



## Heisey Collectors of America, Inc.

169 W. Church Street  
Newark, Ohio 43055  
Phone: 740-345-2932  
Fax: 740-345-9638  
www.HeiseyMuseum.org

### Curator - Director

Jack Burriss, ext. 4  
curator@HeiseyMuseum.org

- Building Use Opportunities
- Collection / Displays
- Community Involvement
- Donations & Fundraising
- Educational / School Outreach
- Employment / Internships
- Heisey News / Heisey News Ads
- Public Relations

### Membership

Susan Bruah, ext. 1  
membership@HeiseyMuseum.org

- Changes in Contact Information
- HCA Membership Information
- Registration for Special Events
- Study Club Information

### Financial Coordinator

Beth Sperry, ext. 3  
business@HeiseyMuseum.org

- Accounting
- Billing and receivables

### Member Guest Services

Rochelle Steinberg, ext. 2  
Linda Greenwood, ext. 2  
Kelly Haist, ext. 2  
Nickie Crowe, ext. 2  
Clerk@HeiseyMuseum.org

### National Heisey Glass Museum

Heisey Collectors of America, Inc., a non-profit corporation (tax-exempt status), owns and operates the National Heisey Glass Museum. Open year round, Tuesday through Saturday, 10 a.m. to 4 p.m. and Sunday, 1 p.m. to 4 p.m., closed holidays. Other hours by appointment. We will be closed both Monday & Tuesday for January and February of 2017. Members admitted free. Regular admission \$4.

# Message from the President



We had some excitement for a few days at the Museum. I'm sure some of you have heard about the Heisey mould issue. It seemed there were some Heisey moulds for sale on the Fenton gift shop web site.

I can assure everyone there were no Heisey moulds for sale, anywhere or at any time. The Fenton Gift Shop used old pictures taken of the Heisey moulds when we had the "Gold Series" made by Fenton. The Fenton gift shop does have their Fenton moulds available for sale.

The Heisey moulds are safe and sound locked up in our warehouse. We have a very precise inventory of everything there! The Fenton gift shop was made aware of this and I hope they remove the pictures of the Heisey moulds quickly.

We are still looking for someone to chair the 2018 Heisey Convention next June. We really need to get this started as it does take some time to get everything arranged. Please contact me or the Museum and we can help!

On a sad note Mary L. Kuster, age 94, passed away on Saturday, August 12, 2017 at Kindred Heath Care, Newark, OH. She was married to David Kuster who preceded her in death in 2015. Mary and David were both avid collectors of Heisey glass and were always front row center at every Heisey Auction. They always had bidder number one! We will miss them.

Summer is almost over but not the excitement of finding Heisey glass. The Fall Select Auction is almost here and it will be part of an exciting weekend. The sign up form for Percy & Vivian Moore, is included in this copy of Heisey News on page 20.

HCA is always looking for new members to share the passion and excitement of collecting Heisey glass. Why not invite someone new to your next club meeting and watch the excitement grow!

Happy Heisey Hunting!  
Roy Eggert



# *Please Save the Date*

## **Percy & Vivian Moore Weekend**

**October 12 - 15, 2017  
Newark, OH**

## **Fall Select Auction**

**October 14, 2017  
Newark, OH**

## **Dick Marsh Annual Memorial Car Show**

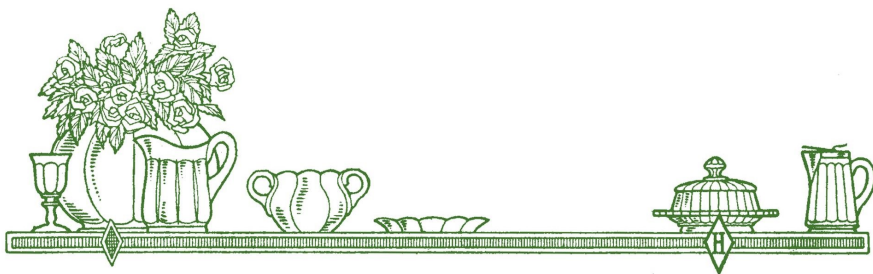
**October 15, 2017  
Newark, OH**

## **Holiday Open House**

**December 2, 2017  
Newark, OH**

## **National Heisey Convention & Glass Show**

**June 13-16, 2018  
Newark, OH**



## **HCA Board of Directors**

### **President**

Roy Eggert  
Frederick, Maryland  
301-620-0234  
royegg54@comcast.net

### **Vice President**

Emie Heisey  
Savannah, GA  
912-414-7144  
askemie@comcast.net

### **Secretary**

Mary Ann Spahr  
Xenia, OH  
937-372-7166  
masxenia@aol.com

### **Treasurer**

Karen Taylo  
New Bern, NC  
252-671-0234  
krtaylo@embarqmail.com

### **Immediate Past President**

Michael Maher  
Heath, OH  
740-644-1796  
theflyingmaher@yahoo.com

Gregg Cameron  
Ankeny, IA  
515-450-6539

David Dusenberry  
Mount Vernon, OH  
740-507-4535

Sandy Dyer  
Medina, WA  
425-454-8968

Marianne Henderson  
Zanesville, OH  
740-454-1085

Jon Heron  
Hilton Head Island, SC  
585-737-9455

Dan Kilgore  
Ellsworth, MI  
231-599-2259

Isa Nelson  
Bellevue, WA  
425-454-3769



## Words From Your Curator – Director

Our nights have been those very nice evenings where the air conditioning can be off and your windows open and you sleep very well under a blanket, thus we know that September has started in Central Ohio and that cooler days and all the glories of the fall will not be too far behind. This Autumn has so much in the way of excitement and interest in store for the Heisey Collectors of America and our fine Museum that it is good to have commence!

I spoke of our new Museum Shop computer in my last article and we are all learning to use it and it does indeed seem to be much faster and more efficient and I am sure we will catch up with it soon. In our last Executive Board meeting it was decided that my computer being the oldest one still in primary use (it was a lap top purchased for Walter when he was undergoing cancer treatments) and of an older operating system, not as willing to play well with others as it used to be, needed to be replaced. I thank you all for my new setup that I am penning this on and plan to be up to speed with in the near future. It was also decided that we will be hiring a new member for our Museum team. We are looking forward to a new and additional face around here to fill out our efforts in member/guest services and I shall keep you posted.

Our cover this issue is graced with a few of the many fantastic Heisey items that will be offered in this year's Fall Select Auction. This is without question the BEST collection of exciting items that I have seen in my time here for this always fun happening! Gallery 3, next to my office, is the display area for these items and I have the opportunity to enjoy them daily so please believe me when I state how very good they are. Enjoy the full auction catalog as it appears on pages 13 thru 18, and dream and plan to bid. It may be an overused group of words however there is indeed something for everyone in this auction and it all goes to help the Museum we love. The best of luck to you, unless of course, you and I are bidding on the same item!!!

I am praying for all our Texas members and friends. Last year our Texas study group created a novel and much enjoyed collector's competition: The Best Road Trip Find. On your way to Newark



for all the festivities you now have an excuse, as if you needed one, to shop for Heisey. All in attendance at our Banquet will have the opportunity again this year to make their votes and money count in selecting the best of what has been discovered and purchased on the trip! The Henderson's, last years winners of , shall we say the very creative trophy, have stated that as difficult as it will be to give up said trophy they are willing to for the good of all. Have FUN with this because we all know that we enjoy sharing our stories and finds.



Marianne and Ed Henderson have a beautiful home filled with an extensive and impressive collection of Heisey, as well as other fascinating glass items. They have an entire room full of brand new custom built display cases filled with our beloved Heisey, as well as a totally redone patio and deck area just waiting to host you. The trip to Mosser Glass and tour, as well as their Factory store will be of interest and enjoyment to all. Mosser has done our reproductions for a number of years now and it is always good to see glass being created and touring it will make a nice way to start a day full of Heisey Fun. Thank-You in advance to the Henderson's as we all look forward to being together.

May all of our Autumns start off well and lets enjoy what remains of summer. Here's to that one of a kind Heisey find, that may be just around the corner.

In Thanks,

# TREASURER'S REPORT

**Karen Taylo**

As we wait for all the invoices to arrive so we can finalize Convention numbers, I thought Endowment numbers could be the theme of this month's report.

A member recently asked about the growth of the Endowment in 2016:

Dec 31, 2015 balance \$3,724,596.22

Dec 31, 2016 balance \$3,984,163.40

Endowment growth for 2016 = \$259,567.18

The 2016 Endowment income less fees was \$77,399.81. To date, we have not taken any of the 2016 income from the Endowment.

As reported last month, the Endowment balance as of June 30, 2017 was \$4,139,267.92. This does not include \$24,006 in 2017 deposits. The total deposits for 2017 equal \$31,659.

The Endowment balance as of March 31, 2017 was \$4,083,714.81 showing a growth of \$99,551.41 over the first quarter of the year. With the June 30<sup>th</sup> balance of \$4,139,267.92, the growth for the second quarter of 2017 was \$55,553.11. This means the Endowment growth for 2017 so far is \$155,104.52

Well, I've done a number on the numbers. If you have any questions, you have my number!!

# 2017 Limited Edition Glass Ornament, Heisey Mermaids etch

**\$38.00 EACH**  
**OR**  
**\$99.00 ALL 3 SCENES**

*Hand blown and etched  
in Ohio, individually signed  
& numbered, gift boxed with  
a card of thanks and history.*



Name \_\_\_\_\_

Address \_\_\_\_\_

City \_\_\_\_\_ State \_\_\_\_\_ Zip \_\_\_\_\_

Phone & e-mail \_\_\_\_\_

Quantity \_\_\_ Pick Up \_\_\_ Ship \_\_\_ *Call Museum for current shipping rate.*

Total \_\_\_\_\_ *(Ohio residents + 7.25% sales tax) Fax or mail to Museum*

Check# \_\_\_\_\_ Visa \_\_\_ MasterCard \_\_\_ Discover \_\_\_\_\_

Card# \_\_\_\_\_ Exp Date \_\_\_\_\_ Code \_\_\_\_\_

       *I would like to order all three at the reduced price, OR*  
*I would like to order one \_\_\_Trumpet \_\_\_Seahorse \_\_\_Dancing*

Heisey Collectors of America, Inc. celebrate the Annual

## PERCY & VIVIAN MOORE MEMORIAL WEEKEND

OCTOBER 12-15, 2017 Newark, OH



### Best Road Find Competition



We are having a competition for the Best Road Find during the 2017 Moore Dinner Weekend. The rules are simple, the piece or pieces must be Heisey and you must have acquired them on the trip to, or during the Moore Weekend. Bring your Heisey finds to the Friday evening dinner for judging. All registered attendees are eligible. We will have a display area for the competition. Voting will be in conjunction with a raffle and the winner will receive a distinctive trophy. Bragging rights are at stake so good luck! We will post information on the Museum's website:

[www.heiseymuseum.org](http://www.heiseymuseum.org)

Check us out on Facebook: Heisey Glass Collectors, and post photos of your Percy Moore Weekend travel adventures.

# 44<sup>th</sup> ANNUAL *Antique Glass & Depression Glass* 2017 SHOW & SALE



Sat., Oct. 21st - 10 am to 5 pm  
Sun., Oct. 22nd - 11 am to 4 pm  
• Free Glass Gift to 1<sup>st</sup> 25 people on Sat. & Sun. •

Admission: **\$5<sup>00</sup>**  
Good Both Days  
or \$4.00 with ad

Fraternal Order of Police Building  
5530 Beach Blvd. JACKSONVILLE, FL

[www.depressionglassclubjax.com](http://www.depressionglassclubjax.com)

SPONSORED BY COLLECTORS OF DEPRESSION GLASS, INC.

For information call Elaine Palmer 904.268.5550 or 904.699.0863 or  
kwpewp@aol.com • Lee 904.655.8445 or Sue 904.612.2398

**FREE**  
Seminars

COLORS OF HEISEY  
Sat. & Sun.  
1:15 pm

By:  
Barbara  
Bartlett

**\$1,000**  
in Door Prizes

Food Court

FREE Parking

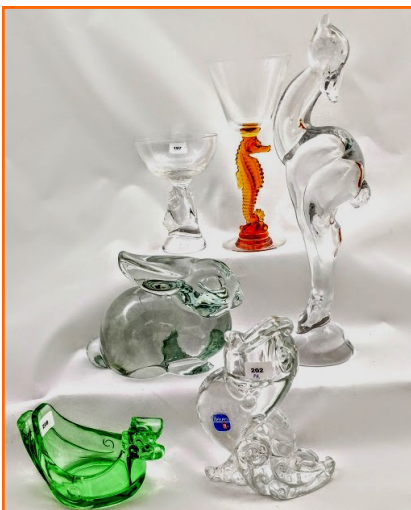
# Highlights of the 2017 Fall Select Auction

## Walter Ludwig

The Fall Auction has now been cataloged and I can hardly wait to tell you all about it. On October 14, there will be 321 lots offered for sale - almost 100 lots more than last year. We are proud to say that this is probably the best auction we have ever had in terms of quality. We have rarities throughout this Auction – items which you may have never seen and have never had a chance to purchase. I will list a few of these wonderful items here but be sure to look at the catalog because I just do not have the room to mention all of the great items we are offering in this Auction.



The auction starts out with a group of water pitchers and jugs including the rarely seen 1405 Ipswich jug in Flamingo (Lot 8) and is followed by 11 Heisey baskets. There are groupings of cruets (including a 1485 early Saturn squat (295)) and animals (including a 1 Mother Rabbit (201) and 104 Gazelle (212)). Candlesticks are also well represented including pairs of 1447 Rococo (229), 1483 World (236), and 1485 Saturn two-light (239).

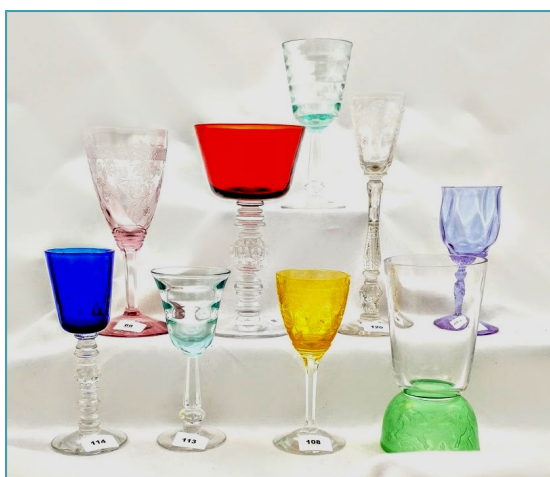


The auction is very strong in barware with many decanters and cocktail shakers (including 1503 Crystolite (99), 4004 Impromptu (100), 1404 Ipswich (102), and 1469 Ridgeleigh (103)). Lot 162 is a 4027 Christos decanter in Alexandrite. There is a 6060 Country Club double old fashion with 517 Winchester '73 etch (125), 2052 old fashion with 476 Circus/Western Scene etch (127), and a 2401 Newton bar with 469 Mermaid etch (129). Lot 155 is a 150 Banded Flute root beer mug. Additionally there is a 1404 Old Sandwich oval decanter in Cobalt (170) and 5 matching bar glasses (171 – selling choice).

Other great items in Cobalt include a 1430 tall Aristocrat candy jar (165) and a 1420 Tulip vase (166). A special item in Hawthorne is a 1184 Yeoman puff box with the rarely seen crystal insert (134). A special Alexandrite piece is a 1401 8" round plate with super elaborate cutting (264). Nice pieces of Moongleam include a 350 Pinwheel and Fan 8" nappy (189), 4218 Marilyn vase with Moongleam foot (215), a 1428 Warwick 9" vase (216), and a super rare 1252 Twist two part relish half Moongleam and half Sahara (196).

We have 21 lots of Zircon/Limelight in this auction including many stems: three pieces in 4085 Kohinoor (122, 299), nine pieces of 4083 Stanhope (123, 300-303), one piece 4091 Kimberly (113), and four pieces of 4090 Coventry including two goblets all Zircon (305) and two with only Zircon bowls (304).

If stems are your thing then we have some great early goblets: 160 Locket on Chain (175), 1049 Deshler (176), 704 Keller ale (177), and 804 Bismark (178). There is also a 5064 Hydrangea with Dorothy Thorpe decoration (255). There are a good number of rare wines and clarets but lots 105 – 120 offer a number of hard to find cordials including 3404 Spanish in Cobalt (114), 5040 Lariat double loop with 1003 Ivy cutting (115), 4091 Kimberly with Zircon bowl (113), three 3381 Creole Alexandrite (119 – selling choice) and one with Sahara bowl (106).



Two exciting vases included are a 444 three handled (20) and a 14 Plaid 32" (319). Two nice pieces in early patterns include a 315 Paneled Cane molasses (143) and a 1776 Kalonyal mustard (146).

This auction has a number of lots in 1469 Ridgeleigh including an hors d'oeuvre plate (281), three dinner plates (487 – selling choice), four roly poly sets (288 – selling choice), a pair of cupped goblets (290), and a pair of 1469 ½ cupped 12 ounce sodas (291).



Other special pieces of note are a 10 Carter inkwell (46), a 1593 Prism marmalade (63), and a 1540 Lariat round egg plate (279). One final piece is one which we had never seen before in the Museum, this is a 417 Double Rib and Panel high footed 10" bowl (47). The piece is stunning and well-marked with the Diamond H.

Space prevents me from listing more but the full auction catalog is available to you in this issue of the Heisey News. Please consider coming to this outstanding auction, or, if you cannot make it, send in an absentee bid on any of the great lots available. I will be there and I hope to see you, too.

# FALL SELECT AUCTION NEWS

Dave Spahr, Auction Manager

The **Thirteenth Annual Fall Select Auction** is coming up soon and will be held at the GMP Union Hall, 350 Hudson Avenue, in Newark OH. **The Public is invited!**

The auction date is **Saturday, October 14, 2017.**

The **Preview** will be from **12:00 p.m. to 1:00 p.m.** with the **Auction** beginning at **1:00 p.m.**

Come and spend Saturday with us at in Newark and also visit the Museum and see all the changes as part of the Percy & Vivian Moore Weekend festivities! We have some great auction glass for your viewing and purchase. The glass is on exhibit in the Museum's Gallery 3 of the King House. Please stop in and see it!

Elsewhere in this newsletter is the auction catalog, guidelines, absentee bid instructions, and absentee bid forms. The catalog is for all of you to use, for those of you who can't make it but want to participate please utilize our absentee bid instructions and absentee bid form. We have our catalog, guidelines, absentee bid instructions, and forms on our website, [www.HeiseyMuseum.org](http://www.HeiseyMuseum.org). Auction volunteer, Walter Ludwig has written an article highlighting the wonderful glass available to be auctioned off. Be sure and read it! Also, Auctioneer Craig Connelly and his crew will call this auction and arrange for good cuisine!

I want to extend a special thanks to our consignors who have made this our **largest and best Fall Select Auctions ever!** We have over 320 lots of really fine Heisey!

See you all in Newark at the Auction on October 14th... and Happy Heisey Hunting!



# HCA Heisey Fall Select Auction

## General Auction Terms and Conditions:

- 1) All lots sold in numerical cataloged order.
- 2) Payment: Cash, traveler's check, certified check, personal check, or money order with proper ID. Visa, MasterCard and Discover cards are accepted. 5% buyers premium. Buyer's premium deleted for cash or check payment. Cash only payment may be specified for individual bidders at HCA's request.
- 3) HCA has endeavored to describe all items to the best of their ability; however this is not a warranty.
- 4) All items are sold as is and where is. The auctioneer has the right to make any verbal corrections at the time of sale and to provide additional information. Inspection is welcomed during preview and before the item is sold.
- 5) In the case of a disputed bid the auctioneers have the authority to settle disputes to the best of their ability and their decision(s) is/are final. Resale of items will be handled at the auctioneer's discretion.
- 6) The auctioneer has the right to set opening bids and reject any bid raise not in line with established bid increments. Items are sold without reserve, unless advertised otherwise.
- 7) All sales are final and all items must be paid for each day of sale. A moving and storage fee may be assessed for items not picked up within seven (7) calendar days after the last day of sale of the auction.
- 8) Buyers assume full responsibility for items once they are sold unless otherwise specified by HCA or the auctioneer. Buyer must have receipt in hand to pick up items.
- 9) HCA (an auction firm) and all auctioneers used by HCA are licensed by the Ohio Department of Agriculture and bonded in favor of the state.
- 10) Bidding on any item indicates acceptance of these Terms and Conditions of Auction.

Other:

The minimum starting bid per lot is \$15.

**IF YOU HAVE ANY QUESTIONS, PLEASE CONTACT THE MUSEUM**

# 2017 HCA Heisey Fall Select Auction

## Absentee Bid Instructions

As absentee bidders, we will bid competitively for you at the 2017 HCA Heisey Fall Select Auction to be held October 14, 2017. In case of duplicate bids, the earliest postmark wins. Bids must reflect the listing in the catalog as to lot number, pattern, description, and condition. The minimum absentee bid per lot is \$15.

You set the maximum amount you are willing to pay on each lot. If successful, the remainder will be refunded. Please use good judgment in arriving at your maximum bid figure. Remember, there are minimum limits to raises that the auctioneer will accept (smaller items \$2.50, larger items \$5, \$10 or as much as \$25). Lots containing multiple items will be as one lot to the successful bidder. Normally, these are not split up, however, there may be some exceptions to this.

Please indicate on your bid the desired condition of the item on which you are bidding. We have endeavored to describe all items to the best of our ability and a bid on an item reflects your acceptance of the condition as listed. (As you know, if no flaws are noted, that means the glass is in generally good condition.) If you mark your bid "near mint only," we will use no discretion in your bid. If there is a variance on a lot not called in the catalog (such as unlisted damage or a difference in the number of items in a lot), we will not bid on that lot for you. Please use the form (or a copy) available in the *Heisey News*, or from this catalog, or from our website [www.HeiseyMuseum.org](http://www.HeiseyMuseum.org) to submit your bid. Absentee bids can be submitted by e-mail, fax, or postal service.

**PAYMENT** Cash, check, cashier's check, or money order payable to HCA Auction, and Visa/MasterCard/DiscoverCard accepted. A 5% buyer's premium will be added. Buyer's premium is deleted for cash, cashier's check, money order, or approved check payments. You may send a separate check for each lot or you may send one check covering the maximum amount of all bids. Absentee Bidders must make their own shipping arrangements. See Shipping section below for further information.

In addition, if you would like to pay by check, **Please** consider leaving the amount blank. Designate in the memo blank of your check an amount not to exceed the total amount of your bids. The Auction Manager or HCA Treasurer will fill in the exact amount of your purchase, thus greatly cutting back on refunds. Surplus bid money will be refunded. Send in a self-addressed, stamped envelope to return your checks. HCA reserves the right to reject any bid.

**SHIPPING** Buyers must make their own shipping arrangements including payments for shipping directly to the shipper. Glass is available to be picked up by your shipper on Tuesday, October 17, 2017, after 10:00 AM at the National Heisey Glass Museum, 169 W. Church St., Newark, OH 43055. HCA is aware of the following area shippers: Express Pack and Ship: 740-366-1325, Pakmail: 740-522-2564, and UPS Store 3910: 614-939-5195. HCA is not responsible for any services provided by these vendors. HCA will work with these vendors to make sure your glass is available.

**BID SUBMISSION** Absentee bids must be **received** no later than Saturday, October 7, 2017, at 4:00 PM. Eastern Standard Time. When using a credit card number, bids must be faxed to 740-345-9638 using the Absentee Bidding Form. When your Fax is complete, please contact the Museum to ensure it has arrived and is removed from the Museum Fax machine as soon as it arrives. The Absentee Forms with personal checks, et. al., must be mailed to Absentee Bids, National Heisey Glass Museum, 169 W. Church Street, Newark, OH 43055. HCA, Inc. must have credit card information or cash, a personal check, money order, or travelers check in its possession prior to executing a bid.

**OTHER** The prices realized from this Auction on all lots will be printed in a future issue of the Heisey News. If you are not an HCA member but want to receive the results list, send \$2 and a long SASE.

## 2017 All-Heisey Fall Select Auction List

Note: All lots with numbers starting with D are donations to HCA and all funds realized go to assist the Museum.

1		341 ½	PURITAN JUG 3-QT SQUAT H
2		343	SUNBURST PITCHER ½-GAL H
3		406	COARSE RIB JUG H
4		341 ½	PURITAN JUG SQUAT 3-PINT H
5		517	DANIEL TUMBLE UP W/ 197 TUMBLER H
6	D	433	GREEK KEY TANKARD 3-PINT H
7	D	433	GREEK KEY JUG 1-QT H
8		1405	IPSWICH JUG FLAMINGO H
9		417	DOUBLE RIB & PANEL BASKET 6" W/ UNK CUTTING MOONGLEAM H
10		417	DOUBLE RIB & PANEL BASKET 6" IRIDIZED H
11		417	DOUBLE RIB & PANEL BASKET 6" H
12		417	DOUBLE RIB & PANEL BASKET 6" FLAMINGO H
13		459	ROUND COLONIAL BASKET 7" H
14		500	OCTAGON BASKET H
15		461	BANDED PICKET BASKET W/ UNK CUTTING H
16		480	DAISY & LEAVES BASKET CUT & FROSTED H
17		465	RECESSED PANEL BASKET 8" H
18		460	PINWHEEL & FAN BASKET 6" H
19		462	PLAIN HEXAGON BASKET 8" W/ UNK FLORAL CUTTING H
20		444	VASE 3-HDL 12" H
21	D	353	MEDIUM FLAT PANEL VASE 15" W/ 305 MOLLIE ETCH H
22		1433	THUMBPRINT & PANEL VASE FLARED H
23		473	NARROW FLUTE W/ RIM VASE 8 ½" H
24		300	PEERLESS VASE ORCHID 4 ½" SMALL
25		391	VASE 12" H
26		353	MEDIUM FLAT PANEL CRUSHED FRUIT W/ LID H
27		352	FLAT PANEL CRUSHED FRUIT W/ LID 2-QT PAT. DATE H
28		341 ½	PURITAN JUG 1/2-GAL EMBOSSED STERLING OVERLAY MARKED STERLING H
29		341	PURITAN TANKARD 1-QT W/ LID H W/ MONO "SHE" H
30		339	CONTINENTAL COMPORT 8 ½" H
31		353	MEDIUM FLAT PANEL COMPORT 10" H
32		473	NARROW FLUTE W/ RIM STRAWBERRY INDV H
33		473	NARROW FLUTE W/ RIM PICKLE / OLIVE COMBINATION H
34		353	MEDIUM FLAT PANEL MARMALADE W/ LID H
35		355	QUATOR DOMINO SUGAR - 2 SIDED H
36		393	NARROW FLUTE BANANA SPLIT H (2)
37		352	FLAT PANEL CHEESE & CRACKER W/ WHEELING GOLD DÉCOR H (2 PCS)
38		353	MEDIUM FLAT PANEL TOOTHPICK TRAY H
39		351	PRISCILLA TOOTHPICK H
40		1185/109	YEOMAN / PETTICOAT DOLPHIN COMPORT ALL FLAMINGO

### HCA Catalog

The following codes are used to describe any problems/ issues identified by our catalogers with our glass at our auctions.

Mold marks and straw marks which occur in the manufacturing processes are not called.

H - Marked with diamond H

D = Appearing after lot #, indicates item donated to the auction on the Museum's behalf; full amount to Museum

41	1252	TWIST COMFORT 7" W/ UNK FLORAL CUTTING FLAMINGO
42	1186	YEOMAN COMFORT HI FTD DEEP 6" FLAMINGO H
43	1401	EMPRESS CUP & SAUCER FLAMINGO H (4-SETS)
44	1401	EMPRESS CREAM H & SUGAR H DF W/ 500 OCTAGON TRAY 11" ALL FLAMINGO
45	354	WIDE FLAT PANEL STACK SET: CREAM / SUGAR / BUTTER FLAMINGO H
46	10	CARTER INKWELL H
47	417	DOUBLE RIB & PANEL BOWL 10" HI FTD H
48	110	SANDWICH DOLPHIN CANDLESTICK 10" W/ UNK FLORAL CUT ON BASE FLAMINGO (PR)
49	2	OLD WILLIAMSBURG CANDLESTICK 1-LITE 11" H (PR)
50	1405	IPSWICH CONSOLE SET: CANDLEVASE W/ INSERT & PRISMS H (PR); BOWL FLORAL 11" H (1)
51	118	MISS MUFFET CANDLESTICK NO OPTIC FLAMINGO (PR)
52	120	OVERLAPPING SWIRL CANDLESTICK MOONGLEAM H (PR) H
53	1503 ¼	CRYSTOLITE CANDLEBLOCK SQUARE (PR)
54	1405	IPSWICH OIL H
55	1401	EMPRESS CRUET W/ STOPPER MOONGLEAM FT & STOPPER
56	1540	LARIAT CRUET W/ STOPPER
57	1252	TWIST CRUET W/ STOPPER 4-OZ MOONGLEAM H
58	1252	TWIST CRUET W/ STOPPER 2-OZ FLAMINGO
59	1404	OLD SANDWICH CRUET SAHARA H
60	1184	YEOMAN CRUET 4-OZ D/O MOONGLEAM W/ STOPPER CRYSTAL
61	1405	IPSWICH OIL W/ CROSS STOPPER
62	1425	VICTORIAN FRENCH DRESSING W/ STOPPER
63	1593	PRISM MARMALADE W/ LID
64	1231	RIBBED OCTAGON CREAM & SUGAR MOONGLEAM H
65	1405	IPSWICH CREAM & SUGAR H
66	1020	PHYLLIS CREAM & SUGAR W/ UNK ROSE CUTTING H
67	1495	FERN CREAM & SUGAR W/ STERLING OVERLAY H
68	4090	COVENTRY CLARET W/ 902 ORLANDO CUTTING
69	3350	WABASH WINE DO W/ 440 FRONTENAC ETCH HAWTHORNE H
70	5042	CORINTHIAN CLARET W/ 988 SERENADE CUTTING
71	5077	LEGIONAIRE CLARET SULTANA STEM (2)
72	3366	TROJAN WINE DO FLAMINGO H
73	1404	OLD SANDWICH WINE MOONGLEAM H
74	1550	DOLPHIN FISH BOWL H
75	4	SWAN H
76	1	HORSEHEAD BOOKEND (PR)
77	1557	CHANTICLEER VASE (2)
78	1554	FISH BOOKENDS (PR)
79	3	GOOSE WINGS UP
80	1632	LODESTAR BOWL 8" DAWN H
81	1632	LODESTAR PITCHER DAWN H
82	1415	TWENTIETH CENTURY MILK PITCHER 1-PINT H
83	1632	LODESTAR NAPPY 4" DAWN H (2)
84	1565	LEAF JELLY DAWN
85	1639	TOWN & COUNTRY NAPPY 6" DAWN
86	1229	OCTAGON MAYO D/O MARIGOLD
87	1229	OCTAGON CHEESE PLATE MARIGOLD (4)
88	3404	SPANISH COCKTAIL TANGERINE BOWL
89	1401	EMPRESS PLATE 8" SQ TANGERINE H (4) H
90	1567	PLANTATION JUG
91	1567	PLANTATION OIL W/ STOPPER
92	1567	PLANTATION SALT & PEPPER W/ LIDS H
93	1567	PLANTATION SNACK SET: CUP & PLATE (1-SET) H
94	1567	PLANTATION COMFORT 5" H X 7" W H
95	1295	BEADED SWAG TABLE SET: CREAM, SUGAR, SPOONER, BUTTER W/ LID ALL W/ MATCHING ROSE DÉCOR OPAL
96	9	SINGLE ROW SLASH NAPPY 9"
97	1201	FANDANGO WATER BOTTLE

98	4225	COBEL COCKTAIL SHAKER 2-QT W/ 118 ROOSTER HEAD STOPPER
99	1503	CRYSTOLITE COCKTAIL SHAKER W/ MONO "GWF"
100	4004	IMPROMPTU COCKTAIL SHAKER
101	4036	MARSHALL COCKTAIL SHAKER W/ 941 BARCELONA CUTTING
102	1405	IPSWICH COCKTAIL SHAKER
103	1469	RIDGELEIGH COCKTAIL SHAKER
104	4036	MARSHALL COCKTAIL SHAKER W/ 118 ROOSTERHEAD STOPPER (1); 5048 ROOSTERHEAD COCKTAIL (12)
105	1503	CRYSTOLITE CORDIAL H (2)
106	3381	CREOLE CORDIAL SAHARA BOWL
107	3308	BOB WHITE CORDIAL W/ 366 PEACOCK ETCH H
108	3350	WABASH CORDIAL W/ 440 FRONTENAC ETCH MARIGOLD BOWL H
109	3408	JAMESTOWN CORDIAL W/ 458 OLYMPIAD ETCH
110	3304	UNIVERSAL POUSSE CAFÉ W/ 9012 VICTORY ETCH
111	3389	DUQUESNE CORDIAL W/ 450 CHINTZ ETCH SAHARA
112	3408	JAMESTOWN CORDIAL W/ 816 PALMETTO CUTTING
113	4091	KIMBERLY CORDIAL 1-OZ ZIRCON BOWL
114	3404	SPANISH CORDIAL COBALT BOWL
115	5040	LARIAT CORDIAL 2-LOOP W/ 1003 IVY CUTTING H
116	3411	MONTE CRISTO CORDIAL W/ 851 KALARAMA CUTTING
117	3416	BARBARA FRITCHIE CORDIAL W/ 799 MANHATTAN CUTTING
118	3411	MONTE CRISTO CORDIAL W/ 456 TITANIA ETCHING
119	A-C 3381	CREOLE CORDIAL ALEXANDRITE – SELLING CHOICE
120	3416	BARBARA FRITCHIE CORDIAL W/ 468 CHATEAU ETCHING
121	3397	GASCONY WINE SAHARA
122	4085	KOHINOOR CLARET W/ ZIRCON BOWL
123	4083	STANHOPE WINE W/ ZIRCON BOWL
124	5078	PARK AVENUE SHERRY 3-OZ W/ UNK CUTTING (4) H
125	6060	COUNTRY CLUB OLD FASHION DOUBLE W/ 517 WINCESTER '73 ETCHING
126	3417	ADKIN BITTERS BOTTLE W/ 467 TALLY HO ETCH PAPER LABEL
127	2052	OLD FASHION W/ 476 CIRCUS / WESTERN SCENE ETCH
128	4002	AQUA CALIENTE COCKTAIL W/ 459 FISHERMAN ETCH H
129	2401	NEWTON BAR GLASS 1 ½-OZ W/ 469 MERMAID ETCH
130	2351	NEWTON TUMBLER 10-OZ W/ 467 TALLY HO ETCH (2)
131	5048	ROOSTERHEAD COCKTAIL (4)
132	5038	BANTAM ROOSTER COCKTAIL
133	1231	RIBBED OCTAGON PLATE 8" HAWTHORNE (4)
134	1184	YEOMAN PUFF BOX W/ LID DO HAWTHORNE & INSERT CRYSTAL (3-PCS) H
135	479	PETAL CREAM H & SUGAR HAWTHORNE (1-SET)
136	1192	INSIDE SCALLOP CUCUMBER DISH W/ UNK CUTTING HAWTHORNE
137	3366	TROJAN CHAMPAGNE DO HAWTHORNE H (2)
138	3481	GLENFORD TUMBLER FTD HAWTHORNE
139	3350	WABASH SHERBET W/ 440 FRONTENAC ETCH HAWTHORNE H (4)
140	1229	OCTAGON NUT INDV NO OPTIC HAWTHORNE H (4)
141	16	COLONIAL PUFF BOX W/ LID W/ FLORAL ENGRAVING "RAY" H
142	1129	FINE TOOTH NAPPY 7 ½" SHALLOW W/ UNK CUTTING H
143	315	PANELLED CANE MOLASSES CAN
144	1776	KALONYAL CELERY 11" H
145	1776	KALONYAL CLARET H
146	1776	KALONYAL MUSTARD W/ LID H
147	365	OLD QUEEN ANNE JELLY HDLD H
148	433	GREEK KEY JELLY HI FTD 5" H
149	433	GREEK KEY NAPPY SHALLOW 4 ½" H (2)
150	1503	CRYSTOLITE DRESSER SET: PUFF BOX W/ LID H; COLOGNE W/ DAUBER (2); TRAY OVAL 13" H
151	1503	CRYSTOLITE CENTERPIECE 11" H
152	1503	CRYSTOLITE ICE TUB W/ TONGS H
153	1503	CRYSTOLITE CANDY SHELL W/ LID
154	1503	CRYSTOLITE MUSTARD W/ LID

155	150	BANDED FLUTE ROOT BEER MUG H
156	150	BANDED FLUTE TUMBLER H (3)
157	150	BANDED FLUTE MOLASSES
158	150	BANDED FLUTE BUTTER W/ LID H
159	150	BANDED FLUTE NAPPY 4 ½" H (4)
160	4035	BETHEL DECANTER W/ STOPPER W/ UNK THISTLE CUTTING
161	367	PRISM BAND DECANTER W/ STOPPER FLAMINGO
162	4027	CHRISTOS DECANTER ALEXANDRITE W/ STOPPER CRYSTAL
163	4027	CHRISTOS DECANTER W/ STOPPER W/ UNK CUTTING
164	4035	BETHEL DECANTER W/ STOPPER NOT GROUND W/ UNK "BOURBON" CUTTING (1); BETHEL DECANTER W/ STOPPER NOT GROUND W/ UNK "SCOTCH" CUTTING (1)
165	1430	ARISTOCRAT CANDY HI FTD COBALT
166	1420	TULIP VASE COBALT
167	3404	SPANISH GOBLET COBALT BOWL (4)
168	3404	SPANISH COCKTAIL COBALT BOWL (4)
169	4231	FAVOR VASE COBALT
170	1404	OLD SANDWICH DECANTER W/ CRYSTAL STOPPER OVAL COBALT H
171	A-E 1404	OLD SANDWICH BAR COBALT H – SELLING CHOICE
172	1428	WARWICK CORNUCOPIA VASE INDV COBALT H
173	1428	WARWICK CORNUCOPIA CANDLE VASE COBALT H
174	1205	FANCY LOOP GOBLET EMERALD WORN GOLD
175	D 160	LOCKET ON CHAIN GOBLET
176	D 1049	DESHLER GOBLET W/ ETCHED BANDS
177	D 704	KELLER ALE W/ UNK ENGRAVING
178	D 804	BISMARCK GOBLET
179	1519	WAVERLY BOWL FLORAL 11" SEAHORSE FTD W/ 507 ORCHID ETCH H
180	D 1540	LARIAT VASE 6" FAN W/ 507 ORCHID ETCH
181	D 5031	OOH-LA-LA FRENCH DRESSING BOTTLE W/ 507 ORCHID ETCH
182	1540	LARIAT VASE 7" CRIMPED W/ 507 ORCHID ETCH
183	1519	WAVERLY BUTTER W/ LID W/ 507 ORCHID ETCH H
184	1495	FERN PLATE 8" W/ 507 ORCHID ETCH
185	1519	WAVERLY MAYO W/ UNDERPLATE W/ 507 ORCHID ETCH H
186	1435	ASHTRAY INDV W/ 507 ORCHID ETCH (2)
187	5072	ROSE STEM CHAMPAGNE W/ 515 HEISEY ROSE ETCH H (4)
188	5072	ROSE STEM COCKTAIL W/ 515 HEISEY ROSE ETCH H (4)
189	350	PINWHEEL & FAN NAPPY 8" MOONGLEAM H
190	1252	TWIST BERRY SET: BOWL 8" (1); BOWL 4" (8) MOONGLEAM H
191	1252 ½	TWIST CUP & SAUCER MOONGLEAM H (2 SETS)
192	4224	STEEPLE CHASE COCKTAIL MOONGLEAM FT
193	3380	OLD DOMINION GOBLET SHORT STEM W/ 447 EMPRESS ETCH MOONGLEAM STEM & FT (2)
194	411	TUDOR PRESERVE W/ LID MOONGLEAM H
195	52	SHORT INDIVIDUAL SALT SHAKER W/ #5 GLASS TOPS ALL MOONGLEAM H
196	1252	TWIST RELISH 2-PRT COMBO UNFINISHED BOTTOM MOONGLEAM & SAHARA H
197	5066	HORSEHEAD COCKTAIL
198	5074	SEAHORSE STEM COCKTAIL W/ SULTANA STEM H
199	5074	SEAHORSE STEM COCKTAIL H
200	1	SOW
201	1	MOTHER RABBIT
202	1550	FISH CANDLESTICK (PR)
203	1	ROOSTER
204	7002	RAMSHEAD STOPPER NOT GROUND & STRAINER
205	1527	COLT KICKING
206	12	MALLARD WINGS UP (1); 11 WINGS HALF (1) H; 10 WINGS DOWN (1) H
207	357	DUCK ASHTRAY FLAMINGO H
208	357	DUCK ASHTRAY MOONGLEAM H
209	15	FLORAL FROG MOONGLEAM (1); DUCK INSERT MOONGLEAM (1)

210	123	MERCURY CANDLE INSERT MOONGLEAM H
211	15	FLOWER FROG FLAMINGO (1); DUCK INSERT FLAMINGO (1)
212	104	GAZELLE H
213	1489	PURITAN CIGARETTE BOX LARGE W/ LID & HORSEHEAD FINIAL
214	1489	PURITAN CIGARETTE BOX W/ LID SMALL W/ HORSEHEAD FINIAL
215	4218	MARILYN VASE 10" W/ MOONGLEAM FT
216	1428	WARWICK VASE 9" MOONGLEAM H
217	1469	RIDGELEIGH VASE 8" RND ZIRCON H
218	411	TUDOR VASE 8 ½"
219	1558	DROOP BOWL FLORAL OVAL 12" H
220	5012	URN VASE FTD 6"
221	5012	URN CIGARETTE HOLDER
222	1428	WARWICK VASE 5" H (2)
223	1473	BUTTRESS CENTERPIECE: MEDIUM CENTER (1); CORNER (4) H
224	1405	IPSWICH CANDY W/ LID ½-LB H
225	1405	IPSWICH CANDY W/ LID ¼-LB
226	1951	CABOCHON CANDY W/ LID W/ 516 PLANTATION IVY ETCH H
227	1183	REVERE CANDY BOX W/ LID 7" H
228	2	OLD WILLIAMSBURG CANDLESTICK 9" (PR)
229	1447	ROCOCO CANDLESTICKS 2-LITE H (PR)
230	1509	QUEEN ANN CANDELABRA 1-LITE 7 ½" W/ "A" PRISMS (PR)
231	1615	FLAME CANDLESTICK 2-LITE H (PR)
232	25	FEDERAL CANDLESTICK 1-H (PR)
233	70	OCTAGON CANDLESTICK 7 ½" H (PR)
234	109	PETTICOAT DOLPHIN CANDLESTICK 6" MOONGLEAM (PR)
235	1401	EMPRESS CANDLESTICK 1-LITE (PR)
236	1483	WORLD CANDLESTICK 2-LITE (PR)
237	1433	THUMBPRINT & PANEL CANDLESTICK 2-LITE SAHARA (PR)
238	1495	FERN CANDLESTICK W/ 508 FLORAL ETCH (PR)
239	1485	SATURN CANDLESTICK 2-LITE (PR)
240	1511	TOUJOURS APPLE MARMALADE W/ #7 SPOON W/ 893 CARLTON CUTTING H
241	1466	STAR RELISH 5-PRT W/ 849 NOMAD CUTTING
242	1488	KOHINOOR BOWL FLORAL 14" W/ UNK CUTTING
243	1486	COLEPORT BOWL 14" OVAL W/UNK CUTTING
244	1489	PURITAN ASHTRAY HORSEHEAD W/ UNK CUTTING
245	4044	NEW ERA PLATE LUNCHEON 7" X 9" W/ 826 VENUS CUTTING
246	4044	NEW ERA OYSTER COCKTAIL W/ 826 VENUS CUTTING
247	4044	NEW ERA SODA / ICE TEA 12-OZ W/ 826 VENUS CUTTING
248	4044	NEW ERA GOBLET W/ 826 VENUS CUTTING
249	16	PUFF BOX W/ LID H (1); HAIR RECEIVER W/ LID H (1) BOTH CUT TOP AND BOTTOM W/ SAME UNK CUTTING
250	1504	REGENCY PUFF BOX W/ LID H
251	1184	YEOMAN COLOGNE 4-OZ W/ DAUBER W/ UNK CUTTING
252	485	HEXAGON STEM COLOGNE 1-OZ W/ DAUBER W/ UNK CUTTING H
253	516	FAIRACRE COLOGNE FLAMINGO H W/ DAUBER MOONGLEAM
254	1401	EMPRESS ICE BUCKET W/ 840 NOMAD CUTTING H
255	5064	HYDRANGEA GOBLET W/ DOROTHY THORP DÉCOR
256	1401	EMPRESS PLATE 8" RND ALEXANDRITE H (8)
257	1401	EMPRESS PLATE 7 ½" RND ALEXANDRITE H (8)
258	1401	EMPRESS PLATE 6" RND ALEXANDRITE H (8)
259	135	EMPRESS CANDLESTICK 1-LITE ALEXANDRITE (PR)
260	4220	JANICE VASE 4" SWIRL OPTIC ALEXANDRITE
261	D 3381	CREOLE SODA 8-OZ ALEXANDRITE
262	1401	EMPRESS CANDLESTICK 6" DF ALEXANDRITE H (1-ONLY)
263	3380	OLD DOMINION CHAMPAGNE ALEXANDRITE H (4)
264	1401	EMPRESS PLATE 8" RD W/ UNK ELABORATE CUTTING ALEXANDRITE
265	1401	EMPRESS PLATE SANDWICH 12" SQ HDLD SAHARA

266	1401	EMPRESS PLATE HORS D'OEUVRES 13" 2-HDL D SAHARA H
267	1401	EMPRESS RELISH TRIPLEX HDLD SAHARA
268	3390	CARCASSONNE GOBLET SHORT STEM SAHARA (4)
269	1401	EMPRESS MAYO SAHARA (1); #6 LADLE SAHARA (1) H
270	1401	EMPRESS MUSTARD SAHARA H (1); W/ #5 SPOON H (1)
271	372	MCGRADY SYRUP 7-OZ SAHARA H
272	1401	EMPRESS ASHTRAY SAHARA H
273	1401	EMPRESS PLATE 9" RND SAHARA H (4)
274	1401	EMPRESS PLATE 10 ½" RND SAHARA H (4)
275	1540	LARIAT COCKTAIL W/ 980 MOONGLO CUTTING (4)
276	1540	LARIAT CIGARETTE BOX
277	1540	LARIAT CREAM & SUGAR W/ TRAY H (3-PCS)
278	1540	LARIAT VASE ROUND CRIMPED 7"
279	1540	LARIAT PLATE DEVEILED EGG RND 14"
280	1540	LARIAT HURRICANE CANDLESTICK W/ GLOBES W/ CHARLTON DÉCOR H (PR)
281	1469	RIDGELEIGH PLATE HORS D'OUVRES
282	1469	RIDGELEIGH BOWL FLORAL SWAN HDLD 14"
283	1469	RIDGELEIGH CANDLESTICK SQ FTD 2" (PR)
284	1469	RIDGELEIGH CIGARETTE HOLDER OVAL W/ ASHTRAY PLATE 6" (2 PCS) H
285	1469	RIDGELEIGH VASE INDV #5 H
286	1469	RIDGELEIGH CANDELABRA 2-LITE (PR) + 6 EXTRA PRISMS
287	A-C	1469 RIDGELEIGH PLATE 10 ½" H – SELLING CHOICE
288	A-D	1469 RIDGELEIGH ROLY POLY SET - COMPLETE H – SELLING CHOICE
289		1469 RIDGELEIGH DECANTER ICICLE
290		1469 RIDGELEIGH GOBLET CUPPED (2)
291	1469 ½	RIDGELEIGH SODA 12-OZ CUPPED (2) H
292	1447	ROCOCO MAYO & RELISH COMBINATION - NO LID ZIRCON
293	1495	FERN JELLO DISH ZIRCON
294	1495	FERN BON BON 6" HDLD ZIRCON
295	1483	SATURN OIL SQUAT ZIRCON W/ STOPPER CRYSTAL - EARLY DESIGN
296	1469	RIDGELEIGH COASTER ZIRCON (2)
297	1506	PROVINCIAL PLATE 8" LIMELIGHT (2)
298	1506	PROVINCIAL TUMBLER 8-OZ FTD LIMELIGHT H (4)
299	4085	KOHINOOR GOBLET ZIRCON BOWL (2)
300	4083	STANHOPE GOBLET ZIRCON BOWL & FT (2)
301	4083	STANHOPE SODA / ICE TEA FTD 12-OZ ZIRCON (2)
302	4083	STANHOPE CHAMPAGNE ZIRCON BOWL & FT (2)
303	4083	STANHOPE COCKTAIL ZIRCON BOWL & FT (2)
304	4090	COVENTRY GOBLET ZIRCON BOWL (2)
305	4090	COVENTRY GOBLET ALL ZIRCON (2)
306	1495	FERN MINT ZIRCON
307	1506	PROVINCIAL TUMBLER FTD LIMELIGHT H
308	433	GREEK KEY PUNCH BOWL (1); BASE (1); CUPS (17) (19-PCS) H
309	150	BANDED FLUTE PUNCH BOWL (1), BASE (1), PUNCH CUP (17) H (19-PCS)
310	1469	RIDGELEIGH PUNCH BOWL (1); UNDERPLATE 18" (1); PUNCH CUP (10) H (12-PCS)
311	D	500 OCTAGON VARIETY TRAY FLAMINGO H
312	1401	EMPRESS MINT DF 8" FLAT W/ 454 ANTARTIC ETCH
313	1401	EMPRESS HORS'D'OEUVRE 13" 2-HDL D W/ 9009 ARCTIC ETCH H
314	134	TRIDENT BOWL 14" 4-TOED OVAL SAHARA H
315	1445	GRAPE CLUSTER BOWL FLORAL H
316	1401	EMPRESS BOWL FLORAL LION HEAD
317	1509	QUEEN ANN BOWL DF 11" (1); 142 CASCADE CANDLESTICK 3-LITE (PR) ALL W/ 941 BARCELONA CUTTING
318	1598	COCKADE BOWL FLORAL CRIMPED
319	14	PLAID VASE 32" H
320	1637A	TOWN & COUNTRY SALAD BOWL LIMELIGHT
321	1637A	TOWN & COUNTRY PLATE SANDWICH 14" LIMELIGHT



# MUSEUM ACQUISITIONS (NON-MONETARY)

August 2016 – July 2017

## Compiled by Walter Ludwig

The Museum has been extremely fortunate to be the recipient of a great deal of wonderful glass during the last year. Some pieces were donated specifically to be added to the collection, but we received a lot of glass that was designated for the benefit of HCA. All of this glass is reviewed and any item which is not found to be in the collection is also accessed into the Museum Collection. The remainder is designated to be sold either in our Museum Shop or at a future auction.

Some of you have inquired as to what the Museum would like to add to our collection. For a long while the Museum's objective was to have a good representative collection with examples of all patterns, colors, and decorations done at the Heisey factory. We have now expanded the collection objective to have a solid study collection that encompasses all the production that A.H. Heisey & Company produced. Any piece that the Museum does not own would be accepted. If you have a piece that you think the Museum does not own, call the Museum and we will check our database. If you have many pieces, send us a list and we will gladly let you know which pieces the Museum would like.

This is a compilation of donations that have been accessed into the Collection since I last reported in August 2016.

**Abrams, Sally** – 1513 Baroque candelabra with insert vases, pair

**Bartlett, Barbara and Dick** – 1195 Paul Revere floral bowl, Moongleam in Memory of Irene Rauck

**Blodgett, Everett and Virginia** – 1425 Victorian goblet, Tangerine

**Clark, Jim and Karen** – 10 Oak Leaf coaster, Hawthorne

**Cochran, Gordon and Darlene** – 30 salt/pepper shakers; 1184 Yeoman banana split; 1401 Empress mint w/ 454 Antarctic etch; 1469 Ridgeleigh dessert, 10", 2 handled; 1503 Crystolite relish, 5 pt, rd; 1509 Queen Ann relish, triplex w/ 941 Barcelona cutting

**Cooke, Jim** – 21 Aristocrat candelabrum base with shoe stand top; 354 Pedestal ashtray, Flamingo; 349 water bar

**Cummons family** – 355 Quator ashtray; 1525 ashtray w/ 515 Heisey Rose etch; 1489 Puritan ashtray 3", square, shallow; unknown bar. All in Memory of Mabel Giles (former worker) and Jack Cummons

**Deal, Phyllis** – 118 Miss Muffet candlestick, Flamingo; 142 Cascade candlesticks, pr w/ 896 Sungate cutting; 343 Sunburst ftd rose bowl; 393 Narrow Flute soda 6 oz., handled, footed w/unknown cutting; 417 Double Rib and Panel champagne; 419 Sussex goblet, Flamingo bowl; 1181 Revere cheese/cracker, 2 piece w/ gold décor; 1403 Old Sandwich sundae, Sahara; 1509 Queen Ann relish, 4 O'clock w/913 Everglades cut; 3350 Wabash grapefruit w/ 439 Pied Piper etch

**Deetz, Phil and Hedden, Leo** – 3322 Gamin goblet w/724 Daffodil cutting

**Dunham, Jack and Bonnie** – 1192 Inside Scallop nappy, shallow, 8" w/unknown cut; 1225 Plain Band oval, 11"

**Eggert, Ray** – Cordials: 150 Banded Flute, 341 Puritan, 351 Priscilla, 359 Colonial – optic, 373 Old Williamsburg, 901 Overlook, 3309 Petite, 3312 Gayoso w/ 153 Monticello etch, 3317 Drake w/33 Tatting etch, 3336 Lady Leg w/unknown etch, 3390 Carcassonne, 3408 Jamestown w/965 Narcissus cut, 3411 Monte Christo, 3418 Savoy Plaza, 3424 Admiralty w/ 602 Simplex, 4091 Kimberly w/944 Courtship cut, 5011 Yorktown w/925 Huguenot cut, 5019 Waverly, 5077 Legionnaire w/1025 Arcadia, 5078 Park Avenue, 5086 Plantation Ivy w/517 Plantation Ivy etch, 5089 Princess cordial w/507 Orchid etch, 5091 Cabochon; 3318 Waldorf pony brandy w/unknown etch

**Evans, Larry** – 1485 Saturn pickle

**Feinberg, Michael and Elizabeth** – 352 Flat Panel match holder/ashtray – metal match box holder

**Files, Tom and Kathy** – 2 coaster, 4"

**Fritz, Irene** – 116 Oakleaf Candlesticks, pair, Flamingo tops

**Gable, Walter** - 301 Old Williamsburg 4-light candelabra, pair

**Harrison, Bob and Pat** – 1184 Yeoman salt, ind. w/unknown cut; 1231 Ribbed Octagon sandwich, center handled, Flamingo; 1540 Plug Horse on bust off, Imperial Caramel Slag

**Hawkins, Bill** – 463 Bonnet basket, Flamingo w/unknown cut; 1183 Revere candy jar, 1# w/unknown engraving; 4290 Oval vase, 9", Moongleam w/unknown cutting. All in Memory of Jean Hawkins

**Heisey Club of California** – 337 Touraine molasses; 5044 Constellation old fashion and soda, 8 oz.

**Heisey Collectors of Texas** – 325 Pillows ice tub in Memory of George Ann Powell

**Heisey, Emmie** – 1495 Fern bonbon w/497 Rosalie etch; 3411 Monte Christo soda, 5 oz. w/458 Olympiad etch; look alike to 1186 Yeoman 2 handled jelly w/unknown etch

**Henderson, Ed and Marianne** – 1229 Octagon salad bowl, 10" (not in catalogs), 2351 Newton soda, 6 oz. w/439 Zodiac etch; 4054 Coronation juice, 5 oz.

**Heron, Scott** – 1252 Twist goblet, 1511 Toujours floral bowl w/503 Minuet etch

**Hicks, Doris** – 409 soda, 12 oz.

**Hulslander, Erma** – 1235 Beaded Panel Sunburst wine

**Jones, Chuck and Amy Jo** – 1205 Raindrop candlestick, Moongleam in Memory of Jo Rogers; 1231 Ribbed Octagon candlestick, Flamingo in Memory of Miriam Pringle

**Kilburn, Linda** –341 Puritan jelly, 1 handled, crimped; 4002 Aqua Caliente cocktail w/450 Chintz etch

**Kilgore, Dan and Sue** – 3360 Penn Charter sherbet, Flamingo

**Lucke, Rex and Pat** – 1425 Victorian goblet, goblet (low), cocktail, wine, champagne, sherbet, plate (7”), plate (8”)

**Ludwig, Walter** – 351 Priscilla salt, ind.; 1184 Yeoman tumbler cover; 1225 Plain Band open salt, medium size; 4044 New Era goblet w/831 Valencia cut

**McGill, Martha** – 3308 Bob White goblet w/694 Balboa cut

**McKelvey, William** – 4091 Kimberly cordial w/Krall Bird of Paradise cut in Memory of Karl Kolter

**Miller, Jeanne and Dan** – 135 Empress candlestick, Sahara

**Merwin, Marie** – 16 Susanneh puff box w/679 Windsor cut; 1183 Revere hair receiver w/679 Windsor cut; 1252 Twist pickle, Flamingo; 3314 Grandeur goblet w/410 Sabrina cut

**Metcalfe, Jack** – look alike to 1536 Military Cap ashtray

**Newsome, Norma** – 335 Prince of Wales Plumes jug w/gold; 1252 Twist relish, 3 pt., 13”, Sahara; 1401 Empress muffin, rd, Sahara; 1519 Waverly sandwich, center handled w/515 Heisey Rose etch; 4182 Thin plate, 7”, Marigold

**North Carolina Heisey Study Club** - 1E92 Omega goblet w/ 1088 Aurora cutting; 5077 Legionnaire goblet w/ 1036 Beau Knot cutting; 3389 Duquesne goblet w/ 832 Continental cutting; 4091 Kimberly cocktail w/ 844 ½ Cromwell cutting; 6091 Cabochon goblet w/ 1066 Debutante cutting; 1E92 Omega goblet w/ 1099 Festoon cutting; 6004 Classic goblet w/ 1085 Forget-Me-Not cutting; 6060 Country Club champagne w/ 1031 Greenbriar cutting; 5057 Suez goblet w/ 1044 Laurel cutting; 5086 Plantation Ivy goblet w/ 1069 Lilyvale cutting; 5082 Mid Century goblet w/ 1034 Maytime cutting; 4090 Coventry goblet w/ 934 Olive cutting; 4090 Coventry goblet w/ 902 Orlando cutting; 3408 Jamestown goblet w/ 816 Palmetto cutting 5011 Yorktown goblet w/ 827 Powhattan cutting; 1E92 Omega goblet w/ 1090 Radiance cutting; 5042 Corinthian goblet with 988 Serenade cutting; 5082 Mid Century goblet w/ 870 St. Albans cutting; 1E92 Omega goblet w/ 1098 Starflower cutting; 5024 Oxford goblet w/ 976 St. George Waterford cutting; 4091 Kimberly ice tea, footed w/ 945 Virginia cutting; 6003 Tempo goblet w/ 1081 Wedding Band cutting; 3416 Barbara Fritchie ice tea, footed w/ 795 Will O’ the Wisp cutting; 1E92 Omega goblet w/ 1096 Wreath cutting. All in celebration of their 30<sup>th</sup> Anniversary

**Northwest Heisey Collectors** – 1567 Plantation vase, 9” in Memory of Candice Schmitt

**Olson, Gary and Susan** – 393 Narrow Flute covered urn, frosted in Memory of Jay Martin

**Pescatore, Steve and Susan** – 305 Puntty and Diamond Point ind. cream/sugar

**Pitts, Mary Lou and Charles** – 1255 Pineapple and Fan tankard ½ pint, ruby stained

**Prettyman, Brenda** – 351 Priscilla water bottle; 1401 Empress mayonnaise, Sahara; unknown salt shaker, 5 sided, marked

**Richardson, Lynn** – 6 mayo spoon, Hawthorne; 100 Centennial candlestick, 9”, pair; 341 Puritan punch bowl, cupped; 353 Medium Flat Panel cheese/cracker, 1 piece; 394 Narrow Flute cheese/cracker/lid; 473 Narrow Flute/Rim puff box; 1229 Octagon mayo, Hawthorne; 1401 Empress frappe/liner w/Hawke’s cutting; 1231 Ribbed Octagon sandwich, center handled, Hawthorne; 1509 Queen Ann marmalade/lid

**Rowan, Brother Ray** – 21 Aristocrat candlestick, 7” w/9006 Cairo etch (found in New G)

**Schmitt, Steve** – 1540 Lariat vase, swung, 10 ½” in Memory of Candace Schmitt

**Smith, Dick and Marilyn** – 3320 Ritz champagne w/153 Monticello etch; 3335 Lady Leg goblet w/680 Crusader cut; 4044 New Era soda, 12 oz. and wine w/826 Venus cut; 6091 Cabochon wine w/1084 Spring cut

**Spahr, Dave and Mary Ann** – 337 Touraine plate, 7”

**Taylor, Bobbie and Karen** – 100 vase, 8” in Memory of James T. Taylor

**Taylor, Karen** – 3344 Caroline champagne w/160 Osage etch; unknown nappy, cupped, marked

**Wehmeyer, Donald** – goblets: 337 Touraine, Amber; 348 Colonial Cupped; 357 Prison Stripe; 363 Colonial; 395 Colonial; 411 Tudor; 413 Tudor; 473 Narrow Flute/Rim; 701 ½ Derby ale; 818 Fifth Avenue, with and without optic; 839 Continental; 1055 Astor; 1056 Lexington; 1205 Fancy loop; 1295 Beaded Swag w/gold band; 3304 Universal w/33 Tatting; 3316 Biltmore w/162 Raleigh; 3326 Biltmore w/730 Cornflower; 5085 African-Tempo; 5087 Plantation Ivy w/516 Plantation Ivy; 6004 Classic w/1087 Comet; 8004 Christie; 8028 Empress Lily; 8031 Dover

**Will, Jean** – 5024 Oxford goblet w/957 Oriental cut

**Wade, Charlie** – automobile lens, marked

**Williams, Mr. and Mrs. William L** – 1189 Yeoman celery, 12” w/D-51 Wheeling decoration

### **Museum Purchase**

4198 Cynthia vase, 8” w/507 Orchid etch

Paperweight, “Ray Cobel”

### **Items put on loan to the Museum**

1201 LaVerne floral bowl, cupped, Moongleam

4225 Cobel cocktail shaker, 1 qt. w/469 Mermaids etch



Heisey Collectors of America, Inc. celebrate the Annual  
**PERCY & VIVIAN MOORE MEMORIAL WEEKEND**

OCTOBER 12-15, 2017

Newark, Ohio



**REGISTRATION FORM**

\*Please use a separate registration form for each person, and PRINT name and information as it should appear on your Badge\*

Name \_\_\_\_\_  
Address \_\_\_\_\_  
City \_\_\_\_\_ State \_\_\_\_\_ Zip Code \_\_\_\_\_  
Phone (\_\_\_\_) \_\_\_\_\_ E-Mail \_\_\_\_\_

Banquet Entrée - please check one: (All entrees served with house salad, rolls & butter, water, coffee, ice tea & dessert)

\_\_\_\_\_ **CHICKEN CHASSEUR** - pan seared with sautéed mushrooms, onions & tomatoes with a white wine demi-glace, served with garlic smashed potatoes and haricot vert

\_\_\_\_\_ **HONEY PECAN SALMON** - baked with a fresh honey glaze, served with wild rice blend and asparagus

\_\_\_\_\_ **HERB ROASTED PORK LOIN** - encrusted with fresh sage, thyme, rosemary, shallots, garlic, topped with thyme demi-glace, served with garlic smashed potatoes and haricot vert

\_\_\_\_\_ **VEGETARIAN ENTRÉE** - chef's choice

**SCHEDULE of EVENTS**

**THURSDAY A NIGHT at the MUSEUM**

5:30 Dedication of new Museum entry doors - made from real Heisey!

6:00 - 9:00 Enjoy a glass of wine or spiced cider punch and dessert buffet as you visit your Museum and preview the Fall Select Auction Glass in Gallery 3

**FRIDAY FIELD TRIP and BANQUET**

9:00 Begin your day as the caravan departs the Museum for Cambridge and a private tour of the Mosser Glass Company and Gift Shop, 9279 Cadiz Road, Cambridge, OH

12:00 Depart for Zanesville to the home of Ed and Marianne Henderson for home tour and luncheon, 1253 Rankin Drive, Zanesville OH

3:00 Return to Newark

5:30 - 9:00 Percy & Vivian Moore Memorial Banquet at Virtues Golf Club (formerly Longaberger), 1 Long Drive, Nashport, OH

5:30 - 6:30 Cash bar w/ light Hors d'Ouvres 6:30 HCA Membership Meeting 7:00 Dinner served

**SATURDAY FALL SELECT AUCTION** at GMP Union Hall, 350 N Hudson Ave, Newark

12:00 Auction Preview

1:00 Auction begins

**SUNDAY The 2nd Annual DICK MARSH MEMORIAL CAR SHOW** in the Museum Parking Area and 6th Street

1:30 - 4:00 Percy and Dick both had a love of cars. Reminisce as you view classic cars of yesteryear

**Registration Fee** (covers ALL EVENTS for 1 person)

**\$ 95.00**

Check Payment Type: \_\_\_ Cash; \_\_\_ Check\*; \_\_\_ Discover; \_\_\_ Master Card; \_\_\_ Visa

Card # \_\_\_\_\_ Exp \_\_\_\_\_ Code \_\_\_\_\_

\*Make Checks Payable to: HCA - PVM Weekend

Registration is required and due no later than September 26, 2017. No refunds after October 2, 2017

- 1) Mail form to "PVM Registration", The National Heisey Glass Museum, 169 W Church St, Newark OH 43055 or
- 2) Phone-in your information at 740-345-2932 or 3) Fax form to 740-345-9638 or 4) Deliver your form to the Museum!

For E-Mail Confirmation - Check here \_\_\_ and provide your E-Mail address above; For USPS Confirmation - enclose a SASE.

*July 2017*

**Museum Volunteers**

- Tim Ballard
- Charlene Bowman
- Carol Brandt
- Gregg & Mary Cameron
- Karen & Jim Clark
- Kim Clark
- Darlene & Gordon Cochran
- Nickie Crowe
- Dave & Traci Dusenberry
- Sandy Dyer
- Sid & Mary Edwards
- Roy Eggert
- Tom & Kathy Files
- Jay & Julie Goletz
- Linda Greenwood
- Brent Guest
- Bev & Bob Heise
- Emie Heisey
- Ed & Marianne Henderson
- Jon Heron
- Amy Jo & Chuck Jones
- Sue & Dan Kilgore
- Walter Ludwig
- Michael & Kate Maher
- Ginny Marsh
- William McKelvey
- John & Trudy Mock
- Don & Pat Moore
- Mike & Cindy Morgan
- Isa Nelson
- Dick & Marilyn Smith
- David & Mary Ann Spahr
- Beth Sperry
- Eric Tankesley-Clarke

Thank you to everyone  
who help make our  
Museum a success

*Thank You !*



**Grand Opening**  
**CORNER GROVE ANTIQUES**

Kim & Pam Carlisle  
Sheridan, Indiana  
October 15<sup>th</sup> 1-5 pm  
RSVP only by Oct. 1<sup>st</sup> - 317-402-5406

Personal Collection will also be available for viewing

*2017 Ruby Star Nappy*

*\$20. each or 2 for \$30.*



*Heisey STARdom!*

# Study Club Directory



**Interested in joining a study club?** You will have the opportunity to meet fellow collectors and HCA members and learn more about your favorite glassware. Below is our Study Club Directory; please contact the Museum with your information. We also would like to share your club's news; please forward your meeting notes to us!

<p><b>#4 CENTRAL ILLINOIS HEISEY CLUB</b> Serving Central Illinois - Pekin to Watseka. Meets quarterly in Bloomington, IL at a restaurant. Call for specific dates. Contact Joyce Deany at 815-432-4310 (jdeany@sbcglobal.net).</p>	<p><b>#33 GOLDEN GATE HEISEY COLLECTORS' CLUB</b> Serving northern California and northern Nevada. Meets quarterly, usually on Saturday afternoons in members' homes throughout region. Contact Russ Nicholas at 916-515-8558 (RL3690@comcast.net).</p>
<p><b>#5 BAY STATE HEISEY COLLECTORS' CLUB</b> Serving Massachusetts, Rhode Island, Connecticut and New Hampshire. Meets 2nd Saturday September, October, November, December, February, March, April, May &amp; June at Brooksby Village facility, Peabody, MA. Contact Stephen Pescatore at 978-256-5418 (stevepes51@gmail.com).</p>	<p><b>#38 NORTH CAROLINA HEISEY STUDY GROUP</b> (www.northcarolinaheiseystudygroup.org) Serving North Carolina, South Carolina, Virginia (also have members from West Virginia &amp; Texas). Meets odd numbered months 2nd Saturday at noon at Replacements, LTD in Greensboro, NC. Contact Jaime Robinson by email jaime.robinson@replacements.com</p>
<p><b>#7 DAYTON AREA HEISEY COLLECTORS' CLUB</b> (daytonheiseyclub.org) Serving southwest Ohio, northern Kentucky, &amp; eastern Indiana. Meets 3rd Tuesday, September thru May (no December meeting) Faith Community UMC 100 Country Club Dr. Xenia, OH - Contact Joe Harner at 937-372-0852 (lh937@aol.com).</p>	<p><b>#49 GREAT PLAINS HEISEY CLUB</b> (www.greatplainsheiseyclub.org) Serving west of Mississippi, east of Rocky Mountains. Meets March, May, July, September and November in members' homes throughout region. Specific dates and times to be announced. Contact Kathy Files at 816-468-7087 (tkfiles@kc.rr.com).</p>
<p><b>#8 HEISEY HERITAGE SOCIETY</b> Serving Pennsylvania, New Jersey and Delaware. Meets quarterly on Sundays in members' homes throughout region. Call for specific dates. Contact Craig Kratochvil at 973-962-4004 (lorrain805@aol.com).</p>	<p><b>#50 NORTHWOODS HEISEY STUDY CLUB</b> Serving Minnesota and Wisconsin. Meets March, May, August, and October in members' homes throughout region. Specific dates and times to be announced. Contact Doug Olson at 651-227-4358 (dmolson555@gmail.com).</p>
<p><b>#13 HEISEY CLUB OF CALIFORNIA</b> (www.heiseyclubca.org) Serving Southern California (San Diego to Santa Barbara). Meets 4th Sunday at 12:30 p.m. except November, and 2nd Sunday in December in members' homes throughout region. Contact Richard Borino at 949-496-0676 (lrb1946@aol.com).</p>	<p><b>#51 NORTHEAST FLORIDA HEISEY STUDY CLUB</b> Serving northeast Florida, meets 3 times a year at the Avonlea Antique Mall's Olde Florida Café, Jacksonville, FL. Call for specific dates. Contact: Chuck Carroll email jaxcat8@yahoo.com</p>
<p><b>#15 HEISEY COLLECTORS' CLUB OF MICHIGAN</b> Serving Michigan and northern Indiana. Meets six times per year in members' homes throughout the region. Contact Rick Van Meer at 517-782-3874 (rickvanmeer@comcast.net).</p>	<p><b>#52 NORTHERN VIRGINIA HEISEY STUDY CLUB</b> Serving Northern Virginia to include Maryland and Washington D.C. Meets September thru May. Please email for date and location each month. Contact Elizabeth Shirley by email at esshirley@msn.com.</p>
<p><b>#16 HEISEY COLLECTORS OF TEXAS</b> (www.heiseycollectorsoftexas.org) Serving Texas. Meets odd numbered months 2nd Saturday at 1 p.m. Meeting locations to be announced. Contact Mike Morgan at 281-433-4551 (mbmorgan1965@gmail.com).</p>	<p><b>#53 KENTUCKY HEISEY COLLECTOR GROUP</b> The group is sharing Heisey knowledge &amp; having fun. Next meeting Sept. 1 @ 10 AM at the Flea Market at the Kentucky State Fair Grounds. Please contact: Vicki Ensor 502-222-7609 or (ensorvs@mac.com) for more information!</p>
<p><b>#20 BUCKEYE HEISEY COLLECTORS' CLUB</b> Serving Ohio. Meets 4th Monday September thru May in Heisey Museum Meeting Room or members' homes. Contact Michael Maher at 740-644-1796 (theflyingmaher@yahoo.com).</p>	<p><b>COLORADO</b> - All members in Colorado &amp; surrounding area interested in getting together to share ideas and show-off your latest Heisey 'finds' - - please contact Caroline Jensen 303-567-2472 (ckjwatercolor@msn.com)</p>
<p><b>#22 NORTHWEST HEISEY COLLECTORS' CLUB</b> Serving Washington (west of Cascade Mountains; north to Canadian border; south to Oregon). Meets 1st Saturday at noon with potluck in members' homes. Contact Deborah de Jong at 425-868-0457 (bahama50@hotmail.com)</p>	<p><b>Thank you to our Heisey Collectors' Study Club Groups for the wonderful donations &amp; support they give to our Heisey Museum !!</b></p>



# Real Heisey in the Museum Shop



The following real Heisey & reproduction items are available in the Museum Shop & would make wonderful gifts! HCA members have exclusive access to these items from **September 12, to September 24, 2017**, beginning at **11:00 AM**. On **September 26, 2017** these items will be offered to the public.

Please call the Museum Shop if you are interested in purchasing any of these items.

**Note: All items listed below are crystal and all prices are “each” unless otherwise noted.**

**\*\*\* Items WILL NOT be sold prior to the date specified above.**

Pattern #	Item Name / Description	H denotes piece is marked with diamond H	Price
338	Wafer Stem goblet, ruby stain		\$30
417	Double Rib & Panel goblet, (H)		15
438	Spiral Optic goblet, (H)		25
1183	Revere goblet, Narrow Optic, (H)		15
1184	Yeoman cup & saucer, Diamond Optic, Flamingo, (2), (H)		12 set
1184	Yeoman cup & saucer, Diamond Optic, Sahara, (2), (H)		12 set
1184	Yeoman plate, 6” (8), w/447 Marigold Empress Etch		10 ea.
1184	Yeoman plate, 8” (8), w/447 Marigold Empress Etch		14 ea.
1252	Twist cup & saucer, (7 sets), (H)		10 ea
1252	Twist floral bowl, flared, 9”, (H)		12
1252	Twist mint, (H)		10
1252	Twist pickle, (H)		10
1252	Twist plate, 8”, (6), (H)		8 ea.
3324	Delaware goblet, Flamingo		30
3380	Old Dominion soda, footed, 12 oz., flamingo		15
3390	Carcassonne champagne w/Classic etch by Lotus Co., Sahara		15
4044	New Era ice tea soda, 12 oz., frosted base		15
8029	Princess Lilly goblet		30

There is someone in the Museum Shop during the Museum’s hours of operation to help answer questions or take orders. When ordering by phone, please have a credit card ready.

When ordering by mail, please be sure to include appropriate charges such as shipping and sales tax. Please note that the HCA member discount does not apply to special project items. We prefer to use USPS. If you have not received a package, please call the Administrative Office to confirm it was sent. We will assist you in tracking it. If your package arrives damaged, please contact your local USPS representative. We insure everything.

If you would like to make a donation to the Museum or have questions regarding items on loan, contact the Museum at 740-345-2932. HCA reserves the right to accept or refuse items based on current holdings.

# Membership

To join Heisey Collectors of America or to renew your membership, contact the HCA Administrative Office at 740-345-2932 or visit our Web site at [www.HeiseyMuseum.org](http://www.HeiseyMuseum.org).

Your membership ensures the future of the Heisey Museum. Please consider opting for the Endowment level.

## Membership Levels

Associate Member (one person)	\$30
Each additional household member	\$5
Voting Member (one-time fee)	\$25

Any amount beyond the Associate Member fee goes into the Endowment Fund.

## Endowment Levels

Individual Contributing (one person)	\$50
Joint Contributing (two persons)	\$60
Family Contributing (parents and children under 18)	\$75
Patron	\$125
Sponsor	\$250
Benefactor	\$500

The Endowment Committee thanks those who have become Endowment Members. Your continued support of the fund will help to make the Museum self sustaining in the years to come.

## Membership Renewal Alert

Check above your name on the mailing label of your Heisey News for your membership expiration date. If it is the current month, make sure your dues are paid soon to receive next month's issue of Heisey News.

## Shipping & Handling Fees

Additional shipping charges may be required for members living outside the USA. Rates are subject to changes made by the United States Postal Service. To verify current rates, contact the Museum at 740-345-2932 or email [business@HeiseyMuseum.org](mailto:business@HeiseyMuseum.org).

**Thank you!**



## HCA MEMBERS NEW & RETURNING AUGUST 2017

Martha & John Brautigam	Texas
Lisa Crock	Ohio
Caleb-Michael Files	New York
Kris A. Frankenberry	Ohio
Kathryn Lee	Ohio
Lucinda & James Nemeth	Ohio

### H.C.A. Membership Number\*

This Month: 1203

Last Month: 1208

\*Members who have not renewed to date are not included in this number - total changes monthly.



<p><b>KIM &amp; PAM CARLISLE</b> Shows &amp; Mail-orders We Buy Heisey One Piece or Entire Collection Cloudy Glass Cleaning Services Available 317-402- 5406 • kcarlisl@att.net</p>	<p><b>MOUNDBUILDERS SECOND GENERATION</b> Barbara &amp; Richard Bartlett Heisey Exclusively! 904-280-0450 PO Box 1931 Ponte Vedra Beach, FL 32082 Cell: 614-302-2904 CLASYGLAS2 @AOL.COM</p>	<p><b>DICK &amp; MARILYN SMITH</b> Heisey Glass Buy - Sell - Appraisals Show &amp; Mail Order Newark, OH 43055 740-258-3512 prestonmom225@yahoo.com</p>
<p><b>ALL HEISEY AUCTION</b> Consignments Welcome Apple Tree Auction Center 1625 W. Church Street Newark, OH 43055 • 740-344-4282</p>	<p><b>ONCE AND FUTURE ANTIQUES</b> Susan &amp; Stephen Pescatore Heisey and Elegant Glass 9 Donna Road Chelmsford, MA 01824 978-256-5418</p>	<p><b>EAGLES REST ANTIQUES</b> Buying Heisey, China &amp; Pottery Carl &amp; Mary Evans 62 Fieldpoint Road Heath, OH 43056 740-522-2035</p>
<p><b>JEFF MORROW</b> Elegant Glassware 179 N. Berteau Avenue Elmhurst, IL 60126 630-390-0168 jmorrow64@comcast.net</p>	<p><b>LINDA x 2</b> Linda and Michael Binger 29N 3rd street Newark, Ohio 43055 740-618-8012, 740-323-0055 Closed on Monday labinger@windstream.net</p>	<p><b>CRYSTAL LADY</b> 1817 Vinton Street Omaha, NE 68108 Bill, Joann &amp; Marcie Hagerty 402-699-0422 Specializing in Elegant Glass and Collectibles www.crystalladyantiques.com</p>
<p><b>REALMS IN GLASS</b> Roy Eggert Heisey • Custom Stained Glass 9423 Saddlebrook Court Frederick, MD 21701 301-620-0234 • royegg54@comcast.net</p>	<p><b>THE FLYING MAHER</b> Michael Maher Heisey Glass Buy - Sell - Appraisals Heath, Ohio 43056 740-644-1796 TheFlyingMaher@yahoo.com</p>	<p><b>MOONGLEAM ANTIQUES</b> Heisey Glassware &amp; American Art Pottery John Woytowicz 70 Pleasant St., Gardiner, ME 04345 207-592-0692 hawthorn57@gmail.com</p>
<p><b>MATILDA CHARLOTTE ANTIQUES, ETC.</b> Buy and Selling Heisey <i>NEW LOCATION</i> 1515 Granville Road Mon. - Sat. 10 a.m. - 5 p.m. 740-348-5485 cmorgan40@windstream.net</p>	<p><b>WILLIAM M. RIDDLE</b> Specializing In Heisey Factory Antique Mall - Verona, VA Exit 227 off I-81 - Mall is on 15th St. Booth 32 wsriddle@embarqmail.com 434-579-3864</p>	<p><b>J &amp; L TREASURES</b> Linda Kilburn Specializing in Heisey, Cambridge, Fostoria, Tiffin, Morgantown, etc. PO Box 1257, Burlington, CT 06013 860-673-4088 jltreasures@comcast.net</p>
<p><b>J. &amp; B. COLLECTIBLES</b> 204 Main Street Old Town Spring, TX 77373 281-288-5075 ycnlulu@aol.com www.JandBCollectibles.net</p>	<p><b>WM GLASS</b> Bill &amp; Mary Barker 500 Nantucket Ave., Pickerington, OH 43147 740-927-0918 barker.mary6@gmail.com Heisey Only</p>	<p><b>CHARLENE BOWMAN</b> Heisey * Cambridge * Fostoria * Morgantown Shows Only P.O Box 287, Clarksville, OH 45113 937-289-2114 twoclbs@aol.com</p>
<p><b>The AMERICAN BELL ASSOCIATION INTERNATIONAL, Inc.</b> 7210 Bellbrook Drive San Antonio, TX 78227 www.americanbell.org</p>	<p><b>HCA AUCTIONS</b> We accept large consignments from members downsizing their collections. Go to: www.HeiseyMuseum.org Under "auctions" for "accepting member glass collections" for more details.</p>	<p><b>CRESTONE MANOR UNIQUES</b> Harold &amp; Loleta Hammontree 2405 Talking Leaves Drive, Ooltewah, TN 37363 423-615-0081 • hammonlsh@gmail.com Heisey Only</p>
	<p><b>Your ad could Appear here</b></p> <p><b>\$48./year</b></p>	



Periodical Postage  
 Paid at the Post Office  
 In Newark, OH 43055  
 Publication #00986  
**POSTMASTER SEND FORM TO:**  
 HCA  
 169 W. Church Street  
 Newark, Ohio 43055

HEISEY NEWS is published and printed monthly by Heisey Collectors of America, Inc. (HCA). Subscription is limited to HCA members. First class mailing is available for an extra \$20, due with payment of membership. If you are having difficulty receiving your newsletter, please contact the HCA Administrative Office Thursday thru Sunday 12 Noon. to 4 p.m. (subject to change). Back issues are available from files for \$3 per issue plus shipping and handling.

TO:

Come at your leisure to enjoy more than 6,000 pieces of glassware produced by A.H. Heisey and Company from 1896-1957. Hundreds of patterns are featured in all production colors. Rare and experimental items are included as well. Facilities are air-conditioned and handicapped accessible. The opinions expressed in articles in HEISEY NEWS are those of the authors and not necessarily those of the organization. The Editorial Staff reserves the right to edit, with or without the consent of the author, or to refuse any material submitted for publication.

