

HEISEY NEWS

The Official Publication of Heisey Collectors of America, Inc.

Highlights of the 2013 Fall Select Auction

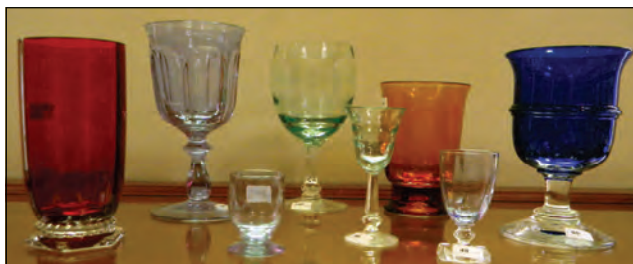
Dave Spahr and his crew have done it again. We have another great Select Auction coming up on October 12. The 213 lots represent a great cross section of Heisey glass well worth your consideration.

The auction starts off with 23 lots of cream and sugar related items, many of them those cute individual cream and sugar sets. Among the harder to find earlier individual sets are ones in #305 Puntty and Diamond Point (Lot 2), #1235 Beaded Panel and Sunburst (8), and #1200 Cut Block (10). The creams and sugars are followed with several lots of #507 Orchid etch including a #1951 Cabochon ¼ lb butter (24) and a #3454 Donna pitcher (31). A lot to watch for is the #4161 Little King pitcher and four juice glasses all with 499 Good Morning etch (39).

Nice stemware items include #4081 Kimberly cordial with Zircon bowl (44), #419 Sussex goblet with Cobalt bowl (55), #373 Old Williamsburg goblet in Alexandrite (53), and #5092 Empress Lily goblet with Limelight bowl (180). An unusual item is Lot 52, a #5072 Rose Stem claret that the top has not been busted off—quite a conversation piece.

Lots 70–73 give you the opportunity to purchase complete sets of the #15 flower block with the Duck insert and the #123 Mercury insert in both Moongleam and Flamingo. There is a nice Swan Handled console set in Sahara (67-68), a pair of #300-4 Old Williamsburg 4-light candelabra with cut bases (143), and a pair of #300 Old Williamsburg 1-light candelabra that have been fitted with Alexandrite bobeches (148).

For the animal collector there are many lots including a #1550 Fish bowl (66) and candlesticks (67), #4 Swan (68), #1522 Standing Colt in Amber (90), #1 Airedale



continued on back cover...

Heisey Collectors of America, Inc.

169 W. Church Street
Newark, Ohio 43055
Phone: 740-345-2932
Fax: 740-345-9638
www.HeiseyMuseum.org

Director

Larry Burge, extension 3
director@HeiseyMuseum.org

- Building Use Opportunities
- Community Involvement
- Donations / Fundraising
- Educational / School Outreach
- Employment / Internships
- Heisey News / Heisey News Ads

Curator

Jack Burriss
curator@HeiseyMuseum.org

Membership Clerk

Susan Bruah, extension 1
membership@HeiseyMuseum.org

- HCA Membership Information
- Registration for Special Events
- Study Club Information

Clerks

Rochelle Steinberg
Bobbe Eelberry
Linda Bishop
business@HeiseyMuseum.org

National Heisey Glass Museum

Heisey Collectors of America, Inc., a non-profit corporation (tax-exempt status), owns and operates the National Heisey Glass Museum. Open year round, Tuesday through Saturday, 10 a.m. to 4 p.m. and Sunday, 1 p.m. to 4 p.m., closed holidays. Between December 1 and March 15 the museum will be open from 12 noon to 4 p.m. on Thursday, Friday, Saturday and Sunday. Other hours by appointment. Members admitted free; regular admission \$4.



Message from the President

The dog days of summer have truly found their way to Newark, Ohio and it has greatly impacted Our Museum. The days are hot and muggy, which has contributed to the increased visitor attendance. We offer a great opportunity to spend time in air conditioned galleries viewing beautiful pieces of stunning glass preserved as art from decades of the past. Guests who are enjoying the AC are now also enjoying the newly added display located in the factory room on the first floor. The four large cases from the Lower Level of the Museum have been moved to the Factory Room, and the shelves are filled with every piece of glass to be sold at the Select Auction on October 12. Having this glass located on our first floor has provided a cost effective way to advertise within our museum. The location of the Select Auction glass allows us to impact visitors who see this presentation of our glassware as one of the first captivating displays as they enter our museum. This display location also encourages visitors to realize that they can become a Heisey owner or collector should they attend and purchase at the Select Auction.

The Select Auction glass is stunning! Be sure to read the articles by Walther Ludwig and Dave Spahr and view the sneak peak photos in this issue of the newsletter. For our social media members, visit our Facebook page to view photos of Select Auction pieces. Join us and "like" us on Facebook to receive mobile updates and alerts when new photos or information is posted.

While I'm on the Select Auction subject, be sure to get your Percy and Vivian Moore Weekend (October 11–13) registrations in NOW, you will be treated to many activities and opportunities you do not want to miss! The deadline is October 1, 2013. Mail, fax or call the Museum to get registered today. We want you to "Be Our Guest", and show you a weekend you will not forget in Heisey's Hometown!

Visitors have commented how great the gift shop looks with much of the new glass that many of you donated during convention. This is an important way for the Museum to raise funds, educate and promote Heisey glass to newer members and collectors! What better way to encourage new collectors than to get them to buy a REAL piece of Heisey during their visit. Thanks to all of you who see the importance of this and for your donations.

Also, in the gift shop we have the 2013 Christmas Ornaments. These are selling quickly. The ornament is created from Fenton Glass' Lime Green color formula with Heisey's Spring cutting, accented with the diamond H logo. Please place your order as the limited handcrafted ornament quantities are being sold out.

The gift shop has also received its first shipment of the Heisey glass beads. We have begun assembling your orders. The beads look amazing. But it is not just me who sees their beauty. The perfect description was said by a staff member, "These beads are so beautiful, they have the true Heisey

formula glow about them.” Beads are formed from damaged color Heisey glass that is beyond repair. The glass is melted down and hand crafted into glass beads for you to wear every day. To order contact the Gift Shop. This project has proved very popular and many have requested desired colors for the next series of beads. The colors are all based on availability of broken glass. So it’s really up to you what is produced next. If you have colored damaged Heisey glass that you want to save from the trash or have been waiting to find a good use for, send it to the Museum labeled “Damaged Glass for Heisey Beads.”

Speaking of projects, as a local to Newark, I am excited about an upcoming project. HCA is very fortunate to own many of what are left of the original Heisey metal etching plates. These are the designs stamps that appear on the glass when etched. The Etching Plate Project will be a restoration project of many of the plates, to preserve and to protect them from future corrosion damage. More importantly it is a way to educate and learn more about Heisey. After the plates are cleaned and preserved, they will then be photographed or stamped to get a preferred image of the etching design. Then we will publish the collection as the known Heisey etchings. Many of the plates show special commissioned pieces by different firms or individuals. They are very cool and tell a story that we haven’t tapped into yet! I am very excited to literally get my hands dirty and see what we discover for the preservation of these plates.

I am saddened to report that we just received word on the loss of member Marsha Young of Westerville, Ohio, who passed early in 2013. Also member Pam Johnson of California, passed away in July. Pam was the social secretary for the Heisey Collectors of California Club.

As a Newark resident, younger member, collector and supporter of Heisey glass, I am always amazed at what has been accomplished by members who have contributed to HCA and to this Great Museum. They are the reason we are where we are today. It doesn’t take a visitor long to see the importance of our members. Names on the endowment donation plaques, glass identification cards and many items and pieces throughout the Museum surround you as you quickly see the provenance and purpose of our Museum. Members are the reason we are here. Although not every name who contributed to this great museum is documented, when I see past and present members’ names on the ID cards or endowment donor wall, I wonder if they really knew the importance of their gifts? Some names of people I know and other names of people are familiar, but I never had the privilege to meet them. These dedicated people are the ones who left their mark through their time and talent and yet although they are gone, their legacy lives on through their charitable gifts. It is because of the shared love and support that we all have for the education and preservation of Heisey Glass that we are HCA and the National Heisey Glass Museum. Thank you for all of your past, current and on-going support for YOUR Heisey Glass Museum.

Michael Maher, Vice-President



HCA Board of Directors

President

William McKelvey
Willard, Ohio
419-933-2845
solawilliam@gmail.com

Vice President

Michael Maher
Newark, Ohio
740-644-1796
TheFlyingMaher@yahoo.com

Secretary

Mary Ann Spahr
Xenia, Ohio
937-372-7166
masxenia@aol.com

Treasurer

Charlie Wade
Heath, Ohio
740-522-2002
cswade418@gmail.com

Immediate Past President

Jay Barker
Granville, Ohio
740-321-1219
jay.barker@me.com

David Ahart
Berlin Center, Ohio
330-547-4224

Mary Cameron
Ames, Iowa
515-450-2483

Gordon Cochran
Redmond, Washington
425-883-4001

Sid Edwards
Tallahassee, Alabama
334-283-4663

Roy Eggert
Frederick, Maryland
240-361-8146

Jon Heron
Hilton Head, South Carolina
585-737-9455

Sue Kilgore
Kalamazoo, Michigan
269-345-3990

Michael Morgan
Spring, Texas
281-433-4551

#473 Narrow Flute with Rim Sugars and Creams

A. J. Sanford designed Narrow Flute with Rim, displaying again his unmatched elegance of taste. I marvel at how the pattern manages to be both classical and modern all at once. The many fine ribs dazzle in the light, while the wide, plain rims give each piece formality and serenity.

A problem with all those ribs, of course, is they give so many opportunities for nicks and flakes, so condition can be an issue with the pattern. The pristine pieces are out there. You just have to be persistent. In feeling a piece over thoroughly, the finicky collector must be as dedicated and meticulous as a well-groomed cat. (I groomed our cats last week. I coughed up hair balls for days.)

As with any self-respecting large pattern, Narrow Flute with Rim is blessed with several variations on creams and sugars. (A.H. Heisey & Co., as well as other makers, always referred to these pairings in the reverse order, namely, "sugar and cream." That was true from the company's beginning right up to the end. But even in the early days of the company, popular usage seems to have preferred the opposite order. It is a point on which I feel no need to be consistent. If that troubles you, you can always call 1-800-WHO-CARES.) Narrow Flute with Rim encompasses four pattern numbers, from 472 through 475. Fortunately, all the sugars and creams are in #473, so at least we don't have that matter to confuse us. On the other hand, there is an unprecedented variety of shapes, some unique to this pattern and never repeated afterward by Heisey. I've included a photo that shows all of them together, just so you can see the variety at a glance. There is one piece missing from the photo, but we'll get to that in a moment.

#473 Narrow Flute with Rim cream and sugar items. Clockwise from top, hotel cream in loaf sugar tray, 4-oz. individual cream in dice sugar tray, individual cheese and cracker (strawberry and sugar), individual sugar with 3-oz. individual cream, individual sugar and cream stack set, hotel sugar without cover.



Narrow Flute with Rim came to market about 1915. The big table sets were on their way out by then, so you won't find a covered butter or spooner in the pattern. For that matter, there is no table-size sugar or cream. Despite that, there is a piece that could easily be mistaken for a large, square sugar. That is the **covered marmalade**. What is unusual about the Narrow Flute with Rim marmalade is that the cover has no spoon slot. In some other patterns the spoon slot is the only thing that distinguishes a sugar from a marmalade. In fact, I can't think of another marmalade that *doesn't* have a spoon slot in the cover. So it would be natural to suppose the table-sugar-sized #473 marmalade is something else. However, the catalog illustration we have doesn't show a spoon slot and I don't think I've ever seen a Narrow Flute with Rim marmalade cover that did have one. Making it even more strange, when the moulds were re-cut to fashion the Ridgeleigh marmalade Heisey realized their omission and added a cut-out to the lid.

Having no table-sized creams or sugars, the largest free-standing set in #473 is the **hotel sugar and cream**, the size typically one step down from table sets. (By this time, many patterns were made *only* in the hotel size.) It's a good thing there are no spooners in Narrow Flute with Rim, because the hotel sugar could easily be mistaken for one. Its proportions, relatively tall and narrow for a sugar, are more like a spooner. Both cream and sugar are perfectly cylindrical, as wide at the bottom as at the top. The cream has a hand-pulled spout; that is, it came out of the mould

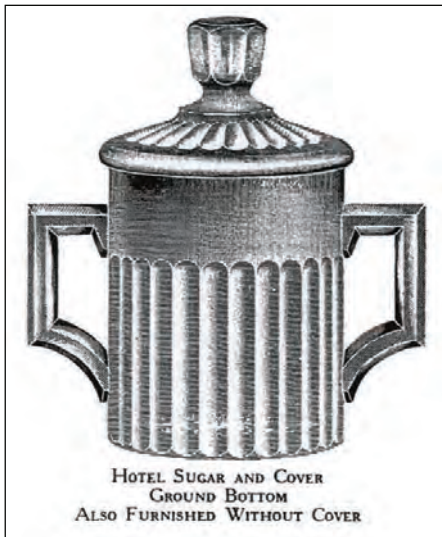


Marmalade: Unusual in having no spoon slot, this could be mistaken for a table sugar.



Hotel cream and sugar, unknown decoration similar to Wheeling D-2.

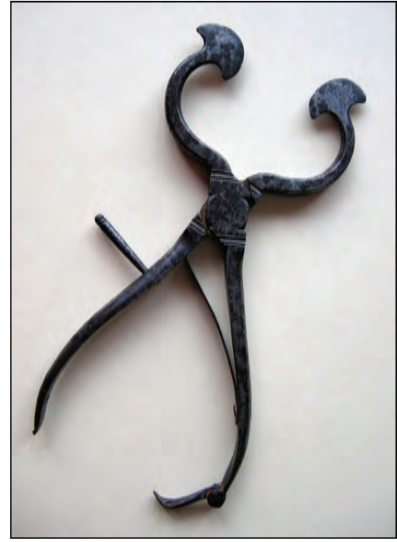
with no spout at all, looking like a mug, but while the glass was soft, a worker formed the spout. In Catalogue 100, the hotel set is shown with a cover on the sugar, but with a note that the sugar is “also furnished without cover.” In other catalogs the set has no cover and no mention of one. This is not the only pattern offered both ways. (See *Heisey News*, July, 2013, “The Great Cover-Up, or, Sugars Exposed.”) However, the lid for the Narrow Flute with Rim hotel sugar is especially hard to find, even compared to other sets that came with or without covers. I’m told one is lucky to have the Narrow Flute with Rim hotel sugar at all. In my own experience, I found the hotel cream years before I came across a sugar. I’m still waiting for a cover. That is the piece that is missing from the group photo.



4-oz. individual cream with 5-in. dice sugar tray.

The hotel cream served another purpose in this pattern. You may recall in the Domino sugar article (April, 2013) I mentioned that there was one Domino sugar that Heisey didn’t call by that name. That is the tray in the **loaf sugar and cream set**. There is no question that the set was intended for Domino sugars. A Heisey ad from 1921 (see p. 22) shows the loaf set holding them, all perfectly arrayed around the cream in the center, fitting just so. I don’t know why Heisey abandoned the term “domino.” If anything, Heisey added confusion. Even more exasperating, a 1915 ad shows what is labeled a loaf sugar holding, not Dominos, but cubed (dice) sugar. Possibly the 1915 ad mislabeled the set, or possibly Heisey didn’t really care what you put in them.

Loaf sugar was the hard, moulded, bulk form that an earlier generation bought, before cubes, dominos, or sacks of granulated sugar were widely available. In some parts of the world, it is still the way sugar is sold. Typically, a sugar loaf was torpedo-shaped (think Sugar Loaf Mountain, Rio de Janeiro), and sugar nips or other tools were used to cut off what you needed. In 1916, when Heisey’s set was patented, some people would have still remembered those old sugar loaves. Surely that wasn’t the image Heisey was going for, so perhaps they were trying to distinguish the “loaf” set from the linear trays they did call dominos.



A sugar loaf and sugar nips (photos courtesy Creative Commons).

Heisey ad from the April 1915 issue of *American Cookery*

Another confusing thing is that this set was illustrated in at least one catalogue as an “8-in. loaf sugar and cream set.” There is nothing 8” about the loaf sugar tray. The diameter is about 6 3/8”, and handle to handle it measures 9”. Heisey made no sugar tray that was 8” in diameter. The price lists clear up the mistake, though, since they call it a 6-in. loaf set.

Heisey *did* make a sugar tray that was 8” handle to handle, and that is the tray in the **dice sugar and cream set**. But how did they describe the size of this smaller set? Five inches. And sure enough, the diameter of the dice sugar tray is about 5 3/8”. So there’s no doubt the catalog caption for the loaf sugar was just an error. The dice sugar and cream set is intended to hold sugar cubes. Yet again, Heisey ignored the perfectly good, well-used term and went for something different.

Of course, the dice sugar tray needed a cream. The hotel cream was too large, so Heisey created a **4-oz. individual cream** to go in the center. This cream has no free-standing individual sugar partner. The cream was sold either separately or as part of the dice set but that was all. Just as the dice sugar is a miniature of the loaf sugar, the 4-oz. cream is scaled down from the hotel cream. Just like the larger piece, the smaller cream is straight-sided with a hand-pulled spout. The dice set is available in Moongleam, usually in one of the early, deep shades that are nearly indistinguishable from Emerald, sometimes even glowing as brilliantly under ultraviolet. There is a collector’s price guide listing the set in Flamingo, but I suspect that is theoretical only. Price List 209 goes to some trouble to show a number of items available in both Moongleam and Flamingo, carefully omitting Flamingo mid-list when it gets to the dice sugar and cream set. I’m sure one of you will gleefully correct me if you have a Flamingo set at hand. A couple of Heisey’s price lists raise the interesting possibility that the Moongleam dice sugar was offered with a crystal cream, but I see no evidence for it the other way around.



Loaf sugar and cream set (hotel cream and 6-in. tray); dice sugar and cream set (4-oz. cream and 5-in. tray).

The sugar trays, both the 6-in. loaf size and the 5-in. dice size, have counterparts lacking the center rings that hold the creams in place. The 6-in. size with no center ring is called a 2-handled cheese dish, and the 5-in. size is a 2-handled jelly. It was just a matter of changing plungers when moulding the glass that gave you one or the other.

The idea of a sugar tray with a center-held cream was never explored any further by Heisey. Other companies tried the same thing. Every so often, one sees a sugar tray that is the same size as the 6" loaf sugar tray, but with plain sides, no narrow flutes. The handles are nearly identical to the ones Heisey used. The plain-sided trays I have seen are either in a pink that could nearly pass for soft Flamingo or in an acidic turquoise hopped up on uranium that gives it a brilliant glow under ultraviolet but that looks nothing like Moongleam. When seen with a cream, it is a very plain cream that looks as though it should be Yeoman, but isn't. This set is not Heisey. Genuine Heisey sets are marked, frequently if not always, and usually in the centers, with patent dates to boot. Some sugar trays, however, have been seen with no mark in the center, the <H> obscurely placed off to the side along the rim.

Not willing to leave well enough alone, Heisey made two other creams that were called individual, each with an accompanying sugar. There was the **3-oz. individual cream and sugar set** and the **squat individual sugar and cream set**. We've already looked at the squat set, because this is none other than one of the stacking sets mentioned back in February, 2013. I've already pointed out in that article how the squat set is unusual in having rounded handles, rather than the square ones favored for most of the Narrow Flute with Rim pattern. The 3-oz. individual cream and sugar set is somewhat taller and has square handles, so can't be confused with the squat set. On the other hand, the 3-oz. cream is shorter and blockier than its 4-oz. counterpart, so there should be only minimal chances for mixing up those two. The 3-oz. cream has a moulded spout, although the very tip is probably hand-pulled. Both the individual sugar and cream taper outward slightly, so the tops are wider than the bottoms. The round-handled squat set taper inward slightly.



3-oz. individual cream and individual sugar.

Also back in the stack set article, I mentioned how the 3-oz. cream mould was used to make the individual syrup that is included in the griddle cake set. The only difference between the two is that the syrup has an added thick inset disk on the bottom to enable it to sit inside the griddle cake cover. I needed to bring it up again, though, because I have a **correction**: I made an error in the stack set article. I know, I was shocked, too. Back there, when mentioning the comparison between the cream and the syrup, I said that the 3-oz. cream was also used in the dice set. Of course, it was not; the dice sugar uses the 4-oz. cream. When I was working on that article, I was sometimes away from home going back and forth between my laptop and the main computer at home and the correction never made it into the final edition.

We aren't quite done with #473 Narrow Flute with Rim. One more piece, one that almost invariably draws exclamations attesting to its cuteness, is the **individual strawberry and sugar**, a one-piece item. I've never found confirmation in a factory-original primary source that Heisey truly offered it under this description. It is certain that Heisey sold the piece as an individual cheese and cracker, the only one they ever offered, but hardly anyone ever calls it that. When Clarence Vogel first encountered the piece, he had not located it in Heisey documentation. He only speculated in his newsletter that it was a strawberry and sugar. Nevertheless, it has been accepted as such by Heisey collectors, so I'll go ahead and include it here, even if its sweet and fruity status is dubious. The combination piece features a plate with a heavy stem in the center holding aloft a small tray. Not every cream and sugar collector would include this in the collection, but if you are looking for undeniable completeness, you surely wouldn't leave this piece out.

By the late 1920's, most Narrow Flute with Rim was no longer in production. While a 1924 price list shows most of the items, by about 1929 only the dice set was left, and it fell out of the price lists soon after. That means that other than the Moongleam dice set, the cream and sugar items are available only in crystal. There is some decorating, but



Individual syrup (left) and 3-oz. individual cream.

not a great deal. Some of the tray sets are found partially or entirely iridized, and almost any of the cream or sugar pieces can be found with various enamels applied to the rims. The cheese and cracker that everyone calls a strawberry and sugar is often found with cuttings, but none of these, so far as I know, originated at the Heisey plant.

Let's summarize. Narrow Flute with Rim has four creams, three free-standing sugars (one sometimes with a cover), two sugar trays, and one combination sugar-and-fruit item (or not). Three of the creams and two of the sugars were called "individual." They come together in five sugar-and-cream combinations, six if you allow for the sugar cover, and seven if you include the Moongleam combination. One of the sets stack. One of the creams was sometimes sold all on its own. Narrow Flute with Rim is nothing if not flexible. Something like a cat grooming itself.



Individual cheese and cracker (strawberry and sugar).

Vital Statistics

#473 Narrow Flute with Rim cream and sugar items

Hotel sugar—3 3/8" high, 2 3/4" diameter, 4 7/8" across handles

Hotel cream—3 3/8" high, 2 3/4" diameter, 4 1/8" spout to handle

Loaf sugar tray—7/8" high at rim, 1 1/2" high at handles, 6 3/8" diameter, 9" across handles

4-oz. individual cream—2 7/8" high, 2 3/8" diameter, 3 1/2" spout to handle

Dice sugar tray—7/8" high at rim, 1 1/2" high at handles, 5 3/8" diameter, 8" across handles

Individual sugar—2 1/4" high, 2 3/4" diameter (top), 2 3/8" diameter (bottom), 4 1/2" across handles

3-oz. individual cream—2 1/4" high, 2 1/2" diameter (top), 2 1/4" diameter (bottom), 3 3/4" spout to handle

Individual cheese & cracker (strawberry & sugar)—2" high, 6 1/2" diameter (plate), 2 3/4" diameter (center cup)

Individual cream, squat; individual sugar, squat—see *Heisey News*, February, 2013

All with ground and polished star bottoms. Usually marked in the inside center bottom except for a few very occasional trays. Trays frequently with patent notice "PAT. 6/20/16".

Some cats find a nice, big Heisey nappy improves their grooming posture immensely. Which Heisey makes you sit up and take notice? Let's compare notes at heisey@embarqmail.com.

Eric Tankesley-Clarke



BE OUR GUEST!



PERCY & VIVIAN MOORE MEMORIAL WEEKEND

October 11-13, 2013, Newark Ohio

SCHEDULE of EVENTS

<u>FRIDAY, OCTOBER 11, 2013</u>	<u>TIME</u>	<u>LOCATION</u>
Brunch Buffet** <i>Offering: Scrambled Eggs w/ Chives, Sausage / Bacon, Asst'd Pastries, Juice, Coffee, Tea</i>	9:30 - 11:00 am	The Buckingham House, Veterans Park
Museum Open House	11:00 am - 4:00 pm	
Mini Flea Market	11:30 - 2:00 pm	Museum Multi-Purpose Room
Tour of Homes** Homes of Dick & Ginny Marsh and Walter Ludwig	3:00 - 6:00 pm	Member's Homes - car pooling encouraged
A Night at the Museum** An event benefitting the Museum Endowment Fund "semi-formal" <i>Featuring: Evening Museum Tour, A Glass of Wine, Spiced "Heisey" Punch, Fruit and Cheese</i>	7:00 - 9:00 pm	Heisey Museum

<u>SATURDAY, OCTOBER 12, 2013</u>	<u>TIME</u>	<u>LOCATION</u>
Museum Open House	10:00 am - 4:00 pm	
Select Auction Preview Auction	12:30 - 1:30 pm 1:30 pm	Church of the Blessed Sacrament Annex 411 E Main St Newark
Memorial Dinner** <i>Featuring: Hot Buffet of Roast Beef, Boneless Chick Breast A Donation Bar, Mini Auction, and Glass-making demonstration by glass artist Andrew Newbold</i>	6:00 pm	The Works Ohio Center for History, Art, Technology 55 S 1st Street - Downtown Newark



<u>SUNDAY, OCTOBER 13, 2013</u>	<u>TIME</u>	<u>LOCATION</u>
Museum Open House	Noon - 4:00 pm	
Cruise-In Car Expo	Noon - 4:00 pm	in Veteran's Park at the Museum
Punch Cup Craft Jack-O-Lantern	Noon - 4:00 pm	Museum Multi-Purpose Room

****REGISTRATION REQUIRED**



BE OUR GUEST!



PERCY & VIVIAN MOORE MEMORIAL WEEKEND

October 11-13, 2013, Newark Ohio

REGISTRATION

-PLEASE USE A SEPARATE REGISTRATION FORM FOR EACH PERSON-

Print name and information as it should appear on your Badge!

Name _____

Address _____

City _____ State _____ Zip Code _____

Phone _ (____) _____ E-Mail _____

BE OUR GUEST...Enjoy an event-filled weekend in Newark Ohio!

On Friday morning enjoy brunch at the Buckingham House in Veteran's Park. Shop at the mini flea in the Museum multi-purpose room. The Select Auction glass will be on display in Gallery I. Private home tours are offered in the afternoon. "A Night at the Museum", a "semi-formal" event benefitting the Museum Endowment Fund will welcome registrants as well as specially invited guests from the Newark area. Enjoy a glass of wine or spiced cider punch, fruit and cheese tidbits, and the new gallery case lights will do their magic to show off our favorite glass.

Saturday events begin with the Select Auction preview from 12:30 -1:30, followed by the live auction at 1:30. Note that the Auction will be held at a new location - Church of the Blessed Sacrament Annex at 411 E. Main Street, Newark. End your day with dinner at The Works, at 55 S. 1st Street in downtown Newark. There will be a donation bar, buffet dinner and mini live auction. Glass artist Andrew Newbold will amaze us with a special hands-on demonstration. He will use a Heisey tumbler mold, flare it to create a basket or beer mug with applied handle. Finished similar items will be available for sale.

On Sunday, in honor of Percy Moore, an avid antique car collector, a cruise-in will be held in the Museum parking area. Eighty cars participated in our June car show! Punch Cup crafts in fall décor can be made in the Museum Multi-purpose room.

REGISTRATION FEE for the WEEKEND (each person) is \$65.00

Circle Payment Type: Cash Check * Discover Master Card Visa

_____ Exp _____

Registration is required and due no later than October 1st. No refunds after October 5th

**Make Checks Payable to: HCA - PVM Weekend*

- 1) **Mail** form to "PVM Registration", The National Heisey Glass Museum, 169 W Church St, Newark OH 43055 **or**
- 2) **Phone-in** your information at 740-345-2932 **or** 3) **Fax** form to 740-345-9638 **or** 4) **Deliver** your form to the Museum!

For E-Mail Confirmation - Check here ___ and provide your E-Mail address above; For USPS Confirmation - enclose a SASE.

2013 Heisey Fall Select Auction

Hey! Hope you have remembered about the **Ninth Annual Select Auction** held in Newark, OH as a part of the Percy and Vivian Moore Weekend. The auction date is now about six weeks away—**Saturday, October 12, 2013**. We have moved the auction this year to give some elbow room! The new location is in the Annex of the Church of the Blessed Sacrament, 411 East Main St. in Newark. The **Preview will be from 12:30 p.m. to 1:30 p.m.** with the **Auction beginning at 1:30 p.m.** Our auction is available to all Heisey members and the General Public!

We have some great glass for your viewing and purchase! The glass is now on exhibit in the Gallery I Factory Room. Stop in and see it! Elsewhere in this newsletter is the auction catalog, guidelines, and absentee bid forms. The catalog is for everyone to use. If you can't make it to the auction but want to participate please read our absentee bid instructions and use the absentee bid form. We should also have our catalog, instructions, and forms on our website, www.HeiseyMuseum.org very soon. Walter Ludwig, our former curator and invaluable auction volunteer, has written an article highlighting the wonderful glass available to be auctioned off. Be sure and read it! Also, auctioneer Gary Babcock has graciously agreed to again come and volunteer his services. This will be Gary's eighth select auction!

I want to extend a special thanks to our 18 consignors who have made this, the ninth annual Select Auction, one of our largest, we think, our finest! We have 213 lots of great glass of which forty-six (46) are donations. This is **really** special for HCA since all the proceeds from the donations go 100% to help fund museum operations.

We have normally had an all glass Flea Market preceding our Select Auction in the Museum Parking lot. This year we have moved the Flea Market to a new day: Friday, October 11; a new location: the Museum's Multipurpose room; and a new time: 11:30 a.m. to 2:00 p.m. There will be some dealers setting up as in past years. If you any questions about the flea market please contact Dave Duesenberry at 740-507-4535, or email dusie202@Hotmail.com.

See you all in Newark at the Percy and Vivian Moore Weekend (October 11–13) and at the Fall Select Auction and Flea Market. Happy Heisey Hunting!

Dave Spahr, HCA Auction Chair

Absentee Bid Instructions



As absentee bidders, we will bid competitively for you at the HCA Select Auction, October 12, 2013. In case of duplicate bids, the earliest postmark wins. Bids must reflect the listing in the catalog as to lot number, pattern, description, and condition. The minimum absentee bid per lot is \$15.

You set the maximum amount you are willing to pay on each lot. If successful, the remainder will be refunded. Please use good judgment in arriving at your maximum bid figure. Remember, there are minimum limits to raises that the auctioneer will accept (smaller items \$2.50, larger items \$5, \$10 or as much as \$25). Lots containing multiple items will be as one lot to the successful bidder. Normally, these are not split up, however, there may be some exceptions to this.

Please indicate on your bid the desired condition of the item on which you are bidding. We have endeavored to describe all items to the best of our ability and a bid on an item reflects your acceptance of the condition as listed. (As you know, if no flaws are noted, that means the glass is in generally good condition.) If you mark your bid "near mint only," we will use no discretion in your bid. If there is a variance on a lot not called in the catalog (such as unlisted damage or a difference in the number of items in a lot), we will not bid on that lot for you. Please use the form (or a copy) available in the *Heisey News*, or from this catalog, or from our website www.HeiseyMuseum.org to submit your bid. Absentee bids can be submitted by e-mail, fax, or postal service.

PAYMENT Cash, check, cashier's check, or money order payable to HCA Auction, and Visa/MasterCard/DiscoverCard accepted. A 5% buyer's premium will be added. Buyer's premium is deleted for cash, cashier's check, money order, or approved check payments. You may send a separate check for each lot or you may send one check covering the maximum amount of all bids. Absentee Bidders **must** make their own shipping arrangements. See Shipping section below for further information.

In addition, if you would like to pay by check, **Please** consider leaving the amount blank. Designate in the memo blank of your check an amount not to exceed the total amount of your bids. The Auction Manager or HCA Treasurer will fill in the exact amount of your purchase, thus greatly cutting back on refunds. Surplus bid money will be refunded. Send in a self-addressed, stamped envelope to return your checks. HCA reserves the right to reject any bid.

SHIPPING Buyers must make their own shipping arrangements including payments for shipping directly to the shipper. Glass is available to be picked up by your shipper on Tuesday, October 15, 2013, after 10:00 AM at the National Heisey Glass Museum, 169 W. Church St., Newark, OH 43055. HCA is aware of the following area shippers: Express Pack and Ship: 740-366-1325, Pakmail: 740-522-2564, and UPS Store 3910: 614-939-5195. HCA is not responsible for any services provided by these vendors. HCA will work with these vendors to make sure your glass is available.

BID SUBMISSION Absentee bids must be **received** no later than Tuesday, October 8, 2013, at 4:00 p.m. Eastern Standard Time. When using a credit card number, bids must be faxed to (740) 345-9638 using the absentee bidding form. When your Fax is complete, please contact the Museum to ensure it has arrived and is removed from the Museum Fax machine as soon as it arrives. The Absentee Forms with personal checks, et. al., must be mailed to Absentee Bids, National Glass Heisey Museum, 169 W. Church St., Newark, OH 43055. HCA, Inc. must have credit card information or cash, a personal check, money order, or travelers check in its possession prior to executing a bid.

OTHER The prices realized from this Auction will be printed in a future issue of the Heisey News. If you are not an HCA member but want to receive the results list, send \$2 and a long SASE.

General Auction Terms and Conditions

1. All lots sold in numerical cataloged order.
2. Payment: Cash, traveler's check, certified check or personal check or money order with proper ID. Visa, MasterCard and Discover cards are accepted. 5% buyers premium. Buyers premium deleted for cash or check payment. Cash only payment may be specified for individual bidders at HCA's request.
3. HCA has endeavored to describe all items to the best of their ability; however this is not a warranty.
4. All items are sold as is and where is. The auctioneer has the right to make any verbal corrections at the time of sale and to provide additional information. Inspection is welcomed during preview and before the item is sold.
5. In the case of a disputed bid the auctioneers have the authority to settle disputes to the best of their ability and their decision(s) is/are final. Resale of items will be handled at the auctioneer's discretion.
6. The auctioneer has the right to set opening bids and reject any bid raise not in line with established bid increments. Items are sold without reserve, unless advertised otherwise.
7. All sales are final and all items must be paid for each day of sale. A moving and storage fee may be assessed for items not picked up within seven (7) calendar days after the last day of sale of the auction.
8. Buyers assume full responsibility for items once they are sold unless otherwise specified by HCA or the auctioneer. Buyer must have receipt in hand to pick up items.
9. HCA (an auction firm) and all auctioneers used by HCA are licensed by the Ohio Department of Agriculture and bonded in favor of the state.
10. Bidding on any item indicates acceptance of these Terms and Conditions of Auction.

OTHER The minimum starting bid per lot is \$15.

**IF YOU HAVE ANY QUESTIONS,
PLEASE CONTACT THE MUSEUM**

Condition Codes The following codes are used to describe any problems or issues identified by our catalogers with our glass at our auctions. Minor mold marks and straw marks which occur in the manufacturing process are not called.

H = Marked with Diamond H

B = Bruise

C = Crack

F or f = Flake

M = Major Mold Flaw

R = Repair

X = Major damage

D after the lot # indicates item donated to the Auction on the Museum's behalf; full amount will go to the Museum.

Heisey Collectors of America, Inc. 2013 Fall Select Auction

Lot #	Pat #	Pattern	Description
1	1225	PLAIN BAND	TOY SET: CREAM SUGAR W/ LID SPOONER COV BUTTER H
2	305	PUNTY & DIAMOND POINT	CREAM & SUGAR INDV
3	393	NARROW FLUTE	CREAM & SUGAR INDV FLAMINGO H
4	1401	EMPRESS	CREAM INDV W/ 450 1/2 FORMAL CHINTZ ETCH SAHARA H (1); SUGAR INDV W/ 448 OLD COLONY ETCH SAHARA H (1)
5	1401	EMPRESS	CREAM INDV (1); 1509 QUEEN ANN SUGAR INDV H (1); 1401 EMPRESS TRAY ALL W/ 497 ROSALIE ETCH
6	407	COARSE RIB	CREAM & SUGAR INDV H
7	473	NARROW FLUTE W/ RIM	CREAM & SUGAR INDV H
8	1235	BEADED PANEL & SUNBURST	CREAM & SUGAR INDV
9	1403	HALF CIRCLE	CREAM & SUGAR H
10	1200	CUT BLOCK	CREAM & SUGAR INDV
11	1495	FERN	CREAM & SUGAR INDV H
12	1401	EMPRESS	CREAM & SUGAR INDV W/ TRAY SAHARA H (3-PCS)
13	355	QUATOR	SUGAR CUBE DBL H
14	393	NARROW FLUTE	DOMINO SUGAR INDV
15	394	NARROW FLUTE	DOMINO SUGAR TRAY H
16	411	TUDOR	SUGAR POURER W/PEWTER LID
17	354	WIDE FLAT PANEL	CREAM & SUGAR FLAMINGO
18	465	RECESSED PANEL	CREAM & SUGAR W/ UNK CUTTING H
19	355	QUATOR	CREAM & SUGAR W/ UNK PINWHEEL & FAN-TYPE CUTTING H
20	343	SUNBURST	CREAM & SUGAR HOTEL
21	1280	WINGED SCROLL	CREAM W/ OPALESCENT RIM HDL & WINGS VASELINE
22	310	RING BAND	TABLE SET: BUTTER W/ LID (1) SUGAR W/ LID (1) CREAM (1) SPOONER (1); ALL CUSTARD W/ ROSE DÉCOR FAIR GOLD TRIM
23	1519	WAVERLY	CREAM & SUGAR INDV W/ 507 ORCHID ETCH H
24 D	1951	CABOCHON	BUTTER 1/4-LB W/ 507 ORCHID ETCH
25 D	1519	WAVERLY	CIGARETTE BOX HORSEHEAD W/ 507 ORCHID ETCH
26 D	4037	CLARENCE	SHERRY BOTTLE OVAL W/ 507 ORCHID ETCH SILVER STOPPER
27 D	1540	LARIAT	VASE RD 7" W/ 507 ORCHID ETCH
28 D	5025	TYROLEAN	WINE W/ 507 ORCHID ETCH (3)
29 D	1519	WAVERLY	CANDY BOX BOW TIE W/ 507 ORCHID ETCH
30 D	142	CASCADE	CANDLESTICK 3-LITE W/ 507 ORCHID ETCH PR
31 D	3484	DONNA	PITCHER W/ 507 ORCHID ETCH
32 D	5072	ROSE STEM	ICE TEA W/ 515 HEISEY ROSE ETCH (4)
33	1511	TOUJOURS	APPLE MARMALADE W/ 503 MINUETTE ETCH H
34	393	NARROW FLUTE	JUG 3-PT (1) H ; SODAS 10-OZ (8) H
35	3362	CHARTER OAK	PITCHER FLAMINGO
36	3362	CHARTER OAK	TUMBLER (4) FLAMINGO
37	343	SUNBURST	PITCHER 1-QT H
38	351	PRISCILLA	JUG 1-QT H

Lot #	Pat #	Pattern	Description
39 D	4161	LITTLE KING	PITCHER (1) & SODA 5-OZ (4) ALL W/ 499 GOOD MORNING ETCH
40	1252	TWIST	JUG 1-QT MOONGLEAM H
41	1235	BEADED PANEL & SUNBURST	WATER BOTTLE
42	3480	KOORS	JUG 3-PT D/O MOONGLEAM HDL & FT
43	517		JUG H W/ UNK FLORAL CUTTING (1); 197 TUMBLE-UP TUMBLER H W/ UNK CUTTING (1)
44 D	4091	KIMBERLY	CORDIAL ZIRCON BOWL
45 D	3390	CARCASSONNE	CORDIAL ALEXANDRITE BOWL
46	1503	CRYSTOLITE	CORDIAL (2) H
47	4083	STANHOPE	COCKTAIL 3 1/2-OZ ZIRCON BOWL AND FT
48	4083	STANHOPE	GOBLET ZIRCON BOWL & FT
49	3404	SPANISH	GOBLET 10-OZ COBALT BOWL (2)
50	3404	SPANISH	COCKTAIL TANGERINE BOWL
51	3404	SPANISH	CHAMPAGNE TANGERINE BOWL
52	5072	ROSE STEM	CLARET W/ BUSTOFF
53	3312	GAYOSO	GOBLET 11-OZ W/O W/ 168 ADAM ETCH H
54	433	GREEK KEY	CHAMPAGNE H
55 D	419	SUSSEX	GOBLET 10-OZ COBALT BOWL
56	419	SUSSEX	GOBLET 8-OZ MOONGLEAM BOWL H
57	4004	IMPROMPTU	GOBLET
58	337	TOURAIN	GOBLET 8-OZ LITE AMBER H
59	5077	LEGIONNAIRE	COCKTAIL SULTANA STEM
60	5077	LEGIONNAIRE	ICE TEA SULTANA PAPER LABEL
61	6092	CABOCHON	SODA 12-OZ SULTANA BASE PAPER LABEL
62	3366	TROJAN	COCKTAIL 3 OZ W/ 445 TROJAN ETCH W/ MOONGLEAM STEM/FT H
63 D	373	OLD WILLIAMSBURG	GOBLET ALEXANDRITE
64	1567	PLANTATION	CANDLEBLOCK PR
65	113	MARS	CANDLESTICK 1-LITE PR
66	3	MARLBORO	CANDLESTICK PR
67	133	SWAN HANDLE	CANDLESTICK 6" SAHARA PR
68	133	SWAN HANDLE	FLORAL BOWL SAHARA
69	129	TRICORN	CANDLESTICK 3-LITE MOONGLEAM H PR
70	15		FLORAL BLOCK W/ 123 MERCURY CANDLE INSERT 5" MOONGLEAM (2 PCS)
71	15		DUCK INSERT ONLY MOONGLEAM
72	15		FLORAL BLOCK W/ 123 MERCURY CANDLE INSERT 5" FLAMINGO (2 PCS)
73	15		DUCK INSERT ONLY FLAMINGO
74	1567	PLANTATION	CANDLESTICK 2-LITE PR
75	1567	PLANTATION	BOWL FLORAL CRIMPED 12"
76	1404	OLD SANDWICH	CANDLESTICK 1-LITE H PR
77	417	DOUBLE RIB & PANEL	BASKET W/ GOLD DÉCOR FLAMINGO H
78	462	PLAIN HEXAGON	BASKET 8" W/ UNK CUTTING W/ GOLD FILL
79	350	PINWHEEL & FAN	BASKET 7"
80	461	BANDED PICKET	BASKET FLAMINGO PARTIAL FLAMINGO LABEL
81	417	DOUBLE RIB & PANEL	BASKET H
82	477	HEISEY HAIRPIN	BASKET H

Lot #	Pat #	Pattern	Description
83	463	BONNET	BASKET 9" H
84	459	ROUND COLONIAL	BASKET FROSTED H
85	1	RINGNECK PHEASANT	
86 D	1550	FISH	CANDLESTICK PR
87 D	1550	FISH	BOWL
88 D	4	SWAN	
89 D	5	CYGNET	
90 D	1522	COLT	STANDING AMBER
91 D	1	AIREDALE	
92 D	1	DONKEY	
93 D	100	ASIATIC PHEASANT	
94 D	1	POUTER PIGEON	
95 D	1	HORSEHEAD	TOY PAPER LABEL
96 D	7002	RAMSHEAD	STOPPER NOT GROUND
97 D	1	MINUET GIRL	
98	12	MALLARD	WINGS UP (1); 11 WINGS HALF (1) H; 10 WINGS DOWN (1)
99	14	KINGFISHER	FLORAL BLOCK FLAMINGO
100 D	1401	EMPRESS	LION HEAD FLORAL BOWL FLARED
101	1428	WARWICK	VASE 2 1/2" INDV COBALT H PR
102	1428	WARWICK	VASE 5" COBALT H PR
103 D	1420	TULIP	VASE COBALT
104	1280	WINGED SCROLL	SWING VASE 7" CUSTARD W/ POOR GOLD DÉCOR
105	1413	CATHEDRAL	VASE FLARED H
106	4157	STEELE	VASE MOONGLEAM
107	4204	JOYCE	VASE D/O MOONGLEAM
108	1485	SATURN	VASE 7" FLARED ZIRCON H
109	1255	PINEAPPLE & FAN	VASE 6" WORN GOLD
110	1255	PINEAPPLE & FAN	VASE 10"
111	358	SOLITAIRE	ASHTRAY SAHARA
112	1280	WINGED SCROLL	CIGARETTE HOLDER CUSTARD GOLD DÉCOR
113	355		ASHTRAY - MATCH HOLDER H NOT FROSTED
114 D	1401	EMPRESS	ASHTRAY ALEXANDRITE
115 D	1401	EMPRESS	ASHTRAY MOONGLEAM
116	1508	KREIMER	CARD BOX - ASHTRAY W/ 501 BELLE LE ROSE ETCH
117	305	PUNTY & DIAMOND POINT	SUGAR SIFTER
118	1250	GROOVE & SLASH	PICKLE JAR
119	1280	WINGED SCROLL	CRUET CUSTARD W/ CRYSTAL STOPPER UNFINISHED
120	310	RING BAND	OIL 6-OZ W/ ROSE DÉCOR W/ GOLD TRIM
121	325	PILLOWS	JELLY HDLD TRI-CORNER H
122	352	FLAT PANEL	HORSERADISH JAR
123	352	FLAT PANEL	LAVENDER JAR 1.5-OZ H
124	354	WIDE FLAT PANEL	LAVENDAR JAR 1-OZ H CLOUDY
125	354	WIDE FLAT PANEL	LAVENDAR JAR 11-OZ H
126	354	WIDE FLAT PANEL	CRUSHED FRUIT FTD W/ LID H

Lot #	Pat #	Pattern	Description
127	429	PLAIN PANEL RECESS	OIL 6-OZ W/ UNK CUTTING
128	394	NARROW FLUTE	MUSTARD W/ LID W/ 2 SPOON H
129	393	NARROW FLUTE	COMBINATION RELISH W/ LID 2-PRT H
130	353	MEDIUM FLAT PANEL	SANITARY STRAW TRAY H
131	473	NARROW FLUTE W/ RIM	PICKLE-OLIVE H
132	472	NARROW FLUTE W/ RIM	UNDERPLATE OVAL 6" H VASELINE
133	1255	PINEAPPLE & FAN	CREAM SOUVENIR "GRANGER PICNIC 1902" OPAL
134	310	RING BAND	TOOTHPICK CUSTARD W/ ROSE & GOLD DÉCOR
135	394	NARROW FLUTE	COTTAGE CHEESE 9" H
136	433	GREEK KEY	ICE TUB INDV W/ UNDERPLATE H (2 PCS)
137	393	NARROW FLUTE	BANANA SPLIT FTD 9" H
138	109	PETTICOAT DOLPHIN	CANDLEHOLDER FLAMINGO PR
139	1184 / 109	PETTICOAT DOLPHIN	COMPORT 7 1/2" FLAMINGO W/ UNK CUTTING
140	1405	IPSWICH	CENTERPIECE W/ INSERT "A" PRISMS H
141	1	GEORGIAN	CANDLESTICK
142	5	PATRICIAN	TOY CANDLESTICK H PR
143	300-4	OLD WILLIAMSBURG	CANDELABRA 4-LITE PR
144	433	GREEK KEY	PLATE BUFFET 21" H
145	300-1	OLD WILLIAMSBURG	CANDELABRA 1- LITE 12" W/ CUT BASES SAHARA H PR
146	1428	WARWICK	CANDLESTICK 2-LT SAHARA PR COLOR MIS-MATCH
147	135	EMPRESS	CANDLESTICK 6" SAHARA PR W/ UNK CUTTING
148 D	300	OLD WILLIAMSBURG	CANDELABRA 1-LITE W/ ALEXANDRITE BOBECHES PR
149	5039	PENGUIN	DECANTER 1-QT
150	4225	COBEL	COCKTAIL SHAKER 1-QT W/ 463 EQUESTRIAN ETCH
151	4225	COBEL	COCKTAIL SHAKER 1-QT W/ 467 TALLY HO ETCH
152	4002	AQUA CALIENTE	COCKTAIL W/ 459 FISHERMAN ETCH
153	3397	GASCONY	SODA 12-OZ W/ 455 SPORTSMAN ETCH
154	2401	OAKWOOD	SODA 8-OZ W/ 2 TALL SAILBOAT ETCH
155	2052		BAR 2-1/2-OZ W/ 439 PIED PIPER ETCH
156 D	3381	CREOLE	BAR 1-1/2 - OZ ALEXANDRITE
157	1205 1/2	FANCY LOOP	BAR EMERALD FAIR GOLD
158	1591	ELEPHANT	MUG HDLD H
159	1404	OLD SANDWICH	MUG 12-OZ H
160	1404	OLD SANDWICH	MUG 18-OZ SAHARA H
161	1434	TOM & JERRY	MUG H
162	5048	ROOSTER HEAD	COCKTAIL
163	5063	BANTAM ROOSTER	COCKTAIL
164	5058	GOOSE STEM	SHERRY
165	4224	STEEPLE CHASE	COCKTAIL SAHARA BOWL
166	1252	TWIST	ICE BUCKET MOONGLEAM H
167	1503	CRYSTOLITE	BITTERS BOTTLE
168 D	10		MUDDLER MOONGLEAM
169	1220	PUNTY BAND	TUMBLER SOUVENIR "MOUNT GRETN, PA" CUSTARD W/ ROSE DÉCOR H
170	1170	PLEAT & PANEL	TUMBLER 8-OZ FLAMINGO H

Lot #	Pat #	Pattern	Description
171	167		TUMBLER H
172	1624	PATIO	TUMBLER SULTANA
173 D	3397	GASCONY	SODA 12-OZ TANGERINE BOWL
174	3390	CARCASSONNE	GOBLET LOW ALEXANDRITE BOWL
175 D	3390	CARCASSONNE	SODA 12-OZ ALEXANDRITE BOWL (2)
176 D	3357	KING ARTHUR	GOBLET FLAMINGO STEM & FT
177 D	4091	KIMBERLY	GOBLET W/ 1015 DOLLY MADISON ROSE CUTTING
178 D	3350	WABASH	GOBLET W/ 440 FRONTENAC ETCH MOONGLEAM STEM & FT
179 D	3344	CAROLINA	GOBLET W/ 679 WINDSOR CUTTING
180 D	5092	EMPRESS LILY	GOBLET W/ SATURN OPTIC LIMELIGHT BOWL
181 D	3368	ALBEMARLE	GOBLET W/ 445 TROJAN ETCH MOONGLEAM STEM & FT
182 D	3366	TROJAN	GOBLET W/ 445 TROJAN ETCH FLAMINGO
183 D	3389	DUQUESNE	GOBLET W/ UNK CUTTING
184 D	3335	LADY LEG	GOBLET W/ 679 WINDSOR CUTTING (5)
185	500	OCTAGON	TRAY 4-PRT
186	1189	YEOMAN	MAYONNAISE H
187	3397	GASCONY	MAYONNAISE 2-PRT W/ UNK CUTTING H
188 D	1401	EMPRESS	RELISH TRIPLEX 7" ALEXANDRITE
189	1194	PENTAGON	RELISH MOONGLEAM
190	10	OAKLEAF	COASTER FLAMINGO
191	353	MEDIUM FLAT PANEL	INDV ALMOND HAWTHORNE H
192	1184	YEOMAN	COMPORT MINT MOONGLEAM
193	1183	YEOMAN	COMPORT 6" MOONGLEAM STEM & FT SWIRL OPTIC H
194	1252	TWIST	OIL W/ STOPPER MOONGLEAM H
195	1252	TWIST	MUSTARD W/ LID FLAMINGO H
196	1428	VICTORIAN	CONDIMENT SET: SALT & PEPPER MUSTARD W/ LID W/ TRAY H
197	1506	WHIRLPOOL	MARMALADE W/ LID 4 1/4" H
198	362	EARNSHAW	SYRUP 7-OZ W/ UNK ROSE CUTTING
199	1951	CABOCHON	OIL W/ STOPPER
200	1567	PLANTATION	SYRUP W/ DRIP TOP & CELLULOID HDL
201	1567	PLANTATION	BUTTER W/ LID H
202	1567	PLANTATION	MARMALADE W/ LID H; 6 SPOON H (1)
203	341	PURITAN	PUNCH CUP 4-OZ FLARED (9)
204	1184	YEOMAN	PLATE 7 1/2" AMBER H
205	411	TUDOR	NAPPY 4 1/2" H (8)
206	1280	WINGED SCROLL	NAPPY 7 " (1); NAPPY 4" (4); ALL EMERALD WORN GOLD
207	464	RIBBON CANDY	NAPPY 10" LOW (1) H; NAPPY 4 3/4" (1) H; NAPPY 4 1/4" FLARED (1) H
208	361	CRISS CROSS	NAPPY 5" CRIMPED W/ GOLD DÉCOR H
209	305	PUNTY & DIAMOND POINT	NAPPY 8"
210 D	1183	REVERE	BOWL OVAL 10" W/ 679 WINDSOR CUTTING
211	352	FLAT PANEL	STRAWBERRY DISH 8" W/ STRAINER H
212	1231	RIBBED OCTAGON	SANDWICH TRAY W/ HDL HAWTHORNE H
213	8063	NOONAN	SHAVING MUG SOUVENIR "NOONAN & SONS" SPECIAL ORDER

Administrative Notes

We are now entering into the autumn season which is an exciting time of year with the fall colors, football, crisp air, harvest time, Percy Moore, Select Auction, etc. My only question is where did summer go?

Amy Jo Jones was able to return to the Museum on August 1. While she was still not able to walk well, she is feeling much better. It was so good to see her coming back.

David Hiestand, our intern in the Archives, will be able to continue the digitizing project of our records well into the school year. We have been very pleased with his progress as he has come up with simplified methods of scanning the materials.

Our two new clerks are doing well and are involved in on-the-job training. A slight delay happened when Bobbe suffered a broken leg, but she is now moving about the Museum on a type of scooter.

Last month we ran an article about the “Name the Heisey” program. We printed the list of items available to be named, but didn’t remove the ones already named since the list was last published. The #4192 Vase has been renamed the Hanna Vase, the #25 Powder Puff has been renamed Mensh Powder Puff, and the #602 Soda Fountain Line has been named the Marsa Soda Fountain Line. These items are no longer available for naming. If there are others that have been named and should not have appeared in the list, please let us know.

The E-Gram test turned into a real nightmare. With the help of Alpha Link Technologies we had been successfully testing the E-gram program on small samples. I decided it was time to send an E-gram to our entire email list. It went out beautifully, and the first few responses were great, but then we started getting complaints from people receiving multiple replies. Without getting technical, I’ll say one little box was left unchecked and that caused the problem. We fixed it right away, but the damage was done and we had to ride it out until everyone stopped responding—which took several days. I apologize for causing the issue. The system is now fixed.

The Heisey Website is functional, but is partly under construction as we are updating some very old information, and will be adding other features. Please check our site weekly for changes.

This is David Malick’s last *Heisey News* production, and the duty will now fall to Jack Burriss and myself (with help from others) to carry on in his footsteps. David’s production of the newsletter was superb and I thank him for a job well done.

Larry Burge, Managing Director

North Carolina Heisey Study Club

President Gallagher gaveled the July meeting to order following a delicious lunch hosted by Frank and Michele Scott that ended with homemade fudge, a German Chocolate cake and pound cake topped with local, fresh strawberries or peaches.

The treasurer’s report was given by Carolyn Crozier in the absence of Phil Abrams. We are still solvent.

A hearty thanks was given to Karen Taylo for her 8 years of service on the HCA board. Likewise, congratulations were given to Jon Heron on his election to the HCA board.

There was lively discussion surrounding museum job assignments and a bank for the endowment fund. The idea of e-mails to club presidents seemed to be well accepted and providing member demographics was not a problem. Members were urged to check their local libraries to see if Heisey books were available.

President Gallagher reported they were able to sell several Heisey sun catchers during the convention, but still have some remaining. Individuals may contact him at ecgallagher@suddenlink.net for more information.

The mystery gift, a Hawthorne Tudor Jelly Comport, was won by Karen Taylo,.

Show and tell was a full table. Among the items were a Revere Creamer; a Stiegel Blue Tulip vase; an Octagon Marigold muffin plate; a Hartman candy jar with enamel decoration; a Cut Block crystal sugar; a Colonial basket with #353 Susan etch; a Plain Hexagon basket with an unknown cutting; a Flamingo Pleat an Panel jug; a decorated 14” Beehive plate, (Heisey plates have leaves); a Laverne floral bowl in Moongleam; an #1186 Yeoman lemon dish in Canary; a West Point etch on an Oxford goblet; and a Lariat plate with etch of a man propelling a gondolier.

The club voted to make a donation to the Endowment Fund in memory of Victoria McKelvey.

The program was a presentation of the video *The Making of the Tulip Vase #1420* by Mike Maher. It was interesting how many people were required to make the vase and why using a blow torch during the cooling process was necessary.

Our next meeting will be September 14 at Replacements Ltd. in Greensboro at 11:30 a.m.

Great Plains Heisey Club

SMOKE & MIRRORS in Omaha? No, but more about that later. July 20, 2013, was a REAL Great Plains Heisey Club meeting with 28 members attending at the lovely home of John and Trudy Mock. A delicious meal of smoked pork, "grandma's" potato salad, and numerous other salads preceded the official meeting.

Our club had 14 members in attendance at the HCA convention and reports were made about the events. Congratulations and thanks to those who planned and worked to make it another winner. The new ice arena venue for the show was well received by all and we welcomed the return of the displays there. Gregg Cameron fulfilled "official photographer" duties and everyone can enjoy his work in the Heisey News and many additional photos on our website www.greatplainsheiseyclub.org. Board member Mary Cameron announced plans for the Percy Moore Dinner and fall auction to be held in Newark on October 11 and 12, 2013. (Best news was Jean Will is feeling fine and going strong again).

Trudy Mock's "Martha Moment" was reversed when she was "Martha'ed" by Glen Gall who presented her with a bird feeder made from pieces of Heisey Crystolite. Trudy did have photos to share from the Convention and monogrammed guest towels made by her niece.

Our REAL program was about Heisey "smoke"-ing items with many displayed on "mirrors." Eric Tankesley-Clarke steered us through the patterns and examples supplied by many members that dazzled us with their diversity. Eric prepared a very helpful handout and we were all amazed by the variety of smoking items in shapes and colors that Heisey produced to keep their customers happy. Eric was a great guide for the approximately 150 pieces present—the program was a hit! Thanks to Eric, whose research helps all of us learn more about our classy, elegant glass.

Show and Tell was prolific as our members attempt to keep the economy moving by buying Heisey. Much too much to list it all. Examples included: Beaded Panel and Sunburst cheese plate that looks like a miniature cake salver; #10 muddler/Sahara; Twist grapefruit; Daisy candlesticks/cut; Donna jug/Barcelona cutting; Petticoat Dolphin comport/Flamingo; Queen Ann lemon dish in "Krome-Kraft" holder; Lodestar platter/Dawn; Kohinoor candlesticks with prisms; Whaley mug/special cutting found in Newark; Athena platter/elaborately cut; Winged Scroll nappy/Canary Opalescent; Duplex confection tray/Flamingo; 7" Aristocrat candlesticks—one with Cairo etching on foot and column/one with Cairo etching on



column only; Tumbler/Golf Scene etching; and a pair of wool trousers with inside label "Made for A.H. Heisey". It was tough to narrow the list to only these items!

An auction of donated Heisey pieces (and Jean's jams and jellies) was held to boost the Treasury. The top seller was a beautiful Twist footed mayo in Moongleam with possibly a Heisey cutting. The meeting was adjourned so we could enjoy desserts: two cakes, brownies, gooseberry pie and a sweet/salty snack mix—all yummy! Our next meeting will be September 14 at Glen Gall's home in Urbandale, IA. Please check our website and Happy Heisey Hunting to all.

Kathy Files, Secretary—Great Plains Heisey Club



Study Club Directory



Interested in joining a study club? You will have the opportunity to meet fellow collectors and HCA members and learn more about your favorite glassware. Below is our Study Club Directory; please contact the Museum with your information. We also would like to share your club's news; please forward your meeting minutes to us!

<p>#4 CENTRAL ILLINOIS HEISEY CLUB Serving Central Illinois - Pekin to Watseka. Meets quarterly in Bloomington, IL at a restaurant. Call for specific dates. Contact Joyce Deany at 815-432-4310 (jdeany@sbcglobal.net).</p>	<p>#33 GOLDEN GATE HEISEY COLLECTORS' CLUB Serving northern California and northern Nevada. Meets quarterly, usually on Saturday afternoons in members' homes throughout region. Contact Russ Nicholas at 916-515-8558 (RL3690@comcast.net).</p>
<p>#5 BAY STATE HEISEY COLLECTORS' CLUB Serving Massachusetts, Rhode Island, Connecticut and New Hampshire. Meets 2nd Tuesday of September, October, November, March, April and May and 1st Tuesday of June in the Community Room of Whole Foods Market of Bedford, MA. Contact Stephen Pescatore at 978-256-5418 (spescatore@houghton.com).</p>	<p>#38 NORTH CAROLINA HEISEY STUDY CLUB (www.northcarolinaheiseystudygroup.org) Serving North Carolina, South Carolina, Virginia (also have members from West Virginia and Texas). Meets odd numbered months 2nd Saturday at noon at Replacements, LTD in Greensboro, NC. Contact Karen Taylo at 252-637-9985 (nchsg@yahoo.com).</p>
<p>#7 DAYTON AREA HEISEY COLLECTORS' CLUB Serving southwest Ohio, northern Kentucky, and eastern Indiana. Meets 3rd Tuesday, September thru May (no December meeting) in Huber Heights, Ohio Library. Contact Joe Harner at 937-372-0852 (lh937@aol.com).</p>	<p>#42 GULF COAST HEISEY CLUB Serving West Central Florida. Meets January, February and November at 1 p.m. in members' homes throughout region. Specific dates to be announced. Contact Don Walzer at 352-314-8975 (dnnwalzer@embarqmail.com).</p>
<p>#8 HEISEY HERITAGE SOCIETY Serving Pennsylvania, New Jersey and Delaware. Meets quarterly on Sundays in members' homes throughout region. Call for specific dates. Contact Craig Kratochvil at 973-962-4004 (lorrain805@aol.com).</p>	<p>#49 GREAT PLAINS HEISEY CLUB (www.greatplainsheiseyclub.org) Serving west of Mississippi, east of Rocky Mountains. Meets March, May, July, September and November in members' homes throughout region. Specific dates and times to be announced. Contact Kathy Files at 816-468-7087 (tkfiles@kc.rr.com).</p>
<p>#13 HEISEY CLUB OF CALIFORNIA (www.heiseyclubca.org) Serving Southern California (San Diego to Santa Barbara). Meets 4th Sunday at 12:30 p.m. except November, and 2nd Sunday in December in members' homes throughout region. Contact Richard Borino at 949-496-0676 (Lrb1946@aol.com).</p>	<p>#50 NORTHWOODS HEISEY STUDY CLUB Serving Minnesota and Wisconsin. Meets March, May, August, and October in members' homes throughout region. Specific dates and times to be announced. Contact Doug Olson at 651-227-4358 (dmolson555@gmail.com).</p>
<p>#15 HEISEY COLLECTORS' CLUB OF MICHIGAN Serving Michigan and northern Indiana. Meets six times per year in members' homes throughout the region. Contact Rick Van Meer at 517-782-3874 (rickvanmeer@comcast.net).</p>	<p>#51 NORTHEAST FLORIDA HEISEY STUDY CLUB Serving northeast Florida, meets 3 times a year at the Avonlea Antique Mall's Olde Florida Café, Jacksonville, FL. Call for specific dates. Contact Bea Ketchum at 904-636-8785 (bea@avonleamall.com).</p>
<p>#16 HEISEY COLLECTORS OF TEXAS (www.heiseycollectorsoftexas.org) Serving Texas. Meets odd numbered months 2nd Saturday at 1 p.m. Meeting locations to be announced. Contact Mike Morgan at 936-321-4292 (mikemorgan@consolidated.net).</p>	<p>#52 NORTHERN VIRGINIA HEISEY STUDY CLUB Serving Northern Virginia to include Maryland and Washington D.C. Meets September thru May. Please call or email for date and location each month. Contact Russ Reopell at 703-250-6117 (rreopell@verizon.net).</p>
<p>#20 BUCKEYE HEISEY COLLECTORS' CLUB Serving Ohio. Meets 4th Monday September thru May in Heisey Museum Meeting Room or members' homes. Contact Michael Maher at 740-644-1796 (theflyingmaher@yahoo.com).</p>	<p>DAIRYLAND HEISEY CLUB (Currently Inactive) Serving Wisconsin. Looking for individuals interested in Heisey Glass with a desire to reactivate this club. Contact Ray Courtnage at 414-962-9747.</p>
<p>#22 NORTHWEST HEISEY COLLECTORS' CLUB Serving Washington (west of Cascade Mountains; north to Canadian border; south to Oregon). Meets 1st Saturday at noon with potluck in members' homes. Contact Deborah DeJong at 425-868-0457 (bahama50@hotmail.com).</p>	<p>TRI-STATE HEISEY STUDY CLUB (Currently Inactive) Serving Indiana, Ohio and Michigan. Looking for individuals interested in Heisey Glass with a desire to reactivate this club. Contact Jim Cheadle at 419-485-3766.</p>

#724 Daffodil

Introduced in 1921 | Discontinued around 1926

Gray with large miter cuts forming the arches, the flame-like motif at the top of the arches, and the punties about the bottom are polished.

#3322 GAMIN

10 oz. Goblet..... \$56.30/doz.
5 1/2 oz. Saucer champagne
5 1/2 oz. Sherbet, ftd.
2 oz. Wine

#398 HOPEWELL

9 in. Bowl

#489 KAREN

2 oz. Cologne

#1020 PHYLLIS

Cream
Sugar

#2401 OAKWOOD

5 oz. Soda

#2451

8 oz. Soda
10 oz. Tumbler
12oz. Soda

#2930 PLAIN AND FANCY

10 oz. Tumbler

#3416 TEMPLE

12 oz. Ice tea, ftd., hldd.

#3948

8 in. Comport, ftd.

#4026 SPENCER

Decanter, cut neck

#4163 WHALEY

54 oz. Jug, cut flutes on bottom and star bottom

#4182 THIN

7 in. Plate

#4192 AMY

8 in. Vase
10 in. Vase
12in. Vase

#4291 MARLENE

1 lb. Candy jar and cover



#748 Euridice

Introduced in 1924 | Discontinued around 1928

Gray, with punties and flower centers.

#411 TUDOR

8 oz. Goblet
5 1/2 oz. Saucer champagne
5 oz. Sherbet, ftd.
12 oz. Ice tea
3 pt. Jug
4 1/2 in. Nappy
5 1/2 in. Plate
6 oz. Oil
7 in. Candy box and cover, oval
7 in. Compotier
7 in. Compotier and block
7 in. Nappy
8 in. Nappy
8 in. Plate
10 in. Floral plateau
10 in. Floral plateau and block
12 in. Celery tray
Bonbon, 2 hdd.
Cheese, 2 hdd.
Cream, hotel
Sugar, hotel
Jelly, 2 hdd.
Jelly, high ftd.
Mayonnaise, 2 hdd.
Mayonnaise plate
Mint, 2 hdd.

#412 TUDOR

3 pt. Tankard
12 oz. Ice tea, hdd. and ftd.



These excerpts on Heisey's #724 Daffodil and #748 Euridice cuttings are taken from the forthcoming *Encyclopedia of Heisey Glassware, Volume II: Cuttings and Engravings* by Neila M. Bredehoft, Thomas H. Bredehoft and Louise W. Ream.

From the Curator

As I pen this it may be noted that today, August 15, is my 90-day anniversary here at the National Heisey Glass Museum. The word is still out on what others may think of my presence here; however, I am very pleased to celebrate my time thus far. Working in this fantastic collection of yours is a joy. I'm understanding why Heisey glass is your favorite, because it's rapidly becoming mine as well. The collection, the wonderful people (guests, volunteers and staff), as well as all the stories and the complex of buildings, hold a new and interesting discovery every day. I am working on learning and respecting the needs and wants of our current audience, as well as expanding the base of those who celebrate that we are here! (more on those in future articles). The select auctions group has created a wonderful display of Heisey that one is able to actually think about owning and that can always be fun. Stop by and see for yourself not only these items but the brilliant display of the gift shop these days. All of this is made possible by your generous support of your (our) museum. I thank you! Enjoy the remainder of summer and the new patterns of the fall! <><><> Jack Burriss, Curator

Membership

To join Heisey Collectors of America or to renew your membership, contact the HCA Administrative Office at 740-345-2932 or visit our website at www.HeiseyMuseum.org.

Your membership ensures the future of the Heisey Museum. Please consider opting for the Endowment level.

Membership Levels

Associate Member (one person)	\$30
Each additional household member	\$5
Voting Member (onetime fee)	\$25

Any amount beyond the Associate Member fee goes into the Endowment Fund.

Endowment Levels

Individual Contributing (one person)	\$50
Joint Contributing (two persons)	\$60
Family Contributing (parents and children under 18)	\$75
Patron	\$125
Sponsor	\$250
Benefactor	\$500

The Endowment Committee thanks those who have become Endowment Members. All members who supported the fund in the previous year are recognized in the February issue of Heisey News. Your continued support of the fund will help to make the Museum self-sustaining in the years to come.

Membership Renewal Alert

Check above your name on the mailing label of your Heisey News for your membership expiration date. If it is the current month, make sure your dues are paid soon to receive next month's issue of Heisey News.

Shipping & Handling Fees

Additional shipping charges may be required for members living outside the USA. Rates are subject to changes made by the United States Postal Service. To verify current rates, contact the Museum at 740-345-2932 or email business@HeiseyMuseum.org.

Thank you!

HCA Welcomes New Members for July 2013

Karla Carson (AlphaLink)	Ohio
Bruce H. and Margaret Besmen	Maryland
Margaret Guyard	Florida
John Laughlin	California
Sandra P. and Robert M. Moyer	Pennsylvania
Rebecca Shank	Oregon
Karen and Sam Pierce	Ohio

Our Membership is now 1,302 Members



HCA Thanks Museum Volunteers for July 2013

Jay Barker
Barbara Bartlett
Mike and Linda Bishop & Michelle
Charlene Bowman
Jim and Karen Clark
John Drury
Traci and Dave Dusenberry
Ed and Marianne Henderson
Amy Jo and Chuck Jones
Frank Kuhlman
Tom LeBlanc
Walter Ludwig
Michael Maher
David Malick
Dick and Ginny Marsh
Don and Pat Moore
Dick and Marilyn Smith
David and Mary Ann Spahr
Kate Stickle
Charlie and Susan Wade

Museum Gift Shop

There is always someone in the Gift Shop during the Museum's hours of operation to help answer questions or take orders. When ordering by phone, please have a credit card ready. When ordering by mail, please be sure to include appropriate charges such as shipping and sales tax. Please note that the HCA member discount does not apply to original Heisey or special project items. We prefer to use USPS. If you have not received a package, please call the Administrative Office to confirm it was sent. We will assist you in tracing it. If your package arrives damaged, please contact your local USPS representative. We insure everything.

If you would like to make a donation to the Museum or have questions regarding items on loan, contact the Museum at 740-345-2932. HCA reserves the right to accept or refuse items based on current holdings.

HCA will attempt to identify unknown glass items. Send a color photograph, measurements, and a self-addressed, stamped envelope. Other arrangements should be made in advance with the Museum staff. Please keep in mind that the Museum cannot appraise items. Identification is free to members; non-members \$5 per item.



Real Heisey in the Gift Shop

The following real Heisey items are available in the gift shop. HCA members have exclusive access to these items between September 2 and September 11. On September 12, they will be released for public sale. Please contact the museum if you are interested in purchasing any of these items. **Note: All items listed below are crystal and all prices are "each" unless otherwise noted.**

Pattern #	Item Name / Description	Price
#1513	Baroque 2-lite candlestick, pair (no vase or bobèche/prisms)	\$60.00 pair
#1401	Empress DF covered candy with grape design silver overlay	\$50.00
#1401	Empress oval comport with grape design silver overlay	\$50.00
#1567	Plantation candle blocks (2)	\$60.00 each
#406	Coarse Rib Flamingo 6" plates (4)	\$25.00 set of 4
#1503	Crystolite footed covered candy	\$45.00
#310	Ring Band custard tumbler (Nashville Michigan souvenir)	\$40.00
#10	Oakleaf Flamingo coaster	\$25.00
#1951	Cabochon Dawn creamer	\$45.00
#406	Coarse Rib oval celery with Marigold stain	\$40.00
#1509	Queen Ann 7" plates (7)	\$40.00 set of 7
#1469	Ridgeleigh bridge ashtrays (choice) heart/club/spade	\$15.00 each
#1401	Empress DF floral bowl, Sahara	\$70.00
#1519	Waverly individual cream and sugar	\$25.00 pair
#411	Tudor 7" plates (4)	\$25.00 set of 4

HCA MEMBERS WISHING TO DOWNSIZE COLLECTIONS? GO TO WWW.HEISEYMUSEUM.ORG UNDER "AUCTIONS" FOR "ACCEPTING MEMBER GLASS COLLECTIONS"

Advertising Guidelines

Ads may be mailed to HCA Advertising, 169 W. Church Street, Newark, Ohio 43055; faxed to (740) 345-9638; or e-mailed to business@HeiseyMuseum.org. Whenever possible, please e-mail your ad. Ad copy must be received by the first of the month prior to publication. Always include your MasterCard or Visa number and expiration date. When mailed or faxed, ads should be typed or printed on white paper with dark ink. Camera-ready ads are accepted, but must follow line specifications. Ads containing reproductions will not knowingly be accepted unless clearly stated (e.g. Heisey by Imperial, etc.). HEISEY NEWS accepts no further liability. In the event of a typographical error, the incorrect portion of the ad will be run in the following issue, but HEISEY NEWS assumes no further liability.

CLASSIFIED

20 cents per word for members; 30 cents per word for non-members; \$1.50 minimum, 1/8 page limit. Personal ads 1/8 page limit. Abbreviations and initials count as words.

DISPLAY

1/8 page:	Member \$20	Non-member \$30
1/4 page:	Member \$40	Non-member \$60
1/2 page:	Member \$80	Non-member \$120
Full page:	Member \$160	Non-member \$240

Submission Guidelines

Send articles for publication in HEISEY NEWS to Larry Burge (director@HeiseyMuseum.org) and to Jack Burriss (curator@HeiseyMuseum.org). If accepted, a proof of the submission will be returned for review and approval within 3-5 business days. If you receive no response after that period of time, please follow up with both Larry and Jack to ensure your submission is received. The submission deadline is the 15th of each month.

The opinions expressed in articles in HEISEY NEWS are those of their authors and do not necessarily reflect the views of HCA. The editorial staff reserves the right to edit submissions, with or without author consent, and to refuse material submitted for publication.



An original Heisey ad from the September 1921 issue of *Woman's Home Companion*.

Dealer Directory



<p>KIM & PAM CARLISLE Shows & Mail-orders We Buy Heisey One Piece or Entire Collection Cloudy Glass Cleaning Services Available (317) 402- 5406 • kcarlisl@att.net</p>	<p>MOUNDBUILDERS SECOND GENERATION Barbara and Richard Bartlett Heisey Exclusively! 1-904-280-0450 PO Box 1931, Ponte Vedra Beach, FL 32082 Toll Free 1-888-434-7397(HEISEYS) CLASYGLAS2 @AOL.COM</p>	<p>SUM OF LIFE Elaine Husted: 610-469-1243 Traveling through eastern PA Call, stop in, be a buyer or a browser!! 1classycat@comcast.net</p>
<p>ALL HEISEY AUCTION Consignments Welcome Apple Tree Auction Center 1625 W. Church Street Newark, OH 43055 • (740) 344-4282</p>	<p>THE STRIPPER ANTIQUES Specializing in Heisey, Cambridge and Elegant Glass 209 Allen Street • Kelso, WA, 98626 (360) 575-9927 furniture-silver@stripperantiques.com</p>	<p>EAGLES REST ANTIQUES <i>Buying Heisey, China & Pottery</i> Carl and Mary Evans 62 Fieldpoint Road Heath, OH 43056 • (740) 522-2035</p>
<p>PAULA & JEFF MORROW Elegant Glassware & American Dinnerware 126 Clinton Avenue Elmhurst, IL 60126 (630) 833-4644 mor-fab@comcast.net</p>	<p>GRECIAN BORDER (GREEK KEY) By Petros Z. Mantarakis The definitive guide on Greek Key (#433) with photos and detailed descriptions of all pieces. Now available at Amazon.com www.pzmworks@yahoo.com</p>	<p>CRYSTAL LADY Bill, Joann & Marcie Hagerty Specializing in elegant depression glassware 1817 Vinton St., Omaha, NE 68108 (402) 341-0643 or (402) 391-6730 ejhagerty@aol.com www.crystalladyantiques.co</p>
<p>REALMS IN GLASS Roy Eggert Heisey • Custom Stained Glass 9423 Saddlebrook Ct, Frederick, MD 21701 301-620-0234 • royeegg54@comcast.net</p>	<p>SIBYLS OF WILMINGTON Sibyl & Ned Lavengood at Castle Corner Antiques 555 Castle St. Wilmington, NC (910) 264-9597 • sibylsantiques@bellsouth.net</p>	<p>MOONGLEAM ANTIQUES Heisey Glassware & American Art Pottery John Woytowicz and Peter Rivard 70 Pleasant St., Gardiner, ME 04345 (207) 582-9048 • jmwppwr@aol.com</p>
<p>MATILDA CHARLOTTE ANTIQUES, ETC. Buy and Selling Heisey 14 North Park Place, on square in downtown Newark Mon. - Sat. 10 a.m. - 5 p.m. (740) 349-7448 cmorgan40@windstream.net</p>	<p>PATTON HOUSE ANTIQUES Specializing in Glass * Heisey * Cambridge * Fostoria * Duncan * Factory Antique Mall, Verona, VA off I-81 Exit 227; Antiquers Mall, Booth 81, Rt. 29 N., Charlottesville, VA The Daniels, Box 547, Louisa, VA 23093 (540) 967-1181</p>	<p>WATERSEEDGE ANTIQUES Norene & Don Walzer Shows & Mail Order 25089 Riverwalk Drive Leesburg, FL 34748 (352) 314-8975 dnnwalzer@embarqmail.com</p>
<p>CHARLES & MILDRED FISHER Heisey and Heisey by Imperial animals 1607 Dayton Rd, Newark, OH 43055 cfisher08@roadrunner.com (740) 281-3104</p>	<p>MARSH'S ANTIQUES Dick and Virginia Marsh 4532 Newton Road Newark, OH 43055 swamp@alink.com • (740) 366-5608</p>	<p>CHARLENE BOWMAN Heisey * Cambridge * Fostoria * Morgantown Shows Only P.O Box 287, Clarksville, OH 45113 937-289-2114 • twoclbs@aol.com</p>
<p>YELLOW BRICK ROAD ANTIQUES Jean Will Specializing in Heisey and Elegant Glass Leavenworth, KS 66048 (913) 682-4831 Shows and Estate Sales</p>	<p>CRESTONE MANOR UNIQUES Harold & Loleta Hammontree 2405 Talking Leaves Drive, Ooltewah, TN 37363 423-615-0081 • hammonlsh@gmail.com Heisey Only</p>	<p>J & L TREASURES Linda Kilburn Specializing in Heisey, Cambridge, Fostoria, Tiffin, Morgantown, etc PO Box 1257, Burlington, CT 06013 860-673-4088 • jltreasures@comcast.net</p>
<p>ONCE AND FUTURE ANTIQUES Susan & Stephen Pescatore Heisey and Elegant Glass 9 Donna Road Chelmsford, MA 01824 (978) 256-5418</p>	<p>WM GLASS Bill & Mary Barker 500 Nantucket Ave., Pickerington, OH 43147 (740) 927-0918 • barker.mary6@gmail.com Heisey Only</p>	<p>FRAN'S FANCY FINDS Fran & Jack Grenzebach 10534 Valencia Road Seminole, FL 33772-7511 (727) 391-5184 SHOWS • MAIL ORDERS</p>
<p>PHIL & LEO Specializing in Elegant Glass at Southport Antique Mall booth # 204 2028 E. Southport Road Indianapolis, IN 46227 317-786-8246 mall or 317-605-8767</p>	<p align="center">SUPPORT HEISEY GLASS COLLECTING! SHOP WITH DEALERS THAT SUPPORT HCA!</p>	

HEISEY NEWS is published and printed monthly by Heisey Collectors of America, Inc. (HCA). Subscription is limited to HCA members. First class mailing is available for an extra \$20, due with payment of membership. If you are having difficulty receiving your newsletter, please contact the HCA Administrative Office Tuesday thru Saturday 10 a.m. to 4 p.m. (subject to change). Back issues are available from files for \$3 per issue plus shipping and handling.



Periodical Postage
Paid at the Post Office
In Newark, OH 43055
Publication #00986
POSTMASTER SEND FORM TO:
HCA
169 W. Church Street
Newark, Ohio 43055

TO: _____

...continued from front cover.

(91), #1 Pouter Pigeon (94), and a complete set of #10-#12 Mallards (98). Animal related items include a 1 quart #5039 Penguin decanter (149), #5063 Bantam Rooster cocktail (163), and #5058 Goose Stem sherry (154). Other nice bar items include #4225 Cobel shaker with #463 Equestrian etch (150) and a #1434 Tom and Jerry mug (161),

More good color items include a #1420 Tulip vase in Cobalt (103), #1485 Saturn flared vase in Zircon (108), #3381 Creole 1 1/2 oz. bar in Alexandrite (156), and a #10 muddler in Moongleam (168). If you want something very rare there is Lot 21, a #1280 Winged Scroll cream in Vaseline with opalescent rim. The opalescence in this piece is among the best I have ever seen going deeply into the piece.

Among the unusual items is a #115 Kreimer card box with #501 Belle Le Rose etch, #353 Medium Flat Panel sanitary straw tray (130), a #433 Greek Key 21" buffet plate (144), a #1506 Whirlpool marmalade (197), and a #352 Flat Panel strawberry plate that still retains the original glass drainer (211). Probably the rarest of all the pieces in the auction was saved for last, this is the #8083 Noonan shaving mug (213) which was a special order item for the Noonan & Sons Company. A most unusual item, indeed.

Space limitations prevent me from listing so many other great pieces, so please look at the full catalog printed in this issue of the Heisey News. Please consider coming to this outstanding auction, or, if you cannot make it, send in an absentee bid on any of the great lots available. I will be there and I hope to see you, too. <><><> Water Ludwig



Come at your leisure to enjoy more than 5,000 pieces of glassware produced by A.H. Heisey and Company from 1896-1957. Hundreds of patterns are featured in all production colors. Rare and experimental items are included as well. Facilities are air-conditioned and handicapped accessible. The opinions expressed in articles in HEISEY NEWS are those of the authors and not necessarily those of the organization. The Editorial Staff reserves the right to edit, with or without the consent of the author, or to refuse any material submitted for publication.