

HEISEY NEWS

The Official Publication of Heisey Collectors of America, Inc.

Volume XXXIX No. 2

February 2010

ISSN 0731-8014



Louise Ream (1915 – 2002)

See President's Message and Article on Page 18 for Details of Louise Ream Circle
Biography of Louise on Page 18

HEISEY NEWS

Heisey Collectors of America, Inc.

169 West Church Street

Newark, Ohio 43055

Phone 740-345-2932 Fax 740-345-9638

Web Site: www.heiseyMuseum.org

All Rights Reserved 2009

ISSN 0731-8014

Staff and Phone Extensions

Director, Susan Dawson, director@HeiseyMuseum.org, Ext. 3

Curator, Walter Ludwig, curator@HeiseyMuseum.org, Ext. 4

Clerks, Justin Church, Micki Wareham,

membership@HeiseyMuseum.org, Ext. 1

Gift Shop, Ext. 5

HCA Board of Directors:

President, Sue Kilgore – Kalamazoo, MI, 269-345-3990 –

hcapresident@HeiseyMuseum.org

Vice-President, Karen Taylo – New Bern, NC, 252-637-9985

Secretary, Charlene Bowman – Clarksville, OH, 937-289-2114

Treasurer, Sharon Orienter – Rochester, NY, 585-288-8076

Member-at-Large, Dave Spahr – Xenia, OH, 937-372-7166

Bryan Baker - Fairfax Station, VA, 703-250-6117

Sid Edwards – Tallassee, AL, 334-283-4663

Tom Files – Kansas City, MO, 816-468-7087

Amy Jo Jones - Beavercreek, OH, 937-426-1567

Bob Kreimer – Ocala, FL, 352-873-8306

Robert Loch – Custer, WA, 360-366-3166

Jack Metcalf – Utica, OH, 740-892-2664

HEISEY NEWS is published and printed monthly, by Heisey Collectors of America, Inc. (HCA). Periodical postage paid at Newark. Subscription is limited to HCA members. First class mailing is available for an extra \$20.00, due with payment of membership. If you are having difficulty receiving your Newsletter, please contact the HCA Administrative Office Monday through Friday 8:30 a.m. - 4:30 p.m.

The opinions expressed in articles in HEISEY NEWS are those of the authors and not necessarily those of the organization. The Editorial Staff reserves the right to edit, with or without the consent of the author or to refuse any material submitted for publication.

Back Issues

Back Issues available from files are \$3.00 per issue plus shipping and handling

Advertising

Ads may be mailed to: HCA Advertising, 169 W. Church St., Newark, OH 43055; faxed to (740) 345-9638; or e-mailed to curator@HeiseyMuseum.org. Whenever possible, please e-mail your ad. Always include your MasterCard or Visa number and expiration date. When mailed or faxed, ads should be typed or printed on white paper with dark ink. Camera ready ads are accepted, but must follow line specifications outlined at the beginning of the advertising section. Ads containing reproductions will not knowingly be accepted unless clearly stated (e.g. Heisey by Imperial, etc.). HEISEY NEWS accepts no further liability. In the event of a typographical error, the incorrect portion of the ad will be run in the following issue, but HEISEY NEWS assumes no further liability. See advertising section for rates and deadlines.

Museum

Heisey Collectors of America, Inc., a non-profit corporation (tax-exempt status), owns and operates The National Heisey Glass Museum in Veterans Park, 6th and Church Streets, Newark, Ohio. Open year round, Tuesday through Saturday 10:00 a.m. – 4:00 p.m., Sunday 1:00 – 4:00 p.m. (except Jan. and Feb.), closed holidays. Other hours by appointment. Members admitted free.

Identification

HCA will attempt to identify unknown glass items. Send a color photograph, measurements, and a self-addressed, stamped envelope to the attention of the Curator. Other arrangements should be made in advance with the Museum staff. Please keep in mind that the Museum cannot appraise items. Identification is free to members, non-members \$5.00 per item.

Membership

To join Heisey Collectors of America or to renew your membership, contact the HCA Administrative Office Monday through Friday 8:00 a.m. - 4:30 p.m. Eastern Time. Associate dues are \$30.00 plus \$5.00 for each additional household member. Voting members pay an additional one-time fee of \$25.00. Please consider supporting the Endowment Fund by joining at one of the levels listed on the back page.

Museum Gift Shop

There is always someone in the Gift Shop during the Museum's hours of operation to help answer questions or take orders. When ordering by phone, please have a credit card ready. When ordering by mail, please be sure to include appropriate charges such as shipping and sales tax. Please note that the HCA member discount does not apply to original Heisey or special project items.

Shipping and Receiving

We prefer to use USPS. If you have not received a package, please call the Administrative Office to confirm it was sent. We will assist you in tracing it. If your package arrives damaged, please contact your local USPS representative. We insure everything.

Donations and Loans to the Museum

If you would like to make a donation to the Museum or have questions regarding items on loan, contact the Curator. HCA reserves the right to accept or refuse items based on current holdings.

HEISEY CALENDAR OF EVENTS

2010

HCA Benefit Auction, Newark, OH April 9 & 10
Heisey National Convention and Elegant Glass Show
Newark, OH June 16-19

Table of Contents

Heisey Calendar of Events	2
Message from the President, Sue Kilgore	3
Director's Notes, Susan Dawson	3-4
Curator's Report, Walter Ludwig	4
Cover of Table Talk, Febrary 1931	5
1220 Puntzy Band, Joe Lokay	6-11
Museum Contributions July 2009 – December 2009, Walter Ludwig	11
Museum July – December Monetary Museum Contributions, Susan Dawson	12
Voting Members	13-15
2010 Benefit Auction Update, Dave Spahr	16
Policy for Accepting Member's Glass for Consignment	16
Convention News, Mary Ann Spahr and Judy Rhoads	17
Endowment Report - 2009, Sharon Orienter	18
The Louise Ream Circle, Sue Kilgore	18
Louise Ream – Our Founder, Robert Loch	18-20
The Workings of a Glass Factory, Walter Ludwig	20-21
Ad from China, Glass, and Lamps – March 22, 1900	22
Heisey Glass Museum Playing Cards and New Ruby Card Case, Order Form	23
Study Club Directory	24
Club Notes	25
HCA Welcomes New Members for December 2009	25
In Memorium	25
Advertising Guidelines	25
Classified Ads	26
Dealer Directory	27
Museum Volunteers for December 2009	BC

MESSAGE FROM THE PRESIDENT

Sue Kilgore

Dear Heisey Membership:

Well, we finally got our newest "member" on December 19, two weeks late. But we forgive HER for that, since SHE is so cute and such a good baby. Her name is Vanessa Mae. The other grandkids think she is pretty great, too, when they take time to notice her.

Is it cold enough for all of us? I hope everyone is safe and warm enough!!! Our Museum is always a good place to warm up. I can hardly keep from melting when I see all of that beautiful glass in one place.

Many of the projects and problems that came with this "job" are starting to resolve themselves. The reprinting of the Bredehoft reference book is moving along. We have been informed that we need to pay for the books when we place the order. So, we really need your help now. Study clubs and private members are giving for this cause. Our goal is that this book will be a feature to get new members for HCA. Please help us with this project, if you can.

Another large project is being introduced this month, the Louise Ream Circle. This is one solution to help stop the need to withdraw our endowment interest every year to cover the short fall of the Museum expenses. Your board of directors is endorsing this effort and hoping that all of you will as well. Details about the LRC can be found in the article on page 18 of this Newsletter. Information on who qualifies to be a member, what it costs and especially, what are the benefits to those who join will be laid out for you. If anyone has any questions about this effort, please contact a board member. We whole-heartedly hope you will consider joining this group.

I am anxious to hear from all of you about any new friends you have made for HCA and the projects the study clubs and membership will be doing to make the country more aware to the beauty of Heisey glass. There is no better way to catch the "Heisey bug" than from an existing member like YOU!!!

Please make plans to come to Newark in April for our Spring Benefit Auction. We can assure you that the "one piece" that you have been waiting for will be there and it will be beautiful. The catalog will be out soon, so make your plans now to take your SPRING BREAK in Newark for the benefit of HCA and our Museum.

Thanks to all of you who do so much for HCA. You know who you are!!!

Sue Kilgore ♦

DIRECTOR'S NOTES

Susan Dawson

January is almost over, and it is so cold outside! I hope your holidays were wonderful, and that you got all the Heisey presents you could want.

The New Year rings in exciting developments at the Museum. We are inaugurating a new fundraising effort in honor of Louise Ream. The Museum will be getting a new roof thanks to a generous donation. We recently received a matching grant for improvements to the archives. All of these developments will help make the Museum better than ever, and help maintain the collection for the enjoyment of current and future members.

Of course, we could not have done any of these things without your help! New projects also present new opportunities for participating in the life of your Museum. If you can, participate in the Louise Ream Circle as a donor. Also, we always welcome volunteers as docents or for glass cleaning projects. Many people make New Year's resolutions – I would like to urge

you to add the Heisey Glass Museum to your list! Volunteering is a great way to meet new friends or reconnect with old ones and, even better, to enjoy the collection!

In an effort to get even more people interested in Heisey, we are starting a new series of etiquette classes featuring traditional tea services. My goal is to offer classes to local Girl Scout troops, school classes, or anyone who just wants a day of fun. However, we do need supplies. If you have any tea service items you might like to donate for use in these presentations, please contact me at the Museum.

Finally, Heisey Glass will be popping up in some exciting places in the news. Look for articles on the glass or the Museum in *Midwest Living*, and online at www.virtualtourist.com.

If you need a place to get out of the snow and cold – come to the Museum! See you soon! ♦

CURATOR'S REPORT

Walter Ludwig

It is hard to believe that we are already into a new year and a new decade. It is hard to believe that it was only ten years ago that the world was about to come to an end because of a thing called the Y2K bug that would make all the computers stop dead in their tracks. Well, it seems we all survived that one and are still here to look forward to another new decade. I no longer stay up to watch the ball drop in Times Square, but I hope many of you were able to lift a Heisey champagne glass (those in 300 Peerless are perfect for the job) and toast in the New Year.

One thing the New Year did bring to Ohio was a break from the bitter cold we were having in December, it has actually gotten above freezing now for several days and our snow accumulation is now just about gone. I am sure that winter still has a few more surprises for us before it will be willing to leave us for good.

Things have been a bit slow here at the Museum with regard to visitors since the month began. But we have had a few small tours so we have been able to share the collection with a few people. The slowness however gives us the perfect opportunity to catch up on some of the chores that need doing here at the Museum. I have been able to start cleaning the glass and cases in the King House. Unfortunately, that is where it really does show that cleaning is overdue. If you have a bit of time to come and help with this necessary chore, give me a call and we will set up a session.

This past weekend was devoted to our first sessions of cataloging the Benefit Auction glass. We managed to make it through 850 lots and still have some more boxes to process. A lot of great items have shown up and I will give you a preview of them next month. Do make plans to come to the Benefit Auction – I do not think you will be disappointed.

We have taken down the beautiful Cobalt dining room display that we had for our Open House. We now have the Museums own set of 480 Normandie etched glass on the table with bright red accents for the February holiday season. The accents will be switched to green for March and April. Phyllis McClain and Marilyn Smith do a tremendous job in making the table look fresh and sparkling each month. You will have plenty of time to drop in and see this beautiful set.

On the next page you see the cover of the February 1931 issue of Table Talk, the Heisey magazine for its retail customers. This issue, besides the Valentine designs on the cover, features the new showrooms that Heisey had just opened at the Chicago Merchandise Mart.

I know that this is the quiet time of the year when hibernation seems like the perfect thing to do, but there is Heisey to be found out there and while others sleep, it is the perfect time to get yourself a real sleeper. Heisey will not find you; you need to go out and find it. ♦

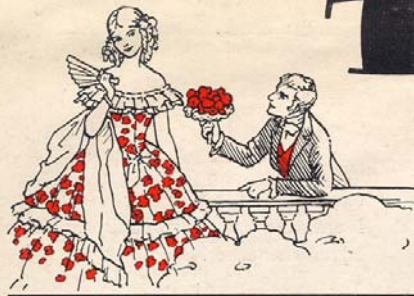


Table Talk



No. 55

A. H. HEISEY & COMPANY, NEWARK, OHIO

FEBRUARY, 1931



New Chicago Headquarters for Heisey's Glassware

The beautiful Georgian dining-room in the new Chicago display headquarters of Heisey's glassware, 1561 Merchandise Mart. The attractive setting of this room has won widespread admiration from visitors.

Cover of Table Talk, February, 1931

1220 PUNTY BAND

Joe Lokay

In 1897, A.H. Heisey & Company introduced two new patterns, 1220 Punty Band and 1225 Plain Band. The pattern designs were very similar except 1225 had a bulbous band that was plain and 1220 had a similar bulbous band that contained a row of oval shaped punties. Pattern 1225 Plain Band was discussed in a previous article (Heisey News, October 2009, p.17).

1220 Punty Band was an extensive glassware pattern offering 95 various items. Initially, 73 items were offered. The pattern must have been successful as over the next six years 22 more items were added to the line such as two square nappies, four crushed fruit jars, flared tumbler, four pieces of stemware, oil with a drop stopper, third salt and pepper, large table salt, etc.

The design is very plain except for the row of punties. A punty is a round or oval indentation in the glass. The covered compote has three rows of punties; one on the body, one on the base, and one on the cover. Others have two rows of punties. Many pieces have beads on the top edge. Covered pieces do not have the beads. Some pieces for practical reasons do not have the beads like the tumbler or the pouring spouts of the pitchers. Two design patents were filed on November 12, 1897 for pattern 1225 Plain Band which were granted on January 18, 1898. No design patents were filed for pattern 1220 Punty Band. Patent numbers for 1225 were listed with pattern 1220 as an attempt to protect 1220 Punty Band. The United States Glass Company produced a pattern in 1903 that resembles Punty Band which has been named Carolina. The bulge was not as pronounced as in Punty Band, and the punties were round rather than oval.

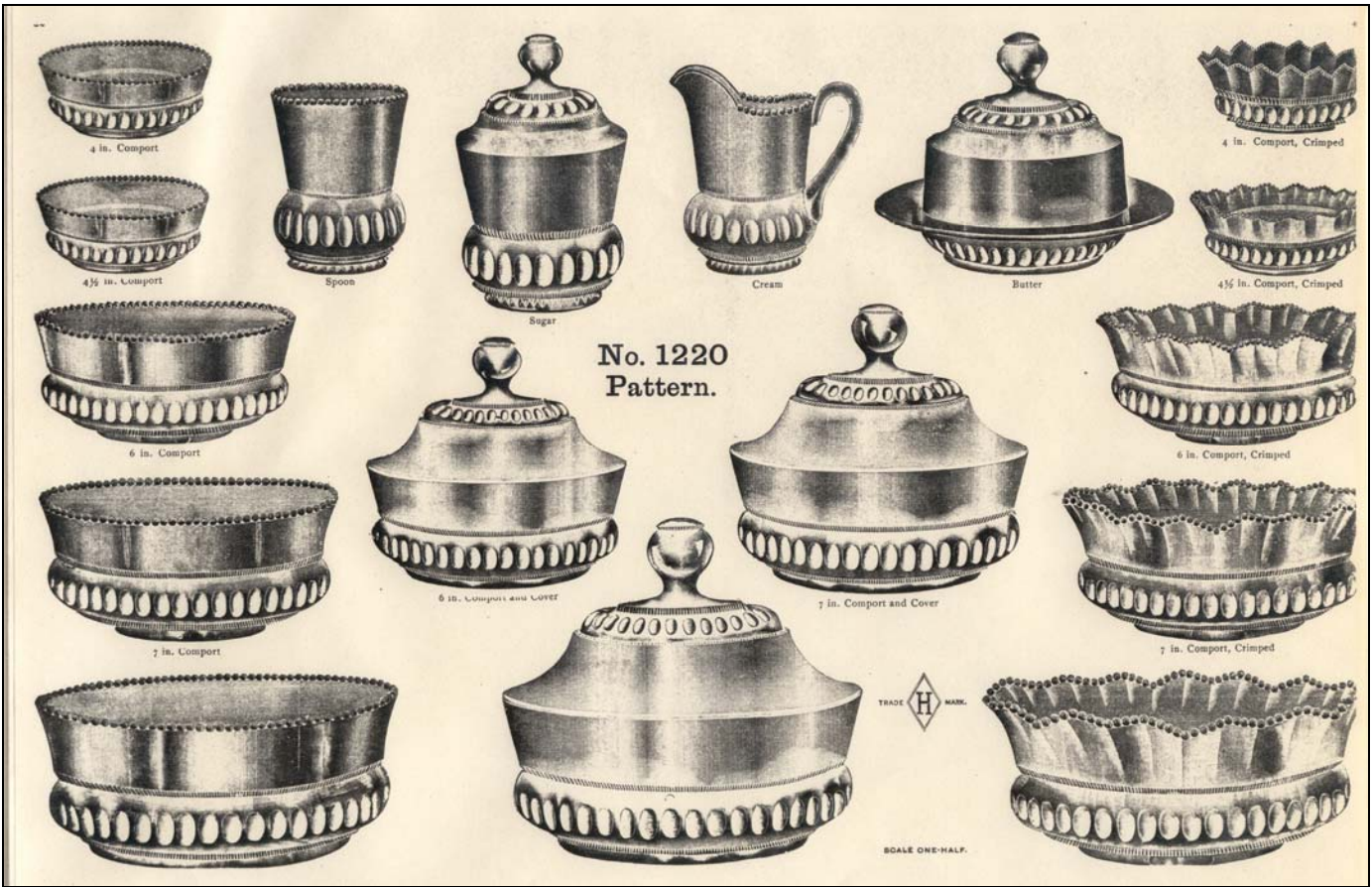
Almost all the pieces in the pattern were offered with a choice of decorations as well as plain. Heisey Price lists include decorations #20 Gold Bead, #21 Ruby Ball, #22 Amber Ball, or #23

Green Ball. Most pieces were offered with acid engravings #28 or #30. A number of pieces can be found with ruby stain in the plain area above the bulge or bulbous band. This decoration was most likely applied by the Oriental Glass Company as the records show that they purchased many pieces of pattern 1220. Many of the ruby stained pieces are souvenir items.

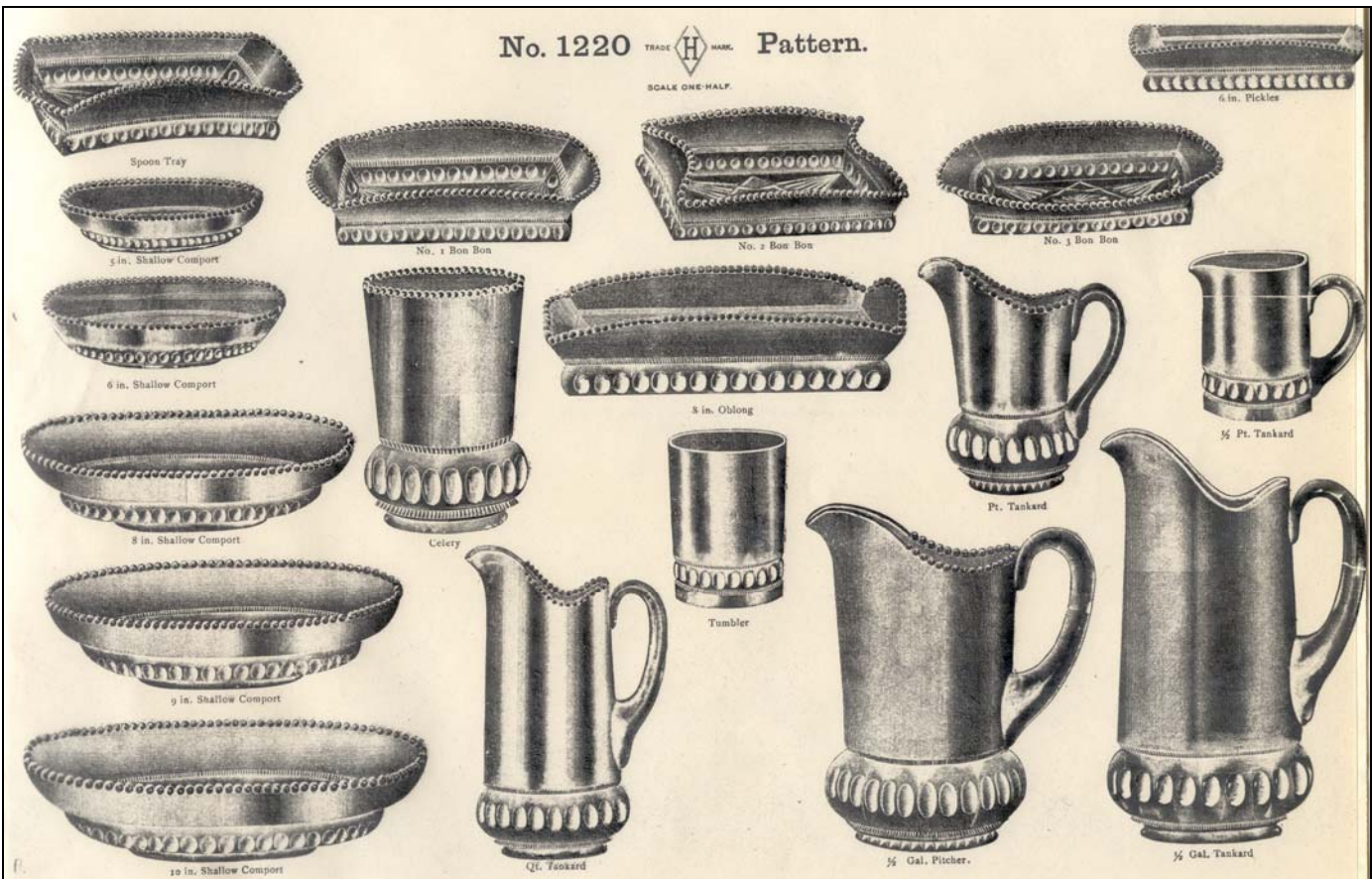


From Early Heisey Catalog – Page 43
Top – Engraving #28 on 1220 Punty Band
Bottom – Engraving #30 on 1225 Plain Band

Most of the production was in crystal although you will see many small items in Custard. Much of the Custard was decorated with hand painted flowers or with souvenir inscriptions. The word Ivory was used by the company for Custard. The Museum has both the individual cream and the mug in Opal and other small items might be found in this color. The Museum also has a 4" nappy with an opalescent edge treatment which is very unusual.



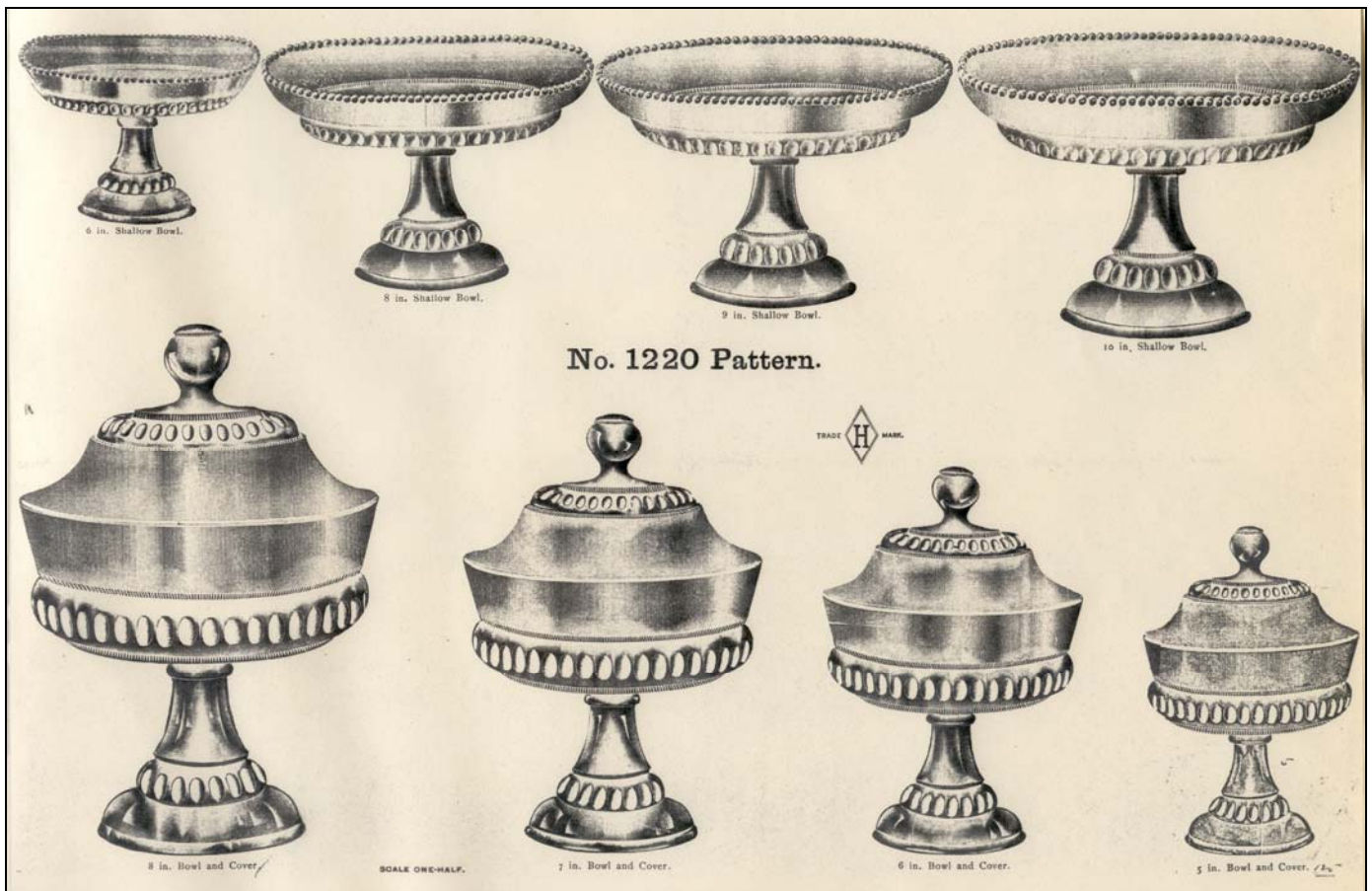
1220 Puntly Band – Early Heisey Catalog – Page 38



1220 Puntly Band – Early Heisey Catalog – Page 39



1220 Punty Band – Early Heisey Catalog – Page 40



1220 Punty Band – Early Heisey Catalog – Page 41



1220 Punt Band – Early Heisey Catalog – Page 42

The toothpick in 1220 Punt Band was made in two different styles. You can find it both with a scalloped top and a beaded top. Neither style is difficult to find. A compote occasionally turns up that seems to be a combination of the 1220 Punt Band and 1224 Plain Band patterns. In this case the base of the compote will have the punties but the bowl is lacking them.

Pieces can be found signed or unsigned with the Diamond H. The production life of pattern 1220 existed on both sides of the date when Heisey started using the Diamond H trademark. The last price list to offer pattern 1220 was #142 (1908). There was no 1220 in price list #155 (1910). Thus, the production life was about 13 years.

Production

1. cream

2. sugar and cover
3. butter and cover
4. spooner
5. comport, 4"
6. comport, 4 1/2"
7. comport, 6"
8. comport, 7"
9. comport, 8"
10. comport, 4", crimped
11. comport, 4 1/2", crimped
12. comport, 6", crimped
13. comport, 7", crimped
14. comport, 8", crimped
15. comport, 5", shallow
16. comport, 6", shallow
17. comport, 8", shallow
18. comport, 9", shallow
19. comport, 10" shallow

20. comport and cover, 6"
21. comport and cover, 7"
22. comport and cover, 8"
23. nappy, 4", square
24. nappy, 4 1/2", square
25. bowl, 5", footed
26. bowl, 6", footed
27. bowl, 7", footed
28. bowl, 8", footed
29. bowl, 5", footed, crimped
30. bowl, 6", footed, crimped
31. bowl, 7", footed, crimped
32. bowl, 8", footed, crimped
33. bowl, 6", footed, shallow
34. bowl, 8", footed, shallow
35. bowl, 9", footed, shallow
36. bowl, 10", footed, shallow
37. bowl and cover, 5", footed
38. bowl and cover 6", footed
39. bowl and cover, 7", footed
40. bowl and cover, 8", footed
41. salver, 9"
42. salver, 10"
43. cake basket, 9"
44. cake basket, 10"
45. tall celery
46. pickle tray, 6"
47. spoon tray
48. oblong dish, 8"
49. tumbler, 8 1/2 oz., ground bottom
50. tumbler, flared, stuck handle, ground bottom
51. mug, pressed handle
52. pitcher, 1/2 gal.
53. pitcher, qt.
54. tankard, 1/2 gal
55. tankard, qt., stuck handle
56. tankard, pt., cream, stuck handle
57. tankard, 1/2 pt., cream, stuck handle
58. tankard. No.2 1/2 pt., cream, stuck handle
59. toothpick
60. salt and pepper, No. 3, nickel top
61. salt and pepper, No. 3, P.T

62. salt and pepper, No.3, #2 sanitary top
63. salt and pepper, No. 3, #3 sanitary top
64. salt, individual
65. salt, table, medium
66. salt, table, large
67. Jelly , 5", handled
68. jelly, 5", handled, crimped
69. jelly, 5", handled 3 corner
70. oil, 6 oz., drop stopper
71. oil, 6 oz., pressed stopper
72. oil, 6 oz., cut stopper
73. molasses can, 13 oz., nickel top
74. molasses can, 13 oz., O.K. top
75. plate, 5"
76. plate, 6"
77. plate, 9"
78. plate, 10"
79. plate, 11"
80. cordial, 3/4 oz.
81. wine, 2 oz.
82. wine, 2 1/2 oz.
83. claret, 5oz.
84. bonbon, No. 1
85. bonbon, No. 2
86. bonbon, No. 3
87. cream, individual., stuck handle
88. sugar, individual
89. cream, toy, pressed handle
90. cream, hotel
91. sugar, hotel
92. crushed fruit, 7", notched cover
93. crushed fruit, 8", notched cover
94. crushed fruit, 7", footed, notched cover
95. crushed fruit, 8", footed, notched cover

References

1. Heisey Price List (1898), p 16 – 19
2. Early Heisey Catalog (1900), p 38 – 43
3. Heisey Price List #60 (1902), p 29 – 33, 102
4. Heisey Price List #100 (1903), p 86 – 89
5. Heisey Catalog #50 (1905), p 99
6. Heisey Price List #120 (1906), p 137 – 140
7. Heisey Price List #142 (1908), p170 – 173

8. Heisey Catalog #56 (1909), p 150
9. Heisey News, July 1972, p 2, 1220 Pattern
10. Heisey News, October 1976, p 9, Mixed Patterns
11. Heisey News, January 1977, p 5, 1220 Tumbler
12. Heisey News, October 1979, p 13, 1220 Pictures
13. Heisey News, June 1980, p 8, Two Toothpicks
14. Heisey News, August, 1982, p 4, 1220 Little Things
15. Heisey News, June 1986, p 4, Chronology 1897 - 1903
16. Heisey News April 1988, p 7, 1220 Pattern
17. Heisey News October 1993, p 10, 1220 Pattern
18. Vogel Book 1, p 99, Book 4, p 92 – 101 ♦

bottom of a piece with top removed – still investigating

John A. Johnson, Jr. 1235 Beaded Panel Sunburst punch bowl with 43 cups in memory of Betty Wood Johnson

Phyllis McClain: 4163 Whaley beer mug with 469 Club Drinking etch in memory of Bob McClain

Dick and Marilyn Smith: 4182 Thin plate, 6" with 422 Cumberland etch

Bob and Kathy Westbrook: 1519 Waverly cream and sugar, individual; 4035 Bethel cigarette holder; and 4037 Clarence oval sherry bottle all with 507 Orchid etch

For the Archives:

Mary Jo Earnshaw: photo album of syrups and molasses put together by Jim Earnshaw

Jerry and Arlene Gillette: Triptych advertising display sign showing Glass Secrets and Moongleam pieces

For the Louise Ream Library

Dick and Marilyn Smith: The Lladro Authorized Reference Guide 2003-2004 Edition

Donations for the Gift shop:

Sandra Barker
 Gordon and Darlene Cochran
 Larry and Ruth Ernest
 Arlene Gillette
 Scott Heron
 Janet Holt
 Barbara Lesak
 Rex and Pat Lucke
 Dick and Virginia Marsh
 Linda and Ed Megaw
 Dick and Marilyn Smith
 Charlie Wade
 Bob and Kathy Westbrook

Items Put on Loan:

4223 Swirl vase, 12", Flamingo
 Bowling ball decanter, blown – made in the Heisey factory and given in recognition to members of the Heisey Bowling Team. Never a production item. ♦

MUSEUM CONTRIBUTIONS JULY 2009 – DECEMBER 2009

Walter Ludwig

We want to thank all those who have contributed to the success of the Museum in the last six months of 2009. The following have made contributions that greatly enhance the Museum by donating glass for the collection and for sale in our Gift Shop as well as valuable archival material. If you made a contribution and you are not listed or not listed correctly, please let someone at the Museum know so that proper recognition can be given.

To the Collection:

Gordon and Darlene Cochran: 1506 Whirlpool ashtray; 1509 Queen Anne oval dressing, 2 part with 507 Orchid etch; 1519 Waverly oval dressing, 2 part with 515 Heisey Rose etch; and 1 Donkey in light Cobalt, made by Fenton

Scott Heron: 365 Queen Ann handled jelly, round; 1424 Lucky Strike ashtray; and 1220 Punt Band piece that could be the table salt or

JULY– DECEMBER 2009 MONETARY MUSEUM CONTRIBUTIONS

Susan Dawson

At this time we would like to acknowledge all of the monetary gifts that have come into the Museum in the last half of 2009. It is only through these generous donations that we can continue to operate our wonderful Museum devoted to the glassware and history of A. H. Heisey and Company.

If you made a contribution between July and December that does not appear on this list, or is listed incorrectly, please contact the Museum so that we may update our records and properly recognize your contribution properly.

Endowment Fund Donations (of \$100 or more):

Sandra W Dyer \$250
Sid and Mary Edwards \$500
June Godden \$250
Robert and Patricia Harrison \$215
Heisey Club of Southeast Florida \$100
Margaret E Jones \$220
Bob and Mary Kreimer \$215
Jean and Cole Miesner \$215
Jeffrey Morrow and family \$130
Lynda Randolph \$140
Ruby Riedel \$125
William and Dorothy Roderick \$100
Miriam Slemmons \$125
Herbert and Betty Wanser \$110

Endowment Fund Donations (special):

Iris F Givens \$100 in memory of Terrell Givens
Don and Betsy Hanna \$2000 in memory of son,
Larry
National Capital Heisey Collectors Club \$25 in
memory of Dick Schwan
In honor of Bryan Baker:
Phil and Sally Abrams \$250
Charlene Bowman \$50
Martha and Norm Crane \$100
Sid and Mary Edwards \$50
Harold and Loleta Hammontree \$100

Dan and Sue Kilgore \$50
Bob and Mary Kreimer \$100
North Carolina Heisey Study Club \$100
Sharon and Frank Orienter \$250
Suzanne Parker \$100
James and Elizabeth Shirley \$50
Karen Taylo \$200
Mildred Wiley \$50

Operating Fund Donations (of \$100 or more):

Sandra Barker \$100
Jim and Karen Clark \$100
Joyce and W.T. Dawson \$100
Sid and Mary Edwards \$100
Robert and Patricia Harrison \$100
Elaine Husted \$600
Bob and Mary Kreimer \$100
Peter Mantarakis \$100
Jean and Cole Miesner \$100

Operating Fund Donations in Memory of Marian Heron

Blair Brown \$100
Nancy Brush \$25
Norm & Martha Crane \$25
Elaine Cuthbert \$50
Jerome & Arlene Gillette \$100
John Grandusky \$25
Jonathan Heron \$100
Sheila and Josh Hollander \$25
Helen Jones \$25
Cynthia Marshall \$60
Barb McKinley \$15
Adele Pardee \$50
David States \$25
John & Sally States \$50
Robert Stegemann \$25
U.S. Airways \$50

Bredehoft Book Reprint Fund

Mary Hibbs \$200
Robert Loch \$1035
Jacquelyn Smith \$100
Jean Will \$100

Miscellaneous

W. Drescher Associates Co., L.P.A. (legal
services) \$746
Bob Rarey (binding of Heisey News) \$105 ♦

VOTING MEMBERS

The following is a list of voting members as of January 15, 2010. If you feel there is an error in the list, contact the Museum at 740-345-2932 or e-mail curator@HeiseyMuseum.org.

PHIL H ABRAMS
SALLY ABRAMS
J ROBERT ADAMS
DAVID LAHART
JUDY AHART
DAVID ALBRIGHT
DOUG ALLARA
JERRY ASHCRAFT
CHARLES N BAIRD
BRYAN BAKER
DENISE BAKER
BETH A BARKER
JOHN C BARKER
VERLYN L BARKER
JAMES BARTELL
BARBARA R. BARTLETT
KENDAL BARTLETT
MAXINE BARTLETT
RICHARD L BARTLETT
MARY BEATTY
JULIE BINKLEY
LINDA C. BISCHOFF
LYNNE BLOCH
CHARLENE L BOWMAN
WILLIAM BRAKEMEYER
DARRELL BRATT
NANCY BRATT
THOMAS BREDEHOFT
IRA D BROOKS
JANE BROOKS
RAYMOND BRUBACHER
CHARLES ROBERT BRUSH
MARY S BRUSH
RICHARD BUTHY
PAT BUTLER
GREGG CAMERON
MARY CAMERON
CAROLINE F CAPACHIN
RONALD CAPSTACK
MARTHA W CARDEN
MILNER R CARDEN
JANET CASWELL
CATHY CHAPMAN
BETTY CHEADLE
JAMES E CHEADLE
JOAN CIMINI

PATTI CLAPP
JAMES S CLARK
JERRY E CLARK
KAREN M CLARK
JOYCE CLEMINGS
CAMILLE A CLEVELAND
WILLIAM T CLIFFORD
DARLENE COCHRAN
GORDON COCHRAN
TOM COFFEY
DIANA H COGDILL
ALFRED COLANGELO
JOYCE COLANGELO
MARILYN M COLEMAN
KAREN COLWELL
MICHAEL L COMPTON
MARGARET P CONNER
ELAINE COOK
CLYDE COOK JR
RAY COURTNAGE
MICHAEL D CRAMER
MARTHA CRANE
TERRY H CRANSTON
CAROLYN CROZIER
FRED CURREY
JIM CURTISS
LARRY DAGESSE
ARSHAG M DAIYAN
CONNIE DALL
MARIAN L DALTON
EVELYN P DANIEL
JOYCE DAWSON
W . T. DAWSON
RICHARD EDAY
DEBORAH De JONG
KARL De JONG
PHYLLIS DEAL
DONALD C DEANY
PHIL DEETZ
LYNN DeGROOTE
CHAUNCEY R DELANEY
JOHN A DEPPONG
MARJORIE J DEPPONG
DAVID DEVITO
D. CARLENE D'ONOFRIO
RENA DOORNINK

JOHN L DOTSON
JEAN R DOUGHERTY
JERRY P DOUGHERTY
DEVON DOW
EVERETT DUNBAR
SHIRLEY DUNBAR
MARCIA DUNCAN
SUZANNE DURYEE
SANDRA W DYER
GERALD R EASTERLA
J SIDNEY EDWARDS
MARY C EDWARDS
RALPH EDWARDS
ROBERTA EDWARDS
ROY T EGGERT
ALLAN B ELKOWITZ
RICHARD ELLIS
SUEANNE ELLIS
MARY A EVANS
NETTYE EVANS
PAULA FABBRI-MORROW
JOYCE M FARNHAM
BARI A FAUSS
CAROLYN FELGER
TOM FELT
KATHY FILES
TOM FILES
CHARLES F FISHER
JEANNE FITZGIBBONS
GEORGE A FOGG
JOHN FORRESTER
M. E. FOSTER
TERRI FOXX-WISHERT
CYNDEE H FREEMAN
GREG FREEMAN
FRANKLIN V FRYE
DIXIE FULLER
GLEN G GALL
THOMAS GANSE
RICHARD GARNETT
FRED W GARTNER JR
PATRICIA L GIBBONS
CORY GIBBS
ISABELLE H GIBBS
ARLENE GILLETTE
JEROME GILLETTE

ANN GLENN
JUNE A GODDEN
DOLETTA GOICOA
RAY GOLDSBERRY
STEVE GOLLIS
SUSAN GOODEARL
DONALD L GOODIN
KATHLEEN A GOODIN
NORMA J GORSUCH
JOHN GRANGER
FRANCES GRENZEBACH
JACK GRENZEBACH
DAN GUCKIEN
HAROLD HAMMONTREE
LOLETA HAMMONTREE
ANN T HANCOCK
LES HANSEN
FLORENCE B HARNER
JOSEPHR HARNER
GLENN HARRIS JR
PATRICIA J HARRISON
ROBERT G HARRISON
EARLE V. HART
ELAINE C HART
DONNA HARTIG
GARY L HARTIG
DAVID P HASWELL
LAUREN HASWELL
MARY U HAUSER
VIRGIL HAUSER
DENNIS L HEADRICK
EVA HEADRICK
LEO HEDDEN
BETTY W HEFLIN
LARRY D HEFTI
BEV HEISE
JILL C HEISE
NORVAL HEISEY
WARREN HEISEY
GAIL HEISEY-LOOMIS
PIERCE
DAVID HELM
LISA HELM
JANIS HENDERSON
ANDREA L. HENNE
GREGORY M. HENNE
JONATHAN HERON
SCOTT L HERON
PHYLLIS HESS
WILL HEWITT
EDWARD D HINSHAW
DORCAS HOBBS
SHELLY HOBERG

SHEILA HOLLANDER
RUTH E HORWITZ
CHERYL R HOSKINS
ERMA HULSLANDER
RODGER HULSLANDER
LOIS JACOB
MARVIN JACOB
WILLIAM JENSEN
ROBERT E JOHNSON
VIRGINIA M JOHNSON
AMYJO JONES
CHARLES A JONES
JANET JONES
LEE JONES
MARY BETH JONES
WILLIAM KALLMER
RONALD KEENER
KATHLEEN KEIGER
ANNA E KEISTER
PAUL M KEISTER
RACHEL J KEITH
DAN KILGORE
SUE KILGORE
ANN G KNAAK
KAY KOHLER
RUSTY KOHLER
EBBIE KOLTER
KARL KOLTER
CRAIG KRATOCHVIL
MARY C KREIMER
ROBERT M KREIMER
ANGELA KRUPP
DENNIS KRUPP
FRANK L. KUHLMANN
MARY T LACKEY
CLEO LANCASTER
JANICE E LARSON
JEFFREY J LARSON
REBECCA LARSON
WILLIAM P LAVELLE
NED LAVENGOOD
SIBYL LAVENGOOD
JOYCE LENTZ-MOENNING
PEGGY LEONARD
DOROTHY S LEVITON
ROBERT M. LOCH
BRUCE M LOGAN
MARILOU W LOGAN
JOSEPH D LOKAY
LaVERNE LOKAY
JAMES S LUCAS
PATRICIA LUCKE
REX LUCKE

WALTER LUDWIG
JAMES J LUKASKO
RALPH H LUSHER
DONALD W MACOMBER
BARBARA MARQUIS
DICK MARSH
VIRGINIA MARSH
CHRIS MASKALERIS
ROBERT K MAXWELL
DENISE MAZE
PHYLLIS McCLAIN
GARY L McDONALD
MARTHA A McDONALD
JOANNE McELHENEY
MARTHA L McGILL
RALPH McKELVEY
SANDRA McKELVEY
WILLIAM McKELVEY
BARBARA McNIEL
GEORGE McNIEL
BARBARA McTIGHE
JACK ALLEN METCALF
COLE MIESNER
JEAN MIESNER
CHARLENE M MILLER
JEANNE MILLER
JOHN MOCK
TRUDY MOCK
GENE MOENNING
DAVE MOLINA JR
DON L MOORE
GLORIA MOORE
PATRICIA E MOORE
PATRICIA MORENO
ROBERT MORENO
EDWARD M MORIN
JEFFREY MORROW
JOHN R MUELLER
VIOLET M MUELLER
CHARLES MULLINS
SANDRA MULLINS
ISA NELSON
CHARLES L NESBIT
PATRICIA T NESBIT
JERRY NETERER
KENNETH R NEWTON
RUSSELL L NICHOLAS
OTTO NIELSEN
JOSEPH NOLL
DIANE NOYES
PARK NOYES
P BRADLEY NUTTING
PHYLLIS M NUTTING

JOHN O'FLAHERTY
KAREN O'HARE
FRANKLIN H ORIENTER
SHARON E ORIENTER
TRACY OSBORNE
MAC W OTTEN
ANNEMARIE T OTTO
RICHARD LOVERDORF
GARY OVERFIELD
ADELE H PARDEE
SUZANNE PARKER
NORMA JEAN PARRETT
HOMER PAULSON
ELAINE PEARL
AMY ELIZABETH PEASE
ANNE MARGARET PEASE
BETTY LEE PEASE
FREDERICK L PEASE
ED PERVA
STEPHEN M PESCATORE
SUSAN PESCATORE
DAVE PHELPS
MARCIA PHILBRICK
WILLIAM PIERCE
JEANNETTE G PINION
SHERRY L PLUMB
DEBRA A POLING
LIZ POWELL
MIKE POWELL
RONALD A PRATT
VIRGINIA PRATT
CORALIE PRIDDY
TOM PURDY
LYNDA RANDOLPH
WILLIAM RANDOLPH
WENDELL RANEY
ROBERT P RAREY
ROGER H REAM
FRED REESBECK
MARIE E REHBECK
WILLIAM L REHBECK
CAROL S RENNEKAMP
RUSSELL C REOPELL
ELEANOR P REYNOLDS
JUDITH M RHOADS
KENNETH L RHOADS
LYNNE RICHARDSON
JERRY ROBINSON
JUDY ROBINSON
CLAYTON M ROGERS

JOYCE M ROHDE
B MARIE ROHRER
LLOYD S ROHRER
CHARLES E ROSE
DIANA M ROSE
HILDA RYAN
ROBERT R RYAN
DOUG SANDEMAN
JOHN R SANDERS
EILEEN SCHAMEL
GEORGE SCHAMEL
DONNA SCHELLENBERGER
CANDACE SCHMITT
SAM SCHNAIDT
LEILA SCHWAN
FRACHELE SCOTT
MICHELE B SCOTT
FRANK P SCOTT JR
YOLANDA SHILLING
JAMES V SHINDLER JR
JAMES KELLY SHIRLEY
EMOGENE SHOMAKER
EDNA H SICKELS
NANCY SINGLETON
BLANCHE R SMITH
DENI SMITH
MARILYN SMITH
RICHARD SMITH
BEVERLY A SOUDERS
DAVID G SPAHR
MARY ANN SPAHR
PAT SPENCER
RICHARD A SPENCER
LEWIS SPIEGEL
PAUL D STRATTON
FRANCES SUTTON
JIM SUTTON
MILDRED Z TALBOT
ERIC TANQUESLEY-CLARKE
DARCEL TANQUARY
KAREN TAYLO
J MICHAEL TAYLOR
KATHLEEN TAYLOR
JUNIOR THIRY
SHERRON THIRY
JOHN R THOMAS
ROBERT THOMAS
SALLY THOMAS
PENNY L THORUP
KELLY THRAN

NORMAN THRAN
CAROLYN TRENT
HAROLD A TUCKER
RICHARD R TURKIEWICZ
BONNIE VAN MEER
RICK VAN MEER
DURWARD D VOGEL
BARBARA L VORPE
CARL VORPE
CHARLES WADE JR
JACK A WALKER
MAEZENE WALKER
EMOGENEM WALLACE
JEAN R WALTER
MAURICE A WALTER
DON WALZER
NORENE WALZER
BETTY WANSEER
HERBERT H WANSEER
KATHERYN WANSEER
DAVID WARREN
RUTH WARTELL
JANICE WEBER
DONALD L WEHMEYER
GLENN R WEHMEYER
ALVA JEAN WELCH
DONALD C WELCH
JOHN P WELGAN
VIRGINIA WELGAN
JACQUELINE J WESOLOSKI
BETTY WHALEY
BURL WHALEY
JANET A WILCOX
LYNN A WILCOX
JEAN WILL
MARY BETH WILL
MILDRED M WILLEY
LIBBY WILLIAMS
ALICIA L WILSON
W ALLEN WILSON
PEGGY WINGARD
FRANCES WOYTALEWICZ
JOHN WOYTOWICZ
LOREN YEAKLEY
VIRGINIA YEAKLEY
DELORES ZIEGLER
RAYMOND ZIEGLER
ARLENE ZIPPERLEN
DANEEN ZUREICH ♦

2010 BENEFIT AUCTION UPDATE

Dave Spahr

Our 37th Annual Benefit Auction will be held on APRIL 9 & 10, 2010, at the GMP Local #244 Union Hall at 350 Hudson Ave. in Newark. In the January 2010 Newsletter, you will find a listing of places to stay while attending the auction.

My deadline for submitting an article for this newsletter is January 15 - the last day of receiving consignments, so I can't tell you how much glass we will totally have. We will begin our cataloging on January 16. Hopefully we will reach the 1000 to 1200 lot level. Watch for our March Newsletter for a preview of some of the glass we have found!

(Editor's Note: I was there when we cataloged over 850 lots in our first two cataloging sessions last weekend. There were some truly great items that came out of the boxes for us all to see. There will be at least one more cataloging session and I know we have over 250 more lots to go through, so I can guarantee that this auction will have over 1000 lots. I will write a preview article for next month's Newsletter.)

We will next be entering the cataloging information on our new auction software and get ready for the auction. As in the past, we will be putting the catalog information on our website on or about March 15. Do make use of the listing to find your Heisey treasure! Also on-line will be our absentee bid forms and instructions, as well as shipping information. We will be sending out catalogs to members who consigned glass, purchased glass, or submitted absentee bids in the last two years. If you are a member and want a printed catalog, please contact the Museum after March 15 and one will be sent to you. We have done this as a cost cutting measure since regrettably many members do not participate in this outstanding auction.

We will again have absentee bidders make their own arrangements to have their auction glass shipped. That has worked very well for the last two years. We will provide a list of area vendors (shippers) on-line and in the auction catalog that will pick up your glass, pack it, and send it to you. We simply do not have the volunteers, materials on hand, and staffing capability to do this task.

This auction is your association's largest fundraiser. Please plan on attending if you can. If you can't make it, consider bidding absentee for that piece you desire. We can use you - we are always looking for volunteers to help at the auction. If you would spend an hour or two helping, please contact me at 937-372-7166 or masdgs@aol.com. I'll find a job for you!

Happy Heisey Hunting! See you at the auction.



Policy for Accepting Member's Glass for Consignment

In response to requests from many HCA members, the Board of Directors has approved an auction policy on accepting member's glass for consignment to benefit HCA and support the Museum.

Our policy allows HCA to accept unlimited quantities of glass made by A. H. Heisey Company and glass made by any company using a Heisey mould. Depending on the size of the consignment/collection, HCA may spread the glass over several auctions, not to exceed two years.

The policy in its entirety appears on the Heisey Museum website and in the Sept. 2008 Heisey News. If you have any questions, please contact Dave Spahr by telephone (937-372-7166) or by e-mail (masdgs@aol.com) or any Board member.



CONVENTION NEWS

Mary Ann Spahr and Judy Rhoads,
Co-Chairs

Banquet to be Held at Moundbuilders Country Club

We are thrilled to announce the location for the banquet at HCA's 2010 Convention in June. Our annual banquet will be held at the Moundbuilders Country Club. This unique and historic Newark landmark is located just off 30th Street between Church Street and Main Street in western Newark.

The Moundbuilders Country Club was established in 1910, making it one of the oldest country clubs in central Ohio. Its location is firmly linked to Newark history – ancient Newark history – because the golf course is built on and around the Octagon and Circle Mounds, created by ancient Hopewell settlers as much as three thousand years ago. The significance of this site to the Hopewell people remains unknown, although archaeologists have put forward a number of theories: the mounds were possibly used for athletic events, or burial grounds, or a lunar observatory, or town walls, or a ceremonial space. The mystery remains.

Now owned and carefully monitored by the Ohio Historical Society, the mounds are maintained by the Moundbuilders Country Club.

Another significant link for those of us who collect Heisey glass is that the second president of the Moundbuilders Country Club was A. H. Heisey. Country club records indicate that T. Clarence Heisey was also once president.

The clubhouse is a gracious and comfortable building. The warm and welcoming foyer leads either up the lovely stairway, or by way of the spacious, well-lit elevator to the second floor dining room where our banquet will be held.

The dining room is warm and welcoming; with

French doors leading to a verandah that overlooks the historic golf course.

A well-stocked bar and a plated, served dinner, with a choice of two entrees, will make this a wonderful event for Heisey folks to enjoy each other, tell glass stories, and have fun. Plan now to attend this destination event at Convention in June.

If you want more information, or to see some great pictures of Newark's Moundbuilders Country Club, explore their website: www.moundbuilderscc.com.

Show and Tell at Convention

Our new Show and Tell event, held along with the popular Glass Identification Session at the 2009 Convention, was enthusiastically received. This year we hope more members participate.

Begin planning now. Look over your Heisey collection and find something with an interesting story. Perhaps it is a rare piece, or has an etching or cutting with an interesting history. Perhaps you have a Heisey-related item that is not glass. Maybe you have a piece of lunch-box glass that was handmade by a worker and found its way out of the factory. Or maybe you have such a treasure that its sheer beauty moves you to share it with the rest of us.

Bring all these wonderful pieces to Show and Tell and be prepared to tell about them. We all love seeing each others cherished items.

More to Come

Each month until Convention we will be sharing with you some of the great things that we have planned for you when you come here in June. Look for this column in your Newsletters and make your plans now to join us for another great Convention right here where that wonderful glass you collect was originally made. See you in June. ♦

ENDOWMENT REPORT – 2009

Sharon Orienter

The good news in 2009, concerning the HCA Endowment Fund is that it regained a good bit of its value as you can see below. The not-so good news is that the 2009 income is less than the \$71,000 that we anticipated. The Endowment Fund continues to be supported by donations but those dropped significantly (by app. 20%) in 2009.

Market value HCA Endowment Fund

December 31, 2008	\$1,870,832.40
March 31, 2009	1,748,219.44
June 30, 2009	1,943,097.53
September 30, 2009	2,125,856.33
December 31, 2009	2,171,353.81

2009 donations to the Endowment Fund
\$14,327.00

2009 Endowment Fund projected income
\$68,601.29



THE LOUISE REAM CIRCLE

Sue Kilgore

We are announcing the launching of the Louise Ream Circle, a much-needed fund-raiser for our National Heisey Glass Museum. For the last several years, we have been forced to take most, if not all, of the endowment's income to pay the Museum's annual operating expenses. Consequently, the endowment is not growing as much as it would if we reinvested the income back into the fund. With The Louise Ream Circle, that income can be used to help the endowment grow.

The Board of Directors and I strongly believe there are at least 140 HCA members, businesses, and other institutions that can and will contribute \$500 each per year. These benefactors will be enrolled in The Louise Ream

Circle with accompanying benefits that will be detailed in a future Heisey News. Enrollment begins April 1, 2010. We are hoping to enroll 140 in The Louise Ream Circle. The \$70,000 revenue will go directly toward the National Heisey Museum's operating expenses, which in total are about \$240,000 per year. These expenses include wages, utilities, recurring building maintenance and upkeep, insurance, cleaning, and other outlays not provided by volunteer labor.

The Board of Directors is planning to solicit Louise Ream Circle members from amongst businesses, agencies, and foundations who may be inclined to support our National Heisey Museum, a valuable Ohio institution.

A separate biographical article on Louise follows this article which gives you insight into why we have titled this special cadre of benefactors The Louise Ream Circle.

The National Heisey Glass Museum is a first-class institution; and it must remain so. Having such an institution is not a cost-free operation. Please take time to consider this essential appeal for support and plan to set aside \$500 for your donation. ◆

LOUISE REAM – OUR FOUNDER

Robert Loch

Louise Ream was the driving force behind the founding of the Heisey Collectors of America and its continued existence in the early years of the organization. She was able to muster the resources necessary to acquire the King House and carry out its transformation into the beautiful National Heisey Glass Museum that opened in 1974. As president of the organization from 1971 to 1981 and then Museum curator and executive director, she guided the organization to reach goals we could not even imagine when the organization was founded.

Those that did not have the pleasure of personally knowing her should visualize Louise Ream as a charismatic recruiter, a dedicated and tireless worker, a knowledgeable and wise friend, an effective promoter, and an inspirational guide to novice collectors. She had a remarkable recall of detail.

To those who knew Louise Ream well, she was inspirational and they say that she had a sweet, smiling face. Louise Ream was a keeper of the Faith. It is said that she was one fine lady "with Heisey in her veins."

Upon her death in 2002, an issue of the Heisey News was devoted to some of the remembrances of those who knew her well. In order for you to better understand what a great individual Louise was, I will print some excerpts from that issue.

"Not being content to merely collect the glass, Louise has been a diligent student and has spent much of her time over the years studying everything available concerning Heisey history and manufacture. Under her guidance and with her desire to present all the true facts about Heisey glass, the *Heisey News* has become one of the finest and most informative publications on any one collectible today. Her memory of pattern names and numbers has been a great asset in her work with the club. Her former experience in writing includes a signed weekly column in a small newspaper for six years and publicity work which she did for many organizations."

From her daughter, Phyllis Hess, "It was in 1959 we learned that some crystal was being sold at a factory in Newark

"Louise was the President for the first 10 years. What many don't know is that Mom, at age 55, became the Executive Director of HCA, after having only worked one year in her life! She practically ran the whole operation in the early years, as a volunteer. At age 65, when she was old enough to draw Social Security she became a paid employee and worked every day until she

was 75! She never wanted anyone to know how old she was; she figured they would not give her the same respect if they knew she was 'old.' (Though many had a hard time keeping up with her.) When we had Mom and Dad's 50th wedding anniversary at the Heisey Museum, she had to be talked into it. She was afraid everyone would put two and two together and know how old she was.

"It amazes me that the mousy little woman I knew as a teenager grew into one of the leading authorities on Heisey glass who was able to juggle work and be caregiver for a spouse all at the same time. She was able to do it all, and Dad always had to receive the latest news about the Heisey world no matter how ill he was. Many nights she would be burning the midnight oil writing the *Heisey News* or studying any material she could find on Heisey. She also found time to collaborate on two books on Heisey."

Bob Ryan said, "Friend, mentor, tormentor, counselor, confidante, needler, sympathizer, editor and fellow collector; Louise was all of these to me, and much more. We debated many issues, not just Heisey issues. We had fun, serious discussions; even disagreements, but we always left friends. She was always there for me and I tried to support her. Heisey was Louise's passion and she worked at it full time. She was always at the Museum, at all of the Heisey functions, and was a tireless Heisey worker and enthusiast."

"Her enthusiasm and dream drove all of us in the early years of HCA and her indomitable spirit will continue to push us through every valley we encounter as a Club. With Louise's will the Club found a way, someone stepped up, and the Club moved forward. There were many who were responsible for HCA's success but it was Louise Ream's will that made it all come together."

From Ginny Marsh, "In her good times she was Heisey's biggest advocate. She totally lived Heisey.

“Louise only needed a few minutes with a prospective new member and they were sold on collecting beautiful Heisey. She didn’t let you and you did not want to disappoint her by not being an HCA Member.

We were in her home often and we were just excited each time when we discovered a new Heisey item. Louise was **always** positive about HCA, Heisey, and her family!”

I hope that I have conveyed to you what a remarkable woman Louise was and why we feel that it is fitting to name the new Louise Ream Circle in her honor. ♦

THE WORKINGS OF A GLASS FACTORY

Walter Ludwig

I found the following letter in the Archives in which Emmet Olson, at that time Sales Manager of A.H. Heisey & Company, describes the workings of a glass factory.

Emmet Olson had for years been the chemist at the A. H. Heisey & Company. It is only late in the company’s life that he took on the job as sales manager.

This letter was probably a boilerplate to answer questions about the operation of the factory. He uses a lot of the special names for the workers who worked as a team to make the glass. I know that I learned a few new things from this letter and I am sure that you will also.

Dear Readers:

Many requests for information on the Manufacture of glassware are received by the A.H. Heisey & Co. of Newark, Ohio, each year and therefore the following:

Our glassware is made in pots. The better quality glassware is made in furnaces that hold

from ten to eighteen pots. Our three furnaces hold sixteen pots each. The furnaces are heated by natural gas to a temperature of from twenty four hundred to twenty seven hundred degrees.

Each pot holds about two thousand pounds of melted glass and it takes from eighteen hours to forty hours to melt a pot of glass. This is because of the different kinds of glass that are made and the type item being made. The largest percentage of glass manufactured by the A. H. Heisey & Co. is lime crystal. About twenty percent is lead crystal, lead crystal being the most expensive because of the raw materials used in it and the care necessary to produce good glass.

Pressed ware is made by pressing the molten metal in moulds. The mould consists of the plunger and the mould which has the design and shape of the article desired. Many items pressed in moulds are finished into different shapes by a finisher, such as a nine inch Salad bowl may be the mold shape. From this shape can be made a rolled edge flower bowl, a crimped bowl, different size floral bowls or gardenia bowls. Torte and sandwich plates can be made from the nine inch salad bowl mold. Usually one mould makes one item like a sugar mould will make only the sugar bowl. It takes another mould to make the cream pitcher.

The following takes place in the manufacture of a pressed piece of glassware. A gatherer gathers a glob of hot glass on the end of the puntie stick. The glass is dropped into the mould and the presser cuts off the amount necessary to make the item his mould will produce. The presser will then pull a lever and force the plunger into the mould, distributing the glass in the mould and shaping the item to the proper depth, diameter and circumference.

It is then removed from the mould by a carry over boy. The carry over boy takes it to the warming in boys of which there may be several, according to the item being made. The warming in boy places it in the fire to be polished and at the same time softens the glass enough for the

finisher to whom the warming in boy takes the item to be shaped and finished. The carry in boy takes the item to the lehr for annealing.

The ware is placed in the front of the Lehr and is moved back by a screen belt through a fire which will heat the ware to the annealing point. When the ware gets to the annealing point the strain leaves it or is equally distributed and then the ware is gradually brought down in temperature below five hundred degrees. It is then free from strain and it is taken from the back end of the lehr and placed in boxes to transport to the finishing of grinding rooms. Some ware is complete and does not need grinding and polishing when taken from the lehr. It is finished off the lehr, packed and sent to stock for shipment.

If it is to be cut or etched, sand blasted or decorated it is taken to the various departments in boxes unwrapped. This, of course, is another story.

Now to the blown ware. A gatherer gathers a glob of glass on a hollow pipe and marvels it into starting shape by blowing a small puff of air into the glob of glass. It is then rolled on a smooth flat surface to the proper shape. It is then handed to the blower. He brings the mould up to a position out of water by stepping on a foot pedal with the left foot, closes the mould around the blob of glass by stepping on a pedal with the right foot. Then he blows into the end of gathering pipe until the glob of glass has been shaped to the mould. The carry over boy then takes it to the stem presser.

A bit gatherer gathers and drops a bit of glass into the stem mould and the presser cuts off the proper amount of glass and presses a lever which forces the glass up into the mould and makes the stem, at the same time the hot glass pressed into the stem shape is joined to the base

of the goblet of what ever bowl shape being used. The stem presser then cuts off the cup on the bottom of the goblet stem and the warm in boy polishes by heating the base of the stem. The goblet is then taken to the foot straightener and then to the foot caster.

A gatherer gathers a bit of glass and holds over the stem of the goblet while the foot caster connects the stem and the glob of glass. After the foot caster cuts off enough glass he proceeds to squeeze out the foot with a tool adjusted to make the foot the proper size.

The goblet is then taken to the lehr and the same action takes place as described in the pressed ware annealing.

The ware having gone through the lehr is then transferred to the blown grinding room where it is cracked off, flat ground on top, beveled inside and out, washed, dried, and sent through the preheat oven to the glazer. The glazer melts and polishes the top edge of the ware. It is then sent through the annealing oven and selected off the end of the glazer and sent to stock or the different departments for decoration.

I hope this short trip through the hot end of our plant will assist you. Thanking you for your attention, we remain

Very truly yours,

A. H. Heisey & Co.

E. E. Olson
Sales Manager

EEO:ar

P.S. The A. H. Heisey & Co. was organized in 1895. ♦

MAR 22 1900

CHINA GLASS & LAMPS

VOL. XIX. NO. 17.

PITTSBURGH, MARCH 22, 1900

\$2.50 PER ANNUM.

A. H. HEISEY & CO.

INCORPORATED.



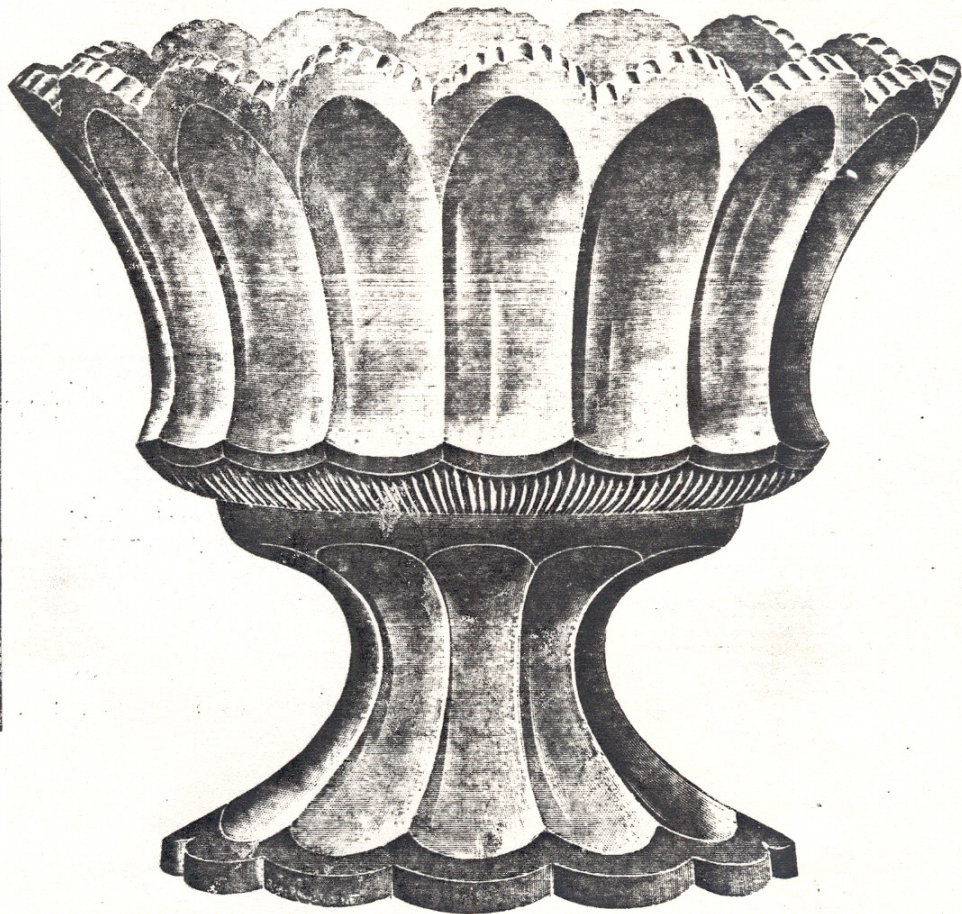
Newark, Ohio.

Massive,
Graceful,
Elegant,
New,
Faultless,
Up-to-date.

No. 300

A COMPLETE LINE OF
AS HANDSOME & DE-
SIGN AS EVER PRODUCED.

Crystal,
Crystal and Gold,
Crystal and Ruby.



REPRESENTATIVES:

Clarence B. Martz, New York.

T. E. Goodwin, Baltimore.
John Patterson, South.

J. E. Johnston, East.
Charles G. Cassel, West.

C. D. Helwig, Pacific Coast.

Cover of China, Glass, and Lamps – March 22, 1900
Featuring Advertisement for Heisey's 300 Peerless Pattern

HEISEY GLASS MUSEUM PLAYING CARDS AND NEW RUBY CARD CASE

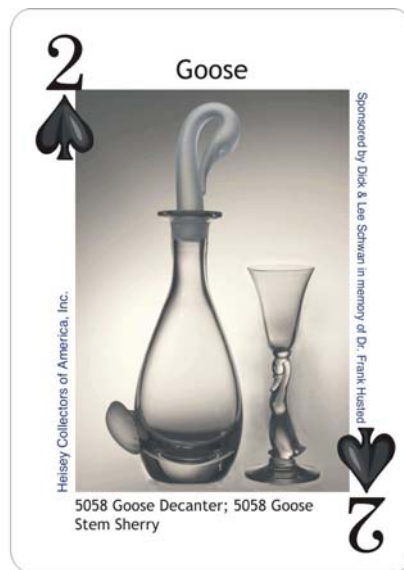
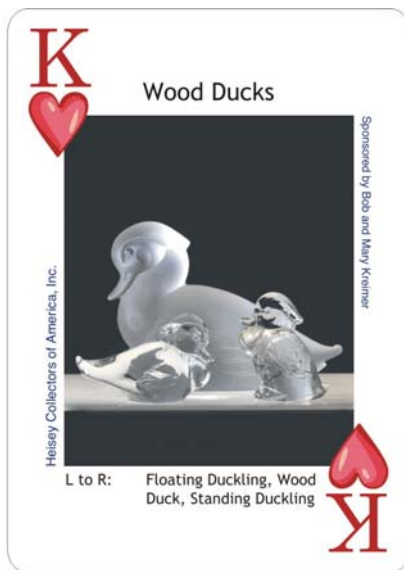
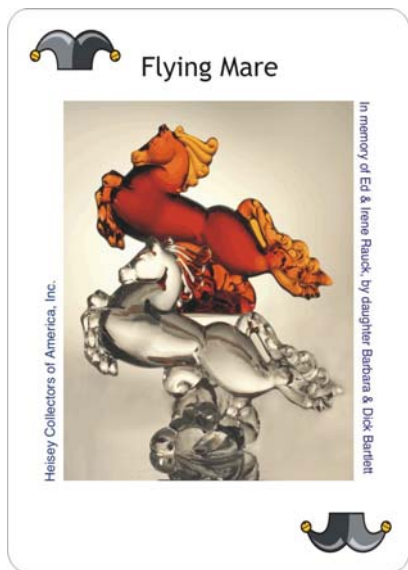


Edition 3 (green deck) of Heisey Glass Museum Playing Cards are now in. In addition, we have for sale a limited number of uncut sheets (21" x 25") which will be suitable for framing. This deck features the Heisey animals and animal related items. **Just in are the new reproduction card cases in Ruby.** These look stunning and will make an attractive addition to your Heisey playing cards. Orders for red card decks and uncut sheets can also be placed now.

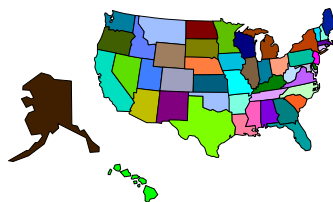
Name _____
 Address _____
 City _____ State _____ Zip _____
 Phone and/or E-mail _____

I wish to order:	Total
_____ (number) Heisey Glass Museum Playing Cards (Green) @ \$10 each	_____
_____ (number) Heisey Glass Museum Playing Cards (Red) @ \$10 each	_____
Shipping per deck \$ 1.50 (can be picked up at Gift Shop)	_____
_____ (number) Uncut sheets of Heisey Playing Cards (Green) @ \$25 each	_____
_____ (number) Uncut sheets of Heisey Playing Cards (Red) @ \$25 each	_____
Shipping per uncut sheet @ \$5.00 each (can be picked up at Gift Shop)	_____
_____ 1508 Card case in Ruby @ \$36 each	_____
Shipping per card case @ \$6.00 each (can be picked up at Gift Shop)	_____
Grand Total (tax will be added when appropriate)	_____

Check # _____ Visa _____ Master Card _____
 Card Number _____ Exp _____

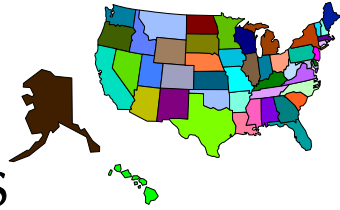


Study Club Directory



Interested in joining a study club? You will have the opportunity to meet fellow collectors and HCA members and learn more about your favorite glassware. If your club is not listed or you need to make corrections to your listing, please contact the Museum.

STUDY CLUB	MEET WHEN?	WHERE?	Email/Web Site	CONTACT
#4 Central Illinois Heisey Collectors Club	Four times a year	Members' homes or restaurants		Joyce Deany (815) 432-4310
#5 Bay State Heisey Collectors Club	2 nd Tuesday of each month except July, Aug., and Dec.	Whole Foods Community Rm, Bedford, MA	spescatore@houghton.com	Stephen Pescatore (978) 256-5418
#7 Dayton Area Heisey Collectors Club	1st Tues. of the month Sept. to May, 6:30 p.m.	Huber Heights Library	LH937@aol.com	Joe Harner (937) 372-0852
#8 Heisey Heritage Society <i>NJ, Eastern PA and DE areas</i>	Four times per year	Members' homes	craigkratochvil@aol.com	Craig Kratochvil (973) 962-4004
#13 Heisey Club of California	4th Sunday every month, 12:30	Members' homes	herbet@sbcglobal.net www.heiseyclubca.org	Norval Heisey (818)-349-0945
#14 Northern Illinois Heisey Club	Four times a year	Members' homes	niheisey@comcast.net	Jeff Morrow (630) 833-4644
#15 Heisey Collectors Club of Michigan	Every six weeks, August to May	Members' homes	kilgoredesigns@att.net	Sue E. Kilgore (269)-345-3990
#16 Heisey Collectors of Texas	2nd Sat. of every odd month except May 1st Sat., 1 p.m.	Members' homes	sanddollars97@tx.rr.com www.heiseyclubsoftexas.org	Greg Freeman (817)-545-5889
#19 Heisey Collectors of the Rochester Area	10 meetings per year: Sunday, 2:30 p.m.	Members' homes	seo2@aol.com	Sharon Orienter (585) 288-8076
#20 Buckeye Heisey Collectors Club <i>Newark, OH area</i>	September to May, 4th Monday	Members' homes or the Museum	Theflyingmaher@webtv.net	Michael Maher (740) 763-4256
#22 Northwest Heisey Collectors	First Saturday of the month	Members' homes	bahama50@hotmail.com	Deborah de Jong (425) 868-0457
#25 Heisey 76'ers <i>Columbus, OH area</i>	Once a month, September to May	Members' homes	ldburg48@aol.com	Colleen Burgess (614) 882-1884
#31 Nassau Long Island Heisey Club	Generally every other month	Members' homes		Babs Kent (516) 228-8274
#32 Dairyland Heisey Club	Once every two months	Members' homes		Ray K. Courtnage (414) 962-9747
#33 Golden Gate Heisey Collectors Club <i>Northern California</i>	Quarterly	Members' homes		Russ Nicholas (916) 515-8558
#36 Heisey Club of Southern MA	April, June, September, December			Maria Martell (508) 833-0633
#38 North Carolina Heisey Study Group	6 meetings per year: Jan.; March, May, July, Sept., Nov.	Replacements Ltd Greensboro, NC	Nchsg@yahoo.com www.northcarolinaheiseystudygroup.org	Karen Taylo (252) 637-9985
#39 Florida Heisey Collectors Club	4 times per year: January – February-March-April	Westchester Country Club Boyton Beach, FL	Shirley400@aol.com	Everett Dunbar (772)-337-1558
#42 Gulf Coast Heisey Club of Florida	Nov., Jan. and March; 2 nd Thursday 11:00 am	Members' homes		Jack Grenzebach (727)-391-5784
#43 Tri-State Heisey Study Club <i>OH, IN, MI</i>	1st Sat. every 3rd month	Members' homes	Maxwellm@cktech.biz	Mike Maxwell (260) 925-3484
#45 Hoosier Heisey Club	Four times a year	Warren Library, Indianapolis, IN		J. David Litsey, (317) 872-7800
#48 Dixieland Heisey Study Club	Odd number months, 2 nd Saturday night	Members' homes	www.dixielandheisey.org	Craig German (770) 967-8733
#49 Great Plains Heisey Club	March, May, July, September, and November	Members' homes	cameron_mg@mchsi.com www.greatplainsheiseyclub.org	Mary Cameron (515) 292-3743
#50 Northwoods Heisey Club of Minnesota	Four times a year	Members' homes	wheise@comcast.net	Bob Heise (952)-831-9335
#51 Heisey Club of Northeast Florida	Feb., May, Aug., and Nov. 2 nd Thursday	Avonlea Antique Mall, Jacksonville	Clasyglas2@aol.com	Barb Bartlett (904) 280-0450
#52 Northern Virginia Heisey Study Club	Monthly, Sept. – May	Members' homes	rreopell@verizon.net	Russ Reopell (703) 250-6117



CLUB NOTES

Heisey Collectors Club of Michigan
Dan Kilgore

Our Holiday dinner was held for the 20th consecutive year at the Southern Exposure Farm between Battle Creek and Marshall. We had eighteen members enjoying the great ambiance and wonderful food.

Our Holiday auction was full of wonderful items, from homemade jams and pickles, a huge poinsettia and tree trimmed boxwood, to awesome Heisey pieces. Our club raised over \$700 that day. This helped in our fund-raising for the Museum's new "factory display room." We are providing an antique drafting table, shelves and benches as well as stanchions for the tool display area. With our success from this auction we hope to be able to provide funds for the new television and DVD player needed to complete this display.

I am very proud of our club members and their efforts over the years to help HCA and our beautiful museum continue to be a great organization.

Our next meeting is scheduled for January 23 at John and Sheila Demings' home in Grand Ledge. ♦

HCA WELCOMES NEW MEMBERS FOR December 2009

Tracy Laurinat, WA
Barbara Krall Mayer, MI
Sharon Sweeny, TX

IN MEMORIAM

Thomas "Howard" Everett, of Smyrna, Delaware, died on December 16, 2009 at the age of 78. He had served with the Delaware State Police for 20 years. He was an active member of HCA and the Heisey Heritage Society.

Maxine Glenn Hertrich, known to most everyone she met as "Mackie" of Southern California, died January 2, 2010. She had a large and wonderful collection of Heisey glass and was sure that the H within the diamond stood for her last name. She has been a member of HCA since 1972.

Advertising Guidelines:

Advertising: Ads may be mailed to: HCA Advertising, 169 W. Church St., Newark, OH 43055; faxed to (740) 345-9638; or e-mailed to curator@HeiseyMuseum.org. Whenever possible, please e-mail your ad. Include your MasterCard or VISA number and expiration date for billing purposes, or send a check. All ads must be prepaid. When mailed or faxed, ads should be typed or printed on white paper with dark ink. Please double space. Ads that are entered in a vertical column format may contain a maximum of 65 characters per line, including spaces & punctuation.

Classified: 20 cents per word (members), 30 cents per word (non-members), \$1.50 min., 1/8 page limit. Personal ads 1/8 page limit. Abbreviations & initials count as words.

Display Ads:	member	nonmember
1/8 page (12 lines)	\$ 20	\$ 30
¼ page (25 lines)	\$ 40	\$ 60
½ page (60 lines, horizontal or vertical)	\$ 80	\$ 120
Full page (120 lines)	\$ 160	\$ 240

A charge of \$1.60 will be added for each additional line.

½ page: 4½" high by 7½" wide or 9" high by 3½" wide

Full page: 9" high by 7½" wide

Ad copy must be received by the first of the month prior to publication. Reproductions (i.e., Heisey by Imperial) must be indicated. Heisey News accepts no further liability. In the event of a typographical error, the incorrect portion of the ad will be run in the following issue, but HEISEY NEWS assumes no further liability.

Abbreviations: DF = Dolphin Foot NO = Narrow Optic
DO = Diamond Optic SO = Spiral & Saturn Optic
MO = Medium Optic WO = Wide Optic

Classified Ads

REAL HEISEY IN THE GIFT SHOP

All crystal and all prices are each unless noted.

Supply changes daily. Please contact the Gift Shop before placing an order.

Item	Price
341 Puritan individual salt (4 each)	8
411 Tudor oil, H	35
475 Narrow Flute/Rim salted nut, plain bottom, H	15
1205 Fancy Loop celery dip (5 each)	15
1252 Twish mint, Marigold, H	20
1252 Twist cheese plate, Marigold, H	20
1469 Ridgeleigh vase, 3 1/2", H	15
1469 Ridgeleigh star relish, H	25
1502 Crystolite candleblocks, swirl, pr	25
1503 Crystolite nut, ind leaf (3 each)	10
1503 Crystolite nut, 6" leaf	15
1503 Crystolite relish, 3 part, oblong	20
1503 Crystolite relish, 4 part cloverleaf	20
1503 Crystolite relish, 5 part round, 12"	20
1503 Crystolite relish, 3 part, oval, 13", H	20
1503 Crystolite plate, sandwich, 11"	20
1503 Crystolite plate, torte, 13 1/2", H	25
1503 Crystolite ind. cream/sugar, H	20
1503 Crystolite cup/saucer	12
1503 Crystolite 1000 Island dressing, flared, H	15
1503 Crystolite jam jar/cover, H	25
1503 Crystolite vase, individual, H	10
1503 Crystolite jelly, handled, 6", H	10
1503 Crystolite plate, 8" star bottom, H (2 each)	5
1503 Crystolite plate, 8", plain bottom (2 each)	5
1503 Crystolite plate, 7", plain bottom (2 each)	5
1503 1/2 Crystolite candleblock, mellon (one only)	15
1540 Lariat plate, 7" (3 each)	7
1540 Lariat jelly, 2 compartment	15
1540 Lariat floral bowl, oval, 13"	20
3389 Duquesne goblet with 450 Chintz etch (2 each)	12
4035 Bethel cigarette holder with 507 Orchid etch	30
5003 Crystolite goblet (7 each)	15
5003 Crystolite ice tea (2 each)	15
5003 Crystolite oyster cocktail (3 each)	10
5003 Crystolite cocktail (3 each)	10

NEW IN THE GIFT SHOP

1508 Card case in Ruby	\$36
Reprint of Catalog and Price List No. 31, September, 1950	12.95
Heisey Placemats (produced by Bay State Heisey Club)	\$14 each or 2 for \$25
Heisey Notecards, 12 cards each with a different Heisey etching plus envelopes	\$12



**South Florida Depression Glass Club
American Glass, Pottery, Dinnerware
Show and Sale**

February 13 & 14, 2010
Sat. 10am-5pm & Sun. 10am-4pm

NEW VENUE Emma Lou Olson Civic Center **FREE PARKING**
1801 N.E. 6th St. • Pompano Beach, FL

**Designs of the Past
That Dazzle Today!**

♦ Paid Advertisement

*The National Capital Heisey Collector's Club
Present the **Thirty-Seventh Annual**
All-Heisey Glass Show*

★★★★★★★★★★★★★★★★

AVFD Ossian Hall

7128 Columbia Pike Annandale, VA Admission \$7.00
(With Ad \$6.00)

Sat., March 20, 2010 10am to 5pm Sun., March 21, 2010 11am to 4pm

Check us out at: www.natcapheisey.org
Donation will be made to Benefit **The Heisey Museum**

From 495 use exit 52B onto Rt. 236 East ; Left on Backlick Rd.; Right on Columbia Pike to Ossian Hall (behind Annandale Volunteer Fire Dept)

For more information call: (703) 819-6429

♦ Paid Advertisement

Dealer Directory

Maximum 6 lines/12 months/\$35 MEMBERS ONLY

Contact the Editor to place your ad!



<p>KIM & PAM CARLISLE SHOWS & MAILORDERS ONLY 28220 Lamong Rd. Dept. H Sheridan, IN 46069 Glass Cleaning Services Available (317) 758-5767 kcarlis@worldnet.att.net</p>	<p>SHIRLEY EUGENIA DUNBAR Heisey a Specialty—Mail Order, Shows, Appraisals EMAIL: shirley400@aol.com PO Box 8344, Port St. Lucie, FL 34952 Oct-May (772) 337-1558 PO Box 222, Naples, ME 04055 May-Oct (207) 647-5652</p>	<p>SUM OF LIFE Elaine Husted: 610-469-1243 Traveling through eastern PA Call, stop in, be a buyer or a browser!! E-mail: 1classycat@comcast.net</p>
<p>ALL HEISEY AUCTION Consignments Welcome Apple Tree Auction Center 1616 W. Church, Newark, OH 43055 (740) 344-4282</p>	<p>MOUNDBUILDERS SECOND GENERATION Barbara and Richard Bartlett Heisey Exclusively! 1-904-280-0450 PO Box 1931, Ponte Vedra Beach, FL 32082 Toll Free 1-888-434-7397(HEISEYS) EMAIL: CLASYGLAS2@AOL.COM</p>	<p>EAGLES REST ANTIQUES <i>Buying Heisey, China & Pottery</i> Carl and Mary Evans 62 Fieldpoint Rd., Heath, OH 43056 (740) 522-2035</p>
<p>PAULA & JEFF MORROW Elegant Glassware and American Dinnerware 126 Clinton Avenue Elmhurst, IL 60126 (630) 833-4644 mor-fab@comcast.net</p>	<p>H & R DIAMOND H Helen & Bob Rarey 1450 White Ash Dr. Columbus, OH 43204 (614) 279-0390 after 5:30</p>	<p>CRYSTAL LADY Bill, Joann & Marcie Hagerty Specializing in elegant depression glassware 1817 Vinton St., Omaha, NE 68108 Shop (402) 341-0643 or Home (402) 391-6730 Email: ejhagerty@aol.com website:www.crystalladyantiques.co</p>
<p>REALMS IN GLASS Roy Eggert Heisey Custom Stained Glass 9423 Saddlebrook Ct, Frederick, MD 21701 301-260-0234 roy54@hughes.net</p>	<p>GRECIAN BORDER (GREEK KEY) By Petros Z. Mantarakis The definitive guide on Greek Key (#433) with photos and detailed descriptions of all pieces. Now available at Amazon.com Website: www.pzmworks@yahoo.com</p>	<p>PATTON HOUSE ANTIQUES Specializing in Glass*Heisey*Cambridge*Fostoria*Duncan* Factory Antique Mall, Verona, VA off I-81 Exit 227 Antiquers Mall, Booth 81, Rt. 29 N., Charlottesville, VA The Daniels, Box 547, Louisa, VA 23093 (540) 967-1181</p>
<p>C&J ANTIQUES Cole & Jean Miesner Box 45, 72 Whig St. Newark Valley, NY 13811 (607) 642-9905</p>	<p>SIBYLS OF WILMINGTON Sibyl & Ned Lavengood at Castle Corner Antiques 555 Castle St. Wilmington, NC (910) 264-9597 or Sibylsantiques@bellsouth.net</p>	<p>FRAN'S FANCY FINDS Fran & Jack Grenzsbach 10534 Valencia Rd., Seminole, FL 33772-7511 (727) 391-5184 SHOWS MAIL ORDERS</p>
<p>The American Bell Association 7210 Bellbrook Drive San Antonio, TX 78227-1002 www.americanbell.org</p>	<p>PASTICHE ANTIQUES at Preston's Antique Gaslight Village US 12, Allen, MI 49227 Elegant Glass and Other Fine Antiques pasticheantiques@gmail.com</p>	<p>WILLEY'S ANTIQUES & MUSEUM Specializing in Heisey 11110 Cannon Rd., Frazeyburg, OH 43822 16 miles east of Newark, OH (740) 828-2557</p>
<p>CHARLES & MILDRED FISHER Heisey animals and Heisey By Imperial animals 1607 Dayton Rd, Newark, OH 43055 Cfisher08@roadrunner.com (740) 281-3104</p>	<p>MARSH'S ANTIQUES Dick and Virginia Marsh 4532 Newton Road Newark, OH 43055 swamp@alink.com (740) 366-5608</p>	<p>MOONGLEAM ANTIQUES Heisey Glassware & American Art Pottery John Woytowicz and Peter Rivard 70 Pleasant St., Gardiner, ME 04345 (207) 582-9048 E-mail: jmwpwr@aol.com</p>
<p>ROBERT M. LOCH Voting Member HCA and NWHC Pacific Interstate Glassware Co. PO BOX 469 Custer, WA 98240 360-366-3166</p>	<p>CRESTONE MANOR UNIQUES Harold & Loleta Hammontree 3317 Crestone Circle, Chattanooga, TN 37411 423-629-1274 hammonl@bellsouth.net Heisey Only</p>	<p>APPLE VALLEY COLLECTIBLES Richard & Marilyn Garnett – Owners Shows/ Mail Order (845) 691-8799 Email: diamondH95@aol.com</p>
<p>DOWNSTAIRS AT FELTON ANTIQUES 100B Felton St, Waltham, MA 02453 781-894-2223 info@feltonstreetantiques.com GLASSWARE, POTTERY, EPHEMERA, STERLING, FURNITURE FROM EVERY DECADE!</p>	<p>WM GLASS Bill & Mary Barker 400 Nantucket Ave., Pickerington, OH 43147 (740) 927-0918 mcbarker@embarqmail.com Heisey Only</p>	<p>WATERSEDGE ANTIQUES Norene & Don Walzer Shows & Mail Order 25089 Riverwalk Drive Leesburg, FL 34748 (352) 314-8975 dnnwalzer@embarqmail.com</p>
<p>JERRYS' ANTIQUES Shows Only Glassware and Other Fine Collectables PO Box 4485, Davenport, IA 52808 563-340-1871 jerrysantiques@mchsi.com</p>	<p>ONCE AND FUTURE ANTIQUES Susan & Stephen Pescatore 9 Donna Rd. Chelmsford, MA 01824 (978) 256-5418 Heisey and Elegant Glass</p>	<p>BOB & MARY KREIMER Specializing in Heisey Glass 7044 SW 116th Loop, Ocala, FL 34476 (352) 873-8306 email: rkreimer@earthlink.net. Shows and Mail Orders Only</p>
<p>J & L TREASURES Specializing in Heisey, Cambridge, Fostoria, Tiffin, Morgantown, etc Linda Kilburn, PO Box 1257, Burlington, CT 860-673-4088 jltreasures@comcast.net</p>	<p>Phil and Leo Specializing in elegant glass @ Southport Antique Mall booth #660 2028 E, Southport Rd. Indianapolis, IN. 46227 317-786-8246 mall 317-856-7004 home</p>	<p>YELLOW BRICK ROAD ANTIQUES Jean Will Leavenworth, KS 66048 (913) 682-4831 Specializing in Heisey and Elegant Glassware Shows and Estate Sales</p>
<p>Just in Time Antique Mini Mall 29 North Third St Newark, OH 43055 Heisey in Stock 740-349-0001 ntleblanc@aol.com</p>	<p>Second Chance Antiques Doug and Donna Sites McHenry, MD 301-387-4064 donnasites@comcast.net</p>	<p>Charlene Bowman Shows Only Heisey – Cambridge – Fostoria - Morgantown P.O Box 287, Clarksville, OH 45113 937-289-2114 twoclbs@aol.com</p>

When Renewing Your Membership

Help ensure the future of your Museum. When you renew your membership at one of the levels below, any amount beyond the regular Associate dues goes into the Endowment Fund.

<i>Individual Contributing, one person in household</i>	<i>\$50</i>
<i>Joint Contributing, two people in one household</i>	<i>\$60</i>
<i>Family Contributing, parents and children under 18</i>	<i>\$75</i>
<i>Patron</i>	<i>\$125</i>
<i>Sponsor</i>	<i>\$250</i>
<i>Benefactor</i>	<i>\$500</i>

Visit The
National
Heisey
Glass
Museum



Come at your leisure to enjoy more than 4,800 pieces of glassware produced by A.H. Heisey and Company from 1896-1957. Hundreds of patterns are featured in all production colors. Rare and experimental items are included as well.

Facilities are air-conditioned and handicapped-accessible. Hours are 10:00 a.m. to 4:00 p.m. Tuesday through Saturday, 1:00 to 4:00 p.m. Sunday (except Jan. and Feb.). Members are admitted free, regular admission is \$4. Office hours are 8:00 a.m. to 4:30 p.m. weekdays.

Membership Renewal Notice: Check the date above your name and address on the mailing label. This is your expiration date. If it reads 2-10-10, make sure your dues are paid soon in order to receive next month's issue of *Heisey News*.

Contact the HCA Administrative Office at (740) 345-2932 for more information. The Endowment Committee wishes to thank those who have become Endowment Members and all of the individuals and study clubs that have so generously supported the HCA Endowment Fund. All members who have supported the fund are recognized each year in the February issue of the Newsletter. Your support will make the Museum self-sustaining in the years to come. Thank You all! ♦

Shipping & Handling Fees for Outside US

Additional shipping charges are required for members living outside the U.S. Current rates are Canada, \$22; for other countries, contact the Museum. Rates are subject to change at any time due to rate changes made by the US Postal Service. To verify current rates, call (740) 345-2932 or E-mail business@HeiseyMuseum.org



Periodical Postage

Paid at the Post Office
In Newark, OH 43055
Publication # 00986
POSTMASTER SEND FORM 3579 TO:
HCA
169 W. Church St.
Newark, OH 43055

To: _____

Museum Volunteers for December 2009

Charlene Bowman
Karen and Jim Clark
Chris Doyle
Joe and Flo Harner
Chuck & Amy Jo Jones
Dan and Sue Kilgore
Frank Kuhlmann
Robert Loch
Dick and Virginia Marsh
Phyllis McClain
Don & Pat Moore
Sharon Orienter
Ginny Priest
Kathy Smith
Dick & Marilyn Smith
Dave & Mary Ann Spahr