

# HEISEY NEWS

The Official Publication of Heisey Collectors of America, Inc.

Volume XXXVI No. 9

August 2007

ISSN 0731-8014



Stanhope Brochure – Cover

## 1483 AND 4083 STANHOPE BROCHURE

Walter Ludwig

This month's brochure is on the Stanhope pattern and features both the pressed 1483 line and the blown 4083 line. The Stanhope pattern was introduced in 1936 and was produced until 1941. This pattern was designed by Walter Von Nessen, a famous New York based industrial designer of the era. His designs are avidly collected by many devotees of the Art Deco esthetic. Many of his most famous designs were done for Chase Chrome and used Bakelite (an early form of plastic) trim. Von Nessen carried that idea over to glass and designed many of the Stanhope pieces to incorporate plascon (another form of plastic) knobs and handles. This is one of the true Art Deco patterns that Heisey produced.

This is one of the harder to find pattern brochures that we have here at the Museum. We currently only own one copy and, I am afraid, it is not in the best of shape. There are creases on the cover page and some kind of cellophane tape was used to hold it together. This tape has yellowed with age so it is easily seen in the pictures you see with this article.

Continued on page 5

HEISEY NEWS

Heisey Collectors of America, Inc.
169 West Church Street
Newark, Ohio 43055
Phone 740-345-2932 Fax 740-345-9638
Web Site: www.heiseyMuseum.org
All Rights Reserved 2007
ISSN 0731-8014

Staff and Phone Extensions

Curator, Walter Ludwig, curator@heiseyMuseum.org, Ext. 4
Business Manager, Shelly Hoberg, business@heiseyMuseum.org, Ext. 2
Clerk, Alisha Tilley
membership@heiseyMuseum.org, Ext. 1
Clerk, Mary Jo Kochendorfer, Ext. 5

HCA Board of Directors:

President, Bryan Baker - Fairfax Station, VA, 703-250-6117 -
hcpresident@heiseyMuseum.org
Vice-President, Charlie Wade - Newark, OH 740-587-2002
Secretary, Amy Jo Jones - Beavercreek, OH, 937-426-1567
Treasurer, Dave Spahr - Xenia, OH, 937-372-7166
Member-at-Large, Sharon Orienter - Rochester, NY, 585-288-8076

Phil Abrams - Charlotte, NC, 704-364-4561
Ron Keener - Heath, OH, 740-323-3747
Sue Kilgore - Kalamazoo, MI, 269-345-3990
Robert Loch - Custer, WA, 360-366-3166
Jack Metcalf - Utica, OH, 740-892-2664
Karen O'Hare - Newark, OH, 740-366-3739
Sam Schnaidt - Granville, OH, 740-587-0052
Karen Taylo - New Bern, NC, 252-637-9985
Jean Will - Leavenworth, KS, 913-682-4831

HEISEY NEWS is published and printed monthly (twice in March), by Heisey Collectors of America, Inc. (HCA). Periodical postage paid at Newark. Subscription is limited to HCA members. First class mailing is available for an extra \$20.00 (Effective July 1, 2007), due with payment of membership. If you are having difficulty receiving your Newsletter, please contact the HCA Administrative Office Monday through Friday 8:30 a.m. - 4:30 p.m.

The opinions expressed in articles in HEISEY NEWS are those of the authors and not necessarily those of the organization. The Editorial Staff reserves the right to edit, with or without the consent of the author or to refuse any material submitted for publication.

Back Issues

Back Issues available from files are \$3.00 per issue plus shipping and handling

Advertising

Ads may be mailed to: HCA Advertising, 169 W. Church St., Newark, OH 43055; faxed to (740) 345-9638; or e-mailed to curator@HeiseyMuseum.org . Whenever possible, please e-mail your ad. Always include your MasterCard or Visa number and expiration date. When mailed or faxed, ads should be typed or printed on white paper with dark ink. Camera ready ads are accepted, but must follow line specifications outlined at the beginning of the advertising section. Ads containing reproductions will not knowingly be accepted unless clearly stated (e.g. Heisey by Imperial, etc.). HEISEY NEWS accepts no further liability. In the event of a typographical error, the incorrect portion of the ad will be run in the following issue, but HEISEY NEWS assumes no further liability. See advertising section for rates and deadlines.

Museum

Heisey Collectors of America, Inc., a non-profit corporation (tax-exempt status), owns and operates The National Heisey Glass Museum in Veterans Park, 6th and Church Streets, Newark, Ohio. Open year round, Tuesday through Saturday 10:00 a.m. - 4:00 p.m., Sunday 1:00 - 4:00 p.m., closed holidays. Other hours by appointment. Members admitted free.

Identification

HCA will attempt to identify unknown glass items. Send a color photograph, measurements, and a self-addressed, stamped envelope to the attention of the Curator. Other arrangements should be made in advance with the Museum

staff. Please keep in mind that the Museum cannot appraise items. Identification is free to members, non-members \$5.00 per item.

Membership

To join Heisey Collectors of America or to renew your membership, contact the HCA Administrative Office Monday through Friday 8:00 a.m. - 4:30 p.m. Eastern Time. Associate dues are \$30.00 plus \$5.00 for each additional household member. Voting members pay an additional one-time fee of \$25.00. Please consider supporting the Endowment Fund by joining at one of the levels listed on the back page.

Museum Gift Shop

There is always someone in the Gift Shop during the Museum's hours of operation to help answer questions or take orders. When ordering by phone, please have a credit card ready. When ordering by mail, please be sure to include appropriate charges such as shipping and sales tax. Please note that the HCA member discount does not apply to original Heisey or special project items.

Shipping and Receiving

Delivery is made much easier when we have a complete street address, not a PO Box. We prefer to use UPS. If you have not received a package, please call the Administrative Office to confirm it was sent. We will assist you in tracing it. If your package arrives damaged, please contact your local UPS representative. We insure everything.

Donations and Loans to the Museum

If you would like to make a donation to the Museum or have questions regarding items on loan, contact the Curator. HCA reserves the right to accept or refuse items based on current holdings.

2007

Heisey Select Auction, Newark, OH October 6
Percy and Vivian Moore Memorial Dinner, Newark, OH October 6
Holiday Open House, Newark, OH December 8

2008

Heisey National Convention and Elegant Glass Show Newark, OH June 18-21

Table of Contents

1483 and 4083 Stanhope Brochure, Walter Ludwig FC & 5-6
Message from the President, Bryan Baker 3
Curator's Report, Walter Ludwig 4
Jun 2007 Holdback Auction Results 4
HCA Welcomes New Members for June 2007 4
Early Cocktails, Joe Lokay 7-8
Heisey Egg Cups, Walter Ludwig 8-9
1184 Yeoman 2 Handled, 1/2 Pound Candy Jar, Walter Ludwig 9
485 Dunham, Walter Ludwig 10-11
Catalog 100 - Miscellaneous Pages, Walter Ludwig 12-15
January - June 2007 Museum Contributions, Shelly Hoberg 16
Museum Contributions January 2007 - June 2007, Walter Ludwig 17-18
HCA Membership Survey Results, Bryan Baker 18-19
Heisey Select Auction - October 6, Dave Spahr 19
Treasurer's Report - Second Quarter 2007, Dave Spahr 20
National Heisey Glass Museum Endowment Fund - June 30, 2007 20
Income Statement - June 30, 2007 21
Study Club Directory 22
"Diamond H" Charm, Pendant, or Lapel Pin Order Form 23
Club Notes 24-25
Advertising Guidelines 26
Real Heisey in the Gift Shop 26
Frankly Rhyming, Frank Husted 26
Dealer Directory 27
Museum Volunteers for June 2007 BC

# MESSAGE FROM THE PRESIDENT

Bryan Baker

Summer is in full *swing*; however, fall will be here before we know it. Speaking of *swing* and fall; make your plans now to enjoy "A Heisey Swing Time" at the 15<sup>th</sup> Annual Percy and Vivian Moore Memorial Weekend and Dinner October 5 and 6. Come join us as Heisey celebrates the 40s! We'll be flashing back to a time when USO shows, big bands playing swing, Rosie the Riveter, Victory gardens, and other aspects where World War II touched everyday life. This wasn't a decade without glamour and glitz, however, as you'll see when we roll out the red carpet for the Heisey Silver Screen Premiere.

Here are some of the highlights of the weekend:

- Friday evening: Heisey USO
- Saturday morning: Flea Market (open to all HCA members who wish to setup and sell their wares)
- Saturday afternoon: Heisey Select Auction
- Saturday evening: Percy & Vivian Moore Memorial Dinner (Heisey Silver Screen Premiere)

All these events will take place at the Heisey Museum and Buckingham House - both located in Veterans Park, Newark, Ohio. Throughout this weekend, we will learn and reminisce of the events that shaped our nation during this decade - and the role A.H. Heisey and Company played during this period. We will also remind ourselves of the primary purpose of this weekend; to honor the contributions made by Percy and Vivian Moore to our organization. Please join me and all of your Heisey family at this fun-filled weekend! The September issue of our Newsletter will have further details on the events and registration information.

On our financial front, it appears we are operating within our budget. This is due to exercising financial discipline and the generous contributions made by our members (both financial and volunteerism) - Thank You all for making this possible. I do need to caution that this does not mean we are out of the woods financially, or can rest on our laurels. Your Board of Directors and I are working hard at identifying new projects to generate income. We are still waiting for the completion of our candles by our manufacturer. Other projects are being discussed for their feasibility. We also must continue our outreach to other organizations and individuals; this includes pursuing opportunities with our newly-formed relationship with the Ohio Governor's Residence.

Visitor count to our Museum is up substantially from over the past couple of years - a trend we all hope continues. The winter months will be here before we know it - this is a time when visitor counts to the Museum drop dramatically. In addition, revenues coming into the Museum decrease while our operating expenses remain constant.

In this month's issue, you will find the results of our membership survey. This information will be quite useful to us for future planning - please take the time to review it. The results were recently compiled, and we will be taking the time to go over the data and sharing with you any actions/directions.

On a more somber note, I am sorry to inform you of the passing of Mary Pool of Virginia and Butch Jones of Maryland, both long-time members of HCA. Our sympathies go out to their families and friends.

Until Next Time,

Bryan Baker ♦

# CURATOR'S REPORT

Walter Ludwig

As we head into the dog days of August, we, here in Newark, consider ourselves very fortunate. The weather has been, for the most part, very pleasant without extremes of cold or hot. Although we are suffering a deficit in rainfall, we get just enough to sustain us to keep the corn growing and the grass more or less green. I get to sit on my back porch after work most days and soak up the good weather as I read a few chapters of the latest mystery that I have picked up.

Here at the Museum, we continue to be very busy. After Convention there are always a lot of tasks to complete and to catch up on. I am pleased to say a lot of donations of glass come into the Museum during Convention. There were some nice additions to the collection as well as a lot of glass for the Gift Shop. The donations for the Gift Shop are especially appreciated because it allows us to offer visitor's to the Museum a chance to buy a special souvenir of their visit that truly carries the message of what this Museum is about: a piece of genuine Heisey glassware reflecting the heritage of those long ago glassmakers. If you will look at pages 16 - 18 of this Newsletter, we acknowledge all those who have made donations to the Museum during the first half of 2007.

I did receive a box of glass for the Gift Shop during Convention that unfortunately did not have a label as to who had donated it. The box contained among other things two Moongleam 1252 Twist cups and an Emerald 1255 Pineapple and Fan creamer. If this was your box of glass, please contact me at the Museum so that I may send out the proper paperwork. We are most appreciative of your support.

Our next card deck is off to a great start. Frank and Sharon Orienter will be here during the first full week of August to take the photographic images that will be used on this deck guaranteeing us a product every bit as good as our first deck. Again, heartfelt thanks go out to all who have sponsored cards in this deck. And thanks to all of those who have bought the deck from our first edition making this an extremely successful project for HCA. We know we can depend on your support for this ongoing project.

Just after Convention, we received the gift of a new display case from Dan Longo, a long time member of the organization. This case is fully lighted and mirrored and has been put in Room 1 of the King House where we had previously displayed A.H. Heisey's desk. That desk has now been moved to Room 5, where it holds a place of prominence. Exact plans for the case have not been finalized, but temporarily it will house the Bill and Isabelle Gibbs Punch Cup Collection as we use the cases in the Multi-purpose Room to display the Select Auction glass that will be sold on October 6 during the Percy and Vivian Moore Weekend here in Newark this year.

Occasionally, people have asked me what the Museum wants in the way of glass to add to our collection. There are a few figural items which I would like to have to finish off that area. The 1560 Victorian Girl Bell and the 20 Wood Duck that we have are both frosted. I would like to have non-frosted versions of both. We do not have a 7064 Girl Head stopper or a 5058 Goose decanter in our collection. These items would go a long way to completing our display of Heisey figural items.

This is prime Heisey hunting time so I hope all of you are scouring your area. If you do not get out and look, someone else will beat you to the sleepers.



## JUNE 2007 HOLDBACK AUCTION RESULTS

1. \$ 115	6. \$ 45	10.. \$ 151	14. \$ 90
2. 110	7. 60	11. 135	15. 110
3. 50	8. 75	12. 60	16. 30
4. 115	9. 105	13. 152	18. 25
5. 45			

---

## HCA WELCOMES NEW MEMBERS FOR June 2007

Margaret Bachert, NJ  
Linda Dickey, IN  
Jim & Kathy Hetherwick, MI  
Cliff Hoelscher, TX  
Edna Killebrew, OH  
Sue Warden, NC

...accented with **COLOR** and enhanced with the  
**"SWINGTIME" etching**



■ **STANHOPE**... an engaging pattern in fine Heisey crystal, with an original idea that has started a new vogue! As occasion and your fancy suggest, you can add touches of lively color to various pieces that fill out your Stanhope service... simply by means of handle-inserts, of red, blue, green, ivory, or black. With its spot of color—its dashing pattern—its "Swingtime" etching—this Heisey glassware has a piquant, modern charm. You will find Stanhope priced very modestly.

A. H. HEISEY & CO.  
 Newark, Ohio



THE SWINGTIME ETCHING that you may have on your Stanhope lead-blown stemware, or on various other pieces you select, is an excellent example of the master-craftsmanship which distinguishes Heisey creations.

Stanhope... in the superior quality of pure, brilliant crystal for which Heisey is so famous, is available either plain, without decoration—etched—or in one of several interesting rock crystal cuttings. Sold with or without colored handle-inserts.



Stanhope Brochure – Inside

## 1483 AND 4083 STANHOPE BROCHURE

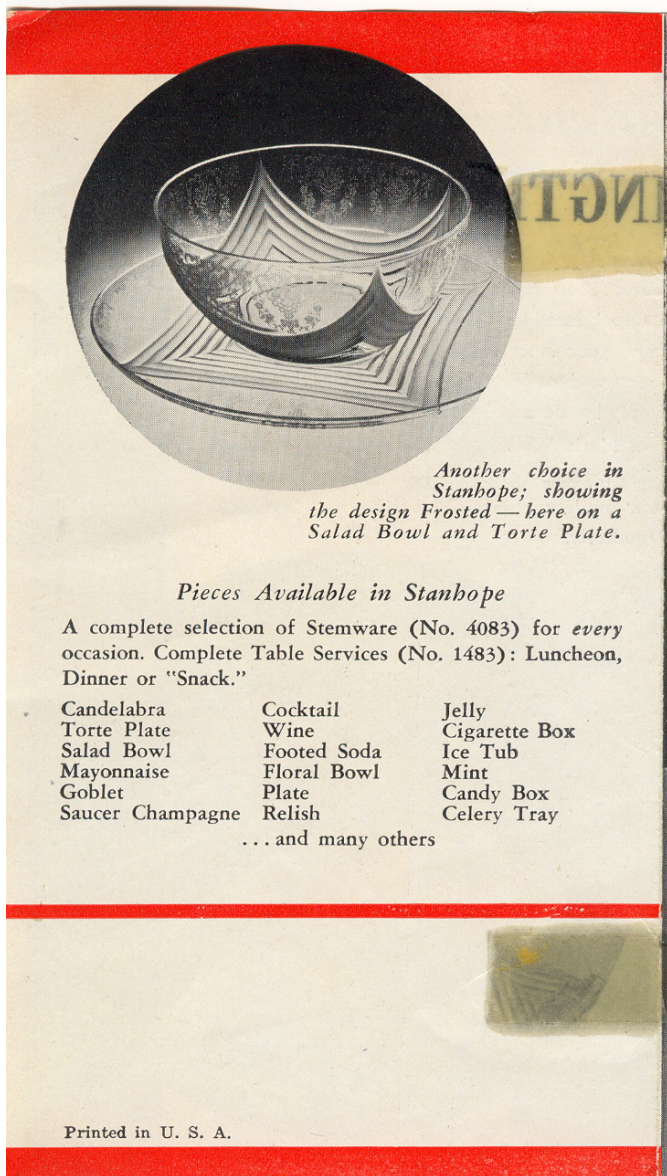
(Continued from Front Cover)

This brochure is a single fold giving us a front and back as well as a two page center section. Red has been used to accent the brochure with only the "Stanhope" heading and the plascon handles printed in that color for a good visual effect. The cover features a framed silhouette of Lady Stanhope (a famous courtier in the early 1600s), for whom the pattern was named, hanging above a possible mantle on which the Stanhope console set has been placed

with an arrangement of what may be carnations. "STANHOPE" on the top of the page is followed with "... by HEISEY" on the bottom.

The center pages are headed with the words "... accented with COLOR and enhanced with the "SWINGTIME" etching." The following text then reads:

"Stanhope... an engaging pattern in fine Heisey crystal, with an original idea that has started a new vogue! As occasion and your fancy suggest, you can add touches of lively color to various pieces that fill out your Stanhope service... simply by means of handle-inserts, of red, blue, green, ivory, or black.



**Stanhope Brochure – Back**

With its spots of color – its dashing pattern – its “Swingtime” etching – this Heisey glassware has a piquant, modern charm. You will find Stanhope priced very modestly. A. H. Heisey & Co., Newark, Ohio.”

Mention is made of the various colors of the handles available. Black is the most often seen of the colors, mainly because a special luncheon set with black handles was made for General Electric to give away with the purchase of a new GE refrigerator. All pieces not in this luncheon set are much more difficult to find. Red handles are probably the next most available color with blue following. I have only seen a few pieces with ivory handles over the years and I have never seen a piece with a green handle or insert.

On the bottom left of the center section is this description, “The Swingtime etching that you may have on your Stanhope lead-blown stemware, or on various other pieces you select, is an excellent example of the master-craftsmanship which distinguishes Heisey creations.

“Stanhope... in the superior quality of pure, brilliant crystal for which Heisey is so famous, is available either plain, without decoration – etched – or in one of several interesting rock crystal cuttings. Sold with or without colored handle-inserts.”

The 494 Swingtime etch was designed by Carl Cobel and only produced from 1937 to 1938. It is much harder to find than the 490 Maytime etching which was produced at the same time.

Accompanying the text in the center section of the brochure are two pictures, both featuring items with Swingtime etching and with red knobs. On the left we see the two handled sandwich accompanying a blown 4083 goblet. To the right there is a grouping of 4 items: 6” mint, two compartment and two handled; 9” vase; 4 ½” nappy or porringer, one handled; and the covered cigarette box. On the right hand side there is a column of blown stemware in silhouette with from top to bottom the goblet, champagne, claret, oyster cocktail, cocktail, wine, and 5, 8, or 12 ounce soda.

The back of the brochure features the salad bowl and torte plate with Swingtime etching and frosted chevrons. This decoration was never given a special name or number by Heisey but the Maytime etching with frosted chevrons was called 491 Frosty Dawn.

Finishing the back of the brochure is a statement that, “A complete selection of Stemware (No. 4083) for every occasion. Complete Table Services (No. 1483): Luncheon, Dinner or ‘Snack’.” A listing of items follows: candelabra, torte plate, salad bowl, mayonnaise, goblet, saucer champagne, cocktail, wine, footed soda, floral bowl, plate, relish, jelly, cigarette box, ice tub, mint, candy box, celery tray ... and many others.

For those who like a pattern with true advanced design, Stanhope will fill the bill. No other pattern in Heisey’s production offers such a variety of pieces. This is a pattern that people either love or hate – there is no middle ground. Searching for all the pieces will offer you a great challenge. ♦

## COCKTAILS



900 3 ½ oz



901 3 oz



908 2 ½ oz



909 3 ½ oz



910 4 oz



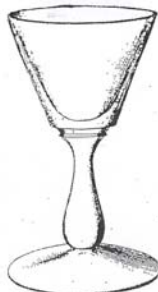
911 3 ½ oz



912 4 oz



913 2 ½ oz



914 3 oz



915 3 ½ oz



916 3 oz



917 3 ½ oz

## EARLY COCKTAILS

Joe Lokay

In the price list dated circa 1898, A. H. Heisey & Company offered to the trade 18 different cocktail stemware glasses. Six have been discussed in previous articles (see June and July 2007 Heisey News). This article will cover the remaining 12. Each one of the 12 can be identified by the design of its stem and the size of the bowl. The 12 consist of two singles and four sets. Each set consists of two or three cocktails with the same stem design. The details are:

Cocktails	Production Time	Years
Singles		
900 3 ½ oz	1898 - 1909	12
901 3 oz	1898 - 1909	12
Set		
908 2 ½ oz	1898 - 1907	10
909 3 ½ oz	1898 - 1907	10
910 4 oz	1898 - 1907	10
Set		
911 3 ½ oz	1898 - 1907	10
912 4 oz	1898 - 1907	10
Set		
913 2 ½ oz	1898 - 1907	10
914 3 oz	1898 - 1907	10
915 3 ½ oz	1898 - 1907	10
Set		
916 3 oz	1898 - 1907	10
917 3 ½ oz	1898 - 1909	12

Production started before the Diamond H trademark, so the early pieces are unmarked. Production ended before Heisey's 1913 catalog was issued. The pictures come from the unnumbered Heisey Catalog circa 1901. The pages in that catalog show the Diamond H trademark; so, it is a good chance that the later production is marked. The stem design should help in looking for Heisey made pieces. ♦

# Heisey Price List Circa 1898

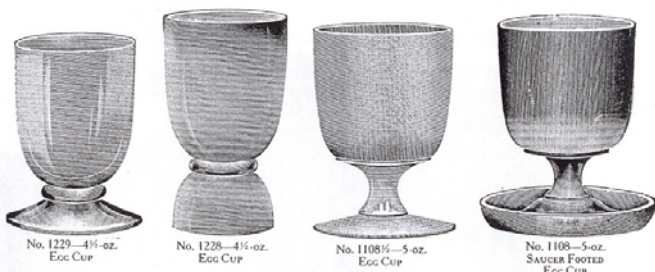
## COCKTAILS.

900 3½ oz. Cocktail.....	45	90	24	\$ 40
901 3 oz. " .....	45	90	24	35
902 3¾ oz. Twist Stem St.....	45	90	24	35
903 3¾ oz. " Flared .....	45	90	24	35
904 4¼ oz. " Saucer.....	45	85	20	40
905 3¾ oz. Cocktail St. ....	46	90	24	35
906 3¾ oz. " Flared.....	46	90	24	35
907 4¼ oz. " Saucer.....	46	85	20	40
908 2½ oz. " Mitchell.....	46	90	24	40
909 3½ oz. " " .....	46	90	24	45
910 4 oz. " " .....	46	85	20	45
911 3½ oz. " .....	47	90	24	45
912 4 oz. " .....	47	85	20	45
913 2½ oz. " .....	47	90	24	40
914 3 oz. " .....	47	90	24	40
915 3½ oz. " .....	47	90	24	40
916 3 oz. " .....	48	90	24	40
917 3½ oz. " .....	48	90	24	40
1205 " Large.....	90	18	40	
1205 " Small.....	95	24	35	

## HEISEY EGG CUPS

Walter Ludwig

In looking over the remainder of Catalog 100 to see what might be new material to bring to our members, I noticed the egg cups shown on page 26 of the catalog along with other miscellaneous stemware. Egg cups today seem like novelties and we seldom encounter them in today's world. The four egg cups shown on this page are rather unique in that they are the only ones that are not part of full pattern lines; instead they are the only pieces in their patterns.



Egg Cups from page 26 Catalog 100  
1229 Barnum, 1228 Ringling, 1108 ½ and 1108  
Penelope

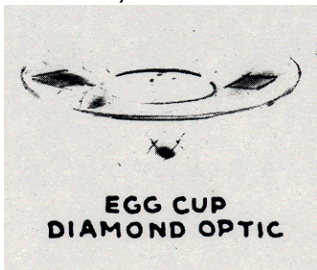
A table of Heisey egg cups by pattern:

No.	Pattern	Size	Comment
150	Banded Flute	5 ½	
300	Peerless	5	
325	Pillows		
335	Prince of Wales Plumes		
337	Touraine	5	
339	Continental		
341	Puritan	4 ½	
343	Sunburst		
347	Fifth Avenue	6	Doubled as oyster cocktail
348	Colonial Cupped	6	Doubled as oyster cocktail
349	Colonial Flared	6	
351	Priscilla	5	
357	Prison Stripe		
373	Colonial	6	Not part of Old Williamsburg
379	Urn	5	
393	Narrow Flute	5	
394	Narrow Flute	5	Boston, doubled as sherbet
400	Colonial Scalloped Top		
429	Plain Panel Recess	4	
433	Greek Key	5	
438	Spiral Optic	5	Doubled as oyster cocktail
439	Raised Loop	5	
1108	Penelope	5	Saucer footed
1108 1/2	Penelope	5	
1184	Yeoman		
1228	Ringling	4 ½	
1229	Barnum	4 ½	
1776	Kalonyal	9 ½	*

The table shows 28 different egg cups that were made by the Heisey factory. Twenty-seven of them are identified in the Heisey Stemware book by Bradley, Ryan, and Ryan. These are the footed egg cups, most of them part of stemware lines.

I have been asked by several folks what was the purpose of an egg cup. Obviously these are younger people who were never served a soft boiled egg in these traditional egg cups like Heisey produced. I can remember my grandmother preparing the egg and then breaking up a piece of toast and serving the toast and egg mixed up in such a cup. A hard boiled egg could also be served in such a cup but that is not my memory.

There was a second way of serving these eggs which must have come into vogue later, maybe the late teens or early twenties. That was to perch the egg on end in a shallower cup and then just cut off the top of the egg and use the egg shell as the serving vessel. The 1228 Ringling egg cup could be inverted and used for just this purpose. Egg cups that functioned in both ways would be called double egg cups. In



the late 1920s Heisey produced the 1184 Yeoman egg cup which was the only one that you could say did not have a stem; instead this egg cup just

Cat. 109 (1929)

provided the indentation to rest the bottom of the egg in. The 1184 Yeoman egg cup was produced in crystal, Moongleam, Flamingo, and Marigold.



5-oz. BOSTON EGG CUP OR FOOTED SHERBET

The 394 Narrow Flute egg cup was called a Boston egg cup. This must be a third type of egg cup that must have been popular in New England. This

egg cup is show in Catalog 100 on page 116. It is a short footed bowl type egg cup. I guess, in case you were not from New England, they covered their bases with this piece and also sold it as a footed sherbet.

A few other comments on our table of egg cups. Two patterns, 325 Pillows and 335 Prince of Wales Plumes, have as their only stems the egg

cup and a sherbet. The 343 Sunburst pattern adds a goblet. Most patterns with an egg cup, however, are much more extensive.

I will comment on the 1776 Kalonyal egg cup which the catalog clearly identifies with a 9 1/2 ounce capacity. This would be huge, especially when you consider that the goblet is only 9 ounces. A look at the catalog page (reprinted on Vogel I, page 25) tells us that this must be a misprint. The egg cup is proportionally the same size as the 5 or 6 ounce sherbet. The egg cup should have been labeled 5 1/2 ounce or 6 1/2 ounce.

Egg cups would make a very interesting specialty for some enterprising collector. A few are relatively easy to find but some would be much more difficult. ♦

## 1184 YEOMAN 2 HANDLED, 1/2 POUND CANDY JAR Walter Ludwig

Last month, in my discussion of the various pieces in the Revere and Yeoman patterns that appeared in Catalog 100 circa 1920, I mentioned that there was a 1184 handled candy jar in addition to the 1183 Revere series. A further look at Catalog 100 shows this candy jar on page 38 along with 1183 candy jars.



This jar is very hard to find. It measures 9" high and is 6" wide from handle to handle. Note, that the finials on the lid as well as the base of the candy jar are very different from the others in the 1184 Yeoman pattern. The jar in the collection of the Museum is non-

factory decorated as have been all others that I have seen. ♦



No. 485 PATTERN

SCALE HALF SIZE

ALL ITEMS ON THIS PAGE HAVE GROUND BOTTOMS



PICKLE JAR KNOB COVER



CREAM



SUGAR AND COVER



SPOON



BUTTER AND COVER



4-IN. NAPPY



4 1/2-IN. NAPPY



7-IN. NAPPY



8-IN. NAPPY



9-IN. NAPPY

133

485 Dunham Pattern – Catalog 100, Page 133

## 485 Dunham Walter Ludwig

Continuing our look at the pages of Catalog 100 circa 1920, we find two pages devoted to the pattern 485 which was named Dunham by early researchers of Heisey. This pattern was first introduced in about 1917 and was discontinued soon after this catalog came out. Pieces in this pattern rarely turn up. This is an extremely plain pattern that seems ideal for decorating and when it does show up you usually find it with a non-factory cutting, although Heisey did use it for some of its early cuttings, also. On the pages at the end of Catalog 100, the punch set is shown with cutting 679 Windsor and the 8" nappy with cutting 693 Cloister.

On page 133 of Catalog 100 we see a few of the pieces in the pattern. The first thing to note is a

line under the pattern heading that reads, "All items on this page have ground bottoms." This would distinguish this very plain ware from other pieces made at the time. Of course, we would also expect all pieces to be marked with the Diamond H. The pickle jar is shown in the upper left. The rest of the row is made up of the four pieces in a table set: cream, covered sugar, spoon, and round covered butter.

This is the last pattern that Heisey made that included the four piece table set. The table set had a long run as the staple of every pattern that Heisey produced. But times change and by 1920, you no longer found this set proudly holding its place of honor in the middle of the round oak dining tables of that era. Butter was now commercially available in one pound blocks rather than the round molded mounds that had been used before. Creams and sugars



**485 Dunham Pattern – Catalog 100, Page 134**

became smaller. And the spoon no longer was used to place spoons on the table.

Note the difference in the finials on the pickle jar and on the two pieces of the table set. Using the catalog pictures as a guide, the bottom of the sugar is definitely different than the spooner. The sugar is 3 ½" in diameter while the spooner is 3" in diameter. The bottom of the pickle jar appears to be a little larger than the spooner, but this could be a difference only in the artist's rendering. It is very reasonable to expect that they are the same piece of glass.

The bottom of the page shows a range of nappies in the pattern measuring 4", 4 ½", 7", 8", and 9". The 8" nappy probably lasted longer than any of the other pieces in the pattern being absorbed into the 1183 Revere line.

On page 134, we see the remaining pieces in the pattern. A 9" and a 12" celery tray are shown. These appear to be identical to the celery trays we saw in last month's article on the 1183 pattern. These appeared on page 139 of Catalog 100 which was printed in the July 2007 Heisey News on page 9. The three pint jug shown on this page is one that I have never seen. The punch bowl set is very elegant and it is noted that it was sold both with and without the foot. The 6" vase is the punch bowl vase inverted. This is the only case where Heisey actually marketed a base as another piece of glass when turned upside down.

Be on the lookout for pieces of 485 Dunham, they would make an excellent addition to any collection. ♦



Catalog 100 – Page 49

## CATALOG 100 – MISCELLANEOUS PAGES

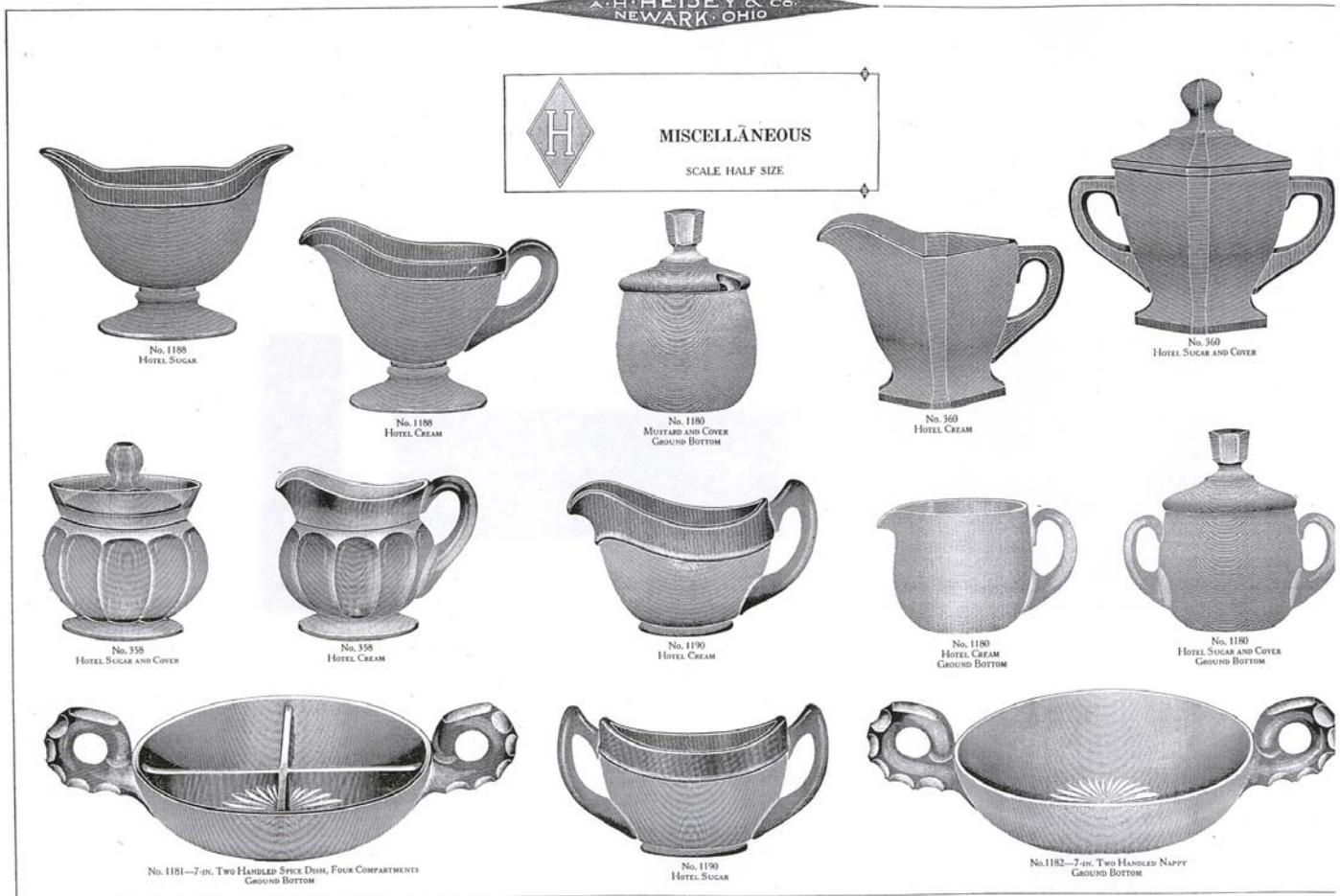
Walter Ludwig

Catalog 100 (circa 1920) has several pages that were presented under a banner with the title Miscellaneous filled in. These pages present a mix of different types of pieces in a variety of patterns rather than the norm of presenting a single pattern on a page or a single type of item on a page. Let us examine four of these pages to see some of the interesting items that A.H. Heisey and Company was producing in 1920.

Page 49 of the catalog is reproduced above. On the left are presented two pieces in pattern 484 Edith. This is the pattern that was named two years ago at the Convention by the winner of the

Name the Pattern Contest we held that year. At that time we discussed the rolled edge 7" and 8" nappies as they appeared in Catalog 102 from 1924. In this catalog, we have two more pieces presented in the pattern. In the lower left, we see the 8" nappy and cover with the reference that it was also made in the 7" size. This is a piece that I have never seen. Given that the bowls are marked, I would certainly expect the bottoms of these covered nappies would definitely be marked and even expect that the tops would also be marked. Covered nappies in other pattern (notably 341 Puritan) have a ridge on which the cover fits inside the bowl. It makes sense that these nappies would have a similar ridge to make a good fit for the covers.

In the bottom right, we see a 10" sandwich plate in the 1221 Star Center pattern. In the center of



### Catalog 100 – Page 50

the page is the 1118 Indian Hill grapefruit and the 1118 ½ Indian Hill grapefruit. These are stemmed grapefruits rather than grapefruit bowls which we will see introduced in the later 1920s. The 1118 ½ is considerably shorter and does not have the distinctive knob in the top part of the stem that the 1118 has. To be used in the stemmed grapefruits, we have three different grapefruit centers, No 1 (a shallow bowl), No 2 (with a peg bottom), and No 3 (with a footed bottom). These were meant to be used on top of crushed or shaved ice which was put into the grapefruits and then the centers would be filled with grapefruit sections. This was an effective way to keep the appetizer chilled before the days of refrigerators. These centers are shown in Catalog 75 (1913) in conjunction with a 351 Priscilla grapefruit stem.

Miscellaneous page 50 presents us with two two-handed bowls as well as an array of hotel creams and sugars and a single mustard. The 1181 7" two-handed spice dish with four compartments is shown on the bottom left and on the bottom right we see the 1182 7" two-handed nappy. Both of these pieces would be considered part of the Revere pattern. The five creams and sugars do not belong to larger patterns per se. The 358 colonial footed hotel cream and sugar is a hard set to find. If the sugar lid has a slot in its cover, it becomes the 352 Flat Panel covered marmalade. The 360 Corby cream and sugar is another rarely seen set. In one price list, this set is listed as being available in Moongleam, Flamingo, and Sahara, but I have never seen it in color. The 1180 Debra set is much easier to find and is usually decorated with either a factory or non-factory cutting. The 1180 Debra mustard was made

MISCELLANEOUS  
SCALE HALF SIZE



No. 1—MUSTARD SPOON



No. 2—MUSTARD SPOON



No. 5—MUSTARD SPOON



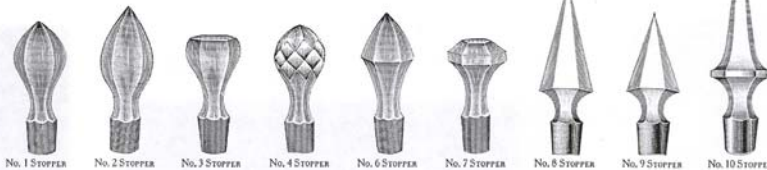
No. 3—ICE TEA SPOON



No. 4—MARMALADE SPOON



No. 6—MAYONNAISE LADLE



No. 1 STOPPER No. 2 STOPPER No. 3 STOPPER No. 4 STOPPER No. 5 STOPPER No. 6 STOPPER No. 7 STOPPER No. 8 STOPPER No. 9 STOPPER No. 10 STOPPER



No. 2—SALAD SPOON



No. 2—SALAD FORK

No. 395—No. 3 CONDIMENT SET

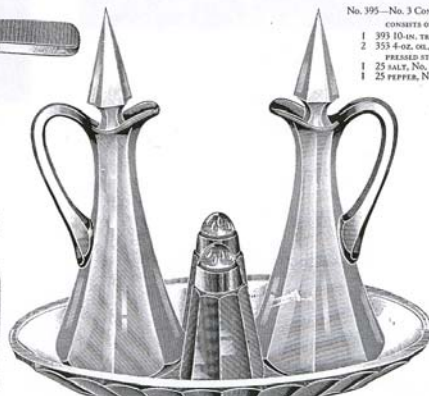
CONSISTS OF  
1 395 10-IN. TRAY  
2 393 4-oz. GL. No. 8 CUT OR  
PRESSED STOPPER  
1 25 SALT, No. 57 TOP  
1 25 PEPPER, No. 57 TOP



No. 1145—MUSTARD AND COVER WITH GLASS SPOON GROUND BOTTOM



No. 1216—HORSE RADISH OR MUSTARD GROUND TOP AND BOTTOM



No. 395—No. 3 CONDIMENT SET



No. 392—HANDLED MARMALADE AND COVER



No. 395—MARMALADE AND COVER GROUND BOTTOM



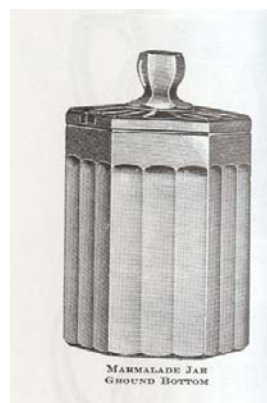
No. 1000—MARMALADE AND COVER GROUND BOTTOM

Catalog 100 – Page 51

from the same mold as the sugar only without the handles. The same cover is used with the addition of a slot. The 1188 footed set is in the range of pattern number that we usually name Yeoman, but this set is quite distinctive for Yeoman's plainer components. This final set is the 1190 set; another very hard set to find.

Page 51 presents us with an array of glass serving pieces that Heisey made to compliment their condiment lines. These include three different mustard spoons (No 1, No 2, and No 5), an ice tea spoon (No 3), a marmalade spoon (No 4), and a mayonnaise ladle (No 6). The No 2 salad fork and spoon are shown in their earlier design. This would later be redesigned with a pattern on the handle – only the earlier design is marked. The 1145 mustard and the 1216 horseradish or mustard are shown in the bottom left. In the bottom right are three marmalades: 392, 395, and 1000. The 392 (393 hotel sugar

with a slot in its cover) and the 395 are obviously extensions of the Narrow Flute pattern (393-394) but there were already marmalades assigned to pattern 393 and 394 so Heisey used different numbers to distinguish these.



393 Marmalade



394 Marmalade

The final page of Miscellaneous items I will present is page 148 from Catalog 100. In the upper left you see an interesting combination



Catalog 100 – Page 148

epergne that Heisey put together from two pieces it was producing: the 484 Edith rolled edge nappy and the 4195 vase which we had discussed back in the December 2006 Heisey News. The number 200 plain 8 oz tumbler is shown on the upper right. The 1020 Phyllis cream and sugar set is shown in the center. This set was made in Vaseline, dark and lighter shades of Moongleam, and Flamingo.

There are three interesting pieces of 1189 Yeoman on this page. The 13" celery is shown below the cream and sugar. This piece was made in Moongleam and Flamingo as well as crystal. Later, this piece was redesigned to be part of the 1506 Whirlpool pattern. We display the mould for this piece in the Multi-purpose Room of the Museum along with both the 1189 relish and the 1506 relish because it is a good example of the Heisey company making use of an old mould to make a new piece in a different pattern. Moulds were one of the biggest

expenses of putting any piece into production, so the reuse of old moulds was an economy measure and was done frequently at the factory.

On the right, we see two additional pieces of 1189 Yeoman; they share the same design but are in different sizes, a mayonnaise and a 9" footed bowl. These pieces could be easily mistaken as part of the 1951 Cabochon line because of the mixture of square and round in the pieces, but both were discontinued long before Cabochon was introduced.

The last pieces to discuss are the 342 four piece table set shown on the bottom of this page. This set is identical to the 341 ½ Puritan set except for the butter. This butter is much smaller than the one in the 341 ½ set; it uses a smaller dome (could this be one of the lids of a 341 candy jar?) and a plain rather than a paneled and scalloped bottom. ♦

# JANUARY– JUNE 2007

## MUSEUM CONTRIBUTIONS

Shelly Hoberg

If you made a contribution between January and June that does not appear on this list, or is listed incorrectly, please contact the Museum, so that we may update our records and properly recognize your contribution.

### ENDOWMENT FUND DONATIONS (of \$100 or more)

Bill & Marcia Booth, \$250  
Walter & Frances Brock, \$105  
Buckeye Heisey Club, \$316  
Darlene & Gordon Cochran, \$500  
Clyde & Elaine Cook, \$100  
Florida Heisey Collectors Club, \$100  
Glen Gall, \$125  
Ray Goldsberry, \$125  
Gulf Coast Heisey Study Club, \$500  
Heisey Collectors of the Rochester Area, \$500  
Heisey Club of California, \$3,000  
Elizabeth & Edward Hughes, Jr., \$125  
Harriet Kupferberg, \$300  
Jeffrey & Janice Larson, \$215  
George and Barbara McNiel, \$3,000  
Joseph Noll, \$500  
North Carolina Heisey Study Club, \$1,000  
Northwest Heisey Collectors Club, \$300  
Northwoods Heisey Club of Minnesota, \$627.50  
Bob & the late Helen Rarey, \$10,000

### ENDOWMENT FUND DONATIONS (In Memory Of)

Heisey Club of California, \$50 in memory of Walter Brock  
National Capital Heisey Study Club, \$50 in memory of Jim Houghton

### OPERATING FUND DONATIONS (of \$100 or more)

Sandra Barker, \$100  
Bay State Heisey Collectors Club, \$250  
Buckeye Heisey Club, \$316  
Central Illinois Heisey Club, \$125  
Darlene & Gordon Cochran, \$1,000  
Dayton Area Heisey Study Club, \$175  
Dixieland Heisey Club, \$1,973.83  
Flea Market on the Square, \$310  
Great Plains Heisey Club, \$700  
Gulf Coast Heisey Study Club, \$500  
Heisey Collectors of the Rochester Area, \$50  
Heisey Heritage Society, \$750  
Heisey Study Club of Michigan, \$505  
Harriet Kupferberg, \$300  
Lincoln Land Depression Era Glass & Pottery Club, \$500  
National Capital Heisey Study Club, \$1,500  
North Carolina Heisey Study Club, \$500  
Northwest Heisey Collectors Club, \$200  
Northwoods Heisey Club of Minnesota, \$627.50  
Bob & the late Helen Rarey, \$5,000

Tri State Heisey Study Club, \$750

### OPERATING FUND (In Memory Of):

Sid & Mary Edwards, \$50 in memory of Glenn Maurawski  
Heisey Collectors Club of Texas, \$100 in memory of A. C. Sullivan

In memory of Frank Walter, \$150, by his family  
Bucky Will, \$30 in memory of Ruth Elliott

### CAPITAL FUND

Dayton Area Heisey Study Club, \$175  
Don & Pat Moore, \$550

### CENTERPIECES

Donated By:		Purchased by:
1. Linda Bichoff	\$ 150	Amy Jo Jones
2. Jean Will	150	Sharon Orienter
3. Jean Will	125	Linda Bischoff
4. Phil & Sally Abrams	85	Roy Eggert
5. North Carolina HSC	250	Dan Kilgore
6. Roy Eggert	75	Virginia Yeakley
7. Buckeye HSC	410	Roy Eggert
8. Jean Will	175	Sharon Orienter
9. Cash donation	20	

### BLIND AUCTION

Donated By:		Purchased by:
1. Linda Bischoff	\$ 350	Steve Pescatore
2. Dan & Sue Kilgore	300	Mary Beth Will
3. Northwest Heisey Collectors	350	Sally Abrams
4. Heisey Club of Michigan	300	Jean Will
5. Great Plains Heisey Club	350	Linda Bischoff
6. Heisey Club of Michigan	350	Elaine Husted
7. North Carolina HSC	350	Barbara Bartlett
8. Heisey Heritage Society	625	Sherry Warren
9. Kim Carlisle	425	Bryan Baker
10. Phil & Sally Abrams	525	Sherry Warren
11. Chuck Rose	725	Robert Loch
12. Dayton Area Heisey Club	300	Dan Kilgore
13. Northwest Heisey Collectors	350	Chuck Rose
14. Karen Taylo	350	Rex Lucke

### HOSPITALITY DONATIONS

Phil & Sally Abrams, \$25  
Central Illinois Heisey Club, \$25  
Dayton Area Heisey Study Club, \$25  
North Carolina Heisey Study Club, \$75  
Northwoods Heisey Club of Minnesota, \$50  
Fred & Betty Pease, \$50  
Jacquelyn Smith, \$100

### Miscellaneous

Cherry Valley Lodge, Overnight Stay  
John Edward Price, Floral arrangement for A. H. Heisey's desk during Convention  
Dick & Marilyn Smith, table cart and light bulbs ♦

# Museum Contributions January 2007 – June 2007

## Walter Ludwig

We want to thank all those who have contributed to the success of the Museum this year. The following have made contributions that greatly enhance the Museum by donating glass for the collection and for sale in our Gift Shop as well as valuable archival material. If you made a contribution and you are not listed or not listed correctly, please let someone at the Museum know, so that proper recognition can be given.

### To the Collection:

**Bryan Baker:** 5038 Rooster Stem cocktail

**Jerry Easterla and Jerry Laitinen:** (2) 300 Peerless high footed sherbet, scalloped

**Mary Friedemann and Dairyland Heisey Club:** 393 Narrow Flute Dr. Johnson punch bowl with lid in memory of Don Friedemann

**Gulf Coast Heisey Club of Florida:** 3484 Donna tumbler with 507 Orchid etch in memory of Bob King

**George Fogg:** 1205 Fancy Loop spoon tray

**Gary Hartig:** 1489 Puritan card suit ashtray set, Black, LIG, Imperial – Lenox paper label

**Sharon Orienter:** 1509 Queen Ann mint with 458 Olympiad etch; 1509 Queen Ann cream/sugar, DF with 458 Olympiad etch; 4091 Kimberly goblet with 1015 Dolly Madison Rose cut; 6006 Hourglass claret/juice; 6003 Tempo cordial; 8029 Princess Lily goblet with 1083 Jungle Flower cut

**OSU Dealers – 2007:** 5031 Ooh-La-La French dressing bottle with 507 Orchid etch and 2401 Oakwood soda, 6 oz with 507 Orchid etch – both in memory of Helen P. Rarey

**Mac and Georgia Otten:** 5067 Plantation goblet with 516 Plantation Ivy etch

**Fred and Betty Pease:** 5086 Plantation Ivy cocktail with 522B Cocktail Party etch in memory of Jan Thran

**Billy Reinbeau:** Original communal drinking bucket from Heisey factory

**Russ Reopell:** 3407 Jamestown mug with 9027 Amherst Crest etch in memory of William R. Reopell, Amherst 1958

**Russ Reopell and Bryan Baker:** 4 center post turned into knife rest, 1189 Yeoman mayonnaise, 3408 Jamestown goblet with 835 Larkspur cut, 8003 Heisey Thistle tumbler

**Ted Sheets:** 357 Prison Stripe egg cup

**Dave Spahr:** Look-a-like Pavonia sherbet like 1567 Plantation

**Evelyn E. Tipton:** 2 Old Williamsburg candlestick, 7", Moongleam in memory of William H. Tipton

**Charlie Wade:** 1170 Pleat and Panel tumbler, unattributed cutting

**Jack and Maezene Walker:** 106 Inverted Saucer candlestick, Moongleam; 150 Banded Flute 4" chamberstick; 1184 Yeoman cream/sugar/lid, Flamingo; 7020 Grid puff box

**David and Sharon Warren:** 3312 Gayoso Russian coffee, all Moongleam

**Betty and Burl Whaley:** 4002 Aqua Caliente cocktail, Sahara with unattributed cutting in memory of Bernice M. Jones, mother of Burl

**Jean Will:** 359 sherbet, narrow optic; 536 handled soda, 4 ounce; 3331 Old Glory cordial with 413 Renaissance etch; 3404 Spanish champagne with 797 Killarney cut; 5041 Athena cocktail

### For the National Heisey Glass Museum:

**Dan Longo:** Wooden display cabinet 66" x 18" x 48" in contemporary style, glass shelves

### To Governor's Mansion Project – 507 Orchid Etch

Bryan Baker

Linda Kilburn

Sue and Dan Kilgore

Bob Rarey

Jack and Maezene Walker

Mildred Willey

### To the Benefit Auction:

Linda Bischoff

Marian L. Dalton

John A. Deppong

Joseph Harner

Heisey Collectors Club of Michigan

Linda Kilburn

Sue and Dan Kilgore

Chris Maskaleris

Bob Rarey

Dave Spahr

### To the Louise Ream Library:

**Amy Jo Jones:** Handbook of Early American Pressed Glass Patterns by Ruth Webb Lee and Victorian Glass Handbook by Ruth Webb Lee

**Dan Vogelmeyer:** 1901 Catalog Reprint, Fostoria Glass Company; All Crystal is Glass but ... , undated brochure of Fostoria Glass Company; Avon Bottle Collector's Encyclopedia (1983) by Bud Hastin; Catalog No. 93, Duncan and Miller Division, United States Glass Co., Tiffin, OH; Christmas Ornaments, Lights, and Decorations, Volume 1 by George Johnson; A Collection of Old Fostoria Patterns by Joan Collins; Collector's Encyclopedia of Depression Glass (6<sup>th</sup> Edition) by Gene Florence; Collector's Encyclopedia of Weller Pottery by Sharon and Bob Huxford; Fostoria Glass Company: Eastern Price List, January 1, 1982; Fostoria: The Crystal for America, Catalog 1982; Get Hooked on Collecting: A Welcome to the World of Keepsake Ornaments; A Guide to Pottery in Zanesville, Muskingum County and Southeast Ohio; Heavenly Fostoria Crystal, undated company brochure; History of Fostoria, Ohio Glass: 1887-

1920 by Melvin L. Murray; Official 1983 Price Guide to American Silver and Silver Plate; and Old-Fashioned Dolls and Toys by Better Homes and Gardens

#### For the Archives:

**Robert E. Johnson:** Ad proof and original photographs taken in 1974 for Florida Grapefruit Growers showing 150 Banded Flute 1 quart pitcher

**Ned and Sibyl Lavengood:** Saturday Evening Post, Nov 16, 1948 with ad for Goodall Blended-for-Performance Fabrics showing 4225 Cobel cocktail shaker

#### Donations for the Gift shop:

Judy and Dave Ahart  
Sandra Barker  
Kendal Bartlett  
Kay and Warren Chapman  
Suzanne Church  
Chuck Clark and Norval Heisey  
Tim Colwell  
Sara Connolly  
Pat Dixon  
Jerry Easterla and Jerry Laitinen  
Bari Fauss  
Mary Emma Foster  
Stephen Fritchle  
Earle and Elaine Hart  
Dennis Headrick: 120 copies of Catalog 81, Baskets  
Virginia and Odell Johnson  
Bob and Mary Kreimer  
Michael Krumme  
Douglas McDougal  
Dick and Virginia Marsh  
Jay Martin  
Douglas McDougal  
Mac and Georgia Otten  
Bob Rarey  
Russ Reopell and Bryan Baker  
Mrs. Roger Rydin  
Dick and Lee Schwan  
Bob and Rose Sirois  
Dick & Marilyn Smith  
Dave Spahr  
Dan Vogelmeier  
Jack and Maezene Walker  
Jean Will  
Wilma Windle  
Frances M. Woytalewicz

#### Items Put on Loan:

1 Georgian candlestick  
341 Old Williamsburg footed tumber  
1184 Yeoman plate, 8" with 9012 Victory etch  
1225 Plain Band master salt  
1404 Old Sandwich popcorn bowl  
1483 Stanhope mayonnaise with 605 Frosted etch, blue T handles  
1626 Satellite candleblocks, pr  
1626 Satellite vase, crimped

1626 Satellite bowl, 4", set of 4  
4052 National soda, 12 ounce with 9012 Victory etch  
6006 Hourglass tumbler, 10 ounces

#### Items Purchased with the Acquisition Fund

8 Vertical Bead and Panel electric shade  
9 Single Row and Slash electric shade  
40 salt and pepper, glass tops with unattributed cutting  
476 Hairpin 1 qt jug  
1186 Yeoman 2 handled preserve, 4 compartments, 6", unattributed cutting  
1590 Zodiac ashtray, 1952 Newark Sesquicentennial center  
Unknown pattern 8" footed compote, diamond foot/plain bowl, like 8037 Fluted Diamond ♦

## HCA MEMBERSHIP SURVEY RESULTS

### Bryan Baker

As promised, here are the results of the Membership Survey. In all, we received 284 responses or approximately 15% of the membership. As surveys go, the response was well above average – typically a 10% response is considered excellent. Thanks to all who responded! We will be using this information for planning future events, Newsletter articles, and the overall future of our organization. – more detailed information/actions from this survey will be addressed in future Newsletters; however, I wanted to get the preliminary numbers to you as soon as I could.

#### OF THE 284 RESPONDENTS:

How long have you been an HCA member?

a) Less than one year	3%
b) 1 – 5 years	9%
c) 6 – 10 years	12%
d) 11 – 20 years	28%
e) Over 20 years	48%

Type of membership:

a) Voting member	45%
b) Primary active member	42%
c) Additional member of household	13%

Your age:

a) Under 30	1%
b) 30 – 45	2%
c) 46 – 60	20%
d) 61 – 70	21%
e) Over 70	56%

Main reason for reading newsletter:	
a) Educational articles	60%
b) Ads	6%
c) Keep abreast of HCA events	34%
d) Study Club news	Less than 1%

When was the last time you attended a quarterly meeting of the membership?	
a) I most always attend	9%
b) 1 – 3 years ago	11%
c) 4 – 5 years ago	5%
d) Over 5 years ago	10%
e) Never	65%

Are you a member of a Study Club?	
a) Yes	40%
b) No	60%

Are you an active member of a Study Club?	
a) Yes	67%
b) No	33%

Last time you visited the National Heisey Glass Museum:	
a) Within the last year	29%
b) 1 – 3 years ago	20%
c) 4 – 5 years ago	11%
d) Over 5 years ago	26%
e) Never	14%

Where do you live?	
a) Under 50 miles from Newark, OH	14%
b) 50 – 200 miles from Newark, OH	9%
c) 201 – 500 miles from Newark, OH	21%
d) 501 – 1000 miles from Newark, OH	27%
e) Over 1000 miles from Newark, OH	29%

Is the next generation of your family interested in Heisey Glass (i.e. Children, Grandchildren, Nieces, Nephews)?	
a) Yes	46%
b) No	54%

Do you feel they will maintain/continue your collection (if applicable)?	
a) Yes	42%
b) No	58%

If two members of your household belong to HCA, are:	
a) Both equally interested in HCA	63%
b) One strongly interested and one only mildly interested	22%
c) One strongly interested and only has little interest	6%
d) Both mild interest	6%
e) Both little interest	3%

Where do you see yourself in 5 – 10 years?	
a) Still active in the membership and collecting	70%
b) Holding a collection, but not a member	8%
c) No longer a member and disbursing of collection	22%

Do you plan on attending an HCA event in 2007 (i.e. Convention, Percy and Vivian Moore Dinner Weekend)?	
a) Yes	39%
b) No	61%

Have you ever been a Study Club officer, or member of the Board of Directors?	
a) Yes	29%
b) No	71%



## HEISEY SELECT AUCTION - OCTOBER 6 Dave Spahr

Just a reminder to mark your calendar, if you haven't already, to plan on attending the Percy and Vivian Moore Memorial Dinner weekend October 5-6 and the Select Auction being held on October 6. The Select Auction will be held in the Multi-purpose Room in the lower level of the Museum. We plan on having a one-hour Preview beginning at 1:00 p.m. with the auction beginning at 2:00 p.m. We want to make sure we have sufficient time for the auction and for attendees to collect their purchases and have time to get ready for a wonderful dinner in the evening.

We have selected from our submitted lists of glass approximately 180 lots. We have not inspected the glass as of yet – the deadline for submission corresponded with the Newsletter deadline for this article! We will include a listing of the glass and other instructions, including absentee bid forms, in the September Newsletter. Hopefully, we will be able to highlight our special pieces for you at that time! Please come and plan on having a great time! See you then! ◆

# TREASURER'S REPORT- SECOND QUARTER 2007

Dave Spahr

You will find the 2007 Budget vs. Actual Report through June 30, 2007, on page 21 in this Newsletter. So far this year, thanks to having the Benefit Auction and the Convention in the first half of the year, our revenues have exceeded quarterly projections while expenses have been slightly under projected levels.

Our 2007 revenues are 80.60% of our annual estimates with one half (50%) of our year complete. Gift Shop receipts are higher than anticipated so far this year. Our Benefit Auction profits were slightly less than budgeted while our Convention profit is more than anticipated but we still have some outstanding bills. Another positive trend is our admission fees are ahead of projections - we are experiencing an upturn in visitors at the Museum. Our members have been generous as reflected by our cash donations. Please note our special income revenues are down - we need moneymaking projects to supplement our budget and to fund Museum operations. We have only a few planned and we need your ideas. Contact any Board member. Early in the year, we transferred \$15,000 to help our early cash flow and now have placed it in an interest bearing money market account until needed in the next quarter.

Our expenses, with half of our year completed are at 48.87% of our annual budget. Most expenditures are consistent with estimates. Our repair and maintenance costs are above estimates since we have painted the Museum inside and out and repaired the roof over the W. Church St. entry to the Museum. Our computer expenses are over budget since we purchased a much needed new financial software package in the first quarter. I do need to report that members generously donated funds to pay for the painting and the financial software. Our personnel costs are less than anticipated since we have had some part-time vacancies. Costs of goods sold are higher than anticipated since we have increased sales in the Gift Shop. Nothing else unusual has occurred and we are paying necessary bills and watching every dollar spent.

On a positive note, our overall financial picture has improved slightly over the past year - we have

closely watched expenses and maintained personnel levels. The Museum has never looked better and the reorganization of the collection has been well received. We are experiencing increased visitors. So far, unfortunately, the overall revenue and expense picture hasn't changed. We need increased revenues to sustain our operating budget.

The HCA Endowment Fund balance has grown to \$2,302,826.43 as of June 30, 2007. At the end of last year we had \$1,971,055.76 and have placed \$24,419.60 in the fund during the first six months. As mentioned earlier, we have drawn down \$15,000 from last year's earned income less fees for 2007 Museum operations. We have another \$29,558.56 available to drawn down, if needed. Unfortunately, use of prior years earned income is necessary to keep the Museum open and functioning.

HCA began the year with cash assets of \$43,329.63 in five separate accounts with \$3,105.00 of that amount for the Endowment Fund. Our current cash balances in the five accounts are \$74,425.83 with \$9,848.50 to be placed in the Endowment Fund. The next six months, we will have negative cash flow that will severely deplete these funds. This process happens annually for HCA with its cyclical revenues.

If you have any questions about this report, I will be happy to answer them and listen to your ideas. If you have any fund-raising ideas, please contact any Board member or me. You can reach me by telephone (937-372-7166) or e-mail me at [masdgs@aol.com](mailto:masdgs@aol.com). ♦

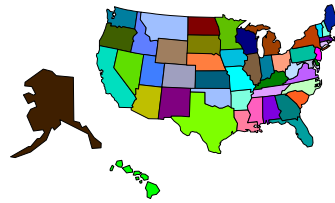
## NATIONAL HEISEY GLASS MUSEUM ENDOWMENT FUND – JUNE 30, 2007

MARKET VALUE AS OF DEC 31, 2006	\$1,971,055.76
MARKET VALUE AS OF MAR 31, 2007	\$2,117,718.42
MARKET VALUE AS OF JUNE 30, 2007	\$2,302,826.43
HCA 2007 ENDOWMENT RECEIPTS	\$31,163.10
2007 DEPOSITS FROM 2006 RECEIPTS	3,105.00
2007 DEPOSITS FROM 2007 RECEIPTS	21,314.60
TOTAL 2007 ENDOWMENT DEPOSITS	<u>\$24,419.60</u>
AMOUNT TO BE DEP FROM 2007 REC	<u>\$9,848.50</u>
2006 INCOME LESS FEES	\$44,558.56
INCOME DRAWN DOWN FOR OPERATIONS IN 2007	\$15,000.00

## INCOME STATEMENT - JUNE 30, 2007

ITEM	TOTAL BUDGET	YTD BUDGET AMT	YTD ACTUAL	VAR vs YTD BUDGET AMT	% YTD vs TOTAL BUDGET
<b>REVENUES</b>					
MEMBERSHIP	42,500	21,250	23,365	2,115	54.98%
NEWSLETTER ADS	3,400	1,700	1,455	-245	42.79%
CASH DONATIONS	34,450	17,225	25,559	8,334	74.19%
BD MEETING TELEPHONE REIMB	100	50	0	-50	0.00%
ACQUISITION DONATIONS	500	250	0	-250	0.00%
SALES	32,000	16,000	41,157	25,157	128.62%
SHIPPING/HANDLING CHARGES	2,500	1,250	1,313	63	52.52%
ADMISSIONS	2,850	1,425	1,994	569	69.96%
SPECIAL PROJ / ROYALTIES NET	10,150	5,075	87	-4,988	0.86%
INTEREST INCOME	250	125	152	27	60.80%
ARCHIVES	100	50	0	-50	0.00%
AUCTION NET	16,000	16,000	15,558	-442	97.24%
SELECT AUCTION NET	3,750	0	0	0	0.00%
CONVENTION NET	8,450	8,450	16,392	7,942	193.99%
P & V MOORE DINNER NET	600	0	0	0	0.00%
<b>TOTAL INCOME</b>	<b>157,600</b>	<b>88,850</b>	<b>127,032</b>	<b>38,182</b>	<b>80.60%</b>
RESERVE TRANSFER	46,800	23,400	15,000	-8,400	32.05%
<b>TOTAL AVAILABLE</b>	<b>204,400</b>	<b>112,250</b>	<b>142,032</b>	<b>142,032</b>	<b>69.49%</b>
<b>EXPENDITURES</b>					
ACCOUNTING EXPENSE	3,600	1,800	625	-1,175	17.36%
OFFICE SUPPLIES	8,000	4,000	3,068	-932	38.35%
REPAIRS / MAINTENANCE	9,500	4,750	13,845	9,095	145.74%
GROUNDS MAINT.	2,800	1,400	1,000	-400	35.71%
LEGAL FEES/RETAINERS	500	250	668	418	133.60%
MISCELLANEOUS	1,000	500	507	7	50.70%
AUCTION FIRM LICENSE/BOND	375	375	350	-25	93.33%
BD MEETING TELEPHONE COSTS	100	50	0	-50	0.00%
UTILITIES	20,550	10,275	10,186	-89	49.57%
MUSEUM EXP./EQUIP REPL.	13,000	6,500	241	-6,259	1.85%
MEMBERSHIPS / SUBSCRIPTIONS	1,100	550	508	-42	46.18%
INSURANCE	12,325	6,163	5,608	-555	45.50%
NEWSLETTER PRINT & POSTAGE	14,625	7,313	6,221	-1,092	42.54%
SHIPPING	2,000	1,000	2,131	1,131	106.55%
COST OF GOODS SOLD	9,600	4,800	8,934	4,134	93.06%
BANK CHARGES	1,900	950	911	-39	47.95%
ACQUISITIONS	500	250	527	277	105.40%
ADVERTISING	3,500	1,750	1,391	-359	39.74%
COMPUTER MAINT	500	250	1,710	1,460	342.00%
EMP/VOL RELATIONS	300	150	210	60	70.00%
SALARIES	76,751	38,376	31,256	-7,120	40.72%
EMP HEALTH INSURANCE	8,775	4,388	4,243	-145	48.35%
PAYROLL TAXES	5,871	2,936	2,021	-915	34.42%
WORKER'S COMP	2,063	1,032	1,201	170	58.22%
<b>TOTAL EXPENDITURES</b>	<b>199,235</b>	<b>99,805</b>	<b>97,362</b>	<b>-2,443</b>	<b>48.87%</b>
LESS COST OF GOODS SOLD	9,600	4,800	8,934	4,134	93.06%
PLUS INVENTORY PURCHASES	14,765	7,383	9,032	1,650	61.17%
<b>FUNDS REQUIRED</b>	<b>204,400</b>	<b>102,388</b>	<b>97,460</b>	<b>-4,928</b>	<b>47.68%</b>

# Study Club Directory



**Interested in joining a study club?** You will have the opportunity to meet fellow collectors and HCA members and learn more about your favorite glassware. If your club is not listed or you need to make corrections to your listing, please contact the Museum.

STUDY CLUB	MEET WHEN?	WHERE?	Email/Web Site	CONTACT
#4 Central Illinois Heisey Collectors Club	Four times a year	Members' homes or restaurants		Joyce Deany (815) 432-4310
#5 Bay State Heisey Collectors Club	2 <sup>nd</sup> Tuesday of each month except July, Aug., and Dec.	Follen Community Church	spescatore@houghton.com	Stephen Pescatore (978) 256-5418
#7 Dayton Area Heisey Collectors Club	3 <sup>rd</sup> Tues. of the month Sept. to May, 6:30 p.m.	Huber Heights Library	LH937@aol.com	Joe Harner (937) 372-0852
#8 Heisey Heritage Society <i>NJ, Eastern PA and DE areas</i>	Bi-monthly	Members' homes	jpwelgan@att.net	Virginia Welgan (302) 736-6848
#13 Heisey Club of California	4 <sup>th</sup> Sunday every month, 12:30	Members' homes	<a href="http://herbet@sbcglobal.net">herbet@sbcglobal.net</a> <a href="http://www.heiseyclubca.org">www.heiseyclubca.org</a>	Norval Heisey (818)-349-0945
#14 Northern Illinois Heisey Club	Four times a year	Members' homes	niheisey@comcast.net	Jeff Morrow (630) 833-4644
#15 Heisey Collectors Club of Michigan	Every six weeks, August to May	Members' homes	kilgoredesigns@att.net	Sue E. Kilgore (269)-345-3990
#16 Heisey Collectors of Texas	2 <sup>nd</sup> Sat. of every other month, 1 p.m.	Members' homes	heiseytoo@att.net	Greg Freeman (817)-545-5889
#19 Heisey Collectors of the Rochester Area	10 meetings per year: Sunday, 2:30 p.m.	Members' homes		Susan Shafer (585)396-7310
#20 Buckeye Heisey Collectors Club <i>Newark, OH area</i>	September to May, 4 <sup>th</sup> Monday	Members' homes or the Museum	bismarck4867@ yahoo.com	Karen Colwell (740) 323-3769
#22 Northwest Heisey Collectors	First Saturday of the month	Members' homes	bahama50@hotmail.com	Deborah de Jong (425) 868-0457
#25 Heisey 76'ers <i>Columbus, OH area</i>	Once a month, September to May	Members' homes	ldburg48@aol.com	Colleen Burgess (614) 882-1884
#31 Nassau Long Island Heisey Club	Generally every other month	Members' homes		Babs Kent (516) 228-8274
#32 Dairyland Heisey Club	Once every two months	Members' homes		Ray K. Courtneage (414) 962-9747
#33 Golden Gate Heisey Collectors Club <i>Northern California</i>	Quarterly	Members' homes		Russ Nicholas (707) 762-2494
#36 Heisey Club of Southern MA	April, June, September, December			Maria Martell (508) 833-0633
#38 North Carolina Heisey Study Group	6 meetings per year: Jan.; March, May, July, Sept., Nov.	Replacements Ltd Greensboro, NC	<a href="mailto:Nchsg@yahoo.com">Nchsg@yahoo.com</a> <a href="http://www.northcarolinaheiseystudygroup.org">www.northcarolinaheiseystudygroup.org</a>	Karen Taylo (252) 637-9985
#39 Florida Heisey Collectors Club	4 times per year: January – February-March-April	Westchester Country Club Boyton Beach, Fl	Shirley400@aol.com	Everett Dunbar (772)-337-1558
#42 Gulf Coast Heisey Club of Florida	Nov., Jan. and March; 2 <sup>nd</sup> Thursday 11:00 am	Members' homes		Jack Grenzenach (727)-391-5784
#43 Tri-State Heisey Study Club <i>OH, IN, MI</i>	1 <sup>st</sup> Sat. every 3 <sup>rd</sup> month	Members' homes	Maxwellm@cktech.biz	Mike Maxwell (260) 925-3484
#44 National Capital Heisey Study Club	Monthly: September - May	MD and VA Libraries	pres@capitalheiseyclub.org <a href="http://www.capitalheiseyclub.org">www.capitalheiseyclub.org</a>	Ted Sheets (703)-346-5000
#45 Hoosier Heisey Club	Four times a year	Warren Library, Indianapolis, IN		J. David Litsey, (317) 872-7800
#47 Oregon Trail Heisey Collectors Club	Odd number months, 2 <sup>nd</sup> Saturday, 2 p.m.	Members' homes	<a href="mailto:lariat_roundup@hotmail.com">lariat_roundup@hotmail.com</a>	Dennis Headrick (503) 538-9352
#48 Dixieland Heisey Study Club	Odd number months, 2 <sup>nd</sup> Saturday night	Members' homes	<a href="http://www.dixielandheisey.org">www.dixielandheisey.org</a>	Craig German (770) 967-8733
#49 Great Plains Heisey Club	March, May, July, September, and November	Members' homes	cameron_mg@mchsi.com <a href="http://www.greatplainsheiseyclub.org">www.greatplainsheiseyclub.org</a>	Mary Cameron (515) 292-3743
#50 Northwoods Heisey Club of Minnesota	2 <sup>nd</sup> Sat., March, May, September and November	Members' homes	wheise@mn.rr.com	Bob Heise (952)-831-9335
#51 Heisey Club of Northeast Florida	2 <sup>nd</sup> Tuesday	Members' homes	Clasyglas2@aol.com	Barb Bartlett (904) 280-0450

# "DIAMOND H"

Charm,  
Pendant,  
OR  
Lapel Pin



- HEISEY "DIAMOND H" LOGO CHARM, PENDANT, or LAPEL PIN
- SOLID STERLING SILVER; 4.5 gm, SIZE 1.12" h x .5" w
- CUSTOM CAST and INDIVIDUALLY HAND-CRAFTED
- RAISED "DIAMOND H" TRADEMARK on BEADBLASTED BACKGROUND
- CHARM SAMPLE on display in HCA MUSEUM GIFT SHOP
- **ORDER BEFORE September 1, 2007**

**ORDER YOURS NOW !**

## HEISEY STERLING SILVER LOGO JEWELRY ORDER FORM

*(Please print clearly)*

NAME: \_\_\_\_\_

ADDRESS: \_\_\_\_\_

CITY: \_\_\_\_\_ STATE: \_\_\_\_\_ ZIP: \_\_\_\_\_

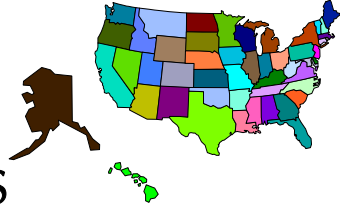
PHONE: \_\_\_\_\_

Check or MC/VISA \_\_\_\_\_ exp \_\_\_\_\_ OH Tax ID# \_\_\_\_\_

Check one:  I will pick up at the Museum (No S & H or Insurance charges apply)  
 Please ship to me

	<u>QTY</u>	<u>COST EACH</u>	<u>SUB TOTALS</u>
CHARM (w/jump ring)	_____	@ 65.00 ea	= _____
PENDANT (w/pendant bale)	_____	@ 65.00 ea	= _____
LAPEL PIN	_____	@ 65.00 ea	= _____
TAX (OH only)	_____	@ 4.55 ea	= _____
S & H and Insurance	_____	@ 3.50 ea	= _____

**HEISEY STERLING SILVER LOGO TOTAL:** = \_\_\_\_\_



## CLUB NOTES

### Heisey Collectors Club of Michigan *Sue Kilgore*

We met at the home of Dan & Sue Kilgore in Kalamazoo on May 19 for everyone's first "picnic" of the year, outside with hamburgers and hot dogs with all the fixing. We had a study of "red, white and blue" items. It is fun to see what people come up with for our studies. We also had our first silent auction of the year and raised \$275.

Most of the meeting dealt with plans for the upcoming Heisey Convention and our plans for the Blind Auction. Everything went very smoothly at the auction and we raised just over \$5,800 for the Museum. All of our club members put a lot of effort into this event and I greatly appreciate them and their efforts.

All of our club members who were able to attend the Convention had a wonderful time in Heiseyland. The Museum looks wonderful, the First Lady of Ohio was very nice to everyone, the show was as beautiful as always, the town square was a lot of fun (we found several items there) and the weather was really great.

Our next meeting will be at Jack & Marge Deppongs home on Houghton Lake on the 12th of August. We will be full steam ahead for the Moore weekend in 2008.

I want to thank everyone who donated glass for the Blind Auction and everyone who bought a bid. It was a lot of fun and if you weren't there, ask someone who was. ♦

### Heisey Collectors of Texas *Erma Hulslander*

At our May meeting, we had an interesting report from Greg & Candy who attended the Gaithersburg show in March. Peggy has heard stories for many years about all those great sleepers!! Well, it finally happened, Peggy bought some 5003 Crystolite goblets for \$1.50 each, and marked! Hurray for Peggy!!

Some more of our "Show & Tell" was: 305 Punt & Diamond Point gas shade; 1488 Kohinoor and 1496 Mahabar ashtrays in Zircon, 335 Prince of Wales Plumes tumbler; 3381 Creole tall goblet in Alexandrite; 68  
24

Hepplewhite 9" candlestick; 1191 Lobe spice tray in Flamingo, and on and on.



We had a 1405 Ipswich candy jar, which contained one very important number. The perfect number "7" was drawn by Candy and she received the Dunbar favor vase in Cobalt. Other attendees picked a wrapped, Dunbar favor vase, from the large 465 Recessed Panel basket! Then, the "REAL" Heisey favor vases were shown and discussed.

After reading an article in the Heisey News, we are encouraging all of our Study Club members, and HCA everywhere to **contribute five dollars** per person, per month, to the HCA Operating Fund. This would be a great help to HCA, and will help protect each individual member's investment in Heisey glass.

A big "Thank You" to Charlie Baird! Not only for donating the pecans for HCT, but also carrying them to the Hospitality Room at the Convention in June. ♦

### Heisey Club of California *Bill Brakemeyer*

The Heisey Club of California has had a successful start to the year 2007 for its members throughout southern California. Monthly club meetings in various members' homes have featured educational programs on mustards in January, handled mugs in February, the color Flamingo in March, the color Sahara in April, 150 Banded Flute in May, favor vases in June, and the annual fund-raiser for HCA with a new raffle format.

We lost long-time member Walter Brock and made a donation to HCA in his memory. Our website ([www.heiseyclubca.org](http://www.heiseyclubca.org)) continues to draw compliments, and we provide our monthly newsletter in color to members by e-mail, as well as the black ink version by postal mail.

HCC officers re-elected for the 2007 year include president Bill Brakemeyer, vice president Carolyn Felger,

secretary Betty Wanser, treasurer Norval Heisey, program chair Gordon Clark, publications chair Martha McGill, website chair Herb Wanser, and friendship chair Ann Leffingwell.

HCC welcomes guests who have interest in learning about Heisey glass, its history and manufacture in the Ohio valley, and distribution throughout the United States and beyond. ♦

**Great Plains Heisey Club**  
*Kathy Files*

Ahh, hot ole summertime in the Midwest right after the 4<sup>th</sup> of July! Nineteen members and two guests of the Great Plains Heisey Club found their way to the home of Gregg and Mary Cameron in Ames, IA, on 7/7/07. It was our lucky day as Chef Matt Wenger had a luncheon treat awaiting the hungry and thirsty travelers who had come from four states. Building a make-your-own pizza on pita bread using numerous fresh ingredients was the first step. Next, you proceeded outside where host Gregg Cameron had the hot job of cooking the custom creations on his grill. A cold mixed salad was a nice complement. After the meeting, hostess Mary Cameron served her patriotic red (raspberry), white (whipped cream), and blue (blueberry) pie with a creamy lemon filling.

Once appetites were satisfied, President Bucky Will called the meeting to order. Tom Files reported on the treasury status and summarized the donations made by the GPHC to HCA at the Convention. A basket was passed among members which raised money to help replenish the Club treasury.

Jean Will (an HCA Board Member) gave a report on events at the 2007 Convention. Seventeen members of the GPHC attended the Convention and stories of good times and good finds were exchanged.

The program on Heisey reference books was prepared and presented by Mary Cameron. Mary's thorough handout listed 63 Heisey reference books and she had them all arrayed on a large table. No one had any idea there were that many separate books, catalogs, and documents containing reference information on Heisey. Great job, Mary.

Show and Tell brought out the usual plethora of fine Heisey pieces – especially since several members had just returned from Convention buying opportunities. Items included: 1401 Empress individual nut dish; 5040 Lariat oyster cocktail; 1469 Ridgeleigh large square ashtray with cigarette holder insert; 353 Medium Flat Panel lavender jar; 341 Puritan large marmalade jar; 1 Rooster; 500 Octagon variety tray with 939 Festoon Wreath cutting; 1252 Twist cup & saucer, luncheon

goblet, and muffin plate all in Moongleam; 1469 Ridgeleigh 9" flared vase; 411 Tudor bar glass; 1255 Pineapple and Fan salt shaker; 331 Colonial molasses; 25 Puff jar (purchased for \$.50 at a garage sale); 516 Fairacre cologne in Flamingo; 335 Prince of Wales Plumes toothpick, 479 Petal sugar with cover; unknown number small jug with 964 Maryland cutting; 5083 El Rancho cocktail and goblet; and the June 2007 edition of Better Homes and Gardens magazine showing Heisey on two pages.

The next meetings will be Sept. 15 in Overland Park, KS and Nov. 11 in Urbandale, IA. Guests are always welcome – contact info is in the Heisey News Study Club Directory. We offer a money back guarantee on learning something about Heisey and having a good time. ♦

**Northwoods Heisey Club of Minnesota**  
*Ann M. Moll*

Fourteen members met at the home of Bob and Bev Heise for our May 19 meeting. It was a gorgeous spring day which allowed us to enjoy the event on their porch, along with views of assorted birds and a pair of mallard ducks.

New business began with the suggestion the group contribute a piece of Heisey for the Percy and Vivian Moore Memorial Dinner's HCA Select Auction, which is on October 6, 2007. Odell and Virginia Johnson decided to donate a 1469 Ridgeleigh cocktail shaker, contributing a personal donation, with the club contributing the remaining portion. A final suggestion was made to contribute \$50 for the Hospitality Room at the June Convention and was approved.

Our fund-raiser began with a raffle of a 1510 Square on Round centerpiece bowl, won by Mollie Campbell. Bob Heise was the enthusiastic auctioneer. The following items were available: 1565 Leaf candlestick, 1503 Crystolite spider web nappy, 1469 Ridgeleigh star relish, 1252 Twist Sahara double oval relish, 1401 Empress plates with 449 Pompeii etch, 1428 Warwick horn of plenty, 1252 Twist bon bon, 1540 Lariat plate, 1495 Fern candlesticks, 4225 Cobel cocktail shaker with Rooster Head stopper and gold bale, 1519 Waverly three piece mayonnaise set etched 507 Orchid, 1540 Lariat oval floral bowl, as well as other items. We were pleased to send \$1,255 to the HCA Endowment and Operating Funds. This amount was garnered by the raffle, auction, refreshment profit, along with a generous donation by Kay and Warren Chapman, members not in attendance.

Bev Heise provided a variety of items to satisfy our palettes – cucumber sandwiches, an artichoke spread, plus angel food cake topped with strawberries, all served on a variety of Heisey collectibles. ♦

### Advertising Guidelines:

Advertising: Ads may be mailed to: HCA Advertising, 169 W. Church St., Newark, OH 43055; faxed to (740) 345-9638; or e-mailed to [curator@HeiseyMuseum.org](mailto:curator@HeiseyMuseum.org). Whenever possible, please e-mail your ad. Include your MasterCard or VISA number and expiration date for billing purposes, or send a check. All ads must be prepaid. When mailed or faxed, ads should be typed or printed on white paper with dark ink. Please double space. Ads that are entered in a vertical column format may contain a maximum of 65 characters per line, including spaces & punctuation.

Classified: 20 cents per word (members), 30 cents per word (non-members), \$1.5 min., 1/8 page limit. Personal ads 1/8 page limit. Abbreviations & initials count as words.

Display Ads:	member	non member
1/8 page (12 lines)	\$ 20	\$ 30
¼ page (25 lines)	\$ 40	\$ 60
½ page (60 lines, horizontal or vertical)	\$ 80	\$ 120
Full page (120 lines)	\$160	\$240

A charge of \$1.60 will be added for each additional line. Camera ready ads must follow specifications. Ads that do not correspond to the following measurements will be sized.

#### Camera Ready Ad Specifications:

- 1/8 page: 2¼" high by 3½" wide
- ¼ page: 4½" high by 3½" wide
- ½ page: 4½" high by 7½" wide or 9" high by 3½" wide
- Full page: 9" high by 7½" wide

Camera ready ads may be resized because of space concerns. Ad copy must be received by the first of the month prior to publication. Reproductions (i.e. Heisey by Imperial) must be indicated. Heisey News accepts no further liability. In the event of a typographical error, the incorrect portion of the ad will be run in the following issue, but HEISEY NEWS assumes no further liability. ♦

**Abbreviations:** DF = Dolphin Foot NO = Narrow Optic  
DO = Diamond Optic SO = Spiral & Saturn Optic  
MO = Medium Optic WO = Wide Optic

### Classified Ads

## REAL HEISEY IN THE GIFT SHOP

All crystal and all prices are each unless noted.

Supply changes daily. Please contact the Gift Shop before placing an order.

Item	Price
338 Wafer Stem goblet, DO (3 each)	\$ 20
343 Sunburst butter lid only H	25
350 Pinwheel and Fan punch cup	10
393 Narrow Flute banana split, H (2 each)	20
393 Narrow Flute 10" oval cond tray, 4 rings, H	40
411 Tudor jug lid H	12
411 Tudor plate, 5 ½" Hawthorne, H	15
413 Tudor champagne H (4 each)	10
1184 Yeoman cream soup/underplate Flamingo H	15
1225 Ridge and Star plate, 6" Flamingo H (6 each)	5
1252 Twist cup, Moongleam H	10
1519 Waverly cup H	10
5067 Plantation champagne (2 each)	20

♦

# Find the Best of Heisey Glass...

...with popular patterns like Orchid, Heisey Rose, Minuet, and hundreds more. We also carry other fine crystal and depression glass from Cambridge, Fostoria, Imperial, Duncan & Miller, and more. The world's largest supplier of old and new china, crystal, flatware and collectibles, Replacements, Ltd. carries over 11 million pieces in inventory in over 250,000 patterns.

If you're looking to add to your collection, or if you're looking to sell — call us toll-free. We're always looking for more.



**1-800-REPLACE (1-800-737-5223)**

♦ *Paid Ad*

## FRANKLY RHYMING

Frank Husted

As part of a fund-raising effort, Dr. Husted has agreed to create limericks, like the one below, for HCA members based on the pattern(s) of their choice. A donation to HCA would be appreciated for each limerick created. If you would like to learn more about this fund-raising project, you may contact Dr. Frank Husted by phone at (610) 469-1243 or via e-mail to [frankly.me@comcast.net](mailto:frankly.me@comcast.net).

### GRACEFUL/TYROLEAN

Stem Graceful, and stem Tyrolean  
Are similar [so it would seem]  
The difference, quite droll,  
Is the shape of the bowl  
With two pattern numbers between.

♦

# Dealer Directory

Maximum 6 lines/12 months/\$35 MEMBERS ONLY

Contact the Editor to place your ad!



<p><b>KIM &amp; PAM CARLISLE</b> SHOWS &amp; MAILORDERS ONLY 28220 Lamong Rd. Dept. H Sheridan, IN 46069  (317) 758- 5767      <a href="mailto:kcarlisl@worldnet.att.net">kcarlisl@worldnet.att.net</a></p>	<p><b>SHIRLEY EUGENIA DUNBAR</b> Heisey a Specialty—Mail Order, Shows, Appraisals EMAIL: <a href="mailto:shirley400@aol.com">shirley400@aol.com</a> PO Box 8344, Port St. Lucie, FL 34952 Oct-May (772) 337-1558 PO Box 222, Naples, ME 04055 May-Oct (207) 647-5652</p>	<p><b>SUM OF LIFE</b> Elaine &amp; Frank Husted: 610-469-1243 147 Barton Dr., Spring City, PA 19475 Traveling through eastern PA Call, stop in, be a buyer or a browser!! E-mail: <a href="mailto:frankly.me@comcast.net">frankly.me@comcast.net</a></p>
<p><b>ALL HEISEY AUCTION</b> Consignments Welcome Apple Tree Auction Center 1616 W. Church, Newark, OH 43055 (740) 344-4282</p>	<p><b>MOUNDBUILDERS SECOND GENERATION</b> Barbara and Richard Bartlett Heisey Exclusively! 1-904-280-0450 PO Box 1931, Ponte Vedra Beach, FL 32082 Toll Free 1-888-434-7397(HEISEYS) EMAIL: CLASYGLAS2 @AOL.COM</p>	<p><b>EAGLES REST ANTIQUES</b> Buying Heisey, China &amp; Pottery Carl and Mary Evans 62 Fieldpoint Rd., Heath, OH 43056 (740) 522-2035</p>
<p><b>PAULA &amp; JEFF MORROW</b>  Elegant Glassware and American Dinnerware 126 Clinton Avenue Elmhurst, IL 60126 <b>(630) 833-4644</b>      <a href="mailto:mor-fab@comcast.net">mor-fab@comcast.net</a></p>	<p><b>H &amp; R DIAMOND H</b>  Helen &amp; Bob Rarey 1450 White Ash Dr. Columbus, OH 43204 (614) 279-0390 after 5:30</p>	<p><b>The American Bell Association</b>  P.O. Box 19443 Indianapolis, IN 46219-0443 <a href="http://www.americanbell.org">www.americanbell.org</a></p>
<p><b>REALMS IN GLASS</b>  Roy Eggert Heisey Custom Stained Glass 12009 Fingerboard Rd, Monrovia, MD 21770 301-865-5196      <a href="mailto:roy54@hughes.net">roy54@hughes.net</a></p>	<p><b>PIECE BY PIECE ANTIQUES</b> Buy &amp; Sell Specializing in Heisey Glassware Bryan K. Baker Fairfax Station, VA 22039      Newark, OH 43055 (703) 250-6117      <a href="mailto:piecebypiece@verizon.net">piecebypiece@verizon.net</a></p>	<p><b>PATTON HOUSE ANTIQUES</b> Specializing in Glass*Heisey*Cambridge*Fostoria*Duncan* Factory Antique Mall, Verona, VA off I-81 Exit 227 Antiquers Mall, Booth 81, Rt. 29 N., Charlottesville, VA The Daniels, Box 547, Louisa, VA 23093 (540) 967-1181</p>
<p><b>C&amp;J ANTIQUES</b> Cole &amp; Jean Miesner Box 45, 72 Whig St. Newark Valley, NY 13811 (607) 642-9905</p>	<p><b>SIBYLS OF WILMINGTON</b> Sibyl &amp; Ned Lavengood Newcastle Antique Center 606 Castle St. Wilmington, NC (910) 763-7157 or <a href="mailto:Sibylsantiques@bellsouth.net">Sibylsantiques@bellsouth.net</a></p>	<p><b>FRAN'S FANCY FINDS</b> Fran &amp; Jack Grenzebach 10534 Valencia Rd., Seminole, FL 33772-7511 (727) 391-5184 SHOWS      MAIL ORDERS</p>
<p><b>CRYSTAL LADY</b> Bill, Joann &amp; Marcie Hagerty Specializing in elegant depression glassware 1817 Vinton St., Omaha, NE 68108 Shop (402) 341-0643 or Home (402) 391-6730 Email: <a href="mailto:ejhagerty@aol.com">ejhagerty@aol.com</a> website:<a href="http://www.crystalladyantiques.com">www.crystalladyantiques.com</a></p>	<p><b>PASTICHE ANTIQUES</b> at Preston's Antique Gaslight Village US 12, Allen, MI 49227 Elegant Glass and Other Fine Antiques <a href="mailto:pasticheantiques@gmail.com">pasticheantiques@gmail.com</a></p>	<p><b>WILLEY'S ANTIQUES &amp; MUSEUM</b> Specializing in Heisey 11110 Cannon Rd., Frazeeburg, OH 43822 16 miles east of Newark, OH (740) 828-2557</p>
<p><b>CHARLES &amp; MILDRED FISHER</b> Heisey animals and Heisey By Imperial animals 991 Idlewilde, Newark, OH 43055 <a href="mailto:c.f.fisher@roadrunner.com">c.f.fisher@roadrunner.com</a>      (740) 522-5398</p>	<p><b>MARSH'S ANTIQUES</b> Dick and Virginia Marsh 4532 Newton Road Newark, OH 43055 <a href="mailto:swamp@alink.com">swamp@alink.com</a>      (740) 366-5608</p>	<p><b>MOONGLEAM ANTIQUES</b> Heisey Glassware &amp; American Art Pottery John Woytowicz and Peter Rivard 70 Pleasant St., Gardiner, ME 04345 (207) 582-9048 E-mail: <a href="mailto:jmwpwr@aol.com">jmwpwr@aol.com</a></p>
<p><b>ROBERT M. LOCH</b> Voting Member HCA and NWHC Pacific Interstate Glassware Co. PO BOX 469 Custer, WA 98240 360-366-3166</p>	<p><b>CRESTONE MANOR UNIQUES</b>  Harold &amp; Loleta Hammontree 3317 Crestone Circle, Chattanooga, TN 37411 423-629-1274      <a href="mailto:hammonl@bellsouth.net">hammonl@bellsouth.net</a> Heisey Only</p>	<p><b>APPLE VALLEY COLLECTIBLES</b> Richard Garnett &amp; Marilyn Faxon— Owners Shows/ Mail Order (845) 691-6308 Email: <a href="mailto:diamondH95@aol.com">diamondH95@aol.com</a></p>
<p>Your Ad Could Be Here</p>	<p>Your Ad Could Be Here</p>	<p><b>WATERSEdge ANTIQUES</b> Norene &amp; Don Walzer Shows &amp; Mail Order 25089 Riverwalk Drive Leesburg, FL 34748 (352) 314-8975      <a href="mailto:dnnwalzer@embarqmail.com">dnnwalzer@embarqmail.com</a></p>
<p><b>JERRYS' ANTIQUES</b> Shows Only Glassware and Other Fine Collectables PO Box 4485, Davenport, IA 52808 563-340-1871      <a href="mailto:jerrysantiques@mchsi.com">jerrysantiques@mchsi.com</a></p>	<p><b>ONCE AND FUTURE ANTIQUES</b>  Susan &amp; Stephen Pescatore 9 Donna Rd. Chelmsford, MA 01824 (978) 256-5418 Heisey and Elegant Glass</p>	<p><b>BOB &amp; MARY KREIMER</b> Specializing in Heisey Glass 7044 SW 116<sup>th</sup> Loop, Ocala, FL 34476 (352) 873-8306      email: <a href="mailto:rkreimer@earthlink.net">rkreimer@earthlink.net</a>. Shows and Mail Orders Only</p>
<p><b>J &amp; L TREASURES</b> Specializing in Heisey, Cambridge, Fostoria, Tiffin, Morgantown, etc Linda Kilburn, PO Box 1257, Burlington, CT 860-673-4088      <a href="mailto:jltreasures@comcast.net">jltreasures@comcast.net</a></p>	<p>Your Ad Could Be Here</p>	<p><b>YELLOW BRICK ROAD ANTIQUES</b> Jean Will Leavenworth, KS 66048 (913) 682-4831 Specializing in Heisey and Elegant Glassware Shows and Estate Sales</p>

## When Renewing Your Membership

Help ensure the future of your Museum. When you renew your membership at one of the levels below, any amount beyond the regular Associate dues goes into the Endowment Fund.

<i>Individual Contributing, one person in household</i>	<i>\$50</i>
<i>Joint Contributing, two people in one household</i>	<i>\$60</i>
<i>Family Contributing, parents and children under 18</i>	<i>\$75</i>
<i>Patron</i>	<i>\$125</i>
<i>Sponsor</i>	<i>\$250</i>
<i>Benefactor</i>	<i>\$500</i>

Visit The  
National  
Heisey  
Glass  
Museum



Come at your leisure to enjoy more than 4,800 pieces of glassware produced by A.H. Heisey and Company from 1896-1957. Hundreds of patterns are featured in all production colors. Rare and experimental items are included as well.

Facilities are air-conditioned and handicapped accessible. Hours are 10:00 a.m. to 4:00 p.m. Tuesday through Saturday, 1:00 to 4:00 p.m. Sunday. Members are admitted free, regular admission is \$4. Office hours are 8:00 a.m. to 4:30 p.m. weekdays.

**Membership Renewal Notice:** Check the date above your name and address on the mailing label. This is your expiration date. If it reads 8-10-07 make sure your dues are paid soon in order to receive next month's issue of *Heisey News*.

Contact the HCA Administrative Office at (740) 345-2932 for more information. The Endowment Committee wishes to thank those who have become Endowment Members and all of the individuals and study clubs that have so generously supported the HCA Endowment Fund. All members who have supported the fund are recognized each year in the February issue of the Newsletter. Your support will make the Museum self-sustaining in the years to come. Thank You all! ♦

### Shipping & Handling Fees for Outside US

Additional shipping charges are required for members living outside the U.S. Current rates are Canada \$22 (Effective July 1, 2007); for other countries contact the Museum. Rates are subject to change at any time due to rate changes made by the US Postal Service. To verify current rates, call (740) 345-2932 or E-mail [business@HeiseyMuseum.org](mailto:business@HeiseyMuseum.org)

## Museum Volunteers for June 2007

Phil & Sally Abrams  
Bryan Baker  
Linda Bischoff  
Chuck & Amy Jo Jones  
Steve Killebrew  
Frank Kuhlmann  
Joe & LaVerne Lokay  
Phyllis McClain  
Don & Pat Moore  
Sharon Orienter  
Ginny Priest  
Bob Rarey  
Dick Ritter  
Russ Reopell  
Dick & Marilyn Smith  
Kathy Smith  
Dave and Mary Ann Spahr  
Karen Taylo  
Charlie Wade



### Periodical Postage

Paid at the Post Office  
In Newark, OH 43055  
Publication # 00986  
POSTMASTER SEND FORM 3579 TO:  
HCA  
169 W. Church St.  
Newark, OH 43055

To: \_\_\_\_\_