

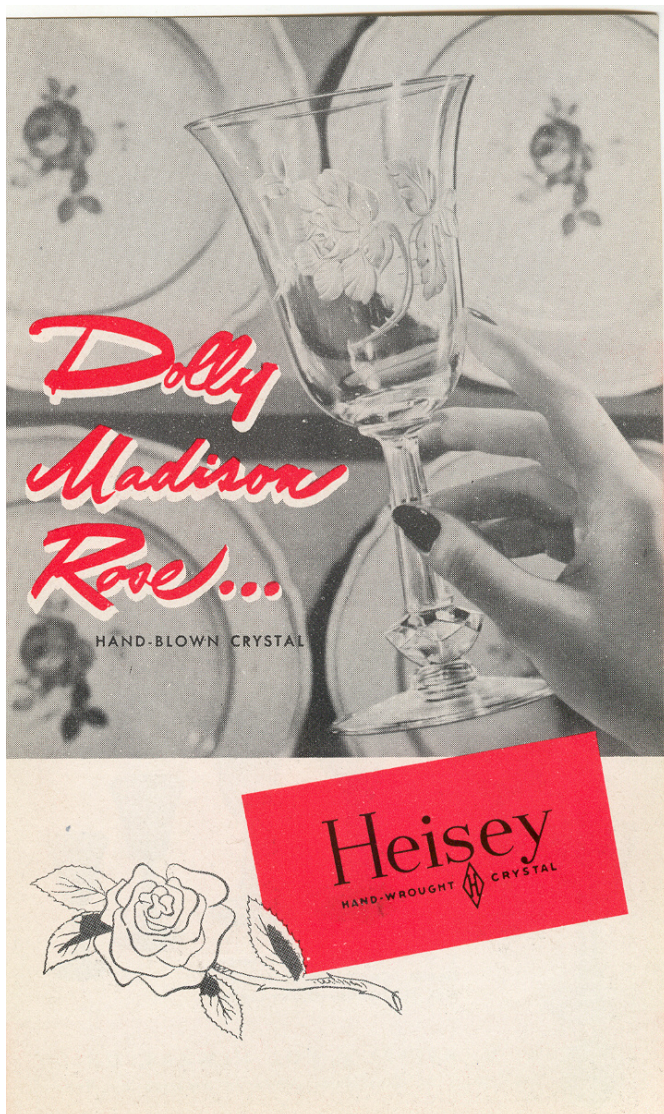
HEISEY NEWS

The Official Publication of Heisey Collectors of America, Inc.

Volume XXXVI No. 7

June 2007

ISSN 0731-8014



Dolly Madison Rose Brochure - Front

1015 DOLLY MADISON ROSE CUTTING BROCHURE

Walter Ludwig

The 1015 Dolly Madison Rose cutting was introduced in 1949 and promoted with a pattern brochure put out by the company in the same year. Dolly Madison Rose was truly an artistic achievement matching the beautifully full cut rose of the cutting to the elegant 4091 Kimberly stemware. Heisey designed this pattern to specifically go with Castleton's Dolly Madison Rose chinaware, although they had no problem promoting it to match any silver or china pattern that featured a full bloom rose. Heisey at the time was coordinating patterns with several different china and silverware companies. Dolly Madison Rose cutting was expanded with additional pieces in 1489 Puritan and 1951 Cabochon to widen its appeal.

The brochure is only a single sheet front and back showing on the front a goblet in the pattern held up in front of a display of plates in Castleton's Dolly Madison Rose pattern. A deep rich rosy pink color is used to enhance the brochure highlighting the pattern name and the

Continued on page 5

HEISEY NEWS

Heisey Collectors of America, Inc.

169 West Church Street

Newark, Ohio 43055

Phone 740-345-2932 Fax 740-345-9638

Web Site: www.heiseyMuseum.org

All Rights Reserved 2007

ISSN 0731-8014

Staff and Phone Extensions

Curator, Walter Ludwig, curator@heiseyMuseum.org, Ext. 4

Business Manager, Shelly Hoberg, business@heiseyMuseum.org, Ext. 2

Clerk, Alisha Tilley, membership@heiseyMuseum.org, Ext. 1

Clerk, Mary Jo Kochendorfer, Ext. 5

HCA Board of Directors:

President, Bryan Baker - Fairfax Station, VA, 703-250-6117 –

hcapresident@heiseyMuseum.org

Vice-President, Charlie Wade – Newark, OH 740-587-2002

Secretary, Karen O'Hare - Newark, OH, 740-366-3739

Treasurer, Dave Spahr - Xenia, OH, 937-372-7166

Immediate Past President, Dick Smith – Newark, OH, 740-366-5163

Phil Abrams - Charlotte, NC, 704-364-4561

Linda Bischoff - Holland, OH, 419-865-3996

Amy Jo Jones - Beavercreek, OH, 937-426-1567

Ron Keener – Heath, OH, 740-323-3747

Sue Kilgore – Kalamazoo, MI, 269-345-3990

Jack Metcalf – Utica, OH, 740-892-2664

Sam Schnaidt – Granville, OH, 740-587-0052

Karen Taylo – New Bern, NC, 252-637-9985

Jean Will – Leavenworth, KS, 913-682-4831

HEISEY NEWS is published and printed monthly (twice in March), by Heisey Collectors of America, Inc. (HCA). Periodical postage paid at Newark. Subscription is limited to HCA members. First class mailing is available for an extra \$20.00 (Effective July 1, 2007), due with payment of membership. If you are having difficulty receiving your Newsletter, please contact the HCA Administrative Office Monday through Friday 8:30 a.m. - 4:30 p.m.

The opinions expressed in articles in HEISEY NEWS are those of the authors and not necessarily those of the organization. The Editorial Staff reserves the right to edit, with or without the consent of the author or to refuse any material submitted for publication.

Back Issues

Back Issues available from files are \$3.00 per issue plus shipping and handling

Advertising

Ads may be mailed to: HCA Advertising, 169 W. Church St., Newark, OH 43055; faxed to (740) 345-9638; or e-mailed to curator@HeiseyMuseum.org. Whenever possible, please e-mail your ad. Always include your MasterCard or Visa number and expiration date. When mailed or faxed, ads should be typed or printed on white paper with dark ink. Camera ready ads are accepted, but must follow line specifications outlined at the beginning of the advertising section. Ads containing reproductions will not knowingly be accepted unless clearly stated (e.g. Heisey by Imperial, etc.). HEISEY NEWS accepts no further liability. In the event of a typographical error, the incorrect portion of the ad will be run in the following issue, but HEISEY NEWS assumes no further liability. See advertising section for rates and deadlines.

Museum

Heisey Collectors of America, Inc., a non-profit corporation (tax-exempt status), owns and operates The National Heisey Glass Museum in Veterans Park, 6th and Church Streets, Newark, Ohio. Open year round, Tuesday through Saturday 10:00 a.m. – 4:00 p.m., Sunday 1:00 – 4:00 p.m., closed holidays. Other hours by appointment. Members admitted free.

Identification

HCA will attempt to identify unknown glass items. Send a color photograph, measurements, and a self-addressed, stamped envelope to the attention of the Curator. Other arrangements should be made in advance with the Museum staff. Please keep in mind that the Museum cannot appraise items. Identification is free to members, non-members \$5.00 per item.

Membership

To join Heisey Collectors of America or to renew your membership, contact the HCA Administrative Office Monday through Friday 8:00 a.m. - 4:30 p.m. Eastern Time. Associate dues are \$30.00 plus \$5.00 for each additional household member. Voting members pay an additional one-time fee of \$25.00. Please consider supporting the Endowment Fund by joining at one of the levels listed on the back page.

Museum Gift Shop

There is always someone in the Gift Shop during the Museum's hours of operation to help answer questions or take orders. When ordering by phone, please have a credit card ready. When ordering by mail, please be sure to include appropriate charges such as shipping and sales tax. Please note that the HCA member discount does not apply to original Heisey or special project items.

Shipping and Receiving

Delivery is made much easier when we have a complete street address, not a PO Box. We prefer to use UPS. If you have not received a package, please call the Administrative Office to confirm it was sent. We will assist you in tracing it. If your package arrives damaged, please contact your local UPS representative. We insure everything.

Donations and Loans to the Museum

If you would like to make a donation to the Museum or have questions regarding items on loan, contact the Curator. HCA reserves the right to accept or refuse items based on current holdings.

2007

Heisey National Convention & Elegant Glass Show

Newark, OH

June 13-16

Heisey Select Auction, Newark, OH

October 6

Percy and Vivian Moore Memorial Dinner,

Newark, OH

October 6

Table of Contents

| | |
|---|--------|
| 1015 Dolly Madison Rose Cutting Brochure, Walter Ludwig | FC & 5 |
| Message from the President, Bryan Baker | 3-4 |
| Curator's Report, Walter Ludwig | 4 |
| HCA Welcomes New Members for April 2007 | 4 |
| WATER Bar Tumblers, Joe Lokay | 5-6 |
| 707-708 Dennison Goblets, Joe Lokay | 6 |
| 902-904 Twist Stem Cocktails | 7 |
| Soda Fountain Line 602, Walter Ludwig | 8-10 |
| "What Do I Have?", Walter Ludwig | 10-12 |
| There Are Still New Discoveries to Be Made in the World of Heisey, Walter Ludwig | 12-13 |
| Heisey News Binding, Bob Rarey | 14 |
| Announcing Heisey Playing Cards – Deck Two, Walter Ludwig | 14-15 |
| Convention 2007 Final Preparations, Amy Jo Jones | 16 |
| 2007 Convention Schedule of Events | 17 |
| 2007 Convention Registration Form | 18 |
| Summer Holdback Silent Auction | 19 |
| Holdback Silent Auction: Mail Auction Bid Form | 20 |
| Study Club Directory | 21 |
| "Diamond H" Charm, Pendant, or Lapel Pin Order Form | 22 |
| Club Notes | 23-24 |
| Advertising Guidelines | 24 |
| Frankly Rhyming, Frank Husted | 24 |
| Classified Ads | 24-26 |
| Dealer Directory | 27 |
| Museum Volunteers for April 2007 | BC |

MESSAGE FROM THE PRESIDENT

Bryan Baker

I have an important news flash for all Convention-goers . . . one of our newest HCA members; the First Lady of Ohio, Frances Strickland, will be paying us a special visit Thursday, June 14 at 10 a.m. during Convention. This is exciting news for all of us at HCA. At 10 a.m. in front of the King House, Mrs. Strickland will give a re-dedication address and be given a tour of our newly revitalized Museum. Please join me at this event and let's all give the First Lady a warm "Heisey Welcome!"

Speaking of the First Lady, we are fresh from visiting the Ohio Governor's Residence where we presented the First Lady with an indefinite loan of a "State Crystal Service," specifically a stemware service of Heisey Orchid in addition to various serving pieces in this pattern. On this page is a copy of the recognition we received – the original will be proudly displayed at our Museum. I cannot begin to tell you how impressed everyone in attendance was with the beauty of the glassware as it adorned the formal dining room table. On behalf of HCA and the Governor's Residence, I wish to thank all who donated and helped make this project a huge success. This is not the end of the PR and exposure, however; a set of State China is being produced by Homer Laughlin and should be ready mid to late summer. At that time, there will be a grand unveiling of the china and our glassware to the public and media.

In visiting with Mrs. Strickland and members of the residential staff, it became evident that the Governor, First Lady, and staff have a keen sense of the historical importance of Heisey glassware (and HCA) to the state of Ohio and the nation at large. Our Heisey glassware will be on display for the over 10,000 people who visit the residence annually. In addition, there is discussion of a gift shop and educational areas

focusing on Ohio manufacturing on the property as well. I am optimistic that future opportunities will arise as a result of this newfound relationship with the Ohio Governor's Residence.



Ted Strickland
Governor of said State
hereby officially recognizes

The NATIONAL HEISEY GLASS MUSEUM

Frances and I, on behalf of "The Friends of the Ohio Governor's Residence and Heritage Garden", and on behalf of all Ohioans, thank The National Heisey Glass Museum for their generous loan of a "State Crystal Service".

Through this permanent loan to the Ohio Governor's Residence, generations of Ohioans to come will be able to appreciate the beautiful crystal that was produced by A. H. Heisey and Co. of Newark, between 1896 and 1957.

ON THIS SEVENTH DAY OF MAY, TWO THOUSAND SEVEN.

Ted Strickland
Ted Strickland
Governor

Frances Strickland
Frances Strickland
First Lady

In last month's Newsletter, we included a survey for our members to complete and return – wow, the response has been remarkable! For your survey response to be included in the final results, please return yours by June 15. The information gleaned from this survey will help us in building a strong future for HCA and our Museum. In addition to your words of support and encouragement, we have received suggestions for areas of improvement and questions of "why" and "how." This is constructive dialogue with our members to the point that I have decided to dedicate a part of future articles I write to answering these questions, and hopefully better explain the "why's" and how's" things are done as they are. I hope you find this informative.

On another front, we are moving forward with our candle-making project: reproducing select Heisey tumblers filled with wax. Based on the response to this project, we hope to be able to continue reproduction in non-Heisey colors so that we can offer candles as seasons change (e.g. red and green Christmas candles).

I hope you agree that positive efforts are being made to broaden the public awareness of our organization, and to the fine glassware that we admire and strive to preserve. Meeting challenges head-on, identifying revenue generating projects, and responsible cost saving measures are ways I and your Board of Directors are striving to ensure HCA is around for generations to come. Your support financially, through volunteerism, or by simply renewing your membership does make a difference – we Thank You!

Until Next Time,

Bryan Baker ♦

CURATOR'S REPORT

Walter Ludwig

Well, the high point of the Heisey year is almost upon us and the excitement level is now almost at fever pitch. Convention 2007 is just around the corner and I can not wait for it to begin. So many of you are contributing to make this a very special year. This is the time to meet up with old Heisey friends and to make a few new ones. If you have never before been to a Heisey Convention, make this the year that you do. I promise you, you will not regret it. We all want to hear about the latest treasure you added to your collection and that wonderful buy you made in that out of the way shop. The only price you have to pay to tell your story is to listen to my story in return. The joy of sharing can not be underestimated.

We are putting the final touches on the new displays in the Museum and eagerly await your

arrival to share them with you. By rearranging the Museum, items that you may have overlooked before have become much more visible. The signage has been greatly improved and we feel we are communicating with our visitors on a whole new level.

On page 14, you will find an announcement of our plans to produce a second deck of Heisey playing cards. When we announced our plans to produce the first deck at Convention last year, we were overwhelmed with the response from our members and the sponsorships sold out within 24 hours. When we finally had the decks in hand just before the holidays last year, you responded again and at this time we have less than 100 decks of the original offering left. Please, consider sponsoring a card in our second deck of Heisey playing cards. This kind of support for your Museum pays great dividends.

I am pleased to announce that we have had another pattern named in the Name the Pattern initiative to raise money for the capital fund. The Northwest Heisey Collectors Study Club has chosen to honor two of their long time members, Fred and Clara Olsen, by naming the 32 salt and pepper after them. From now on these will be known as the 32 Olsen salt and pepper.

I look forward to seeing all of you at Convention this year and sharing some Heisey-talk with you. We will have a great time. ♦

HCA WELCOMES NEW MEMBERS FOR April 2007

Virginia Bryant, OH
Felix Cisneros, WA
M.O. King and Betty Morrison, WA
Richard Stoltzfus, PA



Dolly Madison Rose Brochure – Back

1015 DOLLY MADISON ROSE CUTTING BROCHURE

(Continued from front cover)

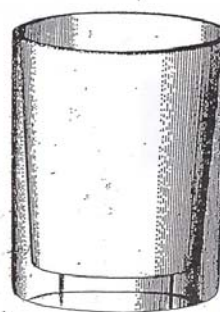
Heisey name on the front of the brochure and as background for the ad copy on the back.

The text on the back of the brochure reads, "If you delight in romantic floral designs, the classic lines of Heisey's Dolly Madison Rose will completely captivate you. Each full-blown rose is a work of art ... engraved by a true craftsman. Here's the perfect crystal to complement china and silver abloom with roses. The choice of this exquisite Heisey pattern for yourself or as a gift is a gesture of impeccable taste."

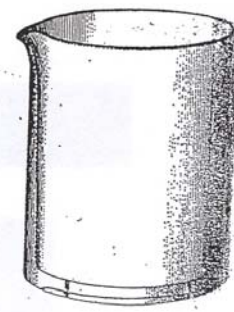
On the top of the back you see the Kimberly footed juice and ice tea accompanying a 1183 Revere salad plate. Below is an array of stemware including cocktail, tall sherbet, goblet, claret, wine, and cordial. A note is added that the oyster cocktail is not shown.

This is a truly great design by Heisey and commands a premium price today. When it appears it is often as a set of stems. This pattern would make a great gift for that new bride – she would treasure it always. ♦

Water Bar Tumblers



#243 Plain



#244 Lipped

243 – 244 WATER BAR TUMBLERS

Joe Lokay

A patron came into a bar and asked for a scotch and water. What types of tumblers would you use?

For the scotch, one would use a bar tumbler. A. H. Heisey & Company offered eight sets of bar tumblers for this use. See the article on Heisey bar tumblers in the February 2007 Heisey News. Their size varied from 1 to 4 ounces. The size selection would depend on the amount of scotch ordered. Perhaps a double or a triple.

For the water, Heisey offered two bar water tumblers, pattern numbers 243 and 244. Both

were 5 ½ ounces in capacity. The water tumblers are slightly larger than the tumblers for the scotch. The 243 was plain and the 244 was plain with a pouring spout. Heisey's price lists referred to the spout as lipped. The 244 reminds me of a chemistry beaker as they have pouring spouts. Both of the water bars had ground bottoms.

Production of 243 and 244 started in about 1898. Heisey offered 244 up to about 1909. Production of 243 stopped around 1916. The life of 244 was about 11 years, and for 243 about 17 years. The 234 is pictured in Heisey Catalog #75 (circa 1913).

In 1908, Heisey offered a 243 with optic. This lasted for about four years.

The water bar tumblers started before the Diamond H, so the early ones would not be marked. Later ones may be marked. Does anyone have one of these water bar tumblers? The one with the spout would be a nice one to find. ♦

707 – 708 DENNISON GOBLETS

Joe Lokay

A. H. Heisey & Company offered two similar goblets in their 1898 price list. They were pattern numbers 707 and 708. Goblet 707 was listed with a 10 ounce capacity and a straight sided bowl. Goblet 708 was listed with a 10 ounce capacity and a cupped bowl. These two goblets came from the same mold. The mold produced the straight sided bowl. For the cupped, the straight sided bowl was reformed with a wooden paddle to a cupped shape while the glass was still hot and workable. Two stock numbers were used so that an order for straight sided was identified just by 707 and an order for cupped was identified by 708.

The two goblets were listed twice in the price list, once in the Footed Ale and Beer category and then again in the Goblet category. The two categories were combined in later price lists. The two goblets were pictured in an unnumbered Heisey catalog, circa 1900 and in Heisey Catalog # 75, circa 1913.

Goblets Catalog #75 (1913)



#707 Straight
10 oz.



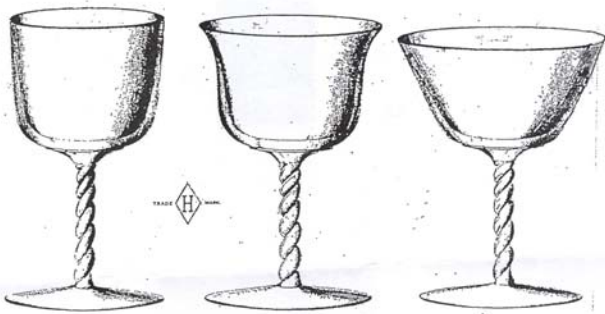
#708 Cupped
10 oz.

Production of 707 and 708 started in about 1898 and continued to about 1923. That gives a production life of about 25 years.

The two goblets started before the Diamond H, so the early ones would be unmarked. Because of the long production life, you would think that later production would be marked. The lack of the item in collections today may mean these stems were never marked.

Bradley and the Ryans in their Heisey Stemware book grouped the two goblets together and named the 707 and 708 goblets Dennison. These were considered standard restaurant ware items and would be indistinguishable from similar production of other companies if they were not marked. ♦

Cocktail Glasses



#902 Straight 3 ¾ oz. #903 Cupped 3 ¾ oz. #904 Saucer 4 ¼ oz.

902 – 904 TWISTED STEM COCKTAILS

Joe Lokay

In their circa 1898 price list, A. H. Heisey & Company offered to the trade 20 different cocktail stemware. Three of the 20 were with a twisted stem. The count was three, but one might say there were actually only two. The 3 ¾ ounce cocktail with a twisted stem was offered with a straight bowl or a cupped bowl. The straight one was given pattern number 902 while the cupped one was given pattern number 903. The 4 ½ ounce cocktail was given pattern number 904. The 904 had a saucer shaped bowl. How do you picture a saucer shape? It is not like a cup and saucer. For a saucer shape, it looks like the side of the bowl is well flared out such that the open diameter at the top is much larger than the base diameter.

Production of the twisted stem cocktails ended about 1905. Thus, their production life was for about eight years. Production started before the Diamond H, so the early pieces are unmarked. The pictures of the twisted cocktails came from an unnumbered Heisey catalog, circa 1901. In the catalog, picture references were made to the Diamond H trademark. So, there is a chance that the later production is marked. The twisted stem should help in looking for Heisey made pieces.

A copy of the 1898 price list is included with this article to show the 20 cocktail glasses that were offered in 1898. Note the 1205 Fancy Loop stemware in the listing.

COCKTAILS.

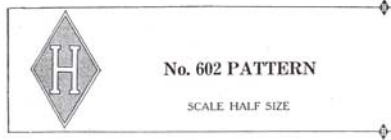
| | | | | | |
|------|---------------------------|----|----|----|-------|
| 900 | 3½ oz. Cocktail..... | 45 | 90 | 24 | \$ 40 |
| 901 | 3 oz. " | 45 | 90 | 24 | 35 |
| 902 | 3¾ oz. Twist Stem St..... | 45 | 90 | 24 | 35 |
| 903 | 3¾ oz. " Flared | 45 | 90 | 24 | 35 |
| 904 | 4½ oz. " Saucer..... | 45 | 85 | 20 | 40 |
| 905 | 3¾ oz. Cocktail St. | 46 | 90 | 24 | 35 |
| 906 | 3¾ oz. " Flared..... | 46 | 90 | 24 | 35 |
| 907 | 4½ oz. " Saucer..... | 46 | 85 | 20 | 40 |
| 908 | 2½ oz. " Mitchell..... | 90 | 24 | 40 | |
| 909 | 3½ oz. " " | 46 | 90 | 24 | 45 |
| 910 | 4 oz. " " | 46 | 85 | 20 | 45 |
| 911 | 3½ oz. " | 47 | 90 | 24 | 45 |
| 912 | 4 oz. " | 47 | 85 | 20 | 45 |
| 913 | 2½ oz. " | 47 | 90 | 24 | 40 |
| 914 | 3 oz. " | 47 | 90 | 24 | 40 |
| 915 | 3½ oz. " | 47 | 90 | 24 | 40 |
| 916 | 3 oz. " | 48 | 90 | 24 | 40 |
| 917 | 3½ oz. " | 48 | 90 | 24 | 40 |
| 1205 | " Largo..... | 90 | 18 | 40 | |
| 1205 | " Small..... | 95 | 24 | 35 | |

From Price List, Circa 1898

Bradley and the Ryans in the Heisey Stemware book put names to these three different stems. The 902 is called Rope, the 903 Cable, and the 904 Cord. Interestingly, two of these pattern numbers seemed to be used at about the same time for goblets in totally unrelated patterns. The 902 Essex 9 ounce goblet dates from around 1901. It has a very distinguishing ridge running around the upper portion of a very plain bowl. The 903 Jefferson 8 ounce goblet is a very early colonial style paneled goblet.

In the October 1981 Heisey News, Carl Sparacio reported seeing a 902 Rope cocktail. His comments were, "The glass lacks the brilliance of most Heisey but is equal to what we see in Locket on Chain. The stem is pressed and the mold lines are quite apparent while the foot appears to have been pressed as a lump of glass at the end of the stem and manipulated into a foot while the glass was still malleable. The bowl shows no indication of pressing but it is thicker than the glass we see in blown bowls." He does mention that the piece was not marked.





ALL ITEMS ON THIS PAGE HAVE GROUND BOTTOMS
PATENT No. 46296



9-oz. BUTTERMILK



4-oz. SODA



5-oz. SODA



6-oz. SODA



7-oz. SODA



8-oz. SODA



10-oz. SODA



12-oz. SODA



14-oz. SODA OR ALE



9-oz. BUTTERMILK
OPTIC



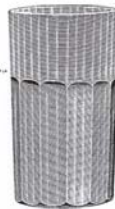
4-oz. SODA
OPTIC



5-oz. SODA
OPTIC



6-oz. SODA
OPTIC



7-oz. SODA
OPTIC



8-oz. SODA
OPTIC



10-oz. SODA
OPTIC



12-oz. SODA
OPTIC



14-oz. SODA OR ALE
OPTIC

135

Catalog 100 – Page 135

SODA FOUNTAIN LINE 602 Walter Ludwig

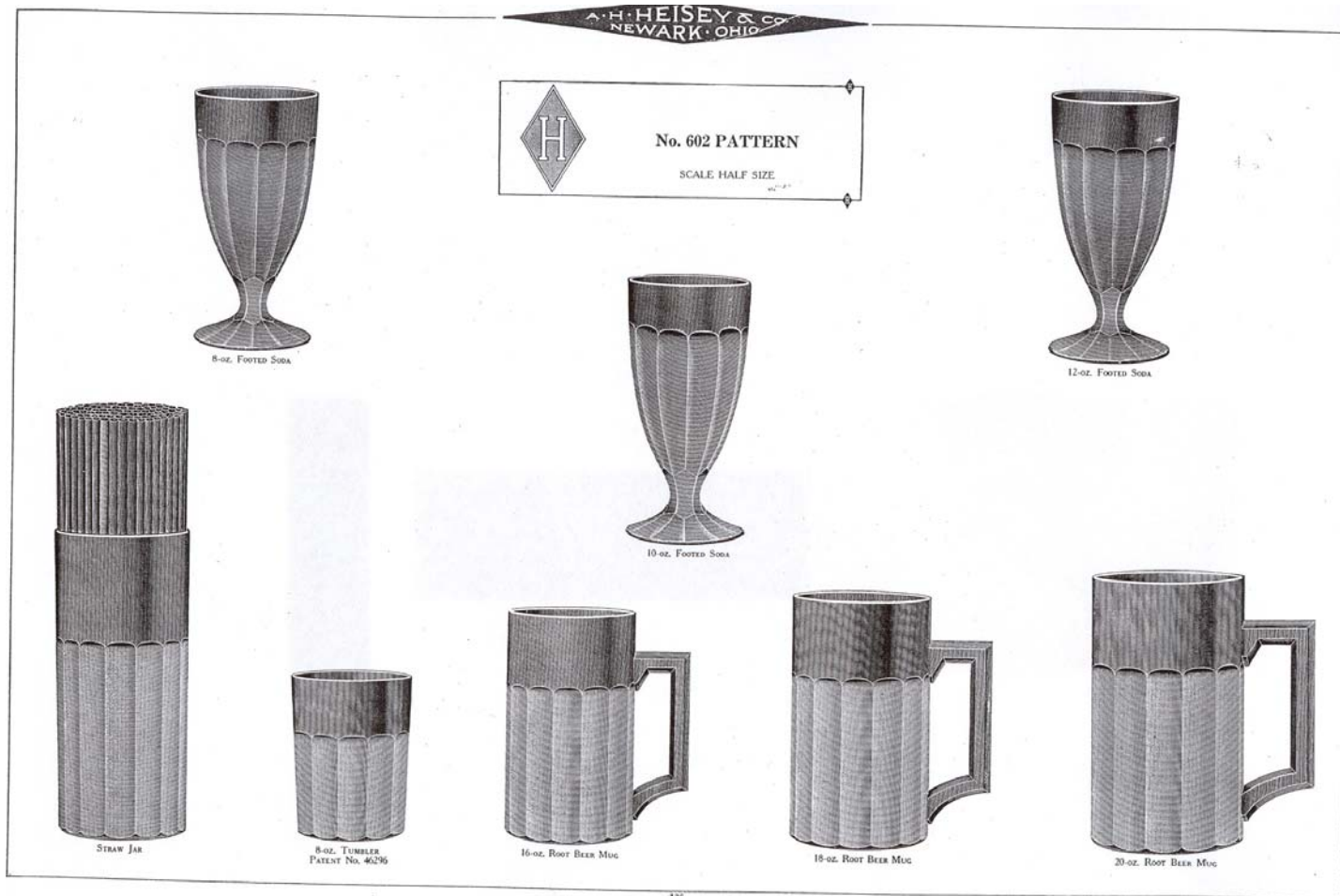
While looking through the Archives recently, I came across a copy of Catalog 100. A quick examination of the catalog showed me that there were many pages in this catalog that had never been reproduced before. This is the first of several articles that will cover this material.

Pattern 602 is a soda fountain line that was developed around 1914. Items in this line could easily have been incorporated into the 393 Narrow Flute pattern because of the similarity of the design. Both patterns are based on flutes evenly spaced around the pieces. All of the pieces of 602 have a wide plain band above the flutes (some pieces of 393 have this plain band but with the exception of the footed sodas in 602, the band in 602 is wider).

Take a look at the catalog pages that are presented with this article. Are any of the Narrow Flute pieces in your collection shown here?

Two different design patents were filed on pieces in this pattern, both under Andrew J. Sanford's name. Sanford was in charge of the mould shop at Heisey from the time of the founding of the company. It was the mould shops responsibility to come up with the designs for the company and to turn the designs into actual moulds that were used to make the pieces. The only thing that was not done in-house at Heisey was the actual foundering of the moulds – that was always done by another company.

On August 6, 1913, a design patent was filed for a "tumbler or similar article" which became the basis for the tumbler and sodas in the 602 line. The patent was granted on August 18, 1914 as design patent 46, 296. On November 7, 1913, a second



Catalog 100 – Page 136

design patent was filed for a “glass jar.” This became design patent 46, 870 when it was granted January 19, 1915. This was the design for the crushed fruit.

On page 8 of this issue, you see page 135 of Catalog 100. This shows the sodas that were produced in this pattern both plain and with narrow optic. The sizes of the sodas are 4, 5, 6, 7, 8, 10, and 12 ounces. The 13 ounce soda is also labeled an ale. Interestingly, one other item is shown on this page and that is a 9 ounce buttermilk. I do not know of any other line that offered a special drinking vessel for buttermilk. This item is slightly shorter and wider than a 9 ounce soda in the line would be.

Above is page 136 from Catalog 100. Included here are the 602 tumbler, straw jar, and three sizes of root beer mugs: 16, 18, and 20 ounces. Also shown are three sizes of footed sodas: 8, 10, and 12 ounces. These sodas are more like pieces of the 393 Narrow Flute pattern than any other of the 602 pieces. They

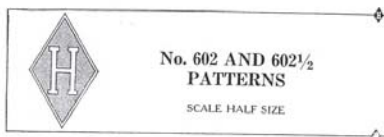
are identical to the goblet only with a shorter stem and more elongated bowl.

Finally on page 10 we see page 137 from Catalog 100. Shown here are the small and large spoon and the quart and two quart crushed fruits in 602. Also shown are the 24 ounce and 48 ounce 602 ½ crushed fruits. Note the lids on these crushed fruits, they are not used on any other jars that Heisey made.

On page 11 is one final page from catalog 100. Besides three different candy jars in 352 Flat Panel (all very difficult to find today), a series of four candy jars are shown numbered 804 through 807. All of these jars cite patent number 46, 870 as covering the designs on these pieces. This is the same patent number as on the 602 and 602 ½ crushed fruits and you will notice that these candies all use the bottoms from those crushed fruits using a different flatter, pointed top. The 804 is cited as a 2 pound candy and used the 602 1 quart crushed fruit bottom. The



No. 602
SMALL SPOON



No. 602
LARGE SPOON

ALL ITEMS ON THIS PAGE HAVE GROUND BOTTOMS



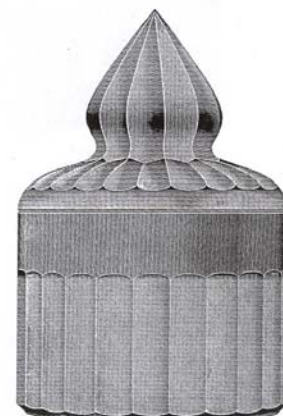
No. 602
CRUSHED FRUIT, HOLLOW COVER
CAPACITY ONE QUART
PATENT No. 46870



No. 602
CRUSHED FRUIT, HOLLOW COVER
CAPACITY TWO QUARTS
PATENT No. 46870



No. 602 1/2
CRUSHED FRUIT, HOLLOW COVER
CAPACITY 24 OUNCES
PATENT No. 46870



No. 602 1/2
CRUSHED FRUIT, HOLLOW COVER
CAPACITY 48 OUNCES
PATENT No. 46870

137

Catalog 100 – Page 137

805 (4 pounds) used the 602 2 quart bottom. The 806 1/2 pound used the 602 1/2 24 ounce crushed fruit, while the 807 3 pound candy used the bottom of the 602 1/2 48 ounce crushed fruit.

None of the items of 602 (or the candy jars based on the same pattern) are easy to find today. As soda fountain items they would have had hard use at the time and few would have survived. You would be very lucky to have even one of these pieces in your collection. ♦

“WHAT DO I HAVE?”

Walter Ludwig

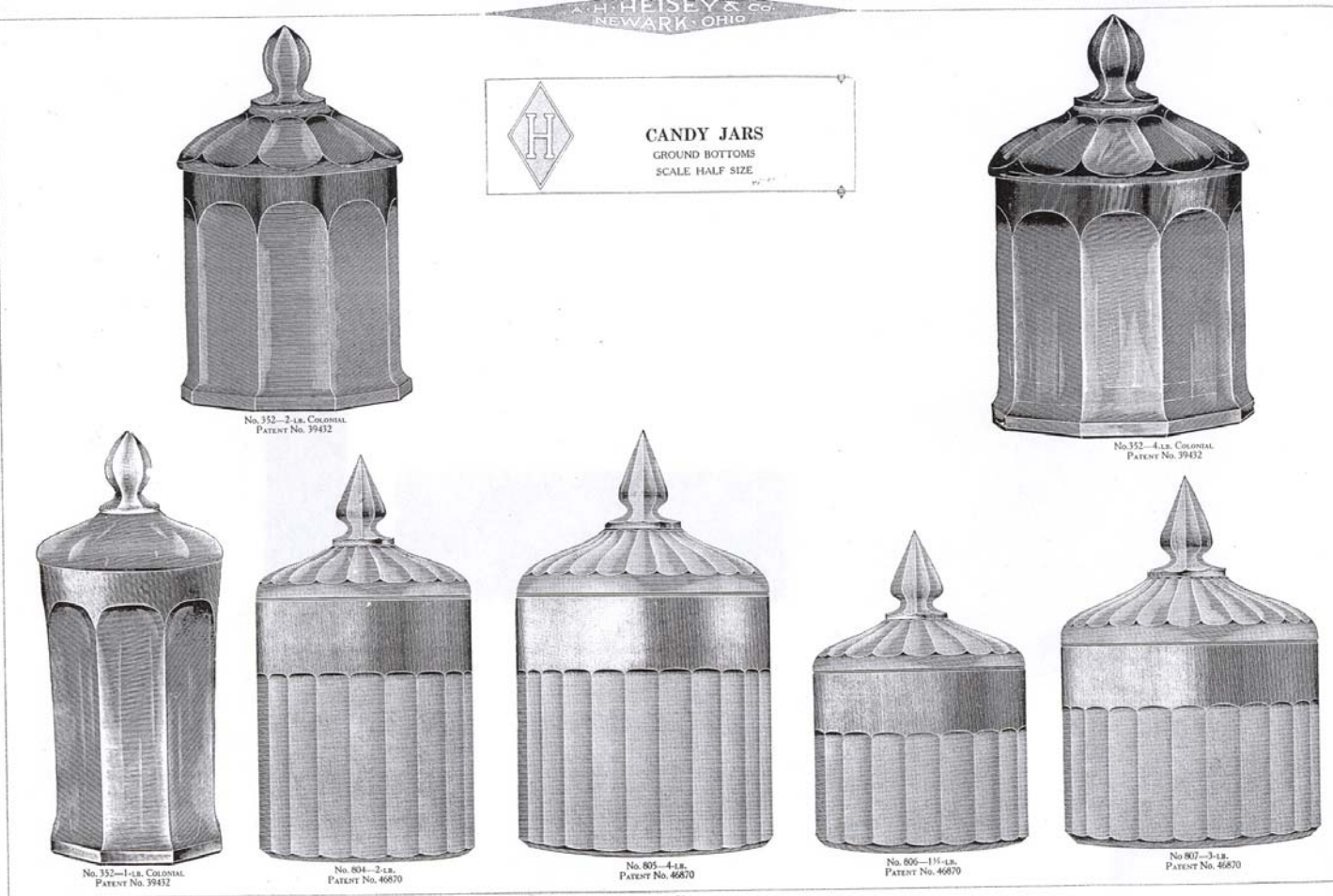
The above lament is a common one for Heisey collectors. Even with all of the books available to us today, there are pieces that are hard to distinguish. Recently, I got a call from one collector recently who described a piece that he had acquired, but he did not know what it was. He described a piece that

was 6" tall and a bit over 5" wide that had a Narrow Flute like pattern on the bottom and a wide rim on the top.

If you read the previous article you recognize from his description that he has the bottom of the crushed fruit in the 602 pattern. But, given his description can you tell which one it is that he has? If you have a good sense of proportionality, you may have realized that it was the one quart jar that he has. But most of us are not that good. What do you do?

Well the key is seen on the catalog page just below the pattern description. If you look closely, it says "Scale Half Size." Now since I have an original catalog I can go to the page and take a ruler and measure the picture and find it is 3" tall and 2 5/8" wide. I then multiply by two and get 6" by 5 1/4" which is about the measurements he gave me.

But, you say you do not have an original Heisey catalog. Instead you have either a Vogel book, HCA



Catalog 100 – Page 34

reprint, Heisey News page, or a book from another source. All these have different sizes of reduced pages taken from original catalogs. What you need to know is one other piece of information and then you can solve the problem using your own sources.

All of the Heisey Catalogs from the early twentieth century until the late twenties were in the same format. They were big books about 18 ½" by 12". There was a little variation based on how the books were bound. But, what was always true was the pages had a frame that measures 10 ¼" (10.25") high. By taking the ratio of the actual page height to the reproduction page height you get the factor that you use to adjust the measurement of the picture you are using.

If you look at the catalog page 137 on page 10 and measure the height of the frame, you get 4 7/8" (4.875"). Now divide 10.25 by 4.875 and you get 2.1. Since the original is half scale, multiply this by 2 and get 4.2. Measuring the height of the

illustration of the 1 quart crushed fruit (without lid), you get 1 7/16" (1.45"). That multiplied by 4.20 is 6.1 which is close enough to the 6" height we were told that the actual piece measured.

Recently, another example with a piece of 602 pattern glass came up in the Museum. A piece that we have had on display for several years has been labeled a 602 straw jar as is pictured on page 9. I recently measured the piece and found it to be 5 1/4" in height. Doing the calculation we find the page height is 4 7/8" and the height of the straw jar on the page is 1 ¾". The math then becomes 10.25 / 4.875 * 2 * 1.75 resulting in 7.36". That means that we do not have a 602 straw jar, instead we have a 12 ounce soda (I will let you do the math using the illustration from Catalog 100 page 135).

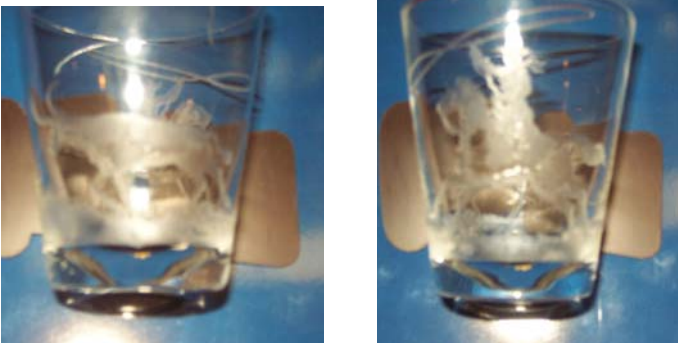
This type of calculation should be very useful to you in figuring out which size cruet or lavender jar you own. Pay attention to the scale that is printed on the

catalog pages. The vast majority is half size but there are instances of full size for some of the "little things." Unfortunately, the very earliest catalog did not use scale drawings, so this method will not work on those pages in Vogel Book IV which show 1201 Fandango and patterns made around then. Also, in the late twenties, Heisey abandoned the large catalogs for a more book-like format and they no longer used uniform scale drawings on the same page. ♦

THERE ARE STILL NEW DISCOVERIES TO BE MADE IN THE WORLD OF HEISEY

Walter Ludwig

It is always so surprising that here we are almost 50 years since the factory closed at the end of 1957 and we are still discovering new Heisey pieces and decorations.



Two Sides of 2401 Old Fashion

Our first example was recently listed on E-bay as a "Heisey glass bar tumbler with western cowboy etch." Now a lot of people would have dismissed this as a listing for a piece of 517 Winchester '73 or even a piece of 476 Circus – Western Scene etch and not bothered to go to the full listing to see what was listed. When I did I got quite a surprise. There were two pictures of the piece - one showing a cowboy on his horse with his lasso ready to be thrown and the other showing the other side of the tumbler with a steer running ahead of the cowboy. This sent me to the Encyclopedia of Heisey Glassware: Etchings and Carvings to see what I could find. Sure enough, after the entry for the two sailboat and the motor boat etches on page 169 was the following entry.

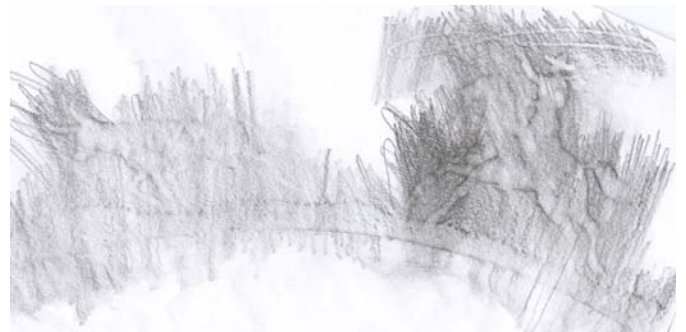
The following five names were found on an added page to the 1937 price list. Below a typed entry for 1 Short Sailboat, 2 Tall Sailboat, and 3 Motor Boat were a handwritten list exactly as it appears below:

- (#4 Several Sailboats – Discontinued)
- 5 Alamo – with Star
- 6 Alamo – without Star
- 7 Cowboy & Steer
- 8 Bucking Bronco

The 8 Bucking Bronco is no doubt the 9018 Buckin' Bronco etch that is listed in the book as coming on a 4225 Cocktail Shaker (which the Museum owns). It has since appeared on a 4004 Aqua Caliente.

But, this piece has to be 7 Cowboy & Steer. The description is just perfect for the actual etching on the piece. After making what turned out to be a feeble attempt to get the piece for the Museum, I contacted the owner through E-bay and asked if I could use his pictures for this piece. He was from Newark and offered to bring it to the Museum so that I could take my own pictures.

The gentleman turned out to be from a family that had workers at the factory in the 1930s. It came as quite a surprise to him what the item actually went for on E-bay. He wished that the family had gotten a few more way back when. The piece turned out to be a 2401 Oakwood old fashion.



Rubbing from 2401 Old Fashion

Because it is so hard to take a picture of any etching I also did a rubbing of the piece so that you could get a good idea of what it looks like.

Two other interesting pieces had turned up at the Gaithersburg show sponsored by the National Capital Heisey Collectors back in March of this year.

First, we have a footed console bowl in Flamingo with a very clear Diamond H mark in the center of the bowl. This is not a piece that was ever pictured

in a catalog or one that I had ever seen before. The bowl is 9 ½" in diameter and is 4 ¾" tall. The bowl's stem is ball like with swirls like in the 516 Fairacre cologne. The bottom of the bowl has petals radiating out from the stem similar to those on the 479 Petal cream and sugar set. Given that all of these motifs are known on Heisey pieces it would be easy to identify it as Heisey even without the mark. What is amazing is that it has not shown up before.



**Two Views of Console Bowl
With 112 Mercury 9" Candlesticks**

My pictures of the piece show it with a pair of 112 Mercury 9" candlesticks because that is what I believe the piece was made for. The design elements are reflected in both pieces when you examine the balls at the top and bottom of the stem of the candlestick and the ball in the stem of the bowl. The petals on the bottom of the bowl are echoed in similar structures on the bottom of the candle cup.

The mid-20s was a time when many companies were putting out console sets and it stands to reason that Heisey would be exploring the idea, also. Although the 113 Mars and the 114 Plutos can be put with several Heisey floral bowls to good effect, it has long been thought that the 116 Oak Leaf candlesticks and matching bowl were the first coordinated set that Heisey produced. With the discovery of this bowl we will have to revise that assessment. When you put the bowl with the 3" 112 Mercury sticks the proportions are all wrong so that the bowl was probably made to only go with the 9" size. Given

the dearth of those 9" candlesticks today maybe, it is not surprising that this bowl has not turned up before. The dealer did say that it came out of a Newark household so there is a distinct possibility that the bowl was only produced as a feasibility item and never marketed by the company.



**4163 Whaley Beer Mug
(Card Inserted to Bring Out Etching)**

The last item is well known – it is a 4163 Whaley beer mug with a Moongleam handle. What is unusual is the decoration on the piece. It has an etched sky scene with stars, shooting stars or comets, and a crescent moon (not visible on the left of the picture is a representation of the planet Saturn).

On page 43 of the Bredehoft's Handbook of Heisey Production Cuttings is a drawing of this etching listing it as 821 Sky Scene which is an original factory name. It is listed as appearing on a 3416 Barbara Fritchie goblet. It is noted that the illustration was taken from a rubbing so the Bredehofts never actually saw this decoration. Given that the decoration is definitely an etching and not a cutting it can not be 821 Sky Line. But what is it?

The etching book does list an etching called 9011 Sky Line without an illustration mentioning that it appears in a handwritten note from 1938. Unfortunately, that date does not jive with the Moongleam handle on the mug. Moongleam ceased production in 1935. The 821 cutting was produced in 1934 which does work for the handle but no factory assigned etching number goes above number 518. Number 821 is definitely the proper range for a cutting in 1934.

The mystery still exists but it is good to know that the piece of glass exists, too. It is a beautiful example of the work of the Heisey factory. ♦

HEISEY NEWS BINDING

Bob Rarey

Every two years, I have offered to have the Heisey News bound for those members who wish to have that service performed. It is now time for the 2005-2006 issues to be bound. Binding is library quality, a hard Royal Blue cover with Gold lettering as we have done in past years. The price for binding is \$35 plus \$5 for return shipping if required. No binding of back issues is available at this time.

If you are missing any back issues, HCA will be able to provide them at the rate of \$3. per issue.

Please, you must remove all staples. This is necessary for binding.

The cut-off date for binding is the last day of the HCA Convention, June 16, 2007.

You may send or bring your Newsletters to me at the Museum or to me directly at my home address. Make checks payable to Bob Rarey, as this is not a club function. Thank You.

Bob Rarey
c/o HCA Museum
169 W. Church St.
Newark, OH 43055

Bob Rarey
1540 White Ash Drive
Columbus, OH 43204
(614) 279-0390



ANNOUNCING HEISEY PLAYING CARDS - DECK TWO

Walter Ludwig

I am pleased to announce that the Board of Directors has approved the production of a second deck of Heisey Playing Cards. Once again, we are soliciting our membership to come forward to sponsor the 55 cards that will comprise this new deck.

The blue deck project that was launched at Convention last year was a huge success for HCA and we are hoping that the new deck this year will be equally successful. At this time, we have only a little over 100 decks left and there is a good chance they will sell out at Convention this year.



The sponsorships will work the same way as last year. The sponsor's name will be shown on the card and sponsors will have the opportunity of buying two decks of cards at \$5 each. Sponsors will have the opportunity of selecting the pattern that will be featured on their card, but we will not be duplicating any of the patterns that were used in the first deck. Sponsorship levels will be for cards of denomination deuce through 8 - \$50 (28 cards), 9 through King - \$100 (20), Ace - \$150 (4), Joker - \$250 (3) for a total of 55 cards needing sponsors. As you note, there will be three jokers in the new deck because the cut card has been eliminated.

This is an exciting project because it allows us to present Heisey patterns in a different format. We will continue to have something new and different to sell in the Gift Shop that is reasonably priced and yet very informative about Heisey glassware. It will also allow the Museum to continue its digitalization of its collection in order to make it available in other media like our web site and DVDs.

The list of available patterns follows this article. If you wish to participate, call (740-345-2932, ext. 4) or e-mail (curator@HeiseyMuseum.org) the curator to reserve the card and pattern you wish to sponsor. Payment can then be made at the Convention or through the mail. Many of you were disappointed last year when the sponsorships sold out within 24 hours of the announcement of the project. We are announcing it in this Newsletter so that everyone will have a chance to participate. ◆

HEISEY PATTERNS AVAILABLE FOR PLAYING CARDS

Patterns marked with * only available at sponsorship levels of \$100 and up. All other patterns may be sponsored at any level.

| | | |
|----------------------------------|--|--------------------------------|
| Arch (1417) | Grid and Square (385) | Puritan (1489) |
| Athena (1541) | Hartman (369) | Quator (355) |
| Beaded Panel Sunburst (1234) | * Hi Lo (1421) | Quilt (1521) |
| Beaded Swag (1295) | Hourglass (6006) | Raised Loop (439) |
| Beehive (1238) | * Impromptu (4004) | Regency (1504) |
| Bethel (4035) | Inside Scallop (1191) | Revere (1183) |
| Botanical (1612) | Janice (4220) | Ribbed Octagon (1231) |
| Buttress (1473) | Kohinoor (1488) | Ring Band (310) |
| Cabochon (1951) | Koors (3480) | Rococo (1447) |
| Card Case (1508) | * Lariat (1540) | Round Colonial (459) |
| Caswell (1001) | Leaf (1565) | Satellite (1626) |
| Cecelia (4057) | Marshall (4036) | * Saturn (1485) |
| Celestial (6000) | McGrady (372) | Single Slash and Panel (9) |
| Clover Leaf (2355) | Medium Flat Panel (353) | * Stanhope (1483) |
| Coarse Rib (406, 407) | Nail (462) | Star (1466) |
| Cobel (4225) | Narrow Flute (393) | Star and Zipper (1245) |
| Cockade (1598) | Navy (2323) | Steele (4157) |
| Coleport (1486) | Octagon (1229) | * Sunburst (343) |
| Colonial Cupped Scallop (397) | Octagon with Rim (468) | Teardrop (2517) |
| Colonial Panel (331) | * Old Sandwich (1404) | Thran (3406) |
| Colonial Scalloped Top (400) | * Old Williamsburg (341) | Thumbprint and Panel (1433) |
| Columbia (1559) | Opal Novelties | Toujours (1511) |
| Constellation (5044) | Panel + Double Pleat (466) | Touraine (337) |
| Continental (339) | Paneled Cane (315) | * Tudor (411-413)) |
| Convex Circle (461) | Patio (1624) | * Tulip (1420) |
| Coronation (4054) | Petal (479) | Twentieth Century (1415) |
| Coyle (3405) | * Pillows (325) | * Twist (1252) |
| Criss Cross (361) | * Pineapple and Fan (1225) | Urn (379) |
| Cross Line Flute (451) | Pinwheel and Fan (350) | Valli (4205) |
| Daisy and Leaves (427) | Plaid | * Verlys by Heisey |
| Diamond Band (423) | Plain Band (1225) | Vertical Bead & Panel (8) |
| Diamond Point (1454) | Plain Panel Recess (429) | Visible Cooking Ware |
| Double Slash and Panel (12) | Plateau (3359) | Waldorf Astoria (333) |
| Dunham (485) | Pointed Oval in Diamond Point (150) | Wampum (1533) |
| Eagle (1236) | Priscilla (351) | * Warwick (1428) |
| Fern (1495) | Prism (1593) | Washington Square (5060) |
| Fine Tooth (445) | Prism Band (367) | Whaley (4163) |
| Fleur de Lis (1406) | Pumpkin (4058) | Wide Flat Panel (352) |
| Gallagher (4162) | Punty Band (1220) | Yeoman (1184) |
| Glenford (3481) | | Zodiac (1590) |

Convention 2007

Final Preparations

Amy Jo Jones

Who knew? Until the other day while preparing for the Convention, I never realized what a “fowl” place the Museum is. There are chickens, wood ducks, peacocks, Bob Whites, geese, pouter pigeons, chanticleers, flying mares (do those count?), and there must be a headless rooster running around in there somewhere because we’ve got his head in a cocktail shaker. Among all that and the flowers and animals, Karen O’Hare and I discovered new frogs, brass ladies, gnomes, and bunches of cherries. Did *you* know? Sign up for the **Treasure Hunt** Wednesday night with a team to be the first to find these long lost items!

The schedule of Mrs. Strickland, First Lady of Ohio, has changed; therefore, she will be at the Museum bright and early Thursday morning to cut a ribbon on the porch of the King House to officially inaugurate the Museum’s new look. We hope all of you will be there.

For an early peek at just a couple of items to be shown in the **Member’s Display**, there is promised to be a dazzling display of George IV cutting, a blown Crystalite item, and some very rare Orchid pieces. We have room for more; let me know soon if I need to reserve a spot just for your “treasure.” The shelf area is minimal (with height restrictions) and only a portion of one shelf will be available for you, so it would be best to bring only one or two (at the most) pieces. The pieces preferably would not duplicate one already in the Museum’s collection. Help us make the Museum a showplace in every major room, even the Multipurpose Room. (Ajones935@aol.com or 937-426-1567)

Speaking of treasures, we want to rock the world of our panel of experts and the audience at the **ID Session**; please bring some pieces that will dazzle all of us! Just imagine it sitting up there on the table tantalizing all of us with its beauty. The experts will tell us what makes it special, rare, and beautiful. Some of us think it is no longer out there – prove to us that it is.

We’re wrapping up – time for the festivities to begin! Here is a checklist:

1. **Registration** – Do you have yours filled out and off to the Museum?
2. **Member’s Display** – Do I have your reservation?
3. **I.D. Session** – Tuck in that special piece with your Member’s Display item.
4. **Hospitality** – Goodies! We’re having a party and need your help!
5. **Centerpiece Banquet** – We hope you and/or your club will bedazzle our banquet.
6. **Endowment Reception** – Come see where the plans and deals were made.
7. **Former Employees Reception** – Come meet with the people who helped make it all possible.
8. **Walking shoes** – There is a beautiful show full of dealer booths, three walking tours of the Museum, and the Treasure Hunt for which you will need to be well shod. (*And let’s catch that headless rooster!*)

The last word before Convention comes from Dan and Sue Kilgore and the Michigan Club promoting the Blind Auction. They are still looking for some spectacular donated pieces!

YO HO HO & SEVERAL BOTTLES OF RUM!
BRING YOUR GOLD & SILVER
TO BUY YE SOME!

THIS BLIND AUCTION WILL BE
FABULOUS, FUNNY, AND FUN!
IF YE AREN’T A BIDDIN’, YE BETTER RUN!!!

COME ON PIRATES, ROBES & HAT
WEAR YOUR PEG LEG, EYE PATCH OR “HOOK”!
WE KNOW WHO WILL ARRIVE FULL OF
GRIME & GRIT
FIT TO GIVE MANY A DIRTY LOOK!!!

YOU CAN TREAT YOURSELF TO
DESSERT AND DRINKS,
WHILE BIDDING ON SOME OF THE “BEAUTIES”
HIDDEN THERE.

SAIL AWAY FOR SOME HEISEY TREASURES
AND LOTS OF FUN!

*Don’t forget to bring your doubloons
and/or check book!*



**36th Annual Convention
HEISEY COLLECTORS OF AMERICA, INC.
June 13-16, 2007**

“Treasures of the National Heisey Glass Museum”

FEATURING THE PREMIERE GLASS SHOW

SCHEDULE OF EVENTS

| Date & Time | Event | Location |
|---------------------------|--|--|
| WEDNESDAY, June 13 | | |
| 6:30 p.m. | Mixer/Cookout, Meet the Candidates | Museum Grounds |
| 8:00 p.m. | <i>Museum Treasure Hunt!</i> | Museum |
| THURSDAY, June 14 | | |
| 9:00 a.m. – 10:15 a.m. | Seminar – Walking tour of Museum | Museum |
| 10:00 a.m. | Mrs. Strickland formally opens Museum displays | King House Porch |
| 10:30 a.m. | Glass Show ticket sales start | Adena Hall, OSUN/COTC |
| 11:00 a.m. – Noon | Show Preview <i>For Convention Registrants Only</i> | Adena Hall |
| Noon – 5:00 p.m. | Glass Show open – general admission | Adena Hall |
| 3:00 - 4:00 p.m. | Study Club Representatives Meeting | Founder’s Hall |
| 3:00 – 4:15 p.m. | Seminar – Walking tour of Museum | Museum |
| 7:00 p.m. | Blind Auction | Hopewell Hall |
| FRIDAY, June 15 | | |
| 8:00 a.m. | Annual General Membership Meeting (Polls open 8– 8:30 a.m.) | Hopewell Hall |
| 9:30 a.m. | ID Panel <i>(Cash & Carry Breakfast Available)</i> | Hopewell Hall |
| 12:00 noon – 5:00 p.m. | Glass Show open | Adena Hall |
| 1:00 p.m. – 2:00 p.m. | Seminar – Joe Lokay, <i>“Unique Heisey Items”</i> | Founder’s Hall |
| 3:30 p.m. | Endowment Reception | Heisey Cabin |
| 6:30 p.m. | Heisey Social (cash bar) & Centerpiece Banquet | The Crystal Ballroom, Downtown Newark |
| SATURDAY, June 16 | | |
| 8:00 a.m. – 3:00 p.m. | Flea Market – Courthouse Square | Downtown Newark |
| 11:00 a.m – 12:15 p.m | Seminar – Walking tour of Museum | Museum |
| Noon – 5:00 p.m. | Glass Show | Adena Hall |
| 1 p.m. – 2:00 p.m. | Former Heisey Employees Reception | Museum |

The National Heisey Glass Museum will hold an Open House

Tuesday – Saturday, June 12-16, 10:00 a.m. to 4:00 p.m.

Sunday, June 17, 1:00 to 4:00 p.m.

Hospitality – Multipurpose Room – Wednesday – Friday 10:00 a.m. to 3:30 p.m.

HCA CONVENTION 2007 REGISTRATION FORM - Deadline June 1

Don't miss the 2007 HCA Convention!

To register, stop by the Museum, phone (740-345-2932), fax (740-345-9638), register online (www.heiseymuseum.org), or mail your form to: Convention Registration, 169 W. Church St., Newark, OH 43055.

- If you want notice of confirmation, you must include a SASE or provide an e-mail address.

Registration deadline Monday, June 1 for all food events. *Sorry, no registration refunds after June 6 when final counts are taken!*

If you are not registering the same people for all events, please fill out separate forms for each person.

List each name as it should appear on their badge:

Name(s): _____

Address: _____

City/State/Zip: _____

Phone: _____ E-mail: _____

o Check here to receive e-mail confirmation of your registration.

Payment: o Cash o Check # _____

o MasterCard o Visa # _____ exp. _____

| Event | How Many | Cost | Subtotal |
|---|----------|-----------|----------|
| Registration Fee Prior to June 1 | _____ X | \$20 = | \$ _____ |
| Registration Fee After June 1 | _____ X | \$25 = | \$ _____ |
| Mixer/Cookout Wed 6:30 p.m., Museum Grounds | _____ X | \$15 = | \$ _____ |
| Blind Auction Thurs. 7:00 p.m. (Free to Convention registrants!) | _____ | no charge | |
| Annual Meeting Fri. 8:00 a.m. <i>Open to all HCA Members</i> | | | |
| ID session Fri. 9:30 a.m. <i>(cash and carry breakfast available)</i> | _____ X | \$5 = | \$ _____ |
| Endowment Reception 3:30 p.m. Friday – Heisey Cabin | _____ X | \$35 = | \$ _____ |
| Heisey Social & Centerpiece Banquet Fri. 6:30 p.m. | _____ X | \$25 = | \$ _____ |
| Thursday walking tours of Museum: Walter Ludwig | | | |
| 9:00 a.m. | _____ | no charge | |
| 3:00 p.m. | _____ | no charge | |
| Friday Seminar: Joe Lokay., <i>"Unique Heisey Items,"</i> 1:00 p.m. | _____ | no charge | |
| Saturday walking tour of Museum, Walter Ludwig 11:00 a.m. | _____ | no charge | |
| Former Employees Reception, Sat. 1:00 p.m. | _____ | no charge | |

You must be registered to attend any event above!

TOTAL = \$ _____

SUMMER HOLDBACK SILENT AUCTION

Holdback Silent Auction closes Friday, June 15 at 5:00 p.m. EST. Forms must be received in the HCA Business Office by the closing date and time. There are no reserves, but just like E-bay, there will be a modest minimum first bid.

Bids will be accepted by mail, drop off, fax to 740-345-9638, and e-mail to business@HeiseyMuseum.org. All bids will be sealed and date-stamped with the highest bid winning. In the case of a tie, the earliest date-stamped bid wins. All bids will be competitively bid. Payment, including shipping and insurance, will not be requested until after the auction. Once a bid is placed, it cannot be withdrawn.

All items are on display at the Museum and will remain there throughout the auction.

Winning bidders will be notified within seven days after the auction and the amounts of the winning bids will be published in a future issue of the *Heisey News*.

Markings Key

ALIG, IG, NI = Imperial Glass Corp., Bellaire, OH, F = Fenton Art Glass Co., Williamstown, WV, HCA = Heisey Collectors of America, Inc., D = Dalzell-Viking, New Martinsville, WV, M = Mosser, Cambridge, OH

| <u>Item #</u> | <u>Item, Color, Maker, Marking, Comments</u> | <u>minimum 1st bid</u> |
|---------------|--|-----------------------------------|
| 1. | 2 Filly, Head Back, Ruby, HCA/M/01, Longaberger leaf | \$ 75 |
| 2. | 1 Donkey Ruby/White slag on bustoff, HCA/M/04 | 50 |
| 3. | 1541 Scottie Dog, Rosalene, Fenton/Sample | 40 |
| 4. | 1 Sow & 2 Piglets Sitting (pair), Yellow Mist, HCA/95/D/Sample | 75 |
| 5. | 3 Bunny, head up, Ultra Blue, IG/Imperial sticker | 25 |
| 6. | 2 Bunny, head down, Ultra Blue, ALIG/Imperial sticker | 25 |
| 7. | Cabochon sign, Amethyst on bustoff, HCA/M/00 | 30 |
| 8. | 2 Clydesdale, Verde Green, ALIG | 75 |
| 9. | 100 Asiatic Pheasant, Brown, HCA/D/95/Sample | 75 |
| 10. | 5 Show Horse, Cobalt, HCA/D/95/Sample | 100 |
| 11. | 1 Elephant, Large, Ruby, HCA/D | 100 |
| 12. | 1540 Oscar (Sparky/Plug Horse), Burmese, Fenton, HCA/92 | 35 |
| 13. | 1 Giraffe, Amber, ALIG | 125 |
| 14. | 1550 Fish candlestick, Cobalt, HCA/D/95/Sample | 40 |
| 15. | 1557 Fighting Rooster, Pink, Imperial | 75 |
| 16. | 1 Minuet Girl, Caramel Slag, ALIG | 30 |
| 17. | 1601 Sleeping Fox ashtray, Lavender Ice, frosted fox, Heisey Museum Addition Dedication, June 1993, D | 50 |
| 18. | 1553 Sparrow, Verde Green, no mark, Imperial Hayshed price sticker | 25 |

All Items are rare, samples, one of a kind, or very low production numbers.

All items are handmade.

Some might have slight imperfections

Auction runs through June 15, 2007 at 5:00 p.m. Items can be picked up Saturday at Museum after 10:00 a.m.

HOLDBACK SILENT AUCTION

Mail Auction Bid Form

Mail to: HCA Holdback Auction, 169 W. Church St., Newark, OH 43055. **Form must be received by Friday June 15 at 5:00 p.m. EST, or fax to (740) 345-9638, or e-mail to business@HeiseyMuseum.org**

Name _____

Address * _____

City/State/Zip _____

Daytime phone _____ E-mail _____

Vendor's License # _____

Payment method: Bill me after the auction, or charge the Visa or MasterCard (circle card type)

Card # _____ Exp. _____

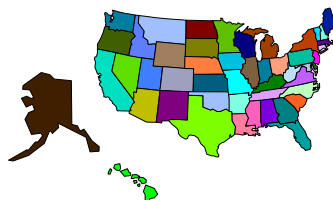
Please check one: Pick Up Ship

****Address must be a physical address; HCA cannot ship to a PO Box***

| <i>Item #</i> | <i>Item Name</i> | <i>Bid Amount</i> |
|---------------|------------------|-------------------|
| | | |
| | | |
| | | |
| | | |
| | | |
| | | |
| | | |
| | | |
| | | |

7% Sales Tax for Ohio residents. Shipping & insurance charges \$7.50 first item, \$5 each additional will be added to your total.

Study Club Directory



Interested in joining a study club? You will have the opportunity to meet fellow collectors and HCA members and learn more about your favorite glassware. If your club is not listed or you need to make corrections to your listing, please contact the Museum.

| STUDY CLUB | MEET WHEN? | WHERE? | Email/Web Site | CONTACT |
|--|---|---|--|-------------------------------------|
| #4 Central Illinois Heisey Collectors Club | Four times a year | Members' homes or restaurants | | Joyce Deany (815) 432-4310 |
| #5 Bay State Heisey Collectors Club | 2 nd Tuesday of each month except July, Aug., and Dec. | Follen Community Church | spescatore@houghton.com | Stephen Pescatore (978) 256-5418 |
| #7 Dayton Area Heisey Collectors Club | 3rd Tues. of the month Sept. to May, 6:30 p.m. | Huber Heights Library | LH937@aol.com | Joe Harner (937) 372-0852 |
| #8 Heisey Heritage Society <i>NJ, Eastern PA and DE areas</i> | Bi-monthly | Members' homes | Jpwelgan@att.net | Virginia Welgan (302) 736-6848 |
| #13 Heisey Club of California | 4th Sunday every month, 12:30 | Members' homes | herbet@sbcglobal.net www.heiseyclubca.org | Norval Heisey (818)-349-0945 |
| #14 Northern Illinois Heisey Club | Four times a year | Members' homes | niheisey@comcast.net | Jeff Morrow (630) 833-4644 |
| #15 Heisey Collectors Club of Michigan | Every six weeks, August to May | Members' homes | kilgoredesigns@att.net | Sue E. Kilgore (269)-345-3990 |
| #16 Heisey Collectors of Texas | 2nd Sat. of every other month, 1 p.m. | Members' homes | heiseytoo@att.net | Greg Freeman (817)-545-5889 |
| #19 Heisey Collectors of the Rochester Area | 10 meetings per year: Sunday, 2:30 p.m. | Members' homes | | Susan Shafer (585)396-7310 |
| #20 Buckeye Heisey Collectors Club <i>Newark, OH area</i> | September to May, 4th Monday | Members' homes or the Museum | bismarck4867@ yahoo.com | Karen Colwell (740) 323-3769 |
| #22 Northwest Heisey Collectors | First Saturday of the month | Members' homes | bahama50@hotmail.com | Deborah de Jong (425) 868-0457 |
| #25 Heisey 76'ers <i>Columbus, OH area</i> | Once a month, September to May | Members' homes | ldburg48@aol.com | Colleen Burgess (614) 882-1884 |
| #31 Nassau Long Island Heisey Club | Generally every other month | Members' homes | | Babs Kent (516) 228-8274 |
| #32 Dairyland Heisey Club | Once every two months | Members' homes | | Ray K. Courtneage (414) 962-9747 |
| #33 Golden Gate Heisey Collectors Club <i>Northern California</i> | Quarterly | Members' homes | | Russ Nicholas (707) 762-2494 |
| #36 Heisey Club of Southern MA | April, June, September, December | | | Maria Martell (508) 833-0633 |
| #38 North Carolina Heisey Study Group | 6 meetings per year: Jan.; March, May, July, Sept., Nov. | Replacements Ltd Greensboro, NC | Nchsg@yahoo.com www.northcarolinaheiseystudygroup.org | Karen Taylo (252) 637-9985 |
| #39 Florida Heisey Collectors Club | 4 times per year: January – February-March-April | Westchester Country Club Boyton Beach, FL | Shirley400@aol.com | Everett Dunbar (772)-337-1558 |
| #42 Gulf Coast Heisey Club of Florida | Nov., Jan. and March; 2 nd Thursday 11:00 am | Members' homes | | Jack Grenzenach (727)-391-5784 |
| #43 Tri-State Heisey Study Club <i>OH, IN, MI</i> | 1st Sat. every 3rd month | Members' homes | Maxwellm@cktech.biz | Mike Maxwell (260) 925-3484 |
| #44 National Capital Heisey Study Club | Monthly: September - May | MD and VA Libraries | pres@capitalheiseyclub.org www.capitalheiseyclub.org | Ted Sheets (703)-346-5000 |
| #45 Hoosier Heisey Club | Four times a year | Warren Library, Indianapolis, IN | | J. David Litsey, (317) 872-7800 |
| #47 Oregon Trail Heisey Collectors Club | Odd number months, 2 nd Saturday, 2 p.m. | Members' homes | lariat_roundup@hotmail.com | Dennis Headrick (503) 538-9352 |
| #48 Dixieland Heisey Study Club | Odd number months, 2 nd Saturday night | Members' homes | www.dixielandheisey.org | Craig German (770) 967-8733 |
| #49 Great Plains Heisey Club | March, May, July, September, and November | Members' homes | cameron_mg@mchsi.com www.greatplainsheiseyclub.org | Mary Cameron (515) 292-3743 |
| #50 Northwoods Heisey Club of Minnesota | 2 nd Sat., March, May, September and November | Members' homes | wheise@mn.rr.com | Bob Heise (952)-831-9335 |
| #51 Heisey Club of Northeast Florida | 2 nd Tuesday | Members' homes | Clasyglas2@aol.com | Barb Bartlett (904) 280-0450 |

"DIAMOND H"

Charm,
Pendant,
OR
Lapel Pin



- HEISEY "DIAMOND H" LOGO CHARM, PENDANT, or LAPEL PIN
- SOLID STERLING SILVER; 4.5 gm, SIZE 1.12" h x .5" w
- CUSTOM CAST and INDIVIDUALLY HAND-CRAFTED
- RAISED "DIAMOND H" TRADEMARK on BEADBLASTED BACKGROUND
- CHARM SAMPLE on display in HCA MUSEUM GIFT SHOP
- **ORDER BEFORE September 1, 2007**

ORDER YOURS NOW !

HEISEY STERLING SILVER LOGO JEWELRY ORDER FORM

(Please print clearly)

NAME: _____

ADDRESS: _____

CITY: _____ STATE: _____ ZIP: _____

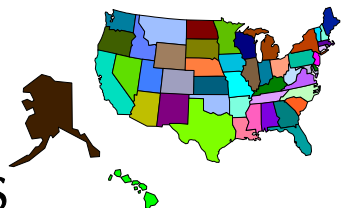
PHONE: _____

Check or MC/VISA _____ exp _____ OH Tax ID# _____

Check one: I will pick up at the Museum (No S & H or Insurance charges apply)
 Please ship to me

| | <u>QTY</u> | <u>COST EACH</u> | <u>SUB TOTALS</u> |
|--------------------------|------------|------------------|-------------------|
| CHARM (w/jump ring) | _____ | @ 65.00 ea | = _____ |
| PENDANT (w/pendant bale) | _____ | @ 65.00 ea | = _____ |
| LAPEL PIN | _____ | @ 65.00 ea | = _____ |
| TAX (OH only) | _____ | @ 4.55 ea | = _____ |
| S & H and Insurance | _____ | @ 3.50 ea | = _____ |

HEISEY STERLING SILVER LOGO TOTAL: = _____



CLUB NOTES

HEISEY CLUB CLIPS
Edited by Sue Kilgore

WELCOME TO ALL INTERESTED CLUBS AND MEMBERS OF THE HCA

We are presenting, in this space, news from you or your club.

We are hoping to hear from more of you.

Please feel free to send in ideas on:

fun studies you have had

great recipes you have served

funny (clean) jokes you have heard

fund-raisers that have been successful

news on members who might need a prayer or two

Etc., etc., etc.

| | | | | | | | | | | | | | | | | | | | |
|-----|--|-----|-----|-----|-----|-----|-----|-----|-----|-----|-----|-----|-----|-----|-----|-----|-----|-----|-----|
| \$5 | \$5 | \$5 | \$5 | \$5 | \$5 | \$5 | \$5 | \$5 | \$5 | \$5 | \$5 | \$5 | \$5 | \$5 | \$5 | \$5 | \$5 | \$5 | \$5 |
| \$5 | | | | | | | | | | | | | | | | | | | \$5 |
| \$5 | DO ALL OF THE HCA MEMBERS | | | | | | | | | | | | | | | | | | \$5 |
| \$5 | HAVE AN EXTRA \$5 A MONTH? | | | | | | | | | | | | | | | | | | \$5 |
| \$5 | IF WE DID & WE GAVE IT TO THE HCA | | | | | | | | | | | | | | | | | | \$5 |
| \$5 | THAT WOULD BE MORE THAN | | | | | | | | | | | | | | | | | | \$5 |
| \$5 | \$6,000 PER MONTH OR | | | | | | | | | | | | | | | | | | \$5 |
| \$5 | \$72,000 PER YEAR OR | | | | | | | | | | | | | | | | | | \$5 |
| \$5 | 1/3 OF THE ANNUAL BUDGET FOR HCA | | | | | | | | | | | | | | | | | | \$5 |
| \$5 | DO YOU KNOW WHAT | | | | | | | | | | | | | | | | | | \$5 |
| \$5 | THAT COULD MEAN? | | | | | | | | | | | | | | | | | | \$5 |
| \$5 | THINK ABOUT IT! | | | | | | | | | | | | | | | | | | \$5 |
| \$5 | DO YOU HAVE AN EXTRA \$5 | | | | | | | | | | | | | | | | | | \$5 |
| \$5 | TO HELP OUR HCA? | | | | | | | | | | | | | | | | | | \$5 |
| \$5 | <u>Let's see how many \$5 bills we can collect</u> | | | | | | | | | | | | | | | | | | \$5 |
| \$5 | <u>at the Convention?</u> | | | | | | | | | | | | | | | | | | \$5 |
| \$5 | | | | | | | | | | | | | | | | | | | \$5 |
| \$5 | \$5 | \$5 | \$5 | \$5 | \$5 | \$5 | \$5 | \$5 | \$5 | \$5 | \$5 | \$5 | \$5 | \$5 | \$5 | \$5 | \$5 | \$5 | \$5 |

Many thanks to Virginia Welgan for the following: The Heisey Heritage Society study club is looking for new members. We invite any HCA members who live in Delaware, New Jersey and Eastern Pennsylvania to contact us about our activities. HHS has been a Study Club for thirty-five years. We are passionate about Heisey, good food, and good fellowship. For more information call Virginia at 302-736-6848 or e-mail Jpwelgan@att.net.

What a good idea – more members – more friends – more fun and maybe new Heisey to see!

FRIENDLY REMINDER –

The Heisey Collectors Club of Michigan is still asking for BLIND AUCTION donations. We received some donations during and since the benefit auction. Don't let that stop you though, as we can always use more. A special Thank You to all those who have already donated to this great cause.

Is all of the information about your study club correct in the Newsletter? Please take a minute to check it and e-mail or send in any corrections.

Please send your "short notes" to me for the Newsletter by the 12th of each month – at kilgoredesigns@att.net. ♦

Great Plains Heisey Club
Tom Files

It's hard to deter Heisey folks from their mission. Despite flooding unseen since 1993, 15 Great Plains Heisey Club members found ways to circumvent the closed roads and make it to Leavenworth on May 12. Jean Will hosted the event at her home and started everyone off in the proper mood by filling them with Kansas City barbeque and all the trimmings.

President Bucky Will conducted the meeting. Discussion turned to the 2007 Heisey Convention and contributions to be made by our club. Mary Cameron will gather items for the Hospitality Room donation in the club's name. Shelby and Gary Corey generously agreed to donate a 19 inch candelabra complete with bobeches and prisms for the blind auction to be held during the Convention. Jean Will advised she planned to personally provide a centerpiece to be auctioned at the Convention banquet. She asked that other study clubs and individuals to contact her regarding providing centerpieces or donations for this HCA fund-raiser. Our members approved an additional donation to help with this event.

Tom and Kathy Files briefly reviewed the Heisey display they prepared for the Depression Glass Show in Independence, MO in March. Many HCA and Great Plains Club brochures were distributed and hopefully some new members were recruited.

The program for the meeting was Heisey colognes. Jean Will presented a handout showing all the colognes produced by Heisey including interesting facts about each item. Jean and other club members displayed examples of the different colognes. It was quite an impressive array, especially considering the different cuttings on many of the pieces.

Show and Tell followed and, as usual, the GPHC members had been busy buyers. A few of the items shown were: 1229 Octagon sandwich in Flamingo with 447 Empress etch, 1010 Decagon nappy in Flamingo, 1401 Empress two handled sandwich plate in Alexandrite, Geese (3) wings up and (2) wings half, 1557 Rooster vase, 1425 Victorian salt and pepper, 339 Continental tall footed compote, 3408 Jamestown bell, 150 Banded Flute punch bowl and base, 22 Windsor 11" candlesticks, # 1 clear Madonna, 1201 Fandango horseradish with gold trim, 1567 Plantation oblong butter, 353 Medium Flat Panel stack cream, sugar, and butter pat in Flamingo, 1405 Ipswich cream and sugar sets in Flamingo and Sahara, 1469 Ridgeleigh 8 salts in original box, 4044 New Era stems and cordial, 433 Greek Key individual almond, and Heisey ads from 1940s and 1950s magazines.

The meeting was adjourned but only to eat again. Shortcake with fresh strawberries topped off the day. Some members lingered to view or talk Heisey and eventually to navigate the flooded roads to home. ♦

Advertising Guidelines:

Advertising: Ads may be mailed to: HCA Advertising, 169 W. Church St., Newark, OH 43055; faxed to (740) 345-9638; or e-mailed to curator@HeiseyMuseum.org. Whenever possible, please e-mail your ad. Include your MasterCard or VISA number and expiration date for billing purposes, or send a check. All ads must be prepaid. When mailed or faxed, ads should be typed or printed on white paper with dark ink. Please double space. Ads that are entered in a vertical column format may contain a maximum of 65 characters per line, including spaces & punctuation.

Classified: 20 cents per word (members), 30 cents per word (non-members), \$1.5 min., 1/8 page limit. Personal ads 1/8 page limit. Abbreviations & initials count as words.

| Display Ads: | member | non member |
|--|--------|------------|
| 1/8 page (12 lines) | \$ 20 | \$ 30 |
| ¼ page (25 lines) | \$ 40 | \$ 60 |
| ½ page (60 lines, horizontal or vertical) | \$ 80 | \$ 120 |
| Full page (120 lines) | \$160 | \$240 |

A charge of \$1.60 will be added for each additional line. Camera ready ads must follow specifications. Ads that do not correspond to the following measurements will be sized.

Camera Ready Ad Specifications:

- 1/8 page: 2¼" high by 3½" wide
- ¼ page: 4½" high by 3½" wide
- ½ page: 4½" high by 7½" wide or 9" high by 3½" wide
- Full page: 9" high by 7½" wide

Camera ready ads may be resized because of space concerns. Ad copy must be received by the first of the month prior to publication. Reproductions (i.e. Heisey by Imperial) must be indicated. Heisey News accepts no further liability. In the event of a typographical error, the incorrect portion of the ad will be run in the following issue, but HEISEY NEWS assumes no further liability. ♦

Abbreviations: DF = Dolphin Foot NO = Narrow Optic
DO = Diamond Optic SO = Spiral & Saturn Optic
MO = Medium Optic WO = Wide Optic

Heisey Cambridge Fostoria Imperial Paden City Tiffin Morgantown Duncan & Miller More!

Flea Market On The Square

Saturday, June 16th – 8am to Noon

Downtown Newark, OH


2007 Heisey Convention Event

Remember the fun and Heisey hunting of past conventions when people could set up on the Square and sell their glass? Relive the excitement on the Square in downtown Newark!

The Northern Illinois Heisey Study Club is proud to present the ALL GLASS Flea Market on the Square with **NO SET UP FEE**. You can get as much space as you need. Bring whatever size and quantity of tables you need. Sellers will start getting their space assignments at 7 am but no glass on the tables until 8 am. Remember **Glass only please**.

This event is a HCA event and while there is no set up fee, we will be sending around a representative to accept donations for the benefit of the HCA museum. Contact any of the following for more details and information:

| | |
|--|---|
| Michael Maher (740) 763-4256 carolyn53@webtv.net | Kim Carlisle (317) 758-5767 kcarlisl@worldnet.att.net |
| Carl Bowman (937) 289-2114 twoclbs@aol.com | |
| Joey Cogdill (864) 228-4741 hizhuntr@charter.net | Jeff Morrow (630) 833-4644 jmorrow64@comcast.net |



Heisey Cambridge Fostoria Imperial Paden City Tiffin Morgantown Duncan & Miller More!

FRANKLY RHYMING

Frank Husted

As part of a fund-raising effort, Dr. Husted has agreed to create limericks, like the one below, for HCA members based on the pattern(s) of their choice. A donation to HCA would be appreciated for each limerick created. If you would like to learn more about this fund-raising project, you may contact Dr. Frank Husted by phone at (610) 469-1243 or via e-mail to frankly.me@comcast.net.

REVERE

Come now, my children, and hear
About quite another REVERE
It isn't a horse
It is Heisey, of course,
A glass that is most crystal clear

♦



**IMPORTANT TWO DAY
ALL HEISEY & HEISEY BY IMPERIAL AUCTION**

Tuesday June 12th, 2:00 pm
Wednesday June 13th, 9:00 am
Apple Tree Auction Center
1616 W. Church Street
Newark, OH 43055
740-344-4282

1400 lots to sell

This auction features many rare pieces. Items in all colors, large selection of animals and animal related, deep plate etchings, 15 favor vases with all colors represented.

Cobalt: 30 pieces including rare 2 color *Crystalite* divided pickle, rum pot, *Aristocrat* candy and ball vases.

Flamingo: 100 pcs including cherub candlesticks, dolphin and swan candlesticks, baskets, pitchers, candlesticks and animal related.

Moongleam: Tulip vase, humidor, candle vases, basket, kingfisher and 50 other good pieces.

Tangerine: 8" *Empress* plates, *Gascony* sodas, ivy vases, favor vases and *Spanish* champagnes.

Emerald: Good selection of *Winged Scroll*, *Fancy Loop* and *Pineapple and Fan*.

Sahara: About 150 pcs to include tall 3 light candelabra, tulip vase, large *Empress* vase, *Carcasonne* decanter, ice buckets, pitchers and much more.

Vaseline: 3 (never seen before) *Cross Line Flute* goblets and *1020 Phyllis* sugar.

Amber: Elephant handled mug, colonial pitcher, and *Arch* tumblers.

Hawthorne: *Double Rib and Panel* basket, vases and compotes.

Opal & Custard: Nice selection in *Winged Scroll*, *Ring Band* and *Bead Swag* including dresser items, swung vase, *341 Puritan* sherbet (1 of 6 known) and other decorated pieces.

Dawn: Experimental *Screen optic* soda, *Lodestar 2* light candlesticks and other pieces.

Limelight: *Screen optic* soda, *Kohinoor* candlesticks and console bowl, *Rococo* 5 part relish, *Stanhope* goblet, *Saturn* and *Whirlpool*.

Alexandrite: Large ball vase, *Carcasonne* decanter, marmalade jar, *Twist* ice bucket, stemware and plates.

Deep plate etchings: 60 pcs including rare *Buckin' Bronco* etch, *Circus*, *Wigwam*, *Golfer*, *Victory*, *Mermaid*, *Skier*, and *Polo*, *Fisherman* mug with *Sahara* handle.

Animals & animal related: About 75 animals including gazelles, fish bowl, large rabbit, sow, swan, wood duck, Clydesdale, pouter pigeon, pheasants, geese, elephants & many other animal related feature, bantam rooster, goose, pony and seahorse stems, lion trinket box and lion head bowls.

Other Heisey: Over 100 candlesticks and candelabra, rare oil lamp on candlestick base, fine selection of baskets, 50 pcs of *Greek Key*, punch bowls, pitchers, decanters, humidors, candy jars, *Plantation*, 200 pcs of *Orchid Etch* with almost all serving pieces, *Rose Etch*, good selection of toothpicks, colognes, bar glasses, cordials and other small items, measuring cup and many more interesting items.

Heisey by Imperial and other companies: Over 150 animals in all colors, many hard to find examples.

Don't miss either session of this great auction. Start your Convention week here.

We would like to invite you to a barbeque during our Tuesday session. This will be free but please *RSVP*, to help us plan food.

Preview: Tuesday at 12:00 noon

Terms: This auction will be subject to a 10% buyers premium on all sales Cash, or check w/positive ID. We accept Visa, MC, Discover and Am. Express.

Auctioneers: Sam Schnaidt, David Schnaidt and Jacki Collins

Heisey Collectors of America, Inc.

37th Annual

PREMIERE GLASS SHOW

Featuring 40 prominent elegant glass dealers from across the U.S.

Thursday, June 14, 12:00 noon – 5:00 p.m., \$5.00
(Ticket sales start at 10:30 a.m.)

Friday, June 15, 12:00 noon – 5:00 p.m., \$5.00

Saturday, June 16, 12:00 noon – 5:00 p.m., FREE

OSUN/COTC Campus, Country Club Drive, Newark, OH
30 miles east of Columbus off St. Rt. 16

36th National HCA Convention

"Treasures of the National Heisey Glass Museum"
June 13-16, 2007

Convention events include Annual Meeting, ID session,
Blind Auction, Former Heisey Employees' Reception

Museum Open House with FREE admission

Tuesday, June 12 – Sunday, June 17
169 W. Church St, Newark, OH 43055

For more information: (740) 345-2932
www.heiseymuseum.org

Proceeds benefit the National Heisey Glass Museum

Find the Best of Heisey Glass...

...with popular patterns like Orchid, Heisey Rose, Minuet, and hundreds more. We also carry other fine crystal and depression glass from Cambridge, Fostoria, Imperial, Duncan & Miller, and more. The world's largest supplier of old and new china, crystal, flatware and collectibles, Replacements, Ltd. carries over 11 million pieces in inventory in over 250,000 patterns.

If you're looking to add to your collection, or if you're looking to sell — call us toll-free. We're always looking for more.

 **REPLACEMENTS, LTD.**
China, Crystal & Silver • Old & New

Dept. HS, PO Box 26029, Greensboro, NC 27420

www.replacements.com

1-800-REPLACE (1-800-737-5223)

◆ Paid Ad

OPEN HOUSE

Mrs. HAROLD (MILDRED) WILLEY
WILLEY'S HEISEY GLASS MUSEUM

11110 Cannon Rd.,
Frazeesburg, OH 43822
12 MILES EAST OF NEWARK, OH

OPEN FOR SALES

June 10-16, 2007

9 a.m. – 5 p.m.

Fostoria, Cambridge, Tiffin, plus lots of Heisey and more at reduced prices. Alexandrite, Cobalt, Tangerine, Marigold, etchings, candelabras, lots of orchid, and more!

From Newark, Take Rt. 16 to Rt. 586. Go left (north), cross the new highway. Turn right on Raiders Rd. (old 16) to Cannon Rd. Turn left. Proceed 1.2 miles. We are on the right. Our name is on the mailbox.

If you get lost, call 740/828-2557

***WE WILL NOT BE AT GRANVILLE
OR NEWARK THIS YEAR***

Our Museum will open for you to enjoy with over 3500 pieces, including many rare pieces.

COME SEE US!

Paid Ad ◆

Dealer Directory

Maximum 6 lines/12 months/\$35 MEMBERS ONLY

Contact the Editor to place your ad!



| | | |
|--|--|---|
| <p>KIM & PAM CARLISLE SHOWS & MAILORDERS ONLY 28220 Lamong Rd. Dept. H Sheridan, IN 46069 (317) 758- 5767 kcarlisi@worldnet.att.net</p> | <p>SHIRLEY EUGENIA DUNBAR Heisey a Specialty—Mail Order, Shows, Appraisals EMAIL: shirley400@aol.com PO Box 8344, Port St. Lucie, FL 34952 Oct-May (772) 337-1558 PO Box 222, Naples, ME 04055 May-Oct (207) 647-5652</p> | <p>SUM OF LIFE Elaine & Frank Husted: 610-469-1243 147 Barton Dr., Spring City, PA 19475 Traveling through eastern PA Call, stop in, be a buyer or a browser!! E-mail: frankly.me@comcast.net</p> |
| <p>ALL HEISEY AUCTION Consignments Welcome Apple Tree Auction Center 1616 W. Church, Newark, OH 43055 (740) 344-4282</p> | <p>MOUNDBUILDERS SECOND GENERATION Barbara and Richard Bartlett Heisey Exclusively! 1-904-280-0450 PO Box 1931, Ponte Vedra Beach, FL 32082 Toll Free 1-888-434-7397(HEISEYS) EMAIL: CLASYGLAS2@AOL.COM</p> | <p>EAGLES REST ANTIQUES <i>Buying Heisey, China & Pottery</i> Carl and Mary Evans 62 Fieldpoint Rd., Heath, OH 43056 (740) 522-2035</p> |
| <p>PAULA & JEFF MORROW Elegant Glassware and American Dinnerware 126 Clinton Avenue Elmhurst, IL 60126 (630) 833-4644 mor-fab@comcast.net</p> | <p>H & R DIAMOND H Helen & Bob Rarey 1450 White Ash Dr. Columbus, OH 43204 (614) 279-0390 after 5:30</p> | <p>The American Bell Association P.O. Box 19443 Indianapolis, IN 46219-0443 www.americanbell.org</p> |
| <p>REALMS IN GLASS Roy Eggert Heisey Custom Stained Glass 12009 Fingerboard Rd, Monrovia, MD 21770 301-865-5196 royeggert7@cs.com</p> | <p>PIECE BY PIECE ANTIQUES Buy & Sell Specializing in Heisey Glassware Bryan K. Baker Fairfax Station, VA 22039 (703) 250-6117 piecebypiece@verizon.net</p> | <p>PATTON HOUSE ANTIQUES Specializing in Glass*Heisey*Cambridge*Fostoria*Duncan* Factory Antique Mall, Verona, VA off I-81 Exit 227 Antiquers Mall, Booth 81, Rt. 29 N., Charlottesville, VA The Daniels, Box 547, Louisa, VA 23093 (540) 967-1181</p> |
| <p>C&J ANTIQUES Cole & Jean Miesner Box 45, 72 Whig St. Newark Valley, NY 13811 (607) 642-9905</p> | <p>SIBYLS ANTIQUES & COLLECTIBLES Sibyl & Ned Lavengood Newcastle Antique Center 606 Castle St. Wilmington, NC (910) 763-7157 or Sibylsantiques@bellsouth.net</p> | <p>FRAN'S FANCY FINDS Fran & Jack Grenzebach 10534 Valencia Rd., Seminole, FL 33772-7511 (727) 391-5184 SHOWS MAIL ORDERS</p> |
| <p>CRYSTAL LADY Bill, Joann & Marcie Hagerty Specializing in elegant depression glassware 1817 Vinton St., Omaha, NE 68108 Shop (402) 341-0643 or Home (402) 391-6730 Email: ejhagerty@aol.com website: www.crystalladyantiques.com</p> | <p>WHALEY'S PRICE LIST 2004-2005 185 Pages of Heisey Glass ONLY \$25 @ includes first class postage Send Check to B.WHALEY, 48 RENWICK DR. FFG-CROSSVILLE, TN 38558</p> | <p>WILLEY'S ANTIQUES & MUSEUM Specializing in Heisey 11110 Cannon Rd., Frazeyburg, OH 43822 16 miles east of Newark, OH (740) 828-2557</p> |
| <p>CHARLES & MILDRED FISHER Heisey animals and Heisey By Imperial animals 991 Idlewilde, Newark, OH 43055 cffisher@adelphia.net (740) 522-5398</p> | <p>MARSH'S ANTIQUES Dick and Virginia Marsh 4532 Newton Road Newark, OH 43055 swamp@alink.com (740) 366-5608</p> | <p>MOONGLEAM ANTIQUES Heisey Glassware & American Art Pottery John Woytowicz and Peter Rivard 70 Pleasant St., Gardiner, ME 04345 (207) 582-9048 E-mail: jmwpwr@aol.com</p> |
| <p>ROBERT M. LOCH Voting Member HCA and NWHC Pacific Interstate Glassware Co. PO BOX 469 Custer, WA 98240 360-366-3166</p> | <p>CRESTONE MANOR UNIQUES Harold & Loleta Hammontree 3317 Crestone Circle, Chattanooga, TN 37411 423-629-1274 hammonl@bellsouth.net Heisey Only</p> | <p>APPLE VALLEY COLLECTIBLES Richard Garnett & Marilyn Faxon— Owners Shows/ Mail Order (845) 691-6308 Email: diamondH95@aol.com</p> |
| <p>JOAN'S ANTIQUES Buy & Sell Heisey by Imperial Joe & Joan Cimini 67183 Stein Rd. Belmont, OH 43718 (740) 782-1327 upperigladylady@windstream.net</p> | <p>THE CRYSTAL REPAIR DOCTOR Repairs to Damaged Crystal John T. Forrester PO Box 795, Kotzebue, AK 99752-0795 (907) 442-2680 crystalrepairdr@yahoo.com</p> | <p>WATERSEdge ANTIQUES Norene & Don Walzer Shows & Mail Order 25089 Riverwalk Drive Leesburg, FL 34748 (352) 314-8975 dnnwalzer@earthlink.net</p> |
| <p>JERRYS' ANTIQUES Shows Only Glassware and Other Fine Collectables PO Box 4485, Davenport, IA 52808 563-340-1871 jerrysantiques@mchsi.com</p> | <p>ONCE AND FUTURE ANTIQUES Susan & Stephen Pescatore 9 Donna Rd. Chelmsford, MA 01824 (978) 256-5418</p> | <p>BOB & MARY KREIMER Specializing in Heisey Glass 7044 SW 116th Loop, Ocala, FL 34476 (352) 873-8306 email: rkreimer@earthlink.net. Shows and Mail Orders Only</p> |
| <p>J & L TREASURES Specializing in Heisey, Cambridge, Fostoria, Tiffin, Morgantown, etc Linda Kilburn, PO Box 1257, Burlington, CT 860-673-4088 jltreasures@comcast.net</p> | <p>GW ANTIQUES Robert Gindhart & Gary Wimmershoff Santa Rosa, CA (707) 575-8706 gwant@sonic.net</p> | <p>YELLOW BRICK ROAD ANTIQUES Shows and Estate Sales Jean Will Leavenworth, KS 66048 (913) 682-4831</p> |

When Renewing Your Membership

Help ensure the future of your Museum. When you renew your membership at one of the levels below, any amount beyond the regular Associate dues goes into the Endowment Fund.

| | |
|---|--------------|
| <i>Individual Contributing, one person in household</i> | <i>\$50</i> |
| <i>Joint Contributing, two people in one household</i> | <i>\$60</i> |
| <i>Family Contributing, parents and children under 18</i> | <i>\$75</i> |
| <i>Patron</i> | <i>\$125</i> |
| <i>Sponsor</i> | <i>\$250</i> |
| <i>Benefactor</i> | <i>\$500</i> |

Visit The
National
Heisey
Glass
Museum



Come at your leisure to enjoy more than 4,800 pieces of glassware produced by A.H. Heisey and Company from 1896-1957. Hundreds of patterns are featured in all production colors. Rare and experimental items are included as well.

Facilities are air-conditioned and handicapped accessible. Hours are 10:00 a.m. to 4:00 p.m. Tuesday through Saturday, 1:00 to 4:00 p.m. Sunday. Members are admitted free, regular admission is \$4. Office hours are 8:00 a.m. to 4:30 p.m. weekdays.

Membership Renewal Notice: Check the date above your name and address on the mailing label. This is your expiration date. If it reads 6-10-07 make sure your dues are paid soon in order to receive next month's issue of *Heisey News*.

Contact the HCA Administrative Office at (740) 345-2932 for more information. The Endowment Committee wishes to thank those who have become Endowment Members and all of the individuals and study clubs that have so generously supported the HCA Endowment Fund. All members who have supported the fund are recognized each year in the February issue of the Newsletter. Your support will make the Museum self-sustaining in the years to come. Thank You all! ♦

Shipping & Handling Fees for Outside US

Additional shipping charges are required for members living outside the U.S. Current rates are Canada \$22 (Effective July 1, 2007); for other countries contact the Museum. Rates are subject to change at any time due to rate changes made by the US Postal Service. To verify current rates, call (740) 345-2932 or E-mail business@HeiseyMuseum.org

Museum Volunteers for April 2007

Joe & Flo Harner
Chuck & Amy Jo Jones
Joe & LaVerne Lokay
Bob & Phyllis McClain
Don & Pat Moore
Sharon Orienter
Mac & Georgia Otten
Ginny Priest
Bob Rarey
Russ Reopell
Dick Ritter
Dave and Mary Ann Spahr



Periodical Postage

Paid at the Post Office
In Newark, OH 43055
Publication # 00986
POSTMASTER SEND FORM 3579 TO:
HCA
169 W. Church St.
Newark, OH 43055

To: _____