

HEISEY NEWS

The Official Publication of Heisey Collectors of America, Inc.

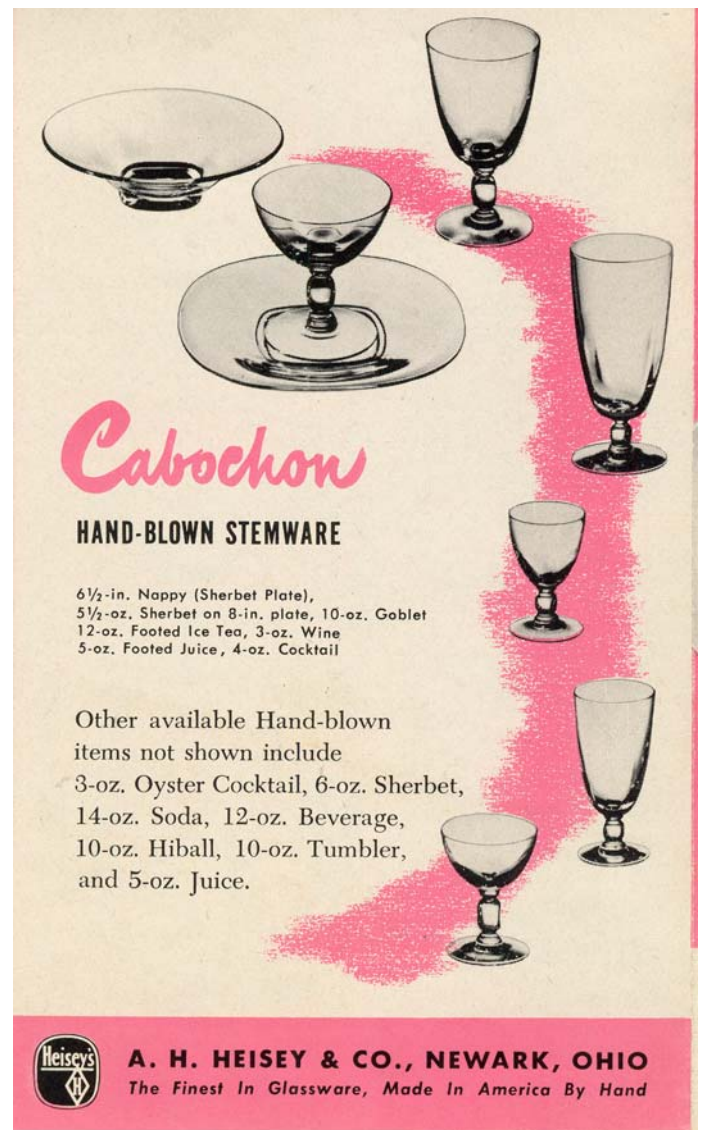
Volume XXXV No. 7

June 2006

ISSN 0731-8014



Front



Back

For more on the Cabochon brochure see page 6

HEISEY NEWS

Heisey Collectors of America, Inc.
169 West Church Street
Newark, Ohio 43055
Phone 740-345-2932 Fax 740-345-9638
Web Site: www.heiseyMuseum.org
All Rights Reserved 2006
ISSN 0731-8014

Staff and Phone Extensions

Curator, Walter Ludwig, curator@heiseyMuseum.org, Ext. 4
Business Manager, Shelly Hoberg, business@heiseyMuseum.org, Ext. 2
Clerks, Liz Moats and Melita Miller, membership@heiseyMuseum.org,
Ext. 1
Clerk, Mary Jo Kochendorfer, Ext. 5

HCA Board of Directors:

President, Dick Smith – Newark, OH, 740-366-5163
Vice President, Bryan Baker, - Fairfax Station, VA, 703-250-6117
Secretary, Karen O'Hare - Newark, OH, 740-366-3739
Treasurer, Dave Spahr - Xenia, OH, 937-372-7166
Member at Large, Amy Jo Jones - Beavercreek, OH, 937-426-1567

Phil Abrams - Charlotte, NC, 704-364-4561
Linda Bischoff - Holland, OH, 419-865-3996
Carolyn Felger – Thousand Oaks, CA, 805-373-2838
Palmer Haffner - Naperville, IL, 630-548-5060
Ron Keener – Heath, OH, 740-323-3747
Sharon Orienter - Rochester, NY, 585-288-8076
Sam Schnaidt – Granville, OH, 740-587-0052
Karen Taylo – New Bern, NC, 252-637-9985
Charlie Wade – Newark, OH 740-587-2002
Jean Will – Leavenworth, KS, 913-682-4831

HEISEY NEWS is published and printed monthly (twice in March), by Heisey Collectors of America, Inc. (HCA). Periodical postage paid at Newark. Subscription is limited to HCA members. First class mailing is available for an extra \$15.00, due with payment of membership. If you are having difficulty receiving your newsletter, please contact the HCA Administrative Office Monday through Friday 8:00 a.m. - 4:30 p.m.

The opinions expressed in articles in HEISEY NEWS are those of the authors and not necessarily those of the organization. The Editorial Staff reserves the right to edit, with or without the consent of the author or to refuse any material submitted for publication.

Back Issues

Back Issues available from files are \$3.00 per issue plus shipping and handling

Advertising

Ads may be mailed to: HCA Advertising, 169 W. Church St., Newark, OH 43055; faxed to (740) 345-9638; or e-mailed to curator@heiseymuseum.org. Whenever possible, please e-mail your ad. Always include your MasterCard or Visa number and expiration date. When mailed or faxed, ads should be typed or printed on white paper with dark ink. Camera ready ads are accepted, but must follow line specifications outlined at the beginning of the advertising section. Ads containing reproductions will not knowingly be accepted unless clearly stated (e.g. Heisey by Imperial, etc.). HEISEY NEWS accepts no further liability. In the event of a typographical error, the incorrect portion of the ad will be run in the following issue, but HEISEY NEWS assumes no further liability. See advertising section for rates and deadlines.

Museum

Heisey Collectors of America, Inc., a non-profit corporation (tax-exempt status), owns and operates The National Heisey Glass Museum in Veterans Park, 6th and Church Streets, Newark, Ohio. Open year round, Tuesday through Saturday 10:00 a.m. – 4:00 p.m., Sunday 1:00 – 4:00 p.m., closed holidays. Other hours by appointment. Members admitted free.

Identification

HCA will attempt to identify unknown glass items. Send a color photograph, measurements, and a self-addressed, stamped envelope to the attention of the Curator. Other arrangements should be made in advance with the Museum staff. Please keep in mind that the Museum cannot appraise items. Identification is free to members, non-members \$5.00 per item.

Membership

To join Heisey Collectors of America or to renew your membership, contact the HCA Administrative Office Monday through Friday 8:00 a.m. - 4:30 p.m. Eastern Time. Associate dues are \$30.00 plus \$5.00 for each additional household member. Voting members pay an additional one-time fee of \$25.00. Please consider supporting the Endowment Fund by joining at one of the levels listed on the back page.

Museum Gift Shop

There is always someone in the Gift Shop during the Museum's hours of operation to help answer questions or take orders. When ordering by phone, please have a credit card ready. When ordering by mail, please be sure to include appropriate charges such as shipping and sales tax. Please note that the HCA member discount does not apply to original Heisey or special project items.

Shipping and Receiving

Delivery is made much easier when we have a complete street address, not a PO Box. We prefer to use UPS. If you have not received a package, please call the Administrative Office to confirm it was sent. We will assist you in tracing it. If your package arrives damaged, please contact your local UPS representative. We insure everything.

Donations and Loans to the Museum

If you would like to make a donation to the Museum or have questions regarding items on loan, contact the Curator. HCA reserves the right to accept or refuse items based on current holdings.

2006 HCA Calendar of Events

| | |
|--|------------|
| Heisey National Convention & Elegant Glass Show, Newark, OH | June 14-17 |
| Heisey Select Auction, Newark, OH | Sept. |
| Percy and Vivian Moore Memorial Dinner, Omaha, NE | Oct 20-21 |
| Holiday Open House in the Park, Newark, OH | Dec 9 |

Table of Contents

| | |
|--|----------|
| Cabacon Brochure, Walter Ludwig | FC & 6-7 |
| Message From the President, Dick Smith | 3 |
| Curator's Report, Walter Ludwig | 3-4 |
| Name the Pattern Contest | 4 |
| Front Page Jewelers' Circular-Keystone, June 1942 | 5 & 11 |
| Ad – 1060 Starlight Cutting | 7 |
| Twist Stemware 845-849, Joe Lokay | 8-9 |
| Derbey Stemware 700 to 703, Joe Lokay | 9 |
| Plain Stemware Cupped 850–854, Joe Lokay | 10-11 |
| More 1252 Twist Whimseys, Walter Ludwig | 11 |
| 1183 Revere Japanese Garden Trays, Walter Ludwig | 12 |
| Game, <i>Set</i> , and Match!, Georgia G. Otten | 13 |
| Silver City Glass Company, Walter Ludwig | 14-15 |
| Heisey Punch Bowls, Walter Ludwig | 16-17 |
| Hold Back Auction Results | 17 |
| Convention 2006 – <i>Last Call!</i> , Amy Jo Jones | 18 |
| Heisey Card Deck Special Project, Walter Ludwig | 18 |
| 2006 HCA Convention Events | 19 |
| 2006 HCA Convention Registration Form | 20 |

Table of Contents Continued

17

MESSAGE FROM THE PRESIDENT Dick Smith

The Holdback Silent Auction is over and was a great success. HCA earned approximately \$1600 from this. The results are on page 17. HCA thanks those who participated and purchased glass.

HCA is now a Licensed Auction Firm. HCA has acquired its license to manage and operate the Benefit Auction thanks to Dave Spahr for taking the test representing HCA. HCA is now in compliant with Ohio law and can conduct its own auction as has been done in past years.

For those of you who have not heard, the church show at Convention has been canceled this year due to health problems of Betty Morrison. Because of this, the HCA show has added several dealers and should be full. This has necessitated in reducing the display area to accommodate the added dealers. Marilyn Smith, the display coordinator, has agreed and worked out a reduced area to ensure that we will still have a display for all to enjoy at Convention.

I want to thank those who stepped forward to volunteer at Convention. Without you, the volunteers, Convention could not be possible.

With the elections in June, we will be gaining some new members to the Board of Directors. Unfortunately, this also means we will be losing some. I personally want to thank the out going Board members, Palmer Haffner, Sharon Orienter, and Dave Spahr for all their time, hard work and dedication to HCA these past four years. HCA Thanks You.

HCA extends its sympathies to the family of Stan DeGroote who passed away on the morning of May 1. HCA membership clerk Liz Moats is still on the mend and we wish her well and a speedy recovery.

HAPPY HEISEY HUNTING
Until Next Month

DICK SMITH ♦

CURATOR'S REPORT Walter Ludwig

Can you believe it, the excitement here is building every day! Here at *Heisey Station* we are awaiting for the train to pull around the bend and unload all of its passengers for one of the best Heisey Conventions to ever be held. We can smell the train smoke in the air and hear that whistle approaching. Do you have your ticket yet? If not, then this is the time to fill in that registration blank (see page 20) and send it in so you do not miss out on the fun. Hotel rooms are available; that is not an excuse to stay away this year.

If you have never attended a Convention before, then this is the year to make up your mind to attend. You will never regret it. Besides all of the great Heisey glass that will be available during the Convention (the show, the flea market, garage sales, and auctions that will be held that week), it is a time to meet people who share your passion for the wonderful product that was made right here in Newark. No one will look at you funny if you want to tell the story about the great piece you found at that hole-in-the-wall shop — they will listen eagerly and probably try to top you with a story of their own. Everyone who will be here is infected with the same wonderful disease, Heisey-philes rule!!

I keep hearing from collectors that Heisey has all but disappeared in their area — it is just not available like it once was. I certainly agree with that, but it is not true during Convention here in Newark. There is plenty of Heisey available, both common and uncommon. All colors, all patterns, and all decorations abound here at this time. True, you may not find that one piece you have been looking for to fill in the gap in your collection — but, then again, you might. But, with all the choices available, you should find many pieces to bring home that will continue to enhance your appreciation of Heisey glassware.

Besides all of the wonderful Heisey events that are scheduled for you during the Convention, your Museum is located in an area that is rich in cultural and recreational possibilities; so plan a great getaway that you can truly enjoy. There is plenty of golfing available. A new waterpark has opened just outside Columbus less than 25 miles from Newark (by next

year another one will have opened on the grounds of Cherry Valley Lodge). Visit the world famous Newark Earthworks to see remnants of civilizations that were here more than 1,000 years ago. This year, the Greater Buckeye Lake Historical Society will conduct its "Open Bog Day" on Saturday, June 17. This is a wonderful event that you can take advantage of while you are here in Newark. If this is something you think you may be interested in, call them at 740-929-1998 for more information. For information on other things to do and places of interest, visit the web site of the Licking County Convention and Visitors Bureau at www.lccvb.com.

We are busy here at the Museum getting ready for all the visitors who will be here for convention. Do plan to stop at the Museum while you are in town. The multi-purpose room will be open for refreshments and a place to visit with other people who share your passion. We will all be glad to see you.

Please look on page 18 for an exciting project that we will be launching during Convention this year.

I am looking forward to seeing you all at the Convention. We will all have a great time. ♦

NAME THE PATTERN CONTEST

Walter Ludwig

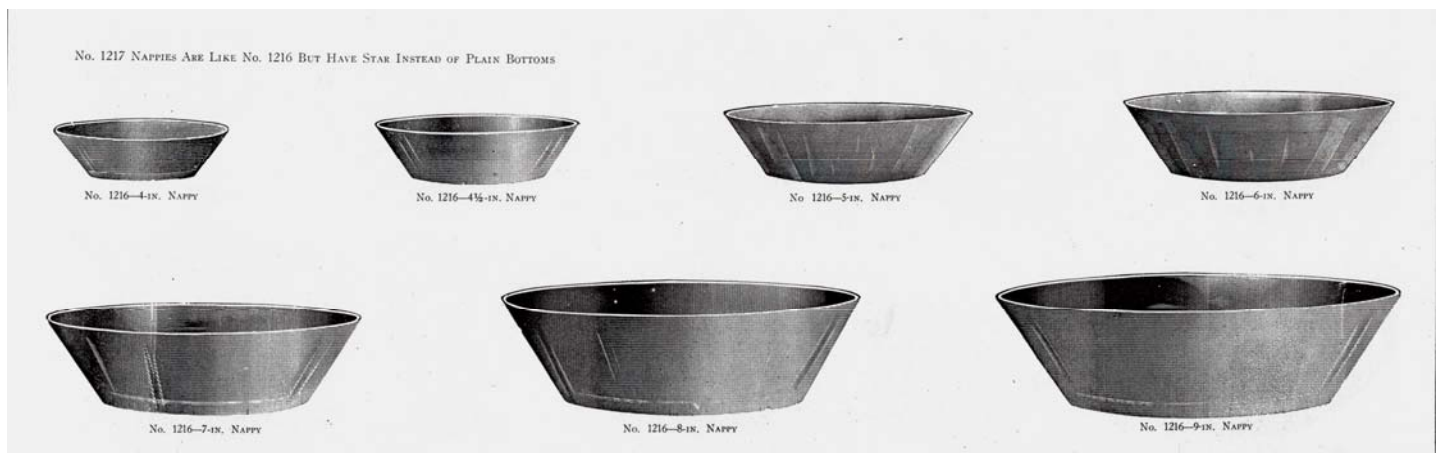
Last year, we introduced the Name the Pattern Contest to great success. For \$5 you had a chance to name one of the Heisey patterns that, to date, has not been assigned a name by Heisey, HCA, or an early

researcher in Heisey. The major patterns have all been previously named, so it is only some small pattern lines that are still nameless.

Last year, we named the 484 pattern Edith. The lucky winner was a first time Convention attendee who chose to name the pattern after her mother who had left her a few pieces of glass, and when she found out they were Heisey, came to Convention to see what it all was about. Read her story in the September 2005 Heisey News.

This year, we have a pattern of seven different sizes of nappies to name. These nappies are very plain and have straight sides. Heisey's pattern number is 1216. I have reprinted a page from Catalog 102 produced in 1924 which shows these nappies. The pattern was not produced for a long time but is well marked with the Diamond H. A note on the catalog page says that the 1216 pattern has a plain bottom, but pattern 1217 were the same series of nappies with a star bottom.

The winner has not only the right to name the pattern, but will receive three 4" nappies in the pattern to commemorate winning the contest this year. Entry blanks will be available during Convention at the Museum, as well as at the HCA booth on the show floor. The winner will be drawn during the Centerpiece Banquet Friday night. You do not have to be present to win, so if you are not attending the Convention you may call in your entry and arrange for payment. Multiple entries from the same person will also be accepted. The only criterion for a winning entry is that it must be acceptable to the Museum curator. Good Luck. ♦



1216 Nappies

Heisey News June 2006



Jewelers'
Circular-
Keystone
JUNE 1947

This Lucky June Bride From June 1947 Received Heisey. How Many Pieces Can You Count?
See Page 11

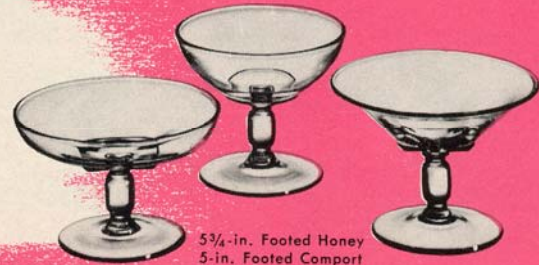
Cabochon

HAND-CAST CRYSTAL

Using the basic simplicity of the circle and the square, Heisey has fashioned dramatic, fresh-as-tomorrow *Cabochon!* Each piece is designed for practical duty at buffets, luncheons, and other informal entertaining . . . each piece so modern, so moderately priced! Be sure to see the complete line of hand-cast table accessories and hand-blown pieces at your Heisey dealer.



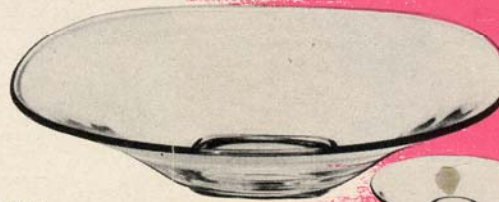
Sugar & Cream
12-oz. Tumbler
6-oz. Sherbet on Sherbet Plate
and 8-in. Salad Plate
Cup & Saucer



5 3/4-in. Footed Honey
5-in. Footed Comport
5 3/4-in. Footed Mint



13-in. Gardenia Bowl



13-in. Floral Bowl
1-light Candellette
2-light Candlestick



Cabochon Brochure Center

CABOCHON BROCHURE Walter Ludwig

On the cover of this issue of the Heisey News you will find the front and back of the promotional brochure that A. H. Heisey & Co. published to promote the Cabochon pattern. This brochure is a single fold using a pink color to highlight the background on all pages of the brochure. The word Cabochon on the inside and back is also in this pink color.

The front of the brochure features several different pieces of the pattern which are not identified there. All of the pieces are identified on other pages of the brochure with the exception of the unusual flared vase. In the upper right of the cover is a presentation

featuring rayed projections highlighting the design concept of the pattern. The caption reads, "The Circle and the Square are the two perfect shapes that are basic in all design. *Cabochon* is the ideal combination of these two perfect shapes."

The promotional blurb on the inside of the brochure reads, "Using the basic simplicity of the circle and the square, Heisey has fashioned dramatic, fresh-as-tomorrow *Cabochon!* Each piece is designed for practical duty at buffets, luncheons, and other informal entertaining ... each piece so modern, so moderately priced! Be sure to see the complete line of hand-cast table accessories and hand-blown pieces at your Heisey dealer." Illustrated and identified in groupings are in the upper right sugar and cream, 12 oz. tumbler, 6 oz. sherbet on sherbet plate, 8" salad plate, and cup and saucer; in middle

right is the 5 ¾" footed honey, 5" footed compote, and 5 ¾" footed mint; in the lower right is the 13" floral bowl, 1 light candelette, and 2 light candlestick; and standing alone in the lower left is the 13" gardenia bowl.

The back of the brochure features a few pressed pieces from 1951 Cabochon and some of the blown stemware from 5091 Cabochon identified as 6 ½" nappy (sherbet plate), 5 ½ oz sherbet (this time the 5091 footed one) on an 8" plate, 10 oz. goblet, 12 oz. footed ice tea, 3 oz. wine, 5 oz. footed juice, and 4 oz. cocktail. Additionally, it states, "Other available Hand-blown items not shown include 3 oz. oyster cocktail, 6 oz. sherbet, 14 oz. soda, 12 oz. beverage, 10 oz. hiball, 10 oz. tumbler, and 4 oz. juice."

The 1951 Cabochon pattern was Heisey's last full pressed line introduced before the company went out of business. The pattern was put on the market in 1951 which probably led to the pattern number being altered to 1951. Given that this pattern was introduced soon after 1590 Zodiac, logically the pattern number should have been 1591, but some enterprising individual in marketing saw the chance to tie the pattern to the year and so the pattern number was changed. (Not the first time Heisey did this. The 1776 Kalonyal pattern also underwent a pattern number change for promotional purposes).

This is a pattern that is relatively cheap to start now, but it is really difficult to find also. The pattern remained in production until the factory closed with a few pieces even appearing in Dawn (cream and sugar, butter dish, and candy box) and Limelight (candy box). Several pieces were produced by Imperial glass with the butter and cover in their line until 1971. The 5091 blown stemware were produced from 1958 until 1964 by Imperial. In 1952 Heisey introduced the 5092 line of blown sodas with heavy squared bottoms. These can be found in crystal and with Sultana (Amber) bases (see ad for Starlight cutting to see an example).

It is quite possible that Heisey's Cabochon line was developed due to the success of Cambridge's Square line that had been introduced in 1949. There are decided similarities in the patterns with the bases on Cambridge pieces being more prominent but the "squares" on Heisey pieces being softer with more rounded corners. The pattern is very in keeping with the modernistic design trends of the fifties. ♦

HEISEY
Starlight
CUTTING

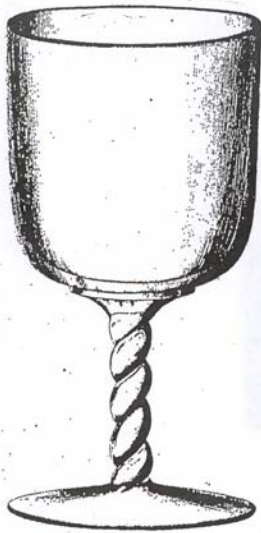
Heisey created this bright rock crystal cutting as a perfect complement to your table... and a flattering compliment to your friends. Ask your Heisey dealer to show you this lovely new modern pattern in hand-blown stemware and matching salad plates.
A. H. Heisey & Co., Dept. L-1, Newark, Ohio

Heisey CABOCHON... is an inexpensive, functional pattern, available in hand-blown stemware and hand-cast table pieces, either plain or hand-cut. See it at your Heisey dealer's now or write for Cabochon folder.

THE FINEST IN GLASSWARE MADE IN AMERICA BY HAND

Ad from
Living for Young Homemakers
June 1952
Showing
1060 Starlight Cutting
on
1951 Cabochon
and
6091 Cabochon Stemware

Twisted Stem Stemware



#849
10 oz. Goblet



848
6 oz. Champagne



847
4 1/2 oz. Claret



846
2 1/2 oz. Wine



845
1 oz. Cordial

TWIST STEMWARE 845-849

Joe Lokay

Twist (twisted stem) was the eighth set in the ten stemware lines that Heisey started in 1898. There were five items offered in the Twist line. They were given catalog numbers 845 to 849. The five items were the #845 1 oz. cordial, #846 2 1/2 oz. wine, #847 4 1/2 oz. claret, #848 6 oz. champagne, and #849 10 oz. goblet. The walls of the bowls are straight. Straight means not cupped or flared. A copy of the 1900 Price List and Price List #60 (1902) are pictured with this article.

Price List (1900)

| | | |
|-----|-------------------------|----|
| 845 | Twist Stem Cordial..... | 25 |
| 846 | " " Wine..... | 30 |
| 847 | " " Claret..... | 33 |
| 848 | " " Champagne..... | 35 |
| 849 | " " Goblet..... | 40 |

Since we are not sure exactly how these stems were made there are several possibilities to consider. The stemware could have been made in two separate pieces, the stem and the bowl. Then, while hot, the stem and bowl would be

fused together. To create the Twist line, the stem would be twisted four times before it was fused to the bowl. The same bowls for Plain pattern line were used for the Twist pattern line. Another possible production approach for the Plain line is the pulled stem concept. The stem is pulled from the bottom of the molded bowl and then a base piece is added. In the case of the Twist line, as the stem is pulled, it is twisted four times and then the base piece is added. One other possibility is that the mold incorporated both the bowl and the stem and one will see two mold lines running over the twists in the stem on opposite sides.

Price List #60 (1902)

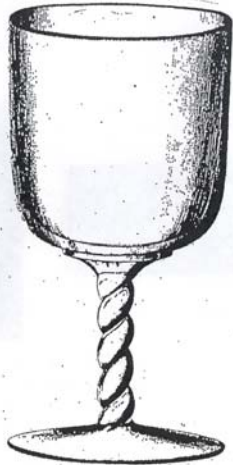
No. 859 LINE TWIST STEM, STEMWARE.

| | | | | | |
|---------------------------|----|----|-----|-----|----|
| 859, 10, Goblet | 50 | 43 | 9 | 90 | 22 |
| 858, 6, Champagne | 45 | 37 | 15 | 90 | 22 |
| 857, 4 1/2, Claret..... | 40 | 35 | 21 | 90 | 22 |
| 856, 2 1/2, Wine | 35 | 30 | 35 | 95 | 22 |
| 855, 1, Cordial | 35 | 28 | 100 | 100 | 22 |

The last price list to offer the Twist stemware line was #120, circa 1906. Thus, production of Twist (twisted stem) was for about nine years.

The beginning of Twist was before the Diamond H, so the early pieces are unmarked. Later pieces may be marked.

Comparison



Goblet # 849
10 oz.
Twist



Goblet #844
10 oz.
Plain

This Twist stemware line should not be confused with Heisey's later Twist line, 1252, which was introduced in 1929 and made in so many of Heisey's wonderful colors. The 1252 line was given the name Twist by researchers while the 845-849 Twist stemware line was actually called that in Heisey catalogs and price lists. ♦

DERBY STEMWARE 700 to 703

Joe Lokay

When I was looking through the unnumbered Heisey catalog, circa 1900, a set of stemware caught my eye and I wanted to find out more about these interesting stems. There were punties around the bottom of the bowl, and a decorative circular wafer shaped knob in the middle of the stem. There were four sizes pictured for the set. Their catalog numbers were 700, 701, 702 and 703.

I went to Heisey's price list #60 (1902) to find #700-703. I found this stemware under the category Footed Ales and Beers. The name

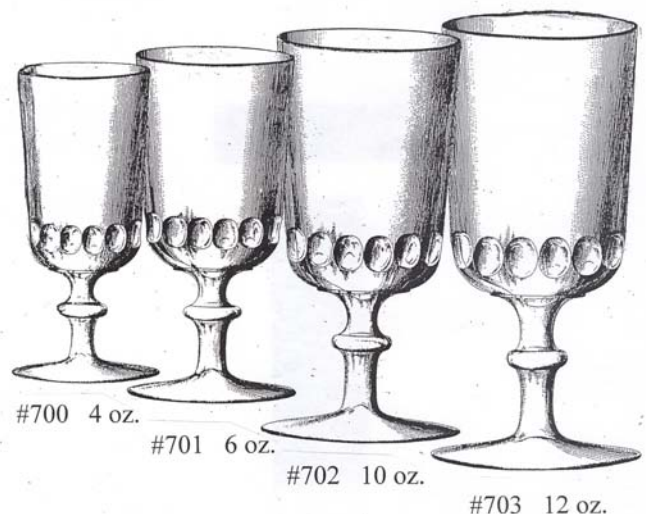
given to this line of ales was Derby. There is a fifth item in the Derby set that was given a half number. The listing was:

| | |
|--------|------------------|
| #700 | 4 oz. Derby Ale |
| #701 | 5 oz. Derby Ale |
| #701 ½ | 8 oz. Derby Ale |
| #702 | 10 oz. Derby Ale |
| #703 | 12 oz. Derby Ale |

Why five sizes? Why not just a large and a small? Perhaps an ale or beer drinker could answer this. This reminds me of the Three Bears story, except mine has five bears. #703 is for father bear, #702 for mother bear, #701 ½ for teenage bear, #701 for child bear, and #700 for baby bear. (Of course, for teenager, child, and baby bears the Ale would, obviously, be Ginger Ale). Does anyone have any Derby stems? (Editor's note: The museum has a 4 ounce Derby ale on display in Gallery 1. It is not marked).

The Derby line was first shown in the 1898 price list. The last price list to offer the Derby stemware line was #142 (1908). Thus, production of Derby was for about 12 years. The beginning of Derby was before the Diamond H, so the early pieces are unmarked. Later pieces may be marked. ♦

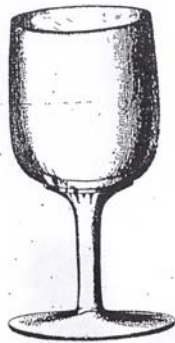
Derby – Footed Ales



Plain Stemware Cupped



850
1 oz. Cordial



851
2 ½ oz. Wine



852
4 ½ oz. Claret



853
6 oz. Champagne



854
10 oz. Goblet

Plain Stemware Cupped 850-854

Joe Lokay

Plain Stemware Cupped was the ninth set in the ten stemware lines that Heisey started in 1898. There were five items offered in the Plain Stemware Cupped line. They were given catalog number 850 to 854. The five items were the #850 1 oz. cordial, #851 2 ½ oz. wine, #852 4 ½ oz. claret, #853 6 oz. champagne, and #854 10 oz. goblet. A copy of the 1900 Price List and Price List #120 (1906) are pictured with this article.

Price List (1900)

| | | |
|-----|---------------------------|----|
| 850 | Plain Stem Cordial, Cup'd | 25 |
| 851 | " " Wide | 28 |
| 852 | " " Claret | 33 |
| 853 | " " Champagne | 35 |
| 854 | " " Goblet | 35 |

Instead of offering the Plain stemware line with an option of straight or cupped, Heisey offered them in two separate lines. The five items in Plain (straight) were listed as #840 to #844 (see Heisey News May 2006, page 6), and the same five items in Plain (cupped) were listed as #850

to #854. Heisey continued to offer them separately to the end of their production. Note the picture that compares straight vs. cupped (page 11).

Price List #120 (1906)

No. 854 Line Stemware Plain Stem Cupped

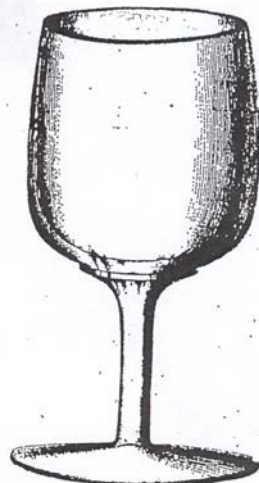
| No. | Oz. | | Price Per Doz. | | No. Doz. in Bbl. | Wt. in Bbl. | Pg. in Cat. |
|------|-----|-----------|----------------|------|------------------|-------------|-------------|
| | | | L.P. | O.P. | | | |
| 854, | 9 ¾ | Goblet | 50 | 45 | 9 | 90 | 12 |
| 853, | 6 ½ | Champagne | 50 | 42 | 15 | 90 | 12 |
| 852, | 4 ½ | Claret | 45 | 40 | 21 | 90 | 12 |
| 851, | 2 ½ | Wine | 40 | 35 | 35 | 95 | 12 |
| 850, | 1 | Cordial | 35 | 31 | 100 | 100 | 12 |

The last price list to offer Plain (straight) or Plain (cupped) was #120, circa 1906. Thus, production of Plain, either as straight or cupped, was for about nine years. The beginning of Plain, straight or cupped, was before the Diamond H, so the early pieces are unmarked. Later pieces may be marked. ♦



842

Plain, straight
4 1/2 oz. Claret



852

Plain, cupped
4 1/2 oz. Claret

whimseys in the Twist pattern), but I did not have the picture then to share with you. The piece is a crystal individual creamer made out of the bottom of the mustard jar. A spout has been tooled on one side and a handle has been applied to the opposite side. The regular mustard bottom could be paired with this to make a cute set. The owner has sent me the accompanying picture to share with our membership.



Twist Rose Bowl Made From 4" Nappy

The second whimsey came to the Museum as a donation to the collection. It was made from a crystal 4" nappy. In this case the piece was hand tooled to cup the nappy in giving it the appearance of a small rose bowl. This piece now is on view in the new acquisition case to the right of the entrance as you come into the Museum.

I really appreciate our members who are willing to share their Heisey with me and the general membership. It is only by doing this that we all learn more about the wonderful glass that the A.H. Heisey and Company produced. ♦

JUNE BRIDE (From page 5)

Did you spot the 1503 Crystolite hurricanes, the 4035 Marshall cocktail shaker, the 1489 Puritan ashtray, the 2 Goose wings half, and the 3 Goose wings up?

MORE 1252 TWIST WHIMSEYS Walter Ludwig

I am glad to be able to share with you pictures of two more 1252 Twist whimseys. This follows up on the whimseys shown in the article I wrote in the March 2006 Newsletter where I showed two of these non-production items that were fashioned out of Heisey molds while the pieces were still hot. These pieces may have been worker's own lunch-time projects or they may have been items that were considered for production but never made the grade.



Ind. Creamer Made From Mustard Bottom

I wrote about the first of these items back in 2000 in the November issue (along with other

1183 REVERE JAPANESE GARDEN TRAYS

Walter Ludwig

The 1183 Revere Japanese garden tray is a piece that does not show up in any Heisey Catalog. Just like the Japanese garden trays in 393 Narrow Flute it comes in more than one size. In Narrow Flute it comes in 10", 12", or 14". I am only aware of two sizes in Revere and that is the 10" and 14" size. The Japanese garden trays are characterized by being perfectly round shallow bowls with deep center sections and vertical sides. In the case of the Revere bowls these vertical sides continue in a wide horizontal flange around the bowl. Both 1469 Ridgeleigh and 1503 Crystolite have pieces that might have been characterized as Japanese garden trays but the company called these center pieces instead.

The bowl gets its name from the oriental bowls that were used for Japanese flower arranging. There, no doubt, was a fad at that time of women taking classes in the art of Japanese flower arranging so the bowls met a demand.

Recently, I received several pictures from one of our members of one of the 14" Revere Japanese garden trays with an inquiry as to what the piece was. The piece has an etch of a pond with swans and water lilies and it was wondered if this was a Heisey decoration. The piece was recognized as Heisey because it has a large Diamond H in the center of the bottom of the bowl.

Interestingly, the Museum owns a 10" Revere Japanese garden tray with the same etching which is on view in Gallery 1. This etching surfaced after the etching and carving book was published so it was never numbered and shown in that book. The etching has been identified as a very early Heisey plate etching and was given the fitting name Schwan.

The photos show that in doing the etching on the smaller tray the design was just truncated all around so that you do not see as much of the

pond scene. This, obviously, saved the company the expense of producing another etching plate of the same design. The rim of the tray is also etched. These designs feature dragonflies and bull frogs as well as lily pads. It looks like there were two different short etching strips used for the rim of these trays. The smaller tray shows two repeats of the bullfrog/dragonfly strip and three of the dragonfly only. For the larger tray more repeats of each of the strips would have been necessary. ♦



**1183 Revere Japanese Garden Tray, 14"
with Schwan Etching**



**1183 Revere Japanese Garden Tray, 10"
with Schwan Etching
(Museum Collection)**

GAME, SET, AND MATCH!

Georgia G. Otten

The Dayton Area Heisey Collectors had a great time at a recent meeting. While the title above was not a subject for display, it could have been! Our program for April was, "On Your (Heisey) Mark, Get "Set." Everyone participated by selecting any phrase at all that contained the word "set." Next was to use Heisey glass that best expressed that phrase. Suggested phrases included: Set me straight, Set it to music, Set the Table, Settle Down, Set the Record and Set the Standard. No one used any of those!



While no one selected 'set the table' there was a wonderful table set presented: #1200 Cut Block, complete! There was a bonus of the individual cream and sugar in the same pattern. Group envy

started early! A history of the pattern was presented and a handout given showing that 'set' in an advertisement.

Next came someone singing out "Set 'em Up, Joe!" and we set our eyes on an offering of decanters and drinking glasses. Depending on the thirst factor, one could have drinks set up in a Sweet Adeline Goblet or a small Tudor mug!



There was a wonderful analysis, "Pair vs. Set" and we saw a set of stems, bowls and animals. There were pairs of tumblers and crushed fruit jars. Setting the stage for laughter, we were treated to a "politically correct set" with the Heisey

Donkey and the Heisey Elephant. Is that a set or a pair? No poll was taken.



Continuing, we saw pieces of Narrow Flute with Rim in graduated sizes:

the Individual nut, the Chow-Chow and the Preserve. That's a set. A set of three! Continuing around the room we were delighted to see an additional selection. A 1503 Crystolite dresser set on an oval tray, complete with cologne bottle, perfume and dauber and two different size powder boxes, one with an interesting metal lid with mirror. There was at least one other member in the room 'set' on getting those same pieces for her collection!



We had two interpretations of "set" using a card theme. There was one who wanted to "Set Your Opponent" and had some Heisey high cards to help. There was the King (Arthur), Queen (Ann) and the Jack (Be-Nimble!). There was another wonderful display using the cards and the Ridgleigh bridge ashtrays to "Get set to board the Heisey Express." Everyone appreciated that thought. Just go with the Flo!



Another presentation was based on "Set the Mood" and there was one on being "Set on the path" to Heisey Collecting. We like to think we are all 'serious' Heisey collectors, but truth be told, well, you "settle" on something to say about our being serious! ♦

SILVER CITY GLASS COMPANY

Walter Ludwig

Silver City Glass Company was one of many companies that purchased Heisey blanks (undecorated ware) and enhanced them by giving them their own treatments and then selling the goods at a markup. In the case of Silver City elaborate silver overlaying was their means of decorating the glassware.

Silver City Glass Company was located in Meriden, CT, and the company actually took its name from the nickname the city acquired in the late 1800s because of the large number of firms that were located there that did silver plating on Britannic ware that was made there. Many of the finest of the metal plating companies were located in Meriden. Silver City continued the tradition of fine silver craftsmanship. They had developed special processes that they claimed made the silver non-tarnish, thereby enhancing the allure of silver without the work.

Silver City purchased glass from all of the better glass houses, as can be seen in the October 1938 ad from The Jewelers' Circular-Keystone that shows Heisey's 134 Trident candlestick along side pieces of Fostoria's Lafayette and Baroque patterns and a pitcher and, I believe, relish that was made by Cambridge. The April 1939 Ad shows a New Martinsville floral bowl paired with Heisey's 7000 Sunflower candlesticks both with the same pattern of silver overlay. The final ad from February 1950 shows Heisey's 1915 Waverly oval compote with a Silver City's Garden pattern.

Silver City apparently started out as a cut glass company in 1905. It was not until 1920 that they changed their name from Silver City Cut Glass Company to Silver City Glass Company, and at that time began doing the silver (and later, gold) decorations. In 1978, they merged with the Rockwell Silver Company and became part of Decorex Industries. They must have gone out of business for good around 1985-86, since that's the last annual trade directory that they are listed in. I tried to find more information on the Internet about Silver City but all I found was that their former factory site in Meriden made the Superfund list of hazardous waste sites. ♦

Now MORE SALES

Instead of
"LOST SALES"



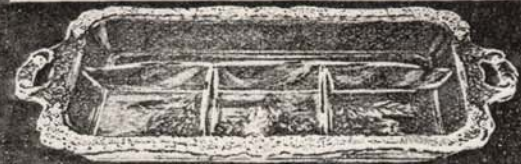
has the splendor of sterling silver, a distinct beauty, yet moderate price



Now on new wave of popularity since perfection of our non-tarnish process.



Our sales records show that the grape design of the pieces illustrated here is easily the most rapid seller



Your opportunity . . .

This increasingly popular line opens an important new source of profit. If it is not represented in your city, write today and ask about our attractive proposition. You can easily step up sales this season by writing now.

SILVER CITY GLASS CO., Inc.

Meriden, Conn.

The Jeweler's Circular-Keystone, October 1938

EXTRA PROFITS
this Spring



Fills a Price Gap . . .
wins many Extra Sales

Here's a dilemma facing many of your customers for Spring gifts. Their taste leans towards the elegance and beauty of sterling silver. Their pocketbooks, however, forbid extravagant giving. In this situation you save a sale—earn extra profit—by showing Sterling-on-Crystal.

NON-TARNISH

This feature has stimulated a new period of popularity for Sterling-on-Crystal.

Get Ready Today . . .
for extra Spring profits
If this line is not represented in your city, write today for our attractive proposition.

THE SILVER CITY GLASS CO., MERIDEN, CONN.

Definitely new

... IN LINE
... IN PATTERN



STERLING-ON-CRYSTAL COMPOTE

The sweeping contours, the deep bowl, the delightful "Garden" pattern . . . all new . . . will catch the eye of the discerning hostess. And be assured she'll notice the difference in the *high quality lead-content crystal*, fashioned by one of America's leading glass makers . . . and the greater coverage of the *extra heavy deposit of fine Sterling* in the design . . . made absolutely permanent by oven-firing. The Sterling is Rhodium finished and *cannot tarnish*. She'll appreciate the heavy Sterling deposit on the rim which prevents chipping. It's a gift her friends will be proud to own, and one that she'll want for her own casual or elaborate entertaining.



No. 519/C COMPOTE
Dimensions: 7" Oval
5" High
Suggested retail price \$10.



MERIDEN • CONNECTICUT

The Jewelers' Circular-Keystone, February 1950

HEISEY PUNCH BOWLS

Walter Ludwig

I know that many of you collect Heisey little things because you can put a lot of them in a limited amount of space. To the punch bowl collector, you are wimps. Heisey punch bowls are beautiful objects of art well worthy of prominent display in any home. I have heard of one collector who has placed pedestals around his home to display his collection.

Everyone knows that Heisey made punch bowls, but did you ever think of just how many you would have to have to complete a collection of Heisey punch bowls? I recently did a survey to see just how many different ones there were. I came up with about 34 different patterns in which Heisey produced a punch bowl. That seems like a lot, but in reality it is just the beginning of putting together a collection because many of the patterns had multiple punch bowls available. The 357 Prison Stripe pattern had 11 different bowls available using three different molds for bowls and three different sized bases and then varying the bowls shape through hand tooling. Many other patterns offered similar variations.

Four patterns offered punch bowls in color with the early 1235 Beaded Panel and Sunburst offered in Custard, Ivorina Verde, and Emerald (I have never seen a base in Emerald but the other two colors have bases that match) as well as crystal. The 1401 Empress dolphin footed punch bowl comes in an equal number of colors (crystal, Moongleam, Flamingo, and Sahara) while the 433 Greek Key was offered in Flamingo as well as crystal. The last of the colored punch bowls is in 350 Pinwheel and Fan where the bowl only was offered in Moongleam.

The early punch bowls came on pedestal bases – Heisey called it a foot (Heisey also offered all its punch bowls without the matching foot). In later years, the punch bowls came with a large underplate instead. The 1401 Empress and 1509 Queen Ann were offered without either a base or an underplate, the dolphin feet instead elevating the punch bowl. Whirlpool/Provincial (1506) also had a footed punch bowl that was used without a foot or underplate.

My list of Heisey punch bowls shows a total of 82 different or variation ones offered by Heisey. I would not doubt that I might have missed a couple, too. How many do you have? ♦

| Pat # | Pattern Name | Size | More Info |
|-------|-----------------------|-------|--------------------------|
| 1205 | Fancy Loop | 10" | Foot, st. (Straight ?) |
| | | 12" | Foot, Flared |
| | | 14" | Foot, Flared |
| | | 14" | Foot, Crimped |
| 1235 | Bd Panel Sunburst | 14" | Foot, Plain or Decorated |
| | | | Opal |
| | | | Ivorina Verde |
| | | | Emerald (Bowl only) |
| 300 | Peerless | 14" | Foot |
| 305 | Punty + Diamond Point | 14" | Foot |
| 325 | Pillows | 14" | Foot |
| 335 | Prince of Wales | 10" | Foot |
| | | 14" | Foot |
| 341 | Puritan | 13" | Foot (High or Low) |
| | | 12" | Foot, Cupped |
| | | 14 ½" | Foot, Flared |
| | | 16 ½" | Foot, Shallow |
| 341 ½ | Puritan | 10" | Foot |
| | | 12" | Foot, Flared |
| | | 13" | Foot, Shallow |
| 343 | Sunburst | 12" | Foot, Cupped |
| | | 14" | Foot |
| | | 15" | Foot, Flared |
| 343 ½ | Sunburst | 10" | Foot |
| 357 | Prison Stripe | 10" | Foot |
| | | 12" | Foot |
| | | 14" | Foot |
| | | 10" | Foot, Cupped |
| | | 12" | Foot, Cupped |
| | | 12" | Foot, Flared |
| | | 14" | Foot, Flared |
| | | 16" | Foot, Flared |
| | | 13" | Foot, Shallow |
| | | 15" | Foot, Shallow |
| | | 16" | Foot, Shallow |
| 1776 | Kalonyal | 12" | Foot |
| 150 | Banded Flute | 14" | Foot, Straight |
| | | 15" | Foot, Shallow |
| | | 15" | Foot, Flared |
| | | 18" | Foot, Shallow |
| 365 | Queen Ann | 15" | Foot |
| | | 17" | Foot, Flared |

| Pat # | Pattern Name | Size | More Info |
|-------|------------------------|-------------------|---------------------------------|
| 400 | Colonial Scalloped Top | 12" | Foot |
| | | | Foot, Cupped |
| | | | Foot, Flared |
| | | | Foot, Shallow |
| 350 | Pinwheel and Fan | 14" | Foot, High |
| | | 14" | Foot, Moongleam, Bowl only |
| | | | Foot, Flared, Whimsey in Museum |
| 393 | Narrow Flute | 14" | Foot |
| | | 16" | Foot, Flared |
| | | 18" | Foot, Shallow |
| 394 | Narrow Flute | Dr. Johnson | Lid optional |
| 429 | Plain Panel Recess | 15" | Foot, High |
| | | 16" | Foot, Flared |
| | | 17" | Foot, Shallow |
| 433 | Greek Key | 15" | Foot |
| | | 12" | Foot, Cupped |
| | | 18" | Foot, Shallow |
| | | 15" | Foot, Flamingo |
| 1183 | Revere | | Plate, 16 ½" |
| | | Dr Johnson | |
| 485 | Dunham | 11" | Foot |
| | | 9" Beverage | Underplate, 14" |
| 411 | Tudor | 20" | Foot |
| 1401 | Empress | 15" | DF |
| | | | DF, Moongleam |
| | | | DF, Flamingo |
| | | | DF, Sahara |
| 1425 | Victorian | | Buffet Plate, 21" |
| 1469 | Ridgeleigh | 11" | Underplate |
| | | 11" Beverage | Cone Shaped, Underplate |
| 4058 | Pumpkin | | Lid optional |
| 4045 | Ball | 11" | |
| 1503 | Crystalite | 11", 7 Qt | Underplate, 20" |
| 1506 | Whirlpool/ Provincial | 5 Qt | Buffet Plate |
| | | 3 Qt | Footed Bowl |
| 1509 | Queen Ann | 15" | DF |
| 341 | Old Wmsburg | 7 Qt | Foot |
| | | 7 Qt | Underplate, 19" |
| 1540 | Lariat | 7 ½ Qt | Underplate |
| 1567 | Plantation | Dr. Johnson, 9 Qt | Underplate, 18" |



350 Pinwheel and Fan Punch Bowl, Flared and Crimped (Museum Collection)



4045 Ball Punch Bowl (no optics)

HOLDBACK SILENT AUCTION RESULTS (ended May 8, 2006)

| | | |
|----------|-----------|----------|
| 1. \$100 | 11. \$450 | 20. \$15 |
| 2. 35 | 13. 45 | 21. 65 |
| 3. 30 | 14. 50 | 22. 60 |
| 4. 20 | 15. 20 | 23. 25 |
| 5. 60 | 16. 50 | 24. 50 |
| 6. 40 | 17. 35 | 25. 75 |
| 7. 41 | 18. 125 | 26. 25 |
| 9. 70 | 19. 45 | 27. 100 |
| 10. 25 | | |

TABLE OF CONTENTS (CONTINUED FROM PAGE 2)

| | |
|---|-------|
| Study Club Directory | 21 |
| Club Notes | 22-23 |
| Frankly Rhyming, Frank Husted | 23 |
| Advertising Guidelines | 23 |
| HCA Welcomes New Members for April 2006 | 23 |
| Real Heisey in the Gift Shop | 24 |
| Classified Ads | 24-26 |
| Dealer Directory | 27 |
| Museum Volunteers for April 2006 | BC |

CONVENTION 2006 - *LAST CALL!*

Your Last Minute Checklist Amy Jo Jones, Co-Conductor

Procrastinate no more; the time to fill out your registration form is here – yes, there is still time! The following are things you should not forget:

1. Got goodies? The Hospitality Lounge Car awaits! We will take them anytime in the multipurpose room. First Convention? Need some help? Most likely you will find out what you need to know there or get some pointers to make the most of your trip. There are people who will be resting and telling glass stories; set yourself down and soak it in. Got a question? Don't be shy, everyone was new at one time.
2. Remember, there is the Swap Wednesday night at the Pre-boarding mixer/cookout. Need to swap an orphan lid or a single salt shaker or candlestick, etc? Bring it along and delight someone looking for just what you have. In case you will be hungry, there will be burgers, brats, and hot dogs, baked beans, potato salad, pasta salad, cookies and brownies, lemonade and tea. The candidates will be there – talk with them to get an idea of what their “platform” is; three of them will be elected as your representatives to the board.
3. Your item for the Blind Auction. Please take it to the Museum by Thursday no later than 3 p.m. so the committee can ready it for the big night.
4. Bring your mystery with which to challenge the judges at the ID session. Let's make them really scratch their heads with intrigue. Have you found a very special piece this year you would like to share with all of us? Bring it and brag all you want. Prove to us it is still out there!
5. Are you, a co-op of your friends, or your club donating a centerpiece for the banquet? Great! Put on your list to take to the banquet.
6. If you haven't signed up for the banquet, reconsider. The speaker, Howard Seuffer, is planning a visit to the Museum prior to the Convention just to become more acquainted with us. Before retirement, he was the Quality Control Manager for Fenton. He has an unusual, witty take on the glass industry and what it takes to produce fine glassware.

7. We have first rate seminars again this year. Please make time in your schedule to attend Joe Lokay's “Heisey – The First Five Years.” You would swear Joe was there (however, the math just doesn't add up), he knows his subject so well; Jean Will's “A Personal Glimpse in the Life and Times of Fred Harvey” (Jean lives right in Fred Harvey country); and Walter's primer on “Heisey Collecting 101”. You don't have to be a novice to attend – there is something for everyone. Be sure no one gets any tips you haven't used!

So, this is truly the Last Call! Hop Aboard Today! ♦

HEISEY CARD DECK SPECIAL PROJECT

Walter Ludwig

During Convention this year we will launch a new special project aimed at producing card decks featuring Heisey patterns on the faces of the cards. The Executive Committee will meet soon to finalize these plans, but I wanted to give you a preview. We will be soliciting sponsors for each card in the deck as well as two jokers and a cut card. Cards of value 2 through 8 will be available at one sponsorship level, 9 through King at a higher level, and the Aces, Jokers, and cut card at the highest level of sponsorship. Sponsors name(s) will appear on the face of the card as well as the pattern image.

All monies to finance the project must be raised before we go ahead and actually commission the cards for production.

Our intention is to feature a different Heisey pattern on each card. We will take new color digital images for this project of pieces from the Museum's collection. Only from one to three pieces of a pattern would be chosen so that a clear picture of the pattern will be available. The backs of the cards will all have a single unique pattern based on the Diamond H.

If we are able to sign up enough sponsors, the first deck will be produced. If there is enough interest, further decks may be possible. Sponsorships will be offered during Convention week here in Newark. If you are not able to attend Convention and want to participate, call the Museum and we will be able to give you the full details on how you can sponsor a card. ♦

HEISEY COLLECTORS OF AMERICA, INC.

35th Annual Convention ~ June 14 - 17, 2006

“All Aboard the Heisey Express!”

Wednesday, June 14

| | | |
|-----------|---|----------------------------------|
| 6:30 p.m. | Pre-Boarding Mixer/Cookout <i>SWAP!</i> Meet the Candidates | Amphitheater OSUN/COTC Campus |
|-----------|---|----------------------------------|

Thursday, June 15

| | | |
|-------------------|---|----------------|
| 9:30 a.m. | Seminar: “Heisey - The First Five Years,” Joe Lokay | Founder’s Hall |
| 10:30 a.m. | Show Tickets Sales Start | Adena Hall |
| 11:00 a.m. – Noon | Show Preview for Convention Registrants | Adena Hall |
| Noon – 5:00 p.m. | Show & Display Open | Adena Hall |
| 3:00 p.m. | Study Club Representatives Meeting | Hopewell Hall |
| 7:00 p.m. | Social with Cash Bar | Hopewell Hall |
| 7:30 p.m. | Blind Auction | Hopewell Hall |

Friday, June 16

| | | |
|------------------|---|--|
| 8:00 a.m. | Annual Meeting – (Polls Open 8 – 8:30) Study Club Presentations Follow | Hopewell Hall |
| 9:45 a.m. | ID Panel – <i>Mystery Aboard the Heisey Express!</i> | Hopewell Hall |
| Noon – 5:00 p.m. | Show & Display Open | Adena Hall |
| 1:00 p.m. | Former Employees Reception | Museum |
| 2:00 p.m. | Seminar: “A Personal Glimpse into the Life and Times of Fred Harvey,” Jean Will | Founder’s Hall |
| CANCELLED | Car Show | |
| 7:00 p.m. | Heisey Social | The Crystal Ballroom, Downtown Newark |
| 7:30 p.m. | Centerpiece Banquet with Guest Speaker Howard Seufer | The Crystal Ballroom, Downtown Newark |

Saturday, June 17

| | | |
|------------------|---|---------------------------------------|
| 8:00 a.m. | <i>Last Stop!</i> Flea Market | Courthouse Square, Downtown Newark |
| 11:00 a.m. | Seminar: “Heisey Collecting 101,” Walter Ludwig | Museum |
| Noon – 5:00 p.m. | Show & Display Open | Adena Hall |

The National Heisey Glass Museum will hold an Open House

Tuesday – Saturday, June 13-17, 10:00 a.m. to 4:00 p.m.
Sunday, June 18, 1:00 to 4:00 p.m. (Hospitality Room open Thursday – Saturday)

DON'T FORGET TO VISIT THE MUSEUM GIFT SHOP, ALWAYS SOMETHING NEW!

HCA CONVENTION 2006 REGISTRATION FORM - Deadline June 5

Don't miss the 2006 HCA Convention! To register, stop by the Museum, phone (740-345-2932), fax (740-345-9638), register online (www.heiseymuseum.org), or mail your form to: Convention Registration, 169 W. Church St., Newark, OH 43055. If you want notice of confirmation, you must include a SASE or provide an e-mail address. **Registration deadline is Monday, June 5 for all food events.** Sorry, no registration refunds after June 6 when final counts are taken!

If you are not registering the same people for all events, please fill out separate forms for each person.

List each name as it should appear on their badge:

Name(s): _____

Address: _____

City/State/Zip: _____

Phone: _____ E-mail: _____

Check here to receive e-mail confirmation of your registration.

Payment: Cash Check # _____

MasterCard Visa # _____ exp. _____

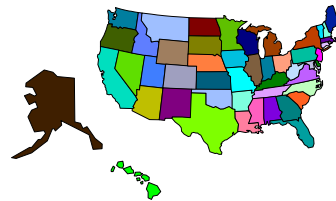
| Event | How Many* | Cost | Subtotal |
|---|-----------|-----------|------------|
| Registration Fee Prior to May 31 | _____ X | \$18.00 | = \$ _____ |
| Registration Fee After May 31 | _____ X | \$20.00 | = \$ _____ |
| "Pre-Boarding Mixer/Cookout and SWAP" at OSUN/COTC Wed 6:30 p.m. | _____ X | \$15.00 | = \$ _____ |
| Blind Auction 7:00 p.m. (Free to convention registrants!) | _____ X | Free | = \$ _____ |
| ID session Fri. 9:45 a.m. (cash and carry breakfast available) | _____ X | \$6.00 | = \$ _____ |
| Heisey Social and Centerpiece Banquet Friday 7:00 p.m. | _____ X | \$25.00 | = \$ _____ |
| Thursday Seminar: | _____ | no charge | |
| Friday Seminar: | _____ | no charge | |
| Saturday Seminar: | _____ | no charge | |
| Former Employees Reception Fri. 1:00 p.m. | _____ | no charge | |

You must be registered to attend any event above!

TOTAL = \$ _____

Annual Meeting Open to all HCA Members

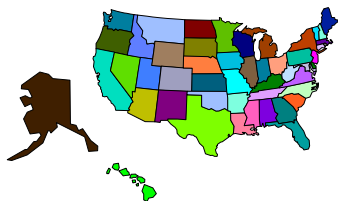
Study Club Directory



Interested in joining a study club? You will have the opportunity to meet fellow collectors and HCA members and learn more about your favorite glassware. If your club is not listed or you need to make corrections to your listing, please contact the Museum.

| STUDY CLUB | MEET WHEN? | WHERE? | Email/Web Site | CONTACT |
|--|---|---|--|-------------------------------------|
| #4 Central Illinois Heisey Collectors Club | Four times a year | Members' homes or restaurants | | Joyce Deany (815) 432-4310 |
| #5 Bay State Heisey Collectors Club | 2 nd Tuesday of each month except July, Aug., and Dec. | Follen Community Church | spescatore@houghton.com | Stephen Pescatore (978) 256-5418 |
| #7 Dayton Area Heisey Collectors Club | 3 rd Tues. of the month Sept. to May, 6:30 p.m. | Huber Heights Library | LH937@aol.com | Joe Harner (937) 372-0852 |
| #8 Heisey Heritage Society <i>NJ, Eastern PA and DE areas</i> | Bi-monthly | Members' homes | jpwelgan@att.net | Virginia Welgan (302) 736-6848 |
| #13 Heisey Club of California | 4 th Sunday every month, 12:30 | Members' homes | herbet@sbcglobal.net www.heiseyclubca.org | Norval Heisey (818)-349-0945 |
| #14 Northern Illinois Heisey Club | Four times a year | Members' homes | niheisey@comcast.net | Jeff Morrow (630) 833-4644 |
| #15 Heisey Collectors Club of Michigan | Every six weeks, August to May | Members' homes | kilgoredesigns@att.net | Sue E. Kilgore (269)-345-3990 |
| #16 Heisey Collectors of Texas | 2 nd Sat. of every other month, 1 p.m. | Members' homes | heiseytoo@att.net | Greg Freeman (817)-545-5889 |
| #19 Heisey Collectors of the Rochester Area | 10 meetings per year: Sunday, 2:30 p.m. | Members' homes | | Susan Shafer (585)396-7310 |
| #20 Buckeye Heisey Collectors Club <i>Newark, OH area</i> | September to May, 4 th Monday | Members' homes or the Museum | bismarck4867@ yahoo.com | Karen Colwell (740) 323-3769 |
| #22 Northwest Heisey Collectors | First Saturday of the month | Members' homes | bahama50@hotmail.com | Deborah de Jong (425) 868-0457 |
| #25 Heisey 76'ers <i>Columbus, OH area</i> | Once a month, September to May | Members' homes | ldburg48@aol.com | Colleen Burgess (614) 882-1884 |
| #31 Nassau Long Island Heisey Club | Generally every other month | Members' homes | | Babs Kent (516) 228-8274 |
| #32 Dairyland Heisey Club | Once every two months | Members' homes | | Ray K. Courtneage (414) 962-9747 |
| #33 Golden Gate Heisey Collectors Club <i>Northern California</i> | Quarterly | Members' homes | | Russ Nicholas (707) 762-2494 |
| #36 Heisey Club of Southern MA | April, June, September , December | | | Maria Martell (508) 833-0633 |
| #38 North Carolina Heisey Study Group | 6 meetings per year: Jan.; March, May, July, Sept., Nov. | Replacements Ltd Greensboro, NC | Nchsg@yahoo.com www.northcarolinaheiseystudygroup.org | Karen Taylo (252) 637-9985 |
| #39 Florida Heisey Collectors Club | 4 times per year: January – February-March-April | Westchester Country Club Boyton Beach, FL | Mawjrw@aol.com | Everett Dunbar (772)-337-1558 |
| #42 Gulf Coast Heisey Club of Florida | Nov., Jan. and March; 3 rd Thursday 11:00 am | Members' homes | JABiniasz@aol.com | Judy Biniasz (813)996-4384 |
| #43 Tri-State Heisey Study Club <i>OH, IN, MI</i> | 1 st Sat. every 3 rd month | Members' homes | Maxwellm@cktech.biz | Mike Maxwell (260) 925-3484 |
| #44 National Capital Heisey Study Club | Monthly: September - May | Potomac Comm. Library | pres@capitalheiseyclub.org www.capitalheiseyclub.org | John Martinez (703)-979-6718 |
| #45 Hoosier Heisey Club | Four times a year | Warren Library, Indianapolis, IN | | J. David Litsey, (317) 872-7800 |
| #47 Oregon Trail Heisey Collectors Club | Odd number months, 2 nd Saturday, 2 p.m. | Members' homes | lariat_roundup@hotmail.com | Dennis Headrick (503) 538-9352 |
| #48 Dixieland Heisey Study Club | Odd number months, 2 nd Saturday night | Members' homes | www.dixielandheisey.org | Craig German (770) 967-8733 |
| #49 Great Plains Heisey Club | March, May, July, September, and November | Members' homes | cameron_mg@mchsi.com www.greatplainsheiseyclub.org | Mary Cameron (515) 292-3743 |
| #50 Northwoods Heisey Club of Minnesota | 2 nd Sat., March, May, September and November | Members' homes | wheise@mn.rr.com | Bob Heise (952)-831-9335 |
| #51 Heisey Club of Northeast Florida | 2 nd Tuesday | Members' homes | Clasyglas2@aol.com | Barb Bartlett (904) 280-0450 |

CLUB NOTES



Dayton Area Heisey Collectors Club *GEORGIA OTTEN*

There were ten members present for the March 28, 2006 meeting of our study club and those ten made quick work of the business portion of the meeting.

Our group had hoped to put a Heisey glass display in the library showcase. A decision was made against it when we learned the case had to be pulled away from the wall, loaded from the back and pushed back against the wall. This, we thought, was not the best for a glass display. Laurene Bollinger suggested we offer up a paper display (excellent!) and that is what we will do! Our display will go in the first of May and will be there for a month. This will give us a chance to display Heisey books, memorabilia and advertisements as well as an opportunity to advertise the Convention! We will even put in a piece of Heisey glass on the bottom shelf, substantial enough not to fall over....a nice bowl perhaps! That being decided, we moved along to our program.

The program for the evening was continuing the study of the Heisey colors. Up for discussion were Ivory/Opal/Custard, Amber, and Dawn. We had a color from the very early days of Heisey production, the middle era and a color from the late years of Heisey production. Planning is everything! With the help of members there was a wonderful display of items in these colors including a comparison of Dawn with Cambridge's color, Smoke. I believe everyone is appreciative of the information presented. There is always something to learn no matter how long a person has been collecting.

April's program was decided. It will be *On Your (Heisey) Mark, Get 'Set'* and ought to be interesting. It should provide an opportunity to be creative (read that as 'silly') with Heisey glass to support an interpretation of "set." More about this after the fact!

Show and tell continues to be a favorite part of the meeting and we were not disappointed with: a 1 Pouter Pigeon, 1447 Rococo footed cheese with Crinoline etching, 1519 Waverly square covered butter with 507 Orchid etching, 451 Cross Line Flute ½ gallon pitcher with tumblers, #2 eleven inch vase, 150 Banded Flute

cream and sugar, 1229 Octagon cheese tray in Sahara, 1401 Empress d.f mayo in Sahara, 1401 Empress ashtray in Moongleam, 8025 Banded Diamond Flute individual footed almond, 3397 Gascony decanter and wines with 455 Sportsman etching, 305 Puntty and Diamond Point Brandy/bitters bottle and a 5058 Goose Stem sherry. H-m-m, no Ivory/Opal/Custard, Amber, or Dawn, proving, as the program told us, those are hard colors to find. Show and tell is another excellent learning tool for continuing education and provides fuel for the "IWOOT" Syndrome, 'I want one of those'... and that just 'dawned' on me! ♦

Great Plains Heisey Club *Mary Cameron*

Sixteen members and one guest attended the Great Plains Heisey Club meeting in Leavenworth, KS at the home of Jean Will on May 13, 2006. Although the home of the famous federal prison, we enjoyed "spending time in Leavenworth" for a Heisey meeting. It was a cold, cloudy day that turned beautiful at the Missouri border. Though we were all there to learn more about Heisey, certainly one of the highlights of the day was the Kansas City barbeque served for lunch. It was the best! President Bucky Will called the meeting to order at 1:40. This was an amazing start due to the great food given the fact many members were known to eat seconds and maybe a few even had thirds!

The club also discussed donations for the Convention. It was decided in April to donate \$50 to help defray Hospitality Room expenses and Tom Files will send that money. Club members also advised they will volunteer for various Convention duties.

Jean Will gave an updated report on her involvement with the HCA Board.

A discussion was held about the Percy Moore dinner to be held in Omaha in October. More ideas for fundraising were discussed and approved. Gregg will make more brochures for the HCA Convention and Tom will provide publicity/registration information to the Curator for inclusion in the HCA News. After Convention, Mary will contact all the study clubs with invitations.

The July 8 meeting is at Gregg and Mary Cameron's home in Ames, IA and the program will be on Heisey toothpicks. Pauline Soderholm will be the speaker and feature her collection of Heisey toothpicks. Everyone should come for lunch at 12:30.

Jean and Bucky gave the program on Heisey colors that included a display of pieces in most of the Heisey production colors.

Show and Tell followed with: 339 Continental wine; 1184 Yeoman tray for a smoking set in Moongleam; 433 Greek Key 4oz oil; 3389 Duquesne 8 oz footed soda with 480 Normandie etch; 1489 Plantation marmalade; 1451 Athena sugar; 300 Peerless 1 oz cordial; 1503 Crystolite jam jar; 3390 Carcassonne cigarette holder in Cobalt; 1485 Saturn violet vase in Zircon; 201 Harvey Amber tumbler; 1632 Lodestar Dawn candleholder; 1540 Lariat cream and sugar with unusual cutting; 1183 Revere ½ lb candy jar with cutting; Emerald 1255 Pineapple and Fan rose bowl; Colonial hotel cream and sugar with cutting; 2 – 305 Punt and Diamond Point crimped bowls (different sizes); 2- 1255 Pineapple and Fan custard cups; 4202 Bamboo bud vase in Moongleam; 467 Helmet basket in Flamingo with 693 Cloister cutting; and a Fred Harvey Trading Co. souvenir box.

The 50/50 Auction was held next and contained many nice pieces of Heisey for sale – including original Crystolite brochures from a jewelry store sale. Members continued to talk Heisey and then headed home full of good food and good Heisey talk. ♦

FRANKLY RHYMING

Frank Husted

As part of a fund-raising effort, Dr. Husted has agreed to create limericks, like the one below, for HCA members based on the pattern(s) of their choice. A donation to HCA would be appreciated for each limerick created. If you would like to learn more about this fund-raising project, you may contact Dr. Frank Husted by phone at (610) 469-1243 or via e-mail to frankly.me@comcast.net.

ACORN

That massive old tree is a “Beaut”
It bears an acorn-shaped fruit
Heisey stood it straight up
As a strong candle cup
With a stylized leaf as its root ♥

Advertising Guidelines:

Advertising: Ads may be mailed to: HCA Advertising, 169 W. Church St., Newark, OH 43055; faxed to (740) 345-9638; or e-mailed to curator@HeiseyMuseum.org. Whenever possible, please e-mail your ad. Include your MasterCard or VISA number and expiration date for billing purposes, or send a check. All ads must be prepaid. When mailed or faxed, ads should be typed or printed on white paper with dark ink. Please double space. Ads that are entered in a vertical column format may contain a maximum of 65 characters per line, including spaces & punctuation.

Classified: 20 cents per word (members), 30 cents per word (non-members), \$1.50 min., 1/8 page limit. Personal ads 1/8 page limit. Abbreviations & initials count as words.

| Display Ads: | member | non member |
|--|----------|------------|
| 1/8 page (12 lines) | \$20.00 | \$30.00 |
| ¼ page (25 lines) | \$40.00 | \$60.00 |
| ½ page (60 lines, horizontal or vertical) | \$80.00 | \$120.00 |
| Full page (120 lines) | \$160.00 | \$240.00 |

A charge of \$1.60 will be added for each additional line. Camera ready ads must follow specifications. Ads that do not correspond to the following measurements will be sized.

Camera Ready Ad Specifications:

1/8 page: 2¼" high by 3½" wide

¼ page: 4½" high by 3½" wide

½ page: 4½" high by 7½" wide or 9" high by 3½" wide

Full page: 9" high by 7½" wide

Camera ready ads may be resized because of space concerns. Ad copy must be received by the first of the month prior to publication. Reproductions (i.e. Heisey by Imperial) must be indicated. Heisey News accepts no further liability. In the event of a typographical error, the incorrect portion of the ad will be run in the following issue, but HEISEY NEWS assumes no further liability. ♦

Abbreviations: DF = Dolphin Foot NO = Narrow Optic
DO = Diamond Optic SO = Spiral & Saturn Optic
MO = Medium Optic WO = Wide Optic

HCA WELCOMES NEW MEMBERS FOR APRIL 2006

Glenda Cash, CA
Mike & Nancy Dugan, OH
Bridget Langdale, TX
Donna McMickel, MO
Barbara Ryan, OH
Alan Stultz, VA
Kathy Trimble, CA

REAL HEISEY IN THE GIFT SHOP

Supply changes daily. Please contact the Gift Shop before placing an order.

All crystal and all prices are each unless noted.

| Item | Price |
|---|-------|
| 341 Puritan champagne H (8 each) | \$12 |
| 351 Priscilla tumbler H (4 each) | 10 |
| 351 Priscilla champagne H (2 each) | 8 |
| 393 Narrow Flute tumbler H (2 each) | 10 |
| 406 Coarse Rib plate, 8 1/2" H (8 each) | 8 |
| 406 Coarse Rib plate, 7" H (3 each) | 6 |
| 406 Coarse Rib plate, 6" H | 5 |
| 413 Tudor champagne H (4 each) | 10 |
| 1112 Sparta sherbet H | 12 |
| 1183 Revere cup/saucer H (6 each) | 8 |
| 1220 Plain Band ind. salt | 20 |
| 1201 Fandango ind. salt | 25 |
| 1295 Beaded Swag nappy, 4" Opal | 16 |
| 1469 Ridgeleigh champagne (6 each) | 15 |
| 1469 Ridgeleigh cheese plate | 10 |
| 1469 Ridgeleigh saucer H (4 each) | 5 |
| 1519 Waverly pickle/olive | 10 |
| 1540 Lariat ice tea, ftd | 15 |
| 3355 Fairacre oyster cocktail (6 each) | 12 |
| 3408 Jamestown champagne / 965 Narcissus cut (4 each) | 15 |
| 4085 Kohinoor soda, ftd, 8 oz | 10 |

◆

• TIFFIN • DUNCAN & MILLER • FENTON •

HEISEY

MORGANTOWN

FRY

PADEN CITY

NEW MARTNSVILLE

IMPERIAL

CAMBRIDGE

FOSTORIA



31st Annual Duncan & Miller Convention Glass Show & Sale

July 29 & 30, 2006
10:00 a.m. to 4:00 p.m.
Alpine Club
 735 Jefferson Avenue, Washington, PA
 I-70 Exit 17, 1/2 Mile
• Admission \$4.00 •

Convention Dinner

Friday, July 28, 2006 - 6:00 p.m.
 Holiday Inn, Meadowlands - Reservations Required
SPECIAL GUEST - TOM FELT
 Collector & Author
 Co-author of
The Glass Candlestick Book - Three Volume Set

Auction

Saturday, July 29, 2006, 5:30 pm
 Thistlecrest Auction House, Rt. 40 - East of Washington

Sponsored by *The National Duncan Glass Society*
 Benefits the Duncan & Miller Glass Museum
 For Information Call: 724-225-9950
 Email: museum@linequest.net

Heisey Cambridge Fostoria Imperial Paden City Tiffin Morgantown Duncan & Miller More!

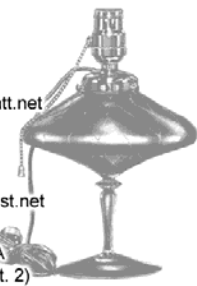
Flea Market On The Square Saturday, June 17th — 8am to 1pm Downtown Newark, OH 2006 Heisey Convention Event

Remember the fun and Heisey hunting of past conventions when people could set up on the Square and sell their glass? Relive the excitement on the Square in downtown Newark!

The Northern Illinois Heisey Study Club is proud to present the *all glass Flea Market on the Square* with **NO SETUP FEE**. Get as much or as little space as you need. Bring whatever size tables you need and as many as you want.

Sellers will start getting space assignments at 7am, but no glass on the tables until 8am. Remember, set up is absolutely **FREE** and *glass only please*. Contact any of the following for more details and restrictions:

| | |
|--|--|
| Carl Bowman (937) 289-2114 twoclbs@aol.com | Kim Carlisle (317) 758-5767 kcarlisl@worldnet.att.net |
| Michael Maher (740) 763-4256 carolyn53@webtv.net | Jeff Morrow (630) 833-4644 jmorrow64@comcast.net |
| Joey Cogdill (864) 228-4741 hizhunr@charter.net | Shelly Hoberg, HCA (740) 345-2932 (Ext. 2) business@heiseymuseum.org |



Heisey Cambridge Fostoria Imperial Paden City Tiffin Morgantown Duncan & Miller More!

FOSTORIA GLASS SOCIETY OF AMERICA 26TH ANNUAL SHOW & SALE JUNE 9, 10, 11, 2006

DELFT NORONA MUSEUM (GRAVE CREEK MOUND HISTORICAL SIGHT)
 EIGHTH STREET AND JEFFERSON AVENUE
 MOUNDSVILLE, WEST VIRGINIA

FEATURING GLASSWARE BY FOSTORIA, HEISEY, CAMBRIDGE, IMPERIAL, MORGANTOWN & OTHERS, INCLUDING DEPRESSION GLASS

PREMIER FRIDAY 4 P.M. TO 7 P.M. ADMISSION \$10.00 (ALL 3 DAYS)
SATURDAY 11 A.M. - 5 P.M. & SUNDAY 11 A.M. - 3 P.M.
ADMISSION \$5.00

GLASS AUCTION SATURDAY 5 P.M. (PREVIEW 4 P.M.)
 FOR MORE INFORMATION, CONTACT ANNA 304-845-9188

FLEA MARKET SUNDAY 8 A.M. - ADMISSION \$7.50
FREE ADMISSION - 10 A.M.
 FOR MORE INFORMATION CONTACT CLARA 304-845-3897

FOR FURTHER INFORMATION CONTACT THE FGSA 304-845-9188
 OR DEALER/SHOW INFORMATION CONTACT CHUCK HILL
 304-242-3176 OR VIA EMAIL cj.glass@comcast.net

BENEFITTING THE FOSTORIA GLASS MUSEUM



36TH ANNUAL ALL HEISEY GLASS AUCTION

Tuesday June 13 3:00 P.M.
Wednesday June 14 10:00 A.M.
Apple Tree Auction Center
1616 W Church St
Newark, Ohio 43055

This outstanding auction features lots of color, many animals, large collection of Orchid etch, Ridgeleigh, and Crystolite.

EARLY PATTERNS: includes Custard Beaded Panel and Sunburst punch bowl, other Custard and Opal, 20 pieces of Emerald.

TANGERINE: includes Gascony and Spanish stemware, Empress 8" plate.

COBALT: Cascade 3 light candleholders, Old Sandwich mugs, Empress plates, Arch tumblers, Spanish, Gascony and New Era stemware.

DAWN: 19 pieces including Roundelay creamer, Saturn cruet, Lodestar, 20th Century, and Coleport.

LIMELIGHT: Ridgeleigh, Whirlpool, Cabochon, and Crystolite.

HAWTHORNE: 30 pieces including stemware, plates and serving pieces.

ALEXANDRITE: Empress 2 light candelabra, 134 candlesticks, 7" ball vase, Empress floral bowl, cream and sugar, stemware and plates.

SAHARA: Cascade and Empress candlesticks, Gascony martini, and many other pieces.

FLAMINGO: About 80 pieces incl Empress candlesticks, Empress and Twist ice buckets, 5" ball vase, dolphin ftd tall vase, king fisher and duck flower frogs, cruets, salt and peppers, Twist mustard.

MOONGLEAM: dolphin finial lemon dish, lightning handle Twist cream and sugar, lots of serving pieces, and other interesting pieces.

ANIMALS: Over 75 including fish bowl, bull, sows, piglets, all three geese, all three elephants, hen, bunnies, mallards, pheasants, giraffes and many more. Animal related includes swan pitcher, dolphin candlesticks, goose, seahorse, rooster and rooster head stems,


DEEP PLATE ETCHINGS: Mermaid ball vase, New Era Chicken Chase cocktail, Sportsman and Fisherman mugs, Winchester, Club Drinking Scene, Tally Ho and other pieces.

TABLEWARE: Over 200 pieces of Crystolite, over 200 pieces of Ridgeleigh both with many hard to find serving pieces. 200 pieces of Orchid Etch including tall pitcher, Donna tumblers, wines, candlesticks, covered butter, cruets and other good serving pieces as well as stemware and plates. Good selection of Plantation incl Coupe plate and flared sodas, Plantation Ivy and Rose Etch.

MISCELLANEOUS: includes cuttings, candelabra, candlesticks, candy jars, decanters, 5 punch bowls incl Kalonyal, Pinwheel and Fan, and Beaded Panel and Sunburst, 12 baskets, little things and much more as well as selection of Heisey by Imperial. About 1300 lots to sell in two sessions.

Start your Heisey week with us on Tuesday. Catalogs available for each session. Doors open one hour before each session. Auction conducted by Apple Tree Auction Center. Phone 740-344-4282. Auctioneers Sam Schnaidt, David Schnaidt, Jacki Collins and Rick Hogue. Terms: Cash or check w/positive ID. We accept Visa, MC, Discover and Am. Ex. 5% buyer's premium will be deducted for cash or check payment.

Paid Ad ♦





36th Annual
PREMIERE GLASS SHOW
and Heisey Glass Display

Featuring 40 prominent elegant glass dealers from across the U.S.

OSUN/COTC Campus, Country Club Drive, Newark, OH
30 miles east of Columbus off St. Rt. 16

Sponsored by Heisey Collectors of America, Inc.





35th HCA National Convention
"All Aboard the Heisey Express"
June 14-17, 2006

Thursday, June 15, 12:00 noon – 5:00 p.m., \$5.00
(Ticket sales start at 10:30 a.m.)
Friday, June 16, 12:00 noon – 5:00 p.m., \$5.00
Saturday, June 17, 12:00 noon – 5:00 p.m., FREE
Museum Open House with FREE admission
Tuesday June 13– Sunday June 18

Other Convention events to include Annual Meeting,
ID session, Glass Making Classes, Blind Auction,
Former Heisey Employees' Reception

For more info: (740) 345-2932 - www.heiseymuseum.org
Proceeds benefit the National Heisey Glass Museum



HEISEY GLASS AUCTION

June 17, Saturday, 1 p.m.
Preview, June 12-17 or per request
In the Rear of Park Place Antiques
14 N. Park Place, Newark, OH
740-349-7424

Sahara 9" Mermaid Etch Ball Vase – very rare; candles; Dolphin Footed Vase & Console Bowl w/Flower Frog; Etched Syrup; Old Sandwich Cream + Sugar; Flamingo Flat Panel Cream + Sugar; Twist Juice Square Base; Dolphin Finial Covered Dish; Orchid Rose Bowl; Moonglo & Rose Etched pcs; Panel Basket; Frosted Goose Stem & Rooster Stem; Amber Stem Wines 6; Old Fashion Mugs 2 Sizes; Pillows Bowl; Cobalt; Moongleam; Plantation Candle Blocks; Pr. Empress Candle Lamp w/Prisms; Crystolite Hurricane Lamp w/ Lafayette & Dresser Lamps; Heisey 1932 Baseball Team Photo; Catalogs & Reference Books; Small pieces of Furniture made by the late Olli (& Viola) Armentrout. Many more Fantastic Heisey Glass Pieces.

Consignments Still Being Accepted – Cut Off Date is June 10

Auctioneer Robert Wilson, Apprentice Robert Boals
Cash, Check, & Visa/MC

<http://www.ppacnewark.com/heisey.html>

Paid Ad ♦

OPEN HOUSE

Mrs. HAROLD (MILDRED) WILLEY
WILLEY'S HEISEY GLASS MUSEUM

11110 Cannon Rd.,
Fazeysburg, OH 43822
12 MILES EAST OF NEWARK, OH

OPEN FOR SALES

June 11-17, 2006

9 a.m. – 5 p.m.

Fostoria, Cambridge, Tiffin,
plus lots of Heisey and more at
reduced prices. Alexandrite,
Cobalt, Tangerine, Marigold,
etchings, candelabras, lots of
orchid, and more!

From Newark, Take Rt. 16 to Rt. 586. Go left (north), cross the new highway. Turn right on Raiders Rd. (old 16) to Cannon Rd. Turn left. Proceed 1.2 miles. We are on the right. Our name is on the mailbox.

If you get lost, call 740/828-2557

***WE WILL NOT BE AT GRANVILLE
OR NEWARK THIS YEAR***

Our Museum will open for you to enjoy with
over 3500 pieces, including many rare pieces.

COME SEE US!

Paid Ad ♦

Dealer Directory

Maximum 6 lines/12 months/\$35 MEMBERS ONLY

Contact the Editor to place your ad!



| | | |
|---|--|---|
| <p>KIM & PAM CARLISLE SHOWS & MAILORDERS ONLY 28220 Lamong Rd. Dept. H Sheridan, IN 46069 (317) 758- 5767 kcarlisl@worldnet.att.net</p> | <p>SHIRLEY EUGENIA DUNBAR Heisey a Specialty—Mail Order, Shows, Appraisals EMAIL: shirley400@aol.COM PO Box 8344, Port St. Lucie, FL 34952 Oct-May (772) 337-1558 PO Box 222, Naples, ME 04055 May-Oct (207) 647-5652</p> | <p>SUM OF LIFE Elaine & Frank Husted: 610-469-1243 147 Barton Dr., Spring City, PA 19475 Traveling through eastern PA Call, stop in, be a buyer or a browser!! E-mail: frankly.me@comcast.net</p> |
| <p>ALL HEISEY AUCTION Consignments Welcome Apple Tree Auction Center 1616 W. Church, Newark, OH 43055 (740) 344-4282</p> | <p>MOUNDBUILDERS SECOND GENERATION Heisey Exclusively! 1-904-280-0450 Appointment, mail order, and shows. We search! PO Box 1931, Ponte Vedra Beach, FL 32082 Toll Free 1-888-434-7397(HEISEYS) EMAIL: CLASYGLAS2 @AOL.COM</p> | <p>EAGLES REST ANTIQUES <i>Buying Heisey, China & Pottery</i> Carl and Mary Evans 62 Fieldpoint Rd., Heath, OH 43056 (740) 522-2035</p> |
| <p>PAULA & JEFF MORROW Elegant Glassware and American Dinnerware 126 Clinton Avenue Elmhurst, IL 60126 (630) 833-4644 mor-fab@comcast.net</p> | <p>H & R DIAMOND H Helen & Bob Rarey 1450 White Ash Dr. Columbus, OH 43204 (614) 279-0390 after 5:30</p> | <p>WHITEWOLF LIMITED Jim Houghton & Tim Rector P.O. Box 31, Brimfield, MA 01010 Specializing in Fine American Glassware 413-245-0933 FAX 413-245-3884 whitewolfldt@verizon.net</p> |
| <p><i>Your Ad Could be Here</i></p> | <p>PIECE BY PIECE ANTIQUES Buy & Sell Specializing in Heisey Glassware Bryan K. Baker Fairfax Station, VA 22039 (703) 250-6117 piecebypiece@verizon.net</p> | <p>PATTON HOUSE ANTIQUES Specializing in Glass*Heisey*Cambridge*Fostoria*Duncan* Factory Antique Mall, Verona, VA off I-81 Exit 227 Antiquers Mall, Booth 81, Rt. 29 N., Charlottesville, VA The Daniels, Box 547, Louisa, VA 23093 (540) 967-1181</p> |
| <p>C&J ANTIQUES Cole & Jean Miesner Box 45, 72 Whig St. Newark Valley, NY 13811 (607) 642-9905</p> | <p>SIBYLS ANTIQUES & COLLECTIBLES Sibyl & Ned Lavengood Newcastle Antique Center 606 Castle St. Wilmington, NC (910) 763-7157 or Sibylsantiques@bellsouth.net</p> | <p>FRAN'S FANCY FINDS Fran & Jack Grenzebach 10534 Valencia Rd., Seminole, FL 33772-7511 (727) 391-5184 SHOWS MAIL ORDERS</p> |
| <p>CRYSTAL LADY Bill, Joann & Marcie Hagerty Specializing in elegant depression glassware 1817 Vinton St., Omaha, NE 68108 Shop (402) 341-0643 or Home (402) 391-6730 Email: ejhagerty@aol.com website:www.crystalladyantiques.com</p> | <p>WHALEY'S PRICE LIST 2004-2005 185 Pages of Heisey Glass ONLY \$25.00 @ includes first class postage Send Check to B.WHALEY, 48 RENWICK DR. FFG-CROSSVILLE, TN 38558</p> | <p>WILLEY'S ANTIQUES & MUSEUM Specializing in Heisey 11110 Cannon Rd., Frazeesburg, OH 43822 16 miles east of Newark, OH (740) 828-2557</p> |
| <p>CHARLES & MILDRED FISHER Heisey animals and Heisey By Imperial animals 991 Idlewilde, Newark, OH 43055 cffisher@adelphia.net (740) 522-5398</p> | <p>MARSH'S ANTIQUES Dick and Virginia Marsh 4532 Newton Road Newark, OH 43055 swamp@alink.com (740) 366-5608</p> | <p>MOONGLEAM ANTIQUES Heisey Glassware & American Art Pottery John Woytowicz and Peter Rivard 70 Pleasant St., Gardiner, ME 04345 (207) 582-9048 E-mail: jmwpwr@aol.com</p> |
| <p>HIGHLAND MANOR HEISEY Heisey Glass-Tools-Furniture Leonard and Maxine Ashcraft 2152 Hillside Road Pueblo, Co 81006 (719)544-0225 lenmax@att.net</p> | <p>PARRETT ANTIQUES Dealers of Heisey Glass 4995 Mapledale Rd. Jackson, MI 49201 (517)784-7319</p> | <p>APPLE VALLEY COLLECTIBLES Richard Garnett & Marilyn Faxon— Owners Shows/ Mail Order (845) 691-6308 Email: diamondH95@aol.com</p> |
| <p>JOAN'S ANTIQUES Buy & Sell Heisey by Imperial Joe & Joan Cimini 67183 Stein Rd. Belmont, OH 43718 (740) 782-1327 upperglady@1st.net</p> | <p>THE CRYSTAL REPAIR DOCTOR Repairs to Damaged Crystal John T. Forrester PO Box 795, Kotzebue, AK 99752-0795 (907) 442-2680 crystalrepairdr@yahoo.com</p> | <p>WATERSEDGE ANTIQUES Norene & Don Walzer Shows & Mail Order 25089 Riverwalk Drive Leesburg, FL 34748 (352) 314-8975 dnnwalzer@earthlink.net</p> |
| <p><i>Your Ad Could be Here</i></p> | <p>ONCE AND FUTURE ANTIQUES Susan & Stephen Pescatore 9 Donna Rd. Chelmsford, MA 01824 (978) 256-5418</p> | <p>BOB & MARY KREIMER Specializing in Heisey Glass 7044 SW 116th Loop, Ocala, FL 34476 (352) 873-8306 email: rkreimer@earthlink.net. Shows and Mail Orders Only</p> |
| <p><i>Your Ad Could be Here</i></p> | <p>GW ANTIQUES Robert Gindhart & Gary Wimmershoff Santa Rosa, CA (707) 575-8706 gwant@sonic.net</p> | <p>YELLOW BRICK ROAD ANTIQUES Shows and Estate Sales Jean Will Leavenworth, KS 66048 (913) 682-4831</p> |

When Renewing Your Membership

Help ensure the future of your Museum. When you renew your membership at one of the levels below, any amount beyond the regular Associate dues — \$30.00 plus \$5.00 for each additional household member — goes into the Endowment Fund.

| | |
|---|--------------|
| <i>Individual Voting Privilege (onetime fee)</i> | <i>\$25</i> |
| <i>Individual Contributing, one person in household</i> | <i>\$35</i> |
| <i>Joint Contributing, two people in one household</i> | <i>\$45</i> |
| <i>Family Contributing, parents and children under 18</i> | <i>\$55</i> |
| <i>Patron</i> | <i>\$105</i> |
| <i>Sponsor</i> | <i>\$250</i> |
| <i>Benefactor</i> | <i>\$500</i> |

Visit The
National
Heisey
Glass
Museum



Come at your leisure to enjoy more than 4,800 pieces of glassware produced by A.H. Heisey and Company from 1896-1957. Hundreds of patterns are featured in all production colors. Rare and experimental items are included as well.

Facilities are air-conditioned and handicapped accessible. Hours are 10:00 a.m. to 4:00 p.m. Tuesday through Saturday, 1:00 to 4:00 p.m. Sunday. Members are admitted free, regular admission is \$4. Office hours are 8:00 a.m. to 4:30 p.m. weekdays.

Membership Renewal Notice: Check the date above your name and address on the mailing label. This is your expiration date. If it reads 5-10-06 make sure your dues are paid soon in order to receive next month's issue of *Heisey News*.

Contact the HCA Administrative Office at (740) 345-2932 for more information. The Endowment Committee wishes to thank those who have become Endowment Members and all of the individuals and study clubs that have so generously supported the HCA Endowment Fund. All members who have supported the fund are recognized each year in the February issue of the newsletter. Your support will make the Museum self-sustaining in the years to come. Thank You all! ♦

Shipping & Handling Fees for Outside US

Additional shipping charges are required for members living outside the U.S. Current rates are Canada \$20; Mexico \$22; and other Countries \$44. These rates are subject to change at any time due to rate changes made by the US Postal Service. To verify current rates, call (740) 345-2932 or E-mail business@HeiseyMuseum.org

Museum Volunteers for April 2006

Bryan Baker
Karen Colwell
Bob & Phyllis McClain
Don & Pat Moore
Karen O'Hare
Jinny Priest
Russ Reopell
Dick Ritter
Emogene Shomaker
Kathy Smith
Jean Will



Periodical Postage

Paid at the Post Office
In Newark, OH 43055
Publication # 00986
POSTMASTER SEND FORM 3579 TO:
HCA
169 W. Church St.
Newark, OH 43055

To: _____