

# HEISEY NEWS

The Official Publication of Heisey Collectors of America, Inc.

Volume XXVIII No. 1

January 1999

ISSN 0731-8014



© Heisey Collectors of America, Inc.

All rights reserved 1999

***Limited Edition Sale ♦ Ruby Red Geese***  
***January 1-31, 1999***  
***Look inside for all the details!***

## HEISEY NEWS

Heisey Collectors of America, Inc.  
169 West Church Street  
Newark, Ohio 43055  
Phone (740) 345-2932 Fax (740) 345-9638  
E-mail: heisey@infinet.com  
WEB SITE: www.ahheisey.com  
All Rights Reserved 1999  
ISSN 0731-8014

**Curator/Editor**  
Molly Frye

**Administrator**  
Mary Ourant

**HCA President**  
Dick Smith (740) 366-5163

**HCA Vice President**  
Amy Jo Jones (937) 426-1567

**HCA Secretary**  
Ginny Marsh (740) 366-5608

**HCA Treasurer**  
Kenneth Rhoads (937) 275-5735

HEISEY NEWS is published and printed monthly (twice in March), by Heisey Collectors of America, Inc. Periodicals postage paid at Newark. Subscription is limited to HCA members. First class mailing is available for an extra \$13.00, due with payment of membership. If you are having difficulty receiving your newsletter, please contact the HCA Administrative office Monday through Friday 8:00 a.m. to 4:30 p.m.

The opinions expressed in articles in HEISEY NEWS are those of the authors and not necessarily those of the organization. The Editorial Staff reserves the right to edit, with or without the consent of the author, or to refuse any material submitted for publication.

### Back Issues

The following volumes are available as complete sets: V, VII, VIII, IX, X, XI, XII, XIII, XIV, XV, XVI, XVII, XVIII, XX, XXI, XXIII, XXIV, XXV, XXVI, XXVII for \$15.00 each volume (12 issues, plus auction list if available).

### Advertising

Send all ads to: HCA Advertising, 169 W. Church St., Newark, OH 43055 or fax ads to (740) 345-9638, include MasterCard or Visa information. Ads are to be typed or printed on white paper with dark ink. Camera ready ads accepted, but must follow line specifications. Ads containing reproductions will not knowingly be accepted unless clearly stated (e.g. Heisey by Imperial, etc.) HEISEY NEWS accepts no further liability. See Advertising section for rates and deadlines.

### Museum

Heisey Collectors of America, Inc., a non profit corporation (tax exempt status), owns and operates The National Heisey Glass Museum in Veteran's Park, 6th and Church Streets, Newark, Ohio. Open Tuesday-Saturday 10-4, Sunday 1-4, closed holidays. Other hours by appointment. Members admitted free.

### Identification

HCA will attempt to identify unknown glass items. Please enclose a photograph with your drawings or descriptions. Other arrangements should be made in advance with the museum staff.

### Membership

To join Heisey Collectors of America or to renew your membership, contact HCA Administrative office Monday through Friday 8:00 a.m. to 4:30 p.m. Associate dues are \$22.00 plus \$5.00 for each additional household member. Voting members pay an additional one-time fee of \$25.00. Please consider supporting the Endowment Fund by joining at one of the levels listed on the back page.

### Museum Shop

There is always someone available in the shop to answer questions or take your order. When ordering by phone, please have a credit card ready. When ordering by mail, please be sure to include appropriate charges such as shipping and sales tax.

### Shipping and Receiving

Delivery is made much easier when we have a complete street address, not a PO Box. We prefer to use UPS. If you have not received a package, please call the administrative office to confirm it was sent. We will assist you in tracing it. If your package arrives damaged, please contact your local UPS representative. We insure everything.

### Donations and Loans to the Museum

If you have something you would like to share with the museum or have questions regarding items on loan, contact the assistant curator. HCA reserves the right to accept or refuse items based on current holdings.

## Calendar

Silver Spring Show	March 20-21, 1999
All Heisey Benefit Auction	April 9-10, 1999
Bay State Heisey Show	April 24-25
HCA Convention	June 14-20, 1999

## Features

### HCA Molds

*Tom Felt* 4-5

### 1999 HCA Benefit Auction

*Mike Rosenberger* 5

**Limited Edition Pink Tiger Paperweight** 6

**Limited Time Offer—Ruby Red Geese** 7

### Technology Needs at the Heisey Museum

*Walter Ludwig* 8

### Twenty-Five Years Ago this Month

*Molly Frye* 10

### Museum Now More than a Dream

*Louise Ream* 10-12

**Original Heisey Advertisement** 13

**News from the Shop—20% off Sale!!** 14-15

**Auction Consignor Packing List** 16

## Departments

**Message from the President, Dick Smith** 3

**Museum Happenings, Molly Frye** 6

**From the Archives, Don Valdes** 9

**Club Notes** 17-20

**HCA News & Notes** 20

**Advertising** 21-27

## ***MESSAGE FROM THE PRESIDENT***

*DICK SMITH*

I hope everyone had a very merry Christmas with lots of Heisey under their tree. The new year should be exciting in Heiseyland, with this being the 25th Anniversary of the National Heisey Glass Museum.

Several people have asked me about the Longaberger Clydesdale project. HCA made \$12,000 on this project, making it the second largest fund-raiser of the year.

The Board met in December with a lot of success. We approved the 1999 budget, passed a new employee handbook, approved two new projects for 1999, discussed Y2K compliance on HCA computers and went over the preliminary plans for next years convention.

HCA would like to thank the Heisey Heritage Society for their donation of 44 hand bags to be sold in the Museum Shop. This is a great way for study clubs to help the museum.

Tom Felt wrote an article on the molds back in the August 1985 issue of the *Heisey News*. After reading it again I felt it was very worthwhile and should be reprinted. Look for it in this issue of the *News*.

I have received several letters and I will try to answer all of them. Sometimes it takes two or three weeks for me to get this done. Please be patient.

Please pay special attention to the order forms in this newsletter. The Ruby Geese will be limited to two production runs with the first run of approximately 125. If no more than 100 are sold in the first 30 days (January 1-31), then the second run will not be produced. The maximum number possible to be made is approximately 250. The reason for the approximate number is because Mosser Glass produces by the turn or half turn, and HCA will receive whatever number is made in that time frame.

Congratulations to Molly Kaspar and her new husband, Phil Frye. Best of luck to Molly and Phil.

Mary Ourant has just gone through all the joys and pains of building a new house. She just moved in and is putting the finishing touches on it just in time for Christmas.

A special thank you for all members who volunteered in 1998. All volunteers are greatly appreciated and needed. Pat yourself on the back for a job well done.

Our staff has done an outstanding job this year. You have to remember they are working understaffed and have all taken on extra duties. Thank you staff!

Sympathies to the families of Don Parrett and Jim Briggs who recently passed away.

See you next month! ♦

*Dick*

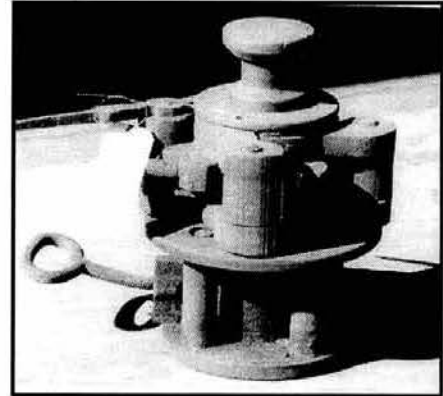
## HCA MOLDS

TOM FELT

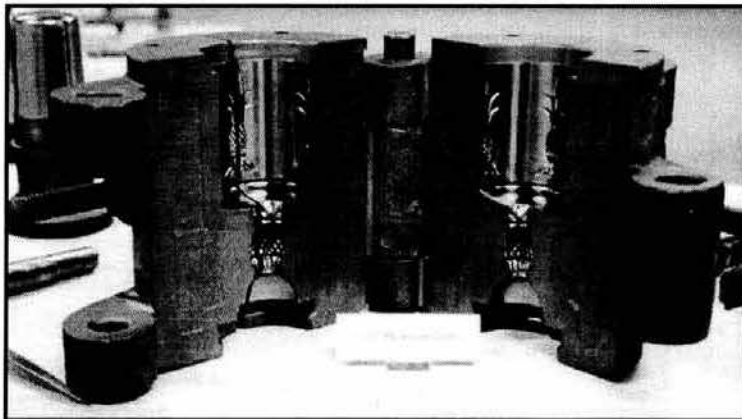
*Reprinted from the August 1985 Heisey News*

And now I would like to take the opportunity to share a few thoughts about the molds. I was particularly struck at the Convention banquet this year (1985) by the words spoken by Lucile Kennedy, since they were so close to what I had been thinking but had not heard from anyone else. I know that there is a lot of fear about reissues from the molds "devaluing" original Heisey pieces and this may have been why many people contributed to the successful effort to gain control of the molds.

I can't help feeling differently about them, however. Physically, the molds represent a level of skill that probably could not be reproduced today—i.e. they are works of craftsmanship (Or *art* or you will), in their own right. (I did hear this same comment from a number of others after they had had an opportunity to actually see the molds for the first time.) For this reason alone, I feel it would be irresponsible and entirely contrary to all of the principles we as collectors should stand for to even consider destroying the molds.



Further, as I mentioned above, there is tremendous educational value to be gained from the molds, even the incomplete ones (especially) the commercially unsuccessful ones. We don't know yet all that there is to learn from them and no matter how carefully considered



or selective a policy might be to dispose of all or part of them, it could be disastrous from a research point of view. So I am opposed, for these and other reasons, to the suggestion that the molds be destroyed.

But what about the alternative of simply "retiring" them, of placing them in a museum? Obviously, that would be better than destroying them—but I'd like to ask you to think about that, too.

Much of glass history could be described as a continuum. The earliest American glassmakers copied English and Irish styles, nineteenth century companies copied one another—Heisey copied Sandwich (Ipswich, the large dolphins, etc.), Northwood (the Petticoat dolphins), and many other companies, as well as reissuing pieces in the Verly line—are they any less valuable because they are reproductions or reissues? Heisey by Imperial has become increasingly popular in recent years and probably will eventually be a major collectible, as original Heisey pieces become more expensive and outside the

reach of many. In both cases, however, collectors can feel *safe* because of the amount of information available. That is a major function of HCA—keeping members informed.



Which leads me to my point: the molds have created a great deal of beauty in the past. They are part of the flow of the history of glassware in this country—why should they not continue to create beauty in the future? Glassmaking is, in many respects, a peculiarly American art form—why shouldn't we do what we can to see that at least one small part of it continues on? For that reason, I would like to see the molds used to produce glassware.

There would have to be certain stipulations and I think everyone is agreed on them—that reissues be clearly marked (and, if possible, dated) and that care be taken not to duplicate colors used in original pieces. Other than that, I would put no limits on their use. I would like to see HCA making glass to sell in the Museum Shop from as many molds as might be economically feasible and, further, I would support making the molds available for lease to other individuals or firms (with the same stipulations set for above), with all profits to be used to help support the museum.

This is one individual's opinion. I would like to see this heritage kept alive and vital, and I think it would be to the advantage of the club and its members to do so. Whether you agree or not, I hope you will take a moment to respond; now, it's *your turn*. ♦

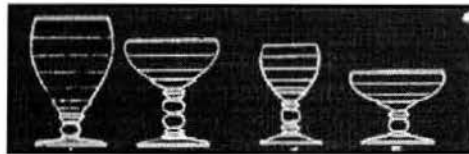
## **1999 HCA BENEFIT AUCTION**

*MIKE ROSENBERGER*



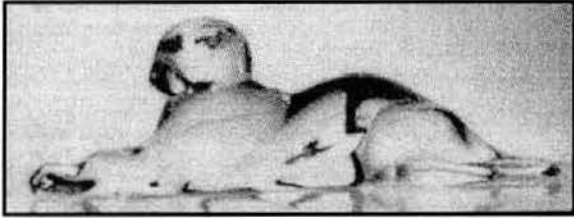
We have checked in 238 lots of auction glassware and have at least that many more on hand now to do yet. So far, there are approximately thirty pieces of Limelight Saturn—goblets, tumblers, plates, footed compote, pair of two light candleblocks and an 11" floral bowl. Also, there are two Coventry Zircon low footed goblets and a Donna pitcher with Orchid etch.

Good glass brings good money for both the seller and HCA. The deadline to have glass in to HCA for the auction is January 7, 1999. You still have a few days to get those last minute items in—don't delay! Call the museum at (740) 345-2932 if you have any questions.



Watch for more auction updates in February! ♦

## LIMITED EDITION PINK TIGER PAPERWEIGHT



HCA offers its **final Tiger Paperweight** in a series of four, produced by Mosser Glass in Pink. The Tiger will be on sale January 1-31, 1999. This piece will be the perfect finishing touch to your collection, including HCA Tiger's in Ice Blue, Yellow Mist and Evergreen. **This sale is open to everyone.** The cost is \$55 each plus \$6.00 shipping. Ohio residents must pay sales tax. ♦

Mail to: Pink Tiger, 169 W. Church St., Newark, OH 43055 Call: 740-345-2932

Name: \_\_\_\_\_ Tax Id.#: \_\_\_\_\_  
Address: \_\_\_\_\_ Phone: \_\_\_\_\_  
City: \_\_\_\_\_ State: \_\_\_\_\_ Zip: \_\_\_\_\_  
Payment: Check or MasterCard/Visa: \_\_\_\_\_ Exp: \_\_\_\_\_

Quantity: \_\_\_\_\_ x \$55.00 each = \_\_\_\_\_  
Tax (OH) \_\_\_\_\_ x \$3.30 each = \_\_\_\_\_  
Shipping: \_\_\_\_\_ x \$6.00 each = \_\_\_\_\_  
Total: \_\_\_\_\_ = \_\_\_\_\_

**Please Circle:**  
SHIP  
PICKUP

---

## MUSEUM HAPPENINGS

### MOLLY FRYE

Happy 1999 to all!

I, for one, am happy to see the new year—we have a lot in store for ourselves. It means no more wedding planning for me (for those of you who have taken on this task, you know what I mean!), another auction and convention to prepare for, plus a 25th anniversary to celebrate. The National Heisey Glass Museum turns the big 2-5 this year, what a fantastic accomplishment!

To highlight this special event, I'm taking us back twenty five years each month, to spotlight the events that brought HCA to where it is today. It wasn't an easy task; there were many HCA members who worked hard to make the museum dream a reality. Take time to reminisce.



Watch your newsletters for upcoming events and special Convention programs! ♦

## LIMITED TIME OFFER—RUBY RED GEESE

We have a special limited one time offer to all collectors of A.H. Heisey and Company glassware, a set of three Ruby Red Geese.

Please help support HCA's first fund-raiser of 1999—Remember all proceeds from this project go directly to the general fund to help defray the museum operating expenses.

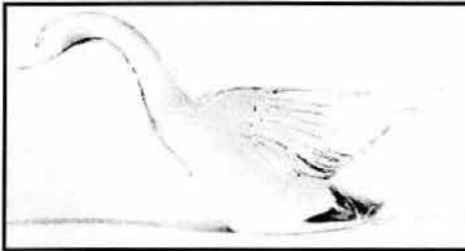


This is the first time HCA has produced the Geese in Ruby Red, a beautiful color from Mosser Glass. The set includes all three Geese: wings half, wings up and wings back. The cost is \$150 for the set, plus shipping and applicable Ohio resident sales tax.

The Geese sale will commence January 1 and end January 31, 1999. This special sale is open to glass lovers, both members and non-members. All are encouraged to participate.



The Geese will be produced in two runs, with no more than 250 sets made. The first run will produce approximately 125 sets. **If no more than 100 sets are purchased by the end date, January 31, then the second run will not be made.**



Please, remember that the Geese are difficult to make due especially to their long, thin necks. As with all handmade glassware, there may be fractional differences between each piece when compared side by side. ♦

### RUBY RED GESE SALE—LIMITED ONE TIME OFFER!

Order your set of (3) Ruby Red Geese, produced by Mosser Glass, between January 1-31, 1999. Cost is \$150 plus shipping and applicable Ohio resident sales tax. This project will be produced in two runs, with no more than 250 sets made. The first will produce approximately 125 sets. **If no more than 100 sets are sold by January 31, then the second run of Geese will not be made.**

Mail order: Ruby Red Geese, 169 W. Church St., Newark, OH 43055.

Fax: 740-345-9638 or Call 740-345-2932.

Name: \_\_\_\_\_ Tax Id.# \_\_\_\_\_  
 Address: \_\_\_\_\_ Phone: \_\_\_\_\_  
 City: \_\_\_\_\_ State: \_\_\_\_\_ Zip: \_\_\_\_\_  
 Payment: Check or MasterCard/Visa: \_\_\_\_\_ Exp.: \_\_\_\_\_

Quantity: \_\_\_\_\_ x \$150.00 each set = \_\_\_\_\_  
 Tax (OH): \_\_\_\_\_ x \$9.00 each = \_\_\_\_\_  
 Shipping: \_\_\_\_\_ x \$10.00 each = \_\_\_\_\_  
 Total \_\_\_\_\_ = \_\_\_\_\_

Please Circle:  
 SHIP  
 PICKUP

## ***TECHNOLOGY NEEDS AT THE HEISEY MUSEUM***

**WALTER LUDWIG**

As everyone is aware technology changes rapidly in this day and age. It wasn't that long ago that everyone was content using paper and pen plus a calculator and amazingly everything worked. Nowadays we have to have computers to do the same thing. Unfortunately when a computer becomes obsolete the cost is much greater than it was to just buy another pen.

The Heisey Museum has to face the reality of changing technology this coming year for several reasons. I am sure many of you have read stories about a problem that many computers have that is being referred to as the Y2K bug. What this refers to is the fact that many computer programs were written to work in the 20<sup>th</sup> century but will not work in the 21<sup>st</sup>. These problems occur not only in regular programs but also in the special programs called operating systems that enable computers to run. Investigation has shown that most of the machines at the museum have this problem with their operating system. In addition the accounting package we are using for invoicing and record keeping is also non-compliant.

A second problem is that our machinery is now over two generations out of date with the latest equipment and programs available. This means is that it is becoming harder to integrate with any machine that produces documents outside of the museum. Also we are not able to take advantage of many of the latest developments in technology.

The board at its December meeting approved a balanced budget for the coming year. Unfortunately the budget does not have money in it for the needed upgrades to our equipment. I have put forward a proposal that includes all of the technological enhancements that the museum needs.

Included in the proposal are the following items: 2 computers capable of doing publication preparation work (Curator, Assistant Curator), 4 computers (Administrator, Gift Shop, Membership, and Archivist), software upgrades (Msoffice—6 copies, Accounting software—3, other 32 bit software), labor (installation, network upgrade), and monitors (2 17"). In addition we have a need for a digital camera to enhance our publication production and web presence.

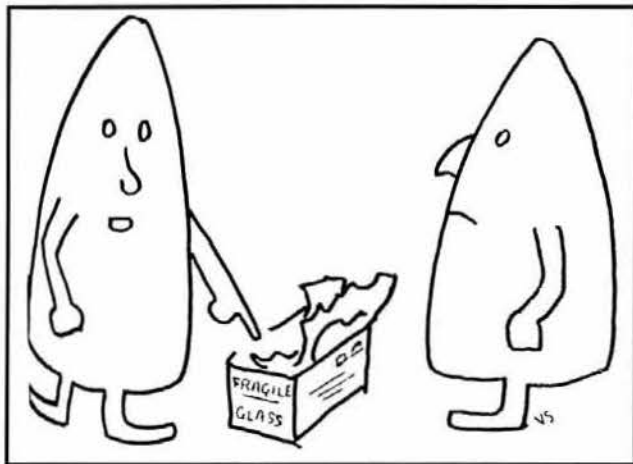
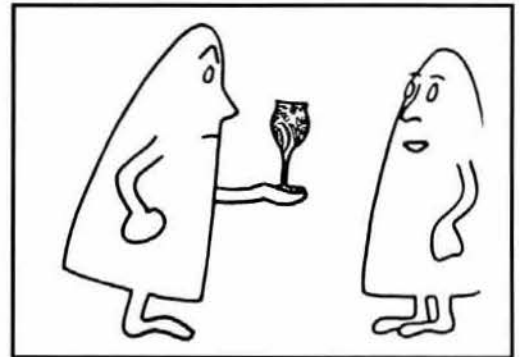
The total cost of all these enhancements would be about \$12,000. This is a large amount for our organization. I would like to make an appeal to the membership and to study clubs to think about making donations earmarked for this cause. The two publication computers have to be bought so we can get the latest technology. But the other 4 machines would only have to be pentium grade machines. Many businesses are currently phasing out early generation pentiums and we could use such machines if they were donated to the museum. The digital camera (about \$600) or a 17" monitor (\$300) would make a wonderful donation for an individual or group to make to the museum.

If you have any questions or suggestions dealing with the museums technological needs I will be glad to talk to you. You can reach me evenings at 215-763-4343 or by e-mail at [ludwig@wefa.com](mailto:ludwig@wefa.com). ♦

## FROM THE ARCHIVES—MORE CRAZY CARTOONS

DON VALDES

Finally! The computerized version of the Heisey News Index has been completed and the Board has granted permission for it to be distributed through the Gift Shop and by order. So far, the cost has not been determined so don't rush in for it. Of course there is a catch. At the risk of contributing to the whole controversy surrounding Microsoft and its possible monopolistic practices, it is available only in Microsoft Office's ACCESS although I do believe some other database programs could "translate" it. Without the 1998 materials there are 4459 entries with some cross referencing. If you compare it to the regular printed index you might notice that I have taken the liberty of creating a few new categories and combined some others. There are 19 "major headings" in all including "HCA History," "HCA Reports," and "Humor," to name a few of the new ones. A copy is available in the library for those working there. This should speed up



the process of finding that certain article or learning all the information about a particular subject ever published in *Heisey News*.

In addition to that progress report, I'm pleased to share some vital information received this past week.

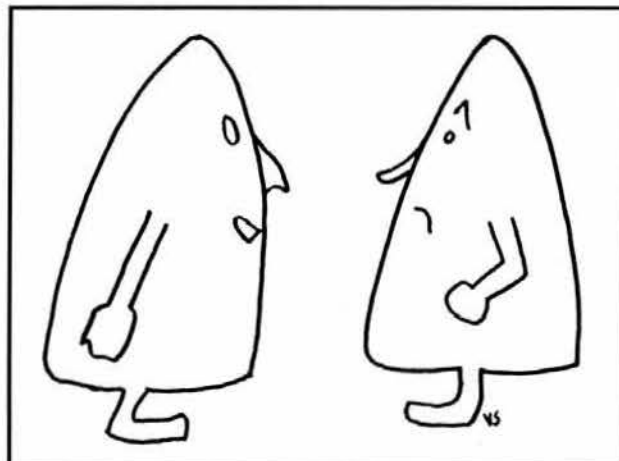
The author of the Rodney Ripoff cartoons wrote to inform me, not of his identity, but to provide me with a clue I had obviously overlooked (alongside the garbage pail).

Something of the rise and fall of

*Yes, it's a very intricate cutting. That's why it's "continued on next goblet".*

*I called the post office about this broken Heisey. They are sending a get well card!!*

Heisey cartoons was included in the letter and, I must say, the story is a rather grim example of the type of persuasion sometimes exercised in this land of freedom of expression. At the risk of having a certain member of the Board declare me redundant (or something worse) I will provide our editor with thereby concluding this series. There have been eight unnamed cartoons I have referenced as "Coneheads." Although they lack the artistic flair of Rodney Ripoff's producer, the humor and initials are the same. If you combine these with Harry Diamond, the readers of the *Heisey News* have, over the years, enjoyed fifty cartoons created by this member. He is but one of many persons whose contributions have made *Heisey News* a most enjoyable publication. In compiling the index I have been amazed at the number of articles some members have provided. Here are a few examples of the "Coneheads." ♦



*So you're a Heisey collector. Funny, you don't look rich!*

## **TWENTY FIVE YEARS AGO THIS MONTH**

*MOLLY FRYE*



*The King House,  
Thanksgiving 1877*

*Hilda Ryan and  
Frances Law, along  
with many others  
inspected the King  
House in July, 1973*

Do you remember the *Heisey News* headlines twenty five years ago this month?

The first thing President Louise Ream mentioned in her column was the fact HCA was turning two! She also reported that both associate and voting membership levels continued to increase. She went on to say, "The realization of our dream of a museum is by far the most outstanding accomplishment to date. With any luck the building should be pretty well restored by June but it is doubtful that it will have glass in it by then. It will be a proud day for HCA when the doors are finally opened to the public."

The house progress was reported. "The furnaces are now set and pipes are being run. There are two furnaces, one to heat the basement and second floor and the other for the first floor. The house will also be air-conditioned. There are two sets of restrooms on the first floor and basement as well as a dish washing kitchen on the first floor and a second one in the basement for serving foot at meetings, etc."

Let's backtrack a moment, and recount the origins of the National Heisey Glass Museum...

### **MUSEUM NOW MORE THAN DREAM**

**LOUISE REAM**

*Reprinted from the August 25, 1973 Heisey News*

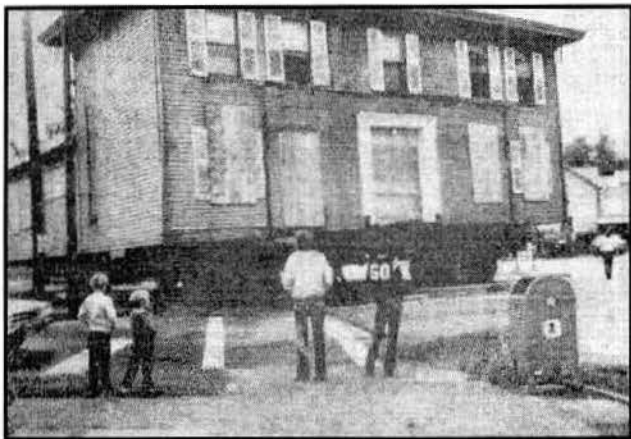
Hooray!!! We have a museum. Well, not quite, but we do have a house to restore for the future museum. Little did we realize at the annual meeting in June (1973) that in a few short weeks the "dream" might begin to take shape as a reality.

The 1973-74 Museum Committee with Sam Schnaidt as chairman and Donna Yeager as secretary, went into action immediately and looked at several available houses. They soon came up with the offer of one that would be ours for the taking if we wanted to move and restore it.

The King House at 64 N. Second Street was built in 1831 and is one of the oldest in Newark. For all of the intervening 142 years the house has been occupied by



descendants of the same family. Miss. Elizabeth King was living there until July 23, 1973. It was her great grandfather who built it.



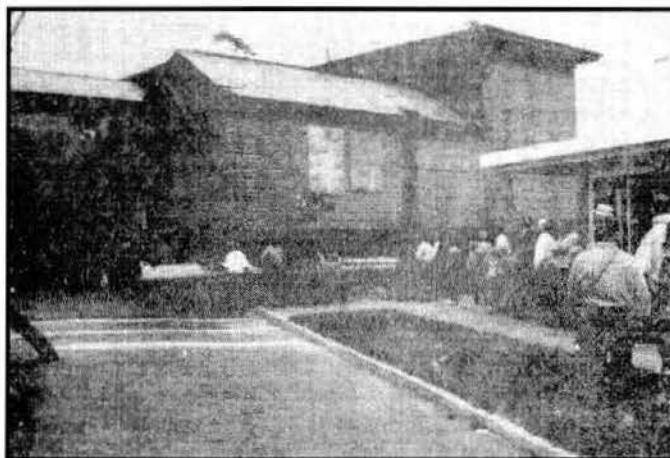
Progress was forcing it to be moved to make way for a hotel. The new owners, Robert Weakley, and others, were willing to give it to someone who would preserve it.

After seeing the interior, the museum committee members were unanimously in favor of accepting it. A special meeting of the Board of Directors was called for July 21 to be followed on Sunday, July 22, by

*The King House during its move down Church Street*

a special meeting of the voting membership. Both groups, after viewing the house, voted, unanimously once more, to accept it. Several voting members who could not attend wrote or telephoned their approval. Absentee votes cannot be counted but they were recorded as being favorable, for the record, since it was such an important issue.

Time was very important since we had first seen the house on July 12 and the two special meetings had to be called with adequate notice before Miss. King moved on July 23. At such time she would lose possession and all rights to anything in the house. She had already sold several of the nice things including two beautiful chandeliers, a marble mantel, the glass around the front door and other items. These were to be removed on the day she moved. The buyers generously offered to release her from these sales if we took the house so that the things could stay with it. We are grateful to Miss. King and to the buyers.



So, we moved fast again on July 23. Russ Ream and Jim Korus immediately removed items which we feared might be stolen and had to hurry to keep ahead of a contractor we had hired to board up the doors and windows to avoid vandalism. in fact, Miss King left her good white shoes in the house and will have to wait until it is unboarded to retrieve them!

The house will be moved to the 6th Street Park where the Licking County Historical Society already has two restored houses, one which is the museum and the other a meeting house. The King House will be placed north of these. There will be no charge for the land which is owned by the city.

A free house and free land might lead one to believe that there will be little expense. Quite the contrary is true. However, when restored, and the original porch rebuilt, this house will be a source of pride to all HCA members and to the city of Newark.

It is a very large house and the part to be moved has ten rooms plus some little ones which can be made into two restrooms and a kitchen for washing glass. Basically the



house frame is quite sound. Redecoration, with some plaster repair, will do wonders for the interior. The restrooms, new furnace, plumbing, wiring and cabinets will be expensive. However, everyone agrees that we will have much more space for our money than if we were to build a new building which would lack all of the charm of an old house.

The front entry has a beautiful spiral staircase with a cherry rail. This was almost enough to "sell" many of us. To the right of the charming entry hall there are three large rooms, each

leading into the other which makes an almost unbroken expanse of nearly sixty feet. The rooms have high ceilings and beautiful old woodwork. On the other side there are three more rooms, not so large and impressive as the others.

*The King House  
before restoration,  
1973 and after, 1974*

Upstairs there are four rooms, one of which will probably be used for a library or office since it has low ceilings and it is not too adaptable for displaying glass.

Moving the house and setting it on the foundation is very expensive and will take most of our museum fund to accomplish. Donations will be needed to continue. Our project committee is busy at work and by this time you may have already received a letter concerning the first money making venture. All donations to the museum fund are tax deductible.

Lest you may think we will have no glass for the museum when it is finished, many collectors plan to provide glass on loan as they do in many museums. We also anticipate donations of glass and related items.

This will be *your* museum and we can speak with pride about the fact that, with your help, the museum will become a reality long before we had ever dreamed possible. Heisey glassware will have a fitting home in the King House and the house itself will have great historical significance. We hope you are as pleased as we are. ♦



NEW PATTERNS IN

# Heisey Glass

SPARKLING TRADITIONAL  
OR MODERN ACCESSORIES



Count Heisey glass among your blessings in planning interesting and distinctive room arrangements! You'll find exquisite shapes and designs in stemware; scintillating originality in the great variety of decorative pieces; cocktail and smoking accessories; and unbelievably moderate prices that slip easily into a slim budget. The two new designs illustrated are only a hint of the exciting possibilities for working out fresh decorative accents in Heisey Glass for any type of room.



A. H. HEISEY & COMPANY

## NEWS FROM THE SHOP—SALE ♦ SALE ♦ SALE

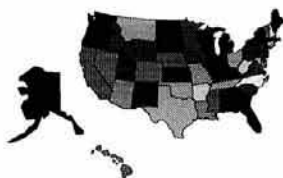
### Special 20% off sale on selected glassware items

Now is the perfect time to finish your holiday shopping! **Beginning December 1, 1998** the following list of items were marked **20% off**. The HCA Board of Directors approved the sale of items which have been in stock several years and those which have not been selling well. You may call (740) 345-2932 to place an order or use the order form and mail the order with your payment. **No refunds will be given on previously purchased merchandise.**

Stock	Item	Color	Maker	Price
006A	Tropical Fish	Lavender Ice	Dalzell Viking/94	\$250.00
036C	Horsehead ½ size paperweight	Ruby Red frosted	Dalzell Viking/86	35.00
036D	Horsehead ½ size paperweight	Blue Haze frosted	Fenton/87	35.00
037	Double Horsehead paperweight	Lavender Ice frosted	Dalzell Viking/93	35.00
037C	Double Horsehead paperweight	Green Mist	Dalzell Viking/94	35.00
037E	Double Horsehead Paperweight	Ruby Red frosted	Dalzell Viking	35.00
044	Rooster	Peachalene	Fenton/92	45.00
044A	Rooster	Peachalene frosted	Fenton/92	45.00
045A	Hen	Rosalene frosted	Fenton/92	45.00
046A	Chick	Rosalene	Fenton/92	15.00 or 2 for \$25.00
048A	Victorian Girl Bell	Tangelo	Imperial	12.00
049A	Victorian Girl Bell	Tangelo frosted	Imperial	12.00
049D	Victorian Girl Bell	Ruby Red frosted	Dalzell Viking	12.00
049H	Victorian Girl Bell	Horizon Blue frosted	Imperial	12.00
050	Piglet	Rosalene	Fenton/92	15.00 or 2 for \$25.00
067C	Goose, wings half	Lavender Ice, frosted	Dalzell Viking/93	50.00
071F	Cygnets	Rosalene frosted	Fenton/92	25.00
072A	Standing Duckling	Sunshine Yellow	Imperial	15.00
072B	Standing Duckling	Sunshine Yellow frosted	Imperial	15.00
072C	Standing Duckling	Ruby Red	Dalzell Viking	20.00
072D	Standing Duckling	Rosalene frosted	Fenton/92	25.00
072E	Standing Duckling <i>Pink Blossom Painted Decor.</i>	Rosalene frosted	Fenton/92	25.00
072F	Standing Duckling <i>Violet Painted Decoration</i>	Rosalene frosted	Fenton/92	25.00
073A	Floating Duckling	Sunshine Yellow	Imperial	15.00
073C	Floating Duckling	Ruby Red	Dalzell Viking	20.00
078B	Fish match holder	Sunshine Yellow frosted	Imperial	12.00
106A	Marmalade Jar	Green Mist	Dalzell Viking/95	25.00
111C	Rococo Basket	Sea Mist Green	Fenton	40.00
116A	Kicking Colt	Rosalene frosted	Fenton	55.00
116B	Rearing Colt	Rosalene frosted	Fenton	55.00
128C	Donkey	Sea Mist Green frosted	Fenton	25.00
152D	Rabbit Paperweight	Rosalene frosted	Fenton	40.00
152E	Rabbit Family, <i>Mother, with (2) babies-head up, head down</i>	Lavender Ice frosted	Dalzell Viking/94	100.00
155	Airedale	Rosalene frosted	Fenton	50.00
157B	Clover Rope Mug <i>Frosted handle, clear body</i>	Amber	Dalzell Viking/90	35.00
180A	Oscar	Emerald Green	Imperial/82	44.00
180B	Oscar	Tangelo	Imperial/83	42.00







## STUDY CLUB DIRECTORY

Interested in joining a study club? This updated list of the HCA Study Clubs reflects information obtained from a questionnaire mailed early this spring. Why not join a local study club? You will have the opportunity to meet fellow collectors and HCA members and learn more about your favorite glassware. If your club is not listed please forward the appropriate information—club name, contact name and phone number, when and where you meet—to Heisey News, 169 W. Church St., Newark, OH 43055. Updated June 1998.

STUDY CLUB	MEET WHEN?	WHERE?	CONTACT NAME
#1 Newark Heisey Collectors Club**			
#4 Central Illinois Heisey Collectors Club	Four times a year	Member's homes or restaurants	Jean Marsa (309) 444-4612
#5 Bay State Heisey Collectors Club	2nd. Tuesday of each month September to June, 7:00 pm	Follen Community Church	Doug Wynne (508) 660-2979
#7 Dayton Area Heisey Collectors Club	3rd Tues. of the month Sept. to May, 6:30 pm	Huber Heights Library	Charlene Bowman (937) 289-2114
#8 Heisey Heritage Society <i>New Jersey, E. Pennsylvania and Delaware areas</i>	Bi-monthly	Member's homes	Nettye Evans (302) 736-1368
#10 Gateway Heisey Collectors Club	Four times a year	Member's homes	Joe Lokay (412) 372-8563
#13 Heisey Club of California	4th Sunday every month, 12:30	Member's homes	Jay Byrne (818) 353-2988
#14 Northern Illinois Heisey Club	Four times a year	Member's homes	
#15 Heisey Collectors Club of Michigan	Every six weeks, August to May	Member's homes	Jack Deppong (517) 323-7921
#16 Heisey Collectors of Texas	6 meetings per year, 2nd Sat. of month	Member's homes	Jan Hiser (972) 492-4827
#19 Heisey Collectors of the Rochester Area	10 meetings per year: Sunday, 2:30 pm	Member's homes	Bruce Schwendy (716) 247-5613
#20 Buckeye Heisey Collectors Club	September to May, 4th Monday	Member's homes or the museum	John Eshelman (740) 366-4826
#22 Northwest Heisey Collectors	First Saturday of the month	Member's homes	Dixie Fuller (360) 263-4125
#25 Heisey 76'ers	September to May	Member's homes	Hugo Wenzel (614) 258-2816
#26 Southern Illinois Diamond H Seekers**			
#31 Nassau Long Island Heisey Club	Generally every other month	Member's homes	Babs Kent*
#32 Dairyland Heisey Club	Once a month	Member's homes	Don Friedemann (414) 673-2671
# 33 Golden Gate Heisey Collectors Club <i>Northern California</i>	Quarterly	Member's homes	Russ Nicholas (707) 762-2494
#35 Virginia Heisey Club	Six times a year, first Sunday of the month, 3 pm	Member's homes	Jean Dougherty (757) 868-6664
#38 North Carolina Heisey Study Group	6 meetings per year: Jan, March, May, July, Sept, Nov.	Replacements Ltd Greensboro, NC	Frank Scott*
#39 Florida Heisey Collectors Club	Once a month, Oct. to May	Member's homes	Al Colangelo (561) 499-3396
#41 Yankee Heisey Club	6 times a year	Member's homes	Jim Houghton (508) 764-1597
#42 Gulf Coast Heisey Club of Florida	November, December, January and March	Member's homes	Bob Ellis (941) 379-3302
#43 Tri-State Heisey Study Club	1st Sat. every 3rd. month	Member's homes	Mike Maxwell (419) 485-8701
#44 National Capital Heisey Study Club	Monthly: September, May	Potomac Comm. Library	John Martinez (703) 979-6718
#45 Hoosier Heisey Club	Four times a year	Warren Library, Indianapolis, IN	Mike Rosenberger (219) 864-1704
#47 Oregon Trail Heisey Collectors Club	Second Sunday of the month	Member's homes	Jim Cooke (503) 645-3385
#48 Dixieland Heisey Study Club	Odd number months, 2nd Saturday night	Member's homes	Sid Edwards (770) 928-3774

\*Please contact HCA; we will pass your inquiry on to the appropriate study club.

\*\*These clubs are not accepting new members.

## CLUB NOTES



### Dayton Area Heisey Collectors

*Joyce Dickman*

Our November meeting was held the 17th at the Huber Heights Library. Twenty members and two guests attended.

After a brief business meeting Jim Barbian presented the evening program, "Is it Heisey if it isn't marked?" . It became obvious Jim had spent numerous hours of research at the Heisey Museum Library compiling an informative hand-out which he shared. His research provided trade-mark applications, dates, labels, embossed markings, etc. used for Heisey glassware. He also included discussion why certain patterns or pieces of Heisey may or may not be marked as well as tips to use in identifying marked vs. unmarked Heisey. Thanks Jim for your very informative program.

Show and Tell finds were: #305 Puntly and Diamond Point 8½" compote; #8 Jacobean 9" candlesticks; #1469 Ridgeleigh 8" flower box; #459 Colonial 7" basket with #352 Anne etch; #300 Colonial 6" orchid vase; #350 Pineapple and Fan 8" nappy; #473 Narrow Flute with Rim syrup for griddle set; #451 Cross Lined Flute ftd. jelly; #1280 Winged Scroll Vaseline celery; #357 Prison Stripe spooner with Opalescent rim; #433 Greek Key covered puff box; #433 Greek Key tall straw jar and #3397 Gascony Sahara decanter. ♦



### National Capital Heisey CC

*John Martinez*

For all of you who missed the October meeting, you really missed quite an impressive display of Heisey's Puntly and Diamond Point pattern, along with many other early Heisey patterns that were in production during the same period. Thanks to George Schamel for a wonderful program.

The demolition of the Armory has started. We will miss having our All-Heisey Show there but I

believe that we will have great success at the Summit Hall Farm Park Activity Center in Gaithersburg. Preparations for the show are going along as scheduled and we already have two contracts in from dealers.

The January meeting is the 11th at 7:00 pm, Potomac Community Library, Potomac, Maryland. Future meetings include February 8, March 8, and April 5, 1999. ♦



### Bay State Heisey Club

*Susan Pescatore*

The Bay State Heisey Club met on November 10, at the Follen Church in Lexington, MA.

Show and Tell, presented by George Fogg, was, as usual, a testament to our members tenacity and excellent eyesight, for example: three rather unusual 4½" nappies—#465 Recessed Panel, #1280 Winged Scroll (crystal), and #417 Double Rib and Panel; #1483 Stanhope cup and saucer, plus sugar and creamer along with the GE vacuum coffee pot designed for this pattern; #150 Banded Flute 13" tray; #1252 Twist Moongleam footed nut; #3481 Glenford bar, Hawthorne with checker optic; three scarce to rare goblets—#347 Fifth Avenue colonial, #3438 Spiral, and #357 Prison Stripe; #1205 Fancy Loop cracker jar; #4163 Whaley tankard with four #3304 Universal goblets, all cut and with silver overlay rims; #2516 Circle Pair Moongleam goblet and #411 Tudor; #1469 Ridgeleigh 8" square plates and stunning 11" salad bowl with the wide rim; finally, D. Young brought an #1185 Yeoman Moongleam center handle sandwich tray, HH, with a gorgeous cutting and silver overlay.

The non-Heisey entries were equally as interesting: two pieces of Fostoria "Diadem" in ebony; an early Duncan and Sons "Cottage" amber pitcher in a metal holder; Duncan and Miller tall basket made in one piece, plus many other items too numerous to mention.

At this point the traditional purpose of our November meeting commenced—the annual auction for the benefit of HCA.

With Steve Pescatore wielding the gavel, and with a huge number of donated items, we had an unusually successful (and lucrative) auction this year. ♦



**North Carolina Heisey Study Group**  
*Michele Scott*

The North Carolina Heisey Study Group met on November 8th in Charlotte at the home of Phil and Sally Abrams for a dinner meeting. Sally's a great cook, and we all had an enjoyable time. There were 18 members and guests Joey and Diana Cogdill from the Dixieland club present.

President Frank Scott opened the meeting with news to share from the HCA Quarterly Meeting held in Corning, NY. The minutes from the September meeting and treasurer's report were approved. Thus far, 70 tote bags have been sold.

Phyllis has the new roster and will keep it maintained. Derek provided a report on local museum display possibilities. Isabelle reported that she has located a popular facility that will display for us in early 1999. In addition, her punch cup collection will be on loan to the museum.

Our program for the evening was Show and Tell. Members had much to show and tell about, as this meeting follows at least one full day of Heisey hunting. A pair of 3-lite Whirlpool candlesticks; Pyramid footed soda in Flamingo; Modern Polo on Coronation; pair of Mercury 12" candlesticks in Moongleam; Punt and Diamond Point individual brandy; Gascony decanter with Sportsman etch; #1000 marmalade with lid and cutting; Beaded Panel and Sunburst hotel cream and sugar; two Fancy Loop decanters (one with a set of matching tumblers); Ridgeleigh fruit bowl; Moongleam shot glass; Pillows decanter; Tudor bowl with Arctic etch; Greek Key handled nappy; cologne with cork insert; and—I hope you're still reading—Kohinoor stemmed goblets, wines, and saucer champagnes with Zircon bowls.

The mystery gift raffle winner was delighted to receive two Empress oyster cocktails and the Etchings and Carvings book. Karen and Derek provided the hostess gift: an Old Dominion stem with Marigold bowl and Empress etch. A real beauty!

Our second annual Christmas Party/Silent Auction will be held at the home of Patsy and Charles Nesbitt. ♦



**Gulf Coast Heisey Club**  
*Virginia Johnson*

November 19th the Gulf Coast Heisey Club met at the home of Rose Mensh in Hudson, Florida. Her assisting hostess was Jean Drexler. There were 21 present including members and 4 guests. Two of our guests, Eugene and Ann Shearer, became members.

During our business meeting we voted to send \$25.00 to HCA as a "Thank You" for the use of videos of the Identification Sessions from the June conventions of 1997 and 1998. Our Education Chair, Jack Grenzebach, will send this off with a letter. He provides us with excellent programs for our club meetings. At this November meeting we viewed the 1997 video and all thoroughly enjoyed the items shown and discussed—a learning experience. In March we plan to view the 1998 video.

We were served a lovely lunch by Rose and Jean and this is always a good time to become better acquainted and to share our interest and love of Heisey. During the Show and Tell there were some great items to see: Heisey measuring cup and jelly jar with lid, both marked: Hairpin basket with beautiful cutting and an etching plate for the Orchid etch photo used in advertisements; Dawn Cabochon covered candy; Plantation cordial; #394 Narrow Flute mustard (no cover!); Lariat handed bon bon; Moongleam Kingfisher flower frog; Amber Standing Colt; Doe Head bookend marked; and a Verlys Lovebird Vase.

The January meeting will be at the home of **Odell and Virginia Johnson, Bradenton Florida** on the **fourth Thursday, January 28th (Please note change from third Thursday)** at 11:00 am. This will be our annual HCA fund-raising Silent Auction. Visitors are welcome. Please call (941) 792-0604 for directions. We ask our members and guests to bring some good Heisey for the auction and a pocket full of money to buy—and we always have lunch! ♦

## HCA NEWS & NOTES

### HCA Welcomes new members for November:

James & Greta Brown, Ohio  
Kim Baughman, North Carolina  
Emil & Milissa Beeson, California  
Richard & Anne Belter, Ohio  
D. Laird Blue, California  
Patricia & John Booth, Massachusetts  
Mary Brockmeier & Teresa Hardin, Ohio  
Ken & Kathy Brondyke, Michigan  
E Warren Campbell, Florida  
Ronald Capstack, Virginia  
Robert & Donna Gappo, New Jersey  
Jane Gibble, Pennsylvania  
Charles & Judith Gugudan, Florida  
Sharon & Charles Holcomb, Arizona  
Karen King, Missouri  
Cleo Lancaster, Michigan  
Ron Lane, Nebraska  
Steven Lappe, Indiana  
Cathy Miller, Ohio  
Linda & George Peterson, California  
Allen & Linda Schwartz, Illinois  
Chandler Thompson, Idaho  
Olive Wilson, Florida  
Mardge Winter, Minnesota

HCA is saddened by the loss of two members, Jim Briggs of Bellfountain, Ohio and Don Parrett of Jackson, Michigan. Both will be missed by all who knew them.

**ATTENTION STUDY CLUBS!** Does your club have news or events to share with fellow members? Send updates BY THE FIRST OF THE MONTH to: Heisey News, 169 W. Church St., Newark, OH 43055, fax (740) 345-9638 or email: [heisey@infinet.com](mailto:heisey@infinet.com). ♦

### Coming Soon...

#### ♦ March 20-21, 1999

Annual All-Heisey Glass Show, Gaithersburg, MD. Sponsored by the National Capital Heisey Collectors Club (*formerly held in Silver Spring*). Contact George Schamel 301-432-6285 for further information.

#### ♦ April 9-10, 1999

Annual HCA All-Heisey Benefit Auction, Newark, OH. Benefits the National Heisey Glass Museum. Contact the museum at (740) 345-2932.

#### ♦ April 24-25, 1999

The Bay State Heisey Collectors 21st Annual Show and Sale. Featuring antique glassware of all periods. Contact Louis at (617) 387-0017 for information.

#### ♦ June 15-20, 1999

Annual HCA Convention and Glass Show. Mark you calendar and plan to attend! Watch future newsletters for information.

➔**Advertising:** Send all ads to HCA, Advertising, 169 W. Church St., Newark, OH 43055. Ads may be faxed to (740) 345-9638; please include MasterCard or VISA number for billing purposes. **All ads must be prepaid.** Ads are to be typed or printed on white paper with dark ink. Please double space. Do not abbreviate Heisey pattern names or colors. Ads which are entered in a vertical column format may contain a maximum of 65 characters per line, including spaces & punctuation.

**Classified:** 20 cents per word (members), 30 cents per word (non-members), \$1.50 min., 1/8 page limit. Personal ads 1/8 page limit. Abbreviations & initials count as words.

Display Ads:	member	non
1/8 page (12 lines)	\$20.00	\$30.00
1/4 page (25 lines)	\$40.00	\$60.00
1/2 page (60 lines, horizontal or vertical)	\$80.00	\$120.00
Full page(120 lines)	\$160.00	\$240.00

A charge of \$1.60 will be added for each additional line.

Camera ready ads must follow specifications. Ads which do not correspond to the following measurements will be sized.

**Camera Ready Ad Specifications:**

- 1/8 page: 2 1/4" high by 3 1/2" wide
- 1/4 page: 4 1/2" high by 3 1/2" wide
- 1/2 page: 4 1/2" high by 7 1/2" wide OR 9" high by 3 1/2" wide
- Full page: 9" high by 7 1/2" wide

**Ad copy must be received by the first of the month prior to publication.** Reproductions (i.e. Heisey by Imperial) must be indicated. *Heisey News* accepts no further liability. ♦

**Classified Ads**

**FOR SALE:** Entire private collection of Lariat. No pieces sold individually. For inventory, send SASE to Martha Eckman, 501 Stone Bluff, El Paso, TX 79912-3312 or send email inquiry to mareck@whc.net

**WANTED:** Heisey "Fox Chase" #1509 8" square plate, #5012 7" ftd. vase, #4163 16 oz. beer mug with Red, Moongleam, Amber handle. Fred Ludwig, 300 Rt. 10, Randolph, New Jersey 07869. (973) 366-1351.

**WANTED:** Heisey Baskets: etched, cut, colored, unusual decorations or whimsies. Send price and description to Kim Carlisle, 28220 Lamong Rd., Sheridan, IN 46069 (317) 758-5767.

**WANTED:** #341 Old Williamsburg footed cake plate. Heisey or Heisey by Imperial. Sunny Allred, HC4 Box 18G, Payson, AZ 85541 (520) 472-7932.

**FOR SALE:** HCA Oscars 1977 through 1995, plus 1979 and 1983 misdates and 1990 Peach, \$695.00 plus shipping. Jane's, Box 897, Phoenix, OR 97535. (541) 535-1315

**DAVID W. DUGGER**  
3985 Alana Ave. S.E.  
Salem, OR 97302

**(503) 371-1701**  
dvdug@cyberis.net  
UPS & Ins. Extra

1509	Queen Ann 12" sandwich plate, ctr. hdl. Orchid etch	\$175.00
1509	Queen Ann d/f ice cube bucket w/hdl., Orchid etch	\$295.00
1509	Queen Ann 5 1/2" d/f mint, Orchid etch	\$75.00
1519	Waverly 12" crimped bowl, Orchid etch	\$70.00
1519	Waverly 8" salad plate, Orchid etch, (8) ea.	\$25.00
1519	Waverly cup and saucer, Orchid etch	\$75.00
1519	Waverly 2-lite candlesticks, Orchid etch	\$125.00
1519	Waverly 10 1/2" dinner plate, Orchid etch, (2) ea.	\$155.00
4225	Cobel 1 qt. cocktail shaker, Orchid etch	\$225.00
4164	Gallagher 73 oz. ice jug, Orchid etch	\$595.00
1567	Plantation 5" ft. epergne candlesticks, pr.	\$225.00
1567	Plantation oil bottle, 3 oz. w/#125 stopper	\$100.00

**H&R Diamond H**  
**Helen & Bob Rarey**  
1450 White Ash Drive  
Columbus, OH 43204

**(614) 279-0390**  
**After 5:30 pm**  
**UPS & Ins. Extra**  
**H=Marked**

1218	Brookville 3 1/2 oz. ftd. hdl. sherbet, H, ca. 1916, (2) ea.	\$22.50
1404	Old Sandwich 10 oz. goblet, Sahara, 1929-54	\$35.00
1485	Saturn 10 oz. goblet, Zircon, H, 1936-56, (2) ea.	\$85.00
2401	Oakwood 7 oz. soda, Tally Ho etch, 1932-53, (6) ea.	\$30.00
2401	Oakwood 12 oz. soda, Tally Ho etch, 1932-53, (4) ea.	\$30.00
3304	Universal 3 oz. burgundy, Tally Ho et., 1932-53, (4) ea.	\$32.50
3311	Velvedere 2 1/2 oz. sherry, Moonglo cut, 1942-56, (4) ea.	\$35.00
3318	Waldorf 3 1/2 oz. cocktail, Tally Ho etch, 1932-53	\$45.00
3333	Old Glory 4 1/2 oz. parfait, #3413 et., H, 1918-38, (3) ea.	\$30.00
3350	Wabash 10 oz. goblet, 1922-46, (8) ALL	\$95.00
3350	Wabash 10 oz. goblet, Frontenac etch, 1921-41	\$21.50
3355	Fairacre 10 oz. goblet, (2) ea.	\$15.00
3359	Plateau 8 oz. goblet, d/o, Flamingo, 1923-30	\$45.00
3360	Penn Charter 10 oz. gob., St. Anne cut, 1932-36, (6) ea.	\$40.00
3360	Penn Charter 6 oz. champ., St. Anne cut, 32-36, (8) ea.	\$25.00
3360	Penn Charter 10 oz. goblet, Hawthorne, 1927-28	\$60.00
3362	Charter Oak 8 oz. goblet, d/o, Hawthorne, 1927-28	\$65.00
3362	Charter Oak 8 oz. goblet, d/o, 1923-32	\$40.00
3362	Charter Oak 8 oz. goblet, d/o Moongleam, 1925-32	\$45.00
3365	Ramshorn 9 oz. goblet (cut by Newton), 1923-30	\$60.00
3366	Trojan 8 oz. goblet, Flamingo, Trojan etch, 1924-32	\$65.00
3366	Trojan 8 oz. goblet, Hawthorne, H, 1927-28	\$80.00
3366	Trojan 1 oz. cordial, Moongleam stem and ft., 24-32	\$90.00
3366	Trojan 8 oz. goblet, unknown cut, H, 1924-32, (6) ea.	\$42.50
3366	Trojan 1 oz. cordial, unknown cut, H, 1924-32, (6) ea.	\$65.00
3368	Albemarle 8 oz. goblet, Chateau cut, 1935-50	\$35.00
3368	Albemarle 8 oz. goblet, Alexandrite, ca. 1935	\$275.00
3368	Albemarle 1 oz. cordial, Chateau cut, 1935-50	\$65.00
3368	Albemarle 8 oz. goblet, Trojan etch, Mnglm stem&foot	\$60.00
3370	African 8 oz. goblet, 1925-30	\$65.00
3370	African 8 oz. goblet, Flamingo, 1925-30	\$45.00
3376	Adam 11 oz. goblet, Flamingo, 1925-30	\$45.00
3376	Adam 11 oz. goblet, Flamingo, Biltmore etch, 1925-30	\$45.00
3379	Pyramid 12 oz. soda, d/o, Moongleam foot, ca. 1926	\$90.00
3380	Old Dominion 10 oz. tall goblet, Flamingo, 1925-30	\$35.00
3380	Old Dominion 10 oz. short goblet, Moongleam stem and foot, Empress etch, 1925-35	\$45.00
3380	Old Dominion short goblet, Marigold, Empress etch	\$80.00
3380	Old Dominion 10 oz. short goblet, Sahara, Old Colony	\$50.00
3380	Old Dominion 10 oz. short goblet, Moongleam bowl	\$60.00
3380	Old Dominion 10 oz. short goblet, Alexandrite, (2) ea.	\$225.00
3380	Old Dominion 10 oz. short goblet, 1925-35	\$35.00
3381	Creole 11 oz. tall goblet, Sahara bowl, 1930-40	\$90.00
3381	Creole 11 oz. short goblet, Alexandrite bowl, (4) ea.	\$175.00
3381	Creole 7 oz. champagne, Alexandrite, 1930-35, (4) ea.	\$165.00
3381	Creole 12 oz. soda, Alexandrite, 1930-35, (4) ea.	\$165.00
3381	Creole 5 oz. soda, Alexandrite, 1930-35, (4) ea.	\$125.00
3381	Creole 5 oz. cocktail, Alexandrite, 1930-35, (6) ea.	\$250.00
3381	Creole 2 1/2 oz. wine, Alexandrite, 1930-35	\$275.00
3386	Diamond Rose 12 oz. goblet, d/o Moongleam bowl, H	\$175.00
3389	Duquesne 9 oz. goblet, unknown cut, 1926-42	\$35.00
3389	Duquesne 9 oz. goblet, Normandy etch, 1935-38	\$35.00
3389	Duquesne 9 oz. goblet, Chintz etch, 1931-42	\$30.00
3389	Duquesne 10 oz. ftd. tumbler, Orchid etch, 1940-42	\$135.00
3389	Duquesne 8 oz. ftd. soda, Tangerine bowl, 1935-40	\$135.00
3390	Carcassone 11 oz. short goblet, Moongleam stem & foot	\$40.00
3390	Carcassone 11 oz. short goblet, Lafayette etch	\$25.00
3390	Carcassone 11 oz. tall goblet, Alexandrite bowl	\$125.00
3390	Carcassone 11 oz. short goblet, Sahara, Old Colony	\$40.00
3390	Carcassone 1 oz. cordial, Sahara, 1930-38	\$65.00
3390	Carcassone 1 oz. cordial, Alexandrite bowl, 1930-38	\$135.00
3390	Carcassone 2 1/2 oz. wine, Sahara, 1930-38, (2) ea.	\$35.00
3390	Carcassone 3 oz. oyster cocktail, Alex. bowl, (6) ea.	\$80.00
3390	Carcassone 6 oz. sherbet, Alexandrite bowl, (2) ea.	\$60.00
3390	Carcassone 12 oz. soda, Cobalt bowl, (6) ea.	\$70.00
3390	Carcassone 6 oz. sherbet, Cobalt bowl	\$40.00

**H&R Diamond H**  
**Helen & Bob Rarey**  
**1450 White Ash Drive**  
**Columbus, OH 43204**

**(614) 279-0390**  
**After 5:30 pm**  
**UPS & Ins. Extra**  
**H = Marked**

3390	Carcassone 6 oz. champagne, Cobalt bowl, (3) ea.	\$45.00	5003	Crystolite 12 oz. soda, 1937-57, (8) ea.	\$40.00
3390	Carcassone 12 oz. soda, Alexandrite bowl, (2) ea.	\$95.00	5003	Crystolite 1 oz. cordial, H, 1937-57	\$90.00
3394	Saxony 12 oz. ftd. soda, Needle etch, Sahara, 1930-38	\$75.00	5009	Queen Ann 10 oz. goblet, Belle la Rose etch, 1934-42	\$35.00
3397	Gascony 2½ oz. wine, w/o Tangerine, 1932-37	\$350.00	5009	Queen Ann 10 oz. gob., Everglade cut, 1938-42, (2) ea.	\$35.00
3397	Gascony 2 oz. goblet, w/o Sahara, 1932-38	\$85.00	5009	Queen Ann 6 oz. champ., Everglade cut, 38-42, (6) ea.	\$20.00
3397	Gascony 6 oz. champagne, Tangerine bowl, 1932-37	\$215.00	5009	Queen Ann 10 oz. goblet, unknown cut, 1934-42	\$35.00
3397	Gascony 14 oz. soda, Tangerine bowl (Red), 1932-37	\$450.00	5010	Syphone 9 oz. goblet, Minuet etch	\$40.00
3404	Spanish 10 oz. goblet, Cobalt bowl, 1932-40, (3) ea.	\$140.00	5010	Syphone 9 oz. goblet, Waikiki cut, 1933-41	\$40.00
3404	Spanish 5½ oz. champ., Cobalt bowl, 1932-40, (2) ea.	\$90.00	5010	Syphone 1 oz. cordial, Danish Princess cut, 1939-57	\$135.00
3404	Spanish 3½ oz. cocktail, Cobalt bowl, 1932-40, (6) ea.	\$160.00	5013	Shasta 10 oz. goblet, w/o, 1939-43	\$65.00
3405	Alibi 3 oz. cocktail, Tally Ho etch, ca. 1930	\$45.00	5019	Waverly 10 oz. goblet, Ivy etch, 1947-57	\$40.00
3408	Jamestown 9 oz. goblet, Sheffield cut, 1942-57	\$30.00	5019	Waverly 10 oz. goblet, H, 1947-57	\$20.00
3408	Jamestown 9 oz. goblet, unknown cut, 1940-57	\$35.00	5019	Waverly 1 oz. cordial, 1947-57	\$45.00
3409	Plymouth 2½ oz. sherry, H	\$60.00	5022	Graceful 10 oz. short goblet, Orchid etch, 1937-43	\$37.50
3441	Monte Cristo 9 oz. goblet, Kalaram cut, 1935-40	\$55.00	5023	Continental 1 oz. cordial, 1937-52	\$50.00
3441	Monte Cristo 9 oz. goblet, Waikiki cut, 1933-44	\$50.00	5024	Oxford 11 oz. goblet, Inspiration cut, ca. 1952	\$40.00
3441	Monte Cristo 9 oz. goblet, 1930-40	\$35.00	5024	Oxford 11 oz. goblet, unknown cut, H, 1937-57	\$40.00
3441	Monte Cristo 1 oz. cordial, unknown cut, 1930-40	\$125.00	5024	Oxford 3 oz. cocktail, Fanfare cut, H, 1953-54	\$40.00
3414	Mariette 10 oz. goblet, unknown cut, 1930-40	\$65.00	5024	Oxford 6 oz. sherbet, 1937-57, (6) ea.	\$10.00
3416	Barbara Fritchie 10 oz. goblet, Del Monte cut, H	\$115.00	5038	Rooster stem 3½ oz. cocktail, ca. 1951	\$45.00
3418	Savoy Plaza 10 oz. gob., frosted stem & ft., H, 1932-38	\$55.00	5038	Rooster stem, 3½ oz. cocktail, Moonglo cut, 1942-56	\$45.00
3424	Admiralty 9 oz. goblet, frosted stem & ft., H, 1932-41	\$55.00	5040	Lariat 10 oz. goblet, Moonglo cut, 1948-56	\$30.00
3440	Portsmouth 9 oz. goblet, Moongleam ft., ca. 1926	\$45.00	5040	Lariat 1 oz. cordial, 1948-56	\$75.00
3454	Granada 11 oz. goblet, ca. 1928	\$40.00	5041	Athena 9 oz. goblet, ca. 1940	\$40.00
3454	Granada 11 oz. goblet, unknown cut, H, ca. 1928	\$45.00	5042	Corinthian 10 oz. goblet, ca. 1939	\$40.00
3470	Temple 12 oz. ftd. hdl. soda, #413 etch, ca. 1926	\$17.50	5048	Rooster Head 3½ oz. cocktail, ca. 1947	\$45.00
3476	Temple 12 oz. ftd. hdl. soda, Victory etch	\$25.00	5057	Suez 9 oz. goblet, Midwest cut, 1952-57	\$40.00
3481	Glenford 1½ oz. bar glass, d/o Hawthorne, 1927-28	\$65.00	5057	Suez 9 oz. goblet, Greenbriar cut, 1950-51	\$40.00
3481	Glenford 1½ oz. bar glass, d/o Flamingo, 1925-30	\$30.00	5057	Suez 9 oz. goblet, Laurel cut, H, 1951-54	\$35.00
3481	Glenford 1½ oz. bar glass, d/o Alexandrite, 1930-36	\$195.00	5067	Plantation 10 oz. goblet, Ivy etch, 1940-56	\$30.00
3542	Hazelwood 4½ oz. oyster cocktl., d/o Flam., ca. 1926	\$40.00	5071	Seahorse 4 oz. cocktail, ca. 1952	\$150.00
4004	Impromptu 10 oz. goblet, 1941-57, (2) ea.	\$25.00	5077	Legionnaire 5 oz. ft. juice, Amber stem, 1950-57	\$25.00
4044	New Era 10 oz. goblet, frosted dec., 1935-52	\$70.00	5077	Legionnaire 12 oz. soda, Amber stem, 1950-57, (8) ea.	\$25.00
4044	New Era 10 oz. goblet, 1935-52, (6) ea.	\$20.00	5077	Legionnaire 3½ oz. cktail, Amber stem, 1950-57, (5) ea.	\$20.00
4044	New Era 1 oz. cordial, frosted stem and ft.	\$50.00	5077	Legionnaire 10 oz. goblet, H, 1950-57	\$20.00
4044	New Era 3½ oz. cocktail, Chicken Chase etch	\$150.00	5077	Legionnaire 10 oz. goblet, Arcadia cut, 1950-57, (6) ea.	\$20.00
4052	National 10 oz. goblet, 1949-52	\$20.00	5078	Park Avenue 6 oz. champagne, mono. SJS, H, 1950-52	\$40.00
4055	Park Lane 10 oz. goblet, Gray cut, 1936-39	\$80.00	5078	Park Avenue 2 oz. tall cordial, H, 1950-52	\$60.00
4055	Park Lane 10 oz. goblet, Singapore cut, ca. 1935	\$110.00	5079	Pan American 3½ oz. cocktail, 1950-52	\$25.00
4055	Park Lane 1 oz. cordial, Briar Cliff cut, 1935-38	\$125.00	5082	Mid Century 10 oz. goblet, H, 1950-55	\$40.00
4055	Park Lane 13 oz. soda, Briar Cliff cut, 1936-38	\$25.00	5082	Mid Century 1 oz. cordial, H, 1950-55	\$40.00
4055	Park Lane 10 oz. goblet, Briar Cliff cut, 1935-38	\$35.00	5083	El Rancho 12 oz. ftd. soda, H, 1950-52	\$25.00
4069	Ridgeleigh 8 oz. goblet, Marimont cut, 1936-38	\$75.00	5085	African-Temp 4 oz. cocktail, H, ca. 1955	\$35.00
4083	Stanhope 10 oz. goblet, Swingtime etch, 1936-37	\$40.00	5089	Princess 10 oz. goblet, Orchid etch, 1951-57	\$125.00
4083	Stanhope 10 oz. goblet, Zircon bowl & ft., 1936-37	\$145.00	6003	Tempo 1 oz. cordial, H, 1955-57	\$70.00
4083	Stanhope 6 oz. champ., Zircon bowl & foot, 1936-37	\$125.00	6003	Tempo 11 oz. goblet, Moonglo cut, H, 1955-57	\$35.00
4083	Stanhope 3½ oz. cocktail, Zircon bowl & ft., 1936-37	\$155.00	6010	Finesse 4 oz. cocktail, Ultronic cut, 1955-57	\$30.00
4083	Stanhope 10 oz. goblet, Maytime etch, 1936-37	\$40.00	6091	Cabochon 6½ oz. ftd. soda, Amber foot, 1955-57	\$40.00
4085	Kohinoor 9 oz. goblet, s/o, 1937-47	\$50.00	6091	Cabochon 10 oz. goblet, H, 1950-57	\$20.00
4090	Coventry 10 oz. goblet, Zeus cut, 1938-43	\$125.00	6091	Cabochon 10 oz. goblet, Southwind cut, H, 1950-57	\$30.00
4091	Kimberly 10 oz. goblet, Laurel Wreath cut, 1939-47	\$50.00	6091	Cabochon 10 oz. goblet, unknown cut, H, 1950-57	\$40.00
4091	Kimberly 10 oz. goblet, Dolly Madison Rose, 1949-56	\$45.00	6091	Cabochon 10 oz. goblet, Debutante cut, H, 1950-57	\$40.00
4091	Kimberly 10 oz. goblet, Botticelli cut, 1940-50	\$50.00	6091	Cabochon 1 oz. cordial, H	\$25.00
4091	Kimberly 10 oz. goblet, Courtship cut, 1940-52	\$50.00	1E92	Omega 10 oz. goblet, Star Flower cut, 1956-57	\$25.00
4091	Kimberly 10 oz. goblet, Sungate cut, 1937-41, (3) ea.	\$65.00	1E92	Omega 10 oz. goblet, Moonglo cut, 1956-57	\$25.00
4092	Kenilworth 10 oz. goblet, Rosalie etch, 1937-40	\$40.00	1E92	Omega 10 oz. goblet, silver leaves cut, 1956-57	\$25.00
4092	Kenilworth 1 oz. cordial, H	\$120.00	7009	Hydrangea 12 oz. goblet, no decoration, D. Thorpe	\$175.00
4224	Steeplechase 3 oz. cocktail, Moongleam, 1925-32	\$130.00	7047	Comet Leaf 10 oz. goblet, H, 1933-35	\$50.00
4224	Steeplechase 3 oz. cocktail, Sahara, 1930-38	\$130.00	7097	Tri-Knob 6 oz. sherbet, needle etch, H, ca. 1920	\$40.00
4224	Steeplechase 3 oz. cocktail, Flamingo, 1925-32	\$130.00	U8005	Galaxy 8 oz. goblet, Flamingo, H, ca. 1930	\$75.00
5003	Crystolite 10 oz. goblet, H, 1937-57, (6) ea.	\$22.50	U8023	Rampul 10 oz. goblet, Hawthorne, 1927-28	\$150.00
5003	Crystolite 6 oz. sherbet, 1937-57, (3) ea.	\$15.00	U8028	Empress Lily 10 oz. gob., Limelight bowl, H, ca. 1950	\$175.00
5003	Crystolite 3½ oz. cocktail, 1937-57, (6) ea.	\$25.00	U8029	Princess Lily 10 oz. goblet, H, ca. 1950's	\$45.00
			U8032	Capital 10 oz. goblet, bubble stem, ca. 1950's	\$25.00

**GINNY & BOB**  
 Virginia & Bob Marotto  
 49 Hart Acre Rd.  
 Southington, CT 06489-3727

(860) 628-5389  
 r.marotto@snet.net  
 Packing & postage extra

**Heisey by Imperial**

Bull, Nut Brown	\$425.00
Rooster, Amber	\$400.00
Hen, Sunshine Yellow, factory polish on one side	\$100.00
1978 Oscar, Pink	\$53.00
1979 Oscar, Sunshine Yellow	\$40.00
1980 Oscar, Heather	\$30.00
Flying Mare, Amber, leans slightly	\$1125.00
Piglets, Amber, standing or sitting, ea.	\$50.00
Filly, head forward, marked #30	\$155.00
Filly, head back	\$200.00
Clydesdale, Amber	\$300.00
Giraffe, head turned	\$125.00
Elephant, small, Nut Brown	\$90.00

**R & S ANTIQUES**  
 Ray & Susan Ball  
 2560 S. Maguire Rd.  
 Ocoee, FL 34761

(407) 656-5700  
 (407) 876-9199 evenings  
 UPS & Ins Extra

1	Coaster (plain bottom), (5) ea.	\$8.00
1	Coaster (star bottom), (2) ea.	\$8.00
4	Coaster (ridged, star bottom), (2) ea.	\$8.00
5	Puff box & original glass cover	\$130.00
300	Peerless 4 oz. bar/sherbet (2) ea.	\$22.00
1184	Yeoman 5" compote	\$20.00
1184	Yeoman 6" low ftd. deep comport	\$25.00
1184	Yeoman 4½ oz. soda (3 flared, 1 cupped) ea.	\$12.00
1401	Empress 6" square plate, (6) ea.	\$12.00
1401	Empress mayonnaise	\$27.00
1469	Ridgeleigh 4" cigarette box and cover	\$40.00
1469	Ridgeleigh cocktail rest, (3) ea.	\$15.00
1469	Ridgeleigh cream and sugar	\$42.00
1469	Ridgeleigh mayonnaise and underplate	\$50.00
1509	Queen Ann 7" combination salad dressing, (2) ea.	\$25.00
1519	Waverly 7" salad plate, (6) ea.	\$15.00
1519	Waverly 2-compartment oval dressing	\$35.00
1519	Waverly 3-part oblong relish	\$40.00
3411	Monte Cristo 9 oz. goblet, (5) ea.	\$25.00
3411	Monte Cristo 9 oz. ftd. tumbler, (6) ea.	\$20.00
1184	Yeoman 6" plate, d/o Moongleam	\$11.00
1184	Yeoman 7" plate, Moongleam	\$10.00
1184	Yeoman 6½" grapefruit plate, Moongleam, (2) ea.	\$25.00
3366	Trojan 8 oz. goblet, Moongleam/crystal, (4) ea.	\$50.00
1184	Yeoman 6" salad plate, d/o Sahara, (6) ea.	\$15.00
1401	Empress 7" round underplate, Sahara, (3) ea.	\$18.00
1401	Empress 7" round underplate, Sahara, (3) ea.	\$18.00
1401	Empress nut cup, Sahara	\$28.00

**WE CLEAN CLOUDY GLASS!**  
**SATISFACTION GUARANTEED**

*Yes, it is true* that we really can restore the interior of your cruet, vase, decanter and other *internally* etched items back to near original condition.

*We do not* oil, wax or cover up the sickness in any way! We actually *remove* it.

*No items are too sick to clean!* If we cannot clean an item to meet your satisfaction, the cleaning is **FREE!**

*Send no money up front.* When we return your item a bill will be enclosed for the postage and cleaning. If you are not satisfied, only the return postage is requested.

*Most items* clean in 6-8 weeks. All glass is handled and cleaned at your risk. Some very cloudy items may take several additional weeks.

Cruet	\$27.50	Cocktail Shaker	\$30-35.00
Vinegar & Oil	\$30.00	Salt Shaker (one)	\$25.00
Cologne	\$27.50	Salt Shaker (pair)	\$42.50
Decanter	\$35-40.00	Water Bottle	\$30-40.00
Vases (under 10")	\$30-35.00	Lavender Jar	\$25-35.00

Ship to: **Kim Carlisle & Associates**  
 28220 Lamong Road, Dept. H  
 Sheridan, IN 46069  
 (317) 758-5767  
 kcarlisl@indy.net

**RAPHAEL & EILEENE WISE**  
 12018 Suellen Circle  
 West Palm Beach, FL 33414

(561) 793-0986  
 Shipping & Ins. Extra  
 H=Marked

42	Salt & pepper shkr, Orchid et. (shows full Orchid), pr.	\$275.00
1425	Victorian pitcher, H	\$475.00
1405	Half Circle cream and sugar, Moongleam, H	\$180.00
500	Octagon 4-part variety tray, Moongleam, H	\$235.00
461	Convex Circle #4 candy jar and cover, HH (2 marks)	\$295.00
16	7½" candlesticks, pr.	\$85.00
1183	Revere 1 lb. candy & cvr., butterfly etch, HH (2 marks)	\$125.00
134	Trident 2-lite candlestick, Alexandrite, great color, H	\$450.00
3397	Gascony 1 pt. decan. & #88 str., #455 Sportsman et.	\$495.00
325	Pillows 4" rose bowl, H	\$140.00
4224	Steeple Chase shaker & (4) cocktails, Moongleam	\$575.00
4044	New Era 2-lite candlesticks complete with prisms, pr.	\$125.00



**Advertise  
 with the  
 Heisey News!**

# HEISEY COLLECTORS OF AMERICA, INC.

The National Heisey Glass Museum ~ Celebrating 25 Years

## 28th Annual National Convention

Featuring the 29th Annual

# PREMIERE GLASS SHOW

50 prominent dealers from across the U.S.

**June 16-19, 1999**

—Special Preview—  
Wednesday, June 16  
5 to 8 p.m.

—\$20 admission—

Friday, June 18  
Noon - 5 p.m.

—\$4 admission—

Thursday, June 17  
Noon - 5 p.m.

—\$4 admission—

Saturday, June 19  
Noon - 5 p.m.

—Free admission—

Visit the free  
HEISEY GLASS DISPLAY  
Hopewell Hall

OSUN-COTC Campus, Country Club Drive, Newark, OH  
30 miles east of Columbus off St. Rt. 16  
For more information call (740) 345-2932

Proceeds benefit the National Heisey Glass Museum

SUM OF LIFE  
Elaine & Frank Husted  
147 Barton Dr.  
Spring City, PA 19475-3415

(610) 469-1243  
(610) 469-1245 fax  
mehusted@aol.com  
H = Marked

We hope that you had a great Heiseymas!! Happy New Year!!!

473	Narrow Flute w/Rim 8-sided pickle 8½x5½", Flam., H	\$35.00
473	Narrow Flute w/Rim 6 oz. cruet, H	\$45.00
473	Narrow Flute w/Rim ind. almond, H, (10) ea.	\$16.00
473	Narrow Flute w/ Rim celery tray, Flamingo, H	\$25.00
1540	Lariat tall covered candy jar	\$165.00
355	Quator 7" square nappy, (1 corner rough), H	\$28.00
1590	Zodiac 4½" comport	\$38.00
412	Tudor ice tea set, ftd. pitcher, (8) hdl. glasses	\$280.00
433	Greek Key 3 pt. pitcher, H	\$260.00
3390	Carcassone 1 qt. tankard, monogrammed AWB	\$85.00
1951	Cabochon center handled platter	\$45.00
1951	Cabochon wine with Debutante cut	\$55.00
339	Continental water jug	\$95.00
3416	Barbara Fritchie cordial, plain	\$110.00
3326	Biltmore cordials, (4) ea.	\$18.00
1401	Empress mayonnaise d/f, Alexandrite	\$295.00
1401	Empress mayonnaise d/f, Orchid etch	\$45.00
1205	Fandango mustard jar with gold decor.	\$90.00
	Swan master nut	\$55.00
1405	Ipswich 11" ftd. floral bowl	\$120.00
352	Flat Panel water jug	\$40.00
1495	Fern candlestick with #598 cutting, pr.	\$165.00
3411	Monte Cristo claret with unknown cutting	\$35.00

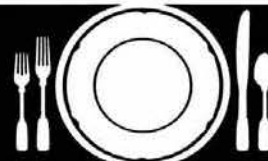
Please add \$5.00 minimum postage and handling

FOREVER HEISEY  
Norm & Jan Thran  
1663 Londondale Pkwy.  
Newark, OH 43055

(740) 344-5955  
jathra@communiagate.net  
UPS & Ins. Extra  
H = Marked

	Heisey Mallard, wings up, H	\$175.00
150	Banded Flute cordial, H	\$85.00
150	Banded Flute 8 oz. toothpick, H	\$65.00
351	Colonial 5" vase (sweet pea), H, (2) ea.	\$30.00
1405	Ipswich 10 oz. ftd. goblet, (12) ea.	\$22.50
1405	Ipswich 4 oz. oyster cocktail, (7) ea.	\$17.50
1485	Saturn 5" whipped cream, bowl, Zircon s/o, H	\$175.00
1485	Saturn goblet, Zircon s/o, H	\$95.00
1503	Crystalite 7" round covered candy, H	\$55.00
1509	Queen A. 12" 2-hd. sand. pl., Orchid et., H, minor use	\$90.00
1519	Waverly 13" gardenia bowl, Heisey Rose etch	\$77.50
1519	Waverly covered butter, Seahorse lid, Orchid etch	\$170.00
1519	Waverly 7" mayo pl. w/center ring, Orchid etch, (2) ea.	\$18.00
1519	Waverly 8¼" plate, Orchid etch, (5) ea.	\$24.00
1536	Military cap ash tray	\$27.50
1567	Plantation 5" ftd. covered cheese, H	\$130.00
1567	Plantation 8" tall ftd. cvd. candy, H, (8" to top of finial)	\$150.00
3324	Delaware tall goblet, Hawthorne checker optic, (4) ea. or (4) for	\$65.00 \$200.00
3404	Spanish 5 oz. ftd. juice/soda, Barcelona cutting, (6) for	\$125.00
5010	Symphone tall champagne, Minuet etch, (6) ea. or (6) for	\$27.00 \$150.00
4002	Aqua Caliente with Sportsman etch	\$45.00
4085	Kohinoor goblet, Zircon s/o bowl with Crystal stem	\$175.00
4090	Coventry 6 oz. sherbet, Zircon s/o, (2) ea.	\$100.00
	Flying Mare, Lavender Ice by Dalzell	\$795.00
	Gold Series set 12 animals, Rosalene by Fenton, only 450 sets made	\$950.00

Our 19th year serving the Heisey Family!! Always a large inventory, call, write or stop & visit while in Newark, open 7 days, we accept layaways.



## The Best Of Heisey Glass...

... with popular patterns like Orchid, Heisey Rose, Minuet, and hundreds more. We also carry other fine crystal and depression glass from Cambridge, Fostoria, Imperial, Duncan & Miller, and more. The world's largest supplier of discontinued and active china, crystal, flatware and collectibles, Replacements, Ltd. carries over 4,000,000 pieces in inventory in over 85,000 patterns.

If you're looking to add to your collection, or if you're looking to sell - call us toll-free. Because even with over 4,000,000 pieces in our inventory, we're always looking for more.

## REPLACEMENTS, LTD.

China, Crystal & Flatware • Discontinued & Active

1089 Knox Road, Greensboro, NC 27420 Dept. HS

**1-800-REPLACE (1-800-737-5223)**

**MOSTLY HEISEY** (800) 972-2775  
**Rhoda Curley** (518) 482-6272  
**16 Clayton Place** UPS Extra  
**Albany, NY 12209** All prices each  
[www.sony.ineergy.com/mostlyheisey](http://www.sony.ineergy.com/mostlyheisey)

341	Puritan 3 oz. sherbets, flared, (4)	\$12.00
5041	Athena saucer champagne, (6)	\$20.00
300	Peerless bar glasses, (3)	\$33.00
4054	Coronation bar glass 2 oz (4), or 1 oz. (3)	\$30.00
310	Ring Band toothpick Custard souv., Put-in-Bay	\$85.00
1205	Fandango salt dips, (1) \$20.00, Fancy Loop (10)	\$20.00
1506	Provincial 8 oz. ft. tumbler, Zircon	\$75.00
1503	Crystalite 4" ashtray, Zircon	\$55.00
1404	Old Sandwich pitcher, Sahara \$185.00 or Crystal	\$85.00
1252	Twist mustard, Flamingo	\$85.00
1401	Empress mustard	\$48.00
1503	Crystalite mustard	\$55.00

**OAK GROVE ANTIQUES** (978) 772-2538 after 5 pm  
**49 Grove St.** Shipping & Handling Extra  
**Ayer, MA 01432** H=Marked

112	Mercury 3" candlesticks, Orchid etch, pr.	\$68.00
134	Trident double candle holders, Sahara, H, pr.	\$125.00
160	Locket on Chain cake salver	\$100.00
1401	Empress 13" hdl. tray, Antarctic etch, H	\$75.00
1404	Old Sand. 1/2 gal. ice jug, (6) 10 oz. sodas, Sahara, H	\$295.00
1425	Victorian hi-ftd. 9 oz. goblet, (8) ALL	\$160.00
1469	Ridgeleigh 9 oz. stem goblets, (2) ea.	\$29.00
1473	Buttress 5 piece set, med. center, H	\$225.00
3333	Old Glory 3 oz wine, H, (5) ALL	\$80.00
3380	Old Dominion tall champagnes, Flamingo d/o, (3) ea.	\$15.00
3390	Carcassone 12 oz. ftd. soda short stem, (6) ALL	\$85.00
3481	Glenford 8 1/2 oz. ft. soda, Diana etch, (7), 1 w/rim chip	\$200.00
4052	National 8 oz. tumbler, w/o with Moonglo cutting, (6)	\$85.00

**WANTED:** Mustards #150, #300, #305, #325, #1201, #1205, #1235

**ERMA HULSLANDER** (972) 289-6159  
**1427 Ridgeview St.** UPS Extra  
**Mesquite, TX 75149** heisey@flash.net

	Filly, head forward	\$1300.00
479	Petal hotel ftd. cream and sugar, Flamingo, H	\$75.00
1021	Christine hotel covered cream and sugar, cut, H	\$175.00
1170	Pleat and panel cruet and stopper, Moongleam	\$95.00
1404	Old Sandwich oval cream and sugar, Sahara, H	\$90.00
1404	Old Sandwich salt and pepper, Sahara, H	\$90.00
1404	Old Sandwich salt and pepper, Flamingo, H	\$120.00
1413	Cathedral vase flared, Cobalt	\$600.00
1445	Grape oval floral bowl, Cobalt, H	\$700.00
1567	Plantation ftd. honey 6 1/2" compote, H	\$60.00
1567	Plantation cream and sugar, H	\$70.00
2517	Teardrop 12" vase, Moongleam	\$105.00
3368	Albamarle 8 oz. goblet, d/o Alexandrite	\$190.00
3368	Albamarle 8 oz. goblet, d/o Marigold	\$125.00
3381	Creole all Alexandrite d/o—(2) 11 oz. tall goblets, (2) 7 oz. saucer champ. tall stem, 94) 12 oz. ftd. sodas all (8) for	\$900.00
4044	New Era 4 oz. wine, Cobalt bowl	\$150.00
4217	Frances 6" vase, Moongleam d/o	\$85.00
5024	Oxford goblet, Maryland cut, H, (9) all	\$130.00
5024	Oxford soda, Maryland cut, H, (5) all	\$70.00
5024	oxford saucer champagne, Maryland cut, H, (4) all	\$50.00
5162	6" crimped vase, Flamingo d/o	\$85.00

**YEAR END SPECIAL!**  
**10% off remaining items from all previous 1998 ads!**

The National Capital Heisey Study Club with  
 The National Capital Heisey Collector's Club  
 Present The Twenty-Seventh Annual  
**All-Heisey Glass Show**  
 ★★★★★ New Location ★★★★★  
**Summit Hall Farm Park  
 Activity Center**

505 S. Frederick Ave. Gaithersburg, Md  Admission \$4.50  
 (With Ad \$4.00)  
 All Proceeds to Benefit  
 The Heisey Museum

Sat., March 20, 1999 10am to 6pm Sun., March 21, 1999 11am to 4pm



From I-270 use Exit 9A (I-370 Sam Eig Hwy)  
 Take 355 North Exit (Town Center)  
 Turn Left at 3rd Stop Light (Education Blvd)

For More Information Call:  
 (301) 432-6285

**GLASS 'N' GLASS** (941) 792-0604  
**Virginia & Odell Johnson** email: ovjohnson@aol.com  
**6909 10th Ave. West** UPS & Ins. Extra  
**Bradenton, FL 34209** H=Marked

**10% Discount on this ad & on any remaining items in our Nov. & Dec. ads, as we are moving into a retirement complex in the next few months**

300	Peerless toothpick	\$40.00
310	Ring Band souvenir toothpick, Custard	\$55.00
352	Flat Panel 2 qt. crusted fruit jar, pat. dtd., H	\$275.00
358	Individual ashtray, Flamingo	\$35.00
394	Narrow Flute mustard bottom (Vogel bk 3, pg. 25), H	\$25.00
417	Double Rib and Panel basket, Flamingo, H	\$225.00
473	Narrow Flute with Rim 6" pickle tray, Flamingo, H	\$75.00
1184	Yeoman 8 1/2" bowtie hdl. candy dish, Flamingo, H	\$75.00
1184	Yeoman 8 1/2" bowtie hdl. candy dish with cutting, H	\$50.00
1225	Plain Band toothpick, beaded top	\$35.00
1255	Pineapple and Fan 8" vase	\$35.00
1404	Old Sandwich 1/2 gal. jug, Sahara, H	\$250.00
1404	Old Sandwich 8 oz. tumblers, Sahara, H, (2) ea.	\$30.00
1469	Ridgeleigh 3" square ashtray, Zircon	\$75.00
1503	Crystalite coasters, (6) ea.	\$8.00
1503	Crystalite single candleholders, pr.	\$40.00
1506	Whirlpool hdl. and ft. mayo bowl, Limelight, H	\$115.00
1506	Whirlpool hdl. and ft. mayo bowl	\$40.00
1540	Lariat 8" hdl. bon bon	\$135.00
4206	Optic Tooth ice tea, d/o with Moongleam foot	\$45.00
433	Greek Key 2 qt. crusted fruit jar with cover, H Madonna frosted	\$425.00 \$100.00
	Cockeral stem cocktails, How many do you want? ea.	\$45.00
1405	Ipswich (Imperial) candy jar/cover, Amber	\$40.00

# Heisey

**PUBLICATIONS**

PO BOX 102  
Plymouth, Ohio 44865  
Ralph & Sandra McKelvey  
(419) 935-0338



**Heisey**  
**Books & Glass**

## VOGEL BOOKS ON HEISEY

BOOK I "FIRST TEN YEARS".....\$14.00

BOOK II "COLONIAL YEARS".....\$14.00

BOOK III "ART & COLORED GLASS"...\$15.00

BOOK IV "EARLY AND LATE YEARS"..\$15.00



SET PRICE \$55.00

### SHIPPING AND HANDLING

Add \$4.00 for all orders!!

#### CHIEFLY ANTIQUES

Ron & Sandy Taylor  
30982 Grandview  
Mackinaw, IL 61755

(309) 263-2311

(309) 359-8552 After 8:30 pm

UPS & Ins. Extra

H=Marked

350	Pinwheel and Fan pitcher, H	\$160.00
411	Tudor 5" jelly compote, Hawthorne, H	\$50.00
436	13 1/2" Swing vase, H	\$70.00
1401	Empress round cup and saucer set, Sahara, H, (5) ea.	\$40.00
1401	Empress d/f cream and sugar, (2 pr.), ea.	\$65.00
3380	Old Dominion tall goblet, Sahara d/o, (7) ea.	\$40.00
3380	Old Dominion tall champagne, Sahara d/o, (8) ea.	\$22.50
3380	Old Dominion 12 oz. ice tea, Sahara, (12) ea.	\$20.00
1506	Whirlpool 5 oz. champagne glasses, (6) ea.	\$12.00
1506	Whirlpool 10 oz. water goblets, (6) ea.	\$12.00
1506	Whirlpool sugar	\$5.00
1450	Ipswich sherbet, (3) ea.	\$10.00
400	Underplate for butter set, H	\$30.00
300	Colonial punch cups, H, (11) ea.	\$7.50
300	1-lite candleholder, pr.	\$165.00
	Crystalite 5-part relish, H	\$35.00
	Crystalite ashtray, H, (3) ea.	\$10.00
	Kohinoor 9 oz. water goblets, (10) ea.	\$25.00
	Kohinoor 5 1/2 oz. champagne, (6) ea.	\$18.00
	Pinwheel 6" plates, H, (6) ea.	\$10.00

JOHN WOYTOWICZ  
230 Highland Ave.  
Gardiner, ME 04345

(207) 582-9048  
Shipping & Ins. Extra  
H=Marked

300	Peerless custard cups and underplate, (8) sets ea.	\$15.00
335	Prince of Wales footed jelly	\$45.00
335	Prince of Wales cream, for table set	\$40.00
341	Colonial low ftd. jelly, crimped, (2) ea.	\$20.00
351	Colonial 1 pt. wine decanter with stopper	\$100.00
353	Medium Flat Panel ashtray, pat. dtd. 3/15/10, HH	\$45.00
353	Medium Flat Panel 2 qt. sanitary crusted fruit w/cover	\$300.00
354	Wide Flat Panel stacking creamer and sugar, Flamingo	\$60.00
373	Colonial 9 oz. goblets, (8) ea.	\$25.00
393	Narrow Flute 9 oz. goblets, (7) ALL	\$120.00
1184	Yeoman 8" plate, Sahara, Empress etch, (8) ea.	\$15.00
1201	Fandango cake salver	\$150.00
1201	Fandango 3-cornered nappy with handle	\$35.00
1201	Fandango wine	\$50.00
1235	Beaded Panel and Sunburst punch bowl and base	\$225.00
1243	Stepped Octagon 7" plate, Moongleam, (4) ea.	\$15.00
1252	Twist 2-part relish, Sahara	\$70.00
1252	Twist 12" relish, Sahara	\$40.00
1252	Twist nasturtium bowl, round, Flamingo	\$100.00
1252	Twist footed nut dish, Flamingo	\$35.00
1255	Pinwheel and Fan hair receiver with cover	\$70.00
1404	Old Sandwich oval bowl, Sahara	\$90.00
1404	Old Sandwich pitcher, Sahara	\$180.00
1404	Old Sandwich wines, (4) ea.	\$15.00
1404	Old Sandwich 12 oz. ftd. soda, Cobalt, (2)	\$100.00
1425	Victorian wines, (7), ea.	\$15.00
1425	Victorian champagnes, (2) ea.	\$10.00
1469	Ridgeleigh cup and saucer, (2 sets) ea.	\$20.00
1469 1/2	Ridgeleigh 1-lite candelabra, "A" prisms (single)	\$100.00
1503	Crystalite goblets, blown bowl, (10)	\$25.00
1506	Whirlpool sodas, (6) ea.	\$20.00
1506	Whirlpool ftd. candy dish and cover	\$95.00
1519	Waverly 2-lite candlesticks, Orchid etch, pr.	\$120.00
1540	Lariat 11" bowl	\$30.00
1540	Lariat 4-part relish	\$40.00
1540	Lariat goblets, (3) ea.	\$20.00
1541	Athena 8" plate, folded	\$20.00
2401	Oakwood old fashion, Fox Chase etch, (4) ea.	\$50.00
2401	Oakwood bar glass, Fox Chase etch, (6) ea.	\$30.00
3389	Duquesne champagne, Tangerine	\$175.00
3389	Duquesne cocktail, Tangerine	\$160.00
3389	Duquesne 5 oz. juice, (2) ea.	\$120.00
3404	Spanish goblets, Cobalt, (2) ea.	\$90.00
4164	Gallagher w/o pitch&(6) sodas w/o, Monticello et., ALL	\$150.00
4182	6" plates, Osage etch, (8) ALL	\$50.00
4206	Optic Tooth 10" vase, Flamingo	\$125.00
	Clydesdale, repair to foot, (2) ea.	\$150.00
	19" Swing vase	\$150.00
<b>Punch Cups:</b>		
	Prince of Wales	\$10.00
	Fandango	\$10.00
	Pinwheel and Fan, (2) ea.	\$10.00
	Sunburst, (2) ea.	\$10.00
<b>Cruets:</b>		
	Saturn	\$30.00
	Victorian	\$30.00
	Tudor	\$30.00
	Banded Flute	\$30.00
	Empress, no top	\$30.00
	Punty Band, no top	\$20.00
	Crystalite, (2) ea.	\$25.00

**WANTED:** Twist Moongleam salt and pepper, any size, and goblets, tall or luncheon size.

# DEALER DIRECTORY

Maximum 5 lines/12 months/\$35 MEMBERS ONLY

<p><b>HAROLD'S COLLECTABLES &amp; ANTIQUES</b> Heisey and other elegant glassware 6244 S. Cook Dr., Littleton, CO 80121 (303) 771-9432 email: harolds@uswest.net www.glasshow.com (see aisle 6)</p>	<p><b>SHIRLEY EUGENIA DUNBAR</b> Heisey a Specialty—Mail Order, Shows, Appraisals email: shirley400@aol.com PO Box 7085, Port St. Lucie, FL 34985 Oct-May (407) 337-1558 PO Box 222, Naples, ME 04055 May-Oct (207) 647-5652</p>	<p><b>COMPARISON LIST</b> NEW HEISEY AUCTION LIST FOR 1998 3 Year's Auction 96-97-98 Price: \$20.00 + \$3.00 Shipping Payable: B. Whaley 300 International Dr., Pataskala, OH 43062 (740) 927-1557</p>
<p><b>ALL HEISEY AUCTION</b> Consignments Welcome Apple Tree Auction Center 1616 W. Church, Newark, OH 43055 (740) 344-4282</p>	<p><b>GREEN ACRES FARM</b> Antiques, Crystal Glass &amp; Collectibles 2678 Hazelton-Etna Rd., SW (S.R. 310-N) Pataskala, OH 43062 Sat. or Sun. PM or call (740) 927-1882</p>	<p><b>MICHAEL KRUMME</b> Heisey and other elegant glassware PO Box 48225 http://www.glassshow.com Los Angeles, CA 90048 I search—send your want list (213) 874-GLASS (-4527) email: mkrumme@pacbell.net</p>
<p><b>D &amp; B ANTIQUES—ATLANTA</b> Bob Bartholomew Members Dixieland Heisey Club PO Box 33283, Decatur, GA 30033 Shows (404) 634-2799 Mail Order</p>	<p><b>H &amp; R DIAMOND H</b> Helen &amp; Bob Rarey 1450 White Ash Dr. Columbus, OH 43204 (614) 279-0390 after 5:30</p>	<p><b>JEAN &amp; DON PARRETT</b> Beautiful Heisey Layaways Accepted 4995 Maple Dale Rd. Jackson, Michigan 49201 (517) 784-7319—Recorder</p>
<p><b>ANTIQUES - THE SHULTZES</b> 206-208 East Main St. Newmanstown, PA 17073 15 Miles West of Reading, PA (610) 589-2819</p>	<p><b>"HAPPINESS IS" - THE STULTZS</b> 3106 Warren Court, Glen Allen, VA 23060 Shows and Mail Order (804) 672-8102</p>	<p><b>PATTON HOUSE ANTIQUES</b> Specializing in Glass*Heisey*Cambridge*Fostoria*Duncan* Factory Antique Mall, Verona, VA off I-81 Exit 227 The Antique Gallery, 3140 W. Cary St., Richmond, VA Antiquers Mall, Booth 81, Rt. 29 N., Charlottesville, VA The Daniels, Box 547, Louisa, VA 23093 (540) 967-1181</p>
<p><b>C&amp;J ANTIQUES</b> Cole &amp; Jean Miesner Box 45, 72 Whig St. Newark Valley, NY 13811 (607) 642-9905</p>	<p><b>GERI PINION</b> PO Box 110965 Campbell, CA 95011 (408) 370-1328 email: ibuyglass@aol.com</p>	<p><b>SCHWAN'S ANTIQUES</b> SHOWS &amp; MAILORDER 77 Lagos del Norte Ft. Pierce, FL 34951 (561) 461-5940</p>
<p><b>DOXTOIS</b> Eva &amp; Joe Hirsh Heisey &amp; Pattern Glass 6 James St., Norwalk, CT 06850 (203) 847-3315</p>	<p><b>HOOKED ON HEISEY</b> Jay C. Martin 97 Heritage Hill Rd., New Canaan, CT 06840 (203) 966-9359 24 hr. answering machine thefamilyfirm@worldnet.att.net</p>	<p><b>R &amp; L ANTIQUES-SAN FRANCISCO</b> Members of the Golden Gate Heisey Club 3690 Bodega Ave., Petaluma, CA 94952 Petaluma (707) 762-2494 San Francisco (415) 621-6693</p>
<p><b>CHARLES &amp; MILDRED FISHER</b> Heisey animals and Heisey By Imperial animals 991 Idlewilde, Newark, OH 43055 (740) 522-5398</p>	<p><b>MOUNDBUILDERS SECOND GENERATION</b> Shows, mail orders or appointment * Fifteen miles north of St. Augustine in Ponte Vedra Beach, FL. PO Box 1931, Ponte Vedra Beach, FL 32082 (888) HEISEYS (434-7397) (904) 280-0450</p>	<p><b>THE SPARACIO'S</b> Carl &amp; Helen Shows and Mail Order 28 Refy Ave., Ramsey, NJ 07446 (201) 327-2495 email: poppcarl@msn.com</p>
<p><b>CRYSTAL LADY</b> Bill, Joann &amp; Marcie Hagerty Specializing in elegant depression glassware 1817 Vinton St., Omaha, NE 68108 Shop (402) 341-0643 or Home (402) 391-6730</p>	<p><b>GALAXY ANTIQUE MALL—JIM PAPPAS</b> galaxy-mall.com Email: jlp@galaxy-mall.com Glass and Pottery—Heisey &amp; Blue Ridge a Specialty Phone: (609) 897-0345 Fax: (609) 936-0091 26 Kinglet Dr. N, Cranbury, NJ 08512</p>	<p><b>YOUR AD COULD BE HERE</b> Call 740-345-2932</p>
<p><b>FINDER'S ANTIQUE HOUSE</b> 3769 Hwy. 29 North Danville, VA 24540 Open Thursday—Saturday (804) 836-6782 Area's largest selection of Heisey and other Elegant Glassware.</p>	<p><b>J. &amp; R. COLLECTIBLES</b> Shows, SASE, Mail Order list The Lukasko's PO Box 1030, Newark, OH 43058-1030 (740) 344-9719</p>	<p><b>APPLE VALLEY COLLECTIBLES</b> Richard Garnett &amp; Anne Borchert PO Box 552, Amenia, NY 12501 (914) 373-8791 Shows &amp; Mail Order *Yesteryears Antique's—Monroe, CT (203) 459-9548*</p>
<p><b>FRAN'S FANCY FINDS</b> Fran &amp; Jack Grenzebach 10534 Valencia Rd., Seminole, FL 33772-7511 (727) 391-5184 SHOWS MAIL ORDERS</p>	<p><b>MOSTLY HEISEY</b> Rhoda Curley 16 Clayton Pl., Albany, NY 12209 Shop and Mail Order (800) 972-2775 Visit our web page: www.sony.inergy.com/mostlyheisey</p>	<p><b>THE WOODEN SHOE</b> 222 W. Washington St., Charles Town, WV 25414 Fri-Mon 11-5 (304) 725-1673 Email: wdshuct@aol.com Glass—Pottery—Kerosene Lamps</p>
<p><b>FOREVER HEISEY</b> Jan &amp; Norm Thran Mail Order, Shows, Appraisal Service 1663 Londondale Pkwy., Newark, OH 43055 (740) 344-5955</p>	<p><b>R &amp; S ANTIQUES AND GLASSWARE</b> Heisey—Specializing in Complete Heisey Tableservice Call or write for patterns and colors 2560 S. Maguire Rd. Ocoee, FL 34761 (407) 656-5700 or (407) 876-9199 PM</p>	<p><b>WILLEY'S ANTIQUES &amp; MUSEUM</b> Specializing in Heisey 11110 Cannon Rd., Frazeyburg, OH 43822 16 miles east of Newark, OH (740) 828-2557</p>
<p><b>WARREN &amp; MARY WELSH</b> Heisey &amp; other elegant glassware 3635 Saddle Rock Rd., Colorado Springs, CO 80918 (719) 531-5866 Mail Order Shows</p>	<p><b>GLORIOUS TREASURES ANTIQUE SHOPPE</b> Heisey Glass and other Fine Treasures 518 Main Street, Edmonds, WA 98020 10:00 to 6:00 Mon. thru Sat., Sun. Special events (425) 775-5753</p>	<p><b>A TOUCH OF GLASS</b> Heisey—Depression—Elegant The Antique Station Case 03R 194 Thomas Johnson Dr., Frederick, MD 21709 David &amp; Lisa Helm (410) 239-4234</p>
<p><b>GLASS 'N' GLASS</b> Virginia &amp; Odell Johnson 6909 10th Ave. W. Bradenton, FL 34209 (941) 792-0604 email: ovjohnson@aol.com</p>	<p><b>G.W. ANTIQUES</b> www.sonic.net/gwant Robert Gindhart (707) 575-8706 Gary Wimmershoff Santa Rosa, CA Heisey, Wedgwood and other fine antiques</p>	<p><b>HEISEY, etc.</b> Mike &amp; Barb Rosenberger heisey@logantele.com Shows-Mail order (502) 657-8344 974 Forgy Mill Rd., Dunmor, KY 42339 Visit our web site: www.logantele.com/~heisey</p>

---

**Museum Volunteers for  
November & December**

Beth & Jay Barker  
Frances Law  
Connie Makris  
Dick Marsh  
Phyllis McClain  
Mary McWilliams  
Shannon & Wendy Mitchell  
Mary Ourant  
Marilyn Norris

---

**When Renewing Your Membership...**

Help us to reach our new goal of \$2,000,000 by the year 2002. When you renew your membership at one of the levels below, any amount beyond the regular Associate dues—\$22.00 plus \$5.00 for each additional household member—goes into the Endowment Fund.

<i>Individual Contributing</i> , one person in household	<b>\$30</b>
<i>Joint Contributing</i> , two people in one household	<b>\$40</b>
<i>Family Contributing</i> , parents and children under 18	<b>\$50</b>
<i>Patron</i>	<b>\$100</b>
<i>Sponsor</i>	<b>\$250</b>
<i>Benefactor</i>	<b>\$500</b>

Contact HCA Administrative Office at (740) 345-2932 for more information. The Endowment Committee wishes to thank those who have become Endowment Members and all of the individuals and study clubs that have so generously supported the HCA Endowment Fund. Your support will make the museum self-sustaining in the years to come. Thank you all! ♦



**Visit The  
National  
Heisey  
Glass  
Museum**

Come at your leisure to enjoy more than 4,800 pieces of glassware produced by A.H. Heisey and Company from 1896-1957. Hundreds of patterns are featured in all production colors. Rare and experimental items are included as well.

Facilities are air-conditioned and handicapped accessible. Hours are 10:00 a.m. to 4:00 p.m. Tuesday through Saturday, 1:00 to 4:00 p.m. Sunday. Members are admitted free, regular admission is \$2. Office hours are 8:00 a.m. to 4:30 p.m. weekdays.

**Membership Renewal Notice:** Check the date above your name and address on the mailing label. This is your expiration date. If it reads 2-10-99 make sure your dues are paid soon in order to receive next month's issue of Heisey News. Dues are \$22.00 per year, plus \$5.00 for each additional household member.

---

POSTMASTER SEND FORM 3579 TO:

**HCA  
169 W. Church St.  
Newark, OH 43055**



**PERIODICAL POSTAGE PAID**