

HEISEY NEWS

The Official Publication of Heisey Collectors of America, Inc.

Volume XXVII No. 11

October 1998

ISSN 0731-8014

GREENBRIAR

HEIRLOOM

PATIO

BANDOLEER

CORRAL

*Heisey deals you
Five Aces in new
hand blown cuttings.*

Heisey proudly deals you this sure-fire winning hand of five new rock crystal cuttings on sophisticated, new hand-blown shapes. You'll find them ace-high in modern styling . . . ace-high in perfect blending with contemporary dinnerware . . . ace-high with value-seeking, quality-conscious customers. Ask your Heisey representative to show you Bandoleer, Greenbriar, Heirloom, Corral and Patio. All five are priced low to bring fall and Holiday volume in stemware and matching hand-cast plates. A. H. Heisey & Co., Newark, Ohio.

Heisey
HAND-BLOWN CRYSTAL

The finest in glassware . . . made in America by hand and nationally advertised for more than fifty years

This month Carl Sparacio gives Heisey News readers the lowdown on Recessed Panel Candy Jars. Plus, learn more about talented Heisey company designer Eva Zeisel.

HEISEY NEWS

Heisey Collectors of America, Inc.

169 West Church Street
Newark, Ohio 43055

Phone (740) 345-2932 Fax (740) 345-9638

E-mail: heisey@infinet.com

WEB SITE: www.ahheisey.com

All Rights Reserved 1998

ISSN 0731-8014

Curator/Editor

Molly Kaspar

Administrator

Mary Ourant

HCA President

Dick Smith (740) 366-5163

HCA Vice President

Amy Jo Jones (937) 426-1567

HCA Secretary

Ginny Marsh (740) 366-5608

HCA Treasurer

Kenneth Rhoads (937) 275-5735

HEISEY NEWS is published and printed monthly (twice in March), by Heisey Collectors of America, Inc. Periodicals postage paid at Newark. Subscription is limited to HCA members. First class mailing is available for an extra \$13.00, due with payment of membership. If you are having difficulty receiving your newsletter, please contact the HCA Administrative office Monday through Friday 8:00 a.m. to 4:30 p.m.

The opinions expressed in articles in HEISEY NEWS are those of the authors and not necessarily those of the organization. The Editorial Staff reserves the right to edit, with or without the consent of the author, or to refuse any material submitted for publication.

Back Issues

The following volumes are available as complete sets: V, VII, VIII, IX, X, XI, XII, XIII, XIV, XV, XVI, XVII, XVIII, XX, XXI, XXIII, XXIV, XXV, XXVI for \$15.00 each volume (12 issues, plus auction list if available).

Advertising

Send all ads to: HCA Advertising, 169 W. Church St., Newark, OH 43055 or fax ads to (740) 345-9638, include MasterCard or Visa information. Ads are to be typed or printed on white paper with dark ink. Camera ready ads accepted, but must follow line specifications. Ads containing reproductions will not knowingly be accepted unless clearly stated (e.g. Heisey by Imperial, etc.) HEISEY NEWS accepts no further liability. See Advertising section for rates and deadlines.

Museum

Heisey Collectors of America, Inc., a non profit corporation (tax exempt status), owns and operates The National Heisey Glass Museum in Veteran's Park, 6th and Church Streets, Newark, Ohio. Open Tuesday-Saturday 10-4, Sunday 1-4, closed holidays. Other hours by appointment. Members admitted free.

Identification

HCA will attempt to identify unknown glass items. Please enclose a photograph with your drawings or descriptions. Other arrangements should be made in advance with the museum staff.

Membership

To join Heisey Collectors of America or to renew your membership, contact HCA Administrative office Monday through Friday 8:00 a.m. to 4:30 p.m. Associate dues are \$22.00 plus \$5.00 for each additional household member. Voting members pay an additional one-time fee of \$25.00. Please consider supporting the Endowment Fund by joining at one of the levels listed on the back page.

Museum Shop

There is always someone available in the shop to answer questions or take your order. When ordering by phone, please have a credit card ready. When ordering by mail, please be sure to include appropriate charges such as shipping and sales tax.

Shipping and Receiving

Delivery is made much easier when we have a complete street address, not a PO Box. We prefer to use UPS. If you have not received a package, please call the administrative office to confirm it was sent. We will assist you in tracing it. If your package arrives damaged, please contact your local UPS representative. We insure everything.

Donations and Loans to the Museum

If you have something you would like to share with the museum or have questions regarding items on loan, contact the assistant curator. HCA reserves the right to accept or refuse items based on current holdings.

Calendar

Museum open house	October 3
HCA Holiday Meeting & Dinner	December 5
Silver Spring Show	March 20-21, 1999
All Heisey Benefit Auction	April 9-10, 1999

Features

The Trouble with Recessed Panel Candy Jars

Carl Sparacio 5-6

Heisey Advertisement, December 1953 9

Spotlight on Heisey Designers: Eva Zeisel

Tom Felt 10-13

Table Talk, December 1931 14-15

News from the Shop 16-17

Auction Consignor Packing List 18

Departments

Message from the President, Dick Smith 3

Museum Happenings, Molly Kaspar 4

From the Archives, Don Valdes 7-8

Club Notes 19-20

HCA News & Notes 20

Advertising 21-27

MESSAGE FROM THE PRESIDENT

DICK SMITH

The Percy & Vivian Moore Dinner was another success this year. Carl Sparacio said he put lots of Heisey in the antique stores real cheap so we would have something to find. Thank you to Carl and members of the Heisey Heritage Society and all who attended the event.

The Longaberger Barn Raising was attended by about 60,000 people and all the Ruby Clydesdales sold early. This means the Longaberger Company does not have any left to offer HCA. I hope some of our members were there early to get one. HCA volunteers handed out several thousand museum and membership brochures and answered questions about Heisey and the museum. We received lots of positive responses. I want to thank the volunteers who helped.

The Clydesdales sold at the Longaberger Barn Raising were sold "exclusively" to the Longaberger Company, board approved. The quantity of 900 was the number Longaberger ordered. **ALL** advertising, the sales policy, inspection and price were done by the Longaberger Company. If you have any comments on this please call the Longaberger Company at (740) 754-6330.

There appears to be some odd color 1998 Longaberger tour plates on the market that have been stolen. **NOTE: All of the yellow 1998 off color plates (dark golden yellow color) are stolen property.** Warn people not to buy these. If you have information on who is selling them please call me or the museum.

*Alert...*Rumors have another large event scheduled in the month of June 1999 in Newark which may conflict with the HCA Convention. Make your convention plans and reservations now to avoid any conflict!

Don't forget to send your glass for the 1999 HCA Benefit Auction. Contact Mike Rosenberger (219) 864-1704 or mer@jorsm.com) or the museum if you have questions.

See you next month. ♦

All Heisey Benefit Auction April 9&10, 1999

The deadline for consigning glass is Friday, January 7, 1999

Don't wait until the last minute! Get your glass in early!! Remember to consign only Heisey or Verlys by Heisey glassware. Non-Heisey or Heisey by Imperial will not be sold at this auction. It will be returned at the consignors expense or become a donation to be sold at another auction.

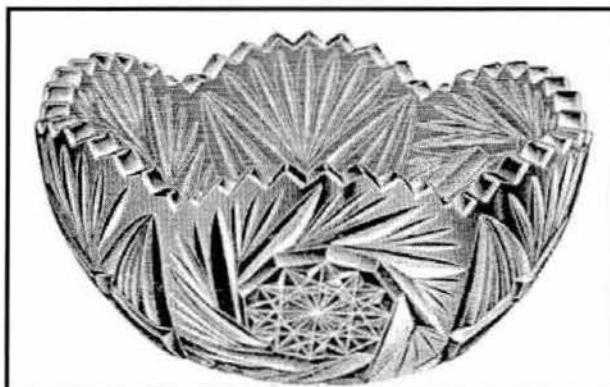
Please use the consignors packing list that appears in this issue of the *Heisey News*. Be certain the contract is signed and submitted with the consignment. If shipping, address to: HCA April Auction, 169 W. Church St., Newark, OH 43055. Please use adequate packing. Good glass brings more money for you and the museum.

MUSEUM HAPPENINGS

MOLLY KASPAR

We hope everyone who attended the quarterly board meeting and functions had a great time in Corning, New York—I for one am jealous of all who went since I wasn't able to! There's something special for visitors to look for on your next trip to the Corning Museum, that is eight items donated to them by the National Heisey Glass Museum at the Percy and Vivian Moore dinner.

The items include a Sahara Ridgeleigh oval bowl, individual Crystolite cream and sugar, Dawn Lodestar nappy, Pinwheel and Fan nappy, Flamingo Pleat and Panel cruet, Custard souvenir nappy, Moongleam Octagon two handled bon bon and a Mallard (wings half). The items originated from a large donation, of which not all items were needed in our museum at this time. These eight items certainly enhance Corning's already large collection and provide a greater opportunity to enjoy Heisey glassware.



There are several upcoming events to tell you about, including a museum open house on October 3. October is slated as National Arts & Humanities month, and all arts organizations are encouraged to celebrate. Please stop by and see our latest additions to the collection on display, Saturday, October 3, 10:00 am to 4:00 pm.

Much to the staff's chagrin (just kidding!), our semi-annual glass cleaning chores begin October 19. We plan to work the next three to four following Monday's to get the job completed. Volunteers are encouraged to join in and help make our Heisey glass collection sparkle.

On November 21 (evening) and 22 the staff and volunteers plan to decorate the museum for the Yuletide season. We are also seeking volunteers to help, so please contact the museum at (740) 345-2932. Any amount of time you can offer HCA is beneficial. ♦

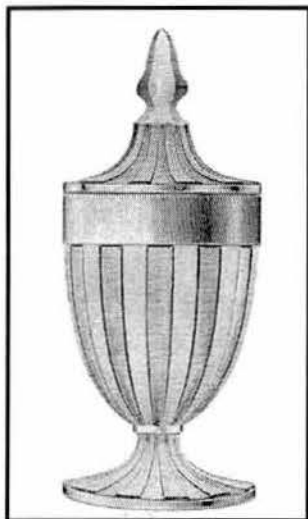
ANNUAL HCA HOLIDAY DINNER
December 5, 1998 6:30 pm
National Heisey Glass Museum

Mark your calendars! At the newsletter press time we were still awaiting the final details from the caterer. Look for the reservation form in the November and December newsletters. And don't forget to mail it in as early as possible!

THE TROUBLE WITH RECESSED PANEL CANDY JARS

CARL SPARACIO

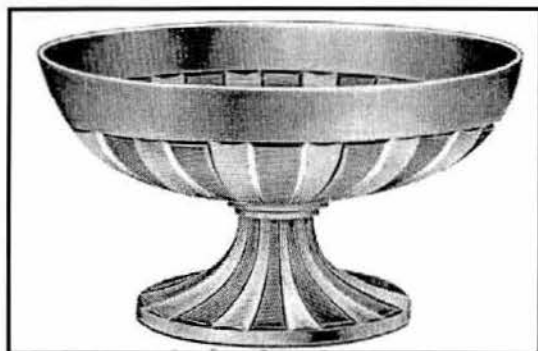
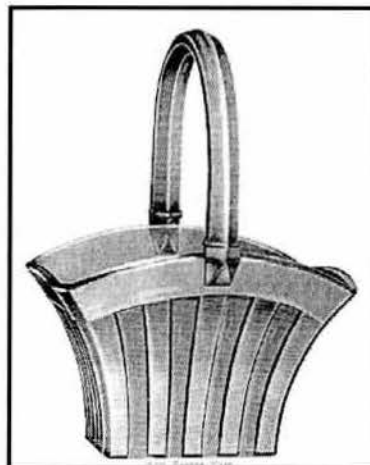
No. 465, Recessed panel was a short line if you consider the small number of pieces offered (OK, sure, the 8 pound candy jar was tall). Judging from the amount of pieces available, a lot of it was made (big deal, so you can't find that 8 lb. candy jar). This time around we're concerned with Recessed Panel Candy jars only—the baskets and such are for another time. The production period began in 1913 and ended in the early 30s.



The candy jars were made in six sizes ranging from the little ¼ pounder to the humongous 8 pounder. They are almost always found in crystal though Vaseline is also known and the ½ pounder has been seen in Moongleam. Anything in color is exceptional. They can also be found decorated and Heisey as well as outside decorators did nice, as well as not so nice things to them. Heisey did an overall frosting on some, as did other decorators. The Heisey frosting is easy to spot as it is a dull overall gray devoid of any highlights.

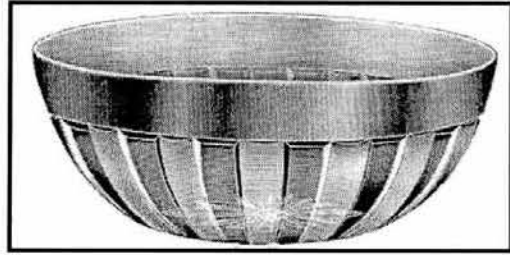
Candy jars weren't the only items in the Recessed Panel pattern line. Other items produced include nappies, baskets and compotes.

They can be collected with etchings, cuttings, gold and silver décor as well as painted designs. Some are beautiful, some are not. They can be found, too, with metal covers from nondescript to sterling. A word now about the Recessed Panel goblets that are often offered at antiques shows. They, too, range in size from ¼ lb. to 8 lbs.—the ¼ lb. being the cordial and the 8 pounder being the banquet goblet. I confess, I'm pulling your leg. There aren't any goblets. Those offered at shows are cover-less candy jars. It took me a long time to accept that my Recessed Panel goblet collection was not the envy of every Heisey goblet collector.



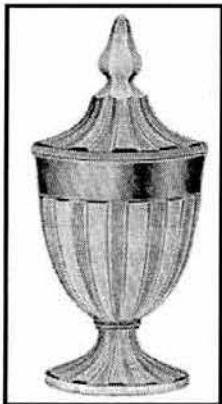
How many times have you fretted over a purchase of a 465 Recessed Panel candy jar because you weren't sure of its size? You need a half pounder but what you're looking at could easily be a ¼ pounder or a 1 pounder. The solution is simple of course, just carry around measured amounts of gum balls to fill a jar and you'll know the amount the candy jar will hold (eight pounds in quarter pound increments ought to do it).

"Aha!" you say, "I eat marshmallows and marshmallows are bulkier than gum balls." To you I say, "Join the Cambridge Club and bother somebody else." My waistline and I have been very happy with my solution over the years. Unfortunately, there are folks who insist on doing things the hard way. HCA member, Harold Keller, E-mailed a query: "Can you tell me the top to bottom measurements of the Recessed Panel candy jars so I can more easily identify their sizes?"



"No," I wanted to answer but I didn't want to disappoint a fan (actually, Harold is not a fan—he's a sensible, down to earth person). My own 465 candy jar collection stops at the one pounder so I called brother Vince, the Ridgeleigh maven, who moonlights as a candy jar maven. Vince measured then I E-mailed the measurements to Harold and pretended to be a hero.

It was then I decided to share this information with the rest of the Heisey world because Harold was likely to keep this to himself. It was then I discovered that this same information had been printed in the September 1980 issue of the Heisey News. I hesitated to do a replay and then I thought, "Hey, we have members who weren't even born before September 1980—they don't know about this."



This is for those who find it uncomfortable to fill their pockets with gum balls.

Recessed Panel Candy Jar Heights

¼ pound	7 ½"
½ pound	9 1/8"
1 pound	10 3/8"
3 pound	13"
5 pound	15 ½"
8 pound	18 ¼"

Please note that because these pieces were hand molded there will often be a slight size variation.

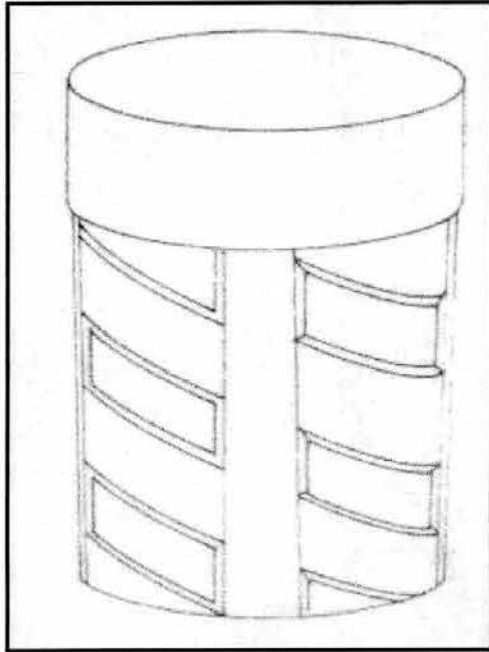
The 1980 *Heisey News* piece said, "The smart collector carries a tape measure when shopping." If carrying gum balls bothers you, a tape measure won't be much better. Here's a tip—do what I do: I put notches on my belt at ¼" increments so I don't have to carry a tape measure. The only thing I need to remember then is to wear suspenders so I don't embarrass myself when I whip off my belt to measure that elusive 8 pounder.

Our editor likes articles such as this where she can insert a lot of pictures to take up space—she should have a field day with Recessed Panel Candy Jars. I've suggested she do a centerfold of a lifesize 8 pounder (it will only take 4 pages). It'll be an exciting first. I can't wait to receive this issue. ♦

FROM THE ARCHIVES—BOGGED DOWN AGAIN

DON VALDES

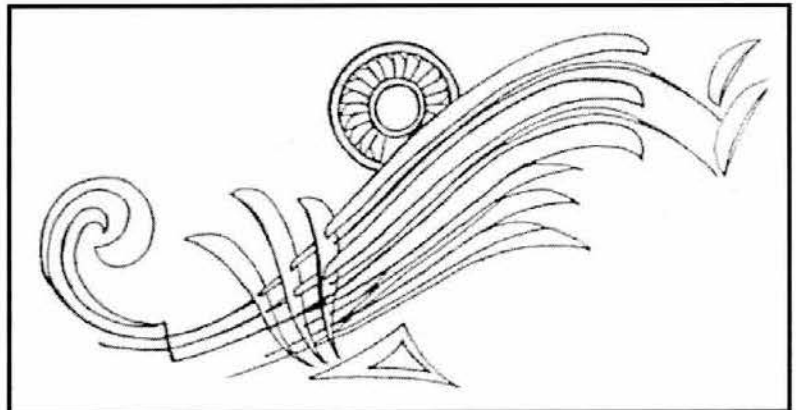
After last month I received lots of remarks regarding my ignorance of “soaps” in general but particularly of Robert Mandan. However, neither of my detractors has yet come through on my problem with Lois, Delia, Serge and/or Frank. Get with it, readers!



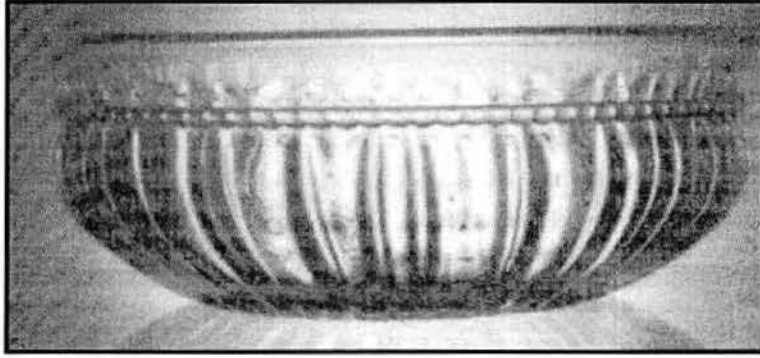
In redoing the index I have been doing some proofreading. One of the references I questioned was an article by Tom Bredehoff, “8060 Barber Pole Tumbler.” My attention was drawn to that one for two reasons. First, I didn’t recall ever running into the Barber Pole Tumbler. (Barber poles, yes) A check with Molly and, once more, my memory had failed me. We’ve got a Barber Pole tumbler in the case right by the *Heisey News* editor’s office. I’ve probably cleaned it once or twice. But it isn’t labeled number 8060, it’s 210. That brought me up to my second question that was regarding the number. The 8060 conjured up visions of stemware, but not tumblers. Further, as I recalled, the 8000’s were usually preceded by a “U,” a feature that gave me fits in setting up a database. We don’t like alphabetic characters and numbers mixed. However, a check in the

new *Index of Heisey Glassware* (2nd edition) revealed some new (new for me, that is) information. There are many 8000’s, including plates, nappies, sugar and creamers as well as stems. Using the 2nd edition as a guide I didn’t have to worry about the “U” prefix at all. But there was no 8086. The Barber Pole tumbler is listed as 210. So be it. But now what do I do for my *Heisey News* index? A researcher looking up pattern no. 210 won’t find it, but searching no. 8060 will bring up Tom Bredehoff’s article. Here is just one more case for a second entry.

Another of the intriguing items was a reference to a decoration, Patricia no. 9078. It was listed as both a cutting and an etching. Did that mean the same design was used for either? In looking up the source, an article by Neila Bredehoff done in November of 1982, I learned that Patricia was a *combined* etching and cutting. It is pictured in both the article and the etchings book. It isn’t in the cuttings book. We don’t seem to have one in the museum. Hint, hint.



Still another perplexing item—on page 11 of the July 1987 issue of the *Heisey News* is a picture of “8079 JOSHUA PATTERN FORMERLY UNKNOWN.” The pattern isn’t listed in the *Index of Heisey Glassware* nor any other of my favorite sources. I wish I knew more about it. There is no accompanying article or even explanation. If any of you would like to enlighten me, please do. I feel confident there are others just as curious as I.



One more—I’ve checked this one out several times and still can’t

believe it. To the novice, the variety of glasses, each for a specific beverage, is awesome. A check on the Heisey catalogue for 1913, for example, reveals ten different shaped or sized pieces of stemware in just one pattern: 2 sizes of goblets, a champagne, a claret, a burgundy, a wine, a cocktail, a pony brandy, a sherry and a cordial. (This weekend I overheard a man telling a friend that he had purchased a set of port glasses for his wife. The Heiseys either must not have liked port or felt a claret would do!) In this day of relative simplicity and/or informality, and certainly where glassware is concerned, one can hardly imagine owning such a variety of stemware. With these thoughts running about in my head is it any wonder I did a double check on an index entry for “1205 Fancy Loop Half Gallon & Claret Jugs” (Article by Joe Lokay to be found in Vol XV, 1986 No. 4 Page 2)? Surely this had to be an error! No, there, on page 2, just as the index indicated, is a picture of not only the half gallon jug but a half gallon claret jug as well.



Well, I’m sorry. If you come to my house, and we have claret, count on having it poured from just an ordinary pitcher or even the bottle. ♦

Attention Members!

The Museum Shop is in need of Heisey glassware donations. Your donated glassware, valued at \$50.00 or less helps fund the National Heisey Glass Museum.

When you’re gathering your auction glassware, save a few items for the museum—your scratch and dent items can soon be our treasures!

Thank you for your continued support to HCA!

"Right now, exciting things are going on at Heisey. Whole new horizons are opening up . . . many original concepts in glass design and production are being inaugurated. Such a re-birth in a respected, well-established firm is bound to stimulate sales . . . bound to capture new markets!"

EVA ZEISEL



The entire Heisey organization is buzzing with fresh, sparkling ideas . . . designed to set a series of brand new trends in the hand-made glassware industry. New horizons at Heisey mean more and more sales for you.

Be sure to visit the Heisey exhibit at the January Pittsburgh show. There you will see unveiled for the very first time several new groups of glassware by Eva Zeisel. This revolutionary exhibit will indicate to you Heisey's competitive design plans for the future.



A. H. HEISEY & CO., NEWARK, OHIO

the finest in glassware made in America by hand

Eva Zeisel

The internationally known designer and teacher, Eva Zeisel was recently appointed Art Director at A. H. HEISEY & CO.

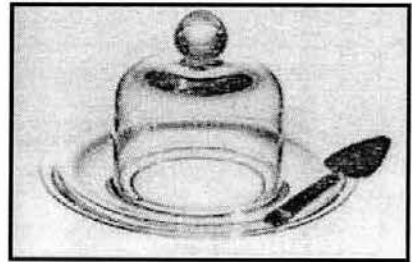


SPOTLIGHT ON HEISEY DESIGNERS: EVA ZEISEL

TOM FELT

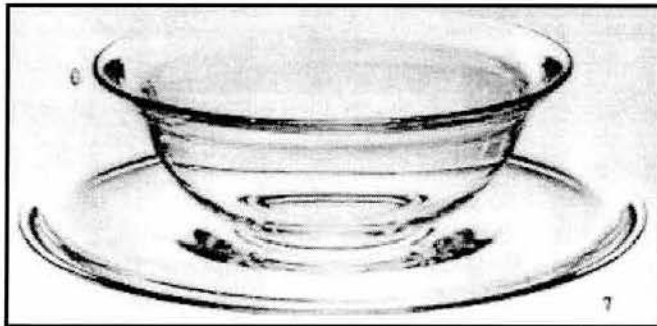
Reprinted from the Heisey News Vol. XVI No. 8 pg. 4-5

(Editor's Note: Although T.C. oftentimes signed the company's glass patents with his signature on the "designer" line, there were others behind the scenes held accountable for A.H. Heisey and Company's distinctive pattern creations. One of the final designers was Eva Zeisel, an artist with a long history of innovative designs. She created very modern lines the company, Roundelay and Town and Country, as well as the smoky gray color Dawn.



Just when I began to think that Eva's work was overlooked (her items are some of my favorites), I found I was mistaken. In the past week I received three inquiries from collectors, both of

glass and ceramics wishing to know more about her work. The following three part article by Tom Felt provides a great history on Eva Zeisel and sets up the stage for her entry into A.H. Heisey and Company in the early 1950's. The illustrations are reprinted from *The Crockery and Glass Journal* 1954.)



her as the prestigious ceramic designer who became Heisey's art director in 1953. Although her association with the company was relatively brief, she did create at least two patterns for Heisey and some of you may have pieces from her no. 1637A Town and Country line in your collection. Those who are really fortunate may even have an example of the much more elusive no. 6009A Roundelay line—my own experience with this pattern has been limited to looking at the pieces on display in the Heisey Museum.

What most people don't know, however, is how extensive and fascinating Eva Zeisel's entire career was. What follows is not directly related to Heisey, therefore—who was only one of the many illustrious clients Mrs. Zeisel designed for—but is of interest in its own right. It also amplifies and corrects some of the information previously published about her. I am indebted for most of this data to the catalogue essay



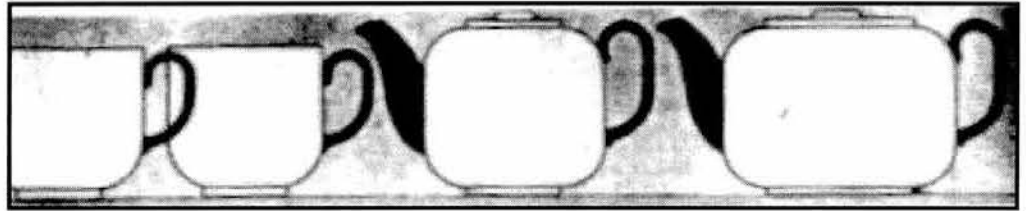
written by Martin Eidelberg for a book entitled *Eva Zeisel: Designer for Industry*, published in 1984 on the occasion of an exhibition of her work organized by Le Chateau Dufresne, Musee des Arts Decoratifs in Montreal.

The Years in Europe

She was born November 11, 1906 in Budapest as Eva Polanyi Stricker. Her family was quite wealthy and typified the best of the upper middle class, with its cultural and social aspirations. In 1912, while she was still a child, the family moved to Vienna where she lived for several years.

Her father owned a textile factory. Her mother was a scholar, an early feminist and actively involved in Austro-Hungarian politics. From a very early age, Eva showed an interest in art and began painting while still a teenager.

Following World War I, the textile factory had to be sold and the family returned to Budapest. In 1923, at the age



of 16, Eva entered the Royal Academy of Fine Arts there, with the goal of becoming a painter. However, her father's business dealings had not been as successful during these years as they had previously been and this may have influenced her decision to withdraw after only three semesters. It became her plan to learn a craft instead, something that would allow her to live simply but with the freedom to paint. Her aunt had a collection of Hungarian peasant pottery which Eva had admired and so, even though she had never made any pottery herself, she decided to become a ceramist. At her mother's urging and for fear of becoming only a dilettante at the craft, she became an apprentice in a pottery shop, performing all of the same duties that the other, traditionally all male apprentices did.



In March, 1925, when she was only 18½, she began making her own pottery, using a hothouse on the family property as her studio. She exhibited at a local trade fair and received recognition as the first female journeyman potter. It is interesting to note as a sign of the times that friends were horrified not so much at the idea of her having adopted a career as they were that she was seen sitting unchaperoned with a male friend at the trade show.

In 1926, the Hungarian government invited her to send some pieces to the country's display at the Philadelphia Sesquicentennial celebration, where she received an honorable mention.

She also began designing for the Kispester Pottery about this time. This was a new company which had just formed in Budapest and some of her work for them was exported to the United States. They created a separate art department for her and the pieces she designed for them had the fanciful and whimsical air that was to characterize so much of her later work. She also continued to espouse her own independence by spending the entire week at the factory, sometimes even sleeping there, which was considered very bold for a young lady of her times. She worked for them for less than a year, however, establishing the trend that was to dominate her professional life of moving rapidly from one firm to another, usually on a freelance basis. In the case of Kispester, however, her departure occurred when the bank which controlled the company ordered the art department closed because the workmen were spending too much time on her designs and not enough on the main product of the company, which was sanitary porcelain such as sinks and toilets.

From 1927 to 1928, she spent six months working for Hans Kunstermik in Hamburg and then, in the fall of the latter year, was appointed ceramic designer for Schramberger Majolika Fabrik in the Black Forest. Of some interest to Heisey collectors is her recollection of adapting a



design by the French ceramist, Jean Luce, for use at Schramberg. It was one of Jean Luce's earthenware plates that inspired Heisey's New Era pattern just a few years later.

As might be gathered by this association of her name with Luce's and thus, indirectly, with Heisey's New Era, much of her work at this time was in the style now known as art deco. Summarizing an article she wrote for a German periodical in 1932, "the aim of the modern movement was the purification of taste through the use of geometric forms, noble materials and self-imposed limitations." She was not in accord, however, with "soul-less" modernism. "charm and provocative delight are essential aspects of her designs" from this period, which can be described as a "combination of rational planning and whimsey." An examination of the pieces she created for Heisey nearly three decades later will show this same rational approach towards the utilitarian requirements of the pieces coupled with the sense of whimsey which could almost be said to have been her trademark over the years.

In 1930, she moved to Berlin and began designing for Christian Carstens Kommerz, a combine of several German factories. She found the intellectual climate of Berlin very stimulating, and became friends with many young scientists, artists and writers, including Arthur Koestler.

In January, 1932, there was an even greater change in her life. She left Berlin at this time to go to the Soviet Union, at first merely to visit out of curiosity about what she perceived as a noble social experiment, but ultimately to stay for nearly six years. At this period, the Soviets were very receptive to foreign experts whose abilities could be utilized to further the programs of the Five Year Plan. She worked at Lomonosov, the former Imperial Porcelain factory in Leningrad, and at the Dulevo factory near Moscow, which was reputedly the largest ceramic manufacturer in the world.



The emphasis in the Soviet Union was on standardization and one of her first assignments was to create a set of dinnerware that could be used throughout the entire country.

However, no sooner had she completed that project than the government began to issue directives reversing its position on standardization and so these designs did not go into full production. It is interesting to note that her work at this time took on an almost classical simplicity, foreshadowing much of the work she was to do during her American years.

In addition to many other projects, she also departed from her previous work by doing designs for porcelain electric fixtures and glass bottles for the perfume industry. This latter was her first experience with glassware design, predating by many years her rather brief later association with this field.

That her work was highly honored by the Soviets is indicated by their naming her art director of the China and Glass Industry of the Russian Republic. In September, 1937, however, Soviet attitudes changed drastically and foreign exports suddenly became no longer as welcome as they had been. She was removed from her position and left the country shortly thereafter.

Her next stop was Vienna, where she joined Hans Zeisel, a young lawyer and sociologist she had previously met in Berlin and whom she planned to marry. She made arrangements to return to designing dinnerware for the Kispester factory in Budapest, but once again political occurrences were to interfere. In this instance, her plans were canceled by the rise to power of the Nazis. On March 12, 1938, the day that German troops invaded Austria, she left the country on the only train allowed to cross the Swiss border. She then sought temporary refuge in England. Her mother was briefly detained by the Gestapo and it was only with great difficulty that she eventually also managed to obtain a visa for England. It was there that Eva and Hans Zeisel were finally married.

For permanent residency, however, they followed the example of so many other Europeans uprooted by the threat of war and sailed for the United States to join Eva's younger brother who was already living there. Thus, in October, 1938, they arrived in New York where she soon began the career which was to truly bring her international fame. ♦



Week of November 1, Is Merchandising History

TRYING in with the big, forceful, full-page Heisey glassware advertisement in the November 7th issue of the Saturday Evening Post, stores throughout the country "put their best foot forward" in making "glassware week" count in their respective communities.

Window displays, table displays, newspaper advertising and letters were used in arousing increased interest in glassware offerings. Customers read the advertising in the Post, as well as in the October 24th New Yorker, then when the local tie-in told them where the glass was displayed, they came, saw and bought.

Good Results Reported

From many parts of the country real enthusiasm with results obtained has been reported. The week of November 1st in a large number of stores witnessed a consider-

able spurt in sales due to the carefully planned promotion efforts that were hooked up with the national advertising.

The interest shown by customers of one store for Heisey's Early American designs was quite evident. Some women bought sets of goblets or other stemware, some purchased sets of plates, and others ordered pieces for table settings at bridge tea, luncheons or dinner use. The buyer was pleased with the response obtained.

Other stores experienced similar buying action. Heisey's new chintz etchings, Nos. 450 and 451 were bought extensively. Other patterns also were given a good reception in various sections. The week of November 1st has passed into the successes of merchandising history.

Preparations are now being made for your next year's campaign. In the meantime—display and sell! Make the most of the Holiday Season.



Abraham & Straus, Brooklyn

One of their displays of Heisey glass is shown above. "We have increased our sales of Heisey glassware," states Mr. L. Hoening, buyer. "This glassware is of outstanding quality and among the finest made in this country. Our selling force is Heisey glass conscious and to back them up we display the glass in a prominent place. The Heisey table contains one of a kind pieces set on a mirrored surface, which reflects the life and brilliance of the glass. Overcrowding is avoided and colors are grouped. The result is that almost any time of the day some one can be seen admiring a piece of this fine glass. Heisey glass is always original and distinctive and new items reflect what is fashionable. The price is considerably lower than the quality would indicate."

Oakland China & Glass Studio, Inc.

The picture below shows a demonstration by this enterprising California firm in the window of Sacramento's largest department store, John Breuner Co. Fascinating rock crystal cuttings are being made on Heisey glass No. 3368, 3389 and 3390. "We are making every effort to spread the good news about beautiful, clear, lead blown Heisey glassware as we travel up and down the state of California," says Mr. Frank G. Ransom of the Studio. The results of their artistic workmanship are much in demand.



FASHION TURNS TO *Glass* FOR GIFTS



CHOOSE THE PATTERN WHICH MOST STRIKES YOUR MOOD. HERE ARE SHOWN FOUR DISTINCT AND DIFFERENT ETCHED DESIGNS AMONG SEVERAL OFFERED IN FINE HEISEY GLASS

THE lovely gift, the fitting gift, the thoughtful gift—to choose *that* is an art—and what a finished artist you become when you give fascinating etched glass by Heisey!

You will appreciate the interesting designs, attractive colors and delicate etchings. That clear, bell-like tone, the ring of finest blown glass, indicates supreme quality. You will be *proud* to give Heisey glass—confident that it will be received with delight.

Heisey offers the perfect gift for *any* occasion. Not only are there goblets and glasses—but complete table services, in pure crystal or radiant color. And the designs are *distinctive*—modern or Early American. For a gift that is a tribute select Heisey glass at leading department stores and gift shops. Let us send you valuable, colorful booklet, "Little Journeys in Glass Land." Free on request. A. H. Heisey & Company, Newark, Ohio.

Look for
the  on every
piece
embossed on the glass
or on adhesive label



Heisey's
GLASSWARE  *for your table*

This color ad appears in The New Yorker, December 5th. The items, left to right, are: 3390 8-oz. Soda, Etch 451. 3389 Sauter Champagne, Etch 449. 3390 Sherbet, Etch 448. 3389 Goblet, Etch 450. 3390 12-oz. Soda, Etch 451. 1401 Plate, Etch 448.

NEWS FROM THE SHOP—TIME TO SHOP FOR THE HOLIDAYS!!

The list of books we ran in the September issue of the *Heisey News* was so popular that we decided to run it again, along with a partial list of glass items. Why not start your Christmas shopping early this year? **Don't forget members receive a 10% discount on shop items.** However, this does not include special projects/limited edition glassware and HCA Glass Studio production items.



The museum still needs your extra punch cups for our holiday open house project. Many thank you's to those members who have already sent one or more. Each one counts and we appreciate your help.

In addition to the list of glass and book items, there's something new, a battery operated clock with a color Heisey company advertising logo. The clock face is white with black numbers. The clocks come in four different styles: black, gold, silver, and wood grain. Help support the National Heisey Glass Museum and order yours today! The cost is only \$22.00 plus shipping (\$6.00).

There is a new glass item to the shop, the **miniature swan nut in Vaseline!** This is the first item produced in the mold since HCA purchased it from Boyd Glass several years ago. These little beauties are only \$6.75 each plus shipping (\$2.50 each).

We plan to have more glass selections to offer soon now that we have eased ourselves into Mosser's already busy production schedule. Look for new additions in upcoming issues of the *Heisey News*. **Call (740) 345-2932, fax (740) 345-9638 or email heisey@infinet.com to order!** ♦

BOOKS

Price guides are sold only as supplements to certain books and have been compiled by independent authors. HCA no longer provides monetary appraisals of glassware and does not publish price guides. Price guides are not sold individually. Revised 9/17/98.

Collector's Guide to Heisey and Heisey by Imperial Glass Animals

By Frank L. Hahn and Paul Kikeli, 1991 1st edition. 76 pages with pictures and price guide. #001A\$19.95 (\$4.00 S&H)

Heisey's Glassware of Distinction

By Mary Louise Burns. Contains all major patterns with pictures. 81 pages with price guide. #004\$8.95 (\$2.00 S&H)

Etching & Carving Book

By Louise Ream, Neila & Tom Bredehoft. 1997 Second edition. Illustrations, examples & pattern list. #008A \$26.95 (\$5.00 S&H)

Heisey's Fandango Pattern

By Joe Lokay, assembled by Marv Jacob for HCA. List of all known pieces plus many pictures. #009\$4.95 (\$2.00 S&H)

Heisey Jugs, Pitchers and Tankards

Pocket guide illustrates examples of jugs, pitchers and tankards. A perfect field guide when shopping. #010\$4.95 (\$2.00 S&H)

Heisey News Back Issues

Years available: 1976, 1978, 1979, 1980, 1981, 1982, 1983, 1984, 1985, 1986, 1987, 1988, 1989, 1991, 1992, 1994, 1995, 1996. Set includes 12-13 issues per year. #039\$15.00 (\$2.00 S&H)

Heisey's Cut Handmade Glassware

By Harold E. Willey. Reprint of catalog illustrations, shows a sampling of Heisey cuttings. 147 pages. #055\$5.95 (\$2.00 S&H)

Heisey Glassware

Reprint of Catalog 76, 1915. Includes kerosene lamps and electric lamps. 58 pages. with price guide. #079..... \$4.95 (\$2.00 S&H)

Heisey Toothpick Holders

By Nancy and David Jones. 55 pages with price guide. #088.....sale price \$2.95 (\$2.00 S&H)

Heisey's Orchid Etch

By Neila Bredehoft. 230 pieces listed and dated. Includes a history of the etch and price guide. #092.....\$4.95 (\$2.00 S&H)

Elegant Glassware of the Depression Era 8th Edition NEW!!!!!!

By Gene Florence. Price guide. #093B.....\$19.95 (\$5.00 S&H)

Glass Animals of the Depression Era

By Lee Garmon and Dick Spencer. Examples from many popular US glassmakers; 237 pages. #095\$19.95 (\$5.00 S&H)

Heisey Rose

By Neila Bredehoft. Lists all known pieces, includes dates, history and copies of ads with price guide. #099.....\$4.95 (\$2.00 S&H)

Heisey Candlesticks, Candelabra and Lamps

By Tom Felt & Bob O'Grady assisted by Jack Metcalf. 350 photos, 436 pages with price guide. #101\$19.95 (\$5.00 S&H)

Heisey News Reference Catalog

By Norma Schweghoefer. Lists major subjects published in the *Heisey News* from 1972-1981. #110\$4.95 (\$2.00 S&H)

Westmoreland Specialty Company

Reprint of their 1912 Catalog. Several patterns shown, items easily confused with Heisey, illustrated. #111\$6.95 (\$2.00 S&H)

Collector's Encyclopedia of Heisey Glassware 1925-1938 The Color Years

By Neila Bredehoft. 408 pages, 38 pages of color photos with 1996 price guide in bound book. #112\$24.95 (\$5.00 S&H)

Heisey Lariat and Athena Patterns

By Tom Felt. All known pieces in both pattern lines are illustrated and listed. 52 pages. #116sale price \$5.95 (\$2.00 S&H)

Heisey's Classic Ridgeleigh Glassware

By Jim Jones and Vince Sparacio. Complete item listing, decorations, ads and illustrations. #122\$5.95 (\$2.00 S&H)

Heisey Candlesticks Field Guide

Information compiled from *Heisey Candlesticks, Candelabra and Lamps* by Tom Felt and Bob O'Grady. #123...\$4.95 (\$2.00 S&H)

Heisey's Deep Plate Etching and Carving

By Harold E. Willey. Illustrates many of Heisey's popular carvings & etchings. 39 pgs. with price guide. #129.....\$6.95 (\$2.00 S&H)

Verlys of America

By Carole and Wayne McPeck. Second edition, color plates and photos. 71 pages with price guide. #137.....\$23.95 (\$5.00 S&H)

Heisey Cut Block

By Jim Jones. Information on pattern no. 1200, includes illustrations and price guide. #140.....\$4.95 (\$2.00 S&H)

A Collection of American Crystal: A Stemware Identification Guide for Glastonbury/Lotus, Libbey/Rock Sharpe & Hawkes By Bob Page & Dale Frederiksen. Includes stems and patterns from these popular companies. #143.....\$24.95 (\$5.00 S&H)

Tiffin Is Forever: A Stemware Identification Guide

By Bob Page and Dale Frederiksen. Reference guide to Tiffin stemware produced from the 1920's to the 1980's. #145.....\$24.95 (\$5.00 S&H)

A.H. Heisey & Company: A Brief History

By Tom Felt, published in 1996 by HCA.#148.....\$9.95 (\$3.00 S&H)

Kovels Depression Glass and American Dinnerware

By Ralph and Terry Kovel. Includes a price list and illustrations. Fifth edition. #150.....\$16.00 (\$4.00 S&H)

Handbook of Heisey Production Cuttings

By Neila and Tom Bredehoft. Includes illustrations and important information on Heisey cuttings. #152.....\$15.95 (\$2.00 S&H)

GLASS

*Items marked * are exempt from discount.*

Cygnets

Yellow Mist (clear), HCA/D-Viking #071G.....\$14.50
Sea Mist Green (clear), HCA/D-Viking #071H.....\$14.50
Sea Mist Green (frosted), HCA/D-Viking #071I.....\$14.50
Rosalene (frosted), HCA 92/Fenton #071F*.....\$25.00

Standing Duckling

Sunshine Yellow (clear), HCA/IG #072A*.....\$15.00ea./\$20.00pr.
Sunshine Yellow (frosted), HCA/IG #072B*.....\$15.00ea./\$20.00pr.
Ruby/Red (clear), HCA/D-Viking #072C*.....\$20.00ea./\$37.50pr.
Rosalene (frosted), HCA 92/Fenton #072D*.....\$25.00
Rosalene/Hand Painted/Pink Blossom (frosted) #072E*.....\$25.00
Rosalene/Hand Painted/Violet (frosted), #072F*.....\$25.00

Floating Duckling

Sunshine Yellow (clear), HCA/IG #073A*.....\$15.00ea./\$20.00pr.
Sunshine Yellow (frosted), HCA/IG #073B*.....\$15.00ea./\$20.00pr.
Ruby/Red (clear), HCA/D-Viking #073C*.....\$20.00ea./\$37.50pr.

Fish Match Holder

Sunshine Yellow (frosted), HCA/IG #078B*.....\$12.00

Rococo Basket

Made from an original Heisey tumbler mold, then fashioned into a one-of-a-kind basket. Green (clear), HCA/Fenton #111C.....\$40.00

Colt Standing

Rosalene (frosted), HCA/Fenton #115*.....\$55.00

Colt Kicking

Rosalene (frosted), HCA/Fenton #116A*.....\$55.00

Colt Balking

Rosalene (frosted), HCA/Fenton #116B*.....\$55.00

Cabochoon Sign

Lavender Ice (clear), HCA/D-Viking #117A.....\$17.00

Provincial Individual Cream and Sugar

Ruby Red (clear), HCA/D-Viking #192A SET.....\$22.00

Elephant

Ice Blue (clear), HCA 96/D-Viking #125.....\$36.50

Donkey

Sea Mist Green (frosted), HCA/Fenton #128C*.....\$25.00
Ice Blue (clear), HCA 96/D-Viking #128D.....\$36.50
Cobalt (frosted), HCA/D-Viking #013D*.....\$45.00

Bunny Set

Mother and 2 babies—one head up, one head down. Lavender Ice (frosted), HCA/D-Viking #152E* SET.....\$100.00

Rabbit Paperweight

Rosalene (frosted), HCA/Fenton #152D*.....\$40.00
Lavender Ice (clear), HCA/D-Viking #200A.....\$30.00
Lavender Ice (frosted), HCA/D-Viking #200B.....\$30.00

Toujours Covered Marmalade

Green Mist (clear), HCA/D-Viking #106A.....\$25.00

Waverly Covered Seahorse Jar

Green Mist (clear), HCA/D-Viking #105C.....\$16.00

Clover Rope Mug

Amber (clear or frosted handle), HCA 90/D-Viking. #157B*.....\$35.00

Oxford Cordial Bell

Crystal, HCA 81/IG #187*.....\$35.00

Oxford Cordial w/Swingtime etch

Crystal, HCA 83/IG #189*.....\$35.00
Crystal, Plain, HCA IG #190.....(6) for \$19.99/\$3.33ea.

Piglet Sitting

Rosalene (shiny), HCA 92/Fenton #050*.....\$15.00ea./\$25.00pr.

Tropical Fish Piece

Lavender Ice (frosted), HCA 94/D-Viking #006A*.....\$250.00

Oscar/Sparky/Plug Horse

Emerald Green (clear), HCA 82/IG #180A*.....\$44.00
Emerald Green (frosted), HCA 82/IG #180J*.....\$45.00
Goodness Gracious Brown (clear), 95 #180U*.....\$27.00
Goodness Gracious Brown (frosted), 95 #180X*.....\$27.00
Opal (clear), HCA 88/Fenton #180E*.....\$33.00
Opal (frosted), HCA 88/Fenton 180N*.....\$35.00
Opalescent (clear), HCA/Fenton 180D*.....\$35.00
Opalescent (frosted), HCA/Fenton 180M*.....\$45.00
Ruby/Red (clear), HCA 84/IG #180C*.....\$40.00
Sapphire Blue Opalescent (frosted), 91 #180I*.....\$27.00
Tangelo/Orange (clear), HCA 83/IG #180B*.....\$42.00
Tangelo/Orange (frosted), HCA 83/IG #180K*.....\$50.00

Asiatic Pheasant

Lavender Ice (frosted), HCA 96/D-Viking SN*.....\$75.00

Sparrow

Yellow Mist, HCA 97/D-Viking #153H.....\$15.50
Yellow Mist (frosted), HCA 97/D-Viking #153K.....\$15.50
Sea Mist Green, HCA 97/D-Viking #153I.....\$15.50
Sea Mist Green (frosted), HCA 97/D-Viking #153J.....\$15.50

Giraffe

Lavender Ice (frosted), HCA/D-Viking #014A*.....\$65.00

Victorian Girl Bell

Ice Blue (clear), HCA 96/D-Viking #048J.....\$12.00
Evergreen, (clear) HCA 89/D-Viking #048F.....\$12.00
Evergreen (frosted), HCA 89/D-Viking #049F.....\$13.00
Horizon Blue (frosted), HCA/IG #049H.....\$12.00
Lavender Ice (clear), HCA 95/D-Viking #048I.....\$12.00
Lilac (clear), HCA/ALIG-D-Viking #048E.....\$12.00
Lilac (frosted), HCA/ALIG-D-Viking #049G.....\$12.00
Yellow Mist (clear), HCA/D-Viking #048H.....\$12.00
Ruby/Red (frosted), HCA/ALIG-D-Viking #049D.....\$12.00
Sunshine Yellow (frosted), HCA/IG #049B.....\$12.00
Tangelo/Orange (clear), HCA/ALIG-D-Viking #048A.....\$12.00
Tangelo/Orange (frosted), HCA/ALIG-D-Viking #049A.....\$12.00
Pink (clear), HCA/D-Viking #048G.....\$12.00



STUDY CLUB DIRECTORY

Interested in joining a study club? This updated list of the HCA Study Clubs reflects information obtained from a questionnaire mailed early this spring. Why not join a local study club? You will have the opportunity to meet fellow collectors and HCA members and learn more about your favorite glassware. If your club is not listed please forward the appropriate information—club name, contact name and phone number, when and where you meet—to Heisey News, 169 W. Church St., Newark, OH 43055. Updated June 1998.

STUDY CLUB	MEET WHEN?	WHERE?	CONTACT NAME
#1 Newark Heisey Collectors Club**			
#4 Central Illinois Heisey Collectors Club	Four times a year	Member's homes or restaurants	Jean Marsa (309) 444-4612
#5 Bay State Heisey Collectors Club	2nd. Tuesday of each month September to June, 7:30 pm	Follen Community Church	Doug Wynne (508) 660-2979
#7 Dayton Area Heisey Collectors Club	3rd Tues. of the month Sept. to May, 6:30 pm	Huber Heights Library	Charlene Bowman (937) 289-2114
#8 Heisey Heritage Society <i>New Jersey, E. Pennsylvania and Delaware areas</i>	Bi-monthly	Member's homes	Nettye Evans (302) 736-1368
#10 Gateway Heisey Collectors Club	Four times a year	Member's homes	Joe Lokay (412) 372-8563
#13 Heisey Club of California	4th Sunday every month, 12:30	Member's homes	Jay Byrne (818) 353-2988
#14 Northern Illinois Heisey Club	Four times a year	Member's homes	
#15 Heisey Collectors Club of Michigan	Every six weeks, August to May	Member's homes	Jack Deppong (517) 323-7921
#16 Heisey Collectors of Texas	6 meetings per year, 2nd Sat. of month	Member's homes	Jan Hiser (972) 492-4827
#19 Heisey Collectors of the Rochester Area	10 meetings per year: Sunday, 2:30 pm	Member's homes	Bruce Schwendy (716) 247-5613
#20 Buckeye Heisey Collectors Club	September to May, 4th Monday	Member's homes or the museum	John Eshelman (740) 366-4826
#22 Northwest Heisey Collectors	First Saturday of the month	Member's homes	Dixie Fuller (360) 263-4125
#25 Heisey 76'ers	September to May	Member's homes	Hugo Wenzel (614) 258-2816
#26 Southern Illinois Diamond H Seekers**			
#31 Nassau Long Island Heisey Club	Generally every other month	Member's homes	Babs Kent*
#32 Dairyland Heisey Club	Once a month	Member's homes	Don Friedemann (414) 673-2671
# 33 Golden Gate Heisey Collectors Club <i>Northern California</i>	Quarterly	Member's homes	Russ Nicholas (707) 762-2494
#35 Virginia Heisey Club	Six times a year, first Sunday of the month, 3 pm	Member's homes	Jean Dougherty (757) 868-6664
#38 North Carolina Heisey Study Group	6 meetings per year: Jan, March, May, July, Sept, Nov.	Replacements Ltd Greensboro, NC	Frank Scott*
#39 Florida Heisey Collectors Club	Once a month, Oct. to May	Member's homes	Al Colangelo (561) 499-3396
#41 Yankee Heisey Club	6 times a year	Member's homes	Jim Houghton (508) 764-1597
#42 Gulf Coast Heisey Club of Florida	November, December, January and March	Member's homes	Bob Ellis (941) 379-3302
#43 Tri-State Heisey Study Club	1st Sat. every 3rd. month	Member's homes	Mike Maxwell (419) 485-8701
#44 National Capital Heisey Study Club	Monthly: September, May	Potomac Comm. Library	John Martinez (703) 979-6718
#45 Hoosier Heisey Club	Four times a year	Warren Library, Indianapolis, IN	Mike Rosenberger (219) 864-1704
#47 Oregon Trail Heisey Collectors Club	Second Sunday of the month	Member's homes	Jim Cooke (503) 645-3385
#48 Dixieland Heisey Study Club	Odd number months, 2nd Saturday night	Member's homes	Sid Edwards (770) 928-3774

*Please contact HCA; we will pass your inquiry on to the appropriate study club.

**These clubs are not accepting new members.

CLUB NOTES



Heisey Club of California
Carolyn Felger

The Heisey Club of California had our annual Flea Market in August at the home of Connie and Don Murphy in Corona del Mar. Connie's garden was magnificent and the weather, along with the ocean view, completed the picture.

We had some very special pieces for sale. A Colonial Basket, 7 inch, with a Butterfly and Floral cutting, another Colonial Basket, 8 inch, with deep etching No. 353, an Orchid etch Cocktail Shaker, a Banded Picket Basket with Floral cutting, a Custard Winged Scroll Cake Salver!!! and many many more wonderful, reasonably priced pieces.

Lunch was barbecued hot dogs, Jeannie Lorti's baked beans and Connie's famous English Trifle. This was really a special day for all who attended. ♦



National Capital Heisey Collectors
John Martinez

I wish to thank our outgoing officers: Betty Heflin, President and Jack Walker, Vice President, for the superb jobs they did. Also, thanks to Christos Maskaleris for staying on as Treasurer, Butch Jones as Newsletter Editor, Chris Maskaleris as Membership Chairperson and George Schamel as Show Committee Chairperson. Welcome to our new officers: Eileen Schamel, VP Program Chairperson, and Carol Reeves, Secretary.

I would also like to thank the Selection Committee spearheaded by George Schamel (with inside help from Jim Garnter), for finding a wonderful new place to hold our All Heisey Glass Show and Sale.

We discussed next year's show at the September meeting. Thank you to all for your input.

Our next meeting is Monday, October 5, followed by Monday November 9 and Monday December 14 (Christmas dinner party). Meetings are held at the Potomac Community Library, 7:00 pm unless otherwise stated. ♦

HCA NEWS & NOTES

HCA Welcomes 26 new members for August:

Judy Belter, Ohio
Patricia Birney, California
Deborah Brindley, New York
Tricia & Eric Claussen, Florida
Arlene & Edwards Crafts, Pennsylvania
Don & Rosemarie Dettore, Ohio
Marilyn & Miller Glanzer, South Dakota
George C. Gross, Florida
Harriet Huffman, California
Jeanelle Kidd, Tennessee
Victor & Jean Laermans, Illinois
Beverly Littleton, Louisiana
Paul Losh, Ohio
Mary Sue MacNealy, Tennessee
Cheryl Perez, Louisiana
Corrine Perez, Florida
Michele Quilici, California
Suzanne Schaefer, Ohio
Leona Tulloch, Florida
Joan Wyatt, Ohio

1998 Depression Era Collector Market

November 15, 1998

9:00 - 3:30

Admission \$1.00

American Legion Hall

900 South La Grange Rd.

La Grange, IL 60525 (708) 354-3300

Sponsored by the 20-30-40 Society

This market is a depression glass collector's outlet. Come and look for that special item among the club members' booths.

ATTENTION STUDY CLUBS! Does your club have news or events to share with fellow members? Send updates BY THE FIRST OF THE MONTH to: Heisey News, 169 W. Church St., Newark, OH 43055, fax (740) 345-9638 or email: heisey@infinet.com. ♦

► **Advertising:** Send all ads to HCA, Advertising, 169 W. Church St., Newark, OH 43055. Ads may be faxed to (740) 345-9638; please include MasterCard or VISA number for billing purposes. **All ads must be prepaid.** Ads are to be typed or printed on white paper with dark ink. Please double space. Do not abbreviate Heisey pattern names or colors. Ads which are entered in a vertical column format may contain a maximum of 65 characters per line, including spaces & punctuation.

Classified: 20 cents per word (members), 30 cents per word (non-members), \$1.50 min., 1/8 page limit. Personal ads 1/8 page limit. Abbreviations & initials count as words.

Display Ads:	member	non
1/8 page (12 lines)	\$20.00	\$30.00
¼ page (25 lines)	\$40.00	\$60.00
½ page (60 lines, <i>horizontal or vertical</i>)	\$80.00	\$120.00
Full page (120 lines)	\$160.00	\$240.00

A charge of \$1.60 will be added for each additional line.

Camera ready ads must follow specifications. Ads which do not correspond to the following measurements will be sized.

Camera Ready Ad Specifications:

- 1/8 page: 2¼" high by 3½" wide
- ¼ page: 4½" high by 3½" wide
- ½ page: 4½" high by 7½" wide OR 9" high by 3½" wide
- Full page: 9" high by 7½" wide

Ad copy must be received by the first of the month prior to publication. Reproductions (i.e. Heisey by Imperial) must be indicated. Heisey News accepts no further liability. ♦

Classified Ads

FOR SALE: (6) Goblets, Diana the Huntress, \$185.00. Carol Manifold, (740) 927-5696.

FOR SALE: Selling private Heisey collection of 2500+ pieces. Animals, baskets, cruets, pitchers, etchings, color, large pattern selection. Partial listing available immediately; complete inventory for serious bidders on bulk or complete package at discounted prices. Call Frank Read at (919) 496-6224 evenings from 6-9 pm or send SASE to 127 Jeffress Dr., Louisburg, NC 27549 for list. Also, inquiries answered at email address: fread@earthlink.net

WANTED: Heisey Baskets: etched, cut, colored, unusual decorations or whimsies. Send price and description to Kim Carlisle, 28220 Lamong Rd., Sheridan, IN 46069 (317) 758-5767.

FOR SALE: Oscars 1977 through 1995, plus 1979 and 1983 misdates and 1990 Peach, \$695.00 plus shipping. Jane's, Box 897, Phoenix, OR 97535. (541) 535-1315.

FOR SALE: #1401 Empress 7" square plates, Tangerine. #3389 Duquesne finger bowls, 5 oz. sherbets, 9 oz. goblets, 5 oz. saucer champagne, Tangerine bowl w/o. Alice Cooper, 1018 Lowell Rd., Las Cruces, NM 88001. (505) 525-0247.

FOR SALE: Alexandrite bowl/crystal stem and foot Carcassone 3 oz. cocktails, (5) ea. \$70.00. Flamingo Empress ashtray, H, \$120.00. Lariat coasters (4) ea., \$8.00. UPS extra. Also, will buy animals and Moongleam Twist at 50% of book value (mint condition only). Brenda Lindner, (612) 689-3365.

WANTED: Heisey "Fox Chase" #1509 8" square platè, #5012 7" ftd. vase, #4163 16 oz. beer mug with Red, Moongleam, Amber handle. Fred Ludwig, 300 Rt. 10, Randolph, New Jersey 07869. (973) 366-1351.

FOR SALE: Jugs & Pitchers for sale! Ribbon Candy, Ring Band, Custard: Oriental Poppy, Puritan, (4) sizes. Greek Key, Ridgeleigh, (2) styles. (3) in Moongleam: Empress, Twist and Old Sandwich. Banded Flute, King Arthur, Pinwheel and Fan and Carcassone in Sahara. Touraine, 341½ ftd. Puritan, Twentieth Century, Dawn and Plantation. Moundbuilders Second Generation (888) HEISEYS (434-7397).

WANTED: Ruby Clydesdale limited edition. Bill Clifford, 419 Meadow Brook Dr., Newark, OH 43055. (740) 366-5868.

WANTED: Colonial coffee cup 2½"x2½". PO Box 833, Edgewood, TX 75117. (903) 896-7442.

**WE CLEAN CLOUDY GLASS!
SATISFACTION GUARANTEED**

Yes, it is true that we really can restore the interior of your cruet, vase, decanter and other *internally* etched items back to near original condition.

We do not oil, wax or cover up the sickness in any way! We actually *remove* it.

No items are too sick to clean! If we cannot clean an item to meet your satisfaction, the cleaning is **FREE!**

Send no money up front. When we return your item a bill will be enclosed for the postage and cleaning. If you are not satisfied, only the return postage is requested.

Most items clean in 6-8 weeks. All glass is handled and cleaned at your risk. Some very cloudy items may take several additional weeks.

Cruet	\$20.00	Cocktail Shaker	\$30.00
Vinegar & Oil	\$25.00	Salt Shaker (one)	\$25.00
Cologne	\$20.00	Salt Shaker (pair)	\$35.00
Decanter	\$30.00	Water Bottle	\$30.00
Vases (under 12")	\$25.00	Lavender Jar	\$20-\$30.00

Ship to: **Kim Carlisle & Associates**
28220 Lamong Road, Dept. H
Sheridan, IN 46069
(317) 758-5767

BARI FAUSS
8503 Shirley Woods Ct.
Lorton, VA 22079

(703) 550-2218
UPS & Ins. Extra
H=Marked

353	8" trumpet vase, H	\$65.00
433	Greek Key 2 oz. sherry, straight sided, H	\$150.00
1401	Empress d/f ice bucket, silver overlay, hdl. and tongs	\$90.00
1402	Empress 12" ctr. hdl. sandwich plate, round, Formal Chintz etch	\$75.00
1503	Crystalite shell praline, shows some wear	\$35.00
1503	Crystalite ind. leaf nut, (1) H, (6) ea.	\$10.00
1503	Crystalite 10 oz. goblet, H, (8) ea.	\$27.00
1503	Crystalite juice, H, (12) ea.	\$35.00
1503	Crystalite sherbet, H, (12) ea.	\$13.00
1519	Waverly cream and sugar, Rose etch, H	\$75.00

BILLIE WATERS
6367 Tussic St.
Westerville, OH 43081

(614) 882-6039

Asiatic Pheasant	\$300.00
Fish Bookend, pr.	\$300.00
Twenty Imperial slag animals, (20)	\$400.00
Old Wlmsburg 3-lite candelabra, bobèche, prisms, pr.	\$500.00
Twelve Lavender Ice animals, (12)	\$850.00
Lavender Ice flying mare	\$600.00
Oscars, various colors, ea.	\$40.00
Peachalene Oscar	\$100.00
Rosalene Oscar	\$100.00

"T & P" COLLECTIBLES

Tom & Pat Gibbons
1089 Wood St.
Swansea, MA 02777

(508) 674-7361

tomg@meganet.net
Packing & UPS Extra
H = Marked

SEND SASE FOR LATEST LIST

5	Patrician 7½" candlestick cut	\$45.00
352	Flat Panel 28 oz. humidior, cvd., water stain, Mnglm., H	\$375.00
1183	Revere ½ lb. ftd. candy jar, cut, H	\$65.00
1401	Empress d/f nasturtium bowl, H	\$75.00
1404	Old Sandwich oval cream & sugar, Sahara, pr., H	\$125.00
1405	Ipswich 11" ftd. floral bowl, H	\$55.00
1469	Ridgeleigh 3½" square candlestick, pr.	\$45.00
1540	Lariat 5" ftd. cvd. cheese	\$45.00
4055	Park Lane 4 oz. oyster cocktail (9)	\$110.00

Wanted: Pretzel jar cover or complete jar

J. & R. COLLECTIBLES

P.O. Box 1030
Newark, Ohio 43058-1030

(740) 344-9719

UPS & Ins. Extra
H = Marked

142	Cascade 3-lite candlestick, Minuet etch, pr.	\$225.00
1401	Empress 8" sq. plate, Club Drinking Scene, H, (2)ea.	\$95.00
1401	Empress 7" triplex relish, Alexandrite	\$285.00
1401	Empress sugar, stress crack one hdl., Tangerine, H	\$265.00
1485	Saturn 8½" straight vase, Limelight, H	\$265.00
1509	Queen Ann cups & rnd. scr., Orchid, both H, (8) sets ea.	\$37.50
1637A	Town & Country 5" flared desert bowls, Dawn, (8) ea.	\$42.50
2052	1½ oz. bar, #467 Tally Ho etch	\$30.00
3390	Carcassone 6 oz. sherbet, Alx. bowl, cry stem & ft. (4) ea.	\$52.50
4083	Stanhope 12 oz. ftd. soda, s/o, Zircon (2) ea.	\$125.00
3368	Albemarle 1 oz. cordial, Moongleam stem & ft. (2) ea.	\$135.00
	Sparrow Imperial Verde Green	\$75.00
	Sparrow, Dalzell Viking, Ruby, HCA	\$45.00
	Tiger paperweight, Imperial Amber or Crystal ,ea.	\$250.00
	Tiger Paperweight, Imp. Caramel Slag or Jade green, ea.	\$95.00

GARY SHARDELL

537 69th Street
Holmes Beach, FL 34217

(941) 778-2167

UPS & Ins. Extra
H = Marked

1252	Twist 2 oz. cruet and stopper, Moongleam, H	\$140.00
1170	Pleat & Panel 3 oz. cruet and stopper, Moongleam, H	\$95.00
1485	Saturn 6 oz. bitters bottle with pour tube	\$115.00
4027	Christos 32 oz. decanter, Moongleam ft. & stopper	\$245.00
393	Narrow Flute 4 oz. cruet, Ruby stain, H	\$135.00
52	Salt and pepper, glass tops, all Moongleam, H	\$60.00
52	Salt and pepper, glass tops, all Sahara, H	\$110.00
1540	Lariat salt and pepper shaker, only 34 pair made	\$925.00
515	Taper ¼ oz. cologne, #69 Moongleam stopper, H	\$245.00
3390	Carcassone & stopper 4-2½ oz. wine, Sahara, H	\$525.00
299	Shot glass, Moongleam, H	\$90.00
1184	Yeoman 2 oz. cruet & stopper	\$90.00

DON & JEAN PARRETT

4995 Mapledale Rd.
Jackson, MI 49201

(517) 784-7319

Post & Shipping extra

1170	Pleat & Panel sugar & creamer, Moongleam	\$45.00
1184	Yeoman cruet, Sahara, clear stopper	\$125.00
1519	Waverly cruet, with stopper (c)	\$125.00
1519	Waverly ice bucket (c)	\$195.00
1401	Empress ice bucket, Moongleam, metal hdl. & tongs	\$245.00
335	Prince of Wales Plumes ½ gal. pitcher	\$235.00
473	Narrow Flute with Rim 6" baked apple dish, cutting	\$50.00
393	Narrow Flute ice tub, 6" X 6"	\$150.00
436	Carnation vase, base 4", height 12"	\$125.00
7019	Sunflower covered candy, height 3½ width 6½	\$95.00
300	Peerless (7) pc. pitcher, 7 oz. tumbler, star bottom, (6)	\$325.00
1252	Twist 2-compartment relish	\$75.00
417	Double Rib & Panel cruet (c) (2) ea.	\$85.00
305	Punty & Diamond Point cruet (c)	\$125.00
1250	Groove & Slash cruet (c)	\$145.00
1425	Victorian flared top vase, height 8 1/2"	\$245.00
1567	Plantation 10 oz. pressed goblet (5) ea.	\$38.00
1567	Plantation 3 oz. oil cruet, #125 stopper	\$185.00
1567	Plantation salt & pepper with chrome tops	\$80.00
1567	Plantation marmalade jar, cover, pineapple	\$175.00
1567	Plantation syrup & top, Ivy etch	\$195.00
1567	Plantation footed comport with cover, Ivy etch	\$160.00
1489	Puritan 3¼" x 4½" ashtray	\$30.00
1489	Puritan horsehead covered cigarette box	\$75.00
1508	Card box	\$45.00

Heisey

PUBLICATIONS

PO BOX 102

Plymouth, Ohio 44865

Ralph & Sandra McKelvey

(419) 935-0338

**Heisey****Books & Glass****VOGEL BOOKS ON HEISEY****BOOK I "FIRST TEN YEARS".....\$14.00****BOOK II "COLONIAL YEARS".....\$14.00****BOOK III "ART & COLORED GLASS"....\$15.00****BOOK IV "EARLY AND LATE YEARS"..\$15.00****SET PRICE \$55.00****SHIPPING AND HANDLING**

Add \$4.00 for all orders!!

ALAN BATES
8986 Jade Lake Rd. East
Pinson, AL 35126

(205) 680-4312
UPS & Ins. Extra
H = Marked

150	Banded Flute saucer ftd. candlestick, H	\$40.00
343	Sunburst 5" high ftd. jelly H	\$45.00
351	4" Vase	\$30.00
393	Narrow Flute oval hotel creamer & sugar, H	\$65.00
353	Trumpet 8" vase, (2) ea.	\$40.00
411	Tudor 1 qt. jug with lid, H	\$165.00
1201	Fandango 7" oblong nappy	\$35.00
1205	Fancy Loop 6" shallow nappy, Emerald	\$30.00
1401	Empress, 7" ctr. hdl. triplex relish, Sahara	\$75.00
1255	Pineapple & Fan 6" pickle tray, Emerald	\$30.00
1425	Victorian ¼ lb. stick butter & cover, H	\$100.00
1425	Victorian 2 oz. bar, H	\$25.00
1469	Ridgeleigh 5 compartment star relish, H	\$50.00
1469	Ridgeleigh 3½" round coaster, Sahara, (8) ea.	\$25.00
1469	Ridgeleigh individual mustard w/paddle, H	\$95.00
1469	Ridgeleigh 1-lite candelabra, H, pr.	\$275.00
1469	Ridgeleigh small cig. box & (4) ashtrays, orig. box, H	\$120.00
1495	Fern 11" ftd. oval floral bowl, Rose etch, H	\$175.00
1502	Gracefull 1 oz. cordial, Orchid etch, H, (8) ea.	\$120.00
1503	Crystalite 6" ftd. covered candy, H	\$75.00
1503	Crystalite 10 oz. goblets, H, (12) ea.	\$22.50
1503	Crystalite 13" shell torte plate	\$100.00
1503	Crystalite swirl candleblock	\$45.00
1541	Athena 10" ftd. urn candy w/cutting	\$225.00
5058	Goose Stem, cordial	\$160.00

SUM OF LIFE
Elaine & Frank Husted
147 Barton Drive
Spring City, PA 19475-3415

(610) 469-1243
FAX (610) 469-1298
H = Marked

THE MATCH MAKER IS BACK!! TRY THESE!!

	Rooster vase	\$130.00
	Donkey, Slag	\$45.00
	Wood Duck, Slag	\$40.00
	Giraffe, head backwards	\$305.00
	Sparky	\$150.00
1503	Crystalite swan master nut dish (you supply the nuts)	\$50.00
1180	Brazil nut dish 5" x 4", Moongleam, H (same deal)	\$45.00
343	Sunburst punch bowl base, H	\$26.00
4255	Pineapple & Fan sugar bottom, Emerald	\$30.00
7000	Sunflower 1-lite candle holder	\$27.00
1420	Warwick 2-lite candle holder	\$40.00
5010	Symphone cordial, Crinoline etch	\$75.00
343	Sunburst club suit shape ashtray	\$35.00
1519	Waverly creamer, Orchid etch	\$35.00
354	Wide Flat Panel creamer, H	\$50.00
1280	Winged Scroll butter dish bottom, Custard with gold	\$55.00
1184	Yeoman 3½ oz. individual restaurant creamer, d/o, H	\$115.00
1401	Empress dolphin ftd. nut cup, Moongleam, H	\$45.00
1201	Fandango wine	\$75.00
325	Flat Panel water jug	\$42.00
1405	Ipswich 11" ftd. floral bowl	\$120.00
113	Mars candle	\$25.00
112	Mercury 3" candle, Moongleam	\$40.00
3333	Old Glory cordial, unknown cutting	\$175.00
4044	New Era wine, Cobalt bowl	\$250.00
1404	Old Sandwich wine, Sahara	\$65.00
5024	Oxford cordial, Huguenot cutting	\$80.00
301	Old Williamsburg 2-lite cndlbra, short base, "C" prisms \$125.00	

When you call, please leave your name, address, and telephone number (or fax number). Add \$5.00 to each order for minimum postage. If more, the honor system prevails.

FOREVER HEISEY
Norm & Jan Thran
1663 Londondale Pkwy.
Newark, OH 43055

(740) 344-5955
UPS & Ins. Extra
H = Marked

134	Trident 2-lite candlesticks, Moongleam, H, pr.	\$250.00
142	Cascade 3-lite candlesticks, Orchid etch, pr.	\$175.00
150	Banded Flute 8 oz. tumbler, H (2) ea.	\$60.00
150	Banded Flute 10" tray, H	\$50.00
150	Banded Flute saucer footed handled candlestick	\$60.00
150	Banded Flute water bottle	\$125.00
150	Banded Flute 1 oz. cordial, H	\$85.00
150	Banded Flute cocktail or tall sherbet, H, choice (5) ea.	\$15.00
150	Banded Flute 5½ oz. egg cup, H (2) ea.	\$35.00
352	Flat Panel individual cream & sugar, H, pr.	\$35.00
354	Wide Flat Panel 1 oz. footed lavender jar, H	\$125.00
354	Wide Flat Panel 1 oz. footed lavender jar, floral cut, H	\$225.00
354	Wide Flat Panel 2¼ oz. ftd. lavender jar, floral cut, H	\$195.00
393	Narrow Flute ind. cream & sugar, Moongleam, H, pr.	\$135.00
393	Narrow Flute ind. cream & sugar, H, pr.	\$35.00
500	Octagon 5 part variety tray, Moongleam, H	\$185.00
1184	Yeoman 8" center handled mint, Flamingo, H	\$50.00
1186	Yeoman covered puff box, Flamingo, d/o, H	\$155.00
1252	Twist 7" plate, Flamingo, H (8) for	\$80.00
1252	Twist 7" pickle, Flamingo, H (2) ea.	\$25.00
1252	Twist 10" celery tray, Flamingo, H	\$30.00
1401	Empress d/f mayo, Flamingo	\$50.00
1401	Empress d/f mayo, Moongleam, H	\$60.00
1401	Empress 4½" nappy, Moongleam, H (4) for	\$90.00
1401	Empress punch cup, Moongleam, H (7) ea.	\$40.00
1401	Empress 7" sq. plate, Old Colony etch, Mnglm, H, (7) ea.	\$25.00
1401	Empress 8½" sq. plate, Old Colony, Mnglm, H (2) ea.	\$35.00
1401	Empress 6" sq. plate, Alexandrite, H (3) ea.	\$50.00
1401	Empress 8½" sq. plate, Alexandrite, H (2) ea.	\$85.00
1428	Warwick 9" horn of plenty vase, Cobalt, H	\$350.00
1428	Warwick 9" horn of plenty vase, Moongleam, H	\$795.00
1469	Ridgeleigh 9 oz. water goblet (5) ea.	\$39.00
1469	Ridgeleigh cup and saucer, H (3) sets ea.	\$27.50
1503	Crystalite 13" coupe tray, H	\$125.00
1503	Crystalite 12" oval 3-part relish, H	\$40.00
1503	Crystalite 5" ftd. choc. or 5" ftd compote, H, choice ea.	\$27.00
1503	Crystalite cup and saucer, H (8) sets ea.	\$19.00
1509	Queen Ann 9½" crimped floral bowl, Orchid etch	\$60.00
1509	Queen Ann cup and saucer, Orchid etch, H, (6) sets ea.	\$47.50
1519	Waverly 14" torte/sandwich plate, Orchid etch	\$95.00
1519	Waverly 7¼" plate, Orchid etch (11) ea.	\$18.00
1519	Waverly 8" plate, Orchid etch (3) ea.	\$25.00
1519	Waverly 2-lite candlesticks, Orchid etch, pr.	\$125.00
2351	Newton 12 oz. soda, Orchid etch	\$95.00
1519	Waverly 7" plate, Heisey Rose etch, (4) ea.	\$22.00
1519	Waverly 8" plate, Heisey Rose etch, (6) ea.	\$27.00
1519	Waverly cup & saucer, Heisey Rose etch, H, (6) sets ea.	\$75.00
1519	Waverly ftd. cream and sugar, Heisey Rose etch, H, pr.	\$75.00
1519	Waverly 12" crimped floral bowl, Heisey Rose etch	\$85.00
1519	Waverly 12" gardenia bowl, Heisey Rose etch	\$85.00
5072	Rose Stem champagne, Heisey Rose etch (6) ea.	\$39.00
5072	Rose Stem water goblet, Heisey Rose etch, H (3) ea.	\$45.00
3368	Albermarle 7" high footed compote, Sahara d/o, H	\$100.00
3381	Creole short stem champagne, all Alex. d/o, (7) ea.	\$145.00
3381	Creole tall stem champagne, all Alexandrite d/o (2) ea.	\$155.00
3397	Gascony goblet, Tangerine, w/o bowl	\$295.00
4224	Steeple Chase cocktail mixer, Moongleam frosted base, (slight use, scratches)	\$350.00
6060	Country Club 10 oz. soda/beverage, Winchester etch (2) ea.	\$125.00
7000	Sunflower cream & sugar, H, pr.	\$55.00
7078	Heisey Diamond H display sign	\$395.00

Our 19th year serving the Heisey family!! We search, All SASE inquires answered. Stop & visit while in Newark, see the largest collection of ball vases in the organization.

H & R DIAMOND H
Helen & Bob Rarey
1450 White Ash Drive
Columbus, OH 43204

(614) 279-0390
After 5:30 pm
UPS & Ins. Extra
H = Marked

150	Banded Flute 9 oz. goblet, H (1909-1937)	\$20.00
300	Peerless 9 oz. goblet, H (1897-1957)	\$20.00
300	Peerless 7 oz. goblet, Flamingo (1925-1935)	\$125.00
300	Peerless 1 oz. cordial, H (1897-1957)	\$25.00
300	Peerless 1 oz. cordial, heavy sham, H (1897-1957)	\$35.00
337	Touraine 8 oz. goblet, Amber, H (1902-1930)	\$100.00
337	Touraine 1½ oz. wine, H (1902-1930)	\$35.00
338	Wafer Stem 8½ oz. goblet, H (1929-1930)	\$45.00
339	Continental 8 oz. goblet, H (1904-)	\$40.00
341	Puritan 2 oz. sherry, H (1904-1957)	\$35.00
341	Puritan 1 oz. cordial, H (1904-1957)	\$35.00
343	Sunburst 7 oz. goblet, H (1903-1920)	\$150.00
347	Fifth Avenue 9 oz. goblet, H (1905-)	\$35.00
347	Fifth Avenue 1 oz. cordial, H (1905-)	\$35.00
349	Fifth Avenue 1 oz. cordial, flared bowl, H (1905-)	\$40.00
351	Priscilla 8 oz. goblet, H (1905-1933)	\$30.00
351	Priscilla 1 oz. cordial, H (1905-1933)	\$40.00
357	Prison Stripe 8 oz. goblet, H (1904-1909)	\$195.00
359	Colonial 7 oz. goblet, H (ca. 1907)	\$25.00
359	Colonial ¾ oz. pony brandy, H (ca. 1907)	\$35.00
359	Colonial ¾ oz. cordial, H (ca. 1907)	\$35.00
369	Hartman 9 oz. goblet, H (1907-1925)	\$70.00
373	Colonial 9 oz. goblet, H (1907-1956)	\$35.00
373	Colonial 1 oz. cordial, H (1907-1956)	\$40.00
373	Colonial 9 oz. goblet, Alexandrite, H (1930-1935)	\$1025.00
397½	Urn 8½ oz. goblet, H (1907-1911)	\$60.00
393	Narrow Flute 9 oz. goblet, H (1909-1935)	\$30.00
394	Narrow Flute 4 oz. fld. hdl. soda, H, worn gold dec.	\$30.00
393	Narrow Flute 2 oz. wine, H (1909-1935) (4) ea.	\$30.00
393	Narrow Flute 2 oz. sherry, H (1909-1935) (6) ea.	\$30.00
393	Narrow Flute 1 oz. cordial, H (1909-1935)	\$35.00
393	Narrow Flute ¾ oz. pony brandy, H (1909-1935)	\$45.00
400	Colonial 11 oz. goblet, H	\$35.00
407	Coarse Rib 8 oz. goblet, Emerald, H (1916-1933)	\$55.00
411	Tudor (Rib & Panel) 8 oz. goblet, H (1916-1950)	\$40.00
411	Tudor (Rib & Panel) 2½ oz. oyster cocktail (1916-950)	\$30.00
417	Double Rib & Panel 2½ oz. oyster cocktail (1916-1950)	\$30.00
419	Sussex 8 oz. goblet, Moongleam bowl, H (1925-1935)	\$85.00
419	Sussex 8 oz. goblet, Cobalt bowl, H (1935-1940)	\$175.00
433	Greek Key 9 oz. goblet, H (1912-1938)	\$150.00
438	Spiral Optic 8 oz. goblet, H (1909-)	\$35.00
451	Cross Lined Flute 7 oz. goblet, H (1916-1934)	\$30.00
818	Fifth Avenue 10 oz. goblet, H (ca. 1901)	\$20.00
1067	Ramsey 4½ oz. hot whiskey (ca. 1901)	\$40.00
1055	Astor 7½ oz. champagne, n/o, H (ca. 1907)	\$25.00
1108	Penelope 5 oz. saucer fld. egg cup, H (ca. 1901)	\$25.00
1112	Sparta 3½ oz. sherbet, n/o, (ca. 1907)	\$20.00
1170	Pleat and Panel 7½ oz. goblet, Flamingo, (1925-1935)	\$40.00
1183	Revere 8 oz. goblet, n/o, H (ca. 1900-)	\$30.00
1184	Peach melba grapefruit, n/o, H (ca. 1900-)	\$50.00
1184	Yeoman 10 oz. goblet, Moongleam, H (1914-1956)	\$30.00
1184	Yeoman 10 oz. goblet, Wigwam etch, (1914-1956) wear	\$30.00
1201	Fandango 3 oz. wine, (1896-1905)	\$100.00
1205	Fancy Loop 8 oz. cupped goblet, X, (1896-1910)	\$10.00
1225	Plain Band 5 oz. claret, British Reg. (1896-1905)	\$25.00
1227	Maharg 7 oz. sherbet, n/o, H (ca. 1909)	\$10.00
1228	Ringling 4½ oz. egg cup, H (ca. 1909)	\$25.00
1235	Beaded Panel and Sunburst 9 oz. goblet, (1897-1913)	\$100.00
1252	Twist 9 oz. goblet, Moongleam, H (1925-1935)	\$50.00
1256	Lee 6 oz. sherbet, H (ca. 1909)	\$20.00

H&R DIAMOND H continued

1295	Beaded Swag 8 oz. goblet, Custard (1898-1907)	\$90.00
1404	Old Sandwich 10 oz. goblet, Mnglm., H (1929-1954)	\$75.00
1404	Old Sandwich 10 oz. goblet, Sahara, H (1930-1954)	\$60.00
1405	Ipswich 6 oz. champagne, Moongleam (1930-1935)	\$50.00
1415	20th Century 5 oz. juice, Dawn, H (1930-1950)	\$30.00
1415	20th Century 6 oz. sherbet, Dawn, H (1930-1950)	\$40.00
1415	20th Century 9 oz. tumbler, Dawn, H (5) (1930-1950)	\$45.00
1425	Victorian 9 oz. tall goblet (1933-1952)	\$20.00
1425	Victorian 9 oz. goblet, Sahara (1933-1938)	\$70.00
1469	Ridgeleigh 9 oz. goblet (1934-1943)	\$40.00
1483	Stanhope 9 oz. goblet, H (1935-1937)	\$55.00
1485	Saturn 10 oz. goblet, Zircon, H (1936-1956)	\$90.00
1486	Coleport 8 oz. goblet (1935-1949)	\$70.00
1506	Provincial 10 oz. goblet (1938-1957)	\$20.00
1540	Lariat 9 oz. goblet, unknown cut, (1942-1956)	\$30.00
1567	Plantation 9 oz. goblet, H (1942-1956)	\$20.00
1590	Zodiac 4 oz. claret, H (ca. 1947)	\$25.00
1776	Kalonyal 4 oz. egg cup, H (ca. 1904)	\$30.00
2223	Navy 5 oz. soda, Cobalt foot (1935-1940)	\$70.00
2216	Circle Pair 10 oz. goblet, Flamingo (1925-1935)	\$35.00
3304	Universal 1 oz. cordial (1915-1952)	\$15.00
3304	Universal 1 oz. cordial, Geometric Cut, (1925-1935)	\$40.00
3304	Universal 1 oz. pousse cafe (1915-1952)	\$20.00
3304	Universal 10 oz. goblet, Fred Harvey etch	\$30.00
3308	Bob White 11 oz. goblet, Basket etch (1918-1928)	\$25.00
3308	Bob White 11 oz. goblet, Thistle etch (1918-1928)	\$25.00
3308	Bob White 11 oz. goblet, Raleigh etch (1918-1928)	\$25.00
3311	Velvedere (Catha) 10 oz. goblet (1916-1952)	\$20.00
3311	Velvedere (Catha) 10 oz. goblet, Flamingo (1925-1935)	\$40.00
3312	Gayoso 9 oz. goblet, Kilarney etch (1916-1935)	\$30.00
3312	Gayoso 9 oz. goblet, Flamingo (1925-1935)	\$30.00
3312	Gayoso 9 oz. goblet, Trefoil etch (1925-1935)	\$25.00
3312	Gayoso 5 oz. Russian coffee, Moongleam ft. & hdl.	\$30.00
3314	Grandeur 9 oz. goblet, Sabrina etch (1918-1928)	\$30.00
3316	Biltmore 1 oz. pousse cafe (ca. 1917)	\$20.00
3318	Waldorf 3½ oz. cocktail, Tally Ho etch (1926-1952)	\$45.00
3320	Ritz 10 oz. goblet, w/o, Neptune etch (1918-1928)	\$35.00
3324	Delaware 9 oz. goblet, Flamingo (1926-1935)	\$30.00
3330	Hanover 11 oz. goblet, Elizabeth etch (1918-1924)	\$45.00
3331	Statuesque 9 oz. goblet, Grecian Urn etch, H (ca. 1920)	\$45.00
3333	Old Glory 9 oz. goblet, Titanic etch, H (1928-1938)	\$25.00
3333	Old Glory 9 oz. goblet, Hawthorne, H (1927-1928)	\$70.00
3333	Old Glory 9 oz. goblet, Peacock etch, H (1919-1938)	\$30.00
3333	Old Glory 2 oz. wine, #413 etch, H (1918-1938)	\$40.00
3333	Old Glory 1 oz. cordial, #413 etch, H (1918-1938)	\$70.00
3334	Sexton 10 oz. goblet, unknown cut, H (ca. 1920)	\$100.00
3335	Lady Leg 8 oz. goblet, Zodiac etch, H (1920-1930)	\$25.00
3336	Lady Leg 10 oz. goblet, Bead and Fan etch (ca. 1920)	\$30.00
3344	Carolina 9 oz. goblet, H (1918-1928)	\$30.00
3344	Carolina 2 oz. wine, Osage etch, H (1918-1928) (5) ea.	\$35.00
3345	Mary & Virg 9 oz. goblet, Adam etch (1924-1929)	\$50.00
3345	Mary & Virg 6 oz. sherbet, Vaseline (ca. 1922)	\$175.00
3350	Wabash 10 oz. goblet, Frontenac etch, Flmg. (ca. 1925)	\$45.00
3350	Wabash 10 oz. goblet, Needle etch, H (ca. 1921)	\$30.00
3350	Wabash 10 oz. goblet, Mnglm stem & ft., Frontenac etch	\$30.00
3350	Wabash 10 oz. goblet, Hawthorne, Frontenac etch, H	\$80.00
3350	Wabash 10 oz. goblet, Trefoil etch, H (1919-1928)	\$25.00
3355	Fairacre 10 oz. goblet, Mnglm. stem and ft. (1922-1939)	\$35.00
3355	Fairacre 10 oz. goblet (1922-1939) (2) ea.	\$20.00
3357	King Arthur 10 oz. goblet, Mnglm stem & ft. Diana etch	\$45.00
3357	King Arthur 10 oz. goblet, Flmg. stem and ft. (1924-1935)	\$35.00
3357	King Arthur 2½ oz. wine, Mnglm. stem & ft. (1924-1935)	\$30.00



IMPORTANT
ALL HEISEY AUCTION
Saturday, October 31, 1998



Apple Tree Auction Center
1616 W. Church St.
Newark, Ohio 43055

We have not unpacked or started to catalog this fine auction yet. A few highlights include over 400 pieces of Crystolite with many scarce pieces, Alexandrite covered marmalade, Zircon Saturn mustard, Sahara Gascony martini pitcher, large Cobalt ball vase, nice selection of Orchid and other etchings, set of New Era stemware, good smalls, animals, colonial, cruets, Imperial animals from Heisey molds. Our fall auction is always good. Don't be scared even though it's Halloween. We will have items from several estates but no ghosts will be here.

It is possible this sale may include a Friday evening session—please call or check catalog.

Catalogs available. For more information call Apple Tree Auction (740) 344-4282.

DONNA McLENDON
304 Martin Rd.
Greenville, GA 30222

(706) 672-4779
Shipping Extra

	Puritan footed teas, (4) ea.	\$25.00
	Greek Key punch cups, (8) ea.	\$20.00
	Tray for individual cream & sugar, Rosalie etch	\$32.00
153	8 oz. tumblers, plain (8) ea.	\$15.00
359	Colonial footed sherbets, (8) ea.	\$10.00
1519	6½" round 2-part relish	\$18.00
1519	11" 3 seahorse feet bowl, Titania etch	\$95.00
ALL ORCHID ETCH BELOW		
1435	Ashtray, labels (4) ea.	\$28.00
1509	10½" dinner plate (5) ea.	\$170.00
1509	7" Triplex relish	\$50.00
1519	10½" dinner plate, scratches, (6) ea.	\$135.00
1519	3 piece mayonnaise set	\$85.00
1519	Ind. sugar & cream pr.	\$75.00
1519	Regular sugar & cream, pr.	\$50.00
1519	13" floral bowl (2) ea.	\$75.00
1519	14" torte plate	\$75.00
1540	Lariat 7" #2 fan vase	\$125.00
5025	6 oz. tall champagne, (12) ea.	\$24.00
5025	10 oz. tall goblet (7) ea.	\$38.00
5025	12 oz. footed tea tumbler, (4) ea.	\$60.00

Wanted: (1) #1509 1-lite candle with prisms, Orchid Etch

CAROL JEAN REED
416 Grace Hill Rd.
Jamesburg, NJ 08831-2931

(732) 521-3586
UPS & Ins. Extra
H = Marked

305	Punty & Diamond Point punch cup, H	\$23.00
341	Puritan 5" 3-corner handled jelly, H	\$26.00
341	Puritan 13" 5-part oval relish tray, H	\$65.00
352	Flat Panel hotel style sugar, cover-H, H	\$35.00
372	7 oz. McGrady syrup, nickel pltd. top, sunflower etch, H	\$85.00
393	Narrow Flute footed ind. domino sugar, H	\$60.00
393	Narrow Flute 10" shallow nappy with rim, H	\$35.00
393	Narrow Flute banana split, H (2) ea.	\$30.00
411	Tudor 5" high footed jelly, Hawthorne, H	\$70.00
473	Narrow Flute 6" plain rim oval pickle tray, H	\$40.00
473	Narrow Flute 12" celery tray, H	\$30.00
500	Octagon cream & sugar, Sahara, H	\$70.00
501	Fogg 8x3" floral box, Moongleam, H	\$120.00
1010	Decagon 2-hdl. relish dish, Moongleam, H	\$45.00
1185	Yeoman 12" celery tray, Flamingo, H	\$48.00
1252	Twist mustard and cover, H	\$45.00
1415	Twentieth Century 9 oz. footed soda, H	\$25.00
1469	Ridgeleigh 5" covered lemon dish, H	\$25.00
1469	Ridgeleigh 5" dressing bowl with underplate, H	\$65.00
1469	Ridgeleigh 7" 2-compartment relish, H	\$35.00
1503	Crystolite 3½" square ashtray, H (5) all	\$45.00
1503	Crystolite 12" celery tray, H	\$47.00
1503	Crystolite ice tub, silver plate handle, H	\$117.00
1509	Queen Ann 11" 5 o'clock 3-compartment relish, H	\$55.00
1567	Plantation covered marmalade, H	\$140.00

RON KOVACS
9310 E. Windrose Drive
Scottsdale, AZ 85260

(602) 451-4995
UPS & Ins. Extra
H = Marked

300	Peerless 6 oz. champagne, H	\$14.00
300	Peerless 4½" nappy, red stain, H	\$22.00
337	Touraine 5 oz. custard, pressed, star bottom, H	\$7.00
335	Prince of Wales custard, H	\$14.00
359	Colonial 2 oz. sherry, H (4) ea.	\$14.00
393	Narrow Flute 5 oz. water ice, low footed, flared, H	\$8.00
407	Coarse Rib hotel covered sugar, H	\$35.00
411	Rib and Panel 5" high footed jelly, blue & gold dec., H	\$32.00
417	Double Rib and Panel 7 oz. goblet, H	\$40.00
805	Hoffman House ¾ oz. cordial	\$50.00
1158	4¼ oz. custard, pressed, H (15) ea.	\$5.00
1183	Revere divided mayo dish, unknown cut, sterling base	\$28.00
1184	Yeoman 5 oz. sherbet, d/o, H (4) ea.	\$6.00
1186	Yeoman ashtray, gray & clear cut mono "D"	\$15.00
1205	Fancy Loop 8 oz. tumbler, Emerald. gold dec. rim	\$42.00
1225	Ridge and Star 10" plate, H (2) ea.	\$27.00
1255	Pineapple and Fan #1 cracker Jar, no cover, 3½" ID	\$25.00
1404	Old Sandwich 10 oz. beer mug, Cobalt, H	\$295.00
1405	Ipswich 5 oz. ftd. soda, H	\$11.00
1425	Victorian 5 oz. saucer champagne, H	\$13.00
1486	Coleport 8 oz. soda, H (4) ea.	\$10.00
1503	Crystolite 7" candy box, round, 3-part, no lid, H	\$20.00
1503	Crystolite marmalade jar & cover, underplate, H	\$49.00
1503	Crystolite 5" ftd. comport, shallow, H	\$22.00
1506	Provincial 5 oz. champagne, original label, H	\$10.00
1519	Waverly individual cream & sugar, #507 Orchid etch	\$59.00
1519	Waverly 5" candy jar, hi-ftd., #507 etch, no cover, H	\$85.00
1567	Plantation 3½" coaster ashtray	\$29.00
3304	Universal 6 oz. champagne, #980 Moonglo cut (2) ea.	\$22.00
3314	Grandeur 5½ oz. saucer champagne, #410 etch (7) ea.	\$9.00
3350	Wabash 6 oz. sherbet, #439 Pied Piper etch, H (2) ea.	\$13.00
3368	Albemarle 8 oz. goblet, blue & gold stain, H	\$32.00
3381	Creole 11 oz. goblet, d/o, short stem, Sahara bowl	\$76.00
3389	Duquesne 9 oz. goblet, plain optic	\$18.00
3416	Barbara Fritchie ¾ oz. brandy, w/o, H	\$48.00
3416	Barbara Fritchie 1 oz. cordial, w/o, H	\$46.00
3404	Spanish 10 oz. goblet, Pairpoint cut (6) ea.	\$45.00
5003	Crystolite 3½ oz. oyster cocktail, w/o	\$13.00
	Colt standing, Slag, original label, Imp.	\$35.00
	Colt standing, Slag, Imp.	\$31.00
	Colt balking, Horizon Blue, Imp.	\$34.00
	Elephant, small, Pink satin, orig. label, Imp.	\$40.00
	Oscar (Plug Horse), Slag, Imp., orig. label	\$42.00
	Oscar (Plug Horse), Pink, 1978, Imp.	\$53.00
	Oscar (Plug Horse), Sunshine Yellow, 1979, Imp.	\$47.00
	Oscar (Plug Horse), Heather, 1980, Imp.	\$39.00
	Oscar (Plug Horse), 1983, Tangelo frosted, Viking	\$49.00
	Oscar (Plug Horse), Opalescent, 1987, Fenton	\$40.00
	Oscar (Plug Horse), 1984, Red, Viking	\$36.00
	Oscar (Plug Horse), Slag, Imp.	\$40.00
	Rooster Vase	\$100.00
	Tropical Fish, #125 of 450, Lavender Ice, D-Viking	\$400.00
	Tiger Paperweight, Jade, Imp.	\$80.00
	Bunny, head down, Milk Glass, Imp.	\$27.00
	Diamond H display sign, Ultra Blue satin, Viking	\$89.00
	Sparrow, Horizon Blue, Imp.	\$22.00
	Pouter Pigeon, #268 of 450, Lavender Ice, D-Viking	\$160.00
	Mallard, wings down, Horizon Blue, Imperial	\$28.00
	Mallard, wings up, Horizon Blue, Imperial	\$20.00
	Mallard, wings half, Horizon Blue, Imperial	\$20.00
	Mallard, wings half, down, up, Lav. Ice, D-Viking, set	\$70.00
	Scotty, #267 of 450, Lavender Ice, Dalzell-Viking	\$59.00
	Show Horse, #267 of 450, Lavender Ice, D-Viking	\$225.00
	Elephant, medium, #268 of 450, Lavender Ice, D-Viking	\$72.00
	Elephant, large, #267 of 450, Lavender Ice, D-Viking	\$75.00
	Bull, #267 of 450, Lavender Ice, Dalzell Viking	\$200.00

MOSTLY HEISEY
Rhoda Curley
16 Clayton Place
Albany, NY 12209

(800) 972-2775
(518) 482-6272
UPS Extra
All prices each

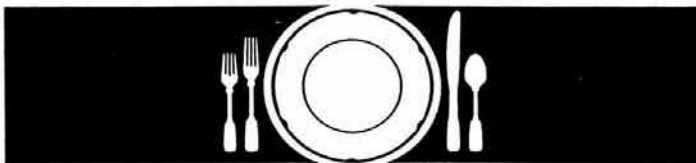
1405	Ipswich 10 oz. soda, (9)	\$30.00
1405	Ipswich oyster cocktails, (7)	\$25.00
1405	Ipswich sherbets, (4)	\$25.00
1405	Ipswich 11' floral bowl	\$105.00
150	Wedding Band champagnes, (12)	\$20.00
150	Wedding Band cocktails, (2)	\$20.00
150	Wedding Band cordial	\$25.00
1223	Miscellaneous grapefruit bowls, (6)	\$15.00
310	Ring Band toothpick, Cstrd., Put-In-Bay, wrn gold dec.	\$95.00
1401	Empress punch bowl cup, Moongloam	\$45.00
2	Old Williamsburg 9" candlesticks, pr.	\$195.00
1469	Ridgeleigh mayo, Meriden CT slvr. plt, unk maker ladle	\$45.00
3404	Spanish cocktails, Cobalt bowls (4)	\$125.00

Visit our web page: www.sony.inergy.com/MostlyHeisey

DICK & LEE SCHWAN
77 Lagos del Norte
Fort Pierce, FL 34951

(561) 461-5940
Ship & Ins. Extra
H = Marked

5	Sahara ladle, H <i>Sold</i>	\$55.00
1401	15" Round tray	\$135.00
365	Old Queen Anne punch cups, H (6) ea. <i>Sold</i>	\$45.00
365	Old Queen Anne 4½" flared nappies H ea.	\$25.00
1401	Sandwich tray, center handled, Sahara, H	\$125.00
4224	Ivy Vase, w/o, Tangerine	\$240.00
411	Rib and Panel mustard and cover, H	\$85.00
116	Oak Leaf candlesticks, Hawthorne, pr. <i>Sold</i>	\$225.00
501	5" Floral block	\$65.00
3366	Trojan water goblets, Flamingo, H (4) ea.	\$45.00
341	Puritan toothpick, H <i>Sold</i>	\$125.00
1519	Waverly 9" 4-part relish, Orchid etch	\$125.00



The Best Of Heisey Glass...

... with popular patterns like Orchid, Heisey Rose, Minuet, and hundreds more. We also carry other fine crystal and depression glass from Cambridge, Fostoria, Imperial, Duncan & Miller, and more. The world's largest supplier of discontinued and active china, crystal, flatware and collectibles, Replacements, Ltd. carries over 4,000,000 pieces in inventory in over 85,000 patterns.

If you're looking to add to your collection, or if you're looking to sell - call us toll-free. Because even with over 4,000,000 pieces in our inventory, we're always looking for more.

REPLACEMENTS, LTD.

China, Crystal & Flatware • Discontinued & Active
 1089 Knox Road, Greensboro, NC 27420 Dept. HS

1-800-REPLACE (1-800-737-5223)

DEALER DIRECTORY

Maximum 5 lines/12 months/\$35 MEMBERS ONLY

<p>HAROLD'S COLLECTABLES & ANTIQUES Harold Keller 6244 S. Cook Dr., Littleton, CO 80121 (303) 771-9432 email: harolds@uswest.net</p>	<p>SHIRLEY EUGENIA DUNBAR Heisey a Specialty Mail Order, Shows, Appraisals PO Box 7085, Port St. Lucie, FL 34985 Oct-May (407) 337-1558 PO Box 222, Naples, ME 04055 May-Oct (207) 647-5652</p>	<p>COMPARISON LIST NEW HEISEY AUCTION LIST FOR 1998 3 Year's Auction 95-96-97 Price: \$18.00 + \$3.00 Shipping Payable: B. Whaley 300 International Dr., Pataskala, OH 43062 (740) 927-1557</p>
<p>ALL HEISEY AUCTION Consignments Welcome Apple Tree Auction Center 1616 W. Church, Newark, OH 43055 (740) 344-9449</p>	<p>GREEN ACRES FARM Antiques, Crystal Glass & Collectibles 2678 Hazelton-Etna Rd., SW (S.R. 310-N) Pataskala, OH 43062 Sat. or Sun. PM or call (740) 927-1882</p>	<p>MICHAEL KRUMME Heisey and other elegant glassware PO Box 48225 http://www.glassshow.com Los Angeles, CA 90048 I search—send your want list (213) 874-GLASS (-4527) email:mkrumme@pacbell.net</p>
<p>D & B ANTIQUES—ATLANTA Bob Bartholomew Members Dixieland Heisey Club PO Box 33283, Decatur, GA 30033 Shows (404) 634-2799 Mail Order</p>	<p>H & R DIAMOND H Helen & Bob Rarey 1450 White Ash Dr. Columbus, OH 43204 (614) 279-0390 after 5:30</p>	<p>JEAN & DON PARRETT Beautiful Heisey Layaways Accepted 4995 Maple Dale Rd. Jackson, Michigan 49201 (517) 784-7319—Recorder</p>
<p>ANTIQUES - THE SHULTZES 206-208 East Main St. Newmanstown, PA 17073 15 Miles West of Reading, PA (610) 589-2819</p>	<p>"HAPPINESS IS" - THE STULTZS 3106 Warren Court, Glen Allen, VA 23060 Shows and Mail Order (804) 672-8102</p>	<p>PATTON HOUSE ANTIQUES Specializing in Glass*Heisey*Cambridge*Fostoria*Duncan* Factory Antique Mall, Verona, VA off I-81 Exit 227 The Antique Gallery, 3140 W. Cary St., Richmond, VA Antiquers Mall, Booth 81, Rt. 29 N., Charlottesville, VA The Daniels, Box 547, Louisa, VA 23093 (540) 967-1181</p>
<p>C&J ANTIQUES Cole & Jean Miesner Box 45, 72 Whig St. Newark Valley, NY 13811 (607) 642-9905</p>	<p>GERI PINION PO Box 110965 Campbell, CA 95011 (408) 370-1328 email: ibuyglass@aol.com</p>	<p>SCHWAN'S ANTIQUES SHOWS & MAILORDER 77 Lagos del Norte Ft. Pierce, FL 34951 (561) 461-5940</p>
<p>DOXTOIS Eva & Joe Hirsh Heisey & Pattern Glass 6 James St., Norwalk, CT 06850 (203) 847-3315</p>	<p>HOOKED ON HEISEY Jay C. Martin 97 Heritage Hill Rd., New Canaan, CT 06840 (203) 966-9359 24 hr. answering machine thefamilyfirm@worldnet.att.net</p>	<p>R & L ANTIQUES-SAN FRANCISCO Members of the Golden Gate Heisey Club 3690 Bodega Ave., Petaluma, CA 94952 Petaluma (707) 762-2494 San Francisco (415) 621-6693</p>
<p>CHARLES & MILDRED FISHER Heisey animals and Heisey By Imperial animals 991 Idlewilde, Newark, OH 43055 (614) 522-5398</p>	<p>MOUNDBUILDERS SECOND GENERATION Shows, mail orders or appointment * Fifteen miles north of St. Augustine in Ponte Vedra Beach, FL. PO Box 1931, Ponta Vedra Beach, FL 32082 (800) 366-4347 (904) 280-0450</p>	<p>THE SPARACIO'S Carl & Helen Shows and Mail Order 28 Refy Ave., Ramsey, NJ 07446 (201) 327-2495 email: poppicarl@msn.com</p>
<p>CRYSTAL LADY Bill, Joann & Marcie Hagerty Specializing in elegant depression glassware 1817 Vinton St., Omaha, NE 68108 Shop (402) 341-0643 or Home (402) 391-6730</p>	<p>GALAXY ANTIQUE MALL—JIM PAPPAS galaxy-mall.com Email: ljpp@galaxy-mall.com Glass and Pottery—Heisey & Blue Ridge a Specialty Phone: (609) 897-0345 Fax: (609) 936-0091 26 Kinglet Dr. N, Cranbury, NJ 08512</p>	<p>MY DAUGHTER'S INHERITANCE Heisey - Crystal - Porcelain Antique Village - 3750 Howard Ave. Kensington, MD 20895 (301) 933-4618 Maggi Smith</p>
<p>FINDER'S ANTIQUE HOUSE 3769 Hwy. 29 North Danville, VA 24540 Open Thursday—Saturday (804) 836-6782 Area's largest selection of Heisey and other Elegant Glassware.</p>	<p>J. & R. COLLECTIBLES Shows, SASE, Mail Order list The Lukasko's PO Box 1030, Newark, OH 43058-1030 (740) 344-9719</p>	<p>APPLE VALLEY COLLECTIBLES Richard Garnett & Anne Borchert PO Box 552, Amenia, NY 12501 (914) 373-8791 Shows & Mail Order *Yesteryears Antique's—Monroe, CT (203) 459-9548*</p>
<p>FRAN'S FANCY FINDS Fran & Jack Grenzsbach 10534 Valencia Rd., Seminole, FL 33772-7511 (727) 391-5184 SHOWS MAIL ORDERS</p>	<p>MOSTLY HEISEY Rhoda Curley 16 Clayton Pl., Albany, NY 12209 Shop and Mail Order (800) 972-2775</p>	<p>THE WOODEN SHOE 222 W. Washington St., Charles Town, WV 25414 Fri-Mon 11-5 (304) 725-1673 Email: wdnshuct@aol.com Glass—Pottery—Kerosene Lamps</p>
<p>FOREVER HEISEY Jan & Norm Thran Mail Order, Shows, Appraisal Service 1663 Londondale Pkwy., Newark, OH 43055 (740) 344-5955</p>	<p>R & S ANTIQUES AND GLASSWARE Heisey—Specializing in Complete Heisey Tableservice Call or write for patterns and colors 2560 S. Maguire Rd. Ocoee, FL 34761 (407) 656-5700 or (407) 876-9199 PM</p>	<p>WILLEY'S ANTIQUES & MUSEUM Specializing in Heisey 11110 Cannon Rd., Frazeyburg, OH 43822 16 miles east of Newark, OH (614) 828-2557</p>
<p>WARREN & MARY WELSH Heisey & other elegant glassware 3635 Saddle Rock Rd., Colorado Springs, CO 80918 (719) 531-5866 Mail Order Shows</p>	<p>GLORIOUS TREASURES ANTIQUE SHOPPE Heisey Glass and other Fine Treasures 518 Main Street, Edmonds, WA 98020 10:00 to 6:00 Mon. thru Sat., Sun. Special events (425) 775-5753</p>	<p>A TOUCH OF GLASS Heisey—Depression—Elegant The Antique Station Case 03R 194 Thomas Johnson Dr., Frederick, MD 21709 David & Lisa Helm (410) 239-4234</p>
<p>GLASS 'N' GLASS Virginia & Odell Johnson 6909 10th Ave. W. Bradenton, FL 34209 (941) 792-0604 email: ovjohnson@aol.com</p>	<p>G.W. ANTIQUES http://www.sonic.net/~gwant Robert Gindhart (707) 575-8706 Gary Wimmershoff Santa Rosa, CA Heisey, Wedgwood and other fine antiques</p>	<p>HEISEY, etc. Mike & Barb Rosenberger Shows-Mail order (219) 864-1704 5115 W. 78th Ln., Schererville, IN 46375 Visit our web site: www.jorsm.com/elegantglass</p>

When Renewing Your Membership...

Help us to reach our new goal of \$2,000,000 by the year 2002. When you renew your membership at one of the levels below, any amount beyond the regular Associate dues—\$22.00 plus \$5.00 for each additional household member—goes into the Endowment Fund.

Museum Volunteers for August and September

Jack Caughenbaugh
Chauncey & Helen Delaney
George Heisey
Gus Heisey
Tom Heisey
Kristy Gossett
Molly Kaspar
Connie Makris
Phyllis & Bob McClain
Mary McWilliams
Mary Ourant
Dick & Marilyn Smith
Bob Willson

<i>Individual Contributing, one person in household</i>	\$30
<i>Joint Contributing, two people in one household</i>	\$40
<i>Family Contributing, parents and children under 18</i>	\$50
Patron	\$100
Sponsor	\$250
Benefactor	\$500

Contact HCA Administrative Office at (740) 345-2932 for more information. The Endowment Committee wishes to thank those who have become Endowment Members and all of the individuals and study clubs that have so generously supported the HCA Endowment Fund. Your support will make the museum self-sustaining in the years to come. Thank you all! ♦



Visit The National Heisey Glass Museum

Come at your leisure to enjoy more than 4,800 pieces of glassware produced by A.H. Heisey and Company from 1896-1957. Hundreds of patterns are featured in all production colors. Rare and experimental items are included as well.

Facilities are air-conditioned and handicapped accessible. Hours are 10:00 a.m. to 4:00 p.m. Tuesday through Saturday, 1:00 to 4:00 p.m. Sunday. Members are admitted free, regular admission is \$2. Office hours are 8:00 a.m. to 4:30 p.m. weekdays.

Membership Renewal Notice: Check the date above your name and address on the mailing label. This is your expiration date. If it reads 11-10-98 make sure your dues are paid soon in order to receive next month's issue of Heisey News. Dues are \$22.00 per year, plus \$5.00 for each additional household member.

POSTMASTER SEND FORM 3579 TO:

HCA
169 W. Church St.
Newark, OH 43055



PERIODICAL POSTAGE PAID