

HEISEY NEWS

The Official Publication of Heisey Collectors of America, Inc.

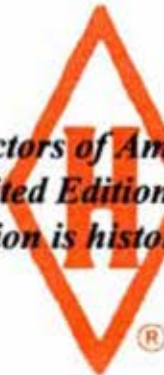
Volume XXV No. 11

October 1996

ISSN 0731-8014



Republican or Democrat? Heisey Collectors of America, Inc. has something special for both parties! Order your '96 Election Limited Edition Ruby Red Small Elephants and Cobalt Blue Donkeys before the election is history! See page 20 for more details.



HEISEY NEWS

Heisey Collectors of America, Inc.
169 West Church Street
Newark, Ohio 43055
Phone (614) 345-2932 Fax (614) 345-9638
All Rights Reserved 1996
ISSN 0731-8014

Administrator

Mary Ourant

Museum Assistant

Molly Kaspar

HCA President

Tom Bischoff, (419) 533-7431

HCA Vice President

Bob Rarey, (614) 279-0390

HCA Secretary

Ginny Marsh, (614) 366-5608

HCA Treasurer

Charlie Wade, (614) 366-6636

HEISEY NEWS is published and printed monthly (twice in February), by Heisey Collectors of America, Inc. Periodicals postage paid at Columbus. Subscription is limited to HCA members. First class mailing is available for an extra \$13.00, due with payment of membership. If you are having difficulty receiving your newsletter, please contact HCA Administrative office Monday through Friday 8:00 a.m. to 5:00 p.m.

The opinions expressed in articles in HEISEY NEWS are those of the authors and not necessarily those of the organization. The Editorial staff reserves the right to edit, with or without the consent of the author, or to refuse any material submitted for publication.

Back Issues

The following volumes are available as complete sets: V, VII, VIII, IX, X, XI, XII, XIII, XIV, XV, XVI, XVII, XVIII, XX, XXI, XXIII, for \$9.00 each volume (12 issues, plus auction list if available).

Advertising

Send all ads to: HCA Advertising, 169 W. Church St., Newark, OH 43055 or fax ads to (614) 345-9638, include M.C. or Visa info. Ads are to be typed or printed on white paper with dark ink. Camera ready ads accepted, but must follow line specifications. Ads containing reproductions will not knowingly be accepted unless clearly stated (e.g. Heisey by Imperial, etc.) HEISEY NEWS accepts no further liability. See Advertising section for rates and deadlines.

Museum

Heisey Collectors of America, Inc, a non profit corporation (tax exempt status), owns and operates The National Heisey Glass Museum in Veteran's Park, 6th and Church Streets, Newark, Ohio. Open Tuesday-Saturday 10-4, Sunday 1-4, closed holidays. Other hours by appointment. Members admitted free.

Identification

HCA will attempt to identify unknown glass items. Please enclose a photograph with your drawings or descriptions. Other arrangements should be made in advance with the museum staff.

Membership

To join Heisey Collectors of America or to renew your membership, contact HCA Administrative office Monday through Friday 8:00 a.m. to 5:00 p.m. Associate dues are \$22.00 plus \$5.00 for each additional household member. Voting members pay an additional one-time fee of \$25.00. Please consider supporting the Endowment Fund by joining at one of the levels listed on the back page.

Museum Shop

There is always someone available in the shop to answer questions or take your order. When ordering by phone, please have a credit card ready. When ordering by mail, please be sure to include appropriate charges such as shipping and sales tax.

Shipping and Receiving

Delivery is made much easier when we have a complete street address, not a PO Box. We prefer to use UPS. If you have not received a package, please call Brad, shipping clerk, to confirm it was sent. He will assist you in tracing it. If your package arrives damaged, please contact your local UPS representative. We insure everything.

Donations and Loans to the Museum

If you have something you would like to share with the museum or have questions regarding items on loan, please contact the curatorial staff. HCA reserves the right to accept or refuse items based on current holdings.

Calendar

1996 Holiday Dinner	December 7, 1996
1997 HCA Convention	June 18-21, 1997

Features

A Very Long Heisey Weekend and Quarterly Meeting

John (Carl) Sparacio 4-6

Liaison Relations—A Discovery Is Made!

Molly Kaspar 8

How Sweet It Is—Part 3

Jim Earnshaw 9-11

Heisey Advertisement

12

Questions and Answers

13-14

Making Glass By Hand—Part Two

Author Unknown 15-18

News From The Museum Shop

It's time to start your holiday shopping! 19

Special Limited Edition & Holiday Dinner

Order Forms 20

Departments

President's Discourse, Tom Bischoff 3

From the Archives, Don Valdes 7

Club Notes 21

Advertising 22-31

The President's Discourse

Tom Bischoff

Linda and I just returned from Sturbridge, Massachusetts and the now renamed Percy and Vivian Moore Memorial Quarterly Dinner, hosted by the Bay State and Yankee Heisey Collectors Clubs. A fine job those hard working easterners did! The auction held in Southbridge was a successful fund raiser and I am sure Sam had as much fun as I did as the guest auctioneers. The dinner was one of the best I can remember and the after dinner specialty auction was also well received by those who have never had the pleasure of attending. All of the souvenirs (Rococo type tumblers) sold out as well.

I was happy to be able to report an endowment fund balance of over \$533,000.00! The HCA Board has authorized a break from tradition which will permit the use of non-Heisey items at the 1997 Convention Display as long as done in a clearly marked way for educational purposes. Under the careful supervision of Janet Caswell and her committee the new procedure should afford a greater educational experience for visitors; as if the beauty of our beloved Heisey glass is not enough.

Kelly and I had planned an article for this issue of the *Heisey News* concerning the use of the Diamond H logo by members. Circumstances, technical and otherwise, kept me from getting together the exact information necessary to complete the article but it will appear next month.

The Board under the watchful and thoughtful eyes of Director Jay Martin is pursuing a mold use and marketing policy which will benefit HCA and the focus of our goal of education and presentation of Heisey glass through the museum and otherwise. More perhaps from Jay as the plans are implemented.

In this issue appears a members only offering of Cobalt Blue Donkeys and Ruby Red Baby Elephants. While HCA is now the largest glass collecting club with arguably the best museum of its type in the nation, its Board understands its members are the strength of the organization. Membership has its privileges including a 10% discount on museum shop purchases only of \$50.00 or more (Special limited editions and sale items are exempt from this offer. Member must request discount). Advise others of the benefits—a yearly subscription to the *Heisey News*, free admission to the National Heisey Glass Museum, access to the Louise Ream Library, an opportunity to attend special events and the opportunity to join a study club—how can they refuse to join? ♦



Mr. President hard at work in Sturbridge, MA.

A Very Long Heisey Weekend And Quarterly Meeting

John (Carl) Sparacio

It was yet another Heisey “You Shoulda Been There” weekend at the HCA September quarterly meeting and the annual Percy & Vivian Moore Memorial Dinner. If you’ve been paying attention at all, you know that it was held in Sturbridge, Massachusetts and hosted by the Yankee Heisey Club.

This is the second time the Yankee Heisey Club has hosted an “away” (translation: not in Newark, Ohio) HCA meeting. I am tempted to say—and they’re going to keep doing it until they get it right but each meeting has been right thanks to Jim Houghton, Tim Rector and the members of the Yankee Heisey Club. Jim cleverly arranged to have the famous Brimfield Flea



Jim Houghton with fellow members at the cocktail party.

Auction attendees viewing the glassware before bidding began.

Market coincide with our meeting so he could tell the hotels, motels and restaurants in the area that they were filled to capacity because of our meeting.

The first official event (after the unofficial Brimfield extravaganza) was the welcoming cocktail party at 4 pm Friday afternoon at Charlie Brown’s, a local restaurant. My wife Helen

and I took advantage of the late starting festivities by heading for Sturbridge early Friday morning to allow for stops at one or two antiques centers along the way (I harbored no thoughts of Brimfield as it is not on my list of places to visit while conscious).

The welcoming get together was a lot of fun, it’s always a great meeting with Heisey lovers whether they’re



old friends or brand new acquaintances. A common bond is an automatic ice breaker. That and inquiring if I got the marble out yet served to break the ice for some. I refused to talk about it.

Two hours of catch up talk and news of other people's finds makes a dieting man (me) hungry—especially when he tried (albeit unsuccessfully) to inhibit his hors d'oeuvres intake. The revelers split into groups and went off to an assortment of area restaurants to stoke up for the busy day ahead.

The viewing for an all Heisey auction was to begin at 10:00 am Saturday morning but that didn't phase me. Heck, I've been known to be up and at 'em by 9:00 am at times. It was the HCA Board meeting scheduled for 7:00 am that same morning that bent me out of shape. Isn't there something in the Constitution of the United States that says pre-dawn



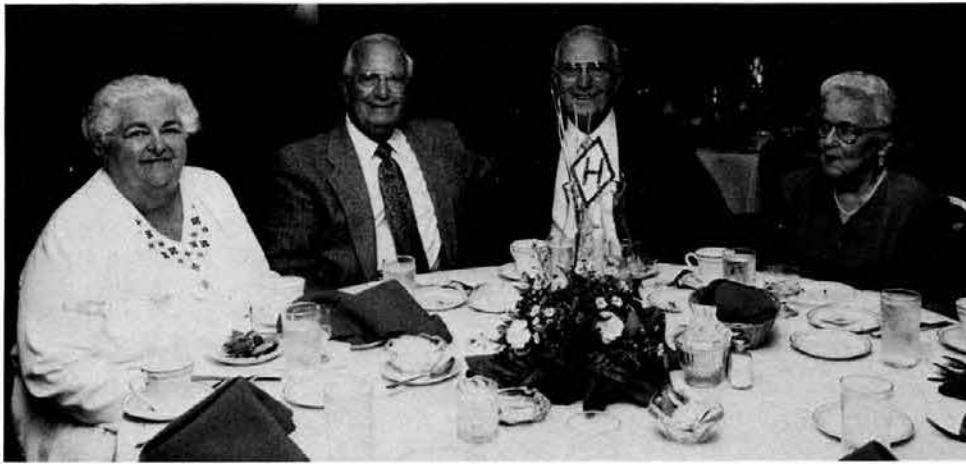
The Yankee Heisey Club created a special table setting for the occasion.

meetings are cruel and unusual punishment? And as if it wasn't enough that even my wife managed to push me out of bed, into the shower and out the door on time, when I got to the meeting the coffee wasn't ready! How's a body to function? Not being one to complain, I whimpered under my chair until it was served.

There's not much I can report about the board meeting. I woke up as everyone was leaving the room when someone asked if I'd be going to the auction viewing then. It's true what they say, I guess—time flies when your having fun.

The auction was great fun but could have been better if my wife wasn't controlling our bid number. We're incompatible, you see, I'm more cautious than she is. To her an auction is a challenge and she takes it personal affront when anyone bids against her. She gets a very determined look on her face. It says "Mess with me, will they, I'll show 'em!" And she usually does. I console myself by repeating over and over that it's all for a good cause.

There were many great pieces in the auction (my check book says we got most of them). President, Tom Bischoff and Board Member Sam Schnaidt of Apple Tree Auction Service did a fine job of keeping it going. I'm beginning to suspect they know Helen's weakness. Four hundred pieces means that a lot of glass had to be handled and the Yankee Heisey Collectors, with help from the Bay State Heisey Club and HCA members Mike and Barbara Rosenberger and Frank Scott out of the North Carolina group, were up to the task. Frank took the risk of leaving his wife unattended while he worked. Frank's wife, Michelle, sat directly in front of us and I was buffeted about by the wind whipped up by waiving arms when she and Helen vied for the same pieces.



Twin brothers Carl and Vincent Sparacio with their dates, Helen and Grace.

After the auction we packed up and left—poorer but not wiser. We had a couple of hours to kill before the annual meeting and the Percy & Vivian Moore Memorial Banquet that evening. You might have already

guessed that we went antiquing. Using the thinness of my wallet as I gauge, I can report that we were successful. Because nobody likes to see a grown man cry, I'll skip the antiquing and get right to the meeting and banquet.

The banquet was a special affair—it wasn't "all you can eat" but it should have been billed as such. Each entree could have fed two people but more important, everything was delicious. Rom's where the banquet was held, is my favorite place to eat in Sturbridge, a town that boasts many fine restaurants. Rom's may not be as fancy as some but the food is always great. I've had lunch or dinner at weird hours because I will not miss having a meal there whenever we pass through. After a wonderful dinner it was time for our meeting.

As I've noted in the past, I enjoy these quarterly meetings (as opposed to the annual meeting in June) because there are a lot of motions to "dispense with." Dispense with the minutes, dispense with the treasurer's report, dispense with committee reports, etc., etc. Now I know there are those who would rather hear these things but, being on the board, I've been there and done that so humor me. If anyone disagrees he or she can always stand up and demand that something that has been dispensed with be read. That might be fun too because they'd get to hear everyone else say, "Awwwww!" in unison (I'm in the tenor section).

Sam Schnaidt works the dinner crowd during the feasibility auction.

With the requirements of Robert's Rules dispensed with (I'll bet Robert never sat through a meeting chaired by Tom Bischoff, who inexplicably addresses me as John, as you can tell, I don't harbor a grudge,) things went swimmingly. Jim Houghton thanked his club, everyone who helped and everyone who attended. Tom Bischoff then thanked Jim for doing the thanking. Members of the National Heisey Glass Museum staff in attendance were introduced and applauded.



As has become tradition, after the formal meeting was closed (and I use the word "formal" in its loosest sense) an auction of rare pieces out of Heisey molds made for feasibility studies were auctioned. These pieces (mostly animals) are in colors not available to the open market. They are true treasures. What's-his-name Bischoff and Sam Schnaidt did the light hearted auctioning and some unusual items found new homes. My wife felt naked without a number card to wave so we didn't get anything else to carry home.

The quarterly meeting ended leaving everyone with a nice warm glow. Actually, it didn't end for us - we continued on for a few days of antiquing in New Hampshire which made it the "Very Long Heisey Weekend" alluded to earlier. But that's another story for another time. ♦

From The Archives—Moving Towards the 21st Century

Don Valdes

Talk of the difficulty computer users are destined to encounter in less than four years when we hit the magic number, 2000 AD hasn't really bothered me. I've been fooling around with these simple but oh so literal machines for some time. True, I can visualize wherein the



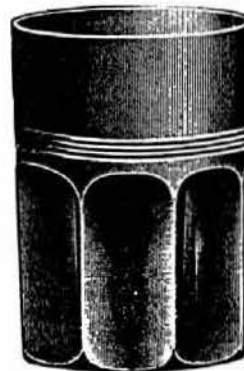
problem lies, the computer simply can't tell 2000 from 1000 if you drop the first two numbers. For some programs '00 will imply 1900, not the current year 2000. With my limited knowledge of huge data banks and the programming of highly sophisticated machines it is easy for me to say that the problem is a minor one to solve but makes good copy for a "slow news day."

The reason I even ponder this problem today is not completely a reaction to all the year 2000 ballyhoo and the accompanying philosophical discussions of how computers are beginning to dictate many aspects of our lives. The simple, literal minded machine is messing up my efforts in the archives! At the risk of boring you out of your skulls those of you who are not computer literate, here goes.

#1E92 Omega

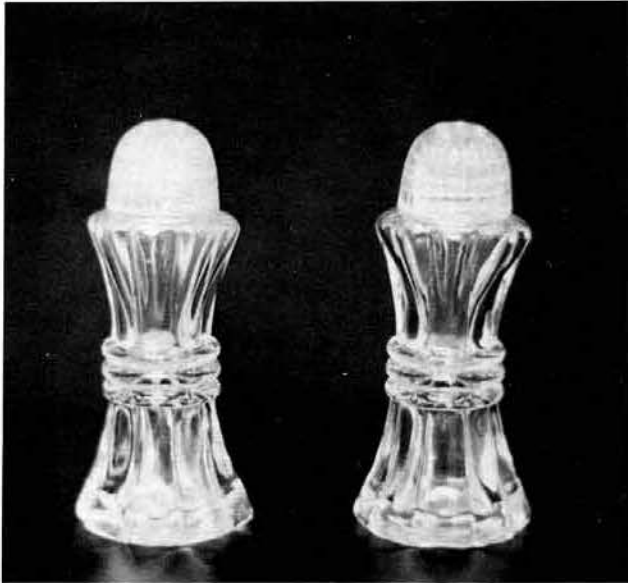
My latest box to clean out contained some Table Talks. Now, long ago I decided that while sorting through and classifying material it would be wise to cross reference at the same time. This makes it handy for future researchers but sure slows down the sorting-out process. When I first started work in the archives we were limited in the choices of computer programs I could use. However, this was of little consequence as I was working on correspondence and, with all that textual material, it seemed to me Word Perfect was just dandy anyway. Then we got Microsoft Office and ACCESS. I've converted many of the files, Employee Records, Photographs, Advertisements, etc. and just love the cross referencing one can accomplish with this simple-minded, literal machine. But herein lies the point (limited and obscure though it may be) of this whole dissertation: we have a few decorations and a few patterns that screw up the whole process. What does one do with Pattern #379 1/2 when you are running a sort with a machine that loves decimals but hates fractions? You may define the field as "text" rather than "number" but then a sort places 2000 before 300 (back to our calendar problem again). I'm sure you computer lovers can answer that one, but it does slow down the sorting process. Resolving the more complicated "numbers" gets hairy. What should we do with Omega stemware? Did it ever have a Dahlia cutting? Whoever decided on the numbers didn't mess with a computer! ♦

379½ 8 oz. tumbler



Liaison Relations—A Discovery Is Made!

Molly Kaspar



*The mysterious pair of
Regency shakers.*

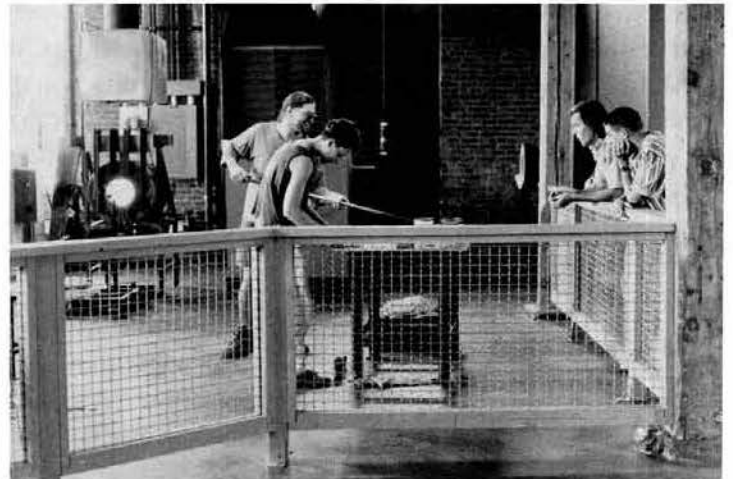
*Just another day in the
HCA Glass Studio!*

For those of you who couldn't make it to the Percy and Vivian Moore Dinner in Sturbridge, Massachusetts, it was announced that our annual Christmas Dinner will be held December 7 at the Institute of Industrial Technology and the HCA Glass Studio. I think this is going to be another exciting evening, much like our opening night last June. Lots to see, friends to visit with, a great dinner (I promise it won't be as cramped as the opening!) and a hot auction to top it off! A hot auction takes place as the pieces are being made—bidding begins as the glassmaker is finishing the piece. These auctions are often pretty exciting. I know of a few other surprises for the evening but I'll keep them a secret for now. Don't forget to mark your calendars!

The holidays will again be a special time for Heisey Collectors of America. Plans for special programs at both museums are currently being finalized. I am planning a paperweight making class at the studio to tie into our holiday events at the National Heisey Glass Museum. Each participant in the class will make a paperweight, with the assistance from qualified instructors, learn the basic steps to glassmaking and take home the finished piece for added lasting memories. More details on this next month, along with my next artist profile! ♦

It's been an exciting month at the HCA Glass Studio. One of your fellow Heisey collectors made a great find in his collection, and now all of our curiosity can be put to rest. Remember the Regency salt that is on display at the studio? Well, the piece was discovered!

A gentleman stopped by the museum with several pieces of glassware for Kelly to identify. Among them was a pair of Regency salt shakers. When he showed them to us he said he had read one of my articles and thought the glass might be what I was looking for. Since the pieces were not marked, none of us knew for sure if they were authentic Heisey. They passed the infamous "black light test," which was a good sign. It wasn't until I got in the case at IIT and fit the piece into the mold that we knew for sure. What a lucky find! The pair of shakers were placed on loan to the museum; one is on display at the studio, the other at the National Heisey Glass Museum. Now, if only that Plantation goblet would turn up...



How Sweet It Is—The Pattern Years 1890 to 1910, Part 3

Jim Earnshaw

The period of 1890 to 1910 was a busy time for A.H. Heisey and Company. More new patterns were created to keep up with the trends of an already growing company. Research concludes that Heisey had a molasses or syrup for nearly every pattern introduced during this time. Already utilitarian, Heisey focused on the everyday, basic needs of its customers. Heisey understood that the country was falling into hard times and saw the need to make glassware more economical for both business and customers. The company expanded their diverse selection of molds and continued with an already prominent company motto—"Only the finest in American Crystal".

During this time Banded Flute #150 produced a 7 oz. size molasses that is extremely hard to find. It has clear glass with the familiar band around the body. Only two of these are known, therefore the piece is a real find. So far about 4 or 5 13 oz. Locket on Chain molasses have appeared, treasured by those who own them. Peerless, an old pattern, had a 5 oz. bar, a 7 oz. hotel and a 13 oz. jug in its line. None are easy to find, especially the 5 oz. Lids or tops may vary depending on when or who replaced them. Plaster of Paris was used to attach the lids, often making them difficult remove.

The Paneled Cane #315 line had a 13 oz. molasses with OK top in Crystal and possibly Ivorina Verde. The piece was only in production for eight years and is considered by researchers to be very rare. Next was #325 Pillows in both a 7 oz. squat molasses and a 13 oz. in Crystal. This piece has also been seen in Rose. The #331 Colonial appeared in 1906 as a 13 oz. molasses in Crystal and continued in production until 1918. The Waldorf-Astoria #333 had the only 9 oz. molasses in the Heisey line. Due to its use in the hotel trade the #333 molasses received great use and damage, thus making it difficult to find today.

Prince of Wales Plumes #335, probably one of the busiest and most intricate patterns, was produced in two sizes, a 7 oz. and 13 oz. molasses. Most were Crystal while some had gold decoration. After its 12 year production one may assume that there are still some molasses yet to be found. Touraine #337 seems to be an elusive pattern. The catalog mentions a 5 oz. Crystal molasses and one with decorations; none have been seen or known. The Touraine 13 oz. molasses is clear with a plain shape and typical flared Touraine bottom.

The #339 Continental and the #400 Colonial lines produced 13 oz. Crystal molasses. The #339 has 8 panels of flutes with a "division" around the circumference. The Heisey catalog prints for #339 and #400 *are the same*—but the #400 had 10 panels. Don't be confused. They *are not* the same, but appear to be. The tops used are the same. The #341 Puritan-Old Williamsburg-Colonial-call it what you may, was produced from 1904 to 1910 in a 13 oz. molasses only. I could not find production "turn sheets" beyond then for this molasses can.

Sunburst #343 came in a 13 oz. Crystal molasses without decoration. Prison Stripe produced a 13 oz. in Crystal, with a short production life from 1904 to 1909. Old Queen Ann #365 was also produced in the 13 oz. size, but has not been seen. The #379 Urn, produced from 1905-1907, is confusing. The 7 oz. is a creamer and the syrup has a "notch" above the handle for a "clip" type lid. This was Heisey's first syrup with a removable top for easy cleaning. Unfortunately for collectors, this piece is found mostly without the lid. A 12 oz. molasses was also in the Urn line. This is the first indication that Heisey admitted to less than a 13 oz. capacity.

The following list numbers 110 Heisey syrup pitchers—taking into consideration Crystal, colors, Heisey decorations, tops, bottoms, Heisey etchings and cutting and handles. Add the cuttings done by others on #362 and #363 and you may consider 35 or 40 more. ♦

No.	Pattern	Dates	Size	Color
150	Banded Flute	1907-1932	7 oz.	Crystal
160	Locket on Chain <i>Also seen with decoration, possible red flashed with gold</i>	1896-1910	13 oz.	Crystal (<i>NT top</i>)
300	Peerless-Colonial	1897-1910	5 oz. <i>bar</i> 7 oz. <i>hotel</i> 13 oz.	Crystal Crystal Crystal
305	Punty and Diamond Point	1899-1907	5 oz. 13 oz.	Crystal Crystal
315	Paneled Cane	1900-1908	13 oz. 13 oz.	Crystal (<i>OK top</i>) Possibly Ivorina Verde
325	Pillows	1900-1912	7 oz. 13 oz. 13 oz.	Crystal Crystal Flamingo (<i>originally Rose</i>)
331	Colonial	1906-1918	13 oz.	Crystal
333	Waldorf-Astoria Hotel	1902-1914	9 oz.	Crystal
335	Prince of Wales Plumes	1902-1914	7 oz. 13 oz.	Crystal Crystal
337	Touraine	1902-1930	5 oz. 13 oz. 5 oz.	Crystal (<i>unseen</i>) Crystal With 56 decoration and #63 green (<i>unseen</i>)
339	Continental	1903-1913	13 oz.	Crystal (<i>8 panels</i>)
341	Puritan	1904-1920	13 oz.	Crystal
343	Sunburst	1904-1920	13 oz.	Crystal
357	Prison Stripe	1904-1909	13 oz.	Crystal
365	Queen Ann	1906-1911	13 oz.	Crystal
379	Urn	1905-1907	7 oz. 12 oz.	Crystal Crystal
400	Colonial <i>Looks like #339 Continental but with 10 panels.</i>	1909-1916	13 oz.	Crystal
1776	Kalonyal	1904-1908	13 oz.	Crystal
353	Medium Flat panel <i>All with flat bottoms</i>	1908-1930	5 oz. 7 oz. 12 oz.	Crystal with 5½" #1150 plate Crystal with 5½" #1150 plate Crystal with 6" #1150 plate
354	Wide Flat Panel	1906-1930	12 oz. <i>squat</i> 16 oz. 16 oz.	Crystal with 6" #1150 plate Crystal with raised/flat bottom Moongleam (<i>two seen, doubt this was a production item</i>)
355	Quator <i>(Part of #354 but sometimes identified as Quator)</i>		24 oz. 32 oz.	Crystal with raised/flat bottom Crystal with raised/flat bottom

468	<i>Blown with ground bottom. Pat'd 11/21/10. Also sold as iced tea or lemonade (July 1916).</i>		64 oz. (actual 48 oz.)	Crystal
357			7 oz.	Crystal
359	<i>Same shape as #357.</i>		12 oz.	Crystal
360			7 oz.	Crystal
362	<i>Series #362 & #363 were primarily sold to other companies for cutting or engraving)</i>		7 oz. 12 oz.	Crystal Crystal
363			5 oz. 12 oz.	Crystal Crystal
362			7 oz. 7 oz. 7 oz.	Crystal, #693 Cloister cutting Crystal, #729 Fairfield cutting Crystal, #679 Windsor cutting
363			7 oz. 7 oz..	Crystal, #679 Windsor cutting Crystal, #693 Cloister cutting
371			7 oz. 7 oz.	Crystal with chrome metal and curved top Crystal, #693 Cloister cutting
371			5 oz. 7 oz. 12 oz.	All THREE are found in Crystal, Flamingo, Moongleam and Sahara
362			7 oz.	Crystal with gold trim and matching plate
363			7 oz.	Crystal with gold trim and matching plate
353			7 oz. 12 oz.	Crystal, #416 Vintage etch Crystal, #416 Vintage etch
362			7 oz. 12 oz.	Crystal with Blackberry etch Crystal with Blackberry etch
363			7 oz.	Crystal, #411 Lansdowne (Nosegay etch)
1181 1184	Yeoman <i>One in 1972 Heisey Auction.</i>		7 oz. <i>syrup with foot</i>	Possible colors
1503	Crystolite		7 oz.	Crystal with Drip-cut lid, black or ivory plastic handle
1567	Plantation		7 oz.	Crystal with Drip-cut lid, black or ivory plastic handle

There's still lots to be found. Happy Heisey Hunting.

How Sweet It Is! ♦

Alluring etched glass... by Heisey... the most expressive gift

Magnificent is the gift of this smart, original etched glassware by Heisey, a new design of delicate tracery and complete beauty that always charms. How delightful on holiday tables and what a treasure to own! . . . Choose the golden, gleaming *Sahara* color in this pat-

tern, or the fascinating combination of crystal and *Moon Gleam green*. Or select an *all-crystal* set. Leading department stores, gift shops and glassware stores are showing them now in complete table services, with other Heisey creations. . . . "Gifts of Glassware"

contains a wealth of suggestions to help you choose a gift to delight another—or one that you, yourself, will cherish. Write for your copy.



Glass Perfected Through the Secrets of 4000 Years

They say that when *Emperor Frederick IV of Germany* paid a visit to Venice in the fifteenth century, the doge and senators of that city presented him with a beautiful glass vase. They deemed glass to be the gift most worthy of honoring royalty. Now Heisey glass, created upon the secrets of all the centuries, is chosen by those who wish their gifts to be fully in keeping with the finest sentiments, honoring both the donor and the recipient.

A. H. HEISEY & CO., NEWARK, OHIO

Look for
the  on every
piece
embossed on the glass
or on adhesive label

 **Heisey's**
GLASSWARE  for your table

Questions And Answers

Oxford, Massachusetts member sets the record straight:

I am writing to set the record straight on A.H. Heisey's Civil War rank. My mother and I are both members of HCA—she just received a copy of Thomas G. Felt's *A.H. Heisey & Company: A Brief History*, which (on page 2) still questions Heisey's rank. I am a military historian but unfortunately my expertise is in European forces, not our own, however...

Per Act of Congress of April 23, 1904 it was enacted "that any officer below the grade of Brigadier General, who served in the Civil War prior to April 9, 1865, theretofore or thereafter retired would be advanced one grade and would receive the retired pay and allowances of the advanced grade."



By this legislation, Heisey and all other surviving Union officers below General rank were all simultaneously "bumped" up a rank. He was therefore legally "Major Heisey from that point on."

I only just tracked this information down in the 1969 Directory of Graduates of the United States Military Academy 1802-1969, page 27, in a list of Congressional actions affecting promotions and pensions of U.S. Army officers.

Dedicated Reader in Indiana asks:

Ques: My husband and I collect and sell vintage Carnival glass. I've been telling everyone that Heisey did not

irridize their glass—that other companies probably bought the Heisey and did the irridizing. I thought maybe I'd better ask you so I won't be telling them wrong!

Ans: You are correct—A.H. Heisey and Company did not irridize their glassware. Although Heisey did have their own "decorating" department (cutting, etching, etc.), Heisey blanks were sold to other companies who in turn would decorate the glass. This practice was fairly common among glassmakers.

Researcher in New York inquires:

Ques: A friend recently showed us a bottle approximately 5½ inches high from top to bottom with a silver screw top. It might be a liquor flask or some type of cologne. In my thinking, it did not look like a Heisey pattern. I would describe it as somewhat like a herringbone pattern. The bottom of the bottle had a diamond mold mark but with no "H" inside. There appeared to be a dot inside the diamond. Above the diamond was a "B".



My research has not come up with anything that indicates Heisey made such a bottle. Vogel listed a liquor bottle, but it did not look like this bottle. Can you give me any clues on this?



The left diamond is the famous Heisey trademark while the right diamond is the mark of Owens of Illinois.



Ans: The bottle which you refer to in your correspondence is not Heisey.

In my opinion, it sounds like you have an Owens of Illinois bottle. This signature is very similar to Heisey's H inside of a diamond and is often confused with Heisey. The Owens of Illinois signature is an I inside of a diamond. Factories were located in Alton, Illinois, Gas City, Indiana, Chicago Heights, Illinois, Bridgeton, New Jersey and Minatola, New Jersey. The bottle may be manufactured by Mosser Glass Company from Cambridge, Ohio. This mark is a "B".

You can see how this can be easily confused. Again, without actually viewing the piece it is difficult to give a positive answer!

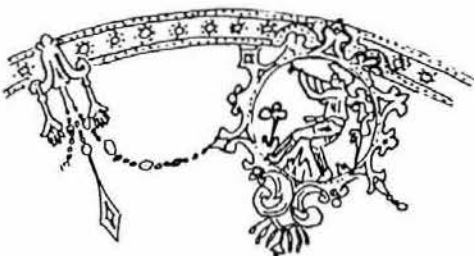
Curious collector asks:

Ques: At the suggestion of Ms. Jane Spillman, Curator of American Glass at The Corning Museum of Glass, I am writing to you for help in identifying a set of Heisey stemware that I have inherited. I have 9 goblets, 12 cocktail glasses, 10 highballs and 7 sherries.



The Pied Piper etch on a Wabash goblet and wine.

The stemware is acid-etched. From the enclosed rubbings, could you possibly identify the etch and provide further information on the glassware?



Ans: From your sketches we determined the etch on your stemware is A.H. Heisey and Company's #439 Pied Piper. This double plate etching sometimes known as "Dancing Girl" was in production from 1922 to 1942. The stemware depicts 3 different cameos while the larger pieces of glassware may contain more.

In regards to your stemware pattern, without a drawing or picture, I can only guess that it is likely to be #3350 Wabash. The Pied Piper etch is most often associated with that pattern. ♦

Making Glass By Hand—The Conclusion

Reprint from May 1984 Heisey News, Author unknown

The Gatherer then lays the end of the pipe on the marvering block, which is a smooth, flat slab of iron standing on four legs. By rolling the glass on the end of the pipe back and forth across the block, while he holds the other end about waist high, the Gatherer presses the glass into a cylindrical shape. It is almost the shape of the final beer glass, but of course it is not yet hollow, and at this stage of the process the partly formed glass is called a parison. The



Gatherer takes a few steps from the marvering block over to the Blower, and gives the pipe to the Blower by placing the nose end of the pipe in a rack and letting the Blower take the other end in his left hand. The Blower holds the pipe in this position for a short while, since his right hand is still occupied with the previous piece. He must keep turning the pipe slowly, to prevent the soft glass from sagging out of shape (this is called keeping it on center).

The A.H. Heisey & Company hot shop.

The Blower is standing on a platform about two feet off the ground, with his back to the furnace. In front of him, and under the platform on which he stands, is a tub of water. The mold into which he will blow the glass is made in three sections which are attached by metal arms to the platform. One of the sections, called the bottom plate, can be lowered or raised from the tub of water as the Blower steps off or on a pedal on the platform. The two side sections, which are swung open when the mold is under water, are closed when the Blower steps with his left foot on another pedal. This apparatus, which is merely a convenient way of wetting and cooling the mold when it is not in use, is called the dummy.

When the Blower finishes the blowing of one glass, he gives it to the Crack-off Boy, who takes the pipe with the glass on it to another part of the shop. The Blower then takes the pipe he has been holding in his left hand, examines the parison or partly formed glass to see if the glass can be blown, and puts the pipe to his lips to blow a little more air into the bubble. He turns the pipe from one position to another, allowing the cylindrical piece of hot glass sag until it is brought into a perfectly straight alignment with the pipe. He swings the pipe like a pendulum once or twice, to elongate the parison by the pull of gravity.

The glass is now ready to be blown. The Blower steps on the pedal to raise the mold out of the tub of water and lowers the glass to the mold, but just before he puts it in the mold he lets the

bottom of the parison touch a flat metal plate. This flattens the part of the parison that will be the bottom of the finished beer glass. Then the Blower holds the glass in between the two side sections of the mold and steps on the second pedal to close the mold around the glass. Now he must bend his head slightly to hold the mouthpiece of the pipe in his mouth. He quickly applies

his lips to the pipe and blows, at the same time turning the pipe continually. If he were to stop turning, the seams and steam holds on the inside of the mold would be filled with the soft glass forced into them by the pressure of blowing. The rotating motion gives the outside of the tumbler a smooth surface corresponding to the smooth portions of the interior of the mold.

This type of mold is called a pastemold, because a paste of burnt cork and linseed oil has been spread over the inside by the Mold Cleaner. The paste lubricates the glass so that it does not rub on the inside of the mold. The water which remains on the mold is heated to steam by the hot glass forming a cushion of steam all over the inside of the mold, which also keeps the glass from rubbing on the metal. As the Blower keeps turning the pipe around and blowing, the lump of glass on the inside of the mold swells out into a thin shell which fits the inside of the mold perfectly. The blower can tell when the glass has hardened and cannot be blown any more. Then he steps off the pedal which opens the two sections of the mold and hands the pipe to the Crack-off Boy. (In the meantime the Blower has received another pipe from the Gatherer as mentioned above.)

The Blower does not make a finished tumbler by blowing the lump of glass in the mold. He has made a hollow

form, something like a short bottle. When the bottle is cut in two, the bottom section will be a glass. The top part, next to the pipe, is thrown out as cullet. The separation of the excess glass from the article being made is usually done in another department.

The Crack-off Boy takes the pipe from the Blower to the cracking-off stand. This is a shallow metal pan filled with sand, and standing waist high on four metal legs. From one side of it projects a rack upon which the end of the blow pipe can be laid. The Crack-off Boy holds the pipe on this rack awhile, to let the glass cool. Then he holds the pipe in his right hand while the left hand places the end of a chisel on the glass where it joins the pipe. By raising both the pipe and chisel together, bringing them down sharply on the edge of the stand, he "cracks off" the glass. The short bottle falls into the tray of sand, from which it is picked up by the Crack-off Boy, who carries it with long pincers to the beginning of thelehr. There he sets it on a moving steel wire mesh belt, which carries the glassware through to the other side of thelehr. In some shops another workman, the Carry-in Boy, is required to walk with the glassware from the cracking-off stand to the beginning of thelehr.

Stemware, such as wine glasses, goblets, etc., is one of the most important products of the fine quality glassware factory. The bowl of a wine glass is made in about the same fashion as the beer tumbler. The Gatherer uses a smaller blow pipe, and marvers the glass into a conical shape



This photo depicts a blower just as he has finished blowing his piece in the mold. His assistant is opening the mold, so that the piece may be removed and taken to another worker for the next step.

on the marvering block. By alternate blowing and swinging the pipe, the Blower forms the conical lump of glass into a bubble, which he then blows into the mold.

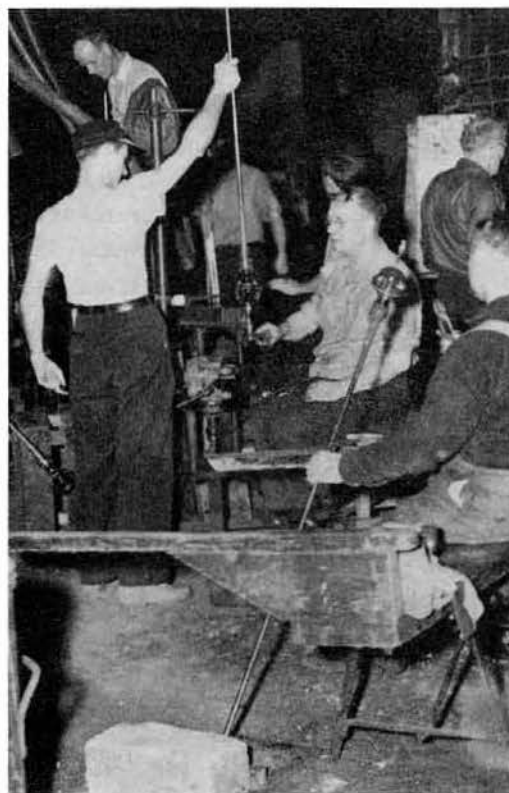
The pipe is taken from the Blower by a Straightener, who sits at a finisher's chair. The finisher's chair is a bench with two long flat arms, on which the blow pipe can be laid crosswise and rolled back and forth. By rolling the pipe toward and away from his left hand, the Straightener rotates the glass bowl on the nose of the pipe. His tool is a flat piece of carbon from which a rounded section is cut at one side. He holds the cut-out against the bowl while the latter is turning, thus pressing the bowl into a rounded shape. The pipe is then passed on to a Pipe Holder, who sits directly above the Straightener. The pipe holder turns around in his high seat and on the other side holds the pipe upright over a stem pressing mold, upon which he allows the bowl to rest. This mold will force a thin stem against the bottom of the bowl in the following way. The Stem Presser pulls a little iron cup from underneath the mold, and the Bit Gatherer fills the cup with glass that he has just brought from the pot. The Stem Presser shoves the little cup back under the mold, closes and locks the mold with a lever, and then presses downward on another short lever. The action of this lever is to force the hot glass out of the little cup and up into the mold, where it takes the shape of a stem. The upper end of the stem welds to the bottom of the bowl. The Stem Presser opens the mold, and the Pipe Holder, who has been holding the pipe in its upright position during the pressing operation, passes it down to the Warming-in Boy.

These workers are adding a stem to a blown bowl.

The Warming-in boy sits at a small finisher chair, upon which he rolls the pipe a few times to detect and straighten any unevenness in the bowl or stem. He cuts off a small glass thread that was left on the bottom of the stem by the pressing mold. By this time, the bowl and the stem are so cold that they must be heated again before then can straighten perfectly. The Warming-in Boy takes the pipe over to a glory hole, which is a small brickwork furnace heated by flames from burning gas. He holds the glass in the flames awhile, until the heat has softened it, and then passes the pipe to a Straightener. The Straightener sits at another finisher's chair, where he can roll a pipe back and forth and correct any unevenness in the stem or bowl by pressing them into shape with a wooden paddle.

Next the Pipe Boy takes the blow pipe from the Straightener to the Foot Caster. The foot of a glass is the flat disk at the bottom end of the stem, upon which the glass lands when upright. The Foot Caster is sitting at a finisher's chair, working on the last piece, and the new pipe is laid on the outer ends of the arms. When he is ready, he takes the pipe off the arms and holds it up to the Bit Gatherer, who has brought a small amount of glass from the pot. The Bit Gatherer holds the soft glass on the end of his gathering iron down on the end of the stem, which is turned slowly by the Foot Caster to let the glass spread evenly over the end of the stem.

After a second or so, when enough glass has dripped down and stuck to the stem, the Foot Caster takes a pair of shears in his right hand and quickly reaches out to shear through the stream of glass. He lays the pipe back on the arms of his chair, rolls it back and forth while he





The worker above has just added a bit of glass to the tip of the stem in order to make the foot on the goblet.

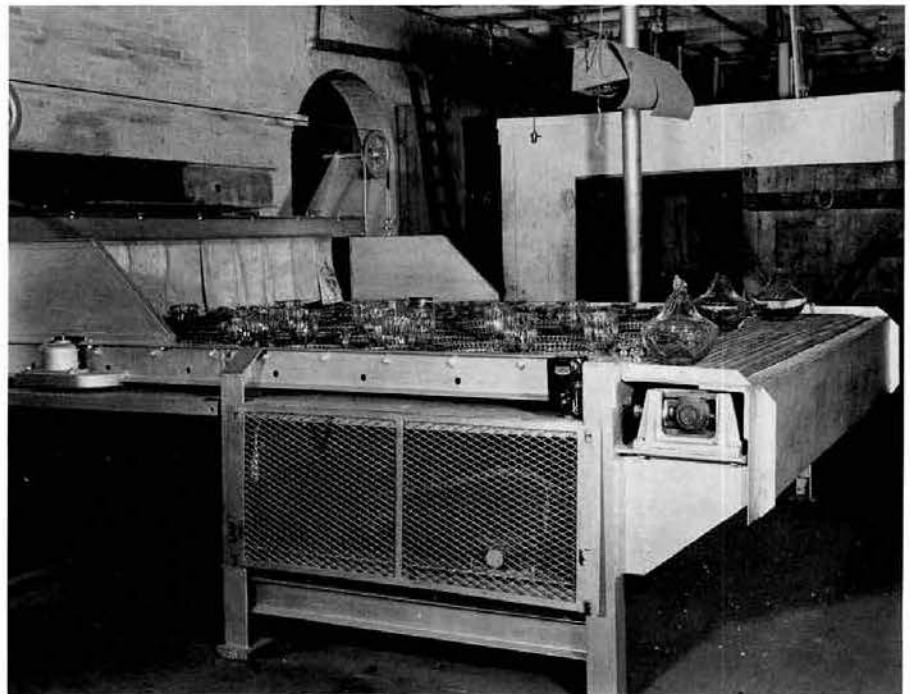
Annealed glass coming out of the lehr.

shapes the fresh glass into a round lump with a wooden paddle. His main tool, the clappers, is made by hinging two flat, oblong pieces of carbon together and fastening small round metal forming rims at the end of each piece. The Foot Caster takes the clappers in his right hand, opens them, and closes them on the soft glass. As he rounds the clappers on either side of the lump of glass, this causes the glass to flatten out into the shape of a disc. When he is finished, he rolls the pipe out to the end of the arms, where the Foot Straightener can reach it from his seat opposite. This same operation is performed to put a handle on a pitcher.

The Foot Straightener rolls the pipe on the arms of his chair and pats the glass here and there with a paddle to make the foot even with the rest of the glass. If the foot is to be convex, instead of flat, he presses the outer edge of the disk into this shape. To remove the glass from the pipe, he holds a small piece of cold iron against the glass where it joins the pipe, and then knocks the end of the pipe near the glass with the same iron. The contraction from cold iron and shock from the knock, cause the glass to break away from the pipe. The Pipe Boy holds a pair of asbestos wrapped pincers around the stem of the completed glass while it is being broken off, and then carries it over to a stand next to the burning-off machine. This machine has four circular holders in which the glass bottles are put by the Burn-off Man, where they are held in the center of a ring of small glass flames. The holder turns the glass around inside these flames for even heating. In a few seconds the flames melt through the glass, and the top excess portion falls off into a cullet box, leaving only the finished wine glass. The Burn-off Man takes the glasses out of the machine and sets them on an asbestos pad over a small gas flame. They are kept warm here until the Carry-in Boy takes them, several at a time, on a pronged fork to the lehr. He opens the door to the lehr by stepping on a metal plate in the floor. Then he reaches the fork inside, gently sets the glass on the moving belt, and withdraws the fork from underneath the bowl.

The speed of production of a hand shop depends on the sense of timing shown by each man. The workers take no unnecessary steps and make no extra motions. Each one does his part of the work quickly, handling the pipe in an easy, swinging manner. As the pipe is passed from one man to the next, the man receiving it does not

always have to look up before he takes it, though the blow pipe is long and cumbersome. The degree of skill shown by each man, and the coordination of the one man with another is possible because they have worked together for a long time, making the same pieces of glassware. ♦



News From the Museum Shop

Start your holiday shopping with HCA!

NEW ITEMS!

Dalzell-Viking recently reproduced our Small Elephant and Donkey in Ice Blue and both are now available in the shop. Sold individually, each piece is \$36.50. Items #125 (Elephant) and #128D (Donkey). Frosted Elephants (item #125A) are available for \$37.50.

And for those ready to spread holiday cheer...

Cover your table in red and green glassware! Tom and Jerry Mugs are available in red (\$18.00, item #107A) and green (\$15.00, item #107B). These are perfect for hot chocolate on a cold winter day! A pair of green Ipswich candlesticks would also be nice, at just \$22.00 each or \$40.00 for two (item #103C). Individual Provincial cream and sugar sets are also available in red. Why not buy a set for \$22.00 (item #192A)?

Or, how about a Gold Rope Mug? (\$35.00, 157B)

For those on your gift list interested in animals, a frosted Ruby Red Double Horsehead paperweight on bust off might be just the gift. This special piece is offered at \$35.00 (item #037E). Frosted Ruby Red (item #049D) and Frosted Green (item #019I) Victorian Bells are also available for only \$12.00 each.



Don't forget the book lovers on your holiday shopping list! Order an additional copy of Tom Felt's *A.H. Heisey and Company: A Brief History* (\$9.95 plus \$3 shipping and handling, item #148.). And for the new Heisey collector why not purchase the *Collectors Encyclopedia of Heisey Glassware 1925-1938, The Color Years* (\$24.95 plus \$4 shipping and handling, item #112).

We have much more waiting for you at the Museum Shop, so stop by or give us a call at 614-345-2932! ♦

HCA Annual Holiday Dinner

Saturday, December 7, 6:30 p.m. at the Institute of Industrial Technology

*Deadline for Holiday
Dinner reservations is
5:00 p.m. Thursday,
December 5th!*

Please join your fellow members for a festive holiday dinner at the Institute of Industrial Technology and the HCA Glass Studio. Catch the excitement of special glassblowing demonstrations and browse through the exhibits on display in the Institute. The evening begins with a cocktail hour at 6:30 p.m. with your choice of many tempting appetizers and a donation bar. The dinner, catered by Heritage Catering, follows at 7:30 p.m. The menu includes shrimp scampi, beef tenderloin, new potatoes, California vegetable medley, tossed salad, dinner rolls, with turtle cheesecake and holiday cookies for dessert. Wine, coffee and ice tea are included. Pieces will be auctioned as they are made in the studio and we will also have an HCA feasibility auction. All this for only \$22.00 per person! ♦

Reservation Form for 1996 Holiday Dinner

Mail to: HCA Holiday Dinner, 169 W. Church St., Newark, OH 43055, or call 614-345-2932

Name: _____

Address: _____

City/State/Zip: _____

Daytime Phone: _____

Payment: Check or MasterCard/Visa: _____ exp. _____

Number of Dinner Reservations: _____ X \$22.00 each = _____ Total

Name(s) of other attendees: _____

Elephant & Donkey Limited Edition Sale

Order your set before the '96 election is history!

Beginning **October 7, 1996** through **November 5, 1996** for a 30 day period, Heisey Collectors of America, Inc. will offer the Small Elephant in Ruby Red and Donkey in Dalzell Viking's Cobalt Blue. This offer is open to **members only**. The animals will be sold individually or in sets, one Ruby Elephant and one Cobalt Donkey per set. Cost is **\$45.00 each** plus \$5 shipping and handling, or **\$80.00 for the set** plus \$5.00 shipping and handling. Ohio residents pay applicable sales tax. Please allow 12 weeks for shipment, that's 12 weeks after the closing date. HCA assumes no responsibility in delay of shipment when delay occurs due to problems with glass production at the factory. A limited amount of frosted and seconds will be available in the Museum Shop when sale concludes. ♦

Mail to: Election Edition, 169 W. Church St., Newark, OH 43055 or call 614-345-2932

Deadline for sales is November 5, 1996!

Name: _____

Address: _____

City/State/Zip: _____

Daytime Phone: _____ OH Tax exempt # _____

Payment: Check or MasterCard/Visa: _____ exp. _____

Quantity _____ X = _____

Tax (OH ONLY) _____ X = _____ (tax on \$45=\$2.70, \$80=\$4.80)

Shipping _____ X = _____

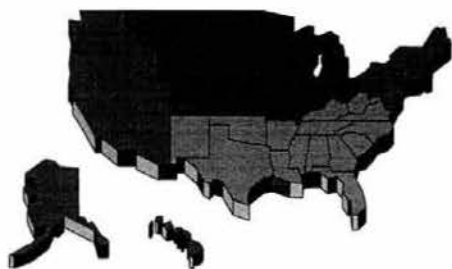
TOTAL _____ X = _____

**Please Circle
SHIP
PICK UP**

*Deadline for orders is
November 5th at 5 p.m.*

*Orders will not be
accepted after the
deadline unless
postmarked 11/5/96.*

Club Notes



Heisey Club of California

Fran Brock

The August meeting was held in the lovely home of Lynn and Rich Borino in Dana Point. Their spacious home has Heisey in almost every room...and the collection grows constantly. A light salad luncheon preceded the meeting which was called to order by Prez, Gene Moenning. Thirty two members were present, and one guest. The program was an extended Show 'N Tell, as it had been over 2 months that we had had time for same, and lots of goodies were ready for oohs & aahs since Convention and trips were great sources for picking up more Heisey. While lots of unusual and beautiful Heisey was shown, Gene Moenning's beautiful vase...such a rare one...#4157 Steele rose bowl, Tangerine with Opalescent rim was easily seen as the "prize pick". Everyone showed what they had, with a limit of 10 pieces, due to time allowed.

The main tope of the meeting was our offer to be made to the HCA Board to host another Quarterly Meeting in southern California. Also discussed was the August St. Louis Board Planning Day that Gene and Fran attended, with some answers that were given to questions raised by some of our members after Convention. Also discussed were plans for the club to attend Roy Boggs' Memorial Service. (22 members did attend!)

The September Meeting will be at the Fowlers in Lakewood on the 22nd. The program will be "Heisey look-alikes...our mistakes". Our club has always had a structured study program and we feel that is partly the reason that we are constantly growing in membership. Another important reason is that we have a meeting every month in member's homes and that adds to the camaraderie. We did that when our club was very small, and it has helped us grow. Many of our members consistently travel at least 35-50 miles to each meeting, and often up to

75-100 miles, depending on which town the meeting is in. It doesn't get dull, we get to see other's collections grow and enjoy the hospitality. We meet every 4th Sunday and invite you to join us. Call Terry Smith, our newsletter editor at 310-424-6426 as he always has the information as to the location of the next meeting. ♦



Fostoria Glass Collectors, Inc. announce Extravaganza VII

Elegant American handmade glassware is the focus of this year's Extravaganza VII; an annual event sponsored by Fostoria Glass Collectors, Inc. The event is on Saturday, November 2 at King Richard's Antique Mall, 12301 E. Whittier Blvd., Whittier, California. This large facility makes it possible for several exciting additions. First, there is space for more dealers. Dealers will be selling Heisey, Imperial, Cambridge, Fostoria, Westmoreland, china and silver. Second, glass identification is available from 10 a.m. to 1 p.m. Third, seminars on glass related topics promise a learning experience throughout the day. Fourth, an authentic Victorian table display showing how period table pieces of glass, china and silver were used.

Many stunning pieces of elegant glassware from members' collections will be on display. This large exhibit will have several rarely seen pieces and is an education by itself.

Do you have a piece of glass you cannot identify? Bring it to the Glass Identification Table between 10 a.m. and 1 p.m. (limit two pieces). Seminars by noted speakers begin at 11 a.m.

Over 200 lots of exciting glassware will be auctioned. Professional auctioneers promise to keep the auction fever going. Net proceeds from the auction goes to support glass museums and national glass organizations for preservation and education of American handmade glassware.

Glass sale starts at 9 a.m. The auction begins at 6 p.m. with preview at 5:30. Visit King Richard's Mall for antiquing (open at 10 a.m.) Food service is available in the area. Admission is \$5 for all events. For more information call 310-410-1179. ♦

➔**Advertising:** Send all ads to HCA Advertising, 169 W. Church St., Newark, OH 43055 or fax ads to (614) 345-9638, include MasterCard or VISA information. Ads are to be typed or printed on white paper with dark ink. Please double space. All ads must be prepaid. Please do not abbreviate Heisey pattern names or colors. Ads which are entered in a vertical column format can contain a maximum of 67 characters per line, including spaces and punctuation.

Classified: 20 cents per word (members), 30 cents per word (non-members), \$1.50 minimum, 1/8 page limit. Personal ads 1/8 page limit. Abbreviations and initials count as words.

Display Ads:	member	non
1/8 page (12 lines)	\$20.00	\$30.00
1/4 page (25 lines)	\$40.00	\$60.00
1/2 page (horizontal or vertical) (60 lines)	\$80.00	\$120.00
Full page (120 lines)	\$160.00	\$240.00

Ad copy must be received by the first of the month prior to publication (e.g. April 1 for May issue). Camera ready ads must follow specification. Reproductions (i.e. Heisey by Imperial) must be

Classified Ads

WANTED: Heisey "Fox Chase" #1509 8" sq. plate, #5012 7" ft'd. vase, #4163 16 oz. beer mug w/Red, Mnglm., Amber, handle. Fred Ludwig, 300 Rt. 10 clearly indicated. *Heisey News* accepts no further liability. Randolph, New Jersey 07869. (201) 366-1351.

WANTED: #3408 Jamestown stems, Rosalie etch: Oysters, Clarets, Juices, Sherrys and Cordials. Bill Ponseti, 749 Kendon Ln., Novato, California 94947. (415) 892-2648.

HIS & HER ANTIQUES
Cynthia Veilleux
121 East Street
Wrentham, MA 02093

(508) 384-3894
Shipping & Ins. Extra
H=Marked

#21	Aristocrat 7 1/4" etched candlesticks, H, pr.	\$145.00
#333	Colonial water bottle 9 1/4" for Waldorf Astoria	\$140.00
#343	Sunburst 1/2 gallon jug, H, (line in handle)	\$80.00
#350	Pinwheel & Fan punch bowl base, H	\$85.00
#350	Pinwheel & Fan hair receiver silver top, H	\$75.00
#350	Pinwheel & Fan dresser box silver top, H	\$75.00
#365	Early Queen Anne 7" pickle dish, H	\$40.00
#1219	Colonial 9" plates ground base, H, (11) ea.	\$20.00
#1228	Swirl Marcel Wave 8" plates, Moongleam, H, (8)	\$20.00
#1250	Groove & Slash hair receiver woman's face on silver pl. top, H	\$80.00
#1250	Groove & Slash 1/2 gallon jug	\$175.00
#1252	Twist nut cups, Marigold, H, (6) ea.	\$30.00
#1280	Winged Scroll 1/2 gallon tankard, Custard	\$335.00
#1401	Empress lemon dish, etched, dolphin finial, Faberware holder, Sahara	\$95.00
#1469	Ridgeleigh 11" bowl sterling vintage overlay	\$90.00
#1506	Provincial/Whirlpool tumbler 9 oz., H, (6) ea.	\$15.00
#1540	Lariat 3-part relish, etched 12 1/2"x8 1/4"	\$60.00
#1401	Empress #502 Orchid etched cream & sugar, H, pr.	\$65.00
#150	Banded Flute bar glass in sweet grass basket fitted, H	\$75.00
#1519	Waverly crm. & sug. ft'd. #507 Orchid etch, H, pr.	\$75.00

S. Williams
PO Box 1779
Brazoria, TX 77422-1779

(409) 964-4092
Leave msg. if no ans.
UPS & Ins. Extra
H=Marked

#417	Double Rib & Panel 6" basket, H	\$150.00
#417	Double Rib & Panel 6" basket, Flamingo, H	\$200.00
#458	Picket 8" basket, Wheat cut, H	\$175.00
#459	Colonial 7" round basket, Floral etch, H	\$250.00
#461	Banded Picket 7" basket, Floral cut, H	\$225.00
#463	Bonnet 7" basket, Floral etch, Flamingo, H, handle mold flaw	\$375.00
#463	Bonnet 7" basket, Wheat Band etch, H, sm. chip	\$150.00
#465	Recessed Panel 8" basket, H, (V2PG100)	\$175.00
#466	8" fruit basket, Floral etch, H, (V2PG155)	\$175.00
#33	5" Skirted Panel candlestick, H, pr.	\$90.00
#53	Tall individual salt & pepper, Moongleam w/ Crystal tops, set	\$60.00
#325	Pillows 7" Rose ball vase, H, (V1PG73)	\$150.00
#352	Flat Panel vase w/perforated cur, (V2PG28)	\$375.00
	12" Daisy & Leaves vase, H, (V2PG126)	\$350.00
#353	Colonial 2 qt. crushed fruit w/cover, H, (V2PG631)	\$350.00
#451	Lined Flute 1/2 gallon pitch/4-8 oz. tumblers, H, (V2PG97)	\$260.00
#1225-109	Petticoat Dolphin compote, Flamingo, w/ sterling trim	\$175.00
#1295	Beaded Swag 1/2 gallon tank, milk glass w/Rose dec.	\$210.00
#1433	Thumb Print & Panel 11" floral bowl, Moonleam	\$90.00
#1506	Provincial 4 1/2" nappy, Limelight, H	\$85.00
#1509	Waverly 14" Orchid etched (#507) platter	\$75.00

SEND SASE FOR COMPLETE INVENTORY

Michael Krumme
PO Box 5542
Santa Monica, CA 90409

(213) 936-4214
UPS Shipping Included
H=Marked

	Baby elephant	\$195.00
	Plug horse (Oscar)	\$95.00
	Punch ladle	\$50.00
#394	Narrow Flute Domino sugar tray, Flamingo, H	\$75.00
#433	Greek Key three quart tankard, H	\$265.00
#1205	Fancy Loop cruet & stopper	\$50.00
#1404	Old Sandwich cruet & stopper, H	\$55.00
#1469	Ridgeleigh tantalus set: 2 decanters in chrome stand w/black bakelite handle, minor as is, call	\$250.00
#1509	Queen Ann lion head floral bowl	\$195.00
#1567	Plantation marmalade & cover, H	\$110.00
#1567	Plantation footed gardenia bowl	\$150.00
#3350	Wabash with Pied Piper etch: 2 goblets, 4 oyster cocktails, 5 champagnes (plus 2 goblets and 1 champagne as is, H, take all for	\$225.00
#3417	Adkins bitters bottle, Circus etch (Lion Tamer)	\$225.00
#4157	Steele rose bowl d.o., Flamingo	\$45.00

UPS shipping is INCLUDED in all prices. If I'm not in please leave a message, ALL calls will be returned. "Do you still have?" Calls are welcome any time. Much more Heisey--no lists, send your detailed want list. Michael Krumme PO Box 5542, Santa Monica, CA 90409-5542 (213) 936-4214 7AM-9PM Pacific.

MOSTLY HEISEY
Rhoda Curley
16 Clayton Pl.
Albany, NY 12209

(800) 972-2775 or
(518) 482-6272
Plus UPS
H=Marked

#3368	Albemarle tall champagne, Hawthorne, (6)	\$70.00
#3368	Albemarle sherbets, Hawthorne, (3)	\$60.00
#3368	Albemarle champagne Moongleam foot and stem, clear bowl	\$38.00
#8434	Albemarle Variant saucer champagne, Moongleam and Hawthorne combination	\$500.00
#3390	Carcassone oyster cocktail, Sahara	\$32.00
#3404	Spanish wines, Titania etch, (6)	\$45.00
#3404	Spanish sherbets, Titania etch, (3)	\$25.00
#4092	Kenilworth sherries, (6)	\$30.00
#5024	Oxford goblets, Maryland cutting, (3)	\$35.00
#1404	Old Sandwich goblets, Sahara, (3)	\$25.00
#1404	Old Sandwich sundaes, Sahara, (2)	\$25.00
#5010	Symphone cocktails, Danish Princess cut, (6)	\$27.00
#3397	Gascony juice, Old Colony etch	\$30.00
#2516	Circle Pair goblets, Flamingo, (3)	\$30.00
#6091	Cabochon juice, Southwind cut	\$23.00
#6091	Cabochon sherbet, Southwind cut	\$20.00
#3380	Old Dominion cocktails, Sahara, (2)	\$25.00
#351	Priscilla 6 oz. shams Fort William Henry etch, (2)	\$95.00

Billie Waters
6367 Tussic Street
Westerville, OH 43082

(614) 882-6039
UPS & Ins. Extra
H=Marked

Set of 12 Lavender Ice animals	\$1000.00
50 Oscars	\$2000.00
20 Slag Imperial animals	\$400.00
Imperial Jade Tiger paperweight	\$60.00
Cheese cutting plate, H	\$100.00
Fox Chase stems, water goblets, (12) 3 repaired ALL	\$250.00
Williamsburg 3-lite candelabra w/prisms, pr.	\$500.00
Fish Bookends, pr.	\$300.00
Asiatic Pheasant, H	\$350.00

THE COLLECTORS STOP
Raphael & Eileen Wise
12018 Suellen Circle
West Palm Beach, FL 33414

(561) 793-0986
UPS Extra
H=Marked

#5	Patrician 8" candlesticks, H, pr.	\$135.00
#500	Octagon basket w/cutting, Flamingo, H	\$275.00
#1401	Empress cruet, Flamingo	\$175.00
#465	Recessed Panel 8" basket, H	\$155.00
#1401	Empress dolphin footed candlesticks, Sahara, H, pr.	\$295.00
#150	Banded Flute 8 oz. tumbler, H	\$55.00
#433	Greek Key small cherry jar & cover, H	\$225.00
	Kicking Pony	\$195.00
#1447	Rococo mayo & relish with cover	\$175.00
#1428	2-lite candlesticks, Sahara, H, pr.	\$225.00
#451	Cross Line Flute 1-pint pitcher, H	\$135.00
#133	Swan candlesticks, Sahara, pr.	\$335.00

Jean & Don Parrett
4995 Maple Dale Rd.
Jackson, MI 49201

(517) 784-7319
Recorder
Shipping & Ins. Extra
H=Marked

#3416	Barbara Fritchie ¼ oz. brandy, optic	\$110.00
#3416	Barbara Frithchie ¼ oz. brandy, optic, Cobalt bowl	\$400.00
#5040	Lariat Moonglo cut 1oz. cordial tall 5" 2 knot stem	\$295.00
#3381	Creole 1 oz. cordial d.o., All Alexandrite	\$245.00
#5072	Rose stem 1 oz. optic cordial	\$75.00
#5077	Legionnaire 1 oz. cordial, cut	\$75.00
#341	Williamsburg 1 oz. cordial	\$35.00
#373	Colonial 1 oz. cordial	\$35.00
#379	Wide Panel ¼ oz. Posse	\$42.00
#393	Narrow Flute 1 oz. cordial bar	\$75.00
#1469	Ridgeleigh 4" candle block, pr.	\$78.00
#1503	Crystalite 6" low cheese compote	\$35.00
#1503	Crystalite 10" spring salad bowl, star bottom	\$90.00
#1503	Crystalite 14" sandwich plate, star bottom	\$75.00
#1245/3970	Spiral 8" compote, Hawthorne	\$150.00
#1567	Plantation salt & pepper, pr.	\$78.00
#1405	Ipswich 8½" sq. luncheon plate, Sahara, (4)	\$35.00
#1503	Crystalite 4" coasters, (8), ea.	\$12.00
#1503½	Crystalite flared rim & saucers & panels, (6 set) ea. set	\$29.00
#1503	Crystalite 7" round candy glass lid	\$95.00
#1503	Crystalite large covered mustard	\$55.00
#1503	Crystalite salt & pepper, good chrome tops, pr.	\$48.00
#1503	Crystalite footed cigarette holder	\$35.00
#1503	Crystalite 8 oz. sanitary syrup & original top	\$125.00
#4004	Impromptu (4) cocktails & (3) oyster cocktails, ea.	\$15.00
#109	6½" compote (ridge & star & dolphin), Flamingo	\$295.00
#3362	Egyptian 7" compote d.o., Moongleam	\$135.00
#341	Williamsburg, largest pitcher	\$195.00
#393	Narrow Flute 16 oz. milk pitcher	\$125.00
#4164	Gallagher d.o. 2 qt. pitcher, Flamingo	\$295.00
#1401	Empress 3 pt. d.f. pitcher, Moongleam	\$395.00
#1401	Empress 3 pt. d.f. pitcher, Sahara	\$295.00
#351	Narrow Panel 28 oz. decanter & stopper	\$195.00
#341	Williamsburg 30 oz decanter, stopper plug X	\$165.00
#333	Waldorf Astoria 1 pt. decanter & stopper	\$175.00
#367	Prism Band 1 pt. decanter & stopper, Flamingo	\$345.00
#367	Prism Band 1 pt. decanter & stopper	\$195.00
#4225	Cobel 1 qt. cocktail shaker, Orchid, bubble on rim, sterling top & bottom	\$175.00
#393	Narrow Flute 3-part 13" lg. relish, Moongleam	\$49.00
#1238	Beehive 8½" plate, Flamingo, (4) ea.	\$20.00
#1183	Revere 8" square cheese & cover	\$80.00
#341	Williamsburg lg. cherry jar & stopper	\$125.00
#341	Williamsburg squat horseradish	\$95.00
#411	Rib & Panel covered candy 5", Moongleam	\$95.00
#1184	Yeoman covered candy 5¼", Moongleam	\$95.00
#406	Coarse Rib covered candy 5¼"	\$95.00
#353	Wide Panel sugar & creamer, pr.	\$75.00
#407	Coarse Rib sugar & creamer, Flamingo, pr.	\$90.00
#479	Petal sugar & creamer, Flamingo, pr.	\$85.00
#150	Pointed oval & Diamond Point spooner, Emerald	\$35.00
#2516	Circle Pair 11" d.o. floral bowl & #10 Frog, Mnglm., pr.	\$135.00
#3400	Koors 10" flared floral bowl d.o., Moongleam	\$110.00
#325	Pillows 3½ oz. punch cups, (3) ea.	\$25.00
#353	Large Panel 2 qt. covered Tobacco jar	\$295.00
#352	Medium Panel 1½ qt. crushed fruit jar & cover	\$225.00
#352	Medium Panel 1 qt. crushed fruit jar & cover	\$225.00
#1205	Fancy loop large Rose bowl	\$175.00
#357	Prison Stripe 4½" flared vase	\$50.00
#1540	Lariat covered 5" footed candy box	\$55.00
#1540	Lariat 12" footed swung vase	\$145.00
#464	8" fruit basket cut, beautiful	\$290.00

MOSTLY HEISEY
Rhoda Curley
16 Clayton Pl.
Albany, NY 12209

(800) 972-2775 or
(518) 482-6272
Plus UPS
H=Marked

#1223	Fluted border 8" plate, Moongleam, H, (6) ea.	\$20.00
#1245	Spiral Flute 8" plate, Flamingo, H, (8) ea.	\$20.00
#406	Coarse Rib 7 1/2" plate, Flamingo, H, (14) ea.	\$18.00
#406	Coarse Rib 4 1/4" plate, Flamingo, H, (6) ea.	\$12.00
#1252	Twist 8" plate, Marigold, H, (4) ea.	\$25.00
#1252	Twist 7" plate, Marigold, H, (4) ea.	\$22.00
#1252	Twist 6" plate, Marigold, H, (1)	\$20.00
#1252	Twist 8" plate, Moongleam, H, (6) ea.	\$30.00
#1252	Twist 4 1/2" plate, Flamingo, H, (5) ea.	\$12.00
#1401	Empress 8" sq. plate, Empress etch, Sahara, H, (10) ea.	\$30.00
#1405	Ipswich 8" sq. plate, Sahara, H, (2) ea.	\$45.00
#1404	Old Sandwich 8" plate, Sahara, H, (8) ea.	\$28.00
#1401	Empress 7" plate, Moongleam, H, (6) ea.	\$30.00
#1401	Empress 8" plate, Titania etch, H, (11) ea.	\$16.00
#1401	Empress 6" plate, Titania etch, H, (4) ea.	\$10.00
#1401	Empress 8" plate, Olympiad etch, H, (4) ea.	\$17.00
#1401	Empress 7" plate, Renaissance etch, H, (6) ea.	\$13.00
#1170	Pleat & Panel 8" plate with Flower cutting, H, (8) ea.	\$15.00
#1503	Crystalite 10 1/2" dinner plate, H, (1)	\$85.00
#1540	Lariat 7 1/2" plate, H, (6) ea.	\$10.00
#1238	Beehive 8" plate, H, (2) ea.	\$22.00
#1637 1/2	Town & Country plate, Dawn, H	\$95.00
#1469	Ridgeleigh 14" plate, H	\$85.00
#1541	Athena 14" plate, H, (2) ea.	\$65.00
#1252	Twist 11" plate with 48 2" cut flowers and leaves circling the outer band, Moongleam, H	\$135.00

SUM OF LIFE (610) 469-1243
Elaine & Fran Husted Fax (610) 469-1928
147 Barton Drive We pay S&I on all orders over \$500
Spring City, PA 19475 H=Marked

#1280	Winged Scroll pin tray, Custard	\$235.00
#1519	Waverly cram & sugar, Orchid etched, H, set	\$80.00
#1519	Waverly gardenia bowl, Orchid etch, H	\$100.00
#4230	Favor vase, diamond optic, Sahara	\$335.00
#4085	Ball vase 4", Zircon (small x on base)	\$240.00
#5025	Tyrolean cordial Orchid etched	\$195.00
#5025	Tyrolean goblet Orchid etched	\$50.00
#3336	Trojan cordial diamond optic, Pairpoint cutting	\$160.00
#411	Tudor candy dish 2-handles 5", Moongleam	\$60.00
#5010	Symphone goblet Minuet etch, (8) ea.	\$35.00
#5010	Symphone cocktail Minuet etch, (8) ea.	\$22.00
#5010	Symphone champagne Minuet etch, (7) ea.	\$22.00
#5010	Symphone cordial Crinoline etch	\$85.00
#5072	Rose stem wine Rose etch	\$100.00
#1469	Ridgeleigh star relish	\$50.00
#1469	Ridgeleigh cruet with stopper	\$50.00
#1469	Ridgeleigh coasters, Zircon, (2) ea.	\$60.00
#1469	Ridgeleigh candle vase, Sahara	\$150.00
#3350	Wabash cordial Pied Piper etch	\$95.00
#305	Punty & Diamond Point water bottle 1 qt.	\$110.00
#1170	Pleat & Panel bouillon with unknown cutting, (2) ea.	\$22.00
#1567	Plantation parfait, (3) ea.	\$45.00
#1567	Plantation sherbets/champagnes Ivy etch, (9) ea.	\$25.00
#1567	Plantation cream/sugar Ivy etch, set	\$65.00
#300	Peerless toothpick	\$60.00
#1E92	Omega wine Moonglo cut, (2) ea.	\$32.00
#5024	Oxford cordial Huguenot cutting	\$80.00
#1404	Old Sandwich pilsners clear, H, (4) ea.	\$95.00
#3380	Old Dominion cordial unknown cutting	\$180.00
#1540	Lariat punch bowl, underplate and 12 cups, H, set	\$220.00

We have over 400 items in many patterns and colors. Send SASE or inquire by fax or letter regarding your specific needs! We invite your calling (610) 469-1243, but please be sure to give your name, address and/or FAX number for our response. All orders shipped via UPS. Each piece carries a refund guarantee, upon our receipt of the piece, if you're not satisfied. Shipping extra.

A. York
7520A Lexington Club Blvd.
Delray Beach, FL 33446

(561) 496-7037
UPS & Ins. Extra
H=Marked

#5	Patrician 7 1/2" candlesticks, H, (1)	\$40.00
#31	Toy low handled candlestick, H, pr.	\$50.00
#112	Mercury candlestick, Sahara, pr.	\$65.00
#150	Banded Flute claret 4 1/2", H, (4) ea.	\$25.00
#305	Punty & Diamond Point #3 salt, sun color	\$20.00
#305	Punty & Diamond Point punch cups, H, (4) ea.	\$12.00
#335	Prince of Wales toothpick, fair gold, rim chip	\$35.00
#335	Prince of Wales punch cups w/gold, H, (2) ea.	\$15.00
#400	Colonial punch cups, (4) ea.	\$8.00
#1201	Fandango salt shaker #1	\$40.00
#1201	Fandango 6 oz. oil, (2) ea.	\$60.00
#1201	Fandango water bottle	\$75.00
#1205	Fancy Loop oil	\$60.00
#1205	Fancy Loop syrup, some dings on pattern	\$100.00
#1205	Fancy Loop butter pats, (5) ea.	\$12.00
#1220	Punty Band individual creamer, Custard, H, no souvenir	\$30.00
#1220	Punty Band tumbler, Custard, Flowers	\$50.00
#1235	Beaded Panel & Sunburst cruets, (2) ea.	\$60.00
#1252	Twist individual nut, Flamingo, H	\$15.00
#1255	Pineapple & Fan individual sugar, Emerald/Gold	\$40.00
#1280	Wing Scroll tumbler, Custard/Gold	\$50.00
#1295	Bead Swag lg. berry, Opal/roses	\$60.00
#1404	Old Sandwich ketchup bottle	\$70.00
#1404	Old Sandwich 2 1/2 oz. oil, o.s., some cloud, H	\$48.00
#1404	Old Sandwich 5 oz. glass, H, Sahara, (3) ea.	\$20.00
#1404	Old Sandwich purpled goblet low fld. 10 oz.	\$20.00
#1404	Old Sandwich ashtrays, individual, H, (4) ea.	\$10.00
#1425	Victorian etched ashtray w/match holder, H	\$20.00
#1469	Ridgeleigh oil, o.s. (some cloudiness), (2) ea.	\$25.00
#1469	Ridgeleigh 2 handled 6 1/2" cheese, H	\$10.00
#1459	Ridgeleigh cigarette holder w/2 ashtrays, H, set	\$25.00
#1486	Coleport ashtray, H, (4) all	\$30.00
#1503	Crystalite 1-lite candlestick, pr.	\$40.00
#1503	Crystalite rosette candleblock, pr.	\$22.00
#1503	Crystalite 10" 5-part relish	\$40.00
#1503	Crystalite individual swan nut cup, (4) ea.	\$20.00
#1519	Waverly fan vase	\$55.00
#1519	Waverly 11" 3-part relish with Orchid etch	\$45.00
#1519	Waverly 6" footed comport, Rose etch	\$45.00
#1540	Lariat perfume	\$70.00
#1567	Plantation mayo/underplate, H, some wear	\$40.00
#1567	Plantation punch cups, H, (10) ea.	\$18.00
#1567	Plantation 14" plate, Ivy etch, (wear in center)	\$38.00
#4035	Bethel decanter n.o.s. slightly cloudy, Tally Ho etch	\$85.00
#4036	Cocktail shaker, Rooster head	\$65.00
#4225	Cobel cocktail shaker 1 qt. w/Tally Ho etch	\$135.00
#5022	Graceful goblet w/Orchid etch, (2) ea.	\$40.00
#5072	Rose stem champagne, w/Rose etch, (2) ea.	\$30.00
#1447	Rococo cheese compote 5 1/2" w/Orchid etch	\$50.00
	Goose Wings 1/2	\$60.00
	Mallard wings 1/2	\$140.00
	Scottie dog	\$100.00

Heisey by Imperial

	Fish toothpick, Sunshine Yellow	\$30.00
	Elephant mug, (1) green, (1) white, ea.	\$15.00
	Wood Duck, Caramel Slag	\$35.00
	Verly 6" Pinecone bowl	\$45.00

Walrick Antiques (810) 229-5994
Rick Vaughan/Walter Sherman UPS Extra
1070 Hillcrest H=Marked
Brighton, MI 48116

#113	Mars 3" 1-lite candles, pr.	\$57.00
#128	Liberty 3" 1-lite candles, Flamingo, H, pr.	\$70.00
#352	Colonial horseradish jar, H	\$64.00
#393	Narrow Flute 8" nappy, H, dtd.	\$40.00
#393	Narrow Flute pint pitcher, H	\$74.00
#394	Narrow Flute oil & vinegar, dtd.	\$52.00
#411	Tudor 3-pint jug, H	\$97.00
#1184	Yeoman d.o. 4 1/2 oz. sherbet, Sahara, (8) ea.	\$12.00
#1231	Ribbed Octagon hotel cream & sugar, Flamingo, H	\$54.00
#1238	Beehive 8" plate, Flamingo, (2) ea.	\$27.00
#1252	Twist 9" flared floral bowl, Moongleam, H	\$58.00
#1401	Empress d.f. cream & sugar, Sahara, H	\$72.00
#1401	Empress cream soup & underplate, Sahara, H, (4), ea.	\$40.00
#1404	Old Sandwich saucer champagne, Sahara, H, (8) ea.	\$28.00
#1425	Victorian 3 oz. oil, H	\$52.00
#1425	Victorian 2 1/2 oz. wine, H, (2) ea.	\$26.00
#1469	Ridgeleigh individual cream & sugar, tray, H	\$68.00
#1469	Ridgeleigh 13" torte plate, H	\$65.00
#1469 1/2	Ridgeleigh 6" 2-part jelly	\$28.00
#1503	Crystalite 9" 4-part leaf relish	\$48.00
#1503	Crystalite 12" 3-part oval relish, H	\$42.00
#1503	Crystalite covered jam jar with ladle, H	\$98.00
#1503	Crystalite 6" vase, flared	\$46.00
#3390	Carcassone 12 oz. flagon, Sahara	\$110.00
#4157	Steele 5 1/2" rose bowl, d.o., Flamingo	\$74.00

Terry Gottwaldt (612) 421-1667
3451-152nd Ln NW Packing/UPS Extra
Andover, MN 55304 H=Marked

#1567	Plantation 10 oz. water goblet	\$50.00
#1567	Plantation 12 oz. footed ice tea	\$75.00
#1567	Plantation punch cup, (2)	\$30.00
#1567	Plantation coaster/ashtray	\$35.00
#1567	Plantation rolled foot mayo	\$55.00
#1567	Plantation lid 5" round	\$15.00

WANTED: One #300 3-lite Williamsburg candelabrum

J & T ANTIQUES (508) 764-1597
Jim Houghton & Tim Rector Fax (508) 764-1014
PO Box 933 UPS & Ins. Extra
Sturbridge, MA 01566 H=Marked

#479	Petal cream and sugar, Hawthorne, H, pr.	\$150.00
#335	Prince of Wales toothpick, fair gold, H	\$180.00
#353	Medium Flat Panel 8" Trumpet vase, Hawthorne, H	\$275.00
#1401	Empress 8" square plates, Tangerine, H, (15) ea.	\$125.00
#3389	Duquesne parfait, Tangerine, H	\$195.00
#3397	Gascony 2 1/2 oz. wine, Tangerine, H, (10) ea.	\$265.00
#3397	Gascony 6 oz. tumblers, Tangerine, H, (4) ea.	\$165.00
#3397	Gascony 3 oz. cocktail, Tangerine, H	\$195.00
#3397	Gascony 6 oz. finger bowl, Tangerine, H	\$175.00
#3397	Gascony 11 oz. low fld. goblet, Tangerine, H, (3) ea.	\$275.00
#3404	Spanish 5 1/2 oz. saucer champagne, Tangerine, (4) ea.	\$310.00
#3404	Spanish 10 oz. goblets, Cobalt bowl, (12) ea.	\$125.00
#3404	Spanish 3 1/2 oz. cocktails, Cobalt bowl, (12) ea.	\$100.00

L. A. MANESS (804) 769-3024
902 Clark's Lane UPS \$5/Minimum
Aylett, VA 23009 H=Marked

VISA/MASTERCARD WELCOME

#351	Priscilla 2 oz. wine, H, (6) ea.	\$15.00
#351	Priscilla covered mustard, H	\$45.00
#353	Colonial 2 oz. cruet, H	\$37.50
#1150	Colonial Star 7 1/2" plate, H, (8) ea.	\$11.00
#1184	Yeoman saucer champagne d.o. Moongleam, (2)ea.	\$27.50
#1225	Ridge & Star 8 1/2" plate, Moongleam, H, (6) ea.	\$17.50
#1243	Stepped Octagon 6" plate, Flamingo, H, (4) ea.	\$10.00
#1252	Twist 8" plate, Flamingo, H, (2) ea.	\$18.00
#1404	Old Sandwich 4 oz. claret, Sahara, H, (2) ea.	\$30.00
#1405	Ipswich oyster cocktail, H, (2) ea.	\$17.50
#1405	Ipswich 4 oz. sherbet, H, (2) ea.	\$14.00
#1469	Ridgeleigh mayo with ladle	\$42.50
#1503	Crystalite 14" torte, H	\$45.00
#1503	Crystalite 6" handled jelly, H	\$27.50
#1509	Queen Ann 6" jelly, Orchid etch, H	\$37.50
#1519	Waverly covered chocolate box, H	\$80.00
#1519	Waverly 13" celery, Rose etch, H	\$87.50
#1540	Lariat 9 oz. goblet, (4) ea.	\$20.00
#1540	Lariat cream sugar, H, set	\$37.50
#3355	Fairacre saucer champ, Moongleam ft, H, (5) ea.	\$27.50
#3355	Fairacre luncheon goblet, Flamingo foot, (2) ea.	\$40.00
#3408	Jamestown saucer champagne, (3) ea.	\$20.00
#3408	Jamestown footed ice tea tumbler, (5) ea.	\$18.00
#5024	Oxford 6 1/2 oz. saucer champagne, (4) ea.	\$15.00
#5067	Plantation goblet, (2) ea.	\$35.00

WALTER ANTIQUES (508) 975-3541, After 5 pm
Maurice & Jean Walter UPS & Ins. Extra
6 Royal Crest Dr. #5 H=Marked
N. Andover, MA 01845

Please call on September ad, answering machine malfunctioned!!

#5	Patrician 7 1/4" candlesticks, pr.	\$150.00
#419	Sussex 8 oz. goblet, Moongleam/Crystal stem & foot, H, 1 sm. bubble, (2) ea.	\$38.00
#419	Sussex 8 oz. gob., Mnglm/Cry stem & foot, H, scrape on side	\$15.00
#419	Sussex 5 1/2 oz. saucer champagne Moongleam/Crystal, H, 1 small bubble, (5) ea.	\$32.00
#1201	Fandango, custard or punch cups, minor nicks pattern bottom, (4) ea.	\$15.00
#1255	Pineapple & Fan bulbous pitcher, Emerald/worn gold, flake botm	\$95.00
#1255	Pineapple & Fan tumblers, Emerald/worn gold (still pretty) (2)ea.	\$40.00
#1401	Empress 13" celery, Sahara	\$38.00
#1428	Warwick 9" vase, Cobalt, some straw marks	\$315.00
#1469	Ridgeleigh round cigarette holder, H	\$15.00
#1469	Ridgeleigh square cigarette holder w/inset to make into lighter	\$18.00
#1485	Saturn Hostess Helper 12", bowl only, wear	\$32.00
#1503	Crystalite fld. cigarette holder, sm broken bubble on side, H	\$22.00
#1513	Baroque 3-lite candlestick, 1 only	\$55.00
#1533	Wampum 1-lite candlestick, pr.	\$45.00
#1540	Lariat 4 oz. wine	\$16.00
#1540	Lariat 1-lite candleblock, pr.	\$48.00
#1540	Lariat 2-lite candlestick, pr.	\$50.00
#1951	Cabochoon 1-lite candleblock w/Moonglo cut, pr.	\$78.00
#2401	Tumbler w/Tally Ho etch, (3) ea.	\$35.00
#4036	Marshall 3 pc. cocktail shaker w/bird cutting	\$75.00
#4225	1 qt. Cobel 3 pc. cocktail shaker w/Moonglo cutting	\$85.00
#5038	Rooster Tail 3 1/2 oz. cocktail. (4) ea.	\$45.00
	Console set, Fern 2-lite candles & Waverly 12 1/2" bowl all with #508 etch, set	\$185.00

H & R DIAMOND H
Helen & Bob Rarey
1450 White Ash Drive
Columbus, OH 43204

(614) 279-0390
After 5:30 p.m.
UPS & Ins. Extra
H=Marked

#1218	Brookville 3 1/2 oz. handle sherbet, H, (2) ea.	\$22.50
#1469	Ridgeleigh 9 oz. goblet, flared, (7) ea.	\$35.00
#3357	King Arthur 10 oz. goblet, d.o., Flmg. stem, (2) ea.	\$27.50
#3357	King Arthur 2 1/2 oz. wine, d.o., Flmg. stem, (6) ea.	\$32.50
#3381	Creole 11 Oz. tall goblet, Alexandrite, (2) ea.	\$210.00
#3381	Creole 11 Oz. short goblet, Alexandrite bowl, (6) ea.	\$165.00
#3381	Creole 12 oz. fld. soda, Alexandrite, (6) ea.	\$200.00
#3381	Creole 5 oz. cocktail, Alexandrite, (6) ea.	\$260.00
#3381	Creole 7 oz. champagne, Alexandrite, (2) ea.	\$175.00
#3380	Old Dominion 10 oz. short goblet, Alexandrite	\$210.00
#3390	Carcassone 10 oz. tall goblet, Alex. bowl, (6) ea.	\$125.00
#3390	Carcassone 10 oz. short goblet, Alex. bowl, (6) ea.	\$110.00
#3390	Carcassone 6 oz. sherbet, Alexandrite bowl, (6) ea.	\$65.00
#3390	Carcassone 3 oz. oyster cocktail, Alex. bowl, (6) ea.	\$85.00
#3480	Koors 29" 12 oz. fld. soda, d.o., Flmg., (6) ea.	\$22.50
#5003	Crystolite 10 oz. goblet, H, (8) ea.	\$22.50
#5003	Crystolite 3 1/2 oz. cocktail, (4) ea.	\$25.00
#5003	Crystolite 12 oz. fld. soda, (3) ea.	\$27.50
#5003	Crystolite 6 oz. sherbet, (6) ea.	\$17.50
#5009	Queen Ann 10 oz. goblet, Everglade cut, (5) ea.	\$27.50
#5009	Queen Ann 6 oz. champagne, Everglade cut, (8) ea.	\$22.50
#5019	Waverly 10 oz. goblet, (8) ea.	\$17.50
#5072	Rose stem 10 oz. goblet, Moonglo cut, (2) ea.	\$35.00
#5072	Rose stem 10 oz. goblet, Rose etch, (6) ea.	\$42.50
#5089	Princess 4 oz. claret, H	\$21.50

Jim Pappas
26 Kinglet Drive N.
Cranbury, NJ 08512

(609) 897-0345
UPS & Ins. Extra
H=Marked

#1567	Plantation Ivy etch, relish 4-part 8" round, H	\$70.00
#473	Narrow Flute w/rim, strawberry & powdered sugar plate, H, (3) ea.	\$135.00 or ALL \$375.00
#4002	Aqua Caliente cocktail, Sportsman etch, (2) ea.	\$48.00
#150	Banded Flute cordial, H	\$75.00
#150	Banded Flute hotel creamer & open sugar, H, pr.	\$50.00
#150	Banded Flute saucer candlestick, H	\$55.00
#150	Banded Flute 4" nappy, H, (2) ea.	\$20.00
#150	Banded Flute 12" celery tray, H	\$25.00
#4059	Allen water bottle 42 oz.	\$40.00
#1425	Victorian 2 oz. bar glass, H	\$25.00
#112	Mercury 3" candlesticks, Hawthorne, pr.	\$100.00
#1506	Provincial 3" rd. candle blocks, pr.	\$50.00
#1485	Saturn covered mustard, H	\$35.00
#1485	Saturn salt & pepper metal tops, H, pr.	\$35.00
#49	Salt & pepper d.o. w/metal tops, Hawthorne	\$100.00
	Lavender Ice Scotty dog	\$50.00

Fred & Shirley Reesbeck
238 Rockland Ave.
River Vale, NJ 07675-5536

(201) 666-9320
UPS & Ins. Extra
H=Marked

#1225	Saw Tooth Bands 11" cake plateau	\$60.00
#1170	Pleat and Panel 10 1/2" round 5 compartment spice tray	\$20.00
#5	Patrician 9" candlesticks, pr.	\$135.00
#5	Patrician 9" candlestick, (1)	\$65.00
#5	Patrician 7 5/8" candlesticks, HH, pr.	\$105.00
#5	Patrician 6" candlesticks, pr.	\$95.00
#5	Patrician toy candlestick, (1)	\$35.00
#341	Puritan 9 1/2" cake plateau, H	\$50.00
#300-1	Old Williamsburg 12" 1-lite, pr.	\$195.00
#1	Georgian 9" candlestick, (1)	\$70.00
#100	Centennial 6" candlestick, unk. cutting, HH, (1)	\$40.00
#1438	Bobeche, (4) ea.	\$25.00
	"D" Prisms, ea.	\$5.00
#1540	Lariat 2-lite candlesticks, pr.	\$50.00
#1503	Crystolite 3-lite candlesticks, pr.	\$60.00
#300-4	Old Williamsburg, short base, 4-lite, candelabra, (1)	\$450.00
#1205	Fancy Loop fld. punch glass, Vogle IV-79, (1)	\$25.00
#341	Puritan 1 lb. candy jar with lid, unk. floral cutting, H	\$85.00
#300	Old Williamsburg 18" candle lamps with 9" #300 hurricane shades, #6 bobeche, "A" prisms, pr.	\$650.00
#1469 1/2	Ridgeleigh 1-lite candelabra, H, pr.	\$195.00

As we are moving to a retirement center, I will sell the following at Public Auction inside the Glen La Rue Auction Center 201 S. Miller in Sweet Springs, MO. Watch for sale signs on:

SATURDAY OCTOBER 26
9:00 A.M.

HEISEY

Approximately 500 pcs inc.: Colonial, #1503 Crystolite; #1540 Lariat; #1469 Ridgeleigh; #433 Greek Key (Grecian Border); #1401 Empress; #150 Banded Flute; #341 Puritan; #394 Narrow Flute; #1252 Twist; Octagon, #1184 Yeoman; Flat Panel; #1506 Provincial; Waverly; Prince of Wales; Pinwheel & Fan; Coleport; Ridge & Star; Diamond Band; Sunburst; Prism Stripe; Verlys; Old Sandwich; Priscilla; Pillows; Kalonyal; Plantation; Warwick; Hexagon Six; Overlapping Swirl; Recessed Panel; Stanhope; LaVerne; Pleat & Panel; Fancy Loop; Animals inc.: Pheasant, Geese, Giraffe; horse head cigarette box.

GLASS

38 toothpick holders; 30 pcs Cambridge "Rosepoint"; Fostoria inc.: "Fairfax"; "American", "Irish Lace"; "Lido"; Cambridge "Caprice"; other: Sharp, Rock Crystal "Washington", Mild Glass, colored glass; cut, pressed & pattern glass.

CHINA

Castleton "Peony" dinnerware service for 8; Poptrail "Sculptured Grape" dinnerware service for 8; Germany Lustre ware; Gray's Pottery.

MISCELLANEOUS

Sterling silver; lot silver plate serving pcs; pottery; lamps.

Statements made sale day take precedence over all printed material!

HELEN SHEEHAN

For full listing write or call

AUCTIONEER: Col. Glen La Rue
816-335-4538; Sweet Springs, MO

J & R COLLECTIBLES
Ray & June Lukasko
PO Box 1030
Newark, OH 43058-1030

(614) 344-9719
UPS & Ins. Extra
H=Marked

	Ladle - punch	\$95.00
#25	Federal 8" candlestick, H, pr.	\$145.00
#39	Salt & pepper w/#57 tops beautiful cut, pr.	\$47.50
#341	Old Williamsburg 13 1/2" 5-compartment relish, H	\$85.00
#353	Colonial cheese & cracker plate, H	\$85.00
#480	Fruit basket 8" cut (Vogel II p. 155), H	\$295.00
#1401	Empress salt & pepper, metal tops, Sahara, pr.	\$110.00
#1435	3" square ashtrays Orchid etch, (2) ea.	\$32.00
#1540	Lariat basket	\$165.00
#3404	Spanish 1 oz. cordial, unknown cut	\$95.00
#4090	Coventry 10 oz. goblet Belvedere etch, (2) ea.	\$60.00
#7018	Oval in Diamond Point indiv. butter pats, H, (2)ea.	\$15.00

Bari Fauss
8503 Shirley Woods Ct.
Lorton, VA 22079

(703) 550-2218
UPS & Ins. Extra
H=Marked

#150	Banded Flute saucer champagne, H, (5) ea.	\$20.00
#436	Swung vase, 3" base, 15" tall, H	\$60.00
#325	Pillows 10" cake salver, light wear, H	\$300.00
#1220	Punty Band mug custard souvenir Salem, H	\$33.00
#1220	Punty Band mug custard souvenir Altoona, H	\$33.00
#1401	Empress d.f. mint w/Rose etch, H	\$45.00
#1425	Victorian 4" vase, (2) ea.	\$45.00
#1469	Ridgeleigh 2-lite candlestick	\$60.00
#1485	Saturn salt shaker w/sterling top, H, (3) ea.	\$15.00
#1488	Kohinoor 2-lite candlestick	\$65.00
#1519	Waverly liner for mayo, Orchid etch	\$25.00
#1567	Plantation 3-lite candelabra no bobèche/prism	\$100.00

WE CLEAN CLOUDY GLASS
SATISFACTION GUARANTEED

Yes, it is true that we really can restore the interior of your cruet, vase, decanter and most other internally etched items back to near original condition!

We do not oil, wax or cover up the sickness in any way! We actually remove it.

No items are too sick to clean! If we cannot clean your item to meet your satisfaction, the cleaning is FREE!

We are so confident in our service that we ask that you send no money. When we return your item a bill will be enclosed for the postage and cleaning. If you are happy, please send payment; if not, return the bill marked "NOT SATISFIED."

Please allow 6-8 weeks for redelivery of most items. All glass is handled and cleaned at your risk. Some very cloudy items may take several additional weeks.

Cruet	\$20.00	Cocktail Shaker	\$30.00
Cologne	\$20.00	Salt Shaker (single)	\$15.00
Water Bottle	\$30.00	Salt Shaker (pair)	\$25.00
Decanter	\$30.00	Crushed Fruit Jar	\$30.00
Vases (under 12 in.)	\$25.00	Lavender Jar	\$20-30.00

All others write for quote

SHIP TO: Carlisle & Associates
 28220 Lamong Rd., Dept. 11
 Sheridan, IN 46069
 (317) 758-5767 AFTER 6:00 p.m.

Ron Kovacs (602) 451-4995 Tues-Wed 9AM-10PM
9310 E. Windrose Dr. Thurs-Mon 7PM-10PM (PST)
Scottsdale, AZ 85260 UPS & Ins. Extra H=Marked

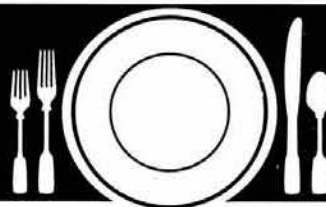
#112	Mercury 3" candlestick, Sahara, pr.	\$58.00
#300	Peerless 1 oz. cordial, sham, H	\$18.00
#300	Peerless 5" fld. jelly, H	\$33.00
#300	Peerless 2 1/2 oz. wine, English reg. no., H, (4) ea.	\$19.00
#310	Ring Band jelly, hi-fld., gold dec., Custard	\$105.00
#325	Pillows sugar, no cover, H	\$42.00
#335	Prince of Wales custard, H	\$16.00
#341	Puritan 3 oz. sherbet, low fld., H, (9) set	\$60.00
#341	Puritan 2 oz. wine, H, (6) ea.	\$20.00
#343	Sunburst 7 oz. goblet, H	\$195.00
#359	Colonial 2 oz. sherry, H, (4) ea.	\$16.00
#417	Double Rib & Panel 7 oz. goblet, H	\$45.00
#427	Daisy & Leaves 4" nappy, shallow, h	\$25.00
#475	Narrow Flute w/Rim 3 1/2" salted nut, H, ori. label, (6) ea.	\$10.00
#805	Hoffman House 3/4 oz. cordial	\$50.00
#1158	4 1/2 oz. custard, pressed, H, (15) ea.	\$5.00
#1184	Yeoman 5 oz. sherbet, d.o., H, (4) ea.	\$7.00
#1186	Yeoman ashtray, gray & clear cut mono "D"	\$17.00
#1220	Punty Band toothpick holder, souv. Ruby stain, beaded top, H	\$49.00
#1225	Ridge & Star 10" plate, H, (2) ea.	\$30.00
#1255	Pineapple & Fan #3 cracker jar, no cover	\$28.00
#1255	Pineapple & Fan hotel sugar	\$23.00
#1401	Empress 10" triplex relish, ornate unk. cut, H	\$45.00
#1404	Old Sandwich 10 oz. beer mug, Cobalt, H	\$325.00
#1415	Twentieth Century 9 oz. tumbler, fld., H	\$16.00
#1486	Coleport 8 oz. soda, H, (4) ea.	\$11.00
#1503	Crystalite 7" candy box, round, 3-part, no lid, H	\$22.00
#1503	Crystalite marmalade jar & cover, under plate, H	\$54.00
#1503	Crystalite 5" fld. comport, shallow, H	\$25.00
#1519	Waverly individual cream & sugar, #507 Orchid etch	\$65.00
#1567	Plantation 3 1/2" coaster ashtray	\$32.00
#2516	Circle Pair 8 oz. goblet, purple irridized, (2) ea.	\$22.00
#3304	Universal 6 oz. champagne, #980 Moonglo cut, (2) ea.	\$25.00
#3350	Wabash 10 oz. goblet, w.o. ornate unk. gray cut	\$48.00
#3350	Wabash 10 oz. goblet, d.o., Hawthorne, H	\$68.00
#3350	Wabash 6 oz. sherbet, #439 Pied Piper etch, H, (2) ea.	\$15.00
#3359	Plateau 8 1/2 oz. goblet, d.o., Flamingo	\$25.00
#3356	Ramshorn 9 oz. goblet, Ramshorn optic, nice unk cut	\$50.00
#3368	Albemarle 8 oz. goblet, ornate unk, cut, faint H	\$68.00
#3368	Albemarle 8 oz. goblet, blue & gold stain, H	\$36.00
#3381	Creole 11 oz. goblet d.o. short stem, Sahara bowl	\$85.00
#3416	Barbara Fritchie 3/4 oz. brandy w.o., H	\$49.00
#3416	Barbara Fritchie 1 oz. cordial w.o., H	\$58.00
#3404	Spanish 10 oz. goblet, Pairpoint cut, (6) ea.	\$50.00
#4091	Kimberly 10 oz. goblet, #944 Courtship cut, H	\$50.00
	Colt standing, Slag, orig. label, Imperial	\$35.00
	Elephant, small, Pink, satin, orig. label, Imperial	\$45.00
	Oscar (Plug Horse), Slag, Imperial, orig. label	\$45.00
	Oscar (Plug Horse), Pink, 1978, Imperial	\$59.00
	Oscar (Plug Horse), Sunshine Yellow, 1979, Imperial	\$52.00
	Oscar (Plug Horse), Heather, satin, 1979, Imperial	\$63.00
	Oscar (Plug Horse), Heather, 1980, Imperial	\$43.00
	Oscar (Plug Horse), Opalescent, 1987, Fenton	\$45.00
	Rooster vase	\$112.00
	Tropical Fish #125 of 450, Lavender Ice, Dal-Vik	\$450.00
	Tiger paperweight, Jade, Imperial	\$85.00
	Bunny head down, Mild Glass, Imperial	\$30.00
	Colt, standing, Slag, Imperial	\$35.00
	Diamond H display sign, Ultra Blue, satin, Viking	\$99.00
	Sparrow, Horizon Blue, Imperial	\$25.00
	Oscar (Plug Horse) 1986, Clematis, Imperial	\$72.00
	Oscar (Plug Horse) 1984, Red, Viking	\$40.00
	Pouter Pigeon, #268 of 450, Lavender Ice, Dal-Vik	\$175.00
	Elephant medium, #268 of 450, Lavender Ice, Dal-Vik	\$80.00

FOREVER HEISEY
Norm & Jan Thran
1663 Londondale Pkwy.
Newark, OH 43055

(614) 344-5955
UPS & Ins. Extra
H=Marked

	Sparky (Oscar, Plug Horse), Honey Amber	\$750.00
	Gazelle, H, repair to front of base	\$950.00
	Fish matchholder	\$180.00
	Giraffe, head back	\$225.00
	Standing colt, (Pony)	\$75.00
#6	Colonial 7 1/2" vase, threaded for Epergne, H	\$40.00
#10	Oak Leaf coaster, Hawthorne	\$55.00
#10	Oak Leaf coaster, Moongleam, (2) ea.	\$20.00
#10	Oak Leaf coaster, Crystal, (2) ea.	\$12.50
#10	Oak Leaf coaster, Flamingo	\$15.00
#5	Patrician 2 1/2" 4-lite candelabra w/#5 bobèche & #5 candle holders and "A" prisms	\$695.00
#17	Classic 16" 1-lite candelabra w/#7 bobèche & #5 candle holders and 4" spear prisms, pr.	\$475.00
#134	Trident 2-lite candlestick, Alexandrite (one only)	\$395.00
#300-1	Old Williamsburg 12" 1-lite candelabra, Sahara, H, pr.	\$375.00
#301-3	Old Williamsburg 15" short base, 3-lite candelabra, Sah.	\$495.00
#373	Old Williamsburg 4 1/2 oz. claret wine, H, 3 for	\$40.00
#1170	Pleat & Panel hi footed compote (base only), Flamingo	\$35.00
#1170	Pleat & Panel cup & saucer, Flamingo, H, (8 sets) ea.	\$27.00
#1184	Yeoman 7 1/2" lid for vegetable bowl, d.o., Flamingo	\$20.00
#1184	Yeoman goblet, d.o., Flamingo, H, (5) ea.	\$15.00
#1201	Fandango toothpick	\$70.00
#1205	Fancy Loop toothpick w/gold decoration on top edges	\$65.00
#1205	Fancy Loop toothpick, Emerald, small flake on rim	\$70.00
#1238	Beehive 5" plate, Flamingo, (6) ea.	\$15.00
#1252 1/2	Twist footed mayonnaise, Moongleam	\$40.00
#1252	Twist 2" 1-lite candlestick, Marigold, H, pr.	\$145.00
#1401	Empress 6" square plate, Alexandrite, H, (8) ea.	\$50.00
#1401	Empress 6" round plate, Alexandrite, H, (6) ea.	\$40.00
#1401	Empress 6" d.f. mint, Alexandrite, H	\$225.00
#1401	Empress ashtray, Alexandrite, H	\$275.00
#1401	Empress ashtray, Cobalt, H	\$340.00
#1401	Empress 6" square plate, Sahara, H, 6 for	\$55.00
#1401	Empress 6" 3-toed d.f. candlestick, Sahara, H, pr.	\$275.00
#1401	Empress 6" 3-toed d.f. candlestick, Moongleam, H, (1)	\$225.00
#1401	Empress individual cream & sugar, Sahara, H, pr.	\$65.00
#1425	Victorian 2 ball stem, champagne, (7) ea.	\$13.00
#1469	Ridgeleigh 4 1/2" candle vase, flared, Zircon, pr.	\$425.00
#1469	Ridgeleigh 4 1/2" candle vase, flared, Sahara, H, pr.	\$220.00
#1469 1/2	Ridgeleigh 10" 1-lite candelabra complete, H, pr.	\$210.00
#1485	Saturn 12 1/2" Hostess helper bowl w/center ring, Zircon	\$195.00
#1488	Kohinoor 2-lite candelabra w/Heisey 2" J prisms (1 Bobèche cracked), pr.	\$235.00
#1503	Crystalite 9" 2 handled oval mayo underplate, H	\$30.00
#1503	Crystalite 10" salad bowl star base, H	\$55.00
#1509	Queen Anne cup & saucer w/Orchid etch, H, (4 sets) ea.	\$45.00
#1519	Waverly cup & saucer w/Orchid etch, H, (7 sets) ea.	\$70.00
#1519	Waverly cup & saucer w/Rose etch, H, (2 sets) ea.	\$85.00
#1519	Waverly 7 1/4" plate w/Rose etch, (7) ea.	\$22.50
#1519	Waverly 7 1/4" plate w/Orchid etch, (6) ea.	\$20.00
#1519	Waverly 7" mayo underplate w/center ring & Orchid etch	\$20.00
#1552	Four leaf candle blocks, pr.	\$85.00
#1567	Plantation rolled edge mayonnaise with Rotary etch	\$65.00
#1632	Lodestar 12" floral bowl, Dawn, H	\$95.00
#1632	Lodestar 5" mayonnaise, Dawn, H	\$55.00
#2401	Oakwood 12 oz. soda w/Admiral etch	\$175.00
#3304	Universal shrimp cocktail w.o. w/Orchid etch, (2) ea.	\$185.00
#3390	Carcassone 12 oz. fld. soda/ice tea, Alexandrite, (2) ea.	\$120.00
#3390	Carcassone tall stem goblet, Cobalt bowl	\$85.00
#3357	King Arthur goblet w/Moongleam stem & foot, (2) ea.	\$30.00
#3357	King Arthur wine w/Moongleam stem & foot	\$35.00
#4191	10" footed vase w/Heisey #693 Cloister cutting, H	\$67.50
#8025	Banded Diamond 3 1/2" footed oval nut, HH	\$195.00
	Gold Series set, Rosalene by Fenton #81 of 450, 12 animal set	\$950.00

Call Today! Much Much More In Stock!! You Need It, We Find It!!!



Spectacular Parade of Heisey

As the world's largest supplier of discontinued or obsolete china, crystal and flatware, Replacements, Ltd. buys and sells over 54,000 patterns and has 2.1 million pieces.

We have many of your favorite Heisey patterns, including Heisey Rose and Heisey Orchid.

Contact us if you need to pick up a piece to add to your collection, or if you would like to sell some unneeded extras. We can provide a complete printout of available pieces in your pattern. Or we'll let you know our prices for the pieces you wish to sell. Let us help you complete your collection . . . or maybe you'll help add to ours.

REPLACEMENTS, LTD.

Call 1-800-562-4462

or visit our showroom:

Mon-Sat 8am-9pm; Sun 8am-6pm

Off I-85/40 at Mt. Hope Church Rd.,

Exit 132 between Greensboro and Burlington • Dept HS

Fostoria Glass Society of North Texas Presents

The Dallas/Fort Worth Metroplex - Ninth Annual

"Age of Elegance"

"Elegant Glass Show" and Sale
October 26 & 27, 1996

Grapevine Convention Center
1209 So. Main Street, Grapevine, TX 75220
(Dallas/Fort Worth Metroplex)

The best show in the nation for **Elegant glassware** by Fostoria, Heisey, Cambridge, Duncan & Miller, Imperial, Tiffin, Morgantown, etc. Glass Identification, books and other information available.

Sat., Oct. 26, Early Entry 8:00 a.m. \$10.00 Per Person

Sat., October 26, 10:00 a.m. - 6:00 p.m.

Sun., October 27, 11:00 a.m. - 4:00 p.m.

\$3.00 Donation - Good Both Days

Benefiting the Fostoria Glass Museum

For Info. Contact: Tom or Aleeta Herr, (214) 780-0193.



**IMPORTANT
TWO DAY AUCTION
ALL HEISEY AND HEISEY BY IMPERIAL
FRIDAY OCTOBER 18, 1996 4 PM
SATURDAY OCTOBER 19, 1996 9 AM
Apple Tree Auction Center
1616 W. Church Street
Newark, Ohio 43055**



This sale will offer several rare and unusual pieces to include very rare Tangerine Old Sandwich Soda; (2) Amber elephant handled mugs; Cobalt tulip vase; Flamingo Ipswich sodas; Locket on Chain goblets; Heisey lamp; large selection of animals with frosted Gazelle, Show Horse, Clydesdale, all three Elephants; Colts; Roosters; Pheasants; Amber Sparky and Amber Standing Colt. Limelight including Kohinoor 2 light candelabra and Provincial relishes; large selection of candlesticks; approx (100) pcs Orchid etch, many early patterns; collection of Greek Key; lots of early patterns. Much more to be unpacked. Heisey by Imperial features over (350) animals with most every Amber animal produced including Flying Mare, Fillys, Giraffe, Show Horse, Clydesdale, Geese and many others; Crystal Show Horse; Salmon Sow; several feasibility items. The best collection of Heisey by Imperial and other companies.

Don't miss this fall sale.

Sale conducted by Apple Tree Auction Center

Frank Frye, Manager

Auctioneers: Sam Schnaidt, David Schnaidt, Paul Robison, Debbie Johnson

DOORS OPEN ONE HOUR BEFORE EACH SESSION

Good Food Available

Visa, MasterCard and Discover available

Terms: Cash, check or credit card. 5% buyers premium. Buyer's premium will be deleted for cash or check payment.

Nuts!

*Can't find insurance
protection for your
glassware & ceramic
antiques and collectibles?*

Get the all risk* protection they deserve
with low cost insurance coverage
available only from International
Collectors Insurance Agency.

Call us today. 1-800-691-1114

International Collectors Insurance Agency
P.O. Box 6991
Warwick, RI 02887-6991

*Subject to exclusions.



Fostoria
MADE IN U.S.A.

Extravaganza VII

GLASS FAIRE

WITH
GLASS AUCTION, DISPLAYS AND
GLASS IDENTIFICATION

Saturday, November 2, 1996

Glass Sale 9 AM to 5 PM

Seminars All Day Auction 6 PM
Only \$5 for all events

King Richard's Antique Mall
12301 E. Whittier Blvd., Whittier, CA

SPONSORED BY

FOSTORIA GLASS COLLECTORS, INC.

A nonprofit organization dedicated to the study of Fostoria glass and the preservation of handmade American glassware.
Membership \$18 per year includes 16-page newsletter.

For more information call
310-410-1179

Proceeds benefit various museums and glass organizations
Present this flyer for \$1 off admission

PL

The
DAZE Inc.

SPECIAL OFFER
\$2.00 OFF
The 1 year subscription price
when on this form or copy of it.

The Original National monthly newspaper dedicated to the buying, selling and collecting of colored glassware and china including Depression glass and the elegant glass (Cambridge, Heisey, Fostoria, etc.). We educate and inform you each month with feature articles by top-notch columnists, readers' finds, club happenings, show news and a multitude of ads. Find those missing pieces to your '30s, '40s, or '50s' pattern. Can't identify it? Perhaps we can help "keep up with what's happening" with a subscription to The DAZE. Buy, sell or trade from the convenience of your easy chair.



Name _____
Street _____
City _____
State _____ Zip _____
 1 year \$21.00 2 years \$38.00 Free Sample Copy
 Charge to my Visa, Mastercard or Discover
Exp. Date _____ Card No. _____
Signature _____

Orders to The DAZE, Inc., Box 57, Otisville, MI 48463 • (800) 336-9927
Please allow 30 days for your first issue.
Canadian Subscribers, add \$1.00 per year and subscribe by charge card or U.S. money order only



**BECOME A
MEMBER OF THE
INSTITUTE OF
INDUSTRIAL
TECHNOLOGY, HOME OF THE
HCA GLASS STUDIO!**

GET IN GEAR AND VISIT
NEWARK'S INDUSTRIAL
HISTORY CENTER. DAILY
GLASSMAKING DEMO'S
PROVIDED BY SKILLED
ARTISANS. OPEN WEDNESDAY THROUGH
SUNDAY, 12 NOON TO 4 P.M. ADMISSION IS
\$2 FOR ADULTS, \$1 FOR CHILDREN AND
SENIOR CITIZENS. PLEASE CALL 614-349-
9277 OR 614-345-2932 FOR FURTHER INFO.



TOP ~ OF ~ TEXAS

Annual

Depression & Elegant Glass SHOW & SALE

AMARILLO, TX
OCTOBER 12-13

Amarillo Civic Center
4th & Buchanan

Show Hours: Sat. 11-6, Sunday 12-5

Top quality dealers from across the United States present an outstanding display of Depression Era Glassware including Cambridge, Imperial, Heisey, Fenton, Fostoria, china, and pottery.

PUBLIC WELCOME!



Glass Grinding & Repair Done At This Show
Information call: 806-371-9371 or 806-352-6862

Dealers Directory

Maximum 5 lines/12 months/\$35 MEMBERS ONLY

<p>MARJORIE GILLETTE Rochester, New York Glassware Specialty Heisey Mail Orders & Shows 716-225-4678</p>	<p>SHIRLEY EUGENIA DUNBAR Heisey a Specialty Mail Order, Shows, Appraisals PO Box 7085, Port St. Lucie, FL 34985 Oct.-May 407-337-1558 PO Box 222, Naples, ME 04055 May-Oct. 207-647-5652</p>	<p>COMPARISON LIST New Heisey Auction List for 1996 3 Year's Auction 93-94-95 Price: \$15.00 + \$3.00 Shipping Payable: B. Whaley 300 International Dr., Pataskala, OH 43062 1-614-927-1557</p>
<p>ALL HEISEY AUCTION Consignments Welcome Apple Tree Auction Center 1616 W. Church, Newark, OH 43055 PH: (614) 344-9449</p>	<p>GREEN ACRES FARM Antiques, Crystal Glass & Collectibles 2678 Hazelton-Etna Rd., SW (S.R.310-N) Pataskala, OH 43062 Sat. or Sun. PM or call (614) 927-1882</p>	<p>MICHAEL KRUMME Cambridge • Heisey • Fostoria • Duncan-Miller • Paden City I search - send detailed want list - all are kept on file P.O. Box 5542 Santa Monica, CA 90409</p>
<p>D & B ANTIQUES — ATLANTA Bob Bartholomew Members Dixieland Heisey Club PO Box 33283, Decatur, GA 30033 Shows (404) 634-2799 Mail Order</p>	<p>H & R DIAMOND H Helen & Robert Rarey 1450 White Ash Dr. Columbus, OH 43204 PH: (614) 279-0390 after 5:30</p>	<p>JEAN & DON PARRETT Beautiful Heisey Layaways Accepted 4995 Maple Dale Rd. Jackson, Michigan 49201 (517) 784-7319 — Recorder</p>
<p>ANTIQUES - THE SHULTZES 206-208 East Main St. Newmanstown, PA 17073 15 Miles West of Reading, PA PH: (610) 589-2819</p>	<p>"HAPPINESS IS" - THE STULTZS 3106 Warren Court, Glen Allen, VA 23060 Shows and Mail Order PH: (804) 672-8102</p>	<p>PATTON HOUSE ANTIQUES THE DANIELS Box 547 Louisa, Virginia 23093 (540) 967-1181 Specializing in Glass Heisey * Fostoria * Duncan * Rocky's Antique Mall Weyers Cave, VA off I-81 The Antique Gallery 3140 W. Cary St., Richmond, VA</p>
<p>C & J ANTIQUES Cole & Jean Miesner Box 45, 72 Whig St. Newark Valley, NY 13811 PH: (607) 642-9905</p>	<p>MOUNDBUILDERS ANTIQUES 2ND GENERATION 3669 Route #360 Buckeye Lake, OH 43008-1905 (614) 928-1994 — (800) 366-4347 We Search We Ship Hours By Appointment</p>	<p>SCHWAN'S ANTIQUES SHOWS & MAILORDER 77 Lagos del Norte Ft. Pierce, FL 34951 PH: (407) 461-5940</p>
<p>DOXTOIS Eva & Joe Hirsh Heisey & Pattern Glass 6 James St., Norwalk, CT 06850 PH: (203) 847-3315</p>	<p>HOOKE ON HEISEY Jay C. Martin 97 Heritage Hill Rd., New Canaan, CT 06840 (203) 966-9359 24 hr. ans. mach. Mail Orders & Shows</p>	<p>R & L ANTIQUES-SAN FRANCISCO Members of the Golden Gate Heisey Club 3690 Bodega Ave. Petaluma, CA 94952 PH: Petaluma (707) 762-2494 PH: San Francisco (415) 621-6693</p>
<p>CHARLES & MILDRED FISHER Heisey animals and Heisey By Imperial animals 991 Idlewilde, Newark, Ohio 43055 614-522-5398</p>	<p>JJ MC KEE ANTIQUITIES Pottery - Glassware - Collectibles 222 West 75th St. Kansas City, MO 64114 Wed.-Sun. 10-5 PH: (816) 361-8719</p>	<p>THE WOODEN SHOE Antiques & Collectibles 222 W. Washington St., Charles Town, WV 25414 PH: 304-725-1673 Fri-Mon 11:00 to 5:00</p>
<p>CRYSTAL LADY Joann Hagerty Specializing in elegant depression glassware 1817 Vinton Street, Omaha, NE 68108 Shop Ph. (402) 341-0643 or Home Ph. (402) 391-6730</p>	<p>DINNERWARE CLASSICS! 4125 Sperry St., Dallas, TX 75214-2743 (214) 821-6852 Selling Glassware & Dinnerware By Mail Heisey Glass</p>	<p>MY DAUGHTER'S INHERITANCE Heisey - Crystal - Porcelain Antique Village - 3750 Howard Avenue Kensington, MD 20895 (301) 933-4618 Maggi Smith</p>
<p>ELEGANT GLASSWARE NOW LOCATED IN FINDER'S ANTIQUE HOUSE 1169 Piney Forest Rd. Danville, VA 24540 Open Thursday—Sunday (804) 836-6782 Area's Largest Selection of Heisey & Other Elegant Glass</p>	<p>J. & R. COLLECTIBLES Shows, SASE, Mail Order list The Lukasko's PO Box 1030, Newark, Ohio 43058-1030 PH: (614) 344-9719</p>	<p>RON & MAUREEN KOVACS Downsizing Twenty Year Heisey Collection Please Send \$1.00 for extensive list 9310 East Wind Rose Dr. Scottsdale, AZ 85260 (602) 451-4995 (MST)</p>
<p>FRAN'S FANCY FINDS Fran & Jack Grenzebach 10534 Valencia Rd., Seminole, Florida 33772-7511 PH: (813) 391-5184 SHOWS MAIL ORDERS</p>	<p>MOSTLY HEISEY Rhoda Curley 16 Clayton PL, Albany, NY 12209 Shop and Mail Order PH: 1-800-972-2775</p>	<p>HEISEY HASBEENS Heisey glassware and estate books Toni and Parker Heisey 6678 Comstock Court, San Diego, CA 92111 PH: (619) 277-1210</p>
<p>FOREVER HEISEY Jan & Norm Thran Mail Order, Shows, Appraisal Service 1663 Londondale Pkwy, Newark, OH 43055 PH: (614) 344-5955</p>	<p>R & S ANTIQUES AND GLASSWARE Heisey-Specializing in Complete Heisey Tableservice call or write for patterns and colors 2560 S. Maguire Rd. Ocoee, FL 34761 (407) 656-5700 or (407) 298-5980 PM</p>	<p>WILLEY'S ANTIQUES & MUSEUM Specializing in Heisey 11110 Cannon Rd., Frazeyburg, OH 43822 16 miles east of Newark, OH PH: (614) 828-2557</p>
<p>WARREN & MARY WELSH Heisey & other elegant glassware 3635 Saddle Rock Road, Colo. Springs, CO 80918 PH (719) 531-5866 Mail Order Shows</p>	<p>BOB & JOANNE MCELHENY'S HEISEY Booth 44-Pioneer Antique Mall Open 10-6, Sun. 1-5 Downtown Pioneer, Ohio-North of Exit 2 Ohio Turnpike Phones: Mall (419) 737-2341 Home (419) 537-6890</p>	<p>JAMES S. HARRIS ANTIQUES/APPRISALS Box 672 Richmond, KY 40475-0672 PH: (606) 623-9100 Buying and Selling by Mail</p>
<p>GLASS 'N' GLASS Virginia & Odell Johnson 6909 10th Ave. W. Bradenton, FL 34209 PH: (941) 792-0604</p>	<p>JIM HOUGHTON & TIM RECTOR J & T Antiques Ltd. PO Box 933 Sturbridge, MA 01566 PH: (508) 764-1597</p>	<p>HEISEY, etc. Mike & Barb Rosenberger Glassware-Specializing in Heisey Shows - Mail order (219) 864-1704 5115 W 78th Ln, Schererville, IN 46375</p>

When Renewing Your Membership...

Help us to reach our new goal of \$750,000 by the year 2004. When you renew your membership at one of the levels below, any amount beyond the regular Associate dues—\$22.00 plus \$5.00 for each additional household member—goes into the Endowment Fund.

<i>Individual Contributing, one person in household</i>	\$30
<i>Joint Contributing, two people in one household</i>	\$40
<i>Family Contributing, parents and children under 18</i>	\$50
<i>Patron</i>	\$100
<i>Sponsor</i>	\$250
<i>Benefactor</i>	\$500

Contact HCA Administrative Office at (614) 345-2932 for more information. The Endowment Committee wishes to thank those who have become Endowment Members and all of the individuals and study clubs that have so generously supported the HCA Endowment Fund. Your support will make the museum self-sustaining in the years to come. Thank you all! ♦

Museum Volunteers for August & September

Leota Friel
Mary Holmquist
Frances Law
Connie Makris
Phyllis McClain
Mary McWilliams
Dick & Marilyn
Norris
Bob Rarey
Bob Wilson



Visit The National Heisey Glass Museum

Come at your leisure to enjoy more than 4,800 pieces of glassware produced by A.H. Heisey and Company from 1896-1957. Hundreds of patterns are featured in all production colors. Rare and experimental items are included as well.

Facilities are air-conditioned and handicapped accessible. Hours are 10:00 a.m. to 4:00 p.m. Tuesday through Saturday, 1:00 to 4:00 p.m. Sunday. Members are admitted free, regular admission is \$2. Office hours are 8:00 a.m. to 4:30 p.m. weekdays.

Membership Renewal Notice: Check the date above your name and address on the mailing label. This is your expiration date. If it reads 11-10-96 make sure your dues are paid soon in order to receive next month's issue of Heisey News. Dues are \$22.00 per year, plus \$5.00 for each additional household member.

POSTMASTER SEND FORM 3579 TO:

HCA
169 W. Church St.
Newark, OH 43055



PERIODICAL POSTAGE PAID