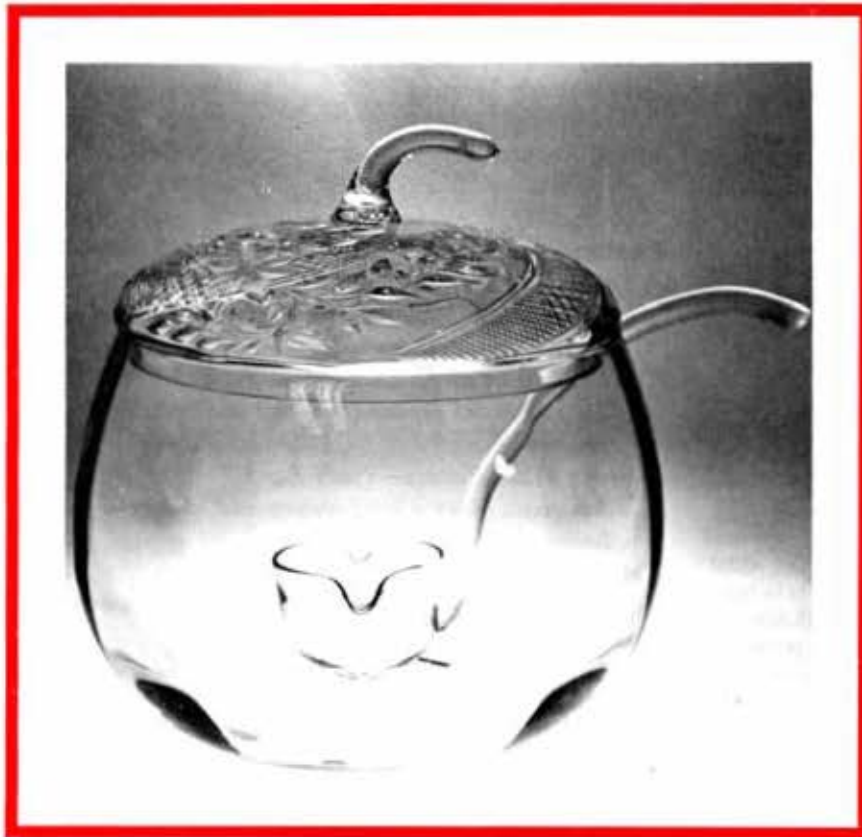


# HEISEY NEWS

The Official Publication of Heisey Collectors of America, Inc.  
Volume XXII No. 11

October 1993

ISSN 0731-8014



## Trick or Treat! Museum's Recent Donation is Really Sweet

When asked how she came into possession of such a unique item Evelyn Thorp replied in her letter:

"Several years ago in the late thirties, I was invited by a man, Pete Streer, and his wife Eva to see some glassware that they had just brought home from Ohio. I had never seen such beautiful pieces.

"Of course, my eye caught the pumpkin. Then he told its history. ..."

*see page 4  
Focus on the Collection*

### In this issue ...

*Heisey's #1220 Pattern—Punty Band ♦ Focus on the Collection: Pumpkin Punch Bowl  
March Auction Consignment Form ♦ More Photos from the Archives ♦ Table Talk*

## HEISEY NEWS

Heisey Collectors of America, Inc.  
169 West Church Street  
Newark, Ohio 43055  
Phone (614) 345-2932  
Fax (614) 345-9638  
All Rights Reserved 1993  
ISSN 0731-8014

### Editor

Karen D. Kneisley

### Assistant Editor

Kelly Thran

### HCA President

Sam Schnaidt, (614) 587-0052

### HCA Vice President

Norm Thran, (614) 344-5955

### HCA Secretary

Tom Bischoff, (419) 533-7431

### HCA Treasurer

Larry Stickle, (614) 366-2000

HEISEY NEWS is published and printed monthly (twice in February), by Heisey Collectors of America, Inc. Second Class Postage Paid. Subscription is limited to HCA members. First class mailing is available for an extra \$13.00, due with payment of membership.

The opinions expressed in articles in HEISEY NEWS are those of the authors and not necessarily those of the organization. The Editor reserves the right to edit, with or without the consent of the author, or to refuse any material submitted for publication.

### Back Issues

The following volumes are available: V, VIII, IX, X, XI, XII, XIII, XIV, XV, XVI, XVII, XVIII, XIX, D, XXI, XXII, XXIII, XXIV, XXV, XXVI, XXVII, XXVIII, for \$9.00 each volume (12 issues).

### Advertising

Send all ads to: HCA Advertising, 169 W. Church St., Newark, OH 43055 or fax ads to 614-345-9638, include M.C. or Visa info. Ads are to be typed or printed on white paper with dark ink. Please double space. All Ads must be prepaid. Ad copy must be received by the 1st of the month preceeding the publication date, e.g. April 1st for May issue. Camera ready ads accepted, but must follow line specifications. Ads containing reproductions will not knowingly be accepted unless clearly stated (e.g. Heisey by Imperial, etc.) HEISEY NEWS accepts no further liability.

### Museum

Heisey Collectors of America, Inc, a non profit corporation (tax exempt status), owns and operates The National Heisey Glass Museum in Veteran's Park, 6th and Church Sts, Newark, Ohio. Open Tuesday-Saturday 10-4, Sunday 1-4, closed holidays. Other hours by appointment. Members admitted free.

### Membership

To join Heisey Collectors of America or to renew your membership, contact Mary Holland, membership secretary. Associate dues are \$18.50, plus \$2.50 for each additional household member. Voting members pay an additional one-time fee of \$25. Please consider supporting the Endowment Fund by joining at one of the levels listed on the back page.

### Museum Shop

There is always someone available in the shop to answer questions or take your order. When ordering by phone, please have a credit card ready. When ordering by mail, please be sure to include appropriate charges such as shipping and sales tax.

### Shipping and Receiving

Delivery is made much easier when we have a complete street address, not a PO Box. We prefer to use UPS. If you have not received a package, please call Brad, shipping clerk, to confirm it was sent. He will assist you in tracing it. If your package arrives damaged, please contact your local UPS representative. We insure everything.

### Donations and Loans to the Museum

HCA reserves the right to accept or refuse items based on current holdings. If you have something you would like to share with the museum, please arrange an appointment with Karen D. Kneisley, curator.

### Identification

HCA will attempt to identify unknown glass items. If sending a written inquiry, please enclose a photograph. Drawings and descriptions are not helpful when trying to identify glassware. Other arrangements should be made in advance with Karen D. Kneisley, curator.

### Calendar of Events

Holiday Dinner  
and Quarterly Meeting *December 11, 1993*

March Auction *March 12, 1994*

### Features

- A Few of My Favorite Things  
*Asked to name his favorite Heisey piece, Carl Sparacio goes all the way—he names several* 6-8
- The Importance of the Endowment Fund  
*Amy Jo Jones explains the nuts and bolts of endowment* 8
- Heisey's #1220 Pattern—Punty Band  
*Jim Jones gives a brief history and comprehensive listing of this early pattern* 10-13
- Table Talk  
*A reprint of one in Heisey's series of brochures* 14
- Auction Consignment Form  
*Use this form to send your Heisey to be sold in the March auction* 15

### Departments

- Sam's Scribbles, *Sam Schnaidt* 3
- Curator's Report, *Karen D. Kneisley* 4
- Focus on the Collection, *Karen D. Kneisley* 4-5
- From the Archives, *Don Valdes* 9
- Club Notes 16
- Museum Shop 16
- Advertising 16-23

## Sam's Scribbles

*Sam Schnaidt, President*

As I write this column we are returning from a most enjoyable weekend in Sturbridge, Massachusetts. As always, HCA events kept us busy. Friday evening was a very nice cocktail reception in the pool area of the Sturbridge Host Hotel hosted by the Yankee Heisey Club. It was nice to meet some of the people from the New England area who seldom get to Newark. We were ready for a good night's sleep following a pleasant day in the fields at Brimfield. We found a few items but no Heisey bargains. We understand some of our members had already gotten all the bargains. Always remember one has to be very fast and early to get ahead of Norm and Jan Thran and Lynn Welker.

Saturday morning came early with a breakfast Board of Directors meeting at 8:00 a.m. This was over just in time for the All Heisey Auction at 11:00 a.m. Jim Houghton, Tim Rector and many members, not only from the Yankee Club but also from several other southern New England clubs put on a very well run auction with lots of interesting and scarce items. The bidding was spirited and I felt it was a very good auction. The club made about \$2,000 which will eventually be turned over to HCA. Jan Thran sold glass items and books from the Museum Shop during the auction and indicated sales were good.

Eighty-one people attended the annual Percy Moore Memorial Dinner which started with a cocktail hour. The Yankee Club entertained us with a magician who amused us with his tricks and wit. The Host Hotel provided a very good filet mignon dinner. This was followed by a short quarterly meeting and concluded with an auction of some interesting animals and even a small oriental rug (made from a discard King House carpet remnant). I would like to hear comments from members as to whether or not they would occasionally like to hold a quarterly meeting away from Newark.

The museum seems to be running smoothly. Attendance and Museum Shop sales are up. We have just hired an administrator: Sue Ann Taylor. Sue is a Newark native who has just returned after spending many years in New York City. She served in executive secretarial positions and as assistant to the presidents and vice presidents of large companies like Hickey Freeman, Allied Signal and Neiman Marcus. I think we are fortunate that she has returned home and she looks forward to working at the museum.

Board-appointed committees are busy too. The Museum Committee delegated furniture purchasing to Phyllis McClain, Mary McWilliams and Heidi Schnaidt. They will select furnishings for the upstairs rooms of the King House and comfortable seating for elsewhere in the museum. The Special Projects Committee is at work selecting new items to be reproduced by Dalzell Viking. Look for the next limited edition in December *Heisey News*. The Publicity Committee is looking at new ways to increase the convention and museum audience through advertising and public relations. If you feel your talents can be useful in any of these activities, please give the museum a call. ♦

*Hungry bidders and hard-to-find items made the Sturbridge auction exciting.*

## Curator's Report

*Karen D. Kneisley*

As of this writing I can officially say summer is over. The kids are back in school; the adults are back on track; we've finished a busy season at the museum.

Our trial run with extended hours was very successful. To publicize the change we took ads in newspapers in Licking and neighboring counties. The ads featured a free admission coupon with an identifying mark so that we could track the responses. We received a good number of coupons at the door (from all over), but the true indicator was that people were coming at 10 a.m. (no coupon in hand, even).

I am pleased to announce that the Board of Directors has chosen to maintain the extended hours. Beginning in October the museum is officially open Tuesday through Saturday, 10:00 a.m. to 4:00 p.m., Sunday 1:00 to 4:00 p.m. Rest assured—if you're on your way through town on Monday and it's the only time you can visit, we'll be here to turn the lights on for you. We're simply making Monday a "catch-up" day, a time during which we'll handle collections work and address maintenance needs. Administration offices remain open 8:00 a.m. to 4:30 p.m.

More good news comes in the form of a new person on the staff. Sue Taylor has been hired as our new administrator. The staff and I look forward to working with her and agree that her help is truly needed because of the organization's recent growth.

As always, keep your comments, letters and suggestions coming. We're always eager to include a new author in the newsletter or add a volunteer to our roster. ♦

### Focus on the Collection

*This month's feature—a recently donated #4058 Pumpkin punch bowl*



*#4058 Pumpkin punch bowl with cut lid.*

What makes yours a favorite piece of Heisey? Rarity? ... Color? ... Quality? Carl Sparacio shares his thoughts on the subject in his column this month. It's safe to say that in any collection, different items have significance and appeal to different people.

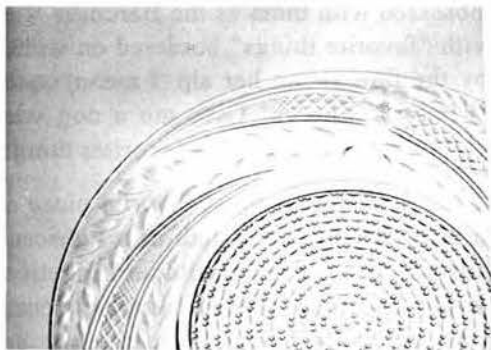
Not many people disagree that cuttings by Krall greatly affect their appreciation of Heisey glassware. When added to a particularly special item, such as a Pumpkin punch bowl, a Krall cutting becomes even more dynamic.

Enter Evelyn Thorp, a Heisey aficionado living in Oreland, Pennsylvania. In the late 1930s she came into contact with a former Heisey employee who showed her some of the company's most impressive wares. Like many, she was captivated by the quality and beauty of the items.

"Of course, my eye caught the pumpkin," she wrote.

"Then he told its history. It was the top prize winner in the National Glass Competition and had been placed in a glass case and displayed in various cities for six months. The pumpkin sat on a tray with one dozen punch cups, all cut in the same design as the pumpkin lid by a seventy-five-year old designer."

Mrs. Thorp wanted to buy the set, which was missing several cups that were broken in transit from city to city. She inquired about a replacement set of cups and was told "Mr. Krall, the artist, was afraid to tackle the job and turned it over to his son, who made the second set."



*Detail of cutting from torque plate.*

And so goes the story of the museum's most recent donation. In all, Mrs. Thorp gave the museum a punch bowl and lid, six #4058 cups, 12 # 4266 cups (replacements), a #1476 18-inch torque plate and a #1429 oval floral bowl—each embellished with the same Krall cutting. The cutting is similar to that on a #4056 Caesar salad bowl owned by the museum.

The #4056 Pumpkin punch bowl and cup were made from 1935-1944 and were sold under that name. The items were made in Crystal and Cobalt is reported in *The Collectors Encyclopedia of Heisey Glass, 1935-1938*

(Bredehoft). In his June 1978 article, Joe Lokay described an advertisement for the punch bowl set that appeared in the Fall 1935 issue of *Creative Design in Home Furnishings*. "Something new in punch bowls from A.H. Heisey." reads the ad, "a glass pumpkin with stemmed top. Set comes complete with tray and tiny punch cups." The bowl and lid are blown, while the underplate is pressed. None of the items are marked.

The museum has another Pumpkin punch bowl and cup, both undecorated. The applied stem on the undecorated lid is different in shape than that on the cut lid, attesting to their handcrafted origin. Both bowls have wide optics—creating the "pumpkin" effect—but Joe Lokay's original article speaks of an optic-less Pumpkin punch bowl previously on loan to the museum. The punch sets are on view in Gallery 1.



*#4058 Pumpkin punch bowl.*

In closing, Mrs. Thorp said in her letter "I am happy and relieved to know that my pieces are where they belong, in the Heisey Museum." Treat yourself this Halloween to a trip to the museum to see these beauties. ♦



*Punch cup with and without cutting.*



## A Few of My Favorite Things

*Carl Sparacio*

We all have favorite things, though few of us are as obsessed with them as the Baroness Von Trapp. Now there was a lady whose preoccupation with "favorite things" bordered on weird. She had a favorite-thing fetish—caused, no doubt, by the thin air on her alp. I mean, come on, already, "*soft fuzzy kittens and warm woolen mittens?*" Sheesh! Give me a dog who knows who's boss and a pair of lambskin-lined leather gloves—then we'll talk favorites things.

This subject came up recently when someone asked that I name my most favorite piece of Heisey—the one piece in our entire collection I would rescue from the path of a hurricane while forsaking all others. "That's easy," I said and tossed out an answer without hesitation. My firm, sure answer was followed by a, "No, wait ...!" and I named another Heisey favorite—then another and another and another. I began listing favorites faster than the Baroness sang hers—and *I* did it a cappella.

"You seem so positive," was the snide response.

"Well, no ... I mean, yes!" said I, with what I'd hoped was conviction.

Choosing a Heisey favorite is not easy. At least not for me. My criteria for a favorite piece of Heisey is more than beauty or rarity, the piece must also mean something. When I thought about it, after being released from the pressure of an immediate reply for my sharp-tongued inquisitor, I came to the conclusion that the circumstances surrounding the acquisition of each piece governs its place on my favoritosity (don't look it up) scale. I discovered, too, that all my favored Heisey pieces are from our early collecting days.



Years ago, while knocking around South Jersey, I found a Fandango ice bucket which became "a favorite thing." It was on a flea market table surrounded by those odd-looking old bottles collectors dig up in the most unlikely places. The ice bucket was free of chips and nicks but it had seen better days. For lack of a kinder word—it was "stressed." No matter, I was thrilled to find it.

Playing coy and feigning lack of any real interest as we are wont to do when flea marketing, I approached the dealer—a wrinkled, white haired old codger—this was about 25 years ago when this guy was about as old as I am now (a sobering realization). In deference to his age, which no longer seems as old as it did then, I said, "Sir, can you tell me something about this piece?"

"Sure can Sonny," he said, "I dug it up at an excavation site where they were cleaning out a bunch of old houses."

"It was buried in the ground?"

"Sure was, Sonny."

I thought it best not to pursue it. We agreed on a modest price. As I left he said to someone in his truck, "See, I told you some fool would buy that glass flower pot."

At the opposite end of the dealer spectrum, I received a call from a New York Dealer who, way back then, knew Heisey only if it was clearly marked. I was likely the only Heisey Collector she knew, too.

"Carl," she said, "I have a lovely oil lamp for you. It has the Heisey Mark." Without waiting for a response she continued her sales pitch, "It used to belong to the Astors."

"Huh?" I queried.

"You know, *The* Astors, from the Astors and the Vanderbilts."

"Really," I said for no reason as it hardly mattered.

"They gave it to their maid," She continued, " and she wants to sell it."

I'm not a hard sell. I bought it—sigh unseen. How many collectors, after all, have a chance to get something that was once owned by Lady Astor's maid? When I picked up the oil lamp I was overjoyed. It became an instant favorite thing. Assembled, it stood almost three feet high. Its tall base was topped by a huge boboche with long, dangly prisms, on top of that stood a scalloped oil font which in turn held a burner and a long, graceful glass chimney. I asked the dealer if the maid got the pet horse, too, and we had a good laugh ... I guess you had to be there.

Another favorite of mine is the world's biggest piece of heisey—well, actually, it's only *my* biggest piece of Heisey. A young relative, my wife's cousin, called to tell us about a large piece of Heisey sitting in a shop window about twenty miles south of us. His description left a lot to be desired. I ignored. When I next ran into him on the street he mentioned this big hunk of Heisey again and, being an air guitar aficionado, did an invisible air drawing by way of explanation. As near as I could tell, it was either a comport with a glandular condition or a Christmas tree. Eventually, out of curiosity more than anything else, I sought out the shop when I next passed through the area.

Dammed if he wasn't right. There in the window stood a Colonial, two-tiered epergne. The adrenaline began flowing. In the shop I asked the shopkeeper about "that big piece of glass in the window." Pulling no punches, he said, "It's broken," and the adrenaline came to a screeching halt as it slammed against my broken heart.

"Here, see?" he added, as if to confirm the bad news—he pulled out a large glass tray and a glass center post from under his counter.

"What's wrong with them?" I asked.

"The doo-hickey that joins these pieces to what's in the window is missing"

I tried to control the mounting adrenaline tide stirring once more within. I also resisted the urge to genuflect in the hallowed presence of a *three*-tiered epergne (In pieces, to be sure, and missing a ferrule). With mock hesitation I agreed to buy it "as is." The dealer thought this very generous of me.

It's a fun piece. Every time I look at it I see our cousin waving his arms wildly in the air as he tries to describe it.

Yet another most favorite thing, just as the ice bucket, its a piece of Fandango. It's a water bottle. It was owned by a treasured Heisey friend, Sandy Flashner—the friend who sang the night away with me as we waited for a Brimfield, Massachusetts flea market extravaganza to open when, unbeknownst to us, it had already been open for days. Sandy's water bottle was so sick it was more opaque than crystal. He tried every home remedy ever suggested to clear that thing. If anything, it got worse. I enjoyed teasing him about it.





Years ago Sandy passed away suddenly and unexpectedly and much too young, leaving family and friends devastated. Long after he was gone, it came into my possession. I wanted it as a remembrance. Eventually I found a wizard in Ohio who could clear the sickness. I agonized a bit over having it cleaned but finally chose to turn it into the sparkling gem Sandy wanted it to be. He'd surely love the way it looks now.

Sandy's Fandango water bottle sits in a place of honor with my Fandango ice bucket, the epergne and the oil lamp. Each one is everything a favorite piece of Heisey should be and, as they say in the song, "... *They're just a few of my favorite things.*"

The Baroness should stick to singing *Edelweiss*,—her favorite things are no match for mine. ♦

## **The Importance of the Endowment Fund**

*Amy Jo Jones*

A few of us have had the opportunity to be involved with charitable management and are aware of the advantages an endowment fund can bring to an organization such as HCA. This article is addressed to those who would like to begin their involvement in building a financially secure future for The National Heisey Glass Museum.

As the museum and glass collections have expanded so have the associated costs. Increases occur in both the fixed expenses, such as utilities and other costs associated with the physical building, and variable expenses, such as labor (which is the single largest ingredient).

Although expenses have grown, membership has remained at a level around 4,000. Proportionately, most of those members live outside the central Ohio region. Traditionally the support received on a daily, weekly and monthly level from our local and regional members has been crucial to the success of the operation of HCA. However, local enthusiasm can wane and it stands to reason that interest in the history and collecting of glass becomes the dominant reason for membership. Because of this probable change in geographical distribution of membership, chances are good that the future will see fewer donated hours necessitating higher labor costs. This approaching crevasse must be filled by expanding our endowment fund.

The Endowment Committee believes we must adopt the reasonable objective to increase the Endowment Fund to provide sufficient income to help meet the museum's costs and to keep HCA membership within easy reach of everyone. Once this basic fund is built, proper management will assure its appreciation as the cost of living increases. Our initial goal is \$500,000 to be obtained through donations, fund raisers and endowment membership levels.

We have successfully completed a building fund drive. The bricks and mortar are in place. Displays of the museum's collections are improved beyond our imagination of just a few years ago. When you initiate a building fund each dollar you raise is a dollar you can *see* because each one is spent directly on the objective. Raising money for the Endowment Fund is quite a different challenge.

Think about what you can do to support the goal of the Board of Directors and the Endowment Committee. You've already taken the first step by continuing your membership. For the next step consider renewing your membership at one of the levels as outlined on the back page of Heisey News. With your support we can preserve a legacy given to us by the best of the American artisans and craftsman who produced Heisey glassware. No other glass company has produced finer and no other glass club has given greater tribute. ♦

*What can you do to support the growth of HCA and the museum? Ask Amy Jo Jones.*

## From the Archives

*Don Valdes*

For all of you who are waiting patiently for the solutions to last month's photo identification quiz, tough luck. While several persons have mentioned their enjoyment of that feature, I haven't received many answers. Not to be daunted, I'll try a few again.

#1



#1—This is one I love. According to the inscription on the back, Paul Chapman donated this picture of "Fish Camp on Licking River below Stadden Bridge ca. 1900 - 1910" back in 1979. We even have the names of the subjects. If interested I'll be happy to aid in the identification.

#2—I don't have any identification on this one but thought you might enjoy a factory scene. They seem to be a happy crew!

#2



#3—and here's one for the ladies.

Rest assured, these photo features are not testing only you! After going to the copier I have to put them back where they belong, a real test at this stage of the game. I mention this for the enlightenment of those of you who wonder what your archivist is doing. Fortunately, all of the photographs have been cataloged and entered into the computer with something of a rough sort. Putting them in the data base will have to come later.

#3



So far the data base contains all of T. Clarence Heisey's correspondence for 1937-38 and we're well into 1940-41.

(1939 must be in one of those other cartons!) He was company vice-president at the time. Reflected in the Heisey glass (pardon the pun) as well as in the letters are his interest in horses, Amherst College, Psi Upsilon Fraternity and other themes suggested by friends and acquaintances. One certainly gets a feel for his pro-business, anti-Roosevelt political position. A wonderful compensation for reading and cataloging hundreds of letters is the feeling of intimacy and even friendship one can develop by simply reading letters. ♦

## Heisey's # 1220 Pattern—Punty Band

Jim Jones

Pattern #1220, Punty Band was introduced to the trade in January 1897. An article in the January 13 issue of *China, Glass and Lamps* declared, "... one of the best high class exhibits in pressed tableware in the house, or elsewhere for that matter, is made by A. H. Heisey & Co. of Newark, Ohio in room 79. ... The exhibit contains a few advance pieces of the new #1220 pattern, a combination of plain and figured line... The new ware is finished so as to give it a blown shape, which lends it additional attractiveness..." Apparently this was the only advertisement for Punty Band in the trade journals although *House Furnisher: China, Glass and Pottery* pictured a bowl in the November 1899 issue and a salt and pepper in December.

"... one of the best high class exhibits in pressed tableware in the house ... is made by A.H. Heisey & Co. of Newark, Ohio ..." —*China Glass and Lamps, January 1897.*

Punty Band is nearly identical to pattern #1225, Plain Band, issued also in early 1897 except for the row of punties on the bulbous part of the pieces and at the edge of the tops for covered pieces. Most pieces produced in the #1225 pattern were also produced in #1220 pattern covered by Patent no. 28, & 180; Plain Band, #1225 pattern, by patents 28, 180, & 28, 181.

The #1220 pattern was included in Heisey Company price lists from 1897 through 1908 in both the "Pattern" and "Miscellaneous" sections. Some 90 pieces were listed in the "Pattern" section from 1902 through 1908. (See table at end of article) At various times during this period the "Miscellaneous" sections listed a 4-inch low footed sherbet, stuck handle, figured; the large table salt, individual salt, 2-oz. and 2-1/2-oz. wines described as "figured", and the 13-oz. molasses can identified as a syrup. Other pieces not price listed were the 9-inch and 10-inch cake basket shown in the 1900/1901 Heisey catalog. The following pieces listed in warehouse inventories: 9 inch oblong dish, 1899; 8-inch salver, 1901 (six dozen were shipped

to the United States Glass Company, Factory F - Ripley & Co. in August, 1906); a footed tumbler and a handled footed tumbler, 1904. Early warehouse inventories indicate also that many, perhaps most pieces in Punty Band, were available with scalloped tops as well as beaded and crimped.

All pieces in the 1897 price list were offered plain, or with engravings #28 and #30, or with decorations—#20, gold on beads; #21 ruby; #22 amber; or #23 green applied to the punties. Luster decoration was mentioned as another option in the 1897 warehouse inventory. Engravings #28 and #30, but no decorations, were offered on selected pieces in the 1902 price list; engravings were dropped from the price list after 1902. A number of the pieces in Punty Band can be found decorated with ruby stain over most of the piece above the bulge. This decoration probably was applied by the Oriental Glass Company. Invoices to the Oriental Glass

No. 1220 — Pattern.



A page from the 1900/1901 catalog.

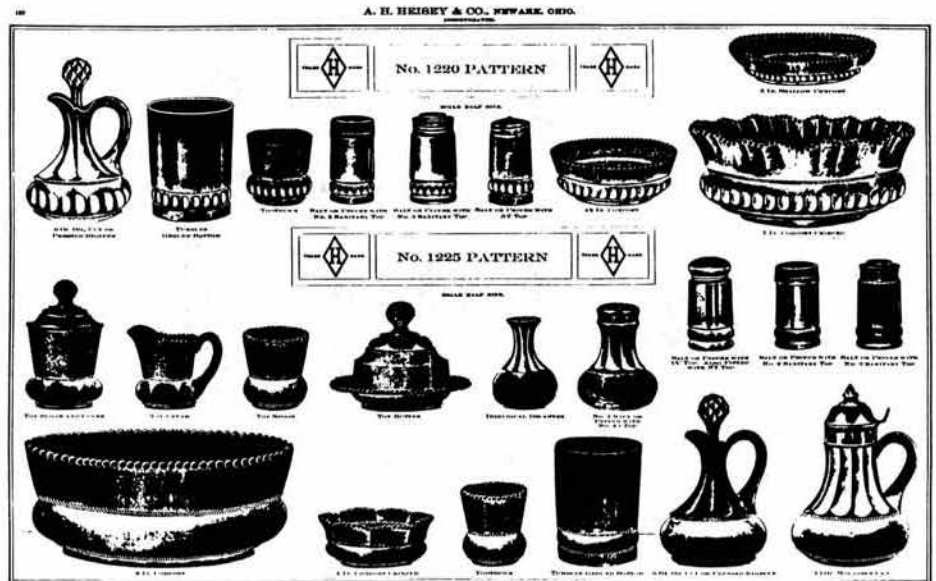
Company in the early 1900's included mugs, handled tumblers, wines, salts & peppers, toothpick holders and flared tumblers. A number, but not all, of these ruby stained pieces

were inscribed with names of people, names of places, and dates and sold as souvenir items. In addition to the standard #28 and #30 engravings, it appears that Heisey filled special orders. The 1901 warehouse inventory includes five tumblers "Eng. Elk".

Punty Band was produced mainly in crystal, however the warehouse inventory lists between 1899 and 1902 include the following items in color: 4-inch compote "opalescent," handled mug, individual cream, toy cream, 8-1/2-oz. tumbler, salt & pepper, and toothpick holder in "ivory." Many of these were decorated with hand painted flowers; others were inscribed with names, places and dates for souvenir items. These pieces in opaque colors are found both marked and unmarked.

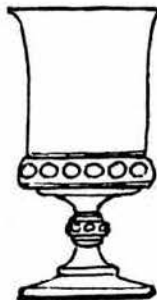
Punty Band pattern apparently was withdrawn from production abruptly. The 1909 Heisey catalog pictured only the 6-oz. oil with cut or pressed stopper, the 8-1/2-oz. tumbler, handled mug, salt & pepper and toothpick holder. No mention of the pattern was included in the 1910 price list.

The United States Glass Company produced two patterns that resemble Punty Band. Factory F (Ripley & Co. of Pittsburgh) began production of the Carolina pattern in 1903. The "bulge" in these patterns is not as pronounced as in Punty Band, and the punties are round, rather than oval.



A comparison of #1220 and #1225 from the 1909 catalog.

Prices charged for Heisey items "back then" are often of interest to late 20th century collectors. For example, in 1897 the 1/2 gallon tankard pitcher was offered at wholesale for \$2.50 doz. plain; engraved \$3.50 doz. and \$4.75 doz. decorated. If the decorated item was purchased on Dec. 21, 22, 23, the price was discounted to \$4.50 doz.! (All decorated pieces were discounted on these days) In 1902 the price of the tankard plain was \$2.75 doz in the "original package" (2 doz. barrel) \$3.05 doz. "in less than original package", and \$3.75 doz. engraved. No Yuletide discounts offered. To place these prices in perspective, the average wage in 1900 was \$12.74 week; the average work week, 59 hours. ♦



Two patterns that resemble #1220 Punty Band: Washington (top) and Carolina (bottom).

**Sources of Information on #1220 Puntty Band**



MISCELLANEOUS  
STEMWARE

Primary

- "Early" Catalog
- Catalog, Late 1900/Early 1901
- Catalog 50, 1905
- Catalog 56, 1909
- 1897 Price List
- Price List #60, w/supplement, 1902
- Price List #100, 1903
- Price List #120, 1906
- Price List #142, 1908
- Price List #155, 1910
- China, Glass and Lamps Jan. 13, 1897
- Heisey Invoices, 1905-1907
- Heisey Warehouse Inventories

Miscellaneous  
Stemware  
section from  
1905 catalog  
(above). Pages  
from 1903  
price list  
(below).

Secondary

- "Heisey's #1220, Puntty Band," Loren Yeakley, *Heisey News* Vol. I, no. 7, July 1972
- "Heisey's Little Things", Louise Ream, *Heisey News*, Vol. XI, no. 8, August, 1982
- "Heisey in the Trade Journals - no. 1225 Plain Band", Tom Felt, *Heisey News*, Vol. XVII., no. 4, April, 1986
- Encyclopedia of Victorian Pattern Glass, Book 5, U.S. Glass From A to Z*, William Heacock and Fred Bickenheuser



	Price Per Doz.	Price Per Doz.	Price Per Doz.	Price Per Doz.
	in Less than Original Page.	in Original Page.	in Original Page.	in Original Page.
Set	1 62 1/2	1 11	1 12 1/2	38
Spoon	86	78	10	115
Cream	104	88	9	130
Sugar and Cover	1 84 1/2	23	7	133
Butter and Cover	1 55 1/2	88	4	112
4-in. Compot	35	38	28	155
4 1/2-in. "	49	30	22	150
6-in. "	95	85	6	138
7-in. "	1 84 1/2	54	4	114
8-in. "	2 18 1/2	86	3	110

	Price Per Doz.	Price Per Doz.	Price Per Doz.	Price Per Doz.
	in Less than Original Page.	in Original Page.	in Original Page.	in Original Page.
1 in. Compot, Crimp	35	34	28	154
4 1/2-in. "	49	30	22	150
6-in. "	95	85	6	138
7-in. "	1 84 1/2	54	4	114
8-in. "	2 25 1/2	88	3	114
5-in. Shallow	49	30	40	190
6-in. "	45	40	40	194
8-in. "	1 50 1/2	35	8	194
9-in. "	1 80 1/2	65	4	194
10-in. "	2 25 1/2	68	4	114
6-in. and Cover	1 45 1/2	54	4	124
7-in. "	2 20 1/2	68	3	130
8-in. "	3 25 1/2	65	3	114
4-in. Square Dish	49	35	30	200
4 1/2-in. "	78	45	20	174
7 in. Crushed Fruit, Notched Cover	1 80 1/2	70	3	138
8 in. Crushed Fruit, Notched Cover	1 80 1/2	54	2	130
7 in. Footed Crushed Fruit, Notched Cover	3 05 1/2	56	11	112
8 in. Footed Crushed Fruit, Notched Cover	3 05 1/2	56	1	92
5 in. Hld. Jelly	85	72	12	128
5 1/2-in. Hld. Jd. 2 Cor. or Crimp	85	75	10	125
6-in. Pickle Tray	68	50	15	150
Nos. 1, 2 or 3 Bow Bon	65	60	14	140
Spoon Tray	65	60	14	140
8-in. Oblong Dish	1 25 1/2	118	5	122
5-in. Plate	45	40	40	190
6-in. "	50	45	30	200
9-in. "	1 10 1/2	60	9	104
8-in. "	1 35 1/2	40	6	145
11-in. "	2 25 1/2	60	4	145

	Price Per Doz.	Price Per Doz.	Price Per Doz.	Price Per Doz.
	in Less than Original Page.	in Original Page.	in Original Page.	in Original Page.
5-oz. Bowl, Footed	95	85	8	94
6-in. "	1 20 1/2	80	3	80
7-in. "	2 15 1/2	95	11	94
8-in. "	3 05 1/2	75	11	104
5-in. Crimp	1 80	98	8	94
6-in. "	1 55 1/2	74	8	80
7-in. "	2 20 1/2	70	14	80
8-in. "	3 20 1/2	90	11	94
6-in. Bowl, Shallow, Footed	1 80	90	5	85
8-in. "	1 80	90	2	80
9-in. "	2 40 1/2	20	11	75
10-in. "	3 40 1/2	30	1	70
5-in. Bowl, Footed and Cover	1 80 1/2	25	8	94
6-in. "	2 25 1/2	60	21	94
7-in. "	3 40 1/2	75	11	110
8-in. "	4 40 1/2	85	1	94
9-in. Salver	2 25 1/2	98	11	94
10-in. "	2 45 1/2	85	11	82
Colery, Tall	1 55 1/2	80	6	130
Quart Pitcher, Stock Handle	1 80 1/2	65	4	130
Half Gal. Pitcher	1 30 1/2	60	2	125
Half Pint Tankard, Cream, Stock Handle	95	85	10	120
No. 2 1/2 Pint Tankard, Cream, Stock Handle	90	80	25	150
Pint Tankard, Cream, Stock Handle	1 10 1/2	60	10	140
Quart Tankard, Stock Handle	1 80 1/2	65	4	130
8-oz. Tumbler, Ground	60	42	18	155
Mag. Pressed Handle	60	42	22	150
Tumbler, Flared, Stock Handle	85	75	17	160

	Price Per Doz.	Price Per Doz.	Price Per Doz.	Price Per Doz.
	in Less than Original Page.	in Original Page.	in Original Page.	in Original Page.
Yacht	85	35	80	104
No. 1 Salt or Pepper, P. T.	80	80	32	110
No. 2 " " P. T. gro	85	75	48	155
No. 3 " " P. T.	35	30	48	180
Individual Salt	80	60	50	215
Table Salt, medium	80	38	32	198
" Large	58	42	29	228
6-oz. Oil, Drop Stopper	1 80	87	12	155
6-oz. Oil, Pressed Stopper	1 80	25	12	155
6-oz. " Cut	2 50 1/2	25	12	155
13-oz. Molasses Can, Pat- ent Suckle Top	1 80 1/2	65	8	125
12-oz. Molasses Can, Pat- ent U. K. Top	2 10 1/2	80	8	125
4-oz. Cordial	35	31	72	98
2-oz. Wine	80	35	80	102
25-oz. "	85	35	80	105
5-oz. Claret	85	40	20	110
Hotel Cream	80	50	25	142
Toy Cream, Pressed Handle	80	70	25	155
Hotel Sugar	70	60	40	130
Hotel Cream	80	80	10	154

L. P. means Price Per Doz. in Less than Original Page.  
O. P. means Price Per Doz. in Original Page.

O. P. means Price Per Doz. in Original Page.  
L. P. means Price Per Doz. in Less than Original Page.

## #1220 Pattern Items in Price Lists for 1897, 1902, 1903, 1906 & 1908

E=Engraved, D=Decorated

Decorations offered: #20, Gold Bead; #21, Ruby Ball;  
#22, Amber Ball; #23, Green Ball

Engravings: #28 & #30

Item	97	02	03	06	08
Table Set	X-ED	X-E	X	X	X
Sugar w/cover	X-ED	X-E	X	X	X
Cream spooner	X-ED	X-E	X	X	X
Butter w/cover	X-ED	X-E	X	X	X
4 inch comport	X-ED	X-E	X	X	X
4-1/2 inch comport	X-ED	X-E	X	X	X
6 inch comport	X-ED	X-E	X	X	X
7 inch comport	X-ED	X-E	X	X	X
8 inch comport	X-ED	X-E	X	X	X
4 inch comp., crimped	X-ED	X	X	X	X
4-1/2" comp., crimped	X-ED	X	X	X	X
6 inch comp., crimped	X-ED	X	X	X	X
7 inch comp., crimped	X-ED	X	X	X	X
8 inch comp., crimped	X-ED	X	X	X	X
5 inch shallow comp.	X-ED	X-E	X	X	X
6 inch shallow comp.	X-E	X-E	X	X	X
8 inch shallow comp.	X-ED	X-E	X	X	X
9 inch shallow comp.	X-ED	X-E	X	X	X
10 inch shallow comp.	X-ED	X-E	X	X	X
7 inch comp. w/cover	X-ED	X-E	X	X	X
7 inch comp. w/cover	X-ED	X-E	X	X	X
8 inch comp. w/cover	X-ED	X-E	X	X	X
5 inch bowl fld.	X-ED	X-E	X	X	X
6 inch bowl fld.	X-ED	X-E	X	X	X
7 inch bowl fld.	X-ED	X-E	X	X	X
8 inch bowl fld.	X-ED	X-E	X	X	X
5 inch bowl crimped	X-ED	X	X	X	X
6 inch bowl crimped	X-ED	X	X	X	X
7 inch bowl crimped	X-ED	X	X	X	X
8 inch bowl crimped	X-ED	X	X	X	X
6 " bowl shallow, fld.	X-ED	X-E	X	X	X
8 " bowl shallow, fld.	X-ED	X-E	X	X	X
9 " bowl shallow, fld.	X-ED	X-E	X	X	X
10 " bowl shallow, fld.	X-ED	X-E	X	X	X
5 " bowl fld. w/cover	X-ED	X-E	X	X	X
6 " bowl fld. w/cover	X-ED	X-E	X	X	X
7 " bowl fld. w/cover	X-ED	X-E	X	X	X
8 " bowl fld. w/cover	X-ED	X-E	X	X	X
4 inch sq. nappy	-----	X	X	X	X
4-1/2 inch sq. nappy	-----	X	X	X	X
9 inch salver	X-ED	X-E	X	X	X
10 inch salver	X-ED	X-E	X	X	X
7" crushed frt. w/slot lid	-----	X	X	X	X
8" crushed frt. w/slot lid	-----	X	X	X	X

Item	97	02	03	06	08
7" cr. frt. fld. w/slot lid	-----	X	X	X	X
8" cr. frt. fld. w/slot lid	-----	X	X	X	X
Celery, tall	X-ED	X-E	X	X	X
6 inch pickle tray	X-ED	X-E	X	X	X
8 inch oblong dish	X-ED	X-E	X	X	X
Tumbler, ground	X-ED	X-E	X	X	X
Tumbler, flared - stock handle	-----	X	X	X	X
1/2 gal. pitcher	X-ED	X-E	X	X	X
1/2 gal. tankard	X-ED	X-E	-----	-----	-----
Qt. pitcher	X-ED	X-E	X	X	X
Qt. tankard	X-ED	X-E	X	X	X
Pt. tank creamer	X-ED	X-E	X	X	X
1/2 pt. tank creamer	X-ED	X-E	X	X	X
#2 1/2 pt. tank cream	-----	X	X	X	X
Toothpick	X-ED	X-E	X	X	X
Salt/Pepper, NT	X-ED	X-E	X	X	X
Salt/Pepper, PT	X-ED	X-E	X	X	X
Salt/Pepper, PT Gro	-----	-----	-----	-----	X
Ind. Salt	X-E	X	X	X	X
Table Salt	X-ED	X-E	X	X	X
Table Salt, Med	-----	-----	-----	X	X
5 inch hdl. jelly	X-ED	X-E	X	X	X
5 1/2 " hdl. jelly 3-corner	X-ED	X	X	X	X
5 1/2 " hdl. jelly crimped	X-ED	X	X	X	X
6 oz. oil, PS	X-ED	X-E	X	X	X
6 oz. oil, CS	X-ED	X-E	X	X	X
6 oz. oil, DS	-----	-----	-----	X	X
13 oz. mol can NT	X-ED	X-E	X	X	X
13 oz. mol can OK	X-ED	X-E	X	X	X
5 inch plate	X-ED	X-E	X	X	X
6 inch plate	X-ED	X-E	X	X	X
9 inch plate	X-ED	X-E	X	X	X
10 inch plate	X-ED	X-E	X	X	X
11 inch plate	X-E	X-E	X	X	X
Bon Bon #1	X-ED	X-E	X	X	X
Bon Bon #2	X-ED	X-E	X	X	X
Bon Bon #3	X-ED	X-E	X	X	X
Spoon tray	X-ED	X	X	X	X
Hotel sugar	X-ED	X	X	X	X
Hotel cream	X-ED	X	X	X	X
Ind. sugar	X-ED	X	X	X	X
Ind. cream	X-ED	X	X	X	X
Toy cream	-----	X	X	X	X
Wine	X-ED	X-E	X	X	X
2 1/2 oz. wine	-----	X-E	X	X	X
3/4 oz. cordial	-----	X-E	X	X	X
5 oz. claret	-----	X-E	X	X	X
Mug, press hdl	-----	X	X	X	X

# Table Talk

A. H. HEISEY & CO., NEWARK, OHIO



MARCH, 1937

## HELLO AGAIN



• With this issue, TABLE TALK resumes publication.

To those of you who remember the TABLE TALK of a few years ago: It is our hope that you will welcome this reappearance of Heisey's spokesman.

To others whom we greet for the first time with a new TABLE TALK: May you recognize in it at least the promise of a periodical bearing information of interest and value to the personnel of your department.

Promises, though, or statements of editorial policy are vain. TABLE TALK must itself show you what it expects to be. All we ask is your indulgence in not judging before the evidence is in. If this number seems like "house organ" with full stop pulled on the "house"—it is only because we have to announce what we consider glassware news of first importance.

## ROCK CRYSTAL CUTTINGS and ETCHINGS



STANHOPE (4085) 10 oz. Goblet  
Rock Crystal Cutting (885)



KOHINOOR (4085) 9 oz. Goblet  
Coronation Etching (492)



STANHOPE (4085) 10 oz. Goblet  
Sunning Etching (499)



KOHINOOR (4085) 9 oz. Goblet  
Rock Crystal Cutting (885)



KOHINOOR (4085) 9 oz. Goblet  
Rock Crystal Cutting (885)

• The beauty of Heisey Glassware starts with smart, modern design. Then it is enhanced by decorative art. Here are a few of the cuttings and etchings available in Heisey's newest patterns. They give you an almost limitless opportunity for "creative selection" of the Heisey ware which you will feature—combining pattern with cutting or etching. For example, the stately Kohinoor goblet with your choice of Coronation etching or 890 cutting or 888 cutting. And Stanhope goblet (note stem) with Sunning etching or 885 cutting.

## Table Talk

MARCH, 1937

...and HELLO, AGAIN! This "Hello" to a Million or So American Families who will be Greeted with News about Heisey Glassware in the Pages of Their Favorite Magazines. A Campaign to Commence at Once.



• Why, wonder many well-informed persons, does not A. H. Heisey & Company make all citizens of a recovering nation instantly aware of the truly delightful and really distinguished examples of contemporary glassware that are constantly coming from the furnaces at Newark? Whatever the reason (some guess it's too-busyness based on the "better mouse trap" principle), let such persons now cease wondering. In plain words, Heisey Glassware advertising (Heisey's was the first nationally advertised line of glassware in America) is scheduled to reappear in leading magazines this spring.

Timely, pictorial news belongs naturally in LIFE, one of the most sensational, instant successes in pub-

lishing history. As this is written, LIFE goes weekly to 800,000 alert persons. As you read this, the circulation will have jumped higher. When Heisey advertising appears in the issue of April 19th—well, one guess is as good as another.

The New Yorker, commencing with the issue of May 1st, will carry Heisey messages to more than hundred thousand of the "people that other people copy"—not only in New York but throughout the United States.

Point to check! How many of your customers read LIFE and NEW YORKER? The answer, you'll find, is "plenty."

## NEW DESIGNS, New Merchandising Helps

• Timely merchandise that enables you to swim with the tide of public interest! Public attention is directed now to things British and royal—which nobody can deny! And so we take the Kohinoor (as everybody knows, the large Indian diamond presented to Her Majesty, Queen Victoria) and set replicas in the stems of lovely glasses. As if that were not enough, we decorate the bowls with an exquisite etching called Coronation, because it features the ceremonial crown of Britain and the Empire. But these touches are subtle, in glassware so handsome, that "Kohinoor" will reign on American tables "for aye." Long live the King! "Kohinoor" will be featured in future advertisements in LIFE and NEW YORKER. Be sure that you have it on display—and a good supply in stock—for it will be "hot."



• LIFE Gets Data Bulletin: Heisey J. L. Hudson Company glass and lamp lines, and J. L. Schurman, Marshall Field & Co. merchandising manager, admires a new KOHINOOR goblet which Heisey's E. Lee Bradburn displays.

## "STANHOPE"... "SATURN"... "KOHINOOR"... "RIDGELEIGH"



• STANHOPE... not merely a pattern in glassware, but an idea that has started a new vogue... the use of a piquant note of color with crystal. Stanhope even allows a lady to match the occasion in the color with which she "spots" her glassware, by means of gay-colored, removable handle-inserts. Stanhope's pattern is marked by "swings," serrated lines, plain or frosted. SATURN takes its name from its encircling optic "rings," and is a vigorous, intriguing design, sure to prove instantly popular. SATURN will be featured in national advertising in May. Be sure that you are ready for the demand. Also in the picture is a sparkling KOHINOOR goblet. And a primed candelabra in the fast-selling RIDGLEIGH pattern—featured in LIFE April 19th and NEW YORKER May 1. To supplement your displays of these four designs—to make Heisey's national advertising sell for you, employ the attractive folders shown. We will supply them for your imprint.

As TABLE TALK goes to press, LIFE Circulation is over 1,000,000 Copies!

**1994 HCA BENEFIT AUCTION  
CONSIGNOR PACKING LIST**

Name \_\_\_\_\_  
 Address \_\_\_\_\_  
 City \_\_\_\_\_ State \_\_\_\_\_ Zip \_\_\_\_\_  
 Daytime phone (\_\_\_\_) \_\_\_\_\_

Ship to: **HCA Auction, 169 W. Church St., Newark, OH 43055**

Deadline: **January 3, 1994**

*A signed contract must accompany your auction glass*

Lot#	Qty.	Pattern #/Name	Description	Cut/Etch	Color	H	Damage
1							
2							
3							
4							
5							
6							
7							
8							
9							
10							
11							
12							

**Heisey Collectors of America, Inc. Benefit Auction  
 March 11 and 12, 1994  
 AUCTION CONTRACT**

This agreement is hereby entered into between *(Please Print)*

Owner/Consignor \_\_\_\_\_  
 Address \_\_\_\_\_  
 City \_\_\_\_\_ State \_\_\_\_\_ Zip \_\_\_\_\_

and Heisey Collectors of America, Inc. In consideration of 20% commission charged, HCA, in conjunction with auctioneers who are licensed by the Division of Licensing Dept. of Commerce and bonded in favor of the State of Ohio in the amount of \$10,000.00, hereby agrees to sell at absolute auction the above listed Heisey glass.

Commission percentage is subject to certain minimums or other extra expenses. Minimum commission is \$5.00 per lot. Usual expenses such as advertising, clerk and cashier fees, cataloging, labor and other expenses necessary to properly conduct an auction will be born by HCA.

HCA agrees to assume responsibility for goods to be sold at Benefit Auction. HCA responsibility begins when the goods are received and continues until the goods are sold. In the event of loss prior to sale, consignor will be compensated for item(s) lost or damaged based on the value determined by a qualified appraiser(s), less commission. HCA carries a blanket insurance policy to cover all items held for sale.

Owner/Consignor may not bid on his own goods at auction. Settlement for goods sold must be made in full within 72 hours after auction is completed. Collection of payment from buyers is the sole responsibility of HCA. All monies are held in HCA Trust Account. Consignors will be paid from Trust Account.

**HCA rep:** Signature \_\_\_\_\_  
**Consignor:** Signature \_\_\_\_\_ Date \_\_\_\_\_  
 Daytime phone (\_\_\_\_) \_\_\_\_\_

## CLUB NOTES

### Gulf Coast Heisey Club # 42

Calvin J. Meyer

The Gulf Coast Heisey Club will hold its first 1993-94 meeting on Wednesday, November 17, 1993 at 2:00 p.m. at the home of Calvin and Dorothy Meyer in Gainesville, Florida. Guests are welcome, but please call Cal and Dot at (904) 335-0664 for directions and further information. John and Adele Pardee will conduct the program on "The First 10 years of Heisey Glass Production", mainly on items that resembled cut glass.

### Gateway Heisey Club # 10

JoAnne S. Autenreith

The pineapple flag which was flying from the Autenreith house on Sunday, May 23, was not only to welcome the members of the Gateway Heisey Club for the May meeting, but to herald the program for the day presented by Rick Stoll—the two pineapple patterns made by Heisey. The earlier pattern, Pineapple and Fan was made from 1898 to 1905, a relatively short period of time, but was produced prolifically and in many forms. Plantation, the later pattern, was discovered by Harry Frier, who seems to ferret out all kinds of goodies.

Before the program we managed to get in our picnic on the porch before it got too cold. We were happy to welcome Mary Alice Stoll's mother to our meeting. ♦

## News from the Museum Shop

order by phone - call (614) 345-2932, ask for the Shop



### Frosted Oscars

Don't miss this chance to purchase an oscar which has never before been frosted.

Ruby/Red /HCA 84	\$60.00
Teal/HCA 89	\$35.00
Opal/HCA 88	\$35.00
Opalescent/HCA 87	\$40.00
Emerald green/HCA 82	\$45.00
Tangelo/Orange/ HCA 83	\$50.00

### Ruby Frosted Animals - Never before frosted!

Mallard half	\$25.00
Standing duckling	\$20.00 ea. \$37.50 pr.
Floating duckling	\$20.00 ea. \$37.50 pr.

Don't wait another minute call now or write HCA Sales 169 W. Church St., Newark, Ohio 43055. ♦

# Heisey

HEISEY PUBLICATIONS

P.O. Box 102  
Plymouth, Ohio 44865



Ralph & Sandra McKelvey (419) 935-0338  
VOGEL BOOKS ON HEISEY

BOOK I FIRST TEN YEARS .....	\$14.00
BOOK II COLONIAL YEARS .....	14.00
BOOK III ART AND COLORED GLASS .....	15.00
BOOK IV EARLY AND LATE YEARS .....	15.00
Special Set Price - \$55.00	

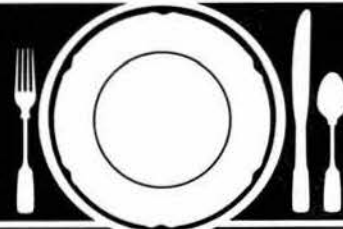
THE NEWSCASTER — oldest all-Heisey publication. All issues from 1977 to 1986 inclusive (publication was discontinued end of 1986). Set for \$35.00. Issues for individual years is \$4.00 per year.

#### NEW ITEMS

HEISEY NEWSCASTER - 1971-1976 - in 3 ring binder. Price \$35.00

#### SHIPPING AND HANDLING

Add \$4.00 for all orders!!



## How to Find Those Missing Pieces.

The world's largest source of discontinued china, crystal and flatware, Replacements, Ltd., buys and sells over 45,000 different patterns.

If you need a piece, or several pieces to add to your collection ... or if you'd like to sell some unneeded extras ... call or write us. We can provide you with a complete printout of available pieces in your pattern. Or we'll let you know our prices for the pieces you wish to sell.

Replacements, Ltd. — a 100,000 square foot facility; 1.5 million pieces; over 500,000 satisfied customers. Contact us, or come see our showroom. Let us help you complete your collection ... or maybe you'll help add to ours.

## REPLACEMENTS, LTD.

Call 1-800-562-4462. Or write:  
1089 Knox Road • P. O. Box 26029 • Dept. HS  
Greensboro, NC 27420

OVER 3000 HEISEY PIECES

ADVERTISING: Send all ads to: HCA Advertising, 169 W. Church St., Newark, OH 43055 or fax ads to 614-345-9638, include M.C. or Visa info. Ads are to be typed or printed on white paper with dark ink. Please double space. All Ads must be prepaid.

CLASSIFIED: 20 cents per word, members, 30 cents per word, non-members, \$1.50 minimum, 1/8 page limit. Personal ads 1/8 page limit. Abbreviations and initials count as words. Please do not abbreviate Heisey pattern names or Heisey colors. Ads which are entered in a vertical column format can contain 67 characters (maximum) per line. When counting characters, remember to includespaces.

DEALER DIRECTORY: \$35.00 Per Year, members only.

DISPLAY AD Rates,	MEMBER	NON
1/8 page - (9 lines)	\$ 20.00	\$ 30.00
1/4 page - (20 lines)	\$ 40.00	\$ 60.00
1/2 page - (horizontal or vertical)	\$ 80.00	\$120.00
Full page - (letter style or columns)	\$160.00	\$240.00

Ad copy must be received by the 1st of the month preceding the publication date, e.g. April 1st for May issue. Camera ready ads accepted, but must follow line specifications. Ads containing reproductions will not knowingly be accepted unless clearly stated (e.g. Heisey by Imperial, etc.) HEISEY NEWS accepts no further liability.

## CLASSIFIED ADS

WANTED: New York City epergne collector seeking epergnes of any origin. Particularly desirous of unusual shapes, colors, those with hanging baskets or tulips, and any wick are of definite American manufacture. Send photos only: Ann Aikens, 810 7th Ave, 36th floor, New York, NY 10019. Phone (212) 830-2072 fax: 5199.

FOR SALE: Pussy Willow vase. Marked. 15" to 16" top heights. \$365.00. See Vogel 1978 *Newscaster*. Philip E. Phillips, Box 425, West Barnstable, MA 02668.

FOR SALE: Pinweel and Fan punch bowl, stand & 10 cups. Make offer (614) 855-1070.

FOR SALE: Heisey Rose #5072: 12 oz. ftd ice tea (10) @ \$40.00, goblet (9) @ \$38.00, sherbet (5) @ \$25.00, Waverly ftd jelly \$45.00, pr. Mercury candlesticks \$75.00, Waverly salt & pepper set \$95.00. Priced each. Linda Love (214) 821-1688.

FOR SALE: Lavender Ice Flying Mare. Please call (407) 793-0986.

WANTED: Acorn & Leaves dinner plates, any color. Lid for Empress Cobalt candy. Bottom Provincial Zircon candy. Lid Fancy Loop mustard. Lid for 3lb. Recessed Panel candy (5-1/4" dia.). (214) 821-1688.

FOR SALE: Oscars 1977 thru 1993 plus 1979 frosted. Plates 1972 thru 1976. All perfect. Best offer for lot. C.H. Persing, 2620 Winemiller Ln., York, PA 17404.

WANTED: Empress or Carcassonne w/Old Colony etching, Crystal, (715) 693-3279.

FOR SALE BOOKS: Heisey Toothpick Identification and Price Guide, 1993, 2nd printing \$4.95 postpaid and Heisey Production Cuttings, \$17.95 postpaid. Both by Neila and Tom Bredehoff. Available from: Cherry Hill Publications, 10217 Stickle Rd. N.E., St. Louisville, OH 43071.

WANTED: Plantation hostess helpers, bridge trays, 7" cvd candy boxes, 12oz. flared ice teas, grd. bottom. (214) 821-1688.

WANTED: Heisey "Fox Chase" #4163 Tankard, #5012 Vase footed. Fred Ludwig, 300 Rt. 10, Randolph, NJ 07869. Tel: (201) 366-7279.

MOSTLY HEISEY: Some of our customers say, "The most beautiful Heisey pieces in our collection, we bought from you," which makes us feel good. Compliments like these encourage us to help others in their search for Heisey glass. If you have Heisey wants, call 1-800-972-2775.

FOR SALE: #4231 favor vase, Sahara, \$200.00 postpaid. Michael Krumme, P.O. Box 5542, Santa Monica, CA 90409. (213) 936-4214

WANTED: Two or three #3366 Trojan goblets and wines. Hawthorne. Robert Steinbach, 117 W. 65 Terrace, Kansas City, MO 64113. (816) 221-2200.

WANTED: Heisey Victorian punch bowl base. Highest price paid. 1-(800) 972-2775.

---

L & L Uniques, Ltd. (214) 821-1688  
Larry & Linda Love UPS & Ins. Extra  
4125 Sperry Street H=Marked  
Dallas, TX 75214-2743

---

#4035 Bethel urn cigarette holder, Orchid etch, (2) ea.	\$75.00
#5072 Wine 3 oz. Heisey Rose etch	\$95.00
#5003 Crystolite 10 oz. goblet, (6) ea.	\$25.00
#1776 Kalonyal 3-1/2 oz. flared egg/sherbet, H, (2) ea.	\$75.00
#1425 Victorian 9 oz. high ftd goblet, (9) ea.	\$25.00
#1425 Victorian 4 oz. claret, H, (7) ea.	\$20.00
#5010 Symphone 12 oz. ftd. soda, Minuet etch	\$42.00
#1184 Yeoman D/O 8" plate, Empress etch (lt. use), Mgl., (6)ea.	\$25.00
#1404 Old Sandwich ind. ashtray, H, Sahara, (2) ea.	\$35.00

---

Donald P. Bean (508) 473-0561  
36 Harding St. Ship & Ins. Extra  
Milford, MA 01757 H=Marked

---

#1425 Victorian sugar & cream, H	\$47.50
#1425 Victorian 6" comport	\$55.00
#1401 Empress ind. D/F nut cups, (8) ea.	\$7.50
#451 Cross lined flutes 5" flared vase, H	\$42.50
#1519 Waverly 6" L/F comport, Orchid etch	\$37.50
#411 Tudor 6 oz. cruet #7 stopper	\$37.50
#406 Coarse rib covd sug/cream, HH, Mglm.	\$75.00
#150 Banded Flute tooth pick hldr., H, mint	\$85.00
#1255 Pineapple & Fan spooner for table set, Emerald, Exc. gld.	\$55.00

---

The Collector's Stop (407) 793-0986  
Raphael & Eileen Wise Shipping & Ins. Extra  
12018 Snellen Circle H=Marked  
West Palm Beach, FL 33414

Would like you to visit us at the following shows

Oct. 22-23-24, 1993 Fri-Sat, 11-8 pm., Sun 12-6 pm.,  
Gwinett Civic Center, Atlanta, GA

Nov. 5-6-7, 1993 Fri-Sat, 12-8 pm., Sun 12-6 pm.,  
Florida State Fairgrounds, Tampa, FL

Dec. 31, 1993, Jan. 1-2, 1994 Fri-Sat, 12-9 pm., Sun 12-6 pm.,  
Gwinett Civic Center, Atlanta, GA

Coming with many colored and unusual pieces of Heisey.  
We also will be glad to buy.

Stephanie Danaher (713) 583-8581  
 J.B. Gibson Shipping & Ins. Extra  
 14150 Wunderlich #801 H=Marked  
 Houston, TX 77069

#517 W/#197 tumbler, Pitcher cut, H	\$150.00
#333 Wine set complete, 8 pieces, H	\$275.00
#461 7" basket w/cutting, H	\$175.00
#1184 Sugar, cream, butter, all cut, H	\$125.00
#3409 Cocktail w/#462 Fox Chase etch, (2) ea.	\$60.00
#1776 Kalonyal 12" celery, H	\$70.00
#1776 #3 Bon Bon, H	\$100.00
#407 Cruet w/#8 stopper, H	\$55.00
#150 Root beer mug, H	\$150.00
#3389 Duquesne cocktail w/Everglade cut	\$12.50
#393 Narrow Flute 6 oz. hldd soda w/cutting, H	\$25.00
#1218 Dolly Madison Rose 8" plates, (2) ea.	\$35.00
#4091 Kimberly w/Dolly Madison Rose goblet, H	\$35.00
#4091 Kimberly w/Dolly Madison Rose 6 oz. champagne, H	\$25.00
#4091 Kimberly w/Dolly Madison Rose sherbets, H, (4) ea.	\$27.50
#4229 Favor vase D/O, Sahara	\$150.00
#1428 Warwick set, 5" vase, 2 ind. vases	\$80.00
#1509 Queen Ann ice bucket hdl/tongs silver floral overlay	\$135.00
#1252 Twist flared floral, H, Moongleam	\$65.00
#4420 Janice 4" vase, Sahara	\$85.00
#493 Cologne w/#65 stopper, all cut, H	\$115.00
#1225 7-1/2" plate D/O, H, Hawthorne	\$25.00
#1223 6" cereal D/O, H, Hawthorne	\$25.00
#393 Individual creamers, H, (one w/ label) ea.	\$12.50
#365 Queen Ann 9" nappy crimped, H, plus	
#365 Queen Ann 5" nappies shallow, H, set	\$165.00
#341-1/2 Half gal. squat jug	\$85.00
#300 Peerless ftd sherbet scalloped, w/Eng. Reg, H	\$30.00
#300 1-1/2 oz. wine, H	\$12.50
#1776 Kalonyal 6" plate, H, (shows wear)	\$15.00
#5025 Tyrolean 2 oz. sherry, Orchid etch, H, (2) ea.	\$75.00
#5025 Tyrolean 6 oz. champagne, Orchid etch, H, (2) ea.	\$40.00
#1184 Yeoman puff box, H, Hawthorne	\$135.00
#1404 Old Sandwich ind. ashtray, H, Cobalt, (2) ea.	\$50.00
#1184 Yeoman divided relish w/Empress etch, Moongleam	\$75.00
Gold Series 14 pieces, OBO	\$1000.00
Gem Series 12 pieces, OBO	\$1000.00

L. A. Maness (804) 798-1825  
 Rt. 1 Box 552 UPS \$4.50/CTN  
 Ashland, VA 23005 H=Marked  
 Visa/Mastercard Welcome

#1150 Colonial star 7-1/2" plate, H, (10) ea.	\$12.50
#1503 Crystolite ind. cream, sugar & tray, H, set	\$67.50
#1503 Crystolite 3 part relish	\$25.00
#1503 Crystolite covered mustard, H	\$47.50
#1503 Crystolite 3" handled ind. nut, (6) ea.	\$10.00
#1503 Crystolite 10 oz. goblet (5) ea.	\$30.00
#1401 Empress 7-1/2" D/F nappy, H	\$30.00
#1401 Empress 3 part round relish, H, Sahara	\$62.50
#1401 Empress 8" round plate, H, Sahara, (8) ea.	\$17.50
#3355 Fairacre 10 oz. goblet (2) ea	\$25.00
#433 Greek Key 4 oz. 3" sherbet, H, (6) ea.	\$19.00
#1405 Ipswich oyster cocktail, H, (2) ea.	\$20.00
#1405 Ipswich 10 oz. goblet, H, (8) ea.	\$25.00
#1540 Lariat 7-1/2 qt. punch bowl, 12 cups H, glass ladle and 21" underplate, all	\$450.00
#1540 Lariat 6 oz. saucer champagne, (6) ea.	\$22.50
#1540 Lariat 5" mayonnaise, H	\$27.50
#112 Mercury 1 lite candlesticks, Moongleam, pr.	\$55.00
#393 Narrow Flute french dressing boat w/underplate, H	\$57.50
#300 Peerless low footed sherbet, H, (6) ea.	\$12.00
#300 Peerless 2-1/2 oz. wine, H, (4) ea.	\$16.00
#1567 Plantation 6-1/2" handled jelly, H	\$55.00
#1567 Plantation 6-1/2" footed honey, H	\$65.00
#351 Priscilla saucer champagne, H, (8) ea.	\$15.00
#351 Priscilla high footed sherbet, H, (3) ea.	\$12.50
#479 Petal hotel creamer & sugar, Flamingo, set	\$55.00
#341 Puritan creamer & open sugar, set	\$57.50
#341 Puritan 9" celery, H	\$37.50
#341 Puritan 4-1/2" high footed jelly, H	\$42.50
#1506 Provincial 4 part 10" relish	\$35.00
#1506 Provincial 1000 island dressing bowl, H	\$37.50
#1469 Ridgeleigh covered lemon dish, H	\$40.00
#1469 Ridgeleigh 5 part star relish, H	\$50.00
#1469 Ridgeleigh mayonnaise & ladle, H	\$42.50
#3394 Saxony 2-1/2 oz. low wine, Sahara (3) ea.	\$65.00
#337 Touraine low footed N/O sherbet, H (6) ea.	\$10.00
#1252 Twist 6" plate, H, Moongleam, (5) all	\$95.00
#1252 Twist 8" plate, (4) ea.	\$15.00
#1252 Twist 10" celery, H, Moongleam	\$40.00
#1425 Victorian 9 oz. goblet (1 ball stem), H, (6) ea.	\$22.50
#1425 Victorian 7-1/2" plate, H, (4) ea.	\$15.00
#1425 Victorian 2 oz. bar, H	\$22.50
#3350 Wabash 10 oz. W/O goblet, H, (8) ea.	\$25.00
#1519 Waverly, Orchid etch creamer & sugar, H, set	\$67.50
#1519 Waverly, Orchid etch 5-1/2" footed mayo, H	\$62.50
#1184 Yeoman 8 oz. goblet, Flamingo, (10) ea.	\$22.50
#1184 Yeoman D/O saucer champagne, Moongleam, (2) ea.	\$28.00
#1184 Yeoman 3 part center hdl. server, H, Moongleam	\$42.50

**H & R Diamond H**  
**Helen & Bob Rare**  
**1450 White Ash Drive**  
**Columbus, OH 43204**

**(614) 279-0390**  
**yafter 5:30 pm.**  
**UPS & Ins. Extra**  
**H=Marked**

#142 Cascade 3 lite candleholder, Rose etch	\$85.00
#1509 Queen Ann 6" fld., hdl. jelly, Rose etch, H	\$50.00
#1509 Queen Ann 5-1/2" D/F mint, Rose etch	\$50.00
#1519 Waverly 7" plate, Rose etch (10) ea.	\$20.00
#1519 Waverly 8" plate, Rose etch (6) ea.	\$25.00
#1519 Waverly cream & sugar, Rose etch, pr.	\$60.00
#1519 Waverly cup & saucer, Rose etch (2) ea. set	\$85.00
#1519 Waverly 6" jelly compote, Rose etch	\$50.00
#1519 Waverly 6-1/2" cheese compote, Rose etch	\$50.00
#1519 Waverly salt & pepper, Rose etch, pr.	\$65.00
#1519 Waverly cov'd. butter, Rose etch	\$160.00
#5072 Rose stem goblet, Rose etch (4) ea.	\$40.00
#5072 Rose stem champagne, Rose etch (2) ea.	\$36.00
#5072 Rose stem sherbet, Rose etch (8) ea.	\$32.50
#5072 Rose stem cocktail, Rose etch (2) ea.	\$75.00
#5072 Rose stem claret, Rose etch (6) ea.	\$110.00
#5072 Rose stem cordial, Rose etch (2) ea.	\$150.00
#1519 Waverly 7" plate, Narcissus cut (3) ea.	\$15.00
#1519 Waverly 8" plate, Narcissus cut (5) ea.	\$20.00
#1519 Waverly mayo & underplate, Narcissus cut, H	\$45.00
#1519 Waverly 6" jelly compote, Narcissus cut S	\$45.00
#1519 Waverly 12" celery, Narcissus cut	\$40.00
#1519 Waverly cream & sugar, Narcissus cut, H	\$50.00
#1519 Waverly sugar only, Narcissus cut, H	\$25.00
#3408 Jamestown 2 oz. wine, Narcissus cut, (6) ea.	\$40.00
#3408 Jamestown 5 oz. parfait, Narcissus cut, (6) ea.	\$35.00
#3408 Jamestown 5 oz. champagne, Narcissus cut, (6) ea.	\$25.00
#3408 Jamestown 9 oz. goblet Narcissus cut, (4) ea.	\$35.00
#3408 Jamestown 12 oz. ice tea, Narcissus cut, (6) ea.	\$37.50
#1509 Queen Ann 5-1/2" D/F mint, Barcelona cut	\$35.00
#5077 Legionaire 12 oz. fld. ice tea, Amber stem, (12) ea.	\$20.00
#5077 Legionaire 3-1/2 oz. fld. cocktail, Amber stem, (11) ea.	\$20.00
#341 Heisey by Imperial goblet, Amber, (4) ea.	\$10.00
#341 Heisey by Imperial 1 qt. pitcher, Amber	\$50.00
#300 Heisey by Imperial ind. creamer & sugar, H, Amber, pr.	\$45.00
#1405 Heisey by Imperial small compote, Amber	\$40.00
#1405 Heisey by Imperial cov'd. candy, Green	\$40.00
#1506 Heisey by Imperial goblet, Amber, (5) all	\$35.00
#1506 Heisey by Imperial wine, Amber, (5) all	\$40.00
#1506 Heisey by Imperial 8" plate, Amber, (3) all	\$15.00
#1506 Heisey by Imperial rnd. candleblock, Amber, pr.	\$40.00
#1506 Heisey by Imperial goblet, Red	\$7.50
#341 Heisey by Imperial goblet, Azalea, (8) ea.	\$10.00
#341 Heisey by Imperial champ/sherbet, Azalea, (8) ea.	\$7.50
#341 Heisey by Imperial claret, Azalea, (12) ea.	\$10.00
Heisey by Imperial set of 3 colts, Ultra Blue	\$125.00
Heisey by Imperial set of 3 colts, Light Blue	\$85.00
Heisey by Imperial set of 3 colts, Amber	\$275.00
Heisey by Imperial lion trinket box, Amber	\$95.00

**Nita's Glass & Linen**  
**Nita Kadwell**  
**591 Leonard Rd.**  
**Onalaska, WA 98570**

**(206) 978-4913**  
**Shipping & Ins. Extra**  
**H=Marked**

#150 Banded Flute salt & pepper (or. tops), H, pr.	\$35.00
#150 Banded Flute cruets (or. stoper)	\$32.00
#160 Locket On Chain 8" compote	\$79.00
#433 Greek Key 1/2 gal. pitcher, H	\$200.00
#433 Greek Key crushed fruit & cover, H	\$400.00
#436 Sweet Pea vase #2	\$30.00
#451 Cross Line flute vase, H	\$28.00
#1184 Yeoman cup & saucer, D/O, Sahara, H	\$18.00
#1205 Fancy Loop wine, (2) ea.	\$48.00
#1205 Fancy Loop ind. creamer	\$25.00
#1238 Bee Hive 5" plates, (4) ea.	\$12.00
#1401 Empress ice bucket, sterling overlay, H	\$148.00
#1401 Empress 14" torte, Minuet etch	\$65.00
#1401 Empress t. handled sq. sandwich, H, Sahara	\$40.00
#1503 Crystolite cup, H	\$11.00
#1503 Crystolite oval ashtray & match holder, H	\$55.00
#1567 Plantation 3 part relish, H	\$35.00
#1776 Kalonyal 4" nappy, H	\$20.00
Rooster vase, (2) ea.	\$35.00
#1565 Leaf candlestick, (1only)	\$20.00

**Forever Heisey**  
**Norm & Jan Thrun**  
**1663 Londondale Pkwy.**  
**Newark, OH 43055**

**(614) 344-5955**  
**UPS & Ins. Extra**  
**H=Marked**

#112 Mercury 1 lite candlestick w/Orchid etch (1 only)	\$32.00
#142 Cascade 3 lite candlestick w/Orchid etch (1 only)	\$60.00
#5025 Tyrolean sherbet w/Orchid etch (3) ea.	\$18.00
#5025 Tyrolean low goblet w/Orchid etch (6) ea.	\$28.00
#1404 Old Sandwich oval cream & sugar, H, pr.	\$45.00
#1404 Old Sandwich goblet, Flamingo, (3) ea.	\$45.00
#1567 Plantation goblet (6) ea.	\$35.00
#5067 Plantation goblet w/Ivy etch (6) ea.	\$30.00
#1184 Yeoman 5 oz. fld. juice/parfait, D/O, Moongleam, (2) ea.	\$35.00
#1252 Twist fld. & hdl'd. mayo, Moongleam	\$60.00
#1401 Empress 7" Triplex relish, H, Alexandrite	\$295.00
#353 Medium Flat Panel 5" fld. master nut, Flamingo	\$65.00
#3380 Old Dominion fld. grapefruit w/Empress etch, H, Flam.	\$55.00
#1200 Cut Block, 5" fld. jelly compote	\$40.00
#1503 Crystolite 13" oval fld. floral bowl, H	\$65.00
#1503 Crystolite 2 lite candelabra, scalloped base w/bobeche and prisms, pr.	\$125.00
#4 Essex 9" 1 lite candlestick (1 only)	\$110.00
#25 Federal 7" 1 lite candlestick, H, (1 only)	\$55.00
#5 Patrician 7-1/2" 1 lite candlestick, H, (1 only)	\$50.00
#5 Patrician 12" 1 lite candelabra, complete (1 only)	\$125.00

**Jean & Don Parret** (517) 784-7319  
**4995 Mapledale Rd.** Recorder  
**Jackson, MI 49201** Post. & Ins. Extra  
**H=Marked**

#1238 Beehive 14" serving plate, Flamingo	\$65.00
#1469 Ridgeleigh 8" sm. ind. holder ashtray, (8 pc set)	\$50.00
#1469 Ridgeleigh 4" lg. square cigarette lighter	\$29.00
#1469 Ridgeleigh 3 oz. cocktail, (4) ea.	\$39.00
#1469 Ridgeleigh ball pitcher	\$265.00
#1469 Ridgeleigh 6" cheese plate, 2 hdl.	\$12.00
#1469 Ridgeleigh 10-1/2" peticote 1 lite candlabra, A/prisms, pr	\$295.00
#1469 Ridgeleigh 7" ball vase	\$95.00
#1469 Ridgeleigh 10" orange bowl, 2 hdl.	\$75.00
#1469 Ridgeleigh 8" sq. lunch plates (6) ea.	\$20.00
#351 Priscilla 2 oz. oil & stopper	\$42.00
#1503 Crystolite 3 oz. cruet & stopper (2) ea.	\$35.00
#1107 Pleat & Panel 3 oz. cruet & stopper, Flamingo (2) ea.	\$95.00
#1184 Yeoman 3 oz. cruet & stopper, Flamingo	\$95.00
#1184 Yeoman 3 oz. cruet & stopper, Moongleam	\$95.00
#356 Little Prince 4 oz. cruet & stopper	\$90.00
#451 Cross Lined Flute 6 oz. cruet & stopper	\$135.00
#4163 Lg. pretzel jar & lid, #462 fox hunt	call
#4163 16 oz. beer mug, #462 fox hunt (6 matched)	call
#1425 Victorian 7-1/2" plates, H (7) ea.	\$12.00
#1425 Victorian 4" flared vase	\$35.00
#1425 Victorian 3 oz. cocktail, (4) ea.	\$25.00
#1425 Victorian 2 oz. sherry, (6) ea.	\$32.00
#1425 Victorian 8 oz. old fashion, (5) ea.	\$26.00
#1425 Victorian 1-1/2 oz. bar, (6) ea.	\$32.00
#1425 Victorian 3 oz. cruet & stopper	\$85.00
#2930 8 oz. D/O tumbler, Flamingo, (5) ea.	\$20.00
#5038 Rooster tail 3 oz. cocktail, frosted stem, (6) ea.	\$68.00
#602 12 oz. heavy soda, #459 Fisherman, (2)	\$95.00
#2407 10 oz. soda #462 fox hunt, (6) ea.	\$45.00
#4044 New Era 5 oz. juice, (6) ea.	\$19.00
#4044 New Era 8 oz. goblet, frosted foot, (4) ea.	\$15.00
#3390 Cacassone 6 oz. tall/champ., Mnglm. stem & foot, (5) ea.	\$30.00
#6041 Cabochon 3 oz. oyster cocktail, (4) ea.	\$12.00
#3368 Albemarle 3 oz. D/O oyster cocktail, (5) ea.	\$12.00
#1200 Cut Block 8 oz. cruet & stopper, (2) ea.	\$125.00
#1205 Fancy Loop 2 oz. bar gold/Emerald	\$120.00
#4054 Coronation 2-1/2 oz. bar	\$15.00
#393 Narrow Flute 1-1/2 oz. bar/deco., (2) ea.	\$20.00
#1404 Old Sandwich 16 oz. beer mug	\$70.00
#1106 Touranine 3 oz. bar N/F, Amber	\$35.00
#1184 Yeoman 6" hdl. bow tie candy, Moongleam	\$35.00
#1184 Yeoman 4" hdl. bow tie candy, Moongleam	\$48.00
#1184 Yeoman 4" hdl. bow tie candy, Flamingo	\$45.00
#1506 Whirlpool 4" cv'd. cig. box	\$45.00
#1506 Whirlpool 2-3/4 sq. ashtray (3) ea.	\$12.00
#439 Ind. "bridge" ashtray	\$25.00
#1280 Winged Scroll cv'd. trinket box, Opal/deco.	\$35.00

**Jean & Don Parrett** (517) 784-7319  
**4995 Mapledale Rd.** Recorder  
**Jackson, MI 49201** Post. & Ins. Extra  
**H=Marked**

#394 Narrow Flute Dr. Johnson punch bowl	\$695.00
#393 Narrow Flute hollow stem flared champagne, (6) ea.	\$29.00
#351 Colonial 4 oz. ft'd. schopen (3) ea.	\$15.00
#351 Colonial 6 oz. ft'd. schopen (6) ea.	\$25.00
#351 Colonial 10 oz. ft'd. schopen (5) ea.	\$35.00
#429 Plain Panel 8 oz. tumbler (4) ea.	\$22.00
#429 Plain Panel 3 pint pitcher	\$125.00
#367 Williamsburg 20 oz. decanter	\$130.00
#1252 Twist ice tub & handle	\$80.00
#2 Salad fork & spoon, pr.	\$45.00
#300 Peerless 12 oz. ice tea (8) ea.	\$30.00
#353 Colonial 26 oz. tobacco jar & lid	\$245.00
#354 Colonial 16 oz. lavender jar & lid/gold	\$125.00
#331 Colonial 8 oz. pickle jar & lid	\$69.00
#341 Williamsburg squat horse radish	\$70.00
#352 Colonial 3 oz. lavender jar & lid	\$55.00
#353 Colonial 2 oz. lavender jar & lid	\$65.00
#1405 Ipswich 10 oz. ft'd. soda, Moongleam, (4) ea.	\$105.00
#1405 Ipswich 10 oz. ft'd. soda, Sahara	\$40.00
#3397 Gascony 3 oz. wine, Tangerine	\$250.00

**Hooked On Heisey** (203) 966-9359  
**Jay C. Martin** Eves. or Answ. Mach.  
**97 Heritage Hill Rd.** UPS & Ins. Extra  
**New Canaan, CT 06840** H=Marked

Tropical Fish piece, Frosted	\$1550.00
Rosalene Gold animal series w/ added colts (14) pcs. #206/450	\$1350.00
Heisey mailbow w/#679 Windsor cutting	\$1000.00
Giraffe, head turned to side	\$185.00
#22 Windsor 7" candlesticks, H, pr.	\$165.00
#460 Pinwheel & Fan variant 7" basket, H	\$395.00
#465 Recess Panel 7" basket, H	\$195.00
#473 Narrow Flute w/rim 7" oval plate, H, Vaseline	\$325.00
#1225 Plain Band toy table set, H	\$300.00
#1420 Tulip vase 9", Cobalt	\$355.00
#1428 Warwick Horn of Plenty vase 9", H, Cobalt	\$275.00
#1489 Puritan 7" sq. ashtray, 2-1/2" deep, Zircon	\$750.00
#1540-1/2 Lariat 3 lite candleblock	\$325.00
#4002 Aqua caliente cocktail w/#2 Tall Sailboat etch	\$150.00
#4027 Christos decanter w/#471 Circus etch	\$650.00
#4036 Marshall cocktail shaker w/#2 Tall Sailboat etch	\$295.00
#4231 Favor vase, Sahara	\$255.00

**Harold's Collectables** (303) 771-9432  
**Carole & Harold Keller** VISA/MC accepted  
**6244 S. Cook Dr.** UPS & Ins. extra  
**Littleton, CO 80121** H=marked  
 #1404 Old Sandwich 4 oz. oyster cocktail, H, Sahara, (6) ea. \$30.00  
 #1404 Old Sandwich 6 oz. Sundae, H, Sahara, (10) ea. \$27.50  
 #1425 Victorian 5 oz. sherbet, H, (7) ea. \$12.50  
 #1483 Stanhope cup w/black knobs, (4) ea. \$17.50  
 #1485 Saturn tidbit tray, H, Zircon \$95.00  
 #1567 Plantation candle holder 5" ft'd. epergne, H \$75.00  
 #1567 Plantation candleblock, 1 lite \$85.00  
 #3390 Carcassone 2-1/2 oz. wine, Alexandrite bowl, (7) ea. \$150.00  
 #4044 New Era stem 1 oz. cordial, (3) ea. \$75.00

**MoundBuilders** 800-Fon-Heisey  
**1640 Columbus Rd. S. W.** 614-587-2227  
**Granville, OH 43023** UPS & Ins. Extra  
 H=Marked

## WANTED!! COLLECTORS OF ORCHID ETCHING

### Some most unusual pieces now available:

Waverly ice bucket with sea horse handles  
 Waverly covered cigarette, seahorse handles  
 Queen Ann lilly bowl with cut starburst center  
 Fan vases in Lariat and Waverly  
 Trident candleholders  
 Graceful stems, ice teas, and juice  
 Duquene stems  
 #4164 Water jug

**Just to name a few. Call for listing!**

**The Season for gift giving will soon be here!**

### We Clean Cloudy Glass—Satisfaction Guaranteed

Ship to: Carlisle & Associates  
 28220 Lamong Rd., Dept H  
 Sheridan, IN 46069

"You Seek Perfection—At Carlisle & Associates We Provide It!"

We ask that you send no money until we return your item(s) to you. If you are happy, please send payment. If not, please return the bill marked "Not Satisfied."

Please allow 6-8 weeks for redelivery of most items. Some very cloudy items may take several additional weeks. All glass is handled and cleaned at your risk.

Cruet	\$20	Cocktail Shaker	\$30
Cologne	\$20	Salt Shaker (single)	\$15
Water Bottle	\$30	Salt Shaker (pair)	\$25
Decanter	\$30	Crushed Fruit Jar	\$30
Vases (under 12")	\$25	Lavender Jar	\$20-30
#517 Quart jug	\$30	Water Lamps	\$30-50

All other items for quote, or call (317) 758-5767

Will Pick Up/Deliver at any Apple Tree Heisey Auction

### Public Auction

After 33 years of collecting Heisey we will offer our private collection, of over 400 pcs., at Public Auction including 8 Crystalite cordials; Sahara Empress D/F candy & cover, all decorated; Fish Bowl; Cathedral flared vase, Artic etch; Elephant handle beer mug; 6 Flamingo coarse rib dinner plates; Warwick 9" Cobalt vase; Door knob; Purtain 3 lb. candy & cover; 2 qt. crushed fruit & cover; #1 Madonna; #1401 ashtrays Moongleam, Cobalt, Alexandrite, Sahara & Clear; 3 Ridgeleigh Sahara So. ashtrays; Cabochon frosted display sign; Mirror display sign; Jamestown Bell Minuet etch and many more Heisey items too numerous to mention.

**Saturday October 30, 1993 Starting at 2:00 pm.**

Scott Hall, Johnson County Fairgrounds  
 Franklin, Indiana

Owner: Mr. & Mrs. Charles Bechman

Auctioneer: Roger Hughes - Auo 9000050 - (317) 736-5254



**ALL HEISEY AUCTION**  
**FRIDAY OCTOBER 22, 1993 5:00 P.M.**  
**SATURDAY OCTOBER 23, 1993 9:00 A.M.**  
**APPLE TREE AUCTION CENTER**  
**1616 W CHURCH STREET**  
**NEWARK, OHIO 43055**

This sale will feature our usual good selection of creams & sugars, many in color; lots of candlesticks & candelabras; a good selection of cruets, some in color & lots of stemware. Several nice pcs of Verlys incl pcs in Directoire Blue & Topaz poissons bowl. A good selection of pattern incl Pleat & Panel, Victorian, Yeoman, Provincial & Empress. A lrg collection of Plantation (150 pcs) incl pressed & blown stemware & many hard to find items. A good selection of vases incl 9" Warwick Horn of Plenty vases in each color; unusual vases in Nail & Recessed Panel. Candy jars incl Recessed Panel 1/2 lb in Vaseline & (2) 8 lb cov jars in crystal. Lrg selection of celerys, jellys & bon bons. Lots of smalls, punch cups, animals & smoking items. A lrg selection of Imperial & other items made in Heisey molds incl a set of Lavender Ice animals, first time offered at auction. Over 1,200 lots to sell.

**DOORS OPEN ONE HOUR BEFORE EACH SESSION**

**Good food and comfortable building**  
**A fast moving sale**  
**Absentee bids always welcome and handled competitively**

**Sale Manager: Frank Frye**  
**Auctioneers: Sam Schnaidt and Paul Robison (614) 344-4282**  
**Apprentice Auctioneers: Sue Giffen and Andy Ourant**

<p><b>MARJORIE GILLETTE</b> Rochester, New York Glassware Speciality Heisey Mail Orders &amp; Shows 716-225-4678</p>	<p><b>SHIRLEY EUGENIA DUNBAR</b> Heisey a Specialty Mail Order, Shows, Appraisals PO Box 7085, Port St. Lucie, FL 34985 Oct.-May 407-337-1558 PO Box 222, Naples, ME 04055 May-Oct. 207-647-5652</p>	<p><b>COMPARISON LIST</b> New Heisey Auction List For 1993 3 year's auction 90-91-92 Price \$15.00 + \$3.00 shipping, Payable: B. Whaley 300 International Dr., Pataskala, OH 43062-1-614-927-1557</p>
<p><b>ALL HEISEY AUCTION</b> Consignments Welcome Apple Tree Auction Center 1616 W. Church, Newark, OH 43055 PH: (614) 344-9449</p>	<p><b>GREEN ACRES FARMS</b> Antiques, Crystal Glass &amp; Collectibles 2678 Hazelton-Etna Rd., SW (S.R. 310-N) Pataskala, OH 43062 Sat. or Sun. PM or call (614) 927-1882</p>	<p><b>THE CURIOSITY SHOPPE</b> Heisey, Pottery, Coins, Crafts &amp; More In Holmes County Amish Country 55 W. Jackson, Millersburg, OH 44654 (216) 674-2999</p>
<p><b>ALFA I CARRIAGE HOUSE ANTIQUES</b> Featuring Depression &amp; Elegant Glassware Al &amp; Faye Maness Rt. 1 Box 552, Ashland, VA 23005 PH: (804) 798-1825</p>	<p><b>H &amp; R DIAMOND H</b> Helen &amp; Robert Rarey 1450 White Ash Dr. Columbus, OH 43204 PH: (614) 279-0390 after 5:30</p>	<p><b>JEAN &amp; DON PARRETT</b> Beautiful Heisey 4995 Maple Dale Rd. Jackson, Michigan 49201 517-784-7319 — Recorder</p>
<p><b>ANTIQUES - THE SHULTZES</b> 206-208 East Main St. Newmanstown, PA 17073 15 Miles West of Reading, PA PH: (215) 589-2819</p>	<p><b>"HAPPINESS IS" - THE STULTZS</b> 3106 Warren Court, Glen Allen, VA 23060 Shows and Mail Order PH: (804) 672-8102</p>	<p><b>PATTON HOUSE</b> Rocky's Mall, I-81 &amp; US 11 Weyer's Cave, VA 24486 PH: (703) 967-1181 The Antique Gallery, Richmond, VA</p>
<p><b>C &amp; J ANTIQUES</b> Cole &amp; Jean Miesner Box 45, 72 Whig St. Newark Valley, NY 13811 PH: (607) 642-9905</p>	<p><b>MOUNDBUILDERS ANTIQUES</b> The Second Generation 1640 Columbus Rd., S.W., Granville, OH 43023 Closed Saturday 1-800-FON-HEISEY Lots of Heisey, minutes from the museum. (614) 587-2227</p>	<p><b>SCHWAN'S ANITQUES</b> SHOWS &amp; MAILORDER 77 Lagos del Norte Ft. Pierce, FL 34951 PH: (407) 461-5940</p>
<p><b>DOXTOIS</b> Eva &amp; Joe Hirsh Heisey &amp; Pattern Glass 6 James St., Norwalk, CT 06850 PH: (203) 847-3315</p>	<p><b>HELEN &amp; JIM KENNON</b> Heisey, Cambridge, Fostoria, Duncan, Imperial, Fenton, Tiffin P.O. Box 114 Brookville, OH 45309 PH: (513) 833-5406 SHOWS ONLY</p>	<p><b>R &amp; L ANTIQUES-SAN FRANCISCO</b> Members of the Golden Gate Heisey Club 3690 Bodega Ave. Petaluma, CA 94952 PH: Petaluma (707) 762-2494 PH: San Francisco (415) 621-6693</p>
<p><b>CHARLES &amp; MILDRED FISHER</b> Heisey animals and Heisey By Imperial animals 991 Idlewild, Newark, Ohio 614-522-5398</p>	<p><b>JJ MC KEE ANTIQUITIES</b> Pottery - Glassware - Collectibles 222 West 75th St. Kansas City, MO 64114 Wed.-Sun. 10-5 PH: (816) 361-8719</p>	<p><b>THE WOODEN SHOE</b> Antiques &amp; Collectibles Jim &amp; Sheri VanEs by Appt. 810 Elden, Herndon, VA 22070 PH: (703) 435-9045</p>
<p><b>CRYSTAL LADY</b> Joann Hagerty Specializing in elegant depression glassware 1817 Vinton Street, Omaha, NE 68108 Shop Ph. (402) 341-0643 or Home Ph. (402) 391-6730</p>	<p><b>L &amp; L UNIQUES, LTD.</b> 4125 Sperry St., Dallas, TX 75214-2743 214-821-1688 Selling Glassware &amp; Dinnerware by mail HEISEY GLASS</p>	<p><b>CARLISLE AND ASSOCIATES</b> We clean cloudy cruets, decanters, cocktail shakers, vases, salt &amp; peppers, etc. Write for flyer 28220 Lamong Rd., Sheridan, IN 46069</p>
<p><b>DIAMOND H PLUS</b> Mail Orders &amp; Shows George &amp; Eileen Schamel 6625 Gillardi Rd., Boonsboro, MD 21713 PH: (301) 432-6285</p>	<p><b>J. &amp; R. COLLECTIBLES</b> Shows, SASE, Mail Order list The Lukasko's P.O. Box 1030, Newark, Ohio 43058-1030 PH: (614) 344-9719</p>	<p><b>ARMORY ANTIQUES</b> Specializing In Quality Glass &amp; Furniture Heisey And Other Elegant Glass 168 W. Main St., Plain City, OH 43064 (614) 873-4890</p>
<p><b>ETTELMAN'S DISCONTINUED CHINA &amp; CRYSTAL HEISEY a SPECIALTY</b> P.O. Box 6491-HN Corpus Christi, TX 78411 PH: (512) 888-8391 Include SASE</p>	<p><b>MOSTLY HEISEY</b> Rhoda Curley 16 Clayton PL, Albany, NY 12209 Shop and Mail Order PH: (518) 482-6272</p>	<p><b>HEISEY PUBLICATIONS</b> Box 102, Plymouth, Ohio 44865 All Vogel Heisey Books I, II, III, IV And Quarterly Newscasters available</p>
<p><b>FOREVER HEISEY</b> Jan &amp; Norm Thran Mail Order, Shows, Appraisal Service 1663 Londondale Pkwy., Newark, OH 43055 PH: (614) 344-5955</p>	<p><b>R &amp; S ANTIQUES AND GLASSWARE</b> Heisey - Specializing in Complete Tableservice call or write for patterns and colors 719 W. Winter Park St., Orlando, FL 32804 407-841-1440 or 407-298-5980 PM</p>	<p><b>WILLEY'S ANTIQUES &amp; MUSEUM</b> Specializing in Heisey 11110 Cannon Rd., Frazeyburg, OH 43822 16 miles east of Newark, OH PH: (614) 828-2557</p>
<p><b>"OUR PLACE ANTIQUES" &amp; "The Barn"</b> 121 S. Prospect St., Granville, Ohio 43023 Open Daily 12-5 PH: (614) 587-4601</p>	<p><b>THE MUTED SWAN ANTIQUES</b> 5486 Peachtree Rd., Chamblee, GA 30341 Heart of Chamblee Antique Row Specializing in Heisey &amp; Cambridge Bill &amp; Pat Miller PH: (404) 451-7620</p>	<p><b>JAMES S. HARRIS ANTIQUES/APPRISALS</b> Box 672 Richmond, KY 40475-0672 PH:(606) 623-9100 Buying and Selling by Mail</p>
<p><b>GLASS 'N' GLASS</b> Virginia &amp; Odell Johnson 6909 10th Ave. W. Bradenton, FL 34209</p>	<p><b>SHRADER ANTIQUES</b> Dep. &amp; Elegant Glass, Buffalo Pottery Railroad Dining Car China, Shelley China 2025 Highway 199, Crescent City, CA 95531 PH: (707) 458-3525</p>	<p><b>TALL OAKS ANTIQUES</b> Glassware-Specializing in Heisey Shows - Mail order 219-864-1704 Mike &amp; Barb Rosenberger 5115 W 78th LN, Schererville, IN 46375</p>

---

### Museum Volunteers for August and September

Bob and Phyllis McClain  
Mary McWilliams  
Phyllis Wilson\*  
Norm Thran  
Leota Friel  
Francis Law  
Jim and Helen Kennon  
Bob and Helen Rarey  
Dick and Francis Stotler  
Hugo Wenzel  
Arlene Zipperlen  
Gloria Wilson\*  
Heisey Collectors of Columbus

\* *new volunteer*

---

### When Renewing Your Membership ...

Please consider renewing (or upgrading) your membership to one of these levels. Any amount beyond regular Associate dues—\$18.50, plus \$2.50 for each additional household member—goes into the Endowment Fund. Participation is voluntary.

<i>Individual Contributing</i>	<b>\$30</b>
<i>Joint Contributing, two people in one household</i>	<b>\$40</b>
<i>Family Contributing, parents and children under 18</i>	<b>\$50</b>
<i>Patron</i>	<b>\$100</b>
<i>Sponsor</i>	<b>\$250</b>
<i>Benefactor</i>	<b>\$500</b>

Since 1983 the Endowment Fund has grown to more than \$110,000. Now that we've built a new museum, we need to guarantee its financial future. Contributors will be listed annually in *Heisey News*. For more information contact Mary Holland, membership secretary, (614) 345-2932.

---

### New Museum Hours

During the summer The National Heisey Glass Museum had extended hours on a trial basis. Beginning October 1, official hours will be 10:00 a.m. to 4:00 p.m. Tuesday through Saturday and 1:00 to 4:00 p.m. on Sunday. Office hours remain 8:00 a.m. to 4:30 p.m., Monday through Friday.

If you haven't made it to Newark yet to see the new building and collection displays, now's the time to do it. Everyone agrees, the museum is more breathtaking than ever.

**Membership Renewal Notice:** Check the date above your name and address on the mailing label. This is your expiration date. If it reads 10-10-93, make sure your dues are paid soon in order to receive next month's issue of *Heisey News*. Dues are \$18.50 per year, plus \$2.50 for each additional household member.

POSTMASTER SEND FORM 3579 TO:

HCA  
169 W. Church St.  
Newark, OH 43055



**SECOND CLASS Dated Material**