

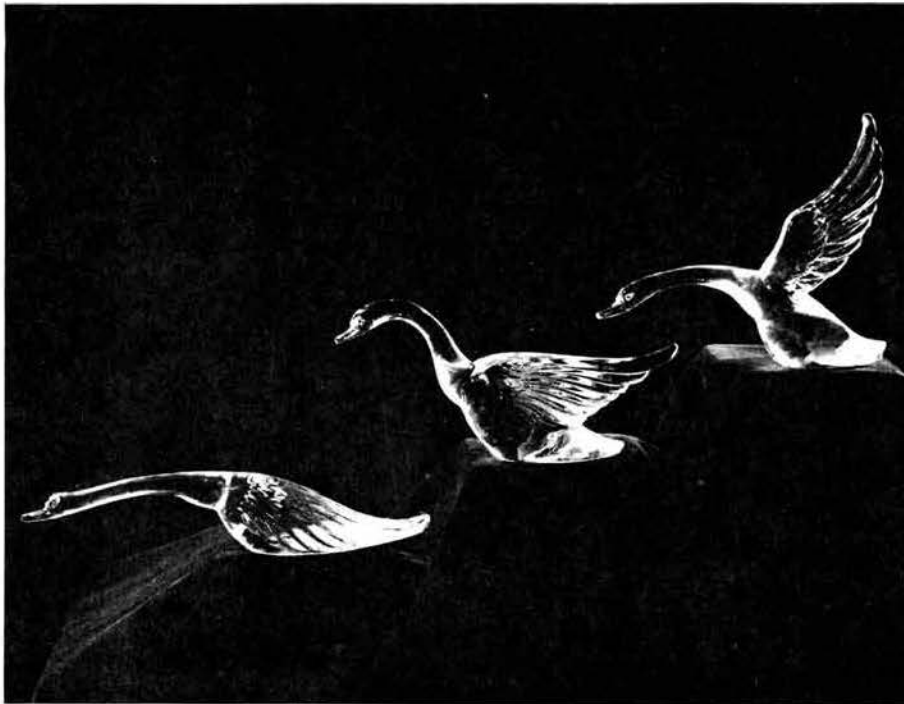
# HEISEY NEWS

The Official Publication of Heisey Collectors of America, Inc.

Volume XXII No. 10

September 1993

ISSN 0731-8014



## HCA Announces Sale of Three Geese

The Board of Directors approved the sale of Heisey's Geese (wings up, wings half and wings down). The set will be produced by Dalzell Viking in the ever popular Lavender Ice and will be sold this month. Four Hundred Fifty numbered sets will be available for \$150 each. A portion of the proceeds from this sale will benefit the Education fund.

*New procedures and form  
for sale appear on page 5.*

### In this issue ...

*Dalzell Viking Theft Update ♦ Focus on the Collection: Cobel Cocktail Shakers  
New Museum Shop Catalog ♦ More Photos from the Archives ♦ Final Reminder: Percy Moore Dinner*

## HEISEY NEWS

Heisey Collectors of America, Inc.  
169 West Church Street  
Newark, Ohio 43055  
Phone (614) 345-2932  
Fax (614) 345-9638  
All Rights Reserved 1993  
ISSN 0731-8014

### Editor

Karen D. Kneisley

### Assistant Editor

Kelly Thran

### HCA President

Sam Schnaidt, (614) 587-0052

### HCA Vice President

Norm Thran, (614) 344-5955

### HCA Secretary

Tom Bischoff, (419) 533-7431

### HCA Treasurer

Larry Stickle, (614) 366-2000

HEISEY NEWS is published and printed monthly (twice in February), by Heisey Collectors of America, Inc. Second Class Postage Paid. Subscription is limited to HCA members. First class mailing is available for an extra \$13.00, due with payment of membership.

The opinions expressed in articles in HEISEY NEWS are those of the authors and not necessarily those of the organization. The Editor reserves the right to edit, with or without the consent of the author, or to refuse any material submitted for publication.

### Back Issues

The following volumes are available: V, VIII, IX, X, XI, XII, XIII, XIV, XV, XVI, XVII, XVIII, IX, D, XL, XII, XIII, XIV, XV, XVI, XVII, XVIII, for \$9.00 each volume (12 issues).

### Advertising

Send all ads to: HCA Advertising, 169 W. Church St., Newark, OH 43055 or fax ads to 614-345-9638, include M.C. or Visa info. Ads are to be typed or printed on white paper with dark ink. Please double space. All Ads must be prepaid. Ad copy must be received by the 1st of the month preceeding the publication date, e.g. April 1st for May issue. Camera ready ads accepted, but must follow line specifications. Ads containing reproductions will not knowingly be accepted unless clearly stated (e.g. Heisey by Imperial, etc.) HEISEY NEWS accepts no further liability.

### Museum

Heisey Collectors of America, Inc, a non profit corporation (tax exempt status), owns and operates The National Heisey Glass Museum in Veteran's Park, 6th and Church Streets, Newark, Ohio. Open daily 10-4, Sunday 1-4, closed holidays. Other hours by appointment. Members admitted free.

### Membership

To join Heisey Collectors of America or to renew your membership, contact Mary Holland, membership secretary. Associate dues are \$18.50, plus \$2.50 for each additional household member. Voting members pay an additional one-time fee of \$25. Please consider supporting the Endowment Fund by joining at one of the levels listed on the back page.

### Museum Shop

There is always someone available in the shop to answer questions or take your order. When ordering by phone, please have a credit card ready. When ordering by mail, please be sure to include appropriate charges such as shipping and sales tax.

### Shipping and Receiving

Delivery is made much easier when we have a complete street address, not a PO Box. We prefer to use UPS. If you have not received an expected package, please call Brad, shipping clerk, to confirm it was sent. He will assist you in tracing it. If your package arrives damaged, please contact your local UPS representative. We insure everything.

### Donations and Loans to the Museum

HCA reserves the right to accept or refuse items based on current holdings. If you have something you would like to share with the museum, please arrange an appointment with Karen D. Kneisley, curator.

### Identification

HCA will attempt to identify unknwn glass items. If sending a written inquiry, please enclose a photograph. Drawings and descriptions are not as helpful when trying to identify glassware. Other arrangements should be made in advance with Karen D. Kneisley, curator. Sorry, we do not provide monetary evaluations.

### Calendar of Events

Second Annual Percy Moore Dinner, to be held at  
Sturbridge, Massachusetts *September 11, 1993*

All Heisey Auction *September 11, 1993*

March Auction *March 12, 1993*

### Features

#### DALZELL VIKING THEFT UPDATE

A report on the outcome of the theft of the Lavender  
Ice items 3

#### HEISEY GEESE GO ON SALE

Charlie Wade reports on new procedures for this  
limited edition sale 5

#### A FLEA MARKETING LESSON

Carl Sparacio offers insight into the big league of  
collecting—the flea market! 6-7

#### KEEPING IN TOUCH

Louise Ream discusses the use of the original Heisey  
molds by Imperial and HCA 10

#### PERCY MOORE DINNER FORM

This is your last chance to sign up for the dinner or to  
order your souvenir 17

### Departments

SAM'S SCRIBBLES, Sam Schnaidt 3

CURATOR'S REPORT, Karen D. Kneisley 4

FOCUS ON THE COLLECTION, #4225 Cobel Shaker 4

FROM THE ARCHIVES, Don Valdes 8-9

MUSEUM SHOP, Catalog and Form 10-15

CLUB NOTES 16

ADVERTISING 17-23

## Sam's Scribbles

*Sam Schnaidt, President*

The summer has gone by very quickly. The museum had about 1200 visitors for the month of July and the sales in the Museum Shop have been brisk.

The Board of Directors all-day planning session that took place on July 24 was very productive. I was very pleased that 18 out of 20 members were able to attend, including new members Fran Brock, Gordon Cochran and Charlie Wade, who contributed fresh ideas and lots of enthusiasm. This shows the dedication and interest of this group. The focus of 1993 will be twofold—education and endowment. The committees for both areas will be very active and you will see many of the details throughout the year in *Heisey News*. The Board unanimously endorsed the Cadillac dinner project for March of 1994. This will be held at Cherry Valley Lodge, the new facility that will be 1994 convention headquarters.

I have heard many members outside of Newark say that they wish they were here and could help. Karen and Kelly need people to write articles for the newsletter. This is something that anyone can do at home and it would be nice to see some new bylines in *Heisey News*. Other out-of-state news: I just saw some beautiful and rare Krall-cut pieces that were donated to the museum. These finds from Pennsylvania are gorgeous additions to our cuttings collection.

Plans are underway for next year's convention and an interesting change will be that events will start on Tuesday and end on Saturday night. This will allow Sunday to be a travel day for those who join us from great distances. Amy Jo Jones will be 1994 convention chairperson and if you have any ideas, please call her or drop her a note.

HCA sends its sympathy to the families of long-time members Mollie Miller and Fern Linne, who passed away last month. ♦

### Update on Theft of Lavender Ice Items from Dalzell Viking Factory

In May 1993, two Lavender Ice Flying Mares were sold at a flea market in Pataskala, Ohio. They were unnumbered and sold at a very low price. A short time later two Kingfishers and a Madonna of the same color were purchased at a yard sale believed to be at the residence of the dealer who sold the two Flying Mares. Given that numbered Lavender Ice items are now selling for prices considerably greater than those of the original series, and that Dalzell Viking developed the color for the exclusive use of HCA, it was obvious they could not have come from any other source. They were stolen from the factory.

Ken Dalzell pursued the matter diligently with West Virginia authorities and HCA supported him with figures and paperwork detailing our careful distribution techniques. By mid-July a firm connection was established between the flea market dealer and a Dalzell Viking employee. Upon confrontation by the local authorities, the employee confessed to the thefts. He was promptly dismissed in lieu of prosecution. Ken Dalzell felt this would send the strongest message to his remaining employees.

The investigation by Dalzell Viking and West Virginia authorities confirmed that the theft involved very few Lavender Ice items. The stolen items sold by the flea market dealer were kept as evidence by HCA. All other items uncovered by this investigation were confiscated as evidence. Reimbursement of costs associated with recovery of the items has been demanded from the flea market dealer by HCA officers. As unfortunate as this situation was, it is not new to the glass industry. HCA members should be assured that Dalzell Viking will continue its tight security practices. ♦

*We are looking forward to this month's dinner and meeting in Sturbridge—hope to see you there!*

*HCA members should be reassured that the persons involved with the theft and sale of Lavender Ice items have been apprehended.*

## Curator's Report

*Karen D. Kneisley*

The more visitors that come through our doors, the more we learn about our museum. When preparing a facility for public use, we can account for certain needs: restrooms, water fountains, stairs, the elevator. It's personal preferences that we can't anticipate.

People "ooh and ah" over the glass and even the handcrafted cabinetry. They comment on the new building and the refurbished King House. Then they get to the nitty-gritty—the glass arrangement.

*Missed something during convention?*

"I can't find ..." are words I hear almost daily. I explain that we rearranged everything, of course, and then offer assistance in locating the item. The person is then amazed at how "sparse" the collection now appears. I explain that we have more space and the newfound luxury of letting items "breathe." Most people respond that they have observed items that they didn't even know we had and that the new displays are truly beautiful.

In many respects we have played musical chairs with the collection—only we haven't removed any chairs at the end of the round. For those of you with photographic memories, it does look different. But, almost everything is on view—minus only a few duplications and larger items.

The task at hand is reacquainting visitors with the collection. In the next month or so we'll have new brochures with the revised floorplan and an index of the collection, so to speak. And, debuting in this issue, there will be a new column—Focus on the Collection. Every month I'll highlight some favorite item and pinpoint "hiding places."

Missed something during convention? Send me your suggestion and I'll focus on it. ♦

### **Focus on the Collection—#4225 Cobel Cocktail Shaker**

*Send your suggestions for future topics to the curator*

The #4225 cocktail shaker with strainer and stopper, named for its designer, Ray C. Cobel, was produced by A.H. Heisey Co. from 1932-1957 and by Imperial Glass Co. until 1968. The shaker comes in three sizes: 1-pint, 1-quart and 2-quart. The 1- and 2-quart sizes are identical in shape, while the pint shaker has tapered sides. *The Collectors Encyclopedia of Heisey Glass, 1925-1938* (Bredehoft) lists the shaker's colors as Crystal, Moongleam, Flamingo, Sahara, Cobalt and Experimental Red. The item was used widely for cuttings and etchings and often featured a figural stopper, such as the Rooster Head or Horse Head. Other companies sometimes decorated the shaker, especially with cuttings, silver overlay or rattan.

We are fortunate to have quite a selection of Cobel shakers in the museum's collection. In all, we have 19 #4225 cocktail shakers in every size. In our history we have had every color listed, as we used to have a Moongleam 2-quart shaker on loan and recently received a Flamingo 2-quart shaker as a donation. And, we have *la creme de la creme*: the 1-quart Cobel shaker cased in Cobalt and cut in the manner of Webb Cameo glass, as well as shakers with Krall cuttings.

*Cheers!*

You can find Cobel shakers throughout the museum. The Cobalt-cased, Krall-cut and Experimental Red shakers are in Gallery 1 with cuttings and experimental items, respectively. In Gallery 2 you will find a 1-quart shaker in the Cobalt section and 2-quart shakers in the Sahara and Flamingo sections. The largest concentration of shakers, those with etchings and figural stoppers, will be found in the barware section, located in Room 4 of the King House. ♦

## Cover Story: Heisey Geese

Charlie Wade, Special Projects Committee

On September 22, a limited edition of 450 sets of Heisey Geese will go on sale. They will be produced in Lavender Ice by Dalzell Viking. Due to the nature of these molds, **All Geese will have bubbles in their heads—it is inevitable.**

In response to suggestions from HCA members, the Board of Directors has approved new procedures for this sale. Guidelines are outlined below, please read carefully.

The 450 numbered sets of three Geese will be sold for \$150 each. Price includes shipping, tax is extra for Ohio residents. Processing begins September 22, continues through November 21 (60 days) and will follow these rules:

1. **Initial orders will be accepted only by mail.** All entries should include the order form below and should arrive in a sealed envelope. Orders will not be opened until first day of sale. **There will be no phone orders before the sale begins.**
2. On September 22, **orders will be processed for HCA members only**, limit one set per member. Orders will be processed by lottery (i.e drawn at random).
3. From September 23 through 28, **HCA members only** will be permitted to purchase extra sets, up to 4 per member (total of 5 for first week). These orders will be taken from previously submitted mail orders, by phone and in person.
4. From September 29 through November 22, **remaining sets are available on first-come-first-serve basis.** Anyone may purchase as many sets as he or she desires. This will also be done by mail, by phone and in person.
5. **All orders submitted will be filled and are the responsibility of the entrant** (i.e. if you submit two separate forms and both are selected in the initial lottery, you must purchase both).
6. There will be no more than **50 frosted seconds and overruns** available after the sale. These will be sold by lottery to HCA members only for \$150.

*In response to numerous suggestions, the limited edition Geese will initially be available only to HCA members. Please read the new guidelines carefully before placing your order.*

---

**ORDER FORM** for Set of Three Geese: MAIL to HCA, 169 W. Church St., Newark, OH 43055

Name: \_\_\_\_\_

Address: \_\_\_\_\_

City/State/Zip: \_\_\_\_\_

Daytime phone: \_\_\_\_\_ Vendor's License #: \_\_\_\_\_

Please enclose payment: check OR MasterCard/VISA#: \_\_\_\_\_

Quantity: \_\_\_\_\_ x \$150 each set = \_\_\_\_\_

+ Tax: \_\_\_\_\_ x \$9 each set = \_\_\_\_\_

Shipping is included, tax on Ohio orders only

**TOTAL:** \_\_\_\_\_ = \_\_\_\_\_

**Please circle one:**

Ship my sets

I will pick up my sets

## A Flea Marketing Lesson

*Carl Sparacio*



This is a public service message. It's for those who plan to attend the 1993 September quarterly meeting and Percy Moore Memorial Dinner in Sturbridge, Massachusetts. Many of you will be tempted to leave home days early to attend a major flea market being held nearby that same week. There's little advice I can offer about attending that market but I *can* tell you how *NOT* to do it.

Anyone seriously into Heisey or collecting antiques is expected to attend at least one of the major antiques flea markets held regularly throughout the country. Everyone does. Well, almost everyone. I don't. My experience has been minimal at these "major markets" or, to put it more concisely—once was enough.

There is a "greatest," "biggest," "most extravagant extravaganza," antiques flea market within a day's drive of everywhere. Check any antiques newspaper. Only the vision impaired could miss the full page ads with all the exclamation points.

In our corner of the northeast, *THE* market is Brimfield, Massachusetts (just 8 miles from Sturbridge). It's held maybe three times a year—I don't know when exactly, but you can bet I would if I cared.

Brimfield is a sleepy little New England town on a secondary road blessed with many open fields. The fields are alternately mud flats, dusty deserts or pleasant meadows—depending upon the whims of the weather at the time you attend or who's telling tales about those times you didn't.

Remember the snake pit in the movie *Indiana Jones and the Temple of Doom*? A zillion writhing snakes made the floor appear to be in motion. Something similar happens in that sleepy little town brim full of fields. The ground movement there, however, is the result of a massing of antique dealers and collectors, not vipers (though there are those who may dispute that).

It's been about 20 years since my first and only trip to the market in Brimfield which, I understand, has grown into multiple markets. I was 20 years younger but 40 years younger might have served me better that one time. A friend and I, both relatively gung-ho new collectors, decided we were ready for Brimfield and the big time. We sought out wizened, experienced antiquers for advice. Not surprisingly, it was given freely.

We were advised to arrive early, bring flashlights and be prepared to sleep in the car if necessary. Motel rooms in Brimfield during market weeks are owned by those who inherit them—they are handed down from generation to generation.

We kissed our wives goodbye at midnight and drove gaily off to the Brimfield antiques flea market. It was little more than a three-hour drive from home—the plan was to arrive early to compete with the masters. The drive went smoothly and we sang the hours away as we anticipated a great day among treasures waiting to be picked.

As we approached Brimfield, heading west on route 20, our headlights picked out a long line of cars, vans and trucks parked at the side of the road. It didn't take a genius to figure out that these folks were waiting to get into the flea market. We did a quick u-turn and took our place at the end of the line. With no idea how far the caravan stretched ahead of us, we gleefully watched as it built behind us.

*Heisey collectors love a good show. But is there such a thing as "too much?"*

We hunkered down and waited. It was fascinating—total strangers knocked on our car's windows asking if we had things like Persian rugs or dolls or whatever. We wondered why they'd expect we'd have any antiques at all.

Along about 6:00 a.m. the vehicles began to move slowly forward and, after a total of almost five hours in line (it was past 8:00 a.m. by now), we reached the entrance. It was then we discovered we spent the night lined up with dealers waiting to be admitted to their spaces. Every collector west of the Atlantic Ocean had been crawling over that field finding treasures among the early vendors while we sang the night away in our car.

It took talent and a lot of effort to appear nonchalant as we pulled out of that line. Still, the car surely had its tail tucked between its wheels as we parked for a fee on a nearby entrepreneur's lawn.

We did the market that day. It was as big as advertised and, from the bragging we heard, just as fruitful. Our luck was poor, not because we were late but rather because we were miffed. We antiqued with an attitude. I wouldn't turn off my flashlight even as the sun shone bright above. I lugged the damn thing all the way from New Jersey and, by golly, I was going to use it.

*We  
antiqued  
with an  
attitude.*

For 20 years now I've never had a desire to reprise Brimfield or attend any other major market, even as stories of Heisey "finds" became almost too much to bear—until last month when we had occasion to be in central Pennsylvania. This is an area infested with antique malls and large weekend outdoor antique flea markets. My wife thought it would be fun to stop at Renninger's, perhaps the best known and largest market in that area. I wasn't keen on it, I suffer from Brimfield Syndrome—cold sweats and uncontrollable shaking when trapped in a line of cars. Toll booths are a living hell.

"We have to be in the area anyway," she reasoned. "I'll make reservations at a nearby motel and we can roll out of bed and be there when Renninger's opens."

I was still hesitant—I don't have an enviable flea market track record and she understood my reluctance.

"Look," she encouraged, "There's no all-nighter involved, the brochure says it doesn't open until 7:30 a.m. Sunday morning. We might even have time for an early breakfast!"

So it was that, after opting to skip breakfast, we approached Renninger's entrance before its scheduled opening. We were on our way to kill time at a smaller market up the road.

"Look!" I shouted as we approached Renninger's. "People are leaving! With packages!"

I barely had time to turn into the entrance before we passed it. We were waved on past seas of cars by attendants and directed to a distant parking lot. The walk would have been shorter from the motel. I could feel an attitude developing—it came on full blown when I overheard dealers talking of business done the previous day. We asked one dealer about the hours and he said, "7:30 a.m. Sunday applies to inside dealers. People do outside all day Saturday and all night long with flashlights." He further observed that, "Those with the biggest flashlights have the least money."

I added, "and brains," and sulked off.

My advice? Pay no attention to what the ads or brochures say about an antiques market. Get there a week before it's scheduled to open and you'll be right on time. ♦

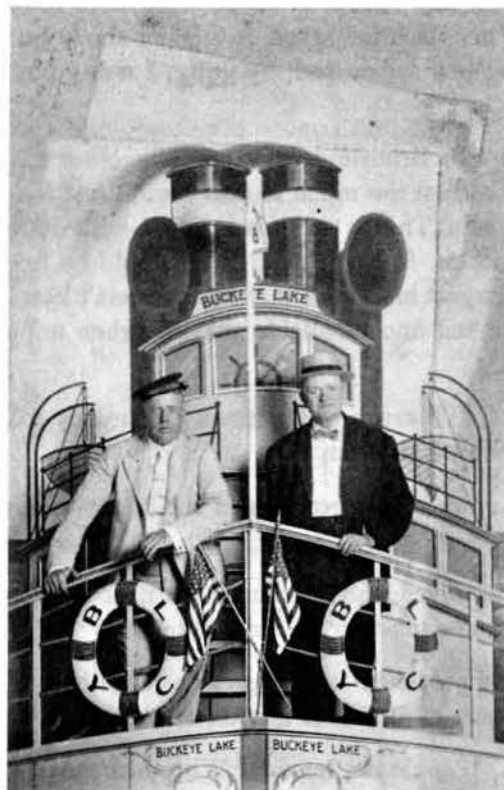
## From the Archives

*Don Valdes*

There is nothing like a little success to keep one going. A phone call from Dave Boling of Columbus has spurred me on! I can provide photos for identification forever. He identified the photograph (upper left, page 14) in the last issue of *Heisey News*. Without waiting the arrival of all of the information he promised to send, thereby making the archives that much more complete, perhaps it is sufficient to note that the house was on Buckeye Lake and the people are relatives of Dave.

So now for more picture identification. I am dedicating them to Dave in appreciation of his response. (If he isn't careful I'll have him working in archives!) The first two are printed on postcards.

*Featured on  
pages 12-13 are  
more  
photographs in  
need of  
clarification or  
identification.*



Next—among the memorabilia from the Heisey home is this interesting tin-type. Now the game is getting rough!



This lovely photograph (right) is mounted on a board from "Baker Art Studio, Columbus, O." Who's the bride?

Finally, I sense a joke of some sort. On the back of this couple's picture, written in pencil and barely legible, is the following:



*One of the most interesting aspects of the archives is the story behind what was saved and by whom. Can you provide background on any of these photographs?*

Mrs. Frank Wood  
?do 16 x 20 of lady marked X  
Hanover, O  
North End  
Fix other sleeve right  
Please make this lady  
good looking  
Millionaire Ave  
near 4 corners

Don't be bashful. Drop me a line if you would like to take a shot at identification. I'll acknowledge all worthy contributors. ♦

## Keeping in Touch

*Louise Ream*

Some members of HCA seem to be upset because we are having animals made in our molds which we purchased several years ago. Most of you know that shortly after Imperial purchased the molds in 1957 they made many of the animals in Crystal only. These now seem to be accepted by most people as Heisey.

The animals were made the first time in color by Imperial when they were in bankruptcy. These also were well received by Heisey Collectors and they bring high prices. Most of these were marked ALIG.

Almost all Heisey collectors love the animals but the originals bring much more money than money can afford. Also many of them were not made by Imperial. It is for these reasons that we want to buy the animals which HCA has had made.

HCA plans to eventually have every one of the original animals made which will make your collection complete. Another good thing about these animals is the fact that they are all marked. The Rosalene animals made by Fenton are marked with a F inside an oval, with HCA our registered trademark.

The Gem Series animals made by Dalzell Viking are marked D, HCA and dated. Actually no one should confuse these two colors with Heisey's clear crystal. The Board of Directors established a policy years ago stating that no HCA reproductions would be in the same color as items made by A.H. Heisey Co. or Imperial. Also remember that these animals have provided a great deal of money for the Museum expansion. ♦

## News from the Museum Shop

The Museum Shop has a great selection of merchandise for all tastes, from animals to beautiful baskets ranging in a variety of colors. Each item is carefully crafted in A.H. Heisey Co. original mold now owned and commissioned by HCA. We take great pride in the workmanship which goes into each handmade glass object.

With the new expansion to the Museum, the shop has also expanded making it possible to hold more of your favorites!! As you are well aware we are making the Lavender Ice Cabochon sign right as you are reading this. Give the shop a call and place your order, or write to HCA Sales, 169 W. Church St. Newark, OH 43055.

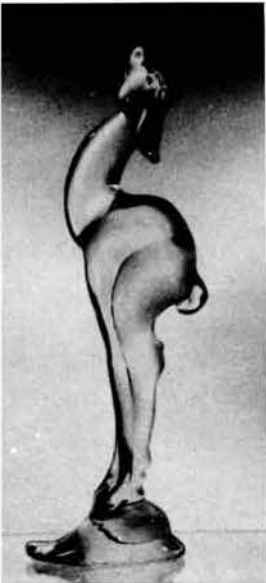
When back ordering it is important to remember that the shop does not hold items which are not already pre-paid. It is important that you include a method of payment, and we recommend you use your credit card. When placing an order from out of state do not include tax, however if you would like that item shipped you must add **\$3.00 handling and 10% of the total cost for shipping**

**\*\*Shipping Rates\*\*** Books 10% shipping only (no handling charge) \$1.00 minimum. Other items include \$3.00 handling plus 10% shipping. Ohio residents please add 6% sales tax.

**\*\*Discounts\*\*** Offered to members only on orders of \$50.00 or more. No discounts on limited editions or on sale items. Offer applies to individual sales not cumulative, regardless of how frequent.

☺ The Shop is always looking for original Heisey to sell. If you would like to donate items to be sold in the shop let us know. All proceeds go to the Museum. ♦

*HCA offers reproductions from the original Heisey molds to give everyone the opportunity to purchase these cherished items.*



## MUSEUM SHOP CATALOG

\*= no discounts

### BOOKS

**Collector's Encyclopedia of Heisey Glassware 1925-1938 The Color Years**

by Neila Bredehoft, for HCA over 1000 pieces are illustrated and priced in every color in which the item was made. 408 pages, 38 pages of color photos w/new price guide in bound book.

#112 \$24.95

**Collector's Guide to Heisey Glassware**

by L.W. Book Sales, Inc. Excerpts from Heisey Catalogs 75, 109, 212, & 17 w/price guide.

#106 \$17.95

**Collector's Guide to Heisey and Heisey by Imperial Glass Animals**

by Frank L. Hahn and Paul Kikeli, 1991 1st edition. 76 pages w/price guide.

#1A \$19.95

**Field Guide to Heisey Candlesticks**

by Marv Jacobs using information from the Candlestick book.

#123 \$1.95

**Heisey Candlesticks, Candelabras and Lamps**

by Tom Felt and Bob O'Grady assisted by Jack Metcalf. A definitive survey of the history and manufacture of candlesticks and other light devices made by the A.H. Heisey Co. between 1896-1957. 350 photos of all known candlesticks, 25 color photos, 436 pages w/price guide. (was \$15.95)

#101\* sale price \$10.95

**HCA'S Reprint of the Original Heisey Catalog #56** Reprint of the original #56 catalog courtesy of Gordon Cochran by HCA and Barclay Press.

#56 \$19.95

**HCA'S Reprint of the Original Heisey Catalog #102** Reprint of the original #102 catalog courtesy of Gordon Cochran by HCA and Barclay Press.

#102 \$19.95

**Heisey's Classic Ridgely Glassware** by Jim Jones and Vince Sparacio, includes dates of production for each piece, complete item listing, decorations, ads and several illustrations, includes confusing items made by other companies and proposed production items. (was \$5.95)

#122\* sale price \$3.00

**Heisey Cut Block**

by Jim Jones w/price guide.

#140 \$4.95

**Heisey's Cut Handmade Glassware** by Harold E. Willey, reprint of old catalogs showing some of the many cuttings by Heisey, mostly on stemware. 147 pages.

#55 \$5.95

**Heisey's Deep Plate Etching and Carving** by Harold E. Willey w/price guide. 39 pages

#129 \$6.95

**Heisey's Fandango Pattern** by Joe Lokay assembled by Marv Jacob for HCA. List of all known pieces plus many pictures includes narrative and old Heisey order lists. Price guide included.

#09 \$4.95

**Heisey Glassware** by HCA. Reprint of original Catalog 76, the 1915 supplement of Catalog 75 many items never shown in books or catalogs, includes all kerosene lamps and many electric lamps. 58 pages w/price guide. (was \$4.95)

#79\* sale price \$2.50

**Heisey's Glassware of Distinction** by Mary Louise Burns. Contains all major tableware patterns with pictures for easy identification w/price guide. (was \$8.95)

#4\* sale price \$2.95

**Heisey by Imperial** by Newark Heisey Collectors Club, First edition, copyright 1980, 35 pages. Contains regular production items, special order items, animals, cuttings & etchings, stemware, and special items made for HCA, price trends 1980-81, color plate.

#68A\* sale price \$2.00

**Heisey by Imperial** by Newark Heisey Collectors Club, Second edition, copyright 1982, 41 pages. Contains all information in first edition plus additional items. Also contains price trends 1982-83 and color plate of Imperial colors.

#68 \$6.95

**Heisey Jugs, Pitchers, Tankards, and Water Bottles** by Marv Jacob for HCA. A pocket field guide. 44 pages of pictured jugs, plus index of patterns and sizes. Price guide included.

#10 \$3.95

**Heisey Lariat and Athena Patterns** by Tom Felt. 52 pages. (was \$4.95)

#116\* sale price \$3.00

**Heisey News** Back issues, by volume, volumes available are: V(1976), VIII(1979), IX(1980), X(1981), XI(1982), XII(1983), XIII(1984), XIV(1985), XV(1986), XVI(1987), XVII(1988), XVIII(1989), XX(1991), XXI(1992). Set includes one issue per month, (12 issues per year). The special March Auction issue will be included whenever available.

#39 \$9.00

**Heisey News Reference Catalog** by Norma Schweghoefer, lists major subjects published in the *Heisey News* from January 1972, through December 1981.

#110 \$4.95

**Heisey's Orchid Etch** by Neila Bredehoft published by HCA. Booklet of Heisey's most popular etchings, 230 pieces listed and dated individually, includes a history of the etchings and many early ads, 24, pages w/price guide.  
#92 \$3.95

**Heisey Rose** by Neila Bredehoft, published by HCA. Booklet of all known pieces, includes dates, history and copies of ads w/price guide.(was \$4.95)  
#99 sale price \$2.00

**Heisey Toothpick Holders** by Nancy and David Jones published by HCA. Complete information on all Heisey toothpick holders, contains photos of each, plus section on confusing items and fakes w/price guide.(was \$2.95)  
#88\* sale price \$2.00

**Antique Week Mid Central Antique Shop Guide**  
#133 \$2.95

**Collecting Royal Haeger** by Lee Garmon and Doris Frizzell. A comprehensive illustrated price guide highlighting the 1930's and 1940's.  
#136 \$19.95

**Early Duncan Glassware** by Neila Bredehoft, George Fogg and Frank Maloney. A complete history of the George Duncan & Sons Co. of Pittsburgh from 1874-1892.) Includes color plate and photo section. Illustrations w/price guide. (A.H. Heisey was associated with Duncan before establishing his own company in 1896.  
#124 \$19.95

**Elegant Glassware of the Depression Era** by Gene Florence includes Fostoria, Cambridge, Heisey and others. Illustrated in full color w/price guide.  
#93 \$19.95

**Glass Animals of Depression Era** by Lee Garmon and Dick Spencer including figural flower frogs and reissues, includes identification and values. Published by Collector Books, 237 pages.  
#95 \$19.95

**Schroeder's Antique Price Guide**  
1993 Eleventh edition

#132A \$12.95

**Tiffin Glassmaster** by Fred Bickenheuser

#134 \$17.00

**Tiffin Glassmaster II** by Fred Bickenheuser

#134A \$22.00

**Tiffin Glassmaster III** by Fred Bickenheuser

#135 \$25.95

**Verlys of America** by Carole and Wayne McPeck, 2nd. edition, includes a history of the French Verlys Company through the purchase and use of the molds by Fenton includes information on Heisey's lease and use of these molds. Color plates, clear photos and descriptions. W/price guide. Soft cover, spiral bound, 71 pages.  
#137 \$23.95

**Westmoreland Specialty Company**  
Reprint of their 1912 Catalog several patterns shown, items easily confused with Heisey, illustrated, includes candlesticks, toy set, etc.

#111 \$6.95

**Full Color Lithographs:** (The lithographs listed are originals from the Heisey era and therefore show slight wear or other imperfections.)  
Featuring Moongleam, Flamingo, Hawthorne 19" x 26"  
#142A \$10.00  
From Glass Secrets ad series, featuring Flamingo 19" x 28"  
#142B \$10.00  
From Glass Secrets ad series, featuring Moongleam 19" x 28"  
#142C \$10.00

**Thank you cards and envelopes:**  
Featuring the National Heisey Glass Museum (King House Only)  
#143 \$2.75

#142A \$10.00

From Glass Secrets ad series, featuring Flamingo 19" x 28"

#142B \$10.00

From Glass Secrets ad series, featuring Moongleam 19" x 28"

#142C \$10.00

**Thank you cards and envelopes:**  
Featuring the National Heisey Glass Museum (King House Only)  
#143 \$2.75

## GLASS ITEMS

**Half-size Horsehead paperweight**

Ruby (frosted)

HCA 86/D-Viking

#36C\* \$35.00

**Half-Size Horsehead paperweight**

Blue Haze (frosted)

HCA 87/Fenton

#36D\* \$35.00

**Madonna**

French Opalescent (clear)

HCA 87/Fenton

#40A \$21.50

Lavender Ice (clear)

HCA 93/D-Viking

#40D \$28.50

**Child's Cup**

Copper Blue (clear)

HCA 87/Fenton

#41B \$16.00

Pink (clear)

HCA 91/D-Viking

#41E \$13.00

Rosalene (shiny)

HCA 90/Fenton

#41F \$21.00

**Rooster**

Light Peachalene (shiny)

HCA 92/Fenton

#44 \$45.00

Light Peachalene (frosted)

HCA 92/Fenton

#44A \$45.00

**Hen**

Milk glass

HCA /IG

#45 \$7.00

**Chick Head Down**

Milk glass

HCA /IG

#46 \$1.50

Rosalene (shiny)

HCA 92/Fenton

#46A \$15.00 ea.

\$25.00 pr.

**Chick Head Up**

Rosalene (shiny)

HCA 92/Fenton

#47 \$15.00 ea.

\$25.00 pr.

**Victorian Girl Bell**

Tangelo/Orange (clear)

HCA /ALIG-D-Viking

#48A \$11.00

Tangelo/Orange (frosted)

HCA /ALIG-D-Viking

#49A \$12.00

Ruby/Red (clear)

**Victorian Girl Bell**

HCA /ALIG-D-Viking  
#48B \$11.00  
Ruby/Red (frosted)  
HCA /ALIG-D-Viking  
#49D \$12.00  
Azure Blue (clear)  
HCA 86/D-Viking  
#48C \$11.00  
Azure Blue (frosted)  
HCA 86/D-Viking  
#49E \$12.00  
Lilac (clear)  
HCA /ALIG-D-Viking  
#48E \$11.00  
Lilac (frosted)  
HCA /ALIG-D-Viking  
#49G \$12.00  
Evergreen (clear)  
HCA 89/D-Viking  
#48F \$11.00  
Evergreen (frosted)  
HCA 89/D-Viking  
#49I \$12.00  
Pink (clear)  
HCA /D-Viking  
#48G \$11.00  
Pink (frosted)  
HCA /D-Viking  
#49J \$12.00  
Sunshine Yellow (frosted)  
HCA /IG  
#49B \$12.00  
Light Green (frosted)  
HCA /IG  
#49C \$12.00  
Clematis/Purple (frosted)  
HCA 86/D-Viking  
#49F \$12.00  
Horizon Blue (frosted)  
HCA /IG  
#49H \$12.00

**Piglet Sitting**

Rosalene (shiny)  
HCA 92/Fenton  
#50 \$15.00 ea.  
\$25.00 pr.

**Mallard Wings Up**

Lavender Ice (frosted)  
HCA 93/D-Viking  
#65B\* \$30.00

**Mallard Wings Down**

Lavender Ice (frosted)  
HCA 93/D-Viking  
#64\* \$30.00

**Mallard Wings Half**

Light Blue (clear)  
HCA /IG  
#66A \$13.00  
Ruby/Red (clear)  
HCA /D-Viking  
#66C\* \$25.00  
Lavender Ice (frosted)  
HCA 93/D-Viking  
#66D\* \$30.00

**Cygnets (baby swan)**

Ruby/Red (clear)  
HCA /D-Viking  
#71A\* \$15.00  
Horizon Blue (frosted)  
HCA /IG  
#71B \$11.00  
Horizon Blue (clear)  
HCA /IG  
#71C \$10.00  
Pink (frosted)  
HCA /D-Viking  
#71E \$14.00  
Rosalene (frosted)  
HCA 92/Fenton  
#71F \$25.00

**Standing Duckling**

Sunshine Yellow (clear)  
HCA /IG  
#72A \$11.00  
Sunshine Yellow (frosted)  
HCA /IG  
#72B \$11.00  
Ruby/Red (clear)  
HCA /D-Viking  
#72C\* \$20.00  
Rosalene (frosted)  
HCA 92/Fenton  
#72D \$25.00  
Rosalene/Hand Painted/Pink  
Blossom (frosted)  
HCA 92/Fenton  
#72E\* \$25.00

Rosalene/Hand Painted/Violet  
(frosted)  
HCA 92/Fenton

#72F\* \$25.00

Rosalene/Hand Painted/Daisies

(frosted)

HCA 92/Fenton  
#72G\* \$25.00  
Rosalene/Hand Painted/Wild  
Roses (frosted)  
HCA 92/Fenton  
#72H\* \$25.00

**Floating Duckling**

Sunshine Yellow (clear)  
HCA /IG  
#73A \$11.00  
Sunshine Yellow (frosted)  
HCA /IG  
#73B \$11.00  
Ruby/Red (clear)  
HCA /D-Viking  
#73C\* \$20.00

**Mother Wood Duck**

Sunshine Yellow (frosted)  
HCA /IG  
#74 \$20.00

**Fish Match Holer**

Sunshine Yellow (clear)  
HCA /IG  
#78A \$9.50  
Sunshine Yellow (frosted)  
HCA /IG  
#78B \$11.00

**Revere Triangle Ashtray H**

Ruby/Red (clear)  
HCA 85/D-Viking  
#94 \$6.50

**Toy Candlesticks**

Crystal (clear)  
HCA /ALIG  
#102A \$10.00  
Sunshine Yellow (clear)  
HCA /ALIG  
#102C \$13.50  
Horizon Blue (clear)  
HCA /ALIG  
#102D \$13.50

**Prisms w/gold wire (import)**

#105 \$1.25

**Short Ferrule (used to hold Bobeche)**

#107 \$4.00

**Prism Pins**

Gold wire  
#108 \$.50 Doz.  
Silver wire  
#108 \$.50 Doz.

**Sunflower Basket**

Dusty Rose (frosted)  
HCA /Fenton  
#109B \$40.00

**Ipswich Basket**

Dusty Rose (frosted)  
HCA /Fenton  
#110B \$42.50

**Rococo Basket**

Fenton Blue (clear)  
HCA /Fenton  
#111A \$40.00

Fenton Blue (frosted)  
HCA /Fenton  
#111B \$42.50

Sea Mist Green (clear)  
HCA /Fenton  
#111C \$40.00

Sea Mist Green (frosted)  
HCA /Fenton  
#111D \$42.50

**Empress 4 1/2" Plate**

Crystal/Victory Etch/Molds 1985  
HCA /Viking  
#113 \$2.50

**Diamond H Sign**

Rosalene (shiny)  
HCA /Fenton  
#114B \$40.00

Rosalene (frosted)  
HCA /Fenton  
#144C \$40.00

**Colt Kicking**

Rosalene (shiny)  
HCA /Fenton  
#115A \$55.00 ea.  
\$100.00 pr.

Rosalene (frosted)  
HCA /Fenton  
#116A \$55.00 ea.  
\$100.00 pr.

**Colt Rearing**

Rosalene (shiny)  
HCA /Fenton  
#115B \$55.00 ea.  
\$100.00 pr.

Rosalene (frosted)  
HCA /Fenton  
#116B \$55.00 ea.  
\$100.00 pr.

**Cabochon Sign**

Lavender Ice (clear)  
HCA 93/D-Viking  
#117A \$17.00

Lavender Ice (frosted)  
HCA 93/D-Viking  
#117B \$17.00

**Small Elephant**

Sea Mist Green (clear)  
HCA /Fenton  
#125A\* \$25.00  
Sea Mist Green (frosted)  
HCA /Fenton  
#125B\* \$25.00

**Medium Elephant**

Lavender Ice (frosted)  
HCA 93/D-Viking  
#126A\* \$50.00

**Large Elephant**

Lavender Ice (frosted)  
HCA 93/D-Viking  
#127A\* \$75.00

**Donkey**

French Opalescent (clear)  
HCA 88/Fenton  
#128A \$20.00

Sea Mist Green (clear)  
HCA /Fenton  
#128B\* \$25.00  
Sea Mist Green (frosted)  
HCA /Fenton  
#128C\* \$25.00

**Bunnies Head Down/Head Up/Set**

Ruby/Red (clear)  
HCA /D-Viking  
#130A\* \$37.50 set  
Pink (frosted)  
HCA /D-Viking  
#130C \$37.50 set

**Bunny Head Up**

Ruby/Red (clear)  
HCA /D-Viking  
#151A\* \$20.00  
Pink (frosted)  
HCA /DViking  
#151C \$20.00

**Bunny Head Down**

Ruby/Red (clear)  
HCA /D-Viking  
#152A\* \$20.00  
Pink (frosted)  
HCA /DViking  
#152C \$20.00

**Mother Rabbit**

Pink (frosted)  
HCA 92/DViking  
#159C \$55.00

**Sparrow**

Biscayne Blue  
HCA /D Viking  
#153C \$16.00

**Land Of Legend Plate**

Blue Haze  
HCA 72/IG  
#154A\* \$12.50

Verde  
HCA 73/IG  
#154B\* \$11.25

Nut Brown  
HCA 74/IG  
#154C\* \$10.00

Ultra Blue  
HCA 75/IG  
#154D\* \$11.25

CrystalHCA 76/IG  
#154E\* \$11.75

**4" Ball Vase w/swirl optic**

Evergreen /IG  
#155A \$10.00

**Cup Plates**

Cooper Blue/Wood Ducks  
Pairpoint  
#156C \$4.50

Crystal/Wood Ducks  
Pairpoint  
#156D \$4.50

Crystal/Horse & Rider  
(Lancaster etch) Pairpoint  
#156E \$4.50

Amber/Horse & Rider  
(Lancaster etch) Pairpoint  
#156G \$4.50

Crystal/Fandango Pitcher  
Pairpoint  
#156H \$4.50

**Clover Rope Mugs Frosted Handle**

Amber  
HCA 90/D-Viking  
#157B\* \$35.00

**Flying Mare**

Lavender Ice (frosted)  
HCA 93/D-Viking  
#160\* \$400.00

**Rearing Horse Bookend**

Lavender Ice (frosted)  
 HCA 93/D-Viking  
 #161\* \$75.00

**Showhorse**

Lavender Ice (frosted)  
 HCA 93/D-Viking  
 #162\* \$85.00

**Oscar/Sparkie/Plug Horse**

Emerald Green (clear)  
 HCA 82/IG  
 #180A\* \$44.00

Tangelo/Orange (clear)  
 HCA 83/IG  
 #180B\* \$42.00

Ruby/Red (clear)  
 HCA 84/IG  
 #180C\* \$40.00

Crystal Opalescent (clear)  
 HCA 87/Fenton  
 #180D\* \$35.00

**Oscar/Sparkie/Plug Horse**

Opal (clear)  
 HCA 88/Fenton  
 #180E\* \$33.00

Teal (clear)  
 HCA 89/Fenton  
 #180F\* \$31.00

Sapphire Blue Opalescent (frosted)  
 HCA 91/Fenton  
 #180I\* \$27.00

**Caviar Liner, H**

Crystal/Heisey by Imperial  
 ♦H before 1968  
 #181 \$10.00

**Large Ridgeleigh Ball Vase**

Yellow ALIG  
 #183 \$24.00

**Ashtray w/Tally Ho etch**

Crystal/10th. Anniversary  
 HCA 71-81  
 #182 \$1.00

**Oxford Cordial Bell**

Crystal HCA 81/IG  
 #187\* \$35.00

**Oxford Cordial w/Coronation etch**

Crystal HCA 82/IG  
 #188\* \$35.00

**Oxford Cordial w/Swingtime etch**

Crystal HCA 83/IG  
 #189\* \$35.00

**Oxford Cordial/Plain**

Crystal HCA 78/IG  
 #190 6 for \$20.00  
 \$5.00 ea.

**Refrigerator Magnet**

Heisey's Diamond H trademark,  
 blue background w/white lettering  
 #192 \$2.00

**ORDER FORM** for Museum Shop merchandise: **MAIL** to HCA Sales, 169 W. Church St., Newark, OH 43055

Quantity	Stock #	Item Name	Color	Unit Price	Total

<b>Please note:</b> order items by name & number.	Subtotal	_____
<b>Shipping:</b> 10% on books, \$3 + 10% others, \$1 min.	Discount	_____
<b>Member Discounts:</b> 10% on orders \$50 or more, no limited editions or sale items (denoted by *)	Sales Tax (Ohio only)	_____
	\$3 Handling (non-books)	_____
	10% Shipping	_____
	<b>TOTAL</b>	_____

Name: \_\_\_\_\_

Address: \_\_\_\_\_

City/State/Zip: \_\_\_\_\_

Daytime phone: \_\_\_\_\_ Vendor's License #: \_\_\_\_\_

Please enclose payment: check OR MasterCard/VISA#: \_\_\_\_\_ exp. date \_\_\_\_\_

## CLUB NOTES

### The Heisey Collectors of the Rochester Area #19

*George J. Reynolds*

Our May meeting was held at the Faith Lutheran Church in Penfield, N.Y. Marvin Jacob opened the meeting with a reminder that our annual HCA benefit auction was coming up and to bring "goodies" to auction off. A delegate was appointed to vote the clubs wishes for directors of HCA.

The glass presented for display, included the following: #1401 Sahara creamer & sugar with tray, #1401 saucer candle, #135 Sahara candle and a beautiful cream soup with underplate in Alexandrite. Bobbie Zimmer reported cream soup was often served on railroad dinning cars during the 1890's. Her Uncle was a conductor for the B&O just before she was born.

May 27th found the group at the Rochester Depression Glass club for the auction. This was the fourth straight year that these folks were kind enough to let us use their hall. Marvin started things off as auctioneer but his voice soon gave out. Bruce Schwendy and Jeff Frew then took over and did a great job. Bruce and Jeff both looked great modeling the earrings and other jewelry. The evening made it possible for our club to give its largest donation to HCA, to date.

HCARA's annual picnic was held at the lovely 1902 home of Sharon and Frank Orientor. The Orientors are gradually restoring the gardens with five lovely ponds and water fountains in view already. Their antique furniture and the wonderful collection of Heisey Glass have the perfect resting place. A brief meeting was held and our out of town members Adele & John Pardee were welcomed. We then celebrated Edith Boches's 80th birthday with two cakes.

Marvin brought out his latest finds. Two Whirlpool three-lite candles, the original and the redesigned. Both are scarce in this area. He Also showed a Daisey #27 one-lite and described a Twist stem #127 that he had recently found. Marv is not just a pretty face, he really knows his candle types. We congratulate him on his years of service with HCA's Board of Directors.♦

### Heisey Club of California #13

*Bill Brakemeyer*

HCC held its July meeting at the Corona Del Mar home of Connie and Don Murphy, overlooking Newport Beach and the Pacific ocean. A report on the 1993 Convention was given by those who attended. A members' flea market was gathered outside around the pool area followed by a summertime barbecue. We congratulated member Frances Brock on her election to the Board of Directors of HCA. HCC will observe the twentieth anniversary of its organizational meeting in October. An invitation is extended to former members of HCC who would like to join

us for this occasion which will be held in Riverside, California on October 24, 1993. If you will be in the Southern California area and would like to attend, contact the current HCC President Bill Brakemeyer at post office box 20811 Riverside, California 92516, (909) 788-4406.♦

### The Hoosier Heisey Club #14

*Sonnie Taylor*

The Hoosier Heisey Club met in July at the Warren Library in Indianapolis. Twenty-two members were present. Charles Bechman introduced Donna Schellenberger, our newest member, from DePauw, Indiana. The secretary and treasurer reports were read and approved.

Twenty-four of our forty-two members attended the Heisey Convention in Newark in June. Everyone praised the museum for its beauty and educational merits. It was announced that the new Cherry Valley Lodge will be convention hosts for 1994.

Larry Higgins was appointed to purchase memorial gifts in honor of Harry Zaiser and Evelyn Prather, former members of the Hoosier club. Larry will check with the museum acquisition committee to see what items they would like to acquire for the museum, not to exceed \$50.00 per person.

Bill Phillips is chairperson, with Karl Kolter and Lucille Duhm, of the nominating committee for officers for the coming year.

Kim and Pam Carlisle volunteered to serve refreshments at the October 2 meeting, same time and place. Our program will be a slide presentation on Heisey Cuttings and Etchings and the feature color will be ruby flash and any decorated item. Bob Davis moved to adjourn, seconded by Karl Kolter.

Jim Kennon discussed many facets of the Locket on Chain pattern. He stated that it is never marked and all pieces are hard to find. Rare pieces displayed were an emerald wine, cruet, & toothpick.

Bill Phillips discussed the Rose Etch Gallagher pitcher, Trident candlesticks, Waverly seahorse footed bowl, and a Rose stem goblet & champagne.

Our color was Vaseline which Kim Carlisle stated was made from 1896-1920. A Winged Scroll toothpick, Locket on Chain cream & sugar, 7" Opalescent swung plaid vase, and a piece of bakeware were examples shown. Kim said Vaseline pieces are all hard to find & expensive with the oyster plate the most common.

Don Rabourn conducted the "Show & Tell" featuring a Raindrop pitcher and Yeoman puff box in Moongleam, Prince of Whales pitcher & spooner in Crystal with gold, an oil bottle with Equestrian etch and a cream & sugar purchased at a garage sale for \$1.50. Not bad for the pretty Crystalite set!♦

**Percy Moore Dinner: September 11, 1993 in Sturbridge, Massachusetts**

*Your Last Chance to Sign Up and Purchase the Souvenir Paperweight*

Don't Forget: the deadline for submitting your reservations for the Second Annual Percy Moore Dinner is **Friday, September 3**. You must also order the souvenir—the Double Horsehead Finial Paperweight in Lavender Ice—by this date. Limit one paperweight per member, please. Checks should be made payable to HCA. Mail this form to HCA, 169 W. Church St., Newark, OH 43055, or call (614) 345-2932 and ask for the Museum Shop. Shipping and tax are included in the price.

**ORDER FORM** for Percy Moore Dinner/Paperweight, Shipping/tax included

MAIL to HCA, 169 W. Church St., Newark, OH 43055

Name: \_\_\_\_\_

Address: \_\_\_\_\_

City/State/Zip: \_\_\_\_\_

Daytime phone: \_\_\_\_\_

Please enclose payment: check OR MasterCard/VISA#: \_\_\_\_\_

Qty Paperweights and Dinner: \_\_\_\_\_ x \$45 each = \_\_\_\_\_ **Please circle one:**

Qty Paperweights, only: \_\_\_\_\_ x \$35 each = \_\_\_\_\_ Ship my paperweight

Qty Dinner, only: \_\_\_\_\_ x \$30 each = \_\_\_\_\_ I will pick up at dinner

**TOTAL=** \_\_\_\_\_ I will pick up at museum

*The itinerary for the Percy Moore Dinner and other events in Sturbridge is in the August issue of Heisey News.*



**WHEN?** September 11, 1993 • 11:00 a.m., Preview: 10:00 a.m.

**WHERE?** Sturbridge Host Hotel • Rt. 20, Sturbridge, MA 01566  
*(Across the street from the entrance to Old Sturbridge Village)*

**SPONSOR:** Yankee Heisey Club

**BENEFIT:** Heisey Collectors of America Inc.  
Heisey Glass Museum  
Newark, Ohio

Guest Auctioneers for this non-profit auction will be the auctioneering staff of Apple Tree Auctions, Newark, Ohio, Nationally Respected Specialty Auctioneers of Heisey Glassware.

**TERMS:** Cash or check with positive ID

*Food Concession available during auction • Plenty of Parking*

The Yankee Heisey Club Presents...  
3rd Annual Yankee Invitational  
**ANTIQUES, GLASS,  
& COLLECTIBLES  
SHOW & SALE**  
Burgess Elementary School  
Cafetorium, Gym, & Main Hall  
*(Route 20, opposite entrance to Old Sturbridge Village)*  
**55 BOOTHS**  
**STURBRIDGE, MASS<sup>TTS</sup>**  
SATURDAY, SEPT. 25, 1993 10 AM to 5 PM  
SUNDAY, SEPT. 26, 1993 10 AM to 4 PM  
For the Benefit of the Sturbridge-Senior Center  
and the National Heisey Glass Museum/HCA, Inc.  
**ADMISSION \$2.50 / \$2.00 with this ad.**  
Heisey reference books and souvenirs from Heisey Collectors of America, Inc. will be available for purchase. Professionally Catered Snack Bar on Premises

ADVERTISING: Send all ads to: HCA Advertising, 169 W. Church St., Newark, OH 43055 or fax ads to 614-345-9638, include M.C. or Visa info. Ads are to be typed or printed on white paper with dark ink. Please double space. All Ads must be prepaid.

CLASSIFIED: 20 cents per word, members, 30 cents per word, non-members, \$1.50 minimum, 1/8 page limit. Personal ads 1/8 page limit. Abbreviations and initials count as words. Please do not abbreviate Heisey pattern names or Heisey colors. Ads which are entered in a vertical column format can contain 67 characters (maximum) per line. When counting characters, remember to includespaces.

DEALER DIRECTORY: \$35.00 Per Year, members only.

DISPLAY AD Rates,	MEMBER	NON
1/8 page - (9 lines)	\$ 20.00	\$ 30.00
1/4 page - (20 lines)	\$ 40.00	\$ 60.00
1/2 page - (horizontal or vertical)	\$ 80.00	\$120.00
Full page - (letter style or columns)	\$160.00	\$240.00

Ad copy must be received by the 1st of the month preceding the publication date, e.g. April 1st for May issue. Camera ready ads accepted, but must follow line specifications. Ads containing reproductions will not knowingly be accepted unless clearly stated (e.g. Heisey by Imperial, etc.) HEISEY NEWS accepts no further liability.

## CLASSIFIED ADS

WANTED: #500 Octagon baskets in Marigold & Crystal. #463 Moongleam bonnet basket. Tom Taylor, (812) 546-4066.

FOR SALE: Heisey Orchid Pattern: #1519 (H) 2 mayonnaise, 1 plate; #1509 (H) Lemon dish, dolphin cover; #5025 3 sherbets & 4 sherries; #4036 1/2 decanter; #4225 quart cocktail shaker, 2 low footed ice tea. (202) 244-7003.

FOR SALE: 2-10 1/2" #416 Hawthorne dinner plates, (H), \$62.00ea.; #112 Hawthorne candlesticks, \$110.00; Heisey Rabbit paperweight, \$120.00; #1405 11" Ipswich floral bowl, Sahara, \$225.00; #3380 1 oz. cordial, Sahara, \$110.00; 6 Octagon frozen desserts, Flamingo, \$15.00ea. - all for \$80.00. Call Marc Guthrie at (614) 323-2800 after 8:00 p.m.

FOR SALE: Heisey candy jars: Revere 5lb., 3lb. (etched), 1lb. black & gold stripe, 1/2 lb., 1/4 lb. black & gold stripe, Puritan jars: 5lb., 3lb., 2lb., 1lb. Heisey Oscars 1977 - 1992. Call (614) 892-2142.

FOR SALE: My collection of Oscar's 1977-1990, plus specials 1979, 1983, 1984, 1985, 1990, all \$750.00 UPS 5%, Maurine Murray, Box 546, Colby, Kansas, 67701.

FOR SALE: #1509 Queen Ann 8" round plate w/ Fisherman etch, \$85.00; #1509 Queen Ann 8 1/2" plate w/ Club Drinking Scene etch, \$80.00; #1430 High-ftd. Aristocrat Candy, Sahara, some damage, \$275; #1205 Fancy Loop toothpick, \$60.00; Mallard Wings Up, H, \$135.00; #352 Flat Panel sugar shaker w/ cutting, Sterling top, \$195.00; #1252 Twist footed salt & pepper, H, \$275.00; #7003 Pinwheel & Fan Variant basket, \$250.00; #4164 73 oz. D/O jug w/ #448 Old Colony etch, Sahara, \$195.00; #1401 ash tray, Alexandrite, \$275.00; #22 Windsor lamp, \$225.00; #1430 Hi Ftd. Aristocrat candy, Sahara, some damage, \$275.00; #1405 Ipswich, 8" sq. plate, Sahara, (2)ea., \$25.00; #1401 Empress D/F stick, Moongleam, H, \$195.00; #360 3 lb. candy jar & cover, \$595.00; R. Wise, (407) 793-0986. Shipping/Ins. Extra.

WANTED: Any piece Harvey Amber. Ann Clark, 536 Gleenwilde, Baton Rouge, Louisiana, 70815. (504) 275-6632.

FOR SALE: Heisey #4045 12" Ball Vase, Cobalt. Call Schwan's Antiques. (407) 461-5940.

WANTED: Empress or Carcassonne w/Old Colony etching, Crystal, (715) 693-3279.

FOR SALE: #1567 Plantation ice tea pressed 12 oz. fld. (11), \$45.00; #4091 Kimberly Dolly Madison Rose 5 oz. soda/juice, H, (12), \$55.00; #4091 Kimberly Dolly Madison Rose 2 oz. wine, (7), \$75.00; Priced each. (214) 821-1688.

WANTED: Acorn & Leaves dinner plates, any color. Lid for Empress Cobalt candy. Bottom Provincial Zircon candy. Lid Fancy Loop mustard. Lid for 3lb. Recessed Panel candy (5-1/4" dia.). (214) 821-1688.

WANTED: Plantation hostess helpers, bridge trays, 7" cvd. candy boxes, 12 oz. flared ice teas, grd. bottom. Dolly Madison Rose ice teas, goblets. (214) 821-1688.

FOR SALE: #1201 Fandango 13" x 8" ice cream tray, \$110.00; #465 Recessed Panel, 3 lb. cov'd. candy, H, \$195.00; #1404 Old Sandwich 12" oval ft'd. floral bowl, H, Sahara, \$95.00; Following are all punch cups: #325 Pillows, H, (6) ea. \$30.00; #1205 Fancy Loop (2) ea. \$15; #1201 Fandango, (4) ea. \$18.00; #407 Coarse Rib, H, (12) ea. \$7.00; #1469 Ridgeleigh, H, (12) ea. \$10.00; #433 Greek Key, H, (12) ea. \$15.00; #357 Prison Stripe, H, (8) ea. \$25.00; #1540 Lariat, H, (14) ea. \$6.00, Jan Thran, 1663 Londondale Pkwy. Newark, OH, 43055, Ship & Ins. Extra, (614) 344-5955.

MOSTLY HEISEY: Some of our customers say, "The most beautiful Heisey pieces in our collection, we bought from you," which makes us feel good. Compliments like these encourage us to help others in their search for Heisey glass. If you have Heisey wants, call 1-800-972-2775.

FOR SALE: Swan by Imperial, Crystal, \$795.00, negotiable. (505) 296-1890.

Virginia and Odell Johnson  
Rte. 1, Box 1324  
Hayward, WI 54843

Glass N' Glass  
(715) 462-3753  
UPS extra

As we have sold our Wisconsin home we are offering a

## 20% Off Heisey Sale

This includes any unsold items from our May, July and August HCA ads. Extensive list available for legal-size SASE

L & L Uniques, Ltd.

Larry & Linda Love  
4125 Sperry Street  
Dallas, TX 75214

(214) 821-1688  
UPS & Ins. Extra  
H=Marked

#3408 Jamestown champagne, Lancaster cut, (4)ea.	\$40.00
#3390 Carcassonne 3 pint fld jug, H	\$130.00
#116 Oak Leaf candlestick w/Moongleam ft., H, (2)ea	\$65.00
#1469 Ridgeleigh cup/saucer, H, (6) ea.	\$22.00
#351 Priscilla 3 oz. burgundy, H, (4) ea.	\$20.00
#351 Priscilla 6 1/2" plate, full grd. btm., lt. use, H, (4) ea.	\$5.00
#393 Narrow Flute 5 oz. egg cup, H, (2) ea.	\$25.00
#1205 fancy Loop 8" vase, #3	\$65.00
#5003 Crystolite 5 oz. juice, H, (5) ea	\$25.00

The Collector's Stop  
Raphael & Eileen Wise  
12018 Suellen Circle  
West Palm Beach, FL 33414

(407) 793-0986  
Shipping & Ins. Extra  
H=Marked

Giraffe head back/head side, ea.	\$180.00
#1404 Ipswich 1/4 lb. candy & cover, H	\$145.00
Small elephant	\$210.00
#1567 Plantation 5 pt. relish	\$135.00
#433 Greek Key chip & dip, H	\$150.00
#1503 Crystolite syrup	\$150.00
#1506 Provincial 3 hndl. mayo, Zircon, H,	\$140.00
#1428 Horn of Plenty 5", H, Cobalt	\$195.00
#325 Pillows 3 qt. pitcher, H,	\$395.00

**Bob Johnson**  
**P.O. Box 42**  
**Dayton, OH 45420**

**(513) 299-4364**  
**UPS & Ins. Extra**  
**H=Marked**

#5 Patrician 12" candelabra w/C prisms, H, Pr	\$225.00
#352 Flat Panel 2 Hndl. mustard & cover, H	\$35.00
#393 Narrow Flute mustard & cover, H	\$27.00
#397 Cupped scallop covered butter, H	\$95.00
#1183 Revere horse radish & cover, Grey cut, H	\$45.00
#1205 Fancy Loop tumbler, Emerald	\$40.00
#1220 Puntty Band 5 oz. claret, rd.#310925, (4) ea.	\$35.00
#1225 Plain Band #4 salt & pepper	\$45.00
#1231 Ribbed Octagon cream & sugar, H, Mnglm.pr.	\$45.00
#1295 Beaded Swag goblet, I.V. Rose & "Dow City IA"	\$55.00
#1401 Empress 7.5" rd. plates, Concord etch, H, (8) ea.	\$10.00
#1401 Empress dolphin fld. cream & sugar, Olympiad etch, H,	\$50.00
#1401 Empress diamond ashtray, H, Flamingo	\$75.00
#1425 Victorian 9 oz. high fld. goblets, (6) ea.	\$20.00
#1469 Ridgeleigh cruet	\$45.00
#1488 Kohinor 3" round ashtrays, H, (6) ea.	\$20.00
#1503 Crystolite 13" round floral bowl	\$45.00
#1503 Crystolite puff box, H	\$55.00
#1503 Crystolite 6" swan jelly or relish	\$35.00
#1506 Whirlpool fld. cream & sugar, H	\$45.00
#1509 Queen Ann 7" comb. salad dress, Barcelona cut, H,	\$55.00
#1509 Queen Ann 15" torte plate, Orchid etch,	\$85.00
#1533 Wampum candlesticks, pr.	\$50.00
#1540 Lariat large covered candy	\$55.00
#1540 Lariat small covered candy	\$45.00
#2401 12 oz. soda w/Nimrod carving	\$35.00
#3350 Wabash parfait, cut, Hawthorne	\$75.00
#3389 Duquesne goblet, Chintz etch	\$35.00
#3404 Spanish champagne, Concord etch, (3) ea.	\$35.00
#3404 Spanish 4 oz. claret, Concord etch	\$45.00
#3411 Monte Cristo goblet, Olympiad etch	\$35.00
#4057 Saturn 10.5" vase, #5020 Lily carving	\$85.00
#5057 Suez wine, Midwest cut	\$27.00
#7000 Sunflower cream & sugar, H, pr.	\$45.00

**Heisey by Imperial**

#1405 Ipswich 1/2 lb. covered candy, Verde	\$45.00
#1405 Ipswich 1/2 lb. covered candy, H, Heather	\$75.00
#1506 Whirlpool 9 oz. fld. tumbler, Ruby	\$45.00
#1506 Whirlpool tumblers, H, Cobalt, (4)	\$45.00
#1952 Dumbo mug, Plum (black amethyst), "Nixon-Ford"	\$55.00
Light blue colts, (3) set	\$75.00
Mallard wings half, Carmel Slag	\$30.00
Mallard wings up, Carmel Slag	\$30.00
Standing colt, Carmel Slag	\$30.00
Oscar, Carmel Slag	\$40.00
Donkey, Carmel Slag	\$45.00
Elephant, medium, Carmel Slag	\$60.00
Wood duck, Carmel Slag	\$40.00

**Charles & Mildred Fisher**  
**991 Idlewilde Ave.**  
**Newark, OH 43055**

**(614) 522-5398**  
**UPS & Ins. Extra**  
**H=Marked**

**Heisey Animals**

Elephant, small	\$325.00
Elephant, medium	\$425.00
Elephant, large	\$475.00
Giraffe, head back	\$260.00
Giraffe, head side	\$260.00
Pouter Pigeon	\$1050.00
Filley, head front	\$2500.00
Filley, head back	\$2500.00
Asiatic Pheasant	\$425.00
Ringneck Pheasant	\$155.00
Swan, H	\$1100.00
Swan, H, (tail feathers repaired)	\$600.00
Cygnets	\$295.00
Goose, wings up	\$145.00
Goose, wings half	\$145.00
Goose, wings down	\$600.00
Mallard, wings up	\$240.00
Colts, standing	\$120.00
Colts, balking	\$295.00
Colts, kicking, (1 marked)	\$295.00
Sow, H	\$950.00
Piglet	\$105.00
Duckling, standing	\$275.00
Duckling, floating, H	\$275.00
Donkey, H	\$450.00
Bunny, head up	\$295.00
Fish bookend	\$165.00
Rooster Vase	\$165.00
Fish Candlestick	\$245.00
Rabbit paperweight	\$185.00
Showhorse	\$1000.00
Mallard, wings half	\$240.00
Tiger paperweight	\$750.00
Colt, standing, Amber	\$550.00

**Heisey by Imperial**

Bull, Black	\$800.00
Bull, Verde Green	\$1000.00
Clysdale, Amber	\$500.00
Clysdale, Verde Green	\$350.00
Clysdale, Ultra Blue	\$350.00
Colt, standing, Amber	\$250.00
Colt, kicking, Amber	\$250.00
Colt, balking, Amber	\$250.00
Colt, standing, yellow	\$250.00
Colt, kicking, yellow	\$250.00
Colt, Balking, yellow	\$250.00
Sow, Black	\$500.00
Sow, Amber	\$500.00
Sow, Red	\$600.00

L. A. Maness  
 Rt. 1, Box 552  
 Ashland, VA 23005  
 Visa/Mastercard welcome

(804) 798-1825  
 UPS \$4.50/Cartron  
 H=Marked

#1541 Athena duo candlesticks, pr.	\$90.00
#3390 Carcassonne 12 oz. fld. ice tea, Sahara, (2) ea.	\$30.00
#359 Colonial 4 oz. saucer champagne, H, (8) ea.	\$16.00
#407 Coarse Rib 7" plate, H, Moongleam, (8) ea.	\$15.00
#1503 Crystolite 7" covered candy, H	\$65.00
#5003 Crystolite 10 oz. goblet, (4) ea.	\$30.00
#3389 Duquesne 2-1/2 oz. wine, (3) ea.	\$28.00
#1401 Empress 10" celery, H, Flamingo	\$25.00
#3355 Fairacre saucer champagne, Mnglm. ft., H, (4) ea.	\$30.00
#433 Greek Key 5" nappy, H, (3) ea.	\$30.00
#3408 Jamestown footed ice tea tumbler, (4) ea.	\$18.00
#1540 Lariat duo candlesticks, pr.	\$50.00
#394 Narrow Flute domino tray, H	\$50.00
#5024 Oxford 6-1/2 oz. saucer champagne, (4) ea.	\$15.00
#5067 Plantation goblet, (2) ea.	\$35.00
#5067 Plantation sherbet/champagne, (8) ea.	\$25.00
#341 Puritan cordial, H, (2) ea.	\$38.00
#341 Puritan 3 cornered handled jelly, H	\$37.50
#1469 Ridgeleigh cup & saucer, H, (2) set	\$27.50
#1243 Stepped octagon 6" plate, H, Flamingo, (4) ea.	\$12.00

Jean & Don Parrett  
 4995 Mapledale Rd.  
 Jackson, MI 49201

H=Marked  
 Post. & Ins. Extra  
 (517) 784-7314  
 & Recorder

#394 Narrow Flute Dr. Johnson punch bowl	\$695.00
#393 Narrow Flute hollow stem flared champagne, (6) ea.	\$29.00
#351 Colonial 4 oz. ft'd. schopen, (3) ea.	\$15.00
#351 Colonial 6 oz. ft'd. schopen, (6) ea.	\$25.00
#351 Colonial 10 oz. ft'd. schopen, (5) ea.	\$35.00
#429 Plain Panel 8 oz. tumbler, (4) ea.	\$22.00
#429 Plain Panel 3 pint pitcher	\$125.00
#367 Williamsburg 20 oz. decanter	\$130.00
#1252 Twist ice tub & handle	\$80.00
#2 Salad fork & spoon, pr.	\$45.00
#300 Peerless 12 oz. ice tea, (8) ea.	\$30.00
#353 Colonial 26 oz. tobacco jar & lid	\$245.00
#354 Colonial 16 oz. lavender jar & lid/gold	\$125.00
#331 Colonial 8 oz. pickle jar & lid	\$69.00
#341 Williamsburg squat horse radish	\$70.00
#352 Colonial 3 oz. lavender jar & lid	\$55.00
#353 Colonial 2 oz. lavender jar & lid	\$65.00
#1405 Ipswich 10 oz. ft'd. soda, Moongleam, (4) ea.	\$105.00
#1405 Ipswich 10 oz. ft'd. soda, Sahara	\$40.00
#3397 Gascony 3 oz. wine, Tangerine	\$250.00

T & P Collectibles  
 Tom & Pat Gibbons  
 1089 Wood Street  
 Swansea, MA 02777

(508) 674-7361  
 Postage & Ins. Extra  
 H=Marked

#0331 Colonial Panel 2 qt. jug, H	\$145.00
#0358 Medium Flat Panel 26 oz. lavender jar, H	\$155.00
#0393 Narrow Flute 9 oz. footed goblet, H, (16) ea.	\$13.00
#0433 Greek Key 4.5 plates, H, (11) ea.	\$10.00
#1229 Octagon nut cut, etched, (9) ea.	\$10.00
#1231 Ribbed octagon 9" celery, Moongleam	\$25.00
#1231 Ribbed octagon cup & saucer, Flamingo, (4) ea.	\$18.00
#1295 Beaded Swag covered sugar	\$85.00
#1401 Empress 4.5 nappy, H, Flamingo, (5) ea.	\$13.00
#1404 Old Sandwich 6" comport, H, Moongleam	\$155.00
#1433 Thumbprint & Panel 11" floral bowl	\$45.00
#1469 Ridgeleigh cruet w/ Bee-Hive stopper, (2) ea.	\$45.00
#1503 Crystolite leaf bon-bon, (2) ea.	\$17.00
#1509 Queen Ann 11 " floral bowl w/Everglade cutting	\$60.00
#1519 Waverly square butter top w/ pony & oe	\$65.00
#1519 Waverly 10" 3 part relish oe	\$40.00
#3380 Old Dominion 10 oz. goblet, Sahara, (6)	\$200.00
#3416 Barbara Fritchie 1 oz. tall cordial, (2) ea.	\$60.00
#3480 Koors 3 pt. D/O pitcher, foot/handle, Moongleam	\$180.00
#4085 Kohinoor 9 oz. goblet, (6)	\$150.00

Gary Shardiell  
 Rd. 6, Box 6199  
 E. Stroudsburg, PA 18301

(717) 223-8759  
 UPS & Ins. Extra  
 H=Marked

#300 Old Williamsburg 4 lite candelabra,	\$390.00
#1401 Empress cruet 4 oz., Sahara	\$105.00
#1252 Twist covered mustard, H, Moongleam	\$80.00
#406 Coarse Rib cream & cov'd sugar, H, Moongleam	\$70.00
#393 Narrow Flute ind. cream & sugar, H, Flamingo	\$100.00
#1469 Ridgeleigh 6" candle vase, Sahara, pr.	\$65.00
#1401 Empress indiv. cream & sugar, H, Sahara	\$70.00
#1519 Waverly 3 lite candlestick, single, H	\$55.00
#1469 Ridgeleigh sq. ashtrays, 2 zircon, 1 Crystal	\$25.00
#5025 Tyrolean stem 2 oz. wine, H, (4) ea.	\$20.00
#1170 Pleat & Panel hi-ft'd. cov'd. comportier, Moongleam	\$95.00
#1503 Crystolite 1 lite candle holders, pr.	\$20.00
#1503 Crystolite candy dish w/metal cover & rosette hndl., H,	\$40.00
#1401 Empress 7" oval bon-bon, H, Moongleam	\$25.00
#1469 Ridgeleigh 5 pt. star relish dish, H	\$25.00
#1469 Ridgeleigh vinegar & oil, grnd. stopper	\$40.00
#411 Tudor 2 hndl. bon-bon, H, Hawthorne flash	\$15.00
#341 Puritan vinegar & oil etched, grnd. stopper	\$25.00
#1170 Pleat & Panel rnd. 6" plates, H, Moongleam, all	\$15.00
#1454 Diamond Point ind. 1952 Newark comm. ashtrays, (4) a	\$15.00

**TomKat Antiques** (816) 454-5078  
 6704 N. Olive Shipping & Ins. Extra  
 Gladstone, MO 64118 H=Marked

#325 Pillows tall celery vase, H \$25.00  
 #341 Puritan hi-ft'd. jelly, H \$20.00  
 #351 Priscilla 2 oz. wines, H, (3) all \$25.00  
 #1469 Ridgeleigh oyster cocktails, H, (6) ea. \$22.50  
 #1469 Ridgeleigh 8" triangular vase, H \$65.00  
 #354 Wide Flat Panel cream & sugar, H, Moongleam \$70.00  
 #463 Bonnet 9" basket, H \$250.00  
 #135 Empress candlesticks, H, Sahara, pr. \$120.00  
 #1493 World candlesticks, pr. \$625.00

**Walrick Antiques** (513) 579-9877  
**Rick Vaughan & Sally Sherman** UPS Extra  
 322 Milton Street H=Marked  
 Cincinnati, OH 45210

#341 Puritan 6 oz. oil, H \$45.00  
 #352 Flat Panel covered mustard, H \$45.00  
 #500 Octagon 5 1/2" D/O ft'd mayo, Sahara \$45.00  
 #1170 Pleat & Panel 3 oz. oil w/cutting, Moongleam \$65.00  
 #1184 Yeoman cov'd. sugar w/etch, H \$23.00  
 #1184 Yeoman D/O creamer/cov'd sugar, H, Flamingo \$66.00  
 #1225 Ridge & Star 6" plates, H, Flamingo, ea. \$11.50  
 #1252 Twist 13" 3 part relish, H, Moongleam \$48.00  
 #1252 Twist 10" celery, H, Sahara \$42.00  
 #1252 Twist 7" pickle tray, H, Moongleam \$30.00  
 #1252 Twist 4 1/2" nappy, H, Flamingo, (4) ea. \$25.00  
 #1401 Empress cov'd lemon dish, dolphin finial, H \$47.00  
 #1428 Warwick 2 lite candlesticks, pr. \$82.00  
 #1428 Warwick indi. vases, pr. \$70.00  
 #1469 Ridgeleigh punch cups, H, (7) ea. \$12.00  
 #1469 Ridgeleigh indiv. salts, H, (12) set \$120.00  
 #1541 Athena 2 lite candlestick \$42.00  
 #3370 African D/O cocktail, sterling dec., Flamingo \$40.00  
 #4054 Coronation 30 oz. martini \$110.00  
 Goose, wings half \$100.00

**Donald P. Bean** (508) 473-0561  
 36 Harding Street Ship & Ins. Extra  
 Milford, MA 01757 H=Marked

#1567 Plantation 7" candy box, H, no cover \$75.00  
 #1170 Pleat & Panel cov'd compotier, Flamingo \$65.00  
 #1185 Saturn 10 oz. goblets, H, 6 ea. \$15.00  
 #373 Old Williamsburg 5 oz. tall sherbets, H, (6) all \$65.00  
 #1503 Crystalite indiv. sugar/cream tray set, HH \$47.50  
 #352 Flat Panel 13 1/2" oval 5 part relish, H \$55.00  
 #351 Priscilla sugar & cream, HH, full gr. btm. \$48.00  
 #1469 Ridgeleigh cov'd mustard & paddle, H \$45.00  
 #1200 Cut Block souv. T.P./v.c. sp./cas.1899/Rub.St. \$65.00

**Jim Pappas** H=Marked  
 5633 Zaring Dr. Shipping & Ins. Extra  
 West Chester, OH 45069 (513) 779-1824  
 & Recorder

#1632 Lodestar 8" vase, H, Dawn \$95.00  
 #1485 Saturn sugar w/silver plate poorer, H \$65.00  
 #1485 Saturn 5 oz. Juice/parfait tumblers, H, (6) all \$50.00  
 #1485 Saturn 10 oz. goblet, H, (12) all \$110.00  
 #1567 Plantation salt shaker w/Ivy etch \$30.00  
 #121 Pinwheel candle holder, H, Hawthorne \$45.00  
 #393 Narrow Flute 1 pint pitcher, H \$60.00  
 #1519 Waverly, Orchid etch mayo & underplate/ladle, H \$70.00  
 #1404 Old Sandwich ind. ashtrays 1ea. Crystal, Sahara, Cobalt, all \$35.00  
 Fighting Rooster \$125.00  
 Mallard, wings up \$160.00  
 Oscar (Sparkie) \$85.00  
 \*Animal Gem Series, Lavender Ice limited edition, HCA-D (all 12) \$1099.00  
 (after Sept. 6th will sell Animals separate)  
 Pouter Pigeon, \$250.00; Bull, \$300.00; Kingfisher, \$75.00; Rearing Horse Bkend., \$300.00; Showhorse, \$350.00; Scotty, \$75.00; Mallards (3) set, \$300.00; Elephants (3) set, \$350.00.

**Forever Helsey** (614) 344-5955  
**Norm & Jan Thran** UPS & Ins. Extra  
 1663 Londondale Pkwy. H=Marked  
 Newark, OH 43055

#325 Pillows punch bowl & stand, H \$250.00  
 #325 Pillows individual salt dip \$95.00  
 #112 Mercury 1 lite candlestick w/Orchid etch, pr. \$75.00  
 #343 Sunburst quart jug, H \$195.00  
 #100 Centennial 9" 1 lite candlestick, H, pr. \$145.00  
 #373 Old Williamsburg 12 oz. ft'd. ice tea, H, (8) ea. \$27.50  
 #501 8"x 3" Flower box, H, Moongleam \$95.00  
 #352 Flat Panel, 2 qt. cov'd. rounded fruit, H \$195.00  
 #300-2 Old Williamsburg 1 lite 12" candelabra, H, Sahara, pr \$350.00  
 #1540 Lariat, 12 oz. ft'd. ice tea, H, (9) ea. \$18.00  
 #5040 Lariat oyster cocktail, H, (5) ea. \$22.50  
 #5019 Waverly wine, (3) ea. \$20.00  
 #1225 Plain Band ft'd cake stand rolled upside \$80.00  
 #1255 Pineapple & Fan 8" vase, Emerald \$70.00  
 #357 Prison stripe tumbler, H \$45.00  
 #4055 Park Lane goblet w/Nomad cutting \$30.00  
 #3350 Wabash goblet w/Mt. Vernon cutting, H \$45.00  
 #3408 Jamestown goblet w/Barcelona cutting, H, (4) ea. \$22.50  
 #3408 Jamestown champagne w/Barcelona cutting, H, (4) ea. \$18.00  
 #4230 Favor vase, crystal D/O \$125.00

**John & Carolyn Sanders**  
 940 Ridgeland Street  
 Cheyenne, WY 82009

(307) 634-6457  
 Post & Ins. Extra  
 H-Marked

#350 Pinwheel & Fan custard, Mnglm. H, (4)ea.	\$30.00
#1255 Pineapple & Fan 10" berry bowl	\$45.00
#1401 Empress triplex relish 7", Sahara, H	\$22.00
#1403 Grapefruit bowl, H	\$15.00
#1483 Stanhope 6", 3 part jelly	\$21.00
#1495 Fern 3 part relish, w/ Rosalie etch	\$42.00
#1503 Crystolite indiv. swan nut, (6) ea.	\$10.00
#1503 Crystolite 5.5" large swan	\$28.00
#1503 Crystolite 5 part 10" relish	\$22.00
#1509 Queen Ann ice/buck., w/Everglades cut, no hndl	\$95.00
#4225 1 qt. cocktail shaker, Sunset Towers carving, signed Dorothy Thorpe	\$135.00
#6060 18 oz. soda, Winchester '73 etch	\$150.00
#7022 Athena ice bucket, Zeuse cutting	\$125.00
#7022 Athena soup bowl & underplate	\$35.00
#7022 Athena 2 lite candlesticks	\$95.00
#7022 Athena cream & sugar	\$65.00
Fish bowl	\$450.00
Ringneck Pheasant	\$120.00
Show horse	\$950.00

**We Clean Cloudy Glass—Satisfaction Guaranteed**

Ship to: Carlisle & Associates  
 28220 Lamong Rd., Dept H  
 Sheridan, IN 46069

"You Seek Perfection—At Carlisle & Associates We  
 Provide It!"

We ask that you send no money until we return your  
 item(s) to you. If you are happy, please send payment. If  
 not, please return the bill marked "Not Satisfied."

Please allow 6-8 weeks for redelivery of most items.  
 Some very cloudy items may take several additional  
 weeks. All glass is handled and cleaned at your risk.

Cruet	\$20	Cocktail Shaker	\$30
Cologne	\$20	Salt Shaker (single)	\$15
Water Bottle	\$30	Salt Shaker (pair)	\$25
Decanter	\$30	Crushed Fruit Jar	\$30
Vases (under 12")	\$25	Lavender Jar	\$20-30
#517 Quart jug	\$30	Water Lamps	\$30-50

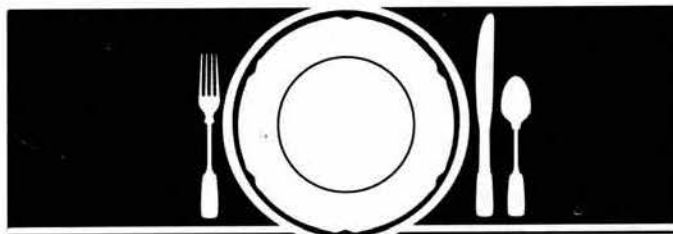
All other items for quote, or call (317) 758-5767

Will Pick Up/Deliver at any Apple Tree Heisey Auction

**IMPORTANT**  
**ALL HEISEY AUCTION**  
**FRIDAY, OCTOBER 22, 1993 5:00 P.M.**  
**SATURDAY, OCTOBER 23, 1993 9:00 A.M.**

**APPLE TREE AUCTION CENTER**  
**1616 W. CHURCH STREET**  
**NEWARK, OHIO 43055**

This sale features a large collection from a long  
 time up state New York collector, a fine collection  
 of Plantation. Sale offers good color and many  
 hard to find items. See next month's newsletter for  
 more information or send \$2.00 for a catalog. Plan  
 to attend both sessions as we will have quality  
 both days.



**How to Find Those Missing Pieces.**

The world's largest source of discontinued  
 china, crystal and flatware, Replacements, Ltd.,  
 buys and sells over 45,000 different patterns.

If you need a piece, or several pieces to add  
 to your collection ... or if you'd like to sell some  
 unneeded extras ... call or write us. We can provide  
 you with a complete printout of available  
 pieces in your pattern. Or we'll let you know our  
 prices for the pieces you wish to sell.

Replacements, Ltd. — a 100,000 square foot  
 facility; 1.5 million pieces; over 500,000  
 satisfied customers. Contact us, or come see  
 our showroom. Let us help you complete your  
 collection ... or maybe you'll help add to ours.

**REPLACEMENTS, LTD.**

Call 1-800-562-4462. Or write:  
 1089 Knox Road • P. O. Box 26029 • Dept. HS  
 Greensboro, NC 27420

**OVER 3000 HEISEY PIECES**

<p><b>MARJORIE GILLETTE</b> Rochester, New York Glassware Speciality Heisey Mail Orders &amp; Shows 716-225-4678</p>	<p><b>SHIRLEY EUGENIA DUNBAR</b> Heisey a Speciality Mail Order, Shows, Appraisals PO Box 7085, Port St. Lucie, FL 34985 Oct.-May 407-337-1558 PO Box 222, Naples, ME 04055 May-Oct. 207-647-5652</p>	<p><b>COMPARISON LIST</b> New Heisey Auction List For 1993 3 year's auction 90-91-92 Price \$15.00 + \$3.00 shipping, Payable: B. Whaley 300 International Dr., Pataskala, OH 43062 -1-614-927-1557</p>
<p><b>ALL HEISEY AUCTION</b> Consignments Welcome Apple Tree Auction Center 1616 W. Church, Newark, OH 43055 PH: (614) 344-9449</p>	<p><b>GREEN ACRES FARMS</b> Antiques, Crystal Glass &amp; Collectibles 2678 Hazelton-Etna Rd., SW (S.R. 310-N) Pataskala, OH 43062 Sat. or Sun. PM or call (614) 927-1882</p>	<p><b>THE CURIOSITY SHOPPE</b> Heisey, Pottery, Coins, Crafts &amp; More In Holmes County Amish Country 55 W. Jackson, Millersburg, OH 44654 (216) 674-2999</p>
<p><b>ALFA I CARRIAGE HOUSE ANTIQUES</b> Featuring Depression &amp; Elegant Glassware Al &amp; Faye Maness Rt. 1 Box 552, Ashland, VA 23005 PH: (804) 798-1825</p>	<p><b>H &amp; R DIAMOND H</b> Helen &amp; Robert Rarey 1450 White Ash Dr. Columbus, OH 43204 PH: (614) 279-0390 after 5:30</p>	<p><b>PARRETT'S ANTIQUES</b> Heisey 4995 Mapledale Rd. Jackson, MI 49201 517-784-7319 - Recorder</p>
<p><b>ANTIQUES - THE SHULTZES</b> 206-208 East Main St. Newmanstown, PA 17073 15 Miles West of Reading, PA PH: (215) 589-2819</p>	<p><b>"HAPPINESS IS" - THE STULTZS</b> 3106 Warren Court, Glen Allen, VA 23060 Shows and Mail Order PH: (804) 672-8102</p>	<p><b>PATTON HOUSE</b> Rocky's Mall, I-81 &amp; US 11 Weyer's Cave, VA 24486 PH: (703) 967-1181 The Antique Gallery, Richmond, VA</p>
<p><b>C &amp; J ANTIQUES</b> Cole &amp; Jean Miesner Box 45, 72 Whig St. Newark Valley, NY 13811 PH: (607) 642-9905</p>	<p><b>MOUNDBUILDERS ANTIQUES</b> The Second Generation 1640 Columbus Rd., S.W., Granville, OH 43023 Closed Saturday 1-800-FON-HEISEY Lots of Heisey, minutes from the museum. (614) 587-2227</p>	<p><b>SCHWAN'S ANITQUES</b> SHOWS &amp; MAILORDER 77 Lagos del Norte Ft. Pierce, FL 34951 PH: (407) 461-5940</p>
<p><b>DOXTOIS</b> Eva &amp; Joe Hirsh Heisey &amp; Pattern Glass 6 James St., Norwalk, CT 06850 PH: (203) 847-3315</p>	<p><b>HELEN &amp; JIM KENNON</b> Heisey, Cambridge, Fostoria, Duncan, Imperial, Fenton, Tiffin P.O. Box 114 Brookville, OH 45309 PH: (513) 833-5406 SHOWS ONLY</p>	<p><b>R &amp; L ANTIQUES-SAN FRANCISCO</b> Members of the Golden Gate Heisey Club 3690 Bodega Ave. Petaluma, CA 94952 PH: Petaluma (707) 762-2494 PH: San Francisco (415) 621-6693</p>
<p><b>CHARLES &amp; MILDRED FISHER</b> Heisey animals and Heisey By Imperial animals 991 Idlewilde, Newark, Ohio 614-522-5398</p>	<p><b>JJ MC KEE ANTIQUITIES</b> Pottery - Glassware - Collectibles 222 West 75th St. Kansas City, MO 64114 Wed.-Sun. 10-5 PH: (816) 361-8719</p>	<p><b>THE WOODEN SHOE</b> Antiques &amp; Collectibles Jim &amp; Sheri VanEs by Appt. 810 Elden, Herndon, VA 22070 PH: (703) 435-9045</p>
<p><b>CRYSTAL LADY</b> Joann Hagerty Specializing in elegant depression glassware 1817 Vinton Street, Omaha, NE 68108 Shop Ph. (402) 341-0643 or Home Ph. (402) 391-6730</p>	<p><b>RAILROAD DINING CAR CHINA</b> Wanted By Collector - Harold W. Ames 4574 Driftwood La., Canandaigua, NY 144424 1-716-394-1098 1-800-836-9619 Most Anything Railroad Related Wanted</p>	<p><b>CARLISLE AND ASSOCIATES</b> We clean cloudy cruets, decanters, cocktail shakers, vases, salt &amp; peppers, etc. Write for flyer 28220 Lamong Rd., Sheridan, IN 46069</p>
<p><b>DIAMOND H PLUS</b> Mail Orders &amp; Shows George &amp; Eileen Schamel 6625 Gillardi Rd., Boonsboro, MD 21713 PH: (301) 432-6285</p>	<p><b>J. &amp; R. COLLECTIBLES</b> Shows, SASE, Mail Order list The Lukasko's P.O. Box 1030, Newark, Ohio 43058-1030 PH: (614) 344-9719</p>	<p><b>ARMORY ANTIQUES</b> Specializing In Quality Glass &amp; Furniture Heisey And Other Elegant Glass 168 W. Main St., Plain City, OH 43064 (614) 873-4890</p>
<p><b>ETTELMAN'S DISCONTINUED</b> CHINA &amp; CRYSTAL HEISEY a SPECIALTY P.O. Box 6491-HN Corpus Christi, TX 78411 PH: (512) 888-8391 Include SASE</p>	<p><b>MOSTLY HEISEY</b> Rhoda Curley 16 Clayton PL, Albany, NY 12209 Shop and Mail Order PH: (518) 482-6272</p>	<p><b>HEISEY PUBLICATIONS</b> Box 102, Plymouth, Ohio 44865 All Vogel Heisey Books I, II, III, IV And Quarterly Newscasters available</p>
<p><b>FOREVER HEISEY</b> Jan &amp; Norm Thran Mail Order, Shows, Appraisal Service 1663 Londondale Pkwy., Newark, OH 43055 PH: (614) 344-5955</p>	<p><b>GLASS PAPERWEIGHTS</b> Handcrafted by W.E. Porter, former Heisey glassworker. Available for purchase at the Heisey Museum Gift shop. For information send large SASE to 6405 Chippindon Drive, Huber Heights, OH 45424. Wholesale/Retail (513) 233-8570.</p>	<p><b>WILLEY'S ANTIQUES &amp; MUSEUM</b> Specializing in Heisey 11110 Cannon Rd., Frazeytsburg, OH 43822 16 miles east of Newark, OH PH: (614) 828-2557</p>
<p><b>"OUR PLACE ANTIQUES"</b> &amp; "The Barn" 121 S. Prospect St., Granville, Ohio 43023 Open Daily 12-5 PH: (614) 587-4601</p>	<p><b>THE MUTED SWAN ANTIQUES</b> 5486 Peachtree Rd., Chamblee, GA 30341 Heart of Chamblee Antique Row Specializing in Heisey &amp; Cambridge Bill &amp; Pat Miller PH: (404) 451-7620</p>	<p><b>JAMES S. HARRIS ANTIQUES/APPRISALS</b> Box 672 Richmond, KY 40475-0672 PH:(606) 623-9400 Buying and Selling by Mail</p>
<p><b>GLASS 'N' GLASS</b> Virginia &amp; Odell Johnson Rt. 1 Box 1324 Hayward, WI 54843 (715) 462-3753</p>	<p><b>SHRADER ANTIQUES</b> Dep. &amp; Elegant Glass, Buffalo Pottery Railroad Dining Car China, Shelley China 2025 Highway 199, Crescent City, CA 95531 PH: (707) 458-3525</p>	<p><b>TALL OAKS ANTIQUES</b> Glassware-Specializing in Heisey Shows - Mail order 219-864-1704 Mike &amp; Barb Rosenberger 5115 W 78th LN, Schererville, IN 46375</p>

---

## Volunteers for July and August

Phyllis McClain  
Mary McWilliams  
Norm and Jan Thran  
Leota Friel  
Francis Law  
Jim and Helen Kennon  
Bob and Helen Rarey  
Dick and Francis Stotler  
Hugo and Betty Wenzel  
Arlene Zipperlen  
Karen O'Hare  
Ann Holman

## When Renewing Your Membership ...

Please consider renewing (or upgrading) your membership to one of these levels. Any amount beyond regular Associate dues—\$18.50, plus \$2.50 for each additional household member—goes into the Endowment Fund. Participation is voluntary.

<i>Individual Contributing</i>	<b>\$30</b>
<i>Joint Contributing, two people in one household</i>	<b>\$40</b>
<i>Family Contributing, parents and children under 18</i>	<b>\$50</b>
<i>Patron</i>	<b>\$100</b>
<i>Sponsor</i>	<b>\$250</b>
<i>Benefactor</i>	<b>\$500</b>

Since 1983 the Endowment Fund has grown to more than \$110,000. Now that we've built a new museum, we need to guarantee its financial future. Contributors will be listed annually in *Heisey News*. For more information contact Mary Holland, membership secretary, (614) 345-2932.

---

## New Museum Hours

The National Heisey Glass Museum is now open on a trial basis from 10:00 a.m. to 4:00 a.m. daily and 1:00 to 4:00 p.m. on Sunday. Office hours remain 8:00 a.m. to 4:30 p.m., Monday through Friday.

If you haven't made it to Newark yet to see the new building and collection displays, now's the time to do it. Everyone agrees, the museum is more breathtaking than ever.

**Membership Renewal Notice:** Check the date above your name and address on the mailing label. This is your expiration date. If it reads 9-10-93, make sure your dues are paid soon in order to receive next month's issue of *Heisey News*. Dues are \$18.50 per year, plus \$2.50 for each additional household member.

POSTMASTER SEND FORM 3579 TO:

HCA

169 W. Church St.

Newark, OH 43055



**SECOND CLASS Dated Material**