

# HEISEY

# NEWS



for your  
knowledge

OFFICIAL PUBLICATION of HEISEY COLLECTORS OF AMERICA

Volume XXI No. 13

December 1992 ISSN 0731-8014

"Year after year they've served my  
treat on Heisey!"



Remember our own crystal  
and other fine crystals our  
customers have since 1891  
our crystal has been a source  
of pride and joy to many  
and we are proud  
to be a part of  
the Heisey family

**Heisey's**  
HAND-CRUSHED CRYSTAL

# HEISEY NEWS

Heisey Collectors of America, Inc.  
169 W. Church St.  
Newark, OH 43055



Editor, Susan Pennington  
Phone (614)345-2932 - Fax (614)345-9638  
All Rights Reserved 1992 ISSN 0731-8014  
Published and printed in Newark, Ohio

## HCA Club Officers

President	Sam Schnaidt	(614) 587-0052
Vice Pres.	Norm Thran	(614) 344-5955
Secretary	Amy Jo Jones	(513) 426-1567
Treasurer	Larry Stickle	(614) 366-2000

**Back Issues:** Each volume (12 issues a year): \$9.00 The following volumes are available: V, VIII, IX, X, XI, XII, XIII, XIV, XV, XVI, XVII, XVIII, IX, X, D, XI, XII, XIII, XIV, XV, XVI, XVII, XVIII. Heisey Collectors of America, Inc, a not-for-profit corporation (tax exempt status), are owners and operators of The National Heisey Glass Museum, 6th and Church Streets, Newark, OH. Open daily 1-4 P.M. except holidays. Other hours by appointment. Members admitted free.

**HEISEY NEWS** Published monthly (twice in February), by Heisey Collectors of America, Inc., Newark, OH 43055. Second Class Postage Paid. Club Membership (includes 13 issues of Heisey News and participation in all club activities) \$18.50 per year, plus \$2.50 for each household family member desiring a membership card. Voting Membership, add \$25.00 as a one time only fee. **FIRST CLASS MAILING OPTION:** For an additional fee of \$1.00 per issue, \$13.00 per year, the **HEISEY NEWS** will be sent by First Class mail—Full subscription only, no single issue mailing. This optional service is offered to members, in an attempt to alleviate the problem of late delivery. The extra fee is due with your annual dues. Contact Mary Holland, membership secretary, for more information.

**ADVERTISING:** Send all ads to: HCA Advertising, 169 W. Church St., Newark, OH 43055 or fax ads to 614-345-9638, include M.C. or Visa info. Ads are to be typed or printed on white paper with dark ink. Please double space. All Ads must be prepaid.

**CLASSIFIED:** 20 cents per word, members, 30 cents per word, non-members, \$1.50 minimum, 1/8 page limit. Personal ads 1/8 page limit. Abbreviations and initials count as words. Please do not abbreviate Heisey pattern names or Heisey colors. Ads which are entered in a vertical column format can contain 67 characters (maximum) per line. When counting characters, remember to include spaces.

**DEALER DIRECTORY:** \$35.00 Per Year, members only.

DISPLAY AD Rates	MEMBER	NON
1/8 page - (9 lines)	\$ 20.00	\$ 30.00
1/4 page - (20 lines)	\$ 40.00	\$ 60.00
1/2 page - (horizontal or vertical)	\$ 80.00	\$120.00
Full page - (letter style or columns)	\$160.00	\$240.00

Ad copy must be received by the 1st of the month preceeding the publication date.  
e.g. April 1st for May issue. Camera ready ads accepted, but must follow line specifications. Ads containing reproductions will not knowingly be accepted unless clearly stated (e.g. Heisey by Imperial, etc.) **HEISEY NEWS** accepts no further liability.

The opinions expressed in articles in **HEISEY NEWS** are those of the authors and not necessarily those of the organization. The Editor reserves the right to edit, with or without the consent of the author, or to refuse any material submitted for publication.

**About the cover:** The A.H. Heisey Company was well known for its excellent magazine advertising. In December of 1947 and again in 1948, the National Advertising Agency Network awarded Heisey its highest honor for excellence in general magazine advertising.

This month's cover features an original drawing designed for a Heisey advertisement. Santa is shown holding a #5077 Legionnaire 10 oz. goblet. On the table is a #5077 Legionnaire 12 oz. footed ice tea. The Legionnaire pattern was designed by Horace King and was produced from 1950-1957.

During the holiday season we are reminded of the special people who have touched our lives. On behalf of the entire staff, I would like to wish each and every one of you a peaceful holiday season.

### Limited Number of ROSALENE COLTS Available

Beginning December 3, any of the remaining 450 shiny Rosalene kicking and rearing colts will go on sale to the membership and the general public. The cost is \$55.00 each or \$100.00 for both, shipping included. These will not be numbered. There will also be a limited number of frosted Rosalene colts available. These will be seconds or overruns. The price for the frosted colts will also be \$55.00 each or \$100.00 for both.

Proceeds from the sale of the shiny Rosalene colts will go to the Building Fund. Proceeds from the sale of the frosted Rosalene colts will go to the General Fund. To order, or for more information, call the Museum at (614) 345-2932.

If you ordered numbered colts to go along with the Gold Animal Collectors Series, they are now available for pick-up at the museum.

### Calendar of Events

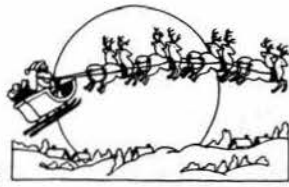
Holiday Dinner, Best Western.....Dec. 5, 1992  
Benefit Auction ..... March 12 & 13, 1993  
Cadillac/Lincoln Dinner .....March 13, 1993  
'93 Convention.....June 16-20, 1993

### In This Issue

Sam's Scribbles <i>Sam Schnaidt</i>	3
Curator's Report <i>Kathy McCracken</i>	3
Views from the Fund Raiser <i>Norm Thran</i>	4
Museum Expansion Committee Update	4
Animals, Animals, Animals <i>Charlie Wade</i>	5
A Magnificent Accomplishment <i>Amy Jo Jones</i>	5
Cadillac/Lincoln Dinner News	6
Christmas Wishes <i>Carl Sparacio</i>	6
Keeping in Touch <i>Louise Ream</i>	7
Club Notes	8-10
Benefit Auction Update <i>Jim Clark</i>	10
Shipping Tips <i>Brad</i>	10
HCA Gift Gallery Holiday Order Form	11
Holiday Dinner Reservation Form	22
Benefit Auction Form & Contract	23



**Sam's Scribbles**  
*Sam Schmaidt, President*



There has been lots of activity here in Newark during the past month. The new building is coming along well, although the contractor is running behind schedule. The Expansion Committee, as well as the Museum, Cadillac/Lincoln Dinner and Gold Animal Series Committees, have been meeting with excellent participation and lots of enthusiasm. Everyone involved seems very excited and I only wish more of you could help with the planning.

The rearing colts and kicking colts, in Rosalene, have arrived and are being shipped as ordered. Orders from original subscribers will be accepted through Dec. 2. Beginning December 3, remaining colts will go on sale to all HCA members and to the general public. If you want to be in line for an unclaimed set of shiny colts or a set of frosted ones, call the museum and get on the waiting list. See the ad on page 2 for all the specifics.

Don't forget to get your glass in for the March Benefit Auction. If you're planning to attend the auction and/or Cadillac Dinner and will need accommodations, now is the time to make motel reservations. Check the November *Heisey News* for the list of area motels.

Cadillac/Lincoln Dinner tickets will be available soon. If you were unable to attend this great event last year and would like to come this year, call the museum and get your name on the waiting list right away.

Get well wishes go to Jim Jones, Board member from Temple Hills, MD. Jim has been in the hospital and we all hope that he is feeling like *his old self* soon.

As 1992 comes to a close, I can't help but reflect on the accomplishments we've made in just one year! I look forward to 1993 with excitement and anticipation, as we continue BUILDING FOR THE FUTURE.

I hope to see lots of you at the quarterly meeting and Holiday Dinner on December 5.

Happy Holidays!

P.S.) Mary Holland, Membership Secretary, reminds you to remember that special person on your gift list by giving them a special gift-- a membership to HCA!

**Curator's Report**  
*Kathy McCracken*



In November we set up a booth at two local events to advertise the museum and to sell Christmas merchandise as well as our regular Gift Shop items. One Saturday we were set up at the local mall and the following weekend we were at the YWCA Christmas Bazaar. Although our sales were slow, we did give out many brochures and talk to a lot of people about what HCA is doing. It is always surprising how many local people do not know that we exist or what is available in the Gift Shop.

On Saturday, December 12 we will be holding the annual Holiday Open House from 5:00 until 7:00 p.m. This is held in conjunction with the Licking County Historical Society's Victorian Christmas. Remember to drop by to enjoy refreshments, music, and the decorations. A talented bell choir from one of the local churches will be entertaining us throughout the evening.

We welcome Mary Jo Kochendorfer to the staff at the museum. Mary Jo will be working weekends and some weekdays as needed. Susan and I were having increasing trouble finding volunteers each weekend, and with an increasing workload due to the new addition, there was a definite need for additional staff.

During the next few weeks and months there will be many changes here due to the construction. Eventually the Lower Level will have to be closed to visitors as it will be used for shipping, offices and storage. The current office building will have to be partially vacated for a short time as the construction workers will be cutting through from the new addition on all three levels. There will undoubtedly be some chaos for awhile but we will remain open to the public.

As you will read elsewhere in the newsletter, the Expansion Committee has been working on additional projects including the 1993 Cadillac/Lincoln Dinner, Rosalene colts to go along with the Gold Animal Collectors Series, and eventually another series of animals. Initial response to the Rosalene colts has been tremendous and we look forward to being able to offer additional animals in the future.

See you at the Holiday Dinner on December 5...

*Museum Volunteers for October*

<i>Norm &amp; Jan Thran</i>	<i>Stan Holmquist</i>
<i>Mary McWilliams</i>	<i>Ann Holman</i>
<i>Bob &amp; Helen Rarey</i>	<i>Arlene Zipperlen</i>
<i>Hugo Wenzel</i>	<i>Frances Law</i>
<i>Jim &amp; Helen Kennon</i>	<i>Liz King</i>
<i>Dick &amp; Frances Stotler</i>	<i>Vivian Moore</i>
<i>Phyllis &amp; Bob McClain</i>	<i>Mollie Miller</i>



Mary Jo Kochendorfer, gift shop clerk, checks the HCA display table at the Community Bazaar held at Newark's Indian Mound Mall. Photo S. Pennington

## VIEWS FROM THE FUND RAISER

*Norm Thran*

The increase reflected in the Nov. 11th total is due primarily to the support/donations received from two study groups. The membership and committee thanks the Virginia Heisey Collectors and the Yankee Heisey Collectors. It takes all of us working and pulling our share to make this project a real success.

### BUILDING FUND SUMMARY

Total Raised as of October 12, 1992	\$256,000.00
Interest received on account	150.00
Member/Study Club Donations	2,450.00
Donated Glass for Auction	0.00
Gold Animal Series I	1,050.00
<b>Total Raised as of Nov. 11, 1992</b>	<b>\$259,650.00</b>

Yes, we have made great strides in the past--but the future holds the key. You can help by any of the following suggested methods:

- **Donate glass for the Benefit Auction** *We need glass donations by early January for cataloging.*
- **Pledge a dollar amount for 1993.**
- **Contributions anytime are welcome.**
- **Purchase a ticket for 1993 Cadillac/Lincoln Dinner.**
- **Purchase the Rosalene Add On items.** *The kicking and the rearing colts are the first add-ons.*
- **Support the Special Animal Series by Viking.** *Color & number of animals to be determined at the December Board Meeting.*
- **Donate your time and skill.** *Volunteers and ideas are always welcome.*
- **Recruit new members.** *A worthwhile project for all members in '93. Lets build our membership as we grow.*

The roof is 50% completed and as the building is enclosed, work will continue indoors. The various committees are meeting on a regular weekly basis. Our attention is now being directed towards the interior of the new addition, as well as the interior of the King House and the administration building. Let's all pull together and . . . **BUILD FOR THE FUTURE !**



Photos by S. Pennington

### Museum Expansion Committee Update

*Bob Rarey, Recording Secretary*

The museum expansion is proceeding in a timely manner. The building is under roof and the installation of the interior wallboard will be underway by the time this report reaches you. These are indeed exciting times for those of us who have seen the building progress from a hole in the ground to its full height.

The Cadillac/Lincoln Dinner will be held on Saturday, March 13, 1993. Tickets go on sale December 1, 92, to purchasers of 1992 tickets. A waiting list is in place for those wishing tickets who did not participate in 1992.

A second set of special series animals is planned as a fund raiser in 1993. Details will be forthcoming as they develop. Norman Thran has developed an over all fund raising plan which will be of interest to all. We need your support. The Committee hopes you can attend the December Quarterly Meeting to see first hand the Museum Expansion Building. A further update will appear next month in the *Heisey News*.

## ANIMALS, ANIMALS, ANIMALS

Charlie Wade

Just when you think everything is slowing down, look out! Here comes the new year and new plans. Oh well, no rest for the wicked, as the old saying goes.

The animal committee is gearing up for its next production, which we should be announcing sometime during the Christmas holiday season. Of course, this new series will be another *Block Buster Series*, which may possibly include a B \_ L, or even a REAR \_ HOR \_ B \_ K E \_ , and . . . well, I really shouldn't let the cat out of the bag until all the details have been finalized. Color? Let's just say it will be a premier color made especially for HCA, unlike any color you have ever seen an animal in before. Please stay tuned for the **GEM SERIES**.

For those of you who are interested, we may produce a few more *Add-on* items to go with your Gold Animal Collectors Series. Whether or not additional *Add-on* items are produced is dependent upon Fenton's Rosalene production schedule and their willingness to make the requested item.

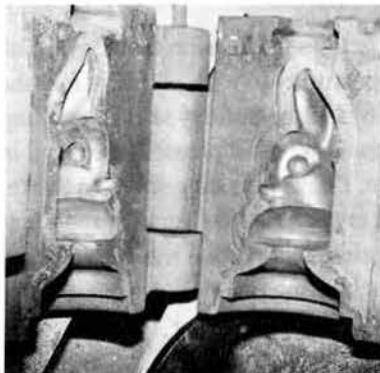
One Sunday afternoon recently, as a group of committee members were sorting through the molds in the warehouse, we made some interesting discoveries. When HCA purchased the molds from Imperial in 1985, some of the original Heisey animal molds were not listed on the inventory listing. It turns out that the long neck goose mold was marked SWAN. Only by opening the mold, did we discover that we do indeed have all three geese. The ring in the Doehead mold was marked gazelle, and the #2 Madonna was simply marked madonna. These three molds have never been used by HCA in part because we didn't know we had them.



#2 Madonna mold

Another interesting discovery we happened to make was that Imperial used Heisey's #1236 Eagle plate mold to produce a commemorative plate for the Holmes County Antique Festival in 1974. The special inscription was added around the circumference of the plate.

There is no way to know just what other surprises could be found if each and every mold could be opened and inspected. Someday we hope to do just that in order to update the existing computer mold inventory. (Doehead mold below)



## A MAGNIFICENT ACCOMPLISHMENT

Amy Jo Jones



The production of the Gold Animal Collectors Series (in Rosalene), as a means of fund raising for the expansion of the museum, has been an exciting, successful venture. For the Committee, the process of selecting the animals for the first series was a juggling act and an act of compromise--a

12 animal mix of small and large animals and an agreement amongst the members which to finally choose.

For the second series, the process has begun again but the choices have been narrowed somewhat because of the committee's decision to avoid repetition of any of the twelve animals used in the first series. Consequently, all other animals were considered. Of course, a tantalizing possibility was the Flying Mare, long considered to be too large a piece for today's glassmaking production. Still, it was decided to give it a shot to put the thought to rest. Fenton tried, but their press was not large enough to accommodate the substantial size of the flying Mare mould. Dalzell Viking asked to try a trial run because it was felt their press was large enough. Excitement was high but anticipation mounted--it would have to wait until a color other than crystal was in the pot.

When the day finally arrived, Sam Schnaidt, Larry Stickle, Chauncy Delaney and I went to New Martinsville to witness the event. We watched as a special team of eight workers made the first Flying Mares since Imperial had produced them just up-river in Bellaire. Excitement was evident among these workers as the first piece came out of the mould (it had taken two pressers), into the former and handed over to be refired. As Mr. Dalzell explained, the workers were accomplishing something at this small factory that their larger contemporary down river couldn't.

And it was magnificent! In Dalzell Viking's emerald, the committee agreed that the piece was striking enough to stand alone rather than part of a series. Its quality and finishing rank it among the finest ever made at Imperial.

So, how will these trial run Flying Mares be sold? Will more emerald Flying Mares be produced? Will it be included as part of the next animal series? Or, will it be offered as a separate item, not a part of the series but as an *Add-on* for that series? These questions and more are all to be answered by the committee and the Board of Directors in the near future. Stay tuned, HCA !



Flying Mare made by Dalzell Viking for HCA.

**HEISEY COLLECTORS OF AMERICA, INC.**

*Presents the 2nd Annual*

**CADILLAC/ LINCOLN DINNER**

*Saturday March 13, 1993*

**HUFFMAN HALL -- DENISON UNIVERSITY**

Social Hour 6:30 p.m.

Dinner 7:30 p.m.

**200 TICKETS--\$300.00 EACH**

**GRAND PRIZE**

**YOUR CHOICE--1993 CADILLAC OR LINCOLN**

*Prizes For Drawing*

1st # drawn	\$300.00
50th # drawn	\$500.00
100th # drawn	\$600.00
150th # drawn	\$700.00
190th # drawn	\$1,000.00
200th# drawn	NEW CADILLAC OR LINCOLN



*Profits from this project are returned to the Heisey Collectors of America, Inc. General Fund and for the Heisey Museum Expansion. A waiting list is currently growing because of the great success of this project last year. The Committee promises a spectacular evening and maybe you will be going home in a NEW CAR.*

Please Forward Your Commitment To:

**HCA, 169 W. CHURCH ST, NEWARK, OHIO 43055**

**TERMS OF TICKET**

- 1) 1992 purchased numbers are reserved for 1993
- 2) Commitment per ticket by Jan. 1, 1993. Payment in full by January 15, 1993
- 3) Two persons per ticket may attend the dinner and drawing; ticket holder may designate two persons to attend.
- 4) Everyone including HCA members is eligible to purchase a ticket and win any prize offered.
- 5) Drawing in reversed order--last ticket wins the Grand Prize.
- 6) Taxes are the responsibility of the winners.
- 7) Sale of tickets is not offered in states where prohibited by law.



As a result of the article in Nov. H. N., a member donated this #1184 Yeoman cup w/ #9036 Alf Landon etch. Photo by S. Pennington

**CHRISTMAS WISHES**

*Carl Sparacio*

What is it about

Christmas? I know it's going to come around--it has every year for as far back as I can remember. There are people who have assured me that Christmas has been showing up for years before I became aware of it--of course, they're much older than I. So, how come Christmas takes me by surprise every year?

I'm never prepared. I'm not only caught unaware about what gifts to buy for whom but I seldom have enough money to buy them even when I do know. I don't think about saving for Christmas spending until I'm out shopping about the 20th of December. Worse, it's Christmas Eve before my own Christmas wish list is put together--much too late for serious hint dropping.

This year I've turned over a new leaf. No, I didn't shop early--the money thing, remember? But, I've begun my Christmas hinting early. I made up a list of presents Santa might choose from just in case he passes over our house and wants to drop off a few things. I had difficulty finding a place to leave my list so it could be easily found by Santa. I didn't want to appear pushy. I finally hit on the magazine rack in the bathroom, betting that Santa will require a rest stop.

My list is short as I know there are many, many Heisey collectors besides myself who are waiting for Santa to make their Heisey dreams come true. I suggested that he might please me with something a little *Emill Krall-ish* or maybe a set of blown Ridegeleigh stemware from cordials on up--perhaps with a cutting that's *Botticelli-ish*. The choice is his. I let him know, too, that I wouldn't feel slighted if he carried a Banded Flute dresser set in Flamingo down my chimney.

Sure, just as everyone else, I covet Limelight and Alexandrite and Cobalt, but I'm not greedy, I'll settle for Sahara or Moongleam--something in Greek Key, perhaps. Something small would be nice--a Moongleam Grecian Border toothpick would fit easily into my tiny Christmas stocking.

Lest you get the impression that I'm selfish, I'd like to take this opportunity to wish all HCA members and friends the joys of the holiday season and happy collecting in the new year. And please know that, in the spirit of the season, I have also suggested to Santa in a note accompanying my list, that he might spread his supply of square Ridegeleigh individual ashtrays among all my dedicated Heisey hunting competitors.





## Keeping in Touch

Louise Ream

On the Sunday following the Heisey Convention, my sister and brother-in-law, Ruth and Jack Perloff, went over to the Cambridge Glass Club's Annual Show.

We usually go to the show every year or so to enjoy the beautiful glass, which also includes a sprinkling of Heisey and other fine collectible glass. We also see a lot of friends there. We congratulate the Cambridge Club for obtaining access to a spacious new facility for their show instead of the crowded area they had in the past. It was a great show!

After we left the show and started on our 90 mile trip back home, we decided to stop in Zanesville to visit several of the glass outlet stores there. One of these was the outlet for Dalzell Viking factory located in New Martinsville, West Virginia, which we visited first.

The Viking company went out of business some time after Imperial and several others closed. It was taken over by Ken Dalzell, former owner of the Fostoria Glass Factory. I purchased several of their beautiful glass Christmas trees made in crystal, green and ruby. Viking has been known for a long time for making the best ruby in the business. Most of HCA's ruby items were made there.

Next, we went to the Fostoria outlet nearby. Of course, Fostoria has been out of business for several years. To my surprise, I saw many pieces of Fostoria's American pattern, and pieces in Imperial's Candlewick, as well as other Fostoria patterns. I couldn't imagine where these things had been made since these companies no longer exist. I asked a clerk and she said that at least part of them were made at Viking. There was no mark at all on these items. How is any collector and especially a new one, to tell whether this is real Fostoria?

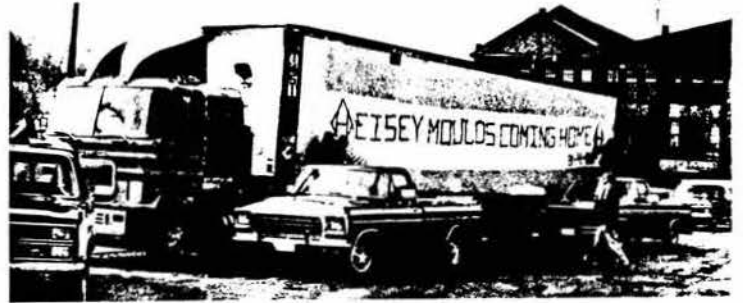
In 1958, shortly after the Heisey company went out of business, Imperial bought all of the existing molds. Considering the quantity, they used only a small part of them, mostly patterns made in Heisey's later years. Prior to January 1, 1968, much of the glass was marked with the Diamond H. At that time, Imperial announced that they would no longer use the Heisey mark, probably due to complaints from collectors.

From that time on, the Diamond H was not used on glass in their line. However, sometimes the mark was left on until a few pieces, usually about 20 were made for feasibility studies. If the item was then put in their line the mark was removed and theirs added. In the very late years, while they were in bankruptcy, the Heisey mark did appear on the Ultra Blue Gazelle along with the Imperial mark. Also, a few Asiatic Pheasants in Amber and Crystal had the Heisey mark. HCA bought all of the pheasants. When Imperial marked the glass after

January 1, 1968, they used Imperial's mark IG. Lenox bought the factory in 1973 and used the mark, LIG. In 1981 the factory was sold to Arthur Lorch and they used ALIG as the mark. Many items were not marked at all, including most of the Williamsburg line.

Items made for HCA in these moulds were marked HCA and usually dated. The same is true of the glass made for HCA now by Fenton and Dalzell Viking.

As most of you know, when Imperial closed, Heisey Collectors of America bought all of the moulds except Williamsburg. The cost was \$299,150.00 We also bought a warehouse for storing them. These moulds can be used only for HCA and then only in colors approved by HCA. Your money paid for these moulds. With HCA owning the moulds, the patents, the mark (ie: the *Diamond H*), most of the old catalogs, turn books, and loads of material from the factory, Heisey collectors can feel very safe, more secure than most other collectors!



This photo appeared in the May 1985 Heisey News. The Semi carrying the Heisey molds was draped with a banner reading: HEISEY MOULDS COMING HOME 3/4/85.

There have been very few fakes made, but, if any appear, HCA will initiate legal action at once. This was done with the company which imported the dishes with animal lids. These came from Taiwan with the false mark which is more square than the real Heisey mark.

Items made in the Old Williamsburg moulds have been adapted to machine moulds and have little resemblance to the real Heisey glass.

The twenty members of the Newark Heisey Collectors Club, founded in 1969, had the courage to form a national club in 1971 and to help establish a museum in 1974. In 1978 a building located next door to the museum was purchased for administrative offices. Now, in the years 1992-93, we are adding to our museum by adding a three story expansion which should be ready for the 1993 Convention. We still need donations for this expansion!

HOW LUCKY WE ARE ! We are the only glass club able to control its own destiny. This club must be kept strong! Try to convince your friends and other Heisey Collectors to join HCA to continue keeping our collectible glass safe!



### #5 BAY STATE HCC *Susan Pescatore*

The monthly meeting of the Bay State Heisey Club was held on Oct. 13, 1992 at the Sir Speedy Printing Center in Woburn, Mass. President Steve Pescatore conducted the meeting with about twenty members present.

The business portion of the meeting focused on plans for the Club's annual April show in Waltham, MA, which will be held at the Waltham Junior (not Senior) High School (same location, different building, more accessible). We also discussed the Club's 20th Anniversary Party in March, to which all former members of the Bay State Heisey Club are being located and invited, as well as all members of the other three study clubs in Massachusetts. (If you fall into any of these categories, but have not yet received your preliminary invitation, contact Steve Pescatore, 9 Donna Rd., Chelmsford, MA 01824.)

George Gleason took charge of *Show & Tell*, which as always consisted of an impressive array of glass: #310 Ring Band tankard in Custard with perfect gold; a #1469 Ridgeleigh round covered cigarette box (George mentioned how he looked for one of these for 10 years, and then found three in one year, figures!); a neat Ridgeleigh hostess piece made from a 10" and an 8" square plate with a chrome center shaft and ring handle; two #1425 Victorian finger bowls, not common; a stunning #341 Puritan 8" covered compote; the #353 Medium Flat Panel bathroom set, consisting of the covered soap dish, the toothbrush holder, and the shaving mug; an #1185 Yeoman center-handled sandwich tray with a simple floral cutting near the center and a very deep, almost brilliant-type cutting near the rim; the #500 Octagon variety tray in Moongleam; and a pair of #71 oval candlesticks (for which this correspondent has been looking over the last ten years and was finally rewarded).

Dina Fitzpatrick and Helene Guski were the caterers for this month, and provided a great selection of sandwiches, vegetables and dips.

In the final segment of the meeting, this correspondent presented a program entitled *Goddesses in the Glass*, which examined the derivation of many Heisey etchings from classical themes: Greek mythology and history, Roman influences, neo-classical designs, and Egyptian ornament.

### #13 HC OF CALIFORNIA *Penny Thorup, President*

The 19th Annual Meeting of the HCC was held October 25th at the home of Chuck and Linda Fowler in Lakewood with Bob and Diane Dickison co-hosts. We welcomed three new members and Barbara and Dick Bartlett, our visiting members from Granville, Ohio. Presently, HCC has 55 active members including 14 members from out-of-state.

Our December 1991 and April 1992 fund raising auctions netted record proceeds, making it possible for HCC to donate \$5,000 to HCA at the June Convention as follows: \$2,000.00 Endowment Fund, \$2,000.00 Building Fund, \$700.00 Educational Committee and \$300.00 for the purchase of a Cadillac/Lincoln Dinner ticket. Fran Brock also donated the handmade Heisey *Diamond H* afghan for the June Expansion Fund Auction, which generated \$350.00.

Congratulations to our newly elected 1993 Slate of officers: Bill Brakemeyer - President, Carolyn Felger - V.P., Ann Paulson - Secretary, and Homer Paulson - Treasurer.

Upcoming HCC events will be our regular meeting on Nov. 22, at the Paulson's in Arcadia and our Christmas party/gourmet potluck, December 13th, at Herb and Betty Wanser's in Anaheim. Our Christmas party highlights will include the *Member Heisey Christmas Gift Exchange* and the Collectible *White Elephant Live Auction* with our energetic auctioneer Bud Thorup performing with his assistant, Betty Wanser.

The HCC members wish our Heisey friends Happy Holidays and a Happy and prosperous New Year. If any of you are visiting in California, please plan to join us at a meeting by calling Bill Brakemeyer: (714) 788-4406.

### #19 HCC ROCHESTER AREA *George Reynolds*

Warren and Bobbie Zimmer welcomed our group into their home on October 18, 1992 for the monthly meeting. We did not see much of Warren, he was watching the New York Giants lose, again! Bobbie keeps a lovely home with pictures of their thirty seven and one half grandchildren lining the livingroom walls. Since Bobbie collects candy jars, there were enough jars to hold at least one million M & Ms. She has a secret source for these candies.

Marion Woodworth, Lynn Mantione's Mother, was welcomed as our guest.

The Prez, Marv Jacob, opened the business meeting with the disclaimer that it could only last twenty minutes. I believe that a motion was made to adjourn after ten minutes, a new record.

The subject for the meeting was Ipswich. Several nice pieces were presented: a crystal candle vase, 1/2 lb. candy, one lb. candy in Sahara, finger bowl, 10 oz. goblet, Moongleam saucer champagne and an 8" Crystal plate.

*Show & Tell* produced some nice items. A Fenton rose basket that was made from a footed soda, Narrow Flute olive/pickle dish, Daisey and Leaves pitcher, this brought *oohs and wows* from the group. Marge Gillette found it at a barn sale.

Bruce passed out a quiz entitled *What's in a Name*. This is a tough little quiz and the results, in most cases,

were under 50%. Good way to learn the glass though. I believe Donna Schwendy won, however, since no prize was offered, no one paid much attention to the winner.

Marvin made up a great little booklet on Ipswich. It consists of pages copied from various sources. We will be using it at the next meeting to see how much the members retain from it.

Arlene and I were in Newark in September. The addition is progressing well. It was our pleasure to meet Kathy and Susan for the first time. It is certainly easy to see why the museum is running so smoothly after meeting these fine women. The flower beds look better than we have ever seen them, in spite of the construction work. The revised format for the Gift Shop is certainly a plus for the customer and staff. *Merry Christmas to all!*

**#22 NORTHWEST HCC** *Mary Martin*

On October 3, the Northwest Heisey Club traveled to Auburn, WA to the lovely home of Bill and Kathy Eytcheson on the banks of the Green River.

The topic of the day was *Console* brought by many to display and talk about.

During the meeting, which was conducted by President Mary Beatty, the group discussed having a meeting and lunch in mid-summer in the town of Snohomish, Washington. We would spend the day browsing the town which is filled with many antique shops, leaving NO Heisey behind.

After the short meeting and monthly raffle, we adjourned for the potluck lunch and visiting.

**#35 THE VIRGINIA HC** *Becky W. Eshbach*

The Virginia Heisey Club has put the idea of a Heisey cookbook on the back burner for now. There was not enough interest shown for the project at this time. The VHC could have come up with the required recipes but felt that a cookbook that represented the Heisey members from across the country would have been more appealing. The VHC would like to thank all of the HCA members who did send in recipes. The recipes will be kept and used if the project is picked up later.

**#41 YANKEE HEISEY CLUB** *Dr. Ed Morin, V.P.*

The YHC is a small Heisey Study Club in Central Massachusetts composed of 23 members with usually 14 to 18 members in attendance at our bi-monthly meetings. We meet the first Monday in January, March, May, September, and November at the Bean's home in Milford, MA. and hold special get-togethers in mid-July and in mid-December. Guests are always welcome!

Tom and Pat Gibbons hosted their second annual summer cook out on July 12, in Swansea, MA. It was a gorgeous summer day enjoyed by all who attended.

On September 26 & 27, YHC hosted its Second Annual Yankee Invitational Antiques Show and Sale in

Sturbridge, MA. It was very well attended, according to the gate receipts, and the 55 dealer booth spaces were filled to capacity. The National Heisey Glass Museum and the Sturbridge-Fiskdale Seniors, Inc. are the prime beneficiaries of this show. They can expect a significant contribution from YHC in the near future.

The November meeting of the Yankee HC was held in Milford, MA at the home of charter members Donald and Betty Bean. Incoming President Phyllis Zona, presided at her first meeting on behalf of the 16 attending members and three guests. Tim Rector conducted the *Show & Tell* portion of the meeting and Program Chair, Ed Morin, presented a short program on his collection of #1590 Zodiac, showing both original Heisey and Heisey by Imperial pieces.

Bill and Sylvia Stickney will host their second annual Christmas party of the YHC at their home in Holliston MA on Dec. 13th. I should like to wish all our Heisey friends around the country, *A Very Merry Christmas and a Happy and Prosperous New Year In 1993.*

**#44 THE NATIONAL CAPITAL HCC**

*Heisey Herald Nov- Dec. 92 Prez Sez, Butch Jones*

*Early Seasons Greetings* to you all. Thanksgiving is almost here, with Christmas just a step behind.

We had a nice attendance at the October meeting when Tom Felt and Bob O'Grady presented the slide program on Heisey Animals.

Our November program, by George Schamel, was special. He brought the contents of a china cabinet, wife Eileen says only the top two shelves.

Mark December 15 on your calendar. Fancy up a plate of finger food, and come meet for an evening of fun.

For Christmas shopping, stuff a stocking with an NCHC membership or consider books or souvenirs from the the Museum Gift Shop.

At this beautiful time of the year, the officers and my *room-mate*, Jim, join me in wishing you and yours very Happy and Blessed Holidays.



Heisey 76er's study club members Arlene Zipperten (L), and Louise Ream (R), admire the club's display at the American Ceramic Society Museum in Westerville, Ohio.

Photo submitted by Hugo Wenzel.

## BENEFIT AUCTION UPDATE

Jim Clark, Co-Chair



Glass continues to arrive daily for the March Benefit Auction. Please avoid the last minute rush during the holiday and remember the **DEADLINE FOR CONSIGNING YOUR GLASS IS JANUARY 4TH**. With your help, we can make this the best auction ever! What a great way to help HCA reach its financial goals for the coming years.

Our first cataloging session will be held in mid-December. If you would like to volunteer to help, call me, Jim Clark (513) 845-9132, Amy Jo Jones (513) 426-1567, or Kathy McCracken at the museum.

Each HCA FAMILY may consign 12 lots of Heisey glass. Each lot may contain as many items as you wish. 80% of the price realized goes to the consignor and 20% to the General Fund. Any item which sells for \$5.00 or less will be considered a donation.

Glass given as donations are gratefully accepted. 100% of the profit goes to the General Fund, or to the Building Fund if you prefer, and is tax deductible by you. You may donate as many lots of glass as you wish in addition to your twelve lots. **SHIP TO :**

HCA, 169 W. Church St., Newark, OH 43055

ENCLOSE A PACKING LIST WITH EVERY BOX. If more space is needed, reproduce the form. Please note: the Benefit Auction contract appears on page 23, just below the packing list. A signed contract should accompany your auction glass.

Remember to clean your glass--glass in good condition receives better prices.

All glass is inspected when received. Any glass found not to be Heisey will be returned, including Heisey by Imperial and commemorative pieces.

Be sure to read Brad's shipping tips on how to pack your glass for shipping.



### CLUB NOTES

#45 Hoosier HC *Sonnie Taylor, Acting Secretary*

Mike Rosenberger, President, called the Hoosier HC meeting to order on August 29, 1992 with 34 present.

Kim Carlisle, membership chair, reported 51 members. Members were also asked to consider donating glass to the March Benefit Auction or for resale in the museum gift shop. Gifts are tax deductible.

Mike Rosenberger expressed sadness for everyone at the sudden passing of our member and friend, Irene Pope. Her smile and friendly manner will be missed.

The Taylors presented the club's participation certificate from the 1992 Convention display to Don Raybourn for the scrapbook and thanked everyone for loaning their glass for the club display.

## FROM DOWN UNDER . . . *Shipping Department*

Brad, Shipping Clerk

*The holidays are upon us and many of you will be shipping items, so I have compiled a checklist for you to use as a guide for good packaging.*

### Packaging

- Choose a sturdy, undamaged container.
- Use a carton which is strong enough to pass the 200# bursting test per sq. inch.
- Make sure that the flaps are intact.
- Plan for extra space for adequate cushioning.

### Cushioning

- Use several inches of polyfoam peanuts or other similar material in bottom of carton.
- Wrap items separately and position them in the center of carton.
- Surround items with polyfoam peanuts or other similar material.

### Closure

- Use tape designed for shipping; it should be at least 2" wide.
- Do not use cellophane tape, masking tape, or string.

### Labeling

- Use one address label on package.
- Write clearly.
- Provide a complete delivery address, including zip code.
- Provide a clear complete return address, including zip code.
- Include a duplicate mailing label inside the carton.
- Label the carton FRAGILE (in red) on the top and sides.

*Following the above guidelines will increase the chances of your package arriving safely at its destination.*

**Merry Christmas and Happy New Year to All!**



Mary Cowley's color presentation included many pieces of Sahara; Sahara was produced from 1930-1937.

Tom Taylor passed out an information sheet with details he had gathered from Vogel's *Newscasters* and past *Heisey News* publications on pattern #1255 Pineapple & Fan. This pattern had such great acceptance, one wonders why the production years were limited from 1898-1907. Two toothpick styles have been found. Both styles, round top and square top, were on display.

Larry Higgins conducted our *Show & Tell* which included: #7075 Egyptian candlestick, #1401 Empress 7" round plate in Alexandrite with beautiful cut front and back, #299 Heisey toddy with interesting paint decoration, Circus bar glass with clown etch, early bakeware (almost looked like vaseline), Amber standing Colt, an Old Sandwich beer mug in Cobalt, and many more.



**HCA HOLIDAY GIFT ORDER FORM** The HCA Gift Gallery is the perfect way to shop for those special gifts for special people. In 92 we added glass handled baskets to the gallery. They have been very popular. We also added the donkey and the elephant in Sea Mist Green to the inventory. We have new books on the book list and we carry tote bags, note cards, and playing cards. Check us out.

Clip & Mail to: **HCA, Gifts**  
**169 W. Church St**  
**Newark, OH 43055**

Phone orders call: (614) 345-2932  
 Fax orders (614) 3459638 All fax orders must include charge card info.

- Make checks payable to HCA
- Mastercard and Visa accepted
- Mail orders: add ship. & hndl.
- All Ohio orders: add 6 % Ohio Sales tax.

Quantity	Stock#	Item Name	Unit Price	Price

Name \_\_\_\_\_

Street Address \_\_\_\_\_

City \_\_\_\_\_ State \_\_\_\_\_ Zip \_\_\_\_\_

Phone # ( ) \_\_\_\_\_

M.C. ( ) Visa ( )      Expir. Date: Mo \_\_\_/Yr \_\_\_

Card # \_\_\_\_\_

Total	_____
Tax	_____
SubTotal	_____
10% Ship	_____
\$3.00 Hndl.	_____
Total	_____

**Holiday Gift Gallery Suggestions**

<u>Glass Items</u>	Color	Price	
Rococo Basket	Sea Mist Green	Clear \$ 40.00	Frosted \$ 42.50
	Penton Blue	Clear \$ 40.00	Frosted \$ 42.50
Sunflower Basket	Dusty Rose	Clear \$ 40.00	Frosted \$ 40.00
Small Elephant	Sea Mist Green	Clear \$ 25.00	Frosted \$ 25.00
Donkey	Sea Mist Green	Clear \$ 25.00	Frosted \$ 25.00
Victorian Girl Bell	Red, Green, Pink, Azure Blue	Clear \$11.00	Frosted \$12.00



**New Heisey Reference Books**

- "Jugs, Pitchers, and Water Bottles" - by Marv Jacob \$ 3.95
- "Fandango, Heisey's First Pattern" - by Joe Lokay, compiled by Marv Jacob \$ 4.95

**Miscellaneous Gift Items**

- Refrigerator magnet - square blue vinyl magnet, "Heisey's" and the diamond H in white lettering \$ 2.00
- Suncatcher - leaded glass diamond H, suction cup included \$ 8.00
- Boxed Notes - 1 doz. folded antique white notes w/sketch of exterior of Museum \$ 2.75
- Heisey Notes - 1 doz. folded white notes w/Orchid etch design or Rose etch design, tied with satin ribbon \$ 2.25
- Handled Tote Bag - heavy blue fabric w/sketch of exterior of Heisey Museum \$ 8.00
- Porter paperweights - hand made glass paperweights, made by former Heisey employee \$ 25.00
- Heisey Museum wooden cut out - with silk screen of front of Heisey Museum \$ 12.50

For complete five page Gift Gallery and Book List, Write to: HCA, 169 W. Church St., Newark, Ohio 43055  
 Call (614) 345-2932 M - F, 8:00 a.m. - 4:30 p.m. Selected Heisey reference books are on sale now.

**CLASSIFIEDS**



**For Sale:** (24) pc. chintz etch, includes (22) #3389 Duquesne stems & #1509 Queen Ann crm & sug. By piece or whole lot. (614) 587-2270.

**For Sale:** Great new list with many unusual and rare items. Thank you all for the great response in June. Send requests w/SASE to: Bob Ryan, P.O. Box 592, Centerville, Ohio 45459 (513)433-6289.

**For Sale:** Souvenir Oscars, incl: '90 Rosalene, '80 Heather, '80 Heather frosted, & misdated '79 Heather. Billie Waters (614) 882-6039.

**For Sale:** #4054 Coronation 3 oz. bar/cocktail w/Tavern etch, (2) ea. \$185.00. Dan Weakley, 3212 Viking Drive, Sioux City, IA 51104 (712) 255-7162.

**For Sale:** Heisey Animals, the hard to find ones. (614) 587-2227

**For Sale:** Mail Bid or phone bid--Locket on Chain toothpick, ruby stain w/ gold. Sandwich 10" candlesticks, D/F, Cobalt, pr. Bids close Dec. 31, 1992. Right to refuse. Collectors Stop, 12018 Suellen Circle, Wellington, FL 33414. (407)793-0986

**For Sale:** Mail Bid/Phone Bid--#3389 Duquesne stems w/Chintz etch, #3357 King Arthur stems w/Cleopatra etch, #3350 Wabash stems w/Frontenac etch. Barbara Brock 26 Fayette St., Martinsville, VA 24112 (804)724-6762.

**Wanted:** Etched old fashions--Fisherman, Circus, Motorboat, Tavern, Chevy Chase, Nymph & Satyr, Cocktail Party, 3-Pigs, others. J. Glenn, 1637 Londondale Pkwy, Newark, Ohio 43055. (614) 344-8419.

**Wanted:** Any/all Heisey pieces w/#455 Sportman deep plate etch: decanters, mugs, plates, wines, tumblers, etc. Also want #459 Fisherman & #467 Tally Ho. Write: 168 Lakeshore Drive W., Hebron, Ohio 43025 (614)928-8561.

**Wanted:** #463 Equestrian or #481 Lancaster silhouette etchings (show horse w/rider) Mike Smith, 2646 Andjon Drive, Dallas, TX 75220. (214) 352-3939.

**Wanted:** #3355 Fairacre wines w/#450 Chinz deep plate etch, Need (6). A. Winger, 1900 20th St., Parkersburg, WV (304) 485-4116.

**Wanted:** #477 Hairpin pitcher for wash bowl, 5# Revere candy jar, 1# Puritan candy jar (complete or cover only), 8# Recessed Panel candy jar, Hairpin basket. Milner Carden, 214 Lake Hills Rd., Tullahoma, TN 37388 (615) 455-3368

**Wanted:** Heisey baskets: etched, cut, colored, or whimsey. Send price and description to Kim Carlisle, 28220 Lamong Rd., Sheridan, IN 46069 (317)758-5767.

**Wanted:** #1403 Half Circle sugar, Sahara. Marti Dozier (405) 752-8971.

<b>Donald P. Bean</b> 36 Harding St. Milford, MA 01757	<b>Ship &amp; Ins. Extra</b> (508) 473-0561 H = Marked
#150 Banded Flute 7" X 4" oblong pickle, H	\$ 35.00
#357 Duck ashtray, Moongleam, H	\$195.00
#406 Coarse Rib hotel cr. & cov. sug., Moongleam, HHH	\$ 75.00
#341 Puritan 3-1/2 oz. flared parfait, H, (4 for)	\$ 38.50
#393 Narrow Flute 12 oz. jug, H	\$ 55.00
#1405 Ipswich 4 oz sherbet, H (6 for)	\$ 60.00
#1506 Provincial 3" round candleblocks, pr.	\$ 45.00
#411 Tudor 5" rnd. lemon dish & cov. w/copper wheel cut, H	\$ 35.00
#300 Peerless 5 oz. ftd. egg cups, H, (6) ea.	\$ 7.50



<b>Braswell's Collectible Glass</b> 380 Lowell Jones Rd. Piney Flats, TN 37686	(615) 538-5760 H = Marked Ship & Ins. Extra
#113 Mars ind. candlestick w/floral cut, Flamingo	\$ 25.00
#465 Recessed Panel 1# covd. candy, excel. gold dec., H	\$ 52.00
#1401 Empress ind. candlestick, D/F, Sahara, H	\$ 90.00
#1425 Victorian 9 oz. low ftd. goblet, H (3) ea.	\$ 19.00
#1428 Warwick 5" vase, H, (2) ea.	\$ 20.00
#1540 Lariat cream & sugar, H	\$ 22.00
#1567 Plantation cruet, H	\$ 85.00
#3350 Wabash 10 oz. goblet w/Pied Piper etch, H, (2) ea.	\$ 18.00
HCA 1977 Oscar, Fern Green	\$ 32.00



<b>Jim Pappas</b> 5633 Zaring Drive West Chester, Ohio 45069	(513) 779-1824 P & I H = Marked
#1401 Empress ice bucket w/Tally Ho etch, H, w/tongs	\$175.00
#411 Tudor 5" ftd. cov. preserve, Hawthorne, H	\$145.00
#1485 Saturn 5 oz. parfait/juice, H, (6) ea.	\$ 10.00
#411 Tudor 2-hndl bon bon, Hawthorne, H	\$ 45.00
#393 Narrow Flute 1 pt. jug, H	\$ 90.00
#1183 Revere 5" covd. lemon w/cut	\$ 38.00
#1951 Cabochon creamer & covd. sugar, pr., H	\$ 40.00
#411 Tudor 5" hi ftd. jelly, Moongleam, H	\$ 40.00
#2 Old Williamsburg 9" 1-lite candle, pr.	\$160.00



<b>Bobbie Edwards</b> 782 Cornell Rd. Franklin Square, NY 11010	(516) 483-2563 Ship & Ins Extra H = Marked
#1225 Ridge & Star 7-1/2" plates, Flamingo, H, (21) ea.	\$ 12.00
#416 Herringbone 9" plates, Moongleam, H (8) ea.	\$ 18.00
#411 Tudor 7" plates, H, (10) ea	\$ 10.00
#1425 Victorian sherbets, (7) ea.	\$ 15.00
#365 Queen Ann punch bowl base, H	\$110.00
#335 Prince of Wales Plumes punch bowl base, H	\$110.00
#1469 Ridgeleigh cups/saucers, H, (7 sets) ea. set	\$ 24.00
#1503 Crystolite punch cups (12), H, ea.	\$ 8.00
#1425 Victorian punch cups, H, (15) ea.	\$ 12.00



<b>Helen Sasser</b> 409 Sasser Lane Conway, SC 29527	(803) 397-2516 Ship & Ins. Extra
#3404 Spanish saucer champagne, Tangerine, (4) ea.	\$360.00
#3404 Spanish goblet, Tangerine, (3) ea.	\$360.00
#3404 Spanish wine, Tangerine, (4) ea.	\$300.00
#1401 Empress 8" square plate, Tangerine, H (4) ea.	\$155.00
#1401 Empress 7" square plates, Tangerine, H, (4) ea.	\$140.00
#1503 Crystolite 5" berry bowl, (6) ea.	\$ 22.50
#1503 Crystolite cream & sugar, (6) ea.	\$ 25.00



**Charles & Mildred Fisher**  
 991 Idlewild Ave  
 Newark, Ohio 43055

**Antiques & Collectibles**  
 (614) 522-5398  
 UPS & Ins. Extra

**Heisey Crystal Animals**

Filly, head back	\$2,500.00
Mallard, wings up	\$195.00
Goose, wings up	\$145.00
Goose, wings half	\$145.00
Goose, wings down	\$550.00
Asiatic Pheasant	\$425.00
Fish candlestick	\$245.00
Giraffe, head side	\$265.00
Large Elephant	\$425.00
Small Elephant	\$265.00
Balking Colt	\$245.00
Standing Colt	\$110.00
Chicks, different positions, (3) ea.	\$ 85.00
Piglets, sitting	\$ 85.00
Rooster vase	\$145.00
Sow, H	\$800.00
Mallard, wings half, H	\$225.00
Cygnets, H	\$250.00
Ringneck Pheasant	\$155.00
Wood Duck, sitting, H	\$225.00
Colt, Kicking, H	\$265.00
Giraffe, head back	\$265.00
Donkey, faint H	\$425.00
Pouter Pigeon, H	\$950.00
Mallard, wings down, faint H	\$250.00
Rabbit paperweight	\$165.00
Swan, H	\$1100.00
Scottie, H	\$200.00



**Heisey by Imperial (All on Bustoff)**

Bull, Black	\$1200.00
Tiger paperweight, Amber	\$600.00
Hen, Yellow	\$600.00
Kicking Colt, Yellow	\$350.00
Standing Colt, Yellow	\$350.00
Donkey, Light Blue	\$250.00
1985 HCA Oscar, (Sparkie), Black	\$250.00
1982 HCA Oscar, Sparkie, Green	\$250.00
Flying Mare, Amber	\$1200.00
Flying Mare, Amber	\$600.00
Show Horse	\$900.00
Show Horse, Amber	\$1,000.00
Medium Elephant, C/S	\$225.00
Donkey, C/S	\$250.00
Filly, head forward, Satin	\$300.00
Other Heisey by Imperial animals available	
Imperial Parlor pup, Iridized carnival	\$125.00
Imperial Parlor pup, C/S	\$250.00

**L & L Uniques LTD.**  
 4125 Sperry Street  
 Dallas, TX 75214

**Linda & Larry Love**  
 (214)821-1688  
 UPS & Ins. Extra

#33 Toy candlesticks, (3) ea., H	\$ 75.00
#30 Tom Thumb candlestick, H, pr.	\$175.00
#1170 Pleat & Panel cream/open sugar, Moongleam, H	\$ 75.00
#1469 Ridgeleigh bitters bottle, no tubes, (2) ea.	\$ 40.00
#1159 Colonial star 8-1/2" plate, H, (8) ea.	\$ 25.00
#1567 Plantation 3-light candelabra	\$140.00
#1567 Plantation punch cup, H, (6) ea.	\$ 30.00
#1567 Plantation 10 oz. tumbler, (sl. wear), H, (2) ea.	\$ 45.00
#1567 Plantation cup and saucer, H, (set)	\$ 50.00
#1567 Plantation 5" round covered butter, H	\$110.00
#1567 Plantation ftd. sugar	\$ 35.00
#1567 Plantation coffee cup, ivy etch, sl. cloudy, H	\$ 15.00
#1567 Plantation 8" salad plate, minor scratches	\$ 15.00
#1567 Plantation 2-part dressing bowl, H	\$ 85.00
#1567 Plantation 2-part celery & olive, H	\$ 55.00
#1567 Plantation 9" salad bowl, H	\$ 85.00
#5067 Plantation 10 oz. goblet, blown, H	\$ 38.00
#5067 Plantation 5 oz. ftd. juice, blown, H	\$ 45.00
#5067 Plantation 4 oz. oyster cocktail, blown, H	\$ 28.00
#5067 Plantation 12 oz. ftd. ice tea, blown, H	\$ 50.00
#1506 Whirlpool 12 oz. ftd. ice tea, H, (6) ea.	\$ 25.00
#5072 Heisey Rose 12 oz. ftd. ice tea	\$ 45.00
#1486 Coleport 10 oz. tumbler, H, Dawn	\$ 70.00
#1205 Fancy Loop ftd. punch glasses, (6) ea.	\$ 45.00
#379 Urn 5 oz. ftd. egg cup, H	\$ 25.00
#3404 Spanish 3-1/2oz cocktail, Cobalt	\$120.00
#393 Colonial 1/2 gallon tankard, floral cut, H	\$150.00
#4044 New Era goblet, H	\$ 25.00
#4044 New Era 12 oz. ftd. soda, H, (2)	\$ 20.00
#4044 New Era sherbet, H	\$ 20.00
#3380 Old Dominion ftd. tumbler, D/O, Sahara, (2) ea.	\$ 10.00
#3390 Carcassonne sherbet, Lafayette etch, (2) ea.	\$ 15.00
#1533 Wampum square ashtray, flakes	\$ 10.00
#473 Narrow Flute dice sugar tray, ground bottom cut, H	\$ 75.00
#352 Flat Panel 1-1/2 quart jar, no lid, H	\$ 75.00
#310 Ring Band berry bowls, Custard, H, (5) ea.	\$ 25.00
#1183 Revere condiment set, tray salt/pepper, oil, H	\$ 75.00
#7000 Sunflower 15" torte plate	\$ 45.00
#120 Overlapping Swirl candlestick, H, Moongleam	\$ 40.00
#1469 Ridgeleigh 10-1/2" 3-part relish, H	\$ 65.00
#1404 Old Sandwich 1/2 gallon jug, H	\$ 90.00
#1435 Victorian 12 oz. soda, H, (2) ea.	\$ 25.00
#1183 Revere square honey and cover, gold trim, cut, H	\$175.00
#353 Colonial 4" mushroom cover and underplate, H	\$ 75.00
HCA 1971 Land of Legend plate, Ambergio	\$ 85.00
Heisey by Imperial: #33 toy candlestick, (2) ea.	\$ 40.00
Heisey by Imperial #1506 Provincial soda, straight, Ruby, (2)	\$ 32.00
Heisey by Imperial #1506 Provincial goblets, Heather, (6) ea.	\$ 12.00



**H & R Diamond H**  
**Helen & Bob Rarey**  
**1450 White Ash Drive**  
**Columbus, OH 43204**

**(614) 279-0390**  
**after 5:30 P.M.**  
**UPS & Ins. Extra**  
**H = Marked**

Clydesdale	\$425.00
Large Elephant	\$425.00
Middle Elephant, H, (bubble in trunk)	\$375.00
Small Elephant	\$335.00
Rooster	\$500.00
Hen	\$465.00
Show Horse	\$1375.00
Donkey	\$295.00
Ringneck Pheasant	\$165.00
Asiatic Pheasant	\$415.00
Goose, wings down	\$485.00
Goose, wings up	\$115.00
Goose, wings 1/2	\$105.00
Mallard, wings up, H	\$255.00
Mallard, wings 1/2	\$255.00
Mallard, wings down, H	\$395.00
Scottie dog	\$125.00
Sparkie (Oscar)	\$115.00
Standing Pony, (2) ea.	\$ 95.00
Giraffe, head rear (1), head side (1), ea.	\$195.00



**Edgar de Lasalle**  
**6747 Laurel Court**  
**North Port, FL 34287-2649**

**Ship/Ins. Extra**  
**(813) 426-0906**  
**H = Marked**

#1509 Queen Ann footed candy, Alexandrite, paper label	\$ 75.00
#1509 Queen Ann plate, Alexandrite, H	\$ 70.00
#433 Greek Key 3-1/2" high creamer/sugar, H	\$ 60.00
#1519 Waverly:	
goblet, w/ Peacock etch, (2) ea.	\$ 15.00
10" fruit bowl, Orchid etch	\$ 55.00
12-1/2" orchid bowl, flared	\$ 55.00
6-1/2" bon bon w/Orchid etch	\$ 35.00
wine w/Orchid etch, (one has paper label), (3) ea.	\$ 15.00
9" orchid bowl	\$ 40.00
5-1/2" relish w/ Orchid etch	\$ 35.00
creamer & sugar w/Orchid etch, H	\$ 55.00
1/4 # candy jar & cover, H	\$ 60.00
11" flared floral bowl, sea horse footed, H	\$ 45.00
candleholder, 4-1/2" high, H	\$ 30.00
nappy candleholder 4", H	\$ 40.00
4-1/2" high candelabra (miniature)	\$ 40.00



**Stephanie Danaher**  
**J.B. Gibson**  
**Fool Wolfen #1079**  
**Amarillo, TX 79106**

**(806) 359-3567**  
**Post & Ins. Extra**  
**H = Marked**

#1252 Twist 5 oz. champagne, Flamingo, H	\$ 18.00
#1252 Twist floral bowl, flared, Moonbeam, H	\$ 65.00
#1401 Empress floral bowl, Sahara, H	\$ 60.00
#1503 Crystolite hdd 5" jelly, spiderweb bottom	\$ 35.00
#4420 Janice 4" vase, Sahara	\$125.00
#353 toothpick tray, minute flake on bottom, H	\$ 50.00
#1509 Queen Ann ice bucket, w/Everglades cut, hndl, tongs	\$175.00
#451 Cross Lined Flute 5-1/2" vase, H	\$ 60.00
#335 Prince of Wales Plume punch cups, H, (10)	\$130.00
#33 Skirted Panel candlesticks, H, pr.	\$ 80.00
#351 Sweet Pea 7" vase, H	\$ 55.00
#1401 Empress ind. sugar, Sahara, H	\$ 30.00
#1401 Empress ind. creamer, Moonbeam, H	\$ 35.00
#353 12" vase, slightly cloudy, H	\$ 30.00
#1403 Old Sandwich 4 oz. sherbet, Moonbeam, H	\$ 30.00
#31 toy candlestick, H, (1)	\$ 40.00
#352 Flat Panel grapefruit, H, (4) ea.	\$ 17.00
#1023 hotel cream & sugar w/cover, drip cut, H	\$ 65.00



**Gary & Chris Shardell**  
**R.D. 6, Box 6199**  
**E. Stroudsburg, PA 18301**

**(717) 223-8759**  
**Ship & Ins. Extra**  
**H = Marked**

#1413 Cathedral vase, Flared, Cobalt	\$375.00
#1428 Warwick 11" floral bowl, Cobalt, H	\$325.00
#4225 Cobel cocktail shaker & (8) glasses, w/sterling	\$ 65.00
#3380 Old Dominion soda, Empress etch, Marigold bowl, (4)ea.	\$35.00
#1184 Yeoman 10" round plate, Vaseline, H	\$ 65.00
#1125 8" round plate, w/starburst bottom, Amber, H, (2) ea.	\$ 35.00
#5072 Rose stem goblet w/Rose etch, (4) ea.	\$ 38.00
#1519 Waverly 8" plates, Rose etch, (4) ea.	\$ 25.00
#1567 Plantation 12" footed gardenia bowl	\$ 95.00
#1469 Ridgeleigh 6" candle vase, Sahara, pr.	\$160.00
#1469 Ridgeleigh 5-part star relish, H	\$ 40.00
#1428 Warwick 1-lite candlestick, H, pr.	\$ 40.00
#48 salt & pepper shakers, metal tops, Flamingo	\$ 35.00
#1567 Plantation salt & pepper shakers, metal tops	\$ 40.00
#1503 Crystolite salt & pepper shakers, sterling silver tops	\$ 45.00
#3481 Glenford 5 oz. footed soda, Moonbeam foot, (2) ea.	\$ 10.00
#1401 Empress 6" square plate, Alexandrite, H	\$ 40.00
#1252 Twist oval 12" platter, SESQUI, OHIO	\$ 20.00
#451 Cross Lined Flute champagne, (5) ea.	\$ 10.00
#1401 Empress 7" 3-part relish, Sahara	\$ 30.00



**Dick & Lee Schwan**  
77 Lagos del Norte  
Fort Pierce, FL 34951

(407) 461-5940  
S & I Extra

#1280 Winged Scroll ring tree, Emerald w/gold	\$800.00
#3350 Wabash cordials, (6) ea.	\$ 40.00
#150 Banded Flute cordial	\$ 75.00
#1205 Fancy Loop 4" rose bow	\$ 75.00
#1280 Winged Scroll creamer, Emerald w/gold	\$ 90.00
#335 Prince of Wales Plumes cake salver	\$185.00
#465 Recessed Panel 3# candy jar	\$275.00
#1469 Ridgeleigh stem water goblet, 5, ea.	\$ 40.00
#1469 Ridgeleigh cup and saucer, (2 sets) ea set	\$ 30.00
#1469 Ridgeleigh skirted 1-lite candelabra, pr.	\$225.00
#1428 Warwick 9" vase, Cobalt	\$325.00
#1404 Old Sandwich mug, Moongleam	\$275.00
#6 mayo ladle, Sahara	\$ 55.00
#1401 Empress candlestick, D/F, Sahara (1 only)	\$125.00
#150 Banded Flute 10" tray	\$ 85.00
#1405 Ipswich cruet w/#86 stopper	\$ 85.00
#1401 Empress vase, D/F, Moongleam	\$165.00
#1567 Plantation buffet tray	\$200.00
#367 Prism Band decanter w/#48 stopper	\$130.00
#352 Flat Panel knife rest, (2) ea.	\$ 65.00



**L.A. Maness**  
Rt. 1 Box 552  
Ashland, VA 23005

(804) 798-1825  
UPS \$4 Ea. Carton  
H = Marked

Visa/Mastercard Welcome

#1503 Crystalite ind. creamer, sug., & tray, H, set	\$ 60.00
#1503 Crystalite 14" torte plate, H	\$ 40.00
#1401 Empress mayo, D/F, Sahara, H	\$ 52.00
#3355 Fairacre saucer champagne, Moongleam stem, H, (6) ea.	\$ 30.00
#1405 Ipswich 4 oz. saucer champagne, H (6) ea.	\$ 19.00
#300 Peerless 2-1/4 oz. wine, H, (6) ea.	\$ 14.00
#5067 Plantation goblet, (2) ea.	\$ 35.00
#1567 Plantation 6-1/2" ftd. honey, H	\$ 62.00
#351 Priscilla covered mustard, H	\$ 48.00
#479 petal hotel creamer & sugar, Flamingo, set	\$ 52.00
#341 Puritan 4-3/4" nappy, H, (3) ea.	\$ 10.00
#341 Puritan 4-1/2" high footed jelly, H	\$ 39.00
#1231 Ribbed Octagon creamer & sugar, Flamingo, H, set	\$ 47.00
#1225 Ridge & Star 8-1/2" plate, Moongleam, H, (6) ea.	\$ 17.00
#1225 Ridge & Star 6" plate, Flamingo, H (8), ea.	\$ 10.00
#1252 Twist 6" plate, Moongleam, H (4) ea.	\$ 16.00
#1425 Victorian 9 oz. goblet, 1 ball stem, H, (6) ea.	\$ 25.00
#1425 Victorian saucer champagne, H (8), ea.	\$ 17.00
#1184 Yeoman center hndl. 3-part tray, H, Moongleam	\$ 37.00
Standing colt, H	\$115.00



**T & P Collectibles**  
1089 Wood St.  
Swansea, MA 02777

(508) 674-7361  
Tom & Pat Gibbons  
Post & Ins. Extra

Have a Happy Heisey Holiday

#150 Banded Flute 3 oz. sherbet, (6) ea.	\$ 14.00
#373 colonial tall 9 oz. goblet, (6) ea.	\$ 22.00
#433 Greek Key 4-1/2" plate, (11) ea.	\$ 11.50
#449 Thumbprint & Panel console 11" bowl	\$ 65.00
#1252 Twist 13" celery, Sahara	\$ 38.00
#1404 Old Sandwich 6-1/2 oz. toddie, (3) ea.	\$ 20.00
#1469 Ridgeleigh square 8" plate, (4) ea.	\$ 15.00
#1469 Ridgeleigh salts, boxed, set of 8	\$100.00
#1509 Queen Ann 11" floral bowl w/ Everglade cut	\$ 68.00
#1509 Queen Ann oyster, (6) ea.	\$ 8.00
#1519 Waverly sq. butter, Orchid etch, horsehead finial, top only	\$85.00
#3380 Old Dominion 10 oz. goblet, Sahara, (6) ea.	\$ 35.00
#3416 Barbara Fritchie tall 1 oz. cordial, (2) ea.	\$ 65.00
#3480 Koors floral bowl, D/O, rolled edge, Flamingo	\$ 75.00
#3480 Koors 3 pt. pitcher, D/O, Moongleam ft & handle	\$195.00
#3481 Glenford 8 oz. tumbler, D/O, Moongleam ft., (6), (3 fl.)	\$ 85.00
#4027 Christos 32 oz. decanter, Tally Ho etch	\$450.00
#4027 Christos 32 oz. decanter, D/O, Moongleam ft./strp.	\$200.00
#4036 Marshall 1 pt. oval sherry, Orchid etch, silver stopper	\$250.00
#7000 Sunflower candleblock, pr.	\$ 45.00



**Barbara Brock**  
26 Fayette St.  
Martinsville, VA 24112

Elegant Glassware  
(804) 724-6762  
S & H Extra

Want Lists maintained -- Call or write for list of items we have in stock.

#1401 11" bowl & #134 2-lite candlesticks, Arctic etch, set	\$275.00
#433 Greek Key hotel ice tub, H	\$200.00
#4231 favor vase, D/O	\$125.00
#1428 Warwick 9" cornicopia vase, H, (2) ea.	\$110.00
#341-1/2 Old Williamsburg compote, H	\$ 35.00
#150 10" nappy, H	\$ 43.00
#353 10" vase, HH	\$115.00
#1560 Plantation syrup drip cut top	\$100.00
#1567 Plantation 12" gardenia bowl	\$165.00
#1401-1/2 Empress cup & saucer, H (4) ea.	\$ 28.00
#1401 Empress ind. nut dish, (4) ea.	\$ 20.00
#1506 Whirlpool #6 5 oz. ftd. soda, (8) ea.	\$ 10.00
#1519 Waverly 12-1/2" bowl, Rose etch	\$ 55.00
#1519 Waverly 6" low ftd. compote, Orchid etch	\$ 45.00
#1401 Empress 3-part celery/relish, Belle le Rose, H	\$ 50.00
#129 Tricorn candlestick, Flamingo, H	\$150.00
#4157 Steel rose bowl, W/O, Moongleam	\$ 67.50
#1485 Saturn violet vase, Limelight	\$185.00



**Mostly Heisey**  
**Rhoda Curley**  
**16 Clayton Place**  
**Albany, NY 12209-1304**

**(518) 482-6272**  
**or Call Toll Free**  
**1-800-972-2775**  
**UPS Ex. Add \$6.00 For 2nd Day Air**

WE ARE 1-1/4 MILE OFF EXIT 23 OF NEW YORK STATE  
 THRUWAY. EASY ON, EASY OFF. THOUSANDS OF PIECES  
 OF HEISEY (SOME CAMBRIDGE). WHY NOT STOP AND SAY  
 HELLO? BY CHANCE OR APPOINTMENT.

#1401 Empress 10" ftd. floral bowl w/lion heads, Sahara	\$550.00
#301 Old Williamsburg 3-lite candelabra, low base, completely Sahara except ferrule, (1)	\$550.00
#8034 Albemarle saucer champagne, variant, Hawthorne & Moongleam combo, experimental	\$400.00
#1428 Warwick 9" horn of plenty vase, Sahara	\$105.00
#40 Epergne 30" high, has 9", 11" & 14" plates	\$1100.00
#1469 Ridgeleigh 2 lite center post bobèche, A prisms, pr.	\$275.00
#1469 1/4 Ridgeleigh 1-lite candelabra, pr.	\$175.00
#17 Classic candelabra 1-lite, A prisms, pr.	\$550.00
#34 Aristocrat 16" 1-lite candelabra blue teardrop prism, pr.	\$550.00
#5 Patrician 21-1/2" 4-lite candelabra, pr.	\$1195.00
#201 Windsor electro-portable, A prisms, frosted bottom, complete with bulbs, pr.	\$650.00
#1401 Empress punch bowl, D/F, Flamingo, (small nick on floor of bowl)	\$1100.00
#3408 Penn Charter sherbets, Hawthorne, (3) ea.	\$ 55.00
#3408 Penn Charter saucer champagne, Hawthorne, (8) ea.	\$ 60.00
#1184 Yeoman baked apple w/plate, D/O, (10 sets), ea. set	\$ 65.00
#1184 Yeoman 11-1/2" bowl, D/O	\$110.00
#411 Rib and Panel cheese/mint, ea.	\$ 45.00
#4206 Optic Tooth 10-1/2" vase, optic, Flamingo	\$160.00
#4206 Optic Tooth 8" vase, Optic, Flamingo	\$140.00
#4057 Saturn 10-1/2" vase, Zircon	\$250.00
#1469 Ridgeleigh or #1503 Crystalite Zircon ashtrays, either	\$ 65.00
#1495 Fern 6" cheese, Zircon	\$100.00
#1626 Lodestar 7-1/2" bowl, Dawn	\$100.00
#1637 Town & Country 11" plate, Dawn	\$100.00
#350 Pinwheel & Fan 3-pt. pitcher	\$195.00
#1447 Rococo 12" plate	\$100.00
#1540 Lariat 10-1/2" 3-part div. relish, Moonglo cut	\$ 90.00
#1540 Lariat 12-1/2" bowl, (loops stand up), Moonglo cut	\$110.00

We have many punch cups.

HAPPY HOLIDAYS



**D & G Collectibles**  
**3200 W. Lk. Samm N.E.**  
**Redmond, WA 98052**

**(206) 883-4001**  
**Ship & Ins. Extra**  
**H = Marked Visa/MC**

#4085 Kohinoor 12oz soda, Zircon, (17) ea.	\$250.00
#4085 Kohinoor 9 oz. goblet, Zircon (3) ea.	\$195.00
#5078 Park Avenue cocktail, H	\$ 35.00
#5078 Park Avenue claret, H	\$ 25.00
#5078 Park Avenue champagne, H	\$ 20.00
#5078 Park Avenue wine, H	\$ 20.00
#3362 Charter Oak 3 oz. cocktail	\$ 15.00
#3362 Charter Oak finger bowl	\$ 10.00
#3362 Charter Oak 8 oz. goblet, (4) ea.	\$ 20.00
#3362 Charter Oak 8 oz. luncheon goblet	\$ 20.00
#3362 Charter Oak 6 oz. sherbet, (8) ea.	\$ 15.00
#3362 Charter Oak 6 oz. saucer champagne (2) ea.	\$ 15.00
#3362 Charter Oak 6" comport, low ftd.	\$ 60.00
#3362 Charter Oak 4-1/2 oz. parfait, Flamingo, (8) ea.	\$ 30.00
#3362 Charter Oak 3 oz. cocktail, Flamingo, (7) ea.	\$ 25.00
#3362 Charter Oak 10 oz. tumbler, Flamingo	\$ 20.00
#3362 Charter Oak 12 oz. ice tea, (4) ea., Flamingo	\$ 20.00
#3362 Charter Oak 1/2 gal. jug, Flamingo	\$175.00
#3362 Charter Oak 8 oz. goblet, Flamingo, (8) ea.	\$ 40.00
#3362 Charter Oak 8 oz. luncheon goblet, Flamingo, (7) ea.	\$ 40.00
#3362 Charter Oak 7" comport, Flamingo	\$ 60.00
#3362 Charter Oak 6" comport, Flamingo	\$ 60.00
#3362 Charter Oak 6 oz. sherbet, Flamingo, (8) ea.	\$ 25.00
#3362 Charter Oak 6 oz. saucer champagne, Flamingo (7) ea.	\$ 25.00
#4044 New Era 10 oz. goblet, (8) ea.	\$ 30.00
#4044 New Era 3-1/2 oz. cocktail, (8) ea.	\$ 25.00
#4044 New Era 4 oz. claret, (8) ea.	\$ 25.00
#1415 Twentieth Century 12 oz. ftd. soda, Dawn, H, (4) ea.	\$ 45.00
#1415 Twentieth Century 12 oz. ftd. soda, (3) ea.	\$ 20.00
#1415 Twentieth Century 9 oz. ftd. soda, (4) ea.	\$ 20.00
#1415 Twentieth Century 9 oz. soda, Flamingo, (8) ea.	\$ 45.00
#1415 Twentieth Century 5 oz. soda, (5) ea.	\$ 20.00
#1415 Twentieth Century 5 oz. soda, Dawn	\$ 45.00
#1415 Twentieth Century 4 oz. sherbet, H, (2) ea.	\$ 20.00
#1415 Twentieth Century 4 oz. sherbet, Flamingo, H, (2) ea.	\$ 35.00
#1415 Twentieth Century 4 oz. sherbet, Dawn, H, (2) ea.	\$ 40.00
#1447 Rococo 10" 5-part spice tray & cover	\$175.00
#104 Gazelle	\$2000.00
#1 Airedale	\$735.00
#20 Wood Duck	\$625.00
#21 Duckling, floating	\$185.00
#22 Duckling, standing	\$160.00
#4 Swan, H	\$850.00
#1 Donkey	\$375.00
#5 Show Horse, H	\$1200.00
#2 Hen	\$375.00
#1540 Sparky, Honey Amber	\$650.00



<b>Tall Oaks Antiques</b>	<b>(219) 696-0147</b>
<b>Mike &amp; Barb Rosenberger</b>	<b>UPS &amp; Ins. Extra</b>
<b>565 N. Nichols</b>	<b>H = Marked</b>
<b>Lowell, IN 46356</b>	<b>Happy Holidays!</b>
#6 mayo ladle, Sahara, H	\$ 45.00
#6 mayo ladle, Moongleam, H	\$ 65.00
#142 Cascade 3-lite candlestick, Orchid etch, pr.	\$160.00
#160 Locket on Chain 4" nappy	\$ 40.00
#325 Pillows 7" rose bowl, H	\$185.00
#333 Waldorf Astoria ind. decanter	\$ 45.00
#350 Pinwheel & Fan 8" nappy, H	\$ 57.50
#355 Quator ftd. sugar/cream, Sahara, H, set	\$135.00
#391 12" vase, H	\$185.00
#394 Narrow Flute ind. nut, Hawthorne, H, (2) ea.	\$ 60.00
#442 Maltese Cross ashtray, Flamingo, H	\$ 45.00
#442 Maltase Cross ashtray, H	\$ 30.00
#517 pitcher & tumbler w/gold trim, (tumbler, H)	\$155.00
#600 Old Glory ashtray, dated, H	\$ 38.50
#1183 Revere 1# covd. candy, cut, lid, H	\$ 90.00
#1205 Fancy Loop spooner	\$ 55.00
#1252 Twist 2-compartment relish, Sahara, H	\$ 85.00
#1252 Twist 12" round floral bowl, Sahara, H	\$ 95.00
#1401 Empress 9" vase, D/F, Moongleam	\$185.00
#1401 Empress mayo, D/F, Flamingo	\$ 50.00
#1401 Empress 6" round comptr, Moongleam, H	\$ 85.00
#1401 Empress 3-pint jug, cut, Sahara	\$265.00
#1404 Old Sandwich 12 oz. beer mug, Cobalt, H	\$285.00
#1425 Victorian 3 oz. oil, H, (2) ea.	\$ 5750
#1428 Warwick 7" vase, Cobalt, H	\$235.00
#1469 Ridgeleigh oil & vinegar, H	\$ 80.00
#1469 Ridgeleigh ind. sugar/creamer/tray, H	\$ 65.00
#1469 Ridgeleigh 12" oval bowl, H	\$ 49.50
#1469-1/2 Ridegleigh oval cig. holder & ashtray, H	\$ 80.00
#1508 card case, cut	\$ 75.00
#1509 Queen Ann 4 oz. oil, Everglades cut	\$ 85.00
#1509 Queen Ann candlestick, w/prisms, pr.	\$180.00
#1509 Queen Ann ind. sugar/crmr/tray, H, set	\$ 65.00
#1519 Waverly 3 oz. oil, Rose etch	\$225.00
#1521 Quilt 7" covd. candy, lid H	\$235.00
#1565 Leaf jelly, Dawn	\$ 49.50
#1566 Banded Crystolite candle block, pr.	\$125.00
#1567 Plantation 11" 3-part relish, H	\$ 59.50
#1567 Plantation 7" comport, H	\$ 65.00
#1567 Plantation salt & pepper, H, pr.	\$ 57.50
#1567 Plantation sugar/creamer, pr.	\$ 70.00
#1567 Plantation round covd. butter, H	\$110.00
#1632 Satellite 1-quart pitcher, H	\$ 45.00
#3366 Trojan goblet, D/O, Moongleam stem & ft., H	\$ 57.50
#3390 Carcassonne 12 oz. flagon, Sahara, (2) ea.	\$160.00
#4026 Spencer 16 oz. decanter, D/O, Moongleam, Paper label	\$245.00
#4044 New Era ind. ashtray	\$ 32.50
#4164 Gallagher 73 oz. pitcher, Rose etch	\$595.00



<b>Forever Heisey</b>	<b>(614) 344-5955</b>
<b>Norm &amp; Jan Thran</b>	<b>Ship &amp; Ins. Extra</b>
<b>1663 Londondale Pkwy</b>	<b>H = Marked</b>
<b>Newark, Ohio 43055</b>	
#4002 Aqua Caliente cocktail, Sahara, H	\$ 85.00
#4002 Aqua Caliente cocktail, Polo player etch	\$145.00
#4002 Aqua Caliente cocktail, club drinking scene	\$ 75.00
#6060 Country Club 14 oz. soda, Winchester "73" etch	\$135.00
#2401 Oakwood 8 oz. old fashion, Circus etch: camel	\$195.00
#2401 Oakwood 12 oz. soda, Circus etch:Rube	\$ 95.00
#370 Penney goblet, N/O, H	\$ 95.00
#5058 Goose stem cordial, frosted goose	\$195.00
#3380 Old Dominion cordial, Sahara, H	\$125.00
#5023 Continental cordial	\$ 95.00
#3416 Barbara Fritchie cordial, Cobalt, H	\$395.00
#5024 Oxford cordial, H, (4) ea.	\$ 20.00
#3362 Charter Oak goblet, Flamingo, h (3) ea.	\$ 25.00
#3362 Charter Oak champagne, Flamingo, H (4) ea.	\$ 18.00
#3379 Pyramid 5 oz. ftd. soda, Flamingo	\$ 45.00
#3389 Duquesne goblet, Tangerine	\$225.00
#3389 Duquesne champagne or cocktail, Tangerine ea.	\$195.00
#5010 Symphone goblet w/Minuet etch, (2) ea.	\$ 37.50
#5010 Symphone champagne w/Minuet etch, (2) ea.	\$ 35.00
#1509 Queen Ann cup (only) w/Minuet etch, H	\$ 35.00
#1420 Tulip 9" vase, Cobalt, H	\$450.00
#1404 Old Sandwich 8" plate, Tangerine, H	\$1400.00
#1404 Old Sandwich 18 oz. mug, Cobalt, H	\$395.00
#301 Old Williamsburg 2-lite candelabrum, Sahara, H, pr.	\$750.00
#1425 Victorian 8-1/2" plate, H, (3) ea.	\$ 12.50
#1425 Victorian 15-1/2" punch bowl, 22" undplt, 22 cups,H,24pc.\$875.00	
#5040 Lariat 12 oz. ftd. ice tea, w/Moonglo cut, H (3) ea.	\$ 30.00
#1540 Lariat 12 oz. ftd. ice tea, (pressed), H, (12) ea.	\$ 20.00
#1225 Plain Band ftd. cake stand (banana dish)	\$ 95.00
#1401 Empress covered candy box, D/F, Sahara, H	\$140.00
#1401 Empress cup/saucer, square, Sahara,H, (3) ea.	\$ 32.00
#1401 Empress cvrd. lemon dish w/Lotus etch, Sahara, H, metal Faber Bros. holder	\$115.00
#1280 Winged Scroll toothpick, Custard w/Ex. gold	\$145.00
#351 Priscilla toothpick, H	\$ 35.00
#351 Priscilla toothpick, w/silver overlay, H	\$ 45.00
#300 Peerless toothpick, H	\$ 35.00
#341 Puritan ftd. toothpick, H	\$ 95.00
#1201 Fandango ind. salt dip, (6) ea.	\$ 18.00
#331 Colonial ind. salt dip (5) ea.	\$ 8.00
#5010 Symphone goblet w/Crinoline etch (6) ea.	\$ 25.00
#5010 Symphone champagne w/Crinoline etch, (5) ea	\$ 22.50
#5010 Symphone cocktail w/Crinoline etch, (6) ea.	\$ 22.50
#1509 Queen Ann 8" plate w/Crinoline etch, (6) ea.	\$ 12.50
#1509 Queen Ann 7" plate w/Crinoline etch, (6) ea.	\$ 10.00
#1469 Ridgeleigh 12" fruit bowl, H	\$ 45.00
#1469 Ridgeleigh 10-1/2" oblong 3-part relish, H	\$ 40.00
1469-1/2 Ridgeleigh round coaster, Zircon, (2) ea.	\$ 40.00



Susan & Steve Pescatore  
9 Donna Road  
Chelmsford, MA 01824



Once & Future Antiques  
(508) 256-5418  
UPS & Ins. Extra H = Marked

'Twas the Month Before Christmas . . .

MEMORABLE GIFTS

#1 Georgian 9" candlesticks, pr.	\$150.00
#343 Sunburst 3-pint jug, stuck handle, H	\$225.00
#417 Double Rib & Panel 6" handled basket, Flamingo	\$135.00
#1225 Sawtooth Bands toy table set (covered sugar H, creamer H, covered butter H, spooner H), set	\$475.00
#1415 Twentieth Century 1-pint milk pitcher, Dawn, H	\$160.00
#1428 Warwick 2-lite horn of plenty candlesticks, Cobalt, pr.	\$375.00
#1433 Thumbprint & Panel 8-1/2" vase, flared, Cobalt	\$375.00
#1503 Crystolite 6" handled basket, H	\$400.00
#3390 Carcassone 3-pint footed jug, Sahara	\$225.00
#3404 Spanish 3-1/2 oz. oyster cocktail, Tangerine	\$200.00

SURPRISES ON CHRISTMAS MORNING

#5 Patrician 12" 1-lite candelabra, A prisms	\$ 85.00
#16 Puff box, H, cover, H	\$ 85.00
#300-1/2 Peerless #1 10" vase, H	\$ 55.00
#305 Punt & Diamond Point 11-1/2" oval bowl, cupped H	\$ 60.00
#325 Pillows 8" bowl, crimped, good gold dec., H	\$ 75.00
#341 Puritan oval hotel creamer H & sugar H, set	\$ 45.00
#343 Sunburst 5" footed jelly	\$ 65.00
#465 Recessed Panel 1# candy jar, cut alternate panels	\$ 80.00
#1125 Starburst 7-1/2" plate, Harvey Amber, H	\$ 50.00
#1184 Yeoman 8" plate, Harvey Amber, H	\$ 50.00
#1184 Yeoman 2 oz. oil, D/O	\$ 30.00
#1184 Yeoman 10" bowl, crimped, D/O, Moongleam, H	\$ 33.00
#1250 Groove & Slash 6 oz. oil w/pressed stopper	\$ 80.00
#1252 Twist 9 oz. goblet, smoky blk stain, dec., H, (2) ea.	\$ 45.00
#1540 Lariat 9-1/2" camellia bowl	\$ 30.00
#2401 Oakwood 7 oz. taper soda, Polo Player etch	\$ 40.00
#3404 Spanish 5-1/2 oz. saucer champagne, (4) ea.	\$ 18.00
#3416 Barbara Fritchie 10 oz. goblet, H, (2) ea.	\$ 35.00
#3416 Barbara Fritchie 1-1/2 oz. tall sherry, H (2) ea.	\$ 60.00
#3418 Savoy Plaza 10 oz. goblet, clear stem, H	\$ 35.00

FOR THE HOST(ESS) WITH THE MOST(EST)

Holiday Punch Bowls:

#305 Punt & Diamond Point ftd. punch bowl H, 12cups H, set	\$525.00
#343 Sunburst 14" ftd. punch bowl, H, (7) cups, H, set	\$450.00

Other Entertaining Ideas:

#300 Peerless 9" cake salver	\$100.00
#341 Puritan 9" cake salver, H	\$100.00
#341 Puritan ice tub, H	\$ 80.00

#351 Priscilla 24 oz. (1 pint) jug, H	\$ 90.00
#352 Flat Panel roll tray, H	\$ 65.00
#352 Flat Panel 10" round tray, H, (2) ea.	\$ 50.00
#1184 Yeoman 9" celery tray, D/O, Empress etch, Moongleam, H	\$30.00
#1187 Yeoman 13" 4-piece spice tray, w/Pairpoint gold etched decoration, (all pieces H)	\$ 80.00
#1229 Octagon 6" mint dish, Marigold, H	\$ 32.00
#1229 Octagon 6" bon bon, Hawthorne, (2) ea.	\$ 28.00
#1252-1/2 Twist mayonnaise, Marigold, H	\$ 50.00
#1401 Empress 14" oval platter, Flamingo, H, sl. wear	\$ 40.00
#1401 Empress 10" 7-part hors d'oeuvre, H	\$ 40.00
#1485 Saturn covd. mustard, H, (3) on #1951 Cabochon tray, set	\$75.00
#1495 Fern mayo. & underplate w/spoon, Belvedere etch, set	\$ 75.00
#1503 Crystolite 1/2 gallon ice jug	\$ 90.00
#1503 Crystolite 2-compartment center handled jelly	\$ 55.00
#1519 Waverly 14" torte plate, Orchid etch	\$ 50.00
#1519 Waverly mayo & underplate, all over gold floral dec.	\$ 45.00
#1567 Plantation 10-1/2" party plate, Plantation ivy etch	\$ 50.00
#1567 Plantation 7" compote, flat, H	\$ 75.00
#4163 Whaley 54 oz. tankard w/ (4) #2926 tumblers, all cut	\$100.00

STOCKING STUFFERS

#150 Banded Flute match stand/ashtray, H	\$ 50.00
#150 Banded Flute 2 oz. wine, H (2) ea.	\$ 35.00
#352 Flat Panel covered horseradish jar	\$ 35.00
#393 Narrow Flute ind. footed Domino sugar, H	\$ 55.00
#393 Narrow Flute ind. creamer, H, & sugar, set	\$ 38.00
#393 Narrow Flute 2 oz. wine, H, (2) ea.	\$ 25.00
#475 Narrow Flute with Rim salted nut dish, Moongleam, H	\$ 22.00
#1116 Twin salt, small flake	\$ 30.00
#1205 Fancy Loop 2 oz. bar, Emerald, GG, base slight rough	\$ 75.00
#1212 4-1.2 oz. hld. custard/punch cup, H	\$ 8.00
#1401 Empress ashtray, H	\$ 40.00

SANTA'S MIXED BAG

#354 Wide Flat Panel grapefruit, gold etched dec., H (2) ea.	\$ 22.00
#355 Quator hotel sugar, H	\$ 18.00
#393 Narrow Flute 10" cheese & cracker (plate only), H	\$ 22.00
#1170 Pleat & Panel lo ftd. comport, Moongleam, H(btm.only)	\$25.00
#1201 Pandango 10" shallow nappy	\$ 28.00

CHRISTMAS SPECIAL!

#4036-1/2 Marshall 1-pint decanter w/stopper, mono "RBD": For the first person proving his/her initials are "RBD" --	\$ 20.00
--	----------

. . MERRY CHRISTMAS TO ALL, AND TO ALL A GOOD NIGHT!

**ALL HEISEY  
AND HEISEY BY IMPERIAL  
AUCTION**

**FRIDAY DECEMBER 4, 1992**

**3:00 P.M.**

**Apple Tree Auction Center  
1616 W Church Street  
Newark, Ohio 43055**



This will be a large quality sale with over 1,000 lots to sell in one day. Note early starting time.

Interesting features incl (59) pcs of Spanish stem in Cobalt with goblets, wines, clarets, oyster cocktails, sodas, champagnes, sherbets, finger bowls and juices; D F vases in Alexandrite and Sahara; sev nice baskets; (3) experimental or prototype goblets with different variations of Orchid Etch on Coventry stem; other Orchid, Rose and Minuet Etch; lrg selection of pitchers to incl Old Sandwich, Ribbon Candy, Pinwheel and Fan, Sahara Empress, D F, Moongleam Twist and many others; good selection of candlesticks and candelabras; lots of cruets; many cream and sugars incl Limelight Provincial; lots of red stained pieces and Moongleam for Christmas. Lots of little things to stuff your stockings like salt dips, crystal favor vases, almond dishes, toothpicks, cordials and bar glasses to fill with spirits to warm Santa. Banded Flute punch bowl and base with lots of punch cups in many patterns for that Holiday Cheer. Plantation incl (3) ice lip water pitchers, 12 oz sodas, stick butter, marmalades and cruet. Very large selection of Colonial with lots of Old Williamsburg, Peerless, Puritan and Narrow Flute. A fine selection of Crystolite with blown stems and good serving pieces. Deep plate etchings incl Tally Ho cocktail shaker, Aqua Caliente cocktails, Modern Polo, Polo, Equestrian, Victory, Fox Chase, Antarctic and Sailboat carving.

Animals feature Amber Plug Horse, Pouter Pigeon, Fish Bookend, Satin Middle Elephant and others. This sale offers much for those who have been nice and even an "X" rated cutting on a military cap ash tray for those who are naughty.

Verlys exceptional mermaid vase in amber with flared top (may be only one made).

**HEISEY BY IMPERIAL**

Large selection of Imperial animals incl Crystal Show Horse, Amber Show Horse, Clydesdale, Piglets, Colts, Mallard and Tigers; Caramel Slag incl rare H.C.A. 1982 error Oscar, Airdales, Elephants, Colts, Donkeys, Cygnet and others; many Ultra Blue animals; lots of other animals; many Sparkies; lots of different nursery rhyme cups.

We hope you can attend this fine sale and spend the weekend in Newark for the H.C.A. Holiday dinner on Saturday. If you are unable to attend we will be glad to bid absentee for you and if you tell us you want this for Christmas giving we will get it shipped right away.

Catalogs Available For \$2.00

**DOORS OPEN AT 2:00 P.M.**

**TERMS: Cash or Check with Auctioneers Approval  
Good Food and Comfortable Building**

**Sales Manager: Frank Frye**

**Auctioneers: Sam Schnaidt and Paul Robison (614) 344-4282**

**Don & Jean Parrett**  
**4995 Maple Dale Rd.**  
**Jackson, MI 49201**

**Post & Ins. Extra**  
**(517) 784-7319**  
**& Recorder**

#21 Aristocrat 12" candleholder, pr	\$495.00
#1183 Revere candlevase, candleholder Crystal, 5*spear prisms Amber, cut, sterling, pr.	\$350.00
#301-4 Williamsburg 4-lite candelabra, (1 only)	\$495.00
#1430 Aristocrat short candy jar, (no lid), Cobalt	\$465.00
#2323 Navy 6" plates, (3); #2323 Navy 7" plates, (3) ea.	\$ 75.00
#1401 Empress 3-pint pitcher, D/F, Sahara	\$250.00
#1401 Empress floral bowl, D/F, Sahara	\$ 75.00
#150 Pointed Oval in Diamond Point 3-pint pitcher, Emerald	\$195.00
#1454 Diamond Point ashtray, (10) ea.	\$ 8.00
#1535 Oval Diamond Point 14" sandwich tray	\$ 55.00
#393 Narrow Flute 10" dinner plate	\$ 98.00
#3418 Savoy 3 oz. cocktail, (4) ea.	\$ 20.00
#3440 Portsmouth 3 oz. cocktail, D/O, Moongleam ft., (2) ea.	\$ 25.00
#3440 Portsmouth 10 oz goblet, D/O, Moongleam ft.	\$ 30.00
#3440 Portsmouth 6 oz. sherbet, D/O, Moongleam ft., (6) ea.	\$ 16.00
#2930 9 oz. blown tumbler, D/O Flamingo, (5) ea.	\$ 20.00
#3350 Wabash 6 oz. champagne, Flamingo, (2) ea.	\$ 25.00
#367 1 pint decanter, Flamingo	\$275.00
#1183 Revere salt tubs, Flamingo, (2) ea.	\$ 12.50
#1405 Ipswich 6 oz. champagne, Sahara, (3) ea.	\$ 38.00
#4228 favor vase, D/O, Sahara	\$295.00
#4231 favor vase, D/O, Sahara	\$295.00
#1401 Empress salt shaker, glass top, Sahara	\$ 50.00
#3480 Old Dominion 1 oz. cordial, D/O	\$ 95.00
#3390 Carcassone 1 oz. cordial, optic, Sahara, (3) ea.	\$110.00
#5078 Park Avenue 1 oz. cordial, (3) ea.	\$100.00
#5078 Park Avenue 3 oz. cocktail	\$ 45.00
#3397 Gascony 6 oz. champagne, optic	\$ 20.00
#3416 Barbara Fritchie 3/4 oz. liqueur, (4) ea.	\$110.00
#5010 Symphone 1 oz. cordial, optic, (2) ea.	\$ 75.00
#5019 Waverly 1 oz. cordial, optic	\$105.00
#6003 Tempo 1 oz. cordial	\$ 75.00
#5040 Lariat 1 oz. cordial, (2) ea.	\$110.00
#5038 Rooster stem, 3 oz. cocktail, Moonglo cut	\$ 90.00
#601 Heavy 12 oz. soda, #459 Fisherman d. p. etch, (3) ea.	\$105.00
#5003 Crystolite 1 oz. cordial, optic	\$110.00
#5077 Legionnaire 1 oz. cordial	\$ 85.00
#359 Colonial 1 oz. cordial, ea.	\$ 29.00
#300 Peerless 1 oz. cordial, (2) ea.	\$ 27.00
#300 Peerless 2-1/2 oz. bar, ea.	\$ 29.00
#4054 Coronation 2-1/2 oz. bar	\$ 20.00
#1404 Old Sandwich 1 oz. bar, (2) ea.	\$ 29.00
#1229 Octagon 8" lunch plate, Flamingo, (4) ea.	\$ 12.50
#1229 Octagon cup & saucer, Flamingo, (4 sets) ea.	\$ 22.00
#1229 Octagon 14" sandwich plate, Flamingo	\$ 75.00
# 48 Colonial 25" epergne, 2 plates & vase, complete	\$795.00



**RE: ANTIQUES**  
**1014 Foxwood Drive**  
**Nashville, TN 37215**

**(615) 665-1824**  
**H = Marked**  
**Postage & Ins. Extra**

#300 Peerless 9" cake salver, H	\$110.00
#300 Peerless 8 oz. goblet, (3) ea.	\$ 18.00
#300 Peerless 4-1/2 oz. high ft. sherbet, scalloped, H, (9) ea.	\$ 20.00
#325 Pillows 3-qt. pitcher, H	\$240.00
#325 Pillows punch cup, H	\$ 55.00
#352 Flat Panel 2 oz. oil & stopper, H	\$ 45.00
#411 Tudor 6 oz. oil & stopper, H	\$ 50.00
#417 Double rib & Panel cruet & stopper	\$ 75.00
#433 Greek Key cherry or horseradish jar/stopper, H	\$135.00
#458 Picket basket, floral cut, H	\$170.00
#1184 Yeoman 4 oz. cruet, D/O, Moongleam, Crystal stopper	\$ 95.00
#1201 Fandango covered butter	\$175.00
#1205 Fancy Loop 4" rose bowl	\$150.00
#1205 Fancy Loop punch/custard cup, (7) ea.	\$ 16.00
#1238 Beehive 5" plate, Zircon	\$ 90.00
#1255 Pineapple & Fan toothpick, Emerald	\$195.00
#1286 ashtray Cupid & Psyche, Moongleam	\$ 45.00
#1295 Bead Swag spooner, floral enamel dec., Opal	\$ 45.00
#1401 Empress cream & sugar, D/F, Sahara	\$ 55.00
#1401 Empress 6" round plate, Alexandrite, H, (3) ea.	\$ 38.00
#1401 Empress shallow bowl, lion head, Sahara	\$475.00
#1401 Empress cream & sugar, D/F, Flamingo, H	\$ 70.00
#1401 Empress ashtray, Cobalt, H	\$325.00
#1401 Empress ashtray, Alexandrite, H	\$275.00
#1401 Empress 4-1/2" nappy, Moongleam, H, (3) ea.	\$ 20.00
#1415 Twentieth Century 9 oz. ftd. tumbler, Cobalt, H	\$ 80.00
#1425 Victorian rye bottle & stopper	\$120.00
#1485 Saturn 10 oz. goblet, Zircon, (8) ea.	\$ 80.00
#1503 Crystolite 10" salad bowl	\$ 80.00
#1503 Crystolite half gallon ice jug	\$140.00
#1504 Regency 2-lite candlestick, pr.	\$ 70.00
#1506 Provincial 9 oz. ftd. tumbler, Limelight, H, (3) ea.	\$ 70.00
#1506 Provincial 12 oz. ftd. soda, Limelight	\$ 85.00
#1506 Provincial 10" 4-part relish, Limelight	\$195.00
#1519 Waverly 6" butterw/cover, Heisey Rose etch	\$175.00
#1519 Waverly 6-1/2" ftd. honey/cheese, Heisey Rose etch	\$ 72.00
#3381 Creole 11 oz. tallstem goblet, D/O, Sahara (Crystal stem)	\$110.00
#3389 Duquesne cocktail, W/O, Tangerine bowl, (3) ea.	\$180.00
#3389 Duquesne goblet, W/O, Tangerine bowl, (3) ea.	\$300.00
#3390 Carcassone cigarette holder, Cobalt bowl	\$ 75.00
#3397 Gascony 12 oz. low ftd. goblet, Tangerine bowl, (4) ea.	\$240.00
#3404 Spanish 12 oz. ftd. soda, Cobalt bowl	\$ 75.00
#3404 Spanish champagne, Cobalt bowl	\$ 90.00
#3480 Koors "29" 3-pt. jug, Flamingo handle & foot	\$150.00
#5003 Crystolite goblet W/O, (9)ea.	\$ 40.00
#5022 Graceful 1 oz. cordial, Orchid etch, H	\$145.00
#5024 Oxford 7 oz. sauc. champ., West Point etch, H, (8) set	\$135.00



SEASONS GREETINGS TO ALL

<p><b>MARJORIE GILLETTE</b> Rochester, New York Glassware Speciality Heisey Mail Orders &amp; Shows 716-225-4678</p>	<p><b>DUNBAR ENTERPRISES</b> Heisey a Specialty Mail Order, Shows, Appraisals PO Box 7085, Port St. Lucie, FL 34985-7085 Oct-May 407-337-1558 PO Box 222, Naples, ME 04055 June-Sept 207-647-5652</p>	<p><b>COMPARISON LIST</b> New Heisey Auction List For 1992, 3 year auctions 89-90-91 Price \$13.00 + \$2.00 shipping, Payable: B. Whaley 300 International Dr., Pataskala, OH 43062-9209 614-927-1557</p>
<p><b>ALL HEISEY AUCTION</b> Consignments Welcome Apple Tree Auction Center 1616 W. Church, Newark, OH 43055 PH: (614) 344-9449</p>	<p><b>GREEN ACRES FARMS</b> Antiques, Crystal Glass &amp; Collectibles 2678 Hazelton-Etna Rd., SW (S.R. 310-N) Pataskala, OH 43062 Sat. or Sun. PM or call (614) 927-1882</p>	<p><b>THE CURIOSITY SHOPPE</b> Heisey, Pottery, Coins, Crafts &amp; More In Holmes County Amish Country 55 W. Jackson, Millersburg, OH 44654 (216) 674-2999</p>
<p><b>ALFA I CARRIAGE HOUSE ANTIQUES</b> Featuring Depression &amp; Elegant Glassware Al &amp; Faye Maness Rt. 1 Box 552, Ashland, VA 23005 PH: (804) 798-1825</p>	<p><b>H &amp; R DIAMOND H</b> Helen &amp; Robert Rarey 1450 White Ash Dr. Columbus, OH 43204 PH: (614) 279-0390 after 5:30</p>	<p><b>PARRETT'S ANTIQUES</b> Heisey 4995 Mapledale Rd. Jackson, MI 49201 517-784-7319 - Recorder</p>
<p><b>ANTIQUES - THE SHULTZES</b> 206-208 East Main St. Newmanstown, PA 17073 15 Miles West of Reading, PA PH: (215) 589-2819</p>	<p><b>"HAPPINESS IS" - THE STULTZS</b> 3106 Warren Court, Glen Allen, VA 23060 Shows and Mail Order PH: (804) 672-8102</p>	<p><b>PATTON HOUSE</b> Rocky's Mall, I-81 &amp; US 11 Weyer's Cave, VA 24486 PH: (703) 967-1181 The Antique Gallery, Richmond, VA</p>
<p><b>C &amp; J ANTIQUES</b> Cole &amp; Jean Miesner Box 45, 72 Whig St. Newark Valley, NY 13811 PH: (607) 642-9905</p>	<p><b>MOUNDBUILDERS ANTIQUES</b> The Second Generation 1640 Columbus Rd., S.W., Granville, OH 43023 Closed Saturday 1-800-FON-HEISEY Lots of Heisey, minutes from the museum. (614) 587-2227</p>	<p><b>SCHWAN'S ANITQUES</b> SHOWS &amp; MAILORDER 77 Lagos del Norte Ft. Pierce, FL 34951 PH: (407) 461-5940</p>
<p><b>DOXTOIS</b> Eva &amp; Joe Hirsh Heisey &amp; Pattern Glass 6 James St., Norwalk, CT 06850 PH: (203) 847-3315</p>	<p><b>HELEN &amp; JIM KENNON</b> Heisey, Cambridge, Fostoria, Duncan, Imperial, Fenton, Tiffin P.O. Box 114 Brookville, OH 45309 PH: (513) 833-5406 SHOWS ONLY</p>	<p><b>R &amp; L ANTIQUES-SAN FRANCISCO</b> Members of the Golden Gate Heisey Club 3690 Bodega Ave. Petaluma, CA 94952 PH: Petaluma (707) 762-2494 PH: San Francisco (415) 621-6693</p>
<p><b>CHARLES &amp; MILDRED FISHER</b> Heisey, Degenhart, Imperial, Antiques, Collectibles, General Line 991 Idlewilde, Newark, OH 43055 PH: (614) 522-5398</p>	<p><b>JJ MC KEE ANTIQUES</b> Pottery - Glassware - Collectibles 222 West 75th St. Kansas City, MO 64114 Wed.-Sun. 10-5 PH: (816) 361-8719</p>	<p><b>THE WOODEN SHOE</b> Antiques &amp; Collectibles Jim &amp; Sheri VanEs by Appt. 810 Elden, Herndon, VA 22070 PH: (703) 435-9045</p>
<p><b>CRYSTAL LADY</b> Joann Hagerty Specializing in elegant depression glassware 1817 Vinton Street, Omaha, NE 68108 Shop Ph. (402) 341-0643 or Home Ph. (402) 391-6730</p>	<p><b>RAILROAD DINING CAR CHINA</b> Wanted By Collector - Harold W. Ames 4574 Driftwood La., Canandaigua, NY 14424 1-716-394-1098 1-800-836-9619 Most Anything Railroad Related Wanted</p>	<p><b>CARLISLE AND ASSOCIATES</b> We clean cloudy cruets, decanters, cocktail shakers, vases, salt &amp; peppers, etc. Write for flyer 28220 Lamong Rd., Sheridan, IN 46069</p>
<p><b>DIAMOND H PLUS</b> Mail Orders &amp; Shows George &amp; Eileen Schamel 6625 Gilardi Rd., Boonsboro, MD 21713 PH: (301) 432-6285</p>	<p><b>J. &amp; R. COLLECTIBLES</b> Shows, SASE, Mail Order list The Lukasko's P.O. Box 1030, Newark, Ohio 43058-1030 PH: (614) 344-9719</p>	<p><b>ARMORY ANTIQUES</b> Specializing In Quality Glass &amp; Furniture Heisey And Other Elegant Glass 168 W. Main St., Plain City, OH 43064 (614) 873-4890</p>
<p><b>ETTELMAN'S DISCONTINUED</b> CHINA &amp; CRYSTAL HEISEY a SPECIALTY P.O. Box 6491-HN Corpus Christi, TX 78411 PH: (512) 888-8391 Include SASE</p>	<p><b>MOSTLY HEISEY</b> Rhoda Curley 16 Clayton PL, Albany, NY 12209 Shop and Mail Order PH: (518) 482-6272</p>	<p><b>HEISEY PUBLICATIONS</b> Box 102, Plymouth, Ohio 44865 All Vogel Heisey Books I, II, III, IV And Quarterly Newscasters available</p>
<p><b>FOREVER HEISEY</b> Jan &amp; Norm Thran Mail Order, Shows, Appraisal Service 1663 Londondale Pkwy., Newark, OH 43055 PH: (614) 344-5955</p>	<p><b>GLASS PAPERWEIGHTS</b> Handcrafted by W.E. Porter, former Heisey glassworker. Available for purchase at the Heisey Museum Gift shop. For information send large SASE to 6405 Chippindon Drive, Huber Heights, OH 45424. Wholesale/Retail (513) 233-8570.</p>	<p><b>WILLEY'S ANTIQUES &amp; MUSEUM</b> Specializing in Heisey 11110 Cannon Rd., Frazeysburg, OH 43822 16 miles east of Newark, OH PH: (614) 828-2557</p>
<p><b>"OUR PLACE ANTIQUES"</b> &amp; "The Barn" 121 S. Prospect St., Granville, Ohio 43023 Open Daily 12-5 PH: (614) 587-4601</p>	<p><b>THE MUTED SWAN ANTIQUES</b> 5486 Peachtree Rd., Chamblee, GA 30341 Heart of Chamblee Antique Row Specializing in Heisey &amp; Cambridge Bill &amp; Pat Miller PH: (404) 451-7620</p>	<p><b>JAMES S. HARRIS ANTIQUES/APPRISALS</b> Box 672 Richmond, KY 40475-0672 PH:(606) 623-9100 Buying and Selling by Mail</p>
<p><b>GLASS 'N' GLASS</b> Virginia &amp; Odell Johnson 6909 10th Ave. West Bradenton, FL 34209 (813) 792-0604</p>	<p><b>SHRADER ANTIQUES</b> Dep. &amp; Elegant Glass, Buffalo Pottery Railroad Dining Car China, Shelley China 2025 Highway 199, Crescent City, CA 95531 PH: (707) 458-3525</p>	<p><b>TALL OAKS ANTIQUES</b> Glassware-Specializing in Heisey Shows - Mail order 219-696-0147 Mike &amp; Barb Rosenberger 565 N Nichols, Lowell, IN 46356</p>



# Annual Holiday Dinner

Saturday December 5, 1992  
Best Western  
Cocktails 6:30 p.m. Dinner 7:30 p.m.



Prime Rib Buffet \$16.50 per person  
Menu: Prime Rib, Seafood, Pasta, Potato, Vegetable, soup and salad bar, dessert

Entertainment: Newark High School Swing Choir

Send Reservations To: HCA Holiday Dinner, 169 W. Church St., Newark, Ohio 43055  
Make checks payable to HCA. Last minute reservations will be accepted until 4 p.m. on Dec. 1st.

List Names of guests attending dinner:

(1) \_\_\_\_\_ (3) \_\_\_\_\_  
(2) \_\_\_\_\_ (4) \_\_\_\_\_

Total guests \_\_\_\_\_ times \$16.50 each = \_\_\_\_\_ Amount Due  
Type of payment :

Personal Check  
 Visa  MC Name on charge card \_\_\_\_\_

Expiration Date Mo. \_\_\_\_/Yr. \_\_\_\_ Charge card number \_\_\_\_\_

**Moundbuilders Antiques**    **The Second Generation**  
1640 Columbus Rd. S.W.    (614) 587-2227  
Granville, OH 43023    Open Daily, except Sat.

Need a gift idea? Dial 1-800- FON-HEISEY.

Video available upon request.

A special thanks to the California HCC for your kind hospitality.

To all my Heisey friends for all your help and support during the past year, Thank you !



**Fran & Jack Grenzbach**  
10534 Valencia Rd.  
Seminole, FL 34642

**Fran's Fancy Finds**  
(813) 391-5184  
Post & Ins. Extra

#3397 Gascony tomato juice pitcher, Sahara	\$195.00
#1401 Empress nut cups, D/F, Flamingo & Sahara, (6) ea.	\$ 30.00
#1563 Whaley 16 oz. beer mug, drinking scene, H	\$135.00
#6060 Country Club cocktail shaker, 3 pt., paper label	\$ 75.00
#1201 Fandango tankard	\$395.00
#1255 Pineapple & Fan pitcher, Emerald w/gold	\$350.00
#3404 Spanish 3-1/2 oz. cocktail, Cobalt, (8) ea.	\$110.00
#1485 Saturn 8-1/2" flared vase, Zircon, H	\$250.00
#1445 Grape Cluster 1-lite candlestick, bobeches & prisms, pr	\$300.00
#109 dolphin comport, Flamingo	\$225.00
#1509 Queen Ann 8" bowl, D/F, Orchid etch	\$ 85.00
#4057 10-1/2" vase, Orchid etch	\$325.00
#353 Medium Flat Panel 8 oz. cologne, cut	\$150.00
#300-1/2 No. 2 water bottle, H	\$ 80.00
#459 Colonial 7" basket, H	\$225.00
#1235 Bead Panel & Sunburst cracker jar & lid	\$225.00
#1567 Plantation round covered butter	\$ 95.00
#433 Greek Key low ftd. jelly & lid	\$135.00
#3390 Carcassone 3 oz. oyster cocktail, Sahara, (4) ea.	\$ 35.00
#Scottie	\$115.00





# Heisey

HEISEY PUBLICATIONS

P.O. Box 102  
Plymouth, Ohio 44865



Heisey  
Books-  
Glass

Ralph & Sandra McKelvey (419) 935-0338  
VOGEL BOOKS ON HEISEY

BOOK I FIRST TEN YEARS ..... \$14.00  
BOOK II COLONIAL YEARS ..... 14.00  
BOOK III ART AND COLORED GLASS ..... 15.00  
BOOK IV EARLY AND LATE YEARS ..... 15.00  
Special Set Price - \$55.00

THE NEWSCASTER -- oldest all-Heisey publication. All issues from 1977 to 1986 inclusive (publication was discontinued end of 1986). Set for \$35.00. Issues for individual years is \$4.00 per year.

### NEW ITEMS

HEISEY NEWSCASTER - 1971-1976 - in 3 ring binder. Price \$35.00

### SHIPPING AND HANDLING

Add \$4.00 for all orders!!

## WE CLEAN CLOUDY GLASS!

**\*\* SATISFACTION GUARANTEED \*\***

WE DO NOT OIL, WAX OR COVER UP THE SICKNESS IN ANY WAY! WE ACTUALLY REMOVE IT.

NO ITEMS ARE TOO SICK TO CLEAN! IF WE CANNOT CLEAN THE INTERIOR OF AN ITEM TO MEET YOUR SATISFACTION THE CLEANING IS FREE!

WE ARE SO CONFIDENT IN OUR SERVICE THAT WE ASK THAT YOU SEND NO MONEY. WHEN WE RETURN YOUR ITEM A BILL WILL BE ENCLOSED FOR THE POSTAGE & CLEANING. IF YOU ARE HAPPY, PLEASE SEND PAYMENT, IF NOT, RETURN THE BILL MARKED "NOT SATISFIED".

PLEASE ALLOW 4-6 WEEKS FOR REDELIVERY OF MOST ITEMS. SOME VERY CLOUDY ITEMS MAY TAKE SEVERAL ADDITIONAL WEEKS. ALL GLASS IS HANDLED AND CLEANED AT YOUR RISK.

CRUET	\$20.00	COCKTAIL SHAKER	\$30.00
COLOGNE	\$20.00	SALT SHAKER (SINGLE)	\$15.00
WATER BOTTLE	\$30.00	SALT SHAKER (PAIR)	\$25.00
DECANTER	\$30.00	CRUSHED FRUIT JAR	\$30.00
VASES (UNDER 12 IN.)	\$25.00	LAUNDRY JAR	\$20-30.00

ALL OTHER ITEMS WRITE FOR QUOTE

" YOU SEEK PERFECTION - AT CARLISLE & ASSOCIATES WE PROVIDE IT! "

--- WE CAN PICKUP/DELIVER ---  
\* ANY APPLE TREE HEISEY AUCTION

SHIP TO: CARLISLE & ASSOCIATES  
28228 LAMONG ROAD DEPT. H  
SHERIDAN IN 46069  
(317) 750-5767 AFTER 6:00 P.M.

The

## National Heisey Glass Museum

Corner of W. Church St. & N. Sixth St.

Newark, OH 43055

(614) 345-2932

Open Daily

1 p.m. - 4 p.m.

Closed holidays



We have eight rooms, approximately 5,600 feet, of display space for the beautiful handmade glass produced in Newark, Ohio by the A. H. Heisey Co. from 1896 to 1957.

POSTMASTER SEND FORM 3579 TO:



HCA  
169 W CHURCH ST  
NEWARK, OH 43055

**Membership Renewal Notice:** Check the date above your name and address on the mailing label. This is your renewal date. If it reads 12 -10-92, make sure your dues have been paid in order to receive next month's issue of the *Heisey News*. Yearly dues are \$18.50 per year plus \$2.50 for each additional household member.

**OHIO**  
*the heart of it all!*™