

# HEISEY

## NEWS



for your  
knowledge

OFFICIAL PUBLICATION of HEISEY COLLECTORS OF AMERICA

Volume XXI No. 1

January 1992 ISSN 0731-8014

No. 433 PATTERN



15-IN. PUNCH BOWL & HIGH FOOT  
ALSO MAKE 12-IN. CUPPED & 18-IN. SHALLOW  
ALL SHAPES MADE WITH OR WITHOUT  
FOOT



4 1/2-OZ. CUSTARD  
GROUND BOTTOM

## MUSEUM EXPANSION BACK ON TRACK

### GET YOUR TICKET

### JUMP ON THE TRAIN

### SEE PAGE 4 FOR DETAILS

# HEISEY NEWS

**Editor Susan Pennington**  
 169 W. Church St.  
 Newark, OH 43055  
 (614)345-2932



Published and Printed in Newark, Ohio  
 \$18.50 per year, \$1.25 per copy

## HCA Club Officers

|            |                         |                |
|------------|-------------------------|----------------|
| President  | Richard P. (Dick) Smith | (614) 366-5163 |
| Vice Pres. | Sam Schnaidt            | (614) 587-0052 |
| Secretary  | Amy Jo Jones            | (513) 426-1567 |
| Treasurer  | Larry Stickle           | (614) 366-2000 |

**Back Issues:** Each volume (12 issues a year): \$9.00 The following volumes are available: V, VIII, IX, X, XI, XII, XIII, XIV, XV, XVI, XVII, XVIII, IX, D, XI, XII, XIII, XIV, XV, XVI, XVII, XVIII. Heisey Collectors of America, Inc, a not-for-profit corporation (tax exempt status), are owners and operators of The National Heisey Glass Museum, 6th and Church Streets, Newark, OH. Open daily 1-4 P.M. except holidays. Other hours by appointment. Members admitted free.

## HEISEY NEWS

Heisey Collectors of America, Inc.

All Rights Reserved 1991ISSN 073-8014

Published monthly, except twice in February, by Heisey Collectors of America, Inc., Newark, OH 43055. Second Class Postage Paid. Club Membership ( includes 13 issues of Heisey News and participation in all club activities) \$18.50 per year, plus \$2.50 for each additional family member in same household who wishes a membership card. For Voting Membership, add \$25.00 as a one time only fee.

**ADVERTISING:** Ads are to be typed or printed on white paper with dark ink.

**PLEASE DOUBLE SPACE ALL ADS.**

**Send to:** HCA Advertising, 169 W. Church St., Newark, OH 43055

**Rates:** Classified: 15 cents per word. \$1.50 minimum, 1/8 page limit. Personal ads 1/8 page limit. Abbreviations and initials count as words. Please do not abbreviate Heisey pattern names or Heisey colors. Ads which are entered in a vertical format can contain 67 characters (maximum) per line. When counting characters, remember to include spaces.

**DEALER DIRECTORY: \$25.00 Per Year**

| DISPLAY                          | MEMBER   | NON      |
|----------------------------------|----------|----------|
| 1/8 page (9 lines)               | \$ 20.00 | \$ 30.00 |
| 1/4 page (20 lines)              | \$ 30.00 | \$ 45.00 |
| 1/2 page (20 lines - horizontal) | \$ 45.00 | \$ 67.00 |
| 1/2 page (48 lines - vertical)   | \$ 60.00 | \$ 90.00 |
| Full page (48 lines)             | \$ 75.00 | \$112.00 |

ALL ADS MUST BE PREPAID. Ad copy must be received by the 5th of the month preceeding the publication date, e.g. April 5th for May issue. Ads containing reproductions will not knowingly be accepted unless clearly stated (e.g. Heisey by Imperial, etc.) HEISEY NEWS accepts no further liability.

The opinions expressed in articles in HEISEY NEWS are those of the authors and not necessarily those of the organization. The Editor reserves the right to edit, with or without the consent of the author, or to refuse any material submitted for publication.

**About the cover:** This months cover shows a #433 Greek Key punch bowl and custard cup. This photo is page 81 of Heisey Catalog 109, from the year 1928-1929. Greek Key was produced from 1911 through 1938. Greek Key pieces are rarely found in colors, however, the punch bowl set was available in Flamingo as well as Crystal. This pattern was popular during the Heisey years and remains popular with Heisey collectors of today. See Tom Felts interesting article about pattern #433 Greek Key on pages 15,16,&17 of this issue. For additional information on pattern #433 and #433-1/2 Greek Key, see page 10 of the April 1979 issue of the Heisey News for Louise Reams article on the subject.

Picture if you will, a Geek Key punch bowl in the center of a New Years Day celebration--I propose a toast! May you Discover your Dreams in 1992, Happy New Year!

## America Discovers Heisey

Theme for Convention '92

Discover the Beauty

Theme for Display '92

Discover Your Dreams

Theme for Preview and Show '92



|                                      |                                |
|--------------------------------------|--------------------------------|
| <b>1992 Benefit Auction</b>          | <b>March 13 &amp; 14, 1992</b> |
| <b>Starlight Antique Flea Market</b> | <b>March 15, 1992</b>          |
| <b>Silver Spring All Heisey Show</b> | <b>March 21 &amp; 22, 1992</b> |
| <b>1992 HCA Convention</b>           | <b>June 17 thru 21, 1992</b>   |

| In This Issue                      | page  |
|------------------------------------|-------|
| Calendar of Events                 | 2     |
| Letter from the President          | 3     |
| Letter from the Curator            | 3     |
| Expansion Committee Report         | 4     |
| Convention News                    | 4     |
| Treasurers Report                  | 5     |
| Motel List                         | 5     |
| Donation List                      | 6     |
| Benefit Auction Update             | 6     |
| A Special Celebration              | 7     |
| <i>Carl Sparacio</i>               |       |
| Club Notes                         | 8 - 9 |
| Sanitary Salt & Peppers            | 10-11 |
| <i>From Heisey Catalog, ca1910</i> |       |
| Christmas Poem - Liz King          | 12    |
| Memories                           | 13    |
| diamonds are forever....           | 14    |
| <i>Janet Caswell</i>               |       |
| HEISEY IN TRADE JOURNALS           | 15-17 |
| <i>Tom Felt</i>                    |       |
| Advertising                        | 18-24 |
| Dealer Directory                   | 23    |
| 1992 Oscar Order Form              | 24    |



## Letter from the President

The holidays are just about over. I hope everyone had a joyous Christmas season.

The special limited edition St. Francis Madonna is sold out. We do not expect to have seconds or over runs.

**Dealers and advertisers: Pay special attention to the new advertising rates which will go into effect in the March newsletter. Watch for details in February.**

The Expansion Committee has come up with a plan which would provide us with the most building for the least cost. This project involves building the back half of the building which was presented in the proposal last June. The addition of this portion of the building will provide us with the much needed space for educational facilities, archives, a media center, better library facilities and more display space. This plan was recommended to the Board of Directors at the quarterly meeting on December 7. The Board voted unanimously to approve the project. The cost of the project will be approximately \$350,000.00. We feel that this is a reasonable and an attainable amount. Voting members will be receiving a letter concerning the expansion project soon. The Expansion Committee has come up with several fundraisers. 1) The Cadillac Dinner and 2.) The "Gold Series" of Animals - 450 sets offered for sale by subscription only (no orders will be accepted until a formal announcement of the beginning date has been made in the newsletter) Watch the newsletter. When you see the announcement, don't wait to order your set of the "Gold Series". The Expansion Committee wants and needs your support. Someday we hope to get our museum accredited. Send your suggestions and concerns to me or any other committee member.

Don't forget to send your glass for the Benefit Auction. The cut off date is December 31, 1991. This is a major fund raiser for the museum General Fund.

As of January 1, 1992, we will accept glass donations to be sold at the Benefit Auction with proceeds going to the Building Fund. This is a way for members to contribute to the Building Fund without giving cash. Remember, it is tax deductible.

Make your plans to attend the March Benefit Auction, the Cadillac Dinner, and the Starlight Antique Show on the weekend of March 14. The following weekend plan to attend the All Heisey Show in Silver Spring, Md. Check the calendar of events on page two for specific dates of HCA activities.

Get well wishes go to George Reynolds. George has been ill, but we understand that he is being well taken care of and is making a quick recovery. Miriam Walters is recovering from a broken knee. We send our best wishes to her. Til next month.....

*Dick Smith*

## Curator's Report

*Kathy McCracken*



As this issue goes to the printer, we have just had our Holiday Open House. This was a new event for HCA, as the activities were planned cooperatively with the Licking County Historical Society. Despite the frigid temperature and howling winds, ninety people, most of whom were first time visitors, toured the museums and participated in the tree-lighting ceremony. Piano music played in the Buckingham House while refreshments were served. The wind precluded the luminaries, but the decorations on the interior of the three museums were lovely. Thanks to all of the volunteers who helped to make this event a success.

The December 7 quarterly meetings and Holiday Dinner was my first HCA event. I was very glad to meet more members and to hear some of your ideas and concerns. I attended meetings of the Museum, Education, and Research and Archives Committees and was struck by the overall enthusiasm and desire to get things done. I hope that I will be able to facilitate these plans.

The major event of December 7, of course, was the board's approval of the proposal submitted by the Expansion Committee (details are on page 4). As I indicated in this column last month, I believe this expansion plan will prove to be pivotal to the future of the museum. Improved and expanded facilities will allow us to market our collection to a much wider audience and to improve our educational mission.

I am continuing to work on the inventory. With Susan's help, I moved the new donations and loans to Room 1, Cabinet 1 so that it is the first display that visitors see when they begin their tour. (See photo on page 13)

On November 29, the museum was featured locally on a morning radio show on WCLT and on the 5:30 news show on WBNS television in Columbus. The television show, although brief, did a nice job of summarizing the history of Heisey glassware and HCA and we had several visitors in that weekend who came because they heard about the museum on that show. Thanks to Mary McWilliams and Dick Smith for giving up part of their Thanksgiving holidays to help me out that morning.

Best wishes to everyone in 1992.

### *Museum Volunteers for November*

Connie Makris  
Phyllis & Bob McClain  
Liz King  
Bob Rarey  
Jim & Helen Kennon  
Hugo Wenzel  
Jim & Karen Clark



Frances Law  
Mary McWilliams  
Vivian Moore  
Stan Holmquist  
Arlene Zipperlen  
Mollie Miller  
Bob Ryan

## SPECIAL ANNOUNCEMENT

### HCA Board of Directors Approves Museum Expansion Plans

#### Expansion Committee Report

*Bob Rarey*

The HCA Board of Directors, at the quarterly meeting on December 7, 1991, approved the plan presented for Phase I Museum Expansion, as developed by the Museum Expansion Committee.

The Museum Expansion Committee has been meeting on a regular basis since early in the year, many times on a weekly basis. As a result of these meetings, the Expansion Committee formulated the plan for Phase I of the Museum Expansion. It was a presentation of this plan that was given to the Board of Directors on December 7.

Phase I, as developed by the Museum Expansion Committee, would build a two floor with basement structure, about 36 feet wide and 60 feet long, to the rear of the present office building. The building would be situated on land owned by HCA. The proposed building is about one half of the original plan as proposed and presented by the Committee to the HCA Convention in June 1991. It would connect to the present office building on the ground and second floors and will provide handicap access. This expansion will provide the space for a much needed media center and additional display on the first (ground) floor. Archival storage/study area and a larger library area are proposed for the second floor. The lower level is proposed as a large meeting room in the plan.

Heisey Collectors of America, Inc. enjoys tax-exempt status, qualifying as an educational group. This expansion will provide for increased educational opportunities to the members and to the public in general.

While no fixed dollar cost can be given at this time, the Committee feels the Phase I project can be completed for no more than \$350,000. This estimated cost figure was derived through consultation with the architects who drew the plans that were presented at the June Convention and with the help of a local builder who does this type of construction.

Now we need the support of all members financially in either cash or pledges. The Board of Directors have each individually committed their financial support. Several fund raising projects are being planned. As a kick-off, a special Heisey Glass Donation Auction will be held in conjunction with the Museum Benefit Auction in March. Closing date for glass in the Benefit Auction is January 1, 1992. The Committee is soliciting glass donations during the month of January for the benefit of the Museum Expansion Project. Donors will receive a donation slip for

the sale price of each donated glass item. This donated glass will be listed separately in the Benefit Auction List and will sell at the conclusion of the Benefit Auction.

Remember, this is a donation of glass for Phase I of the Museum Expansion. The glass must be received during the month of January for this donation auction. We, the Committee, "Thank You" for your continued support. We also solicit your comments and input. The February Heisey News will outline the next portion of the Phase I Museum Expansion project.

#### Golf Outing

*Chauncey Delaney*

The 1992 Convention Committee is considering a "golf outing" as a new event on the 1992 Convention schedule. As currently planned, the golf outing would be held at a local golf course on Wednesday, June 17, at about 9:00 a.m. Green fees for 1992 are \$17.00 for 18 holes during the week. Cost of a riding cart is \$22 (\$11 for 1/2 cart). In order to make the necessary arrangements and to reserve tee times, we need to know the number of men and women interested in such an event. If you would like to participate in the golf outing, please submit the required golf fees (\$28 for those needing a riding cart and \$17 for those walking) to arrive at HCA no later than March 12, 1992. Mail to: HCA Golf Outing, 169 W. Church Street, Newark, OH 43055. The 1992 Convention Committee will review the response to this proposed event at its March 14 meeting and act accordingly. If there is insufficient interest in the golf outing, the event will be cancelled and golf fees will be refunded.

#### Press Release:

**Attention: Attention:** The 1992 Heisey Convention is just around the corner--time to put on thinking caps and come up with some good ideas for DISPLAY. I need CLUB and INDIVIDUAL participation, so please consider being included in this year's festivities. It is a great deal of fun and gives everyone a real sense of togetherness. Let's make this another Banner Year. Share your collections with us, plan to Display. You may reserve one, two, or three tables and a poster will be made for you. Do it now so you will be assured of your space. Individuals really make the Display a success; be one, it is FUN!! For more information write to me c/o HCA or at the address listed below. I would also be happy to hear from you by phone. Write to:

Janet M. Caswell, Display Chairman  
41 Marion Road  
Marblehead, Mass 01945  
1-617-631-9169 or 1-617-846-3895

Treasurers Quarterly Report  
November 30, 1991



|                                      |                     |
|--------------------------------------|---------------------|
| CASH BALANCE AUGUST 31, 1991         | \$3,669.75          |
| CASH RECEIVED:                       |                     |
| Initiation Fees                      | \$ 300.00           |
| Membership Fees                      | 11,329.50           |
| Newsletter Ads                       | 3,074.15            |
| Cash Donations                       | 54.85               |
| Sales - Non Taxable                  | 9,589.98            |
| Sales - Taxable                      | 6,383.25            |
| Sales Tax Collected                  | 375.42              |
| Shipping & Handling                  | 505.32              |
| Museum Admissions                    | 1,159.50            |
| Royalty Color Book                   | 922.50              |
| Interest from Checking Account       | 113.35              |
| Film Rentals                         | 30.00               |
| Membership Endowment Fund            | 2,012.00            |
| Donations to Endowment Fund          | 756.20              |
| Transferred from Building Fund       | 2,070.00            |
| 1991 Souvenir Dinner                 | 2,637.40            |
| <b>TOTAL CASH RECEIVED</b>           | <b>\$41,313.42</b>  |
| EXPENSES:                            |                     |
| Club Expenses                        | \$ 5,270.80         |
| Club Utilities                       | 1,113.60            |
| Museum Expenses                      | 2,586.02            |
| Museum Utilities                     | 1,283.00            |
| Newsletter Printing & Postage        | 5,624.50            |
| Merchandise for resale               | 2,133.44            |
| Cost of Sales                        | 508.90              |
| Sales Tax Paid                       | 510.27              |
| General Advertising                  | 592.85              |
| Salaries                             | 10,596.23           |
| Related cost of Salaries             | 3,709.72            |
| Bank Charges                         | 447.39              |
| Warehouse Expenses                   | 42.90               |
| Computer Expenses                    | 3,502.86            |
| Tablecloths                          | 254.80              |
| Donations to Endowment Fund          | 2,768.20            |
| 1991 Souvenir Dinner                 | 2,493.08            |
| <b>TOTAL EXPENSES</b>                | <b>\$43,438.56</b>  |
| CASH BALANCE NOVEMBER 30, 1991       | \$ 1,544.61         |
| <b>Building Fund Balance</b>         | <b>\$ 8,587.54</b>  |
| <b>Endowment Fund Balance</b>        | <b>\$ 85,260.67</b> |
| <b>Bob Evans Stock - 7377 shares</b> |                     |
| <b>@ \$22.50 per share =</b>         | <b>\$165,982.50</b> |

Respectfully submitted,

L. E. Stickle, Treasurer

- Best Western** (614) 349-8411  
50 N 2nd St., Newark, OH 43055
- Buzz Inn** (614) 467-2020  
10668 Lancaster Rd. SW, Hebron, OH
- Buxton Inn 1812** (614) 587-0001  
313 W. Broadway, Granville, OH 43023
- Cream Station Antiques B & B** (614) 587-4814  
1444 Newark Granville Rd., Newark, OH 43055
- Duke's Inn Motel** (614) 929-1015  
St. Rt. 79 & 70, Buckeye Lake, OH
- Granville Inn** (614) 587-3333  
314 E. Broadway, Granville, OH 43023
- Holiday Inn** (614) 522-1165  
733 Hebron Rd., Newark, OH 43055
- Hometown Inn Heath** (614) 522-8112  
1266 Hebron Rd., Heath, OH 43055
- Howard Johnson** (614) 522-3191  
775 Hebron Rd., Heath, OH 43055
- Kellers I-70 Motel** (614) 927-8011  
4756 Keller's Road, Hebron, OH 43023
- Maples Motel** (614) 927-2103  
13611 National Rd. SW, Rt. 40, Reynoldsburg, OH
- Motel 76** (614) 467-2311  
10772 Lancaster Rd. SW, Hebron, OH
- Pitzer-Cooper House B & B** (614) 323-2680  
6019 White Chapel Rd. SE, Newark, OH
- Shamrock Motel** (614) 927-7946  
Box 87, Rt. 40, Etna, OH 43018
- Starlight Motel** (614) 522-3207  
1342 Hebron Rd., Heath, OH 43055
- University Inn Motel** (614) 344-2136  
1225 W. Church St, Newark, OH 43055
- Wagram Motel** (614) 927-2470  
13255 National Rd. SE, Rt. 40, Reynoldsburg, OH
- Wehrle Mansion B & B** (614) 345-4550  
444 Hudson Ave. Newark, OH
- Welcome Inn Motel** (614) 928-7861  
706 Main St. Rt. 40, Hebron, OH



# Donations

## Museum Glass

#3454 Granada goblet, with W/O and unknown etch  
Donated in honor of Elizabeth Brown, by Howard Brown.

#1540 Lariat heavy rope floral bowl. Donated by Southern Illinois Diamond H Seekers, in memory of Joette Siglock, a founding member.

#1428 Warwick 2-lite candlestick, Sahara  
Donated by Southern Illinois Diamond H Seekers, in memory of Bill Balcer.

#1401 Empress footed punch cup  
Donated by Norm & Jan Thran, in memory of Frank Friel.

#1170 Pleat & Panel 8" nappy, Moongleam with silver overlay and unknown cutting. Donated by Mr. & Mrs. Robert Eshbach, in memory of Ernest A. Clark, founding member of the Virginia Heisey Club.

#465 Recessed Panel 2# candy jar, with yellow decoration  
Donated by Joyce A. Hamburg in memory of her parents, Mr. & Mrs. Harry Getty.

#1519 Waverly 13-1/2" footed cake salver, with Orchid etch.  
Donated by Dairyland HCC in memory of June Revelle.

#3304 Universal parfait  
Donated by James G. Van Winkle Jr, in honor of Jason Tyler Kane, Thomas George Kane and Garrett Andrew Kane.

#1404 Old Sandwich 6" plate, Moongleam  
Donated by Al Miller.

#353 soap dish & lid  
Donated by Jim Earnshaw.

Look-alike Old Sandwich type pattern tumbler, Cobalt.  
Donated by Betty M. Regan.

Fake-chamberstick in Flamingo type color marked with a fake diamond H.  
Donated by Phyllis & Robert Danley.

#14220 Imperial Candlewick champagne with Heisey Rose etch #515 Donated by Skip Munn and John Karkoski

## Glass & Books for Gift Shop

Bob and Helen Rarey - glass  
Burle and Betty Whaley - glass & books  
Marv Jacobs - books  
Nassau Long Island Study Club - Note cards  
Hugo Wenzel - glass  
Mary Jane Albyn Davis - glass  
Marian J. Darst - glass  
Patton House Antiques - glass  
Mr. & Mrs. David Ahart - glass

**Endowment Fund** **Total \$600.00**

Reynoldsburg Club  
North Carolina HSC - In memory of Bill Gibbs and Earl Howell.

## Library & Archives

Handbook of Heisey Production Cuttings by Tom and Neila Bredehoft. Donated by Tom and Neila Bredehoft.

*Corrections from the Donation list which appeared in the September '91 issue of Heisey News.*

## Acquisitions

#3386 Diamond Rose 12 oz pilsner, Wide Optic, Sahara  
#4225 Cobel decanter with #1 Sport etch



## Benefit Auction Update

*Jim Clark, Chairman*

On December 7th we held another unpacking and cataloging session for glass which will go into the March-Benefit Auction. In spite of this day long session, boxes and boxes remain to be opened and cataloged. Opening each box is just like Christmas! I don't know of any other way to describe the excitement of unwrapping and actually seeing that beautiful Heisey. I am still hoping that we will receive pieces in Opal, Black, and Vaseline. We have cataloged pieces in all other colors and I know for a fact that there is a piece in Trial Blue in one of the boxes yet to be opened. Another piece is rumored to have the Japanese cut by Krall. (Get your check books ready.) The candlesticks are numerous, cuttings are beautiful and the quantity is great. I'll have a list next month.

Thanks to all of you who sent glass, thanks for the donated items and thanks to all the people who have been helping us with cataloging. If you wish to volunteer your time in any way with the Auction, or if you have any questions, please call me: (513) 845-9132

## A Special Celebration

by Carl Sparacio

On a wet, windy day in November, the Heisey Heritage Society met to celebrate its 20th anniversary. The study club, who shall hereafter be referred to as the HHS, is affiliated with the HCA by marriage and Charter No. 8. The group is somewhat unique in that its membership is drawn from the Mid-Atlantic states rather than a more sensibly confined area.

Reaching the big Two-O is a remarkable achievement for a club which never knows in which state it'll hold its next meeting (ignoring the geographical reference, some will say that it usually meets in a state of confusion). For this celebration, members found their way from New Jersey, Pennsylvania, Maryland and Delaware (illness cancelled the New York contingent's trip).

Delawarrians, Walter and Nettye Evans, were in charge of the anniversary meeting so it should come as no surprise that the affair was held in Delaware. What was a surprise was where in Delaware it was held. The Evanses managed to commandeer the U.S. Air Force's Dove Air Base. They are closed mouthed about how they achieved this but whisperers offer a soap opera recipe of nasty rumors, a high ranking military official and blackmail.

The ballroom of the base Officer's Club was put at the disposal of the celebrating Heisey collectors (those officers know how to live) and the Base Commander also threw in a bus, a couple of guides and a tour of a C-5 airplane, the largest cargo carrier in the U.S. Air Force's arsenal. The Lord provided rain and winds near hurricane force. Picture, if you can, a group of 30 out of shape civilians, all improperly dressed, climbing over a humongous aircraft which is blessed with every amenity except windows, stairs or elevators; this during a gale that was hell-bent on tearing apart half the east coast. The Air Force personnel assigned to guide the group looked on in horror as their charges poked and scampered about in columns of bunches oblivious of the danger to themselves or the airplane. Climbing the catwalks and ladders of the C-5 brought out phobias, hidden terrors and shaky knees in the brave little group. It also elicited a lot of laughter.

When they were through using the C-5 as a jungle gym the Heisey collectors were given a bus tour of the base. The bus driver was particularly impressed. His windows were the only ones fitted with defrosters and wipers. The HHSers were returned to the Officers Club and their ballroom which had been beautifully decorated for the party. Tables for dinner were laid out in a square. Everyone faced each other and all felt obliged to speak at

once--before, during and after the fabulous buffet dinner (those officers really do know how to live). After dinner a pretense at holding a meeting was made and, surprisingly, in that festive atmosphere some club business was actually resolved. President, Walter Ludwig, is nothing if not determined.

With the "formal meeting" over, members honored the Heisey glass that brought them together. They assembled around two Show and Tell tables and alternately cheered each beautiful find and booed the tale of its acquisition. A better reporter would have listed some of the bragging Heisey but, what the heck, you get what you pay for.

Slides of the early meetings were shown as part of the program. Many members saw themselves as they were 20 years ago: younger, hairier and thinner.

Back in their seats once again, club members and guests shared

cake and coffee. A beautiful cake, half chocolate, half white to please all tastes, was specially decorated. It was donated by the Evanses, the hosts for the day. With luck, there will be a photo of the cake cutting ceremony accompanying this report. Suspicions to the contrary, this photo was chosen because no one had the foresight to take a group picture.

All former members of the HHS were invited to attend and be part of this celebration. Those who came helped to make it a day filled with reminiscences. Remembering and seeing old friends was a highlight of this very special occasion.

Perhaps, after all, Heisey collecting has less to do with glass than it has to do with friendship. This appeared to be the case at this celebration shared by a very special group of collectors. Perhaps, too, it's not only officers who know how to live.



Carl Sparacio, founding President of the Heisey Heritage Society cuts cake with current president, Walter Ludwig.

## Club Notes



### #13 Heisey Club of California

*From Nov. '91 issue of Pony Express*

*Penny Thorup, President*

The HCC members met at the home of Fran and Walt Brock with Tom Parsons as co-host for the regular October meeting. The first chilly fall weather and the Halloween decorations set the mood for our meeting, program and Show and Tell on the patio. We viewed many beautiful examples of Heisey Athena and Lariat patterns shared by our members and Betty Wanser presented the program. Everyone always enjoys viewing the Brocks collection of that glorious Heisey.

A special thank you to our members for offering and loaning their Heisey glass for the Fullerton Antique mall HCC display during the month of November.

The Annual HCC Christmas Party/Potluck will be held at the Wansers on Sunday December 15th at 1:00 P.M. the members voted at the October regular meeting to have a "Collectible Gift" live auction to benefit HCA. Bud Thorup will be the auctioneer.

The January HCC meeting will be January 26, at the home of Joyce and Gene Moenning.

### # 22 Northwest Heisey Collectors Club

*Nancy Alderson, Secretary*

The Northwest Heisey Collectors Club will be celebrating 15 years as a study club chartered by Heisey Collectors of America, Inc. This special event will be held Saturday, June 6, 1992 in Renton, WA.

Former members interested in attending may do so by writing to Nancy Alderson, 24846 13th Ave. so. Des Moines, WA 98198 or by calling (206)824-7946. We would appreciate hearing from you as soon as possible but no later than May 1, 1992.

### #27 Land of Legend Heisey Study Club

*Dick Smith*

The Starlight Antique Flea Market will be held March 15th, 1992 from 9 a.m. to 9 p.m. There will be lots of Heisey, pottery, antiques, and misc. Dealer contract necessary. Contact Dick Smith 225 Upson Downs Rd. Newark, OH 43055 (614) 366-5163. This is our clubs annual fund raiser for the benefit of HCA; it also benefits Starlight School.

### # 33 The Golden Gate Heisey Collectors Club

*From the December '91 issue of The Golden Gater*

Our next meeting will be held on Saturday January 25, 1992 at 3:00 p.m. in the home of Kate Winkle. This will be our annual "Belated Holiday Party".

The business meeting will begin at 3:00 p.m. for the selection of our 1992 slate of officers. Future meeting dates and locations will also be discussed. Bring your finds for sharing. Since we are gaining new members, this will be a very educational part of our meetings.

A gift exchange will be available for those who wish to join in on the fun. At our October meeting it was decided to increase the cost of the gift to \$15.00 and hopefully no "junk" or "chipped" items will be brought. To participate, just gift wrap a Heisey item for which you have no more than \$15.00. (Of course, the true value can be much greater!) We will explain the rules of the "exchange" at the party.

Dinner will be Pot-Luck, with the club providing ham. When you R.S.V.P. (A Must!), tell Kate what you would like to bring. (707)446-0104

### # 42 Gulf Coast Heisey Club

*Virginia Johnson, Adele Pardee*

The Gulf Coast Heisey Club (FL) held their November meeting on the 21st at 11:00 a.m. in Bradenton, FL. It was hosted by Bob and Betty Williams at their condominium Club House. Seventeen members were present. Paul and Anne Keister and Henry and Evelyn Carlisle attended as guests. Both couples are HCA members as well as members of other study clubs.

This was the first meeting for our new officers, Jean Drexler, President, and Adele Pardee Secretary / Treasurer. Members discussed the possibility of setting up educational displays at the FL State Fair and at area libraries. Virginia Johnson gave a report on the Heisey convention which was held last June. She and Jack Grenzbach also reviewed the information about building expansion plans which have been in the *Heisey News*.

We adjourned for a delicious lunch of sandwiches, fruit cocktail, and delectable desserts, including a spectacular cheese cake, all prepared by Bob Williams. He and Betty used some of their collection of Old Sandwich and Ridgeleigh. We gave them a round of applause for the repast and their hospitality.

After lunch we turned our attention to the Heisey goodies members and visitors had brought for "Show & Tell". There was a Crosslined Flute jug, a Waldorf Astoria decanter, Beaded Panel and Sunburst celery and a Diamond Swag (Fandango) toothpick, and 18" colonial vase, some Gascony Tangerine a number of candelsticks, a Lodestar Dawn pitcher and glass set, a Saturn Optic Rose bowl with a Krall cutting (Bird & Rose)--and an interesting small humidior in copper marked Manning Bowman Quality, Mendian, CT., with the glass insert a Banded Flute glass about 3" across. This was obviously a "marriage" by someone other than Heisey.

Our next meeting will be January 23rd, at the home of John and Adele Pardee in Sarasota, FL. This will be our Silent Auction and our money making project of the year for HCA. Visitors are welcome. Please call (813)922-3174 for directions.

#### **# 44 National Capital Heisey Study Club**

*Jim Jones, Scribe*

The National Capital Heisey Study Club and the National Capital Heisey Collectors met together in November for an evening of talkin' Heisey, good refreshments and admiring the finds displayed by members. These finds were on display: a creamer in Pointed Oval in diamond Point, Emerald (the flea market dealer had identified the piece as "pressed glass pattern" and priced it accordingly); a vase, Warwick 9", in Moongleam; a pair of candlesticks, Empress in Sahara; a set of ashtrays, Empress in Crystal, Moongleam, Sahara, Flamingo and Alexandrite; a ball vase in Alexandrite; a child's mug in Amber by Imperial and marked "Nixon-Agnew"; and a cup plate in the Greek Key pattern with a likeness of A. Heisey in the center.

During the business meeting, Chris Maskaleris (the Mr. half of Chris & Chris), currently an HCA Board member, gave a status report on the proposed museum expansion project. Following the business meeting, Mr. Chris presented an interesting program on salt and pepper shakers produced as part of the major Heisey pattern lines. He illustrated the talk with a display of salt and pepper shakers representing a majority of the 52 major patterns. One exception in the display was a #12 shaker which, in Amber, was part of the Fred Harvey line. Salt and pepper shakers were produced in Crystal, and some in colors available during the time a pattern was in production. Decorations--ruby stain, gold, striping, floral design in enamel, cuttings and etchings--were applied to some patterns. An unusual item in the program display was a Bead Swag shaker with the etching "Chautauqua 1899". Of all the major Heisey patterns, Empress shakers are found in the most colors and with the greatest variety of cuttings and etchings. Decorations were applied by Heisey as well as by other companies e. g. Oriental Glass company applied ruby stain to many Heisey blanks, including some salt and pepper shakers, and some Heisey salt and peppers have been found with a Hawkes cutting and signature applied and the Diamond H trademark ground out.

Within the major pattern category, some 98 shapes/sizes of salt and pepper shakers were produced by Heisey. Several were reissued by Imperial. When colors (Heisey & Imperial), decorations, and various

tops are added to shape and size, this category offers a large field for the collector of Heisey's little things.

In December we'll meet for our pot-luck. We'll have the "press gang" out signing up workers for the 20th Annual All-Heisey Glass Show and Sale in March '92. Our first meeting of '92 will be held on Monday January 13, at 7:00 in the Oxon Hill Library, Oxon Hill, MD.

*Editors Note:* See Heisey Sanitary Salts from Heisey catalog ca1910 pictured on page 10 & 11

#### **#45 The Hoosier Heisey Club**

*Jean Phillips*

The Hoosier Heisey Club held its last meeting of the year on Sunday November 24th 1991. Thirty-two members and three guests were present. We welcomed Durwood Vogel as a new member. President, Dave Stratton called the meeting to order. The Secretary and Treasurers reports were read and approved. A Silent Auction was discussed as a fund raiser for the club. It was suggested the auction be a mystery auction.

The nomination committee had prepared a slate for officers for 1992. A motion was made and seconded that we accept the slate. A vote by the membership confirmed the election of officers as follows: President, Mike Rosenberger; Vice President, Mary Cowley; Secretary, Donna Higgins; Treasurer, Irene Pope.

The program began with a color presentation of Zircon/Limelight by Dave Stratton. Several pieces of various patterns were on display for study and identification. Mary Cowley presented the pattern of the day--#305 Puntty and Diamond Point. This pattern was one of the earliest produced and is a large pattern, sometimes with gold or Amber trim. A sugar sifter, spooner, punch cup and salt and pepper shakers were among the items brought in for display.

Heisey colonial pieces in color was presented by Kim Carlisle. His segment was broken down into three categories-- history, how to tell the difference in the patterns, and the colors produced. The items on display provided a rainbow of color.

Jim Kennon concluded the program with "Show and Tell", which included a Pineapple and Fan spooner, in Emerald, a Victorian creamer in Sahara, Creole soda in Alexandrite, a Toujour two-candle candlestick with prisms, and a Gascony tumber in Tangerine. Jim also brought several pieces of experimental blue from his own collection.

After browsing and visiting, a large number of those attending the meeting shared the buffet in the motel restaurant.

Interested in starting a study club in the Atlanta, GA area? Call: Sid & Mary Edwards (404) 928-3774

PRICES OF SALTS AND PEPPERS

| With No. 1 Sanitary Top | Price Per Gross |       |    |     | No. Doz. in Pkg. | Wt. in Lbs. | Price Per Lb. | Pack. in Case |
|-------------------------|-----------------|-------|----|-----|------------------|-------------|---------------|---------------|
|                         | O. P.           | L. P. | 18 | 24  |                  |             |               |               |
| No. 9                   | 12 00           | 13 20 | 42 | 160 | 16               |             |               |               |
| 11 Colonial             | 15 00           | 16 80 | 25 | 180 | 17               |             |               |               |
| 14                      | 13 20           | 15 00 | 38 | 160 | 9                |             |               |               |
| 15 Square Taper         | 12 00           | 13 20 | 30 | 145 | 12               |             |               |               |
| 16 Colonial             | 14 00           | 15 60 | 38 | 160 | 7                |             |               |               |
| 150                     | 12 00           | 13 20 | 42 | 160 | 10               |             |               |               |
| 300 Colonial            | 12 00           | 13 20 | 48 | 160 | 16               |             |               |               |
| 300 " No. 4             | 18 00           | 19 80 | 25 | 150 | 17               |             |               |               |
| 325 Figured             | 12 00           | 13 20 | 48 | 150 | 14               |             |               |               |
| 341                     | 12 00           | 13 20 | 44 | 170 | 10               |             |               |               |
| 379                     | 13 20           | 15 00 | 38 | 160 | 11               |             |               |               |
| 400 Colonial            | 12 00           | 13 20 | 44 | 175 | 11               |             |               |               |
| 1250                    | 12 00           | 13 20 | 48 | 175 | 16               |             |               |               |

L. P. means Price Per Gross in Less than Original Pkg. O. P. means Price Per Gross in Original Pkg.  
12 Doz. of ANY ONE PATTERN Assorted Salts and Peppers constitute a package

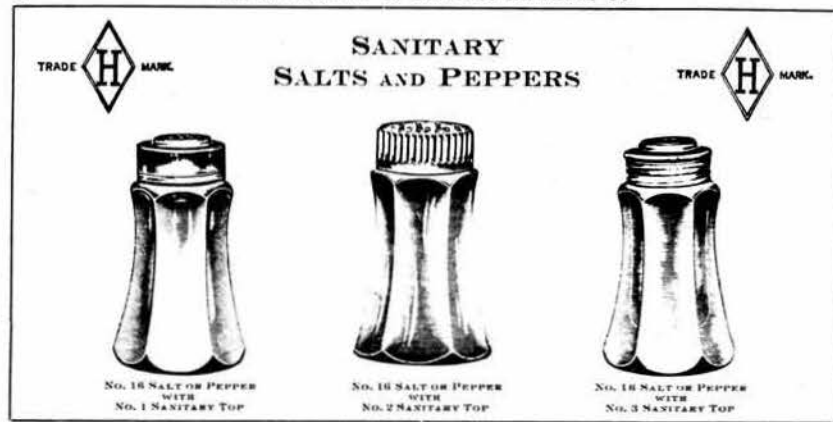
| With No. 3 Sanitary Top | Price Per Gross |       |    |     | No. Doz. in Pkg. | Wt. in Lbs. | Price Per Lb. | Pack. in Case |
|-------------------------|-----------------|-------|----|-----|------------------|-------------|---------------|---------------|
|                         | O. P.           | L. P. | 18 | 24  |                  |             |               |               |
| No. 11 Colonial         | 11 20           | 12 60 | 25 | 150 | 17               |             |               |               |
| 14                      | 9 00            | 10 20 | 38 | 160 | 9                |             |               |               |
| 15 Square Taper         | 10 50           | 12 00 | 30 | 145 | 13               |             |               |               |
| 16 Colonial             | 10 00           | 11 40 | 38 | 160 | 8                |             |               |               |
| 17 " Blown              | 8 40            | 9 25  | 38 | 140 | 13               |             |               |               |
| 325 Figured             | 8 25            | 9 25  | 48 | 150 | 14               |             |               |               |
| 335                     | 8 25            | 9 25  | 48 | 165 | 15               |             |               |               |
| 337 Plain               | 8 25            | 9 25  | 48 | 190 | 15               |             |               |               |
| 343 Figured             | 8 25            | 9 25  | 42 | 160 | 14               |             |               |               |
| 1250 Semi-plain         | 8 25            | 9 25  | 48 | 180 | 12               |             |               |               |
| 1255                    | 8 25            | 9 25  | 48 | 180 | 12               |             |               |               |
| 1250                    | 8 25            | 9 25  | 48 | 175 | 16               |             |               |               |

PRICES OF SALTS AND PEPPERS

| With No. 3 Sanitary Top | Price Per Gross |       |    |     | No. Doz. in Pkg. | Wt. in Lbs. | Price Per Lb. | Pack. in Case |
|-------------------------|-----------------|-------|----|-----|------------------|-------------|---------------|---------------|
|                         | O. P.           | L. P. | 18 | 24  |                  |             |               |               |
| No. 9                   | 9 00            | 10 20 | 42 | 160 | 16               |             |               |               |
| 11 Colonial             | 12 00           | 13 20 | 28 | 180 | 17               |             |               |               |
| 14                      | 10 00           | 11 40 | 38 | 160 | 9                |             |               |               |
| 15 Square Taper         | 11 25           | 12 60 | 30 | 14  | 13               |             |               |               |
| 16 Colonial             | 11 00           | 12 10 | 38 | 160 | 8                |             |               |               |
| 150                     | 9 00            | 10 20 | 42 | 160 | 10               |             |               |               |
| 300 Colonial            | 9 00            | 10 20 | 48 | 160 | 16               |             |               |               |
| 300 " No. 4             | 15 00           | 16 80 | 24 | 140 | 17               |             |               |               |
| 325 Figured             | 9 00            | 10 20 | 48 | 150 | 14               |             |               |               |
| 335                     | 9 00            | 10 20 | 48 | 165 | 15               |             |               |               |
| 337 Plain               | 9 00            | 10 20 | 48 | 190 | 15               |             |               |               |
| 341                     | 9 00            | 10 20 | 44 | 170 | 10               |             |               |               |
| 343 Figured             | 9 00            | 10 20 | 42 | 160 | 14               |             |               |               |
| 879                     | 10 00           | 11 40 | 38 | 160 | 11               |             |               |               |
| 400 Colonial            | 9 00            | 10 20 | 44 | 175 | 11               |             |               |               |
| 1220                    | 9 00            | 10 20 | 48 | 180 | 12               |             |               |               |
| 1225                    | 9 00            | 10 20 | 48 | 180 | 12               |             |               |               |
| 1250                    | 9 00            | 10 20 | 48 | 175 | 16               |             |               |               |

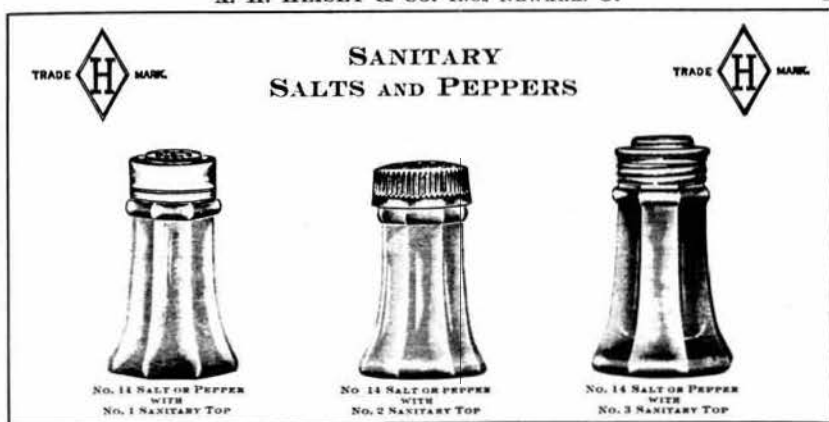
L. P. means Price Per Gross in Less than Original Pkg.  
O. P. means Price Per Gross in Original Pkg.  
12 Doz. of any one pattern assorted Salts and Peppers constitute a package.

A. H. HEISEY & CO. INC. NEWARK, O.



SCALE HALF SIZE

A. H. HEISEY & CO. INC. NEWARK, O.



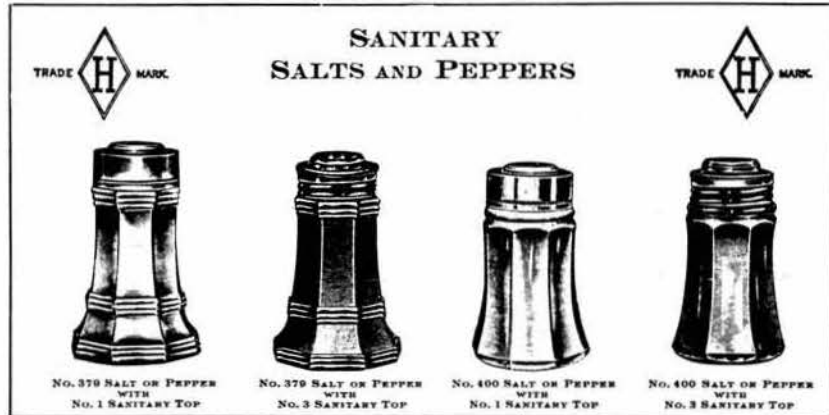
SCALE HALF SIZE

A. H. HEISEY & CO. INC. NEWARK, O.



SCALE HALF SIZE

A. H. HEISEY & CO. INC. NEWARK, O.



SCALE HALF SIZE

TRADE  MARK.

**SANITARY SALTS AND PEPPERS**

TRADE  MARK.




No. 1225 SALT OR PEPPER WITH No. 2 SANITARY TOP

No. 1225 SALT OR PEPPER WITH No. 3 SANITARY TOP

No. 1220 SALT OR PEPPER WITH No. 2 SANITARY TOP

No. 1220 SALT OR PEPPER WITH No. 3 SANITARY TOP

SCALE HALF SIZE

TRADE  MARK.

**SANITARY SALTS AND PEPPERS**

TRADE  MARK.



No. 15 SALT OR PEPPER WITH No. 1 SANITARY TOP

No. 15 SALT OR PEPPER WITH No. 2 SANITARY TOP

No. 15 SALT OR PEPPER WITH No. 3 SANITARY TOP

BLOWN BOTTLE No. 17 SALT OR PEPPER WITH No. 2 SANITARY TOP

SCALE HALF SIZE

TRADE  MARK.

**SANITARY SALTS AND PEPPERS**

TRADE  MARK.



No. 325 SALT OR PEPPER WITH No. 1 SANITARY TOP ALSO FIT WITH No. 3 TOP

No. 325 SALT OR PEPPER WITH No. 2 SANITARY TOP

No. 343 SALT OR PEPPER WITH No. 2 SANITARY TOP

No. 343 SALT OR PEPPER WITH No. 3 SANITARY TOP

SCALE HALF SIZE

TRADE  MARK.

**SANITARY SALTS AND PEPPERS**

TRADE  MARK.



No. 285 SALT OR PEPPER WITH No. 1 SANITARY TOP

No. 285 SALT OR PEPPER WITH No. 2 SANITARY TOP

No. 281 SALT OR PEPPER WITH No. 2 SANITARY TOP

No. 281 SALT OR PEPPER WITH No. 3 SANITARY TOP

SCALE HALF SIZE

TRADE  MARK.

**SANITARY SALTS AND PEPPERS**

TRADE  MARK.



No. 800 SALT OR PEPPER WITH No. 1 SANITARY TOP

No. 800 SALT OR PEPPER WITH No. 2 SANITARY TOP

No. 8 SALT OR PEPPER WITH No. 1 SANITARY TOP ALSO FIT WITH No. 2 TOP

No. 1250 SALT OR PEPPER WITH No. 1 SANITARY TOP ALSO FIT WITH No. 2 TOP

No. 1250 SALT OR PEPPER WITH No. 2 SANITARY TOP ALSO FIT WITH No. 3 TOP

SCALE HALF SIZE

**SANITARY SALTS AND PEPPERS**  
RESTAURANT SIZE

TRADE  MARK.

TRADE  MARK.



No. 800-S SALT OR PEPPER WITH No. 2 SANITARY TOP ALSO FIT WITH No. 1 TOP

No. 11 SALT OR PEPPER WITH No. 2 SANITARY TOP

No. 11 SALT OR PEPPER WITH No. 1 TOP ALSO FIT WITH No. 1 TOP

SCALE HALF SIZE



*Greetings from  
The National Heisey Glass Museum*

*A Christmas Poem  
Liz King, '91  
Presented at the HCA Holiday Dinner*

*Amy Jo was quite insistant-  
I might even say persistent-  
That I should write a verse this year  
Just full of joy and Christmas cheer!*

*I wrote one back in Seventy-four,  
In succeeding years I wrote some more;  
Suggested Heisey 'neath the tree,  
The punch bowl out for all to see,*

*Filled with champagne or something hot,  
A madonna on the old what-not,  
Candlesticks with candles red  
And greenery, Can more be said?*

*Now you're all set for entertaining.  
If there's no snow but it is raining  
Inside, the glow of Christmas lights  
Will make for festive, fun-filled nights.*

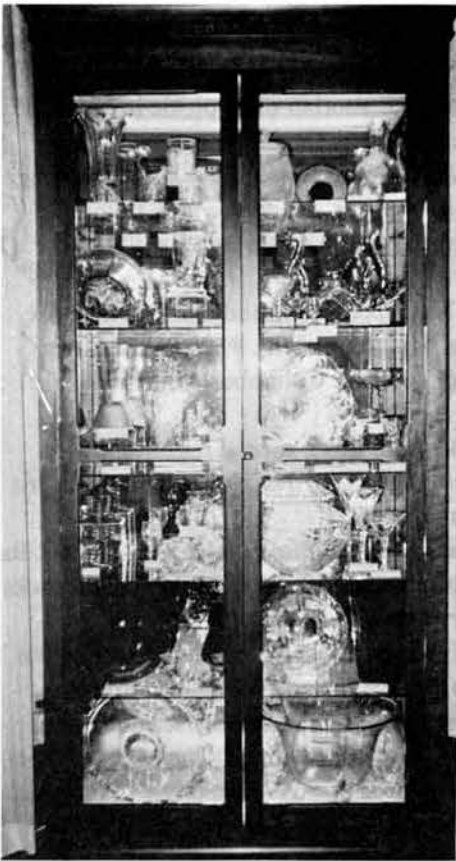
*So Merry Christmas one and all.  
I know that you will have a ball.  
And Happy New Year to you too.  
May your Christmas wishes all come true.*



*The King family banquet table, located in Room 2 of  
the Museum, was set with a holiday dining display.*



*The tree was trimmed in prisms, ribbon,  
and lace.*



*Newly relocated "Recent Loans and Donations Display", is now in Rm. 1*



*Liz King & Phyllis McClain savor the fragrance of the fresh oranges which were part of the centerpiece decorations at the Holiday Dinner. Amy Jo Jones arranged fresh fruit and greenery on each table.*



*Larry Stickle, Sam Schnaidt, and Frank Frye work hard to auction off an Imperial Flying Mare, in Amber, at the Holiday Dinner.*



*Norm Thran speaks on the subject of fundraising.*



*Another look at the beautiful decorations at the Museum.*



diamonds are forever.....

Janet Caswell

I Hope everyone's holidays were everything they expected and more. Did you *Discover* delightful Heisey in the toe of your stocking? Perhaps a "little thing" or maybe a "larger thing" peeking over the top?

Is it 1992? I had great plans for 1991 but ran out of time. How much can we *Discover* in the year 1992? Let's turn back the clock and *Yours Truly* will dig deep into the past to bring back some of the great finds.

It is 1972 - the finds column, or "Heisey Hunter Happenings" appears in October, by Bob Ryan. In those days his daughter found most signed Heisey "out-of-sight" price wise, but unsigned Heisey was a "steal or sleeper". She found a #1225 Sawtooth Band toothpick, a syrup jug w/ pewter top and 6 #5072 Rose Stem, Rose etched juices.

In January of 1973 a *Certain Ohio Collector* found some beautiful Heisey gleaming from under her Christmas tree; an Emerald #1203 Fancy Loop toothpick, a marigold #1184 Yeoman egg cup. For the *Cruet collectors*, the year was 1974 in January and a #1200 (or #170) Square and Diamond Point cruet was *discovered* with the stopper mid-section having the pattern repeated on it. That's a goodie!!

January of 1975 finds *Buffalo Bill and Annie Oakely* with the find of the year. At first they were not certain if the piece was Heisey, but, it was exactly what they had thought--#1231 Rumpot, panelled in Sahara.

1976 -- got a new correspondant from the Nutmeg State-- #1205 Fancy Loop half gallon jug, an Emerald #1255 Pineapple and Fan sugar and spooner turned up on a tailgate at a flea market with 26 pieces of table setting and dinnerware with Frontenac etching, in Marigold.

In March of 1977 the *Cincinnati Reds* did some shopping and found a #1185 Yeoman Moongleam marmalade, #407 Coarse Rib Marigold flashed mustard with the spoon also flashed, and the #335 Prince of Wales Plumes toothpick (that's a keeper) plus the #1201 Fandango horseradish with excellent gold.

In the year 1978 we held the first benefit auction. We sold the Heisey truck for the first time and dropped the "Black Lariat plate".

1979 -- January, the *Brookville Kid* found a #1404 Empress nasturtium vase in Sahara, a #1776 Kalonyal punch cup, and the #352 Flat Panel 1 quart crushed fruit.

In 1980 Jim Jordan renamed the column *Down the Heisey Trail*. In August he reported that the *Oi Stopper Snatcher* from Virginia picked up a #1235 Beaded Panel and Sunburst goblet. Stem collectors, eat your heart out!!

1981 in January rumors are still coming through the lines about the Bay State Club. Mr. Lloyd and Mrs. Janet found a 6" pickle boat in #473 Narrow Flute with Rim in Flamingo, the Victorian champagne in Sahara, a Planta-

tion Sandwich plate, and another 6 1/4 pickle in #365 Pld Queen Ann. Nice goin' New England.

April of 1982 rolled around. *Yours Truly* started writing the finds column --*diamonds are forever...* I found the #1229 Octagon nut dish in Flamingo and a #400 11 oz. goblet.

1983 in January *The Tipper* reported a #439 Raised Loop 5oz. egg cup, straight, and the #300 Peerless egg cup with gold decor souvenir Columbus, Ohio - Mt. Vernon no. 1....

In January of 1984 there was a special find. Ready--a measuring cup was acquired by *The Keeper* and that's just what it will remain--a keeper!!

1985 found *My good English Buddy* with a #351 Priscilla toothpick and a pair of #110 10 inch Dolphin candlesticks in Flamingo!! Very nice *Discovery*!

In 1986 I heard from my *Rebel Cousins*. We met at the museum years ago. As we talked, we realized that our great, great grandparents had the same first and last names-- we must be long lost relatives. They are very special people. They reported at #1776 Kalonyal 11 inch high footed compote, the #1280 Winged Scroll cruet in Custard, #1245 Ring Band table set of cream, sugar, and covered butter and spooner. At their Country Fair, they entered the glass spooner contest with their Ring Band and Prince of Wales Plumes spooners. Won first and second prizes with Ring Band taking home the first.

Now comes 1987--*Orchid Lady* reported a #1280 Winged Scroll covered butter in Custard and #351 butter pats in Flamingo. Orchid etch is really her pattern but when there is a good buy, why not take advantage.

1988 brings a #406 Coarse Rib covered mustard and six 8 inch plates in Crystal along with the #1220 Puntly Band 6 oz. oil. *Discovered* by the *Felicitous Flamingo Hunter*. Most of you know who she is. On holidays and special occasions, she uses her Heisey. Isn't that what it's for?

1989 comes along and *The Keystone Cops* have a #300 1/2 Peerless 2 1/2 oz. bar glass in Flamingo and the #1503 Crystolite 4 1/2 oz. cologne with drip stopper (or dauber). That is also a very nice *Discovery*.

In 1990--January, the *Friendly Fox* ventured out of her den just long enough to *Discover* the #7000 Sunflower butter dish with cover. The *Two Guys* from Conn. report the #5012 Crystal vase with #507 Orchid etch.

1991 brings the *Cruet Man* what he called "a beauty". It was shaken loose by the San Francisco earth quake. Even so, the #439 Raised Loop cruet was in excellent condition.

Now this brings us to the great new year--1992. Write to me and share your prizes so I can pass them along to all. Remember "One of the wonders of life is just that--the wonder of life" by Bill Copeland, Herald Tribune.

Happy Hunting.

**HEISEY IN TRADE JOURNALS -  
# 433 GRECIAN BORDER**

Tom Felt

The Grecian Border pattern, also known as Greek Key, is arguably Heisey's most attractive and popular colonial pattern. It is heavy, brilliant crystal and those of you who have seen the table displays at convention provided by Mr. and Mrs. Chris Maskaleris last year and in previous years, know just how striking it is in use. Judging from the advertising for the pattern and the large number and variety of pieces available in it, it clearly was equally popular both with the general public and the confectionary and soda fountain trade.

Unlike many of the other colonial patterns, we can date Greek Key's introduction with some accuracy, since it was Heisey's new line for 1911. Development of the pattern, however, began early in 1910. A patent was filed for the crushed fruit jar in May, approved in August 1910 as D40,837. The designer was Andrew J. Sanford, the man responsible for most of Heisey's patterns in the early years. That same month, the initial patent was followed up by another which is particularly intriguing to



figure 1

collectors today, since it was for a light shade (figure 1). Although approved in November as D40,978, to my knowledge there is no evidence that this shade was ever actually produced. Still, it is an item for which it would be worth continuing to look.

A third patent was filed in September 1910 for the scalloped nappy. Curiously, this one was not approved until over a year later, in January 1912, as D42,110. This style of nappy was made in two sizes, 4-1/2" and 8", and is also unique in that these two pieces are the only ones, as

far as I can tell, where the Greek Key motif differs from that used on all of the other items in the line. (You can see this bowl in Figure 3; the "keys" go in the opposite direction and do not have the downward turn that makes the pattern an interlocking one on all of the other pieces.) The United States Glass Company produced a pattern called Sheraton around 1912, which used a similar motif (though only as a very narrow band).

The first report on Greek Key was in the *Pottery, Glass & Brass Salesman* for January 12, 1911:

"The pattern is more than usually attractive, being Colonial shape with Grecian border and plain edge. It has a high polish and the usual high class ground bottom, characteristic of the Heisey glass. The effect of the design of the star bottom is so much like cut glass that even the experienced man can hardly tell the difference on the first glance. This new design is made in the complete line. One very effective article is the ice tub, an exact facsimile of cut glass..."

A week later, the *Crockery and Glass Journal* reported

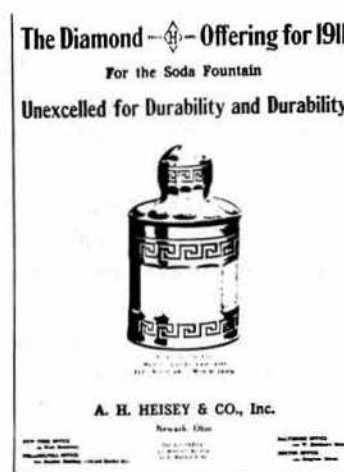


figure 2

on a new "Mission border" pattern, which they found to be very attractive.

In February 1911, a fourth patent was filed, this time for the sherbet, approved July 4, 1911, as D41,533. That same month, the first advertisement appeared in the *Confectioners Journal*, featuring the crushed fruit jar (figure 2). Available in both a 1-quart and 2-quart size, these same jars with different tops also doubled as 2-pound and 4-pound candy jars.

Figure 3 is from the March 1911 issue of the *National Druggist* and features the low foot sherbet, small ice tub



figure 3

(or whipped cream bowl), and 8" scalloped nappy (called a lemon or egg bowl). A medium and large ice tub were also offered as part of the line, as well as a massive hotel ice tub, available with or without a cover.

An advertisement in April in *Iron-Age Hardware* mentioned that a full line of stemware was available in #433, and pictured the saucer champagne, claret and goblet. In common with many of the most desirable pieces in the line, stemware in Greek Key tends to be scarce and highly priced, with the exception of sherbets, which were offered in eight or nine different styles.

A fifth patent was filed for in April 1911, for the oval sugar. (Although only the sugar is pictured on the patent application, Heisey's catalogues make it clear that they considered both the sugar and cream to be covered by this patent.) It was approved September 12, 1911 as D41,764. Eventually, this style was made in both an individual and hotel size and was in addition to a round hotel set and the original sugar made as part of the table set. (I don't know if this is true or not, but I suspect this was one of the last patterns to include the complete table set, consisting of the cream, sugar, covered butter, and spoon holder.) The spoon holder and one of the sherbets were featured along with pieces in several other patterns in another advertisement in the *Confectioners Journal* in 1911, proclaiming that "Soda fountain glass ware of the diamond H brand supplies every requirement-durable, practical, artistic and brilliant." Few collectors would disagree today. Seventeen different tumblers were offered, including the 12 oz ice tea seen in figure 4 from the *The Hardware Reporter*, dated June 9, 1911. Other ads run throughout the remainder of this year emphasized utilitarian pieces from the pattern, including the handled bon bon in the *Confectioners Jour-*

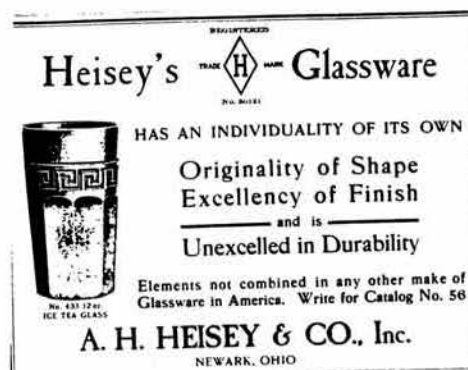


figure 4

nal in July (figure 5), two sizes of the straight edge nappy in *Iron Age-Hardware* in the June 3 issue, and the two-handed jelly in the *Hardware Reporter*, September 15, 1911. *The Pottery, Glass & Brass Salesman* also pictured several pieces in a column devoted to new patterns in their August 17th issue-- of note because this is the only place I have ever seen Grecian Border given as the name of this pattern, indicating that this was Heisey's own designation for the line.

In 1913 Greek Key remained one of the most frequently advertised patterns. The soda and banana split



figure 5

were included along with pieces from various other patterns in the *Confectioners Journal* in April 1912 (repeated through June), and the banana split by itself was highlighted in *The Soda Fountain* from June through September and again, in the August issue of the *Confectioners Journal* (figure 6). The banana splits were made in large quantities, primarily for the soda fountain trade, and can be found today--but are snapped up by collectors. Also very desirable is the straw jar, shown in figure 7 from the same *Journal* in October 1913. Interest-

ingly, it is identified as a candy jar here, although none of the catalogs mention this dual use.

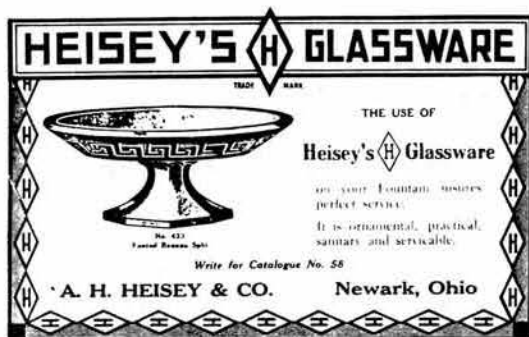


figure 6

Not surprisingly, some of Heisey's advertising budget for this pattern was also earmarked for popular magazines. One ad showing ten different pieces appeared in both *Dress* and the *Boston Cooking School Magazine* in March 1912, and a second ad displaying a slightly different selection of items can be found in the same magazines in October and December 1912, respectively. I suspect both of these ads also appeared elsewhere.

While mentioning Greek Key in the magazines, it is also worth noting that the ubiquitous banana split can also be found in an advertisement in the February 1913 issue of *The Soda Fountain*. What is intriguing about this is that the advertisement is for the Henry G. Loeber Company of New York. Loeber's ad says they are "Mfrs. Reliable Soda Fountains," but it appears from the many different items offered that they were also suppliers, offering glassware and silver from many different companies. Heisey's Greek Key banana split is called the "finest glass-footed banana-split dish" and is offered for \$2.25 a dozen. (Other Loeber ads offer a number of other Heisey pieces.)

Heisey also made a banana split without a foot, which was essentially just an oval nappy. An enterprising craftsperson in an article entitled "Knickknacks for next to Nothing" in the *Delineator* in October 1914 used this to create a unique covered dish by adding a lid made from cardboard "covered with brocade galloon and gold lace," with a wire bail handle. (It's amazing, when you're going through old magazines, what will jump out at you!)

As I mentioned above, Greek key was a very large pattern. Somewhere around 170 different items were made, including just about everything that would be expected to

be found in a complete table line, usually in several different sizes or styles. Some of the more unusual items include the covered butter (which was also sold as a covered jelly), the low-footed jelly, the cheese and cracker plate, the individual ice tub butter with cover, and the toothpick (which was also sold as a bar glass). There were even three styles of spoon holder. The medium and tall ones doubled respectively as a pickle jar (with a cover added) and a tall celery. There were also pieces in the pattern intended for dresser use, including three puff boxes and a hair reciever. A shaving mug, similar to the two-handled sugar from the table set, but with only a single handle, was pictured by Vogel in the *Heisey Glass Newscaster*, spring 1982 issue.

Greek Key was made for many years, though by 1929 it had dwindled to only ten items (four of which were sherbets--cupped, straight, flared, and shallow). By 1939, only the punch bowl, underplate and punch cup were still in production.

The pieces in the punch set are the only ones known to have been made in color, occasionally being found in Flamingo. They are also the only molds still in existence, all of the others reportedly having been destroyed during a wartime metal drive.

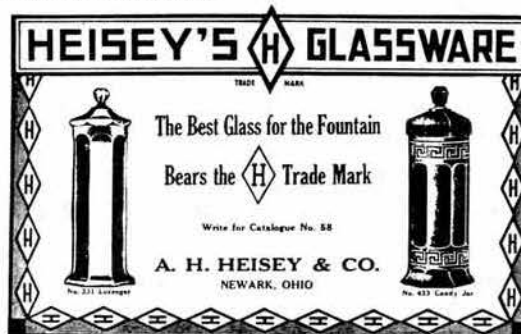


figure 7

In her article in the April 1979 *Heisey News*, Louise Ream mentions that at least one other company made a pattern very similar to Heisey's Greek Key, with sherbets almost identical in shape but with the Key design reversed. In addition, U.S. Glass's #15144 Sheraton pattern (already mentioned above) employed this same motif, but as narrow band around its pieces. U. S. Glass also made a night lamp, pictured in Heacock & Bickenheuser's *U.S. Glass from A to Z*. It seems likely that other companies probably made similar designs as well, including a number of nineteenth century pattern glass companies--but Heisey's sparkling, classical Grecian Border is still the favorite!

## Classified Ads



**For Sale:** 3-pc set Heisey Geese, all signed, perfect condition. Pair #301 Peerless 2-lite candelabras w/Epergne & (20) "A" prisms. Isoble Olson, Box 475, Newman Grove, NE 68758-0475 (402) 447-2453 Shipping Extra.

**For Sale:** Set of (6) Sweet Ad-O-Line goblets, pitcher to match. All perfect. Make offer (813) 597-7342

**For Sale:** #1401 Empress 7" square plate, Moongleam, H (8) each \$ 24.00. P&I extra. Mary Lundstrom, 3 Willow St., Oxford, MA 01540 #433 Grecian Border 5" hdl. jelly, H, \$45.00; #305 Punty & Diamond Point punch bowl, stand, and (5) punch cups, H, 7 pc set \$400.00; #357 Prison Stripe, punch bowl, stand, and (8) punch cups, H, 10 pc set \$650.00; #1567 Plantation 1/4# cvrd stick butter, H \$ 85.00; Round cvrd butter \$95.00; 13" oval 5-part relish \$125.00; 6" 2 hldd. jelly, H \$45.00; #1401 Empress round saucer w/ Old Colony etch, Flamingo, (4) each \$10.00; #305 Punty & Diamond Point regular cream \$20.00; #7000 Sunflower cream, H, \$15.00; #1170 Pleat & Panel cream flamin-go \$25.00; #479 Petal hotel ftd. cream, Moongleam, H \$25.00; #1404 Old Sandwich oval ftd cream, Sahara, H \$25.00; #407 Coarse Rib cvrd. sugar, Flamingo, H \$20.00; #354 Wide Flate Panel ftd. sugar, Moongleam, H \$25.00; #1401 Empress D/F sugar, Moongleam & Sahara, H, choice, each \$25.00. Jan Thran, 1663 Londondale Pkwy, Newark, OH 43055 H=Mrkd, Ship & Ins. Ex. (614)344-5955

**For Sale:** Imperial Bull on Bustoff, Black, \$575.00; Minuet Girl, on bustoff, Amber, \$375.00 - Offers considered. COLLECTOR, PO BOX 1115, Newark, OH 43058 (614) 349-4714

**Wanted:** Heisey etched old fashions w/ Fisherman, Golf Circus, Mermaids, Tavern, and many others. Jerry Glenn, 1637 Londondale Pkwy, Newark, OH 43055 (614) 344-8419

**Wanted:** Wattware, all patterns, mint. Bud Moreau Call collect. (614) 397-4591

**Wanted:** Heisey baskets - etched, cut, colored, or whimsy. Send price & description to Kim Carlisle, 28220 Lamong Rd., Sheridan, IN 46069 (317) 758-5767

### New items in the Museum Gift Shop & Gift Gallery

ROSALENE ELEPHANT HANDLE CHILDS CUP \$21.00  
ORCHID ETCH OR HEISEY ROSE ETCH NOTE CARDS \$ 2.25  
Stop in or phone in your mail order - (614) 345-2932

**Gwen & Bob McKeeman Antiques**  
5517 S. 74th. E. Ave.  
Tulsa, Ok 74145

(918) 627-6715  
UPS & Ins. Extra  
All Marked

|   |          |
|---|----------|
| #305 Punty and Diamond Point water botttle & (6) tumblers*, set | \$550.00 |
| 8" vase*  | \$ 85.00 |
| #433 Greek Key  |          |
| 8 oz tumblers* (12), each (minimum sale 2)                      | \$ 75.00 |
| 12 oz straight soda*, each (minimum sale 2)                     | \$ 80.00 |
| 4-1/2" straw jar* or small spooner                              | \$185.00 |
| 12-1/2" French roll tray*                                       | \$155.00 |
| 5-1/2" high ftd. shallow jelly*                                 | \$ 65.00 |

**Donald Bean**  
36 Harding St.  
Milford, MA 01757

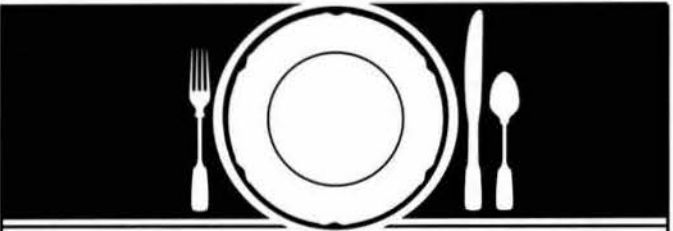
(508) 473-0561  
H = Marked  
Shipping Extra

|  |          |
|--|----------|
| #1401 Empress 6-1/2" oval lemon, dolphin finial cover, Sahara, H | \$70.00  |
| #1405 Ipswich 5 oz ftd soda, (7) each                            | \$ 14.00 |
| #1405 Ipswich insert for candlevase                              | \$ 40.00 |
| #305 Punty & Diamond Point paste pot, complete                   | \$ 78.00 |
| #1170 Pleat & Panel high ftd. compote & cover, Flamingo          | \$ 58.00 |
| #1183 Revere 1/2lb candy & cover, cut, H                         | \$ 35.00 |
| #300 Peerless 5 oz egg cup, H, (6) each                          | \$ 8.00  |
| #433 Greek Key 5" ftd almond, H & ind. almond set, H             | \$ 80.00 |
| #475 Narrow Flute w/Rim 3-1/2" salted nut cups, H 4 for          | \$ 58.00 |

**Braswell's Collectible Glass**  
119 Cagle Road  
Bluff City, TN 37618

(615) 538-5760  
UPS & Ins. Extra  
H = Marked

|  |          |
|--|----------|
| #1184 Yeoman 13" 3-comp. relish, D/O, Empress etch, Sahara | \$ 30.00 |
| #1184 Yeoman 9" oval baker, D/O, Empress etch, Sahara, H   | \$ 20.00 |
| #1184 Yeoman 9" celery, D/O, Empress etch, Sahara          | \$ 25.00 |
| #1229 Octagon ftd. mayo, D/O, Empress etch, Sahara         | \$ 30.00 |
| #465 Recessed Panel 1# cvrd. candy, gold decor, H          | \$ 60.00 |
| #1425 Victorian 9 oz goblet, H, (3) each                   | \$ 21.00 |
| #1425 Victorian 5 oz sherbet, H (4) each                   | \$ 14.00 |
| #1567 Plantation salt & pepper, H set                      | \$ 55.00 |
| #451 Cross Lined Flute 7 oz stem goblet, H (5) each        | \$ 25.00 |



## How to Find Those Missing Pieces.

The world's largest source of discontinued and obsolete crystal -- as well as china and flatware -- Replacements, Ltd., buys and sells over 36,000 different patterns.

If you need a piece or several pieces to add to your collection ... or if you'd like to sell some unneeded extras ... call or write us. We can provide you with a complete printout of available pieces in your pattern. Or we'll let you know our prices for the pieces you wish to sell.

Replacements, Ltd.: a 100,000 square foot facility; 1.4 million pieces; over 600,000 satisfied customers. Contact us, or come see our showroom. Let us help you complete your collection ... or maybe you'll help add to ours.

## REPLACEMENTS, LTD.

Call (919) 697-3000, FAX (919) 697-3100, or write:  
1089 Knox Road • P. O. Box 26029, Dept. H • Greensboro, NC 27420

OVER 3500 HEISEY PIECES

**RE: Antiques** (615)665-1824  
**1014 Foxwood Drive** H = Marked  
**Nashville, TN 37215** P & Ins. Extra

|  |          |
|--|----------|
| #12 eight flute salt & pepper shakers, small, pair   | \$ 55.00 |
| #112 Mercury 3" candlestick, Flamingo, pair  | \$ 38.00 |
| #112 Mercury 3" candlestick, Moongleam, pair   | \$ 42.00 |
| #134 Trident 2-lite candlestick, floral etch, pair   | \$ 80.00 |
| #351 colonial covered mustard, H   | \$ 40.00 |
| #411 Tudor 5" high ftd jelly, H  | \$ 22.00 |
| #411 Tudor 6" 2-hndld cheese, H  | \$ 15.00 |
| #451 Cross Lined Flute 7 oz goblet, H  | \$ 25.00 |
| #473 Narrow Flute salted nut dish, Moongleam, H, (2) ea.   | \$ 20.00 |
| #487 Hexagon Stem cologne, 1-3/4 oz, H & #63 stopper   | \$ 95.00 |
| #1101 Stitch 5 oz custard, Flamingo D/O, H (3) ea  | \$ 18.00 |
| #1229 Octagon ind. nut dishes, Moongleam, H (5) ea   | \$ 26.00 |
| #1286 individual ashtray with Cupid & Psyche   | \$ 25.00 |
| #1401 Empress 8" rnd plate, Old Col. etch, Sahara,, H (8) ea.  | \$ 22.00 |
| #1401 Empress cup & rnd. sauc. Old Col., H, (7sets) each set   | \$ 39.00 |
| #1401 Empress sugar & cream, Sahara Old Colony etch, H on plain Sahara tray, (tray has sm. chip under 1 hndl.) | \$115.00 |
| #1401 Empress sugar & cream D/F, Flamingo, H   | \$ 78.00 |
| #1401 Empress sugar & cream, D/F, Sahara, H  | \$ 68.00 |
| #1401 Empress ice tub w/metal hndl., D/F, H  | \$ 50.00 |
| #1401 Empress mayonnaise, D/F, Sahara  | \$ 35.00 |
| #1401 Empress 11" floral bowl, D/F, floral etch  | \$ 45.00 |
| #1417 Arch 9 oz straight ftd. tumbler, Amber   | \$ 95.00 |
| #1425 Victorian 11" 3-compart. relish dish   | \$ 35.00 |
| #1428 Warwick 5" Horn of Plenty vase   | \$ 35.00 |
| #1428 Thumbprint & Panel 8-1/2" vase, H  | \$ 48.00 |
| #1445 Grape Cluster 2-lite candlestick, H pair   | \$235.00 |
| #1454 Diamond Point ind. jelly, H, (4) each  | \$ 10.00 |
| #1469 Ridgeleigh 3-handled jelly, H  | \$ 24.00 |
| #1469 Ridgeleigh mayonnaise, H   | \$ 25.00 |
| #1469 Ridgeleigh round cigaretteholder, H  | \$ 18.00 |
| #1469 Ridgeleigh 4" covered cigareete box, H   | \$ 32.00 |
| #1485 Saturn 3 oz cocktail (3) each  | \$ 14.00 |
| #1486 Coleport 2 oz bar, H   | \$ 18.00 |
| #1489 Puritan 4" covered horsehead cigarette box   | \$ 60.00 |
| #1503 Crystolite 6" handled jelly, H   | \$ 12.00 |
| #1519 Waverly 13" gardenia bowl, #1507 Orchid etch   | \$ 60.00 |
| #1519 Waverly 6" dia. deep epergnette candleholder, H, pair  | \$ 28.00 |
| #1519 Waverly 3-lite candlestick, floral etch, H pair  | \$175.00 |
| #1536 Military cap ashtray   | \$ 25.00 |
| #1540 Lariat 7" footed fan vase, H   | \$ 32.00 |
| #1626 Satellite star bowl, 6" diameter   | \$ 35.00 |
| #3362 Charter Oak 3 oz cocktail, Flamingo, D/O, H  | \$ 18.00 |
| #3368 Albemarle 10 oz goblet, Moongleam stem & base, D/O   | \$ 35.00 |
| #3390 Carcassone short stem goblet, Old Colony etch, Sahara  | \$ 20.00 |
| #4163 Whaley 16 oz beer mug, H   | \$ 50.00 |
| #5009 Queen Ann 10 oz goblet, (2)  | \$ 20.00 |
| Heisey by Imperial Colt kicking& Balking, Ultra Blue, each   | \$ 40.00 |

**Jean & Don Parrett** (517) 784-7319 &  
**4995 Maple Dale Rd.** Recorder  
**Jackson, MI 49201** Post & Ins. Extra

|  |           |
|--|-----------|
| #1 Georgian 9" candlestick, pair                               | \$ 95.00  |
| #300 Old Williamsburg 20-1/2" 3-lite , "A" prism, Sahara, pair | \$1595.00 |
| #49 Old Williamsburg 3-tier epergne                            | \$1095.00 |
| #54 Aristocrat 34" stand lamp                                  | \$1295.00 |
| #17 Classic 16" 1-lite candelabra, w/C prisms, pair            | \$450.00  |
| #341 Old Williamsburg 2 hndl ice tub                           | \$ 75.00  |
| #341 Old Williamsburg 14" ice cream tray                       | \$ 95.00  |
| #352 Colonial 2 oz lavender jar                                | \$ 65.00  |
| #353 Colonial 1/2# covered cheese                              | \$105.00  |
| #411 Rib & Panel 2-hndl mayo & ladel, gold decor.              | \$ 30.00  |
| #500 Octagon ind. custard, Flamingo, (6) each                  | \$ 12.00  |
| #600 & 4054 Grape juice set, cut & monogram, (7pcs)            | \$ 85.00  |
| #1193 Inside Scallop 7" hndl pickle, Flamingo                  | \$ 32.00  |
| #1201 Lavern ftd floral bowl, Moongleam                        | \$ 75.00  |
| #1184 Yeoman 10-1/2" dinner plate, D/O, Flamingo, ea.          | \$ 85.00  |
| #1184 Yeoman 9 oz D/O tumblers, Flamingo, each                 | \$ 20.00  |
| #359 Colonial 1 oz cordial, (6) each                           | \$ 35.00  |
| #1205 Fancy Loop salt & pepper, original top, pair             | \$ 65.00  |
| #1252 Twist 12 " floral bowl, Moongleam                        | \$ 75.00  |
| #1252 Twist 3-pint pitcher, Moongleam                          | \$275.00  |
| #1252 Twist 3-pint pitcher, Flamingo                           | \$275.00  |
| #1252 Twist 9oz tumbler, Flamingo, (4) each                    | \$ 38.00  |
| #1252 Twist 2 hndl hotel sugar, Flamingo                       | \$ 25.00  |
| #1401 Empress 12" 2-hndl tray, Sahara                          | \$ 75.00  |
| #1401 Empress 3-pint pitcher, Sahara                           | \$250.00  |
| #1401 Empress 3-pint pitcher, Moongleam                        | \$295.00  |
| #1401 Empress 9 oz tumbler, Sahara, (2) each                   | \$ 35.00  |
| #1404 Old Sanwich 3 oz cruet, Sahara                           | \$145.00  |
| #1503 Crystolite 10" plain center dinner plates, ea            | \$ 95.00  |
| #1503 Crystolite 1-lite mellon blocks, pair                    | \$ 45.00  |
| #5003 Crystolite 10 oz tumbler, each                           | \$ 35.00  |
| #1469 Ridgeleigh 12" oval floral bowl                          | \$ 48.00  |
| #1469 Ridgeleigh 3-1/4" dia. coaster, (10) each                | \$ 6.00   |
| #1513 Baroque 2-lite & vase, w/A prisms                        | \$ 85.00  |
| #3359 Plateau flared ball vase, Moongleam                      | \$ 75.00  |
| #1489 Puritan large horsehead cigarette box                    | \$ 75.00  |
| #5078 Park Avenue 1-1/4oz cordial, (6) each                    | \$105.00  |
| #5078 Park Anenue 3 oz cocktail, (2) each                      | \$ 50.00  |
| #112 Mercury, Rose, 1-lite candle holder, pair                 | \$ 65.00  |
| #5012 Urn 10" high, Rose vase                                  | \$295.00  |
| #5012 Urn 8" high Orchid vase                                  | \$195.00  |
| #350 Pinwheel & Fan 15" dia. punch bowl & base                 | \$295.00  |
| #350 Pinwheel & Fan punch cups, (8) each                       | \$ 19.00  |
| #1637A Town & Country 11" salad bowl, Limelight                | \$155.00  |
| 1637A Town & Country 14" sandwich tray, Limelight              | \$155.00  |

Year End Clearance Sale--10% off on all items left From Aug., Sept. Oct., Nov., Dec., 1991 ads.



**ALL HEISEY  
AND HEISEY BY IMPERIAL  
AUCTION  
SATURDAY JANUARY 11, 1992  
10:00 A.M.  
APPLE TREE AUCTION CENTER  
1616 W CHURCH STREET  
NEWARK, OHIO 43055  
(614) 344 - 4282**



Our January auction looks very colorful and exciting. (60) pcs Alexandrite incl footed decanter, candlesticks, ice bucket, stemware & more. (45) pcs Cobalt incl vases, Spanish & Carcassonne, Old Sandwich, Sussex & more. Limelight incl Rococco relish, Saturn & Whirlpool. Moongleam features dolphin footed punch bowl, Empress pitcher & candlesticks. Over (100) pcs Sahara with items in Old Sandwich, Gascony & lots of Empress. Other colors incl Flamingo, Emerald, Tangerine, Dawn & a Vaseline candy jar. Nice selection of about (30) crushed fruit, humidors & small jars. Good collection of little things incl cordials, wines, salts, almonds & smoking items. Electric lamp with glass spider, pr #17 candelabras. (50) animals incl all 3 Geese, Elephants, Hen, Rooster & Chick, Fish, Mallards, Colts, Pheasants & others. Many animal related items incl Elephant handled mug. Imperial incl many Ultra Blue animals, Slag & other colored animals, most of the oscars & other items. Please try to attend this fine sale but if you can't we will be happy to mail bid for you. If you are not currently a subscriber to our Heisey auction catalogs send \$14.00 for the 1992 subscription to the above address. This price includes the after sale price list.

**ATTENTION: DEALERS & COLLECTORS OF GLASSWARE**

CAN YOU CLEAN AN ETCHED (CLOUDY) DECANTER OR CRUET?  
HAVE YOU TRIED USING VINEGAR, DENTURE TABLETS, CLR, TOILET BOWL CLEANER OR EVEN SAND OR EVEN GRAVEL?  
WE CAN RESTORE THE INERIOR OF YOUR GLASS ARTICLE BACK TO NEAR ORIGINAL CONDITON.

**\*\*SATISFACTION GUARANTEED OR YOUR MONEY REFUNDED!\*\***

**PRICE\*\***

|                         |                 |
|-------------------------|-----------------|
| CRUETS                  | \$ 20.00        |
| COLOGNES                | \$ 20.00        |
| WATER BOTTLES           | \$ 30.00        |
| SALT SHAKER, PR         | \$ 25.00        |
| VASES (UNDER 14 INCHES) | \$ 25.00        |
| DECANTERS               | \$ 30.00        |
| COCKTAIL SHAKERS        | \$ 30.00        |
| OTHERS (LIKE SQ. ITEMS) | WRITE FOR QUOTE |

**SHIP TO:**

**CARLISLE & ASSOCIATES  
28220 LAMONG RD.  
SHERDAN, IN 46069**

ALLOW 4-6 WEEKS FOR RE-DELIVERLY (MOST ITEMS)  
ALL ITEMS HANDLED AND CLEANED AT YOUR RISK!

\*\*Plus return postage & ins. (excess refunded)

\*\*Prices subject to change without notice

**H & R Diamond H** (614) 279-0390  
**Helen & Bob Rarey** after 5:30 P.M.  
**1450 White Ash Drive** UPS & Ins. Extra  
**Columbus, OH 43204** H = Marked

|   |          |
|---|----------|
| #433 Greek Key 9 oz goblet, H                         | \$150.00 |
| #1205 Fancy Loop 3 oz wine                            | \$ 31.50 |
| #1295 Beaded Swag 8 oz goblet, Custard, Newark, N.Y   | \$ 57.00 |
| #1405 Ipswich 4 oz sherbet, Sahara, H                 | \$ 32.50 |
| #3350 Wabash 10 oz goblet, Pied Piper etch, (2) ea    | \$ 18.00 |
| #3362 Charter Oak 8 oz goblet, Flamingo, (6) ea       | \$ 22.50 |
| #3362 Charter Oak 6 oz champagne, Flamingo (3) ea     | \$ 15.00 |
| #3390 Carcassonne 11 oz short goblet, Sahara (5) ea   | \$ 21.50 |
| #3390 Carcassonne 8 oz soda, Sahara (2) each          | \$ 15.00 |
| #3408 Jamestown 6 oz champagne, Palmento cut, (3) ea  | \$ 15.00 |
| #4004 Impromptu 10 oz goblet, (3) ea                  | \$ 15.00 |
| #4044 New Era 6 oz champagne, Sea Glade cut           | \$ 32.00 |
| #4055 Park Lane 10 oz goblet, Briar Cliff cut, (2) ea | \$ 37.50 |
| #5003 Crystolite 10 oz goblet, (8) ea                 | \$ 17.50 |
| #5010 Symphone 9 oz short goblet, Minuet etch, (6) ea | \$ 32.50 |
| #5038 Rooster Stem 3-1/2 oz cocktail, Moonglo cut     | \$ 32.50 |
| #5040 Lariat 1 oz cordial                             | \$ 85.00 |
| #5072 Rose Stem 1oz cordial, Rose etch, H             | \$165.00 |
| #5078 Park Avenue 3 oz tall sherry, H, (6) ea         | \$ 37.50 |
| #5082 Mid Century 3 oz short sherry, H (6) ea         | \$ 35.00 |

**Fran & Jack Grenzebach** Fran's Fancy Finds  
**105 Valencia Rd** (813) 391-5184  
**Seminole, FL 34642** UPS & Ins. Extra

|  |          |
|--|----------|
| #1567 Plantation 2-lite candlestick, pair                                | \$175.00 |
| #1567 Plantation 5-lite epergne candlestick, pair                        | \$150.00 |
| #1567 Plantation ice lip pitcher   | \$250.00 |
| #1567 Plantation 1/4# covered butter                                     | \$ 95.00 |
| #1567 Plantation cream & sugar, Ivy etch                                 | \$ 65.00 |
| #1489 Puritan bitters bottle (dra fly all sides)                         | \$ 65.00 |
| #3408 Tyrolean 9 oz goblet, Narcissus cut                                | \$ 35.00 |
| #3408 Tyrolean 3 oz cocktail, Narcissus cut, (3) ea                      | \$ 42.00 |
| #1184 Yeoman cup/sauc, D/O, Flamingo, H (8) \$20.00set, or ea.\$15.00    |          |
| ea#1405 Ipswich 8" plate, Sahara, H (12) ea \$35.00,8 or more,ea \$30.00 |          |
| #1428 Warwick 2-lite candestick, pair                                    | \$ 75.00 |
| #300-1/2 water bottle, #2, H   | \$100.00 |
| #150 Banded Flute pickle jar/cover, H                                    | \$ 70.00 |
| #353 Medium Flat Panel marmalade/cover, cut, H                           | \$ 75.00 |
| #3350 Wabash, squat jug, #166 Mayflower etch                             | \$170.00 |
| #2323 Navy 10 oz soda, cut diamond, Cobalt base                          | \$ 45.00 |
| #2323 12 oz soda, Cobalt base  | \$ 45.00 |
| #1489 Puritan 3 part relish, Dawn, H                                     | \$ 95.00 |
| #6060 Country Club 3-part cocktail shaker, paper label                   | \$ 75.00 |

Tiffn june night-1oz cordial (4) 50.00 ea. or all for \$150.00

**L.A. Maness** (804) 798-1825  
**Rt. 1 Box 552** UPS \$3.50  
**Ashland, VA 23005** H = Marked

Visa/Mastercard Welcome

|   |          |
|---|----------|
| #300 Colonial low footed sherbet, H (8) each        | \$ 10.00 |
| #351 Colonial covered mustard, H                    | \$ 49.00 |
| #351 Colonial 2 oz wine, H (8) ea                   | \$ 16.00 |
| #1503 Crystolite 2 part relish, H                   | \$ 37.50 |
| #5003 Crystolite 10 oz goblet, (3) ea               | \$ 27.50 |
| #352 Flat Panel oyster cocktail 8" plate, H (6) ea  | \$ 24.00 |
| #433 Greek Key 5" nappy, H (3) ea                   | \$ 30.00 |
| #433 Greek Key 8" nappy, H                          | \$ 60.00 |
| #433 Greek Key low footed sherbet, H (4) ea         | \$ 19.00 |
| #1405 Ipswich 8 oz footed soda (4) ea               | \$ 20.00 |
| #1540 Lariat mayo, H, underplate & ladle, set       | \$ 55.00 |
| #351 Priscilla 5" nappy, H (4) ea                   | \$ 12.50 |
| #1506 Provincial 4-part 10" relish                  | \$ 32.50 |
| #341 Puritan cordial, H (4) ea                      | \$ 35.00 |
| #1225 Ridge & Star 7-1/2" plate, Flamingo, H (6) ea | \$ 12.50 |
| #1469 Ridgeleigh mayo, H, with ladle                | \$ 37.50 |
| #1469 Ridgeleigh round cigarette holder, H          | \$ 17.50 |
| #1428 Warwick 7" cornucopia vase, (2) ea            | \$ 50.00 |

**John Woytowicz** (207) 696-3020  
**RFD 1 Box 4047** Ship & Ins. Extra  
**North Anson, ME 04958**

|   |          |
|---|----------|
| #341 Colonial covered butter                      | \$ 90.00 |
| #341 Colonial 11" cake salver                     | \$120.00 |
| #373 Colonial 1-1/2 oz wine, (4) ea               | \$ 18.00 |
| #373 Colonial 3 oz cocktail, (7) ea               | \$ 15.00 |
| #419 Sussex champagne, Moongleam bowl, (2) ea     | \$ 25.00 |
| #1201 Fandango 5' nappy                           | \$ 28.00 |
| #1201 Fandango 9" nappy                           | \$ 45.00 |
| #1252 Twist 9" plate, Marigold, (2) ea            | \$ 20.00 |
| #1252 Twist cup & saucer, Flamingo, (4 sets) ea   | \$ 35.00 |
| #1401 Empress cup & saucer, Sahara, (5 sets) ea   | \$ 35.00 |
| #1401 Empress 6" square plate, Sahara, (6) ea     | \$ 12.00 |
| #1401 Empress 10" square plate, Sahara            | \$ 50.00 |
| #1503 Crystolite 8 oz tumbler, (8) ea             | \$ 20.00 |
| #1419 Arch tumbler, Sahara, (2) ea                | \$ 60.00 |
| #3408 Jamestown iced tea, Barcellona cut, (3) ea  | \$ 20.00 |
| #1425 Victorian 8oz water goblet, (10) ea         | \$ 20.00 |
| #3480 Koors pitcher, Moongleam foot and handle    | \$200.00 |
| #341 Colonial punch bowl & stand, flared, 15 cups | \$325.00 |
| #351 Priscilla 4 oz and 6 oz ales, ea             | \$ 20.00 |

**Forever Heisey  
Norm & Jan Thran  
1663 Londandale Pkwy  
Newark, OH 43055**

**(614) 344-5955  
Ship & Ins. Extra  
H = Marked**

|   |          |
|---|----------|
| #126 Liberty 6" 1-lite candlestick, Flamingo  | \$ 50.00 |
| #1231 Ribbed Octagon 3" candlestick, Flamingo, pr   | \$ 50.00 |
| #1231 Ribbed Octagon 3" candlestick, Moongleam, pair  | \$ 60.00 |
| #1541 Athena 2-lite candlestick, pr   | \$ 75.00 |
| #1404 Old Sandwich 1-lite candlestick, H, pr  | \$ 85.00 |
| #1445 Grape Cluster 1-lite candlestick, H, pr   | \$175.00 |
| #105 Pembroke 9" 1-lite candelabra, Moongleam, H pr   | \$325.00 |
| #129 Tricorn 3-lite, Flamingo, H  | \$ 95.00 |
| #135 Empress 6" 1-lite candlestick, Flamingo, pr  | \$150.00 |
| #120 Overlapping Swirl 3" 1-lite, Hawthorne, H, pr  | \$125.00 |
| #114 Pluto 3-1/2" 1-lite, Moongleam, pr   | \$ 55.00 |
| #20 Sheffield 7-1/2" 1-lite candlestick, w/Blue Bird decor., pr.  | \$195.00 |
| #3416 Barbara Fritchie 1 oz cordial, Alexandrite, H   | \$425.00 |
| #3416 Barbara Fritchie 1 oz cordial, Cobalt, H  | \$375.00 |
| #5058 Goose stem, 1 oz cordial, frosted goose stem  | \$210.00 |
| #3404 Spanish 1 oz cordial, Cobalt  | \$225.00 |
| #6060 Country Club 18 oz soda, Winchester "73" etch   | \$145.00 |
| #6060 Country Club 14 oz soda, Winchester "73" etch, (2) ea   | \$125.00 |
| #1401 Empress 10-1/2" square dinner plate, Sahara, with Formal Chintz, H (4) ea                           | \$100.00 |
| #1401 Empress cup/sauc. rnd., Sahara, Formal Chintz, H, (7) ea  | \$35.00  |
| #1184 Yeoman 10-1/2" oval ctr hndl tray, floral cut, Flamingo, H  | \$47.50  |
| #1184 Yeoman 11-1/2" floral bowl, D/O, Flamingo, and #14 King Fisher, Flamingo, H 2 pc. set               | \$295.00 |
| #17 Flower block, Flamingo, H   | \$ 65.00 |
| #1183 Revere 5" ftd. compote, Flamingo, S/O, H  | \$ 45.00 |
| #300 Colonial/Peerless 10 oz schoeppen, Flamingo, H (6) ea  | \$ 85.00 |
| #1519A Elephant hndl. beer mug, Amber, H  | \$850.00 |
| #4225 Cobel 1 qt. shaker, Sahara  | \$450.00 |
| #4002 Aqua Caliente cocktail, Sahara, H, (8) ea   | \$ 95.00 |
| #4002 Aqua Caliente cocktail w/Club Drinking scene, H   | \$ 65.00 |
| #1485 Saturn cup/sauc., Zircon, H (3 sets) ea   | \$165.00 |
| #1469 Ridgely 8" vase, Sahara, H  | \$145.00 |
| #464 8" rnd., hndl. basket, w/ floral cut, H  | \$245.00 |
| #1488 Kohinoor ashtray, Zircon, H (2) each  | \$ 65.00 |
| #3967/1245, ftd compote, Moongleam stem & ft., H  | \$ 85.00 |
| #1503 Crystolite, 18 1/2" buffet/punch bowl underplate, H   | \$115.00 |
| #3362 Charter Oak sherbet, Marigold, D/O, H (4) ea  | \$ 25.00 |
| #1506 Provincial 13" torte plate, H   | \$ 35.00 |
| #1506 Provincial covrd. candy, H  | \$ 85.00 |
| #1280 Winged Scroll 8-1/2" bowl and (6) 4-1/2" nappies, Emerald w/ gold ( Mint, excellent color) 7 pc set | \$295.00 |
| #1201 Fandango 4" nappy or 7" oblong tray/bonbon, choice ea   | \$ 15.00 |
| #2401 12 oz soda, Circus etch, "Rube"   | \$ 95.00 |
| #2401 14 oz soda, Sportsman etch, (4) ea  | \$ 45.00 |
| #2401 12 oz soda, Sailboat carving  | \$ 95.00 |
| #3408 Jamestown hndl. beer mug, W/O   | \$ 35.00 |
| #3389 Duquesne goblet, Tangerine, W/O, (2) ea   | \$225.00 |

**J & T Antiques  
P.O. Box 933  
Sturbridge, MA 01566**

**(508) 347-5424  
UPS & Hnd. Extra  
H = Marked**

|  |          |
|--|----------|
| Animals Mallards, wings 1/2, H (2) ea  | \$175.00 |
| #4206 Sawtooth vases 8", Moongleam base, (2) ea  | \$145.00 |
| #1483 Stanhope 6" candy box, H   | \$110.00 |
| #1519 Waverly ctr. hndl. platter, Orchid etch  | \$120.00 |
| #1401 Empress 8-1/2" plates, Cobalt, H, (7) ea   | \$ 75.00 |
| #1495 Fern 2-lite candlestick, pair  | \$ 75.00 |
| #20 Sheffield 7-1/2" candlesticks, H, pair   | \$195.00 |
| #21 Aristocrat 9" candlesticks, H, pair  | \$165.00 |
| #101 Simplicity 9" candlestick, H, pr  | \$225.00 |
| #129 Tricorn 3-lite, H, pr   | \$120.00 |
| #5 Patrician 9" candlestick, pair  | \$145.00 |
| #5 Patrician 5" candlestick, H pr  | \$175.00 |
| #30 Tom Thumb candlestick, H   | \$145.00 |
| #343 Sunburst orchid vase  | \$225.00 |
| #1483 Stanhope 15 pc, luncheon set, (incl. sandwich platter)   | \$275.00 |
| #1503 Crystolite 10" square gardenia bowl, H   | \$ 70.00 |
| #1503 Crystolite dinner plates, star bottom, H ea  | \$110.00 |
| #1503 Crystolite punch set, 24 cups, bowl, underplate & ladle still in original octagonal Heisey Box | \$550.00 |
| #351 8 oz footed ales, flared, H, (2) ea   | \$ 60.00 |
| #300 Peerless cordials, H, (5), ea   | \$ 22.00 |
| #1425 Victorian cigarette box, 3-1/2 x 4-1/2, H  | \$ 85.00 |
| #300 5 oz schoeppens, flared, H, (8) ea  | \$ 25.00 |
| #300 1-2 Colonial 7 oz flared taper champagne, H (6) ea  | \$ 23.00 |
| #331 Pickle jar, Mushroom stopper, H   | \$ 50.00 |
| #341 oval dishes (9", 10", 12") nest of 3, H, set  | \$ 48.00 |
| #1252 9" plate, Moongleam, H ea  | \$ 18.00 |
| #352 6-1/2" grapefruit plate, H, set of (8)  | \$ 95.00 |
| #1404 Old Sandwich 6" comport, H   | \$ 60.00 |
| #1404 12" oval floral bowl, H  | \$ 65.00 |
| #5024 Oxford 6 oz champagnes, Maryland cut, (8) ea   | \$ 40.00 |
| #5024 Oxford 3-1/2 oz cocktail, Maryland cut, (8) ea   | \$ 40.00 |
| #5024 Oxford 10 oz goblets, Maryland cut, (4) ea   | \$ 40.00 |
| #1503 Crystolite 7" shell praline  | \$ 60.00 |
| #411 Tudor saucer champagne, H (3) ea.   | \$ 18.00 |
| #5024 Oxford 6 oz champagne, (4) ea  | \$ 15.00 |
| #5024 Oxford, 3-1/2oz cocktails, H, (7) ea   | \$ 15.00 |



|  |   |   |
|--|---|---|
| <p><b>MARJORIE GILLETTE</b><br/>Rochester, New York<br/>Glassware Speciality Heisey<br/>Mail Orders &amp; Shows<br/>716-225-4678</p>   | <p><b>DUNBAR ENTERPRISES</b><br/>Heisey a Specialty<br/>Mail Order, Shows, Appraisals<br/>PO Box 7085, Port St. Lucie, FL 34985-7085 Oct-May 407-337-1558<br/>PO Box 222, Naples, ME 04055 June-Sept 207-647-5652</p> | <p><b>COMPARISON LIST</b><br/>New Heisey Auction List for 1990<br/>3 Year Auctions 88-89-90<br/>Price: \$13.00 + \$2.00 Shipping, Payable B. Whaley<br/>300 International Dr., Pataskala, Oh 43062 614-927-1557</p> |
| <p><b>ALL HEISEY AUCTION</b><br/>Consignments Welcome<br/>Apple Tree Auction Center<br/>1616 W. Church, Newark, OH 43055<br/>PH: (614) 344-9449</p>  | <p><b>GREEN ACRES FARMS</b><br/>Antiques, Crystal Glass &amp; Collectibles<br/>2678 Hazelton-Etna Rd., SW (S.R. 310-N)<br/>Pataskala, OH 43062<br/>Sat. or Sun. PM or call (614) 927-1882</p>                         | <p><b>THE CURIOSITY SHOPPE</b><br/>Heisey, Pottery, Coins, Crafts &amp; More<br/>In Holmes County Amish Country<br/>55 W. Jackson, Millersburg, OH 44654<br/>(216) 674-2999</p>                                     |
| <p><b>ALFA I CARRIAGE HOUSE ANTIQUES</b><br/>Featuring Depression &amp; Elegant Glassware<br/>Al &amp; Faye Maness<br/>Rt. 1 Box 552, Ashland, VA 23005<br/>PH: (804) 798-1825</p>           | <p><b>H &amp; R DIAMOND H</b><br/>Helen &amp; Robert Rarey<br/>1450 White Ash Dr.<br/>Columbus, OH 43204<br/>PH: (614) 279-0390 after 5:30</p>  | <p><b>PARRETT'S ANTIQUES</b><br/>Heisey<br/>4994 Mapledale Rd. OR<br/>1215 Greenwood Ave.<br/>Jackson, Mich. 49201<br/>PH: (517) 784-7319 OR (517) 783-3289</p>   |
| <p><b>ANTIQUES - THE SHULTZES</b><br/>206-208 East Main St.<br/>Newmanstown, PA 17073<br/>15 Miles West of Reading, PA<br/>PH: (215) 589-2819</p>  | <p><b>"HAPPINESS IS" - THE STULTZS</b><br/>3106 Warren Court, Glen Allen, VA 23060<br/>Shows and Mail Order<br/>PH: (804) 672-8102<br/>GLASS CIRCA 1890-1960</p>  | <p><b>PATTON HOUSE</b><br/>Rocky's Mall, I-81 &amp; US 11<br/>Weyer's Cave, VA 24486<br/>PH: (703) 967-1181<br/>The Antique Gallery, Richmond, VA</p>   |
| <p><b>C &amp; J ANTIQUES</b><br/>Cole &amp; Jean Miesner<br/>Box 45, 72 Whig St.<br/>Newark Valley, NY 13811<br/>PH: (607) 642-9905</p>  | <p><b>YOUR AD COULD BE HERE</b></p>   | <p><b>YOUR AD COULD BE HERE</b></p>   |
| <p><b>DOXTOIS</b><br/>Eva &amp; Joe Hirsh<br/>Heisey &amp; Pattern Glass<br/>6 James St., Norwalk, CT 06850<br/>PH: (203) 847-3315</p>   | <p><b>HELEN &amp; JIM KENNON</b><br/>Heisey, Cambridge, Fostoria, Duncan,<br/>Imperial, Fenton, Tiffin<br/>P.O. Box 114 Brookville, OH 45309<br/>PH: (513) 833-5406 SHOWS ONLY</p>                                    | <p><b>R &amp; L ANTIQUES-SAN FRANCISCO</b><br/>Members of the Golden Gate Heisey Club<br/>3690 Bodega Ave. Petaluma, CA 94952<br/>PH: Petaluma (707) 762-2494<br/>PH: San Francisco (415) 621-6693</p>              |
| <p><b>CHARLES &amp; MILDRED FISHER</b><br/>Heisey, Degenhart, Imperial, Antiques,<br/>Collectibles, General Line<br/>991 Idlewild, Newark, OH 43055<br/>PH: (614) 522-5398</p>               | <p><b>JJ MC KEE ANTIQUES</b><br/>Pottery - Glassware - Collectibles<br/>222 B West 75th St. Kansas City, MO 64114<br/>Wed.-Sun. 10-5 PH: (816) 361-8719</p>   | <p><b>THE WOODEN SHOE</b><br/>Antiques &amp; Collectibles<br/>Jim &amp; Sheri VanEs by Appt.<br/>810 Elden, Herndon, VA 22070<br/>PH: (703) 435-9045</p>  |
| <p><b>CRYSTAL LADY</b><br/>Joann Hagerty<br/>Specializing in elegant depression glassware<br/>1817 Vinton Street, Omaha, NE 68108<br/>Shop Ph. (402) 341-0643 or Home Ph. (402) 391-6730</p> | <p><b>RAILROAD DINING CAR CHINA</b><br/>Wanted By Collector - Harold W. Ames<br/>4574 Driftwood La., Canandaigua, NY 144424<br/>1-716-394-1098 1-800-836-9619<br/>Most Anything Railroad Related Wanted</p>           | <p><b>SCHWAN'S ANTIQUES</b><br/>SHOWS &amp; MAILORDER<br/>77 Lagos del Norte<br/>Ft. Pierce, FL 34951<br/>PH: (407) 461-5940</p>  |
| <p><b>DIAMOND H PLUS</b><br/>Mail Orders &amp; Shows<br/>George &amp; Eileen Schamel<br/>6625 Gilardi Rd., Boonsboro, MD 21713<br/>PH: (301) 432-6285</p>                                    | <p><b>J. &amp; R. COLLECTIBLES</b><br/>Shows, SASE, Mail Order list<br/>The Lukasko's<br/>P.O. Box 1030, Newark, Ohio 43055<br/>PH: (614) 344-9719</p>  | <p><b>ARMORY ANTIQUES</b><br/>Quality Glass &amp; Furniture<br/>168 W. Main St.<br/>Plain City, OH 43064<br/>(614) 873-4890</p>   |
| <p><b>ETTELMAN'S DISCONTINUED</b><br/>CHINA &amp; CRYSTAL<br/>HEISEY a SPECIALTY<br/>P.O. Box 6491-HN Corpus Christi, TX 78411<br/>PH: (512) 888-8391 Include SASE</p>                       | <p><b>MOSTLY HEISEY</b><br/>Rhoda Curley<br/>16 Clayton PL, Albany, NY 12209<br/>Shop and Mail Order<br/>PH: (518) 482-6272</p>   | <p><b>HEISEY PUBLICATIONS</b><br/>Box 102, Plymouth, Ohio 44865<br/>All Vogel Heisey Books I, II, III, IV<br/>And Quarterly Newscasters available</p>   |
| <p><b>FOREVER HEISEY</b><br/>Jan &amp; Norm Thran<br/>Mail Order, Shows, Appraisal Service<br/>1663 Londondale Pkwy., Newark, OH 43055<br/>PH: (614) 344-5955</p>                            | <p><b>MOUNDBUILDERS ANTIQUES</b><br/>Heisey &amp; Animals, General Antiques<br/>Irene Rauck<br/>1138 Moundview, Newark, OH 43055<br/>PH: (614) 344-6043</p>   | <p><b>WILLEY'S ANTIQUES &amp; MUSEUM</b><br/>Specializing in Heisey<br/>11110 Cannon Rd., Frazeytsburg, OH 43822<br/>16 miles east of Newark, OH<br/>PH: (614) 828-2557</p>   |
| <p><b>YOUR AD COULD BE HERE</b></p>  | <p><b>THE MUTED SWAN ANTIQUES</b><br/>5486 Peachtree Rd., Chamblee, GA 30341<br/>Heart of Chamblee Antique Row<br/>Specializing in Heisey &amp; Cambridge<br/>Bill &amp; Pat Miller PH: (404) 451-7620</p>            | <p><b>JAMES S. HARRIS ANTIQUES/APPRISALS</b><br/>Box 672<br/>Richmond, KY 40475-0672<br/>PH:(606) 623-9100<br/>Buying and Selling by Mail</p>   |
| <p><b>GLASS 'N' GLASS</b><br/>Virginia &amp; Odell Johnson<br/>6909 10th Ave. West<br/>Brandenton, FL 34209<br/>PH: (813) 792-0604</p>   | <p><b>SHRADER ANTIQUES</b><br/>Dep. &amp; Elegant Glass, Buffalo Pottery<br/>Railroad Dining Car China, Shelley China<br/>2025 Highway 199, Crescent City, CA 95531<br/>PH: (707) 458-3525</p>                        | <p><b>TALL OAKS ANTIQUES</b><br/>Glassware-Specializing in Heisey<br/>Shows - Mail order 219-696-0147<br/>Mike &amp; Barb Rosenberger<br/>565 N Nichols, Lowell, IN 46356</p>                                       |

## 16th Annual Souvenir Oscar Order Form

The 1992 Oscar will be made by Fenton in shiny Burmese. These beautiful Oscars will be marked F and HCA 92. As always, Oscars will be ordered on a prepay basis, **one per HCA member**, at a cost of \$25.00 plus \$1.50 tax (Ohio orders and pick ups in Ohio) and \$3.50 shipping. On the first day of convention, June 18, 1992, remaining quantities will go on sale to the general public at a slightly higher price. When placing your order, please do not include dues, book orders, etc.. We expect to receive 1992 Oscars in late January. As soon as they are inspected and sorted they will be available for pick up in the gift shop. All Pick-up orders should be picked up by the last day of Convention 92. Mail orders will be shipped as soon as possible after they are received. Make checks payable to HCA. Clip and mail this form to:

**HCA 92 Oscar, 169 W. Church St. Newark, OH 43055 - Please read form carefully and fill in completely.**

- |     |                      |                                 |       |                   |   |
|-----|----------------------|---------------------------------|-------|-------------------|---|
| (1) | <input type="text"/> | Number of Oscars                | times | \$ 25.00 each     | \$ _____ (one per member)                           |
| (2) | ADD:                 | Ohio sales tax                  |       | \$ 1.50 each      | \$ _____ (All Ohio mail orders and museum pick ups) |
| (3) | ADD:                 | Postage & handling for shipping |       | \$ 3.50 each      | \$ _____ *  |
| (4) | <b>TOTAL</b>         |                                 |       | <b>Amount due</b> | \$ _____  |

\* If (3) - Postage & handling is left blank, we will place your Oscar with those to be picked up at the Museum.

(5) Name (s) \_\_\_\_\_

Address \_\_\_\_\_ City \_\_\_\_\_ State \_\_\_\_\_ Zip \_\_\_\_\_

(6) Check One: MC  Visa

Card # \_\_\_\_\_

Expiration Date: Month   
Year

### THE NATIONAL HEISEY GLASS MUSEUM

Corner of W. Church St. & N. Sixth St.

Newark, OH 43055

(614) 345-2932

Open daily

1 P.M. - 4 P.M.

Closed holidays



We have approximately 5,600 square feet of display space for the beautiful handmade glass produced in Newark, OH by the A.H. Heisey Co. from 1896 to 1957.

### MEMBERSHIP RENEWAL NOTICE

THE DATE ABOVE YOUR NAME AND ADDRESS IS YOUR RENEWAL DATE. THIS IS YOUR LAST ISSUE IF IT READS: 1-10-92. REMEMBER THAT DUES ARE NOW \$18.50 PER YEAR, PLUS \$2.50 FOR EACH ADDITIONAL HOUSEHOLD MEMBER.

PLEASE DISREGARD THIS NOTICE IF YOU HAVE RECENTLY PAID YOUR DUES! THANKS



### POSTMASTER SEND FORM 3579 TO:



HCA  
169 W CHURCH ST  
NEWARK, OH 43055

SECOND CLASS  
DATED MATERIAL 12-27 -91