

HEISEY *news*

OFFICIAL PUBLICATION HEISEY COLLECTORS OF AMERICA

© Heisey Collectors of America, Inc.
All Rights Reserved 1989

VOLUME XVIII NO. 12

DECEMBER, 1989 ISSN 0731-8014



HEISEY NEWS

P.O. Box 4367, Newark, OH 43055

CLUB OFFICERS:

President - Bob Rarey (614) 279-0390
Vice President - Dick Smith (614) 366-5163
Secretary - Amy Jo Jones (513) 426-8668
Treasurer - Betty Barnard (614) 366-7002
Curator - Louise Ream

Editor: Louise Ream

P.O. Box 4367, Newark, Ohio 43055

PH: (614) 345-2932

Published in Newark, Ohio, Printed in Newark, Ohio.

\$15.00 per year - \$1.25 per copy

Back Issues - Each Volume (12 issues) year - \$9.00

Volume V, VIII, IX, X, XI, XII, XIII, XIV, XV, XVI, XVII

Heisey Collectors of America, Inc. is a non-profit corporation with tax exempt status. Owners and operators of National Heisey Glass Museum, 6th and Church Streets, Newark, Ohio.

Open daily 1-4 p.m. except holidays. Other hours by appointment. Members admitted free.

HEISEY NEWS

Heisey Collectors of America, Inc.

All Rights Reserved 1989 - ISSN 0731-8014

Published monthly, except twice in February, by Heisey Collectors of America, Inc., Newark, OH 43055. Second Class postage paid, Newark, Ohio 43055. Club membership (includes 13 issues of Heisey News and participation in all club activities) \$15.00 per year plus \$2.50 for each additional family member in same household who wishes a membership card. For Voting Membership add \$25.00 one time only fee.

POSTMASTER: Send address change to:
HCA, P.O. Box 4367, Newark, OH 43055

When requesting information, please enclose a self-addressed, stamped envelope (SASE).

ADVERTISING - Send all ads to: HCA - Advertising
P.O. Box 4367
Newark, Ohio 43055

DOUBLE SPACE ALL ADS

Rates:

CLASSIFIED: 15¢ per word. \$1.50 minimum.

ABBREVIATIONS AND INITIALS COUNT AS WORDS

DEALER DIRECTORY: \$25 per year.

Display:	Members:	Non-Members:
1/8 page (9 items)	\$20.00	\$ 30.00
1/4 page (20 items)	30.00	45.00
1/2 page (20 items) Hor.	45.00	67.00
1/2 page (50 items) Vert.	60.00	90.00
1 page (50 items)	75.00	112.50

Personal ads limited to 1/8 space.

ALL ADS MUST BE PREPAID. Ad copy must be received by the 5th of the month preceding the publication date-i.e. April 5th for May issue. Ads containing reproductions will not knowingly be accepted unless clearly stated (i.e. Heisey by Imperial, etc.). HEISEY NEWS assumes no responsibility for false advertising or misleading information. In the event of typographical error, the incorrect portion of the ad will be run in the following issue, but HEISEY NEWS assumes no further liability.

The opinions expressed in articles in HEISEY NEWS are those of the authors and not necessarily those of the organization. The Editorial Staff reserves the right to edit or refuse any material submitted for publication. When requesting information, please enclose a self-addressed stamped envelope (SASE).

DON'T FORGET TO GET YOUR RESERVATIONS IN FOR THE CHRISTMAS DINNER TO BE HELD DECEMBER 9 AT THE TROUT CLUB. YOU CAN CALL US IF IT'S TOO LATE TO MAIL IN THE FORM WHICH APPEARED IN LAST'S MONTHS NEWSLETTER. WE ARE ABLE TO ACCEPT RESERVATIONS THROUGH DECEMBER 5.

THE BOARD OF DIRECTORS HAS DECIDED NOT TO GIVE DISCOUNTS ON ITEMS THAT ARE LIMITED EDITIONS. IN YOUR NEWSLETTER, PAGES 19, 20 & 21, YOU WILL FIND A LIST OF THE BOOKS AND ITEMS FOR SALE IN OUR GIFT SHOP. THE LIMITED EDITION ITEMS HAVE A "*" IN FRONT OF THEM AND SAY (LIMITED EDITION) IN THE DESCRIPTION. PLEASE, WHEN YOU ARE ADDING UP YOUR ORDERS (ORDER FORM ON PAGE 22) DO NOT TAKE A DISCOUNT ON THESE ITEMS. WE APPRECIATE YOUR COOPERATION.

ABOUT THE COVER

THE CHRISTMAS CARD IS A COPY OF AN ORIGINAL HEISEY CARD.

A SPECIAL THANKS TO ALL THE DOCENTS THAT HAVE HELPED US GREET GUESTS AND RUN THE GIFT SHOP DURING THE PAST YEAR. WE REALLY APPRECIATE YOUR HELP

Pat & Louise



FROM YOUR PRESIDENT

Last month I stated that HCA was looking for someone to take charge of the Flea Market on the Square. It is in operation on Saturday and Sunday of Convention week and the weekend prior to the Heisey Convention. As of this writing, no one has volunteered to be in charge, but some have volunteered to help. Your consideration would be appreciated.

On October 21, Helen and I attended a meeting of the National Glass Clubs in Parkersburg, West Virginia. This semi-annual meeting was hosted by the Fenton Art Glass Collectors of America, Inc. The National Glass Clubs have a joint ad appearing in the Daze, on a quarterly basis, soliciting new members. The ad has been successful for all participants in obtaining new members. At the last two meetings, this group has been discussing the possibilities of sponsoring a joint Glass Show. At the earliest, it was felt this event could not be held before the fall of 1991. Much work needs to be done if this event is to become a reality. The time and place are two decisions that need to be made soon. It was the feeling of the group that it be held somewhere in the Ohio Valley. Two locations were suggested as possibilities: Oglebay Park in Wheeling, West Virginia, and the new Holiday Inn, Parkersburg, West Virginia. (The Holiday Inn will host the Fenton Convention in 1990.) I will welcome input from HCA members regarding this proposed event. The recently formed Old Morgantown Glass Collector's Guild joined the group at this meeting.

There seems to be some confusion regarding discounts on some items for sale in the Museum Gift Shop. The Board of Directors established the policy of "no discount on items that are listed as limited editions". Most items now being made in Ruby are in this category.

Dates to remember: December 9, HCA Annual Christmas Dinner at the Trout Club in Newark; March 9 & 10, the Annual Museum Benefit Auction at Apple Tree Auction Center.

Until next month - Happy Collecting.

Merry Christmas

Bob Rarey

FROM THE DESK OF THE EDITOR

Today, November 13, was a lovely warm day in mid-Ohio and we've had that kind of weather for several days. Why did I have to waste this great weather by being sick and at home in bed! I am lucky that I am seldom ill. The time seemed endless so I was happy to go back to work today after over a week off. I am thankful for good friends and a fine daughter who took good care of me. Thanks!

I was worrying about the newsletter since the deadline at the printers is the 15th. However, to my surprise, Pat, my secretary and assistant, had almost everything typed, pasted up and practically ready to go. Only this column was left for me to do and a few very small changes. Pat has really learned a lot about doing the newsletter, running the computer, the gift shop and the museum itself. She is a dedicated worker who loves the museum and the glass.

Betty Barnard and Mary McWilliams proofread the newsletter. Pat and I would like to thank both of them as well as our many docents who give a great deal of time to the museum and to the gift shop. They do a lot to help make the club a success and it is greatly appreciated by everyone here.

Be sure to read Bob Ryan's full page about the March Auction. We have received many more boxes since he wrote about it and work is continuing in getting it ready to sell. The glass deadline is January 1, 1990. See page 4.

Let your fingers do the walking through the pages of Heisey News. There is a lot of good glass for Santa's pack. It is easier than bucking the big crowds in the stores and the gifts are much more lasting than most things. Check the Ads, the Gift Gallery list of items, the Dealer's Directory, for just that right piece of Heisey.

The Ruby figurines are later than we had expected, but should be here in the next three or four days. We can't wait to see them! Viking makes such a beautiful Ruby glass, as you know.

We'll be hoping to see many of you at the Christmas dinner. Snow would be nice but it would be better for you from afar if it waits until you are home again. If you need a late reservation, call us. The deadline is the 5th. The dinner is on the 9th. See page 23 of the last issue.

The big tourist season is now over so perhaps we'll have more time in the museum to do some of the things we have had to put off in the summer and the fall when there are so many people around.

We were once again saddened by a recent death in the Heisey family. Susan Been, A. H. Heisey II (Gus') daughter died recently at the age of 47. She had been living with Gus most of the time since the death of his wife. We understand that his son is now living with him. Our sympathy to the entire Heisey family.

We have not yet heard from anyone in the Carolinas or in California to learn if any of them suffered damage to their homes or their Heisey. Please drop us a line! We have been thinking about you a lot.

Pat and I wish you all the best Christmas ever. May your packages be full of Heisey!

Louise Ream



TO THE BOARD OF DIRECTORS,
DOCENTS
AND ALL THE MEMBERS OF HCA:
WE, THE STAFF,
WISH
YOU ALL

A VERY HAPPY HOLIDAY SEASON!

Wanda, Mary, Rose, Leonard,
Neila, Louise & Pat



diamonds are forever

Can it really be December already? How can that be - it seems only yesterday it was "Christmas in June", now it is Christmas for real. Oh well, time has a way of moving swiftly along and we should take advantage of each and every moment. The Yachting Center is moving forward at great speed getting ready for the holidays. The harbor is almost devoid of boats, presenting an almost eerie look, but the merchants are preparing their shops for the annual Window decorating contest, making the town very festive. The windows remind me of "fairy tales" each one different. There are drummer boys, elves, and popcorn strung on string, draped around Christmas trees aglitter with fairy lights. Brings back memories of things we read in books when we were small. After dark one evening when the lights were on the windows, I was driving down town and saw a family looking in one particular window. There were three small children, with their noses pressed against the glass, looking in the window; it was full of cradles, dolls, rocking horses, toy soldiers and drums. What a picture! It reminded me of something Norman Rockwell might paint. Maybe, just maybe, that window will win! It is a magic time of year, a time for children. Perhaps someday you all can see my town.

From the Land of Lincoln the "Frisky Fox" is the recipient of a wonderful present, a nice way to start the holidays. Let me share it with you - the #1503 Crystolite punch bowl and underplate with twelve (12) cups and the original ladle. This is not the whole story, the best part is yet to be told; this set was never unpacked and was discovered in the original octagonal shipping box, certainly a treasure to own! I did have the pleasure of seeing a set like this years ago (about 12, give or take) but it had been unpacked by the dealer to display.

The "Wistful Wayfarer" has really outdone herself; she sometimes questions her discoveries, but never fear, her instincts always steer her in the right direction. Let's start with the Thumbprint and Panel floral (center) bowl, in Crystal; two colognes were also discovered, both were iridized, one was the #354, the other she didn't know the number. A #350 Pinwheel and Fan 4½" nappy and another nappy, the 2-handled 4½" #1447 Rococo. The cutest one (nappy) of all was a #1503 Crystolite

4½" which had a glass handle attached to it, with glass flowers hanging from top center of the handle; #305 Puntty and Diamond Point spooner.

"Yours Truly" has a very elusive #439 Raised Loop 5 oz egg cup plus the #452 hotel sugar, cut top and bottom. This is the piece that the Heisey sugar scoop (whimsey) is made of. If you look on page twenty-one of the October, 1989, Heisey News, you will find a picture of this piece.

The "Amicable Stroller" sent me a copy of a page from an old glass magazine published in 1978. It was an article about two early American style patterns, "Ipswich" and "Old Sandwich". "Old Sandwich" was pictured; it was in 1932 and "Ipswich" was advertised as "Early American Scroll" while the "Panel and Thumbprint" pattern*, advertised as "Early American Thumbprint", is now known by today's collectors as "Old Sandwich", #1404. Color was coming into its own in 1932 and, therefore, both patterns were advertised in Sahara, "bright with the tone of sunshine"; Flamingo, "the rose tint of tropical plumage"; Moongleam, "the green of the seas in moonlight"; Alexandrite, "the patrician purple of Kings and Emperors". What a charming way to advertise! Today, "Ipswich" and "Old Sandwich" are greatly sought after by collectors.

"A friend in Deed" always comes up with awesome treasures, such as: Puritan egg cup in Flamingo; #3381 Creole champagne in Alexandrite; Tri-knob goblet with Needle Etch; #4085 Kohinoor wine in Limelight; Omega stem with Wheat cutting; Arch tumbler in Amber was also a grand discovery.

"The Genial Gypsy" was all agog over the #33 handled skirted candlestick.

"Mr. Crystolite" didn't report any #1503, but he did find a #352 cheese and cracker; the #20 vase, swung - narrow optic, at the top only.

"The Midnight Riders" passed up, a long while ago, the #150 Banded Flute bedroom set. Needless to say, they were always sorry; they started to put it together piece by piece. The 10" tray was purchased first, and, one by one, things fell into place: pint tankard and cover; tumbler; saucer foot candlestick; lastly, the match stand. I was told that putting the set together in this manner was much more exciting and meaningful than if they had purchased the set in its entirety!

"My Sharp Eyed Friends" have a couple of things: #1519 Waverly cream & sugar w/Rose etch; #1245 Ring Band toothpick; #1245 Ring Band tumbler; #1485 Saturn mustard. The thing that makes this different is the cover is metal but the little round finial is glass. Cute!!

Let's see what the "Steadfast Colleague" has to say for himself: #305 Puntty & Diamond Point footed jelly; #1503 Crystolite 14" plate; #1252 Twist 11" relish in Marigold & cut; #335 Prince of Wales Plumes spooner.

"The La Pelican", this past June, unearthed Provincial (Whirlpool) #1506 creamer, and this now gives them something to look for - the sugar. Did I forget to tell you the color? Yes, I think so - Zircon, UMM UMM Good!!

"The Canadian Goose" crows about a #17 puff box with a flowered metal lid and a #1503 Crystolite footed cigarette holder.

Well now, my grandchildren just called and want me to take them down to the "Landing" where a big Lobster boat will arrive bringing Santa to the

continued on next page

Yachting Center. Balloons, lollipops and toys will be shared by all. What a thrill for the children, and what a thrill for Gram!! Remember "nobody can do for little children what grandparents do. Grandparents sort of sprinkle stardust over the lives of little children".

(Alex Haley in *The Maroon*)

Before I sign off, let me also share with you what Peter Marshall "Let's Keep Christmas" said: "May we not "spend" Christmas, or "observe" Christmas, but rather "keep" it."

Please, I hope that you can all find it in your hearts at this time of year to give me the best Christmas present I could have, "A mailbox full of letters!" Thank you and Happy Holidays from the Yachting Center, I love you all.

Janet Caswell

* These names were not given by Heisey, possibly the advertising agent.

Ed Note: Send letters to Janet at the museum address. They will be forwarded to her. L.R.

CLUB NOTES

DAYTON AREA HEISEY COLLECTOR'S CLUB

By Karen Clark

The Dayton Area Heisey Collector's Club meeting on September 19, was devoted to determining the glass that would be displayed by club members as an exhibit for the Montgomery County Historical Society in the "Discovery Room" in the old Courthouse Building in Dayton. This display was set up on October 16, showing the different eras of the Heisey glass production, in an 18'x4'x4' display case that was made specifically for this display. The display also filled several cases in the Courthouse Rotunda area. The display is open to the public through December 1, 1989. Several of our members told me that this display looked like a "mini Heisey museum".

In addition to the Heisey glass display we were also asked to present a lecture and slides about Heisey glass. This also was presented to the public and sponsored by the Montgomery County Historical Society. The lecture and slides were presented by Bob Ryan on October 18.

Our study program for the month of September was the color Cobalt and the Rococo pattern. This was presented by Barbara Vorpe and Karen Clark. This provided our club members an opportunity to show and tell their finds in Cobalt, including the #3404 Spanish 12 oz footed soda, 10 oz goblet, and the 5½ oz saucer champagne. Several of each of these were purchased at bargain prices during our recent trip to Myrtle Beach. Also found on this same trip, same shop, were the #140 Crocus candlesticks, also in Cobalt. Needless to say, we were EXCITED about that find.

Our October meeting was a study of the color Flamingo and the Ribbed Octagon pattern. This program was presented by Hilda Ryan and Amy Jo Jones. Our members, as usual, provided a wide variety of items for show and tell, which included: #393 Domino sugar; #150 Banded Flute cruet; red flashed "Fancy Loop" sugar; #133 Swan handled floral bowl with flower block; a pair of Regency candlesticks.

Before closing, a plug for the March, 1990, Benefit Auction. Get your consignments and donations in EARLY! Let's all do our share to make this event even bigger than last year!

Our next club meeting will be held November 21, at 6:30 p.m., at the Huber Heights library. New members are always welcome to come and join us.

HEISEY CLUB OF CALIFORNIA

By Roy T. Boggs

The Heisey Club of California met October 22, at the Thompson's home, in the shadow of the L. A. Arboretum in Arcadia. A beautiful peacock, displaying all his colorful glory, was strutting his stuff on a lawn.

Election of the 1990 officers was the major order of business. Upon receiving the report of committee, the 30 odd members were unanimous in approval of the slate. Elected were: Prez - Leo Bevon; Vice Prez - Penny Thorup; Secretary - Ann Paulson; Treasurer - Homer Paulson. Penny also agreed to continued on next page

LETTERS, WE GET LETTERS . . .

Dear Club:

I take this moment to commend you and all volunteers. The 1989 Convention was more than I could have ever anticipated! It being my first convention, I still have a hard time imagining all that gorgeous Heisey not only in the beautiful displays, but also on sale at the various locations in the Newark area.

The museum is something all collectors and dealers must be proud of. The work represented by the founding members cannot be appreciated until one goes to see the museum. The renovation is quite handsome, not to mention the displays. It is also good to see the offices, as so many times they are cramped and not accommodating to the staff's needs.

This annual event and the museum could not come to pass if it were not for the gracious hosts and hostesses - not enough can be said in this short letter.

Marilyn Huffman
New Jersey

Dear Louise:

We received our Heisey News today and have read with regret the deaths of some very special Heisey people; Clarence Vogel, Harold Crim, and Bruce Montgomery. The first books we bought about Heisey were put together by Clarence and he surely enhanced our knowledge. Harold Crim was a delightful man and we enjoyed knowing him, and Bruce Montgomery was a Charter member of our West Coast Heisey Club in Florida. He added so much and we will miss him. It seems that we have lost quite a few "old familiar faces" but perhaps that is because we have been members of HCA a long time, too.

We enjoyed Liz King's poem. She is another very special person in HCA.

Virginia & Odell
Johnson
Florida

. . . Club Notes continued from preceding page

continue as editor of our Club Pub, The Pony Express, for another year.

Flower frogs and related items, program of the day, was presented by Gene Moenning. These items are often overlooked, and few collectors seem to have a real knowledge or ability to identify these Heisey pieces. All assembled were in agreement on the timeliness and thoroughness of Gene's presentation.

After successful business, an enlightening program, our hosts spread a very ample repast, completing the enjoyment of a beautiful day with a group of affable Heisey enthusiasts.

ROCHESTER AREA HEISEY COLLECTORS

By George Reynolds

The October meeting was held at the home of Marge and Jerry Gillette on the 15th.

Things quieted down by 3:15 when Bruce Schwendy called the meeting to order. Since we have not had a meeting in five months, the ladies had a lot of gossip to catch up on.

Bruce gave a brief rundown on the Convention. Our display was apparently well received by all. This was the first display that our club has presented. I do hope it is not the last; all the clubs should participate in as many HCA affairs as possible. A nice note from HCA was read thanking us for the donation and the display. The following people, who were at the convention, helped to set it up: Sharon Orientor; Marvin & Lois Jacob; Betty Evans; Bruce & Susie Schwendy; Edith Bockes; Marge and Jerry Gillette.

Marvin, Jerry and myself, were appointed to talk three people into taking the new officers jobs. After many threats, enticements, etc., Betty Evans agreed to be the next President, Marge Gillette the next Vice President and Lois Jacob the next Secretary/Treasurer. We will vote on this at the next meeting. However, they are all running unopposed.

We are continuing to use the Vogel Newsletters as a study tool. The Summer issue of the 1979 Newscaster will be used for the November meeting, with Ipswich, Groove and Slash and Lariat among the topics that various people have to report on.

There was some discussion regarding new members, we need them. However, since the club meets in private homes, it is not practical to take in too many. Therefore, we will try to get some through friends, relatives, etc., rather than by advertising. There was a motion, made by some disjointed soul, (me) that we put an ad in the New York Pa. Collector. He was roundly booed and left in disgrace.

There was a large show and tell. The following are a few of the items shown. A #1493 World Candle (Vogel called it Saturn & Stars); a pair of #137 Candles, Hawthorne Roly Poly; a Locket on Chain cake salver.

The shows in this area continue to come fast and furious. However, little good Heisey is seen. With the promoters continuing to raise their fees to the dealers, several November shows have been cancelled. The smaller events are apparently having a problem making ends meet. Of course, there have been far too many shows with the quality declining in most cases.

Well, another year is fast coming to a close. We in the Rochester area wish you all a Happy, Healthy, Merry Christmas!

Our quote for the month: "After reading the epitaphs in the cemetery, you wonder where they buried the sinners".

THE BAY STATE HEISEY COLLECTORS CLUB

By George Gleason

The Bay State Heisey Collectors Club held its regular monthly meeting on October 10, 1989, with President Steve Pescatore at the gavel.

The program for the evening was (Stems) which was done by Susan Pescatore. Her talk ranged from the early years, middle years and late years of production of stems made by Heisey. There were at least seventy-five different stems brought by our members. It was a sight to behold. Susan is very knowledgeable on stems and gave an excellent talk. I, for one, learned a few new things regarding stems. Thanks Susan.

Show and tell was done by David Steer, who does a great job every time he does it. Here is a list that was brought: #1184 Yeoman bowl; #352 Flat Panel cheese and cracker; #33 candlestick; #1533 Wampum candlestick; #411 Tudor creamer; #1245 Ring Band toothpick; #1245 Ring Band tumbler; an Arch tumbler in Amber; #1485 Saturn mustard; #1447 Rococo nappy; #305 Puntty & Diamond Point spooner. A good job by our members in finding these good finds. Keep up the good work.

Barbara McTighe provided the refreshments for the evening. The food was very good; thanks again, Barbara.

We will be having another glass show again in the spring; look for our ads and come and shop.

We in the Bay State want to wish everyone a Merry Christmas and a Happy New Year. I hope Santa is good to all and our stockings are filled with Heisey goodies. See you in 1990.

MOUNDBUILDERS HEISEY COLLECTORS CLUB

By Mary McWilliams

Moundbuilders Heisey Study Club met at the home of Margaret Weber for their November meeting. Leonard Tipton, president, called the meeting to order. A short business meeting was held.

The program for the evening was a video tape of the June Display and colored tables provided by Mary McWilliams. It was very interesting and well done by her son, David.

Refreshments were served. Margaret gave us her recipe for her fresh apple cake which was delicious. Next meeting will be in January with Jeanne Cullison as hostess.

To all our Heisey friends - Happy Holidays!!



TOURAINÉ

By Tom Felt

In my article last month, I mentioned that both no. 335 Prince of Wales Plumes and no. 337 Touraine were brought out together early in 1902. Prince of Wales Plumes, one of the most ornate designs made by Heisey up to that date, was obviously targeted for that element of the market which favored patterns in imitation of cut glass, an industry which was at its peak in 1902. Touraine, on the other hand, was just as clearly aimed at the opposite end of the market. It was by far the most severely simple line made by Heisey in the early years and, as you will note, was referred to in the advertisements as "No. 337 Plain Touraine Line". To what extent this pattern was intended for domestic use and how popular it was with housewives, I don't know, but I rather suspect that much of its sales were to the restaurant and hotel trade, since it is plain serviceable ware, of good, but not outstanding, quality.

It has been written that "Touraine" was a generic name used in the glass industry for this particular shape of stemware and that several companies may have made very similar pieces, but I've been unable to verify this in any of the reference books available to me. An account in an early issue of the Heisey News in particular mentions Cambridge's no. 300 Touraine, so collectors are probably advised to look for the Diamond H.

In addition to the distinctive "bulge" at the top of the pieces, the only other design element is the star on the bottom of some of the larger items like nappies and the table set. Instead of being uniform in size, this star has alternating "rays" of varying lengths.

Touraine was first advertised in February, 1902, in both The House Furnisher: China, Glass and Pottery Review and the Crockery and Glass Journal. Several tableware pieces were featured as well as the four piece table set, but there were also a couple of stemmed items as well and a sidebar indicating that the pattern included "a complete line of superb stemware." In later advertisements, in April and September of that same year, it was the stemware which seems to have been featured most heavily. And, in fact, this was the largest selection of stemware to be included in any of Heisey's earliest patterns. Out of the more than one hundred items eventually included in the line, more than thirty were either stemware or barware. And by 1905, when only fifty items were still being offered, half of them were stemware. Shortly after this date most of the table pieces were discontinued and, by 1913, only 19 stemmed pieces remained in production. One of those, the egg cup, was still in the catalogues as late as 1938.

The 1913 catalogue also offers the stemware with a narrow optic and, although the catalogue does not differentiate, I believe other sources apply "½" to the pattern numbers for these pieces.

As is not surprising, the very nature of the pattern lent itself to decoration. There were two styles of engraving, no. 30 and no. 40. Although I didn't come across any further information on these, I suspect one of them might be the engraving pic-

tured on p. 204 of William Heacock's Ruby-Stained Glass from A to Z. In addition, the line was also initially available with the no. 56 gold decoration, which consisted of a gold edge on the pieces with a single wide band and two narrow bands around the "bulge." Later the no. 63 decoration was also offered, identical to no. 56 except that the wide center band was green instead of gold.

Other decorations, apparently available only on 27 pieces of stemware, included no. 65 Ruby lustre on the bowls, no. 67 light Amber decoration and no. 68 dark Amber decoration. Other pieces of tableware which have been seen with a narrow edging of Ruby stain and a wide band of Ruby around the broadest portion at the top may have been decorated by the Oriental Glass Company in Pittsburgh, since it was reported as early as February, 1902, that they had added "A. H. Heisey & Co.'s new popular patterns, 335 and 337, in Ruby and Gold band" to their offerings for the season.

As mentioned above, Touraine seems to have been finally discontinued sometime in the late teens or early twenties. However that was not the end of the pattern. Beginning around 1933 and continuing until the late 1950's, the goblet, parfait, 5 oz juice and no 337½ sherbet, 4½ oz, (with narrow optic) were all regularly produced in Amber as special orders for the Fred Harvey restaurant chain. Neila's Collector's Encyclopedia of Heisey Glass, 1925-1938 pictures some of these pieces, as well as a very rare sherbet in an Amberina shade of Tangerine, presumably experimental.

Because of this late production, some of the moulds are still in existence and are owned by the H.C.A., including the sherbet, champagne, claret, egg cup, goblet, 5 oz soda and, somewhat more surprisingly, the sugar.

More on No. 325 Pillows

In my article in the October issue on Pillows, I mentioned that the punch cup in that pattern was known to have been decorated with Ruby stain, probably by a decorating company. Mike Anderton writes that he has also seen the 1-quart pitcher with Ruby on the plain portion around its top.

He also mentions that in addition to the five sizes of Duncan colognes referred to (which appear in the Duncan catalogue as ranging from 1 oz to 8 oz in capacity), a 12 oz version also exists.

Note: Pictures of 337 Touraine are on the following two pages.

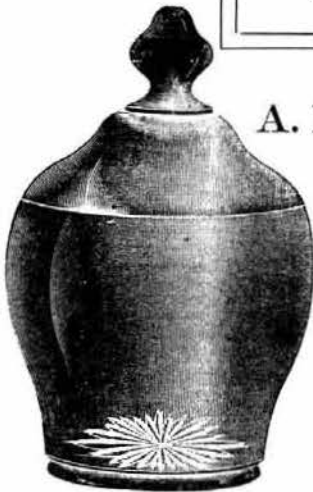
We would like to take this opportunity to thank Tom Felt for his article every month. We really appreciate his input.

HAPPY
HOLIDAYS



No. 337. PLAIN TOURAINE LINE

MANUFACTURED EXCLUSIVELY BY
A. H. HEISEY & Co.
 INCORPORATED
 NEWARK
 OHIO



SUGAR AND COVER.



BUTTER AND COVER.



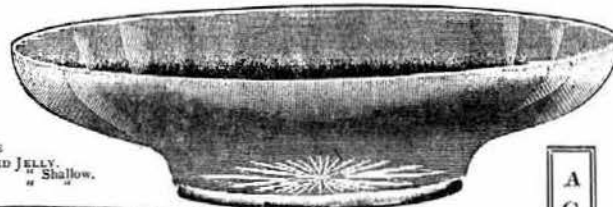
6-oz. OIL BOTTLE.
 PRESSED STOPPER.



CREAM.



GOBLET.



9-in. NAPPY, FLARED.

ALSO MAKE
 5-in. FOOTED JELLY.
 4-in. " " Shallow.
 6-in. " " "



4 1/2-in. FOOTED JELLY.

ALSO MAKE
 5-oz. SYRUP,
 Silver Plated
 Top.



12-oz. MOLASSES CAN, O. K. TOP.

A
 C
 O
 M
 P
 L
 E
 T
 E
 L
 I
 N
 E
 O
 F
 S
 U
 P
 E
 R
 B
 S
 T
 E
 M
 W
 A
 R
 E



WINE.



4-in. NAPPY.



4 1/2-in. NAPPY.



ALSO MAKE
 4 1/2-in. Nappy, Shallow
 5-in. " " "
 7-in. " " "
 8-in. " " "
 9-in. " " "
 10-in. " " "
 11-in. " " "
 12-in. " " "

MANUFACTURED EXCLUSIVELY BY
A. H. HEISEY & Co.
 INCORPORATED
 NEWARK, OHIO

ALSO MAKE
 6 1/2-in. Nappy, Flared.
 7 1/2-in. " " "
 9-in. " " "
 10-in. " " "
 11-in. " " "



EGG GLASS.



No. 337. PLAIN TOURAINE LINE



6-OZ. SAUCER CHAMPAGNE



FOOTED CUSTARD
STUCK HANDLE



EGG CUP



MANUFACTURED EXCLUSIVELY BY

A. H. HEISEY & Co.

INCORPORATED

NEWARK, OHIO



3/4-OZ. CORDIAL



3 1/2-OZ. TALL CHAMPAGNE



8-OZ. GOBLET



8-OZ. HIGH BALL



MANUFACTURED EXCLUSIVELY BY
A. H. HEISEY & Co.
INCORPORATED
NEWARK, OHIO



1989 GLASS DONATIONS FOR THE GIFT SHOP

1. \$135.00 donated by Wendell Avery
2. \$341.00 donated by Jim Field
3. \$ 50.00 donated by Kathleen Wood

1989 INDIVIDUAL DONATIONS OF GLASS & MISCELLANEOUS

1. Jim & Karen Clark - 3404 Spanish Champagne, Cobalt with Crystal stem and a 3404 Spanish 12 oz footed soda, Cobalt with a Crystal stem.
2. John & Joyce Gazave - 300 Peerless celery.
3. Helen & Bob Gschwend - Book "Glass".
4. Jerry & Marjorie Gillette - Book "Elements of Glass & Glass Making".
5. Charles Jones - Booklets about Steuben Glass.
6. Elnora Price - 1415 Twentieth Century 12 oz ice tea in Dawn and 1489 Puritan ash tray with monogram E. J.
7. Lynn Welker - 1415 Twentieth Century sherbet in Cobalt, seldom seen.
8. Betty & Burl Whaley - Heisey Price Guides.

1989 DONATIONS TO THE ENDOWMENT FUND

1. Mary Christine Lutmerding - \$20.00.
2. #41 Yankee Heisey Club - \$200.00

1989 GLASS DONATIONS FROM HEISEY STUDY CLUBS

1. #8 Heisey Heritage Society - 150 Banded Flute Schoepfen in memory of Sandy Flashner.

1989 ACQUISITIONS

1. 4057 Cecilia 10½" Saturn Optic vase in Sultana (Amber).
2. 400 Colonial cruet in Flamingo.
3. 3304 Universal goblet with all Military Etch.

All three of the above acquisitions are the only ones seen of each.

DATES TO REMEMBER

Dec 9	HCA Annual Christmas Dinner Trout Club	HCA
March 3, 4	Glass Show San Mateo, California	Golden Gate HCC
March 9, 10	Annual All-Heisey Auct Apple Tree Auct Center	HCA
March 16, 17	All-Heisey Show, Silver Spring, Maryland	Natl Capital HCC
June 14, 15 16, 17	19th Annual Convention 20th Annual Glass Show & Display, Newark, OH	HCA

* CLASSIFIED ADS

* WANTED: Emerald Beaded Swag. E. J. Cox, Box 367, Spavinow, OK 74366. PH: 918-589-2859.

* WANTED: Collector desires Flamingo 1401 Empress punch cups to go with 1401 Empress 15" punch bowl. Also needs glass ladle for same. Must be mint. Jim Maguire (516) 326-2447 anytime, leave message.

* WANTED: #964 Maryland Cutting on #5024 Oxford stem; goblets and clarets (from 1953 catalog). Please send prices of any other available pieces. Katherine Campbell, 3600 Westcliff Rd., N., Ft. Worth, TX 76109.

* WANTED: ANIMALS, ANIMALS, ANIMALS, ANIMALS Heisey Amber giraffe, Honey Amber Rooster and Flying Mare, Cobalt colts and colored limited edition Heisey and Imperial animals. Plaster/Wax Animal Models. Collector, P.O. Box 1115, Newark, Ohio 43055. PH: 614-349-4714.

* FOR SALE: #1540 Lariat punch bowl, 21" punch bowl plate, glass ladle, eleven marked cups: all \$285 plus shipping. E. Reynolds, Box 133, Waterford, VA 22190. PH: 703-882-3574.

* FOR SALE: #433 Greek Key 5" cov'd* almond dish*, \$195; (6) individual almond*, \$22; covered* butter*, \$250; small ice tub* w/7" underliner*, 2 pcs \$180; 6½" tall celery* (lg. spoon), \$190; 4½" straw jar (sm spoon), \$140; large hotel ice tub*, \$335; (3) 4½" shallow nappies*, \$24; (3) 5" shallow nappies*, \$28; #433½ 4 oz oil w/#8 pressed stopper, \$124; Shipping extra/UPS only. 5-day return privilege, all marks/stickers intact. RED HORSE INN, Jerry Gallagher, 420 1st. Avenue, N.W., Plainview, MN 55964. PH: 507-534-3511.

* GLASS GLASS DEALERS/COLLECTORS: Winter List of Handmade Glass priced for resale in your shops or ads. Lists to be published quarterly, a la Orange County Antique Services of past years. Fostoria, Cambridge, Heisey, Duncan, Tiffin, Fenton, Morgantown, Imperial, and New Martinsville/Viking. SEND LARGE SASE for first list to RED HORSE INN, 420 - 1st Ave, N.W., Plainview, MN 55964. PH: 507-534-3511. Some great buys!!

* FOR SALE: XMAS IDEAS. Waverly #1519 Orchid Etch 6" sq butter & cover, \$140; Waverly #1519 Rose Etch 6" sq butter & cover, \$145; Pair Fish Book-ends, \$195; Goose Wings half-way, \$65; Goose Wings down, \$450; Locket on Chain #160 electric shade, \$135; #6 Flamingo mayo ladle, \$35; #2 mustard spoon, \$25; pair of #2 Old Williamsburg 11" sticks, \$295; #5 Moongleam mustard spoon, \$40; #341½ 1 pint pitcher, \$150; #804 2lb candy or cracker jar, \$195; #22 Windsor 9" candle lamp, \$350; #458 basket, 8" with cutting, \$135; Imperial Amber filly, head forward, \$350; pair #1 Georgian marked 11" sticks, \$295; #1401 Empress Moongleam dolphin footed sticks, \$550; pair #135 1401 Empress Alexandrite sticks, \$575; Limelight Madonna, marked - please call. The following animals are Crystal clear and no mould marks and are marked: bull; airdale; Fighting rooster; goose, wings up; goose wings half; wood duck; rearing pony; ringneck pheasant; mallard wings up; mallard wings half; mallard wings down; pouter pigeon; flying mare; donkey, not marked - call. We have lots of Heisey if you don't see what you would like please call. The Collectors Stop, 12018 Suellen Circle, Wellington, FL 33414. PH: 407-793-0986. P & I Extra. Do not call until Dec. 1st.

MOSTLY HEISEY
RHODA CURLEY
16 CLAYTON PLACE
ALBANY, NY 12209-130

PH: 518-482-6272
UPS EXTRA
MERRY CHRISTMAS

CHRISTMAS SHOPPING MADE EASY. LET US BE YOUR PERSONAL SHOPPER. WE HAVE THOUSANDS OF PIECES OF HEISEY AND CAMBRIDGE. TELL US WHAT YOU WOULD LIKE TO GIVE AND HOW MUCH YOU WANT TO SPEND. PICK FROM OUR SEPTEMBER OR NOVEMBER ADS IN THE HEISEY NEWS OR CHOOSE ANOTHER CATEGORY LIKE STEMS, TOBACCO ITEMS, MUSTARDS, CRUETS, PUNCH CUPS, SHAKERS, ANIMALS, ETC.

WE WILL GET IT TO YOU FOR CHRISTMAS GIVING!



R. L. DINKEL
6058 E. ENCANTO
MESA, AZ 85205

PH: 602-985-5520
P & I EXTRA

- 300-4 Candelabra pr \$950.00
- 417 Double Rib & Panel basket, Moongleam 125.00
- 433 Greek Key nut dish (4) ea 19.00
- 433 Greek Key 9 oz goblets (6) ea 120.00
- 433 Greek Key 10" plates (2) ea 75.00
- 433 Greek Key footed banana boats (6) ea 29.00
- 433 Greek Key french roll 95.00
- 433 Greek Key sherbets (9) ea 12.00
- 433 Greek Key champagnes (4) ea 24.00
- 433 Greek Key egg cup (6) ea 60.00
- 444 Vase, 3-handled,(rare) 395.00
- 459 Basket, decorated, 7" 185.00
- 480 Daisy & Leaves basket 145.00
- 1401 Empress cup & saucer, Sahara (4) set 34.00
- 1401 Empress DF pitcher, Sahara 125.00
- 1567 Plantation 9 oz goblets (12) ea 29.00
- 1567 Plantation 1/2lb cov'd butter 65.00
- 3380 Old Dominion opt goblet, Sah (8) ea 35.00
- 3404 Spanish cocktail, Cobalt (2) ea 85.00
- 5087 Plantation Ivy goblets (12) ea 24.50



* H & R DIAMOND H
* HELEN - BOB RAREY
* 1450 WHITE ASH DRIVE
* COLUMBUS, OHIO 43204
* PH: 614-279-0390
* AFTER 5:30 P.M.
* UPS & INS EXTRA
* = MARKED

HEISEY ANIMALS

- * Standing Pony (colt) (2) ea \$ 65.00
- * Balking Pony (colt) (2) ea 165.00
- * Swan Master Nut Dish 37.50
- * Sparkie (Oscar) (Plug Horse) 95.00
- * Goose, Wings Up 95.00
- * Goose, Wings Half 95.00
- * Elephant, Large 325.00
- * Elephant, Small 210.00
- * Asiatic Pheasant* 325.00
- * Donkey 215.00
- * Scottie Dog 95.00
- * Tropical Fish* 1475.00
- * Ring Neck Pheasant 125.00
- * Pig* 650.00
- * Airedale 525.00
- * Show Horse 750.00
- * Giraffe, Head Back 175.00
- * Bull 1250.00
- * Cygnet* 210.00
- * Gazelle* 1295.00
- * Rooster Stopper, frosted 25.00
- * Horsehead Stopper, small 75.00
- * Victorian Belle, bell (2) ea 75.00
- * Heisey Mirror Sign 185.00

HEISEY BY IMPERIAL ANIMALS

- * Set of 3 Ponies (colts) in Amber 295.00
- * Set of 3 Mallards in Amber 325.00
- * Flying Mare in Amber 1250.00
- * Show Horse in Amber 650.00
- * Giraffe, Head Back in Amber 175.00
- * Filly, Frosted 135.00
- * Sparkie, Caramel Slag (2) ea 27.50
- * Standing Pony (colt),Caramel Slag (2) ea 22.50
- * Donkey, Caramel Slag (2) ea 37.50
- * Airedale, Caramel Slag (2) ea 95.00
- * Elephant, Middle, Caramel Slag (2) . ea 37.50
- * Scottie Dog, Caramel Slag 210.00
- * Wood Duck, Caramel Slag (2) ea 37.50
- * Balking Pony (colt), Caramel Slag 175.00
- * Set of 3 Ponies (colts), Ultra Blue (2 sets) ea set 125.00
- * Standing Pony (colt), Ultra Blue 75.00
- * Balking Pony (colt), Ultra Blue 25.00
- * Kicking Pony (colt), Ultra Blue 25.00

IMPERIAL!

Groundhog, Caramel Slag . . 40.00

All Souvenir Oscars available. Send SASE for List.

"SEASON GREETINGS AND HAPPY HOLIDAYS"

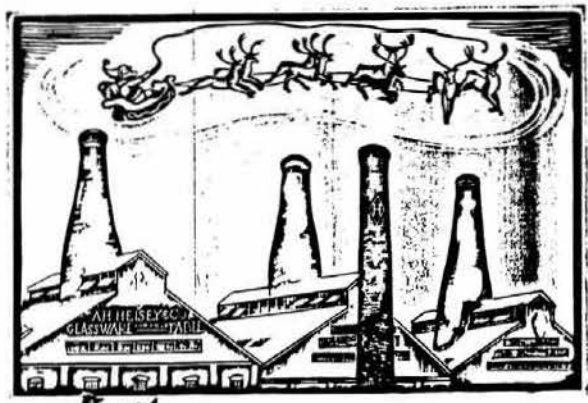


JEAN & DON PARRETT
4995 MAPLE DALE RD.
JACKSON, MI 49201

PH: 517-784-7319
& RECORDER
P & I EXTRA

- 1184 Yeoman 17" decanter tray, #5003 Nimrod Etch \$250.00
- 1184 Yeoman 15" sandwich tray, #5003 Nimrod Etch 195.00
- 500 Octagon 14" 2-h'lded 4-comp hors d 'oeuvre tray, #5003 Nimrod Etch 215.00
- 2401 sodas, 8 oz, #5003 Nimrod Etch (4) ea 40.00
- 2401 Old Fashion, 6 oz, #5003 Nimrod Etch (3) ea 40.00
- 4035 decanter, 32oz, polished stpr, #5003 Nimrod Etch 225.00
- 1183 Revere c'tail shkr, chrn top, #5003 Nimrod Etch (rare) 400.00
- 1205 Raindrop 13" floral, #15 duck & hldr, Flamingo set 295.00
- 1205 Fancy Loop 10" cov'd crkr jar 225.00
- 1250 Groove & Slash 12" cake stand 195.00
- 1503 Crystolite 12" cake stand 395.00
- 1485 Saturn 5 pc condiment set, sterling tops, cherry holder 210.00
- 325 Pillows 4 oz cologne 70.00
- 355 Quator 1 qt ftd cov'd strawberry bow, (rare) 325.00
- 1506 Whirlpool 3-h'lded cov'd candy 80.00
- 341 Old Williamsburg 1 pint milk pitcher 110.00
- 1509 Queen Ann h'lded ice bucket, #874 Exotique Cutting 195.00
- 3397 Gascony 10" diam ftd fruit bowl, Cobalt (rare) 525.00
- 1, 2, 3 Elephant set of 3, lg, med, sm 795.00
- 1554 Fish Book Ends pr 310.00
- 7079 Dinky Do Doulton Girl 425.00
- 100 Asiatic Pheasant 350.00
- 1 Flying Mare (no mark) Amber 2300.00
- 1503 Crystolite twist candleblock pr 25.00
- 1503 Crystolite 2½" candleblock pr 40.00
- 1469½ Ridgeleigh 3" candleblock pr 45.00
- 1506 Whirlpool 2½" round candleblock pr 40.00
- 1428 Warwick 2½" candleblock pr 35.00
- 99 Squat 1-lite low candlehldr, Mnglm pr 35.00
- 118 Miss Muffet 1-lite low candleholder, Moongleam pr 45.00
- 138 Liberty 1-lite 3" candleholder, Moon- gleam (1 only) 20.00
- 112 Mercury 1-lite 3" candlehldr, Moon- gleam (1 only) 20.00
- 112 Mercury 1-lite 3" candleholder, Fla- mingo pr 45.00
- 112 Mercury 1-lite 9" candlehldr, Fla pr 375.00
- 112 Mercury 1-lite 3" candlehldr, Sah pr 50.00
- 112 Mercury 1-lite 3" cut candlehldr, Haw- thorne pr 75.00
- 102 Ball stem 1-lite 9" candlehldr pr 225.00
- 104 Bertha 1-lite 5" candlehldr, Mnglm pr 425.00
- 105 Cherub 1-lite 11½" frosted candle- holder, Moongleam pr 1595.00
- 1614 Plume 3-lite candelabra pr 450.00
- 1632 Lodestar 1-lite candlehldr, Dawn pr 225.00
- 1567 Plantation 3-lite candlehldr pr 250.00
- 1511 Tourjours 2-lite candlehldr pr 135.00
- 1509 Queen Ann 1-lite, Orchid "A" prisms, candleholder pr 325.00
- 300 Old Williamsburg 1-lite 9" cut shade, 18" high candlelamp, 7" "C" prisms (1) 335.00
- 22 Windsor 1-lite 19" high gold shade elec-

- tric lamp (1 only) \$295.00
- 300 Old Williamsburg 1-lite 11" hg candle- stick (1 only) 125.00
- 300 Old Williamsburg 1-lite 12" "A" prisms candlestick pr 225.00
- 301 Old Williamsburg 3-lite 15" "A" prisms candelabra (1 only) 175.00
- 301 Old Williamsburg 3-lite 10½" low "A" prisms candelabra pr 295.00
- 126 Trophy 1-lite 6" hg candlehldr, Fla pr 145.00
- 136 Triplex 3-lite 6" hg candlehldr pr 165.00
- 1469½ Ridgeleigh 1-lite 10" hg "A" prisms candleholder pr 195.00
- 1445 Grape Cluster 2-lite 12" hg candlehldr, frosted pr 240.00
- 301 Old Williamsburg 2-lite 10½" "A" prisms candelabra, Sahara (1 only) 395.00
- 4044 New Era 2-lite "A" prisms candelabra pr 135.00
- 1488 Kohinoor 2-lite "D" prisms, candelabra pr 185.00
- 21 Aristocrat 11" 1-lite candlestk pr 150.00
- 3390 Carcassone 16 oz optic ftd flagon, Sahara (6) ea 75.00
- 1405 Ipswich 8" sq luncheon plate (6) ea 30.00
- 1489 Puritan lqt decanter w/stpr 75.00
- 3389 Duquesne 3 oz optic c'tail, Tangerine 185.00
- 1567 Plantation cov'd marmalade & spn 95.00



MERRY CHRISTMAS
A. H. HEISEY & CO.

Original HEISEY Christmas Card --
colorful 5½" X 7½" suitable for fram-
ing. Limited number available. \$12
UPS paid -- include STREET address.

RED HORSE INN
JERRY GALLAGHER
420 1st AVE. N.W.
PLAINVIEW, MN 55964
607-534-3511

CHARLES & MILDRED FISHER
991 IDLEWILDE AVENUE
NEWARK, OHIO 43055

PH: 614-522-5398
* = MARKED

HEISEY ANIMALS

Colt, Standing*	\$115.00
Colt, Standing	100.00
Goose, Wings Half	105.00
Giraffe, Head Back	225.00
Sparrow	105.00
Elephant, Small	240.00
Elephant, Medium	275.00
Elephant, Large	375.00
Donkey	375.00
Mallard, Wings Up	175.00
Rabbit Paperweight	165.00
Cygnets	250.00
Scottie Dog	145.00
Show Horse	1000.00
Horse Head Stopper, Large	175.00
Horse Head Stopper, Small	135.00
Duck Head Stopper	135.00
Rooster Vase	125.00
Duckling, Standing	190.00
Piglets	75.00
Duckling, Floating	190.00
Colt, Kicking	225.00
Colt, Balking	225.00
Colt, Standing, Amber, Honey	550.00

HEISEY BY IMPERIAL ANIMALS - ON BUST OFF

Tiger Paperweight	600.00
Hen, Yellow	600.00
Colt, Yellow Kicking	350.00
Colt, Yellow Standing	350.00
Plug Horse, Sparkie, Black	250.00
Show Horse, Crystal	900.00
Show Horse, Amber	800.00
Clydesdale, Salmon	800.00
Girl Head Stopper, Amber	900.00
Sow, Red	600.00
Fighting Rooster, Pink	500.00
Bull, Verde Green	1000.00
Bull, Black	800.00
1540 Lariat cup & saucer	set 35.00
1540 Lariat h'lded sandwich plate, 14 1/2"	150.00
1540 Lariat fan vase	65.00
1540 Lariat mayo w/under plate & table	60.00
1540 Lariat wines w/Moonglo cutting (14)ea	35.00
4225 Cocktail shkr w/Moonglo cutting	125.00
1540 Lariat 5 1/2" cov'd candy, footed	55.00
1404 Old Sandwich 12 oz h'lded mug(4)	ea 42.00
465 Recessed Panel basket	175.00
111 Cherub c'sticks, 11 1/2", Flamingo	pr 895.00
1469 Ridgeleigh bridge set (4 pieces)	set 75.00
1469 Ridgeleigh cocktail shaker	235.00
1519 Waverly gardenia bowl, 13", Orchid Et	75.00
1519 Waverly 3-part relish, Orchid Etch	65.00
1519 Waverly floral bowl, 12", Orchid Et	75.00
112 Single c'sticks, Orchid Etch	pr 125.00
134 Trident 2-lite c'sticks, Orchid Et pr	125.00
1519 Waverly honey dish, Orchid Etch	75.00
1567 Plantation 3-part relish	65.00
1567 Plantation floral bowl	85.00
5072 Rose footed mint, 3"	75.00
5072 Rose 2-part oval dish	65.00

* JIM GARTNER PH: 904-677-7415
* 4-FISHERMAN'S CIRCLE UPS & INS EXTRA
* APT. 1 * = MARKED
* ORMOND BEACH, FL 32174

300 Peerless 3 pt water pitcher*	\$ 78.00
300 Peerless punch cups* (9)	ea 8.00
341 Puritan Colonial 9 oz goblets* (3)	ea 20.00
341 1/2 Puritan 2 qt squat jug*	80.00
350 Pinwheel & Fan puff box & hair receiver, 1 each, metal tops, L.E.S. initial	135.00
355 Quator domino sugar*	45.00
372 McGrady 8 oz syrup*, Sahara	72.00
372 McGrady 8 oz syrup*, Moongleam	72.00
393 Narrow Flute 10" Japanese Garden Tr*, rmd	85.00
433 Greek Key 5" ice tub*	85.00
433 Greek Key 9 1/2" hotel ice tub*	185.00
469 Hartman 1/2 lb cov'd candy w/cutting*	78.00
1183 Revere 1/2 lb cov'd candy jar, Cloister Floral Cut*	58.00
1183 Revere 1 lb cov'd candy jar*, Silver overlay, Stripe cutting	138.00
1280 Winged Scroll spooner, Emerald	85.00
1401 Empress ind sugar & cream w/tray*, Moon- gleam	95.00
1405 Ipswich 10 oz sodas* (4)	ea 22.00
1503 Crystolite cheese & cracker, 2 pcs	65.00
1519 Waverly cov'd butter, Seahorse head	70.00
5040 Lariat 3 1/2 oz c'tails, Moonglo Cut* (7)ea	18.00
Sparrow	60.00

* GLASS 'N' GLASS PH: 813-792-0604
* VIRGINIA & ODELL JOHNSON * = MARKED
* 6909 - 10th Avenue, W.
* Bradenton, FL 34209

1469 Ridgeleigh puff box & cover	\$ 35.00
1469 Ridgeleigh rock & rye btl w/stopper	195.00
1469 Ridgeleigh 4 1/2" nappy, bell* (2)	ea 9.00
1469 Ridgeleigh shot glass* (2)	ea 22.50
1469 Ridgeleigh goblets (4)	ea 30.00
1469 Ridgeleigh 5 oz champagne (6)	ea 30.00
1469 Ridgeleigh mustard, lid & #10 paddle*	55.00
1469 Ridgeleigh bridge ash tray set*	40.00
1503 Crystolite pitcher	80.00
1503 Crystolite 8 cups with band, saucers* set	18.00
1503 Crystolite 3-comp relish*	18.00
1503 Crystolite cruet	35.00
1503 Crystolite jam pot, cover & spoon*	45.00
1503 1/2 Crystolite sugar, crmr (solid h'ldes)*	40.00
305 Puntly & Diamond Point 6 oz oil, cut strp	55.00
1540 Lariat 3 piece mayo set	25.00
372 McGrady 5 oz syrup*, Moongleam	70.00
1184 Yeoman 10 1/2" plates, Moongleam (8)	ea 25.00
1184 Yeoman cup & sauc*, Moongleam (6) ea set	18.00
1184 Yeoman 8 1/2" plate, deep cntr, Mnglm (6)ea	12.00
Or 4 piece place settings	ea 50.00

NITA'S GLASS & LINEN SHOPPE PH: 206-978-4913
 591 LEONARD ROAD P & I EXTRA
 ONALASKA, WA 98570 H = MARKED

- 305 Puntly & Diamond Point punch cup, H \$ 25.00
- 350 Pinwheel & Fan punch cup, H 25.00
- 353 Medium Flat Panel 5 oz syrup, 2-H . . . 45.00
- 357 Prison Stripe toothpick, H 175.00
- 379 Urn salts, H (2). ea 34.00
- 433 Greek Key small ice tub, H 110.00

- 465 Recessed Panel 7" basket, H 110.00
- 1183 Revere 10" plate, Vaseline w/Blue & gold edge, H 70.00
- 1205 Fancy Loop punch glasses (4) . . . ea 48.00
- 1205 Fancy Loop butter pat (4) ea 15.00

- 1235 Beaded Panel & Sunburst table set with gold - cov'd butter, cov'd sugar, creamer & spooner 325.00
- 1235 Beaded Panel & Sunburst cov'd cracker jar 235.00
- 1235 Beaded Panel & Sunburst cake salver . . 110.00

- 1401 Empress DF 11" bowl, Everglade cut . . 99.00
- 1401 Empress vase, Antarctic etch 90.00
- 1404 Old Sandwich 10 oz ftd tumblers (6) all 90.00

- 1503 Crystolite swan master nut, label . . . 65.00
- 1569 Plantation tall cov'd candy, H 175.00
- 4036 Bitters bottle, Tally Ho etch 150.00
- 4054 Coronation 14" Martini pitcher with 12" glass stirer 90.00

DONALD P. BEAN PH: 508-473-0561
 36 HARDING STREET * = MARKED
 MILFORD, MA 01757 SHIPPING EXTRA

- 1504 Regency 3" candleblocks pr \$ 75.00
- 1540 Lariat 2-lite candlesticks pr 65.00
- 5 Patrician toy candlesticks* pr 75.00
- 353 Medium Flat Panel trumpet vase*, 8" . . . 35.00
- 1425 Victorian underplates for finger bowls*, (4) all 40.00
- 160 Locket on Chain 8½" pickle dish 75.00
- 407 Coarse Rib mustard with cover* 20.00
- 1405 Ipswich cruets*, no stopper 35.00
- 1184 Yeoman egg cup*, Flamingo 37.00

MERRY CHRISTMAS TO ALL! - BETTY & DON BEAN

ADAMS & EVE'S ANTIQUES PH: 914-896-5818
 49 B ROSILIA LANE UPS & INS EXTRA
 FISHKILL, NY 12524 * = MARKED

- 300 Peerless 8 oz gob* (12) ea \$ 14.00
- 1619 Block Five, 5-lite centerpiece w/#4233 insert vase 225.00
- 341 Puritan toothpick holder* 75.00
- 1205 Fancy Loop toothpick holder 40.00
- 1200 Cut Block toothpick hldr, Ruby stain, "Eva P. Miller, Pan American 1901" . . . 60.00
- 1201 Fandango toothpick holder 55.00
- 1220 Puntly Band toothpick hldr, Ruby stain, "July 11, 1900, Asbury Park, Walter Smith" 50.00
- 353 Medium Flat Panel toothpick hldr* . . . 35.00
- 335 Prince of Whales tankrd & 4 tmlrs* w/gold, mint 250.00

* FOREVER HEISEY PH: 614-344-5955
 * NORM & JAN THRAN SHIP & INS EXTRA
 * 1663 LONDONDALE PKWY. H = MARKED
 * NEWARK, OHIO 43055

* HAPPY HOLIDAYS TO ALL OUR CURRENT, PAST, AND FUTURE
 * CUSTOMERS! 10% OFF ALL REMAINING ITEMS IN OCT 89
 * AD - CALL OR WRITE.

- * 1405 Ipswich ftd center piece w/original Heisey "H" prisms, Cobalt, H \$750.00
- * 1184 Yeoman after dinner cup & saucer with Empress etch, Flamingo, H 65.00
- * 4004 Impromptu 1 pint pitcher 95.00
- * 4004 Impromptu sherbet (2) ea 12.50
- * 3366 Trojan champagne, Flamingo, H (4) . ea 25.00
- * 3366 Trojan wine, Flamingo, H (6) . . . ea 40.00
- * 3330 Hanover champ w/Hermitage et (2) . ea 18.00
- * 3315 Polonaise goblet w/Cassandra etch . . 27.50
- * 350 Pinwheel & Fan punch bowl & base & 10 cups, H set 395.00
- * 3312 Gayoso goblet w/#639 Electro cutting 30.00
- * 3308 Bob White goblet w/#694 Balboa cutting 45.00
- * 4083 Stanhope goblet w/Maytime Etch . . . 45.00
- * 3320 Ritz goblet w/Mt. Vernon, Rose Et (2)ea 27.50
- * 3312 Gayoso goblet w/#19 Double Loop et(2)ea 12.50
- * 1571 Leaf individual nut 40.00
- * 6 Mayo ladle, Moongleam, H 45.00
- * 433 Greek Key 5 oz soda, H (3) ea 45.00
- * 3404 Spanish oyster cocktail w/Titania etch (7) ea 10.00
- * 465 Recessed Panel 3lb cov'd candy, H . . 145.00
- * 1252 Twist 2½ oz wine, Marigold, H 75.00
- * 341 Puritan sherbet, Flamingo, H, rare . . 85.00
- * IG SLAG Kicking & Rearing colt, choice . ea 145.00
- * 1519 Waverly 6" ftd mint, Amber 275.00
- * 150 Pointed Oval in Diamond Point 4" nappy (6) ea 10.00
- * 1632 Lodestar 11" crimped floral bowl, Dawn, H 175.00
- * 133 Swan Handled 14" floral bowl, Moonglmm 250.00
- * 133 Swan Handled 1-lite c'stick, Blue iridized base & candlecup w/Crys body pr 225.00
- * 305 Puntly & Diam Point cov'd cracker jar 295.00
- * 5 Patrician 12" 1-lite candelabra, complete pr 240.00
- * 1420 Tulip Vase, 9", Crystal, H 145.00
- * 1415 Twentieth Century sherbet, Dawn, H (4)ea 45.00
- * 3416 Barbara Fritchie goblet w/#850 Del Monte Cut, H (4) ea 45.00
- * 3416 Barbara Fritchie champ w/#850 Del Monte Cut, H, rim repair (4) ea 15.00
- * 3357 King Arthur 12 oz ftd ice tea, DO, Flamingo H, (3) ea 22.50
- * 1401 Empress 10½" sq dinner plate w/Formal Chintz etch, Sahara, H (4) ea 110.00
- * 1401 Empress cup & sauc, rd w/Formal Chintz etch, Sahara, H (4) ea 37.50
- * 339 Continental wine, H (2) ea 32.50
- * 2401 Soda, 12oz, Circus etch "Rube" . . . 110.00
- * 2401 Soda, 12oz, Skier etch (2) ea 75.00
- * 3481 Glenford 8oz ftd tmlr, Hawthorne, Checker Optic, (4) ea 60.00
- * 1626 Lodestar 12" floral bwl, Dawn, H . . . 115.00
- * 407 Coarse Rib ice bucket, Flmggo, H rare 195.00
- * 3407 Overdorf 16 oz beer mug, Cob w/Cry h'ld 395.00
- * Mike Owens Bust, frosted 45.00

TODD PEASE
552 CARRIAGE DRIVE
BATAVIA, IL 60510

PH: 708-879-8569
AFTER 6:30 C.S.T.
UPS & INS EXTRA
* = MARKED

31 Jack-Be-Nimble candlesticks* . . . pr \$ 65.00
479 Petal cream & sugar*, Flamingo . . . pr 48.50
1220 Puntty Band mug souvenir*, mold mark,
Opal 80.00
1295 Beaded Swag tankard, Rose decor, some
Gold, Opal 260.00
1295 Beaded Swag toothpick souvenir, Opal 135.00

1401 Empress mayo, etched, Sahara 42.50
1401 Empress cream & sugar, DF, Sahara pr 75.00
1405 Ipswich saucer champagnes*, Sahara,
(3) ea 24.00
1425 Victorian cruet w/stopper* 45.00
1428 Warwick 7" vases pr 47.50

1445 Grape Cluster 2-lite candlesticks* pr 235.00
1469 Ridgeleigh coasters w/orig box, Zircon,
(8) all 360.00
1469 Ridgeleigh 2" high candlesticks . . . pr 45.00
1469 Ridgeleigh cigarette box* w/cov . . . 25.00
1469 Ridgeleigh cigarette box cover . . . 15.00

1503 Crystolite 5-part round relish* . . . 40.00
1503 Crystolite ind cream, sug & tray* set 47.50
1506 Whirlpool juice glasses* (8) . . . ea 12.50

1509 Queen Ann cups & saucs*, Orchid etch,
(3 sets) ea 60.00
5025 Tyrolean tall goblets, Orchid et(5)ea 45.00

* L. A. MANESS PH: 804-798-1825
* RT. 1 BOX 552 P & I RATE \$3.00
* ASHLAND, VA 23005 H = MARKED

VISA/MASTERCARD
WELCOME

* 3362 Charter Oak 4 oz cocktail, Moongleam,
H (4) ea \$ 24.00
* 407 Coarse Rib 6" plate, Flamingo, H(8)ea 9.00
* 300 Colonial 1 oz cordial 2 ball stem, H
(3) ea 30.00
* 353 Colonial Medium Flat Panel 2 oz cruet,H 35.00
* 1503 Crystolite oval mayo w/ladle, both H 52.50

* 417 Double Rib & Panel cov'd mustard, H 40.00
* 1401 Empress nut dish, DF, Sahara . . . 25.00
* 433 Greek Key 5" low ftd jelly, H . . . 47.50
* 1540 Lariat cream & sugar & tray, H . set 52.50
* 5040 Lariat goblet, H (2) ea 17.50

* 1567 Plantation cream & sugar pr 52.50
* 1567 Plantation 6½" h'lded jelly, H . . 52.50
* 1170 Pleat & Panel cov'd lemon dish in
Moongleam, bottom not ground, H . . 45.00

* 341 Puritan 4 oz cruet, H 45.00
* 1225 Ridge & Star 7½" plate, Flamingo,
H (6) ea 12.50
* 1469 Ridgeleigh mayo, H, with ladle . . 37.50
* 337 Touraine 4 oz low footed sherbet,
Narrow Optic, H (6) ea 7.50
* 1425 Victorian 5 oz sauc champ, H (6). ea 16.00
* 1425 Victorian cream & sugar, H . . . pr 47.50

* PAID ORDERS (48 STATES) IN BY DEC 12 GUARANTEED
* DELIVERY BY DEC 25. MERRY CHRISTMAS!

ROBERT H. DONOVAN
55 VINING CT. APT. 114
ORMOND BEACH, FL 32176

PH: 904-677-1732
P & I EXTRA (UPS)
* = MARKED



1560 Victorian Belle, frosted \$ 95.00
433 Greek Key 4 oz cruet* with silver overlay 98.00
433 Greek Key 6 oz cruet* 125.00
433 Greek Key 4 oz cruet*, blown 95.00
433 Greek Key 6" almond* 80.00
433 Greek Key 6" compote* 135.00
433 Greek Key individual nut cups*, (6) all 155.00

1401 Empress console bowl, DF, Moongleam 125.00
1466 Star Relish 48.00
1469 Ridgeliegh cream & sug w/tray* set 58.00
1401 Empress cream & sugar*, DF, Sahara 85.00
1540 Lariat cream & sugar* 35.00
1401 Empress toed sticks*, Sahara pr 195.00

1252 Twist 2-part relish*, Moongleam 75.00
1252 Twist individual nut cups*, Flamingo (4) all 80.00
1540 Lariat cream & sugar* 36.00
407 Coarse Rib 12" celery, Amber 58.00
1401 Empress cream & sugar*, DF, Sahara 80.00
1445 Grape Cluster 2-lite candlesticks pr 198.00
1401 Empress 9" DF vase, Grape Etch 115.00

Sparky 95.00
Scottie 95.00
Standing Colt* 90.00

WILLEY'S ANTIQUES
11110 CANNON ROAD
FRAZEYSBURG, OH 43822

PH: 614-828-2557

Over 2,000 pieces of Heisey for sale. Stemware and dinnerware matching service. Lots of colors, etchings and cuttings. Send want list and SASE. All letters answered if a SASE is enclosed.

SHOW DATES
1990

Jan 12,13,14	Will Rogers Coliseum	Ft. Worth,TX
Jan 19,20,21	Civic Center	McAllen,TX
Jan 26,27,28	Y.O. Ranch Hilton Hotel	Kerrville, TX
Feb 2, 3, 4	Brazos Center	Bryan, TX
Feb 9, 10, 11	Palmer Auditorium	Austin,TX
Feb 16,17,18	Rapides Parish Col.	Alex, LA
Feb 23,24,25	Yamatorium	Opelousas, LA
Mar 3, 4	St. Bernard Cult. Center	Chalmette, LA
Mar 18, 19	Armory Place	Silver Sp. MD

SEE YOU AT THE SHOWS, Mildred & Harold Willey

BARB & DONNA
19 INWOOD PLACE
LANCASTER, NY 14086

PH: 716-683-4438
P & I EXTRA
* = MARKED

1205 Fancy Loop top to butter	\$ 35.00
1205 Fancy Loop spooner	40.00
1255 Pineapple & Fan bottom butter dish . .	25.00
1506 Whirlpool ind cream & sugar*	50.00
465 Recessed Panel iridized lavender jar - candy, 10" high	65.00
1252 Twist 7" relish, Marigold*	30.00
352 Flat Panel pickle jar*	50.00
354 Wide Flat Panel ash tray & match box*	50.00
1425 Victorian punch cup*	17.00
1404 Old Sandwich bar glass, 4 oz*	25.00
1503 Crystolite individual cream & sugar* .	35.00
1469 Ridgeleigh cream & sugar*.	33.00
1184 Yeoman divided dish 13x4½, DO, Sahara*	45.00
1229 Octagon bon bon in Flamingo*	30.00
134 Trident gold etched candle pr	100.00
335 Prince of Wales Plume punch cup*	25.00
473 Narrow Flute w/Rim cruet, 4oz*, not H stopper	25.00
433 Greek Key bowl (worn bottom)* & small chip inside rim	25.00
393½ Narrow Flute tankard*,sm chip in handle	50.00
407 Coarse Rib 7½" plates (10) ea	7.00

* J & R COLLECTIBLES
* P.O. BOX 1030
* NEWARK, OHIO 43055
* PH: 614-344-9719
* UPS & INS EXTRA
* = MARKED

1170 Pleat & Panel cup & saucer, Flamingo, both * (2) set	\$ 32.50
1170 Pleat & Panel dinner plate, Flamingo (4) ea	85.00
3368 Albemarle sauc champagne, Chateau Cut (6) ea	27.50
1401 Empress berry set - 8" nappy with (6) 4½" nappies, Sahara set	185.00
3381 Creole 11 oz tall gob, Alex (4) ea	165.00
150 Banded Flute h'lded chamberstick, 4" with yellow Carnival Stain*	55.00
3368 Albemarle 1 oz cordial, Chateau Cut	115.00
1590 Zodiac 5 oz sauc champagne* (5) ea	17.00
473 Narrow Flute w/Rim 2 oz oil* (2) ea	60.00
393 Narrow Flute 10" oval tray, 4-comp, for Condiment set*	45.00
Colt Standing	105.00
SPECIAL - Rooster Vase	95.00
SPECIAL - Rooster Hd stopr, clear or frosted ea	27.50
5010 Symphone 1oz cord'l, Minuet E (2) ea	135.00
5022 Graceful 1oz cord'l, Orchid E (3) ea	135.00
IMPERIAL Show Horse, Amber	650.00
1286 Cupid & Psyche Ash Tray, Flamingo	32.50
3408 Jamestown 9oz gob, Narcissus C (2)*ea	25.00
1205 Fancy Loop toothpick	60.00
1255 Pineapple & Fan #3 salt & pep, Emer pr	110.00
1469 Ridgeleigh coasters, Sah, in original jewelers box (8) set	165.00

Thank you for shopping J & R Collectibles
Happy Holidays!

* SCHWANS ANTIQUES
* 77 LAGOS DEL NORTE
* FT. PIERCE, FL 34951
* PH: 407-461-5940
* P & I EXTRA
* = MARKED

451 Cross Lined Flute cruet*, slightly cldy	\$ 95.00
1401 Empress dolphin ftd 9" vase*, Moonglrm	150.00
4220 Vase, Spiral Optic, Moongleam	65.00
1417 Arch tumbler	95.00
1506 Provincial 3-handled mayo*, Limelight	140.00
1503 Crystolite hurricane lamps w/9" shades & Heisey cutting on shades pr	325.00
1519 Waverly 5" ftd candy & cover	95.00
1469 Ridgeleigh oyster cocktails* (2) . ea	16.00
352 Flat Panel sugar shkr w/no. 1 Sanitary Top	85.00



*Happy
Holidays*

ONCE AND FUTURE ANTIQUES
 STEVE AND SUSAN PESCATORE
 9 DONNA ROAD
 CHELMSFORD, MA 01824

PH: 508-256-5418
 UPS & INS EXTRA
 * = MARKED

- 29 Blown salt w/#57 top** \$ 12.00
- 33 Skirted Panel 7" candlesticks . . pr 55.00
- 150 Banded Flute 8 oz tumbler* (for #2
 Bedroom Set) 70.00
- 150 Banded Flute saucer foot candlestick
 (slight trace of silver overlay) . . 20.00
- 150 Banded Flute horseradish or mustard jar 35.00
- 301 Old Williamsburg 10½" 2-lite candelabra,
 complete, beautiful cutting . . . pr 225.00
- 325 Pillows water bottle (sl cldy) . . . 90.00
- 339 Continental 8 oz tumblers* (2) . . ea 15.00
- 339 Continental 9 oz tumblers* (4) . . ea 15.00
- 341 Salt & Pep shakers (2) ea 10.00
- 341½ Top for covered butter* 18.00
- 350 Pinwheel & Fan 14" punch bowl* & hi ft* 275.00
- 352 Flat Panel horseradish jar 27.00
- 400 Colonial scalloped top ind cr & sug* 35.00
- 473 Narrow Flute w/Rim (variant) dice sugar
 tray (Vogel, bk IV, pg 163) 17.50
- 479 Petal ftd hotel sugar, Moongleam . . 22.00
- 1184 Yeoman 8" plates, Filmgo, DO, Trojan
 Etch (5) ea 12.00
- 1200 Square in Diam Point cruet w/orig
 stpr (sm chip on stpr) 70.00
- 1201 Fandango 4" rose bowl 55.00
- 1220 Punt Band 9" shallow comport* . . . 35.00
- 1220 Punt Band ind creamer, Custard . . 25.00
- 1223 Fluted Border baked apple, Marigold
 Stain* (Mint) 20.00

- 1225 Sawtooth Band sherbet*(Vog bk IV,p 106)\$32.50
- 1225 Sawtooth Band 10" cake salver 85.00
- 1229 Octagon 2-h'lded 6" mint dish w/6"
 2-h'lded underplate (cheese dish), DO,
 Marigold (Mint) set 45.00
- 1235 Beaded Panel & Sunburst tall celery 47.50
- 1243 Stepped Octagon 7" plates*, Filmgo(8)ea 8.00
- 1245/3970 Comport, Filmgo (Bredehf p 382) 40.00
- 1252 Twist 13" relish, 3 comp*, Mnglm . . 22.00
- 1401 Empress 7½" dolphin ftd naturtium bowl,
 Sahara 75.00
- 1401 Empress 12" sq ctr-h'lded sandwich tray,
 Moongleam 50.00
- 1401 Empress 10" celery tray, Sahara . . . 14.00
- 1415 Twentieth Century 4 oz ftd sherbets*,
 Sahara (4) ea 20.00
- 1425 Victorian 9 oz hi-ftd goblet 14.00
- 1428 Warwick 9" Horn of Plenty vase*, Cobalt 300.00
- 1433 Thumbprint & Panel 11" floral bowl . . 30.00
- 1469 Ridgeleigh 3-h'lded jelly* 18.00
- 1469 Ridgeleigh 11" 3-comp relish* 22.00
- 1469 Ridgeleigh 4½" nappies, cupped*(4) ea 7.00
- 1469 Ridgeleigh ind oval jelly* 10.00
- 1469½ Ridgeleigh 6" bon-bon* 18.00
- 1503 Crystolite 6" 2-h'lded preserve w/cov* 50.00
- 1503 Crystolite 2oz oil btl w/stprs (4) ea 15.00
- 1519 Waverly 14" sandwch plate, Gardenia Et 30.00
- 1540 Lariat dbl-spouted oil w/stpr 90.00
- 3355 Fairacre 10 oz goblet*, DO 18.00
- 4044 New Era 1 oz cordials (4) ea 25.00
- 4182 8" plates, Pied Piper Etch (4) . . ea 12.00
- 4182 6" plates, Pied Piper Etch (6) . . ea 7.00
- 102 Ballstem 9" candlesticks*, iridized gold-
 Crys ball pr 95.00

APPLE TREE AUCTION CENTER
 1616 WEST CHURCH STREET
 NEWARK, OHIO 43055
 PHONE (614) 344-4282

ALL HEISEY
 &
 HEISEY BY IMPERIAL

SATURDAY DEC 9, 1989 9:00 A.M.
 DOORS OPEN AT 8:00 A.M.



PLAN NOW TO DO YOUR CHRISTMAS SHOPPING FOR YOUR HEISEY FRIENDS AT OUR AUCTION. ALSO PLAN TO SPEND THE WEEKEND IN NEWARK TO ATTEND THE HCA ANNUAL CHRISTMAS DINNER AFTER THE AUCTION. THIS WILL BE A ONE DAY AUCTION STARTING WITH SEVERAL SETS OF CREAMS & SUGARS, SOME IN INDIVIDUALS, SOME IN COLOR. WE ALSO HAVE A GOOD SELECTION OF CRUETS AND SYRUP JUGS.

WE ARE ALSO OFFERING A NICE SELECTION OF CANDLESTICKS, BOTH CRYSTAL & COLOR INCLUDING A VERY RARE 9" ELECTRO PORTABLE LAMP BASE IN MOONGLEAM. WE ALSO HAVE A COLLECTION OF CABOCHON STEMWARE WITH SOUTHWIND CUTTING, THIS INCLUDES GOBLET, SHERBETS, WINES, CORDIALS, PLATES & COCKTAIL SHAKER. A GOOD VARIETY OF SMALL ITEMS WITH SMOKING ITEMS (INCLUDES A 6" RIDGELEIGH ASH TRAY WITH A RARE DEER & RABBIT ETCHING), SALT DIPS, NUT CUPS, CORDIALS (INCL 4 FROSTED GOOSE STEMS) & BAR GLASSES.

WE HAVE OVER FIFTY LOTS OF CRYSTOLITE INCL STEMWARE, SHELL PIECES, LEAF PIECES, PLATES (INCL 10" DINNER PLATES W/STAR BOTTOM). ANIMAL RELATED ITEMS INCL ROOSTER STEM "YOU, ME & US" COCKTAIL SET. THE ORCHID ETCHED ITEMS INCL (2) WAVERLY SEAHORSE HDLD CIGARETTE JARS, MAYONNAISE, JELLY & BON BON DISHES.

WE HAVE APPROX (90) IMPERIAL ANIMALS INCLUDING A BLACK SEALYHAM TERRIER (SCOTTY): SEVERAL AMBER INCLUDING SHOW HORSE, DOE HEAD SIGNED H, ROOSTER, COLTS & MALLARDS; AMBER, BLUE, RED & BLACK SOWS; LT BLUE FISH BOOK-END; GREEN & PINK IRIDIZED ELEPHANTS; COMPLETE SET OF SOUV SPARKIES INCL A RARE 1977 FROSTED GREEN. OTHER IMPERIAL INCL LAND OF LEGEND SOUV PLATES & ITEMS IN PROVINCIAL, IPSWICH, ZODIAC & OLD WILLIAMSBURG.

WE HOPE YOU WILL BE HERE WITH US, BUT IF YOU CANNOT COME, WE WILL BE HAPPY TO EXECUTE YOUR MAIL BIDS. THIS WILL BE OUR LAST ALL HEISEY SALE THIS YEAR. ITEMIZED LISTS ARE AVAILABLE FROM THE AUCTIONEERS FOR \$2. 1990 SUBSCRIPTIONS WILL BE \$12 FOR ALL THE HEISEY AUCTIONS FOR THE YEAR; THIS INCLUDES THE CATALOGS FOR EACH AUCTION (MAILED FIRST CLASS APPROXIMATELY 3 - 4 WEEKS IN ADVANCE) & PRICES REALIZED LIST AFTER EACH AUCTION. PLAN TO ATTEND THE AUCTION PREVIEW - FRIDAY, DECEMBER 8TH 7:30 - 9:30 P.M.

SAM SCHNAIDT & TIM HUGHES - AUCTIONEERS - PAUL ROBISON, APPRENTICE AUCTIONEER - FRANK FRYE, MANAGER

HEISEY REFERENCE PUBLICATIONS

1. THE HEISEY ANIMALS: By James McDermott. Pictures all 56 animals produced by Heisey, states size of each animal and includes price guide \$ 4.95
4. HEISEY'S GLASSWARE OF DISTINCTION: By Mary Louise Burns. Includes price guide - contains all major tableware patterns with pictures for easy identification \$11.95
7. HEISEY GLASS IN COLOR, BOOK 2: By Loren and Virginia Yeakley. More than 750 items pictured in color. Comprehensive discussion of each. With price guide \$12.50
8. ENCYCLOPEDIA OF HEISEY GLASSWARE, ETCHINGS AND CARVINGS, SECOND PRINTING: Comes with Addendum. By Ream and Bredehoft - 268 pages in all. Both books \$19.95
15. HEISEY CATALOG AND FACTORY PRICE LIST: By Antiques Research Publications. Catalog reprint #33, dated June 1, 1956. Last catalog published by the company. Complete listings of patterns offered by Heisey when they discontinued operations in 1957. . \$ 8.50
55. HEISEY'S CUT HANDMADE GLASSWARE: By Harold E. Willey. Reprint of old catalogs, showing some of the many cuttings by Heisey, mostly on stemware, 147 pages \$ 5.95
68. HEISEY BY IMPERIAL: By Newark Heisey Collectors Club - 2nd. Ed. - includes price trends & color plate. Every piece of every pattern made by Imperial, until they went into bankruptcy, is listed and priced in all colors used for the pattern . . . \$ 6.95
79. HEISEY GLASSWARE: By Heisey Collectors of America, Inc. - reprint of Catalog 76, the 1915 supplement to Catalog 75 - 58 pages - many items never shown in books or catalogs. Includes all the kerosene lamps and many electric lamps, with price guide . \$ 6.95
88. HEISEY TOOTHPICK HOLDERS: By Nancy and David Jones, published by HCA - complete information on all Heisey toothpick holders. Contains photographs of each. Section on confusing items and fakes, with price guide. \$ 4.95
92. HEISEY ORCHID ETCH: By Neila Bredehoft, published by HCA. Twenty-four page booklet of Heisey's most popular etching - 230 pieces listed and dated individually. Includes a history of the etching and many early ads. With updated price guide . . . \$ 4.95
- 93A. ELEGANT GLASSWARE OF THE DEPRESSION ERA - BOOK III: By Gene Florence. Fostoria, Cambridge, Heisey and others. Illustrated in full color with price guide \$19.95
99. HEISEY ROSE: By Neila Bredehoft, published by HCA - 24 page booklet - all known pieces listed and dated. It includes history and many copies of ads. Comes with price guide \$ 4.95
101. HEISEY CANDLESTICKS, CANDELABRA AND LAMPS: By Tom Felt and Bob O'Grady assisted by Jack Metcalf. A definite survey of the history and manufacture of candlesticks and other lighting devices made by A. H. Heisey & Co., 1896-1957 with over 350 illustrations of all known candlesticks, including 25 in full color - 436 pages \$24.95
- 101A. COMPLETE PRICE GUIDE FOR HEISEY CANDLESTICKS: \$ 2.50
106. COLLECTORS GUIDE TO HEISEY'S GLASSWARE: By L. W. Promotions - excerpts from Heisey Catalogs 75, 109, 212-17. Comes with a price guide \$17.95
111. WESTMORELAND SPECIALTY COMPANY: Reprint of 1912 Catalog. Several patterns shown. Items easily confused with Heisey illustrated - includes c'sticks, toy sets, etc. . \$ 6.95
112. COLLECTORS ENCYCLOPEDIA OF HEISEY GLASS, 1925 - 1938: (The Color Years) By Neila Bredehoft for HCA. 408 pages - 32 pages of color. Over 1,000 pieces are illustrated and priced in every color in which the item was made. New pr guide bound in bk \$24.95
115. HEISEY ON PARADE: By Sandra Stout. This book has ads found in magazines from 1896 to 1957 and all of the Heisey patents. 284 pages \$17.95
116. HEISEY'S LARIAT AND ATHENA PATTERNS: By Tom Felt with a price guide. 52 pages . . . \$ 5.95
122. HEISEY'S CLASSIC RIDGELEIGH GLASSWARE: By Jim Jones & Vince Sparacio. Includes dates of production for each piece, complete item listing, decorations, ads & several illustrations. Shows confusing items made by other companies & proposed production items \$5.95

123. FIELD GUIDE FOR HEISEY CANDLESTICKS: By HCA compiled by Marv Jacob. Information from "Heisey Candlesticks, Candelabra & Lamps" by Tom Felt and Bob O'Grady. This pocket guide is perfect for identifying Heisey candlesticks. Includes pictures, heights, sizes, colors, number and name for each candlestick. For price guide see 101A \$ 1.95
124. EARLY DUNCAN GLASSWARE: By Neila Bredehoft, George Fogg & Frank Maloney. A complete and well illustrated history of the George Duncan & Sons Co. of Pittsburg from 1874 to 1892. Includes color plate and photo section. An excellent history of the company A.H. Heisey was associated with before establishing his own company. Includes a price guide \$19.95
125. GEORGE DUNCAN & SONS: Reprint of their 1890 catalog - their last \$ 6.95
129. HEISEY'S DEEP PLATE ETCHING & CARVING: By Harold Willey. 39 pages with price guide \$ 6.95
- 129A. HEISEY'S DEEP PLATE ETCHING & CARVING - PRICE GUIDE ONLY: \$ 2.50
131. VICTORIAN NOVELTIES & FIGURALS - GEORGE DUNCAN & SONS: By Tom & Neila Bredehoft. 52 pages, with price guide \$ 5.95

H E I S E Y ' S G I F T G A L L E R Y

34. LEADED GLASS DIAMOND H WINDOW ORNAMENT: With hanger \$ 7.50
36. HALF SIZE HORSEHEAD PAPERWEIGHT: Souvenir item, all frosted. Crystal (1984), Cobalt (1985), Ruby (1986), Light Blue (1987). Marked HCA & dated each \$35.00
39. BACK ISSUES OF HEISEY NEWS: By the Volume. Volumes VIII,IX,X,XI,XII,XIII,XIV, XV, XVI and XVII (12 issues each year) \$ 9.00
40. MADONNA: By Fenton marked HCA '87 - French Opalescent \$21.50
By Fenton marked HCA '89 - Teal Blue, clear \$25.00
By Fenton marked HCA '89 - Teal Blue, frosted \$26.50
41. ELEPHANT HANDLED FAIRY TALE MUG: Imperial, marked ALIG, Crystal \$13.00
Fenton, marked HCA '87 Copper Blue \$16.00
Fenton, marked HCA '88 Ruby \$16.00
Fenton, marked HCA '89 Teal Blue \$16.00
Viking, marked HCA '89 Ruby \$16.00
Viking, marked HCA '89 Evergreen \$16.00
45. HEN: Made by Imperial - Marked IG - Milk Glass \$ 7.50
46. CHICKS: Made by Imperial - Marked IG - Milk Glass - Head Up & Head Down each \$ 1.50
48. VICTORIAN GIRL BELL: Tangelo (orange) clear, made by Viking \$11.00
Ruby (red) clear, made by Viking \$11.00
Azure Blue, clear, made by Viking \$11.00
Clematis (Alexandrite) clear, made by Viking \$11.00
Lilac, clear, made by Viking \$11.00
Evergreen, clear, made by Viking \$11.00
- 48A. VICTORIAN GIRL BELL: Tangelo (orange) frosted, made by Viking \$12.00
Yellow, frosted, made by Imperial \$12.00
Light Green, frosted, made by Imperial \$12.00
Ruby (red) frosted, made by Viking \$12.00
Azure Blue, frosted, made by Viking \$12.00
Clematis (Alexandrite) frosted, made by Viking \$12.00
Lilac, frosted, made by Viking \$12.00
Light Blue, frosted, made by Imperial \$12.00
Evergreen, frosted, made by Viking \$12.00
65. WINGS-UP MALLARD: By Imperial Glass, Light Blue - clear \$13.00
frosted \$14.00
66. WINGS-HALF MALLARD: By Imperial Glass, Light Blue - clear \$13.00
frosted \$14.00
71. CYGNET: By Imperial Glass, Light Blue - clear \$10.00
frosted \$11.00

<p>A.W. PARKER Heisey & Pattern Glass Shows or Appointment Magalia, CA 95954 PH: (916) 873-2326</p>	<p>GLASS WITH CLASS Lenore A Shelley, GGHC 1336 Lincoln Avenue San Jose, CA 95125 PH: (408) 286-8098</p>	<p>OLDE LOVED THINGS 900 Ridgewood Ave. (Holly Hill) Daytona Beach, FL 32017 (904) 252-7960 Hours: Sat., Sun., & Mon., 10-4</p>
<p>ALL HEISEY AUCTION Consignments Welcome Apple Tree Auction Center 1616 W. Church, Newark, OH 43055 PH: (614) 344-9449</p>	<p>GREEN ACRES FARMS Antiques, Crystal Glass & Collectibles 2678 Hazelton-Etna Rd., SW (S.R. 310-N) Pataskala, OH 43062 Sat. or Sun. PM or call (614) 927-1882</p>	<p>"HEISEY" PRICE COMPARISON GUIDE \$13.00 B. Whaley 614-927-1557 300 International Dr. Pataskala, Ohio 43062</p>
<p>ALFA I CARRIAGE HOUSE ANTIQUES Featuring Depression & Elegant Glassware Al & Faye Maness Rt. 1 Box 552, Ashland, VA 23005 PH: (804) 798-1825</p>	<p>H & R DIAMOND H Helen & Robert Rarey 1450 White Ash Dr. Columbus, OH 43204 PH: (614) 279-0390 after 5:30</p>	<p>PARRETT'S ANTIQUES Heisey 4994 Mapledale Rd. OR 1215 Greenwood Ave. Jackson, Mich. 49201 PH: (517) 784-7319 OR (517) 783-3289</p>
<p>ANTIQUES - THE SHULTZES 206-208 East Main St. Newmanstown, PA 17073 15 Miles West of Reading, PA PH: (215) 589-2819</p>	<p>"HAPPINESS IS" - THE STULTZS 3106 Warren Court, Glen Allen, VA 23060 Shows and Mail Order PH: (804) 672-8102 GLASS CIRCA 1890-1960</p>	<p>PATTON HOUSE Heisey & Duncan Miller Rocky's Mall, 1-81 & US 11 Weyer's Cave, VA 24486 PH: (703) 967-1181</p>
<p>C & J ANTIQUES Cole & Jean Miesner Box 45, 72 Whig St. Newark Valley, NY 13811 PH: (607) 642-9905</p>	<p>HARRALSON'S HEISEY HUNTERS Sponsor: S.W. MO's Antique Shows 78 Quality Dealers From 14 States 1989 Dates: Apr. 29-30 & Oct. 28-29 Info: 1426 W. Highland, Springfield, MO 65807 PH: (417) 883-2449</p>	<p>EAGLES REST ANTIQUES Carl and Mary A. Evans Heisey - China - Pottery, etc. Shows or Appointment PH: (814) 522-2035</p>
<p>GLASS RESTORATION LeRoy Carter, Jr. 125 Maple Ave. Utica, Ohio 43080 Phone 614-892-2775</p>	<p>HELEN & JIM KENNON Heisey, Cambridge, Fostoria, Duncan, Imperial, Fenton, Tiffin P.O. Box 114 Brookville, OH 45309 PH: (513) 833-5406 SHOWS ONLY</p>	<p>R & L ANTIQUES-SAN FRANCISCO Members of the Golden Gate Heisey Club 3690 Bodega Ave. Petaluma, CA 94952 PH: Petaluma (707) 762-2494 PH: San Francisco (415) 621-6693</p>
<p>CHARLES & MILDRED FISHER Heisey, Degenhart, Imperial, Antiques, Collectibles, General Line 991 Idlewild, Newark, OH 43055 PH: (614) 522-5398</p>	<p>JJ MC KEE ANTIQUES Pottery - Glassware - Collectibles 222 B West 75th St. Kansas City, MO 64114 Wed.-Sun. 10-5 PH: (816) 361-8719</p>	<p>THE WOODEN SHOE Antiques & Collectibles Jim & Sheri VanEs by Appt. 810 Elden, Herndon, VA 22070 PH: (703) 435-9045</p>
<p>CRYSTAL LADY Joann Hagerty Specializing in elegant depression glassware 1819 Vinton Street, Omaha, NE 68108 Shop Ph. (402) 341-0643 or Home Ph. (402) 391-6730</p>	<p>THE PURPLE PLACE Featuring Heisey & Other Fine Glass Martha & Harold Earp 1940 Suwanee, Ft. Myers, FL 33901 PH: (813) 936-1572 Anytime</p>	<p>SCHWAN'S ANTIQUES SHOWS & MAILORDER 77 Lago del Norte Ft. Pierce, FL 34951 PH: (407) 461-5940</p>
<p>DIAMOND H PLUS Mail Orders & Shows George & Eileen Schamel 6625 Gilardi Rd., Boonsboro, MD 21713 PH: (301) 432-6285</p>	<p>J. & R. COLLECTIBLES Shows, SASE, Mail Order list June & Ray Lukasko P.O. Box 1030, Newark, OH 43055 PH: (614) 344-9719</p>	<p>SHOW AND TELL ANTIQUES Art, Cut, Heisey and Pattern Glass 1525 Morrow Ave., Waco, TX 76707 Tues-Sat 10:30-4:30 PH: (817) 752-5372 Also: Mail Order and Shows Member NADA</p>
<p>ETTELMAN'S DISCONTINUED CHINA & CRYSTAL HEISEY a SPECIALTY P.O. Box 6491-HN Corpus Christi, TX 78411 PH: (512) 888-8391 Include SASE</p>	<p>MOSTLY HEISEY Rhoda Curley 16 Clayton PL, Albany, NY 12209 Shop and Mail Order PH: (518) 482-5272</p>	<p>HEISEY PUBLICATIONS Box 102, Plymouth, Ohio 44865 All Vogel Heisey Books I, II, III, IV And Quarterly Newscasters available</p>
<p>FOREVER HEISEY Jan & Norm Thran Mail Order, Shows, Appraisal Service 1663 Londondale Pkwy., Newark, OH 43055 PH: (614) 344-5955</p>	<p>MOUND BUILDERS ANTIQUES Heisey & Animals, General Antiques Irene Rauck 1138 Moundview, Newark, OH 43055 PH: (614) 344-5043</p>	<p>WILLEY'S ANTIQUES & MUSEUM Specializing in Heisey 11110 Cannon Rd., Frazeyburg, OH 43822 16 miles east of Newark, OH PH: (614) 828-2557</p>
<p>GERT'S GLASS Heisey & Duncan Gertrude & Russell Swetnam 1926 Saratoga Dr., Adelphi, MD 20783 PH: (301) 434-5113</p>	<p>THE MUTED SWAN ANTIQUES 5486 Peachtree Rd., Chamblee, GA 30341 Heart of Chamblee Antique Row Specializing in Heisey & Cambridge Bill & Pat Miller PH: (404) 451-7620</p>	<p>JAMES S. HARRIS ANTIQUES/APPRISALS Box 672 Richmond, KY 40475-0672 PH:(606) 623-9100 Buying and Selling by Mail</p>
<p>GLASS 'N' GLASS Virginia & Odell Johnson 6909 10th Ave. West Bradenton, FL 34209 PH: (813) 792-0604</p>	<p>NANCY'S ANTIQUES Heisey, Cambridge, Fostoria, Fenton Mail Order 906 44th St. NW, Canton, OH 44709 216-492-2595. Shop Union Station Antiques 12622 Cleveland Ave., Uniontown, OH Daily</p>	<p>TALL OAKS ANTIQUES 565 N. Nichols St., Lowell, IN 46356 Elegant & Dep Glass Specializing in Heisey. Shows - Mail Order - Shop - PH 219-696-0147 Mike & Barb Rosenberger</p>

Old Morgantown Glass Collectors' Guild



\$20.00 CHARTER MEMBERSHIP

includes

- One limited edition clear glass paperweight cast from an original 1930s Morgantown mold.
- One year's membership in the Old Morgantown Glass Collectors' Guild. Annual dues will be \$15.00 after first year.
- A quarterly Newsletter to member households. Each issue will contain previously unpublished material re The Economy Tumbler Company, The Old Morgantown Glass Works, and The Morgantown Glassware Guild.
- Other benefits to be listed in a letter of acknowledgement forwarded to each charter member upon receipt of the information listed below.

Please register me as a Charter Member of the OLD MORGANTOWN GLASS COLLECTORS' GUILD. My \$20.00 Membership Fee is enclosed.

Name (please print) _____

Street Address (D.P.S.) _____

P.O. Box (if applicable) _____

City _____ State _____ Zip _____ A.C. & Phone # _____

THE FOLLOWING MEMBERS OF MY HOUSEHOLD REQUEST ASSOCIATE MEMBERSHIP AND PRIVILEGES FOR AN ANNUAL FEE OF \$2.50 each:

TOTAL # Memberships: _____

AMOUNT ENCLOSED: \$ _____
(Check or Money Order)

MAIL TO: OLD MORGANTOWN GLASS COLLECTORS' GUILD
P.O. Box 894—Dept. HN Morgantown WV 26507-0894



15th ANNUAL FALL FESTIVAL OF GLASS SHOW & SALE

Presented By: HOUSTON GLASS CLUB

- FEATURING -

Depression Glass, American Crystal, Heisey, Cambridge, Fostoria, Carnival & American Pattern Glass.

Admission: \$3.50 (Good for both days)

November 4, 1989 - 10:00 a.m. to 6:00 p.m.

November 5, 1989 - 12:00 to 5:00 p.m.

Adam's Mark Hotel
2900 Briarpark at Westheimer
Houston, Texas 77042
(Free Parking)

INFORMATION:

Lenette Heideman, Chairman 342-4876
Frank Chalafant, Co-Chairman 460-9244
Special Hotel Rates for Show Patrons



National Heisey Glass Museum

Eight rooms and complete lower level displaying the beautiful hand made glass produced in Newark by the A.H. Heisey and Co. from 1896-1957.



Corner of West Church & North Sixth Streets
Newark, Ohio 43055

Phone: (614) 345-2932

Hours: Daily 1pm-4pm Closed Holidays

OHIO
the heart of it all! SM

Membership Renewal Notice

The date above your name and address is your renewal date. This is your last issue of the Heisey News if it reads 12-10-89

PLEASE DISREGARD THIS NOTICE IF YOU HAVE RECENTLY PAID YOUR DUES.

POSTMASTER SEND FORM 3579 TO:



SECOND CLASS