

HEISEY *news*

OFFICIAL PUBLICATION HEISEY COLLECTORS OF AMERICA

©Heisey Collectors of America, Inc.

All Rights Reserved 1987

VOLUME XVII NO. 1

FEBRUARY, 1988 ISSN 0731-8014



HEISEY NEWS

P.O. BOX 4367, NEWARK, OH 43055

CLUB OFFICERS:

President - Bob Rarey (614) 279-0390
Vice President - George Schamel (301) 432-6285
Secretary - Liz Stickle (614) 323-2250
Treasurer - Mary McWilliams (614) 345-4380

Curator - Louise Ream

Editor: Louise Ream

P.O. Box 4367, Newark, Ohio 43055
PH: (614) 345-2932

Assistant Editor: Neila Bredehoft

P.O. Box 4367, Newark, OH 43055
PH: (614) 345-2932

Published in Newark, Ohio, Printed in Mt. Vernon, Ohio.

\$15.00 per year - \$1.25 per copy

Back Issues - Each Volume (12 issues) year - \$9.00.

Volume, V, VIII, IX, X, XI, XII, XIII, XIV, XV, XVI

Heisey Collectors of America, Inc. is a non-profit corporation with tax exempt status. Owners and operators of National Heisey Glass Museum, 6th and Church Streets, Newark, Ohio.

Open daily 1-4 p.m. except holidays. Other hours by appointment. Members admitted free.

HEISEY NEWS

Heisey Collectors of America, Inc.

All Rights Reserved 1987 - ISSN 0731-8014

Published monthly by Heisey Collectors of America, Inc., Newark, OH. 43055. Second Class postage paid, Newark, Ohio 43055. Club membership (includes 12 issues of Heisey News and participation in all club activities) \$15.00 per year plus \$2.50 for each additional family member in same household who wishes a membership card. For Voting Membership add \$25.00 one time only fee.

POSTMASTER: Send address changes to:

HCA, P.O. Box 4367, Newark, OH 43055

When requesting information, please enclose a self-addressed, stamped envelope (SASE).

ADVERTISING - Send all ads to:

HCA - Advertising
P.O. Box 4367
Newark, Ohio 43055

DOUBLE SPACE ALL ADS.

RATES:

CLASSIFIED: 15¢ per word. \$1.50 minimum.

ABBREVIATIONS AND INITIALS COUNT AS WORDS

DEALER DIRECTORY: \$25 per year.

DISPLAY:	MEMBERS:	NON-MEMBERS:
1/8 Page (9 items)	\$20.00	\$ 30.00
1/4 Page (20 items)	30.00	45.00
1/2 Page (20 items) Hor.	45.00	67.00
1/2 Page (50 items) Vert.	60.00	90.00
1 Page (50 items)	75.00	112.50

Extra lines will be billed at \$1.00 per line. Personal ads limited to 1/4 space.

ALL ADS MUST BE PREPAID. Ad copy must be received by the 5th of the month preceding the publication date-i.e. April 5th for May issue. Ads containing reproductions will not knowingly be accepted unless clearly stated (i.e. Heisey by Imperial, etc.). HEISEY NEWS assumes no responsibility for false advertising or misleading information. In the event of typographical error, the incorrect portion of the ad will be run in the following issue, but HEISEY NEWS assumes no further liability.

The opinions expressed in articles in HEISEY NEWS are those of the authors and not necessarily those of the organization. The Editorial Staff reserves the right to edit or refuse any material submitted for publication. When requesting information, please enclose a self addressed stamped envelope. (SASE).

4—AntiqueWeek—Mon., Jan. 11, 1988

Warrant issued for bad check suspect

COLUMBUS, Ohio — A warrant has been issued for the arrest of Richard Iden on one count of passing bad checks, according to the check squad of the Columbus Police Department.

Antique dealers in the Columbus area and in Virginia have called *AntiqueWeek* to report that they had taken checks with the name Richard Iden on them, and that the checks had come back "due to insufficient funds."

John Blackburn of Yesteryears Antiques in Columbus said that he talked to several area dealers who in November had sold items to a man with checks bearing the name of Richard Iden. Blackburn said that his shop lost more than \$900 in merchandise including quilts, Flow Blue and jewelry. He said

the man had checks from the State Savings Bank of Columbus, which were printed with "Richard Iden, 273 Gladys Ave., Newark, Ohio." The man also produced a photocopy of an Ohio driver's license, stating he had lost the original, and a Hawaii driver's license.

Blackburn said the man was very nice and claimed to be an antique dealer. He was very knowledgeable and looked merchandise over carefully. Blackburn described him as having blond hair (although the police have a mug shot where he has black hair), in his early 30s, 170 pounds and 5 feet, 8 inches tall.

An antique dealer in Petersburg, Va., said that on Dec. 16 she took a check, bearing the name Richard Iden, for more than \$700. The man bought mostly jewelry from her.

Det. Chester Street with the check squad in Columbus said that dealers should be very careful when they take identification from people who are writing checks. He said a photocopy of a driver's license should not be taken as proof of identification. He also suggested writing down the license plate number of the vehicle of people who pay by check.

Blackburn said that he would require people writing checks to produce two credit cards along with their driver's license.

Anyone with information should call their local law enforcement agency. Street said Iden's name has been put on a national bulletin.



FROM YOUR PRESIDENT

Dear HCA Members,

A brief look back at 1987 is in order. What we, as a club, have accomplished is testimony to the need to work together to reach our goal. Together we will continue to grow and prosper. Heisey News mailing, fire alarm system, our first computer, restoration of the outside of the Museum, office restructuring and new telephone system. Not all are completed, but are well along and in good hands. The phone system was installed just prior to January 1, 1988, and is a much needed improvement over the old system. Now we need to focus on the future, 1988, and beyond. The Museum Benefit Auction and quarterly Meeting in March. Contact Bob Ryan, Auction Chairman, to volunteer your help. The Starlight Antique Show is the same week-end. Your support of these functions benefits the Heisey Museum.

Plans are developing for the annual Convention to be held here in Newark on June 16 - 19. Let me know if you'd like to volunteer for any of the several committees making these plans.

A special plea to local members and Study Clubs. Louise needs volunteers for docent duty in the Museum, especially on week-ends.

I have received a letter from David Smith of Williams, Arizona regarding his work with members of the Harvey family in establishing a museum on history of the Fred Harvey Company, operators of the famed Harvey House hotels and restaurants. They are looking for a number of pieces of Heisey glassware that were used by the Harvey Company. If you have items used by the Harvey Company, or anything with Santa Fe logo, contact the Museum for Mr. Williams address of the list of items for which they are looking.

Hope to see all of you at the March Auction, quarterly Meeting and Starlight Flea Market.

Happy Collecting,

Bob Ryan

HEISEY BENEFIT AUCTION

by Bob Ryan

It has been a long time since I've written about Heisey Glass; enjoying the monthly column from the "Yachting Center of the World" reporting all those envy gathering finds reported to Janet. Only Janet and I know what it feels like to open letter after letter, month after month, to bear even more ridiculous "steals"; the only thing better would be finding these glass beauties ourselves.

The past couple of weeks, as we have been packing the glass for the auction, parallels the reading

of the finds, in that, box after box reveals all these treasures.

You, HCA members, have responded to my request for good Heisey pieces. Prepare to come to Newark for a fun time. We will have some surprises for you, a few laughs, some ohs and ahs (Louise has had her share of ohs and ahs as we unpacked the boxes). But, if traveling is impossible, check over the auction list and post your bids with our professional bidder. There are many choice pieces in the auction and many boxes to unpack yet.

Just to whet your appetite, a large assortment and great variety in early patterns, many Winged Scroll pieces in emerald tankard pitcher, two table sets, match holders in opal and custard too. Other items include pillows, cracker jar with lid, #444 Colonial three handled vase, an incredible piece of glass, (I handled this beauty for a long time; who knows if I'll ever have the chance again). Beaded Swag large pitcher in emerald with enamel floral decoration, 134 Trident Alexandrite floral bowl (about ten pounds of Alexandrite), many other Alexandrite pieces including a diamond ash tray and dolphin footed nut in 1401 Empress. 4164 72 oz pitcher with Heisey Rose Etching, a magnificent 4225 Cobel 2qt. cocktail shaker with a pair-point cutting, a groove and slash 1250 Humidor, two nice amber pieces, 500 Octagon frozen desert and a 1519 Waverly creamer, two 4224 Ivy vases, one Sahara and one Tangerine, a butter bottom in 160 Locket on Chain in vaseline (couple of beads missing but great color), 5058 Goose stem cordial, sherry and wine, Greek Key 433 wines - Mariette cordial with elaborate cutting; many other elaborate cuttings on stems, a 1404 old Sandwich footed soda and a lot of other glass in cobalt. Some deep plate etchings in a variety of pieces, 4163 Whaley mug golfer etch and Athletic Scenes in Border, a 4002 Aqua Caliente etch, Carcassone 3390 cordial, Sahara Old Colony etch, 3386 Diamond Rose goblet in Flamingo, 4045 ball vase in 4" and 9", Sahara plus other ball vases.

If you are not drooling by now have your "engine" checked; you're in trouble. Many items in all the production colors, elaborate and production cuttings; a 500 ice bucket with a great cutting will have many people vying for it, me included. For you people who collect small items the auction abounds with them, enough to start a new collecting category - they don't take a lot of cupboard space - a good assortment of animals and animal related items and my favorite for elegant pieces, a set of eight 3345 Mary 'n Virge goblets cut with silver overlay. Now I have never been a devotee of silver on glass but with these beauties gracing your table linen you'd be in the same league as the Rockenfellers, Mellons and Vanderbilts.

Prepare, Don't Miss It, Be Kind to Yourself in 88, Buy Heisey Glass.

ABOUT THE COVER - LEON RANDAHXE

Heisey Glass Blower. After his retirement his hobby was making glass novelties. This type of glass making was called lamp work. Mr. Randahxe's profile was in the 1972, April issue of Heisey News.

FROM THE DESK OF THE CURATOR:

This is a slow time in the museum as far as having a lot of visitors from far away, but this time of year we usually receive a lot of mail orders.

We have been offering the Opalescent baby elephant for some time and last month began offering the large elephant and the donkey, marked HCA-88. We are getting another order of the baby elephant now marked HCA-88, and a turn of the medium elephants. The small elephant and the donkey are \$20 each, the medium elephant is \$22.50 and the large elephant is \$25. Remember, there is a 10% discount on members's purchases of \$50 or more. We think you'll be very pleased to have a whole set of elephants.

The Oscars have been made and are probably in the process of having the bust-off removed and the bottom polished. They should arrive before you receive this newsletter. We have many orders and Leonard has the labels already typed so they'll be sent out as soon as we get them. Be sure to list all of the names of family members you are ordering for.

On Friday, January 8th., Governor Celeste visited Newark which he had declared the Capital of Ohio for a day. He did not visit the museum but seven members of his staff did. They enjoyed it very much and several of them said they would be back with their wives.

Marilyn Tomasi of the Department of Development visited us on the same day and was also much impressed. Her department gives us a lot of publicity.

Read all of the information and the auction list and either come or send in mail bids. We have some very nice items.

Anyone who would like to go to dinner after the auction, please put your name on the list which will be at the auction. We will be going to the Newark Inn as we did last year, for the beef buffet. The manager has promised it will be a good dinner, in case you were disappointed with the Christmas dinner. This is always a fun time so we hope to see many of you there.

The auction list took up so much space in this issue that we have to leave out some nice columns but will use them next month. My apologies to the authors.

Please note the dates for the National Capital Club's All-Heisey Show. Also, note the 10th. Annual Show of the Bay State Club's Show. Both are for the benefit of the National Heisey Glass Museum and are advertised in this issue.

The March quarterly meeting will be held during the forenoon on Saturday, March 12 at the auction. Nominees will be announced and the opportunity given for nominations from the floor.

Mary McWilliams, Club Treasurer, had surgery on January 14 and went home on the 17th. We wish her the best of luck and a rapid recovery. They certainly don't keep you in the hospital long after major surgery any more.

No club has yet offered to manage the September Mini-Show and dinner. A volunteer will still be welcome. People who have done it before will cer-

tainly be willing to give you some help.

I am still waiting for volunteers to work in the afternoons in the museum. The hours are 1 to 4 P.M. It is now a self-guiding tour so you don't have to know as much about the glass as you did in earlier days. I'll be there most of the time so that I can answer questions if you don't know the answers.

My new secretary, Pat Hildebrand, now in her sixth week, is an excellent typist and a very good worker. She also helps out in the gift shop and is learning rapidly. I'm very pleased with her.

Another recent new employee is Mary Holland who is the receptionist and membership clerk. She is also doing a fine job.

We'll be at the Silver Spring Show again, back in our usual corner, I assume. We'll be bringing the new figurines with us, and lots of books. We hope to see you there.

Happy Valentines Day

Louise Ream

DATES TO REMEMBER

March 11 & 12, 1988	MUSEUM BENEFIT AUCTION (QUARTERLY MEETING) Newark, Ohio
March 13, 1988	STARLITE ANTIQUE SHOW Newark, Ohio Land of Legend HCC
March 19 & 20, 1988	ALL HEISEY SHOW Sponsored by National Capital HCC Silver Springs, MD
April 30, & May 1, 1988	BAY STATE HEISEY COLLEC- TORS, ANTIQUE SHOW & SALE Waltham, MA
June 11 & 12, 1988	FLEA MARKET ON THE SQUARE
June 16, 17, 18, 19, 1988	HCA ANNUAL CONVENTION Newark, Ohio

All shows listed above are for the benefit of the Heisey Glass Museum.

ORDER NOW

French Opalescent Animals - all marked HCA - 88

Baby Elephant	-	\$20.00
Medium Elephant	-	22.50
Large Elephant	-	25.00
Donkey	-	20.00

10% discount on \$50.00 or more purchase - 6% sales tax in Ohio. \$30.00 handling plus 10% shipping.

Send Order To:

HCA Sales
P.O. Box 4367
Newark, Ohio 43055

DIAMONDS ARE FOREVER

In the year 1909 "an enterprising fisherman in his Dory on the Banks in the morning before sunrise" was accepted as Marblehead's town seal. Another symbol of our town was almost lost in that year. It was patriot Jeremiah Lee's 1968 Mansion; it was unexpectedly auctioned off for three thousand dollars to the mayor of Everett, who was going to strip its woodwork, etc. for future sale to antique hunters. A Miss Eliz Brown went quickly to Boston to arrange resale and with her was the owner of the New Fountain Inn who purchased the house at a 50% mark-up to keep it for Marblehead. Everyone was asked to contribute a "dime", a nimble quarter or quick dollar" to save the Lee home. By July 4 the Mansion was put under the auspices of the Marblehead Historical Society. I'll tell you more about the contents of the Mansion next month; it is quite interesting.

Some interesting items were located from a lady formerly from "the Point" (ma) a lovely #433 Greek key one handled jelly, the #1445 Grape Cluster Console Bowl , and lastly, a gift, four (4) #341 Puritan 2½ oz. Creme-de-menthe glasses. Lovely little items and quite dear.

"The Hanging Judge" has been ever unyielding in his quest for glass; just to put another piece of Heisey behind locked cabinet doors was his whole objective. He took his "side-kick with him and the two set out to capture a victim, any victim, they didn't much care. But, it had to be on the "wanted" list or they would not be gladdened. After stalking their prey for what must have seemed hours they finally came upon a small shop. Perhaps, just perhaps, luck would be with them and the search would be over. Ah yes, the only piece of Heisey in the whole shop was trying desperately to make itself inconspicuous, but it could not elude "the Judge". Was it on the "wanted" list? You tell me - - A #4164 Gallagher 73 oz. Ice Jug with Orchid Etch and in unblemished condition. Behind Bars? - - But of course!!

From the Bay State area many good things were acquired within the past few months. I'll begin with "the Wiz", he picked up a #1401 Empress creamer with silver overlay, a pair of #1503 crystalite one light candlesticks, the #1205 Fancy Loop celery dip, a #1469 Ridgeleigh round cigarette holder and the special piece was a beautiful #1205 Fancy Loop sherry.

"Mrs. Wiz" couldn't let him get away with all that so she purchased a neat little #1201 Fandango nappy.

"The Hilltoppers" became the proud owners of a #465 Recessed Panel ½lb. candy jar with frosted panels and the elusive #1472 Parallel Quarter Console Set with the King House Etch.

"Mrs. Crystalite" also found a few things to brag to Mr. Crystalite about; #1229 Octagon moongleam d. o jelly; #411 Tudor jelly with gold decoration and a #1540 Lariat sugar.

"A friend in deed" put a few things in their sacks; the Cambridge Rose Point keyhole two-lite stick and, in Heisey, the #10 Oak Leaf moongleam coaster, #1229 Octagon d/o moongleam mayonnaise and the Octagon celery with Egyptian etch, in crystal.

"My Sharp Eyed Friends" have in their possession a #1252 Twist marigold grapefruit, a cute and per-

fect Rooster Stem, the 13" #1506 Whirlpool Gardenia Bowl in Imperial's Verde green, a #5040 Lariat tall pressed champagne with original label and the #1401 Empress vase in sahara.

"The Pilgrims" (nh) got a beautiful #1401 Empress saucer in the ever elusive Alexandrite, a #1201 Fandango butter pat, the #150 Pointed Oval in Diamond Point sugar and a cute little perfume, but they didn't say what number.

"Shy Gal" never is too shy not to get what she wants, and she wanted the following: #400 sugar, and two pieces of #300 Peerless, the wine with the English registry mark and a 9 oz. goblet.

"The Farmer" left his plow only long enough to capture the #1401 Empress cream soup (2) in sahara.

"The Cardinal" was lucky enough to add two #1469 Ridgeleigh square ash trays and a cute little #1486 Coleport bar glass.

The #1229 Octagon crystal nut, cut, was scooped up by the "Terrific Lady".

"Busy B" has a #1519 Waverly 13" plain torte plate, beautiful clarity, while the "Man from Newton" has two (2) #411 Rib and Panel (Tudor) champagnes or high footed sherbets and the #1184 Yeoman d/o crystal footed comport.

"Two Guys" (conn) report that there are still bargains to be found; not all is lost when you can walk into a shop and come away with, for less than a loaf of bread each, a #359 colonial 2 oz. sherry, #300 3 oz. wine, #300 saucer champagne and the #1150 4½" coaster plate. All were marked! They also acquired the #4036 Rooster head cocktail shaker with #941 Barcelona cutting.

"The South Jersey Troops" found a #1401 Empress oil bottle in sahara and the #1485 Saturn 10 oz. goblet in Limelight! Mmmmmmm.

"Thistle Dew" (vt) was so excited regarding her "best find ever" that she almost couldn't write legibly enough for me to read her letter, but I was just able to make out the #160 Locket on Chain ruby stain tooth pick.

As for "Yours Truly" I haven't done much hunting of late but, just let me mention a couple of nice things found a while back; #310 Ring Band Tumbler in custard with rose decoration, #1485 Saturn sugar shaker, a pair of #600 square handled candleholders and the #1503 Crystalite cigarette holder.

Please send me your finds, remember this is everyones column. Until next month.

Janet Caswell



SEA HORSE HANDLED CIGARETTE
5½" high

HEISEY CLUB OF SOUTHEASTERN MASSACHUSETTS

T'was a few days before Christmas and all through the Banck's house the Southeastern Massachusetts Heisey Club members were stirring (the punch) and celebrating the holidays with a toast.

Once again the annual club Christmas party was held at Dot and Wade Banck's home in Rockland, Massachusetts. Cocktails and hors d'oeuvres were served in the Banck's antique 1700 home. Candlelight danced around "Beaded Panel" and "Old Queen Ann" punch bowls; Christmas cheer was served in a variety of Heisey punch cups; Heisey animals were decorated with red ribbons. The hospitality committee also created a spectacular buffet of assorted meats, rolls, salads, and desserts which was served in the barn studio. The warmth of the holiday spirit was shared by everyone in attendance.

It was also a special meeting for our new officers who conducted their first meeting.

- President - Mary Williams
- Vice President - Helen Mead
- Treasurer - Dot Banck
- Secretary - Jackie Thran

One of the festivities of the evening was a presentation of a gift to our "out-going" president, Bill Thran. The club members were pleased to read the expression of delight on Bill's face when he opened a box cradling a Duquesne goblet with Continental cutting to add to his stem collection.

After the business meeting, a mini Heisey sale was held and some Christmas shopping was accomplished by some members. The meeting ended with wishes of good health and happiness for the new year to Heisey Club members everywhere.

Mary Neckes

HEISEY COLLECTORS OF THE ROCHESTER AREA

Our club has had an interesting and busy fall leading up to year-end. The October meeting was held at the home of Marge and Jerry Gillette where the subject was vases. Sharon Orienter gave us an informative quiz on 15 vases which represented the following types made by Heisey: ball, fan, swung, candle, violet, bud, favor, flared, nasturtium and cornicopia. Show and tell produced three Winged Scroll custard swung vases and a 10 3/8" tall Nail stemmed vase along with many others.

Our November meeting was held at the home of Bobbi Zimmer, where her display of candy jars is captivating. The subject was the #343 Sunburst pattern and everyone proudly displayed a large variety of items made between 1903 and 1920.

Our December meeting was a Christmas party held at the home of George and Arlene Reynolds, decorated with the seasons trimmings and beautifully displayed glassware. This was followed by a dinner held at the Spring House, a restaurant in a building dating back to the days of the Erie Canal.

Our Club has delivered thirty-two copies of the book "Heisey Candlesticks, Candelabra, and Lamps" by Tom Felt and Bob O'Grady to the Monroe County Library System where they will receive a nameplate recognizing our HCA Club and be distributed to the various branches in the Rochester area.

Our officers for 1988 will be Bruce Schwendy, President; Betty Evans, Vice President; and Arlene Reynolds, Secretary-Treasurer.

by Bruce Schwendy

WHAT IS OUR GOAL?

I have been asked what our goal is in acquiring glass for the museum. Do we want every piece of a pattern, etc.?

No, we do not want every piece of a pattern. It would be impossible to display, or to store, that many pieces of glass. We do, however, want at least one piece of every pattern and hopefully, a piece of each cutting and etching. This is an ambitious goal but it probably will be achieved in the future.

We also desire to have as many rare and unusual items as possible and we have a very good start. These include feasibility items which apparently did not go over well at the glass shows so were never put into actual production. Various items were made in experimental colors and these are very desirable. Whimsies are quite interesting and we have several of those.

We could never turn down a rare and beautiful engraving, no matter how many we had already.

One of the people who wrote about this asked about #150 Oval In Diamond Point. We have both crystal and emerald pitchers, an emerald table set and a small nappy. This is such a short line that we do have most of it.

Another question was whether we had a #411 Tudor piece in "Carnival" glass. Of course, Heisey did not make Carnival or iridized glass, but other Companies bought blanks to decorate in this manner. We do have a #411 bowl with gold iridescence.

Of course we want a full set of Heisey animals eventually. We have all of them on display, but many are on loan, as all of our glass was back in 1974 when we opened the museum.

We are still in need of toothpick holders and cruets, both of which we have special cabinets for and we would like to have them all.

If you would like to donate any of these please write first so that we can tell you what we have. In fact, it is well to contact us anyway, whatever you wish to give, so that we can avoid duplicates.

We will gladly take anything which you want to give to us and if we do receive duplicates, at some point the extras may have to be sold. In that case, the money would go toward the support of the museum, a most worthy cause. Louise Ream



"NEW HORSE HEAD" LARIAT
CANDY DISH
8 1/2" diameter

BAY STATE HCC

The Bay State Heisey Collectors Club held its regular meeting in November. This was our auction meeting. We usually hold this auction for the benefit of the museum, but this time we voted to buy a gift in Lloyd Caswell's memory and have it on display in the museum.

Gary Olson was the auctioneer and he did a very good job. The glass that was brought was of excellent quality as was realized by the total raised at the end of the auction. A good time was had by all. Charles Horsfall provided the refreshments. He really put on a fine repast for everyone's enjoyment. A good job, Charlie.

The December meeting was our Christmas party held at the new home of Gary and Susan Olson (a Condo). They have a very nice home, which lent itself to a cozy Christmas party for all. Members brought a pot pourri of food. The diets had to wait this day, everyone had a good time.

By this time the holidays have come and gone, so I hope everyone had a beautiful time and that all wishes were received. In the coming year I wish prosperity and health to all.

Happy Hunting,
George Gleason

The Bay State Club has used the proceeds from their auction to purchase a wonderful gift for the museum. The gift is the #300-5 light candelabra usually referred to as the "Hemisphere" Candelabra. This is accompanied by a pair of #2 old Williamsburg single candlesticks with bobeches and prisms.

Editors Note:

HCA and the museum are delighted to have these lovely pieces as a gift. We are so grateful that our members and study clubs are so generous.

NOTICE TO DEALERS

Bay State HCC Needs Dealers for their annual show. This year the show will be held on April 30 and May 1 at a new location, Waltham High School, Waltham, Massachusetts. For contracts write or call Clive Goodwin, 117 Mason Terrace, Brookline, MA 02146. Phone (617) 232-2617 after 7:30 p.m. or George Gleason, 11 Beltran Street, Malden, MA 02148. Phone (617) 321-3165 after 7:30 p.m.

CONCERNING THE HEISEY MOULDS

Several of HCA's affiliated study clubs have reprinted a letter to the "Editor" of the paper called "Antique West" which concerns the Heisey moulds. We are reprinting it here. One newsletter stated that Mrs. Clift (or the paper) used the wrong spelling of the word "mold".

Webster Collegiate Dictionary gives the word "mould" as a variant of "mold". Other dictionaries list the word "mould" as archaic. HCA uses "mould" because that is what Heisey called it. Also, the Island Mould Company of Wheeling, West Virginia, still spells the word that way. Either usage is correct.

According to officials of the Imperial Glass Company the only formula they owned was "Heisey Amber".

We wrote to the original Antique publication which printed Mr. Palm's statements. We appreciate very much Joanna's letter to other papers.

As to a flow of "Heisey fakes", this is always possible but they will not be made in original Heisey moulds.

THE LETTER FOLLOWS

HEISEY MOLDS SAFE

To the Editor:

On September 14 your publication ran an article by Betty Gunning. "Antique dealers give views on future collectibles", in which she quoted a Max Palm of Cincinnati as saying "current manufacturing companies, some of which are in the Orient, have purchased molds from defunct glass companies such as Rookwood and Heisey, and are producing new pieces using the old molds".

I believe the following chronology of events concerning the Heisey molds will show this statement to be incomplete and very misleading.

April 29, 1958 - Imperial Glass Corporation of Belaire, Ohio, acquired all glass making molds, the related tools, all etching plates, customer lists, production records, patents, copyrights, trademarks and batch formulas of the 63-year-old A. H. Heisey Company of Newark, Ohio.

NOVEMBER 20, 1984 - The bankrupt Imperial Glass Company was sold to Consolidated International.

JANUARY 22, 1985 - A contract was signed between The Heisey Collectors of America, Inc., (HCA) and Consolidated Colony. HCA became legal owner of all the Heisey molds and other negotiated assets (Old Williamsburg #341, approximately 60 molds, was not included in this contract).

MARCH 1985 - Heisey molds and other assets were transported to Newark, Ohio, where they are now stored and controlled by the HCA.

As an avid Heisey collector I am not at all concerned about new pieces being made in old molds because first, the only molds that could be used for this are #341 Old Williamsburg (only one of Heisey's many patterns) and second, I seriously doubt any new glass could come close to equalling the quality of Heisey's glass.

Thank you for allowing me to attempt to set the record straight since the impression I got from Mr. Palm's statement was that there could possibly be a flood of new fake Heisey glass, and this is not so.

- Mrs. Donald Clift; Syracuse, N Y

(Editor's note - Besides the incorrect spelling of mould, I think that Mr. Palm also made an error in saying that the Rookwood Company made glass. I thought it produced pottery.) This Editor's note is by the editor of the Golden Gate Heisey Club's newsletter.

THEME SELECTED FOR CONVENTION

The theme selected for this years Convention is "Heisey Olympics". More will be printed in the next issue. Clubs and individuals can begin planning their booths. The theme was only selected last night (Jan. 18) at the second Convention Meeting.

December 29, 1987

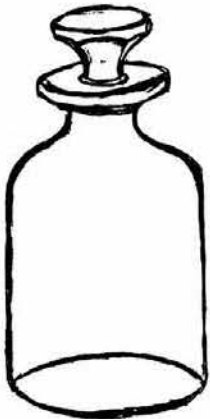
Dear Louise,

I've done no housework since Christmas! Do you know how long it takes to turn every page of every Heisey News you've published -- plus numerous Heisey catalogs, as well as each Vogel book and every Vogel newsletter? That's how I've spent my time since I received for Christmas a pair of cologne (I presume) bottles, the likes of which I cannot recall ever having seen pictured or sketched. They seem rather large for cologne -- maybe bath salts or something like that -- but there's a narrow neck opening. The capacity is about 12 ounces when filled to the brim and 11 when the stopper is in place. They are of very thick glass -- one is very slightly cloudy indicating that it has been used. There is a cut decoration, either a daisy or the cornflower design, and the bottles are marked twice on each side of the neck. They would appear to be from an early period, but the marks are tiny, which to me would indicate later years. Ted is doing a sketch for me. As in the case of the shoemaker, the photographer has no film in the house and we are in the middle of a real New England Nor-easter with no chance of getting out today.

I would appreciate any information you and your sleuths could give me. I hate being stumped especially when the giver sits waiting expectantly for me to come up with all the dope on the gift. I hope you had a pleasant holiday.

Mrs. Theodore P. Mead

I wish you had written before you did all of that looking. The Cologne is #1183 Revere. We have one in the museum with painted decorations. It is only shown in one catalog and I doubt that Vogel ever had that one. We have so many more than he did. The cutting does not appear to be a production one.



MRS. MEAD SENT THIS DRAWING AND DESCRIPTION BELOW

BLOWN - GROUND TOP AND BOTTOM BOTTOM 2½" across. Circumference of bottle 10" HEAVY GLASS - Very small mark, both sides of neck. Height 5¼" Rim - 2" across STOPPER - #61 type. Decoration, cut - Daisy or cornflower. WHAT???? Liquid capacity - 11/12 ounces. Height measurement above is without stopper. (6½: with) stopper ground as well as inside neck of bottle.

BUYER BEWARE

BEWARE OF FAKES AND FALSE ADVERTISING! JOHN WILLOUGHBY, OF LOUISIANA, SENT US A COPY OF AN AD FROM THE DECEMBER 16, 1987 ANTIQUE TRADER. IN IT WAS AN AD FOR A "HEISEY GLASS PONY AND CART CANDY CONTAINER" IN MINT CONDITION FOR \$35.00.

WHILE WE KNOW THAT NO KNOWLEDGEABLE HEISEY COLLECTOR WOULD BUY A "GLASS PONY AND CART" FOR HEISEY GLASS, PERHAPS SOME NOVICE COLLECTOR MIGHT DO SO. PLEASE DO NOT BUY THIS ITEM NOR ANY OF THESE COVERED ANIMAL, CHICKEN OR BIRD COVERED DISHES, WHICH HAVE BEEN IMPORTED FROM TAIWAN. WHEN THESE WERE FIRST MADE THEY HAD A STRANGE "DIAMOND H" ON THEM. HCA WAS ABLE TO GET THE IMPORTING COMPANY TO REMOVE THIS MARK FROM THE MOULDS, BUT OF COURSE, SOME OF THEM ARE STILL AROUND AND ARE STILL BEING SOLD AS HEISEY.

HEISEY MADE NO ITEMS WITH ANIMAL LIDS. THEY DID, HOWEVER, MAKE A TRINKET BOX WITH A LION ON THE COVER AND CIGARETTE AND CANDY BOXES WITH HORSE HEADS OR SITTING PONIES AS FINIALS. ALL OF THESE ARE PICTURED HERE.

AS ALWAYS, IT IS "BUYERS BEWARE", SO DON'T BE TAKEN BY THESE FAKES IN VARIOUS COLORS AND VERY POOR GLASS. A. H. HEISEY WOULD TURN OVER IN HIS GRAVE IF HE KNEW THAT SOME OF THIS JUNKY GLASS WAS BEING PURCHASED AS HEISEY.

LOUISE REAM

TRINKET BOX AND HORSEHEAD COVERS ETC.



Trinket Box

1489½ PURITAN Horse Head Cigarette Boxes & Ashtrays



SITTING PONY CIGARETTE BOX
6¼" long
4½" high

15TH. ANNUAL ALL HEISEY BENEFIT AUCTION

AUCTIONEERS: Sam Schnaidt, Tim Hughes, Craig Connelly & Larry Stickle

Auctioneers donate their services for this auction.

Auction held at . . . Apple Tree Auction Center, 1616 West Church St. Newark, OH 43055

Friday, March 11, 1988
Auction Preview, 8 to 10 P.M.
Refreshments

TERMS:
Cash
Checks
Visa & M C

Saturday, March 12, 1988
Doors Open, 8 A.M.
Auction Begins, 9 A.M.

INCLUDES SOMETHING FOR BOTH COLLECTOR AND DEALER

Condition Codes: A small letter is minimal; a large letter is significant damage

f F - Flake	b B - Bruise	r R - Repaired
c C - Crack	m M - Mould flaw	x X - Major Damage

Sponsored by

Heisey Collectors of America, Inc.
For benefit of the National Heisey Glass Museum

MAIL BIDDING INSTRUCTIONS Read Carefully

As your mail bidder, I will bid competitively for you at the HCA Benefit auction on March 12th. In case of duplicate bids, earliest postmarks will win. Your bids must reflect what is listed in the catalog as to condition, pattern and unit number.

You set the maximum you are willing to pay on each lot. If successful, the remainder will be refunded. Please use good judgment in arriving at your maximum bid figure -- remember, there are minimum limits to raises that the auctioneer will accept (small items - \$2.50; larger items - \$5.00, \$10.00, or as much as \$25.00).

Lots containing multiple items normally are not split up, but will be sold as one lot to the successful bidder.

Items have been checked when cataloged and will be closely checked again prior to selling. In some cases where damage is minimal, your bid may be executed at 70 to 80% of maximum. Mark your BID LISTS Mint Only, if you do not want me to use my discretion in your bid. MOULD FLAWS are not considered as damage.

If there is a variance called at the auction (such as unlisted damage or a difference in the number of items in a lot), I will not bid on that lot. Please do not request the amount of a bid to be moved from one lot to another depending on your success or lack of success on other bid lots.

Please use the form (or copy of it) provided for your bidding and sign the sheet. Send a self addressed stamped envelope for returning your checks and letters giving the results of your bids.

You may send a separate check for each lot or you may send one check covering the maximum amount of all bids. Shipping charges must be added in all cases. Any surplus bid money or shipping charges will be refunded. Instead of sending checks you may use a valid VISA/MASTERCARD. In this case, we will need the type of card, the card number, and its expiration date.

Again this year, the successful mail bid glass will be packed and shipped UPS from the mailing room of the Administration Building, so be sure to include a complete address. (NO POST OFFICE BOX Addresses please).

Send your bids by MARCH 6 to:
Loren Yeakley
Mailman VI
P.O. Box 4367
Newark, OH 43055

If you have questions, call Loren Yeakley after 6 P.M. weekdays or on weekends. NO COLLECT CALLS PLEASE. PH: 614-522-5820 or call the Museum 8:30 to 4:00 P.M. weekdays.

List of prices realized will be printed in the April Heisey News. If you are not a member, send \$1 to HCA, P.O. Box 27, Newark, Ohio 43055 and include a long SASE.

BID FORM ON LAST PAGE OF AUCTION LIST

BIDDERS PLEASE NOTE

D just ahead of the pattern number indicates that the item is a donation.

Some descriptions were so long that they were unable to get it all in the space available. If you have questions about an item write or call the museum and we can check it on the original list.

1. 3333 OLD GLORY COCKTAIL 4 H, 1f STEM
2. 1485 SATURN CHAMPAGNE 6
3. 1485 SATURN PARFAIT 2 H
4. 300 PEERLESS SHERBET 3 H
5. 393 NARROW FLUTE PARFAIT 4 H
6. 5098 LOUISA GOBLET, BEL-AIR CUT 5 H, 1f FOOT
7. 57 OPAL NOVELTY PUFF BOX W/LID, H IN LID
8. 1469 RIDGELEIGH 12" OVAL FLORAL BOWL, ZIRCON H
9. D4090 COVENTRY GOBLET, 903 ZEUSE CUTTING
10. 341 PURITAN HDLD JELLY H
11. 419 SUSSEX FINGER BOWL, COBALT H
12. 2323 NAVY 5 OZ SODA, COBALT BASE, 2
13. 1415 20TH CENTURY SHERBET, COBALT, 1 H
14. 1541 ATHENA 12" GARDENIA BOWL, f BASE
15. 310 RING BAND CUSTARD TUMBLER SOUV/ROSES H, f
16. VERLYS LOVEBIRDS VASE, FROSTED, SCRIPT SIGNED
17. 325 PILLOWS CRACKER JAR W/LID H IN LID
18. 4045 9" BALL VASE, SAHARA
19. 4163 WHALEY MUG GOLFER H SLIGHTLY ROUGH BOT
20. 4228 FAVOR VASE D/O, MOONGLEAM
21. 3481 GLENFORD 1 1/2 OZ BAR GLASS, ALEXANDRITE
22. 3405 ALIBI 3 OZ COCKTAIL, FOX CHASE ETCH
23. 4002 AQUA CALIENTE CKTL TALL SAILBOAT ETCH
24. 4225 COBEL CKTL SHAKER COMPLETE SPTS MAN ETCH
25. 1205 FANCY LOOP MOLASSES CAN
26. 3345 MARY N' VIRG GOB SIL DEC (ROCKWELL) 8 H
27. D2401 8 OZ SODA, TALLY HO 2
28. 1425 VICTORIAN SHOT GLASS H
29. 1519 WAVERLY TOP OF RND CIG BOX W/ORIG STICKER
30. STANDING PIGLET 3, 2f
31. LRG HORSEHEAD STOPPER, NOT GROUND
32. 1401 EMPRESS DIAM ASH TRAY, MONO SMC, CUT
33. 1401 EMPRESS DIAM ASH TRAY, ALEXANDRITE H
34. 1454 DIAMOND PT IND ASH TRAY & JELLY H
35. 1280 WINGED SCROLL MINIATURE LAMP W/GOLD DECOR
36. 379 URN SYRUP H
37. 353 MED FLAT PANEL 2 QT COV CRUSHED FRUIT H
38. 433 GREEK KEY BANANA SPLIT H
39. 1503 CRYSTOLITE 7" SHELL PLATE 4 H
40. 3476 TEMPLE HDLD ICE TEA, RENAISSANCE ETCH
41. 4036 OVAL SHERRY W/STERL STOPPER, MARYLAND CUT
42. 1519 WAVERLY RND CIG HOLDER, ORCHID ETCH H
43. 1519 WAVERLY COV BUTTER W/SEAHORSE FINIAL
44. 1280 WINGED SCROLL MATCH HOLDER, CUSTARD
45. 1280 WINGED SCROLL MATCH HOLDER, OPAL
46. 1280 WINGED SCROLL MATCH HOLDER, EMERALD
47. 1280 WINGED SCROLL CIG HOLDER, EMERALD
48. 31 JACK-BE-NIMBLE TOY CANDLESTICK PR H
49. 1205 FANCY LOOP TPICK EMERALD W/WORN GOLD
50. 1404 OLD SANDWICH SHOT GLASS, COBALT H
51. 1280 WINGED SCROLL TPICK CUSTARD W/GOLD DEC
52. 1404 OLD SANDWICH SHOT GLASS, SAHARA H
53. FANCY LOOP TOOTHPICK W/GOLD DECOR
54. 150 PTD OVAL & DIAM PT SPOONER, EMERALD f
55. 1252 TWIST KRAFT CHEESE PLATE, MOONGLEAM
56. 353 MED FLAT PANEL SYRUP W/LID H
57. 3397 GASCONY DIV RELISH H
58. 1194 YEOMAN CONSERVE, FLAMINGO H
59. 1184 YEOMAN 13" CELERY D/O, SAHARA
60. 351 PRISCILLA CRUET W/GOLD DEC CUT STOP H
61. ROOSTER HEAD STOPPER
62. 479 PETAL CREAMER, MOONGLEAM
63. 1469 RIDGELEIGH 8" CYLINDER VASE
64. 1183 REVERE 1# COV CANDY W/WORN GOLD CUT H
65. 133 SWAN HDLD 14" FLORAL BOWL, MOONGLEAM
66. 1552 FOUR LEAF CANDLE BLOCK PR
67. 103 CUPPED SAUCER CANDLES FLORAL DEC PR H
68. 129 TRICORN CANDLESTICK, FLAMINGO H
69. 122 ZIG ZAG CANDLE HOLDER PR H
70. 600 SQ HDLD SAUCER FTD CANDLE HOLDER
71. 1252 TWIST CANDLE HOLDER, MOONGLEAM PR H
72. 1506 PROVINCIAL CANDLE BLOCK PR
73. 1567 PLANTATION VINEGAR, STOPPER NOT GROUND H
74. 4054 CORONATION 64 OZ LRG ICE LIP PITCHER
75. 5040 LARIAT COCKTAIL, MOONGLO CUT, 6 H
76. 300 PEERLESS IND DECANTER 4
77. 465 REC PANEL 1#COV CANDY FLOR DEC LID ?
78. 300 PEERLESS & 341 PURITAN P CUPS 2 H
79. 347 SCALLOPED LOW FTD SHERBET 4 H
80. 351 PRISCILLA H & 333 WALDORF CRUET NO STPR
81. 300 PEERLESS LOW GOBLET 2 H, SHERBET 2 H
82. 1404 OLD SAND CNLD H & 5 PATRICIAN 7"CNLD H
83. 4225 COBEL 1 QT COCKTAIL SHAKER, PAIRPOINT CUT
84. 1519 WAVERLY TWO LITE CANDLESTICK, ORCHID ETCH
85. 2516 CIRCLE PR 8 OZ TUMBLER, FLAMINGO 7
86. 301 2LT CANDELABRA SAHARA, FINIAL X 1 ARM,PR
87. 1495 FERN MAYO & UNDERPLATE, BELVEDERE ETCH
88. 501 FLOWER BOX, MARIGOLD, CRAZED 2
89. 3481 GLENFORD 8 OZ FTD TUMBLER, MNGLM FT 4
90. 1540 LARIAT CANDY W/LID, MOONGLO CUT H
91. 5072 ROSE CORDIAL, HEISEY ROSE ETCH H
92. 5072 ROSE CORDIAL, HEISEY ROSE ETCH H
93. 5072 ROSE CORDIAL, HEISEY ROSE ETCH H
94. 5072 ROSE CORDIAL, HEISEY ROSE ETCH H
95. 372 MCGRADY SYRUP, FLAMINGO H FHDL
96. D1519 WAVERLY LID FOR LEM DISH, ORCH ETCH
97. 1469 RIDGELEIGH 6" FTD VASE, FLARED
98. 1469 RIDGELEIGH 2 PART DIV RELISH f
99. 5082 MID CENTURY COCKTAIL 4 H
100. 341 PURITAN JELLY COMPOTE, FAINT H
101. 1519 WAVERLY 6" DIVIDED RELISH M
102. 1519 WAVERLY 14" PLATE, ORCHID ETCH
103. 1540 LARIAT 13" OVAL FLORAL BOWL H
104. 1485 SATURN 8 1/2" FTD VASE W/CRIMPED TOP
105. 1401 EMPRESS 13" 2 HDLD HORS D'OEUVRE H
106. 342 PANELED COLONIAL CREAMER H
107. 1485 SATURN TID BIT TRAY H
108. D1229 OCTAGON 2 HDLD CHEESE, FLAMINGO D/O
109. D407 COARSE R. CELERY MET/HOLDER/MARIG SIN H
110. 1255 PINE/FAN CUSTARD SOUV TANKARD H, C
111. 1295 BEADED SWAG COV SUGAR, ROSE DECOR, OPAL
112. 310 RING BAND CUSTARD BUTTER TOP ROSE DEC
113. 341 PURITAN OVAL CREAM & SUGAR H fCREAMER
114. 300 PEERLESS 2 BALL GOBLET 2 H
115. 113 MARS CANDLE HOLDER, MOONGLEAM PR
116. 1506 PROVINCIAL 9 OZ FTD TUMBLER, ZIRCON H
117. 1519 WAVERLY HORN VASE
118. KICKING PONY
119. SPARKY
120. 352 FLAT PANEL CR/SUG BEAUTIFUL CUTTING H
121. 5025 TYROLEAN GOB ORCHID ETC 8 H/1 ACID MK
122. 5025 TYROLEAN CHAMP ORCHID ETCH 8, 1 M
123. 1404 OLD SANWICH ICE LIP PITCHER, SAHARA H m
124. 4224 IVY VASE, TANGERINE W/O
125. 150 BANDED FLUTE CRUET, NO STOPPER
126. 1404 OLD SANDWICH 6 OZ SUNDAE 8 H
127. 1205 FANCY LOOP 10" CELERY, CRIMPED
128. 50 6" FLAM FL BOWL W/#2 BLOCK, GOLD ET H f
129. 1252 TWIST CRUET MARIGOLD, CRAZED F LIP
130. 1170 PLEAT & PANEL TALL GOBLET, MOONGLEAM 2
131. 1186 YEOMAN 6" 2 HDLD JELLY, CUT H
132. 353 MED FLAT PANEL 6 OZ CRUET H SL CLDY
133. 1485 SATURN CRUET W/STOPPER
134. 350 PINWHEEL & FAN 8" BOWL H
135. 433 GREEK KEY 2 OZ WINE H
136. 341 PURITAN 8" BOWL FLRD/CRMPD H, WORN
137. 1401 EMPRESS NUT CUP, SAHARA
138. 1183 REVERE 4" COV LEMON DISH, FLORAL ETCH H
139. 300 PEERLESS SPOONER W/WORN GOLD H f SIDE
140. 300 PEERLESS CLARET JUG

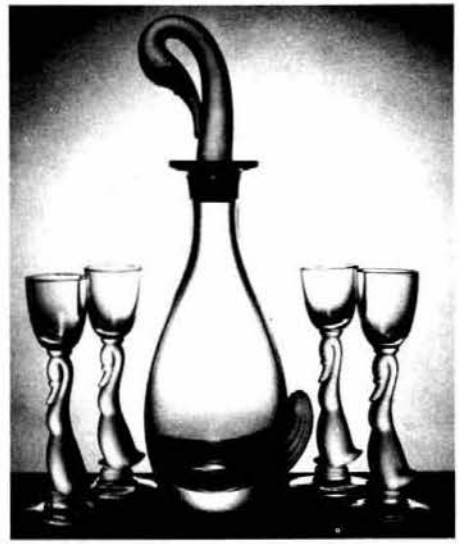
141. 1255 PINE/& FAN 10" VASE EMERALD STAINED
142. 1533 WAMPUM 1 LT CANDLESTICK PR
143. 1519 WAVERLY 2 LT CANDLESTICK, ORCHID ETCH PR
144. 4230 FAVOR VASE D/O f RIM
145. 1519 WAVERLY 13" 3 PT RELISH, ROSE ETCH H
146. 1509 QUEEN ANNE 6" 2 HDL FT JELLY,ORCHID FFT
147. 1280 WINGED SCROLL TOOTHPICK, CUSTARD F BASE
148. 310 RING BAND HI FT JELLY COMPOTE, GOLD DEC
149. 515 PERFUME W/STOPPER, MGLM H X STOPPER
150. 3350 WABASH FTD COV CANDY MGLM ST, BASE
151. 1401 EMPRESS 6" D/F JELLY, SAHARA H
152. 1567 PLANTATION CUP/SAUCER H F
153. 1519 WAVERLY OVAL FTD NUT DISH
154. 1569 PLANTATION 8" SALAD PLATE 6 CLOUDY
155. 1567 PLANTATION 2 PT RELISH W/STERLING BASE H
156. 5067 PLANTATION GOBLET 2, 1H f FT
157. 5067 PLANTATION WINE 2
158. 5067 PLANTATION SHERBET
159. 341 OLD WMSBG/PURITAN PUNCH BOWL BASE H
160. 135 EMPRESS CANDLESTICK, SAHARA C SOCKET
161. TRICORN CANDLESTICK H
162. 1540 LARIAT COV CANDY, UNK CUT
163. 1519 WAVERLY IND CR & SUG, ORCH ETCH
164. 4224 STEEPLE CHS SET MXR & 5 GLS SAH/CRYS 4F
165. 1433 THUMBPRINT & PANEL 2 LT CANDLESTICK
166. 351 PRISCILLA WINE 3 H
167. 1503 CRYSTOLITE IND COV MUST & PAD 5 HEISEY?
168. HEISEY CHECK, FRAMED, OLD
169. 351 PRISCILLA CATSUP BOTTLE CUT STOP H, RIM f
170. 17 HDLD DECANter W/STOP, SL CLOUDY f RIM
171. WINGS DOWN GOOSE
172. 1428 WARWICK 5" VASE, COBALT H
173. 1401 EMPRESS D/F NUT DISH, ALEXANDRITE
174. 1489 1/2 PURITAN SM CIG BOX, HORSEHEAD FINIAL
175. 113 MARS CANDLESTICK, FLAMINGO PR
176. 4004 AQUA CALIENTE COCKTAIL, FOX CHASE 3
177. 1445 GRAPE CLUSTER FLORAL BOWL H
178. 5003 CRYSTOLITE CORDIAL H
179. 1184 YEOMAN LRG BOWTIE X & SM BOWTIE, FLAMINGO
180. 1205 FANCY LOOP PUNCH CUP 8
181. 444 COLONIAL 12" 3 HDLD VASE, RARE, H
182. 2516 CIRCLE PR 12 OZ SODA/TUMBLER, FLAMINGO 2
183. 1205 FANCY LOOP 10" CELERY
184. 1489 1/2 PURITAN SM COV CIG BX,HRSHD BOT WRN
185. 1425 VICTORIAN 4 OZ CLARET 4 H
186. 1186 YEOMAN HDLD CR & SUG, UNK CUT H f ON EA
187. 3404 SPANISH GOBLET CUT,4, 2 f RIM, 1 f FT
188. 1205 FANCY LOOP COV BUTTER, f INSIDE BASE
189. 4225 COBEL CKTL SHKR SPORTSMAN ETCH X TOP
190. 359 COLONIAL N/O SHERBET 4 H
191. STANDING COLT H
192. MALLARD, WINGS UP
193. 1280 WINGED SCROLL TANKARD, EMERALD C HDL
194. 1280 WGD SCROLL EMERALD COV TRNKT BX GLD DEC
195. 1280 WGD SCROLL EMERALD SPOONER,GOLD SOUV
196. 1280 WGD SCROLL EMERALD COV BUTV WRN GLD SOUV
197. 1280 WGD SCROLL EMERALD COV SUG GOLD SOUV
198. 1280 WGD SCROLL CREAMER, GOLD, EMERALD
199. 1295 BEAD SWAG EMERALD PITCHER ENAMEL DEC
200. 1205 FANCY LOOP CRUET W/STOPPER
201. 160 LOCKET ON CHAIN CRUET W/STOPPER
202. 343 SUNBURST 3 QT PITCHER H
203. 3480 KOORS PTCHR MNGLN HDL/FT CUT NECK/BASE
204. 3480 KOORS 8 1/2 OZ FTD SODA 4 1f
205. 6091 CABACHON GOBLET 2 H
206. 6091 CABACHON 5 OZ SODA/JUICE 12 H
207. 6091 CABACHON ICE TEA 12 H
208. 6091 CABACHON SHERBET 16 H
209. 4054 CORONATION 2 1/2 OZ BAR GLASS 12
210. 305 PUNTY & DIAM PT 8" FTD VASE
211. 4045 6" BALL VASE W/O
212. 1469 RIDGELEIGH 12" CELERY/OLIVE H
213. 1540 LARIAT SAUCER CHAMPAGNE 'FLORENCE' 6
214. 419 SUSSEX GOBLET, MGLM BOWL H
215. 3370 AFRICAN WINE, MGLM STEM/FT
216. 5024 OXFORD 1 OZ CORDIAL H
217. 3320 RITZ GOBLET, MT VERNON ETCH
218. 2401 12 OZ SODA, SKIER ETCH
219. 3311 VELVEDERE FNGR BOWL W/PL, WINDSOR CUT 4
220. 3362 CHARTER OAK GOBLET, MGLM H
221. 412 TUDOR 5 OZ SHERBET 5 H
222. D 21 ARISTOCRAT 7" SINGLE CANDLESTICK
223. D113 MARS 1 LT CANDLESTICK GOLD DEC, PR
224. D1235 BEADED PANEL & SUNBURST PUNCH CUP 3
225. D3542 HAZELWOOD OYSTER COCKTAIL W/ETCHING 4H
226. D1235 BEADED PANEL & SUNBURST PUNCH CUP 2
227. D1401 EMPRESS 12" HDLD MUFFIN PLT SAH H WRN
228. D5003 CRYSTOLITE 5 OZ JUICE 6
229. 1295 BEADED SWAG 7 PC BERRY SET, GOLD DECOR
230. 1429 12" OVAL FLORAL BOWL W/FROG 2 H
231. 1170 PLT & PAN FLAM 5"HI FTD COV COMPOTIER
232. 1632 LODESTAR 12" FLORAL BOWL, DAWN H
233. 1632 LODESTAR 8 1/2" BOWL, DAWN H
234. 1540 LARIAT 8 1/2" FTD HDLD BASKET H
235. 1231 RIBBED OCTAGON HAWTHORNE 12 1/2" BOWL
236. 411 TUDOR 5" FTD PRESERVE W/COVER, MGLM H
237. 1637A TOWN & COUNTRY 11" SALAD BOWL, DAWN
238. 1184 YEOMAN SUGAR W/LID, HAWTHORNE H
239. 1538 RABBIT PAPERWEIGHT
240. 1425 VICTORIAN 12 OZ SODA 6 H
241. D1509 QUEEN ANNE 11" D/F FLORAL BOWL
242. D393 NARROW FLUTE CUP PLATES 12 H
243. D1469 RIDGELEIGH 3" VASE W/CRIMPED TOP R
244. D3345 MARY N'VIRG GOBLET W/CUTTING H
245. 3481 GLENFORD 5 OZ FTD SODA D/O, FLAMINGO 5
246. 1295 BEADED SWAG COV BUTTER f BOTIOM
247. 3390 CARCASSONE FLAGON W/O, SAHARA
248. 6091 CABACHON 12 OZ ICE TEA, CATTAIL CUT 2
249. 4091 KIMBERLY GOBLET, ELABORATE UNK CUT
250. 5040 LARIAT 12" SWING VASE W/CRIMPED TOP
251. 1184 YEOMAN 3 1/2 OZ SHERBET D/O 5
252. 1519 WAVERLY 12 1/2" FLORAL BOWL, ORCHID ETCH
253. 1519 WAVERLY SALT/PEPPER, ROSE ETCH PR
254. 1252 TWIST ICE BUCKET, 1 1/4" FROST AT BOTTOM
255. 300 PEERLESS 5 OZ TUMBLER, FLAMINGO H
256. 3366 TROJAN GOBLET, TROJAN ETCH, MGLM H
257. 1183 REVERE 1# COV CANDY, RED STAIN H F LID
258. 407 COARSE RIB 7 1/2" PLATE, HAWTHORNE 6 H
259. 1184 YEOMAN 5 1/2" CHOW CHOW, UNK CUT H
260. 1509 QUEEN ANNE IND HDLD SUGAR
261. 1506 PROVINCIAL IND CR & SUG H
262. MADONNA
263. 99 LITTLE SQUATTER 1 LT CANDLE BLOCK PR
264. 1401 EMPRESS 13" CELERY, MGLM H
265. 1401 EMPRESS SAHARA DIAMOND ASH TRAY H
266. 4220 JANICE SAHARA SWIRL OPTIC VASE f RIM/FT
267. 134 TRIDENT 14" FLORAL BOWL, ALEXANDRITE
268. 1404 OLD SANDWICH 1/2 GAL JUG W/ICE LIP H
269. 1229 OCTAGON FLAM 5 1/2" FTD HDL MAYO, CUT
270. 1503 CRYSTOLITE 7 1/2" PLATES 7
271. 4164 73 OZ PITCHER W/ICE LIP, ROSE ETCH
272. 1469 RIDGELEIGH CUSTARD/PUNCH CUP 5 H
273. 393 NARROW FLUTE FRENCH DRESSING BOAT
274. 1229 OCTAGON MNGLM HDL JELLY W/PLATE CUT
275. D1229 OCTAGON 5 1/2" PLATE CUT 1 FLAM,1 MGLM
276. 4044 NEW ERA CHAMPAGNE, COBALT BOWL
277. 4044 NEW ERA COCKTAIL, COBALT BOWL
278. 1415 TWENTIETH CENTURY 5 OZ JUICE, DAWN H
279. 1415 TWENTIETH CENTURY FTD TUMBLER, DAWN H
280. 1540 LARIAT 10" FTD TORTE PLATE 4 H F BASE

281. 5072 ROSE CORDIAL, ROSE ETCH H
 282. D341 PURITAN HI FTD SHERBET 8 H
 283. 1428 WARWICK 5" VASE H
 284. 1205 FANCY LOOP COV BUTTER
 285. 1205 FANCY LOOP 6" ROSE BOWL
 286. 1467 RIDGELEIGH 7" BALL VASE
 287. 1201 FANDANGO 6" ROSE BOWL
 288. 305 PUNTY & DIAMOND PT WATER BOTTLE
 289. 45 SALT/PEPPER W/PEWTER TOPS, HAWTHORNE PR
 290. 1280 WINGED SCROLL EMERALD SPOONER GOLD DECOR
 291. 1280 WINGED SCROLL EMERALD CREAMER GOLD DECOR
 292. 3390 CARCASSONE GOBLET, COBALT
 293. 1252 TWIST 2 HDLD MAYO, MARIGOLD
 294. 3355 FAIRACRE GOBLET, ELABORATE HUNT CUT 2 H
 295. 3389 DUQUESNE CHAMPAGNE, TANGERINE f RIM
 296. 1401 EMPRESS 6" PLATE, TANGERINE H
 297. 3386 DIAMOND ROSE GOBLET, FLAMINGO 2 H
 298. 379 URN GOBLET H
 299. 379 URN FTD SHERBET H
 300. 3414 MARRIETTE CORDIAL, ELABORATE UNK CUT
 301. 5077 LEGIONNAIRE CORDIAL H
 302. 31 JACK-BE-NIMBLE TOY HDLD CANDLE PR H
 303. 5063 BANTAM ROOSTER COCKTAIL PROF RIM REP
 304. 4224 IVY VASE W/O, SAHARA
 305. 1469 RDGLEIGH SAH COASTERS ORIG GIMBELS BX 8
 306. 1295 BEAD SWAG CR, COV BUT f & COV SUG
 307. D1567 PLANTATION SALT & PEPPER 3
 308. 433 GREEK KEY WINE H
 309. 5058 GOOSE STEM CORDIAL
 310. 5058 GOOSE STEM SHERRY
 311. 5058 GOOSE STEM WINE
 312. 3381 CREOLE 2 1/2 OZ FTD BAR, SAHARA
 313. 3390 CARCASSONE SAHARA CORDIAL OLD COL ETCH
 314. 160 LOCKET ON CHAIN COV SUGAR
 315. 1225 PLAIN BAND COV BUTTER
 316. 1503 CRYSTOLITE 19" PLATE FOR PUNCH BOWL H
 317. 2323 NAVY 13 OZ SODA
 318. 1404 OLD SANDWICH IND ASH TRAY, FLAMINGO H
 319. 433 GREEK KEY 2QT CR FRT,NO LID,PAT DT,H WRN
 320. 305 PUNTY/DIAM PT PERFUME W/STERLING TOP
 321. 1428 WARWICK COBALT 2 LT CANDLE, PROF REP
 322. FISH BOOKENDS 6 5/8" PR
 323. 110 10 1/2" DOLPHIN CANDLESTICK PR
 324. 1252 TWIST 10 OZ FTD SODA, EXC MARIGOLD H
 325. 4225 COBEL 2QT CKTL SHKR TALLY HO,MONO LKL
 326. 3390 CARCASSONE GOBLET, LOTUS ETCH, SAHARA 4
 327. 5066 HORSE HEAD COCKTAIL, MOONGLO CUT
 328. 1519 WAVERLY FTD CR & SUG HEISEY ROSE ET H
 329. 1519 WAVERLY FTD CREAMER, AMBER H
 330. 5 PATRICIAN 5" TOY CANDLESTICK PR H
 331. 1184 YEOMAN OVAL HDLD BONBON, FLAMINGO
 332. 31 JACK-BE-NIMBLE HDLD CANDLESTICK PR
 333. 1252 TWIST 7" NASTURTIUM BOWL MARIGLD, SL CRZ
 334. 1250 GROOVE/SLASH 6"HUMIDOR,METAL LID-DENTED
 335. 99 LITTLE SQUATTER CANDLE BLOCK, FLAMINGO
 336. GOOSE HEAD STOPPER
 337. 1191 LOBE HDL 3 COMP SPICE TRAY,FL CUT W/SL
 338. 1513 BARCQUE 2LT CANDLE W/BOB/PRSM,NO VASE X
 339. 1509 Q.ANNE D/F ICE BCKT/PLSTIC HDL,SIL DEC
 340. 335 PRINCE/WALES FTD JELLY COMP, GD GOLD H
 341. 1511 TOURJOURS 8" PLATE, MINUET ETCH 6
 342. 433 GREEK KEY 6 OZ FLARED SHERBET 5 H
 343. 3360 PENN CHARTER 6 OZ CHAMP W/O,OLYMPIAD 6
 344. 1485 SATURN FTD OYSTER COCKTAIL 6
 345. 1401 EMPRESS BOUILLON CUP W/PLATE 6 EA H
 346. 1229, 433, 473 IND NUT CUPS, ALL H
 347. 1252 NUT CUP H, 473 OVAL NUT H, 393 FT NUT
 348. 1255 PINEAPPLE & FAN VASES (3), 6", 8", 12"
 349. 1483 STANHOPE CR & SUG W/BLK KNOBS & HDLS H
 350. 300 PEERLESS 1 OZ CORDIAL 4 H
 351. 1469 RIDGELEIGH CIG BOX & 4 ASH TRAYS H
 352. 46 CHESHIRE SALT/PEPPER W/TOPS, FLAM PR H
 353. 1252 TWIST MUSTARD W/LID, MGLM H
 354. 1447 ROCOCO CHEESE & CRACKER SET (2 PC) H
 355. 1250 GROOVE & SLASH 1/2 GAL BULBOUS PITCHER
 356. 1255 PINEAPPLE & FAN 6" VASE, EMERALD
 357. 1540 LARIAT 15"CTR HDL TRAY,UNUSUAL BALL HDL
 358. 1404 OLD SANDWICH 8 OZ SODA, SAHARA 4 H
 359. 4206 OPTIC TOOTH 12 OZ TUMBLER, FLAMINGO 6
 360. 134 TRIDENT 2 LT CANDLESTICK, FLAMINGO PR
 361. D5052 PENGUIN SM DECANter, STOPPER GLUED
 362. D1220 PUNTY BAND 2 SM NAPPIES IN MET FTD HLD R
 363. D339 CONTINENTAL WATER BOTTLE, CLOUDY
 364. D1405 IPSWICH 8 OZ TUMBLER H
 365. D341 PRISCILLA OVAL MAYO W/UNDERPLATE H
 366. D1229 OCTAGON 6" HDLD CHEESE, MGLM
 367. D1503 CRYSTOLITE 8" 3 COMP RELISH
 368. D4054 CORONATION 14 OZ SLIM JIM 5, 2f
 369. D6060 CNTRY CLB 1 1/2 OZ BAR W/MOONGLO CUT f
 370. D3390 CARCASSONE 2 OZ FTD BAR, SAHARA
 371. D3416 BARBARA FRITCHIE CORDIAL MANHATTAN CUT
 372. D7028 OHIO SESQUI ASH TRAY W/LABEL
 373. 391 12" VASE H M
 374. 1024 HOTEL CR & SUG, NO LID H F CREAMER
 375. 1469 RIDGELEIGH CUP/SAUCER 6 SETS H
 376. 1469 RIDGELEIGH OVAL CIG BOX W/LID
 377. 429 PLAIN PNL RECESS CRUET, WRONG STOPPER H
 378. 1489 PURITAN BIT BOTTLE W/SPT,ENAML SAILFISH
 379. 21 ELECTRIC PORTABLE LAMP W/SPIDER H
 380. 1280 WINGED SCROLL 8" FTD COMPOTE, CUSTARD
 381. 1252 TWIST ICE BUCKET W/METAL HDL H
 382. 1404 OLD SANDWICH 12 OZ FTD SODA, COBALT H
 383. 160 LOCKET ON CHAIN PUNCH CUP
 384. 500 OCTAGON FROZEN DESSERT, MARIGOLD
 385. 1428 WARWICK IND CANDLE HOLDER, SAHARA PR H
 386. 1210 6" FROG HDLD CHEESE PLATE, FLAMINGO WORN
 387. 21 FLOWER FROG, LRG, HAWTHORNE BRUISED
 388. 4002 AQUA CALIENTE COCKTAIL,ANTARTIC ETCH f
 389. 4191 OLYMPIA 12" FTD VSE ORCHID ETCH RARE H
 390. HORSE HEAD BOOKEND
 391. FIGHTING ROOSTER
 392. MALLARD WINGS UP
 393. GOOSE WINGS UP SCRATCHED
 394. SWAN m
 395. 1433 THUMBPRINT & PANEL FLORAL BOWL, FLAMINGO
 396. 1433 THUMBPRINT/PANEL FLAM 2 LT CANDLE, PR
 397. 1428 WARWICK 9" FROSTED VASE
 398. 1567 PLANTATION 3" CANDLE BLOCK PR
 399. 1225 PLAIN BAND 2 QT HDLD PITCHER H
 400. 341 PURITAN 2 1/2 QT HDLD PITCHER H
 401. 500 OCTAGON MET HDL ICE BUCKET, BEAU CUT
 402. 1205 FANCY LOOP WATER BOTTLE SLIGHTLY CLOUDY
 403. 373 OLD WMSBERG 5 OZ FTD SHERBET 6 H
 404. 373 OLD WMSBERG 3 OZ COCKTAIL 6 H
 405. 1485 SATURN 12" BOWL SET W/2 CLPS,2 TPKS H
 406. 1401 EMPRESS 7 1/2" D/F BOWL W/SIL OVERLAY H
 407. 468 8" OCTAGON BOWL, UNK ETCH H SHOWS WEAR
 408. 3408 JAMESTOWN SHERB W/LABEL BARCELONA CUT 6
 409. 5082 MID CENTURY 3 OZ SHERRY 2 H
 410. BANDED FLUTE 3 OZ CLARETS 4 H
 411. MADONNA, FROSTED BASE
 412. CYGNET
 413. GOOSE WINGS DOWN
 414. GOOSE WINGS HALF
 415. FISH BOOKEND
 416. MALLARD WINGS DOWN H
 417. MALLARD WINGS HALF
 418. 379 URN 4" NAPPY 5 H f BOTTOM
 419. 1540 LARIAT 12" BOWL f BOTTOM
 420. 1201 FANDANGO 10" FLUTED BOWL

421. 1632 LODESTAR 13" SHALLOW BOWL, DAWN H
422. 33 SKIRTED PANEL 7" CANDLESTICK M
423. 5003 CRYSTOLITE GOBLET H
424. 1495 FERN 6" HDLD BONBON
425. 419 SUSSEX GOBLET, MOONGLEAM H
426. 411 TUDOR MNGLM 10" BOWL, STERL RIM DECOR H
427. 393 NARROW FLT FRENCH DRESS BOAT W/PLATE H
428. 1205 FANCY LOOP IND CR & SUG, f CR SPOUT
429. 1567 PLANTATION SYRUP W/HDL & TOP
430. 1001 CASWELL CR D/O W/FLAM LABL, MGLM HDL&FT
431. 1401 EMPRESS 3 PT D/F PITCHER H f FT
432. 1567 PLANTATION MARMALADE W/LADLE H
433. 1485 SATURN PARFAIT, ZIRCON 6
434. 1519 WAVERLY COV BUT W/SEAHORSE FIN, ORCH ET
435. 365 OLD QUEEN ANNE PUNCH CUPS 5 H
436. 433 GREEK KEY PUNCH CUPS 5 H
437. 5040 LARIAT GOBLET W/AD FOLDER, MOONGLO CUT 3
438. 417 DBL RIB N PANEL HDLD BASKET, MOONGLEAM H
439. 1519 WAVERLY 12" FL BOWL FLRD, H. ROSE ET
440. 433 GREEK KEY FLAM P BOWL BASE ONLY H, M
441. 335 SKIRTED PANEL 7" CANDLE, SL ROUGHNESS
442. 4085 KOHINOR GOBLET, LOW FTD S/O, ZIRCON BOWL
443. 4069 REIS RIDGELEIGH GOBLET, MARIEMONT CUT
444. 3404 SPANISH WINE W/O, BARCELONA CUT
445. 3368 ABLEMARLE CORDIAL D/O H
446. 5025 TYROLEAN GOBLET, ORCHID ETCH H
447. 3380 OLD DOM. COCKTAIL, EMPRS ETCH, MARI GOLD
448. 5003 CRYSTOLITE COCKTAIL 4 H
449. 3389 DUQUESNE GOBLET, CHINTZ ETCH
450. 5074 SEAHORSE COCKTAIL H
451. 5074 SEAHORSE COCKTAIL H
452. 354 W FLAT PAN STK SET-CR, SUG & BUT PAT H
453. 1503 CRYSTOLITE CR & SUGAR H
454. 341 PURITAN 3" LOW FTD CRIMPED JELLY H
455. 355 QUATOR HDLD BONBON, FLORAL CUT H
456. 393 NARROW FLUTE SALT DIP 7 H
457. 1454 DIAMOND PT JELLY 10 H
458. 1469 RIDGELEIGH 3 CORNER HDLD JELLY H, M
459. 1469 RIDGELEIGH MUSTARD W/LID H
460. 1434 TOM & JERRY MUG H
461. 1428 WARWICK VASE PR 1H 1 SIDE DISTORTED
462. 1428 WARWICK 2 LT CANDLESTICK PR H
463. 1252 TWIST CANDLESTICK H
464. FISH CANDLE HOLDER PR
465. 21 1 LT CANDLESTICK, 4006 CAIRO ETCH PR H
466. 22 1 LT CANDLESTICK PR H UNFINISHED BOT
467. 1280 WGD SCROLL COV BUT DISH, WORN GOLD
468. 1280 WINGED SCROLL CR & COV SUGAR, GOLD DECOR
469. 3333 OLD GLORY CORDIAL
470. 5013 SHASTA GOBLET, DAISY CUT
471. 305 PUNTY & DIAMOND PT CELERY
472. 1280 WGD SCROLL CUSTARD 7" VASE, WORN GOLD
473. 1401 EMPRESS 7 1/2" PLATE, ALEXANDRITE 2 H
474. 350 PINWHEEL & FAN POWDER JAR W/METAL LID H
475. 4206 OPTIC TOOTH 12 OZ SODA, FLAMINGO
476. 31 JACK-BE-NIMBLE HDLD TOY CANDLES PR H
477. 372 MCGRADY 5 OZ HDLD SYRUP W/LID, SAHARA H
478. 1189 YEOMAN FTD COV SUGAR & CR D/O, SAHARA H
479. 407 CRSE RIB PICKLE H & 406 HDL CR FLAM H
480. 411 TUDOR 8 1/2" ROLLED EDGE FRUIT BOWL H
481. 1403 HALF CIRCLE FTD CR & SUGAR, SAHARA H
482. 31 JACK-BE-NIMBLE HDL TOY CANDLES PR H
483. 1295 BEAD SWAG OPAL TPICK & 4"NAPPY MET BOWL
484. 1469 RIDGELEIGH 4" CIG BOX W/LID H
485. 1567 PLANTATION 12" FTD GARDENIA BWL/RD EDGE
486. 407 COARSE RIB 7 1/2" PLATE, FLAMINGO 6 H
487. 1485 SATURN 12 OZ SODA S/O, ULC CREST 2 H
488. 1233 PRESSED DIA FLAM 6" CEREAL BOWL 2 H
489. 1220 PUNTY BAND CUSTARD MUG SOUV DAYTON, O H m
490. 393 NARROW FLUTE HDLD COV BUTTER H
491. 4036 1 PT FTD DECANTER, MONO LRA
492. 3335 LADY LEG 3 OZ WINE, #429 ZODIAC ETCH H
493. 3357 KING ARTHUR FLAM FTD ICE TEA D/O 2 H
494. 1469 RIDGELEIGH SAUCER CHAMPAGNE 2 H
495. 6060 CNTRY CLB 13 OZ DBL OLD FSHN WNCSTR ET
496. 1567 PLANTATION FTD CR & SUGAR
497. 1567 PLANTATION SALT/PEPPER, SALT SL CLOUDY
498. 1567 PLANTATION 5 OZ SHERBET & FTD JUICE H
499. 1519 WAVERLY 8 1/2" PLATE, HEISEY ROSE ETCH 7
500. 1519 WAVERLY FTD JELLY, HEISEY ROSE ET H
501. 1519 WAVERLY FTD CR & SUG HEISEY ROSE ET H
502. 1519 WAVERLY SALT/PEPPER, HEISEY ROSE ETCH PR
503. 1519 WAVERLY FTD HONEY DSH, HEISEY ROSE ET
504. 1519 WAVERLY FTD CR & SUGAR, ORCHID ETCH H
505. 1519 WAVERLY FTD CR/SUG ORCH ETCH H SL STAIN
506. 1567 PLANT. GOB-RIM, BOT & BOWL ORIG PRESNG 6
507. 1567 PLANTATION HDL SYRUP & MAYO UNERPLATE
508. 1567 PLANTATION ASH TRAY W/PAPER LABEL 4
509. 1540 LARIAT 3 1/2 OZ COCKTAIL 3 H
510. 341 PURITAN 5 1/2 OZ FTD PARFAIT 4 H
511. COLONIAL CRUSHED FRUIT W/LID H
512. 1280 WINGED SCROLL 8 1/2" NAPPY, EMERALD
513. 2 PLAID 15" CHRYS. SWNG VASE, ORIG LABL H
514. 4044 NEW ERA PILSNER, #467 TALLY HO ETCH
515. 3390 CARCASSONNE FLAM STRGHT VASE, #448 ETCH
516. 3386 DIAMOND ROSE PILSNER W/O H
517. 354 W FLAT PNL 6 OZ COLGN, GOLD IRID DBL H
518. 339 CONTINENTAL MINI LAMP MADE FROM #2 SHAKER
519. 1413 CATHEDRAL VASE FLARED, SAHARA
520. 2517 TEARDROP 9 1/2" VASE, MOONGLEAM
521. 451 CROSS LINED FLUTE GOBLET H
522. 902 ESSEX GOBLET - ONE ONLY KNOWN H
523. 1565 LEAF CANDLE HOLDER
524. 433 GREEK KEY CHAMPAGNE H
525. 600 SQ HDLD CHAMBERSTICK
526. 4044 NEW ERA DEMITASSE CUP/SAUCER, MATTE ETCH
527. 4224 IVY VASE W/O, TANGERINE PROF REP TO TOP
528. 1295 BEAD SWAG 7 OZ CRUET-NO STP, STAR CUT f
529. 1503 CRYSTOLITE 4 OZ CRUET W/STOPPER
530. 1469 RIDGELEIGH 2 OZ CRUET W/STOPPER
531. 4036 OVAL SHERRY W/SIL STPR/MONO & ORCHID ET
532. 1425 VICTORIAN RYE BOTTLE W/STOPPER
533. 4054 CORONATION 1 QT PITCHER, DEER DECOR
534. 1541 ATHENA 2 LT CANDLESTICK PR
535. 3397 GASCONY 2 COMP MAYO, SILVER OVERLAY H
536. 5048 ROOSTER HEAD COCKTAIL 2
537. 4225 COBEL QT CKTL SHAKER W/ROOSTERHEAD STPR
538. 310 RING BAND CUSTRD SALT/PEPPER ROSE DEC H
539. 1567 PLANTATION CRUET W/STOPPER H STAINED
540. 1469 RIDGELEIGH 3" RND CANDLE BLOCK PR
541. 331 COL PICKLE W/MSHROOM STPR H WRONG ST
542. 1170 PLT & PNL FLAM 14" CHEESE & CRACK H
543. 7007 WREATH CANDY BOX W/METAL LID H
544. 1231 RIBBED OCTAGON 3" CANDLESTICK PR H
545. 10 COL HR RECVR & COL PUFF BX (W/LIDS) H
546. 411 TUDOR HAWTHORNE COV FTD PRESERVE DBL H
547. 1401 EMPRESS CUSTARD CUP 14 H 1f
548. GOOSES WINGS HALF
549. 1220 PUNTY BAND IND CR & SUG SOUV N. DAKOTA H
550. 33 SKIRTED PANEL 3 1/2" CANDLESTICK PR H
551. D1469 RIDGELEIGH ICE TUB H m HDL
552. 1404 OLD SANDWICH ASH TRAY W/CUTTING
553. 1186 YEOMAN PERFUME, #657 LIBERTY CUT
554. 1186 YEOMAN PERFUME W/CUTTING SL CLOUDY
555. 1186 YEOMAN PERFUME W/CUTTING
556. 1229 OCTAGON HDLD NUT W/CUTTING
557. 1229 OCTAGON HDLD NUT W/CUTTING, FLAMINGO
558. 1229 OCTAGON HDLD NUT W/CUTTING, MOONGLEAM
559. 1229 OCTAGON HDLD NUT W/CUTTING, MOONGLEAM H
560. 39 2" SALT/PEPPER W/EARLY CUTTING PR H

561. 1386 ASH TRAY, IRISH SETTER, FLAMINGO
562. 1286 ASH TRAY, CUPID & PSYCHE, FLAMINGO
563. 1286 ASH TRAY, CUPID & PSYCHE
564. 1186 ASH TRAY, FOX CUT
565. 1183 REVERE IND SALT DIP, STAR CUT 4 H
566. 1503 CRYSTOLITE IND LEAF NUT DISH 3
567. 8037 FLUTED DIAMOND FT OVAL COMPOTE H
568. 500 OCTAGON 6" NAPPY H
569. 1401 EMPRESS D F CR & SUG H, EVANS CUT H
570. 1528 OAK LEAF RELISH RIM ROUGH
570A. 3368 ABLEMARLE 6 OZ SODA, CHAMPLAIN CUT
571. 1220 PUNTY BAND IND CR/SOUV ETTTE 1898,RED STN
572. 4045 BALL VASE, 4" W/O, SAHARA
573. 468 OCTAGON/RIM VASELINE CELERY GLD DEC,H F
574. 1425 VICTORIAN SALT/PEPPER PR H
575. 1252 TWIST OIL & VINEGAR SL CLOUDY
576. 439 RAISED LOOP 11" CELERY H
577. 1225 PLAIN BAND 13 OZ MOLLASSES W/METAL TOP
578. 419 SUSSEX COCKTAIL 9 H
579. 1225 TWIST GRAPEFRUIT, SAHARA
580. 5060 WASH SQ 10 OZ TUMBLER W/O, PUNTIES 6
581. 3480 KOORS 12 OZ FTD SODA, FLAMINGO 6
582. 160 LOCKET ON CHAIN VASELINE BUT DSH BOT f
583. 1489 PURITAN BITTERS BOTTLE W/TUBE
584. 3397 GASCONY OYS CKTL W/PRC STKR\$.07(2)FNT H
585. 300 PEERLESS 8" VASE H SL SCRATCHES
586. 1170 PLEAT & PANEL FLAM LOW GOBS, GOLD DEC 4
587. 134 TRIDENT 2 LT CANDLESTICK, ORCHID ETCH PR
588. 1540 LARIAT CLOGNE W/STOPPER
589. 4069 REIS RIDGELEIGH GOBLET, MARIEMONT CUT
590. 4055 PARKLANE GOBLET, BRIARCLIFF CUT
591. 465 RECESS PAN 1# COV CANDY,BLUE W/GLD H
592. 325 PILLOWS 6 1/2" HI FTD COMP-UNUSUAL PC H
593. 4036 OVAL SHERRY W/STOPPER
594. D3376 2/10OZ, 1/12OZ BLOWN TMBLRS ALL ETCHED
595. D1488 KOHINOOR ASH TRAY H f
596. 1184 YEOMAN 10 1/2" DIN PLATE 5 H SL WEAR
597. 3350 WABASH 2 1/2 OZ WINE EMP ET,MARIGOLD H
598. 1401 EMPRESS SALT/PEPPER, SAHARA PR
599. 3481 GLENFORD 3 OZ COCKTAIL D/O, MGLM FT 5
600. 3408 JAMESTOWN GOB W/O,#816 PALMETTO CUT
601. 5057 SUEZ FTD ICE TEA, AMBER STEM H
602. 3331 STATUESQUE GOBLET, #415 CLASSIC ETCH H
603. 3386 DIAMOND ROSE PILSNER W/O, COBALT BOWL H
604. 1528 OAKLEAF RELISH
605. 1447 ROCOCO CREAMER, SAHARA H
606. 1405 IPSWICH 10 OZ GOBLET 4 H
607. 1485 SATURN CRUET W/STOPPER B
608. 500 FROZEN DESSERT, MOONGLEAM 3
609. 99 LITTLE SQUATTER CANDLE BLOCK FLAM PR H
610. 4044 NEW ERA 2 LT CANDLES W/BOB & PRISMS PR
611. 1519 WAVERLY HDLD DIV RELISH H
612. 1503 CRYSTOLITE CUP/SAUCER 8 SETS H
613. 1503 CRYSTOLITE NUT 5 3H
614. 1503 CRYSTOLITE FTD CHEESE
615. 1519 WAVERLY CRUET W/STOPPER
616. 300 PEERLESS FLARED BAR H
617. 1519 WAVERLY IND CR & SUGAR H
618. 1205 FANCY LOOP FTD PCH GL,STRAIGHT,GOLD DEC
619. 1469 RIDGELEIGH GOBLET
620. 300 PEERLESS 8 OZ TUMBLER, NELLIE ROYCROFT H
621. 393 NARROW FLUTE GOBET H
622. 300 PEERLESS GOBLET, 2 BALL H f BALL
623. 1235 BEADED PAN/SUNBURST IND HDL SUG W/GOLD
624. 359 COLONIAL CORDIAL 2 H
625. 1404 OLD SANDWICH ASH TRAY 2 H
626. 1469 RIDGELEIGH ASH TRAY 3 H
627. 1185 YEOMAN 6 1/2" FTD COV CANDY W/CUTTING H
628. 1509 QUEEN QNNE D/F CANDLE BLOCK H
629. 300 PEERLESS 12" VASAE H
630. 4163 WHALEY 53 OZ TANKARD PITCHER, WINDSOR CUT
631. 1503 CRYSTOLITE ICE BUCKET W/HDL H
632. 1565 LEAF CANDLE HOLDER PR
633. 160 LOCKET ON CHAIN SPOONER, SUN COLORED
634. 1489 PURITAN OIL& VINEGAR BTL W/SILVER STOPPER
635. 1637A TOWN & COUNTRY DAWN MAYO H
636. 1567 PLANTATION CRUET W/STOPPER H
637. 5078 PARK AVENUE 2 OZ CORDIAL H
638. 5025 TYROLEAN 6 OZ CHAMPAGNE 5 RIM CHIP
639. D1200 CUT BLOCK CUSTARD IND SUGAR, SOUV
640. 6060 CNTRY CLB QT CKTL SHKR W/4FTD CKTL,CUT f
641. 4036 QT CKTL SHKR & 5048 ROOSTERHEAD CKTLS 6
642. 423 DIAMOND BAND SHERBET H
643. 1200 CUT BLOCK HDLD CR, SOUV MICH., CUSTARD
644. 1220 PUNTY BAND CUSTARD HDL IND CR SOUV H
645. 1295 BEAD SWAG RUBY STAIN WINE SOUV PETER1903
646. 3350 WABASH HAWTH FTD ICE TEA FRONTENAC ET H
647. 3389 DUQUESNE COCKTAIL, #449 POMPEII ETCH
648. 3390 CARCASSONE GOBLET, #451 LAFAYETTE ETCH H
649. 3424 ADMIRALTY SHERRY H
650. 4004 IMPROMPTU GOBLET, BELLY BUTTON OPTIC
651. 4091 KIMBERLY WINE, #919 LAUREL WREATH CUT 2
652. 4224 STEEPLECHASE COCKTAIL, MOONGLEAM FT
653. 7009 HYDRANGEA GOBLET
654. 1469 RIDGELEIGH 13 IN RND SAND TRAY H
655. 1201 FANDANGO 9 IN CRIMPED BOWL
656. 1428 WARWICK 2 LT CANDLESTICK H
657. 4044 NEW ERA 2 LT CANDELABRA PR, c
658. 341 1/2 PURITAN 1 PT JUG H
659. 1503 CRYSTOLITE 1 LT CANDLESTICK PR
660. 118 MISS MUFFET CANDLESTICK PR
661. 1503 CRYSTOLITE IND LEAF NUT 6
662. 1503 CRYSTOLITE COASTER 8
663. 429 PLAIN PANEL RECESSED IND FTD SALTS 6 H
664. 3408 JAMESTOWN OYST COCKTAIL NARCISSUS CUT H
665. 1519 WAVERLY FTD JELLY NARCIS. CUT, RIM GRND
666. 1519 WAVERLY 3 PRT RELISH OVAL, NARCISS CUT H
667. 1540 LARIAT 7 " RELISH, 8 " TRAY FOR CR & SUG
668. 1252 TWIST 4" NAPPY 14 H, 7 X
669. 341 OLD WMSBRG PICKLE & 1519 OVAL CELERY
670. 1540 LARIAT MAYO & PLATE
671. 341 PURITAN 6 " PICKLE 2, H
672. 5060 WASH. SQ BAR 5
673. 4054 CORONATION BAR 5
674. 6060 COUNTRY CLUB BAR 2
675. 1401 EMPRESS SAHARA CUP & CR SOUP, 1 H
676. 1509 QUEEN ANNE CR & SUG D F BARCELONA CUT H
677. 1540 LARIAT TRAY FOR CR/SUG & 13" BOWL H f
678. 341 3" COASTER, MUST LID & 1503 ASH TRAY H
679. 1401 EMPRESS 6 OZ SODA 6 H
680. 1506 QUEEN ANNE D F MAYO
681. 3476 TEMPLE ICE TEA/ETCH & 3345 CHAMPAGNE 1 H
682. 1191 YEOMAN CUCUMBER DISH H
683. 299 TODDY N O H & 9 SQ SALT - NO LID
684. 142 BARREL TUMBLER 7 & 166 TUMBLER H, C
685. MISC LADLES 4, 2 H, 2X
686. MISC LOT, SODA, TUMBLER & SHERBET, SOME H
687. 1469 RIDGELEIGH 1 PT DECANter f
688. RINGNECK PHEASANT
689. 1401 EMPRESS D F NUT DISHES 6
690. 5003 CRYSTOLITE GOBLET 3 H
691. 5003 CRYSTOLITE CHAMPAGNE/SHERBET 3
692. 1503 CRYSTOLITE CANDLE BLOCKS (NO GLOBES) 2 H
693. 1252 TWIST MNGLM 9 " BOWL H
693A. 1252 TWIST MNGLM 9 " BOWL H.
694. 4163 WHALEY MUG ATHLETIC SCENES H
695. 1184 YEOMAN EXP. AMBER GOBLET H
696. MINUET GIRL (DINKY DOO), FROSTED
697. 5048 ROOSTER HEAD COCKTAIN, AMBER STEM
698. 1404 OLD SANDWICH SAHARA 12 OZ MUG H
699. 1404 OLD SANDWICH SAHARA 12 OZ MUG H
700. 4054 CORONATION MARTINI JUG/NO HDL, SKIER ETCH

- 701. 4054 CORONATION MARTINI JUG GOLF PRESENTATION
- 702. 2401 10 SODA ADMIRAL ETCH - RARE
- 703. 2401 10 OZ SODA ADMIRAL ETCH - RARE
- 704. 1503 CRYSTOLITE OVAL FTD MINT H
- 705. 351 PRISCILLA TOOTHPICK, TULIP CUT H
- 706. 3350 GOBLET FRONTENAC ETCH & 3366 GOBLET H
- 707. 4091 KIMBERLY PARFAIT 2
- 708. 3389 DUQUESNE FTD SODA POMPEII ETCH 2
- 709. 5019 WAVERLY WINE & ZODIAC FTD SODA F ON 1
- 710. 3333 SHERB RENAISSANCE ET & 4091 SODA CUT 1H
- 711. 1503 CRYSTOLITE 2" ROSETTE CANDLES PR
- 712. 1503 CRYSTOLITE 3 COMPT RELISH
- 713. 1503 CRYSTOLITE HDL JELLY, SPIDER WEB BOT
- 714. 465 RECESSED PANEL 1#CANDY JAR CUT, NO LID H
- 715. 1229 OCTAGON MNGLM/FLAM/SAHARA CHEESE PLT 3
- 716. 1469 RIDGELEIGH 5 PC CIG SET H
- 717. 1558 10 1/2 " ROLLED END BOWL F
- 718. 1503 CRYSTOLITE CUP/SAUCER, 1 EXT SAUCER H
- 719. 300 PEERLESS 1 OZ CORDIAL H, 5
- 720. 393 NARROW FLUTE IND CR & SUG H
- 721. 1503 CRYSTOLITE 6 3/4" OVAL TRAY H
- 722. 1503 CRYSTOLITE 1 LT CANDLE PR
- 723. 1454 DIA PNT IND JELLY & ASH TRAY H(2 SETS)
- 724. 393 NARROW FLUTE FLAM IND FTD NUT 3
- 725. 10 OAK LEAF FLAM COASTER 2
- 726. 1494 FERN 5" HDL WHIPPED CREAM
- 727. 1540 LARIAT 7 1/2" FAN VASE
- 728. 1485 SATURN SALT & PEPPER H
- 729. 1503 CRYSTOLITE RND CIG HOLDER & LIGHTER H
- 730. 1469 RIDGELEIGH RND CIG HOLDER H 2
- 731. 4036 MARSHALL 1 QT COCKTAIL SHAKER
- 732. 1280 WINGED SCROLL CUSTARD 4" NAPPY
- 733. 5078 PARK AVE CHAMPAGNE SJS MONO H 2
- 734. 1435 3" SQ ASH TRAY ORCHID ETCH
- 735. 362 SYRUP, FLORAL CUT HH, F
- 736. 1280 WINGED SCROLL CLAMBROTH TRINKET BOX
- 737. 1590 SESQUI ASH TRAY, NEWARK, OH 2
- 738. 1503 CRYSTOLITE 10 1/2" DINNER PLATE 2
- 739. (3) COASTERS, 1401 SAHARA 8" PLATE H
- 740. 1404 OLD SAND FLAM IND ASHTRAY, COCKTAIL H,F
- 741. 416 HERRINGBONE MNGLM " PLATES H, 8



GOOSE CORDIAL SET
 Decanter — 11 3/4" high
 Cordial — 5 3/4" high



SHERRY 6 1/2" high
 GOOSE STEMS COCKTAIL 6" high
 CORDIAL 5 3/4" high



MADONNA
 11" high



HORSEHEAD ASH TRAY
 8" square

HCA AUCTION MAIL BID LIST

BILL TO: _____ SHIP TO: _____

CHECK # _____ Ohio Vendor's No. _____

VISA Card No. _____ Expiration Date / /

MasterCard Card No. _____ Expiration Date / /

<u>Lot No.</u>	<u>Description</u>	<u>Amount Bid</u>	<u>Check Mint Only</u>
1.	_____	_____	_____
2.	_____	_____	_____
3.	_____	_____	_____
4.	_____	_____	_____
5.	_____	_____	_____
6.	_____	_____	_____
7.	_____	_____	_____
8.	_____	_____	_____
9.	_____	_____	_____
10.	_____	_____	_____

TOTAL

\$ _____

 (Signature)

IMPORTANT NOTICE! PRICES REALIZED FROM THIS AUCTION WILL BE
 PRINTED IN THE APRIL HEISEY NEWS. IF YOU ARE NOT A MEMBER,
 PLEASE SEND \$1.00 to:

HCA AUCTION
 PO BOX 4367
 NEWARK, OH 43055

YOU MUST ENCLOSE A LARGE SASE.



12/87

APPLE TREE AUCTION CENTER
 1616 W. CHURCH STREET
 NEWARK, OHIO 43055
 (614) 344 - 4282



PRESENTS
 ALL HEISEY AUCTION
 SAT. FEB. 6, 1988
 9:30 A.M.

HCA MEMBERS & COLLECTORS

Our first All Heisey Auction for 1988 will include more than 600 lots with a good selection of sets of stemware in several different patterns. Creams and sugars include Horseshoe in Sahara and a very rare experimental set in Dawn. Candle holders include a pair of 301 Colonial two-lite candelabra in Sahara, a pair of Crystolite electric lights with Chintz etching and a 'hard to find' Block Five Candleblock. Sets include 65 pieces of pressed Lariat including goblets, champagnes, iced teas, sherbets, parfaits, cocktails and oyster cocktails; 35 pieces of Chintz etching including goblets, champagnes and plates; 18 piece pressed Lariat with Moonglo cutting; Parklane goblets and champagnes with Nomad cutting; 8 goblets in Banded Flute; 30 pieces of Wabash stemware with Pied Piper etching; 45 pieces of etched Diana the Huntress including goblets, champagnes and two sizes of plates; 100 pieces of Orchid etching including RARE sherrys, wines - in two different stems and parfaits and 70 pieces of Provincial including goblets, sherbets, tumblers, juicees and plates.

A collection of 35 cruets including several scarce ones in color and a beautifully cut cruet; animal and animal related items including a pair of Flamingo Dolphin candlesticks. Miscellaneous items including Cobalt Warwick vases, Sunburst punch set, 18 bar glasses, 16 cordials, 40 smoking items and a very good selection of Heisey by Imperial with a pair of Black Rearing Horse Bookends.

We are pleased with the variety in this sale. We hope you can attend but if you are unable to come, please send in your mail bids. If you have not subscribed to our catalogs for 1988, do so today. Cost is \$12.00 for the year and includes the after sale price lists.

SAM SCHNAIDT & TIM HUGHES - AUCTIONEERS
 FRANK FRYE - MANAGER

PH (614) 344-4282

MUSEUM BENEFIT DRAWING

sponsored by

BUCKEYE HEISEY COLLECTORS CLUB

- * 1ST PRIZE: #3390 CARCASSONNE SAHARA
- * 1 pint footed decanter,
- * OLD COLONY etching
- * 2ND PRIZE: #3390 CARCASSONNE ALEXANDRITE BOWL
- * 11 oz. short goblet
- * 3RD PRIZE: #1295 BEAD SWAG CUSTARD
- * goblet, Rose decor
- * 4TH PRIZE: #5048 ROOSTER HEAD cocktail

Donation: 50¢ per ticket or 5 tickets for \$2
 Drawing: Quarterly Meeting, June, 19, 1988

Tickets will be on sale all week of Convention, June 16-19, 1988, Pick up your lucky ticket on one of these days. For those of you not able to attend the Convention, send your check payable to the Buckeye Heisey Collectors Club and mail to:
 659 Canterbury Ct.
 Newark, OH 43055

We will enter your tickets for you and mail your prize (s) if you are a winner. Remember!! You need not be present to win but your check must be received before June 19, 1988.

ALL PROCEEDS BENEFIT THE HEISEY MUSEUM
 (This offer invalid in states where prohibited)

J & R Collectibles	PH: 614-344-9719	
P. O. Box 1030	P & I Extra	
Newark, OH 43055-7930	* Marked	
15 Duck Insert & Flower Frog Flam . . .	140.00	
1250 Groove & Slash Spooner	60.00	
433 Green Key 5½" Ftd Jelly Shallow *	52.50	
5019 Oceanic Cordial SP/OP (2) ea	47.50	
5025 Tyrolean 4½oz Wine-Orchid Et. (4) ea	70.00	
1469 Ridgeleigh 2 Hndld Ice Tub *	55.00	
52 Salt & Pepper-Flamingo pr	27.50	
3381 Creole 11oz Tall Goblet All		
Alexandrite (2) ea	155.00	
3381 Creole 7oz Tall Saucer Champagne		
All Alexandrite (2) ea	145.00	
1205 Fancy Loop Toothpick	50.00	
1435 3" Sq. Ash Tray-Orchid Etch (4) . . ea	30.00	
3408 Jamestown 1oz Cordial (2) ea	20.00	
5077 Legionnaire 12oz Ftd.Ice Tea (8) . ea	17.00	
Horsehead Bookends Frosted pr	135.00	
2052 1½oz Bar Fox Chase Etch	40.00	
4052 1½oz Bar Tally-Ho Etch (3) ea	22.50	
1236 Eagle Plate	37.50	
6091 Cabochon Sherbet Southwind Cut (4) ea	12.00	
1235 Beaded Panel & Sunburst Punch		
Cups * (6) ea	14.00	
1590 Zodiac 3½oz Cocktail * (6) ea	22.50	

Items available most Major Patterns. Send SASE for your needs.

WILLEY'S ANTIQUES
 HAROLD E. & MILDRED M. WILLEY
 PH. 614-828-2557
 11110 CANNON RD.
 FRAZEYSBURG, OH 43822

Dear Heisey Collector and Dealer,
We're heading your way! Heisey animals,
lovely old patterns, and a rainbow of colors, will
be coming along with us.
We'll be at the following shows.



FEB 5, 6, 7
 FEB 19, 20, 21
 FEB 26, 27, 28
 MAR 5, 6
 MAR 19, 20

CIVIC CENTER
 COLISEUM
 MARKET HALL
 ST. BERNARD CULTURAL CENTER
 ARMORY PLACE

MC ALLEN, TX
 ALEXANDRIA, LA
 DALLAS, TX
 CHALMETTE, LA
 SILVER SPRING, MD

16 ANNUAL
**STARLIGHT
 FLEA MARKET**
 ANTIQUES AND COLLECTORS SHOW
 At
 Starlight School
 116 N. 22nd Street
 Newark, Ohio
 March 13 from 9 am - 4 pm

Antiques
 Heisey Glass
 Crafts
 Pottery

Benefits—Starlight School & Heisey Museum
 Sponsored by— Land of Legend Study Club

FOOD AVAILABLE

DONATION
 \$1.00

For Information
 (614) 364-3163

Ad compliments of
Basic Distribution

A PRODUCT OF DOUGLAS ENTERPRISES

Heisey Collectors of America, Inc.

**FLEA MARKET
 ON THE
 SQUARE**

NEWARK, OHIO

TWO WEEKENDS

SATURDAY, JUNE 11 & SUNDAY, JUNE 12
 SATURDAY, JUNE 18 & SUNDAY, JUNE 19

DEALER SPACE AVAILABLE

For Information
 Write: HCA FLEA MARKET
 PO BOX 4367
 NEWARK, OHIO 43055
 Phone: 614-345-2932

Nancy's Antiques
906 44th. Street, N.W.
Canton, OH 44709

PH: 216-492-2595
Shipping Extra
* Marked

Ron & Maureen Kovacs
475 Kime Avenue
West Islip, NY 11795

PH: 516-242-5496
OR 516-595-2775
UPS & Ins. Extra
* Marked

Scotty Dog 145.00
14 Kingfisher flower block Flamingo . . . 300.00
46 Cheshire Flamingo Salt & Pepper * . . . 50.00
1183 Revere Horseradish Metal lid 35.00
1200 Cut Block Custard souv sugar 60.00
1220 Punt Band Toothpick, Ruby Stain . . . 45.00
1229 Octagon 8" Plates, Flamingo (4)ea 20.00
1252 Twist 10" Celery Flamingo * 30.00
1469 Ridgeleigh 3" Coasters (8)ea 10.00
1469 Ridgeleigh square candlepr 50.00

1503 Crystolite and cream & sugar *pr 30.00
1503 Crystolite 5 part relish 10" 35.00
1519 Waverly 2 lite candlepr 120.00
1540 Lariat 5 1/2 oz Sherbets (8)ea 10.00
1540 Lariat 10" shallow nappy (2)ea 25.00
1951 Cabochon candlette 1 litepr 50.00
3408 Koors pitcher Mglm. ftd. & handl. . . . 175.00
5072 Rose stem, Rose etch champs * (5) . . .ea 42.00
7000 Sunflower 1 lite candle sil/decpr 60.00

*
*
*
* 411 Rib & Panel 5" High Ftd. Jelly *,
* Hawthorne 85.00
* 3350 Wabash 6oz Sherbet *, 439 Pied Piper .
* Etch (3)ea 14.50
* 1245/3970 Comport *, Crystal & Moongleam. . . 57.50
* 1503 Crystolite 5 1/2" Ftd. Cheese 20.00
* 1489 1/2 Horse Head 6 3/4" Cigarette Box. 50.00
* 393 Narrow Flute 8oz Jug * 25.00
* 136 Triplex Candlesticks * 115.00
* 473 Narrow Flute with Rim Ind. nut dish*(2)ea 15.00
* 1469 Ridgeleigh Coaster (4)ea 8.00
* 110 Sandwich Dolphin Elec. Lamp, Moongleam,
* Ideal Glass Co. Cutting 375.00
* 1506 Provincial 5oz Champagne *, Org Label .
* (5)ea 12.50
* 3380 Old Dominion 10oz Goblet *, Sah (6) . . .ea 32.50
* 1503 Crystolite Punch Cup *, (7)ea 8.50
* 1183 Revere Puff & Cover *, 679 Windsor Cut . 85.00
* 1489 Puritan 2 1/2" Deep Ash Tray, Org. L.(2) ea 17.50
* 4085 Kohinor 11" Salad Bowl, Sat. Optic. . . 45.00
* 1540 Lariat 14" Sandwich Plate. 980 Moonglm 40.00
* 433 Greek Key 5" Ftd. Almond Dish* 32.50
* 373 Old Williamsburg 3oz Burgundy* 20.00
* 1235 Beaded Panel & Sunburst Custard(7) . . .ea 13.50

PS: 10% Discount on Items Still Available From Ad in
December 1987 Heisey News.

FOREVER HEISEY
JANICE THRAN
1663 Londondale Pkwy.
Newark, Ohio 43055

PH: 614-344-5955
Postage & Insur-
ance Extra
H = Marked

VIRGINIA & ODELL H. JOHNSON
Glass "N" Glass
6909 - 10th. Ave. W.
Bradenton, FL 34209

* Marked
PH: 813-792-0604
Shipping & Ins.
Extra

#1503 Crys. Cup & saucer, H (6) set \$ 15.00
#1503 Crys. Dinner Pl, Star Base, H, (4)ea 90.00
#1503 Crys. Dinner Pl, Plain Base, (3)ea 80.00
#1503 Crys. 8" Plate (6)ea 12.50
#1503 Crys. 8" Oval Plate, H (6)ea 15.00
#5003 Crys. Goblet W/O Handl. (6)ea 17.00
#1503 Crys. Individual Leaf Nut (4)ea 7.50

*
* 1632 Lodestar 12" Floral bowl, Dawn * 100.00
* 1020 Hotel sugar & creamer, Moongleam * . . . 70.00
* 1252 Twist ice tub, cut, Moongleam, silver
* plated handle & tongs * 110.00
* 1170 Pleat & Panel Lemon dish & cover, Flang* 40.00
* 1229 Octagon Ind. nut dish, Flang.* (4)ea 15.00
* 358 Ind. Ash Tray, Flamingo 20.00
* 1180 Ind. nut, handles, Flamingo * 30.00
* 367 Prism Band lqt. Decanter, Flang, cry.stp. 150.00
* 16 Puff Box & Cover * 50.00
* 2401 Circus etch 8oz sodas, W. Scene & Camel ea 90.00

SEE YOU AT THE FOLLOWING SHOWS:

Feb. 12, 13 Hoffman Show, Ohio State Fairgr, Col.
Feb. 19, 20, 21 Pineville LA Cl Show, Alexandria, LA
Feb. 26, 27, 28 Market Hall (Webb Show) Dallas, Texas
Mar. 4, 5, 6 Wintermute Show, State Fairgr, Col.,OH

*
* 1425 Victorian wines * (6)ea 20.00
* 3350 Wabash wines wide optic * (4)ea 12.00
* 1469 Ridgeleigh Salt & Pep. 657 met.top (1944
* turn book) * 25.00
* 1404 Old Sandwich cup & saucer, 7" plate * .all 18.00
* 1404 Old Sandwich 5oz juice glasses *ea 8.00
* 1506 Whirlpool 12oz ftd. soda * 15.00
* 1519 Waverly Heisey Rose etch choc. & cov. * . 150.00
* 369 Hartman tumbler * 18.00
* Coronation Soda, Lancaster etch (2)ea 75.00
* 1488 Kohinor 2 light candleholderspr 90.00

ALWAYS PLENTY OF HEISEY IN STOCK. ALL SASE ANSWERED.
WE BUY ONE PIECE OR COLLECTION INCLUDING ESTATES.

VOTING MEMBERS PLEASE NOTE

The Constitution has now been updated. If you
desire a copy please send a long SASE and it will
be sent to you. Address Your Request to
HCA Constitution
P.O. Box 4367
Newark, OH 43055

ROBERT H. DONOVAN
P. O. Box 4103
Ormond Beach, FL 32075

POSTAGE & INSURANCE EXTRA
PH: 904-677-1732
4 to 8 PM MON THRU FRIDAY
* MARKED

	Standing Colt, Amber	\$	420.00
	Goose Wings Half (2)	ea	75.00
	Rooster Vase		75.00
1560	Victorian Belle (bell) (2)	ea	90.00
	Scotty (3)	ea	75.00
341	Puritan vinegar & oil.		18.00
3350	Old Glory, bell made from goblet *		22.50
1401	Empress 13" celery, Moongleam		32.00
1252	Twist, 1 lite candle, Moongleam *		48.00
1536	Military Cap (2)	ea	22.00
	Floral Boat		22.00
1632	Lodestar crimped bowl, Dawn, Prof. Repair *		45.00
3390	Carcassone ice tea, Lafayette etch (12)	ea	9.00
	Puff box & hair receiver, etched, bottom mould marks *	pr	175.00
1567	Plantation 3½ oz cocktail (4) Ivy etch (4)	ea	25.00
3440	Portsmouth 9 oz goblet D/O Flamingo (3).	ea	32.00
1401	Empress DF vase, Grape etch.		60.00
1445	Grape Cluster 2 lite candle	pr	148.00
1445	Grape Cluster Floral bowl, centerpiece for above *		137.00
407	Coarse Rib 12" celery, Amber *		39.50
1401	Empress cream & sugar D/F, Sahara *	set	62.00
1519	Waverly cream & sugar, Orchid etch *	set	62.00
393	Narrow Flute, Sham. * (4)	all	40.00
5067	Plantation 4½ oz cocktail, Ivy etch (6).	ea	25.00
	Cocktail shaker, 462 Fox Chase etch		138.00
433	Greek Key punch bowl w/base & 12 cups *		535.00
433	Greek Key banana split (3) *	ea	23.00
1401	Empress mustard, no cover, Moongleam *		22.00
1252	Twist nut cups Ind., Flamingo (4) *	ea	15.00
1252	Twist 2 part relish, Moongleam *		65.00
1252	Twist bon bon Ind., Flamingo (4) *	all	52.00
1252	Twist ice bucket, Moongleam *		78.00
150	Banded Flute 4½ oz saucer champagne (8) *	all	125.00
1401	Empress cream & sugar Ind., Flamingo *	pr	65.00
1401	Empress cream & sugar Ind., Crystal	pr	28.00
1401	Empress toed candle sticks, Sahara *	pr	210.00
1401	Empress 4½" plates, Sahara (8) *	set	48.00
1590	Lariat cream & sugar *	set	32.00
	Rooster head cocktails (3)	ea	58.00
1401	Empress cream & sugar D/F, Sahara *	pr	68.00
1590	Lariat cream & sugar w/tray *	set	48.00
1469	Ridgeleigh cream & sugar w/tray Ind.	set	36.00
461	Floral Basket 7"		85.00
5010	Symphone champagne , Danish Princess Cut. (6)	ea	28.00
5010	Symphone goblet D.P. Cut (6)	ea	28.00
1401	Empress console bowl D/F, Moongleam		98.00
465	Recessed panel flower basket		115.00
1401	Empress triple relish, Sahara *		48.00
1401	Empress compote *		55.00
433	Greek Key 6" Almond *		48.00
433	Greek Key 6" Compote *		78.00
433	Greek Key Ind. nut cups (15) *	ea	18.00
433	Greek Key small ice tub *		40.00
433	Greek Key french bread tray *		115.00
433	Greek Key 12" flat celery tray *		42.00
433	Greek Key 3 pt. tankard (2) *	ea	175.00
433	Greek Key 4 oz. cruet, blown *		65.00
433	Greek Key 5 oz soda (4) *	ea	58.00

<p>A.W. PARKER Heisey & Pattern Glass Shows or Appointment Magalia, CA 95954 PH: (916) 873-2326</p>	<p>GLASS WITH CLASS Lenore A Shelley, GGHCC 1336 Lincoln Avenue San Jose, CA 95125 PH: (408) 286-8098</p>	<p>OLDE LOVED THINGS 900 Ridgewood Ave. (Holly Hill) Daytona Beach, FL 32017 (904) 252-7960 Hours: Sat., Sun., & Mon., 10-4</p>
<p>ALL HEISEY AUCTION Consignments Welcome Apple Tree Auction Center 1616 W. Church, Newark, OH 43055 PH: (614) 344-9449</p>	<p>GREEN ACRES FARMS Antiques, Crystal Glass & Collectibles 2678 Hazelton-Etna Rd., SW (S.R. 310-N) Pataskala, OH 43062 Sat. or Sun. PM or call (614) 927-1882</p>	<p>OUR PLACE AND MEMORY LANE ANTIQUES 1234 Newark Rd., Granville, Ohio 43023 (614) 587-4601, Open every day 12-5 Heisey, general line of antiques and collectibles</p>
<p>ALFA I CARRIAGE HOUSE ANTIQUES Featuring Depression & Elegant Glassware Al & Faye Maness 508 E. Cary Street Richmond, VA 23219 PH: (804) 788-1630</p>	<p>H & R DIAMOND H Helen & Robert Rarey 1450 White Ash Dr. Columbus, OH 43204 PH: (614) 279-0390 after 5:30</p>	<p>PARRETT'S ANTIQUES Heisey 4994 Mapledale Rd. OR 1215 Greenwood Ave. Jackson, Mich. 49201 PH: (517) 784-7319 OR (517) 783-3289</p>
<p>ANTIQUES - THE SHULTZES 206-208 East Main St. Newmanstown, PA 17073 15 Miles West of Reading, PA PH: (215) 589-2819</p>	<p>"HAPPINESS IS"-THE STULTZS 3106 Warren Court, Glen Allen VA 23060 Shows and Mail (Richmond Area) PH: (804)262-1273 GLASS/CIRCA 1890-1960</p>	<p>PATTON HOUSE Heisey & Duncan Miller Rocky's Mall, 1-81 & US 11 Weyer's Cave, VA 24486 PH: (703) 967-1181</p>
<p>C & J ANTIQUES Cole & Jean Miesner Box 45, 72 Whig St. Newark Valley, NY 13811 PH: (607) 642-9905</p>	<p>HARRALSON'S HEISEY HUNTERS Sponsor: S.W. MO's Antique Shows 78 Quality Dealers From 14 States 1988 Dates: May 13-15 & Oct. 28-30 Info: 1426 W. Highland, Springfield, MO 65807 PH: (417) 883-2449</p>	<p>THE PURPLE PLACE Featuring Heisey & Other Fine Glass Martha & Harold Earp 1940 Suwanee, Ft. Myers, FL 33901 PH: (813) 936-1572 Anytime</p>
<p>C.E. HIGGINS (S.F. Bay Area) Shows and Mail Order P.O. Box 2723 Menlo Park, CA 94025 PH: (415) 322-0192 Evenings</p>	<p>HELEN & JIM KENNON Heisey, Cambridge, Fostoria, Duncan, Imperial, Fenton, Tiffin P.O. Box 114 Brookville, OH 45309 PH: (513) 833-5406 SHOWS ONLY</p>	<p>R & L ANTIQUES-SAN FRANCISCO Members of the Golden Gate Heisey Club 3690 Bodega Ave. Petaluma, CA 94952 PH: Petaluma (707) 762-2494 PH: San Francisco (415) 621-6693</p>
<p>CHARLES & MILDRED FISHER Heisey, Degenhart, Imperial, Antiques, Collectibles, General Line 991 Idlewilde, Newark, OH 43055 PH: (614) 522-5398</p>	<p>J.J. & BOB MC KEE Pottery Glassware Collectibles 334 W. 75th St. Kansas City, MO 64114 Wed.-Sun. 10-5 PH: (816) 361-8719</p>	<p>RAY ZIEGLER Glass Repair 185 County Line Westerville, OH 43081 PH: (614) 891-9700</p>
<p>DAVE'S ANTIQUES Specializing in Heisey Shows & Mail Order 1403 E. Knollwood St. Tampa, Fl. 33604 (813) 237-5550</p>	<p>J. & M. WALTER ANTIQUES Heisey, Duncan, Cambridge, other glass c/o Sir Speedy, 431 Main St. Woburn, MA 01801, Mail order-SASE PH: (617) 245-2532 after 7:30 dys-wknds</p>	<p>SCHWAN'S ANTIQUES SHOWS & MAILORDER 77 Lagos del Norte Ft. Pierce, FL 33451 PH: (305) 461-5940</p>
<p>DIAMOND H PLUS Mail Orders & Shows George & Eileen Schamel Rt. 3, Box 171, Boonsboro, MD 21713 PH: (301) 432-6285</p>	<p>J. & R. COLLECTIBLES Shows, SASE, Mail Order list June & Ray Lukasko P.O. Box 1030, Newark, OH 43055 PH: (614) 344-9719</p>	<p>SHOW AND TELL ANTIQUES Art, Cut, Heisey and Pattern Glass 1525 Morrow Ave., Wavo TX 76707 Tues-Sat 10:30-4:30 PH: (817) 752-5372 Also: Mail Order and Shows Member NADA</p>
<p>ETTELMAN'S DISCONTINUED CHINA & CRYSTAL HEISEY a SPECIALTY P.O. Box 6491-HN Corpus Christi, TX 78411 PH: (512) 888-8391 Include SASE</p>	<p>MOSTLY HEISEY Rhoda Curley 16 Clayton PL, Albany, NY 12209 Shop and Mail Order PH: (518) 482-6272</p>	<p>SINGLETREE ANTIQUES Cut, Pattern & Heisey Glass 10717 Staples Mill Rd. Glenn Allen, VA 23060 Chance or appointment PH: (804) 266-3795</p>
<p>FOREVER HEISEY Jan & Norm Thran Mail Order, Shows, Appraisal Service 1663 Londondale Pkwy., Newark, OH 43055 PH: (614) 344-5955</p>	<p>MOUND BUILDERS ANTIQUES Heisey & Animals, General Antiques Irene Rauck 1138 Moundview, Newark, OH 43055 PH: (614) 344-6043</p>	<p>WILLEY'S ANTIQUES & MUSEUM Specializing in Heisey 11110 Cannon Rd., Frazeyburg, OH 43822 16 miles east of Newark, OH PH: (614) 828-2557</p>
<p>GERT'S GLASS Heisey & Duncan Gertrude & Russell Swetnam 1926 Saratoga Dr., Adelphi, MD 20783 PH: (301) 434-5113</p>	<p>THE MUTED SWAN ANTIQUES 5486 Peachtree Rd., Chamblee, GA 30341 Heart of Chamblee Antique Row Specializing in Heisey & Cambridge Bill & Pat Miller PH: (404) 451-7620</p>	
<p>GLASS 'N' GLASS Virginia & Odell Johnson 6909 10th Ave. West Bradenton, FL 33529 PH: (813) 792-0604</p>	<p>NANCY'S ANTIQUES Heisey, Cambridge, Fostoria, Fenton Elegant Glassware of the Depression Era 906 44th NW Canton, OH 44709 shows only PH: (216) 492-2595 After 6 p.m.</p>	<p>Support our advertisers</p>

Bay State Heisey Collectors

PRESENT THEIR TENTH

ANTIQUE SHOW AND SALE

Featuring

Heisey

and other collectible glass, pottery, china and collectibles from all periods

Plus a Heisey Glass Display and Books on Heisey and other glass from the National Heisey Museum

Waltham High School

LEXINGTON STREET

Waltham, MA

Exit 27A off Route 128/I-95

Totten Pond Road to Winter Street

Follow Our Signs

Saturday, April 30 10a.m. - 5p.m.

Sunday, May 1 10a.m. - 4p.m.

Donation - \$2.50 With Card - \$2.00

Sponsored by Bay State Heisey Collectors for the benefit of the National Heisey Museum.
•Heisey and the Heisey trademarks are the property of Heisey Collectors of America, Inc.



THE NATIONAL CAPITAL HEISEY COLLECTORS CLUB

Presents the Sixteenth Annual

"ALL-HEISEY GLASS SHOW AND SALE"

For the Benefit of the Heisey Museum

SAT. MAR. 19, 1988

11 AM to 7 PM

SUN. MAR. 20, 1988

11 AM to 4 PM

ARMORY PLACE

Wayne & Fenton Silver Spring, MD

HEISEY GLASS IDENTIFICATION - 1 to 3 PM each day - Certificate of authenticity from HCA - small fee for each item.

DOOR PRIZE

Admission \$2.50

With This Ad \$2.00



POSTMASTER SEND FORM 3579 TO:



SECOND CLASS

National Heisey Glass Museum

Eight rooms and complete lower level displaying the beautiful hand made glass produced in Newark by the A.H. Heisey and Co. from 1896-1957.



Corner of West Church & North Sixth Streets
Newark, Ohio 43055

Phone: (614)345-2932

Hours: Daily 1pm-4pm Closed Holidays



Membership Renewal Notice

The date above your name and address is your renewal date. This is your last issue of the Heisey News if it reads 2-29-88

PLEASE DISREGARD THIS NOTICE IF YOU HAVE RECENTLY PAID YOUR DUES.