

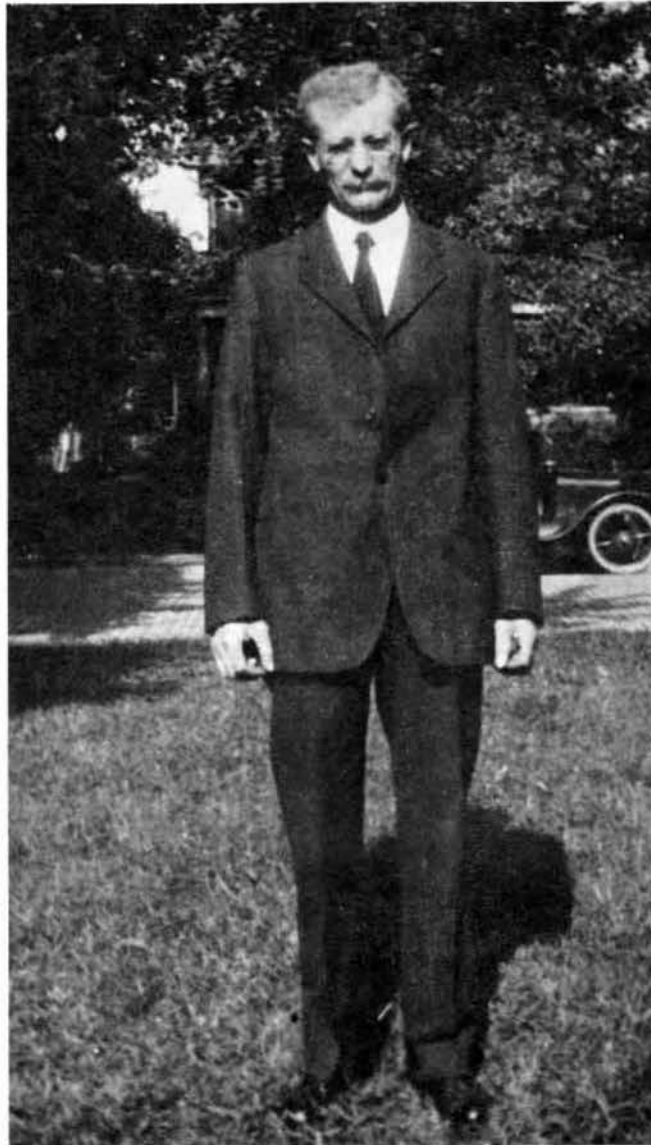
HEISEY *news*

OFFICIAL PUBLICATION HEISEY COLLECTORS OF AMERICA

© Heisey Collectors of America, Inc.
All Rights Reserved 1986

VOLUME XV NO. 2

FEBRUARY 1986 ISSN 0731-8014



ANDREW J. SANFORD

Born 1865 Died 1929

Designer for A.H. Heisey & Co. in early years

HEISEY NEWS

P.O. BOX 27, NEWARK, OH 43055

CLUB OFFICERS:

| | | | | |
|----------------|---|----------------|---|--------------|
| President | — | George Schamel | — | 301-432-6285 |
| Vice President | — | Bob McClain | — | 614-345-8061 |
| Secretary | — | Liz Stickle | — | 614-323-2250 |
| Treasurer | — | Ray Ziegler | — | 614-471-6446 |
| Exec. Dir. | — | Louise Ream | — | 614-345-2932 |

Editor: Louise Ream

P.O. Box 27, Newark, OH 43055

PH: 614-345-2932

Assistant Editor: Neila Bredehoft

P.O. Box 27, Newark, OH 43055

PH: 614-345-2932

Published monthly and printed in Mt. Vernon, Ohio

\$15.00 per year - \$1.25 per copy

Back Issues - Each Volume (12 issues) year - \$9.00.

Volume V, VIII, IX, X, XI, XII & XIII

Heisey Collectors of America, Inc. is a non-profit corporation with tax exempt status. Owners and operators of National Heisey Glass Museum, 6th and Church Streets, Newark, Ohio.

Open daily 1-4 p.m. except holidays. Other hours by appointment. Members admitted free.

Club membership (includes 12 issues of HEISEY NEWS and participation in all club activities) \$15.00 per year plus \$2.50 for each additional family member in same household who wishes a membership card. For VOTING MEMBERSHIP, add \$25.00 one time only fee.

When requesting information, please enclose a self-addressed, stamped envelope (SASE).

ADVERTISING - Send all ads to:

Advertising, c/o Janice Thrane

P.O. Box 27, Newark, OH 43055

DOUBLE SPACE ALL ADS.

RATES:

DEALER'S DIRECTORY - Maximum five (5) lines - \$20.00. Change during year \$2.00 per line. CLASSIFIED - 12-/word - \$1.20 minimum.

Abbreviations and initials count as words.

| DISPLAY: | MEMBERS | NON-MEMBERS |
|-----------------------------|---------|-------------|
| 1/8 pg. (9 items) | \$15.00 | \$25.00 |
| 1/4 pg. (20 items) | 24.00 | 35.00 |
| 1/2 pg. (20 items) | 40.00 | 50.00 |
| 1/2 pg. (50 items) Vertical | 50.00 | 60.00 |
| 1 pg. (50 items) | 65.00 | 80.00 |

Extra lines will be billed at \$1.00 per line. Personal ads limited to 1/8 space.

ALL ADS MUST BE PREPAID. Ad copy must be received by the 5th of the month preceding the publication date - i.e. April 5th for May issue. Ads containing reproductions will not knowingly be accepted unless clearly stated (i.e. Heisey by Imperial, etc.). HEISEY NEWS assumes no responsibility for false advertising or misleading information. In the event of typographical error, the incorrect portion of the ad will be run in the following issue, but HEISEY NEWS assumes no further liability.

The opinions expressed in articles in HEISEY NEWS are those of the authors and not necessarily those of the organization. The Editorial Staff reserves the right to edit or refuse any material submitted for publication. When requesting information, please enclose a self addressed stamped envelope. (SASE).

NOTES FROM YOUR PRESIDENT.....

As I sit, Jan. 7, 1986, trying to put something on paper for the Feb. 1986 issue of the Heisey News, I can't help but think about Jan. 1985. First it was cold, we had sleet, snow, wind, more snow, and finally a thunderstorm. I'm sure that Tom Bredehoft and Bill Barnard will never forget the wind and cold in the Imperial factory. It was colder inside than outside and at places the wind blew just as hard inside as out.

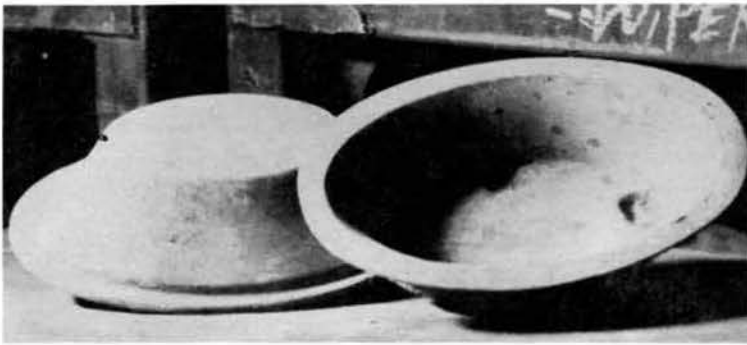
Early in the month the H.C.A. had decided to purchase the Heisey moulds. There were negotiations and a contract was signed Jan. 22, 1985. I doubt that H.C.A. has had a more active year than 1985. Much brain power, clerical and physical labor (ALL COOLIE) went into the big project of paying for, moving and identifying moulds and etching plates--much is still to be done. After the moulds are paid for, there will be the continuing cost of storage and maintenance. This will be comparatively small in relation to the initial cost of moulds. Suggestions for projects to help in this maintenance will be greatly appreciated.

I was going to show stem moulds this month but we need another photograph, therefore they will have to wait until next month.

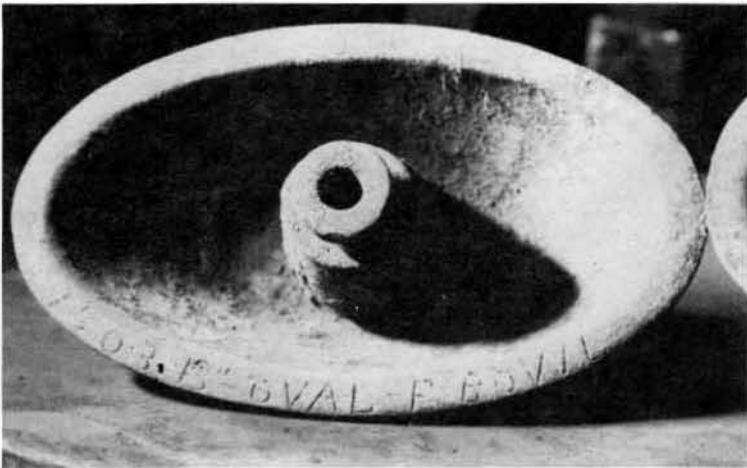
Among the items that H.C.A. obtained from the Imperial factory were a large number (we have not identified or counted them yet) of pieces of metal that had what looked like a pipe fitting on the back and a relatively smooth contoured surface on the other side. Many of the pieces were easily recognizable--one in particular (of which there seems to be a large number) is the #1231 Ribbed Octogan 11" relish. Gib Glasgow (mould man at Imperial) said that they were "formers". After they were returned to Newark, Ray Lukasko (former Heisey Employee) said that they were used to hold the piece of glass for automatic fire polishing. There are two pieces, one for the top and one for the bottom. The piece of glass was placed, in or on, the metal thus keeping its shape as it moved under a natural gas flame. The flame polished the piece of glass (giving it the Heisey look). The two following photographs show the set used to hold the #1503 Crystolite 13" flower bowl.

Happy searching and successful collecting!

George



"Formers" for 1503 13" Oval Floral bowl.



BLOWN OR PASTE MOULDS

By Tom Bredehoft

In past articles, I have mentioned paste or blown moulds, and it was brought to my attention that many of our members may not be familiar with the terminology. This column is going to try to set things straight.

Paste moulds are so called because of the lining which they have. It is about 1/8th inch thick, made of clay mixed with powdered cork. This paste is applied to the inside of the mould in exactly the shape the piece of glass will have. The mould is then heated in the furnace to bake the lining.

The pictures which accompany this article are of a 3318 3/4 oz pony brandy mould. That is stamped on the mould in letters about 1/4 inches high around the top. The cardboard tag also says that, whether it will show in print is another matter.

When the mould is being used, it is kept closed, kept in a bucket of water, to keep it cool and wet. After the gatherer has gathered the glass from the pot, and marvered or rolled it to give it a cylindrical shape it is given to the next person in line who pulls a little tail on it (the stem) and he gives it to the blower who lowers it into the closed mould, which has just been pulled from the water (the holes are to let the water out). The stem drops into the bottom of the mould and the blower inflates the little bubble of glass until it fills the mould. The paste, (remember that?) is still wet, and the heat of the glass makes the water steam, forming a cushion for the glass against the sides of the mould. (Excess steam goes out the holes, too.) The mould is then opened and the blower gives the blowpipe with it's pony brandy to the finisher who puts a snip of glass on the ball at the end of the stem and flattens it out into a foot. The finisher scratches a file across the very top of the bubble then holds it in a gas jet which cracks off the glass and it is put in the lehr to cool slowly.

After the glass has passed through the lehr, it is placed upon a little turn-table where a diamond scratches a line around the top of the bowl. A ring of gas jets cracks off the top of the bubble (at this scratched line) and the piece is ready for its initial grinding and polishing.

MOULD FUND REPORT

By Norm Thran

This month I thought since it is the beginning of a New Year and the 1st Anniversary of the Mould Fund Project, that a change in the reporting would be in order. You all have heard too much about how much it cost to purchase the moulds and how much we have raised and we need help etc. etc. We also have been using the thermometer to register where we are in the champaign.

Now it is time to change and look at what is left to be accomplished. This month the "Count down" is underway. Jan. 13, 1986 we are at \$24,000 and counting down. If we were able to reach the current amount, \$205,500, we as club members certainly should be able to count down to zero from 24 and hopefully by Convention '86. A recap as follows:

| | | |
|----------|------------------|-------------------|
| | December 15 | Jan. 13, 1986 |
| Received | \$202,400 | \$ 205,500 |
| Pledged | 4,200 | 3,500 |
| | <u>\$206,600</u> | <u>\$ 209,000</u> |

The \$205,500 raised to date represents 89.7% of the original purchase price. Looking at that another way only 10.3% more to go and we will have paid the original purchase price. A significant accomplishment in such a short period of time. Next month let's count down together.



Open mould



Closed mould



By Tom Felt

In mid-1939 a new pattern, No. 1511, was introduced by Heisey. The name of the pattern, Tourjours was apparently a misspelling of the French "tourjours," appearing with that spelling in catalog 214-19, and subsequently in the following price lists. The pattern was a small one, with only 18 pieces, most of which were in production for no more than two years.

One of these pieces was a candlevase (also called a centerpiece and vase in one catalog). Along with the rest of the line, it was shown at a meeting of Heisey's salesmen in June and approved, but a note was appended to the minutes of that meeting stating that "the shape of the #1511 candleholder to go in the centerpiece vase will be adjusted so they will hold candles properly," indicating that the salesman had apparently noted a failing in this respect.

Actually, this candlevase was simply a redesigned version of the No. 1183 Revere vase candlestick, which had originally been made from 1926-1927. (See the Heisey News, May 1979, p. 16.) A wide panel optic was added to the inside of the vase and its lip was crimped. The candle insert was also pinched in the middle, presumably the "adjustment" mentioned above.

According to the original factory turn books, both the vase and the candleholder insert were made for the first time in June 1939 and then again in December. 246 of the vases were made and 729 of the candleholders. Although the candlevase continued to be offered in the price lists until 1941, these two turns were the only ones made, explaining why these vases are so scarce today.

The Tourjours pattern seems to have been designed primarily as a blank for the No. 503 Minuet double plate etching and the candlevase was available with this etching, as well as with the No. 924 Daisy cutting. The vase has also been seen with painted flowers, but this was done by a decorating company.

The candlevase was offered with 12 "A" prisms when it was first introduced, though before it was discontinued, it was also briefly available with Heisey wartime "H" and "P" prisms, and also with plastic "X" prisms.

When marked, the Diamond H will appear on the bottom, in the center of the base.

The No. 1511 two-light candlestick (see accompanying photos) was also among the items which were introduced in mid-1939 as part of the new Tourjours pattern. Unlike the candlevase, however, this was an entirely new design. It was made for the first time in June and was mentioned in an advertisement in the July issue of China, Glass & Lamps as a new.. double candlestick with a fan motif". Unlike most of the pieces in the Tourjours pattern, which apparently did not catch on with the public and were all discontinued around 1941, the two-light continued to be made for over ten years. In the later years, however, very few of them were produced and, in January 1950, it was included on a factory list of "items to be discontinued".

The two-light was offered both as a candlestick and, with bobeches and prisms, as a candelabra. There were 8 prisms on each bobèche and ordinarily "A" prisms were used. During the war, however, it was also offered with "H", "P" and plastic "X" prisms. In May 1946, an advertisement in the



No. 1511, TOURJOURS
Candlevase



No. 1511, TOURJOURS
2-light



Continued on next page



Mrs. Guttridge at her home.



Mrs. Guttridge with the present owners of the farm, Mr. and Mrs. Alvin Leibrand

"I REMEMBER GRANDPA" ... Memories of Dorothy Guttridge about her grandfather, Andrew John Sanford

By Betty Barnard

Dorothy Guttridge remembers her grandfather as a pal to the grandchildren. She was six years old when her family moved from Columbus to the farm. "Grandpa was completing the building of this farm on White Chapel Road about the time I started school." She remembers her grandfather would visit her family at the farm every chance he could.

To her, grandpa was a gentle man who loved the outdoors and nature. He would take the grandchildren for long walks along Hog Run Creek to pick flowers. He had a feel for design in everything he did. She remembers he taught her to arrange the flowers they picked.

Dorothy feels that this artistic sense of design reflects his ability to make interesting glass-

ware. "He was an artist at heart." This ability along with his being a perfectionist is probably why he was such a successful Heisey designer.

The period of history that Dorothy remembers is the end of the horse and buggy and the beginning of the horseless carriage. Grandpa loved horses and drove a horse and buggy as well as his Model T until his death in 1929.

*** *** *** *** *** ***

As you remember from reading the last issue this is another chapter in the life of A. J. Sanford. Next issue will continue the story and will do so until June Convention when we will have a display of his designs. The Diamond H study club has offered to help with this display along with several individuals. If you have any of the glass you wish to loan, please contact Betty Barnard, 473 Meadowbrook Drive, Newark, OH 40355; phone 614-366-7002. The list of the patterns designed by Mr. Sanford appeared in last month's HEISEY NEWS.

Note: The picture of Mr. Sanford on the front cover was donated to us by Mrs. Guttridge.

Candlesticks - Con't.

Crockery and Glass Journal, announcing that imported "A" prisms were once again "available in limited quantities", pictured this candelabrum along with several others.

Like the other pieces in the Tourjours pattern, the two-light was offered with the No. 503 Minuet double plate etching, with the etching appearing on the foot only. It was also available with various cuttings over the years, with the known ones including No. 924, Daisy, No. 925, Huguenot, No. 926, George VI, No. 932, Coreopsis*, and No. 942, Harvester.

This candlestick is 8 inches high and, since the arms are vertical, rather than being spread, it is only 5½ inches from candleholder to candleholder, the same as the diameter of the applied foot. It is rather more ornate than most of the pieces in the Tourjours line, with the primary motif being the four-ribbed fan which appears between the arms. The arms themselves have 8 concave panels tapering to a curlicue which nestles beneath the edge of the fan. The candleholders sit on top of the arms and are also panelled, with a circular rim upon which the bobèche can be rested when used.

The bobèche is octagonal in shape with a panelled optic. It is cupped rather than flat, and is about 3 inches in diameter.

The two-light candlestick generally seems not to have been marked. (If any of you have one that is, please let me know.) Both the Tourjours candleholders were made in crystal only, and neither was ever reissued by Imperial.

FENTON MAKES DONATIONS

The Research and Archives Committee is pleased to announce that the HCA has received a gift from Frank M. Fenton of the Fenton Art Glass Company in Williamstown, WV in the form of an A. H. Heisey and Co.'s #56 Catalog. Number 56 is probably the last large (complete line) catalog which the Archives were missing.

At the same time, the Fenton Foundation, of which Mr. Fenton is a trustee, donated \$500 to the HCA Mould Fund.

The entire HCA should be grateful to Mr. Fenton for these gifts.

HEISEY COLLECTORS OF THE ROCHESTER AREA

The club's annual Christmas Party and meeting was held on December 15th at the home of Arlene & George Reynolds.

The election of new officers for the coming year was held. Betty Evans was elected Vice President, Jerry Gillette, Sec.-Treasurer, George Reynolds, President. John and Adele Pardee submitted their properly notarized absentee ballots, and voted for six people, although there were only three on the ballot. Jerry Gillette volunteered to search for the other three people.

The minutes were read for the November meeting. Bill Heron objected to the item that listed Adele as the OLDEST member. The club checked all the pictures of previous meetings, and agreed he was right, he is.

Bill Heron then conducted a great Auction that netted \$228.00 for the clubs treasury. He looked real dapper with the straw hat and ebony silver tipped cane. When the affair was over, he remarked "boy, that Sam Schnaidt really earns his money, this is tough".

Harold and June Ames were our honored guests, and also contributed some nice glass for the Auction, which was really nice of them; we thank them. An unmarked package was also received from the Heisey Heritage Society, with several nice items as their donation to our Auction. We hope to return their kind thoughtfulness at the first opportunity. But for now thanks from all of us.

Among the items that were Auctioned were, an Elephant in soft glass, Ridgeleigh Cigarette Holder, Beautiful etched goblet that came in two parts, milk glass rabbit, pair of Parallel Quarter Candles, Great Priscilla footed grapefruit, and many others.

Arlene had provided a small table full of snacks that included chopped liver, pickled mushrooms, cheese, meat, etc., etc. Actually there were several tables, with one hard punch bowl (Plantation) and one soft (Sunburst). The hard was empty when we left.

After the meeting and party, we all retired to the Spring House Restaurant for a lovely dinner. This restaurant is one of the older buildings in the area. It was built during the construction of the Erie Canal to serve the workers during that period. It is really a great old building, circa 1830.

Marion and Bill Heron provided a birthday cake for their son Jonathan, he was fifty seven and is also one of the older club members, great guy too.

It doesn't seem possible, but 1986 is almost here, so we had better end with this quote from old BEN. "An open foe may prove a curse, but a pretended friend is worse."

BAY STATE HEISEY COLLECTORS CLUB

The Bay State Heisey Collectors Club held their Christmas party on Tuesday evening December 3rd at "John Martins Manor", Route 1, Saugus. Sixteen members and four guests attended. A cocktail hour was enjoyed from seven-eight p.m. followed by a sumptuous meal consisting of: fruit cup, salad, choice of steak or chicken and topped off with a delightfully rich ice cream filled cream puff with chocolate sauce. Members brought in Heisey for sale and along with good food and good company a terrific evening was enjoyed by all.

Jan Caswell

MICHIGAN HEISEY COLLECTORS

Enclosed, please find our own private club membership dues for this year, which we have decided to donate to the mould fund.

Also, we have decided to have silent auctions at our meetings. The members each bring a piece of Heisey and donate it to the auction. Members then write their bids on papers attached to the piece of glass and all the money will be sent to you to help with the mould fund. Our meeting in November was our first try at this and we netted \$141.00 for the fund. We feel that this will be a very profitable way for us to help and for each to have a contribution and a donation to "write off" as well.

Sue E. Kilgore, Sec./Treas.

VIRGINIA HEISEY CLUB

At the December meeting of the Virginia Heisey Club, another fund raising event was held for the Heisey Mould Fund. We were able to raise \$178.50.

Enclosed are four checks totaling this amount. I am both pleased and proud to say that once again our members have gone the extra mile to do what they can to help pay for the moulds.

Betty Johnson, Sec./Treas.

DAYTON AREA HCC

The Dayton Area HCC held its Christmas party at the Stockyard Inn. During the conversation around the table, it was decided to donate a check for \$200 to the mould fund in hopes of getting the fund rolling again.

GATEWAY CLUB

In response to your recent plea for additional contributions to the Mould Fund, last night at the Gateway Heisey collectors Club meeting we voted to send this additional \$200 to the fund. Since our club is composed of eight couples and two singles this breaks down to \$20 for each family represented in the club. We hope other clubs will make this special effort, too and put the fund over the top.

Margaret H. Reed, Treasurer



WANT TO START A HEISEY STUDY CLUB IN SCRANTON - WILKES-BARRE, PA. AREA?

Contact: Arlene Crafts
187 N. Pioneer Ave.
Shavertown, PA 18707
717-675-8553



WANT TO HELP START A CLUB IN PHILADELPHIA?

CONTACT: Larry Barnhouse
1530 Pine Street
Philadelphia, PA 19102
PH: (215) 546-4918

diamonds are forever.....

Is it possible February is here; do I dare think about Spring? You're right, it is a bit too early. The Yachting Center is organizing ski trips for February vacations and the children are skating on the pond by our house while we watch from our window. You did notice that I said "watch from our window"! You bet, that means inside our nice warm house. Winter is not my favorite time of year, but I do love to walk in a nice soft snowstorm especially in the evening when everything is so still and peaceful. We have just come in from one of these special walks, a great time to share our thoughts and just enjoy being together.

One of the things we discussed were the several uneventful Heisey hunting excursions we've been on lately. Last week we came home with a eight inch round saw blade upon which was painted a pretty winter scene, plus two cast iron Boston Terriers. This week I purchased one 1921 Valentine card. But that's all right because, I have added, in the past month, a few terrific pieces of #1404 Old Sandwich; three(3) 8" plates, seven(7) 4 oz sherbets, three (3) 10 oz low footed goblets and two (2) 10 oz ice-teas, now all of the above are Flamingo! I, myself, had never seen any plates in flamingo, so needless to say I am delighted. The other piece I was very excited about was the #367 Water Bottle, crystal and etched.

At least the "Arizona Snowbirds" are keeping warm and happy with a #429 Plain Panel cruet, it didn't have a stopper but it sure was a beautiful hunk of glass so they purchased it anyway. Upon arriving at home base they found, much to their delight, that they had the correct stopper, married it with the cruet and now the little beauty is complete. Ahh, one of lifes' little pleasures!!

From "the Pelican State" (LA) a collector tells of his recent visit to an Antique shop in New Orleans; the dealer said he had some dark blue glasses but he didn't know what they were. Upon looking, our collector recognized Heisey Cobalt finger bowls, perfect and pretty. Made a deal (and what a deal it was) and came away with twelve (12) finger bowls in Sussex. On another trip of about 3000 miles that same "Pelican State" collector visited "flea after flea" and found mostly old tools and crafts, with only a few pieces of decent glass, and those pieces were very dear.

"Cruet Man" (CA) added another cruet to his already large collection, the #4042 blown 6 oz cruet in Flamingo. Real exciting find!

Speaking of "real exciting" what about the man from the "the Pine Tree State" (ME) who found a pair of 5" Fish Candlesticks, for less than a "spinning wheel" and also a #1255 Pineapple and Fan Emerald Toothpick and three Pineapple and Fan Emerald Tumblers.

From the Bay State (MA) Mr. "H" came up with a #406 Coarse Rib two handled sugar in moongleam and a #305 Puntly and Diamond Point salt shaker.

"The Pilgrims" (NH) also have Coarse Rib, the low footed jelly in Moongleam; #1252 Twist 7" Bonbon - Flamingo/etch; a #5 Toy candlestick and a pair of #5 6" sticks; #1184 Yeoman 5 oz sherbet, Flamingo d/o, #1503 Crystolite Master Swan; #32 7" skirted panel/handle candlestick; #1229 Octagon 6" cheese in Hawthorne with etch and another in Moongleam, also etched. #1183 Syrup and lastly a beautiful Sahara #1405 Ipswich cruet with the correct stopper.

"The Orchid Lady" (MA) has ten (10) #350 Pinwheel and Fan Punch cups, the #1225 Handleless sherbet in custard - souvenir Beverly, MA and a #393 Narrow Flute round divided relish - early Moongleam (on the dark side) Ptd 6-20-16.

"The High Steppin' Couple" (MA) have several nice things: #354 footed lavender jar/gold and blue enamel decor, #352 horse-radish, #1225 Plain Band covered butter and the lovely #1540 Lariat gardenia bowl, etched.

"The Eager Beaver" (OH) has a #333 Waldorf Astoria toothpick/silver overlay while a friend from PA found a #427 Daisy and Leaves 8" ice-cream nappy.

"The Two Guys" (CT) found two pieces of #503 Minuet etch; the #5012 7½" Urn vase and the #1509 d/f 11" floral bowl.

"The California Kid" tells me about a Zodiac covered candy - Sweet find!!

One of my readers sent me a list of her 1985 finds. Here goes; #433 Greek Key water bottle, pair of #1252 Twist candlesticks in crystal, pair of #1428 Warwick candlesticks also crystal and #1519 individual cream and sugar/Heisey Rose etch.

The "Lady who likes color" (MA) has a #1220 Puntly Band mug, ruby stain - name on mug reads "Mabel H. Pinkham", also the #1503 Crystolite Swan with one baby.

"My Sharp Eyed Friends" came up with a couple goodies; #411 Rib and Panel fruit bowl, #1184 Yeoman 6" candy dish and cover/#447 Empress etch; #1519 Waverly salt and pepper, orchid etch; a #479 Sahara creamer and the little Sparrow.

"Happy-go-lucky" (MA) is just that #394 Narrow flute sugar cube holder/gold trim, #1503 cordial plus the cake stand or Salver. As you have probably guessed he is an avid Crystolite collector.

Now for the "Hilltoppers" (MA) #1433 Thumbprint and Panel 8" vase in cobalt, a Warwick #1428 double candlestick, also cobalt, and the #1413 Cathedral vase again, cobalt. Believe me all that cobalt looks regal on a buffet table!

May all your Valentines be Heisey Ones!
Peace,
Janet



1986 CONVENTION DISPLAY NEWS

By Lloyd Caswell

The Theme for the Convention this year is "Heisey Roundup". The Display was named "Diamond H Corral".

All Study Clubs are invited to participate, as well as any individuals with their collections. You may order one, two or three tables.

The Display Committee is looking for different table settings. If you would like to bring a place setting for four that we have not shown, please contact me.

Just a few suggestions that would be nice: Frontenac, Chintz, Lafayette or Titania etchings; Stanhope or Pleat and Panel patterns.

Every year you all bring beautiful displays for all to enjoy, let's make the 1986 display another exceptional year.

Write to me: Lloyd H. Caswell/Chairman
41 Marion Road
Marblehead, MA 01945
or
Richard Smith/Co-chairman
225 Upson Downs Road
Newark, Ohio 43055

INDEX FOR HEISEY NEWS VOLUME XIV - 1985

| <u>CANDLESTICKS:</u> | | <u>Month</u> | <u>Page</u> | | | | |
|--------------------------------|------------------------------------|--------------|-------------|-------------------------------------|-------------------------------------|----|----|
| 120 | Overlapping Swirl | 2 | 7 | 1077 | Fanfare cutting | 3 | 14 |
| 1183 | Yeoman | 9 | 4 | 5003 | Nimrod carving | 7 | 4 |
| 1187 | Yeoman | 9 | 4 | 5004 | Scotch carving | 1 | 14 |
| 1447 | Rococo | 10 | 5 | 5007 | Rye carving | 1 | 14 |
| 1489 | Puritan (late) | 11, p. 6 | 12 | 5016 | Stars & Stripes carving | 7 | 3 |
| 1513 | Baroque | 1 | 5 | | | | |
| 1567 | Plantation | 4, p. 6 | 5 | | | | |
| | | 6, p. 5 | 7 | | | | |
| 1590 | Zodiac | 8 | 10 | | | | |
| 4044 | New Era | 8 | 10 | | | | |
| | Candlesticks, Heisey (Book Review) | 2 | 6 | | | | |
| | Epergnettes | 1 | 12 | | | | |
| | Epergnions | 1 | 12 | | | | |
| | Misc. Candlesticks | 1 | 12 | | | | |
| <u>HEISEY PATTERNS:</u> | | | | <u>INDIVIDUAL HEISEY ITEMS:</u> | | | |
| 150 | Banded Flute | 4 | 8 | 215 | Tumbler | 11 | 4 |
| 485 | | 11 | 7 | 341 | Puritan sherbet, custard color | 7 | 24 |
| 486 | | 11 | 7 | 473 | Ten items pictured | 3 | 14 |
| 1483 | Stanhope | 9 | 7 | 1540 | Lariat Covered Candy, Horsehead | | |
| 1489 | Puritan (Late) | 7 | 14 | | Finial | 8 | 3 |
| 1503 | Crystolite | 6, p. 9 | 7 | 1589 | Double Horsehead Ash Tray | 7 | 19 |
| 1567 | Plantation | 4 | 13 | 1612 | Botanical | 9 | 23 |
| 1590 | Zodiac | 4 | 12 | 6006 | Moulds for | 12 | 8 |
| 6009A | Roundelay | 10 | 1 | 6010 | Finesse Stemware | 11 | 13 |
| | | | | | Ash Trays (1928 catalog) | 7 | 7 |
| | | | | | Ash Trays (1935 catalog) | 7 | 13 |
| | | | | | Ash Trays (1937 catalog) | 7 | 18 |
| | | | | | Bar Shakers, Novelty & Accessories | 9 | 8 |
| | | | | | Blown Oil Bottles 4041, 4046, 4048, | | |
| | | | | | 4056, 4057 | 1 | 3 |
| | | | | | Candy Dishes, Jelly, etc. (1956) | 12 | 15 |
| | | | | | Catalog #32 cover | 3 | 10 |
| | | | | | Cordials | 5 | 7 |
| | | | | | Dancer's Leg Cocktail | 7 | 19 |
| | | | | | Figures & Table Decorations | 4 | 12 |
| | | | | | Misc. Items (1953 Catalog) | 6 | 12 |
| | | | | | Molasses Jugs | 6 | 6 |
| | | | | | One-Handle Jelly Dishes | 5 | 9 |
| | | | | | Pitchers, Musc. (1956) | 12 | 14 |
| | | | | | Syrups 365, 366, 369, 370 | 10 | 7 |
| | | | | | Syrups, discussion | 11 | 7 |
| <u>HEISEY DECORATIONS:</u> | | | | <u>ARTICLES, GENERAL:</u> | | | |
| 502 | Crinoline etching | 2 | 3 | Copperwheel Engraving, History | 1 | 10 | |
| 510 | Tavern etching | 7 | 24 | "Cut Shur" | 3 | 9 | |
| 516 | Plantation Ivy etching | 3 | 16 | Donations 1984 and 1985 | 11 | 10 | |
| 693 | Cloister cutting | 7 | 23 | Engravers at Heisey Co | 1 | 7 | |
| 781 | St. Anne cutting | 7 | 8 | Everett, Edward (1934 article on) | 1 | 6 | |
| 795 | Will-O-the-Wisp cutting | 7 | 8 | Fostoria Glass - Old Williamsburg | 12 | 2 | |
| 797 | Killarney cutting | 7 | 2 | Lotus Glass Co. etching | 8 | 13 | |
| 799 | Manhattan cutting | 7 | 2 | Making Glass at Heisey | 12 | 10 | |
| 816 | Palmetto cutting | 7 | 9 | Mandan, Robert | 4 | 3 | |
| 825 | Sea Glade cutting | 7 | 11 | Mould Information, Patterns | 8 | 7 | |
| 826 | Venus cutting | 7 | 11 | Moulds, Inventory | 5, p. 2 | 6 | 11 |
| 843 | Tahiti cutting | 7 | 9 | Mould Parts | 12 | 4 | |
| 845 | Fontaine cutting | 7 | 10 | Moulds, Purchase of | 3, p. 3 | 4 | 4 |
| 846 | Neo Classic cutting | 7 | 10 | Olson, Emmett E. | 11 | 3 | |
| 904 | Rialto cutting | 6 | 2 | Patents by A. J. Sanford | 12 | 7 | |
| 909 | Champlain cutting | 6 | 5 | Photo of Salesmen (1937) | 2 | 5 | |
| 911 | Lytic cutting | 6 | 8 | | | | |
| 913 | Everglade cutting | 6 | 2 | | | | |
| 934 | Olive cutting | 6 | 5 | | | | |
| 1038 | Pine cutting | 6 | 8 | | | | |
| 1066 | Debutante cutting | 4 | 17 | | | | |
| 1052 | Silver Iris cutting | 4 | 17 | | | | |
| 1074 | Inspiration cutting | 3, p. 14 | 11 | | | | |
| 1076 | Nonchalance cutting | 3 | 14 | | | | |

This index was prepared by Joe Lokay. You will wish to Xerox this page to put with your 1985 Heisey News.



Egg Cup



Custard



6in. Footed Jelly, Shallow

13TH ANNUAL ALL HEISEY BENEFIT AUCTION

AUCTIONEERS: Sam Schnaidt, Tim Hughes, Craig Connelly & Larry Stickle

Auctioneers donate their services for this auction.

Auction held at . . . Apple Tree Auction Center, 1616 West Church Street, Newark, Ohio 43055

Friday, March 7, 1986
Doors Open - 4:30 P.M.
Auction starts - 5:30 P.M.
Items 1 thru 450

TERMS:
Cash
Checks
Visa & MC

Saturday, March 8, 1986
Doors Open - 8:30 A.M.
Auction Starts - 10:00 A.M.
Items 451 thru 1044

Includes something for both Collector and Dealer

CONDITION CODES: A small letter is minimal; a large letter is significant damage.
f F - Flake b B - Bruise r R - Repaired
c C - Crack m M - Mold Flaw x X - Major Damage

Lots being sold for the Mould Fund are:

202 thru 214, 277, 358 thru 406, 481, 671, 672, 672 a, 1039 and 1044

The gems of the Mould Fund Glass are a beautiful Carcassonne decanter in Alexandrite, also a pair of beautiful Plantation hurricane lamps, electrified with fine brass bases.

Sponsored by

HEISEY COLLECTORS OF AMERICA, INC.
for benefit of the NATIONAL HEISEY GLASS MUSEUM

MAIL BIDDING INSTRUCTIONS Read Carefully

As your mail bidder, I will bid competitively for you at the HCA Benefit auction on March 7 & 8. In case of duplicate bids, earliest postmarks will win. Your bids must reflect what is listed in the catalog as to condition, pattern and unit number.

You set the maximum you are willing to pay on each lot. If successful, the remainder will be refunded. Please use good judgment in arriving at your maximum bid figure -- remember, there are minimum limits to raises that the auctioneer will accept (small items - \$2.50; larger items - \$5.00, \$10.00, or as much as \$25.00).

Lots containing multiple items normally are not split up, but will be sold as one lot to the successful bidder. These multiple items are usually sold "by the piece" or the "pair or set to go". In such cases your bid must be a dollar value for each piece times the number of items in the lot. (Example: Cream, Sugar, and Tray Set - 3 items @ \$20.00 each = \$60.00 total bid.)

Items have been checked when cataloged and will be closely checked again prior to selling. In some cases where damage is minimal, your bid may be executed at 70 to 80% of maximum. Mark your BID LISTS Mint only, if you do not want me to use my discretion in your bid. MOULD FLAWS are not considered as damage.

If there is a variance called at the auction (such as unlisted damage or a difference in the number of items in a lot), I will not bid on that lot. Please do not request the amount of a bid to be moved from one lot to another depending on your success or lack of success on other bid lots.

Please use the form (or a copy of it) provided for your bidding and sign the sheet. Send a self addressed stamped envelope for returning your checks and letters giving the results of your bids.

You may send a separate check for each lot or you may send one check covering the maximum amount of all bids. Shipping charges must be added in all cases. Any surplus bid money or shipping charges will be refunded. Instead of sending checks, you may use a valid VISA/MasterCard. In this case, we will need the type of card, the card number, and its expiration date.

Again this year, the successful mail bid glass will be packed and shipped UPS from the mailing room of the Administration Building, so be sure to include a complete address. (No Post Office Box addresses please.)

Send your bids by March 1 to:
Loren Yeakley
Mailman V
P. O. Box 27
Newark, Ohio 43055

If you have questions, call Loren Yeakley after 6 P.M. weekdays, or on weekends. NO COLLECT CALLS PLEASE. PH. 614-522-5280 or call the Museum 8:30 to 4:00 P.M. weekdays.

List of prices realized will be printed in the April Heisey News. If you are not a member, send \$1 to HCA, P. O. Box 27, Newark, Ohio 43055 and include a long SASE.

BID FORM ON PAGE 14

| | | | |
|-----|---|------|--|
| 1. | 407 COARSE RIB 6 1/2 OZ SHERBET 10 H | 73. | 1488 KOHINOOR CANDLES W/PRISMS SILV/FLORAL DEC PR |
| 2. | 300 PEERLESS EGG CUP ENG REG, 3 H | 74. | 353 MED FLAT PANEL AMBER 3 PT JUG H |
| 3. | 341 PURITAN 4 1/2 OZ SHERBET, 3 H | 75. | 1401 EMPRESS MNGLM 6 IN SQ COMPOTE H |
| 4. | 465 RECESSED PANEL 1# CANDY NO LID, PURPLE STN H | 76. | 1252 TWIST MARIGOLD, LOT 28 PCS, INCL CUPS/SAUC H |
| 5. | 359 COLONIAL SHERBET, FLARED 4 H | 77. | 300-2 OLD WMSBRG 2 LT CANDELABRA COMP. PR xx |
| 6. | 341 PURITAN CHAMP, 3 & 4 OZ COCKTAIL, 3 H | 78. | 3316 UNIVERSAL 1 OZ CORDIAL VICTORY ETCH |
| 7. | 1225 BUXTON INN SHERBET 2 H | 79. | 1295 BFAD SWAG OPAL COV BUTTER, CORNFLOWER DEC |
| 8. | 300 PEERLESS & 393 NARROW FLUTE SHERBET 2 H | 80. | 1183 REVERE CR & SUG FLORAL CUT H |
| 9. | 4054 CORONATION FTD COCKTAIL MONO R A C, 2 | 81. | 1186 YEOMAN FTD CR & SUG FLORAL CUT H |
| 10. | 4054 CORONATION 12 OZ SODA & 2 5 OZ JUICES | 82. | 4002 AGUA CALIENTE 4 OZ COCKTAIL TALLY HO ETCH 2 |
| 11. | 4054 CORONATION 2 1/2 OZ BAR 3 | 83. | 1229 OCTAGON FLAM IND HDL NUT FLORAL CUT 4 H |
| 12. | 1401 EMPRESS MNGLM 11 IN FLORAL BOWL D F | 84. | 1E92 OMEGA 4 OZ COCKTAIL MELODY CUT 2 H |
| 13. | 393 NARROW FLUTE 8 IN BANANA SPLIT DISH H | 85. | 427 DAISY & LEAVES 8 1/2 IN NAPPY H |
| 14. | 468 9 IN CELERY TRAY H | 86. | 477 HEISEY HAIRPIN HDL BASKET PAT DTD 2/15/16 H |
| 15. | 1168 YEOMAN 5 IN OVAL LEMON DISH, UNK CUTTING H | 87. | 353 MED FLAT PANEL 4 1/2 IN SM STRAW JAR H |
| 16. | 1183 REVERE 4 1/2 IN NAPPY UNK CUTTING H | 88. | 5003 CRYSTOLITE CORDIAL H |
| 17. | 3411/2 PURITAN 4 IN HIGH, PUNCH BOWL BASE H, XRM | 89. | FISH BOOKKINDS PR, SM BRUISE |
| 18. | 1469 RIDGELFIGH 6 IN HDL JELLY H | 90. | 1519 WAVERLY 10 IN CRIMPED BOWL ROSE ETCH |
| 19. | 1503 CRYSTOLITE 3 IN SQ ASH TRAY H | 91. | 1469 RIDGELFIGH ROCK/RYE BOTTLE & OVAL CIG HOLDER |
| 20. | 1540 LARIAT 14 IN SAND PLATE | 92. | 1401 EMPRESS SAHARA(6)7 IN PLTS,3 CUPS,4 SAUC. H |
| 21. | 1519 WAVERLY 13 IN GARDENIA BOWL & ETCH, WORN | 93. | 433 GREEK KEY (3) IND FTD ALMOND, 4 1/2 IN PLT H |
| 22. | 1519 WAVERLY 6 IN LOW FTD COMPOTE | 94. | 3404 SPANISH COBALD CORDIAL |
| 23. | 99 LITTLE SQUATTER CANDLESTICKS PR | 95. | 3381 CREOLE ALEXANDRITE GOB, SHORT STEM |
| 24. | 351 PRISCILLA 3 1/2 IN VIOLET VASE, FLARED H | 96. | 5003 CRYSTOLITE 12 OZ FTD ICE TEA FLORAL CUT 5 H |
| 25. | 411 TUDOR 6 IN BON BON HDL UNK FLORAL CUT H | 97. | 1509 Q A 6 SM PLATES & 1401 SAHARA D F CR ETCHED H |
| 26. | 5003 CRYSTOLITE 5 OZ FTD JUICE, 8 H | 98. | 1201 FANDANGO WATER BOTTLE |
| 27. | 134 TRIDENT 2 LT CANDLES ORCHID ETCH, PR | 99. | 3304 UNIVERSAL GOB TALLY HO ETCH |
| 28. | 1540 LARIAT 2 LT CANDLES PR | 100. | 5038 ROOSTER STEM COCKTAIL |
| 29. | 367 PRISON BAND FLAM DECANTER W/STOPPER H CLOUDY | 101. | GIRAFFE HEAD FORWARD |
| 30. | 1519 WAVERLY 12 IN FLORAL BOWL, ORCHID ETCH | 102. | GIRAFFE HEAD BACK |
| 31. | 3411/2 PURITAN 1/2 GAL SQUAT JUG H | 103. | 1255 PINEAPPLE & FAN SYRUP CAN |
| 32. | 433 GREEK KEY PUNCH CUP, 5 H | 104. | 4163 WHALEY 10 OZ BEER MUG GOLFER ETCH H |
| 33. | 465 RECESSED PANEL 3# COV CANDY FL CUT,STER.FIN H | 105. | 4163 WHALEY 10 OZ BEER MUG GOLFER ETCH H |
| 34. | 1485 SATURN ZIRCON 4 OZ FRT COCKTAIL S O 2 | 106. | 1420 HI LO COBALD VASE H |
| 35. | 1170 PLEAT & PANEL BOUILLON/PLATE 4 SETS H, 1XPLT | 107. | 4231 FAVOR VASE FLAMINGO D O |
| 36. | 4225 COBEI. 1 QT COCKTAIL SHAKER/IG HORSEHEAD STOP. | 108. | 4052 NATIONAL 12 OZ SODA MOONGLO CUT 3 |
| 37. | 4225 COBEI. 1 QT COCKTAIL SHAKER/RAMS HEAD STOP. | 109. | 341 PURITAN 9 IN OVAL NAPPY, 6 1/2 IN RD NAPPY H |
| 38. | 1486 COLLEPORT 5 1/2 OZ SHERBET/CHAMP 10 H | 110. | 1518 CUT MITRE 7 IN VASE |
| 39. | 6091 CABOCHON 4 OZ COCKTAIL 10 | 111. | 1229 OCTAGON MARIGOLD IND HDL NUT D O H |
| 40. | 6091 CABOCHON 10 OZ GOBLET STARLIGHT CUT 6 H | 112. | 9 SINGLE SLASH & PANEL 4 1/2 IN ELEC SHADE |
| 41. | 1503 CRYSTOLITE 9 IN VASE H | 113. | 150 & 305 PUNCH CUPS 2 OF EA H |
| 42. | 335 PRINCE OF WALES 12 IN OVAL DISH | 114. | 3411 MONT CRISTO GOB KALARAMA CUT |
| 43. | 3411/2 PURITAN 1/2 GAL SQUAT JUG H | 115. | 3366 TROJAN GOB TROJAN ETCH MNGLM STEM H |
| 44. | 1205 FANCY LOOP TABLE SET, GOLD DEC 4PCS, SOME X | 116. | 3416 BARBARA FRITCHIE GOB DEL MONTE CUT H |
| 45. | 17 FLOWER BLOCK FLAMINGO H | 117. | 1415 TWENTIETH CENTURY DAWN FTD SHERBET H |
| 46. | 135 SAHARA 12 IN FLORAL BOWL H | 118. | 473 MARROW FLUTE W/RIM 10 IN & 8 IN OVAL NAPPY H |
| 47. | 4162/2 MNGLM 5 IN VASE D O | 119. | 4044 NEW ERA CHAMPAGNE 5 |
| 48. | 1235 BEADED PANEL & SUNBURST CELERY PURPLE STAIN | 120. | 341 PURITAN ICE TUB W/DRAINER H |
| 49. | 99 L SQUAT PR & 120 SWIRL (1) CANDLES ALL FLAM | 121. | 451 CROSS LINE FLUTE 3 PT JUG PAT DTD 3/24/14 H x |
| 50. | 6060 COUNTRY CLUB 3 PT COCKTAIL SHAKER/ROOSTER STO | 122. | 10 PUFF BOX W/WRONG GLASS LID H |
| 51. | 479 PETAL MNGLM CR & SUG | 123. | 359 COLONIAL 4 OZ HI FTD CHAMP N O 7 H, 1X |
| 52. | 3389 DUQUESNE GOB & 4 PARFAITS CHINTZ ETCH | 124. | 300 PEERLESS 4 OZ EGG CUP OR SHERBET 6 H |
| 53. | 4044 NEW ERA 3 1/2 OZ COCKTAIL VENUS CUT 7 | 125. | 1428 WARWICK 2 LITE CANDLES PR |
| 54. | 1540 LARIAT HURRICANE LAMP BASE ONLY, ENAMEL DEC | 126. | 433 GREEK KEY 2 1/2 IN HOTEL CR, 3 1/2 IN CR H X |
| 55. | 1225 PLAIN BAND 4 & 4 1/2 IN NAPPIES CRIMPED 6 X | 127. | 393 NARROW FLUTE 1/2 GAL TANKARD H |
| 56. | 4163 WHALEY 10 OZ BEER MUG/SPTMN ETCH, 6 H | 128. | 305 PUNTY & DIA PT 12 IN OBLONG RELISH |
| 57. | 350 PINWHEEL & FAN 8 IN NAPPY/2 SM NAPPIES xx, H | 129. | 2401 7 OZ SODA TALLY HO ETCH |
| 58. | 3380 OLD DOMINION MARIGOLD 5 OZ PARFAIT D O 4 H | 130. | 1469 RIDGELFIGH STAR RELISH, 5 PART H |
| 59. | 7004 WREATH 6 IN CANDY W/GOLD METAL LID H | 131. | 1469 RIDGELFIGH 4 1/2 IN CANDLE VASE PR H |
| 60. | 355 QUATOR FLAM FTD CR & SUG H | 132. | 1201 FANDANGO 11 IN CELERY TRAY |
| 61. | 355 QUATOR SAHARA FTD CR & SUG H | 133. | 1220 PUNTY BAND TUMBLER RED STN SOUV ATL CITY 1899 |
| 62. | 1184 YEOMAN FLAM COV SUG & CR D O EMPRESS ETCH H | 134. | 4225 QT SHAKER & 6 ROOSTER STEM COCKTAILS |
| 63. | 353 MED FLAT PANEL OVAL HOTEL CR & SUG H HDL X | 135. | 4163 WHALEY 16 OZ BEER MUG CLUB DRINKING SCENE H |
| 64. | 1425 VICTORIAN CR & SUG H | 136. | 2401 8 OZ OLD FASHION, CIRCUS 471 RUBE ETCH |
| 65. | 1231 RIBBED OCTAGON MNGLM HOTEL CR & SUG H | 137. | 2401 8 OZ OLD FASHION CIRCUS 472 LION TAMER ETCH |
| 66. | 1401 EMPRESS SAHARA D F CR & SUG OLD COLONY ETCH H | 138. | 5072 ROSE STEM 1 OZ CORDIAL ROSE ETCH H |
| 67. | 479 PETAL FLAM CR & SUG H | 139. | 5072 ROSE STEM 3 OZ WINE ROSE ETCH H |
| 68. | 433 GREEK KEY 3 OZ COCKTAIL H | 140. | 1219 BROOKVILLE 3 1/2 OZ HDL SHERBET H |
| 69. | U8020 APPLE STEM COCKTAIL | 141. | 1401 EMPRESS ALEXANDRITE IND NUT D F H |
| 70. | 5063 BAN/PAM ROOSTER COCKTAIL, BASE CHIP | 142. | 1401 EMPRESS ALEXANDRITE 8 IN PLATE H |
| 71. | 1567 PLANTATION PUNCH BOWL H | 143. | 4027 DECANTER/MNGLM FT CLOUDY & 6 3370 COCKTAILS |
| 72. | 500 OCTAGON HDL ICE TUB, SWEET ADELINE CARV. H | 144. | 150 BANDED FLUTE GOBLET 5 H |

145. 1425 VICTORIAN GOBLET HI STEM 8
146. 1280 WINGED SCROLL CUSTARD CREAMER WORN GOLD HDLX
147. 1280 WINGED SCROLL CUSTARD 8 OZ TUMBLER GOLD DEC
148. 1201 FANDANGO HOTEL CREAMER f
149. 160 LOCKET ON CHAIN FTD CAKE SALVER
150. 300 PEERLESS HI FTD SHERBET 4 H
151. 2 OLD WMSBURG 9 IN 1 LITE CANDLES PR
152. 99 LITTLE SQUATTER MNGLM 1 LITE CANDLES 2 PR H
153. 5040 LARIAT GOBLET MOONGLO CUT 6 H
154. 3397 GASCONY TANGERINE - RED SIDE, 12 OZ SODA 2,1f
155. 343 SUNBURST PUNCH CUP 2 H 1f
156. 1567 PLANTATION 5 IN NAPPY 6, 2 f
157. 1252 TWIST 4 IN NAPPY 3 H, 1f
158. 1509 QUEEN ANN 6 IN COV LEMON DISH H/METAL HOLDER
159. 1519 WAVERLY 2 LT CANDLE ORCHID ETCH
160. 1503 CRYSTOLITE FTD CHEESE
161. 1503 CRYSTOLITE 2 PART MAYO f
162. 150 BANDED FLUTE 12 OZ ICE TEA 3 H, 1x
163. 2052 2 OZ BAR W O ZODIAC ETCH 2, 1f
164. 2052 2 OZ BAR W O ZODIAC ETCH 2
165. 1519 WAVERLY SQ BUTTER TOP ONLY, ORCHID ETCH
166. 1220 PUNTY BAND WINE RED STAIN SOUV CONEY IS 1908
167. 1401 EMPRESS SAHARA GOBLET (PRESSED) H
168. 1415 TWENTIETH CENTURY MNGLM FTD TUMBLER H
169. 1488 KOHINOOR ZIRCON CIGARETTE HOLDER H
170. 3318 WALDORF GOBLET W/CUTTING
171. 3362 CHARTER OAK MNGLM GOBLET H
172. 3368 ALBEMARLE GOBLET D O, CHATEAU CUT
173. 3390 CARCASSONNE COBALT CIGARETTE HOLDER
174. 3480 KOORS 29 HAWTHORNE FTD SODA, CHECKER OPTIC
175. 4083 STANHOPE ZIRCON FTD SODA S O
176. 4091 KIMBERLY GOBLET COURTSHIP CUT H
177. 3380 OLD DOMINION FLAM GOBLET EMPRESS ETCH
178. GOOSE WINGS DOWN, BUBBLE IN NECK
179. MINUET GIRL (DINKY DOO) MOLD MK
180. 300 PEERLESS 1/2 GAL BULBOUS PITCHER H
181. 1252 TWIST MNGLM ICE BUCKET W/HDL H
182. 500 OCTAGON 4 COMP VARIETY TRAY UNK CUTTING H
183. ELEPHANT LARGE
184. 5012 URN 9 IN VASE ORCHID ETCH
185. 367 DECANter MNGLM W/CRYSTAL STOPPER f, H
186. 1503 CRYSTOLITE FTD CAKE SALVER
187. 1519 WAVERLY 8 IN PLATES NARCISSUS CUT 8
188. 1519 WAVERLY CUPS/SAUCERS NARCISSUS CUT 8 SETS
189. 3408 JAMESTOWN GOBLET NARCISSUS CUT 4 H
190. RINGNECK PHEASANT
191. STANDING COLT
192. OSCAR, x EAR
193. CLYDESDALE f FOOT
194. 1503 CRYSTOLITE IND SWAN NUT 3
195. 300-1 OLD WMSBURG 10 IN 1 LITE CANDELABRA PR H
196. 1405 IPSWICH FTD CENTERPIECE W/INSERT VASE PR H
197. 1472 PARELLEL QUARTER 1 LITE CANDLES PR
198. 301 OLD WMSBURG 3 LITE CANDELABRA (SHORT BASE)
199. 3366 TROJAN FLAM SHERBET TROJAN ETCH 6 H
200. 3366 TROJAN FLAM 12 OZ ICE TEA TROJAN ETCH 4
201. 1205 FANCY LOOP CRACKER JAR (NO LID)
202. 134 14 IN OVAL FLORAL BOWL
203. 3404 SPANISH COBALT 3 1/2 OZ OYSTER COCKTAIL
204. 3350 6 IN PLATE PIED PIPER ETCH 2
205. 393 NARROW FLUTE 4 IN NAPPY H
206. 1252 TWIST 4 1/2 IN NAPPY H
207. 3312 GAYOSO 5 1/2 OZ SHERB 4, 1 CHAMP ELEC CUT X
208. 3312 GAYOSO SHERBET ELECTRO CUT (EARLY) 5 ALL f
209. 3408 JAMESTOWN FTD ICE TEA BARCELONA CUT 6
210. 3408 JAMESTOWN FTD ICE TEA BARCELONA CUT 5
211. 3408 JAMESTOWN COCKTAIL BARCELONA CUT 6 H, 1f
212. 1519 WAVERLY GOBLET
213. 1E92 OMEGA 4 OZ COCKTAIL WREATH CUT 4, PAPER LABEL
214. 6003 TEMPO 7 OZ SHERBET 9 H, 1f
215. 463 BASKET, BEAUTIFUL UNKNOWN CUTTING H
216. 5072 ROSE STEM 3 OZ WINE ROSE ETCH H
217. 1434 TOM & JERRY MUG H
218. 4224 IVY VASE TANGERINE RED SIDE W O
219. 335 PRINCE OF WALES TOOTHPICK H
220. 4090 COVENTRY ZIRCON SHERBET
221. 4054 CORONATION 2 OZ BAR TAVERN SCENE ETCH
222. 1280 WINGED SCROLL EMERALD CIG. HOLDER
223. 1506 WHIRLPOOL 2 LITE CANDLE
224. 2 SALAD FORK & SPOON H
225. 433 GREEK KEY 3 1/2 OZ BURGUNDY H
226. 6003 TEMPO 1 OZ CORDIAL H
227. 462 8 IN FLOWER BASKET UNKNOWN CUTTING H
228. 463 RECESSED PANEL 7 IN FLOWER BASKET CUT H
229. 305 PUNTY & DIA PT DECANter W/STOPPER
230. 1445 GRAPE CLUSTER 1 LT CANDLES PR H
231. 1495 FERN 11 IN FL BOWL OVAL & PR 1 LT CANDLES
232. 301 CANDELABRAS SHORT BASE, NO BOBS. OR PRSMS PR
233. 1205 FANCY LOOP FTD PUNCH CUP 2
234. 5025 TYROLEAN 10 OZ GOB SHORT STEM ORCHID ETCH 3
235. 5025 TYROLEAN 10 OZ GOB TALL STEM, ORCHID ETCH 3
236. 5025 TYROLEAN 12 OZ FTD ICE TEA ORCHID ETCH 4
237. 1540 LARIAT 9 OZ GOB 5
238. 1540 LARIAT 12 OZ FTD ICE TEA 4
239. 3389 DUQUESNE 10 OZ FTD TUMBLER ORCHID ETCH 3
240. 1295 BEAD SWAG OPAL 9 IN NAPPY
241. 1170 PLEAT & PANEL FLAM 3 OZ OIL, SL CLOUDY
242. 1401 EMPRESS SAHARA COV MUSTARD W/SPOON H
243. 1503 CRYSTOLITE ICE TUB W/CANE HDL H
244. 33 SKIRTED PANEL 3 1/2 IN TOY CANDLES PR H
245. 4231 FAVOR VASE SAHARA D O
246. 201 WINDSOR 9 IN ELEC PORT LAMP/CLOTH SHADE H
247. 1184 YEOMAN HAWTHORNE 14 IN FL BOWL D O & FL FROG
248. 1506 WHIRLPOOL 3 LT CANDLES (ORIG DESIGN) PR
249. 343 SUNBURST 8 IN FTD BOWL H
250. 1225 PLAIN BAND FTD CAKE SALVER H
251. 1252 TWIST FLAM IND BON BON H
252. 433 GREEK KEY IND ALMOND DISH H
253. 1401 EMPRESS FLAM IND NUT D F
254. 352 FLAT PANEL ASH TRAY, GROUND BOTTOM H
255. 1540 LARIAT COLOGNE
256. 31 JACK-BE-NIMBLE TOY CANDLESTICK H
257. 1540 LARIAT CRUET
258. 1295 BEAD SWAG OPAL 4 1/2 IN NAPPY ROSE DEC H
259. 1295 BEAD SWAG OPAL TUMBLER DAISY DECOR
260. 1951 CABOCHON 1 LT CANDLETTE PR H 1f
261. 393 NARROW FLUTE COV MUSTARD BOTTLE H
262. 433 GREEK KEY 4 OZ CRUET
263. 1401 EMPRESS ALEXANDRITE ASH TRAY H
264. REARING COLT, f ON MANE
265. CABOCHON ADVERTISING SIGN
266. 1540 LARIAT PUNCH BOWL W/21 IN BUFFET PLATE/LADLE
267. 1540 LARIAT PUNCH CUP 12 H
268. 1540 LARIAT PUNCH CUP 11 H
269. 1540 LARIAT CR & SUG H
270. 1401 EMPRESS 4 1/2 IN RD PLATE 8 H
271. 1951 CABOCHON MAYO BOWL W/PLATE H
272. HORSEHEAD BOOKENDS FROSTED PR, 1M
273. 353 MED FLAT PANEL IND ALMOND H
274. 393 NARROW FLUTE COV MUSTARD, GROUND BOTTOM H
275. 339 CONTINENTAL WATER BOTTLE H
276. 1509 Q A 12 1/2 IN SWING BOWL BELLE-LE-ROSE ETCH
277. 1184 YEOMAN 5 1/2 IN OVAL NAPPY H
278. 1509 Q A 10 1/2 IN SQ PLATE OLD COLONY ETCH
279. 1509 Q A 8 1/2 IN SQ PLATE OLD COLONY ETCH 3
280. 1401 EMPRESS MNGLM CUP & 2 SQ SAUCERS H
281. 1401 EMPRESS MNGLM CUPS & SQ SAUCERS 2 SETS H
282. 1401 EMPRESS MNGLM 6 IN D F MINT H
283. 1229 OCTAGON MARIGOLD 6 IN 2 HDL MINT
284. 1488 KOHINOOR CIG HOLDER H
285. 380 SCALLOPED OCTAGON 5 IN NAPPY H
286. 470 INTERCEPTED FLUTE 4 IN NAPPY FLARED H
287. 1280 WINGED SCROLL CUSTARD 4 IN NAPPY
288. 1405 IPSWICH SAHARA CHAMPAGNE H

289. 1405 IPSWICH MNGLM CHAMPAGNE H
 290. 1401 EMPRESS MNGLM 7 IN TRIPLEX RELISH H
 291. 1401 EMPRESS MNGLM 10 IN TRIPLEX RELISH H
 292. 1401 EMPRESS 9 IN FTD FLORAL BOWL 3 HDL H
 293. 1401 EMPRESS MNGLM 4 1/2 IN NAPPY 2 H
 294. 1401 EMPRESS MNGLM 4 1/2 IN NAPPY 2 H
 295. 1401 EMPRESS MNGLM TUMBLER H
 296. 1401 EMPRESS MNGLM TUMBLER H
 297. 379 URN 7 OZ SYRUP H
 298. 305 PUNTY & DIA PT SYRUP m
 299. 1205 FANCY LOOP 13 OZ MOLASSES CAN, X
 300. 362 7 OZ SYRUP FLORAL CUT H
 301. 1225 PLAIN BAND 13 OZ MOLASSES CAN
 302. 14011/2 EMPRESS MNGLM TEA CUPS 2 H
 303. 1401 EMPRESS MNGLM MUSTARD(NO LID), SAUC & OYS COCK
 304. 429 PLAIN PANEL RECESSED IND FTD SALT
 305. 433 GREEK KEY IND ALMOND H
 306. 371 7 OZ SYRUP H
 307. 1401 EMPRESS MNGLM 8 IN SQ PLATE 2 H
 308. 1401 EMPRESS MNGLM 8 IN SQ PLATE 2 H
 309. 1401 EMPRESS MNGLM 7 1/2 IN RD PLATE 2 H
 310. 1401 EMPRESS MNGLM 7 1/2 IN RD PLATE 2 H
 311. 1401 EMPRESS MNGLM MAYO D F H
 312. 2401 10 OZ SODA TALLY HO ETCH
 313. 3397 GASCONY 14 OZ SODA SPORTSMAN ETCH
 314. 47 7 IN CANDLES GOLD DEC PR H
 315. 109 6 IN PETTICOAT DOLPH CANDLES FLAM PR 1 FLARED
 316. 300 PEERLESS TOOTHPICK
 317. 339 CONTINENTIAL GOBLET
 318. 419 SUSSEX 8 OZ GOB MNGLM BOWL H
 319. 1225 PLAIN BAND 9 IN FTD CAKE BASKET
 320. 1401 EMP SAHARA 13IN HORS D'OEUVRE PLT OLD COL ET H
 321. 1401 EMP SAHARA 12 IN CEN HDL TRAY OLD COL ETCH
 322. 1469 RIDGELEIGH PUFF BOX H
 323. 4085 SATURN LIMELIGHT 6 IN BALL VASE
 324. 1559 COLUMBIA BASE, 15 IN LIGHTS/CLTH SHADE PR
 325. 4083 STANHOPE GOB S O, ZIRCON FT & BOWL
 326. 150 BANDED FLUTE 3 PT JUG H
 327. 3390 CARCASSONNE ALEXANDRITE 6 OZ SHERBET 9, 2f
 328. 3390 CARCASSONNE ALEXANDRITE SAU CHAMP H
 329. 3390 CARCASSONNE ALEXANDRITE SHORT GOB 2
 330. 1401 EMPRESS D F ICE BUCKET W/SILVER RIM, FROSTED
 331. 305 PUNTY & DIA PT COV BUTTER
 332. 1225 PLAIN BAND 2 1/2 X 7 1/4 SPOON TRAY
 333. 341 PURITAN 14 IN OVAL ICE CREAM TRAY H
 334. 1567 PLANTATION 14 IN SAND PLATE IVY ETCH
 335. 1245 10 3/4 IN MNGLM RD PLATES 2 H
 336. 1425 VICTORIAN RYE BOTTLE
 337. 1540 LARIAT 7 IN HURRICANE LAMP BASE, DEC PR
 338. 1509 QUEEN ANN 6 IN D F MINT ROSE ETCH
 339. 1201 FANDANGO CRUET WRONG STOPPER
 340. 1401 EMP. SAHARA 6 IN SQ PLATE OLD COL ETCH 3H, 1f
 341. 1541 ATHENA 12 IN FLORAL BOWL
 342. 1401 EMPRESS FLAM IND D F NUT H
 343. 1401 EMPRESS 7 IN TRIPLEX RELISH ANTARCTIC ETCH
 344. 1404 OLD SANDWICH SAHARA WINE H
 345. 31 JACK-BE-NIMBLE TOY CANDLESTICK
 346. 357 7 OZ SYRUP PAT'D 4/5/1910 H
 347. 1428 WARWICK 9 IN HORN OF PLENTY VASE
 348. 1404 OLD SANDWICH MNGLM 12 OZ FTD SODA H
 349. 1170 PLEAT & PANEL FLAM CRUET
 350. 1536 MILITARY CAP ASH TRAY
 351. 150 BANDED FLUTE PUNCH CUP 8 H
 352. 1235 BEADED PANEL & SUNBURST WINE
 353. 4085 KOHINOOR SAUCER CHAMPAGNE 7, 2f
 354. 1428 WARWICK SAHARA 5 IN HORN OF PLENTY VASE H
 355. 4085 KOHINOOR COCKTAIL 5, 1X
 356. 40851/2 KOHINOOR 8 OZ FTD SODA 8, 1X
 357. 353 MED FLAT PANEL 7 OZ SYRUP PAT'D MAY 1909 H X
 358. 451 CROSS LINED FLUTE 7 IN NAPPY H
 359. 1255 PINEAPPLE & FAN 7 IN NAPPY GOLD DEC c
 360. 1200 CUT BLOCK WATER BOTTLE
 361. 465 RECESSED PANEL 1# CANDY JAR, WORN GOLD flid
 362. 150 OVAL IN DIA PT PITCHER H
 363. 465 RECESSED PANEL 1# CANDY JAR CUT WRONG LID
 364. 353 COLONIAL 3 PT JUG CUT TOP & BOTTOM H
 365. 339 CONTINENTAL WATER BOTTLE
 366. 1295 BEAD SWAG OPAL 8 OZ TUMBLER
 367. 1295 BEAD SWAG OPAL BUTTER DISH LID ONLY
 368. 1295 BEAD SWAG 11 IN SHALLOW NAPPY X BASE
 369. 8 SINGLE ROW SLASH 10 IN NAPPY
 370. 1469 RIDGELEIGH IND CR & SUG H
 371. 1540 LARIAT CR, SUG & TRAY H, X ON TRAY
 372. 341 PURITAN 4 1/2 OZ LO FTD SHERBET 3 H
 373. 3001/2 PEERLESS 4 OZ PUNCH CUP, GROUND BOTTOM 3 H
 374. 407 COARSE RIB 7 IN PLATE 6 H
 375. 3411/2 COLONIAL 4 IN PUNCH BOWL BASE ONLY H f
 376. 1219 6 IN RD PLATE STAR BOTTOM 9 H, 1X
 377. 4182 8 IN PLATE W O 3
 378. 1509 QUEEN ANN 7 1/2 IN RD PLATE 2
 379. 1454 DIA PT IND ASH TRAY & JELLY H
 380. 1185 YEOMAN IND SUG SILVER RIM, CUT STRIPES H
 381. 1469 RIDGELEIGH WATER PITCHER f
 382. 1404 OLD SANDWICH OVAL SHERRY BOTTLE W/STOPPER H
 383. 1184 YEOMAN 7 IN BOWL W/GOLD RIM SPLASH ETCH H
 384. 1205 FANCY LOOP 8 1/2 IN PLATE f
 385. 1295 BEAD SWAG OPAL TUMBLER CIVIL WAR DECOR
 386. 1201 FANDANGO 7 1/2 IN SQ NAPPY
 387. 315 PANELLED CANE 9 IN NAPPY SHALLOW H
 388. 1229 OCTAGON MNGLM 5 1/2 IN HDL MINT D O
 389. 310 RING BAND CUSTARD PUNCH CUP SOUV PETOSKEY H
 390. 1447 ROCOCO 5 1/2 IN BON BON 2 H
 391. 1295 BEAD SWAG PUNCH CUP RED STAIN SOUV 1901
 392. 1565 DAWN 6 1/2 JELLY H
 393. 1229 OCTAGON SAHARA 6 IN HDL MINT D O
 394. 500 OCTAGON MNGLM FROZEN DESSERT 2
 395. 1469 RIDGELEIGH 2 IN SQ CANDLES SILVER DECOR PR
 396. 411 TUDOR MNGLM MAYO H
 397. 1205 FANCY LOOP VARIANT TUMBLER 2
 398. 1401 EMPRESS ASHTRAY FROSTED H f
 399. 1229 OCTAGON MNGLM 5 1/2 FTD MAYO D O H
 400. 1401 EMPRESS MNGLM 6 1/2 IN GRAPEFRUIT
 401. 3370 AFRICAN WINE D O MNGLM STEM 2, 1 x, 1 f
 402. 12 SALT & PEPPER W/GL TOPS ALL MNGLM
 403. 379 URN 4 1/2 IN NAPPY H
 404. 1386 FLAM ASHTRAY IRISH SETTER
 405. 600 2 OZ LAVENDAR JAR H
 406. 1255 PINEAPPLE & FAN 6 IN VASE
 407. 300-1 OLD WMSBRG 2 LIT CANDELABRA PR H
 408. 433 GREEK KEY WATER BOTTLE
 409. 4085 KOHINOOR 5 1/2 OZ CHAMPAGNE S O 5
 410. 411 TUDOR 1 QT JUG & COVER H X
 411. 357 PRISON STRIPE 8 1/2 IN COMPOTE H
 412. 1509 QUEEN ANN 7 1/2 IN CANDLES PR
 413. 359 COLONIAL 3 OZ COCKTAIL N O 8
 414. 150 BANDED FLUTE 3 OZ HI FT SHERBET 6 H
 415. 2517 CIRCLE PAIR FLAM 1/2 GAL JUG CLOUDY
 416. 1404 OLD SANDWICH SHERBET 8 H
 417. LOT 4 T PICKS, 310 CUSTARD H X, 1205F, 300F, 351 H
 418. 1503 CRYSTOLITE JUG
 419. 1503 CRYSTOLITE 14 IN TORTE PLATE
 420. 1540 LARIAT 14IN SANDWICH PLATE, SILVER OVERLAY
 421. 1540 LARIAT 9 IN URN JAR
 422. 3408 JAMESTOWN 3 1/2 OZ COCKTAIL NARCISSUS CUT 7
 423. 4157 FLAM 5 1/2 IN ROSE BOWL D O
 424. 1229 OCTAGON FLAM 5 1/2 IN FTD MAYO D O
 425. 1184 YEOMAN FLAM CR D O H
 426. 1252 TWIST MARIGOLD 8 IN BOWL H
 427. 1540 LARIAT 12 IN GARDENIA BOWL
 428. 1519 WAVERLY 6 1/2 IN EPERNETTE CUPPED 2 H
 429. 1519 WAVERLY 7 IN MAYO PLATE ROSE ETCH
 430. 352 FLAT PANEL FLAM FR DRSG. BOTTLE, f STOPPER
 431. 419 SUSSEX SHERBET FLAM BOWL H
 432. U8042 8 OZ GLASS SCREW TOP JELLY JAR, f inside rim

433. 1540 LARIAT 21 IN PUNCH BOWL UNDERPLATE
434. 1540 LARIAT PUNCH BOWL, 14 CUPS MONO D
435. 4224 IVY VASE TANGERINE W O
436. 4044 NEW ERA 10 IN X 8 1/2 IN PLATE VENUS CUT
437. 1184 YEOMAN VASELINE 10 IN BOWL H, M BASE
438. 1184 YEOMAN VASELINE 9 IN BOWL H, SHOWS WEAR
439. 1401 EMPRESS ICE BUCKET SILVER OVERLAY H
440. 40851/2 KOHINOOR ZIRCON GOB, LO FT, S O
441. 4091 KIMBERLY CLARET CARLTON CUT
442. 1469 RIDGELEIGH WINE
443. 4069 RIDGELEIGH GOBLET MARIEMONT CUT
444. 40851/2 KOHINOOR ZIRCON GOBLET, LO FT, S O
445. 5082 MID CENTURY GOBLET, NON HEISEY CUT/RANSGIL H
446. 4224 IVY VASE TANGERINE W O
447. 1401 EMPRESS SAHARA 10 IN TRIPLEX RELISH ETCHED H
448. 465 RECESSED PANEL 1# COV CANDY ENAM. DEC H
449. 1225 PLAIN BAND 11 IN FTD CAKE SALVER
450. 1540 LARIAT GOBLET f
- Second session Sat., March 8, 1986
451. 142 CASCADE 3 LT CANDLESTICK
452. 3390 CARCASSONNE CIG HOLDER W O
453. 1401 EMPRESS SAHARA 6 IN HDL/FTD JELLY H
454. 300 PEERLESS PUNCH CUP 2 H
455. 1169 5 OZ PUNCH CUP H
456. 5 PATRICIAN 7 1/2 IN CANDLES PR
457. 1519 WAVERLY FTD CREAM ORCHID ETCH H
458. 1519 WAVERLY FTD SUGAR ORCHID ETCH H
459. 1433 THUMBPRINT & PANEL SAHARA 11 IN FLORAL BOWL
460. 1433 THUMBPRINT & PANEL SAHARA 2 LT CANDLES PR 1f
461. 1205 RAINDROP FLAM 12 IN FLORAL BOWL H
462. 335 PRINCE OF WALES 1/2 GAL PITCHER WORN GOLD H
463. 1509 QUEEN ANN 11 IN D F FLORAL BOWL BARCELONA CUT
464. 4166 40 OZ FTD JUG CLOISTER CUT
465. 1469 RIDGELEIGH 2 LT CANDLES PR
466. 14693/4 RIDGELEIGH 8 OZ SODA 4 H
467. 1469 RIDGELEIGH 4 IN COV CIG BOX & 4 SQ ASH TRAYS H
468. 5057 SUEZ 12 OZ FTD ICE TEA AMBER STEM H
469. 3416 BARBARA FRITCHIE 2 1/2 OZ WINE MANHATTAN CUT H
470. 1184 YEOMAN BOUILLON CUP H
471. 341 PURITAN 2 OZ CRUET H X
472. 407 COARSE RIB FLAM 6 IN PLATE 8 H
473. 300 PEERLESS IND CREAM H X BASE
474. 335 PRINCE OF WALES 4 IN NAPPY GOOD GOLD H
475. 1205 FANCY LOOP 4 1/2 IN SQ NAPPY
476. 1225 HAWTHORNE 6 IN PLATES 6 H
477. 339 CONTINENTAL 4 1/2 IN NAPPY H
478. 341 PURITAN 4 IN FTD JELLY, SHALLOW H
479. 429 PLAIN PANEL RECESSED SHERBET 5 H
480. 434 5 IN RD ASH TRAY GROUND BOTTOM H f
481. 1567 PLANTATION ELEC HURR. LAMPS, BRASS BASES PR
482. 1519 WAVERLY FAN VASE ORCHID ETCH
483. 1519 WAVERLY CRUET ORCHID ETCH
484. 1519 WAVERLY 9 IN RD 4 PT RELISH NARCISSUS CUT H
485. 1540 LARIAT COLOGNE BL & GOLD FLORAL DEC
486. 4036 1 QT COCK.SHAKER/ROOST STOP./4 R.HEAD COCKTAIL
487. 325 PILLOWS 9 IN NAPPY CRIMPED H
488. 1220 PUNTY BAND CUSTARD TOY CREAM SOUV. H
489. 70 OCTAGON 9 1/2 IN CANDLES WORN GOLD DEC PR H
490. 1404 OLD SAND IND ASH TRAY IN METAL HOLDER 6 H
491. 372 7 OZ SAHARA SYRUP H
492. 458 8 IN BASKET UNKNOWN FLORAL CUT H
493. 1252 TWIST NEWARK SESQUI PLATTER
494. 1503 CRYSTOLITE 7 IN COV CANDY/BRASS HDLS & FT.
495. 1201 FANDANGO SPOONER
496. 3404 SPANISH GOBLET RIVIERE CUT H
497. 300 PEERLESS 2 1/4 IN WINE 9 H
498. 1295 BEAD SWAG CUSTARD WINE SOUV, ROSE DEC
499. 1567 PLANTATION 5 IN 2 PT MAYO/STERL SILV BASE H
500. 1415 TWENTIETH CENTURY DAWN 8 OZ FTD SODA H f
501. 1415 TWENTIETH CENTURY DAWN 8 OZ FTD SODA H f
502. 335 PRINCE OF WALES COV BUTTER GOOD GOLD H
503. 4025 1 QT COCKTAIL SHAKER STER SILV BASE/ORCH ETCH
504. 1404 OLD SANDWICH CRUET H
505. 417 DOUBLE RIB & PANEL 2 OZ CRUET H
506. 3404 SPANISH COCKTAIL UNKNOWN CUTTING
507. 4091 KIMBERLY CHAMPAGNE COURTSHIP CUT 6, 2f
508. 6004 CLASSIC 12 OZ GOBLET COMET CUTTING 7 H, 2X
509. 6004 CLASSIC 7 OZ SHERBET COMET CUT 9 H
510. 451 CROSS LINED FLUTE 1 PT JUG H
511. 3350 WABASH 3 PT TANKARD UNKNOWN CUTTING H
512. 1235 BEADED PANEL & SUNBURST PUNCH BOWL BASE
513. 1401 EMPRESS FLAM TUMBLER 3 H ALL f
514. 1187 YEOMAN 9 1/2 IN EPERNE CANDLE
515. 1413 CATHEDRAL 8 IN FLARED VASE
516. 1519 WAVERLY CR & SUG ORCHID ETCH PR H
517. 1469 RIDGELEIGH 2 IN SQ CANDLES IN BRASS BASES PR
518. 1469 RIDGELEIGH OIL & VINEGAR BOTTLE HEISEY LABEL
519. 1567 PLANTATION 5 IN 1 LT FTD CANDLES PR
520. 5072 ROSE STEM GOBLET ROSE ETCH H
521. 5072 ROSE STEM 3 OZ WINE ROSE ETCH
522. 1231 RIBBED OCTAGON MNGLM CR & SUG H
523. 4044 NEW ERA 11 IN CELERY NORMANDIE ETCH
524. 3389 DUQUESNE 12 OZ SODA D O MARIGOLD BOWL
525. 1184 YEOMAN MNGLM 5 IN FTD COMPOTE
526. 1255 PINEAPPLE & FAN 12 IN OBLONG SHALLOW BOWL
527. 337 TOURAINE AMBER 3 OZ SHERBET N O
528. 4044 NEW ERA 4 OZ COCKTAIL COBALT BOWL
529. 3381 CREOLE 4 OZ COCKTAIL D O SAHARA BOWL
530. 3366 TROJAN 3 OZ COCK TROJAN ETCH MNGLM STEM 4 H
531. 1483 STANHOPE 3 OZ COCKTAIL 4
532. 1295 BEAD SWAG OPAL 4 1/2 IN NAPPY ROSE DEC
533. 2351 8 OZ TUMBLER WINDSOR CUT 3 1f
534. 1469 RIDGELEIGH 13 1/2 IN TORTE PLATE H
535. 351 PRISCILLA 6 IN SWEET PEA VASE FLARED H
536. 1205 FANCY LOOP EMERALD TUMBLER FAIR GOLD
537. 134 TRIDENT 2 LT CANDLE ROSE ETCH H
538. 1184 YEOMAN MNGLM DEMITASSE CUP 3 H
539. 1184 YEOMAN BOUILLON CUP 4 H
540. 1253 TRI CORNER MARIGOLD 3 HDL MINT H
541. 1469 RIDGELEIGH 4 1/2 IN NAPPY & PLATE 4 SETS H
542. 1170 PLEAT & PANEL FLAM SAUC CHAMP FLORAL CUT H
543. 1519 3 PT RELISH & 352 COV MUSTARD H
544. 1101 CUSTARD CUP STAR BOTTOM PRESSED HDL 6 H
545. 1220 PUNTY BAND CUSTARD TOY PITCHER SOUV H
546. 1533 WAMPUM 1 LT CANDLES PR
547. 1469 RIDGELEIGH SAHARA RD CIG HOLDER
548. 3389 DUQUESNE 3 OZ COCKTAIL 2
549. 310 RING BAND CUSTARD CREAM ROSE DEC H
550. 1485 SATURN CR & SUG H
551. 458 8 IN BASKET UNKNOWN FLORAL CUT H
552. 1184 YEOMAN FLAM 8 1/2 IN BOW TIE CANDY CUT LABEL
553. 1540 LARIAT HDL BON BON BASKET H XX
554. 461 7 IN BASKET FLAM H X HDL
555. 1401 EMPRESS 11 IN CELERY FLORAL CUT
556. 1401 EMPRESS SAHARA 11 IN CELERY FLORAL CUT
557. 411 TUDOR 12 IN CELERY FLORAL CUT H
558. 1508 CARD BOX & ASH TRAY
559. 1519 WAVERLY 6 IN CANDY BOX W/COV BOW FINIAL H X
560. 1184 YEOMAN 6 1/2 IN LEMON DISH FLORAL CUT
561. 300 PUFF BOX W/COV PAT'D 1/25/10 H
562. 1184 YEOMAN 5 1/2 IN HDL MINT FLORAL CUT H
563. 1184 YEOMAN 5 IN COV LEMON DISH X FLORAL CUT H
564. 118 MISS MUFFIT MNGLM 3 IN 1 LT CANDLE H
565. 1252 TWIST MARIGOLD IND HDL NUT H
566. 1252 TWIST MARIGOLD IND HDL NUT H X RIM
567. 1401 EMPRESS IND D F NUT FLORAL CUT
568. 1401 EMPRESS INF D F NUT FLORAL CUT
569. 1951 CABOCHON 4 OZ COCKTAIL STARLIGHT CUT 4 H 1R
570. 1183 REVERE COV MARMALADE/UNDERPLATE FLORAL CUT H
571. 4002 AQUA CALIENTE 4 OZ COCKTAIL 4, 1 B
571A. 4159 21 OZ ICE LIP JUG & 4 5 OZ SODAS CUT
572. 1221 12 IN RD SAND PLATE STAR BOTTOM FLORAL CUT H
573. 1252 TWIST MARIGOLD 15 IN PLATTER X CRAZED
574. 1218 11 IN RD PLATE ADAMS CUT H
575. 1401 EMPRESS 10 1/2 IN RD PLATE CHURCHILL CUT
576. 1609 FRED HARVEY AMBER 8 IN RD PLATE

577. 5065 PONY STEM AND BASE WHIMSEY
578. MISC PLATES ETC ETCHED & CUT 4 PCS.
579. 1519 & 1125 8 IN PLATES, NARCISSUS CUT ETC
580. 407,1509,1184 7 & 8 IN PLATES (3)
581. 1401 EMPRESS ASH TRAY FLORAL CUT
582. 1519 WAVERLY IND SUGAR ORCHID ETCH PAPER LABEL
583. 1201 FANDANGO IND CR & SUG GOOD GOLD CR X
584. MISC LOT ASH TRAY, PLATES, NAPPY 5 PCS.
585. 325 PILLOWS PUNCH BOWL & BASE H X ON BASE
586. 1519 WAVERLY 12 IN GARDENIA BOWL ORCHID ETCH
587. 112 MERCURY 1 LT CANDLE ORCHID ETCH
588. 352 FLAT PANEL SUG SIFTER STER SILV TOP, CUT H
589. 500 OCTAGON MNGLM FROZEN DESSERT
590. 1200 CUT BLOCK CUSTARD CR & SUG SOUV
591. 1401 EMPRESS MNGLM OYSTER COCKTAIL 4 H
592. 1567 PLANTATION FLORAL BOWL & 2 LT CANDLES PR
593. 1503 CRYSTOLITE 2 1/2 IN ROSE BOWL BLUE IRRID H
594. 1401 EMPRESS 12 IN LION HEAD BOWL FLORAL CUT FT X
595. 341 COL CRUET H & ROOSTER VASE M
596. 4225 COBEL 2 QY COCKTAIL SHAKER W/ROOSTER STOPPER
597. 517 TUMBLE UP JUG & TUMBLER FLORAL CUT H
598. 1469 RIDGELEIGH SAHARA CANDLE VASE FLARED
599. 1509 QUEEN ANN D F PITCHER X HDL
600. 1519 WAVERLY 4 IN VIOLET VASE ORCHID ETCH H
601. 310 RING BAND IVORY CPV BUTTER GOLD DEC H X FINIAL
602. 109 PETTICOAT DOLPH FLAM CANDLESTICK PR
603. 109/1225 PETTICOAT DOLPH COM POTIER FLAM H
604. 1184 YEOMAN SAHARA CUP & SAUCER D O 7 SETS H
605. 17 CLASSIC 16 IN CANDLE W/BOBECH & PRSMS H
606. 1205 FANCY LOOP CR & SUG POOR GOLD
607. 310 RING BAND CUSTARD 4 IN NAPPY FLORAL DEC HX
608. 3304 UNIVERSAL 3 OZ WINE 12, 2 f
609. 1184 YEOMAN FLAM 10 1/2 IN PLATE WORN
610. 300 PUFF BOX, NO LID PAT'D 1/25/10 H
611. 1252 TWIST MARIGOLD 7 IN PLATE H CRAZED
612. 1519 WAVERLY 7 IN PLATE FLORAL CUT
613. 5012 URN 7 IN VASE f rim
614. 1252 TWIST 6 IN PLATE 2 NOT FINISHED
615. 1469 RIDGELEIGH CANDLE VASE H
616. 1183 REVERE 7 IN PLATE TROJAN ETCH
617. 1510 SQUARE ON ROUND 11 IN FLORAL BOWL H FBOTTOM
618. 1426 WARWICK COBALT 11 IN FLORAL BOWL H
619. 1428 WARWICK COBALT 2 LT CANDLES PR H
620. 3408 JAMESTOWN CORDIAL LARKSPUR CUT
621. 5024 OXFORD CORDIAL H
622. 3390 CARCASSONNE SAHARA CORDIAL OLD COL ETCH
623. 5077 LEGIONNAIRE GOB ARCADIA CUT H
624. 5074 SEA HORSE STEM WHIMSEY PAPERWEIGHT AMBER
625. 4002 AQUA CALIENTE FTD COCKTAIL SAHARA H
626. 1485 SATURN ZIRCON MAYO S O H
627. 1401 EMPRESS FTD SALT & PEPPER OLD COL ETCH
628. 1401 EMPRESS 4 OZ CRUET OLD COL ETCH
629. 1401 EMPRESS 6 IN RD PLATE OLD COL ETCH 6 H
630. 1454 DIA PT IND JELLY & ASH TRAY 2 SETS H
631. 2052 2 OZ BAR FOX CHASE ETCH
632. 1488 KOHINOR 2 LT CANDLES/COMPLETE, PR, CUT
633. 1488 KOHINOR 14IN FL BOWL, CHURCHILL CUTTING
634. 56 SWT SCROLL OPAL MATCHHOLD,GOLD DEC #56 H
635. 1503 CRYSTOLITE 8 IN BOWL 5 IN NAPPIES H 7 PCS
636. 1519 WAVERLY CR & SUG H
637. 1205 FANCY LOOP 8 IN BOWL f
638. 3350 WABASH 10 OZ GOB FRONTENAC ETCH 2 H
639. 1502 CRYSTOLITE 2 LT CANDLE W/EPERGNETTES H
640. 1519 WAVERLY CR & SUG ORCHID ETCH H
641. 5025 TYROLEAN 4 OZ CHAMPAGNE ORCHID ETCH 2
642. 5025 TYROLEAN 4 OZ COCKTAILS ORCHID ETCH 4
643. 5022 GRACEFUL 9 OZ GOBLETS ORCHID ETCH 2
644. 1235 BEADED PAN & SUNB COV SUG FOR TABLE SET f
645. 343 SUNBURST 7 1/2 IN PICKLE TRAY H WORN
646. 1503 CRYSTOLITE CIG HOLDER FTD H
647. SPARROW
648. 1503 CRYSTOLITE 3 IN COASTER 3 H
649. 1467 RIDGELEIGH 3 IN 2 COMP HDL NUT f
650. 1467 RIDGELEIGH 3 IN HDL NUT H
651. 1252 TWIST MNGLM 3 IN HDL NUT H
652. 1229 OCTAGON HAWTHORNE 3 IN HDL NUT H
653. 1229 OCTAGON SAHARA 3 IN HDL NUT D O H
654. 1489 PURITAN 3 IN ASHTRAY
655. 339 CONTINENTAL TOOTHPICK H
656. 1435 3 IN SQ ASHTRAYS 3
657. 363 FLAM 3 IN ASHTRAY OVAL f
658. 351 PRISCILLA 3 1/2 IN OVAL IND JELLY H
659. 1489 PURITAN 14 IN FLORAL BOWL, SOME WEAR
660. 3315 POLONAISE OYSTER COCKTAIL NEEDLE ETCH 6
661. 351 PRISCILLA TOOTHPICK H
662. 99 LITTLE SQUATTER CANDLES PR H
663. 1404 OLD SANDWICH 1/2 GAL JUG H
664. 1519 WAVERLY 6 IN 2 COMP FTD RELISH
665. 1503 CRYSTOLITE 3 LT CANDLES PR
666. 1503 CRYSTOLITE 6 IN CANDY BOX LIDS 2
667. 1503 CRYSTOLITE SINGLE CANDLE BLOCK PR
668. 1100 5 OZ CUSTARD CUPS 10 H
669. 1413 CATHEDRAL MNGLM 8 IN FLARED VASE ARCTIC ETCH
670. 1229 OCTAGON HAWTHORNE 5 1/2 IN FTD HDL MAYO
671. 1223 7 1/2 IN RD PLATES 6 H
672. 150 BANDED FLUTE 2 IN SAUCER FT CANDLE H
672A. 3390 CARCASSONNE ALEXANDRITE FTD DECANter
673. 1519 WAVERLY COV CANDY SEAHORSE HDL ORCHID ETCH
674. 1519 WAVERLY SQ COV BUTTER ORCHID ETCH
675. 9 IN FISH FLORAL BOWL H m
676. 5038 ROOSTER STEM COCKTAIL 3
677. 602 AMBER TUMBLER H f
678. 39 SALT & PEPPER CUT H
679. 1225 PLAIN BAND 6 IN COV FTD BOWL H X
680. 121 PINWHEEL HAWTHORNE 2 IN CANDLE H
681. 1511 TOUJOURS 2 LT CANDLES PR
682. 3417 6 OZ BITTERS BOTTLE CIRCUS ETCH LION TAMER
683. 150 BANDED FLUTE MATCH BOX W/COV H f BASE
684. 1469 RIDGELEIGH DECANter CLOUDY
685. 5085 AFRICAN-TEMPO FTD ICE TEA H
686. 473 NARROW FLT W/RIM STRAWBERRY PLT WORN GOLD H
687. 4002 AQUA CALIENTE COCKTAIL KRALL CUT
688. 4002 AQUA CALIENTE COCKTAIL KRALL CUT
689. 1483 STANHOPE CUPS/SAUCERS MAYTIME ETCH 2 SETS
690. 150 BANDED FLUTE 3 OZ SHERBET LO FT H
691. 411 TUDOR 8 OZ GOBLET H
692. 406 COARSE RIB HAWTHORNE HOTEL SUGAR NO LID H
693. 1229 OCTAGON MARIGOLD 12 IN HDL MUFFIN PLATE H X
694. 4182 8 1/2 IN RD PLATES MAYFLOWER ETCH 11
695. 1220 PUNTY BAND 9 IN NAPPY FLARED
696. 3389 DUQUESNE 5 OZ CHAMPAGNE CHINTZ ETCH 5
697. 3316 BILTMORE GOBLET M O RALEIGH ETCH 7
698. 3316 BILTMORE COCKTAIL M O RALEIGH ETCH 6
699. 1280 WINGED SCROLL 7 OZ MOLASSES CAN NO LID
700. 602 COLONIAL 12 OZ ICE TEA/SODA H
701. 1186 YEOMAN MNGLM IND ASHTRAY
702. 1255 PINEAPPLE & FAN EMERALD 8 OZ TUMBLER
703. 1186 YEOMAN FLAM UND ASHTRAY
704. 1186 YEOMAN SAHARA IND ASHTRAY
705. 1186 YEOMAN HAWTHORNE IND ASHTRAY
706. 363 MNGLM 3 IN OVAL ASHTRAY FLORAL CUT
707. 1401 EMPRESS SAHARA IND D F NUT UNK CUT
708. 1404 OLD SANDWICH COBALT IND ASHTRAY H
709. 1404 OLD SANDWICH MNGLM IND ASHTRAY H f
710. 1404 OLD SANDWICH FLAM IND ASHTRAY H
711. 1404 OLD SANDWICH SAHARA IND ASHTRAY H
712. 439 IND ASHTRAY CUT & SILVER DEC f
713. 406 COARSE RIB 8 1/2 IN PLATES 5
714. 1125 8 1/2 IN PLATES STAR BOTTOM 4 H
715. 1252 TWIST 9 IN FLORAL BOWL ROLLED EDGE H
716. 1590 ZODIAC 9 IN 4 PART RELISH
717. 393 NARROW FLUTE 8 IN BANANA SPLIT FTD H
718. 335 PRINCE OF WALES HOTEL CREAM FAIR GOLD H
719. 1238 BEEHIVE 8 IN PLATE
720. 1519 WAVERLY 10 IN HDL 4 PART RELISH

721. 1428 WARWICK 7 IN VASE H
722. 1469 RIDGELEIGH 12 IN CELERY H
723. 352 FLAT PANEL FLAM HOTEL CREAM H
724. 3355 FAIRACRE OYS COCKTAIL MNGLM STEM/FT 8, 1X
725. 1229 OCTAGON MNGLM HDL IND NUT GOLD DEC 2 H
726. MALLARD WINGS UP H
727. 4162/2 MNGLM 5 IN VASE D O CLOUDY
728. 3001/2 PEERLESS 8 OZ TUMBLER H
729. 1252 TWIST 8 IN (1) & 4 1/2 IN (7) NAPPIES H
730. 1184 YEOMAN MNGLM FR DRSG BOAT D O, FTD H
731. 1255 PINEAPPLE & FAN #2 SALT SHAKER, SILVER TOP
732. 1483 STANHOPE 12 IN HDL CELERY MAYTIME ETCH
733. 4055 PARK LANE 1 OZ CORDIAL
734. 473 NARROW FLT W/RIM 1 OZ CORDIAL H
735. 150 BANDED FLUTE PUNCH CUPS 3 H
736. 3404 SPANISH 4 OZ CIARET UNKNOWN CUT
737. 3404 SPANISH CHAMPAGNE UNKNOWN CUT 2
738. 3380 OLD DOMINION CHANPAGNE UNKNOWN CUT 2 H
739. 3414 MARIETTE CHAMPAGNE PAIRPOINT CUT 2
740. 343 SUNBURST 10 IN FTD COMPOTE H x
741. 1184 YEOMAN FLAM 5 1/2 IN BOW TIE BASKET
742. 439 RAISED LOOP EGG CUP H
743. 10 OAK LEAF HAWTHORNE COASTER
744. 469 REVERSE HARTMAN CANDY JAR UNKNOWN CUT H
745. 417 DOUBLE RIB & PANEL MNGLM RD BASKET ETCHED H
746. 3373 MORNING GLORY GOB FLAM H
747. 1506 PROVINCIAL 3 LT CANDLE, ORIG DESIGN
748. RINGNECK PHEASANT
749. 3389 DUQUESNE GOBLET ECLIPSE CUTTING
750. 1401 EMPRESS MNGLM 6 IN HI FTD COMFORT H
751. 1540 LARIAT FAN VASE CANADIAN CORNFLOWER CUT H
752. 1540 LARIAT FAN VASE CRANBERRY STAIN H
753. 1425 VICTORIAN 4 IN FLARED VASE
754. 1540 LARIAT 1 LT CANDLE PR
755. 1540 LARIAT 7 1/2 IN HDL BON BON BASKET
756. 305 PUNTY & DIA PT 8 OZ TUMBLER H
757. 1252 TWIST MARIGOLD OYS COCKTAIL H
758. 473 NARROW FLT W/RIM FLAM IND OVAL NUT 2 H
759. 1229 OCTAGON MNGLM & FLAM IND HDL NUT (2) H
760. 1255 PINEAPPLE & FAN 4 PC TABLE SET GOLD DEC x
761. 3480 KOORS 29 HAWTHORNE 3 PT JUG CHECKER OPTIC
762. 411 TUDOR HAWTHORNE FTD PRESERVE & COV H
763. 433 GREEK KEY 6 IN TALL CELERY FLARED H
764. 1280 WINGED SCROLL CUSTARD TUMBLER GOOD GOLD
765. 1503 CRYSTOLITE 6 IN HDL BASKET H
766. 3350 WABASH FLAM 2 1/2 OZ WINE H
767. 433 GREEK KEY 2 OZ SHERRY H
768. 1404 OLD SANDWICH SAHARA IND ASHTRAY 4 H
769. 3380 OLD DOMINION SAHARA CORDIAL H
770. 4227 FAVOR VASE MNGLM D O
771. 160 LOCKET ON CHAIN ELEC SHADE 3
772. 1183 REVERE 1/4# CANDY JAR H
773. 1205 FANCY LOOP VARIANT TANKARD FOR MOUNTING
774. 4162/4 VASE FLAM BLOWN 4 IN D O ROLLED RIM
775. 1191 FLAM 9 IN CNT HDL 3 PART SPICE TRAY ROUGH
776. 1497 BOAT 8 IN FLORAL BOWL H
777. 7000 SUNFLOWER 9 IN SALAD BOWL H
778. 7000 SUNFLOWER CANDLES PR, X 1 base
779. 1170 PLEAT & PANEL MNGLM HDL BOUILLON/PLATE H
780. 1495 FERN 8 IN HDL CHEESE STERLING SILVER DEC
781. 1183 REVERE PUFF BOX COV, BOTTOM UNFINISHED H
782. 4205 MARIGOLD 8 IN VASE D O EMPRESS ETCH 2, f
783. 3380 OLD DOMINION MARIGOLD SAUCER CHAMPAGNE D O
784. 2401 8 OZ SODA MARIGOLD D O 7, SOME CRAZING
785. 1184 YEOMAN MARIGOLD 6 IN PLATES D O 8
786. 1184 YEOMAN MARIGOLD 8 IN PLATES D O 8
787. 1495 FERN 2 LT CANDLES, BOBECHE & PRSMS CUT PR
788. 1519 WAVERLY 12 IN CRIMPED FLORAL BOWL
789. 1433 THUMBPRINT & PANEL COBALT FL BOWL SHOWS WEAR
790. 1202 MNGLM 11 IN FLORAL BOWL ROLLED RIM
791. 3411 MONTE CRISTO CHAMPAGNES W O 5, 1f
792. 4091 KIMBERLY CHAMP CUT H f & OXFORD COCKTAIL H
793. 4027 DECANTER & STOPPER
794. 6091 CABOCHON COCKTAIL SOUTHWIND CUT 6, 3 f
795. 1540 LARIAT CUP (VARIANT)/SAUCERS 4 SETS, SOME X
796. 1503 CRYSTOLITE 1 LT CANDLES PR
797. 1540 LARIAT 6 IN COV CANDY, LID X
798. 419 SUSSEX MNGLM TUMBLER 2 H
799. 1519 WAVERLY 8 IN PLATES NARCISSUS CUT 3
800. FISH BOOKEND X
801. 1506 WHIRLPOOL TRAY FOR IND CR & SUGAR H
802. 1519 WAVERLY 12 IN GARDENIA BOWL ENCHANTRESS CUT
803. 353 MED FLT PAN CHEESE & CRACK PLATE SILV DEC H
804. 4044 NEW ERA FTD FLORAL BOWL MATTE ETCHING
805. 1428 WARWICK SAHARA FLORAL BOWL H
806. 1428 WARWICK SAHARA 2 IN CANDLE/VASE PR H
807. 3405 ALIBI FTD COCKTAIL FOX CHASE ETCH
808. 433 GREEK KEY PUNCH BOWL, BASE & 7 CUPS H
809. 417 DBL RIB & PAN MNGLM 6 IN BASKET H
810. 433 GREEK KEY OVAL CR & SPOONER H
811. 1184 YEOMAN MNGLM & MARIGOLD EGG CUPS D O H
812. 3408 JAMESTOWN 4 OZ OYS COCKTAIL 6 H
813. 3411 MONTE CRISTO 1 OZ CORDIAL UNK CUTTING
814. 3380 OLD DOMIN. 2 COCKTAIL/6 WINE MNGLM STEM/FT H
815. 1503 CRYSTOLITE 3 OZ OIL
816. 1 GEORGIAN 9 IN CANDLES PR
817. 5 PATRICIAN 7 1/2 IN CANDLES PR
818. 22 WINDSOR 7 1/2 IN CANDLES PR
819. 379 URN IND SALT 3 H
820. 4044 NEW ERA 2 LT CANDELBRA, COMPLETE PR
821. 3001/2 PEERLESS HOTEL CR & SUG H
822. 1184 YEOMAN 10 1/2 IN RD PLATE FRONTENAC ETCH 8
823. 1469 RIDGELEIGH 2 LT CANDELBRA COMPLETE PR
824. 3390 CARCASSONNE TALL GOB, ALEXANDRITE BOWL H
825. 3390 CARCASSONNE COBALT 12 OZ SODA
826. 3484 DONNA TUMBLER ORCHID ETCH 2
827. 3368 ALBEMARLE GOBLET D O 7
828. 3368 ALBEMARLE 2 1/2 OZ WINE D O 10
829. 1567 PLANTATION PUNCH CUP 6 H
830. 4055 PARK LANE 1 OZ CORDIAL BRIAR CLIFF CUT
831. 3397 GASCONY SODA W O, FISHERMAN ETCH
832. 1223,407 7 IN PLATES MNGLM 6 H
833. 412 TUDOR 5 IN HDL MINT H
834. 1227 MAHARG SHERBET N O 3 H
835. 113 MARS FLAM CANDLESTICK
836. 300 PEERLESS EGG CUP 2 REG # & 341 SHERB ALL H
837. LOT COLONIAL PLATES & FINGER BOWLS 6 PCS. H
838. 473 NARROW FLT W/RIM VASELINE 6 IN LO COMFORT H
839. 1255 PINEAPPLE & FAN EMERALD BUTTER LID FAIR GOLD
840. 1255 PINE/FAN EMERALD 7 PC BERRY SET, EXCELL GOLD
841. 354 W FLAT PANEL IND FTD DOMINO SUGAR SILVER DEC
842. 354 W FLAT PANEL 3 PC STACK SET SILVER DEC H
843. 411 TUDOR 12 IN CELERY EURIDICE CUTTING H
844. 1405 IPSWICH FLAM 1# CANDY JAR/NO LID H
845. 1295 BEAD SWAG CUSTARD GOBLET SOUV ROSE DEC
846. 310 RING BAND CUSTARD TUMBLER ROSE DECOR H
847. 1210 MNGLM 7 IN FROG HDL CHEESE PLATE
848. 1447 ROCOCO CR & SUG H, CR f
849. 2 FISH MATCH HOLDER
850. 1252 TWIST MNGLM CREAM, LIGHTING HDL H
851. 4163 16 OZ BEER MUG FISHERMAN ETCH H
852. 5 16 OZ BEER MUG ELEPHANT HDL H
853. 4054 CORONATION 8 OZ SODA 8
854. 6060 COUNTRY CLUB OLD FASHION WINCHESTER 73 ETCH
855. 3314 GRANDEUR GOBLET SABRINA ETCH 2 R
856. 3366 TROJAN WINE TROJAN ETCH MNGLM STEM/FT H, f
857. 48 SALT & PEPPER FLAM, METAL TOPS
858. 1255 PINE/FAN EMERALD 7 IN NAPPY FLARED f
859. 1236 8 IN EAGLE PLATE
860. 3404 SPANISH OYS COCKTAIL COBALT 3
861. 134 TRIDENT 2 LT CANDLES PR
862. 4209 MNGLM 9 IN D O VASE
863. 333 WALDORF ASTORIA WATER BOTTLE SL CLOUDY
864. 1509 QUEEN ANN SINGLE CANDELABRA W/PRSMS PR

865. 1184 YEOMAN FLAM COMB CIG HOLDER/ASHTRAY H
866. MEDIUM ELEPHANT R
867. 1485 SATURN CRUET 2
868. 1252 TWIST MNGLM HOTEL CR & SUG H
869. 3390 CARCASSONNE ALEXANDRITE TALL GOB 7 H, 1f
870. 113 MARS MNGLM CANDLESTICK
871. P PRISMS, POOR DETAIL, 6
872. 305 PUNTY & DIA PT PASTE BOTTLE SILV TOP BRUSH X
873. 372 7 OZ MNGLM SYRUP
874. 341 PURITAN 2 OZ CRUET H
875. 1184 YEOMAN HAWTHORNE 7 IN PLATES D O 3
876. 411 TUDOR HAWTHORNE HDL MINT H
877. 1201 FANDANGO HORSERADISH/NO LID GOOD GOLD f
878. 400 COLONIAL GOBLET H
879. 1255 PINE/FAN CUSTARD 1/2 PT TANKARD SOUV H
880. 433 GREEK KEY IND OVAL CR & SUG H. CR V
881. 343 SUNBURST PUNCH CUP 2 H
882. 1435 ASHTRAY 1 ORCHID & 1 ROSE ETCH, ORIG LABEL
883. 353 MED FLAT PANEL 2 OZ CRUET H
884. 134 TRIDENT 2 LT ALEXANDRITE CANDLE base x
885. 1201 FANDANGO 9 IN CRIMPED NAPPY
886. 1519 WAVERLY CREAM ROSE ETCH H
887. 1519 WAVERLY SQ COV BUTTER ROSE ETCH
888. 1295 BEAD SWAG OPAL BUTTER DISH LID ONLY PANSY DEC
889. 393 NARROW FLUTE 2 OZ WINE H
890. 1469 RIDGELEIGH IN DIV NUT 6 H
891. 1503 CRYSTOLITE IND SWAN NUT DISHES 6 ORIG LABEL
892. 1255 PINE/FAN CUSTARD (IVORY) 1/2 PT TANKARD DEC
893. 433 GREEK KEY 6 OZ CRUET, STOPPER x
894. 5019 WAVERLY SHERBETS 4 PAPER LABEL
895. 411 TUDOR 6 1/2 IN TALL COMFORT H
896. 417 DBL RIB & PANEL FLAM COV MUSTARD H
897. 1255 PINE/FAN EMERALD TUMBLER m
898. 1401 EMPRESS D F ICE BUCKER ARCTIC ETCH
899. 1404 OLD SANDWICH COBALT IND ASHTRAY H
900. 1401 EMPRESS IND D F NUT H
901. ROOSTER VASE f, m
902. 1255 PINE/FAN RUBY STAIN 1/2 PT TANKARD SOUV
903. 1106 PUNCH CUP FLARED 6 H
904. 8113/4 HOFFMAN HOUSE BEER SCHOONER FOX CHASE H
905. 1238 BEEHIVE FLAM 5 IN PLATE
906. 10 OAK LEAF MNGLM COASTER
907. 1503 CRYSTOLITE CR, SUG & TRAY H
908. 1503 CRYSTOLITE 10 IN 5 PART RELISH RD
909. 1540 LARIAT 6 IN 2 PART RELISH
910. 1776 KALONYAL #3 BON BON H
911. 433 GREEK KEY 5 1/2 IN HI FTD JELLY, SHALLOW H
912. 325 PILLOWS COVERED CRACKER JAR H
913. 492 2 OZ COLOGNE/61 STOPPER ROSE ENAM DEC (2) H
914. 353 MED FLAT PANEL 9 IN CHEESE & CRACK PLATE H
915. 1220 PUNTY BAND CUSTARD MUG SOUV H
916. 1255 PINE/FAN EMERALD 6 1/2 IN VASE 2
917. 417 DBL RIB & PANEL 11 IN & 6 IN PLATES H
918. FRAMED COLORED AD, 9 X 12, GLASS SECRETS
919. 1469 RIDGELEIGH 5 PART STAR RELISH H
920. 1401 EMPRESS SAHARA 7 IN TRIPLEX RELISH r
921. 1509 QUEEN ANN 2 PT OVAL DRSG BOWL ORCHID ETCH H
922. 1506 PROVINCIAL COCKTAIL 7 H
923. 1486 COLEPORT TUMBLER 6 H, 2 f
924. 1483 STANHOPE CUP/SAUCER/7 IN PLATE
925. 1567 PLANTATION 8 IN PLATE 8
926. 1202 FLAM 11 IN FLORAL BOWL & BASE H
927. 134 TRIDENT 2 LT CANDLES FAIRPOINT CUT PR
928. 1235 BEADED PANEL & SUNBURST WINE WORN GOLD H
929. 325 PILLOWS COV BUTTER H
930. 1401 EMPRESS SAHARA PUNCH CUP 2 H
931. 5072 ROSE STEM GOB ROSE ETCH 7 H
932. 5072 ROSE STEM GOB ROSE ETCH 6 H, 1 f
933. 3404 SPANISH COBALT GOBLET W O
934. 3370 AFRICAN GOBLET D O 2 FLAM, 1 MNGLM, 1 f
935. 1201 FANDANGO 7 IN TRIANGULAR NAPPY
936. 5025 TYROLEAN GOBLET ORCHID ETCH
937. 5010 SYMPHONY SAUCER CHAMPAGNE MINUET ETCH
938. 1252 TWIST FLAM ICE BUCKET W/HDL
939. 1229 OCTAGON MARIGOLD 5 IN JELLY & 6 IN MINT
940. 1503 CRYSTOLITE ICE BUCKET NO HDL H
941. 352 FLAT PANEL 7 IN NAPPY SHALLOW 6 H
942. 1469 RIDGELEIGH 3 1/2 IN COASTER 6
943. 1469 RIDGELEIGH 3 IN COASTER 5
944. 353 MED FLAT PANEL 1 QT JUG H
945. 465 RECESSED PANEL 1# CANDY DECORATED H
946. 1184 YEOMAN MNGLM 14 IN PLATE D O EMPRESS ETCH
947. 1252 TWIST FLAM TUMBLER 2 H
948. 472 NARROW FLT W/RIM 11 IN NAPPY DECORATED H
949. 341 PURITAN 13 IN 5 PART OVAL RELISH H
950. 1433 THUMBPRINT & PANEL 2 LT CANDLES PR
951. 1433 THUMBPRINT & PANEL SAHARA 2 LT CANDLES
952. 134 TRIDENT 2 LT CANDLE DANISH PRINCESS CUT
953. 4233 6 IN VASE & 5 INSERT VASES FOR CANDELABRAS
954. 466 DAISY & LEAVES BASKET ADDED CUTTING H
955. 4163 WHALEY 54 OZ TANKARD UNKNOWN CUTTING
956. 1252 TWIST FLAM 8 IN PLATES 6 H
957. 1401 EMPRESS SAHARA 7 1/2 IN RD PLATE 6 H
958. 129 TRICORN FLAM 3 LT CANDLES PR H
959. 4225 COBEL 1 QT COCKTAIL SHAKER & 6 BARS PALM CUT
960. 465 RECESSED PANEL 1# COV CANDY W/CUTTING H
961. 3161 PITCHER & 4 5 OZ SODAS, ALL GOOD MORNING ETCH
962. 353 MED FLAT PANEL 9 IN CHEESE & CRACK PLATE H
963. 1295 BEAD SWAG OPAL CELERY ROSE DECOR
964. 3368 ALBEMARLE MARIGOLD WINE D O 2, f stem
965. 3380 OLD DOMIN. FLAM WINE D O 2 H, 1f base
966. 3380 OLD DOMINION SAHARA WINE D O 2 H, 1 X
967. 3380 OLD DOMINION MNGLM WINE D O H
968. 3380 OLD DOMINION ALEXANDRITE WINE D O
969. 301 2 LT CANDELABRA SAHARA PR 1 BOBECHÉ f
970. 411 TUDOR 8 OZ GOBLET 6 H
971. 411 TUDOR 8 OZ GOBLET 5 H
972. 1225 7 1/2 IN PLATE FLAM 12 H
973. 465 RECESSED PANEL 2# CANDY BOTTOM ONLY H
974. 352 FLAT PANEL IND CREAM H X BASE
975. 352 FLAT PANEL FRENCH DRESSING CLOUDY
976. 1951 CABOCHON HDL TRIANGULAR JELLY H
977. 5009 QUEEN ANN 12 OZ SODA BELLE-LE-ROSE ETCH f
978. 473 NARROW FLUTE W/RIM 8 1/2 IN FLORAL VASE H
979. 1231 RIBBED OCTAGON SAHARA CTR HDL SAND PLATE H
980. 1252 TWIST SAHARA 12 IN FLORAL BOWL H
981. 1401 EMPRESS SAHARA 12 IN HDL MUFFIN H
982. 4163 WHALEY 16 OZ BEER MUG FISHERMAN ETCH H
983. 4163 WHALEY 16 OZ BEER MUG FISHERMAN ETCH H
984. 4163 WHALEY 16 OZ BEER MUG FISHERMAN ETCH H
985. 4163 WHALEY 16 OZ BEER MUG FISHERMAN ETCH H, f
986. 1401 EMPRESS MNGLM 10 IN HDL BOWL H, m
987. 300 PEERLESS SAUCER CHAMPAGNE, OCTAGON FT 8 H
988. 4091 KIMBERLY GOB DOLLY MAD ROSE SUT 6 H
989. 4091 KIMBERLY CHAMP DOLLY MAD ROSE CUT 6 H, 2 f
990. 4091 KIMBERLY COCKTAILS DOLLY MAD ROSE CUT 6 H
991. 1609/1183 8 IN PLATE DOLLY MAD ROSE CUT 6
992. 1420 COBALT 9 IN TULIP VASE H
993. 1184 YEOMAN 9 IN OVAL FRUIT BOWL BUTTERFLY CUT H
994. 1404 OLD SANDWICH SAHARA 1/2 GAL JUG H
995. 500 OCTAGON MNGLM ICE TUB HDL H
996. 1401 EMPRESS DF FLORAL BOWL PR 135 CANDLES ETCHED
997. 1575 LILLY 11 IN GARDENIA BOWL KRALL ENGRAVING H
998. 1295 BEAD SWAG OPAL TOOTHPICK HOLDER
999. 1220 PUNTY BAND CUSTARD IND CREAMER H
1000. 473 NARROW FLUTE W/RIM 5 IN DOMINO SUG & CR DEC f
1001. BABY CHICK, rough
1002. 1201 FANDANGO SUGAR, SOME GOLD
1003. 3357 KING ARTHUR FLAM GOBLET D O
1004. 5040 LARIAT GOBLET MOONGLO CUT
1005. 3414 MARIETTE GOBLET ROXY CUTTING
1006. 3542 HAZELWOOD OYS COCKTAIL ROXY CUTTING
1007. 1469 RIDGELEIGH IND CR, SUG & TRAY H
1008. 1541 ATHENA 2 LT CANDLES PR

- | | |
|--|--|
| 1009. 1231 RIBBED OCTAGON FLAM CR & SUG FLORAL CUT H | 1027. 3350 OLD GLORY SHERBET UNK CUTTING 2 H |
| 1010. 1404 OLD SANDWICH IND ASHTRAY UNK FLORAL CUT 6 H | 1028. 373 OLD WMSBRG GOBLET H |
| 1011. 3404 SPANISH CLARET FLORENTINE CUT 2 | 1029. 1509 QUEEN ANN OVAL LID FOR LEMON DISH CUT |
| 1012. 1183 REVERE 8 IN PLATE FLORENTINE CUR 12 | 1030. 1469 RIDGELEIGH IND SUG & CR H |
| 1013. 4052 NATIONAL 10 OZ SODA VICTORY ETCH | 1031. 335 PRINCE OF WALES 4 1/2 IN NAPPY H |
| 1014. 3416 BARBARA FRITCHIE 1 OZ CORDIAL H | 1032. 1401 EMPRESS 6 IN TALL COMFORT H |
| 1015. 341 PURITAN EPERNETTECANDLES & EPERGNE, 4 PCS. H | 1033. 1540 LARIAT 12 IN GARDENIA BOWL |
| 1016. 1405 IPSWICH FTD OYS COCKTAILS 6 H | 1034. 1183 REVERE 10 IN DEEP PLATE W/GOLD BORDER H |
| 1017. 1170 PLEAT & PANEL FTD BOUILLON HDL 2 H | 1035. 350 PINWHEEL & FAN 8 IN NAPPY H |
| 1018. 1540 LARIAT PUNCH CUPS 6 H, 1 f | 1036. 1252 TWIST MNGLM 12 IN CELERY H |
| 1019. 393 NARROW FLUTE FR DRSG, PLATE, BANANA SPLIT H | 1037. 341 OLD WMSBRG 12 IN CELERY H |
| 1020. 3362 CHARTER OAK FLAM GOBLET & SHERBET D O 2 H M | 1038. 1503 CRYSTOLITE 1 LT CANDLE |
| 1021. 1519 WAVERLY IND CR & SUG ORCHID ETCH H CR X | 1039. 341 OLD WMSBRG 4 1/2 IN NAPPY H |
| 1022. 5040 LARIAT SHERBET MOONGLO CUT 5 H X | 1040. 1540 LARIAT 11 IN OBLONG 3 PART RELISH H |
| 1023. 5040 LARIAT COCKTAIL MOONGLO CUT 4 H | 1041. 1417 ARCH MNGLM 8 OZ TUMBLER 2 H |
| 1024. 1469 RIDGELEIGH STAR RELISH H | 1042. 333 WALDORF ASTORIA 4 OZ CRUET W/CUT STOPPER |
| 1025. 1519 WAVERLY CR & SUG HEISEY ROSE ETCH H | 1043. 3405 ALIBI 3 OZ COCKTAIL TALLY HO ETCH 2 |
| 1026. TOY HORSE HEAD | 1044. 1255 PINE & FAN 11 1/2 IN OVAL BOWL |

Convention dates for 1986 are June 19, 20, 21, 22

The Sheraton Inn will be our Convention headquarters and they have given a special rate for all HCA members. All activities will be held there with the exception of the Show, Display and Flea Market on the Square. The museum is nearby. Make your reservations early as all rooms will be gone by early March, judging from past experience.

The rates are shown below. King and Queen sizes have steam baths. No additional charges for children under 18. No advance deposit is required. There is a \$4.00 charge per night for a rollaway bed.

#335 Prince of Wales Plumes

Make Your Reservations Now.

SHERATON INN RESERVATION REQUEST

NAME _____
 ADDRESS _____
 CITY _____ STATE _____ ZIP _____
 PHONE _____
 ARRIVE _____
 DEPART _____

All rooms have two double beds.
 Single room requested (one person).....\$37.00
 Double room requested (two people).....\$42.00
 King or Queen size requested (one person)...\$40.00
 King or Queen size requested (two people)...\$45.00
 Rollaway bed.....\$ 4.00

Please make your reservation by clipping the attached form.

MAIL TO: ROBERT MCCLAIN
 156 W. SHIELDS STREET
 NEWARK, OHIO 43055
 PH: (614) 345-8061



HOTEL CHIVALRY STEVIC HANDLE, GROUND BOTTOM



HOTEL SUGAR AND COVER, GROUND BOTTOM



3 IN. FOOTED ROSE BOWL

10TH ANNUAL SOUVENIR OSCAR FORM
 PLEASE READ VERY CAREFULLY BEFORE FILLING OUT

The Oscars are "Clematis" (similar to Alexandrite), are made by Viking, marked HCA 86



They will be offered to members only for \$21 prior to Convention. If any are left by June 19 they will be offered to the general public for \$24 each.

You may order ONE per member. This means ANY member who has a membership card regardless of class of membership. Please list all names as they WILL be checked. Everyone living in Ohio ordering for pick-up in Ohio, must pay \$1.26 Sales Tax per Oscar. Shipping charges will be \$1.50. The Oscars will be shipped as soon as orders are received.

DO NOT SEND DUES, BOOK ORDERS, ETC. WITH YOUR OSCAR ORDER.

Please keep this part for a reference and clip and mail the form below the line. Be sure your dues are currently paid. This is the 10th of a series of souvenir Oscars.

Number of OSCARS at \$21.00 Only one per member
 Sales Tax \$1.26 each All Ohio Residents and Pick-Ups in Newark
 Postage \$1.50 each Check one: Please mail my Oscar(s)
 TOTAL SENT WITH ORDER..... I will pick up my Oscar(s) at
 Convention or Museum after the
 Convention. Circle One.

MAY PICK UP AT THE MUSEUM ANYTIME. NO PHONE ORDERS

NAME(s) _____
 LIST ALL NAMES _____
 ADDRESS _____ CITY _____ STATE _____ ZIP _____

Make check payable to HCA, INC. and mail to:
 HCA OSCAR SALES
 P.O. BOX 27
 NEWARK, OH 43055

CREDIT CARD NUMBER
 MASTER CARD _____
 VISA EXPIRATION DATE REQUIRED Mo. _____ Year _____

APPLE TREE AUCTION CENTER
1616 W. CHURCH ST.
NEWARK, OHIO



SAT. FEB 1, 1986 9:30 A.M.

SEE LAST MONTHS HEISEY NEWS FOR FULL LISTING.
THIS SALE WILL BE PRECEDED WITH AN ANTIQUE AUCTION ON

FRI. JAN. 31, 1986 5:00 P.M.

Fri. evening session will start with about 100 box lots of all kinds of interesting collector items including glass, china, pottery, brass, silver, tin and other items. This will be followed by about 50 pcs. of furniture such as 1920's Walnut, a small custom Cherry corner cupboard, a mirrored back hanging display cabinet and lots more. Glass will offer additional Heisey, Carnival in several colors, Cambridge, Imperial, Depression and a beautiful selection of Heisey by Imperial animals. Also a nice selection of china and other interesting items. We are still cataloging this sale. There will be some beautiful Diamond and Gold jewelry offered in both Fri. and Sat. sessions.

Saturday's sale may be previewed during Fri. session and seats may be reserved for both sessions.

We hope you will be able to attend this additional sale. It should be fun with something for everyone.

SAM SCHNAIDT & TIM HUGHES - AUCTIONEERS
(614) 344 - 9449



HEISEY PUBLICATIONS

P. O. BOX 102 PLYMOUTH, OHIO 44865

CAN YOU COLLECT AND IDENTIFY HEISEY GLASS WITHOUT THEM?

First published 1969, 1970 and 1971. Over 12,400 of these most popular books, all about Heisey, have been sold from 1969 to 1985. Ones most often used for reference. So popular that over 100 customers have purchased second sets and almost without exception say they are the best on the market. Easy to carry in a pocket. Full of pictures and information. If you have subscribed to THE HEISEY GLASS NEWSCASTER (a quarterly) since 1977, you have almost 100% item coverage.

| | |
|--|---------|
| BOOK I HEISEY'S FIRST TEN YEARS, 1896-1905 | \$12.00 |
| BOOK II HEISEY'S COLONIAL YEARS, 1906-1922 | 12.00 |
| BOOK III HEISEY'S ART AND COLORED GLASS, 1923-1942 | 13.00 |
| BOOK IV HEISEY'S EARLY AND LATE YEARS, 1896-1957 | 13.00 |
| THE HEISEY GLASS NEWSCASTER 1977-1986, all issues | 38.00 |
| The 1986 issues alone (4 each) | 7.00 |

The quarterly contains no advertisements, nothing but news about Heisey glass and Heisey news. Postage extra at \$1.00 for one book and 30¢ for each extra book.

WRITE FOR APPOINTMENT TO VISIT THE HEISEY GLASS MUSEUM AT PLYMOUTH, OHIO

H & R DIAMOND H
Helen & Bob Rarey
1450 White Ash Dr.
Columbus, OH 43204

PH: 614-279-0390
AFTER 5:30 P.M.
* MARKED
S. & INS. EXTRA

| | | |
|-------|---------------------------------------|----------|
| #1229 | OCTAGON 5" Mayo, Moongleam..... | \$ 29.50 |
| #1503 | CRYSTOLITE Cruet..... | 22.50 |
| #3390 | CARCASSONE Ind. Cigarette..... | 15.00 |
| #1503 | CRYSTOLITE Ind. Ftd Cigarette*..... | 17.50 |
| # 341 | PURITAN 10" Bowl *..... | 49.50 |
| # 393 | NARROW FLUTE 5" Hld. Jelly*..... | 29.50 |
| #1509 | QUEEN ANN Ind. Cr. & Sug*..... | 39.50 |
| #1200 | CUT BLOCK Ind. Sugar, Custard..... | 32.50 |
| #1509 | QUEEN ANN Saucer Ftd. Candle (2) EA | 35.00 |
| # 411 | TUDOR Ftd. 6" Bowl, St Luke Com. Etch | 19.50 |
| #1506 | WHIRLPOOL Rd. Candleblock....(2) EA | 14.00 |
| #1540 | LARIAT Fan Vase | 22.50 |
| #1469 | RIDGELEIGH Cigarette Box*..... | 25.00 |
| #1469 | RIDGELEIGH 3" Sq. Ash tray* (4) EA | 7.50 |
| #1632 | LODESTAR 4" Bowl*, Dawn..... | 37.50 |
| #5012 | URN Ind. Cigarette.....(2) EA | 22.50 |
| #1570 | LOTUS LEAF 1 lite Candleholder...PR | 49.50 |
| #1401 | EMPRESS Ind DF Nut Cup..... (6) EA | 12.50 |
| #1401 | EMPRESS Ind DF Nut Cup, Sahara..... | 22.50 |
| # 341 | PURITAN Ind. Salt.....(4) EA | 15.00 |
| # 393 | NARROW FLUTE Ind Ftd Nut, Silver Dec. | 22.50 |



Classified Ads

WANTED: Buying Caprice blue or Rosepoint by Cambridge, Rose or Orchid by Heisey, American, June, Fairfax, Versailles, Trojan, etc., by Fostoria and Depression Glass in crystal or colored. NADINE PANKOW, 207 S. Oakwood, Willow Springs, IL 60480 PH 312-839-5231.

FOR SALE: 6 - Heisey 1 oz Cordials #3408 Jamestown stems with #497 Rosalie etch. \$125.00 each. TONI WANGEROW, 10530 Chaney, Downey CA 90241 PH: 213-923-6633

WANTED: Items in #160 Locket on Chain, crystal or colors. JIM KENNON, PO Box 251, Amherst, OH 44001.

FOR SALE: Send SASE (Bus. size) for Heisey Mail Order Lists. Specify: General Lists, Orchid List, or send your list of needs. J. & R. COLLECTIBLES, P. O. Box 1030, Newark Ohio 43055

Sell and Buy Fostoria, Heisey, Cambridge, etc. Available Frontenac 4 goblets \$18.50, 1 champagne \$15.00. 2 Mallards wings 1/2 \$145.00. 1 goose wings 1/2 \$85.00. Orchid 7 #5022 ice teas \$38.00, 1 violet vase \$90.00, 9 Waverly dinner plates \$80.00. Pinwheel & Fan hair receiver \$65.00. Ridgeleigh, 6 shot glasses \$19.50. New Era 8 footed ice teas \$14.00. Narcissus #3408 3 ice teas \$27.50, 6 goblets \$30.00, 9 cocktails \$27.50, 6 sherbets \$25.00. 4 Flamingo frog-handled plates \$150.00. Betty Maki Crystal Matching Service, Rt. 2, Box 58, Kenyon, NM 55946. All orders plus shipping. SASE required.

DANIEL FORTNEY # 713
CHALET AT THE RIVER
823 N. 2nd Street
Milwaukee, WI 53203
UPS & INS. EXTRA
H - MARKED
PH: (414)224-1089

| | | |
|-------|--|-----------|
| # 32 | SKIRTED PANEL w/hndl. Candlestick-H | \$ 28.00 |
| # 99 | LITTLE SQUATTER Candleblock Flamingo | 12.00 |
| #1503 | CRYSTOLITE Candlestick 1 Lite 4".... | 12.00 |
| #1503 | CRYSTOLITE Indv. Sug & Cr. Pr - H... | 20.00 |
| #1503 | CRYSTOLITE Indv. Sug & Cr./Tray - H. | 28.00 |
| #1503 | CRYSTOLITE Sq Ashtrays - H.....(3) | 4.00 |
| #1540 | LARIAT Cocktail Goblets.....(2) | 8.00 |
| #1540 | LARIAT Sug. & Cr./Floral & Leaf cutting - H | Pr. 28.00 |
| #1569 | RIDGELEIGH Cigarette Holder 3" (2) | 14.00 |
| #1569 | RIDGELEIGH Candlevases 4 1/2".....(2) | 18.00 |
| #1519 | WAVERLY 7" Plates Heisey Rose...(8) | 15.00 |
| #5072 | ROSE STEM Goblets H Rose etch...(6) | 34.00 |
| #5072 | ROSE STEM, ROSE ETCH Champ.....(6) | 26.00 |
| | GOOSE, Wings up..... | 65.00 |
| | GOOSE, Wings half..... | 65.00 |
| #1183 | REVERE Compote 4 3/4" Swirl Optic Hawthorne - H..... | 40.00 |
| #3390 | CARCASSONE Cig. Holder-Cobalt W.O. | 65.00 |
| # 393 | NARROW FLUTE Indv. Sug & Cr Mglm H Pr | 40.00 |
| # 393 | NARROW FLUTE Indv. Sug & Cr H....Pr | 25.00 |
| # 433 | GRECIAN BORDER Punch Bowl 15" with High Foot H..... | 300.00 |
| # 433 | GRECIAN BORDER Punch Cups H....(6) | 18.00 |
| # 433 | GRECIAN BORDER Banana Split Ftd 9" H | 28.00 |
| #1509 | QUEEN ANN Sugar D.F. H..... | 18.00 |
| #1509 | QUEEN ANN Triplex Relish 7" W/exquisite Floral & Leaf cutting..... | 28.00 |
| #1506 | WHIRLPOOL Cov Mustard W/#10 Paddle H | 38.00 |
| #1567 | PLANTATION Compote 8 1/2" across..... | 38.00 |
| #1567 | PLANTATION Mayonnaise Liner..... | 8.00 |
| #1509 | QUEEN ANN Oval Comport 7" H..... | 22.00 |

HEISEY BY IMPERIAL

| | | |
|-------|--|-----------|
| #1591 | Elephant HNDL. Storybook Mug Cry. (2) | 18.00 |
| #1591 | Elephant HNDL. Storybook Mug Jade Slag | (4) 18.00 |
| #1591 | Elephant HNDL. Storybook Mug Nut Brown..... | (3) 14.00 |
| #1591 | Elephant HNDL. Storybook Mug Milk Glass..... | (6) 14.00 |
| | REARING PONY Ultra Blue..... | (6) 18.00 |
| | RABBIT PAPERWEIGHT Milkglass..... | (4) 14.00 |
| | PR. OF BUNNIES Milkglass..... | (4) 14.00 |

SEND S.A.S.E. WITH WANTS



HEISEY
news

"FLORIDA-GET-TOGETHER"

2ND ANNUAL HEISEY FLORIDA-GET-TOGETHER
 MARCH 26, 1986 at ODELL AND VIRGINIA JOHNSONS'
 6909 10th AVENUE W., BRADENTON, FLORIDA 33529
 PH: 813-792-0604

3:00 - 5:00 VISITING AND HEISEY TALK, 5:00-6:30
 COCKTAILS AND HEISEY TALK, 7:00 - ? DINNER -
 (RESTAURANT) AND HEISEY TALK. RSVP AND WE WILL
 MAKE MOTEL RESERVATIONS IF DESIRED.
YOU ALL COME !

PATTON HOUSE ANTIQUES
 P. O. Box 547
 Louisa, VA 23093

PH 703-967-1181
 AFTER 6:00 p. m.
 P & I EXTRA
 * MARKED

- #1567 PLANTATION Cruet..... \$60.00
 - #1567 PLANTATION Cheese & Underplate..... 75.00
 - #1567 PLANTATION 1/2 Lb. Butter *..... 60.00
 - #1567 PLANTATION Round Cov. Butter*..... 75.00
 - #1567 PLANTATION Nappys*.....EA. 15.00
 - #1567 PLANTATION Salt & Pepper..... 45.00
 - #1567 PLANTATION Divided Mayo & Liner..... 50.00
 - #1567 PLANTATION Low Cov. Candy..... 72.50
- Also Stemware & other PW No Plates



CRAFTS ENTERPRISES
 187 N. Pioneer Ave.
 Shavertown, PA 18708

PH: 717-675-8553

- # 150 BANDED FLUTE Punch Cups* ... (15) EA \$ 8.00
- #3390 CARCASSONE 12 oz Ftd Soda.... (4) EA 8.00
- #1519 WAVERLY 6" Sq Cov Butter Rose etch 115.00
- #1519 WAVERLY Violet Vase*..... 30.00
- #3389 DUQUESNE Goblet Old Colony etch(4) EA 10.00
- #1170 PLEAT AND PANEL Cruet Moongleam.... 85.00
- #1170 PLEAT AND PANEL 5" Comportier Flam.. 80.00
- # 341 PURITAN Oval Hotel Sugar..... 14.00
- # 433 GREEK KEY Rnd Hotel Creamer..... 20.00
- #3366 TROJAN 7" Compote Flamingo..... 65.00

WANTED - Stoppers for 4036 1/2 Pint Decanter

AFTER CHRISTMAS SALE

ALL ITEMS MINT & SCARCE CALL TOLL FREE
 Prices include shipping 1-800-722-3376
 Ext. 27 9:00-5:00

- #1637 TOWN & COUNTRY 6" Plate, Exper B1k. \$550.00
- #1401 EMPRESS 10" D/F Floral Bowl, Alex.. 450.00
- #4054 CORONATION 8 oz Soda, Dawn, Exper.
 Screen Optic..... 250.00
- #3480 KOORS 3 Pt. Jug, D0,2 Mglm. Ftd.
 Tumblers.....Set 175.00
- #1229 OCTAGON 6" 2 Hdld Cheese Plate D/O
 H Empress etch, Marigold..... 75.00
- #1495 FERN 10" 2 Hdld Ftd Compt relish ZIR 175.00
- # 429 HAWTHORN Hotel Cream & Sugar H....PR 125.00
- #1401 EMPRESS 7" Sq Plate, Tangerine H.... 200.00
- #1624 PATIO 6 oz Sherbet, Amber, Sticker.. 35.00
- #3404 SPANISH Goblet, Cry. Stem & Ft. Exper.
 Red Opalescent Rim H..... 675.00
- #3368 ALBEMARLE 6" Compote DO H Alex..... 650.00
- # 451 CROSSLINE FLUTE 5 1/2" Vase, Variant
 Canary H..... 450.00
- #1295 BEADED SWAG Toothpick, Decorated,
 (not souvenir) Opal..... 175.00
- HEISEY DISPLAY SIGN Diamond H, Cry.. 175.00



DONALD P. BEAN
 36 Harding St.
 Milford, MA 01757

PH 617-473-0561
 P & I EXTRA
 * = MARKED

- #1229 OCTAGON Nut Cups* MGLM.....(6) Ea... \$12.00
 - # 351 PRISCILLA Covered Mustard*..... 24.00
 - # 351 PRISCILLA Toothpick*..... 30.00
 - #1252 TWIST Ind. BonBon* Flam....(4) Ea... 11.50
 - #1567 PLANTATION Sugar Bowl only..... 22.50
 - #1509 QUEEN ANN 7 1/2" Candelabra w/prisms (1) 30.00
 - #1469 RIDGELEIGH 7" 1 Lite Candelabra* with
 Bob.& Prsms(1)See Felt & O'Grady Pg 220 47.50
 - # 112 MERCURY 3" Sticks with Floral & Butter
 fly Cutting.....(Pr) 27.50
 - # 465 REC. PANEL 1/2 Lb Cov. Candy Jar*
 All Over Cut..... 37.50
- WANTED: Cover for Large Fancy Loop Pot Pourri Jar.

SCHWANS ANTIQUES
 Dick & Lee Schwan
 2980 John Tyler Hwy.
 Williamsburg, VA 23185

804-229-7873
 UPS & I IXTRA
 * MARKED

- # 433 GREEK KEY Compote 6 3/4 X 7 1/2* \$150.00
- # 47 10" Candles*.....PR 150.00
- #1235 BEADED PANEL & SUNBURST Berry Bowl
 4" Ruby Stain.....(4) EA 22.00
- # 469 HARTMAN Candy Jar/Cutting *..... 85.00
- # 465 RECESSED PANEL Candy Jar *..... 125.00
- #1205 FANCY LOOP Punch cups.....(5) EA 13.00
- # 343 SUNBURST Punch cup.....(1)... 15.00
- #1540 LARIAT Moonglo Cut 3 Comp. relish... 40.00
- 20 #1184 YEOMAN Sherbets Sahara.....(8) EA 7.00

THE COLLECTOR'S STOP
12018 Suellen Circle
West Palm Beach, FL 33414

PH: 305-793-0986
EXC. COND. OTHERWISE
NOTED S & I EXTRA
* MARKED

| | | |
|---|--|----------------------|
| + | GLASS 'N' GLASS | PH: (813) 792-0604 |
| + | VIRGINIA AND ODELL JOHNSON | UPS & HANDLING EXTRA |
| + | 6909 - 10th AVE. W | * MARKED |
| + | BRADENTON, FL 33529 | |
| + | #1425 VICTORIAN Cruet*..... | \$ 37.50 |
| + | #1425 VICTORIAN Cruet, #3 Stopper*..... | 32.50 |
| + | #1425 VICTORIAN Wines*.....(7) Ea. | 22.00 |
| + | #1404 OLD SANDWICH Sahara 4 oz sher(2) Ea. | 22.00 |
| + | #1404 OLD SANDWICH Sahara 10 oz low Ftd. | |
| + | tumblers*.....(2) Ea | 22.50 |
| + | #1252 OVAL TWIST Sahara Sug. & Cr*..... | 75.00 |
| + | #3350 WABASH Wide Optic Wines*.....(4) Ea | 12.00 |
| + | #4083 STANHOPE Goblets S.O. Crystal(7) Ea | 18.00 |
| + | #4083 STANHOPE Champs S.O. Crystal(2) Ea | 18.00 |
| + | #4083 STANHOPE Gob. S.O. Zir. bowl & Ft | |
| + | (4) Ea | 60.00 |
| + | #4083 STANHOPE Champs S.O. Zir bowl & Ft | |
| + | (4) Ea | 60.00 |
| + | #1519 WAVERLY Heisey Rose Etch Ftd. | |
| + | Violet Vase*..... | 85.00 |
| + | #1519 WAVERLY Heisey Rose Etch min Cr. & | |
| + | Sug, #1509 tray *..... | 120.00 |
| + | # 28 "ELIZABETH" Candlesticks 9 3/4" cut | |
| + | on sides*.....PR. | 110.00 |
| + | #1469 RIDGELEIGH Sq. block Candles, Pr... | 30.00 |
| + | #1469 RIDGELEIGH Sq. Ashtrays*.....(8) Ea | 3.00 |
| + | #1469 RIDGELEIGH Shot glass*..... | 20.00 |
| + | # 337 TOURAINE Punch cups*.....(2) Ea | 9.00 |
| + | #4055 PARK LANE Gob. Nomad Cutting (6) Ea | 35.00 |
| + | # 407 COARSE RIB Mustard/Cov FLASHED*..... | 50.00 |
| + | | |
| + | | |

| |
|---|
| #1401 ALEXANDRITE EMPRESS 7" Sq. Plate*... \$ 48.50 |
| #1433 THUMBPRINT & PANEL 2 Lite Sticks & |
| Bowl.....Pr... 85.00 |
| # 5 Toy Candlesticks*..... 75.00 |
| #1506 PROVINCIAL Zircon 10" Four Part Relish 175.00 |
| #1201 MOONGLEAM 11" Low Ftd Bowl*..... 48.50 |
| #5038 ROOSTER Cocktail..... 45.00 |
| #3368 SAHARA ALbemarle 7" Ftd Compote* |
| Old Colony etch..... 60.00 |
| #1401 EMPRESS Oval Comport*.....(2) Ea 46.50 |
| #1519 WAVERLY 9" Sea Horse Hndld. Candy(2) Ea 70.00 |
| # 150 BANDED FLUTE 3 oz. Cocktails....(4) Set 42.00 |
| STANDING PONY.....(2) Ea 65.00 |
| SPARROW.....(2) Ea 60.00 |
| PLUG HORSE.....(2) Ea 65.00 |
| # 419 SUSSEX Flamingo 5 oz Soda* (Mint(6) Set 65.00 |
| # 160 LOCKET ON CHAIN 8" Ftd Bowl..... 135.00 |
| # 436 # 2 Sweet Pea Vase 8"..... 25.00 |
| #1401 EMPRESS D/F Cr. & Sug* Lafayette etch 67.50 |
| # 417 DOUBLE RIB & PANEL Nappy*.....(6) Set 45.00 |
| #1252 TWIST Bowl Marigold Good cond.*..... 45.00 |
| #1235 BEADED PANEL & SUNBRST 8" High Ftd Bowl 88.50 |

WRITE YOUR WANTS - SEND SASE FOR LIST OF HEISEY

WILLEY'S ANTIQUES
HAROLD E. & MILDRED M. WILLEY
PH. 614-828-2557
11110 CANNON RD.
FRAZEYSBURG, OH 43822



Dear Heisey Collector and Dealer,
We're heading your way! Heisey animals,
lovely old patterns, and a rainbow of colors, will
be coming along with us.
We'll be at the following shows.



| | | |
|----------------|---------------------------------------|--------------------|
| JAN 24, 25, 26 | MUNICIPAL BUILDING | SAN ANTONIO, TX |
| FEB 7, 8, 9 | MUNICIPAL AUDITORIUM | AUSTIN TX |
| FEB 14, 15, 16 | SAN ANGELO CONVENTION CENTER | SAN ANGELO, TX |
| FEB 21, 22, 23 | MOODY CIVIC CENTER | GALVESTON, TX |
| MAR 1, 2 | ST. BERNARD PARRISH & CULTURAL CENTER | CHALMETTE, LA |
| MAR 15, 16 | ARMORY PLACE | SILVER SPRINGS, MD |

| | | |
|---|--|---|
| <p>A.W. PARKER Heisey & Pattern Glass Shows or Appointment Magalia, CA 95954 PH: (916) 873-2326</p> | <p>"HAPPINESS IS" THE STULTZ'S Show and Mail - Elegant Glass Circa 1890-1960 3106 Warren Court Glen Allen, VA 23060 PH: (804) 262-1273 (Richmond Area)</p> | <p>EAGLES REST ANTIQUES China Heisey Antiques Mary Evans 62 Fieldpoint Rd. Heath, Oh. 43056 PH: (614) 522-2035</p> |
| <p>A DOOR ANTIQUES Heisey My Specialty 4241 Bayard Road South Euclid, OH 44121 PH: (216) 381-3008</p> | <p>GERT'S GLASS Heisey & Duncan Gertrude & Russell Swetnam 1926 Saratoga Dr., Adelphi, MD 20783 PH: (301) 434-5113</p> | <p>MOSTLY HEISEY Rhoda Curley 16 Clayton Place Albany, NY 12209 By Appointment, PH: (518) 482 6272</p> |
| <p>ALL HEISEY AUCTION Consignments Welcome Apple Tree Auction Center 1616 W. Church, Newark, OH 43055 PH: (614) 344-9449</p> | <p>GLASS 'N' GLASS Virginia & Odell Johnson 6909 10th Ave. West Bradenton, FL 33529 PH: (813) 792 0604</p> | <p>MOUND BUILDERS ANTIQUES Heisey & Animals, General Antiques Irene Rauck 1138 Moundview, Newark, OH 43055 PH: (614) 344-6043</p> |
| <p>ANN'S GIFTS & ANTIQUES 105 W. Main St., Hebron, OH 43025 Intersection of Rts. 40 & 79 Next door to Daisy Queen Daily 10:30 to 5:30</p> | <p>GLASS WITH CLASS Lenore A Shelley, GGHCC 1336 Lincoln Avenue San Jose, CA 95125 PH: (408) 286-8098</p> | <p>HELEN & JIM KENNON Heisey, Cambridge, Fostoria, Duncan, Imperial, Fenton, Tiffin P.O. Box 114 Brookville, OH 45309 PH: (513) 833 5406 SHOWS ONLY</p> |
| <p>ANTIQUES THE SHULTZES 206-208 East Main St. Newmanstown, PA 17073 15 Miles West of Reading, PA PH: (215) 589-2819</p> | <p>GREEN ACRES FARMS Antiques, Crystal Glass & Collectibles 2678 Hazelton-Etna Rd., SW (S.R. 310 N) Pataskala, OH 43062 Sat. or Sun. PM or call (614) 927 1882</p> | <p>R & L ANTIQUES - SAN FRANCISCO Shows only - always lots of Heisey Member of Golden Gate Heisey Club P.O. Box 3614, Daly City, CA 94015 PH: (415) 621 6693</p> |
| <p>AVERY'S QUALITY ANTIQUES Specializing in Heisey Shows or by Appointment 2112 First St., Jackson, MI 49203 PH: (517) 783-4075</p> | <p>H & R DIAMOND H Helen & Robert Rarey 1450 White Ash Dr. Columbus, OH 43204 PH: (614) 279-0390 after 5:30</p> | <p>RAMBLING LANE ANTIQUES Featuring Heisey & other fine glass Keith & Evelyn Hoover 1978 Rambling Lane, Rhinelander, WI 54501 PH: (715) 282 5019</p> |
| <p>B & B HEISEY & COLLECTIBLES B. Whaley 300 International Dr. Pataskala, OH. 43062 By Appointment: PH: (614) 927 1557</p> | <p>CHARLOTTE'S GLASS REFLECTIONS Quality Glassware Specializing in Fostoria 6816 14th St. W., Bradenton, FL 33507 PH: (813) 756-4143</p> | <p>RAY ZIEGLER Glass Repair 185 County Line Westerville, OH 43081 PH: (614) 891 9700</p> |
| <p>C.E. HIGGINS (S.F. Bay Area) Shows and Mail Order P.O. Box 2723 Menlo Park, CA 94025 PH: (415) 322 0192 Evenings</p> | <p>HARRALSON'S HAPPY HEISEY HUNTERS Sponsor SPFD, MO's Super Antique Show 77 Quality Dealers From 10 States 1986 Dates: May 31-June 1 Nov. 15-16 Info: 1426 W. Highland, Springfield, MD. 65807</p> | <p>SCHWAN'S ANTIQUES SHOPS & SHOWS 2980 John Tyler Hwy. Williamsburg, VA 23185 PH: (804) 229 7873</p> |
| <p>C & J ANTIQUES Cole & Jean Miesner Box 45, 72 Whig St. Newark Valley, NY 13811 PH: (607) 642-9905</p> | <p>HARRISON'S ANTIQUES Heisey, Cambridge, Duncan Shows, Mail, by Appointment 26 Johnston's Lane, Mercersburg, PA 17236 PH: (717) 328 2451</p> | <p>SUM OF LIFE Elaine & Frank Husted P.O. Box 102 Phoenixville, PA 19460 PH: (215) 935-2962</p> |
| <p>CHARLES & MILDRED FISHER Heisey, Degenhart, Imperial, Antiques, Collectibles, General Line 991 Idlewild, Newark, OH 43055 PH: (614) 522 5398</p> | <p>SPARKLING ANTIQUES Arlene I. Reynolds - owner Heisey & Custard Glass 5 Wayside Circle, Pittsford, NY PH: (716) 381 4134</p> | <p>ETTELMAN'S DISCONTINUED CHINA & CRYSTAL HEISEY a SPECIALTY P.O. Box 6491-HN Corpus Christi, TX 78411 PH: (512) 888-8391 Include SASE</p> |
| <p>DAVE'S ANTIQUES Specializing in Heisey Shows & Appointments Tampa, FL 33600 PH: (813) 876 0580</p> | <p>HEISEY PUBLICATIONS Heisey Books I-II-III-IV Newscaster Back Issues \$4.00 1977 thru 1984 Box 102, Plymouth, OH 44865</p> | <p>THE GLASS CONNECTION Specializing in Heisey Shows & Mail Order Box 526, Collegeville, PA 19426 PH: (215) 489 0139</p> |
| <p>DIAMOND H PLUS Mail Orders & Shows George & Eileen Schamel Rt. 3, Box 171, Boonsboro, MD 21713 PH: (301) 432 6285</p> | <p>J. & R. COLLECTIBLES Shows, SASE, Mail Order list June & Ray Lukasko P.O. Box 1030, Newark, OH 43055 PH: (614) 344 9719</p> | <p>THE GLASS LADY Week-Ends Only Glass, Pottery, China Circle Shopping Center, Richmond, VA 23224 SHOP (804) 320-9239 HOME (804) 271-1555</p> |
| <p>ELLIZABETH BASSETT CASON 401 32nd St., W Bradenton, FL 33505 Mail Order List PH: (813) 748-0851</p> | <p>PATTON HOUSE Heisey & Duncan Miller Rocky's Mall, I-81 & US 11 Weyer's Cave, VA 24486 PH: (703) 967-1181</p> | <p>WILLEY'S ANTIQUES & MUSEUM Specializing in Heisey 11110 Cannon Rd., Frazeytsburg, OH 43822 16 miles east of Newark, OH PH: (614) 828-2557</p> |
| <p>FOREVER HEISEY Shows and Mail Order Janice Thran 1663 Londondale Pkwy., Newark, OH 43055 PH: (614) 344 5955</p> | <p>JUDY'S DIAMOND H ANTIQUES Heisey Glass - Lake Isabella, CA HC 1, Box 3001 Weldon, CA. 93283 PH: (619) 378 2176 by Appt.</p> | <p>GOLDSBERRY'S ANTIQUES Heisey a Specialty Shows only - Buy & Sell Kalamazoo, MI 49000 PH: (616) 381 3013</p> |
| <p>DIE KUNST GALLERIES & ANTIQUES Specializing in Heisey Vel & Andy Andress Box 329, 725 Front Street Leavenworth, WA 98826 PH: (509) 548 7856</p> | <p>PEGGY'S ANTIQUES Ernie & Peggy Cox P.O. Box 367, Spavinaw, OK 74366 By Appointment or Chance PH: (918) 589 2859</p> | <p>THE WOODEN SHOE Antiques & Collectibles Jim & Sheri VanEs by Appt. 810 Elden, Herndon, VA 22070 PH: (703) 435 9045</p> |
| <p>TREASURE HOUSE ANTIQUES Heisey, Cambridge Etc. 148 W. Johnstown Rd. Gahanna, Ohio 43230 Closed SUN. PH: (614) 471-2317 Daily 12-5</p> | <p>CRAFTS ENTERPRISES Arlene & Ed Craft 187 N Pioneer Ave. Shavertown, PA 18708 PH: (717) 675-8553</p> | |

BOARD NOTES OF DECEMBER MEETING

The Souvenir Dinner will again be held in a tent on the museum grounds in September. The souvenir will be the half scale Horsehead in Amber.

It was voted to permit charcoal rubbings of selected etching plates to be made at Convention, fee to be determined later.

Jim Jones has volunteered to write a book on 1469 Ridgeleigh pattern. Motion presented by Mould Fund Committee to hold a non-Heisey Auction (antiques, collectibles and good household goods), possibly in April. Also a Pig Roast Dinner with only 200 tickets being sold, with the intention being to try to obtain money from other than HCA members. The motion was accepted.

A traveling exhibit of glass and other items is to be established and made available for educational purposes with a deposit required. The Educational and Archives Committees will suggest how to handle this and make the rules and regulations.

The Educational Committee has a possible chance of getting a grant of a substantial amount for their committee from the Ohio Humanities Council to be used for an educational project

The Convention theme will be Heisey Round-up. There will be a Barbecue instead of the Champagne preview. Barbecue 5 to 7. Show will be open 7-10 P.M. and the Display 8 to 10 P.M. The show hours on Saturday will be 11 A.M. to 7 P.M.

Nominating Committee is Tom Bredehoft, Chm., Frank Husted, Helen Kennon, Emogene Shomaker, Ruth Perloff and Dick Schwan. (To report at March meeting where nominations can also be made from the floor).



From the Executive Director....

Happy Valentine's Day:

Time is rushing along so fast that it is hard to believe that auction time is nearly here again.

Our list is long this year and we are looking for a large crowd to buy all of this fine glass. Be sure to have the 7th and 8th of March saved for this important fund raising event. Read the list carefully and do your mail bidding in accordance with the instructions on page 15 using the form on page 14.

There are lots of fine items in the auction which includes most colors and a great variety of the early, middle, and late years patterns.

Sam Schnaidt generously allowed us to make the list with his computer, with Virginia Yeakley doing the work. This saved us endless time at the office.

The 1986 Oscar was made by Viking Glass Company.

If you are in either of the two areas of PA where someone wants to start a club just give them a call and lend a hand. You'll find that you will enjoy the club very much. We have had many inquiries from the Philadelphia area so this is your chance.

Some of our docents are disappearing recently and we really need someone to replace them. If you can give a day a week or a month, give me a call at 345-2932. It is not hard work and since we have the self-guided tour you need not be too knowledgeable on patterns - though it does help. We plan to have a training session if we get enough volunteers.

Don't forget the All-Heisey Show in Silver Spring, MD on March 15 and 16. This is always a great show. HCA will be there with books and items from the gift shop.

Probably the show in Daly City, Mar. 1-2 is already over but in case it is not - be sure to attend.

HAPPY HUNTING!

Louise Ream

| HCA AUCTION BID LIST | | | | | |
|-------------------------------------|-------------------|----------|----------------|-----------------------|-------|
| BILL TO: _____ | | | SHIP TO: _____ | | |
| CHECKS <input type="checkbox"/> | | | | | |
| VISA <input type="checkbox"/> | Card Number _____ | | | Expiration Date _____ | |
| MasterCard <input type="checkbox"/> | Card Number _____ | | | Expiration Date _____ | |
| EXAMPLE: 97 | Lot 3 | Units 3 | Bid \$20.00 | Subtotal \$60.00 | |
| Lot Number | Number of Units | Bid/Unit | Subtotal | Check Mint Only | |
| 1. | _____ | _____ | _____ | _____ | _____ |
| 2. | _____ | _____ | _____ | _____ | _____ |
| 3. | _____ | _____ | _____ | _____ | _____ |
| 4. | _____ | _____ | _____ | _____ | _____ |
| 5. | _____ | _____ | _____ | _____ | _____ |
| 6. | _____ | _____ | _____ | _____ | _____ |
| 7. | _____ | _____ | _____ | _____ | _____ |
| 8. | _____ | _____ | _____ | _____ | _____ |
| 9. | _____ | _____ | _____ | _____ | _____ |
| 10. | _____ | _____ | _____ | _____ | _____ |
| | | | SUBTOTAL | _____ | |
| | | | SHIPPING | _____ | |
| | | | TOTAL | _____ | |
| (Signature) _____ | | | | | |

14 ANNUAL
STARLIGHT FLEA MARKET
 ANTIQUES AND COLLECTORS SHOW
 At
 Starlight School
 116 N. 22nd Street
 Newark, Ohio
 March 9 from 9 am - 4 pm

Antiques
 Heisey Glass
 Crafts
 Pottery

Benefits-Starlight School & Heisey Museum
 Sponsored by- Land of Legend Study Club

FOOD AVAILABLE

DONATION
 \$1.00

For Information
 (616) 366-5163

Ad compliments of

Basic Distribution

A PRODUCT OF DOUGLAS ENTERPRISES

THE NATIONAL CAPITAL HEISEY COLLECTORS CLUB
 Presents the Fourteenth Annual
 "ALL-HEISEY GLASS SHOW AND SALE"
 For the benefit of the Heisey Museum

SUN, MAR 16, 1986
 11 AM to 5 PM
 ARMORY PLACE
 Silver Spring, MD
 DOOR PRIZE

SAT. MAR 15, 1986
 11 AM to 8 PM
 Wayne & Fenton
 Silver Spring, MD

HEISEY GLASS IDENTIFICATION - 1 to 3 PM, each day - Certificate of authenticity from HCA - small fee for each item.

Admission \$2.00
 With This Ad \$1.50

GLASS
 review

ESTABLISHED 1971

The GLASS REVIEW Magazine is for everyone who studies, collects or sells glass. Whether your glass interests lean toward the early 1900's - or the depression era - or with today's limited glass items, the GLASS REVIEW covers it all!

Articles - price reports - original catalog documentation - shop directory - research and reproduction news - trademark information - glass book releases - what's new on the market - a large variety of glass ads (on both old and new glass) - plus much more.

Enclose payment and mail to:
 GLASS REVIEW,
 P.O. BOX 542, MARIETTA, OH 45750

**NOW 12 ISSUES
 PER YEAR!**

\$14.50 - one year



return to:
 HEISEY NEWS
 Box 27
 Newark, OH 43055

FIRST CLASS MAIL
 U.S. POSTAGE
 PAID
 PERMIT 741
 Mt. Vernon, OH 43050

FIRST-CLASS MAIL