

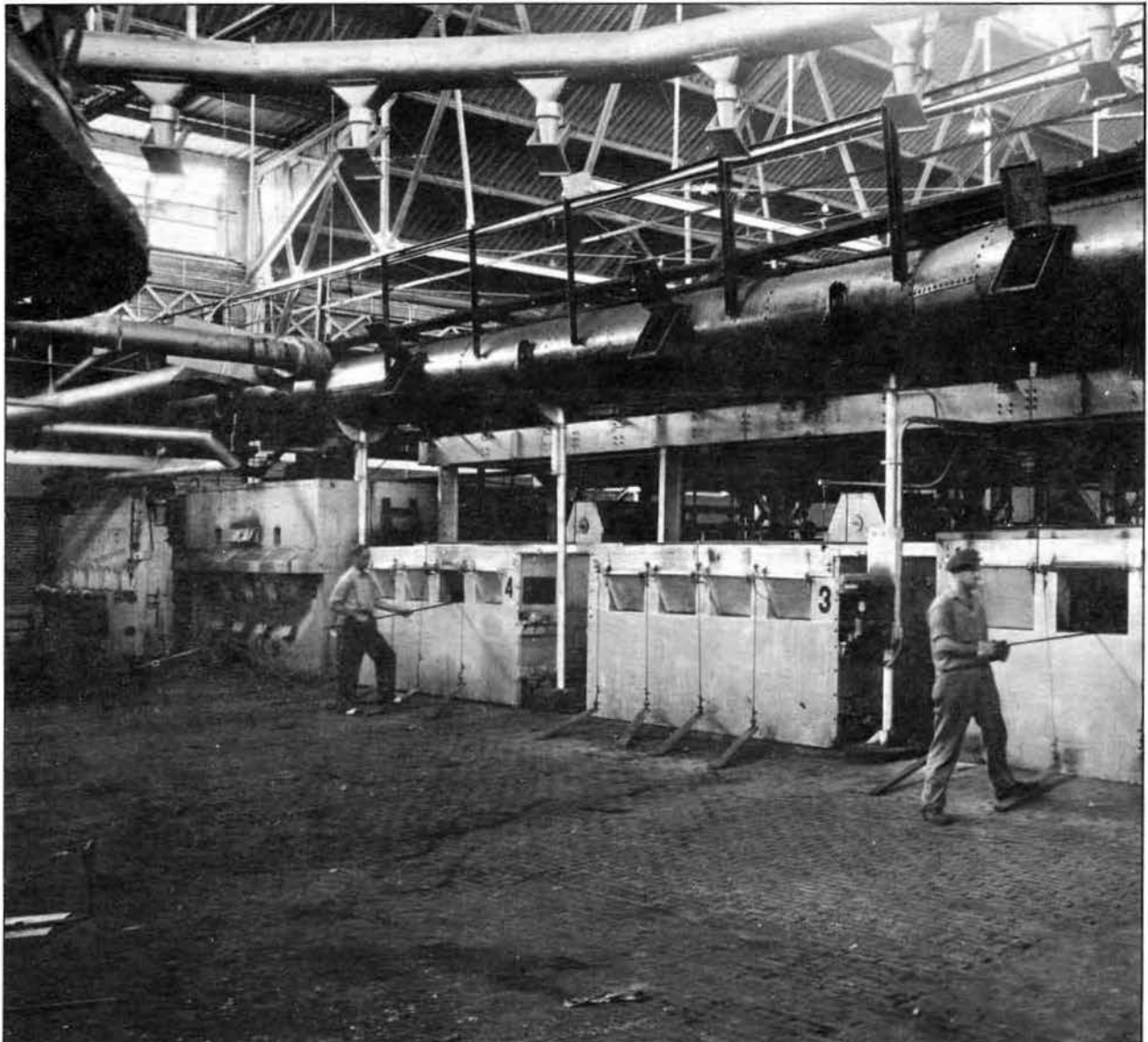
HEISEY *news*

OFFICIAL PUBLICATION HEISEY COLLECTORS OF AMERICA

Heisey Collectors of America, Inc.
All Rights Reserved 1986

VOLUME XV NO. 1

JANUARY 1986 ISSN 0731-8014



THE LEHRS IN THE HEISEY FACTORY

(Annealing ovens)

See page 10 of December issue

HEISEY NEWS

P.O. BOX 27, NEWARK, OH 43055

CLUB OFFICERS:

| | | | | |
|----------------|---|----------------|---|--------------|
| President | — | George Schamel | — | 301-432-6285 |
| Vice President | — | Bob McClain | — | 614-345-8061 |
| Secretary | — | Liz Stickle | — | 614-323-2250 |
| Treasurer | — | Ray Ziegler | — | 614-471-6446 |
| Exec. Dir. | — | Louise Ream | — | 614-345-2932 |

Editor: Louise Ream

P.O. Box 27, Newark, OH 43055

PH: 614-345-2932

Assistant Editor: Neila Bredehoft

P.O. Box 27, Newark, OH 43055

PH: 614-345-2932

Published monthly and printed in Mt. Vernon, Ohio

\$15.00 per year - \$1.25 per copy

Back Issues - Each Volume (12 issues) year - \$9.00.

Volume V, VIII, IX, X, XI, XII & XIII

Heisey Collectors of America, Inc. is a non-profit corporation with tax exempt status. Owners and operators of National Heisey Glass Museum, 6th and Church Streets, Newark, Ohio.

Open daily 1-4 p.m. except holidays. Other hours by appointment. Members admitted free.

Club membership (includes 12 issues of HEISEY NEWS and participation in all club activities) \$15.00 per year plus \$2.50 for each additional family member in same household who wishes a membership card. For VOTING MEMBERSHIP, add \$25.00 one time only fee.

When requesting information, please enclose a self-addressed, stamped envelope (SASE).

ADVERTISING - Send all ads to:

Advertising, c/o Janice Thran

P.O. Box 27, Newark, OH 43055

DOUBLE SPACE ALL ADS.

RATES:

DEALER'S DIRECTORY - Maximum five (5) lines - \$20.00. Change during year \$2.00 per line. CLASSIFIED - 12-/word - \$1.20 minimum.

Abbreviations and initials count as words.

| DISPLAY: | MEMBERS | NON-MEMBERS |
|-----------------------------|---------|-------------|
| 1/8 pg. (9 items) | \$15.00 | \$25.00 |
| 1/4 pg. (20 items) | 24.00 | 35.00 |
| 1/2 pg. (20 items) | 40.00 | 50.00 |
| 1/2 pg. (50 items) Vertical | 50.00 | 60.00 |
| 1 pg. (50 items) | 65.00 | 80.00 |

Extra lines will be billed at \$1.00 per line. Personal ads limited to 1/8 space.

ALL ADS MUST BE PREPAID. Ad copy must be received by the 5th of the month preceding the publication date - i.e. April 5th for May issue. Ads containing reproductions will not knowingly be accepted unless clearly stated (i.e. Heisey by Imperial, etc.). HEISEY NEWS assumes no responsibility for false advertising or misleading information. In the event of typographical error, the incorrect portion of the ad will be run in the following issue, but HEISEY NEWS assumes no further liability.

The opinions expressed in articles in HEISEY NEWS are those of the authors and not necessarily those of the organization. The Editorial Staff reserves the right to edit or refuse any material submitted for publication. When requesting information, please enclose a self addressed stamped envelope. (SASE).

Mould Fund Report

By Norm Thran

We have reached a new milestone in the campaign. On Dec. 15, the Fund reached \$200,100, quite an accomplishment for you, the members of HCA. As of the 15th of Dec. the following has been received.

| | <u>Nov. 14</u> | <u>Dec. 15</u> |
|----------|------------------|------------------|
| Received | \$197,000 | \$202,400 |
| Pledged | 5,500 | 4,200 |
| | <u>\$202,500</u> | <u>\$206,600</u> |

The Fund has grown by \$5,400 the past month and the pledged money has dropped by \$1,300. Thanks to the recent donations and pledged money received we have passed the \$200,000 level.

With continued support from the membership we can wipe out the remaining debt and save on the interest payments.

To date the money received represents 88.3% of the original purchase price. Hopefully by the next update, Feb. issue of the Heisey News we will need less than 10% to complete the Drive.

The Board at the Dec. quarterly meeting approved the two projects mentioned last month by the Steering Committee. Those two projects for '86 are intended to put us over the top by May '86.

-- Auction in April or May.

(China, furniture, glass etc.)

-- Benefit Dinner in Newark.

(200 limit)

Your response has been wonderful and we appreciate the tremendous support the membership has shown in the project to reduce the debt incurred with the purchase of the moulds. Remember every bit helps, donations of time, money, items for auction and the purchase of the Diamond H sign etc. All of these items when multiplied by our dedicated membership can put us over. All gifts are tax deductible - thanks for your continued support.

Happy New Year!

NOTES FROM YOUR PRESIDENT.....

1985 is coming to a close or already has. Most of you are (or have been) actively involved with the Holidays. For all of you that I didn't send a card last year - I also didn't send one this year. Since the opportunity presents itself, to send 4,000+ cards at one time, (without expense to me) I'll take it.

THE OFFICERS AND STAFF OF THE HEISEY COLLECTORS OF AMERICA WISH YOU HAPPY HOLIDAYS AND A SAFE AND PROSPEROUS 1986. Particularly prosperous so that you can continue to generously support HCA. (sometimes we can have ulterior motives for wishes of Prosperity)

1985 has been a very busy and rewarding year for H.C.A. I can't decide whether the dedication of the Museum or the acquisition of the Moulds tops the list of our accomplishments. I'm sure that we would not have acquired the Moulds if we had not had the Museum. Success in one impossible endeavor tends to build confidence in the ability to be successful in other impossible tasks. To have attempted and accomplished both in a relative short time

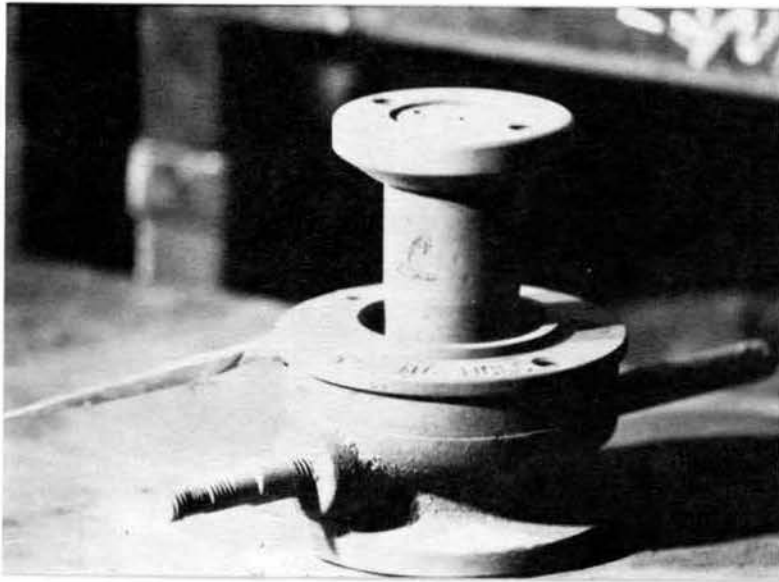
is almost too good to be true. For every positive there seems to be a negative (nature works that way). Our negative is the fact that we are deeper in debt than at any time in our history. (We also have more assets than at any time in our history) In round figures our debt amounts to about \$120,000. This does not mean that we are in major financial difficulties for our assets far, far exceed our debt. What it does mean is that your continuous support is needed in our H.C.A. projects.

Picking up from last month with our discussion of our moulds with the BLOCK MOULD. The BLOCK MOULD consists of a PLUNGER, RING, BLOCK, and VALVE. This type of mould is used for a variety of items but mostly for bowls. As you can see there is no KEY and this mould doesn't open from the side. The GLASS goes in the top and out of the top. In order to conserve space and money I will not repeat the pictures and function of the PLUNGER and RING. They serve the same function in all moulds that have them.

As I'm sure Louise will tell you about the Xmas Dinner, I won't. The blue Madonnas have been made. They are Quite pretty, particularly the frosted ones. These would make a very nice late Xmas gift.

May all your finds be "complete sets"

George



#1. PICTURE OF COMPLETE MOULD

BLOCK This is a large piece of cast iron that has been hollowed out. The Pattern of the piece has been cut on the sides of the hollowed out piece. Most tumblers are made in BLOCK moulds.



#2. PICTURE OF BLOCK

VALVE The VALVE is in the bottom of the mould. It lets air out of the mould when the glass is pressed. The VALVE may or may not have a design cut on it. The design may be a star or in some cases a more elaborate one, such as the intaglio ash tray Cupid and Psyche. Sorry we do not have a picture of a VALVE. Will try to have one next month.



HEISEY CANDLESTICKS 1489 PURITAN BY TOM FELT.

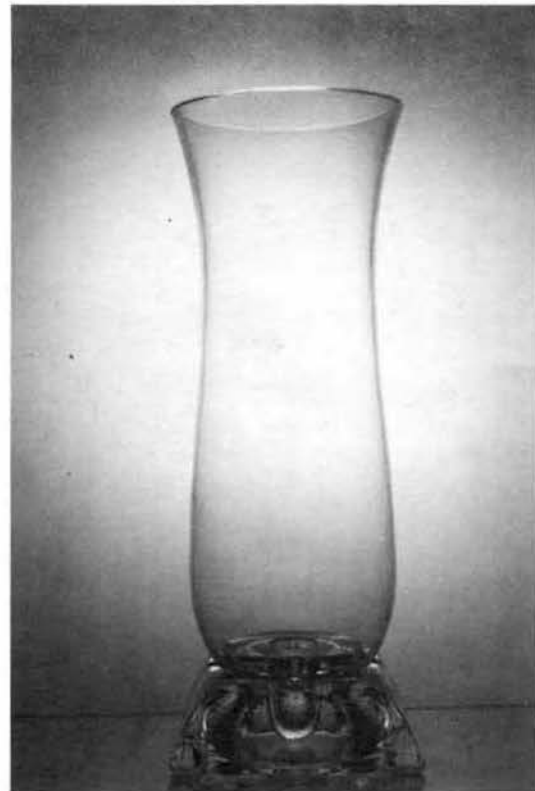
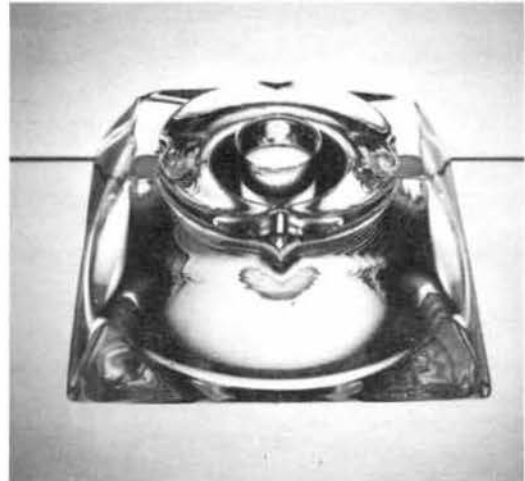
The hurricane block lamp base was the last of the candleholders to be added to the Puritan pattern. The first reference to it is on a typed list of new items added to the line which is dated March 16, 1942, though it did not actually go into production until six months later in October, according to the turn books. It was then to remain in production until the factory closed in 1957. Like the other Puritan candleholders it is not at all common today, though this is probably because its design is so plain and it is not marked with the Diamond H.

The shape of the hurricane block is basically that of the 4 1/2 inch Puritan ash tray turned upside down. It has a raised circular disc, about 2 3/4 inches in diameter, around which the globe fits. Both the base and this disc have indentations on all four sides which help to hold the globe in place. (The globe used, the 10 inch no. 4060 globe, is actually the 12 inch no.300 globe with the bottom cut off, leaving it with an opening which is 2 3/4 inches in diameter.) Depending on how close the actual fit on a given base is, it is sometimes necessary to give the globe a slight twist when putting it on or taking it off. The only other hurricane lamps this particular globe was used on were the no. 1503 Crystolite 1-light hurricane block, which had been brought out about four years before the Puritan hurricane block and the no. 1541 Athena hurricane block, which was not made until 1948, and then only briefly.

The top of the hurricane block is about 3 1/2" square and the bottom is almost 4 3/4 inches square. The block itself is only 2 inches high. With the globe added, the hurricane lamp stands just over 12 1/2 inches tall.

Only one etching was offered on this hurricane lamp, with the globe alone etched, the no. 9012 Victory silhouette etching. One production cutting no. 964 Maryland, was also offered, with both the globe and the base cut. The possibility exists, however, of other decorations being found, including any of the ones known to have been used on this same globe with the no. 1503 hurricane block—the no. 450 Chintz and no. 507 Orchid plate etchings, the no. 5020 Lily carving, or the no. 915 Amarillo, no. 917 Sarasota, or no. 918 Winston cuttings

As with the other Puritan candleholders discussed in this series of articles, the hurricane block lamp base was not reissued by Imperial. It remains a rather elusive prize for the collector who is able to recognize Heisey quality in the absence of the Diamond H.



Dates for Glass Club's 1986 Conventions

| | |
|---|----------------------|
| National Imperial Glass Collectors Society----- | June 13, 14, 15 |
| Fostoria Glass Society of America----- | June 13, 14, 15 |
| Heisey Collectors of America, Inc.----- | June 19, 20, 21, 22 |
| National Cambridge Collectors, Inc.----- | June 27, 28, 29 |
| National Depression Glass Assoc., Inc.----- | July 12, 13 |
| Duncan Glass Society----- | July 19, 20 |
| Fenton Art Glass Collectors of America, Inc.----- | August 5, 6, 7, 8, 9 |

"SPANISH" STEM ANTECEDENTS

By Bill Barnard

How do glass designers get their ideas? To paraphrase a well known commercial "They do it the old fashioned way, they borrow them".

Recently, while at a flea market, I found a book, Old Glass-European and American by N. Hudson Moore. This particular copy has a 1935 publication date but the book was originally published in 1924. There are many sections of photos in the book. One of them, plate number 48, shows what, at first glance, appears to be a Heisey #3404 "Spanish" stem. The text under the picture states that the pictured was produced at the royal glassworks at San Ildefonso, Spain during the 18th Century. Their glassworks operated as a royal Spanish enterprise up until 1809 when it was sold to private interests.

An examination of the picture shows the similarity of the old Spanish goblet to the Heisey #3404 stem. The original had a large central knob with smaller knobs located above and below. All were faceted. Whether the facets were pressed or cut cannot be determined from the photo. The Heisey version used round pressed indentions to represent the facets. Duncan and Miller's similar #504 "Granada" stem preserves, in pressed form, the facets of the original on the large knob. Neither of these two copies uses the smaller knobs.

There seems to have been some confusion among Heisey's advertising or sales people regarding the name to be used for the new line. The December 1932 and January 1933 issues of "The Crockery and Glass Journal" both had articles regarding the new line. December '32 refers to, "New Spanish shapes in stemware". January '33 states, "One of the outstanding lines in Heisey's offerings for 1933 in a cobalt blue line of stemware with exceptionally heavy ball stem in crystal, a reproduction of an old Spanish design". However, there were two separate articles in the February 1933 issue of "China, Glass, and Lamps" which referred to the line as "The new line of French Provincial". The second article dropped the "French" simply stating "- a new shape, the provincial". This was obviously resolved in favor of "Spanish".

Carl Sparacio wrote an article in the April, 1976 issue of "Diamond Dust" which covered most of this ground. He stated "We don't know if the original in the (Victoria & Albert) museum or the picture in the book inspired "Spanish" and "Granada" but there's little doubt that the designers at Duncan and Heisey were aware of one or the other". Since both lines were introduced well after the original 1924 publication of the book, my vote would be for the picture in the book with perhaps a little industrial espionage thrown in.

Whatever inspired the Heisey version it is certainly popular with Heisey collectors. There are no less than eighteen mentions of the "Spanish" stem in the "Heisey News" between the first issue published in 1972 and December 1981.



From Heisey Catalog 211-13. 1935
Colors cobalt, sahara, tangerine and crystal.

GRANADA



Made By Duncan Miller

PROFILES of FORMER HEISEY EMPLOYEES

"HELEN PALAGGI"

by Frances Law

Reprinted from January, 1976 issue.

Helen Pallagi was born in Newark, Ohio on Case Avenue in May, 1911. When she was two years old her mother decided to go back to Hungary with her family. Before her father could follow them World War I had broken out and he was unable to join them. She lived in Hungary until July 4, 1923 when the family came back to Newark as her father had decided to stay here to work. She had first attended school in the old village of Polgar, Hungary. Back in Newark she attended Hazelwood School.

Helen's first Job was at Newark City Hospital where she worked for ten years in the kitchen. She then spent two years in the supply room putting together everything used in surgery, readying it to be sterilized if needed. She also put together all items to be sterilized for obstetrics. She worked alone in this important area of the hospital and at night she took a 300 hour course at a riveting school.

In 1942 she went to work for Heisey while waiting for an aircraft department to open up at Newark Stove Co. She only stayed at Heisey for four months then went to work in this aircraft plant where the pay was higher, and worked there until the war ended.

She then went to Columbus by bus every day to attend beauty school. In 1946 she was licensed after passing the state board. This was a major accomplishment as she hadn't had much prior schooling. She had also learned to speak English fluently by this time. She worked in a beauty shop for three years but was very disappointed with this job as the hours were long and the pay poor.

Helen went back to Heisey in 1949 and stayed there until the plant closed. She started in the etching department at the fifth "table". First the design had been etched or engraved on a steel plate. The printmaker spread the acid resistant ink (made of ink and beeswax) on the plate using a knife to press it into the design. He then put a piece of tissue paper over this and rubbed it very hard with a piece of felt to transfer the design to the paper. The paper was then handed to the first girl, Helen who checked it for marks and thin places and then cut out around the pattern. If there were any bad places the pattern was discarded or bad places were cut out if possible. The tissue paper used for this purpose was specially made in Sweden.

There were four girls at each table, Helen would hand the pattern to the second girl who fit the pattern on the glass. This had to be done so that the pattern centered exactly with no wrinkles in the tissue. The third girl had a piece of felt which she used to transfer the pattern onto the glass by rubbing it. This had to be done exactly for each mistake would show up when the glass was dipped in acid. The last girl at the table dipped the glass (usually stemware) in a big bowl of alcohol and the paper could then be peeled off very carefully. If it was torn she could press it back on. If the tissue pattern had not been rubbed hard enough to transfer it turned out poorly and had to be discarded. This was demanding and exacting work. The last girl had large boards to place the stemware on, stem up. These boards would slide onto shelves. After a careful inspection the shelves were rolled to other girls who put on the wax resist. All of the goblet, for example, had to be covered with wax, except the portion with the pattern, before it went into the acid for etching.

Helen showed me several tissue patterns. One she had made herself. It was #99 and was called Wreath, which was cut rather than etched. She gave her niece a complete set of Wreath cutting when she was married -- lucky girl.

While Helen worked in the etching room all were laid off except the first table. Since four girls and a print man were at each of the five tables this was quite a lay-off.

Helen was then transferred to the cutting shop where she worked with Dove McDonald. In this department they used a tool shaped like a pencil with pieces of wood sticking out at intervals to mark correct spaces according to design. A fine brush was used for this and steady hands were needed. The glass or goblet was put in front of this tool, the goblet was held by the stem and turned slowly as lines were marked. If one made a mistake the red lines were washed off and the procedure was begun again. Helen really enjoyed working in this department. After the glass was lined it was picked up by the cutter. A cut pattern takes a long time to complete. The men who did this were real artists, cutting with nothing but their skill to guide them.

Helen said her work in both departments was most interesting. It was a pleasure

to see the plain glass come out with the beautiful cuttings and etchings. It is no wonder the glass was expensive, even then, when you consider how many hands it went through.

After the pattern was cut it was very dull looking and had to be polished to make it glisten. However glass could be bought in this dull finish (gray cutting). Helen worked at a polishing machine after the cutters were through. Each piece of stemware was put into a machine with two brushes in it. When the door was closed the machine revolved rapidly. She walked up and down by two machines all day. This process had to be times, then the glass was taken out and dipped in hot water, dried and checked. If it was not clear enough it was put back in the machine for more polishing. It took a lot of tedious work to make this beautiful glass.

During a slack time in the cutting department, Helen was transferred to the blow shop to work on the glazers. In the blow room the girls used something like a blow torch. When the glass came in it was closed at the top.* The girls used a piece of metal with a diamond point, and while turning the goblet around, scratched the place to cut off the top. Then the stemware was held against the flame to crack off the top at the place where it was marked. This left the top of the bowl very rough. A row of girls used special belts on grinding machines which went up and down and they held the top of the bowl against the belt to make it smooth. After the grinders were through they placed the glass on a conveyor. This moved the glass on the conveyor through heat to give it's lustrous smooth appearance. Helen removed glass from the glazers sometimes wearing two or three pairs of gloves. Even then the glass was so hot that her thumb was usually burned. The glass cooled and was then inspected for chips or rough spots on top. Then it was laid on another conveyor and moved to a girl, usually Violet Richards, who wrapped the pieces in tissue paper and packed them in ware boxes. The girls from the stockroom put them in the proper bins.

Helen always enjoyed her work and said it was like one big family in the plant. Clarence Heisey came through the departments every day and always knew his workers no matter where he saw them. It was a very good place to work as many workers found out when the plant closed.

Continued

We really enjoyed our visit with Helen. It was a pleasure to see the joy of accomplishment shining in her eyes and to know she loves Heisey ware as we all do. Most employees seem to have the same feeling.

*When a piece of stemware is blown in a mould there is always a bubble of glass at the top which has to be removed.

An Update Ten Years Later

By Frances Law

Helen is a very faithful member of HCA. She has served for nine years as a docent at the museum, being depended on for every Saturday, and for special tours.

For the last five years Helen has been chairman of the party for former Heisey employees and HCA members held during the Convention. She always gets interesting speakers for the program instead of using slides. She is already at work on the 1986 program.

Helen was secretary and treasurer of the Land of Legend Heisey Club for four years. She was also secretary and treasurer of the former Heisey Employees Club which was started in 1976 and still meets monthly in the museum.

We could call Helen our HCA poster girl. For the last ten years she has distributed posters three times a year - for the convention, flea market in March and mini-show in September. She does the entire Southgate shopping center and 21st Street by car the rest of Newark on foot. She did this free at first but for the last two years has received gasoline for her good job. Helen has always been the ticket taker for the Starlight flea market and more recently for the mini-show in September.

She is very fond on classical music; her favorite being Chopin, Debussy and Shubert.

Helen lives in a large house surrounded by the beautiful flowers she grows, both annuals and perennials. She has been a member of the Licking County Historical Society for the last three years.

Ed. Note: The Davidson House next door to our museum is one of the museums operated by Licking County Historical Society.

1986 GLASS ART SOCIETY CONFERENCE

"THE INVISIBLE PRESENCE: LIGHT IN GLASS" is the theme of the 1986 annual Glass Art Society Conference, an event to be held in Los Angeles, California, April 16 - 19, 1986. This conference, the sixteenth international symposium focusing on aesthetic issues and concerns common to those using glass organized by G.A.S., will include presentations by over 70 internationally and nationally renown artists, designers, historians and critics such as Lella Vignelli, Vignelli Design Associates; Dale Eldred, artist; Robert Atkins, Art Critic/Curator; Marvin Lipofsky, Artist; Cork Marchesi, Artist, among others. Also highlighted will be special technical demonstrations, workshop tours, special exhibitions throughout the Los Angeles area investigating various aesthetic avenues of development, and other special events planned for the participants.

The topic of the conference has been broadly defined as "an exploration of the vital relationship between light and glass, as perceived by both the artist and the viewer". The conference theme embraces a wide variety of interdisciplinary approaches and attitudes toward the subject of light, with special emphasis on the manipulation of light by artists using glass. Subjects to be examined over the course of the three-day conference will range from the physical properties of light to the psychological, emotional, and spiritual qualities of light as perceived through the medium of glass. Lectures and presentations will be given by artists using glass in sculpture, installation work, blown and flat glass, neon, and the use of glass in architectural environments. "The diversity of topics and participants addressed in this ambitious conference," said Susan Stinsmuehlen, President of G.A.S., "will be of vital interest to all involved in the creation of works in glass, as well as to a wider audience of critics, curators, historians, and collectors".

Advance registration material and detailed conference information may be obtained by contacting The Glass Art Society, P.O. Box 1364, Corning, New York 14830.

LETTERS, we get letters.....

We had a wonderful trip to Newark for Convention in June. The Museum is beautiful and the display, show and sale and the friendly people were great! Also enjoyed seeing the moulds. Everyone deserves a big vote of thanks for all the hard work.

We had never seen so much beautiful Heisey glass in one place before, and purchased many pieces for my collection.

Enjoyed beautiful, green Ohio, and all the friendly people we met there.

Joyce and Pete Stougaard, WA

Your team continues to produce very fine and timely information. Being involved in another field, I well know the problems and worry of producing an effective journal on a regular basis. Our congratulations to all of those working members of the office.

Best wishes for a happy holiday season.

Raymond D. Donnell, NC

On our way down from Wisconsin, we stopped with friends in Riverdale, GA. and I had the opportunity to look thru the Nov.-Dec. 1985 issue of Colonial Homes magazine. On pages 85 and 86 with pictures and story about Oliver Davis' House, on a table there are Heisey colonial candleholders, #2 Williamsburg, it looks like. In the descriptions this is mentioned--however, they misspelled Heisey! It was fun to see them.

We arrived in Bradenton, FL. 10 days ago and have just been exposed to rain and wind from the hurricane "Juan" and still have summer weather. Hope to see the Heisey "snowbirds" down here this winter--and to see you all up in Newark in December.

Virginia & Odell Johnson, FL

What a great year for Heisey Collectors. You dedicated people in Ohio have accomplished so much that it makes all of the rest of us proud to be a member of such a great organization and proud to support you in our small way. Once a Heisey lover, you are always one. Keep up the good work.

Rayman & Marion Clark, OK



#1551 HORSEHEAD BOOKEND

By Tom Bredehoft

When George Schamel, Bill Barnard and I were asked to go to Imperial to identify the Heisey moulds, we had no idea what we would be finding. We assumed that we would recognize most of them, and hoped we would be finding some new things. I was especially anxious about the animals. The people at Imperial were insistant that the two no. 17 owls were Heisey, and I knew better. On the other hand, there were a pair of moulds identified as '1551 bookend' which I wasn't all that sure about. Instead of a normal round plunger these had a "D" shaped plunger. I'd never seen any thing like that. I didn't want to seem too obvious about it, so instead of opening the mould, I just looked down into it after I took the plunger out. Sure enough, it was a horsehead, but looked like nothing I had ever seen. I wasn't about to say they weren't Heisey, though, and when I asked George why there were two of them he answered "The other one's for the other end of the shelf." Reasonable enough. Our records of Heisey's production included the number 1551 Horsehead, but we didn't know if it was the normal Horsehead bookend or something else.

I forgot about it for a couple of weeks until we asked about the plastic used to test moulds. They told us that the Cambridge club had bought all they had which wasn't used but we could have that which had been used, no charge. Interestingly enough, it all had been used to make something. Imperial had been trying out many of the Heisey moulds to see what they looked like for items to

make. We found plastic samples of 1404 Old Sandwich candlesticks, Wreath candy boxes, (we didn't know they had lids...) and, wonder of wonders, a 1551 Horsehead bookend. That's the one in the picture which looks opaque.

The base on these is hollow, that's where the D shaped plunger goes.

The other (glass) one was purchased at the Corning Museum's gift shop. It's base is not hollow, no plunger was used, the glass was just dumped into the mould and allowed to set. We inquired as to where Corning had gotten them and they told us they were boro-silicate glass, made by the Corning Glass plant in Pittsburgh. They haven't told me yet where they got the mould for it.

The Corning horsehead is of a low grade of glass, not quite as green as a Coke bottle, certainly no match for any quality glass. There are many horizontal lines in it making me think that the mould was filled with several gathers, not one large one.

A pair of 1551 Horseheads have been reported found in the East at some tag sale or some such event in a little town called Brim something or other, I can't remember what it was. They, the horseheads, are supposed to be making their way toward Newark for study. We'll just have to wait and see what they are. None of the 1551 Horseheads made by Heisey are known at this time, and the moulds are not marked so any that Heisey made may not be marked.

FROM THE EXECUTIVE DIRECTOR

George said I would tell you about the Christmas party but as you see there is little room left for me. The dinner was wonderful, one the best we have ever had. It was a buffet with an overabundance of delicious food. The Granville Inn is magnificent at Christmas time.

A movie "Seneca Glass" was shown which gave us a great insight into the making of blowware. Seneca is another glass factory which recently closed. They made gorgeous cuttings on stemware, etc. A small auction netted over \$400.

We went back to the museum to see the decorations there which are very lovely this year. It was a time to browse and visit in our lovely "home away from home".

On Saturday there were meetings all day long as usual at quarterly meetings when out of towners are here.

On Sunday we had an open house for members and anyone who wished to come. We served refreshments, gave door prizes and had a good day in the gift shop. It was a nice weekend and we wish more of you could have come.

Maybe next month I'll have more room.

Louise Roam

diamonds are forever.....

Winter is here in the "Yachting Center"; outside the day is sunny, the sun's rays are playing across our little pond sending up sparkles of light like diamonds dancing on the water's surface, but the air is bitter. This doesn't keep a small group of quite hardy sailors from donning their wet-suits and, starting at the mouth of the harbor, racing their Sloops to the finish. Sunday after Sunday all winter these men, with their crews, are out on the water. Myself I'd rather be cuddled in front of a nice warm fire with a dish of freshly made pop-corn - well let's keep the pop-corn for the evening; in the daylight I'd really rather be in a nice warm car running in and out of "fleas" trying to find the "find" of the year. Right? Of course I'm right!

"Mountain Gal" and her "Heisey Honda" (CA) are always full of "finds", she goes up and down that mountain path never caring who is in the way. There is only one thing on her mind; how much Heisey can she find, and will it all fit in the back seat. Front seat, trunk, roof!! Let's see: The #1404 Old Sandwich candlestick in Sahara, a single - but since she wrote to me about this one the first time she found a mate for it - Great luck! A #150 Banded Flute quart jug; four (4) #341 Puritan 5½" ice cream nappies, shallow with large diamond H; a pair of #1503 Crystolite one-lite candleholders, sun-purpled; a pair of #1559 Columbia #2 Saucer Foot candlesticks, unfortunately they are sun-purpled but Tom & Bob's candlestick book, page 297-298, says these saucer footed sticks are rare, only 773 made; #461 Basket with a beautiful cutting; #350 Pinwheel and Fan 8" nappy and the 4½" nappy. These are her first pieces of #350 and she is real excited. Also the #469 Hartman ½ lb candy jar with gold and silver trim. Mountain-gal, where have you been, my mailbox is waiting for more goodies!

"Our Rebel cousins" (KY) are right in there pitching, first a #1776 Kalonyal 11" high footed compote, then the #1280 Winged Scroll Cruet in Custard, next the #1245 Ring Band Table set - consisting of - creamer, sugar, covered butter and spooner; at their County fair they entered the glass spooner contest with their Ring Band & Prince of Wales Plumes spooners. They won first and second prizes with Ring Band taking home the first!

The "lady who likes color" (MA) also enjoys crystal as well: #1519 Oceanic (Waverly) Fan vase; #1225 Plain Band 9" Bowl/gold, and the #113 Mars Candlestick in Flamingo with good gold leaf, a pair.

From the "Evergreen State: (WA) come news of #3362 Charter Oak (Egyptian) produced in the late 20's, early 30's - wines, sherbets and goblets - twelve (12) of each. Mmmmm they must be lovely!

The "Mr" has a #1519 Waverly Cream & Sugar with Orchid Etch; #1469 Ridgeleigh coasters, two 3½" & two 4"; a #1425 Victorian 3 oz Cruet; #352 Flat Panel Horseradish jar; #1201 Fandango Ind salt; three (3) #473 3¼" Salad Nut dishes in flamingo and the #135 12" round floral Bowl in Sahara.

Elsewhere in the Bay State (MA) comes news of the #1295 Beaded Swag covered sugar, ruby stain and the creamer in Opal; two pieces of #4044 Impromptu (polkadot), the Ice Tea and the Old Fashioned sham, 9 oz; #385 Grid and Square water jug; #150 Banded Flute Chamberstick and a pretty little #1503 Crystolite shell tray.

"A friend in deed" (MA) has the #5024 Oxford 4 oz cocktail with a #958 Ping pong cutting.

My "sharp eyed friend" (MA) found several nice (what an understatement) pieces; pair of #5 5" candlesticks; #305 Puntly and Diamond Point 8" bowl; #1509 Queen Ann d/f 5" nappy, Orchid etch; #1509 d/f 8" nappy, also Orchid etch; #1495 Fern Jelly; #3389 Duquensne 12 oz soda with #450 Chintz etch and the #1255 Pineapple and Fan 10" Vase.

"The Pilgrims" (NH) always have a few things to brag about; #1184 Yeoman 10" plate with #440 Frontenac etch in Hawthorne; #1255 Pineapple and Fan Emerald Mug with good gold plus a tumbler and 6" Vase; #350 Pinwheel and Fan large Puff jar; #1533 Wampum 13" Gardenia Bowl.

"The Wizard" sports a #1220 Puntly Band ruby stained wine while "the Orchid Lady" came forth with a #1469 Ridgeleigh cake plate and a pair of #1252 Twist Candlesticks in Marigold, and good marigold too!

Do you know the song "you light up my life"? That's just what the "little old lamplighter" does, he dimly mentioned something about a Frosted Gazelle, (how lucky!) a Frosted Fish Candleholder and a #400 Water Bottle (which, by the way, he got for a song).

The "Eager Beaver" (OHIO) found two #3381 Creole cordials with Sahara bowl - while the "Arizona Snowbirds" let me know that they added several #300 Peerless stems to their growing collection Ready for the list? OK - four (4) Clarets, three (3) Burgundies, seven (7) Cordials and two (2) Goblets. Great addition! Missed you this past summer, maybe next year you will visit the Yachting Center.

For Christmas this year I added a couple of tumblers to my youngest son's collection; perhaps some of you will remember him but he has grown a great deal since he was last in Newark - #1401 Empress tumbler in Sahara; #4054 Coronation 8 oz tumbler and #369 d/o 9 oz straight soda.

"My English Buddy" (FL) has a \$433 Greek Key 1 pint pitcher and the #459 Basket with a beautiful cutting.

As far as "Yours Truly" is concerned I found a couple of things that might be worth mentioning. I have to get up real early in the morning to get ahead of the Mr. His eyes are so keen that they spy things before I even get near the tables. This time I got the jump on him and found a #7000 Sunflower three compartment relish. What a pretty piece of glass. Also the 6" Crystolite #1503 Straight Vase. Speaking of Crystolite, does anyone remember about the lady who gave the Mr. the Crystolite Water Jug last Thanksgiving? We use it constantly - Ice tea in summer, Cider in winter. Well, that same lady gave me a lovely 12" crystolite center bowl or fruit bowl. Wasn't that nice of her, she received these things many years ago when she was married and wanted them to have another nice home. We must have, on last count, about fourteen center bowls, it sure doesn't take long to accumulate things - one here, one there!

I musn't forget about the two Geese found roaming around Ohio, one had his wings up and the other had his wings down. They were both captured and brought to a loving home where they are fed daily. I'm sure glad they weren't Christmas Geese.

The year will probably be 1986 when you get this and from the Yachting Center both Lloyd and Myself want to wish you all a healthy, happy and prosperous new year.

Happy Hunting
Happy Heisey
Happy New Year!

WESTERN RESERVE STUDY CLUB

The Western Reserve Heisey Study Club held its November meeting at the home of Thelma Morningstar. President, Geneva Lege, announced that the Christmas meeting would be a covered dish dinner at the home of June Barthels. Husbands are invited. Norm Thran's letter concerning the need to support the Mould Fund was read and discussed. The club decided to hold an auction in January to support the Mould Fund.

Many beautiful things appeared during the Show and Tell part of the program. Geneva displayed her recent finds: 2 lite crystal candleabra in Kohinoor, a 461 flamingo basket, a 500 flamingo basket, a crystal perfume bottle, winged scroll custard spooner, and a bottom for a butter dish (same pattern). Sharon brought a wide Flat Panel covered sugar. She is now looking for the creamer. Other members found the following goodies: Plantation torte plate, Plantation sandwich plate; Yeoman 5 inch footed jelly with a black enameled rim; Pied Piper stems-goblets, wines, cordials; #353 footed comport, Locket on a chain footed comport; Pineapple and Fan emerald 10 in. berry bowl plus some beautiful Cambridge glass.

The program was a discussion of the Sunburst pattern. Helen Marimon brought pieces of Cambridge Near cut and Duncan to compare with the Heisey Sunburst pattern.

The hostess served an English Trifle from a Prince of Wales footed comport on Fancy Loop nappies, and served sugar and cream in Fandango containers. Cookies were served from a Fandango salver.

Thelma L Morningstar

GOLDEN GATE HEISEY COLLECTORS (Northern California)

Our club of approximately 25 members meets approximately every other month in the home of members. Most recently we met at the home of Kate and Bernie Winkle in Daly City - this was an evening meeting so a fine dinner was served to share our most recent Heisey experiences and see all the great glass that the Winkles have. Of course Claude Higgins found lots of fabulous Heisey. The next meeting will take place before this letter is in the Heisey News. It will be at Claude and Bob's home in Menlo Park just before Christmas. We are also having our Fifth Annual Glass Show the first weekend in March at San Mateo. This show has proven to be a great success both for the 40 dealers selling in the show and as a fund raiser for H.C.A. With the \$2,000 we are sending with this article our Golden Gate Club has now been able to donate slightly over \$8,000 to HCA in the five Years of our existence. For any of you who are interested in joining us in Northern California - just drop in for a fun time at one of our meetings. Call Lee Jones or Russ Nicholas at (415) 621-6693 - there is an answering machine and we will call you back.

Lee Jones

HEISEY COLLECTORS OF THE ROCHESTER AREA

Our November meeting was held at the lovely home of Betty Evans. Betty collects "little things" and they were much in evidence. She also had a great lunch prepared, which we all enjoyed. Betty found a beautiful pair of Coronation Candles that graced her china cabinets.

The nominating committee reported on their selections for the new officers for the coming year; they were all approved. When Adele Pardee heard the results, she asked for absentee ballots; she will be in Florida during the election. Jon, her son, suggested that all new officers pay be doubled and was roundly booed.

The motion was made that our club try to help the H.C.A. Education Committee where possible; this was agreed on.

The subject of our meeting was little things other than "NUTS" (we have enough of those). Our members responded with a large number, with a few as follows.

Urn salt dip, Kohinoor bridge ash tray with match stand, #33 toy candle, 1 1/2 oz. lavender jar, moongleam Octagon basket (small), a Jack Be Nimble candle, Ind cream & sugar #355 Quator.

Our show and tell produced the following. Marvin & Lois Jacob found a Baroque 1513 two light candle vase, complete. Arlene Reynolds produced a Puritan Camellia Bowl. A silk screen copy of the Fox Chase Etching was shown; it will be sent to the Museum.

There have been a large number of shows in this area lately, however Heisey Glass other than the quite common has become quite scarce.

Jerry Gillette is busy now preparing for our coming celebration of the tenth year anniversary of our club's charter, which we hope to hold next summer.

Bill Heron wasn't able to be at this meeting; he usually does our raffles with "class", but we held one with Sharon Orienter presiding and netted \$60.00 for our club.

Well we were unhappy to see the meeting end and just thrilled to go out in the rain again, two straight weeks of rain is enough, now it is sleeting.

Don't forget the moulds (molds) still have not been paid for, every little bit helps.

Our Quote for the month "When it is found that much is omitted, let it not be forgotten that much likewise is performed".

Happy New Year To All
George J. Revnolds

VIRGINIA HEISEY CLUB

By Betty Johnson, Secretary

On December 7, 1985, 14 members and 3 guests gathered at the beautifully decorated home of Jessie and Charles Hopkins in Hampton, Virginia for our Christmas party. A delicious covered dish dinner was served preceding the meeting.

Following a routine business meeting, the program was turned over to Jessie. She read a beautiful poem entitled "The Innkeeper" which she had written. Jessie also made up an original crossword puzzle which put our minds to work. The first person to complete the puzzle won the prize, that be-

ing a large bag of pecans. The winner was Dick Schwan, not for completing the puzzle but for having the most correct answers.

To top the evening off, we held another silent auction to raise money for the Heisey Mould Fund. Again, this endeavor was a success. A check, in the amount of \$178.50 was duly dispatched to the Heisey Mould Fund. The total amount of the check was derived from the proceeds of the auction, by paying a small amount of money for our dinner, and an annual contribution made to the Virginia Heisey Club by one of our members.

Happy New Year to all of you from all of us.

BAY STATE HEISEY COLLECTORS CLUB

The Bay State Heisey Collectors Club held their November meeting on Tues. the 12th at the Follen Church in Lexington, MA with twenty-five members in attendance. Pres. D. Young called the meeting to order. The past All Glass Show was discussed and plans were made for the 1986 Show. The show will again be held at the Armory in Lexington on Sept. 20th and 21st.

Plans were finalized for our annual Christmas party to be held this year at John Martins Manor House. The food there is the finest, Steak or Chicken being the Menu for the evening. A closed bar will be enjoyed by all. At last count about twenty or more plan to attend.

The meeting was adjourned and our annual auction began. Our good President Mr. "D" was the auctioneer. A lot of nice crystal Heisey was on the auction table with several pieces of color mixed in. As always a fun time was enjoyed by all, with a lot of laughs and much profit.

Refreshments were then enjoyed, compliments of Olga Heath and Virginia Blodgett. Olga outdid herself again and all left over cakes, bread, cheese etc. were auctioned off making a nice profit for the club.

Speaking of Olga, she just came home from the hospital and we all wish her a very speedy recovery. She is one of the clubs favorite people.

Janet Caswell

NORTH CAROLINA HEISEY COLLECTORS

Please excuse the delay in getting back to you after the N.C. group of Heisey Collectors met in Durham at the home of Janet and Jerry Lecky the third weekend in October. Things have been hectic and complicated for the Nesbit family. We did have a good turn out (about 18 persons) from various areas of the state and a good response from several who could not make this meeting, but who are definitely interested in participating.

There definitely was adequate response for us to plan to have a study group and those participating expressed interest in affiliating with the Heisey Collectors of America. We decided to meet on a quarterly basis. Since we had response from the mountains to the coast and from north to south within the state, we decided to go with quarterly meetings rotating within the various geographical areas. Our next meeting will be January 11 at the home of William and Isabell Gibbs in Burlington, NC. We will gather at twelve noon and each person will

bring his or her sandwich for lunch. In case of snow, we will meet the second Saturday in February. I will be getting out a note to the roster we compiled of interested persons, but would like to hear from anyone else in North Carolina who might like to participate.

For our get acquainted program each person brought his or her favorite piece and told something about it. Jerry and Janet Lecky's lovely Durham home provided a fitting setting for the beautiful Heisey glass. Frances and Jim Sutton and Patsy and Charles Nesbit from the coastal area helped Janet with refreshments. We hope to show the film on Heisey glass at our next meeting. This is a reminder to anyone else in NC who has not responded to get in touch with me at Route 1, Box 308, Hubert, NC 28539 or phone me at 919-326-3415.

We wish all of you associated with the museum a very Merry Christmas. It was heartening to have such a good response to our efforts in October. I do believe we are about to launch another study group.

Patsy Nesbit

HEISEY CLUB OF SOUTHEASTERN MASS.

By Beverly Sullivan and Helen Mead

Our first birthday was celebrated at our monthly meeting with Irene Walton, President, officiating. Much was accomplished at the meeting.

William Thran of Fall River was chosen to head the Heisey Club of Southeastern, Mass., for the ensuing year. Other officers are: Vice Pres., Philip E. Phillips of West Barnstable; Secretary, Helen Reed of Marion and Treasurer, Dottie Banck of Rockland. The club meets every third Wednesday at the home of Mr. and Mrs. Wade Banck.

Beverly Sullivan reported the plans are underway for our first All Glass Show and Sale scheduled for May 31 and June 1, 1986 at the Sheraton Sturbridge Inn, in Sturbridge, Mass.

For our birthday present the club voted to send a monetary donation to the mould fund as well as donations of articles to be sold at auction for the benefit of the mould fund.

Shirley Dunbar presented for the clubs' approval a mast head and mock-up of a newsletter which she will edit, assisted by Jackie Thran.

Helen Mead did "Show and Tell" with the finds of the members. A Rococo nappy, Kalonyal Punch bowl, etched Revere mayonnaise bowl and underplate, Yeoman diamond optic oil in Moongleam, and a Twist Cruet in Flamingo.

We adjourned for a birthday cake made by Irene Walton.

Happy New Year!

OSCAR TIME

The 1986 Oscars will soon be here, perhaps before you get this Heisey News. They are a beautiful color called Clematis much like Alexandrite, but they do not turn blue under fluorescent light. This is the tenth Oscar (plug horse). It has become sort of the mascot of our club. The price is again \$21 ea., one per member. If any are left by Convention time they will be \$24. See form on Page 23.

PATTON HOUSE ANTIQUES PHONE 703-967-1181
P. O. BOX 547 AFTER 6:00 PM
LOUISA, VA 23093 * MARKED
P & E EXTRA

- # 393 Narrow Flute Ind Cr & Sug-Mglm... \$ 45.00
- #1404 Old Sandwich Toddy, Sahara (2) Ea. 22.50
- # 515 Rose Etch 8" Plates.....(4) Ea. 18.00
- #1425 Victorian CandlesticksPr. 125.00
- #1519 Waverly Low Cov Candy-Dolphin Finial 35.00
- # 335 Prince of Wales, Plumes Tankard.... 130.00
- #1469 Ridgeleigh Oval Cov. Cigarette Box. 25.00
- # 394 N. Flute Domino Sugar Sahara..... 38.50
- # 325 Pillows Ftd Rose Bowl..... 100.00

THE GLASS LADY
RICHMOND ANTIQUE CENTER
BOOTHS 600 - 610
HULL STREET & BELT BLVD.
RICHMOND, VA 23224

PH. Shop 804-230-9239
Home 804-271-1555
HOURS: Fri: 5 - 9
Sat: 12 - 9
Sun: 12 - 7

GILBERT CLINTON * MARKED
RT. 2 BOX 532
SIKESTON, MO 63801 PH: 314-471-4758

- #1519 Waverly 8½" Salad Plate(4) Ea. \$ 6.00
- # 433 Greek Key Sherbet.....(3) Ea.* 25.00
- # 363 Colonial Sherbet.....(10) Ea.* 15.00
- # 373 Colonial Goblets (Old Wmsbg)(8) Ea.* 16.00
- 14" Torte Plate Orchid Etch..... 55.00
- Ftd Cigarette holder, Orchid Etch... 45.00
- Ice Tea Pitcher, Orchid Etch,..... 295.00
- 12 oz Tumblers, Orchid Etch.(4) Ea.. 40.00
- 10 oz Tall Goblets, Orchid Etch6 Ea. 30.00

- # 500 Octagon Ice bucket. Silver Plate Handle and tongs. Moongleam..... \$85.00
- #1425 Victoria 2½ oz Wine.....(3) Ea 23.00
- #1425 Victoria 5 oz Punch Cup.....(19) Ea 13.00
- # 394 Narrow Flute Olive tray..... 21.00
- # 394 Narrow Flute Large pitcher..... 70.00
- #1184 Yeoman Cup & Saucer, Hawthorne(6) Ea 45.00
- # 150 Banded Flute 7 oz tumbler.....(5) 19.00
- # 150 Banded Flute Pitcher..... 85.00
- ALL 503 MINUET ETCHING**
- #5010 Symphone 2½ oz Wine.....(3) Ea 70.00
- #5010 Symphone 3½ oz Cocktail.....(6) Ea 45.00
- #5010 Symphone 4 oz Claret Cocktail (5) Ea 45.00
- #5010 Symphone 6 oz Champs.....(15) Ea 37.00
- #5010 Symphone 9 oz Goblet.....(18) Ea 38.00
- #5010 Symphone 6 oz Sherbets.....(22) Ea 30.00

MOSTLY HEISEY
RHODA CURLEY
16 CLAYTON PLACE
ALBANY, NY 12209

PHONE 518-482-6272
UPS EXTRA
SASE PLEASE

Happy New Year

- #1184 Yeoman Condiment Set, 2 Cruets, S & P and Tray-EXC Gold..... \$180.00
- # 473 Narrow Flute W/Rim Stack Set 3 pcs. EXC Gold..... 78.00
- # 393 Narrow Flute French Dressing Boat and Plate-EXC Gold..... 75.00
- # 300 Peerless Spooner - EXC Gold Trim.. 40.00
- # 300 Peerless Celery - EXC Gold Trim.. 44.00
- #1252 Twist Mglm. Cruets 4 oz \$110.00/6oz 130.00
- #1503 Crystolite 13" Oval Bowl..... 47.00
- #1503 Crystolite 3 lite Candlesticks Pr.. 49.00
- #1519 Waverly Mayo and Underplate, Orch. Etch..... 85.00

THROUGHOUT 1986 ALBANY WILL BE CELEBRATING ITS 300 ANNIVERSARY. FOR A LIST OF EVENTS WRITE THE TRICENTENNIAL COMMISSION, 155 WASHINGTON AVENUE, ALVANY, NY 12210.

OUR SHOP IS WORTH A TRIP FROM ANYWHERE

WENDELL S. AVERY PH: 517-783-4075
2112 First St.
JACKSON, MI 49203

- #5072 Rose Stem, ftd. Juice, Rose Etch 6 Ea\$44.00
 - #1519 Waverly-5 Part relish, Oval, 965 Cut 64.00
 - #1401 Empress 14" platter, Oval, 447 Etch.. 48.00
 - #1509 Queen Ann ftd. mint, Orchid Etch 2 Ea 24.00
 - #5025 Tyrolean Ice Tea, Orchid Etch..... 25.00
 - #1509 Queen Ann Cup and saucer, Orchid Etch 4 Each.....43.00
 - #5067 Plantation, Blown goblet.....5 Ea..11.00
 - #1567 Plantation, 7" Plates.....5 Ea.. 9.00
 - # 310 Ring Band ftd. Cake salver, some wear.30.00
- WANTED: 1-1503 Bobeche and 4-2 3/8" long prisms with buttons.

DEALERS DIRECTORY

| |
|---|
| <p>EAGLES REST ANTIQUES China Heisey Antiques Mary Evans 62 Fieldpoint Rd. Heath, Oh. 43056 PH: (614) 522-2035</p> |
| <p>TREASURE HOUSE ANTIQUES Heisey, Cambridge Etc. 148 W. Johnstown Rd. Gahanna, Ohio 43230 Closed SUN. PH: (614) 471-2317 Daily 12-5</p> |
| <p>CRAFTS ENTERPRISES Arlene & Ed Craft 3908 Fauquier Ave. Richmond, Va. 23227 PH. (804) 262-2257</p> |



ALL HEISEY AUCTION

SAT. FEB. 1, 1986

9:30 A.M.

APPLE TREE AUCTION CENTER
1616 W. CHURCH ST.
NEWARK, OHIO

TERMS: CASH OR CHECK
GOOD FOOD & WARM BUILDING
SAM SCHNAIDT & TIM HUGHES,
AUCTIONEERS
FRANK FRYE, MANAGER
(614) 344 - 9449

WE HOPE YOU WILL START YOUR 1986 HEISEY BUYING BY ATTENDING THIS FINE SALE. INCLUDED IN THE OFFERING FOR THIS AUCTION WILL BE OVER 50 ANIMALS - SWAN, CYGNETS, ASIATIC & RINGNECK PHEASANTS, BULL, TIGER, CLYDESDALE & MANY OTHERS; AMBER ELEPHANT HANDLED MUG & CAMEL SLAG ANIMALS. WE WILL AGAIN BE FEATURING A GREAT COLLECTION OF OVER 170 PCS. OF ORCHID ETCH WITH MANY SCARCE PIECES SUCH AS CORDIALS, SHRIMP LINERS, OYSTER COCKTAILS, WINES, SHERRYS, DINNER PLATES & MANY ACCESSORY ITEMS.

"LITTLE THINGS" FEATURE OVER 20 CORDIALS, LOTS OF BAR GLASSES MANY SALTS & ALMOND DISHES. A STEM COLLECTION WITH SEVERAL RARE ONES. TABLE SETTINGS IN FLAMINGO PLEAT & PANEL & OLD SANDWICH AS WELL AS A NICE SELECTION IN CRYSTOLITE, WHIRLPOOL & ROSE ETCH. SEVERAL PCS. OF DEEP PLATE ETCH INCLS. TWO OLD FASHIONS IN CIRCUS.

WE ARE PLEASED WITH THE QUALITY & VARIETY IN THIS SALE OF ABOUT 700 LOTS. WE HOPE YOU CAN ATTEND THIS SALE BUT IF YOU ARE UNABLE TO COME, PLEASE SEND IN YOUR MAIL BIDS.

PLEASE READ COMPLETE LIST *****DOORS OPEN 1 HOUR BEFORE EACH SESSION

PLEASE NOTE THE FOLLOWING CONDITION CODES TO BETTER AID IN YOUR MAIL BIDDING:

F f - FLAKE B b - BRUISE R r - REPAIRED
C c - CRACK M m - MOLD FLAW X x - MAJOR DAMAGE

SAM SCHNAIDT & TIM HUGHES, AUCTIONEERS (614) - 344 - 9449
FRANK FRYE, MANAGER (614) - 345 - 4001

- | | | | |
|-----|---|-----|--|
| 1. | 1184 YEOMAN MNGLM COV SUGAR & CR DO H | 33. | 301 2 LT CANDELABRUM PR |
| 2. | 407 COARSE RIB COV SUGAR & CR H | 34. | 142 3 LT CANDLE PR |
| 3. | 1509 QUEEN ANN IND CR & SUGAR H | 35. | 5 1 LT CANDELABRUM PR X BOBECHÉ |
| 4. | 1519 WAVERLY CR & SUG, QUEEN ANN TRAY H | 36. | 1469 RIDGELEIGH 1 LT CANDELABRUM PR F |
| 5. | 1252 TWIST FLAM OVAL HOTEL CR & SUG H | 37. | 1488 KOHINOR 2 LT CANDELABRUM, COMPLETE |
| 6. | 355 QUATOR CR & SUG H | 38. | 1483 STANHOPE 2 LT CANDEL PR FROSTY DAWN ETCH |
| 7. | 1567 PLANTATION CR & SUGAR | 39. | 1404 OLD SANDWICH COBALT 1 LT CANDLES PR H |
| 8. | 1184 YEOMAN FLAM COV SUG & CR D O H | 40. | 1540 LARIAT 3 LT CANDLE PR |
| 9. | 500 OCTAGON SAHARA CR & SUG H c HDL | 41. | 134 2 LT CANDLE PR |
| 10. | 479 HOTEL FILAM CR & SUG H | 42. | 135 1 LT CANDLE SAHARA PR H |
| 11. | 1540 LARIAT CR & SUG H | 43. | 401 1 LT CANDELABRUM, RED STAIN PR |
| 12. | 1225 PLAIN BAND IND SUGAR | 44. | 3 LT SILVER PLTD CANDELABRUM W/EPERGNETTES PR |
| 13. | 1401 EMPRESS D F SUGAR H | 45. | 1511 TOUJOURS 2 LT CANDELABRUM |
| 14. | 1509 QUEEN ANN DF CREAM ROSALIE ETCH | 46. | 47 1 LT CANDLE H |
| 15. | 479 HOTEL CREAMER H | 47. | 135 1 LT CANDLE |
| 16. | 1201 FANDANGO CREAMER, HOTEL | 48. | 1469 RIDGELEIGH 1 LT CANDELABRUM |
| 17. | 354 WIDE FLAT PANEL MNGLM HOTEL CR H F HDL | 49. | 142 3 LT CANDLE |
| 18. | 1255 PINEAPPLE & FAN HOTEL CR, SHOWS WEAR | 50. | 1509 QUEEN ANN D F NAPPIE CANDLEHOLDER H |
| 19. | 393 NARROW FLUTE HOTEL CR, F HDL, H | 51. | 1489 PURITAN 1 LT CANDLEBLOCK MONO |
| 20. | 1485 SATURN SUG F RIM H | 52. | 113 FLAM 1 LT CANDLE |
| 21. | 1280 WING SCROLL EMERALD SUG, NO LID, FAIR GOLD | 53. | 4206 DECANTER W/GASCONY STOPPER, SILVER DEC |
| 22. | 112 FLAM 1 LT CANDLE PR F | 54. | 4036 1 QT COCKTAIL SHAKER W/ROOSTER STOPPER |
| 23. | 112 FLAM 1 LT CANDLES PR | 55. | 4054 CORONATION 1 QT COCKTAIL SHAKER, MONO |
| 24. | 112 FLAM 1 LT CANDLE, XX | 56. | 4004 IMPROMPTU 1 PT DECANTER, CLOUDY |
| 25. | 112 FLAM 1 LT CANDLES PR | 57. | 1425 VICTORIAN 27 OZ RYE BOTTLE |
| 26. | 112 MNGLM 1 LT CANDLE PR | 58. | 1401 EMPRESS MNGLM D F WATER PITCHER H, F FT |
| 27. | 112 MNGLM 1 LT CANDLE W/BOBECHÉ & PRSMS PR | 59. | 393 NARROW FLUTE WATER JUG 3 PT H f |
| 28. | 1552 4 LEAF CANDLE BLOCK PR | 60. | 3380 OLD DOMINION PITCHER MNGLM BASE & HDL D O |
| 29. | 1469 1/2 RIDGELEIGH 3 IN CANDLES PR | 61. | 1295 BEAD SWAG OPAL TANKARD, FLORAL DEC X HDL |
| 30. | 99 MNGLM 1 LT CANDLE PR m | 62. | 1225 PLAIN BAND 1/2 GAL TANKARD H |
| 31. | 1543 DAWN STAR 1 LT CANDLEBLOCK PR F | 63. | 397 COLONIAL CUPPED SCALLOP WATER JUG H |
| 32. | 1469 RIDGELEIGH 2 IN CANDLES PR | 64. | 433 GREEK KEY QT TANKARD H, X |

PAID ADVERTISEMENT

| | | | |
|------|--|-------|---|
| 65. | 3380 OLD DOMINION FLAM 3 PT PITCHER D O | 138. | 1567 PLANTATION 3 SEC RELISH H |
| 66. | 341 PURITAN LRG PITCHER H, XXX | 139. | 411 RIB & PANEL HAWTHORNE 6 IN CHEESE PLATE H |
| 67. | COLONIAL 6 IN VASE FLARED, H | 140. | 1229 OCTAGON SAHARA 6 IN HDL CHEESE PLATE D O |
| 68. | 1558 6 1/2 IN VASE H | 141. | 1229 OCTAGON FLAM 6 IN BON BON D O |
| 69. | 1626 DAWN 8 IN VASE H | 142. | 1541 ATHENA BON BON |
| 70. | 1401 EMPRESS SAHARA D F VASE OLD COLONY ETCH H | 143. | 1509 QUEEN ANN COV LEMON DISH H |
| 71. | 1519 WAVERLY 3 1/2 IN VIOLET VASE H | 144. | 393 NARROW FLUTE 5 IN COV LEMON DISH H |
| 72. | 1469 RIDGELEIGH IND VASE #1 h | 145. | 393 NARROW FLUTE BANANA SPLIT DISH H |
| 73. | 300 PEERLESS 12 IN VASE CLOUDY | 146. | 1229 OCTAGON SAHARA HDL JELLY D O |
| 74. | COLONIAL VASE, PROB. NOT HEISEY | 147. | 1229 OCTAGON FLAM 2 HDL JELLY |
| 75. | 300 PEERLESS 23 IN TALL VASE H | 148. | 1229 OCTAGON HAWTHORNE 2 HDL JELLY |
| 76. | 4205 FLAM 8 IN VASE D O | 149. | 350 PIN WHEEL & FAN PUFF BOX, NO LID, H |
| 77. | 4157 MNGLM 5 1/2 IN ROSE BOWL D O | 150. | 1183 YEOMAN FLAM COV POWDER W/INSERT H |
| 78. | 4085 KOHINOR 7 IN BALL VASE S O | 151. | 1280 WING SCROLL EMERALD TRINKET BOX SOUV 1910 |
| 79. | 4045 9 IN BALL VASE W O | 152. | 393 NARROW FLUTE IND ALMOND |
| 80. | 5015 9 IN URN VASE f | 153. | 393 NARROW FLUTE IND ALMOND |
| 81. | 1540 LARIAT FAN VASE RED STAIN | 154. | 473 NARROW FLT W/RIM IND NUT H |
| 82. | 1428 WARWICK 9 IN CORNUCOPIA VASE PR H | 155. | 1540 LARIAT IND NUT 2 |
| 83. | 353 8 IN VASE CUT H | 156. | 1401 EMPRESS SAHARA D F IND NUT H 2 |
| 84. | 1413 CATHEDRAL MNGLM VASE, STRAIGHT H | 157. | 1401 EMPRESS ALEXANDRITE D F NUT H |
| 85. | 3359 PLATEAU FLAM GOB 2 D O | 158. | 1469 RIDGELEIGH IND JELLY OVAL H 4 |
| 86. | 5072 ROSE STEM GOB 5 H | 159. | 1469 1/2 RIDGELEIGH IND NUT H 4 |
| 87. | 3357 KING ARTHUR GOB 3 H | 160. | 393 NARROW FLT HAWTHORNE IND ALMOND H |
| 88. | 4091 KIMBERLY GOB VIRGINIA CUT 3 | 161. | 1252 TWIST MNGLM IND NUT H |
| 89. | 3440 PORTSMOUTH FLAM GOB D O 2 | 162. | 473 NARROW FLT W/RIM IND SALTED NUT H 2 |
| 90. | 3408 JAMESTOWN GOB 5 | 163. | 473 NARROW FLT W/RIM IND SALTED NUT H |
| 91. | 5009 QUEEN ANN GOB EVERGLADE CUT 3 | 164. | 473 NARROW FLT W/RIM MNGLM IND SALTED NUT H DTD |
| 92. | 3411 MONTE CRISTO GOB WAKIKI CUT 4 | 165. | 473 NARROW FLT W/RIM MNGLM IND SALTED NUT H |
| 93. | 413 RIB & PANEL GOB 2 | 166. | 1571 IND LEAF NUT |
| 94. | 3408 JAMESTOWN GOB BARCELONA CUT 2 | 167. | 341 PURITAN TABLE SALT SUN COLORED, M |
| 95. | 3389 DUQUESNE SAHARA GOB 2 | 168. | 341 PURITAN IND SALT 4, 1f, 1 m |
| 96. | 3357 KING ARTHUR GOB MNGLM STEM 2 H | 169. | 1201 FANDANGO IND SALT |
| 97. | 300 PEERLESS GOB 6 H | 170. | 1205 FANCY LOOP IND SALT |
| 98. | 393 NARROW FLUTE GOB 8 H | 171. | 1183 REVERE IND TUB SALT 3, H, 1 CUT, SOME f |
| 99. | 1469 RIDGELEIGH GOB 6 | 172. | 331 COLONIAL PANEL IND SALT 3 SOMF f |
| 100. | 1469 RIDGELEIGH COCKTAIL 6 H | 173. | 1255 PINEAPPLE & FAN #2 SALT & PEPPER, f TOPS |
| 101. | 1469 RIDGELEIGH PARFAIT 6 H | 174. | 49 FLAM D O SALT & PEPPER, 1 CLOUDY |
| 102. | 1469 RIDGELEIGH OLD FASHION 5 H | 175. | 49 FLAM D O SALT & PEPPER, CLOUDY |
| 103. | 4004 IMPROMPTU GOB 2 | 176. | 49 FLAM D O SALT SHAKER X CLOUDY |
| 104. | 407 COARSE RIB COV MUSTARD H | 177. | 27 SALT & PEPPER H METAL TOPS WORN |
| 105. | 1205 FANCY LOOP COV MUSTARD | 178. | 1401 EMPRESS SALT & PEPPER GLASS TOPS OLD COL. ETCH |
| 106. | 352 FLAT PANEL 5 OZ LAVENDAR JAR H | 179. | 1295 BEAD SWAG OPAL DEC. SALT & PEPPER X, NEW TOPS |
| 107. | 1567 PLANTATION TALL COV CANDY | 180. | 52 SALT & PEPPER H 1f glass tops |
| 108. | 1540 LARIAT COV CANDY | 181. | 1404 OLD SANDWICH IND ASH TRAY 3 |
| 109. | 353 COLONIAL SOAP DISH NO LID H | 182. | 1404 OLD SANDWICH COBALT IND ASH TRAY H m |
| 110. | 1201 FANDANGO TALL COMPOTE M | 183. | 352 FLAT PANEL ICE CREAM CONE HOLDER 4 IN H |
| 111. | 3368 ALBEMARLE 7 IN COMPORT H | 184. | TOY HORSEHEAD WHIMSEY 2, SUN COLORED |
| 112. | 3380 OLD DOMINION 7 IN COMPORT D O H | 185. | 1225 PLAIN BAND 4 IN NAPPY |
| 113. | 1519 WAVERLY 7 IN FTD OVAL COMPORT H | 186. | 1295 BEAD SWAG CUSTARD 4 IN NAPPY, SOUV |
| 114. | 1252 TWIST MNGLM FTD MAYO | 187. | 4080 FINGER BOWL ZIRCON S O |
| 115. | 1252 TWIST FLAM FTD MAYO | 188. | 1495 FERN 5 IN WHIPPED CREAM BOWL |
| 116. | 1184 YEOMAN MNGLM FTD 4 IN COMPOTE D O | 189. | 1469 RIDGELEIGH 5 IN MAYO ON METAL PLATE |
| 117. | 1447 ROCOCO FTD CHEESE ROSALIE ETCH H | 190. | 3350 WABASH GOB PIED PIPER ETCH 2 |
| 118. | 300 1/2 COLONIAL 6 IN JELLY LO FT | 191. | 3350 WABASH GOB PIED PIPER ETCH H |
| 119. | 1519 WAVERLY 6 IN FTD CHEESE | 192. | 3350 WABASH HDL FTD ICE TEA PIED PIPER ETCH 3 H 2f |
| 120. | 1229 OCTAGON FTD MAYO CUT | 193. | 3350 WABASH 12 OZ SODA PIED PIPER ETCH 2 |
| 121. | 1229 OCTAGON MNGLM FTD MAYO D O | 194. | 3350 WABASH 10 OZ FTD TUMBLER PIED PIPER ETCH 3 1x |
| 122. | 351 COLONIAL 6 IN 2 HDL JELLY H X HDL | 195. | 3350 WABASH 6 OZ SHERBET PIED PIPER ETCH 2 |
| 123. | 1509 QUEEN ANN 6 IN D F MINT | 196. | 3366 TROJAN HAWTHORNE SAU CHAMP 8 H |
| 124. | 1401 EMPRESS SAHARA 6 IN D F MINT H | 197. | 3365 RAMS HORN SAU CHAMP 4 NICE CUTTING |
| 125. | 1401 EMPRESS MNGLM FTD JELLIES 2 NO HDLS H | 198. | 3404 SPANISH COBALT SAU CHAMP m |
| 126. | 1469 RIDGELEIGH DIV HDL JELLY | 198A. | 3404 SPANISH COBALT SAU CHAMP 3 |
| 127. | 411 RIB & PANEL HAWTHORNE 5 IN 2 HDL NAPPIE H | 199. | 5010 SYMPHONE SAU CHAMP MINUET ETCH |
| 128. | 1519 WAVERLY JELLY FROM SEAHORSE BOWL | 200. | 5010 SYMPHONE SAU CHAMP DANISH PRINCESS CUT rep. |
| 129. | 1183 REVERE 7 IN CHOW CHOW 2, H CUT | 201. | 3365 RAMS HORN SAU CHAMP SEA NYMPH ETCH H |
| 130. | 1541 ATHENA 7 1/2 IN SHALLOW NAPPIE | 202. | 5078 PARK AVENUE SAU CHAMP H |
| 131. | 1541 ATHENA 7 1/2 IN SHALLOW NAPPIE | 203. | 1405 IPSWICH SAHARA SAU CHAMP H |
| 132. | 1540 LARIAT 3 SEC. RELISH H F | 204. | 5024 OXFORD SAU CHAMP MARYLAND CUT H |
| 133. | 1469 RIDGELEIGH 3 SEC RELISH | 205. | 3408 JAMESTOWN SAU CHAMP 2 |
| 134. | 1495 FERN 3 SEC RELISH | 206. | 3312 GAYOSO FLAM SAU CHAMP D O |
| 135. | 1503 CRYSTOLITE BOAT SHAPE RELISH H | 207. | 3355 FAIRACRE SHERBET D O H |
| 136. | 393 NARROW FLUTE 12 IN RELISH H | 208. | 433 GREEK KEY SHERBET H |
| 137. | 1466 STAR RELISH NORMANDIE ETCH | 209. | 3357 KING ARTHUR SHERBET MNGLM STEM/FT D O 2 H |

PAID ADVERTISEMENT

| | | | |
|-------|--|-------|---|
| 210. | 3355 FAIRACRE SHERBET MNGLM STEM/FT D O 2 H | 281. | OSCAR PLUG HORSE m |
| 211. | 3390 CARCASSONNE SAU CHAMP ALEXANDRITE BOWL H | 282. | OSCAR PLUG HORSE |
| 212. | 3333 OLD GLORY SHERBET SPRINGTIME ETCH 2 H | 283. | SEALYHAM TERRIER (SCOTTY) |
| 213. | 411 TUDOR SHERBET 3, 1 H | 284. | SEALYHAM TERRIER (SCOTTY)m, f base |
| 214. | 419 SUSSEX SHERBET FLAM BOWL H | 285. | SEALYHAM TERRIER (SCOTTY) M |
| 215. | 1227 MAHARG SHERBET N O 2 H | 286. | COLT KICKING |
| 216. | 5019 WAVERLY SAU CHAMP 7, 1X | 287. | COLT REARING m, F BASE |
| 217. | 4004 IMPROMPTU SHERBET 3 | 288. | COLT STANDING |
| 218. | 10 OAK LEAF COASTER FLAM 4 | 289. | FISH BOOKEND |
| 219. | 1540 LARIAT COASTER 10 | 290. | FISH BOOKEND |
| 220. | 352 FLAT PANEL MATCH STAND ASHTRAY, METAL BOAT H f | 291. | MALLARD WINGS UP H |
| 221. | 1521 QUILT COV CIG BOX SEVERAL F | 292. | MALLARD WINGS UP H |
| 222. | 1496 MAHABAR (CRYSTOLITE) SAHARA COV CIG BOX H | 293. | RABBIT PAPERWEIGHT, NOT POLISHED ON BOTTOM, m |
| 223. | 1469 RIDGELEIGH 4 IN COV CIG BOX H | 294. | SPARROW |
| 224. | 1469 RIDGELEIGH 2 1/2 IN SQ ASH TRAY 4 H | 295. | SPARROW SUN COLORED |
| 225. | 1469 RIDGELEIGH 6 IN SQ ASH TRAY 2 | 296. | SPARROW |
| 226. | 1469 RIDGELEIGH 3 IN SQ CIG HOLDER | 297. | FISH BOWL M |
| 227. | 1469 RIDGELEIGH 3 IN RD CIG HOLDER SUN COLORED | 298. | HORSEHEAD BOOKEND FROSTED m |
| 228. | 1489 PURITAN 6 IN SQ ASH TRAY F | 299. | GOOSE WINGS DOWN |
| 229. | 359 ASH TRAY & MATCH STAND | 300. | GOOSE WINGS HALF m |
| 230. | 1536 MILITARY CAP ASH TRAY MONO W T 1941 | 301. | GOOSE WINGS HALF M |
| 231. | 1469 RIDGELEIGH 3 IN RD ASH TRAY H F | 302. | GOOSE WINGS UP |
| 232. | 356 ASH TRAY & MATCH STAND H | 303. | GOOSE WINGS UP m |
| 233. | 1509 QUEEN ANN HDL FTD MINT H ROSE ETCH H | 304. | GOOSE WINGS UP |
| 234. | 1519 WAVERLY 14 IN RD TRAY H ROSE ETCH X | 305. | SWAN m |
| 235. | 1509 QUEEN ANN 8 IN PLATE H ROSE ETCH SUN COLORED | 306. | CYGNET |
| 236. | 1519 IND CR/SUG & 1509 TRAY ALL H ROSE ETCH | 307. | CYGNET H |
| 237. | 1519 WAVERLY IND CR & SUG H ROSE ETCH | 308. | LARGE ELEPHANT, rep |
| 238. | 1519 WAVERLY 101/2 IN RD SERVICE PLATE H ROSE ETCH | 309. | MIDDLE ELEPHANT H |
| 239. | 5072 ROSE STEM H ROSE ETCH FTD ICE TEA 2 FAINT H | 310. | SMALL ELEPHANT |
| 240. | 5072 ROSE STEM H ROSE ETCH FTD ICE TEA 2 H | 311. | CLYDESDALE HORSE |
| 241. | 5072 ROSE STEM H ROSE ETCH GOBLET 2 1f | 312. | CLYDESDALE HORSE f |
| 242. | 5072 ROSE STEM H ROSE ETCH GOBLET 2 H | 313. | ASIATIC PHEASANT H |
| 243. | 5072 ROSE STEM H ROSE ETCH SAU CHAMP 2 H | 314. | ASIATIC PHEASANT H |
| 244. | 5072 ROSE STEM H ROSE ETCH SAU CHAMP H | 315. | ASIATIC PHEASANT |
| 245. | 5072 ROSE STEM H ROSE ETCH SHERBET 2 1H | 316. | ASIATIC PHEASANT |
| 246. | 5072 ROSE STEM H ROSE ETCH SHERBET 2 H | 317. | ASIATIC PHEASANT H |
| 247. | 5072 ROSE STEM H ROSE ETCH COCKTAIL 2 | 318. | RING NECK PHEASANT |
| 248. | 5072 ROSE STEM H ROSE ETCH COCKTAIL | 319. | RING NECK PHEASANT |
| 249. | 5072 ROSE STEM H ROSE ETCH WINE H | 320. | RING NECK PHEASANT |
| 249A. | 5072 ROSE STEM H ROSE ETCH WINE XXX | 321. | RING NECK PHEASANT |
| 250. | 142 3 LT CANDLESTICK H ROSE ETCH F | 322. | RING NECK PHEASANT |
| 251. | 1428 WARWICK 9 IN VASE 2 H | 323. | RING NECK PHEASANT |
| 252. | 1428 WARWICK FLORAL BOWL H | 324. | TIGER PAPERWEIGHT |
| 253. | 1503 CRYSTOLITE NUT SET 9 PCS/1 5 IN/8 3 IN LEAF | 325. | BULL H, m |
| 254. | 1503 CRYSTOLITE 5 SEC RD RELISH ON LRG METAL TRAY | 326. | FIGHTING ROOSTER, NOT POLISHED ON BOTTOM |
| 255. | 1503 CRYSTOLITE 13 IN RD TRAY H | 327. | FIGHTING ROOSTER, M |
| 256. | 1503 CRYSTOLITE 2 LT CANDLEHOLDERS PR | 328. | FIGHTING ROOSTER |
| 257. | 1503 CRYSTOLITE 6 IN JELLY COMPOTE H | 329. | ROOSTER VASE |
| 258. | 1428 WARWICK 5 IN VASE 2 H | 330. | ROOSTER VASE |
| 259. | 1503 CRYSTOLITE 5 1/2 IN FTD CHEESE | 331. | COLT KICKING NO TAIL |
| 260. | 1503 CRYSTOLITE 4 IN COV CIG BOX H | 332. | OSCAR SPARK PLUG NO TAIL |
| 261. | 1503 CRYSTOLITE 3 IN SQ ASH TRAY 3 H, 1F | 333. | SEALYHAM TERRIER (SCOTTY) NO TAIL |
| 262. | 1503 CRYSTOLITE 5 IN COV CIG BOX H | 333A. | IMPERIAL SOUV SPARKIE 1977 |
| 263. | 1503 CRYSTOLITE 4 IN DEEP NAPPIE H ? | 334. | IMPERIAL SOUV SPARKIE 1978 |
| 264. | 1503 CRYSTOLITE 7 IN RD COV CANDY H | 335. | IMPERIAL SOUV SPARKIE 1978 |
| 264A. | 1503 CRYSTOLITE 13 IN RD FLORAL BOWL | 336. | IMPERIAL SOUV SPARKIE 1979 |
| 265. | 1503 CRYSTOLITE 6 IN COV PRESERVE 2 HDL | 337. | IMPERIAL SOUV SPARKIE 1979 |
| 266. | 1503 CRYSTOLITE 6 IN RD VASE H | 338. | IMPERIAL SOUV SPARKIE 1979 FROSTED |
| 267. | 1503 CRYSTOLITE IND LEAF NUT 2 | 339. | IMPERIAL SOUV SPARKIE 1978 FROSTED |
| 268. | 1503 CRYSTOLITE 4 SEC LEAF RELISH | 340. | IMPERIAL SOUV SPARKIE 1980 |
| 269. | 1503 CRYSTOLITE 12 IN 3 SEC OVAL TRAY H | 341. | IMPERIAL SOUV SPARKIE 1980 |
| 270. | 1503 CRYSTOLITE 8 IN OVAL CHEESE PLATE HDLD H | 342. | IMPERIAL SOUV SPARKIE 1981 |
| 271. | 1503 CRYSTOLITE 3 IN ASH TRAY X & 5 IN NAPPIE H | 343. | IMPERIAL SOUV SPARKIE 1981 |
| 272. | 5003 CRYSTOLITE GOBLET 2, 1H | 344. | IMPERIAL SOUV SPARKIE 1982 |
| 273. | 5003 CRYSTOLITE SHERBET 2 | 345. | IMPERIAL SOUV SPARKIE 1982 |
| 274. | 5003 CRYSTOLITE SHERBET 5 | 346. | IMPERIAL SOUV SPARKIE 1983 |
| 275. | 5003 CRYSTOLITE WINE 2 | 347. | IMPERIAL SOUV SPARKIE 1983 |
| 276. | CRYSTOLITE TYPE COV CANDY CONTAINER & SPOON | 348. | IMPERIAL SOUV SPARKIE 1983 FROSTED |
| 277. | FISH CANDLESTICK F | 349. | IMPERIAL SOUV SPARKIE 1984 |
| 278. | WOODDUCKLING FLOATING M | 350. | IMPERIAL SOUV SPARKIE 1984 |
| 279. | BUNNIE HEAD UP FROSTED H | 351. | IMPERIAL SOUV SPARKIE 1985 |
| 280. | OSCAR PLUG HORSE f | 352. | IMPERIAL CARAMEL SLAG AIREDALE TERRIER |

PAID ADVERTISEMENT

495. 3355 FAIRACRE GOB MNGLM STEM H
496. 3390 CARCASSONNE GOB ALEXANDRITE BOWL H
497. 3386 DIAMOND ROSE GOB MNGLM BOWL D O H F
498. 451 CROSSED LINED FLUTE GOB
499. 4044 NEW ERA GOB
500. 3440 PORTSMOUTH FLAM GOB REP
501. 1055 ASTOR HI BALL
502. 341 OLD WMSBRG 4 OZ CRUET H
503. 1184 YEOMAN MNGLM 2 OZ CRUET H
504. 1184 YEOMAN FLAM 2 OZ CRUET H
505. 1569 PLANTATION CRUET H
506. 1404 OLD SAND 2 OZ CRUET H CLOUDY, WRONG STOPPER
507. 300 PEERLESS 5 OZ SYRUP METAL TOP X
508. 372 MOONGLEAM SYRUP 7 OZ
509. GENTLEMANS FAVOR VASE X
510. 459 BASKET 7 IN DIAM CUT H
511. 500 OCTAGON MARIGOLD ICE BUCKET H
512. 393 NARROW FLUTE HOTEL ICE TUB H
513. 310 RING BAND CUSTARD/ROSE DEC COV BUTTER H M
514. 339 CONTINENTIAL COV BUTTER H m
515. 1280 WING SCROLL EMERALD W/GOLD 4 PC TABLE SET COMI
516. 2 SALAD FORK & SPOON H
517. 1219 BROOKVILLE HDL FTD PUNCH CUP H
518. 1567 PLANTATION PUNCH CUPS 6 H
519. COLONIAL PUNCH CUPS 4 H (LIKE WMSBRG)
520. COLONIAL PUNCH CUP H FLARED
521. 1235 BEADED PANEL & SUNBURST PUNCH CUP H
522. 300 PEERLESS PUNCH CUP H
523. 1425 VICTORIAN PUNCH CUP H
524. 8 PUNCH LADLE
525. 1235 BEADED PANEL & SUNBURST PUNCH BOWL & BASE H X
526. 48 EPERGNE 25 IN TALL H F
527. 1506 PROVINCIAL 3 LT CANDLEHOLDERS PR f
528. 1506 PROVINCIAL PUNCH CUPS 12 H SOME f
529. 1506 PROVINCIAL GOBLET 7
530. 1506 PROVINCIAL JUICE 6 H
531. 1506 PROVINCIAL COASTER 4
532. 1506 PROVINCIAL 8 IN PLATE & 8 IN FTD CHEESE H
533. 1506 PROVINCIAL 14 IN CENTERPIECE BOWL & PLATE H
534. 1506 PROVINCIAL FTD COV CANDY
535. 1506 PROVINCIAL 3 HDL COV CANDY
535A. 1506 PROVINCIAL CR & SUG H
536. 1469 RIDGELEIGH 1 OZ BAR 8 H
537. 3481 GLENFORD MNGLM FT 2 1/2 OZ BAR D O 3
538. 3481 GLENFORD MNGLM FT 2 1/2 OZ BAR D O 4
539. 4052 NATIONAL 1 OZ BAR TALLY HO ETCH
540. 2357 1 OZ BAR ZODIAC ETCH W O
541. 1404 OLD SANDWICH SAHARA 1 OZ BAR H
542. TRIPLE BAND BAR GLASS
543. 2351 2 1/2 OZ BAR, SOUV NEWARK, OHIO 10/4/18
544. 1469 RIDGELEIGH 1 OZ BAR H
545. 2052 1 OZ BAR
546. 417 DOUBLE RIB & PANEL 1 OZ BAR 2 H
547. 1425 VICTORIAN 2 OZ BAR 3 H
548. 1184 YEOMAN MNGLM AFTER DINNER CUP H
549. 352 FLAT PANEL TOOTHPICK f
550. 351 PRISCILLA TOOTHPICK SILVER DEC H
551. 1295 BEAD SWAG TOOTHPICK RED STAIN SOUV CLARA 1902
552. 310 RING BAND CUSTARD TOOTHPICK SOUV REP
553. 300 PEERLESS TOOTHPICK
554. 351 PRISCILLA TOOTHPICK H
555. 315 PANELLED CANE TOOTHPICK GOLD DEC H
556. 1220 PUNTY BAND CUSTARD TOY CREAMER SOUV H
557. 393 NARROW FLUTE IND CREAM H
558. WHIMSEY CANDLE SOCKET TOOPICKS, 1 MNGLM, 2 FLAM
559. WHIMSEY GIRL HEAD STOPPER PAPERWEIGHT
560. 1404 OLD SANDWICH 6 IN FTD COMPOTE H
561. 1404 OLD SANDWICH 14 OZ BEER MUG H
562. 1404 OLD SANDWICH 12 OZ CREAMER H
563. 1404 OLD SANDWICH 1/2 GAL PITCHER H
564. 1404 OLD SANDWICH 12 OZ SODA 4 H
565. 1404 OLD SANDWICH 8 OZ TUMBLER 4 H
566. 1404 OLD SANDWICH CUP SAUCERS 4 SETS H
567. 1404 OLD SANDWICH PARFAIT 4 H
568. 1404 OLD SANDWICH CREAM SUGAR H
569. 1404 OLD SANDWICH 8 IN PLATES 4 H
570. 1404 OLD SANDWICH 7 IN PLATES 4 H
571. 1404 OLD SANDWICH SHERBET 4 FAINT H
572. 1184 YEOMAN SAHARA CUPS 3 H, 3 YELLOW FOSTORIA SAUS
573. 1401 EMPRESS FLAM CUPS/SAUCERS 3 SETS H
574. 1184 YEOMAN FLAM CUPS/SAUCERS 2 SETS H
575. 1401 EMPRESS SAHARA CUP/SAUCER CHINTZ ETCH H
576. 3355 FAIRACRE FLAM PARFAITS D O 4 H
577. 3408 JAMESTOWN FTD JC SHEFFIELD CUT 4
578. 1540 LARIAT COCKTAIL CUT 6
579. 5079 PAN AMERICAN COCKTAIL 4 H
580. 5079 PAN AMERICAN COCKTAIL H
581. 3350 WABASH MNGLM STEM/FT COCKTAIL H
582. 5086 PLANTATION IVY COCKTAIL H
583. 3408 JAMESTOWN COCKTAIL 2, 1 H
584. 3365 RAMS HORN COCKTAIL, NICE CUTTING 3
585. UNIVERSAL? CREME DE MINT 4
586. 4083 STANHOPE 4 OZ CLARET 4
587. 3411 MONTE CRISTO 2 1/2 OZ WINE CUT
588. 3408 JAMESTOWN WINE SHEFFIELD CUT 8 H
589. 3381 CREOLE WINE SAHARA BOWL
590. 3333 OLD GLORY 2 OZ WINE H
591. 3404 SPANISH WINE TITANIA ETCH
592. 393 NARROW FLUTE WINE H
593. 3311 VELVEDERE SHERRY TATTING ETCH
594. 3318 WALDORF COCKTAIL CLEOPATRA ETCH
595. 359 COLONIAL 1 1/2 OZ WINE H
596. 4225 COBEL 1 QT COCKTAIL SHAKER SPORTSMAN ETCH
597. 4002 AQUA CALIENTE 4 OZ COCKTAIL SPTS MAN ETCH 2
598. 4002 AQUA CALIENTE 4 OZ COCKTAIL SKIER ETCH
599. 4163 BEER MUG 12 OZ CLUB DRINKING SCENE H
600. 2401 12 OZ SODA FOX CHASE ETCH
601. 2401 7 OZ SODA LANCASTER ETCH
602. 2401 OLD FASHION 474 CLOWNS ETCH
603. 2401 OLD FASHION 475 ELEPHANT ETCH
604. AMBER 11 IN EXPERIMENTAL BENT GLASS PLATE X
605. 1238 BEEHIVE 8 IN PLATE FLAM F
606. 1238 BEEHIVE 5 IN PLATE FLAMINGO 6
607. 1519 WAVERLY 7 IN PLATES 6
608. 1404 OLD SANDWICH SAHARA 8 IN PLATES 6 H
609. 1469 RIDGELEIGH SQ 8 IN PLATES 5 H
610. 1184 YEOMAN 8 IN PLATES SHEFFIELD CUT 8
611. 1184 YEOMAN SAHARA 8 IN PLATES D O 7
612. 1401 EMPRESS ALEXANDRITE 8 IN SQ PLATE H
613. 1401 EMPRESS COBALT 8 IN SQ PLATES 3 H
614. 1401 EMPRESS 10 1/2 IN SQ PLATE LAFAYETTE ETCH H
615. 1509 QUEEN ANN 8 IN RD PLATES MINUET ETCH 7
616. 1401 EMPRESS 8 IN RD PLATES 8 H
617. 1401 EMPRESS SAHARA 8 IN RD PLATES 7 H
618. 1504 LARIAT COLOGNE OR OIL BOTTLE
619. 1504 LARIAT COLOGNE OR OIL BOTTLE X BOTTOM
620. 1540 LARIAT COLOGNE OR OIL BOTTLE
621. 487 COLOGNE PINK & GOLD DEC. H f
622. 486 COLOGNE WINE & GOLD DEC. H
623. 486 COLOGNE GOLD STAIN H
624. 485 COLOGNE 1 OZ BUTTERFLY DEC. H
625. 485 COLOGNE 1 OZ SILVER DEC. WORN, H
626. 489 COLOGNE 2 OZ H
627. 489 COLOGNE 2 OZ HEISEY STICKER, REP DAUBER
628. 485 COLOGNE 1 OZ WINDSOR CUT H
629. 5010 SYMPHONY ICE TEA MINUET ETCH
630. 5052 SUEZ ICE TEA 2 H
631. 5052 SUEZ ICE TEA WHEAT CUT H
632. 4044 NEW ERA SODA COBALT BOWL
633. 4083 STANHOPE ICE TEA SWINGTIME ETCH
634. 5052 SUEZ ICE TEA AMBER STEM H
635. 3390 CARCASSONNE ICE TEA ALEXANDRITE BOWL
636. 1170 PLEAT & PANEL FLAM 7 IN PLATE H
637. 1170 PLEAT & PANEL FLAM 8 IN PLATE 8 H
638. 1170 PLEAT & PANEL FLAM 6 IN PLATE 11 H
639. 1170 PLEAT & PANEL FLAM 10 CUPS/9 SAU. H

| | | | |
|-------|--|------|---|
| 639A. | 1170 PLEAT & PANEL FLAM CUPS 3 H | 685. | 632 LODESTAR DAWN 12 IN FLORAL BOWL H |
| 640. | 1170 PLEAT & PANEL FLAM LUNCHEON GOB 8 | 686. | VERLYS 14 IN CONSOLE BOWL POPPIES |
| 641. | 1170 PLEAT & PANEL FLAM SHERBET 6 | 687. | 1498 BOAT DISH |
| 642. | 1170 PLEAT & PANEL FLAM SHERBET 2 H | 688. | 1404 OLD SANDWICH SAHARA OVAL FLORAL BOWL H |
| 643. | 1170 PLEAT & PANEL FLAM CHAMPAGNE H | 689. | 341 PURITAN ? 8 IN NAPPIE |
| 644. | 1170 PLEAT & PANEL FLAM TUMBLER 7 H | 690. | 12 SALAD BOWL & UNDER PLATE |
| 645. | 1170 PLEAT & PANEL FLAM CR & COV SUG H F ON SUG HI | 691. | 1776 KAYLONAL 8 1/2 IN NAPPIE H |
| 646. | 1229 OCTAGON MARIGOLD 15 IN HDL TRAY D O | 692. | 1184 YEOMAN 7 IN FLAM PLATE D O |
| 647. | 1252 TWIST MNGLM HDL 12 IN SANDWICH PLATE H | 693. | 1401 EMPRESS CONDIMENT TRAY ROSALIE ETCH C |
| 648. | 353 MED FLAT PANEL 10 IN RD TRAY H | 694. | COLONIAL CONDIMENT TRAY H F |
| 649. | 1183 REVERE 14 IN SAND. PL. WATER LILY CARV/SOUV | 695. | IMPERIAL SOUV PLATES 1971, 1972 |
| 650. | 1509 QUEEN ANN 15 IN SAND. PLATE | 696. | IMPERIAL SOUV PLATES, 5, 1972 - 1976 |
| 651. | 1183 10 IN CENTER HDL SAND TRAY H | 697. | RED STAIN BRANDY MARKED A H HEISEY & CO |
| 652. | 1540 LARIAT 13 IN TORTE PLATE | 698. | 1401 EMPRESS FLAM IND CR & SUG H |
| 653. | 1519 WAVERLY CENTER HDL SAND TRAY | 699. | 1519 WAVERLY IND CR & SUG |
| 654. | 7000 SUNFLOWER 15 IN TORTE PLATE | 700. | BLOWN WINE, WINDSOR CUT F |
| 655. | 1509 QUEEN ANN 12 IN HDL SAND PLATE H | 701. | 1540 LARIAT HURRICANE HDLD CANDLEHOLDERS |
| 656. | 1252 TWIST 1952 SESQUI PLATTER | 702. | 1485 SATURN 5 IN MAYO BOWL FAINT H |
| 657. | 1184 YEOMAN FLAM OYSTER COCKTAIL D O 12 | 703. | 1186 YEOMAN MNGLM ASH TRAY, CUPID & PSYCHE |
| 658. | 1567 PLANTATION CIG HOLDER | | ADDITIONS TO LIST |
| 659. | 3380 OLD DOMINION OYSTER COCKTAIL EMPRESS ETCH | 105A | 393 NARROW FLUTE COV MARMALADE, DECOR H |
| 660. | 3404 SPANISH OYSTER COCKTAIL SPRINGTIME ETCH 2 | 107A | 465 RECESSED PANEL 1# COV CANDY DECOR H |
| 661. | 5022 GRACEFUL OYSTER COCKTAIL CUT 4 | 110A | 160 LOCKET ON CHAIN LRG COMPOTE |
| 662. | 1228 RINGLING EGG CUP H DISCOLORED | 177A | 1235 BEADED PANEL & SUNBURST SALT SHAKER |
| 663. | 4044 NEW ERA OYSTER COCKTAIL VENUS CUT | 177B | 305 PUNTY & DIA PT PERFUME BOTTLE |
| 664. | 3350 WABASH OYSTER COCKTAIL PIED PIPER ETCH | 238A | 5072 ROSE STEM H ROSE ETCH ICE TEA 9,1H,1F |
| 665. | 1252 TWIST MARIGOLD FTD SODA H | 246A | 5072 ROSE STEM H ROSE ETCH SHERB 3 H, 1 F |
| 666. | 3397 GASCONY 14 OZ SODA AMBASSADOR ETCH | 453A | 1519 WAVERLY 2 LT CANDLES PR ORCHID ETCH |
| 667. | 1425 VICTORIAN 14 OZ SODA H | 505A | 1567 PLANTATION CRUET H |
| 668. | 337 TOURAINE AMBER 12 SODA NO H m | 505B | 7037 COLONIAL CRUET H |
| 669. | 310 RING BAND CUSTARD TUMBLER ROSE DEC H F | 505C | 5031 VINEGAR & OIL BOTTLE |
| 670. | 1220 PUNTY BAND SOUV MUG RED STAIN H | 538A | 3390 CARCASSONNE COBALT WINE 6 |
| 671. | 3359 PLATEAU FLAM 9 OZ SODA D O 2 F | 595A | 4225 COBEL 2 QT COCKTAIL SHAKER FOX CHASE |
| 672. | 2930 10 OZ TUMBLER FRONTENAC ETCH W O | 595B | 4225 COBEL 1 QT COCKTAIL SHAKER FOX CHASE |
| 673. | 1417 ARCH SAHARA TUMBLER | 598A | 4002 AQUA CALIENTE COCKTAIL 5 FOX CHASE |
| 674. | 7000 SUNFLOWER 1 LT CANDLES PR | 598B | 4002 AQUA CALIENTE COCKTAIL 8 TALLY HO |
| 675. | 7000 SUNFLOWER 12 IN FLORAL BOWL H | 598C | 5 OZ SODA D O, B & O R R CREST |
| 676. | 1472 PARALLEL QUARTER 1 LITE CANDLES ETCHED 3 | 603A | 2052 1 1/2 OZ BAR TALLY HO 2 |
| 677. | 1472 PARALLEL QUARTER 11 IN FLORAL BOWL | 611A | 1183 REVERE COBALT 8 IN PLATE |
| 678. | 134 TRIDENT MNGLM 2 LT CANDLEHOLDERS PR | 611B | 1540 LARIAT PLATES 7 IN 16 |
| 679. | 1401 EMPRESS MNGLM 11 IN D F FLORAL BOWL | 669A | 1220 PUNTY BAND CUSTARD TUMBLER H f |
| 680. | 1401 EMPRESS SAHARA 10 IN D F FLORAL BOWL | 682A | 365 QUEEN ANN 10 IN NAPPY H |
| 681. | 1401 EMPRESS 11 IN D F FLORAL BOWL, NICE CUTTING | 696A | H C A SOUV DECANTER |
| 682. | 1509 QUEEN ANN 11 IN D F FLORAL BOWL MINUET ETCH | 696B | H C A SOUV CLARET 2, 1975 & 1976 |
| 683. | 1567 PLANTATION 12 IN FLARED BOWL IVY ETCH F | 696C | H C A SOUV CORDIAL 1978 |
| 684. | 1252 TWIST MNGLM 12 IN RD FLORAL BOWL H | | |

MAIL BIDS ACCEPTED WITH CHECKS FOR MAXIMUM AMOUNT. MAIL BIDS ARE HANDLED COMPETITIVELY AND ANY DIFFERENCE REFUNDED. CONDITION OF ITEMS FOR MAIL BIDS HANDLED AT THE DISCRETION OF AUCTIONEER. ITEMS HAVE BEEN CHECKED AT THE TIME OF CATALOGING TO THE BEST OF OUR ABILITY. THEY WILL BE CHECKED AGAIN CLOSELY PRIOR TO SELLING. IN SOME CASES WHERE DAMAGE IS FOUND TO BE MINIMAL, WE MAY EXECUTE YOUR BID UP TO 70% TO 80% OF MAXIMUM. MARK YOUR LIST MINT ONLY IF YOU DO NOT WANT US TO USE OUR DISCRETION IN EXECUTING YOUR BIDS. MOLD FLAWS ARE NOT CONSIDERED DAMAGE. PLEASE BID IN INCREMENTS OF AT LEAST \$2.50. EXAMPLE DO NOT BID 11.00 OR 26.00, AS BIDDING IS GOING LIKE 25.00 - 27.50 - 30.00. IT IS NO LONGER POSSIBLE TO ACCEPT BIDS LIKE "IF I DON'T GET ONE ITEM ADD IT ON TO ANOTHER". WE ARE NOW HANDLING IN EXCESS OF 600 + BIDS PER AUCTION. WHEN COMPLICATIONS ARE THROWN IN SOMETIMES WE MISS A BID. ANY BID OF 5.00 OR LESS WILL BE USED AS AN OPENING BID. IN CASE OF IDENTICAL BIDS, EARLIEST POSTMARK WILL BE USED. YOU CAN HELP US TO HELP YOU. WE ENJOY HANDLING YOUR MAIL BIDS. IF YOU HAVE ANY QUESTIONS - DON'T HESITATE TO CALL US. PLEASE ADD 9.00 PER CARTON FOR POSTAGE AND HANDLING, 11.00 WEST OF ROCKY MOUNTAINS.

CHECKS SHOULD BE MADE TO: APPLE TREE AUCTION CENTER
1616 WEST CHURCH STREET
NEWARK, OHIO 43055

LIST OF PRICES REALIZED AVAILABLE AFTER AUCTION FOR \$1.00.

1 YR. SUBSCRIPTION FOR PRICES REALIZED OF HEISEY AUCTIONS OF 1986 - \$5.00.

PAID ADVERTISEMENT

WILLEY'S ANTIQUES
 HAROLD E. & MILDRED M. WILLEY
 PH. 614-828-2557
 11110 CANNON RD.
 FRAZEYSBURG, OH 43822



*Dear Heisey Collector and Dealer,
 We're heading your way! Heisey animals,
 lovely old patterns, and a rainbow of colors, will
 be coming along with us.
 We'll be at the following shows.*



| | | |
|----------------|---------------------------------------|--------------------|
| JAN 3, 4, 5 | HOWARD JOHNSON CIVIC CENTER | SPRINGFIELD, MO |
| JAN 10, 11, 12 | WILL ROGERS COLISEUM CARTER | FT. WORTH, TX |
| JAN 17, 18, 19 | EDUCATION BLDG - FAIRGROUNDS | TULSA, OK |
| JAN 24, 25, 26 | MUNICIPAL BUILDING | SAN ANTONIO, TX |
| FEB 7, 8, 9 | MUNICIPAL AUDITORIUM | AUSTIN TX |
| FEB 14, 15, 16 | SAN ANGELO CONVENTION CENTER | SAN ANGELO, TX |
| FEB 21, 22, 23 | MOODY CIVIC CENTER | GALVESTON, TX |
| MAR 1, 2 | ST. BERNARD PARRISH & CULTURAL CENTER | CHALMETTE, LA |
| MAR 15, 16 | ARMORY PLACE | SILVER SPRINGS, MD |

**Mildred and Harold Willey
 To Help Start Heisey Study Clubs.**

The Willeys would like to help organize Heisey Glass study clubs in some of the cities where they will be doing shows. They will have the necessary information to form Chartered study clubs. Please contact them at any of the above shows

Classified Ads

WANTED: Buying Caprice blue or Rosepoint by Cambridge, Rose or Orchid by Heisey, American, June, Fairfax, Versailles, Trojan, etc., by Fostoria and Depression Glass in crystal or colored. NADINE PANKOW, 207 S. Oakwood, Willow Springs, IL 60480 PH 312-839-5231.

FOR SALE: 6 - Heisey 1 oz Cordials #3408 Jamestown stems with #497 Rosalie etch. \$125.00 each. TONI WANGEROW, 10530 Chaney, Downey CA 90241 PH: 213-923-6633

WANTED: Items in #160 Locket on Chain, crystal or colors. JIM KENNON, PO Box 251, Amherst, OH 44001.

14th ANNUAL

**STARLIGHT
 FLEA MARKET AND MINI SHOW
 at**

Starlight School
 116 N. 22nd. Street
 NEWARK, OHIO

MARCH 9, 1986
 9:00 A.M. - 4:00 P.M.

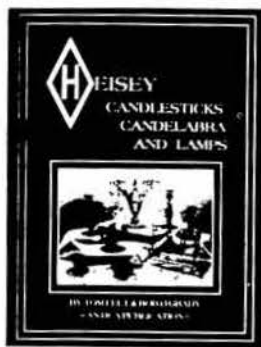
Donation-\$1.00
 Benefit- Starlight School & H.C.A.

Sponsor-Land of Legend Heisey Club

Antiques Dealer Information:
 Heisey Glass Call:(614) 366-5163
 Pottery Dick Smith
 Crafts

SOMETHING FOR EVERYONE

| | | |
|---|--|---|
| <p>A.W. PARKER Heisey & Pattern Glass Shows or Appointment Magalia, CA 95954 PH: (916) 873-2326</p> | <p>"HAPPINESS IS" THE STULTZ'S Show and Mail - Elegant Glass Circa 1890-1960 3106 Warren Court Glen Allen, VA 23060 PH: (804) 262-1273 (Richmond Area)</p> | <p>Your Ad Could Be Here!</p> |
| <p>A DOOR ANTIQUES Heisey My Specialty 4241 Bayard Road South Euclid, OH 44121 PH: (216) 381-3008</p> | <p>GERT'S GLASS Heisey & Duncan Gertrude & Russell Swetnam 1926 Saratoga Dr., Adelphi, MD 20783 PH: (301) 434-5113</p> | <p>MOSTLY HEISEY Rhoda Curley 16 Clayton Place Albany, NY 12209 By Appointment, PH: (518) 482-6272</p> |
| <p>ALL HEISEY AUCTION Consignments Welcome Apple Tree Auction Center 1616 W. Church, Newark, OH 43055 PH: (614) 344-9449</p> | <p>GLASS 'N' GLASS Virginia & Odell Johnson 6909 10th Ave. West Bradenton, FL 33529 PH: (813) 792-0604</p> | <p>MOUND BUILDERS ANTIQUES Heisey & Animals, General Antiques Irene Rauck 1138 Moundview, Newark, OH 43055 PH: (614) 344-6043</p> |
| <p>ANN'S GIFTS & ANTIQUES 105 W. Main St., Hebron, OH 43025 Intersection of Rts. 40 & 79 Next door to Daisy Queen Daily 10:30 to 5:30</p> | <p>GLASS WITH CLASS Lenore A Shelley, GGHC 1336 Lincoln Avenue San Jose, CA 95125 PH: (408) 286-8098</p> | <p>PATTON HOUSE Heisey & Duncan Miller Rocky's Mail, I-81 & US 11 Weyer's Cave, VA 24486 PH: (703) 967-1181</p> |
| <p>ANTIQUES - THE SHULTZES 206-208 East Main St. Newmanstown, PA 17073 15 Miles West of Reading, PA PH: (215) 589-2819</p> | <p>GREEN ACRES FARMS Antiques, Crystal Glass & Collectibles 2678 Hazelton-Erna Rd., SW (S.R. 310-NI) Pataskala, OH 43062 Sat. or Sun, PM or call (614) 927-1882</p> | <p>R & L ANTIQUES - SAN FRANCISCO Shows only - always lots of Heisey Member of Golden Gate Heisey Club P.O. Box 3614, Daly City, CA 94015 PH: (415) 621-6693</p> |
| <p>AVERY'S QUALITY ANTIQUES Specializing in Heisey Shows or by Appointment 2112 First St., Jackson, MI 49203 PH: (517) 783-4075</p> | <p>H & R DIAMOND H Helen & Robert Rarey 1450 White Ash Dr. Columbus, OH 43204 PH: (614) 279-0390 after 5:30</p> | <p>RAMBLING LANE ANTIQUES Featuring Heisey & other fine glass Keith & Evelyn Hoover 1978 Rambling Lane, Rhinelander, WI 54501 PH: (715) 282-5019</p> |
| <p>B & B HEISEY & COLLECTIBLES B. Whaley 300 International Dr. Pataskala, OH, 43062 By Appointment: PH: (614) 927-1557</p> | <p>CHARLOTTE'S GLASS REFLECTIONS Quality Glassware Specializing in Fostoria 6816 14th St. W., Bradenton, FL 33507 PH: (813) 756-4143</p> | <p>RAY ZIEGLER Glass Repair 185 County Line Westerville, OH 43081 PH: (614) 891-9700</p> |
| <p>C.E. HIGGINS (S.F. Bay Area) Shows and Mail Order P.O. Box 2723 Menlo Park, CA 94025 PH: (415) 322-0192 Evenings</p> | <p>HARRALSON'S HAPPY HEISEY HUNTERS Ours & Others - Many Choice Items L SASE - New List - Jan. 1 - May 1 - Sept. 1 We accept consignments & buy collections. 1426 W. Highland, Springfield, MO 65807 PH: (417) 883-2449</p> | <p>SCHWAN'S ANTIQUES SHOPS & SHOWS 2980 John Tyler Hwy. Williamsburg, VA 23185 PH: (804) 229-7873</p> |
| <p>C & J ANTIQUES Cole & Jean Miesner Box 45, 72 Whig St. Newark Valley, NY 13811 PH: (607) 642-9905</p> | <p>HARRISON'S ANTIQUES Heisey, Cambridge, Duncan Shows, Mail, by Appointment 26 Johnston's Lane, Mercersburg, PA 17236 PH: (717) 328-2451</p> | <p>SUM OF LIFE Elaine & Frank Husted P.O. Box 102 Phoenixville, PA 19460 PH: (215) 935-2962</p> |
| <p>CHARLES & MILDRED FISHER Heisey, Degenhart, Imperial, Antiques, Collectibles, General Line 991 Idlewilde, Newark, OH 43055 PH: (614) 522-5398</p> | <p>SPARKLING ANTIQUES Arlene I. Reynolds - owner Heisey & Custard Glass 5 Wayside Circle, Pittsford, NY PH: (716) 381-4134</p> | <p>ETTELMAN'S DISCONTINUED CHINA & CRYSTAL HEISEY a SPECIALTY P.O. Box 6491 HN Corpus Christi, TX 78411 PH: (512) 888-8391 Include SASE</p> |
| <p>DAVE'S ANTIQUES Specializing in Heisey Shows & Appointments Tampa, FL 33600 PH: (813) 876-0580</p> | <p>HEISEY PUBLICATIONS Heisey Books I-III-IV Newscaster Back Issues \$4.00 1977 thru 1984 Box 102, Plymouth, OH 44865</p> | <p>THE GLASS CONNECTION Specializing in Heisey Shows & Mail Order Box 526, Collegeville, PA 19426 PH: (215) 489-0139</p> |
| <p>DIAMOND H PLUS Mail Orders & Shows George & Eileen Schamel Rt. 3, Box 171, Boonsboro, MD 21713 PH: (301) 432-6285</p> | <p>J. & R. COLLECTIBLES Shows, SASE, Mail Order list June & Ray Lukasko P.O. Box 1030, Newark, OH 43055 PH: (614) 344-9719</p> | <p>THE GLASS LADY Week-Ends Only Glass, Pottery, China Circle Shopping Center, Richmond, VA 23224 SHOP (804) 320-9239 HOME (804) 271-1555</p> |
| <p>ELLIZABETH BASSETT CASON 401 32nd St., W. Bradenton, FL 33505 Mail Order - List PH: (813) 748-0851</p> | <p>THE PURPLE PLACE Featuring Heisey & Other Fine Glass Martha & Harold Earp 1940 Suwanee, Ft. Myers, FL 33901 PH: (813) 936-1572 Anytime</p> | <p>WILLEY'S ANTIQUES & MUSEUM Specializing in Heisey 11110 Cannon Rd., Frazeyburg, OH 43822 16 miles east of Newark, OH PH: (614) 828-2557</p> |
| <p>FOREVER HEISEY Shows and Mail Order Janice Thran 1663 Londondale Pkwy., Newark, OH 43055 PH: (614) 344-5955</p> | <p>JUDY'S DIAMOND H ANTIQUES Heisey Glass - Lake Isabella, CA HC 1, Box 3001 Weldon, CA. 93283 PH: (619) 378-2176 by Appt.</p> | <p>GOLDSBERRY'S ANTIQUES Heisey a Specialty Shows only - Buy & Sell Kalamazoo, MI 49000 PH: (616) 381-3013</p> |
| <p>DIE KUNST GALLERIËS & ANTIQUES Specializing in Heisey Vel & Andy Andress Box 329, 725 Front Street Leavenworth, WA 98826 PH: (509) 548-7856</p> | <p>PEGGY'S ANTIQUES Ernie & Peggy Cox P.O. Box 367, Spavinaw, OK 74366 By Appointment or Chance PH: (918) 589-2859</p> | <p>THE WOODEN SHOE Antiques & Collectibles Jim & Sheri VanEs by Appt. 810 Elden, Herndon, VA 22070 PH: (703) 435-9045</p> |



Heisey Candlesticks, Candelabra and Lamps

By Tom Felt and Bob O'Grady. 436 pages. 391 illustrations, including 277 photographs (24 in full color) and 37 line drawings. Hardbound (8 3/4" x 11 1/2") **\$24.95**

"May be the finest book ever published about any type of American glassware."—The Daze

Candlesticks, candelabra and lamps played an important part among the many items of tableware produced by Heisey between 1896 and 1957. Ranging from toy candlesticks, less than two inches tall, to massive candelabra almost three feet in height, more than 300 different candlesticks and candelabra are illustrated and described in this definitive book. Also included are the many kerosene lamps, hurricane lamps, electric lamps and other lighting devices made by Heisey.

Full information on each is given, including dates of production, colors in which the piece was made, whether it was later reissued by the Imperial Glass Corporation, and much more. In addition, a history of each of the major patterns is provided, placing the candlesticks from that pattern in the larger context of the development of design over the years. Information is provided for the beginning collector as well as the advanced one.

Further supplemental data is provided in five appendices, and the book contains an extensive glossary, bibliography and indexes.

*"This important new book adds immense lustre to the status of Heisey glass"—
The Journal (Washington, D.C.)*

Also available:

Price trends for Heisey Candlesticks, Candelabra and Lamps. 12 pages. Paperbound (5 1/2" x 8 1/2") **\$2.50**



Heisey's Orchid Etching

By Neila Bredehoft. 24 pages. Illustrated. Includes price guide. Paperbound (5 1/2" x 8 1/2") **\$4.95**

A complete history of Heisey's most popular etching, a favorite with brides from 1940 to 1957, when the factory closed, and from 1957 to 1962 on selected pieces produced by the Imperial Glass Corporation. Today, equally popular among collectors who have made this etching one of the most avidly sought after examples of American glassware.

This booklet includes an exhaustive listing of over 230 pieces known to have been offered with this etching, with production dates for each. More than 130 individual items are illustrated in line drawings and reproductions of original advertising materials. A complete reference for the Orchid collector and an invaluable aid for the general antique dealer.

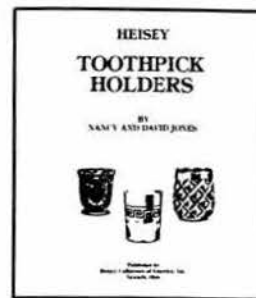


Heisey Rose

By Neila Bredehoft. 24 pages. Illustrated. Includes price guide. Paperbound (5 1/2" x 8 1/2") **\$4.95**

Like its companion volume on Heisey's Orchid etching, this booklet is a detailed survey of one of the most successful of Heisey's decorations in the late years of the factory. First offered to the public in 1949, this etching immediately caught the interest of the American public, and it has remained a popular favorite ever since.

With over 70 line drawings and many illustrations from early advertisements, as well as complete production dates for the 114 items known to have been offered with this etching, this booklet will delight the serious collector and beginner alike.

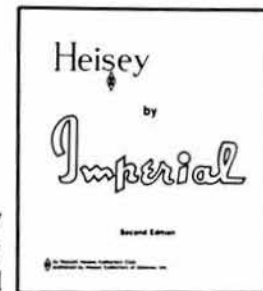


Heisey Toothpick Holders

By Nancy and David Jones. 57 pages. 64 illustrations. Includes price and rarity guide. Paperbound (5 1/2" x 8 1/2") **\$4.95**

A book for all collectors of toothpick holders, as well as for the Heisey enthusiast. Each of the Heisey toothpick holders, in all 33 patterns, is pictured along with identifying data, dates and much additional information.

The book also includes a section on confusing or deceptive items with line drawings and reproductions from early catalogs.



Heisey by Imperial

Second edition. By the Newark Heisey Collectors Club. 36 pages. Illustrated. Includes color chart and price trends. Paperbound (8 1/2" x 11") **\$6.95**

When A. H. Heisey & Company went out of business in 1957, the molds and other assets of the company were purchased by the Imperial Glass Corporation of Bellaire, Ohio. In the years since then, pieces made in the Heisey molds by Imperial have become collectible in their own right. With the closing of Imperial in 1984 and the acquisition of the molds by the HCA, interest has grown greater than ever before.

This book lists and illustrates more than 270 pieces made by Imperial, including 7 full page reproductions from original Imperial catalogs. Production dates and colors are given for each item. A separate color chart pictures 56 different pieces in 26 of Imperial's most popular production colors.

This book is a must for the Heisey collector as well as the collector of Heisey by Imperial.

Convention dates for 1986 are June 19, 20, 21, 22

The Sheraton Inn will be our Convention headquarters and they have given a special rate for all HCA members. All activities will be held there with the exception of the Show, Display and Flea Market on the Square. The museum is nearby. Make your reservations early as all rooms will be gone by early March, judging from past experience.

The rates are shown below. King and Queen sizes have steam baths. No additional charges for children under 18. No advance deposit is required. There is a \$4.00 charge per night for a rollaway bed.

Make Your Reservations Now.

SHERATON INN RESERVATION REQUEST

NAME _____

ADDRESS _____

CITY _____ STATE _____ ZIP _____

PHONE _____

ARRIVE _____

DEPART _____

Please make your reservation by clipping the attached form.

MAIL TO: ROBERT McCLAIN
156 W. SHIELDS STREET
NEWARK, OHIO 43055
PH: (614) 345-8061

All rooms have two double beds.

Single room requested (one person).....\$37.00

Double room requested (two people).....\$42.00

King or Queen size requested (one person)...\$40.00

King or Queen size requested (two people)...\$45.00

Rollaway bed.....\$ 4.00

10TH ANNUAL SOUVENIR OSCAR FORM

PLEASE READ VERY CAREFULLY BEFORE FILLING OUT

The Oscars are "Clematis" (similar to Alexandrite), are made by Viking, marked HCA 86



They will be offered to members only for \$21 prior to Convention. If any are left by June 19 they will be offered to the general public for \$24 each.

You may order ONE per member. This means ANY member who has a membership card regardless of class of membership. Please list all names as they WILL be checked. Everyone living in Ohio ordering for pick-up in Ohio, must pay \$1.26 Sales Tax per Oscar. Shipping charges will be \$1.50. The Oscars will be shipped as soon as orders are received.

DO NOT SEND DUES, BOOK ORDERS, ETC. WITH YOUR OSCAR ORDER.

Please keep this part for a reference and clip and mail the form below the line. Be sure your dues are currently paid. This is the 10th of a series of souvenir Oscars.

Number of OSCARS at \$21.00 _____ Only one per member

Sales Tax \$1.26 each _____ All Ohio Residents and Pick-Ups in Newark

Postage \$1.50 each _____ Check one: Please mail my Oscar(s)

TOTAL SENT WITH ORDER..... _____ I will pick up my Oscar(s) at Convention or Museum after the Convention. Circle One.

MAY PICK UP AT THE MUSEUM ANYTIME.

NO PHONE ORDERS

NAME(s) _____

LIST ALL NAMES _____

ADDRESS _____ CITY _____ STATE _____ ZIP _____

Make check payable to HCA, INC. and mail to:

HCA OSCAR SALES
P.O. BOX 27
NEWARK, OH 43055

CREDIT CARD NUMBER

MASTER CARD _____

VISA EXPIRATION DATE REQUIRED Mo. _____ Year _____



GGHCC
PROUDLY PRESENTS
Its Fifth Annual
Antique and Collectable
ALL GLASS, CHINA and POTTERY
SHOW AND SALE

1986

March 1, Sat. 10 a.m. to 6 p.m.
March 2, Sun. 10 a.m. to 4 p.m.

San Mateo County Fairgrounds

Oak Hall • ADMISSION 2.50
with this ad 2.00

FOR THE BENEFIT OF THE HEISEY MUSEUM
NEWARK, OHIO

GGHCC: P.O. Box 3614, Daly City, Ca 94015

415-621-6693

THE NATIONAL CAPITAL HEISEY COLLECTORS CLUB
Presents the Fourteenth Annual
"ALL-HEISEY GLASS SHOW AND SALE"
For the benefit of the Heisey Museum

SUN, MAR 16, 1986
11 AM to 5 PM
ARMORY PLACE Silver Spring, MD
DOOR PRIZE

SAT. MAR 15, 1986
11 AM to 8 PM
Wayne & Fenton Silver Spring, MD

HEISEY GLASS IDENTIFICATION - 1 to 3 PM, each day - Certificate of authenticity from HCA - small fee for each item.

Admission \$2.00 With This Ad \$1.50



ESTABLISHED 1971

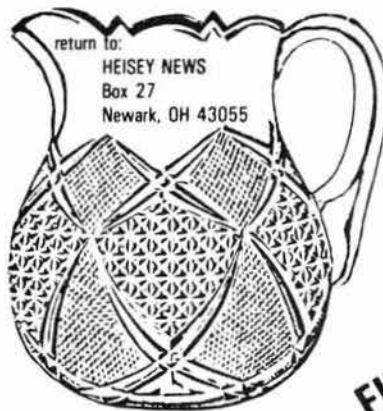
The GLASS REVIEW Magazine is for everyone who studies, collects or sells glass. Whether your glass interests lean toward the early 1900's - or the depression era - or with today's limited glass items, the GLASS REVIEW covers it all!

Articles - price reports - original catalog documentation - shop directory - research and reproduction news - trademark information - glass book releases - what's new on the market - a large variety of glass ads (on both old and new glass) - plus much more.

Enclose payment and mail to:
GLASS REVIEW,
P.O. BOX 542, MARIETTA, OH 45750

**NOW 12 ISSUES
PER YEAR!**

\$14.50 - one year



return to:
HEISEY NEWS
Box 27
Newark, OH 43055

FIRST CLASS MAIL
U.S. POSTAGE
PAID
PERMIT 741
Mt. Vernon, OH 43050

FIRST-CLASS MAIL