

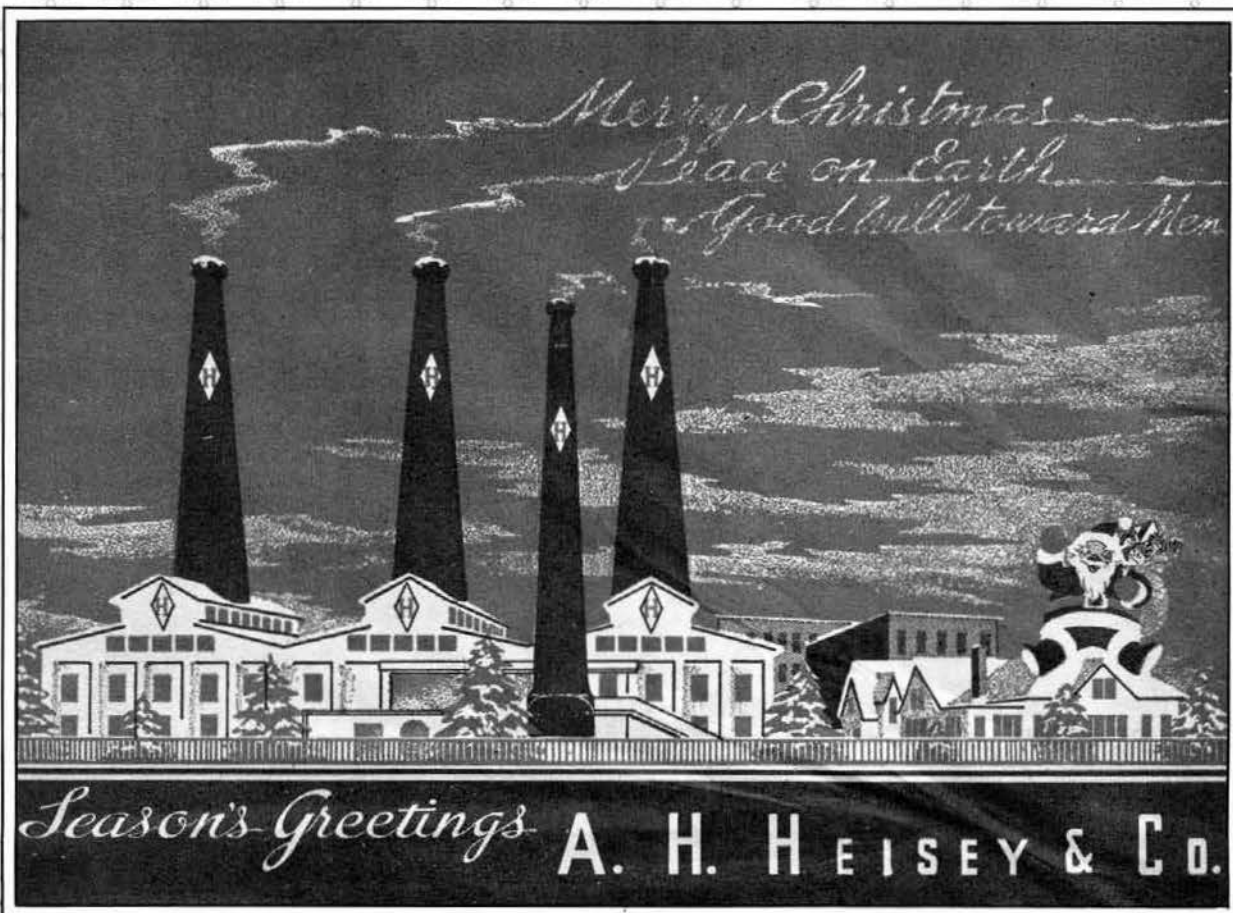
HEISEY news

OFFICIAL PUBLICATION HEISEY COLLECTORS OF AMERICA

©Heisey Collectors of America, Inc.
All Rights Reserved 1985

VOLUME XIV NO. 12

DECEMBER 1985 ISSN 0731-8014



*This is a copy of an original
Heisey Christmas card.*

HEISEY NEWS

P.O. BOX 27, NEWARK, OH 43055

CLUB OFFICERS:

President	—	George Schamel	—	301-432-6285
Vice President	—	Bob McClain	—	614-345-8061
Secretary	—	Liz Stickle	—	614-323-2250
Treasurer	—	Ray Ziegler	—	614-471-6446
Exec. Dir.	—	Louise Ream	—	614-345-2932

Editor: Louise Ream

P.O. Box 27, Newark, OH 43055
PH: 614-345-2932

Assistant Editor: Neila Bredehoft

P.O. Box 27, Newark, OH 43055
PH: 614-345-2932

Published monthly and printed in Mt. Vernon, Ohio

\$15.00 per year - \$1.25 per copy

Back Issues - Each Volume (12 issues) year - \$9.00.

Volume V, VIII, IX, X, XI, XII & XIII

Heisey Collectors of America, Inc. is a non-profit corporation with tax exempt status. Owners and operators of National Heisey Glass Museum, 6th and Church Streets, Newark, Ohio.

Open daily 1-4 p.m. except holidays. Other hours by appointment. Members admitted free.

Club membership (includes 12 issues of HEISEY NEWS and participation in all club activities) \$15.00 per year plus \$2.50 for each additional family member in same household who wishes a membership card. For VOTING MEMBERSHIP, add \$25.00 one time only fee.

When requesting information, please enclose a self-addressed, stamped envelope (SASE).

ADVERTISING Send all ads to:

Advertising, c/o Janice Thran
P.O. Box 27, Newark, OH 43055

DOUBLE SPACE ALL ADS.

RATES:

DEALER'S DIRECTORY - Maximum five (5) lines - \$20.00. Change during year \$2.00 per line. CLASSIFIED - 12-1/word - \$1.20 minimum. Abbreviations and initials count as words.

DISPLAY:	MEMBERS	NON-MEMBERS
1/8 pg. (9 items)	\$15.00	\$25.00
1/4 pg. (20 items)	24.00	35.00
1/2 pg. (20 items)	40.00	50.00
1/2 pg. (50 items) Vertical	50.00	60.00
1 pg. (50 items)	65.00	80.00

Extra lines will be billed at \$1.00 per line. Personal ads limited to 1/8 space.

ALL ADS MUST BE PREPAID. Ad copy must be received by the 5th of the month preceding the publication date - i.e. April 5th for May issue. Ads containing reproductions will not knowingly be accepted unless clearly stated (i.e. Heisey by Imperial, etc.). HEISEY NEWS assumes no responsibility for false advertising or misleading information. In the event of typographical error, the incorrect portion of the ad will be run in the following issue, but HEISEY NEWS assumes no further liability.

The opinions expressed in articles in HEISEY NEWS are those of the authors and not necessarily those of the organization. The Editorial Staff reserves the right to edit or refuse any material submitted for publication. When requesting information, please enclose a self addressed stamped envelope. (SASE).

Fostoria Glass reintroduces Old Williamsburg line

BY DENISE GALLAGHER

MOUNDSVILLE, W. Va. — Fostoria Glass is strengthening its casual stemware business by reintroducing Old Williamsburg, a pattern that once ranked as the number one bridal pattern in casual stemware. In addition, the firm is introducing coordinating giftware. The company is currently producing the Old Williamsburg stemware and giftware, and it expects the line to be shipped this January.

The traditionally styled colored glassware design, initially produced by Imperial Glass until the firm closed over a year ago, will now be marketed by Fostoria

From a recent glass trade magazine.



Glass.

The pattern, according to Fostoria's vice president, David Dalzell Jr., is a perfect fit for Fostoria's casual stemware program. "Old Williamsburg offers us an opportunity to expand our casual stemware lines," he explained. "Over the past few years we have built four colored casual glassware to about 50 percent of our business. Our traditional Virginia pattern climbed to the number one spot when Old Williamsburg was discontinued, and Monet, the contemporary look we introduced two years ago, (has been) making strong inroads in the bridal market. With the addition of Old Williamsburg, we now have



a broader assortment and can appeal to several segments of the market."

Reintroducing Old Williamsburg is Fostoria's response to the increased demand from retailers for another everyday traditional colored glass line. When the Old Williamsburg molds were available, Fostoria made the decision to add the stemware pattern to the line.

Although there are fewer traditional colored patterns available, Dalzell noted, "This styling does not conflict with any of our other patterns, and it will add two new colors to our line, ultrablue and nutmeg."

The five giftware items in this pattern are a footed cake plate, pitcher, candy box, candles and a bowl. The stemware retails at \$12.50 a stem, while the average retail for the giftware is \$20.





FROM THE EXECUTIVE DIRECTOR

Merry Christmas and Happy New Year to all HCA members from east to west, north to south! May Santa bring you everything you want - including lots of Heisey.

This has been a wonderful year for HCA with the acquisition of the 4000 plus Heisey moulds, hundreds of etching plates (at least 75 new etchings), 1000's of mould drawings with many unknowns identified, and much more.

Added to all of the above, the purchase of a warehouse to store the moulds which also allowed us to give up the mini-storage we had been renting to store a lot of things from the museum. The payments on the warehouse are much cheaper than the total rent on the other two warehouses.

It has been extremely gratifying to have retired members from several states spend a lot of time here working at the old warehouse to get the moulds ready to move to the new one. This involved putting them on the proper pallets and also tagging every mould. They really look great on the donated pallets, placed on the donated metal racks, using the loaned or donated tow motors. It is rather awe-inspiring to see. Only real dedication was responsible for all this being done so soon.

Much is left to be done and this work will probably not begin for awhile. Volunteers will again be needed. This will involve further positive identification, including a file system for locating moulds. Each has already been tagged and put on a numbered pallet. Lists are being typed of the items on each pallet, from the lists made at the time they were being prepared to move. Numbers of items were already permanently on the moulds which helped a lot. Material has also been donated for preservation of the moulds.

When it was learned that most of these moulds were actually usable, it became more important than ever that we had purchased them. Otherwise you would be seeing Heisey patterns coming from here, there and everywhere. This way, unless a maverick mould or two escaped us, Williamsburg will be the only pattern being made. (See more about this elsewhere in this issue).

It would bother me, and I am sure it would bother most of you to have new glass being made in the moulds and not being marked in any way, or with the use of the mark of the company who had owned the moulds. I have heard of both Westmoreland and Imperial's marks being in new glass. Summit Art Glass doesn't mark its new glass except for the little dot on "Caprice", as far as I know.

Members of HCA certainly showed the officers and directors that you wanted to save these moulds, by your generosity. The majority of you, who have responded, have indicated that you want all of the moulds kept and that limited items should be made to help support the museum.

If you are a long-time member of HCA you know that this was the first time we have ever asked for substantial amounts of money for any purpose and you

have already given almost beyond our expectations. As Norm says, on page 23 of this issue, we still need over \$30,000 to pay off the loan which we got in March.. Isn't it hard to believe that all the rest of the \$229,150 was given in a little more than a year and the largest part of it since January of this year.

With everyone's cooperation in donating \$15 or \$20 we could still pay off the debt this year. Everyone benefits by HCA's ownership of the moulds-collectors, dealers, investors or anyone who owns any Heisey at all. Local residents are preserving part of the heritage of Licking County and Newark in particular. It is important to all of these, that we know where the moulds are.

No glass club has ever done anything which even remotely comes close to this accomplishment and all HCA members should be proud of that. As Norma Gorsuch suggested in her letter in October, give the mould fund a gift for Christmas. What else can ever be this important to us in the future?

Be sure to read the articles about the moulds and the making of glass at Heisey. Also Tom's articles on new knowledge.

The orders have been coming in well since we printed the list again last month. Did you see the Blue Madonnas listed as item 40? This is a new item and we have very few crystal ones left from our purchase of all Imperial had when they went into bankruptcy. Crystal ones will never be made again and we had hoped that you would like the blue ones. The items made for the mould fund are on the bottom of page 22 in the last issue. These are nice also and are an easy way to help the fund.

Watch next issue for the form for your 1986 Oscar. This will be made by Viking.

For your Christmas giving, patronize our advertisers and our gift shop.

From Norm



IN MEMORIAM

Norman Thran of Fall River, Mass. died in late September. He was the father of Norman Thran of Newark, an HCA board member and of William Thran, Fall River, Mass., member of Southeastern, Mass. Club. Norman is survived by his wife, Elizabeth, also a HCA member. Our belated heartfelt sympathy to the Thran family.

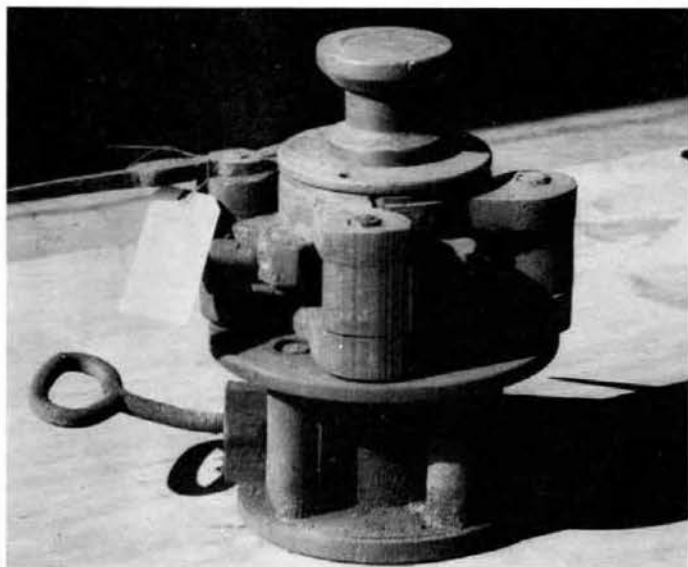


1986 CONVENTION
JUNE 19, 20, 21, 22
Plan your vacation now.

NOTES FROM YOUR PRESIDENT.....

Another month has rapidly passed and it is News Letter time again. October has not been as busy as the past few months have been. Most of us who have worked moving the moulds have been catching our breaths, deciding what to do next. One of the next things is to attempt to (accurately I hope) acquaint the membership with the glass moulds that we own. The photographs were taken by Tom Bredehoff. I wrote most of the text assisted by Tom and the man who runs the mould shop at the Viking Glass Company of New Martinsville, West Virginia. None of the above should be held responsible for mistakes or inaccuracies. Blame the typewriter.

#1. The first photo is of a complete mould. This particular mould would make an Old Sandwich sherbet and shows all the parts, to be described more fully. It consists of (Top to Bottom) the PLUNGER, RING, POSSIBLY A SHELL, THE MOULD BODY, KEY, BOTTOM PLATE and PUSH UP (VALVE BOX).

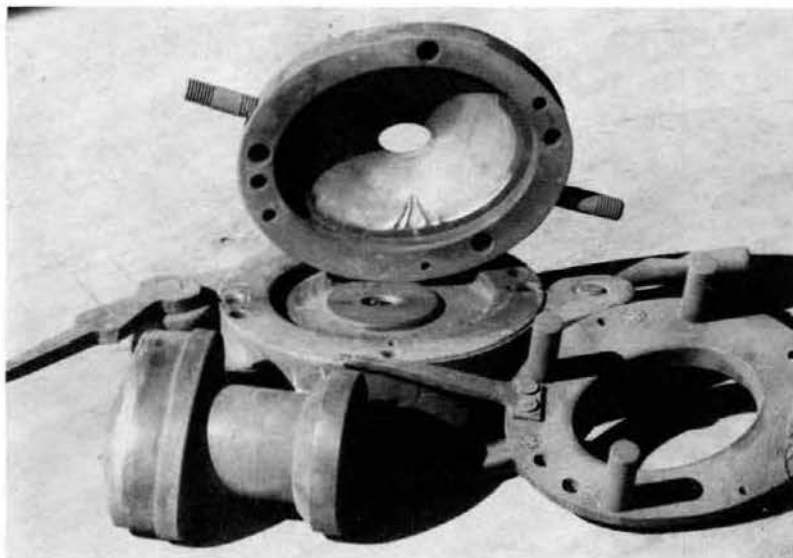


#3. RING. Fits inside the top of the MOULD BODY and centers the PLUNGER as it moves into the MOULD BODY. Sometimes the RING has part of the pattern on the lower side - - this is the top edge of the piece of glass, such as the beads on the rim of WAVERLY. The Ring limits the height of the piece of glass.



#4. SHELL. The SHELL is used on some pieces that have a foot or finial and the piece is SEAMLESS (The lid of the PLANTATION CANDY JAR) the Pineapple has a seam - the lid does not. Like the RING and PLUNGER, the SHELL is one piece (not hinged) and has a hole in the center through which the foot or finial is lifted after pressing. The SHELL has two metal pins that center and hold it to the hinged mould (called a Marie) that forms the foot or finial. The picture is the #1401 Empress Candy box lid.

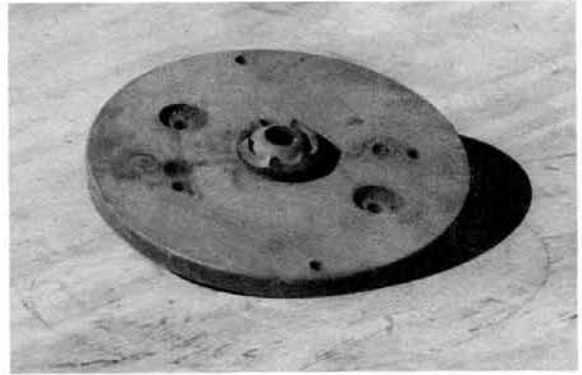
#2. PLUNGER. Attaches to the glass press - moves down into RING and MOULD BODY to form the inside of the piece being made. When the DIAMOND H was on the inside of a piece of glass it was on the PLUNGER. The PLUNGER is first cast and then machined to exactly fit the RING and MOULD BODY. We own many extra Plungers.



#5. MOULD BODY. The MOULD BODY is made of cast iron and the detail is cut into the iron by hand using hammer and chisel. This part is the one that most people would call the mould since it is where the basic shape and form of the piece is made. It can consist of 2,3,4, or 5 hinged pieces held together with tapered pins through "ears" on the sides of the parts.



7. BOTTOM PLATE. The BOTTOM PLATE is a round disc with holes and slots in it. It centers the MOULD BODY on the press and allows the movable parts of the MOULD BODY to open the same way each time by guiding the pins in the bottom of the MOULD BODY in the slots of the BOMMOM PLATE. We own many extra BOTTOM PLATES.

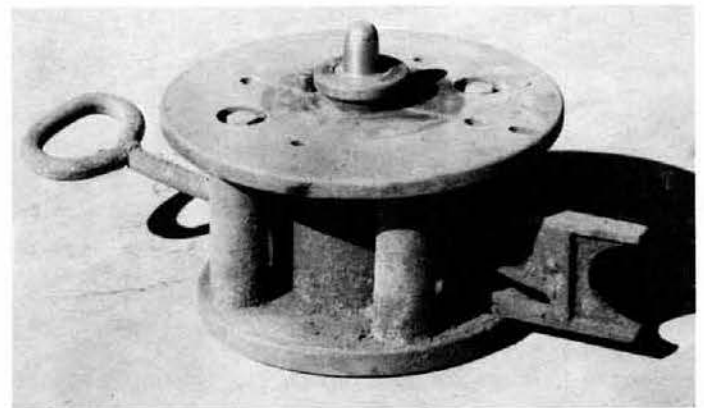


#6. KEY. The KEY is an off-centered pin with a spike of steel attached to the top forming a handle. A wooden handle is attached to the spike since the metal gets hot when the mould is in use. The KEY holds the MOULD BODY tightly closed while glass is being pressed. It is then twisted and removed to allow the MOULD BODY to be opened to remove the piece of glass. We own many extra KEYS.



#8. PUSH UP (VALVE BOX). Some pieces of glass (such as candle sticks) have holes in them. The BOTTOM PLATE attaches to the top of a device called a PUSH UP. This device forms the hole in the candlestick and usually forms the top of the candle holder. When the slide (part of the PUSH UP) is moved, the PUSH UP lifts the piece of glass up off of the BOTTOM PLATE.

I hope that you are not thoroughly confused. The descriptions are short to conserve as much space as possible. We'll try to present another type of mould next month.



Merry Christmas! George

HEISEY CANDLESTICKS

NO. 1489, Puritan, Part II

By Tom Felt

The 2½ inch candleblock was the third candleholder to be offered as part of the Puritan pattern and it was the most popular, remaining in the line from January 1941 until the factory closed in 1957. The "½" designation was added to the pattern number to differentiate it from the earlier 4 and 6 inch candleblocks, discussed in last month's article.

In April 1941, a full page ad appeared in the Crockery and Glass Journal under the heading, "Heisey creates designs significant of the modern trend." Among the items pictured were a console set consisting of the 2½ inch candleblocks and an 8 inch by 10 inch camellia bowl. According to the ad, a patent had been applied for in the case of the candleblocks. Either this patent was denied or, more likely, a design patent filed for on April 1, 1941 for the 2¼ inch deep ash tray "or similar article" was meant also to apply to the candleblock, since it is basically the same size and shape. This patent was granted on June 3, 1941 as D127,620, with the designer given as T. Clarence Heisey, though most likely he simply signed the application, without actually having been responsible for the design.

The candleblock was offered both fire polished or ground top and bottom, and has also been seen full-cut, with all surfaces ground and polished. The examples pictured demonstrate the often marked differences this resulted in: the candleblock on the left has been ground on the top and bottom only, but with a considerable amount of glass having been cut from the bottom, while the full-cut candleblock on the right is actually taller, since less glass has been removed from the top and bottom, but much more has been cut from the sides, changing even their angle. The candleblock which is only ground top and bottom is just 1 3/4 inches high, 2½ inches square at the top and 1 5/8 inches square at the base. Other variations in dimension are also likely to exist.

According to the price lists, this candleblock was available with both the no. 925 Huguenot cutting and the no. 5020 Lily carving. This same carving is also sometimes seen on the camellia bowl and the 4" candleblock*. Other decorations are also possible, since these candleblocks were often paired with that bowl to create a console set, and its very plain surface made it a blank ideally suited for ornamentation.

The candleblocks have also been seen with a gilt metal foot added by a decorating company.

According to the turn books, this candleblock was made in large quantities (almost 14,000 in the first year alone) and it remained in production for 17 years (with 1000 to 3000 made during each of the later years). It does not seem to be often seen today, probably because the design is so simple and the candleblocks are not marked, making them difficult to identify or recognize as Heisey.

Other companies, including the Duncan & Miller Glass Company and the New Martinsville Glass Company, also made plain candleblocks in the 1930's and 1940's, but they are completely square, unlike the Heisey candleblock, which is tapered. (Duncan & Miller's no. 30 2 inch square candlesticks are shown, with

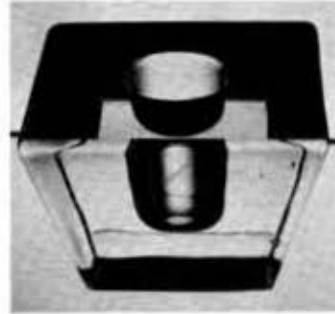


Photo #2



an etching, in Weatherman's Colored Glassware of the Depression Era 2, Pg. 88. They were featured, plain, as a new design in the September 1940 issue of House and Garden, just a few months before Heisey's candleblock was first made. New Martinsville, and its successor, the Viking Glass Company, made several sizes of candleblocks. Their no. 116 1½ inch stick, No. 106 2 inch stick and No. 107 3 inch stick are all pictured in Everett and Addie Miller's The New Martinsville Glass Story, book II, Pg. 35.

Very similar candleblocks, sometimes seen in alexandrite, light green, or other pastel colors, are probably more recent, and are possibly of European origin. The Heisey candleblock is known to have been produced in crystal only and was not introduced until after all of the middle period colors had been discontinued.

According to the turn books, it was first produced in January 1941. A very similar candleblock is pictured in the April 1939 issue of Home Life as part of a console set with an oblong floral bowl and a pair of smaller square bowls which could also pass for Puritan. However, no attribution as to manufacturer accompanies the photograph and it is not known whether these candleblocks could have been a possible inspiration for Heisey's later ones.

In May 1942, another candleblock, this one hexagonal, was added to the Puritan line. This candleblock had a very short production period, with only four turns made between May 1942 and July 1943, for a total of just over 750 pairs.

This candleblock appears to have been identical in height to the no. 1489½ 2½ inch candleblock (which is also listed in some sources as being 2 inches high) and is of the same basic tapered design, but with six sides instead of four. The only place

Candlesticks, Con't.

it was ever pictured by Heisey was in their Gifts and Decorations wartime ordergram, which was issued in lieu of a catalog in 1943. It is shown with a 13 inch hexagon flower bowl. This console set is quite rare today and, like the other pieces in the Puritan pattern, would not be marked, making it difficult for it to be identified as Heisey.

Neither of these candleblocks were ever reissued by Imperial.

Next month, we'll look at the final candleholder in the Puritan pattern, the 1-light hurricane block lamp base.

*Ed. Note: There is a Camellia bowl and candlestick in the museum with Lily Carving. Beautiful!

HEISEY HISTORY:

"WHEN NEWARK WAS A SATURDAY NIGHT TOWN"

By Betty Barnard

This is the first of several articles about important Heisey people. Please contact me if you are a former Heisey worker or a relative of a former Heisey worker. In response I will call you or send you an interview sheet. All of this information will go in our archives for preservation of our history.

Dorothy Gutridge, the granddaughter of our first designer has already granted me an interview that I have recorded on tape. Her grandfather, A. J. Sanford, was thirty years old when he came to work for Mr. Heisey. He started in the mould shop and later designed well over one hundred patented patterns. He designed up until his death in 1929. Thanks to his granddaughter, I have so much to tell you about this wonderful man. His story will be told in the February issue. A full display of his designs is planned for the June Convention at Adena Hall. The attached list will point out the task that is ahead for this display. Please let me know if you as an individual or a study club would like to loan glass for this display. Write or call me at 473 Meadowbrook Dr., Newark, OH 43055, 614-366-7002.

Ed. Note: This is an outgrowth from a Research and Archives Committee suggestion. Betty Barnard is the Chairman of the newly expanded Educational Committee.

PATENTS AND PATTERNS BY A. J. SANFORD:

- 2 Shoe Rack
- 9, 10, 11 GIBSON GIRL Floral Plateaus
- 16, 17, 25 Puff Boxes
- 21 ARISTOCRAT Candlestick & Base
- 23, 24, 25 Salts
- 28 Salt
- 29 SANFORD Candlestick
- 100 Shelf Support
- 187, 188 Tumblers
- 352 FLAT PANEL lavender jars
- 354 WIDE FLAT PANEL
- 393 NARROW FLUTE
- 394 NARROW FLUTE
- 429 PLAIN PANEL RECESS
- 433 GREEK KEY
- 436 Vase
- 439 RAISED LOOP
- 451 CROSS LINED FLUTE
- 459 ROUND COLONIAL Basket
- 460 PINWHEEL Basket
- 461 CONVEX CIRCLE
- 462 NAIL
- 465 RECESSED PANEL
- 467 HELMET Basket
- 468 OCTAGON WITH RIM
- 473 NARROW FLUTE WITH RIM
- 475 NARROW FLUTE WITH RIM
- 477 HEISEY HAIRPIN
- 489, 490, 491, 492 Colognes
- 602 Crushed Fruit & Sodas
- 1020 PHYLLIS Cream & Sugar
- 1183 REVERE
- 1189 YEOMAN
- 1190 Cream & Sugar
- 3967 Comport

Stemware:

- 373 COLONIAL Stemware
- 601 ELIZABETHEAN Stemware
- 3331 STATUESQUE Stemware
- 3332 SIX SIDE Stemware
- 3334 SEXTON Stemware

All Early Sanitary Syrups

- 4 styles of Cologne Ornamentation
- 4 unnumbered sanitary syrups
- 1 unnumbered tumbler
- 2 unnumbered baskets
- 1 unnumbered nappy
- 23 styles of electric light shades



Seasons Greetings



By Tom Bredehoft

5024 Oxford was a profitable line of Heisey, and it continued to be so for Imperial. In one of our tours at the closed Imperial plant, one of the HCA members found a filthy goblet in 5024, top cracked off, never ground, with the grease pencil message "5024 GOB new mould 5-24-65". Apparently they had a market and had to make a new mould for the goblet. We had already seen the note on one of the mould bins to the effect that the moulds for the entire line were sent to Lenox (then the owner) in 1974. (We were assured that they had been returned.)

Strangest thing...We (the HCA) have the moulds for the 5024 finger bowl and 5024 compote, nothing more...Except that the mould for the goblet bowl has been on the hearth of the HCA Annex for as many years as it has been our office, donated by some member who no longer needed it in his basement. I wonder why Imperial needed a new goblet mould in 1965?...

In case some astute stem collector says "They are probably all under 5011", nope, all we have in 5011 Yorktown is the stem to the 12 oz ice tea. I suspect the Oxford/Yorktown moulds could still be used by Lenox for their own production if they wanted to use them.

LATE NOTE:

Fostoria (read Lancaster Colony) is offering "Old Williamsburg". Will have to investigate.

For several years, Heisey students have pondered over the existence of several small glasses, sodas, tumblers, what-have-you. They were seen in connection with a known late production Heisey piece, the 6000 Celestial cocktail. If you remember, 6000 Celestial was a design by Eva Zeisel, an hour glass shape, with a bubble in the solid base. These other pieces were of similar appearance, an hour glass shape, with a cone shaped impression in the base. There were two or three sets of these in the Newark area, all reported to have come from Paul Fairall, the recently deceased antique dealer who had been the last Heisey employee, running the sales room until all stock was exhausted.

Neila and I had, somewhere along the way, picked up one of these sets, (the 6000 Celestial Cocktail and the two other pieces) and had become familiar with their shape and general impression. About two years ago, there was a household auction of one of the Heisey glassworker's estates which was avidly attended by Heisey collectors looking for unidentified Heisey. One of the box lots we brought home contained a tumbler which looked remarkably like the Hour glass shaped pieces we had. "Aha, he said, a discovery". But of course it was no more substantial than idle speculation.

Then...the HCA purchased the moulds from Imperial and while browsing through the mould drawings, lo and behold there were the hour glass shaped pieces, complete with cone impression in the bottom, four of them, shown as follows:

5 oz footed sherbet
5 oz juice
10 oz tumbler
12 oz ice tea
All listed as 6006.

Then when the moulds were inventoried, we found that there were four moulds for the 6006 line:

5 oz footed sherbet
5 oz juice
10 oz tumbler
12 oz ice tea

I couldn't wait until I had located the 6006 moulds, (no small task in itself), and put a piece of glass in one of them. Finally, at the Display, in the convention, I managed to get the mould for the 5 oz juice open, (it was rusted shut) and put my 5 oz juice glass in it. After thirty years, it nestled down just like it had been made in the mould; of course it had.

By measurement, the sherbet holds a little over 4 oz, the juice 4 and $\frac{1}{2}$ and the tumbler I have holds 6 and $\frac{1}{2}$ oz. (All measurements are brim full.)

We knew that Heisey had used numbers up to and including 6010, so the number was not a surprise, but of course being able to assign the correct number to a line (which was doubtful at best) is always



a thrill. We have no way of knowing if Heisey marketed the 6006 line, or how extensively. It is hoped that somewhere out there, some of you will now be able to identify some more 'unmarked Heisey' as just that, and sneak home with a real rarity.

The few pieces that we have seen are not consistent in weight, some being quite thin and almost light, even with the nearly solid bottom, and others are heavy, as if the glass were much stiffer when they were blown. Two of the examples have ground, but not polished, top rims, indicating that they were never finished. They are both quite thick.

The moulds we have do not have their bottom plates which held the cone and would give the piece its distinctive bottom, however it is apparent that the piece was begun as a bubble on a blow-pipe, with a large quantity of glass relative to its size. It was marvered to its basic shape and then inserted in the closed mould. The excess glass was allowed to settle into the bottom of the mould, forming the foot, then the bubble was inflated to fill the mould and give the bowl its final shape.

Being entirely blown, these pieces could not be signed.

diamonds are forever....By Janet M. Caswell

My favorite time of year - - Fall! Even though the heat of summer has gone the boats are still seen parading into the harbor, with brightly colored spinnakers flying, it is enough to make a Marble-header's pulse beat faster. Another thrill is just to sit quietly at Fort Sewall and listen to the water lapping against the rocks. This is truly a soothing and relaxing experience. It is now that the Yachting Center is sort of settling in before the holiday festivities are upon us.

It does seem that my "good English Buddy" is nappy with this past summer: #1401 Empress Cruet in Sahara; #1205 Fancy Loop ice bucket along with a Ribbon Candy 3 pint jug; #379 Urn small table salt; Sea Horse Handled Candy Jar; Horse Head Ash Tray; #1433 Thumbprint & Panel - Sahara - Candlesticks and 11" Floral Bowl; and the #485 Cologne/#64 stopper with blue and gold decoration.

The "Felicitous Flamingo Hunter" is always coming home from somewhere or another with something or other. This time from Maine. She couldn't get too much in her suitcase but managed a few pieces; #357 Prison Stripe 4" nappy; two #121b crystal 5" nappies along with two 6" nappies; #1486 Coleport 14" Oval bowl; #1252 Twist oil in Flamingo, her only flamingo piece this time; a pair of #116 3" Oak Leaf Candlesticks and a #1286 Cupid and Psyche Ash Tray.

If you talk to enough people you find out all sorts of things. We met a couple from Iowa while we were, of all places, in a Japanese Restaurant right here in the Boston Area. Got talking about things and Heisey just popped into the conversation right out of nowhere. Anyway, this couple collects and told us of a few of their recent finds: #1401 Empress 13" relish with the Lafayette etch; a #1508 Card-Box, engraved with initials; #1466 Star Relish, cut; #1404 Old Sandwich oval Cream & Sugar in Sahara; #1425 Victorian French Dressing Bottle with #7 stopper and a #1235 Beaded Panel and Sunburst Cracker Jar with Cover. Needless to say our interesting conversation made up for our difficulties with the chop-sticks. It isn't easy to eat rice that way.

What about the "Bay State"; #1776 Kalonyal punch cup; #434 Ash tray - wheel cut; #407 Coarse Rib punch cup; #360 Creamer; #3355 Fairacre Champagne with #9001 Trefoil etch; #3411 Monte Cristo Wine; #1428 Warwick Vase, crystal; #1401 Empress cup and saucer in Sahara; #1469 Ridgeleigh 8 oz. Old Fashioned and a #1225 Plain Band ½ gal. Pitcher.

"The Tipper" went to the mountains for a few days rest (that is what he called it) and was happily rewarded for his early morning excursions; #1425 Victorian Mustard (goes in the condiment set) #1201 Fandango individual salt; #393 Ind salt; #608 St Louis Beer Mug - 8 oz; #248 Plain Bottom 2½ oz. Bar; #462 Nail nappy; #352 Flat Panel Horseradish Jar; and the #352 Sugar Sifter/ #1 Sanitary top.

"The Spirit of St. Louis" (PA) tells of two (2) Gascony Wines (Cobalt) and another in crystal with Fox Chase etch.

"The Arizona Snowbird" has a #1205 Fancy Loop Toothpick in Emerald! mmmmmmm

Haven't heard from "Grampa W" for a while but when he does write it's a "goodie"; four (4) #3390 Carcassone 2 oz. footed Bars in Cobalt plus an 11" Frosted Madonna.

"The Mr" found a little dish in Moongleam - 5½" across and 3" high. It is pictured in the Spring 1983 issue of Vogals Newscaster on page 20. #7166

(what is it?) The dealer we bought it from called it a small ice bucket. (Ed Note) - It is a liner. He also has always wanted a Bitters Bottle, within the last month he has found and purchased two. #1489 Puritan, one has a "fishing fly" on each side, the other has a Beatle (fishing fly?) done in heavy oil on one side only. Both are mint and neither dealer knew they were Heisey so the price on each was less than a Heisey Banquet.

What about the "California Kid", how does Crystalite Jug sound? And then there are the "two guys" from Conn. 1 #1202 Floral Bowl (no base) and the #1229 13" round Platter. Both of these in Moongleam, no less!

From the "wild blue yonder" in (NY) come tales of six (6) #101 10" Shelf Supports all in great shape and marked. They came from an old store that went out of business many years ago. Two wouldn't have been good enough it had to be six. Oh well!

"Mountain Gal", your turn; besides five (5) new puppies she has managed to find the following: #341 Puritan 5" footed low jelly; #1401 Empress d/f Mayo one in moongleam - one in Sahara; #3344 Carolina Stem, 6 oz. ftd sundae with the #160 Osage Panograph etch; #1567 Plantation Gardenia Bowl; #112 Candlesticks; #429 Plain Panel Recess Cruet, 6 oz., floral cut.

You know, walking around the Yachting Center on a cool fall evening, seeing the evening stars come out one by one, I can't help but look back on my childhood and remember Wishing on the first evening Star:

Starlight, Star Bright
First Star I've seen tonight
I wish I may, I wish I might
Have the Wish I Wish Tonight.

Happy Hunting

Lloyd and I wish all our many friends the best Holiday ever. Give Heisey to your loved ones and send me a card full of "FINDS"!!



COLOR ERA BOOK . . .

The last of the proofs have been returned to the printer, Collector Books, in Kentucky and the book should soon be available. It will contain over 400 pages with 32 pages of color photographs. It will have a color cover. The price guide will be 48 pages and contain an estimated 10,000 entries. Thanks again to the eleven member clubs who helped with this mammoth guide.

BE SURE TO ORDER YOUR BOOK FROM HCA. It should be ready in early 1986. The cost is \$24.95 including the price guide. Watch the HEISEY NEWS for more information.

With the popularity of books printed by COLLECTOR BOOKS and their aggressive mail-order and book store campaigns, we hope this book will be very popular and make a bit of money for HCA.



MAKING GLASS AT HEISEY
By Emmett Olson
Sales Manager



Many requests for information on the manufacture of glassware are received by the A. H. Heisey & Co. of Newark, Ohio, each year and therefore the following:

Our glassware is made in pots. The better quality glassware is made in furnaces that hold from ten to eighteen pots. Our three furnaces hold sixteen pots each. The furnaces are heated by natural gas to a temperature of from twenty-four hundred to twenty-seven hundred degrees.

Each pot holds about two thousand pounds of melted glass and it takes from eighteen hours to forty hours to melt a pot of glass. This is because of the different kinds of glass that are made and the type of item being made. The largest percentage of glass manufactured by the A. H. Heisey & Co. is lime crystal. About twenty percent is lead crystal, lead crystal being the most expensive because of the raw materials used in it and the care necessary to produce good glass.

Pressed ware is made by pressing the molten metal in moulds. The mould consists of the plunger and the mould which has the design and shape of the article desired. Many items pressed in moulds are finished into different shapes by a finisher, such as a nine inch Salad Bowl may be the mould shape. From this shape can be made a rolled edge flower bowl, crimped bowl, different size floral bowls or gardenia bowls. Torte and sandwich plates can be made from the nine inch salad mould. Usually one mould makes one item like a sugar bowl mould will make only the sugar bowl. It takes another mould to make the cream pitcher.

The following takes place in the manufacture of a pressed piece of glassware. A gatherer gathers a glob of hot glass on the end of the puntie stick. The glass is dropped into the mould and the presser cuts off the amount necessary to make the item his mould will produce. The presser will then pull a lever and force the plunger into the mould, distributing the glass in the mould and shaping the item to the proper depth, diameter and circumference.

It is then removed from the mould by a carry over boy. The carry over boy takes it to the warming in boys of which there may be several, according to the item being made. The warming in boy, places it in the fire to be polished and at the same time softens the glass enough for the finisher to whom the warming in boy takes the item to be shaped and finished. The carry in boy takes the item to the lehr for annealing.

The ware is placed in the front of the lehr and is moved back by a screen belt through a fire which will heat the ware to the annealing point. When the ware gets to the annealing point the strain leaves it or is equally distributed and then the ware is gradually brought down in temperature below five hundred degrees. It is then free from strain and it is taken from the back end of the lehr and placed in boxes to transport to the finishing or grinding rooms. Some ware is complete and does not need grinding and polishing when taken from the lehr. It is finished off the lehr, packed and sent to stock for shipment.

If it is to be cut or etched, sandblasted or decorated it is taken to the various departments in boxes unwrapped. This, of course, is another story.

Now to the blown ware. A gatherer gathers a glob of glass on a hollow pipe and marvels it into starting shape by blowing a small puff of air into the glob of glass. It is then rolled on a smooth flat surface to the proper shape. It is then handed to the blower. He brings the mould up to position out of water by stepping on a pedal with the right foot. Then he blows into the end of the gathering pipe until the glob of glass has been shaped to the mould. The carry over boy then takes it to the stem presser.

A bit gatherer gathers and drops a bit of glass into the stem mould and the presser cuts off the proper amount of glass and presses a lever which forces the glass up into the mould and makes the stem, at the same time the hot glass pressed into the stem shape is joined to the base of the goblet or whatever bowl shape being used. The stem presser then cuts off the cup on the bottom of the goblet stem and the warm in boy polishes by heating the base of the stem. The goblet is then taken to the foot straightener and then to the foot caster.

A gatherer gathers a bit of glass and holds over the stem of the goblet while the foot caster connects the stem and the glob of glass. After the foot caster cuts off enough glass he proceeds to squeeze out the foot with a tool adjusted to make the foot the proper size.

The goblet is then taken to the lehr and the same action takes place as described in the pressed ware annealing.

The ware having gone through the lehr is then transferred to the blown grinding room where it is cracked off, flat ground on top, beveled inside and out, washed, dried, and sent through the preheat oven to the glazer. The glazer melts and polishes the top edge of the ware. It is then sent through the annealing oven and selected off the end of the glazer and sent to stock or the different departments for decoration.

I hope this short trip through the hot end of our plant will assist you. Thanking you for your attention.
Ed. Note: - This was copied exactly as written originally. Year it was written is unknown.



Kanda Lybarger

Neila Budekoff

Jan Shan

May Your
Christmas and New Year
be Joyful and Happy with
Peace and Prosperity in
Bountiful share.

Louise Ream

Jeanine Cullison

Leonard Tipton

Rose Marshall

THE OFFICE AND NEWSLETTER STAFF

THE BAY STATE HEISEY CLUB'S EIGHTH ANNUAL SHOW

Thanks to the dedication of the Bay State Heisey Club members, our 8th Annual Show and Sale was held September 28th and 29th at the Lexington National Guard Armory, Lexington, Mass. Our members really banded together above and beyond the usual club participation to set-up this show. The Show was changed to the Armory this year and along with a new location, came one lady named "Hurricane - Gloria," who tried to disrupt things, but was unable to do more than create a nuisance by downing trees and electric power lines. Because the Governor had opened the Armory to shelter any homeless on Friday night, tables were not able to be set up until early Saturday morning after people had left. Electricity was restored after a big willow tree that fell on the utility truck repairing the wires was removed. Saturday was a clear fall New England day, and the natural light from the Armory skylights showed off the glass that our 28 dealers displayed. Beautiful glass was shown and bought, and we had a successful two-day show. Again, many thanks are due to the members who gave more of themselves, and to the dealers, who managed to arrive and set-up at the show. The Bay State Heisey Club thanks you all, and looks forward to many more shows in our new location. We had such a good show this year with all kinds of obstacles, how much better will it be next year? Come and see!!!



The Bay State Heisey Collectors Club held its October meeting on Tuesday the 8th at the Follen Church in Lexington. There were twenty-six members in attendance. President "D" Young brought the meeting to order and the "All Glass Show" held in September was discussed in full. Even though "Gloria" paid us a visit, here in New England, at the same time as the show we still made out very well and had a beautiful show.

We polled the membership and agreed to hold the show again next year at the same location. The meeting was then adjourned and turned over to Shirley Dunbar for a terrific program on "Custard and Opal Glass". She really did her "homework" and a delightfully interesting and informative presentation was given. In addition to her own collection of opal and custard, members brought in their pieces making an exceptionally nice display.

Janet and Lloyd Caswell gave a report on a nice restaurant to hold our annual Christmas party. The green light was given and plans will be made.

Refreshments were served by Clive Godwin and Richard Gagnon our "in-house'gourmets".

Janet Caswell/reporter

The Western Reserve Heisey Study Club

The Western Reserve Heisey Study Club held its September meeting at the home of President Geneva Lege in North Royalton, Ohio. Plans were made for the coming year. The club suggested that H.C.A. use the moulds for the small candy dishes, toy candle holders (especially Tom Thumb) and coasters in colors. These could be sold in limited editions.

Members brought Summer Finds. Among the Finds displayed were - a \$150 Banded Flute tankard, #1401 Empress ice bucket with dolphin feet, #1519 Waverly candy dish with a sea horse finial, inserts for #1405 Ipswich candle vases, #22 9" candle holders with prisms, #465 3 lb Recessed Panel candy jar, and #116 Oakleaf candleholders with Moongleam base. A delicious lunch was served on crystalite plates!!

The Oct. 29 meeting was held at the home of Lynne Sellers in Lorain. A number of new friends attended the meeting. Many interesting stories were exchanged by our dealers who participated in shows in Ohio and Indiana. The group played Heisey Trivia. The members enjoyed Lynne's beautiful collection of candle holders. It was decided to repeat our program on the Sunburst pattern at the November meeting.

Thelma L. Morningstar
Reporter

NORTHWEST HCC

Nov. 2, 1985 was a wet, windy day in Bellingham, WA. but the Northwest Heisey Study Club was warmly welcomed to the home of Fred and Clara Olson with cups of hot apple cider. Don and Marilyn Pederson and Don and Luvonne Nelson were co-hosts.

Twenty one members and two guests enjoyed a delicious baked potato supper with potluck toppings, rolls and salads. Before, during and after the meeting there was lots of talking, visiting and catching up on what had gone on since we last saw each other.

We ate our dessert of chocolate cake and apple pie during the Slides on Heisey Animals. Some of the animals members brought were - rooster vase, fish candlestick, little pony, Flying Rooster Chanticleer, Clydesdale Horse, amber filly, standing pony, little pig and Fish bookends.

For Show and Tell we saw - Twist salt and pepper in Moongleam; Twist Ladies Lap Spittoon in Sahara; #1404 Old Sandwich beer pitcher in crystal; Plantation candy jar, covered; Rococo mayonnaise and divided relish with lid; Ridgeleigh divided relish, Emerald Pineapple and Fan vase; Old Sandwich salt in Sahara; Ridgeleigh candlestick vase.

Some of these pieces were bought on the way to the meeting today. One advantage of traveling to different towns is having different shops to do some Heisey buying.

Have a very merry and blessed Christmas from the Northwest Heisey Study Club.

Luvonne Nelson, Secretary



**XMAS DINNER
DEC. 6th**

If you forgot to send in your reservation and you receive this in time, give us a call at:

614-345-2932



On October 6, 1985 our first meeting of the new season was held at the beautiful home of Edith Bockes in Fairport, New York. It was a great fall day and good to see all the friendly faces together again.

Sharon Orienter opened the meeting at 3:00 PM and welcomed our newest member Eileen Zimmer and her beautiful guest Cathy Koester, WOW!

Edith served a great lunch with a lot of help from Ann Brunell. The Angel Food cake was almost gone before I fought my way to it. Jerry Gillette should really cut down, now he and I have to fight over the special foods our friends prepare for people with heart problems.

The subject of the meeting was "Yellow" and believe me you needed sun glasses with Edith's fantastic display of well - just about everything. When I suggested that we have a Glass Auction, at the December meeting she was seen crying in the next room until we decided it didn't have to be Heisey Glass. Her smile lit up the whole room.

There was a great Depression Glass show at the Rochester Museum and Science Center in September. Edith had a trailer truck standing by in case she found anything, which she did by the looks of her home. T & P Antiques from Erie, PA. had a nice Heisey display with a good Greek Key selection, as they usually do. Shirley Graff, from Ohio, offered a Crystal "Good Morning" pitcher that was exceptional. This seems to be show month in this area, with several each weekend. The East Aurora, N.Y. and Ellicottville shows were both beautiful with many out of state dealers. The ride to Ellicottville was great with all the hills covered in gold, red and purple leaves. When we arrived we found 25,000 people at their Fall Festival, this is in a town of 4500 souls, some traffic jam.

Back at the meeting a large show and tell was held, with a few of the pieces presented as follows:

Edith Bockes, Sahara Empress Egg Cup
Bruce Schwendy, First Colored piece Sahara Empress Nut

Arlene Reynolds, Vaseline Pineapple & Fan*
3" nappy.

Marge Gillette., Coarse Rib Pitcher and Candy dish Flashed yellow with a Silver Overlay.

Sharon Orienter, Marigold Mars #113 Candle.

Bruce Schwendy presented 2 #393 Nappies which he polished in a innovative way. You stand or sit and rub them on an abrasive for 24-36 hours. They really turned out beautiful, everyone should try it, great exercise.

The meeting was excellent and Edith was seen counting her Glass as we all left.

Our quote for the month.

"Quarrels would not last long if the fault were only on one side".

Merry Christmas to all.

George J. Reynolds
Sec-Treas.



On our way down from Wisconsin, we stopped with friends in Riverdale, GA and I had the opportunity to look through the Nov.-Dec. 1985 issue of Colonial Homes magazine. On pages 85 and 86 with pictures and story about Oliver Davis' House, on a table there are Heisey colonial candleholders, #2 Williamsburg, it looks like. In the descriptions this is mentioned--however, they misspelled Heisey! It was fun to see them.

We arrived in Bradenton, FL 10 days ago and have just been exposed to rain and wind from the hurricane "Juan" and still have summer weather. Hope to see the Heisey "snowbirds" down here this winter--and to see you all up in Newark in December.

Virginia and Odell Johnson

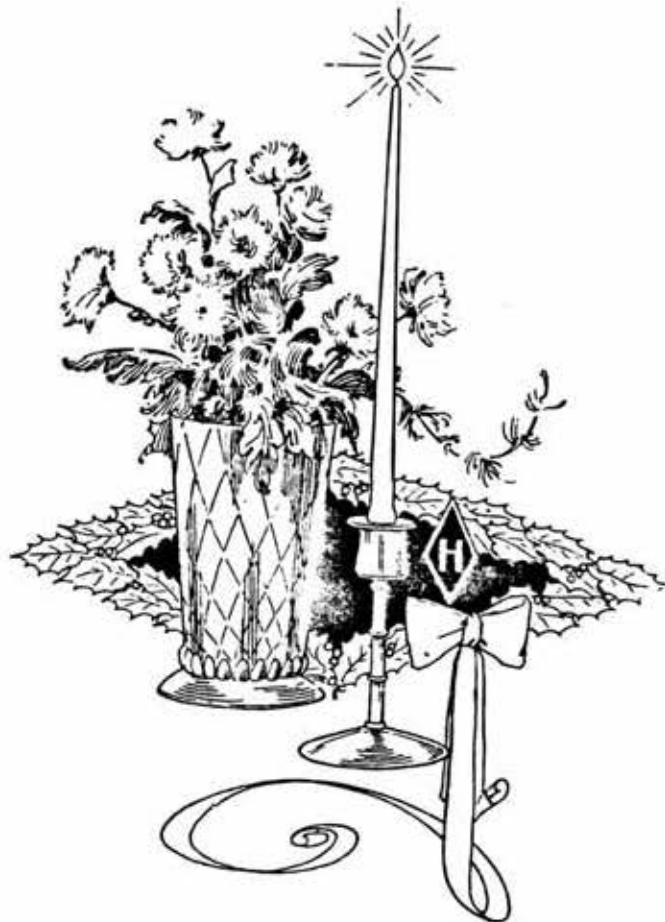


HEISEY TALK AT THE HENRY FORD MUSEUM

Neila Bredehoft presented a slide show on the history of the A. H. Heisey & Co. to the Henry Ford Museum Collectors Club-Glass at the Henry Ford Museum, Dearborn, MI, on October 14.

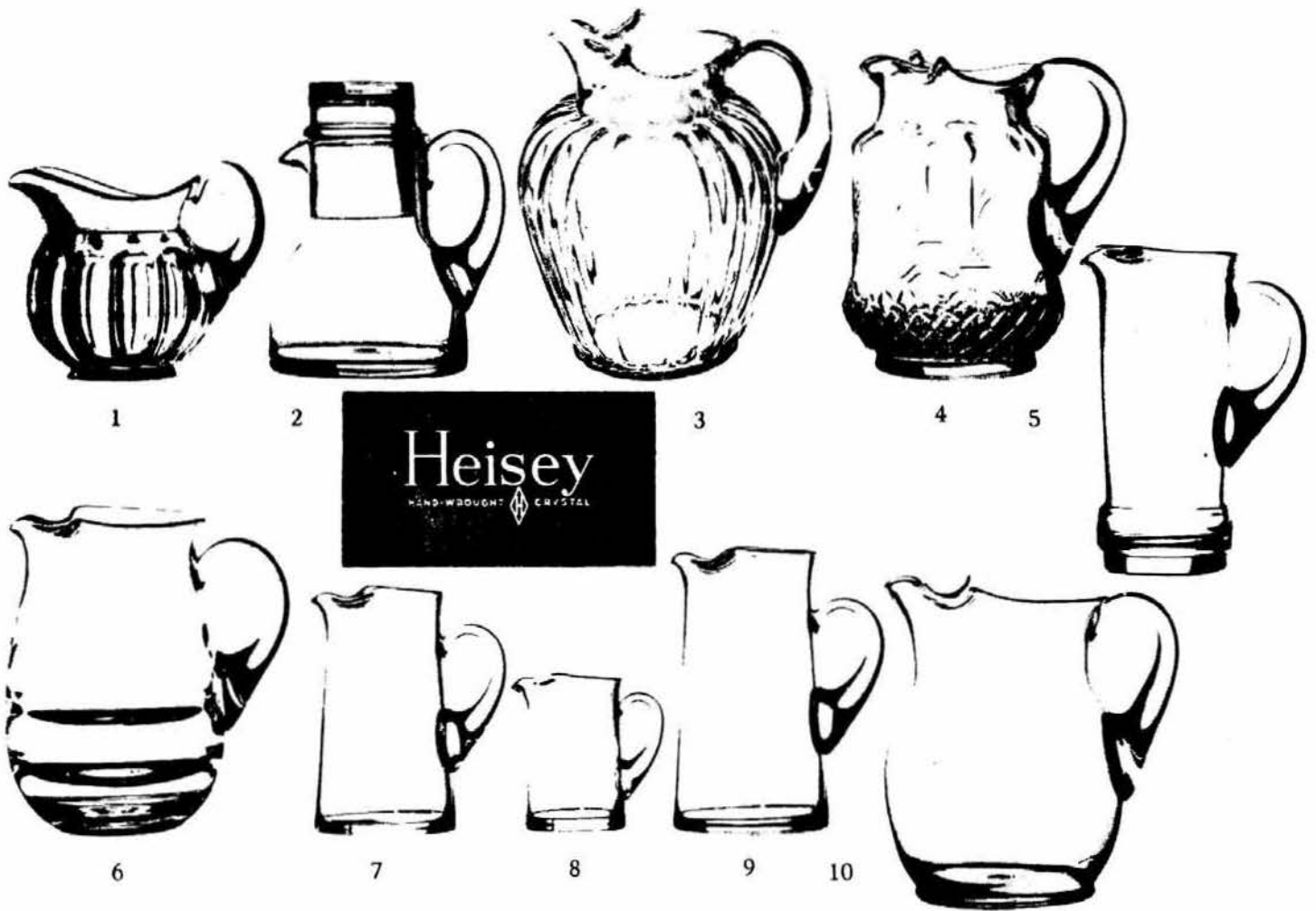
Approximately 50 people were in attendance including about a dozen guests. Those attending seemed quite interested in Heisey glass and had many questions. They were also interested in hearing about the HCA acquiring the Heisey molds which had been the property of Imperial Glass.

After the slide presentation, a question and answer period was held and identification of Heisey pieces which members had brought followed.



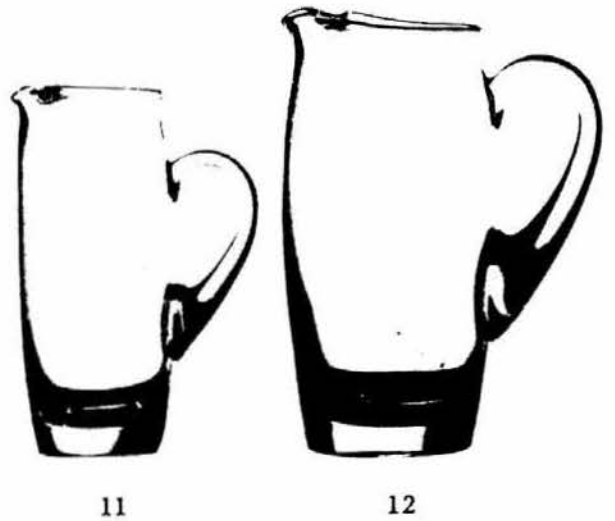
JUNE 1, 1956

Catalog and Price List No. 33



MISCELLANEOUS PITCHERS

No.	Size	Item	Dozen	Each
1-341½	1 qt.	Squat jug.....	\$45.00	\$3.75
341½	½ gal.	Squat jug.....	71.40	5.95
2-517	1 qt.	Jug & 197 tumbler	60.00	5.00
517	1 qt.	Jug.....	51.00	4.25
3-1503	½ gal.	Ice lip jug.....	47.40	3.95
4-1567	½ gal.	Ice lip jug.....	47.40	3.95
5-4054	30 oz.	Ice lip tankard.	57.00	4.75
4054	½ gal.	Ice lip jug.....	90.00	7.50
6-4085	70 oz.	Ice lip jug(4161)	78.00	6.50
7-4159	14 oz.	Ice lip jug.....	47.40	3.95
8-4159	8 oz.	Ice lip jug.....	42.00	3.50
9-4159	21 oz.	Ice lip jug.....	57.00	4.75
4159	31 oz.	Ice lip jug.....	59.40	4.95
4159	54 oz.	Ice lip jug.....	71.40	5.95
4159	65 oz.	Ice lip jug.....	78.00	6.50
10-4164	73 oz.	Ice lip jug.....	83.40	6.95
11-6060	40 oz.	Ice lip jug.....	66.00	5.50
12-6060	½ gal.	Ice lip jug.....	95.40	7.95



MARTINI OR JUICE STIRERS

1	9½ inch	Chr. pl. spoon.	\$18.00	\$1.50
2	11½ inch	Chr. pl. spoon.	18.00	1.50

A. H. HEISEY & CO., NEWARK, OHIO

ATTENTION NEW MEMBERS

Nothing can be of more help to you in learning about Heisey and the club than buying the past issues of Heisey News which are available. These sell for \$9.00 for 12 issues. Those available are V, VIII, IX, X, XI, XII, XIII and this year, XIV. All of them would cost \$72 but think how much information you would be getting! This would be a nice Christmas gift. If you want to start with one volume I would suggest that you get the earliest ones first as some are in short supply.

We also have an excellent index of the first ten years which is invaluable to anyone having all or part of the newsletters for that period. Regularly \$7.00, we are now offering it for a special price of \$5.00. See last months newsletters for these items, Items 39 and 110.

Museum OPEN HOUSE
Dec. 8, 1985 10-4 P.M

Refreshments - Door Prizes
For lasting gifts
Visit Our Gift Gallery

The Davidson House next door
will also be open.



Catalog and Price List No. 33

JUNE 1, 1956



FOR JELLY, HONEY, BONBONS

No.	Size	Item	Price	
			Dozen	Each
1-341	5 in.	Handled jelly...	\$15.00	\$1.25
2-1509	5½ in.	Footed mint....	18.00	1.50
3-1519	6½ in.	Footed honey or cheese.....	27.00	2.25
4-1567	6½ in.	2-handled jelly.	15.00	1.25
5-1519	6 in.	Low ftd.comport	27.00	2.25
6-1951	5¾ in.	Footed mint....	27.00	2.25
7-1951	5½ in.	Handled jelly...	18.00	1.50



No.	Size	Item	Price	
			Dozen	Each
1-1506	5½ in.	Footed candy box and cover.....	\$54.00	\$4.50
2-1519	5 in.	Chocolate & cov. Patented.....	35.40	2.95
3-1519	5 in.	Tall footed candy box and cover..	51.00	4.25
4-1567	5 in.	Round candy or butter & cover..	27.00	2.25
5-1567	5 in.	Ftd.comport & cover.....	45.00	3.75
6-1951	6¼ in.	Candy & cover.	51.00	4.25



COVERED CANDY OR NUT DISHES

Heisey Collectors of America, Inc.

ALL HEISEY - Benefit Auction

MARCH 7 AND 8, 1986

It is time to prepare for our Twelfth Annual All-Heisey Museum Benefit Auction. The Auction will again be held at The Apple Tree Auction Center. It will, as usual, be held in conjunction with the Quarterly Meeting.

The Annual Christmas Dinner and Quarterly Meeting on December 6th would be a good time to bring your consignments to the Museum in the afternoon, or after the dinner, and avoid the Christmas rush. Deadline for glass is January 1, 1986.

The same policy as the last few years will again be followed. LIMIT HAS BEEN RAISED TO TWELVE (12) ITEMS PER FAMILY (excluding donations). Items such as 8 goblets or 12 plates together would constitute one lot. Any consignments OVER 12 lots will be considered as donations. The consignment fee remains at 20% with a \$5.00 minimum per lot. HCA receives the 20% selling fee. Please consign only Heisey or Verlys by Heisey. No Imperial Please.

Be sure to include a list (including pattern number, name, color etc., if possible) along with your name and address. Arrange the list in desired lots and identify which lots are consignments and which are donations. Don't forget to make a duplicate copy for your records.

The Benefit Auction is one of the major fund raising projects of the year and all proceeds go for support of your Museum. There is very little expense associated with the Auction. You can help by donating items for the Auction. Remember, donations are full value tax deductible. The consignment fees are also tax deductible. So, get your glass in early and plan to be at The Apple Tree Auction Center on March 7th and 8th.

Glass will be sold in the order it is received.

DONATIONS FOR THE MOULD FUND ARE ALSO WELCOME.

Ray Ziegler, Chairman

1. Donations - Full value tax deductible.
2. Consignment - You receive a check for 80% - The Heisey Collectors of America, Inc. receive 20% - These proceeds support your Museum.
3. Glass must be in our possession by January 1st.
 - a. Mail your glass now to:
Heisey Collectors of America, Inc.
169 West Church Street
Newark, OH 43055
 - b. Visit the Museum and leave your glass there.

Please send only good quality glass so that you can receive higher prices
It also will help HCA.

RON & MAUREEN KOVACS
475 Kime Avenue
West Islip, NY 11795

PH: 516-242-5496
UPS & INS. EXTRA
* MARKED

- #1519 WAVERLY 14" Torte Plate, Orchid Et.. \$ 45.00
- # 2 OLD WILLIAMSBURG Candlesticks* 11"PR 160.00
- #1519 WAVERLY 12" Floral Bowl, Orchid Etch 47.50
- #1245 8" Plates, Moongleam* (6).....EA 8.00
- #2351 14 oz Soda, #417 Renaissance Etch.... 12.50
- #3380 OLD DOMINION Goblet, Sahara..... 22.50
- #1401 EMPRESS Ftd. Compote..... 37.50
- # 300 PEERLESS 1 oz Cordial* (8).....EA 16.00
- # 300 PEERLESS 3/4 oz Cordial*, Sham..... 18.00
- #1469 RIDGELEIGH Mustard & Cover*..... 30.00
- #1519 WAVERLY Ftd. Cream & Sugar*..... 25.00
- # 411 RIB & PANEL Floral Compotier* & #19 4" Block..... 42.50
- #1184 YEOMAN 6 1/2" Bon Bon, Flamingo..... 27.50
- #1503 CRYSTOLITE 4" Cig Box & Cover*..... 22.50
- #1401 EMPRESS Ftd. Cream & Sugar*..... 35.00
- #1519 WAVERLY Ftd. Cream & Sugar* Orchid Et # 6 Vase, Insert* (2).....EA 17.50
- # 126 TROPHY Candlesticks.....PR 55.00
- # 473 NARROW FLUTE 3 1/2" Salted Nut, Mglm*2 EA 14.00
- # 359 COLONIAL 3/4 oz Cordial*..... 22.50
- #4202 6" BAMBOO Bud Vase..... 40.00
- # 102 BALLSTEM 9" Candlesticks*.....PR 130.00
- # 1 GEORGIAN 9" Candlesticks*.....PR 115.00
- # 393 NARROW FLUTE 2 oz Sherry* (2).....EA 16.00
- # 134 TRIDENT 5" Candlesticks, 2-lite, #497 ROSALIE ETCH.....PR 62.50
- #1401 EMPRESS 11" Floral Bowl, D.F., #497 ROSALIE ETCH..... 42.50
- #1401 EMPRESS Ind Nut Dish, D.F., Mglm..... 27.50
- # 150 BANDED FLUTE 8 oz Tumblers* (6)....EA 14.00
- #1255 PINEAPPLE & FAN 1/2 Pt. Tankard, Custard, Souvenir *..... 55.00
- #1205 FANCY LOOP 8" Oval Celery Tray..... 22.50
- #8063 SCHAMEL Covered Butter Dish, Cut*.... 80.00
- #1511 TOURJOURS Candle, 2-lite, A-Prsm.... 117.50
- # 341 PURITAN 5" High Ftd. Shal. Jelly*.... 25.00
- #1405 IPSWICH 10 oz Goblet, Mglm.* (4)....EA. 65.00
- # 9 Single Row Slash 11" Plate..... 27.50
- # 5 PATRICIAN 8" Candlesticks*.....PR. 77.50
- # 440 Ashtray*..... 32.50
- #3362 EGYPTIAN 6" Compote* (Charter Oak).. Standing Pony..... 45.00
- #1519 WAVERLY 5" High Ftd. Candy Jar, ORCHID ETCH, No Cover..... 55.00
- #3359 PLATEAU Boblet, D.O., Flam..... 60.00
- #1255 PINEAPPLE & FAN 10" Vase..... 25.00
- #1519 WAVERLY 5" High Ftd. Candy Jar & Cover, #9040 ELKS ETCH*..... 32.50
- #3390 CARCASSONE 12 oz Soda, Cobalt..... 67.50
- #1229 OCTAGON 5 1/2" Jelly, D. O. Hawth..... 52.50
- # 411 RIB & PANEL 8 oz Goblets* (7).... EA 30.00
- #1469 RIDGELEIGH Cig. Box & Cover..... 15.50
- # 150 BANDED FLUTE 13" Tray*..... 25.00
- #1469 RIDGELEIGH 2" Square Ftd Candle....PR 47.50
- #1503 CRYSTOLITE 1-Lite Hurricane Blk.*....PR 37.50
- #1469 RIDGELEIGH 8" Square Nappy*..... 37.50
- #1428 WARWICK 9" Horn of Plenty*, Sahara... 35.00
- # 150 BANDED FLUTE 4" Hd1. Chamberstick.... 110.00
- 37.50

WANTED #407 COARSE RIB 9 1/2 & 11" PLATES

Classified Ads

FOR SALE: Hundreds of Heisey pieces. Send # 10 SASE for list updated to 9/1/85. M & J Walter Antiques, C/O Sir Speedy, 431 Main St., Woburn, MA 01801

WANTED: Buying Caprice blue or Rosepoint by Cambridge, Rose or Orchid by Heisey, American, June, Fairfax, Versailles, Trojan, etc., by Fostoria and Depression Glass in crystal or colored. NADINE PANKOW, 207 S. Oakwood, Willow Springs, IL 60480 PH 312-839-5231.

WANTED: Items in #160 Locket on Chain, crystal or colors. JIM KENNON, PO Box 251, Amherst, OH 44001

WANTED: #1401 Empress Individual Creamer, Sahara. MARY KEZAR, 12152 E. Mapleton Rd., Mapleton, OR 97453, PH. 503-268-4801.

20% off Pre-Christmas Sale: Includes much Heisey and Cambridge - Treasure House Antiques, 148 Johnstown Rd. Gahanna, Ohio 43230 - 614-471-2317. Hours 12-5 daily - Closed Sundays.

FOR SALE: Heisey Ipswich pattern assorted glassware, sugar and creamer. 44 pieces total. Mint. R. Siegal, 7605 N. Tripp; Skokie, IL 60076. Phone 312-676-2089.

WANTED TO BUY: Punch cups for #150 Punch bowl. Angeline E. Maury, 41 Beaver Dam, Columbia, S.C., 29223.

WANTED: Pair of 3-tier Heisey Candleabra. Minuet etching #503. Will take Orchid. Mildred C. Christensen, 109 Russell Place, Syracuse, NY 13207.

DEALERS DIRECTORY

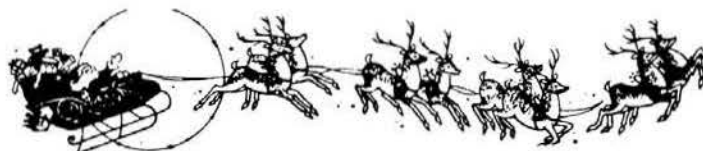
<p>FAGLES REST ANTIQUES China Heisey Antiques Mary Evans 62 Fieldpoint Rd. Heath, Oh. 43056 PH. (614) 522-2035</p>
<p>TREASURE HOUSE ANTIQUES Heisey, Cambridge Etc. 148 W. Johnstown Rd. Gahanna, Ohio 43230 Closed SUN. PH. (614) 471-2317 Daily 12-5</p>
<p>CRAFTS ENTERPRISES Arlene & Ed Craft 3908 Fauquier Ave. Richmond, Va. 23227 PH. (804) 262-2257</p>

ABOUT YOUR EXPIRATION

If the number 12 appears to the right of your address label, followed by the number of members which you have, then this is your last issue of Heisey News. We will not be responsible for missed issues if renewals are not received by December 20th when the changes go to the printer.

Jeanie thanks all of you who observed this same notice in the November issue and promptly mailed your dues including many for December.

If you joined HCA in the month of December then this is your twelfth issue of 1985. If your dues arrive after deletion you will be promptly reinstated but this causes extra work for the office secretary and it costs to get your name back in the computer.



CARR auction & real estate

LARRY CARR, Auctioneer
Home: 316-285-6001

Office
316-285-3148
123 East 5th Street
LARNED, KANSAS 67550

MIKE NIEDENS,
Auctioneer



HEISEY

- | | |
|--|---|
| #1295 Beaded Swag Goblet, Custard | #3389 Duquesne Saucer Champ., Chintz Et. 7 EA |
| # 310 Ring Band Tumbler, Custard | # 343 Sunburst Punch Bowl Base |
| # 310 Ring Band S/P W/Tray (Tray Rare), Custard | Hot-Cold Liners (2) |
| #1225 Plain Band Sherbet, Custard | #1225 7" Round Plates (6) |
| #1200 Cut Block Ind Cr and Sug, Custard | #1225 Small Celery |
| #1280 Winged Scroll Nappy, Custard | Butter Bottom |
| #1401 Empress Sahara 5½" Plate, Round | #1519 Waverly 3-Part Relish |
| #1401 Empress Sah Ftd 2-Hdled Bowl, Old Colony Et | # 341 Old Williamsburg Ftd Compote |
| #1401 Empress Sah (4) 7½" Round Plates | #1951 Cabochon Cruet |
| #1401 Empress Sah (4) 8½" Square Plates | #1951 Cabochon Compote |
| #1401 Empress Sah 11" D.F. Floral Bowl | #1951 Cabochan 1-Handled Bowl |
| #1401 Empress Sah 5" D.F. Bowl | #1951 Cabochon Bowl, (Moonglo Cut) |
| #1401 Empress Sah 4 oz. Oil Cruet | #1951 Cabochon Compote (Moonglo Cut) |
| #1401 Empress Sah 9½" D.F. Vase | Shrimp Bowl W/Liner |
| #1401 Empress Sah 5" 2-Hdld Jelly | # 393 Narrow Flute Celery |
| #1401 Empress Sah Salt and Pepper | #1503 Crystolite Ind Cr & Sug |
| # 112 Mercury Candlesticks, Sahara PR. | # 411 Rib and Panel Celery |
| # 411 Rib and Panel Syrup, Sahara | #1503 Crystolite Ash Tray |
| #1253 Twist 3-Cornered Dish W/Cover, Sahara | #1503 Crystolite Cream & Sugar |
| #3390 Carcassonne Sherbet, Sahara | #1503 Crystolite Salt & Pepper |
| #3390 Carcassonne Wine, Old Colony Etch, Sah. | Large Chip & Dip |
| #1469 Ridgeleigh Candlevase (Rare in Sah.) | Plain Bowl |
| #3380 Old Dominion D.O. (5) 4½" Ftd Tumblers, Sah. | # 341 Old Williamsburg Cupped Torte Plate |
| #3380 Old Dominion D.O. (6) 5" Ftd Tumblers, Sah. | # 431 Old Williamsburg Cup and Saucer |
| #3380 Old Dominion D.O. (7) Cocktails, Sah. | # 341 Old Williamsburg Mayo |
| #3380 Old Dominion D.O. (4) Clarets, Sah. | # 341 Old Williamsburg Small Bowl |
| #3380 Old Dominion D.O. (10) Champs, Sah. | #1401 Empress 8½" Sq Plates (5) Each |
| #3380 Old Dominion D.O. Goblets 8 Each | Punch Cups (6) Each |
| #3397 Gascony 4½" Tumbler, Sahara | #1150 Saucers (6)Each |
| #1252 Twist 4 oz Oil W/Stopper, Mglm. | Colonial Fluted Sherbets (2) Each |
| #1401 Empress Saucers, Chintz Etch, 14 Each | Colonial Sherbets (4) Each |
| #1401 Empress Cups, Chintz Etch, 12 Each | Colonial Toothpick |
| #1401 Empress 8½" Square Plates Chintz Etch 8 EA | # 353 Medium Flat Panel Sherbets (6) Each |
| #3389 Duquesne 10 oz Ftd Tumb., Chintz Et. 5 EA | Oblong Bowl Etched, Pat. Date 4-24-17 |



CUSTARD, LOUIS XV NORTHWOOD

Banana Bowl
Spoooner
Creamer
Sugar, No Lid



CALL OR WRITE FOR COMPLETE BROCHURE.

SUNDAY, DECEMBER 15, 1985

COMMENCING @ 11:00 A.M.
HEISEY SELLS AT 12:00 NOON

OWNERS: LaVern and Rose George

LOCATION: CARR AUCTION GALLERY

123 EAST FIFTH, LARNED, KANSAS

FOREVER HEISEY

Janice A. Thran Shipping & Ins. Extra
 1663 Londondale Pkwy. PH: 614-344-5955
 Newark, Ohio 43055

#1770 Pleat & Panel, Cruet, Moongleam.....	\$ 90.00
#1469 Ridgeleigh, 3 oz Cruet.....	35.00
#1485 Saturn, Cruet.....	30.00
#1255 Pineapple & Fan Molasses can (No top)	35.00
#1503 Crystolite covered puff box - H.....	35.00
#1447 Rococo, 5 1/2" Ft'd cheese, Orchid etch-H	45.00
#1519 Waverly, Covered candy/Seahorse hldd, Orchid etch - H.....	140.00
# 407 Coarse Rib, Cr & Sug, Flamingo - H...	45.00
#4044 New Era, Cr & Sug, #480 Normandie etch	55.00
#1170 Pleat & Panel Rd. Spice tray, Fla - H	47.50
#1170 Pleat & Pan. low Ft'd Cov Candy, Fla-H	45.00
#1632 Lodestar, Cov. Candy, Dawn - H.....	110.00
# 501 Flower Box, Flamingo - H.....	65.00
# 501 Flower Box, Moongleam - H.....	85.00
#5024 Oxford, Cordial - H.....4 Ea..	20.00
#4026 1 Pint Decanter, Flamingo D.O.....	135.00
#3357 King Arthur, 2 1/2 oz wine, Fla D.O. - H 4 Each.....	40.00
1977 I.G. Sparky, green.....	62.50
1978 & 1979 I.G. Sparkies Pink/yellow..Ea.	45.00
1979 I.G. Sparky, purple Frosted (wrong yr)	50.00

WRITE YOUR WANTS WE SEARCH
 OVER 1,000 ITEMS IN STOCK



THE COLLECTOR'S STOP
 12018 Suellen Circle
 West Palm Beach, FL 33414

PH: 305-793-0986
 EXC. COND. OTHERWISE
 NOTED - S & I EXTRA
 * MARKED

#4085 Kohinoor 1 oz Cordial Zircon Saturn Optic (Rare).....	\$500.00
#1428 Warwick Cobalt 2 lite Candlesticks PR.	250.00
#1428 Warwick Cobalt Horn of Plenty Vase*	195.00
# 350 Pinwheel & Fan 8 oz Tumblers (3)*..EA	30.00
#1503 Crystolite Zircon Sq Ash Tray*.....	55.00
#1205 Fancy Loop 4" Rose Bowl.....	65.00
#1205 Fancy Loop 8" Vase.....	50.00
# 353 Flamingo Syrup.....	60.00
# 354 Wide Flat Panel Flamingo Stackset Cream-Sugar-Pat *.....	85.00
#1503 Crystolite Dresser Set Tray-2 Colo/Pow	300.00
#5072 Rose Stem Rose Etch 1 oz Cordial (2)Ea	145.00
#4092 Kenilworth 1 oz Cordial (2).....Ea	95.00
# 101 Pr. Simplicity 9" Candlesticks.....	165.00
# 102 Pr. Ballstem 9" Candlesticks.....	155.00
# 433 Greek Key 1 Pt Pitcher-Silver Overlay	135.00
# 433 Greek Key 1/2 gal Jug.....	185.00
#1489 Puritan 5" Deep Sq Ash Tray.....	20.00
# 461 Moongleam 7" Basket.....	195.00
#1403 Mql Cr & Sug Half Circle.....	125.00
#4225 Cobel, 2 qt cocktail shaker, ster- ling base, Orchid etch.....	235.00

WE BUY 1 PIECE OR COMPLETE COLLECTIONS

JUNE WIRTANEN
 2128 East 4th St.
 Duluth, MN 55812

PH: 218-724-0238

UPS - EXTRA

HEISEY BY IMPERIAL

#1447 ROCOCO "Land of Legend Souvenir Plates, Complete set of 6 - 1971-1976. Marked HCA and dated. Sold as set only.....	\$500.00
#1591 Storybook Mug. Amber Carnival. Nixon-Agnew. EWR. (2).....EA.	75.00
#1952 Dumbo Beer Mug. Nixon-Agnew EWR.....	90.00
Set of 4 Elephant Mugs by Frankoma, 1968,'69,'70,'71. Sold as set only..	265.00

CARMEL SLAG BY IMPERIAL
 Wood Duck, \$45.00; Mallard, Wings Up, \$40.00;
 Mallard, Wings half, \$40.00; Plug Horse,
 \$40.00; Standing Pony, \$40.00; #1591 Child's
 Mug, \$35.00.

Torte Plate, Orchid etch.....	65.00
Fish bookend.....	110.00
Goose Wings Half Way.....	95.00
Goose Wings Up.....	110.00

BINDERS FOR VOGEL BOOKS

THE PERFECT PLACE FOR YOUR VOGEL BOOKS

A BINDER THAT HOLDS ALL FOUR BOOKS IN PLACE,
 ALWAYS READY FOR YOU. VERY EASY TO USE, PRE-
 SERVES YOUR BOOKS. ATTRACTIVELY MARKED.

SEND \$9.00 PLUS \$2.50 POSTAGE TO:

KENNON'S KORNER

PO BOX 114

BROOKVILLE, OH 45309

MAKE CHECK PAYABLE TO DAYTON AREA HEISEY CLUB

- AN APPROVED HCA PROJECT -



Donald P. Bean PH. 617-473-0561
 36 Harding St. P & I EXTRA
 Milford, MA 01757 * = MARKED

- # 1454 Dia. Pt. Ind. Ash Trays* 6 for \$30.00
- # 150 Banded Flute Hld. Candlestick*..... 35.00
- # 7013 Thumbprint & Angle Jar*
- Metal Hair Rec. Cover V-4 P64..... 27.50
- # 1401 Empress 1 3/4" Tall 2 Hdle. Candle
- Holder Ftd.* Felt & O'Grady PG 202 PR.35.00
- # 343 Sunburst Finger Bowl Straight*
- Beautifully Sun Purpled..... 25.00
- # 1567 Plantation 13" Pickle & Olive*..... 32.50
- # 341 Puritan 3 oz, Ruffled Top,
- Sherbets.*.....2 for 10.00
- # 1509 Q. Ann 7 1/2" 1 Lite Candelabra
- with Prisms..... PR 50.00
- # 1776 Kalonyal Toothpick Hldr.* (MINT)... 110.00

PATTON HOUSE ANTIQUES PH. 703-962-1181
 P. O. Box 547 AFTER 6:00 P.M.
 Louisa, VA 23093 * MARKED
 P & I EXTRA



- # 343 Sunburst Water Bottle..... \$ 50.00
- # 1235 Beaded Panel & Sunburst Punch
- Bowl & Base*..... 175.00
- # 1205 Fancy Loop 9" Bowl..... 37.50
- # 1170 Pleat & Panel, Flamingo, 12 oz
- Soda* (2).....EA. 14.50
- # 1170 Pleat & Panel, Fla 8 oz Fl'd Tumb*2 EA13.50
- # 1170 Pleat & Panel Fla. Vase*.....40.00
- # 1401 Empress Sahara Mint Dish*.....22.50
- # 341 4 1/2 oz Clarets* Old Wmsburg (4)....EA 15.00
- # 1503 Crystolite Cruet..... 26.50

GILBERT CLINTON UPS EXTRA
 R 2 Box 532 Satisfaction Guaranteed
 Sikeston, MO 63801 PH. 314-471-4738

- Fighting Rooster, 2.....EA.. \$125.00
- Mallard Wings 1/2..... 140.00
- Ice Tea Pitcher, Orchid etch..... 295.00
- 8 oz Goblet, tall stem, Orchid etch 4 EA.. 35.00
- 2 lite Candleholder, Orchid etch.....PR.. 100.00
- Waverly 8 1/2" plates4 EA.. 6.00
- 7" fan vase, Orchid etch..... 55.00
- # 362 Syrup, Starburst cut..... 35.00
- # 353 Syrup pitcher..... 35.00

MOSTLY HEISEY - RHODA CURLEY PH: 518-482-6272
 16 Clayton Place UPS EXTRA
 Albany, NY 12209 SASE PLEASE

- # 305 Puntly and Dia Pt Lamp Shds 8"x4" 2 EA \$69.00
- # 17 Dia Pt & Pan Lamp Shade 7 1/4"x4" Flar., 75.00
- # 1495 Fern Zir 6" Cheese, Tid Bit or Mint EA 75.00
- # 1235 Beaded Pan & Sunbrst Punch Bwl/13 cps 325.00
- # 1519 Waverly Mayo & Underplate Set..... 85.00
- # 325 Pillows Rose Bowl 4"..... 95.00
- # 1205 Fancy Loop Cov Butter..... 125.00
- # 21 Aristocrat Candlestick 11".....PR.. 165.00
- # 353 Med Flat Panel Stack Set Cr/Sug and
- Butter Pat..... 55.00

*
 *
 *
 * BABS KENT PH: 516-374-4719
 * 554 Amherst Dr
 * Woodmere, NY 11598 P & H EXTRA



- * # 1255 Pineapple and Fan Bud Vases
- Set of 4 Sizes..... \$128.00
- * # 1469 Ridgeleigh 8" Flower Vase..... 50.00
- * # 1469 Ridgeleigh Decanter & 5 Bar Glass.St 200.00
- * # 1469 Ridgeleigh 6" Candle vase, Sahara... 48.00
- * # 133 Swan Candlestick, Moongleam..... 175.00
- * # 1519 Waverly Sq. butter. Rose etch..... 128.00
- * # 465 Recessed Panel. 3 lb Cut Candy jar.. 120.00
- * # 433 Greek Key, Crushed fruit jar..... 248.00
- * # 1401 Empress Cruet, Moongleam..... 98.00



* GLASS 'N' GLASS PH: 813-792-6004
 * Virginia & Odell Johnson UPS & HNDLG EXTRA
 * 6909 10th Ave. W
 * Bradenton, FL 33529 * MARKED

- * # 413 Rib & Panel cig box & Cov MGLM*..... \$115.00
- * #1425 Victorian Cruet*..... 37.50
- * #1425 Victorian Cruet with #3 Stopper*.... 32.50
- * #1404 Old Sand 8" plates SAHARA* 4 EA.... 13.00
- * #1404 Old Sand 4 oz sherbets 2 EA..... 22.00
- * #1404 Old Sand 10 oz low ftd tumb 2 EA... 22.50
- * #1252 Oval Twist Sug/cmr SAHARA*..... 75.00
- * #4002 Aqua Caliente 4 oz cocktails SAH* 5 EA 20.00
- * # 135 Empress Candle ALEXANDRITE.....1...150.00
- * #1401 Empress ind nut ALEXANDRITE*.....3 EA 85.00
- * #3350 Wabash wide optic wines*.....4 EA 12.00
- * #1425 Victorian wines*.....7 EA 22.00
- * #4083 Stanhope goblets S.O. crystal.....7 EA 18.00
- * #4083 Stanhope champs S.O. crystal.....2 EA 18.00
- * #4083 Stanhope gob S.O. bwl & ft ZIRCON..4 EA 60.00
- * #4083 Stanhope champs S.O. bwl & ft ZIR 4 EA 90.00
- * #1519 Wav. Heisey Rose etch ftd violet vase* 85.00
- * #1519 Wav.Heisey Rose etch min sug/cmr &
- #1509 tray*..... 120.00
- * #1503 Crystolite 7" Shell Bon Bon..... 15.00
- * # 28 "Elizabeth" candles 9 3/4" Cut on
- Sides*.....Pr. 110.00



JIM GARTNER
444 Girard St. # 103
Gaithersburg, MD 20877

PH: 301-869-5306
P & I EXTRA
* MARKED

- #1404 Old Sandwich 8 oz ice tea, Ground Bottom, Moongleam*.....1 EA \$ 35.00
- #1404 Old Sand. plates 8" Moongleam*...8 EA 22.50
- #1404 Old Sand. 4 oz Sherbets, Flam.*...7 EA 27.50
- #1404 Old Sand. 4 oz Sherbets, Sahara* 5 EA 22.50
- #1404 Old Sand. 10 oz Low ftd gob, Sah*5 EA 35.00
- #1404 Old Sand. 3 oz Cocktails, Sah*...6 EA 35.00
- #1404 Old Sand.12 oz Beer Mug(Lge) Sah*2 EA 145.00
- #1404 Old Sand. ½ gal water jug W/ice lip W/6 12 oz ice teas Ground bottom* Sahara...350.00
- #1404 Old Sand. 3 pc console set* Sahara....275.00
- #1404 Old Sand. 2½ oz wines* Sahara ...5 EA 35.00
- #1404 Old Sand.4 oz oyster cktl.* Sah...6 EA 25.00
- #1404 Old Sand.5 oz ice teas, Ground bottom* Sahara.....6 EA 25.00
- #1404 Old Sand.6" plates* Sahara.....6 EA 20.00
- #1404 Old Sand. Clarets* Sahara.....4 EA 37.50
- #1235 Beaded Panel & Sunburst 8" plate..... 30.00
- # 107 Wellington 10" Candlesticks W/cuttings* Moongleam..... PR 380.00



C. R. DELANEY
659 Canterbury Ct.
Newark, OH 43055

PH: 614-366-3741
UPS & I EXTRA
* MARKED



- #1513 Baroque 3-Lite candelabra epergne W/bobeches, "B" prisms & #5013 vase \$160.00
- #1503 Crystolite ½ gal ice jug (blown).... 67.50
- #1503 Crystolite cup/saucer* 8 sets...Set. 20.00
- #1503 Crystolite Ind cream/sugar*.....Pr.. 35.00
- #1503 Crystolite 11½" Floral bowl..... 27.50
- #1509 Queen Ann covered lemon dish, Dolphin Finial*..... 45.00
- #4220 Janice 4½" vase (spiral Optic) Sah... 35.00
- #1519 Waverly 10½" Dinner Plate (8), 8" Plate (6), 7" Plate (8).....A11.185.00
- #1506 Whirlpool Ind cream/sugar*.....Pr.. 40.00
- #1560 Victorian Belle Bell W/clapper (Frstd) 85.00
- # 516 Fairacre 1 oz Cologne* Flamingo..... 125.00
- # 351 Priscilla Mustard W/cover*..... 28.00
- # 351 Priscilla 2-handled footed jelly*.... 30.00
- #1403 Dowager Grapefruit*.....27.50
- #2351 14 oz Soda or ice tea W/#413 Renaissance etch (8)Ea.. 14.00
- #2351 10 oz Soda or ice tea W/ #439 Pied Pip. etch (8).....Ea.. 12.00
- # 2 Piglet, standingEa.. 65.00
- # 5 Cygnet*125.00
- #5072 Rose Sher * W/#515 Heisey Rose Et 6 Ea 22.50
- #1519 Waverly 8" Plate W/#515 Heisey Rose etch (8)Ea..20.00

H & R DIAMOND H
HELEN & BOB RAREY
1450 WHITE ASH DR.
COLUMBUS, OH 43204

PH: 614-279-0390
(After 5:30 P.M.)
* MARKED
S & I EXTRA

- * #1184 Yeoman 10½" Rd. Plate, Frontenac etch (8)..... \$ 22.50
- * # 310 Ring Band 5 pc Berry Set*, Gold Dec. Custard..... 245.00
- * #341½ Old Wmsbg. 13 x 10" Oval Bowl*..... 65.00
- * #1220 Punty Band 10 oz Pitcher, Red Stain. MOONGLEAM: 95.00
- * #1184 Yeoman Demi Cup & Saucer* (2).....Ea. 29.50
- * #1184 Yeoman Cup* DO (no saucer)..... 12.50
- * #1229 Octagon Ind. Hld. Nut Cup (6)..... Ea. 24.50
- * #3480 Koor"s "29" 5 pc. Water Set-Moongleam Hdle. & Foot..... 235.00
- * #4182 7" Plate, DO (6).....Ea. 17.50
- * COBALT:
- * #1183 Revere 8" Rd. Plate (5).....Ea. 32.50
- * #3390 Carcassone Champ. (5).....Ea. 45.00
- * Tall Goblet (1).....55.00
- * Ice Tea (7).....Ea. 65.00
- * Sherbet (4).....Ea. 35.00
- * TANGERINE: RED SIDE
- * #3397 Gascony Fruit Cocktail..... 235.00
- * #3397 Gascony 18 oz Soda..... 435.00



SCHWANS ANTIQUES
2980 John Tyler Highway
Williamsburg, VA 23185

PH: 804-229-7873
UPS & INS. EXTRA
* MARKED

- * #1235 Beaded Panel & Sunburst 8"x 9" Comp. \$ 90.00
- * #1235 Beaded Panel & Sunburst Hdled. Dec.. 65.00
- * #1280 Winged Scroll Butter Dish, Emerald.. 195.00
- * #1280 Winged Scroll Butter Dish, Custard.. 145.00
- * # 811 3/4 Hoffman House Goblet W/ Club Drinking Scene plate etching*..... 95.00
- * #5040 Lariat Blown stems, Moonglo Cutting Cordials (4).....Ea.. 55.00
- * #5040 Lariat Blown stems, Moonglo Cutting 3 ½ oz Cocktails (3).....Ea.. 35.00
- * #5040 Lariat Blown Stems, Moonglo Cuting 4 oz Claret (4).....Ea.. 45.00
- * #5040 Lariat Blown Stems, Moonglo Cutting 5 oz Footed Juice-Parfait (5)....Ea.. 45.00
- * #5040 Lariat Blown Stems, Moonglo Cutting 5½ oz Sherbets (4).....Ea.. 15.00
- * Blown Moonglo Cut 1 oz Bar Glass 2 Ea. 35.00
- * #1428 Warwick Ind. Candle, Sah.*Pr.. 65.00
- * # 133 Swan Handled Bowl, Moongleam..... 225.00
- * #1483 Stanhope Champagne (2).....Ea.. 10.00
- * #1425 Victorian Cocktail, Sahara* (4)..Ea.. 40.00
- * # 126 Trophy Candlesticks, Flamingo....Pr.. 90.00
- * #1615 Flame Candlesticks.....Pr. 110.00
- * # 411 Tudor Quart Tankard Pitcher W/cut*... 98.00
- * #1205 Fancy Loop Cake Salver..... 90.00



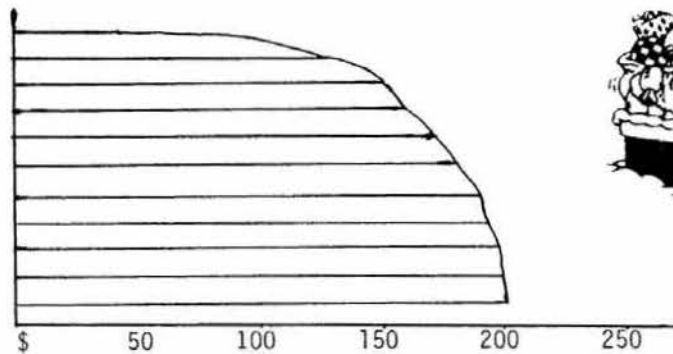
<p>A.W. PARKER Heisey & Pattern Glass Shows or Appointment Magalia, CA 95954 PH: (916) 873-2326</p>	<p>"HAPPINESS IS" THE STULTZ'S Show and Mail - Elegant Glass Circa 1890-1960 3106 Warren Court Glen Allen, VA 23060 PH: (804) 262-1273 (Richmond Area)</p>	<p>Your Ad Could Be Here!</p>
<p>A DOOR ANTIQUES Heisey My Specialty 4241 Bayard Road South Euclid, OH 44121 PH: (216) 381-3008</p>	<p>GERT'S GLASS Heisey & Duncan Gertrude & Russell Swetnam 1926 Saratoga Dr., Adelphi, MD 20783 PH: (301) 434-5113</p>	<p>MOSTLY HEISEY Rhoda Curley 16 Clayton Place Albany, NY 12209 By Appointment, PH: (518) 482-6272</p>
<p>ALL HEISEY AUCTION Consignments Welcome Apple Tree Auction Center 1616 W. Church, Newark, OH 43055 PH: (614) 344-9449</p>	<p>GLASS 'N' GLASS Virginia & Odell Johnson 6909 10th Ave West Bradenton, FL 33529 PH: (813) 792-0604</p>	<p>MOUND BUILDERS ANTIQUES Heisey & Animals, General Antiques Irene Rauck 1138 Moundview, Newark, OH 43055 PH: (614) 344-6043</p>
<p>ANN'S GIFTS & ANTIQUES 105 W. Main St., Hebron, OH 43025 Intersection of Rts. 40 & 79 Next door to Daisy Queen Daily 10:30 to 5:30</p>	<p>GLASS WITH CLASS Lenore A Shelley, GGHC 1336 Lincoln Avenue San Jose, CA 95125 PH: (408) 286-8098</p>	<p>HELEN & JIM KENNON Heisey, Cambridge, Fostoria, Duncan, Imperial, Fenton, Tiffin P.O. Box 114 Brookville, OH 45309 PH: (513) 833-5406 SHOWS ONLY</p>
<p>ANTIQUES - THE SHULTZES 206-208 East Main St. Newmanstown, PA 17073 15 Miles West of Reading, PA PH: (215) 589-2819</p>	<p>GREEN ACRES FARMS Antiques, Crystal Glass & Collectibles 2678 Hazelton-Etna Rd., SW I.S.R. 310-NI Pataskala, OH 43062 Sat. or Sun. PM or call (614) 927-1882</p>	<p>R & L ANTIQUES - SAN FRANCISCO Shows only always lots of Heisey Member of Golden Gate Heisey Club P.O. Box 3614, Daly City, CA 94015 PH: (415) 621-6693</p>
<p>AVERY'S QUALITY ANTIQUES Specializing in Heisey Shows or by Appointment 2112 First St., Jackson, MI 49203 PH: (517) 783-4075</p>	<p>H & R DIAMOND H Helen & Robert Rarey 1450 White Ash Dr. Columbus, OH 43204 PH: (614) 279-0390 after 5:30</p>	<p>RAMBLING LANE ANTIQUES Featuring Heisey & other fine glass Keith & Evelyn Hoover 1978 Rambling Lane, Rhinelander, WI 54501 PH: (715) 282-5019</p>
<p>B & B HEISEY & COLLECTIBLES B. Whaley 300 International Dr. Pataskala, OH 43062 By Appointment: PH: (614) 927-1557</p>	<p>CHARLOTTE'S GLASS REFLECTIONS Quality Glassware Specializing in Fostoria 6816 14th St. W., Bradenton, FL 33507 PH: (813) 756-4143</p>	<p>RAY ZIEGLER Glass Repair 185 County Line Westerville, OH 43081 PH: (614) 891-9700</p>
<p>C.E. HIGGINS (S.F. Bay Area) Shows and Mail Order P.O. Box 2723 Menlo Park, CA 94025 PH: (415) 322-0192 Evenings</p>	<p>HARRALSON'S HAPPY HEISEY HUNTERS Sponsor SPFD MD's Super Antique Show 77 Quality Dealers from 10 States 1986 Dates: May 31 June 1 Nov. 15-16 Info: 1426 W. Highland, Springfield, MD 65807</p>	<p>SCHWAN'S ANTIQUES SHOPS & SHOWS 2980 John Tyler Hwy. Williamsburg, VA 23185 PH: (804) 229-7873</p>
<p>C & J ANTIQUES Cole & Jean Miesner Box 45, 72 Whig St. Newark Valley, NY 13811 PH: (607) 642-9905</p>	<p>HARRISON'S ANTIQUES Heisey, Cambridge, Duncan Shows, Mail, by Appointment 26 Johnston's Lane, Mercersburg, PA 17236 PH: (717) 328-2451</p>	<p>SUM OF LIFE Elaine & Frank Husted P.O. Box 102 Phoenixville, PA 19460 PH: (215) 935-2962</p>
<p>CHARLES & MILDRED FISHER Heisey, Degenhart, Imperial, Antiques, Collectibles, General Line 991 Idlewild, Newark, OH 43055 PH: (614) 522-5398</p>	<p>SPARKLING ANTIQUES Arlene I. Reynolds - owner Heisey & Custard Glass 5 Wayside Circle, Pittsford, NY PH: (716) 381-4134</p>	<p>ETTELMAN'S DISCONTINUED CHINA & CRYSTAL HEISEY a SPECIALTY P.O. Box 6491 HN Corpus Christi, TX 78411 PH: (512) 888-8391 Include SASE</p>
<p>DAVE'S ANTIQUES Specializing in Heisey Shows & Appointments Tampa, FL 33600 PH: (813) 876-0580</p>	<p>HEISEY PUBLICATIONS Heisey Books I-III-IV Newscaster Back Issues \$4.00 1977 thru 1984 Box 102, Plymouth, OH 44865</p>	<p>THE GLASS CONNECTION Specializing in Heisey Shows & Mail Order Box 526, Collegeville, PA 19426 PH: (215) 489-0139</p>
<p>DIAMOND H PLUS Mail Orders & Shows George & Eileen Schamel Rt. 3, Box 171, Boonsboro, MD 21713 PH: (301) 432-6285</p>	<p>J. & R. COLLECTIBLES Shows, SASE, Mail Order list June & Ray Lukasko P.O. Box 1030, Newark, OH 43055 PH: (614) 344-9719</p>	<p>THE GLASS LADY Week Ends Only Glass, Pottery, China Circle Shopping Center, Richmond, VA 23224 SHOP (804) 370-9239 HOME (804) 271-1545</p>
<p>ELIZABETH BASSETT CASON 401 32nd St., W. Bradenton, FL 33505 Mail Order - List PH: (813) 748-0851</p>	<p>THE PURPLE PLACE Featuring Heisey & Other Fine Glass Martha & Harold Earp 1940 Suwanee, Ft. Myers, FL 33901 PH: (813) 936-1572 Anytime</p>	<p>WILLEY'S ANTIQUES & MUSEUM Specializing in Heisey 11110 Cannon Rd., Frazeyburg, OH 43822 16 miles east of Newark, OH PH: (614) 828-2557</p>
<p>FOREVER HEISEY Shows and Mail Order Janice Thran 1663 Londondale Pkwy., Newark, OH 43055 PH: (614) 344-5955</p>	<p>JUDY'S DIAMOND H ANTIQUES Heisey Glass - Lake Isabella, CA HC 1, Box 3001 Weldon, CA 93783 PH: (619) 378-2176 by Appt.</p>	<p>GOLDSBERRY'S ANTIQUES Heisey a Specialty Shows only Buy & Sell Kalamazoo, MI 49000 PH: (616) 381-3013</p>
<p>DIE KUNST GALLERIES & ANTIQUES Specializing in Heisey Vel & Andy Andress Box 329, 725 Front Street Leavenworth, WA 98826 PH: (509) 548-7856</p>	<p>PEGGY'S ANTIQUES Ernie & Peggy Cox P.O. Box 367, Spavinaw, OK 74366 By Appointment or Chance PH: (918) 589-2859</p>	<p>THE WOODEN SHOE Antiques & Collectibles Jim & Sheri VanEs by Appt. 810 Elden, Herndon, VA 22070 PH: (703) 435-9045</p>

MOULD FUND Year End Report

Steering Committee Chairman
Norm Thran



Jan. 14, 1985	=	\$ 44,775
Feb. 14, 1985	=	129,700
Mar. 14, 1985	=	150,500
Apr. 14, 1985	=	157,000
May 14, 1985	=	172,400
Jun. 14, 1985	=	177,400
Jul. 14, 1985	=	192,500
Aug. 14, 1985	=	194,700
Sept 14, 1985	=	195,700
Oct. 14, 1985	=	196,500
Nov. 14, 1985	=	197,000



We have received only \$500 the past month for the Mould Fund. Think about that for awhile, approximately \$15 per day. With donations at the current rate we will have difficulty repaying the loan and the quarterly interest. The drive has been successful to date but needs a push to get us over the top. The first \$200,000 was easy I have been told, the last \$30,000 still needs to be raised. listed above is a recap of where we were each month of the campaign in '85.

Please note the two most active periods of the campaign late Jan. to April and mid June to July. Both of these were very active periods, high dollar donations etc. These two periods were when we as members of HCA responded to the call for support of the Mould Fund. It is easy to recall the initial support back in Jan. and Feb. when we were actively in the process of securing the moulds. The second period came during Convention with many visitors and, as usual, much support for the recent acquisitions, the 4,400 plus Heisey moulds. Then the donations and pledges slowed to almost nothing.

We must be realistic and try to reduce the current debt. During the purchase of the moulds, the committee worked hard to not only secure them but to arrange for the financing in order to meet our commitment to the liquidator to purchase these moulds and not default. We were again successful and with all of that said and done it leads to this:

We still need to raise \$32,000 to repay the Mould Fund loan plus the interest on a quarterly basis. The current drive has slowed to approximately \$15/day the past few months. We, the Committee, are committed to see this to completion and the sooner the better!! To date 50% of the membership

has given and that is a feat in itself for this is a voluntary gift. Both the cash and any man hours is greatly appreciated by all of us.

I believe we as a group, even if it's only the 50% of us, in this organization can see this task to a successful finish. We all can help!! immediately by:

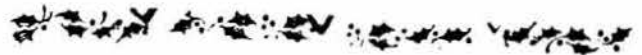
- Donating again, \$15/20 per family would put us over.
- Purchase a Display sign, we could reduce the debt by 50% if every family purchased a sign.
- Send us glass for sale at auction. (we have had poor response on this item).

Clip the coupon below and respond with what you can, it is still time to take a 1985 tax deduction and remember cash and glass donations are fully tax deductible. Some members have stated that originally they were not in favor of the purchase and didn't respond and would like to help; well let's get down to it. We own the moulds like we own the Museum and the future of the moulds rests with you and your trusted elected officials.

The Steering Committee will be exploring other ways to reduce this debt and although plans for the following are not firm we see looking at:

- General Benefit Auction in April. (Antiques, China, Furniture, glass etc.) Not a Heisey Auction but certainly we will sell the Heisey that is donated.
- Benefit Dinner in April or May.

Please respond today as you have in the past and push us over the top.



PLEASE RESPOND:

NAME _____ STREET _____

CITY _____ STATE _____ ZIP CODE _____ PHONE _____

Visa or Master Charge Number _____ Expiration Date _____

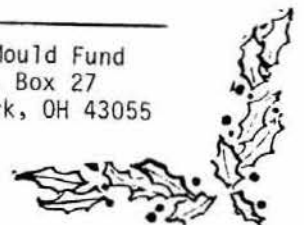
___ I will give \$15/20 additional donations

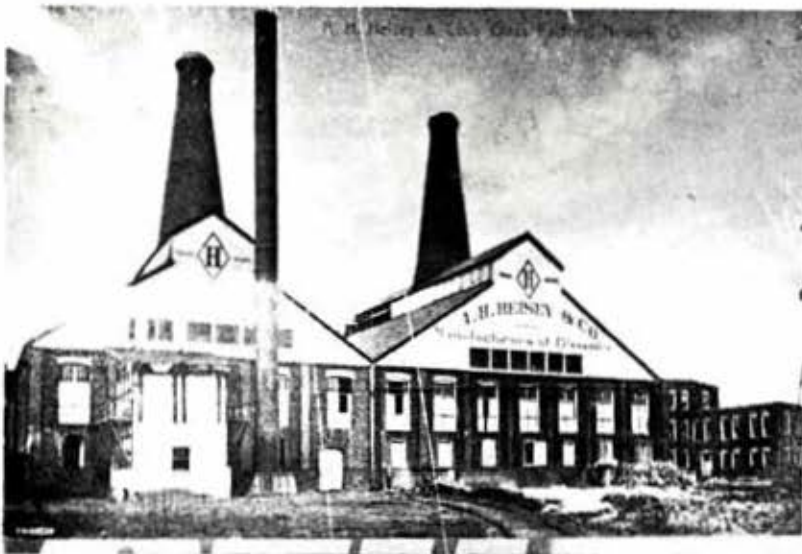
Make Payable and Mail to: HCA Mould Fund
P. O. Box 27
Newark, OH 43055

___ I will give \$ _____ now and balance later.

___ I will pledge \$ _____ over the next ___ 3 months ___ 6 months.

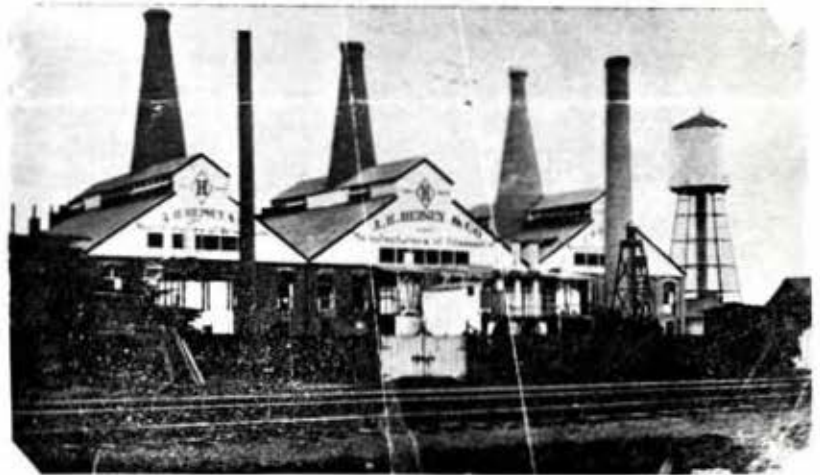
___ I cannot give .





These two pictures are from a Flint Magazine (Glass union publication) printed in 1946. The original factory had only one furnace.

The two factory pictures will recall many memories among our glass-workers who have been employed here over the past 50 years. Shown here are the two-furnace factory of years ago and the present three-furnace factory shortly after its construction. At the present time only one furnace is in operation.



The above is a quote from the American Flint.

GLASS[®] review

ESTABLISHED 1971

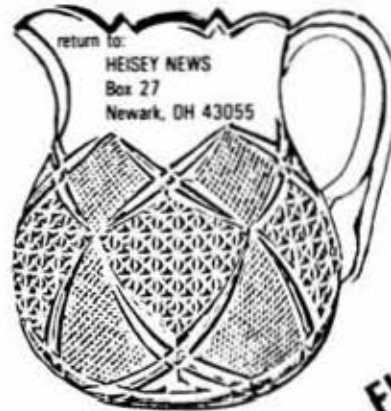
The GLASS REVIEW Magazine is for everyone who studies, collects or sells glass. Whether your glass interests lean toward the early 1900's — or the depression era — or with today's limited glass items, the GLASS REVIEW covers it all!

Articles — price reports — original catalog documentation — shop directory — research and reproduction news — trademark information — glass book releases — what's new on the market — a large variety of glass ads (on both old and new glass) — plus much more.

Enclose payment and mail to:
GLASS REVIEW,
P.O. BOX 542, MARIETTA, OH 45750

**NOW 12 ISSUES
PER YEAR!**

\$14.50 - one year



FIRST CLASS MAIL
U.S. POSTAGE
PAID
PERMIT 741
Mt. Vernon, OH 43050

FIRST-CLASS MAIL

