

HEISEY news

OFFICIAL PUBLICATION HEISEY COLLECTORS OF AMERICA

©Heisey Collectors of America, Inc.
All Rights Reserved 1985

VOLUME XIV NO. 7

JULY, 1985

ISSN 0731-8014

Genesis

We are the molds!
Without us you would not have been!
You - the "Impossible Dream"
The curving stairs from lighted floor
to lighted floor.
The cases - **shining** with our creations!
We held, we **formed** the gleaming glass
While it was hot. We enclosed it
Until it cooled - and formed.
The stem, the vase, the curving line,
The square corner, all are **ours**
and the colors
We held the greens, the greys, the golds,
The ambers, blues, pinks, and lavenders!
We shaped and contained it all.

But then, The minds that conceived us
Were gone.
The hands that carved us Were gone.
The workers that used us Were gone.
The factory that housed us Was gone.
And we - we were gone to a new location.
Used by new people or left to gather dust
Used under a new name-not our own.

But now we have come back
We have returned to the place that
gave us birth
To the place where our glass images remain
To be appreciated, to be admired
We are home!

By Emogene Shomaker

HEISEY NEWS

P.O. BOX 27, NEWARK, OH 43055

CLUB OFFICERS:

President — Tom Bredehoft — 614-745-1014
Vice President — George Schamel, III — 301-432-6285
Secretary — Ray Ziegler — 614-471-6446
Treasurer — Dick Marsh — 614-366-5608
Exec. Dir. — Louise Ream — 614-345-2932

Editor: Louise Ream

P.O. Box 27, Newark, OH 43055
PH: 614-345-2932

Assistant Editor: Neila Bredehoft

P.O. Box 27, Newark, OH 43055
PH: 614-345-2932

Published monthly and printed in Mt. Vernon, Ohio

\$15.00 per year - \$1.25 per copy

Back Issues - Each Volume (12 issues) year - \$9.00.

Volume V, VIII, IX, X, XI, XII & XIII

Heisey Collectors of America, Inc. is a non-profit corporation with tax exempt status. Owners and operators of National Heisey Glass Museum, 6th and Church Streets, Newark, Ohio.

Open daily 1-4 p.m. except holidays. Other hours by appointment. Members admitted free.

Club membership (includes 12 issues of HEISEY NEWS and participation in all club activities) \$15.00 per year plus \$2.50 for each additional family member in same household who wishes a membership card. For VOTING MEMBERSHIP, add \$25.00 one time only fee.

When requesting information, please enclose a self-addressed, stamped envelope (SASE).

ADVERTISING - Send all ads to:

Advertising, c/o Janice Thran
P.O. Box 27, Newark, OH 43055

DOUBLE SPACE ALL ADS.

RATES:

DEALER'S DIRECTORY - Maximum five (5) lines - \$20.00. Change during year \$2.00 per line. CLASSIFIED - 12-/word - \$1.20 minimum.

Abbreviations and initials count as words.

DISPLAY:	MEMBERS	NON-MEMBERS
1/8 pg. (9 items)	\$15.00	\$25.00
1/4 pg. (20 items)	24.00	35.00
1/2 pg. (20 items)	40.00	50.00
1/2 pg. (50 items) Vertical	50.00	60.00
1 pg. (50 items)	65.00	80.00

Extra lines will be billed at \$1.00 per line. Personal ads limited to 1/8 space.

ALL ADS MUST BE PREPAID. Ad copy must be received by the 5th of the month preceding the publication date - i.e. April 5th for May issue. Ads containing reproductions will not knowingly be accepted unless clearly stated (i.e. Heisey by Imperial, etc.). HEISEY NEWS assumes no responsibility for false advertising or misleading information. In the event of typographical error, the incorrect portion of the ad will be run in the following issue, but HEISEY NEWS assumes no further liability.

The opinions expressed in articles in HEISEY NEWS are those of the authors and not necessarily those of the organization. The Editorial Staff reserves the right to edit or refuse any material submitted for publication. When requesting information, please enclose a self addressed stamped envelope. (SASE).



Manhattan - Cutting No. 799



Killarney - Cutting No. 797



Happy 4th of July!

This month's issue is mostly pictures since we had so little time to work on Heisey News. You wouldn't believe everything that has been going on here the past few months. Perhaps we'll be back to normal before too long. Then it will be time to start on the September event.

The date for the September Mini-Show and Souvenir Dinner will be Saturday, September 7th., and it will again be held in the big tent on the grounds of the museum.

The Christmas dinner will be held on Friday, December 6th., probably at the Granville Inn.

It is getting very exciting around here and on Friday, June 15, the first conventioners have arrived. Jerry and Judy Robinson from Illinois came in this afternoon, accompanied by their daughter, Christy. She is nearly as tall as her mother, Judy, but she was only two weeks old when she attended her first convention - with a big Diamond H on her dress.

I hope you all enjoyed our June Heisey News with all its circus decorations. I thank Sharon Orienter of the Rochester Heisey Club for most of the clip art. I am using more of them this month and I thought you'd appreciate nice flowers in the hot month of July.

Sam Schnaidt will be having an August auction, so watch the next issue for the list.

We are anxious to learn who the new Board Members are and also who the officers will be, and I'm sure you are too.

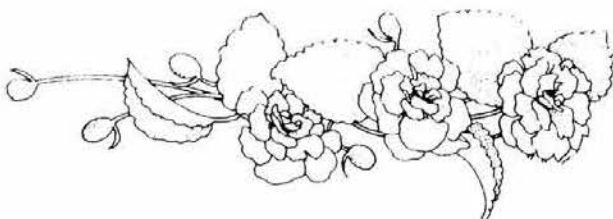
Our present shipping lady, Margaret Weber, is retiring July 1st. and we have hired her brother, Leonard Tipton, who is retired from his regular job, to take her place, working part time. He has helped her so much over the years that he pretty well knows the job and we are sure we'll enjoy working with him. He will be the only man on the staff and perhaps our lunch hour conversation will have to change!

I promised to get back to "Little Things" but didn't do too well. I really will get "back on the ball" soon.

Until next time,

Happy Collecting!

Louise Ream



MOULD FUND STATUS

By Norm Thran
Mould Fund Steering Committee

As of June 13, 1985, we have received the following cash and pledged monies:

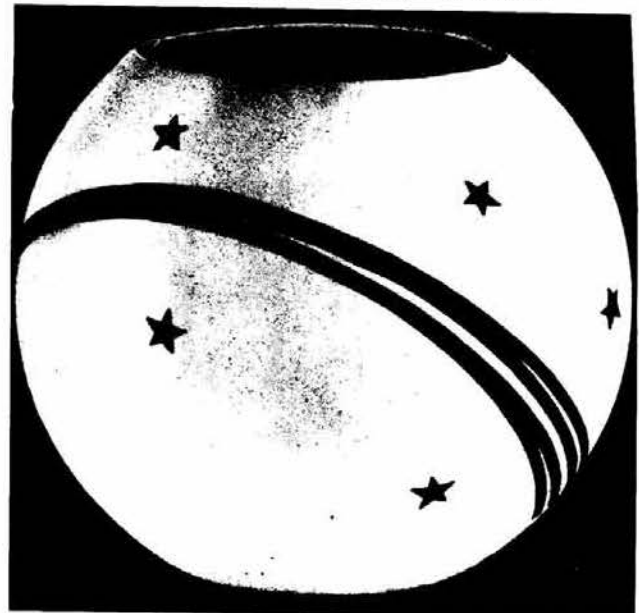
	May 13	June 13
Received	\$172,300	\$177,400
Pledged	8,100	7,900
TOTAL	\$180,400	\$185,300

The past month showed a growth of \$5,000 cash received and the pledges remained the same. Convention is almost here and at the time of this writing, it is our expectation to reach the \$200,000 level including pledged monies. The membership, all who have given money, time and pledges, deserve a BIG "THANK YOU."

We have really come a long way from one year ago. In early June of '84, the purchase of the moulds was just a slim possibility. Today, we have raised over 77% of the purchase price and our goal to reduce the Mould Fund debt will continue. Keep your pledges and donations coming, together we can do it.

Send to: HCA MOULD FUND
P.O. BOX 27
NEWARK, OH 43055

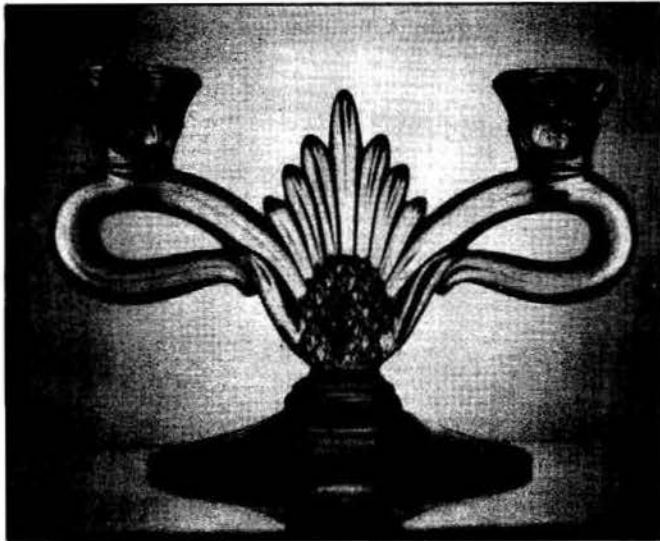
STARS AND STRIPES CARVING No. 5016



No. 4045—6 in. Ball Vase

HEISEY CANDLESTICKS - NO. 1567, PLANTATION

By Tom Felt



This month we will look at the last two candlesticks to have been added to Heisey's very popular Plantation pattern. Altogether, there were eight different devices for holding candles in this pattern -- the hurricane lamp, candleblock, and three-light candlestick and candelabra all went into production in 1948, followed by two sizes of footed epergne candleholder in 1949.

The no. 1567 two-light candlestick (photo #1) was first listed in catalog 30, dated July 1949, but according to original factory records, it did not actually go into production until August. After the candleblock, it was the second most popular of the Plantation candleholders, continuing to be made for over 8 years until the closing of the factory in 1957. It is not too difficult for collectors to find today.

The pineapple motif forms the central portion of this candlestick with a spray of seven fronds rising from it. The arms curve outward to the sides and are about 8-3/4 inches wide. The candlestick is slightly over 5-1/2 inches in height and has an applied foot, 5-1/2 inches in diameter.

When Heisey revised and reissued their advertising brochure on epergnettes in late 1949, the two-light candlestick was one of the ones pictured in it with a pair of no. 341 epergnettes.

The last candlestick to be added to the no. 1567 Plantation line was the one-light (photo #2). It was first made in August 1950 and seems to have been discontinued just about exactly five years later. In September 1955, prices were increased as the result of a raise granted to the workers that month and records exist also working out a second price increase to reflect a raise granted September 19, 1956 -- but apparently the popularity of this candlestick was not great enough to justify either of the increases since it was discontinued prior to the issuance of catalog 33 in January 1956.

Although over 1500 were made in the first seven months it was in production, it may not have been produced in such large quantities in the later years, since it seems to be a rather difficult candlestick for collectors to find today.

Like the hurricane lamp and the candleblock,



the one-light consists simply of a pineapple, though smaller in proportion and with a molded foot. The pineapple is just a little over 2 inches in diameter and only 4-1/2 inches high, although the catalogs routinely listed it as being 5 inches. The base is 5 inches in diameter. The eight fronds at the top of the pineapple form the candleholder portion and it sits on a ribbed pedestal similar to that on the footed epergne candleholder.

Like most of the pieces in the Plantation pattern, both of these candlesticks were designed by Horace King. They were both offered with the no. 516 Plantation Ivy plate etching. Neither are known to be marked with the Diamond H. Both were made in crystal only.

Although some pieces of Plantation were reissued by Imperial, the candlesticks are not known to have been included among them.



"NIMROD" CARVING No. 5003



No. 2401--8 oz. Old Fashion



diamonds are forever.....

By Janet M. Caswell

Finally warm weather has arrived in the Yachting Center, at least long enough for me to work on my "tan." The boats in the Harbor seem to multiply like rabbits, now that warm weather is here, and one of the unique features of our town is the number of boats per square foot of water space. Nearly 2000--with 500 more on the yachting center side of Salem Harbor--are moored in the harbor during the summer months. Over 22 fleets compete in races on weekends during the months of May - September. Warm lazy days are here!

The first weekend this past spring for outdoor "fleas," it rained, but the second weekend was lovely and the Mr. and I headed out. At the different "flea" fields, we always split, one going on one side, and the other of us on the other side of the aisles. The Mr. soon whistled (our signal that something is special, so hurry over) and I went to see what goodie he had uncovered. He told me there was a pair of #121 2" candleholders in Hawthorne on a table two down on the other side. Upon looking, I discovered they were not a pair. One #121 2" Pinwheel, the other #133 2" Zig Zag, but both were Hawthorne. When I nicely informed the dealer they were not a pair, he cut the price three fold (which was peanuts in the first place) What a deal! That gives the Mr. a pair of #122s, as he had one already, and a single #121. Always fun to have something to look for.

Let's again write about "the California Kid" it's Plantation #1567 - a pair of shakers (salt & pepper) plus a pair of cruets with the correct stoppers! Also, from California "Mountain Gal" keeps her "lil red mg" packed full of goodies. I sometimes wonder if that "mg" is ever empty long enough to give anyone a ride? Oh well, here goes: #1503 Crystolite four-compartment Clover shape relish, #1295 Beaded Swag covered butter, covered sugar and the spooner, in opal, with daisy decoration. How sweet it is!! - #1205 Fancy Loop toothpick, good gold, a pair of #1469 Ridgeleigh 7" 1-light candelabra, complete with prisms, #112 Mercury 3" candleholders (2 pair), one in flamingo and the other pair in moongleam, and to watch over all these good things and to keep them safe and secure was a Giraffe, head turned. What can I say?????

From my "Evergreen friends" (ME) - #515 Rose Etch sugar and cream (they didn't say what pattern, my guess would be #1519 Waverly) and eight (8) #3350 Wabash 1 oz. cordials with the #439 Pied Piper Etch. It is this type of find that makes getting up before the birds worth every minute of lost sleep.

"The Guys" (CT) report #393 french dressing boat, three (3) #1401 Empress demitasse cups and saucers in crystal and the #1401 six-part relish.

"That Double Steppin Couple" found two #1405 Ipswich cruets and "Twinkle Toes" has a Ribbon Candy cruet and the #439 Raised Loop cruet.

"Our Rebel Cousins" (KY) don't check in every month, but when they do, it is Super! #470 Intercepted Flute 11-1/2" platter, cut, and a pair of #300-2 Old Williamsburg 16" 2-light candelabra in marigold stain.

"A Friend in Deed" (MA) brags (and rightly so) #1612 Botanical cigarette box, #4163 16 oz. beer mug with the Drinking Scene Etch, #5044 Constellation 4 oz. bar glass and a #6003 Tempo cordial with #1081 wedding-band cutting. I have seen these pieces and believe me, they are beautiful - I feel privileged to be a friend of this "friend."

"The Little One" has a #1503 Crystolite powder box and "Grampa W" is on the circuit again, finding a little of this and a little of that - #33 Toy Stick (one), #393 Hotel ice tub, #126 Trophy sticks, #1184 Yeoman powder jar in flamingo, and the #160 Locket on Chain spooner.

From "The Pelican State" (LA), I received a lovely letter, it was written on yellow stationery with a smiling sun on the left and on the right was imprinted these words - "It's a bright, happy world with you in it!" Not only did the letter make my day but the stationery was happy all by itself. I want you to think about the first words, "it's a bright, happy world" - here is the sum and total of that "happy" letter - It seems there was to be an auction, the wife (newly retired) was asked by the husband if she would enjoy going. Needless to say, folks, the hands were full on the way home. Read carefully and weep. Twelve (12) pieces of #1245 Ring Band, ivorina verde with roses, all mint condition. Looked as if never used, 8" berry bowl and six (6) 4-1/2" nappys, creamer, covered sugar and spooner, cruet with a crystal stopper and the covered butter. Oh, Happy Day!!

"The Tipper" sends his best to all of you and wants to let you know about a few things: #315 Paneled Cane nappy, #500 Octagon nappy, 5" in moon-gleam and the #1488 Kohinoor ash tray in crystal. While "The Busy Bee" has #1201 Fandango handled jelly and a covered sugar.

"The Wiz" (MA), I can't leave him out - #160 Locket on Chain cruet and the #150 Pointed Oval in Diamond Point creamer in emerald.

As far as "My English Buddy" (FL) is concerned, he has four (4) #1488 Kohinoor 1 oz cordials, zircon bowl, saturn optic, plus the Medium Elephant! "Good Show," don't forget to keep in touch.

As for Yours Truly, I'm still in there pitching. By the time you read this, Convention will be past history but I did pick up a couple more candlesticks for my display: #150 Banded Flute 4" chamberstick and a pair of #142 Cascade 3-light in crystal. Wish I could tell you they were perfect but not so, one is damaged up under one of the holders but not visible from the top. Love them anyway! Also, a pretty #3359 Plateau 6" rose bowl d/o in moongleam and the #1541 Athena covered candy.

You know, Heisey Friends, it is truly fun to see your finds in print, whatever they are, big or small. Write to me in care of HCA - it will keep my mailbox full and me smiling!

From the Yachting Center, Good Health and Good Hunting!!

CLUB NOTES:

WESTERN RESERVE HEISEY STUDY CLUB

By Genny Lege

Our May 16, 1985 meeting was held at the home of Genny Lege.

After the meeting was called to order, our new officers: Genny Lege, president, Thelma Morningstar, vice-president and Judy Kienzle, secretary, were installed.

A report was given by Thelma Morningstar on the success of the Glass & Antique Identification day that was held in Avon Lake. (a big thanks to our experts Mary Little & Fred Hopkins) As a result of the glass & antique identification, plus our auction of last month, we will have the funds to once again contribute to the museum during the convention. As last year, it was decided to have Louise Ream choose an item during the convention which we will purchase and donate in the memory of Thelma Young.

Lynn Sellers presented a great program on Heisey Sunburst pattern. Many of us were not aware of the variations and oddities of the pattern and pattern numbers. Helen Marimon had several pieces of Duncan & Cambridge Sunburst patterns to compare to the Heisey Sunburst.

Lynn Sellers was also under the spotlight for show and tell, being the only one that came up with some great finds: #1533 Wampum torte plate; #3390 Carcassone goblet etched with Chintz variation; a beautiful moongleam #461 basket and an emerald Pineapple and Fan nappy.

At the close of meeting, refreshments were served on Genny's Crystalite collection.

We are all looking forward to the big event, CONVENTION TIME, see you there.

HEISEY COLLECTORS OF THE ROCHESTER AREA

By George J. Reynolds, Secy., Treas.

The meeting was held at the attractive home of Marian and Bill Heron. Beautiful begonias and geraniums decorated the front of the house and you really felt Marian's "Southern Hospitality" on entering her home.

The Herons' have a beautiful collection of animals, mostly glass, among their other wonderful collection. Bill is quite a traveler and I guess Marian never knows what he will come home with, but as long as it's not alive, she probably doesn't worry too much.

Our meeting was held on a very sad note this month with news that one of our members, Jerry Gillette, was taken quite ill the night before. He is not just a member of our Club, but a loving friend as well, even though he doesn't like restaurants.

We were fortunate to have Rhoda and Dave Curley as our guests. They brought along 104 slides that David had taken of Heisey, Horace King drawings and some beautiful flower shots. I was a little disappointed when he called an "Aquilegia" a Columbine, but no one is perfect. David makes a very humorous

presentation and we all enjoyed his show immensely. He calls it "Heisey Foolishness" and will contract out to other clubs for a modest fee plus expenses. Be careful, they go only "First Class." It was interesting to hear that Rhoda Curley was born and raised in Newark, Ohio. Be careful down there now, we know all about you.

Our formal meeting began at 5 p.m. The Club discussed the candidates for Directors of HCA and authorized Sharon Orienter to vote for the majority choice.

Bill Heron raffled off a "Heisey Trivia" game that Marvin Jacob had spent many hours producing for the HCA gift shop. He also raffled one other item. The game produced more money for our Club than any other item raffled to date. All you Heisey nuts around the country be sure and get one of these games, then you will find out how much you know. I especially recommend that the Heisey Heritage Society obtain one.

Our "Show and Tell" was small, but good. Adele Pardee produced a Prince of Wales Plumes toothpick with a beautiful red stain, Sunburst and Beaded Panel toothpick with good gold, and a custard Ringband tumbler. Bill Heron found a large master Leaf nut.

Well, the Convention will have come and gone when this is read. I hope Tom and Neila Bredehoft, remember him! our outgoing President, receive a real rousing "Thank You" for all the work they have done for you. The purchase, identification and just plain bull work on the moulds, etching plates and drawings. Many others have helped as well but they took the lead and deserve your thanks, whether you agree with the purchase or not.

For our quote for the month, we offer humbly "If we had no faults of our own, we would not take so much pleasure in noticing those of others."

p.s. Marian made a great Sally Lunn bread for me. Thanks XXXX

BAY STATE HEISEY COLLECTORS CLUB

By Janet Caswell

The May meeting of the Bay State Heisey Club was held in Lexington at the Follen Church with twenty-four members in attendance. President, "D" discussed in detail our Annual Antique Show, which is being held at a new location this year, and all seems to be shaping up quite well. New ideas on money-making projects along with programs for the coming year were discussed.

Our Ridgeleigh collector, George Gleason, brought in his extensive collection. Almost all of the Ridgeleigh items in one place is very impressive. He brought from the 4" ashtray to the 5" Puff Box, Star relish tray, candle vases and the Rock & Rye bottle. I could go on to list all the pieces but would run out of paper. George uses all his Ridgeleigh. The program was informative for both the new and the old members.

Meeting adjourned, refreshments and pleasant company were enjoyed.

ASH TRAYS



No. 356 ASH TRAY & MATCH STAND



No. 357



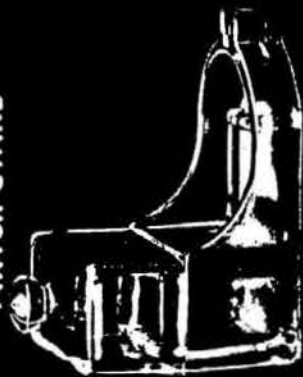
No. 358 INDIVIDUAL



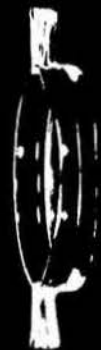
No. 359 ASH TRAY & MATCH STAND



No. 360 ASH TRAY & MATCH STAND



No. 361 ASH TRAY & CIGARETTE CONTAINER



No. 363



No. 365



No. 366 ASH TRAY & MATCH STAND



No. 439 INDIVIDUAL



No. 440



No. 442



No. 600 ASH TRAY & MATCH STAND



No. 1179



No. 1160



No. 1186 INDIVIDUAL



No. 1187



No. 1200 INDIVIDUAL



No. 1286



No. 1386

St. Anne - Cutting No. 781

Price
per
Dozen

3360	10 oz.	Goblet-----W/O	17.35
"	6 oz.	Saucer Champagne-----"	17.35
"	6 oz.	Sherbet-----"	17.35
"	4½ oz.	Claret-----"	16.00
"	4 oz.	Oyster Cocktail-----"	16.00
"	3 oz.	Cocktail-----"	15.00
"	2 oz.	Wine (3408)-----"	16.00
"	1½ oz.	Sherry-----"	16.00
"	5 oz.	Soda Ftd. (3381)-----"	16.00
"	12 oz.	" " "-----"	18.70
"		Finger Bowl (3309)-----"	23.35
134	2 lt.	Candlestick-----	34.70
500		Variety Tray-----	93.35
1184	6 in.	Plate-----	28.90
"	7 in.	"-----	31.10
"	8 in.	"-----	33.35
"	14 in.	"-----	106.65
"	16 in.	Buffet Plate-----	146.70
1401	7 in.	Triplex Relish-----	41.35
"		Oval Compot-----	41.35
"	11 in.	Floral Bowl-----	80.00
"		Ice Tub & Sil. Pl. Hdl.---	66.65
"	16 in.	Buffet Plate, 4 Comp.-----	86.65



This, and the following three pages are from a supplement to 211-16 Catalog, ca 1935. The prices are the original ones. St. Anne is the first cutting of the Krall era. Very few cuttings can be documented from 1924 - 1935.

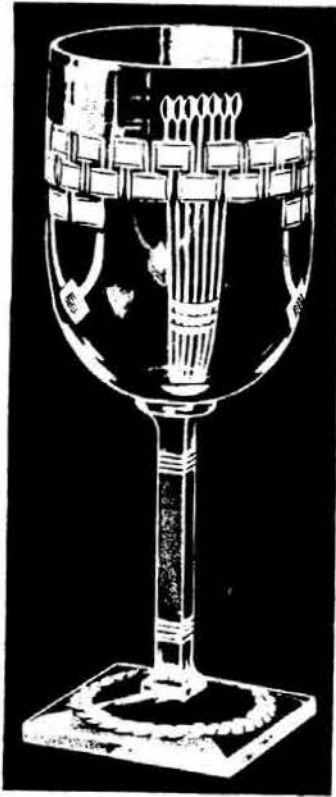
Will-O-The-Wisp - Cutting No. 795

Price
per
Dozen

3416	10 oz.	Goblet High Foot-----W/O	22.65
"	10 oz.	"-----"	22.65
"	6 oz.	S. Champagne-----"	22.65
"	6 oz.	Sherbet-----"	22.65
"	6 oz.	Rhine Wine-----"	22.65
"	3½ oz.	Claret-----"	20.45
"	3¼ oz.	Cocktail-----"	20.45
"	2½ oz.	Wine-----"	20.45
"	3 oz.	Oyster Cocktail (3409)---	16.00
"	1½ oz.	Sherry Tall Stem-----"	20.45
"	1 oz.	Cordial " "-----"	20.45
"	¾ oz.	Brandy " "-----"	20.45
"	5 oz.	Soda Ftd. (3409)-----"	16.00
"	12 oz.	" " "-----"	22.65
"		Finger Bowl (3335)-----"	26.65
2052	2½ oz.	Bar Half Sham-----	12.00
2401	8 oz.	Old Fashion Half Sham---	16.00
"	5 oz.	Soda Half Sham-----	13.80
"	8 oz.	" " "-----	16.00
"	12 oz.	" " "-----	18.20
3417	6 oz.	Bitter Bottle & Tube-----	31.10
4039	9 oz.	Decanter Ftd. #10 P/S-----	53.30
500		Variety Tray-----	100.00
1184	6 in.	Plate-----	27.80
"	7 in.	"-----	32.20
"	8 in.	"-----	34.45
"	14 in.	"-----	113.30
"	16 in.	Buffet Plate-----	146.70
1401	7 in.	Triplex Relish-----	41.35
"	7 in.	Oval Compot-----	42.65
"		Ice Tub & Sil. Pl. Hdl.---	53.30
1445		Floral Bowl-----	73.30
"	2 lt.	Candlestick-----	53.30



Tahiti - Cutting No. 843



			Price per Dozen
3418	- 10 oz.	Goblet-----	24.45
"	6 oz.	S. Champ.-----	24.45
"	4 oz.	Claret-----	22.65
"	3½ oz.	Cocktail-----	22.65
"	3½ oz.	Oys. Cocktail-----	22.65
"	3 oz.	Wine-----	22.65
"	1½ oz.	Sherry-----	20.00
"	1 oz.	Cordial-----	20.00
"	5 oz.	Soda-----	22.65
"	12 oz.	"-----	26.65
"		Finger Bowl (4080)-----	26.65
4044	11 in.	Floral Bowl-----	80.00
"	2 lt.	Candlestick with Bobache "A" Prisms-----	86.65
"	5½ by 4½ in.	Bread & Butter Plate-----	21.95
"	9 by 7 in.	Plate-----	28.85
"	10 by 8½ in.	"-----	40.00
"		Cup-----	22.65
"		Saucer-----	18.70
"		After Dinner Cup-----	17.35
"		" " Saucer-----	16.00
"		Sugar-----	24.00
"		Cream-----	24.00
"		Ind. Nut-----	15.10
1466	13 in.	Relish, 3 Comp.-----	41.10
1184	14 in.	Relish, 5 Comp.-----	66.65
		Plate-----	126.65

Palmetto - Cutting No. 816



			Price per Dozen
3408	- 9 oz.	Goblet-----W/O	16.00
"	6 oz.	Saucer Champagne-----	16.00
"	4½ oz.	Claret-----	14.00
"	3 oz.	Cocktail-----	14.00
"	2 oz.	Wine-----	13.35
"	1 oz.	Cordial-----	13.35
"	1½ oz.	Sherry (3360)-----	13.35
"	4 oz.	Oyster Cocktail (3360)-----	13.35
"	5 oz.	Soda Ftd. (3411)-----	14.00
"	12 oz.	" " "-----	18.70
"		Finger Bowl (3309)-----	22.65
2052	2½ oz.	Bar Half Sham-----	9.35
2401	8 oz.	Old Fashion Half Sham-----	12.45
"	8 oz.	Soda " "-----	12.45
"	12 oz.	" " "-----	14.00
3417	6 oz.	Bitter Bottle & Tube-----	26.65
4035	32 oz.	Decanter #48 C/S-----	66.65
4225	1 qt.	Cocktail Shaker Complete---	60.00
142	3 lt.	Candlestick-----	40.00
500		Variety Tray-----	93.35
1184	6 in.	Plate-----	20.00
"	7 in.	"-----	22.20
"	8 in.	"-----	24.45
"	14 in.	"-----	106.65
"	16 in.	Buffet Plate-----	140.00
1401	7 in.	Triplex Relish-----	40.00
"	11 in.	Floral Bowl-----	86.65
"		Ice Tub & Sil. Pl. Hdl.-----	53.30
"	16 in.	Buffet Relish, 4 Comp.-----	86.65
"	10 in.	Hors D'Oeuvre, 7 Comp.-----	60.00
1401	12 in.	Sandwich Rd. 2 Hdl.-----	93.30

Neo Classic - Cutting No. 846

Price
per
Dozen



3418	- 10 oz.	Goblet-----	21.30
"	6 oz.	S. Champ.-----	21.30
"	4 oz.	Claret-----	18.70
"	3 ¹ / ₂ oz.	Cocktail-----	18.70
"	3 ¹ / ₂ oz.	Oys. Cocktail-----	18.70
"	3 oz.	Wine-----	18.70
"	1 ¹ / ₂ oz.	Sherry-----	17.80
"	1 oz.	Cordial-----	17.80
"	5 oz.	Soda Ftd.-----	18.70
"	12 oz.	" "-----	22.65
"		Finger Bowl (4080)-----	24.00
4044	11 in.	Floral Bowl-----	80.00
"	2 lt.	Candlestick with Bobache & "A" Prisms----	80.00
"	5 ¹ / ₂ by 4 ¹ / ₂ in.	Bread & Butter Plate----	21.95
"	9 by 7 in.	Plate-----	28.90
"	10 by 8 ¹ / ₂ in.	"-----	38.85
"		Cup-----	20.00
"		Saucer-----	20.00
"		After Dinner Cup-----	17.35
"		" " Saucer-----	17.35
"		Sugar-----	24.00
"		Cream-----	24.00
"		Ind. Nut-----	14.65
"	13 in.	Relish, 3 Comp.-----	40.00
1466		Relish, 5 Comp.-----	66.65
1184	14 in.	Plate-----	113.30

Fontaine - Cutting No. 845

Price
per
Dozen



3318	11 oz.	Goblet Tall Stem-----	13.35
"	5 oz.	S. Champ.-----	13.35
"	4 oz.	Claret-----	12.00
"	4 oz.	Oyster Cocktail (3389)----	12.00
"	3 oz.	Cocktail-----	12.00
"	2 ¹ / ₂ oz.	Wine-----	12.00
"	1 oz.	Cordial-----	12.00
"		Finger Bowl-----	17.80
112		Candlestick-----	21.95
134	2 lt.	Candlestick-----	33.30
1184	6 in.	Plate-----	20.40
"	7 in.	"-----	23.35
"	8 in.	"-----	26.65
"	14 in.	"-----	100.00
"	16 in.	Buffet Plate-----	126.65
1401	11 in.	Floral Bowl-----	66.65
"	6 in.	Ftd. Mint-----	24.85
1458	8 in.	Plate-----	26.65
1466		Relish, 5 Comp.-----	60.00



Venus - Cutting No. 826 - Gray Finish

Price
per
Dozen



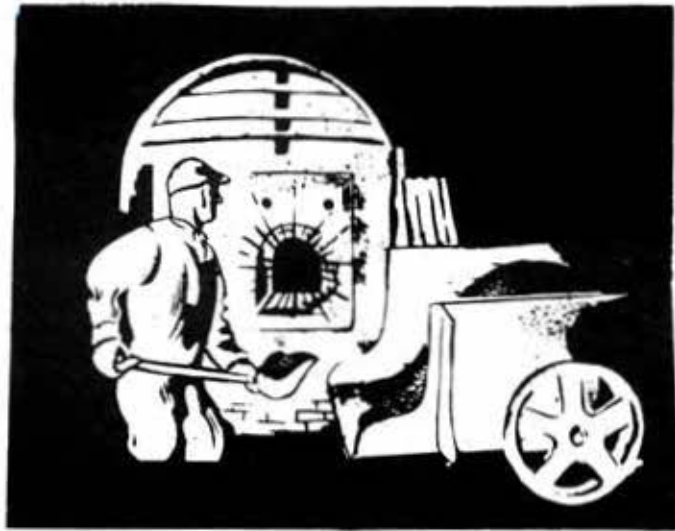
4044	-	10 oz.	Goblet-----	16.00
"		6 oz.	Saucer Champagne-----	16.00
"		6 oz.	Sherbet-----	16.00
"		4 oz.	Claret-----	13.75
"		3½ oz.	Cocktail-----	13.75
"		3½ oz.	Oyster Cocktail-----	13.75
"		3 oz.	Wine-----	13.75
"		1 oz.	Cordial-----	12.90
"		5 oz.	Soda Ftd.-----	14.65
"		8 oz.	" "-----	16.00
"		10 oz.	Tumbler Ftd.-----	16.00
"		12 oz.	Soda Ftd.-----	17.35
"		14 oz.	" "-----	18.70
"		8 oz.	Pilsner Ftd.-----	16.00
"		10 oz.	" "-----	16.65
"		12 oz.	" "-----	17.35
"			Finger Bowl (4080)-----	18.70
"	5½ by 4½ in.		Bread & Butter Plate-----	11.55
"	9 by 7 in.		Plate-----	20.45
"	10 by 8 in.		"-----	29.30
"			Cup-----	10.00
"			Saucer-----	10.00
"			After Dinner Cup-----	8.45
"			" " Saucer-----	8.45
"			Sugar-----	11.10
"			Cream-----	11.10
"			Ind. Nut or Ash Tray-----	6.65
"	13 in.		Celery Tray-----	28.00
"	13 in.		Relish, 3 Comp.-----	30.65
"			Rye Bottle & Stopper-----	46.65
"	2 lt.		Candlestick with Bobache & "A" Prisms-----	80.00
"	11 in.		Floral Bowl-----	66.65

Sea Glade - Cutting No. 825 - Gray Finish

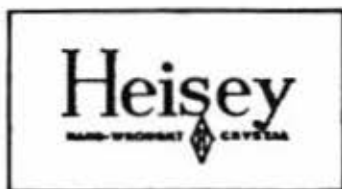
Price
per
Dozen



4044	-	10 oz.	Goblet-----	19.55
"		6 oz.	Saucer Champagne-----	19.55
"		6 oz.	Sherbet-----	19.55
"		4 oz.	Claret-----	18.20
"		3½ oz.	Cocktail-----	18.20
"		3½ oz.	Oyster Cocktail-----	18.20
"		3 oz.	Wine-----	18.20
"		1 oz.	Cordial-----	14.65
"		5 oz.	Soda Ftd.-----	18.20
"		8 oz.	" "-----	19.55
"		10 oz.	Tumbler Ftd.-----	19.55
"		12 oz.	Soda Ftd.-----	20.00
"		14 oz.	" "-----	22.20
"		8 oz.	Pilsner-----	19.55
"		10 oz.	"-----	19.55
"		12 oz.	"-----	20.00
"			Finger Bowl (4080)-----	21.30
"	5½ by 4½ in.		Bread & Butter Plate-----	13.35
"	9 by 7 in.		Plate-----	21.30
"	10 by 8½ in.		"-----	33.35
"			Cup-----	11.55
"			Saucer-----	11.55
"			After Dinner Cup-----	10.65
"			" " Saucer-----	10.65
"			Sugar-----	12.90
"			Cream-----	12.90
"			Ind. Nut or Ash Tray-----	6.65
"	13 in.		Celery Tray-----	28.00
"	13 in.		Relish, 3 Comp.-----	30.65
"			Rye Bottle & Stop.-----	53.30
"	2 lt.		Candlestick, Bobache & "A" Prisms-----	73.30
"	11 in.		Floral Bowl-----	66.65



MAKING GLASS BY HAND



The Finest in Glassware . . . Made in America by Hand

ASH TRAYS

From 1935 Catalog



No. 358
Individual Ash Tray



No. 1454
Individual Ash Tray



No. 4044
Individual Ash Tray or Nut



No. 355
Individual Ash Tray



No. 1425
Individual Cigarette
Holder & Ash Tray



No. 1424
Bridge Ash Tray



No. 1404
Individual Ash Tray F/P



No. 439
Individual Cigarette
Ash Tray (Cut)



No. 1184
Cigarette Box Ash Tray & Cover



No. 1401
Ash Tray



No. 353
Match Stand Ash Tray



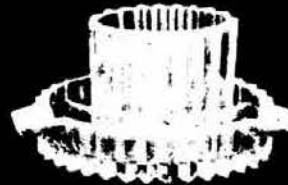
No. 1186
Individual Ash Tray



No. 1469
4 In. Ash Tray F/P



No. 1469
Square Ash Tray



No. 1469
Oval Cigarette Holder
& Ash Tray
2 Compartments



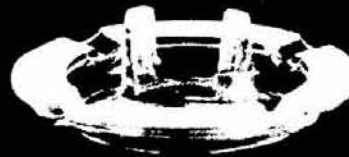
No. 1169
Round Ash Tray



No. 356
Match Stand Ash Tray



No. 365
Ash Tray



No. 366
Match Stand Ash Tray
(Bk. Match)



No. 359
Match Stand Ash Tray
(Bk. Match)



No. 360
Match Stand Ash Tray
(Bk. Match)



No. 1201
Match Stand Ash Tray



No. 364
Square Ash Tray



No. 600
Match Stand Ash Tray

1489 PATTERN

Many of these items are not in published material.



No. 1489—14" Oblong Floral Bowl



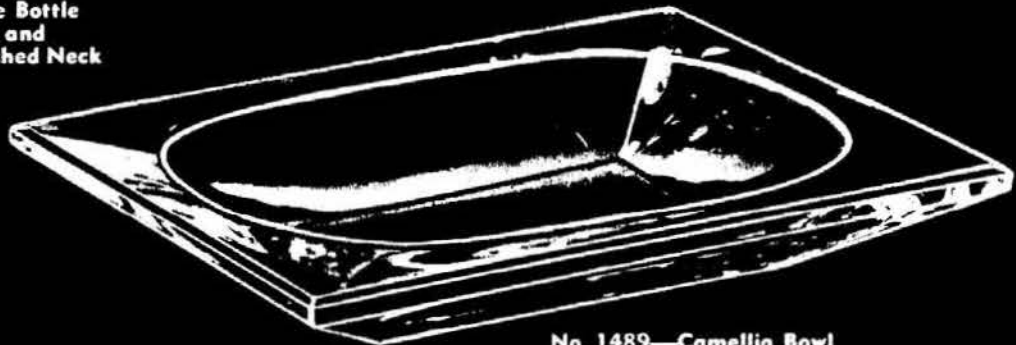
No. 1489—Rye Bottle
Grd. Top & Bot.
No. 111 c/s with Polished Neck



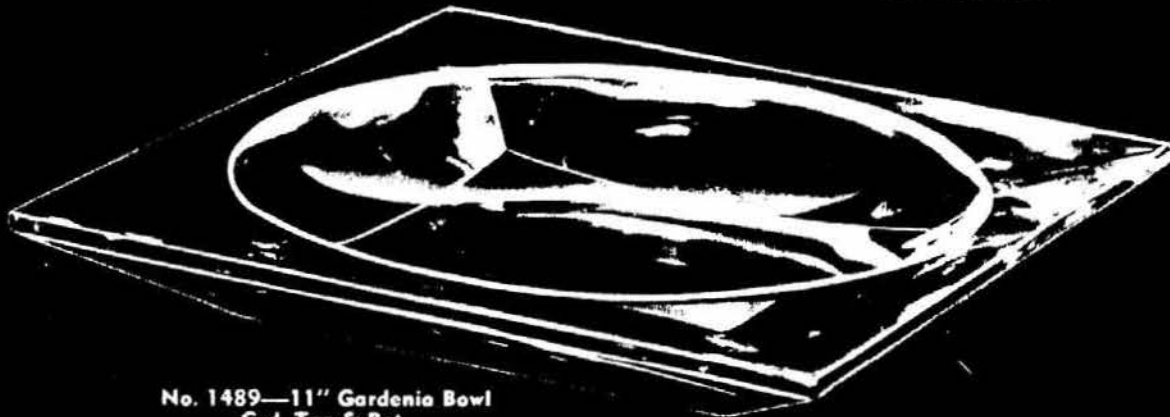
No. 1489—Cologne Bottle
Grd. Top & Bot. and
No. 112 c/s with Polished Neck



No. 1489—Bitter Bottle
Grd. Top & Bot. & Short Tube



No. 1489—Camellia Bowl
Grd. Top & Bot.



No. 1489—11" Gardenia Bowl
Grd. Top & Bot.

1489 PATTERN



No. 1489—2 3/4 in. Ash Tray
Grd. Top & Bot. or Fire
Polished or Full Smooth



No. 1489—4 1/2 in. Ash Tray
Grd. Top & Bot. or Fire
Polished or Full Smooth



No. 1489 1/2—2 in. Candleblock
Grd. Top & Bot. or Fire Polished



No. 1489—4 in. Candleblock
Grd. Top & Bot. or Fire Polished



No. 1489—4 3/4 in. Cig. Ash Tray Deep
Grd. Top & Bot. or Fire Polished



No. 1489—5 in. Ash Tray
Grd. Top & Bot. or Fire
Polished or Full Smooth



No. 1489—7 in. Candy Box & Cover
Grd. Top & Bot.



No. 1489—Ind. Table Salt
Grd. Top & Bot. or Fire Polished



No. 1489—2 1/4 in. Ash Tray Deep
Grd. Top & Bot. or Fire Polished



No. 1489—6 in. Cig. Box & Cover



No. 1489—4 in. Cig. Box & Cover



Supplemental Pages from Catalog 212-17, ca 1938-39.
No. 1503 CRYSTOLITE PATTERN

H
A
N
D
M
A
D
E

G
L
A
S
S
W
A
R
E



1503—5" Jelly 1 Hld.



1503—Ind. Nut Hld.



1503—5½" Chocolate



1503½—7" Pickle



1503¼—2¼" Candleblock
Grd. Bot.



1503—5" High Ftd. Compt.



1503—5" Jelly Ftd.



1503¾—2½" Candleblock
Grd. Top & Bot.



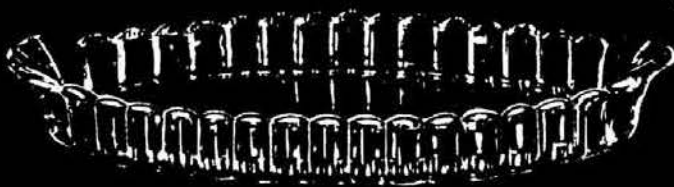
1503—Oval Nut Compt.



1503—Mayonnaise, 2 Compt.



1503—5" Jelly 1 Hld.
3 Cornered



1503½—12" Celery



1503—12½" Relish, 3 Compt.



No. 1503 CRYSTOLITE PATTERN



1503—Cup & Saucer



1503—Custard or Punch Cup



1503—Conserve, 2 Compt., Hld.



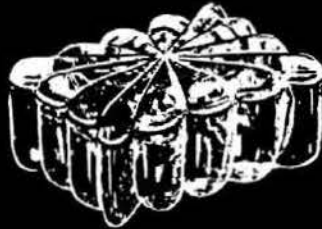
1503—4" Ash Tray Sq.



1503—Breakfast Preserve



1503—6" Vase, Ftd., Flared



1503—King Size
Cigarette Box & Cover



1503—7" Preserve Dish



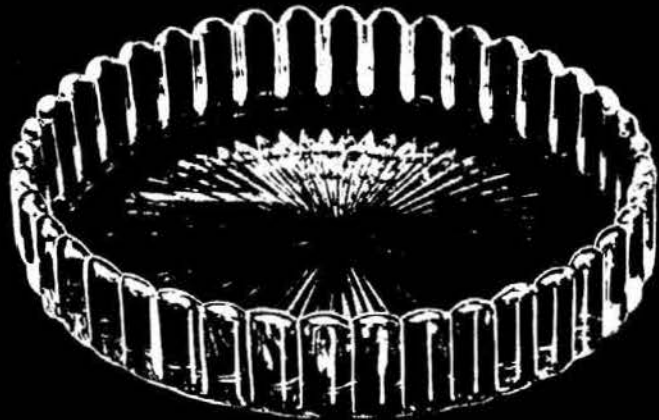
1503—7" Preserve Dish Plate



1503—6" Vase, Ftd., Regular



1503—Cloverleaf Relish
4 Compt.



1503—11" Center Piece

H
A
N
D
M
A
D
E

G
L
A
S
S
W
A
R
E

A. H. HEISEY & CO.,



NEWARK, OHIO

43C

MISCELLANEOUS ASH TRAYS

From 1937 Catalog

H
A
N
D
M
A
D
E
G
L
A
S
S
W
A
R
E



No. 1469—Ash Tray,
Round



No. 1469—Ash Tray, Square



No. 600
Match Stand Ash Tray



No. 1454
Individual Ash Tray



No. 1425
Individual Cigarette
Holder & Ash Tray



No. 1500—3½ in.
Ash Tray Rd.



No. 1498—2¾ in.
Ash Tray Sq.



No. 1469—
Bridge Ash Tray



No. 1404
Individual Ash Tray F P



1503—3¼ in.
Ash Tray Sq.



1503—3¼ in.
Ash Tray Rd.



1503—5 in. Ash Tray
Book Match



No. 365
Ash Tray



No. 1469½
4 in. Ash Tray F P



No. 1186
Individual Ash Tray



1510—3¾ in.
Ash Tray Sq.



No. 359
Match Stand Ash Tray
(Bk. Match)



No. 1469—6 in. Ash Tray, Square
Also made No. 1469½—with Plain Bottom



No. 1489—4½ in. Ash Tray
Made Ground Top & Bottom
Full Smooth or Fire Polish



No. 1489—2¾ in.
Sq. Ind. Ash Tray F P

BOB CLARK
1314 N.E. 95TH AVE.
VANCOUVER, WA 98664

PH: 206-254-5586

UPS EXTRA

All items excellent condition unless noted.

	GIRAFFE, HEAD TURNED TO RIGHT.....	\$135.00
	TROPICAL FISH, FROSTED.....	850.00
#1503½	SWAN Pitcher.....	375.00
#1255	PINEAPPLE & FAN Jelly, Emerald, 5" Ftd	75.00
#1295	BEADED SWAG 1/2 Gallon Jug.....	85.00
#1252	TWIST Ice Bucket, Flamingo.....	65.00
V1070	VERLYS Bowl Flowers.....	65.00
#1495	FERN Candleholders, Floral....Pr.....	65.00
# 451	CROSS LINE FLUTE 1/2 Gallon Jug.....	110.00
#3359	ROSE BOWL, Moongleam (2) ea.....	65.00
#5025	ORCHID ETCH Cordials (5) ea.....	135.00
# 134	CANDLEHOLDERS, Sahara, 2-Light..Pr....	95.00
# 135	CANDLEHOLDERS, Sahara, Single...Pr....	95.00
# 150	BANDED FLUTE Cordials (2) ea.....	65.00
# 150	BANDED FLUTE Butter Dish.....	95.00
# 393	NARROW FLUTE, Cranberry Flash, 6 oz. Oil.....	65.00
#1503	CRYSTOLITE Shell 5-Compartment Relish, 13".....	45.00
# 300	ORCHID Vase.....	45.00
#1519	WAVERLY, Rose Etch, Seahorse Handle Candy.....	185.00
#1519	WAVERLY, Rose Etch, 4-Compartment Relish.....	95.00

JOHN & CAROLYN SANDERS
PIGASUS ANTIQUES
1725 CAREY AVENUE
CHEYENNE, WY 82001

PH: 307-638-4022
10 A.M. to 5 P.M.

P & I EXTRA

# 134	TRIDENT C.Sticks, Rosalie Etch.....	\$ 65.00
# 305	PUNTY & DIAMOND POINT Bitters Bottle..	65.00
# 305	PUNTY & DIAMOND POINT 8" Vase.....	35.00
# 394	NARROW FLUTE Divided Relish, 12", Mglm	35.00
# 465	RECESSED PANEL Candy Jar, 10".....	45.00
#1170	PLEAT & PANEL Ftd. Comport & Cover, 6" Moongleam.....	45.00
#1184	BOW TIE 8-1/2" Candy Dish, Moongleam..	45.00
#1231	OCTAGON Cup, Moongleam.....	12.00
#1250	GROOVE & SLASH 8" Nappy.....	65.00
#1401	EMPRESS 10" Celery, Formal Chintz Etch	22.00
#1401	EMPRESS 10" Spun Bowl, Moongleam.....	65.00
#1401	LION HEAD BOWL, Moongleam.....	495.00
	GIRAFFE, Head Back.....	125.00
	RINGNECK PHEASANT.....	125.00
#1401	EMPRESS 7" Oval Comport, Old Colony Etch, Sahara.....	72.00
#1632	LODESTAR 11" Crimped Bowl, Dawn.....	250.00
#4225	COCKTAIL SHAKER, Etching of the Hollywood Towers, signed Dorothy Thorpe.....	295.00
#1503	HALF CIRCLE Sugar, Flamingo.....	28.00
	DECANTER & 5 GOBLETS, Osage Etching...	195.00
	VERLYS ORCHID BOWL, signed.....	130.00
	LITTLE SQUATTER Candleblocks.....	18.00

Classified Ads

WANTED: Buying Caprice blue or Rosepoint by Cambridge, Rose or Orchid by Heisey, American, June, Fairfax, Versailles, Trojan, etc., by Fostoria and Depression Glass in crystal or colored. NADINE PANKOW, 207 S. Oakwood, Willow Springs, IL 60480. PH: 312-839-5231.

FOR SALE: Send SASE (Bus. Size) for Heisey Mail order lists. Specify: General Lists, Orchid Etch List, or send your list of needs. J. & R. COLLECTIBLES (Owned by Former Heisey Employee), P.O. Box 1030, Newark, OH 43055.

WANTED: No. 300 Bobeche and Candleholder in Sahara, No. 300 Bobeche in Crystal. THE PURPLE PLACE, 1940 Suwanee Avenue, Fort Myers, FL 33901 - PH: 813-936-1572 Collect.

FOR SALE: Several 3-1/2" Diameter Banded Flute Sugar Lids - \$6.00 each, Lip will fit 3" Opening. HARMAN, P.O. Box 282, El Centro, CA 92244.

WANTED: Buying Colonial Cupped #348, Fifth Avenue Colonial #347, Colonial #363, Sunburst #343, Bankers Ink #1117. HAROLD HODGES, 3739 Plaza Drive, Topeka, Kansas 66609.



#1589 DOUBLE HORSEHEAD ASH TRAY
4½" square



DANCERS LEG COCKTAIL
5½" high

We have the moulds for the above items.

COLUMBUS, OHIO

1985 7th Annual

GLASS
SILVER
CUT GLASS
PRIMITIVES
PRESSED GLASS
CHINA
HEISEY
FURNITURE
DUNCAN
PRINTS
IMPERIAL
CAMBRIDGE
POTTERY
BOOKS
D. G. GLASS
WESTMORELAND
TINS
JEWELRY
LINENS
FOSTORIA
QUILTS
HUMMELS
PAPER ITEMS
VICTORIANA
NOVELTY GLASS
PAPERWEIGHTS

Antique & GLASS BASH

SHOW
&
SALE

AUG. 3 & 4

60 Quality Glass and Antique Dealers

ALADDIN TEMPLE

I-270 AT 3850 STELZER RD
1/2 BLOCK OFF MORSE RD. EXIT

Admission \$2.50 — good both days

- GUEST AUTHORS
- FREE PARKING
- DISPLAYS
- AIR CONDITIONED
- DOOR PRIZES
- FOOD ON PREMISES

• Bring your glass to be repaired while you shop •

Shaeffer Shows, P. O. Box 542, Marietta, OH 45750, (614) 374-2719



Sat
10 AM - 7 PM

Sun
11 AM - 4 PM

EIGHTH ANNUAL

Show and Sale

National Guard Armory, 459 Bedford St. Lexington, MA
(Routes 4 & 225)

September 28, 1985
Sat. 10:00 am - 5:00 pm

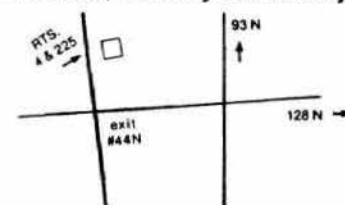
Sept. 29, 1985
Sun. 10:00 am - 4:00 pm

Glass of All Periods
Porcelain, Pottery & Jewelry

SPONSOR
BAY STATE
HEISEY COLLECTORS CLUB

DONATION \$2.50
(with card \$2.00)

BENEFIT - Heisey Glass Museum



GLASS AND POTTERY - SHOW AND SALE - OVER 40 DEALERS

3RD ANNUAL DEPRESSION ERA GLASS AND POTTERY SHOW
St. Clair Fairgrounds (Air Conditioned Building)
Belleville, Illinois

SATURDAY - August 10 - 10 A.M. to 5 P.M.
SUNDAY - August 11 - 10 A.M. to 4 P.M.

SPECIAL GUESTS: GENE FLORENCE - Noted Author
BILL SMITH - Well known Cambridge Glass Authority.

SPECIAL DISPLAYS: HEISEY, CAMBRIDGE, FOSTORIA, IMPERIAL, FENTON
GLASS REPAIR (GRINDING) AVAILABLE. DOOR PRIZES
ADMISSION: \$1.25 - GOOD FOR BOTH DAYS
SPONSORED BY: SOUTHERN ILLINOIS DIAMOND H SEEKERS

Proceeds from the first two shows were donated to HCA in the following forms:

\$1,000.00	Endowment Fund
\$ 200.00	General Funds
\$1,140.00	Glass for Museum
\$2,000.00	40 tables for HCA
<u>Total</u>	<u>\$4,340.00</u>

THE NATIONAL DUNCAN GLASS SOCIETY

Presents Its

Tenth Annual All-Glass Show & Sale

FEATURING DUNCAN, HEISEY, CAMBRIDGE, FOSTORIA & Etc.
July 20, 11:00 A.M. to 7:00 P.M. — July 21, 12 NOON to 5:30 P.M.

CASA ROYALE

(formerly Holiday Inn)

WASHINGTON, PENNSYLVANIA
At Intersection of I-70 and U.S. 40

Guest Speaker — FRANCIS (FRANK) MALONEY
Speaking on Old Duncan Glass

Guest Author — GAIL KRAUSE

ADMISSION: \$2.00

PATTON HOUSE ANTIQUES

P.O. BOX 547
LOUISA, VA 23093

PH: 703-967-1181

After 6 P.M.
P & I EXTRA

MOSTLY HEISEY

RHODA CURLEY
16 CLAYTON PLACE
ALBANY, NY 12209

PH: 518-482-6272

UPS EXTRA
SASE PLEASE

* Marked

- #1540 LARIAT 2-Lite Candlesticks...Pr.....\$ 30.00
- #1405 IPSWICH Bowl (Centerpiece)..... 40.00
- #1540 LARIAT 12" Bowl..... 18.50
- #4044 NEW ERA Clarets, 4 oz. (4) ea..... 12.50
- #1540 LARIAT Compote..... 18.50
- # 150 POINTED OVAL IN DIAMOND POINT Pitcher. 100.00
- #1503 CRYSTOLITE Cigarette Box & Cover*..... 20.00
- # 300 PEERLESS Goblet* (6) each..... 14.50
- # 429 PLAIN PANEL Pedestal Salt*..... 18.50

DONALD P. BEAN
36 HARDING STREET
MILFORD, MA 01756

PH: 617-473-0561

P & I EXTRA
* MARKED

- #1503 CRYSTOLITE Small Rd. Flower Vase*.....\$ 15.00
- # 365 OLD QUEEN ANNE Footed Sherbet*, 4 oz.. 35.00
- # 433 GREEK KEY Footed Almond* (2) ea..... 17.50
- # 150 BANDED FLUTE Toothpick*..... 37.50
- #1405 IPSWICH 10 oz. Ftd. Goblets* (6) ea... 10.00
- #1428 WARWICK 2-Lite Candlesticks*...Pr..... 35.00
- #1252 TWIST 4 oz. Cruet, Flam.* #78 Stopper. 60.00
- #1252 TWIST Individual Bon Bon*, Flamingo (4) ea..... 15.00
- #1252 TWIST 2-Handled Jelly, Flamingo*..... 15.00

VIRGINIA & ODELL JOHNSON
GLASS 'N' GLASS
RT. 1, BOX 1324
HAYWARD, WI 54843

PH: 715-462-2753

P & I EXTRA
* MARKED

- #1519 WAVERLY Cream & Sugar, Orchid Etch*...\$ 45.00
- #1519 WAVERLY, Orchid Etch Cig. Holder & Cover*..... 80.00
- #1519 WAVERLY Orchid Etch Individual Cream & Sugar & #1509 Tray*..... 90.00
- #1503 CRYSTOLITE Ice Bucket, Handle & Tongs* 90.00
- #1401 EMPRESS Individual Cream & Sugar, Flamingo*..... 55.00
- #1401 EMPRESS 9" Footed Vase, Sahara*..... 75.00
- #4085 KOHINOOR 4" Ball Vase, Zircon..... 85.00
- #1495 FERN 6" Handled Bon Bon, Zircon..... 55.00
- #3390 CARCASSONNE Cigarette Holder, Cobalt Bowl..... 75.00
- #1404 OLD SANDWICH Individual Ash Tray, Cobalt*..... 35.00
- #1201 FANDANGO Toothpick, Small Chip on Bottom Rim..... 38.00
- # 358 PEERLESS Toothpick*..... 28.00
- # 116 Etched "OAK LEAF" Candleholders, Moongleam Base...Pr..... 50.00
- # 114 Candleholders, Flamingo...Pr..... 40.00
- #1541 ATHENA Candleholders, 2-Light...Pr... 60.00
- #1506 WHIRLPOOL 3" Candleblocks...Pr..... 30.00
- # 126 TROPHY Candlesticks, Flamingo...Pr... 85.00
- #1469 RIDGELEIGH 6" Candlevase*..... 28.00
- #1469 RIDGELEIGH 7" Candelabrum, One Only... 70.00
- #1469½ RIDGELEIGH 1-Lite Candelabra...Pr.*.... 115.00

Congratulations to the Committee for putting on the best Convention ever. The whole Show was super. The mold is cast for all future convention committees to top 1985.

It was the best, you agree, but you did not find the one piece you were hoping to latch on to. Maybe your luck is changing for the better and you will find the Heisey piece below. Give it a try.

- #1401 EMPRESS 6" Toed Candlestick, Flamingo Pair.....\$200.00
- # 300 COLONIAL 5-Light Candelabra..... 595.00
- # 120 OVERLAPPING SWIRL Candlesticks, Flamingo....Pair..... 48.00
- #8034 ALBEMARLE Variant Champagne, Hawthorne & Moongleam Combination...Each..... 350.00
- # 305 PUNTY & DIAMOND POINT Compote, 9" Diameter, 8" High, A Beauty..... 150.00
- #1401 EMPRESS Cups & Saucers (5 Sets) Ea.Set 20.00
- #1252 TWIST Cruet, Flamingo..... 89.00
- #1170 PLEAT & PANEL Crystal Cruet, Moongleam Stopper..... 60.00
- #1220 PUNTY BAND Tumbler, Custard Rose Dec., Souvenir Lansing, Iowa..... 70.00
- # 150 BANDED FLUTE Sherbets (7) ea..... 11.00
- #1519 WAVERLY 9" Bowl, Heisey Rose Etch..... 55.00
- #1519 WAVERLY Mayonnaise & Under Plate, Orchid Etch..... 75.00
- # 433 GREEK KEY 5-1/2" Plates (12) ea..... 12.00
- #3404 SPANISH Stems with Cobalt Bowls, Goblets (8) ea..... 90.00
- #1252 TWIST Water Goblets, Marigold (3) ea.. 38.00
- #1252 TWIST Ice Teas, Marigold (7) ea..... 38.00
- #1252 TWIST Sherbets, Marigold (11) ea..... 35.00
- #1252 TWIST Plates, 6", Marigold (7) ea..... 20.00
- #1252 TWIST Plates, 7", Marigold (9) ea..... 22.00
- #1252 TWIST Plates, 8" Marigold (6) ea..... 25.00

Above Marigold in Excellent Condition. One Set Cream and Sugar - Creamer Crazed - Set..... 100.00

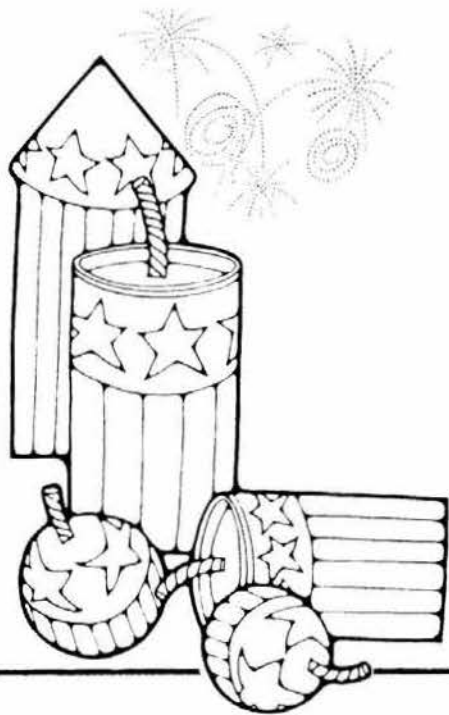
Our Shop: WORTH A TRIP FROM ANYWHERE by Chance or

Appointment

DEALERS DIRECTORY
MAX. 5 LINES / 12 MONTHS / \$20.00

 We assume no responsibility for errors in these ads after the first printing - Editor
 For changes in ads during the year, please send \$2.00 per line.

<p>A.W. PARKER Heisey & Pattern Glass Shows or Appointment Magalia, CA 95954 PH: (916) 873-2326</p>	<p>"HAPPINESS IS" THE STULTZ'S Show and Mail - Elegant Glass Circa 1890-1960 3106 Warren Court Glen Allen, VA 23060 PH: (804) 262-1273 (Richmond Area)</p>	<p>THE COLLECTOR Heisey, Fostoria, Cambridge, Linens, Lace & Primitives Mary Weaver, 209 Cortex Rd., E. (44th Ave., E.), Bradenton, FL 33505 Mon., Wed., Fri., 11-4 PH: (813) 729-2324 - Evenings</p>
<p>A DOOR ANTIQUES Heisey My Specialty 4241 Bayard Road South Euclid, OH 44121 PH: (216) 381-3008</p>	<p>GERT'S GLASS Heisey & Duncan Gertrude & Russell Swetnam 1926 Saratoga Dr., Adelphi, MD 20783 PH: (301) 434-5113</p>	<p>MOSTLY HEISEY Rhoda Curley 16 Clayton Place Albany, NY 12209 By Appointment, PH: (518) 482-6272</p>
<p>ALL HEISEY AUCTION Consignments Welcome Apple Tree Auction Center 1616 W. Church, Newark, OH 43055 PH: (614) 344-9449</p>	<p>GLASS 'N' GLASS Virginia & Odell Johnson Rte. 1, Box 1324 Hayward, WI 54843 (715) 462-3753</p>	<p>MOUND BUILDERS ANTIQUES Heisey & Animals, General Antiques Irene Rauck 1138 Moundview, Newark, OH 43055 PH: (614) 344-6043</p>
<p>ANN'S GIFTS & ANTIQUES 105 W. Main St., Hebron, OH 43025 Intersection of Rts. 40 & 79 Next door to Daisy Queen Daily 10:30 to 5:30</p>	<p>GLASS WITH CLASS Lenore A Shelley, GGHC 1336 Lincoln Avenue San Jose, CA 95125 PH: (408) 286-8098</p>	<p>PATTON HOUSE Heisey & Duncan Miller Rocky's Mall, I-81 & US 11 Weyer's Cave, VA 24486 PH: (703) 967-1181</p>
<p>ANTIQUES - THE SHULTZES 206-208 East Main St. Newmanstown, PA 17073 15 Miles West of Reading, PA PH: (215) 589-2819</p>	<p>GREEN ACRES FARMS Antiques, Crystal Glass & Collectibles 2678 Hazelton-Etna Rd., SW (S.R. 310-N) Pataskala, OH 43062 Sat. or Sun. PM or call (614) 927-1882</p>	<p>R & L ANTIQUES - SAN FRANCISCO Shows only - always lots of Heisey Member of Golden Gate Heisey Club P.O. Box 3614, Daly City, CA 94015 PH: (415) 621-6693</p>
<p>AVERY'S QUALITY ANTIQUES Specializing in Heisey Shows or by Appointment 2112 First St., Jackson, MI 49203 PH: (517) 783-4075</p>	<p>H & R DIAMOND H Helen & Robert Rarey 1450 White Ash Dr. Columbus, OH 43204 PH: (614) 279-0390 after 5:30</p>	<p>RAMBLING LANE ANTIQUES Featuring Heisey & other fine glass Keith & Evelyn Hoover 1978 Rambling Lane, Rhinelander, WI 54501 PH: (715) 282-5019</p>
<p>B & B HEISEY & COLLECTIBLES B. Whaley 300 International Dr. Pataskala, OH. 43062 By Appointment: PH: (614) 927-1557</p>	<p>CHARLOTTE'S GLASS REFLECTIONS Glass, China, Crystal Including Heisey 6816 14th St. W., Bradenton, FL 33507 PH: (813) 756-4143</p>	<p>RAY ZIEGLER Glass Repair 185 County Line Westerville, OH 43081 PH: (614) 891-9700</p>
<p>C.E. HIGGINS (S.F. Bay Area) Shows and Mail Order P.O. Box 2723 Menlo Park, CA 94025 PH: (415) 322-0192 Evenings</p>	<p>HARRALSON'S HAPPY HEISEY HUNTERS Ours & Others - Many Choice Items L SASE - New List - Jan. 1 - May 1 - Sept. 1 We accept consignments & buy collections. 1426 W. Highland, Springfield, MO 65807 PH: (417) 883-2449</p>	<p>SCHWAN'S ANTIQUES SHOPS & SHOWS 2980 John Tyler Hwy. Williamsburg, VA 23185 PH: (804) 229-7873</p>
<p>C & J ANTIQUES Cole & Jean Miesner Box 45, 72 Whig St. Newark Valley, NY 13811 PH: (607) 842-9905</p>	<p>HARRISON'S ANTIQUES Heisey, Cambridge, Duncan Shows, Mail, by Appointment 26 Johnston's Lane, Mercersburg, PA 17236 PH: (717) 328-2451</p>	<p>SUM OF LIFE Elaine & Frank Husted P.O. Box 102 Phoenixville, PA 19460 PH: (215) 935-2962</p>
<p>CHARLES & MILDRED FISHER Heisey, Degenhart, Imperial, Antiques, Collectibles, General Line 991 Idlewilde, Newark, OH 43055 PH: (614) 522-5398</p>	<p>SPARKLING ANTIQUES Arlene I. Reynolds - owner Heisey & Custard Glass 5 Wayside Circle, Pittsford, NY PH: (716) 381-4134</p>	<p>T & S ANTIQUES Specializing in Heisey Steve Roderick New Rochelle, NY 10805 PH: (914) 235-9632</p>
<p>DAVE'S ANTIQUES Specializing in Heisey Shows & Appointments Tampa, FL 33600 PH: (813) 876-0580</p>	<p>HEISEY PUBLICATIONS Heisey Books I-II-III-IV Newscaster Back Issues \$4.00 1977 thru 1984 Box 102, Plymouth, OH 44865</p>	<p>THE GLASS CONNECTION Specializing in Heisey Shows & Mail Order Box 526, Collegeville, PA 19426 PH: (215) 489-0139</p>
<p>DIAMOND H PLUS Mail Orders & Shows George & Eileen Schamel Rt. 3, Box 171, Boonsboro, MD 21713 PH: (301) 432-6285</p>	<p>J. & R. COLLECTIBLES Shows, SASE, Mail Order list June & Ray Lukasko P.O. Box 1030, Newark, OH 43055 PH: (614) 344-9719</p>	<p>TRUDY MILLER ANTIQUES China & Crystal Matching Heisey a Specialty P.O. Box 740548, Dallas, TX 75374 PH: (214) 783-9920</p>
<p>ELLIZABETH BASSETT CASON 401 32nd St., W. Bradenton, FL 33505 Mail Order - List PH: (813) 748-0851</p>	<p>THE PURPLE PLACE Featuring Heisey & Other Fine Glass Martha & Harold Earp 1940 Suwanee, Ft. Myers, FL 33901 PH: (813) 936-1572 Anytime</p>	<p>WILLEY'S ANTIQUES & MUSEUM Specializing in Heisey 11110 Cannon Rd., Frazeyburg, OH 43822 16 miles east of Newark, OH PH: (614) 828-2557</p>
<p>FOREVER HEISEY Shows and Mail Order Janice Thrane 1663 Londondale Pkwy., Newark, OH 43055 PH: (614) 344-5955</p>	<p>JUDY'S DIAMOND H ANTIQUES Specializing in Heisey - Buy & Sell Star Rt. 3, Box 2556 Lake Isabella, CA 93240 PH: (619) 378-2176 by Appointment</p>	<p>GOLDSBERRY'S ANTIQUES Heisey a Specialty Shows only - Buy & Sell Kalamazoo, MI 49000 PH: (616) 381-3013</p>
<p>DIE KUNST GALLERIES & ANTIQUES Specializing in Heisey Vel & Andy Andress Box 329, 725 Front Street Leavenworth, WA 98826 PH: (509) 548-7856</p>	<p>PEGGY'S ANTIQUES 2000 pcs. of Heisey in stock Ernie & Peggy Cox P.O. Box 367, Spavinaw, OK 74366 By Appointment or by Chance PH: (918) 589-2859</p>	<p>THE WOODEN SHOE Antiques & Collectibles - Buy & Sell Glass, Furniture, Estates Jim & Sheri Van Es, by Appointment 810 Elden, Herndon, VA 22070 PH: (703) 435-9045</p>



#693 Cloister Cutting



Cloister cutting, ca 1919.

#3335 Lady Leg Goblet

SOUVENIR PLATE

Viking has made us an Empress Plate, 4-1/2", marked "HCA", from our own Heisey mould. The Victory Etching has been added to the center and it is inscribed "MOULDS 1985." The profits from this plate will be for the Mould Fund.

_____ Number of Plates at \$12.50 each..... \$ _____
 Sales Tax .75 ea., OHIO RESIDENTS, or Pick-Ups in Newark..... _____
 Shipping For Each \$1.50 _____
 TOTAL..... _____

NAME(s) _____

ADDRESS _____ CITY _____ STATE _____ ZIP _____

Make check payable to HCA. and mail to: HCA SALES P.O. BOX 27 NEWARK, OH 43055 ALL PROCEEDS FROM THE ABOVE GO TO THE MOULD FUND.



DIAMOND H ADVERTISING PIECE
 MADE IN OUR OWN ORIGINAL MOULD



COBALT BLUE

_____ Number of DIAMOND H ADVERTISING PIECES - PLAIN at \$22.50 each..... _____
 _____ Number of DIAMOND H ADVERTISING PIECES - SATIN at \$23.50 each..... _____
 Sales Tax \$1.35 Plain and \$1.41 Satin each, OHIO RESIDENTS, or Pick-Up in Newark..... _____
 Shipping For Each \$2.25..... _____

NAME (s) _____ TOTAL _____

ADDRESS _____ CITY _____ STATE _____ ZIP _____

Make check payable to HCA.

and mail to: HCA ADVERTISING PIECE P.O. BOX 27 NEWARK, OH 43055 - ALL PROCEEDS FROM THE ABOVE GO TO THE MOULD FUND.

"TAVERN" PATTERN DEEP PLATE ETCHING



#341 PURITAN
3 OZ. LOW FOOTED SHERBET

By Louise Ream



No. 4054—13 oz. Soda

A couple of months ago, George Reynolds mentioned in his column that he had purchased one of four known sherbets like this which are known in Ivory (custard glass). They are beautiful and have very fiery opalescence. We have watched these over the years to keep account of where they each are.

At a long ago, early, All-Heisey Auction, there were four of these. Four of us had planned to bid on them and divide them. Thirty-five dollars (\$35.) was the amount set to be paid for each. After they reached that amount, two people dropped, but I continued to bid on them for the other two of us until they reached \$60 each. The high bidder paid \$65 but only took two and Dick Marsh and I decided to take the other two.

These had belonged to a former Heisey employee and no more have been seen since. If anyone has another one, or has seen one, please let us know.

Presently, the owners are: Dick & Ginny Marsh, Newark; Russ and Louise Ream, Newark; Carole Baker, Michigan; and now George Reynolds, New York, owns the fourth one.

The value of these will continue to increase as they are rare, beautiful AND marked.

L.R.



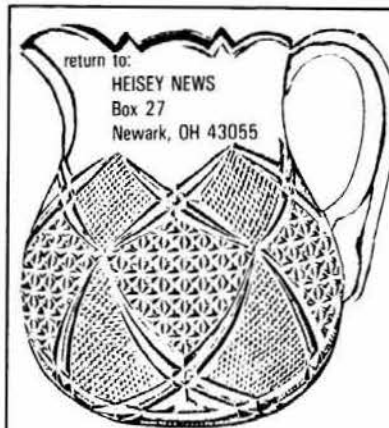
ESTABLISHED 1871

The GLASS REVIEW Magazine is for everyone who studies, collects or sells glass. Whether your glass interests lean toward the early 1900's — or the depression era — or with today's limited glass items, the GLASS REVIEW covers it all!

Articles — price reports — original catalog documentation — shop directory — research and reproduction news — trademark information — glass book releases — what's new on the market — a large variety of glass ads (on both old and new glass) — plus much more.

Enclose payment and mail to:
GLASS REVIEW,
P.O. BOX 542, MARIETTA, OH 45750

10 'big' yearly issues
68 pages or more
\$12.50 — one year



return to:
HEISEY NEWS
Box 27
Newark, OH 43055

FIRST CLASS MAIL
U.S. POSTAGE
PAID
PERMIT 741
Mt. Vernon, OH 43050

FIRST-CLASS MAIL