

# HEISEY news

OFFICIAL PUBLICATION HEISEY COLLECTORS OF AMERICA

©Heisey Collectors of America, Inc.  
All Rights Reserved 1985

VOLUME XIV NO. 6

JUNE, 1985

ISSN 0731-8014



**THE  
GREATEST SHOW ON EARTH**

*15th Annual*  
**ANTIQUÉ SHOW & SALE**  
**HEISEY GLASS DISPLAY**

Newark Branch — O.S.U. Campus  
Country Club Drive, Newark, Ohio

Sponsored By  
*Heisey Collectors of America, Inc.*

|                   |                         |
|-------------------|-------------------------|
| Friday, June 21   | 12:00 noon to 5:00 p.m. |
| Saturday, June 22 | 12:00 noon to 8:00 p.m. |
| Sunday, June 23   | 12:00 noon to 5:00 p.m. |

Donation \$2.50

Champagne Preview  
Thursday, June 20  
6:00 p.m. - 10:00 p.m.  
Donation \$7.00

**BENEFIT NATIONAL HEISEY MUSEUM**

RHC



## HEISEY NEWS

P.O. BOX 27, NEWARK, OH 43055

### CLUB OFFICERS:

President — Tom Bredehoft — 614-745-1014  
Vice President — George Schamel, III — 301-432-6285  
Secretary — Ray Ziegler — 614-471-6446  
Treasurer — Dick Marsh — 614-366-5608  
Exec. Dir. — Louise Ream — 614-345-2932

Editor: Louise Ream  
P.O. Box 27, Newark, OH 43055  
PH: 614-345-2932

Assistant Editor: Neila Bredehoft  
P.O. Box 27, Newark, OH 43055  
PH: 614-345-2932

Published monthly and printed in Mt. Vernon, Ohio  
\$15.00 per year - \$1.25 per copy

Back Issues - Each Volume (12 issues) year - \$9.00.  
Volume V, VI, VIII, IX, X, XI, XII & XIII

Heisey Collectors of America, Inc. is a non-profit corporation with tax exempt status. Owners and operators of National Heisey Glass Museum, 6th and Church Streets, Newark, Ohio.

Open daily 1-4 p.m. except holidays. Other hours by appointment. Members admitted free.

Club membership (includes 12 issues of HEISEY NEWS and participation in all club activities) \$15.00 per year plus \$2.50 for each additional family member in same household who wishes a membership card. For VOTING MEMBERSHIP, add \$25.00 one time only fee.

When requesting information, please enclose a self-addressed, stamped envelope (SASE).

ADVERTISING - Send all ads to:

Advertising, c/o Janice Thran  
P.O. Box 27, Newark, OH 43055

DOUBLE SPACE ALL ADS.

### RATES:

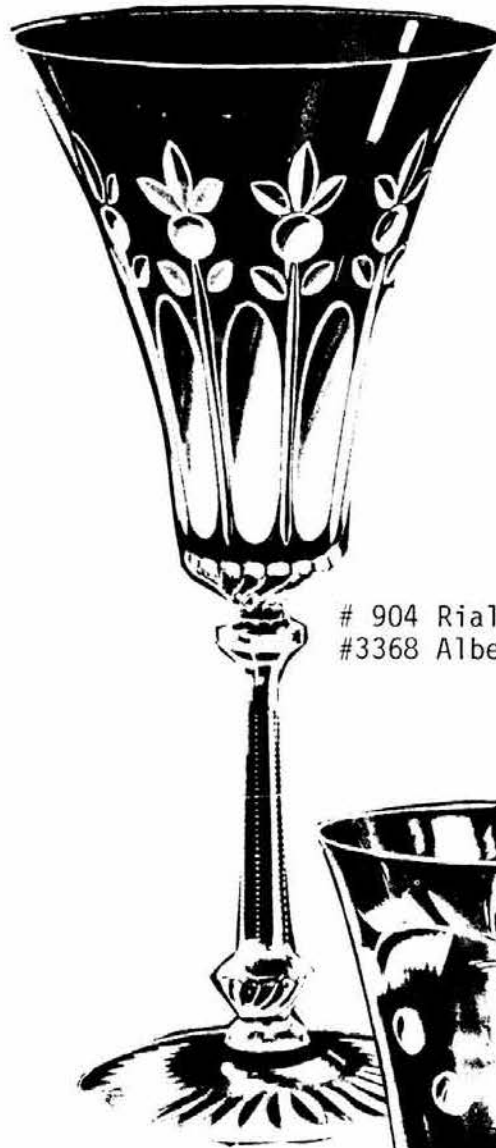
DEALER'S DIRECTORY - Maximum five (5) lines - \$20.00. Change during year \$2.00 per line. CLASSIFIED - 12-/word - \$1.20 minimum. Abbreviations and initials count as words.

| DISPLAY:                    | MEMBERS | NON-MEMBERS |
|-----------------------------|---------|-------------|
| 1/8 pg. (9 items)           | \$15.00 | \$25.00     |
| 1/4 pg. (20 items)          | 24.00   | 35.00       |
| 1/2 pg. (20 items)          | 40.00   | 50.00       |
| 1/2 pg. (50 items) Vertical | 50.00   | 60.00       |
| 1 pg. (50 items)            | 65.00   | 80.00       |

Extra lines will be billed at \$1.00 per line. Personal ads limited to 1/8 space.

ALL ADS MUST BE PREPAID. Ad copy must be received by the 5th of the month preceding the publication date - i.e. April 5th for May issue. Ads containing reproductions will not knowingly be accepted unless clearly stated (i.e. Heisey by Imperial, etc.). HEISEY NEWS assumes no responsibility for false advertising or misleading information. In the event of typographical error, the incorrect portion of the ad will be run in the following issue, but HEISEY NEWS assumes no further liability.

The opinions expressed in articles in HEISEY NEWS are those of the authors and not necessarily those of the organization. The Editorial Staff reserves the right to edit or refuse any material submitted for publication. When requesting information, please enclose a self addressed stamped envelope. (SASE).



# 904 Rialto Cutting  
#3368 Albemarle Goblet



# 913 Everglade Cutting  
#5009 Queen Ann Goblet

## NOTES FROM YOUR PRESIDENT.....



Bringing the Heisey moulds home to Newark appears to be going to be easier than inventorying them. We've had them in Newark now for about six weeks and we have identified and tagged about 3000 or 60% of them. When we have them all identified, there will still be a great amount of parts, rings, plungers, shells, valves, and valve boxes, not to mention formers and other tools, which may or may not go together to make more moulds. We are only doing complete moulds now. Then too, once they are all tagged, they should be put together by pattern or type, i.e., ashtrays, tumblers, etc. The parts, (plungers, rings, etc.) may have been extra, used to make something else in the same mould, (two lids with the same knob), or simply part of one mould (the bowl of a pressed goblet). After all the complete moulds have been tagged and perhaps separated, maybe we can then tell what can be done with what is left. George Schamel and Ray Lukasko deserve special mention, along with Lee and Dick Schwan for their efforts in identifying and tagging moulds - they all have put in an inordinate amount of time at the warehouse.

During convention, there will be three sessions dealing with the moulds. On Wednesday night there will be an open meeting at the Sheraton for discussion on the moulds. This is the time to come forward with your opinions as to what should be done with them. Then, on Saturday morning from 10 a.m. until it's over, there will be "open house" at the warehouse for viewing what has become a sea of moulds. Beware, the warehouse used to be a meat packing house and it hasn't completely forgotten its heritage. Then later Saturday afternoon, Betty Barnard and her husband Bill will present a seminar on "The Mould Show -- The Coup of the Century." Many of the aspects of the whole operation will be brought out here.

The HCA was taken to task, albeit with tongue in cheek, last month for using an "archaic" spelling of MOULDS. Well, in defense of the HCA, we made the decision to use this archaic spelling because the moulds we are dealing with are themselves archaic, some of them being at least eighty years old, and when they were made, they were called "moulds" and when Heisey had another firm make its moulds, it might have been Island MOULD and MACHINE Company of Wheeling, West Virginia, who did make the seahorse cocktail mould, among others and still uses "mould" in its name. So while it may be in fashion now to call them MOLDS, the HCA will continue to call the rusty chunks of iron we treasure so highly MOULDS.

One of our long standing friends asked us to write about a proposal of his. He presented me with a check for the Mould Fund a couple of weeks ago and said that it was a percentage of his profit from the Starlite Flea Market. He said there would be another one after the Convention and he suggested that perhaps other dealers might want to contribute in this manner also. It seems he feels that since the HCA has been responsible for increasing his income, he is trying to return the favor. Dealers take note, you've had our help, now we need yours.

If you can't come to Convention, don't forget

to write what you think should be done with the moulds. No decision will be made without due deliberation, but we need your ideas and thoughts on the subject.

Here's something new to the HCA. Marvin Jacobs of New York has put together a Heisey Trivia Game which should be great entertainment at club meetings and other Heisey get-togethers. Look for details elsewhere in the news.

See you at Convention!

*Tou*

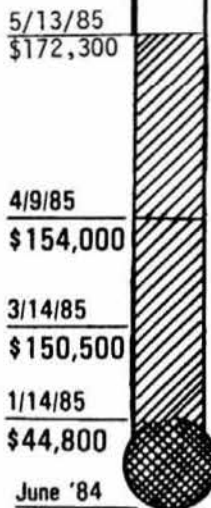


## MOULD FUND STATUS

By Norm Thran  
Mould Fund Steering Committee

As of May 13, 1985, we have received the following cash and pledged monies:

|              | April 9          | May 13           |
|--------------|------------------|------------------|
| Received     | \$154,000        | \$172,300        |
| Pledged      | 9,700            | 8,100            |
| <b>TOTAL</b> | <b>\$163,700</b> | <b>\$180,400</b> |



The second mailing to the membership (Those who hadn't given) has resulted in the majority of the increase in the past month, approximately \$14,000. In addition, the sale of the cobalt diamond H display sign has resulted in a Mould Fund donation of approximately \$3,000 and the sale of auction glass \$425.

As we draw closer to convention time, it's nice to see the monies coming in and our goal is certainly in sight. \$172,300 in hand as of May 13, 1985 represents 72% of the goal. To date, we have received money from 40.2% of the 2,600 family membership.

All of us working together can make this Fund Drive a success. Looking back four months ago, Jan. 14, 1985, we were @ \$44,000 and today, we are @ \$172,300 plus \$8,100 pledged. Keep the pledges and donations coming as we approach convention time. Heisey certainly is the "Greatest Show on Earth."



Robert Mandan will be the guest speaker at the banquet, and Mr. & Mrs. Mandan will attend the Champagne Preview.





## FROM THE DESK OF THE DIRECTOR.....

It will be only a short couple of weeks or so until you will be arriving in Newark for the big event. We believe that our theme for the 1985 convention, "The Greatest Show on Earth" is really true, especially in this momentous year for our organization. Everything seems to be on target for now. We are very excited about the decorations and hope all of you will be also.

The front cover this month is taken from the poster but of course it will be in the bright colors suitable for a circus theme on the poster itself.

Robert Mandan and his wife will attend both the Champagne Preview and the "Main Event" (banquet) where he will be the guest speaker.

Lucile Kennedy, our honorary member and favorite person from the glass world, will be speaking briefly on, (what else), "Handmade Glass."

The "Mould Fund" is coming along as Norm told you in his report. Of course Tom told you that the job of identifying and tagging of moulds has ended. Since we have moulds, parts of moulds, etc., it is hard to know the actual mould count at this time. They worked in daylight and dark, and the lighting isn't of the best. The rust and the years of dust have been unpleasant to work with, but the first stage is done and all who helped deserve great notes of thanks. Even those will probably still be on the floor during the "open warehouse" in June. You will enjoy seeing them and realizing the magnitude of this operation. Eventually they will all be on pallet racks or shelves of some kind and stored in an orderly fashion. First things first however!

We plan to have moulds on display at Hopewell Hall, some in the museum, etc. Take time to look at them and see what we bought. I think you'll believe as we do that it was money well spent. Of course, we still have a good ways to go but our "thermometers" in the office and in the museum rise day by day.

Neila Bredehoft, Archives Chairman, has kept her crews of local people and those from away busy cleaning these dirty pieces of paper. They use some kind of a sponge first and then wallpaper cleaner. This has, and still is, and will be, a monumental task.

Speaking of monumental tasks, Jan Thran and Liz Stickle have spent all, or part of nearly every week day this year, working or taking reservations for the Flea Market and keeping the Mould Fund records. They record every donation, send all of the donation slips to those who send money, send letters soliciting funds to different groups, and, working with our bookkeeper, "Wanda," handle all of the money. They keep the "thermometer" up-to-date as well. Sometimes it just won't go up fast enough!

It is amazing to see how generous Depression clubs are. They seem to be almost more aware of the danger of unauthorized reproductions than most other collectors. That is probably because of the repro-

duction of depression glass. We are extremely grateful for their help.

It has been brought to our attention that someone has complained about the wording in the Registration form concerning the Champagne Preview. We don't understand the problem because if you do register, the preview fee is \$5.00, a savings of two dollars. Anyone can come to the Preview for \$7 as was said in Heisey News and if all you are attending is the Preview, it would be cheaper not to register. However, we would like everyone to register so that your badge indicates that you are a member of, and support, HCA. Your badge also allows you to unlimited admission to the Show and Display and takes you to all free events. We hope you'll support us to this extent. Conventions are very expensive for us.

Dealers this year must register if they want to attend convention events. The front cover of this issue gives the price of the Show and the Preview if you aren't registered.

Our member, Walter Stickle, was recently hospitalized and is now doing fine. His surgery has caused us the temporary loss of his wife, Liz, who has worked so diligently on the Flea Market and Mould Fund.

*Louise Ream*



## IN MEMORIAM

Our devoted member, MAURICE SEEBER, of Spanaway, Washington, died recently. We had just mentioned in our last issue that he was very ill. Maurice was a very good friend of HCA and promoted memberships more than anyone else we know.

He will be missed by those of us who know him and certainly the members of his study group, which he founded, Northwest Heisey Collectors Club.

Our sincerest sympathy to his widow Orlena and his family.

We received word today, May 16, that everyone's good friend, MURPHY TARQUINIO, died last night. He became very ill last Friday with infection throughout his body.

The Tarquinos were founding members of the Reynoldsburg Heisey Collectors Club in 1969 and members of HCA since the beginning.

Murphy was very active both in HCA and the RHCC. He acted as a docent in the museum, was our first shipping clerk (volunteer) and helped in any way he could. He and his wife Dorothy did the HCA Show for many years as well as many flea markets and shows throughout the area, making a host of friends who will miss him greatly.

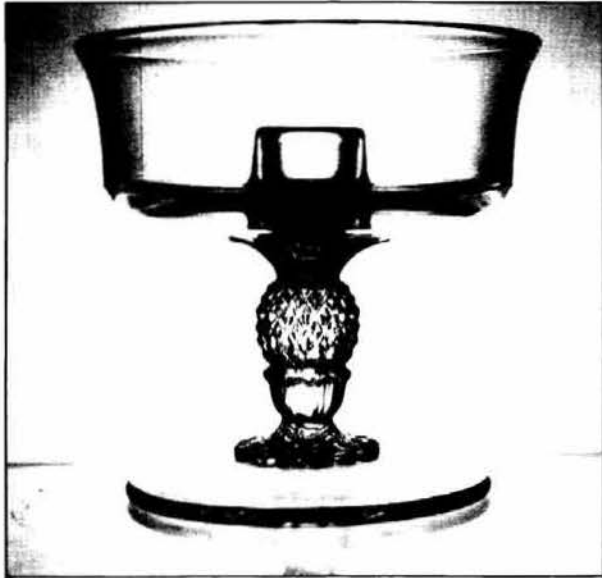
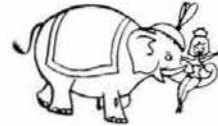
They had to miss last year's show because of Dorothy's illness but had planned to do it this year. They had already sent their registrations for the convention.

All of their friends and members of HCA extend their sympathy to Dorothy, their two sons and their grandchildren.

Murphy was one of a kind and to know him was to love him!

HEISEY CANDLESTICKS - NO. 1567 PLANTATION,  
PART III

By Tom Felt



the August 1949 *Crockery and Glass Journal*. The footed epergne candleholder is exactly 5 inches high. It has a bowl with a diameter of 5 inches and a depth of 2 inches. The foot is molded and is 4 inches in diameter. The Diamond H appears on the bottom underside of the foot. The stem is a pineapple setting upon an acorn-like pedestal, very similar to that used on several of the pressed stemware pieces in the pattern.

It was made only in crystal and was never re-issued by Imperial.

Next month we will conclude the series of articles by looking at the final two candlesticks added to this large pattern, the one- and two-lights.

Most of the Plantation pattern was originally issued in 1948, including the candleblock and three-light candlestick discussed in last month's article. A year was to pass before the next candlestick was added to the line, and then it was a rather unusual one, the footed epergne candleholder pictured above.

This candlestick, along with the no. 341 footed epergne candleholder which came out a few months later, was a follow-up to the success of the epergnette which Heisey had introduced in the fall of 1948. Unlike the epergnettes, these candlesticks could stand alone but, like them, could also be used to hold floral arrangements.

Two sizes of footed epergne candleholder were made as part of the Plantation pattern. The 5 inch size went into production in June 1949 and remained in the catalogs until sometime prior to the fall of 1953, a total of about four years. They were made in relatively small quantities, however. For instance, from June 1949 to December 1950, only 1000 were produced.

The 7 inch size is even scarcer and was made for no more than a year, if that long. It was offered in price list 30, dated July 1949, but may not have actually been made until the following year. Factory records indicate that only 800 7 inch Plantation "epergnettes" were made between January and August 1950. The use of the term "epergnette" in these records is not as confusing as it might seem if it is realized that Heisey listed the footed epergne candleholders under that heading in the catalogues. Despite these dates, however, this size candleholder was not included in catalog 31 when it came out in August 1950.

Like most pieces in the Plantation pattern, this candleholder was also a creation of Horace King. The small one is identical to the footed compot, or footed cheese in the pattern, but with the candleholder element added to the bowl. Both pieces would have been made from a single mould and, in fact, both came out simultaneously and were pictured together as new items added to the line in an ad in



#934 Olive Cutting  
#4090 Coventry Goblet



# 909 Champlain Cutting  
#3368 Albemarle Goblet

## HOW SWEET IT IS!!

By Jim Earnshaw

Heisey molasses jugs -cans- as described by Heisey workers on their turn sheets, and syrup pitchers have held a number one spot for me as a highly desirable and valuable Heisey collectible since 1980. I have collected Brilliant Period Cut Glass for a number of years which included several syrup pitchers. In looking for more, I discovered that quite a few pitchers were made by Heisey and cut or engraved by someone else. This led to my interest in Heisey and research in the area of molasses jugs and syrup pitchers.

A very informative and detailed article by Joe Lokay in the September 1977 Heisey News followed by another in February 1980, helped greatly in my quest for information. Thanks to Joe for helping me get a good, firm and detailed start. Further research led to photostating catalog pictures and drawings, articles and drawings in later Heisey News issues and finally, the assembly and cataloging of that information into my "bible." A loose ring binder containing this information was started and now has grown into a thick 150 page "wealth of information book" on Heisey molasses jugs, cans and/or syrup pitchers. This book became my outline, my guide, my record for collection of about 156 examples as of this date. Being an engineer, I felt (and now know) that research was necessary for a successful and detailed collection.

My actual collection of Heisey syrups began in June of 1980 and grew into a display of approximately 80 items at the 1981 Heisey Convention. "Charged-Up" with the many good comments from this display, I was determined to expand and try to find as many Heisey patterns, sizes, shapes and colors as possible. My real challenge had begun! What a great source of fun, investment, and commitment it has become. Now to mention all the fine people we have met looking for Heisey. My wife Jo and countless others have been of immense help. Let me share some of this with you.

My research led to the fact that there are approximately 110 different Heisey syrup pitchers, counting patterns, crystal, colors, decorations, tops, bottoms, handles, and Heisey cuttings and etchings. Forty-two patterns - the first #1200 Square in Diamond (Cut Block), the last, #1567 Plantation, in between, literally dozens and dozens of pitchers. I hope to write several articles on these and intend to divide them into three groups:

First, 1896 - 1910 - "The Pattern Years"

Second, 1910 - 1928 "The Syrup Years"

Third, 1928 - 1956 "The Lean Years, with color added"

The term molasses jugs (or cans) and the construction of them probably led to their early demise (Heisey 1896-1910). These jugs came in several sizes: 5 oz., 7 oz., 10 oz., and 13 oz. Although the factory described the 13 oz. as having that capacity, none will hold more than 10 or 11 ozs. This leads up to the question - how were these filled with thick, gooey molasses?? The tops of all of the early patterns were cemented on with plaster-of-paris with a spring loaded lid or closure. Just how could one comfortably fill or refill such a jug without having a big, sticky mess? How could one use and reuse such a jug without having a big, sticky mess?

Picture Grandma with the gallon jug or crock of

molasses - trying to hold the lid open and pour into that small opening, with or without help - result?? Probably a big, sticky mess, not to mention a bigger one over, on, or under the jug on her working surface! Can't help but believe that these beautiful, early molasses jugs quickly became ornaments and lost their utilitarian use very early. They just weren't practical, much less usable, without too much care. How lucky for us collectors! They were probably set aside early, not used again, and just waited for us to collect them. There are hundreds and hundreds of early molasses jugs available today. Most are not Heisey, but highly desirable and collectible. William Heacock, in his Book III, Victorian Pattern Glass, Syrups, Sugar Shakers & Cruets, from A to Z, shows many, many beautiful jugs in different types of glass. I firmly believe that the "big, sticky mess" of yesteryear made many molasses jugs and cans available to us collectors today.

The next article will cover the early pattern years, 1896 - 1910, probably the most varied and interesting period, but certainly not the biggest, busiest period which followed.

Hope you enjoyed this first article, as I have tried to share some of my research and findings with you. How Sweet it is!!



## BOARD NOTES:

### Executive Committee Report

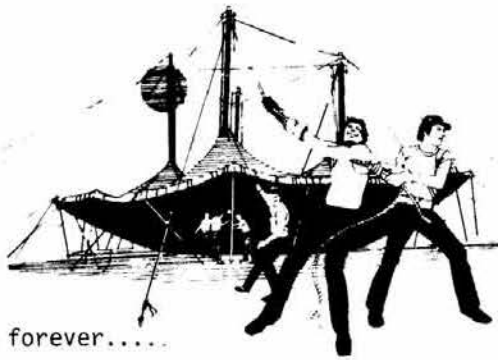
Given by Ray Ziegler. Executive Committee refers to the Board, use of wiring harness by Home Builders Association. Motion was made by George Schamel to rent at nominal fee, wiring harness to Home Builders Association for show in Adena Hall. Ex-committee to determine specific details. Consideration to be given to reasonable estimate in relation to floor covering usage on a return favor basis. Seconded by Lloyd Caswell. Motion passed.

Discussed asiatic pheasants made by Imperial now owned by HCA. Motion was made by Frank Husted that the diamond "H" be removed from both the amber and crystal asiatic pheasants to be replaced by a script identifier. Seconded by Lloyd Caswell. Motion passed.

Resolution by Frank Husted. Seconded by Lloyd Caswell. Passed unanimously as follows:

"Be it resolved that the Heisey Collectors of America Board extend Norman Thran and all persons involved in the task of investigating, evaluating and raising of funds for the Heisey Moulds, all accolades for their efforts above and beyond the call of duty."

Motion was made by Frank Husted that the limited edition amber cabochon ad sign be made in the amount of 1500 to be used for Mould Fund - Seconded by Odell Johnson. Motion passed.



diamonds are forever.....

By Janet M. Caswell

On Friday, March 15th at 5:30 a.m., the Mr. and I left the Yachting Center, picked up a very dear Heisey friend and headed for the "All Heisey Show" held in Silver Spring, Maryland. As always, the show was beautiful, giving us the pleasure of being with our many Heisey friends as well as the opportunity of purchasing that special piece to add to our collection. This was our friend's first time at the Washington Show and she was excited, adding a few goodies to her collection: #3404 Spanish Stem, 1 oz. cordial in cobalt (two of these); #1205 Fancy Loop water bottle and for her basket collection, the #461 7" in Flamingo. Needless to say, she was singing to herself all the way home.

It is always great fun to watch the expression on a friend's face when he or she sees all that Heisey in one place. It is almost as if I were seeing it again for the first time.

The Mr. and I also purchased a few things; a pair of #1951 Cabochon l-Lite candlesticks; #4163 16 oz. beer mug with the #462 Fox Chase Silhouette etch, plus a pair of the very beautiful #137 Concave Circle candlesticks in flamingo. We also were singing on the way home!

"The Hanging Judge," or "Curly" as most of you remember, came up with a couple of real nice pieces: #429 Plain Panel Recess punch cup and a pair of very lovely #116 Oak Leaf candlesticks, completely hawthorne. I had the privilege to see these and they are truly beautiful.

From "the Evergreen State" (Wash.) comes news of eight (8) parfais, eight (8) 12 oz. sodas and the large oval floral bowl in #1404 Old Sandwich, Sahara. Old Sandwich is always great to find in color.

The "Busy Bee" still believes that all animals come in pairs. Some day her bubble will burst, but until then, let's let her dream on: The Goose, wings down, a pair (that means two); also one (1) Goose, wings half; plus a pair of #16 candlesticks.   
mmmmmmmmmm good going!!

The "two guys" from Connecticut seem to be always shopping around and they came upon five (5) #393 3 oz. cocktails and the #479 Hotel creamer in flamingo. They told me they passed a pair of crystal #402 Gothic candelabra with the prisms because one was so very badly damaged.

Up "the ladder" of Heisey success with the #354 Wide Flat Panel sugar also a knife rest, double marked. She told me that she has used her knife rest several times already. She is one collector who uses all her Heisey. Easy does it, a rung at a time!\*

I heard from "mountain gal" (CA) again this month. She didn't have any finds for me but she sent pictures of her home and valley buried in snow,

enough to go sledding - which she did! Even though she didn't report any of her own finds, she did relate a sad tale regarding a friend who was lucky enough to find a #1295 Beaded Swag spooner, opal, with perfect flowers around the side. The cost was less than a Heisey Banquet - great, hah!! Oh well, she dropped it going in the door of her house and knocked a big chunk (and I mean big) out of the top. Boy, let me say, that's enough to ruin your whole day!

Now, let's go all the way from the West Coast to the South East Coast and find out what my "English Buddy" has to say for himself (Fla.). It's so nice thinking about warm weather that I'll mention the #500 flamingo basket (makes me think of Easter); two (2) Madonnas, both marked; an Orchid Etch cocktail shaker, silver overlay on the base, and the #352 two quart crushed fruit.

The "Buckeye State" (OH) reports a #464 fruit basket with an unknown etch; and from my "Evergreen Friends" (ME) comes news of a #1252 Twist mustard and spoon in marigold (good color).

"The Tipper" reports a #1466 Panel and Double Pleat 8" nappy and a #381 Heisey Quilt nappy. Now, "the little one" talks about the #16 powder box and hair receiver; the "Wiz" has the #201 Electro Portable light, frosted bottom and removable prisms, terrific!!

New "Bay Stater" this month - with a #1231 Ribbed Octagon floral bowl in hawthorne, while "the Pilgrims" from the Granite State (NH) sailed in with a #1205 Fancy Loop toothpick; #126 Trophy candlestick (blue flashed); a #4231 Favor Vase in sahara, plus the Puritan four-part relish tray with all four little inserts (trays).

"The California Kid" hasn't been heard from for quite a while but his finds are worth waiting for! A torte plate with Minuet Etch; the Empress #1401 cruet/stopper in moongleam; and in tangerine, a #3380 Duquesne parfait. Ah, Yes!!

Today was a rainy day so the Mr. and I decided to forgo the out-door flea markets and keep to the inside and be dry. Quite a favorable decision on our part if I do say so. We sauntered into a favorite haunt of ours and in less than two minutes had spotted, picked up and purchased our greatest find in many a moon - #477 Hairpin Basket with patent date, 2/15/16, in perfect condition. We paid our dues and left the shop walking on cloud nine. Nothing else was purchased today.

It's almost Convention time again and Lloyd & I will be at the Display at Hopewell Hall. For us, it is the most exciting time of year. This year, we are setting up a Candlestick Display of our own sticks so please stop by and see us. It is a great pleasure talking to all our old friends and a delight to meet new ones.

The days are getting longer and warmer here in the Yachting Center and the Harbor is slowly filling with beautiful Sloops of all sizes - a nice time of year.

Happy hunting,  
See you in Ohio  
Janet

\* Jan didn't identify the she.



FOR YOU—PRECIOUS *Pine*

Clear magic! Feathery boughs of pine with fine green needles fanning out from rich brown cones . . . fresh and delicate against the gleam of Lenox. Pine is the identical quality of china as in the brilliant Cambodian service, for Lenox makes only one china—the finest! Choose your Lenox pattern from the wide selection at the finest stores. In years to come, you'll appreciate more and more the timeless perfection of design and the amazing durability of Lenox!

Place setting: dinner, salad and butter plates, teacup and saucer . . . \$1895



HEISEY CLUB OF CALIFORNIA

By Betty Wanser



The Heisey Club of California held its regular monthly meeting April 28th at the home of Herb and Betty Wanser in Anaheim. This is traditionally the month of our Annual Silent Auction where we raise funds for support of HCA. This year we had already donated \$1,000 of our yet un-earned money to the Mould Fund, (through the generosity of one of our members who loaned us the money.) So, the pressure was on! We had about 25 members and guests turn out for the auction and potluck. They showed their generosity by donating 106 items of either Heisey Glass or Heisey related memorabilia. Then, as if that wasn't already enough, we all stood around with our bid cards, silently writing down our bids to buy all this good stuff back. Much to everyone's delight, we raised \$1,737.50. After partaking of a bountiful potluck dinner, paying the Treasurer our toll & wrapping up our glass, 23 happy people winged their way home all over South California. Needless to say, this was our biggest Silent Auction ever.

Our meeting in May was held in Northridge, Sunday the 26th. Our program was on Verlys, and the Verlys moulds leased to Heisey. Members also brought their first item purchased in Heisey and told its story.

Sunday night, May 12, 1985, in the movie "Malice in Wonderland" with Liz Taylor & Jane Alexander as Louella Parsons and Hedda Hopper, famous Hollywood Gossip Columnists, one of the scenes featured a Greek Key Punch Bowl and Base and it could be seen in two different shots.

Heisey's "PINE" Cutting was made to match the Lenox "Pine" pattern in fine china in 1951.

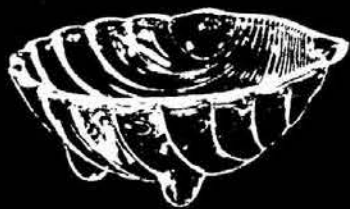


#4004 Jacobean  
W/911 Lyric Cutting

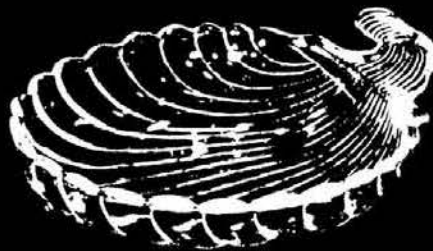


# No. 1503 CRYSTOLITE PATTERN

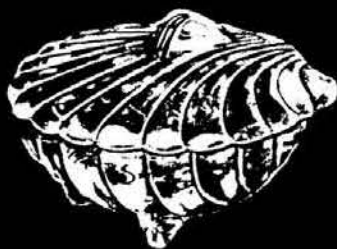
COPY OF AN ADDED PAGE IN CATALOG 212 - 1938 or 1939



1503—6" Shell Mayonnaise



1503—7" Shell Praline



1503—6" Shell Candy Box & Cover



1503—7" Shell Plate  
also made  
4", 10½" and 13"



1503—13" Shell Relish  
5 Compt.



1503—11" Shell Comb. Salad  
& Mayonnaise Bowl



1503—11" Shell Salad Bowl

**No. 1503 CRYSTOLITE PATTERN**

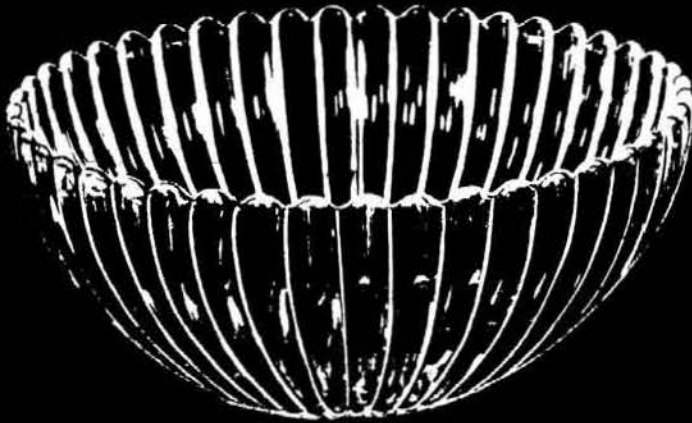
COPY OF AN ADDED PAGE IN CATALOG 212 - 1938 or 1939



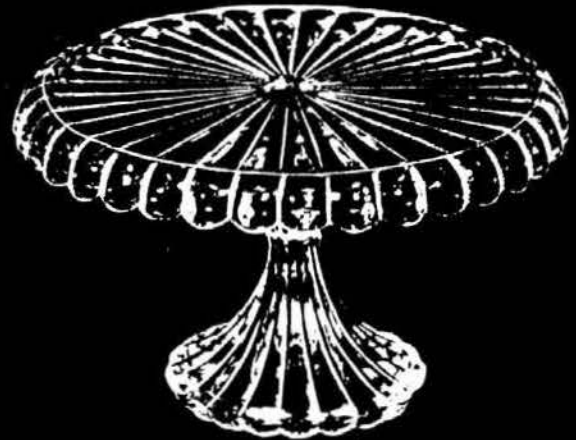
1503—12" Oval Utility Tray



1503—Gardenia Bowl



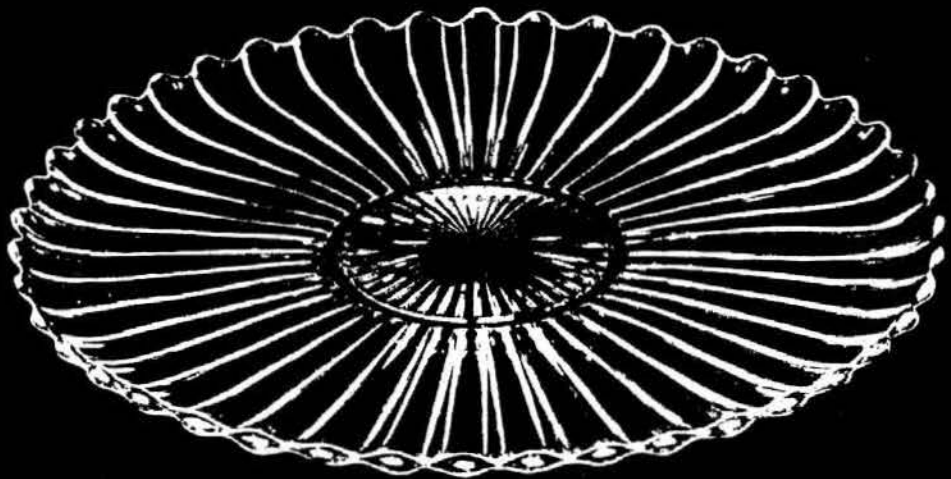
1503—11" Punch Bowl (7 1/2 qts.)



1503—11" Silver Fnd.



1503—6" Basket Hld.



1503—20" Buffet Plate



PART II OF LIST OF MOULDS IN WAREHOUSE

p. 2 Inventory of Moulds, Cont'd.

- 4054 Coronation Ice Bucket
- 1425 Victorian Cheese Holder
- 1489 Late Puritan 10" Plate
- 1489 Late Puritan 8x10 Gardenia
- 1540 Lariat Candy Box Cover - Shell Only
- 1540 Lariat Cup
- 1540 Lariat 7" Plate
- 1447 Rococo Relish
- 1405 Ipswich 1/2 Gal. Jug
- 5009 Queen Ann Goblet - Stem
- 3333 Old Glory Grapefruit - Plunger Only
- 1456 Unknown Name 8 oz. Ftd. Tumbler - Shell Only
- 436 Unknown Name 6" Vase
- 1404 Old Sandwich 10 oz. Ftd. Tumbler
- 1404 Old Sandwich 3 oz. Cocktail
- 1404 Old Sandwich 6-1/2 oz. Hot Toddy
- 1404 Old Sandwich 4-1/2" Finger Bowl
- 1404 Old Sandwich 3 oz. Cocktail
- 1404 Old Sandwich 4 oz. Sherbet
- 1509 Queen Ann Cup
- 1503 Crystolite Shell P B Cover
- 3350 Wabash 6" Plate
- 1509 Queen Ann 6" Plate
- 1609 Plain 7" Plate
- 1506 Provincial - Plunger Only
- 373 Colonial 10 oz. Ftd. Tumbler
- 1503 Crystolite Custard
- 1503 Crystolite 6" B
- Gazelle Head Book End (5305)
- 1540 Lariat 7" Comport - No Plunger & Ring
- 341 Puritan 8" Nappy
- 1509 Provincial Marmalade
- 1506 Provincial 12 oz. Ftd. Soda - Bottom Plate - dated 6/21/67
- 1506 Provincial 5-3/8" Nappy
- 1506 Provincial 12 oz. Ftd. Soda
- 1506 Provincial 6" Nappy . Shell Only
- 1506 Provincial 5-3/8" Ash Tray - Plunger & Ring Only
- 1506 Provincial 8" Plate
- 1506 Provincial 13 oz. Soda
- 1506 Provincial 8" Plate - Shell Only
- 1506 Provincial 4 oz. Oil
- 411 Tudor Grapefruit & Peg
- 1506 Provincial 9" Nappy - Marked IG
- 1404 Old Sandwich 8 oz. Tumbler
- 1503 1/2 Crystolite 3-Compartment Relish
- 1503 Crystolite 3-Compartment Oval Tray
- 1503 Crystolite 1/2 Gal. Jug
- 411 Tudor 4 oz. Oil
- 1226 Old Sandwich Sherbet
- 1509 Queen Ann Lemon Dish Cover
- 1503 Crystolite 3 oz. Oil
- 1503 Crystolite 5-3/8" Handled Jelly
- 1509 Queen Ann 8" Square Plate
- 1509 Queen Ann Lemon Dish Cover - Shell Only
- 1509 Queen Ann Saucer
- 1404 Old Sandwich 11" Floral Bowl



ENGRAVING UNDER THE WHEEL



PAINING WAX ON A GOBLET TO BE ETCHED



## MISCELLANEOUS ITEMS

| NO.     | SIZE   | ITEM  |
|---------|--------|---|
| 1- 12   |        | Mayonnaise Ladle  |
| 2- 7    |        | Mayonnaise Ladle  |
| 3- 11   |        | Glass Punch Ladle   |
| 3a- 10  |        | Plastic Punch Ladle   |
| 4- 1    |        | Plated Ice Bucket Handle  |
| 5- 1    |        | Plated Ice Tong   |
| 6- 10   |        | Muddler   |
| 7-5031  | 8 oz.  | French Dress. Bottle, Pl. & #80 Stop                                |
| 5031    | 8 oz.  | French Dress. Bottle, Pl. without Stop                              |
| 5031    | 8 oz.  | French Dressing, Etched "Oil" and "Vinegar", and Stop               |
| 5031    | 8 oz.  | French Dressing, Etched "Oil" and "Vinegar", without Stop           |
| 8-1489  | 6 oz.  | French Dress. Bottle, Pl. & #113 Stop                               |
| 1489    | 6 oz.  | French Dress. Bottle, Pl. without Stop                              |
| 1489    | 6 oz.  | French Dressing, Etched "Oil" and "Vinegar", and Stop               |
| 1489    | 6 oz.  | French Dressing, Etched "Oil" and "Vinegar", without Stop           |
| 9-3408  |        | Dinner Bell   |
| 10-1252 | 4½ in. | Nappy   |
| 12-     |        | Punch Cup Hook, Red or Green  |
| 13- 1   |        | Chrome Plated Toothpick Clips                                       |
| 14- 1   |        | Wise Flower Holder  |
| 15- 112 |        | Drip Cut Top, Chrome Plated with Ivory Plastic Handle               |
| 16-1485 | 8 pc.  | Hostess Helper (Saturn Pattern)                                     |
| 244     |        | Individual Carton for Hostess Helper                                |
| 17-1630 | 10 oz. | Stacking Tumbler  |
| 18-1511 |        | Apple Marmalade & Cover   |
| 1511    |        | Apple Marmalade & Cover   |
| 19-1590 | 4½ in. | Footed Zodiac Candy Jar & Cover                                     |
| 1590    | 4½ in. | Footed Zodiac Candy Jar without Cover                               |
| 20-1458 | 8 in.  | Cocktail or Snack Plate   |
| 20-1458 | 2 pc.  | Cocktail or Snack Plate with Mid Century #5082-4 oz. Cocktail Glass |
| 1458    | 2 pc.  | Cocktail or Snack Plate with Crystolite #1503 Tea Cup               |
| 21- 99  | 2 pc.  | Salad Fork and Spoon (Wood) (Sold in Pales only)                    |
| 1       | 8 in.  | Chrome Plated Bar Spoon (Stirrer)                                   |
| 2       | 10 in. | Chrome Plated Bar Spoon (Stirrer)                                   |
| 3       | 15 in. | Chrome Plated Bar Spoon (Stirrer)                                   |

NOTE: Unless marking is specified, plain French Dressing will be sent.

## MISCELLANEOUS Ash Trays and Cigarette Boxes

| NO.    | SIZE   | ITEM                        |
|--------|--------|-----------------------------|
| 1-1435 | 3 in.  | Individual Ash Tray         |
| 2-4035 |        | Footed Cigarette Holder     |
| 3-5012 |        | Footed Cigarette Holder     |
| 5-1606 | 4½ in. | Square Ash Tray             |
| 6-1593 | 6 in.  | Cigarette Box and Cover     |
| 1593   | 6 in.  | Cigarette Box without Cover |

PAGE FROM 1953 CATALOG

## O O P S !!

The typist of the newsletter, namely Merrell, left out one complete sentence when typing Betty Barnard's resume. It should read as follows:

Betty Ann Barnard resides in Newark, Ohio with her husband, Bill. Born in New York in 1925, she graduated from Richfield Springs High School, Richfield Springs, New York; Ithaca College, Ithaca, New York, B.S. Degree; St. Lawrence University, Canton, New York; MED; and took 18 graduate hours in Psychology at Syracuse University. Sorry Betty!

Merrell

## ANOTHER OOPS!!

I neglected to put in Liz Stickle's resume that she has been very active on the Mould Fund Drive, doing extensive typing, etc.

L.R.

CLUB NOTES:

HEISEY CLUB OF SOUTHEASTERN MASSACHUSETTS

We have had our first auction and it was very successful. The members were very generous with their donations and a large table glistened with many goodies. The auction was capably handled by Everett Dunbar who more than earned the appreciation of the round of applause he received.

We have had a "Show & Tell" on ash trays by Mary Williams. Almost every ash receiver Heisey ever made, and color was represented. She thoroughly described her collection in an interesting talk on styles, patterns and colors.

Shirley Dunbar has done a display on perfumes. A variety on all glass of all periods, Sandwich, Pairpoint, Heisey and others.

The club is in the process of making plans to do a two-day glass show at the Sheraton Sturbridge Inn in Sturbridge, Massachusetts on May 31st and June 1st for the 1986 season. Any dealers who would be interested in displaying in the show may get in touch with Beverly Sullivan, 12 Pond View Circle, Hatchville, MA 02536 or Phone (617) 563-2500 for further information.

Beverly Sullivan



\*\*\*\*\*

BAY STATE HEISEY COLLECTORS CLUB

The Bay State Heisey Collectors Club held its monthly meeting on April 9th, in Lexington, Mass., with twenty-five members present.

Our new President, D Young conducted his first meeting, discussing in length the many aspects of our "Annual Show & Sale" to be held in September. Plans are shaping up and excitement is in the air. We are expanding to include some china and pottery this year and the location will be changed to the Armory in Lexington, Mass.

The program for the evening was led by Beverly Berberian discussing "Short and Uncommon" pattern groups. Many rare and interesting pieces were displayed plus many interesting facts regarding these pieces were shared with the membership. I'm sure we all learned from this informative program.

"Show & Tell" was then the order for the evening followed by refreshments provided by Lloyd and Jan Caswell and Ann Montague.

Jan Caswell, Reporter

\*\*\*\*\*

WESTERN RESERVE HEISEY STUDY CLUB

Our February, 1985 meeting was held at the home of Jane Barthels in Avon Lake. Past President, Mary Little conducted the meeting, as our President, Thelma Morningstar was on an extended vacation. After our "Show & Tell" and a very brief meeting, we had a surprise baby shower for Jayne Eisbrenner. A first for our club! After the gift opening, Jane Barthels served her delicious chocolate cake.

Our March meeting, again led by Mary Little,

was held at Helen Marimon's home. During this meeting a nominating committee was named for the selection of officers for the coming year. More discussions were held on fund raising ideas for the club. It was decided that our Appraisal Day would be held in April at the Avon Lake Public Library. We also decided to try an auction at our next club meeting. At the end of the meeting, Helen Marimon gave an excellent presentation on Francoma Pottery, one of her many collectibles. We were happy to have long time member Wendell Young with us again, after a long absence due to the poor health and subsequent death of his wife, Thelma. We all will miss her.

Our April meeting was held at the home of Lynn Sellers. Our "Show & Tell" at this meeting consisted of Lynn's great finds which she carefully flew home from Smithville. A magnificent, huge #436 flower vase, never seen plantation divided luncheon plates with cups and original stickers (4 sets, no less), a Plantation tall footed, covered candy jar, and a Pineapple and Fan salt shaker. Unfortunately, all of Lynn's treasures were on the coffee table where some of us placed our glass for the auction. How disappointed we were when we found that none of these pieces were to be auctioned!

We were quite happy with the results of our first auction. The amount of \$77.50 went into our treasury from this event.

Final plans were made for our antique and glass appraisal, which will be held on April 13, 1985. New officers were elected: Genny Lege, president and Judy Kienzle, secretary-treasurer.

The biggest surprise of the meeting was the entrance of Jayne Eisbrenner with our new member, Eric (3 weeks old). That is true dedication to Heisey. Jayne said she didn't want to miss another meeting.

With so many happy events in one meeting, how can we top this at the next meeting?

Geneva Lege

\*\*\*\*\*

HEISEY COLLECTORS OF THE ROCHESTER AREA

Well, we were really blessed with another beautiful day in the frozen North.

The meeting was held at the beautiful home of Roberta (Bobbie) Zimmer. All her gardens were in bloom with Daffodils, Hyacinth, Scilla and hanging basket Geraniums. She had a great lunch with several varieties of dessert, etc. The coffee was served with her beautiful old paper thin china, which I call female type. Bobbie got me a nice thick mug. Three of her neighbors were in to watch the spectacle of crazy glass collectors get together, all lovely women.

The zoo was brought to order by Sharon Orienter at 3:30 P.M. The minutes of the March debacle were read and approved under duress, (I carry a gun.)

A letter from Louise Ream was read, which was a response to the club's letter to her, thanking her for all her work and soul searching during the mold, mould, mouldy, situation.

The club was reminded to bring their glass, for donation to the gift shop, to the next meeting for Bill Heron to deliver. Don't forget it must be marked and valued under \$50.00.

Bill was in that buggy State New Jersey, receiving a special award from Carl Sparacio for his poem in that illustrious publication, Diamond Dust,

you know the one that is never dated.

Sharon reminded all voting members to obtain their own absentee ballots, if needed.

Marvin Jacob reported on his project for HCA and asked us to all help put the finishing touches on it next Wednesday. Lois offered to feed us, so we agreed to help. (They'll be sorry).

Bobbie provided a guessing game raffle to provide money for the mold fund. We had to guess how many M&M's were in a large candy jar and how many jelly beans in a smaller jar. Our resident genius, Gert Costello, won the M&M jar game, and after much counting, I won the jelly bean project.

Marge Gillette provided a very expensive (\$1.69) pair of sunglasses and a Corning candle, something for another raffle. The income went to our club in an effort to raise enough money to provide a celebration next year on the anniversary of our 10th year as a chartered HCA club. Jerome Gillette was appointed chairman of this earth shaking event. Please, when you write to or about him, spell his name with a J, when you use a G, his blood pressure goes up 100 points. I do hope he can find a place other than Wendy's. Since he doesn't seem to like restaurants, Marge and I feel we will be lucky if he finds a place at all.

The subject of the meeting was candy dishes, of which Bobbie has them galore. Some were even Heisey.

The display table included Puritan #341, a 5 lb. Colonial Candy, 1/2 lb. Aristocrat with unknown cutting, Hawthorne Rib & Panel, Moongleam Pleat & Panel, Whirlpool Limelight, what looked like a trophy 1/2 lb. with Hawks mark on bottom and Heisey mark on top, an Athena, made for Montgomery Ward, a Lariat with a Charlton decoration (research provided by Sharon) and a Dawn, Cabochon chocolate box #1951. The "Show and Tell" provided a Fern divided relish, a 1/2 gallon Colonial Pitcher, a Lodestar Dawn Mayonnaise without under plate, an Empress Flamingo Ash Tray, and Bobbie's daughter, Eileen, brought two Narrow Flute With Rim nut dishes in Flamingo, one with patent 1915, the other plain.

Well, all good things come to an end. We really had a great meeting. I especially enjoyed talking to Bobbie's neighbor, Coleen Farmer, a Scotch girl who we hope will join our nutty group.

The quote for the Month "Mediocre minds will always dismiss anything which reaches beyond their understanding." (The molds?)

See you all in June, bring money.

George J. Reynolds  
Secy.-Treasurer



### TEST YOUR KNOWLEDGE by Phyllis Freier

1. What decanter is named for a Bird of the Southern Hemisphere?
2. Which of the early patterns has a Salted Almond Tray?
3. What pattern has a 5-Point Star Relish?
4. What pattern has the same name as Indian Money?
5. What cutting has the same name as Square in London?
6. What color is sometimes referred to as Tattle Tale Gray?
7. What is a Bobeche?

8. Name the Stem that has the same name as Old Authority, Empire or Dynasty?
9. How many pieces are there in the Pinwheel & Fan Pattern? Name them.
10. What Etchings can be found on the Old Dominion Stem (3380)? (3)
11. Who is the Executive Director of the Heisey Museum in Newark, Ohio?
12. What type of glass was Heisey's early pressed glass made to resemble??
13. Name the Etching with the same name as Thomas Jefferson's Home?
14. Name the pattern with the same name as John Alden's girl friend?
15. Is there stippling on the Beehive plate?
16. What Heisey animal is a famous fighter in the ring?
17. What Heisey figurine is noted for its ringneck?
18. What was the design of the Beehive plate based on?
19. What Etch reminds you of a Mexican Indian?
20. What do artists do with small choice bits of broken Heisey glass?
21. What pattern is #8?
22. The #385 pattern (Grid & Square) can or can not be found easily?
23. Are pieces in the #385 pattern, Grid & Square, signed or unsigned?
24. What colors will you find Grid & Square?
25. How large is the pitcher in the twist pattern?
26. Which was the most popular of these three patterns - Fandango, Fancy Loop or Locket on Chain?
27. Does the #105 Pembroke candlestick have an unattached Bobeche?
28. Are there Blown ware items in the Twist pattern?
29. What pattern is named for a Military Service?
30. What pattern is a Reverse Letter?
31. What pattern was designed to compete with Imperial's Candlewick?
32. What is the name of the house next to the Heisey Museum?
33. What is the Davidson House??
34. What is the difference in organization between the Bob Evans Stock & The T. J. Evans Foundation?
35. What can each side of a Heisey card box be used for - other than holding cards?
36. Are the small Crystolite candleblocks marked or unmarked?

Cont'd. on Page 20

PERSONAL ADS, SUCH AS GET WELL AND BIRTHDAY, WILL BE LIMITED TO 1/8 PAGE SINCE WE ARE GETTING SO MANY GLASS ADS NOW.

NOTE!! - The two forms on Page 23, one for the Cobalt Diamond H Advertising Piece; the other for a 4 1/2" Empress Plate with Victory Etch and inscribed "Moulds 1985". Both of these are made in our Heisey moulds. Both are for the benefit of the Mould Fund.

We received word Sunday, May 19th, that Jerry Gillette of the Rochester Club suffered a severe heart attack. He is the husband of Marjorie Gillette who is running for the Board.  
We hope you recover rapidly Jerry.

## Classified Ads

**FOR SALE:** Send SASE (Bus. Size) for Heisey mail lists. Specify: General Lists, Orchid Etch List or send your list of needs. See you at Convention, OSU Booth #10. J. & R. COLLECTIBLES, (Owned by Former Heisey Employee) P.O. Box 1030, Newark, OH 43055.  
**WANTED:** #341 Puritan 9 oz. Water Goblets and Champagnes. MARILYN JORDAN, 2025 E. Fremont Court, Arlington Heights, IL 60004.

**FOR SALE:** Orchid Stemware by Heisey, Mint condition - Listing sent on request (SASE) - DOT BENNETT, P.O. Box 1312, New Bern, NC 28560 - PH: 919-637-9386.

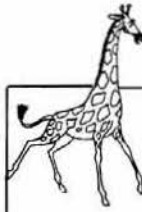
**FOR SALE:** Large selection of Heisey Orchid (including dinner plates), Heisey Rose and Banded Flute, One Empress Vase, others. Also large collection of Cambridge glass including Rosepoint, colored pieces and others. TREASURE HOUSE ANTIQUES, 148 Johnstown Road, Gahanna, OH 43230 - PH: 614-471-2317.

**WANTED:** Buying Colonial Cupped #348, Fifth Avenue Colonial #347, Colonial #363, Sunburst #343, Bankers Ink #1117. HAROLD HODGES, 3739 Plaza Drive, Topeka, Kansas 66609.

**FOR SALE:** #3397 Gascony Wine Decanter with 9, 2½ oz. glasses in cobalt. Original stopper, set mint condition. See Yeakley Book Two #544 & 545. The set \$1,250.00 JERRY HAMPTON - PH: 215-399-0607.

**FOR SALE:** Orchid Etch dinner set, including large 10-17/2" Plates & Stems. 48 pieces, Can deliver at convention. Contact MILDRED LEE - PH: 217-428-3106.

**WANTED:** Buying Caprice blue or Rosepoint by Cambridge, Rose or Orchid by Heisey, American, June, Fairfax, Versailles, Trojan, etc., by Fostoria and Depression Glass in crystal or colored. NADINE PANKOW, 207 S. Oakwood, Willow Springs, IL 60480. PH: 312-839-5231.



1985 FIFTH ANNUAL

# Fostoria Glass Society

## CONVENTION SHOW & SALE

DELFT NORONA MUSEUM  
EIGHTH STREET AND JEFFERSON AVENUE  
Moundsville, West Virginia 26041

FRIDAY, JUNE 14 — 6:30 - 8:30 P.M.

Premiere Admission \$3.00

SATURDAY, JUNE 15 — 11:00 - 6:00

SUNDAY, JUNE 16 — 12:00 - 5:00

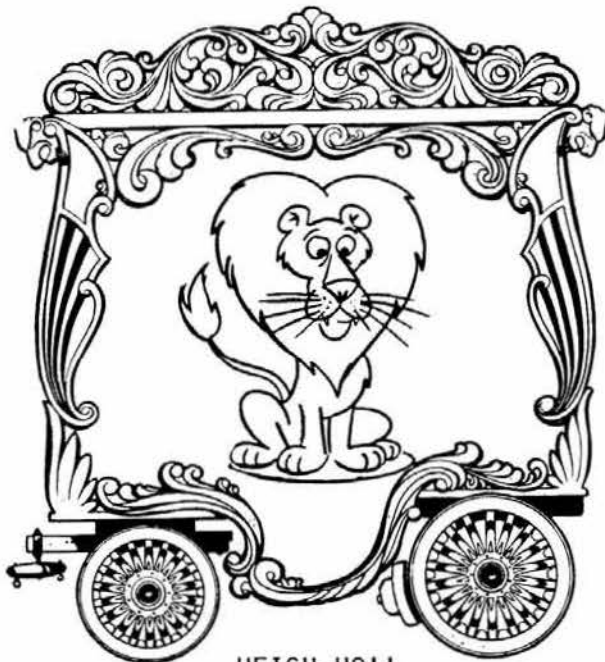
General Admission \$1.50

LECTURES DOOR PRIZES

For Information Write or Call —

(304) 845-0362 After 6:00 p.m. Evenings

P. O. BOX 826 MOUNDSVILLE, W. VA. 26041



HEIGH-HO!!  
COME TO THE SHOW!!!

DON'T FORGET!  
BIG ESTATE AUCTION  
500 PIECES OF HEISEY, PLUS OTHER GLASS AND  
ANTIQUES

SEE AD IN MAY ISSUE - PAGE 16

WRITE FOR LIST. SEND S.A.S.E.

OWNER: EDYTHE HEISEY TAYLOR

BEATTY AUCTION SERVICE

CECIL BEATTY, AUCTIONEER

WEST WILSON STREET

OTTAWA, KANSAS 66067

PHONE: (913) 242-2476

(NOTE CORRECTION IN PHONE NUMBER)



BEVERLY SULLIVAN  
12 POND VIEW CIRCLE  
HATCHVILLE, MA 02536



PH: 617-563-2500  
P & I EXTRA

- GOOSE, Wings Up (2) ea.....\$ 60.00
- # 357 PRISON STRIPE Nappies 4" (7) ea..... 18.00
- # 300 PEERLESS 2 oz. Cocktail..... 8.00
- # 341 PURITAN 2-1/2 oz. Creme De Mint (6)ea. 14.00
- # 341 PURITAN 4 oz. Claret (3) ea..... 11.00
- # 341 PURITAN 8 oz. Tumbler (10) ea..... 10.00
- # 393 NARROW FLUTE 3 oz. Cocktail (4) ea.... 10.00
- # 411 RIB & PANEL 9-1/2" Vase, Unknown Etch. 17.50
- #5025 TYROLEAN 10 oz. Goblet (5) ea..... 25.00

DONALD P. BEAN  
36 HARDING STREET  
MILFORD, MA 01757



PH: 617-473-0561  
P & I EXTRA  
\* - MARKED

- # 351 PRISCILLA Mustard\* & Cover.....\$ 25.00
- #1252 TWIST 9" Celery\*..... 10.00
- #1252 TWIST 9" Celery\*, Flamingo (2) ea.... 12.50
- #1252 TWIST 13" Celery\*, Flamingo..... 17.50
- #1503 CRYSTOLITE Cigarette Box\* & Cover.... 17.50
- #1503 CRYSTOLITE 6" Rd. Covered Dish\*, Ftd.. 35.00
- # 451 CROSS LINED FLUTE 7 oz. Goblets\* (3)ea 22.50
- #1567 PLANTATION 6-1/2" 2-Hld. Jelly\*..... 25.00
- # 300 PEERLESS Punch Cups\* (6) For..... 45.00

\*\*\*\*\*

HEISEY COLLECTORS

WE WILL BE AT O.S.U. CAMPUS SHOW - NEWARK

JUNE 20-23, 1985

BOOTH #3

WITH LOTS OF HEISEY IN COLORS AS WELL AS A  
COLLECTION OF 15 CANDLESTICKS, SOME RARE,  
AND SEVERAL RARE CORDIALS - TOOTHPICKS.

HOPE TO SEE YOU ALL

THE COLLECTOR'S STOP (EILEEN & RALPH WISE)  
12018 SUELLEN CIRCLE

WEST PALM BEACH, WELLINGTON, FLORIDA 33414  
PH: 305-793-0986

\*\*\*\*\*

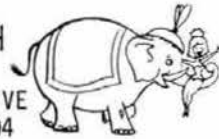
HELEN BONAR PH: 916-587-7239  
P.O. BOX 1373 UPS EXTRA  
TRUCKEE, CA 95734

HEISEY BY IMPERIAL ULTRA BLUE ANIMALS:

- ELEPHANT (Medium) .....\$ 75.00
- AIRDALE..... 75.00
- WOOD DUCK & 2 DUCKLINGS....Set..... 100.00
- SCOTTY..... 60.00
- DONKEY..... 75.00
- PIG & 2 PIGLETS.....Set..... 100.00
- GAZELLE..... 150.00
- CLYDESDALE..... 150.00
- WOOD CHUCK (IMPERIAL)..... 50.00

\*\*\*\*\*

H & R DIAMOND H  
HELEN & BOB RAREY  
1450 WHITE ASH DRIVE  
COLUMBUS, OH 43204



PH: 614-279-0390  
After 5:30 P.M.  
S & Ins. Extra  
\* Marked

- #1503 CRYSTOLITE Ice Bucket\*, Chrome Handle  
& Tongs.....\$110.00
- # 357 DUCK ASH TRAY\*, Flamingo..... 95.00
- #1401 EMPRESS 8" Hld. Ftd. Bowl\*, Sahara..... 42.50
- #1401 EMPRESS 6-1/2" Oval Bowl\*, Sahara..... 25.00
- #1401 EMPRESS 8" Rd. Plates\*, Sahara (Show  
Wear) (6) ea..... 7.50
- #1485 SATURN Sugar Pourer\*, Reed & Barton Top 55.00
- # 335 PRINCE OF WALES Small Punch Bowl Base  
Only..... 30.00
- #1519 WAVERLY Salt & Pepper\*, Plastic Tops,  
Pair..... 39.50
- # 112 MERCURY 1-Lite Candleholder, Orchid  
Etch, Pair..... 75.00
- #5025 TYROLEAN 3 oz. Wine\*, Orchid Etch (4)ea 95.00
- #1435 3" Ind. Ash Tray, Orchid Etch (6) ea... 29.50
- #1509 QUEEN ANN D/F 5-1/2" Mint, Orchid Etch. 25.00
- #1403 DOWAGER Ftd. Grapefruit\*..... 12.50
- #1469 RIDGELEIGH Md. Salt\* (8) in Original  
Box..... 49.50
- #1469 RIDGELEIGH Covered Cigarette Box\* & 4  
Ashtrays\*..... 49.50
- #1252 TWIST Covered Mustard\*, Flamingo..... 67.50
- # 500 OCTAGON Variety Tray\*, Moongleam..... 155.00

\*\*\*\*\*

OAK GROVE ANTIQUES

PH: 617-772-2538  
After 5 P.M.  
P & I Extra

49 GROVE STREET  
AYER, MA 01432 \* MARKED

- # 300 PEERLESS Ind. Creamer & Sugar\*.....\$ 32.00
- # 341 PURITAN 2 oz. Cocktail\* (2) each..... 7.50
- # 393 NARROW FLUTE Nappies, 4" (10) each.... 6.00
- # 393 NARROW FLUTE 8" Nappy..... 25.00
- # 393 NARROW FLUTE Banana Split..... 23.00
- # 393 NARROW FLUTE Egg Cup..... 12.00
- # 397 COLONIAL CUPPED SCALLOP 8" Oblong  
Candy Tray\*..... 28.00
- #1023 (1184) DIAMOND OPTIC HOTEL Cream &  
Sugar, Flamingo\*..... 46.00
- #1023 (1184) DIAMOND OPTIC HOTEL Cream &  
Sugar, Moongleam\*..... 48.00
- #1184 EMPRESS Etched Cups & Saucers\*(9)..... 95.00
- #1185 12" Celery, Etched - Flamingo\*..... 37.00
- #1201 11" Low Footed Bowl, Flamingo - Vogel  
Bk., Page 153..... 46.00
- #1401 EMPRESS Sugar & Creamer, Dolphin Ftd.,  
Flamingo\*..... 40.00
- #1401 EMPRESS 13" Celery, Sahara..... 27.00
- #1401 EMPRESS 13" Divided Pickle & Olive,  
Flamingo ..... 26.00
- #1401 EMPRESS Ind. Sugar..... 15.00
- #1425 VICTORIAN Creamer & Sugar\*..... 50.00
- #1467 RIDGELEIGH 2-Hld. Bon Bon\*..... 18.00
- #1483 STANHOPE 7" Plates (4), Black Knobs\*  
STANHOPE Cups & Saucers, Black Knobs  
(4) ALL OF PLATES & CUPS & SAUCERS..... 45.00



RECOLLECTIONS

T. D. WERT  
BOX 144, R.R. 2, CREEK ROAD  
FURLONG, PA 18925



PH: 215-794-8667  
P & I EXTRA  
\*MARKED  
SUBJECT TO PRIOR SALE

- # 150 BANDED FLUTE 4-1/2 oz. Champagne (8)\* each.....\$ 12.00
- # 433 GREEK KEY 3 oz. Cocktail (4)\* each.... 30.00
- # 433 GREEK KEY 3/4 oz. Cordial\*..... 195.00
- # 305 PUNTY & DIAMOND POINT 8" Nappy..... 25.00
- # 325 PILLOWS Spooner\*..... 65.00
- #3404 SPANISH 12 oz. Soda, Ftd., Cobalt (6) each..... 55.00
- #1951 CABOCHON 3-Part Relish 9", Dawn\*..... 50.00
- #1951 CABOCHON Oil..... 65.00
- #1415 TWENTIETH CENTURY Sherbet\*, Moongleam (4) each..... 20.00
- #1187 Covered Ashtray, Moongleam, Gold Dec.\* 70.00
- #1425 VICTORIAN 8-1/2" Vase, Flared\*..... 48.00
- #7000 SUNFLOWER Covered Butter\*..... 48.00
- #1509 QUEEN ANN D/F Floral Bowl, Manhattan Cut..... 48.00
- #4159 Pitcher, 65 oz., Antarctic Etch..... 80.00
- #1519 WAVERLY Db1. Candlesticks, Orchid Etch...Pair..... 110.00
- #1519 WAVERLY Covered Candy, Sea Horse Handles, Rose Etch\*..... 170.00
- #3390 CARCASSONE 8 oz. Soda, Ftd., Olympiad Etch (10) each..... 15.00
- #4045 BALL VASE, 6", Sahara, Mermaid Etch, Minor Rim Flakes..... 350.00

PATTON HOUSE ANTIQUES

P.O. BOX 547  
LOUISA, VA 23093



PH: 703-967-1181  
After 6 P.M.  
P. & I Extra  
\*Marked

- # 341 PURITAN Punch Bowl & Stand\*.....\$140.00
- # 343 SUNBURST Punch Bowl & Stand\*..... 185.00
- #1507 5 oz. Punch Cups\*(6) ea. \$8 - ALL..... 42.50
- # 965 NARCISSUS Bell..... 30.00
- # 507 SHERRY DECANTER, Sterling Top, Orchid Etch..... 175.00
- # 325 PILLOWS 8" x 8-1/2" Footed Fruit Bowl\* 100.00
- #1252 TWIST Ice Bucket W/Hdl., Crystal\*..... 46.50
- # 964 MARYLAND Cut 3 oz. Wines, each..... 16.50
- #1554 FISH BOOK ENDS...Pair..... 100.00

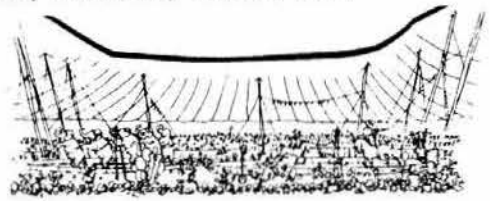
MICHAEL KRUMME

BOX 5542  
SANTA MONICA, CA 90405

PH: 213-396-4012  
P & I EXTRA, FREE ON ORDERS  
\$100/MORE - SASE

- #3389 DUQUESNE Parfait, rare Tangerine color, minor flaws, call.....\$100.00
- #1503 CRYSTOLITE 4Ftd.5",4oz.Tumb.Pressed ea 15.00
- #1567 PLANTATION Cruet/Stopper (2) each\*.... 85.00
- #1567 PLANTATION Salt/Pepper, Small Flake... 35.00
- #1540 LARIAT Handled Cruet/Stopper\*..... 45.00

I WILL PLEDGE 10% OF SALES FROM THIS AD TO THE HEISEY MOULD FUND. WRITE WANTS, I SEARCH - HEISEY, CAMBRIDGE, FOSTORIA, DUNCAN, ETC.



\* MOSTLY HEISEY

\* RHODA CURLEY  
\* 16 CLAYTON PLACE  
\* ALBANY, NY 12209



PH: 518-482-6272  
USP EXTRA  
SASE Please

- \* We have the following Flamingo Pleat & Panel for sale:
- \* 12 10-1/2" Dinner Plates....Each.....\$50.00
  - \* 8 Cups and Saucers....Each Set..... 25.00
  - \* 1 Serving Plate 14"..... 49.00
  - \* 1 Cruet..... 50.00
  - \* Cream and Sugar Set..... 48.00
  - \* Comportier & Cover, High Footed..... 75.00
  - \* 1 Plate 8"..... 7.00
  - \* 2 Plates 7"....Each..... 6.00
  - \* 1 Marmalade..... 20.00

\* OUR SHOP - WORTH A TRIP FROM ANYWHERE  
\*\*\*\*\*



ADVERTISERS - PLEASE TAKE NOTE!!!!  
DEALER DIRECTORY ADS WILL BE LIMITED TO FIVE LINES AFTER YOUR CURRENT LISTING EXPIRES. FIVE LINES WILL BETTER FIT OUR FORMAT.

\*\*\*\*\*



A NEW EXPERIENCE IN HEISEY - LAMPS  
ORIGINALS -- RECONDITIONED, FOR SALE AND COMMISSIONED.  
NEW CONCEPTS & DESIGNS -- FOR SALE  
MADE FROM VARIOUS COMPONENTS COMBINED WITH OTHERS TO MAKE A VERY INTERESTING LAMP.

USE YOUR HEISEY -- BOWLS, COASTERS, ASH TRAYS, SUGARS, PITCHERS, ETC. MAY BE DESIGNED INTO A VERY INVITING LAMP. THE POSSIBILITIES ARE HUGE!!

WE CAN DO IT ALL FOR YOU  
JO & JIM EARNSAHW  
133 LIND AVENUE  
MANSFIELD, OHIO 44903

PHONE: (419) 526-2334 AFTER 6 PM  
SEE US AT GRANVILLE ANNUAL SHOW AND FLEA MARKET, AND IN THE AUDITORIUM  
JUNE 19, 20, 21 AND 22



# Granville, Ohio's Land of Legend Annual Show & Flea Market



GRANVILLE HIGH SCHOOL --- RT. 661 N.  
OVER 50 DEALERS Including Virgil Harp (repairing glassware)  
Clarence Vogel (author of Heisey books)

Glassware, China, Brass, Furniture, Copper, Iron, Crafts, Primitives, Books,  
Pottery, lots of misc. (over 2000 pieces of Heisey to be offered for sale).

Wed. - June 19 - 4 P.M. - 9 P.M.  
Thurs. - June 20 - 9 A.M. - 9 P.M.  
Fri. - June 21 - 9 A.M. - 8 P.M.  
Sat. - June 22 - 10 A.M. - 4 P.M.

FREE ADMISSION

Inside and Outside

For info:  
Mrs. Betty Morrison  
127 E. Elm Street  
Granville, OH 43023

No reservations needed for outside space

PH: (614) 587-1062, 349-7934  
or 366-3298

**HOME COOKED FOOD**

OUTSIDE FLEA MARKET  
Thurs., Fri. & Sat. - Dawn To?

**PLENTY OF PARKING**

DEALERS NEEDED

\*\*\*\*\*

## 15th Annual Antique Show & Sale

*Heisey Glass Display*

Newark Branch - O.S.U. Campus  
Country Club Drive, Newark, Ohio

SPONSORED BY

*Heisey Collectors of America, Inc.*

Friday, June 21 12:00 noon to 5:00 p.m.  
Saturday, June 22 12:00 noon to 8:00 p.m.  
Sunday, June 23 12:00 noon to 5:00 p.m.  
Donation \$2.50



Champagne Preview  
Thursday, June 20th  
6:00 p.m.-10:00 p.m.  
Donation \$7.00



BENEFIT NATIONAL HEISEY MUSEUM

10th Annual

NATIONAL  
**CAMBRIDGE**  
COLLECTORS

## ANTIQUÉ SHOW & SALE

(& 12th Annual NCC Convention)

SHENANDOAH INN  
INTERSTATE 70 - EXIT 186 - 7 MILES EAST OF  
CAMBRIDGE, OHIO

**JUNE 28, 29, 30, 1985**

| HOURS  |              |
|--|--------------|
| FRIDAY, JUNE 28th (PREVIEW ADMISSION \$3.50) | 6:00 - 9:00  |
| SATURDAY, JUNE 29th                          | 11:00 - 6:00 |
| SUNDAY, JUNE 30th (ADMISSION \$1.75)         | 12:00 - 5:00 |

OFFERING CAMBRIDGE AND OTHER FINE GLASSWARE  
ALONG WITH A GENERAL LINE OF ANTIQUES

FOOD DOOR PRIZES PARKING

ANSWERS: Test Your Knowledge

1. Penguin
2. Prince of Wales
3. Ridgeleigh & #1466
4. Wampum
5. Picadilly
6. Dawn
7. A saucer like piece that goes on a candlestick that holds prisms.
8. Old Dominion
9. 11 Pitchers, Punch Bowl, Custard Glass, Cream & Sugar, 3 Nappies, Puff Box and Hair Receiver.
10. Old Colony, Empress & Titania
11. Louise Ream
12. Cut Glass
13. Monticello
14. Priscilla
15. Yes
16. Bull
17. Pheasant



18. The Old "Beehive plate" from Sandwich Glass.
19. Aztec
20. Make jewelry and mosaics.
21. Vertical Bead & Panel
22. Can not
23. Signed
24. Crystal only
25. 3-Pint
26. Fancy Loop
27. Has wide lip which serves as a built-in bobèche.
28. No
29. Navy
30. Athena (Reverse S)
31. Lariat
32. Davidson House
33. Licking County Historical Society Museum
34. Bob Evans Stock is restaurants & Sausage, etc. The T. J. Evans foundation is a former Newark pharmacists foundation.
35. Ash Trays
36. Unmarked

SOUVENIR PLATE

Viking has made us an Empress Plate, 4-1/2", marked "HCA", from our own Heisey mould. The Victory Etching has been added to the center and it is inscribed "MOULDS 1985." The profits from this plate will be for the Mould Fund.

Number of Plates at \$12.50 each..... \$ \_\_\_\_\_

Sales Tax .75 ea., OHIO RESIDENTS, or Pick-Ups in Newark..... \_\_\_\_\_

Shipping For Each \$1.50 ..... \_\_\_\_\_

TOTAL..... \_\_\_\_\_

NAME(s) \_\_\_\_\_

ADDRESS \_\_\_\_\_ CITY \_\_\_\_\_ STATE \_\_\_\_\_ ZIP \_\_\_\_\_

Make check payable to HCA. and mail to: HCA SALES P.O. BOX 27 NEWARK, OH 43055 ALL PROCEEDS FROM THE ABOVE GO TO THE MOULD FUND.



DIAMOND H ADVERTISING PIECE  
MADE IN OUR OWN ORIGINAL MOULD

COBALT BLUE



Number of DIAMOND H ADVERTISING PIECES - PLAIN at \$22.50 each..... \_\_\_\_\_

Number of DIAMOND H ADVERTISING PIECES - SATIN at \$23.50 each..... \_\_\_\_\_

Sales Tax \$1.35 Plain and \$1.41 Satin each, OHIO RESIDENTS, or Pick-Up in Newark..... \_\_\_\_\_

Shipping For Each \$2.25..... \_\_\_\_\_

NAME (s) \_\_\_\_\_ TOTAL \_\_\_\_\_

ADDRESS \_\_\_\_\_ CITY \_\_\_\_\_ STATE \_\_\_\_\_ ZIP \_\_\_\_\_

Make check payable to HCA.

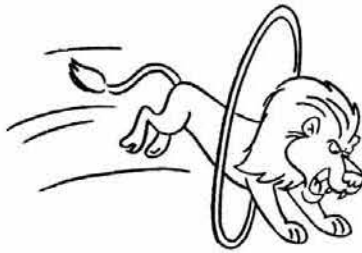
and mail to: HCA ADVERTISING PIECE P.O. BOX 27 NEWARK, OH 43055 - ALL PROCEEDS FROM THE ABOVE GO TO THE MOULD FUND.

|   |  |   |
|---|--|---|
| <p><b>A.W. PARKER</b><br/>Heisey &amp; Pattern Glass<br/>Shows or Appointment<br/>Magalia, CA 95954<br/>PH: (916) 873-2326</p>  | <p><b>"HAPPINESS IS" THE STULTZ'S</b><br/>Show and Mail - Elegant Glass Circa 1890-1960<br/>3106 Warren Court<br/>Glen Allen, VA 23060<br/>PH: (804) 262-1273 (Richmond Area)</p>  | <p><b>THE COLLECTOR</b><br/>Heisey, Fostoria, Cambridge, Linens,<br/>Lace &amp; Primitives<br/>Mary Weaver, 209 Cortex Rd., E.<br/>(44th Ave., E.), Bradenton, FL 33505<br/>Mon., Wed., Fri., -11-4<br/>PH: (813) 729-2324 - Evenings</p> |
| <p><b>A DOOR ANTIQUES</b><br/>Heisey My Specialty<br/>4241 Bayard Road<br/>South Euclid, OH 44121<br/>PH: (216) 381-3008</p>  | <p><b>GERT'S GLASS</b><br/>Heisey &amp; Duncan<br/>Gertrude &amp; Russell Swetnam<br/>1926 Saratoga Dr., Adelphi, MD 20783<br/>PH: (301) 434-5113</p>  | <p><b>MOSTLY HEISEY</b><br/>Rhoda Curley<br/>16 Clayton Place<br/>Albany, NY 12209<br/>By Appointment, PH: (518) 482-6272</p>   |
| <p><b>ALL HEISEY AUCTION</b><br/>Consignments Welcome<br/>Apple Tree Auction Center<br/>1616 W. Church, Newark, OH 43055<br/>PH: (614) 344-9449</p>                                   | <p><b>GLASS 'N' GLASS</b><br/>Virginia &amp; Odell Johnson<br/>Rte. 1, Box 1324<br/>Hayward, WI 54843<br/>(715) 462-3753</p>   | <p><b>MOUND BUILDERS ANTIQUES</b><br/>Heisey &amp; Animals, General Antiques<br/>Irene Rauck<br/>1138 Moundview, Newark, OH 43055<br/>PH: (614) 344-6043</p>  |
| <p><b>ANN'S GIFTS &amp; ANTIQUES</b><br/>105 W. Main St., Hebron, OH 43025<br/>Intersection of Rts. 40 &amp; 79<br/>Next door to Daisy Queen<br/>Daily 10:30 to 5:30</p>              | <p><b>GLASS WITH CLASS</b><br/>Lenore A Shelley, GGHC<br/>1336 Lincoln Avenue<br/>San Jose, CA 95125<br/>PH: (408) 286-8098</p>  | <p><b>PATTON HOUSE</b><br/>Heisey &amp; Duncan Miller<br/>Rocky's Mall, I-81 &amp; US 11<br/>Weyer's Cave, VA 24486<br/>PH: (703) 967-1181</p>  |
| <p><b>ANTIQUES - THE SHULTZES</b><br/>206-208 East Main St.<br/>Newmanstown, PA 17073<br/>15 Miles West of Reading, PA<br/>PH: (215) 589-2819</p>                                     | <p><b>GREEN ACRES FARMS</b><br/>Antiques, Crystal Glass &amp; Collectibles<br/>2678 Hazelton-Etna Rd., SW (S.R. 310-N)<br/>Pataskala, OH 43062<br/>Sat. or Sun. PM or call (614) 927-1882</p>  | <p><b>R &amp; I ANTIQUES - SAN FRANCISCO</b><br/>Shows only - always lots of Heisey<br/>Member of Golden Gate Heisey Club<br/>P.O. Box 3614, Daly City, CA 94015<br/>PH: (415) 621-6693</p>   |
| <p><b>AVERY'S QUALITY ANTIQUES</b><br/>Specializing in Heisey<br/>Shows or by Appointment<br/>2112 First St., Jackson, MI 49203<br/>PH: (517) 783-4075</p>                            | <p><b>H &amp; R DIAMOND H</b><br/>Helen &amp; Robert Rarey<br/>1450 White Ash Dr.<br/>Columbus, OH 43204<br/>PH: (614) 279-0390 after 5:30</p>   | <p><b>RAMBLING LANE ANTIQUES</b><br/>Featuring Heisey &amp; other fine glass<br/>Kerth &amp; Evelyn Hoover<br/>1978 Rambling Lane, Rhinelander, WI 54501<br/>PH: (715) 282-5019</p>   |
| <p><b>B &amp; B HEISEY &amp; COLLECTIBLES</b><br/>B. Whaley<br/>300 International Dr.<br/>Pataskala, OH. 43062<br/>By Appointment: PH: (614) 927-1557</p>                             | <p><b>CHARLOTTE'S GLASS REFLECTIONS</b><br/>Glass, China, Crystal<br/>Including Heisey<br/>6816 14th St. W., Bradenton, FL 33507<br/>PH: (813) 756-4143</p>  | <p><b>RAY ZIEGLER</b><br/>Glass Repair<br/>185 County Line<br/>Westerville, OH 43081<br/>PH: (614) 891-9700</p>   |
| <p><b>C.E. HIGGINS (S.F. Bay Area)</b><br/>Shows and Mail Order<br/>P.O. Box 2723<br/>Menlo Park, CA 94025<br/>PH: (415) 322-0192 Evenings</p>  | <p><b>HARRALSON'S HAPPY HEISEY HUNTERS</b><br/>Ours &amp; Others - Many Choice Items<br/>L SASE - New List - Jan. 1 - May 1 - Sept. 1<br/>We accept consignments &amp; buy collections.<br/>1426 W. Highland, Springfield, MO 65807<br/>PH: (417) 883-2449</p> | <p><b>SCHWAN'S ANTIQUES<br/>SHOPS &amp; SHOWS</b><br/>2980 John Tyler Hwy.<br/>Williamsburg, VA 23185<br/>PH: (804) 229-7873</p>  |
| <p><b>C &amp; J ANTIQUES</b><br/>Cole &amp; Jean Miesner<br/>Box 45, 72 Whig St.<br/>Newark Valley, NY 13811<br/>PH: (607) 642-9905</p>   | <p><b>HARRISON'S ANTIQUES</b><br/>Heisey, Cambridge, Duncan<br/>Shows, Mail, by Appointment<br/>26 Johnston's Lane, Mercersburg, PA 17236<br/>PH: (717) 328-2451</p>   | <p><b>SUM OF LIFE</b><br/>Elaine &amp; Frank Husted<br/>P.O. Box 102<br/>Phoenixville, PA 19460<br/>PH: (215) 935-2962</p>  |
| <p><b>CHARLES &amp; MILDRED FISHER</b><br/>Heisey, Degenhart, Imperial, Antiques,<br/>Collectibles, General Line<br/>991 Idlewilde, Newark, OH 43055<br/>PH: (614) 522-5398</p>       | <p><b>SPARKLING ANTIQUES</b><br/>Arlene I. Reynolds - owner<br/>Heisey &amp; Custard Glass<br/>5 Wayside Circle, Pittsford, NY<br/>PH: (716) 381-4134</p>  | <p><b>T &amp; S ANTIQUES</b><br/>Specializing in Heisey<br/>Steve Roderick<br/>New Rochelle, NY 10805<br/>PH: (914) 235-9632</p>  |
| <p><b>DAVE'S ANTIQUES</b><br/>Specializing in Heisey<br/>Shows &amp; Appointments<br/>Tampa, FL 33600<br/>PH: (813) 876-0580</p>  | <p><b>HEISEY PUBLICATIONS</b><br/>Heisey Books I-II-III-IV<br/>Newscaster Back Issues \$4.00<br/>1977 thru 1984<br/>Box 102, Plymouth, OH 44865</p>  | <p><b>THE GLASS CONNECTION</b><br/>Specializing in Heisey<br/>Shows &amp; Mail Order<br/>Box 526, Collegeville, PA 19426<br/>PH: (215) 489-0139</p>   |
| <p><b>DIAMOND H PLUS</b><br/>Mail Orders &amp; Shows<br/>George &amp; Eileen Schamel<br/>Rt. 3, Box 171, Boonsboro, MD 21713<br/>PH: (301) 432-6285</p>                               | <p><b>J. &amp; R. COLLECTIBLES</b><br/>Shows, SASE, Mail Order list<br/>June &amp; Ray Lukasko<br/>P.O. Box 1030, Newark, OH 43055<br/>PH: (614) 344-9719</p>  | <p><b>TRUDY MILLER ANTIQUES</b><br/>China &amp; Crystal Matching<br/>Heisey a Specialty<br/>P.O. Box 740548, Dallas, TX 75374<br/>PH: (214) 783-9920</p>  |
| <p><b>ELLIZABETH BASSETT CASON</b><br/>401 32nd St., W.<br/>Bradenton, FL 33505<br/>Mail Order - List<br/>PH: (813) 748-0851</p>  | <p><b>THE PURPLE PLACE</b><br/>Featuring Heisey &amp; Other Fine Glass<br/>Martha &amp; Harold Earp<br/>1940 Suwanee, Ft. Myers, FL 33901<br/>PH: (813) 936-1572 Anytime</p>   | <p><b>WILLEY'S ANTIQUES &amp; MUSEUM</b><br/>Specializing in Heisey<br/>11110 Cannon Rd., Frazeyburg, OH 43822<br/>16 miles east of Newark, OH<br/>PH: (614) 828-2557</p>   |
| <p><b>FOREVER HEISEY</b><br/>Shows and Mail Order<br/>Janice Thrane<br/>1663 Londondale Pkwy., Newark, OH 43055<br/>PH: (614) 344-5955</p>  | <p><b>JUDY'S DIAMOND H ANTIQUES</b><br/>Specializing in Heisey - Buy &amp; Sell<br/>Star Rt. 3, Box 2556<br/>Lake Isabella, CA 93240<br/>PH: (619) 378-2176 by Appointment</p>   | <p><b>GOLDSBERRY'S ANTIQUES</b><br/>Heisey a Specialty<br/>Shows only - Buy &amp; Sell<br/>Kalamazoo, MI 49000<br/>PH: (616) 381-3013</p>   |
| <p><b>DIE KUNST GALLERIES &amp; ANTIQUES</b><br/>Specializing in Heisey<br/>Vel &amp; Andy Andress<br/>Box 329, 725 Front Street<br/>Leavenworth, WA 98826<br/>PH: (509) 548-7856</p> | <p><b>PEGGY'S ANTIQUES</b><br/>2000 pcs. of Heisey in stock<br/>Ernie &amp; Peggy Cox<br/>P.O. Box 367, Spavinaw, OK 74366<br/>By Appointment or by Chance<br/>PH: (918) 589-2859</p>  | <p><b>THE WOODEN SHOE</b><br/>Antiques &amp; Collectibles - Buy &amp; Sell<br/>Glass, Furniture, Estates<br/>Jim &amp; Sheri Van Es, by Appointment<br/>810 Elden, Herndon, VA 22070<br/>PH: (703) 435-9045</p>                           |

# THE GREATEST SHOW ON EARTH

CONVENTION HEADQUARTERS, SHERATON INN  
SECOND AND CHURCH STREETS

FOURTEENTH ANNUAL CONVENTION  
JUNE 20, 21, 22, 23, 1985



DISPLAY: HOPEWELL HALL

SHOW: ADENA HALL

OSU - COTC NEWARK CAMPUS  
COUNTRY CLUB DRIVE  
NEWARK, OHIO

The Museum will be open at 9 a.m. daily. The lounge will open for refreshments at 1 p.m. on Wednesday, June 20th. The Museum and Lounge will close at the same time as the Show and Display, except Thursday when it will close at 5 p.m.

## CALENDAR OF EVENTS

### THURSDAY, June 20, 1985

1. REGISTRATION: EVERYONE MUST REGISTER. Packets may be picked up at the Museum beginning on June 19th. No matter when you arrive, the packets must be picked up at the Museum during open hours. Remember that registration badges are required for all events; they permit unlimited admission to the SHOW AND DISPLAY and to all free activities. Children under 12 will be admitted free except where food is served.

PRE-ORDERED OSCARS may be picked up at the Museum until the 21st when they can be picked up at the club booth in Hopewell Hall. Left over Oscars (if any) will be sold at the Museum and both club booths at O.S.U.

2. "THE GRAND MARCH":



Adena Hall, OSU Branch. The Antique Show opens with a champagne preview from 6 to 10 p.m. A Semi-formal affair open to all members and the public. You will be served champagne and other refreshments for your enjoyment. Booths will be open for selling: 6 - 10 p.m. Mr. & Mrs. Robert Mandan will be attending this event.

HCA Museum only - 9 a.m. Till Closing

Sheraton Inn from 8:30 a.m. to 11 a.m. Bring your FINDS AND QUESTIONABLE HEISEY for identification. A panel of knowledgeable individuals will be on hand to assist. A continental breakfast will be served. Introduction of Candidates for Board of Directors.

Adena Hall from 12 o'clock to 5 p.m.

Hopewell Hall from 12 o'clock to 5 p.m.

Sheraton Inn from 2 to 4 p.m. This is a reception for HCA MEMBERS & FORMER HEISEY WORKERS. Speaker will be Clark Greenwood, a former Heisey employee.

Convention banquet at the Sheraton Inn with social hour beginning at 6:30 p.m. and dinner at 7:30 p.m. Robert Mandan, Hollywood personality and Heisey Collector, will be the guest speaker. (See April Heisey News.) Candidates for the Board will be presented.

### FRIDAY, June 21, 1985

1. REGISTRATION:
2. "THREE RING CIRCUS"
3. ANTIQUE SHOW - "THE MIDWAY"
4. DISPLAY - "THE STAR PERFORMERS"
5. "THE RINGMASTERS"
6. "THE MAIN EVENT"



On the Square at daylight.

### SATURDAY, June 22, 1985

1. FLEA MARKET:

4. SEMINARS - "THE SIDE SHOW"

2 - 3:15 p.m.

3:15 - 4:30 p.m.

4:30 - 5:30 p.m.



5. "THE FUN HOUSE"

All at Sheraton Inn

"The Beauty of Crystolite" by Phyllis Freier  
An in-depth discussion of Crystolite, one of Heisey's major patterns from 1938 to 1956. Examples will be on display and will be used to illustrate various points during the lecture.

"Heisey's First Five Years, 1896 - 1900" by Joe Lokay  
The early Heisey patterns started with pressed, mold-made simulations of cut glass patterns. These were then followed by simpler simulated cuttings and simple press-design patterns. Large open areas and panels began to be in the design. In 1900, the Colonial designs took over.

"Coup of the Century" by Betty & Bill Barnard  
The inside story of the moulds, etching plates, mould drawings, drawings of experimental items, etc., illustrated by slides and actual examples.

At the Sheraton Inn from 8:30 to 10 p.m. for members only. A trading post for Heisey Glass will be set up. Bring your duplicates or other Heisey to trade for Heisey of your choice. Each family will be permitted a maximum of 12 items on the table at any one time. These items will be for trade only. Absolutely no money will be involved in the exchange.  
YOU WILL NOT BE ADMITTED WITHOUT YOUR BADGE.

SUNDAY, June 23, 1985

1. FLEA MARKET:
2. "STRIKE THE TENTS"
3. ANTIQUE SHOW:
4. DISPLAY:

On the Square at daylight.

Sheraton Inn at 8 a.m. - HCA Annual Meeting and Election of Board Members - Breakfast Buffet.

Adena Hall - 12 o'clock to 5 p.m.

Hopewell Hall 12 o'clock to 4 p.m.

\*\*\*\*\*

| EVENTS:                  | COST     | NO ATTENDING | TOTAL PER ITEM |
|--------------------------|----------|--------------|----------------|
| REGISTRATION.....        | \$ 6.00  | _____        | _____          |
| **"THE GRAND MARCH"..... | 5.00     | _____        | _____          |
| "THREE RING CIRCUS"..... | 3.00     | _____        | _____          |
| "THE RINGMASTERS".....   | 2.00     | _____        | _____          |
| "THE MAIN EVENT".....    | 19.00    | _____        | _____          |
| "STRIKE THE TENTS".....  | 5.00     | _____        | _____          |
| TOTAL COST OF ALL EVENTS | \$ 40.00 | _____        | _____          |

Make checks payable to HEISEY COLLECTORS OF AMERICA, INC.

\* No Pre-Registration needed for seminars.

\*\* \$7.00 If not registered.

Mail to: Mrs. Robert McClain, Conv. Secy.  
156 West Shields Street  
Newark, OH 43055 - PH: 614-345-8061

Please list all names for badges. Check all events you plan to attend.

NAME(s) \_\_\_\_\_

STREET: \_\_\_\_\_ CITY: \_\_\_\_\_ STATE \_\_\_\_\_ ZIP \_\_\_\_\_



Check One  
 VISA  
 MasterCard

DEALERS WISHING TO ATTEND ANY OF THE ABOVE EVENTS MUST BE REGISTERED.

# IMPERIAL

9th ANNUAL

## NATIONAL IMPERIAL GLASS COLLECTORS SOCIETY CONVENTION

Wilson Lodge—Oglebay Park  
Wheeling, West Virginia  
June 22-23, 1985

Saturday, June 22—Seminar on IMPERIAL  
SLAG—1:00 p.m.  
6:30 p.m.—Banquet  
Open to public by reservation

Sunday, June 23—Show & Sale  
11:00 a.m. to 6:00 p.m.  
Free admission both days  
Door prizes

For info call: (614) 686-2456  
or (614) 676-9827

Write: NIGCS, P.O. Box 534  
Bellaire, OH 43906

# GLASS review

ESTABLISHED 1871

The GLASS REVIEW Magazine is for everyone who studies, collects or sells glass. Whether your glass interests lean toward the early 1900's — or the depression era — or with today's limited glass items, the GLASS REVIEW covers it all!

Articles — price reports — original catalog documentation — shop directory — research and reproduction news — trademark information — glass book releases — what's new on the market — a large variety of glass ads (on both old and new glass) — plus much more.

Enclose payment and mail to:  
GLASS REVIEW,  
P.O. BOX 542, MARIETTA, OH 45750

10 'big' yearly issues  
68 pages or more  
\$12.50 — one year



Heisey Collectors of America, Inc.  
present

## FLEA MARKET ON THE SQUARE

NEWARK, OHIO

TWO WEEKENDS

Saturday, June 15 & Sunday, June 16  
Saturday, June 22 & Sunday, June 23  
dealer space available

For Information or Contract  
Write: HCA FLEA MARKET  
P.O. Box 27  
Newark, Ohio 43055  
Phone: 614-345-2932

JAN THRAN and LIZ STICKLE, managers



FIRST CLASS MAIL  
U.S. POSTAGE  
PAID  
PERMIT 741  
Mt. Vernon, OH 43050

FIRST-CLASS MAIL

