

HEISEY news

OFFICIAL PUBLICATION HEISEY COLLECTORS OF AMERICA

© Heisey Collectors of America, Inc.
All Rights Reserved 1985

VOLUME XIV NO. 4

APRIL, 1985 ISSN 0731-8014



ROBERT MANDAN

HEISEY NEWS

P.O. BOX 27, NEWARK, OH 43055

CLUB OFFICERS:

President — Tom Bredehoft — 614-745-1014
 Vice President — George Schamel, III — 301-432-6285
 Secretary — Ray Ziegler — 614-471-6446
 Treasurer — Dick Marsh — 614-366-5608
 Exec. Dir. — Louise Ream — 614-345-2932

Editor: Louise Ream
 P.O. Box 27, Newark, OH 43055
 PH: 614-345-2932

Assistant Editor: Neila Bredehoft
 P.O. Box 27, Newark, OH 43055
 PH: 614-345-2932

Published monthly and printed in Mt. Vernon, Ohio
 \$15.00 per year - \$1.25 per copy

Back Issues - Each Volume (12 issues) year - \$9.00.
 Volume V, VI, VIII, IX, X, XI, XII & XIII

Heisey Collectors of America, Inc. is a non-profit corporation with tax exempt status. Owners and operators of National Heisey Glass Museum, 6th and Church Streets, Newark, Ohio.

Open daily 1-4 p.m. except Mondays and holidays. Other hours by appointment. Members admitted free.

Club membership (includes 12 issues of HEISEY NEWS and participation in all club activities) \$15.00 per year plus \$2.50 for each additional family member in same household who wishes a membership card. For VOTING MEMBERSHIP, add \$25.00 one time only fee.

When requesting information, please enclose a self-addressed, stamped envelope (SASE).

ADVERTISING - Send all ads to:
 Advertising, c/o Janice Thran
 P.O. Box 27, Newark, OH 43055

DOUBLE SPACE ALL ADS.

RATES:

DEALER'S DIRECTORY - Maximum five (5) lines - \$20.00. Change during year \$2.00 per line. CLASSIFIED - 12-/word - \$1.20 minimum. Abbreviations and initials count as words.

DISPLAY:	MEMBERS	NON-MEMBERS
1/8 pg. (9 items)	\$15.00	\$25.00
1/4 pg. (20 items)	24.00	35.00
1/2 pg. (20 items)	40.00	50.00
1/2 pg. (50 items) Vertical	50.00	60.00
1 pg. (50 items)	65.00	80.00

Extra lines will be billed at \$1.00 per line. Personal ads limited to 1/8 space.

ALL ADS MUST BE PREPAID. Ad copy must be received by the 5th of the month preceding the publication date - i.e. April 5th for May issue. Ads containing reproductions will not knowingly be accepted unless clearly stated (i.e. Heisey by Imperial, etc.). HEISEY NEWS assumes no responsibility for false advertising or misleading information. In the event of typographical error, the incorrect portion of the ad will be run in the following issue, but HEISEY NEWS assumes no further liability.

The opinions expressed in articles in HEISEY NEWS are those of the authors and not necessarily those of the organization. The Editorial Staff reserves the right to edit or refuse any material submitted for publication. When requesting information, please enclose a self addressed stamped envelope. (SASE).



#150 Banded Flute
High Foot Sherbet, Shallow
and Plate



#150 Banded Flute
3-Piece Oyster Cocktail



#150 Banded Flute
Pint Tankard
Stuck Handle



#150 Banded Flute
Water Bottle



#150 Banded Flute
Squat Water Bottle

ROBERT MANDAN

Even though he was born in Clever, Missouri, it wasn't until his freshman year in college that Robert Mandan decided that you could spend your life working at something you wanted to do rather than what was expected of you . . . and what he wanted to do was act.

Leaving Pomona College just 10 credits short of his degree in speech and drama (he later completed the program at NYU), Robert joined the Palm Springs Playhouse for their winter run as the resident juvenile character actor. A summer session followed at the Tenthouse Theatre in Highland Park, Illinois and then came the move to New York.

His first week in the big city he landed a job in the Equity Library Theatre production of "House of Connelly," but he spent the next two years in acting classes studying with Lee Strasberg, Herbert Berghof, and Alan Miller and doing the standard out-of-work actor jobs. Among them was a stint in the typing pool of the National Biscuit Company (Mandan used to tell friends he was writing at NBC).

In 1957, he received the attention of the critics for the first time in a revival of Sartre's "No Exit." Following a six month run, Mandan understudied for Lorne Green in "Speaking of Murder," with Neva Patterson and Estelle Winwood, and produced by Burgess Meredith. Despite raves from the then seven New York papers, the show lasted one month.

Over the next few years, Mandan appeared in the daytime dramas "From These Roots," "As the World Turns," and "The Edge of Night," and guest starred in numerous live television productions of the "Kraft Television Theatre," "The U.S. Steel Hour," and what was to be the last live broadcast from New York on "The Armstrong Circle Theatre."

Sandwiched in between rehearsal and performances during those years he also managed to appear in nine off-Broadway plays, including the award-winning productions of "The Trojan Women," directed by Michael Cacoyannis and the Shakespearewrights' "Julius Caesar" and "King Lear."

In 1967, Mandan created the role of Sam Reynolds in "Search for Tomorrow," which he played for the next three years. During that period, he also appeared on Broadway in "Maggie Flynn" with Jack Cassidy and Shirley Jones; "There's A Girl in My Soup" (he stood in for Gig Young); and "But, Seriously" with Tom Poston, which opened and closed on the same night.

His next run on Broadway was much more successful, starring in the Tony-winning musical, "Applause." After a year in that hit, Mandan decided to make the move to Los Angeles, and over the following years appeared in numerous episodes of "Mannix," "Petrocelli," and as a 'Quinn Martin regular' in "The F.B.I.," "Cannon," "The Streets of San Francisco," "Barnaby Jones," and "Manhunter."

QM then signed Mandan to star with Stacy Keach and Carl Franklin in the ABC series "Caribe" which lasted one season. Returning to episodic work, he guest starred in hundreds of shows, among them "Marcus Welby, M.D.," "Sarah," "Delvecchio," "Kojak," "The Rockford Files," "Police Story," and "Medical Center."

In January 1977, he was cast as Chester Tate in the most talked-about show of that season . . . "SOAP." Despite the initial uproar over content, it settled

in as a highly rated show for ABC and enjoyed a four-year run on the network. It is an even bigger success while currently in worldwide syndication.

During production breaks from "SOAP" Robert worked in a number of projects including CBS-TV's remake of "You Can't Take It with You," the Kenley Players' stage production of "Same Time, Next Year," starring with "SOAP" co-star Katherine Helmond, and "Chicago," at the Melody Top Playhouse in Milwaukee, Wisconsin.

In January 1982, Robert joined the cast of the CBS-TV comedy series "Private Benjamin" for their last season, starring as Col. Lawrence Lee Fielding, and in the summer of 1982 starred in two theatrical films: Universal's "The Best Little Whorehouse in Texas," and "Embassy Pictures' "Zapped." In the fall of 1983, he starred with Karen Valentine in the stage production of "Girly Girly and the Real McCoy" at the Cast Theatre in Hollywood, winning rave reviews from the Los Angeles critics for his performance.

In February 1984, he joined the cast of ABC-TV's revamped comedy staple "Three's Company," continuing as "Three's A Crowd," portraying James Bradford, the father of Jack Tripper's new live-in girl friend.

Mandan has been happily married for the past 21 years to his wife Sherry who, after years of practicing as a licensed Marriage, Family and Child Counselor, is currently an aerobics/dance exercise instructor at the Voight Fitness Center in Los Angeles.

The Mandans live in, and are currently renovating, a newly purchased home in Sherman Oaks. Robert enjoys tennis, sailing, and buying antiques. In addition, they have an extensive collection of early American Heisey glass. An amateur carpenter, Robert has built everything from picket fences to a grandfather clock to a backyard gazebo.



MANDAN TO SPEAK AT BANQUET

As Bob McClain announced last month, Robert Mandan will be the guest speaker at the Convention Banquet on June 21st.

He has been collecting Colonial patterns of Heisey glass for several years and is a member of Heisey Collectors of America, Inc.

We are sure you will all enjoy his talk.

FROM THE DESK OF THE EXECUTIVE DIRECTOR...

Even with all of the added pages this month there is not enough room for everything we'd like to write.

The moulds are coming home regularly and the excitement remains high. Everyone who has seen or worked with them is extremely enthusiastic about them and most want to keep them forever.

The Auction was a success and the prices realized are on Page 29.

We have been very busy preparing for the Silver Spring All-Heisey Show along with many other things, but will try to bring you up to date on everything next month.

Louise Ream

NOTES FROM THE PRESIDENT

Monday, March 4, 1985, was a RED LETTER day for the HCA. It began dark and early for Neila and myself. Dawn came as we were eastbound on I-70 toward Bellaire. Neila had dozed and when she awoke she needed a cup of coffee. The Bob Evans restaurant at St. Clairsville was handy so we stopped for coffee and a roll. We had just determined that it was coffee only, no rolls, when in came Delores and Ray Ziegler and Hugo Wenzel. They got their order in and suddenly the parking lot was filled with pickups and vans and trailers all bearing HCA members.

We reconvened at the Imperial plant in Bellaire about nine o'clock. The Freight Services' semi was already backed up at the dock, ready to load. We were met at the door by Everett Sklarz, Helen Clark and Gib Glasgow, Consolidated-Colony's project manager, and some of what remains of Imperial's staff. They had set up a table with a dozen champagne glasses and two bottles of champagne to celebrate the final payment. They didn't know the HCA. As soon as the check was passed, the thirty-five of us made short work of the champagne and after congratulating each other and ourselves and answering several questions of the news media who were present, we began loading the semi and then the other trucks.

We actually had a triumphal return to Newark later in the day. We were met by a fire truck and two police cars at the city limits and escorted through the city with lights and sirens to the Museum where there were reporters from four newspapers and two television stations. It was really an experience, the convoy going through traffic lights, the citizens of Newark standing along side the streets watching the parade. The semi trailer had a sign on it reading "HEISEY MOULDS COMING HOME" the full length of the trailer.

Getting back to more mundane matters, I want to explain how it happened that we were unable to purchase the Old Williamsburg moulds and what was involved in their selection. During our initial meeting with Mr. Sklarz, he had told us that he had an offer on the Old Williamsburg moulds which amounted to more than we hoped to pay for the whole lot. At that time, we abandoned hope of getting that pattern. Later it developed that he thought that there were about 300 moulds in the Old Williamsburg line. We of course tried to tell him there were only sixty or so. He came to the final contract negotiations carrying an Old Williamsburg wine in sunshine yellow and said that he thought that the presence of panels on the piece would indicate inclusion in the pattern. I had taken a copy of Heisey's Catalog 75 from 1913 which as you know is nothing but panels. I think he realized that panels weren't enough. We finally settled on defining Old Williamsburg as anything advertised as that in Imperial's catalogs and sales literature. I didn't realize until later that the last catalog Imperial published, in 1982, included the Nos. 31 and 33 toy candlesticks in Old Williamsburg. With apologies to the Old Williamsburg collectors among us, these two candlesticks are the only moulds I regret losing. I tried almost everything short of deceit to keep them, but to no avail. Also, they told us that sometime in the last couple of years two moulds had been stolen, the 1503 individual swan nut dish and the doe head bookend. At least they had no other explanation for them being missing now. I really hate to have to say this, but

be aware that these four moulds are out there and may be used to make glass which may turn up in flea markets and antique shows.

On a brighter note, the new information we have received from Imperial more than makes up for those four moulds. Would you believe out of twenty percent of the paperwork, I have isolated at least 85 new stems that Heisey designed and may have made. We found the original number for 1776 Kaylonyal (345). We found that the 357 Prison Stripe moulds were converted into 400 Colonial by removing the stripes. There is so much more that must be in there that we haven't looked at yet. One of the problems involved in this is that the drawings are literally "filthy pictures" covered with very fine black dust and must be individually cleaned (with wallpaper cleaner) before, in some cases, they can be read. Another problem is that they are draftsman's drawings of moulds and the glass is incidental to the drawing. A lot of detective work is needed in some cases to determine what the glass looked like. So far, the earliest drawing we have seen is of the No. 300-1 11 inch candlestick, dating to 1906.

As I write this, there are two more semis loaded with moulds headed across I-70 with moulds from Imperial. We hope to have all the moulds here before the end of April, then the work will begin, cataloging them and discovering new pieces of glass that we had no idea that Heisey had made. There is also going to be a lot of work (physical) in establishing a system of location in the warehouse, so we know which of those 3000 or so moulds is the one we are looking for at the moment.

I wish you all could be here with us to share in the discoveries we are making daily and in the excitement and emotion of the returning moulds. Come to the convention in June and see what we've been doing.

A photographic history of the 4th of March will be available at the convention for all to see.

CALENDAR OF EVENTS CONT'D. FROM LAST MONTH

By Neila Bredehoft

FEBRUARY 6

Bob McClain, Tom Bredehoft, Frank Frye, Sam Schnaidt and Norm Thran met with Terry Hill of Contour Forming, Inc., owners of the former Heisey factory. They discussed the possibility of renting space for mould storage at the factory. Norm Thran was to find out about renting some space or getting space donated by Owens who already has a large space rented.

FEBRUARY 11

Tom Bredehoft took more papers to the bank to clarify our tax-exempt status.

FEBRUARY 12

A check for the mould fund for \$100 was received from Consolidated.

FEBRUARY 13

A letter was sent to former employees requesting donations from them. Some donations started to arrive from local business.

FEBRUARY 18

Betty & Bill Barnard and Neila Bredehoft met George & Eileen Schamel at Imperial to finish sorting etching plates.

Consolidated had been getting our moulds ready for shipping. Many pallets were ready to be moved, including many Zodiac moulds.

In the afternoon, they found a treasure trove of Heisey paper - original mould drawings of Heisey pieces - some going back into the teens. There were thousands. As many as possible were returned to Newark.

FEBRUARY 20

Betty & Bill Barnard and Tom & Neila Bredehoft returned to Imperial to get the remainder of the mould drawings (3 large paper cartons) and to sort through Imperial's paper files to get material relating to Heisey. Several original Heisey catalogs were also found and returned to Newark. Tom told Mr. Sklarz that the last payment would be made on March 4 and that HCA would begin taking moulds back to Newark that day.

FEBRUARY 22

Louise Ream and Norm Thran spent the day at Imperial buying animals, many of which were of quite limited production, for HCA. Norm called a meeting at his home that night. Those present were: Ray & Delores Ziegler, Betty & Bill Barnard, Louise Ream, Neila Bredehoft, Dick Marsh, Bob & Phyllis McClain, Dick Smith, Liz & Walt Stickle, Norm & Janice Thran and Frank Frye.

Norm announced that the old Heisey factory was not available for lease. Frank Frye indicated he had found another warehouse at a cheaper rate which was closer to the Museum. Frank Frye also said he had found a semi which would be donated for one free trip. Plans were begun for a caravan to bring moulds back on March 4.

FEBRUARY 24

Due to information provided by Sharon Metcalf, Bill and Betty Barnard staffed an informational table at the Stockwell Antique Flea Market in Columbus. Table space was donated by the Stockwells. They displayed moulds, etching plates and drawings. While donations to the mould fund were disappointing, many people showed a lot of interest in the display and in Heisey.

FEBRUARY 27

Ray Ziegler and Frank Frye inspected the warehouse and a contract was drawn up. Glass began arriving for the auction donated for the mould fund.

FEBRUARY 26 & 27

Janice Thran and Liz Stickle began organizing the press coverage and the mould caravan for March 4. They contacted the LICKING COUNTIAN who promised a complete story, WHTH and WCLT (Newark radio stations) Channel 10 News and Channel 4 News (Columbus TV stations.) Louise Ream contacted the ADVOCATE.

Liz and Janice contacted the Licking Twp. Fire Department and the Newark Police Department about an escort to the Museum.

They also contacted Kroger's and Wonder Bread for contributions of food for a dinner following the return to Newark.

An order for posters for the mould fund was given to a local sign maker.

FEBRUARY 28

By this date, a total of 15 vans, 2 cars and the donated semi were available for the caravan on Monday.

MARCH 3

Liz Stickle began cooking the food for the dinner and arranging to have it ready when all members arrived.

MARCH 4

A MEMORABLE DAY FOR HCA!

Early in the morning the following HCA members and other volunteers met at Imperial Glass: George & Eileen Schamel, Bill & Betty Barnard, Norm & Janice Thran, Betty & Burl Whaley, Liz & Walt Stickle, Larry Stickle, Tim & Marty Hughes, Sam Schnaidt, Stan & Mary Holmquist, Mary & Mac McWilliams, Jack & Helen Huber, Buzz & Leota Friel, Louise Ream, Frank Frye, Jim Earnshaw, Jim Williams, Dick Smith, Helen & Jim Kennon, Ray & Delores Ziegler, Hugo Wenzel, Paul Geidenberger and Tom & Neila Bredehoft.

Everett Sklarz had hot coffee and donuts ready for us - very welcome. After a small ceremony of handing over the last payment of \$50,000 and a champagne toast, the moulds were loaded on the semi. After the semi was full of moulds and etching plates all the trucks and vans were loaded. HCA members were all over the Imperial factory looking for anything that conceivably be related to Heisey so we could return it to Newark. Many people took photos, including Jim Earnshaw who was the official HCA photographer of the day.

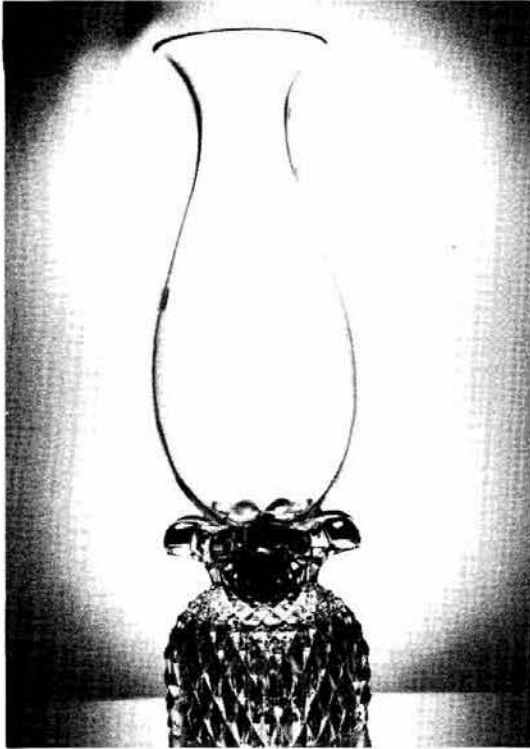
Louise and Tom were interviewed by the Wheeling TV station and various local radio stations and newspapers.

About 12:30 we left Imperial in a prearranged order with huge banners taped to the sides of the semi and all the larger trucks saying "Heisey Moulds Coming Home". Smaller vans and cars all had blue Diamond H signs in their windows.

After an interminable trip we were met at Jacksontown by the Licking Twp. Fire Department who escorted our long caravan with two of their trucks, lights flashing. As we approached the edge of Newark, one of the trucks returned, and was replaced by two Newark police cruisers. The caravan proceeded through Newark without stopping until it arrived at the Museum parking lot. We were met by many people and the press - most of the local newspapers and Channel 10 and Channel 4 News from Columbus. Several members were interviewed and both TV channels had good coverage on the 6 pm news. We were all very emotional and quite a few tears were shed and cries of "We did it!" were heard over and over.

The semi went directly to the warehouse and most of the men went to unload it. The remainder came to the lower level of the museum and had a delicious lunch. The rest of the trucks and vans were unloaded by about 7 pm. There were many tired HCA members that night, but no one complained. We were all thrilled.

Cont'd. on Page 7



No. 1567 Plantation was one of the largest lines introduced by Heisey in the late years, with over 80 items appearing in the 1956 catalog. According to Horace King, who designed the pattern, work on Plantation began in 1944, when he created the goblet in the pattern by combining elements from a nineteenth century German goblet and the finial from a highboy from the Georgian period in Philadelphia. This finial was in the shape of a pineapple, which became the major design motif of the new pattern.

It was not until 1948, however, that the pattern was finally introduced. But according to original factory records, at least one item was initially made earlier, with 118 of the hurricane lamp bases produced in January 1946. Despite this early production date, however, they do not appear in any of the 1946 or 1947 price lists, so it is possible this turn was experimental.

In July 1948, the new line was advertised in the Crockery and Glass Journal, showing a number of pieces, including the hurricane lamp. According to an article by Horace King in the May 1973 issue of the Heisey News, "For some months in the early stages of design and production, this line was known simply as 'the pineapple.' When it was ready for the market we were desperate for a suitable name that would appeal to the buyers and the public. Someone suggested that the pineapple was the symbol of hospitality when the Southern host hollowed it out and filled it with rum for the pleasure of his guests." Thus in the ad in the trade journal, Southern hospitality had become the keynote, with "Plantation" inspired by the fabulous pineapple ... a modern treatment of this gracious token of leisurely-paced life on vast tropic estates."

The base of the hurricane lamp is one of several pieces in the pattern which consisted of a pineapple only. It is 5 inches high and 4-1/2 inches



wide at the top, with fronds around the opening into which the shade fits. The bottom is hollow. Even so, it is a heavy piece of glass, weighing over a pound. It is marked with the Diamond H in the center on the bottom.

The globe shown on this base in the advertisements is always the no. 5080 12 inch shade, as in the accompanying photograph, although both the 9" and the 11" no. 300 shades were also offered on it. An article in the September 1952 issue of Living for Young Homemakers showed the no. 5080 globe with ivy in it, suggesting "another use for the hurricane shape -- and another way to grow ivy -- mounted on Heisey's pineapple-cut pedestal."

The lamp was offered with the no. 515 Heisey Rose and no. 516 Plantation Ivy plate etchings, applied to the shades only, and there is a possibility that other etchings or cuttings might be found. Plantation Ivy was introduced in 1950 and was also designed by Horace King, primarily for use on Plantation blanks.

Production of the hurricane lamp lasted for less than five years. It was included on a list of discontinued items dated January 8, 1953, although in fact there were only a couple of turns produced in the two years prior to this. It is not easily found today.

The hurricane lamp is also occasionally seen electrified. According to factory records, a turn was made in February 1950 with a hole in the base. Only 141 were produced, probably for use as electric lamps.

Of the seven candleholders which were eventually included as part of the no. 1567 Plantation pattern, only two others were in production when the line was introduced. In addition to the hurricane lamp, the three-light candlestick and the candleblock were also new in 1948.

The latter was included among the pieces pictured in the first advertisement for the pattern in the July 1948 issue of the Crockery and Glass Journal. Like the hurricane lamp, but on a smaller scale, it is in the form of a pineapple. It consists of a solid block of glass, about 3-1/4 inches high and 2-1/2 inches wide at top and bottom. It has six fronds around the candleholder and the bottom is ground smooth and polished. It is not marked with the

HEISEY CANDLESTICKS - NO. 1567 PLANTATION CONT'D.

Diamond H.

By 1948, epergnettes had become popular and this candleblock was shown with a no. 341 epergnette in an advertising folder from late that year. In March 1949, an article in Better Homes and Gardens featured the same combination, with the epergnette holding individual corsages "for those at the table."

The candleblock was the most popular of the Plantation candleholders, remaining in production until 1957 when the factory closed. It was made in large quantities and is not too difficult for the collector to find today.

Neither the hurricane lamp nor the candleblock were ever reproduced by Imperial.

Calendar of Events Cont'd.

MARCH 8 & 9

The Annual March Auction was held with many pieces of glass donated to be sold for the mould fund. Members had the opportunity to see the photos taken by Jim Earnshaw of the caravan which were on display at Sam's auction house. Members also had the opportunity of seeing some of the moulds at the Museum and some of the etching plates.

MARCH 10

Ray Ziegler and George Schamel spent a large part of the day moving moulds and etching plates in the warehouse so more could be stored.

MARCH 11

Another two semi truck loads of moulds arrived in Newark with another two to arrive March 12.

MARCH 14

Two loads of moulds have arrived on each day since the 11th. The Greek Key, Peerless and #1401 Empress punch bowls were included. Imagine how much those moulds weigh.

NEW FROM OUR GIFT SHOP

DIAMOND H ADVERTISING PIECE MADE IN OUR OWN ORIGINAL MOULD. BEAUTIFUL COBALT BLUE - PLAIN OR FROSTED.

THESE WERE MADE BY VIKING GLASS ON THE SAME DAY THE MOULDS CAME HOME.

NOT LIMITED - DIAMOND H COBALT PLAIN - \$22.50
SATIN - 23.50

SHIPPING FOR EACH - 2.25
TAX IN OHIO 6% - _____
(or \$1.35 Plain &
\$1.41 Frosted ea.)
TOTAL..... \$ _____

ALL PROCEEDS FROM THE ABOVE GO TO THE MOULD FUND.

DECISION MADE TO UPDATE STEMWARE BOOK

The HCA Research & Archives Committee has recently authorized work on a completely updated stemware book. The time seemed right for many reasons. The current supply of the Bradley & Ryan Book is rapidly running out. Secondly, a good bit of new material has become available, since that pioneering book was first published in 1976. Most recently, the new mould purchase has yielded a number of new stems. In the third week of February, another new exciting treasure was discovered in a file cabinet at the defunct Imperial Glass Corporation ... A drawer full of the original pencil mould drawings for many of the Heisey stem moulds. The new book will also feature a new, simplified approach to identifying stems, and locating them in the book. Another section will be devoted to rare stems and unsolved mysteries.

Soon HCA members will have the opportunity to participate in several ways. Study Clubs will be asked to help with updated price lists. Everyone will be asked to bring unusual, rare or especially beautiful goblets to the June Convention for photography. A room will be set up with specific hours each day so that good, well-lighted photographs can be taken.

The majority of the research for the new book is due to be completed this summer, using catalogues, price lists, turn books and the museum records for verification. In the meantime, give a little thought to which special rare or beautiful goblets you'd like to bring to Newark in June! Tom McCollough has agreed to coordinate the project. If possible, please send a list of goblets to him you'd like to bring so we may check for duplicates. Write c/o Tom McCollough at the Heisey Museum, P.O. Box 27, Newark, Ohio 43055.

MOULD FUND STATUS:

By Norm Thran
Mould Fund Steering Committee

As of March 13, 1985, we have received the following:

\$150,100 Received
12,700 Pledges

\$162,800 TOTAL

Pledged money outstanding should be forwarded in order to repay the loan and interest. The TOTAL received to date represents 28.5% of the current membership. The monies that have been received and their percentage come from the following cluster groups:

HCA Membership - 74.7%
HCA Study Clubs - 3.5%
Depression Glass Clubs - 3.9%
Local Business - 1.2%
Evans Foundation & Other - 16.7%
Museums
100%

This Fund Drive will continue throughout the year and your committee thanks you for your generosity and support. Wouldn't it be nice to pay this off in '85." Already we have raised 65% of the goal in a short period of time. TOTAL PARTICIPATION can make this a reality.

#150 BANDED FLUTE

By Hugo C. Wenzel

The number 150 was used by the Heisey Company to identify two patterns. It was first used for Pointed Oval in Diamond Point in 1896. In 1907, #150 was assigned to Banded Flute which was a major pattern in production until 1932. The pattern has narrow vertical flutes intercepted by four or five horizontal rings 1/2 to 1-1/4 inches from the rim, depending on the size of the piece. Because of the rings, the pattern was sometimes called Wedding Band. The patent number is 48529.

There were about 80 moulds all of which were probably converted to scrap by 1945 as part of World War II effort to reclaim metal. From these moulds, about 100 items were produced, at least six of which are not listed in any catalogue I've seen. My collection contains 90 items, at least five of which are not in catalogues. Several of the missing pieces are variations like flared and shallow punch bowls. I have seen a shallow punch bowl.

Except for the 10 inch and 13 inch trays, the pieces in the pattern were made in crystal only. Both sizes of these trays are found in moonbeam and flamingo.

I have seen only two pieces of this pattern decorated. A 4 inch nappy is trimmed in gold and a 9 ounce goblet has a heavy silver overlay. Neither decoration improved the appearance of the piece.

The glass is of good quality and reflects lots of light. The pattern is pretty but not gaudy. Most items in the line are attractive designs, especially the pitchers, stemware and some accessory pieces. Most items are marked, but the design is so distinctive that a collector has no difficulty with identification.

Most serious collectors when visiting shows, flea markets, auctions, etc., carry with them an inventory of items or wants for their collection. A collector of Banded Flute must have not only this, but his system should be more refined. Catalogues show that there are at least 13 items of stemware, 14 items of barware/tumblers, 9 different sizes of pitchers/jugs, and 15 different nappies. I devised a system of recording measurements to assist me in listing pieces in my inventory. For stemware, I used height of piece and diameter of bowl; for barware, height outside, height inside, diameter of top and diameter of bottom; for platters and nappies, diameter; for pitchers and jugs, height to lip, height and width of jug, diameter of bottom. However, the most reliable jug measurement was the lip measurement. Always have a measuring tape available to check dimensions.

Vogel in his Book II wrote that #150 was relatively easy to locate. That may have been the situation in 1969 when he wrote the book, but I never felt that my shopping was "easy." I have been collecting the pattern since that book was available. Punch cups are most common and might be "easy" to locate. The 3 ounce cocktail and the 4 1/2 ounce champagne have been seen in sets so they are available. However, the goblets and smaller pieces for cordial, wine and burgundy are only seen occasionally. These are also collected by stem collectors which increases the demand for available pieces. The footed tumbler is seldom seen.

While tumblers/barware (including sodas, schoep-

pens, iced teas, etc.) do not have the appeal to collectors that stems, candlesticks, and sundry pieces do, these items are not plentiful. In fifteen years of collecting with my "sophisticated" inventory system, I feel that I have not yet seen all the items listed in the catalogues.

Nappies come in three styles, standard, shallow and flared, each with about six sizes. They are not difficult to distinguish, but the shallow and flared are not as readily available. The 4 1/2 inch handled nappy, flared or regular is rare. The handled items are identified in catalogues as "sundaes," but I also include them in my collection of one-handled jelly dishes.

Plates come in three sizes: 5, 6 and 7 inch (plus or minus 1/4 inch) diameter. They are not plentiful, but neither is the demand. Prices are reasonable.

Pitchers and jugs are now seldom seen. Collecting a set of nine different sizes would be very difficult.

Accessory pieces, although popular, are not readily available. Items like cream and sugar, candlesticks, horseradish jar, sugar sifters, syrup pitchers and pint tankards command good prices when available.

The #150 pattern with its crisp design and good reflective glass is pretty. While most of the items in the pattern are attractive, three do not measure up to the standard of the others. These are the punch cup, finger bowl and the 3 ounce footed sherbet. The shape of these items is straight, rather than rounded. The rest of the stemware and jugs have pretty and graceful designs. The table set (creamer, sugar, spooner, and covered butter) is very attractive. However, for me, blue ribbons for eye appeal go to the footed schoeppen with flared top and the mustard jar with the hollow top.

The 12 inch celery and the 7 inch pickle dish are also very attractive. Other appealing pieces are the candlesticks, the matchbox stand and the matchbox and cover.

The saucer-footed candlestick is easy to associate with the pattern because of the rings. However, the handled candlestick must be studied because it has no rings and its shape is different from most of the other pieces.

Every collector has varied experiences in putting the collection together. An accumulation of 90 items is no exception. The first pieces (two butter dishes with lids and two spooners) were purchased at the Heisey factory close-out in 1958. One set was given as a Christmas present to a lady who still made her own butter in half pound molds. (They were never used and were later returned to our collection.) It was ten years later that we saw the next pieces -- 6 oyster cocktails -- at a flea market near Philadelphia, and that was the real beginning of the collection. Finding the first jug and the first footed schoeppen were exciting experiences.

The squat water bottle is not as easy to distinguish by itself as the catalogue drawing would have you believe.

Two of my biggest thrills occurred in the last two years when I found pieces not in the catalogue and never before known to me. They are a tobacco humidor and a cake plate. The humidor proper was made by Manning-Bowman with a retainer for a sponge in the lid. The liner is #150 pattern Heisey glass with straight sides, 4 inches tall and 3 1/2 inches in

#150 BANDED FLUTE CONT'D.

diameter. A matching glass insert had been in our collection for several years with a questionable identity. The cake plate is one of the premier pieces and last acquired, in the collection.

This collection has been photographed on slides with funds provided by the 76'ers Study Club of Columbus and will be available for rental from HCA after the June Convention.

LONG ISLAND CLUB

By Ruth Perloff

The "southern" contingent of the Long Island Heisey Collectors' Club met over dinner in a Lake Worth, Florida restaurant in mid-December. That proved to be a mid-point between our now permanent Florida residents' homes and the airport where two Long Island members had just arrived. We managed to get our dues paid and spent time trying to solve some of the clubs' problems. The easiest solution would be for the remaining members to move to Florida but that just doesn't seem feasible much as we would like it.

Ten of our Long Island - Florida members will be at the National Capital Clubs' All-Heisey Show in March so we will hold another meeting there.

FLORIDA IN-GATHERING

A dozen or so Floridians, both permanent and winter residents got together at the home of Jack and Ruth Perloff, in Port St. Lucie, Florida, February 6th. We had HCA members from Florida, New York, Ohio, Vermont, Indiana, Virginia and Michigan all with one common interest, - Heisey.

Of course, one subject of all-consuming interest was the moulds and whether we (the club) could manage to raise the huge amount of money required. (By the time this reaches print, we will know the answer.) We were all urged to contribute if we had not already done so or to give more if we could as we all want to keep our Heisey moulds from going into mass production.

Virginia and O'Dell Johnson's March 27th cocktail party was announced and several people expressed interest in going.

We were told of the HCA members living in the area who are interested in a local club and will meet again to get plans underway. In the meantime, we will be looking for more HCA members who will be potential members.

FLORIDA LIBRARY DISPLAY

The Heisey Glass on display in the Port St. Lucie Library (Florida) was seen by many local residents, as well as a number of northern HCA members who winter in various parts of Florida. Several librarians said that it had been one of their most popular exhibits with many viewers commenting excitedly that, "I have that" or "my mother (or grandmother had that." Even one librarian felt that she has some blown cut stems which are Heisey and wants us to identify them. Other people expressed surprise at the diversity of colors and items made by Heisey as well as the beauty of the glass.

It was worth the effort to expand the circle of people who know a little more about our favorite collectible.



Pickle Jar Knob Cover

7 oz. Syrup



No. 150-No. 2 Bed Room Set

Plate

6 oz. Oil

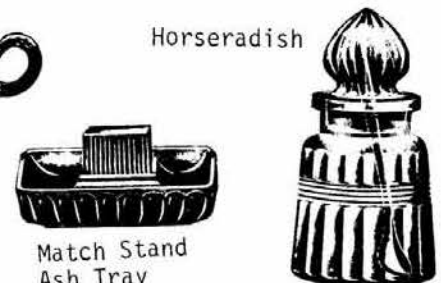


4-Piece Table Set



Flared Sundae

Horseradish



Match Stand Ash Tray



DIAMONDS ARE FOREVER

In going over some facts regarding the Yachting Center, the date 1898 seemed to jump right off the page. It seems that on January 31st and February 1st of that year, there was a great Blizzard, snow fell for twenty-nine hours straight crippling the town. Again in the year 1978, just 80 years later, there was also a Great Blizzard, February 6th to be exact, which also crippled the town closing it to traffic for three days. The only vehicles allowed on our crooked, narrow streets were commercial and emergency. Now here we are 1985 and February 6th with near blizzard conditions and near zero degrees. Wind chill factor -30°. It is almost April as you read this, and long overdue for warm days. It's time to think of Easter Baskets, outdoor flea markets and sunny weather.

If you are ready to think about sunny things, think about the stems we found this past weekend. There are eight (8) of them, and they are 3 oz wines, #5023 Continental. It would have been great if they had been cut, but they weren't. Even so, these pretty little stems were a colossal discovery. A picture can be seen on Page 160 of Ryans Stem book!

Pickins have been very poor for my "Evergreen" friends (ME). They told me that it was quite discouraging when cordials turn out to be wines. But they didn't tell me what ones they were. Nevertheless a pair of two-light candlesticks in #1540 Lariat with Moonglo cutting were reported plus the #1295 Beaded Swag sugar and cream in crystal with some sort of gold maple leaf decal. They also picked up a few things by Imperial.

"The Felicitous Flamingo Hunter" (MA) saw the #1252 Twist 2-compartment relish in moongleam but it was too dear; she did pick up a half dozen Twist wines, 2 oz, in flamingo, among some depression; also the cute little #369 Hartman bar - a nice "little thing" for any collection.

From the Bay State area were many goodies: #112 Candlesticks with Orchid Etch; #1469 Ridgeleigh floral bowl; #341 High Footed jelly; #1201 Tri-cornered, one handled jelly; #1404 Old Sandwich salt and pepper in sahara; tiny Double Rib and Panel nappy; and the #1776 Kalonyal high footed jelly.

"Double Steppin Couple" came up with a #325 Pillows handled custard and a couple of #5019 Waverly sherbets.

"The Wisard" and what a wiz, again #325 Pillows, a toothpick no less (what a goodie) and the #1472 Parallel Quarter bowl/silver overlay. Oh, I must not forget ... #1235 Beaded Panel and Sunburst covered butter ... Terrific!

"Sharp eyes" has a #1425 Victorian Water pitcher and a #1503 Crystolite jug. What I like about the

Crystolite pitcher is that it is light weight. A real pretty one.

"Mountain Gal" (CA) believe it or not has been snowed in. She told me that there was 6" of that white fluffy "fairyland" all over her front yard. Her fences looked as if they had been frosted with marshmallow during the night. Of course we are used to that in the Yachting Center. The snow didn't keep her from jumping into her "lil red vehicle" and heading for the Hunt: #305 Puntty and Diamond Point punch cups, three (3); #411 Rib and Panel quart jug/cover. The rest of her catch was Heisey by Imperial (second person this month) #1506 Whirlpool, all Heather; nine champagnes, two footed juices, one wine and one 9 oz. footed tumbler.

The "Point" (MA) reports two (2) #1469 Ridgeleigh oval cigarette holders.

"The Tipper" came up with three (3) water glasses, the #418 9 oz. with plain bottom; the #154 8 oz. also with plain bottom and the #1913. He is not completely sure of the 1913 number but it is marked and a beautiful glass.

"Two Guys" (CT) have several real nice pieces of #1401 Empress, 7" Center handled 3-part relish and six (6) bouillon with the underplates - all crystal.

As for us, we have eight (8) #1519 Waverly 7" salad plates and the 6½" honey dish, Orchid etch; #1509 Queen Ann 6" footed mint, also Orchid etch. A pair of #2 7" Candlesticks which we will most likely give to the "Felicitous Flamingo Hunter" for a wedding present. Lastly, a pretty little #7024 decagon handled nappy in flamingo.

It is time to close now, so I send my best wishes from the Yachting Center for much Happy Hunting and along with that a song to keep in your hearts:

"H" is for the hours that we spend hunting,
 "E" is for our eyes that sharp must be;
 "I" is for the interest Lloyd shares with me
 "S" is for the "sleepers" sometimes found;
 "E" means many evenings spent in study,
 "Y" oh yes, it's fun we must agree!
 Put them all together, they spell "HEISEY" a
 glass that means so much to me!!!
 (to the tune of "mother")

Janet Caswell

AREA CAMP SITES

CAMP & MOTEL FAIRVIEW (614) 323-3983
 US Rt. 40
 Newark, OH 43055

HONDA HILLS
 Rt. 2
 Thornville, OH 43076

LAZY R CAMP GROUND (614) 366-4385
 2340 Dry Creek Road, NE
 Granville, OH 43023

BUCKEYE LAKE KOA (614) 928-0706
 Box 972
 Buckeye Lake, OH 43008

CLUB NOTES:

BAY STATE HEISEY CLUB

President Caswell called the meeting to order on February 12, 1985 with the reporting of what they had done within the last month. The business portion of our meeting over, we had our program.

The program "Heisey by Imperial" was presented by David Steer. The program was very apropos of what is going on in the Newark area with all the money flowing in to buy the moulds. In this vein, please keep that money coming in.

David presented a very good program with an abundance of color and patterns. He also gave a brief history of Imperial from its rise to its fall. Now the Heisey moulds are coming back to Newark where they belong. As usual, David made a good presentation.

The "Show & Tell" part of our meeting was done by George Fogg. Herewith is the list of goodies found: #1503 Crystalite salad bowl; #1401 nasturtium bowl in sahara; #1404 Old Sandwich wine in flamingo; #1417 Arch tumbler; #343 Sunburst comport #3404 Spanish Stem; Holophane shades (three types); and #1220 Punt Band nappy.

George did an excellent job, and the members did an even better job in finding these little treasures.

Don't forget ... keep that mould money rolling in!

George Gleason

* * * * *

HEISEY COLLECTORS OF THE ROCHESTER AREA

By George J. Reynolds

Our February meeting was held at the beautiful country home of Norene and Don Walzer. It was a beautiful sunny day and the fields were beautiful with all the fresh snow. A sunny day has become a rarity in this area, it has snowed every day but one so far in 1985.

Norene served a delicious table full of goodies including a great looking home made cheese cake.

Bill Heron opened the meeting with a raffle of three miscellaneous items.

Sharon Orienter opened our meeting with the latest report on the mould situation and passed out copies of all the information sent to her by HCA.

Sharon asked the club members to consider ideas for projects to help the HCA Project Committee plan fund raising events on a national level.

Bill Heron then held another raffle, the prize among other things was a smoke alarm. Bill didn't win it but since one of my electricians recently did some wiring in his house, he may need it the most.

The mould situation was again discussed and Sharon again urged members to help all they can with money for the mould fund.

Sharon Orienter was designated club voting member to act on our behalf at the convention. She again urged all members to send in their \$25.00 to become voting members, a position I heartily support. If you belong, why not take an active part in the HCA's future.

Our subject for the day was cuttings, carvings

and etchings. We had a table full which included in part: Nimrod Carving; Tally-Ho etching; Cloister Cutting; Polo Player Etch; Fox Chase Etch; a bitters bottle with a Circus Lion Tamer Etch (one of 6 made in Circus series); Winchester Etch; Pied Piper Etch; Crinoline Etch; Crusader Cutting, a Sailboat Etch; a #679 Cutting, Finger bowls with Continental Cutting; a Duquesne Etch and a #3320 Ritz Goblet with a #155 Neptune Etch, which was quite impressive.

Our "Show & Tell" produced a Spiral Optic Violet Vase in moonbeam and a Narrow Flute Salt Dip.

Well, I for one, was sorry to leave but I'm sure Norene was exhausted since she had all the work. Thank you to she and Don for a lovely afternoon.

To end the day on a perfect note, I got stuck in their driveway and Don, his son and Gerry Gillette had to get me out.

We are all sorry to hear that Clarence Vogel has been ill and are reminded of the quote "I would never read a book if it were possible for me to talk half an hour with the man who wrote it."

All the best, Clarence, you old grouch. Hope to get that chance in June.

George Reynolds, Secy.

LETTERS, WE GET LETTERS

How could I live without my Heisey Newsletter? A friend and I are coming to our second convention this year and can hardly wait!

Keep up the great work. Wish we didn't live so far away.....Anxiously waiting for June...

Jean, Minnesota

Enclosed is Check No. 8072 to help pay for the purchase of Heisey glass moulds. I know, we, as collectors, will feel more assured of getting the real glass with these in the museum's possession.

I am not a member because there is not a club near Ottawa, Ill., if so, I am not aware of such. Congratulations on such an important purchase.

Illinois

We were so pleased to hear you have succeeded in regaining the Heisey moulds. So many treasured items of the past are too often lost and it is so nice to know you are helping to retain a very vital part of Newark's history. We treasure our many pieces of Heisey and know our children will be happy to share in preserving it in the years to come.

Much success to you in this endeavor.

Newark, Ohio

Betsy and I were so thrilled to be at Veteran's Park when the moulds "came home."

The entire family is grateful to the Heisey Collectors Club for their dedicated efforts to preserve the beauty begun by that remarkable man, A. H. Heisey.

Sincere best wishes for a successful conclusion to the fund drive, and for all your future endeavors.

Virginia M. Heisey

Editor's Note:

Virginia Heisey is the wife of John Fulton Heisey who is a grandson of A. H. Heisey. We were very happy to see Virginia and daughter, Betsy in the park when we arrived with the moulds.

Betsy showed up in one of the TV spots and was very enthusiastic about HCA bringing the moulds back to Newark. She is a darling girl.

Louise

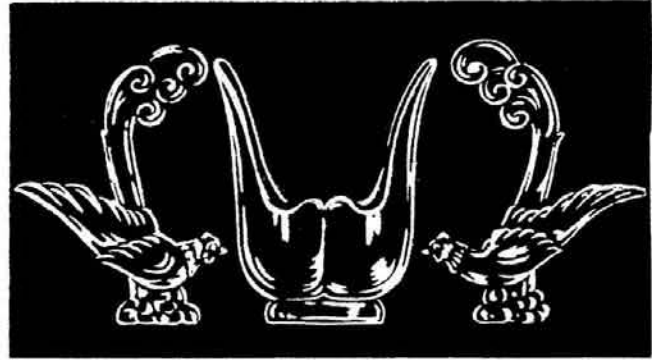
ZODIAC

No. 1590 Pattern

(Leaflets Available)



No.	Size	Item	Price Doz. Crystal
Stemware			
1590	10	oz. Goblet	\$ 8.40
1590	5	oz. Saucer Champagne	8.40
1590	5	oz. Sherbet	8.40
1590	4	oz. Claret	8.40
1590	3 1/2	oz. Cocktail	8.40
1590	4	oz. Oyster Cocktail	8.40
1590	5	oz. Footed Juice	8.40
1590	12	oz. Footed Ice Tea	8.40
1590	5	oz. Tapered Soda	4.20
1590	12	oz. Tapered Soda	6.00
1590		Coaster	4.20
Plates, Miscellaneous			
1590	8	in. Plate	\$13.20
1590	13	in. Sandwich Plate	48.00
1590	13	in. Salver	48.00
1590	11	in. Flower Bowl, 12 Sided	42.00
1590	2	lt. Candlestick	28.80
1590	8	in. Relish, 4-Compartment	34.80
1590	10	in. Oval Relish, 2-Compartment	24.00
1590	6	in. Comport	19.20
1590		Footed Sugar	10.80
1590		Footed Cream	10.80
1590		Salt Bottle and No. 57 Chrome-Plated Top	8.40
1590	4 1/2	in. Nappy	4.80
1590	3 1/2	in. Square Ash Tray	4.80
1590		Footed Candy Jar and Cover	42.00



No. 100 Pheasants and 1558 6 1/2-Inch Vase-Bowl

FIGURINES & TABLE DECORATIONS

No.	Size	Item	Price Doz. Crystal
1		Elephant (Large)	\$ 60.00
2		Elephant (Middle Size)	48.00
3		Elephant (Small)	36.00
1		Book End (Horse Head)	90.00
1		Giraffe	42.00
2		Giraffe	42.00
1		Pheasant (Tail Down)	72.00
2		Goose (Wings Down)	36.00
3		Goose (Wings Up)	36.00
1		Filly (Head Forward)	54.00
2		Filly (Head Backward)	54.00
4		Swan (Large)	84.00
5		Cygnets (Small)	12.00
1		Rabbit	72.00
2		Bunny (Eating, Head Down)	12.00
3		Bunny (Sitting, Head Up)	12.00
1		Madonna, Small	36.00
1		Madonna, Small, Frosted	42.00
2		Madonna, Frosted	120.00
1		Rooster	48.00
2		Hen	36.00
3		Chick (Head Up)	6.00
4		Chick (Head Down)	6.00
1		Sow	48.00
2		Pig (Walking)	6.00
3		Pig (Resting)	6.00
5		Show Horse	48.00
1		Airdale Terrier	48.00
1		Pouter Pigeon	60.00
1		Bull	60.00
10		Mallard Duck (Wings Down)	21.00
11		Mallard Duck (Wings Half Up)	21.00
12		Mallard Duck (Wings All Way Up)	21.00
20		Wood Duck	48.00
21		Wood Duckling (Resting)	12.00
22		Wood Duckling (Walking)	12.00
100		Pheasant (Tail Up)	48.00
101		Tropical Fish	192.00
101		Tropical Fish, Frosted	216.00
103		Tiger Paper Weight	24.00
104		Gazelle	72.00
1554		Fish Book Ends Dozen Pairs	90.00

THESE ARE PAGES FROM AN ORIGINAL 1949 CATALOG WITH ORIGINAL PRICES.

Hand Made Glassware

PLANTATION
No. 1567 Pattern

(Leaflets, 2-Col.
Mat Available)



No.	Size	Item	Price Doz. Crystal
Stemware			
5067	10 oz.	Goblet, Blown	\$15.00
5067	6½ oz.	Saucer Champagne, Blown	15.00
5067	4½ oz.	Claret, Blown	15.00
5067	3 oz.	Wine, Blown	15.00
5067	1 oz.	Cordial, Blown	15.00
5067	3½ oz.	Cocktail, Blown	15.00
5067	4 oz.	Oyster or Fruit Cocktail, Blown	15.00
5067	5 oz.	Footed Juice, Blown	15.00
5067	12 oz.	Footed Ice Tea, Blown	15.00

1567	10 oz.	Goblet, Pressed	9.00
1567	5 oz.	Saucer Champagne, Pressed	9.00
1567	4 oz.	Claret, Pressed	9.00
1567	3½ oz.	Cocktail, Pressed	9.00
1567	3½ oz.	Oyster Cocktail, Pressed	9.00
1567	5 oz.	Footed Juice, Pressed	9.00
1567	12 oz.	Footed Ice Tea, Pressed	9.00
1567	½ gal.	Ice Lip Jug	31.20
1567	12 oz.	Flared Ice Tea, Reg., Grd. Bot.	7.80
1567	4 in.	Coaster	4.20

Plates			
1567	7 in.	Plate, Ground Bottom	\$ 10.20
1567	8 in.	Plate, Ground Bottom	13.20
1567	10½ in.	Demi Torte, Ground Bottom	24.00
1567	14 in.	Torte Plate, Ground Bottom	33.00
1567	11 in.	Sandwich Plate, Ground Bottom	24.00
1567	14 in.	Sandwich Plate, Ground Bottom	33.00
1567	14 in.	Sandwich and Footed Cheese and Cover	54.00
1567	14 in.	Sandwich and Footed Cheese (Without Cover)	45.00
1567	18 in.	Buffet Plate, Ground Bottom	96.00
1567	18 in.	Buffet Plate and Rolled Foot Mayonnaise	112.80
1567	18 in.	Punch Bowl Plate, Grd. Bot.	96.00
1567	18 in.	Rolled Foot Mayonnaise	16.80
1567	13 in.	Footed Salver	48.00

Bowls			
1567	7 in.	Salad Bowl, Ground Bottom	\$ 24.00
1567	9 in.	Salad Bowl, Ground Bottom	33.00
1567	9½ in.	Gardenia Bowl, Ground Bottom	24.00
1567	11½ in.	Footed Gardenia Bowl	48.00
1567	13 in.	Gardenia Bowl, Ground Bottom	33.00
1567	9½ in.	Crimped Bowl, Ground Bottom	24.00
1567	12 in.	Crimped Bowl, Ground Bottom	33.00
1567	12 in.	Floral Bowl, Ground Bottom	33.00
1567	12 in.	Footed Floral Bowl	48.00
1567	19 pc.	Dr. Johnson Punch Bowl Deep (9 quarts) Ground Bottom	90.00
1567	19 pc.	Dr. Johnson Punch Bowl Set Consists of: Punch Bowl, Ladle, Punch Bowl Plate, 8 Punch Cups and 8 Green or Red Hooks	270.00
1567		Punch Cups	6.00

PLANTATION (Cont.)

No. 1567 Pattern

No.	Size	Item	Price Doz. Crystal
Candleholders			
1567	3 in.	1 Lt. Candleblock, Grd. Bot.	\$ 15.00
1567	2 in.	Candlestick	33.60
1567	3 in.	Candlestick	48.00
1567	3 in.	Candelabra, Complete	114.00
Consists of: Candelabra Base, 2 No. 1503 Bobeche and 10 "A" Prisms			
1567	1 in.	Hurricane Lamp with 12-inch No. 5080 Shade, Complete	127.20
1567	5 in.	Footed Epergne Candleholder	21.60
1567	7 in.	Footed Epergne Candleholder	24.00

Mayonnaise and Relishes			
1567	5¼ in.	Twin Mayonnaise, Grd. Bot.	\$14.40
1567	5¼ in.	Mayonnaise	14.40
1567	7 in.	Mayonnaise Plate, Grd. Bot.	10.20
1567	7 in.	Mayonnaise Ladle	6.00
1567	5¼ in.	3-Piece Mayonnaise Set	30.00
1567	8½ in.	Dressing Bowl, 2 Compartments	14.40
1567	8 in.	4-Compt. 2-Hld. Round Relish	33.60
1567	13 in.	5-Compt. Oval Relish	27.00
1567	11 in.	Relish, 3-Compt., Grd. Bot.	22.80
1567	13 in.	Celery Tray, Grd. Bot.	22.80
1567	13 in.	Celery and Olive, Grd. Bot.	22.80

Comports, Jellies, Candies			
1567	5 in.	Footed Comport, Deep	\$19.80
1567	5 in.	Footed Comport and Cover	28.80
1567	6½ in.	Flared Comport	21.00
1567	7 in.	Footed Comport	21.00
1567	7 in.	Footed Honey	21.00
1567		Marmalade	14.40
1567		Marmalade and Cover	22.80
1567	5 in.	Footed Cheese	12.00
1567	5 in.	Footed Cheese and Cover	21.00
1567	5 in.	Tall Footed Candy Jar	30.00
1567	5 in.	Tall Footed Candy Jar and Cover	39.00
1567	7 in.	Candy Box	6.00
1567	7 in.	Candy Box and Cover	6.00

Hostess Helper			
1567	11 in.	8-Piece Hostess Helper	\$86.40
Consists of: 1 11-inch Ice Bowl, 1 Footed Sauce, 3 1485 Toothpick Holders, 3 No. 1 Chrome Clips			
Ind. Carton for Hostess Helper			

Miscellaneous			
1567		Footed Sugar	\$13.20
1567		Footed Cream	13.20
1567	3 oz.	Oil and Stopper No. 125	18.00
1567		Salt or Pepper and No. 57 Chrome-Plated Top	8.40
1567		Salt or Pepper, No. 48 Spun Nickel Top	6.00
1567		Syrup Bottle, No Top	14.40
1567		Syrup Bottle with Drip Cut Top (Chrome Plated with Ivory Plastic Handle)	30.00
1567	¼ lb.	Butter, Oblong	
1567	¼ lb.	Butter and Cover	
1567	5 in.	Butter, Round	10.20
1567	5 in.	Butter and Cover	19.20
1567	6 in.	Cigarette Box	24.00
1567	6 in.	Cigarette Box with Cover	39.00
1567	4 in.	Ash Tray	4.20
1567		Tea Cup	7.20
1567		Saucer	7.20
1567		Bridge Tray	
1567		Bridge Tray and Tea Cup	
1567		Bridge Tray and Punch Cup	
1567	5 in.	Footed Vase, Flared	
1567	9 in.	Footed Vase, Flared	
1567	5 in.	Footed Fan Vase	
1567	9 in.	Footed Fan Vase	

ROBERT H. DONOVAN
 P.O. BOX 4103
 ORMOND BEACH, FL 32075

PH: 904-677-1732 - EVE,
 904-252-2210 - DAYS
 LEAVE NO. - WILL RETURN
 CALLS - UPS \$3.50 ANY LOT

*MARKED

SET ELEPHANTS... (3)	\$ 750.00
GAZELLE	1150.00
HEN & ROOSTER - Pair	850.00
WOOD DUCK	600.00
BULL*	1150.00
RINGNECK PHEASANT - Pair	200.00
GIRAFFE	160.00
PLUG HORSE - AMBER	645.00
STANDING COLT - AMBER	475.00
ROOSTER VASE	95.00
DOLPHIN FINIAL COVERED DISH - Chrome Frame	35.00
#1205 FANCY LOOP Wine	70.00
#1210 BOW-TIE Bon-Bon, Moongleam	42.00
# 461 BASKET*, 7"	105.00
# 465 RECESSED PANEL BASKET*, 8"	140.00
#1401 EMPRESS, Sahara (Cloudy)	65.00
#1252 TWIST Nasturtium Bowl*, Moongleam	140.00
#1466 STAR RELISH	55.00
#5010 SYMPHONIE Ice Tea, Danish Princess Cut	35.00
#5010 SYMPHONIE (12) Goblets, Danish Princess - \$45.00 Each - Set	400.00
# 109 DOLPHIN Compotier, Flamingo	325.00
#1506 WHIRLPOOL 12 oz. Soda, Sahara ? (Sunshine Yellow)	28.00
#1401 EMPRESS Mayonnaise, Dolphin Foot, Flamingo	49.00
# 433 GREEK KEY 6" Almond*	75.00
# 433 GREEK KEY Footed Banana (4) ea	38.00
# 433 GREEK KEY Nut Cup (15) ea	35.00
# 433 GREEK KEY Individual Ice Tub (2) ea	70.00
# 433 GREEK KEY 2-Handled Jelly	45.00
# 433 GREEK KEY French Bread Tray	160.00
# 433 GREEK KEY Meat Tray	160.00
# 433 GREEK KEY Celery Tray, 12"	50.00
# 433 GREEK KEY Tankard With six (6) Tumblers.....Set	500.00
# 433 GREEK KEY Fruit Plate With Metal Rim, 10"	90.00
# 433 GREEK KEY Handled Jelly, 5"	48.00
# 1 2-Handled Jelly With Cover	225.00
CHEESE & CRACKER	80.00
OILS (5) each	125.00
# 111 DOLPHIN Candlesticks, Flamingo.....Pair	395.00
# 111 CHERUB Candlestick, Flamingo (1) - (Nice W/Compotier)	375.00
# 300 Punch Cups* (6) ea	36.00
Bar Glass - 2-1/2 oz	15.00
#1488 KOHINOOR 6" Ball Vase*	30.00
# 351 PRISCILLA 3" Violet Vase	14.00
#3440 PORTSMOUTH 9 oz. Goblet, Diamond Optic, Flamingo (3) ea	38.00
#3404 SPANISH 10 oz. Goblet, Unknown Cutting	35.00
#3389 DUQUESNE 5 oz. Sherbet, Tangerine	145.00
# 300 COLONIAL Stem 3 oz. (3) ea	7.50
#4225 ROOSTER Cocktail Shaker, Sportsman Deep Plate Etch and #5048 Cocktails (2) - ALL	195.00
#1567 PLANTATION 8-1/2" Plates (2) ea	15.00
#1567 PLANTATION 8-1/2" Plates With Ivy Etch (4) ea	18.00
#1567 PLANTATION Goblets, 10 oz. (3) ea... (flared)	22.00
#1567 PLANTATION Syrup (Pitted Top)	42.50
#1567 PLANTATION Gardenia Bowl	70.00
#1567 PLANTATION Claret* 5 oz. (7) ea	20.00

WANTED: ITEMS IN #1252 TWIST - MOONGLEAM AND FLAMINGO - ANY PATTERN - CREAM AND SUGAR - OILS - TOOTHPICKS - ETCHED BASKETS - MUSTARDS - FLOWER BLOCKS - AND AS ALWAYS, GREEK KEY - PRICED FOR RESALE.



Classified Ads

FOR SALE: Send SASE (Bus. Size) for Heisey mail Lists. Specify: General Lists, Orchid Etch List or Send your list of needs. J. & R. COLLECTIBLES (Owned by Former Heisey Employee) P.O. Box 1030, Newark, OH 43055

FOR SALE: Heisey Glass - color Alexandrite: 8 Empress Cups & Saucers, 8 Empress Cream Soup Bowls, 8 Empress 8" Plates, 8 Low-footed Sherbets, 8 10 1/2" Plates, 1 bonbon dish - Best offer for all. GEORGE LE BLANC, 312 S. Houston, Livingston, TX 77351.

FOR SALE: Two Plantation Cruets with Stoppers, - \$115 each. Five Orchid Etch Goblets - \$35.00 each. Plantation Salt & Pepper - \$40 pair. Postage free on orders over \$100. MICHAEL KRUMME, Box 5542, Santa Monica, CA 90405 PH: 213-396-4012.

WANTED: Buying Caprice blue or Rosepoint by Cambridge, Rose or Orchid by Heisey, American, June, Fairfax, Versailles, Trojan, etc., by Fostoria and Depression Glass in crystal or colored. NADINE PANKOW, 207 S. Oakwood, Willow Springs, IL 60480. PH: 312-839-5231.

WANTED: Please help! I need the Ruby Oscar, Satin, dated 1983 to complete my herd of HCA Souvenirs. VICKI HARMAN, P.O. Box 982, Carlsbad, CA 92008 or PH: 619-941-6567.

FOR SALE: Hundreds of Heisey Pieces. Send #10 S.A.S.E. for list. M & J WALTER ANTIQUES, c/o Sir Speedy, 431 Main St., Woburn, MA 01801.

FOR SALE: Having a tough time finding Heisey? Why not let us help you. We have many Creams & Sugars, Compotes, Stems Galore, Animals, Candlesticks, Bowls, Vases, Tobacco Items, Punch Cups, Cups & Saucers, Nut Dishes, Etched Ware, Etc. SASE - MOSTLY HEISEY, Rhoda Curley, 16 Clayton Place, Albany, NY 12209 PH: 518-482-6272.

HEISEY SALE: Including choice miniatures - New list each Jan., May & Sept. - Large SASE Please. CLIFF HARRALSON, 1426 W. Highland, Springfield, MO 65807.

THE COLLECTOR'S STOP
12018 SUELLEN CIRCLE
WEST PALM BEACH, FL 33414
SUBJECT TO PRIOR SALE

PH: 305-793-0986
EXC. COND. OTHERWISE
NOTED - S & I EXTRA
*MARKED

- #1401 EMPRESS, Sahara 8" Rd. Plates* (8) ea..\$ 20.00
- #1401 EMPRESS, Sahara 6" Rd. Plates* (8) ea.. 15.00
- #1401 EMPRESS, Sahara 12" 2-Hdld Cake Plate*. 40.00
- #1401 EMPRESS, Sahara After Dinner Cups & Saucers* (7) ea..... 32.50
- #1401 EMPRESS, Sahara 7 1/2" Bowl, D/F*..... 50.00
- #1401 EMPRESS, Sahara 11" D/F Floral Bowl.... 65.00
- #1433 THUMBPRINT & PANEL C.Sticks, Sahara and 11" Floral Bowl..... 150.00
- #1401 EMPRESS Mustard Lid Spoon*, Flamingo... 85.00
- #1401 EMPRESS D/F Cream & Sugar*, Sahara..... 75.00
- #1252 TWIST Ice Tub*, Crystal..... 60.00
- #1404 OLD SANDWICH Plates*, 8", Mglm. (8) ea. 30.00
- #1404 OLD SANDWICH Plates*, 6", Mglm. (8) ea. 20.00
- #1404 OLD SANDWICH Sherry Btl.,Sterling Strpr. 125.00
- # 433 GREEK KEY Punch Bowl Stand*..... 35.00
- MEDIUM ELEPHANT, Exc. Condition..... 175.00
- STANDING DUCKLING 2-5/8"*..... 125.00
- # 501 FLOWER BOX*, Flamingo - 8" x 3"..... 75.00
- #1469 RIDGELEIGH Ind. Cream/Sugar Tray*..... 35.00
- # 352 CRUSHED FRUIT Jar - 2-Quart..... 235.00

GLASS 'N' GLASS

PH: 813-792-0604

VIRGINIA & ODELL JOHNSON
6909 - 10th Ave., W
BRADENTON, FL 33529

UPS & Handling Extra
Out of town til APRIL 5th
*Marked

- # 16 CANDLESTICK, Pair, 7 1/2", Not Marked....\$ 75.00
- #1469 EMPRESS C.Stick, ALEXANDRITE,Not Mkd.. 150.00
- # 325 PILLOWS One-half gal. pitcher*..... 125.00
- #1503 CRYSTOLITE 3-Comp. Candy Dish/Cover*.. 28.00
- #1503 CRYSTOLITE Shell Bon Bon or Relish, Not Marked..... 15.00
- #1503 CRYSTOLITE 11" Party Plate, Not Mkd... 22.00
- #1428 WARWICK Horn of Plenty Vase, 7"Not Mkd 22.00
- #1428 WARWICK Horn of Plenty Bowl 11", COBALT*..... 295.00
- #1404 OLD SANDWICH 8" Plates*, SAHARA (4)ea. 13.50
- #1404 OLD SANDWICH 4 oz. Sherbets, Nt. Mkd., SAHARA (2) ea..... 22.50
- #1404 OLD SANDWICH 10 oz. Low Ftd. Tumblers* SAHARA (2)ea..... 22.50
- #2252 TWIST Oval Sugar & Creamer*, SAHARA... 75.00
- #4002 AQUA CALIENTE 4 oz. Cocktail*, SAHARA, (5) ea..... 20.00
- # 352 LAVENDAR Jar, 3 oz.*..... 50.00
- # 352 HORSERADISH Jar, Ground Stopper*..... 45.00
- #1184 YEOMAN 6" Candy Box & Cover*..... 45.00
- #1024 MAYONNAISE, Cover, Spoon* (V.Bk 2, p. 154)..... 50.00
- #1469 RIDGELEIGH Shot Glass*..... 22.00
- #1469 RIDGELEIGH Sq. Ashtrays (4) Sq. Cig. Holder*..... 20.00
- #1519 WAVERLY Heisey Rose Footed Violet Vase*..... 85.00

FELSTA FENTON PADEN CITY ART GLASS

THE FANTASTIC
**SAN FRANCISCO
DEPRESSION ERA
GLASS
CHINA & POTTERY
SHOW & SALE**

(EAST COAST DEALERS EXHIBITING)
**SAT APRIL 13th, 1985 10am-5pm.
SUN APRIL 14th, 1985 10am-5pm.**

AT
THE HALL OF FLOWERS
9TH AVE. & LINCOLN WAY
INSIDE GOLDEN GATE PARK

**Admission \$2.50
(\$2.00 WITH THIS TICKET)
FOR YOU & YOUR PARTY**

For Information Contact
"UP TO PARR"
588 Guerrero Street
San Francisco, CA 94110
(415) 552-9337 - (415) 285-7799

REFERENCE BOOKS AND A WHOLE LOT MORE
GOOD FOOD

HEISEY FOSTORIA CAMBRIDGE TIFIN DEPRESSION GLASS HALL IMPERIAL MORGANTOWN

TIFFANY CARNIVAL DRESDEN MIESSEN WEDGEWOOD CRYSTAL BAUER ROSEVILLE

MOSTLY HEISEY

RHODA CURLEY
16 CLAYTON PLACE
ALBANY, NY 12209

PH: 518-482-6272
UPS EXTRA

As the snows melt and the crocuses pop their heads, our thoughts turn to Spring and a new beginning. What greater new beginning could there be than a Wedding, High School or College Graduation, Confirmation or Bar Mizvah. On these special occasions, why not give a worthwhile gift of glass and make it Heisey - the beautiful one. Who knows, your gift may create a new Heisey collector and maybe a new member for HCA. It's worth a try.

#1519	WAVERLY Chocolate & Cover Candy.....	\$ 40.00
# 465	RECESSED PANEL 1 lb. , Magnificent Grape Cutting.....	135.00
	DIAMOND GLASS DISPLAY EMBLEM, Crystal.....	295.00
#1229	OCTAGON, Amber 13" Hors d'oeuvre Tray.....	69.00
#1540	LARIAT 21" Buffet Plate.....	69.00
# 305	PUNTY AND DIAMOND POINT Compote 9" Diameter, 8" High.....	145.00
#1250	GROOVE AND SLASH Tobacco Jar, Metal Top.....	110.00
#1205	FANCY LOOP Potpourri Jar 9" High (V-4, P-84).....	175.00
# 393	NARROW FLUTE 1-Pint Pitcher - \$75.00, Same 3-Pint.....	135.00
# 341	PURITAN Bulbous Pitcher and 8 Tumblers No. 300.....	235.00
# 341	PURITAN Ice Tub, 1-Piece, 2-Handled.....	75.00
#1469	RIDGELEIGH Ice Tub 2-Handled.....	85.00
#1401	EMPRESS Dolphin Footed Vase 9", Beautiful Silver Decoration.....	75.00
#1533	WAMPUM Candlesticks - Pair - and Flared or Shallow Bowl.....	95.00
# 341	PURITAN Punch Bowl, Small, 6-Pints, With 12 Cups and Lovely Glass Ladle, Maker Unknown.....	200.00
# 335	PRINCE OF WALES Punch Bowl and 12 Cups.....	395.00
#1401	EMPRESS Luncheon Set, Lafayette Etch, 8 - 8" Plates; 8 Cups and Saucers - Cream and Sugar....	400.00
#1184	BOWTIE Candy Bon Bon, Moongleam, Medium Size...Each.....	40.00
	MADONNA, Frosted.....Each.....	100.00
	SPARKY.....	85.00
#1506	PROVINCIAL Relish, 4-Compartment.....	28.00
#1495	FERN Relish, 3-Compartment, Lovely Etching.....	28.00
#1401	EMPRESS Covered Butter, Dolphin Finial in Farberware Holder With Silver Plated Knife.....	65.00
# 433	GREEK KEY French Roll Tray.....	135.00
#1519	WAVERLY Large Four-Footed Bowl, Seahorse Handles.....	90.00
#1503	CRYSTOLITE Cruets.....Pair.....	80.00
#1184	OCTAGON Sandwich Plate, Sahara, Center Handled.....	46.00
# 473	NARROW FLUTE WITH RIM Compote, Beautiful Gold Trim.....	49.00
#1252	TWIST Nut Cups, Flamingo.....Each.....	21.00
#1186	YEOMAN 6" Compote, Clear Bowl, Moongleam Stem and Foot.....	45.00

IF YOU ARE PLANNING TO ATTEND SHOWS AT BRIMFIELD OR DUANESBURG THIS SPRING OR SUMMER, WHY NOT STOP AND SEE OUR MANY, MANY PIECES OF HEISEY AND CAMBRIDGE. EVERYTHING IS PRICED TO MOVE. OUR SHOP IS WORTH A TRIP FROM ANYWHERE.

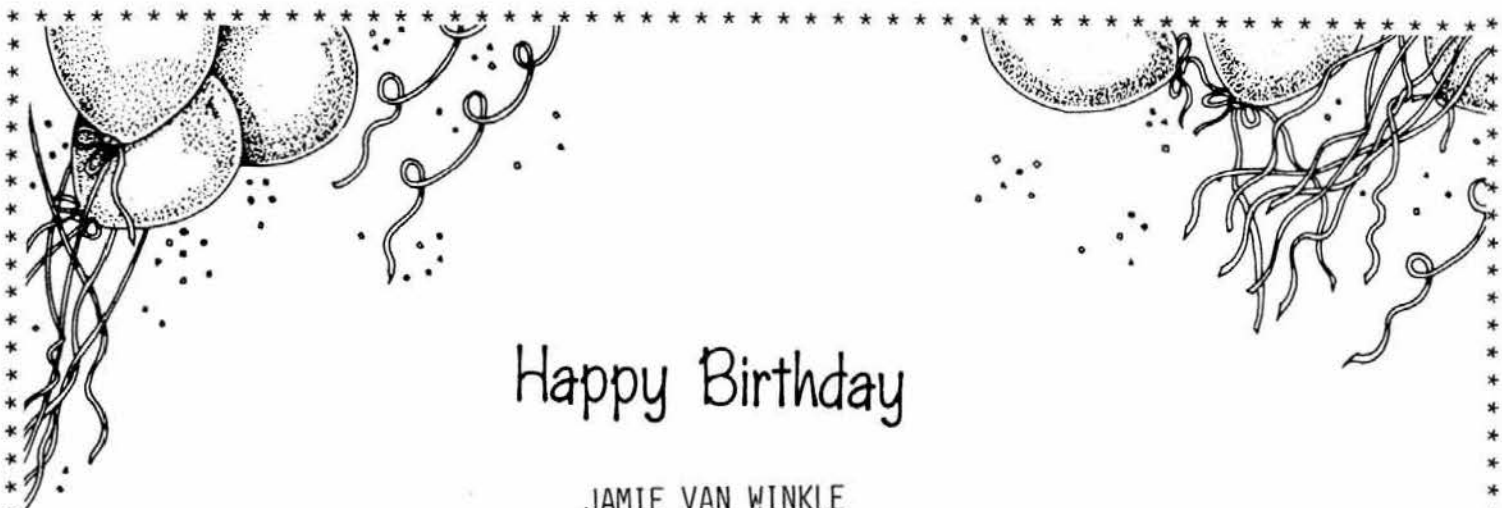
WANTED
MICHIGAN SOUVENIR
GLASS,

CUSTARD - RED FLASHED - CHINA
OPAQUE WHITE - AND ANY OTHERS.

WRITE MURRAY'S ANTIQUES
15431 No. 20TH STREET
OR PHOENIX, ARIZONA 85022
CALL: 602-992-2178

On behalf of the National Imperial Glass Collectors Society Inc., let me congratulate you and the Club for your great achievement. I had hoped all along this would be a reality. I'm sure it will be quite a "HOME COMING," for the moulds. Again, congratulations and I know you'll enjoy and savor the excitement of it all.

John Cimini
President
National Imperial Glass
Collectors Society, Inc.



Happy Birthday

JAMIE VAN WINKLE

LOVE,

MOTHER
AND
GRANDMA

FLEA MARKET ON THE SQUARE
NEWARK, OHIO

TWO WEEKENDS:

SATURDAY, JUNE 15 AND SUNDAY, JUNE 16

SATURDAY, JUNE 22 AND SUNDAY, JUNE 23

DEALERS WANTED

SPONSORED BY H.C.A.

P.O. BOX 27

NEWARK, OH 43055

- * PATTON HOUSE ANTIQUES PH: 703-967-1181
- * P. O. BOX 547 AFTER 6 P.M.
- * LOUISA, VA 23093 P & I EXTRA
- * VERLYS THISTLES BOWL (Signed).....\$50.00
- * #1540 LARIAT Ash Trays (2) ea..... 11.50
- * # 300 PEERLESS Toothpick..... 40.00
- * # 99 CANDLESTICKS*...Pair..... 30.00
- * #1951 CABACHON Wines* (4) ea..... 18.50
- * #1483 STANHOPE Ice Teas (2) ea..... 18.50
- * #1483 STANHOPE Juices (2) ea..... 18.50
- * # 433 GREEK KEY Ice Tub*..... 75.00
- * #1615 FLAME Candlestick (1)..... 50.00





P.O. BOX 52572
TULSA, OK 74142

PH: 918-585-3203
Mint, Ea. Except Noted
UPS \$3 - \$10 Maximum

*Marked

* THE COLLECTOR'S STOP PH: 305-793-0986
* 12018 SUELLEN CIRCLE EXC. COND. OTHERWISE
* WEST PALM BEACH, FL 33414 NOTED - S & I EXTRA
* SUBJECT TO PRIOR SALE *MARKED

EXOTICS AND ADVANCED COLLECTORS ITEMS:

- #1487 COLEPORT Dawn 9 oz. Tumblers (4)*.....\$ 27.00
- #1170 PLEAT & PANEL, Flamingo Cruet O/S..... 77.50
- #1170 PLEAT & PANEL Cup/Saucer*, Flamingo.... 15.00
- #1170 PLEAT & PANEL Cov'd. Sugar*, Flamingo.. 46.00
- #1205/1206 (Comb.) Flip Bowl*, Flamingo 12½".. 87.00
- #1237 SANDWICH Star, Moongleam 8" Plate..... 150.00
- #1295 BEAD SWAG Crm/Cov.Sugar, Opal, Corn-
flower Decor - Some Wear..... 170.00
- #1401 EMPRESS 3-Pt. Pitcher*, D/F, Flamingo.. 115.00
- #1401 EMPRESS Floral Bowl*, Mglm. 11", D/F... 92.00
- #1401 EMPRESS Vase* Alexandrite 9", D/F..... 450.00
- #1401 EMPRESS Handled Plate*, Sahara 12"..... 60.00
- #1404 OLD SANDWICH Mug*, 18 oz., Sahara..... 195.00
- #1404 OLD SANDWICH Oval Crm/Sug*, Sahara..... 77.50
- #1404 OLD SANDWICH Plate*, 8", Moongleam.... 30.00
- #1428 WARWICK Cornucopia Bowl*, Cobalt, 11".. 340.00
- #1428 WARWICK Cornucopia Vase*, Cobalt, 9"... 230.00
- #1445 GRAPE Cluster 2-Lite C.Sticks, Scarce
frosted to Clear*....Pr..... 205.00
- #1485 SATURN Cruet, Original Stopper..... 57.00
- #1567 PLANTATION Cov.Butter, Pineapple
Finial*, 5" d..... 90.00
- #3381 CREOLE Cocktail Cl. Stem*, Alexandrite. 97.00
- #4026 DECANTER 16 oz., D/O, Moongleam..... 110.00
- #5036 ROOSTER STEM Cktl.,Frosted Stem (4).... 55.00
- #7037 TEMPLE Cruet, # Stopper..... 120.00

PRICES REDUCED ON THE FOLLOWING ITEMS:

- # 433 GRECIAN BORDER Ftd. Banana Split* (2).. 27.00
- # 433 GRECIAN BORDER 4½ oz. Custard Cup* (2). 29.50
- # 433 GRECIAN BORDER Ice Tub*..... 97.50
- #1401 EMPRESS Cry. D/F Cream/Sugar*...Set.... 36.50
- #1401 EMPRESS Cry. Ind. Creamer*..... 12.50
- #1401 EMPRESS, Mglm. Ind. Sugar..... 20.00
- #1401 EMPRESS Cry. D/F Creamer..... 24.00
- #1401 EMPRESS Cry. D/F Sug. Barcelona Cut*... 27.00
- #1405 IPSWICH Mglm. 8" Sq. Plate*..... 29.50
- #1425 VICTORIAN Goblet, 9 oz., H1 Ftd. (5)... 23.50
- #1425 VICTORIAN Wines (2)*..... 29.00
- #1425 VICTORIAN 5 oz. Custard (2)*..... 15.00
- #1425 VICTORIAN 12" Celery Tray*..... 36.50
- #1425 VICTORIAN 8" Plate..... 10.00
- #1540 LARIAT Small Compote, Footed..... 25.00
- #1540 LARIAT Hld. Std. Sugar*..... 11.00
- #1540 LARIAT Covd. Candy*..... 35.00
- #1540 LARIAT Oval Tray 9" x 15"*..... 37.50
- #1567 PLANTATION Tall Sherbet..... 20.00
- #1252 TWIST Ice Bucket, No Hdl.*, Moongleam.. 50.00
- #1252 TWIST 9" Bowl, Rolled Edge*, Flamingo.. 38.50
- #1252 TWIST Hld. Cheese*, D/O, 6", Marigold. 18.00
- #1469 RIDGELEIGH 12" Celery..... 29.00
- # 343 SUNBURST 5" Oval Nappy..... 26.00
- # 112 MERCURY C.Sticks - Pair..... 30.00
- # 406 COARSE RIB 8-1/2" Plates (5)..... 7.00
- # 980 MOONGLO CUT 7" Plates (6)*..... 10.50
- # 413 RENAISSANCE Etch 6" Plate..... 9.50

- * #1401 EMPRESS, Sahara 8" Rd. Plates* (8) ea..\$ 20.00
- * #1401 EMPRESS, Sahara 6" Rd. Plates* (8) ea.. 15.00
- * #1401 EMPRESS, Sahara 12" 2-Hldd Cake Plate*. 40.00
- * #1401 EMPRESS, Sahara After Dinner Cups &
Saucers* (7) ea..... 32.50
- * #1401 EMPRESS, Sahara 7½" Bowl, D/F*..... 50.00
- * #1401 EMPRESS, Sahara 11" D/F Floral Bowl.... 65.00
- * #1433 THUMBPRINT & PANEL C.Sticks, Sahara
and 11" Floral Bowl..... 150.00
- * #1401 EMPRESS Mustard Lid Spoon*, Flamingo... 85.00
- * #1401 EMPRESS D/F Cream & Sugar*, Sahara.... 75.00
- * #1252 TWIST Ice Tub*, Crystal..... 60.00
- * #1404 OLD SANDWICH Plates*, 8", Mglm. (8) ea. 30.00
- * #1404 OLD SANDWICH Plates*, 6", Mglm. (8) ea. 20.00
- * #1404 OLD SANDWICH Sherry Btl.,Sterling Strpr. 125.00
- * # 433 GREEK KEY Punch Bowl Stand*..... 35.00
- * MEDIUM ELEPHANT, Exc. Condition..... 175.00
- * STANDING DUCKLING 2-5/8"*..... 125.00
- * # 501 FLOWER BOX*, Flamingo - 8" x 3"..... 75.00
- * #1469 RIDGELEIGH Ind. Cream/Sugar Tray*..... 35.00
- * # 352 CRUSHED FRUIT Jar - 2-Quart..... 235.00



QUALITY HEISEY

PH: 614-366-6010

W. T. CLIFFORD
P.O. BOX 292
NEWARK, OH 43055

P & I EXTRA
*MARKED

SUBJECT TO PRIOR SALE

- * # 516 YEOMAN Diamond Optic 1 oz. Cologne,
Moongleam (Very Rare).....\$350.00
- * #1591 STORY BOOK MUG, Frosted Handle*..... 300.00
- * #1404 OLD SANDWICH 4 oz. Oyster Ckt*, Sahara 40.00
- * #1506 PROVINCIAL Nappy, Limelight*..... 40.00
- * # 52 INDIVIDUAL Salt-Pepper, Flamingo*.... 30.00
- * #1401 EMPRESS C.Sticks, D/F*..Pair..... 80.00
- * AMBER STANDING COLT..... 475.00
- * # 419 SUSSEX Goblet, Cobalt Bowl*..... 120.00
- * #1488 KOHINOOR Bridge Ashtray, Limelight*... 75.00
- * #1506 WHIRLPOOL Candy Jar, Limelight*..... 300.00
- * #1401 EMPRESS C.Sticks*,D/F, Flamingo..Pair. 200.00
- * COBALT STANDING PONY..... 750.00
- * #1225/109 PETTICOAT DOLPHIN Compote With Cut-
ting, Flamingo..... 150.00
- * #5072 ROSE Goblet, Rose Etch, Gold Filled... 85.00
- * #1184 YEOMAN Goblet, Unknown Yellow/Gold
Color*..... 50.00
- * #3411 MONTE CRISTO Goblet, W/Beautiful
Japanese Scene Cutting - Very Rare -.. 300.00
- * #1252 TWIST Wine, Flamingo*..... 30.00
- * #2401 OLD FASHION, Mermaid Etch..... 100.00
- * #5074 SEA HORSE STEM*- GOBLET - YES - GOBLET
Extremely Rare..... 450.00

IMPORTANT
ALL HEISEY AUCTION

TWO SESSIONS

FRI. APR. 26, 1985 - 5:30 P.M.

SAT. APR. 27, 1985 - 9:30 A.M.

APPLE TREE AUCTION CENTER

1616 W. CHURCH ST.

NEWARK, OHIO 43055



This sale features the largest collection of Orchid Etch ever offered -- 375 pieces including Cordials, Wines, Clarets, Dinner Plates, Cups & Saucers, and 75 accessory pieces. If you collect Orchid Etch, this sale should be a must for you. Also the best selection of "Little Things" ever, such as Toothpicks, Bar Glasses, Favor Vases, Almond Dishes, Smoking Items and Cordials. Lots of good color, about 50 animals including COBALT COLT, and good animal related items. We will sell 400 lots on Friday evening and over 600 items on Saturday. Don't miss this fast moving, fun sale.

PLEASE READ COMPLETE LIST, DOORS OPEN 1 HR. BEFORE EACH SALE.

Please note the following condition codes to better aid in your mail bidding:

f F - FLAKE	b B - BRUISE	r R - REPAIRED
c C - CRACK	m M - MOLD FLAW	x X - MAJOR DAMAGE

SAM SCHNAIDT and TIM HUGHES, AUCTIONEERS (614) 344 - 9449
 FRANK FRYE, MANAGER (614) 345 - 4001

- | | |
|--|--|
| 1. 355 QUATOR HOTEL CR. & SUG. ETCHED H, C
2. 1503 CRYSTOLITE IND. CR., SUG. & TRAY H
3. 1225 FLAIN BAND SPOONER, BRUISE
4. 1295 BEAD SWAG OPAL COV SUGAR FLORAL DEC WORN GOLD
5. 1295 BEAD SWAG OPAL COV BUTTER FLORAL DEC WORN GOLD
6. 1519 WAVERLY IND. CR. & SUG., H
7. 1469 RIDGELEIGH IND. DREAM, H
8. 1401 EMPRESS IND. SUGAR, H
9. 354 COLONIAL DOKING SUGAR
10. 506 OCTAGON CR. W/MNGLM HDL., H, f
11. 1020 HOTEL SUG., CUT, H
12. 150 POINTED OVAL & DIA. PT. SUGAR, NO LID, c
13. 319 RING BAND DUSTARD SUG., NO LID, ROSE DEC., H, c
14. 325 PILLOWS SUG., NO LID, H, ROUGHNESS
15. 1231 RIBBED OCTAGON MNGLM. HOTEL CR. & SUG., H
16. 1184 YEDMAN HAWTHORNE SUG. W/CRYSTAL LID, H
17. 352 FLAT PANEL 6 OZ. OIL, CUT, H, M, ROUGH STOPPER
18. 433 GREEK KEY 6 OZ. OIL, F ON STOPPER
19. 429 PLAIN PANEL 6 OZ. OIL, H, CUT
20. 394 NARROW FLUTE VIN. & OIL, SL. CLOUDY, STOPPER f
21. 353 MED. FLAT PANEL 6 OZ. OIL, H
22. 341 COLONIAL 6 OZ. OIL H
23. 1489 PURITAN OIL BOTTLE
24. 1205 FANCY LOOP 6 OZ OIL
25. 1201 FANDANG 6 OZ. OIL, WRONG STOPPER, CLOUDY
26. 300 PEEPLESS BITTERS BOTTLE, f
27. 1170 FLEAT & PANEL FLAM. 3 OZ. OIL, WRONG STOPPER | 28. 1405 IPSWICH OIL BOTTLE, NO STOPPER
29. 1228 MNGLM. 11 IN CELERY, SWIRL, ?
30. 1469 RIDGELEIGH 12 CELERY & OLIVE, H, f
31. 407 COARSE RIB FLAM. 12 IN CELERY, H
32. 1189 13 IN CELERY, STERLING OVERLAY, H
33. 351 COLONIAL 12 IN CELERY H
34. 1401 EMPRESS SAHARA 13 IN PICKLE & OLIVE TRAY, H, f
35. 500 VARIETY TRAY, CUT & MONO E A R, H
36. 1469 RIDGELEIGH STAR RELISH, H, F
37. 7000 SUNFLOWER, 3 PT. HDLD. RELISH, H
38. 360 MNGLM. ASH TRAY & MATCH STAND, H, M
39. 1401 EMPRESS ASH TRAY, CUT & MONO F E P, H
40. 1536 MILITARY CAP ASH TRAY
41. 1425 VICTORIAN IND. CIG. HOLDER & ASH TRAY, M
42. 437 ASH TRAY, GROUND BOTTOM, H
43. 356 ASH TRAY & MATCH STAND, H
44. 1184 YEDMAN COV. CIG. BOX
45. 1500 3 1/2 IN RD. ASH TRAY, H
46. 1489 PURITAN 2 1/2 IN DEEP ASH TRAY
47. 600 ASH TRAY & MATCH STAND, H
48. 436 ASH TRAY, H
49. 1489 PURITAN OBLONG ASH TRAY, DEEP, REP.
50. 1489 PURITAN 6 IN ASH TRAY, f
51. 442 FLAMINGO ASH TRAY
52. 442 FLAMINGO ASH TRAY
53. 359 FLAMINGO ASH TRAY & MATCH STAND
54. 1469 RIDGELEIGH SM COV. CIG. BOX, H |
|--|--|

PAID ADVERTISEMENT

55.	1469 RIDGELEIGH SQ. CIG. HOLDER, H	115.	150 OVAL IN DIA POINT 4 IN NAPPY H
56.	VERLYS SWALLOWS ASH TRAY	116.	1485 SATURN 5 IN NAPPY H
57.	VERLYS SWALLOWS COV. CIG. BOX	117.	1295 BEAD SWAG CUSTARD 4 IN NAPPY, DEC. & SOUV.
58.	VERLYS GREEK HORSE ASH TRAY	118.	352 FLAT PANEL 5 1/2 IN SHALLOW NAPPY 5 EA. H
59.	VERLYS GREEK HORSE ASH TRAY	119.	335 PRINCE OF WALES 4 1/2 IN NAPPY, WORN GOLD H, F
60.	VERLYS BLUE COV. BOX X	120.	316 PANELLED CANE 4 IN NAPPY H
61.	HOLDPHANE SPOON REST OR ASH TRAY	121.	1405 IPSWICH SAHARA 4 1/2 IN FINGER BOWL I.
62.	FOUR HORSEHEAD ASH TRAY	122.	1280 WINGED SCROLL 4 IN NAPPY
63.	3 FTD. GRAPEFRUIT CENTER, 28 EA.	123.	1201 FANDANGO FINGER BOWL f
64.	300 PEERLESS 4 1/2 OZ HI FTD SHERBET SCALLOPED 2 EA H	124.	1495 FERN 5 IN HDL JELLY, f
65.	341 PURITAN 3 OZ SCALLOPED SHERBET, H	125.	1201 FANDANGO 10 IN NAPPY CUPPED
66.	359 COLONIAL 3 1/2 OZ FTD. SHERBET, 4 EA., H	126.	1220 PUNTY BAND 8 IN CRIMPED NAPPY H
67.	300 PEERLESS 4 1/2 OZ. CLARET 3 EA. H, 2 W. ENG. REG	127.	365 OLD QUEEN ANN 8 IN NAPPY H, F
68.	300 PEERLESS 3 1/2 OZ BURGUNDY 6 EA H	128.	1150 COL. 6 1/2 IN PLATE H
69.	300 PEERLESS 2 1/4 OZ WINE, 3 EA. H	129.	341 CCL 7 IN NAPPY H
69A.	300 PEERLESS 1 1/2 OZ WINE, 2 EA. H	130.	473 NARROW FLUTE W/RIM 6 IN BAKED APPLE H CUT
70.	341 PURITAN 6 OZ LOW SHERBET H	131.	341 1/2 PURITAN FINGER BOWL FLARED H
71.	341 PURITAN 5 OZ HI SHERBET, 8 EA. H	132.	1469 RIDGELEIGH MAYO H
72.	351 COLONIAL 4 OZ FTD. GRAPE JUICE GLASS, 5 EA. H	133.	1540 LARIAT 6 IN MAYO
73.	341 PURITAN 2 OZ. COCKTAIL 6 EA. H	134.	1485 SATURN 5 IN FTD. BOWL H
74.	1405 IPSWICH FTD. SODA 7 EA. H	135.	835-839 CONTINENTAL GOBLET, ETCHED
75.	393 12 OZ. FTD. & HDL. ICE TEA, CUT, 4 EA. H	136.	1506 PROVINCIAL GOBLET H
76.	429 PLAIN PANEL 4 OZ LO FTD. SHERBET, STR. 2 EA. H	137.	3360 PENN CHARTER HAWTHORNE GOBLET, CHECKER OPTIC, H
77.	LRG. MNGLM. FLOWER FROG	138.	411 TUDOR GOBLET H
78.	LRG. FLAMINGO FLOWER FROG	139.	413 TUDOR GOBLET H
79.	SM. FLAMINGO FLOWER FROG	140.	3362 CHARTER OAK FLAMINGO GOBLET H
80.	SM. CRYSTAL FLOWER FROG	141.	3362 CHARTER OAK FLAMINGO GOBLET H
81.	10 10 IN FLAMINGO FLORAL PLATEAU H	142.	3380 OLD DOMINION SAHARA GOBLET OLD COLONY ETCH
82.	1428 11 IN CORNUCOPIA FLORAL BOWL, RED STAIN H, f	143.	3389 DUQUEBNE GOBLET NORMANDIE ETCH
83.	501 8 X 3 IN FLOWER BOX, MNGLM. H	144.	1184 YEDMAN FLAMINGO GOBLET H
84.	1569 12 1/2 IN SHALLOW BOWL H	145.	801-804 BIGMARK GOBLET
85.	1509 QUEEN ANN D F ICE BUCKET, NO HDL.	146.	3408 JAMESTOWN GOBLET NEEDLE ETCH
86.	500 OCTAGON MNGLM. ICE BUCKET, H	147.	4044 NEW ERA GOBLET
87.	406 DCARGE RIB FLAMINGO 5 IN NAPPY H	148.	4052 NATIONAL GOBLET FRED HARVEY ETCH
88.	393 1/2 NARROW FLUTE 4 1/2 IN NAPPY 2 EA. H	149.	3335 LADY LEG GOBLET CUT H
89.	1295 BEAD SWAG OPAL 5 IN NAPPY IN METAL BASE	150.	1170 PLEAT & PANEL FLAMINGO GOBLET 3 EA
90.	400 COLONIAL 4 1/2 IN NAPPY H	151.	3390 CARCASSONNE SAHARA LG GOBLET, OLD COLONY ETCH H
91.	1252 TWIST 4 1/2 IN NAPPY H	152.	1252 TWIST MARIGOLD IND ALMOND H
92.	473 NARROW FLUTE W/RIM SQ NAPPY 6 EA. H	153.	1252 TWIST FLAMINGO IND ALMOND 2 EA. H, M
93.	337 TOURNAINE 4 IN NAPPY 2 EA. H	154.	393 NARROW FLUTE IND ALMOND 5 EA H
94.	473 NARROW FLUTE W/RIM 5 1/2 IN NAPPY H	155.	1183 REVERE COBALT SALT TUB, REP.
95.	1295 BEAD SWAG 4 1/2 IN NAPPY, LEANS, WORN GOLD	156.	1183 REVERE FLAMINGO SALT TUB, 2 EA.
96.	341 PURITAN 4 1/2 IN CRIMPED NAPPY H, f	157.	1183 REVERE CRYSTAL SALT TUB, 2 EA., CUT
97.	466 PANEL & DOUBLE PLEAT 4 1/2 IN NAPPY H	158.	393 NARROW FLUTE SALT TUB, H, F
98.	355 QUATOR 4 1/2 IN SQ NAPPY H, m	159.	1503 CRYSTOLITE IND SWAN NUT
99.	341 PURITAN 4 1/2 IN NAPPY H	160.	1121 OVAL IND SALT DIP, ?
100.	411 RIB & PANEL 4 1/2 IN NAPPY H	161.	1469 RIDGELEIGH IND SALT 4 EA. H
101.	1469 RIDGELEIGH 4 1/2 SCALLOPED NAPPY H	162.	1503 CRYSTOLITE IND LEAF NUT 2 EA.
102.	1250 GROOVE & SLASH 4 IN NAPPY	163.	31 TOY CANDLESTICK, PR. H, m
103.	1170 PLEAT & PANEL 4 IN CHOW CHOW	164.	1454 DIA POINT IND JELLY & ASH TRAY, H
104.	6 1/2 IN COLONIAL GRAPEFRUIT H	165.	1454 DIA POINT IND JELLY H
105.	369 HARTMAN 4 1/2 IN NAPPY WORN GOLD H	166.	1220 PUNTY BAND CUSTARD T PICK BEADED TOP DEC H X
106.	353 COL. FLAT PANEL 4 IN NAPPY	167.	1220 PUNTY BAND CUSTARD IND CR. GOLD DEC., SOUV. H
107.	397 COL. CUPPED SCALLOP 5 IN NAPPY H	168.	1220 PUNTY BAND IND CREAM, OLIVE STAIN, f
108.	379 URN 4 IN NAPPY H f	169.	393 NARROW FLUTE IND CR., H
109.	451 CROSS LINE FLUTE 4 IN NAPPY H & DTD.	170.	1401 EMPRESS DEMITASSE CUP H
110.	445 GROOVE & DIA. 4 1/2 IN NAPPY, 3 EA. H	171.	1404 OLD SAND. IND ASH TRAY 3 EA. H
111.	343 SUNBURST FINGER BOWL H	172.	1404 OLD SAND. COBALT IND ASH TRAY 2 EA. H, REP & f
112.	1469 RIDGELEIGH 5 IN NAPPY H	173.	1280 WING SCROLL COV TRINKET BOX SOUV RED STAIN F LID
113.	398 4 IN NAPPY, CUT, 2 EA. H	174.	1485 SATURN 8 OZ TUMBLER H, WORN
114.	325 PILLOWS 4 IN NAPPY H F	175.	1506 PROVINCIAL 8 OZ TUMBLER H; WORN

PAID ADVERTISEMENT

176.	1404 OLD SAND. TODDY H	237.	7 MAYONNAISE SPOON 2 EA.
177.	369 HARTMAN 12 OZ SODA N O, H	238.	1503 CRYSTOLITE 3 COR. HDL JELLY, WEB BOTTOM
178.	2351 12 OZ SODA RENAISSANCE ETCH & 12 OZ SODA H	239.	1503 CRYSTOLITE 1000 ISLAND DRSG. BOWL H
179.	COLONIAL PANELLED TUMBLER, BLUE STAIN, H	240.	1503 CRYSTOLITE 6 IN OVAL PICKLE H
180.	8 OZ TUMBLER, 4 EA., LOOKS LIKE DOUBLE RIB & PANEL	241.	1503 CRYSTOLITE 7 IN SHELL PRALINE
181.	1235 BEADED PANEL & SUNBURST 8 OZ TUMBLER W/GOLD DEC	242.	1503 CRYSTOLITE 4 PART CLOVER LEAF RELISH
182.	1637 LODESTAR DAWN 6 OZ. COCKTAIL H	243.	1503 CRYSTOLITE 7 IN OVAL RELISH H f
183.	1506 PROVINCIAL FTD. JUICE 2 EA H, 1 X	244.	1503 CRYSTOLITE 7 IN OVAL RELISH H
184.	1485 SATURN 4 OZ JUICE H	245.	1503 CRYSTOLITE FTD. CHEESE
185.	1415 TWENTIETH CENTURY FTD. TUMBLER H	246.	1503 CRYSTOLITE FTD. COMFORT, FLARED H
186.	7000 SUNFLOWER TUMBLER H	247.	1503 CRYSTOLITE DEEP COMFORT, LIPPED EDGE H
187.	1487 COLEPORT DAWN TUMBLER H	248.	1503 CRYSTOLITE RD CIG. HOLDER H
188.	602 8 OZ TUMBLER AMBER H	249.	1503 CRYSTOLITE FTD. CIG. HOLDER H
189.	208 TUMBLER H	250.	1428 WARWICK 5 IN VASE WHIMSEY, H
190.	1295 BEAD SWAG OPAL TUMBLER, DAISY DEC., SOME GOLD	251.	1503 CRYSTOLITE COV. PUFF BOX H
191.	300 PEERLESS TUMBLER 6 EA. H	252.	1503 CRYSTOLITE FTD. CHEESE
192.	1183 REVERE SQ COV. HONEY DISH W/PLATE, M, f	253.	1503 CRYSTOLITE HDL 2 COMP DRSG BOWL
193.	472 NARROW FLUTE W/RIM 9 IN OVAL DISH, DEC., H, m	254.	COV. CANDY CONTAINER W/SPOON (LIKE CRYSTOLITE)
194.	1186 YEOMAN 12 IN TRAY, CUT H	255.	1503 CRYSTOLITE COV. CHERRY JAR W/LADLE H
195.	1185 YEOMAN 13 IN RD TRAY H	256.	1503 CRYSTOLITE 4 I/1 IN COV. CIG. BOX H
196.	393 NARROW FLUTE 10 IN SHALLOW NAPPY H PAT DTD	257.	1503 CRYSTOLITE 14 IN SAND. PLATE H
197.	353 MED FLAT PANEL CHEESE & CRACK SILVER DEC, H, WORN	258.	1503 CRYSTOLITE 6 IN FLARED VASE
198.	1170 PLEAT & PANEL 4 IN CHOW CHOW H	259.	1503 CRYSTOLITE 8 IN 3 COMP RELISH, DOUBLE H
199.	393 NARROW FLUTE 4 1/2 IN LEMON DISH, NO LID, H	260.	1503 CRYSTOLITE 4 1/2 COV. CIG. BOX H
200.	393 NARROW FLUTE 5 IN LEMON DISH CUT H, NO LID	261.	1503 CRYSTOLITE 3 IN SQ ASH TRAY, 11 EA., H, 3 X
201.	1183 REVERE 5 IN COV. LEMON DISH, WORN GOLD, H	262.	1503 CRYSTOLITE 3 IN SQ ASH TRAY 2 EA. H, 1 X
202.	1401 EMPRESS COV. LEMON DISH, CUT, IN METAL HOLDER, H	263.	1503 CRYSTOLITE 7 IN COV CANDY H, METAL LID X
203.	393 NARROW FLUTE 4 1/2 IN COV. LEMON DISH H	264.	1503 CRYSTOLITE 15 IN RD FLORAL BOWL H
204.	341 PURITAN COLD CREAM JAR H	265.	1503 CRYSTOLITE 3 LT CANDLES PR. W/VASE INSERTS
205.	16 COV. PUFF BOX H PAT DTD	266.	1503 CRYSTOLITE 1 LITE HURRICANE BLOCK H
206.	16 HAIR RECEIVER H PAT DTD	266A.	1503 CRYSTOLITE 1 LT. SQ. HURRICANE BLOCK
207.	5 PUFF BOX, NO LID, H	267.	1503 CRYSTOLITE 1 LT CANDLESTICK PR
208.	7013 THUMBPRINT & ANGLE PUFF BOX, METAL LID, H	268.	1504 REGENCY 2 LT CANDLESTICKS
209.	16 PUFF BOX, METAL LID, H	269.	1428 WARWICK 1 LT CANDLESTICKS PR. H
210.	1170 PLEAT & PANEL FLAMINGO 14 IN RD TRAY H	270.	142 CASCADE 3 LT CANDLESTICK
211.	1511 TOUJOURS 14 IN TORTE PLATE W/MINUET ETCH	271.	142 CASCADE CANDLESTICK, PR
212.	1401 EMP SAHARA 12 IN SQ 2 HDL SAND TRAY OLD COL ETCH H	272.	1513 3 LT CANDELABRA EPERGNE, INCOMP., X
213.	1229 OCTAGON FLAMINGO 12 IN MUFFIN TRAY	273.	1506 PROVINCIAL 1 LT CANDLEBLOCK
214.	1509 QUEEN ANN 12 IN RD HDL SAND TRAY, CRINOLINE ETCH	274.	1488 KOHINOOR 2 LT CANDEL W/BOBECH & HEISEY PRISMS
215.	1405 IPSWICH 8 IN PLATE H	275.	134 TRIDENT CANDLESTICKS PR
216.	1401 EMPRESS SAHARA 8 IN SQ PLATE, OLD COLONY ETCH H	276.	1513 3 LT CANDELABRUM/EPERGNE, BOBECH, PRISMS, NO VASE
217.	353 MED FLAT PANEL 10 IN TRAY H	277.	22 7 IN CANDLESTICKS, PR. H
218.	1184 YEOMAN 8 IN OYSTER COCK. PLATE, METAL RIM, H	278.	1509 QUEEN ANN HDL FTD 1 LT CANDLESTICKS PR.
219.	1150 6 IN PLATE H	279.	116 OAK LEAF FLAM 1 LT CANDLES PR, H, NOT ETCHED
220.	393 NARROW FLUTE 8 IN PLATE H	280.	112 MNGLM 1 LT CANDLESTICK, REP.
221.	1405 IPSWICH MNGLM 8 IN PLATE, NOT GROUND, H	281.	120 1 LT CANDLESTICK
222.	1509 QUEEN ANN RD 7 1/2 IN PLATE, CRINOLINE ETCH, 9 EA	282.	112 SAHARA 1 LT CANDLESTICK, PR
223.	407 COARSE RIB 6 1/2 IN PLATE 6 EA H	283.	1533 WAMPAM 1 LT CANDLESTICKS, PR H
224.	1238 BEEHIVE 8 IN PLATE m	284.	301 2 LT CANDELABRA CUTTING ON ALL PCS., PR.
225.	1238 BEEHIVE MNGLM 8 IN PLATE	285.	MISC. PRISMS, APPROX. 3 DOZ.
226.	1238 BEEHIVE FLAMINGO 8 IN PLATE	286.	14 IN COL PUNCH BOWL & BASE (NOT H) & 13 #341 CUPS H
227.	1252 TWIST MNGLM 4 1/2 IN PLATE 4 EA H	287.	1235 BEADED PANEL & SUNBURST PUNCH BOWL BASE ONLY H
228.	1184 YEOMAN SAHARA 8 IN PLATE D O, 8 EA	288.	335 PRINCE OF WALES 4 IN HGT, BASE ONLY, 3 IN DIAM TOP H
229.	433 GREEK KEY CHEESE & CRACKER H	289.	8 PUNCH LADLE, 2 EA., SELLING CHOICE
230.	393 NARROW FLUTE 10 IN OVAL TRAY H	290.	357 PRISON STRIPE PUNCH CUP H, f
231.	1185 YEOMAN 12 IN CELERY, WINDSOR CUT H	291.	1156 3 OZ PUNCH CUP 2 EA. H
232.	341 PURITAN 12 IN CELERY H	292.	1295 BEAD SWAG PUNCH CUP, GOLD DEC. 2 EA.
233.	1540 LARIAT 12 IN CELERY	293.	439 RAISED LOOP PUNCH CUP H
234.	1509 QUEEN ANN 11 IN OVAL 3 PART RELISH H	294.	1503 1/2 CRYSTOLITE CUP, 2 EA., H, 1 C
235.	1503 CRYSTOLITE COV. JAM JAR & SPOON H, SPOON REP.	295.	393 NARROW FLUTE HDL ORANGE JC CUP H
236.	1503 CRYSTOLITE 6 IN HDL JELLY H	296.	411 TUDOR PUNCH CUP 2 EA. H

PAID ADVERTISEMENT

- | | | | |
|------|---|------|--|
| 297. | 1201 FANDANGO PUNCH CUP | 357. | OHIO SESQUICENTENNIAL ASH TRAY |
| 298. | 150 BANDED FLUTE PUNCH CUP 2 EA., 1 H | 358. | 1590 ZODIAC ASH TRAY |
| 299. | 337 TOURAINE PUNCH CUP 4 EA. H, 1 PLAIN BOTTOM | 359. | 1469 RIDGELEIGH 2 1/2 IN SQ. ASH TRAY, H |
| 300. | 1201 FANDANGO PUNCH CUP, GOOD GOLD | 360. | 1469 RIDGELEIGH 2 IN RND ASH TRAYS, 2 EA 1 H |
| 301. | 305 PUNTY & DIA POINT PUNCH CUP | 361. | 1469 RIDGELEIGH SPADE ASH TRAY, 2 EA, 1 X |
| 302. | 393 NARROW FLUTE PUNCH CUP H | 362. | 1469 RIDGELEIGH CLUB ASH TRAY, H |
| 303. | 1 W O PUNCH CUP & 1 PLAIN PUNCH CUP, BOTH H | 363. | 1469 RIDGELEIGH 2 IN. RND ASH TRAY, 3 EA, H |
| 304. | 3 PUNCH CUPS, 300, 339 & COL., ALL H | 364. | 1469 RIDGELEIGH 3 1/2 IN COV. CIGARETTE BOX, H f |
| 305. | LOT 6 PUNCH CUPS, 3 PURITAN H & 3 NON HEISEY | 365. | 1469 RIDGELEIGH SQ. CIGARETTE HOLDER |
| 306. | 407 COARSE RIB & 1506 PROVINCIAL PUNCH CUPS, BOTH H | 366. | 1498 2 3/4 IN. SQ. ASH TRAY, H |
| 307. | 339 CONTINENTAL PUNCH CUP, 10 EA. H | 367. | 358 FLAMINGO ASH TRAY |
| 308. | HORSE HEAD BOOKEND, f | 368. | 1425 VICTORIAN CIG. HOLDER/ASH TRAY MONO HCP, H |
| 309. | HORSE HEAD BOOKEND | 369. | 1506 PROVINCIAL 2 IN. ASH TRAY |
| 310. | RINGNECK PHEASANT | 370. | 1540 LARIAT ASH TRAY |
| 311. | RINGNECK PHEASANT | 371. | 1184 YEOMAN MGLM 5 IN. BOW TIE MINT |
| 312. | GIRAFFE, HEAD BACK | 372. | YELLOW MAYO LADLE, PROB. NOT HEISEY |
| 313. | DONKEY ON BUST OFF, FROSTED, X TAIL | 373. | PINK MAYO LADLE, PROB. NOT HEISEY |
| 314. | ROOSTER VASE, FROSTED | 374. | 352 FLAT PANEL KNIFE REST, HH |
| 315. | MIDDLE ELEPHANT m | 375. | CRYSTAL MUDDLER |
| 316. | STANDING COLT, ROUGH SEAM | 376. | WHIMSEY KNIFE REST FROM SYMPHONE STEM |
| 317. | RABBIT PAPERWEIGHT H | 377. | GLASS DOOR KNOB |
| 318. | 3404 SPANISH SAUCER CHAMPAGNE, PAIRPOINT CUTTING | 378. | PAIR GLASS DOOR KNOBS WITH HARDWARE, PROB. HEISEY, f |
| 319. | 3389 DUBUESNE SAHARA SAUCER CHAMPAGNE | 379. | 2 SALAD FORK, UNFINISHED |
| 320. | 3366 TROJAN FLAMINGO SAUCER CHAMP. TROJAN ETCH | 380. | MUSEUM DEDICATION PAPERWEIGHT |
| 321. | 3366 TROJAN HAWTHORNE SAUCER CHAMP., H | 381. | 31 TOY CANDLEHOLDER, PAIR, 1 H |
| 322. | 393 NARROW FLUTE 3 OZ COCKTAIL H | 382. | 393 NARROW FLUTE 4 IN. PLATE, H |
| 323. | 5010 SYMPHONE SAUCER CHAMP. DANISH PRINCESS CUT | 383. | 1540 LARIAT COASTER |
| 324. | 3380 OLD DOMINION SAHARA SAUCER CHAMP. | 384. | 1540 LARIAT COASTER, 5 EA, 2f |
| 325. | 3362 CHARTER OAK MGLM. SAUCER CHAMP. H | 385. | RIDGELEIGH TYPE COASTER, 5 EA, 1 X |
| 326. | 3390 CARCASSONNE COBALT SAUCER CHAMP. | 386. | 10 OAK LEAF MGLM COASTER |
| 327. | 150 BANDED FLUTE SAUCER CHAMP. H | 387. | 1469 RIDGELEIGH SAHARA COASTER, f |
| 328. | 451 CROSS LINE FLUTE SAUCER CHAMP. H | 388. | 1186 YEOMAN ASH TRAY, CUT, m |
| 329. | 3362 CHARTER OAK FLAMINGO SAUCER CHAMP., 2 EA. H | 389. | 1186 YEOMAN ASH TRAY, MONOGRAM BWL, CUT |
| 330. | 1425 VICTORIAN 5 OZ SAUCER CHAMP. | 390. | 1186 YEOMAN ASH TRAY, CUT |
| 331. | 3390 CARCASSONNE SAHARA SAUCER CHAMP. H | 391. | 1469 RIDGELEIGH 2 1/2 IN. SQ. ASH TRAYS, 2 EA., H f |
| 332. | 3390 CARCASSONNE SAHARA SHERBET 3 EA. H | 392. | 1533 WAMPUM ASH TRAY, X H |
| 333. | 1306 COMET LEAF SAUCER CHAMP. 2 EA. H | 393. | LOT 1469 SUB/CIG BOX BOTTOM/P CUP/LINER, ALL H |
| 334. | 5079 PAN AMERICAN SHERBET H | 394. | 1224 LINER, 3 EA, H |
| 335. | 3362 CHARTER OAK SHERBET H | 395. | 2 COLONIAL PLATES, 6 IN. CUT H, & 4 IN. H |
| 336. | 1243 4 OZ SHERBET N O, H | 396. | 393 NARROW FLUTE DIVIDED RELISH, NO LID H f |
| 337. | 1405 IPSWICH SHERBET 2 EA. | 397. | MISC LOT 5 NAPPIES, ALL H |
| 338. | 1485 SATURN SHERBET & 5072 ROSE STEM SHERBET | 398. | MISC LOT 3 PLATES, 1 COASTER, ALL H |
| 339. | 1506 PROVINCIAL SHERBET 8 EA. | 399. | MISC LOT 3 PIECES |
| 340. | 14 FTD. ICE TEAS, 6 O, 2 X, NOT HEISEY | 400. | 3 HOLOPHANE LIGHT SHADES, 2 SMALL, 1 LARGE |
| 341. | 1401 EMPRESS CONDIMENT TRAY, 3 EA. | | |
| 342. | 1401 EMPRESS 8 IN SQ PLATES 8 EA., H | | End of FRIDAY session |
| 343. | 1401 EMPRESS 6 IN SQ PLATE 8 EA. H | | |
| 344. | 1509 QUEEN ANN 8 IN RD PLATE 12 EA. | | Beginning of SATURDAY session |
| 345. | 1401 EMPRESS 4 1/2 IN RD PLATE 4 EA. H | 401. | 1428 WARWICK 5 IN VASE, H |
| 346. | 1401 EMPRESS 4 1/2 IN NAPPIES 8 EA. H | 402. | 1428 WARWICK 7 IN VASE |
| 347. | 1509 QUEEN ANN 5 1/2 IN D F MINT | 403. | 1428 WARWICK 7 IN VASE, H |
| 348. | 1401 EMPRESS 7 IN OVAL BOWL H | 404. | 1428 WARWICK 9 IN VASE, H |
| 349. | 1401 EMPRESS 10 IN D F FLORAL BOWL | 405. | 1518 CUT MITRE VASE, 2 EA., CUT |
| 350. | 1519 WAVERLY TALL COV. CANDY, SEAHORSE HDLS., H | 406. | 2 PLAID 15 IN CHRYSANTHEMUM VASE, H, f |
| 351. | 1185 6 IN. COVERED FTD BOWL, WINDSOR CUT, H | 407. | 1252 TWIST FLAMINGO 9 IN FOOTED VASE, H, X |
| 352. | 1503 CRYSTOLITE 7 IN RND CANDY W/METAL LID & FINIAL H | 408. | 1485 SATURN 8 1/2 IN FLARED VASE, H |
| 353. | 1521 QUILT COVERED CANDY, H | 409. | 2 SWEET PEA VASE, 8 IN, H |
| 354. | 1504 REGENCY 7 IN. CANDY, NO LID | 410. | 1469 RIDGELEIGH 5 IN FLARED CANDLE VASE, H |
| 355. | 1252 1/2 TWIST FLAMINGO MINT & COVER, H | 411. | 1540 LARIAT 7 1/2 IN CRIMPED VASE, H |
| 356. | NEWARK SESQUICENTENNIAL ASH TRAY | 412. | 8 1/2 IN VASE, WINDSOR CUT, X |
| | | 413. | 1401 EMPRESS SAHARA DF 9 IN VASE, OLD COLONY ETCH, H |

PAID ADVERTISEMENT

414.	300 PEERLESS 10 IN VASE, H	473.	1401 EMPRESS SAHARA 3 PART ROUND RELISH, H
415.	305 PUNTY & DIAMOND POINT 8 IN VASE	474.	1401 EMPRESS 3 PART ROUND RELISH, POMPEI ETCH
416.	1255 PINEAPPLE & FAN 6 IN VASE	475.	1401 EMPRESS MOONGLEAM 3 PART ROUND RELISH
417.	1567 PLANTATION 5 1/2 IN VASE	476.	468 FLAMINGO 12 IN CELERY TRAY, CUT
418.	1201 FANDANGO CELERY VASE	477.	1189 CELERY TRAY, 9 IN, CUT, H
419.	400 COLONIAL INDIV CREAM & SUGAR, H	478.	1185 YEDMAN FLAMINGO 12 IN CELERY TRAY, CUT, H
420.	400 COLONIAL INDIVIDUAL CREAM & SUGAR, H, M	479.	1401 EMPRESS ALEXANDRITE 13 IN CELERY TRAY, H, f
421.	1503 CRYSTOLITE OVAL CREAM & SUGAR, H	480.	1401 EMPRESS MOONGLEAM 13 IN PICKLE & OLIVE TRAY, H
422.	1567 PLANTATION FTD CREAM & SUGAR	481.	1401 EMPRESS SAHARA 13 IN PICKLE & OLIVE TRAY, H
423.	1519 WAVERLY CREAM & SUGAR, NARCISSUS CUT, H	482.	1504 REGENCY 2 LIGHT CANDLE, PAIR
424.	407 COARSE RIB FLAMINGO COVERED SUGAR & CREAM, H	483.	1503 CRYSTOLITE 1 LT CANDLE, PR
425.	1469 RIDGELEIGH INDIV CREAM, SUGAR & TRAY, H, f	484.	1503 CRYSTOLITE 12 IN OVAL TRAY, H
426.	1503 CRYSTOLITE INDIV CREAM, SUGAR & TRAY, H	485.	1503 CRYSTOLITE INDIV CREAM, SUGAR & TRAY, H
427.	1540 LARIAT CREAM, SUGAR & TRAY, H	486.	1503 CRYSTOLITE OVAL CREAM & SUGAR, H
428.	1540 LARIAT CREAM, SUGAR & TRAY, H	487.	1503 CRYSTOLITE 5 IN NAPPY, H
429.	342 PANELLED COLONIAL SPOONER, H, Rough Edges	488.	1503 CRYSTOLITE 7 IN 2 HDL BON BON, H, f
430.	1255 PINEAPPLE & FAN EMERALD SPOONER, Shows Wear	489.	1503 CRYSTOLITE 5 IN HIGH FT JELLY, H
431.	1225 PLAIN BAND SPOONER	490.	1503 CRYSTOLITE 6 IN HANDLED JELLY & 1 PUNCH CUP, H
432.	1280 WINGED SCROLL CUSTARD SPOONER, No Gold, F	491.	1503 CRYSTOLITE 6 IN 2 HDL JELLY, H
433.	1540 LARIAT SUGAR, H & 1183 REVERE CREAMER, CUT, H, f	492.	1503 CRYSTOLITE 4 1/2 IN COVERED CIGARETTE BOX, H
434.	1225 PLAIN BAND COVERED BUTTER, WRONG TOP	493.	1503 CRYSTOLITE 3 SQUARE ASH TRAYS
435.	1540 LARIAT CONDIMENT TRAY	494.	1503 CRYSTOLITE OVAL CIGARETTE HOLDER
436.	1567 PLANTATION STICK BUTTER & COVER, IVY ETCH, H	495.	1503 CRYSTOLITE 4 1/2 IN SQUARE ASH TRAY, H
437.	1567 PLANTATION COVERED MARMALADE, H	496.	1503 CRYSTOLITE COASTER, 3 EA, 1 LOPSIDED
438.	1567 PLANTATION SYRUP JUG	497.	1503 CRYSTOLITE COVERED POWDER BOX, H
439.	362 SYRUP JUG, 7 OZ, WINDSOR CUT, H, X	498.	1503 CRYSTOLITE 7 IN ROUND COVERED CANDY, H
440.	393 NARROW FLUTE, 2 OZ OIL, H, F on stopper	499.	1503 CRYSTOLITE TUMBLER, 6 EA, H, Bottoms show wear
441.	1235 BEADED PANEL & SUNBURST 4 OZ OIL, CLOUDY	500.	1503 CRYSTOLITE 6 IN VASE
442.	4004 IMPROMPTU COCKTAIL	501.	1503 CRYSTOLITE 5 IN BREAKFAST PRESERVE
443.	3333 OLD GLORY COCKTAIL ETCHED, 5082 MID CENTURY COCTAIL H	502.	1503 CRYSTOLITE SHELL COVERED CANDY
444.	359 COLONIAL 3 OZ COLONIAL OPTIC COCKTAIL, H	503.	1503 CRYSTOLITE 6 IN FLARED VASE, H
445.	5072 OXFORD COCKTAIL ?, CUT	504.	1503 CRYSTOLITE 12 IN OVAL SHALLOW BOWL, H
446.	1483 STANHOPE COCKTAIL	505.	1503 CRYSTOLITE LARGE FLARED ROSE BOWL
447.	3350 WABASH COCKTAIL MNGLM STEM MAYFLOWER ETCH H	506.	1503 CRYSTOLITE ICE BUCKET, H
448.	5082 MID CENTURY SHERRY, H	507.	1503 CRYSTOLITE 7 IN ROUND PLATE, H
449.	1183 REVERE COCKTAIL, H	508.	1503 CRYSTOLITE 13 IN OVAL FLORAL BOWL, H
450.	4044 NEW ERA COCKTAIL, 3 EA, H	509.	1503 CRYSTOLITE 5 1/2 IN FOOTED CHEESE, H
451.	337 TOURAINE COCKTAIL, 3 EA, H	510.	1503 CRYSTOLITE 5 1/2 IN HIGH FOOTED JELLY, H
452.	1951 CABOCHON COCKTAIL, SOUTHWIND CUT	511.	1503 CRYSTOLITE 6 IN 2 HDL, 2 COMP JELLY, H
453.	5024 OXFORD CLARET, IVY ETCH, H	512.	1503 CRYSTOLITE 2 HDL 6 IN JELLY, H
454.	5085 AFRICAN TEMPO WINE, H	513.	1503 CRYSTOLITE 7 IN ROUND CANDY, NO LIDS, 2 EA H
455.	5085 AFRICAN-TEMPO WINE, H	514.	1503 CRYSTOLITE 9 IN 4 PART CLOVER LEAF RELISH, M
456.	3368 ALBEMARLE WINE, DO, IRRIDIZED GOLD, H	515.	1503 CRYSTOLITE COLOGNE W/DAUBER
457.	3368 ALBEMARLE WINE, DO, IRRIDIZED GOLD, H	516.	1503 CRYSTOLITE DECANTER, Slightly Cloudy
458.	4083 STANHOPE WINE	517.	1503 CRYSTOLITE 13 IN ROUND FLORAL BOWL, H
458A.	3397 GASCONY COBALT WINE	518.	1503 CRYSTOLITE POWDER BOX LID ONLY
459.	3389 DUQUESNE WINE	519.	1503 CRYSTOLITE 4 IN COASTER, 6 EA., H LABEL
460.	3333 OLD GLORY WINE, RENAISSANCE ETCH, H	520.	1425 VICTORIAN BAR, 6 EA. H
461.	300 PEERLESS WINE, ENGLISH REGISTRY MARK, H	521.	300 PEERLESS BAR GLASS H
462.	300 PEERLESS WINE, ENGLISH REGISTRY MARK, H	522.	300 1/2 PEERLESS BAR, H, f
463.	337 TOURAINE WINE, NARROW OPTIC, H	523.	300 PEERLESS BAR H
464.	4044 NEW ERA CLARET, MOND6 FJG, F	524.	3380 OLD DOMINION SAHARA BAR
465.	1404 OLD SANDWICH WINE, 2 EA, H	525.	2 BAR GL 393 NOT GRND & TALLY HO ETCH
466.	5024 OXFORD WINE, IVY ETCH, H	526.	4052 NATIONAL BAR W/MOONGLD CUT
467.	3408 JAMESTOWN WINE, BARCELONA CUT, H	527.	1404 OLD SAND. SAHARA BAR H
468.	1506 PROVINCIAL 4 PART DIVIDED RELISH TRAY, c,m	528.	1404 OLD SAND. SAHARA BAR H
469.	1495 FERN 6 1/22 IN DIVIDED RELISH	528A.	1404 OLD SAND. SAHARA BAR H
470.	1495 FERN 6 1/2 IN DIVIDED RELISH	529.	1485 SATURN TOOTHPICKS, 6 EA., 1 F
471.	1252 TWIST MOONGLEAM 13 IN PICKLE & OLIVE TRAY, H, f	530.	3405 ALIBI COCKTAIL W/CHICKEN CHASE ETCH, POSS. REP.
472.	1252 TWIST FLAMINGO 13 IN CELERY TRAY, H	531.	2351 BAR W/SKIER ETCH
		532.	2351 BAR W/FOX CHASE ETCH, H LABEL

PAID ADVERTISEMENT

533.	4054 CORONATION LRG. BAR	589.	335 PRINCE OF WALES PLUMES PUNCH CUP
534.	300 PEERLESS CORDIAL H	590.	1776 KALONYAL PUNCH CUP, H
535.	300 PEERLESS CORDIAL H	591.	350 PINWHEEL & FAN PUNCH CUP, H
536.	341 PURITAN CORDIAL H	592.	350 PINWHEEL & FAN PUNCH CUP, MOONGLEAM, H
537.	341 PURITAN CORDIAL H	593.	325 PILLOWS PUNCH CUP, H
538.	393 NARROW FLUTE CORDIAL H	594.	343 1/2 SUNBURST PUNCH CUP, 2 EA, H If
539.	393 NARROW FLUTE CORDIAL H	595.	1425 VICTORIAN PUNCH CUP, 2 EA, H
540.	1225 PLAIN BAND IND SALT, 2 EA., 1 f	596.	1567 PLANTATION PUNCH CUP, 18 EA, H, 7 f
541.	331 IND SALT, CUT TOP & BOTTOM, f	597.	341 PURITAN PUNCH CUP, 6 EA., H, 2 COL. CUPS ?
542.	1469 RIDGELEIGH IND. SALT, 4 EA. H	598.	1229 OCTAGON FLAMINGO 12 IN. HDLD. SANDWICH TRAY, H
543.	393 NARROW FLUTE IND SALT, 4 EA.,H	599.	1406 FLEUR DE LIS 8 IN. PLATE, 2 EA, H
544.	341 PURITAN IND SALT 2 EA GRND BOTTOM 1m	600.	1404 OLD SANDWICH 7 IN. SQ. PLATE, 2 EA., H
545.	16 SALT & PEPPER PR., H, SHOW WEAR, 1 SANITARY TOP	601.	1469 RIDGELEIGH 6 IN ROUND PLATE, H
546.	52 FLAMINGO IND SALT & PEPPER, CLOUDY, FLAM. GL. TOPS	602.	451 CROSS LINED FLUTE 6 IN. PLATE, H
547.	1469 RIDGELEIGH SALT & PEPPER, 1 CLOUDY	603.	1495 FERN 6 IN PLATE, CUT
548.	1519 WAVERLY SALT & PEPPER, H, 1 SL. CLOUDY	604.	1495 FERN BON BON
549.	1567 PLANTATION SALT & PEPPER, H	605.	1252 TWIST FLAMINGO 7 IN HDLD. PLATE, H
550.	1567 PLANTATION SALT & PEPPER, IVY ETCH H	606.	407 COARSE RIB 7 IN. PLATES, 12 EA., H, SOME m
551.	465 RECESSED PANEL 8 IN BASKET H & DTD.	607.	1252 TWIST MARIGOLD BON BON, H, SLIGHT CRAZING
552.	325 PILLOWS COV. CRACKER JAR, H	608.	1229 OCTAGON SAHARA BON BON, DO
553.	6 IN. RD. COV. CANDY, WAVERLY BOTTOM H, LARIAT TOP	609.	1485 SATURN HOSTESS HELPER, 5 PIECE, NO CLIPS
554.	1540 LARIAT 5 IN. COV. FTD. CHEESE	610.	1183 REVERE 2 HDLD 6 IN. MINT, CUT, H
555.	393 NARROW FLUTE COV. SUG. TO TABLE SET, H	611.	1401 EMPRESS MNGLM 8 IN D F SHALLOW BOWL H
556.	341 PURITAN COV. PICKLE JAR, H, GOLD DEC., f	612.	1405 IPSWICH 11 IN. FLORAL BOWL, H
557.	1/2 # COV. COLONIAL CANDY, WORN GOLD ?	613.	1202 11 IN. FLORAL BOWL & BASE, H
558.	456 RECESSED PANEL COV. CANDY, 1 #, ENAMEL DEC. H	614.	337 TOURAINE 8 IN. HIGH FTD. BOWL, H, SHOWS WEAR
558A.	1401 EMPRESS FLAM. COV. D F CANDY H	615.	1445 GRAPE CLUSTER OVAL FLORAL BOWL, H
559.	1519 WAVERLY TALL COV. CANDY W/HDLS., ELKS ETCH H	616.	1401 EMPRESS DOLPHIN FTD. FLORAL BOWL, OLD COLONY ETCH
560.	341 PURITAN COV. PICKLE JAR H	617.	7000 SUNFLOWER 12 IN. FLORAL BOWL, H
561.	150 POINTED OVAL & DIA PT W/WHIMSEY LID - ROSE STEM, LADLE	618.	341 OLD WILLIAMSBURG 9 IN. DEEP NAPPY, SHOWS WEAR, H
562.	393 NARROW FLUTE COV. MUSTARD H	619.	341 OLD WMSBRG 10 IN NAPPY CRIMPED H, SOME WEAR
562A.	1186 YEOMAN MNGLM. COV. PUFF BOX, WINDSOR CUT, H	620.	1503 CRYSTOLITE 3 IN. SQ. ASH TRAYS, 5 EA., H, 4X
563.	351 PRISCILLA COV. MUSTARD, H, f	621.	1503 CRYSTOLITE 3 IN. SQ. ASH TRAYS, 5 EA, H
564.	1112 DEEP FTD. SHERBET H	622.	1503 CRYSTOLITE 4 IN. COV. CIGARETTE BOX, ORIG. WRAP
565.	811 3/4 HOFFMAN HOUSE 17 OZ GOBLET H	623.	1533 WAMPUM 5 IN. COV. CIGARETTE BOX, REP.
566.	3390 CARCARSSONNE SAHARA FLAGON	624.	1508 CARD BOX, X
567.	351 PRICILLA 6 OZ FTD. ALE, 2 EA. H	625.	1469 RIDGELEIGH 3 1/2 IN. COV. CIGARETTE BOX, H
568.	1425 VICTORIAN 9 OZ GOBLET LOW, H	626.	1469 RIDGELEIGH SQ. CIGARETTE HOLDER
569.	3357 KING ARTHUR FLAMINGO 10 OZ LUNCHEON GOBLET H	627.	413 TUDOR MNGLM RND CIG BOX, H, W/CRYSTAL WHIMSEY LID,
570.	3350 WABASH GOBLET PIED PIPER ETCH H	628.	1489 PURITAN 8 IN. SQ. ASH TRAY
571.	3404 SPANISH GOBLET, SPECIAL CUT	629.	438 ASH TRAY, H, f
572.	3411 MONTE CRISTO GOBLET, NICELY CUT	630.	440 ASH TRAY, H
573.	3365 RAMSHORN GOBLET, ELABORATE CUTTING	631.	1184 CIGAR ASH TRAY, REP., WORN, H
574.	337 TOURAINE AMBER GOBLET H	632.	1632 SATELLITE ASH TRAY, H, NOT FINISHED, REP.
575.	3381 CREOLE ALEXANDRITE GOBLET	633.	437 ASH TRAY, H, REP.
576.	3380 OLD DOMINION SAHARA GOBLET H, f	634.	1612 BOTANICAL ASH TRAY, H, REP.
577.	3380 OLD ADMINION SAHARA GOBLET H	635.	1503 CRYSTOLITE 5 IN. ASH TRAY BOOK MATCH, H
578.	3380 OLD DOMINION TALL GOBLET, MNGLM BOWL, H, f	636.	1606 SQ. ASH TRAY, H
579.	1295 BEAD SWAG CUSTARD GOBLET SOUV.	637.	365 ASH TRAY, F
580.	3390 CARCARSSONNE SAHARA GOBELT H	638.	1485 SATURN 3 1/2 IN. ASH TRAY, H
581.	3390 CARCARSSONNE FTD ICE TEA, COBALT BOWL	639.	1183 CIGARETTE ASH TRAY, H
582.	BELL MADE FROM TYROLEAN CLARET	640.	1536 MILITARY CAP ASH TRAY
583.	365 OLD QUEEN ANN PUNCH BOWL & BASE H, GLASS LADLE	641.	1488 KOHINOOR ASH TRAY, H
584.	341 OLD WMSBRG PUNCH BOWL W/TALL BASE, 12 CUPS, ALL H	642.	1489 PURITAN 2 3/4 IN. SQ. ASH TRAY
585.	2 PUNCH CUPS, MOONGLO CUT, NOT HEISEY	643.	1506 PROVINCIAL 3 1/2 IN. SQ. ASH TRAY
586.	1105 PUNCH CUP, 2 EA., H & 1157 PUNCH CUP, H	644.	1503 CRYSTOLITE IND. LEAF NUT BISH
587.	315 PANELED CANE PUNCH CUP, H	645.	1533 WAMPUM 3 IN ASH TRAY, 3 EA. H
588.	343 SUNBURST PUNCH CUP, H		

PAID ADVERTISEMENT

ITEMS 646 THROUGH 754 ARE ALL ORCHID ETCH. ORCHID ETCH STEMS, CUPS AND SAUCERS, PLATES AND ASH TRAYS WILL BE SOLD BY THE PIECE AND THE BUYER MAY TAKE AS MANY AS THEY WISH. SOME STEAMWARE MAY HAVE RIM CHIPS OR BASE CHIPS, SOME PLATES MAY ALSO HAVE CHIPS. IN CASE YOU ARE MAIL BIDDING ON ORCHID, PLEASE STATE - NO CHIPS OR LEAVE TO THE DISCRETION OF THE AUCTIONEER.

- | | | | |
|------|---|------|---|
| 646. | 5025 TYROLEAN GOBLET, 5 EA, 14 H | 697. | 1509 QUEEN ANN 5 1/2 DF FTD. MINT |
| 647. | 5025 TYROLEAN GOBLET, 13 EA, 1 C | 698. | 1509 QUEEN ANN 5 1/2 IN. DF MINT, f 1 FOOT |
| 648. | 5025 TYROLEAN GOBLET, 11 EA. | 699. | 1509 QUEEN ANN 5 1/2 IN. DF MINT |
| 649. | 5025 TYROLEAN 10 OZ. LOW GOBLET, 8 EA. SOME H | 700. | 1509 QUEEN ANN 5 1/2 IN. DF MINT |
| 650. | 5025 TYROLEAN 10 OZ. LOW GOBLET, 17 EA. | 701. | 1509 QUEEN ANN FTD. HDLD. JELLY, H |
| 651. | 5025 TYROLEAN 10 OZ. LOW GOBLET, 9 EA. | 702. | 1509 QUEEN ANN FTD. HDLD. JELLY, f, H |
| 652. | 5025 TYROLEAN SAUCER CHAMPAGNE, 13 EA. | 703. | 1509 QUEEN ANN 7 IN. TRIPLEX RELISH |
| 653. | 5025 TYROLEAN CHAMPAGNE, 5 EA. | 704. | 1509 QUEEN ANN 7 IN. TRIPLEX RELISH |
| 654. | 5025 TYROLEAN SHERBET, 24 EA. | 705. | 1519 WAVERLY 9 IN. 4 COMP. ROUND RELISH, H |
| 655. | 5025 TYROLEAN 4 OZ OYSTER COCKTAIL | 706. | 1519 WAVERLY 11 IN. 3 COMP. RELISH, ■ |
| 656. | 5025 TYROLEAN 12 OZ FTD. ICE TEA, H | 707. | 1519 WAVERLY 11 IN. 3 COMP. RELISH, H |
| 657. | 5025 TYROLEAN COCKTAIL, 2 EA, H | 708. | 1519 WAVERLY 11 IN. 3 COMP. RELISH, ROUGH ENDS |
| 658. | 5025 TYROLEAN COCKTAIL, 12 EA., H | 709. | 1509 QUEEN ANN DF SAUCE OR FLOWER BOWL, H, ROUGH FEET |
| 659. | 5025 TYROLEAN 5 OZ. FTD. JUICE, 8 EA. | 710. | 1509 QUEEN ANN 7 IN. LILY BOWL |
| 660. | 5025 TYROLEAN 4 OZ. CLARET, 6 EA. | 711. | 1509 QUEEN ANN 7 IN. LILY BOWL |
| 661. | 5025 TYROLEAN WINE, 7 EA., H | 712. | 1509 QUEEN ANN 8 IN. NAPPY |
| 662. | 5025 TYROLEAN CORDIAL, 6 EA. | 713. | 1509 QUEEN ANN 9 IN. GARDENIA BOWL |
| 663. | 5025 TYROLEAN BELL, H | 714. | 1509 QUEEN ANN 9 IN. GARDENIA BOWL |
| 664. | 5022 GRACEFUL BELL FROM LOW GOBLET | 715. | 1519 WAVERLY 9 IN. GARDENIA BOWL |
| 665. | 1509 QUEEN ANN CUPS & SAUCERS, 8 SETS, H | 716. | 1519 WAVERLY 10 IN. SALAD BOWL |
| 666. | 1509 QUEEN ANN CUPS & SAUCERS, 14 SETS, H | 717. | 1519 WAVERLY 14 IN CENTER HDLD. SANDWICH PLATE |
| 667. | 1509 QUEEN ANN CUPS & SAUCERS, 13 SETS, H | 718. | 1509 QUEEN ANN 12 IN. SANDWICH, CENTER HDLD. |
| 668. | 1509 QUEEN ANN CUP, 1519 WAVERLY SAUCER, H | 719. | 1519 WAVERLY 14 IN. SANDWICH PLATE |
| 669. | 1509 QUEEN ANN SAUCERS, 6 EA., H | 720. | 3484 DONNA PITCHER |
| 670. | 1519 WAVERLY 10 1/2 IN. DINNER PLATE, 12 EA. | 721. | 1519 WAVERLY COVERED OVAL LEMON OR CANDY, H |
| 671. | 1519 WAVERLY 10 1/2 IN. DINNER PLATES, 12 EA. | 722. | 1519 WAVERLY 7 IN. OVAL NUT COMFORT |
| 672. | 1519 WAVERLY 8 IN. PLATE, 10 EA. | 723. | 1519 WAVERLY SQ. COVERED BUTTER |
| 673. | 1519 WAVERLY 8 IN. PLATE, 12 EA. | 724. | 1519 WAVERLY SQ. COVERED BUTTER |
| 674. | 1519 WAVERLY 7 IN. PLATE, 24 EA. | 725. | 1519 WAVERLY FTD. OVAL COMFORT, H |
| 675. | 1519 WAVERLY 7 IN. PLATE, 18 EA. | 726. | 1509 QUEEN ANN 7 IN. COMBINATION DRESSING BOWL, H |
| 676. | 4035 C16. HOLDER, ■ | 727. | 1509 QUEEN ANN 7 IN. COMBINATION DRESSING BOWL, H |
| 677. | 4035 C16. HOLDER | 728. | 5031 FRENCH DRESSING BOTTLE |
| 678. | 1435 3 IN. INDIV. ASH TRAY, 11 EA., 1 F | 729. | 1519 WAVERLY OIL |
| 679. | 1435 3 IN. INDIV. ASH TRAY, 6 EA., SOME ROUGHNESS | 730. | 1519 WAVERLY OIL |
| 680. | 1435 3 IN. INDIV. ASH TRAY | 731. | 1519 WAVERLY 13 IN. GARDENIA BOWL |
| 681. | 1519 WAVERLY INDIV. CREAM & SUGAR | 732. | 1519 WAVERLY SEAHORSE FTD. FLORAL BOWL, H |
| 682. | 1519 WAVERLY INDIV. CREAM & SUGAR, H | 733. | 1519 WAVERLY 11 IN. FTD. FLORAL BOWL, H |
| 683. | 1519 WAVERLY CREAM & SUGAR | 734. | 1519 WAVERLY 11 IN. FLORAL BOWL |
| 684. | 1519 WAVERLY CREAM & SUGAR, H | 735. | 1519 WAVERLY 12 IN. FLORAL BOWL |
| 685. | 1519 WAVERLY CREAM & SUGAR, H | 736. | 1509 QUEEN ANN 10 IN. CRIMPED BOWL |
| 686. | 1519 WAVERLY VIOLET VASE, H | 737. | 1509 QUEEN ANN 10 IN. CRIMPED BOWL |
| 687. | 1519 WAVERLY SALT & PEPPER | 738. | 1509 QUEEN ANN 10 IN. CRIMPED BOWL |
| 688. | 1519 WAVERLY 6 1/2 IN. FTD. JELLY, H, REP. | 739. | 1509 QUEEN ANN 10 IN. CRIMPED BOWL |
| 689. | 1519 WAVERLY 6 1/2 IN. FTD. JELLY, H | 740. | 1519 WAVERLY 12 IN. GARDENIA BOWL |
| 690. | 1519 WAVERLY FTD. MAYONNAISE & UNDERPLATE, H | 741. | 1519 WAVERLY 11 IN. DEEP FLORAL BOWL, CRIMPED |
| 691. | 1519 WAVERLY 7 IN. FTD. JELLY, H | 742. | 1509 QUEEN ANN 1 LT. CANDELABRA, COMPLETE, PR. |
| 692. | 1519 WAVERLY 7 IN. UNDERPLATE FOR MAYO | 743. | 112 1 LT. CANDLESTICKS, PAIR |
| 693. | 1509 QUEEN ANN 2 PC. FTD. CHEESE & 12 IN. TRAY | 744. | 142 CASCADE 3 LT. CANDLESTICKS, PAIR |
| 694. | 1447 ROCOCO (1509) FTD. CHEESE | 745. | 134 TRIDENT 2 LT. CANDLESTICKS, PR. |
| 695. | 1519 WAVERLY 6 1/2 IN. FTD. HONEY OR CHEESE | 746. | 4192 1/2 9 IN. VASE |
| 696. | 1519 WAVERLY 6 1/2 IN. FTD. HONEY OR CHEESE | 747. | 4198 8 1/2 IN. VASE, f |
| | | 748. | 1540 LARIAT ROUND VASE, CRIMPED, H |
| | | 749. | 1540 LARIAT ROUND VASE, CRIMPED, H |
| | | 750. | 1540 LARIAT ROUND VASE, CRIMPED |
| | | 751. | 1519 WAVERLY ICE TUB, H |
| | | 752. | 1509 QUEEN ANN DF ICE BUCKET WITH TONGS |
| | | 753. | 1519 WAVERLY TALL COV. CANDY, SEAHORSE HDLS, H |
| | | 754. | 1519 WAVERLY BOW TIE COV. CANDY, H |
| | | 755. | 4225 COBEL 1 QT COCKTAIL SHAKER SILVER BASE & TOP |
| | | 756. | 150 BANDED FLUTE TOOTHPICK H |
| | | 757. | 1220 PUNTY BAND T PICK SCALLOPED TOP RED STAIN SOUV |

PAID ADVERTISEMENT

758.	1220 PUNTY BAND TOOTHPICK, RED STAIN, f	815.	GOOSE WINGS HALF
759.	300 PEERLESS TOOTHPICK, H, SILVER DEC	815A.	GOOSE WING UP
760.	1280 WINGED SCROLL EMERALD MATCH HOLDER, f	815B.	GOOSE, WING DOWN
761.	1295 BEAD SWAG TOOTHPICK RED STAIN, SOUV.	816.	ROOSTER VASE
762.	300 PEERLESS TOOTHPICK H	816A.	ROOSTER VASE
763.	300 PEERLESS TOOTHPICK H, REP.	816B.	ROOSTER VASE
764.	1205 FANCY LOOP EMERALD TOOTHPICK, GOLD, SHOWS WEAR	817.	ROOSTER VASE XXX
765.	343 SUNBURST TOOTHPICK F	818.	LARGE ELEPHANT M
766.	335 PRINCE OF WALES TOOTHPICK, WORN RED STAIN, H, X	818A.	LARGE ELEPHANT, X
767.	310 RRING BAND CUSTARD TOOTHPICK	819.	MIDDLE ELEPHANT m
768.	310 RING BAND CUSTARD TOOTHPICK, SOUV.	820.	MIDDLE ELEPHANT, X TRUNK REGLUED
769.	310 RING BAND CUSTARD TOOTHPICK, "TAKE YOUR PICK"	821.	SMALL ELEPHANT
770.	1205 FANCY LOOP TOOTHPICK, X	821A.	SMALL ELEPHANT
771.	351 PRISCILLA TOOTHPICK, SILVER DEC., H, f	822.	RINGNECK PHEASANT
772.	1295 BEAD SWAG TOOTHPICK, VERY WORN	822A.	RINGNECK PHEASANT
773.	COLONIAL TOOTHPICK, SOUV., PROB. KRISTOL	822B.	RINGNECK PHEASANT
774.	1295 BEAD SWAG CUSTARD WINE, ROSE DEC., SOUV.	823.	RINGNECK PHEASANT, f, m
775.	1295 BEAD SWAG WINE, RED STAIN, SOUV. H	823A.	ASIATIC PHEASANT, H, f base
776.	1220 PUNTY BAND WINE, RED STAIN SOUV. H	823B.	ASIATIC PHEASANT, H, f base
777.	3390 CARCASSONNE WINE, COBALT BOWL	824.	HORSEHEAD BOOKEND
778.	31 TOY CANDLESTICKS, PR. H	825.	HORSEHEAD BOOKEND
779.	31 TOY CANDLESTICKS, PR. H	826.	GIRAFFE, HEAD TURNED
780.	1201 FANDANGO IND CREAM	827.	GIRAFFE, HEAD TURNED
781.	300 PEERLESS IND CREAM H	828.	OSCAR PLUG HORSE, SPARKY, ROUGH EAR
782.	1200 CUT BLOCK CUSTARD HOTEL SUGAR, ROSE DEC, SOUV	828A.	SHOW HORSE, H, m
783.	1200 CUT BLOCK CUSTARD IND CR., ROSE DEC. SOUV.	828B.	COLT, KICKING x
784.	1225 PLAIN BAND COV. MUSTARD H	828C.	COLT, STANDING, COBALT
785.	351 PRISCILLA COV. MUSTARD H	829.	BUNNIE, HEAD UP f
786.	1255 PINEAPPLE & FAN SM. TANKARD, RED STAIN m	830.	BUNNIE, HEAD DOWN, f
787.	1200 CUT BLOCK SM. TANKARD, B P O E 1899	830A.	SOW, H, f base
788.	1255 PINEAPPLE & FAN CUSTARD SM. TANKARD, SOUV. M	831.	STANDING PIGLET
789.	1220 PUNTY BAND CUSTARD MUG, ROSE DEC. SOUV. H	832.	STANDING PIGLET
790.	1404 OLD SAND. SM. BEER MUG, H, REP.	832A.	PIGLET, SITTING, 3 EA., 1 M
791.	1404 OLD SAND. SAHARA LRG. BEER MUG H, f	832B.	PIGLET, STANDING, 3 EA.
792.	1404 OLD SAND. SAHARA LRG. BEER MUG H, TOP REP.	833.	3 CHICKS, 1 M
793.	1519 WAVERLY FTD. MAYO, HEISEY ROSE ETCH, H	833A.	CHICKS, 5 EA., 1 M
794.	1519 WAVERLY 6 1/2 IN FTD HONEY DISH HEISEY ROSE ETCH	834.	FISH MATCHHOLDER, ROUGH BASE
795.	1435 IND 3 IN ASH TRAY, HEISEY ROSE ETCH, 7 EA.	834A.	FISH BOOKEND
796.	1229 OCTAGON MNGLM FTD MAYO ETCHED BAND DEC	834B.	FISH BOOKEND
797.	1229 OCTAGON HAWTHORNE FTD MAYO	835.	STANDING WOOD DUCKLING, H, F
798.	1495 FERN DIV. MAYO	836.	HEN, H, XX
799.	1495 FERN DIV. MAYO	836A.	HEN
800.	1495 FERN DIV. MAYO	836B.	ROOSTER
801.	1183 REVERE 5 1/2 IN 2 PART MAYO H	837.	1503 CRYSTOLITE SWAN MASTER NUT
802.	1540 LARIAT FTD CHEESE	838.	1503 CRYSTOLITE SWAN MASTER NUT
803.	1447 ROCOCO FTD CHEESE, ROSALIE ETCH H	839.	1503 CRYSTOLITE SWAN INDIV. NUT, 9 EA., 2X
804.	353 MED FLAT PANEL 4 1/2 IN LOW FTD. COMFORT H, M	840.	5074 SEAHORSE 4 OZ COCKTAIL, SWIRL OPTIC, H
805.	393 NARROW FLUTE 5 1/2 IN LOW FTD. JELLY H	841.	5074 SEAHORSE 4 OZ COCKTAIL, SWIRL OPTIC, H
806.	1225 PLAIN BAND 5 IN FTD. JELLY	842.	5038 ROOSTER STEM COCKTAIL, 6 EA.
807.	300 PEERLESS 5 IN FTD. JELLY COMFORT, WORN GOLD	843.	5048 ROOSTER HEAD COCKTAIL
808.	1186 YEDMAN 5 IN FTD. COMFORT, ENAMEL & SILVER DEC. H	844.	WHIMSEY ROOSTER STOPPER PAPERWEIGHT
809.	353 MED FLAT PANEL 7 IN LOW FTD. COMFORT H	844A.	WHIMSEY HORSEHEAD PAPERWEIGHT, (FROM CIG. BOX)
810.	341 PURITAN 5 IN FTD. JELLY, H, m	845.	WHIMSEY ROOSTER HEAD MUSTARD LID
811.	1401 EMPRESS SAHARA 6 IN HDL JELLY, f	846.	GIRL'S HEAD STOPPER
812.	433 GREEK KEY 5 1/2 IN HDL JELLY H	847.	RAM'S HEAD STOPPER
813.	300 PEERLESS 6 IN HDL JELLY, H	848.	LARGE HORSEHEAD STOPPER, F BASE
814.	FIGHTING ROOSTER	849.	SMALL HORSEHEAD STOPPER
814A.	MALLARD DUCK, WING HALF, H	850.	ROOSTER HEAD STOPPER
814B.	MALLARD DUCK, WING UP	851.	SMALL HORSEHEAD STOPPER & COCKTAIL STRAINER
814C.	MALLARD DUCK, WING DOWN, H	852.	PENGUIN STOPPER

PAID ADVERTISEMENT

853.	GOOSE STOPPER, POOR GLASS	913.	1404 OLD SANDWICH IND. ASH TRAY, APPLE ETCH, H
854.	1489 PURITAN SMALL HORSE HEAD COV. CIG. BOX, REP.	914.	1404 OLD SANDWICH IND. ASH TRAY, 2 EA., H
855.	1489 PURITAN HORSE HEAD ASH TRAY, F	915.	4163 JUG, ADAMS CUT, XX
856.	6060 COUNTRY CLUB 1 QT. COCKTAIL SHAKER, ROOSTER STOPPER	916.	3335 LADY LEG GOBLET, ADAMS CUT, 6 EA., H, 5 f
857.	IMPERIAL CHILD'S MUG, ULTRA BLUE, 16	917.	351 PRISCILLA 2 QT. JUG, H, X HDL.
858.	IMPERIAL MILK GLASS CHICKS, 2 EA.	918.	393 NARROW FLUTE 2 QT. JUG, H
859.	IMPERIAL MILK GLASS HEN	919.	341 1/2 PURITAN 3 QT. SQUAT JUG, H
860.	IMPERIAL MILK GLASS ROOSTER	920.	341 PURITAN 3 PINT TANKARD, H
861.	IMPERIAL MILK GLASS SCOTTY, 16	921.	517 1 QT. PITCHER WITH 197 TUMBLER, H
862.	IMPERIAL MILK GLASS RABBIT PAPERWEIGHT	922.	1401 EMPRESS DF JUG, CRINOLINE ETCH, X HDL.
863.	IMPERIAL GREEN IRIDIZED MIDDLE ELEPHANT, LIG #694	923.	4163 PITCHER, WINDSOR CUT
864.	IMPERIAL GREEN IRIDIZED DONKEY, LIG, #393, F	924.	1401 EMPRESS DF ICE BUCKET, FISHERMAN ETCH, H
865.	IMPERIAL WILLIAMSBURG GOBLET, AZALEA, 7 EA.	925.	4002 AQ CALIENTE COCK., FISHERMAN ETCH, 5 EA. 4 F
866.	IMPERIAL WILLIAMSBURG SAUCER CHAMP, AZALEA 8 EA	926.	2401 OLD FASHION, TALLY HO ETCH, 4 EA.,
867.	IMPERIAL WILLIAMSBURG CLARET, AZALEA, 12 EA.	927.	5048 ROOSTER HEAD COCKTAIL, TALLY HO ETCH
868.	4225 COBEL 2 QT. SAHARA COCKTAIL SHAKER	928.	4002 AGUA CALIENTE COCKTAIL, FOX CHASE ETCH, REP. BASE
869.	1425 VICTORIAN RYE BOTTLE	929.	5091 CABOCHON 5 OZ JUICE, DEBUTANTE CUT
870.	4225 COBEL 1 PT. COCKTAIL SHAKER	930.	5057 SUEZ FTD. JUICE, MIDWEST CUT, H
871.	4036 1/2 1 PT. DECANTER, BARCELONA CUT	931.	4085 KOHINOOR 5 OZ JUICE
872.	3408 JAMESTOWN WINE, BARCELONA CUT, 6 EA., H	932.	1183 REVERE 5 OZ. FTD. GRAPE JUICE, N/O, H
873.	5010 SYMPHONY SAU. CHAMPAGNE, MINUET ETCH, 8 EA.	933.	3350 WABASH PARFAIT, H, 2 EA.
874.	1540 LARIAT GOBLET, MOONGLO CUT, 4 EA.	934.	3350 WABASH HAWTHORNE PARFAIT, CUT, H
875.	2351 SODA, RENAISSANCE ETCH, 5 EA.	935.	3390 CARCASSONNE 4 OZ CLARET, SAHARA
876.	3404 SPANISH GOBLET, COBALT BOWL	936.	4002 AGUA CALIENTE COCKTAIL, CHINTZ ETCH
877.	3404 SPANISH GOBLET, COBALT BOWL	937.	4055 PARK LANE FTD. JUICE, HEISEY CUT
878.	3404 SPANISH GOBLET, COBALT BOWL, 8 EA., CHOICE	937A.	3404 SPANISH COBALT OYSTER COCKTAIL
879.	3404 SPANISH SAU. CHAMPAGNE, COBALT BOWL, 4 EA.	937B.	FTD. JUICE N O, CUT
880.	1401 EMPRESS COBALT 8 IN. SQ. PLATES, 8 EA., H, CHOICE	937C.	FTD. OYSTER COCKTAIL CUT
881.	341 PURITAN SAUCER CHAMPAGNE, H	937D.	1184 YEOMAN OYSTER COCKTAIL, D O, 2 EA.
882.	349 COLONIAL SAUCER CHAMPAGNE, 5 EA., H	938.	1184 YEOMAN FLAMINGO COV. VEGETABLE DISH, D/O, m
883.	300 PEERLESS SHERBET, 7 EA., H	939.	472 NARROW FLUTE WITH RIM 7 IN. PICKLE, H
884.	300 PEERLESS 2 OZ COCKTAIL, 7 EA., H	940.	1252 TWIST FLAMINGO 7 IN. PICKLE, CUT, H
885.	3350 WABASH GOBLET, PIED PIPER ETCH, H, 12 EA.	941.	1252 TWIST MOONGLEAM 7 IN. PICKLE, H
886.	3350 WABASH SAU. CHAMPAGNES, PIED PIPER ETCH, H, 12 EA.	942.	1194 5 IN. MOONGLEAM RELISH, H
887.	3350 WABASH SHERBET, PIED PIPER ETCH, 12 EA., H	943.	393 NARROW FLUTE 6 IN. PICKLE, H, f
888.	2351 10 OZ. SODA, PIED PIPER ETCH, 6 EA.	944.	411 TUDOR 7 IN. PICKLE, H
889.	2351 8 OZ. SODA, PIED PIPER ETCH, 13 EA.	945.	4229 MOONGLEAM D/O FAVOR VASE
890.	2930 TUMBLER, PIED PIPER ETCH, 14 EA.	946.	4231 SAHARA D/O FAVOR VASE
891.	4182 8 IN. PLATE, PIED PIPER ETCH, 12 EA.	947.	4232 COBALT D/O FAVOR VASE
892.	1454 DIAMOND POINT ASH TRAY, 2 EA, H	948.	4231 COBALT D/O FAVOR VASE
893.	1454 DIAMOND POINT IND. MARMALADE, 5 EA., H	949.	4227 COBALT D/O FAVOR VASE
894.	1469 RIDGELEIGH SAHARA ROUND CIG HOLDER	950.	4229 COBALT D/O FAVOR VASE
895.	1469 RIDGELEIGH SAHARA 2 1/2 IN SQ ASH TRAY 2 EA H	951.	4228 COBALT D/O FAVOR VASE
896.	1503 CRYSTOLITE CIG. LIGHTER FOR NON-SMOKER	952.	4230 COBALT D/O FAVOR VASE
897.	1469 RIDGELEIGH 2 1/2 IN. RND. ASH TRAY, H, 2 EA.	953.	1252 TWIST FLAMINGO FTD. ALMOND
898.	1489 PURITAN CLUB, HEART, SPADE ASH TRAYS, CHOICE	954.	1252 TWIST FLAMINGO FTD. ALMOND
899.	1469 RIDGELEIGH CARD SUIT ASH TRAYS, COMPLETE, 4 EA. H	955.	1540 LARIAT 4 IN. NUT, 2 EA.
900.	363 FLAMINGO ASH TRAY	956.	1252 TWIST MOONGLEAM NUT DISH, H
901.	1571 LEAF IND. NUT	957.	1252 TWIST MOONGLEAM NUT DISH, H
902.	1571 LEAF IND. NUT	958.	1252 TWIST NUT DISH, H
903.	1286 CUPID & PSYCHE FLAMINGO ASH TRAY	959.	1229 OCTAGON MOONGLEAM INDIV. NUT, 4 EA., H
904.	1286 CUPID & PSYCHE ASH TRAY	960.	1229 OCTAGON FLAMINGO INDIV. NUT, 6 EA., H
905.	1286 CUPID & PSYCHE ASH TRAY	961.	1229 OCTAGON FLAMINGO INDIV. NUT, 5 EA., H
906.	1186 YEOMAN MOONGLEAM ASH TRAY	962.	473 NARROW FLUTE WITH RIM FLAMINGO NUT, H
907.	1386 IRISH SETTER FLAMINGO ASH TRAY, m	963.	473 NARROW FLUTE WITH RIM INDIV. NUT, 6 EA., H
908.	1386 IRISH SETTER FLAMINGO ASH TRAY	964.	1401 EMPRESS SAHARA DF INDIV NUT, 6 EA.
909.	1404 OLD SANDWICH IND. ASH TRAY, COBALT, H	965.	1401 EMPRESS DF INDIV NUT
910.	1404 OLD SANDWICH IND. ASH TRAY, SAHARA, H	966.	353 MEDIUM FLAT PANEL INDIV. ALMOND
911.	1404 OLD SANDWICH IND. ASH TRAY, MOONGLEAM, H	967.	393 NARROW FLUTE FLAMINGO INDIV. NUT, H
912.	1404 OLD SANDWICH IND. ASH TRAY, FLAMINGO, H		

PAID ADVERTISEMENT

- 968. 393 NARROW FLUTE MOONGLEAM INDIV. NUT
- 969. 393 NARROW FLUTE MOONGLEAM INDIV. NUT, 6 EA., H
- 970. 393 NARROW FLUTE INDIV. NUT, 2 EA., 1 H
- 971. 393 NARROW FLUTE INDIV. NUT, 6 EA. H
- 972. 1428 WARWICK 7 IN. VASE, PAIR, POOR GLASS
- 973. 1540 LARIAT FAN VASE
- 974. 1540 LARIAT FAN VASE
- 975. 1469 RIDGELEIGH VIOLET VASE, H
- 976. 1469 RIDGELEIGH 6 IN. JELLY, 6 EA., H
- 977. 1469 RIDGELEIGH 6 IN. 2 COMP. JELLY
- 978. 1469 RIDGELEIGH 5 IN. LEMON & COVER, H
- 979. 1469 RIDGELEIGH 5 IN. NAPPY, 12 EA., H
- 980. 1469 RIDGELEIGH 4 1/2 IN. NAPPY WITH METAL HANDLE, H
- 981. 1469 RIDGELEIGH MAYONNAISE, H
- 982. 1403 DOWAGER FTD. GRAPEFRUIT, H
- 983. 1540 LARIAT 8 IN. CRIMPED BON BON, ENAMEL FLOWERS
- 984. 1540 LARIAT 7 1/2 IN FLAT BOWL, SILVER OVERLAY
- 985. 473 NARROW FLUTE W/RIM FLAM. 6 IN 2 HDL CHEESE DISH H
- 986. APPLE HDL JELLY
- 987. 1165 2 PC. CRIMPED OYSTER COCKTAIL, N/O, H
- 988. 1170 PLEAT & PANEL 5 IN. 2 HDL BOUILLON, CUT
- 989. 341 OLD WILLIAMSBURG 6 IN. NAPPY, H, SHOWS WEAR
- 990. 341 OLD WILLIAMSBURG 6 IN. NAPPY, H, NOT FINISHED
- 991. 341 OLD WILLIAMSBURG 5 IN. SHALLOW NAPPY, 8 EA., H
- 992. 350 DOL 6 1/2 IN GRAPEFRUIT PLATE 6 EA H CUT RIM
- 993. 342 OLD WYBERG SUGAR NO LID H, 343 SPONGER H
- 994. 335 PRINCE OF WALES SUGAR, NO LID, H, WORN GOLD
- 995. 1486 DULFORD 7 OZ OLD FASHION, 6 EA., H
- 996. 1435 3 IN. 60. ASH TRAY, 2 EA.
- 997. 485 COLOGNE, NO STOPPER, WINDSOR CUT, H, f
- 998. MISC. LOT 3 PIECES COLONIAL, H
- 999. 2 PIECES: COLONIAL NAPPY & PUNCH CUP, H
- 1000. COLONIAL MARMALADE WITH LADLE, WINDSOR CUT, LID X, H
- 1001. COLONIAL BUTTER BASE, RIDGELEIGH CTS BOTTOM, BOTH H
- 1002. ROUND BOBECHE, f
- 1003. FAKE TOOTHPICK, MARKED AM HEISEY & CO, 1896
- 1004. HEISEY MAGAZINE ADS MOUNTED ON BOARD
- 1005. 1205 FANCY LOOP 8 IN VASE

ADDITIONS TO LIST:

- 481A. 1428 WARWICK 9" Vase, Cobalt H
- 481B. 1428 WARWICK 9" Vase, Cobalt H
- 539A. 5013 SHASTA Cordial, Geo. IV, Gray Cutting
- 539B. 4091 KIMBERLY Cordial, Virginia Cut, Gr. Fl.
- 816C. ROOSTER VASE - m
- 834C. FISH BOOKEND
- 834D. FISH BOOKEND
- 834E. TROPICAL FISH Piece on bust-off H, f
- 834F. FISH Bowl H, m

NATIONAL CAMBRIDGE COLLECTORS

FLEA MARKET

SATURDAY, JUNE 29th

6 A.M. to 5 P.M.

DEALERS MUST REMAIN SET UP UNTIL 2 P.M.

GUERNSEY COUNTY FAIRGROUNDS

OLD WASHINGTON, OHIO

(one mile East of I-70. Exit #186. on Old U.S. 40)

DEALER SPACE AVAILABLE

For information or Contract write:

Larry Hughes, Chrm.,

P.O. Box 416, Cambridge, OH 43725

MAIL BID INSTRUCTIONS

Mail bids accepted with checks for maximum amount. Mail bids are handled competitively and any difference refunded. Condition of items for mail bids handled at the discretion of auctioneer. In some cases where damage is found to be minimal, we may execute your bid up to 70% to 80% of maximum. Please add \$9.00 per carton for postage and handling, \$11.00 west of Rocky Mountains. Checks should be made to: APPLE TREE AUCTION CENTER
1616 WEST CHURCH STREET
NEWARK, OHIO 43055

LIST OF PRICES REALIZED AVAILABLE AFTER THE AUCTION FOR \$1.00.

BRING THIS LIST WITH YOU - THIS WILL BE A FAST PACED SALE.

PRICES REALIZED ALL-HEISEY BENEFIT AUCTION MARCH 8, 9, 1985

1.	\$ 20.00	69.	\$ 16.00	137.	\$ 60.00	205.	\$ 25.00	273.	\$ 32.50	341.	\$ 70.00	409.	\$ 35.00	477.	\$ 75.00	547.	\$ 400.00	617.	\$ 5.00	687.	\$ 7.00
2.	30.00	70.	20.00	138.	35.00	206.	30.00	274.	60.00	342.	82.50	410.	35.00	478.	17.50	548.	45.00	618.	49.00	688.	14.00
3.	40.00	71.	4.00	139.	55.00	207.	NOT HEISEY	275.	70.00	343.	135.00	411.	60.00	479.	40.00	549.	22.50	619.	20.00	689.	6.00
4.	4.00	72.	22.50	140.	40.00	208.	17.50	276.	190.00	344.	15.00	412.	40.00	480.	80.00	550.	35.00	620.	10.00	690.	22.50
5.	4.00	73.	17.50	141.	22.50	209.	15.00	277.	56.00	345.	27.50	413.	17.50	481.	45.00	551.	22.50	621.	37.50	691.	10.00
6.	10.00	74.	15.00	142.	30.00	210.	66.00	278.	7.50	346.	150.00	414.	30.00	482.	67.50	552.	15.00	622.	45.00	692.	3.00
7.	14.50	75.	40.00	143.	240.00	211.	25.00	279.	50.00	347.	55.00	415.	30.00	483.	17.50	553.	40.00	623.	9.00	693.	2.00
8.	12.50	76.	24.00	144.	70.00	212.	30.00	280.	55.00	348.	70.00	416.	60.00	484.	80.00	554.	35.00	624.	36.00	694.	30.00
9.	7.00	77.	22.50	145.	180.00	213.	30.00	281.	210.00	349.	55.00	417.	30.00	485.	110.00	555.	62.50	625.	40.00	695.	40.00
10.	20.00	78.	30.00	146.	32.50	214.	65.00	282.	30.00	350.	100.00	418.	40.00	486.	22.50	556.	27.50	626.	45.00	696.	40.00
11.	9.00	79.	90.00	147.	40.00	215.	155.00	283.	62.50	351.	35.00	419.	12.50	487.	27.50	557.	30.00	627.	20.00	697.	27.50
12.	50.00	80.	70.00	148.	35.00	216.	30.00	284.	40.00	352.	22.50	420.	55.00	488.	100.00	558.	150.00	628.	30.00	698.	45.00
13.	22.50	81.	6.00	149.	75.00	217.	30.00	285.	65.00	353.	40.00	421.	15.00	489.	25.00	559.	75.00	629.	30.00	699.	45.00
14.	10.00	82.	45.00	150.	10.00	318.	40.00	286.	25.00	354.	42.00	422.	45.00	490.	80.00	560.	45.00	630.	25.00	700.	12.50
15.	15.00	83.	32.00	151.	37.50	219.	14.00	287.	75.00	355.	90.00	423.	40.00	491.	160.00	561.	50.00	631.	17.50	701.	35.00
16.	12.00	84.	28.00	152.	22.50	220.	40.00	288.	40.00	356.	17.50	424.	65.00	492.	65.00	562.	30.00	632.	22.50	702.	25.00
17.	40.00	85.	36.00	153.	50.00	221.	45.00	289.	100.00	357.	7.50	425.	50.00	493.	16.00	563.	16.00	633.	110.00	703.	45.00
18.	75.00	86.	130.00	154.	150.00	222.	30.00	290.	25.00	358.	10.00	426.	17.50	494.	10.00	564.	65.00	634.	20.00	704.	6.00
19.	90.00	87.	15.00	155.	60.00	223.	50.00	291.	12.00	359.	7.00	427.	15.00	495.	35.00	565.	30.00	635.	11.00	705.	10.00
20.	16.00	88.	36.00	156.	35.00	224.	30.00	292.	30.00	360.	30.00	428.	20.00	496.	12.50	566.	60.00	636.	40.00	706.	20.00
21.	52.00	89.	20.00	157.	15.00	225.	30.00	293.	30.00	361.	7.50	429.	25.00	497.	20.00	567.	32.50	637.	28.00	707.	10.00
22.	25.00	90.	26.00	158.	105.00	226.	12.50	294.	56.00	362.	22.50	430.	20.00	498.	12.50	568.	108.00	638.	44.00	708.	5.00
23.	20.00	91.	130.00	159.	35.00	227.	40.00	295.	200.00	363.	5.00	431.	20.00	499.	20.00	569.	25.00	639.	48.00	709.	16.00
24.	70.00	92.	15.00	160.	32.50	228.	17.50	296.	190.00	364.	35.00	432.	45.00	500.	75.00	570.	65.00	640.	30.00	710.	22.50
25.	40.00	93.	42.50	161.	95.00	229.	25.00	297.	140.00	365.	30.00	433.	80.00	501.	17.50	571.	150.00	641.	60.00	711.	30.00
26.	20.00	94.	25.00	162.	45.00	230.	50.00	298.	140.00	366.	40.00	434.	170.00	502.	32.50	572.	65.00	642.	27.00	712.	10.00
27.	33.00	95.	45.00	163.	20.00	231.	30.00	299.	50.00	367.	22.50	435.	90.00	503.	20.00	573.	50.00	643.	14.00	713.	7.50
28.	65.00	96.	17.50	164.	Broken	232.	40.00	300.	30.00	368.	175.00	436.	90.00	504.	30.00	574.	50.00	644.	16.00	714.	7.50
29.	80.00	97.	15.00	165.	50.00	233.	100.00	301.	35.00	369.	60.00	437.	80.00	505.	45.00	575.	105.00	645.	35.00	715.	15.00
30.	66.00	98.	20.00	166.	14.00	234.	55.00	302.	80.00	370.	25.00	438.	90.00	506.	20.00	576.	7.50	646.	58.00	716.	6.00
31.	45.00	99.	15.00	167.	25.00	235.	45.00	303.	40.00	371.	40.00	439.	40.00	507.	45.00	577.	35.00	647.	25.00	717.	17.50
32.	130.00	100.	5.00	168.	24.00	236.	80.00	304.	20.00	372.	35.00	440.	45.00	508.	45.00	578.	170.00	648.	35.00	718.	15.00
33.	45.00	101.	2.00	169.	10.00	237.	55.00	305.	25.00	373.	45.00	441.	15.00	509.	30.00	579.	170.00	649.	25.00	719.	45.00
34.	25.00	102.	5.00	170.	20.00	238.	40.00	306.	15.00	374.	60.00	442.	45.00	510.	60.00	580.	25.00	650.	170.00	720.	70.00
35.	30.00	103.	17.50	171.	10.00	239.	60.00	307.	7.50	375.	40.00	443.	130.00	511.	17.50	581.	45.00	651.	60.00	721.	35.00
36.	25.00	104.	27.50	172.	40.00	240.	35.00	308.	50.00	376.	60.00	444.	120.00	512.	20.00	582.	25.00	652.	60.00	722.	20.00
37.	30.00	105.	10.00	173.	65.00	241.	20.00	309.	190.00	377.	120.00	445.	60.00	513.	65.00	583.	25.00	653.	75.00	723.	24.00
38.	30.00	106.	50.00	174.	105.00	242.	12.50	310.	90.00	378.	175.00	446.	45.00	514.	35.00	584.	110.00	654.	80.00		
39.	40.00	107.	10.00	175.	42.50	243.	20.00	311.	40.00	379.	145.00	447.	48.00	515.	35.00	585.	25.00	655.	400.00		
40.	35.00	108.	12.50	176.	100.00	244.	70.00	312.	80.00	380.	65.00	448.	84.00	516.	25.00	586.	22.50	656.	140.00		
41.	17.50	109.	12.50	177.	36.00	245.	40.00	313.	55.00	381.	22.50	449.	40.00	517.	45.00	587.	22.50	657.	21.00		
42.	15.00	110.	65.00	178.	60.00	246.	22.50	314.	75.00	382.	80.00	450.	65.00	518.	35.00	588.	60.00	658.	36.00		
43.	10.00	111.	22.50	179.	55.00	247.	30.00	315.	65.00	383.	70.00	451.	90.00	519.	35.00	589.	90.00	659.	3.00		
44.	20.00	112.	35.00	180.	87.50	248.	50.00	316.	90.00	384.	45.00	452.	15.00	520.	17.50	590.	125.00	660.	45.00		
45.	15.00	113.	40.00	181.	30.00	249.	35.00	317.	35.00	385.	30.00	453.	21.00	521.	110.00	591.	110.00	661.	20.00		
46.	30.00	114.	25.00	182.	50.00	250.	20.00	318.	15.00	386.	50.00	454.	21.00	522.	45.00	592.	32.50	662.	12.00		
47.	60.00	115.	40.00	183.	7.00	251.	15.00	319.	15.00	387.	55.00	455.	45.00	523.	17.50	593.	35.00	663.	51.00		
48.	22.50	116.	15.00	184.	5.00	252.	15.00	320.	27.50	388.	120.00	456.	47.50	524.	35.00	594.	45.00	664.	16.00		
49.	130.00	117.	50.00	185.	150.00	253.	125.00	321.	90.00	389.	65.00	457.	40.00	525.	30.00	595.	30.00	665.	20.00		
50.	25.00	118.	50.00	186.	75.00	254.	8.00	322.	350.00	390.	120.00	458.	30.00	526.	55.00	596.	20.00	666.	50.00		
51.	17.50	119.	20.00	187.	22.50	255.	15.00	323.	120.00	391.	35.00	459.	160.00	527.	25.00	597.	80.00	667.	10.00		
52.	45.00	120.	40.00	188.	70.00	256.	80.00	324.	60.00	392.	40.00	460.	15.00	528.	25.00	598.	80.00	668.	50.00		
53.	50.00	121.	120.00	189.	35.00	257.	10.00	325.	275.00	393.	45.00	461.	20.00	529.	25.00	599.	22.50	669.	28.00		
54.	17.50	122.	110.00	190.	35.00	258.	15.00	326.	120.00	394.	15.00	462.	20.00	530.	50.00	600.	80.00	670.	60.00		
55.	60.00	123.	130.00	191.	40.00	259.	50.00	327.	220.00	395.	50.00	463.	25.00	531.	50.00	601.	50.00	671.	45.00		
56.	30.00	124.	15.00	192.	65.00	260.	45.00	328.	100.00	396.	65.00	464.	55.00	532.	17.50	602.	22.50	672.	37.50		
57.	30.00	125.	35.00	193.	100.00	261.	35.00	329.	220.00	397.	185.00	465.	90.00	533.	36.00	603.	75.00	673.	55.00		
58.	20.00	126.	27.50	194.	45.00	262.	20.00	330.	60.00	398.	80.00	466.	22.50	534.	45.00	604.	150.00	674.	40.00		
59.	36.00	127.	20.00	195.	10.00	263.	120.00	331.	160.00	399.	40.00	467.	52.50	535.	12.50	605.	110.00	675.	32.50		
60.	17.50	128.	60.00	196.	22.50	264.	16.00	332.	50.00	400.	135.00	468.	100.00	536.	25.00	606.	60.00	676.	200.00		
61.	60.00	129.	40.00	197.	10.00	265.	20.00	333.	55.00	401.	22.50	469.	35.00	537.	35.00	607.	65.00	677.	200.00		
62.	270.00	130.	45.00	198.	7.50	266.	60.00	334.	60.00	402.	35.00	470.	45.00	538.	20.00	608.	25.00	678.	22.50		

MAX. 5 LINES / 12 MONTHS / \$20.00

We assume no responsibility for errors in these ads after the first printing - Editor

For changes in ads during the year, please send \$2.00 per line.

DEALERS DIRECTORY

THE COLLECTOR
Heisey, Fostoria, Cambridge, Linens,
Lack & Primitives
Mary Weaver, 209 Cortex Rd., E.
(44th Ave., E.), Bradenton, FL 33505
Mon., Wed., Fri., 11-4
PH: (813) 729-2324 - Evenings

<p>A DOOR ANTIQUES Heisey My Specialty 4241 Bayard Road South Euclid, OH 44121 PH: (216) 381-3008</p>	<p>GERT'S GLASS Heisey & Duncan Gertrude & Russell Swetnam 1926 Saratoga Dr., Adelphi, MD 20783 PH: (301) 434-5113</p>	<p>MOSTLY HEISEY Rhoda Curley 16 Clayton Place Albany, NY 12209 By Appointment, PH: (518) 482-6272</p>
<p>ALL HEISEY AUCTION Consignments Welcome Apple Tree Auction Center 1616 W. Church, Newark, OH 43055 PH: (614) 344-9449</p>	<p>GLASS 'N' GLASS Virginia & Odell Johnson 6909 10th Avenue, W. Bradenton, FL 33529 PH: (813) 792-0604</p>	<p>MOUND BUILDERS ANTIQUES Heisey & Animals, General Antiques Irene Rauck 1138 Moundview, Newark, OH 43055 PH: (614) 344-6043</p>
<p>ANN'S GIFTS & ANTIQUES 105 W. Main St., Hebron, OH 43025 Intersection of Rts. 40 & 79 Next door to Daisy Queen Daily 10:30 to 5:30</p>	<p>GLASS WITH CLASS Lenore A Shelley, GGHC 1336 Lincoln Avenue San Jose, CA 95125 PH: (408) 286-8098</p>	<p>PATTON HOUSE Heisey & Duncan Miller Rocky's Mall, I-81 & US 11 Weyer's Cave, VA 24486 PH: (703) 967-1181</p>
<p>ANTIQUES - THE SHULTZES 206-208 East Main St. Newmanstown, PA 17073 15 Miles West of Reading, PA PH: (215) 589-2819</p>	<p>GREEN ACRES FARMS Antiques, Crystal Glass & Collectibles 2678 Hazelton-Etna Rd., SW (S.R. 310-N) Pataskala, OH 43062 Sat. or Sun. PM or call (614) 927-1882</p>	<p>R & L ANTIQUES - SAN FRANCISCO Shows only - always lots of Heisey Member of Golden Gate Heisey Club P.O. Box 3614, Daly City, CA 94015 PH: (415) 621-6693</p>
<p>AVERY'S QUALITY ANTIQUES Specializing in Heisey Shows or by Appointment 2112 First St., Jackson, MI 49203 PH: (517) 783-4075</p>	<p>H & R DIAMOND H Helen & Robert Rarey 1450 White Ash Dr. Columbus, OH 43204 PH: (614) 279-0390 after 5:30</p>	<p>RAMBLING LANE ANTIQUES Featuring Heisey & other fine glass Keith & Evelyn Hoover Rt. 4, Box 1005, Rhinelander, WI 54501 PH: (715) 282-5019</p>
<p>B & B HEISEY & COLLECTIBLES B. Whaley 300 International Dr. Pataskala, OH. 43062 By Appointment: PH: (614) 927-1557</p>	<p>CHARLOTTE'S GLASS REFLECTIONS Glass, China, Crystal Including Heisey 6816 14th St. W., Bradenton, FL 33507 PH: (813) 756-4143</p>	<p>RAY ZIEGLER 185 County Line Westerville, OH 43081 PH: (614) 891-9700</p>
<p>C.E. HIGGINS (S.F. Bay Area) Shows and Mail Order P.O. Box 2723 Menlo Park, CA 94025 PH: (415) 322-0192 Evenings</p>	<p>HARRALSON'S HAPPY HEISEY HUNTERS Ours & Others - Many Choice Items L SASE - New List - Jan. 1 - May 1 - Sept. 1 We accept consignments & buy collections. 1426 W. Highland, Springfield, MO 65807 PH: (417) 863-2449</p>	<p>SCHWAN'S ANTIQUES SHOPS & SHOWS 2980 John Tyler Hwy. Williamsburg, VA 23185 PH: (804) 229-7873</p>
<p>C & J ANTIQUES Cole & Jean Miesner Box 45, 72 Whig St. Newark Valley, NY 13811 PH: (607) 642-9906</p>	<p>HARRISON'S ANTIQUES Heisey, Cambridge, Duncan Shows, Mail, by Appointment 26 Johnston's Lane, Mercersburg, PA 17236 PH: (717) 328-2451</p>	<p>SUM OF LIFE Elaine & Frank Husted P.O. Box 102 Phoenixville, PA 19460 PH: (215) 935-2962</p>
<p>CHARLES & MILDRED FISHER Heisey, Degenhart, Imperial, Antiques, Collectibles, General Line 991 Idlewild, Newark, OH 43055 PH: (614) 522-5398</p>	<p>YOUR AD COULD BE HERE!</p>	<p>T & S ANTIQUES Specializing in Heisey Steve Roderick New Rochelle, NY 10805 PH: (914) 235-9632</p>
<p>DAVE'S ANTIQUES Specializing in Heisey Shows & Appointments Tampa, FL 33600 PH: (813) 876-0580</p>		<p>HEISEY PUBLICATIONS Heisey Books I-II-III-IV Newscaster Back Issues \$4.00 1977 thru 1984 Box 102, Plymouth, OH 44865</p>
<p>DIAMOND H PLUS Appointment or Mail Order George & Eileen Schamel Rt. 3, Box 419, Boonsboro, MD 21713 PH: (301) 432-6285</p>	<p>J. & R. COLLECTIBLES Shows, SASE, Mail Order list June & Ray Lukasko P.O. Box 1030, Newark, OH 43055 PH: (614) 344-9719</p>	<p>TRUDY MILLER ANTIQUES China & Crystal Matching Heisey a Specialty P.O. Box 740548, Dallas, TX 75374 PH: (214) 783-9920</p>
<p>ELLIZABETH BASSETT CASON 401 32nd St., W. Bradenton, FL 33505 Mail Order - List PH: (813) 748-0851</p>	<p>THE PURPLE PLACE Featuring Heisey & Other Fine Glass Martha & Harold Earp 1940 Suwanee, Ft. Myers, FL 33901 PH: (813) 936-1572 Anytime</p>	<p>WILLEY'S ANTIQUES & MUSEUM Specializing in Heisey 11110 Cannon Rd., Frazeyburg, OH 43822 16 miles east of Newark, OH PH: (614) 828-2557</p>
<p>FOREVER HEISEY Shows and Mail Order Janice Thran 1663 Londondale Pkwy., Newark, OH 43055 PH: (614) 344-5955</p>	<p>JUDY'S DIAMOND H ANTIQUES Specializing in Heisey - Buy & Sell Star Rt. 3, Box 2556 Lake Isabella, CA 93240 PH: (619) 378-2176 by Appointment</p>	<p>GOLDSBERRY'S ANTIQUES Heisey a Specialty Shows only - Buy & Sell Kalamazoo, MI 49000 PH: (616) 381-3013</p>
<p>DIE KUNST GALLERIES & ANTIQUES Specializing in Heisey Vel & Andy Andress Box 329, 725 Front Street Leavenworth, WA 98826 PH: (509) 548-7856</p>	<p>PEGGY'S ANTIQUES 2000 pcs. of Heisey in stock Ernie & Peggy Cox P.O. Box 367, Spavinaw, OK 74366 By Appointment or by Chance PH: (918) 589-2859</p>	<p>THE WOODEN SHOE Antiques & Collectibles - Buy & Sell Glass, Furniture, Estates Jim & Sheri Van Es, by Appointment 810 Elden, Herndon, VA 22070 PH: (703) 435-9045</p>

MOTELS IN THE NEWARK AREA

<u>FACILITY</u>	<u>LOCATION</u>	<u># UNITS</u>	<u>RATES</u>
Buxton Inn 1812	313 E. Broadway Granville, OH 43023 (614) 587-0001	7	S - \$45.00 D - \$50 - \$55 \$5 Ea. Additional Person
Duke's Inn Motel	I-70 at St. Rt. 79 (Buckeye Lake Exit) P.O. Box 1206 Buckeye Lake, OH 43008 (614) 929-1015	95	S - \$21.95 + Tax D - \$26.50 3 - \$29.50 4 - \$32.50
Granville Inn	314 E. Broadway Granville, OH 43023 (614) 587-3333	27	S - \$44.00 D - \$49.00
Holiday Inn of America	733 Hebron Road Rt. 79, Heath, OH 43056 (614) 522-1165	21 7 Steams	S - \$36.00 + Tax D - \$43.00 \$7 Ea. Additional Person over 19 years K - \$43 - \$51
Howard Johnson's Motor Lodge	755 Hebron Road Rt. #79, Heath, OH 43056 (614) 522-3191 1-800-654-2000	72	S - \$38.00 D - \$50.00 \$8 Ea. Additional Person
Midtown Terrace Motel (Rooms available for June 22 & 23 only.)	Church & Seventh Streets Newark, OH 43055 (614) 345-9721	37	S - \$21.75 D - \$26.11
Star Lite Motel	Route 79, South 1342 Hebron Road Heath, OH 43056 (614) 522-3207	19	S - \$20 - \$22.89 D - \$26.16

ALL OTHER MOTELS/HOTELS FULL.

MOST MAJOR MOTELS CAN BE FOUND IN EAST COLUMBUS, WORTHINGTON,
REYNOLDSBURG AND ZANESVILLE - ALL WITHIN 30-35 MILES OF NEWARK.

1985 SOUVENIR OSCAR FORM

PLEASE READ VERY CAREFULLY BEFORE FILLING OUT

Oscars are Black, marked "HCA '85" and "IG." A limited edition of 1500 to be offered to members at \$21.00 until June 1st. None will be sold between that date and the first day of the Convention, June 20th., when they will be sold for \$24. If any are left. You may order ONE per member. This means ANY member who has a membership card regardless of class of membership. Please list all names as they WILL be checked. Everyone living in Ohio ordering for pick-up in Ohio, must

pay \$1.26 Sales Tax per Oscar. Shipping charges will be \$1.50. The Oscars will be shipped as soon as orders are received.

DO NOT SEND DUES, BOOK ORDERS, ETC. WITH YOUR OSCAR ORDER.

Please keep this part for a reference and clip and mail the form below the line. Be sure your dues are currently paid.

This is the 9th of a series of souvenir Oscars.

Number of OSCARS at \$21.00

Only one per member

Sales Tax \$1.26 each

All Ohio Residents and Pick-Ups in Newark

Postage \$1.50 each

Check one: Please mail my Oscar(s)
 I will pick up my Oscar(s) at
Convention or Museum after the
Convention. Circle One.

TOTAL SENT WITH ORDER.....

MAY PICK UP AT THE MUSEUM ANYTIME.

NO PHONE ORDERS

NAME(s) _____

LIST ALL NAMES _____

ADDRESS _____ CITY _____ STATE _____ ZIP _____

Make check payable to HCA, INC.
and mail to:

HCA OSCAR SALES
P.O. BOX 27
NEWARK, OH 43055

CREDIT CARD NUMBER

MASTER CARD _____

VISA EXPIRATION DATE REQUIRED Mo. _____ Year _____

ONLY 500 OSCARS LEFT ON MARCH 15, 1985



Geo. Duncan & Sons
Catalog of
Fine Flint Glassware
Circa 1890

This 79 page catalog reprint, reproduced in its original size, contains the patterns and early etchings and engravings in production shortly before the 1892 Pittsburgh, PA factory fire.

Major patterns illustrated show table sets and accessory pieces plus a variety of rose bowls, lamps, colognes, novelties, tumblers, barware and decanters.

9 x 12 size No PG yet.
\$7.50 plus \$1.50 Shipping and Handling
(MA Residents add 5% sales tax)
Canadian orders, U.S. funds, please
Dealer Inquiries Invited

Send orders to:
George A. Fogg
40 Gray Street
Boston, MA 02116



The GLASS REVIEW Magazine is for everyone who studies, collects or sells glass. Whether your glass interests lean toward the early 1900's — or the depression era — or with today's limited glass items, the GLASS REVIEW covers it all!

Articles — price reports — original catalog documentation — shop directory — research and reproduction news — trademark information — glass book releases — what's new on the market — a large variety of glass ads (on both old and new glass) — plus much more.

Enclose payment and mail to:
GLASS REVIEW,
P.O. BOX 542, MARIETTA, OH 45750

10 'big' yearly issues
68 pages or more
\$12.50 — one year

HEISEY'S GLASSWARE
OF DISTINCTION

By Mary Louise Burns

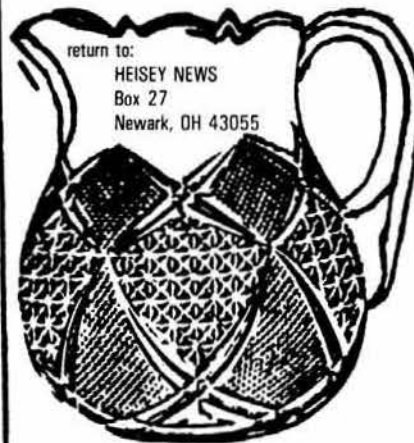
1983 EDITION

Condensed and updated! Contains all major tableware patterns with pictures for easy identification.

Current Price List Included
Order direct from author
\$11.95 pp
MARY LOUISE BURNS
P.O. Box 1931
Grants Pass, OR 97527



Individual price lists available for Heisey's Orchid Etch, Rose Etch, Animals and Verly's at \$1.50 each plus large SASE.



return to:
HEISEY NEWS
Box 27
Newark, OH 43055

FIRST CLASS MAIL
U.S. POSTAGE
PAID
PERMIT 741
Mt. Vernon, OH 43050

FIRST-CLASS MAIL