

# HEISEY news

OFFICIAL PUBLICATION HEISEY COLLECTORS OF AMERICA

©Heisey Collectors of America, Inc. 1985  
All Rights Reserved

VOLUME XIV

NO. 2

FEBRUARY, 1985

ISSN 0731-8014



502  
*Crinoline*  
*a new etching*  
*by*  
*Heisey*

1939 HEISEY CO. PATTERN FOLDER FOR #502 CRINOLINE ETCH  
(see page 3 for rest of folder)

President Tom Bredehoft 614-745-1014  
 Vice President George Schamel, III 301-432-6285  
 Secretary Ray Ziegler 614-471-6446  
 Treasurer Dick Marsh 614-366-5608  
 Exec. Dir. Louise Ream 614-345-2932

HEISEY NEWS - P.O. BOX 27, NEWARK, OH 43055

Editor: Louise Ream  
 P.O. Box 27, Newark, OH 43055  
 PH: 614-345-2932  
 Assistant Editor: Neila Bredehoft  
 P.O. Box 27, Newark, OH 43055  
 PH: 614-345-2932

Published monthly and mailed from Reynoldsburg, Ohio 43068.

\$15.00 per year - \$1.25 per copy

Back Issues - Each Volume (12 issues) year - \$9.00  
 Volume V, VI, VIII, IX, X, XI & XII Available

Heisey Collectors of America, Inc. is a non-profit corporation with tax exempt status. Owners and operators of National Heisey Glass Museum, 6th and Church Streets, Newark, Ohio. Open Daily 1 - 4 p.m. except Mondays & Holidays. Other hours by appointment. Members admitted free.

Club membership (includes 12 issues of HEISEY NEWS and participation in all club activities) \$15.00 per year plus \$2.50 for each additional family member in same household who wishes a membership card. For VOTING MEMBERSHIP, add \$25.00 one time only fee.

When requesting information, please enclose a self-addressed, stamped envelope (SASE).

ADVERTISING - Send all ads to:  
 Advertising  
 c/o Janice Thran  
 P.O. Box 27  
 Newark, OH 43055

**RATES:**

DEALERS' DIRECTORY - 5 lines - \$20.00  
 Extra Line - \$2.00 - Change during year \$2.00 per line.

CLASSIFIED - 12c/word - \$1.20 Minimum.  
 Abbreviations & initials count as words.

DISPLAY:	MEMBERS	NON-MEMBERS
1/8 pg (9 items)	\$15.00	\$25.00
1/4 pg (20 items)	24.00	35.00
1/2 pg (20 items)	40.00	50.00
1/2 pg (50 items) Vertical	50.00	60.00
1 pg (50 items)	65.00	80.00

Extra lines will be billed at \$1.00 per line.

We cannot double-column ads.

ALL ADS MUST BE PREPAID. Ad copy must be received by the 5th of the month to be included in that month's NEWS. Ads containing reproductions will not knowingly be accepted unless clearly stated (i.e. Heisey by Imperial, etc). HEISEY News assumes no responsibility for false advertising or misleading information. In the event of typographical error, the incorrect portion of the ad will be run in the following issue, but HEISEY NEWS assumes no further liability.

NOTES FROM YOUR PRESIDENT.....

As I write this, January 14th, we are awaiting acceptance of our offer to Consolidated-Colony for the entirety of the Heisey Moulds. By the time you read this, we probably will be moving 2000 to 5000 moulds out of Bellaire, Ohio.

If we are unable to raise the entire amount, instead of loosing our deposit, we will loose what Consolidated considers to be the most desirable of the moulds, the animals. They have valued these moulds at \$1500.00 each, or for 2.3% of the Heisey moulds, they are asking 38% of the total amount.

I have not written about this for the past two months, not out of secrecy, but from caution, not wanting to promise without being able to deliver.

I know there have been many questions, hopefully, they can now be answered. The disposal of the moulds will be a "stroll in the park" compared to the work that has gone into the past several weeks. The sound you hear in the background is a HUGE sigh of relief.

Thank you all for all your support.

Tom



Some of you may notice a few changes in the newsletter this month. Just as the copy was being prepared for this issue, Louise fell in Uhlman's Department Store downtown and broke her left arm on January 12th. She is doing well, but we are encouraging her to take a little time off and not venture out in the cold with the snow-covered streets we are having at this time. Fortunately, it was not necessary for her to have a cast applied, but her arm is in a sling.

All of this leads to the fact that for this month, we are assembling the newsletter. Extra typing was done by Liz Stickle and faithful Merrell.

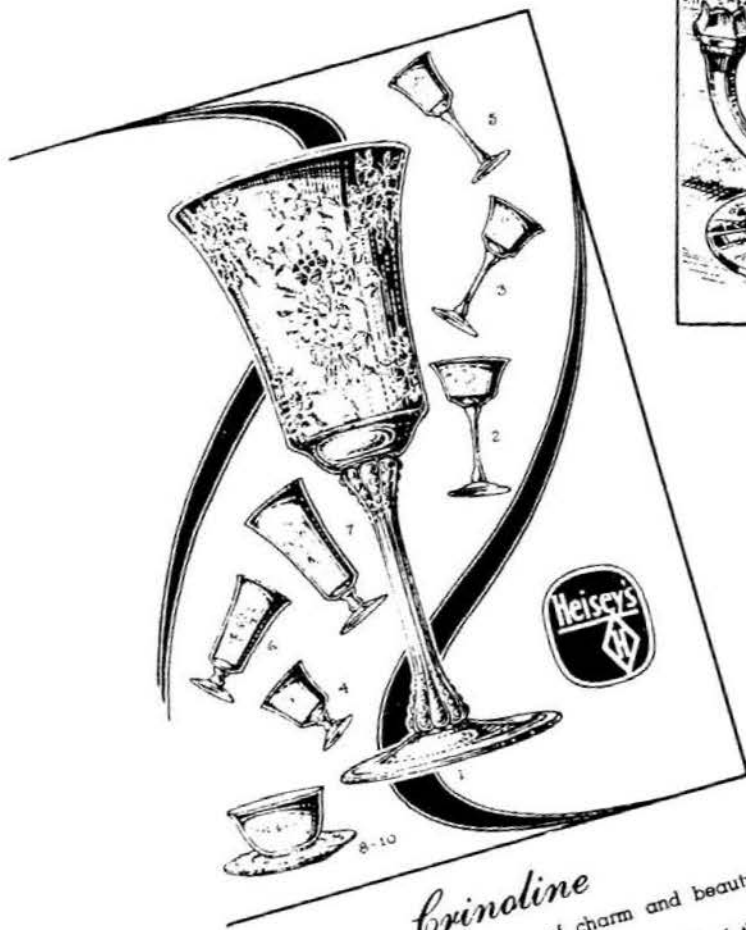
While this issue will lack Louise's touch, we hope you enjoy it. We wish Louise well and hope she will be back soon.

Jan Thran  
 Neila Bredehoft

p.s. If you remember, Louise broke her wrist last year on January 6th. Next year we are going to quarantine her for the month of January.....for her own good.



#502  
CRINOLINE ETCHING



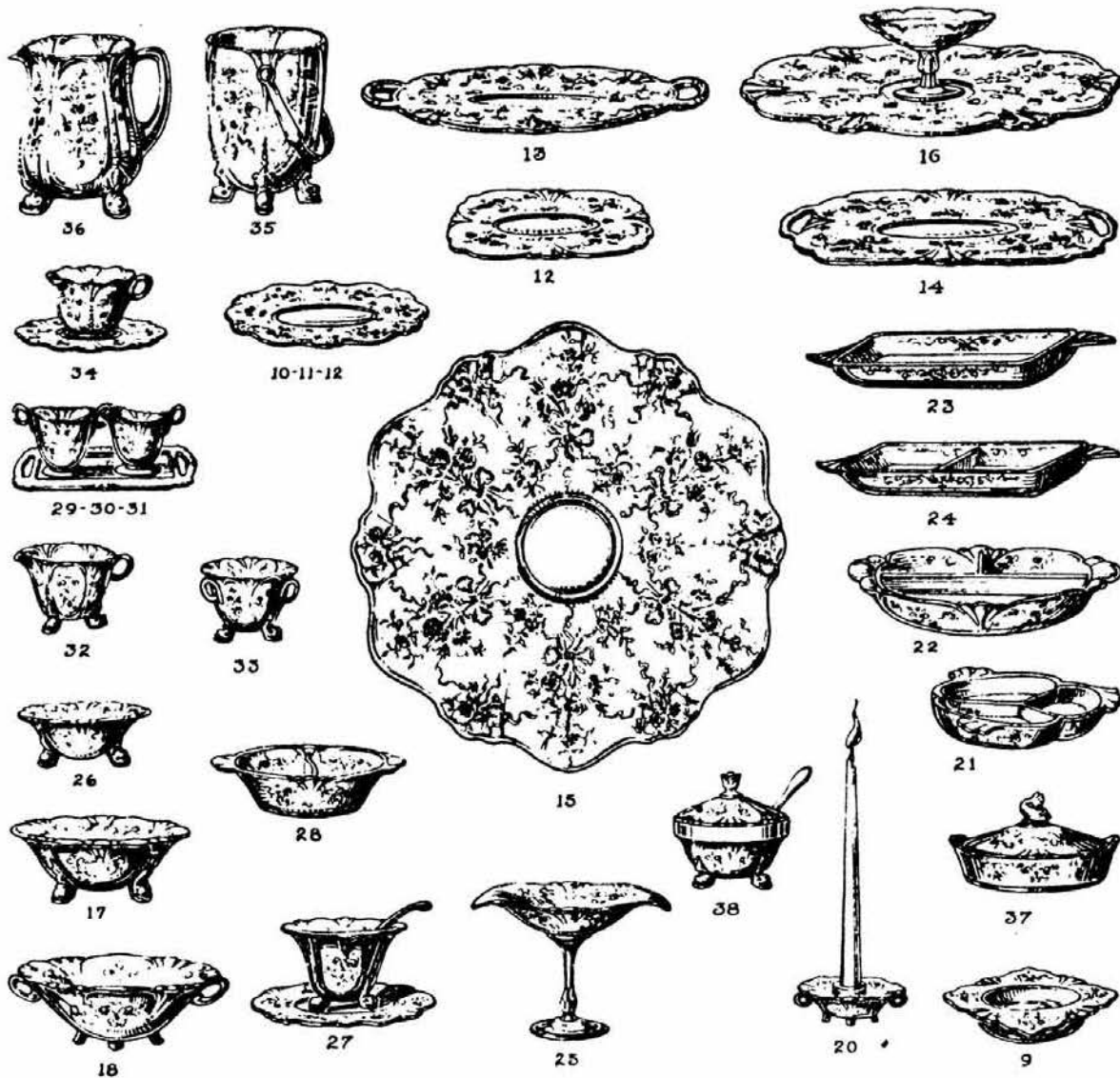
*Crinoline*

Crinoline!! What visions of charm and beauty it brings to our minds! This new pattern by HEISEY suggests all of the romance and gallantry of "Crinoline Days", but, paradoxically, it is as up-to-date as tomorrow. "Graceful as the minuet", is the goblet with its fluted stem, flaring bowl and dainty etched design that is carried through on many matching odd pieces.

This etching has been HEISEYIZED, a process that gives a new, silvery brilliance not found in the usual plate etching.

No. 502

1-5010-9 oz. Goblet M/O.....	\$12.00
2-5010-6 oz. S. Champ. M/O.....	12.00
3-5010-3½ oz. Cocktail M/O.....	11.40
4-5010-3½ oz. Oyster Cocktail M/O.....	11.40
5-5010-2½ oz. Wine M/O.....	11.40
6-5010-5 oz. Soda Fld. M/O (Orange Juice).....	11.40
7-5010-12 oz. Soda Fld. M/O (Ice Tea).....	12.00
8-5010-Finger Bowl M/O (3309).....	12.80
9-1509-6 in. Grape Fruit.....	13.80
10-1509-6 in. Plate Rd.....	9.00
11-1509-7 in. Plate Rd.....	12.00
12-1509-8 in. Plate Rd. or Sq.....	15.00
13-1509-12 in. Sandwich Plate 2 Hld. Rd.....	45.00
14-1509-13 in. Sandwich Plate 2 Hld. Sq.....	48.00
15-1509-15 in. Social Hour Tray (Torte Plate).....	40.00
16-1509-16 in. Snack Rack Plate & Center (1447).....	60.00
17-1509-7½ in. Sauce Bowl Fld. (Nappy).....	21.00
18-1509-8½ in. Floral Bowl Fld., 2 Hld.....	21.00
19-1509-11 in. Floral Bowl Fld., 2 Hld.....	33.00
20-1509-Candlestick Fld., 2 Hld.....	12.00
21-1509-Triplex Relish.....	24.00
22-1509-11 in. Five O'Clock Relish, 3 Comp.....	33.00



23—1509—13 in. Celery Tray .....	23.00
24—1509—13 in. Pickle & Olive .....	26.00
25—1509—7 in. Comport Oval.....	27.00
26—1509—6 in. Mint Ftd. ....	12.00
27—1509—5½ in. Mayonnaise Ftd. & 7 in. Plate & No. 7 Ladle.....	30.60
28—1509—Comb. Salad Dressing Bowl..	12.00
29—1509—Ind. Cream .....	7.80
30—1509—Ind. Sugar .....	7.80
31—1509—8 in. Sugar & Cream Tray, Ind. ....	14.40
32—1509—Cream Ftd. ....	13.20
33—1509—Sugar Ftd. ....	13.80
34—1509—Cup & Saucer.....	19.20
35—1509—Ice Cube Bucket & Sil. Pl. Hld.	36.00
36—3 pt. Jug Ftd. Stuck Hld. ....	39.00
37—1509—6½ in. Lemon Dish & Cover..	24.00
38—1509—Marmalade & Cover & No. 4 Spoon .....	20.10
39—1506—3 lt. Candlestick.....	33.00

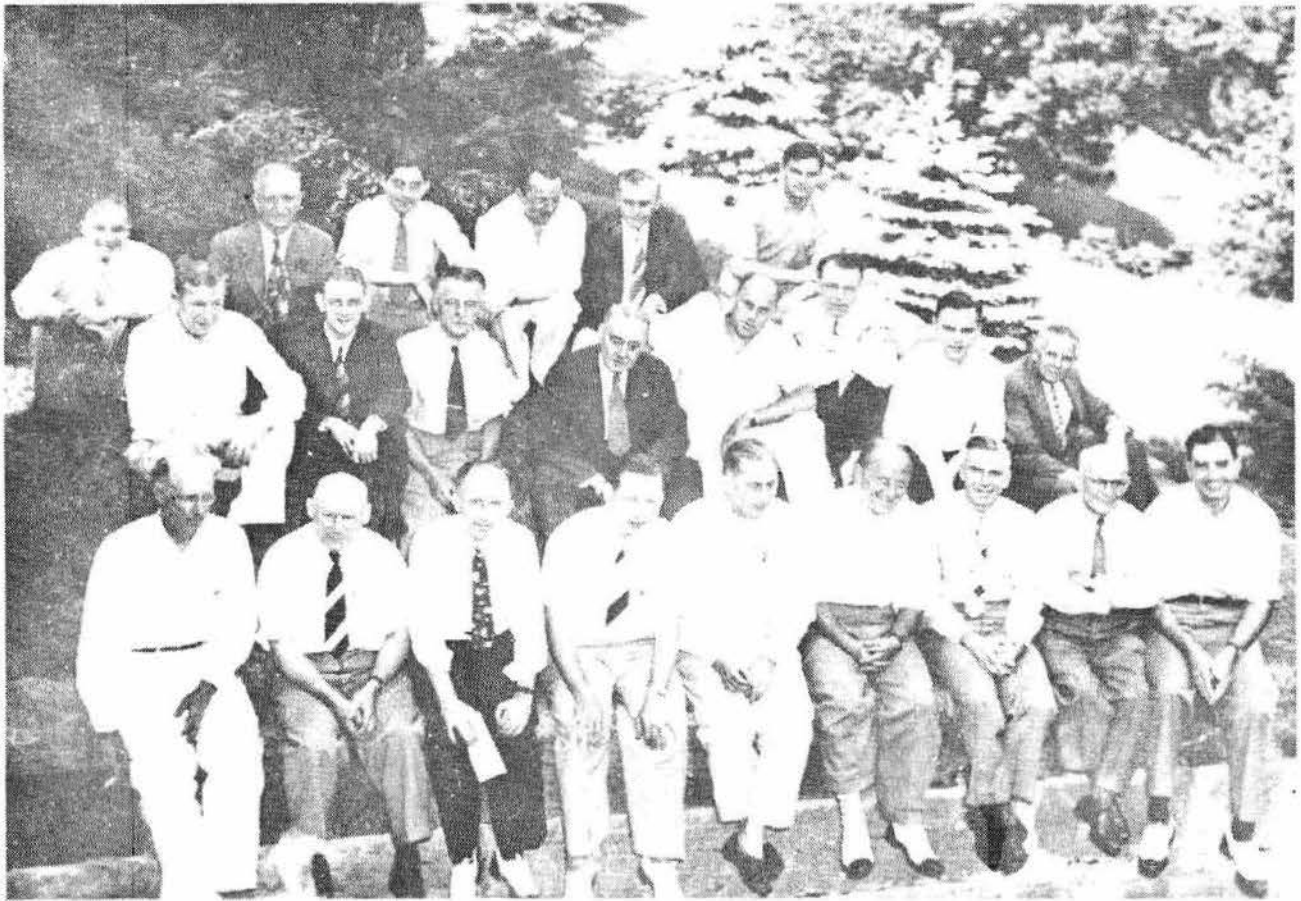
Every piece of Heisey's "Crinoline Etching" is a creation of Brilliant Beauty and inherent Good Taste. Modern in feeling yet traditionally patterned from the Pre-Civil War Days. There is just the piece large or small that will do honor for any occasion. You must see them to appreciate.

The prices will be a surprise for such Skilled Craftsmanship combined with the Quality that only Heisey can produce.

A. H. HEISEY & CO., NEWARK, OHIO

#502 CRINOLINE ETCHING

1939 Pattern Folder



### 1937 SALES MEETING AT WILSON HEISEY'S CABIN

FRONT ROW, L TO R: BABCOCK, OHIO; PETERS, CALIFORNIA, J. LOWER, NEW YORK; BEARDSHEAR, CHICAGO; R. IRWIN, SALES MANAGER; C. WOEFEL, CHICAGO; H. BORTZ, PENNSYLVANIA; REDFIELD, WEST; G. GRANVILLE, NORTHEAST.

SECOND ROW, L TO R: ROY PHILLIPS, MIDWEST; ED BOKEE; PROBABLY ROYAL HICKMAN, DESIGNER; H. BOKEE, WASHINGTON DC AND BALTIMORE; H. COPELAND, SOUTHEAST; E. OLSON, CHEMIST; FRED BOSWORTH, NEW YORK AND NEW JERSEY; BAUMGARDNER, TEXAS.

THIRD ROW, L TO R: GEORGE HEISEY; DAVIS, ROCKY MOUNTAINS; ---, AD AGENCY; H. BERNI, NORTHWEST; H. MUELLER, TREASURER; GUS HEISEY.

Photo Courtesy of Fred Bosworth

## CLUB NOTES

### VIRGINIA HEISEY CLUB

By Betty W. Johnson, Secretary

A year has passed since news of the Virginia Heisey Club has been submitted for publication. We are still an active Club and our membership has been increased. Also, we have donated gifts to the Museum, contributed money to the Endowment Fund, the Museum, and the Heisey-Imperial Mould Fund.

During the past year, our programs have been varied, interesting and most informative. Our December meeting was a huge success. We gathered at the home of Jessie and Charles Hopkins in Hampton, Virginia and preceding the meeting, a delicious covered dish dinner was served.

Following business, the program was turned over to Jessie Hopkins. She read a story written by her which is enclosed in hopes that the many members of HCA can enjoy it as much as our members did. We were asked to make note of all the different names of Heisey related items or words. George Fallows won the prize.

#### QUIZ AS FOLLOWS:

Tw as many long years ago when Joseph and Mary rode into Bethlehem to pay their taxes. She was tired from her long ride on a \_\_\_\_\_. As darkness fell, the heat of the desert turned to cold and Mary's \_\_\_\_\_ blue shawl was not enough to keep her warm. Joseph, too, was tired, for he had led the \_\_\_\_\_ over dusty roads. In the distance they saw a \_\_\_\_\_ and hurriedly sought shelter. We all know that the innkeeper brought his \_\_\_\_\_ to the door and told them there was no room in the Inn, but they could rest in the stable. On that night Mary gave birth to a tiny baby and called him Jesus. The birth of this child issued in a \_\_\_\_\_ for His life. His teachings, and His death on the cross continue to be an inspiration to humanity each day that the \_\_\_\_\_ forth on the \_\_\_\_\_ of a new day. Just as the \_\_\_\_\_ like \_\_\_\_\_ led the wise men to the stable, Jesus leads mankind to a better way of living.

In this \_\_\_\_\_, we celebrate Christmas on December 25th. Many of us attend Christmas Eve Candlelight service or Christmas morning service. We decorate a lovely Christmas tree with \_\_\_\_\_ of tinsel and ornaments, some with \_\_\_\_\_ edging. Some of us sit down to a \_\_\_\_\_ Christmas dinner, which might include \_\_\_\_\_, \_\_\_\_\_, Turkey or even \_\_\_\_\_, stuffing, cranberry, yams, and other vegetables. If one can find the time during the holidays to visit \_\_\_\_\_, you can always enjoy a \_\_\_\_\_ meal. Many of the shops feature lovely \_\_\_\_\_ decorations, \_\_\_\_\_ tables and \_\_\_\_\_ furniture.

And now may all of you have a very Merry Christmas and a Happy New Year. May your stockings include an \_\_\_\_\_, a \_\_\_\_\_, a \_\_\_\_\_ colt or a piece of \_\_\_\_\_.

Happy Heisey hunting.



We thought you'd like to read another rave review of the "Candlestick Book" by Tom Felt and Bob O'Grady as it appeared in the recent issue of the "Daze"!

George Fogg

## BOOKS REVIEWED

**Heisey Candlesticks, Candleabra and Lamps, by Tom Felt & Bob O'Grady. Available from Heisey Collectors of America, Inc. Box 27, Newark, OH 43055.**

**Price: \$24.95 + 10% shipping. \$2.50 + shipping for price guide**

*Reviewed by Edward L. Trindle*

It is not often that a new book on glass lives up to all it claims to be. This is one that does. It covers the entire history of the Heisey company, and all the lighting devices they made. Let me list some of the many strong points of what may be the finest book ever published about any type of American glassware:

1. The researching is impeccable, fresh and presented in a highly intelligent orderly manner.

2. The 350+ illustrations are comprehensive, most of them being photographs of actual lighting devices. The photography is of superb quality, reproducing beautifully on a fine grade of paper.

3. The copy accompanying each illustration is well written and if you do not know Heisey patterns well, each article covers enough about the history of the pattern so it is properly placed for you in the history of the company.

4. There is a good deal of supplemental material provided in five Appendixes, covering much that is instructive as well as adding the romantic and knowledgeable bits that we collectors seem to love.

5. Physically, the book is attractive, hard bound and well fabricated.

How much more can one say? The book is superb, demands a place in the library of every discriminating collector and dealer. It is so definitive that no one else will have to concern themselves with Heisey lighting devices. Without seeing the book, one might think the price high — it is not. Quality of all types is on every page. As an old English teacher I found only 2-3 minor grammatical structures of questionable value.

Several years ago, I had the privilege of reviewing an earlier publication of the HCA and congratulated them on NOT publishing a price guide. There is one for this book, a flimsy poorly stapled pamphlet of 12 pages. In the opinion of this reviewer it is a mistake. Price guides manipulate the market and tax exempt research organizations should cease and desist from publishing them. The guide gives some 600+ prices for pairs of lighting devices, ranging from \$20 to \$2000. It indicates there are 115 pairs that are worth \$500 or more. Of these 115, 23 pairs carry figures of \$1000 or more. This reviewer is well aware of the desperate need of many in the glass collecting field for a safe and comforting Linus blanket. This need which arises from ignorance must not be fed and coddled. Information sets a person free, not some one deciding what something is "worth". It is probably cynical of this reviewer, but few Heisey collectors I have met are willing to pay \$20, much less \$2000 for lighting devices. The HCA has a public relations problem arising from their study groups in this matter.



1495



1519

HEISEY CANDLESTICKS - NO. 120,  
OVERLAPPING SWIRL\*

By Tom Felt

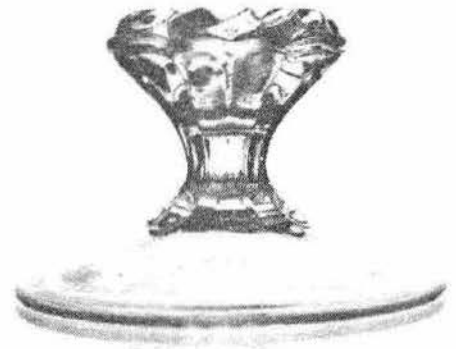
This month's candlestick is one for which very little information is available. It is seen occasionally in hawthorne, which indicates that it was already on the market in 1927 or early 1928 and it was still in production in 1929 when catalog 109 was issued. However, by 1933, when the next price list came out, it had been discontinued. This means it was probably in production for no more than two to five years. Despite this relatively brief period, however, it is not a difficult candlestick for collectors to find today. It was made in moongleam and flamingo and is most common in these colors. Hawthorne is relatively scarce and, as was the case with many candlesticks of this period, so is crystal.

The candlestick is only about 3 inches high, with some variance depending upon the base, which was occasionally flattened more than in the example seen in the accompanying photographs. The base, which is 4-1/2 inches in diameter, was molded in a cupped position and then flattened by hand after removal from the mold. The Diamond H, when it appears, is on the underside, in the center of the base.

The design of the no. 120 candlestick is very simple, consisting of a rosette with twelve "petals," which overlap and swirl around the top of the candleholder. A similar design was later used for the no. 1503 Crystolite, no. 1504 Regency, and no. 1566 Banded Crystolite candleblocks.

This candlestick was never reissued by Imperial.

\*Name assigned by researchers.



\*\*\*\*\*

LETTERS, WE GET LETTERS.....

Smack my hand, put a bag over my head, do anything, but PLEASE renew my membership in HCA. I misplaced my "Only notice you will receive!" and have looked high and low, finally found and hope I will be forgiven. Maybe my order below will help ease the situation. I so look forward to each issue of Heisey News. I am so far away in the mountains of North Carolina and must really search long and hard to find pieces of this beautiful glass that I have fallen in love with. Since I have been collecting for only about three years, please help me inform myself by sending the following book order.

Christine Friesner, N.C.

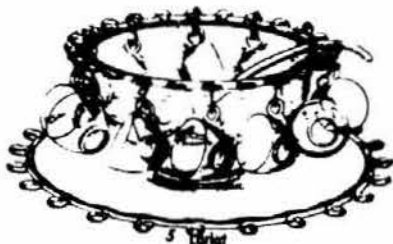


*Heisey* Punch Sets

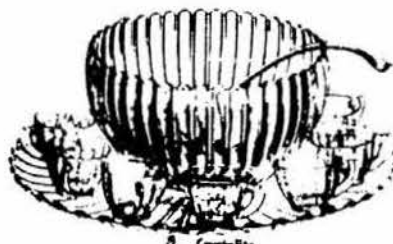


2 Old Williamsburg

\*\*\*\*\*



3 Flint



5 Crystolite



1 Old Williamsburg



diamonds are forever.....

By Janet M. Caswell

Yes, I know that, as you read this it is mid-winter but let me share with you a sensation that I got one day in the late Fall here in the Yachting Center. We usually get fog in the spring but this year we, what with the mild weather, also got fog in the fall. It doesn't burn away by noon but sits like a wet blanket for days. It is an eerie sight driving down town on a supposedly sunny day and looking up to see the steeple of our town hall lopped off by the fog. This gives the sensation of make believe, just as in the story of the headless horseman of sleepy hollow.

The Mr. just arrived home from Ohio with a horse for me. The Antique Blue "Sparky." It is just lovely and has a beautiful color in the sunshine.

"Curley" has the bottom of a #1519 Oceanic or Waverly 5" chocolate box, orchid etch with narry a cover, and the #305 Punt and Diamond Point 6" vase.

"The Spirit" from the Keystone State (PA) came across a sleeper - twelve (12) 3 oz. #373 cocktails. Nice little stems to own.

"My Good English Buddy" gave me a short list just before he headed for the sunny south; #335 Prince of Wales Plumes 6" footed jelly; #1252 Twist Ice Tub with the handle in Moongleam; and the #357 3-Pint Sanitary Crushed Fruit and Cover.

"Ms Lucky" (MA) is with us again this month with just as many goodies as before! #1404 Old Sandwich Oil in crystal; #1205 Fancy Loop Cruet (this one was marked by the dealer, "old pattern glass"; #300 4-Arm Candelabra/Bobeches and Prisms (unfortunately this was not without a few bangs and dings - but even so); #1405 Ipswich console set in crystal and a #433 Greek Key large Punch Bowl, Base and twelve (12) cups.

Several weeks ago, the Mr. & Myself were leisurely strolling around a real nice flea market. Actually not one hundred percent looking for Heisey but enjoying a day together. Days together have been few and far between this winter due to our respective jobs. Well, there we found two (2) Ipswich (Heisey by Imperial) candy jars in Heather. Believe it or not, one was priced higher than the Sahara one (Heisey) in the color book and the other was less than a Heisey Banquet (for two). Both were in good condition so needless to say we purchased the least expensive jar. We didn't have, until that day, any Heisey by Imperial in Heather.

From the Buckeye State (OH) comes news of six (6) #1225 9" plates and a #1184 Yeoman 9" Oval bowl, D/O in Flamingo.

The "two guys" (CT) have a moongleam #354 Wide Flat Panel Oval hotel sugar and creamer.

(haven't heard from you in a while, how about a letter - please.)

"Mountain Gal" (CA) I'm so glad to hear you are fine, I worry about you! Okay, ready - #407 Coarse Rib 5" low footed jelly, moongleam; pair of #114 Candlesticks in Hawthorne; #1503 Crystalite 3-1/2" low footed cheese and individual cream and sugar/tray; #1404 Old Sandwich footed comport in moongleam (I guess you know I am moongleam with envy.); and the #1425-1/2 Victorian condiment set.

Now it's time to go from the warm days of the West coast to the cold of the East. From the Bay State I heard rumors of a #465 3-pound Recessed Panel candy jar and "the Wizard" tells me of #500 4-compartment relish and a #1506 Whirlpool sugar (ready!) - Zircon. That's a Wiz of a find, Wiz!

My "sharp eyed friend" came up with #3350 Wash stem with blue stain bowl and yellow stain base, plus a 14" purple stained Beehive plate.

The "double stepping couple" showed me a #1401 Empress 8" vase, cut, and a #5025 Tyrolean 12 oz. goblet.

The "little one" has a pair of #112 Orchid Etch candlesticks and a Waverly center bowl also Orchid Etch.

"Shy gal" found a #1469 Ridgeleigh oval individual jelly and a Fancy Loop salt and pepper.

Lastly, the "terrific lady" told me she had a #343 Sunburst 2 oz. cruet and a #433 Greek Key low footed sherbet.

Would you believe that from the "Evergreen State" (WA) there was great news of Charter Oak - Flamingo - twelve (12) each Wines, Sherbets and Goblets and a tall Aristocrat #21 Candlestick, signed and in perfect condition.

My "Evergreen friends" (ME) tell me of a #335 Prince of Wales spooner; a large Crystalite swan and the #33 Toy Candlestick.

Even though it is snowing here tonight in the Yachting Center, I still have thoughts of Spring and Spinnakers flying in the wind.

"not far away we saw the port,  
the strange, old fashioned town,  
the lighthouse, the deserted fort  
the wooden houses, quaint and brown"

Be Good to Yourselves!

Janet Caswell

## IN MEMORIAM

We have recently lost two very dedicated members of HCA.

JIM RICHMOND, of Cincinnati, died in late December. The richmonds were members of the Dayton Area HCC. We offer our sincere sympathy to Betty and her family.

TONY REGAN, of California, died suddenly on December 7th. The Regans were very active in the Heisey Collectors of California. You may recall that he was hospitalized in Newark once during one of our Conventions. Our heartfelt sympathy goes to his wife Betty and her family.

## MARCH AUCTION -- MAIL BIDS

Believe it or not -- it's time again to review some points for the mail bids for the Annual Heisey Benefit Auction (March 8 and 9, 1985) For those who cannot attend the auction, I will bid competitively for you and make every effort to win the selected item as reasonable (cheap) as possible. Your bids must reflect what is listed in the published sale catalog as to condition, pattern, and unit number. If there is a variance called at the auction (such as unlisted damage or a difference in the number of items in a lot), I will not bid on that lot. Please do not request the amount of a bid to be moved from one lot to another depending on your success or lack of success on other bid lots.

1. All bids must be received in writing and have your signature.
2. A Self Addressed, Stamped Envelope (SASE) is required for the return of unused checks and your letter giving the results of your bids.
3. You set the maximum you are willing to pay on each lot. If successful, the remainder will be refunded. Please use good judgment in arriving at your maximum bid figure -- remember, there are minimum limits to raises that the auctioneer will accept (small items - \$2.50; larger items - \$5.00, \$10.00, or as much as \$25.00).
4. Lots containing multiple items normally are not split up, but will be sold as one lot to the successful bidder. These multiple items are usually sold "by the piece" or the "pair or set to go". In such cases your bid must be a dollar value for each piece times the number of items in the lot. (Example: Cream, Sugar, and Tray Set - 3 items @ \$20.00 each = \$60.00 total bid.)
5. You may send a separate check for each lot or you may send one check covering the maximum amount of all bids. Shipping charges must be added in all cases. Any surplus bid money or shipping charges will be refunded. Instead of sending checks, you may use a valid VISA/MasterCard. In this case, we will need the type of card, the card number, and its expiration date.

Please use the following form included with the mail bid list for submitting your bids. Its use will help in processing your bids in a timely manner. Again this year, the successful mail bid glass will be packed and shipped UPS from the mailing room of the Administration Building, so be sure to include a complete address. (No post office box addresses please.)

ATTENTION!! In case of duplicate bids, the earliest postmark wins. So get your bids in as

early as possible. Bids must be received by Wednesday, March 6, at the following address in order to be prepared for the auction on Friday and Saturday.

Mrs. Lynette Parmer  
Mailman IV, HCA Auction  
c/o Battelle Columbus Division  
505 King Avenue  
Columbus, OH 43201

If you have any questions, you may call me at (614) 252-0456 after 6:00 P.M. or weekends. No collect calls please!



### ANSWERS TO QUIZ: (PAGE 6)

1. Madonna
2. Colt
3. Cobbit
4. Donkey
5. Single light
6. Candlelamp
7. Crystolite
8. New Era
9. Sunburst
10. Dawn
11. Saturn
12. Star
13. Hemisphere
14. Lariats
14. Greek Key
15. Colonial
16. Goose
17. Hen
18. Rooster
19. Old Williamsburg
20. Plantation
21. Candlestick
22. Queen Ann
23. Victorian
24. Elephant
25. Wings Up Goose
26. Standing Colt
27. Alexandrite



4044



HCA AUCTION MAIL BID LIST

BILL TO: \_\_\_\_\_  
 \_\_\_\_\_  
 \_\_\_\_\_

SHIP TO: \_\_\_\_\_  
 \_\_\_\_\_  
 \_\_\_\_\_

CHECKS  Ohio Vendor's No. \_\_\_\_\_

VISA  Card Number \_\_\_\_\_ Expiration Date \_\_\_\_\_

MasterCard  Card Number \_\_\_\_\_ Expiration Date \_\_\_\_\_

EXAMPLE:

Lot	Units	Bid	Subtotal
97	3	\$20.00	\$60.00

	<u>Lot Number</u>	<u>Number of Units</u>	<u>Bid/Unit</u>	<u>Subtotal</u>
1.	_____	_____	_____	_____
2.	_____	_____	_____	_____
3.	_____	_____	_____	_____
4.	_____	_____	_____	_____
5.	_____	_____	_____	_____
6.	_____	_____	_____	_____
7.	_____	_____	_____	_____
8.	_____	_____	_____	_____
9.	_____	_____	_____	_____
10.	_____	_____	_____	_____

SUBTOTAL \_\_\_\_\_  
 SHIPPING \_\_\_\_\_  
 TOTAL \_\_\_\_\_

\_\_\_\_\_  
 (Signature)



**IMPORTANT NOTICE!!!**

PRICES REALIZED FROM THIS AUCTION WILL BE PRINTED IN THE APRIL NEWSLETTER. IF YOU ARE NOT A MEMBER, PLEASE SEND \$1.00 TO:

H.C.A. AUCTION  
 P.O. BOX 27  
 NEWARK, OH 43055

PLEASE INCLUDE A LARGE SASE.

# ALL HEISEY BENEFIT AUCTION

AUCTIONEERS: Sam Schnaidt, Tim Hughes, Craig Connelly & Larry Stickle

APPLE TREE AUCTION CENTER  
1616 West Church Street  
Newark, Ohio

1/2 Mile West of Country Club Drive  
(Take Church St. Exit off Rt. 16)

Sponsored by  
HEISEY COLLECTORS OF AMERICA, INC.  
for benefit of the NATIONAL HEISEY GLASS MUSEUM  
Includes something for both Collector and Dealer

## TWO SESSIONS

### FRIDAY

March 8, 1985

DOORS OPEN 5:00 PM  
AUCTION STARTS 6:30 PM  
ITEMS 1 THRU 250

### MOST HEISEY COLORS

Emerald, Hawthorne, Marigold, Cobalt  
Amber, Opal, Custard, Alexandrite, Zircon  
(Limelight), Moongleam, Sahara, Flamingo,  
Tangerine

CONDITION CODES: A small letter is minimal; a large letter is significant damage.

f F - Flake

b B - Bruise

r R - Repaired

c C - Crack

m M - Mold Flaw

x X - Major Damage

### SATURDAY

March 9, 1985

DOORS OPEN 8:30 AM  
AUCTION STARTS 10:00 AM  
ITEMS 251 THRU 703

### MANY FINE PIECES

Animal & Animal Related Items,  
Cuttings, Etchings, Stems, including Cordials,  
Favor Vases

- |  |   |
|--|---|
| 1. 4225 COBEL One Pt. Cktl. Shaker, f strainer                           | 32. 3380 OLD DOMINION 2-1/2 oz. Wine, D/O, Sahara - 4 ea. - H     |
| 2. 4036 One Qt. Cktl. Shaker, Rooster Stopper - f Strainer               | 33. 135 EMPRESS 7" 1-Lite Candlesticks, Unk. Floral Cut - Pr.     |
| 3. 351 PRISCILLA 1/2 Ga. Jug - H - f Base                                | 34. 1489 PURITAN 6" Cig. Box/Horsehead Cover                      |
| 4. 353 MED. FLAT PANEL 7 oz. Syrup/No Lid H - X Handle                   | 35. 1485 SATURN Salt & Pepper, Sterling Tops, Pr. - H             |
| 5. 351 PRISCILLA Mustard/No Lid - H                                      | 36. 357 PRISON STRIPE 7 oz. Tumbler - H                           |
| 6. 1295 BEAD SWAG Cvd. Sugar, Worn Gold                                  | 37. 32 SKIRTED PANEL 5" C.Stick Hldr.                             |
| 7. 6 Mayonnaise Ladle, Gold Edge - H                                     | 38. 1469 RIDGELEIGH 2-Lite Candle W/Bobeche & "A" Prisms          |
| 8. 300 PEERLESS 4 oz. Saucer Champ. - H                                  | 39. 411 TUDOR 6 oz. Cruet - H                                     |
| 9. 5040 LARIAT 12 oz. Ftd. Ice Tea                                       | 40. 1509 QUEEN ANN Ice Bucket, No HdL., Sterling Fruit Decor.     |
| 10. 300 PEERLESS 10 oz. Catsup Btl., Cloudy                              | 41. 1541 ATHENA 12" Gardenia Bowl, Wheat Cut.                     |
| 11. 315 PANELED CANE Crmr., Tall, Worn Gold H                            | 42. 1184 YEOMAN 11" Floral Bowl, D/O, Flam.                       |
| 12. 1503 CRYSTOLITE 12" Punch Bowl - H                                   | 43. 1250 GROOVE & SLASH 8" Nappy, Rim Rough.                      |
| 13. 341 PURITAN Punch Bowl Base, High Ftd H                              | 44. 2401 Old Fashion, 7 oz. Nimrod Carving                        |
| 14. 1184 YEOMAN 6" Oval Preserve, Pat. Date 4-24-17, Unk. Flower Cut - H | 45. 2401 SODA, 12 oz., Fox Chase Etch                             |
| 15. 1469 RIDGELEIGH Ind. Cr./Sg. Pr. H Cr. F                             | 46. 1503 CRYSTOLITE 3 oz. Cruet                                   |
| 16. 1202 Base for Floral Bowl 5", Mglm. - H                              | 47. 1170 PLEAT & PANEL 3 oz. Cruet W/Mglm. Stopper                |
| 17. 1540 LARIAT 3-1/2 oz. Cocktail - 8 ea.                               | 48. 1404 OLD SANDWICH Ind. Ash Tray, Cobalt H                     |
| 18. 134 TRIDENT 6" 2-Lite C.Sticks, Orchid Etch - Pr.                    | 49. 1485 SATURN 12" Gardenia Bowl, Limelight                      |
| 19. 1401 EMPRESS 8" Rd. Plate, Alexandrite, 3 ea. - H                    | 50. 300 PEERLESS 5" Ftd. Jelly - H                                |
| 20. 1533 WAMPUM 14" Torte Plate  | 51. 300 PEERLESS 2-1/2 oz. Wine, Reg. No. H                       |
| 21. 1519 WAVERLY 7" Plate, Rose Etch - 4 ea.                             | 52. GOOSE, WINGS UP - Base f                                      |
| 22. 1405 IPSWICH Sau. Cham. & Sherbet, Sah. 2 ea. - H                    | 53. GOOSE, WINGS HALF   |
| 23. 6091 CABOCHON 5-1/2 oz. Sherbet, Southwind Cut - 2 ea.               | 54. 1503 CRYSTOLITE, 5-1/2" Ftd. Cheese                           |
| 24. 1567 PLANTATION Coaster - 4 ea.                                      | 55. 300 PEERLESS Saucer Champagne - 6 ea. H                       |
| 25. 1425 VICTORIAN Ash & Match Hldr. 4 ea. H                             | 56. 407 COARSE RIB Mustard & Lid - H                              |
| 26. 1519 WAVERLY 6" Oval Relish & Cover - H                              | 57. 1201 FANDANGO Ind. Salt - 2 ea.                               |
| 27. 466 PANEL & DOUBLE PLEAT 8" Nappy & 10 4" Nappies - 11 ea - H 4X     | 58. 407 COARSE RIB 9" Relish in Metal Holder - Marigold Stain - H |
| 28. 1295 BEAD SWAG 1/2 Gal. Tankard, Gold Beads, Cornflower Decor., Opal | 59. 500 OCTAGON Frozen Desert, Mglm. 6 ea, 1 f                    |
| 29. 1295 BEAD SWAG Tumbler, Gold Bead, Cornflower Decor., Opal - 4 ea.   | 60. 407 COARSE RIB Goblet - H                                     |
| 30. 150 BANDED FLUTE 5-1/2 oz. Oyster Cktl. 6 ea. - H                    | 61. 4231 Favor Vase, D/O  |
| 31. 112 MERCURY 4" 1-Lite C.Sticks, Orchid Etch - Pr.                    | 62. 4227 Favor Vase, D/O, Heisey Label, Moongleam                 |
|  | 63. 4232 Favor Vase, D/O  |
|  | 64. 4230 Favor Vase, D/O - Moongleam                              |
|  | 65. 4231 Favor Vase, D/O - Sahara                                 |

66.	4229 Favor Vase, D/O - Cobalt	121.	1401 EMPRESS Pitcher, D/F, Flamingo - H
67.	4228 Favor Vase, D/O	122.	1401 EMPRESS Pitcher, D/F, Sahara - H
68.	429 PLAIN PANEL RECESS Ftd. Ind. Salt 5 ea. - H	123.	1401 EMPRESS Pitcher, D/F, Moongleam - H
69.	393 NARROW FLUTE 8 oz. Tumbler, Cupped H	124.	1401 EMPRESS Ind. Cr.&Sg. + Tray, Floral Cut on Cr. & Sg. Only - 3 Pcs. - H
70.	393 NARROW FLUTE 8 oz. Tumb.Straight - H	125.	1401 EMPRESS 9" Vase, D/F - H
71.	166 Tumbler, 8 oz., Plain Bottom - H	126.	1401 EMPRESS Ind. Nut, D/F, Chintz Et.-H
72.	1401 EMPRESS Mustard & Lid - H	127.	1401 EMPRESS 5-1/2" Mayo., D/F, Unknown Cutting, Sahara - H
73.	1509 QUEEN ANN 5-1/2" Mint, D/F - H	128.	1229 OCTAGON 5-1/2" 2-Hdld. Mayo. & Ladle, Unk. Floral Cut, Hawthorne, 2 Pc. - H
74.	1469 RIDGELEIGH 12" Ftd. Celery - H	129.	1229 OCTAGON 5-1/2" 2-Hdld. Ftd. Mayo. & Ladle - Etched & Gold Trim, Moongleam - 2 Pc.
75.	1469 RIDGELEIGH 4" Ind. Vase #2 - 2 ea. H	130.	3417 Bitters Bottle, Wrong Stopper #812 Sweet Briar Cut
76.	1469 RIDGELEIGH Ind. Hd1. Nut -3 ea. - H	131.	1405 IPSWICH Goblet 3 ea.
77.	353 MED. FLAT PANEL 6-1/2" Low Ftd. Comport - H	132.	300 PEERLESS Sherbet - 5 ea. - H
78.	3362 CHARTER OAK 6 oz. Sherb., Flam. 2ea. H	133.	352 FLAT PANEL 4-1/2" Nappy - H
79.	150 BANDED FLUTE 2" Sau. Ft. C.Sticks 3 ea. - H	134.	1401 EMPRESS Cr.&Sg., D/F, Sah.-H Pr. Sg.x
80.	393 NARROW FLUTE Ind. Sugar Cube Holder, Footed - 2 ea. - H	135.	1469 RIDGELEIGH Rd. Cig. Hldr. & 3 Ash Trays - 4 - H
81.	1590 Ohio Sesqui. Ash Tray, 3-1/2"	136.	1472 PARALLEL QUARTER 3" C.Sticks - Pr.
82.	1205 FANCY LOOP Punch Cup - 6 ea.	137.	1280 WINGED SCROLL Trinket Box W/Lid, Souv. Gettysburg, Clambroth
83.	1235 BEADED PANEL & SUNBURST Punch Cup 4 ea.	138.	1184 YEOMAN Cr.&Sg. W/Lid, Sah. Cr. x
84.	305 PUNTY & DIA. POINT Punch Cup 4 ea. H	139.	112 MERCURY 3" C.Stick, Mglm. - Pr.
85.	305 PUNTY & DIA. POINT Punch Cup 6ea. H-1X	140.	134 TRIDENT 2-Lite C.Stick - Pr.
86.	350 PINWHEEL & FAN Punch Cup, Mglm. 4ea. H	141.	1540 LARIAT 7" x 3" Bowl, 2-Part., Unknown cutting
87.	4225 COBEL 2 Qt. Ckt1. Shaker, Horsehead Enamel - Strainer f	142.	300½ PEERLESS Cr.&Sg. Ftd, Sugar Yellowish - H - Pr.
88.	3380 OLD DOMINION Goblet D/O, Unknown Cutting - 3 ea. - H	143.	4163 WHALEY Beer Mug, Golf Scene - H
89.	5024 OXFORD Goblet & Sauc. Champ., Unk. Cutting & 4085 KOHINOOR 12 oz. Ftd. Soda & Sauc. Champ, Waterford Type Cut - 4 ea.	144.	4163 WHALEY Beer Mug, Club Drinking Scene - H
90.	3408 JAMESTOWN Goblet & Sauc. Champ, Larkspur Cut - 2 ea.	145.	1295 BEAD SWAG Molasses, Cornflower Dec. Opal
91.	3389 DUQUESNE 12 oz. Soda, W/O, Tangerine	146.	393 NARROW FLUTE Ind. Cube Sugar - H
92.	1220 PUNTY BAND Tall Crmr., Gold Band	147.	3370 AFRICAN 3 oz. Wine, D/O, Mglm. Ft/ Stem - H
93.	1220 PUNTY BAND Spooner, Gold Band	148.	5072 HEISEY ROSE Ckt1., Rose Etch
94.	1469 RIDGELEIGH 14" Oblong Floral Bowl, Base Bruise	149.	393 NARROW FLUTE Biscuit Tray - H
95.	134 TRIDENT 2-Lite Candlesticks - Pr.	150.	1401 EMPRESS 6" Candy/No Cover, D/F, Antarctic Etch
96.	1201 FANDANGO 8" Crimped Nappy	151.	129 TRICORN 5" Triplex C.Stick, Mglm. H
97.	1555 CORNUCOPIA 10" Vase (Shoe)	152.	1184 YEOMAN 11" Rd. 4-Part Relish Plate, Flamingo - H
98.	1401 EMPRESS 12" Rd. Plate, Sahara, Bottom Repair - H	153.	3416 BARBARA FRITCHIE Gob. W/O, #850 Del Monte Cut - H
99.	1401 EMPRESS Sugar, D/F - H	154.	3414 MARIETTE Cordial, Unk. Cut
100.	1212 Punch Cup, Optic 4 oz. - 2 ea. H	155.	3316 BILTMORE Cordial, Victory Etch, Base f
101.	1101 Punch Cup, 4 oz. 2 ea. H - 1 f	156.	3386 DIAMOND ROSE 12 oz. Gob. D/O, Flam. H
102.	339 CONTINENTAL 4-1/2" Nappy -H	157.	3404 SPANISH Sau. Champ. W/O Concord Etch - H
103.	1489 PURITAN 14" Oblong Floral Bowl - c	158.	3324 DELAWARE 9 oz. Goblet, Checker Optic, Orig. Label - Hawthorne - H
104.	1252 TWIST 12" Oval Floral Bowl, Flam. H	159.	2401 Soda, 8 oz. #2 Tall Sail Boat Etch
105.	1540 LARIAT Sugar, Moonglo Cut - H	160.	310 RING BAND Hdld. Custard Cup, Souv. Gettysburg 1863 - Custard - H
106.	1404 OLD SANDWICH 8" Plate, Sahara, 4 ea. - H - 2 Base f	161.	125 LEAF DESIGN C. Block, Pr. - f Base
107.	341 PURITAN Cordial, Mono. M - H	162.	4291 BLOWN CANDY Jar W/Lid, Unk Cut. H, Rim Rough
108.	341 PURITAN Cordial, Mono. M - H	163.	1184 YEOMAN 8" Bowl, D/O, Mglm. - H
109.	341 PURITAN Cordial, Mono. M - H	164.	5065 COLT STEM Cocktail, Prof. Rim. Rpr.
110.	5003 CRYSTOLITE 10 oz. Tumb. 5 ea.	165.	150 BANDED FLUTE 4" Hdld. Chamber- stick - H
111.	V8636 VERLY'S By Heisey, 8-3/4" Thistles Bowl, Frosted	166.	300 PEERLESS Goblet - H
112.	1401 EMPRESS Ind. Nut, D/F, Mglm. - H	167.	1503 CRYSTOLITE 6½" Large Swan Candy or Jelly, Frosted
113.	1229 OCTAGON Ind. Nut., Hdld. D/O, Marigold - H	168.	300 PEERLESS 4 oz. Sherbet - 2 ea. H
114.	2401 2 oz. Bar W/#812 Sweet Briar Cut		
115.	1245/3967 Compote 5", Mglm. Stem & Ft. H		
116.	1201 FANDANGO 8" Crimped Nappy - Rim f		
117.	5 PATRICIAN 5" Toy C.Sticks - Pr.		
118.	352 FLAT PANEL Horseradish & Cvr. - H		
119.	2401 Soda, 14 oz. Fox Chase Etch		
120.	1280 WINGED SCROLL 1/2 Gal. Bulbous Jug Emerald - Crack Hd1.		

169.	500	OCTAGON 2-Hdld. Sugar, Flam. - H	218.	1567	PLANTATION Cr. & Sg., Ftd. - Pr.
170	1951	CABOCHON Sugar/No Cover, Moonglo	219.	1469	RIDGELEIGH Ind. Cr. & Sg. - H - Pr.
171.	358	Ind. Ash Tray - Flamingo	220.	1401	EMPRESS Punch Cup, Sahara - 2 ea. - H
172.	1519	WAVERLY 12" Floral Bowl, Orchid Etch	221.	300½	COLONIAL 2 oz. Bar, Flamingo - H
173.	1509	QUEEN ANN 6" Mint, D/F & 6" Oval 2-Part Relish, Orchid Etch 2 ea. H	222.	1413	CATHEDRAL Vase, Fld., Sun Purple, Unk. Cut - 2 ea.
174.	1255	PINEAPPLE & FAN Toothpick, Some	223.	112	MERCURY 1-Lite C.Stick, Mglm. - Pr.
175.	5003	CRYSTOLITE Cordial - H	224.	412	RIB & PANEL 6" 2-Hdld. Cheese - Hawth.
176.	2	OLD WILLIAMSBURG 9" C.Stick - Pr.	225.	1509	QUEEN ANN 5½" Mint D.F., Orchid Etch H
177.	433	GRECIAN BORDER Ind. Nut - 2 - H & 1401 EMPRESS Ind. Nut D/F - 2 ea.	226.	468	OCTAGON W/Rim 7" Pickle Tray, Unk Cut H
178	4225	COBEL Cktl. Shaker, 1 Qt., 2 Qt. Mono. LTE, 1 Qt. Plain - 3 ea.	227.		HEISEY 12" x 16" Framed Ad in Color (Glass Secrets)
179.	2	OLD WILLIAMSBURG 9" C.Stick and 1401 EMPRESS 6" Mint, D/F, Sahara	228.	300	PEERLESS Ind. Sugar - H
180.	3411	MONTE CRISTO 4 Goblets & 3 Ckts., Pairpoint Cut - 7 ea.	229.	1509	QUEEN ANN 11" Fl. Bwl., D.F. Chat. Cut.
181.	3404	SPANISH Sauc. Champ., Waterford Type Cut - 2 and 5024 OXFORD Cktl. - 2 - H and 3390 CARCASSONE Low Goblet, Lafayette Etch, Sahara and Ftd. Ice Tea, Lafayette Etch. 6 ea.	230.	1205	FANCY LOOP Ftd. Punch Cup, Cupped 2 ea.
182.	1506	PROVINCIAL Punch Cup (10) H	231.	1509	QUEEN ANN 5½" Mint, D.F., Orchid Etch
183.	335	PRINCE OF WALES PLUMES Butter Dish Lid Only, Gold deco. - H	232.	1519	WAVERLY 13" Gardenia Bwl., Orchid Etch
184.	393	NARROW FLUTE 5" Lemon Dish Lid 2E-H	233.	5072	HEISEY ROSE Goblet, Rose Etch 4 ea. H
185.	1506	PROVINCIAL 17" Buffet Plate, Limelight - H	234.	411	RIB & PANEL 1 Qt. Pitcher W/Lid (Poor Fit) - H
186.	1495	FERN 6" Hdld. Jelly, Zircon	235.	1252	TWIST 2-Hdld. Cr. Soup & Plate, Mari. 3 Sets - H
187.	407	COARSE RIB 9" Celery, Metal Holder, Marigold Stain - H	236.	458	8" Basket, Unk. Floral Cut - H
188.	473	NARROW FLUTE W/RIM 6" Ind. Cheese & Cracker, Gold Decor. 2 ea - H	237.	21	7½" Candlestick, Gold Decor. H - Pr.
189.	1540	LARIAT 12" 3-Pt. Relish, Moonglo Cut	238.	1503	CRYSTOLITE 2-Lite C.Stick (Scal.Base)Pr.
190.	305	PUNTY & DIAMOND POINT 4" Fl.Elec. Light Shade - f on base.	239	341½	PURITAN 3-Qt. Squat Jug - H
191.	1403	HALF CIRCLE Ind. Creamer, Mglm. - H	240.	3370	AFRICAN Gob. D.O. Paper Label, Fla.2 ea.
192.	5	PATRICIAN 4½" Toy C.Stick - Pr.	241.	1509	QUEEN ANN 8½" Floral Bowl, Ftd. & Hdld. Rosalie Etch - H
193.	300	PEERLESS 3½ oz. Sherb. 10 ea. - H	242.	1509	QUEEN ANN 6" 2-Hdld. Ftd. Jelly, Rosalie Etch - H
194.	1488	KOHINOOR 13" Fl.Bowl W/Ftd. Metal Holder - Unk. Cut - H	243.	1229	OCTAGON Ind. Nut, 2-Hdld. Gold Decor., Mglm. 2 ea. - H
195.	1519	WAVERLY 9½" Fl. Bwl., Gold Decor.	244.	1205	FANCY LOOP Spooner
196.	407	COARSE RIB 8" Bowl - H	245.	300	PEERLESS #2 Salt & Pepper, Orig.Tops Pr.
197.	1216	9½" Bowl, Star Bottom - H	246.	1255	PINEAPPLE & FAN 10" Vase
198.	1405	IPSWICH 7" Plate - H	247.	1252	TWIST 8" 2-Comp. Relish, Sahara - H
199.	1503	CRYSTOLITE Ftd. Cig. Holder - H	248.	517	1-Qt. Jug W/197 Tumbler - H
200.	1469	RIDGELEIGH 6½" Hdld. Cheese - H	249.	1252	TWIST 4½" Nappy, 1 Mglm., 1 Fla. 2 ea-H
201.	1469	RIDGELEIGH 3" Ind. Oval Jelly 2 - H 1 f	250.	1180	Ind. Nut, 2-Hdld. D.O. Flam. 2 ea - H
202.	1469	RIDGELEIGH 7" Plate 2 ea. - H	251.	394	NARROW FLUTE 12" 3-Pt. Relish, Flam. H
203.	349	COLONIAL 4 oz. Tall Sherbet, Scalloped 5 ea. - H - 1x	252.	1428	WARWICK 7" Cornucopia Vase - H
204.	112	MERCURY 4" 1-Lite C.Stick, Flam. Pr.	253.	465	RECESSED PANEL 3# Candy Jar - H
205.	433	GRECIAN BORDER 1/2 Gal. Jug - H HdL. Crack	254.	1253	3-Corner Mint, Unk. Cut. Mglm. H. HdL.c
206.	1503	CRYSTOLITE 4" 1-Lite C.Block H - Pr.	255.	1186	YEOMAN 6" 2-Hdld. Mint, Unk. Cut - H
207.	ITEM	WAS NOT HEISEY	256.	1413	CATHEDRAL Vase, Sahara - H
208.	1503	CRYSTOLITE Salt & Pepper, No Tops, Unk. Cut - H - Pr.	257.	1495	FERN 6" Cheese & 5½" Divided Mayo. 2 ea.
209.	1503	CRYSTOLITE 5½" Ftd. Cheese	258.	1519	WAVERLY Salt & Pepper (No Tops) Silver Decor. - Pr.
210.	1425	VICTORIAN Low Gob. 6 ea. - H 1x	259.	3404	SPANISH 10 oz. Gob., Unk. Engraving
211.	1469	RIDGELEIGH 5-Pt. Star Relish - H	260.	3380	OLD DOMINION 3 oz. Cocktail, D.O. Sah. 3
212.	1503	CRYSTOLITE Melon C.Block - Pr.	261.	4163	WHALEY Pretzel Jar(No Cvr.),Club Drinking Scene - H
213.	1519	WAVERLY 6" Sw. Butter W/Cover	262.	393	NARROW FLUTE Cr. & Sg. H - Pr. f Sg.HdL.
214.	485	1-3/4 oz. Cologne W #64 Stopper - H	263.	1503	CRYSTOLITE 18½" Punch Bowl Underplate H
215.	1255	PINEAPPLE & FAN 5" Ftd. Jelly Comp.Emer.	264.	8064	KATHIE 8" Plate 2 ea. - H
216.	4044	NEW ERA Demitasse Cup/Saucer, #600 Satin Etched	265.	1519	WAVERLY 8½" Plate, Rose Etch
217.	1205	FANCY LOOP Ind. Creamer, Gold Decor.	266.	1519	WAVERLY Ind. Cr. & Sg., Orchid Etch - Pr.
			267.	1401	EMPRESS Cr. & Sg. D.F., Sah. Pr. H, c HdL. Sg.
			268.	1401	EMPRESS 6" Sq. Ftd. Comp. Flam. - H
			269.	1404	OLD SANDWICH 1-Pt. Pitcher - H
			270.	1469½	RIDGELEIGH 3½" Rd. Coaster, Sah. 2 ea.
			271.	1540	LARIAT 7½" Hdld. Bon Bon
			272.	1447	ROCOCO 5½" Ftd. Cheese, Orchid Etch H
			273.	8005	GALAXY Champ., Flamingo - H
			274.	1252	TWIST French Drsg. W/Stpr.,Flam. Cldy.
			275.	1473	BUTRESS Med. Center Piece & Corners, Normandie Etch - 5 Pc. Set - H
			276.	305	PUNTY & DIAMOND POINT (Claret Jug)

277.	1235	BEADED PANEL & SUNBURST Punch C. 8 ea.	328.	3404	SPANISH 5½ oz. Champ. #865 Florentine Cut 4 ea.
278.	515	1 Qt. Pitcher W/Lid, Silver Overlay, Unknown Cut - H Lid - c Base X	329.	3404	SPANISH 4 oz. Claret, #865 Florentine Cut 4 ea.
279.	1401	EMPRESS Punch Cup 10 ea. - H	330.	4052	NATIONAL 10 oz. Soda & 8 oz. Old Fashion, Tally Ho Etch (2 ea) 4
280.	1401	EMPRESS 10½" Ftd. Floral Bwl.Lion Head	331.	4054	CORONATION 1 Qt. Cocktail Shaker, Bird & Tree Cutting - Cldy.
281.	335	PRINCE OF WALES PLUMES 14" Punch Bowl & Base & 6 cups. 8 Pc.Set - H - 1 Cup X	332.	3390	CARCASSONE 2-1/2 oz. Wine, Alexandrite Bowl - Rim repair.
282.	1433	THUMBPRINT & PANEL 2-Lite C.Sticks Pr.	333.	1540	LARIAT 12 oz. Ftd. Ice Tea, Rose & Griffin Engraving - H
283.	1469	RIDGELEIGH Ice Tub, 2-Hld. - H	334.	3404	SPANISH 10 oz. Goblet, Rose & Bird Eng
284.	350	PINWHEEL & FAN 8½" Nappy - H	335.	3404	SPANISH 10 oz. Goblet, Floral Eng.f Rim
285.	393	NARROW FLUTE 1/2 Gal. Jug, Pat.4-15-131	336.	1503	CRYSTOLITE 3 oz. Oil
286.	1401	EMPRESS 8½" Ftd. & Hld. Fl.Bowl, Flam.	337.	1469	RIDGELEIGH 2 oz. Oil W/Stopper f Strp.
287.	300	PEERLESS 1-1/2 oz. Sherry 3 ea. - H	338.	407	COARSE RIB 6 oz. Oil W/#8 Stopper - H
288.	1509	QUEEN ANN 7" Triplex Relish, Orchid Etch	339.	1280	WINGED SCROLL 4" Nappy, Custard
289.	3404	SPANISH 10 oz. Goblet, Cobalt - H	340.	1205	FANCY LOOP Spooner
290.	1472	PARALLEL QUARTER 12" Ftd. Floral Bowl, King House Etch - H	341.	1200	CUT BLOCK Creamer, Red Stain Souv. Tillie Cole, Atlantic City 1897
291.	1469½	RIDGELEIGH Rd. Ash Tray - 1 4", 1 3" 2 H - f	342.	3357	KING ARTHUR Sauc. Champ. Mglm. Stem & Foot 3 ea - H
292.	473	NARROW FLUTE W/RIM 3½" Salted Nut, Ptd. 2-22-16 - 1 Mglm, 1 Flam. 2 H - ea.	343.	300	PEERLESS 1 oz. Cordial 6 ea. - H
293.	465	RECESSED PANEL 1/2# Candy, Gold Deco. H	344.	343	SUNBURST Punch Cup - H
294.	1469	RIDGELEIGH 4" Rd. Coaster 8 ea.	345.	1776	KALONYAL Punch Cup - H
295.	3404	SPANISH 10 oz. Goblet, Tang. f Rim, Bubbles in glass.	346.	1405	IPSWICH Bowl, 2 Candle Vases with Inserts and prisms - 5 ea - H 1 Insert x
296.	3404	SPANISH 10 oz. Goblet, Tang. f Rim, Bubbles in glass	347.	341	PURITAN 3-Qt. Bulbous Pitcher - H
297.	3404	SPANISH 1 oz. Cordial, Unk. Cutting	348.	341	PURITAN 1-Pt. Bulbous Pitcher - H
298.	3404	SPANISH 1 oz. Cordial, Unk. Cutting	349.	1252	TWIST Ice Bucket W/Hdl. Flamingo - H
299.	1469	RIDGELEIGH 4" Rd. Coaster, Zircon 2 ea.	350.	1203	12" Fl. Bowl & Base, Hawth 2 - H and 112 MARS 1-Lite C.Stick, Hawthorne, Pr.
300.	1401	EMPRESS Mayo. D.F. & Ladle, Silver Decor. 2 ea.	351.	1428	WARWICK 2-Lite Candlestick, Pr.
301.	1540	LARIAT 2-Lite Candlestick - Pr.	352.	1503	CRYSTOLITE 14" Plate - H
302.	465	RECESSED PANEL 7" Basket, Patd 8-7-15 H - f Base	353.	1503	CRYSTOLITE 5" Vase 2 ea.
303.	394	NARROW FLUTE Domino Sugar Tray - H	354.	1E92	OMEGA 12 oz. Ftd. Ice Tea 6 ea. - H
304.	1469	RIDGELEIGH Creamer & 5" Mayo. 2 - H	355.	1469	RIDGELEIGH 6" Sq. Plate 6 ea. - H
305.	1469	RIDGELEIGH Ind. Cr. & Sg. - Pr. - H	356.	1469	RIDGELEIGH 9½" Floral Bowl - H
306.	1469	RIDGELEIGH Ind. Hld. Nut & Rd. Ash Tray - 2 - H	357.	1252	TWIST 1-Lite Candlestick - H
307.	5	Puff Jar (No cover) - H	358.	411	TUDOR 4½" Plate 2 ea. - H
308.	1205	FANCY LOOP Sherry	359.	341	PURITAN 3½" Ind. Butter - H
309.	1413	CATHEDRAL 9" Floral Vase, Artic Etch., Moongleam - H	360.	354	WIDE FLAT PANEL Cr. & Butter Pat. for Stack Set - 2 Sets. ea - H f Base
310.	1295	BEAD SWAG Cvd. Butter & Crmr., Ruby Stain	361.	1184	YEOMAN Ind. Sg. - H
311.	PLAID	6-3/4" Vase - H - f Base	362.	1540	LARIAT 4" Ind. Nut or Ash Tray
312.	1447	ROCOCO 12" Cracker Plate & Ftd. Cheese Set - H	363.	1469	RIDGELEIGH Sugar - H
313.	33A	SKIRTED PANEL 10½" Candelabrum Complete	364.	1632	SATELLITE Cigarette Urn - H
314.	1401	EMPRESS Ice Bucket W/Hdl. D.F. #793 Monterey Cutting	365.	1404	OLD SANDWICH Oyster Cktl. Mglm. H Rough
315.	4224	Ivy Vase W.O., Cobalt	366.	1519	WAVERLY Cruet - Cloudy
316.	3380	OLD DOMINION 1½ oz. Ftd. Bar, D.O, Marigold Bowl, Empress Etch	367.	1401	EMPRESS Lemon Dish (No Cvr.) Sah. - H
317.	3411	MONTE CRISTO Goblet #802 Manchester Cut	368.	4232	Favor Vase, D.O. Sahara
318.	335	PRINCE OF WALES PLUMES Base for 10" Punch Bowl, Gold Decor.	369.	1509	QUEEN ANN Cr. & Sg. D.F., Chateau Cut Pr. - H
319.	1519	WAVERLY 12" Floral Bowl, Crimped	370.	1506	PROVINCIAL 8" Plate, Limelight
320.	1231	RIBBED OCTAGON 12½" Salad Bowl, Mglm.	371.	1238	BEEHIVE 5" Plate, Zircon
321.	3380	OLD DOMINION Goblet, D.O. Sahara 4 ea.	372.	1205	FANCY LOOP #1 Salt & Pepper - Pr.
322.	3416	BARBARA FRITCHIE 3/4 oz. Cordial, Sahara Bowl - H	373.	5078	PARK AVENUE Cordial - H
323.	1401	EMPRESS 8" Sq. Plate, Old Colony Etch, Sahara 12 ea. - H	374.	5078	PARK AVENUE Cocktail 4 ea. - H
324.	4069	RIDGELEIGH 8 oz. Gob.Mariemont Cut 4 ea.	375.	4002	AQUA CALIENTE 4 oz. Cktl.Lancaster Etch
325.	4054	CORONATION 32 oz. Martini Mixer, Tavern Etch.	376.	4002	AQUA CALIENTE 4 oz. Cktl.Club Drinking Scene Etch
326.	2401	8 oz. Old Fashion #5003 Nimrod Carv.6 ea	377.	129	TRICORN 5" 3-Lite C.Stick, Mglm Base Pr
327.	3404	SPANISH 10 oz. Gob.#865 Florentine Cut 4 ea.	378.	1601	Sleeping Fox Ash Tray - Paper Label
			379.	10	Ink Well With Lid - H
			380.	357	Duck Ash Tray - H f Base
			381.	1469	RIDGELEIGH Oval Cig. Box, Covered
			382.	1540	LARIAT Mayo. Ladle & Underplate - Set H Standing Colt
			383.	5038	Rooster Head Cocktail
			384.	1238	Beehive 8" Plate, Moongleam
			385.		

386. Rearing Colt - f on Ear.  
387. Rooster Vase - m  
388. 3389 DUQUESNE Oyster Cktl., Tangerine  
389. 301 10" 2-Lite Candelabrum, Complete  
390. 1469 RIDGELEIGH 10½" Single Candelabra, Complete - Pr. - H  
391. 1472 PARALLEL QUARTER 1-Lite Candlestick, Pr.  
392. 1401 EMPRESS 10" 7-Part Relish - H  
393. 1295 BEAD SWAG Tumbler, Opal  
394. 1252 TWIST 6 oz. Ftd. Soda, Marigold - H Slight craze  
395. 1541 ATHENA 5" Small Candy Box & Cover  
396. 1220 PUNTY BAND Toothpick, Beaded Top, Souv. Waubeka, Custard - H  
397. 305 PUNTY & DIAMOND POINT Toothpick  
398. 315 PANELED CANE Toothpick - H  
399. 351 PRISCILLA Toothpick - H f Base  
400. 1401 EMPRESS Champagne, Mglm. - H  
401. 2401 10 oz. Soda, Equestrian Etch  
402. 1205 FANCY LOOP Ftd. Punch Cup, Flared  
403. 1201 FANDANGO Punch Cup  
404. COLONIAL Large Knife Rest - H  
405. 1401 EMPRESS Cvd. Candy W/Lid D.F., Sah.- H  
406. 118 MISS MUFFET 1-Lite C. Stick, Flam. Pr.  
407. 1401 EMPRESS 11" Fl. Bowl, D.F., Lafayette Etch.  
408. 113 MARS 1-Lite C. Stick, Flamingo W/Silver Overlay - Pr. - H  
409. 465 RECESSED PANEL 1# Cvd. Candy, Iridized Yellow - H  
410. 1401 EMPRESS Mayo. D.F. Sahara  
411. 1519 WAVERLY 9½" Shallow Fl. Bwl., Orchid Et.  
412. 112 MERCURY 1-Lite C. Stick, Amer Stain, Cut - Pr.  
413. 1540 LARIAT 12½" 2-Part Celery & Olive  
414. 1428 WARWICK 2-Lite C. Stick - Pr.  
415. 465 RECESSED PANEL 1# Cvd. Candy, Iridized Yellow - H  
416. 4232 Favor Vase, D.O.  
417. 4228 Favor Vase, D.O., Silvered Inside  
418. 4231 Favor Vase, D.O., Silvered Inside  
419. 3381 CREOLE 5 oz. Oyster Cktl., Sahara Bowl  
420. 5010 SYMPHONIE Goblet, Minuet Etch, Original Minuet Label  
421. 1509 QUEEN ANN 8" Plate, Old Colony Etch 3 ea.  
422. 393 NARROW FLUTE 3-Pt. Jug - H  
423. 1235 BEADED PANEL & SUNBURST Wine  
424. 3390 CARCASSONNE 3 oz. Cocktail, Cobalt  
425. 1401 EMPRESS 8 oz. Tumbler, Moongleam  
426. 1401 EMPRESS 2-Hld. Boullion, Mglm. - H  
427. 1401 EMPRESS 7" Triplex Relish, Floral Cut  
428. 1401 EMPRESS 7" Triplex Relish, Flamingo - H  
429. 1401 EMPRESS 7" Triplex Relish, Mglm. - H  
430. 1401 EMPRESS 7" Triplex Relish, Sahara  
431. 1513 3-Lt. Candelabrum, No Bobeche or Prisms  
432. 3454 GRANADA 10 oz. T. Gob., Unk. Cut. 3 ea - H  
433. 352 FLAT PANEL Lg. Cigar Jar, Sgnd. Benson & Hedges - H  
434. 459 Basket 7", Bird & Floral Cut - Inside lid cldy. - H  
435. 1420 Tulip Vase, Crystal - H  
436. 1513 3-Lt. Candelabra, Complete - Pr.  
437. 4225 COBEL 2-Qt. Cktl. Shaker, Complete Unknown Engraving  
438. 1205 FANCY LOOP Pot Pourri Jar - Base f  
439. 1404 OLD SANDWICH Cruet - H Stpr. f  
440. 1252 TWIST 4 oz. Cruet, Silver Decor. - H  
441. 1225 PLAIN BAND Cruet, No Stopper  
442. 356 LITTLE PRINCE Cruet - H, Stpr. f  
443. 1280 WINGED SCROLL 4-Pc. Table Set, Fair Gold - Emerald  
444. 4002 AQUA CALIENTE cktl. 4 and #4225 COBEL 1-Qt. Cktl, Shaker, Tallyho Et. Comp. 5 ea  
445. 354 FLAT PANEL Cr./Sg. & Btr. Pat, Stacr Set, Silver Decor - Set - All H  
446. 1540 LARIAT Cr./Sugar, Unk. Cut. - H - Pr.  
447. 1425 VICTORIAN Goblet - 6 ea. - H  
448. 7000 SUNFLOWER 8 oz. Tumbler - 6 ea - H  
449. 1503 CRYSTOLITE 2-Lite Cdl. Scalloped Base Pr.  
450. 341½ PURITAN 1/2 Gal. Squat Jug - H  
451. 341½ PURITAN 3-Pt. Squat Jug - H  
452. 1191 Pickle & Olive - 2-Part, Moongleam  
453. 1503 CRYSTOLITE Ind. Mustard 3 ea.  
454. 1403 CRYSTOLITE Ind. Mustard 3 ea.  
455. 5" Blown Vase, Moongleam  
456. 353 MED. FLAT PANEL 18" Trumpet Vase - H, Base Scratches  
457. 1220 PUNTY BAND Cake Salver  
458. 1225 PLAIN BAND Tall Celery  
459. 1255 PINEAPPLE & FAN 2-1/2" Rose Bowl  
460. 333 WALDORF ASTORIA Water Bottle, Cldy.  
461. 5012 URN 6" Vase  
462. 300 PEERLESS Water Bottle  
463. 150 OVAL IN DIAMOND POINT Pitcher - f  
464. 160 LOCKET ON CHAIN Wine  
465. 1434 TOM & JERRY Mug - H  
466. 5077 LEGIONNAIRE 3 oz. Cktl., Amber Stain - H  
467. 1503 CRYSTOLITE 12" Punch Bowl - H  
468. 473 NARROW FLUTE W/Rim Domino Sg./Cr. Set, Moongleam - H  
469. 1429 Oval Floral Bowl, Sahara - H  
470. 411 TUDOR 5" Ftd. Jelly, Hawthorne - H  
471. 4223 SWIRL 12" Vase  
472. 1951 CABOCHON Cruet  
473. 135 EMPRESS 6" C. Stick, Chintz Etch - Pr.  
474. 1201 FANDANGO Toothpick, Worn Gld., Base Rough  
475. 1205 FANCY LOOP Ind. Salt - 8 ea  
476. 1540 LARIAT 2-Lt. C. Stick - Pr.  
477. 372 7 oz. Syrup, Sahara - H  
478. 300 PEERLESS Bitters Bottle  
479. 393 NARROW FLUTE Marmalade - H - f  
480. 1252 TWIST 14" Fl. Bowl & C. Stick, Mglm. 3 Pr. H  
481. 362 Sanitary Syrup W/Unk. Cutting - H  
482. 1252 TWIST Ice Tub W/Tongs, Hdl. - H  
483. 1469 RIDGELEIGH 12" Celery & Olive  
484. 4164 73 oz. Jug & Four #2930 10 oz. Tumblers, Renaissance Etch. 5 ea.  
485. 3362 CHARTER OAK 4½ oz. Parfait, Marigold D.O., Crystal Stem/Ft. - H  
486. 1401 EMPRESS Ind. Nut D.F., Mglm. - H  
487. 1571 IVY Ind. Nut  
488. 4224 IVY Vase, W.O., Tangerine  
489. 3404 SPANISH Goblet, 10 oz. W.O. Unk. H Cut  
490. 433 GRECIAN BORDER 9 oz. Goblet - H  
491. 1423 SWEET-AD-O-LINE 12 oz. Banquet Gob. W.O. H  
492. 5038 ROOSTER STEM Cocktail  
493. 41 Salt & Pepper #57 Tops, Cloister Ct. Pr.  
494. Printing Plate #1506 Provincial Goblet, Copper  
495. Printing Plate Heisey's "Visible" Cooking Ware, Copper  
496. Printing Plate, #1229 Octagon Pat., Cpr.  
497. Printing Plate #300 Single Cdlabrum.  
498. Printing Plate #1447 Rococo Cheese & Cracker  
499. Printing Plate Orchid Etch, Copper, and Soda W/Tallyho Etch 2 ea.  
500. Printing Plate #1503 Crystolite & L-Shape Corner for ad. "Heisey's Glassware" 2 ea.  
501. Printing Plate 6-7/8 x 7-1/2 Advertisement "How about Thanksgiving 1995" Etc.

502.	Printing Plate 6 x 7-1/2 "We Got Heisey Too", Etc. Ad	566.	1435 Ash Tray, Orchid Etch 2 ea - 1 f
503.	Printing Plate 3 x 10-3/4 Post War Ad	567.	Misc. Lot #1489 3" Ash, 7" Gr. Key Plat
504.	4085 KOHINOOR Goblet 3 ea.	568.	1506 Goblet & 357 Syrup 4 ea. H - 3 X
505.	5067 PLANTATION Goblet 2 ea. - H	569.	4044 NEW ERA Pilsner 6 ea. - 1 f
506.	1558 6-1/2" Vase Bowl - H	570.	5009 QUEEN ANN Goblet, W.O.
507.	337 TOURAINE Cvd. Btr. Good Gold - H	571.	5013 SHASTA Goblet, W.O. W/#924 Daisy Cut
508.	337 TOURAINE Pitcher, Faint Gold - H	572.	3409 PLYMOUTH Goblet, W.O., Sahara - H
509.	1497 BOAT 13" Oval Fl. Bowl, Beaded Edge - H	573.	33 SKIRTED PANEL 3 1/2" Toy C.Stick - Pr. - f
510.	1503 CRYSTOLITE 9" Vase, Unusual Style - H	574.	1425 VICTORIAN 6" Div. Ftd. Bowl - H.
511.	1428 WARWICK 9" Vase - H	575.	3362 CHARTER OAK Tumbler, D.O., Mglm.
512.	300 PEERLESS Punch Bowl Base Only - H	576.	411 RIB & PANEL 6" Cvd. Ftd. Preserve, Haw.
513.	1401 EMPRESS 10-1/2" 2-Hld. Rd. Fl. Bowl. Mglm. H	577.	1489 PURITAN 8" Sq. Plate (Unusual)
514.	1519 WAVERLY 12" Crimped Fl. Bowl. Rose Etch	578.	371 7 oz. Syrup - H
515.	1799 QUEEN ANN 7-1/2" Bowl. D.F., Silver Decor. H	579.	3381 CREOLE 1 oz. Cordial, D.O., Sahara
516.	1799 QUEEN ANN Oval Ftd. Jelly, Silver Deco. H	580.	3381 CREOLE 1 oz. Cordial, D.O., Sahara
517.	1252 TWIST 4 oz. Oil, Flamingo - H	581.	23 COLONIAL 7" Vase, Scalloped Top, N.O. -
518.	2401 8 oz. Old Fashion, Lancaster Etch	582.	310 RING BAND Tumbler, Rose Deco., Cust. - H
519.	3373 MORNING GLORY Goblet, D.O., Flamingo - H	583.	1519 WAVERLY 7" Ftd. Oval Compote, Silver De
520.	3380 OLD DOMINION Tall Gob., D.O., Unk Cut - H	584.	1540 LARIAT Fan Vase, Special Cutting
521.	3380 OLD DOMINION 1 oz. Cordial, Unk. Cut - H	585.	1445 GRAPE CLUSTER 1-Lt. C.Stick W/Bobeche &
522.	5048 ROOSTER HEAD Cocktail	586.	"A" Prisms - 2 ea - H
523.	1286 YEOMAN Ash Tray, Cupid & Psyche, Flam.	587.	417 DOUBLE RIB & PANEL Basket, Flam. X Btm.
524.	5003 CRYSTOLITE 6 oz. Sherbet - 7 ea. - H	588.	1503 CRYSTOLITE Ind. Cr./Sugar & Tray 3 - H
525.	1205 FANCY LOOP Ftd. Punch Cup - m	589.	f on Creamer
526.	305 PUNTY & DIAMOND POINT 8 oz. Tumbler - H	590.	3397 GASCONY 5 oz. Soda, W.O., Sahara
527.	3404 SPANISH 4 oz. Claret, Unk. Heisey Cut	591.	1280 WINGED SCROLL 2-Hld. Spooner, Emer. W/
528.	3404 SPANISH 10 oz. Goblet, Unk. Heisey Cut	592.	1401 EMPRESS Diamond Ash tray, Alexandrite
529.	3404 SPANISH Sauc. Champ., Unk. Heisey Cut 2 ea	593.	343 SUNBURST 3" Ftd. Rose Bowl - H
530.	4002 AQUA CALIENTE 4 oz. Cktl., Lancaster Etch.	594.	2401 12 oz. Soda, Motor Boat Etch
531.	1415 TWENTIETH CENTURY Ftd. Tumbler, Cobalt-H	595.	305 PUNTY & DIAMOND POINT Sugar Sifter/No
532.	1519 WAVERLY Tall Cvd. Ftd. Candy, Elks Crest-H	596.	1295 BEAD SWAG Wine, Souv. West Baden, Spri
533.	3366 TROJAN 12 oz. Ftd. Ice Tea, D.O., Trojan	597.	Ind., Rose Decor - Custard
534.	3408 JAMESTOWN Sauc. Champ., Narcissus Cut 3ea-H	598.	1205 FANCY LOOP 10" Crimped Punch Bowl
535.	3381 CREOLE Sauc. Champ., Sahara	599.	1201 FANDANGO Ind. Cr./W Sug., Gold Worn f B
536.	465 RECESSED PANEL 1/2 # Cvd. Candy, Satin,	600.	1469 RIDGELEIGH Salt & Pepper - Pr. 1 f
537.	465 RECESSED PANEL 1/2 # Cvd. Candy, Gold Dec.-H	601.	305 PUNTY & DIAMOND POINT Salt & Pepper,
538.	1200 CUT BLOCK Ind. Cream, Souv. Salem, N.Y. Cust.	602.	Original Tops - Pr.
539.	3366 TROJAN Gob., D.O., Trojan Etch - H	603.	49 Salt & Pepper, D.O., Hawth. Pr. 1 sl.c
540.	1184 YEOMAN 12 oz. Soda, D.O., Equestrian Et.-H	604.	1258 TWIST 2-Hld. Nut, Mariqold - H
541.	1205 FANCY LOOP Toothpick, Gold Decor.	605.	4044 NEW ERA 2-Lite Candelabra, Complete - P
542.	1205 FANCY LOOP VARIANT 2 oz. Bar, Emerald	606.	1201 FANDANGO Water Bottle
543.	300 16" 2-Lite Candelabra, Complete, Sahara	607.	1201 FANDANGO 1/2 Gal. Tankard, Handle c
544.	1428 WARWICK 7" Vase, Sahara - Pr. - H	608.	417 DOUBLE RIB & PANEL Basket, Flam. - H
545.	1428 WARWICK 2-Lite C.Stick, Sahara - Pr. - H	609.	463 9" Basket, Cut, Rim Repair
546.	1428 WARWICK 11" Floral Bowl, Sahara - H	610.	343 SUNBURST 9" Shallow Ftd. Bowl - H
547.	21 9" Electroportable Lamp 8" Cut Shade,	611.	325 PILLOWS Egg Cup - H
548.	1504 REGENCY 1-Lt. Candle - Pr.	612.	335 PRINCE OF WALES PLUMES Egg Cup - H
549.	300 PEERLESS Toothpick	613.	395 BARREL HUBER Goblet - H
550.	1489 PURITAN Salt & Pepper, West Pt. Crest	614.	407 COARSE RIB Goblet, Moongleam - H
551.	2401 2 oz. Bar, Tally Ho Etch	615.	439 RAISED LOOP Egg Cup - H
552.	1509 QUEEN ANN 5" Mayo. D.F., Rosalie Etch	616.	1252 TWIST Goblet, Moongleam - H f on stem
553.	3315 POLONAISE Goblet, Cassandra Etch	617.	1404 OLD SANDWICH Goblet, Sahara - H
554.	3381 CREOLE Goblet, D.O., Sahara Bowl	618.	1485 SATURN Goblet, Zircon - H - m
555.	4231 Favor Vase, D.O.	619.	3320 RITZ Goblet #426 Mt. Vernon Etch 2 ea.
556.	3362 CHARTER OAK Cktl., D.O., Marigold Bowl. H	620.	5083 EL RANCHO Goblet - H
557.	3390 CARCASSONE Goblet, Sahara - 6 ea. 1 Rim f	621.	1540 LARIAT 8" Bon Bon
558.	2401 2 oz. Bar, Circus Etch "Clowns"	622.	393 NARROW FLUTE WITH RIM 8 oz. Goblet H f
559.	4054 CORONATION 2 1/2 oz. Bar, Modern Polo Player	623.	1469 RIDGELEIGH 4 1/2 oz. Sherbet - 7 ea.
560.	1509 QUEEN ANN Ice Bucket, Chateau Cutting	624.	1189 YEOMAN 13" Oval Tray, Flamingo
561.	4215 Vase 4-1/2", Flamingo	625.	465 RECESSED PANEL Ftd. Candy - No Lid - H
562.	1489 PURITAN King Size Cig. Box, Ruby Stain	626.	1469 RIDGELEIGH 9 oz. Goblet 3 ea.
563.	52 Salt & Pepper, Glass Tops, Flam. Pr. lcldy.	627.	407 COARSE RIB 5 1/2 oz. Champ. 3 ea. - H
564.	SPARROW	628.	1219 6 1/2" Plate, Star Bottom 3 ea. - H
565.	1404 OLD SANDWICH Ash Tray, Mglm. - H - f	629.	1219 7 1/2" Plate, Star Bottom 9 ea. - H
			1280 WINGED SCROLL Crms., Ivory, Good Gold
			1280 WINGED SCROLL Spooner, Ivory, Good Gold
			1252 TWIST 2-Compt. Relish, Flam. - H - m
			3380 OLD DOMINION 6 oz. Champ. D.O., Empress
			Etch, Sahara - 2 ea. - H - Rim Repair
			1401 EMPRESS Cr./Sug., D.F., 2 ea. - H

- 630. 1503 CRYSTOLITE Shell Cdy. W/Cover
- 631. 1401 EMPRESS 7" Oval Comport
- 632. 1519 WAVERLY 2-Compt. Relish Orig. Box, Silver Fork & Spoon - H - Ground Rim LARGE ELEPHANT - c
- 633. 1401 EMPRESS 2-Compt. Pickle & Olive, Sahara
- 634. 331 COLONIAL 5" Shallow Nappy - H
- 635. 4004 IMPROMPTU 14 oz. Soda - 4 ea.
- 636. 4004 IMPROMPTU 14 oz. Soda - 4 ea.
- 637. 3357 KING ARTHUR Goblet, D.O. Flam. 4 ea - H 2 Rim f
- 638. 3357 KING ARTHUR Goblet, D.O.,Flam. 4 ea - H
- 639. 3357 KING ARTHUR Gob. D.O.,Flam. Stem/Ft. 2 ea. - H
- 640. 1225 7½" Plate, Flamingo 10 ea. - H
- 641. 1225 7½" Plate, Flam. 9 ea. - H
- 642. 46 Salt & Pepper, Flam. Pr. - H 1 Cldy.
- 643. 46 Salt & Pepper, Flam. Pr. - H 1 Cldy.
- 644. 46 Salt & Pepper W/#21 Flower Frog, Flam. 3 ea. - H
- 645. 1417 ARCH Tumbler, Mglm. 2 ea. - H 2 f Sides
- 646. 1255 PINEAPPLE & FAN Hotel Sugar (Worn Gold) Emerald
- 647. 3405 ALIBI 3 oz. Cktl.,Tallyho Etch 2 ea.
- 648. 1519 WAVERLY Tall Cvd. Candy, Elks Crest Et. H
- 649. 1401 EMPRESS 6" Toed C.Stick, Sah. Pr. - H
- 650. 3304 UNIVERSAL Cktl. Icer & Liner, Minuet Etch - 2 ea. 1 f liner
- 651. 3304 UNIVERSAL Cktl. Icer & Liner, Minuet Etch - 2 ea - 1 f liner
- 652. 5074 SEA HORSE Stem Cktl. - H
- 653. 5074 SEA HORSE Cktl. - H
- 654. 300-5 HEMISPHERE 25" 5-Lt.Candelabrum, Complete
- 655. 1509 QUEEN ANN 7½" 1-Lt.Candelabra, Beaut. Special Cut - Pr.
- 656. 407 COARSE RIB Plate, Marigold 3 ea. - H
- 657. 1405 IPSWICH Oyster Cktl. - H - 6 ea.
- 658. 343 SUNBURST 4" Nappy - H f Rim
- 659. CHICKS - Head Up & Head Down 2 ea. 1 Base Rough
- 660. Misc. Lot. #150 Oval & Dia. Pt. Spooner, 1469 Ind. Cr. & #352 FLAT PANEL Ind. Cr. 3 ea.
- 661. 99 LITTLE SQUATTER 1-Lite Candlestick and CRYSTOLITE 4" Coaster 2 ea. - H
- 662. 3390 CARCASSONE 2½ oz. Wine, W.O., Sah. 3 ea.
- 663. 1401 EMPRESS 6" Sq. Plate, Lafayette, Sahara 4 ea. - H
- 664. 1255 PINEAPPLE & FAN 1/2 Pt. Tankard, Souv. "Katherine" - Custard f Base
- 665. STANDING DUCKLING
- 666. 1235 BEADED PANEL & SUNBURST Punch Bowl Base Only - H
- 667. 1567 PLANTATION Salt & Pepper - Pr. - H
- 668. 5077 LEGIONNAIRE Sherbet, Arcadia Cut 4 ea. H
- 669. 1951 CABOCHON Cruet
- 670. 1425 VICTORIAN Rye Bottle, Stopper X
- 671. 4035 DECANTER Bell Shape, Steeple Stopper
- 672. 367 OLD WILLIAMSBURG Decanter H - Sl.Cldy.
- 673. 1415 TWENTIETH CENTURY 9 oz. Tumb.Cobalt H
- 674. 4054 CORONATION 10 oz. Soda, Mod.PoloPlayer Et
- 675. 4224 IVY Vase, W.O., Tangerine
- 676. 4045 Ball Vase 6", Alexandrite
- 677. 1210 DUPLEX Confection, Flamingo
- 678. 3360 PENN CHARTER Cktl. St. Anne Cut
- 679. 300 PEERLESS Hdld. Jelly - H - X
- 680. 393 NARROW FLUTE Spooner - H - Cloudy
- 681. 433 GRECIAN BORDER 1/2 Gal. Tankard, Base badly chipped - H
- 682. 337 TOURAINE Lq. Suq. No Lid, Ruby Stain - H
- 683. 2852 12 oz. Soda, Tatting Etch
- 684. 1469 RIDGELEIGH 6" Bon Bon
- 685. 341 PURITAN 3 oz. Sherb.,Scallop. Top 2 ea. H
- 686. 4044 NEW ERA Champagne
- 687. 398 5" Nappy, White Gold Leaf Decor. - H
- 688. 1469 RIDGELEIGH Rd. Cig. Hldr. & 4 Rd. Ash Trays - 5 ea. - H
- 689. 3308 BOB WHITE Sherbet 3 ea.
- 690. 5025 GRACEFUL Footed Soda
- 691. 1186 YEOMAN 6" Oval Presv., Gold Decor. - H
- 692. 300½ PEERLESS Punch Cup 2 ea. - H - 1 f
- 693. 2852 12 oz. Soda, Tatting Etch
- 694. 1469 RIDGELEIGH 6" Bon Bon
- 695. 341 PURITAN 3 oz. Sherb.,Scallop. Top 2 ea. H
- 696. 4044 NEW ERA Champagne
- 697. 398 5" Nappy, White Gold Leaf Decor. - H
- 698. 1469 RIDGELEIGH Rd. Cig. Hldr. & 4 Rd. Ash Trays - 5 ea. - H
- 699. 3308 BOB WHITE Sherbet 3 ea.
- 700. 5025 GRACEFUL Footed Soda
- 701. 353 MED. FLAT PANEL Water Bottle
- 702. 1506 PROVINCIAL 9 oz. Ftd. Tumbler, Limelt. H
- 703. 1567 PLANTATION Sherb. 2 ea. Flared & Straight (4)
- 704. 1509 QUEEN ANN 6" Lemon Dish W/Dolphin Finial Cover - Orchid Etch - Paper Label
- 705. 3312 GAYOSO Ftd. Russian Coffee, D.O., Flam.
- 706. 6060 COUNTRY CLUB 20 oz., 14 & 10 oz. Sodas Scroll Etch - 3 ea.
- 707. 1503 CRYSTOLITE Cig. Box & Cvr. 2 - H and 411 RIB & PANEL Salt Shaker
- 708. 5 7-1/2" C.Stick, Silver Decor, Fl.Et. H & 4057 5" Vase, S.O.
- 709. 1509 QUEEN ANN Ind. Sug.,Rosalie Etch - H & 1184 YEOMAN Cup & Sauc., D.O., Mglm. - H and 1170 PLEAT & PANEL Sug. Floral Cut, Flam. H
- 710. 5077 LEGIONNAIRE 10 oz. Goblets, Fern Cut. 3 ea. - H

\*\*\*\*\*

HEISEY FAVOR VASES



CLUB NOTES:

HEISEY CLUB OF SOUTHEASTERN MASSACHUSETTS

By Beverly Sullivan

Being a relatively new club that is just beginning to meet and organize, we seem to have accomplished a lot in a short time and have many projects in the planning stage.

The following officers have been elected to serve for one year: President - Irene Walton, Vice-President - Bill Thran, Secretary/Treasurer - Dottie Banck. The committee chairpersons named include: Hospitality - Mary Williams, Membership - Helen Mead, Publicity - Beverly Sullivan, Program - Philip Phillips.

We purpose to meet the third Wednesday of each month. Wade and Dottie Banck have kindly offered their lovely refurbished barn for a meeting place. By-laws have been drawn and approved by the officers and members. Fund raising projects have been discussed and are in the process of being materialized, such as a mini - auction and a barn sale. Phil Phillips has given an interesting talk on the history of toothpicks and a lovely display of all types of holders. For our December meeting, the room was cheerfully decorated with plants and seasonal evergreens. Irene Walton knitted stockings and they held chocolate santas in them for favors. Our tasty refreshments were prepared by Mary Williams culinary talents and served on crystal and moongleam dishes, all Heisey of course.

We are always looking for new members or guests. Anyone interested in joining us can get in touch with Mrs. Helen Mead, P.O. Box 771, Marion, Mass. 02370 617-748-2240 for details and information.

BAY STATE HEISEY CLUB

By George Gleason

Label this issue "Social Event of the Season." The Bay State Club held its annual Christmas party at the Harvard Faculty Club in Cambridge, Mass. The party, an elegant affair, was hosted by Kathleen Montague, daughter of our secretary, Ann Montague. The club, with all its mahogany walls and crystal chandeliers, lent itself to a very cozy evening for all. Kathleen and her staff made us feel very comfortable and a good time was had by all.

Janet Caswell made key rings and embroidered different Heisey patterns on the back of each one. It was a very thoughtful present and we all appreciate it very much.

We who attended the party want to thank Kathleen and her staff very much. Happy New Year, Kathleen.

See you next year and by the way, a belated Happy New Year from all the Bay State members, and here's hoping all your Heisey wishes come true.



\* HEISEY COLLECTORS OF THE ROCHESTER AREA

\* By George J. Reynolds

\* A very brief meeting, to say the least, was held at the home of Arlene and George Reynolds, prior to our annual Christmas party and dinner.

\* The existing officers were re-elected to serve one more year. They are: Sharon Orienter, President. Bill Heron, Vice-President and George Reynolds, Secretary/Treasurer.

\* It was a lovely day for this time of year and was attended by most of the membership.

\* Arlene served a "hard" punch in a Prince of Wales Plumes punch bowl, with a soft punch in a Sunburst Egg Nog. Making use of her beautiful collection she also used a Waverly torte plate with Orchid Etch, #100 tall candlesticks, a footed Empress bowl with Orchid etch, a Plantation jelly and cheese compote. She also used an exceptional Cambridge cornucopia with a sterling base, but we all tried not to notice it. She made a great liver pate' which I can't eat, but I'll get even.

\* Since the "hard" punch bowl was empty when we left, I'm not sure whether some of the members remember going to the Springhouse for dinner or not, but we did and I for one enjoyed a great meal.

\* All in all, it was a lovely day and I'm sure that most of the members had a nice day although some seemed to be asleep at the Springhouse restaurant.

\* Our quote for the month, which I am sure applies to some HCA members, maybe all.

\* "When I get a little money, I buy glass, and if any is left, I buy food and clothes."

\* HEISEY SNOWBIRD-GET-TOGETHER, MARCH 27, 1985

\* AT ODELL AND VIRGINIA JOHNSONS', 6909 - 10TH AVENUE, W., BRADENTON, FL 33529

\* PH: 813-792-0604 - 3:00 - 5:00 VISITING AND

\* HEISEY TALK, 5:00 - 6:30 COCKTAILS AND

\* HEISEY TALK, 7:00 - ? DINNER (RESTAURANT)

\* AND HEISEY TALK. RSVP AND WE WILL MAKE

\* MOTEL RESERVATIONS IF DESIRED.

Y O U A L L - C O M E !



No. 4215-4 1/2 in. Vase  
Diamond Optic Only



No. 4224  
Ivy Vase

OAK GROVE ANTIQUES

49 GROVE STREET  
AYER, MA 01432

\* MARKED

PH: 617-772-2538

AFTER 5 P.M.  
P & I EXTRA

- # 142 CASCADE 3-Lite Candelabra, Orchid Etch Pr. - Slight damage on one.....\$100.00
- # 300 PEERLESS 7 oz. Water Goblet (2) ea.... 13.00
- # 300 PEERLESS 1 oz. Cordial, Reg. No. (2)ea 24.00
- # 300 PEERLESS 2½ oz. Wine Reg. No. (2) ea.. 20.00
- #300½ COLONIAL 2 oz. Bar Tumbler, Straight (3) ea..... 12.00
- # 341 PURITAN 6½" Oval Dish..... 10.50
- # 341 PURITAN 4 oz. Cruet With #6 Stopper... 30.00
- # 351 PRISCILLA Sweet Pea Vase..... 15.00
- # 351 PRISCILLA 2 oz. Oil (2) ea..... 15.00
- # 351 PRISCILLA Mustard With Cover..... 20.00
- # 354 FLAT PANEL 2 oz. Oil..... 16.00
- # 393 NARROW FLUTE Handled Jelly..... 12.00
- # 393 NARROW FLUTE Parfaits (4) ea..... 17.00
- # 393 NARROW FLUTE 10" Condiment Tray..... 12.00
- #1401 EMPRESS Creamer D/F, Lafayette Etch... 20.00
- #1454 DIAMOND POINT Ind. Ashtray & Ind. Jelly (2) ea..... 7.00
- #1469 RIDGELEIGH 7" Candelabra, Bobeche With "A" Prisms ....Pr..... 115.00
- #1503 CRYSTOLITE 5" Handled Jelly..... 10.50
- #1503 CRYSTOLITE 5-1/2" 2-Handled Dish..... 15.00
- #1506 WHIRLPOOL 3-1/2 oz. Cocktails (3) All. 14.00

\* PATTON HOUSE ANTIQUES

\* P.O. BOX 547  
\* LOUISA, VA 23093

\* MARKED

PH: 703-967-1181

After 6 P.M.  
P & I EXTRA

- \* #1503 CRYSTOLITE Covered Candy\*.....\$ 35.00
- \* #1503 CRYSTOLITE 4-Section Leaf Relish..... 17.50
- \* #1469 RIDGELEIGH 10" Floral Bowl\*..... 25.00
- \* #4169 RIDGELEIGH Floral Bowl, Silver Overlay\* 35.00
- \* # 135 EMPRESS C.Stick, Flamingo - Pr..... 125.00
- \* #1401 EMPRESS Cream & Sugar, Sahara\*..... 62.50
- \* # 341 OLD WILLIAMSBURG Oval Tray 15"\*..... 30.00
- \* # 515 ROSE ETCH Cream & Sugar..... 55.00
- \* #1210 FROG Handled Plate, Flamingo..... 135.00

\* \* \* \* \*

M O S T L Y H E I S E Y

RHODA CURLEY

16 CLAYTON PLACE

ALBANY, N.Y. 12209

PH: 518-482-6272

OUR SHOP:

"WORTH A TRIP FROM ANYWHERE"

BY APPOINTMENT

DAN CHERNEY

12 WINCHESTER STREET  
BOSTON, MA 02116

\* MARKED

PH: 617-423-7034

After 6 P.M.  
P & I EXTRA

- # 150 BANDED FLUTE Covered Butter, 2 Pcs.\*..\$ 50.00
- # 16 Powder Box & Hair Receiver, 4 Pcs.\*... 135.00
- #1567 PLANTATION 3-Lite Candlesticks, Pair.. 110.00
- #1503 CRYSTOLITE 5" Covered Powder Box\*..... 65.00
- #1225 PLAIN BAND Toy Covered Butter\*, 2 Pcs. 85.00
- #1428 WARWICK Horn of Plenty in Sahara, 11"\* 85.00
- # 21 Candlesticks, 7", Pair\*..... 70.00
- # 5 Candlesticks, 5", Pair\*..... 85.00
- #1401 EMPRESS Candlesticks, Sahara, 6" Pair\* 175.00

\* \* \* \* \*

\* H & R DIAMOND H

\* HELEN - BOB RAREY  
\* 1450 WHITE ASH DRIVE  
\* COLUMBUS, OH 43204

PH: 614-279-0390

After 5:30 P.M.  
S & I EXTRA  
\*MARKED

- \* # 150 BANDED FLUTE 2 oz. Wine\* (4) ea.....\$ 17.50
- \* # 150 BANDED FLUTE 4 oz. Cruet\*, sl. cloudy.. 39.50
- \* # 300 PEERLESS Berry Set\* 7 pc. W/Gold Decor. 95.00
- \* # 350 PINWHEEL & FAN Punch Bowl\* (Bowl Only). 125.00
- \* # 397 URN Footed Sherbet\*..... 12.50
- \* #1184 YEOMAN 10-1/2" Dinner Plate, Frontenac Etch (8) ea..... 22.50
- \* #1229 OCTAGON Ind. Nut\*, Moongleam (6) ea.... 25.00
- \* #1295 BEADED SWAG Custard Goblet, (Amasa, MI) 62.50
- \* #1519 WAVERLY Ftd. Sugar\*, #515 Rose Etch.... 35.00
- \* #1540 LARIAT 7-1/2" Shallow Bowl..... 12.50
- \* #1540 LARIAT 12" Floral Bowl..... 12.50
- \* #1401 EMPRESS 8" Hdld. Vase\*, Anarctic Etch.. 42.50
- \* #2052 2-1/2 oz. Bar, #507 Orchid Etch (4) ea. 85.00
- \* #3333 OLD GLORY Wine\*, Renaissance Etch (2)ea 22.50
- \* #3357 KING ARTHUR 10 oz. Goblet, D.O., Mglm. Stem & Foot (8) ea..... 22.50
- \* #3357 KING ARTHUR 6-1/2 oz. Champagne, D.O., Moongleam Stem & Foot (7) ea..... 18.50
- \* #3370 AFRICAN Goblet, D.O., Flamingo (6) ea.. 27.50
- \* #5003 CRYSTOLITE Sherbet (2) ea..... 7.50
- \* #5003 CRYSTOLITE Cocktail (4) ea..... 15.00
- \* #4002 AQUA CALIENTE 4 oz. Cocktail, Anarctic Etch (4) ea..... 32.50

D O N ' T F O R G E T

CONVENTION RESERVATION  
FORMS & OSCAR FORMS

SEE PAGE 23

DONALD P. BEAH  
36 HARDING STREET  
MILFORD, MA 01757

PH: 617-473-0561  
P & I EXTRA  
\* Marked

- # 300 PEERLESS Toothpick\*.....\$ 27.50
- #1503 CRYSTOLITE Cvd. Mustard\* With #10 Paddle..... 20.00
- #1252 TWIST 2-Hdld. Bon Bon\*, Moongleam..... 17.50
- # 142 CASCADE 3-Lite Stick, Orchid - 1 only. 40.00
- # 465 RECESSED PANEL 1# Cvd. Candy\*Grey Cut. 25.00
- #1519 WAVERLY 6" Deep Epergnettes\*..Pair.... 15.00
- # 419 SUSSEX Sherb.\*, Mglm. Bowl, Cry.Stem. & Foot (2) ea..... 18.00
- #1202 BASE Only, for #1202 Floral Bowl\*Mglm. 15.00
- # 473 NARROW FLUTE 3½" Salted Nuts\*, Plain Bottom (Not Ground) 6 for..... 35.00

ALAS & ALACK ANTIQUES

EMMA & MANNY KLAWANS  
2308 ASHBORO DRIVE  
CHEVY CHASE, MD 20815

PH: 301-588-2755  
All Items MINT  
\$3.00 P & I EXTRA  
SASE, Please.

Will hand deliver anywhere East of the Mississippi:  
VICTORIAN PUNCH BOWL - \$400.00  
18 VICTORIAN PUNCH CUPS  
1 VERY LARGE VICTORIAN UNDERPLATE  
1 HEISEY LADLE (ORIGINAL)  
WILL MEET YOU HALFWAY TO YOUR HOMETOWN.

WILL SHIP: 7 #5010 Symphone 2-1/2 oz. Wines, Danish Princess Cut, @ \$30. each or \$200. All.

THE COLLECTOR'S STOP

12018 SUELLEN CIRCLE  
WEST PALM BEACH, FL 33414  
\* Marked

PH: 305-793-0986  
Exc. Cond. Other-  
wise Noted  
S & I EXTRA

SUBJECT TO PRIOR SALE

- #1503 CRYSTOLITE, Zircon 4" Ash Tray\* (2)ea.\$ 55.00
- #1295 BEADED SWAG Toothpick With Gold..... 65.00
- # 433 GREEK KEY Oval Cream & Sugar\*..... 115.00
- #1401 EMPRESS, Sahara D/F Cream & Sugar\*.... 85.00
- #1401 EMPRESS, Flamingo Mustard Cover Spoon\* 85.00
- #1469½ RIDGELEIGH, Zircon 8" Vase..... 225.00
- # 2 OLD WILLIAMSBURG 11" C. Sticks - Pr... 199.50
- # 353 COLONIAL Cheese & Cracker W/Silver Overlay\*..... 80.00
- # 500 OCTAGON Cr.&Sug. W/Moongleam Handles\*. 85.00

BEVERLY SULLIVAN

12 POND VIEW CIRCLE  
HATCHVILLE, MA 02536

PH: 617-563-2500  
S & I EXTRA

- MEDIUM ELEPHANT.....\$175.00
- # 417 RIB & PANEL Quart Jug..... 60.00
- #1184 YEOMAN After Dinner/Coffee Cups, Flam. (5) ea..... 15.00
- #1519 WAVERLY Orchid Etch, Ind. Sugar..... 30.00
- #1401 EMPRESS Orchid Etch 8" Ftd. Mint..... 40.00
- #1519 WAVERLY Orchid Etch 7" Plate..... 15.00
- #1428 WAVERLY 2-Lite C. Sticks (3) ea..... 30.00
- ROOSTER Cocktail Shaker, Monogram "K". 45.00
- # 5 PATRICIAN Candlesticks 5" (3) ea..... 30.00

ROBERT H. DONOVAN

P.O. BOX 4103  
ORMOND BEACH, FL 32075  
U.P.S. \$3.50 Any Lot

PH: 904-677-1732  
Mon. - Sun, Eve.  
PH: 904-252-2210  
Mon. - Sat. 10-4

- \* FROSTED MADONNA.....\$ 90.00
- \* SCOTTY..... 85.00
- \* GEESE - Up - Down - Half.....Set..... 400.00
- \* GIRAFFE, Head Forward..... 138.00
- \* VICTORIAN BELLE Bell, Frosted\*..... 110.00
- \* CLYDESDALE..... 250.00
- \* DONKEY..... 210.00
- \* #1401 EMPRESS Compote, Moongleam\* (2) ea.... 65.00
- \* #1252 TWIST Cream & Sugar, Flamingo\*...Pr... 80.00
- \* #1401 EMPRESS Console Bowl, Moongleam..... 145.00
- \* #1252 TWIST Bon Bon, Moongleam\*..... 22.00
- \* #1401 EMPRESS Mayonnaise, Flamingo..... 49.50
- \* #3357 KING ARTHUR D/O St. Champ, Moongleam Foot..... 25.00
- \* #3357 KING ARTHUR D/O Fl. Champ, Mglm. (3)ea 25.00
- \* #1401 EMPRESS Triple Relish - Sahara\*..... 45.00
- \* # 352 FLAT PANEL Cheese & Cracker..... 70.00
- \* #1205 FANCY LOOP Punch Glass (6) V IV Pg. 79 RARE....ea..... 48.00
- \* #1509 QUEEN ANN Console Bowl..... 28.00
- \* #3357 KING ARTHUR D/O St. Sherbet, Moongleam Foot (4) ea..... 25.00
- \* # 433 GREEK KEY 3-Pint Jug\*..... 140.00
- \* # 433 GREEK KEY Individual Ice Tub\* (2) ea.. 70.00
- \* # 433 GREEK KEY French Bread Tray\*..... 160.00
- \* # 433 GREEK KEY Meat Tray\*..... 215.00
- \* #1488 KOHINOOR 6" Ball Vase - Paper \*..... 30.00
- \* #1567 PLANTATION 5" Footed Vase, Ivy Etch (Nice)..... 42.00
- \* #1567 PLANTATION 5 oz. Claret - Paper Label (7) ea..... 20.00
- \* #1567 PLANTATION Footed Gardenia Bowl..... 79.50
- \* #3389 DUQUESNE 5 oz. Sherbet, Tangerine (2) each..... 145.00
- \* #4225 ROOSTER Cocktail Shaker, Sportsman Etch..... 95.00
- \* #1252 TWIST Oval Bowl 10" (A Beauty)..... 30.00
- \* # 150 BANDED FLUTE 4 oz. Cruet With Stopper. 18.50
- \* # 433 TANKARD\* - 3-Pint..... 285.00
- \* # 433 GREEK KEY 2-Handled Jelly\* (3) ea..... 45.00
- \* # 433 GREEK KEY 4 oz. Oil\* (2) ea..... 120.00
- \* # 433 GREEK KEY 1-Quart Jug\*..... 120.00
- \* # 433 GREEK KEY 2-Quart Fruit Jar\*..... 225.00
- \* # 433 GREEK KEY No. 1 Low Footed Jelly, Handles & Cover\*..... 600.00
- \* # 433 GREEK KEY Tall Celery\*..... 105.00
- \* # 433 GREEK KEY 1-1/2 Quart Fruit Jar\*..... 195.00

WANTED: ITEMS FOR RESALE IN

- \* #1252 TWIST, Moongleam & Flamingo - #433 GREEK KEY
- \* MANY ITEMS - #1567 PLANTATION - MOST ITEMS, ALSO IN
- \* IVY ETCH - #1401 EMPRESS - IN COLOR ONLY - #1506
- \* WHIRLPOOL - LIMELITE & SAHARA - STEAMWARE IN COBALT,
- \* MINUET ETCH, OLYMPIAD ETCH - DANISH PRINCESS, COCK-
- \* TAILS - SPOONERS & OILS - ANY PATTERN - MINT ONLY.



**5 LINES / 12 MONTHS / \$20.00**

**DEALERS DIRECTORY**

We assume no responsibility for errors in these ads after the first printing... Editor.

For changes in ads during the year, please send \$2.00 per line.

Heisey, Fostoria, Cambridge, Linens,  
Lace & Primitives  
Mary Weaver, 209 Cortez Rd., E.  
(44th Ave., E.), Bradenton, FL 33505  
Mon., Wed., Fri., - 11-4  
PH: (813) 729-2324 - Evenings

<p><b>A DOOR ANTIQUES</b> Heisey My Specialty 4241 Bayard Road South Euclid, Oh. 44121 PH: (216) 381-3008</p>	<p><b>GERT'S GLASS</b> Heisey &amp; Duncan Gertrude &amp; Russell Swetnam 1926 Saratoga Dr., Adelphi, Md. 20783 PH: (301) 434-5113</p>	<p><b>MOSTLY HEISEY</b> Rhoda Curley 16 Clayton Place Albany, NY 12209 By Appointment, PH: (518) 482-6272</p>
<p><b>ALL HEISEY AUCTION</b> Consignments Welcome Apple Tree Auction Center 1616 W. Church, Newark, Oh. 43055 PH: (614) 344-9449</p>	<p><b>GLASS 'N' GLASS</b> Virginia &amp; Odell Johnson 6909 10th Ave. W. Bradenton, FL 33529 PH: (813) 729-0604</p>	<p><b>MOUND BUILDERS ANTIQUES</b> Heisey &amp; Animals, General Antiques Irene Rauck 1138 Moundview, Newark, Oh. 43055 PH: (614) 344-6043</p>
<p><b>ANN'S GIFTS &amp; ANTIQUES</b> 105 W. Main St., Hebron, Oh. 43025 Intersection of Rts. 40 &amp; 79 Next door to Daisy Queen Daily 10:30 to 5:30</p>	<p><b>GLASS WITH CLASS</b> Lenore A Shelley, GGHCC 1336 Lincoln Avenue San Jose, Ca. 95125 PH: (408) 286-8098</p>	<p><b>PATTON HOUSE</b> Heisey &amp; Duncan Miller Rocky's Mall, I-81 &amp; US 11 Weyer's Cave, Va. 24486 PH: (703) 967-1181</p>
<p><b>ANTIQUES - THE SHULTZES</b> 206-208 East Main St. Newmanstown, Pa. 17073 15 Miles West of Reading, Pa. PH: (215) 589-2819</p>	<p><b>GREEN ACRES FARMS</b> Antiques, Crystal Glass &amp; Collectibles 2678 Hazelton-Etna Rd., SW (S.R. 310-N) Pataskala, Oh. 43062 Sat. or Sun. PM or call (614) 927-1882</p>	<p><b>R &amp; L ANTIQUES - SAN FRANCISCO</b> Shows only - Always lots of Heisey Member of Golden Gate Heisey Club P.O. Box 3614, Daly City, Ca. 94015 PH: (415) 621-6693</p>
<p><b>AVERY'S QUALITY ANTIQUES</b> Specializing in Heisey Shows or by Appointment 2112 First St., Jackson, MI. 49203 PH: (517) 783-4075</p>	<p><b>H &amp; R DIAMOND H</b> Helen &amp; Robert Rarey 1450 White Ash Dr. Columbus, Oh. 43204 PH: (614) 279-0390 after 5:30</p>	<p><b>RAMBLING LANE ANTIQUES</b> Featuring Heisey &amp; Other fine glass Keith &amp; Evelyn Hoover Rt. 4, Box 1005, Rhinelander, WI. 54501 - PH: (715) 282-5019</p>
<p><b>B &amp; B HEISEY &amp; COLLECTIBLES</b> B. Whaley 300 International Dr. Pataskala, Oh. 43062 By Appointment, PH: (614) 927-1557</p>	<p><b>CHARLOTTE'S GLASS REFLECTIONS</b> Glass, China, Crystal Including Heisey 6816 14th St. W., Bradenton, FL. 33507 PH: (813) 756-4143</p>	<p><b>RAY ZIEGLER</b> Glass repair 2265 Innis Rd. Columbus, Oh. 43224 PH: (614) 882-8446</p>
<p><b>C. E. HIGGINS (S. F. Bay Area)</b> Shows and Mail Order P. O. Box 2723 Menlo Park, Ca. 94025 PH: (415) 322-0192 Evenings</p>	<p><b>HARRALSON'S HAPPY HEISEY HUNTERS</b> Ours &amp; Others', Many Choice Items L SASE - New List - Jan. 1 - May 1 - Sept. 1 We accept consignments &amp; buy collections. 1426 W. Highland, Springfield, MO. 65807 PH: (417) 883-2449</p>	<p><b>SCHWAN'S ANTIQUES SHOPS &amp; SHOWS</b> 2980 John Tyler Hwy. Williamsburg, VA. 23185 PH: (804) 229-7873</p>
<p><b>C &amp; J ANTIQUES</b> Cole &amp; Jean Miessner Box 45, 72 Whig St. Newark Valley, NY 13811 PH: (607) 642-9905</p>	<p><b>HARRISON'S ANTIQUES</b> Heisey, Cambridge, Duncan Shows, Mail, by Appointment 26 Johnston's Lane, Mercersburg, Pa. 17236 PH: (717) 328-2451</p>	<p><b>SUM OF LIFE</b> Elaine &amp; Frank Husted P O. Box 102 Phoenixville, Pa. 19460 PH: (215) 935-2962</p>
<p><b>CHARLES &amp; MILDRED FISHER</b> Heisey, Degenhart, Imperial, Antiques, Collectibles, General Line 991 Idlewild, Newark, Oh. 43055 PH: (614) 522-5398</p>	<p><b>HEISEY GLASS NEWSCASTER</b> Sample copy 70¢, 32 pg. All-Heisey Quarterly \$6.00 (1984) Back issues \$4.00 yr. 1977-1978-1979- 1980-1981-1982-1983. Box 102, Plymouth, Oh. 44865</p>	<p><b>T &amp; S ANTIQUES</b> Specializing in Heisey Tom Martin &amp; Steve Roderick New Rochelle, NY 10805 PH: (914) 235-9632</p>
<p><b>DAVE'S ANTIQUES</b> Specializing in Heisey Shows &amp; Appointments Tampa, FL. 33600 PH: (813) 876-0580</p>	<p><b>HEISEY PUBLICATIONS</b> All heisey Books I-II-III-IV- Heisey Newscaster, 32 pg. Quarterly - \$6.00 Back Issues - \$4.00 Box 102, Plymouth, Oh. 44865</p>	<p><b>THE GLASS CONNECTION</b> Specializing in Heisey Shows &amp; Mail Order Box 526, Collegeville, Pa. 19426 PH: (215) 489-0139</p>
<p><b>DIAMOND H PLUS</b> Appointment or Mail Order George &amp; Eileen Schamel Rt. 3, Box 419, Boonsboro, Md. 21713 PH: (301) 432-6285</p>	<p><b>J &amp; R COLLECTIBLES</b> Shows, SASE, Mail Order list June &amp; Ray Lukasko 1032 Fairlawn, Newark, Oh. 43055. PH: (614) 344-9719</p>	<p><b>TRUDY MILLER ANTIQUES</b> China &amp; Crystal Matching Heisey A Specialty P.O. Box 740548, Dallas, Tx. 75374 PH: (214) 783-9920</p>
<p><b>ELLIZABETH BASSETT CASON</b> 401 32nd St., W. Bradenton, FL. 33505 Mail Order - List PH: (813) 748-0851</p>	<p><b>THE PURPLE PLACE</b> Featuring Heisey &amp; Other Fine Glass Martha &amp; Harold Earp 1940 Suwanee, Ft. Myers, FL. 33901 PH: (813) 936-1572 Anytime</p>	<p><b>WILLEY'S ANTIQUES &amp; MUSEUM</b> Specializing in Heisey 11110 Cannon Rd., 'frazeytsburg, Oh. 43822 16 miles east of Newark, Oh. PH: (614) 828-2557</p>
<p><b>FOREVER HEISEY</b> Shows and Mail Order Janice Thran 1663 Londondale Pkwy., Newark, Oh. 43055 PH: (614) 344-5955</p>	<p><b>JUDY'S DIAMOND H ANTIQUES</b> Specializing in Heisey - Buy &amp; Sell Star Rt. 3, Box 2556 Lake Isabella, Ca. 93240 PH: (619) 378-2176 by Appointment</p>	<p><b>GOLDSBERRY'S ANTIQUES</b> Heisey a Specialty Shows Only - Buy &amp; Sell Kalamazoo, MI 49000 PH: (616) 381-3013</p>
<p><b>DIE KUNST GALLERIES &amp; ANTIQUES</b> Specializing in Heisey Vel &amp; Andy Andress Box 329, 725 Front Street Leavenworth, Wa. 98826 PH: (509) 548-7856</p>	<p><b>PEGGY'S ANTIQUES</b> 2000 pcs. of Heisey in stock Ernie &amp; Peggy Cox P.O. Box 367, Spavinaw, Ok. 74366 By Appointment or by Chance PH: (918) 589-2859</p>	<p><b>THE WOODEN SHOE</b> Antiques &amp; Collectibles - Buy &amp; Sell Glass, Furniture, Estates Jim &amp; Sheri Van Es, By Appointment 810 Elden, Herndon, Va. 22070 PH: (703) 435-9045</p>



THIRTEENTH ANNUAL  
STARLITE ANTIQUES FLEA MARKET

SUNDAY, MARCH 10, 1985

NEW LOCATION!  
(FORMERLY HELD AT STARLIGHT SCHOOL)

NORTH ELEMENTARY SCHOOL  
300 DEO DRIVE  
NEWARK, OHIO

(Off North 21st Street)

9:00 A.M. - 4:00 P.M. (firm times)

FOR FURTHER INFORMATION WRITE:

Dick Smith  
225 Upson Downs Road  
Newark, Ohio 43055  
PH: 614-366-5163 Evenings

ANTIQUES - HEISEY GLASS - POTTERY - CRAFTS  
Something for Everyone

Managed by: Land of Legend Heisey Study Club

Benefit of The National Heisey Glass Museum

Plenty of free parking.                      Donation \$1.00



The GLASS REVIEW Magazine is for every-  
one who studies, collects or sells glass.  
Whether your glass interests lean toward  
the early 1900's -- or the depression era--  
or with today's limited glass items, the  
GLASS REVIEW covers it all!

Articles -- price reports -- original  
catalog documentation -- shop directory --  
research and reproduction news -- trademark  
information -- glass book releases -- what's  
new on the market -- a large variety of  
glass ads (on both old and new glass) --  
plus much more.

Enclose payment and mail to:  
GLASS REVIEW, P.O. BOX 542, MARIETTA,  
OH 45750

10 'big' yearly issues

68 pages or more

\$12.50--one year

HEISEY'S GLASSWARE  
OF DISTINCTION

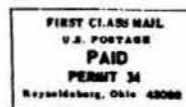
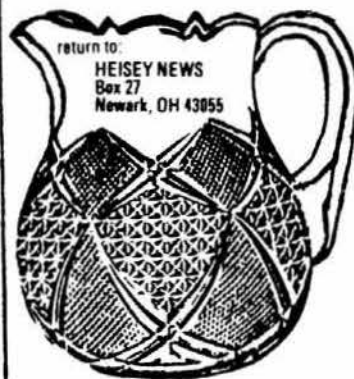
By Mary Louise Burns

1983 EDITION

Condensed and updated! Contains all major  
tableware patterns with pictures for easy iden-  
tification.

Current Price List Included

Order direct from author  
\$11.95 pp  
MARY LOUISE BURNS  
P.O. Box 1931  
Grants Pass, OR 97527



FIRST-CLASS MAIL

Individual price lists available for Heisey's  
Orchid Etch, Rose Etch., Animals & Verly's @  
\$1.50 each plus large SASE.