

HEISEY news

OFFICIAL PUBLICATION HEISEY COLLECTORS OF AMERICA

©Heisey Collectors of America, Inc. 1984
All Rights Reserved

VOLUME XIII

NO. 6

JUNE, 1984

ISSN 0731-8014



Our Impossible Dream... .. 10 yrs later
1974 - 1984

14th Annual

ANTIQUÉ SHOW & SALE

HEISEY GLASS DISPLAY

Newark Branch - O.S.U. Campus
Country Club Drive, Newark, Ohio

Sponsored By

Heisey Collectors of America, Inc.

| | |
|-------------------|-------------------------|
| Friday, June 15 | 12:00 noon to 5:00 p.m. |
| Saturday, June 16 | 12:00 noon to 8:00 p.m. |
| Sunday, June 17 | 12:00 noon to 5:00 p.m. |

Donation \$2.00

Champagne Preview
Thursday, June 14
6:00 p.m. - 10:00 p.m.

Donation \$7.00

BENEFIT NATIONAL HEISEY MUSEUM



HCA OFFICERS

- * President Tom Bredehoft 614-745-1014
- * Vice President Jim Kennon 216-282-7711
- * Secretary Ray Ziegler 614-471-6446
- * Treasurer Dick Marsh 614-366-5608
- * Exec. Dir. Louise Ream 614-345-2932

HEISEY NEWS - P.O. BOX 27, NEWARK, OH 43055

- * Editor: Louise Ream
- * P.O. Box 27, Newark, OH 43055
- * PH: 614-345-2932
- * Assistant Editor: Neila Bredehoft
- * P.O. Box 27, Newark, OH 43055
- * PH: 614-345-2932

* Published monthly and mailed from Reynoldsburg, Ohio 43068.

* \$15.00 per year - \$1.25 per copy

* Back Issues - Each Volume (12 issues) year - \$9.00

* Volume V, VI, VIII, IX, X, XI & XII Available

* Heisey Collectors of America, Inc. is a non-profit corporation with tax exempt status.

* Owners and operators of National Heisey Glass Museum, 6th and Church Streets, Newark, Ohio.

* Open Daily 1 - 4 p.m. except Mondays & Holidays.

* Other hours by appointment. Members admitted free.

* Club membership (includes 12 issues of HEISEY NEWS and participation in all club activities)

* \$15.00 per year plus \$2.50 for each additional family member in same household who wishes a membership card. For VOTING MEMBERSHIP, add \$25.00 one time only fee.

* When requesting information, please enclose a self-addressed, stamped envelope (SASE).

* ADVERTISING - Send all ads to:

* Advertising

* c/o Janice Thran

* P.O. Box 27

* Newark, OH 43055

* RATES:

* DEALERS' DIRECTORY - 5 lines - \$20.00

* Extra Line - \$2.00 - Change during year \$2.00 per line.

* CLASSIFIED - 12¢/Word - \$1.20 Minimum.

* Abbreviations & initials count as words.

| DISPLAY: | MEMBERS | NON-MEMBERS |
|------------------------------|---------|-------------|
| * 1/8 pg (9 items) | \$15.00 | \$25.00 |
| * 1/4 pg (20 items) | 24.00 | 35.00 |
| * 1/2 pg (20 items) | 40.00 | 50.00 |
| * 1/2 pg (50 items) Vertical | 50.00 | 60.00 |
| * 1 pg (50 items) | 65.00 | 80.00 |

* Extra lines will be billed at \$1.00 per line.

* We cannot double-column ads.

* ALL ADS MUST BE PREPAID. Ad copy must be received by the 5th of the month to be included in that month's NEWS. Ads containing reproductions will not knowingly be accepted unless clearly stated (i.e. Heisey by Imperial, etc). HEISEY News assumes no responsibility for false advertising or misleading information. In the event of typographical error, the incorrect portion of the ad will be run in the following issue, but HEISEY NEWS assumes no further liability.

NOTES FROM YOUR PRESIDENT.....

This column, appearing the first of June, marks the end of one year of my administration. In that year, we have realized some of the goals for which we have been striving. The "Diamond H" trademark in glass is now the property of the HCA. Also, we have stopped an importer from selling confusingly marked glass. While these came to pass during the last year, I can take little credit for them, all the work had been done under Bob McClain's administration. My thanks to Bob and the rest of the Board of Directors for all their help.

By the time this is published, there may be some final word on the disposition of Imperial Glass. The next hearing on their bankruptcy proceeding is May 23. The unofficial word from Bellaire is not encouraging.

Convention will soon be here. Remember there are a lot of attractions to attend. Former Heisey employee Walter Porter will be speaking on the making of glass at the Former Employee's Reception. This should be very educational. Fred Bosworth, Heisey Sales Representative, will be the banquet speaker on Friday night. Remember to bring your unidentified pieces to "Stump the Dummy" on Friday morning. Tom Felt and Bob O'Grady will hold an autograph session with their newly released candlestick book in the lobby at Hopewell Hall.

Many thanks to the people who responded to my plea for mirrors. A study club has donated mirrors for a room and an individual has donated mirrors for the gift shop.

On the other hand, my plea for computers has so far fallen on deaf ears. Someone has donated a copy of "Visicalc" (a software program) set up to maintain a constant inventory and study cost effectiveness of our gift shop sales, but it will only run on an Apple II+ or IIE computer. Now to take advantage of this, we must have one of them donated.

I'm looking forward to seeing all of you at Convention. Please stop and talk when you can.

Opinions expressed in articles are those of the authors and not necessarily those of HCA. Editorial Staff reserves the right to edit or refuse any material submitted for publication. Send all letters and articles to the EDITOR. Letters to columnists should be sent to the club address and will be forwarded.

BITS AND PIECES ABOUT DECORATIONS

By Neila Bredehoft

There have been several unusual items either found or reported over the past several months and it is difficult to find a way of including them in a column, so I thought I would mention a few so that everyone who wished to could make some notes about them.

In a recent Newark auction, two unusual pieces of Minuet etching were sold. The #10 Small Square salt and pepper were seen for the first time (at least by me and several other people). The interesting thing about these (besides their rarity) was that two sides had the medallions etched on them and the other two sides had the frilly, fill-in design which is found on Minuet. Very interesting. The other Minuet item never before known was the #372 5 oz. sanitary syrup. This was truly a darling little piece and commanded quite a price since it fit into so many collections.

Also in a recent auction was a 1951 Cabochon plate with an unknown flower and leaf etching. The flower is similar to a lily, but I am not sure exactly what flower it was meant to represent. Since this plate came from a former Heisey employee, it is almost certainly an original Heisey etching - probably an experimental one.

Still with etchings, the most unusual and exciting item I have been told of also came from a former Newark family. A lucky lady has two #507 Orchid etched cordials - nice enough. However, these particular cordials are from the experimental twisted stem line which Heisey produced. They are truly unusual.

I can't remember if I reported the #1489 Puritan covered candy box with #5020 Lily carving before or not. If I have, it bears repeating. Lily carving is very elegant - especially on simple plain items such as Puritan.

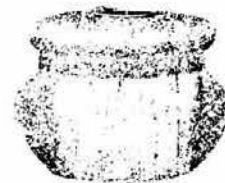
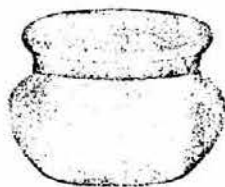
A set of salt shakers which I truly loved were also sold recently in an auction. These were the #1519 Waverly footed salt with #1015 Dolly Madison Rose cutting on them. I had only seen Dolly Madison on Cabochon salts before these turned up. A really nice set.

Of course, from the Paul Fairall estate, many lovely special cuttings were sold. A pair of #4043 colognes with special hollow and ground paneled stoppers were sold. These were only the second set of these special cut colognes known - both sets having come from Paul Fairall. An exquisite #1511 Toujours apple marmalade was elaborately cut as was a #5031 French dressing bottle. Several Spanish goblets were sold which had special cuttings. The #4057 vases were well represented with several sizes and different types of cuttings. One special example, although rather plain in design, was of a design done by Walter von Nessen for the special exhibit in the Metropolitan Museum of Art. (See Heisey News for more on this). It is a combination of sand blasting and cutting done in a rather simple geometric design. A three compartment relish tray (an unknown Heisey pattern) was

also elaborately cut to match some of the other pieces from Mr. Fairall. There were many other cut items - one was a simple paneled plate which was not a Heisey blank but was engraved with a floral and leaf design and marked "Hawkes." While not Heisey, it was a nice piece to add to anyone's collection.

At least two blown and cut powder boxes were sold which may or may not have been made at Heisey. Since they came with other Heisey glass consigned to the auction, they may well have been some of the many that were made for Hope Glass to their designs. Unfortunately, we don't have illustrations for these puff boxes - only the numbers and the fact that they were sold to Hope. In spite of the great amount of information available about Heisey, there are always tantalizing questions. Sometimes I wonder if we will ever know about some of these things. We do find the answers to some puzzles, but I am sure that many will remain forever.

The powder jars referred to above both had metal tops. There were two blown powder jars in the January All-Heisey Auction which were also cut and went for very high prices. They were the #4301 puff boxes as shown below. There is also a hair receiver in this pattern.



HEISEY SALTS

By Neila Bredehoft

#32 CORBY - name given by researchers



This attractive footed salt is not often found in spite of the fact that it was listed in price lists from 1914 to 1929. It is a massive, heavy salt and the glass is of superior quality.

Crystal was the only "color" listed and it has not been found in any other. It is not marked (or at least examples I have seen were not) and so that may be why so few have been found. Various tops were offered, including #56 heavy silver plate and #57 heavy silver plate, plain. The design is an elegant, formal one of panels. Basically the salt is square, but by chamfering the corners, an uneven octagon is the result. Thus the shaker has 8 sides, 4 larger and 4 smaller on the corners. The set has been seen with a simple leaf cutting, but it is unknown whether this was done at Heisey's or by some decorating company.

Feel fortunate if you are able to add this set to your collections. It took me many years to find mine. The name has been assigned by researchers as Heisey price lists only referred to the shaker as "footed blown."

diamonds are forever.....

by Janet M. Caswell

The Yachting Center is planning a busy summer, crammed full of wonderful things to do and see. Boating on our pretty Harbor, "finger painting" for the children during the "Festival in the Street" and Concerts, held in the evenings in a lovely Park overlooking the harbor. What excitement is in store for our little town, I can hardly wait, but first things first. Now first I must concentrate on "Convention Time" and it is that time again. The Mr and I are going to display our creams and sugars at Hopewell Hall this year and they are setting, all washed and sparkling, on a large table just waiting to be packed for their journey to "Heisey Land." In my mind's eye I can already see the spectacular array of glistening Heisey in every color, and adorned with the most magnificent etchings, cuttings and carvings. Will that piece I just can't live without be there? I can hardly wait to find out.

In the meantime, lets put our minds to what some of my friends have told me. "My good English Buddy" (Mass) is away on vacation at the present time but before he went I talked to him on the phone and learned about a very nice #1401 Empress 7" three compartment relish in flamingo; the #353 cheese and crackers and a #1509 Queen Ann 2-handled jelly. He also has ten (10) #3357 King Arthur goblets, crystal bowl/moongleam stem and foot d/o along with twelve (12) parfaits - same as above - and I understand all are in good condition. In the Animal world there was a Goose, wings down, no less. Not really difficult to handle. "Good Show"!

When I started typing this column, I had thoughts of warm weather, summer, boats and convention time. I still have the same thoughts of Convention time but now I'm typing this in the midst of a bad (real bad) winter, or maybe I should say Spring, Snow storm (New England doesn't care that spring is officially here). We are having high winds and very, and I want to bring attention to the word very, heavy snow. The lights are flickering and I'm sure there will be many towns with no power. But the bright spot came with the mail-man, he really cheered me up. He brought me a post card from my "Evergreen friend"...(Maine). She found a #1252 Twist mustard and spoon in marigold. The marigold was perfect color (so many pieces are not) and to add, both pieces were marked. She also picked up the #335 Prince of Wales Plumes spooner and a beautiful little #325 Pillows nappy, all while on vacation. Also seen, while on vacation, was a #300 Punch Bowl with 15 cups (for a very high price). She had to pass on this one. The P.S. on her card to me said, "having a Great Time!" Well, that went without saying.....

Our "Rebel Cousins" (Kentucky) were telling the Mr. about a #1434 Tom & Jerry Mug and the #3390 Carcassone Decanter in (ready) Alexandrite..... ooh & aaah!

The "Sunshine State" (Florida) for a "steal" purchased the #134 Candlesticks in Tangerine with

crystal foot. They mentioned something about "making their day," you know I believe it! Also a pair of Aristocrat tall Covered Candy Jars in Sahara. Say it again, A Pair, hmmm hmmm. That sure does put sunshine in ones day, just think, even if it was snowing outside, that sunshine would just creep right along in.

"Yours Truly" is the proud possessor of the #7004 Wreath 6" Candy Box/metal cover; #1401 Empress cream & sugar in moongleam, d/f; two (2) #1404 Old Sandwich 7" plates in Sahara, plus two (2) 6 oz. Sundaes also Sahara; and a #1225 Twist 13" celery, etched and in flamingo.

I was talking on the phone the other evening to "Mountain gal" (Calif.) and she has a pair of #1606 Ash-trays; three (3) #1506 Whirlpool 12 oz. footed sodas or Ice teas (sleeping); #1533 Wampum ash-tray; #1469 Ridgeleigh 3 oz. Oil Bottle/#103 stopper; and the #353 Medium Flat Panel 3 qt. Sanitary Crushed Fruit (no cover). This piece has a curved rim with six slots inside. You can see a complete one in the Heisey Museum or in Catalog 75; also, a Crystolite Jam Jar with cover. I understand her "mountain truck" has gone the way of all good mountain trucks and she is now scouting around in a "little red MGB." What does that stand for, "many good buys"?

"Grampa W" (Mass) had the #406 Coarse Rib cream and sugar in moongleam and the #1231 Ribbed Octagon cream & sugar in flamingo. The #406 sugar has a cover. Makes a pretty set.

From the "Empire State" (N.Y.); a #1454 Diamond Point ash-tray and jelly; a #1252 Twist Mustard jar/cover (crystal); and a #480 8" Fruit Basket. Thats a real pretty basket to own. I have seen quite a few baskets lately in my travels (in my own area) but they command a dear price. It seems to be getting more and more difficult to find odd and unusual Heisey, but that makes the hunt all the more enjoyable. Just this past week-end, the "Mr" and I walked into this tiny shop and he walked right over to a shelf and picked up the Scotty - perfect shape, even all shined up and everything. He paid a meager token and he was ours!

"The Tipper" (Mass) also found a nice piece of the #407 Coarse Rib, the 5" footed jelly in moongleam (on the dark side), a beauty; #1401 Empress 12" round plate in moongleam, etched; #1255 Plain Band handleless sherbet - custard, two (2) of them... a pair of #112 Candlesticks/Orchid etch; #1519 Waverly 11" three compartment relish/Rose etch and a very lovely little #1295 Beaded Swag 6 oz handled mug/ruby stain, souvenir "Old Orchard 1903."

By the time you read this it will be just about Convention Time, please stop by and visit with me. I'll be at Hopewell Hall, with the Mr., everyday during convention. Introduce yourselves to us. It is always nice to talk with "old friends" and very exciting to meet new ones.

Until then, from the Yachting Center of the World -

Among the legends sung or said
along our rocky shore
The Wishing Bridge of Marblehead
May well be sung once more.
HHH, Janet Caswell

HEISEY'S LITTLE THINGS

By Louise Ream

At HCA's All-Heisey Auction in March, another #1183 Revere cobalt salt was sold. If you recall, the one sold in '83 went for \$110. This year, one went for \$140. This is no doubt the ultimate in Heisey salt dips. Who knows, there may be another one in the 1985 auction.

This month's patterns are #393, #393-1/2 and #394 Narrow Flute, a pattern which began in about 1911. Narrow Flute was apparently a popular pattern as so much of it can be found today. The basic line is #393 and as the line was extended, the additional numbers were assigned.

The pattern has a good bit to offer for our HLT Collection. The glass is of very high quality and the distinguishing feature is the narrow flutes on each piece. This is a change from the wide panels and scallops of earlier patterns.

The punch cups are very attractive with their different shape and angular handles, one of the more attractive in my estimation. The individual almond is footed and is identical to the one shown with #353 Medium Flat Panel. This was made in crystal, flamingo, sahara, moongleam and hawthorne. Of these, sahara is relatively rare and hawthorne is scarce so these should bring a very good price. Most, but not all, of these are plainly marked. This item can be found iridized, cut or with silver overlay. The silver and the iridescence would have been done by decorating companies as were some of the cuttings. The nut dishes vary somewhat in height - 1-3/8 to 1-5/8", perhaps more. The widths of mine vary from 2-3/4 to 2-7/8".

The #353 Medium Flat Panel nut is the one listed as having been made in color, even though there is no apparent difference between the two and both were still being made in 1929, the heart of the second color era.

The salt dip is very similar to #1183 Revere except that it has the narrow flutes. It has a starred bottom and should be marked. Perhaps I failed to tell you, when writing about Revere, that most of the clear crystal salts in that pattern have star bottoms while the colored ones have a plain bottom.

The butter pat is another nice piece of Narrow Flute. Sometimes you find it on top of the individual ice tub. The footed individual cube sugar is very cute and is similar to one in the #355 Quator pattern.

The individual cream and sugar comes in crystal, flamingo and moongleam. However it is also known in marigold and, strangely enough, in the beautiful light experimental blue - certainly the greatest piece in this pattern by far. Maybe one of these will come up in an auction sometime and if it does, there should be a mad scramble to obtain it at most any price. There are also salts and peppers and a mustard jar.

In the #394, the 4 oz. orange juice may be a little tall for an HLT but it is a very nice piece. Also in the #394 pattern, there is a different little mustard jar that looks like no other, and an individual flat domino sugar. There is another nut dish (called a salted

nut). This is oval and has indented horizontal lines around the band at the top. This dish is very similar to that in the #373 Narrow Flute W/ Rim pattern.

With the addition of a 1 oz. cordial, 2 oz. wine and a 2 oz. bar, you have a good many things to add to your HLT's Collection. The 1937 catalog shows only one page of #393 and by then, only the salt and pepper, individual nut and punch cup in our category had survived.

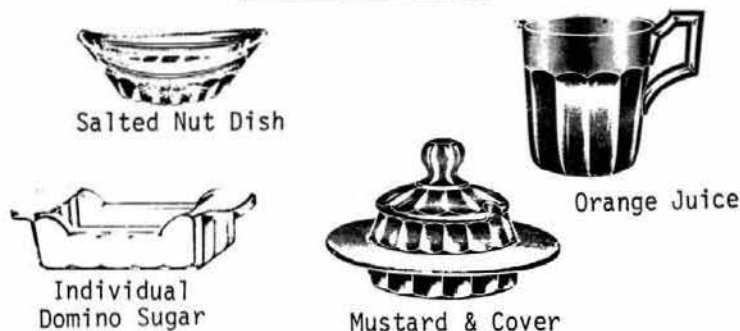
I hope to see many of you at the Convention. In the meantime - Think Little.

Louise Ream

#393 NARROW FLUTE



#394 NARROW FLUTE



CLUB NOTES

BAY STATE HCC

The Bay State Club held its regular meeting in April at the Follen Church in Lexington, Mass. with President Caswell at the helm.

The program for the meeting was Cambridge Glassware. George Fogg was the moderator and was ably assisted by his partner, Frank Maloney. There was an array of colors that left us all breathless. Whether it was ball jugs, figurals or Caprice, George had a little history of each type with time and dates when made. A lot of effort went into the program and it was well appreciated. George did a fantastic job.

"Show and Tell" was conducted by David Steer as usual. We are getting better at finding things when most of the field seems to be about dried up. Here are some that were found: #379 Urn salt; #365 Old Queen Anne punch cup, #2401 bar with Tallyho etch; #310 Ring Band salt shaker, #3355 Fairacre champagne and a #1225 Plain Band pitcher, a goodie. David did a capable job as usual.

The meeting adjourned for coffee and goodies provided by David Steer, George Gleason and the Caswells.

See you next month.

George Gleason

THE WESTERN RESERVE HEISEY GLASS STUDY CLUB

The Western Reserve Heisey Glass Study Club has had a very busy year. In October, the club had a booth at the Avon Lake Home Coming Festival. The club made money by identifying glass and antiques and by giving oral and written appraisals.

In November, the club had an outstanding display of Heisey Glass at the Avon Lake Library. The club presented the movie, "The Heisey Glass Story" at an open meeting at the Avon Lake Library. One of the club members, Judy Kienzle, had a display of Heisey Glass at the Demonkas Library in Sheffield Lake. Helen Marimon presented a program on Ohio Glass at the Lorain College Club. Mary Little presented several lectures on Heisey Glass in the area. Mrs. Little was also seen on local cable presenting information about Heisey Glass.

The club has had monthly meetings with interesting programs - including a study of Heisey Glass colors and comparisons with other glass company's colors.

The April meeting will be held at the home of Jayne Eisbrenner in Elyria. Members will be asked to identify patterns and objects wrapped in opaque plastic.

Thelma Morningstar and Helen Marimon will display their Cambridge, Tiffin, and Duncan Miller glass at the Avon Lake Libraries during the month of May.

HEISEY COLLECTORS OF THE ROCHESTER AREA

On April 29, the regular monthly meeting was at the home of Bill & Marion Heron. It was a lovely but cool spring day. It's nice to see the daffodils out.

Sharon, our talented and artistic president, conducted an Easter Bunny Game Quiz that she had prepared, using the letters to name patterns of Heisey. Most of the members then discovered how little they really knew. Bill Heron, our co-oldest (not in years) member won a Viking plate for the most correct answers.

Bill Heron then presented an excellent program entitled the "Magical Moments of Heisey." He had a beautiful piece of glass to represent the history of the factory. Edith Boches assisted Bill in this presentation with some of her beautiful Heisey. In particular, a set of plates of all the colors that were produced. It was truly a spectacular sight. Bill did a professional job with his program.

A "Show and Tell" was then held with the following presentations: Sharon - A rest, of unknown use, in crystal, Tiger paper weight, Yeoman ashtray with Cupid and Psyche etch; Marvin & Lois Jacob - #125 Candlestick #1570 Lotus Leaf candlestick, #1552 Four Leaf Candlestick; Bobbie Zimmer - a Mother Elephant; Marge & Jerry Gillette - Rib & Panel sugar pourer, 2-handled Trophy Candlestick in Moongleam; Jerry Gillette - Since he retired recently, acquired a beautiful glass cane, Cabochon 2-lite Candlestick; Betty & Bill Barnard - Touraine flower bowl with enameled flowers over a blue rim, #466 Cruet with unknown cutting; Art & Gert Costello #1485 Saturn mustard with attached paddle; Arlene Reynolds - Showed a great Heisey spoon that her dummy husband bought with a non-Heisey mustard, which was Pairpoint. If anyone needs a non-Heisey mustard, beautiful cutting, please advise; Marion Heron - our beautiful hostess, who even went to the trouble of fixing this old writer some dry toast, because he couldn't eat any of her great food, had a roly-poly bottom dish with a rare glass that fit inside, Beehive plate in Flamingo; Betty Evans - Whimsey vase of Moongleam.

After the show and tell, eight members played a game which is really a study of Heisey. We all learned a great deal.


During the meeting, I noticed that people kept coming and going, to where I didn't know. After the meeting, I found out that they were smoking in another area of the house so the fumes would not bother me. All I can say is thank you for your kind consideration and thanks for a lovely afternoon to the Herons.

George J. Reynolds,
Corresponding Secretary

REGISTER NOW FOR THE 13TH ANNUAL
CONVENTION

SEE PAGE 23.

DONATIONS BEGINNING AUGUST 16, 1983

1. #1519 Waverly Butter Dish W/Sea Horse Finial, Mary Rose & Peter McCabe in honor of her mother, Grace Gilhuly Daly.
2. #1425 Victorian 4 oz. Custard, Mrs. R. Wesoloski.
3. #1489 Puritan Bottom to King Size Cigarette Box (to go with lid we had with Pineapple finial), Sam Schnaidt.
4. Baby Elephant, Green Satin by Imperial, Marked ALIG, Betty & Burl A. Whaley.
5. #353 Flat Panel Toothpick Holder, Mary K. Coveland.
6. #1469 Ridgeleigh Five Piece Cigarette Set in Original Box, Mr. & Mrs. James Priaulx.
7. #3355 Fairacre Pitcher, Crystal & Moongleam, Optic on outside, Mr. & Mrs. Donald Parrett.
8. Micro Wave Oven to use in Office Bldg., New, Betty and Burl Whaley.
9. All Newsletters of the old California based National Club, Mrs. E. Loss.
10. #473 Narrow Flute W/Rim 3" Footed Almond, Tom & Neila Bredehoft.
11. Double Candlestick, Dark Pink, Marked with  made in Taiwan, Carmine Crea.
12. #123 7 oz. Tumbler, Caned Waffle, Loren Giblin.
13. Electrical supplies, Richard P. Smith.
14. #5038 Rooster Cocktail, Frosted Stem, Etched "Me" and #4044 New Era Cocktail, Horse Head Cutting, Odell & Virginia Johnson.
15. #1590 Zodiac 13" Sandwich Plate - H, Mr. & Mrs. A. L. Birdwell.
16. #1 Salt Shaker, Early, Tom Martin.
17. #339 Continental Salt & Pepper, Dick & Lee Schwan.
18. #7000 Sunflower 8 oz. Tumbler - The mold was the first one made by his father, Ray, who was a mold maker at Heisey, James J. Lukasko.
19. Miscellaneous snapshots & 8 x 10 photographs which once belonged to Rodney C. Irwin, Frank Frye & Sam Schnaidt.
20. #5011 Yorktown Claret with Eisenhower cutting. Designed and cut by William (Butter) Groves, Harold E. & Mildred M. Willey.
21. Forty-seven (47) glass lids for Heisey Cigarette boxes (Possibly for #1490 Cigarette Boxes), Robert and Anne Johnson.
22. #3381 Creole Bar Glass, 2 oz., Footed, Sahara, Gerald T. & Mary Law.
23. Flip Vase - Made from #4206 Vase Mould with the "teeth" left off. Done by Von Nessen for Metropolitan Museum of Art Show. From the estate of Paul Fairall, Al & Peggy Miller.
24. Plaid Light Globe, Stalactite (Probably Holophane), Jim & Jo Earnshaw.

DONATIONS 1984 TO DATE

1. Nine books on antiques, Robert P. & Helen P. Rarey.
2. Four Heisey Rose Goblets and three #5025 Tyrolean Goblets, Waxed for Etching, Alice F. Crouch.
3. Two ads, One framed, Barbara Lesak.
4. #341 Puritan Footed Toothpick, Silver Overlay, Dave Kuster.
5. #1401 Empress Nut Cup, Unknown Cutting and #310 Ring Band Toothpick, Custard W/Good Gold on The Ring, Drs. Evelyn & Griffith Daniel.
6. #1184 Yeoman 6-1/2" Plate, Sultana (Amber) Made for Fred Harvey, Mr. & Mrs. Norm Thran.
7. #12 Salt Shaker W/Metal Top, Harvey Amber, Tom & Neila Bredehoft.
8. Look-A-Like for Pan American Stem, Jack & Sharon Metcalf.
9. #150 Banded Flute Oil, E. F. Kennedy.
10. #1485 Saturn Soda, Experimental applied color, Mr. & Mrs. Norm Thran.
11. Ceramic Copy of Heisey Madonna, Made in Taiwan, Margaret Reed.
12. #3312 Gayoso Champagne, Hollow Stem, Thomas H. Bredehoft.
13. #8057 San Diego Champagne, Trefoil Etch, Russell & Gertrude Swetnam.
14. #3345 Mary N' Virg Goblet, Champagne & Sherbet and #2451 Soda, Early Unknown Cutting, Ann C. Lake & Nancy Settlemire.
15. #1252 Twist Cup & Saucer, Flamingo, Walter Ludwig.

CLUB NOTES CONT'D.

HEISEY CLUB OF CALIFORNIA

During our April 29th meeting, we held our 9th Annual Silent Auction to benefit the National Museum. Twenty-two members attended.

The meeting was held at Herb and Betty Wanser's in their "out-door - in-door" patio. One of the items discussed was increasing our annual dues from \$8.00 to \$10.00 per year, due to increased cost of printing and mailing. The monthly drawing was won by Fran Brock.

With taxes: IRS, house taxes and insurance among others, most members felt poor. But members did have a few "Big" finds, here are a few: At a flea market, the Losch's found seven goblets and two small sodas in Spanish Stem with Tangerine bowls, - \$8.00 each - WOW!!! Many club members were at the same flea market but it just shows you have to be at the right spot at the right time. Maxine Hertrich found a Fancy Loop Variant wine in Emerald. Tom Parsons found a Crystalite cream and sugar.

Our Silent Auction, again, was a great success and we hit our goal. Over \$1,000.00. Members brought a nice amount of glass for us to bid on. I bid on, and was fortunate to get a beautiful Queen Ann ice bucket with silver overlay and a pair of #113 (Mars) candlesticks in Flamingo. Over 75 lots were offered and all but one sold.

Our annual "Pot Luck" buffet was held after the meeting. From the looks of the food, cost was forgotten. Many, many dishes of hot foods and desserts, even a birthday cake for Betty Wanser.

Everyone had a great day, lots of good food, lots of Heisey Glass and lots of friendship.

Your roving reporter,
Norval Heisey

MAKING GLASS BY HAND CONT'D. SOURCE UNKNOWN

GLASS ARTICLES MADE BY PRESSING

Ash-trays, platters and bowls are types of glassware that are made by pressing. The GATHERER takes the molten glass from the pot on an iron bar called "punty." He walks from the furnace over to the press, and holds the glass over an open mold. The glass flows off the punty into the mold in a thick stream, which the presser cuts at exactly the right moment with a large pair of metal shears. The GATHERER winds up the string of glass left hanging to the punty, scrapes the soft glass off the end of the punty into a cullet chest, and goes to the pot for another "gather."

The mold stands on a flat, greased, iron table, upon which it is free to slide. When it is filled with molten glass, the PRESSER pushes the mold away from him over the greased table to a position under the plunger of the press. It is held in this position by bolts and guided bars. The PRESSER reaches for the handle of the press, pulls it over to a horizontal position, and leans on it to press the glass. Sometimes, for a larger piece, a PRESSER'S HELPER is required to pull the lever down. The PRESSER must give just the right pressure to the lever. Too little pressure will result in a partially formed piece; some of the higher sections of the mold will not have had glass forced into them. Too much pressure will fracture the glass, because it hardens immediately upon being pressed out.

Next to the PRESSER is the TURN OUT BOY. When the press handle is raised, taking the plunger out of the mold, he reaches forward and pulls the mold to the front of the pressing table. There it must stand a short while to cool. Then the TURN OUT BOY lifts the pressed piece in a tongs and sets it on a small stand. The WARMING IN BOY picks the piece from this stand in a "snaprod" and walks with it to the glory hole. After a short heating, to give the glass its softness again, he takes the piece over to a FINISHER. The FINISHER makes sure that the article is even in shape. If a soda glass or bowl is being made, he rolls the pipe on the arms of his chair and presses the sides of the article with a paddle to give them the desired flare. He then takes the ware off the snap rod and the CARRY IN BOY takes the piece on a fork to the beginning of the lehr.

BACK LEHR DEPARTMENT

At the back end of the lehr, the glassware comes out of the long heated tunnel on the moving belt and passes in front of a group of women SELECTORS AND PACKERS. The SELECTOR examines each piece for defects such as bubbles in the glass or scratches on the surface of the article. Imperfections show up easily when she holds the piece in front of a strong white light. When she is satisfied that the glass is good enough, according to the standards enforced by the

FORELADY, she packs it in a carton or puts it on a tray to be carried to another department.

The beer tumbler is put into the lehr without being separated from the dome of glass which held it to the pipe. After the good "bottles" (glass article with the dome still attached) are selected, the excess glass must be burned or cracked off. One type of burning off machine has been described. A second type is called the flame cutting machine, operated by a FLAME CUTTER. He first scratches each piece with a diamond point at the exact level where it is desired to cut through to form the rim. He then places the "bottles" on a revolving stand in front of a line of small gas flames. This small scratch causes the glass to break off in a perfect rim when it is tapped slightly by the FLAME CUTTER. This entire operation can be performed by a machine, operated by a CRACKING OFF MACHINE OPERATOR who places the glasses in the machine and takes them out when they are finished.

Ware which has been cracked off or flame cut has a sharp rim, which must be taken away by grinding. Most pressed pieces have some rough surfaces or ridges, that are removed by grinding. The ware comes to the GRINDER by truck (pulled by a TRUCKER) or on a conveyor. The GRINDER stands in front of a large abrasive wheel, made of sandstone or emery. The wheel is moistened from above by a trickle of water carried from a funnel full of water to the wheel on a length of string. The GRINDER takes the glassware from the tray beside him, holding it with both hands, and presses it against the surface of the wheel. He turns the piece from one position to another, to give all surfaces an even grinding. A second grinding may be necessary, on a softer wheel. There are various machine devices to hold the glassware against the grinding wheel, but in each case the ware is put on and taken off the device by a GRINDER.

After grinding, the glassware may be ready for shipping, or it may go to another department for decorating, cutting or etching. The methods of decoration and etching will be described.

HAND DECORATING

Only the finest quality glassware is decorated by hand, because hand painting takes time and skill. In the case of banding, where no great skill is required, a BANDER sets the glass on a revolving table and holds a paint brush against it as it revolves. Free-hand painting is sometimes necessary to fill uneven spaces on a glass surface. The HAND PAINTERS use small soft brushes to apply gold paint. The easiest method of application is to paint the entire surface and then pass the piece to SCRAPERS (women) who remove the excess paint with razor blades. Brown, orange, green, and other colors besides gold are used. The paint must be fired in a decorating lehr to fuse it with the glass. When gold paint is fired, the heat dulls its brilliance. The LEHR TENDER takes the pieces as they come out of the lehr to BURNISHERS (women). They dip each piece in a tray of fine sharp sand, and with a cloth scrub the sand vigorously

MAKING GLASS BY HAND HAND DECORATING CONT'D.

over the gold paint. In this way the gold is given a high lustre.

ETCHING

When a glass surface is exposed to hydro-fluoric acid, the glass is eaten away by the chemical. By covering the glass with an acid-resisting wax, and leaving some portions uncovered in the form of an artistic pattern, the eating action of the acid can be made to produce a design on the glass surface. There are several methods of preparing a glass surface for etching. The "deep plate" process will be explained here.

A STEEL ENGRAVER carves the design on a smooth steel plate with a sharp tool. This plate is then sent to the first section of the Etching Department, called the paint room. The principle of the deep plate is that the engraved design can be filled with ink, and the ink then transferred to the surface of the glass on a sheet of tissue paper.

The PRINTER heats the thick ink in a small pot, and spreads it over the steel plate with a palette knife. He takes a rubber roller and rolls the ink over the entire design. Then he scrapes the long edge of the palette knife over the plate, removing all the ink that has not filled the lines of the design. Next he rubs a sheet of special strong tissue paper over the plate, pressing it firmly down with a small flannel pad, so that the ink sticks to the tissue paper. When the PRINTER strips the tissue paper away from the plate by pulling it up at one side, the design to be etched is left on the paper as white lines with no ink over them.

The PRINTER hands the paper to a CUTTING OUT GIRL. She sits with a group of girls at a long metal table. The inked pattern is cut out of the sheet of tissue when she runs a penknife around it, and the extra unprinted tissue is thrown away. One sheet of tissue supplies three identical designs to cover the sides of a wine glass. The TRANSFER GIRL takes these designs and applies them to the glass, carefully placing them to align the separate parts of the pattern correctly. Then the glass is passed to a RUBBER, who smooths the tissue with a cloth and rubs it firmly on the glass. The ink now sticks to the glass. Next a WASHER rubs a wet cloth over the tissue, softening and wiping off the tissue. When the glass is dipped in acid, the hardened ink will resist the action of the acid.

The inked patterns have covered only a portion of the glass. The inside of the bowl, and the foot, as well as the outside portions that have not been covered with ink, must all be protected from the acid by a special wax compound called "resist." The WAX PAINTERS sit next to a small basin or basins of hot wax. They dip a paint brush into the wax and applies the wax like paint to the surface of the glass. The hot wax solidifies on touching the glass, forming a hard coat.

The ETCHER takes trays of glassware that have been coated with ink designs and wax and carries them to the Acid Room of the Etching Department. Several tubs of warmed "fuming" acid stand in the bottom of a ventilating chimney, into which the ETCHER dips the glassware in wire baskets. He wears heavy rubber gloves and an apron to protect him from the acid. The ware is kept under the acid from three to seven minutes, the longer time for deeper etching. After the glassware has been under acid for the correct length of time, the ETCHER removes the wire baskets and carries them carefully to a water bath. He dips the ware several times in the water and then gives the basket to the WASHER.

The WASHER puts the basket of ware on a moving belt which takes it through a washing machine. Inside this machine, the glasses are sprayed with hot water, which melts and washes off the ink and wax. At the other side of the washing machine the glasses are taken out of the basket by the WASHER, who then throws them into a pile of coarse sawdust. A group of women DRIERS take the glasses one by one and rub the sawdust over them to soak up the water and give the glass a polish. Next a SELECTOR examines the etching, and especially the portions of the glass surface that were not supposed to be eaten by the acid, to make sure that no acid ate through the wax or ink. Then women WRAPPERS and PACKERS protect the glass with tissue paper and cardboard and place it in cartons.

GLASS CUTTING

Fine quality glassware is usually made of "lead" glass, which can be cut very easily. The GLASS CUTTER has such highly skilled arms and hands that he can pick up a vase and cut a pleasing design in it freehand. But he usually has a pattern to work from, which has been drawn by an artist or DESIGNER. The CUTTER copies the drawing on, and a tracing is taken of the first perfect design to preserve the pattern. The tracing will be copied by CUTTERS who are using the same design at some later time.

The MARKER is the first worker engaged in the regular operation of cutting. To prepare a vase for a CUTTER, the MARKER measures off the pattern on the tracing with calipers and a ruler, and transfers the design by parts to the surface of the glass. Between the points thus marked she draws fine lines in white ink. In this way, spaces are left in which the design will fit, and limits are set to guide the CUTTER in his work. After the MARKER has drawn the pattern on a number of vases, she knows the measurements by heart and can work without looking at the tracing.

The CUTTER can either be a man or woman. For light, easily learned work, women are most suitable, while men CUTTERS of long experience are necessary for the more intricate work. The frame at which the CUTTERS work is a wooden tub standing on four legs, with a large abrasive wheel hung over it. Water drips down over the wheel and falls in the tub. The CUTTER holds the piece to cut with both hands, and presses it against the upper side of the wheel. To guide

MAKING GLASS BY HAND GLASS CUTTING CONT'D.

his motions, he must look through the glass article. This requires fine coordination of hand and eye, which is the skill developed by the glass CUTTER. Each line is made with the greatest of care. The pressure must be very carefully applied, because too much pressure will dig away more than enough glass and ruin the piece.

A finer type of cutting is done on a smaller and thinner abrasive wheel attached to a lathe. The man who uses this equipment is sometimes called an ENGRAVER rather than a CUTTER. The smaller wheel permits very small lines to be cut, and the pattern can be followed with great accuracy. The ENGRAVERS are very patient men, because they must sometimes spend as long as several weeks to cut a very complicated piece.

The lines cut by an abrasive wheel into glass are white. Finished cut glass is brilliant and smooth because this whiteness has been removed by polishing. The Polisher uses a natural cork wheel, which he smears as it turns with a mixture of pumice, litharge, and water. He sits or stands in front of the tub which holds the mixture, gathering some every now and then to apply to the wheel. He holds the cut piece of glass at various angles to let the wheel rub in every cutting. The pumice paste is removed by dipping the piece in water and drying it off with a cloth. The POLISHER looks at his work to be sure that a high lustre has been obtained, and that the glass surface has not been scratched. A second type of polishing wheel is made of felt, with which is used an abrasive mixture of rough powder (iron oxide) and water, called "putty." The PUTTY BUFFER holds the cut glassware against the wheel in the same manner as the POLISHER.

Cut glass can also be polished in a bath of acid--"acid polishing." The acid eats away a thin layer from the entire glass surface, from the cut as well as the uncut parts. The ACID POLISHER puts the pieces to be polished in a wire basket, which he dips in a tub of acid. Then he transfers the basket to a tub of water. This process is repeated until the glass has received the desired polish. After the final dipping in acid, the ACID POLISHER washes the ware in the water bath.

SAND BLASTING

A glass surface can be worn away if a jet of compressed air carrying particles of sharp sand is directed against the glass. In the sand blasting process, this principle is used to cut away some parts of a glass surface and not others. The SAND BLASTER is given a stencil to fit over the piece of glassware. The stencil can be made of rubber or hard paper, and it protects those parts of the glass surface which are not to be cut. The SAND BLASTER'S equipment is a small wooden cabinet with a window in one side or in the top, called the sand-blasting cabinet. The nozzle of the hose carrying the sand and air is fixed to point inside the cabinet, and the SAND BLASTER can reach inside the cabinet with glove protected hands to hold a piece of glassware in

front of the nozzle. He holds the ware in the path of the stream of sand long enough to eat away the glass to the desired depth. The length of time necessary being judged by the SAND BLASTER'S past experience with the same patterns and type of glass. The parts of a glass surface which have been sand blasted are frosted in appearance.

The methods of cutting which have been described here are done by hand. There is also another method, where the designs are simpler--either straight lines or bands around circular ware. The piece of ware to be cut (a pitcher for instance) is placed with its bottom against a vacuum suction pad on the automatic cutting machine. This pad holds the pitcher against an abrasive wheel, controlled by a set of gears to cut the lines at the right moment and in the right direction. The machine may consist of several such arrangements. The AUTOMATIC CUTTING MACHINE OPERATOR places the pieces on the suction pad and takes them off. He goes from one wheel to the next just in time to take the pitcher off as the cutting is finished. The work of the BANDING MACHINE OPERATOR is similar to this.

WASHING

The handling which glassware receives during the cutting and polishing leaves smudges on it. They are removed by the WASHER. First, she holds the piece against a stiff wire revolving brush to clean putty out of the cracks. Then she wipes the glass with a wet cloth and pumice powder. She removes the pumice with a damp cloth and then polishes the glassware with a dry cloth.

Next comes the WRAPPER. She sets the piece on a small pile of tissue paper sheets, and deftly snaps up the corners of the sheet to wrap the glass. After wrapping a few dozen, she arranges them in a row and stamps each one with a mark which shows what kind of ware has been wrapped. She places each piece in an individual compartment in a nearby carton.

DATES TO REMEMBER!

- | | |
|--|-------------------------------|
| FLEA MARKET ON THE SQUARE | - JUNE 9 - 10 & 16 - 17th. |
| CONVENTION, SHOW & DISPLAY | - JUNE 14 - 17th. |
| SOUVENIR DINNER | - SEPTEMBER 8th. |
| GLASS & POTTERY SHOW AND SALE BELLEVILLE, IL | - AUGUST 11 - 12th. |
| REYNOLDSBURG HCC ANTIQUÉ FLEA MARKET | - OCTOBER 28th. |
| CHRISTMAS DINNER | - DECMEBER 7th. |





ANTIQUE SHOW & SALE

(& 10th Annual NCC Convention)

SHERANDOAH INN

INTERSTATE 70 • E. 11 1/2 • 7 MILES EAST OF
CAMBRIDGE, OHIO

JUNE 24, 25, 26, 1983

HOURS

| | |
|----------------------------|------------|
| FRIDAY, JUNE 24th | 6:00-9:00 |
| (PREVIEW ADMISSION \$3.50) | |
| SATURDAY, JUNE 25th | 11:00-6:00 |
| SUNDAY, JUNE 26th | 12:00-6:00 |
| (ADMISSION \$1.75) | |

OFFERING CAMBRIDGE AND OTHER FINE GLASSWARE
ALONG WITH A GENUINE LINE OF ANTIQUES

FOOD DOOR PRIZES PARKING

ATTENTION!!

A

CHANGE

THIS YEAR

CONVENTION

PACKET PICK-UP

AND REGISTRATION

AT MUSEUM

ONLY

TUESDAY - THROUGH - SUNDAY

9:00 A.M. - 5:00 P.M.

DESK OF EXECUTIVE DIRECTOR.....

We are very busy at the Heisey Museum, refurbishing the offices and the museum itself, preparing for Convention. We want everything to be beautiful when you come to help celebrate your museum's tenth anniversary. In the office, we are working around the painters, or they are working around us, which adds greatly to the confusion.

As Tom has told you, we will have some very interesting guest speakers this year. You've all read Fred Bosworth's articles and you know he'll be very good at the banquet. Walter Porter's slide show and talk on how he makes the beautiful paperweights should be a very interesting program at the "Dream Makers" session so we hope many of you will make an extra effort to get there. He'll be showing some of his beautiful glass. Afterward perhaps you'll come to the museum to buy some of his glass.

As we go to press, Imperial is facing being forced into liquidation on May 23, unless they come up with money to pay their creditors by then.

The All-Heisey Auction to be held during convention is going to be very nice. You may mail bid as usual. Checks or cash, NO VISA OR MASTERCARD, please! One very special item is an Old Dominion Champagne in a combination of Zircon and Sahara. Outstanding.

You should all send to Apple Tree Auction Center for prices realized at their April 27-28 Auction. Prices on rare items were never higher. Also send them \$1 for prices realized in our June 16th Auction.

Hope to see you soon,
Louise

"STRAWBERRIES ON THE SQUARE"

GREETINGS TO H.C.A. MEMBERS,

The Newark Downtown Ass'n has planned a "Strawberries On The Square" Festival to harmonize with your "Flea Market" (See newspaper item). We have ordered 1,000 high quality coffee mugs, our logo on one side, and The National Museum on the front side, (4 color artwork). These cups available on first come basis. Reservations now being accepted, the "paid for cups/orders" can be picked up at the N.D.A. booth, June 16th., on the square. Retail value \$5.00 each.



FRONT



BACK

Page 2—The Advocate, Newark, O., Wed. April 4, 1984

Area briefs

NDA plans June celebration

"Strawberries on the Square" will be the theme of a June celebration planned by the Newark Downtown Association. President Lewis Claggett said the idea was discussed at a meeting of the NDA this week.

Neil Cavanaugh, Cavanaugh's Catering and Cavanaugh's Too, will bake for the occasion, "the biggest strawberry shortcake ever seen in this area," Claggett says.

The event, scheduled for June 9, will coincide with the Heisey Collectors of America flea market on the Square. Events will include a stawberry eating contest and a "baby race" for infants. There will also be a competition for the best strawberry recipes of every kind.

"We are hoping to use the winning recipes in the publication of a cookbook which will help with future development plans," Claggett said.

SEND CHECK TO LEW CLAGGETT, P.O. BOX 128,
NEWARK, OH 43055

- Clip and Mail -

Please reserve ___ cups @ \$4.00 prepaid
with this purchase order.

NAME _____

ADDRESS _____

CITY _____ STATE _____ ZIP _____

Enclosed please find check # _____ in the
amount of \$ _____.

Ed. Note: This is a white ceramic mug of good quality, with a colorful design. With the "National Heisey Glass Museum - 10th Anniversary" logo, it should be a nice souvenir of our convention. How nice to drink your coffee while looking at your Heisey Glass Museum!

APPLE TREE AUCTION CENTER
1616 WEST CHURCH ST.
NEWARK, OHIO 43055



ALL HEISEY AUCTION

MAY 16, 1984

CO-SPONSORS:
Sam Schnaidt
Frank Frye
Heisey Collectors of America, Inc.

AUCTIONEERS: Sam Schnaidt
Tim Hughes

Doors open 8 a.m. - Auction begins 9 a.m.
Auction Preview after the banquet on June 15.

We have tried to inspect the glass closely and will use the following code to better describe the condition. A small letter indicates the damage or flaw is minimal. It would be our opinion that the value would be affected 5 - 20%. A capital letter indicates more significant damage affecting 20 - 40%. Anything damaged more than this in our opinion will be marked with an X. We hope this will better aid in your mail bidding.

f F = Flake b B = Bruise r R = Repaired
c C = Crack m M = Mold Flaw x X = Major Damage

MAIL BID INSTRUCTIONS: Mail bids accepted with checks for maximum amount. Mail bids are handled competitively and any difference refunded. Only items in mint condition will be subjected to mail bids. Please add \$8.00 per carton for postage and handling, \$10.00 west of Rocky Mts... Checks should be made to Sam Schnaidt, Auctioneer and mailed to the above address.

115 More lots needed. Call HCA: 614-345-2932 or Sam Schnaidt: 614-344-9449 - First come, first served. 285 Fine lots already received.

- | | | | | | |
|---------|--------|---|---------|-------|---|
| ___ 1. | #4004 | IMPROMPTU 9" Ball Vase | ___ 16. | # 14 | 13" Floral Bowl H, #112 Candlesticks (Pr.), Kingfisher Flower Frog H, 1 f (4) ea. |
| ___ 2. | #5058 | PENGUIN DECANTER | ___ 17. | #5089 | PRINCESS 10 oz. Goblet, Serenade Cutting H, #5077 LEGIONNAIRE 10 oz. Goblet, Fern Cutting, & #4055 PARK LANE 10 oz. Goblet, Spec. Cut. (3) ea |
| ___ 3. | #2401 | OLD FASHION, Gray Cutting, | ___ 18. | #3390 | CARCASSONNE Low Ftd. Gob., Cobalt |
| | #4054 | CORONATION 10 oz. Soda, Unknown Cutting, #6060 COUNTRY CLUB 10 oz. Soda, Barcelona Cut (3) ea. | ___ 19. | #3404 | SPANISH Goblet, Cobalt |
| ___ 3A. | #1519 | WAVERLY Ice Tub (1) H, Liners for Empress Shrimp Cocktails, Sahara (3), #4132 Peg Liners (3) Total 7 - ea. | ___ 20. | #3380 | OLD DOMINION 10 oz. Goblet, Empress Etch, Flamingo H & #3397 GASCONY 12 oz. Goblet, Ambassador Etch, Sahara (2) ea. |
| ___ 4. | #1485 | SATURN 8 oz. Tumbler, ULC Crest (1), Beautiful Unknown Tumblers (3) - 2 H - Total 4 ea. | ___ 21. | #1624 | PATIO 6 oz. Sherbet, Amber (2) ea. |
| ___ 5. | #1184 | YEOMAN 6 oz. Soda H, Zeisel Cocktail, #5019 WAVERLY 3 oz. Wine, Ivy Cutting, #5077 LEGIONNAIRE 3-1/2 oz. Wine, Unknown Cutting & #5024 OXFORD 3 oz. Wine, Total 5 ea. | ___ 22. | #1624 | PATIO 5 oz. Juice, Amber (2) ea. |
| ___ 5A. | #5077 | LEGIONNAIRE Parfait, Amber, #5024 OXFORD Parfait 2 cut, 1 plain, #5013 SHASTA Parfait & #6091 CABACHON Parfait, Starlight Cut, Total 6 ea. | ___ 23. | #1624 | PATIO 10 oz. Footed Tumbler, Amber (2) ea. |
| ___ 6. | #4004 | IMPROMPTU Low Goblets (2), Clarets (2), Footed Juice, Cocktails (2), 10 oz. Beverage, Finger Bowl & 7" Plate - Total 10 ea. (1 Cocktail ground) | ___ 24. | #1624 | PATIO 12 oz. Footed Soda, Amber (2) ea. |
| ___ 7. | #1632 | LODESTAR 5" Candy & Cover & 8" Bowl, Dawn (2) ea H - Bowl m | ___ 25. | #1951 | CABOCHON 8" Salad Plate, Amber f(1) |
| ___ 8. | #1183 | REVERE Mayo & Under Plate, Dawn H 2 Sets ea. | ___ 26. | #5057 | SHERBET & 6" Plate, Amber (2 sets) |
| ___ 9. | #1637A | TOWN & COUNTRY Special Tumblers, Dawn (3) - H ea. | ___ 27. | #5057 | SUEZ Oyster Cocktail, Amber H (2) ea. |
| ___ 10. | #1401 | EMPRESS Ice Bucket W/Handle, Special Cutting | ___ 28. | #1401 | EMPRESS Dolphin Finial Covered Lemon Dish, Sahara H f Cover |
| ___ 11. | #8048 | COLONIAL Marmalade (No Lid), Experimental Black H | ___ 29. | #1469 | RIDGELEIGH 6" Candle Vase, Sahara |
| ___ 12. | #1485 | SATURN High Footed Compot, Zircon H | ___ 30. | #1401 | EMPRESS 3-Part Relish, Old Colony Etch, Sahara 1 f & #1184 YEOMAN 13" Celery, Empress Etch, Sahara (2) ea. |
| ___ 13. | #1506 | PROVINCIAL Cream/Sugar, Limelight H (2) | ___ 31. | #1401 | EMPRESS D/F 6" Candlestick, Sahara H, m, #1401 EMPRESS Individual Sugar, Sahara H, & #500 OCTAGON Sugar, Sahara H, c |
| ___ 14. | #1506 | PROVINCIAL 10" 4-Part Relish, Limelight | ___ 32. | # 135 | EMPRESS 7" Candlestick, Sahara, Pr. |
| ___ 15. | #1506 | PROVINCIAL 9 oz. Footed Soda, Limelight (2) ea. H | ___ 33. | #1401 | EMPRESS 10" Footed Floral Bowl, Lion Head, Sahara |
| | | | ___ 34. | | ROOSTER VASE |
| | | | ___ 35. | #5031 | FRENCH DRESSING Oil/Vinegar Bottle, Orchid Etch |
| | | | ___ 36. | #1401 | EMPRESS 6" Square Plate, Old Colony Etch H (6) ea. |
| | | | ___ 37. | #3350 | WABASH 10 oz. Goblet, Pied Piper Etch (6) ea. |
| | | | ___ 38. | # 24 | SALT & PEPPER, Cobalt - Pr. H |
| | | | ___ 39. | | STANDING PIGLET (4) & SITTING PIGLET - 1 H - 5 m - ea. |

| | | | | | |
|-----|-------|--|-------|----------|---|
| 40 | #2052 | 2 oz. Bar, Pied Piper Etch (6) ea. 1 f | 86. | #1250 | GROOVE & SLASH 5" Rose Bowl & Pickle Jar, No Lid (2) ea. |
| 41. | #1420 | TULIP VASE, Cobalt H | 87. | # 367 | Decanters W/Stopper (1 stopper chipped) 1 Flamingo & 1 Moongleam (Both Cloudy) (2) ea.M |
| 42. | #1401 | EMPRESS 7" Plates, Alexandrite (4) ea. | 88. | #1401 | Console Set, Rosalie Etch - #1401 Bowl & 1 Pr. #134 TRIDENT Candles (3) ea. |
| 43. | #1401 | EMPRESS 8" Plates, Alexandrite (4) ea. | 89. | #1404 | OLD SANDWICH, Sahara 10 oz.L.Ft. Tumblers (2), 12 oz. Footed Ice Tea, Moongleam, 8 oz. Ice Tea (2)f Total 5 ea. |
| 44. | #4033 | 28 oz. Bar Bottle W/#1 Stopper & 10 oz. Sodas (4) Nimrod Carv. 5ea | 90. | #4157 | ARCTIC Etch 5-1/2" Rose Bowl |
| 45. | #3397 | GASCONY Decanter & 2 oz. Wines (5) Sportsman Etch - Total 6 ea. | 91. | #1280 | WINGED SCROLL Trinket Box (2) ea. |
| 46. | #4163 | TANKARD & #2930 PLAIN AND FANCY Tumbler (5), Windsor Cut - Total 6 ea. | 92. | #1235 | BEADED PANEL & SUNBURST 9" Cakestand (f), Tall Celery, 7" Nappy & 4" Nappy - Total 4 ea. |
| 47. | #1295 | BEADED SWAG Custard Goblet, Emerald Rose Decor. | 93. | #1225 | PLAIN BAND 11" Cakestand |
| 48. | | IMPERIAL Land of Legend Souvenir Plates - 1971 - 1975 (5) ea. | 94. | # 352 | FLAT PANEL Cruet, #1184 YEOMAN Cruet (no stopper), #1200 CUT BLOCK Cruet (no stopper) Total 3 ea. |
| 49. | | GIRAFFE, Head Back (2) ea. | 95. | #1184 | YEOMAN Cruet (2), #1170 PLEAT & PANEL Cruet, #433 GREEK KEY Cruet 2 oz. (All - No Stoppers) Total 4 ea. |
| 50. | #5074 | SEAHORSE Stem Cocktail, Spiral Optic H | 96 | #1170 | PLEAT & PANEL CRUET, #417 DOUBLE RIB & PANEL Cruet (2) - Total 3 ea. |
| 51. | #5074 | SEAHORSE Stem Cocktail, Spiral Optic H | 97. | #1225 | PLAIN BAND Cruet, #1280 GROOVE & SLASH Cruet (2) ea. |
| 52. | #4091 | KIMBERLY Goblet, Courtship Cut (6) ea. | 98. | #5067 | PLANTATION 3 oz. Wine, Ivy Etch (6) - H ea. |
| 53. | #4224 | IVY VASE, Tangerine (Red Side) | 99. | #5022 | GRACEFUL 1 oz. Cordial, Orchid Etch - H |
| 54. | #1434 | TOM & JERRY MUG | 100. | #5022 | GRACEFUL 1 oz. Cordial, Orchid Etch - H |
| 55. | # 160 | LOCKET ON CHAIN Wine | 101. | #5022 | GRACEFUL 1 oz. Cordial, Orchid Etch - H |
| 56. | #4054 | CORONATION 2-1/2 ox. Bar, Tavern Etch | 102. | #5022 | GRACEFUL 1 oz. Cordial, Orchid Etch - H |
| 57. | #1503 | CRYSTOLITE 8 oz. Syrup | 103. | #5077 | LEGIONNAIRE Goblet, Arcadia Cut (4) ea. - H |
| 58. | #1776 | KALONYAL 5-1/2" High Ftd. Jelly H | 104. | #3408 | JAMESTOWN Goblet, Kruth Cut (6) ea. |
| 59. | #1776 | KALONYAL 5 oz. Sherbet (6) H, ea. | 105. | # 301 | Low Candelabra - Pr. |
| 60. | | GAZELLE H | 106. | #1509 | QUEEN ANN 1-Light Candelabra, Pr. |
| 61. | #3480 | KOORS 3-Pint Pitcher, Moongleam Handle/Foot | 107. | #4157 | Jug - 1/2 Gal. Unknown Cutting |
| 62. | #1433 | THUMBPRINT & PANEL Console Set, Bowl & Candlesticks, Sahara H (3) ea. | 108. | # 341 | Decanter - 1 Qt., With Cut Stopper, Cloudy |
| 63. | #3408 | JAMESTOWN Cordial, Palmetto Cut | 109. | # 461 | BASKET, Unknown Cutting - H |
| 64. | #5074 | SEAHORSE Cocktail | 110. | #1503 | CRYSTOLITE Goblets (8) ea. |
| 65. | #3408 | JAMESTOWN Champagne, Palmetto Cut (6) ea. | 110A. | #1503 | CRYSTOLITE 1/2 Gal. Pitcher With, Ice Lip |
| 66. | # 419 | SUSSEX Champagne, Flamingo Bowl (4) ea. | 111. | #1540 | LARIAT Ftd. Round Basket |
| 67. | #3408 | JAMESTOWN Cordial, Palmetto Cut | 112. | #4045 | BALL VASE 6", Alexandrite, Mold Mk. |
| 68. | #3408 | JAMESTOWN 5 oz. Parfait, Barcelona Cut (6) ea. | 113. | # 15 | DUCK FLOWER FROG (2pc.), Flamingo |
| 69. | #1184 | YEOMAN 8 oz. Goblet, Moongleam (6) ea - H | 114. | #1184 | YEOMAN 10-3/4" Plates, Sahara |
| 70. | #1540 | LARIAT 12" Bowl W/Cutting | 115. | # 343 | SUNBURST Cruet |
| 71. | #1201 | LOW FOOTED 11" Floral Bowl - H | 116. | #433 1/2 | GREEK KEY Quart Jug - H c |
| 72. | # 134 | TRIDENT Candlestick, 2 Pr. Ea. | 117. | # 343 | SUNBURST Water Bottle f |
| 73. | #1511 | TOUJOURS Marmalade & Cover - H | 118. | #1540 | LARIAT Perfume Bottle or Oil |
| 74. | # 305 | PUNTY & DIAMOND POINT Punch Bowl Base - H | 119. | # 411 | TUDOR (Rib & Panel) 7-1/2" Vase, #9009 Arctic Etch & #1401 OLD SANDWICH 6-1/2 oz. Toddy, Silver Overlay - H (2) ea. |
| 75. | # 520 | CANDLELAMP, Pr. H - Ea. | 120. | #3357 | KING ARTHUR Oyster Cocktail, Diana Etch - H, #5040 LARIAT Low Sherbet, Moonglo Cut - H & #3308 BOB WHITE Goblet, Peacock Etch |
| 76. | # 433 | GREEK KEY Cherry Jar, Cloudy - H | | | |
| 77. | #1201 | FANDANGO 14" Ice Cream Tray | | | |
| 78. | #1184 | YEOMAN 13" Celery Tray, D/O, Moongleam, Empress Etch | | | |
| 79. | #4045 | SATURN Optic 9" Ball Vase | | | |
| 80. | | AIREDALE TERRIER on Bust Off | | | |
| 81. | #1252 | TWIST Mustard, Flamingo, No Spoon - H | | | |
| 82. | #3480 | KOORS 7" Floral Bowl, Flamingo | | | |
| 83. | #4157 | 5-1/2" Rose Bowl, Moongleam | | | |
| 84. | #1295 | BEADED SWAG Cakestand, 9" | | | |
| 85. | #1255 | PINEAPPLE & FAN Bowl, 1 - 7" & 1 - 8" (2) ea. | | | |

| | | | | | |
|----------|-------|--|----------|-------|--|
| ___121. | #1417 | ARCH 8 oz. Tumbler, Cobalt - H | ___172. | #5025 | TYROLEAN Goblet, Orchid Etch (4) - H - ea. 2 c |
| ___122. | #1401 | EMPRESS 6" Covered Candy D/F, Sahara - H | ___173. | #5025 | TYROLEAN Sherbet, Orchid Etch (7) ea - 5 c |
| ___123. | #7075 | EGYPTIAN 9-1/2" Candlestick, Rare - H | ___174. | #1255 | PINEAPPLE & FAN Covered Butter, Emerald, Tarnished Gold - C |
| ___124. | #1485 | SATURN Rose Bowl, Limelight Pressed - H | ___175. | #1184 | YEOMAN Cream & Sugar c, and #1183 REVERE Cheese Dish, domed cover, Floral enamel Decor - H Total 3 ea. |
| ___125. | | OSCAR Horse (Sparky) | ___176. | #1405 | IPSWICH 5 oz. Footed Soda, Sahara (8) ea - H |
| ___126. | | MALLARD, Wings Up - H | ___177. | #1252 | TWIST 4 oz. Oil, Flamingo - H f |
| ___127. | | CABOCHON Display Sign | ___178. | #1405 | IPSWICH 11" Floral Bowl in Footed Metal Holder - H |
| ___128. | | SEALYHAM TERRIER (Scotty) | ___179. | # 350 | PINWHEEL & FAN Pitcher, Bulbous, H |
| ___129. | | DONKEY | ___180. | # 310 | RING BAND Toothpick, Souvenir "Colorado Springs" Custard - H |
| ___129A. | #4002 | AQUA CALIENTE Cocktail, Equestrian Etch - H | ___181. | #1469 | RIDGELEIGH Individual Salts in Original Gift Box, With Original Price Sticker (8) - H |
| ___130. | # 341 | PURITAN Covered Butter - H | ___182. | #1205 | FANCY LOOP 8" Cylinder Vase |
| ___131. | #1183 | REVERE 8" Footed Punch Bowl, Floral Cut - H | ___183. | #1404 | OLD SANDWICH 10 oz. Low Footed Tumbler, Cobalt - H |
| ___132. | #1590 | ZODIAC Covered Candy - H f | ___184. | #1425 | VICTORIAN 2 oz. Bar (6) ea - H |
| ___133. | #3390 | CARCASSONNE 1 Pt. Decanter and Stopper, Flamingo | ___185. | # 473 | NARROW FLUTE WITH RIM Combination 2-Part Relish, Iridized Gold - H |
| ___134. | #1428 | WARWICK 9" Vase, Cobalt - H | ___186. | # 350 | PINWHEEL & FAN 8" Nappy - H |
| ___135. | #1428 | WARWICK 9" Vase, Cobalt - H | ___187. | # 400 | COLONIAL Scalloped Spooner, Floral Cut - H |
| ___136. | #1401 | EMPRESS Candle, Three Toed, Moongleam - H Pr. | ___188. | #1295 | BEADED SWAG Toothpick "Mother - 1906" Ruby Stain |
| ___137. | #1401 | EMPRESS Candle, Three Toed, Alexandrite - H - One only | ___188A. | # 27 | 10" Candle - Pr. |
| ___138. | #1401 | EMPRESS 9-1/2" Vase D/F, Footed, Sahara - H - Foot Rough f | ___189. | #1401 | EMPRESS Cream & Sugar, D/F, Sahara - H - 1 Foot c |
| ___139. | | GIRAFFE, Head Back | ___190. | #1519 | WAVERLY 11" Seahorse Ftd. Floral Bowl, Heisey Rose Etch - H |
| ___140. | | ROOSTER | ___191. | #1519 | WAVERLY 9" Seahorse Handled, Covered Candy - H |
| ___141. | | HEN - H | ___192. | #1519 | WAVERLY Individual Cream & Sugar Orchid Etch - H |
| ___141A. | | HEN | ___193. | #1519 | WAVERLY Cream & Sugar, Orchid Etch - H |
| ___142. | | GOOSE, Wings Up. | ___194. | #1469 | RIDGELEIGH 10" Fruit Bowl, Silver Overlay - H |
| ___143. | | PIGLETs, 1 Standing H, 2 Sitting 1 c | ___195. | # 301 | 3-Light Candelabrum |
| ___144. | | FISH BOOKEND | ___196. | #3480 | KOORS Pitcher, Flamingo |
| ___145. | | SCOTTIE | ___197. | #1519 | WAVERLY Covered Butter, Seahorse Finial, Original Label, Heisey Rose Etch. |
| ___146. | | SCOTTIE | ___198. | #3350 | WABASH 1 oz. Cordial, Pied Piper Etch (3) H - ea. |
| ___147. | | MALLARD, Wings Down - H | ___199. | #1401 | EMPRESS Ice Bucket With Handle, Frosted and Silver Overlay - H |
| ___148. | | MALLARD, Wings Down - H | ___200. | #1401 | EMPRESS Nasturtium Bowl, D/F, Flamingo - H |
| ___149. | | MALLARD, Wings Up | ___201. | #1430 | ARISTOCRAT Tall Candy Jar With Lid, Killarney Cut - H |
| ___150. | | CYGNET | ___202. | #1632 | LODESTAR Cream & Sugar, Handleless, Dawn - H - f |
| ___151. | | RABBIT PAPERWEIGHT | ___203. | #6091 | CABOCHON 1 oz. Cordial, Debutante Cut (8) ea. |
| ___152. | | CLYDESDALE | ___204. | #4230 | FAVOR VASE, Moongleam |
| ___153. | | FIGHTING ROOSTER | ___205. | #1255 | PINEAPPLE & FAN Mug, Souvenir "Jonas - 1903", Ruby Stain |
| ___154. | | WOOD DUCKLING, Floating | ___206. | #1567 | PLANTATION Candle Blocks - Pr. c |
| ___155. | | MIDDLE ELEPHANT | ___207. | #4004 | IMPROMPTU Sherbet (5) ea. |
| ___156. | | PLUG HORSE | ___208. | #1428 | WARWICK Cigarette Holder, Sahara (2) - H - ea. |
| ___157. | | STANDING COLT | | | |
| ___158. | #5078 | PARK LANE Champagne, Monogram SJS (Sally Jones Sexton) (4) - H ea. | | | |
| ___159. | #4052 | NATIONAL 10 oz. Soda, Victory Etch (4) ea. | | | |
| ___160. | | ROOSTER VASE | | | |
| ___161. | | RINGNECK PHEASANT | | | |
| ___162. | | RINGNECK PHEASANT | | | |
| ___163. | #3380 | OLD DOMINION Champagen, Sahara Stem & Zircon Bowl - Rare | | | |
| ___164. | | OSCARS 77, 78, 79, 80, 81 & 82 (7) ea. | | | |
| ___165. | | LAND OF LEGEND PLATES, 1971, 1972, 1973, 1974 & 1975 (5) ea. | | | |
| ___166. | | GIRAFFE, Head Back | | | |
| ___167. | | GOOSE, Wings Up - H | | | |
| ___168. | | STANDING PONY (2) c | | | |
| ___169. | #5072 | ROSE Cordial, 1 oz., Rose Etch-H | | | |
| ___170. | #1503 | CRYSTOLITE Cigarette Holder & 4 Ashtrays, Ornate Gold Color Frame | | | |
| ___171. | #5022 | GRACEFUL Goblet, Orchid Etch (7) ea. 1 - c | | | |

| | | | | | |
|------|-----------|---|------|-------|---|
| 209. | #1184 | YEOMAN Sherbet, Flamingo (9) - H ea. | 244. | | SHOW HORSE |
| 210. | # 373 | OLD WILLIAMSBURG Sherbets (2), Clarets (2), Champagnes (5) plus "Colonial Sundaes (2) which possibly are Not Helsey" Total 11 - 7 H | 245. | #3404 | SPANISH Goblet, Cobalt Bowl |
| 211. | #4004 | IMPROMPTU 12 oz. Footed Ice Tea (4) ea. | 246. | # 393 | NARROW FLUTE 1/2 Gal. Jug. Yellow stain above flutes, hammered effect cutting, sterling silver top of handle & top edge. Mint & unusual - H |
| 212. | #5040 | LARIAT Sherbet, Moonglo Cut (3) H - ea. | 247. | # 300 | CANDLELAMP with 4" "C" Prisms, Cutting on shade - C |
| 213. | #4085 | KOHINOOR Cocktail, Zircon Bowl (5) ea. | 248. | # 300 | HEMISPHERE 5-Lt. Candelabrum |
| 214. | #4085 | KOHINOOR 2-1/2 oz. Wine, Zircon Bowl (2) ea. | 249. | # 19 | SINGLE LITE Candelabra 22" With Prisms and Bobeches - Pr. |
| 215. | # 433 | GREEK KEY Punch Bowl With Base - H | 250. | # 301 | 2-LITE Candelabrum, low base - Pr. |
| 216. | # 433 | GREEK KEY Punch Cups - H - (10) ea | 251. | # 343 | SUNBURST Punch Bowl & Base - H |
| 217. | # 135 | EMPRESS Candle, Sahara, Pr. | 252. | #1170 | PLEAT & PANEL Cruet, Amber |
| 218. | #1401 | EMPRESS 10" Vase, Dolphin Foot, Old Colony Etch, Moongleam - H | 253. | #4225 | COBEL, 1 Pt. Cocktail Shaker, Orchid Etch |
| 219. | #1509 | QUEEN ANN Cream & Sugar, Dolphin Foot, Barcelona Cut - H Feet C | 254. | #1405 | IPSWICH Candle Vases W/Insert & Prisms, Pr. & Ftd. Floral Bowl |
| 220. | #1295 | BEADED SWAG 5 oz. Goblet, Red Rose Decor, Souvenir "Parsons Kansas", Custard | 255. | #1225 | PLAIN BAND Berry Set (7) ea. |
| 221. | #1295 | BEADED SWAG 2 oz. Wine, Souvenir "Goldthwaite, Tex," Custard | 256. | # 216 | TROPHY Candlestick, Hdld. Mglm. |
| 222. | #3480 | KOORS Pitcher, Floral Cutting | 257. | #1425 | VICTORIAN, 417 DOUBLE RIB & PANEL, #473 NARROW FLUTE W/RIM & 1503 CRYSTOLITE Cruets (4) ea. |
| 223. | #3480 | KOORS 7" Floral Bowl (hat), Flam. | 258. | #1511 | TOUJOURS Apple Marmalade W/Ladle and 465 RECESSED PANEL 1 lb. Candy Jar - H (2) ea. |
| 224. | #1567 | PLANTATION 5" Deep Footed Comp-ort With Cover, Hand Painted, Green & Gold Decor. | 259. | # 451 | CROSS LINED FLUTE Jug & 6 Tumblers (7) - H |
| 225. | #4206 | OPTIC TOOTH 8" Vase, Moongleam Foot | 260. | #1541 | SCOTTY |
| 226. | #4085 | SATURN 7" Ball Vase, S/O, Zircon | 261. | # 1 | RINGNECK PHEASANT m |
| 227. | # 600 | Handled Chamberstick (2) ea. | 262. | #1529 | REARING COLT |
| 228. | #1425 | VICTORIAN 2-Lite Candle, Pr. - H | 263. | # 1 | GIRAFFE, Head Back |
| 229. | #1225/109 | PETTICOAT DOLPHIN Compport, Flamingo - H | 264. | #1417 | ARCH 8 oz. Tumbler, Cobalt |
| 230. | #1401 | EMPRESS 11" Floral Bowl, D/F, Floral Cut, Sahara | 265. | #3381 | CREOLE Goblet, Sahara |
| 231. | # 134 | TRIDENT 2-Lite Candle, Floral Cut, Sahara | 266. | #2052 | 2-1/2 oz. Bar - Circus "Clowns" Etch |
| 232. | #1401 | EMPRESS 11" Floral Bowl, D/F, Sahara | 267. | #5022 | GRACEFUL 1 oz. Cordial, Orchid Etch - H |
| 233. | # 10 | Powder Jar With Metal Lid - H | 268. | #5048 | ROOSTER HEAD Cocktail (2) ea. |
| 234. | #1519 | WAVERLY Imperial Seahorse Handled Covered Candy, Caramel Slag - H | 269. | #1506 | WHIRLPOOL (Provincial) Cocktail (8) ea - H |
| 235. | #2401 | 7 oz. Soda, Skier Etch and 12 oz. Sodas, Fox Chase Etch (5) Total 6 ea. | 270. | #3405 | ALIBI Oyster Cocktail, Moongleam Foot #9025 Chicken Chase Etch. |
| 236. | # 31 | TOY CHAMBERSTICK, Handled, Pr. - H | 271. | #5089 | PRINCESS Stem Cordial #507 Orchid Etch - H |
| 237. | #3408 | JAMESTOWN Goblet, Narcissus Cut With Original Label (4) - H ea. | 272. | #4227 | FAVOR VASE, Cobalt, Diamond Optic |
| 238. | #3381 | CREOLE 1 oz. Cordial, Alexandrite | 273. | #1404 | OLD SANDWICH Mug, Sahara, 18 oz. H |
| 239. | # 341 | PURITAN 4-1/2" Nappies (6) - H and 7-1/2" Nappy (Probably not Helsey) - Set | 274. | #3417 | BITTERS BOTTLE, 6 oz., #472 Lion Tamer Etch |
| 240. | #1506 | PROVINCIAL Cream & Sugar, Lime-light - Pr. - H | 275. | #1489 | PURITAN 6" Cigarette Box, Krall Cut, Monogram "D" |
| 241. | # 353 | MEDIUM FLAT PANEL Cream & Sugar Beautiful Cherry & Pear gravic Cutting - Pr. - H | 276. | #3304 | UNIVERSAL Pousse Cafe, Victory Etch |
| 242. | # 337 | TOURAINNE Covered Butter, Ruby Stained Band - H | 277. | #4044 | NEW ERA Cocktail, Horsehead Cut-H |
| 243. | #1401 | EMPRESS 7" Plate, Alexandrite (2) ea - H | 278. | #3407 | BEER MUG, 16 oz., Cobalt With Crystal Handle |
| | | | 279. | #3390 | CARCASSONNE Cordial, Sahara, #448 Old Colony Etch |
| | | | 280. | | BABY ELEPHANT |
| | | | 281. | # 126 | TROPHY Candlestick, Flamingo, Pr. |
| | | | 282. | #2516 | CIRCLE PAIR 1/2 Gal. Jug, Flamingo, D/O |
| | | | 283. | #1626 | (1632) LODESTAR, 1 Qt. Pitcher, Dawn - H |
| | | | 284. | # 315 | PANELED CANE 1/2 Gal. Pitcher - H |
| | | | 285. | # 357 | PRISON STRIPE 1/2 Gal. Pitcher- H |

Classified Ads

WANTED: Buying Caprice Blue or Rosepoint by Cambridge, Rose or Orchid by Heisey, and American, June, Fairfax, Versailles, Trojan, etch by Fostoria. NADINE PANKOW, 207 S. Oakwood, Willow Spring, IL 60480 - PH: 312-839-5231.

HEISEY SALE: Including choice miniatures - New list each Jan., May & Sept. L SASE, Please, CLIFF HARRALSON, 1426 W. Highland, Springfield, MO 65807.

FOR SALE: Most Colors, Most Patterns, 2000 pieces of Heisey to choose from. S.A.S.E Please. No list available, Write Wants. PEGGY'S ANTIQUES, Box 367, Spavinaw, OK 74366 PH: 918-589-2859.

FOR SALE: Hundreds of Heisey pieces. Send S.A.S.E. for list. M & J WALTER ANTIQUES, c/o Sir Speedy, 431 Main Street, Woburn, MA 01801

FOR SALE: Send SASE (Bus. Size) for Heisey mail list, over 200 items, or send needs plus SASE. J. & R. COLLECTIBLES, 1032 Fairlawn Ave., Newark, OH 43055

FOR SALE: Entire collection of Heisey Orchid Etching - over 600 pieces - some rare; many marked; set will not be broken. Write W. S. PRIDDY, JR., Rt. 2, Box 90A, Montpelier, VA 23192. SASE - PH: 804-883-6884.

FOR SALE: 4033 28 oz. bar bottle & #1 c/s, and 5 10 oz. sodas, all Nimrod carving. - \$350.00. JERRY SWISHER, 6321 C.R. 140, Findlay, OH 45840 PH: 419-422-4301.

WANTED: #1252 Twist Oval Sugar, Flamingo, CAROL YOST, 275 Newton Avenue, Newark, OH 43055 Call after five: 614-366-1571.

WANTED: Help me fill in the empty spaces in my collection. I need several pieces of Winged Scroll. Such as: Clear Toothpick or Water Set; Green Vase or Ring Tree; any piece in Vaseline or Opal; any less common items in Custard. LINDA HEMBERGER, 764 Fairmount, St. Paul, MN 55105

FOR SALE: Hawthorne #515 D/O Perfume - \$50 Plantation Cruet - \$60, #112 Hawthorne Candlestick - \$45, 10" Waverly Rose Etched Gardenia Bowl - \$55, Crystolite Ind. Stem Preserves - \$4 each, Prince of Wales Punch Cups - \$12 ea., Rib & Panel Punch Cups - \$6 ea., Plantation Cream & Sugar W/Cutting - \$32, Sahara Crystolite Small Ashtray - \$30, Ridgeleigh Lemon Dish & Cover - \$25, Ridgeleigh Saucer Champagnes \$15 ea., #331 Ind. Salt Dip - \$10, Sahara Yeoman Cruet - \$40, Crystal Souvenir Beaded Swag Toothpick - \$35, Crystolite Ind. Stem Preserves - \$4 ea. ELIZABETH CASON, 401 32nd St. W., Bradenton, FL 33505 PH: 813-748-0851.

WE ARE CELEBRATING THE TENTH ANNIVERSARY OF OUR LOVELY MUSEUM THIS YEAR. IF YOU CAN'T COME TO CONVENTION, TRY TO VISIT US SOMETIME THIS SUMMER.

GLASS review

ESTABLISHED 1971

The GLASS REVIEW Magazine is for everyone who studies, collects or sells glass. Whether your glass interests lean toward the early 1900's -- or the depression era -- or with today's limited glass items, the GLASS REVIEW covers it all!

Articles -- price reports -- original catalog documentation -- shop directory -- research and reproduction news -- trademark information -- glass book releases -- what's new on the market -- a large variety of glass ads (on both old and new glass) -- plus much more.

Enclose payment and mail to:
GLASS REVIEW, P.O. BOX 542, MARIETTA,
OH 45750

10 'big' yearly issues

68 pages or more

\$12.50 - one year

OLD TOWNE WEST

50
BLOCK

YARD SALE

9:30 to 5:30 JUNE - 9th

THE OLD TOWNE WEST SOCIETY WOULD LIKE TO INVITE ALL THE HEISEY COLLECTORS TO OUR ANNUAL 50 BLOCK YARD SALES. THESE SALES ARE DISPERSED THROUGHOUT THE OLD TOWN WEST AREA.

COME FOR ANTIQUES, UNIQUES AND JUNK-TIQUES. MANY SALES CONTINUE ON SUNDAY. (THE MUSEUM IS LOCATED IN OLD TOWN WEST AND THE SALES WILL BE IN THE SURROUNDING AREA.)

POSTER ON THE FRONT COVER WAS MADE BY ROBERT H. COYLE.

PATTON HOUSE ANTIQUES
 P.O. BOX 547
 LOUISA, VA 23093

PH: 703-967-1181
 After 6:00 P.M.
 P & I Extra

* Marked

- #4044 NEW ERA Plates 9 x 7 (8) ea.....\$12.50
- #4044 NEW ERA Bowl, Frosted Edge..... 35.00
- #4044 NEW ERA Champagnes (7) ea..... 8.00
- #4044 NEW ERA Water Goblets (2) ea..... 15.00
- #4044 NEW ERA Wines (2) ea..... 15.00
- # 406 COARSE RIB Pickle, Flamingo*..... 17.50
- #1184 YEOMAN Cup & Saucer* (2) ea..... 11.50
- # 394 NARROW FLUTE Banana Split (2)..... 16.50
- # 134 TRIDENT Candlesticks, Rose Etch.Pr.. 80.00

BOSTON HOUSE ANTIQUES
 P.O. BOX 94
 WOLLASTON, MA 02170

PH: 617-471-2723
 P & I Extra
 * Signed

- # 325 PILLOWS Punch Bowl & Base*.....\$185.00
 - ROOSTER HEAD Cocktail Shaker, 14" .. 85.00
 - # 355 QUATOR Cream/Sugar*..... 60.00
 - # 354 FLAT PANEL 5" Cologne, Gold Flash*. 55.00
 - #1255 PINEAPPLE & FAN S/P, Sterling Tops, (not original)..... 55.00
 - # 5 8" CANDLESTICK*..... 40.00
 - LAVENDER JAR* 4-1/2"..... 40.00
 - #1401 EMPRESS Bobeche - 2 Pr.*..Ea.Pr.... 38.50
 - # 341 PURITAN Squat Pitcher* - 3 Pint.... 95.00
 - #1469 RIDGELEIGH Steeple Decanters, in Art Deco Chrome holder W/cream colored bakelite handle...Pr..... 195.00
 - # 500 OCTAGON 4", 5", 6" (nest) of nappies*, Flamingo..... 65.00
 - #1469 RIDGELEIGH 7" Plates (5)..... 45.00
 - # 411 TUDOR Oil Cruet*..... 55.00
- WANTED: Heisey News: 1973-4-5 (all)

PENNY HATHAWAY
 BOX 705
 CONWAY, NH 03818

PH: 603-367-8851
 P & I Included
 * Marked

- #300½ PEERLESS Punch Cups, Set of 11*.....\$65.00
- # 393 NARROW FLUTE 7" Bowl (Pat'd) with 10" Underplate*..... 35.00
- # 433 GREEK KEY Punch Cups, set of 12, (1 rim chip)*..... 80.00
- #1183 REVERE Horse Radish & Cover with #679 Windsor Cutting*..... 25.00
- #1425 VICTORIAN Punch Cups, set of 4*..... 30.00
- #3390 CARCASSONNE Goblet, Moongleam..... 15.00
- Index to "Heisey Glass Newscaster" 1971-1980 3.50
- Index to "Heisey Glass Newscaster" 1981; 1982 & 1983...ea. year..... 1.25

ALL-HEISEY AUCTION

A few lots still needed for June 16th., Auction. This year's auction is co-sponsored by Sam Schnaidt, Frank Frye and HCA.
 Call: 614-345-2932 or 614-344-9449 for further information.
 Moonlight Preview after the Convention banquet.

BETTY KENNEDY
 13 HAWTHORNE STREET
 WOBURN, MA 01801

PH: 617-933-3584
 Shipping
 Extra

- * #1469 RIDGELEIGH 11" Rd. 3-Comp. Relish.\$30.00
- * #1469½ RIDGELEIGH 7" Candelabra, Bobeches & Prisms...Pr..... 85.00
- * # 343 SUNBURST 9" Footed Bowl..... 65.00
- * # 341 PURITAN Covered Butter..... 45.00
- * # 341 PURITAN Covered Pickle Jar..... 30.00
- * # 351 PRISCILLA Quart Decanter..... 50.00
- * # 479 PETAL HOTEL Sugar/Creamer, Sah.Pr. 45.00
- * # 300 PEERLESS 1-1/2 oz. Sherry (3) ea.. 18.00
- * # 300 PEERLESS 3-1/2 oz. Burgundy..... 15.00
- * # 300 PEERLESS 7 oz. Goblet..... 15.00
- * #3408 JAMESTOWN Goblet, Barcelona Cutting (3) ea..... 20.00
- * #3408 JAMESTOWN Champ., Barcelona Cut... 15.00
- * #3408 JAMESTOWN Goblet, Larkspur Cutting (2) ea..... 20.00
- * #3408 JAMESTOWN Champ., Larkspur Cutting 15.00
- * #3380 OLD DOMINION Goblet, Unknown Cutting (3) ea..... 20.00
- * #4085½ KOHINOOR 12 oz. Soda, Saturn Optic Waterford Cut..... 18.00
- * #4085½ KOHINOOR 5 oz. Soda Wide Optic, Waterford Cut..... 10.00
- * #4085 KOHINOOR 5-1/2 oz. Champagne, Saturn Optic, Waterford Cut..... 15.00
- * #5024 OXFORD 6-1/2 oz. Champagne, Fanfare Cutting..... 18.00
- * #5024 OXFORD 11 oz. Footed Goblet, Unknown Cutting..... 20.00

THE COLLECTORS STOP
 512 BROUGHTON DRIVE
 BEVERLY, MA 01915
 * Marked
 Subject to Prior Sale

PH: 617-921-0115
 All Items Exc.
 Cond.Otherwise Stated.
 S & I Extra

- * #1519 WAVERLY Orchid Etch Floral Bowl, 12"\$ 48.00
 - * #1519 WAVERLY Orchid Etch 14" Torte Plate (2) ea..... 48.00
 - * #1519 WAVERLY Orchid Etch 7" Oval Ftd. Comport..... 95.00
 - * # 325 PILLOWS Spooner(Some worn gold)*. 65.00
 - * # 325 PILLOWS 14" Ftd. Punch Bowl*..... 195.00
 - * #1185 YEOMAN 10-1/2" Sandwich Plate*... 35.00
 - * #1401 EMPRESS 7" Oval Comp*W/Cut.(2)ea. 65.00
 - * # 459 BASKET 8", Cloister Cut*..... 185.00
 - * # 441 GRAPE LEAF Ash Tray, Sq. Mglm.... 85.00
- BRINGING LOTS OF EXCITING PIECES TO BOOTH #3 AT O.S.U. CAMPUS SHOW JUNE 14 - 17.

NOTICE!!!!

If you have Loaned or Donated glass to the Museum during the last two years and have not returned a signed copy of the form we sent you, please do so. We need a signed copy for our files.
 If you don't care to evaluate them, just sign and send us the copy anyway.

THANKS!!

H & R DIAMOND H
HELEN - BOB RAREY
1450 WHITE ASH DRIVE
COLUMBUS, OH 43204

PH: 614-279-0390
After 5:30 P.M.
S & I Extra
* Marked

- # 110 DOLPHIN 10" Candlestick, Pair.....\$175.00 *
- # 135 CANDLESTICK*, Sahara, Pair..... 105.00 *
- # 341 COLONIAL Pickle Jar W/Cover*..... 32.50 *
- # 407 COARSE RIB Punch Cup* (4) ea..... 12.50 *
- #1183 REVERE Salt Dip, Flamingo (6) ea... 12.50 *
- #1184 YEOMAN Ind. Butter*, (3) ea..... 7.50 *
- #1252 TWIST Ind. Nut*, Flamingo (6) ea... 17.50 *
- #1256 LEE 6 oz. Sherbet*..... 15.00 *
- #1503 CRYSTOLITE 3" Rd. Ash Tray* (4) ea. 7.50 *
- #1509 QUEEN ANN 8" Plate, Minuet Etch,
(4) ea..... 15.00 *
- #1509 QUEEN ANN 12" Rd. Handled Sandwich,
Orchid Etch..... 165.00 *
- #1519 WAVERLY 7" Salad Plate, Orchid
Etch (4) ea..... 17.50 *
- #5025 TYROLEAN Short Goblet, Orchid Etch,
(6) ea..... 27.50 *
- #5025 TYROLEAN Sherbet, Orchid Etch (4)ea 21.50 *
- #5025 TYROLEAN Champagne, Orchid Etch,
(8) ea..... 27.50 *
- #1540 LARIAT Basket..... 95.00 *
- #1485 SATURN Sugar Dispenser, Metal Top.. 35.00 *
- #1488 KOHINOOR 14" Floral Bowl*..... 37.50 *

ORCHID & ROSE ETCH IN STOCK - SASE FOR LIST

FOREVER HEISEY
JANICE THRAN
1663 LONDONDALE PKWY.
NEWARK, OH 43055

PH: 614-344-5955
S & I Extra
* Marked

- #1447 ROCOCO 5-1/2" Ftd. Cheese*.....\$ 17.50 *
- #1447 ROCOCO 5-1/2" Ftd. Cheese, Orchid
Etch*..... 55.00 *
- #1401 EMPRESS, Ind. Nut D/F, Mglm.(3)ea.. 30.00 *
- #1401 EMPRESS 6" Toed Candlesticks, Flam*
Pair..... 210.00 *
- #1404 OLD SANDWICH 6" Candlesticks, Sah.*
Pair..... 200.00 *
- #1533 WAMPUM 1-Light Candle, Pair..... 40.00 *
- # 353 MEDIUM FLAT PANEL, 1-Piece Cheese
& Cracker*..... 65.00 *
- # 352 FLAT PANEL Sugar Sifter, Sanitary
Glass Top, Paper Label..... 27.50 *
- # 352 FLAT PANEL Horse Radish, and Cover* 35.00 *
- #1252 TWIST 2-1/2 oz. Oil, Moongleam.... 110.00 *
- #1252 TWIST 4 oz. Oil, Sahara*..... 110.00 *
- #1235 BEADED PANEL & SUNBURST Ind. Salt,
Some Rim Roughness (4) ea..... 12.50 *
- # 417 DOUBLE RIB & PANEL 6" Basket,Mglm.* 150.00 *
- #1506 PROVINCIAL 10" 4-Part Relish,
Limelight..... 185.00 *
- #1252 TWIST Mustard/Cover & Spoon,
Moongleam*, 3 pcs..... 95.00 *
- # 2 COLONIAL 9" Candlesticks, Pair.... 95.00 *
- #4083 STANHOPE 3-1/2 oz. Cocktail,
Zircon Bowl & Foot (2) ea..... 85.00 *
- #3390 CARCASSONNE 6 oz. Sherbet,
Flamingo (6) ea..... 22.50 *
- #1540 LARIAT Tray for Ind. Sg. & Cr..... 12.50 *
- #1485 SATURN Sugar Sifter, Sanitary
Glass Top..... 17.50 *

CLASSIQUE GLASS CO. PH: 918-585-3203
P.O. BOX 52572 P.I.X. - * Signed
TULSA, OK 74152 Mint & Each, Except Noted

- * # 413 RENAISSANCE ETCH - Old Glory Stem
Several Items Available, Call or
Write Wants.
- * #1184 YEOMAN Flamingo, Diamond Optic
Dessert Set, Cup, Sauc. 7-1/4"
Plate (6)* - 3 pcs.....\$ 25.00
- * #1252 TWIST - Moongleam
Ftd. Creamer, 8 oz.*..... 37.50
Ice Bucket*..... 85.00
Ice Tea Tumbler, 12 oz. Polished
Bottom Rim (2)*..... 35.00
Coasters (8)*..... 10.00
Bon Bon 5" - 2-Handled*..... 18.50
- * #1295 BEAD SWAG
Opal Crmr./Cov. Sugar, Cornflower
(worn) Decor..... 175.00
Custard Stemmed Goblet, Souvenir.. 70.00
Custard Stemmed Wine, Souvenir.... 70.00
- * 1401 EMPRESS Sahara
Grapefruit Underplate 8-1/2", Sq.
(8)*..... 14.00
Bon Bon 5", 2-Hdld, 4 ftd.*..... 24.00
Mayo Bowl, D/F, Old Colony Etch*.. 42.50
- * #1404 OLD SANDWICH Sahara
12 oz. Ftd. Soda (8)*..... 30.00
6 oz. Ftd. Sundae (8)*..... 25.00
1-1/2 oz. Bar Glass (8)*..... 40.00
- * #1506 PROVINCIAL Cobalt 13 oz. Ice Tea
(4)* Imp..... 32.00
RINGNECK PHEASANT, Decorated..... 175.00
CRYSTOLITE, LARIAT, VICTORIAN,
IPSWICH - MANY CRYSTAL ITEMS - CALL
OR WRITE WANTS
VERLY'S BLUE 13" TASSEL BOWL..... 195.00

NATIONAL CAMBRIDGE COLLECTORS

FLEA MARKET

GUERNSEY COUNTY FAIRGROUNDS

SATURDAY, JUNE 23rd

6 A.M. to 5 P.M.

Dealers Must Remain Set Up Until 2 P.M.

OLD WASHINGTON, OHIO

(one mile East of I-70, Exit #186, on Old U.S. 40)

DEALER SPACE AVAILABLE

For information or Contract write:
Larry Hughes, Chrm., P.O. Box 416, Cambridge,
Ohio 43725.

14th Annual Antique Show & Sale

Heisey Glass Display

Newark Branch - O.S.U. Campus
Country Club Drive, Newark, Ohio

SPONSORED BY

Heisey Collectors of America, Inc.

| | |
|-------------------|-------------------------|
| Friday, June 15 | 12:00 noon to 5:00 p.m. |
| Saturday, June 16 | 12:00 noon to 8:00 p.m. |
| Sunday, June 17 | 12:00 noon to 5:00 p.m. |

Donation \$2.00



Champagne Preview
Thursday, June 14th
6:00 p.m. - 10:00 p.m.

Donation \$7.00

25¢ Off With Ad



BENEFIT NATIONAL HEISEY MUSEUM

FLEA MARKET ON THE SQUARE

Newark, Ohio

SPONSORED BY THE
HEISEY COLLECTORS OF AMERICA, INC.

TWO WEEKENDS

SATURDAY - JUNE 9TH

SUNDAY - JUNE 10TH

and

SATURDAY - JUNE 16TH

SUNDAY - JUNE 17TH

DURING HEISEY CONVENTION

Managed by Newark Area Heisey Study
Clubs ——— Space for 100 Dealers

For Contract Please Write:
Newark Square Flea Market
P.O. Box 27
Newark, OH 43055
or Call: 614/345-2932

**BENEFIT THE NATIONAL HEISEY
GLASS MUSEUM**

GLASS & POTTERY - SHOW AND SALE - OVER 40 DEALERS

2ND ANNUAL DEPRESSION ERA GLASS AND POTTERY SHOW
St Clair Fairgrounds (Air Conditioned Building)
Belleville, Illinois

SATURDAY - August 11 - 10 A.M. to 5 P.M.
SUNDAY - August 12 - 10 A.M. to 4 P.M.

SPECIAL GUESTS: GENE FLORENCE - Noted Author
TOM BREDEHOFT - President, Heisey Collections of
America
NELIA BREDEHOFT - Columnist, Depression Daze

SPECIAL DISPLAYS: HEISEY, CAMBRIDGE, FOSTORIA, IMPERIAL, FENTON
GLASS REPAIR (GRINDING) AVAILABLE. DOOR PRIZES
ADMISSION: \$1.25 - GOOD FOR BOTH DAYS
SPONSORED BY: SOUTHERN ILLINOIS DIAMOND H SEEKERS

REYNOLDSBURG HEISEY COLLECTORS CLUB

ANTIQUÉ FLEA MARKET

NEW LOCATION

ALADDIN TEMPLE

COLUMBUS, OHIO

I-270 STELZER ROAD/MORSE ROAD EXIT

OCTOBER 28, 1984 - 9-4

DEALERS WANTED - PHONE:

DOROTHY MARSHALL
614-866-4522

SHIRLEY BAGFORD
614-866-0032

Granville, Ohio's Land of Legend Annual Show & Flea Market

GRANVILLE HIGH SCHOOL -- Rt. 861 N.
OVER 50 DEALERS including Virgil Harp (repairing glassware)
Clarence Vogel (author of Heisey books)
Glassware, China, Brass, Furniture, Copper, Iron, Crafts, Primitives, Books,
Pottery, lots of misc. (over 2000 pieces of Heisey to be offered for sale).

Wed. - June 13 - 12:00 P.M. - 8:00 P.M.
Thurs. - June 14 - 9:00 A.M. - 9:00 P.M.
Fri. - June 15 - 9:00 A.M. - 5:00 P.M.

For info:

MRS. BETTY MORRISON
127 E. Elm St., Granville, Ohio 43023

FREE ADMISSION

Inside and outside

No reservations needed for outside space

PH: (614) 587-1062, 349-7934 or 366-3298

OUTSIDE FLEA MARKET

Wed. June 13 - 12-8 Thurs. & Fri. - Dawn To?

DRAWING FRIDAY, JUNE 15, 1984 @ 3:00 P.M.
(Need not be present to win)

Tickets Available by calling - 587-1062 or
349-7934 or During Show.

DONATION \$1.00

HOME COOKED FOOD

PLENTY OF PARKING

This offer invalid in states where prohibited by law.

DEALERS NEEDED

Route 202
Lahaska, PA 18931
(215) 794-7800

LYNNE
DOLL



ART'S
HOUSE

P.O. Box 54-6014
Miami Beach, FL 33154
(305) 861-7700

"HEISEY OUR SPECIALTY"

*Dear Heisey Collector and Dealer,
We'll be Heading Your Way!! Heisey Animals,
Lovely Old Patterns, and a Rainbow of Colors, will
be coming along with us.*

AS WELL AS SOME OF OUR RARE PERSONAL COLLECTION FOR SALE.

LOOK FOR US AT:

O. S. U. BRANCH CAMPUS, NEWARK, OHIO - JUNE 14 - 17

WE'LL BE IN OUR SHOP IN LAHASKA, PA THRU NOVEMBER. BY APPOINTMENT
OR BY CHANCE.

*See you soon,
Lynne and Art*

DEALERS DIRECTORY

5 LINES / 12 MONTHS / \$20.00

We assume no responsibility for errors in these ads after the first printing...Editor. For changes in ads during the year, please send \$2.00 per line.

A DOOR ANTIQUES
Heisey My Specialty
South Euclid, OH 44121
PH: (216) 381-3008

ALL HEISEY AUCTION
Consignments Welcome
Apple Tree Auction Center
1616 W. Church, Newark, OH 43055
PH: (614) 344-9449

ANN'S GIFTS & ANTIQUES
105 W. Main St., Hebron, OH 43025
Intersection of Rts. 40 & 79
Next Door to Daisy Queen
Daily 10:30 - 5:30 - Closed Thursday

Judy's DIAMOND H ANTIQUES

Specializing in Heisey-Buy & Sell
Star Rt. 3, Box 2556
Lake Isabella, Ca 93240
Ph: (619)378-2176 by Appointment

ANTIQUES - THE SHULTZES
206-208 East Main St.
Newmanstown, PA 17073
15 Miles West of Reading, PA.
PH: (215) 589-2819

AVERY'S QUALITY ANTIQUES
Heisey, Other Glass & China
Shows or by Appointment
2112 First St., Jackson, MI 49203
PH: (517) 783-4075

B & B HEISEY & COLLECTIBLES
B. Whaley
300 International Dr.
Pataskala, OH 43062
By Appointment; PH: (614) 927-1557

C. E. HIGGINS (S.F. Bay Area)
Shows and Mail Order
P.O. Box 2723
Menlo Park, CA 94025
PH: (415) 322-0192 Evenings

C & J ANTIQUES
Cole & Jean Miesner
Box 45, 72 Whig Street
Newark, Valley, NY 13811
PH: (607) 642-9905

CHARLES & MILDRED FISHER
Heisey, Degenhart, Imperial, Antiques,
Collectibles, General Line
991 Idlewild, Newark, OH 43055
PH: (614) 522-5398

DAVE'S ANTIQUES
Specializing in Heisey
Shows & Appointments
Tampa, FL 33600
PH: (813) 876-0580

GLASS 'N' GLASS
Virginia & Odell Johnson
Rt. 1, Box 1324
Hayward, WI 54843
Ph: (715)462-3753

DIAMOND H PLUS
Appointment or Mail Order
George & Eileen Schamel
Rt. 3, Box 419, Boonsboro, MD 21713
PH: (301) 432-6285

DIE KUNST GALLERIES & ANTIQUES
Specializing in Heisey
Vel & Andy Andress
Box 329, 725 Front St.
Leavenworth, WA 98826
PH: (509) 548-7856

ELIZABETH BASSETT CASON
401 32nd St., W.
Bradenton, FL 33505
Mail Order-List
PH: (813) 748-0851

FOREVER HEISEY
Shows and Mail Order
Janice Thran
1663 Londondale Pwy., Newark, OH 43055
PH: (614) 344-5955

GERT'S GLASS
Heisey & Duncan
Gertrude & Russell Swetnam
1926 Saratoga Dr., Adelphi, MD 20783
PH: (301) 434-5113

GLASS WITH CLASS
Lenore A. Shelley GGHCC
1336 Lincoln Avenue
San Jose, CA 95125
PH: (408) 286-8098

GOLDSBERRY'S ANTIQUES
Heisey A Specialty
Shows Only - Buy & Sell
Kalamazoo, MI 49000
PH: (161) 381-3013

GREEN ACRES FARMS
Antiques, Crystal Glass & Collectibles
2678 Hazelton-Etna Rd., SW (S.R. 310-N)
Pataskala, OH 43062
Sat or Sun P.M. or call (614) 927-1882

H & R DIAMOND H
Helen & Robert Rarey
1450 White Ash Drive
Columbus, OH 43204
PH: (614) 279-0390 After 5:30

HAPPY HAVEN ANTIQUES
Mary Dumke
41319 Rattlesnake Road
Grass Valley, CA 95945
PH: (916) 237-9450

HAPPY HEISEY HUNTERS
Miniatures & other- LSASE for list
New list Jan. 1, May 1, & Sept. 1
1426 W. Highland, Springfield, Mo 65807
Ph: (417)833-2449

HARRISON'S ANTIQUES
Heisey, Cambridge, Duncan
Shows, Mail, by Appt.
26 Johnston's Lane, Mercersburg, PA 17236
PH: (717) 328-2451

HEISEY CLASS NEWSCASTER
Sample Copy 70¢. 32 Pg. All-Heisey Quarterly
\$6.00 (1984) Back Issues \$4.00 yr. 1977-1978-
1979-1980-1981-1982-1983.
Box 102 Plymouth, Ohio 44865

HEISEY PUBLICATIONS
All Heisey Books I-II-III-IV - Heisey
Newscaster 32 Pg. Quarterly - \$6.00
Back Issues - \$4.00
Box 102, Plymouth, OH 44865

JOYCE'S ANTIQUES
Specializing in Heisey, Cambridge, Verly's
& American Glass
P.O. Box 114, Albertson, NY 11507
PH: (516) 499-3396

J. & R. COLLECTIBLES
Shows, SASE Mail Order List
June & Ray Lukasko
1032 Fairlawn, Newark, OH 43055
PH: (614) 344-9719

LAST CHANCE ANTIQUES
Mail Orders - Matching Service
Send Us Your Want Lists
P.O. Box 502, Dania, FL 33004
PH: (305) 467-6356 Day or Evening

MOSTLY HEISEY
Rhoda Curley
16 Clayton Place
Albany, NY 12209
By Appt., PH: (518) 482-6272

MOUND BUILDERS ANTIQUES
Heisey & Animals, General Antiques
Irene Rauck
1138 Moundview, Newark, OH 43055
PH: (614) 344-6043

THE GLASS CONNECTION

Box 526, Collegeville, Pa
19426 Ph.(215)489-4131
Specializing in Heisey
Shows and Mail Order

PATTON HOUSE
Heisey & Duncan Miller
Rocky's Mall, I-81 & US 11
Weyer's Cave, VA 24486
PH: (703) 967-1181

PEGGY'S ANTIQUES
2000 Pcs. of Heisey In Stock
Ernie & Peggy Cox
P.O. Box 367, Spavinaw, OK 74366
By Appt. or by Chance
PH: (918) 589-2859

R & L ANTIQUES - SAN FRANCISCO
Shows Only - Always Lots of Heisey
Member of Golden Gate Heisey Club
P.O. Box 3614, Daly City, CA 94015
PH: (415) 621-6693

RAMBLING LANE ANTIQUES
Featuring Heisey & Other Fine Glass
Keith & Evelyn Hoover
Rt. #4, Box 1005, Rhinelander,
WI 54501 - PH: (715) 282-5019

RAY ZIEGLER
Glass Repair
2265 Innis Road
Columbus, OH 43224
PH: (614) 882-8446

SCHWAN'S ANTIQUES
Shop & Shows
Rt. 1, Box 175B, John Tyler Highway
Williamsburg, VA 23185
PH: (804) 229-7873

SUM OF LIFE
Elaine & Frank Husted
P.O. Box 102
Phoenixville, PA 19460
Ph. (215) 935-2962

T & S ANTIQUES
Specializing in Heisey
Tom Martin & Steve Roderick
New Rochelle, NY 10805
PH: (914) 235-9632

THE WOODEN SHOE
Antiques & Collectables - Buy & Sell
Glass, Furniture, Estates
Jim & Sheri Van Es, By Appointment
810 Elden, Herndon, VA 22070
PH: (703) 435-9045

TRUDY MILLER ANTIQUES
China & Crystal Matching
Heisey A Specialty
P.O. Box 740548, Dallas, TX 75374
PH: (214) 783-9920

WILLEY'S ANTIQUES & MUSEUM
Specializing in Heisey
11110 Cannon Rd., Frazeyburg, OH
43822 - 16 Miles East of Newark
PH: (614) 828-2557

SEE PAGE 22 & 23 IN MAY ISSUE FOR AN EASIER TO READ FORM.
PACKET PICK-UP AND REGISTRATION AT MUSEUM ONLY
TUESDAY - THROUGH - SUNDAY
9:00 A.M. - 5:00 P.M.

OUR IMPOSSIBLE DREAM

- TEN YEARS LATER

1974 - 1984

THIRTEENTH ANNUAL CONVENTION
 JUNE 14, 15, 16, 17, 1984

OSU - COTC NEWARK CAMPUS
 COUNTRY CLUB DRIVE
 NEWARK, OHIO

DISPLAY: HOPEWELL HALL

SHOW: ADENA HALL

The Museum will open at 9:00 a.m. daily. The lounge will open for refreshments at 1:00 p.m. on Wednesday June 13, 1984. The Museum and Lounge will close at the same time as the Show and Display, except Thursday when it will close at 5:00 p.m.

CALENDAR OF EVENTS

THURSDAY, June 14, 1984

1. REGISTRATION: EVERYONE MUST REGISTER. Packets may be picked up at the Museum beginning on June 14th. - No matter when you arrive, the packets must be picked up at the Museum during open hours. Remember that registration badges are required for all events; they permit unlimited admission to the SHOW AND DISPLAY and to all free activities. Children under 12 will be admitted free except where food is served.

PRE-ORDERED OSCARS may be picked up at the Museum June 14 and 15th. After that, they will be at the club booth in Hopewell Hall. Left over Oscars will be sold at the Museum and both club booths at OSU.

2. "LOOKING FOR OUR DREAMS":

Adena Hall, OSU Branch. The Antique Show opens with a champagne preview from 6:00 to 10:00 p.m. A Semi-formal affair open to all members and the public. You will be served champagne and other refreshments for your enjoyment. Booths will be open for selling: 6:00 to 10:00 p.m.

FRIDAY, June 15, 1984

1. REGISTRATION:

HCA Museum only 9:00 a.m. - Till Closing

2. "IDENTIFYING OUR DREAMS":

Sheraton Inn from 8:30 a.m. to 11:00 a.m. Bring your FINDS AND QUESTIONABLE HEISEY for identification. A panel of knowledgeable individuals will be on hand to assist. A continental breakfast will be served. Introduction of Candidates for Board of Directors.

3. ANTIQUE SHOW:

Adena Hall from 12:00 to 5:00 p.m.

4. DISPLAY - "DREAMLAND":

Hopewell Hall from 12:00 to 5:00 p.m.

5. "DREAM MAKERS":

Sheraton Inn from 2:00 to 4:00 p.m. This is a reception for HCA MEMBERS & FORMER HEISEY WORKERS. Speaker will be former Heisey employee (glass blower) W. E. Porter. Refreshments will be served.

6. "SPINNING OUR DREAMS":

Convention banquet at the Sheraton Inn with social hour beginning at 6:30 p.m. and Dinner at 7:30 p.m. Fred Bosworth, Heisey Salesman, will be the guest speaker.

7. PREVIEW OF AUCTION ITEMS:

1616 West Church Street, Apple Tree Auction Center, after banquet.

SATURDAY, June 16, 1984

1. FLEA MARKET:

On the Square at daylight.

2. AUCTION:

1616 West Church Street, Apple Tree Auction Center
 Time - 9:00 a.m.

3. ANTIQUE SHOW:

Adena Hall - Open from 12:00 to 8:00 p.m.

4. DISPLAY:

Hopewell Hall from 12:00 to 8:00 p.m.

5. *SEMINARS - "LEARNING ABOUT OUR DREAMS":

All at the Sheraton Inn.

2:00 - 3:00 p.m.

"My Lady's Favorite" - Slide Show - A comprehensive study of colognes of all periods by Virginia Marsh, Sandy Chaconas and Lynn DeGroot, all cologne collectors.

3:00 - 4:00 p.m.

"Pink Elephants" - Slide Show and lecture on beer mugs of all periods, blown, pressed and etched - by Burl Whaley, mug collector.

4:00 - 5:00 p.m.

"Sweet and Sour," - Oil Bottles (cruets) - An in-depth look at cruets, including a slide show, from the view point of a collector - by Homer Paulson.

6. "TRADING OUR DREAMS":

At the Sheraton Inn from 8:30 to 10:00 p.m. for members only. A trading post for Heisey Glass will be set up. Bring your duplicates or other Heisey to trade for Heisey of your choice. Each family will be permitted a maximum of 12 items on the table at any one time. These items will be for trade only. Absolutely no money will be involved in the exchange. YOU WILL NOT BE ADMITTED WITHOUT YOUR BADGE.

SUNDAY, June 17, 1984

1. FLEA MARKET

On the Square at daylight.

2. "DREAM ON"

Sheraton Inn at 8:00 a.m. - HCA Annual Meeting and Election of Board Members - Breakfast Buffet.

3. ANTIQUE SHOW:

Adena Hall - 12:00 to 5:00 p.m.

4. DISPLAY:

Hopewell Hall - 12:00 to 4:00 p.m.

| EVENTS: | COST | NO. ATTENDING | TOTAL PER ITEM |
|---------------------------------|---------|---------------|----------------|
| REGISTRATION..... | \$ 6.00 | | \$ |
| **"LOOKING FOR OUR DREAMS"..... | \$ 5.00 | | |
| "IDENTIFYING OUR DREAMS"..... | \$ 3.00 | | |
| "DREAM MAKERS"..... | \$ 2.00 | | |
| "SPINNING OUR DREAMS"..... | \$14.00 | | |
| "DREAM ON"..... | \$ 5.00 | | |

TOTAL COST OF ALL EVENTS \$35.00
 Make checks payable to HEISEY COLLECTORS OF AMERICA, INC.

* No Pre-Registration needed for seminars.
 ** \$7.00 if not registered.

Mail to: Mrs. Robert McClain, Conv. Secy.
 156 West Shields Street
 Newark, OH 43055 - PH: 614-345-8061

Please list all names for badges. Check all events you plan to attend.

NAME(s) _____
 STREET: _____ CITY: _____ STATE _____ ZIP _____

HEISEY'S GLASSWARE
OF DISTINCTION

By Mary Louise Burns



1983 EDITION!

Condensed and updated!
Contains all major tableware
patterns with pictures for
easy identification.

Current price list included

Order direct from author
\$11.95 pp
MARY LOUISE BURNS
P.O. Box 1931
Grants Pass, OR 97527

Individual price lists
available for Heisey's
Orchid Etch, Rose Etch.
Animals & Verlys @ \$1.50 ea.
plus large SASE.

THE CANDLESTICK BOOK WILL NOT BE AVAILABLE UNTIL MID JUNE

THE \$5.00 DISCOUNT APPLIES TO PRE-PUBLICATION ORDERS

NEW MUSEUM HOURS - OPEN DAILY 1 - 4 P.M. EVERY DAY OF THE YEAR, EXCEPT MONDAYS AND
HOLIDAYS - ANYTIME BY APPOINTMENT.

ATTENTION!!



LAST CHANCE TO SAVE MONEY - Order by June 9th
to save \$3.00. They will be \$24 after that date.

1984 SOUVENIR OSCAR FORM

PLEASE READ VERY CAREFULLY BEFORE FILLING OUT

Oscars are Ruby, marked "HCA '84" and "IG." A limited edition of approximately 2164 to be offered to members at \$21.00 until May 31st. None will be sold between that date and the first day of the Convention, June 14th, when they will be sold for \$24.00 if any are left. You may order ONE per member. This means ANY member who has a membership card regardless of class of membership. Please list all names as they WILL be checked. Everyone living in Ohio ordering for

pick-up in Ohio, must pay \$1.26 Sales Tax per Oscar. Shipping charges will be \$1.50. The Oscars will be shipped as soon as orders are received. **DO NOT SEND DUES, BOOK ORDERS, ETC. WITH YOUR OSCAR ORDER.** Please keep this part for a reference and clip and mail the form below the line. Be sure your dues are currently paid. This is the 8th of a series of souvenir Oscars.

Number of OSCARS AT \$21.00 _____ Only one per member

Sales Tax \$1.26 each _____ All Ohio Residents and Pick-Ups in Newark

Postage \$1.50 each _____ Check one: _____ Please mail my Oscar (s)
_____ I will pick up my Oscar (s) at
Convention or Museum after the
Convention. Circle one.

TOTAL sent with order _____ MAY PICK UP AT THE MUSEUM ANYTIME.

NAME (s) _____

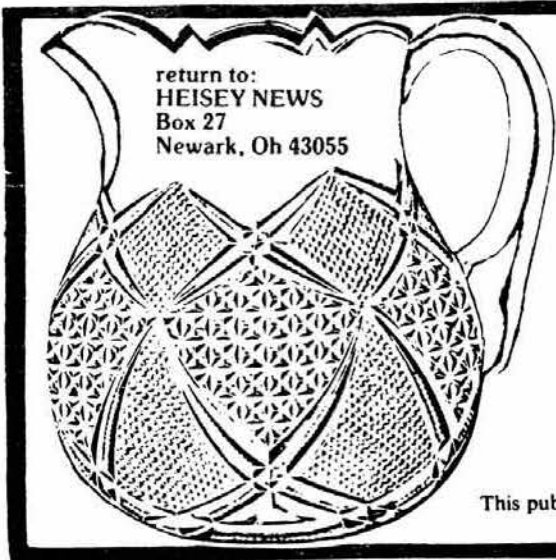
List all names _____

ADDRESS _____ CITY _____ STATE _____ ZIP _____

Make check payable to HCA, Inc.
and mail to: HCA OSCAR SALES
P.O. BOX 27
NEWARK, OH 43055

BankAmericard/Visa

MasterCard



return to:
HEISEY NEWS
Box 27
Newark, Oh 43055



FIRST CLASS MAIL
U.S. POSTAGE
PAID
PERMIT 34
Newark, Ohio 43055

This publication is a Heisey Collectors of America study guide intended for collectors of glass and related items.