



OFFICIAL PUBLICATION HEISEY COLLECTORS OF AMERICA

©Heisey Collectors of America, Inc. 1984
All Rights Reserved

news

VOLUME XIII

NO. 4

APRIL, 1984

ISSN 0731-8014

ONE DOLLAR

Int. Cl.: 21

Prior U.S. Cls.: 2, 33 and 50

Reg. No. 1,265,757

Registered Jan. 31, 1984

United States Patent and Trademark Office

TRADEMARK
Principal Register



Heisey Collectors of America, Inc. (Ohio corporation)
P.O. Box 27
Newark, Ohio 43055

For: GLASS BEVERAGeware AND FIGURINES, in CLASS 21 (U.S. Cls. 2, 33 and 50).
First use Jun. 1974; in commerce Jun. 1974.

Ser. No. 394,188, filed Sep. 29, 1982.

STEVEN L. CATALANO, Examining Attorney

HCA OFFICERS

- * President Tom Bredehoft 614-745-1014
- * Vice President Jim Kennon 216-282-7711
- * Secretary Ray Ziegler 614-471-6446
- * Treasurer Dick Marsh 614-366-5608
- * Exec. Dir. Louise Ream 614-345-2932

IN MEMORIAM

HARLEY BETHEL - 1922 - 1984

Harley Bethel, our printer since 1980, and a long time friend, died on February 19th after a prolonged illness. HCA members who have attended conventions will remember him as the Chairman of the Convention Display for two years and Co-Chairman with Mary McWilliams after that. He was a voting member, dedicated to the club and always most generous with both time and money. He also was a member and former president of the Reynoldsburg HCC.

His wife, Marcella, who died in March, 1980, was our very first printer. Assisted by Harley, she continued to print the Heisey News until just prior to her death after open heart surgery. Harley printed it until sometime last year when his health was deteriorating. At that time, his son, Gary, took over the business and continues to be our printer.

Harley is survived by his daughter, Shirley Bagford, also a dedicated voting member of HCA, his son Gary, and three grandchildren, Mary Jo Bagford and Trent and Trevor Bethel. Aside from an association with Harley in HCA, Russ and I were close friends of the Bethels for twenty-five years. Along with other members of HCA, we'll miss him very much.

Louise Ream

MEMBER SPEAKS AT SANDWICH MUSEUM

On February 13, 1984, The Sandwich Glass Museum was fortunate enough to have Mr. Frank Maloney, your New England Authentication Representative, lecture on Heisey Glass at our Winter Lecture Series.

His informative lecture on one of the nation's fastest growing collectibles attracted a considerable audience and elicited a most favorable response from them. Mr. Maloney brought with him a great many pieces of Heisey glass from his own collection. His ability to illustrate patterns and particularly the range of kaleidoscopic colors in which the glass was made with the actual pieces of glass contributed greatly to the education (and pleasure) of the audience.

We appreciated the excellence of his presentation and thought you might like to know of Mr. Maloney's contribution to your goal of educating the American public about Heisey glass.

Barbara J. Bishop, Director
Sandwich Glass Museum

Opinions expressed in articles are those of the authors and not necessarily those of HCA. Editorial Staff reserves the right to edit or refuse any material submitted for publication. Send all letters and articles to the EDITOR. Letters to columnists should be sent to the club address and will be forwarded.

***** -2-

* HEISEY NEWS - P.O. BOX 27, NEWARK, OH 43055
 * Editor: Louise Ream
 * P.O. Box 27, Newark, OH 43055
 * PH: 614-345-2932
 * Assistant Editor: Neila Bredehoft
 * P.O. Box 27, Newark, OH 43055
 * PH: 614-345-2932

* Published monthly and mailed from Reynoldsburg, Ohio 43068.

* \$15.00 per year - \$1.25 per copy

* Back Issues - Each Volume (12 issues) year - \$9.00
 * Volume V, VI, VIII, IX, X, XI & XII Available

* Heisey Collectors of America, Inc. is a non-profit corporation with tax exempt status.
 * Owners and operators of National Heisey Glass Museum, 6th and Church Streets, Newark, Ohio.
 * Open Daily 1 - 4 p.m. except Mondays & Holidays.
 * Other hours by appointment. Members admitted free.

* Club membership (includes 12 issues of HEISEY NEWS and participation in all club activities)
 * \$15.00 per year plus \$2.50 for each additional family member in same household who wishes a membership card. For VOTING MEMBERSHIP, add \$25.00 one time only fee.

* When requesting information, please enclose a self-addressed, stamped envelope (SASE).

* ADVERTISING - Send all ads to:
 * Advertising
 * c/o Janice Thran
 * P.O. Box 27
 * Newark, OH 43055

* RATES:
 * DEALERS' DIRECTORY - 5 lines - \$20.00
 * Extra Line - \$2.00 - Change during year \$2.00 per line.

* CLASSIFIED - 12¢/Word - \$1.20 Minimum.
 * Abbreviations & initials count as words.

DISPLAY:	MEMBERS	NON-MEMBERS
* 1/8 pg (9 items)	\$15.00	\$25.00
* 1/4 pg (20 items)	24.00	35.00
* 1/2 pg (20 items)	40.00	50.00
* 1/2 pg (50 items) Vertical	50.00	60.00
* 1 pg (50 items)	65.00	80.00

* Extra lines will be billed at \$1.00 per line.

* We cannot double-column ads.

* ALL ADS MUST BE PREPAID. Ad copy must be received by the 5th of the month to be included in that month's NEWS. Ads containing reproductions will not knowingly be accepted unless clearly stated (i.e. Heisey by Imperial, etc). HEISEY News assumes no responsibility for false advertising or misleading information. In the event of typographical error, the incorrect portion of the ad will be run in the following issue, but HEISEY NEWS assumes no further liability.

NOTES FROM YOUR PRESIDENT.....

Several months ago, I was thrilled to be able to report that the HCA had been instrumental in having a confusing mark removed from glass-ware. This month, I am proud to report that the HCA now owns the registration of the DIAMOND H on GLASS. Not just as a collectible mark, but a real trademark on the item and on shipping labels and invoices. We received notification that as of January 31, 1984, the "Diamond H" figure was duly registered in the United States Patent and Trademark Office. A lot of us have been waiting a long time for this.

ENDOWMENT FUND

With a donation from the Bay State Heisey Collectors, our Endowment Fund passed the \$10,000 mark last month. This Fund, or rather the income from this fund, will be used solely for the preservation and maintenance of the Museum. Not that we need it now, but we're trying to protect the future.

AUCTION

This is being written before the auction (lead time being what it is), but there are some unsung heroes we have to honor. Norman and Janice Thran and Dick and Marilyn Smith almost singlehandedly (eight-handedly) catalogued the glass for the auction. I daresay they learned something about the glass, too. Liz Stickle has done all of the typing that goes with the job, the lists of glass, the lot slips, the donation forms, and all that.

HOSPITALITY

Don't forget, while in Newark for the convention, stop by the Hospitality Room in the lower level of the Museum. There will always be someone there to talk Heisey with, and also some goodies to munch on.

REGISTRATION

This year, in order to preserve peace between us and Phyllis McClain, the registration for the convention will be held in the Docent's lounge of the Museum. No matter when you arrive in Newark, (business hours) you will be able to register at the Museum. But you thought you had done that through the mail...NOOOO...that was pre-registration. You are not registered until you pick up your packet from the Docent's lounge. And if you are coming only for the Banquet on Friday night, you will have to have your banquet tickets. They will not be available at the door.

FORMER EMPLOYEE RECEPTION

Let me recommend to you the Former Employees reception. The speaker will be W. E. Porter, a former Heisey Employee (glass blower), who is currently making art glass, supplying the Museum with paper weights and vases which we have for sale in the Gift Shop. He will be speaking on his experiences at Heisey and on the making of glass in general. This is one of the events of the Convention which we tend to gloss over, but these people, the former employees, were the people responsible for making this stuff we all slave for.

Every now and again, this column is used to notify you, the members, of needs we have at the

Museum. Several years ago, it was decided to install mirrors behind the glass in the Museum. We got most of the cabinets on the lower level done, but ran out of money for that purpose before any of the cases upstairs were mirrored. Now is your opportunity to give a large quantity of glass to the Museum. This applies to Study Clubs as well as individuals. Please write before you send the mirrors, there is a possibility of duplication.



MIRRORS! WE NEED MIRRORS!!

Room #1	- Main Floor	- 14 Pcs. Mirror	- \$250.00
Room #2	- Main Floor	- 18 Pcs. Mirror	- 336.00
Gift Shop	- Main Floor	- 18 Pcs. Mirror	- 300.00
Room #4	- Upstairs	- 35 Pcs. Mirror	- 605.00
Room #5	- Upstairs	- 34 Pcs. Mirror	- 585.00
Room #6	- Upstairs	- 36 Pcs. Mirror	- 670.00

ABOVE PRICES ARE INSTALLED.

BENEFIT AUCTION

The Benefit Auction is now history with total sales of \$35,083.50 for 702 lots.

HCA receives 20% of the selling price, less all expenses, and plus the full amount of the donated glass. A few people donated an extra 5% to the Endowment Fund.

The Auction would not have been possible without the help of all of the people who donated their time. Auctioneers - Sam Schnaidt, Larry Stickle, Tim Hughes and Craig Connelly; Norm and Jan Thran, Dick and Marilyn Smith, Louise Ream and Wanda Lybarger for identifying the glass and making the list; Liz Stickle for typing lot slips and sales slips; Lynette and Curt Parmer and their crew from Lynn's office for their work in Mail Bids; Merrell Strawn for typing the list for Heisey News; cashiers, Heidi Schnaidt and Loren and Virginia Yeakley; Delores Ziegler, Delores Good, Kathy Good and Alicia Miller for their work in processing all of the checks and paper work for consignors; Betty Wanser and Loren Yeakley for clerking; The 76'ers Study Club and all of the many other people for helping set up glass before the auction; and all those, too numerous to name, who helped before, during and after the auction.

We also thank Sam and Heidi for the use of their Auction Center.

Thanks also to Margaret Weber and those who assisted her in shipping the mail bid glass. With all of the above mentioned help it was again a pleasure to chair the auction.

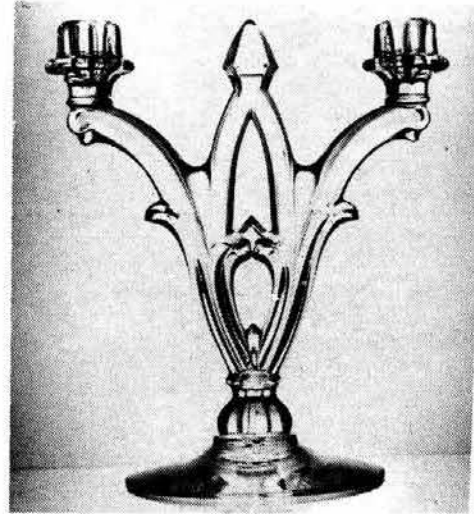
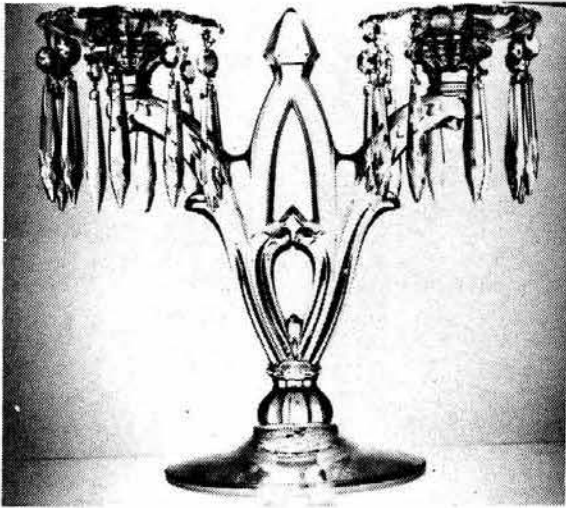
Thank you,
Ray Ziegler

ADDITIONAL PATRONS FOR AUCTION LIST:

Mr. & Mrs. John Willoughby
John and Marjorie Deppong
James J. Lukasko
76'ers Study Club

NO. 402 GOTHIC CANDLESTICK

By Bob O'Grady



Although the Gothic candlestick did not seem to be very popular when it was introduced, it is truly one of the most classic designs ever produced by Heisey. My reaction, when I first saw this candlestick several years ago was that it was somewhat grotesque. However, having the opportunity to live with it and compare it to many of Heisey's other designs as well as other companies, has changed my opinion decidedly. Although I believe it comes off much better as a candelabrum than a candlestick (i.e. without bobèche and prisms).

Heisey did not assign a name, only a pattern number to this candlestick. The name "Gothic" was assigned by a collector and is truly appropriate as descriptive of the elegant arches and points which make up its design. It has occasionally been called "Cathedral" by collectors which is also very appropriate.

The candlestick was first produced in December of 1932 and was last made in September of 1935 giving it almost three years of production. However, it was still offered in a 1936 price list and judging from the relative scarcity of these today, not too many were made over the three year period.

For the time of its production, the pattern number assigned to this candlestick was unusual. One would expect that the Gothic would have a pattern number in the 130s or 140s since the other candlesticks introduced in the same time period which did not belong to a pattern group were numbered in this range. The assignment of a 400 number may have had something to do with the fact that all the candlesticks in the 130s and 140s were sold without bobèches and prisms, whereas the Gothic was sold as a candelabrum with removable bobèches and prisms.

The candlestick was made in crystal (and

is more common in this color), saharra and cobalt (colors which are rare). When made up in cobalt the foot and bobèches were left crystal. However when made in saharra, both foot and bobèches were also saharra. An unusual pair of these candelabra have been on display in the HCA museum with a cobalt foot only and the rest in crystal. This was probably experimental or a special order.

This candlestick is one of the tallest made in this period, standing eleven inches tall with an arm spread of nine inches (twelve inches when bobèches are added). It has an applied foot and when offered as a candelabrum could be purchased with "A" or "C" prisms. The removable bobèche which is a separate piece, merely rests over a rim on the candleholder. And as was not uncommon, Heisey used the bobèche (pattern number 402 also) on the two light no. 301 hurricane lamp.

Shortly before it was discontinued, it was offered with a matte etching or an overall satin finish. It is usually marked with the Diamond H at the bottom of the pointed finial topping off the center of the candlestick. It was not re-issued by Imperial.

MEMBERSHIP UPDATE!!!!

PLEASE NOTE THAT IF YOUR DUES ARE DUE AFTER APRIL 1, 1984, YOU PAY THE NEW RATE OF \$15.00 ASSOCIATE MEMBER, \$2.50 PER PERSON FOR EACH ADDITIONAL HOUSEHOLD MEMBER DESIRING A MEMBERSHIP CARD.

THOUGHTS ON HEISEY'S #4220 VASE

By Edward Noyes,
 Emeritus Professor of History
 University of Wisconsin-Oshkosh

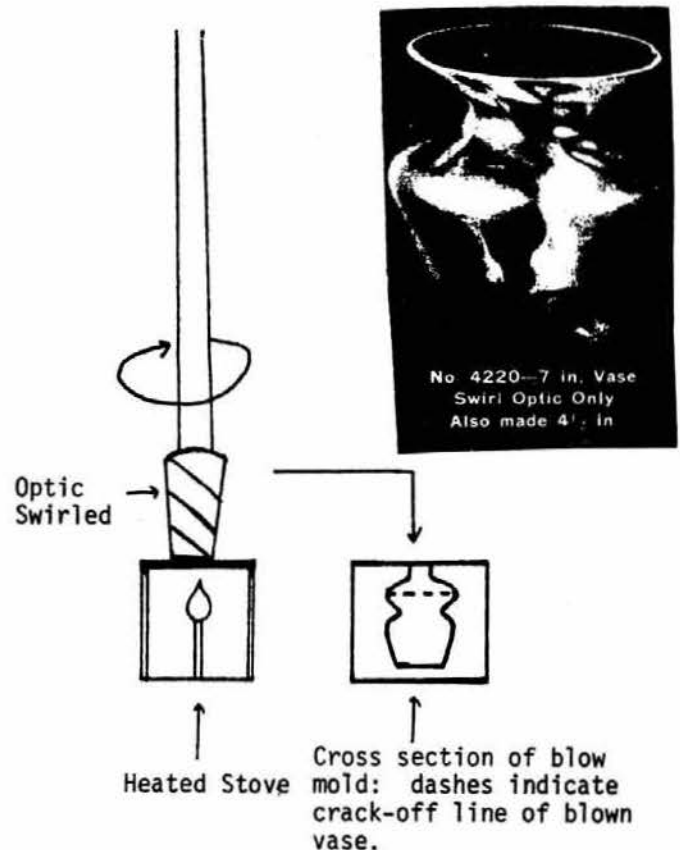
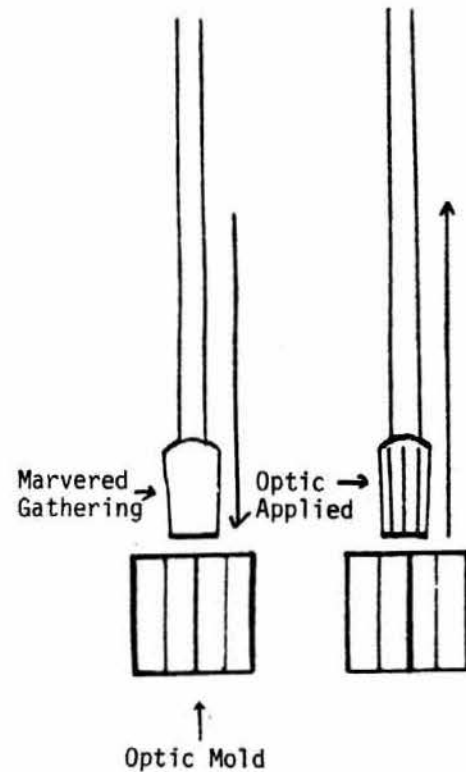
When advertisements of the #4220 vase appeared in recent issues of *Heisey News*, they brought back to the writer memories of more than fifty years ago when he worked in the shop of Arthur Kessmeier who specialized in blowing a variety of bottles, decanters, jugs, salts, and vases.

Blown in a paste mold and ornamented by a swirled optic, the #4220 vase came in two sizes: seven inches and four and one-half inches. Of the two, the smaller was the more difficult to make. Because of the vase's tucked-in "waiste" separating its lower and upper parts, and because of the proportion of bulk in the glass to that waist, painstaking care was required in the marvering process distributing the weight of the hot metal prior to blowing.

Equally exacting was the operation of swirling the optic at precisely the correct angle. After dipping the marvered gathering into the optic mold and then removing it, the blower touched the end of the gathering ever so gently to a heated plate of iron where it hung; next, with what amounted to a "sleight of hand" performance, he turned the blowpipe just enough to have the optic take the proper degree of swirl: for, if the pipe were turned too much, the optic would appear in flattened rings; if not enough, it would appear too perpendicularly on the finished piece. Once this operation was done--and it took only the twinkling of an eye--the gathering was blown in the mold. Usually, the vase carried on its bottom a small circular roughness marking the place where the glass had hung on the heated plate when the optic was swirled.

Although the process described was dependent on immeasurable skill for accuracy, when the working turn was over, each vase was just like its fellows, and all were as nearly perfect as the human hand could fashion them.

Displaying a characteristically high polish from being blown in a paste mold, and with its graceful contours enhancing the swirled optic, the #4220 vase is a joy to the eye. In addition to crystal, it came in colors: those in Alexandrite exhibit an intensely brilliant coloration which is truly delightful. Like fine jewelry, this little vase possesses an excellence all of its own.



Note: While piece is blown, the pressure against the inside of the mold forces the optic from the outside to the inside of the object leaving a smooth external surface.

DIAMONDS ARE FOREVER.....

By Janet M. Caswell

In 1872, a man called Benjamin Abbot left a sum of money to erect a building for the benefit of the inhabitants. Construction was started in 1877 and is a fine example of a romantic Romanesque building made of face brick, unusual Calendonia free-stone carving, stained-glass windows with a large tower which houses a bell and clock. The bell is still used to ring the nine o'clock curfew. The building stands on one of the highest points of land and is sixty feet above sea level. Abbot Hall was the focal point of our town government and it stood silhouetted against the blue sky of day or brilliantly illuminated against the blackness of night saying "Welcome Home" to every townsman, fisherman, or sailor returning from a days sail.

As I told you last month, I was headed for the South Shore but much to my great dismay came home empty handed, but not all here on the North Shore came up thus. My spies tell me the Bay State can brag about all sorts of good things; #15 Duck in Flamingo; a beautiful Rooster Vase; a perfectly lovely #2401 Old Fashioned with the #462 Fox Chase etch. Elsewhere in the Bay State, there was a #1567 Plantation covered lemon, #343 Sunburst Hotel Creamer (those are so pretty), #353 Shaving mug, etched. (that was a real little beauty) Yours truly also found one, but mine was not etched and was sick. I didn't have one and the price was right.... The #469 1/2# Candy jar also appeared in Bean-town along with the #393 3-Pt. Tankard; #1205 Fancy Loop Water bottle; #1483 Stanhope 2-Lite Candlestick and a cute little #21 Desk Candlestick. Others in the same area wanted to brag about a #42 Regal 7" candlestick; #25 Sanford 9-3/4" stick, #600 Chamberstick and the #492 King House etch on a #1472 Parallel Quarter Stick. This was the month for candlesticks. Leaving the candlesticks behind, there was a lovely #1252 Twist Oil & Vinegar in Moongleam and a crystal Cruet marked on the handle; #1183 Salt in Flamingo; #1205 Fancy Loop toothpick in Emerald, #4085 Kohinoor 4-1/2 oz Claret in Zircon & Saturn Optic, #343 Sunburst Tumbler & #1280 Winged Scroll 11-7/8" high Swung Vase in Custard (moongleam with envy)

My "Evergreen Friends" have finally come out of hiding (possibly it was too cold up North to go out, who knows) and they brought with them a #4044 New Era Candelabra/prisms, #1201 Fandango Toothpick, #1503 Crystolite 9" four-part Clover Leaf Relish and a #1235 Chrysanthemum (Beaded Panel & Sunburst) Punch Bowl, Base and eleven cups. This, I understand, was a real find.

"My First Convention Heisey Friends" found seven (7) Lancaster Etched #4002 Aqua Caliente Cocktails.

After driving over 300 miles one day and finding nothing, the Mr. and myself were tired and disappointed. Stopping at just one more place, we met "Grampa W." a real sweet gentlemen who, believe it or not, was just beginning to discover the joys of Heisey. How excited can one person be, he had just found, and purchased,

a #1205 Fancy Loop 9" Ice-Tub in perfect condition and a couple of Victorian wines. We got to talking and he promised to keep me informed of his finds. Even though we didn't come up with anything at that stop, it was not in vain, we found another Heisey friend!

My "English Buddy" has been running between "Here & there" and there was no end to his list of things to make me envious: #1420 9" Tulip Vase, #1401 Empress 9" Footed Vase in Moongleam, a Sea-Horse Handled Candy Jar in mint condition; a pair of #1401 Empress 6" Toed Candlesticks in Flamingo and another pair just like them only in Sahara, #3368 Albemarle compote D/O, Sahara, Old Colony Etch, #1184 Yeoman Cream and Sugar, etched and a #354 6 oz. Cologne, silver top. Not bad for a days work.

"The Tipper" told me once that he just gets in the car and goes wherever it takes him. We should all have his luck: #1201 Fandango covered Butter (hmmm); two Baskets the #458 8" with a wheel-cut and a lovely #1183 with wheel-cut. (both of which he is going to keep) He says the #1183 is without a doubt the most beautiful he has ever seen. Added to his "little things" was a #351 Priscilla Butter Pat in Flamingo; also found was a #354 Wide Flat Panel Cream & Sugar in crystal and a few pieces of Crystolite #1503, namely the 6" Shell Covered Candy, the five (5) compartment round relish and the 12" 3-compartment relish. He says he is waiting for warm weather and out-door flea markets. I guess we all are anxious for that, if only to get warm. It has been minus 10° for the past few days here in the Yachting Center.

OK "Mountain Gal" here goes: #500 Octagon sugar in Flamingo, #1486 Coleport 8" Bowl, #150 Banded Flute salt & pepper/#3 Sanitary top, #411 Rib & Panel 2-hdld. jelly/floral cut, #1252 Twist 7" Pickle dish in Flamingo, #407 Coarse Rib 6" plates (2) and three 8-1/2" plates all in moon-gleam, #1295 Beaded Swag toothpick in Opal, Heisey Goose wings half-way, two of them, Ridgeleigh 2" 1-lite candlestick, #1170 Pleat & Panel 10" Spice tray (5-comp) in flamingo/gold floral rim, and lastly the #7052 Diamond Grid Puff Box/sterling lid.

The Mr. and I run every-which-way and sometimes come up with something, sometimes not. Last week I found a #1404 Old Sandwich 1-2 Gal. Ice Jug in Sahara; #1205 Fancy Loop 4 oz Claret and a 3 oz Wine; #394 Narrow Flute Pickle Jar/cover; #121 2" Candlestick in Hawthorne and a #433 Greek Key Individual Ice-Tub/Underplate. Cute! Love it.

This month we have two new contributors "two guys from Connecticut" they found six (6) #3481 8-1/2 oz Footed Sodas in Crystal. Lets hear from you again!

The "Land of Lincoln" has long been absent. I miss you when you don't write to me. The silence has been broken with the #4027 Tall Decanter with Moongleam Foot and Moongleam Steeple stopper in perfect condition and sleeping. The Sitting Pony, #1280 Winged Scroll crystal covered butter/gold decoration, a Lariat 15-piece punch set and a #1503 Crystolite 10" round Vase.

All of you that I haven't heard from for a long time, please drop me a line and tell me about your finds.

HEISEY'S LITTLE THINGS

I have been neglecting those of you who collect little things the past two months but I have only recently been able to write again after having shattered my right wrist in a fall January 6th.

There were many H.L.T.'s in the Benefit Auction and they seemed, for the most part, to bring good prices. An 1183 Revere salt dip, like the one which sold last year for \$110, sold for \$140 this year. This continues to be the "top of the heap" as far as salt dips are concerned. This is an unmarked item so someday someone will probably come up with a bunch of them at a real sleeper price. Colored nut dishes brought good prices as did most small items.

Number 357 Prison Stripe is the next pattern in line which has a few H.L.T.'s. This pattern shape is definitely copied from 300 Peerless with the addition of horizontal ridges all around the body of every piece. Vogel gave the pattern its name. Made first in 1906, it was not a long line and when I first began to collect, very little of it could be found. The first time a toothpick ever sold at auction, it brought well over \$200. However, Heisey Toothpick Holders by Nancy and David Jones, lists it at \$140. I believe if one showed up in an All Heisey Auction today it would probably bring more than that.

The only other pieces which are H.L.T.'s are the salts and peppers and the custard (Punch Cup). The glass is beautiful clear crystal, well finished and most pieces are marked, delightful additions to your collection. So far, I have none of these three pieces.

Number 365 Old Queen Ann is another interesting pattern from about the same period as Prison Stripe. The shield shaped ornamentation is quite attractive and Queen Ann is a great favorite among the old patterns, again of excellent quality, and usually marked.

The 4 oz sherbet, custard, toothpick, #2 and #3 salts and peppers and 2 oz wine are the pieces which fit our collection.

There is also a late Queen Ann pattern which bears no resemblance to #365.

Louise Ream

#357 Prison Stripe



6 Oz. Custard
Also Made 3-1/2 oz.



No. 3 Salt or
Pepper
Nickle Top



Toothpick

#365 Queen Ann



TOOTHPICK



CUSTARD



No. 2 SALT OR
PEPPER
No. 60 TOP



No. 3 SALT OR
PEPPER
NICKEL TOP



2 OZ. WINE



4 OZ. FOOTED SHERBET

FLEA MARKET ON THE SQUARE NEWARK, OHIO

H.C.A. will once again sponsor the Flea Market, managed by Buckeye and Heisey Hunters Study Clubs. The dates for the Flea Market are June 9, 10, 16, and 17. The price is \$10.00 per space, per day, in advance. All monies benefit The National Heisey Glass Museum. For more info

write: H.C.A. FLEA MARKET
P.O. BOX 27
NEWARK, OHIO 43055

JANICE THRAN

CO-CHAIRMAN

LIZ STICKLE

DEALERS WANTED

PRICES REALIZED AT THE ALL HEISEY BENEFIT AUCTION - MARCH 9 & 10, 1984
 PRICES ARE FOR ENTIRE LOT

1	\$ 25.00	68	\$ 35.00	134A	\$ 6.00	201	\$ 15.00	267	\$ 35.00	334	\$ 40.00	401	\$ 85.00	465	\$155.00	533	\$ 25.00	601	\$155.00	669	\$ 50.00
2	55.00	69	40.00	135	14.00	202	20.00	268	17.50	335	47.50	402	85.00	466	20.00	534	30.00	602	17.50	670	15.00
3	40.00	70	35.00	136	25.00	203	30.00	269	27.50	336	17.50	403	75.00	467	20.00	535	20.00	603	36.00	671	17.00
4	34.00	71	35.00	137	25.00	204	35.00	270	40.00	337	40.00	404	55.00	468	12.50	536	75.00	604	6.00	672	60.00
5	28.00	72	32.50	138	62.00	205	85.00	271	70.00	338	12.50	405	155.00	469	105.00	537	65.00	605	4.00	673	45.00
6	40.00	73	17.00	139	37.50	206	22.50	272	50.00	339	34.00	406	52.50	470	235.00	538	12.50	606	5.00	674	20.00
7	25.00	74	45.00	140	65.00	207	15.00	273	65.00	340	75.00	407	25.00	471	130.00	539	140.00	607	14.00	675	12.50
8	22.50	75	20.00	141	50.00	208	7.50	274	65.00	341	5.00	408	60.00	472	35.00	540	66.00	608	72.00	676	100.00
9	35.00	76	22.50	142	40.00	209	10.00	275	65.00	342	50.00	409	30.00	473	150.00	541	70.00	609	35.00	677	100.00
10	25.00	77	45.00	143	12.50	210	15.00	276	50.00	343	67.50	410	420.00	474	63.00	542	24.00	610	10.00	678	100.00
11	30.00	78	50.00	144	30.00	211	45.00	277	45.00	344	97.50	411	120.00	475	45.00	543	110.00	611	10.00	679	10.00
12	27.50	79	30.00	145	36.00	212	30.00	278	25.00	345	115.00	412	165.00	476	40.00	544	65.00	612	63.00	680	20.00
13	11.00	80	15.00	146	15.00	213	12.50	279	80.00	346	5.00	413	60.00	477	40.00	545	5.00	613	12.00	681	47.00
14	45.00	81	12.50	147	65.00	214	47.50	280	80.00	347	7.50	414	100.00	478	22.50	546	22.50	614	16.00	682	40.00
15	25.00	82	9.00	148	40.00	215	110.00	281	40.00	348	2.00	415	50.00	479	45.00	547	22.50	615	20.00	683	20.00
16	40.00	83	35.00	149	50.00	216	10.00	282	60.00	349	45.00	416	160.00	480	45.00	548	95.00	616	7.00	684	25.00
17	17.50	84	20.00	150	40.00	217	30.00	283	65.00	350	35.00	417	120.00	481	5.00	549	160.00	617	44.00	685	47.50
18	25.00	85	27.50	151	25.00	218	60.00	284	50.00	351	150.00	418	100.00	482	20.00	550	65.00	618	10.00	686	25.00
19	20.00	86	140.00	152	67.50	219	7.50	285	20.00	352	190.00	419	125.00	483	55.00	551	80.00	619	13.00	687	25.00
20	20.00	87	50.00	153	12.50	220	40.00	286	32.50	353	35.00	420	80.00	484	40.00	552	20.00	620	30.00	688	35.00
21	35.00	88	90.00	154	45.00	221	90.00	287	25.00	354	110.00	421	25.00	485	80.00	553	30.00	621	2.00	689	35.00
22	140.00	89	100.00	155	105.00	222	45.00	288	15.00	355	90.00	422	55.00	486	80.00	554	25.00	622	30.00	690	24.00
23	60.00	90	65.00	156	50.00	223	20.00	289	12.50	356	35.00	423	45.00	487	22.50	555	200.00	623	27.00	691	10.00
24	20.00	91	100.00	157	45.00	224	30.00	290	12.50	357	85.00	424	95.00	488	95.00	556	10.00	624	27.50	692	5.00
25	14.00	92	100.00	158	32.50	225	48.00	291	16.00	358	30.00	425	145.00	489	55.00	557	54.00	625	200.00	693	10.00
26	24.00	93	85.00	159	30.00	226	31.50	292	30.00	359	60.00	426	35.00	490	48.00	558	18.00	626	25.00	694	5.00
27	60.00	94	85.00	160	145.00	227	25.00	293	110.00	360	60.00	427	30.00	491	18.00	559	7.00	627	24.00	695	12.50
28	20.00	95	190.00	161	40.00	228	30.00	294	90.00	361	105.00	428	45.00	492	16.00	560	15.00	628	80.00	696	18.00
29	30.00	96	22.50	162	80.00	229	95.00	295	37.50	362	105.00	429	30.00	493	9.00	561	65.00	629	24.00	697	2.00
30	20.00	97	40.00	163	42.50	230	15.00	296	95.00	363	160.00	429A	20.00	494	25.00	562	375.00	630	22.50	698	10.00
31	30.00	98	50.00	164	27.50	231	60.00	297	25.00	364	40.00	430	60.00	495	20.00	563	50.00	631	22.50	699	10.00
32	30.00	99	100.00	165	25.00	232	30.00	298	25.00	365	37.50	431	25.00	496	55.00	564	50.00	632	15.00	700	12.50
33	31.00	100	40.00	166	70.00	233	9.00	299	22.50	366	165.00	432	35.00	497	80.00	565	75.00	633	15.00	701	15.00
34	70.00	101	275.00	167	30.00	234	24.00	300	40.00	367	415.00	433	25.00	498	25.00	566	115.00	634	20.00	702	6.00
35	22.50	102	2.00	168	45.00	235	12.00	301	84.00	368	325.00	434	105.00	499	90.00	567	95.00	635	25.00		
36	50.00	103	7.00	169	55.00	236	6.00	302	84.00	369	60.00	435	100.00	500	275.00	568	65.00	636	20.00		
37	30.00	104	5.00	170	30.00	237	24.00	303	60.00	370	30.00	436	55.00	501	12.50	569	20.00	637	5.00		
38	300.00	105	10.00	171	130.00	237A	140.00	304	35.00	371	96.00	437	45.00	502	21.00	570	37.50	638	5.00		
39	85.00	106	40.00	172	30.00	238	20.00	305	110.00	372	48.00	438	135.00	503	45.00	571	36.00	639	10.00		
40	27.50	107	30.00	173	85.00	239	130.00	306	25.00	373	60.00	439	57.50	504	42.00	572	65.00	640	40.00		
41	10.00	108	320.00	174	50.00	240	10.00	307	325.00	374	150.00	440	50.00	505	24.00	573	25.00	641	25.00		
42	35.00	109	320.00	175	32.50	241	30.00	308	80.00	375	25.00	441	100.00	506	7.00	574	50.00	642	15.00		
43	25.00	110	35.00	176	40.00	242	20.00	309	35.00	376	120.00	442	65.00	507	12.50	575	90.00	643	15.00		
44	15.00	111	150.00	177	80.00	243	17.50	310	105.00	377	36.00	443	50.00	508	15.00	576	26.00	644	10.00		
45	17.50	112	55.00	178	50.00	244	7.50	311	60.00	378	75.00	444	45.00	509	17.50	577	15.00	645	30.00		
46	10.00	113	57.50	179	47.50	245	12.50	312	40.00	379	27.50	444A	85.00	510	30.00	578	40.00	646	15.00		
47	100.00	114	35.00	180	20.00	246	50.00	313	35.00	380	50.00	444B	140.00	511	130.00	579	50.00	647	15.00		
48	30.00	115	15.00	181	15.00	247	20.00	314	37.50	381	35.00	445	10.00	512	110.00	580	26.00	648	15.00		
49	27.50	116	45.00	182	22.50	248	24.00	315	15.00	382	85.00	446	7.50	513	90.00	581	30.00	649	15.00		
50	17.50	117	30.00	183	15.00	249	10.00	316	12.50	383	25.00	447	35.00	514	45.00	582	12.50	650	5.00		
51	55.00	118	17.50	184	55.00	250	70.00	317	20.00	384	45.00	448	25.00	515	45.00	583	5.00	651	17.50		
52	30.00	119	40.00	185	75.00	251	20.00	318	30.00	385	15.00	449	40.00	516	45.00	584	10.00	652	12.50		
53	40.00	120	22.50	186	25.00	252	50.00	319	25.00	386	45.00	450	17.50	517	25.00	585	40.00	653	5.00		
54	27.50	121	30.00	187	30.00	253	25.00	320	75.00	387	55.00	451	32.50	518	35.00	586	18.00	654	22.50		
55	20.00	122	27.50	188	40.00	254	20.00	321	20.00	388	180.00	452	35.00	519	40.00	587	57.50	655	10.00		
56	20.00	123	17.50	189	45.00	255	20.00	322	30.00	389	42.50	453	60.00	520	40.00	588	42.50	656	Not Sold		
57	30.00	124	55.00	190	55.00	256	7.50	323	36.00	390	10.00	454	15.00	521	27.50	589	10.00	657	5.00		
58	25.00	125	60.00	191	65.00	257	30.00	324	70.00	391	9.00	455	10.00	522	20.00	590	12.50	658	Not Sold		
59	45.00	126	60.00	192	25.00	258	12.50	325	165.00	392	15.00	456	40.00	523	30.00	591	27.50	659	9.00		
60	75.00	127	12.00	193	40.00	259	20.00	326	40.00	393	27.50	457	20.00	524	35.00	592	140.00	660	310.00		
61	95.00	128	27.50	194	10.00	260	25.00	327	14.00	394	65.00	458	20.00	525	17.50	593	22.50	661	240.00		
62	25.00	129	15.00	195	15.00	261	30.00	328	30.00	395	25.00	459	16.00	526	12.50	594	25.00	662	150.00		
63	52.00																				



1616 W. CHURCH ST.
NEWARK, OHIO 43055
(614) 344-9449

THE MOST IMPORTANT
ALL HEISEY AUCTION
EVER HELD

2 DAYS

FRI. APRIL 27, 1984 6:30 P.M.
SAT. APRIL 28, 1984 9:30 A.M.

SAM SCHNAIDT, AUCTIONEER
614 - 344 - 9449

FRANK FRYE, MANAGER
614 - 345 - 4001

This sale includes the balance of the Paul Fairall collection, the Heisey from the estate of Henry BOOTS Gebhart, a Pennsylvania collection and other items from Newark homes. A few of the exciting items in this sale include 2 pieces of RUBY GOLD (3 known), Tangerine 4157 Rose Bowl (one of 2 known), Cobalt Dolphin candlesticks, Cobalt and Amber Sparkies, several elaborate cuttings including KRALL cut Hurricane Lamps. Pieces in every color, many small items. There are great pieces in both sessions. This sale will be worth your time. If you liked our January sale, you will love this one. Over 700 lots to be sold.

DOORS OPEN: 5:00 P.M. ON FRI. & 8:30 A.M. ON SAT.

We have tried to inspect the glass closely and will use the following code to better describe the condition. A small letter indicates the damage or flaw is minimal. It would be our opinion that the value would be affected 5 - 20%. A capital letter indicates more significant damage affecting 20 - 40%. Anything damaged more than this is in our opinion, will be marked with an X.

f F = Flake

b B = Bruise

r R = Repaired

c C = Crack

m M = Mold Flaw

x X = Major Damage

1	1504	REGENCY 2 Lt. Candlestick, Pr.	36	1401	EMPRESS Sahara 3 Hdl. 8" Floral bowl H
2	1567	PLANTATION 3 Lt. Candelabra, Pr.	37	1202	9" Mnglm. Floral bowl & base H
3	21	9" Candle, Pr. Etched MOTHER	38	1252	TWIST Marigold 8" Low Ftd. bowl H
4	134	TRIDENT 2 LT. Candle Pr.	39	393	NARROW FLUTE 8" Nappy H Dtd. shows wear
5	4044	NEW ERA 2 Lt. Candelabra, bobèche & prisms, Pr.	40	1540	LARIAT 11" Crimped Floral bowl
6	1205	2" 1 Lt. Flam. Candle, Pr.	41	1252	TWIST Sahara 12" Flared Floral bowl H
7	1205	12" Flam. Floral bowl	42	1252	TWIST Flam. 12" Flared Floral bowl H f
8	1231	2" Flam. 1 Lt. Candle, Pr. H	43	421	PRISM BLOCK 8" Nappy H
9		Pr. Colonial & Metal 1 Lt. Candles made from Candelabra parts H	44	1567	PLANTATION 12" Flared Floral bowl
10	1540	LARIAT 1 Lt. Candle, Pr. not grnd.	45	1567	PLANTATION 14" Torte Plate
11	1567	PLANTATION 5" Frosted Epergne Candleholder H	46	1567	PLANTATION 6½" Ftd. Honey, Cupped H
12	1488	KOHINOOR Zircon 2 Lt. Candelabra W/bobèche & prisms Pr.	47	1567	PLANTATION 7" Ftd. Compote H
13	1488	KOHINOOR Zircon Floral Bowl H r	48	1567	PLANTATION Mayo & 7" Underplate H
14		Colonial 4 Lt. Candelabra on 16" tall base, bobèche & C prisms	49	1567	PLANTATION ½ Gal. Ice Lip Jug H
15	300	Colonial Candle Lamp, Cut shades & Cut prisms Pr.	50	1567	PLANTATION 14" Sandwich Plate
16	1	11" 1 Lt. Candle, Pr. Overcut 9" & 9½"	51	1567	PLANTATION 6½" Ftd. Honey, Cupped H
17	1445	GRAPE CLUSTER 2 Lt. Candle H	52	1567	PLANTATION 10 oz. Goblet 4 ea.
18	1445	GRAPE CLUSTER 1 Lt. Candle H	53	1567	PLANTATION 12 oz. Ftd. Ice Tea 7 ea.
19	1951	CABOCHON 2 Lt. Candle Pr. H	54	1567	PLANTATION 5 oz. Sherb. or Champ 8 ea. H
20	2	9" 1 Lt. Candle	55	1567	PLANTATION 5" Ftd. Vase Flared 2 ea.
21	2	9" 1 Lt. Candle	56	1567	PLANTATION Syrup Bottle w/drip cut top
22	136	Mnglm. 3 Lt. Candle H	57	1567	PLANTATION Punch Set, Bowl, 18" Buffet plate, Ladle & 12 Cups H
23	1405	IPSWICH Center Vase, no insert	58	1567	PLANTATION Punch Cup 12 ea. H
24	2506	7 oz. Plain Blown Tumbler W O 8 ea.	59	1567	PLANTATION 11" 3 Comp. Relish H
25	2351	12 oz. Plain Blown Soda W O 7 ea.	60	3390	CARCASSONNE Cobalt Sherbet 5 ea.
26	2852	12 oz. Plain Blown Soda, Flared W O 6 ea.	61	1183	REVERE Cobalt 8" plate 6 ea.
27	135	8 oz. Tumbler W O Cupped 8 ea H	62	407	COARSE RIB 7" plate 12 ea. H
28	4004	IMPROMPTU 9 oz. Old Fashion 6 ea.	63	1184	YEOMAN Sahara 8" plate DO 5 ea.
29	1486	COLEPORT 5 oz. Juice 7 ea. H	64	4182	Mnglm. 8" plate DO 4 ea.
30	412	TUDOR 8 oz. Tumbler 5 ea. H	65	1951	CABOCHON 8" plate w/Starlight Cut 7 ea.
31	1404	OLD SANDWICH 12 oz. Ftd. Ice Tea 2ea.	66	1951	CABOCHON 8" plate 2 plain 1 etched
32	1506	PROVINCIAL 12 oz. Ftd. Ice Tea 2 H 1 f	67	1483	STANHOPE 7" Coupe plate Frosty Dawn
33	2401	8 oz. Soda 6 ea 2 f	68	1509	QUEEN ANN 7½" Rnd. plate Chintz 14 ea.
34		Misc. Lot of 5 Sodas 2 f	69	1401	EMPRESS Tangerine 8" Sq. plate 2 H
35	1486	CÓLEPORT Dawn 12 oz. Soda 9 ea. H m	70	3389	DUQUESNE Tangerine sherbet W O
			71	3389	DUQUESNE Tangerine Cocktail W O
			72	4091	KIMBERLY 3 oz. Cocktail Unk. Cut 6 ea.
			73	4091	KIMBERLY 4½ oz. Claret, Dolly Madison Rose Cut 12 ea. H
			74		Hollow Stem Champagne 5 ea.
			75	5025	TYROLEAN 4 oz. Cocktail, Orchid etch 8 ea.

76	1519	WAVERLY Saucer, Orchid etch 2 ea H	134	4055	PARK LANE Champ. Cohasset Cut 6 ea.
77	1519	WAVERLY 7" plate, Orchid etch 4 ea.	135	4055	PARK LANE Cocktail Cohasset 6 ea.
78	1519	WAVERLY Cr. & Sug. Orchid etch H	136	1184	YEOMAN 8" plate Cohasset Cut 6 ea.
79	1519	WAVERLY 11" 3 Comp. oblong Relish Orchid etch H	137	1425	VICTORIAN Low Gob. 3 ea. H
80	1519	WAVERLY 3 oz. Oil Orchid etch C	138	1425	VICTORIAN Low Gob. 5 ea. H 1f
81	1519	WAVERLY 3 oz. Oil Orchid etch R	139	1425	VICTORIAN Sherb. 6 ea. H
82	1519	WAVERLY 3 oz. Oil Narcissus Cut	140	1425	VICTORIAN Cocktail 8 ea. H
83	1404	OLD SANDWICH Catsup Bottle & stopper	141	1425	VICTORIAN Wine 6 ea. H
84	5031	FRENCH DRESSING BOTTLE Narcissus Cut cloudy	142	1425	VICTORIAN 8" plate 7 ea. H
85	5031	FRENCH DRESSING Bottle elaborate Cut	143	1425	VICTORIAN Soda H
86	1489	PURITAN Vinegar & Oil Bottle wrong stopper	144	1425	VICTORIAN Cr. & Sug. H
87	500	OCTAGON Flam. Ice Tub no handle H	145	1425	VICTORIAN 27 oz. Rye Bottle Frosted
88	461	7" BASKET H	146	1489	PURITAN 24 oz. Rye Bottle, Abraham Lincoln Engraving
89	458	8" BASKET H	147	3397	GASCONY 1 Pt. Decanter Cut
90	458	8" BASKET Floral Cut H	148	4225	COBEL 1 Qt. Cocktail Shaker, Rafia Dec., Rooster Stopper
91	465	RECESSED PANEL 7" Basket H	149	4225	COBEL 1 Qt. Cocktail Shaker Tally Ho
92	417	DOUBLE RIB & PANEL 6" Basket H	150	2052	2½ oz. Bar Tally Ho etch
93	352	FLAT PANEL 1 Qt. Cr. Fruit H F	151	6060	COUNTRY CLUB Soda Winchester 73 etch
94	354	WIDE FLAT PANEL 27 oz. Lavendar JarH	152	6060	COUNTRY CLUB Cocktail same etch 4 3f
95	465	RECESSED PANEL 1# Cndy. Jar Gld.decH	153	IMP.	Souv. H C A Decanter 1977
96	465	RECESSED PANEL ½# Cndy Jar Gld. decH	154	IMP.	Souv. H C A Claret 1974
97	1183	REVERE ¼# Candy Jar, Gold dec. H	155	IMP.	Souv. H C A Claret 1975
98	300	PEERLESS 16" Vase H cloudy m	156	IMP.	Museum Dedication Paperweight #200 H C A Cobalt Blue Ash tray f
99	338	15" Carnation Vase H f	157	IMP.	set of H C A Souv. Plates 1971 - 1976
100	338	15" Carnation Vase H f	158	IMP.	H C ASouv. plate 1974
101	338	14" Carnation Vase H RARE GOLD RUBY	159	IMP.	Amber Zodiac Candy Jar
102	1489	PURITAN Lg. Cig. Box Dorothy Thorpe dec. signed H & DTC	160	IMP.	Steigel Green Puritan Jelly Compote
103	1508	Card Case/ash tray	161	IMP.	Steigel Green Puritan Jelly Compote
104	1503	CRYSTOLITE (Mahabar) Sahara Cig boxH	162	IMP.	Pink Satin Small Elephant
105	1503	CRYSTOLITE 4" Cig. box H f	163	IMP.	Set of 3 Lt. Blue Colts
106	1503	CRYSTOLITE 4½" Sq. ash tray H f	164	VERLYS	13" Poppies bowl f
107	1503	CRYSTOLITE 3" Sq. ash tray H f 5 ea.	165	VERLYS	Pinecone bowl, not finished
108	1503	CRYSTOLITE 3" Sq. ash tray Dawn H	166	VERLYS	Lovebirds vase, not finished
109	1469	RIDGELEIGH Bridge Set, Heart, Spade, Club & Dia. ash tray H	167	1503	CRYSTOLITE 6" Ftd. Mint H
110		4½" X 7" Ash tray	168	1503	CRYSTOLITE 6" Ftd. Jelly
111		2½" X 4½" Oblong Ash tray	169	1503	CRYSTOLITE 4 Comp. Clover Relish
112	1510	Sq. on Rnd. 6" Ash tray f	170	1503	CRYSTOLITE 3 Comp. Relish
113	1626	LODESTAR Dawn 5" Ash tray H	171	1503	CRYSTOLITE 12" Calery tray H
114	1632	SATTELITE 5" Ash tray H	172	1503	CRYSTOLITE 6" Hdl. Bon Bon H
115	381	QUILT Ash tray H	173	1503	CRYSTOLITE 6" Hdl. Bon Bon H
116	1536	MILITARY CAP Ash tray	174	1503	CRYSTOLITE 5" Round Hdl. Nut
117	600	Ash tray & Match stand	175	1503	CRYSTOLITE 12" Round Flared bowl
118	1489	PURITAN 2½" Sq. Ash tray f	176	1503	CRYSTOLITE Ind. Hdl. Mint or Nut 6 ea.
119	1489	PURITAN 8" Sq. Ash tray	177	1503	CRYSTOLITE Ind. Hdl. Mint or Nut 1 H
120	3386	DIAMOND ROSE Cobalt Pilsner 12 oz. H	178	1503	CRYSTOLITE Ftd. Shell Mayo.
121	3386	DIAMOND ROSE Gob. Mnglm. bowl DO H	179	1503	CRYSTOLITE 10" Sq. Gardenia Bowl
122	3386	DIAMOND ROSE Gob. Marigold bowl Empress etch DO H C	180	1503	CRYSTOLITE 6" Candy w/metal lid H
123	3320	RITZ Gob. Mnglm. Ft. Oakleaf etch 2f	181	1503	CRYSTOLITE 4" Cov. Cig. Box H
124	3360	PENN CHARTER Hawthorne Gob. Checker Optic H	182	5003	CRYSTOLITE Ice Lip Jug m
125	3409	PLYMOUTH Gob. W O	183	341½	PURITAN ½ Gal. Squat Jug H
126	3418	SAVOY PLAZA Gob. H f	184	341½	PURITAN 3 Pt. Squat Jug H f
127	3389	DUQUESNE Gob. Spec. Cut	185	417	DOUBLE RIB & PANEL ½ Gal Jug H
128	3324	DELAWARE Flam. Gob. f	186	411	TUDOR ½ Gal. Jug H
129	3334	SEXTON Gob. Unkn. Cut H	187	1280	WINGED SCROLL Opal Cov. Powder
130	3312	GAYOSO Flam. Gob.	188	1280	WINGED SCROLL Opal Cov. Trinket box
131	8029	PRINCESS LILY Gob.	189	Lg. Blown Powd. Jar w/Sterling Lid, Cut	
132	3373	MORNING GLORY Luncheon Gob. Mnglm. Ft. D O H	190	Med. Blown Powd. Jar w/Sterling Lid, Cut	
133	4055	PARK LANE Gob., Cohasset Cut 6 ea.	191	1504	REGENCY Puff Box & Cov. H
			192	341	PURITAN 9½" Hi Ft. Compote H
			193	160	LOCKET ON CHAIN Compote 8½"
			194	400	COLONIAL 10" Salver H
			195	341	PURITAN 14" Flared Punch Bowl no base H
			196		

197	7000	SUNFLOWER 12" Floral bowl H	263	CABOCHON PRINTING PLATE
198	1401	EMPRESS 11" Ftd Floral bowl, Old Colony etch	264	IPSWICH PRINTING PLATE
199	365	OLD QUEEN ANN 14" Oblong Fruit tray H	265	ROSALIE PRINTING PLATE
200	1489	PURITAN Camellia bowl Spec. Cut	266	ORIGINAL 1956 HEISEY CATALOG
201		Swan f	267	TRADE CATALOG, T. D. TURNER & CO, W/Heisey item
202		Ringneck Pheasant H	268	Misc. Lot,IMP. Catalog 1972, & 5 Heisey Env.
203		Ringneck Pheasant H	269	9 Flower block & Crys. flower block
204		Goose, Wings Down	270	1519 WAVERLY 5" Crimped Epergnette 4ea H
205		Goose, Wings Half Up	271	Colonial 4 Pt. Relish, not Heisey
206		Goose, Wings Up H	272	4291 Candy Jar bottom only, Liberty Cut H f
207		Elephant Small	273	1202 Floral bowl 5½" baseonly, Mnglm. H
208		Donkey	274	1425 VICTORIAN 6" Cig. Box bottom only H
209		Giraffe, Head Turned, Frosted	275	LIDS ONLY - 429 Plain Panel Recessed Sug. & 1183 Revere 5" Sahara Lemon dish D O
210		Giraffe Head Back	*****	
211		Horsehead Bookend Frosted	START SATURDAY SESSION	
212		Horsehead Bookend Frosted m	276	300 PEERLESS Hotel Cr. & Sug. Gold dec. H
213		Fish Bookend	277	1951 CABOCHON Cr. & Sug. Cut H
214		Fish Bookend	278	1401 EMPRESS Alexandrite Ftd. Cr. & Sug. H Sug. F
215		Rabbit Paperweight		
216		Colt, Rearing or balking	279	1540 LARIAT Cr. & Sug. H
217		Colt, Rearing or balking	280	1540 LARIAT Cr. & Sug. H
218		Colt, Standing	281	1231 RIBBED OCTAGON Flam. Cr. & Sug. H
219		Colt, Standing, Frosted	282	1469 RIDGELIGH Ind. Cr., Sug. & tray H
220		Sparrow, Frosted	283	341 OLD WMSBURG. Cr. & Sug H
221	1503	CRYSTOLITE Ind. Swan Nut 4 ea.	284	337 TOURAINE Table Set, Cov. Butter & Sug., Cr. & Spooner Eng. & dtd. 1904 H
222	1560	VICTORIAN GIRL BELL, Frosted H		
223		Madonna Frosted	285	1567 PLANTATION ¼# Stick Butter H f
224	1489	PURITAN 4" Horsehead Cig. Box f	286	160 LOCKET ON CHAIN Emerald Spooner
225	7002	RAMSHEAD Cocktail Shaker Stopper	287	341½ PURITAN Squat Spooner H m
226		PENGUIN Decanter Stopper	288	310 RING BAND Custard Cov. Sug. Floral dec H
227	5038	ROOSTER STEM Cocktail, Frosted stem		411 TUDOR Sug. Dispenser Met. Pourer H
228	5038	ROOSTER STEM Cocktail 5 ea.	290	1255 PINEAPPLE & FAN Custard ½ Pt. Pit. H
229	341	PURITAN Gob. H	291	8047 CANE & BAR Custard ½ Pt. Pitcher H
230	351	PRISCILLA Gob. H	292	1509 QUEEN ANN Ind. Cr. Rosalie etch H
231	300	PEERLESS 7 oz Gob. 6 ea H	293	1519 WAVERLY Ind. Sug. Orchid etch
232	300	PEERLESS Lo Ft. Sherb. 6 ea. H	294	406 COARSE RIB Flam. Cr. H
233	300	PEERLESS Wine 6 ea. H	295	Misc. Lot of Ridgeleigh Sug., Crystolite Sug. & Wide Flat Panel Ind. Sug. all H
234	1226	5½ oz. Lo Ft. Sherb. 7 ea 1f		
235	1226	5½ oz. Lo Ft. Sherb 4 ea. H	296	Misc. Lot of Plantation Sug., Narrow Flute Hotel Cr., Old Wmsburg. Cr. & Cabochon Cr. all H
236	52	Ind. Flam. Salt & Pepper H		
237	12	Salt & Pepper, Sanitary Glass Tops		
238	10	Salt & Pepper Sanitary Glass Tops	297	1401 EMPRESS 8" Cindiment tray for Ind. Cr. & Sug.
239	1519	WAVERLY Ftd. Salt & Pepper Dolly Madison Rose Cut	298	1540 LARIAT tray for Ind. Cr. & Sug.
240	57	Salt & Pepper, Cohasset Cut Cl.	299	1503 CRYSTOLITE tray for Ind. Cr. & Sug.
241	10	Salt, Flam top	300	411 TUDOR 12" Celery tray H
242	53	Ind. Salt Mnglm. Cyrs. top	301	1425 VICTORIAN 12" Celery tray H
243	57	Salt Cohasset Cut & #18 Salt H	302	1252 TWIST Mnglm. 12" Celery tray H
244	52	Ind. Sahara Salt Crys. top	303	4044 NEW ERA 12" Celery tray Chintz etch
245	52	Ind. Flam. Salt H	304	1401 EMPRESS 12" Celery tray H
246	1401	EMPRESS Sahara Salt on bust off	305	473 NARROW FLUTE W/RIM 12" Celery tray H F
247	1469	RIDGELEIGH Ind. Salt Dip H	306	407 COARSE RIB 9" Celery tray H
248	1489	PURITAN Ind. Salt 2 ea.	307	407 COARSE RIB Mnglm. 12" Celery tray H
249	31	TOY 1 Lt. Candle Pr. H	308	407 COARSE RIB 12" Celery tray, Marigold stain H
250	352	FLAT PANEL Knife Rest H		
251	1506	PROVINCIAL Ind. Nut H	309	407 COARSE RIB 12" Celery tray H
252	1469	RIDGELEIGH Oval Nut H	310	393 NARROWFLUTE 9" Celery tray H
253	1469	RIDGELEIGH Hdl. Almond 3 ea. H	311	1567 PLANTATION 3 Lt. Candelabra Pr.
254	1229	OCTAGON Mnglm. Ind. Almond 6 ea H	312	142 CASCADE 3 Lt. Candle Pr.
255	1229	OCTAGON Flam. Ind. Almond 6 ea. H	313	134 TRIDENT Sahara 2 Lt. Candle Pr.
256	1404	OLD SANDWICH Cobalt Ind. Ash trayHf	314	1495 FERN 2 Lt. Candle, Orchid etch Pr.
257	1404	OLD SANDWICH Ind. Ash tray H	315	1495 FERN 2 Lt. Candle, Floral etch Pr.
258	433	GREEK KEY Ind. Butter H	316	1503 CRYSTOLITE 3 Lt. Candle Pr.
259	354	WIDE FLAT PANEL Ind. Butter 6 ea H	317	301 HURRICAIN LIGHTS, 5080 CUT GLOBES, ELABORATE KRALL CUTTING W/BIRDS,PAIR
260		Misc. Lot of 12 Salt Shaker tops		
261		Guernsey Glass Fake Toothpick AHHeisey 1896	318	17 1 Lt. Candelabra, bobèche, & C Prisms Pr. H
262		2 Pc. Lot Flower Frog & 6" plate		

319	PR. ELEC. HURRICANE LAMPS made from Crystolite parts, cut globes	371	341	OLD WMSBURG. 5" Hdl. Jelly H
320	1445 GRAPE CLUSTER 1 Lt. Candle, bobèche & prisms, Pr. H	372	1540	LARIAT 7" Hdl. nappy
321	300 1 Lt. Candelabra, bobèche & Prisms Pr	373	1495	FERN 6" Hdl. Mint Waterford Cut
322	110 COBALT DOLPHIN CANDLESTICK PAIR	374	1253	TWIST Tri Cor. Flam. Mint H
323	1405 IPSWICH Sahara Candle Vase w/crys. insert & prisms Pr. H	375	1509	QUEEN ANN 6" Jelly Ftd. Hdl. Orchid H
324	111 CHERUB CANDLESTICK, Frosted	376	1183	REVERE 5" Lemon Dish & Cov. Gray Cut H
325	111 CHERUB CANDLESTICK, Mnglm., Frosted	377	353	MED. FLAT PANEL 5" Lo Ftd. Comport H
326	1503 CRYSTOLITE Sq. Hurricane bases, Pr.	378	1229	OCTAGON Mnglm. 5½" Ftd. Mayo & Ladle H
327	1252 TWIST Marigold 1 Lt. Candle Pr.	379	1509	QUEEN ANN 7" Comb. Dressing bowl H
328	112 MERCURY 1 Lt. Flam. Candle Pr.	380	1184	YEOMAN Ftd. Bouillon & 6" plate Cut H
329	1472 PARALLEL QUARTER 1 Lt. Candle Pr.	381	3404	SPANISH Tangerine Finger bowl WO
330	1469 RIDGELEIGH Sahara 6" Candle Vase	382	3381	CREOLE Alexandrite Finger bowl f
331	1503 CRYSTOLITE 3 Lt. Candle	383	341	OLD WMSBURG. 4 oz. Oil #2 stopper H
332	1425 VICTORIAN 2 Lt. Candle H	384	351	PRISCILLA Mustard & Cov. H
333	1540 LARIAT 3 Lt. Candle	385	363	7 oz. Sanitary Syrup H
334	1428 WARWICK Sahara 2 Lt. Candle H	386	372	7 oz. Mnglm. Sanitary Syrup
335	1503 CRYSTOLITE Mellon Candleblock	387	372	5 oz. Sanitary Syrup Minuet Etch H
336	1951 CABOCHON Hurricane Globes cut to 8½", Frosted, Cut stars Pr. 12" Globe, Cut, Frosted	388	10	Sal & Pepper Minuet Etch
337	Lot of C Prisms, 6 - 6", 8 - 5", 11 buttons, some chips	389	1511	TOUJOURS Cr. & Sug. Minuet Etch H
339	Lot of approx. 50 A Prisms	390	1509	QUEEN ANN 3 Comp. Relish Minuet Etch H
340	Lot of approx. 28 C Prisms	391		3 Part Round Relish, Elaborate Cut
341	Lot of Prisms, approx 17	392	1511	TOUJOURS Apple Marmalade Elaborate Cut
342	2351 10 oz. Beverage, 12 ea.	393	1519	WAVERLY 6" Bow Tie Candy Box, Spec. Cut
343	2351 10 oz. Beverage, Maryland cut 3ea.	394	1519	WAVERLY 5" Hi Ft. Candy & Cov. Elks H
344	2351 10 oz. Beverage Sabrina etch 3ea.	395	1519	WAVERLY Amber 5" Hi Ft. Candy & Cov. H
345	2351 8 oz. Beverage Zodiac etch 4 ea.	396	358	27 oz. Lavendar Jar H
346	393 NARROW FLUTE 13 oz. Soda H	397	356	24 oz. Lavendar Jar, Windsor Cut H
347	429 PLAIN PANEL RECESSED 12 oz. Ice Tea H f	398	352	FLAT PANEL Horseradish Jar H
348	353 MEDIUM FLAT PANEL Ftd. Soda, Fred Harvey Amber 6 ea. 1 C	399	3335	LADY LEG 5 oz. Saucer Champ. 4 ea. 3f H
349	2351 6 oz. Soda, Floral cut	400	1540	LARIAT 6 oz. Saucer Champ. Carolina Cut
350	5087 COMET 8 oz. Soda Mono S J S	401	4083	STANHOPE 5½ oz. Saucer Champ. Kings Ransom Cut H
351	1280 WINGED SCROLL Custard Tumbler f	402	5019	WAVERLY 5½ oz. Sherb. Burgundy Cut H
352	1487 COLEPORT Dawn 10 oz. Tumbler H	403	3366	TROJAN 5 oz. Sherb. Unkn. Cut
353	1485 SATURN Zircon 9 oz. Luncheon Tumbler H	404	5077	LEGIONNAIRE 6 oz. Sherb. Arcadia Cut H
354	1485 SATURN Zircon 9 oz. Luncheon Tumbler 2 ea. H	405	5057	SUEZ 6 oz. Sherb. Laurel Cut H
355	1485 SATURN Zircon 5" Whipped Cream 3 ea. H	406	341	PURITAN 4½ oz. Saucer Champ. 4 ea. H
356	1485 SATURN Zircon Mayonnaise H	407	1540	LARIAT 6 oz. Saucer Champ. 4 ea. H
357	1485 SATURN Zircon Tid Bit tray H	408	407	COARSE RIB 5½ oz. Saucer Champ. 9ea H
358	1485 SATURN Zircon Saucer 4 ea. H	409	3397	GASCONY 6 oz. Sherb. or Finger bowl Tangerine, Red side, 2 ea.
359	1485 SATURN Zircon 7" Plate 4 ea.	410	6092	CABOCHON 6 oz. Sherb. Amber base 3 1H
360	1485 SATURN Zircon 8" Plate 2 ea	411	300	PEERLESS 14" Punch Bowl & Base H(bubble)
361	1485 SATURN Zircon Marmalade W/crys Lid	412	341	OLD WMSBURG. 4 oz. Punch cup 8 ea 1X
362	1485 SATURN Tumbler in Manning Bowman Marmalade holder H	413	1401½	EMPRESS Cup, Gray Floral Cut H
363	393 NARROW FLUTE Marmalade Jar & Cov H	414	339	CONTINENTAL Punch cup H
364	1567 PLANTATION Marmalade & Cov. H	415	1231	RIBBED OCTAGON Flam. Cup & Saucer 9 sets, H
365	1000 ALEXANDRITE Marmalade & Cov.H	416	1186	YEOMAN Flam. Cup & Sauc. DO 3 cups, 2 saucers H
366	1469½ RIDGELEIGH 6" Jelly 2 Comp.	417	300	PEERLESS Sm. Loving Cup (3 Cracked Hdls)
367	1469½ RIDGELEIGH 6" Jelly 2 Comp.	418	1469	RIDGELEIGH 5" Nappies 6 ea. H
368	1469 RIDGELEIGH 6" Jelly in Chrome Holder H	419	1469	RIDGELEIGH 9" Flared Nappy H
369	1252 TWIST Flam. 6" 2 Hdl. Mint	420	393½	NARROW FLUTE 8½" Nappy & (4) 4" nappies H
370	1252 TWIST Marigold 6" 2 Hdl. Cheese, Sugary H	421	1252	TWIST Floral bowl 12" H
		422	1469	RIDGELEIGH 12" Floral bowl H
		423	341	PURITAN 8½" Shallow nappy H
		423A	1235	BEADED PANEL & SUNBURST 7½" nappy, Frosted panels
		424	393½	NARROW FLUTE Nappy, shows wear H Pat.
		425	135	Floral Bowl Sahara H
		426	1252	TWIST Sahara 8" Nasturtium bowl H
		427	1632	LODESTAR 8" Bowl Dawn
		428	150	BANDED FLUTE 8" Nappy (chip) H

429	1280	WINGED SCROLL VASELINE (CANARY) 8½" Nappy	494	1401	EMPRESS Flam. 7" Triplex Relish H
430	1575	12" Floral bowl H w/ #3 Flower frogx	495	1231	RIBBED OCTAGON 10½" Flam. Center Hdl. Sand. Plate H
431	1509	QUEEN ANN D F 8" Nappy H	496	397	COLONIAL CUPPED SCALLOP Candy tray Hf
432	1519	WAVERLY 5½" Ftd. Mayo Heisey Rose H	497	1401	EMPRESS Sahara D F 8" Flat bowl H
433	5072	ROSE SHERBET w/Heisey Rose etch 6eaH	498	1205	FANCY LOOP 8" Plate
434	5072	ROSE GOB. w/Heisey Rose etch 7ea H	499	1205	FANCY LOOP 4" Sq. nappies 12 ea. 3F
435	3350	WABASH Gob. Pied Piper etch 9ea 1x	500		ROOSTER
436	3357	KING ARTHUR Gob. Mnglm. stem 5ea 1x	501		HEN
437	1423	SWEET AD-O-LINE 12 oz. Goblet H	502		LARGE ELEPHANT
438	3404	SPANISH Gob. Cobalt bowl H	503		SMALL ELEPHANT R H
439	3404	SPANISH Gob. Engraved & Cut "ABMc" Mono	504		DONKEY
440	3404	SPANISH Gob. DaVinci Spec. Engr. m	505		RABBIT PAPERWEIGHT
441	3404	SPANISH Gob. Special Cut	506		SCOTTY
442	3404	SPANISH Gob. Unkn. Spec. Cut	507		SCOTTY
443	3411	MONTE CRISTO Gob. Ice Capades Cut	508		COLT, KICKING
444	3408	JAMESTOWN GOB. Spec. Cut H	509		COLT, BALKING (SITTING) R - L ear
445	3362	CHARTER OAK Hawthorne Gob. DO	510		COLT, STANDING H
446	7043	PANEL & DIA. POINT GOB. H	511		OSCAR, COBALT
447	4044	NEW ERA Gob. Cobalt bowl	512		OSCAR, AMBER
448	8032	CAPITAL Goblet	513		OSCAR H
449	300	PEERLESS Ftd. Gob. H	513A		OSCAR f - ear
450	6091	CABOCHON Gob. W O	513B		CSCAR, No Tail
451	1405	IPSWICH Goblet 6 ea. H	514		RINGNECK PHEASANT m
452	1405	IPSWICH GOBLET ALEXANDRITE RARE H	515		RINGNECK PHEASANT
453	1306	COMET LEAF GOBLET ALEXANDRITE RARE H	516		RINGNECK PHEASANT
454	1540	LARIAT Ftd. Ice Tea Gray Cut	517		GOOSE, WINGS DOWN
455	3390	CARCASSONNE Ftd. Ice Tea WO Cobalt	518		GOOSE, WINGS HALF
456	1508	CARD BOX	519		GOOSE, WINGS UP H
457	1496	MAHABAR Cov. Cig. Box Sahara H	520		GOOSE, WINGS HALF (WINGS FROSTED) H
458	1503	CRYSTOLITE Cig. Box H	521		CYGNET H
459	361	ASHTRAY/Cig. Box & Cov. Sahara H	522		GIRAFFE HEAD BACK
460	3390	CARCASSONNE Cig. Holder Cobalt	523		GIRAFFE 2 ea. Both X
461	1488	KOHINOOR Cig. Holder Zircon H	524		HORSEHEAD BOOKEND
462	1488	KOHINOOR Ash tray 4ea H Zircon	525		HORSEHEAD BOOKEND
463	1632	LODESTAR 5" Ash tray Dawn H	525A		WOOD DUCK
464	1469	RIDGELEIGH Bridge Ash tray 6ea H	525B		TIGER PAPERWEIGHT F
465	1590	ZODIAC Ohio Sesqui Ash tray 2ea.	526	15	DUCK FLOWER BLOCK & FROG Flam.
466	1533	WAMPUM Ash tray 2ea. H	527	14	KINGFISHER FLOWER BLOCK H
467	1503	CRYSTOLITE 3" Sq. Ash tray 2ea H	528	7056	ELEPHANT HDL. MUG H
468	1536	MILITARY CAP Ash tray	528A	1591	CHILDS MUG H
469	1469	RIDGELEIGH 2½" Sq. Ash tray 2 H	529		YOU, ME & US COCKTAIL SET, Rooster Stopper
470	1469	RIDGELEIGH 2½" Sq. Ash tray H	530	5065	STANDING COLT STEM COCKTAIL
471	1469	RIDGELEIGH Club Ash tray H F	531	5066	HORSEHEAD COCKTAIL
472	1469	RIDGELEIGH Club Ash tray H	532	5058	GOOSE STEM CORDIAL 9 ea.
473	1469	RIDGELEIGH Heart Ash tray H	533	357	DUCK ASH TRAY Mnglm. H
474	1186	YEOMAN Ind. Ash tray AMBER RARE	534	1503	CRYSTOLITE Ind. Swan Nut 11 ea.
475	1186	YEOMAN Ind. Ash tray SAHARA	535	1503	CRYSTOLITE Ind. Swan Nut
476	1286	CUPID & PSYCHE Ash tray Mnglm.	536		IMP. CARMEL SLAG MED. ELEPHANT IG
477	1286	CUPID & PSYCHE Ash tray Flam.	537		IMP. CARMEL SLAG WOOD DUCK IG
478	1286	CUPID & PSYCHE Ash tray	538		IMP. CARMEL SLAG STANDING COLT IG
479	1186	YEOMAN Ind. Ash tray Mono BFM 2ea	539		IMP. CARMEL SLAG STANDING COLT
480	458	8" Basket H	540		IMP. SOUV. OSCAR 1977 Green (x bubble base)
481	458	8" Basket H	541		IMP. SOUV. OSCAR 1977 Green (bubble tail)
482	458	8" Basket H Sprig Cut	542		IMP. SOUV. OSCAR 1977 Green 2 ea. 1-bubbletail
483	458	8" Basket H Bl. & Gold Dec.	543		IMP. SOUV. OSCAR 1978 Pink (bubble tail)
484	459	8" Rd. Colonial Basket Mums etch H	544		IMP. SOUV. OSCAR 1978 Pink (bubble tail) 2ea.
485	460	PINWHEEL Basket H	545		IMP. SOUV. OSCAR 1978 Pink 2 ea.
486	465	RECESSED PANEL 8" Basket H	546		IMP. SOUV. OSCAR 1979 Yellow
487	1540	LARIAT 8½" Ftd. Hdl. Basket	547		IMP. SOUV. OSCAR 1979 Yellow (bubble tail) 2ea.
488	1951	CABOCHON 9" 3 Comp. Relish H	548		IMP. SOUV. OSCAR 1980 Amethyst (bubble tail)
489	500	OCTAGON 12" Variety Tray Olympiad H	549		IMP. SOUV. OSCAR 1980 Amethyst 2 ea.
490	1503	CRYSTOLITE 4 Pt. Cloverleaf Relish	550		IMP. SOUV. OSCAR 1981 Lt. Blue (bubble tail)
491	1503	CRYSTOLITE 4 Pt. Cloverleaf Relish	551		IMP. SOUV. OSCAR 1982 Dk. Green
492	1469	RIDGELEIGH Star 5 Pt. Relish H	552		IMP. CHILDS MUG Lt. Blue Irrd.
493	1506	PROVINCIAL 10" 4 Comp. Relish	553		IMP. CHILDS MUG Lt. Green Irrd.
			554		IMP. GLASS DISPLAY SIGN

555	4225	COBEL 1 Qt. Cocktail Shaker	614	1518	CUT MITRE Vase, Cut
556	4225	COBEL 1 Qt. Cocktail Shaker Tally Ho	615	3381	CREOLE 12 oz. Ftd. Soda Alexand. 3ea.
557	4027	32 oz. Decanter Fisherman Etch	616	3397	GASCONY 14 oz. Ftd. Soda Tangerine Red side 2 ea.
558	4002	AQUA CALIENTE Cocktail Fisherman 8 ea.			
559	2401	16 oz. Decanter Sportsman (cloudy)	617	1590	ZODIAC Oyster Cocktail 2 ea. H
560	3397	GASCONY 2½ oz. Wine Sportsman etch 7 ea. 2 f	618	3350	WABASH 5 oz. Parfait DO Marigold bowl
			619	6004	CLASSIC 5 oz. Ftd. Jc. Forget-Me-Not Cutting 5 ea.
561	2052	1½ oz. Bar Sportsman etch 9 ea.			
562	2052	1½ oz. Bar Foxchase etch 2 ea.	620	300	PEERLESS 6 oz. Champagne H
563	2052	1½ oz. Bar Tally Ho etch 6 ea. 1f	621	3359	PLATEAU 6 oz. Sherbet DO Cobalt bowl, crystal foot
563A	4052	1½ oz. Bar Tally Ho etch 5 ea. 1f			
564	6060	COUNTRY CLUB Sodas. Winchester 73 6ea.	622	3381	CREOLE Ftd. Grapefrt. Alexandrite bowl, crys. stem & foot
565	6060	COUNTRY CLUB 13 oz. Old Fashion Winchester 73 etch 6 ea.	623	3404	SPANISH 3 oz. Cocktail Tangerine
566	4002	AQUA CALIENTE Antarctic etch H	624	3404	SPANISH 3 oz. Cocktail Cobalt 6 ea.
567	353	MED. FLAT PANEL Vase 18" H	625	341	PURITAN Cocktail 3 oz. H
568	353	MED. FLAT PANEL Vase 15" H	626	5079	PAN AMERICAN 4 oz. Cocktail Cut H
569	353	MED. FLAT PANEL Vase 12" H	627	4091	KIMBERLY Cocktail Spec. Cut
570	412	TUDOR 10" Vase Crimped H	628	3368	ALBEMARLE Cocktail Spec. Cut H
571	4057	10½" Vase Elaborate Cutting	629	3368	ALBEMARLE Cocktail Chateau Cut H
572	4057	9" Vase Spec. Cut & Sand Blast	630	3411	MONTE CRISTO Cocktail Pairpoint Cut
573	4057	5 3/4" Flip Vase, Spec. Cutting for Metropolitan Museum	631	4091	KIMBERLY Wine Courtship Cut H f
			632	3408	JAMESTOWN Wine 6 ea. 1f
574	1485	SATURN 9" Ftd. Vase H	633	300	PEERLESS 2½ oz. Wine 4 ea. H
575	1205	FANCY LOOP 8" #1 Vase	634	5024	OXFORD 1 oz. Cordial tall stem 6ea H 1f
576	4205	Vase Marigold DO Empress etch Pr.			
577	1519	WAVERLY 7" Ftd. Vase 2ea. H	635	3408	JAMESTOWN 1 oz. Cordial 5 ea. H
578	1540	LARIAT 7" Ftd. Fan Vase #2 H	635A	5003	CRYSTOLITE Cordial 2 ea. H
579	1540	LARIAT Round Vase	636	5072	ROSE STEM Cordial H
580	1540	LARIAT 8" Ftd. Fan Base #2 M	637	3350	WABASH Cordial H
581	1540	LARIAT 7" Ftd. Fan Vase #2 Gray Cut	638	3380	OLD DOMINION Sahara DO Cordial H
582	1503	CRYSTOLITE Vase 6"	639	5067	PLANTATION Cordial H R
583	1469	RIDGELEIGH 6" Candle Vase H	640	1205	FANCY LOOP Toothpick f
584	300	PEERLESS 5" Orchid Vase cut top	641	351	PRISCILLA Toothpick H
585	1575	LILY 7" Cupped bowl H	642	1280	WINGED SCROLL Toothpick Custard
586	1555	10" Cornucopia Vase	643		DOORKNOB Salt Shaker, cut star
587	1569	12½" Shallow bowl Ftd. H	644	52	IND. Salt & Pepper, Sahara, crys. tops H
588	1558	6½" Vase H			
589	1485	SATURN 10½" Vase	645	52	IND. SALT & PEPPER Mnglm. H
590	4045	6" BALL VASE WO Sahara	646	52	IND. SALT & PEPPER Flam. H
591	3335	Whimsey Vase from finger bowl on bubble Cobalt WO	647	52	IND. SALT & PEPPER HAWTHORNE H
			648	1280	WINGED SCROLL 5" Pin tray Emerald
592	4220	4½" VASE WO EXPERIMENTAL GOLD RUBY	649	1184	YEOMAN Marigold DO Egg cup H
593	4157	5½" ROSE BOWL DO Tangerine EXP. W/Opaque top rim	650	1229	OCTAGON Hdl. Ind. Nut Sahara DO H
594	4157	5½" ROSE BOWL DO Hawthorne	651	1229	OCTAGON Hdl. Ind. Nut Hawthorne H
595	4157	5½" ROSE BOWL DO Mnglm.	652	1229	OCTAGON Hdl. Ind. Nut Mnglm. H
596	4157	5½" ROSE BOWL DO Sahara	653	1229	OCTAGON Hdl. Ind. Nut Mnglm. DO H
597	1404	OLD SANDWICH 8" plate 8 ea H	654	1229	OCTAGON Hdl. Ind. Nut Marigold H
598	1404	OLD SANDWICH 6" plate 4 ea H	655	1229	OCTAGON Hdl. Ind. Nut Flam. H
599	8016	JEWEL BAND 7½" plate 3 ea.	656	1252	TWIST Hdl. Ind. Nut Flam. H
600		7" Sq. Plate Cut signed HAWKES	657	1252	TWIST Hdl. Ind. Nut Mnglm. H
601	1238	8" Beehive plate	658	1252	TWIST Hdl. Ind. Nut Crystal H
602	1238	5" Beehive plate Zircon	659	1252	TWIST Hdl. Ind. Nut Marigold H
603	4159	Sm. Ice Lip Jug	660	1401	EMPRESS Ind. Nut DF Mnglm. SeaH
604	6060	COUNTRY CLUB ½ Gal. Ice Lip Jug	661	353	MED. FLAT PANEL Ind. Nut 6ea
605	4206	OPTIC TOOTH 3 pt. Jug DO Mnglm Ft. & Hdl.	662	411	TUDOR Ind. Nut H
			663	3316	BILTMORE Ind. Almond DO Mnglm Ft.
606	2516	CIRCLE PAIR ½ Gal. Jug DO MnglmHdl.	664	1469	RIDGELEIGH Hdl. Ind. Nut 2 Comp. H
607	4166	40 oz. Ftd. Jug & (8) 3476 Temple Hdl. Ice Teas Cloister Cut	665	1469	RIDGELEIGH Hdl. Ind. Nut H
			666	1506	PROVINCIAL Ind. Nut or jelly 12eaH
608	1632	LODESTAR 1 Qt. Pitcher Dawn H	667	1503	CRYSTOLITE Ind. Leaf Nut 5 ea.
609	1632	LODESTAR 6 oz. Cocktail DawnH6ea.	668	1535	OVAL DIA. POINT Ind. jelly H
610	1632	LODESTAR 6 oz. Cocktail DawnH6ea.	669	1454	DIA. POINT Ind. jelly H
611	4085	32 oz. Jug Zircon SO & 1485 Saturn Zircon 5 oz. Juice 6 ea. H	670	1454	DIA. POINT Ind. jelly 12 ea. H
			671	1535	OVAL DIA. POINT Ind. Ash tray H
612	1205	FANCY LOOP 10" #2 Vase	672	1454	DIA. POINT Ind. Ash tray H
613	442	8" Vase H	673	1404	OLD SANDWICH Cobalt Ind. Ash tray 4 ea. 1f h

674	351	PRISCILLA Butter Pat 4 ea. H	706	3	ICE TEA SPOONS 6 ea. H
675	4045	2" BALL VASE COBALT WO	707	305	PUNTY & DIA. POINT Elec. Shade
676	3397	GASCONY Tangerine 2½ oz. Wine	708		Sahara Pendant & Chain H
677	1469	RIDGELEIGH Mustard & Cov. H	709		Zircon Pendant & Chain made from Saturn Cup Hdl.
678	1503	CYRSTOLITE Cov. Mustard H			
679	516	FAIRACRE Flam. 1 oz. Cologne DO H	710	393½	NARROW FLUTE 4½" Nappy 4 ea. H
680	4231	COBALT FAVOR VASE DO	711	1252	TWIST Flam. 8" Nappy H
681	4231	COBALT FAVOR VASE DO	712	1186	YEOMAN Puff Box & Cov. H
682		Solid Glass - Rest 1 3/4" X 2"	713	1540	LARIAT Coaster 9 ea.
683	50	CABOCHON ADV. SIGN	714	9	FLOWER FROG
684	4052	NATIONAL 1 oz. Bar Moonglo Cut 3 ea.	715	4225	COBEL 1 Qt. Cocktail Shaker, no strainer or stopper, Moonglo Cut 6" Sq. Candy Trays 9 ea.
685	5060	WASH. SQUARE 2 oz. Bar 2 ea. f			
686	5087	COMET 2 oz. Bar 2 ea.	715A		
687	2401	1 oz. Bar 3 ea.	716	473	NARROW FLUTE W/RIM bottom to Griddle Cake Set H
688	4054	CORONATION 1 oz. Bar 2 ea.			
689	2351	1 oz. Bar Maryland Cut	717		MISC. LOT - 4 Pcs.
690	2355	CLOVERLEAF 2 oz. Bar	718		MISC. LOT - 4 Pcs.
691	300½	PEERLESS 2 oz. Bar straight H	719		MISC. LOT - 4 Pcs.
692	53	Whimsey Vase made from Mnglm Ind. Salt Shaker	720		Stopper for Puritan Rye Bottle b
			721		Whimsey Glass Boot made for Boots Gebhart
693		TOY ALEXANDRITE CANDLESTICK CUT	722		Glass Parade Cane
694		Whimsey TOY GLASS BIBLE CUT b	723		Glass Parade Cane, Hollow
695		Whimsey Alex. Paperweight cut from #48 Stopper	724		Whimsey Paperweight, Elaborately Cut
696		Whimsey Amber Seahorse Stem H	725		Glass Paperweight, Multi Colors C
697		Whimsey Amber Seahorse Stem H	726		Glass Paperweight, Orange & White w/bubbles
698		Whimsey Colt Stem	727		Glass Paperweight, Purple w/yellow & orange Flowers
699		Whimsey Goose Stem Frosted	728		Glass Paperweight, Lg. w/Lg. bubbles & Multi colored
700		Whimsey Paperweight made from finial from 1401 Lemon dish Cov. 2 ea.	729		Glass Paperweight, Multi Colored stones
701		Whimsey Paperweight from Rooster Stem 2 ea.	730		Glass Paperweight, Aqua w/white Flower
702		TOY Horsehead 2 ea.	731		Glass Paperweight, w/multi colored sunbrst.
703		Milk Bottle Cap from Kimberly stem	732		Glass Paperweight, Multi & blue & wht flowe
704		Milk Bottle Cap from Kimberly & Monte Cristo stem 2 ea.	733		Heisey Glass in Color Bk II w/82-83 PG
705		Cyrstal Mayo Ladle H	734		Animal Book I & II w/83-84 PG
			735		2 Books - Heisey Glass. of Dist./ Burns & Heisey's Orchid - HCA

MAIL BID INSTRUCTIONS

Mail bids accepted with checks for maximum amount. Mail bids are handled competitively and any difference refunded. Condition of items for mail bids handled at the discretion of auctioneer. In some cases where damage is found to be minimal, we may execute your bid up to 70% to 80% of maximum. Please add \$8.00 per carton for postage and handling, \$10.00 west of Rocky Mountains. Checks should be made to: SAM SCHNAIDT, AUCTIONEER and mailed to:

APPLE TREE AUCTION CENTER
1616 WEST CHURCH STREET
NEWARK, OHIO 43055

LIST OF PRICES, REALIZED, AVAILABLE AFTER THE AUCTION FOR \$1.00 or 1984 PRICE LIST SUBSCRIPTION (PRICES ONLY) \$5.00.

For more information call:
Sam Schnaidt - 614-344-944
Heisey Museum - 614-345-293

ALL HEISEY AUCTION TO BE HELD IN JUNE

There will be an auction again this June during the convention. However, this year HCA will be a Co-sponsor and will share in the profits. The auction will be an added attraction for the convention.

The auction will be held on Saturday, June 16th, at the Apple Tree Auction Center and will be limited to 400 lots. The selling fee will be \$10 per lot regardless of the selling price. A lot can be one item or a combination of items as you choose. No limit on number of lots. If you wish to reserve numbers for a certain number of lots, contact either the HCA or the Auction Center as soon as possible.

Items received by April 28 will be listed in the June newsletter which goes out the end of May. Glass may be brought to the museum or the auction house anytime. (The April 28th auction would be a good time.)

There will be a preview of the glass on Friday, June 15 after the banquet. Selling will start promptly at 9 a.m. on Saturday. Since the Flea Market begins early in the morning, you can visit it before going to the auction. The show will be open until 8 p.m. on Saturday. You will be paid almost as soon as your glass is sold and then you'll have more money to spend at the Show and Flea Market.

Mail bids will be accepted.

You cannot bid on your own glass.

PAUL'S COLLECTABLES

140 HILL AVENUE
BIRDSBORO, PA 19508

PH: 215-385-3170

SHIPPING AND
INSURANCE EXTRA
PA Residents - 6%
Sales Tax

* Marked

#1184	YEOMAN Low Footed Compotes (2) Diamond Optic, Flamingo* ..ea.....\$	25.00
# 300	COLONIAL 10 oz. Goblet, Crystal*..	15.00
#1401	EMPRESS Dolphin Footed Ind. Nut Dishes, Sahara (4) ea.....	25.00
# 473	NARROW FLUTE, Plain Rim Oil Bottle, #8 Stopper, Crystal*.....	50.00
#1469	RIDGELEIGH 3 oz. Oil Bottle With #103 P.S., Crystal, Sm. flake on stopper.....	40.00
# 393	NARROW FLUTE Mustard, Crystal* Minor flake on lid.....	25.00
# 341	PURITAN 2 oz. Wines, Crystal, Old Williamsburg (2) ea.....	12.00
# 338	#6 12" High Carnation Vase, Crystal, Old Large Mark.....	45.00
#1183	REVERE 5" Lemon Dish, Crystal, Daisy Cut*.....	22.00
#1252	TWIST 12" Oval Floral Bowl, Moongleam*.....	45.00
# 5	9" Candlesticks, Crystal, Pair....	65.00
#1519	WAVERLY Epergnettes, Crystal* (3) ea.....	10.00
# 341	PURITAN Oval Celery, Crystal* 9" (2) ea.....	15.00
	STANDING COLT, Crystal.....	85.00
	VERLYS of America Rose Bowl, Crystal, Frosted, Script Mark.....	60.00
	HOLOPHANE Ash Tray, Crystal, Frosted, Slightly chipped.....	18.00
# 150	BANDED FLUTE 4 oz. Oil, Crystal*..	40.00
#1170	PLEAT AND PANEL 5" Two Handled Jelly, Crystal*.....	18.00
	CAMBRIDGE Sea Gull Flower Frog, Crystal.....	95.00
	NATIONAL GEOGRAPHIC MAGAZINES WITH FULL PAGE HEISEY ADS:	
	September 1927.....	5.00
	November 1927.....	5.00
	September 1930.....	5.00
	November 1930.....	5.00

* * * * *

JOYCE ROHDE

RT. 2, BOX 18
ECHO, OR 97826

PH: 503-276-3402

UPS EXTRA

#1404	OLD SANDWICH Cups & Saucers (12) Per Set.....\$	20.00
#1404	OLD SANDWICH 1/2 Gal. Jug, Sahara.	125.00
#1401	EMPRESS 3-Pt. Jug, Flamingo.....	125.00
#1401	EMPRESS 3-Pt. Jug, Sahara.....	125.00
#1567	PLANTATION Water Jug.....	175.00
#1567	PLANTATION 3-Lite Candelabra, Ivy Etch.....	65.00
#1503	CRYSTOLITE Dinner Plates (15) ea..	45.00
#1503	CRYSTOLITE Water Pitcher.....	75.00
	GOOSE - WINGS DOWN.....	250.00

BRIARWOOD GLASS

* PAT FRIEDMAN
* 29 GREENWOOD ST.
* NEWTON CTR., MA 02159

PH: 617-527-5443

P & I EXTRA
MINT & PRICES EA.
UNLESS NOTED

* * Marked

# 54	STAND LAMP, #11 Ctr. Bobeche, 12 5-1/2" "C" Prisms (some new), Electrified*.....	\$400.00
# 150	BANDED FLUTE 10" Tray.....	30.00
	7 oz. SCHOEPPEN (5)*.....	18.00
	PUNCH CUP (3)*.....	6.00
# 372	5 oz. SANITARY SYRUP N.P. Top, Sahara*.....	70.00
# 462	BASKET, Floral Engraving*..8".....	145.00
# 500	OCTAGON Ice Tub, Floral Cutting, Silver Plate Handle Worn*.....	90.00
#1205	FANCY LOOP 13 oz. Molasses Can, Glass Lip, Metal Top, few small ruff spots on loops.....	95.00
#1252	TWIST 2" Candles, Marigold..Pr....	55.00
#1405	IPSWICH Candle Vases, Prisms & Inserts - Pr.....	150.00
#1509	QUEEN ANN, Orchid Etch, 6" Footed 2-Handled Jelly*.....	32.00
#1776	KALONYAL 4 oz. Cruet O/S, S1/C1dy. 5 oz. Flared Sherbet*.....	45.00 15.00
#3404	14" Flared Punch Bowl Only*.....	135.00
#3404	SPANISH 12 oz Soda, Cobalt (4)....	90.00
#3480	2-1/2 oz Wine, Cobalt.....	125.00
#3480	D.O. 3-Pint Jug, Flamingo.....	70.00

* * * * *

BETTY KENNEDY

* 13 HAWTHORNE STREET
* WOBURN, MA 01801

PH: 617-933-3584

SHIPPING EXTRA

# 433	GREEK KEY 5 oz. Soda (2) ea.....\$	12.00
# 433	GREEK KEY Oval Sugar.....	30.00
# 433	GREEK KEY 4 oz Cruet.....	55.00
#1205	FANCY LOOP Punch Cups (6) ea.....	14.00
# 305	PUNTY & DIAMOND POINT Punch Cups (11) ea.....	12.00
# 350	PINWHEEL & FAN Punch Cups, Moongleam (4) ea.....	25.00
#4044	NEW ERA Candelabra - Bobeches - Prisms...Pair.....	90.00
#1404	OLD SANDWICH Catsup Bottle O.S....	40.00
# 365	QUEEN ANN Punch Bowl Foot (2) ea..	35.00
#1425	VICTORIAN Cruet O.S.....	35.00
#3389	DUQUESNE 5 oz. Parfait, Chintz Etch (5) ea.....	12.00
#3389	DUQUESNE 9 oz Goblet, Chintz Etch.	15.00
#1245	RING BAND Toothpick, Custard/Gold Souv.....	50.00
#1280	WINGED SCROLL Toothpick, Custard..	90.00
#1220	PUNTY BAND Toothpick, Ruby Stain, Boston 1903.....	35.00
#1225	SAWTOOTH BAND (Plain Band) Tooth- pick, Crystal W/Engraving.....	35.00
#1519	WAVERLY 6" Low Ftd. Comp, Orchid Etch.....	35.00
#1401	EMPRESS 3-Pt. Jug, D/F.....	90.00
#1401	EMPRESS 8 oz. Tumbler, D/F..(2) ea	55.00
# 150	BANDED FLUTE 5-1/2 oz Oyster Cocktail (5) ea.....	12.00

CLASSIQUE GLASS CO. PH: 918-585-3203
 BOX 52572
 TULSA, OK 74152

- # 335 PRINCE OF WALES Creamer, Some Gold.....\$49.50
- # 515 HEISEY ROSE 7" Plate (10) ea..... 18.00
- #1184 YEOMAN D/O, Flamingo:
 Cup/Saucer (7) ea..... 17.00
 7-1/4" Plates (7) ea..... 8.50
 Cup Only (1)..... 12.50
- #1405 IPSWICH 4 oz. Champagnes (10) ea.. 12.75
- #1425 VICTORIAN Wine (2) ea..... 26.00
- #1425 VICTORIAN 8" Plate..... 11.00
- #1220 PUNTY BAND Custard Tumbler, Rose Decor, Souv..... 70.00
- #3333 OLD GLORY With #413 Renaissance:
 3 oz. Burgundy (2) ea..... 23.00
 12 oz. Soda (3) ea..... 17.00
 3 oz. Cocktail..... 21.00
 9 oz. Goblet (3) ea..... 27.50
 4 oz. (Unidentified) (5) ea..... 18.00
 5 oz Champagne (2) ea..... 20.00
 6" Diameter Plate..... 12.00

P & I EXTRA - MINT UNLESS NOTED

MOST ARE MARKED



- THE COLLECTOR'S STOP PH: 617-921-0115
 512 BROUGHTON DRIVE All Items In Excel-
 BEVERLY, MA 01915 lent Cond, Otherwise
 * Marked Stated - S & I EXTRA
- Subject To Prior Sale
- # 419 SUSSEX Flam. 5 oz. Soda* Set of 6.\$ 95.00
 - #5072 ROSE STEM, Rose Etch 9 oz Goblets (5) ea..... 25.00
 - #5072 ROSE STEM, Rose Etch 6 oz Champ. (7) ea..... 25.00
 - #5072 ROSE STEM, Rose Etch 4 oz Cock-tails (5) ea..... 25.00
 - #1467 RIDGELEIGH Coasters, Zircon, Set of 6 135.00
 - # 16 CANDLESTICKS 5-1/2" Pair..... 55.00
 - ROSE ETCH 3 oz. Ftd. Oil #122 Str. 135.00
 - #1401 Triplex Relish*, Flamingo..... 30.00
 - #1253 Mint & Cover, Sahara (Perfect).... 35.00
- WE WILL BE AT THE EASTERN STATES ANTIQUES SHOW
 APRIL 14-15, 1984 WITH LOTS OF HEISEY, BOOTH #89
 SPRINGFIELD, MA

ALL HEISEY AUCTION

SATURDAY, JUNE 16

HCA IS A CO-SPONSOR

SEE BOTTOM OF PAGE 17 FOR DETAILS

DONALD P. BEAN PH: 617-473-0561
 36 HARDING STREET P & I EXTRA
 MILFORD, MA 01757 * Marked

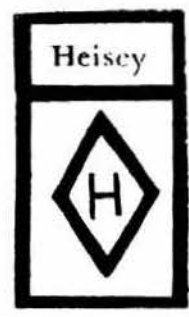
- #1509 QUEEN ANN D/F 10" Floral Bowl....\$ 25.00
- #1509 QUEEN ANN 1-Lite Stick W/Prisms.. 38.00
- #1533 WAMPUM 12" Floral Bowl & Pr. 1-Lite Sticks...Set..... 80.00
- # 469 HARTMAN 1/2# Candy*, No Cover,Cut 24.00
- #1469 RIDGELEIGH Oval Base 2-Lite Stick W/Bobeche & Prisms..... 40.00
- #1405 IPSWICH Sauc.Champ.* (8) each.... 8.00
- #1405 IPSWICH 10" Ftd. Flo. Bowl*..... 35.00
- #1454 DIA. PT. Ind. Jelly* (6) for..... 39.00
- # 465 RECESS PANEL 8" Vase*, Flared Top Irrid. Pale Yellow, Crystal Base. 35.00

MOSTLY HEISEY PH: 518-482-6272

RHODA CURLEY
 16 CLAYTON PLACE
 ALBANY, N.Y. 12209

TRAVELING?

IF YOU PLAN TO ATTEND SHOWS AT DUANESBURG, N.Y. MAY 4-5, JULY 6-7, SEPT. 7-8, WHY NOT STOP AND SEE US - WE ARE ONLY 20 MILES AWAY. WE HAVE MANY PIECES OF HEISEY AND CAMBRIDGE - ALL PRICED RIGHT. BY APPOINTMENT.



1983 EDITION!

HEISEY'S GLASSWARE
 OF DISTINCTION

By Mary Louise Burns

Condensed and updated!
 Contains all major tableware patterns with pictures for easy identification.

*Current price list included

Order direct from author
 \$11.95 pp
 MARY LOUISE BURNS
 P.O. Box 1931
 Grants Pass, OR 97527

Individual price lists available for Heisey's Orchid Etch, Rose Etch. Animals & Verlys @ \$1.50 ea. plus large SASE.

DEALERS DIRECTORY

5 LINES / 12 MONTHS / \$20.00

We assume no responsibility for errors in these ads after the first printing...Editor. For changes in ads during the year, please send \$2.00 per line.

A DOOR ANTIQUES

Heisey My Specialty
South Euclid, OH 44121
PH: (216) 381-3008

ALL HEISEY AUCTION

Consignments Welcome
Apple Tree Auction Center
1616 W. Church, Newark, OH 43055
PH: (614) 344-9449

ANN'S GIFTS & ANTIQUES

105 W. Main St., Hebron, OH 43025
Intersection of Rts. 40 & 79
Next Door to Daisy Queen
Daily 10:30 - 5:30 - Closed Thursday

ANTIQUA JUNCTION

540 N.E. "E." St. (off I-5)
Grants Pass, OR 97526
PH: (503) 479-8575 or (503) 582-4067
Hours: Wed-Sat 11 to 5

ANTIQUES - THE SHULTZES

206-208 East Main St.
Newmanstown, PA 17073
15 Miles West of Reading, PA.
PH: (215) 589-2819

AVERY'S QUALITY ANTIQUES

Heisey, Other Glass & China
Shows or by Appointment
2112 First St., Jackson, MI 49203
PH: (517) 783-4075

B & B HEISEY & COLLECTIBLES

B. Whaley
300 International Dr.
Pataskala, OH 43062
By Appointment; PH: (614) 927-1557

C. E. HIGGINS (S.F. Bay Area)

Shows and Mail Order
P.O. Box 2723
Menlo Park, CA 94025
PH: (415) 322-0192 Evenings

C & J ANTIQUES

Cole & Jean Miesner
Box 45, 72 Whig Street
Newark, Valley, NY 13811
PH: (607) 642-9905

CHARLES & MILDRED FISHER

Heisey, Degenhart, Imperial, Antiques,
Collectibles, General Line
991 Idlewild, Newark, OH 43055
PH: (614) 522-5398

DAVE'S ANTIQUES

Specializing In Heisey
Shows & Appointments
Tampa, FL 33600
PH: (813) 876-0580

DEL'S DOINGS

Heisey - Cambridge Glass
Furniture & Jewelry
Box 188, 10327 Main,
Richmond, IL 60071

DIAMOND H PLUS

Appointment or Mail Order
George & Eileen Schamel
Rt. 3, Box 419, Boonsboro, MD 21713
PH: (301) 432-6285

DIE KUNST GALLERIES & ANTIQUES

Specializing In Heisey
Vel & Andy Andress
Box 329, 725 Front St.
Leavenworth, WA 98826
PH: (509) 548-7856

ELIZABETH BASSETT CASON

401 32nd St., W.
Bradenton, FL 33505
Mail Order-List
PH: (813) 748-0851

FOREVER HEISEY

Shows and Mail Order
Janice Thran
1663 Londondale Pwy., Newark, OH 43055
PH: (614) 344-5955

GERT'S GLASS

Heisey & Duncan
Gertrude & Russell Swetnam
1926 Saratoga Dr., Adelphi, MD 20783
PH: (301) 434-5113

GLASS WITH CLASS

Lenore A. Shelley GGHCC
1336 Lincoln Avenue
San Jose, CA 95125
PH: (408) 286-8098

GOLDSBERRY'S ANTIQUES

Heisey A Specialty
Shows Only - Buy & Sell
Kalamazoo, MI 49000
PH: (161) 381-3013

GREEN ACRES FARMS

Antiques, Crystal Glass & Collectibles
2678 Hazelton-Etna Rd., SW (S.R. 310-N)
Pataskala, OH 43062
Sat or Sun P.M. or call (614) 927-1882

H & R DIAMOND H

Helen & Robert Rarey
1450 White Ash Drive
Columbus, OH 43204
PH: (614) 279-0390 After 5:30

HAPPY HAVEN ANTIQUES

Mary Dumke
41319 Rattlesnake Road
Grass Valley, CA 95945
PH: (916) 237-9450

HAPPY HEISEY HUNTERS

Miniatures - L SASE for List
Cliff & Helen Harralson
1426 W. Highland, Springfield, MO 65807
PH: (717) 328-2451

HARRISON'S ANTIQUES

Heisey, Cambridge, Duncan
Shows, Mail, by Appt.
26 Johnston's Lane, Mercersburg, PA 17236
PH: (717) 328-2451

HEISEY CLASS NEWSCASTER

Sample Copy 70¢, 32 Pg. All-Heisey Quarterly
\$6.00 (1984) Back Issues \$4.00 yr. 1977-1978-
1979-1980-1981-1982-1983.
Box 102 Plymouth, Ohio 44865

HEISEY PUBLICATIONS

All Heisey Books I-II-III-IV - Heisey
Newscaster 32 Pg. Quarterly - \$6.00
Back Issues - \$4.00
Box 102, Plymouth, OH 44865

JOYCE'S ANTIQUES

Specializing In Heisey, Cambridge, Verly's
& American Glass
P.O. Box 114, Albertson, NY 11507
PH: (516) 499-3396

J. & R. COLLECTIBLES

Shows, SASE Mail Order List
June & Ray Lukasko
1032 Fairlawn, Newark, OH 43055
PH: (614) 344-9719

LAST CHANCE ANTIQUES

Mail Orders - Matching Service
Send Us Your Want Lists
P.O. Box 502, Dania, FL 33004
PH: (305) 467-6356 Day or Evening

LYNNE & ART'S GLASS HOUSE

Heisey Our Specialty
P.O. Box 54-6014, Miami Beach, FL 33154
PH: (305) 861-7700 or (305) 895-5666 or
Rt. 202, Lahaska, PA 18931
PH: (215) 794-7800

MOSTLY HEISEY

Rhoda Curley
16 Clayton Place
Albany, NY 12209
By Appt., PH: (518) 482-6272

MOUND BUILDERS ANTIQUES

Heisey & Animals, General Antiques
Irene Rauck
1138 Moundview, Newark, OH 43055
PH: (614) 344-6043

OX YOKE ANTIQUES

General Line & Heisey
Don & Noreen Walzer
675 Ogden-Parma Tr. Rd.
Spencerport, NY 14559
PH: (716) 352-3959

PATTON HOUSE

Heisey & Duncan Miller
Rocky's Mall, I-81 & US 11
Weyer's Cave, VA 24486
PH: (703) 967-1181

PEGGY'S ANTIQUES

2000 Pcs. of Heisey In Stock
Ernie & Peggy Cox
P.O. Box 367, Spavinaw, OK 74366
By Appt. or by Chance
PH: (918) 589-2859

R & L ANTIQUES - SAN FRANCISCO

Shows Only - Always Lots of Heisey
Member of Golden Gate Heisey Club
P.O. Box 3614, Daly City, CA 94015
PH: (415) 621-6693

RAMBLING LANE ANTIQUES

Featuring Heisey & Other Fine Glass
Keith & Evelyn Hoover
Rt. #4, Box 1005, Rhinelander,
WI 54501 - PH: (715) 282-5019

RAY ZIEGLER

Glass Repair
2265 Innis Road
Columbus, OH 43224
PH: (614) 882-8446

SCHWAN'S ANTIQUES

Shop & Shows
Rt. 1, Box 175B, John Tyler Highway
Williamsburg, VA 23185
PH: (804) 229-7873

SUM OF LIFE

Elaine & Frank Husted
P.O. Box 102
Phoenixville, PA 19460
PH: (215) 935-2962

T & S ANTIQUES

Specializing In Heisey
Tom Martin & Steve Roderick
New Rochelle, NY 10805
PH: (914) 235-9632

THE WOODEN SHOE

Antiques & Collectables - Buy & Sell
Glass, Furniture, Estates
Jim & Sheri Van Es, By Appointment
810 Elden, Herndon, VA 22070
PH: (703) 435-9045

TRUDY MILLER ANTIQUES

China & Crystal Matching
Heisey A Specialty
P.O. Box 740548, Dallas, TX 75374
PH: (214) 783-9920

WILLEY'S ANTIQUES & MUSEUM

Specializing in Heisey
11110 Cannon Rd., Frazeyburg, OH
43822 - 16 Miles East of Newark
PH: (614) 828-2557

HEISEY REFERENCE PUBLICATIONS

Please order by Item and Number.
 Make Checks payable to H.C.A., Inc.
 Add 10% for Shipping & Handling (\$1.50 Min.
 on Glass Items except Cup Plates) *See
 Page 4.
 Ohio Residents add 6% Sales Tax.
All Prices Payable in U.S. Funds.

PLEASE KEEP THIS FOR FUTURE REFERENCE

- | | |
|---|----------|
| 1. <u>THE HEISEY ANIMALS</u> , by James McDermott..... | \$ 3.00 |
| Pictures all 56 animals produced by Heisey. States size of each animal. | |
| 2. <u>THE HEISEY ANIMALS, ETC. BOOK II</u> , by Robert Coyle, Lynne Bloch, Art Hartman..... | \$ 3.50 |
| Pictures items using the animal figure as stem, stopper, handle, flower frog, ash tray, etc. | |
| 3. <u>COMBINATION PRICE GUIDE FOR ANIMAL BOOK I & II</u> , by the authors..... | \$ 1.50 |
| 4. <u>HEISEY'S GLASSWARE OF DISTINCTION</u> , by Mary Louise Burns. Condensed and updated!..... | \$ 11.95 |
| Includes price guide - Contains all major tableware patterns with pictures for easy identification. | |
| 7. <u>HEISEY GLASS IN COLOR, BOOK 2</u> , by Loren & Virginia Yeakley. More than 750 items..... | \$ 12.50 |
| pictured in color. Comprehensive discussion of each. Includes value and rarity guide, 60 pages. Includes price guide. | |
| 7A. <u>PRICE GUIDE FOR COLOR BOOK ONLY</u> | \$ 2.50 |
| 8A. <u>FORTY PAGE ADDENDUM TO ETCHINGS AND CARVINGS BOOK</u> by Ream and Bredehoft..... | \$ 3.50 |
| 15. <u>HEISEY CATALOG AND FACTORY PRICE LIST</u> , by Antiques Research Publications. Catalog..... | \$ 6.95 |
| reprint #33, dated June 1, 1956. Last catalog published by the company. Complete listings of patterns offered by Heisey when they discontinued operations in 1957. | |
| 16. <u>HEISEY'S LEAD BLOWN GLASSWARE</u> - Some Pressed - Reprint of 1929 Catalog 14B by..... | \$ 9.95 |
| L. W. Promotions - 80 Pages - Includes price guide. | |
| 22. <u>HEISEY STEMS</u> , by Bradley, Ryan and Ryan. Comprehensive book on more than 350 pressed.. | \$ 20.00 |
| and blown stems. A must for the stem collector - 240 pages. | |
| 26. <u>CATALOG & PRICE LIST #32</u> , Complete reprint of 1953 catalog. Added information and..... | \$ 9.95 |
| price guide. The best book on late production. | |
| 55. <u>HEISEY'S CUT HANDMADE GLASSWARE</u> , by Harold E. Willey. Reprint of old catalogs..... | \$ 5.95 |
| showing some of the many cuttings by Heisey, mostly on stemware. Good clear pictures. | |
| 61. <u>SALTS AND PEPPERS CATALOG</u> , by Columbia HC. Reprint of 1910 catalog - 30 pages..... | \$ 3.00 |
| Includes comprehensive price guide by Research and Archives. | |
| 68. <u>HEISEY BY IMPERIAL</u> , by Newark Heisey Collectors Club - Second Edition - Updated and.... | \$ 6.95 |
| added pages. Soft Bound - Includes price trends and color plate. Every piece of every pattern made by Imperial is listed and priced in all colors used for the pattern. All items are dated. A must for the collector or dealer specializing in Heisey or Imperial glass. Many items are already collectible. | |
| 77. <u>COLORED GLASSWARE OF THE DEPRESSION ERA 2</u> , by Hazel Marie Weatherman - 1000 patterns...\$ | 25.00 |
| From 43 glass companies which were operating during the depression era. Includes both machine and hand made glass - 400 pages. | |
| 77A. <u>SUPPLEMENT & PRICE TRENDS</u> for above book, 304 pages - 100 pages of new information..... | \$ 10.50 |
| 79. <u>HEISEY GLASSWARE</u> , by Heisey Collectors of America, Inc. - Reprint of Catalog 76, the...\$ | 6.95 |
| 1915 supplement to Catalog 75 - Soft bound - Includes price trends - 58 pages. Many items never shown in books or catalogs. Includes all the kerosene lamps and many electric lamps - An interesting catalog. | |
| 88. <u>HEISEY TOOTHPICK HOLDERS</u> , by Nancy & David Jones, published by H.C.A. - Complete.....\$ | 4.95 |
| information on all Heisey toothpick holders. Contains photographs of each - Section on confusing items and fakes - 8-1/2 X 5-1/2 - Soft Bound - Includes price trends. | |

92. HEISEY'S ORCHID ETCH by Neila Bredehoft, published by H.C.A. - 24 Page booklet with....\$ 4.95
price guide - Soft bound - A new booklet devoted entirely to Orchid Etching - Heisey's
most popular etching - 230 pieces listed and dated individually - Well illustrated -
Includes a history of the etching and many early ads.
93. ELEGANT GLASSWARE OF THE DEPRESSION ERA by Gene Florence - Fostoria, Cambridge, Heisey \$ 17.95
and others - Illustrated in FULL COLOR with current values.
99. HEISEY'S ROSE ETCH by Neila Bredehoft, published by H.C.A. - 24 Page booklet with.....\$ 4.95
price guide - Soft bound - All known pieces listed and dated - Well illustrated -
Includes history and many copies of ads.
101. HEISEY CANDLESTICKS, CANDELABRA AND LAMPS by Tom Felt and Bob O'Grady assisted by.....\$ 24.95
Jack Metcalf - A definitive survey of the history and manufacture of candlesticks and
other lighting devices made by A. H. Heisey & Co. from 1896 - 1957 with over 350
illustrations of all known candlesticks, including 25 in full color.
- 101A. COMPLETE PRICE TRENDS FOR HEISEY CANDLESTICKS.....\$ 2.50
106. COLLECTORS GUIDE TO HEISEY'S GLASSWARE by L. W. Promotions - Excerpts from Heisey.....\$ 17.95
Catalogs 75, 109, 212-17. 372 Pages of Illustrations - Includes Price Guide.

ANIMALS AND MISCELLANEOUS ITEMS FOR SALE

30. COLOR POST CARDS OF THE HEISEY MUSEUM (outside) Minimum Order 12.....\$ 1.50
31. BLACK AND WHITE POST CARDS OF THE FACTORY (outside) - Minimum Order 12.....\$ 1.50
33. SOUVENIR PENS, National Heisey Glass Museum.....3 for.....\$ 1.00
34. LEADED GLASS DIAMOND H WINDOW ORNAMENT with hanger.....\$ 7.50
36. BUTTONS with sayings, "I Live in Heiseyland U.S.A.", "Heisey Keeps Me Poor, But ea...\$.75
Happy!", Picture of Heisey Museum - "I Belong to H.C.A." & Heisey Collectors of America
39. BACK ISSUES OF THE HEISEY NEWS - Each Volume Contains 12 issues - Each Volume.....\$ 9.00
Volume V, VI, VIII, IX, X, XI & XII available - Reprints of issues of Heisey News in
their entirety - Much valuable information in each issue - A must for the beginner.
40. IMPERIAL REISSUE OF #1 HEISEY MADONNA - Frosted - Marked ALIG.....\$ 19.00
41. IMPERIAL ELEPHANT HANDLED FAIRY TALE MUG - Marked LIG or ALIG - Crystal.....\$ 9.00
Pink, New Issue, February 1984 - Made for H.C.A.....\$ 16.00
45. HEN - Available in Milk Glass - Limited edition of 1999 - Made in original Heisey.....\$ 7.00
molds by Imperial Glass Corp. exclusively for Heisey Collectors of America, Inc.
4-1/4" High - Marked IG - SECONDS ONLY AVAILABLE.
46. CHICKS, Head Up and Head Down - Available in Milk Glass - Limited edition of 3292 Head.\$ 3.00
Down Chick and 2866 Head Up Chick - Made in original Heisey molds by Imperial Glass
Corp. exclusively for Heisey Collectors of America, Inc - 1" High - Price is for Both.
Marked IG - SECONDS ONLY AVAILABLE.
47. ROOSTER - Available in Milk Glass - Limited edition of 1457 - Made in original Heisey..\$ 15.00
molds by Imperial Glass Corp. exclusively for Heisey Collectors of America, Inc.
5-5/8" High - Marked IG - SECONDS ONLY AVAILABLE.
48. NO. 1560 VICTORIAN GIRL BELLE - Available in Milk Glass, Sunshine Yellow, Light Blue,..\$ 8.00
and Light Green - Plain
Light Blue, Rose Pink, Sunshine Yellow and Light Green - Frosted.....\$ 9.00
Marked IG - Made in original Heisey molds by Imperial Glass Corp. exclusively for
Heisey Collectors of America, Inc. - 4-1/4" High.
- 48A. NO. 1560 VICTORIAN GIRL BELLE - Made in the original Heisey molds by Viking Glass
exclusively for Heisey Collectors of America, Inc - 4-1/4" High.
RUBY Plain.....\$ 11.50

48A.	NO. 1560 VICTORIAN GIRL BELLE CONT'D.		
	RUBY SATIN.....	\$	13.00
	LILAC PLAIN.....	\$	9.50
	LILAC SATIN.....	\$	11.00
	ORANGE PLAIN.....	\$	11.50
	ORANGE SATIN.....	\$	13.00
49.	SCOTTIE, Available in Milk Glass - Limited edition of 1617 - Made in original Heisey...\$		5.00
	molds by Imperial Glass Corp. exclusively for Heisey Collectors of America, Inc. 3-1/2"		
	High - Marked IG - SECONDS ONLY AVAILABLE.		
50.	PLATE HANGERS for 8" plates to hang in a series from one nail - Ideal for.....each....\$.85
	Souvenir Plates. (6 for \$4.50)		
50B.	PLATE HANGERS for cup plates to hang in a series - 4" Brass...(6 for \$4.50)...each....\$.85
58.	PAIRPOINT CUP PLATE, Pressed copy of Lancaster Etching - Crystal and also Vaseline.....\$		6.00
58B.	PAIRPOINT CUP PLATE, Fandango Pitcher - Crystal and also Vaseline - Limited to 1000....\$		6.00
58C.	PAIRPOINT CUP PLATE, Fandango Pitcher, Crystal with a 3-size scallop (New Border).....\$		6.00
58D.	PAIRPOINT CUP PLATE, Horse and Rider, Amber with Double/Single scallop - Limited 595...\$		6.00
58E.	PAIRPOINT CUP PLATE, Horse and Rider, Crystal with a 3-size scallop (New Border).....\$		6.00
58F.	PAIRPOINT CUP PLATE, Heisey Museum, Light Green, D/S scallop (New Border) Limited 520..\$		6.00
58H.	PAIRPOINT CUP PLATE, No. 1, Wood Ducks - Royal Hickman Series - Crystal...Limited 627..\$		6.50
58I.	PAIRPOINT CUP PLATE, No. 1, Wood Ducks - Royal Hickman Series - Emerald Blue - Limited		
	Edition 226.....	\$	6.50
60.	OLD WILLIAMSBURG SALT & PEPPER SET, Ultra Blue, Nut Brown, Verde, Rose Pink, Amber.....\$		10.00
	And Sunshine Yellow		
65.	WINGS-UP MALLARD, Light Blue - Limited edition of 1466 - Made in the original Heisey		
	Molds by Imperial Glass Corp. exclusively for Heisey Collectors of America, Inc.		
	6-3/4" High - Marked IG		
	PLAIN.....	\$	13.00
	SATIN, Limited edition of 345.....	\$	14.00
66.	WINGS-HALF MALLARD, Light Blue - Limited edition of 1548 - Made in the original Heisey		
	molds by Imperial Glass Corp. exclusively for Heisey Collectors of America, Inc. 5"		
	High - Marked IG.		
	PLAIN.....	\$	13.00
	SATIN, Limited edition of 345.....	\$	14.00
67.	PLAYING CARDS With picture of Museum - Red or Blue Border - Double decks have one of		
	each - Prices include shipping (Shipped U.P.S.) - Single Deck.....\$		3.45
	Double Deck in Plastic Box.....	\$	5.75
	With other orders \$2.20 & \$4.50		
70.	WINGS-DOWN MALLARD, Light Blue - Limited edition of 971 - Made in original Heisey molds		
	by Imperial Glass Corp. exclusively for Heisey Collectors of America, Inc. - Marked IG.		
	4-1/2" High		
	PLAIN.....	\$	13.00
	SATIN, Limited edition of 345.....	\$	14.00
71.	CYGNET, Light Blue - Limited edition of 1040 - Made in original Heisey molds by		
	Imperial Glass Corp. exclusively for Heisey Collectors of America, Inc. - Marked IG.		
	PLAIN.....	\$	13.25
	SATIN, Limited edition of 240.....	\$	14.00
72.	STANDING DUCKLING, Sunshine Yellow - Limited edition of 1150 Plain and Satin - Made ...\$		14.00
	in original Heisey molds by Imperial Glass Corp. exclusively for Heisey Collectors of		
	America, Inc. - Marked IG - 2-5/8" High.		
73.	FLOATING DUCKLING, Sunshine Yellow - Limited edition of 1035 - Plain and 340 Satin.....\$		14.00
	Made in the original Heisey molds by Imperial Glass Corp. exclusively for Heisey		
	Collectors of America, Inc. - Marked IG - 2-1/4" High.		
74.	MOTHER WOOD DUCK - Sunshine Yellow - Made in original Heisey molds by Imperial Glass		
	Corp. exclusively for Heisey Collectors of America, Inc - Marked IG 4-1/2" High.		
	PLAIN, Limited edition of 317.....	\$	25.00
	SATIN, Limited edition of 375.....	\$	29.95

