

# HEISEY®

# news

© Heisey Collectors of America, Inc. 1984  
All Rights Reserved

VOLUME XIII

NO. 2

FEBRUARY, 1984

ISSN 0731-8014

ONE DOLLAR



USE  
**HEISEY'S**  
TRADE  MARK  
**GLASSWARE**  
FOR THE TABLE

**J**UST a little brighter—  
just a bit more exclusive  
in design — infinitely more  
serviceable and hence more  
economical. Insist that your  
dealer supply you, because  
it is the best of its kind. If  
he declines, we will do so.

**A. H. HEISEY & COMPANY**  
Newark, Ohio

On every piece





## NOTES FROM YOUR PRESIDENT....

For the last several weeks the library in the Museum annex (169 W. Church) has taken on the appearance of a high class antique shop. There has continually been one large table of glass for the March Benefit Auction being assigned lot numbers and being checked for accuracy of identification (our members are almost always right in their identification) and condition. We have received so many lots that again we will have two sessions, one Friday evening and one Saturday.

Then of course on Sunday, the Land of Legend Heisey Club is sponsoring the annual Flea Market at the Starlight School - always a great place to find special pieces we have been looking for and to discuss the Auction and other interesting events with our fellow club members.

The red souvenir Oscar for the 1984 Convention are available now. Remember to write for yours before they run out. The income from these Oscars is depended upon to carry the club through the early months of the year.

Plans for the Convention are coming along. Our speaker has been chosen for the banquet: Fred Bosworth, a former Heisey salesman. The theme has been chosen "Our Impossible Dream" and we're all looking forward to June and renewing old acquaintances and making new friends.

## DATES TO REMEMBER

- MARCH 3 & 4, 1984 - GLASS, CHINA & POTTERY SHOW  
SAN MATEO, CA. FAIRGROUNDS  
MARCH 9 & 10, 1984 - BENEFIT AUCTION, NEWARK, OH  
MARCH 11, 1984 - FLEA MARKET - STARLIGHT  
SCHOOL, NEWARK, OHIO  
MARCH 24 & 25, 1984 - ALL HEISEY GLASS SHOW  
SILVER SPRINGS, MD.  
JUNE 14 - 17, 1984 - CONVENTION

Pres. TOM BREDEHOFT 614-745-1014  
Vice Pres. JIM KENNON 216-282-7711  
Secy. RAY ZIEGLER 614-471-6446  
Treas. DICK MARSH 614-366-5608

Exec. Dir. LOUISE REAM 614-344-2377

HEISEY NEWS-P.O. BOX 27-NEWARK, OHIO 43065

Editor: LOUISE REAM

Box 27 Newark, Oh. 43065 614-345-2932

Ass't Editor: Neila Bredehoft

Box 27 Newark, Oh. 43065 614-345-2932

Published monthly and mailed from Reynoldsburg, Ohio 43068.

\$12.00 per year - \$1.00 per copy.

Back issues Each Volume - \$9.00  
year (12 issues).

Volume V, VI, VIII, IX, X, XI, & XII.

Heisey Collectors of America, Inc. is a non-profit corporation with tax exempt status. Owners and operators of National Heisey Glass Museum, 8th and Church Streets, Newark, Oh. Open daily 1-4p.m. March through December except Mondays and holidays. January and February - Wednesday, Saturday and Sunday 1-4 p.m. Other times by appointment. Members admitted free.

Club membership (includes 12 issues of HEISEY NEWS and participation in all club activities) \$12.00 per year plus \$2.00 each for additional family members in same household who wish a membership card. For VOTING MEMBERSHIP add \$25.00 one time only fee.

When requesting information, please enclose a self-addressed stamped envelope (SASE).

ADVERTISING - Send all ads to: Advertising  
c/o Janice Thran  
P.O. Box 27  
Newark, Oh. 43065

### RATES:

DEALERS' DIRECTORY - 5 lines - \$20.00  
CLASSIFIED - 12¢/word. \$1.20 Minimum.  
Abbreviations & initials count as words.

DISPLAY:	MEMBERS	NON-MEMBERS
1/8 pg (9 items)	\$15.00	\$25.00
1/4 pg (20 items)	24.00	35.00
1/2 pg (20 items)	40.00	50.00
1 pg (50 items)	65.00	80.00

We cannot double-column ads. No VERTICAL 1/2 pg. ads. ALL ADS MUST BE PREPAID. Ad copy must be received by the 5th. of the month to be included in that month's NEWS. Ads containing reproduction will not knowingly be accepted unless clearly stated (i.e. Heisey by Imperial, etc.) HEISEY News assumes no responsibility for false advertising or misleading information. In the event of typographical error, the incorrect portion of the ad will be run in the following issue, but HEISEY NEWS assumes no further liability.

Opinions expressed in articles are those of the authors and not necessarily those of HCA. Editorial Staff reserves the right to edit or refuse any material submitted for publication. Send all letters and articles to the EDITOR. Letters to columnists should be sent to the club address and will be forwarded.



FROM THE DESK OF THE EXECUTIVE DIRECTOR...

We are sorry to be late with the newsletter this month, but your editor fell on the ice on January 6th and suffered a compound fracture to her right wrist and is wearing a cast from her thumb halfway up her shoulder.

After being completely incapacitated for nearly a week was finally able to return to work and with a lot of help from our wonderful staff, we are finally able to get this newsletter ready for the printer.

One never realizes how wonderful it is to have good friends until something like this happens.

We have decided that since we have permanent help every day that we will keep the museum open year round daily from 1 - 4, except Monday and Holidays, other times by appointment.

The auction glass has all been identified and catalogued (over 700 lots) and you will soon be receiving your list. There are some very nice

items in this auction - animals, colors, and rare items.... something for everyone.

Don't forget the Flea Market March 11th at the Starlight School. Dick Smith reports that applications are coming in fast, but there are several spaces still available.

Any club planning a project this year must clear it with Dan Glen, Project Coordinator. Write him in care of the club address.

Liz Stickle and Jan Thran report that contracts are coming in well for the Flea Market or the Square, and if you have a favorite spot, better get those contracts in.

The "Ruby Oscars" are selling well and many people have told us how pleased they are with them this year.

By the time you receive this newsletter, the drawing for the "Satin Oscar" will probably have been held and you will soon either be receiving your Oscar or your checks will have been returned.

WHATEVER YOU DO, WATCH YOUR STEP WHILE WALKING ON ICE!!!!

Louise

A. H. HEISEY & CO. ... JANUARY 1954

LODESTAR Pressed Pattern No. 1632 in "Dawn" Glass  
(This is a list of new items sent to salesmen)

Pattern No.	Size	Item in Dawn Glass	List Price Per Dozen	List Price Each
1632	11 in.	Crimped Bowl.....	\$78.00	\$6.50
1632	12 in.	Deep Bowl.....	72.00	6.00
1632	8 in.	Bowl.....	48.00	4.00
1632	4½ in.	Dessert or Sauce Dish (Nappy).....	15.00	1.25
1632	10 in.	Celery Tray.....	36.00	3.00
1632	5¼ in.	Ash Tray, Fire Polished.....	27.00	2.25
1632	5½ in.	Ash Tray, Ground Top.....	30.00	2.50
1632	1 lt.	Candelholder.(sic).....	18.00	1.50
1632	5 in.	Mayonnaise & Ladle.....	30.60	2.55
1632	5 in.	Mayonnaise.....	22.80	1.90
7*		Ladle.....	7.80	.65

RIPPLE Blown Pattern No. 6060 in "Dawn" Glass

Pattern No.	Size	Item, Ripple Optic** in Dawn Glass	List Price Per Dozen	List Price Each
6060	2 oz.	Bar.....	\$ 7.80	\$ .65
6060	10 oz.	Beverage.....	11.40	.95
6060	14 oz.	Beverage.....	18.00	1.50
6060	18 oz.	Soda.....	21.00	1.75
6060	9 oz.	Old Fashion.....	11.40	.95
6060	13 oz.	Double Old Fashion.....	30.00	2.50

MISCELLANEOUS ITEMS IN "DAWN" GLASS

Pattern No.	Size	Item in Dawn Glass	List Price Per Dozen	List Price Each
***4057	7 in.	Vase, Saturn Optic.....	\$ 84.00	\$7.00
4057	10½ in.	Vase, Saturn Optic.....	114.00	9.50
1487	10 oz.	Tumbler, Flared (1486).....	11.40	.95
1487	13 oz.	Ice Tea, Flared (1486).....	13.20	1.10
*1609	8 in.	Plate.....	19.20	1.60
1593	6 in.	Ash Tray, Fire Polished.....	30.00	2.50

\* To our knowledge this is an unseen item.

\*\* This is often referred to as experimental "screen optic."

\*\*\* Only the 7" size has been seen.

## THE CLOSE RELATIONSHIP OF NAVY AND NEW ERA

By Neila Bredehoft

As a pattern, #2323 NAVY is actually composed of several other patterns and adapted into a new pattern by the addition of cobalt blue bases to all items.

In 1934, the pattern was new and a trade journal report described it as follows: "A. H. Heisey & Company will show something entirely new in two color glassware. They offer plates with a cobalt blue center and a flange of crystal, or with a blue flange and crystal center. ... Also shown are sodas, old fashions and whiskies in the same color combinations with colored bottoms and crystal tops. The arrangement of the blue centers and crystal shoulders helps to a most unusual table setting."

As can be seen by the report, there is some possibility that plates were made both with a cobalt center (as are those known) and with a cobalt rim and crystal center. This is the only known description which indicates that they might have been made in two styles.

Items listed in the Navy pattern include the following:

- 2 oz bar (2052)
- 5 oz soda (2401)
- 8 oz soda (2351)
- 12 oz soda (2351)
- 13 oz soda (2351)
- 8 oz old fashion (2401)
- 6 in plate (1184)
- 7 in plate (1184)
- 8 in plate (1184)

The following were also handwritten in the same listing:

- 7 oz soda (2506)
- 10 oz soda (2351)
- 6 oz soda (2351)
- 8 oz toddy (2351)
- 6 oz old fashion (2401)
- cup (1247)
- saucer (1247)
- sugar (1247)
- cream (1247)
- 1184 bouillon plate

Notice all the different sodas used in the pattern: 2052, 2401, 2351, and 2506. Notations on the list state that all sodas were available wide optic or plain and other items were plain only. Also written on the list is "blue base, 1/2 sham."

The list is taken from a 1937 price list and hand written notations indicate that the 1184 plates were "out" and that the cup, saucer, sugar and cream were also "out."

Interpretation of the rather sparse data presents some rather interesting speculations. First, since the cup, saucer, sugar and cream were hand written, they were not originally in the line - at least in June of 1937 when the price list was printed. Chronologically, the next catalog was issued in April of 1938. This would indicate a very short time of production for these items: sometime between June, 1937

and April, 1938. It seems likely that only a turn or two of these were ever made.

Even more tantalizing are some of the other notations on the page. The cup, saucer, cream and sugar have "4044 line" written beside them. This would indicate that they were taken from the New Era line and had cobalt bases added. From the pieces known, (cup and cream) this is true as they exactly match the corresponding items in New Era. Does a New Era saucer exist with a cobalt center? Information here would seem to indicate that it does.

As though this were not enough to confuse the issue, the same four (4) pieces (cup, saucer, cream and sugar) also have the number 1247 in parentheses after each listing. This number is unknown for these pieces, but if we can take a point farther, the items must be the same as the 4044 New Era pieces. This may be quite likely since the 4044 number is actually a blownware number more in agreement with the blown stemware and not the pressed pieces. This tidbit of information gives rise to the interesting speculation that the pressed items in New Era actually began life as another pattern and were added to the 4044 number later.

One further interpretation can possibly be made from the information. The 1247 number occurs in the midst of a series of Heisey plate numbers. Speculation would suggest that the original piece of this pattern was also a plate since Heisey was rather consistent at this time in assigning numbers. This supposition is further supported by a trade journal report in March, 1934 which states: ( in reference to the 4044 line)

"Just about the most advanced thing yet to make its appearance in the way of glassware is the new line which A. H. Heisey & Co., of Newark, Ohio, have just completed and put on the market ...The outstanding feature of this line is the employment of the 'square' idea. As a matter of fact, the Heisey concern made its initial showing the first of the year with a square, or rather oblong, plate with a food well in the center, after the manner of the plate first brought out in earthenware by the celebrated Jean Luce of Paris. The plate seems to find favor in glass, and now the concern has utilized the idea in all kinds of tableware, as well as stemware...."

About the only item of information which does not fit in is that the plates were being developed about 1926 or 1927. This would be very early for the New Era plate since the line did not come out until 1934. It is still possible however, since sometimes items were developed and assigned pattern numbers but were not immediately put into the line. This could well have happened with the New Era plate.

Anyway, there is a close correlation between Navy and New Era and the information contained on one small piece of paper adds to our knowledge of both patterns.

Sodas in the Navy line continued to be listed until 1941 but all other items were discontinued before 1938. The pattern is never

## THE CLOSE RELATIONSHIP OF NAVY AND NEW ERA CONT'D.

marked so you must learn to recognize it. Some people have speculated that the pattern might have first been made for the Navy department because of the name and the cobalt blue bases. There is no information to either support or deny this supposition. It is rather mind boggling to suppose that there might be an old order in some governmental agency somewhere that would indicate such a possibility. In any even, Heisey did make the line on a production basis for all their customers from about 1934 to 1941. The items listed are the only ones known to part of the line although possibly others were also made.

## ORIGINAL JENKINS' GLASS CATALOG TO BE PUBLISHED

The National Greentown Glass Association will reprint a 1930-era catalog issued by the D.C. Jenkins Glass Company of Kokomo and Arcadia, Indiana. The catalog illustrates hundreds of items, many in color.

A special pre-publication price of \$4.00 is being offered by the NGGA now. Orders should be addressed to James Measell, Editor, National Greentown Glass Association, Box 1052, Berkley, MI 48072. Postage/handling is .75 per catalog. Michigan residents add 4% sales tax, please. Checks should be payable to the National Greentown Glass Association.

The D.C. Jenkins Glass Company operated in Kokomo from about 1901 to the mid-1930's. The firm made a wide variety of glassware products, ranging from novelties and pattern glass to hotel glassware and bar goods.

The catalog reprint will include an introduction which discusses the life and glassmaking career of D.C. Jenkins, Jr., founder of the firm.

The company operated a branch plant at Arcadia, Indiana.

D.C. Jenkins, Jr., was born in Pittsburgh in 1854 and was connected with the glass industry there as well as in Findlay, Ohio; Gas City, Indiana; and Greentown, Indiana between 1870 and 1900.

## BOARD NOTES:

DECEMBER 10, 1983

Treasurer, Dick Marsh, reports that our Endowment Fund contains \$7412.33. Donations are acknowledged and encouraged, and very welcome.

The By-Laws Committee Chairman, Chris Maskaleris, reports that her committee has reviewed the Club Charter in relation to our Tax Free Status and finds that in the future there may be a necessity to either modify our charter or apply for a change in our IRS status. She reported on what changes would be necessary.

The Project Committee recommends that the club have molds made for a souvenir and glass

for sale in our Gift Shop. The Board accepted the report but changed the pieces recommended. When we have found what molds can be made economically we will have several made.

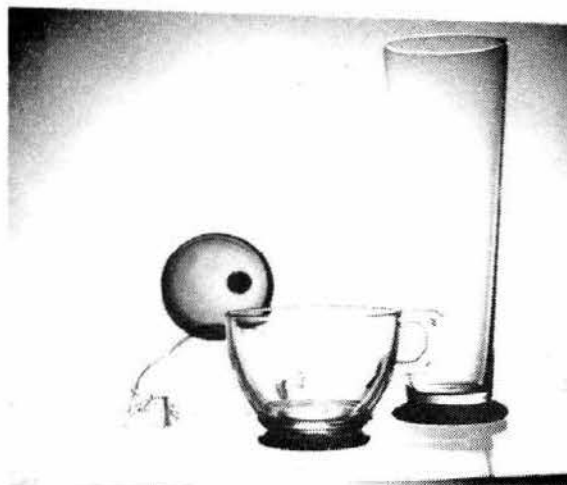
The Board decided that a synopsis of Board action be printed in the Heisey News. This is to be prepared by the Executive Committee so it won't appear immediately after the Board meeting.

Ray Ziegler has compiled a report of Micro Computer Manufacturers and has written them asking them for a donation of a computer to use as a word processor. If Ray failed to put your name on the list and you have a computer to donate, please feel free to write us. We will acknowledge your donation with a receipt for tax purposes.

The Board approved the printing of the Candlestick book for delivery for the convention for 1984. All Board members were present except the following: Jim Jordan, Percy Moore, Dick Spencer and Betty Wanser.

Executive Committee

#2323 NAVY



6" Plate, Teacup and 13 oz. Soda. There is also a round saucer for this cup.



2 oz. Bar - Wide Optic 2 oz. Half Sham - No Optic

The blue at the top of the sham is reflected from the base.

## DIAMONDS ARE FOREVER.....

By Janet M. Caswell

Do you remember the late 1930's and "Valentines Day"? I do! The white crepe paper Valentine Box, with red crepe paper hearts pasted here and there, sat majestically on a table in a place of honor at the front of the classroom (school) for two weeks. There you'd drop Valentines to your special friends, waiting for that magical day when they would be distributed throughout the classroom. Oh, what a party that day brought; it is one of my favorite childhood memories!

The weatherman is talking about a "nor-easter," the Yachting Center has been lucky so far, while other parts of the country have had more snow than they know what to do with. Let's think "warm" and see what the "Sunshine State" has in store for us: a #470 Intercepted Flute 6" plate, and two oval Shell & Tassel bowls,\* one in cobalt and one in amber. From elsewhere in the same state we've heard of half a dozen #3390 Carcassone footed bars in cobalt, three Crystolite individual swan nuts, a #1221 Souffle 6 oz sherbet (goodie!) and a #1225 Sawtooth Band 5" crimped bowl, two (2) #1226 5 oz sherbets and a #1254 4-1/2 oz colonial flared sherbet.

"My first convention heisey friends" have come up with two cruets, the #1252 Twist in marigold and the Old Queen Ann.

"Felicitous Flamingo Hunter" went back to the Tar Heel State over the past Holidays to visit her old stamping ground and while there, naturally, Heisey Hunted and came back with several goodies in her satchel; #1252 Twist oval Hotel cream & sugar in flamingo, plus a half dozen 3 oz Cocktails also flamingo. There was a small flake in the base of one. She also picked up what she said was a "funny looking" Duck Ash Tray. I told her, that was ONLY the #357. Not bad at all! In crystal she saw a #465 Recessed Panel basket and a #355 Quator Hotel cream & sugar, these were a little on the high side, therefore passed, but she did manage nine (9) #1401 Empress 8" plates in crystal.

Again the "Mountain gal" took her "mountain truck" out for a spin and managed to fill the back with all sorts of things; a #339 Continental footed sherbet, #300 Peerless footed cake salver, #1253 Tri-corner mint in flamingo, #341 Puritan 1 pint squat jug and the #341-1/2 Puritan squat sugar (no cover); #433 Greek Key butter pats (six of them) and a #1 two handled low-footed jelly (no cover); three (3) #1425 Victorian 3 oz cruets, 2 of them without stoppers; #343 Sunburst 6" nappy with crimped edge; Excitement time - the #1220 Puntly Band toothpick, beaded top and in Custard with "Naugatuck, Conn" on rim; #3390 Carcassone 4 oz claret in sahara/#448 Old Colony etch; #1489-1/2 Puritan 6" covered cigarette box/horsehead finial, frosted and the #1489-1/2 Puritan ash tray/horsehead, also frosted; I also must mention before going on to anything else that something was also mentioned about the Mallard, Wings down and marked no less!! We haven't found that many things all at one time in ages.

Just what have I found? #1503 Crystolite one handled jelly/spider web bottom. Mine was broken several years ago and this will replace it; pair of #21 7" Candlesticks, clear; #411 Rib & Panel 6 oz oil/#7 stopper, crystal; #3370 African Stem the 3 oz wine in moongleam; #1205 Fancy Loop 4" Rose Bowl. The dealer didn't know what she had, only that it was a rose bowl. Beautiful condition and for less than a "Valentine Heart"; now the prize was a sugar in my pattern - #1404 Old Sandwich, in crystal, and round in shape. What a beauty, just where do you ever find this little gem!! That was what I call "cloud nine."

The "Bay State" boasts a #4227 Favor Vase in sahara. Nice! "My Sharp Eyed" friend has a 4-1/2 oz Kohinoor claret in zircon and the "Double Stepping Couple" boast of a #160 Locket on Chain celery and compote.

"Good English Buddy" has a pair of Petticoat Dolphin candlesticks in flamingo with a compotier to match and three (3) Rooster cocktails. MMMMM, MMMM, good!

"The Tipper" has a #353 Flat Panel individual sugar, covered; five (5) #407 Coarse Rib 7" plates in flamingo; #1469 Ridgeleigh ash tray 3" round; speaking of ash trays, in Heisey News, December 1983, "Heisey's Little Things", Louise shows a picture of the #352 Flat Panel ash tray - the Tipper has one of his own; also #473 Narrow Flute/Rim strawberry and sugar, and lastly, but by no means least, the #355 Quator cream and sugar in sahara.

It is late and time to think about my trip North tomorrow, hope we find lots of exciting things. Will catch you all later.

From the Yachting Center of the World I send best wishes for a Sweet and Happy Valentines Day.

HHH  
Janet

Editor's Note:

\*Shell and Tassel is a Duncan pattern which A. H. Heisey designed when he was with that company.



## NO. 111, CHERUB CANDLESTICK

By Bob O'Grady



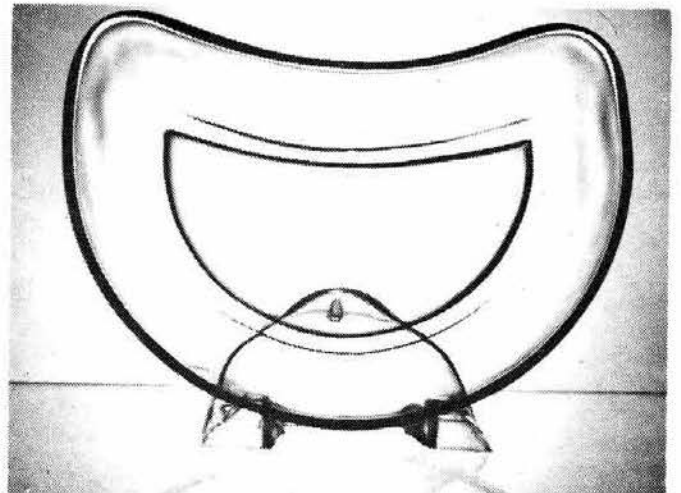
The Cherub is one of the more atypical of Heisey's candlesticks. Many generalists would be hesitant to attribute this figural to the Heisey Company. However, in the second half of the 1920s, consumer interest in glass designs popular during the 19th century led Heisey to produce several patterns copied from that earlier era. (Ref: our series of articles on the influence of early American designs on Heisey's candlesticks in the Heisey News articles of June, August and September of 1982) Although not as familiar as the dolphin candlesticks, the Cherub was produced at the same time and is most likely a direct copy (with slight modifications) from an earlier design. Though, as in the case of the dolphins, the prototype is not so immediately obvious. Mt Washington Glass Co., Central Glass Co. and U.S. Glass all produced earlier cherubs similar to Heisey's. Several French companies also produced cherubs, any one of which could have been the direct ancestor to Heisey's No. 111.

The execution of the mold for the Cherub is a tribute to the Heisey mold shop. Time and again, in Heisey's products, the student of pressed glass is struck by the excellent work of Heisey's mold makers. And this is especially true of the Cherub candlestick. During this period Heisey's candlesticks were numbered in the sequence in which they were produced. So we know, for example, that the No. 104 was designed and produced prior to the No. 105 and so on. In

the case of the No. 111 we find a discrepancy however. In October of 1928, when the Cherub candlestick went into regular production, the No's 112, 113, 114, 116 and 118 candlesticks were already on the market. While the No. 111 was designed and assigned its pattern number prior to number 112 through 118, problems with the complex mold delayed its regular production for about nine months. In the meantime, design and production of the subsequent candlesticks proceeded normally. This is confirmed by a former employee who remembered the Cherub as one of the most difficult items the mold shop had been tasked to execute.

The Cherub, at a height of eleven and a half inches, was one of the tallest candlesticks made during its production period which lasted between three to four years, from October 1926 to sometime in 1929. It was made in moongleam, flamingo and crystal and is most often seen in crystal with an overall frost or satin finish. It is a heavy candlestick with a substantial base and a punted bottom made at a time when this treatment was disappearing from most of the other Heisey candlesticks being introduced. This chubby cherub, which in effect is the column of the candlestick, stands wistfully upon a circular stepped base. The first step is collared with a basket-weave design. Although there is no evidence of wings on the cherub's back, the anatomical details are quite good - distinctive fingers, toes, facial features and wavy hair. Long tendrils or vines grow up from the base behind the cherub, extend up the back of the legs and curve around the waist to the right, continuing up the front of the body to the left shoulder where they extend above the head to support the candleholder. The arms are folded across the chest in a tender embrace of the vine. The round candleholder or cup portion is decorated with narrow vertical ribs.

Though not as difficult to find as many of Heisey's candlesticks, the Cherub is far from common. Because it is a reproduction or copy, like the dolphins, it will most likely never be found with the Diamond H mark. It was not re-issued by Imperial.



#1183 Revere Crescent Salad Plate

# CLUB NEWS

## GATEWAY HEISEY COLLECTORS CLUB

Ten members and four guests were treated to a delicious dinner at the lovely home of Phyllis & Harry Freier on December 3. After sumptuous dining a round of applause was given to our wonderful hosts.

Next, we elected our officers for 1984. They are as follows: President - Rick Stoll; Vice President - Hobie Chivers; Secretary - Mary Alice Stoll and Treasurer - Margaret Reed.

Our study club has been asked to set up a display and possible sales table of Heisey glassware at the Castel Shannon Memorial Hall flea market sometime in March, 1984. A committee was formed to check and see if suitable arrangements can be made. Perhaps we will have more information on this for those Heisey collectors in the Pittsburgh area after our next meeting.

The program for the evening was concerning various smoking items manufactured by Heisey. A vast number of examples were brought by several of our members and discussed by all.

We were shown the following items at the "Show & Tell" period: #2516 Circle Pair pitcher, #30 candlestick, Yeoman after dinner cup, Lariat saucer, Empress coffee cup, Narrow Flute sugar bowl and Pillows punch cups.

We wish all of you a Happy Valentine's Day.  
Mary Alice Stoll

\* \* \* \* \*

The Gateway Heisey Collectors Club cordially invites fellow Heisey collectors in Pittsburgh and the surrounding area to join our study club. Please write to Rick Stoll, c/o HCA, P.O. Box 27, Newark, OH 43055 and your letter will be forwarded.

## VIRGINIA HEISEY CLUB - Dorothea Clark, Sec'y.

On December 3, 1983, 12 members, from near and far, gathered in Hampton, Virginia at the beautifully decorated home of Jessie and Charles Hopkins for our Christmas party. A delicious covered dish dinner was served preceding the meeting.

A routine business meeting included completing plans for our donation to the Museum for the March Auction and the process for election of new officers in February.

Following business, the program was turned over to Jessie Hopkins. She read the poem which follows and members were asked to mentally add up the names of Heisey patterns and colors. The person with the correct number received a prize. We would like to share Jessie's poem as follows:

From a Cobalt blue sky on a night long ago  
A MoongTeam shone down and the cattle did low.

The Madonna on a Colt found shelter in a stable  
With Joseph her husband so strong and able.

On that Crystolite night our Mary so dear  
Gave birth to the Christ Child we now Revere.

Shepherds in the field playing a Narrow Flute  
Saw a Cascade of light from a star so bright.

Like the Yeomen of old to the stable were led  
And there found Baby Jesus in a Manger Bed.

Now we who are seekers of Heisey so rare,  
Have gathered to remember with loving care,

The birth of this King on that Holy Night.  
It's Christmas, My Friends--a time of delight.

Oh Santa, my dear, as you leave on your trip,  
Please pack some Fandango or Empress on your hip.

Even some Peerless or Greek Key in your sleigh,  
But please bring us Heisey on Christmas Day.

As we trim our Colonial Christmas tree,  
We'll Twist the tinsel and guess what we'll see.

The Fancy Loop we have made right in the middle.  
Thank God for this season and the sound of the fiddle.

As the Sunbursts out on this Christmas Morn,  
We'll rush to see if it's Ridgeleigh or Hawthorne.

Merry Christmas my friends and best wishes too,  
for a Williamsburg Christmas to each one of you.

by  
Jessie Hopkins

## LETTERS, we got letters....

I have enjoyed my Heisey News during 1983, and everything I have purchased at the gift shop. We always appreciate the good service, and perfect condition things arrive in, thanks, so much.

Thought the tangerine Oscars were beautiful, and am looking forward to the Ruby red ones in 1984.

We have found several good pieces of Heisey this year and hopefully 1984 will be as good.

Joyce Stougard, WA

I really enjoyed myself on my visit to the Heisey Museum. It was a very educational experience. I'm glad I made the trip. I met some very interesting people at the dinner. The people working at the museum were all very helpful. I am planning and am hopeful I can make the trip for the convention.

Mart R. Groesser, MI

\*\*\*\*\*

DON'T FORGET THE ALL HEISEY MUSEUM BENEFIT

AUCTION - MARCH 9th and 10th, 1984.

## MARCH AUCTION -- MAIL BIDS

Believe it or not -- it's time again to review some points for the mail bids for the Annual Heisey Benefit Auction (March 9 and 10, 1984). For those who cannot attend the auction, I will bid competitively for you and make every effort to win the selected item as reasonable (cheap) as possible. Your bids must reflect what is listed in the published sale catalog as to condition, pattern, and unit number. If there is a variance called at the auction (such as unlisted damage or a difference in the number of items in a lot), I will not bid on that lot. Please do not request the amount of a bid to be moved from one lot to another depending on your success or lack of success on other bid lots.

1. All bids must be received in writing and have your signature.
2. A Self Addressed, Stamped Envelope (SASE) is required for the return of unused checks and your letter giving the results of your bids.
3. You set the maximum you are willing to pay on each lot. If successful, the remainder will be refunded. Please use good judgment in arriving at your maximum bid figure -- remember, there are minimum limits to raises that the auctioneer will accept (small items - \$2.50; larger items - \$5.00, \$10.00, or as much as \$25.00).
4. Lots containing multiple items normally are not split up, but will be sold as one lot to the successful bidder. These multiple items are usually sold "by the piece" or the "pair or set to go". In such cases your bid must be a dollar value for each piece times the number of items in the lot. (Example: Cream, Sugar, and Tray Set - 3 items @ \$20.00 each = \$60.00 total bid.)
5. You may send a separate check for each lot or you may send one check covering the maximum amount of all bids. Shipping charges must be added in all cases. Any surplus bid money or shipping charges will be refunded. Instead of sending checks, you may use a valid VISA/MasterCard. In this case, we will need the type of card, the card number, and its expiration date.

Please use the following form included with the mail bid list for submitting your bids. Its use will help in processing your bids in a timely manner. Again this year, the successful mail bid glass will be packed and shipped UPS from the mailing room of the Administration Building, so be sure to include a complete address. (No post office box addresses please.)

ATTENTION!! In case of duplicate bids, the earliest postmark wins. So get your bids in as

early as possible. Bids must be received by Wednesday, March 7, at the following address in order to be prepared for the auction on Friday and Saturday.

Mrs. Lynette Parmer  
Mailman IV, HCA Auction  
c/o Battelle Columbus Division  
505 King Avenue  
Columbus, OH 43201

If you have any questions, you may call me at (614) 252-0456 after 6:00 P.M. or weekends. No collect calls please!

### PLEASE NOTE:

The list to which Lynette refers will be in the Auction List when it is made.

### PATRON ADS

Most HCA Members are not aware of the large cost of mailing the Auction List. We are trying this year to help offset this cost with Patron Ads with donations of \$5 or more. This list will be published either in the Auction List or the next addition of Heisey News. Your help will be very much appreciated, and will help increase our profit from the auction.

Mail your donation to Ray Ziegler, HCA Auction, P.O. Box 27, Newark, OH 43055.

### HCA ANNUAL AUCTION - MARCH 9 and 10, 1984.

OVER 700 LOTS OF BEAUTIFUL HEISEY GLASS - A LARGE ASSORTMENT OF NUT DISHES, SALT DIPS - INCLUDING ANOTHER 1183 REVERE IN COBALT WHICH PROVED TO BE SO POPULAR LAST YEAR.

MOST COLORS, RARE CUTTINGS, A WIDE VARIETY OF ITEMS TO PLEASE MOST EVERYONE.

YOUR LIST WILL BE COMING SOON. WHEN YOUR LIST ARRIVES, BE SURE AND LOOK IT OVER AND SEND YOUR MAIL BIDS IN PROMPTLY.

DON'T FORGET TO MAKE YOUR MOTEL RESERVATIONS AS SOON AS POSSIBLE.

THE MARCH MEETING IS THE MEETING WHEN THE CANDIDATES FOR THE BOARD WILL BE NOMINATED,

THIS IS A GOOD TIME TO BECOME BETTER ACQUAINTED WITH FELLOW HCA MEMBERS.

JANUARY 8, 1984

## Nocera: I don't know the meaning of the word

# Imperial head won't consider closing

BELLAIRE -- "our progress is that we're here."

That statement more than any other exemplifies the kind of determined optimism guiding Imperial Glass Corp. these days. The firm has been operating under bankruptcy status for more than a year, manager Michael Nocera steadfastly refuses to consider the possibility that the 80-year-old plant might close permanently.

"That's not in my vocabulary," he responds when asked to speculate on the idea. Nocera is the first to admit Imperial's financial standing is not good, however he repeatedly points to a small but growing list of accomplishments that he says will lead the company out of bankruptcy.

"The important thing is, for 1983 the factory still had 84 percent of the business we booked in 1982," he said. "When you consider the economy and the chapter 11 bankruptcy, and you see we're down only 16 percent -- it's remarkable what the people in the factory have done."

Imperial has added several items to its product line for 1984 which Nocera and company owner Robert Stahl hope will attract new business.

"When we first went into chapter 11, we cut sales because we cut the product line to two: Old Williamsburg and collectors' crystal," Nocera explained. "In 1983, we selectively made other lines if an order was big enough. In 1984, we're telling the world we have a limited line of Candlewick and we will come out with other pieces as we rebuild. We also accept orders for Revere ware if they are large enough."

A small melting tank in operation since Dec. 3 has allowed Imperial to again produce pink glassware and to manufacture smaller orders more economically. "As soon as we let the collectors know it was available, we had an order for some specific Christmas bells," Nocera said. "We also got an order for a milk glass cache pot from the Metropolitan Museum of Art because of that tank."

The firm is restructuring its sales force and looking at other retail outlets, but the bottom line is the continuation of bankruptcy status.

Stahl and Nocera are still searching for money to retool the plant and pay \$600,000 debt to Lenox Crystal, which once owned Imperial. That would end the bankruptcy status and pave the way for the U. S. Department of Housing and Urban Development to actively consider a \$5 million Urban Development Action Grant application.

Nocera said the UDAG application has been "rolled over" until the next quarter of the year. "Personally, I think Lenox will give us an extension because they are aware of the need for the handglass industry in this country, even though we are a competitor with Lenox crystal,"

he said. "The handglass industry is in trouble throughout the United States but Imperial has managed to survive and even grow a little, even in chapter 11."

"There have been companies operating in chapter 11 for upwards of 10 years. I find that invigorating because in this country, companies with the difficulties we have had, had the opportunity to regroup and we are doing that," Nocera explained.

He is particularly proud of Imperial's work force, which now numbers 48. "Because of those people in the factory who refused to say no, there has been nothing we asked of ourselves in the last year and a half that we couldn't do."

As an example, Nocera explained, "In 1982, we lost a customer. He wanted eight or 10 Heisey animals in ultra blue and we couldn't do it, so we leased the molds to another company. He wasn't really happy with that, so he came back and we worked out a deal. Now his customers say they've never seen quality like this out of Imperial."

As Imperial Glass Corp. enters 1984, the positive words remain but so do the negative finances. "I see us getting out of chapter 11, with or without the bridge financing," Nocera said. "A lot of people thought we should have rolled over and played dead. We're not well -- I'd say we had a bad cold."

"The realists are saying we'll be here another 80 years. The negativists say we're going to close. That's not in our vocabulary."

MAINTAINING THE quality workmanship that made Imperial Glass Corp. takes time, patience, and repeated testing. General Manager Michael Nocera and supervisor Gary Taylor, top photo, examine a sample of glass from a new melter that has enabled Imperial to produce pink glass for the first time in several years. In the bottom photo, delicate strands of glass are visible trailing from the melter as Nocera shields his face from the heat of the furnace.

Editor's Note: Sorry we could not print the photos as they were very light xerox copies.

Since the glass is still set up in all the pots in the big furnace, there would seem to be no way that Imperial could make large quantities of anything at the present. Since the bankruptcy took effect in the fall of 1982, they have been using two day tanks which had to greatly curtail production.

The small tank which they put in operation in December 1983 has added some versatility and allowed them to make some colors such as pink.

We hope that Mike Nocera's optimism is justified and that we are able to purchase some items for resale.

Louise Ream



No. 1472  
3 in. Candlestick



No. 1469 1/2 Candlestick  
Cut Top and Bottom



No. 112—3 in. Candlestick  
Pat. No. 70558



No. 99 Candlestick



No. 600  
2 1/2 in. Handled Candlestick  
Saucer Footed



No. 132 2 in. Candlestick



No. 1401  
Footed Candlestick



No. 1404  
6 in. Candlestick



No. 109 Candlestick



No. 1401  
6 In. Toed Candlestick



No. 1405  
6 In. Candlestick



No. 2—7 in. Candlestick  
Puntied Bottom  
Also made 9 In.



No. 135—6 in. Candlestick



No. 133 6 in. Candlestick



No. 21 7 in. Candlestick  
Puntied Bottom Cut Top  
Also made 9 in



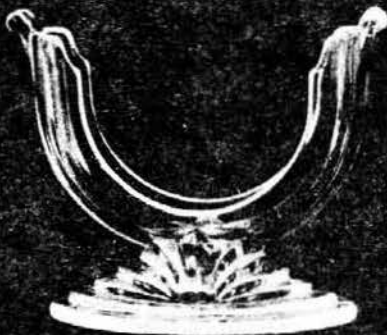
No. 129  
6 in. Triplex Candlestick  
3 Arms



No. 134 - 5 in. Candlestick



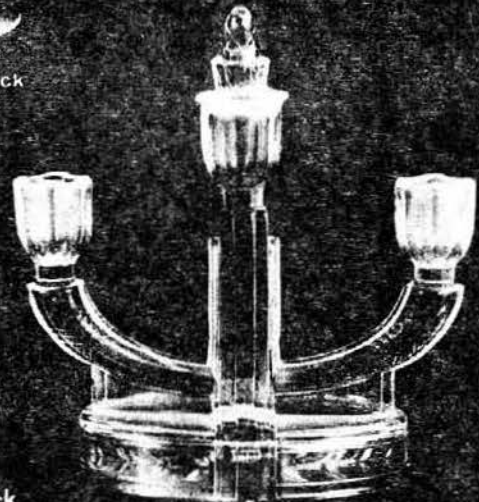
No. 1428  
2 light Candlestick



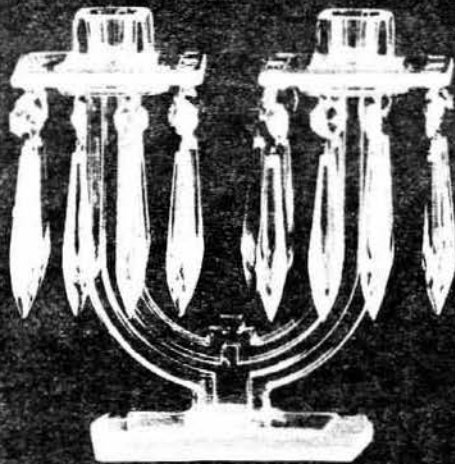
No. 141  
6 in. U Candlestick



No. 31  
Handled Toy Candlestick



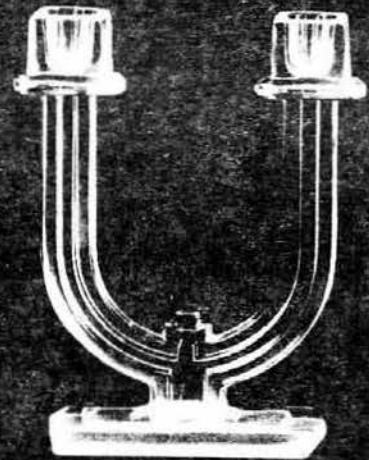
No. 1471  
3 light Candlestick & Center Plug



No. 4044  
2 light Candlestick  
with Bobeche & "A" Prisms



No. 1433  
2 light Candlestick



No. 4044  
2 light Candlestick



No. 1445  
1 light Candlestick



No. 140  
7 In. 2 light Candlestick



No. 1445  
2 light Candlestick



No. 142  
3 light Candlestick



No. 110 Candlestick



No. 1425  
2 light Candlestick



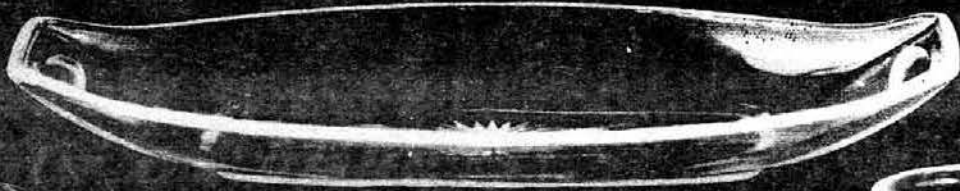
No. 1447  
2 light Candlestick



No. 136  
Triplex Candlestick



No. 1445  
1 light Candlestick  
with No. 6 Bobeche & "A" Prisms



No. 1185  
12 in. Celery Tray  
Plain or Diamond Optic  
Ground Bottom or Fire Polish



No. 1189  
Individual Sugar & Cover



No. 1224  
Hot & Cold Liner



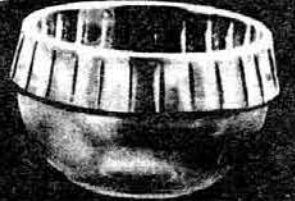
No. 1222  
Hot & Cold Liner



No. 1186  
Cup & Saucer  
Plain or Diamond Optic



No. 1189  
Individual Cream



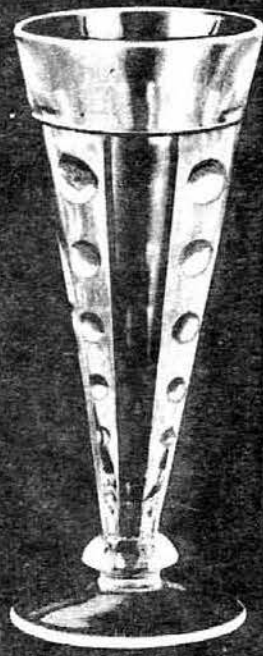
No. 1223  
Hot & Cold Liner



No. 1189  
9 in. Celery Tray  
Ground Bottom  
Also made 13 in.



No. 1413  
Straight Vase  
Stuck Handles



No. 1404  
8-oz. Pilsner



No. 1413  
Straight Vase  
Also made Flared

Hope Glass Co. H-13-42  
 5-11090

#1812 - 4 1/4" Puff \_\_\_\_\_ 12.00  
 1812-A-4 1/2" " \_\_\_\_\_  
 1812 1/2 - 4 1/2" (A) " 1812 1/2 A-  
 made from same mould  
 as #1812-A-4 1/2" with bottom  
 plug removed. - 1440  
 m+8V-1380

#1711 - Cologne - 40.00 - 21.00  
 #1812 - 6 3/4 Cologne - 18.00  
 #143 - Sherbet Hld. Custard - 3.00  
 mould charge 70.00 - 1/2 R. etc

#1495 - Cologne - Lead - 10.80  
 mould charge 20.00  
 m+8V-25 5/8

#399 - 9" 5th Plate Lead Glass - 10.80  
 " - 4 1/2" " " " - 3.30  
 " - " " " " " - 2.40  
 " - 9" " " " " - 2.40

#1176 - 6" 13rd Plate Glass - 21.00  
 mould charge  
 #393 - 21.00  
 #208 - " " " " 2.70  
 #37 - " " " " 2.70  
 #106 - " " " " 18.00  
 #77 - " " " " 18.00

MINUET... to Cherish  
 Forever... easy to buy



HEISEY'S Minuet...  
 STATELINESS...  
 New stemware for...  
 inexpensive in Heisey's...  
 total \$12 doz. Str...  
 tin and rest. Choose...  
 did array of pieces MINUET...  
 These unique duotons, et...  
 different lend a fasci...  
 to time gaiety and...  
 high quality...  
 Better stores. Write for...  
 A. H. HEISEY & CO., Newark, O.

**HEISEY'S**  
 HAND-MADE GLASSWARE

HAPPY  
 VALENTINE'S  
 DAY!!

Heisey made many items for the Hope Glass Co. Most of them seem to be puff boxes, colognes and miscellaneous items. Many of these may remain unrecognized since we have no pictures. A few of those items of which we are aware have come from former Heisey employees such as Paul Fairall. The last item #77, says Mellon (sic) Jam (Jar). We are not aware of any such jar unless it could be Crystalite.

It is possible that these were private molds belonging to the Hope Glass Co. We enjoy reading these lists that we find in old price lists and hope that you do as well.  
 Louise Ream

NEW:  
 Victorian Girl Belle - Orange Plain.....\$11.50  
 Victorian Girl Belle - Orange Satin..... 13.00

ORDER FROM: HCA SALES  
 P.O. BOX 27  
 NEWARK, OH 43055

Don't forget 10% Shipping - Ohio Residents add  
 6% Sales Tax.

Route 202  
Lahaska, PA 18931  
(215) 794-7800

LYNNE  
DOLL



ART'S  
HOUSE

P. O. Box 54-6014  
Miami Beach, FL 33154  
(305) 861-7700

"HEISEY OUR SPECIALTY"

*Dear Heisey Collector and Dealer,  
We're Heading Your Way!! Heisey Animals,  
Lovely Old Patterns, and a Rainbow of Colors, will  
be coming along with us.*

WE'LL ALSO HAVE SOME OF THE BEAUTIFUL GORHAM MUSICAL DOLLS ALONG.

*We'll be at the following show*

MIAMI BEACH, FLORIDA - CONVENTION CENTER - FEBRUARY 10 - 15, 1984.

*See you soon,  
Lynne and Art*



Miscellaneous Vases

**OAK GROVE ANTIQUES**

49 GROVE STREET  
AYER, MA 01432

PH: 617-772-2538  
After 5:00 P.M.  
P & I EXTRA

\*Marked

- #1469 RIDGELEIGH 5-Star Relish\*.....\$32.50
- #1469 RIDGELEIGH 2-Hdld. Bon Bon\*..... 18.00
- #1469 RIDGELEIGH Divided Nut Dish\*(2)ea. 10.00
- #1469 RIDGELEIGH Ind. Oval Jelly\*(4) ea. 9.00
- # 150 BANDED FLUTE 13" Tray\*..... 22.00
- # 393 NARROW FLUTE 6" 3-cornered hdld. Jelly\*..... 14.00
- # 393 NARROW FLUTE 5" Hdld. Jelly\*..... 12.00
- # 393 NARROW FLUTE Ind. Creamer\*(2) ea.. 14.00
- # 393 NARROW FLUTE Low Ftd. Grapefruit\* (4) ea..... 22.00
- # 2 COASTERS\*(4) each..... 10.00
- # 4 COASTERS\* (2) each..... 10.00
- #1186 OVAL LEMON Dish, Etched\*..... 12.00
- #1184 YEOMAN 5" Low Ftd. Comp.Edge Etch\* Shallow 4" Nappy, Trefoil Etch\* (4) each..... 7.00
- #1252 TWIST 12" Oval Platter\* Wear Marks 13.00
- #1519 WAVERLY Sugar, Orchid Etched\*..... 22.00
- #1401 EMPRESS Ind. Sugar, Sahara\*..... 20.00
- #1401 EMPRESS Creamer, Lafayette Etch\*.. 26.00
- #1509 QUEEN ANN Individual Sugar\*..... 15.00
- #1231 RIBBED OCTAGON Sugar, Sahara\*..... 9.00

**SANDRA HANDLER**  
11 SAGEWOOD DRIVE  
ONTARIO, CANADA  
M3B 1T5


PH: 416-441-2251  
PRICES U.S.  
P & I \$3 Min.  
All Signed Pieces

- #1252 TWIST, 10" Celery, Flamingo.....\$ 20.00
- # 135 CANDLESTICK, Cry. 6-3/4" Silver Dep..... 65.00
- # 341 PURITAN 4" Jar n/1, Star Btm. Cry 20.00
- # 341 PURITAN 4-1/2 oz. Punch Cup,Cry. 8.00
- # 351 PRISCILLA 8" Ale, Crystal..... 45.00
- # 355 QUATOR Ind. Cr./Sug., Crystal... 45.00
- # 355 QUATOR Ftd. Creamer, Crystal.... 40.00
- #1184 YEOMAN D/O 12" Floral Plateau, Flamingo..... 55.00
- #1184 YEOMAN D/O 4-3/4" Ftd. Comp.Flam 28.00
- #1428 WARWICK Indiv 2-1/2" Vase, Cry.. 18.00
- #1428 WARWICK Indiv 2-1/2" Vase,Cobalt 105.00
- # 411 RIB & PANEL 9-1/2" Trumpet Vase, Crystal..... 25.00
- # 393 NARROW FLUTE 6 oz. Champ. Cry... 22.00
- # 393 NARROW FLUTE 4-1/2" Plate, Cry.. 7.00
- # 393 NARROW FLUTE 4-1/2 oz. Punch Cup Crystal..... 10.00
- # 500 OCTAGON Reg. Cr./Sug., Flamingo. 40.00
- #1170 PLEAT & PANEL 3 pt. Jug, Flam... 65.00
- #1170 PLEAT & PANEL 4-3/4" 2-Handled Jelly, Moongleam..... 25.00
- #1405 IPSWICH 4 oz. Ftd. Sherbet, Sah. 25.00
- #1280 WINGED SCROLL 1/2 Gal.Jug, Emerald..... 245.00
- #1280 WINGED SCROLL Tumbler , Custard. 85.00

**MOSTLY HEISEY**

RHODA CURLEY  
16 CLAYTON PL.  
ALBANY, NY 12209

PH: 518-482-6272  
UPS Extra  
S.A.S.E.

I  LOVE FLAMINGO

GIVE A GIFT OF GLASS TO YOUR SWEETHEART-HIM OR HER - FOR ST. VALENTINE'S DAY - MAKE IT HEISEY

- #3362 CHARTER OAK 7" H Ftd. Comp.Flam..\$ 59.00
- #1186 YEOMAN Puff Box W/Cover D/O Flam. 39.00
- #1184 YEOMAN Bridge Smoking Set - 4 Ash Trays & Holder, Flamingo..... 79.00
- # 361 Ash Tray and Cig. Holder, Flam... 89.00
- # 15 FLOWER FROG W/Duck Top, Flamingo. 269.00
- #1252 TWIST Nut Dishes 2-Hdld.Flam.(5) Each..... 19.00
- #1252 TWIST Turned Up 2-Hdld Bon Bon Flamingo..... 19.00
- #4206 OPTIC TOOTH 8" Vase, Flamingo.... 59.00
- #4204 BUD VASE 9 1/2" High, Flam., Dainty. 39.00
- #1193 CONSERVE 7" P 25 V2, Flamingo.... 29.00

IF YOU ARE PLANNING TO ATTEND THE SHOW IN DUANESBURG, NY, MAY 4 to 6, WHY NOT PLAN TO STOP AND SEE US. WE HAVE MANY PIECES OF HEISEY AND CAMBRIDGE THAT YOU CAN MAKE SELECTIONS FROM ALL PRICED RIGHT. BY APPOINTMENT.

**PATTON HOUSE ANTIQUES**

BOX 547  
LOUISA, VA 23093

PH: 703-967-1181  
After 6:00 P.M.  
UPS Extra

\* Marked

- # 361 CRISS CROSS Bowl 8" \*.....\$73.50
  - # 451 CROSS LINED FLUTE Bowl 8-1/2" \*... 40.00
  - # 354 WIDE FLAT PANEL Cr.& Sugar, Flam\*. 60.00
  - #1503 CRYSTOLITE Pitcher..... 67.50
  - #3359 PLATEAU Sherbets (8) ea..... 8.50
  - #1210 BOW TIE Bon Bon, Moongleam..... 50.00
  - #1483 STANHOPE Triplex Relish, Maytime Etching..... 32.50
  - BRYCE RINGMONT Champagnes, Amber Bowl (6) each..... 11.50
- FOSTORIA Matching Service - SASE FOR PRICES

**DONALD P. BEAN**

36 HARDING STREET  
NILFORD, MA 01757

PH: 617-473-0561  
P & I EXTRA  
\* MARKED

- # 150 BANDED FLUTE Punch Cups\* (4) ea...\$ 7.50
- # 343 SUNBURST Punch Cups\* (6) ea..... 12.50
- #1776 KALONYAL 5" Nappy\*..... 17.00
- #1503 1/2 CRYSTOLITE Sug. & Cream\*...Pr. 25.00
- #1519 WAVERLY Ftd. Sugar\*, Orchid Etch.. 28.00
- #1200 CUT BLOCK Ind. Sug. Custard, Souv. (2) ea..... 27.00
- #1220 PUNTY BAND Ind. Cream\*, Custard, Souv..... 30.00
- #1255 PINEAPPLE & FAN 1/2 Pt. Tankard, Custard, Souv. of Bailey Island,ME 48.00
- #1405 IPSWICH 7" Sw. Plates (10) ea..... 8.50

BOSTON HOUSE ANTIQUES PH: 617-471-2723  
 P.O. BOX 94 P & I EXTRA  
 WOLLASTON, MA 02170 All Items Mint  
 Otherwise Noted

- #1252 TWIST, Oil/Vinegar Bottle, Moongleam, Marked.....\$ 85.00
- # 429 HOTEL Cream & Sugar (2), Sahara Flamingo..... 85.00
- # 500 OCTAGON Ice Tub\* Flamingo (no Handle)..... 50.00
- #1252 TWIST Ice Tub\*, Moongleam (no handle)..... 50.00
- # 112 CANDLESTICKS 3", Flamingo (pr).. 40.00
- # 411 RIB AND PANEL 3 oz. Juice(5)\*Ea. 10.00
- # 373 COLONIAL Low Ftd. Sherbet(6)\*Ea. 10.00
- #1567 PLANTATION Double Relish\*..... 40.00
- MOONGLEAM Ladle\*..... 25.00
- # 150 WEDDING BAND Low Ftd. Sherbets\* (5) each..... 10.00
- #1540 LARIAT 3-Lite Candleholder, Moonglo Etch..... 35.00
- #1252 TWIST 1 Qt. Pitcher\*, Falmingo.. 75.00
- PLATEAU Floral 10" with #10 Floral Block, Flamingo\*..... 45.00
- # 10 FLORAL BLOCK, Marigold..... 25.00
- # 300 PEERLESS Punch Cups\* (8) each... 8.00
- # 433 GREEK KEY Punch Cups\* (6) each.. 10.00

GLASS, ETC. PH: 617-631-9169  
 JANET & LLOYD CASWELL P & I EXTRA  
 41 MARION ROAD  
 MARBLEHEAD, MA 01945 \* Marked

- #1509 CANDLESTICKS & D/F 11" Floral Bowl.....\$150.00
- #1445 GRAPE CLUSTER 1-Lite Sticks\* pr. 135.00
- #1540 LARIAT 2-Lite Candlesticks..... 45.00
- # 134 TRIDENT Sticks, Pr. Tea Rose Et. 48.00
- #1252 TWIST 9" Floral bowl/rolled edge, Flamingo..... 50.00
- #1252 TWIST Mayonnaise\*, Clear..... 24.00
- #1252 TWIST 7" Pickle Boat\* Moongleam. 18.00
- #1540 LARIAT Bon Bon, Sterling Overlay 35.00
- #1231 RIBBED OCTAGON Cups/Saucers, Moongleam\* (4)...all..... 75.00
- #1951 CABOCHON Cream & Sugar\*..... 40.00
- #4054 CORONATION Tankard & 4 5 oz. Glasses/Gold..... 120.00
- #1401 EMPRESS 12" Celery, Sahara\*..... 32.00
- #1184 YEOMAN Relish W/Silver Overlay.. 38.00
- # 393 NARROW FLUTE 4 oz Low Footed Sherbets (6) ea..... 10.00
- # 393 NARROW FLUTE Med. Finger Bowls (6) each..... 8.00
- #1486 COLEPORT Floral Bowl..... 35.00
- #1225 PLAIN BAND Handleless Sherbet, Custard\*..... 55.00
- DUNCAN Viking Boat, Perfect..... 125.00
- Baby Swan, Clear..... 12.00
- NEW MARTINSVILLE
- #4521 Swan, Cobalt Neck 1 sj. 10"..... 45.00

JIM GARTNER PH: 301-869-5306  
 444 GIRARD ST. #103 P & I EXTRA  
 GAITHERSBURG, MD 20877 \* Marked

- # 5 CANDLESTICKS, 9"...Pair.....\$145.00
- #1225/109 PETTICOAT DOLPHIN Ftd. Compo- tier, Flamingo..... 165.00
- #1425 VICTORIAN 3 oz. Cocktails \*(6) ea. 16.00
- #1425 VICTORIAN Saucer Champagnes (8) ea 15.00
- #1404 OLD SANDWICH Hld. Mug\*, 12 oz. Sah 145.00
- #1404 OLD SANDWICH Water Pitcher\*, 2 qt. Sahara..... 135.00
- #1404 OLD SANDWICH Ice Teas, 12 oz.\*, Sahara (4) each..... 30.00
- #1401 EMPRESS Ftd. Salt & Pep, Sah..Set. 110.00
- #1401 EMPRESS Cruet, Sahara..... 145.00
- #1401 EMPRESS Ash Tray\*, Flamingo..... 75.00
- #1205 FANCY LOOP Sugar & Cov.(Table Set) 65.00
- # 341 PURITAN 7" Ftd. Bowl & Cover\*..... 145.00
- # 341 PURITAN Tankard\*, 1/2 Gal..... 68.00
- # 352 FLAT PANEL Crushed Fruit Jar, 1 Qt.\* Dated..... 145.00
- # 361 CIG. HOLDER, ASH TRAY, Moongleam\* (Mould Scratch)..... 95.00
- #1506 PROVINCIAL 5-1/2" Ftd. Candy Jar & Cover, Zircon\*..... 285.00
- #3350 WABASH 6" Comp. & Cov. W/Silver Overlay, Wide Optic, Mglm Base & Ball Top\*..... 175.00
- #1021 HOTEL Cream/Sugar W/Top, Daisy Cut 75.00
- # 480 BASKET, Fruit, 6" - Daisy Cutting. 140.00

BETTY KENNEDY PH: 617-933-3584  
 13 HAWTHORNE STREET SHIPPING EXTRA  
 WOBURN, MA 01801

- # 343 SUNBURST Punch Bowl/Base \$140.00
- # 365 QUEEN ANN Punch Bowl/Base, 10 Cps 365.00
- # 350 PINWHEEL & FAN Punch Bowl Base.. 35.00
- # 353 COLONIAL Soap Dish/Cover..... 35.00
- #1184 COLOGNE W/Cutting #65 Stopper... 35.00
- # 485 COLOGNE #64 Stopper Sterling/ Enamel..... 75.00
- # 16 CANDLESTICKS 9"...Pair..... 75.00
- # 112 CANDLESTICKS, Moongleam..Pair... 40.00
- # 120 CANDLESTICK, Flamingo..... 20.00
- # 135 SAHARA Floral Bowl 12-1/2" Rd... 45.00
- #4027 DECANTER #467 Tally Ho Etch..... 160.00
- #4027 DECANTER Cry. W/Mglm Ft. No Strp. 35.00
- #4162/2VASE, Moongleam..... 45.00
- #4044 NEW ERA Cocktails, Venus Cut (6) each..... 25.00
- #3350 WABASH Sauc. Champ., Hawthorne (4) each..... 25.00
- #1405 IPSWICH Soda, 5 oz. (6) each.... 10.00
- #1405 IPSWICH Plates, 7" (6) each..... 8.00
- #1495 FERN Belvedere Etch, 15" Hld. Tray..... 45.00
- #4225 COCKTAIL SHAKER 14" T. Ptd. Horse Head on Front..... 45.00
- #4036 COCKTAIL SHAKER, Fisherman Etch. 125.00

CLASSIQUE GLASS CO.  
BOX 52572  
TULSA, OKLA 74152

PH: 918-585-3203  
P & I EXTRA \*Marked  
Mint & Prices Ea.  
Unless Noted

- # 507 ORCHID Etch. Ftd. Crmr/Sugar\*Set\$ 70.00
- # 515 HEISEY ROSE ETCH:  
7-1/2" Plates (11)..... 18.50  
Sherbet Rose Stem (6)\*..... 28.50  
5 oz. Juice, Rose Stem\*..... 30.00
- #1170 PLEAT AND PANEL:  
Flamingo 3 Pt. Ice Lip Pitcher\*. 60.00  
Flamingo Ftd. Cream & Sugar..Set 47.50
- #1229 OCTAGON:  
Hawthorne 3 Pc. Mayo Set: Con-  
sists of Ftd. Bowl Underplate &  
Ladle\*...Set..... 75.00  
Sahara Ind. Hdld Nut Dish,  
Empr. Etch (3)\*..... 25.00  
Flamingo Ind. Hdld. Nut Dish\*... 15.00
- #1252 TWIST, Mglm. 2 Hdld. 5-1/2"Bowl\* 22.50
- #1255 PINEAPPLE & FAN:  
Emerald Grn & Gold Cvd. Butter. 140.00  
Emcrald Grn. 3-1/2" Nappy..... 25.00  
Crystal 12" Vase..... 35.00
- #1280 WINGED SCROLL, Emerald 2-Hdld.  
Spoon..... 75.00
- #1295 BEAD SWAG Opal Cvd. Sug/Creamer  
Floral & Gold Decoration..... 210.00
- #1401 EMPRESS  
Sahara 7-1/2" 3 Comp. 3 Tab.  
Handled Relish..... 32.50  
Sahara 3 Ftd. Dolphin Creamer\*.. 45.00  
Sahara, Oil Cruet, Orig. Stpr... 72.50
- #1404 OLD SANDWICH Sah. Oval Creamer\*. 42.50
- #1405 IPSWICH:  
Sahara 2-Hdld. Sugar\*..... 29.50  
Cry. Candle Vases, Prisms & In-  
serts...Pair..... 165.00  
Cry. Tall Sherbets (8)\*..... 13.50
- #1425 VICTORIAN Cry. 8-3/4" Plate\*.... 15.00
- #1425 VICTORIAN Cry. Wines (2)\*..... 26.00
- #1425 VICTORIAN Cry. Cup\*..... 12.50
- #1425 VICTORIAN Cry. Sugar\*..... 25.00
- #1445 CANDLESTICK 10" Crystal..... 90.00
- #1487 COLEPORT Dawn Tumblers (6)\*.... 30.00
- #1506 WHIRLPOOL Zircon 4 Compt. Rect.  
Hdld. Relish..... 160.00
- # 1540 LARIAT CRYSTAL:  
2-Lite Candelabrum..... 30.00  
Divided Salad Dressing Bowl..... 37.50  
Cheese Compote..... 25.00  
Nut Cup..... 17.50  
Stemmed Goblet..... 18.50
- #1590 ZODIAC Cry. 8" 4 Comp. Relish... 30.00
- #4026 DECANTER, Mglm. 16 oz. Orig.Stpr 110.00
- #4157 YEOMAN Rolled Rim Rose Bowl..... 23.00
- HEISEY BY IMPERIAL:  
9" Zodiac Bowl, Verde..... 50.00  
Whirlpool, Cobalt 8 oz. Tumbler,  
Marked Heisey (4)..... 33.00

AND MUCH MORE - PLEASE WRITE  
YOUR WANTS - SORRY NO LISTS

THE COLLECTOR'S STOP  
512 BROUGHTON DRIVE  
BEVERLY, MA 01915

PH: 617-921-0115  
After 6:00 P.M.  
All Items Excellent  
Otherwise Stated  
S & I EXTRA

\* Marked

ALL ITEMS SUBJECT TO PRIOR SALE

- # 353 COLONIAL Cheese/Cracker 9 1/2"\*.....\$ 47.50
- #1485 SATURN Whipped Cream Bowl, Zircon\* 48.50
- #1184 YEOMAN Mustard & Cover, Flamingo\*. 55.00
- # 109 PETTICOAT DOLPHIN Candlesticks, 6"  
Flamingo (Mint Cond)...Pair..... 275.00
- #1225/109 PETTICOAT DOLPHIN Ftd. Compo-  
tier, Flamingo..... 170.00
- ROSE ETCH 3 oz. Oil Ftd. #122  
Stopper..... 165.00
- #1201 FLORAL BOWL; 11" Low Ftd., Mglm... 67.50
- # 160 LOCKET ON CHAIN Shade (mint)..... 165.00
- #1404 OLD SANDWICH Candlesticks, Sahara  
6"\* Pair..... 185.00
- #1401 EMPRESS 3-Pint Ftd. Jug\*, Flamingo 125.00
- # 16 CANDLESTICKS 5 1/2"..Pair..... 50.00
- # 459 BASKET, Cloister Cut\* 8"..... 160.00
- GOOSE, Wings Down..... 250.00
- #1401 EMPRESS Toed Candlesticks, 6"\*,  
Sahara...Pair..... 195.00
- #1403 HALF CIRCLE Cr./Sug.\*, Moongleam.. 85.00
- #1185 YEOMAN 10 1/2" Sandwich Plate\*..... 32.00
- #5038 ROOSTER Cocktails (3) ea..... 47.00
- #3368 ALBEMARLE 7" Ftd. Compote, Sahara\*  
With 448 Old Colony Plate Etch D/O 85.00
- # 305 PUNTY & DIAMOND POINT Cologne,  
Silver Top..... 40.00

### IMPORTANT NOTICE

Due to an increase in Printing Cost and  
Postal Rates, we are forced to raise our Adver-  
tising Rates.

THE RATES ARE AS FOLLOWS:

Dealers' Directory - 5 lines - \$20.00  
Each additional line - \$2.00

Classified - 12¢/Word - \$1.20 Minimum  
Abbreviations & Initials count as words.

Display	Member	Non- Member
1/8 Page (9 items)	\$15.00	\$25.00
1/4 Page (20 items)	\$24.00	\$35.00
1/2 Page (20 items Horizontal)	\$40.00	\$50.00
1 Page (50 items)	\$65.00	\$80.00

Please, in the future, will advertisers list ads with  
pattern number pattern name, size, item, color and  
price, in that order. See ads in the newsletter for  
format

Thank you,  
Jan Thran

## Classified Ads

**WANTED:** Buying Caprice blue or Rosepoint by Cambridge, Rose or Orchid by Heisey, and American, June, Fairfax, Versailles, Trojan, etc by Fostoria. NADINE PANKOW, 207 S. Oakwood, Willow Springs, IL 60480 - PH: 312-839-5231.

**FOR SALE:** Most Colors, Most Patterns, 2000 pieces of Heisey to choose from. S.A.S.E. Please. No list available, Write wants. PEGGY'S ANTIQUES, Box 367, Spavinaw, OK 74366 PH: 918-589-2859

**FOR SALE:** Heisey, selling choice miniatures. New list each Quarter. Large double S.A.S.E., Please. CLIFF HARRALSON, 1426 W. Highland, Springfield, MO 65807

**FOR SALE:** Caramel Slag Animals, Complete Set of 18 - \$750.00 UPS & Ins. Extra VICKI SANSOM, 5825 Satinwood Drive, Columbus, OH 43229 PH: 614-436-4896.

**SELL AND BUY:** Heisey, Cambridge, Fostoria and other crystal. Available Now: Orchid violet vase\* \$85.00, Arcadia Cutting on #5077 stem six sherbets\* \$18.00, six goblets\* \$22.00. Crystalite: Pitcher \$75.00, five oyster cocktails \$25.00, 4 clarets #35.00, five service plates (slight wear) \$32.00, Ipswich one pair candle vases\* w/inserts \$150.00 pr., Old Sandwich Sahara: Pitcher (no ice lip) & eight ice teas \$450.00. Ridgeleigh: 6 shot glasses\* \$25.00. Rose: one claret \$65.00. Warwick console bowl\* & single candles \$65.00 set. Pinwheel & Fan hair receiver\* w/silver cover \$85.00. Lariat: 10" basket \$145.00. All prices each plus shipping. CRYSTAL MATCHING SERVICE, 1155 Willow St. #24, Faribault, MN 55021 PH: 507-334-4457.

**FOR SALE:** Special Issue - American glass, featuring Heisey and many others, only \$1.00 (Plus Free current issue riverboats and canals) 1 year only \$3.95. Order today! National HOBBY HORSE News, POB 612, New Philadelphia, OH 44663

**FOR SALE:** Ipswich Sahara candle vase inserts, \$85 pr., Warwick Horn of Plenty, Sahara Ind. candle holders \$50 pr., \$1404 Old Sandwich Ind. ashtrays, Cobalt \$25, Sahara \$20 Clear \$9, 2 #3350 2½ oz. wide optic wines w/Frontenac Etching \$20 each, Fandango toothpick \$65, Empress Ice bucket w/Drinking Club etching hammered silver tone handle \$140. ELIZABETH CASON, 401 32nd Street, W., Bradenton, FL 33505 PH: 813-748-0851.

**WANTED:** #1404 Old Sandwich Sahara stick (1); Coarse Rib 7" plate, flamingo (1); #2-300 7" candlestick (1), GLASS ETC, 41 Marion Road, Marblehead, MA 01945 - PH: 617-631-9169.

**FOR SALE:** Hundreds of Heisey pieces. Send SASE for list. M & J WALTER ANTIQUES, c/o Sir Speedy, 431 Main Street, Woburn, MA 01801.



### Its Third Annual Antique and Collectable ALL GLASS, CHINA and POTTERY SHOW AND SALE 1984

March 3, Sat. 10 a.m. to 6 p.m.  
March 4, Sun. 10 a.m. to 4 p.m.

San Mateo County Fairgrounds

Oak Hall • ADMISSION 2.50  
with this ad 2.00

FOR THE BENEFIT OF THE HEISEY MUSEUM  
NEWARK, OHIO

GGHCC: P.O. BOX 3614, DALY CITY, CA 94015

415-621-6693

## FLEA MARKET

HCA is once again sponsoring the Flea Market on the square - June 9, 10 and June 16 and 17th.

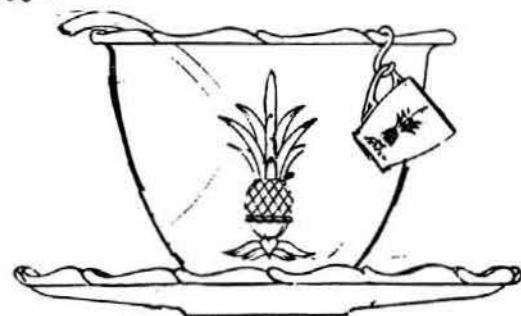
This is managed by the Buckeye Study Club and Heisey Hunters Study Club.

For a contract write:

HCA FLEA MARKET  
P.O. BOX 27  
NEWARK, OH 43055

Liz Stickle and Jan Thran  
Co-Chairman

*Plantation*



TWELFTH ANNUAL  
STARLIGHT FLEA MARKET  
SUNDAY, MARCH 11, 1984

STARLIGHT SCHOOL  
116 N. 22nd Street  
North of West Main Street  
Newark, Ohio

9:00 A.M. - 4:00 P.M. (firm times)

FOR FURTHER INFORMATION WRITE:

Dick Smith  
225 Upton Downs Road  
Newark, Ohio 43055  
PH: 614-366-5163 Evenings

ANTIQUES - HEISEY GLASS - POTTERY - CRAFTS  
Something For Everyone

Managed by: Land of Legend Heisey Study Club

Benefit of The National Heisey Glass Museum

Food Available Donation \$1.00  
25¢ Off With This Ad

**GLASS**  
review

ESTABLISHED 1971

The GLASS REVIEW Magazine is for every-  
one who studies, collects or sells glass.  
Whether your glass interests lean toward  
the early 1900's -- or the depression era--  
or with today's limited glass items, the  
GLASS REVIEW covers it all!

Articles -- price reports -- original  
catalog documentation -- shop directory --  
research and reproduction news -- trademark  
information -- glass book releases -- what's  
new on the market -- a large variety of  
glass ads (on both old and new glass) --  
plus much more.

Enclose payment and mail to:  
GLASS REVIEW, P.O. BOX 542, MARIETTA,  
OH 45750

10 'big' yearly issues

68 pages or more

\$12.50 - one year



1983 EDITION!

HEISEY'S GLASSWARE  
OF DISTINCTION

By Mary Louise Burns

Condensed and updated!  
Contains all major tableware  
patterns with pictures for  
easy identification.

\*Current price list included\*

Order direct from author  
\$11.95 pp  
MARY LOUISE BURNS  
P.O. Box 1931  
Grants Pass, OR 97527

Individual price lists  
available for Heisey's  
Orchid Etch, Rose Etch.  
Animals & Verlys @ \$1.50 ea.  
plus large SASE.

THE NATIONAL CAPITAL HEISEY COLLECTORS CLUB  
Presents the Twelfth Annual  
"ALL-HEISEY GLASS SHOW AND SALE"  
For the benefit of the Heisey Museum

SUN, MAR 25, 1984  
11 AM to 5 PM  
ARMORY PLACE  
Silver Spring, MD  
DOOR PRIZE

SAT, MAR 24, 1984  
11 AM to 8 PM  
Wayne & Fenton

HEISEY GLASS IDENTIFICATION - 1 to 3 PM, each day - Cer-  
tificate of authenticity from HCA - small fee for each  
item.

Admission \$2.00 With This Ad \$1.50

We assume no responsibility for errors in these ads after the first printing...Editor. For changes in ads during the year, please send \$2.00 per line.

## A DOOR ANTIQUES

Heisey My Specialty  
South Euclid, OH 44121  
PH: (216)381-3008

## ALL HEISEY AUCTION

Consignments Welcome  
Apple Tree Auction Center  
1616 W. Church, Newark, OH 43055  
PH: (614)344-9449

## ANN'S GIFTS & ANTIQUES

105 W. Main St., Hebron, OH 43025  
Intersection of Rts. 40 & 79  
Next Door to Daisy Queen  
Daily 10:30 - 5:30 - Closed Thursday

## ANTIQUJE JUNCTION

540 N.E. "E." St. (off I-5)  
Grants Pass, OR 97526  
PH: (503)479-8575 or (503)582-4067  
Hours: Wed-Sat 11 to 5

## ANTIQUES - THE SHULTZES

206-208 East Main St.  
Newmanstown, PA 17073  
15 Miles West of Reading, PA.  
PH: (215)589-2819

## AVERY'S QUALITY ANTIQUES

Heisey, Other Glass & China  
Shows or by Appointment  
2112 First St., Jackson, MI 49203  
PH: (517)783-4075

## B & B HEISEY & COLLECTIBLES

B. Whaley  
300 International Dr.  
Pataskala, OH 43062  
By Appointment; PH: (614)927-1557

## C & J ANTIQUES

Cole & Jean Miesner  
Box 45, 72 Whig Street  
Newark, Valley, NY 13811  
PH: (607)642-9905

## CHARLES & MILDRED FISHER

Heisey, Degenhart, Imperial, Antiques,  
Collectibles, General Line  
991 Idlewild, Newark, OH 43055  
PH: (614)522-5398

## DAVE'S ANTIQUES

Specializing In Heisey  
Shows & Appointments  
Tampa, FL 33600  
PH: (813)876-0580

## DEL'S DOINGS

Heisey - Cambridge Glass  
Furniture & Jewelry  
Box 188, 10327 Main,  
Richmond, IL 60071

## DIAMOND H PLUS

Appointment or Mail Order  
George & Eileen Schamel  
Rt. 3, Box 419, Boonsboro, MD 21713  
PH: (301)432-6285

## DIE KUNST GALLERIES & ANTIQUES

Specializing In Heisey  
Vel & Andy Andress  
Box 329, 725 Front St.  
Leavenworth, WA 98826  
PH: (509) 548-7856

## ELIZABETH BASSETT CASON

401 32nd St., W.  
Bradenton, FL 33505  
Mail Order-List  
PH: (813)748-0851

## FOREVER HEISEY

Shows and Mail Order  
Janice Thran  
1663 Londondale Pwy., Newark, OH 43055  
PH: (614)344-5955

## GERT'S GLASS

Heisey & Duncan  
Gertrude & Russell Swetnam  
1926 Saratoga Dr., Adelphi, MD 20783  
PH: (301)434-5113

## GLASS WITH CLASS

Lenore A. Shelley GGHCC  
1336 Lincoln Avenue  
San Jose, CA 95125  
PH: (408)286-8098

## GOLDSBERRY'S ANTIQUES

Heisey A Specialty  
Shows Only - Buy & Sell  
Kalamazoo, MI 49000  
PH: (616)381-3013

## GREEN ACRES FARMS

Antiques, Crystal Glass & Collectibles  
2678 Hazelton-Etna Rd., SW (S.R. 310-N)  
Pataskala, OH 43062  
Sat or Sun P.M. or call (614)927-1882

## H & R DIAMOND H

Helen & Robert Rarey  
1450 White Ash Drive  
Columbus, OH 43204  
PH: (614)279-0390 After 5:30

## HAPPY HAVEN ANTIQUES

Mary Dumke  
41319 Rattlesnake Road  
Grass Valley, CA 95945  
PH: (916)237-9450

## HAPPY HEISEY HUNTERS

Minatures - Dbl. SASE for List  
Cliff & Helen Harralson  
1426 W. Highland, Springfield, MO 65807  
PH: (417)883-2449

## HARRISON'S ANTIQUES

Heisey, Cambridge, Duncan  
Shows, Mail, by Appt.  
26 Johnston's Lane, Mercersburg, PA 17236  
PH: (717)328-2451

## HEISEY PUBLICATIONS

All Heisey Books I-II-III-IV - Heisey  
Newscaster 32 Pg. Quarterly - \$6.00  
Back Issues - \$4.00  
Box 102, Plymouth, OH 44865

## JOYCE'S ANTIQUES

Specializing In Heisey, Cambridge, Verly's  
& American Glass  
P.O. Box 114, Albertson, NY 11507  
PH: (516)499-3396

## LAST CHANCE ANTIQUES

Mail Orders - Matching Service  
Send Us Your Want Lists  
P.O. Box 502, Dania, FL 33004  
PH: (305)467-6356 Day or Evening

## LYNNE & ART'S GLASS HOUSE

Heisey Our Specialty  
P.O. Box 54-6014, Miami Beach, FL 33154  
PH: (305)861-7700 or (305)895-5666 or  
Rt. 202, Lahaska, PA 18931  
PH: (215)794-7800

## MOSTLY HEISEY

Rhoda Curley  
16 Clayton Place  
Albany, NY 12209  
By Appt., PH: (518)482-6272

## MOUNDBUILDERS ANTIQUES

Heisey & Animals, General Antiques  
Irene Rauck  
1138 Moundview, Newark, OH 43055  
PH: (614)344-6043

## OX YOKE ANTIQUES

General Line & Heisey  
Don & Norene Walzer  
675 Ogden-Parma Tr. Rd.  
Spencerport, NY 14559  
PH: (716)352-3959

## PATTON HOUSE

Heisey & Duncan Miller  
Rocky's Mall, I-81 & US 11  
Weyer's Cave, VA 24486  
PH: (703)967-1181

## PEGGY'S ANTIQUES

2000 Pcs. of Heisey In Stock  
Ernie & Peggy Cox  
P.O. Box 367, Spavinaw, OK 74366  
By Appt. or by Chance  
PH: (918)589-2859

## R & L ANTIQUES - SAN FRANCISCO

Shows Only - Always Lots of Heisey  
Member of Golden Gate Heisey Club  
P.O. Box 3614, Daly City, CA 94015  
PH: (415)621-6693

## RAMBLING LANE ANTIQUES

Featuring Heisey & Other Fine Glass  
Keith & Evelyn Hoover  
Rt. #4, Box 1005, Rhinelander,  
WI 54501 - PH: (715)282-5019

## RAY ZIEGLER

Glass Repair  
2265 Innis Road  
Columbus, OH 43224  
PH: (614)882-8446

## SCHWAN'S ANTIQUES

Shop & Shows  
Rt. 1, Box 175B, John Tyler Highway  
Williamsburg, VA 23185  
PH: (804)229-7873

## SUM OF LIFE

Elaine & Frank Husted  
P.O. Box 102  
Phoenixville, PA 19460  
PH: (215)935-2962

## T & S ANTIQUES

Specializing In Heisey  
Tom Martin & Steve Roderick  
New Rochelle, NY 10805  
PH: (914)235-9632

## THE WOODEN SHOE

Antiques & Collectables - Buy & Sell  
Glass, Furniture, Estates  
Jim & Sheri Van Es, By Appointment  
810 Elden, Herndon, VA 22070  
PH: (703)435-9045

## TRUDY MILLER ANTIQUES

China & Crystal Matching  
Heisey A Specialty  
P.O. Box 740548, Dallas, TX 75374  
PH: (214)783-9920

## WILLEY'S ANTIQUES & MUSEUM

Specializing in Glass  
11110 Cannon Rd., Frazeyburg, Oh  
43822 - 16 Miles East of Newark  
PH: (614)828-2557



Detroit News January 4, 1924

# A Carload Heisey Glassware—Sale!

*400 Barrels of Glassware That is Unselected! Some Pieces Have Air Bubbles—Some Have Marks—But None of it is Chipped! All at Savings!*

YOU KNOW the reputation of HEISEY GLASSWARE! And every piece in this sale bears that famous name! The fact that it is unselected does not prevent it from being useful! Come early tomorrow and stock up at great savings!



**At 7c**

*15c to 20c Values*

Handled Jellies, Nappies, Finger Bowls, Salad Plates and other pieces. Plain and strictly Colonial lines.

**At 10c**

*20c to 25c Values*

Spoon Holders, Oval Nappies, Tumblers, Preserve Dishes, Salad Plates, 6½ and 7 inch Ice Creams.

**At 15c**

*35c to 45c Values*

Glass Creamers, Fruit Bowls, Footed Jellies, Salad Dressing Boats, etc. In Colonial patterns.

**At 25c**

*50c Values*

Large Salad Plates, Candy Jars, Salad Bowls, Sandwich Trays, Candlesticks and Other Pieces.

**At 35c**

*60c to 75c Values*

Cake Plates, Square Nappies, Candy Jars, Footed Trays, Oval Bread Trays, Footed Trays and Other Pieces.

**At 50c**

*85c to \$1 Values*

Table Candlesticks, Covered Candy Boxes, Spice Trays, Rolled Edge Nappies, Baskets, Water Pitchers and Other Pieces.

*50c Glass Salad Plates, Special, 14c Each*

*Colonial Table Tumblers, 7c Each*

*Colonial Glass Fruit Saucers, 5c Each*

Basement.

NEW MUSEUM HOURS - OPEN DAILY 1 - 4 P.M. EVERY DAY OF THE YEAR, EXCEPT MONDAYS AND HOLIDAYS - ANYTIME BY APPOINTMENT.



REPRINTED FROM  
HEISEY NEWS  
P.O. Box 27  
Newark, Ohio 43066

**FIRST-CLASS MAIL**

FIRST CLASS MAIL  
U.S. POSTAGE  
PAID  
PERMIT 34  
Reynoldsburg, Ohio 43068