

HEISEY *news*

© Heisey Collectors of America, Inc. 1983
All Rights Reserved

VOLUME XII

NO. 11

NOVEMBER, 1983

ONE DOLLAR

HEISEY'S GLASSWARE



The KEY NOTE
of
Glassware
Excellence



All
Trying To
Reach "High C"
(HEISEY)



WRITE FOR CATALOGUE NO. 75
A. H. HEISEY & CO. NEWARK, O.

HARDWARE AGE MAGAZINE - OCTOBER 16, 1913

See December Dinner Form on Page 23.

A HAPPY THANKSGIVING TO YOU ALL



NOTES FROM YOUR PRESIDENT.....

It seems to be that time of year again, when someone has to decide on the theme for next year's convention. Well maybe it will be a little easier this year, seems like this is the tenth anniversary of the museum. If you have any ideas as to how to tie in the tenth anniversary and the convention, be sure to send them to the convention committee.

For those of you who are curious about what Imperial has been doing lately, they sent out a letter to the "Heisey Animal Collector's Club" telling of what they have available. Listed as "New Offerings":

Mother Pig
Giraffe
Tiger Paperweight
Show Horse
Flying Mare

All these are listed in "Heisey Amber."
"Past Offerings," still available are:

Giraffe
Tiger Paperweight
Filly (head back)
Filly (head forward) - (seconds)

These are listed in crystal, the seconds fillies being frosted. Since the letter went out, they have made:

The three colts
The three mallard ducks
All in amber.

All of the above are marked with one of Imperial's trademarks.

If you would like a list of animals Imperial has made in the last couple of years in Heisey colors, send me an SASE and I'll put it together and send it out.

If any one is curious what happened to my column on tumblers, I've been lazy. Perhaps I'll write one of these days and surprise all of us.



DATES TO REMEMBER

DECEMBER 9, 1983 - CHRISTMAS DINNER
GRANVILLE INN

MARCH 9 & 10, 1984 - BENEFIT AUCTION

JUNE 14 - 17, 1984 - CONVENTION

Pres. TOM BREDEHOFT 614-745-1014
Vice Pres. JIM KENNON 216-282-7711
Secy. RAY ZIEGLER 614-471-6446
Treas. DICK MARSH 614-366-5608

Exec. Dir. LOUISE REAM 614-344-2377

HEISEY NEWS-P.O. BOX 27--NEWARK, OHIO 43055

Editor: LOUISE REAM

Box 27 Newark, Oh. 43055 614-345-2932

Ass't Editor: Neila Bredehoft

Box 27 Newark, Oh. 43055 614-345-2932

Published monthly and mailed from Reynoldsburg, Ohio 43068.

\$12.00 per year - \$1.00 per copy.

Back issues Each Volume - \$9.00
year (12 issues).

Volume V, VI, VIII, IX, X & XI.

Heisey Collectors of America, Inc. is a non-profit corporation with tax exempt status. Owners and operators of National Heisey Glass Museum, 8th. and Church Streets, Newark, Oh. Open daily 1-4p.m. March through December except Mondays and holidays. January and February - Wednesday, Saturday and Sunday 1-4 p.m. Other times by appointment. Members admitted free.

Club membership (includes 12 issues of HEISEY NEWS and participation in all club activities) \$12.00 per year plus \$2.00 each for additional family members in same household who wish a membership card. For VOTING MEMBERSHIP add \$25.00 one time only fee.

When requesting information, please enclose a self-addressed stamped envelope (SASE).

ADVERTISING - Send all ads to: Advertising
c/o Janice Thran
P.O. Box 27
Newark, Oh. 43055

RATES:

DEALERS' DIRECTORY - 5 lines-\$18.00/year
CLASSIFIED - 10¢/word. \$1.00 minimum. Abbreviations and initials count as words.

DISPLAY:	MEMBERS	NON-MEMBERS
1/8 pg (9 items)	\$12.00	\$20.00
1/4 pg (20 items)	\$20.00	\$30.00
1/2 pg (20 items)	\$35.00	\$45.00
1 pg (50 items)	\$60.00	\$75.00

We cannot double-column ads. No VERTICAL 1/2 pg. ads. ALL ADS MUST BE PREPAID. Ad copy must be received by the 5th. of the month to be included in that month's NEWS. Ads containing reproduction will not knowingly be accepted unless clearly stated (i.e. Heisey by Imperial, etc.) HEISEY News assumes no responsibility for false advertising or misleading information. In the event of typographical error, the incorrect portion of the ad will be run in the following issue, but HEISEY NEWS assumes no further liability.

.....
Opinions expressed in articles are those of the authors and not necessarily those of HCA. Editorial Staff reserves the right to edit or refuse any material submitted for publication. Send all letters and articles to the EDITOR. Letters to columnists should be sent to the club address and will be forwarded.



Greetings From The Executive Director

The Annual Christmas Dinner will again be held at the Granville Inn. As you will remember we had a delicious buffet last year with plenty of food for all. Bob McClain is the chairman of the affair and has once again engaged the Bell Choir for the entertainment. This is really a treat for everyone. See Page 23 for your reservation form and times. It seems all large restaurants, clubs, etc, have been filled by the same groups from year to year so that we can only get a place for ours on Friday. After the dinner everyone is invited back to the museum to see the decorations, have some refreshments and possibly to do some Christmas shopping in our gift shop.

Saturday will be filled with the meetings of the Board and the various committees.


Helen Pallagi, a former Heisey employee and one of our regular guides, had surgery a few weeks ago and is still unable to be back. We all hope she will soon feel fine.

Harley Bethel, our printer, is still undergoing treatment and is not feeling too well. Cards to him c/o the club would probably cheer him a little. He is having very great problems and has had some laser treatment recently.

In our museum we have been selling some beautiful art glass paperweights and small vases made by W. E. Porter, a former Heisey employee. Most of these are Tiffany type and are very nice but since they are all one of a kind they would be difficult to sell by mail. Drop by if you are in this area. We know you'll be pleased.

Material printed in the last months as "Insights Into Heisey History" is taken from the many copies of original ads furnished by Tom Felt and Bob O'Grady, the Bredehofts and Betty Regan. Other people also send occasional "gems" to us.

With Imperial making practically nothing we are hunting for new items for those of you who buy everything. We are expecting momentarily the "Wood Ducks" cup plate in "emerald blue."

A list of items for sale is on the back page and we really need your purchases to carry out our work here. The bells are beautiful in red and lilac. The cobalt and ruby ash trays signed  and HCA are limited and your first chance to buy an authentic HCA item.

Please help us help you and our museum. Come by to see what all we have for Christmas giving.

Louise Ream

CORDIAL DINNER AUCTION

Prices Realized From Imperial Items at the September 10th Cordial Dinner. (See list on Page 9 of August issue).

- 1. - \$15.00, 2. - \$15.00, 3. - \$70.00,
- 4. - \$160.00, 5. - \$55.00, 6. - \$70.00,
- 7. - \$50.00, 8. - \$50.00, 9. - \$55.00,
- 10. - \$42.50, 11. - \$35.00, 12. - \$20.00,
- 13. - \$27.50, 14. - \$42.50, 15. - \$70.00,
- 16. - \$60.00, 17. - \$70.00, 18. - \$60.00,
- 19. - \$60.00, 20. - \$47.50, 21. - \$30.00,
- 22. - \$56.00 and 23. - \$40.00



JEANNETTE GLASS IS BOUGHT AT AUCTION FOR \$2.35 MILLION

HFD - Retailing Home Furnishings,
October 10, 1983

PITTSBURGH - Jeannette Glass, a division of Jeanette Corp., has been sold at auction to Consolidated International, a Columbus, Ohio based liquidator.

Jerome Schottenstein, who liquidated the Korvettes and Halle's chains, holds an interest in Consolidated.

A spokesman for Moody, Connel & Associates, a trustee for Jeanette Corp., said the firm was sold to Consolidated for a bid of \$2.35 million. The unsuccessful bidders were Abraham Zion and Don Gage.

Sol Shenk, Consolidated chairman, said his firm is not committed to liquidating Jeannette Glass and would consider proposals from anyone interested in buying and operating Jeannette, according to the spokesman for the trustee.

At press time last week, Zion, one of the unsuccessful bidders, had scheduled a press conference at the Jeannette plant in Jeannette, Pa. Zion, when reached at his office in New York City, would not comment on the subject of the conference.

Industry reports, however, suggest that Zion has made a deal with Consolidated to operate Jeannette. According to sources, he will fire two of the firm's three tanks, while Consolidated will retain the accounts receivable and will sell off current inventory.

Zion would not confirm these reports. He told HFD he has owned a glass plant in Israel since 1962 that produces crystal stemware.

Consolidated could not be reached for comment.

NOTE - Even tho Jeannette hasn't been making hand-made glass in recent years, it is still a part of the glass industry!!!

Lucile Kennedy

MADONNA BEING MADE IN TAIWAN

Someone kindly sent us a Spencer Gift Catalog and on one page was pictured a Madonna which looked like the Heisey or Heisey by Imperial Madonna. It was priced at \$7.99.

A letter from Mike Nocera, General Manager of Imperial, told us the Heisey mold was still safely in their factory and he mentioned it probably was made in Taiwan. Most of the fake type items are coming from there. We ordered one and it has arrived.

You won't have to worry about it. The base is hollow up to the top of pleats in the robe. She has a jutting jaw and at least on the one we have, has a flat place just above her eyes. She is just full of bubbles and horrible mold marks.

Anyone who knows Heisey glass would never buy this piece for the real thing.

Louise Ream

HEISEY'S LITTLE THINGS

By Louise Ream

No. 331, named Colonial Panel by Vogel, is another of the patterns which are made up of flutes and scallops and considered to be colonial lines. Most of the colonial patterns mix well together so that you can obtain a wide variety of pieces in a so-called set.

This is a very short line, all items are of beautiful heavy crystal. For our HLT collection the pieces are few! In most catalogs the toothpick holder appears to be just like no. 300 Peerless but that was only because the person who pasted up the catalog used the wrong toothpick. In reality this toothpick holder has eight panels instead of the six of Peerless, and is identical to no. 400 Colonial Scalloped Top. (another Vogel name).

There is also a nice salt and pepper, 4-1/2 oz custard, a mustard and a beautiful individual salt. The mustard looks like Peerless in the catalog which could be another error like the toothpick.

The salt dip is 1-1/2" square and 1" high. The round opening is 1" across and the bottom and top have been ground and polished. The glass quality is superb and the polishing really enhances its beauty. It is not marked though the other pieces are.

No. 351 Priscilla is yet another colonial pattern which has many more pieces than no. 331. It also has a line of stemware which no. 331 does not. The glass is the same heavy beautiful clear crystal which all the colonials are.

Items of particular interest to us are the 1 oz cordial, 2 oz wine, 2 oz bar, both straight and flared, individual butter pat, salt and pepper, mustard, toothpick, and both individual and table salts.

The table salt, usually referred to as a master salt by collectors, is a beautiful chunk of glass. It is 3-1/8" long, 2-1/4" wide and 1-3/4" high. These figures will vary when the item is full cut (which means that all surfaces are ground and polished). The one I am examining is full cut and it ends up being 3-1/16" long, 2-1/8" wide and 1-1/16" high. This one also has a beautiful cut star on the outside bottom. When you look down inside it, the star is reflected on all four sides. You can't imagine how something which is already very pretty can be transformed into a magnificent thing of beauty after being cut. The difference is like night and day. This was, indeed, the period of outstanding quality glass never to be equaled again until the very plain no. 1489 Puritan items were made in the later years. It, so far, goes unappreciated. Do you know of anyone who goes into such ecstasy over a piece of plain glass?

The individual salt is also beautiful. It measures about 1-1/8" x 2-1/4" and is approximately 1-1/4" high. The one I measured is ground and polished on both top and bottom. The inside of both of these salts remind one of the

inside of a bar sham as you probably can see from the picture. The salt dips are not marked.

The toothpick, butter, custard and mustard all have ground bottoms and these pieces should be marked.



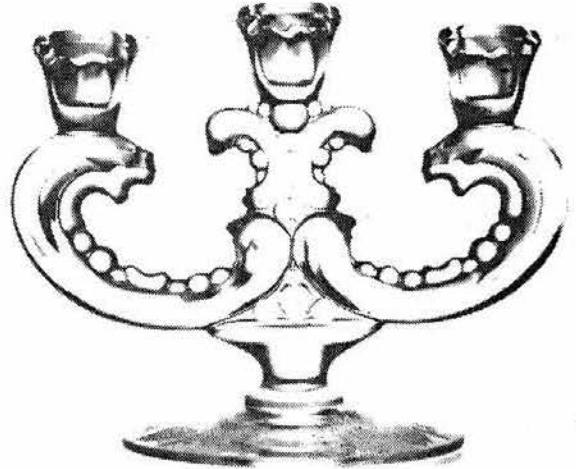
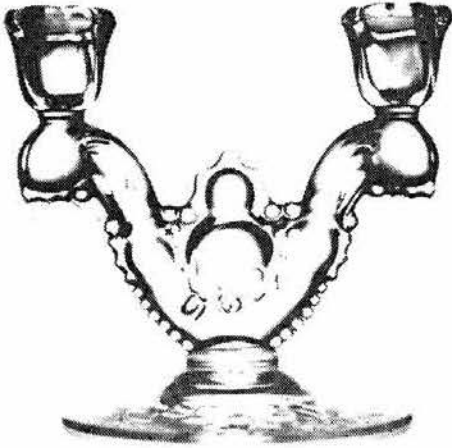
SOUTHERN ILLINOIS DIAMOND H SEEKERS

The Southern Illinois Diamond H Seekers held their First Annual Depression Era Glass and Pottery Show and Sale, August 27th & 28th at Belleville, Illinois. The show consisted of 50 Dealers from 10 States and featured as guest, noted author, Gene Florence. Displays of Heisey, Cambridge, Duncan, Roseville jardinières, Flower Garden and Butterfly, Cherry Blossom Child's Set and Florence figurines were admired and closely studied by the 1147 patrons. Although the attendance was somewhat less than expected, it was considered acceptable for a 1st time show. A "best booth" contest was held and Len and Arlyn Ols, Cleveland, Ohio, won first place. Second place went to Virginia Perva, St. Charles, Missouri and 3rd place was won by Delores Martin, Springfield, Missouri. Plans are underway for the 2nd Annual Show, August 11th & 12th, 1984. Mark your calendar.

The Southern Illinois Diamond H Seekers at the September Quarterly Meeting presented to HCA \$1,000.00 for the Endowment Fund, \$200.00 for General Funds and presented five pieces of Heisey for the Museum.

Dick Spencer, Show Manager

HEISEY CANDLESTICKS



NO. 1519 OCEANIC/WAVERLY CANDLESTICKS

By Bob O'Grady

In July of 1940 Heisey came out with a new pattern, No. 1519 Oceanic, which, with the exception of the candlesticks, was rather plain. Its two main motifs were the swirl optic and beaded edges. It seems that this pattern was meant to be a vehicle for their new no. 507 Orchid plate etching. It was offered under the name Oceanic during most of the war, and was a rather modest size pattern at this time. The only candlestick offered as part of the pattern under the Oceanic name during these early years was the two-light (photo #1). Sometimes in 1944 the name Oceanic was dropped but pieces (including the two-light candlestick) remained in production and were identified by the pattern number only, continuing to be a vehicle for the Orchid etching. And so it is only the two-light candlestick in the 1519 pattern which had the name Oceanic as well as Waverly when this second name was later added. The rest of the candlesticks were part of the pattern only when it was called Waverly.

The two-light candlestick was first made in October of 1940 and continued in fairly constant production until 1953. Factory turn book information is available for the early production years of this candlestick when it was called Oceanic. So we know that 6,437 were made from 1940 thru 1944. The two-light is about six and a half inches high and has an applied foot. As

both of the pattern names suggest, the motif is reminiscent of ocean waves with beads on the bottom edges of the arms and placed at random elsewhere on the body of the candlestick representing sea-foam. The arms are wave-like and the candleholders have a swirl to them.

Quite a few cuttings were offered on the foot of this candlestick including No. 866 Kent, No. 883 Royal York, No. 941 Barcelona, No. 944 Courtship, No. 957 Oriental and No. 965 Narcissus. There are no records of any etchings other than the No. 507 Orchid for this candlestick.

Between 1944 and 1949 pieces of this pattern continued to be made mainly for the Orchid etching. However Heisey no longer used the name Oceanic, only the pattern No. 1519. About 1947 when Horace King began working for Heisey he designed additional pieces for the pattern one of which was the three-light candlestick. (Photo #2). It went into production sometime between January and March of 1948 in Crockery and Glass Journal with the Heisey Rose plate etching. Orchid etching was also offered on the three-light as well as one cutting, no. 965 Narcissus. The three-light is almost seven and a half inches high and has an applied foot. The motif is very similar to the two-light with wave-like arms and beads to represent sea-foam. The three-light seems to be a bit more available than the two-light for collectors today. And neither were reissued by Imperial. More on Waverly next month....

Heisey Collectors of America ALL HEISEY - Benefit Auction



MARCH 9 - 10, 1984

It is time to prepare for our Tenth Annual All-Heisey Museum Benefit Auction. The Auction will again be held at the Apple Tree Auction Center. It will, as usual, be held in conjunction with the Quarterly Meeting.

The Annual Christmas Dinner and Quarterly Meeting on December 9th would be a good time to bring your consignments to the Museum in the afternoon, or after the dinner, and omit the Christmas rush. Deadline for glass is January 1, 1984.

The same policy as the last few years will again be followed. Limit your glass to 10 lots per family (excluding donations). Items such as 8 goblets or 12 plates together would constitute one lot. Any consignments OVER 10 lots will be considered as donations. The consignment fee remains at 20% with a \$5 minimum per lot. HCA receives the 20% selling fee. Please consign only Heisey or Verlys by Heisey. No Imperial Please.

Be sure to include a list (including pattern number, name, color, etc., if possible) along with your name and address. Arrange the list in desired lots and identify which lots are consignments and which are donations. Don't forget to make a duplicate copy for your records.

The Benefit Auction is one of the major fund raising projects of the year and all proceeds go for support of your Museum. There is very little expense associated with the Auction. You can help by donating items for the Auction. Remember, donations are full value tax deductible. The consignment fees are also tax deductible. So, get your glass in early and plan to be at the Apple Tree Auction Center on March 9th and 10th.

Glass will be sold in the order it is received.

Ray Ziegler, Chairman



1. Donations - Full value tax deductible.
2. Consignment - You receive a check for 80% - The Heisey Collectors of America, Inc. receive 20% - These proceeds support your Museum.
3. Glass must be in our possession by January 1.
 - a. Mail your glass now to: Heisey Collectors of America, Inc.
169 West Church Street
Newark, OH 43055
 - b. Visit the Museum and leave your glass there.

DIAMONDS ARE FOREVER.....

BY JANET M. CASWELL

Fall has arrived here in the Yachting Center and with it, and you can be sure a most welcome relief, came cooler, dryer weather. Hopefully the yard sales will become more plentiful, but everyone wants antique shop prices for their things especially if that little "diamond H" is there. Where did the bargains go? Last weekend would you believe that we had fifteen yard sales in our little town with nary a buy - or even a piece of Heisey. On second thought I must retract the part about the "buy" because for the large sum of \$1.00 I did manage to purchase a beautiful old compact, it was covered with black silk with petit point roses, quite lovely. Made in France. Really now, it is sure time for the nice indoor Antique Shows to begin. I for one am ready.

Thanks are extended to all my new friends who have written me about their finds. Sure are some nice ones. Let's start with the "North Country Travelers" who came out of the mountains with a pair of Lariat Hurricane Candles and with the right chimneys!! These weren't sleeping they were in a coma.....

The "Purple Passion" wrote to say that the summer drought was broken with the following few things: a pair of #133 double swan candlesticks, in sahara (nodding their little heads in a nest of Empress sahara. This is how we would all like to find things); a pair of #105 Candlesticks in crystal, 7" high with prisms; and a Winged Scroll toothpick in Custard. The latter was captured in Canada no less!

The "Pine Tree State" never seems to fall short: #1229 Octagon 6" Mint in Flamingo with an unknown etch and the always lovely #1776 Kalonyal toothpick.

We eat out about once a week and we have yet to find a piece of Heisey in any Restaurant that we've been, that is not to say that there couldn't be some there some day. Take my "Evergreens", here they were all settled in a lovely restaurant waiting for all that good food when Mrs. Evergreen is sure the sugar bowl is Heisey. Have you all got a mental picture? Nothing would do but to very carefully dump the sugar into a napkin and turn it over to see if the "diamond H" is there. Yes, yes, yes! Oh joy! The owner was paged and asked if by any chance the sugar could be purchased. If there was one, could there be more? Again yes, yes! They were not all in the greatest condition but the owner was willing to sell, all seven (7) of them. After all how could you possibly leave them there to be tossed around in a dishwasher. I couldn't, could you? The "Evergreens" also discovered a Ridgeleigh ice tea; a #22 9-1/2" Candlestick and a #16 7" Candlestick; and a Wood Duck, marked.

Haven't heard from our "Rebel Cousins" in a while but when we do it sure is worth waiting for. They were at an Auction where the #3416 Barbara Fritchie stemware was being auctioned/#799 Manhattan cut. There were a dozen each of six different size stems. Our "Cousins" came away with

twelve (12) Clarets and twelve (12) Cordials. Not bad for one day.

A pair of Fish Bookends were seen floating around these here parts by my "English Buddy." You know, he keeps asking me where to find Tangerine. Can't help him, haven't seen any Tangerine on the field for a long, long time. This month was his month for Tangerine, I guess; a #3397 Gascony 5 oz juice; a #3389 Duquesne 3 oz Cocktail and a 12 oz footed Soda. These nice things didn't quite satisfy my "Buddy" so he went looking until he found a real lovely #1401 Empress Mayonnaise in Alexandrite and a 14" Banded Flute Punch Bowl, stand and ten (10) cups. Nice work for one month.

The "Double Stepping Couple" report eight #5024 Oxford 5 oz Sodas, and a #150 Banded Flute Saucer Candlestick.

The "Tipper" also found a #1401 Empress Mayonnaise only his was in Sahara and fast, fast asleep: a #7023 Half Circle Sugar, (Correct number 1403) Sahara; and (a little sweetheart) the #1184 Yeoman Mustard/cover this also was Sahara. REEAAL nice!!

"Felicitous Flamingo Hunter" went to a wedding a couple weeks back and came home with some presents of her own; #1193 Inside Scallop Candy dish in Flamingo; a #1489 Saturn Mustard; a Moon-pleam Domino Cube Sugar Tray and the #1405 Ipswich 11" Floral Bowl in Crystal.

"The Keeper" caught two Geese - one with Wings Up, the other Wings Down. That's quite a decent catch if you ask me.

How does a pair of Thumbprint and Panel Candlesticks and a pair of #5 9" Candlesticks sound, good? What about the #150 Banded Flute Toothpick; a Colonial Footed Jelly and a 4" Saturn Ball Vase in Crystal, nice? I would have been glad to tell you about these things except it is difficult to understand the "Funny Talking Couple" from the Badger State and I didn't want to ask him to repeat himself.

"The Sunshine State" again has lots of goodies to report; here goes nothing - another #1184 Yeoman Handled Mustard Pot, but in Flamingo; a #1201 Fandango Cruet; a Large Waverly Cream and Sugar; the #1170 Pleat and Panel Cream in Flamingo; a 3-1/2 oz Bar Glass with Frontenac Etch on unknown pattern; a 3/4 oz Peerless Cordial and a Ridgeleigh 8 oz Tumbler.

"Mountain Gal" really gets out there hunting and it sure pays. Her list is long so I'll mention just a few items; three (3) #1454 Diamond Point 2-1/2" ind. jellies and the ash trays - also three; a #353 Medium Flat Panel 2 oz Cruet with orig. stopper; a #433 Greek Key 3 pt. Jug; #343 Sunburst Goblet, also the Hotel Creamer; two (2) #3397 Gascony 12 oz Footed Sodas with the Ambassador Etch, in Sahara; the #407 Coarse Rib 3 pt. Jug; a #1469 Ridgeleigh 6" Square Plate and an Oval Cigarette Box & Cover; a #365 Queen Ann 4 oz Footed Sherbet (ho-humming) a #3362 Charter Oak 7" High Footed Compote in Moongleam. I could go on but will leave some for next time. Always enjoy hearing from you even if it does make me turn "moongleam" with envy....

My I do enjoy ramblin on and on, how nice it would be to see how many States I can represent

FASCINATING INSIGHTS INTO EARLY HEISEY HISTORY - TAKEN FROM EARLY TRADE JOURNAL REPORTS.

CROCKERY & GLASS JOURNAL - June, 1929

HEISEY'S FLAMINGO WARE FEATURED IN UNUSUAL DISPLAY

A good deal of work and thought went into the preparation of the interest-winning window display illustrated here. To this fact can be traced its originality and effectiveness.

The window was arranged in the establishment of Brown-Rogers-Dixon Co., Winston-Salem, N.C. This firm is among the largest wholesale and retail hardware concerns in the South. They recently moved into their newly-built store, which is said to be the most modernly equipped in the southern section.

The city of Winston-Salem is the most populous in the state of North Carolina, and holds a high place among the leading cigarette and tobacco centers of the world.

SEPARATE GLASSWARE DEPARTMENT

Brown-Rogers-Dixon Co. have a complete china and glassware department, which is entirely separate from the other departments. It has its own entrance and windows, so that it is practically a separate store of its kind. Customers do not have to go through the hardware department in order to reach the china and glass section.

The buyer for this department is Miss Carrie Rempson, who has had many years of experience in the fields of china, glassware and housefurnishings. The department has its own artist and advertising staff, under the direction of R. C. Flynt.

The window display illustrated here was created by Mr. Flynt and he painted the unusual background, taking for his model the label which appears on each piece of Heisey's Flamingo ware.

WINDOWS OFTEN USED

The Flamingo panel gave a color and vividness to the window that was distinctly appealing to the attention. This, with the exquisite vase of flowers in the center and the graceful grouping of the other Flamingo rose ware against rich velvet, produced a display of real sales value.

This is a typical example of the progressive methods that have built for Brown-Rogers-Dixon Co. an enviable reputation throughout the state for high quality merchandise in all departments. Especially is this true with regard to the china and glassware department, which draws a large trade from neighboring towns and cities for miles around.

CROCKERY & GLASS JOURNAL - October, 1930

NEW HEISEY STEMWARE IN SAHARA YELLOW

"Too much filagree" is a defect in decoration of certain lines of domestic glassware, a defect conspicuous by its absence from the productions of A. H. Heisey & Co., Newark, O., shown in the company's local salesrooms, in the Fifth Ave. Building. Patterns etched on their new square-footed low-stemmed line of stemware are of a graceful simplicity which speaks for itself and makes no needless effort to conceal faults in technical execution; they are, therefore, truly artistic in being strictly suitable to the shapes and uses of stemware. Featured at present in Sahara yellow, yet appearing also in the other Heisey colors, is a patented etched pattern of unusual character, seemingly based on a rayed star, like one of the glittering "orders" worn by foreign diplomats at official functions in Washington. Severity is avoided, however, in this pattern by a few leafy scrolls pendent from the star. A special item, illustrated herewith, is a new flagon, 9-1/2 inches in height, about 16 ounces in capacity, cone in wide optic effect and obtainable in the various Heisey colors.

New items added to the 1401 line comprises oval compotes, three-compartment relish dishes, handled and footed bowls, and handled sandwich trays round and of unusually liberal size. And special mention must be made of the beautiful candelabra, holding one, two and three candles, in Sahara, for which orders are now being placed almost continuously by leading department stores here and in Chicago.

CROCKERY & GLASS JOURNAL - February, 1931

TASTE AND DISTINCTION CHARACTERISTIC OF HEISEY GLASS DISPLAY - New Exhibit of A. H. Heisey & Co. in Merchandise Mart, Chicago is the Last Word in Glassware Selling.

Because there are so many new and attractive displays of china and glassware, it is a genuine pleasure to the buyer to choose his stock in the Merchandise Mart, Chicago. Every convenience is at his disposal and the merchandise is shown under such ideal surroundings that much of the drudgery and unpleasant conditions are eliminated.

It is only natural that there be some displays which stand out above the rest. It is in this class that the new showroom of A. H. Heisey & Co., Newark, O., must be placed. Buyers from all parts of the world have expressed their admiration for the superb taste and distinctiveness of the furnishings of this exhibit. The beautiful appointments serve as an admirable presentation for the delightful offerings of Heisey, an atmosphere befitting the quality of the merchandise.

Although the furnishings must be classified as luxurious, it is the naturalness of the setting with the realistic atmosphere of the home

BACK ISSUES AVAILABLE

We still have back issues of Heisey News for the following years:

1976, 1977, 1979, 1980, 1981 & 1982
\$9.00 Per Volume (12 issues)

which the Heisey display imparts that makes it so outstanding. The conservative good taste used in the fittings and the furniture is so impressive that it cannot be escaped.

For many years the Chicago display of A. H. Heisey & Co., was located in the Heyworth Building, 29 E. Madison St. In recent years it was evident that the facilities there did not furnish a display that did full justice to the glassware. But here in the new Merchandise Mart showroom with its 3,200 square feet of floor space, Heisey glassware is shown in a manner that is most gratifying.

The Chicago activities of Heisey are under the direction of Walter S. Redfield, who has been a familiar figure in glass and pottery circles for many years. R. C. Irwin, the Heisey representative in the Middle West and Rocky Mountain territory, has moved his headquarters from Kansas City to Chicago. He will continue to serve his clientele through the new Chicago offices.

The new Heisey glassware display is located in spaces 1560-1561 on Glass Boulevard in the Merchandise Mart. The space is eighty feet long and forty feet wide.

As one enters one comes into a spacious reception room with woodwork in two-tone ivory and flooring of rubber tile. The beautiful show cabinets in this room have mirrored backgrounds inset in the side walls. The Heisey display offers a most unusual view from the corridor of the building. A large window shows a small room with a few select pieces of furniture adorned by a small number of glass pieces. Through an archway one sees in the background a large dining room furnished in the Georgian period. This room is one of the most distinctive presentations of the entire Mart. With the furniture accentuating the period style and the plastic work in Georgian green a delightful setting is accomplished. A deep-pile carpet of taupe, an empire crystal chandelier blends with a delightful Heisey glassware table setting to complete the unusual offering.

Ed. Note: The above taken from Crockery and Glass Journal for February, 1931 is the first part of an article about the New Chicago office which was printed in the September issue, Page 11. Since we use more than one source for this material evidently we didn't have the first part of the article in the other source we used. Sorry, but here tis!

As usual, this is printed as written and the errors are theirs, not ours.

In the first excerpt here, I believe they are describing Old Colony etching though the description doesn't seem too apt to me. The stemware described is, of course, 3390, Carcassone. No. 1401 is the Empress line.



BOISE STORE WINS HEISEY CONTEST

A striking window of Heisey Glass which drew pedestrians from across the street and caused motorists to stop their cars and get out for a closer view, won for The Mode, Ltd., Boise, Idaho, first prize of \$50 in the recent A. H. Heisey & Co., Newark, O., Display Contest.

The eye-drawing feature of the window was the "Evening Prayer" picture--the Mussulman at his devotions while his camel stands quietly by. It had in it the mystery of the desert and was most appropriate to the exhibit of the glass, which was Heisey's golden Sahara.

This main set-piece was in the form of an oval drum, the silhouette frame being in black and gold and the drum itself about ten inches deep, with a backing of parchment in amber. Thus there was an effective distance between the cut-out of the desert group and the back of the piece. Amber lights, concealed behind the cut-out gave a striking impression of sunset glow stealing over the vast expanse of sand.

Three graduated steps, covered with black, supported the art picture. The large cut-out letters, "Sahara," were finished in bright amber metallic. Several examples of Heisey's No. 3390 stemware with etching 448 were attractively grouped on a simple and balanced plan. No. 1401 items, with the same etching, and candelabra were effectively placed. The sign at the very front told passer-bys most definitely that this was a showing of Heisey's Sahara glass. Flowers in the center foreground added seasonable charm, in keeping with The Mode's Spring Home-Makers Event, which was under way when the display was placed.

Photographs came from many sections of the country in this contest and so much difficulty was experienced in selecting winners that a fourth prize was added although three prizes only had been planned for.

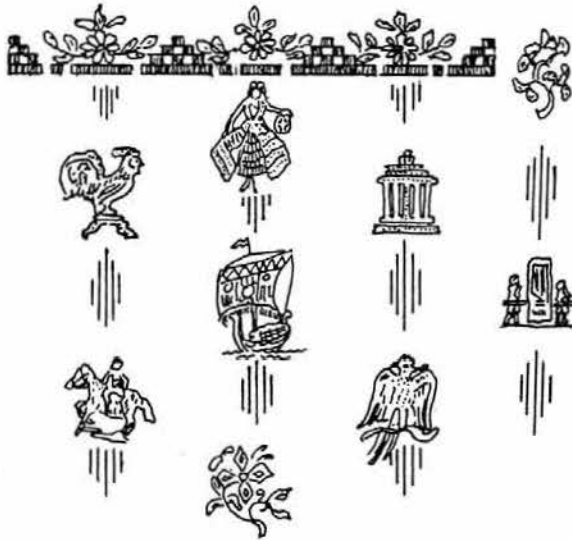
Other winners in the contest were McMorrin & Washbourne, Eugene, Ore., second prize \$30; Ziesel Brothers Co., Elkhart, Ind., third prize, \$20; Gilmore Bros., Inc., Kalamazoo, Mich., fourth prize, \$10.

UNUSUAL HEISEY ETCHING ATTRACTS ATTENTION

A most unusual plate etching is one of the innovations of the new A. H. Heisey & Co. line being shown in the Chicago showroom, 1561 Merchandise Mart. This etching consists of vertical lines of figures. It is especially attractive in square-footed stemware both with the long and short stems. The etching is offered in a complete table service line as well as stemware. The Chicago Heisey showroom also has on display a number of new table pieces. Of especial interest are relish dishes both with handles and without handles. There is also a delightful new line of vases

in a wide variety of colors. One of the most attractive numbers is a 15 inch vase in a most distinctive shape.

Editor's Note: The reference here is to the #451 Lafayette Etching also used on #3390 Carcasone.



SENECA STOPS PRODUCTION TERMINATES FACTORY STAFF

MORGANTOWN, W.Va. -- Seneca Crystal which has been operating in Chap. 11 since this Spring, has ceased production and terminated all of its factory employees because of technical problems in production.

The firm will continue to fill orders with existing stock on a cash basis, a company spokesman said.

Seneca, a 92-year-old producer of hand-made fine lead crystal, was purchased by Kai Holdings, a Malaysian investment company two years ago. At that time the investors installed two new glass melting furnaces at a cost of \$750,000 to improve efficiency and reduce costs. The furnaces took longer than anticipated to come on line, and continuing technical difficulties with the new equipment caused production problems which hampered a turn-around in the company's financial situation.

A source within the company said no decision has been made about the future of the company once the stock is depleted.

Principals of Kai Holdings could not be reached for comment.

RETAILING HOME FURNISHINGS, September 26, 1983.

Diamonds are Forever Cont'd.

next month. Sit right down and take five or ten minutes to drop me a nice long list (or ever a short one) of your finds. Surely you have something to tell me about, make this your column too!!

From the Yachting Center of the World comes my very warmest wishes to each and every one HHH

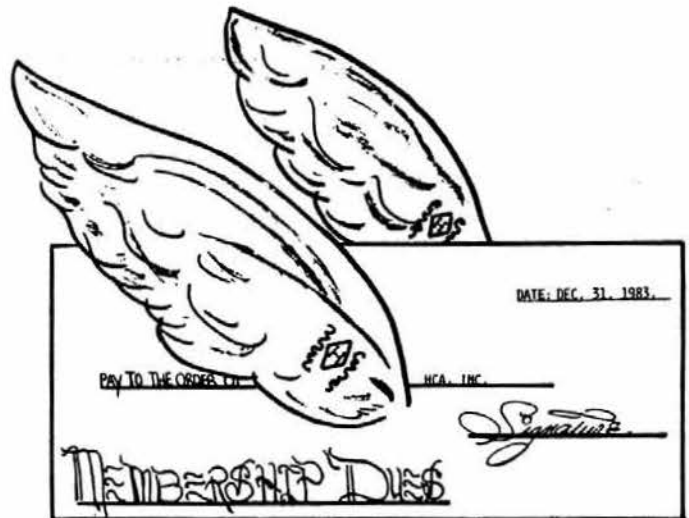
Janet Caswell

TOOTHPICK HOLDERS

Since last month we have received two (2) more donated toothpick holders. The promised #300 Peerless arrived, a gift from Mr. and Mrs. Frederick Duham and the #353 Medium Flat Panel lay-down toothpick holder was given by Tom and Neila Bredehoft. This makes a total of six since I wrote the article for the September issue. So we now own a total of 13. Of these 13, some are duplicates, either in different colors or with different decorations which we like to have.

Thank all of you for your fine support. We love to get these but please contact us before sending any so that we can avoid duplications. We know you want to be sure that yours will always remain here.

L.R.



Do you remember my envelope with wings??? Why do I request that Louise put this in once a year? You Got It - December Dues!!

I have a mountain of you folks due in December and it would certainly take a load off if you would fly your dues in early, and it would save your club a lot of money if you send them in before I have to notify you the last of November.

Why don't you sit right down, look at your membership card, and if the due date is December 31, 1983, make out your check or money order and send it in.

Thank you so much.

Merrell, Membership

The Buckeye Chapter of the Pairpoint Cup Plate Collectors of America sends it's deepest appreciation for your hosting our recent tour and meeting.

We are awed by the amount of accomplishments achieved by the Heisey Collectors thus far.

We found the tour well organized and informative, but speaking for myself, the setting of the glass collection in the beautifully restored home with the magnificent showcases, furniture, and other appointments is what sets the Heisey Museum far above any others I've been to.

I look forward to going through again the next time I'm in Newark.

V. H. Yambrovich, OH

CLUB NEWS

LONG ISLAND HCC

UPDATE ON OUR ACTIVITIES.....

The May meeting was held at the home of Jack & Ruth Perloff. Much of the evening was spent in discussion of getting new members for our club as four members are moving to Florida and two others spend most of the winter there. We planned to hold a short meeting during the June convention in Newark which ten of us will attend.

Esther Loss, widow of Bill Loss, (two of our founding members) gave us a #423 Diamond Band goblet, which had been Bill's pride and joy, and asked that it be given to the Museum in his memory. We also decided to contribute a Horsehead Cigarette box in his memory after consultation with Newark on items needed for permanent display.

The evening ended with the presentation of a large beautiful going-away card, made by our beloved club artist, Maureen Kovacs, which was signed by all of us, to Charlotte and Marty Belfer who are moving to Florida. Coffee and cake was enjoyed for what would be the last time ever at the Perloff home on Return Lane where our happy Heisey fellowship began twelve years ago.

On August 26 we met at the home of our president and wife, Ron and Maureen Kovacs. After "Show and Tell" (Horsehead and Fish bookends, custard Ring Band water set, orchid etch Donna water set, an Old Queen Ann and a maribold Twist cruet) we welcomed two new members, Natalie and Alan Dodge, into the club. They had contacted the Kovacs as a result of our notice in the Heisey News. Discussion and education was followed by coffee and Maureen's luscious and beautifully served goodies.

September 18 we met at the home of our new members, Alan and Natalie Dodge where we were pleased to view their sizable and attractively displayed Heisey collection. They had taped Ron and Marty's program on Heisey presented on Cable TV last year and ran it for our enjoyment.

Ron and Maureen had arranged a guessing game with bagged tumblers and nappies and we had a hilarious time identifying them.

A southern winter club meeting was again discussed and is a possibility. The Perloffs who are moving to Florida permanently, were presented a large and beautiful farewell card again made by Maureen, and signed by all club members. Valli Feldman volunteered to have it framed so that Jack and Ruth can hang it in their Florida home.

Natalie showed herself to be a true-blue LIHC member by serving a varied, beautifully-presented delicious group of homemade goodies. We're hoping for recipes.

Ruth Perloff

Anyone interested in information on the Long Island Heisey Collectors' Club, please write:

LIHCC
c/o HCA
P.O. Box 27
Newark, OH 43055

BAY STATE HEISEY COLLECTORS CLUB

Well, the Bay State held its first meeting of the fall season in September with president Lloyd Caswell at the helm. We are all sorry to see the summer has passed so quickly. We now have to worry about oil and getting ourselves ready for winter; how boring!

The September meeting topic was "Bring & Brag," i.e. finds that were found during the summer, and they were plentiful, from Locket on Chain to #1776 and Fandango. The list would fill two pages, suffice it to say finds in the Bay State were really great as usual. A tip of the hat to all of you, a job well done.

Lloyd showed slides of our pool party and convention and also a slide show on oil lamps which was really great. There was no show and tell so David Steer, our show and teller, took a mini vacation for the night.

We also are planning a Christmas party in December hosted by Ralph & Eilene Wise. We also put the finishing touches on our All Glass Show to be reported on in October by Dan Cherney, Show Chairman.

Refreshments were provided by Betty Bean, Irene Walton and Mary Williams. Needless to say they were excellent.

In closing I hope everyone did well at the glass show.

Your roving reporter,
George Gleason

HEISEY CLUB OF CALIFORNIA

The September 25th meeting of the Heisey Club of California was held in Arcadia. Some 18 members attended. The hosts collect cruets and little else. Cabinets of "mint condition" cruets are beautifully displayed so that each is shown as a jewel in itself. Nothing is crowded together and each is visible from the other. An example is 8 cruets (in two sizes) in Twist (#1252), in Moongleam, Flamingo, Sahara and Marigold. In another cabinet the 2-1/2 oz and 4 oz in clear. Several hundred were on display, which included related items including catsup bottles and other salad dressing containers.

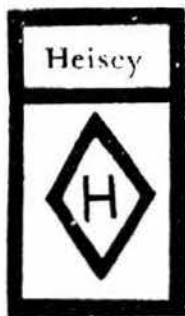
Our host shared his secret for restoring cruets. If his display is an example it certainly works. Unfortunately many members who would have profited by his demonstration did not attend. This was probably one of the most informative and interesting meetings in many a month or even years. Those who attended will certainly profit by being there. A delicious buffet was served and it was a beautiful day in a lovely home. Our drawing prize, a large clear Twist celery with a beautiful leaf and berry cutting, was won by M. Mische.

Your roving reporter,
Norval Heisey

FOREVER HEISEY
Janice A. Thran
1663 Londondale Pkwy.
Newark, OH 43055

PH: 614-344-5955
Shipping & Ins. Extra
* Marked

- # 49 Footed Salt Shaker, Flamingo....\$ 25.00
 - #1201 FANDANGO C. & Sugar....Pr..... 50.00
 - # 354 WIDE FLAT PANEL Cr. & Sg.. Pr... 37.50
 - #1238 BEEHIVE 8" Plate, Crystal (4) ea 12.50
 - #1404 OLD SANDWICH 6" Candlesticks,
Cobalt*.....Pair..... 350.00
 - #1225 PLAIN BAND 5" Covered Comport... 35.00
 - #1235 BEADED PANEL & SUNBURST Punch
Bowl Base*..... 35.00
 - #1255 PINEAPPLE & FAN 8" Vase, Emerald
(Some gold worn)..... 60.00
 - #1401 EMPRESS 6" Sq. Plate, Sahara,
#480 Old Colony Etch*..(6) ea... 12.50
 - # 126 Candlestick, Flamingo..... 45.00
 - # 372 7 oz Syrup, Crystal (No top).... 15.00
 - #5010 SYMPHONY 9 oz Gob, #503 Minuet
Etch (8) ea..... 32.50
 - #3350 WABASH 9 oz Gob. #439 Pied Piper
Etch* (2) ea..... 20.00
 - #5067 PLANTATION 8 oz Gob, #516 Ivy
Etch (4) ea..... 25.00
 - #1567 PLANTATION 1/4 Butter Cover
(only) #516 Ivy Etch..... 27.50
 - #1503 CRYSTOLITE 5-1/2" Ftd. Cheese*.. 15.00
 - #1469 RIDGELEIGH 1 Pt. Decanter &
Steeple Stopper..... 95.00
 - #1469 RIDGELEIGH Bridge Set, Club,
Spade, Diamond & Heart*..... 45.00
 - # 367 1 Qt. Decanter, Cry. Cut Stopper
(slightly Cloudy)*..... 45.00
 - # 367 1 Qt. Decanter, Moongleam, Cry-
stal Stopper (Slightly Cloudy)*. 150.00
- WANTED- #1469 RIDGELEIGH BOBECHES - Pair



1983 EDITION!
HEISEY'S GLASSWARE
OF DISTINCTION
By Mary Louise Burns

Condensed and updated!
Contains all major tableware
patterns with pictures for
easy identification.

Current price list included

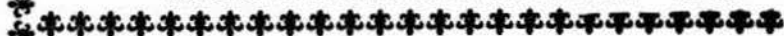
Order direct from author
\$11.95 pp
MARY LOUISE BURNS
P.O. Box 1931
Grants Pass, OR 97527

Individual price lists
available for Heisey's
Orchid Etch, Rose Etch.
Animals & Verlys @ \$1.50 ea.
plus large SASE.

DONALD P. BEAN
36 Harding Street
Milford, MA 01757

PH: 617-473-0561
P & I EXTRA
* Marked

- # 343 SUNBURST Punch Cups* 8 For.....\$ 90.00
- # 365 OLD QUEEN ANN Punch Cups* 1 Minor
Flake - 12 For..... 200.00
- # 29 9" Candle Sticks - Pair..... 90.00
- #1405 IPSWICH Saucer Champs* (11) ea... 9.00
- # 305 PUNTY & DIAMOND POINT 10" Vase... 35.00
- #1469 RIDGELEIGH Marmalade & Cover*.... 35.00
- #1469 RIDGELEIGH Mustard & Cover* With
#10 Paddle..... 45.00
- #1469 RIDGELEIGH 2" Candle Sticks Sq.
Pair..... 27.50
- # 150 BANDED FLUTE Handled Candle*..... 40.00
- #1425 VICTORIAN 2-Lite Candle* 1 Only.. 40.00
- #1533 WAMPUM 1-Lite Candles - Pair..... 50.00
- # 100 6" Candlestick* 1 Only..... 40.00
- #1252 TWIST Flamingo 8" Nappy*..... 30.00
- #1252 TWIST Flamingo 4" Nappies* 4 For. 25.00
- #1252 TWIST Flamingo 13" Celery*..... 18.50
- #1252 TWIST Flamingo 7" Pickle*..... 12.50
- #1503 CRYSTOLITE 3-Part Relish..... 12.00
- #1509 QUEEN ANN D/F Ice Bucket* Grapes
and Leaves Silver Overlay, Chrome
Handle..... 40.00



PATTON HOUSE
P.O. Box 547
Louisa, VA 23093

PH: 703-967-1181
P & I Extra
* Signed

- #1567 PLANTATION Cordials (6) ea\$ 35.00
 - #1183 REVERE Mayo & Underplate, Dawn*.. 75.00
 - # 470 INTERCEPTED FLUTE 5-1/2" Plates*
(2) ea..... 16.50
 - #1425 VICTORIAN Plates*7-1/2" (5) ea... 12.00
 - # 4 Candlesticks 9-1/2" Pair..... 125.00
 - #1469 RIDGELEIGH Wines*(4) ea..... 18.00
 - #1252 TWIST 2-Cpt. Relish* Flamingo.... 45.00
 - #3408 JAMESTOWN 12 oz Iced Teas (6) ea. 12.50
- Heisey & Other Glass Ads Framed \$15 And Up.



ALL GLASS OF ALL PERIODS

2nd ANNUAL SHOW & SALE

Sponsored by the

Connecticut Heisey Collectors Club

SATURDAY NOV. 5, 1983 SUNDAY NOV. 6, 1983

10:00 a.m. to 5:00 p.m. 11:00 a.m. to 5:00 p.m.

BENEFIT OF THE NATIONAL
HEISEY MUSEUM

Knights of Columbus Hall
Hobart Street — Off Route 10
Southington, CT

ALL HEISEY AUCTION

APPLE TREE AUCTION CENTER
 SAM SCHNAIDT, AUCTIONEER
 1616 W. CHURCH ST.
 NEWARK, OHIO 43055
 (614) 344-9449

SATURDAY NOV. 26, 1983
 DOORS OPEN 8:30 A.M.
 SALE STARTS 9:30 A.M.

ALL HEISEY AUCTION



LIST OF PRICES REALIZED, AVAILABLE AFTER THE AUCTION \$1.00

We have tried to inspect the glass closely and will use the following code to better describe the condition. A small letter indicates the damage or flaw is minimal. It would be our opinion that the value would be affected 5 - 20%. A capital letter indicates more significant damage affecting 20 - 40%. Anything damaged more than this is in our opinion will be marked with an X. We hope this will better aid in your mail bidding.

f F = Flake

c C = Crack

b B = Bruise

m M = Mold Flaw

r R = Repaired

x X = Major Damage

SAM SCHNAIDT, AUCTIONEER

614-344-9449

FRANK FRYE, MANAGER

614-344-4001

___ 1	1201 FANDANGO Hotel Cr & Sug f	___ 31	394 NARROW FLUTE Fr. drsg. bottle wrong stopper
___ 2	1567 PLANTATION Cr & Sug, Ivy Etch	___ 32	1489 PURITAN Vin. & Oil bottle
___ 3	1540 LARIAT Cr & Sug H	___ 33	5031 8 oz Fr. dressing bottle
___ 4	300 PEERLESS Ind Cr & Sug	___ 34	1252 TWIST Mnglm Cov Mustard & 4" plate H
___ 5	393 NARROW FLUTE Ind Cr & Sug H	___ 35	1252 TWIST Marigold Cov. Mustard sugary H
___ 6	1201 FANDANGO Ind Sug f	___ 36	351 COLONIAL Mustard w/wrong lid H
___ 6A	1201 FANDANGO Ind Cr	___ 37	393 NARROW FLUTE Cov Mustard w/5" underplate, Enamel decor H
___ 7	1469 RIDGELEIGH Ind Cr & Sug H	___ 38	17 Handled Decanter
___ 8	355 QUATOR Ind Cr & Sug H dtd	___ 39	331 COLONIAL Panel 13 oz Syrup
___ 9	355 QUATOR Ftd Cr & Sug H	___ 40	COLONIAL 9 oz Syrup
___ 10	1509 QUEEN ANNE D F Sug R	___ 41	354 12 oz Sanitary Syrup H
___ 11	150 OVAL IN DIA PT Emerald Creamer	___ 42	150 BANDED FLUTE Sug Sifter #1 Sanitary top 2 ea.
___ 12	393 NARROW FLUTE Double Domino Sug H	___ 43	1184 YEOMAN Sug Pouer #1 Sanitary top
___ 13	1485 SATURN Sug 2 ea H	___ 44	352 COLONIAL Horseradish Jar
___ 14	1200 CUT BLOCK Custard Ind Sug Souv.	___ 45	352 COLONIAL Horseradish jar wrong stopper
___ 15	1200 CUT BLOCK Custard Ind Sug Souv.	___ 46	1503 CRYSTOLITE 2 Lt Candle, bobèche & prisma, Pr.
___ 16	1205 FANCY LOOP Ind Cr F	___ 47	1519 WAVERLY 2 Lt. Candle Midwest cut pr.
___ 17	1401 EMPRESS Moongleam Bouillon H	___ 48	1506 PROVINCIAL 3 Lt candle cut Pr.
___ 18	150 BANDED FLUTE Cov Butter	___ 49	1540 LARIAT 3 Lt Candle Pr.
___ 19	1255 PINEAPPLE & FAN Cov Butter	___ 50	1540 LARIAT 2 Lt Candle Pr.
___ 20	1469 RIDGELEIGH Cruet, wrong stopper	___ 51	21 11½" 1 Lt Candle, sun col. F
___ 21	1184 YEOMAN Flam. 4 oz Oil D O wrong stopper, H f	___ 52	5 9" 1 Lt Candle gold dec H f
___ 22	341 OLD WMSBG 4 oz Oil H wrong stop.	___ 53	5 8" 1 Lt Candle H
___ 23	1280 WINGED SCROLL Custard 6 oz Oil some gold	___ 54	5 8" 1 Lt Candle H
___ 24	1506 PROVINCIAL 4 oz Oil H wrong stop.	___ 55	1503 CRYSTOLITE 1 Lt Candle Pr.
___ 25	1170 PLEAT & PANEL Cruet	___ 56	1503 CRYSTOLITE 1 Lt Candle Pr.
___ 26	352 HARVEY AMBER 6 oz Cruet w/Amber Pleat & Panel stopper	___ 57	1503 CRYSTOLITE 1 Lt Candleblock Pr.
___ 27	451 CROSS LINED FLUTE Cruet H no stop	___ 57A	465 RECESSED PANEL 3# Cov Candy H Dec.
___ 28	1184 YEOMAN Cruet H no stopper		
___ 29	1225 PLAIN BAND Cruet 6 oz Etched no stopper		
___ 30	1225 PLAIN BAND Cruet 4 oz no stopper		

58	1489	PURITAN 1 Lt Candleblock 4" Sq.	106	4044	NEW ERA ftd Floral bowl
59	1509	QUEEN ANNE Nappy ftd Candle Pr.H	107	1202	11" Floral bowl H
60	1503	CRYSTOLITE 1 Lt Candleblock Pr.	108	1575	Cupped Lily bowl H
61	114	HAWTHORNE 1 Lt. Candle Pr	109	1535	OVAL DIA PT 12" Flared bowl
62	1540	LARIAT Hurricane base only Pr.	110		Rolled edge 9" Floral bowl H
63	201	Complete Candlelamp, cut shade H	111	1184	YEOMAN Marigold Cov Veg D O
64	1425	VICTORIAN Low Gob. 11ea.	112	1225	PLAIN BAND Tall Cov Compote
65	1425	VICTORIAN 5 oz Sherb. 11 ea.	113	335	PRINCE OF WALES PLUMES 9" Tall
66	1425	VICTORIAN 10 oz ftd tumbler 7 H			Compote H
67	1469	RIDGELEIGH Gob. 3 ea.	114	1184	YEOMAN Mnglm 5" ftd Compote DOH
68	1469	RIDGELEIGH Sauc. Champ. 3 ea.	115	1184	YEOMAN Flam. 5" ftd Compote DO
69	3404	SPANISH Sauc. Champ. Killarney	116	1186	YEOMAN Flam. 5" low ftd Comp H
		cut 6 ea.	117	1401	EMPRESS Mnglm 6" rd Tall Stemmed
70	3404	SPANISH Cocktail Killarney cut			Compote H
		5 ea. 2 f	118	3362	CHARTER OAK Flam. 7" Tall Stem-
71	3404	SPANISH Oys. Cock. Killarney			med Compote
		cut 5 ea. 2f	119	1469	RIDGELEIGH 8" Flared ftd Comp.
72	1405	IPSWICH Oyster Cock. 7 ea H	120	1229	OCTAGON Mnglm ftd Mayonnaise
73	1447	ROCOCO 5 Comp ftd Relish H	121	339	CONTINENTAL ftd Jelly Comp H
74	1466	STAR 5 part Relish	122	1567	PLANTATION 5" ftd Cheese H
75	500	OCTAGON Variety Tray F	123	1509	QUEEN ANNE 2 Pt Drsg. bowl
76	1519	WAVERLY 3 Pt. oval Relish			Orchid etch H F
77	1201	FANDANGO #2 Bon Bon	124	1509	QUEEN ANNE 2 Pt Drsg. bowl
78	1503	CRYATOLITE 8" 2 comp. Hdl Con-			Orchid etch H F
		serve H	125	1509	QUEFN ANNE ftd Mint, Orch. etchH
79	1401	EMPRESS Flam. 3 pt rd Relish H	126	1519	WAVERLY 6" low ftd Comp Orchetch
80	4044	NEW ERA 13" Celery Tray cut	127	1509	QUEEN ANNE 8" Flared Nappy
81	1401	EMPRESS Flam. 13" Celery Tray H			Orchid etch
82	341	PURITAN 9" Celery 2 ea. H	128	1519	WAVERLY Cr & Sug Orchid etch H
83	1483	STANHOPE 3 pt Relish Blue Hdls.	129	4121	MARMALADE & Cov Orchid etch f
84	1401	EMPRESS 13" Celery Tray Ant-	130	1435	Ind. Ash Tray Orchid etch 6 ea
		arctic etch	131	5025	TYROLEAN Bell, Orchid etch
85	1401	EMPRESS Mnglm 13" Celery Tray H	132	5025	TYROLEAN ftd Jc. Orchid etch6 1f
86	1401	EMPRESS Mnglm 10" Olive Tray H	133	5025	TYROLEAN Tall Stem Gob. Orchid
87	407	COARSE RIB 9" Celery Tray H			etch 12 ea
88	1519	WAVERLY 3 pt. Relish Tray	133A	5025	TYROLEAN Tall Stem Gob. Orchid
		Narcissis cut H	134	5025	TYROLEAN Low Stem Gob. Orchid
89	1503	CRYSTOLITE 9" Leaf Pickle H			etch 5 ea
90	1469	RIDGELEIGH 12" Celery & Olive H	135	1519	WAVERLY 6½" ftd Jelly Heisey
91	1469	RIDGELEIGH 12" Celery Tray H			Rose etch H
92	1495	FERN 3 Comp. Tray, Rosalee etch	136	THRU 142A	ALL DOLLY MADISON ROSE CUT
93	500	OCTAGON Variety Tray	136	4091	KIMBERLY Gob. 12 ea. H
94		VERLYS Cupidon bowl	137	4091	KIMBERLY Saucer Champ. 12 ea H
95		VERLYS Cupidon bowl	138	4091	KIMBERLY Cocktail 12 ea H
96	V8621	VERLYS by Heisey Limelight	139	4091	KIMBERLY Ftd Juice 12 ea. H
		Pinecone bowl	140	4091	KIMBERLY Claret 3 ea H
97	V1099	VERLYS by Heisey Sacred Mountain	141	4091	KIMBERLY Ftd Ice Tea
		bowl	142	1609	8" Plate 12 ea
98		VERLYS Chrysanthmum bowl, not	142A	1951	CABOCHON Ftd 6" Compote
		finished	143	4091	KIMBERLY Gob. Sungate Cut
99		VERLYS Thistle bowl, not finish.	144	3411	MONTE CRISTO Gob. Waikiki cut 6
100	1509	QUEEN ANNE D F Floral bowl	145	5013	SHASTA Goblet, Beautiful unkn cut
101	350	PINWHEEL & FAN 8" Nappy H	146	4090	COVENTRY Gob. Zeuse cut
102	1295	BEAD SWAG Opal 8" Nappy & 4 ea	147	5013	SHASTA Goblet H
		4" Nappies	148	5057	SUEZ Goblet H
103	1533	WAMPUM 12" Floral bowl	149	U8005	GALAXY Flam. Goblet H F
104	1632	LODESTAR 8" bowl H	150		Beautifully Cut Goblet by Krall
105	1428	WARWICK Cobalt Floral bowl H	151	3333	OLD GLORY Gob Peacock etch H

152	5022	GRACEFUL Goblet	198	1255	PINEAPPLE & FAN Emerald Tumbler
153	5024	OXFORD Goblet Ticonderoga cut			Good Gold 3 ea
154	3325	RAM-PUL Hawthorne Gob cut stem	199	433	GREEK KEY Sm. Ice Tub H f
155	4209	Mnglml 9" Vase D O	200	459	8" Basket Cloister cut H
156	1413	CATHEDRAL Vase Cobalt, Flared	201		RINGNECK PHEASANT
157	1413	CATHEDRAL Vase Flam., Flared	202		RINGNECK PHEASANT
158	5012	7 oz Vase	203		GIRAFFE, Head Turned
159	6	Vase in Metal Holder H	204		STANDING COLT
160	300	PEERLESS 9" Vase H	205		STANDING COLT
161	1540	LARIAT Fan Vase	206		OSCAR HORSE (Sparky)
162	7047	COMETLEAF Goblet H	207		OSCAR HORSE (Sparky) Amber
163	1503	CRYSTOLITE Violet Vase H	208		SEALYHAM TERRIER (Scotty)
164	1519	WAVERLY Violet Vase H	209		SEALYHAM TERRIER (Scotty)
165	1555	10" Cornucopia Vase	210		FISH CANDLESTICK f
166	465	RECESSED PANEL 9" Flared Vase H	211		FISH CANDLESTICK f
167	465	RECESSED PANEL 1/2# Cov CandyDecH	212		SMALL ELEPHANT
168	465	RECESSED PANEL 1# Cov Candy Dec	213		SMALL ELEPHANT
169	1519	WAVERLY Stemmed Cov Candy	214		SMALL ELEPHANT
		Elks Crest H	215		MIDDLE ELEPHANT
170	1590	ZODIAC Stemmed Cov Candy H	216		MIDDLE ELEPHANT
171	1430	ARISTOCRAT Short Cov Candy	217		LARGE ELEPHANT R
		Krall cut H	218		SOW H R
172	300	PEERLESS Water Bottle	219		SITTING PIGLET
173	4026	16 oz Decanter, Mayflower etch	220		SITTING PIGLET
174	4036	1 Pt Decanter, Maryland cut	221		SITTING PIGLET H
		Sterling on Stopper	222		STANDING PIGLET
175	4002	AQUA CALIENTE Tally Ho etch	223		STANDING PIGLET H
176	4052	NATIONAL 10 oz Soda, Tally Ho	224		STANDING PIGLET H
177	4054	CORONATION Martini Pitcher	225		STANDING PIGLET
178	4036 1/2	1 Qt Decanter	226		CYGNET
179	6060	COUNTRY CLUB 13 oz Old Fashion	227		WOOD DUCKLING, Floating M
		Winchester 73 etch 4 ea	228		SPARROW
180	6060	3 Pt Cocktail Shaker, Winchest-	229		GOOSE Wings Up
		er 73 etch	230		GOOSE Wings Half
181	6060	COUNTRY CLUB 40 oz Martini	231		FIGHTING ROOSTER
		Mixer, Winchester 73 etch	232		HORSEHEAD BOOKEND
182	4027	32 oz ftd Decanter, Golfer etch	233		HORSEHEAD BOOKEND
183	6060	3 Pt Cocktail Shaker Small	233A		ASIATIC PHEASANT H
		Horsehead Stopper	233B		ASIATIC PHEASANT H
184	4225	COBEL 1 Qt Cocktail Shaker	233C		SHOW HORSE
		Roosterhead Stopper	233D		CLYDESDALE
185	4036	1 Qt. Cocktail Shaker Rooster	233E		REARING COLT F
		head Stopper	233F		STANDING COLT
186	4036	1 Qt Cocktail Shaker Rooster	233G		SPARK PLUG (OSCAR)
		head Stopper	233H		ROOSTER
187	367	1 Qt Decanter, Repaired stopper	233I		HEN
188	341	PURITAN 24 oz Decanter, Press-	233J		CHICK HEAD UP
		ed Stopper H	233K		CHICK HEAD UP
189	333	HOTEL WALDORF ASTORIA Decanter	233L		CHICK HEAD DOWN
190	351	COLONIAL 1 Qt Decanter, pressed	233M		CHICK HEAD DOWN
		Stopper H	233N		MALLARD WING UP
191	1469	RIDGELEIGH Decanter	233O		MALLARD WING HALF
192	3484	DONNA 1/2 Gal. Ice Jug,	233P		MALLARD WIND DOWN
		Barcelona Cut	233Q		WOOD DUCK
193	4054	CORONATION 1/2 Gal Ice Tankard	233R		DUCKLING STANDING
194	1591	AELEPHANT Handled Pitcher H	233S		FIGHTING ROOSTER (COBALT & CRYSTAL)
195	341	PURITAN 2 Pt Pitcher H	233T		FIGHTING ROOSTER
196	429	PLAIN PANEL 3 Pt Jug H	233U		GOOSE WING HALF WAY H
197	1255	PINEAPPLE & FAN Emerald 1/2 Gal	233V		RABBIT PAPERWEIGHT
		Jug, Good Gold			

233W	BUNNIE HEAD UP	267	5003	CRYSTOLITE 1 oz. Cordial
233X	BUNNIE HEAD DOWN	268	3408	JAMESTOWN Sherry Barcelona cut H
233Y	GIRAFFE ON BUST OFF, HEAD TURNED H	269	3390	CARCASSONNE Sahara 1 oz. Cordial
233Z	DONKEY			Old Colony etch 3 ea.
233AA	TIGER PAPERWEIGHT H	270	3390	CARCASSONNE Sahara 1 oz. Cordial
233BB	LARGE MADONNA	271	1205	FANCY LOOP Sherry
233CC	SMALL MADONNA	272	300	PEERLESS 1 oz. Cordial 5 ea H
233DD	RAMS HEAD STOPPER	273	347	COLONIAL 1 oz Cordial H
233EE	IMP. CAR. SLAG SCOTTY	274	3304	UNIVERSAL 3 oz. Burgandy 6 ea.
233FF	IMP. CAR. SLAG MALLARD WINF DOWN X	275	3404	SPANISH Cobalt Sauc. Champ. 5 ea.
233GG	IMP. CAR. SLAG MALLARD WING UP	276	3404	SPANISH Cobalt Oys. Cock.8 ea.
233HH	IMP. CAR. SLAG MALLARD WING HALF	277	3355	FAIRACRE Sauc. Champ. Flam.
233II	IMP. CAR. SLAG WOOD DUCK			stem & ft cut H f
233JJ	IMP. CAR. SLAG DONKEY	278	5024	OXFORD Sauc. Champ.MarylandcutH
233KK	IMP. CAR. SLAG AIREDALE	279	1170	PLEAT & PANEL Flam. Sherbet
233LL	IMP. CAR. SLAG SPARKY (OSCAR)	280	3350	WABASH Sauc. Champ. Pied Piper
233MM	IMP. CAR. SLAG KICKING COLT			etch 2 ea. H
233NN	IMP. CAR. SLAG REARING COLT	281	3333	OLD GLORY Cock. Ren. etch H
233OO	IMP. CAR. SLAG STANDING COLT	282	3368	ALBEMARLE Flam. Sauc. Champ Hf
233PP	HEISEY SIGN (CABOCHON)	283	1401	EMPRESS 8" Tangerine plate H
234	1503 CRYSTOLITE Master Swan Nut	284	1401	EMPRESS 8" Tangerine plate H
235	1503 CRYSTOLITE Swan Ind. Nut 2 ea.	285	1236	EAGLE PLATE 4 ea. H
236	1560 VICTORIAN GIRL BELL, FROSTED	286	1238	BEEHIVE 8" plate Flamingo
237	GOOSE HEAD STOPPER	287	4182	8" Plate Diana etch 7 ea.
238	15 DUCK FLOWER FROG, Flam. no base	288	352	FLAT PANEL 14" Rd. tray H
239	14 KINGFISHER FLOWER HOLDER, Hawth. H	289	1252	TWIST OHIO Sesqui. Platter
240	133 SWAN 1 Lt Candle, Mnglm F	290	1183	REVERE 14" Buffett plate,
240A3404	SPANISH Gob. Tangerine (Red Side)			Swan Dive Carving
241	1624 PATIO Amber ftd Juice	291	1183	REVERE 18" Torte Plate Liberia
242	6060 COUNTRY CLUB Dawn 10 oz Bev. Sham			Crest Monog.
	Screen Optic 4 ea	292	1184	YEOMAN 7" Mnglm plate DO 5 ea.
243	515 1/4 oz. COLOGNE Mnglm Windsor cut H	293	1401	EMPRESS Sahara 10 1/2" Rd PlateH
244	515 1/4 oz. COLOGNE Flam. D O H	294	1231	OCTAGON Flam. 8" plate 6 ea.
245	1489 PURITAN COLOGNE	295		8" Piecrust Plate 8 ea.
246	1489 PURITAN COLOGNE, cut stopper	296	1183	8" Plate, Barcelona cut 12 ea.
247	DUCK COLOGNE STOPPER Mnglm	297	1183	8" Plate 12 ea.
248	LOT of 6 Misc. Stoppers	298	1183	Dawn Mayo Underplate 2 ea.
249	4227 FAVOR VASE Crystal D O	299	1509	QUEEN ANNE D F Punch Bowl F
250	352 FLAT PANEL Ice Cream Cone Holder	300	1503	CRYSTOLITE Punch Cups 12 ea. H
	Flared H	301	1503	CRYSTOLITE Punch Cups 12 ea. H
251	2052 2 oz. BAR Orchid etch	302	1506	PROVINCIAL Punch Cups 6 ea. H
252	2052 2 oz. BAR Orchid etch	303	1540	LARIAT Punch Cups 4 ea. H
253	2052 2 oz. BAR Renaissance etch 2 ea.	304	1161	2 1/2 oz. Punch Cup H
254	4052 1 1/2 oz. BAR Tally Ho etch	305	1229	OCTAGON Nut Cup Cut
255	6060 COUNTRY CLUB 2 oz. bar Winchester	306	1252	TWIST Marigold Nut Cup H
	73 etch	307	1252	TWIST Flam. Nut Cup H
256	6060 COUNTRY CLUB 2 oz. bar Winchester	308	1428	WARWICK Sahara Ind Vase 2 ea. H
	73 etch	309	31	1 Lt. Toy Candle 2 ea.
257	4052 1 1/2 oz. BAR Moonglo cut 4 ea. 1f	310	31	1 Lt. Toy Candle H
258	1486 COLEPORT 1 1/2 oz. bar 2 ea m	311	473	NARROW FLUTE W/RIM Ind.
259	417 DOUBLE RIB & PANEL 1 oz. bar H			Almond 5 ea. H
260	411 TUDOR 2 1/2 oz. bar tumbler H	312	473	NARROW FLUTE W/RIM Ind.
261	5087 COMET 2 oz. bar			Almond 4 ea. H
262	6010 FINESSE 1 oz Cordial	313	393	NARROW FLUTE Ind. Almond H
263	6010 FINESSE 1 oz. Cordial, Ultronic cut	314	1201	FANDANGO Toothpick
264	3408 JAMESTOWN 1 oz. Cordial Narcissus	315	315	PANELLED CANE Toothpick, Good
	cut H			Gold dec. H
265	4044 NEW ERA 1 oz. Cordial H	316	1225	PLAIN BAND Toy Sug, No lid
266	5019 WAVERLY 1 oz. Cordial 4 ea 1F	317	1454	DIA. PT. Ind. Marmalade H

317A	1540	LARIAT Gob. Moonglo cut 6 ea.	356	7013	THUMBPRINT & ANGLE Puff Box metal lid H
317B		RABBIT PAPERWEIGHT			
317C		FISH BOOKEND	357	7070	PINEAPPLE & HEART Puff Box no lid H
317D		FISH BOOKEND			
317E		SEALYHAM TERRIER(SCOTTY)	358	16	Puff Box no lid H f
317F		ROOSTER VASE	359	5	Puff Box no lid H
317G		DONKEY	360	13	COLONIAL Salt & Pepper Amber
317H		SEALYHAM TERRIER (SCOTTY)	361	1951	CABOCHON Salt & Pepper Dolly Madison Rose cut
317I		CYGNET			
317J		HORSE HEAD BOOKEND, Frosted	362	49	Salt & Pepper metal top, D O Moongleam ft.
317K		IMPERIAL OSCAR SOUV. 1978			
317L		Small Ash Tray	363		Salt & Pepper metal top?
318	1469	RIDGELEIGH Salt Dip 3 ea H	364		Ind. Mnglm Salt glass top ?
319	1469	RIDGELEIGH Salt Dip H	365	52	Ind. Flam Shakers, 2 Pr.
320	351	PRISCILLA oblong Table Salt, Fully ground	366	1469	RIDGELEIGH Salt metal top
321	1503	CRYSTOLITE Ind Swan nut	367	1503	CRYSTOLITE Salt Shaker, cl.
322	1220	PUNTY BAND WINE Red St, Souv H	368	1486	COLEPORT Dawn soda 7 ea all f
323	1295	BEAD SWAG Mug Red St. Souv 1901	369	5087	COMET 12 oz Ice Tea mono SJS
324	1200	CUT BLOCK 1/2 Pt Pitcher Red St. Souv. Pitts Expo	370	1404	OLD SAND Sahara Ftd Soda H
325	310	RING BAND Tumbler Red St. Souv. H, Rare in crystal	371	1404	OLD SAND Sahara Ftd Tumbler H
326	1489	PURITAN 4 1/2" Ash Tray cut f	372	1417	ARCH Flam 9 oz Tumbler H
327	1521	QUILT Ash Tray f	373	1417	ARCH Amber 9 oz Tumbler H
327A	1532	WAMPUM Ash Tray H	374	1630	10 oz STACKING Tumbler H
328	1401	EMPRESS Ash Tray H	375	5040	LARIAT Goblet H
329	1401	EMPRESS Ash Tray Sahara H	376	715	10 oz Goblet H
330	1404	OLD SAND. Ind Ash Tray 2 ea H	377	3312	GAYOSO Goblet Vogel etch
331	1404	OLD SAND. Sahara Ind Ash Tray 3 ea. H	378	1205	FANCY LOOP Gob. good gold
332	1404	OLD SAND. Ind. Ash Tray H	379	1205	FANCY LOOP Emerald Gobgold wn
333	1183	YEOMAN Ash Tray Golfer etch?	380	839	10 oz Goblet
334	1183	YEOMAN Ash Tray 4 ea MONOG	381	1184	YEOMAN Mnglm Gob. H
335	1489	PURITAN Lg Horsehead Cig Box	382	369	10 oz Gob. optic H
336	1483	STANHOPE Cig Box sgn MAC	383	3344	CAROLINA Gob. Dundee etch H
337	361	Ash Tray & Cig Holder Flam cutH	384	839	10 oz Goblet
338	1503	CRYSTOLITE Cig Lighter/cdlblk	385	5077	LEGIONNAIRE Goblet H
339	1503	CRYSTOLITE Cig Lighter	386	4085	KOHINOOR Ftd Soda Saturn optic
340	1503	CRYSTOLITE 3" Sq Ash Tray 2 H	387	1540	LARIAT Ftd Soda cut
341	1503	CRYSTOLITE 3" Rd Ash Tray 4 H	388	3350	WABASH Ftd Soda Pied Piper 3 ea H 1 f
342	1503	CRYSTOLITE # " Rd Ash Tray 3 H	389	3350	WABASH Gob Pied Piper 3 H 1 f
343	1503	CRYSTOLITE Ftd Cig Holder H	390	6091	CABOCHON Gob Southwind cut 5
344	1503	CRYSTOLITE Ftd Cig Holder H	391	3418	SAVOY PLAZA 12 oz ftd Soda & 4054 CORONATION 12 oz ftd Soda
345	4035	Cig. Holder	392	3368	ALBEMARLE Flam. 12 oz ftd Soda 5 ea
346	1503	CRYSTOLITE 4" Rd Coaster 6ea	393	4091	KIMBERLY Claret 12 ea H
347	1503	CRYSTOLITE Ind Cr, Sug,&Tray H	394	4091	KIMBERLY Sherb. 7 ea H 2 f
348	1540	LARIAT Ind Nut dish 2 ea.	395	341	PURITAN Saucer Champagne H
349	1540	LARIAT Butter bottom only Moonglo cut f	396	433	GREEK KEY Sherbet H
350	5066	HORSEHEAD COCKTAIL	397	300	PEERLESS Sherbet 7 ea H 1 f
351	5074	SEAHORSE STEM COCKTAIL H	398	1184	YEOMAN 2 3/4 oz ftd Oyster Cocktail D O 6 ea
352	5048	ROOSTER HEAD Cocktail 3 ea.	399	1401	EMPRESS Sahara 7 1/2" Rd plate & Mnglm 8" plate Old Colony etchH Colonial 3 " Violet Vase
352A	1184	YEOMAN Wine Flamingo 6 ea. H	400	1483	STANHOPE Cup Black Knob
353	1567	PLANTATION Ftd Mayo w/ladle Rotary logo	401	3325	RAM-PUL Flam. Oys Cock
354		Blown Hollow Stem Champ 10ea.	402	300	PEERLESS Sug no lid H rough
355	350	PINWHEEL & FAN Puff Box metal lid H	403	1295	BEAD SWAG Opal Sug no lid x
			404		

404A 1503 CRYSTOLITE Zircon 3"coaster
 or ash tray
 405 1489 PURITAN Camelia Bowl
 405A 1489 PURITAN Decanter
 406 1253 Flam. 3 Cor Mint dish H
 407 1229 OCTAGON Hawthorne Hdl Jelly
 408 1229 OCTAGON Mnglm Hdl Jelly cut
 409 1401 EMPRESS Flam 10" Pickle &
 Olive Tray
 410 1401 EMPRESS Flam 13" Pickle &
 Olive Tray H
 411 1220 PUNTY BAND 4" Nappy, Red St.
 412 3350 WABASH Mnglm Finger Bowl DO
 413 337 PRISON STRIPE 4" Hdl Nappy H
 414 1469 RIDGELEIGH 6½" Hdl Cheese H
 415 1469 RIDGELEIGH 6" hdl Bon Bon
 416 1229 OCTAGON Flam 6" hdl Bon Bon
 417 1469 RIDGELEIGH 4½" Sq Nappy 4 H
 418 1193 Flamingo 7 " Conserve H
 419 1950 CABOCHON 6½" Shallow Nappy
 Silver Dec. 25th Anniv.
 420 1295 BEAD SWAG 5" Flared Nappy 6
 421 1519 WAVERLY 6" Div ftd Mint
 422 1506 PROVINCIAL Oys Cock H
 423 1280 WINGED SCROLL Clambroth
 Trinket Box Souv
 424 Toothpick made from Flamingo
 candle socket
 425 5025 TYROLEAN Bell
 426 3408 JAMESTOWN Cordial Narcissus
 cut Broken Foot H
 427 Mayonnaise Spoon H
 428 393 NARROW FLUTE Ind Cr
 429 10 MUDDLER
 430 Mayonnaise Spoon 2 ea H
 431 1519 WAVERLY 5" Choc Box, no lid 4H
 432 1503 CRYSTOLITE 2 Pcs. 1 Candy Box
 w/out lid & Footed Shell
 433 1503 CRYSTOLITE Cov Shell Candy no
 lid 2 ea
 434 1519 WAVERLY Cig Box Orchid etch
 no lid X & 1503 3" Rd ash tr.
 435 Misc. Lot of 4 pcs. as is
 436 1519 WAVERLY Epergnette 2 ea
 437 4233 5" Vase for Candelabra 3 ea
 438 3359 Flam 3 Gobs & 3 Sauc Champ
 439 Box Lot Of Misc Prisms incl A
 440 Box Lot "C" Prisms app 15,6"
 441 Box Lot "C" Prisms app 15, 6"
 442 Box Lot "C" Prisms app 15, 6"
 443 Box Lot "C" Prisms app 15, 6"
 444 Imp Car Slag Medium Elephant
 445 Imp Milk Glass Mother Rabbit
 446 Imp Milk Glass Bunny Head Up
 447 Imp Milk Glass Bunny Head Down
 448 Imp Milk Glass Chick 4 ea
 449 Imp HCA Souv 1978 Pink Sparky
 450 Imp HCA Souv 1978 Pink Sparky

451 Imp HCA Souv 1978 Pink Sparky
 452 Imp HCA Souv 1979 Yellow Sparky
 453 Imp HCA Souv 1979 Yellow Sparky
 454 Imp HCA Souv 1977 Green Sparky
 455 Imp HCA Souv Clarets '74, '75, '76
 456 Imp Aurora Jewels Top Hat
 457 Imp Childs Mug Green
 458 Imp Childs Mug Aurora Jewels
 459 Imp Provincial Amber Wine
 460 Imp Ipswich Amber Pecan Dish H
 461 Imp Amber 1971 L of L Souv Plate
 462 Imp Nut Brown 1974 L od L Souv Plate
 463 Imp Lot of 6 L of L Souv Plates
 1972, 1973, 1974, 1975 & (2) 1976
 464 3 Colonial Stems (gob, champ, & wine)
 from Emmett Olson's office (cannot
 positively identify as Heisey)
 465 Goblet w/Green knob, same as 464

MAIL BID INSTRUCTIONS

Mail bids accepted with checks for maximum amount. Mail bids are handled competitively and any difference refunded. Only items in mint condition will be subjected to mail bids. Please add \$8.00 per carton for postage and handling, \$10.00 west of Rocky Mountains. Checks should be made to: SAM SCHNAIDT, AUCTIONEER and mailed to: APPLE TREE AUCTION CENTER
 1616 W. CHURCH ST.
 NEWARK, OHIO 43055

LIST OF PRICES REALIZED, AVAILABLE AFTER THE AUCTION FOR \$1.00

ATTEND THESE SHOWS
SUPPORT THE MUSEUM

OCT. 30 - 9 - 5
 REYNOLDSBURG HIGH SCHOOL
 REYNOLDSBURG HEISEY COLLECTORS CLUB

NOV. 5 AND 6
 KNIGHTS OF COLUMBUS HALL, SOUTHINGTON, CT
 CONNECTICUT HEISEY COLLECTORS CLUB

MARCH 24 AND 25, 1984
 ALL-HEISEY SHOW AND SALE
 SILVER SPRING, MD
 NATIONAL CAPITOL HCC



Route 202
Lahaska, PA 18931
(215) 794-7800

LYNNE ART'S
DOLL HOUSE



P.O. Box 54-6014
Miami Beach, FL 33154
(305) 861-7700

"HEISEY OUR SPECIALTY"

Dear Heisey Collector and Dealer,

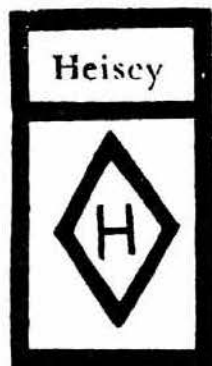
AFTER THE FIRST OF THE YEAR

*We'll be Heading Your Way!! Heisey Animals,
Lovely Old Patterns, and a Rainbow of Colors, will
be coming along with us.*

IN THE MEANTIME WE'LL BE IN OUR SHOP IN LAHASKA, PENNA. BY APPOINTMENT
OR BY CHANCE.

ONLY BECAUSE OF DOCTORS ORDERS, WE ARE SELLING OUR ENTIRE HEISEY GLASS
INVENTORY AND PART OF OUR PRIVATE COLLECTION, ONE PIECE OR EVERYTHING.

*See you soon,
Lynne and Art*



1983 EDITION!

HEISEY'S GLASSWARE
OF DISTINCTION

By Mary Louise Burns

Condensed and updated!
Contains all major tableware
patterns with pictures for
easy identification.

Current price list included

Order direct from author
\$11.95 pp
MARY LOUISE BURNS
P.O. Box 1931
Grants Pass, OR 97527

Individual price lists
available for Heisey's
Orchid Etch, Rose Etch.
Animals & Verlys @ \$1.50 ea.
plus large SASE.

GLASS
review

ESTABLISHED 1971

The GLASS REVIEW Magazine is for every-
one who studies, collects or sells glass.
Whether your glass interests lean toward
the early 1900's -- or the depression era--
or with today's limited glass items, the
GLASS REVIEW covers it all!

Articles -- price reports -- original
catalog documentation -- shop directory --
research and reproduction news -- trademark
information -- glass book releases -- what's
new on the market -- a large variety of
glass ads (on both old and new glass) --
plus much more.

Enclose payment and mail to:
GLASS REVIEW, P.O. BOX 542, MARIETTA,
OH 45750

10 'big' yearly issues

68 pages or more

\$12.50 -- one year

GRAFTON HOUSE ANTIQUES

P.O. Box 223832
Dallas, TX 75222

PH: 214-943-1621
Add 10% Shp/hdlg
* Marked

- #1503 CRYSTOLITE Bon Bon 6".....\$ 6.00
- #1540 LARIAT 6" Plates* (4) ea..... 7.00
- # 300 COLONIAL 7" Candlesticks..Pr..... 65.00
- # 300 1-Lite Candelabra A prism* 1 Only. 85.00
- #1519 WAVERLY Triplex Relish*..... 20.00
- #1183 REVERE Covered Candy 6" With Cutting*..... 50.00
- #1509 QUEEN ANN 5 o'clock Relish With #913 Everglade Cutting*..... 65.00
- #4220 Cocktail Shaker With Rooster Stopper W/Cattail & Duck Cutting Pair..... 225.00
- # 393 NARROW FLUTE French Dressing* With Underplate..... 45.00
- #1469 RIDGELEIGH Lemonade Pitcher*..... 110.00
- # 7 Mayonnaise Ladle, Hawthorne*..... 35.00
- # 7 Mayonnaise Ladle, Flamingo*..... 25.00
- #1401 EMPRESS Handled Fruit Bowl, Flamingo*..... 65.00
- #1445 GRAPE 1-Lite Candlestick 11" Tall* Pair..... 165.00
- #1503 CRYSTOLITE 3-Lite Candlestick Pair..... 35.00
- # 433 GREEK KEY Tall Footed 5" Jelly*... 50.00

CHRISTMAS RECIPES from the past 100 years - A small collection - \$3.00 Postage Paid.

THE COLLECTOR'S STOP

512 Broughton Drive
Beverly, MA 01915
* Marked

PH: 617-921-0115
All Items in Excellent Condition, Otherwise Stated - S & I Extra

ALL ITEMS SUBJECT TO PRIOR SALE

- # 150 BANDED FLUTE 14" Punch Bowl With Stand* & 10 Cups.....\$295.00
- # 451 CROSS LINE FLUTE 12" Celery*..... 40.00
- #5038 Rooster Cocktail (3) each..... 55.00
- #1201 Moongleam 11" Low Footed Bowl*.... 75.00
- # 150 BANDED FLUTE Toothpick*..... 40.00
- #5072 ROSE Stem, Rose Etch 9 oz Goblets (5) each..... 38.00
- #5072 ROSE Stem, Rose Etch, 6 oz Saucer Champagnes (7) each..... 38.00
- #5072 ROSE Stem, Rose Etch 4 oz Cocktail (5) each..... 38.00
- #5072 ROSE Stem, Rose Etch 3 oz Wines (3) each..... 75.00
- #5025 TYROLEAN Orchid Etch 10 oz Goblets (6) each..... 25.00
- #5025 TYROLEAN Orchid Etch 3 oz Wines (2) each..... 38.00
- #5025 TYROLEAN Orchid Etch 4 oz Cocktail (2) each..... 27.00
- # 433 GREEK KEY 2 Qt. Crushed Fruit*.... 275.00
- #3350 Hawthorne 10 oz Goblet* (8) each.. 36.00
- #3350 Hawthorne 6 oz Sau/Champ (8) ea... 36.00
- # 352 FLAT PANEL Toothpick..... 45.00
- # 351 PRISCILLA Toothpick*..... 40.00
- # 305 PUNTY & DIAMOND POINT Small Cologne - Silver Top..... 40.00
- #1401 EMPRESS Alexandrite 13" Celery*... 175.00
- #1205 FANCY LOOP Cream & Sugar..... 75.00

GLASS, ETC.

JANET & LLOYD CASWELL
41 Marion Road
Marblehead, MA 01945

PH: 617-631-9169
P & I Extra

- #4162/2 5" Vase, Flamingo (Orig. Flam. Sticker).....\$ 58.00
- #1469 RIDGELEIGH Star Relish..... 35.00
- #1567 PLANTATION 3-Part Relish..... 35.00
- #1252 TWIST Ice Bucket/no handle, Flam. 70.00
- #1951 CABOCHON Cream & Sugar..... 40.00
- #1252 TWIST 9" Floral Bowl, Rolled Edge, Flamingo..... 45.00
- # 393 NARROW FLUTE 4 oz Low Footed Sherbets...each..... 12.00
- # 393 NARROW FLUTE Med. Finger Bowls each..... 8.00
- #4054 CORONATION Tankard/4 5 oz Glasses (gold)....set..... 120.00
- #1252 TWIST Mayonnaise, Clear..... 25.00
- #1445 GRAPE CLUSTER Single Sticks..Pr.. 125.00
- #1540 LARIAT 2-Lite Candlesticks..... 45.00
- #1540 LARIAT 12" Divided Celery..... 22.50
- #1401 EMPRESS 12" Celery, Sahara..... 32.00
- #1184 YEOMAN C & S (Stack-No Top) Wheel Cut..... 42.00
- # 406 COARSE RIB 9" Celery, Crystal.... 20.00
- #1231 RIBBED OCTAGON Cups & Saucers, Moongleam (4) ea..... 75.00
- # 134 TRIDENT Sticks, Tea Rose Etch.Pr. 42.00
- #1184 YEOMAN Relish/Silver Overlay.... 42.00
- #1486 COLEPORT Floral Bowl..... 38.00

H & R DIAMOND H

Helen - Bob Rarey
1450 White Ash Drive
Columbus, OH 43204

PH: 614-279-0390
After 5:30 P.M.
Shipping & Ins. Extra
* Marked

#439 Pied Piper Etch:

- #3350 WABASH 10 oz Goblet (12) ea.....\$ 18.00
- #3350 WABASH 10 oz Tumbler, Ftd. (2) ea. 20.00
- #3350 WABASH 12 oz Ice Tea, Ftd. (7) ea. 17.50
- #3350 WABASH 12 oz Ice Tea, Ftd., Hdld. (6) ea..... 20.00
- #3350 WABASH 6 oz Saucer Champagne (3) ea..... 17.50
- #3350 WABASH 6 oz Sherbet (9) ea..... 15.00
- #3350 WABASH 3 Pt. Tankard, Plain Neck.. 160.00
- #3350 WABASH 3 Pt. Tankard, Cut Neck.... 160.00
- #2401 5 oz. Soda or Juice (8) ea..... 15.00
- #4164 73 oz. Jug, Plain Neck..... 175.00
- #4182 7" Plate (12) ea..... 12.50

Other Items:

- # 134 2-Lite Candle holders, Plain..Pr.. 50.00
- # 300 PEERLESS, 3 Pt. Jug*..... 55.00
- # 433 GREEK KEY 9 oz Goblet*..... 105.00
- #1229 OCTAGON, Ind. Nut* D/O Moongleam.. 21.50
- #4224 1 Qt. Cocktail Shaker, Rooster Stopper..... 75.00
- #5048 Rooster Head 3-1/2 oz Cocktail (8) ea..... 40.00

CLASSIQUE GLASS CO. PH: 918-585-3203
 Box 52572 P & I Extra
 Tulsa, OK 74152 Mint Unless Noted

# 472	NARROW FLUTE Creamer*	15.00
# 472	NARROW FLUTE Ftd. Banana Split*	22.50
#4157	YEOMAN Rose Bowl - Vogel III p.70	25.00
#3380	OLD DOMINION, Sahara Sauc. Champ.	17.50
#3390	CARCASSONE Sahara Ftd. Tumbler...	20.00
#1486	COLEPORT Dawn* Tumbler (8).....	32.00
#1483	STANHOPE Sugar Swingtime Etch....	22.00
#1255	PINEAPPLE & FAN Red Hd1. Emerald Covered Butter.....	140.00
#1255	PINEAPPLE & FAN 4" Nappy (4).....	25.00
# 406	COARSE RIB 8-3/4" Plate Clear*(6)	7.50
#1404	OLD SANDWICH Sahara Oval Creamer*	45.00
#1216	Crystal 7-1/2" Plate, Clear* (6).	7.00
#1637A	TOWN & COUNTRY Dawn Tumbler*.....	37.50
#1252	TWIST Flamingo Hdld. Nut Cup*....	17.50
#1252	TWIST Moongleam Coaster*(4).....	12.00
#1295	BEAD SWAG Cream & Cov. Sugar Worn Floral & Gold Decor.....	220.00
#1428	WARWICK 7" Cornucopia Vase*.....	45.00
# 335	PRINCE OF WALES Clear Creamer* Worn Gold.....	57.50
# 352	FLAT PANEL Shaker Clear Orig. Top	15.00
#1184	YEOMAN 6" Plate, Hawthorne.....	17.00
# 121	Hawthorne Candle Holders*.....	68.00
#3381	CREOLE Cocktail, Clear Stem, Alexandrite Bowl*.....	135.00
# 479	HOTEL Sugar/Creamer, Moongleam..	37.50
#4045	WIDE Optic Cobalt 6" Rose Bowl.	95.00
#1170	PLEAT & PANEL Flamingo 3-Pint Ice Lip Pitcher*.....	68.00
#1503	CRYSTOLITE Tall Crm/Sugar* Set...	27.50
#1503	CRYSTOLITE Oval Crm/Sugar* Set...	25.00
#1503	CRYSTOLITE Rnd. Cig. Holder*.....	14.00
#1503	CRYSTOLITE Brass Top & Flower Finial for Candy.....	17.50
#1405	IPSWICH Clear 11" Ftd. Console Bowl.....	65.00
#1405	IPSWICH Candle Lamps Prisms No/ Inserts.....Pair.....	125.00
#1405	IPSWICH Sherbet* (10).....	15.00
#1405	IPSWICH Footed Ice Tea* (4).....	17.50
#1405	IPSWICH Goblets* Moongleam (4)...	42.00
#1229	OCTAGON Hdld.6"PlateMarigold D/O.	21.00
#1540	LARIAT Cup* (6).....	10.00
#1540	LARIAT Coaster.....	10.00
#1540	LARIAT Goblet.....	18.50
#1540	LARIAT Bowl/Salad Drsg. 2-Compt..	37.50
# 433	GRECIAN BORDER Spooner*.....	67.50
# 433	GRECIAN BORDER Ftd. Banana Split.	32.50
# 300	PEERLESS 4" Nappy*.....	12.50
# 315	PANELED CANE 4-1/2" Nappy* (4)...	27.50
#1401/1509	3 Hdld. Dolphin Ftd. Sugar Barcelona Cut, Crystal*.....	30.00
#1401	EMPRESS Ind. Sugar, Moongleam....	20.00
#1401	EMPRESS 8-1/2" Sq. Plate, Sah*(8)	12.00
#1401	EMPRESS 3-Hdld. D/F, Sug. Sahara.	45.00
#1401	EMPRESS 7" Compote, Moongleam*...	65.00
# 112	TRIDENT Candlesticks, Crystal Pair.....	32.00
# 112	TRIDENT Candlesticks, Moongleam Pair.....	42.00
# 112	TRIDENT Candlesticks, Flamingo Pair.....	42.00

Classified Ads

WANTED: Buying Cambridge Rosepoint, Heisey Rose & Orchid, Fostoria etched dinnerware and Depression Glass. Also glass figures and unusual glass pieces. NADINE PANKOW, 207 South Oakwood, Willow Springs, IL 60480

PH: 312-839-5231

FOR SALE: Most Colors, Most Patterns, 2000 pieces of Heisey to choose from. S.A.S.E. Please. No list available, Write wants. PEGGY'S ANTIQUES, Box 367, Spavinaw, OK 74366
 PH: 918-589-2859

FOR SALE: 12 - Heisey 2 oz. Wine #3408 Jamestown stem with #497 Rosalie Etch. - \$12.00 each. TONY WANGEROW, 10530 Chaney, Downey, CA 90241 PH: 213-923-6633.

FOR SALE: Heisey, selling choice miniatures. New list each Quarter. Large double S.A.S.E., Please. CLIFF HARRALSON, 1426 W. Highland, Springfield, MO 65807

FOR SALE: Hundreds of Heisey pieces. Send S.A.S.E. for updated list. M & J WALTER ANTIQUES, c/o Sir Speedy, 431 Main Street, Woburn, MA 01801

WANTED: 7 - #1567 Plantation Cocktails. Will buy or trade sherbets, juices or iced teas. MRS. ROBERT AHEARN, 5334 Wiley Avenue, Indianapolis, IN 46226 PH: 317-546-5772.

FOR SALE: Greek Key - 6 Footed Banana Splits, 8 4-1/2" Plates. MARTHA DAVIS, Box 129, Rushville, IL 62681 PH: 217-322-4812.

WANTED: #407 Coarse Rib 9-1/2 & 11 inch crystal Plates. RON KOVACS, 475 Kime Avenue, West Islip, NY 11795. PH: 516-242-5496.

WANTED: One Heisey 9 oz Tumbler with Plain Paneled Goblet, long stem. Duquesne #3389, "Sahara." HELEN BEACH, 4810 Miller Creek, Missoula, Montana 59801.

FOR SALE: #347 *Fifth Avenue 2 oz Wine (6) - \$10.00 each; #341 *Puritan 3 oz Cocktail (6) - \$8.00 each; #5038 Rooster Stem Cocktail (6) - \$40.00 each, and #300-1/2 *Peerless 7 oz Soda (6) - \$9.00 each. MILDRED LEE, 115 Phillips Drive, Decatur, IL 62521 - U.P.S. - S.A.S.E. PH: 217-428-3106.

WANT TO TRADE: Circus Etch 8 oz. #2401 Old Fashion: "Rube", "Lion Tamer", "Clowns", or "Elephant" for same item with "Camel" or "Western Scene" Etch. Contact MALCOLM VARNER, 1439 NE 13 Ave., Rochester, MN 55904
 PH: 507-289-2938.

HEISEY FINDS!!

ADDRESS YOUR LETTERS WITH YOUR
 GREAT FINDS TO JANET CASWELL. SEND
 LETTERS TO THE CLUB ADDRESS;

P.O. Box 27
 NEWARK, OH 43055

DEALERS DIRECTORY

5 LINES / 12 MONTHS / \$18.00

We assume no responsibility for errors in these ads after the first printing...Editor. For changes in ads during the year, please send \$1.00 per line.

A DOOR ANTIQUES

Heisey My Specialty
South Euclid, OH 44121
PH: (216)381-3008

ALL HEISEY AUCTION

Consignments Welcome
Apple Tree Auction Center
1616 W. Church, Newark, OH 43055
PH: (614) 344-9449

ANN'S GIFTS & ANTIQUES

105 W. Main St., Hebron, OH 43025
Intersection of Rts. 40 & 79
Next Door to Daisy Queen
Daily 10:30 - 5:30 - Closed Thursday

ANTIQUEN JUNCTION

540 N.E. "E" St. (off I-5)
Grants Pass, OR 97526
PH: (503) 479-8575 or (503) 582-4067
Hours: Wed-Sat 11 to 5

ANTIQUES - THE SHULTZES

206-208 East Main St.
Newmanstown, PA 17073
15 Miles West of Reading, PA.
PH: (215) 589-2819

AVERY'S QUALITY ANTIQUES

Heisey, Other Glass & China
Shows or by Appointment
2112 First St., Jackson, MI 49203
PH: (517) 783-4075

B & B HEISEY & COLLECTIBLES

B. Whaley
300 International Dr.
Pataskala, OH 43062
By Appointment; PH: (614) 927-1557

C & J ANTIQUES

Cole & Jean Miesner
Box 45, 72 Whig Street
Newark, Valley, NY 13811
PH: (607) 642-9905

CHARLES & MILDRED FISHER

Heisey, Degenhart, Imperial, Antiques,
Collectibles, General Line
991 Idlewilde, Newark, OH 43055
PH: (614) 522-5398

DAVE'S ANTIQUES

Specializing In Heisey
Shows & Appointments
Tampa, FL 33600
PH: (813) 876-0580

DEL'S DOINGS

Heisey - Cambridge Glass
Furniture & Jewelry
Box 188, 10327 Main,
Richmond, IL 60071

DIAMOND H PLUS

Appointment or Mail Order
George & Eileen Schamel
Rt. 3, Box 419, Boonsboro, MD 21713
PH: (301) 432-6285

DIE KUNST GALLERIES & ANTIQUES

Specializing In Heisey
Vel & Andy Andress
Box 329, 725 Front St.
Leavenworth, WA 99026
PH: (509) 548-7856

ELIZABETH BASSETT CASON

401 32nd St., W.
Bradenton, FL 33505
Mail Order-List
PH: (813) 748-0851

FOREVER HEISEY

Shows and Mail Order
Janice Thran
1663 Londondale Pkwy., Newark, OH 43055
PH: (614) 344-5955

GERT'S GLASS

Heisey & Duncan
Gertrude & Russell Swetnam
1326 Saratoga Dr., Adelphi, MD 20783
PH: (301) 434-5113

GOLDSBERRY'S ANTIQUES

Heisey A Specialty
Shows Only - Buy & Sell
Kalamazoo, MI 49000
PH: (616) 381-3013

GREEN ACRES FARMS

Antiques, Crystal Glass & Collectibles
2678 Hazelton-Etna Rd., SW (S.R. 310-N)
Pataskala, OH 43062
Sat or Sun P.M. or call (614) 927-1882

H & R DIAMOND H

Helen & Robert Rarey
1450 White Ash Drive
Columbus, OH 43204
PH: (614) 279-0390 After 5:30

HAPPY HAVEN ANTIQUES

Mary Dumke
41319 Rattlesnake Road
Grass Valley, CA 95945
PH: (916) 273-9450

HAPPY HEISEY HUNTERS

Miniatures - Db1. SASE For List
Cliff & Helen Harralson
1426 W. Highland, Springfield, MO 65807
PH: (417) 883-2449

HARRISON'S ANTIQUES

Heisey, Cambridge, Duncan
Shows, Mail, by Appt.
26 Johnston's Lane, Mercersburg, PA 17236
PH: (717) 328-2451

HEISEY PUBLICATIONS

All Heisey Books I-II-III-IV - Heisey
Newscaster 32 Pg. Quarterly - \$6.00
Back Issues - \$4.00
Box 102, Plymouth, OH 44865

JOYCE'S ANTIQUES

Specializing In Heisey, Cambridge, Verly's
& American Glass
P.O. Box 114, Albertson, NY 11507
PH: (516) 499-3396

LAST CHANCE ANTIQUES

Mail Orders - Matching Service
Send Us Your Want Lists
P.O. Box 502, Dania, FL 33004
PH: (305) 467-6356 Day or Evening

LYNNE & ART'S GLASS HOUSE

Heisey Our Specialty
P.O. Box 54-6014, Miami Beach, FL 33154
PH: (305) 861-7700 or (305) 895-5666 or
Rt. 202, Lahaska, PA 18931
PH: (215) 794-7800

MOSTLY HEISEY

Rhoda Curley
16 Clayton Place
Albany, NY 12209
By Appt., PH: (518) 482-6272

MOUNDBUILDERS ANTIQUES

Heisey & Animals, General Antiques
Irene Rauck
1138 Moundview, Newark, OH 43055
PH: (614) 344-6043

OX YOKE ANTIQUES

General Line & Heisey
Don & Norene Walzer
675 Ogden-Parma Tl. Rd.
Spencerport, NY 14559
PH: (716) 352-3959

PATTON HOUSE

Heisey & Duncan Miller
Rocky's Mall, I-81 & US 11
Weyer's Cave, VA 24486
PH: (703) 967-1181

PEGGY'S ANTIQUES

2000 Pcs. of Heisey In Stock
Ernie & Peggy Cox
P.O. Box 367, Spavinaw, OK 74366
By Appt. or by Chance
PH: (918) 589-2859

R & L ANTIQUES - SAN FRANCISCO

Shows Only - Always Lots of Heisey
Member of Golden Gate Heisey Club
P.O. Box 3614, Daly City, CA 94015
PH: (415) 621-6693 Russ & Lee

RAMBLING LANE ANTIQUES

Featuring Heisey & Other Fine Glass
Keith & Evelyn Hoover
Rt. #4, Box 1005, Rhinelander,
WI 54501 - PH: (715) 282-5019

RAY ZIEGLER

Glass Repair
2265 Innis Road
Columbus, OH 43224
PH: (614) 882-8446

SCHWAN'S ANTIQUES

Shop & Shows
Rt. 1, Box 175B, John Tyler Highway
Williamsburg, VA 23185
PH: (804) 229-7873

SUM OF LIFE

Elaine & Frank Husted
P.O. Box 102
Phoenixville, PA 19460
PH: (215) 935-2962

T & S ANTIQUES

Specializing In Heisey
Tom Martin & Steve Roderick
New Rochelle, NY 10805
PH: (914) 235-9632

THE WOODEN SHOE

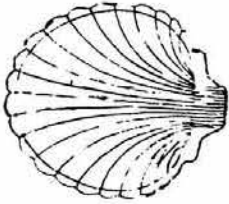
Antiques & Collectables - Buy & Sell
Glass, Furniture, Estates
Jim & Sheri Van Es, By Appointment
810 Elden, Herndon, VA 22070
PH: (703) 435-9045

TRUDY MILLER ANTIQUES

China & Crystal Matching
Heisey A Specialty
P.O. Box 740548, Dallas, TX 75374
PH: (214) 783-9920

WILLEY'S ANTIQUES & MUSEUM

Specializing In Glass
11110 Cannon Rd., Frazeyburg, OH
43822 - 16 Miles East of Newark
PH: (614) 828-2557



HEISEY PUBLICATIONS
 P.O. BOX 102, PLYMOUTH, OHIO 44865



Snow Will Soon Be Here - Buy Your Heisey Books Now.

If you have not as yet purchased those four famous Heisey books by Clarence W. Vogel, now is the time to place an order. First on the market in 1969. All inclusive. Some pictures in color. Over 98% of the patterns are listed and shown. Compiled by Mr. Vogel when he lived in Heiseyland (Heath) from 1963 - 1970. He discovered Heisey in 1966, realized its great potential as a collectible, and began writing about it in 1969; and has been writing about it and searching it ever since. Also invest \$6.00 for subscription to THE HEISEY GLASS NEWSCASTER for 1983, a quarterly publication, edited by Mr. Vogel. This 32 page quarterly contains many pictures and new information not otherwise published or known. There are no advertisements in this magazine. With an order for the four books you may have issues for 1977, 1978, 1979, 1980, 1981 and 1982 at \$4.00 for each year.... One testimonial reads, "With the four books in my arms, I have nearly all of the information I need with me when I go Heisey Hunting. Really they are all I need on the road."

- BOOK I HEISEY'S FIRST TEN YEARS, 1896 - 1905 \$11.00
- BOOK II HEISEY'S COLONIAL YEARS, 1906 - 1922 12.00
- BOOK III HEISEY'S ART AND COLORED GLASS, 1923 - 1942 13.00
- BOOK IV HEISEY'S EARLY AND LATE YEARS, 1896 - 1957 13.00



Include postage at \$1.00 for one book and 30¢ for each additional book. Ohio residents add 5-1/2% Ohio Sales Tax. On 4 Books Only - No tax on Quarterly.



WRITE FOR APPOINTMENT TO VISIT THE HEISEY GLASS MUSEUM AT PLYMOUTH, OHIO.



ANNUAL CHRISTMAS DINNER

December 9, 1983

GRANVILLE INN
 314 EAST BROADWAY
 GRANVILLE, OH 43023



Deadline for Reservation: 12-3-83
 Cocktail Hour 6:00 - 7:00 - Open Cash Bar
 Dinner Served 7:00

\$14.50 Per Person - Includes Tax & Tip

Send Reservations To:
 HCA CHRISTMAS DINNER
 P.O. BOX 27
 NEWARK, OH 43055

Please Clip and Mail

NAME ADDRESS AMOUNT PER PERSON

List all names so that name tags may be made out properly.

TOTAL \$ _____

10% DISCOUNT ON ORDERS OF \$50.00 OR MORE TO MEMBERS ONLY.

7.	<u>HEISEY GLASS IN COLOR, BOOK 2</u> by Loren & Virginia Yeakley, More than 750 items.....\$	12.50
	pictured in color. Comprehensive discussion of each. Includes value and rarity guide. 60 pages. Includes new price guide.	
68.	<u>HEISEY BY IMPERIAL</u> by Newark Heisey Collectors Club - Second Edition - Updated and.....\$	6.95
	added pages. Soft Bound - Includes price trends and color plate. Every piece of every pattern made by Imperial is listed and priced in all colors used for the pattern.	
79.	<u>HEISEY GLASSWARE</u> by Heisey Collectors of America, Inc. Reprint of Catalog 76 - Includes.\$	6.95
	price trends. 58 pages. Many items never shown in books or catalogs. Includes all the kerosene lamps and many electric lamps.	
88.	<u>HEISEY TOOTHPICK HOLDERS</u> by Nancy & David Jones - Published by H.C.A. Complete.....\$	4.95
	information on all Heisey toothpick holders. Contains photographs of each - Includes price trends.	
92.	<u>HEISEY'S ORCHID ETCH</u> by Neila Bredehoft - Published by HCA - 24 page booklet with price.\$	4.95
	guide - 230 Pieces listed and dated individually - Well illustrated.	
99.	<u>HEISEY ROSE ETCH</u> by Neila Bredehoft - 24 pages with price trends - Well illustrated.....\$	4.95
39.	<u>BACK ISSUES OF THE HEISEY NEWS...Vol.V, VI, VIII, IX, X, XI..Each Volume - 12 Issues....\$</u>	9.00
40.	<u>IMPERIAL REISSUE OF #1 HEISEY MADONNA</u> - Frosted - Marked ALIG.....\$	19.00
41.	<u>IMPERIAL ELEPHANT HANDLED FAIRY TALE MUG</u> - Marked LIG or ALIG - Crystal.....\$	9.00
48.	<u>NO. 1560 VICTORIAN GIRL BELLE</u> - Available in Milk Glass, Sunshine Yellow, Light Green...\$	8.00
	(Plain)	
	Light Blue, Rose Pink, Sunshine Yellow and Light Green (Frosted).....\$	
48A.	<u>RUBY PLAIN BELLE</u>\$	11.50
	<u>RUBY SATIN</u>\$	13.00
	<u>LILAC PLAIN</u>\$	9.50
	<u>LILAC SATIN</u>\$	11.00
91.	<u>NO. 4220 BLOWN VASE</u> , Drape Optic - Emerald Green. Christmas Special - Was \$13.00 - Now..\$	11.00
94.	<u>YEOMAN TRIANGLE ASH TRAY</u> - Marked with Diamond H & HCA. This ash tray was made..COBALT..\$	8.00
	for us by Viking in HCA's original mold which was donated to us by Paul Fairall RUBY...\$	
	<u>COBALT SATIN Ash Tray</u>\$	8.50
	<u>RED SATIN Ash Tray</u>\$	9.00
96.	<u>NOTE PAPER</u> by Nassau L.I. Study Club - Rose or Orchid Etch - Blue on White - May be.....\$	3.00
	assorted if desired - Per dozen P.P.	
97.	<u>BLACK TIGER</u> - Made by Imperial in Heisey Mold - Marked ALIG.....\$	35.00
98.	<u>HEAD FORWARD FILLY</u> - Frosted - Made by Imperial in Heisey Mold - Marked ALIG.....\$	45.00
	<u>1982 SOUVENIR CORDIAL</u> - Coronation Etch - Marked HCA & Dated.....\$	37.50
	<u>1983 SOUVENIR CORDIAL</u> - Swingtime Etch - Marked HCA & Dated.....\$	35.00
	<u>1981 OSCAR</u> - Light Blue.....\$	32.00
	<u>1982 OSCAR</u> - Emerald.....\$	28.00
	<u>1983 OSCAR</u> - Tangelo.....\$	23.00
	<u>BOBECHES</u> - Made by Imperial - Slightly Cupped, Includes prism pins....each.....\$	8.00
	<u>PRISM PINS</u> - State Gold or Silver....Dozen.....\$.50
	<u>#54 FERRULES</u> for Candelabra Base.....\$	6.00
	<u>SHORT FURRULE</u> to hold bobèche.....\$	4.00

FOR CHRISTMAS - WHY NOT GIVE A GIFT FROM THE HEISEY MUSEUM

ORDER FROM: H.C.A. SALES
Dept. F
P.O. Box 27
Newark, OH 43055

MasterCard/Visa accepted. Please include your card number and expiration date with order.

ALL SALES BENEFIT THE NATIONAL HEISEY GLASS MUSEUM.



FIRST CLASS MAIL
U.S. POSTAGE
PAID
PERMIT 34
Reynoldsburg, Ohio 43068

