

HEISEY

news

OFFICIAL PUBLICATION HEISEY COLLECTORS OF AMERICA
 ©Heisey Collectors of America, Inc. 1982
 All Rights Reserved

VOLUME VII NO. 1 JANUARY, 1983

ISSN 0731-8014

ONE DOLLAR

PICTURES FROM IMPERIAL'S
 1981 CATALOG



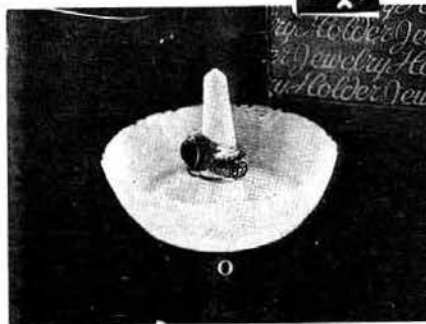
#1489 PURITAN ASH TRAYS marked LIG



Nappy
 #1406



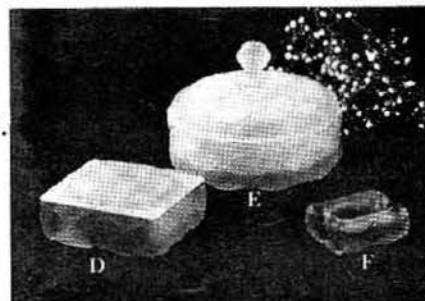
Cut Miter Vase
 #1518



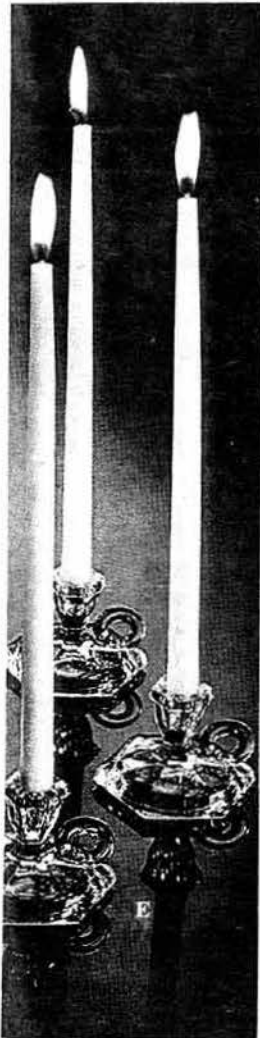
Jewelry Holder
 #1401

#1401 EMPRESS

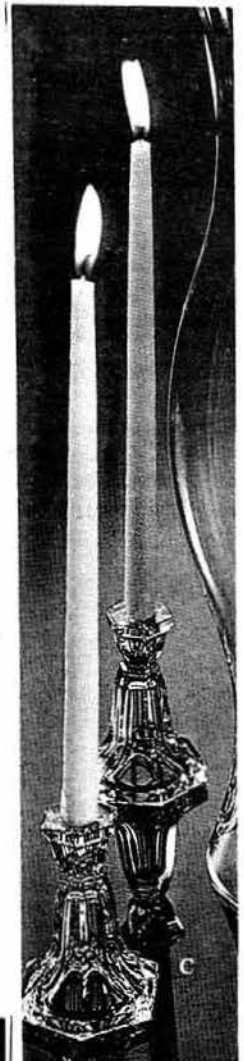
- Ring holder made from 3½ in. nappy mold.
- 5. Crystal satin New mid-1980-
 - 6. Pink satin 1981-
 - 7. Lemon Frost satin 1982-
 - 8. Sunburst Carnival 1982-
 - 9. Pink Carnival 1982-
- Unmarked and marked ALIG



#1533 Wampum Candy Box, marked LIG
 Cigarette Box & Ash Tray



Toy Chamberstick
 #31



Toy Candlestick
 #33



HEISEY DECORATIONS

BY: Neila Bredehoff

SPECIAL ETCHINGS FOR ASH TRAYS

- #9058 FISH
- #9059 HUNTING SCENE
- #9060 DOG
- #9061 HORSE
- #9073 BUCKEYE STATE SHERIFFS ASSOCIATION



In our archives we have many interesting added pages to catalogs which have odd and often unrelated information. These lists sometimes contain information about extra services and items which the company was marketing or promoting and are not in the regular catalogs or price lists. One such sheet contains information on how the company decided that it could reach a large market by making the 1469-1/2 Ridgeleigh ash tray a souvenir item for special groups. These were probably used by the companies and groups using them as souvenirs, promotional items and the like.

The following is a direct quote and will give you some insight into the production of these items: dated 6-20-39:

"The following quotations apply to the Plate Etched 6 inch #1469-1/2 and the 4-1/2 inch #1469 Ash Trays.

"The prices include the Tray, the Etching and the Art Work and Plates.

"These trays can be shipped in Bulk, or packed in a Gift Box or with Gift Box inserted in a re-shipping carton.

"Send rough sketch or insignia to factory for us to submit drawing for Etching. This drawing to be approved by customer."

The company sold the #1469-1/2 Ridgeleigh 6 inch ash tray in quantities of 50 for \$1.00 each and in quantities of 1000 for 60¢. The Puritan ashtray (4-1/2") cost 80¢ in quantities of 50 and 50¢ in quantities of 1000. These prices included the ash tray, etching plate and cost of etching. Gift boxes were available at approximately 10¢ each. (Hardly seems possible does it?) This offer seems to have been in effect for many years.

The #9073 Buckeye State Sheriffs Association etching is an example of one of these custom etchings. Several others have been seen, including one for Socony vacuums. If any of you have some of these etchings and report them, we could list them in a future newsletter. It would be interesting to see how many club members could find.

In addition to the special etchings offered to groups, the Heisey Co. produced at least 4 for their regular sales. Again, we don't have illustrations of these, so if any of you have one which sounds right, we'd love to have a rubbing so we could have a drawing made to publish.

In 1955, (possibly for a time earlier and later also) the #1469-1/2 Ridgeleigh 6" ash tray was used for #9058 Fish and #9059 Hunting Scene etching.

About 1949, another list contained #9060 Dog and #9061 Horse etchings listed on both the #1469-1/2 Ridgeleigh 6 in. ash tray and the #1489 Puritan 4-1/2 in. ash tray.

Questions & Answers

Q. After reading your article on Small Things (Nov. & Dec. Issue), I once again looked at two different toothpick holders, I own.

One is a six sided #300, slashes on bottom, the other an eight sided #400, no slashes -

My question is this: What is the difference between Peerless #300 and Panel #331 (6 sided) ? - found in Vogel's Book I, Page 90 and Vogel's Book II, Page 14.

A. No. 300 Peerless has only six sides - No. 331 Colonial Panel and No. 400 Colonial Scalloped are actually identical and both have EIGHT panels. In one or more Heisey catalogs the wrong picture was shown for the No. 331 line. Heisey often made mistakes in catalogs. For instance, in all of our written information for the No. 926 cutting, it is called George the VI. In catalogs this is listed as George IV. Apparently the numbers were transposed since George the VI was the king at that time.

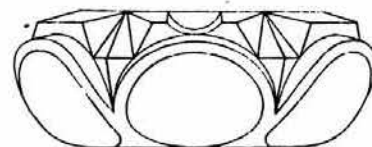
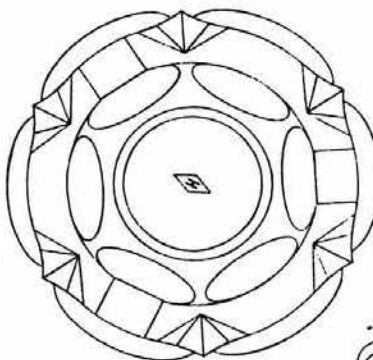
Q. We have an unusual ashtray but have not been able to identify it in any of our books or publications.

We would appreciate it if you will re-search and identify this piece for us.

Clyde Smith, CA

A. The ash tray is the #1500 which is shown in 212-17 and 211-16 catalogs. The latter is from 1935. It is not seen too often. Lots of people think it is Provincial because of the circles.

Louise Ream



HEISEY'S LITTLE THINGS

BY: Louise Ream

No. 305 Puntty and Diamond Point was first advertised in CHINA, GLASS AND POTTERY REVIEW on December 1, 1899. It is a very beautiful pattern of such brilliance that it appears to be cut and in at least one book on cut glass it is actually referred to as cut. The pattern is very eagerly collected and to have a nearly complete set is a great accomplishment. Items can be found both marked and unmarked, since it was made prior to 1900 and afterward.

Interesting items for the "Little Things" collector are the two different salts and peppers, the toothpick holder, punch cup, individual cream and sugar and mustard and cover.

In addition to these pieces an early price list dated, ca 1902, lists as #16 the Puntty and Diamond Point long necked cologne and a mucilage, both as "ware for mounting." The mucilage or paste bottle is made from the #1 salt and has a silver top with a handle for the brush which is also silver. The long neck cologne also has a silver top. These are two unusual and lovely little pieces. In the Museum, there is a very rare pair of the #2 salt in milk glass. Any HLT collector would give their eye teeth for these.

No. 315 PATTERN

PANELED CANE

The next pattern introduced was advertised in CHINA, GLASS AND POTTERY REVIEW in December 1900. It was referred to as a modification of the #300 pattern and indeed several of the basic shapes are very similar. In this pattern HLT's are the salt and pepper, toothpick and punch cup (or custard). The rows of cane between the indented flutes make this a most attractive pattern.



Custard.



Toothpick.



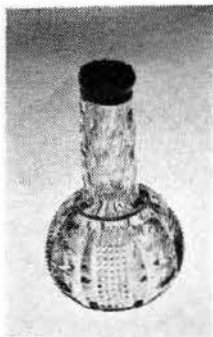
No 3 Salt or Pep.

ABOUT IMPERIAL

There is not a lot new to report about Imperial. They are presently working two or three "day tanks" making Williamsburg stemware and Collector's Crystal. They are also selling off their glass archives (once destined to be a museum) and it almost seems that everything is for sale. The company's debts total almost \$3 million. Stahl paid \$100 for the total 10,000 shares of the company and assumed the debts. He still says he will have the company out of bankruptcy by March, a noble ambition but is it possible? At a recent brief hearing the bankruptcy court cut Stahl's salary from \$2000 a week and \$1500 expenses he was paying himself to \$59,800 a year and less than \$300 a week expenses. We hope they can return to regular production again because we need them, but we are skeptical. Louise Ream



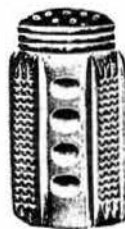
Mustard and Cover.



Cologne



Toothpick.



No. 3 Salt or Pepper.



Individual Cream.



Individual Sugar.



Custard.



No. 1 Salt or Pepper.

MUSEUM TRUST FUND DONATIONS

National Capital HCC.....	\$500.00
Manuel & Emma Klawans.....	30.00
Unknown.....	20.00
Golden Gate HCC.....	250.00
Southern Illinois Diamond H Seekers....	27.00
Basil & Elizabeth Regan.....	100.00
William and Marian Heron.....	50.00
Land of Legend HCC.....	500.00
Heisey Collectors of Rochester.....	80.00
Mr. & Mrs. Jerry Robinson.....	25.00
Josephine Groom, ...	50.00
Lynn & Stanley DeGroot.....	100.00
Plus Interest	8.52
TOTAL as of December 13, 1982.....	\$1740.52

DIAMONDS ARE FOREVER.....

BY: Janet M. Caswell

We have our "Festival of the Arts" in Summer and in the Winter our "Christmas Walk". This consists of a complete week-end in December when all the merchants decorate their shops for the Holidays, and the people of our town and surrounding towns, young and old alike, wander thru our narrow, crooked streets entering all the Boutiques and Antique Shops along the way. It is great fun meeting old friends and congenial shop-keepers for a bit of "Cheer" Perhaps hot cider and donuts, or cheese and crackers with a smooth delicious eggnog to help keep us warm on a cold, but sunny, Sunday. The "Carolers" are also out, wandering in and out of shops, stopping here and there along the streets to entertain us. Excitement can be felt in the air! Maybe, just maybe, that certain piece of Heisey will be hiding among all the glitter and decorations of the Holiday Season.....

"All that Glitters is not Gold", or is it? Yours truly was very fortunate and found right here in the New England area, a #1252 Twist 9 oz footed soda in Experimental Gold. How about that "Eagle Eye"!... The #1776 Kalonyal Spoon tray was also added to my finds.... "Bean Town" reports several other items; #1540 Lariat Bon Bon; #1519 Waverly Mayonnaise with Orchid Etch; 3 coasters with star bottoms and the #1509 Candlesticks with prisms.....from the "Hoosier State" the "pickins" were thus; #1506 Whirlpool 5-1/2" nappy, six of them (Imperial Heather); 2 #3390 Carcassone 2-1/2 oz wines in Cobalt; and the #3480 Koors 8-1/2 oz soda in moongleam;.....My happy writer from the "Tar Heel State" makes me green with envy, she is the proud owner of the #1632 Lodestar Pitcher in dawn and the #1637A Town and Country ice tea, in dawn (two of them), let's not forget to mention the #1233 Pressed Diamond 6" Baked apple in Hawthorne, and a #354 Flat Panel double domino sugar.....Now who was that very lucky fellow that found 6 #357 Prison Stripe goblets? Would they ever look nice on the shelf.....

The "Sunshine State" is certainly bright and sunny. Real sunny! A #1280 Crystal, Winged Scroll, covered butter with gold trim was found (mint); a #1469 Ridgeleigh, sahara candle vase; a red flash #1295 Beaded Swag wine; and, now pay good attention, a pair of #134 Trident candlesticks in Tangerine with crystal base!! What a find, you sure have a real "goodie" there..... I met up with my "Good English Buddy" who picked up the very nice #1503 Crystolite 2 compartment relish with the handle in the center....seen but not purchased by various collectors around the New England States were; 2 moongleam #416 8" soup plates; #1503 Crystolite mayo and under-plate (way overpriced); 6 #3350 Wabash 6 oz sherbets with the #9001 Trefoil needle etch; #352 ice cream holder with silver overlay; #1235 Beaded Panel & Sunburst celery, cranberry stain; 5 8" clear plates; #300 Peerless toothpick (not a sleeper); and #1220 Punt Band 7" crimped

comport..... the "Empire State of the South" was heard from for the first time this month and he found a "great find" the #1225-109 Petticoat Dolphin comport in flamingo, it was sleeping quite soundly; and a #1485 Saturn cruet in crystal and eleven (count them 11) #1229 Octagon individual nut dishes in moongleam; this same collector also saw a #310 Ring Band oil in Ivorina Verde, which value was known by the dealer and was priced accordingly. Even so, he was real happy to have recognized it, never having seen one "in the real" before. Yes, it really does pay to do one's homework! "Empire State of the South", keep those letters coming. My "Sharp Eyed Friend" came across a molasses can, no top....."My first convention Heisey friend" added to their already super collection; (seven) Aqua Caliente stems with the Lancaster etch; a Rose etch floral bowl and an Orchid etch french dressing bottle..... from "The Point" comes news of 2 Lady Leg saucer champagnes with Zodiac etching; very, very nice, keep up the good work..... "The Pine Tree State" says they have a #365 Moongleam Ash Tray (V3 - P127). "The Tipper" doesn't want to be left out this month so here is what was told me; #439 Raised Loop 5 oz egg cup, straight; #300 Peerless egg cup, gold decoration, souvenir Columbus, Ohio - Mt Vernon No. 1; Plaid Vase and a pair of #1404 Old Sandwich Candlesticks in flamingo; #1495 Fern 6" handled mint (plain) and another with the #497 Rosalie etch; #407 Coarse Rib 9" celery in Flamingo, this was so sound asleep... another pair of #1404 Old Sandwich Candlesticks, in Flamingo, were found in "The Old Line State" plus a pair in Crystal. Must have been the month for Old Sandwich sticks..... the "Garden State" reports a #7000 Sunflower creamer and 3 Yeoman cups and saucers in crystal; and a couple of Empress small round plates in Alexandrite, nice.....

Well it is almost time to make those New Years Resolutions. How about making yours truly happy this New Year with lots and lots of letters. I just love to get letters, it makes me feel so wanted. From the Yachting Center of the World comes by best wishes for a Very Happy, Healthy, Heisey NEW YEAR!

BAY STATE NEWS

BY: George Gleason

The Bay State held its regular meeting at the Follen Church in Lexington, Mass. We welcome new members Valli Feldman and Lynn & Art. This was our annual auction for the museum. There was glass and people a plenty. George Fogg, the auctioneer, did a fine job for the museum again this year. Our thanks to him. With finishing touches on our Christmas Party, the meeting was adjourned for coffee and cakes provided by Don Libby, David Steer and George Gleason.

We want to extend warm BELATED Wishes that you had a Beautiful Christmas and a Happy New Year.

TUMBLER RESEARCH

BY: Tom Bredehoft

I've done a lot of belly-aching about the research that has to be done for these columns; I've tried to tell you just what is involved in it - how many sources must be searched, what different sources there are to be searched, and so on. This month, I'm going to try to tell you about one of the sources we have to work with and what in-depth research reveals.

The source I'm writing about has come to be called the "turn books". These books, compiled by the Heisey Co. daily, were the company's basis for 1. recording the production output, and 2. paying the hot metal shop employees (the men who worked with molten glass.)

The book I'm working in now starts in February, 1925. There are eighteen shops recorded for the week ending Feb. 21, (pay Feb. 28.) Two of these are blownware shops. Since most glass furnaces contain 16 pots, I'm going to guess that there were two lead pots (for blown ware) and fourteen pots of lime glass (for pressed wares.) This is a real reduction in work from eight months before when they had 48 shops in operation. Enough speculation.

Since this is a tumbler column, I only extracted the tumbler, soda, and schoppen information from the book.

In this week ending Feb. 21, 1925, Heisey's hot metal shops turned out 22,463 tumblers, sodas, etc. That's 1872 dozen or 156 gross, and that's in reduced circumstances.

The break down looks like this:

Pattern #	Item	Number Made
30	Tumbler	1116
150	Schoppen	1154
170	Plain tumbler	1098
200	Plain tumbler	1365
300	Tumbler	2213
300½	5 oz. taper champagne	758
406	8 & 12 oz sodas	1376
411	Tumbler	5007
417	8 oz soda	94
417	10 oz soda	52
417	12 oz soda	188
451	Tumbler	830
574	13 oz soda, optic	492
588	7 oz soda	1199
2401	5 oz soda	1119
2930	Tumbler	2231

This represents 35 turns of four hours work each. The 417 sodas were all made in one turn, the 2930's and the 300's in four each. The 411's were made in seven turns. Can you imagine making 830 451 Cross Lined Flute tumblers in four hours? That's 208 per hour or almost three and one half per minute. Those 830 tumblers cost the company about \$10.00 in labor, a little over a cent each. In price list #208, the price list nearest the time of this turn book, they were selling these tumblers for \$1.25/doz. in barrel lots or 10+ cents each.

Anyway, that's one week, five shops, just the tumblers. Some of these shops made other items too.

We have turn books for about sixteen years of Heisey's life. I have a feeling that when we get through going through these books, we will be older and grayer, and have a lot more respect for Heisey's glassware.

* * * * *

As to the scope of my tumbler columns, I try to write about Heisey's tumblers. Sometimes I write about Heisey's sodas, I may have written about Heisey's schoppens, I know I have written about Heisey's bar glasses.... I guess what I'm trying to say is that I'll write about what I darn well please (I think I should have said what pleases me.)

I was asked though where tumblers stopped and sodas began. Heisey, and the other glass makers called some pieces of glass, tumblers, others sodas, etc., based on their expected use and shape. A tumbler is 3 3/4" high and 2 3/4" wide at the top* A soda is taller and more slender. If it is shorter, it is an old fashion or a toddy, depending on when it was made. If it is shaped like a soda but is generally larger and pressed it might be a schoppen. The only definition I could find for schoppen said in an old dictionary " a vessel containing half a pint". Try telling that to the 16 oz schoppen in 150 Banded Flute!

I guess if I have to say what my columns are about, I'd have to say about beverage containers, but don't look for punch bowls or beer mugs. That is not to say I won't write about things other than tumblers, but if I do it will be a bonus, not the regular info in the column.

* approximate.

NEWSLETTER DATING, AGAIN

I announced last month that the dating on the newsletter was being changed so that from now on you would get your issues with more current dating. The problem lays in the fact that it is usually mailed on the 25th of the month it is dated, which seemed to cause a lot of new people confusion if it was late, and especially into the next month. I dated last issue November, December and planned to date this one simply January. However, some people were confused about that, saying they would have only 11 issues for 1982, and that they keep them in yearly notebooks. To eliminate that, I have divided this one into two parts, one dated December, the other January. You can separate them if you want to.

You WILL get 13 issues this way in 1983, but the one in next December will be for January, 1984.

Hopefully this will finally end this problem forever. I think you'll like it better when you get used to it. Please continue to send ads to reach us by the 5th of the month to be in that month's issue.

Louise Ream

A. H. HEISEY & CO.

TOUCH OF COLOR MAKES NEW STANHOPE
PATTERN OUTSTANDING

FROM: POTTERY, GLASS & BRASS SALESMAN

It has become quite the fashion now-a-days for glass manufacturers to go outside the field in searching for new designs. With all due respect to the many capable mould makers and designers that abound in this country, they are so steeped in glassware lore that their vision is apt to become circumscribed. On the other hand, there are architects, illustrators and designers who will bring to glassware designing an entirely new thought.

It was the realization of this that prompted A. H. Heisey & Co., of Newark, Ohio, to turn to Walter Von Nessen, well-known Dutch architect and designer for ideas when they contemplated bringing out a new pattern for the fall season. Mr. Von Nessen, who has done much splendid work in other fields, attacked his new problem with enthusiasm, and brought to bear on it his wealth of broad experience, sound artistic judgment and native ability. The result was the "Stanhope" line, named for Lady Stanhope, famous court beauty in England before the Victorian era and, perhaps, best known as the owner of the great Stanhope diamond. Something of the romance that surrounded her life has been caught by Mr. Von Nessen and translated to this new pattern, which while on the fringe of the neoclassic order, is thoroughly up to date. The outstanding feature is its "touch of color", supplied in the form of handles etc., and which are not made of the glass itself, but of plascon, a resinous compound similar to a number now on the market and widely used for smokers's articles and the like. Its paramount feature is its ability to take high, rich colors to a much greater extent than any other kindred compound. The red, blue, green and other shades* (together with the black), suggest enamels of the richest sort. These plascon ornaments are attached by being screwed in, the glass being threaded for the purpose. A full line of pressed tableware is brought out in this new line together with blown stemware to match.

The pattern created a veritable furor when it was first shown in the New York China, Glass and Housewares Show in July and duplicated its success at subsequent Chicago exhibitions. It is now on display at all showrooms of the concern including the local quarters at 200 Fifth Avenue in charge of E. G. Nock.

* Yellow and Ivory



AN OPEN LETTER TO MEMBERS

Dear Fellow Heisey Collectors,

With the closing of Imperial Glass and then their reopening under circumstances which can be called doubtful at best, I feel it is time we analyzed the annual budget of the HCA from a new point of view.

Broken down on a per member basis, I find that each member (whether voting, associate or family) pays an average of \$7.86 into the HCA through his membership fees. The cost of printing and postage for the Heisey News is \$6.53 per member, which eats up all but \$1.33 of the membership fees. \$1.29 will pay the club utilities leaving \$.04 on which to run the club. Total operating expenses in 1981 came to \$63.58 per member.

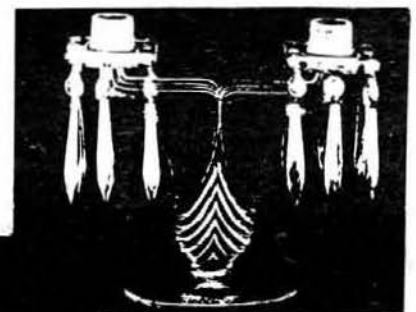
In the past, the bulk of the income of the HCA has been from the sale of goods from the sales room, averaging \$34.56 per member. Most of this was from the sale of glass made by Imperial in Heisey molds. When our inventory is exhausted, the resulting deficit will have to be made up some other way.

The executive committee has begun the search for alternate sources of income, including other suppliers of glass, but it will be difficult to supplant Imperial with their ready supply of molds.

In the near future each member, whether voting or associate will have to realize how dependent on him the HCA is and re-evaluate his commitment to the HCA and determine how best he can support our club through these difficult times.

Tom Bredehoft

No. 1483 STANHOPE PATTERN



ALL HEISEY AUCTION

Our January auction is always a fun time after the hustle and bustle of the Holiday season. This will be a fascinating auction for the stem collector with over 200 stems, many of them rare and unusual, ranging from cordials to goblets. Lots of other good items in most colors. Please note the later starting time to allow collectors to come from greater distances on Saturday morning.

Please note the following condition codes to better aid in your mail bidding:

f F - Flake b B - Bruise r R - Repaired
c C - Crack m M - Mold Flaw x X - Major Damage

- | | |
|--|--|
| ___ 1 3333 OLD GLORY Goblet, Peacock Etch H | ___ 43 354 WIDE FLAT PANEL Flamingo Cream & Sugar,
rough on handles H |
| ___ 2 3376 ADAM Flamingo Goblet, Adam Etch | ___ 44 1485 SATURN Sugar, Chip on handle |
| ___ 3 5025 TYROLEAN Goblet, Orchid Etch H | ___ 45 359 COLONIAL Goblet, NO |
| ___ 4 3308 BOB WHITE Goblet, Thistle Etch | ___ 46 5077 LEGIONNAIRE Goblet H |
| ___ 5 3357 KING ARTHUR Goblet, Diana Etch H | ___ 47 3390 CARCASSONNE Sahara Goblet H |
| ___ 6 3314 GRANDEUR Goblet, Sabrina Etch | ___ 48 300 PEERLESS Goblet H |
| ___ 7 3335 LADY LEG Goblet, Zodiac Etch | ___ 49 351 PRISCILLA Goblet H |
| ___ 8 3411 MONTE Cristo Goblet, Olympiad Etch | ___ 50 337 TOURAINE Goblet H |
| ___ 9 3389 DUQUESNE Goblet, Normandie Etch | ___ 51 337 TOURAINE Amber Goblet H |
| ___ 10 3344 CAROLINA Goblet, Osage Etch H | ___ 52 903 JEFFERSON Goblet H |
| ___ 11 3312 GAYOSO Goblet, Vogel Etch | ___ 53 370 PENNY Goblet H |
| ___ 12 3390 CARCASSONNE Sahara Goblet, Classic
Etch by Lotus Glass Co H | ___ 54 1486 COLEPORT Goblet H |
| ___ 13 5019 WAVERLY Goblet, Ivy Etch H | ___ 55 417 DOUBLE RIB & PANEL Low Goblet H |
| ___ 14 3350 WABASH Goblet, Frontenac Etch H | ___ 56 4052 NATIONAL Goblet |
| ___ 15 3312 GAYOSO Goblet, Monticello Etch | ___ 57 1469 RIDGELEIGH Goblet |
| ___ 16 5010 SYMPHONIE Goblet, Minuet Etch | ___ 58 8028 PRINCESS LILY Goblet |
| ___ 17 3335 LADY LEG Goblet, Victory Etch, 2 Ea H | ___ 59 4044 NEW ERA Goblet |
| ___ 18 3389 DUQUESNE Goblet, Ole Colony Etch | ___ 60 3334 SEXTON Goblet H |
| ___ 19 3368 ALBEMARLE Moongleam Goblet, Trojan
Etch H | ___ 61 1252 TWIST Flamingo Goblet H |
| ___ 20 3380 OLD DOMINION Goblet, Empress Etch | ___ 62 1567 PLANTATION Goblet |
| ___ 21 3312 GAYOSO Goblet, Augusta Etch | ___ 63 363 COLONIAL Goblet r |
| ___ 22 1201 FANDANGO 6 oz Oil, wrong stopper | ___ 64 451 CROSS LINED FLUTE Goblet H |
| ___ 23 1201 FANDANGO 4 oz Oil, wrong stopper | ___ 65 341 PURITAN Goblet H |
| ___ 24 343 SUNBURST 4 oz Oil | ___ 66 818 FIFTH AVENUE Goblet H |
| ___ 25 1252 TWIST Flamingo 4 oz Oil H | ___ 67 1519 WAVERLY 12" Flared Floral Bowl,
Orchid Etch |
| ___ 26 353 COLONIAL 4 oz Oil | ___ 68 1202 FLAMINGO 11" Rolled Edge Floral Bowl |
| ___ 27 341 PURITAN 6 oz Oil H, x on stopper | ___ 69 1506 PROVINCIAL 12" Gardenia Bowl |
| ___ 28 1469 RIDGELEIGH Oil, no stopper | ___ 70 1503 CRYSTOLITE 12" Floral Bowl |
| ___ 29 1503 CRYSTOLITE Oil Bottle, 2 Ea, wrong
stoppers | ___ 71 1540 LARIAT 11" Flared Floral Bowl |
| ___ 30 1170 PLEAT & PANEL Moongleam Oil Bottle | ___ 72 4045 Sahara 6" Ball Vase, WO |
| ___ 31 1489 PURITAN Cologne | ___ 73 4085 SATURN 7" Ball Vase |
| ___ 32 362 7 Oz Syrup H | ___ 74 4045 Alexandrite 4" Ball Vase, WO |
| ___ 33 353 COLONIAL Flamingo 5 oz Syrup, no lid | ___ 75 4045 Alexandrite 4" Ball Vase, WO, x &
cloudy |
| ___ 34 1540 LARIAT Cream & Sugar H | ___ 76 1519 WAVERLY Violet Vase, H |
| ___ 35 355 QUATOR Sahara Ftd Sugar H | ___ 77 1469 RIDGELEIGH Candle Vase H |
| ___ 36 1020 Hotel Vaseline Sugar H f | ___ 78 1469 RIDGELEIGH 6" Vase H |
| ___ 37 1184 YEOMAN Sahara Covered Sugar, DO | ___ 79 451 CROSS LINED FLUTE 5" Vase H |
| ___ 38 1189 YEOMAN moongleam Indiv Covered Sugar,
DO, H | ___ 80 1428 WARWICK 7" Horn of Plenty Vase, Pr. H |
| ___ 39 393 NARROW FLUTE Flamingo Domino Sugar
Cube Tray, Dtd H | ___ 81 1428 WARWICK 9" Horn of Plenty Vase, Pr H |
| ___ 40 393 NARROW FLUTE Hotel Cream & Sugar, H
flakes on handles | ___ 82 4159/1 Moongleam 9" Vase, DO |
| ___ 41 7023 HALF CIRCLE Sahara Indiv Cream H | ___ 83 1255 PINEAPPLE & FAN 10" Vase |
| ___ 42 1255 PINEAPPLE & FAN Cream, good gold | ___ 84 1503 CRYSTOLITE 5½" Ftd Compote |
| | ___ 85 1503 CRYSTOLITE French Dressing Boat H |
| | ___ 86 1519 WAVERLY 6" Low Ftd Compote H |
| | ___ 87 1567 PLANTATION 6" Low Ftd Compote H |

PAID ADVERTISEMENT

88 1186 YEOMAN 7" High Ftd Compote, Cut H
 89 3366 TROJAN Flamingo 7" High Ftd Compote H
 90 1405 IPSWICH Goblet H
 91 379½ URN Goblet H
 92 5067 PLANTATION Goblet
 93 1485 SATURN Goblet
 94 300 PEERLESS Flamingo Goblet
 95 3357 KING ARTHUR Flamingo Goblet H
 96 1590 ZODIAC Goblet H
 97 417 DOUBLE RIB & PANEL Goblet H
 98 150 BANDED FLUTE Goblet H
 99 1483 STANHOPE Goblet
 100 373 COLONIAL Goblet H
 101 400 COLONIAL Goblet H
 102 407 COARSE RIB Goblet, flared H
 103 7047 COMET LEAF Goblet H
 104 1183 REVERE Goblet, NO H
 105 473 NARROW FLUTE W/RIM Goblet H
 106 5085 AFRICAN-TEMPO Goblet H
 107 413 RIB & PANEL Goblet H
 108 379 URN Goblet H
 109 3359 PLATEAU Flamingo Goblet, 2 Ea H
 110 5057 SUEZ Goblet, Amber Stem H
 111 1401 EMPRESS Flamingo Goblet H
 112 3360 PENN CHARTER Flamingo Goblet, NO H
 113 3380 OLD DOMINION Sahara Goblet, Empress Etch, 6 Ea H
 114 3380 OLD DOMINION Sahara Wine, Empress Etch, 3 Ea H 2-f
 115 4182 Sahara 10½" Plate, Empress Etch, 6 Ea
 116 4182 Sahara 8" Plate, Empress Etch, 6 Ea
 117 4182 Sahara 6" Plate, Empress Etch, 6 Ea
 118 1184 YEOMAN Sahara Cup & Saucer, 4 Ea H
 119 135 12" Round Sahara Floral Bowl & 1 Lt #135 Sahara Candle, Pr., Empress Etch, H 1-Candle Chip on Base
 120 1401 EMPRESS Sahara Ftd Cream & Sugar, Formal Chintz Etch H
 121 1504 REGENCY 7" Round Divided Candy, Metal Lid
 122 1503 CRYSTOLITE Shell Covered Candy, X
 123 1503 CRYSTOLITE Handled Jelly, Spider Webb Bottom
 124 1540 LARIAT 7" Round Divided 2 Comp. Jelly
 125 1540 LARIAT 6" Mayonnaise and Underplate
 126 1519 WAVERLY 6½" Ftd Jelly, Orchid Etch H
 127 1519 WAVERLY 6" Bow Tie Candy Box & Cover, Orchid Etch H
 128 2401 16 oz Decanter, Sportsman Etch, Cloudy
 129 2401 12 oz Soda, Tally Ho Etch, 3 Ea
 130 2401 12 oz Soda, Sailboat Carving, 3 Ea
 131 2401 8 oz Soda, Sailboat Carving, 2 Ea
 132 2401 8 oz Old Fashion, Sailboat Carving, 3 Ea
 133 2401 8 oz Old Fashion, Polo Etch
 134 2401 8 oz Old Fashion, Sportsman Etch, 2 Ea
 135 2401 2 oz Bar, Tally Ho Etch
 136 2401 2 oz Bar, Short Sailboat Etch, 3 Ea
 137 1401 EMPRESS Ftd Ice Bucket
 138 333 HOTEL WALDORF ASTORIA Decanter
 139 4027 32 oz Decanter, Silver Overlay, No Stopper
 140 4054 CORONATION 1 Qt Cocktail Shaker, & 6 Bar Glasses on #150 Banded Flute Round Tray 1 Glass f
 141 3368 ALBEMARLE Goblet, Cut
 142 4091 KIMBERLY Goblet, Waterford Cut
 143 3411 MONTE CRISTO Goblet, Wakiki Cut
 144 5072 ROSE STEM Goblet, Cut H

PAID ADVERTISEMENT

PAID ADVERTISEMENT

145 3334 SEXTON goblet, Engraved H
 146 1540 LARIAT Goblet, Cut
 147 1E92 OMEGA Goblet, Cut H
 148 3322 GAMIN Goblet, Cut H X
 149 3408 JAMESTOWN Goblet, Sweet Briar Cut
 150 3408 JAMESTOWN Goblet, Narcissus Cut H
 151 3416 BARBARA FRITCHIE Goblet, Del Monte Cut H
 152 6091 CABOCHON Goblet, Starlight Cut
 153 5040 LARIAT Goblet, Moonglo Cut, 2 Ea H
 154 3366 TROJAN Goblet, Moongleam Stem H
 155 3366 TROJAN Flamingo Goblet
 156 3370 AFRICAN Goblet, Moongleam Stem
 157 3368 ALBEMARLE Flamingo Goblet H
 158 3370 AFRICAN Flamingo Goblet
 159 3380 OLD DOMINION Marigold Goblet, DO X
 160 3365 RAMS HORN Flamingo Goblet
 161 3366 TROJAN Goblet H
 162 1503 CRYSTOLITE Oval 3 Part Relish H
 163 1503 CRYSTOLITE 3 Part Relish
 164 1469 RIDGELEIGH 11" 3 Comp Relish H
 165 1519 WAVERLY 9" Round 4 Comp Relish
 166 500 OCTAGON Moongleam 4 Comp Variety Tray H X
 167 411 RIB & PANEL 12" Celery Tray H
 168 1401 EMPRESS Shara Round 3 Comp Relish
 169 468 12" Celery Tray H X
 170 1185 Flamingo 12" Celery Tray H
 171 393 NARROW FLUTE Flamingo 3 Comp Relish H
 172 341 OLD WILLIAMSBURG 9" Celery Tray H
 173 1252 TWIST Moongleam 7" Olive Tray H
 174 473 NARROW FLUTE w/RIM Moongleam 6" Comb Relish, Dtd H
 175 393 NAPROW FLUTE Divided 4" Round Box H
 176 407 COARSE RIB Hawthorne 5" Ftd Compote
 177 1519 WAVERLY Mayonnaise, Heisey Rose Etch H
 178 1485 SATURN Zircon Tid Bit Tray H
 179 1509 QUEEN ANN Ftd Mint, Everglades Cut
 180 1401 EMPRESS Ftd Mint, Silver Overlay
 181 433 GRECIAN BORDER Sherbet, 5 Ea H
 182 5072 ROSE STEM Sherbet, no Etch, 4 Ea H
 183 3362 CHARTER OAK Moongleam Sherbet, 2 Ea H 1-F
 184 1214 MARSEILLE Hi Sherbet, 2 Ea H
 185 1184 Peach Melba Optic Tall Sherbet H
 186 3380 OLD DOMINION Sahara Sherbet, Empress Etch
 187 7057 TRI KNOB Sherbet, Needle Etch H F
 188 3370 AFRICAN Sherbet, Moongleam Stem, 2 Ea
 189 3357 KING ARTHUR Sherbet, Moongleam Stem H
 190 3408 JAMESTOWN Sherbet, Barcelona Cut x
 191 3370 AFRICAN Sherbet, Moongleam Stem x
 192 4090 COVENTRY Zircon Sherbet
 193 5079 PAN AMERICAN Champagne, Etched H
 194 6060 FINESSE Champagne, Cut
 195 3424 ADMIRALTY Champagne H X
 196 4090 COVENTRY Champagne
 197 3404 SPANISH Champagne, Cut
 198 3420 MILWAUKEE Pilsner
 199 811 3/4 HOFFMAN HOUSE Beer Schooner H
 200 3386 DIAMOND ROSE Pilsner, 2 Ea H
 201 Sealyham Terrier (Scotty)
 202 Oscar Horse (Sparky)
 203 Oscar Horse (Sparky) Tailed glued Standing Colt
 204
 205 Goose, Wings ½ Up
 206 Goose, Wings Up
 207 Goose, Wings Up

PAID ADVERTISEMENT

PAID ADVERTISEMENT

208	Middle Elephant
209	Middle Elephant, Frosted
210	Fish Bookend
211	Fish Match Holder
212	Fish Bowl, Red Stain
213	Rooster Vase
214	Rooster Vase
215	Ringneck Pheasant
216	Mike Owens Bust, Frosted
217	Madonna by Imperial
218	Imperial Ultra Blue Standing Colt
219	Imperial Ultra Blue Rearing Colt
220 3411	Monte Cristo Goblet, Titania Etch
221 3350	WABASH Goblet, Pied Piper Etch H
222 5009	QUEEN Ann Goblet, Belle-le-Rose Etch
223 3335	LADY LEG Goblet, Zodiac Etch
224 3333	OLD GLORY Goblet, Renaissance Etch, 2 Ea H
225 3404	SPANISH Goblet, Titania Etch
226 3350	WABASH Goblet, Mayflower Etch, 2 Ea H
227 3350	WABASH Goblet, Pied Piper Etch
228 3330	HANOVER Goblet, Elizabeth Etch c
229 3304	UNIVERSAL Goblet, Tatting needle Etch
230 3345	MARY 'N VIRG Goblet, Adam Etch H
231 3386	DIAMOND ROSE Marigold Goblet, Empress Etch H X
232 3331	STATUESQUE Goblet, Grecian Urn Etch, 2 Ea H
233 4052	NATIONAL Goblet, Fred Harvey Etch, 2 Ea
234 3408	JAMESTOWN Goblet, Rosalee Etch
235 393	NARROW FLUTE Goblet, Rim Etched H
236 3336	LADY LEG Goblet, Bead & Fan Etch H
237 3350	WABASH Goblet, Trefoil Etch, 5 Ea H
238 3389	DUQUESNE Goblet, Chintz Etch, 2 Ea
239 1252	TWIST Marigold Soda H
240 3350	WABASH Marigold Soda, H c
241 4083	STANHOPE Soda, Swingtime Etch
242 3479	CONE Soda, Cut H
243 1238	8" Beehive Plate
244 1238	Flamingo 8" Beehive Plate
245 4182	10½" Hawthorne Plate, Frontenac Etch
246 4182	8" Marigold Round Plate, Empress Etch, 4 Ea
247 1567	PLANTATION 8" Round Plate, 2 Ea
248 1447	ROCOCO 7" Round Plate H X
249 1231	RIBBED OCTAGON Flamingo 6" Plate, 6 Ea
250 1227	Hawthorne 6" Round Plate, 3 Ea H
251 1503	CRYSTOLITE 11" Party Plate
252 1401	EMPRESS Cobalt 8" Square Plate H
253 1401	OLD SANDWICH 7" Square Plate H
254 1184	YEOMAN Hawthorne 8" Plate, DO
255 1401	EMPRESS Alexandrite 6" Round Plate, 2 Ea H
256 1128	6" Moongleam Plate, DO
257 407	COARSE RIB Moongleam 7" Round Plate H
258 1185	YEOMAN 10½" Hd1 Sandwich Plate, Decor H
259 393	NARROW FLUTE 6½" Plate, Gold Decor H
260	Set of 5 Imperial Land of Legend Souv Plates 1972-1976
261 5089	PRINCESS Wine, 2 Ea H
262 5089	PRINCESS Wine H
263 5067	PLANTATION Claret, Pinecone Cut, 2 Ea H
264 5040	LARIAT WINE, Leaf Etch H
265 3311	VELVEDERE Grape Juice
266 5079	PAN AMERICAN Claret H
267 412	RIB & PANEL Goblet H
268 700	DERBY Ale
269 300	PEERLESS Claret, Eng Reg Mark H

PAID ADVERTISEMENT

270 1112	SPARTA Oyster Cocktail, 4 Ea
271 1228	RINGLING Egg Cup
272 3394	SAXONY Sahara Oyster Cocktail
273 4054	CORONATION Cocktail
274 4085	KOHINOOR Oyster Cocktail, Coronation Etch
275 1405	IPSWICH Oyster Cocktail
276 341	PURITAN Oyster Cocktail
277 349	COLONIAL 3 oz Low Ftd Sherbet, 6 Ea H
278 1227	MAGARG Sherbet H
279 1183	REVERE Saucer Champagne H
280 1227	MAHARG Saucer Champagne, 2 Ea H
281	Imperial Caramel Slag Donkey
282	Imperial Caramel Slag Oscar (Sparky)
283	Imperial Caramel Slag Standing Colt
284	Imperial Caramel Slag Mallard, Wings Up
285	Imperial Caramel Slag Mallard, Wings ½ Up
286	Heisey Large Horsehead Cocktail Stopper
287	Heisey Small Horsehead Cocktail Stopper
288	Heisey Moongleam Duck Cologne Stopper
289 1503	CRYSTOLITE Indiv Swan Nut
290	Victorian Girl Bell (No Clapper)
291 1210	Moongleam 6" Cheese Plate, Frog Handle
292 5074	4 oz Seahorse Stem Cocktail H
293 5038	Rooster Stem Cocktail, 5 Ea
294 5048	Rooster Head Cocktail, 4 Ea
295 4225	COBEL 1 Qt Cocktail Shaker, Rooster Head Stopper
296 4225	COBEL 1 Qt Cocktail Shaker, Rooster Head Stopper
297 4036	1 Qt Cocktail Shaker, Small Horsehead Stopper
298	Verlys Pelican Tray
299	Verlys Pinecone Bowl, 2 Ea 1-Frosted
300	Imperial Aurora Jewels Childs Fairy Tale Elephant Handled Mug
301 4091	KIMBERLY Wine, 5 Ea H
302 300	PEERLESS Wine H
303 359	COLONIAL Wine, NO
304 601	ELIZABETHAN Wine H
305 341	PURITAN Wine H, Monog M
306 373	COLONIAL Wine H
307 4092	KENILWORTH Wine, Rosalie Etch, 2 Ea H
308 1235	BEADED PANEL & SUNBURST Wine
309 1404	OLD SANDWICH Wine
310 3355	FAIRACRE Cocktail, Moongleam Stem
311 4055	PARK LANE Cocktail, 2 Ea
312 1590	ZODIAC Ftd Juice H
313 4004	JACOBAN Cocktail
314 3404	SPANISH Cocktail, Concord Etch
315 3408	JAMESTOWN COCKTAIL
316 351	COLONIAL 2½ oz Creme De Mint
317 3404	SPANISH Cocktail, Cut, 6 Ea
318 3404	SPANISH Cocktail, Cut, 6 Ea
319 1536	MILITARY CAP Ash Tray
320 1536	MILITARY CAP Ash Tray
321 1469	RIDGELEIGH Bridge Ash Trays & Square Cigarette Holder H X
322 1469	RIDGELEIGH Club Ash Tray H
323 1401	EMPRESS Ash Tray H
324 1186	YEOMAN Ash Tray, Cupid & Psyche Etch
325 1435	3" Ind Ash Tray, Orchid Etch
326 1469	RIDGELEIGH Square Cigarette Holder
327 1469	RIDGELEIGH Round Cigarette Holder H c
328 301	3 Light Candelabra, Short Base, Pr Complete H 1-X
329 300	1 Light Candelabra 10" Complete Pr
330 1519	WAVERLY 2 Lt Candelabra & 13" Gardenia Bowl, Flower Carving, 3 Pc Set

PAID ADVERTISEMENT

331 5 8" Candlestick, Pr H
 331A 142 3 Light Candlestick, Pr
 332 1503 CRYSTOLITE 1 Lite Candle, Pr
 333 1503 CRYSTOLITE Candle Block, Pr
 334 134 TRIDENT Candle, Pr
 335 1509 QUEEN ANN 1 Light Candle & Prisms, Pr
 336 29 8" Candle, Pr H
 337 1469 RIDGELEIGH 1 Lt Candle, Pr
 338 118 3" Flamingo Candle, Pr
 339 112 3" Flamingo Candle, Pr
 340 112 3" Flamingo Candle, Pr
 341 1540 LARIAT 1 Lt Candle, Pr
 342 1533 WAMPUM 1 Lt Candle, Pr
 343 1489 PURITAN 1 Lt Candle, Pr
 344 1513 3 Lt Candelabra Epergne w/Vase & Prisms
 345 1495 FERN 2 Lt Candle, Orchid Etch
 346 1469 RIDGELEIGH 1 Lt Candelabra H
 347 1469 RIDGELEIGH 1 Lt Candelabra Base Only H
 348 129 Triplex Candle, Moongleam H
 349 132 1 Lt Candle, 1-Moongleam & 1-Flamingo
 350 1503 CRYSTOLITE Hurricane Candle Base Only,
 351 1469 RIDGELEIGH 3" Round Candle Block
 352 99 1 Lt Candle Block, Irrid
 353 1404 OLD SANDWICH Sahara 12 Oz Ftd Soda H
 354 1415 TWENTIETH CENTURY Dawn 10 oz Tumbler H
 355 300½ PEERLESS 8 oz Tumbler H
 356 1417 ARCH Flamingo Tumbler H
 357 6092 CABOCHON Amber Base 12 Oz Ice Tea H
 358 1487 COLEPORT Dawn 10 oz Tumbler H
 359 2323 NAVY 8 Oz Soda, 2 Ea 1-X
 360 5087 COMET Large Soda
 361 567 6 oz Grape Juice, NO H
 362 2351 12 oz Soda, Tatting Needle Etch, WO
 363 4054 CORONATION Soda, Cut
 364 4054 CORONATION Soda, Cut
 365 1235 BEADED PANEL & SUNBURST Punch Bowl & Base H C
 366 433 GRECIAN BORDER Punch Bowl Base Only H
 367 3350 WABASH 3 Pt Squatty Jug, Pied Piper Etch H
 368 4054 CORONATION 1 Pt Martini Pitcher & Stirer
 369 3331 STATUESQUE Goblet, Cut H
 370 5057 SUEZ Goblet, Cut H
 371 4091 KIMBERLY Goblet, Virginia Cut
 372 3411 MONTE CRISTO Goblet, Cut f
 373 4091 KIMBERLY Goblet, Courtship Cut H
 374 5024 OXFORD Goblet, Inspiration Cut
 375 3321 BIRGHTON Goblet, Cut
 376 3336 LADY LEG Goblet, Cut H
 377 5098 LOUISA GOBLET, Cut H
 378 5098 LOUISA GOBLET, Cut H
 379 3368 ALBEMARLE Goblet, 2 Ea Monog EBB
 380 3478 CONE Ftd Soda, Cut H
 381 3389 DUQUESNE Cordial
 382 363 COLONIAL Cordial H
 383 300 PEERLESS Cordial H
 384 341 PURITAN Cordial H
 385 341 PURITAN Cordial, 3 Ea H (Monog M)
 386 4044 NEW ERA CORDIAL, Waterford Cut, 7 Ea Some roughness
 387 1486 COLEPORT 1 Oz Bar
 388 1425 VICTORIAN 1 oz Bar H
 389 6060 COUNTRY CLUB 1 oz Bar
 390 1469 RIDGELEIGH 1 Oz Bar H
 391 351 PRISCILLA Toothpick H
 392 300 PEERLESS 2 OZ Bar in Silver Holder H

PAID ADVERTISEMENT

393 300 PEERLESS 2 oz Bar H
 394 379½ URN Cigarette Holder
 395 1401 EMPRESS Sahara Seafood Cocktail H
 396 1295 BEAD SWAG Toothpick Holder, Red Stain, Souvenir 1902
 397 1225 PLAIN BAND Toothpick, Beaded Top, Souvenir H
 398 1401 EMPRESS Indiv Sugar, Gold Decor
 399 1200 CUT BLOCK Indiv Cream, Custard, Souv.
 400 1200 CUT BLOCK Indiv Sugar, Custard, Souv c
 401 1200 CUT BLOCK Indiv Sugar, Custard, Souv Roses
 402 1205 FANCY LOOP Mustard & Cover c
 403 465 RECESSED PANEL 1 Lb Candy, Moongleam, No Lid
 404 1184 YEOMAN 6½" Handled Bon Bon, Flamingo
 405 1180 YEOMAN Flamingo Indiv Nut H
 406 6" Moongleam Boat Dish, Silver Decor, DO
 407 1255 PINEAPPLE & FAN Emerald 6½" Relish, Gold Decor
 408 1280 WINGED SCROLL Clambroth Trinket Box, Souv
 409 1401 EMPRESS Moongleam 6" Grapefruit H
 410 1509 QUEEN ANN 8½" Ftd Plate, Antarctic Etch
 411 1401 EMPRESS Sahara 4½" Nappy, 6 Ea H
 412 1170 PLEAT & PANEL Hd1 Boullion & 7" Underplate H
 413 1447 ROCOCO Bon Bon H
 414 4074 Finger Bowl, DO, 2 Ea
 415 1255 PINEAPPLE & FAN Emerald Cream, Gold Dec
 416 1425 VICTORIAN Stick Butter H
 417 25 Puff Box and Cover, Monog "C" H
 418 1469 RIDGELEIGH Puff Box & Cover H
 419 5 Puff Box, Metal Lid
 420 25 Puff Box, No Cover H
 421 25 Puff Box, No Cover H
 422 300 Indiv Drink Decanter
 423 300 Indiv Drink Decanter
 424 300 Indiv Drink Decanter, 2 Ea 1-x
 425 1469 RIDGELEIGH Zircon Coaster
 426 150 BANDED FLUTE Match Holder, no cover H
 427 1540 LARIAT Salt & Pepper, No Lid
 428 25 Salt & Pepper, 2 Pr H X
 429 1567 PLANTATION Salt & Pepper H
 430 1225 PLAIN BAND Salt & Pepper X
 431 1405 OLD SANDWICH Flamingo Salt & Pepper, No Lids
 432 1295 BEAD SWAG Salt & Pepper, Red Stain x
 433 46 Flamingo Salt
 434 47 Flamingo Salt
 435 1469 RIDGELEIGH Ind Salt H
 436 393 NARROW FLUTE Ind Salt, 4 Ea H
 437 1404 OLD SANDWICH Indiv Ash Tray
 438 3350 WABASH Goblet H
 439 5025 TYROLEAN Goblet, Orchid Etch
 440 3312 GAYOSO Goblet, Monticello Etch
 441 5003 CRYSTOLITE Goblet, 2 Ea
 442 339 CONTINENTAL Goblet H
 443 3324 DELAWARE Flamingo Goblet
 444 337 TOURAINE Goblet, NO H
 445 1184 YEOMAN Goblet, 3 Ea, Sahara, Flamingo & Crystal H
 446 407 COARSE RIB Goblet, 4 Ea H 1-c
 447 1170 PLEAT & PANEL Flamingo Luncheon Goblet, Gold Decor, 4 Ea
 448 1425 VICTORIAN Goblet
 449 347 FIFTH AVENUE Colonial Goblet H
 450 5003 CRYSTOLITE Goblet

451 2516 CIRCLE PAIR Flamingo Goblet	486 1184 YEOMAN Goblet
452 1404 OLD SANDWICH Goblet	487 3362 CHARTER OAK Flamingo Goblet H
453 1170 PLEAT & PANEL Flamingo Goblet	488 5040 LARIAT Goblet H
454 3312 GAYOSO Flamingo Goblet, 2 Ea	489 1540 LARIAT Goblet
455 3440 PORTSMOUGH Goblet, Moongleaf Foot, 2 Ea	490 5024 OXFORD Goblet, Saturn Optic
456 393 NARROW FLUTE Moongleam Indiv Almond, 3 Ea	491 411 RIB & PANEL Goblet
457 393 NARROW FLUTE Moongleam Indiv Almond	492 373 COLONIAL Goblet H
453 393 NARROW FLUTE Indiv Almond H	493 341 PURITAN Goblet H
459 1252 TWIST Marigold Indiv Nut Dish H	494 393 NARROW FLUTE Goblet H
460 1229 OCTAGON Flamingo Indiv Nut Dish, 3 EaH	495 5082 MID CENTURY Goblet, 2 Ea H
461 1229 OCTAGON Moongleam Indiv Nut Dish, 5 Ea H	496 373 COLONIAL Goblet H
462 1401 EMPRESS Sahara Indiv Ftd Nut Dish	497 3386 DIAMOND ROSE Pilsner H
463 1401 EMPRESS Flamingo Indiv Ftd Nut Dish H	498 1229 OCTAGON Flamingo 6" Mint Dish
464 1401 EMPRESS Indiv Ftd Nut Dish, 6 Ea	499 300 PEERLESS 4" Nappy
465 411 RIB & PANEL Cigarette Jar, No Lid H	500 341 PURITAN Nappy, 2 Ea 1-4" & 1-5"
466 1974 Imperial Museum Souvenir Claret	501 1503 CRYSTOLITE 5" Nappy
467 1975 Imperial Museum Souvenir Claret	502 429 PLAIN PANEL 4½" Nappy H
468 1976 Imperial Museum Souvenir Claret	503 1469 RIDGELEIGH Roly Poly Base H
469 1776 KALONYAL Mustard, No Lid H	504 4026 FLAMINGO 16 oz Decanter, DO, Cloudy
470 150 POINTED OVAL IN DIAMOND POINT Spooner	505 1425 VICTORIAN Punch Cup H
471 COLONIAL Sugar, no lid H	506 1509 QUEEN ANN Cup, Formal Chintz Etch H
472 2930 PLAIN AND FANCY 10 oz Tumbler, Monticello Etch, 2 Ea 1-c	507 1509 QUEEN ANN Cup, Rosalee Etch H
473 3405 ALIBI Cocktail, Cut	508 6060 COUNTRY CLUB 14 oz Beverage, 2 Ea
474 Glass Salad Spoon	509 1485 SATURN Sugar, No Lid H
475 1205 FANCY LOOP Goblet	510 Imperial 1975 Museum Dedication Paperweight, 2 Ea Nos. 9 & 585
476 1184 YEOMAN Flamingo Goblet H	511 1489 PURITAN Horsehead Ash Tray X
477 1184 YEOMAN Flamingo Goblet, Flared H	512 1469 RIDGELEIGH 2½" Square Ash Tray, 3 Ea, 1-Red Stain H All-X
478 5089 PRINCESS Goblet H	513 1184 YEOMAN Sugar Pourer, No Top
479 1506 PROVINCIAL Goblet	514 2401 8 Oz Soda, Skier Etch, Badly Ground
480 U8005 GALAXY Flamingo Goblet H	515 Pair Candle Epergnettes
481 3357 KING ARTHUR Goblet, 2 Ea H	516 1519 WAVERLY Lid for Bow Tie Candy Box, Heisey Rose Etch
482 1401 EMPRESS Goblet H	517 1506 PROVINCIAL Zircon Lid for Candy Jar c
483 369 HARTMAN Goblet H	518 1503 CRYSTOLITE Lid for Round Candy Box
484 8035 BLAIR Goblet	519 411 RIB & PANEL Lid for Water Jug and #353 Lid for Covered Sugar
485 3390 CARCASSONNE Low Goblet	520 BTown Mushroom Cover 4½"
	521 Stopper for #5225 Cocktail Shaker

PLEASE NOTE MAIL BIDDING INSTRUCTIONS AS FOLLOWS:

Mail bids accepted with checks for the maximum amount of the bid. Mail bids are handled competitively and any difference is refunded after postage and handling. Only items in mint condition will be subjected to mail bids unless specifically requested otherwise. Please add \$8.00 per carton for postage and handling, \$10.00 west of Rocky Mountains. Checks should be made to Sam Schnaidt, Auctioneer, and mailed to:

Sam Schnaidt, Auctioneer
 P. O. Box 84
 Granville, Ohio 43023

LIST OF PRICES REALIZED, AVAILABLE AFTER THE AUCTION, FOR \$1.00

SAM SCHNAIDT, AUCTIONEER

FRANK FRYE, MANAGER

(614) 587-0052

(614) 344-9847

(614) 345-5073

MAKE YOUR RESERVATIONS NOW....CONVENTION 1983--JUNE 16-17-18-19, 1983

The rate given us is ONE PERSON - \$36.00 - TWO PEOPLE - \$41.00, Queen Size ONE PERSON \$37.00 - TWO PEOPLE \$42.00. The queen size rooms all have steam baths. NO ADDITIONAL CHARGE FOR CHILDREN UNDER 18 YEARS OF AGE AND NO ADVANCE DEPOSIT IS NEEDED. There is a \$5.00 charge per night for a rollaway bed.

The SHERATON INN will once again be our convention headquarters for 1983, and they have given a special room rate for all H.C.A. members. All activities will be held there with the exception of the SHOW AND DISPLAY. Please make your reservations early because last year they were all taken by the first of March.

SHERATON INN RESERVATION REQUEST

Name _____

Address _____

City _____ State _____ Zip _____

Phone _____

All rooms have two double beds.

Arrive _____

Single room requested (one person) \$36.00

Depart _____

Double room requested (two people) \$41.00

Please make your reservation by clipping the attached form

Queen size requested (one person) \$37.00

Queen size requested (two people) \$42.00

Mail to: ROBERT McCLAIN
156 W. SHIELDS ST.
NEWARK, OHIO 43055
Phone: (614)345-8061

Rollaway bed _____ \$ 5.00

**Fostoria
Glass Into
Machine Age**

The Fostoria Glass Co. at Moundsville, W. Va., has entered the machine age, ending nearly a century of producing glassware by hand.

The glass company decided to end its 90-year practice of making hand-blown and hand-pressed glassware, because of the high cost of the process.

While the new machinery will enable the plant to boost its output, it also means nearly half of the 425 employees will be without jobs. Fostoria is the biggest employer in Moundsville.

Fostoria Glass Co. is the nation's oldest producer of handmade glassware, and has been recognized as the best-known producer of

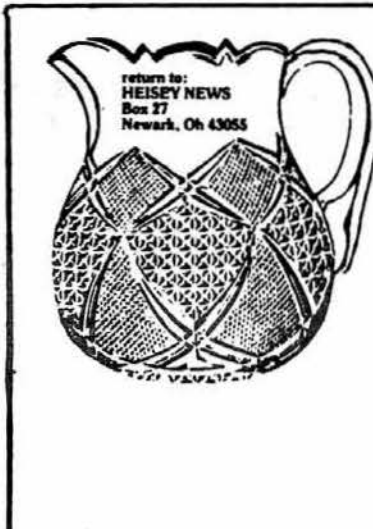
handcrafted glassware in the country. It has even manufactured special stemware with the Presidential seal for a quarter century, through a special White House commission.

Fostoria began operations in Fostoria, Ohio, in 1887, moving to West Virginia in 1891. It installed its first machines in 1965,

and about a third of the glassware produced at the plant — nearly 28 tons daily — has been handmade.

Company officials say that each machine, operated by one employee, can produce 6.5 pieces of glassware per minute. It takes 10 people to make four glasses a minute by hand.

- kt



FIRST CLASS MAIL
U.S. POSTAGE
PAID
PERMIT 34
Reynoldsburg, Ohio 43068

FIRST CLASS MAIL