

HEISEY *news*

OFFICIAL PUBLICATION HEISEY COLLECTORS OF AMERICA

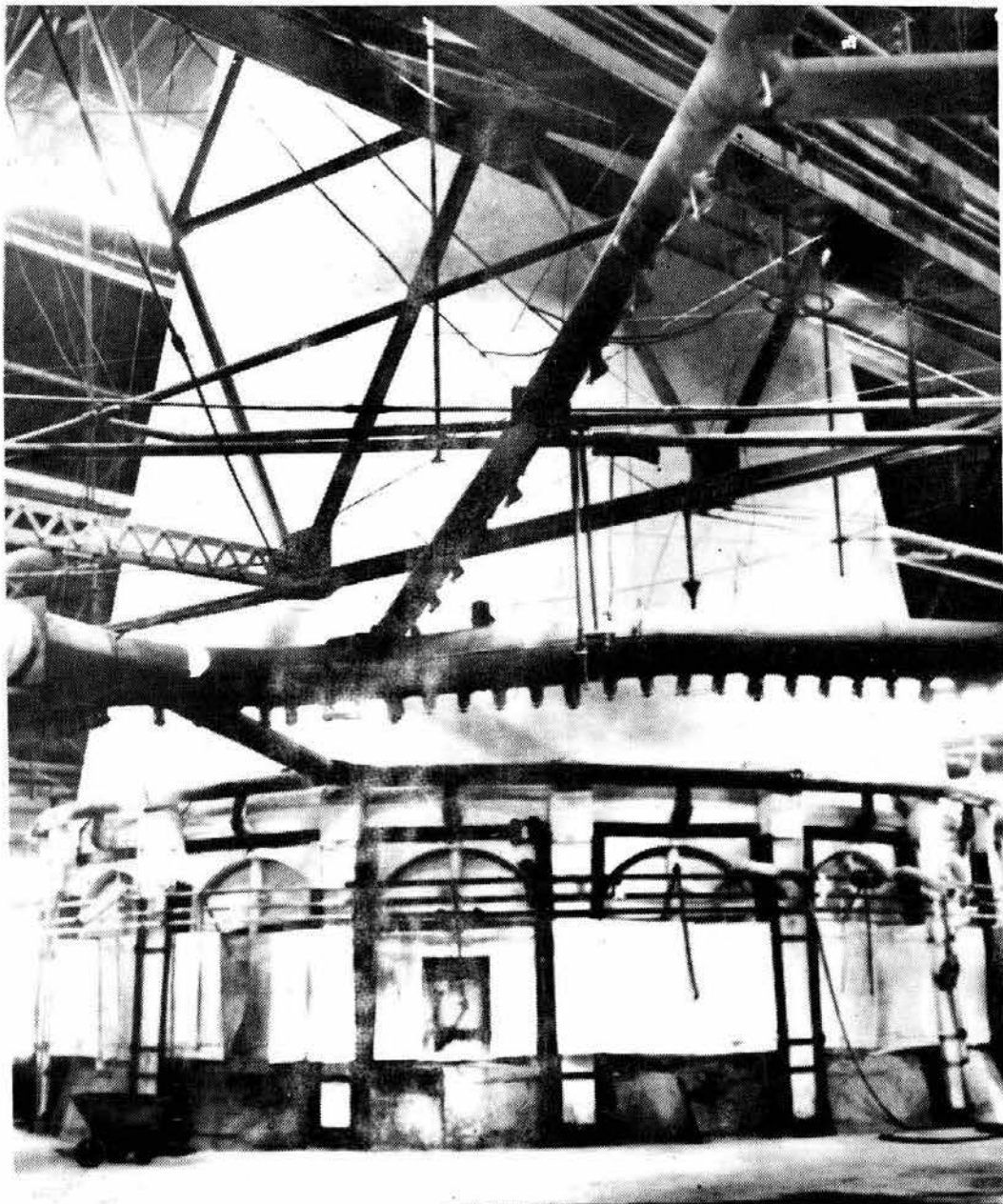
©Heisey Collectors of America, Inc. 1982
All Rights Reserved

VOLUME XI

NO. 9

SEPTEMBER, 1982 ISSN 0731-8014

ONE DOLLAR



SIXTEEN POT FURNACE AT THE HEISEY FACTORY

FROM THE DESK OF YOUR PRESIDENT:

The week-end of September 11th, was the most eventful period since I have been a member of H.C.A. By the time you get this news letter at your home, you may know much more about the future of Imperial Glass Company than I do at this moment. Thursday, September 9th, was a very blue day for H.C.A. when we got the word that Imperial was probably closing, because we depend on them so much for our income to support the Museum. The Project Committee is, however, taking steps to replace that loss should it be necessary to do so.

As of September 16 at 3 P.M., Negotiations are still going on and we are waiting for news.

We have received many letters from Study Clubs and individuals voicing their opposition to the proposed By-Law Change which would take away the vote of Study Clubs. After taking another look at this, the Board recommended to the Membership that the proposed change be defeated, which it was. The By-Laws Committee will have another recommendation prepared by the December Board Meeting which, if approved by the Board, can be voted on by the Membership at the March Quarterly Meeting. Hopefully, at that time, the conflict between the Constitution and By-Laws will be resolved.

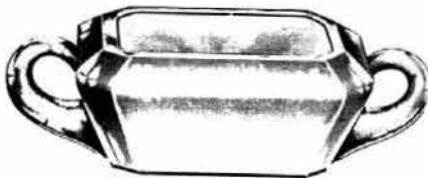
The Board also approved the establishment of the Endowment Fund which has been in the works for about a year. The original committee, Jim LaMoreaux, Chairman, Frank Frye, Loren Yeakley, and Harold Crim deserve much praise for all the hard work and time that went into this project. The purpose of the Endowment Fund is to provide support to the Museum forever. Donations can be mailed to the Museum with the address of:

HCA Trust Fund
P.O. Box 27
Newark, Ohio 43055

Bill Clifford is the 1983 Convention Chairman and, as usual, we are looking forward to another great Convention. We do need a theme, so if you have any ideas, mail them to Bill Clifford at the club address.

Happy Hunting,

Bob



No. 452
HOTEL SUGAR
CUT TOP AND BOTTOM



No. 452
HOTEL CREAM
CUT TOP AND BOTTOM

FIFTH ANNUAL
*All Glass Show
and Sale*

Sheraton - Sturbridge Inn
Rte. 20 - Sturbridge, Mass.

Oct. 23 Oct. 24
Sat. 10:30 am-5:30 pm Sun. 10 am-4 pm

All Glass of All Periods

SPONSOR
BAY STATE HEISEY COLLECTORS CLUB

DONATION \$1.75 — with card \$1.50

Benefit—Heisey Glass Museum

HEISEY NEWS—P.O. BOX 27—NEWARK, OHIO 43055

Editor LOUISE REAM
Box 27, Newark, OH 43055 614-345-2932
Ass't Editor NEILA BREDEHOFT
Box 27, Newark, OH 43055 614-345-2932

Published monthly and mailed from Reynoldsburg,
Ohio 43068

\$12.00 per year - \$1.00 per copy
Back issues 1972/1980 (except 1974) \$9.00 per
year (12 issues).

CLUB OFFICERS

President	BOB McCLAIN	614-345-8061
Vice President	TOM BREDEHOFT	614-745-1014
Secretary	R. T. MARSHALL	614-866-4522
Treasurer	DICK MARSH	614-366-5608
Exec. Director	LOUISE REAM	614-344-2377

Heisey Collectors of America, Inc. is a non-profit corporation with tax exempt status. Owners and operators of National Heisey Glass Museum, 6th & Church Sts, Newark, OH. Open Daily 1-4 pm March through December except Mondays and holidays. January & February-Wednesday, Saturday, & Sunday 1-4pm. Other times by appointment. Members admitted free.

Club membership (includes 12 issues of HEISEY NEWS and participation in all club activities) \$12.00/year plus \$2.00 each for additional family members in same household who wish a membership card. For VOTING MEMBERSHIP add \$25.00, one time only fee.

When requesting information, please enclose a self-addressed stamped envelope (SASE).

ADVERTISING - Send all ads to: Advertising
c/o NEILA BREDEHOFT
P. O. Box 27
Newark, OH 43055

RATES:

DEALERS' DIRECTORY - 5 lines-\$18.00/year

CLASSIFIED - 10¢/word. \$1.00 minimum. Abbreviations and initials count as words.

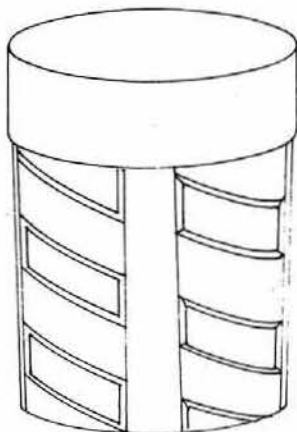
DISPLAY:	MEMBERS	NON-MEMBERS
1/8 pg (9 items)	\$12.00	\$20.00
1/4 pg (20 items)	20.00	30.00
1/2 pg (20 items)	35.00	45.00
1 pg (50 items)	60.00	75.00

We cannot double-column ads. No VERTICAL 1/2 pg. ads. ALL ADS MUST BE PREPAID. Ad copy must be received by the 5th of the month to be included in that month's NEWS. Ads containing reproductions will not knowingly be accepted unless clearly stated (i.e. Heisey by Imperial, etc.) HEISEY NEWS assumes no responsibility for false advertising or misleading information. In the event of typographical error, the incorrect portion of the ad will be run in the following issue, but HEISEY NEWS assumes no further liability.

Opinions expressed in articles are those of the authors and not necessarily those of HCA. Editorial Staff reserves the right to edit or refuse any material submitted for publication. Send all letters & articles to be published to the EDITOR. Letters to columnists should be sent to the club address and will be forwarded.

8060 BARBER POLE TUMBLER

By: Tom Bredehoft



Heisey must have made a lot of glass that never made it into catalogs. The picture with this article is of a tumbler with a Diamond H in it, in the bottom, just where you would expect it, - If you were looking for it.

I don't know if, were I to see this tumbler on a flea market table, I would think to look. Aside from a passing similarity to Criss Cross, it doesn't look like anything Heisey made.

Several years ago, one of our members in California found a tumbler which was signed, but had not been seen before. The HCA called it "Golden State Arches" and duly put one in the Museum so that we all could study it. Well, California has done it again....Another tumbler, another member, too.

On looking through Neila's research material, I find that she located a series of tumblers in the daily production records, each listed as new, running from October, 1923, to October, 1924, numbered from 204 to 213. Unfortunately, the timing of these tumblers is wrong. Apparently October, 1923, was too late to get into the next catalog. No. 102, dated January 1, 1924, and the next catalog didn't come out until December, 1929. None of these tumblers were popular enough to stay in production that long.

Of course, we can't be sure any of these tumblers (which we are now finding) are the ones Heisey was making in the mid '20's, but it sure is fun to speculate.

I'm sorry I can't give you any data on this as to when it was made, or what color comes in, but when a member sends a picture of a tumbler, you're lucky to get this much of a column out of it.

The picture is not quite accurate. There are four repeats of the pattern around the glass.

HEISEY SALTS

By: Neila Bredehoft

NO. 14 REGAN*



NO. 14 SALT OR PEPPER
WITH
NO. 1 SANITARY TOP

This tall, attractive salt was produced by Heisey for quite a long time -- from about 1908 to 1929. In spite of this long life, I have seen very few of these for sale.

They are distinctively shaped with the sudden flaring at the base and the wide collar at the top. The body consists of 8 panels which run the full length of the shaker. The bottom has a 16 point indented star. Mine is not polished. The shaker was made only in crystal and examples I have seen were marked on the inside bottom.

The shaker was listed as available with several styles of tops: #1 Sanitary (glass insert, metal ring), #2 Sanitary (all glass), #3 Sanitary (also a glass insert with metal ring), and #43 described as "white metal, heavy silver plate". These are the style of tops often now described as "pewter" when the silver plate is missing. There is no indication in Heisey lists that these are actually made of pewter. I feel they are not.

The name is not original with Heisey, but comes from the name of a lady who appreciates Heisey salts. The only reference in price lists was simply the designation "colonial".

CONVENTION '83

JUNE 1983 - - It will be here quicker than we realize.....And we need your help in finding a theme for the H.C.A. Convention. If you have an idea or suggestion for '83, please send me a note to: P. O. Box 27, Ark, Ohio 43055. I look forward to getting a lot of good suggestions. Also, any ideas you might have on changing or improving the Convention will be appreciated.

Bill Clifford
1983 Convention Chairman

FISH CANDLESTICK NOW IN

Fish Candlestick now in. Sunshine Yellow, Clear, \$15.95 each.
Some may be frosted later - See back page to order.

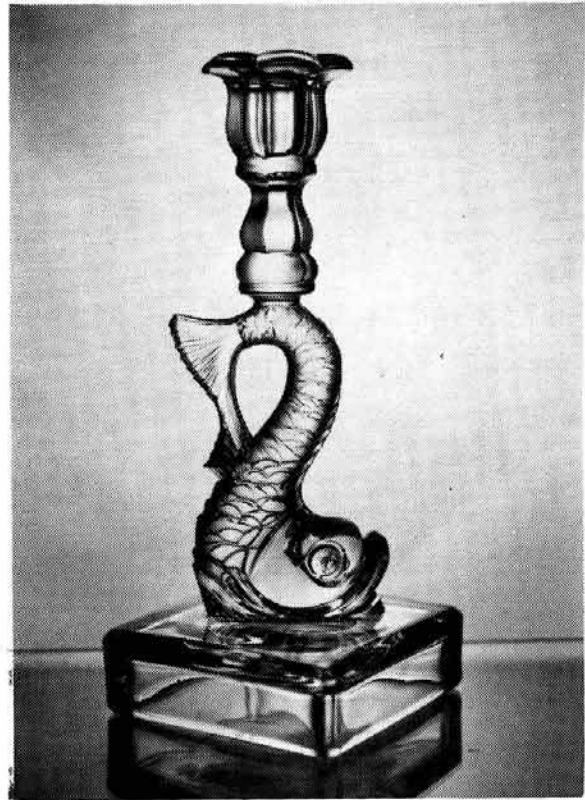
MORE "EARLY AMERICAN" INFLUENCES ON HEISEY'S CANDLESTICKS

BY: Bob O'Grady

In two prior articles, June and August 1982, we discussed Patterns No. 1405 "Ipswich" and No. 1404 "Old Sandwich" respectively. Both were inspired by patterns produced in the mid 1800's at the Boston and Sandwich Glass Company on Cape Cod. This is the final article in this short series on some of the Heisey candlesticks which were based on Sandwich and other nineteenth century glasshouse patterns. Probably the most recognized of Heisey's candlesticks as being a sandwich copy is their No. 110 Dolphin (Picture #1). We know that this model was among those owned by Heisey from the photograph which appeared in the March 1927 issue of "Antiques" magazine. Sandwich produced at least five different versions of this dolphin candlestick from about 1835 to 1850. Large quantities of shards of two of the versions, the "Double-Base" or stepped base and the single-base, were dug up at the site of the Sandwich Factory in a variety of colors including green, amber, canary (vaseline), amethyst, opaque white, blue and opaque lavender. It was the single-base model that was among those owned by Heisey and it was this version which Heisey reproduced though not quite in the same dimensions. The Heisey Dolphin went into production in October of 1925 and was discontinued sometime in 1935. The length of its production is an indicator of its popularity. Because it was somewhat of a complex item to mold not many could be made in one turn. It was made in crystal, moongleam, flamingo, cobalt, amber, sahara, and zircon and is not marked with the Diamond H. A zircon pair, which may have been made about 1937 as a special order after they had gone out of regular production, is now owned by the HCA and on display in the Heisey Museum.

Starting in 1926, the Ideal Cut Glass Company of Canastota, New York, special-ordered these candlesticks which were converted and sold as electric lamps. "Converted" means the socket was removed from the candlestick and a metal ring fitted in its place just above the tail of the dolphin so that the electric socket and cord could be installed in its place. I don't think Heisey had a separate mold which would have produced the candlestick without the socket portion. This means it would have been removed after the dolphin was finished off as a regular candlestick. It is uncertain whether Ideal had Heisey remove the socket for them or whether they removed it themselves. Some circumstantial evidence leads me to believe Heisey removed the socket for Ideal. The cutting usually found on the base of the lamp was most likely added by Ideal however.*

Some confusion has arisen over the sandwich dolphin candlesticks reproduced by Imperial for the Metropolitan Museum of Art. As Louise Ream has pointed out, none of the Imperial dolphins were made from the Heisey mold since Imperial's were different versions of



1

sandwich than the one used by Heisey.

Although Heisey's Petticoat Dolphin candlestick No. 109, (Picture #2), may not have been produced at Sandwich, it has become a "Sandwich-Related" item by close association. In the January, 1928, edition of their "Table Talk", the Heisey Company itself pictured and labeled the Petticoat Dolphin along with the No. 110 Sandwich dolphin as a reproduction of Sandwich Glass. There is no definitive proof that Sandwich did or did not make some version of a petticoat dolphin, but it seems evident from the information available to us that Heisey did not have a sandwich "Petticoat" mahogany model.

At any rate, Heisey's Petticoat Dolphin is a very close copy of a candlestick made by an earlier American glass company or companies, which they probably had in their possession and used to make their reproduction. The "Original" Petticoat Dolphin has been found in crystal, canary, and blue, all with some opalescence around the rim of the socket. Over the years various researchers and authors have attributed it to McKee of Pittsburgh, Bakewell and Pears of Pittsburgh and Sandwich. However, the latest and perhaps best founded attribution comes from Bill Heacock in his book on "Opalescent Glass from A To Z" where he attributes it to Northwood-Dugan of Indiana, Penna., based on shards dug up at the factory dumpsite.

Heisey's Petticoat Dolphin went into production two months before the Sandwich dolphin in August of 1925 and, like the No. 110 dolphin, the first turn was in moongleam. This too had a production span of ten years. It was made in moongleam, flamingo, crystal, sahara and

MORE "EARLY AMERICAN" INFLUENCES ON HEISEY'S CANDLESTICKS CONT'D.

cobalt, though to my knowledge it has yet to be found by a collector in either of the last two colors. The base of the moongleam is usually cupped while the flamingo is usually flared to one degree or another. And as with many of the items produced during the color era, it is harder to find in crystal than moongleam or flamingo. It will probably never be found marked with the Diamond H. The petticoat dolphin was used as the base for a compote and was also converted for use as a lamp, perhaps by the same company that sold the No. 110 as a lamp.



2

A third item, the No. 111 Cherub Candlestick bears mention here also. Although there has never been any association of this with Sandwich, there is always that possibility. The cherub was a popular figural with several nineteenth century glasshouses who used it as a motif for candlesticks and compotes. An 1880 catalog reprint of the Mount Washington Glass Company, in New Bedford, Mass. (Later merged with Pairpoint) pictures a cherub used to hold the Scales of Justice which is very similar to Heisey's Cherub. Heisey's Cherub was also designed and produced during the same time as they were making both of their dolphins so that it is definitely from the period when there was renewed interest in earlier american patterns.

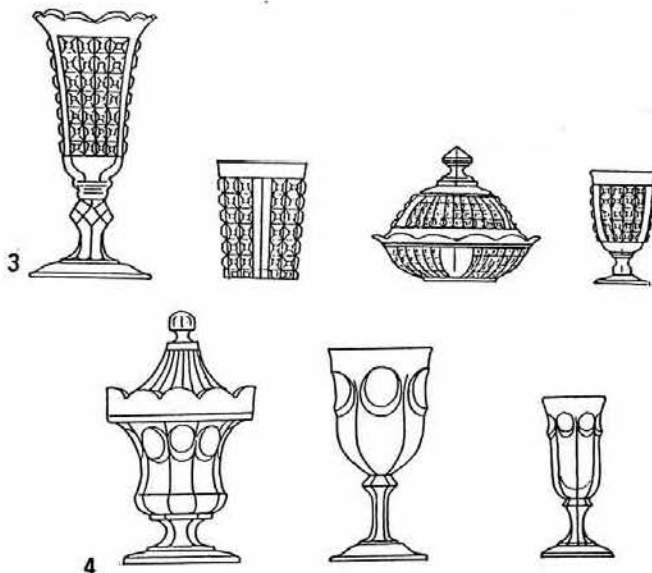
Finally, there were two other patterns made at Sandwich which may or may not have inspired Heisey patterns. Heisey's No. 1425 Victorian Pattern came out very shortly after

the Old Sandwich and Ipswich patterns (the two we know were definitely based on Sandwich patterns). Victorian was also advertised in the Trade Journals as Early American in character. Among Heisey's Sandwich models were several goblets in the Waffle pattern (Picture #3). Writing in 1931, Ruth Webb Lee, in her book "Early American Pressed Glass" stated, "The Waffle was one of the early patterns produced at Sandwich. This was established some years ago when a number of the old original mahogany models were found long after the factory had ceased operations. Later on, fragments were excavated at the site of the Boston and Sandwich Glass Company." It is a very real possibility that Sandwich's Waffle pattern was the inspiration for Heisey's Victorian. However, just about every glasshouse of the Nineteenth Century had their own version of the Waffle pattern, including Duncan who called their pattern "Block".

A year after Victorian, Heisey issued the small pattern group No. 1433, "Thumbprint and Panel" with a two light candlestick in a style very similar to the Victorian candlestick. The basic pattern motif is so close as to almost be an exact copy of a common pattern produced by many Nineteenth Century Glasshouses, including Sandwich. According to Ruth Webb Lee, this pattern was called "Colonial" by many dealers and collectors (Picture #4). The original name, if it had one is unknown.

A comparative listing is presented in the following summary:

<u>Sandwich/Other Glasshouse Patterns</u>	<u>Heisey Related Patterns</u>
Comet - Sandwich	Ipswich No. 1405
Pillar - Sandwich	Old Sandwich No. 1404
Waffle - Sandwich	Victorian No. 1425
Colonial - Sandwich	Thumbprint & Panel No. 1433
Dolphin - Sandwich	Sandwich Dolphin No. 110
Petticoat Dolphin - Northwood	Petticoat Dolphin No. 109
Cherub - Mount Washington?	Cherub No. 111



BY: Louise Ream

I hope that many of you are becoming aware of the fun of collecting "Little Things" now that you realize that there is an abundance of these to look for. As I've said before, these can make a delightful and extensive collection but take little space.

No. 1235, named Beaded Panel and Sunburst by Vogel, is the next pattern mentioned in the old trade journals and the first mention I've seen was in the September 7, 1897, issue. No. 1235 is another elaborate pattern and quite a contrast to the two written about in the last issue. It is not a very fertile field for our category but the few pieces that fit are very nice additions.

First of all there is the toothpick holder. Since I found two of these as sleepers at the same flea market about thirteen years ago I once had the mistaken idea that they were easy to find. Not so! I haven't found one as a sleeper since. The salt dip and three styles of salt and peppers with silver or nickle tops were made. The individual cream and sugar are nice additions to your miniature collection and also to a cream and sugar collection. The wine, which is a little large, the individual mustard and 3 oz. bar complete the items we need for HTL. (Heisey's Little Things) in the #1235 pattern.

No. 1255 Pineapple and Fan was mentioned on January 12, 1898, in China, Glass and Lamps. This came in both crystal and emerald with engraving and gold decoration.

Again our selection of "HLT's" is quite limited. They include a toothpick holder, three styles of salt and peppers, individual salt and 2 and 3" rose bowls. They also made the 4" rose bowl which is just as pretty but is not small enough for a miniature.

All of these items are very nice in crystal but are just beautiful in emerald. Let me know what you are finding.

No. 1235 Pattern.
SCALE ONE-HALF



FILLY UPDATE

For those of you who have said you hadn't heard of the Fillies which Imperial made, I refer you to Page 2 of the March issue of Heisey News.

When Imperial makes something new in a Heisey mold we announce it as a FACT, not as though they had committed a crime as some people seem to think we should. We do use (and need) Imperial glass to help run our Museum and they do have the right to make it.

They made approximately 720 Heads Forward Fillies and many of these were frosted. They also made 200 Heads Turned and these have not been put on the market.

These animals are marked ALIG. With such limited quantities, they are sure to be valuable in the future. L.R.

SOUVENIR DINNER

The Souvenir Dinner was a great success as usual even though the crowd was not as large as it used to be when the economy was better and the dinner held in the tent. The food was excellent at the Country Club. The tape of Dave Curley's program on Heisey, done with George Michaels for public TV was shown and enjoyed by those present. Dave deserves a lot of credit for this fine program.

For the usual auction, held at the dinner and which netted over \$2,238.00 for the Club, Sam sold several unusual feasibility items from Imperial. These included a pair of Amber Giraffes still on the bust-off. There were only 14 of these made and we know that at least two (2) of them were broken. The Museum has two on display and the other eight (8) were given to top management. Bill Clifford is the proud new owner of the giraffes. Several other feasibility items were sold as well as Oscars and Cordials from former years. A jacket formerly owned by A. H. Heisey's son-in-law, Colonel Dockery returned again to be resold.

This affair still is the most fun of any of the H.C.A. events and everyone should come at least once. It is a great time to get better acquainted with other members. L.R.

HEISEY DECORATIONS

BY NEILA BREDEHOFT

#9068 HEIDI*
Plate Etching

#9069 CIRCLES & LINES*
Needle Etching

#9070 MERRELL*
Needle Etching

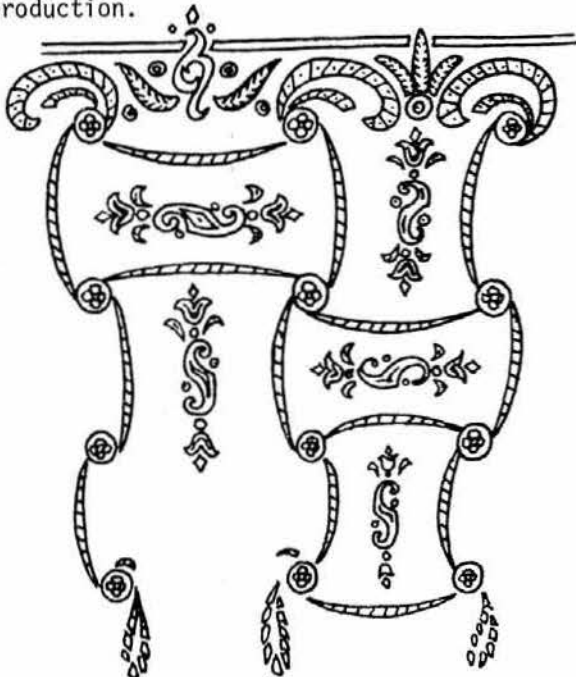
#9071 WANDA*
Needle Etching

This month I want to begin a series of articles on the new etchings featured in the Addendum to the Etching Book which we published in 1981. Several of these etchings were never before published and the Addendum is a great addition to the Etching Book. It contains all updated information which we have gathered since publishing the Etching Book. Everyone who uses the Etching Book for reference needs a copy of the Addendum to complete their information.

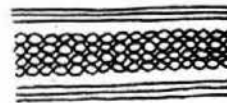
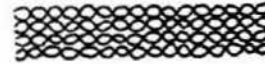
* * * * *

The following etchings are all in a section of the book entitled "Unlisted Etchings On Heisey." Most we feel are done by the Heisey Co. because of the history of the pieces, but our research has turned up nothing regarding their original numbers or names.

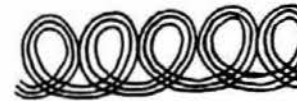
The first is #9068 which we named Heidi*. It is a plate etching found on a #3389 Duquesne goblet. This particular goblet was purchased along with several other sample goblets all of which were cut except this one. We feel this etching was never in production.



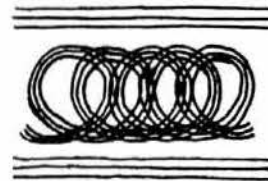
The next etching we named #9069 Circles & Lines* and it is a needle etching. This particular piece was purchased at the Heisey sales room when the company was going out of business. It is on display in the Museum. It is etched on a #3480 Koors soda.



Next comes #9070 Merrell*, again a needle etching occurring on a #3316 Biltmore goblet. It was purchased from a former employee and we feel it may be either #52 or #53 needle etching, but we cannot be sure.



Last, we have #9071 Wanda*, another needle etching found on a #197 tumbler and a #517 2 quart jug (the tumble-up jug). This was also from a former employee and is felt to be a Heisey etching. This set is also in the Museum.



I'll try to continue with this series of little known or seen Heisey etchings next month. I can't encourage you that you may find these particular etchings, but new information is always interesting and who knows, possibly these will turn up on other Heisey pieces if we know what we're looking for. All of the numbers and names are not original but are ones we have given for easier reference.



No. 1986
MARRIAGE AND COVER
GRASS BOTTOM



No. 517
2 QUART JUG
GRASS BOTTOM

"NARROW FLUTE WITH RIM" PATTERN

BY: Joseph D. Lokay

On March 1, 1915, Andrew J. Sanford filed a patent application for a new, original and ornamental design for a vase. He was granted design patent #47,738 on August 17, 1915, and the patent was assigned to the A. H. Heisey Company of Newark, Ohio. Pattern #473 was assigned by Heisey to the glassware in this new design which was later named Narrow Flute With Rim by Clarence Vogel. While A. J. Sanford in his patent referred to the specific piece as a vase; we, today, call it a basket.

Pattern #473 first appeared in an addendum for Heisey catalog #75 (circa 1914). Three pieces were offered; the 8" basket, an eight-sided 9" oval dish and a 9" combination oyster cocktail plate and center. Note that a design patent for the #473 basket was not applied for at the start of production of the basket but somewhere from 6 to 12 months later.

The Narrow Flute with Rim pattern is somewhat colonial in nature and general design. I say that because the panels are much narrower than the broad panels I normally associate with colonial patterns. Pattern #473 does have most features of the plain colonial design. The panels are only about 1/4 of an inch wide, so it usually takes many panels to go all the way around an item. There is a plain, wide band around the top of most all of the pieces in the pattern. The narrow panels terminate at the bottom of the plain, wide band. Most pieces have ground bottoms that contain the typical Heisey star. Exceptions are the footed pieces and the cruets.

By 1916, there were 70 different items in Narrow Flute With Rim pattern as pictured in Heisey catalog #76 (circa 1915), the added pages (circa 1916) included in catalog #76, and the booklet "Table Glass & How to Use It" (circa 1916). (A reprint of catalog #76 plus the added pages is available for sale at the HCA Museum.)

The make-up of the 70 items is 4 in Number 472, 56 in Number 473, 5 in Number 474 and in 5 in Number 475. The main pattern number was 473, so let's see why it was necessary to use Numbers 472, 474 and 475. The items under #472 were 2 large plates and 2 large bowls where the top edge of the 4 items is a heavy design quite different from the plates and bowls under #473. Thus, Number 472 was used to differentiate these items from the ones in the 473 pattern line. The items under #474 were 5 sizes of a round nappy, and Number 474 was used to differentiate these from the slightly different nappys that already exist under Number 473. Similarly, the items under #475 were 5 sizes of a unique style of oval dish or nappy that had the features of, but were slightly different from Pattern #473 style.

To further protect the pattern design, A. J. Sanford filed an application on June 11, 1915, for the #473 two handled sugar tray design and was granted design Patent #49,224 on

on June 20, 1916. He also filed an application on November 19, 1915, for the #475 oval dish design and was granted design Patent #48,614 on February 22, 1916. Note that it took one year to get the sugar tray design patented as compared to three months for the oval dish design.

The Narrow Flute With Rim pattern is somewhat of a "mystery" pattern for the period 1916 and 1922. After extensive development of the pattern line using the four pattern numbers 472, 473, 474 and 475 that covered many different items, there is then no information on the pattern till 1922. Price List #179 (circa 1-1-17), PL #200 (circa 7-1-17) and PL #205 (circa 6-15-19) all do not contain any type of price listing for items in the four pattern numbers 472, 473, 474 and 475 for Narrow Flute With Rim. I have no idea why the pattern was left out of the price lists as many items in the pattern are offered in PL #206 (circa 1922).

From 1922 to 1924, 85 items were offered in Narrow Flute With Rim in Price Lists #206 and #208. Of the 85 items, 46 were carry-overs from 1916 and 39 are new items introduced since 1916. The make-up of the 85 items in 1922 to 1924 was 10 in #472, 70 in #473, none in #474 and 5 in #475. This brings the total of different items produced in Narrow Flute With Rim to about 109. The make-up of the 109 items was 14 in #472, 85 in #473, 5 in #474 and 5 in #475.

By 1929, only 12 items remained as shown in Price List #209. All the 12 items were under #473. The last remaining item under #475, the 3-1/2" salted nut, had its number changed and was now listed under and included as part of #473. The number change took place in 1928. Pattern #473 essentially ended in about 1931 except for one item; the now re-numbered 3-1/2" salted nut dish. Production of the nut dish continued till about 1945. So, production of the Narrow Flute With Rim pattern was for about 17 years. 1914 to 1931. When I say 17 years, I am talking about the pattern in general and not specific items. Some items were produced for a short length of time, others for a longer time and a few the entire 17 years.

To me, the Narrow Flute With Rim pattern is an interesting one in that it had many unique pieces that don't usually exist in other major patterns. Some of them are:

1. Griddle cake set
2. Sardine dish and cover
3. Square honey dish and cover
4. Nabisco tray
5. Fruit tray
6. Basket
7. Loaf sugar and cream set
8. Dice sugar and cream set
9. Square marmalade and cover
10. Puff box, hair receiver and covers
11. Vase and perforated flower holder
12. Handled mug
13. Individual butter

For the specialty collectors, there are:

1. An 8 oz. tumbler
2. Three sizes of cruets; 2, 4 and 6 oz.

3. Many styles of nappys:
 - a. 4-1/2" square (#473)
 - b. 4" round (#473)
 - c. 4-1/2" round, shallow (#473)
 - d. 4-1/2" round, heavy rim (#472)
 - e. 4" round, Larger base (#474)
 - f. 4-1/2" oval chow-chow (#475)

4. But no stemware,* candlesticks or toothpick

All of the 109 items in the Narrow Flute With Rim pattern were made in crystal. However, only 5 of the 109 were made in color. Perhaps this was because the pattern was already in its decline when the Heisey color era started in the second half of the 1920's. The colored items were:

1. 5" dice sugar (crystal creamer), Moongleam**
2. 6" two hdl. combination relish, Moongleam and Flamingo
3. 3-1/2" salted nut (#475), Moongleam and Hawthorne
4. 5" two handled jelly, Flamingo
5. 6" pickle tray, Flamingo

While I have not seen every piece, I believe all pieces in the Narrow Flute With Rim pattern are signed with a diamond H. Both crystal and colored pieces are on display in the HCA Museum.

Editor's Note:

*There is a goblet in this pattern which is pictured in Ryan, Bradley and Ryan. There is also a cordial and I have one in my cordial collection. There were probably other items but strangely they were not pictured or listed.

**The dice sugar and cream listed above, also loaf sugar and cream both came in flamingo and moongleam.

The cheese dish which is apparently what Joe is referring to in Item 2 also came in flamingo and moongleam. The 3-1/2 salted nut dish was made in flamingo as well as hawthorne and moongleam and the 9" oval bowl was made in flamingo and possibly moongleam. I have had or have now all of these items in these colors. Possibly other colored items could be found.

There are also several items available which never appeared in catalogs. Among these is a soap dish which was just sold at the September 11th Mini-Show. Also a lady in Texas (formerly from Reynoldsburg, OH) has either a giant puff box or a candy box made like a puff box which is very beautiful. I am trying to get a photo of it. L.R.



LOAF SUGAR AND CREAM SET
GROUND BOTTOM



GRIDDLE CAKE SET
GROUND BOTTOM
CONSISTING OF
7 IN. PLATE AND COVER
INDIVIDUAL SYRUP
BUTTER



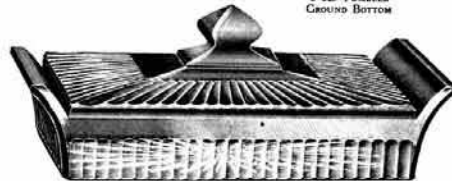
5 IN. DICE SUGAR AND CREAM SET
GROUND BOTTOM
PATENT APPLIED FOR



8 OZ. TUMBLER
GROUND BOTTOM



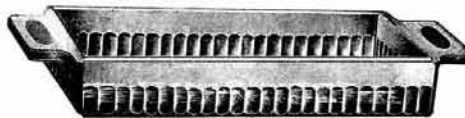
SALT OR PEPPER



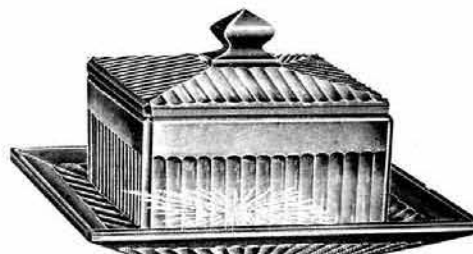
SARDINE DISH AND COVER
GROUND BOTTOM



2 OZ. OIL BOTTLE
No. 8 CUT OR PRESSED STOPPER



9 IN. NABISCO TRAY
GROUND BOTTOM



SQUARE HONEY DISH AND COVER AND PLATE
GROUND BOTTOM



CORDIAL
GROUND BOTTOM



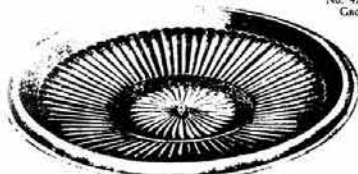
No. 473-7 IN. TWO PIECE VASE
WITH PERFORATED FLOWER HOLDER
GROUND BOTTOM



No. 474-6 IN. NAPPY
GROUND BOTTOM

474 PATTERN

No. 472



11 In. Sandwich Plate
Ground Bottom



No. 475-5 IN. LEMON DISH
GROUND BOTTOM

475 PATTERN



No. 473-8 IN. BASKET VASE
SHOWING EFFECT WHEN FILLED WITH FLOWERS
PATENTED

DIAMONDS ARE FOREVER.....

By: Janet M. Caswell

With the "Festival of the Arts" and the annual summer "Music Festival" a thing of the past, the Yachting Center of the World is gearing up for the ninety-fourth annual "Race Week" Our harbor will be again filled with all types and sizes of Sailboats with their beautiful colors billowing out in the wind. It is a spectacular sight and one every resident and tourist should witness. We are proud of our heritage here in this small sea coast town and our men, women, boys and girls can compete with the best, bringing their boats over the finish line first no matter what "class".

The Country Fairs will be starting soon in this area and we went to one that was held the last of July but, to our great disappointment, we came home with empty hands. This was not the story elsewhere in the country...The Moon- gleam collector from the "Sunshine" state was heard from this month and he has added to his collection a Mustard spoon in Moongleam, and this one is marked; also the #30 Miniature Candlesticks found a way into his collection... Another man found a #352 1 pound Crushed Fruit Jar with a red rubber seal on it. Very, very interesting!.....Now we're off to Colorful Colorado where a little bird told me that a Humidor in Zircon was taken home and added to a collection of goodies (this lovely piece was most likely made for Benson & Hedges) Not a Sleeper.....Speaking of "Sleepers" from the "Buck-eye" state I understand a Columbus couple came across some terrific things; a #1485 Saturn 3 oz oil in Limelight, a #1401 Empress relish in Sahara and a #1469 Ridgeleigh Floral Bowl, also in Sahara.....Also from the "Buck-eye" state there was a very nice Plantation Cordial found with the "Pine" cutting. Nice..... Another couple from Newark decided to visit our own "Bay State" and found two beautiful "Sleepers" for themselves, 2 #1401 Empress cups in Tangerine which they awakened and brought home; Then down the coast a little bit in Newport, this same couple found a pair of #1469 Ridgeleigh 2 light Candelabrum and a #1205 Fancy Loop Toothpick; to make their trip even more pleasant the #411 Rib and Panel cruet with a cutting and a pair of #21 Candlesticks also with a cutting were added to their bounty!..... Do you all remember the Tangerine Comport I told you about a while ago?....O.K....this same lucky fellow came home with another real nice prize, a #4228 Favor Vase in crystal, but not just plain, this one had an unknown cutting and silver overlay on the rim. Talk about "Sleeping Beauties" this was surely one..... The "Land of Lincoln" must not be left out; one of our collectors from there was able to purchase the third of the "3 known" Swirl Vases (decanter?) in Tangerine. This one is shaped more like the #4059 Water Bottle only with a thinner neck. Eat your heart out;.....From the "Empire" state I heard about 6 #1404 Old Sandwich wines in moongleam. These were going to be put with a decanter (not necessarily Heisey) Lucky, nice find.....the "Garden" state also had a few

things to tell me about; 4 #1425 Victorian wines and a Butter Dish were found along with the #1252 Twist Mayonnaise in Clear and a very nice #1540 Lariat Fan Vase with cutting...North Carolina was heard from again and this time instead of just looking this collector purchased the #1503 Crystolite 1 light candlestick, a #3380 Old Dominion tall saucer champagne in Sahara with an etching and a Spanish stem, 8 oz Goblet in Cobalt. Nice going.....Again Ridgeleigh is in the foreground, from the West Coast there was the round cigarette holder and four ash trays, and the three cornered jelly found; also a #315 Paneled Cane 4" nappy.....This month "Yours Truly" found a real nice "Sleeping Beauty" of her own, the Rearing Colt. He looked so lonely sitting all alone on the table that I just had to bring him home with me..... He's not lonely any more...Until next month, thank you for your letters; please keep them coming and let me know of your finds no matter what they are so I can share them with the members all over the country. Please write to me in care of H.C.A.

Happy Heisey Hunting from the Yachting Center of the World!

LONG ISLAND HCC

The May 21st meeting was held at the home of our recently returned Florida collectors, Jack and Ruth Perloff. It was great to all be together again. "Show and Tell" preceded the business session and was exciting as usual. Plans to attend the Convention in Newark were discussed. Education was a continuation of work on the price guide for the new HCA Heisey book. It is interesting work but a huge book. (We will get it back to you as soon as possible, Neila.) Cake and coffee completed a pleasant evening.

Our Heisey weekend in the Poconos with Joyce and Al Colangelo took place Saturday, July 24th. We arrived around noon and began feasting on the delicious barbeque, corn and other goodies provided by our host and hostess and supplemented by salads, breads, fruit salads, cakes, etc., brought by the rest of us. The meeting opened at four o'clock with a convention report and continued with work on the price guide. In order to speed up this work, we set up a committee of four members to continue it between meetings and then report back to the entire club. We all awoke Sunday with healthy appetites and ate breakfast on the deck of the house gazing at the mountains. Then goodbyes were said and we began our trips home.

Sunday night, August 1, we got the painful news that one of our first club members here, William Loss, (also an early member of the old California club) had died suddenly that afternoon of a heart attack. Bill was also a charter member of HCA and was proud to have his name on the plaque in the Museum. All of us extend our sympathy to his widow and our friend, Esther.

LETTERS, WE GET LETTERS

Today my husband and I went to a local flea market and I found a rather interesting item. It is an EXACT (in every detail) iron replica of the #125 Leaf Candleblock. On the back of the leafy end is impressed PAT 12 16 24. On the opposite end of the back of the other leaf point is the impression LVL. I have a Moongleam #125 and this iron one is EXACTLY like it. It's so amazing. The iron is covered with leaf green paint with the rounded grapes purplish because the paint is worn off.

Is it possible that this is an original model?

Anyway - now I have a pair - even if one is glass and one is iron!

Elinor Schnell, NY

I am intrigued by your story about the candle block. The date is quite interesting also.

This seems to be fairly common, that you will see things made in pottery, metal, etc., that Heisey made in glass. It would be interesting to know which came first, and it could easily have been the metal one.

There is a very good copy of the #136 candlestick in Pottery - probably Royal Haeger, since Royal Hickman also designed pottery and was the "Royal" in Royal Haeger.

Companies did a lot of copying and it was really not an infringement in a different material. L.R.

Dear Editor,

I'm a member of HCA, and Northwest Heisey Collectors, but I'm now back home near San Diego. I hope to start a study club in San Diego County sometime in the next year. I sure miss having "Heisey Nuts" to get together with. I have several questions, if I may bother you for information.

I have a piece that looks exactly like Ridgeleigh's individual vase #4, Vogel III, Page 104. It's 8-1/2" long by 5-1/2" wide, and stands 4" tall. It is in a gold filigree holder, with 3 little feet and a handle, so it has become a basket. The dimensions were for the piece of glass only. Is this a piece of Heisey, or Fenton's look-a-like? Next, I have seen two Ridgeleigh Vases, approximately 14" high, 6" across, with VERTICAL ribbing all the way around and clearly marked. I have seen no reference to this style before, are they rare? Third Question: Will the Heisey News for 1974 be reprinted again. I sincerely hope so.

I have found lots of Heisey around this area, many sleepers, but if it's marked, the price just goes sky high. Ask a dealer why piece is so expensive, and they reply, "that's marked Heisey!", as if it was the finest piece of gold. To me it's prettier than gold, but then I'm a "Heisey Nut", what do I know.

You once asked for funny stories regarding purchases. This is my "best" one. At a show I spotted a pair of Crystolite, 2 lite Candelabra, with "D" prisms. As I was inspecting them, I commented they looked like "Cambridge." When I returned later to see what kind of horse trading I could do with the dealer, I was told

the fascinating story of these candleholders. Seems they were purchased by the Actress Jeanette MacDonald and given to her life long companion on her wedding in 1929, and they came from her estate. He also told me they were made by "Cambridge", he had found them in a book, but "no", he didn't happen to have the book with him. I didn't bother to argue the dates. I decided to let him think he had talked me into buying them, because of all his knowledge. If he only knew they were Heisey, the price would of doubled. It pays to know your glass. I always get a chuckle to myself when I think back to his elaborate story. 1929?

Thank you, Louise, for everything. I hope to meet you and everyone in Newark at Convention within a few years. Thank you all, for HCA, and the Museum.

Peggy DeGregg, CA

Many pieces of Ridgeleigh were sold to decorating companies or companies which used it for mounting in various ways. I have seen many cigarette boxes and ash trays in metal frames and sometimes they do have brass filigree on them. I would not question that your piece is genuine Heisey.

There is a tall cylinder type Ridgeleigh vase with vertical ribbing all the way around which is pictured in a catalog never reprinted as yet. The listing says 10" but am sure it is very possible that they made it 14" as well.

We don't know whether the Heisey News will be reprinted for 1974. The printer probably still has the plates but it is quite expensive to get small quantities done, since it is just a nuisance job for a busy printer. We did have one reprint on it some time ago. We have talked of making xerox copies as we did of the 1972 at one time. L.R.

The trip to the Convention was a birthday gift from my parents and what a thrill it was for me. With all the goings on at the Convention, other shows in the area, flea markets and various yard sales featuring Heisey glass, I sure kept busy there in Heiseyland. I saw so many beautiful pieces and really learned a lot about Heisey glass. The people I met were terrific and I thank you all and especially my Mom and Dad, Betty and Jack Starks, for such a wonderful time.

Sincerely, Judy J. Longacre, CA

I hope that you remember me as this letter is much later than I had planned. I was at the Heisey Convention in June with my parents (Dr. & Mrs. Morton Schaffran from Aurora, Illinois) and you verified a pitcher as being "Peerless" for my husband and me. We still thank you for taking the time to help us with our decision to add the piece to our "beginning collection."

I visited the Museum and spoke with a woman in the library about the xeroxed copies of the Heisey Ads enclosed. I would like to donate these copies to your files as they are

CONT'D. ON PAGE 12

WALTER KINNEY, FORMER EMPLOYEE

By: Louise Ream

Walter Kinney, a recent museum visitor from Florida, told us that he had worked at Heisey back in the late 20's when he was young. His brother had also worked there.

Walter started out as a wash out boy. After the glass was washed, women packed it. He later began working in the cutting shop where he learned to polish the bottoms of bowls, tumblers, etc. after they had been cut which restored the shiny appearance. For this purpose willow wheels, with pumice as an abrasive, were used. Sometimes cork wheels were also used with Rottenstone as the abrasive, and felt wheels were also used.

Louise Adkins was the head of the cutting and etching department at that time with Anna Weippert as the "straw boss". Walter said that both Lou Adkins and Wilson Heisey were very good to he and his brother and gave them advice and help. However, one day he was tired and laid down under a table to take a nap. Someone woke him by hitting him with a wet rag and when he looked up, he was surprised to see Lou Adkins. He never slept on the job again.

The stories which he told about the employees carrying out glass were very interesting, and, in at least two cases proved to be quite humorous as well.

One day a woman he remembers only as "Emmy" was leaving the factory carrying several nappies in her bloomers. In that day women wore full bloomers which came down around the knee and had elastic in the bottom of the legs. Apparently the elastic became loose or broke and with every step she took another nappy fell on the floor. Wilson Heisey, the President of the Company, happened to see her and said, "Don't worry, Emmy, we've got another run of those coming out next week."

Another time a worker wanted a punch set. He was able to get the punch cups out with no trouble but didn't know what to do about the huge bowl. Finally he hit on the idea of bringing an umbrella to work and waiting for it to rain. When it finally did rain, he put the punch bowl on his head, put the umbrella over it, and kept it down low so it couldn't be seen. When he was going out, another employee, Budge Hinger, not knowing what he was doing, hit him playfully on the back and the punch bowl fell off and broke. Walter didn't know if he ever got another punch bowl or not.

I could have visited with Walter for hours because he had such a great memory and such interesting stories. He said he was in Newark trying to decide whether to move back from Florida. If he does we hope to see him in the museum many times and to hear more of his work with Heisey and more stories of the things that happened there.

CLUB FORMING

Heisey Study Club forming in San Diego County in Calif. First meeting early in November. Please contact Peggy (714) 721-4466 ASAP for more information.

CONT'D. FROM PAGE 11

not presently included. The magazine/year is written for each. (How pretty the Thanksgiving table looks set completely with Peerless! - But we are partial to that pattern). I hope the museum can use these ads for their collection and/or research.

This letter was late because my father passed away suddenly on July 17th from an unexpected heart attack. He had no coronary medical history - it just happened. The family is still in shock about the whole thing. Daddy has been a member of HCA (and my mom, too) for quite a long time. It was their enthusiasm which started my husband and myself collecting Heisey. I can't express how much daddy enjoyed the Conventions and especially when he'd find a very special piece of glass. He always looked forward to the convention - planning months and months ahead. I'm very grateful that my husband and I were able to spend the last enjoyable Convention with him. Being a physician himself, Daddy welcomed "the long weekend in June." It was something that gave him such pleasure.

Wendy Kaveney, Ill.

EDITOR'S NOTE: Wendy's father was Dr. Morton Schaffran of Aurora, Illinois. We are sorry to hear of his death and extend our sympathy to his family. L.R.

Conn. Heisey Club

First Annual Show

&

SALE

Sat. Nov. 6, 10am-5pm

Sun. Nov. 7, 11am-5pm

K of C Hall

Hobart St. off Route 10

Southington, CT. adm. \$1.25

FOR

The Benefit Of The

National Heisey Glass

MUSEUM

exit 32 so. off I-84 to rte. 10

NO. 4085 KOHINOOR

NO. 4091 KIMBERLY

The stem of the Kohinoor and Kimberly patterns were inspired by the Kohinoor diamond. The diamond was 108.93 carats and was originally in a brooch.

It was put in the Crown of Queen Mary in 1911 and is now in the display of Crown Jewels in the Tower of London.

The optic in the bowl of the Kohinoor pattern is referred to often as "The rings of Saturn"; usually is called saturn optic.

"Kimberly" refers to the mine where the huge diamond was found.

A Carload Heisey Glassware—Sale!

400 Barrels of Glassware That is Unselected! Some Pieces Have Air Bubbles—Some Have Marks—But None of it is Chipped! All at Savings!



YOU KNOW the reputation of HEISEY GLASSWARE! And every piece in this sale bears that famous name! The fact that it is unselected does not prevent it from being useful! Come early tomorrow and stock up at great savings!

At 7c

15c to 20c Values

Handled Jellies, Nappies, Finger Bowls, Salad Plates and other pieces. Plain and strictly Colonial lines.

At 10c

20c to 25c Values

Spoon Holders, Oval Nappies, Tumblers, Preserve Dishes, Salad Plates, 6½ and 7 inch Ice Creams.

At 15c

35c to 45c Values

Glass Creamers, Fruit Bowls, Footed Jellies, Salad Dressing Boats, etc. In Colonial patterns.

At 25c

50c Values

Large Salad Plates, Candy Jars, Salad Bowls, Sandwich Trays, Candlesticks and Other Pieces.

At 35c

60c to 75c Values

Cake Plates, Square Nappies, Candy Jars, Footed Trays, Oval Bread Trays, Footed Trays and Other Pieces.

At 50c

85c to \$1 Values

Table Candlesticks, Covered Candy Boxes, Spice Trays, Rolled Edge Nappies, Baskets, Water Pitchers and Other Pieces.

50c Glass Salad Plates, Special, 14c Each

Colonial Table Tumblers, 7c Each

Colonial Glass Fruit Saucers, 5c Each

Basement.

DO YOU WISH YOU'D BEEN THERE?

This ad is from the Detroit News for January or February 1924. It was sent to us by Dr. James Measell of Wayne State University who was the guest speaker at our June banquet. He collects memorabilia and glass related items, thus the title of the talk he gives "There's More to Glass Collecting Than Just Collecting Glass." Dr. Measell also sent us some other ads. The reason I do not know the correct month is because only the "ary" shows on the worn newspaper clipping.

We've often heard that Heisey never sold any seconds. This ad would seem to refute that claim. We also have seen notes on seconds of glass shipped to Canada in the very early years. And of course Jordan Marsh of Boston once bought up all the discontinued colored glass.

Maybe you can carry this ad with you when hunting glass to prove that it isn't worth what people have on it. Do you think that would work? I'd like to get a few baskets for 50¢ each. L.R.



#358 Cream & Sugar

H. F. PAULSON
1050 DON RICARDO DRIVE
ARCADIA, CA 91006

PHONE: (213) 447-7736

HEISEY CRUETS WANTED - Please contact me if you have, or know of any of the following (spec. oz) for sale. Willing to pay fair price, looking for your response.

	OZ.
4 Square Oil	4
325 Pillows	2
335 Prince of Wales Plumes	4/6
337 Touraine	2/4
339 Continental (8 Panels)	6
351 Priscilla	8
354 Wide Flat Panel	6/8
357 Prison Stripe	4
365 Queen Ann	6
379 Urn	6
394 Narrow Flute	6
397 Colonial Cupped Scallop	6
439 Raised Loop	6
451 Cross Lined Flute	6
1280 Winged Scroll Crystal	6
1404 Old Sandwich - Flamingo	3
1405 Ipswich - Flamingo	3
1485 Saturn - Zircon	4
1776 Kalonyal	2
4048 Cut Neck	6
7074 Ovals & Flutes (8010 Ribbon Candy)	6

LYNNE



ART'S

GLASS-HOUSE
INC.

P.O. BOX 54-6014
MIAMI BEACH, FL 33154
(305) 861-7700
(305) 895-5666

*Dear Heisey Collector and Dealer,
We're heading your way! Heisey animals,
lovely old patterns, and a rainbow of colors, will
be coming along with us.
We'll be at the following show*

We will be at our home in Lahaska through Thanksgiving.

We will also be at the following show:

OCTOBER 8, 9, 10
WHEATON VILLAGE
MILLVILLE, N. J.

By Chance Or Appointment
We Suggest A Call:
215-794-7800
ROUTE 202 - P.O. BOX 242
LAHASKA, PA 18931

Lynne and Art

**HEISEY'S
GLASSWARE of DISTINCTION**

FOR SALE: Comprehensive reference book on Heisey's major patterns of tableware, animals & some stemware, etchings, cuttings, & Verlys by Heisey.

Details of each pattern clearly shown by photo or illus. Double indexed by pattern name & number. \$11.95 p.p.

Current price guide for above book, \$5.95 p.p.

6 books or more - 40% off.

Send check or M.O. to:

Mary Louise Burns
P.O. Box 1931
Grants Pass, OR 97526



GLASS
review

ESTABLISHED 1971

The GLASS REVIEW Magazine is for every-one who studies, collects or sells glass. Whether your glass interests lean toward the early 1900's -- or the depression era-- or with today's limited glass items, the GLASS REVIEW covers it all !

Articles -- price reports -- original catalog documentation -- shop directory -- research and reproduction news -- trademark information -- glass book releases -- what's new on the market -- a large variety of glass ads (on both old and new glass) -- plus much more.

Enclose payment and mail to:
GLASS REVIEW, P.O. BOX 542, MARIETTA,
OH 45750

10 'big' yearly issues

68 pages or more

\$12.50--one year

HEISEY PUBLICATIONS

P.O. BOX 102, PLYMOUTH, OHIO 44865

Snow Will Soon Be Here - Buy Your Heisey Books Now.

If you have not as yet purchased those four famous Heisey books by Clarence W. Vogel, now is the time to place your order. First on the market in 1969. All inclusive. Some pictures in color. Over 98% of the patterns are listed and shown. Compiled by Mr. Vogel when he lived in Heiseyland (Heath) from 1963 - 1970. He discovered Heisey in 1966, realized its great potential as a collectible, and began writing about it in 1969; and has been writing about it and searching it ever since. Also invest \$6.00 for a subscription to THE HEISEY GLASS NEWSCASTER for 1980, a quarterly publication, edited by Mr. Vogel. This 32 page quarterly contains many pictures and new information not otherwise published or known. There are no advertisements in this magazine. With an order for the four books you may have issues for 1977, 1978, 1979, 1980 and 1981 at \$4.00 for each year....One testimonial reads, "With the four books in my arms, I have nearly all of the information I need with me when I go Heisey Hunting. Really they are all I need on the road."

BOOK I	HEISEY'S FIRST TEN YEARS, 1896 - 1905	\$11.00
BOOK II	HEISEY'S COLONIAL YEARS, 1906 - 1922	12.00
BOOK III	HEISEY'S ART AND COLORED GLASS, 1923 - 1942	13.00
BOOK IV	HEISEY'S EARLY AND LATE YEARS, 1896 - 1957	13.00

Include postage at \$1.00 for one book and 30¢ for each additional book. Ohio residents add 5% Ohio Sales Tax.

CLASSIFIED ADS

FOR SALE: Most Colors, Most Patterns, 2000 Pieces of Heisey to choose from. S.A.S.E. Please. No list available. Write wants: PEGGY'S ANTIQUES, Box 367, Spavinaw, OK 74366 Phone: (918) 589-2859.

WANTED: Buying Heisey Rose and Orchid, Cambridge Rosepoint, Fostoria etched dinnerware and Depression Glass. Also glass figures and unusual glass pieces. NADINE PANKOW, 207 S. Oakwood, Willow Springs, IL 60480 Phone: (312) 839-5231.

WANTED: Will pay up to \$200.00 for Straw Holders with glass lids, or #353 that lays down. Also, want crushed fruit jars. Also want #433 Soda Fountain Glassware. GEORGE HANEY, Box 538, Spencer, OK 73084.

WANTED: Am still building on the #1401 Empress Moongleam party setting that I displayed at the 1981 Convention. Will buy Punch Cups, (esp), 12" Square Sandwich Tray, 2 Handled Muffin Plate, 10" Square Salad Bowl, most Comports, Marmalade and Cover, Oil Bottle with Stopper, Pair of Single Dolphin Candlesticks, Floral Bowl, 6" Covered Candy (come on now, Ann Arbor, turn loose), Need most all Relishes, Buffet Plates, Hors d'Oeuvre Serving Trays, and Compartmented items, "T" Handled as well, Nasturtium Bowl and a pair of 3 Handled Vases. Will buy or Trade for these items. Also wanted, any and all Minerva Pattern glass items. All Heisey Marked, please. JERRY BAKER, P. O. Box 13081, St. Petersburg, FL 33733.

WANTED: Any marked pieces in Fifth Avenue - Colonial #347, Colonial Cupped #348, Colonial #349, Colonial #363. Also want Heisey marked ink-well. HAROLD HODGES, 3739 Plaza Drive, Topeka, KS 66609.

FOR SALE: Hundreds of Heisey pieces. Send S.A.S.E. for updated list. M & J WALTER ANTIQUES, c/o Sir Speedy, 431 Main Street, Woburn, MA 01801.

SIXTH ANNUAL DELAWARE VALLEY GLASS SHOW

FEATURING HEISEY
and including other
Collectible Glass of the Late 19th & the 20th
Centuries

At The
WHEATON MUSEUM OF AMERICAN GLASS
10th & "G" Sts.
Millville, N.J.
Near Rts. 47, 49 & 55

Sponsored by: Friday, Oct. 8
the 7-10 p.m.
HEISEY HERITAGE Wine & Cheese Preview
SOCIETY \$15.00
Saturday, Oct. 9 Sunday, Oct. 10
10: a.m. - 8 p.m. 10 a.m. - 5 p.m.

DONATION \$3.50
With Ad \$2.50

Benefit Of National Heisey Glass Museum

BEVERLY SULLIVAN PH: 617-563-2500
 12 POND VIEW CIRCLE
 HATCHVILLE, MA 02536 Postage & Ins. Extra

H & R DIAMOND H PH: 614-279-0390
 HELEN - BOB RAREY After 5:30 P.M.
 1450 WHITE ASH DRIVE Shipping & Ins. Extra
 COLUMBUS, OH 43204 * Marked Items

- #1540 LARIAT Coasters - 6 - ea.....\$ 5.00
- #1540 LARIAT 10" rnd 3 part relish tray\$25.00
- #1503 CRYSTOLITE Shell S/O Vbk.4Pg.10
 Item 46.....\$35.00
- #1503 CRYSTOLITE 6" 2 Handled Jelly....\$18.00
- # 300 COLONIAL Water Gob.Not Marked-1..\$10.00
- #1405 IPSWICH Creamer - 2 - ea.....\$17.50
- # 411 RIB & PANEL 10" Rolled Edge Nappy
 Minor Wear.....\$28.00
- # 393 NARROW FLUTE 2 Hdld. Relish.....\$22.00
- # 393 NARROW FLUTE Hollow Stem Cham-3ea\$17.50
- #1184 YEOMAN D/O nappy -Flam- 6 -ea....\$10.00
- #1184 YEOMAN Ftd. Banana Split Dish D/O\$12.50
- #1467 RIDGELEIGH 3-1/2" Coasters, Paper
 Labels - 6 - ea.....\$ 6.00
- #1469 RIDGELEIGH Candle Vase - 2 - ea..\$35.00
- #1469 RIDGELEIGH - 11" 3 compartment
 tray.....\$40.00
- #3362 CHARTER OAK 3-1/2 oz. Cocktails
 D/O - Moongleam - 6 - ea.....\$17.50
- #1540 LARIAT Water Gob- Moonglo-8- ea...\$25.00
- #1567 PLANTATION Candelabra 3 Lite
 With prism...pair.....\$125.00
- # 393 COLONIAL Hotel Covered Sugar-2- ea\$15.00
- # 407 COARSE RIB 12" Celery.....\$20.00
- IMPERIAL - REARING COLT - Ultra Blue....\$35.00

- # 300 PEERLESS Ind. Dec..(6)...ea.....\$ 15.00
- # 393 NARROW FLUTE Ind. Almond*(6)..ea..\$ 15.00
- # 393 NARROW FLUTE Ind.Almond*Silver Dec.
 (6).....each.....\$ 22.50
- # 393 NARROW FLUTE 14" Punch Bowl & Base*
 Glass Dipper.....\$175.00
- # 353 MED. FLAT PANEL 8" Trumpet Vase*..\$ 37.50
- # 411 RIB & PANEL Punch Cup* (4)....ea..\$ 15.00
- #1401 EMPRESS Cup/Saucer*,Sah -Lotus B
 Etch.. (4).....ea..\$ 12.50
- #1401 EMPRESS 10" Rd. 3 comp.Relish*Mg1m\$115.00
- #1445 GRAPE CLUSTER 1 lt.Candle*Bobecche,
 A Prisms, Pair.....\$195.00
- #1433 THUMBPRINT & PANEL 2-lite Candle-
 stick,..pair.....\$ 85.00
- #1503 CRYSTOLITE 8" Div. Relish*.....\$ 32.50
- #1503 CRYSTOLITE Salt & Pepper, pair....\$ 27.50
- #1504 REGENCY 2-lite Candlesticks..pair.\$ 85.00
- #1540 LARIAT 7" Covered Candy.....\$ 40.00
- #1540 LARIAT 12 oz.IceTea(Pressed)(12)ea\$ 9.50
- #1540 LARIAT 12" Oval Bowl, Moonglo Cut.\$ 55.00
- #1469 RIDGELEIGH 6" Jelly*,2 Compartment\$ 45.00
- #1469 RIDGELEIGH 2-1/2" Rd.AshTray*(2)ea\$ 12.50
- #3480 KOORS "29" 12 oz. Ftd. Soda, D/O
 Flamingo...(10).....each.....\$ 22.50
- #5003 CRYSTOLITE 10 oz. Goblet*(2)..ea..\$ 17.50
- #5003 CRYSTOLITE 3-1/2 oz. Claret (6)ea.\$ 22.50
- #4054 CORONATION 2 oz. Bar,Monogram(4)ea\$ 5.00

PLAIN CITY AUCTION

145 E. MAIN STREET

PLAIN CITY, OHIO

614-873-5622

614-876-5207

FRIDAY NIGHT, - OCTOBER 29, 1982 - 5:00 P.M.

THE FOLLOWING PARTIAL LIST OF UNUSUAL AND HARD TO FIND HEISEY PIECES WILL BE SOLD BY AUCTION WITH OTHER FINE GLASSWARE, CHINA, AND FURNITURE ON THE ABOVE DATE AND TIME. INCLUDED IN THIS SALE WILL BE TWELVE TANGERINE GASCONY FOOTED SODAS, RED SIDE CRYSTAL FOOT; SIX TANGERINE GASCONY FRUIT COCKTAILS, RED SIDE, CRYSTAL FOOT; RARE COBALT 12" BALL VASE, PAIR OF CRYSTOLITE HURRICANE LAMPS WITH BEAUTIFUL CUT GLASS SHADES (Total Height 15" Lamps). ALSO IN THIS SALE WILL BE HEISEY ANIMALS, A RARE GAZELLE, MARKED, PIG MARKED, TWO PIGLETS, PAIR OF GIRAFFES, STANDING COLT, HEN, MARKED, ROOSTER, TWO CHICKS, GOOSE (Wings Up), ROOSTER VASE, AND A RINGNECK PHEASANT.

DOORS OPEN AT 2: P.M. SALE CONDUCTED BY AUCTIONEER:

J. ROBERT SWEENEY, PLAIN CITY AUCTION SERVICE

Y. W. C. A.
6th & W. Church Sts.,
Newark, Ohio 43055

ALL HEISEY AUCTION

Saturday, October 16, 1982
Doors Open - - - 8:30 A.M.
Auction Starts - 9:30 A.M.

This important Heisey auction offers some of the rarest items ever to be offered. Featured items include a beautiful Tangerine ball vase, an oyster cocktail in Old Sandwich in Tangerine as well as other Tangerine items. Also included is a large experimental Cobalt bottle originally belonging to Louise Adkins and the rare Bantam Rooster cocktail. We have the best collection of cordials offered for some time as well as a beautiful set of over 100 pieces of Florentine cut on Spanish stems with Florentine cut accessory items. This auction should appeal to all stem collectors with the most stems we have ever offered at one time. Several nice items with deep plate etchings are included as well as a collection of over thirty cruets including some rare and hard to find ones.

Please note the following condition codes to better aid in your mail bidding.

f F - Flake b B - Bruise r R - Repaired
c C - Crack m M - Mold Flaw x X - Major Damage

1	1401	EMPRESS Floral Bowl & 134 TRIDENT 2 Lt Candle, Pr, Olympiad Etch	46	353	COLONIAL 3 Pt Jug H
2	1495	FERN 2 Lt Candle, #508 Floral Etch, Pr	47	351	COLONIAL 3 Pt Jug H
3	113	Flamingo 3½" Candle, Pr	48	1295	BEAD SWAG Opal Water Set, Tankard & 4 Tumblers, Good Floral Decor
4	113	3½" Candle, Cut, Pr	49	1404	OLD SANDWICH Cobalt 12 Oz Soda H
5	1503	CRYSTOLITE 1 Lt Candle Block, 3 Ea	50	337	TOURAIN Amber 12 Oz Soda, H NO
6	128	Moongleam 3" Candle, Pr	51	337	TOURAIN Amber 12 Oz Soda, H NO
7	301	COLONIAL 3 Lt Candelabra, Low Base, Pr	52	1506	PROVINCIAL Ftd Tumbler H f
8	1567	PLANTATION 3 Lt Candle, Pr	53	417	DOUBLE RIB & PANEL 12 Oz Soda H
9	1428	WARWICK Horn of Plenty Candle and Match Holder, 1 Ea	54	6060	COUNTRY CLUB Dawn 14 Oz Soda, Screen Optic
10	1565	LEAF 1 Lt Candle, RARE	55	4054	CORONATION 8 Oz Soda, Cut
11	112	Flamingo 3" 1 Lt Candle	56	2351	8 Oz Soda, Monticello Etch, 2 Ea
12	112	Moongleam 3" 1 Lt Candle	57	412	RIB & PANEL Ftd Soda
13	134	TRIDENT 2 Lt Candle, Orchid Etch	58	5003	CRYSTOLITE Ftd Soda, Arcadia Cut
14	4091	KIMBERLY Goblet, Sungate Cut	59	3368	ALBEMARLE Ftd Soda, Irridized Bowl
15	3331	STATUESQUE Goblet, Cut H	60	1540	LARIAT Ice Tea, Maryland Cut
16	5022	GRACEFUL Goblet, Enchantress Cut	61	3408	JAMESTOWN Ftd Soda, Barcelona Cut f
17	3331	STATUESQUE Goblet, Grecian Urn Etch H	62	3390	CARCASSONNE Ftd Soda, Alexandrite Bowl
18	5022	TYROLEAN Low Goblet	63	3390	CARCASSONNE Cobalt Ftd Soda
19	3304	UNIVERSAL Goblet	64	1401	EMPRESS Triplex Relish, Cut
20	3380	OLD DOMINION Sahara Goblet	65	1495	FERN 3 Part Relish Tray, feet rough
21	3390	CARCASSONNE Goblet, Alexandrite Bowl H	66	1519	WAVERLY 3 Part Relish Tray
22	3390	CARCASSONNE Sahara Low Goblet	67	1519	WAVERLY 4 Part Round Relish Tray, Orchid Etch H
23	3389	DUQUESNE Goblet, Tangerine Bowl WO	68	473	NARROW FLUTE 12" Celery Tray H f
24	3360	PENN CHARTER Hawthorne Goblet, Checker Optic H	69	4044	NEW ERA 13" Relish Tray
25	3350	WABASH Goblet, Pied Piper Etch H	70	393	NARROW FLUTE 10" Shallow Nappy H Dtd
26	4069	RIDGELEIGH Goblet	71	484	8" Nappy, Enamel Decor H
27	1540	LARIAT Goblet, Moonglo Cut	72	393	NARROW FLUTE 9" Nappy H
28	3404	SPANISH Goblet, Concord Etch H	73	1519	WAVERLY 12" Floral Bowl
29	3350	WABASH Goblet, Pied Piper Etch H	74	1558	10½" Rolled End Bowl H
30	1540	LARIAT Punch Set, Punch Bowl, Under- plate & 12 Cups with plastic hooks	75	433	GREEK KEY Sherbet, 6 Ea H
31	1252	TWIST Newark Sesqui Platter	76	3314	GRANDEUR Sherbet, Sabrina Etch, 6 Ea
32	1238	BEEHIVE Moongleam 14" Plate	77	3311	VELVEDERE Sherbet, Cut, 3 Ea 1-f
33	1238	BEEHIVE Flamingo 14" Plate	78	341	PURITAN Saucer Champagne, 8 Ea H
34	1238	BEEHIVE Moongleam 8" Plate, 2 Ea	79	1184	YEOMAN Moongleam Sherbet H
35	1469	RIDGELEIGH 8" Square Plate, 4 Ea H	80	3314	GRANDEUR Sherbet, 2 Ea H
36	407	COARSE RIB 7" Plate, 4 Ea H	81	150	BANDED FLUTE Sherbet H
37	1184	YEOMAN Marigold 8" Round Plate, 3 Ea	82	1227	MAHARG Sherbet H
38	1184	YEOMAN Marigold 7" Round Plate	83	1425	VICTORIAN Sherbet
39	1184	YEOMAN Flamingo 8" Round Plate	84	1776	KALONYAL Egg Cup H
40	150	BANDED FLUTE 10" Round Tray H	85	3389	DUQUESNE Sherbet, Chintz Etch
41	1150	COLONIAL 7" Plate, 4 Ea H	86	4085	KOHINOOR Sherbet, Coronation Etch
42	1219	Amber 8" Plate H	87	1201	FANDANGO Jelly Compote
43	1401	EMPRESS 8" Alexandrite Square Plate, 4 Ea H	88	343	SUNBURST Jelly Compote H
44	4163	54oz Jug, Victory Plate Etch	89	1186	YEOMAN 5" Ftd Compote H
45	393	NARROW FLUTE 3 Pt Hotel Jug, H Dtd	90	353	COLONIAL 8" Low Ftd Compote H
			91	407	COARSE RIB Flamingo 5" Compote, Mold Flaw
			92	3411	MONTE CRISTO 8" Tall Compote, Cut

PAID ADVERTISEMENT

93 3362 CHARTER OAK 7" Tall Compote, Silver Overlay
 94 1503 CRYSTOLITE Covered Shell Candy
 95 1401 EMPRESS Covered Lemon Dish, Belle-Le-Rose Etch H
 96 1951 CABOCHON 6" Dawn Candy w/Blown Crystal Lid H
 97 1483 STANHOPE 6" Round Covered Candy H
 98 COLONIAL Puff Box, Metal Lid H
 99 12 DOUBLE SLASH & PANEL Puff Box, Metal Lid
 100 7020 GRID Puff Box, Plain Glass Lid H
 101 7020 GRID Puff Box, no lid
 102 7013 Puff Box H
 103 1506 PROVINCIAL 4 Oz Oil Bottle H
 104 397 COLONIAL CUPPED SCALLOP 4 Oz Oil
 105 1170 PLEAT & PANEL 3 Oz Oil
 106 1170 PLEAT & PANEL Flamingo 3 Oz Oil
 107 1170 PLEAT & PANEL Moongleam 3 Oz Oil
 108 1170 PLEAT & PANEL Amber 3 Oz Oil, RARE
 108A 341 PURITAN 2 Oz Oil
 109 335 PRINCE OF WALES PLUMES 6 Oz Oil, Mold flaw in handle
 110 7037 TEMPLE 4 Oz Oil H
 111 150 BANDED FLUTE 6 Oz Oil, wrong cut stopper H
 112 352 FLAT PANEL 2 Oz Oil, Cloister Cut H
 113 473 NARROW FLUTE W/RIM 4 Oz Oil H
 114 1205 FANCY LOOP 6 Oz Oil
 115 1401 EMPRESS Flamingo Oil Bottle
 116 1401 EMPRESS Sahara Oil Bottle
 117 1485 SATURN 3 Oz Oil
 118 451 CROSSED LINE FLUTE 6 Oz Oil H
 119 356 LITTLE PRINCE 4 Oz Oil H
 120 1184 YEOMAN Sahara 4 Oz Oil, DO
 121 1200 CUT BLOCK Oil Bottle w/Cut Block Stopper
 122 1540 LARIAT 4 Oz Oil Bottle H
 123 1252 TWIST Moongleam 2½ Oz Oil Bottle
 124 1252 TWIST Sahara 4 Oz Oil Bottle H
 125 357 PRISON STRIPE 6 Oz Oil Bottle, Some Roughness on Stripes
 126 1776 KALONYAL 4 Oz Oil Bottle, Slight Roughness on Stopper
 127 U8010RIBBON CANDY 6 Oz Oil Bottle, RARE
 128 353 COLONIAL 2 Oz Oil Bottle, Wrong Stopper H
 129 341 PURITAN 2 Oz Oil Bottle, Wrong Stopper
 130 341 PURITAN 4 Oz Oil Bottle, Wrong Stopper
 131 1469 RIDGELEIGH 3 Oz Oil Bottle
 132 333 HOTEL WALDORF ASTORIA 2 Oz Oil, Silver Decor, wrong stopper
 133 5003 CRYSTOLITE Oyster Cocktail
 134 5077 LEGIONNAIRE 3½ Oz Cocktail, Amber Stem
 135 6003 TEMPO Cocktail H
 136 5079 PAN AMERICAN Cocktail H
 137 4044 NEW ERA Cocktail H
 138 3408 JAMESTOWN Cocktail, Rosalie Etch
 139 300 PEERLESS Claret H
 140 5072 ROSE STEM Claret
 141 1540 LARIAT Wine H
 142 3408 JAMESTOWN Sherry
 143 3357 KING ARTHUR Wine, Diana Etch H
 144 1205 FANCY LOOP Straight Wine
 145 1205 FANCY LOOP Emerald Straight Claret

PAID ADVERTISEMENT

PAID ADVERTISEMENT

146 1469 RIDGELEIGH Cocktail H
 147 5010 SYMPHONIE Wine, Crinoline Etch
 148 3389 DUQUESNE Sahara Wine, Chintz Etch
 149 5010 SYMPHONIE Wine, Minuet Etch
 150 1252 TWIST Flamingo Wine H
 151 5040 LARIAT Wine, Moonglo Cut H
 152 1183 REVERE Claret H
 153 300 PEERLESS Wine, 2 Ea H
 154 300 PEERLESS Claret, 4 Ea H
 155 1E92 OMEGA Wine, Moonglo Cut, 9 Ea H
 156 1632 LODESTAR Dawn 12" Nappy H
 157 1575 12" Floral Bowl H
 158 1428 WARWICK Horn of Plenty Floral Bowl H
 159 1433 THUMBPRINT & PANEL Cobalt Floral Bowl
 160 1445 GRAPE Oval Floral Bowl, Cut
 161 1183 REVERE Amber 8" Plate, Cut, 6 Ea
 162 4044 NEW ERA 10" Square Plate, Sea Glade Cut, 4 Ea
 163 1183 REVERE Cobalt 8" Round Plate, 3 Ea
 164 1401 EMPRESS Moongleam 6" Round Plate, 3 Ea H
 165 1401 EMPRESS Sahara 6" Square Plate, Lafayette Etch H
 166 1401 EMPRESS Sahara 7" Square Plate, Old Colony Etch H
 167 7" Colonial Round Plate H
 168 1503 CRYSTOLITE 8" 2 Hd1 Snack Plate, 2 Ea
 169 1184 YEOMAN 14" Buffet Plate, Sailboat Carving
 170 1233 PRESSED DIAMOND Hawthorne Baked Apple H
 171 373 COLONIAL Goblet H
 172 3344 CAROLINA Goblet, Dundee Etch H
 173 3312 GAYOSO Goblet, Vogel Etch
 174 3380 OLD DOMINION Sahara Goblet, Empress Etch
 175 7057 TRI-KNOB Goblet, Needle Etch H
 176 7047 COMET LEAF Sahara Goblet H
 177 1405 IPSWICH Goblet, 3 Ea H
 178 300 PEERLESS Goblet, 2 Ea
 179 1425 VICTORIAN Low Goblet
 180 1506 PROVINCIAL Goblet, 2 Ea
 180A3404 SPANISH 10 Oz Goblet, Florentine Cut, 8 Ea
 180B3404 SPANISH 5½ Oz Saucer Champagne, Florentine Cut, 6 Ea
 180C3404 SPANISH 2½ Oz Wine, Florentine Cut, 11 Ea
 180D3404 SPANISH 3½ Oz Cocktail, Florentine Cut, 5 Ea
 180E3404 SPANISH 3½ Oz Oyster Cocktail, Florentine Cut, 16 Ea
 180F3404 SPANISH 10 Oz Ftd Soda, Florentine Cut, 2 Ea
 180G3404 SPANISH 1 Oz Cordial, Florentine, Cut, 5 Ea
 180H4164 73 Oz Jug, Florentine Cut
 180I2401 12 Oz Soda, Florentine Cut, 11 Ea
 180J1401 EMPRESS 12" Handled Sandwich Plate, Florentine Cut
 180K1183 REVERE 8" Round Plate, Florentine Cut, 15 Ea
 180L1183 REVERE 6" Round Plate, Florentine Cut, 15 Ea
 181 3411 MONTE CRISTO Goblet, Olympiad Etch, 4 Ea
 182 3390 CARCASSONNE Goblet, Olympiad Etch, 6 Ea
 183 3390 CARCASSONNE Sherbet, 5 Ea
 184 3368 ALBEMARLE Marigold Cocktail, 4 Ea
 185 3380 OLD DOMINION Marigold Champagne, 4 Ea H
 186 3370 AFRICAN Moongleam Champagne
 187 4090 COVENTRY Champagne, Belvedere Etch
 188 3314 GRANDEUR Champagne, Sabrina Etch f
 189 4091 KIMBERLY Champagne, Cromwell Cut, 2 Ea

PAID ADVERTISEMENT

190	COLONIAL Champagne, 2 Ea	248	4090 COVENTRY Cordial, Belvedere Etch
191	407 COARSE RIB Champagne, Irridized H	249	3333 OLD GLORY Cordial, Renaissance Etch H
192	3333 OLD GLORY Champagne, Renaissance Etch H	250	3404 SPANISH Cordial, Cut
193	5042 CORINTHIAN Champagne	251	3404 SPANISH Cobalt Cordial
194	3418 SAVOY PLAZA Champagne H	252	4091 KIMBERLY Cordial, Dolly Maidson Rose Cut H
195	5010 SYMPHONIE Champagne, Danish Princess Cut	253	5003 CRYSTOLITE Cordial H
196	3304 UNIVERSAL Hollow Stem Champagne, Moonglo Cut	254	4083 STANHOPE Cordial
197	1469 RIDGELEIGH Champagne H	255	3380 CREOLE Alexandrite Cordial
198	1486 COLEPORT Champagne H	256	3390 CARCASSONNE Alexandrite Cordial
199	4044 NEW ERA Cobalt Champagne	257	300 PEERLESS Cordial H
200	5078 PARK AVENUE Champagne, Mono "SJS" H	258	5092 EMPRESS LILY Parfait, 3 Ea
201	358 COLONIAL Champagne H	259	337 TOURAINE Wine H
202	4044 NEW ERA Champagne, Sea Glade Cut, 2 Ea	260	3304 UNIVERSAL Cordial, 4 Ea
203	1540 LARIAT Champagne, Moonglo Cut, 5 Ea	261	4163 12 Oz Mug, Special Cut & Signed by Mark Pickeral H
204	1E92 OMEGA Champagne, Waltz Cut, 2 Ea H	262	4163 12 Oz Mug, Harlequin Etch H
205	HORSEHEAD Bookend, Pr, Frosted, Mold Flaw in One	263	4163 12 Oz Mug, Sportsman Etch H
206	CLYDESDALE Horse	264	4163 12 Oz Mug, Sportsman Etch H
207	SEALYHAM Terrier (Scotty)	265	4163 12 Oz Mug, Club Drinking Scene Etch H
208	FISH BOOKEND, R	266	1184 YEOMAN 8 Oz Soda, "WIGWAM" Deep Plate Etch & Monog "HPW" H
209	GOOSE, Wings Half	267	2401 8 Oz Soda, Fox Chase Etch
210	GOOSE, Wings Up	268	2401 Old Fashion, Fox Chase Etch, 2 Ea
211	GOOSE, Wings Up	269	4002 Aqua Caliente Cocktail, Fisherman Etch
212	RABBIT PAPERWEIGHT R	270	4054 CORONATION 5 Oz Soda, Tavern Etch, RARE
213	DUCKLING, Standing H	271	411 RIB & PANEL Mug H
214	OSCAR HORSE (Sparky) R	272	1255 PINEAPPLE & FAN Emerald Mug, Good Gold
215	MADONNA, M	273	4224 STEEPLE CHASE Moongleam Cocktail
216	1210 Moongleam 6" Cheese Dish, Frog Handle	274	4224 STEEPLE CHASE, Sahara Cocktail
216A	Paperweight made from Small Horsehead Cocktail Stopper	275	4036 1 Pt Decanter & 4052 National 1 1/2 Oz Bar, 4 Ea, All with Moonglo Cut
216B	Paperweight made from Small Horsehead Cocktail Stopper	276	3312 Handled Russian Coffee
216C	Paperweight made from Rooster Stem	277	588 Colonial Amber 3 Oz Soda H
216D5063	BANTAM ROOSTER Cocktail, RARE	278	4090 COVENTRY Parfait, Belvedere Etch
217	1519 WAVERLY Floral Bowl, Seahorse Ftd	279	1590 ZODIAC Juice H
218	1591AELEPHANT Handled Beer Mug H	280	3408 JAMESTOWN Parfait, Sheffield Cut
219	5048 ROOSTER HEAD Cocktail, 2 Ea	281	6091 CABOCHON Parfait, Debutante Cut
220	1560 VICTORIAN BELLE	282	3357 KING ARTHUR Parfait, Moongleam Stem & Foot H
221	5038 ROOSTER STEM Cocktail, 2 Ea	283	3368 ALBEMARLE Sahara Parfait H
222	5038 ROOSTER STEM Cocktail	284	3362 CHARTER OAK Moongleam Parfait H
223	355 QUATOR Shallow Bonniere H	285	5082 MID CENTURY Parfait, 10 Ea H
224	1951 CABOCHON Advertising Sign	286	4002 AQUA CALIENTE Cocktail, Antarctic Etch
225	1404 OLD SANDWICH Tangerine Oyster Cocktail, RARE H	287	5079 PAN AMERICAN Parfait H
226	1485 SATURN Limelight Old Fashion H	288	5024 OXFORD Parfait, Bel Air Cut H
227	4045 Tangerine 6" Ball Vase, WO - RARE	288A	4054 CORONATION 12 Oz Slim Jim, Cut, 8 Ea
228	1229 OCTAGON Marigold Ind Nut, 5 Ea H	288B	Cobalt Blown Experimental Bottle, RARE
229	3390 CARCASSONNE Alexandrite Cocktail	288C	3397 GASCONY Tangerine 18 Oz Soda
230	3390 CARCASSONNE Alexandrite Oyster Cocktail	289	3404 SPANISH 5 Oz Cobalt Soda, 6 Ea
231	3390 CARCASSONNE Oyster Cocktail, Monog "CCH"	290	1489 PURITAN Cologne, Monog "C" on Stopper
232	1404 OLD SANDWICH Cobalt 1 Oz Bar H	291	1485 SATURN Mustard & Cover H
233	4004 IMPROMPTU 1 1/2 Oz Bar	292	353 7 Oz Sanitary Syrup H
234	3380 OLD DOMINION Sahara 1 Oz Bar DO	293	372 7 Oz Sanitary Syrup, wrong top H
235	Blown Bar, Etched	294	350 PINWHEEL & FAN Cream & Sugar H
236	2052 2 1/2 Oz Bar, Orchid Etch	295	1632 LODESTAR Dawn Cream & Sugar H
237	300 PEERLESS Toothpick H	296	1540 LARIAT Cream & Sugar H (Sugar only cut)
238	31 Handled Toy Candle, Pr H	1231	Sahara Hotel Cream H
239	Individual Drink Decanter, 2 Ea	298	1519 WAVERLY Cream H
240	393 NARROW FLUTE Ind Almond, 6 Ea H	299	429 Moongleam Hotel Sugar
241	1489 PURITAN Salt Tub, 8 Ea	300	1540 LARIAT Cream H
242	5078 PARK AVENUE Cordial H	301	1255 PINEAPPLE & FAN Emerald Hotel Sugar
243	5010 SYMPHONIE Cordial, Minuet Etch	302	300 PEERLESS Ind Sugar H
244	5089 PRINCESS Cordial, Orchid Etch H	303	1519 WAVERLY Ind Sugar H
245	3408 JAMESTOWN Cordial, Narcissus Cut H	304	1231 Flamingo Hotel Sugar H
246	5022 GRACEFUL Cordial, Orchid Etch	305	1425 VICTORIAN Stick Butter H
247	3408 JAMESTOWN Cordial, Barcelona Cut H	306	1519 WAVERLY Square Butter
		307	1567 PLANTATION Condiment Tray, 2 Ea H

308	353	MEDIUM FLAT PANEL Covered Butter	H
309	337	TOURAINÉ Covered Butter	H
310	500	OCTAGON Ice Bucket, Cut & Monog,	H
311	1401	EMPRESS Ftd Ice Bucket	H
312	465	RECESSED PANEL ½ Lb Candy Jar. Cut	H
313	1430	ARISTOCRAT Tall Stem Candy Jar, Cut	H
314	3368	ALBEMARLE Parfait, Champain Cut, 3 Ea	
315	341	PURITAN Parfait	H
316	393	NARROW FLUTE Hollow Stem Champagne	H
317	3333	OLD GLORY Parfait, Renaissance Etch	H
318	3335	LADY LEG Parfait, Zodiac Etch	H
319	3404	SPANISH Cobalt Claret	
320	5078	PARK AVENUE Cocktail, Maryland Cut	H
321	3404	SPANISH Cobalt Cocktail	
322	5010	SYMPHONY Cocktail, Crinoline Etch	
323	5057	SUEZ Cocktail, 4 Ea	H
324	5003	CRYSTOLITE Cocktail	f
324A		Parade Cane, 54", Twisted Zircon	
324B		Parade Cane, 46" Crystal	
324C		Parade Cane, Several Colors	
325	341	PURITAN Creme de Menthe	H
326	3350	WABASH Cocktail, Mayflower Etch	H
327		Blown Cocktail, 4 Ea	
328	6003	TEMPO Cocktail	H
329	3350	WABASH Cocktail,	H
330	337	TOURAINÉ Cocktail	H
331	5024	OXFORD Cocktail, Ivy Etch, 5 Ea	H
332	4085	KOHINOOR Sherbet, Coronation Etch	
333	3355	FAIRACRE Champagne, Moongleam Stem	
334	4091	KIMBERLY Sherbet, Laurel Wreath Cut	
335	6010	FINESSE Cocktail, Ultronic Cut	
336	6091	CABOCHON Sherbet, Cattail Cut	
337	1E92	OMEGA Champagne, Cut	H
338	1E92	OMEGA Champagne, Cut	H
339	3390	CARCASSONNE Sahara Sherbet	
340	1404	OLD SANDWICH Champagne	H
341	6091	CABOCHON Sherbet, Debutante Cut	
342	6010	FINESSE Cocktail, 2 Ea	
343	3312	GAYOSO Champagne, Cut	
344	3304	UNIVERSAL Cocktail Icer, Orchid Etch	
345	433	GREEK KEY Sherbet, Flared, 4 Ea	H
346	3350	WABASH Sherbet w/Underplate, Special cut by Walter Gray	
347	1489	PURITAN Large Cigarette Box, Decorated by Dorothy C. Thorpe	H
348	1503	CRYSTOLITE Cigarette Box	H
349	359	COLONIAL Round Ash Tray w/Match Std	H
350	441	GRAPE LEAF SQUARE Ash Tray	
351	1489	PURITAN 4½" Square Ash Tray	
352	1469	RIDGELEIGH Diamond Ash Tray	H f
353	1488	KOHINOOR Ash Tray, Indiv,	H f
354	1536	MILITARY CAP Ash Tray	
355	3390	CARCASSONNE Cigarette Holder, 2 Ea	
356	1503	CRYSTOLITE Cigarette Holder	
357	1469	RIDGELEIGH Cigarette Holder, 2 Ea	H
358	1469	RIDGELEIGH Set of 4 Bridge Ash Trays, H Chips on all 4	
359	1533	WAMPUM Cigarette Box, no lid	
360	352	FLAT PANEL 24 Oz Tobacco Jar, Cut	H
360A	1489	PURITAN Covered Cigarette Box, All Over Cutting	
361	1567	PLANTATION 2 Compartment Dressing Bowl, Ivy Etch	H
362	1567	PLANTATION 10½" Small Demi Torte Plate, Ivy Etch	
363	1567	PLANTATION 11" Party Plate & 8" Salad Plate, Ivy Etch	
364	1519	WAVERLY 8" Plate, Cut, 11 Ea	

365	1519	WAVERLY 8" Plate, Orchid Etch	
366	393	NARROW FLUTE Finger Bowl, 3 Ea	H
367	1503	CRYSTOLITE 12" Oval Floral Bowl	H
368	5012	Vase made from Urn, Cut	
369	1469	RIDGELEIGH Cup & Saucer, 6 Sets	H
370	1776	KALONYAL Mustard, No Lid	H
371	4045	2" Ball Vase, Irridized, WO	
372	4045	3" Ball Vase, Irridized, WO	
373	4045	4" Ball Vase, Irridized, WO	
374	1201	FANDANGO Rose Bowl, 4½"	
375	1280	WINGED SCROLL Opal Trinket Box, Souv.	
376	52	Flamingo Indiv Salt & Pepper	H
377	57	Salt & Pepper, No Tops	
378	393	NARROW FLUTE 4" Plate, 6 Ea	H
379	1220	PUNTY BAND Custard Salt & Pepper, Souv	H
380	1295	BEAD SWAG Opal 4" Flared Nappy, Pewter Base	
381	5011	YORKTOWN Finger Bowl, Huguenot Cut, 6 Ea	
382	341	PURITAN Finger Bowl, 6 Ea	H
383	407	COARSE RIB 4½" Plate, 6 Ea	
384	1252	TWIST 4" Nappy	H
385	350	PINWHEEL & FAN 4" Nappy	H
386	473	NARROW FLUTE w/RIM 4" Nappy	H
387	393	NARROW FLUTE 5½" 2 Hd1 Jelly	H
388	1632	LODESTAR Dawn 4" Nappy, 2 Ea	H
389	1229	OCTAGON Hawthorne 6" Mint Dish	
390	1229	OCTAGON Moongleam 5½" Jelly, DO	
391	1229	OCTAGON Marigold 6" Mint Dish	
392	1229	OCTAGON 6" Mint Dish, Cut	
393	1229	OCTAGON Flamingo 6" Cheese Dish, Cut	
394	1229	OCTAGON 6" Bon Bon, Empress Etch	
395	1229	OCTAGON Flamingo 6" Bon Bon, DO	
396	411	RIB & PANEL Moongleam 6" Two Handled Mint	
397	1503	CRYSTOLITE 6" Jelly, 2 Hd1	H
398	1229	OCTAGON Flamingo 6" Mint Dish	
399	1183	REVERE Lemon Dish, No Lid, Cut	H
400	1191	YEOMAN Flamingo Pickle & Olive	
401	5067	PLANTATION Goblet, Ivy Etch	
402	4044	NEW ERA Pilsner	
403	4054	CORONATION Slim Jim	
404	3390	CARCASSONNE Flagon, 3 Ea	
405	8113/4	HOFFMAN HOUSE 11 Oz Goblet	H
406	300	PEERLESS Sherbet	H
407	337	TOURAINÉ Sherbet	H
408	1226	COLONIAL Sherbet	H
409		Candle Epergnette & Epergne Vase, 2 Pcs	
410	3405	ALIBI Cocktail, Monog "CCH"	
411	300	PEERLESS 13" Vase	H
412	333	HOTEL WALDORF ASTORIA Bitters Bottle	
413	1540	LARIAT Fan Vase	
414	4057	9" Vase, Lily Carving	
415	4216	OCTAGON Sahara Vase	
416	1184	YEOMAN 5 Oz Soda, 4 Ea	H
417	1489	PURITAN 1 Pt Decanter, Cut Stopper	
418	2	Salad Fork & Spoon	
419	1401	EMPRESS Sahara Cup, Lafayette Etch, 2 Ea	H
420	1469	RIDGELEIGH Punch Cup, 4 Ea	H
421	1184	YEOMAN Moongleam Candy Box, No Lid	H c
422		Lot of 3 Misc Pieces, Quator Indiv Ash Tray, 373 Narrow Flute W Rim 5" Flamingo 2 Hd1 Jelly & 1186 Moongleam Puff Bottom	
423		Verlys Swallows Cigarette Box	
424		Verlys Season Vase, Summer & Winter	
425		Verlys Season Vase, Spring & Fall	
425A		Verlys Directoire Blue Box Bottom w/ Cut Crystal Lid	
426		Verlys Pinecone Bowl	

427 Verlys Water Lily Candle, Pr.
 428 Verlys Chrysanthemum Bowl
 429 1184 YEOMAN Marmalade, No Lid & 393 Narrow
 Flute 6 1/2" Plate
 430 Box Lot of Misc Glass, Punch Cups,
 Flower Frogs Etc
 431 1977 Imperial HCA Souvenir Decanter

432 1973 Imperial HCA Souvenir Claret
 433 1974 Imperial HCA Souvenir Claret
 434 1975 Imperial HCA Souvenir Claret
 435 1976 Imperial HCA Souvenir Claret
 436 Imperial Verde Green Victorian Juice
 437 3 Ea Imperial Williamsburg Footed Soda
 1-Verde Green & 2-Azalia

PLEASE NOTE MAIL BIDDING INSTRUCTIONS AS FOLLOWS:

Mail bids accepted with checks for the maximum amount of the bid. Mail bids are handled competitively and any difference is refunded after postage and handling. Only items in mint condition will be subjected to mail bids unless specifically requested otherwise. Please add \$8.00 per carton for postage and handling, \$10.00 west of Rocky Mountains. Checks should be made to Sam Schnaidt, Auctioneer, and mailed to:

Sam Schnaidt, Auctioneer
 P. O. Box 84
 Granville, Ohio 43023

LIST OF PRICES REALIZED, AVAILABLE AFTER THE AUCTION, FOR \$1.00

SAM SCHNAIDT, AUCTIONEER
 (614) 587-0052
 (614) 345-5073

FRANK FRYE, MANAGER
 (614) 344-9847

PUBLIC AUCTION

October 9, 1982
 Norwalk, Ohio

SEVERAL OUTSTANDING HEISEY ITEMS - AMBER
 DUMBO MUG - MEDIUM AND SMALL AMBER ELEPHANTS.
 PERFECT CONDITION EXCEPT BOTTOMS NOT POLISHED.
 OTHER HEISEY - FOR FURTHER INFORMATION, CALL:
 AUCTIONEER: MAURICE CAHILL 614-268-6335

ELINOR SCHNELL PH: 212-235-4551
 550 JAMAICA AVENUE After 5 P.M.
 BROOKLYN, NY 11208 P & I Extra

#3366 FLAM. TROJAN ETCH: 8 - 8 oz.
 Goblets H, 8 - 5 oz. Sodas, 8 -
 5 oz. Sauc. Champ. H..24 pcs.....*\$350.00
 *Incl. postage plus 10 With Minor Rim damage
 4 Gob., 3 Sodas, 3 Champ...Extra.....\$ 25.00
 #1519 WAVERLY 11" Seahorse ftd. bowl
 Rose Etch H.....\$ 75.00
 #4004 IMPROMPTU 10-1/2" Vase.....\$ 32.00
 #1558 11-1/2 Droop Floral Bowl H.....\$ 24.00
 # 134 TRIDENT Candelabra..pr..H.....\$ 24.00

THE COLLECTORS STOP All items marked
 4 Brookvale Drive In excellent Cond.
 Danvers, MA 01923 Otherwise stated.

Phone: 617-774-1139 Shipping Extra
 *All items subject to prior sale.
 #393 NARROW FLUTE Pitcher 3 pint.....\$ 65.00
 #341-1/2 PURITAN Pitcher 3 pint.....\$ 70.00
 #1401 EMPRESS Flam. 6" Toed Candlstks.pr\$190.00
 #1255 PINEAPPLE & FAN Tumb.Emerald
 (Gold not too good/Not Marked....\$ 58.50
 #1252 TWIST Sahara Nasturtium 8"Bowl...\$ 60.00
 #433 GREEK KEY small ice tub.....\$ 87.50
 #136 Pr. Sahara, 3 lite Candelabra....\$250.00
 #1776 KALONYAL 12" Ftd.Punch Bowl/With
 1 Dz. 5 oz. Ground Btm. Cups.....\$475.00
 WE ARE INTERESTED IN PURCHASING COLORED HEISEY.

DONALD P. BEAN ADD 10% P.P. & INS.
 36 HARDING ST., EXCESS REFUNDED
 MILFORD, MA 01757 5 DAY RETURN PRIV.
 PH: 617-473-0561 * = Marked

#1404 OLD SANDWICH Ind. Ash Tray*Cobalt.\$30.00
 #1401 EMPRESS 6" Sq.Plate*Tangerine.... 75.00
 #1401 EMPRESS 4 oz. Oil*W/#83 Stopper,
 Sahara..... 75.00
 #1401 EMPRESS Cup & Sauc* (Rd.) Alexand-
 rite (3)each..... 55.00
 #1252 TWIST 4ozOil*Stopper.Flam.(2) ea.. 65.00
 #417 DBL RIB & PANEL 6" Basket, Flam... 80.00
 #1184 YEOMAN D/O Cup/Sauc.*Sah. 6 for... 75.00
 #7000 SUNFLOWER 1 lite candlesticks..pr. 35.00
 #16 7" CANDLESTICKS*.....pr. 65.00

We assume no responsibility for errors in these ads after the first printing...Editor
For changes in ads during the year, please send \$1.00 per line.

MOSTLY HEISEY

RHODA CURLEY
16 Clayton Place
Albany, New York 12209
By Appointment (518)482-6272

LAST CHANCE ANTIQUES

P.O. Box 502, Dania, Fl. 33004
Mail Orders - Matching Service
Send us your want lists
(305)467-6356 Day or Evening

GOLDSBERRY'S ANTIQUES

Kalamazoo, Michigan
Shows Only - Buy & Sell
HEISEY A Speciality
Phone (616)381-3013

SCHWAN'S ANTIQUES

Route 1, Box 175B
John Tyler Highway
Williamsburg, Va. 23185
(804)229-7873 Shop and Shows

GREEN ACRES FARMS

Antiques, Crystal Glass & Collectibles
2678 Hazelton Etna Road, S.W.
(S.R.310N.)Pataskala, Oh. 43062
Sat. & Sun. P.M. or Call (614)927-1882

THE WOODEN SHOE

Antiques & Collectables - Buy & Sell
Glass, Furniture, Estates
Jim & Sheri Van Es, By Appointment
810 Elden, Herndon, Va. 22070 Ph.(703)435-9045

ANTIQUES - THE SHULTZES

206-208 E. Main Street
Newmanstown, Pa. 17073
15 Mi. West of Reading Pa.
Phone (215)589-2819

T & S ANTIQUES

Tom Martin Steve Roderick
Specializing in HEISEY
New Rochelle, N.Y.
(914)235-9632

ANTIQUE JUNCTION

'In Old Town'-342 S.W. 'G' St.
Grants Pass, Or. 97526
(503)479-8575 or 582-4067
Hours: Wed. - Sat. 11 to 5

ELIZABETH BASSETT CASON

401 32nd. Street, W.
Bradenton, Fl. 33505
Mail Order - List
(813) 748-0851

GLASS REPAIR

LITTLE ANTIQUES & GIFTS
110 Marshall St. Pigeon Forge, Tn. 37863
Ph: (615) 453-6922
Quality removal of chips, polishing and reshaping of
pitchers. Shipped IPS.

RAMBLING LANE ANTIQUES

KEITH & EVELYN HOOVER
Featuring HEISEY and Other Fine Glass
Rt. 4 Box 1005 Rhinelander, Wi. 54501
Phone: (715)282-5019

ALL-HEISEY AUCTIONS

Consignments Welcome
OFF-BROADWAY ANTIQUES 121 S. Prospect St.
Granville, Ohio 43023
Sam Schnaidt (614)587-2083 Shop, (614)587-0052 Res.

LYNNE & ART'S GLASS HOUSE, INC.

'HEISEY OUR SPECIALTY'
Miami Beach, Fl. 33154
P.O. Box 54-6014
(305)861-7700 or 895-5666

AVERY'S QUALITY ANTIQUES

2112 First St., Jackson, Mi. 49203
Ph: (517) 783-4075
Heisey, Other Glass & China
Shows or By Appointment

PEGGY'S ANTIQUES

ERNIE & PEGGY COX
2000 pcs. Heisey in stock
P.O. Box 367, Spavinaw, Ok. 74366
(918)589-2859 By Appt or by chance

DIAMOND H PLUS

GEORGE & EILEEN SCHAMEL
Rt. 3 Box 419 Boonsboro, Md. 21713
Appointment or Mail Order
Phone:(301)432-6285

HEIDI-HO ANTIQUES, INC.

HEISEY and GENERAL ANTIQUES
838 S. High St., Columbus, Oh. 43206
Phone:(614)444-5774
Hours: Wed-Sat 11-5, Sun 1-5

RECOLLECTIONS

THERESA WERT
Lahaska Antique Center
Route 202, Lahaska, Pa.
Phone:(215)794-8667

ANN'S GIFTS & ANTIQUES

105 W. Main St., Hebron, Oh. 43025
Intersection Rt's 40 & 79
Next Door to Daisy Queen
Daily 11:30 - 5:30 Closed Thursday

SUM OF LIFE

ELAINE & FRANK HUSTED
P.O. Box 102
Phoenixville, Pa. 19460
Phone:(215)935-2962

HEISEY PUBLICATIONS

Box 102, Plymouth, Oh. 44865
All Heisey Books I-III-III-IV
Heisey Newscaster 32 pg. Quarterly
\$6.00. Back issues \$4.00

LITTLE'S ANTIQUES

Heisey and General Antiques
Ph: (216) 282-2242
Lorain, Ohio
Shows and by Appointment

MOUNDBUILDERS ANTIQUES

IRENE RAUCK
1138 Moundview, Newark, Oh. 43055
Phone:(614)344-6043
Heisey & Animals General Antiques

HAPPY HAVEN ANTIQUES

MARY DUMKE
14319 Rattlesnake Road
Grass Valley, Ca. 95945
Phone:(916)273-9450

THE PURPLE PLACE

Martha & Harold Earp
Art Glass, Heisey, Cambridge
Shows, Appointment, Mail Order
Fort Myers, Fl. 33901 (813)936-1572

C & J ANTIQUES

COLE & JEAN MIESNER
Box 45, 72 Whig St.
Newark Valley, N.Y. 13811
Phone:(607)642-9905

GEORGE HOFFMAN ANTIQUES

G.W. HOFFMAN - J.H. DENNIS
129 S. 4th. Street
Newark, Oh. 43055
Phone:(614)345-8021

CHARLES & MILDRED FISHER

HEISEY, DEGENHART, IMPERIAL
Antiques & Collectibles, General Line
991 Idlewilde, Newark, Oh. 43055
Phone:(614)522-5398

HARRISON'S ANTIQUES

HEISEY, CAMBRIDGE, DUNCAN
26 Johnston's Lane
Mercersburg, Pa. 17236
Shows, Mail. Bv Aoot. (717)328-2451

RAY ZIEGLER

GLASS REPAIR
2265 Innis Road
Columbus, Ohio 43224
(614)882-8446

H and R DIAMOND H

HELEN & ROBERT RAREY
1450 White Ash Drive
Columbus, Oh. 43204
(614) 279-0390 after 5:30

JOYCE'S ANTIQUES

Specializing in HEISEY
Cambridge, Verlys, American Glass
P.O. Box 114, Albertson, N.Y. 11507
Phone:(516)499-3396



No. 335 PATTERN THE PRINCE OF WALES PLUMES

Manufactured Exclusively By

A. H. HEISEY & Co.,

INCORPORATED,

NEWARK, OHIO.



5 in. Footed Jelly, Shallow



5 in. Footed Jelly

Also Make

- 4 1/2 in. Footed Jelly Bowl
- 5 in. Footed Jelly Bowl, Shallow
- 5 in. Footed Jelly Bowl
- 6 in. Footed Jelly Bowl, Shallow



Sugar and Cover



4 1/2 in. Jelly



Spoon

NEW YORK REPRESENTATIVE:
CLARENCE BAXTER MARTER,
 42 WEST BROADWAY.



Cream



No. 8 Salt or Pepper Bottle
Nickel Plated Top



Butter and Cover



Toothpick

Send Orders To: HCA SALES, DEPT. F, P.O. BOX 27, NEWARK, OH 43055
The Usual Discounts Apply

- 68. HEISEY BY IMPERIAL, by Newark Heisey Collectors Club.....\$ 6.95
Update and added pages. Soft Bound - Includes price trends and color plate. Every piece of every pattern made by Imperial is listed and priced in all colors used for the pattern. All items are dated. A must for the collector or dealer specializing in Heisey or Imperial glass. Many items are already collectible.

- 77. COLORED GLASSWARE OF THE DEPRESSION ERA 2, by Hazel Marie Weatherman, 1000 patterns from...\$ 25.00
43 glass companies which were operating during the depression era. Includes both machine and hand made glass. 400 pages.

- 79. HEISEY GLASSWARE by Heisey Collectors of America, Inc. Reprint of Catalog 76, the 1915.... 6.95
supplement to Catalog 75. Soft bound with price trends. 58 pages. Many items never shown in books or catalogs. Includes all the kerosene lamps and many electric lamps. An interesting catalog.

- 88. HEISEY TOOTHPICK HOLDERS by Nancy & David Jones, published by HCA. Complete information on 4.95
all Heisey toothpick holders. Contains photographs of each. Section on confusing items and fakes. 8-1/2 X 5-1/2 soft bound. Includes price trends.

- 78. FISH MATCH HOLDER, Plain - Limited Edition of 483. Made in the Original Heisey Molds by.\$ 12.50
Imperial Glass Corporation, exclusively for Heisey Collectors of America, Inc. Marked
IG. Sunshine Yellow
FISH MATCH HOLDER, Satin - Limited Edition of 382. Sunshine Yellow\$ 14.00

- 80. HEADS DOWN BUNNY, Marked ALIG, Caramel Slag - NOT LIMITED.....\$ 6.00

- 81. CYGNET, Marked ALIG.. Caramel Slag - NOT LIMITED.....\$ 6.00

- 82. MINUET GIRL, Marked ALIG, Caramel Slag - NOT LIMITED.....\$ 10.00

- 83. TIGER PAPERWEIGHT, Marked ALIG..Caramel Slag - NOT LIMITED.....\$ 12.00

- 84. SMALL ELEPHANT, Marked ALIG..Caramel Slag - NOT LIMITED.....\$ 12.50

- 85. NO. 31 TOY CHAMBERSTICK, Marked ALIG...Crystal..NOT LIMITED.....\$ 5.00

- 86. NO. 32 5" HANDLED CANDLEHOLDER, Marked ALIG...Crystal..NOT LIMITED.....\$ 7.50

- 87. NO. 33 TOY CANDLEHOLDER, Marked ALIG...Crystal...NOT LIMITED.....\$ 5.00

- 89. Fish Candlestick, Sunshine Yellow, Plain Only.....\$ 15.95

If your order totals \$50 - \$250 you may deduct 10%.
25% Discount on orders \$250 and over.
(No hand selection at this price.)
Please add 10% for Shipping & Handling.



Ohio Residents add 5-1/2% Sales Tax.
All prices payable in U.S. Funds.
Visa/Mastercharge - Please include your card number and expiration date with order.

10TH ANNUAL
ANTIQUe SHOW AND FLEA MARKET

Oct. 31, 1982 - 9 to 5
Reynoldsburg High School
Reynoldsburg, OH
Sponsored by: R.H.C.C.
For Dealer Space, Contact:

SHIRLEY BAGFORD
1290 Hilton Drive
Reynoldsburg, Ohio 43068
Phone: (614) 866-0032



FIRST CLASS MAIL
U.S. POSTAGE
PAID
PERMIT 34
Reynoldsburg, Ohio 43068

FIRST CLASS MAIL