

HEISEY

news

OFFICIAL PUBLICATION HEISEY COLLECTORS OF AMERICA

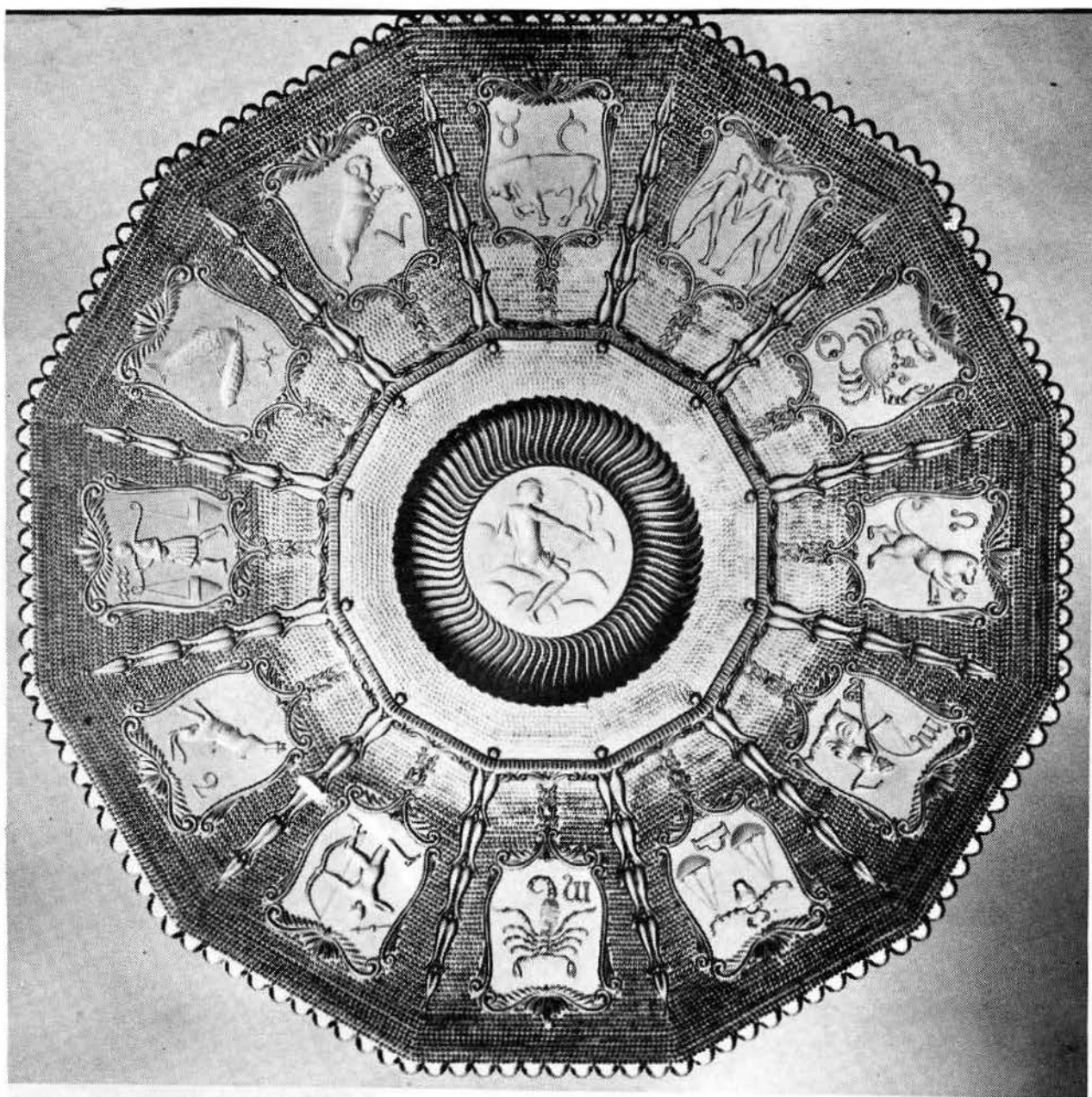
©Heisey Collectors of America, Inc. 1982
All Rights Reserved

VOLUME XI

NO. 3

MARCH, 1982

ONE DOLLAR



1590 Zodiac 13" Sandwich Plate 1949

Editor LOUISE REAM
 Box 27, Newark, OH 43055 614-345-2932
 Ass't Editor NEILA BREDEHOFT
 Box 27, Newark, OH 43055 614-345-2932

Published monthly and mailed from Reynoldsburg, Ohio 43068

\$12.00 per year - \$1.00 per copy
 Back issues 1972/1980 (except 1974) \$9.00 per year (12 issues).

	CLUB OFFICERS	
President	BOB McCLAIN	614-345-8061
Vice President	JACK METCALF	614-892-2664
Secretary	MARY McWILLIAMS	614-345-4380
Treasurer	DICK MARSH	614-366-5608
Exec. Director	LOUISE REAM	614-344-2377

Heisey Collectors of America, Inc. is a non-profit corporation with tax exempt status. Owners and operators of National Heisey Glass Museum, 6th & Church Sts, Newark, OH. Open Daily 1-4 pm March through December except Mondays and holidays. January & February-Wednesday, Saturday, & Sunday 1-4pm. Other times by appointment. Members admitted free.

Club membership (includes 12 issues of HEISEY NEWS and participation in all club activities) \$12.00/year plus \$2.00 each for additional family members in same household who wish a membership card. For VOTING MEMBERSHIP add \$25.00, one time only fee.

When requesting information, please enclose a self-addressed stamped envelope (SASE).

ADVERTISING - Send all ads to: NEILA BREDEHOFT
 Box 27
 Newark, OH 43055

RATES:

DEALERS' DIRECTORY - 5 lines-\$18.00/year
 CLASSIFIED - 10¢/word. \$1.00 minimum. Abbreviations and initials count as words.

DISPLAY:	MEMBERS	NON-MEMBERS
1/8 pg (9 items)	\$12.00	\$20.00
1/4 pg (20 items)	20.00	30.00
1/2 pg (20 items)	35.00	45.00
1 pg (50 items)	60.00	75.00

We cannot double-column ads. No VERTICAL 1/2 pg. ads. ALL ADS MUST BE PREPAID. Ad copy must be received by the 5th of the month to be included in that month's NEWS. Ads containing reproductions will not knowingly be accepted unless clearly stated (i.e. Heisey by Imperial, etc.) HEISEY NEWS assumes no responsibility for false advertising or misleading information. In the event of typographical error, the incorrect portion of the ad will be run in the following issue, but HEISEY NEWS assumes no further liability.

Opinions expressed in articles are those of the authors and not necessarily those of HCA. Editorial Staff reserves the right to edit or refuse any material submitted for publication. Send all letters & articles to be published to the EDITOR. Letters to columnists should be sent to the club address and will be forwarded.

" FILLIES "

THE FILLIES MENTIONED IN MY COLUMN ARE LIMITED TO 1000, ARE MARKED ALIG, AND ARE NUMBERED. THEY CAN BE PURCHASED FROM IMPERIAL ONLY. WE DO NOT HAVE THEM FOR SALE.

Bob

FROM THE DESK OF YOUR PRESIDENT.....

On February 25th, Louise Ream, Jim Kennon and myself met with Lucile Kennedy, Marketing Manager, and Mike Nocera, General Manager of Imperial Glass Corp. We went there to discuss with them and to voice HCA's concerns about the following:

1. The manufacture of Heisey animals by Imperial in colors the same as, or similar, to Heisey production colors.
2. The rights to and the use of the Diamond H trademark.
3. The manufacture of other Heisey items by Imperial in colors the same as, or similar, to Heisey production colors.

Concerning the first subject, they both told us that as long as they have anything to do with the plant they will not produce Heisey animals in Heisey production colors, Amber and Cobalt (Ultra Blue) for anyone, including themselves, after they have completed the Mirror Images series in ultra blue. They will; however, make some animals in crystal only for themselves. They are currently making lead crystal fillies but are having many problems and will probably end up with less than one thousand. After they complete this run, they plan to investigate making the "ALIG" trademark impressed into the glass instead of being raised, as a raised trademark may be easily removed, while the removal of an impressed mark would require significant alteration of the piece of glass. Another alternative would be to slightly alter the mold without affecting the beauty of the animal. This modification could be sufficient for an informed collector to differentiate between an original Heisey animal and the Imperial re-issue.

They made fourteen (14) amber giraffes for feasibility testing and no more will be made in amber and none will go on the public market. Two were given to us for the museum.

The in-plant security has been greatly improved since Heisey items are kept locked up and only one person has the key.

They plan to take into litigation anyone who may fraudulently use the Diamond H trademark in conjunction with glass items.

They do not allow removal of any Heisey Molds from the Archives, even feasibility testing, without the Heisey mark being removed from the mold. Severe employee discipline would result if this policy were violated, which might include dismissal of the employee.

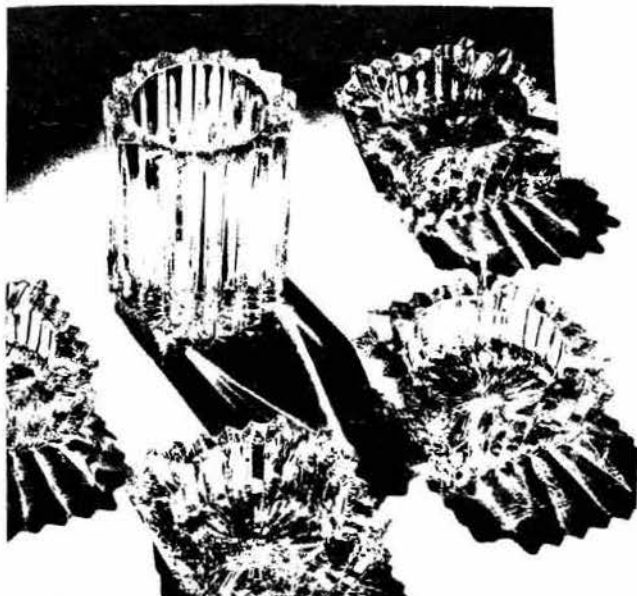
Concerning the manufacture of Heisey items other than animals in colors the same or similar to Heisey production colors; in going over our notes of the meeting, we feel that this topic



Heisey's Ridgeleigh Pattern No. 1469 Candlesticks and Floral Bowl.

ANOTHER LOVELY HEISEY CREATION

A new triumph in Heisey design! The spectacular "Ridgeleigh" pattern employs simple fluting for an effect that is startlingly beautiful and unusual. Its classic simplicity is in line with modern taste in decoration. The heavy candlesticks meet with instant approval. They are most practical—as well as beautifully adapted to any table setting. The various matching accessories—oval Cigarette Box, Ash Trays and Cigarette Holder—greatly increase the sales-making appeal in this new line. For glassware that meets—even anticipates—the desires of your customers today—make your selection from Heisey's new showings. A. H. Heisey & Company, Newark, Ohio.



SMOKING SET, 5 pieces \$1

Four ash trays and a cigarette holder, in clear glass, grand for luncheon or dinner table. Better indulge in several sets.

HEISEY CANDLESTICKS - NO. 1438,
KOHINOOR

By: Tom Felt

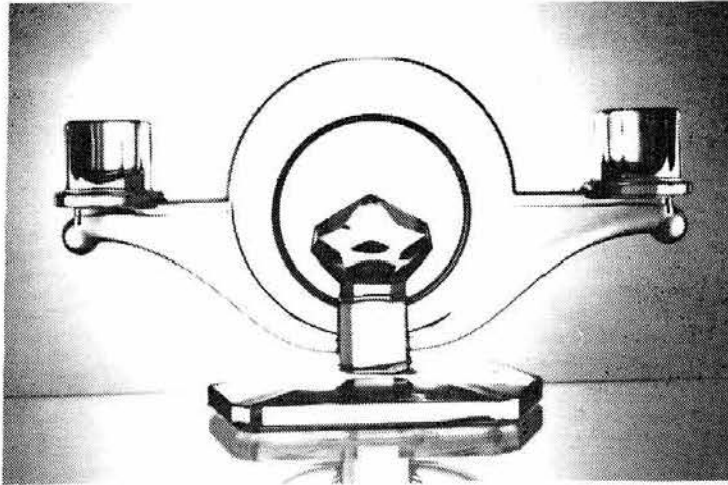


Figure 1

In his article last month, Bob O'Grady wrote about the no. 1483 Stanhope candelabra, which came out in August 1936 and was one of the first designs created for Heisey by Walter Von Nessen, the well known architect and industrial designer who did freelance work from his own firm in New York City. This was also one of the most striking examples of a design inspired by the Art Deco movement to have been made up to that time by Heisey and it was the first of a series of candlesticks which came out around 1936 and 1937, all sharing a similar inspiration. It was followed in January 1937 by the equally striking and modernistic no. 1485 Saturn line, which offered both a 2-light candleblock and candlestick, and then, at about the same time, by the no. 1488 Kohinoor 2-light candlestick/candelabra.

Kohinoor was also designed by Walter Von Nessen and it seems appropriate to follow up a discussion of Stanhope by turning next to Kohinoor. For one thing, Stanhope was named after Lady Stanhope, owner of the famous Stanhope diamond, as Bob mentioned last month--and Kohinoor, of course, was named after the equally famous Kohinoor diamond, a name suggested no doubt by the many faceted knob which appears inside the center arch of the candelabra. This knob, or "diamond," incidentally, does not appear as a design element on any of the other pieces in the no. 1488 pattern, although they are all decorated with faceted surfaces; it is repeated, though, on many of the items in the companion no. 4085 Kohinoor and 4091 Kimberly stem lines.

The first mention of the no. 1488 candelabra is in a pricing out worksheet dated

January 1, 1937. However, we know from available turn records from the previous year that it was not actually in production yet at that time, so the data recorded must have been obtained from making a limited number of feasibility samples. Unfortunately, we do not have the turn books for 1937 and so we cannot be sure exactly when it did go into full production, but it certainly had to have been prior to April, since it was shown on the cover of Heisey's TABLE TALK that month as part of a table set with Stanhope luncheon plates and stemware, with a large Saturn ball vase as the centerpiece. This table setting was in crystal; curiously, the Kohinoor candelabra were again shown as part of a table setting, this time in zircon, on the cover of the June issue of the same magazine and once again in a mixed setting, which included Stanhope stemware with Saturn dinner plates. It is interesting to note that all of these patterns were obviously meant to be interchangeable enough that they could be used with one another.

The Kohinoor candelabra was one of the most popular of Von Nessen's designs and remained in production for at least eight years. It seems to have been discontinued sometime around 1944 and 1945. It was also offered as one of the items which for a period of time were available boxed for giving as gifts.

Although most often seen with prisms, the Kohinoor was also available as a 2-light candlestick, as shown in the accompanying photograph. The prisms used were generally "D" prisms, as in photograph two, but for a brief time, during the war, "J" prisms were also used. (These were a shorter version of the "H"

Cont'd. On Next Page

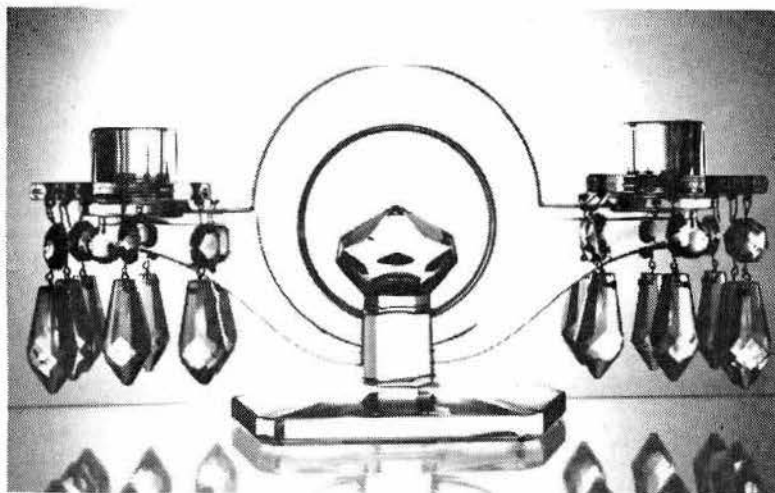


Figure 2

prisms made by Heisey during World War II, when Czechoslovakian prisms had become unavailable; for more on these prisms, see the article on Page 12 of the May 1979 issue of the HEISEY NEWS.) The bobeches used are identical to those also used on Stanhope.

There was only one etching offered on this candelabra and it is a rather scarce one: No. 493 Coronation, which was designed in 1937 for the coronation of Edward VIII and introduced at about the time of his abdication--meaning that it had a very brief production span.

If not often etched, however, the Kohinoor candelabra was a popular blank for cutting and was offered with a total of 19 different production cuttings:

When cut (or etched) not only could the base be decorated, but also the curving arms and the circular center arch.

636 Clermont*	892 Berkeley Square
781 St. Anne	896 Sungate
832 Continental	898 Trafalgar*
848 Botticelli	899 Norfolk*
866 Kent	901 Delft Diamond
867 Chateau	902 Orlando
883 Royal York	921 Danish Princess
888 Madeira	2503 Sussex
890 Churchill	2504
891 Pembroke	

The Kohinoor candelabra is rather unusual in that it is relatively short (only about 5" high at its tallest point) and wide (nearly 9-1/2" from arm to arm). The base is generally rectangular, but with the corners cut away and with the short sides coming to a point, so that it is actually multisided. The bottom is ground smooth but not punted.

These candelabra generally are not marked. However, they have not been reissued by Imperial, so this should cause no problem for the collector.

* Kimberley was the diamond mine.

FINDS

By: Janet Macomber, Massachusetts

Finally we are beginning to see signs of spring after a long cold winter here in the Bay State area. There isn't much to keep our spirits up except an occasional good find of our favorite glass. Last week we came across a #341 Puritan covered pickle jar in mint condition, a beautiful diamond optic Yeoman #1184 Lemon dish in Sahara and a #1401 Empress seven compartment Hors D'Oeuvre dish. All three of

these pieces look as if they were never even set down on a table. A Fair, in a local church, was next in line. We went to have a look and found an 11" Coarse Rib sandwich plate. In another shop we passed up a #301 two light Candelabrum 10-1/2" tall. The dealer had the price too high and the Bobeches were all damaged, BUT we did manage to purchase a beauty--Are you ready!! A Lodestar #1632 crimped bowl in DAWN. We are so pleased, this piece has the place of honor, at least for the present, on our kitchen table. With the coming of good weather our hunting will increase and hopefully many goodies will be found.....

#451 CROSS LINED FLUTE

By: Joseph D. Lokay

On December 13, 1913, Andrew J. Sanford filed a patent application for a new, original and ornamental design for pitchers. He was granted design patent #45,489 on March 24, 1914, and the patent was assigned to the A. H. Heisey Company of Newark, Ohio. Pattern #451 was assigned by Heisey to the glassware in this new design. Thus, the beginning of pattern #451, later named Cross Lined Flute by Clarence Vogel.

The Cross Lined Flute design is a modified colonial pattern. The colonial feature of the design is vertical flutes or panels around the surfaces of each item. The colonial feature is then modified by pairs of horizontal grooves that completely encircle the items. The low items have 1 pair of horizontal grooves, while the tall items have up to 5 pairs of grooves.

Price list #175 (3-1-13) was the first to list pattern #451 and then, only one piece, the 8 oz. tumbler. The #451 tumbler was not pictured in Heisey catalog #75 (circa 1913). Thus, the 8 oz. tumbler must have been made early enough to be in the price list but not soon enough to be pictured in the catalog. Heisey catalog #76 (circa 1915) shows 19 pieces in the #451 pattern. Patent #45,489 was for a pitcher in the #451 design. Since the patent was filed in December 1913, the pitcher and perhaps other pieces were made in late 1913 or early 1914.

The Heisey Company must have wanted greater protection for the #451 design so a second patent application was filed by A. J. Sanford on December 15, 1914. This time the application was for a new, ornamental and original design for a nappy. For some reason it took over 1 year to get the second patent as compared to the first patent which took only three months. Design patent #48,529 for the nappy was granted on February 8, 1916, and again was assigned to A. H. Heisey & Company.

There were 34 pieces offered in the #451 pattern line in the early 1920's. Five additional items were added to the line in the late 1920's for a total of 39 items produced in the pattern over its life.

Production of the #451 pattern ended in the early 1930's except for the 8 oz. tumbler which was produced till about 1940. Thus, pattern #451 was produced from about 1913 to about 1934 or for about 22 years except for the tumbler which went on for another 6 years. It is interesting to note that the #451 pattern began and ended with the 8 oz. tumbler.

It appears that #451 Cross Lined Flute was produced in crystal only as I could find no evidence of any commercial production in color. There is a *#451 vase in vaseline pictured in Vogel Book 2, Color Page 1. Then, where did that come from? My opinion is that it was not a commercial production but was an experimental production where several pieces were test made in an existing color to see how the pattern looks in that color. A production feasibility test to check for problems in making items in a given color and the making of color samples to make a



Half Gallon Jug
Also made pt., qt., 3 pt.



8 oz. tumbler

market survey would be good business practice.

Cross Lined Flute pieces are marked with a large Diamond H. The mark in the jug has PAT. 3-24-14 around the Diamond H and the mark in the nappy has PAT. 2-8-16 around the Diamond H. The date of the patent isn't known till the date it is officially granted and recorded. Therefore, a nappy so marked could not have been made till after 2-8-16. If nappys were made before 2-8-16, then the mark would be only a Diamond H or a Diamond H with patent pending around it. Does anyone have a nappy without the PAT. 2-8-16 around it? Look closely as the date mark may be very weak.

For the specialty collector, the Cross Lined Flute pattern line included a tumbler, goblet, small nappy, handled jelly, cruet and salt and pepper. There were no punch cups, syrups or candlesticks in the pattern. Study of the price lists showed that these specialty items were made for about the following time period: tumbler 1913 to 1940, nappy 1914 to 1934, jelly 1914 to 1930, salt and pepper 1916 to 1930, cruet 1916 to 1934 and the 7 oz. goblet 1920 to 1930.

There were 3 sizes of vases, 5, 6 and 7 inches, and each size was offered in two styles, straight or flared. The production period for the vases was about 1915 to 1920.

Items in the Cross Lined Flute Pattern #451 are:

- 5 nappy sizes, regular
- 5 nappy sizes, shallow
- 2 oval sizes
- 2 celery sizes
- 3 jelly types
- 4 jug sizes
- 2 ice tea types
- 1 salt & pepper
- 1 oil
- 1 hotel sugar
- 3 stemware types
- 2 plate sizes
- 1 finger bowl
- 3 vase sizes, straight
- 3 vase sizes, flared
- 1 tumbler
- 39 Total



Oil

#451 CROSS LINED FLUTE CONT'D.

Pictures of pattern #451 are shown in Vogel book two, Pages 96 and 97. These two pages are copies of Pages 117 and 118 in Heisey catalog #102 (circa 1924). For those who have the reproduction of Heisey catalog #109 (circa 1928), pattern #451 is pictured on Pages 83 and 84.

*Editors Note: Several of these vases have been seen and they are very beautiful. In fact this is a lovely pattern. The glass is of medium weight and of very good quality glass. The cruet and the stemware are exceptionally attractive.
Louise Ream



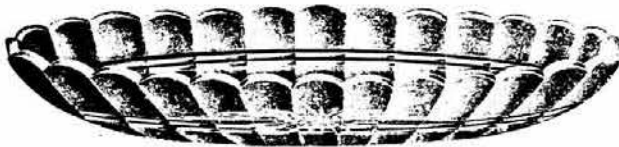
Goblet



Soda



Footed
Hotel Sugar



12" Celery



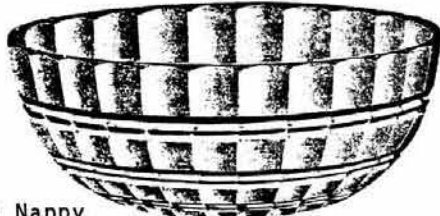
5" shallow nappy



4-1/2" Nappy



7" nappy



9" Nappy



473 NARROW FLUTE WITH RIM
9" OYSTER COCKTAIL PLATE AND ATTACHED CENTER

This is marked twice on the sides of the bowl of the center sauce container. This is one of many unusual items in this pattern. We have seen this and it is much more attractive than the picture.



SQUARE MARMALADE
AND COVER
GROUND BOTTOM

TWELFTH

Annual Antique Show and Sale

Heisey Glass Display

Newark Branch - O.S.U. Campus

Country Club Drive, Newark, Ohio

Sponsored by



Heisey Collectors of America, Inc.

Thursday, June 17th - Champagne Preview, 6-10 P.M.

At the Door - \$7.00

Thursday, June 17th, Display

12:00 Noon to 6:00 P.M.

Friday, June 18th

12:00 Noon to 5:00 P.M.

Saturday, June 19th

12:00 Noon to 8:00 P.M.

Sunday, June 20th

12:00 Noon to 5:00 P.M.

Benefit National Heisey Museum

Over Fifty (50) Quality Dealers

Donation \$1.75

25¢ Off with card

The price of the champagne preview is \$5.00 for pre-registered members.

FASCINATING INSIGHTS INTO EARLY HEISEY HISTORY - TAKEN FROM EARLY TRADE JOURNAL REPORTS

CHINA, GLASS & LAMPS April 22, 1896
NEWARK, OHIO

"The works of A. H. Heisey & Co., which started on the 18th inst., is running full, the start made being very satisfactory. The new patterns are being made in as clear flint as is possible for skill and experience to make, and the firm is ready to book orders for early delivery."

+++++

CHINA, GLASS & LAMPS September 9, 1896
NEWARK, OHIO

"The factory of A. H. Heisey & Co. has been having a good run since starting, and while the new patterns of imitation cut ware this firm started out with have by no means become slow sellers, another very fine set of tableware has been put upon the market for the fall run. No old molds are being worked, because the firm has no old or second hand molds, but proposes to put a new set on the market at least every six months, or as fast as new molds can be designed and executed in their shop. For years to come, therefore, Mr Heisey will be able to supply his patrons with new goods constantly, and the factory is large enough to enable the firm to ship orders promptly."

+++++

NATIONAL GLASS BUDGET September 26, 1896

"The factory of A. H. Heisey & Co., at Newark, Ohio, closed down on Saturday last, owing to dullness in trade in the lines of ware manufactured."

+++++

NATIONAL GLASS BUDGET October 3, 1896

"A. H. Heisey, of the glass firm bearing his name at Newark, O., is looking for the man who started the report that his plant had been closed down owing to dullness in trade, with a razor. Mr. Heisey states that a three day's stop was made for the purpose of making necessary repairs and that trade conditions had nothing to do with matter." Sic.

+++++

CHINA, GLASS AND LAMPS January 13, 1897
A. H. HEISEY & CO.

"One of the best high class exhibits in pressed tableware in the house, or elsewhere, for that matter, is that made by A. H. Heisey & Co., of Newark, Ohio, in room 79. Their new pattern, No. 1205, is an imitation cut, the characteristics of which are the beaded or pillar line of light, supplemented with diamond pointed double incut parallel and cross lines, filled in with faceted hobnails, and quartered faceted squares, which, by their deep cutting and angular

structure, show off the crystal to fine advantage. The bowls are made in 10, 11 and 14 inches, serving for orange, fruit or punch bowls, and are made with or without foot. The nappies and square dishes of the set are exceptionally fine, are without mold mark, and are made to deliver in a manner which has puzzled the oldest glass makers. The pattern in the square dish has an exceptionally bright, pearly square line crossing the pattern, which has been admitted by rivals to be among the choicest pieces of pressed ware ever made. The 1205 pattern is very strong in nappies, bowls, celeries, creams, vases and rose bowls, and the water and wine sets, tumblers and goblets, in which the handsome figure of the pattern is finely brought out, make it one of the best high class lines on the market. The exhibit contains a few advance pieces of the new No. 1220 pattern, a combination of plain and figured line, the plain surface predominating, making it available as plain set, or for engraving and decoration. The new ware is finished so as to give it a blown shape, which lends it additional attractive." Sic.

+++++

CHINA, GLASS AND LAMPS February 3, 1897
A. H. HEISEY & CO.

Samples of Modern Pressed Glassware.

"Among American manufacturers who are fully up to date their lines of pressed glassware, prominence must be given by virtue of merit, to the A. H. Heisey & Co., of Newark, Ohio. Mr. Heisey was for many years identified with the old house of Geo. Duncan & Sons, for whom he sold goods on the road before becoming an active partner and officer of the company, and the experience thus gained as to the taste, requirements and demands of jobbers and consumers, has stood him in good stead ever since. The 16-pot factory built at Newark was started last spring, and one advantage of the new company consisted in the fact that there was an entire absence of old molds, patterns and designs to work off and sandwich between a few new patterns. Every pattern put on the market since last spring has been of original design, and while some old glass men thought it a mistake in the management to spring its third new tableware line on the market early in the fall, it has been found that the line is of sufficient merit to hold its place among the finest patterns shown this year, while new pieces have been constantly added to round out and keep the pattern, No. 1205, fresh and brilliant as the best. A glance at the various samples herewith shown will disclose its strong light reflecting qualities, the design consisting of crossed parallel incut lines looped and returned, with a round raised pillar line, making a strong

FASCINATING INSIGHTS INTO EARLY HEISEY HISTORY
Cont'd.

contrast between the deep cut lines and the filled in spaces of hob nail and faceted squares, which, with scalloped edges, make a very pretty and strong imitation cut pattern, showing off the excellent and clear metal to fine advantage." Sic.

++++
CHINA, GLASS AND LAMPS April 21, 1897

"A. A. Heisey & Co., Newark, Ohio, have stuck it rich in their new plain tableware set, and now a whole field full of imitators may be expected to come tumbling after." Sic.

++++
CHINA, GLASS AND LAMPS July 14, 1897

A. H. HEISEY & CO.

"A. H. Heisey & Co., of Newark, O., are getting out some very elegant gold edge decorations on their 1225 ware. They have other decorations too, but those we call attention to are among the finest that can be found anywhere and are fully up to the best French goods which are generally regarded by the trade as the topmost. The firm is making a strong bid for favor in the decorating line and the 1225 pattern is one which affords large scope for exertion in this direction. The outlines of the design are principally plain, but at the edges there is room for the introduction of an ornamentative feature and their decorator has availed himself of it to the fullest extent. We do not know of any more graceful pattern in the market and dealers seem to share in that opinion if we are to judge by the way they are ordering it." Sic.

++++
CHINA, GLASS AND LAMPS September 8, 1897

A. H. HEISEY & CO.'S 1235 Ware

We made brief reference last week to A. H. Heisey & Co.'s new pattern and have since received the illustrated catalogue representing it. They call it No. 1235 and it is the most elegant design we have yet seen in pressed glassware. The pieces are ornamented with fluting supplemented by chrysanthemums, which are as perfect representations of those pretty flowers as it is possible to make in glass. Beside the set there are hotel sugars and creams, individual sugars and creams, celeries, tumblers, pitchers of different sizes and shapes, tankard, berries, from 4 to 10-inch, nappies, from 4-1/2 to 8-inch, handled jellies, pickle tray, celery tray, oils, catsup, molasses can, salts and peppers, mustard and cover, toothpick, goblet, bar tumbler, salvers, cracker jar and cover, cake basket, water bottle, low foot bowls, footed jelly, 8-inch plate, high foot bowls, handled decanters, 9-inch plate and a full assortment of wine glasses, about 65 pieces in

all. The glass is of clear and bright metal and taking it all round the pattern has a tasteful and showy effect which cannot fail to impress buyers favorably. We anticipate a big demand for this line as it possesses all the requisites of a first class seller." Sic.

++++
CHINA, GLASS AND LAMPS January 12, 1898

A. H. HEISEY AND CO.--ROOM 23

A. H. Heisey & Co., of Newark, Ohio, have their exhibits in room 23 and Walter B. Lindsay has charge there. Their new pattern, No. 1255, of which there is a full line of about 80 pieces, must be allowed a foremost place among the season's novelties, as it is probably the finest the firm ever got out, and they have made many big successes in their time. There are in this line five sizes of pitchers, three of cracker jars, six of rose bowls, and four of vases running up from six to twelve inch, besides all the other articles that go to make a complete assortment of table glass. They have this elegant pattern decorated in green and gold as well as in plain, and it is taking better than anything they had for a long time. They have the 1225 line in new decorations of gold band and engraved and it is having a big run; the 1235, Chrysanthemum, line also keeping well to the front in favor. There are four new designs in gas and electric globes and a lot of novelties in miscellaneous goods, besides a full line of pressed bar ware, the whole constituting an assortment that is replete with everything needful in the lines covered." Sic.

HCA MEMBERS PRESENT PROGRAMS

Bob, Hilda and Connie Ryan did a talk on Feb. 20 for the Early American Glass Club in Carew Tower, Cincinnati, Ohio. They used the slide presentation prepared by Neila and Tom Bredehoff for Neila's talk at the Sandwich Glass Museum. They reported that 50 to 60 people were present and that the talk and slides were well received. They also took pieces of all production colors, old pressed pieces and later cut and etched items as well as several books on Heisey. They said they enjoyed doing the program and would like to do more of them. They generously donated the \$50 they received in payment to HCA as many of our speakers do. Thanks to all three of them for their generosity.

Dick Marsh made a presentation to the Granville Kiwanis Club on February 15 with 80 people present. He took along glass to illustrate his talk on Heisey history and glassware.

Jack Metcalf recently showed the movie, "The Heisey Glass Story" to a group in Utica, Ohio.

HEISEY DECORATIONS

448 Old Colony Etching

In 1930, the Heisey Co. introduced what was to be one of their most popular etchings. All in all, #448 Old Colony remained in production for about 9 years. Quite a lifetime when most of the etchings were only made for 3 to 6 years.

Old Colony was available on a myriad of different items and also was made on 4 different stem lines. No less than 63 items were etched in the Empress pattern alone. After Empress ceased, Old Colony was etched on Queen Ann - at least 28 pieces. Bar ware was also made and included the #4225 Cobel cocktail shakers in 1 and 2 qt. sizes, the #4002 Aqua Caliente cocktail and the #4163 16 oz. beer mug. With all these items available, it is a little surprising that only 2 types of candlesticks were listed with the etching - the #134 Trident and the #135 which was usually sold with the Empress line.

Collectors can still assemble sets in Old Colony, especially in sahara, the most available color. Practically any imaginable piece was available with the etching.

The Empress items were available in crystal, moongleam, flamingo and sahara. The 1 qt. Cobel cocktail shaker was also available in those four colors as was the #4002 Aqua Caliente.

The #3380 Old Dominion stem line, probably the most easy to find with the etching, was made in crystal, flamingo, sahara, moongleam stem with crystal bowl, moongleam bowl with crystal stem, and alexandrite. This stem line with the etching was discontinued by 1938.

#3389 Duquesne stems were available in crystal and sahara. #3390 Carcassonne stems were available in crystal, sahara, moongleam stem with crystal bowl, and flamingo. Carcassonne was also discontinued by 1938. Gascony (#3397) stems were available in sahara and crystal, with sahara being more plentiful than crystal.

Nice items to look for in the stem lines include the Old Dominion comport (same as Albemarle), the Carcassonne flagon, decanter and vase and the Gascony tomato juice pitcher, decanter and footed floral bowl.

The Old Colony etching is a familiar one to most Heisey collectors. It is basically a flower surrounded by highly stylized leaves all formed into a triangular shape. This triangle of pattern is repeated about the various etched items. It is a plate etching.

If some of you do not have the Addendum to the Etching Book, the following items should be added to your lists:

- #3390 CARCASSONNE 8 in ftd vase
- #1401 EMPRESS individual nut
- EMPRESS mustard & cover

By: Neila Bredehoft

- #1401½ EMPRESS cup (plain edge)
- #1183 REVERE 10 in plate
- REVERE 7 in plate
- REVERE cup & saucer
- REVERE oval baker

The following items and lines were etched with Old Colony:

- #3380 OLD DOMINION full stem line in crystal; flamingo; sahara; moongleam bowl & crystal stem; moongleam stem & crystal bowl; and alexandrite. 19 items including both tall and short stem goblets and champagnes
- #3389 DUQUESNE full stem line in crystal and sahara
- #3390 CARCASSONNE full stem line in crystal, sahara, moongleam stem & crystal bowl and flamingo. 19 items including the flagon, cigarette holder, jug, decanter and vase.
- #3397 GASCONY full stem line in crystal and sahara. 16 items including the tomato juice pitcher, decanter and floral bowl.
- # 500 OCTAGON ice tub in crystal and sahara
- #1401 EMPRESS in crystal, flamingo, sahara and moongleam. Approximately 63 items
- #1401½ EMPRESS cup (plain edge)
- #1509 QUEEN ANN in crystal. About 28 items.
- #2351 8 and 12 oz sodas in crystal
- #2401 5 oz soda in crystal
- #2930 PLAIN & FANCY 10 oz tumbler in crystal
- #3350 WAVASH 6 in plate in crystal
- #4002 AQUA CALIENTE 4 oz cocktail in crystal, moongleam, flamingo and sahara
- #4163 16 oz beer mug in crystal
- #4164 73 oz jug
- #4205 8 in ftd bud vase in crystal, moongleam, flamingo
- #4225 COBEL 1 qt cocktail shaker in crystal, moongleam, flamingo and sahara. The 2 qt. available in crystal only.
- # 134 TRIDENT 2 lt candlestick
- # 135 1 lt candlestick
- #1183 REVERE 5 items in crystal

While some of these items are marked, many are not. Much of the stemware is not marked, so learn to recognize the etching and the Heisey shapes. Happy looking!

See pictures next page.

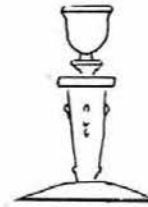
448 OLD COLONY
Plate Etching



3380 Old Dominion Goblet



134



135



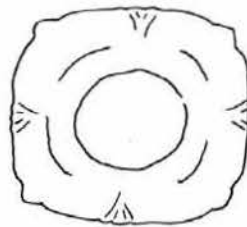
4002



#4225 Cobe1



4164



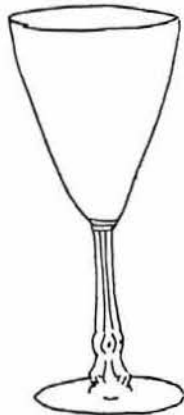
1509



#1401 Empress



#1509 Queen Anne



#3389 Duquesne



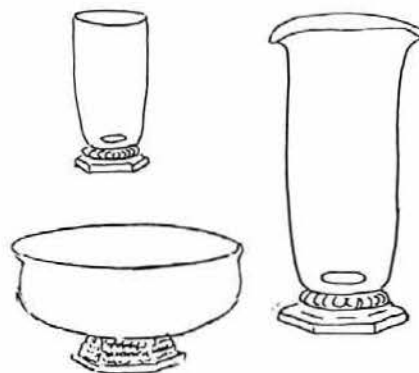
#3390 Carcassone



4163



4205



#3397 Gascony



Dolphin Footed Tumbler

LETTER TO HEISEY SALESMEN:

January 14, 1944

Beardshear Lower
Baumgardner Bosworth
Granville Woelfel
Nicholson Haslop

Gentlemen:

You are termed direct factory representatives and if you will turn in at the first of every month a detailed expense record of the previous month, we will then be able to deduct traveling expenses and Social Security from your gross commissions; then we will deduct 20% Withholding Tax on the remainder. If you do not do this, we will have to deduct the 20% Withholding Tax from your gross commissions. Try to make this expense record as accurate as possible as you will have to use it in filing your Income Tax Report. I would suggest that your list of expenditures be made under the following listings:

Auto expenses
Railroad and Pullman
Taxi, carfare and tips
Hotels and meals
Postage, wires and express
Entertainment, Shows and Parties
Refreshments, bars and liquor
Laundry and cleaning
Incidentals

This gives you nine listings which cover practically all expenditures. At the end of 1944, we will deduct these expenses from your gross income when filing your earnings record with the Government; this will save you a lot of trouble and grief in working up this expense account. This has been approved by the Treasury Dept. We have also been advised by the Treasury that the volume of salesmen's commissions will not be curtailed this year but there cannot be any change in rates paid. Don't forget, these expenses must be the same as you turn in to the Government for Federal Income Tax.

You do not have to list each item of expenditure under these various headings but show the total amount spent, such as Railroad and Pullman, \$55.00; Auto Expense, \$50.00; Taxi, carfare and tips, \$10.00, etc.

RCI:CC

Yours very truly,
R. C. Irwin

+++++

LETTER TO MR. WILSON HEISEY:

Mr. Wilson Heisey, Nov. 14th, '90
Denver, Col. Pittsburgh, Pa.

My Dear Son:

I had intended writing you but knew that the other portion of the family are keeping you posted of the news about home, so I can give you nothing new.

Since Grandma has sold her home, when do you expect to come home?

I am of the opinion that I will be in Denver before the holidays.

We are all well. Your turkeys are growing, but think we have only four left, the other having died. Jennie, Mr. Long has at home, and Jack is at the factory; want to send him up the river; will give him to Heisey Elliot.

Write me often; answer the letters that you receive prompt, and remember that you are my boy when an inclination to do wrong strikes you. I enclose you \$5.

Your Loving Father,
Dictated. A. H. Heisey.

Editor's Note: At the time this letter was written A. H. Heisey and James E. Duncan were co-owners of George Duncan and Sons Glass Co. and this letter was written on their letterhead. Wilson would have been fourteen at the time.

MOTHER DUCK AND DUCKLINGS

We now have yellow satin ducklings - floating and standing, at \$14.00 each - Satin Mother Duck, at \$29.95 each. With your 10% discount these would cost \$57.95 a set including shipping. Ohio Residents add 5-1/2% Sales Tax. This is a BEAUTIFUL set. (See Page 21.)

MALLARDS AND CYGNET

We will be having light blue mallards and cygnets in satin very soon. We are sending some down to Imperial to frost and should have them back in a week or so. We have samples and everyone who has seen them thinks they are lovely. See price list on Page 21 of this issue for costs on these items.

OSCARS

Order your Oscars soon. We have received half of our order and they are all sold. The emerald is a very deep green and looks very well with the rest of the set. It is nothing like the earlier Fern Green.

Next month the Oscar form will not be in the Heisey News as it has to make way for the Convention registration form. (See form on Page 23.)

NOTE OF THANKS

"Thank you", to all my Heisey friends and Clubs for the lovely cards, flowers and fruit sent me during my stay in the hospital. I really appreciated it.

Mary McWilliams
Club Secretary

MORE ON #3379 PYRAMID....

The 1921 price list contains a listing for a "6 oz Saucer Champagne", so the "Rhoda" stem is indeed a #3379 Pyramid saucer champagne as we indicated in a recent newsletter.

CLUB NOTES:

Last week end we had a Heisey Display at a Glass Show/Sale in Seattle. We took in six new members - 4 for HCA. Our meeting was that evening after the show with a turn out of 33. We showed the "Heisey Story." Afterwards the comments were: Beautiful! Beautiful! Speechless. I have seen it about 9 times - but it was new to most of our members.

For Show and Tell we had a 20" + Emerald Plaid Vase - Signed, Plain Fork and Spoon, Dawn Jelly Dish, (1565) Custard Cut Block Sugar, Flamingo Greek Key Punch Cup, Narrow Flute Moon-gleam Cream and Sugar for starters.

Most of our members are new collectors.
Willa Carty, WA

GATEWAY HCC

The Gateway Heisey Collectors Club started the year 1982 with its meeting at the home of Darlene Sanders. All members were in attendance except one who was escaping the winter in the Caribbean. The new officers were duly welcomed by President Robert Cook. There followed discussions regarding the convention, the making of new items in Heisey molds as Book Club promotions, and programs for the balance of the year. Afterwards, Margaret Reed presented a most interesting program on "Salt Dips" and she showed those from her collection augmented by many from the members.

Everyone then enjoyed a social happy hour prepared by the hostess and served on her flamingo Heisey.

HC OF TEXAS

In January HCT met at the Hulslanders. Reminder to all our members to start looking for those good Heisey pieces to donate to our "Blind Auction" in March. All proceeds will go to buying Heisey toothpicks for our Museum in Newark. Program on Heisey baskets was presented by Roger Hulslander with a number of baskets displayed. Show and Tell was outstanding with a bantam rooster cocktail taking our breath away, followed by two tall cut Aristocrat candy jars, #3480 cut pitcher, and cobalt Warwick toothpick (candlestick).

"Salad Supper" was enjoyed by all in February at the Buchanans. Program on Ring Band was given by Gerald Buchanan with a table set of Custard Ring Band plus Custard Berry Bowl set, plus - plus. Jan Baird was the winner of a very difficult test with almost perfect core (90%), reaching in a brown bag (no peeking) and writing down the Heisey pattern. Have you ever run across Charlie spelled JAN? A Kerosene Banquet Lamp was the find in Dallas this month and was a sight many of us Texans had not seen.

Since last we wrote to HCA, Jim & Babs Silz have become members of our Club; we would officially like to welcome them to Texas and to HCT.

HCT has a few membership openings for anyone in Dallas/Fort Worth area, if interested ya' ll call 214/279-0018 or 214/492-2775.

Erma Hulslander, Secy.

BAY STATE HCC

The BSHCC met at the Follen in Lexington, MA on Feb. 9, 1982, with sixteen members present. President Lloyd Caswell called the meeting to order with a discussion on the price book that is going to be published in Ohio. By the way, our new meeting place in Lexington is quite nice. It was a good choice by the committee that found it.

Helen & Ted Mead were in charge of the program for the evening which was Colognes, Perfumes and Puff Boxes. A number of articles were brought for the program, herewith are some that were brought:

No. 4 & 5 Puff Box	- #1720 Grid Puff Box
No. 515 Cologne	- No. 503 Cologne
#1469 Cologne	- #1205 Fancy Loop
#1503 Crystolite	Perfume
Perfume	- #1504 Regency
Quilt Perfume?	Cologne

Ted Mead did a slide show that was quite unique. He photographed different pieces of Heisey at different angles and we were to identify the pattern or piece. Ted and Helen came up with a good idea that was quite enjoyable also. Their program was very good. We hope to have more like them.

With the bad weather upon us people are not going out as often. This was evident as to Show and Tell. David Steer did S & T. As always he did a fine job with limited amount brought. Here are the items shown:

- #3366 Soda with Trojan Etch
- * # 325 Pillows Pickle Boat in Flamingo, A goodie.
- # 352 Flat Panel Oil

Jean Walters and Jane Cherney did the refreshments and as always the food and coffee were good.

George Gleason

FAR EAST HC

The Far East Heisey Club met at the home of Betty & Burl Whaley in Pataskala, Ohio, on February 24th. New members taken in were Jim and Virginia Speelman, Newark, and Jim Umstead, Columbus. When this club was begun in 1970 members were mostly from the far east side of Franklin County, thus the name.

The club later became Charter Club #3 of Heisey Collectors of America. It now has 17 members from Reynoldsburg, Columbus, Upper Arlington, Newark and Pataskala.

Officers were elected for the coming year as follows:

- President, Mary Brush
- Vice President, Mollie Miller
- Secretary-Treasurer, Wanda Lybarger

After the meeting Burl showed his mug collection which was quite interesting. Most people did not realize how many mugs Heisey made. The next meeting will be at the home of Mr. & Mrs. Ben Bennett in Columbus. Louise Ream

PRICES REALIZED AT THE ALL HEISEY BENEFIT AUCTION - MARCH 12 & 13, 1982

1.	20.00	93.	\$ 7.00	185.	\$ 10.00	277.	\$ 17.50	369.	\$ 15.00	457.	\$ 70.00
2.	20.00	94.	7.50	186.	75.00	278.	17.50	370.	25.00	458.	10.00
3.	55.00	95.	22.50	187.	15.00	279.	37.50	371.	40.00	459.	35.00
4.	50.00	96.	32.50	188.	12.50	280.	15.00	372.	25.00	460.	17.50
5.	30.00	97.	35.00	189.	30.00	281.	25.00	373.	165.00	461.	17.50
6.	35.00	98.	17.50	190.	20.00	282.	50.00	374.	30.00	462.	22.50
7.	5.00	99.	65.00	191.	17.50	283.	45.00	375.	60.00	463.	10.00
8.	45.00	100.	17.00	192.	22.50	284.	45.00	376.	80.00	464.	40.00
9.	30.00	101.	25.00	193.	9.00	285.	15.00	376A.	45.00	465.	30.00
10.	80.00	102.	37.50	194.	37.50	286.	35.00	377.	50.00	466.	115.00
11.	67.50	103.	27.50	195.	24.00	287.	27.50	378.	192.50	467.	45.00
12.	70.00	104.	62.50	196.	15.00	288.	20.00	379.	25.00	468.	17.50
13.	40.00	105.	47.50	197.	18.00	289.	15.00	380.	5.00	469.	35.00
14.	20.00	106.	25.00	198.	21.00	290.	300.00	381.	85.00	469A.	32.00
15.	20.00	107.	7.50	199.	24.00	291.	17.50	382.	45.00	470.	70.00
16.	45.00	108.	30.00	200.	25.00	292.	15.00	383.	37.50	471.	35.00
17.	45.00	109.	52.50	201.	35.00	293.	27.50	384.	20.00	472.	25.00
18.	32.50	110.	17.50	202.	12.00	294.	100.00	385.	22.50	473.	17.50
19.	25.00	111.	17.50	203.	25.00	295.	140.00	386.	65.00	474.	35.00
20.	22.50	112.	10.00	204.	17.50	296.	190.00	387.	65.00	475.	22.50
21.	15.00	113.	32.50	205.	7.50	297.	30.00	388.	20.00	476.	35.00
22.	15.00	114.	30.00	206.	30.00	298.	25.00	389.	17.50	477.	30.00
23.	15.00	115.	95.00	207.	17.50	299.	25.00	390.	10.00	478.	90.00
24.	25.00	116.	18.00	208.	32.50	300.	125.00	391.	25.00	479.	12.50
25.	20.00	117.	37.50	209.	15.00	301.	25.00	392.	15.00	480.	60.00
26.	56.00	118.	30.00	210.	15.00	302.	180.00	393.	10.00	481.	62.50
27.	42.00	119.	32.50	211.	20.00	303.	80.00	394.	10.00	482.	80.00
28.	80.00	120.	12.50	212.	15.00	304.	17.50	395.	10.00	483.	17.50
29.	30.00	121.	35.00	213.	12.50	305.	25.00	396.	75.00	484.	15.00
30.	67.50	122.	18.00	214.	15.00	306.	55.00	397.	30.00	485.	30.00
31.	18.00	123.	30.00	215.	17.50	307.	27.50	398.	50.00	486.	32.50
32.	100.00	124.	32.00	216.	30.00	308.	60.00	399.	180.00	487.	25.00
33.	17.50	125.	15.00	217.	5.00	309.	27.50	400.	237.50	488.	20.00
34.	7.00	126.	20.00	218.	35.00	310.	22.50	401.	40.00	489.	25.00
35.	17.50	127.	2.50	219.	75.00	311.	6.00	402.	45.00	490.	25.00
36.	5.00	128.	12.50	220.	60.00	312.	18.00	403.	50.00	491.	30.00
37.	40.00	129.	10.00	221.	30.00	313.	60.00	404.	55.00	492.	7.50
38.	64.00	130.	20.00	222.	52.50	314.	6.00	405.	30.00	493.	25.00
39.	56.00	131.	22.50	223.	15.00	315.	15.00	406.	60.00	494.	50.00
40.	85.00	132.	42.00	224.	15.00	316.	40.00	407.	52.50	495.	32.00
41.	80.00	133.	30.00	225.	22.50	317.	90.00	408.	25.00	496.	75.00
42.	30.00	134.	15.00	226.	15.00	318.	60.00	409.	90.00	497.	35.00
43.	45.00	135.	30.00	227.	12.50	319.	36.00	410.	35.00	498.	90.00
44.	22.50	136.	20.00	228.	7.00	320.	70.00	411.	50.00	499.	165.00
45.	40.00	137.	7.50	229.	15.00	321.	60.00	412.	70.00	500.	30.00
46.	60.00	138.	15.00	230.	12.50	322.	110.00	413.	60.00	501.	32.50
47.	42.50	139.	7.00	231.	4.00	323.	50.00	414.	175.00	502.	50.00
48.	27.50	140.	20.00	232.	63.00	324.	55.00	415.	35.00	503.	60.00
49.	70.00	141.	16.50	233.	75.00	325.	60.00	415A.	70.00	504.	85.00
50.	40.00	142.	60.00	234.	25.00	326.	20.00	416.	10.00	505.	60.00
51.	17.50	143.	54.00	235.	2.00	327.	40.00	417.	22.50	506.	120.00
52.	20.00	144.	15.00	236.	24.00	328.	45.00	418.	25.00	507.	225.00
53.	22.50	145.	25.00	237.	20.00	329.	100.00	419.	35.00	508.	50.00
54.	32.50	146.	30.00	238.	12.50	330.	135.00	420.	60.00	509.	85.00
55.	32.50	147.	27.50	239.	5.00	331.	140.00	421.	40.00	510.	45.00
56.	15.00	148.	12.50	240.	17.50	332.	40.00	422.	35.00	511.	80.00
57.	20.00	149.	25.00	241.	49.00	333.	225.00	423.	20.00	512.	55.00
58.	45.00	150.	17.50	242.	45.00	334.	45.00	424.	80.00	513.	110.00
59.	27.00	151.	27.50	243.	60.00	335.	20.00	425.	325.00	514.	35.00
60.	55.00	152.	22.50	244.	60.00	336.	22.00	426.	45.00	515.	30.00
61.	22.50	153.	40.00	245.	5.00	337.	15.00	427.	400.00	516.	30.00
62.	80.00	154.	27.50	246.	10.00	338.	15.00	428.	22.50	517.	180.00
63.	42.00	155.	7.50	247.	17.50	339.	30.00	429.	290.00	519.	190.00
64.	50.00	156.	30.00	248.	10.00	340.	35.00	430.	37.50	520.	190.00
65.	10.00	157.	10.00	249.	22.50	341.	20.00	431.	25.00	521.	65.00
66.	5.00	158.	22.50	250.	20.00	342.	40.00	432.	17.50	522.	150.00
67.	6.00	159.	37.50	251.	25.00	343.	115.00	433.	45.00	523.	75.00
68.	15.00	160.	40.00	252.	20.00	344.	48.00	434.	40.00	524.	90.00
69.	20.00	161.	50.00	253.	10.00	345.	65.00	435.	17.50	525.	17.50
70.	27.00	162.	25.00	254.	60.00	346.	120.00	436.	60.00	526.	20.00
71.	25.00	163.	44.00	255.	90.00	347.	27.00	437.	17.50	527.	62.50
72.	85.00	164.	20.00	256.	45.00	348.	50.00	438.	40.00	528.	60.00
73.	33.00	165.	30.00	257.	37.50	349.	37.50	439.	20.00	529.	90.00
74.	15.00	166.	30.00	258.	40.00	350.	216.00	440.	37.50	530.	75.00
75.	12.00	167.	12.50	259.	20.00	351.	302.50	441.	37.50	531.	700.00
76.	35.00	168.	10.00	260.	45.00	352.	155.00	442.	17.50	532.	700.00
77.	20.00	169.	72.00	261.	50.00	353.	35.00	443.	17.50	533.	60.00
78.	9.00	170.	62.50	262.	45.00	354.	175.00	444.	20.00	534.	60.00
79.	6.00	171.	30.00	263.	35.00	355.	22.50	445.	35.00	535.	90.00
80.	32.50	172.	40.00	264.	85.00	356.	20.00	446.	75.00	536.	165.00
81.	42.00	173.	30.00	265.	50.00	357.	92.50	447.	270.00	537.	45.00
82.	16.00	174.	24.00	266.	37.50	358.	55.00	448.	75.00	538.	280.00
83.	12.50	175.	55.00	267.	220.00	359.	42.50	448A.	75.00	539.	120.00
84.	20.00	176.	30.00	268.	50.00	360.	30.00	448B.	75.00	540.	60.00
85.	25.00	177.	35.00	269.	160.00	361.	40.00	449.	75.00	541.	200.00
86.	20.00	178.	40.00	270.	55.00	362.	90.00	450.	500.00	542.	80.00
87.	15.00	179.	65.00	271.	27.50	363.	100.00	451.	100.00	543.	90.00
88.	8.00	180.	15.00	272.	80.00	364.	70.00	452.	45.00	544.	140.00
89.	40.00	181.	10.00	273.	40.00	365.	22.50	453.	65.00	545.	90.00
90.	30.00	182.	20.00	274.	50.00	366.	50.00	454.	140.00	546.	75.00
91.	20.00	183.	35.00	275.	130.00	367.	110.00	455.	170.00	547.	75.00
92.	30.00	184.	22.50	276.	35.00	368.	40.00	456.	70.00	548.	100.00

PRICES ARE BY THE ENTIRE LOT - NOT EACH

Cont'd. on Page 15

Auction List Cont'd.

549.	25.00	617.	100.00
550.	110.00	618.	10.00
551.	50.00	619.	37.50
551A.	50.00	620.	15.00
552.	50.00	621.	10.00
553.	475.00	622.	25.00
554.	155.00	623.	20.00
555.	190.00	624.	40.00
556.	30.00	625.	60.00
557.	35.00	626.	15.00
558.	35.00	627.	10.00
559.	35.00	628.	65.00
560.	110.00	629.	25.00
561.	45.00	630.	30.00
562.	90.00	631.	50.00
563.	175.00	632.	10.00
563A.	22.50	633.	45.00
564.	200.00	634.	50.00
565.	200.00	635.	45.00
566.	50.00	636.	40.00
567.	70.00	637.	37.50
568.	35.00	638.	120.00
569.	40.00	639.	30.00
570.	50.00	640.	60.00
571.	200.00	641.	12.50
572.	30.00	642.	45.00
573.	40.00	643.	20.00
574.	70.00	644.	15.00
575.	90.00	645.	47.50
576.	40.00	646.	42.50
577.	40.00	647.	35.00
578.	30.00	648.	22.50
579.	45.00	649.	15.00
580.	44.00	650.	20.00
581.	30.00	651.	32.50
582.	30.00	652.	80.00
583.	40.00	653.	12.50
584.	45.00	654.	20.00
585.	190.00	655.	15.00
586.	35.00	656.	27.50
587.	32.50	657.	30.00
588.	100.00	658.	22.50
589.	12.50	659.	32.50
590.	30.00	660.	15.00
591.	35.00	661.	42.50
592.	27.50	662.	37.50
593.	140.00	663.	37.50
594.	22.50	664.	25.00
595.	300.00	665.	12.50
596.	22.50	666.	12.50
597.	375.00	667.	20.00
598.	300.00	668.	12.50
599.	45.00	669.	5.00
600.	55.00	670.	20.00
601.	50.00	671.	75.00
602.	60.00	672.	50.00
603.	55.00	673.	45.00
604.	7.00	674.	70.00
605.	23.00	675.	40.00
*606.	27.50	676.	40.00
608.	50.00	677.	36.00
609.	50.00	678.	6.00
610.	180.00	679.	40.00
611.	190.00	680.	28.00
612.	110.00	681.	50.00
613.	14.00	682.	30.00
614.	95.00	683.	15.00
615.	45.00	684.	57.00
616.	80.00		

685.	35.00
686.	25.00
687.	15.00
688.	17.50
689.	22.00

* 518.	55.00
* 607.	32.00



Sugar



Cracker Jar

1235 Beaded Panel and Sunburst
Mentioned on Page 9

LETTERS, WE GET LETTERS

The best thing we did a year ago was join the Northwest Heisey Collectors and the HCA. What a year! It has been super. We've made so many new friends, learned so much about Heisey—we could go on and on.

One thing I like very much about our club is this: none of the advanced collectors and older (in terms of membership) members of our club ever make us novices feel embarrassed about our lack of knowledge or our exuberance at finding a piece of Heisey that may be quite ordinary to a lot of them. In fact they are joyous, enthusiastic and encouraging to us in every area. Needless to say, we all look forward to the first Saturday of the month with great anticipation.

Marilyn Pederson, WA

Q AND A

Q. Would like to know if you have any information on some stemware I have. I have written Libbey's and they seem to think that they might have been manufactured by Heisey Glass. Stemware has roosters on the stem and the set of six have 6 different colors brown, pink, green, blue violet and yellow. Would appreciate any information you might have. I have been unable to find these in any collectors books. Would like to know what they are worth and when they were manufactured.

Thank you
George A. Hartog, UT

A. The stemware which you have was made by Morgantown. Heisey did make a rooster cocktail but it is a little "tight" rooster while these have the stretched out neck and tail. We assume they were made in the 40's and 50's but I do not have an exact date. I do not know their value but I am sure it does not compare to that of the Heisey ones. Heisey made theirs in crystal only.

Morgantown is a defunct factory which used to be in Morgantown, West Virginia. As far as we know, no glass is made there.

I am sorry they are not Heisey but I once had a set myself along with a cocktail shaker with the same rooster on top. That was before I learned so much about Heisey and I was disappointed too.

Louise Ream



Heisey Bantam Rooster



Morgantown.

Continued from page 2

was not discussed sufficiently to reach any conclusion. It is my feeling that they will not produce any item for anyone or themselves in colors or like colors that were produced by Heisey. We will get back with them and get a clear understanding of this.

This was a very enjoyable meeting for all of us and we found them willing to cooperate with us in every way. They realize that we are a good customer and they don't want to hurt us since that would also hurt them. I feel that this meeting will bring our relationship even closer because we all got to know one another a little better.

The Convention Registration Form will be in the next newsletter.

Bob



Spoon.



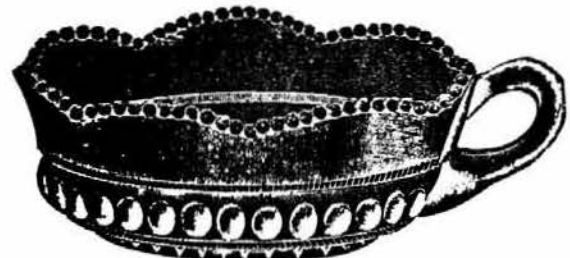
Wine.
Made Straight and Cupped.

1205 Fancy Loop



7 oz. Molasses Can, Plated Top.

These are some of the items from patterns mentioned on Pages 8 and 9.



5 1/2 in. Hdl. Jelly

1220 Puntty Band



1225 Plain Band



13 oz. Molasses Can.

R. KAUFOLD
40 KATHARINE AVE,
OCEAN VIEW, N. J.
08230

609-398-4627
UPS - P&I EXTRA
* = MARKED

500 OCTAGON cream&sugar, Flamingo*... \$ 35.00
1255 PINEAPPLE & FAN vase 12"..... 30.00
411 RIB & PANEL 2 hdlld jelly, Hawth* 32.00
1469 RIDGELEIGH creamer *..... 15.00
465 Candy Jar, iridized *..... 35.00
No. 10-10 floral bowl, Moongleam *.... 28.00
1401 EMPRESS 8" nappy, Moongleam *.... 10.00
1401 EMPRESS 8" nappy, Flamingo *..... 8.00
1401 EMPRESS punch cups, crystal (1935 era) *..... 8 @ .. 12.50
341 PURITAN stem 2½ or 3 oz *. 4 @... 12.00
1295 BEAD SWAG opal sm berry bowl..... 25.00
585 soda, narrow optic * 6 oz (HEISEY NEWS 10-'81)..... 6 @... 11.50
1183 2 hdlld cheese plate-cry w/amber flash & etch *..... 35.00
1503 CRYSTOLITE candy dish bottom *... 10.00
1503 CRYSTOLITE Lid for 6" preserve... 5.00
1540 LARIAT bowl, crimped..... 25.00
429 sugar bowl * no lid, Pat date 5-10-10..... 15.00
1248 "KELLY'S" stem book p. 79 *..... 8.00
1250 "HETRICK'S" stem book p. 80 *.... 8.00
1506 WHIRLPOOL* red - Heisey by Imperial 9 oz tumbler.....4 @..... 10.00

RHODEN'S ANTIQUES 217-662-6758
R R 1 Box 539 P & I EXTRA
GEORGETOWN, ILL 61846 *= SIGNED

341 PURITAN* low ftd sherbet, scalloped 3 oz.....(5).....ea..... \$ 15.00
351 PRISCILLA * creamer..... 18.00
433 GRECIAN BORDER * banana split, ftd * 7" plate (some wear)..... 17.00
* 5" nappy...(5).....ea... 20.00
1401 EMPRESS* 7½" plates, Moongleam.. (8).....ea... 15.00
1503 CRYSTOLITE 8" cheese plate, oval, 2 hdlld. (some wear)..... 22.00
1540 LARIAT Luncheon Set:
4 - 8" plates
4 cups * (2 sm chips on base of 1 cup)
4 - saucers.....ALL.. 120.00
1540 LARIAT Punch Bowl, Underplate, 12 Cups*, & hangers, Ladle in Original box-Will Not Ship..... 350.00
1567 PLANTATION * salt & pepper(cloudy) 22.00
3404 SPANISH 2½ oz wine (S monogram)(6).....ea. 25.00
GOOSE-Wings Half Way..... 110.00

* LAWRENCE E. MURPHY 515-377-2929
* PO BOX 281 P&I EXTRA
* COLO, IOWA 50056 * = MARKED

* SAHARA -- OLD COLONY ETCHED
* 1401 11" console bowl, dolphin ftd..... \$ 75.00
* 1401 cups & saucers, 7 sets* sq...set.. 25.00
* 1401 cream & sugar, d. f. *.....set.. 45.00
* 1401 relish, 13"..... 28.00
* 134 Sahara oval bowl, not etched..... 75.00
* 135 candle holders, pr, OLD COLONY pr 75.00
* 1401 Tangerine plate 8" EMPRESS *.... 175.00
* 1469 RIDGELEIGH candelabra with prisms* 75.00
* 7022 REVERSE S (ATHENA) 12" bowl..... 27.50
* 7022 REVERSE S (ATHENA) 12" shallow bowl 22.50
* CRYSTOLITE
* 1503 8 cups* & saucers 8 not marked..set 22.50
* 1503 cups 7 only *.....ea. 15.00
* 1503 ice bucket, with handle *..... 67.50
* 1503 7" plates 9 each not marked.....ea 7.50
* 1503 4" nappy * 6 ea.....ea 6.50
* 1503 oval console bowl 12½"..... 27.50
* 1503 water jug - no mark - shows wear... 57.50
* 1503 plates 8" - 3 ea not marked.....ea 8.50
* 1503 punch bowl & 10 cups all marked.... 175.00
* 1540 LARIAT plates 10"* some wear....ea 15.00
* 1445 GRAPE CLUSTER candelabra*..... 85.00

* Shawl Dancer-not marked-bought as Heisey
* Goblets-4 ea; Champagnes-6 ea; Plates 8"-8 ea
* all for \$225.00
* 1503 CRYSTOLITE cherry jar w/ladle*..... 37.50

* M. J. LONG 614-451-2959
* 90 EAST BEECHWOLD BL. AFTER 7 PM
* COLUMBUS, OH 43214

* SHIPPING AND INSURANCE EXTRA
* OLD WILLIAMSBURG
* 7 oz goblet *.....(3)..... \$ 15.00
* 5 oz low ftd sherbet * ... (5)..... 12.00
* 5 oz high ftd sherbet *... (5)..... 12.00
* 3 oz cocktail *.....(8)..... 15.00
* 1½ oz wine *.....(2)..... 15.00
* 1 pint jug *..... 40.00
* 5 oz ftd juice *.....(4)..... 10.00
* 1150 8½" colonial plates(9)..... 8.00
* 341 8 oz tumbler *.....(3)..... 8.00
* 341 PURITAN covered butter *..... 80.00
* 341 6½" grapefruit plate*....(4)..... 8.00
* 341 small chive jar & top *..... 40.00
* 339 CONTINENTAL jelly compote* gold band 45.00
* 351 PRISCILLA 2 hdlld ftd jelly *..... 40.00
* 353 Straw jar & cover *..... 50.00
* 393 Sherbet *.....(3)..... 10.00
* 359 11 oz ftd ice tea *.....(18)..... 15.00
* 1503 CRYSTOLITE punch cups * ... (20)... 7.00
* 1183 REVERE 8" wine cooler, floral cut 200.00
* 3411 MONTE CRISTO cordial.....(2)..... 45.00



HEISEY REFERENCE PUBLICATIONS

If your order totals \$50 - \$250 you may deduct 10%
 25% discount on orders \$250 and over.
 (No hand selection at this price.)
 Please add 10% for Shipping & Handling (\$1.50 Min.
 on Glass Items except Cup Plates)* See Page 3.
 Ohio Residents add 5-1/2% Sales Tax.
All prices payable in U. S. Funds

ORDER FROM: H.C.A. SALES
 Dept. F
 P.O. Box 27
 Newark, OH 43055



PLEASE KEEP THIS FOR FUTURE REFERENCE

Please order by Item and Number:
 Make checks payable to H.C.A., Inc.

1. THE HEISEY ANIMALS, by James McDermott.....\$ 3.00
 Pictures all 56 animals produced by Heisey. States size of each animal.
2. THE HEISEY ANIMALS, ETC. BOOK II, by Robert Coyle, Lynn Block, Art Hartman.....\$ 3.50
 Pictures items using the animal figure as stem, stopper, handle, flower frog, ash tray, etc.
3. *COMBINATION PRICE GUIDE FOR ANIMAL BOOKS I & II, by the authors.....\$ 1.50
4. HEISEY'S GLASSWARE OF DISTINCTION, by Mary Louise Burns. Revised.....\$ 11.95
 Includes additional patterns, new illustrations, many new listings. Shows all major patterns, many stems, cuttings and etchings.
5. PRICE GUIDE FOR BURNS BOOK, by Mary Louise Burns.....\$ 5.95
 Both books #4 & #5 for.....\$ 16.50
6. HEISEY GLASSWARE, by Viola Cudd, Hardback book published by the author.....\$ 10.00
 245 Pages including many late stemware items.
7. HEISEY GLASS IN COLOR, BOOK 2, by Loren & Virginia Yeakley. More than 750 items.....\$ 12.50
 pictured in color. Comprehensive discussion of each. Includes value and rarity guide, 60 pages:
8. ENCYCLOPEDIA OF HEISEY GLASSWARE, VOL. I, ETCHINGS AND CARVINGS, by Louise Ream,.....\$ 10.95
 Tom and Neila Bredehoff...over 1500 pictures. Contains 228 pages clearly illustrating all known etchings and carvings made by Heisey. Defines the process used by Heisey for etching and carving and lists all items offered in different etchings.
- 8A. FORTY PAGE ADDENDUM TO #8.....\$ 3.50
 Both books #8 & #8A for.....\$ 13.50
15. HEISEY CATALOG AND FACTORY PRICE LIST, by Antiques Research Publications. Catalog.....\$ 6.95
 reprint #33 dated June 1, 1956. Last catalog published by the company. Complete listings of patterns offered by Heisey when they discontinued operations in 1957.
22. HEISEY STEMS, by Bradley, Ryan and Ryan. Comprehensive book on more than 350 pressed...\$ 20.00
 and blown stems. A must for the stem collector. 240 pages.
25. VERLYS PRICE GUIDE, by Northwest Heisey Collectors Club.....\$ 1.95
26. CATALOG & PRICE LIST #32, Complete reprint of 1953 catalog. Added information.....\$ 9.95
 and price guide. The best book on late production.
55. HEISEY'S CUT HANDMADE GLASSWARE, by Harold E. Willey. Reprint of old catalogs.....\$ 5.95
 showing some of the many cuttings by Heisey, mostly on stemware. Good clear pictures.
61. SALTS AND PEPPERS CATALOG, by Columbia Heisey Collectors. Reprint of 1910 catalog.....\$ 3.00
 30 pages. Includes comprehensive price guide by Research and Archives.
68. HEISEY BY IMPERIAL AND LENOX IMPERIAL, by Newark Heisey Collectors Club.....\$ 5.95
 50 pages. Soft bound. Includes price trends and color plate. Every piece of every pattern made by Imperial is listed and priced in all colors used for the pattern. All items are dated. A must for the collector or dealer specializing in Heisey glass. Many items are already collectible.
77. COLORED GLASSWARE OF THE DEPRESSION ERA 2, by Hazel Marie Weatherman, 1000 patterns from...\$ 25.00
 43 glass companies which were operating during the depression era. Includes both machine and hand made glass. 400 pages.

ANIMALS AND MISCELLANEOUS ITEMS FOR SALE

27.	TIE TAC in shape of DIAMOND H.....	\$ 9.00
28.	CHARM in shape of DIAMOND H.....	\$ 8.00
30.	COLOR POST CARDS OF THE HEISEY MUSEUM (outside), Minimum order...12.....	\$ 1.50
31.	BLACK AND WHITE POST CARDS OF THE FACTORY (outside), Minimum order...12.....	\$ 1.50
33.	SOUVENIR PENS, National Heisey Glass Museum.....	\$.25
34.	LEADED GLASS DIAMOND H WINDOW ORNAMENTS.....with hanger.....	\$ 7.50
35.	WOODEN BOOKENDS TO HOLD PLATES (Land of Legend series).....set.....	\$ 10.50
36.	BUTTONS with sayings, "Ask Me About Heisey", "Heisey Collectors of America, Inc.", Ea.... "Buy Heisey", "I Belong to H.C.A.", "I Live in Heiseyland U.S.A.", "I Dig Heisey" and "Heisey Keeps Me Poor! But Happy!."	\$.75
39.	BACK ISSUES OF THE HEISEY NEWS.....Each Volume..... Volume I, II, IV, V, VI, VII, VIII, IX & X. Reprints of all issues of Heisey News in their entirety. Much valuable information in each issue.	\$ 9.00
40.	IMPERIAL REISSUE OF #I HEISEY MADONNA, Frosted. Marked LIG.....	\$ 19.00
41.	IMPERIAL ELEPHANT HANDLED FAIRY TALE MUG. Marked LIG, Crystal.....	\$ 8.50
45.	HEN, available in milk glass. Limited edition of 1999...Made in original Heisey molds by Imperial Glass Corp. exclusively for Heisey Collectors of America, Inc. 4-1/4" high. Marked IG. SECONDS ONLY AVAILABLE.	\$ 9.00
46.	CHICKS, head up and head down, available in milk glass. Limited..... Pair..... edition of 3292 heads down chick...and 2866 heads up chick...Made in original Heisey molds by Imperial Glass Corp. exclusively for Heisey Collectors of America, Inc. 1" high. Head Down Chick...Marked IG. SECONDS ONLY AVAILABLE.	\$ 3.00
47.	ROOSTER, available in milk glass. Limited edition of 1457...Made in original Heisey molds by Imperial Glass Corp. exclusively for Heisey Collectors of America, Inc. 5-5/8" high. Marked IG. SECONDS ONLY AVAILABLE.	\$ 17.50
48.	#1560 VICTORIAN GIRL BELLE, available in milk glass, rose pink, sunshine yellow, light... blue and light green (plain) Light blue, rose pink, sunshine yellow and light green (frosted)..... Marked IG...Made in original Heisey molds by Imperial Glass Corp. exclusively for Heisey Collectors of America, Inc. - 4-1/4" high.	\$ 8.00 \$ 9.00
49.	SCOTTIE, available in milk glass. Limited edition of 1617...Made in original Heisey molds by Imperial Glass Corp. exclusively for Heisey Collectors of America, Inc. 3-1/2" high. Marked IG. SECONDS ONLY AVAILABLE	\$ 5.00
50.	PLATE HANGERS for 8" plates to hang in a series from one nail. Ideal for H.C.A...each... souvenir plates.	\$.65
50B.	PLATE HANGERS for cup plates to hang in a series..4" Brass.....each...\$.65
52.	9" CERAMIC PLATE, showing Heisey Museum, fall decor. Marked Newark, Ohio 1978.....	\$ 2.50
57.	BABY ELEPHANT, Rose Pink Satin. Marked LIG. NOT a limited edition 4-1/2" high.....	\$ 22.00
58.	PAIRPOINT CUP PLATE, Pressed copy of Lancaster Etching. Crystal and Vaseline.....	\$ 6.00
58B.	PAIRPOINT CUP PLATE, Fandango Pitcher...Crystal and Vaseline limited to 1000.....	\$ 6.00
58C.	PAIRPOINT CUP PLATE, Fandango Pitcher, Crystal with a 3-size scallop.(New Border).....	\$ 6.00
58D.	PAIRPOINT CUP PLATE, Horse and Rider, Amber with double/single scallop..Limited 595.....	\$ 6.00
58E.	PAIRPOINT CUP PLATE, Horse and Rider, Crystal with a 3-size scallop. (New Border).....	\$ 6.00
58F.	PAIRPOINT CUP PLATE, Heisey Museum, Light Green, D/S scallop (New Border) Limited 520....	\$ 6.00
59.	OLD WILLIAMSBURG BELL, crystal, amber, ultra blue, nut brown, verde, sunshine yellow..... and rose pink. (Ruby \$16.00)	\$ 14.00
60.	OLD WILLIAMSBURG SALT AND PEPPER SET, crystal, amber, ultra blue, nut brown, verde..... sunshine yellow and rose pink.	\$ 9.00

64. TIGER PAPERWEIGHT, opaque jade. Marked LIG....NOT a limited edition. 2-3/4" high.....\$ 15.00
65. WINGS-UP MALLARD, available in light blue. Limited edition of 1811. Made in.....\$ 13.00
original Heisey molds by Imperial Glass Corp. exclusively for Heisey Collectors of
America, Inc. 6-3/" high. Marked IG. - Blue Satin.....\$ 14.00
66. WINGS-HALF MALLARD, available in light blue. Limited edition of 1893. Made in.....\$ 13.00
original Heisey molds by Imperial Glass Corp. exclusively for Heisey Collectors of
America, Inc. 5" high. Marked IG. - Blue Satin.....\$ 14.00
67. PLAYING CARDS...Prices include shipping. (Shipped U.P.S.) Single Deck.....\$ 3.45
Double Deck in plastic box.....\$ 5.75
Red or blue border. Double decks have one of each. With other orders \$2.20 & \$4.50.
69. BABY ELEPHANT, pink carnival...NOT a limited edition. Marked LIG....4-1/2" high.....\$ 20.00
70. WINGS-DOWN MALLARD, available in light blue. Limited edition of 1316. Made in.....\$ 13.00
original Heisey molds by Imperial Glass Corp. exclusively for Heisey Collectors of
America, Inc. Marked IG. 4-1/2" high. - Blue Satin.....\$ 14.00
71. CYGNET, Light blue. Limited edition of 1280. Made in original Heisey molds by Imperial..\$ 13.25
Glass Corp. exclusively for Heisey Collectors of America, Inc. Marked IG. -Blue Satin..\$ 14.00
72. STANDING DUCKLING, Sunshine Yellow, Limited Edition of 1490. (1150 Plain and.....\$ 14.00
340 Satin). Made in the original Heisey Molds by Imperial Glass Corporation,
exclusively for Heisey Collectors of America, Inc. Marked IG - 2-5/8" high.
73. FLOATING DUCKLING, Sunshine Yellow, Limited Edition of 1375. (1035 Plain and.....\$ 14.00
340 Satin). Made in the original Heisey Molds by Imperial Glass Corporation,
exclusively for Heisey Collectors of America, Inc. Marked IG - 2-1/4" high.
74. MOTHER WOOD DUCK, Sunshine yellow, Limited Edition of 329 in Satin. Made in original....\$ 29.95
Heisey molds by Imperial Glass Corp., exclusively for Heisey Collectors of America, Inc.
Marked IG - 4-1/2" high.
75. 1435 HCA 10TH ANNIVERSARY ASH TRAY, Tallyho Etch., Crystal.....SPECIAL PRICE.....\$ 3.50
76. #341 OLD WILLIAMSBURG by Imperial - SPECIAL ORDER ONLY:
*#23090 12 oz. tumbler \$ 8.75
*#23200 9 oz. goblet 10.75
*#23220 6 oz. dessert 10.75
*#23240 4 oz. wine 10.75
*#23260 12 oz. iced bev. 10.75
**#13151 1 qt. pitcher 24.00
#13530 Cov. Sug. & Cr. 25.00
The above items (#341) are available in crystal, amber, nut brown, sunshine yellow, ultra
blue, verde, and rose pink. *These items are available in ruby at \$12.50 each.
**Ruby with crystal handle \$30.00 each. MINIMUM ORDER OF \$50 ON THESE ITEMS.
77. FISH MATCH HOLDER, Sunshine Yellow, Plain.....\$12.50
Satin..... 14.00

*Cup Plates are \$7.00 Post Paid - Orders for two \$13.50 Post Paid - Three or more go back to the 10% of Total Order for Shipping & Handling.

Visa/Mastercharge - Please include your card number and expiration date with order.



WOOD DUCK FAMILY



FISH MATCH HOLDER

We assume no responsibility for errors in these ads after the first printing Editor
For changes in ads during the year, please send \$1.00 per line.

MOSTLY HEISEY
RHODA CURLEY
16 Clayton Place
Albany, New York 12209
By Appointment (518)482-6272

LAST CHANCE ANTIQUES
P.O. BOX 502, Dania, Fl. 33004
Mail Orders - Matching Service
Send us your want lists
(305) 467-6356 Day or Evening

GOLDSBERRY'S ANTIQUES
KALAMAZOO, Michigan
Shows Only -- Buy & Sell
HEISEY A Speciality
Phone: (616)381-3013

SCHWAN'S ANTIQUES
Route 1, Box 175B
John Tyler Highway
WILLIAMSBURG, VA. 23185
(804)229-7873 Shop and Shows

GREEN ACRES FARM
Antiques, Crystal Glass & Collectibles
2678 Hazelton Etna Road, S.W.
(S.R. 310 N.) Pataskala, Oh. 43062
Sat. & Sun. P.M. or Call (614)927-1882

BERT'S BUDGET SHOP
General Line Antiques
403 W. Main St., Newark, Oh. 43055
Phone: (614)349-8045

THE WOODEN SHOE
Antiques & Collectables-Buy & Sell
Glass, Furniture, Estates
Jim & Sheri Vanes, By Appointment
Herndon, Va. 22070 Phone:435-9045

CURIOSITY NOOK
'Where Friends Meet To Antique'
3300 S. 8th. Ave. Westward Village
Yuma, Ar. 85364 (602)726-6730 or 726-8070
Barney & Jody Barnicle

**YOUR ADD COULD BE IN
THIS SPACE**

ANTIQUES - THE SHULTZES
206 - 208 E. Main Street
Newmanstown, Pa. 17073
15 Mi. West of Reading, Pa.
Phone: (215) 589-2819

T & S ANTIQUES
TOM MARTIN STEVE RODERICK
Specializing in Heisey
New Rochelle, N.Y.
(914) 235-9632

RAMBLING LANE ANTIQUES
KEITH & EVELYN HOOVER
Featuring HEISEY and Other Fine Glass
Rt. 4 Box 1005 Rhineland, Wi. 54501
Phone:(715)282-5019

OFF-BROADWAY ANTIQUES
HEISEY GLASS & GENERAL ANTIQUES
121 S. Prospect St., Granville, Oh. 43023
Open 7 Days A Week 12-5 P.M.
Shop(614)587-2083 Sam 587-0052

LYNNE & ART'S GLASS HOUSE, INC.
'HEISEY OUR SPECIALTY'
Miami Beach, Fl. 33154
P.O. Box 54-6014
(305)861-7700 (305)895-5666

CRYSTAL PALACE ANTIQUITIES
Cut Glass, Heisey, China, etc.
116 S. Taylor St., Hemet, Ca.
Mon-Fri 10:00 a.m.-5:00 p.m.
Weekends by adv. appt. (714) 652-1307

PEGGY'S ANTIQUES
2000 pcs. Heisey in stock
Ernie and Peggy Cox
P.O. Box 367, Spavinaw, Ok. 74366
(918) 589-2859 By Appt. or by chance

DIAMOND H PLUS
George & EILEEN SCHAMEL
Rt. 3 Box 419 Boonsboro, Md. 21713
Appointment or Mail Order
Phone: (301)432-6285

HEIDI-HO ANTIQUES, INC.
HEISEY and GENERAL ANTIQUES
838 S. High St., Columbus, Oh. 43206
Phone: (614)444-5774
Hours: Wed.-Sat. 11-5, Sun. 1-5

RECOLLECTIONS
THERESA WERT
Lahaska Antique Center
Route 202 Lahaska, Pa.
Phone: (215)794-8667

ANN'S GIFTS & ANTIQUES
105 W. Main St., Hebron, Oh. 43025
Intersection Rt's 40 & 79
Next Door to Daisy Queen
Daily 11:30 A.M. to 5:30 P.M. Closed Thursday

SUM OF LIFE
ELAINE & FRANK HUSTED
P.O. Box 102
Phoenixville, Pa. 19460
Phone: (215)935-2962

HEISEY PUBLICATIONS
Box 102, Plymouth, Oh. 44865
All Heisey Books I-II-III-IV
Heisey Newscaster 32 pg. Quarterly
\$6.00. Back issues \$4.00

THE "FINDERS" ANTIQUES
DAVID & SHIRLEY ROSE
513 E. Main Street
Newark, Oh. 43055
Phone: (614)349-7934

MOUNDBUILDERS ANTIQUES
IRENE RAUCK
1138 Moundview, Newark, Oh. 43055
Phone: (614)344-6043
Heisey & Animals General Antiques

HAPPY HAVEN ANTIQUES
MARY DUMKE
14319 Rattlesnake Road
Grass Valley, Ca. 95945
Phone: (916)273-9450

**YOUR ADD COULD BE IN
THIS SPACE**

C&J ANTIQUES
COLE & JEAN MIESNER
BOX 45, 72WHIG ST.
NEWARK VALLEY, N.Y. 13811
(607) 642-9905

GEORGE HOFFMAN ANTIQUES
G.W. HOFFMAN - J.H. DENNIS
129 South 4th. Street
Newark, Oh. 43055
Phone: (614)345-8021

CHARLES & MILDRED FISHER
Antiques & Collectibles, General Line
HEISEY, DEGENHART, IMPERIAL
991 Idlewilde, Newark, Oh. 43055
Phone:(614)522-5398

HARRISON'S ANTIQUES
HEISEY, CAMBRIDGE, DUNCAN
26 Johnston's Lane
Mercersburg, Pa. 17236
Shows, Mail, By Appt. (717) 328-2451

RAY ZIEGLER
GLASS REPAIR
2265 Innis Road
Columbus, Oh. 43224
(614) 882-8446

H and R DIAMOND H
HELEN & ROBERT RAREY
1450 WHITE ASH DRIVE
Columbus, Oh. 43204
(614) 279-0390 after 5:30

JOYCE'S ANTIQUES
Specializing in: HEISEY
CAMBRIDGE, VERLYS, AMERICAN GLASS
P.O. Box 114, Alburtson, N.Y. 11507
Phone: (516) 499-3396

LYNNE



ART'S

GLASS-HOUSE
INC.

P.O. BOX 54-6014
MIAMI BEACH, FL 33154
(305) 861-7700
(305) 895-5666

*Dear Heisey Collector and Dealer,
We're heading your way! Heisey animals,
lovely old patterns, and a rainbow of colors, will
be coming along with us.*

We'll be at the following shows:

JUNE 11 - 12 - 13 - EXPO HALL, INDY STATE FAIRGROUNDS INDIANAPOLIS, IN
JUNE 17 - 20 - O.S.U. BRANCH CAMPUS NEWARK, OH

ROUTE 202 - P. O. Box 242
LAHASKA, PA 18931
215-794-7800

*See you soon,
Lynne and Art*

NEWSLETTER SALE

All back issues are available from 1972 thru 1981 (except 1974). Twelve issues a year. Early issues gave information on all patterns, colors, animals etc. Invaluable for new members. Regularly \$9.00 now \$8.00 per set, until May 5th. 10percent off on \$50.00 or more. HCA SALES P.O. BOX 27 Newark, Oh. 43055.



return to.....
HEISEY NEWS
P.O. Box 27
Newark, Ohio 43055

FIRST-CLASS MAIL

FIRST CLASS MAIL
U.S. POSTAGE
PAID
PERMIT 34
Reynoldsburg, Ohio 43068

HCA 11TH ANNUAL CONVENTION - JUNE - 17 - 20TH