

HEISEY

news

OFFICIAL PUBLICATION HEISEY COLLECTORS OF AMERICA

©Heisey Collectors of America, Inc. 1982
All Rights Reserved

VOLUME XI

NO. 1

JANUARY, 1982

ONE DOLLAR



HEISEY ROSE ETCH

5072 ROSE STEMWARE - ALL OTHER ITEMS ARE WAVERLY EXCEPT THE 134 CANDLESTICK, LOWER CENTER

HEISEY NEWS---P.O. BOX 27---NEWARK, OHIO 43055

Editor LOUISE REAM
Box 27, Newark, OH 43055 614-345-2932
Ass't Editor NEILA BREDEHOFT
Box 27, Newark, OH 43055 614-345-2932
Published monthly and mailed from Reynoldsburg,
Ohio 43068

\$12.00 per year - \$1.00 per copy
Back issues 1972/1980 (except 1974) \$9.00 per
year (12 issues).

	CLUB OFFICERS	
President	BOB McCLAIN	614-345-8061
Vice President	JACK METCALF	614-892-2664
Secretary	MARY McWILLIAMS	614-345-4380
Treasurer	DICK MARSH	614-366-5608
Exec. Director	LOUISE REAM	614-344-2377

Heisey Collectors of America, Inc. is a non-profit corporation with tax exempt status. Owners and operators of National Heisey Glass Museum, 6th & Church Sts, Newark, OH. Open Daily 1-4 pm March through December except Mondays and holidays. January & February-Wednesday, Saturday, & Sunday 1-4pm. Other times by appointment. Members admitted free.

Club membership (includes 12 issues of HEISEY NEWS and participation in all club activities) \$12.00/year plus \$2.00 each for additional family members in same household who wish a membership card. For VOTING MEMBERSHIP add \$25.00, one time only fee.

When requesting information, please enclose a self-addressed stamped envelope (SASE).

ADVERTISING - Send all ads to: NEILA BREDEHOFT
Box 27
Newark, OH 43055

RATES:
DEALERS' DIRECTORY - 5 lines-\$18.00/year
CLASSIFIED - 10¢/word. \$1.00 minimum. Abbreviations and initials count as words.

DISPLAY:	MEMBERS	NON-MEMBERS
1/8 pg (9 items)	\$12.00	\$20.00
1/4 pg (20 items)	20.00	30.00
1/2 pg (20 items)	35.00	45.00
1 pg (50 items)	60.00	75.00

We cannot double-column ads. No VERTICAL 1/2 pg. ads. ALL ADS MUST BE PREPAID. Ad copy must be received by the 5th of the month to be included in that month's NEWS. Ads containing reproductions will not knowingly be accepted unless clearly stated (i.e. Heisey by Imperial, etc.) HEISEY NEWS assumes no responsibility for false advertising or misleading information. In the event of typographical error, the incorrect portion of the ad will be run in the following issue, but HEISEY NEWS assumes no further liability.

.....
Opinions expressed in articles are those of the authors and not necessarily those of HCA. Editorial Staff reserves the right to edit or refuse any material submitted for publication. Send all letters & articles to be published to the EDITOR. Letters to columnists should be sent to the club address and will be forwarded.

1982 AUCTION

Your Auction list will be sent as soon as possible under separate cover.

Don't forget the dates:

March 12 and 13th.

FROM THE DESK OF THE PRESIDENT....

The beginning of a new year is the time when we all reminisce about the past and look forward to the future. With all the bad news we hear about the economy, HCA has had an outstanding year.

The first of 1981 our total debt was about \$74,000.00, but by the end of the year it was reduced to \$8,688.00 Our balance from 1980 was \$23,785 and our income for 1981 was \$293,909 making \$328,115 out of which this debt, all club and museum expenses were paid. It is just amazing where all the money comes from but it keeps rolling in. The number of people visiting the museum in 1981 was approximately 10,000. I wish that I had taken time to see how many states that represents.

In June, the position of Executive Director was created and as usual Louise is doing an outstanding job running the museum. At that same time, I was elected President and I must tell you I was scared to death thinking about following such a great President. So much had been accomplished during her ten years and I prayed to God that I might have the ability to carry on. I have really enjoyed myself and I think we are still showing progress.

New members are coming in very well as a result of our membership drive. If you have not signed up a new member, please try to get at least one because this can benefit our club in so many ways.

The souvenir oscar orders will be handled the same as last year by mailing them as soon as the orders are received. They won't be mailed as early because we won't get them from Imperial until March, however, get your order in so you will be assured of getting one.

Convention plans are well underway for June 17-20. If you have never attended a Heisey Convention, this is a must. The form for a Sheraton Inn room reservation is in this issue of the news. All rooms were taken last year by the middle of March so get your reservation in early if you want to stay at the Sheraton. All functions are held here with the exception of the Show, Display and Champagne Preview. The plans for this year look like this will be the convention to top them all.

I hope that all of you had a very Merry Christmas and all of our officers join me in wishing you a Happy and Prosperous New Year. Everything for HCA looks great for 1982.

Bob



Greetings From The Executive Director

Winter is here with a vengeance and the snow and cold weather persists. Even though visitors are few we stay busy all of the time.

Neila is spending a little time here now and her hand is coming along fine. She hopes that typing will help strengthen it.

We have seen the amber Waverly trinket box (in fact one was loaned for our Imperial cabinet) and the mark is CG in a circle for Collectors' Guild.

Watch our calendar for all of the upcoming events including two shows and one flea market put on by study clubs.

MOTHER WOOD DUCKS

We are sorry that all of the ducks have not been sent out to those of you who ordered them but we only received part of the order. We should have more very soon.

If you did NOT pre-order before the dead line, it is possible that your duck will be satin finish.

We will also have enough baby ducks made in satin to go with the satin mothers. If you already have clear ones and will need satin ones to go with the large one, you may send them back for exchange. Wait to do this until we make the announcement. If we have more information in time we'll also mention it in the Auction mailing or at least will be in the Catalog.

FISH ITEMS NEXT

The next animals in our series will be the Fish Pieces in Sunshine Yellow, plain and satin with the Match Holder being first, followed by the Candleholders.

HCA AUCTION

Auction glass has been arriving from all over and soon the list will be prepared for a special mailing. It looks like another large sale with something for everyone.

I couldn't begin to name the different goodies; but among them are two cobalt standing colts. Several cordials have been received including a 3350 Wabash in marigold, the first we've seen in that color. A 1295 Lad Swag Cruet in emerald is a very nice item as well. Most colors are represented and there are several wines, nut dishes, plates and go-

blets in Alexandrite. No. 3381 Creole also considered scarce is well represented this time with several different stems. A Bantam Rooster Cocktail is another real winner as is a Plantation Coupe plate.

The stem collectors should be in seventh heaven as there is a great variety of stems.

Be sure to send in your bids early as Bob gets so many that it is hard for him to get them all ready if you don't send them until the last minute. We'll repeat bidding instructions with the list.

* The consignors of this item also donated one to the museum. This is not included on the list of donations on Page 13 since it came after the first of the year.

OSCARS

Oscar orders are coming in well even though we neglected to put the bottom of the form in the last newsletter. Some of you called and others just added your names to the bottom of the sheet or put them on the cordial bell form above. This month we have added a place for your names and address.

We still don't know when they will arrive but will start mailing as soon as they do.

CUP PLATES

We have finally decided we are NEVER going to get the rest of our Cobalt Blue Cup Plates nor our Teal Blue Museum ones so have sent back the money for all which were on order. Pairpoint has so many orders that they sort of make what they want to, we believe. At any rate they only make a couple of colors and crystal at one time. The colors now are amber and light green. We did order 500 of the Lancaster plate in a very pretty shade of amber. We received 595 and this is a limited edition. The border on this one is also new.

We have ordered 500 of the museum in the light green which should come in sometime soon but because of past experience PLEASE don't order until we let you know they are HERE. These will have a different border also.

We had to reorder in crystal, too, and received the Fandango Pitcher with a different border also. This is the fourth different border we have had on cup plates. This seems important to cup plate collectors.

The Fandango plate is beautiful and every Heisey collector should own one since it is the symbol of our organization. It was limited to 1000 in vaseline and unlimited in crystal. If you want to be notified when cup plates arrive, send an S.A.S.E.

The two new borders are shown on page 5. Cup plates remain at \$6.00 in the shop or \$7 if mailed, including postage, two for \$13.50 P.P.

Louise Ream

TUMBLERS

By: Tom Bredehoft

Oh, the perils and pitfalls waiting for the researcher! When one gets involved in this nonsense, one must keep track of where one is. By that I mean that I forgot to keep a record of what tumblers I've written about. So..... nothing will do until I've sat down and gone through six years of Heisey News listing all those I've written about. It's amazing the number of tumblers I've written about twice. Well, that won't happen again unless I forget where I am now.

Here's one I started researching years ago, before there was a tumbler column, before I was even sure I was collecting tumblers.

Back when the world was new, and the HCA didn't have research material that could be measured in cubic feet, someone showed me a price list from the early part of the century which contained a list of sodas, among other things. These sodas, however, had the cryptic message "Coca Cola" after them. Of course the question that occurred was 'Did Heisey make glasses for that great soft drink purveyor in Atlanta?'. I had heard that The Coca Cola Co. had a museum, or at least archives, so postage being what it was, and you could write a letter to satisfy a whim, I wrote to them asking whether Heisey had indeed made glasses for them.

Time passed and I forgot my letter. After all, large corporations don't have time to go digging through dusty old records pointlessly.

Then one day I received a lumpy manila envelope from, of all places, The Coca Cola Bottling Co., Atlanta. In it were several items. One was a brief letter stating that they had not purchased glasses, but had licensed the use of the name, and let whoever wanted to make glasses purchase the license and put the trade mark on the glass. The letter said they were including a reproduction of an early glass and a holder for my collection. (I must have said I was a collector of something). There was a brochure about their museum, or about the history of Coca Cola, I forget which, a tin or nickel plated brass soda holder from an old soda fountain for holding the Coke glass and true to their word, a reproduction of an early coke glass. I must be a lot older than I thought I was, because it looked to me like the same kind of glass I used to drink cherry Coke from in my misspent youth. It was a seven ounce "Coke" glass with the words "Coca Cola" silk screened in white about the top. And would you believe, on the bottom was a mark, not the Diamond H I would have liked to find, but an F within a shield. Federal Glass in Columbus, Ohio, had made this one.

I still didn't know any more than I did when I started. Of course price lists, while they say 8, 10, or 12 oz soda, straight or cupped, don't have any pictures. And I had no idea what these looked like. I did have the



number 396, though. All I had to do was find a picture.

Eventually the records we now have on Microfische became available, and I found the elusive 396 soda line illustrated in Catalog 58, a catalog for the soda fountain trade. It even has the notation "No 396 sodas fit standard holders."

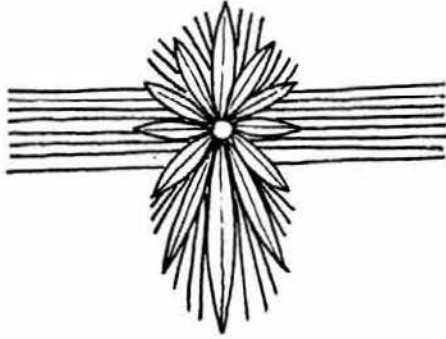
As you can see, 396 is basically the standard "Coke" glass shape, made to fit the standard holder. At first glance it looks like 393 Narrow Flute. Well I have some unproved as yet thoughts on that, too. I think that they both were developed as short soda lines and 393 took root and flourished as a major line and 396 died an early death.

Anyway, 396 was introduced about 1909 and was no longer in production by 1913 when catalog 75 came out. They should have a ground bottom and be signed.

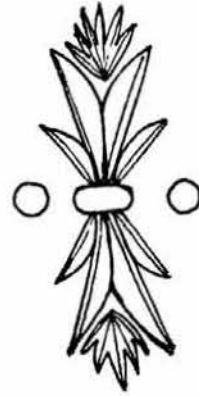
PERIOD: Colonial COLOR: Crystal,
only
VARIATIONS: Straight or cupped,
"belled"

HEISEY DECORATIONS

By: Neila Bredehoft



#637 POLISHED STAR*



#638 CALAIS*

When the Heisey Co. began to produce cuttings in their newly opened cutting shop, they seem to have concentrated on very simple designs. This may have been due to the inexperience of the workers in general, or maybe the Co. was not sure how the ware would be received by the public and so made it inexpensive enough so that it would be within reach of everyone's purse.

Two of these very early cuttings are #637 which we have assigned the name of Polished Star and #638 which we have called Calais*. Both of these cuttings were listed and shown in the IOB price list from July, 1917. We believe this to be the first Heisey price list for blownware and it includes early etchings and cuttings. Both of these cuttings were discontinued by April of 1919, so their life was rather short. By 1919, the cuttings were becoming more elaborate and were being made on larger lines. Apparently the Heisey Co. had been successful in breaking into the cut glass tableware market.

In the case of Polished Star*, it seems to have had a resurrection on a few later pieces according to old company ledgers. It was listed on several pieces being made in the early and mid 1930's.

#637 POLISHED STAR* found on:
#3320 Ritz--full stem line (not marked)
--The goblet cost \$7.25/doz.

This was made from 1917 to 1919.
From circa 1933-1936 the following pieces were listed:

- #134 Trident--console set--bowl & 2 lt. candlestick
- #1401 Empress--11" d. f. floral bowl
- #1445 Grape Cluster--Console set--floral bowl & 2 lt. Candlestick.

#637 Polished Star* also bears a remarkable resemblance to #639 Electro cutting about which I will write in a later column.

#638 Calais* was another very simple, early cutting. I have not seen this as yet. It was made on a full line of #3308 Bob White stemware which is unmarked. Possibly none has been found as yet, simply because it has not been identified as Heisey. This was an extremely inexpensive cutting at the time, costing only \$4.30 per dozen for goblets. I'd like to find them today for that price!

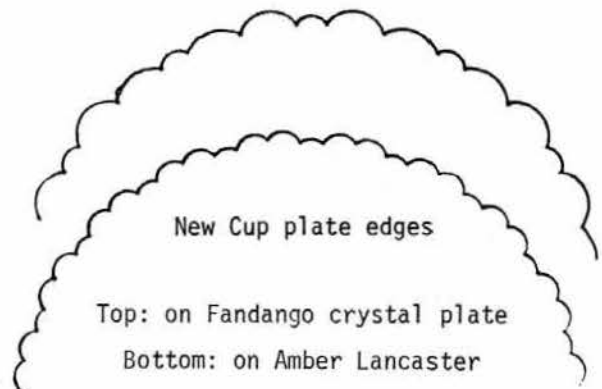
Both Calais* and Polished Star* were made only on crystal ware and neither of the stem lines were marked with the Diamond H, so you must learn the cuttings to recognize them as Heisey. Good Luck!

+++++

As a personal note, I'd like to thank all of you who sent notes and cards while I had my surgery. Everything is progressing well and I hope to be back working more regularly at the Museum soon. Again, thanks to everyone. Please forgive me for not sending personal notes, but writing or typing only left handed when you are right handed is difficult.

Neila

+ + + + +



#300 & #300-1/2 COLONIAL PATTERN IN COLOR

By: Joseph D. Lokay

In this article I want to present the items of the #300 & 300-1/2 Patterns that were produced in color during the 1925 - 1935 Heisey color era. To refresh your memory, the eight colors produced by Heisey during that period were flamingo, moongleam, marigold, hawthorne, sahara, alexandrite, cobalt blue and tangerine.

Number 300 was Heisey's first colonial pattern. Production of the pattern started in 1899. By 1905, many items were available in the #300 and #300-1/2 pattern. Heisey catalog #50, circa 1905, pictured over 160 items covering catalog pages 77 thru 91. These catalog pages are reproduced in Vogel Book I as pages 77 to 91. Circa 1937 Heisey was still offering a few items in the pattern. The 300 pattern was introduced as "The Pattern Without a Peer". This subsequently lead Minnie Kamm to name the pattern "Peerless". The Heisey catalogs from the beginning to the end of the pattern only called it #300 Colonial.

The main sources of information available in the HCA museum library on items commercially produced in color during the period 1925-1935 are listed below:

1. Price list #208 Supplement #3 (circa 1927)
2. Price list #209 Colored Glassware Section (circa 1929)
3. Price list #209 Supplement #1 (circa 1930)
4. Price list #210 (circa 1933)
5. Price list #211 (circa 1935)

Is this list complete? I don't think so. I believe there may be a supplement or two not yet uncovered. And, who knows how many letter memos were written to the sales staff on new color production activities.

The colors shown in the five price lists above are:

1. PL #208 Supp. 3 = Fl., Mg. and Haw.
2. PL #209 C.G.S. = Fl., Mg. and Mar.
3. PL #209 Supp. 1 = Fl., Mg., Sah. and Alex.
4. PL #210 = Fl., Mg., Sah., Alex., Tang. and Blue
5. PL #211 = Sah., Alex. and Blue

Now on to our pattern in question. Price list #209 showed two items in #300 and two items in #300-1/2 made in color. The four items are pictured with this article and specifically are:

1. #300 4-1/2 oz. low footed sherbet, shallow in Fl.
2. #300 7 oz. footed tumbler or low footed goblet in Fl. and Mg.
3. #300-1/2 2 oz. bar (straight or flared) in Fl. and Mg.
4. #300-1/2 8 oz. tumbler in Fl. and Mg.

The moongleam (Mg.) color was not forgotten for the #300 low footed sherbet as only flamingo (Fl.) was listed. No production in

#300 or #300-1/2 was listed for marigold in P.L. #209.

The price lists #208-S3, #210 and #211, no color productions were listed for any items in #300 or #300-1/2 for the eight colors previously mentioned. In conclusion, only four items were made in color for this pattern. I estimate the color production period for the two items in #300 and the two items in #300-1/2 as about 1927 to 1931 or 4 to 5 years.

On display in the HCA museum are the #300 4-1/2 oz. low footed sherbet in flamingo, the #300-1/2 - 2 oz. bar in flamingo and the #300-1/2 - 8 oz. tumbler in flamingo and moongleam. Yes, there is also a #300 - 7 oz. footed tumbler in alexandrite on display in the museum. What about that? Well, in my opinion, it was either a specially made item for a unique gift given by the Heisey family, a special limited order for a few clients, or a short-life commercial item. Take your pick.

What about the #300 colored candlesticks? Yes, some were in color. I left them for the candlestick experts. There is a #300 vase in emerald green in the museum. Also, people talk about #300 in vaseline and vaseline or crystal opalescence. The #300 "Peerless" pattern in the early Heisey color era (ca. 1898 - 1905) is another study in itself.

Below are my estimates for the production period for the four items in crystal.

Item	Period	Years
#300 - 4-1/2 oz. low ft. sh.	1900-1945	46
#300 - 7 oz. ft. tumbler	1899-1945	46
#300-1/2 - 2 oz. bar	1906-1931	26
#300-1/2 - 8 oz. tumbler	1900-1934	35

As you can see, the color production of the four items was only a small fraction of that produced in crystal. The color items are not easy to find.

** Ed. Note: Colonial items in color are very scarce and should command good prices.



7 oz. footed tumbler



8 oz. tumbler



2 oz. bar, flared,
ground bottom



2 oz. bar,
ground bottom

NO. 339 CONTINENTAL AND #333 WALDORF
ASTORIA TOOTHPICK HOLDERS

BY: Nancy and David Jones



No. 339



No. 333

These two toothpick holders were made shortly after the turn of the century, but are presently uncommon and not easily found. Both were produced only in crystal and should always be marked inside the bowl on the upper surface of the base. No.339 Continental was produced from 1903 to 1908 and the only known documented factory decorations are a gold trim and an engraving. Other pieces in this pattern are known with ruby stain, so a toothpick holder similarly decorated probably exists. No.333 Waldorf Astoria was produced from 1901 to 1911 and there are no documented factory decorations. However, this toothpick holder is known with a silver overlay which was applied by one or more outside decorating houses. Thus, there really isn't too much to say about these two toothpick holders. Their plain appearance probably accounts for so few being saved and being easily overlooked if they are encountered. However, both are worth the effort and are among the more desirable Heisey toothpick holders.

Editors Note: While most 333 toothpicks ARE probably marked, some are not, including the one in my collection. L.R.

☞ A novelty that is distinctly usable is shown at the right. It is a card case holder in heavy crystal, just brought out by A. H. Heisey and Co. As the picture indicates, the holder is large enough for two decks of cards, and the two identical halves are made to serve as ash trays, equipped with four snuffers and slots for cigarettes. In plain crystal, the holder can be retailed for \$1.00; decorated with a cutting, it can be retailed for \$2.00.

Photos by Victor Sotardi

BLACK LIGHT AGAIN

By: Louise Ream

Every so often the black light theory comes back to haunt us! A recent Kovel newsletter said that the black light will make Heisey glass turn yellow. This is true, of course, in most instances, provided the glass is pressed and not blown. Some early and some late blownware, which had a low lead content, also turns yellow, however, most blown ware merely reflects the purple of the light.

Several people lately have asked about this. One person said he identifies glass for people and he was calling it Heisey if it turned yellow. He had not realized that other glass did the same thing. You might have a collection of glass from many different companies placed beside some Heisey items and find that they all look exactly alike under the light.

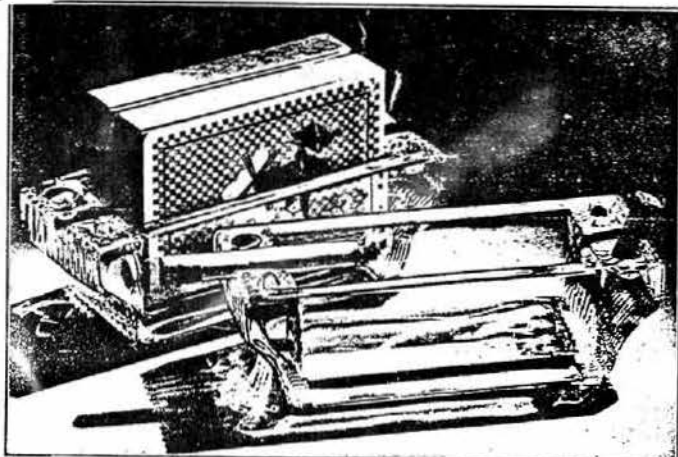
In doing a check of Fakes and Misleading items in our cabinets downstairs, I found that the following fakes turned yellow the same way as Heisey glass: Cabochon Advertising piece, the fake bowl and creamer set, Ram's Head stopper, small horsehead stopper, piglets and Doe Head bookends, ALL NEW GLASS.

In the misleading category the following: A sherbet similar to Greek Key, a Pillar Ale (Sandwich pattern) and a Cambridge pin tray, marked C in Triangle. We don't have much glass of other companies in the museum to check, but we know there is lots more than this.

The main use of the black light to a Heisey collector would be the unusual colors which appear under the light. Also it is true that MOST Imperial does NOT turn yellow, but SOME of it does.

Another "Old Wives Tale" which should be retired is the one about your finger looking smaller if placed inside a piece of Heisey Glass. This may be so but it has nothing to do with it being, or not being, Heisey.

1508 Card Box
China, Glass and Lamps August, 1938



HOW WOULD YOU LIKE TO FIND ? . . .

BY LOUISE REAM

- 1434 TOM & JERRY mug in sahara?
- 134 TRIDENT candlesticks in tangerine?
- 1423 SWEET ADOLINE goblet in moongleam, flamingo, sahara, cobalt?
- 1401 EMPRESS 11" floral bowl in tangerine?
- 1425 VICTORIAN in moongleam and flamingo?
- 12, 23, 24, 54 salt & pepper shakers in moongleam, flamingo or sahara?
- 47 salt & pepper in moongleam & flamingo or #52 in moongleam, flamingo, sahara or hawthorne?
- 811 3/4 goblet in moongleam, flamingo and sahara?
- 1306 goblet, sherbet, champagne and soda in sahara (What is this?)
- 1231 Water jug (Rum pot) in sahara, flamingo, moongleam or cobalt?
- 1101 custard (punch cup) in moongleam & flamingo ?
- 1000 marmalade in alexandrite? This item is one of the very few which was not listed in crystal.
- 142 CASCADE candlestick in sahara or blue?
- 1183 REVERE candlestick in sahara (base and 4 cylinders which screw in)?
- 402 GOTHIC candelabra in sahara or cobalt?
- 4163 Pretzel jar in sahara?

(All of the above are possible since all of these are listed in a price list from 1933)

The items listed below have been found in price lists or have been seen in colors as listed.

- 3411 MONTE CRISTO in sahara?
- 3312 GAYOSO in marigold?
- 31 Toy candle (handled) in moongleam, flamingo and sahara?
- 2516 CIRCLE PAIR tumbler in sahara?
- 2930 tumbler in moongleam, flamingo (9 oz) & 10 oz in flamingo & sahara?
- 3056 tumbler in moongleam, flamingo & sahara?
- 2351 sodas 8 oz in moongleam, flamingo sahara? 10 oz in moongleam & flamingo? 12 oz in moongleam, flamingo & sahara plain & d/o? 16 oz in sahara d/o?
- 2052 bar taper in moongleam w/o?
- 2506 soda in flamingo, moongleam, sahara d/o?
- 3405 mug in moongleam, flamingo, sahara, alexandrite, tangerine, & blue?
- 3406 mug in moongleam, flamingo, sahara, alexandrite, tangerine, & blue?
- 3407 mug in moongleam, flamingo, sahara & blue?
- 3350 WABASH squat jug in moongleam, flamingo, sahara & alexandrite?
- 3404 SPANISH in sahara?
- 3408 JAMESTOWN goblet in moongleam, flamingo & sahara?
- 3409 PLYMOUTH in sahara?
- 4225 COBEL cocktail shaker in moongleam, flamingo, sahara, cobalt, trial red?

- 4002 AQUA CALIENTE in moongleam, flamingo & sahara? also cobalt?
- 3485 jug in moongleam, flamingo & sahara?
- 3805 jug cover in moongleam & flamingo?
- 3362 jug in moongleam, flamingo and sahara?
- 4027 decanter in moongleam, flamingo, sahara or alexandrite?
- 465 RECESSED PANEL candy jar in moongleam and vaseline?

1183 REVERE PUNCH BOWL

By: Louise Ream



This small punch bowl with attached foot is listed in Price List #200, Dated 7-1-17. It was made in both 9 and 10" sizes. Some people refer to it as a bowl for "Raspberry Shrub" an old fashioned beverage containing fruit, fruit rind and sugar with possibly an alcoholic beverage added. Sometimes acidulated fruit juice was added to ice water but I imagine the drink with the liquor was the most popular.

The bowl is quite heavy and is marked. It can be found with Heisey cuttings or those of other companies including gravic cuttings by Sinclair or Hawkes. One of these bowls was shown in the June 1980 issue. That picture did not begin to show the true beauty of the cutting.

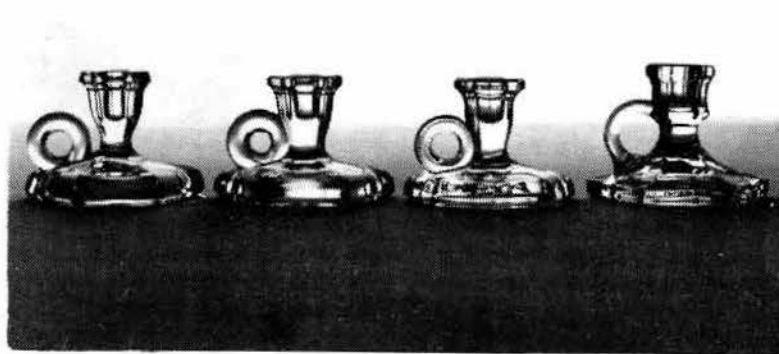
The drawing here was done by Julie Chapman from a small 9" bowl on display in the museum. This one is decorated with gold bands. It is not a very pretty item but it is quite interesting.



No. 8 PATTERN.

UPDATE ON TOY CANDLESTICKS

By: Tom Felt



A
Heisey

B C
Westmoreland

D
Duncan

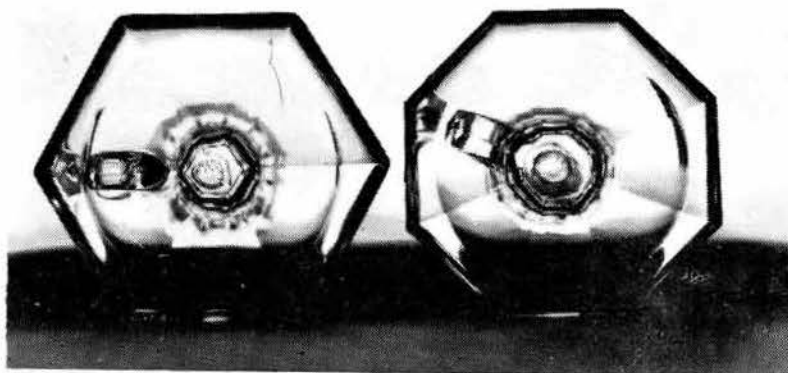
Shown in the photograph above are four toy candlesticks. Candlestick A, on the far left, is Heisey's No. 31 toy. (For more information on this toy, see Jack Metcalf's article in the September 1976 issue of the HEISEY NEWS.) Candlestick D, on the far right, which has a completely different handle from any of the other three, is Duncan & Miller's No. 72 toy candlestick, which probably predates the Heisey toy.

Candlestick B (second from the left), which has a handle very similar to that of the Heisey toy, has also frequently been attributed to Duncan & Miller, but recently I have begun to question that attribution, since I have not been able to find any documentation to support it and it has always seemed odd that Duncan would have redesigned their earlier toy in such a way. Well, thanks to Sue Weatherman, who has been reprinting various original catalog pages in the DEPRESSION GLASS DAZE, we now know that this candlestick is NOT Duncan & Miller. In

the December 1981 issue of the DAZE, it was correctly identified as Westmoreland Glass Company's No. 1039 handled birthday candlestick.

And, from the same source, we can also identify candlestick C as a Westmoreland product. Although the difference between the two Westmoreland candlesticks is not readily apparent in the photograph, Westmoreland No. 1211 birthday candlestick (second from the right) is eight-sided rather than six-sided, as are the other three toys. Picture No. 2 shows a close-up of the bases of the Heisey toy and the eight-sided Westmoreland No. 1211. (If you look closely, you can see the Diamond H on the bottom of the Heisey toy.)

The Heisey toy and Westmoreland's No. 1039 handled birthday candlestick seem generally pretty easy to find today. The Duncan toy and the other Westmoreland toy are much more scarce. However, as you might suspect, you can expect to pay quite a bit more for the one with the Diamond H.



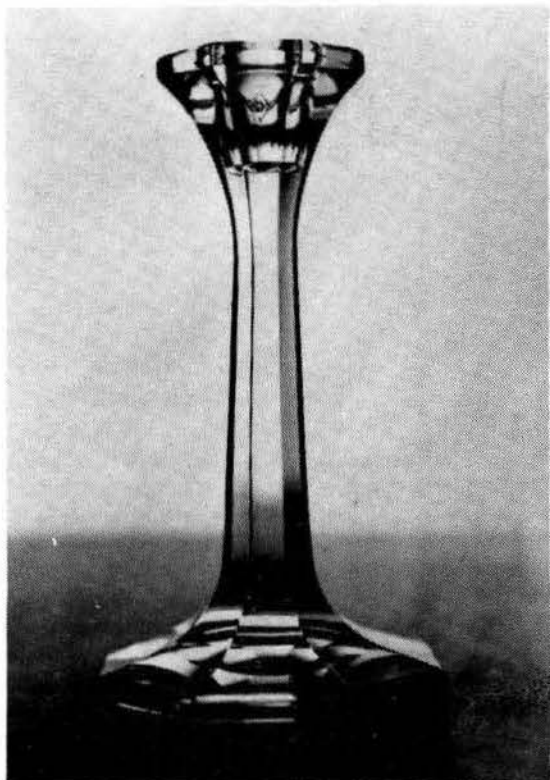
Picture #2

Heisey

Westmoreland

DATES TO REMEMBER

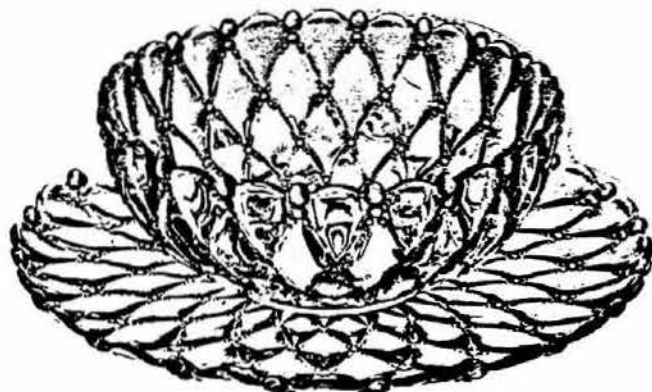
- | | |
|--------------|---|
| Mar. 6 - 7 | Glass, China, Pottery Show
San Mateo, CA - Golden Gate HCC |
| Mar. 12 - 13 | HCA Annual Benefit Auction
O.S.U. - Newark Campus |
| Mar. 14 | Flea Market, Starlight School - Newark Land of Legend HCC |
| Mar. 20 - 21 | All Heisey Show - Silver Springs, MD - National Capital HCC |



Like most of the colonial candlesticks, the No. 70 is punted on the bottom and generally should also be cut on the top, although those made in the later years may not always be so. The Diamond H appears toward the top of the column, on the candleholder just beneath the lip, and may appear twice, with a second mark on the opposite panel. (Although not visible in the photograph, the candlestick pictured is double-marked.)

This candlestick has never been reissued by Imperial and, due to its age, it is very likely that the mold was among those which were melted down as part of the war effort during World War II.

1533 Wampum
China, Glass and Lamps July, 1941



The No. 70, which bears a close resemblance to the No. 16 candlestick, is actually unique among the colonial candlesticks in that it has eight sides. In fact, it appears that in designing this candlestick, someone simply took the six-sided No. 16 and added two additional panels to create the No. 70. (The only other noticeable difference between them is that the No. 70 has a tapered column.)

The No. 70 first appeared in price list 200, which is dated July 1, 1917 and was still in production when catalog 109 came out, ca. 1929, meaning that it was made for at least 13 years and possibly even longer. However, it is not a particularly easy candlestick to find today and this seems to be because relatively few of them were made. According to the available turn books, no more than one or two turns were produced each year and some years none were made at all. Like most of the colonial candlesticks, the No. 70 was made in three sizes (7", 9", and 11") and the heights can be arranged in ascending order of scarcity. Between 1920 and 1926 (the year for which we have the turn books) 7 turns were made of the 7" size, 5 turns were made of the 9" height, and only 2 turns were made of the 11" size (with the amount in each turn ranging from a low of 185 to a high of 137). Compared to some of the more popular colonial candlesticks, these figures really are quite low.

• *This brilliant new pressed design from A. H. Heisey & Company is called "Wampum," and in addition to salad bowl and the 14-inch plate shown here, the line includes flower bowls, gardenia bowls, candlesticks, sandwich plates. Other new Heisey pieces are additions to the "Shell" and the "Crysolite" lines; miniature animal figures, including a Scottie; hexagonal bowl in heavy crystal; cigarette box with horse-head knob; square powder box; small cornucopias.*

MALL TO OPEN

OLD CAMBRIDGE GLASS PLANT TO HOUSE ANTIQUE MALL, GLASS SHOP, AND FLEA MARKET

Tour busses pull up to the Old Cambridge Glass Company gate expecting to be met by a tour guide. Tourists by the hundred make the old glass plant a stopping place for photos and a breath of nostalgia. Phone calls and letters are received at the old plant (built in 1901) asking for Rosepoint and Caprice. The interest in the old factory has simply never faltered.

Guided tours through the Old Cambridge plant are expected to become a reality. The doors of the old plant are scheduled to open once again, this time as an antique mall, museum, flea market, and small glassmaking shop. For the first time since the factory closed, tourists, collectors, and the general public will be allowed into the old, historical facility. Parts of the buildings are scheduled to be opened by March 1st, 1982. The remainder is scheduled for opening in early summer.

Preparations are now under way to make ready a huge one-half million square feet of floor space. Sections of the plant will house permanent antique and collectible shops, flea market areas, a museum, and space for multi-purpose use such as civic affairs or conventions. There will also be a small glassmaking shop which will make limited amounts of novelty glassware which the promoters say will be of quality in the tradition of the old Cambridge Glass Company.

The Old Cambridge Glass Plant is owned by Mr. Barnett Friedman, of Brooklyn, NY. Mr. Friedman is founder and owner of the Super Glass Corporation of New York, and ran the Cambridge Glass Plant for several years in the sixties.

The product of the Super Glass Corp. is lamps and vases, as well as a full line of giftware. The lamps were produced in Cambridge in the mid-1960's. Nearly 3,000 pieces a day were being shipped before the operations were moved back to New York. The decorating department remained active until only a year ago. Mr. Richard Gallagher is manager of the Cambridge plant facilities.

The preparations now taking place at the old facility are purely restorative. No alterations or changes of any kind are being allowed. Every effort possible is being made to preserve the character of the place as it was known prior to the Cambridge Glass Co. closing in 1954. For instance, the antique mall will occupy the office section of the old plant. These rooms will be kept as they are with no alterations or changes save cleanup, restoration, and painting being allowed. The same rule is being applied to the remainder of the facility. A sense of historical concern prevails throughout.

The museum section of the factory will not house a collection of glassware made by the Cambridge Glass Co. Rather it will be a museum of artifacts found during the restoration, and will be a museum more of the glassmaking pro-

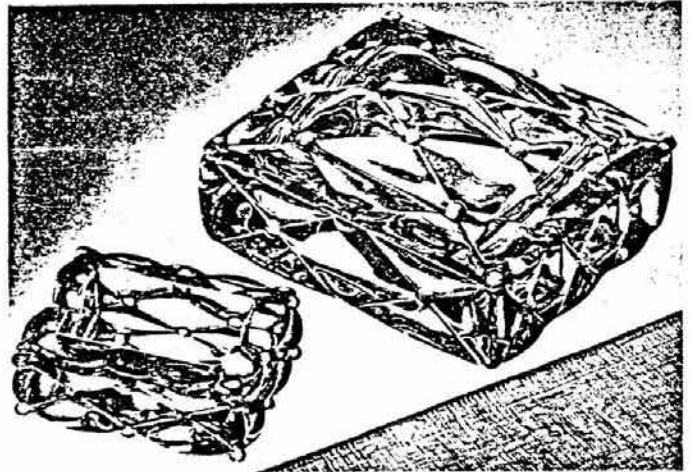
cess than of the product. Even the old Cambridge Glass Co. dump is to be systematically excavated in an effort to re-establish a history of the ware made at this facility. Artifacts recovered, if any, will be exhibited in the museum along with vintage tools and equipment. Historical guidance from former Cambridge Glass Co. employees has been sought, and is being used in order to preserve the enormous historical value of the place.

With two major interstate highways intersecting in Cambridge, OH, Mr. Gallagher expects that the monthly flea market will become one of the largest and best in the United States. He places emphasis on top of the line dealers with top of the line antiques and collectibles. There are huge amounts of under-roof space, and even more can be developed outdoors if time and need prove necessary.

The old plant is planned to become a major center of collecting, education, and nostalgia in the fairest sense of the word. One writer has stated that "the plant is a monument to the American glassmaker, and to the American glassworker". You will soon be able to see for yourself.

For further information write: Cambridge Glass Co., P.O. Box 732, Dept. GW, Cambridge, OH 43725.

1521 Quilt
China, Glass and Lamps Sept. 1940



FROM A. H. Heisey & Co. is this cigarette set in the new "Quilted" design in crystal. The complete set includes the cigarette box and four ash trays, and may be retailed for \$2.25.

CLUB NOTES:

GATEWAY HEISEY COLLECTORS CLUB NEWS

Fourteen members of the Gateway Heisey Collectors Club of the Pittsburgh, PA area met in the new home of Phyllis Goldstein on Saturday evening, December 5, 1981.

The routine business was conducted by Vice President, Edie VanDyke in the absence of President, LaVerne Lokay. Phyllis Goldstein, chairman of the Nominating Committee, presented the following slate of officers for 1982:

President - Bob Cook
Vice President - Darlene Sanders
Secretary - Phyllis Freier
Treasurer - Margaret Reed

There were no additional nominations so the candidates were unanimously accepted. A lengthy discussion was held concerning the increasing number of animals and other items made in Heisey molds that are being advertised for sale by various companies. It was moved and seconded that Secretary Phyllis Freier write to the Board of Directors of HCA expressing our concern in this matter.

Phyllis Freier presented a very interesting program about Heisey Rose etching - comparing it with other rose patterns by Heisey and other companies. A variety of glass items with Heisey Rose were displayed and examined.

After "Show and Tell", Phyllis again proved to be a gracious hostess and culinary expert.

The next meeting of GHCC will be held at the home of Darlene Sanders on February 6, 1982.

NEWARK HCC

The Newark HCC met in December at the home of Howard and Esther Culbertson and enjoyed seeing her lovely glass and her paintings. (Esther is an Artist.)

Officers were elected as follows:

President, Louise Ream
Vice President, Irene Rauck
Secretary-Treasurer, Frances Law
Russ Ream will continue as telephone chairman.

On January 12, the club met at the museum and worked on unpacking and checking glass for the March Auction. The Reams acted as host for the meeting.

LETTERS, WE GET LETTERS

I am writing to inform you of a correction in Nancy Alderson's report from the Northwest Heisey Club.

She incorrectly stated there would be a Heisey Show in February, 1982 at McMicken Heights in Seattle. This is a glass show and sale put on by the Green River Depression Era Glass Collectors Club. This club is DONATING a table to the Northwest Heisey Club for a display by their members and to recruit members for their club.

Betty Reese, Washington

VOLUNTEER - PLEASE!

The Research and Archives Committee would like to ask the assistance of an individual or a Club who would like to undertake a project which we feel is important.

We would like to assemble a dictionary of glass terminology, but most of our members are already busy on book projects or other research and cannot take on another project at this time.

We thought that possibly an individual or club could be a clearing house for glass terms or definitions which could be included. Other persons could send lists to this Club or person who would then alphabetize and organize them. In this way any one of our members could be included in helping with this project. Even if the person could not define the term, he might have a term he would like included.

As a beginning, we published a basic list of terminology in the Heisey News in August, 1981, P. 12. This, along with actual descriptions from Heisey catalogs would form the basis of a good little handbook.

We sincerely hope that someone will volunteer to take on this project. Our committee will be glad to help with suggestions and final review. Please write me at: Box 27

Newark, Oh 43055

if you can do this for us.

-- Neila Bredehoft, Chairman

+++++

1982 DISPLAY NEWS

By: Mary McWilliams

This year the Convention Theme will be "Heisey Goes Hollywood." The theme of the display will be "The Magnificent Obsession."

All study clubs are invited to participate and of course individuals are welcome too.

You may have one, two or three six foot tables. We would like to hear from you as soon as possible as space will be assigned on a first-come, first-served basis. Please send the title for your display to us as early as you can so that we can avoid duplications.

I know this will be a challenge for you all. The ideas for this theme are almost endless with all of the movie titles available to use. Let's see what you can do to make this as glamorous as the THEME indicates.

WRITE TO: Mary McWilliams
P.O. Box 27
Newark, OH 43055

ADDITIONAL 1981 DONATIONS

1. Nassau-Long Island Club \$105 (From glass donated to 1981 Auction.)
2. Golden Gate Heisey Club - 1401 Empress Square Footed Compote (at Convention). (Both of the above were omitted from the Club gifts in the July 1981 list of Convention donations. They were listed on Page 16 of the August issue but we are including them again here.)
3. 1170 Pleat & Panel Marmalade, 1185 Yeoman individual sugar, 1509 Queen Anne triplex relish, 1519 Waverly Cream and Sugar, and low footed Compote (the last three items with 5070 Orchid etch) from Helen Wells Smith.
4. One (1) factory sheet with pictures of goblets with cuttings, Norman and Janice Thran.
5. Green Frozen Dessert - Look - alike for Heisey's #500, Joe Lokay.
6. 353 Medium Flat Panel Cream and Sugar, Beautiful Cutting (probably by Sinclair), Diamond H Club, Newark area.
7. 3390 Carcassonne Cigarette Holder, Sahara. Donated by Tom Fish in Memory of Art Fish of Columbia HCC.
8. Two (2) Old Williamsburg Goblets, by Imperial in an Orange Shade made while producing ruby and one (1) in emerald (by Imperial), Donated by: William T. Clifford.
9. 3334 Sexton Goblet, Unknown Cutting, Jim Earnshaw.
10. 1503-1/2 Swan Handled Pitchers in Stiegel Green and Light Blue by Imperial (Blue not made for production. Green made for Smithsonian) and 7000 Sunflower vase, Stiegel Green made for Smithsonian. Donated by: Charles and Mildred Fisher.
11. 1980 - 1981 Cordial Bells. #1 of each year's bell. Purchased at September Dinner for \$210 each and donated to Museum by Harley Bethel.
12. Three (3) Photos of former employees, Mrs. Ora Coffman
13. Poster Artwork and Signs for 1981 Convention, Maureen Kovacs.
14. 3324 Delaware Sherbet, Hawthorne, Checker Optic, Norman & Janice Thran.
15. 3408 Jamestown Goblet and Champagne, beautiful Heisey engraving, and 3416 Mariette Goblet with Cutting, Harvey Jean Byers (The Antique Workshop.)
16. Tumbler with Silk Screen Design, Look-alike for Tallyho Etching, Mrs. Stan DeGroot.
17. Six (6) wooden models for various items, 6 patterns, 2 sets of wooden gauges and one unfinished 3408 Jamestown Champagne. Marian B. Strimple. (Her father was a Heisey employee.)
18. Seventy-two (72) ads, 5 books on glass, Antique Fakes and Reproductions, Elements of Glass and Glass-Making; McKee Victorian Glass, Tarentum Pattern Glass, American Glass, Tom Felt and Bob O'Grady.

19. 1280 Winged Scroll, Six piece Dresser Set, Custard, Perfect Gold, Mrs. Emerson Miller.
20. 3389 Duquesne Goblet and Champagne, #449 Pompeii Etch, Sahara, Betty and Herbert Wanser.
21. 3311 Velvedere Sherbet, Heisey Cutting, Dick and Dorothy Marshall

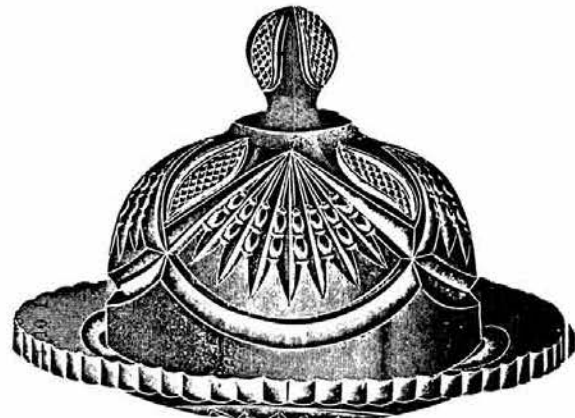
This concludes the donation list for 1981. We hope we have not missed anyone, if so be sure to let us know.

You, too, can make a donation. Donations are fully tax-deductible because of our 501 (c) (3) status. Before sending anything it is best to contact us to avoid duplications.

We also welcome books on any aspects of glass or glass making. Again let us know before sending as we do not need duplicates. We are aspiring to have a fine library on glass in general. It is always nice to be able to find out what you DO have if it isn't Heisey. When you visit the Museum ask to see the Library.L.R.

ACQUISITIONS SINCE LAST LIST

- #700 Derby Ale
- #51 8-3/4" X 12" Opal Novelty Tray
- #393 Narrow Flute Individual Creamer, Sahara.



NO. 1255. BUTTER AND COVER.

No. 1255 PATTERN.



No. 365. HOTEL SUGAR AND COVER

No. 365 QUEEN ANNE PATTERN

LETTERS, WE GET LETTERS

To Whom It May Concern:

First, I must tell you that you've got an addict on your hands. I love Heisey glass and don't know a lot about glass at all, but I am dying to learn more, and I can send a check later if you could send me some information concerning: history; newsletter; or any and all publications. Mark Belote - CA

*** We promptly sent Mr. Belote all our club information.

I really miss you all since I've moved to Kansas City. I've tried to get back occasionally for an auction or two and stop in the Museum Gift Shop to make my "donations" to the cause. I've found a couple exquisite pieces in hiding out here - a fandango cream and sugar in fantastic condition for one - for a mere pittance. It really pays to study and I miss my 76'ers Club very much. I've only run into one other person here who belongs to HCA - I am sure there must be more. Perhaps you could put the word out to call me at (913) 262-3722 or (913) 831-9744 ANYTIME to discuss getting a study group going in KC Area. Thanks a million for all you & HCA have done for me - much more than anyone could realize. Suzanne Duryee, KS

Q & A

Q. While browsing through my many glass books, I came across an interesting bit of information, that to my knowledge, hasn't been pointed out before.

If you have access to Sandra Stout's "The Complete Book of McKee Glass", look on pages 148 & 149. You will find there an exact duplication of 3 Heisey catalog sheets as shown in Vogel's Book II, Pages 91-93. As far as I can see, they are EXACTLY the same, right down to the "No. 411." The only thing that is missing from the McKee reprint is the Diamond - H trademark.

Since I have been an HCA Member for only a little over a year, I am wondering if this has been pointed out before? If not, and you think it significant, perhaps you could share it with other members through the "Heisey News."

I would be interested in knowing how one would tell the difference in an unmarked piece? I wish there was someone around knowledgeable enough on McKee to tell us what colors they produced it in.

LOVE the "Heisey News" and appreciate all your work. Elaine Storck, MN

A. We have been aware of these pages for several years but I guess we had not mentioned it in Heisey News. Thank you for calling it to our attention.

I have talked to Sandra Stout and she said these pages were with the material she had for the book. There is no doubt that they are from a Heisey Catalog. McKee did not, as far as we

know, ever make this pattern. They did, however, make SIMILAR items and the ones I have seen were marked McKee. One of their lines look very much like 417 Double Rib and Panel. Heisey had some correspondence with McKee concerning the copying of Heisey patterns. This evidently was a common problem, with everybody copying - just as it still is today. L.R.

Q. In your August 1981 issue of Heisey News under Club Notes you printed a letter from Mrs. A. B. Knight, Washington, in which she asks the pattern number for the footed creamer in Flamingo that she sketched. The response was #355 - Quator.

I just recently purchased the footed sugar, also in Flamingo, exactly like the sketch, and it was sold to me as #519.

Would you clarify this for both of us. Thank You.

Am enjoying very much being a small-time collector of Heisey glass and the News is an interesting publication.

Annette D. Roloff, CA

A. The cream and sugar pictured on Page 15 of Heisey News, August issue, are indeed the #355 Quator pattern. There is no cream and sugar pattern #519.

Quator has many variations and the cream and sugar pictured are one of them. I know it is confusing but this is the way Heisey numbered them.

The pictures in that issue came directly from Catalog #109, Ca 1928; a copy of the page is enclosed. There are several other items in other catalogs which do not seem to fit this pattern but none-the-less ARE Quator. I believe it was another catch-all pattern like Yeoman.

Thank you for your letter.

L.R.

PLEASE NOTE - MEMBERSHIP REPORT

Dear Members:

I am NOT divorcing you from your family by only putting one name on your address label. Its very simple - I don't have room on the label for all the names. Its okay for you to write all family members/household down when you send in your dues, however, as I can double check all the names in my file.

A great big "THANK YOU" to everyone who sent their dues in early or on time in December. This makes my job much easier at such a busy time. I might add - there are a few who HAVE NOT sent their's in yet. (22 Voting Members)

Check your Membership Card to see when your dues are due.

Merrell Strawn, Membership

VOTING MEMBERSHIP LIST AS OF DEC. 31,
1981

Abdalla, George	Crim, Harold W.	Heissenbuttel, Orva	McWilliams, Mary	Richmond, Betty J.
Ablon, Sandra Lee	Culbertson, Esther	Henry, Georgeann	Macomber, Janet	Richmond, James D.
Adams, J. Robert	Culbertson, Howard	Henry, Jim	Maloney, Frank	Robinson, Blanche E.
Adelstein, Joe	Cunningham, Mary Rose	Henderson, Russ	Marsh, Dick	Robinson, Jerry
Alford, John W.	Curley, David	Henes, J. Donald	Marsh, Virginia	Robinson, Judy
Alford, Norman W.	Currey, Fred	Heron, Jonathan	Marshall, Richard T.	Ryan, Hilda A.
Allen, Evelyn	Dankmer, Wayne H.	Hertrich, Maxine G.	Martin, George E.	Ryan, Robert R.
Allen, Harry	Darling, Kay	Hess, Phyllis	Martin, Tom E.	Sanders, John R.
Ames, June N.	Darling, Stanton G.	Hill, Barbara M.	Maskaleris, Chris H.	Schamel, Eileen
Anderson, Arthur J., Jr.	Dawson, Joyce	Hill, Robert	Maskaleris, Christos L.	Schamel, George, III
Anderson, Janetta C.	Day, Julia	Hoffman, Dr. Paul E.	Masson, Carlene S.	Schnaidt, Sam
Andrews, Muriel R.	Day, Richard E.	Holman, Ann	Masterson, Larry E.	Schneider, Sylva
Anstine, Barbara	DeGroot, Lynn R.	Holman, Maurice	Mehnert, Ernest	Schwan, Leila
Armentrout, Viola	DeGroot, Stanley	Hranilovich, Leah L.	Mehnert, Jean	Schwan, Richard
Ashworth, Larry G.	Delaney, Chauncey R.	Husted, Elaine	Metcalf, Jack A.	Seeber, Maurice G.
Backulich, David M.	Delaney, Debra	Husted, Dr. Frank L.	Metcalf, Sharon	Sexton, Robert L.
Bagford, Shirley	DeNiro, Barbara A.	Hyde, Betty	Miesner, Cole	Shaffer, Glenn A.
Baird, Charles N.	Dunham, Ethel	Jennings, Margaret	Milbaugh, William	Shannon, Mary Frances
Baker, Richard E.	Dunham, Ronald	Jester, Jody	Miller, Karen A.	Shaw, Charles A.
Balo, Miriam	Egbert, Melvin D.	Johnson, Bob	Miller, Mary Jane	Shelley, Lenore A.
Bandy, Calvin	English, Lee Johnson	Johnson, Fred H.	Miller, Wm. Alwyn	Shindler, James V., Jr.
Bandy, Mary	English, M. A. Johnson	Johnson, Jean A.	Moore, Percy M.	Shomaker, Emogene
Barker, John C.	Eshelman, John L., Jr.	Johnson, Odell H.	Moore, Vivian	Sickles, Yvonne
Barker, Johnny A.	Evans, Mary	Johnson, Virginia	Morningstar, Thelma L.	Siglock, Joette
Barnard, Betty Ann	Farnham, Joyce M.	Johnson, William E.	Morris, Ellen	Siglock, Martin R.
Barnes, Linda L.	Feldman, Bernard	Johnston, Bette	Mullen, Cecil	Sleight, Alethea
Belfer, Martin	Feldman, Valli K.	Johnston, Marilyn D.	Mundy, Edna H.	Smith, Marilyn
Bethel, Harley	Felt, Tom	Jones, Butch	Neterer, Jerry	Smith, Richard
Bishop, Elaine D.	Fisher, Charles	Jones, David	Newland, Jeanne	Sparacio, Carl
Blackson, Lewis R.	Fisher, Mildred	Jones, Lee	Newton, Kenneth R.	Sparacio, Helen
Blackwell, Michael	Flashner, Libby	Jones, Nancy	Nicholas, Russell L.	Spencer, Pat
Block, Lynn	Flashner, Sandy	Jordan, Evelyn	Noll, Joseph A.	Spencer, Richard A.
Boland, William P.	Fogg, George A.	Jordan, James W.	Noll, Peggy A.	Stark, Dennis E.
Bonar, Helen M.	Francis, C. Albert	Kennon, Helen Z.	Novak, Constance	Stickley, Larry E.
Bosniak, Elyse R.	Freier, Harry L.	Kennon, James E.	O'Grady, Robert	Stickley, Walter
Bourdon, Mildred	Freier, Phyllis	Kennon, James Lee	Overdorf, Richard	Stitt, James V.
Bradbury, Keith P.	Frye, Franklin V.	Kennon, Renee	Owens, Floyd	Swain, Mrs. C. M.
Bradley, Aly Ann	Fulke, Betty S.	Keyes, Pat	Swearingen, Hal R.	Swetnam, Gertrude
Bradley, Stephen H.	Funkhouser, Mary I.	Kidd, Russell W., Jr.	Swetnam, Russell	Talbot, Mildred Z.
Bratt, Darrell	Gartner, Fred W., Jr.	King, Elizabeth	Tandarich, Regis	Tartell, Lottie
Bratt, Nancy	Gillette, Marjorie	Kinney, Walter Gordon	Taylor, Jerry W.	Theiss, John J.
Bredehoff, Neila	Glenn, Ann	Kline, Roberta	Thomas, John R.	Thompson, J. Wm., Jr.
Bredehoff, Thomas H.	Glenn, Danny L.	Korus, James W.	Tucker, Harold A.	Tucker, Harold A.
Brown, Jane Ann	Godden, June	Kowalik, Thomas E.	VanEs, James H.	Wade, Charles B., Jr.
Brown, Milton	Goldsberry, Jeannie	Krupp, Dennis	Walsh, Martha	Walton, Irene
Brown, Roy R.	Goldsberry, Ray	Lach, Barbara B.	Wanser, Betty	Wanser, Herbert
Bruny, Dolores	Goldstein, Phyllis S.	Lackey, Mary Turk	Waters, Billie	Whaley, Betty
Bumpus, Anne	Gorsuch, N. J.	LaMoreaux, James M.	Whaley, Burl	Wiggins, Berry A.
Burrier, G. W.	Gosnell, M. Ann	Larson, Charles R.	Will, Marybeth	Will, Marybeth
Buthy, Richard E.	Guyselman, Gloria S.	Lavelle, William P.	Yeager, Donna	Yeakley, Loren
Campbell, Donald R.	Hahne, Otto H., M.D.	Law, Carl	Yeakley, Virginia	Zackerdonski, Mrs. Ruby
Carey, Stanley O.	Hanks, Betty E.	Law, Frances	Zehm, Beth	Ziegler, Dolores
Cason, Elizabeth	Harralson, Cliff	Lanthorn, Teresa A.	Ziegler, Raymond	Zipperlen, Arlene
Caswell, Lloyd H.	Harrington, Larry C.	Leviton, Dorothy	Mosier, Mrs. Jane F.	
Caughenbaugh, Jackie L.	Harrison, Robert G.	Little, Mary		
Caughenbaugh, Stephanie A.	Harrison, Patricia J.	Losch, Betty		
Clifford, William T.	Hartman, Art	Losch, Bill		
Cochran, Clara S.	Hartzell, Charles Wm.	Lokay, Dr. Joseph D.		
Colangelo, Alfred	Hauser, Mary	Long, Harold W., M.D.		
Colangelo, Joyce	Hauser, Virgil J.	Loss, William J.		
Cordon, Kenneth	Headrick, Dennis L.	Lupher, Harold P.		
Coyle, Robert H.	Held, Charlene	McClain, Robert G.		
Craig, Frances P.	Heisey, Norval	McPeck, Carole		
Creason, Mary Anne	Heisey, Tim	McPeck, Wayne		
Allen, Statha L.		Livingston, Mildred C.		

LYNNE



ART'S

GLASS-HOUSE
INC.

P.O. BOX 54-6014
MIAMI BEACH, FL 33154
(305) 861-7700
(305) 895-5666

*Dear Heisey Collector and Dealer,
We're heading your way! Heisey animals,
lovely old patterns, and a rainbow of colors, will
be coming along with us.
We'll be at the following shows.*

JAN. 30 - 31	CIVIC CENTER	SANFORD, FL
FEB. 4 - 10	MIAMI BEACH	CONVENTION CENTER
FEB. 6 - 7	NORTH MIAMI ARMORY	ALL-GLASS SHOW

Lynne and Art

GLASS
review

ESTABLISHED 1971

The GLASS REVIEW Magazine is for everyone who studies, collects or sells glass. Whether your glass interests lean toward the early 1900's -- or the depression era-- or with today's limited glass items, the GLASS REVIEW covers it all !

Articles -- price reports -- original catalog documentation -- shop directory -- research and reproduction news -- trademark information -- glass book releases -- what's new on the market -- a large variety of glass ads (on both old and new glass) -- plus much more.

Enclose payment and mail to:
GLASS REVIEW, P.O. BOX 542, MARIETTA,
OH 45750

10 'big' yearly issues

68 pages or more

\$12.50--one year



No. 1250 PATTERN



No. 150 PATTERN

H & R DIAMOND H PHONE 614-279-0390
 HELEN-BOB RAREY AFTER 5:30 PM
 1450 WHITE ASH DR. SHIPPING & INS EXTRA
 COLUMBUS, OH 43204 SASE FOR WANTS

- 1220 8" Plate w/ Peacock etch (12)..ea..\$ 7.50
- 3308 BOB WHITE 11 oz goblet w Peacock(6)ea22.50
- 1506 WHIRLPOOL 12 oz soda, Limelight
(8).....ea... 40.00
- 3357 KING ARTHUR 10 oz goblet, Mglm stem
(9).....ea.... 22.50
- 3357 KING ARTHUR 6½ oz champagne,
 moongleam stem (11).....ea.... 15.00
- 3368 ALBEMARLE 8 oz goblet (12)..ea.... 15.00
- 3368 ALBEMARLE 3 oz cocktail (10)..ea... 17.50
- 3389 DUQUESNE 9 oz goblet, CHINTZ etch
(7).....ea.... 17.50
- 3389 DUQUESNE 5 oz champ, CHINTZ etch
(7).....ea.... 12.50
- 3389 DUQUESNE 12 oz soda, CHINTZ etch
(6).....ea.... 15.00
- 3390 CARCASSONNE tall goblet, Cobalt (4) 45.00ea
- 3397 GASCONY 14 oz soda, FISHERMAN (6)ea 95.00
- 3408 JAMESTOWN 9 oz goblet* BARCELONA
 cut.....(8).....ea.... 25.00
- 4002 AQUA CALIENTE cocktail FOX CHASE
 etch.....(5).....ea.... 42.50
- 4091 KIMBERLY goblet* 10 oz. Unknown
 cut.....(6).....ea.... 35.00
- 5024 OXFORD 11 oz goblet* (8)..ea..... 17.50
- 5024 OXFORD 6 oz sherb-champ (7)..ea.. 10.00
- 5040 LARIAT 3½ oz cocktail MOONGLO (6) 25.00ea
- * * * * *

BILL & MARY STICH P. I. Extra
 3449 Moonridge Drive
 Cincinnati, OH 45211 PH: 1-513-574-0579

- 1205 FANCY LOOP Toothpick (some
 roughness.....\$60.00
- 1425 VICTORIAN Goblet - 2 ball-H 2 ea.... 15.00
- 1425 VICTORIAN Mustard - Sm. Flake - H... 37.50
- 1205 FANCY LOOP Variant Wine..... 45.00
- 33 Toy Candlestick..... 25.00
- 1184 YEOMAN Low Ft. Comport-5" H
 Unknown etch..... 18.00
- 5077 LEGIONAIRE SHERBET, Arcadia Cut, 2ea. 11.00
- 7032 (133) SWAN CANDLESTICKS, Mglm...pr. 275.00
- 394 DOMINO SUGAR HOLDER (Sm. mold flaw
 on bottom) H..... 22.00
- T280 WINGED SCROLL - Opal Puff..... 95.00
- 4045 CRY. BALL VASE - 3" D.O. 20.00
- 5048 ROOSTER HEAD Cocktail..... 60.00
- 1503 CRYSTOLITE Salt & Pepper....Pr..... 15.00
- 1250 GROOVE & SLASH Sm. plate - 4 ea..... 5.00
- 5038 ROOSTER STEM Cocktail -2 ea. 60.00
- 7052 PUFF BOX H..... 27.50

ROBERT HUNTER P & I 10% EXTRA
 * 1233 PINEBROOK WAY EXCESS REFUNDED
 * VENICE, FL 33595 * = SIGNED
 * 813-484-5239
 *

- * 1401 EMPRESS tangerine 7" sq plate* \$ 95.00
- * 1401 EMPRESS alexandrite 8" sq. plate*
3.....ea.... 50.00
- * 1219 8" amber plate* (some scratches) 25.00
- * 1404 6" sq OLD SANDWICH plate
 Moongleam*..... 10.00
- * 1220 PUNTY BAND hdld mug custard*
 small rim flaw..... 35.00
- * 1567½ PLANTATION cov. marmalade*.... 60.00
- * 1425 VICTORIAN Fr. Dsg bottle* ?stop 35.00
- * 352 FLAT PANEL Fr dsg bottle* ?stop 35.00
- * 1401 EMPRESS 5½" ftd mayo, Flamingo* 40.00
- * * * * *

ATTENTION

* Donald Bean of Hopewell, MA, who often adver-
 * tises in Heisey News, was burned out recently
 * and will not be able to fill any orders in
 * the near future. He needs to find a place to
 * live before he will be able to even find out
 * what he has left for sale. All HCA Members
 * sympathize with the Beans in their tragic loss.
 * Mr. Bean will advertise when he has glass for
 * sale again.

* JUDY DICKER P. & I. Extra
 * 1311 Pine Acres Blvd.
 * Bay Shore, NY 11706 *Signed
 * PH: 516-665-4044

- * 3333 OLD GLORY - Hawthorne D/O
 *Goblets.....each.....\$70.00
 *Parfaits.....each..... 70.00
 *Champagnes...each..... 60.00
- * 100 CANDLESTICKS-Flashed, Gold trimmed
 Cut and Signed "Hawkes".....pr...150.00
- * 31 TOY CANDLESTICKS*.....pr... 40.00
- * 5083 EL RANCHO, footed juice* (2)..ea.. 15.00
- * 300-1/2 PEERLESS Cream & Sugar.....pr... 30.00
- * 1506 PROVINCIAL limelight sauce*..... 30.00
- * 1295 BEADED SWAG opal sauce, faded
 decor* (2).....ea.. 25.00
- * 1205 FANCY LOOP Water Bottle..... 60.00
- * 3359 PLATEAU Goblets - flam...(4)..ea.. 12.00
- * 355 QUATOR footed sugar -Mglm*..... 17.00
- * 1231 RIBBED OCTAGON Cream/Sugar,Mglm*set 30.00
- * 1183 REVERE cup/saucer-Sahara w/white
 & gold bands*..... 16.00
- * 1405 IPSWICH footed champ, Sahara*.... 35.00
- * 1404 OLD SANDWICH bar glass*..... 15.00
- * 1404 OLD SANDWICH straight tumblers -
 Sahara*..... 15.00
- * 4157 5-1/2" ROSE BOWL D/O Flamingo..... 30.00
- * * * * *

B. L. CLARK
9500 S.E. 112TH ST.
VANCOUVER, WA 98664

(206) 254-5586
P & I EXTRA

1485	SATURN cruet.....	\$ 45.00
4225	COBEL 1 qt. cocktail shaker.....	45.00
1295	BEADED SWAG ruby flashed wine...	65.00
1469	RIDGELEIGH lamp.....	50.00
3380	OLD DOMINION sahara, old colony etch. Goblets....(3)...ea....	22.50
	Sherbets....(3)...ea....	17.50
1201	FANDANGO 4" nappies....(2)..ea..	10.00
1225	SAWTOOTH BANDS toothpick.....	35.00
1401	EMPRESS mayo. flamingo.....	35.00
1519	WAVERLY tall S & P w/silver overlay.....	25.00
353	MEDIUM FLAT PANEL cruet.....	30.00
341	PURITAN cruet.....	30.00
1567	PLANTATION 2 compartment relish.	25.00
1503	CRYSTOLITE Salt & Pepper (cloudy)	15.00
1503	CRYSTOLITE 3 Comp. relish..(2)..	12.00
507	ORCHID ETCH 7" plates....(12)...	20.00
507	ORCHID ETCH Sugar & Creamer.....	40.00
1540	LARIAT cologne.....	45.00

- WANTED - LARIAT PUNCHBOWL; have underplate.
MRS. FRANK - 2514 Boxwood, Norman, OK 73069
- FOR SALE - 10-year Index for the Vogel
"Newscaster". 1971-1980. 32-pages, includes
Patterns by Number & Name; Colors; Etchings,
Carvings, Cuttings; Not Heisey; General. Send
\$3.25 (postpaid) to PENNY HATHAWAY, Box 705,
Conway, NH 03818

- WANTED - Buying Depression Glass, Heisey
Rose and Orchid, Cambridge Rosepoint and
Fostoria etched dinnerware. Also glass fig-
ures and unusual glass pieces. NADINE PANKOW,
207 S. Oakwood, Willow Springs, IL 60480 312-
839-5231.

- WANTED - SODA FOUNTAIN ITEMS, especially
Straw-Holders. GEORGE HANEY, P.O. Box 538,
Spencer, OK 73084.

- FOR SALE - Most Colors, Most Patterns, 2000
Pieces of Heisey to choose from. S.A.S.E.
Please. No list available. Write Wants:
PEGGY'S ANTIQUES, Box 367, Spavinaw, OK 74366
(918) 589-2859

- WANTED - HEISEY STEMMWARE, Crinoline Pattern.
SANDY WAGNER, 207 Rancho Lane, Yakima, WA 98908.

- WANTED - HEISEY DOLLY MADISON ROSE CUTTING
on Kimberly Stem - Water Goblets, Juices, etc.
JEWEL KURLAND, 1502 Waverly Drive, Champaign,
IL 61820 PH: 217-356-1605

- FOR SALE - Crystal Seahorse Cocktails,
Signed, \$200 each, 7 Botticelli 9 oz. Goblets,
Ridgeleigh Base, \$60 each. Motherlode, 111 E.
30 St., Durango, CO 81301. PH: 303-247-2333,
(247-1318 eves.).

10th ANNUAL

STARLIGHT FLEA MARKET

Sunday, March 14, 1982

STARLIGHT SCHOOL
116 North 22nd. Street
North of West Main Street
Newark, Ohio

9:00 a.m. - 4:00 p.m. (firm times)

FOR FURTHER INFORMATION WRITE:

Dick Smith
225 Upson Downs Rd.
Newark, OH 43055 PH: 614-366-5163

- Antiques
- Heisey Glass
- Pottery
- Crafts
- Something for Everyone

Managed by: Land of Legend Heisey Study Club
(Affiliate of HCA)

Food Available

Donation 50¢



THE GOLDEN GATE HEISEY
COLLECTORS' CLUB
presents its first annual
"Glass, China, and Pottery"
Show and Sale

MARCH 6, 1982 10 a.m. - 6 p.m.
MARCH 7, 1982 10 a.m. - 4 p.m.

Redwood Hall
San Mateo Co. Fairgrounds; San Mateo, CA

"Hourly Door Prize Drawings"
You must be present to win.

Admission \$2.50 (50¢ discount with this coupon)

- a benefit for -
The NATIONAL HEISEY MUSEUM
Newark, Ohio

G.G.H.C.C.; P.O. Box 3614; Daly City, CA 94015

WESTWARD-HO ANTIQUES

P. O. BOX 1593

HUNTSVILLE, ALABAMA 35807

Telephone (205) 883-2072

*SIGNED

1.	3390 CARCASSONNE 11 oz. Goblet-Short Stem, Alexandrite Wide Optic Bowl, Clear.....	\$100.00
	Stem and Foot - Vogel III-137.....	
2	1201 FANDANGO 10" Compote - Vogel IV-70.....	85.00
3	1201 FANDANGO 8" Shallow Bowl (2).....	Each. 25.00
4.	343-1/2 SUNBURST* 7 Pc. Ice Cream Set - Vogel I-28 - 13" Shallow Nappy with Six	
	5-1/2" Shallow Nappies (1 Base Chip).....	Set. 120.00
5.	341 PURITAN* 1/2 Gallon Pitcher - Vogel I-46.....	75.00
6.	341-1/2 PURITAN* 1 Quart Pitcher - Vogel I-46.....	60.00
7.	393 NARROW FLUTE* 3 Pint Pitcher - Vogel II-55.....	75.00
8.	393 NARROW FLUTE* 1 Pint Pitcher - Vogel II-55.....	50.00
9.	1295 BEADED SWAG 1/2 Gallon Tankard Water Pitcher with Ruby Stained Etched Band -	
	Vogel IV-129.....	125.00
10.	1404 OLD SANDWICH* 10 oz. Low Footed Tumbler - Vogel III-98 (12).....	Each. 14.00
11.	341 PURITAN* 4-1/2 oz. Punch Cup - Vogel I-45 (16).....	Each. 8.00
12.	341 PURITAN* 4-1/2 oz. Shallow Punch Cup - Vogel I-45 (4).....	Each. 12.00
13.	331 COLONIAL PANEL* 4-1/2 oz. Punch Cup - Vogel II-169 (8).....	Each. 10.00
14.	311 RIB AND PANEL* Punch Cup (2).....	Each. 8.00
15.	120 COLONIAL* 8 oz. Flared Tumbler - Vogel II-142 (5).....	Each. 16.00
16.	373 COLONIAL* 9 oz. Goblet - Vogel II-119 (10).....	Each. 22.00
17.	373 COLONIAL* 3 oz. Cocktail - Vogel II-119 (12).....	Each. 14.00
18.	300 PEERLESS* 4-1/2 oz. Fluted Sherbet - Vogel I-20 (9).....	Each. 30.00
19.	351 PRISCILLA* 4 oz. Claret - Vogel II-19 (3).....	Each. 22.00
20.	359 COLONIAL* 2-1/2 oz. Creme de Mint - Vogel II-131 (3).....	Each. 12.50
21.	351 PRISCILLA* 4 oz. Saucer Champagne - Vogel II-20 (17).....	Each. 12.50
22.	300 PEERLESS* 5 oz. Low Footed Sherbet-Deep - Vogel I-20 (5).....	Each. 12.50
23.	300 PEERLESS* 4 oz. Low Footed Sherbet-Shallow - Vogel I-20 (13).....	Each. 12.50
24.	1567 PLANTATION Goblet - Vogel IV-14-13 (5).....	Each. 18.00
25.	1495 FERN Whipped Cream Bowl and Underplate - Vogel III-118.....	30.00
26.	1150 STAR AND PANEL* - Vogel I-134	
	a. 4-1/2" Colonial Plate (12).....	Each. 9.00
	b. 5" Colonial Plate (5).....	Each. 9.00
	c. 6" Colonial Plate (6).....	Each. 10.00
	d. 6-1/2" Colonial Plate (Saus Wear) (8).....	Each. 10.00
	e. 7-1/2" Colonial Plate (Saus Wear) (12).....	Each. 10.00
27.	352 FLAT PANEL* 9-1/4" Very Deep Plate - Vogel II-14 for Shape (8).....	Each. 16.00
28.	1252 TWIST 6" Plate, Moonglean - Vogel III-16 (7).....	Each. 12.50
29.	341 PURITAN* Handled Jelly - Vogel I-40.....	22.00
30.	352 FLAT PANEL* 5-1/2 Ice Cream Nappy - Vogel II-170 (12).....	Each. 10.00
31.	352 FLAT PANEL* 4-3/4" Ice Cream Nappy - Vogel II-170 (3).....	Each. 10.00
32.	1503 CRYSTOLITE* 11" x 8" Oval Tray.....	25.00
33.	5024 OXFORD* Saucer Champagne - Vogel IV-26 (3).....	Each. 15.00
34.	3350 WABASH FRONTENAC ETCH 12" Footed Ice Tea - Vogel III-43.....	20.00
35.	3350 WABASH FRONTENAC ETCH Goblet.....	22.50
36.	5010 SYMPHONIE MINUET ETCH 12 oz. Footed Ice Tea - Vogel III-150.....	25.00
37.	V-1065 VERLYS* CHRYSANTHEMUM 10" Frosted Bowl - Vogel IV-46.....	75.00

All items unconditionally guaranteed. Mint unless noted. All items shipped through the U. S. Mail fully insured; please allow \$5 for postage and insurance--excess refunded.

We assume no responsibility for errors in these ads after the first printing Editor
For changes in ads during the year, please send \$1.00 per line.

MOSTLY HEISEY
RHODA CURLEY
16 Clayton Place
Albany, New York 12209
By Appointment (518)482-6272

LAST CHANCE ANTIQUES
P.O. BOX 502, Dania, Fl. 33004
Mail Orders - Matching Service
Send us your want lists
(305) 467-6356 Day or Evening

GOLDSBERRY'S ANTIQUES
KALAMAZOO, Michigan
Shows Only -- Buy & Sell
HEISEY A Speciality
Phone: (616)381-3013

SCHWAN'S ANTIQUES
Route 1, Box 175B
John Tyler Highway

WILLIAMSBURG, VA. 23185
(804)229-7873 Shop and Shows

GREEN ACRES FARM
Antiques, Crystal Glass & Collectibles
2678 Hazelton Etna Road, S.W.
(S.R.310 N.) Pataskala, Oh. 43062
Sat. & Sup. P.M. or Call (614)927-1882

BERT'S BUDGET SHOP
General Line Antiques
403 W. Main St., Newark, Oh. 43055
Phone: (614)349-8045

THE WOODEN SHOE
Antiques & Collectables-Buy & Sell
Glass, Furniture, Estates
Jim & Sheri Vanes, By Appointment
Herndon, Va. 22070 Phone:435-9045

CURIOSITY NOOK
'Where Friends Meet To Antique'
3300 S. 8th. Ave. Westward Village
Yuma, Ar. 85364 (602)726-6730 or 726-8070
Barney & Jody Barnicle

CURIO CORNER
Accent Antiques of Kensington
3742 Howard Ave.
Kensington, Md. 20795
Phone: (301)933-3750

ANTIQUES - THE SHULTZES
206 - 208 E. Main Street
Newmanstown, Pa. 17073
15 Mi. West of Reading, Pa.
Phone: (215) 589-2819

T & S ANTIQUES
TOM MARTIN STEVE RODERICK
Specializing in Heisey
New Rochelle, N.Y.
(914) 235-9632

RAMBLING LANE ANTIQUES
KEITH & EVELYN HOOVER
Featuring HEISEY and Other Fine Glass
Rt.4 Box 1005 Rhinelander, Wi. 54501
Phone:(715)282-5019

OFF-BROADWAY ANTIQUES
HEISEY GLASS & GENERAL ANTIQUES
121 S. Prospect St., Granville, Oh. 43023
Open 7 Days A Week 12-5 P.M.
Shop(614)587-2083 Sam 587-0052

LYNNE & ART'S GLASS HOUSE, INC.
'HEISEY OUR SPECIALTY'
Miami Beach, Fl. 33154
P.O. Box 54-6014
(305)861-7700 (305)895-5666

CRYSTAL PALACE ANTIQUITIES
Cut Glass, Heisey, China, etc.
116 S. Taylor St., Hemet, Ca.
Mon-Fri 10:00 a.m.-5:00 p.m.
Weekends by adv. appt. (714) 652-1307

PEGGY'S ANTIQUES
2000 pcs. Heisey in stock
Ernie and Peggy Cox
P.O. Box 367, Spavinaw, Ok. 74366
(918) 589-2859 By Appt. or by chance

DIAMOND H PLUS
George & EILEEN SCHAMEL
Rt. 3 Box 419 Boonsboro, Md. 21713
Appointment or Mail Order
Phone: (301)432-6285

HEIDI-HO ANTIQUES, INC.
HEISEY and GENERAL ANTIQUES
838 S. High St., Columbus, Oh. 43206
Phone: (614)444-5774
Hours: Wed.-Sat. 11-5, Sun. 1-5

RECOLLECTIONS
THERESA WERT
Lahaska Antique Center
Route 202 Lahaska, Pa.
Phone: (215)794-8667

ANN'S GIFTS & ANTIQUES
105 W. Main St., Hebron, Oh. 43025
Intersection Rt's 40 & 79
Next Door to Daisy Queen
Daily 11:30 A.M. to 5:30 P.M. Closed Thursday

SUM OF LIFE
ELAINE & FRANK HUSTED
P.O. Box 102
Phoenixville, Pa. 19460
Phone: (215)935-2962

THE "FINDERS" ANTIQUES
DAVID & SHIRLEY ROSE
513 E. Main Street
Newark, Oh. 43055
Phone: (614)349-7934

MOUNDBUILDERS ANTIQUES
IRENE RAUCK
1138 Moundview, Newark, Oh. 43055
Phone: (614)344-6043
Heisey & Animals General Antiques

HAPPY HAVEN ANTIQUES
MARY DUMKE
14319 Rattlesnake Road
Grass Valley, Ca. 95945
Phone: (916)273-9450

THE PURPLE PLACE
Specializing in Art Glass
HEISEY, CAMBRIDGE, PATTERN
3093 Cleveland (U. S. 41)
Fort Myers, Fl. 33901 813-936-1572

C&J ANTIQUES
COLE & JEAN MIESNER
BOX 45, 72WHIG ST.
NEWARK VALLEY, N.Y. 13811
(607) 642-9905

GEORGE HOFFMAN ANTIQUES
G.W. HOFFMAN - J.H. DENNIS
129 South 4th. Street
Newark, Oh. 43055
Phone: (614)345-8021

CHARLES & MILDRED FISHER
Antiques & Collectibles, General Line
HEISEY, DEGENHART, IMPERIAL
991 Idlewilde, Newark, Oh. 43055
Phone: (614)522-5398

HARRISON'S ANTIQUES
HEISEY, CAMBRIDGE, DUNCAN
26 Johnston's Lane
Mercersburg, Pa. 17236
Shows, Mail, By Appt. (717) 328-2451

RENETTAS RELICS
515 North St., Utica, Ohio
Antiques & Collectibles
Open Thurs-Sat 12-6 or by appt.
Phone (614) 892-2488

H and R DIAMOND H
HELEN & ROBERT RAREY
1450 WHITE ASH DRIVE
Columbus, Oh. 43204
(614) 279-0390 after 5:30

JOYCE'S ANTIQUES
Specializing in: HEISEY
CAMBRIDGE, VERLYS, AMERICAN GLASS
P.O. Box 114, Albertson, N.Y. 11507
Phone: (516) 499-3396



No. 333
WALDORF-ASTORIA



No. 12 PATTERN-
ROSE BOWL,



No. 160 PATTERN

"HEISEY GOES HOLLYWOOD"

MAKE YOUR RESERVATIONS NOW...CONVENTION 1982-- JUNE 17 - 18 - 19 - 20, 1982

The SHERATON INN will once again be our convention headquarters for 1982, and they have given a special room rate for all H.C.A. members. All activities will be held there with the exception of the SHOW AND DISPLAY. Please make your reservations early because last year they were all taken by the first of March.

The rate given us is ONE PERSON - \$35.00, TWO PEOPLE - \$40.00 Queen size ONE PERSON - \$36.00 - TWO PEOPLE - \$41.00. The queen size rooms all have steam baths. NO ADDITIONAL CHARGE FOR CHILDREN UNDER 18 YEARS OF AGE AND NO ADVANCE DEPOSIT IS NEEDED. There is a \$5.00 charge per night for a rollaway bed.

SHERATON INN RESERVATION REQUEST

Name _____
 Address _____
 City _____ State _____ Zip _____
 Phone _____
 Arrive _____
 Depart _____

All rooms have two double beds.
 Single room requested (one person) \$35.00
 Double room requested (two people) \$40.00
 Queen size requested (one person) \$36.00
 Queen size requested (two people) \$41.00
 Rollaway bed _____ \$ 5.00

Please make your reservation by clipping the attached form.

Mail to: ROBERT McCLAIN
 156 W. Shields Street
 Newark, OH 43055
 Phone: (614) 345-8061

1982 SOUVENIR OSCAR FORM

PLEASE READ VERY CAREFULLY BEFORE FILLING OUT

Oscars are Emerald Green, marked HCA '82 and IG. A limited edition of approximately 2000 to be offered to members at \$19.00 until May 31st. None will be sold between that date and the first day of the Convention, June 17, when they will be sold for \$22.00 if any are left. You may order ONE per member. This means ANY member who has a membership card regardless of class of membership. Please list all names as they WILL be checked. Everyone living in Ohio or ordering for pick-up in Ohio, must pay \$1.05 Sales Tax per Oscar. Shipping charges will be \$1.40 each. The Oscars will be shipped as soon as they are received.

DO NOT SEND DUES, BOOK ORDERS, ETC. WITH YOUR OSCAR ORDER. NO ORDERS WILL BE ACCEPTED WHICH ARE NOT ON YOUR ORIGINAL FORM FROM THE NEWS-LETTER.
 Please keep this part for a reference and clip and mail the form below the line. Be sure your dues are currently paid.
 This is the Sixth and last of a series of Souvenir Oscars.
 The Oscar probably will not arrive until March, or later but order now to be sure you will get yours.

.....
 _____ Number of OSCARS AT \$19.00 _____ Only one per member
 _____ Sales Tax \$1.05 each _____ All Ohio Residents and Pick-Up in Newark.
 _____ Postage of \$1.40 each _____
 _____ TOTAL sent with order _____
 Check one: Please mail my Oscar(s)
 I will pick up my Oscar(s)
 at Convention or Museum
 after the Convention.
 Circle one.

NAME(s) _____
 List All Names _____
 ADDRESS _____
 CITY _____ STATE _____ ZIP _____

Make check payable to HCA, Inc.
 and Mail To: HCA OSCAR
 P.O. Box 2/
 Newark, OH 43055

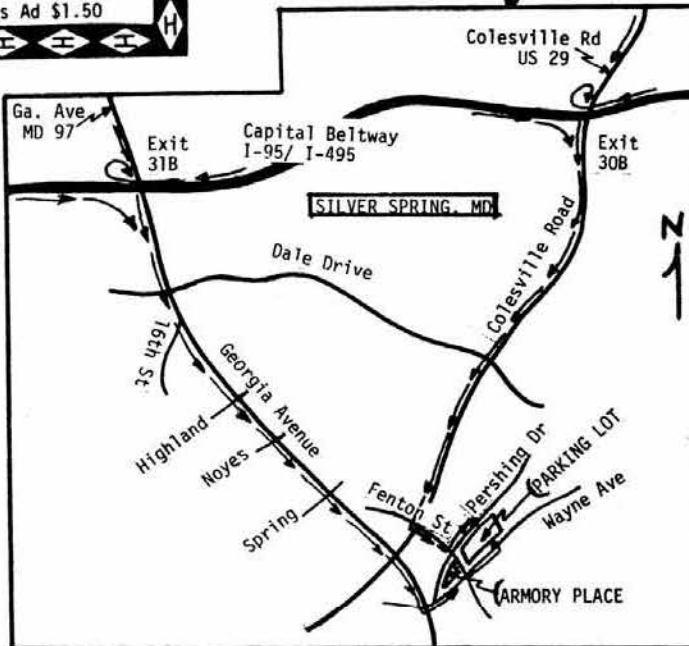
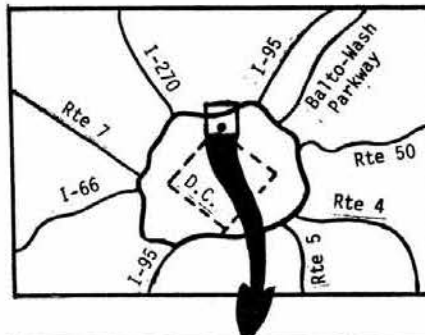
Mastercharge Credit Card No. _____
 Expiration date required _____
 Mo. _____ Yr. _____

THE NATIONAL CAPITAL HEISEY COLLECTORS CLUB
 Presents the Tenth Annual
"ALL-HEISEY GLASS SHOW AND SALE"
 For the benefit of the HEISEY MUSEUM

Sat, Mar 20, 1982 Sun, Mar 21, 1982
 11 AM to 9 PM 11 AM to 5 PM

ARMORY PLACE
 Wayne & Fenton Silver Spring, MD

FREE DOOR PRIZE FREE DOOR PRIZE
 Admission \$2.00 With This Ad \$1.50



Dear Heisey Hunters:

We hope you'll join us this year to observe the Tenth Anniversary of this unique event -- the only All Heisey Glass Show and Sale in the U. S.

We'll open at a new location for this Tenth Annual -- THE ARMORY PLACE, at Wayne Avenue & Fenton Street, Silver Spring, Maryland. The map at the right will help you find us, and there's lots of free parking across Fenton Street from THE ARMORY PLACE.

Twenty-eight dealers will offer lovely Heisey creations and the folks from HCA will be there with reference books on Heisey Glass and collector's items produced by the Imperial Glass Co. in Heisey moulds.

The ticket above admits you and your party at the discount admission price. Come hunt and talk Heisey with us on March 20-21, 1982. If you have questions, call us evenings at 301-423-4228.

Sincerely,
 Jim Jones, for
 The Show Committee



return to:
HEISEY NEWS
 Box 27
 Newark, OH 43055

FIRST-CLASS MAIL

FIRST CLASS MAIL
 U.S. POSTAGE
PAID
 PERMIT 34
 Reynoldsburg, Ohio 43068