

HEISEY *news*

OFFICIAL PUBLICATION HEISEY COLLECTORS OF AMERICA

© Heisey Collectors of America, Inc. 1981
All Rights Reserved

VOLUME X

NO. 12

DECEMBER, 1981

ONE DOLLAR



HEISEY NEWS—P.O. BOX 27—NEWARK, OHIO 43055

Editor LOUISE REAM
Box 27, Newark, OH 43055 614-345-2932
Ass't Editor NEILA BREDEHOFT
Box 27, Newark, OH 43055 614-345-2932
Published monthly and mailed from Reynoldsburg,
Ohio 43068

\$12.00 per year - \$1.00 per copy
Back issues 1972/1980 (except 1974) \$9.00 per
year (12 issues).

CLUB OFFICERS
President BOB McCLAIN 614-345-8061
Vice President JACK METCALF 614-892-2664
Secretary MARY McWILLIAMS 614-345-4380
Treasurer DICK MARSH 614-366-5608
Exec. Director LOUISE REAM 614-344-2377

Heisey Collectors of America, Inc. is a non-profit corporation with tax exempt status. Owners and operators of National Heisey Glass Museum, 6th & Church Sts, Newark, OH. Open Daily 1-4 pm March through December except Mondays and holidays, January & February-Wednesday, Saturday, & Sunday 1-4pm, Other times by appointment. Members admitted free.

Club membership (includes 12 issues of HEISEY NEWS and participation in all club activities) \$12.00/year plus \$2.00 each for additional family members in same household who wish a membership card. For VOTING MEMBERSHIP add \$25.00, one time only fee.

When requesting information, please enclose a self-addressed stamped envelope (SASE).

ADVERTISING - Send all ads to: NEILA BREDEHOFT
Box 27
Newark, OH 43055

RATES:

DEALERS' DIRECTORY - 5 lines-\$18.00/year

CLASSIFIED - 10¢/word, \$1.00 minimum. Abbreviations and initials count as words.

DISPLAY:	MEMBERS	NON-MEMBERS
1/8 pg (9 items)	\$12.00	\$20.00
1/4 pg (20 items)	20.00	30.00
1/2 pg (20 items)	35.00	45.00
1 pg (50 items)	60.00	75.00

We cannot double-column ads. No VERTICAL 1/2 pg. ads. ALL ADS MUST BE PREPAID. Ad copy must be received by the 5th of the month to be included in that month's NEWS. Ads containing reproductions will not knowingly be accepted unless clearly stated (i.e. Heisey by Imperial, etc.) HEISEY NEWS assumes no responsibility for false advertising or misleading information. In the event of typographical error, the incorrect portion of the ad will be run in the following issue, but HEISEY NEWS assumes no further liability.

Opinions expressed in articles are those of the authors and not necessarily those of HCA. Editorial Staff reserves the right to edit or refuse any material submitted for publication. Send all letters & articles to be published to the EDITOR. Letters to columnists should be sent to the club address and will be forwarded.

FROM THE DESK OF THE PRESIDENT.....

The other night I got a phone call from one of our members who asked what I thought about putting up a Christmas tree in the Museum. I thought that it was a good idea and immediately we started to find a way to buy one such as getting one of the study clubs to pay for it. Phyllis and I went to Columbus to look at and price trees and we were amazed when we found that you could spend up to four hundred dollars. Of course, those that look the best are always the most expensive. While trying to make up our minds, who should we see but Frances and Carl Law. They told us that they have a seven foot tree which we could use since they are going to California for the holidays. As you might guess, that seven foot tree now stands decorated at the foot of the stairs in the Museum and it didn't cost a cent. Each room is also beautifully decorated. I wish that everyone could drive by at night and see the candles in each of the windows and the outside illuminated with spots. It certainly is one of the most beautiful houses in town.

If you have not signed up a new member in support of the membership drive, please get into the act and do your part. We need your help to put this over. We have around fifty new members as of this time which I think is really great for the first month. We have a long way to go though to reach ten thousand.

We still have a few cordial bells left so if you have not mailed your order, you still have a chance to get one. This will be on a first come first serve basis.

By the time you get this issue of the news Christmas will be past so I hope that you had a Merry Christmas and we all here at the Museum wish you a Happy New Year.

Bob

REMEMBER!!!! DEADLINE FOR AUCTION GLASS TO ARRIVE IN NEWARK IS JANUARY 15, 1981

SEND TO: HCA, 169 WEST CHURCH STREET, NEWARK, OH 43055

ON THE COVER - ITEMS IN 1503 CRYSTOLITE



Greetings From The Executive Director

New Year's may be over by the time you get this. If so I hope it was a happy occasion and I wish you all a wonderful 1982.

Much mail and phone calls have been received about the recent brochure which came in the mail to many people recently concerning certain reissues of glass. Some of you wonder why you didn't hear about it before. If you will look back to your AUGUST 1981 newsletter, Page 16, at the top of the right hand column under the heading "Items Made for Collectors Guild" the complete list of these items is there. I am reprinting the item again to save you from looking back for it.

The brochure came from Book Club Associates, which, as I understand, is part of the same company as Collectors Guild.

These items are supposed to be marked "C.G." for Collectors Guild. I have also listed the selling price of each of these items which are sold ONLY through the book club. In this offering the word Re-issues is used 10 times.

Another source of excitement, pro and con, is the recent ad which has been appearing in publications recently. This is the offer of "Cobalt" animals being made for "Mirror Images". The color is NOT cobalt but is Imperial's Ultra Blue the same as the Fortney Colts were. I have seen an Animal and I KNOW it is Ultra Blue, and Lucile Kennedy of Imperial has also assured me that it is. The animals pictured in the Glass Review in color were made for feasibility studies and only the Airedale is being currently made. Other items pictured in the ad were the pig, donkey, scottie, and Goose, Wings Half, plus six of Imperial's own animals. These will all be marked ALIG. In an earlier mention of these we said they would be amberina but that didn't work out.

Heisey Collectors of America, Inc., has nothing to do with any of these reissues but we want all of you to be aware that they are being made. That way you can make your own choice about buying them but will know that you are NOT buying REAL Heisey and that HCA did not have them made. I hope this clears up any misunderstanding. The Imperial Glass Co. is making all of these items in molds which they purchased from A. H. Heisey & Co. in 1958.

When the new Imperial Catalog comes out we will inform you of any new reissues and items they no longer will be making. The green elephant is already out of production.

HCA is re-investing the dividends on the Bob Evans stock and now owns 1808.77 shares; all of this came from 250 shares which were donated several years ago by club member, Keith Bradbury, who is the treasurer of Bob Evans Farms, Inc. The stock is being reserved for contingencies.

The "Oscar" (plug horse or Sparky) has been the club's annual souvenir for five years. 1982 is the 6th and last of the series.

You will find the Oscar form on Page 23, and it will be repeated for the next few months; as stated, the Oscar will be Emerald Green. Since Imperial is putting in a new 14 pot furnace and will have better control of colors and can make smaller quantities for special orders than when they had to use tanks. We feel sure we cannot send your orders until March or later - but of course we used to wait until June to mail them even though you ordered in January.

We are sold out of Meadow Green baby cups and this item is now discontinued.

The museum hours for the next two months are 1 - 4 daily except Mondays and holidays. You can come in anytime by going to 169 W. Church, our Office Building, adjacent to the museum.

We regret that we had to refund your money for Teal Cup Plates as we never got delivery on them. Also we are out of Cobalt ones and are anxiously awaiting the delivery of the balance of our order. Pairpoint is very slow.

This has been a prosperous year for HCA though one wonders how long it can last because of the recession. We can only hope that things do improve next year for everyone.

Wayne and Carol McPeck have donated the plates for their book on "Verlys" Glass, plus the Copyrights, to HCA. Possibly in the future we will be able to have it reprinted.

The Copyrights and remaining books "Heisey Stemware" have also been obtained by HCA from Ryan, Bradley and Ryan.

Don't give up hope - we still ARE working on books in the limited time we have available for that purpose.

Neila's hand is improving every day and she is already doing a little one-handed typing. We will be glad to have her back.

Thank you for the nice letters. I appreciate your good wishes.

Louise Ream

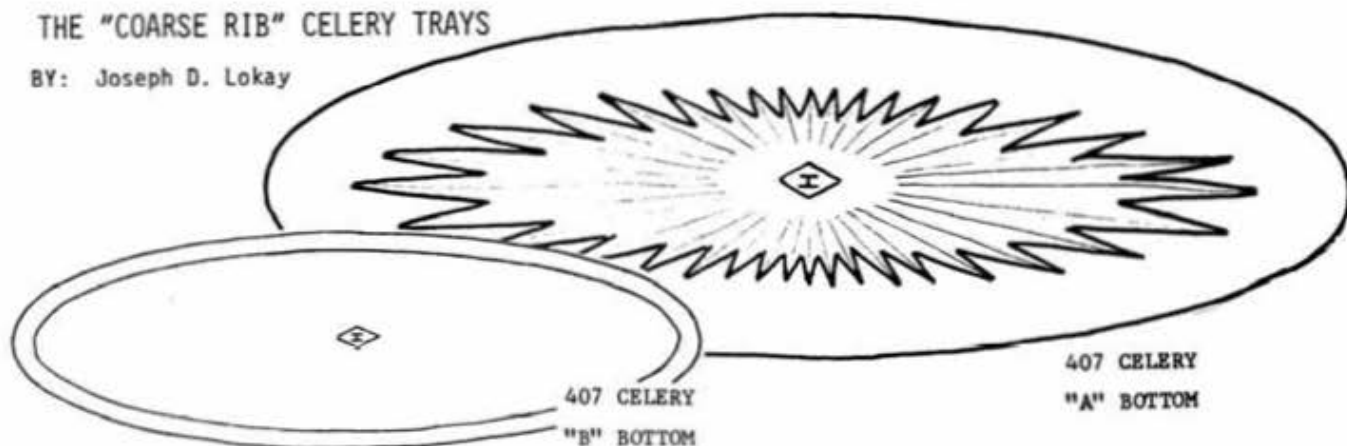
See list of Collectors Guild - Book Club Items on Page 10.

DEALERS PLEASE NOTE

The Show Committee would like anyone who thinks they are on the waiting list for the June show - or others who may want to be on the list to write them. Send the letters here and we'll send them on.

THE "COARSE RIB" CELERY TRAYS

BY: Joseph D. Lokay



A celery tray seems like a rather simple, single item to write about. However, the primary purpose of this article is to bring out the two styles or design features I happened to see in separate 12" celerys in the #407 Coarse Rib pattern. What I am about to describe is not unique to this case but has also occurred with items in other patterns. To differentiate between the two 12" celerys as I write about them, I will refer to one as "A" and the other as "B". Note the two pictures with this article.

Celery "A" has a 36 point star in the bottom that is formed in the glass by the mold when the glass is hot and flowing during the pressing operation. A full surface like the bottom of a celery does not cool evenly as it cools from the molding temperature to room temperature. This causes slight distortions which results in the bottom not being truly flat. While the distortions may not be easily seen with the eye, one will notice them when the celery is placed on a perfectly flat surface. To give the celery a true flat bottom as well as a polished finished look, Heisey ground the bottom of the celery at the factory. Some of the original LARGE grinding wheels from the Heisey factory were used to make the front steps at the Heisey Museum. Another was placed in the center of the front porch.

Celery "B" does not have a typical Heisey star in the bottom. It has a bottom rim which is 1/4 of an inch wide and extends around the circumference of the surface. This type bottom is created by forming a rim that extends about 1/8 of an inch below the main bottom surface. This is easily accomplished by placing a 1/4 inch wide, 1/8 in deep groove around the edge of a plain mold part that forms the bottom. Again, to give the celery a true flat bottom, Heisey ground the bottom rim at the factory.

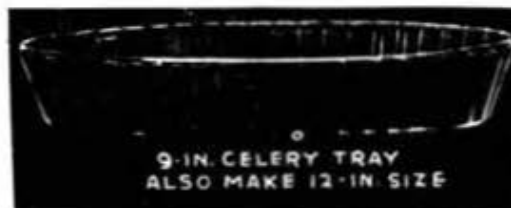
Let's think of the celery mold as two sections called the top and the bottom. Examination of celerys "A" and "B" shows that the top sections are identical for each style. However, the bottom section were two different pieces, one for each style. The identical features of celerys "A" and "B" are that both have 56 coarse ribs and both oval shapes measure 12" x 4-1/2" at the top and 10-3/4" x 3-1/4" at the bottom. The "B" celery however, measuring at 1-3/4" tall is 1/8 of an inch taller than the "A" style celery be-

cause of the added bottom rim feature. Both celerys are signed with a small Diamond H in the same location, namely, in the center of the bottom on the inside.

Heisey introduced the #407 Coarse Rib pattern in 1923. A few items were still available in the pattern in 1935. Production of the pattern ended around 1937. The 12" celery was produced over the entire life of the pattern, 1923 to 1937. I found no information in the Heisey catalogs or price lists that referred to two styles of celerys or even suggested the possibility of two types of celerys. My opinion is that the two styles were not made at the same time and that celery style "A" was made first and celery style "B" was made later. There may have been some overlap in styles most likely because of inventory. My guess is that the style change was made after the first bottom portion of the mold wore out, perhaps around 1928.

Besides crystal, the 12" #407 celery was made in moongleam and flamingo. An amber color stain was applied to several Coarse Rib pieces including the 12" celery by an outside decorating company and sold that way. On occasion, these amber stained pieces have been mistaken for Marigold color.

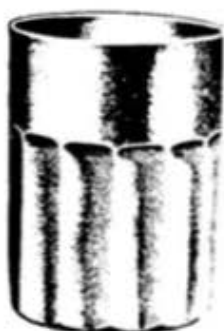
What type of bottom is on your #407 12" celery, particularly, in color????



407 CELERY

MORE ON 201 - 602 TUMBLERS

BY: Tom Bredehoft



No. 201-8-oz.



No. 602-8-oz.
PATENT No. 46296
PLAIN BOTTOM

Several months ago, when I wrote about the 201 tumbler, I said that the 602 line had only a buttermilk glass, no tumbler. If I had turned one more page in the catalog, I would have seen the rest of the line, a straw jar, (without a lid), several crushed fruit jars (with pointy stoppered lids), several sizes of "root" beer mugs, and a tumbler. After seeing this picture, I got to wondering exactly what it was that I had. Comparing the pictures, 602 seems to have 10 flutes while 201 has 12. Both of mine, amber and crystal, have 12 flutes, so they must be 201.

Research can be confusing, though. There is a listing in price list 60, Ca 1902, for a 201 1-3/4 oz bar. An illustration from an early catalog of this shows a shot glass with a terrific sham (it comes to a point in the bottom) and little flutes around the bottom third of the piece. This shot is related to 201, (they both were made by Heisey), but they are probably not the same line.

The first mention of a 201 tumbler is in price list 206, Ca 1922, it lists 201 as an 8 oz star bottom tumbler, @ \$1.10/doz. The following catalog, 102, Ca 1924, shows the tumbler and a note in the corner of the page says "All tumblers not otherwise specified have star bottoms." The next catalog we have, 109, Ca 1928 shows the tumbler and says under it, "8 oz, plain bottom." Some where along the line they changed the mold, and made one more stumbling block for us plodding researchers.

Having found the illustration of the 602 tumbler, I looked through the price lists for it and found that price list 102, (Ca 1922, remember?) lists the 602 tumbler as does price list 208, Ca 1924). Our copy of 208 apparently was used to prepare the following price list (209, Ca 1929) and in 208, the tumbler in the 602 line was crossed off. So, the 602 tumbler was made for at least two years, no more than five.

Both tumblers should be marked with the Diamond H, the 201 should be out there in

bunches, some of them may even have star bottoms. The 602, however will be more elusive.

HEISEY SALTS

BY NEILA BREDEHOFT

#15 SQUARE TAPER



NO. 15 SALT OR PEPPER
WITH
NO. 43 TOP

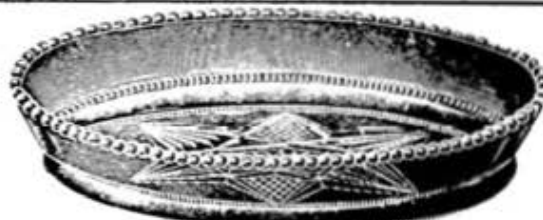
This large, heavy shaker was made from ca. 1908 to 1922. Even though this is a rather long life, I can only remember seeing one pair. Perhaps some of you readers have some in your collections and will report them.

The name "Square Taper" was a Heisey description of the shaker in price lists, so it seems to be a good name. Glass in the shaker is almost 1/4" thick in places making it very heavy. It was probably a good shaker for hotel or restaurant use although the rather square corners might be broken fairly easily. The shaker is 1 5/8" square at the base, 2 3/4" tall to the shoulder or 3 3/16" tall overall. The top is ground. It is marked on the top center of one panel. The sides are gently tapered. The bottom is plain.

The #15 shaker was available with several tops:

- #1 Sanitary -- Metal collar, glass insert
- #2 Sanitary -- All glass
- #3 Sanitary -- Silver plate collar
- #43 -- White metal with heavy silver plate.

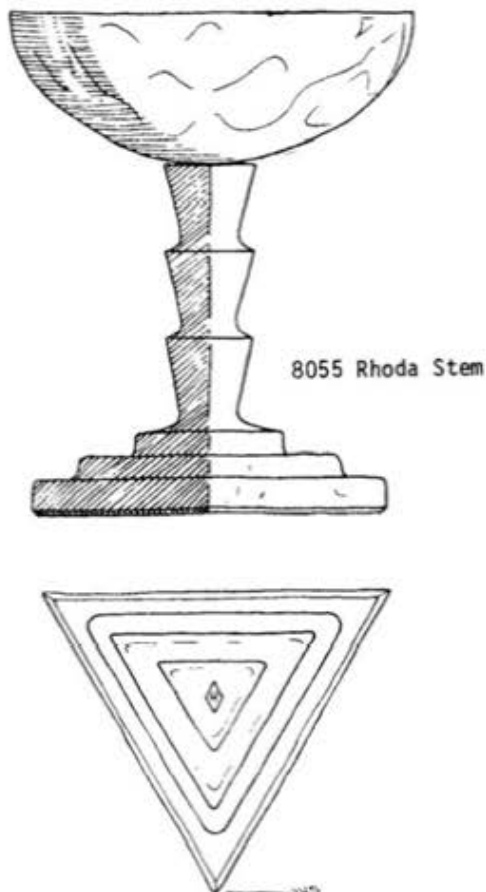
Other tops may also have been available.



1225 Plain Band With Star Bottom

STEMS - RHODA

BY: Carl Sparacio



If you wait long enough something strange will turn up. That's one of the joys of collecting Heisey - you can never know everything. As soon as you think you do somebody will discover something that isn't in the books. We have "Stranger Of The Month" for you thanks to Rhoda and Dave Curley. This unusual stem, which we have pictured in two views, appears to have been pieced together from three different items. The foot is definitely from 3379 Pyramid and the stem is definitely 1252 Twist and the bowl is definitely --- anyone of a number of blown diamond optic bowls..... Well, some of these definites aren't really definite. That the foot is related to Pyramid is a pretty good bet but the most positive thing you can say about the stem part and Twist is that they appear to be similar. The Twist stem is never more than two inverted pyramids high. This stem is three high. The Twist stem is square in cross section. This stem is triangular.

The blown bowl could possibly be Yoeman but it just doesn't sit right on a stem and foot which were pressed as one piece.....This champagne, which Dave tells us is one of 4, is in Flamingo and, as the drawing indicates, it is very clearly marked on the base with the Diamond H. Many of the qualities of this piece tell us that it is Heisey but the "Mark" is the clincher. I can't help but wonder if it would be so easily accepted as Heisey in the absence of catalog documentation if it didn't have the Diamond H... One thing I feel is unusual is the sharpness of the molding on the stem portion. My first reaction was, and I still feel that way, that the planes of the stem have been ground. Dave thinks otherwise and his arguments are most convincing. It is strange that this super-sharpness doesn't continue on the edges of the foot where the edges are softer as you would expect them to be in a molded piece.....We're calling this pattern "Rhoda" in honor of one of the discoverers until, and if, someone proves that it is definitely part of the Pyramid line or that Heisey had already christened it. We trust the HCA will supply a number.....This stem is attractive in its own peculiar way and, as Catherine Crosby would say, "very Art De-co'" (accent on the last syllable, please)..... Where there are four there may be more. Dave has promised to find a goblet for me-----go out and beat him to it.

Our apologies to those who have read this article elsewhere. We try not to repeat ourselves but when something completely new surfaces we'll go for repetition every time.

Once again it's time to extend Holiday Greetings to all our friends. We hope your Holiday was Happy and Merry and that your New Year will be blessed with the best.

Ed. Note: This article recently appeared in Diamond Dust. Thank you for sharing it with all HCA. L.R.

DATES TO REMEMBER

Jan. 15	Deadline for Auction Glass
Mar. 6 - 7	Glass, China, Pottery Show San Mateo, CA - Golden Gate HCC
Mar. 12 - 13	HCA Annual Benefit Auction O.S.U. - Newark Campus
Mar. 14	FleaMarket, Starlight School - Newark Land of Legend HCC
Mar. 20 - 21	All Heisey Show - Silver Springs, MD - National Capital HCC
June 17 - 20	Annual Convention - O.S.U. Newark Campus

NO. 140 "CROCUS" CANDLESTICK

BY: Bob O'Grady



Heisey's No. 140 candlestick is an unusual but very attractive design. It was produced for a short time in the mid-thirties during their color period when styles and designs of their candlesticks were quite varied. Flowers, leaves, acorns, swans, cherubs, dolphins, grapes and swirls and flourishes were indicative of this period's styles, not only with Heisey but other glass companies as well.

The No. 140 first appears in Price List 210 dated June 1933 and the only known catalog which pictures it is the 211-16 which dates to about 1935. And so the best production dates which can be assigned at this time are 1933-1935, a period of almost two years. Since Heisey did not name this candlestick, "Crocus" seems to be an appropriate descriptive name. The double candleholders are similar to crocus buds which have just come into bloom, rising out of the sheath of their leaves.

The candleholders or crocus flowers rise to two different levels, the lower being about six inches high and the taller about seven and a half inches. It was made in crystal, flamingo, sahara, moongleam and cobalt. And although it is difficult to find in any color, it seems to be most common in sahara. It is usually marked at the bottom of the first leaf, just above and adjacent to the top of three graduated rings which separate the base from the leaf column.

A two-part mold was used for this candlestick but its design and fire polishing have made the mold marks nearly invisible. The round foot or base was applied separately by hand. It has not, as yet, been reissued by Imperial. There is a pair of these pictured in sahara on Plate 13 of the Yeakley's, "Heisey Glass in Color, Book II".

No. 351 PRISCILLA AND NO. 352 FLAT PANEL TOOTHPICK HOLDERS

BY: Nancy and David Jones

The closeness of pattern numbers, near coincidence of introduction, and the same termination of production dates would provide circumstantial evidence that these two toothpick holders should have a lot in common. And to a certain extent they are similar. Both were produced in crystal only, a rim with six scallops, a body of six panels, no documented factory decoration and both are rather common. But they have some differences, too.

No. 351 Priscilla (as the pattern number would indicate) was introduced prior to #352 Flat Panel. The actual production dates are 1907 to 1929 and #351 Priscilla should always be marked inside the bowl on the upper surface of the base. It has a star bottom and is sometimes seen with different silver overlay designs, overall yellow stain, and even with cuttings - all done by outside decorating houses.

No. 352 Flat Panel was produced from 1908 to 1929 and was never marked with the Diamond H. It had a ground bottom until 1912 and a punted bottom thereafter. There is a toothpick holder which looks very similar to Heisey's #352 Flat Panel, but we do not know who produced it. The easiest way to distinguish between them is that the other one is much more closely cupped at the rim but it is easy to get confused. So it is best to refer to the picture below and get a firm image of this shape - particularly the upper portion and the rim.



352 Flat Panel

351 Priscilla



TIPS FOR MAIL BIDDERS - MARCH AUCTION

BY: Bob Johnson

With the approach of March and the annual auction, it's time again to review the procedures for mail bids. Although primarily aimed at the first-time bidder, this can also be a refresher course for the "repeaters". With the use of mail bids we are able to extend the opportunity to participate in the auction to all members, whether or not they are able to attend. A review of auction results the last few years shows that mail bids have won a significant number of items, so give it a try.

Each mail bid is handled competitively that is, we start at a reasonable level and bid only as high as necessary to buy the item or lot. Of course, each bid has to have a limit - set by you, the bidder - and we can't bid above that limit. Sometimes, due to the sequence of bidding, a competing bidder will hit the exact amount of the limit and win the bid. This is always frustrating, but is an unavoidable defect in the system.

To anyone who would like to submit one or more mail bids for the coming March auction, we would like to suggest the following tips:

1. Lots containing multiple items (such as cream and sugar, set of goblets, pair of anything, etc.) are usually sold as "so much a piece, the set (pair, lot, etc.) to go". Therefore, the final lot price will be a dollar multiple of the number of items in the lot, and a bid limit should be set accordingly. (Example: a pair of candlesticks might be sold at \$20.00 each for a total of \$40.00.)

2. There are minimum limits to raises that will be accepted in the bidding, depending on the price level of the item. These limits range from \$1.00 possible on an item under \$10.00 to \$25.00 or higher on items over \$100.00. Therefore, a limit of \$10.25 is no better than one of \$10.00.

3. Multiple item lots are not normally split up, but sold as a lot to one bidder.

4. If you wish to bid on an item noted in the list as imperfect (by an X following the description of the item), I will bid on it on an "as is" basis making no judgment as to the extent of damage. If an item, not noted as imperfect in the list, is determined to be imperfect during the auction, I will not bid on it.

To submit mail bids for this auction, please include:

1. A list of lot number, brief description of item and maximum amount of bid for each item in that lot.
2. Payment in one of the following forms:
 - a. A check for each separate lot to be bid on (including shipping cost).
 - b. One check for all the lots to be bid on (including shipping cost).

c. The number and expiration date of your Visa or MasterCard. Excess checks or dollars will be refunded.

3. Your complete street address (No P.O. Boxes) as all glass will be packed at the Administration Building and shipped by UPS.
4. An SASE for refunds of excess money, unused checks, etc.

Due to the large volume of mail bids, we will be unable to comply with special requests, such as calls to give results. Since this is an HCA sponsored event, a complete list of price results will appear in the Heisey News.

In case of duplicate mail bids, the one with the earliest postmark will be given preference. All mail bids must be RECEIVED by Thursday, March 11, at the following address:

HCA AUCTION
P.O. BOX 42
DAYTON, OH 45420

If you have any questions, you may call me at (513) 299-4364

MARCH 1916



*The basket vase
for cut flowers*

East of Missouri River Delivered—		Maine, Canada, and west of Missouri River Delivered—	
No. 402	Each	No. 402	Each
2 each	\$1.30	7 each	\$2.90
3 each	\$2.25	8 each	\$3.75
4 each	\$3.25	9 each	\$3.75

A.H. HEISEY & CO. Dept. 29 Newark, Ohio
Made in U.S.A.



LETTERS, we get letters....

New Club Forming in Virginia

A Heisey Study Club is being started in the Virginia Beach - Williamsburg and Richmond, Virginia Area.

Our next meeting will be held on Feb. 6th, 1982. Anyone interested in joining, please contact Dick and Lee Schwan at (804) 229-7873.

We had our first gathering with about 16 people. We showed the "Heisey Glass Story" and everyone was amazed at all the different patterns and colors that they had never seen. There were many questions. Thank you for the suggestions you sent us. It was very helpful. We have not actually formed the club but will in February with elections of officers, name, etc.

Dick and I were very pleased with the response. There's lots of interest and they are most willing to help.

Dick & Lee Schwan

Dear Mr. Lokay,

In reference to your article on Floral Blocks 1, 2, 3, 4, (Feb 1981 Heisey News).

In recent weeks we have uncovered what we believe is a #3 Floral Block. It measures 4-1/2" in diameter x 1-3/8" high, polished top - bottom ring divided by 3 notches. The bottom ring is about 3/16" high. This block has 31 holes.

Another member of the Rochester Club has a #2 Block, 3-1/2" diameter with 19 holes as you described in your article. The holes are 3/8" diameter.

We hope we have added one more little bit of data to the fascinating Heisey story.
Marjorie & Jerry Gillette NY

Enclosed Check of \$12.00 for 1982 dues. Wish I lived closer so that I could participate in all your activities, but I read about them and I'm so happy to have been an employee of Heisey Glass.

Denise Spetreris

Ed. Note:

Denise worked for the Heisey Company in the Heisey glass department of B. A. Heisey, N.Y.C.

I refer to Joe Lokay's article on the #501 Flower Box and Blocks in the Sept. 1981 issue on Page 3 of the Heisey News. He tells us that the block is listed in the colors of Marigold and Flamingo and goes on to tell us that nowhere is there any mention of Marigold blocks even though the box is listed in Marigold.

I have a block in Marigold. I found it two summers ago in New Hampshire at a Flea Market. Because it is so strange looking by itself with the hole in the bottom, no one had any idea what it was for. I knew and bought it. Didn't care whether I had a box to put it into. It seemed rare to me and in the color of Marigold, I knew not much of it could have been made.

I took this to a show and tell at a Bay State H.C.C. Meeting shortly after I found it but no one made any comments other than never having seen one in clear or color.

Has anyone else reported having the block in this color since the article came out? Like so many other Heisey pieces that are thought to be scarce or rare, once an article comes out everyone reports having one. I have one and of course expected to find another block easily and then buy the box to complete the set. I may accomplish this by the year 1990.

Ed. Note - We would enjoy showing the block along with the box which just happens to belong to the editor. No one else has reported this.
L.R.

HEISEY COLLECTORS OF ROCHESTER, NY

By: Marjorie Gillette, Secretary

The Heisey Collectors of Rochester, NY were invited by the Rochester Depression Club to have a Heisey exhibit at their recent annual Depression Glass Show. We had an exhibit in five categories - candles, Heisey colors, Empress Sahara dinner place settings, glass items used in the bedroom and glass used for a party. We also had a slide show of candles owned by members of our club.

The exhibit was well received by the public and everyone agreed that Heisey glass not only is beautiful but also useful. A photo of our party exhibit is attached.



CLUB NOTES

MILWAUKEE - WEST ALLIS AREA

Will the person who was interested in a club in the West Allis - Milwaukee Area please write and give us her address. The club in that area will then contact her. We regret that we have misplaced the address.

BAY STATE HEISEY C.C.

The monthly meeting of the B.S. H.C.C. was held at the Hancock Church in Lexington, MA.

President Lloyd Caswell called the meeting to order. The business portion of our meeting was dispensed so we could start our auction due to the enormous amount of glass brought. George Fogg was our Auctioneer for the evening. He really did a superb job. Herewith are some of the items brought:

1. Pineapple & Fan tumbler in Emerald
2. Knee & Step comport with Orchid Etch (#1447 Rococo)
3. #393 Ice Cream Holder
4. #443 Greek key miniature ice tub
5. #433 Greek Key stem
6. 2 #5 Puff boxes
7. Jamestown wines
8. 4 #411 Rib & Panel Stems.

George did a fine job again.

The meeting was adjourned for cheese cakes, coffee and goodies. Refreshments were provided by David Steer, Bobbie Kline and George Gleason.

Until January, I hope everyone had a nice Christmas and a Happy New Year.

Geo. Gleason

HCA AFFILIATE PREPARING LOAN EXHIBITION

The Heisey Heritage Society will present an exhibit of Heisey at the invitation of the Wheaton Museum of Glass. Society members will loan quality Heisey that best represents the Company's output through all its years. The exhibit will be on view in the Museum's Lobby. It will run for approximately three months beginning January 30th. HCA Members who find themselves in the Millville, New Jersey area will enjoy a visit to the Museum. Millville is about 45 minutes from Atlantic City or Philadelphia.

Vince Sparacio

TALLYHO LOOK-ALIKE

Mr. and Mrs. Stan DeGroot of the Washington D.C. Area sent us a tumbler with a silk screen design which is almost identical to the Tallyho etching. It is a gray and white raised design on a crystal tumbler. The only thing missing is the lone figure shown here at the left of the design. This should be of no problem at all to a collector of silhouette etchings as it is NOT etched and is very poor glass. It is NOT new and may even have been made before Heisey's Tallyho.

Louise Ream



"Continued from Louise's column on page 3."

COLLECTORS GUILD (LITERARY GUILD)

ITEMS MADE FOR COLLECTORS GUILD

Collector's Guild of N.Y.C. has commissioned Imperial to make several items for them in Heisey molds. These will bear the mark CG for Collectors Guild. This company puts out a catalog and do a mail order business.

The Items are:

- 1401 Empress Pitcher in Emerald Green
- 1401 Empress Floral Bowl -Sunshine Yellow
- 1401 Empress - 3-toed Candlesticks-Sunshine Yellow
- 1519 Waverly- Lion Trinket Box - Amber
- 1413 Cathedral Vase - Pink
- 1503 Crystalite Master Swan Nut or Mint Dish in Ultra Blue

PRICES FOR ABOVE

67496	Empress Pitcher	\$55.00
67504	Lion-Covered Dish	\$45.00
67546	Empress-Toed Candlesticks	\$85.00 per pair
67777	Cathedral Flared Vase	\$55.00
67868	Empress-Footed Bowl	\$45.00
70276	Swan Dish	\$28.00

(This is not a paid add)

1235 Beaded Panel and Sunburst



Bar

Mustard



Salt

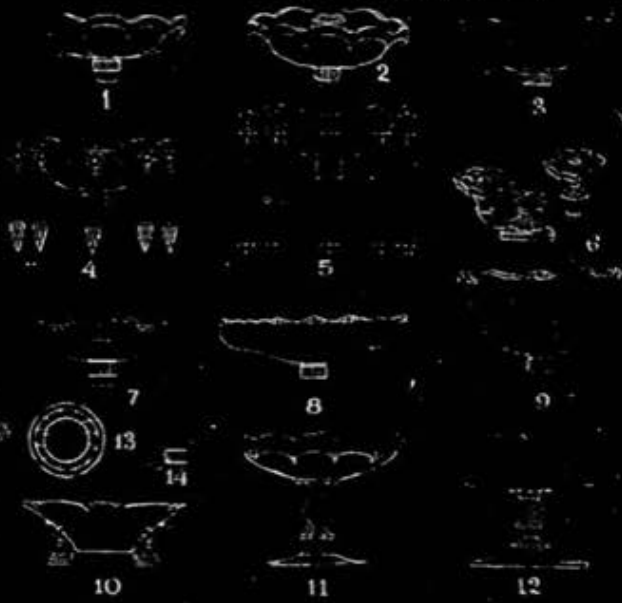


An Original Heisey Photo:

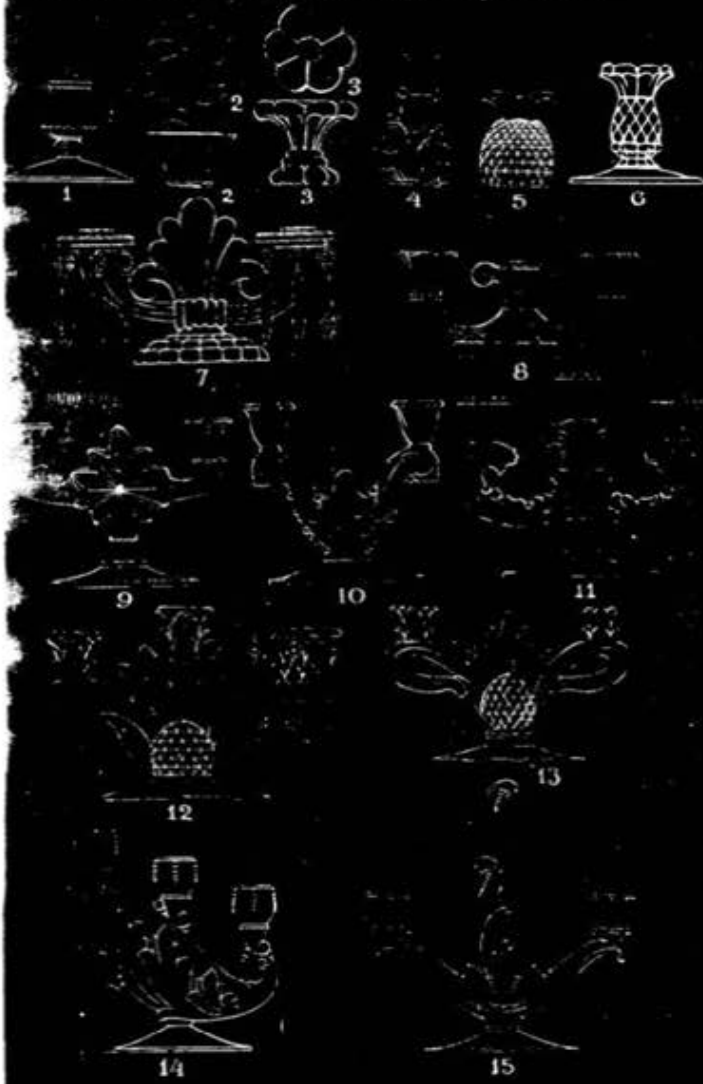
1503 Crystalite Blown Bowl

1519 Daverly, Horn Vase

EPERGNETTES and
EPERGNIONS



CANDLESTICKS for Epergnettes



★EPERGNETTES AND
EPERGNIONS

No.	Size	Item	Price Dozen Crystal	Price Each
1- 341	5½ in.	Epergnette Saucer	\$13.20	\$1.10
2- 341	5½ in.	Epergnette Candleholder	13.20	1.10
3- 342	5½ in.	Epergnion Bobeche without Prisms ..	19.80	1.65
4- 342	5½ in.	Eperg. Bobeche with 10 "A" Prisms ..	49.80	4.15
5- 342	5½ in.	Eperg. Bobeche with 10 "C" Prisms ..	103.80	8.65
6- 341	5½ in.	Epergnette Candleholder adapted to Candlestick		
7-1519	5 in.	Epergnette Candleholder	13.20	1.10
8-1519	6½ in.	Epergnette Candleholder, Cupped ..	19.80	1.65
9-1519	6 in.	Epergnette Candleholder, Deep	19.80	1.65
10-1509	5½ in.	3-Footed Epergne Candleholder	13.20	1.10
11- 341	5½ in.	Footed Epergne Candleholder	24.00	2.00
12-1567	5 in.	Footed Epergne Candleholder	24.00	2.00
13- 1		Wire Flower Holder for Epergnettes and Epergnions	3.00	.25
14-		Rubber Fitter for Epergnettes and Epergnions60	.05

* Pat. No. 2478864 and Design Pat. No. 153506.

NOTE: All Epergnettes and Epergnions come equipped with rubber fitters on stem to assure tight fit in candlesticks.

CANDLESTICKS FOR
EPERGNETTES

No.	Size	Item	Price Dozen Crystal	Price Each
1- 112	1 lt.	Candlestick	\$15.00	\$1.25
2-1502	1 lt.	Swirl Candleblock	12.00	1.00
3-1566	1 lt.	Footed Candleblock (Pat. #152804) ..	16.20	1.35
4-1519	1 lt.	Candlestick	16.20	1.35
5-1567	1 lt.	Candleblock	16.20	1.35
6-1567	1 lt.	Candlestick	16.20	1.35
7-1503	2 lt.	Candelabra with 10 "B" Prisms	120.00	10.00
8-1504	2 lt.	Candlestick	33.00	2.75
9-1510	2 lt.	Candlestick	33.00	2.75
10-1519	2 lt.	Candlestick	33.00	2.75
11-1519	3 lt.	Candlestick	48.00	4.00
1567	3 lt.	Candlestick without Prisms	48.00	4.00
12-1567	3 lt.	Candelabra with 10 "A" Prisms	108.00	9.00
13-1567	2 lt.	Candlestick	36.00	3.00
14-1614	3 lt.	Candlestick	48.00	4.00
15-1615	2 lt.	Candlestick	48.00	4.00
1183	10 in.	Epergne (1187) Shown on page 5 ...	66.00	5.50

The Finest in Glassware . . . Made in America by Hand

Cocktail Shakers & Bottles

Novelty Cocktails and Bar Accessories



COCKTAIL SHAKERS AND BOTTLES

No.	Size	Item	Price Dove Crystal	Price Plain
1- 1		Shaker Strainer for all bottles	\$24.00	\$2.00
86		Plain Shaker Stopper	18.00	1.50
118		Rooster Head Shaker Stopper	18.00	1.50
132		Horse Head Shaker Stopper	18.00	1.50
131		Plain Shaker Stop (for = 6060 Shaker)	18.00	1.50
SPECIFY PLAIN, HORSE HEAD OR ROOSTER HEAD STOPPER ON ANY SHAKER				
2-4225	1 pt.	Cocktail Shaker	89.00	5.75
4225	1 pt.	Shaker Bottle only	27.00	2.25
3-4225	1 qt.	Cocktail Shaker	84.00	7.00
4225	1 qt.	Shaker Bottle only	42.00	3.50
4-4225	2 qt.	Cocktail Shaker	99.00	8.25
4225	2 qt.	Shaker Bottle only	57.00	4.75
5-4036	1 qt.	Cocktail Shaker	84.00	7.00
4036	1 qt.	Shaker Bottle only	42.00	3.50
6-6060	3 pt.	Cocktail Shaker, Sham	96.00	8.00
6060	3 pt.	Shaker Bottle only	54.00	4.50

Novelty Cocktails

7-3311	2½ oz.	Sherry	13.20	1.10
8-3318	3½ oz.	Cocktail	13.20	1.10
9-5038	3½ oz.	Rooster Stem Cocktail	16.20	1.35
10-5048	3½ oz.	Rooster Head Cocktail	16.20	1.35
11-5063	4 oz.	Bantam Rooster Cocktail	16.20	1.35
12-5065	4 oz.	Colt Cocktail	16.20	1.35
13-5074	4 oz.	Sea-Horse Cocktail	16.20	1.35

SPECIFY PLAIN, HORSE HEAD OR ROOSTER HEAD SHAKER STOPPER

14-4225	1 pt.	Cocktail Shaker etched "Us" with one each = 5038 Rooster Stem Cocktails etched "Me" & "You"	128.40	10.70
4225	1 pt.	Cocktail Shaker etched "Us" with one each = 5048 Rooster Head Cocktails etched "Me" & "You"	128.40	10.70
4225	1 pt.	Cocktail Shaker Etched "Us"	86.40	7.20
5038	3½ oz.	Rooster Stem Cocktail, Etched "Me" or "You"	21.00	1.75
5048	3½ oz.	Rooster Head Cocktail, Etched "Me" or "You"	21.00	1.75

Bar Accessories

15-3419	2½ oz.	Pony Brandy	13.20	1.10
16-3419	23 oz.	Brandy Inhaler	33.00	2.75
17-3408	12 oz.	Beer Mug	16.80	1.40
18-4028	6 oz.	Bitters Bottle Plain with Short Tube	24.00	2.00
4028	6 oz.	Bitters Bottle without Tube	21.00	1.75
19-2052	2½ oz.	Bar	3.30	.28
20-5074	1¼ oz.	Individual Decanter	9.00	.75
21-4035	32 oz.	Decanter and = 48 Cut Stopper	84.00	7.00
4035	32 oz.	Decanter without Stopper	46.80	3.90
22-4036	1 pt.	Oval Sherry Bottle & = 115 Stopper	66.00	5.50
4036	1 pt.	Oval Sherry Bottle without Stopper	57.00	4.75
23-4036½	1 pt.	Decanter and = 101 Stopper	51.00	4.25
4036½	1 pt.	Decanter without Stopper	39.60	3.30
4036½	27 oz.	Decanter and = 101 Stopper	84.00	7.00
4036½	27 oz.	Decanter without Stopper	72.60	6.05
5058	1 pt.	Penguin Decanter & = 116 Stopper	78.00	6.50
5058	1 pt.	Penguin Decanter without Stopper	66.00	5.50
24-5058	27 oz.	Penguin Decanter & = 116 Stopper	99.00	8.25
5058	27 oz.	Penguin Decanter without Stopper	85.80	7.15

The Finest in Glassware . . . Made in America by Hand

LINERS AND ICERS

No.	Size	Item	Dozen	Price Crystal	Price Each
1- 1	5 in.	Caviar		\$21.00	\$1.75
2-1222*		Hot & Cold Liner (Pat. #104175)		4.80	.40
3-1223*		Hot & Cold Liner (Pat. #104175)		4.80	.40
4-1223½		Coupe Liner		6.30	.53
5-1224*		Hot & Cold Liner		4.80	.40
6-1226*		Hot & Cold Liner (Pat. #104176)		4.80	.40
7-1227*		Hot & Cold Liner		4.80	.40
8-1228*		Supreme Liner		4.80	.40
9-1230		Hot & Cold Liner		4.80	.40
10-1233		Coupe Liner		6.30	.53
11-1474*		Hot & Cold Liner		4.80	.40
12-1842		Crushed Fruit		10.80	.90
13-1485		Icer without Ring, Saturn Optic		16.20	1.35
14-3304		Cocktail Icer and Liner, Blown		27.60	2.30
3304		Cocktail Icer, Blown		21.00	1.75
3304		Cocktail Liner, Blown		6.60	.55

* Liners all fit standard silver icer rings.

MISCELLANEOUS Ash Trays and Cigarette Boxes

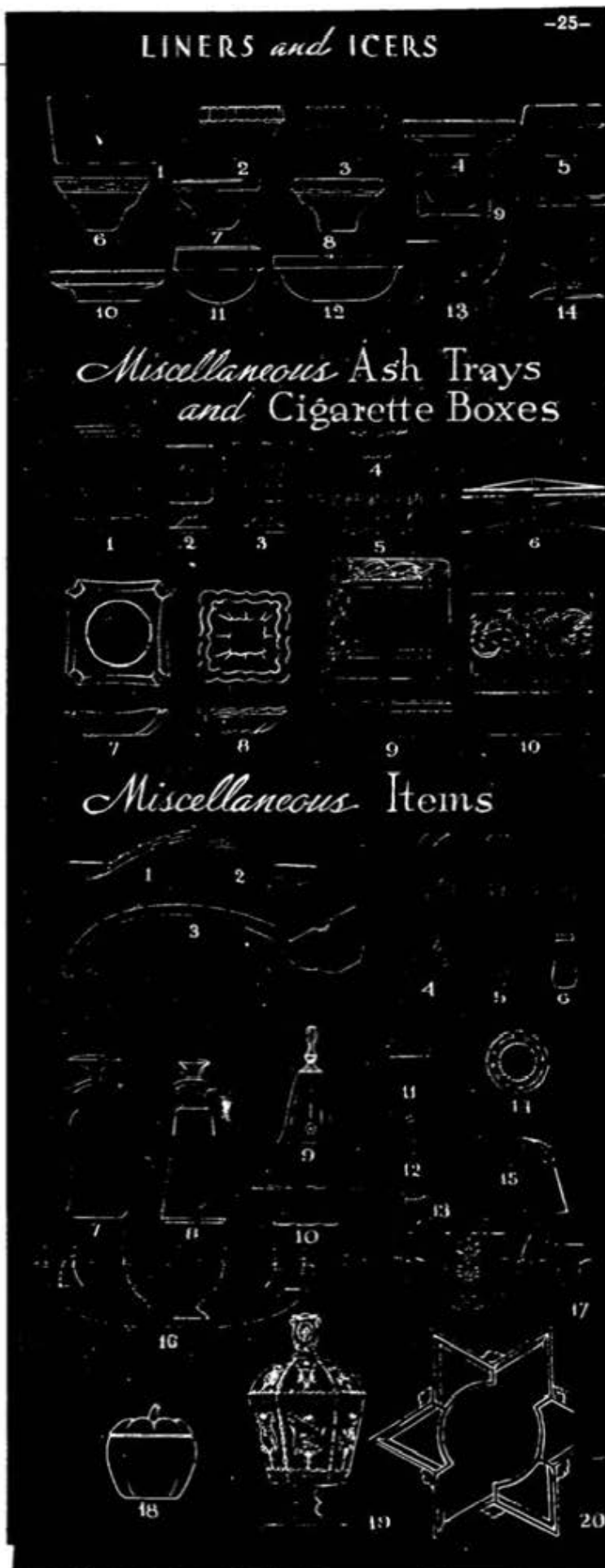
No.	Size	Item	Dozen	Price Crystal	Price Each
1-1435	3 in.	Individual Ash Tray		\$ 4.80	\$.40
2-4035		Footed Cigarette Holder		16.20	1.35
3-5012		Footed Cigarette Holder		21.00	1.75
4-1510	2½ in.	Square Ash Tray		6.00	.50
5-1510	6 in.	Square Ash Tray		21.00	1.75
6-1593	6 in.	Cigarette Box and Cover		42.00	3.50
1593	6 in.	Cigarette Box without Cover		27.00	2.25
7-1606	4½ in.	Square Ash Tray		6.60	.55
8-1611	4 in.	Square Ash Tray		4.80	.40
9-1612	5 in.	Square Ash Tray, Frosted Botanical Design		36.00	3.00
10-1612	5 in.	Cigarette Box and Cover, Frosted Botanical Design		90.00	7.50
- 1612	5 in.	Cigarette Box without Cover		48.00	4.00

NOTE: See page 8 for smoking items in No. 1489 and No. 1593 patterns.

MISCELLANEOUS ITEMS

No.	Size	Item	Dozen	Price Crystal	Price Each
1- 12		Mayonnaise Ladle		\$ 8.40	\$.70
2- 7		Mayonnaise Ladle		6.60	.55
3- 11		Punch Ladle		26.40	2.20
4- 1		Plated Ice Bucket Handle		12.00	1.00
5- 1		Plated Ice Tong		12.00	1.00
6- 10		Muddler		6.00	.50
7-5031	8 oz.	French Dress. Bottle, Pl. & #80 Stop		39.00	3.25
5031	8 oz.	French Dress. Bottle, Pl., without Stop		30.00	2.50
5031	8 oz.	French Dressing, Etched "Oil" and "Vinegar", and Stop		45.00	3.75
5031	8 oz.	French Dressing, Etched "Oil" and "Vinegar", without Stop		36.00	3.00
8-1489	6 oz.	French Dress. Bottle, Pl. & #113 Stop		36.00	3.00
1489	6 oz.	French Dress. Bottle, Pl., without Stop		30.00	2.50
1489	6 oz.	French Dressing, Etched "Oil" and "Vinegar", and Stop		42.00	3.50
1489	6 oz.	French Dressing, Etched "Oil" and "Vinegar", without Stop		36.00	3.00
9-3408		Dinner Bell		24.00	2.00
10-1252	4½ in.	Nappy		5.40	.45
11- 10		Silver Plated Sugar Pourer Top		96.00	8.00
12		Punch Cup Hook, Red or Green		1.20	.10
13- 1		Chrome Plated Toothpick Clips		8.40	.70
14- 1		Wire Flower Holder		3.00	.25
15- 112		Drip Cut Top, Chrome Plated with Ivory Plastic Handle		19.80	1.65
16-1485	8 pc.	Hostess Helper (Saturn Pattern)		90.00	7.50
17-1567	8 pc.	Hostess Helper (Plantation Pattern)		93.60	7.80
244		Individual Carton for Hostess Helper		8.40	.70
18-1511		Apple Marmalade & Cover		24.00	2.00
1511		Apple Marmalade without Cover		16.80	1.40
19-1590	4½ in.	Footed Zodiac Candy Jar & Cover		45.00	3.75
1590	4½ in.	Ftd. Zodiac Candy Jar without Cover		36.00	3.00
20-1466	10 in.	5-Compartment Star Relish		42.00	3.50

The Finest in Glassware . . . Made in America by Hand



Y. W. C. A.
6th & W. Church Sts.,
Newark, Ohio 43055

ALL HEISEY AUCTION

Saturday, January 30, 1902
Doors Open - - - 8:30 A.M.
Sale Starts - - 10:00 A.M.

Over 500 lots of glass will be offered for your bidding pleasure. We have a very good selection of small items included in this sale. Lots of animals including an amber Standing Colt, Pouter Pigeon and a Fish Bowl. Also included is a good selection of Imperial Slag animals with some of the harder to find ones. Pieces in almost all colors and a collection of unusual crystal and colored plates.

We have tried to inspect the glass closely and will use the following code to better describe the condition. A small letter indicates the damage or flaw is minimal. It would be our opinion that the value would be affected 5-20%. A capital letter indicates more significant damage affecting 20-40%. Anything damaged more than this in our opinion will be marked with an X. We hope this will better aid in your mail bidding.

	f	F	-	Flake	b	B	-	Bruise	r	R	-	Repaired
	c	C	-	Crack	m	M	-	Mold Flaw	x	X	-	Major Damage
1				393 NARROW FLUTE Ind Cream & Sugar H	45			4182 8 1/2" Plate, Mah Jong Etch				
2				429 Flamingo Hotel Cream & Sugar H	46			1129 FINETOOTH 7" Plate, Cut H				
3				1509 QUEEN ANN Ftd Cream & Sugar, Cut	47			1590 ZODIAC 8" Plate H				
4				411 RIB & PANEL Hotel Cream & Sugar, Moongleam Handles, No Lid H x	48			1238 BEEHIVE Flamingo 8" Plate				
5				1252 TWIST Flamingo Cream & Sugar H	49			1238 BEEHIVE Dark Flamingo 8" Plate				
6				433 GREEK KEY Oval Hotel Cream & Sugar H f	50			1238 BEEHIVE 8" Plate				
7				1519 WAVERLY Cream & Sugar H	51			1512 STIPPLED ROCCO 8" Plate				
8				1401 EMPRESS Sahara Ftd Cream & Sugar H	52			7093 3" Plate, Beaded Arrow H				
9				1567 PLANTATION Cream & Sugar on Tray, Ivy Etch on Cream & Sugar H f	53			1243 7" Flamingo Plate				
10				1180 Sugar, Cut H	54			3350 WABASH 3Pt Pitcher, Pied Piper Etch				
11				1540 LARIAT Sugar, Courtship Cut H	55			2516 Flamingo 1/2 Gal Pitcher, DO				
12				1231 RIBBED OCTAGON Sahara Hotel Cream H	56			473 NARROW FLUTE W/RIM 3 Pt Water Pitcher H				
13				7000 SUNFLOWER Cream H	57			393 NARROW FLUTE 1 Pt Hotel Jug H				
14				1201 FANDANGO Hotel Cream	58			325 PILLOWS 3 Qt Pitcher H				
15				1235 BEADED PANEL & SUNBURST Hotel Sugar, No Lid	59			3334 SEXTON Goblet, Unknown Cut H				
16				429 Moongleam Hotel Sugar, Silver OverlayH	60			3350 WABASH Goblet, Pied Piper Etch, 2 Ea H				
17				1590 ZODIAC Cream H	61			3365 RAMS HORN Flamingo Goblet, 4 Ea H				
18				351 PRISCILLA 2oz Oil, Wrong Stopper, Rough	62			3424 ADMIRALTY Goblet, 3 Ea H				
19				1170 PLEAT & PANEL Flamingo Oil	63			3370 AFRICAN Flamingo Goblet				
20				352 FLAT PANEL 6oz Oil, Cut H	64			339 Continental Goblet				
21				1503 CRYSTOLITE 3oz Oil	65			4044 NEW ERA Goblet				
22				1401 EMPRESS Flamingo Oil Bottle, Crystal Stopper	66			3390 CARCASSONNE Low Goblet, Old Colony Etch 2 Ea				
23				1401 EMPRESS Oil Bottle	67			3390 CARCASSONNE Alexandrite Low Goblet				
24				1405 IPSWICH Oil Bottle	68			3312 GAYOSO 8oz Goblet, #424 Cherry Etch				
25				1489 PURITAN Vinegar & Oil Bottle	69			3359 PLATEAU Flamingo 3/4oz Goblet				
26				1489 PURITAN French Dressing Bottle	70			2516 CIRCLE PAIR Flamingo Goblet				
27				333 WALDORF ASTORIA Bitters Bottle	71			3440 PORTSMOUTH Flamingo Goblet				
28				372 7oz Syrup	72			3408 JAMESTOWN Goblet, Sheffield Cut, 6 Ea H				
29				1255 PINEAPPLE & FAN Custard 1/2 Pt Pitcher, Souvenir Grand Rapids, Michigan	73			411 RIB & PANEL Goblet, 6 Ea H				
30				1183 REVERE 1/2 Pd Candy, Decor H	74			341 OLD WILLIAMSBURG Goblet, 3 Ea				
31				465 RECESSED PANEL 1Lb Candy, Cut & Enamel Decor H	75			1405 IPSWICH Goblet, 4 Ea H				
32				352 FLAT PANEL 2Qt Crushed Fruit, Pat DateH	76			461 7" Moongleam Basket H				
33				4225 COBEL 2Qt Cocktail Shaker	77			459 7" Basket, Cut H				
34				4035 32oz Decanter, Roughness on Stopper	78			1513 3 Lt Candelabra No bobèche or Vase, Pr				
35				4036 1/2 - 1Pt Decanter & 4-4052 National 1 1/2 Oz Bar, Moonglo Cut	79			4044 NEW ERA 2 Lt Candelabra, Bobèche & Prisms, Pr				
36				3397 GASCONY 1Pt Decanter	80			1469 RIDGELEIGH 2 Lt Candle, Bobèches & Prisms, Pr.				
37				351 COLONIAL 1Pt Decanter	81			1469 RIDGELEIGH 1 Lt Candle, Wrong Bobèches w/Prisms, Pr				
38				1401 EMPRESS 7 1/2" Plate, #468 Chateau Etch H	82			1502 CRYSTOLITE 2 Lt Candelabra, Bobèches w/ Amethyst Tear Drop Prisms				
39				1401 EMPRESS 7 1/2" Plate, #497 Rosalie Etch H	83			1445 GRAPE CLUSTER 1 Lt Candle, Pr H				
40				1237 SANDWICH STAR Moongleam 8" Plate, f	84			1428 WARWICK 2 Lt Candle, Pr				
41				1425 VICTORIAN 8 1/2" Plate H	85			1503 CRYSTOLITE 3 Lt Candle, Pr				
42				407 COARSE RIB Moongleam 9" Plate H	86			112 Flamingo 1 Lt Candle, Pr				
43				1951 CABOCHON Amber 8" Plate, 2 Ea	87			1503 CRYSTOLITE 1 Lt Candle, Pr.				
44				1401 EMPRESS 7 1/2" Plate, 2 Ea H	88			113 Flamingo 1 Lt Candle, Pr				
					89			1506 PROVINCIAL 1 Lt Candleblock, Round, Pr.				
					90			1469 RIDGELEIGH 2" Square Candle, Pr				

PAID ADVERTISEMENT

91	1469	RIDGELEIGH 2" Square Candle
92	1489	PURITAN Square 1 Lt Candle, Lily Carving, Pr R
93	1503	CRYSTOLITE 1 Lt Round Candleblock, 3 Ea
94	150	BANDED FLUTE Handled Candlestick H
95	1552	FOUR LEAF Candleblock
96	22	7" Candle H
97	301	COLONIAL 3 Lt Candelabra, Pr H
98	301	COLONIAL 2 Lt Candelabra, Pr
99	301	COLONIAL 2 Lt Candelabra, Pr
100	301	COLONIAL 2 Lt Candelabra, Pr
101	1509	QUEEN ANN Ftd Ice Bucket, Orchid Etch
102	1519	WAVERLY Ind Cream & Sugar, Orchid EtchH
103	1495	FERN 4 1/2" Nappy, Orchid Etch
104	1519	WAVERLY Square Horsehead Covered Butter, Orchid Etch
105	5025	TYROLEAN Low Goblet, Orchid Etch
106	5025	TYROLEAN Sherbet, Orchid Etch, 8 Ea
107	5025	TYROLEAN Saucer Champagne, Orchid Etch, 6 Ea
108	1632	LODESTAR Dawn 12" Fruit Bowl f b
109	1485	SATURN Limelight 12" Gardenia Bowl
110	10	Flamingo Floral Bowl w/ Frog B
111	1483	STANHOPE 11" Floral Bowl, Maytime Etch f
112	1540	LARIAT 12" Gardenia Bowl
113	1632	LODESTAR 14" Party Plate H
114	1540	LARIAT 13" Party Plate, Monogram
115	1519	WAVERLY 12" Floral Bowl
116	1250	GROOVE & SLASH 8" Crimped Floral Bowl
117	1183	REVERE 8 1/2" Nappy, Lotus Cutting H f
118	1170	PLEAT & PANEL Moongleam 8 1/2" Nappy H
119	1183	REVERE 10" Rolled Edge Floral Bowl, Windsor Cut H
120	360	Flamingo Ash Tray w/Match Stand H
121	1590	ZODIAC Ash Tray H
122	1590	2 Sesqui Ash Trays, Newark and Ohio
123	356	Match Stand Ash Tray H f
124	1500	3 1/2" Round Ash Tray H f
125	434	Round Ash Tray H m
126	1503	CRYSTOLITE Limelight Square Ash Tray H f
127	1489	PURITAN 2 1/2" Deep Ash Tray
128	1469	RIDGELEIGH Diamond Ash Tray H
129	439	Ind Ash Tray
130	1401	EMPRESS Ash Tray H
131	1536	Military Cap Ash Tray
132	1536	Military Cap Ash Tray
133		Verlys Swallows Ash Tray
134	1425	VICTORIAN Book Match Ash Tray H
135	363	Moongleam Ash Tray
136	1489	PURITAN 2 1/2" Deep Ash Tray
137	363	Flamingo Ash Tray f
138	1469	RIDGELEIGH 2 1/2" Round Ash Tray, 5 Ea H f
139	1180	Ind Ash Tray H f
140	1488	KOHINOOR Bridge Ash Tray H
141	3390	CARCASSONNE Cigarette Holder, 2 Ea
142	1184	YEOMAN Flamingo 4" HdI Ash Tray
143	1280	WINGED SCROLL Opal Trinket Box
144	1503	CRYSTOLITE Cigarette Box, Wrong Lid H
145	1506	PROVINCIAL Cigarette Box R
146	1503	CRYSTOLITE Cigarette Lighter
147	1503	CRYSTOLITE Cigarette Lighter
148	1506	PROVINCIAL Cigarette Lighter f
149	1404	OLD SANDWICH 10 Oz Low Ft Tumbler, 6 Ea H 1-f
150	1417	ARCH Tumbler
151	142	8 1/2 Oz Tumbler, N.O. H, 4 Ea
152	1201	FANDANGO Tumbler
153	411	RIB & PANEL Tumbler, 2 Ea H
154	1506	PROVINCIAL Limelight 9 Oz Tumbler

PAID ADVERTISEMENT

PAID ADVERTISEMENT

155	6060	9 Oz Old Fashion, Winchester 73 Etch Gun & Holster
156	3480	KOORS 12 Oz Flamingo Soda
157	299	6 1/2 Oz Toddy H
158	2516	CIRCLE PAIR Flamingo 5 oz Soda f
159	1485	SATURN 12 oz Soda H
160	300	12 Oz Soda H
161	337	TOURAIN Amber 12 Oz Soda, N.O. H f
162	4054	CORONATION Slim Jim
163	419	SUSSEX Flamingo Juice H
164	602	4 Oz Juice H
165	2401	7 Oz Soda, Tally Ho Etch, 4 Ea
166	1506	PROVINCIAL Divided Jelly 5" H
167	1469	RIDGELEIGH Divided Jelly 5" H
168	1519	WAVERLY 2 Comp Oval Dressing Bowl H
169	1252	TWIST Sahara 2 Comp Relish H
170	1519	WAVERLY 3 Compartment Relish, Gold Decor H
171	1401	EMPRESS 10" Hors d' oeuvre, Cut H
172	1252	TWIST Flamingo 13" Relish H f
173	1495	FERN 3 Comp Tray
174	352	FLAT PANEL 13 1/2" Oval 5 Comp Tray
175		Verlys 11 3/4" Tassels Bowl, Signed
176		Verlys Pinecone Bowl, Signed m
177		Verlys Amber Thistles Bowl, Signed
178		Verlys Motif Chinois Bowl, Signed
179		Verlys Thistle Bowl
180		Verlys Love Birds Vase, Signed
181		Verlys Swallows Cigarette Box f
182		Verlys Mandarin Vase
183	1185	YEOMAN Handled Sandwich Tray, Gold Decor H
184	1185	YEOMAN Handled Sandwich Tray, Gold Decor H
185	1185	YEOMAN Handled Sandwich Tray, Enamel Decor H
186	1428	WARWICK Flamingo 9" Horn of Plenty Vase H
187	353	MEDIUM FLAT PANEL 10" Vase H f
188	1519	WAVERLY Fan Vase
189	1519	WAVERLY Fan Vase
190	1420	9" Tulip Vase H
191	1540	LARIAT 7 1/2" Vase
192	1428	WARWICK 5" Vase H
193	335	PRINCE OF WALES PLUMES Footed Rose Bowl H C
194	4207	Moongleam 8" Vase DO f
195	1540	LARIAT Fan Vase
196	1519	WAVERLY Fan Vase
197	4157	Flamingo 5 1/2" Rose Bowl DO
198	516/2	6" Vase DO
199	5012	8" Square Ftd Bud Vase
200	6	8" Vase in Silver Compote H
201	4204	9 1/2" Flamingo Bud Vase DO
202	300	PEERLESS Orchid Vase, Cloudy
203	1503	CRYSTOLITE Violet Vase H
204	1540	LARIAT Vase
205		Ringneck Pheasant
206		Ringneck Pheasant H
207		Ringneck Pheasant
208		Goose, Wings 1/2 Up
209		Rabbit Paperweight
210		Sparrow
211		Sparrow
212		Sparrow
212A		Fish Bowl
213		Pouter Pigeon H M
214		Oscar Horse (Sparkplug)

PAID ADVERTISEMENT

PAID ADVERTISEMENT

215	Oscar Horse (Sparkplug) No Tail
216	Standing Colt, Amber
217	Standing Colt
218	Standing Colt, H
219	Kicking Colt R
220	Rearing Colt H
221	Piglet, Sitting H
222	1503 CRYSTOLITE Swan Master Nut
223	1503 CRYSTOLITE Swan Master Nut & 6 Individ Swan Nut
224	1503 CRYSTOLITE Swan Master Nut & 2 Individ Swan Nut
225	110 Flamingo 10" Dolphin Candle, Pr
226	14 Moongleam 4½" Kingfisher Floral Block, H f
227	Large Horsehead Cocktail Stopper
228	Small Horsehead Cocktail Stopper
229	Moongleam Duck Cologne Stopper, 2 Ea
230	Duck Cologne Stopper, 2 Ea
231	Imperial Caramel Slag Airedale
232	Imperial Caramel Slag Kicking Colt
233	Imperial Caramel Slag Standing Colt
234	Imperial Caramel Slag Scotty Dog
235	Imperial Caramel Slag Middle Elephant
236	Imperial Caramel Slag Middle Elephant
237	Imperial Caramel Slag Middle Elephant
238	Imperial Caramel Slag Oscar Horse
239	Imperial Caramel Slag Oscar Horse
240	Imperial Caramel Slag Wood Duck
241	Imperial Caramel Slag Wood Duck
242	Imperial Caramel Slag Donkey
243	Imperial Caramel Slag Donkey
244	Imperial Caramel Slag Donkey
245	Imperial Ultra Blue Rearing Colt
246	Imperial Ultra Blue Rearing Colt
247	Imperial Ultra Blue Kicking Colt
248	Imperial Heather Frosted Oscar (HCA80)
249	Imperial Sunshine Yellow Oscar (HCA79)
250	Imperial Sunshine Yellow Oscar (HCA79)
251	Imperial Rose Pink Oscar (HCA78)
252	Imperial Light Blue set of 3 Colts
253	1252 TWIST Moongleam 12" Dinner Plate H
254	1519 WAVERLY 14" Party Plate
255	1229 OCTAGON Marigold 12" Sandwich Plated DO
256	1224 Moongleam 10" Plate
257	9 SINGLE ROW SLASH 11" Plate m
258	1184 YEOMAN Marigold 10½" Dinner Plate, Empress Etch DO
259	1246 Flamingo 10½" Acorn Plate
260	1540 LARIAT 10½" Dinner Plate, 6 Ea
261	1425 VICTORIAN 8" Plate, 6 Ea H
262	407 COARSE RIB Flamingo 7½" Plate, 16 Ea H
263	1252 TWIST Marigold 7" Plate, 7 Ea H
264	1404 OLD SANDWICH 8½" Square Plate, 8 Ea H
265	4182 8½" Plate, 4 Ea H
266	1184 YEOMAN 8" Plate, Moonglo Cut, 2 Ea
267	1540 LARIAT 7" Underplate for Mayonnaise, 2 Ea
268	1218 8" Plate, Cut H
269	1227 7" Plate, 4 Ea H
270	411 RIB & PANEL 6" Plate, 6 Ea H
271	1150 5" Plate, 2 Ea H
272	5078 PARK AVENUE Cordial, 2 Ea H
273	1235 BEADED PANEL & SUNBURST Wine H
274	1184 YEOMAN 3 oz Cocktail, DO
275	3403 JAMESTOWN 3oz Cocktail
276	1540 LARIAT Wine H
277	1295 BEAD SWAG Custard Wine, Souvenir

PAID ADVERTISEMENT

PAID ADVERTISEMENT

278	1220 PUNTY BAND Wine, Red Stain, Souvenir H
279	1225 PLAIN BAND Wine H
280	341 OLD WILLIAMSBURG 2oz Wine H
281	351 COLONIAL 2oz Wine, 2 Ea H
282	300 PEERLESS 1oz Cordial, 2 Ea H
283	3380 OLD DOMINION Alexandrite 2oz Wine H
284	1401 EMPRESS Covered Mustard H
285	1401 EMPRESS Moongleam Covered Mustard & Underplate H
286	1252 TWIST Flamingo Covered Mustard H
287	1205 FANCY LOOP Covered Mustard
288	150 OVAL IN DIAMOND POINT Emerald Covered Sugar f
289	1540 LARIAT Cup & Saucer, 6 Ea H
290	1483 STANHOPE Cup & Saucer, Black Knob
291	1483 STANHOPE Cup, Black Knob, 3 Ea
292	1184 YEOMAN Sahara Cup & Saucer, DO H
293	1231 RIBBED OCTAGON Flamingo Cup & Saucer H
294	433 GREEK KEY Punch Cup, 2 Ea H
295	1205 FANCY LOOP Punch Cup
296	Colonial Punch Cup, 2 Ea (?)
297	1567 PLANTATION Punch Cup, 4 Ea H
298	1506 PROVINCIAL Punch Cup, 9 Ea H
299	351 PRISCILLA Oval Underplate H
300	433 GREEK KEY Banana Split Dish H
301	433 GREEK KEY Banana Split Dish H
302	1229 OCTAGON Sahara 6" Bon Bon DO
303	1229 OCTAGON Flamingo 6" Mint Dish
304	1280 WINGED SCROLL 5" Nappy, Good Gold
305	1295 BEAD SWAG Opal 4½" Nappy, Decor H
306	1503 CRYSTOLITE 7" Bon Bon H
307	1469 RIDGELEIGH 3 Cornered Hd1 Nappy, Silver Overlay H
308	357 PRISON STRIPE 5" Handled Nappy H F
309	1229 OCTAGON Flamingo 6" Mint Dish DO
310	1509 QUEEN ANN 6" Ftd Jelly, 2 Hd1 H
311	462 NAIL 4" Nappy H
312	1170 PLEAT & PANEL 5" Lemon Dish, No Lid H
313	1509 QUEEN ANN Ftd 6" Mint Dish
314	Verlys Cracked Ice Bowl
315	1185 YEOMAN Ftd Mayonnaise, Decor
316	1250 GROOVE & SLASH Olive Tray F
317	1186 YEOMAN 6" Oval Preserve, Cut
318	1565 DAWN 6 3/4" Jelly H
319	1495 FERN 6" Hd1 Jelly
320	1503 CRYSTOLITE 7" Round Candy, Metal Lid H
321	1503 CRYSTOLITE Shell Covered Candy F
322	393 NARROW FLUTE 5½" Low Ftd Preserve & Cover, Gold Decor H
323	1183 REVERE 5" Lemon Dish & Cover, Gold Dec H
324	1404 OLD SANDWICH Goblet H
325	4004 IMPROMPTU Ftd Soda
326	7043 PANEL & DIAMOND POINT (Popcorn) Goblet H
327	347 3 Oz Cocktail H
328	3314 GRANDEUR Goblet, Sabrina Etch, 3 Ea
329	8029 PRINCESS LILY Goblet H
330	3380 OLD DOMINION Flamingo Parfait H
331	1184 YEOMAN Flamingo Parfait
332	4049 Amber 4½ Oz Hot Whiskey (Old Fitz) H
333	3386 DIAMOND ROSE Pilsner, 2 Ea
334	393 NARROW FLUTE Hollow Stem Champagne H
335	341 PURITAN Saucer Champagne, Carnival Bowl H
336	5011 YORKTOWN Saucer Champagne, Maryland Cut H
337	3404 SPANISH Saucer Champagne, Killarney Cut, 4 Ea
338	Blown Sherbet, Needle Etch, 7 Ea
339	4090 COVENTRY Sherbet, Belvedere Etch, 6 Ea

PAID ADVERTISEMENT

PAID ADVERTISEMENT

340	1184	YEOMAN Moongleam Sherbet, 5 Ea
341	417	DOUBLE RIB & PANEL Sherbet, 2 Ea H
342	1590	ZODIAC Sherbet H
343	5072	ROSE STEM Sherbet H
344	341	PURITAN Saucer Champagne, 4 Ea H
345	3350	WABASH Grapefruit, Moongleam Stem & Ft, 2 Ea H
346	1486	COLEPORT Champagne H
347	359	COLONIAL 2½ Oz Sherbet, 5 Ea N.O. H
348	1425	VICTORIAN Sherbet, 4 Ea
349	411	RIB & PANEL Sherbet H
350	1227	MAHARG Sherbet H
351	395	COLONIAL 3½ OZ Sherbet H
352	351	PRISCILLA Saucer Champagne H
353	300	COLONIAL 2 Oz Cocktail H
354	341	PURITAN Cocktail H
355	300	PEERLESS Sherbet, 4 Ea H
356	1235	BEADED PANEL & SUNBURST 9" Plate
357	1405	IPSWICH Moongleam 8" Square Plate H
358	1405	IPSWICH 8" Square Plate H
359	1246	FLAMINGO 8" Acorn Plate m
360	1246	MOONGLEAM 8" Acorn Plate
361	473	NARROW FLUTE w/RIM Vaseline 7" Oval Plate H
362	4182	8" Plate, Diana Etch, 2 Ea
363	7026	Moongleam 8½" Heart & Drape Plate H
364	1404	OLD SANDWICH 8" Square Plate H
365	416	Moongleam 9" Round Plate H
366	1447	ROCOCO 8" Plate H
367	7098	8" Daffodil Plate H
368	1252 & 1401	Flamingo 4½" Plate, 1 of Each H
369	1236	8" Eagle Plate H
370	1238	BEEHIVE Flamingo 8" Plate
371	1238	BEEHIVE Moongleam 8" Plate
372	1184	YEOMAN Cobalt 8" Round Plate
373	1125	5" Round Plate, Sun Purpled H
374	3350	WABASH Oyster Cocktail, Moongleam Ft, Mayflower Etch
375	3380	OLD DOMINION Oyster Cocktail, Empress Etch
376	3405	ALIBI 3oz Cocktail, Club Drinking Scene Etch
377	1184	YEOMAN Flamingo 2 ¾ Oz Oyster Cock- tail, 2 Ea
378	3350	WABASH Cocktail, Pied Piper Etch, 2 Ea H
379	4044	NEW ERA Cocktail, Monogram G, 4 Ea
380	4044	NEW ERA Parfait, Monogram G, 2 Ea
381	3311	2½ Oz Sherry, Carved & Signed Dorothy Thorpe (DTC)
382	351	PRISCILLA Ftd Ale H
383	3389	DUQUESNE Cocktail
384	1486	COLEPORT Cocktail H
385	5079	PAN AMERICAN Cocktail, Cut H
386	300	PEERLESS Egg Cup H & English Registry
387	1776	KALONYAL Egg Cup H
388	4163	16oz Mug, Fox Chase Etch x H
389	1220	PUNTY BAND Mug, Red Stain, Souv H X
390	411	RIB & PANEL Mug H
391	353	MEDIUM FLAT PANEL Mug H
392	1503	CRYSTOLITE Salt & Pepper
393	23	Salt & Pepper, No Tops H
394	52	Salt & Pepper, Glass Tops H
395	1503 & 1469	Salt & Pepper, 1 of Each
396	1519	WAVERLY Salt & Pepper H
397	1469	RIDGELEIGH Salt & Pepper, Plastic Tops
398	1252	TWIST Salt Shaker, 3 Ea
399	1404	OLD SANDWICH Flamingo Salt Shaker H
400	11	COLONIAL Salt Shaker, Wrong Top H

PAID ADVERTISEMENT

PAID ADVERTISEMENT

401	1489	PURITAN Salt Dip, 4 Ea
402	1205	FANCY LOOP Salt Dip
403	393	NARROW FLUTE Salt Dip H
404	1225	PLAIN BAND Salt Dip
405	1201	FANDANGO Salt Dip f
406	1183	REVERE Flamingo Tub 3 Ea 2-m
407	379	URN Salt Dip H f
408	352	FLAT PANEL Salt Dip
409	1428	WARWICK Horn of Plenty Indiv Vase, Frosted Base H
410	1220	PUNTY BAND Toothpick, Red Stain, Top Ground H
411	310	RING BAND Custard Toothpick, Souv H
412	351	PRISCILLA Toothpick H
413		Heisey Mirror Display Sign
414	1404	OLD SANDWICH Indiv Ash Tray, 8 Ea H
415	4227	Favor Vase, D/O
416	515	½Oz Hawthorne Cologne, Stopper Ground H
417	487	1 Oz Cologne, Gold Decor, Stopper Damaged H
418	354	COLONIAL Cologne, Cut Stopper H
419		Colonial 2½ Oz Lavendar Jar (?)
420	493	2 Oz Cologne, #65 Stopper
421	1540	LARIAT Cologne, Not Ground for Stopper, 2 Ea
422	1540	LARIAT Indiv Nut Dish
423	1540	LARIAT Indiv Nut Dish, 6 Ea
424	1229	OCTAGON Flamingo Nut Dish, DO, 6 Ea H
425	1180	Flamingo Indiv Nut, 2 Ea H
426	393	NARROW FLUTE Ind Nut Dish, 3 Ea H
427	1401	EMPRESS Flamingo Ftd Ind Nut H
428	1401	EMPRESS Sahara Ftd Ind Nut
429	1194	Flamingo Indiv Nut
430	473	Flamingo Salted Nut H
431	353	Oval Jelly H
432	4044	NEW ERA Indiv Ash Tray
433	1454	DIAMOND POINT Indiv Ash Tray & Indiv Marmalade, 5 Sets H
434	1454	DIAMOND POINT Indiv Marmalade, 4 Ea H
435	393	NARROW FLUTE Indiv Butter H
436	1184	YEOMAN Marigold Egg Cup, DO H
437	208	3 Oz Bar
438	351	Mustard, No Lid H
439	3481	GLENFORD Flamingo 3 Oz Cocktail, 2 Ea
440	2052	2 Oz Bar, 2 Ea
441	2052	1½ Oz Bar, 2 Ea
442	150	BANDED FLUTE Toothpick H
443	2052	1 oz Bar, Tally Ho Etch, 3 Ea
444	4054	CORONATION 2 Oz Bar (2) & 1 Oz Bar (1)
445	4054	CORONATION 2 Oz Bar, 5 Ea
446		2 oz Flamingo Ftd. Bar, D/O, 2 ea
447	3480	KOORS Flamingo 1 ½Oz Bar, DO, 2 Ea
447A3390		CARCASSONNE Cobalt 3 Oz Cocktail
447B3390		CARCASSONNE Sahara 3 Oz Cocktail, Old Colony Etch
448	352	Flamingo Finger Bowl H
449	5011	YORKTOWN Finger Bowl, Hugnot Cut
450	1519	WAVERLY Square Covered Butter
451	1201	FANDANGO Celery Vase
452	1225	PLAIN BAND Cake Salver
453	433	GREEK KEY 9" Relish H r
454	433	GREEK KEY 12" Relish H
455	1540	LARIAT 12" Oval Fruit Bowl, Moonglo Cut
456	1519	WAVERLY Mayonnaise & Underplate H
457	1495	FERN 2 Hd1 Jello Dish, Frosted Highlight
458	1503	CRYSTOLITE 12" Oval Gardenia Bowl H
459	352	FLAT PANEL Celery Vase H
460	473	NARROW FLUTE w/RIM French Dressing Boat w/Underplate H

PAID ADVERTISEMENT

PAID ADVERTISEMENT

461	1183	REVERE French Dressing Boat w/Underplate H
462	351	PRISCILLA 9½" Shallow Nappy H
463	1401	EMPRESS Ftd Ice Bucket, Old Colony Etch f
464		Bakeware 8" Pie Plate H
465	353	Bottom to Crushed Fruit Bowl H
466	341	OLD WILLIAMSBURG Punch Bowl Base OnlyH
467	10	8" Floral Bowl H
468	1540	LARIAT Bottom to Stick Butter or Tray, 2 Ea H
469	353	COLONIAL Soap Dish Bottom Only H
470	1243	RIB & EIGHT SCALLOP Moongleam 7" Nappy
471	1509	QUEEN ANN 7" Footed Nappy H
472	1184	YEOMAN 9" Soup Bowl H
473	1519	WAVERLY 2 Part Relish
474	300	PEERLESS Violet Vase H
475	341	PURITAN 5½" High Foot Jelly H
476	1519	WAVERLY Round Divided Relish
477	1170	PLEAT & PANEL Moongleam Tall Candy, No Lid
478	1228	5" Nappy, Irridized H
479	393	NARROW FLUTE French Dressing Boat H
480	1485	SATURN Sugar, No Lid, 2 Ea H
481	1483	STANHOPE Cream, Black Knob, 3 Ea H
482	352	FLAT PANEL Cream H
483	352	FLAT PANEL Indiv Sugar, No Lid H
484	1503	CRYSTOLITE Cream H
485	354	WIDE FLAT PANEL Cream H
486	1404	OLD SANDWICH Oval Sugar H
487	1540	LARIAT Sugar H
488		Colonial Sugar (?)
489	300½	Colonial Hotel Sugar H
490	341	Old Williamsburg Spooner. H X

PAID ADVERTISEMENT

491	1170	PLEAT & PANEL 5" Boullion Cup & Plate H
492	1183	REVERE 6½" Nappy & 3-4½" Nappies H
493	1540	LARIAT Cup and 1184 Cup
494	300	PEERLESS 5" Plate, 2 Ea H
495	1183	YEOMAN 4" Nappy & 5" Underplate H
496		5" Liner H
497	10	Flamingo Oakleaf Coaster
498	10	Muddler
499	6	Flamingo Mayonnaise Ladle H & Crystal Mayonnaise Ladle
500	341	PURITAN Master Salt, Sun Purpled
501	325	PILLOWS Lid to Round Covered Butter H
502		Arm for 2 Light #301 Candelabra
503		Crystal Boudoir Handles, Pr
504		Crystal Door Knob
505		Crystal Door Knob
506		Stopper for #4225 Cocktail Shaker
507	1519	WAVERLY Candle Epergne, 2 Ea
508	1519	Imperial Caramel Slag Covered Candy
509		Imperial Antique Blue Indiv Cream (300)
510		Imperial Fern Green Childs Mug
511		Imperial Stiegel Green Provincial Juice, 6 Ea
512		Imperial Cobalt Provincial Ftd Soda
513		Amberglo Land of Legend Souvenir Plate, 2 Ea
514		Blue Haze Land of Legend Souvenir Plate, 5 Ea
515		Fern Green Land of Legend Souvenir Plate, 3 Ea
516		Nut Brown Land of Legend Souvenir Plate, 2 Ea
517		Nut Brown Land of Legend Souvenir Plate
518		Ulgra Blue Land of Legend Souvenir Plate
519		Crystal Land of Legend Souvenir Plate

PLEASE NOTE MAIL BID INSTRUCTIONS AS FOLLOWS:

Mail bids accepted with checks for maximum amount. mail bids are handled competitively and any difference refunded. Only items in mint condition will be subjected to mail bids. Please add \$8.00 per carton for postage and handling, \$10.00 west of Rocky Mountains. We regret we have had to increase postage and handling charges but we are only attempting to cover our expenses on these. Checks should be made to Sam Schnaidt, Auctioneer and mailed to:

Sam Schnaidt, Auctioneer
P. O. Box 84
GRANVILLE, OHIO 43023

LIST OF PRICES REALIZED, AVAILABLE AFTER THE AUCTION, FOR \$1.00

GOOD FOOD AVAILABLE

SAM SCHNAIDT, AUCTIONEER
(614) 587-0052

FRANK FRYE, MANAGER
(614) 344-9847

Virginia & Odell Johnson Postage & Handling
 GLASS 'N' GLASS Extra - *Marked
 6909 - 10th Ave. W.
 Bradenton, FL 33529
 813-792-0604

#1428 Warwick 11" Horn of Plenty Floral Bowl COBALT*	\$320.00
#4044 New Era Cocktails, COBALT bowl (6) ea.	95.00
#4044 New Era Champagnes, COBALT bowl (3) ea.	60.00
#3380 Old Dominion Goblets, Empress Etch 8", (6) ea.	14.00
#4055 Park Lane, Nomad Cutting Goblets (6) ea.	35.00
Ridgeleigh Reis Mariemont Cut Goblet.	50.00
Ridgeleigh Reis Mariemont Cut Champagne.	35.00
#3368 Albemarle Chateau Cut Wines*(2)ea.	35.00
#3357 King Arthur Iced Teas D/O FLAMINGO (5) ea.	12.50
#4002 Aqua Caliente Cocktails SAHARA* (5) ea.	22.50
#1415 20th Century 5 oz. juice DAWN* (6) ea.	50.00
#1415 20th Century 12 oz. iced tea DAWN* (6) ea.	55.00
Nimrod Carving 8 oz. soda (2) ea.	40.00
#393 Domino sugar.	25.00
#1567 Plantation celery*	16.00
#1567 Plantation Pressed Claret (4) ea.	25.00
#1776 Kolonyal footed jelly*.	30.00
#1170 Pleat & Panel 10" Spice Tray MOONGLEAM*	30.00
#1503 Crystolite Covered Lemon Dish*...	22.50
#1503 Crystolite 4 Div. Relish, Leaf shape.	9.00
#1503 Crystolite 3 comp. candy dish with cover*	25.00

CLASSIFIED ADS. . .

- WANTED - Lariat Punchbowl; have "underplate". MRS. FRANK, 2514 Boxwood, Norman, OK 73069.
 - FOR SALE - Beaded Panel & Sunburst Punch Bowl and Base in Custard. Base has small flake at top. If interested write or call (after 4:00 P.M. weekdays): C & J ANTIQUES, P.O. BOX 45, NEWARK VALLEY, NY 13811 - PH: (607) 642-9905.
 - WANTED - Heisey Stemware Crinoline Pattern. SANDY WAGNER, 207 RANCHO LANE, YAKIMA, WA 98908
 - WANTED - Buying Depression Glass, Heisey Rose and Orchid, Cambridge Rosepoint and Fostoria etched dinnerware. Also glass figures and unusual glass pieces. NADINE PANKOW, 207 S. OAKWOOD, WILLOW SPRINGS, IL 60480 - PH: (312) 839-5231.
 - WANTED - Soda Fountain Items especially Straw-Holders. GEORGE HANEY, P.O. BOX 538, SPENCER, OK 73084.
 - FOR SALE - Most Colors, Most Patterns, 2000 pieces of Heisey to choose from. S.A.S.E. Please. No list available, Write Wants:
 PEGGY'S ANTIQUES, BOX 367, SPAVINAW, OK 74366 - PH: (918) 589-2859.
 - FOR SALE - Milk Glass Mallard - Wings Up - Heisey by Imperial feasibility - \$175.00 ANGELANA CLARK, 226 CURTIS AVE., MOUNDSVILLE, WV 26041 - PH: (304) 845-6388
 - WANTED - #1020 Hotel Creamer Deep Emerald Green. GLEN CRISSMAN, 617 DRY VALLEY ROAD, LEWISTOWN, PA 17044
 - FOR SALE - 10-year Index for the Vogel "Newscaster". 1971-1980. 32-pages, includes Patterns by Number & Name; Colors; Etchings, Carvings, Cuttings; Not Heisey; General. Send \$3.25 (postpaid) to Penny Hathaway, Box 705, Conway, NH 03818.



P.O. BOX 54-6014
 MIAMI BEACH, FL 33154
 (305) 861-7700
 (305) 895-5666

*Dear Heisey Collector and Dealer,
 We're heading your way! Heisey animals,
 lovely old patterns, and a rainbow of colors, will
 be coming along with us.
 We'll be at the following shows.*

JAN 8, 9, 10

SARASOTA, FL

EXHIBITION CENTER

JAN 30 - 31

SANFORD, FL

SANFORD CIVIC CENTER

Lynne and Art

SUM OF LIFE
 ELAINE AND FRANK HUSTED
 P. O. BOX 102
 PHOENIXVILLE, PA 19460

Return calls will be made at your
 expense with \$2.00 telecredit ded-
 ucted from the resulting order.

(215) 935-2962

Shipment at your expense via UPS
 add 5% for shipping and insurance

1	4225 Cocktail shaker. cutting, sterling overlay on top and base	\$ 85.00
1	4225 Cocktail shaker - Fisherman's etch.....	185.00
2	3350 Wabash parfaits, Moongleam foot, Frontenac etch *.....ea.	18.00
5 pc.	1503 Crystolite smoking set. Pedestal holder and four ashtrays.....set.	22.00
7	1425 Victorian high-footed goblets, 9 oz.....ea.	17.00
1	1235 Beaded Panel and Sunburst tumbler, 8 oz.....ea.	28.00
Pair	1483 Stanhope 2-lite candleholders w/prisms, bobaches.....pr.	165.00
Pair	1467 Ridgeleigh 1-lite candleholders with prisms, bobaches (column type).....pr.	140.00
1	1205 Fancy Loop cracker jar/tobacco jar with art nouveau metal lid.....ea.	120.00
6 pc.	1295 Beaded swag table set, Opal with wild rose deco (B&S w/lid, crmr & sprn....set.	415.00
7 pc.	1295 Beaded swag berry set, bowl with six nappies, rosebud decor.....set.	385.00
5 pc.	1245 Ringband, Custard berry set with rosebud decor.....set.	385.00
3 pc.	352 Flat panel stack set, flamingo.....set.	68.00
7 pc.	357 Prison Stripe berry set, gild edged, mint, bowl with 6 nappies.....set.	260.00
1	1467 Ridgeleigh swan handled floral bowl.....	250.00
10	Monte Cristo #3411 Water goblets with Kalarama cutting.....ea.	30.00
6	3411 Monte Christo Champagnes with Kalarama cutting.....ea.	24.00
4	1205 Fancy loop footed punch cups.....ea.	38.00
1	1776 Kaylonyal water jug.....	75.00
1	Seahorse cocktail.....	210.00

MILDRED LEE (217) 428-3106
 115 Phillips Dr. U.P.S. - P + 1
 Decatur, IL 62521 Extra - Marked*

#7026 Heart & Drape 8" Moongleam Plate.	\$ 15.00
# 370 Astor Optic Goblets*	ea.. 25.00
#1184 Yeoman footed Cake Plate*.....	30.00
# 347 Fifth Avenue, 2 oz. Wines* 5 -	\$25.00 ea.
#1252 Twist 3 pt. jug Moongleam*	45.00
# 451 Cross Lined Flute 3 pint pitcher*	45.00
# 451 Cross Lined Flute 5 in Jelly Compote*	22.00
#300-1/2 Peerless 7 oz. sodas* 6 -	7.00 each
# 393 Narrow Flute 3 pt. pitcher & 6 glasses*.....	65.00
#4157 Rose Bowl (D. Optic) Flamingo.....	24.00
#3386 Diamond Rose 10 oz. pilsner 3 -	\$25.00ea
#1401 Empress Dolphin footed (low) candle holders*.....pr....	45.00
#1021 Sugar & Creamer w/lid Gold & Blue trim*.....	35.00
#1506 Provincial Cruet*.....	30.00
#1227 Maharg's sherbet 7 oz*..... 1 -	\$5.00
#3390 Carcassone 8 oz. goblet short stem Sahara 2 - \$18.00 each	
V-8621 Verlys acorn bowl footed (un- marked).....	30.00
#469 Hartman Candy jar w/cutting* (no lid)	18.00
#1540 Lariat 6 oz. sherbet or champagne	1-8.00
#1519 Waverly Orchid etch Bow tie lid to candy.....	15.00

DOROTHY CLAUSON 401-884-5107
 2500 Division Str. After 5 P.M.
 East Greenwich, U.P.S. Extra
 RI 02818 5 Days Return Priv.

# 350 Pinwheel & Fan Bowl, 8"	\$40.00
#1201 Fandango Creamer & Sugar	45.00
#1425 Victorian High Footed Goblets, 6 each.....	18.00
#3357 King Arthur Goblets, Crystal bowl, Moongleam stem, 4 each.	20.00
#3350 Flamingo Goblets D/O, 5 each	15.00
#3350 Hawthorn Goblets D/O, 5 each	15.00
#1238 Moongleam Beehive Plate 8"	25.00
# 407 Moongleam Coarse Rib Plates 8", 6 each	10.00
#1229 Moongleam Indv. Nut Dishes, D/O 2 each.....	9.50
#1184 Sahara 2 oz. Oil, D/O	25.00
#1201 Low Footed 11" Floral Bowl (Yeakleys Book #2 Plate 5 #126)	45.00
#1401 Crystal Indv. Nut Dishes, 4 ea.	9.50
#1255 Custard, Pineapple & Fan, 1/2 Pint Tankard, Sou. Milford, MA	65.00



We assume no responsibility for errors in these ads after the first printing Editor
For changes in ads during the year, please send \$1.00 per line.

- MOSTLY HEISEY**
RHODA CURLEY
16 Clayton Place
Albany, New York 12209
By Appointment (518)482-6272
- LAST CHANCE ANTIQUES**
P.O. BOX 502, Dania, Fl. 33004
Mail Orders - Matching Service
Send us your want lists
(305) 467-6356 Day or Evening
- GOLDSBERRY'S ANTIQUES**
KALAMAZOO, Michigan
Shows Only -- Buy & Sell
HEISEY A Speciality
Phone: (616)381-3013
- SCHWAN'S ANTIQUES**
Route 1, Box 175B
John Tyler Highway
WILLIAMSBURG, VA. 23185
(804)229-7873 Shop and Shows
- GREEN ACRES FARM**
Antiques, Crystal Glass & Collectibles
2678 Hazelton Etna Road, S.W.
(S.R. 310 N.) Pataskala, Oh. 43062
Sat. & Sun. P.M. or Call (614)927-1882
- BERT'S BUDGET SHOP**
General Line Antiques
403 W. Main St., Newark, Oh. 43055
Phone: (614)349-8045
- THE WOODEN SHOE**
Antiques & Collectables Buy & Sell
Glass, Furniture, Estates
Jira & Sheri Vanes, By Appointment
Herdon, Va. 22070 Phone 435-9045
- CURIOSITY NOOK**
'Where Friends Meet To Antique'
3300 S. 8th. Ave. Westward Village
Yuma, Ar. 85364 (602)726-6730 or 726-8070
Barney & Jody Barnicle
- CURIO CORNER**
Accent Antiques of Kensington
3742 Howard Ave.
Kensington, Md. 20795
Phone: (301)933-3750
- ANTIQUES - THE SHULTZES**
206 - 208 E. Main Street
Newmanstown, Pa. 17073
15 Mi. West of Reading, Pa.
Phone: (215) 589-2819
- T & S ANTIQUES**
TOM MARTIN STEVE RODERICK
Specializing in Heisey
New Rochelle, N.Y.
(914) 235-9632
- RAMBLING LANE ANTIQUES**
KEITH & EVELYN HOOVER
Featuring HEISEY and Other Fine Glass
Rt 4 Box 1005 Rhinelander, WI. 54501
Phone: (715)282-5019
- OFF-BROADWAY ANTIQUES**
HEISEY GLASS & GENERAL ANTIQUES
121 S. Prospect St., Granville, Oh. 43023
Open 7 Days A Week 12-5 P.M.
Shop (614)567-2083 Sun 567-0052
- LYNNE & ART'S GLASS HOUSE, INC.**
'HEISEY OUR SPECIALTY'
Miami Beach, Fl. 33154
P.O. Box 54-6014
(305)861-7700 (305)895-5666
- CRYSTAL PALACE ANTIQUITIES**
Cut Glass, Heisey, China, etc.
116 S. Taylor St., Hemet, Ca.
Mon-Fri 10:00 a.m. - 5:00 p.m.
Weekends by adv. appt. (714) 652-1307
- PEGGY'S ANTIQUES**
2000 pcs. Heisey in stock
Ernie and Peggy Cox
P.O. Box 367, Spavinaw, Ok. 74366
(918) 589-2859 By Appt. or by chance
- DIAMOND H PLUS**
George & EILEEN SCHAMEL
Rt. 3 Box 419 Boonsboro, Md. 21713
Appointment or Mail Order
Phone: (301)432-6285
- HEIDI-HO ANTIQUES, INC.**
HEISEY and GENERAL ANTIQUES
838 S. High St., Columbus, Oh. 43206
Phone: (614)444-5774
Hours: Wed. Sat. 11-5, Sun. 1-5
- RECOLLECTIONS**
THERESA WERT
Lahaska Antique Center
Route 202 Lahaska, Pa.
Phone: (215)794-8667
- ANN'S GIFTS & ANTIQUES**
105 W. Main St., Hebron, Oh. 43025
Intersection Rt's 40 & 79
Next Door to Daisy Queen
Daily 11:30 A.M. to 5:30 P.M. Closed Thursday
- SUM OF LIFE**
ELAINE & FRANK HUSTED
P.O. Box 102
Phoenixville, Pa. 19460
Phone: (215)935-2962
- THE "FINDERS" ANTIQUES**
DAVID & SHIRLEY ROSE
513 E. Main Street
Newark, Oh. 43055
Phone: (614)349-7934
- MOUNDBUILDERS ANTIQUES**
IRENE RAUCK
1138 Moundview, Newark, Oh. 43055
Phone: (614)344-6043
Heisey & Animals General Antiques
- HAPPY HAVEN ANTIQUES**
MARY DUMKE
14319 Rattlesnake Road
Grass Valley, Ca. 95945
Phone: (916)273-9450
- THE PURPLE PLACE**
Specializing in Art Glass
HEISEY, CAMBRIDGE, PATTERN
3093 Cleveland (U.S. 41)
Fort Myers, Fl. 33901 813-936-1572
- C&J ANTIQUES**
COLE & JEAN MIESNER
BOX 45, 72WHIG ST.
NEWARK VALLEY, N.Y. 13811
(607) 642-9905
- GEORGE HOFFMAN ANTIQUES**
G.W. HOFFMAN - J.H. DENNIS
129 South 4th Street
Newark, Oh. 43055
Phone: (614)345-8021
- CHARLES & MILDRED FISHER**
Antiques & Collectibles, General Line
HEISEY, DEGENHART, IMPERIAL
991 Idlewilde, Newark, Oh. 43055
Phone: (614)522-5398
- HARRISON'S ANTIQUES**
HEISEY, CAMBRIDGE, DUNCAN
26 Johnston's Lane
Mercersburg, Pa. 17236
Shows, Mail, By Appt. (717) 328-2451
- RENETTAS RELICS**
515 North St., Utica, Ohio
Antiques & Collectibles
Open Thurs-Sat 12-6 or by appt.
Phone (614) 892-2488
- H and R DIAMOND H**
HELEN & ROBERT RAREY
1450 WHITE ASH DRIVE
Columbus, Oh. 43204
(614) 279-0390 after 5:30
- JOYCE'S ANTIQUES**
Specializing in: HEISEY
CAMBRIDGE, VERLYS, AMERICAN GLASS
P.O. Box 114, Albertson, N.Y. 11507
Phone: (516) 499-3396

Heisey Collectors of America ALL HEISEY - Benefit Auction

MARCH 12-13

It is time again to prepare for our 9th Annual All-Heisey Museum Benefit Auction. The Auction will again be held at the OSU Newark branch Campus. It will, as usual, be held in conjunction with the Quarterly Meeting.

The same policy as the last two years will again be followed. Limit your glass to 10 lots per family (excluding donations). Items such as 8 goblets or 12 plates together would constitute one lot. Any consignments OVER 10 lots will be considered as donations. The consignment fee remains at 20% with a \$5 minimum per lot. HCA receives the 20% selling fee. Please consign only Heisey or Verlys by Heisey. No Imperial Please.

Be sure to include a list (including pattern number, name, color, etc., if possible) along with your name and address. Arrange the list in desired lots and identify which lots are consignments and which are donations. Don't forget to make a duplicate copy for your records.

The Benefit Auction is one of the major fund raising projects of the year and all proceeds go for support of your Museum. There is very little expense associated with the Auction. You can help by donating items for the Auction. Remember, donations are full value tax deductible. The consignment fees are also tax deductible. So, get your glass in early and plan to be at the Newark Branch Ohio State University on March 12 and 13.

Ray Ziegler - Chairman

1. Donations - full value tax deductible.
2. Consignment - you receive a check for 80% - the Heisey Collectors of America receive 20% - these proceeds support your Museum.
3. Glass must be in our possession by January 15
 - A. Mail your glass now to: Heisey Collectors of America, Inc.
 - B. Visit the Museum and leave your glass there.

MAIL GLASS TO: HCA
169 West Church Street, Newark, OH 43055

GLASS[®] review

ESTABLISHED 1971

The GLASS REVIEW Magazine is for everyone who studies, collects or sells glass. Whether your glass interests lean toward the early 1900's -- or the depression era-- or with today's limited glass items, the GLASS REVIEW covers it all!

Articles -- price reports -- original catalog documentation -- shop directory -- research and reproduction news -- trademark information -- glass book releases -- what's new on the market -- a large variety of glass ads (on both old and new glass) -- plus much more.

Enclose payment and mail to:
GLASS REVIEW, P.O. BOX 542, MARIETTA,
OH 45750

10 'big' yearly issues

68 pages or more

\$12.50— one year

FIRST CLASS MAIL
U.S. POSTAGE
PAID
PERMIT 34
Newark, Ohio 43055

FIRST CLASS MAIL

