

HEISEY

OFFICIAL PUBLICATION HEISEY COLLECTORS OF AMERICA
© Heisey Collectors of America, Inc. 1980
All Rights Reserved

news

VOL. IX, #12, DECEMBER, 1980

ONE DOLLAR



1615 - 2 Light Candlestick with 1519 Waverly Epergnettes

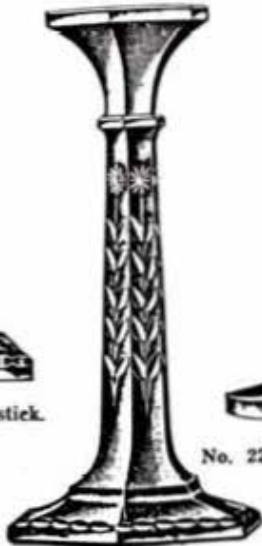
HEISEY PATTERNS CUT BY LEWIS & NEBLETT COMPANY

1917 - 1918

They use original Heisey numbers for the pattern which they cut.



No. 68. 10-inch Candlestick.



No. 25. 9-inch Candlestick.



No. 22. 7-inch Candlestick.



No. 21. 7-inch Candlestick.



No. 21. 9-inch Candlestick.

AMERICAN CUT GLASS

HEISEY NEWS — — — P.O. BOX 27 — — — NEWARK, OHIO 43055

EDITOR — LOUISE REAM, 1115 W. Main St., Newark, OH 43055
 ASS'T. EDITOR — NEILA BREDEHOFT, Box 27, Newark, OH 43055
 PUBLISHED MONTHLY — \$18.00/year — \$1.00/copy
 BACK ISSUES AVAILABLE AT \$8.00/year — \$1.00/copy

PRESIDENT	LOUISE REAM	(614) 344-2377
VICE PRESIDENT	JACK METCALF	(614) 892-2664
SECRETARY	MARY McWILLIAMS	(614) 345-4380
TREASURER	DICK MARSH	(614) 366-5608

Heisey Collectors of America, Inc. is a non-profit corporation with tax exempt status. Owners and operators of National Heisey Glass Museum, 6th and Church Streets, Newark, Ohio. Open Daily 1-4 p.m., April through October except Monday and Holidays, November through March, Wednesday, Saturday, Sunday 1-4 p.m. Members admitted free.

Phone: (614) 345-2932. Club membership (includes 12 issues of Heisey News and participation in all club activities) \$10.00/Year plus \$1.00 each for additional family members in same household who wish a membership card. For voting membership add \$25.00, one time only fee, or write for information.

For Membership - HCA Membership, Box 27, Newark, OH 43055. Notify immediately of any change of address.

The opinions expressed in articles in Heisey News are those of the authors and not necessarily those of the organization. The Editorial Staff reserves the right to edit or refuse any material submitted for publication. When requesting information, please enclose a self addressed stamped envelope (SASE).

ADVERTISING — Send all ads to:
 Neila Bredehoft, Advertising
 Box 27
 Newark, OH 43055

DEALER DIRECTOR ADVERTISING RATES — 5 line - \$6.00/5 issues

CLASSIFIED ADVERTISING — 5¢/word — \$1.00 Minimum. We cannot mix type sizes in Classified Ads. Abbreviations and initials count as words.

DISPLAY ADVERTISING	RATES	MEMBER	NON-MEMBER
	1/8 Page	\$ 8.00	\$15.00
	1/4 Page	\$15.00	\$25.00
	1/2 Page	\$25.00	\$40.00
	Full Page	\$45.00	\$60.00

PAYMENT IN FULL MUST ACCOMPANY ALL ADS.

Advertising copy reaching us by the 5th of the month will be in the next month's issue. Advertisements containing reproductions will not knowingly be accepted unless clearly stated (i.e. Heisey by Imperial, etc.) Heisey News assumes no responsibility for false advertising or misleading information. In the event of typographical error, the incorrect portion of the ad will be run in the following issue, but Heisey News assumes no further liability.

Send all letters and articles to be published to the Editor. Letters to columnists should be sent to the club address and will be forwarded.

FROM THE DESK OF YOUR PRESIDENT

The Standing Colts are now sold out. The Rearing Colt is in short supply at \$14.00 and we have all three Mallards in light blue at \$13.00 each. These are selling well.

The Christmas party at Granville Inn was a huge success. The weather was fine, the food was good, the Inn was beautifully decorated and a hundred members were present. Christmas meetings are usually not as well attended as the other three affairs since it is a busy time and the weather is so uncertain. Emogene Shomaker and her committee had decorated the tables with Heisey Compotes filled with Christmas balls and greens, a real treat to behold.

During a short business meeting, Dick Marsh reported nearly \$18,000 in the bank, assuring us that we will have the money to pay on \$12,500 note to Miriam Balo for the Office Building, on January 1st. This leaves us only \$10,000 balance on the mortgage which Percy and Vivian Moore hold. A payment of \$1,375.00 will be made on this on January 15th. Only eight payments remain on this \$27,500 note. We bought this house in January, 1978, and the cost, including remodeling was \$85,000 so you can see we've made great progress in getting it paid for. In addition the furnishings have cost about \$10,000 more which is also paid. There are no other outstanding debts. We can't tell you ourselves how we DID it but money just seems to be here when needed, thanks to all our loyal members and friends.

Anne Heisey, the 93 year old matriarch of the Heisey Clan was present, along with her son Tim and Granddaughter Anne Harris. We were very pleased to see Gus Heisey and his wife, Susan. Gus has recovered well from his recent cataract surgery and will soon have the same operation on his other eye.

The Far East Club served on the hospitality committee, Mary McWilliams handled dinner arrangements and reservations. Virginia Yeakley presented an interesting talk and slide show on Verlys of America glass made at Holophane, Heisey's across-the-street-neighbor. Some of the molds were also used by Heisey and, in fact, Heisey made all Holophane's light shades until 1922. Liz King read her annual Christmas poem. Each person attending the dinner received a ticket for a drawing and the nice prizes from the gift shop were given out with Brad Hess and Jay Barker handling the drawing.

It turned out that 4 Cordials were broken in the process of making bells so that only 57 were actually made. Only 55 of these were sold prior to the 12th so the two remaining were humorously auctioned off by Frank Frye, with one going for \$60 and one for \$70. Ray Ziegler deserves a great deal of thanks for making the bells at no charge and with the sale of the bells the Cordial project was a complete financial success.

After the program most everyone came to the Museum to see the Christmas decorations, visit, have refreshments and many played cards so that we finally got away from the Museum at 12:30 A.M.

We must remind you that this Museum is one of the finest and is absolutely beautiful. With candles in all of the windows, a lovely wreath on the door and the whole front spot lighted it is breathtaking, looking like a Christmas card.

The Oscar Form is in this newsletter on Page 23. Please read the instructions carefully. Use the ORIGINAL FORM from the newsletter. In fact, in the future ALL orders must be on these forms. (Special Items). We omit important news on the back of forms so that it will not spoil your newsletter. If you want to save the page, you should Xerox it on both sides and retain the copy but SEND US THE ORIGINAL. This confirms that you ARE members and the name and address are easier to read. Your order will be handled by our staff this year and to save much needed storage space, they will be sent out as soon as available, which should be quite soon. Visa and Master Card will be accepted. We still need a volunteer club to hand out Oscars at Convention, however.

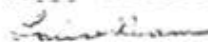
We now have two new desks, one for the bookkeeper and treasurer, and one for Neila who works here at least three days a week, typing Heisey News copy and material for books. For the past few weeks she's been at her parents' home in Wapakoneta since her Mother has had two operations and is still in the hospital.

Percy Moore has had two small strokes in the last few months but is feeling better now. He is still unable to use one hand.

We have a fabulous new acquisition in the Museum, a pair of 110 Dolphins in ZIRCON. How many of these have you seen? We also have on loan a 1417 Arch Tumbler in Tangerine and a 3324 Delaware Goblet IN BLUE (not cobalt). Rumor has it that we are to receive some wonderful donations soon. We just can't wait! People are so generous to their lovely museum.

We hope your Holidays are (were) Wonderful.

Happy Collecting!



This month, in order to end the old year and begin the new year on a proper note, we will finish what we started a couple of months ago, namely: the unseens from Heisey's Catalog 2B circa 1920. The last group of stems we wrote about from this Catalog were pulled stems which are next to impossible to identify. Pulled stems are a bane to every stem collector because with most of them you can never be quite sure if it's Heisey or a ringer. I've solved the problem with the pulled stems in my own collection; I've had them identified by an expert-----me! Does that sound pompous? It's really not meant to be. The point is that when you are as close to Heisey glass as we all are you really do get a feel for it. After all, what avenues are open to us for "expert" identification? After Louise Ream and Clarence Vogel all that remains is God.

The stems we are covering now give the appearance of pulled stems but they should be signed. This will relieve any identification problem. Of these two "unseens", 3438 Ironton and 3455 Lady McBeth, one is definitely signed and the other should be. "How", you may ask, "if it is unseen, do you know it is marked"? I am seeing it right now that's how I know this unseen is marked! No 3438 Ironton is the now seen unseen in question. I bought it from a very nice person at the Bay State Show (you shoulda been there!) and I've been keeping it to myself every since. This 10 oz. goblet, which was the only item made in both Ironton and Lady McBeth, is beautifully marked at the top of the stem. The bowl is a medium optic although the catalog pictures that I've seen show only a plain bowl.

No. 3455 Lady McBeth, on the other hand, is still unseen (I refer only to these tired old eyes) but the catalog drawing tells us that the stem is pressed rather than pulled so we can safely guess that this piece, when seen, will have a Diamond H on its stem.

No one should object if I class both of these stems as rare. As big as the mark is on Ironton it would have been seen long before now if there were at least a few around. These were probably made for the restaurant trade which would partly account for their scarcity. Glass is more likely to survive in a home rather than commercial atmosphere.

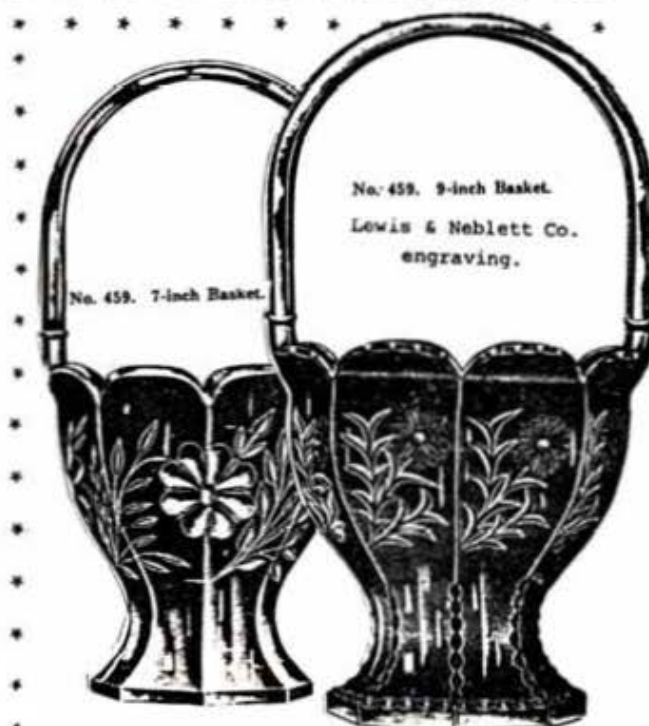
Here's hoping that your transition from 80 to 81 is smooth and happy. If I can find a big enough olive, I plan on celebrating the New Year with a king sized Martini in an Ironton goblet. My transition may not be smooth but it will be happy.

Last month Louise noted that she didn't delete anything from my article but that saucy little joke I told was missing. Maybe if you send her a plain brown wrapper with a stamp she'll send it to you. Cheers!

EDITOR'S NOTE: Carl is only kidding. We put in every work he wrote. L.R.



3455-10-OZ.

3438-10-OZ
GORLET

TUMBLERS

BY TOM BREDEHOFT

438 HELIX

A collector approached a dealer at an antique show and produced from her bag a tumbler. "Can you help me?" she said, "I'm trying to identify this". The dealer looked at it and said, trying to look intelligent as we are wont to do, "It looks like one of those swirl patterns made during the depression". "Oh", said the collector, "well, what is this mark on the bottom?" "Oh that, that's the "Diamond H", the trade mark of the Heisey Company. This is one of their tumblers". Sound familiar? It should, to at least one of you, cuz that's the way it happened.

Well, it's NOT one of those depression glass swirl patterns, it was made long before they even thought of having a depression. And since we columnists have (instead of remuneration) the honor or task if you will, of naming the unnamed things Heisey made, I'll take a shot at it. I will balk, however, at calling this swirl. Twist's been taken, how about we name this quartet "Helix". There, you've witnessed the creative process in action.

438 Helix was introduced, or rather illustrated in Catalog #75, in 1913. None of the price lists for the period (which we have) make any mention of it at all. The only excuse for this I can come up with is that it wasn't at all popular and was never made for sale. Possibly it got into the catalog before they realized it wouldn't sell, and lead times being what they are, they couldn't remove the illustration. I doubt seriously that it was made in any colors, due to the time period, and the shortness of its life. On the other hand, you never know what is going to turn up, see below.

PERIOD: Late Colonial Period, 1913
VARIATIONS: 8, 9, 10, and 12 oz
DECORATIONS: None Known
COLOR: None Known
COMMENTS: Notes on the catalog page on which this appears..
"All sodas on this page have ground bottoms"
"All sodas on this page fit standard holders" These were the nickel plated one, two, or three handled holders which soda fountains deemed necessary for containing soda glasses. Don't know why.



Now on to other things.

Back in September of 1976 when I wrote about the 1417 Arch tumbler, I speculated about the evolution of the mold, the fact that some have "toes" while others have a ring about the base, and which came first, and why the mold was changed, if it was. I have always thought that they had made a turn from the new mold and discovered that the feet, or "toes" broke off too easily, so the mold was changed to the more stable ring foot. Well, to make a long enough story short, there is one of these "toed" Arch tumblers in the museum now in TANGARINE. I've often not been surprised by colors in pieces before, usually one gets to where one knows what to expect, but in this case the color was unexpected, and then to see those pert little toes lifted, as if to start tap dancing, was a real surprise. You may remember that this 1417 Arch tumbler was one I had listed in the standard colors, and almost immediately a "Philadelphia Lawyer" found some in Amber much to my surprise and chagrin.

Another tumbler has turned up on the west coast, which while it wasn't unexpected, has been hoped for but until now has been unreported. It seems that someone waltzed home with a #160 Locket On Chain tumbler in Canary (vaseline) for the price of a meal at Howard Johnson's. I had assumed they had been made, but not having seen one for lo these many years, I wrongly guessed they had all been broken and I would never get one. I may never get one, but at least they do exist.

Something else that does exist, and I wouldn't have believed it if I hadn't seen it, (this is Carl's department again) a diamond optic 3324 Delaware goblet in (get this) Experimental Blue. Yes, I have seen it, and yes it is Experimental Blue.

FLORAL BLOCK #22

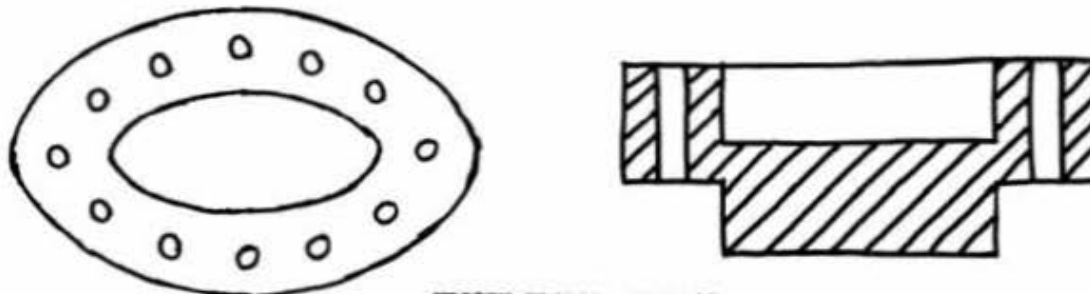
BY JOSEPH D. LOKAY

The 6" floral block #22 is a unique one in that it appears to have been designed and sized to go specifically with the 12" footed oval floral bowl in the #1404 Old Sandwich pattern. Block 22 is oval in shape as shown in the sketch with this article. The block is one piece of glass. However, for discussion purposes, let's visually think of the block as two parts, the upper oval and the lower oval. The upper part has a hole in the center like a doughnut, or more exactly, an oval shaped doughnut. The outside dimensions of the upper oval are about 4 x 6 inches. There are 12 holes around the doughnut body. The lower part is solid glass and also is oval in shape. The dimensions of the lower oval are 1½ x 3½ inches. The lower solid glass oval is sized to insert into the oval shaped foot of the 1404 floral bowl. The overall height of the block is 2½ inches.

The production period for block 22 is estimated from 1930 to 1936 or about 6 years. The 1404 companion floral bowl was produced for a longer period. The block is not signed with a diamond H. The bust-off mark can be found on the bottom side of the lower solid glass oval.

Block 22 was produced in crystal, moongleam, flamingo and sahara. Nothing was listed in the price list color columns for alexandrite, tangerine or cobalt, so it is assumed that the block was not made in these three colors. The companion 1404 floral bowl was also made in crystal, moongleam, flamingo and sahara. It was interesting to note in price list 210 dated June 1933 that the cost for a dozen #22 blocks in a color was equal to the cost for a dozen #1404 bowls in the same color.

Even though price lists #210, circa 1933, and #211, circa 1935, state that floral block 22 is for the 1404 oval floral bowl, the block fits other Heisey oval floral bowls. This may be by coincidence or perhaps may have been planned. For example, block 22 fits nicely in the #1429 oval floral bowl. This combination of bowl and block in moongleam is on display in the HCA Museum. Since the 1429 oval bowl is in moongleam, it must have been prior to 1935, the end date for the production of the moongleam color. I would guess that the 1429 moongleam bowl was made in 1934. There are other oval floral bowls like 1445, 1447 and 1471 that block 22 might fit. My answer is, use block 22 in any floral bowl where it is compatible for the use you desire.



HEISEY FLORAL BLOCK 22

* * * * *

Cont'd From Page 5

It is in the museum, along side those gorgeous #134 Trident Candlesticks in the same color. More about this in the future.
 Columnist's note, this is what passes for a column when Neila isn't around to say "You can't do that".

Editor's Note: There is also a 1417 Arch tumbler with the toes in the lower level of the museum. Of course it is in that mundane color, Crystal. The Tangerine tumbler is on loan from a lovely couple in New England, The Berry's, and we are very grateful to them.

* * * * *

- JANUARY 16 DEADLINE FOR CONSIGNING GLASS FOR MARCH AUCTION
- MARCH 13-14 EIGHTH ANNUAL ALL-HEISEY BENEFIT AUCTION, OSU
NEWARK CAMPUS, COUNTRY CLUB DRIVE
- MARCH 21-22 NATIONAL CAPITAL HEISEY COLLECTORS ALL-HEISEY
SHOW & SALE
- JUNE 18-21 10TH ANNUAL CONVENTION

A. H. Heisey & Co.

NEWARK, OHIO.



1200 PATTERN.

A Full Line Plain, Engraved & Decorated.

7 inch Bowl and Cover.



Celery.



Ind. Salt.



Salt and Pepper, N. T.



8 inch Jelly, Flared.

Fine Crystal Tableware, Bar Goods ETC., ETC.

Full line of Samples on exhibition at Monongahela House, Room 167 during January and February.

SALESMEN.

Walter B. Lindsay, West.

A. A. Gracer, East.

Joe. Tomkinson, N. Y., Philadelphia and Baltimore.

A. H. Heisey & Co.

NEWARK, OHIO.



Celery

1200 PATTERN
ENGRAVED



Molasses Can.



Toothpick.



Cracker Jar and Cover.



Custard.



Wine.



Salt and Pepper.

Fine Crystal Tableware, Bar Goods ETC., ETC.

Full line of Samples on exhibition at Monongahela House, Room 167 during January and February.

SALESMEN.

Walter B. Lindsay, West.

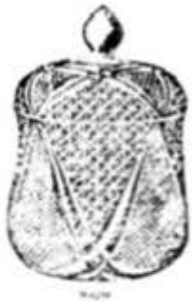
A. A. Gracer, East.

Joe. Tomkinson, N. Y., Philadelphia and Baltimore.

This is a copy of an old sheet which was given to us by Betty Regan of California. She purchased it here in Newark. Even though this heading says "Klondyke Assortment" we DO NOT believe this was the original name for the 1201 pattern. Heisey gave names to many of its special assortments, we have learned in our studies. Perhaps the name "Klondyke" was used because the glass was decorated with gold.

KLONDYKE ASSORTMENT.

1201 FANDANGO



Sugar



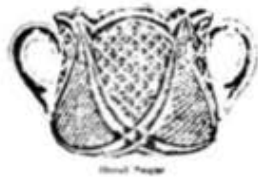
Cream



Spoon



Butter



Sippy



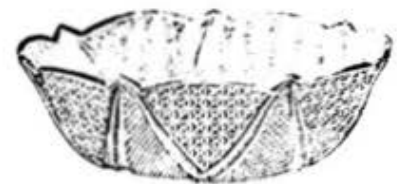
8 in. Cheese Plate



Hotel Cream



7 in. Sippy, Flared



8 in. Sippy, Flared



8 in. Butter, Tall



Creary



8 in. Jelly

- 1 Doz. Sugar
- 1 Doz. Cream
- 1 Doz. Spoon
- 1 Doz. Butter
- 1 Doz. 8 in. Cheese Plates
- 1 Doz. Creary, Tall

This Assortment consists of 1 Dozen each of the pieces illustrated.

144 pieces.

Price, 12 dozen = 70 - \$8.40

Package, 50
\$8.00

- 1 Doz. Hotel Sugar
- 1 Doz. Hotel Cream
- 1 Doz. 8 in. Sippy, Flared
- 1 Doz. 7 in. Sippy, Crimped
- 1 Doz. 5 1/2 in. Hill, Jelly, 3 Cor.
- 1 Doz. 8 in. Oblong or Preserve
- 12 Dozen

FASCINATING INSIGHTS INTO EARLY HEISEY HISTORY - TAKEN FROM EARLY TRADE JOURNAL REPORTS

CHINA, GLASS & LAMPS July 10, 1895

"A. H. Heisey has paid for the site of his new factory at Newark, O., and will begin the work of construction within 30 days. It will employ 200 hands."

CHINA, GLASS & LAMPS November 6, 1895
NEWARK, OHIO

"The new Model Glass Works of A. H. Heisey & Co., located in this city, are nearing completion, and when finished will deserve their name, as they will in plan, convenience and equipment be second to none in the country. Mr. A. H. Heisey, the head of the firm, deserves the credit for all this, as he has drawn upon his knowledge of the business, the fruits of an experience of many years, to bring the new plant as nearly as possible to perfection. This same knowledge will come into advantageous play in the management of the new enterprise, which can be counted upon, under Mr. Heisey's direction, to win success by putting upon the market only first class goods in all lines covered by the output. Mr. Heisey is still young and vigorous, full of vim and energy, of well balanced judgment, and possessing every qualification necessary to win success. A brief description of the new factory will interest the readers of CHINA, GLASS & LAMPS. The new factory building is in size 90x90 feet, the working floor being 12 feet above ground level. It will be equipped with one 16-inch pot furnace, arranged with 48 inch arches, and having four Nicholson gas producers connected with it. The stack is 112 feet high from ground to top. The lehrs and glory holes are connected with one of the improved Nicholson gas producers. There are six lehrs, 56 feet long, with 60 inch pans. The lehr and mold room will be 55x90 feet, with four brick arches underneath to be used for storage of materials, etc. The warehouse is 60x152 feet, three stories high; the mold shop 33x61 feet, three stories high. Fine offices will be located in a building separate from the factory. The roof of the factory, lehr and mold rooms is of iron. All the lumber used, such as posts, joists, flooring, etc., are of native hard wood, principally oak insuring the greatest security against fire. The entire plant will be heated by steam, and lighted by electricity from a plant installed in the works. The entire works are being constructed under the supervision of John Nicholson, Jr., the original builder of the Nicholson gas producing furnaces. The works will be under roof by November 14, weather permitting, and are expected to be making glass by the middle of December. They will employ about 250 hands. The present mold shop is located in one of the machine works of Newark, where twelve mold makers are busy at work on two handsome lines of tableware

for the spring trade. Everything about the works is conveniently arranged. The facilities for the receipt of raw materials and fuel and the shipment of ware are unsurpassed, a switch from the Panhandle Railroad reaching each side of the factory. The location is within the city limits, and is beautiful. Electric street cars run by the property, making it easy of access."

CHINA, GLASS & LAMPS November 20, 1895
NEWARK, OHIO

"A telegram of November 13 from Newark, Ohio, says: The northwest corner of the mammoth table glass factory, now being constructed in East Newark by Ferguson & Son, for A. H. Heisey, of Pittsburgh, collapsed about two o'clock this afternoon, burying four men under the debris. Samuel Cooper, aged 30, unmarried, who was working under an arch, is undoubtedly dead, but his body has not been found. Albert Boss, of Vall street, and Wm. Brookins, of Riler street, were rescued by their fellow workmen, who threw off the bricks and lumber that was crushing them. Both, however, are in a serious condition. Thomas Hastings and Addison Siddon, of Mansfield, were covered with debris, but were only slightly hurt. The building was being roofed when the disaster occurred. It is thought that the recent copious rains weakened the walls. Mr. Nicholson, of Pittsburgh, representing Mr. Heisey, said tonight that the damage to the building would not exceed \$2,000."

CHINA, GLASS & LAMPS January 8, 1896

"The samples of the new works of A. H. Heisey & Co., Newark, O., are now on exhibit in Pittsburgh, and of course no old goods will be expected from a new firm. A full description of their new lines will appear in our regular descriptive review of the annual exhibit in our next issue."

ED. NOTE: By this time, Heisey had already run full page ads showing their #1200 Cut Block and #1201 Pandango patterns. Samples of these patterns reportedly were made by the Robinson Glass Co. of Zanesville, Ohio.

CHINA, GLASS & LAMPS January 22, 1896

" A. H. HEISEY & CO.
Mr. Walter B. Lindsay, room 167, is in charge of the new lines of glassware gotten out by the firm of A. H. Heisey & Co., Newark, Ohio. Mr. Heisey, the leading spirit of the new firm, is well and favorably known to the trade as a former member of the old Pittsburg firm of George Duncan & Co., and was afterwards identified with the United States Glass Co., as superintendent of the sales department. The sets of tableware shown consist of pattern No. 1200, an imitation

of cut base and plain top, designed for plain and decorated sets, a combination of a cut star and diamond cut figure, which has been very favorably received by buyers, and been praised by most of the salesmen of the older firms as a very meritorious production. The No. 1201 Pattern is also an imitation cut figure and shows up especially well in the larger pieces and the shapeliness of the various pieces comprising the set. The new firm has built one of the best equipped and most modern factories in this country and with its Nicholson furnace, new presses and moulds, the best technical experts in every department, and years of experienced management, is in a position to offer bargains to the trade in new and handsome crystal tableware."

(Also included under the heading of "L. J. RODGERS" was the following:)

"With a very large and diverse array of fine stained ruby and amber glassware, is showing buyers what has been accomplished in this industry during the past year. Among the many handsome sets of glassware shown are the finest products and latest patterns of the leading American manufacturers, only the best patterns and those suited for showing off in strong contrast the rich ruby color, complemented by a strong light deflecting figure in clear crystal, are given the preference. The new patterns of the A. H. Heisey Glass Co., Nos. 1200 and 1201, are decorated in ruby and amber, for which they are specially suited and Mr. Rodgers has arranged for a large production, as he is convinced they will prove leaders...."

* * * *

CHINA, GLASS & LAMPS April 15, 1896

A. H. HEISEY & CO.

The new flint glass factory at Newark, Ohio, which has been under way since last fall, was started up and made its first ware last Wednesday. The factory is one of the best in this country, is built of brick and structural steel throughout, with a 16 pot furnace, four Nicholson gas producers, with a separate producer for the lears. The new sets of tableware made by this firm have been repeatedly shown in our advertising columns and have already enjoyed a very large sale. Mr. Heisey has been considerably hampered by the delay of the contractors, but is now in a fair way to fill orders from his factory. Manufactured gas will be used in all departments, and as the glass making department of the works have been placed in charge of Charles Zimmer and Adam Trautman, two experienced men of ability, and the designs and patterns will be under the care of Heisey, the trade will be furnished with new goods in the best crystal it is possible to make with the best facilities obtainable."

CHINA, GLASS & LAMPS April 22, 1896

"The works of A. H. Heisey & Co., which started on the 18th inst., is running full, the start made being very satisfactory. The new patterns are being made in as clear flint as it is possible for skill and experience to make and the firm is ready to book orders for early delivery."

* * * *

WOULD YOU LIKE TO BUY THESE TODAY?

(These prices were handwritten in one of the very first copies of the Animal book, written back in 1969. Paul Fairall gave us the book and he had written in the prices.)

Bull	\$ 85.00
Hen	25.00
Chicks ea.	9.00
Rooster	35.00
Fighting Rooster	30.00
Rooster Vase	40.00
Airedale	30.00
Scotty	17.50
Donkey	25.00
Wood Duck	45.00
Ducklings ea.	17.50
Mallards ea.	20.00
Medium Elephant	35.00
Large Elephant	45.00
Small Elephant	30.00
Fish Book End	30.00
Tropical Fish	125.00
Fish Candlestick	20.00
Fish Match Holder	20.00
Gazelle	85.00
Giraffes	35.00
Goose Wings Down	35.00
Goose Wings Half	25.00
Goose Wings Up	25.00
Clydesdale	40.00
Flying Mare	150.00
Filly, Head Forward	75.00
Filly, Head Back	85.00
Plug Horse	20.00
Ponies (Colts) ea.	18.00
Show Horse	50.00
Horse Head Book End	30.00
Rearing Horse Book End	45.00
Tiger Paperweight	80.00
Ringneck Pheasant	40.00
Asiatic Pheasant	50.00
Pouter Pigeon	50.00
Piglets ea.	10.00
Mother Pig	55.00
Bunnies ea.	15.00
Mother Rabbit	50.00
Doe Head	50.00
Rabbit Paperweight	20.00
Sparrow	10.00
Cygnets	15.00
Swan	65.00

CLUB NOTES , , ,

HEISEY CLUB OF ROCHESTER, N Y

On October 23, 1980 at the beautiful Rochester Planetarium the Heisey Club of Rochester, N. Y. held a joint meeting with the Rochester Depression Club at the invitation of Don Hall, their program chairman.

Each member of both clubs was to bring their favorite piece for a "show and tell" session. The Depression Club have asked us to have a display at their antique show in 1981.

- Marjory Gillette, Secretary

+ + + + + + + + + + + + + + + + + + +

NASSAU-LONG ISLAND

Our October meeting was held at the lovely new home of Roz and Bern Kovit.

As this was our first gathering since the Convention, we exchanged stories of our wonderful experiences-the people we met and all that magnificent glass!

Viewing the animal and toothpick slides was the highlight of the evening. We all enjoyed the challenge of trying to correctly identify the patterns.

After a delicious dessert of homemade cakes and coffee, we called our meeting to a close.

- Elyse Bosniak, Secretary

+ + + + + + + + + + + + + + + + + + +

BAY STATE HEISEY COLLECTORS CLUB

This newsletter is late in coming but I will bring you up to date on the happenings of our club.

First, the election at our annual meeting in March resulted in new officers: Arthur Anderson, Pres; Janet Macomber VP Treasurer;and Betty Kennedy, Secretary

Second, from then until September we planned our show in Sturbridge which by the way was a great success. Wade and Dotty Banck did a superb job as managers of the show. We are all looking forward to our show next year. We also had a display of our glass at the Sandwich Glass Museum in Sandwich, Mass.

We held our annual auction at our last meeting 11/12/80. This is to benefit the Museum in Ohio. This was a great success due to George Fogg who did a fantastic job.

At the same meeting we had Show & Tell conducted by David Steer.

Some items shown:

- #134 Bowl in sahara with candlesticks
- Waverly 14" bowl with 508 Floral Etch
- #136 Triplex sticks pair, clear and 1 sahara
- #903 Jefferson 8 oz. stem
- #1386 ash tray with dog etch
- a tangerine Empress sugar bowl - a fantastic find.
- and a Fancy Loop pickle caster

It just goes to show that there is still good Heisey in the east.

The meeting was adjourned for coffee and cake.

We are all looking forward to our Christmas party held at the Barnside Restaurant hosted by George Williams,son of our member Mary Williams.

Until next time, Happy Hunting.

- George Gleason

+ + + + + + + + + + + + + + + + + + +

HEISEY COLLECTORS OF TEXAS - Erma Hulslander, Secy. Treas.

The latest news from Texas:

HCT met October 18, 1980 at the home of Ella & Ed Buttry in Lindale, TX. Madeline Sullivan gave us a quick run down on her trip to Salado, Texas, about the museum, and the interest shown in Heisey.

Our last meeting of 1980 was held at Jan & Charlie Bairds' home with 16 members and 7 visitors present. Charlie presented an extensive program on Heisey cuttings. During "Show and Tell" one visitor showed us a campaign souvenir covered cup of President McKinley and accompanying article crediting this cup to the Heisey Company in 1896. The article was published in the book entitled "Collecting Political Americana" by Edmund B. Sullivan. (Has National heard anything on this?)

During the course of these last two meetings we welcomed Mr. Hollie Penrod and Mrs. Gerald Buchanan into our club.

WALTER ALEXANDER WELLER

As Walter J. Weller of Chicago, Illinois, was traveling east recently on I-70 he noticed a sign for Newark, Ohio. Since he had lived in Newark briefly in his youth he decided to stay overnight here. At the Holiday Inn someone told him that there was a Heisey Glass Museum in Newark. Since his father had been a glass designer for Heisey for a few years he came to visit the Museum. He didn't know just what pattern his father had designed but as we walked into Room 5 on the second floor he immediately spotted the #1506 Whirlpool (Provincial) and said that it was his father's pattern.

Walter Alexander Weller was born in Dresden, Germany in 1888 and died of a heart attack in Newark, Ohio on December 25, 1940. He came to the United States in 1902 with his whole family who believed there were better opportunities here. He was married in 1933 and he and his wife, Agnes, had only one son, Walter J. Walter, Sr. obtained his U. S. citizenship in the summer of 1940 and about that same time received a letter from the German government telling him to return and serve the Fatherland. He was pleased to be able to write and tell them that he wouldn't be coming.

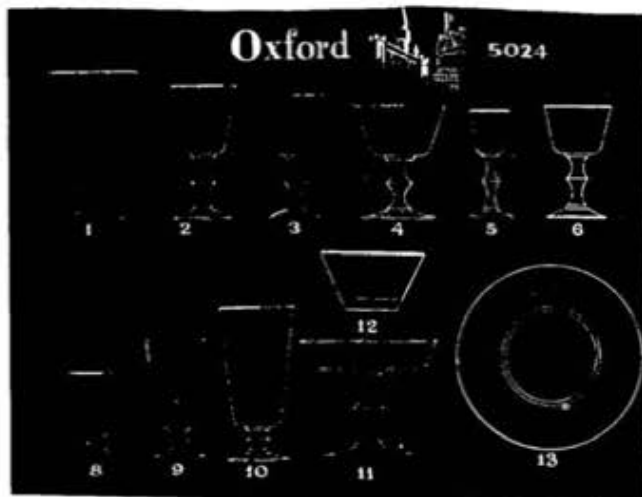
Walter, the son, told me that the family came to Newark in 1938 where they lived at 37 Fairmont St. near the Heisey factory. Since 1506 Whirlpool is pictured in a catalog a little earlier than that we must assume that he was already designing for Heisey while he lived in Chicago. Royal Hickman, who designed most of the Heisey animals, lived in Chicago while he was designing them, only coming to Newark when necessary.

Walter was unable to tell me what other patterns his father may have designed since he was quite young at the time but he said they had many pieces of Whirlpool in their house and he remembered it very well. He also remembered having a Madonna.

He said that his father was a short man, wore stern-looking steel-rim glasses and he always felt that he was terribly strict. When angry he always resorted to his native German tongue.

To Walter it was a nostalgic look into his past and we were happy that he had visited us and had given us just one more detail to add to our growing history of Heisey glass.

* * * * *



OXFORD — Pattern No. 5024

| NO. | SIZE | ITEM | PRICE | |
|---------|-----------|----------------------------|--------------|------|
| | | | Dos. Crystal | Each |
| 1-5024 | 11 oz. | Goblet | \$ 24.00 | 2.00 |
| 2-5024 | 4 1/2 oz. | Claret | 24.00 | 2.00 |
| 3-5024 | 3 oz. | Wine | 24.00 | 2.00 |
| 4-5024 | 8 1/2 oz. | Sherbet (Saucer Champagne) | 24.00 | 2.00 |
| 5-5024 | 7 oz. | Cordial, Tall Stem | 24.00 | 2.00 |
| 8-5024 | 3 1/2 oz. | Cocktail | 24.00 | 2.00 |
| 9-5024 | 4 oz. | Oyster Cocktail | 24.00 | 2.00 |
| 9-5024 | 5 oz. | Footed Juice | 24.00 | 2.00 |
| 10-5024 | 12 oz. | Footed Ice Tea | 24.00 | 2.00 |
| 11-5024 | 6 in. | Comport | 45.00 | 3.75 |



PRINCESS — Pattern No. 5089

| NO. | SIZE | ITEM | PRICE | |
|--------|-----------|----------------------------|--------------|------|
| | | | Dos. Crystal | Each |
| 1-5089 | 10 oz. | Goblet | \$ 18.60 | 1.55 |
| 2-5089 | 5 1/2 oz. | Sherbet (Saucer Champagne) | 18.60 | 1.55 |
| 3-5089 | 2 1/2 oz. | Oyster Cocktail | 18.60 | 1.55 |
| 4-5089 | 4 oz. | Claret | 18.60 | 1.55 |
| 5-5089 | 2 1/2 oz. | Wine | 18.60 | 1.55 |
| 8-5089 | 1 oz. | Cordial | 18.60 | 1.55 |
| 7-5089 | 5 oz. | Footed Juice | 18.60 | 1.55 |
| 8-5089 | 12 oz. | Footed Ice Tea | 18.60 | 1.55 |
| 9-5089 | 3 1/2 oz. | Cocktail | 18.60 | 1.55 |

SEE PAGE 14 FOR MORE OF THESE STEMS

HAVE YOUR HEISEY NEWS PERMANENTLY BOUND

Blue Hard Cover With Gold Embossing
Binding \$10.00 Per Volume, Plus
\$1.50 Postage & Insurance.

Volume I, Heisey News 72-74
Volume II, Heisey News 75-76
Volume III, Heisey News 77-78
Volume IV, Heisey News 79-80

Brown Hard Covers With Gold Embossing
Vogel's Newscasters 71-76, 77-78,
79-80

Binding Costs Same As Heisey News Per
Volume.

Bind all Four of Vogel's Heisey Books
into One Brown Hard Cover Volume \$12.00
plus \$1.50 Postage & Insurance.

Mail Your Material for Binding To:
Cliff Harralson, Com. Ctr.
Northeastern Illinois University
5500 N. St. Louis Ave.
Chicago, Ill. 60625 - U.P.S. is OK

5098 LOUISA



BEL-AIR — Cutting No. 1070

| NO. | SIZE | ITEM | PRICE | |
|--------|--------|----------------------------|--------------|------|
| | | | Des. Crystal | Each |
| 1-5098 | 10 oz. | Goblet | \$ 27.00 | 2.25 |
| 2-5098 | 5½ oz. | Sherbet (Saucer Champagne) | 27.00 | 2.25 |
| 3-5098 | 2½ oz. | Oyster Cocktail | 27.00 | 2.25 |
| 4-5098 | 4 oz. | Claret | 27.00 | 2.25 |
| 5-5098 | 1 oz. | Cordial | 27.00 | 2.25 |
| 6-5098 | 5 oz. | Footed Juice | 27.00 | 2.25 |
| 7-5098 | 12 oz. | Footed Ice Tea | 27.00 | 2.25 |
| 8-5098 | 3½ oz. | Cocktail | 27.00 | 2.25 |

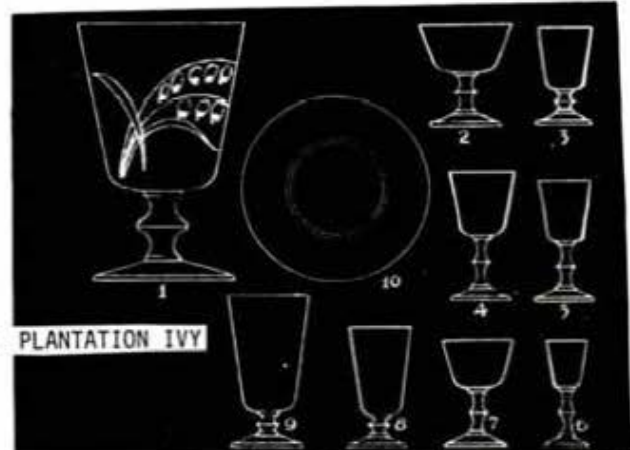
A GROUP OF LOOK ALIKES

The stems of all of these except 5098 are the same. The difference is in the BOWLS of some pieces. 5086 has a shorter stem which was more popular in the late years when it was made.

The 5098 Louisa stem is listed on Page 173 of the Ryan, Bradley Stem Book but is not pictured. However, the picture at the top of Page 172 is actually 5098 and there is no picture for 5086 in the book.

Classified Ads

- * - WANTED: Complete handle for 1252 Twist Ice Tub. Debra Daniels, P.O. Box 624, Ketchum, Idaho 83340 - Phone (208) 726-8495.
- * - WANTED: Heisey Baskets in perfect condition. David Jordan - Phone (317) 676-6966.
- * - WANTED: Buying Depression Glass, Heisey Cambridge, Fostoria, Akro Agate, glass figurals and unusual glass "cuties". Nadine Pankow, 207 So. Oakwood, Willow Springs, Ill. 60480. Phone (312) 839-5231.
- * - WANTED: Young Scottish Glass Artist requires glass cutting equipment, Stone Wheels, Lathe, Frame, Etc. Ann Fleming, 298 West Second Ave., Columbus, OH 43201 - Phone (614) 299-4386.
- * - WANTED: Base for Fancy Loop Punch Bowl. Also, Fancy Loop Cups. Ethel L. Gran, 92764 Territorial Rd., Junction City, OR 97448.
- * - WANTED: Heisey Moonglo Stenware, Need 3 Cocktails, 2-7/8" Rim Diameter, Also 1 Sherbet, 4" Rim Diameter. P. J. Hansen, 64 Kings Lane, Rochester, N.Y. 14617.
- * - WANTED: Pr. Heisey Triple-X two-lite candlesticks in Moongleam with etching. Also Large Heisey Chrysanthemum Basket. Vinson's, 1036 NW 103rd Street, Oklahoma City, OK 73114, Phone (405) 751-3676.
- * - FOR SALE: One 341 Puritan Nappy \$35; #150 Banded Flute Nappy (two chips on base) \$25; Pat Olsen, Star Route 3, Box 10980, Dos Rios, CA 95429.
- * - FOR SALE: Heisey By Imperial, Set of 3 Ultra-Blue Colts - \$120; Caramel Slag Animals, Standing Colt - \$17.50, Plug Horse (Sparkie) \$25.00. Thomas Tuttle, 1444 Bolenhill Ave., Columbus, OH 43229 Phone (614) 888-5542.



LILYVALE — Cutting No. 1069

| NO. | SIZE | ITEM | PRICE | |
|--------|--------|----------------------------|--------------|------|
| | | | Des. Crystal | Each |
| 1-5086 | 10 oz. | Goblet | \$ 28.80 | 2.40 |
| 2-5086 | 6 oz. | Sherbet (Saucer Champagne) | 28.80 | 2.40 |
| 3-5086 | 2½ oz. | Oyster Cocktail | 28.80 | 2.40 |
| 4-5086 | 4½ oz. | Claret | 28.80 | 2.40 |
| 5-5086 | 2½ oz. | Wine | 28.80 | 2.40 |
| 6-5086 | 1 oz. | Cordial | 28.80 | 2.40 |
| 7-5086 | 5 oz. | Footed Juice | 28.80 | 2.40 |
| 8-5086 | 12 oz. | Footed Ice Tea | 28.80 | 2.40 |
| 9-5086 | 3½ oz. | Cocktail | 28.80 | 2.40 |
| 1-1809 | 8 in. | Plate | 33.00 | 2.75 |

IMPORTANT ALL HEISEY AUCTION

JAN. 31, 1981

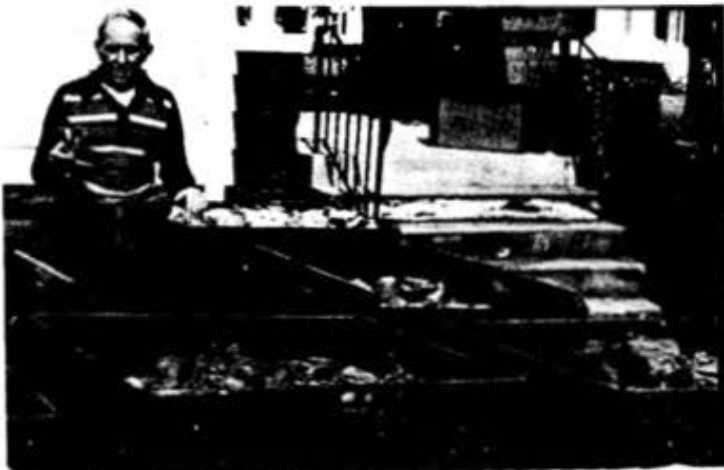
Y.W.C.A. 6TH. & CHURCH ST.

NEWARK, OHIO

10:30 A.M.

The items in this auction come from the collection of Percy and Vivian Moore of Newark, Ohio. They were among the first and largest collectors of Heisey Glass. In 1960 when the factory sales room at the Heisey plant was closed, it was Percy who purchased all remaining stock - from the smallest cordial to the 6 foot diameter cutting stones that are now the steps and retaining walls at the National Heisey Museum. Percy and Vivian have continued to collect Heisey Glass since that time. They have been among the strongest supporters of Heisey Collectors of America, giving financial support to the club when it was most needed, several fine donations, and countless hours as docents.

Now the time has come when they feel the need to dispose of most of their collection. We feel honored that they have selected us to do this and they hope your purchases of items from this collection will give you pleasure as it has given them over the past years.



PAID ADVERTISEMENT

| | | | |
|----|--|-----|---|
| 1 | 479 Hotel Flamingo Cream & Sugar H | 46 | 574 13oz Iced Tea, Straight H |
| 2 | 1201 FANDANGO Cream & Covered Sugar X | 47 | 300½ 12oz Colonial Soda, Flared H |
| 3 | 1509 QUEEN ANN Ftd Cream & Sugar, Narcissus Cut H | 48 | 507 12 oz Soda, Plain, 2 Ea H |
| 4 | 1506 PROVINCIAL Cream & Sugar H | 49 | Blown 6oz Flared Soda, 8 Ea |
| 5 | 352 FLAT PANEL Indiv Cream & Sugar, Silver Overlay H | 50 | 4052 NATIONAL 4 oz Soda, 8 Ea |
| 6 | 354 WIDE FLAT PANEL Stack Set, Cream, Sugar & Butter Pat, Silver Overlay H | 51 | 2351 12 Oz Soda, 6 Ea, & #4164 73 oz Jug, Pied Piper Etch |
| 7 | 352 FLAT PANEL Hotel Cream & Covered Sugar H X | 52 | 2401 12 oz Soda, Tally Ho Etch |
| 8 | 300 PEERLESS Indiv Cream & Sugar | 53 | 6060 COUNTRY CLUB 14 oz Beverage, Winchester 73 Etch |
| 9 | 1632 LODESTAR Dawn Cream & Sugar H | 54 | 1485 SATURN 12 oz Soda, Monogram ULC |
| 10 | 300 PEERLESS Creamer H | 55 | 1184 4 oz Juice, Wigwam Etch, Monogram HPW |
| 11 | 1503 CRYSTOLITE Indiv Creamer H | 56 | 7008 KRALL ROSE Goblet, 2 Ea |
| 12 | 1425 VICTORIAN Creamer H | 57 | 3357 KING ARTHUR Goblet, Diana Etch H |
| 13 | 352 FLAT PANEL Indiv Creamer X | 58 | 6091 CABOCHON Goblet, Cat-Tail Cut |
| 14 | 1540 LARIAT Creamer, Silver Overlay H | 59 | 6091 CABOCHON Goblet, Starlight Cut |
| 15 | 150 OVAL & DIAMOND POINT Emerald Spooner | 60 | 5042 CORINTHIAN Goblet |
| 16 | 1255 PINEAPPLE & FAN Emerald Hotel Sugar, Gold Decor | 61 | 5010 SYMPHONY Goblet, Minuet Etch, Orig Minuet Label |
| 17 | 1235 BEADED PANEL & SUNBURST Hotel Sugar, Gold Decor | 62 | 3408 JAMESTOWN Goblet, Monogram S |
| 18 | 393 NARROW FLUTE, Indiv Domino Sugar, Silver Overlay | 63 | 4055 PARK LANE Goblet, Special Cut |
| 19 | 1020 HOTEL Sugar H | 64 | 3324 DELAWARE Flamingo Goblet |
| 20 | 1405 IPSWICH Sugar H | 65 | 3368 ALBEMARLE Goblet, Chateau Cut |
| 21 | 1503 CRYSTOLITE Oval Sugar H | 66 | 4091 KIMBERLY Goblet, Belfast Cut |
| 22 | 150 BANDED FLUTE Sugar, No Lid H | 67 | U8029 PRINCESS LILY Goblet, 2 Ea H |
| 23 | 353 MEDIUM FLAT PANEL Sugar, No Lid H | 68 | 3404 SPANISH Cobalt Goblet, 6 Ea H |
| 24 | 352 FLAT PANEL 13½" Oval 5 Compartment Tray H | 69 | 3404 SPANISH Goblet, Special Cut H |
| 25 | 500 Moongleam 4 Compartment Variety Tray H | 70 | 3404 SPANISH Goblet, Florentine Cut X |
| 26 | 1503 CRYSTOLITE 13" Oval 3 Compartment Relish | 71 | 1295 BEAD SWAG Custard Goblet, Floral Dec, Souvenir |
| 27 | 1252 TWIST Moongleam 2 Part Relish H | 72 | 3350 WABASH 12oz Ftd HdI Iced Tea, Pied Piper Etch, 2 Ea H |
| 28 | 1401 EMPRESS 10" 3 Compartment Relish, Cut | 73 | 5089 PRINCESS 12oz Ftd Iced Tea, Cut H |
| 29 | 1401 EMPRESS 9" Olive Tray H | 74 | 5079 PAN AMERICAN 12 oz Ftd Iced Tea, 8 Ea H |
| 30 | 335 PRINCE OF WALES 6" Pickle Tray, Gold Decor H | 75 | 5082 MID CENTURY 12 oz Ftd Iced Tea, 8 Ea |
| 31 | 473 NARROW FLUTE W/RIM 2 HdI 6" Round Moongleam Combination Relish H | 76 | 1E92 OMEGA 12 oz Ftd Iced Tea, 6 Ea |
| 32 | 473 NARROW FLUTE W/RIM 5" 2 HdI Jelly, Flamingo H/Dtd | 77 | 3390 CARCASSONNE Cobalt Vase X |
| 33 | 1191 MOONGLEAM 9" Handled Spice Dish, 3 Compartment, Silver Overlay | 78 | 3390 CARCASSONNE Cobalt 12 oz. Ftd. Soda |
| 34 | 1632 LODESTAR Dawn 7½" 3 Comp Relish H | 79 | 3390 CARCASSONNE Cobalt 11 oz Short Stem Goblet, 6 Ea |
| 35 | 341½ 1 Qt Jug & 10 Ea #120 12oz Tumbler, Silver Overlay H | 80 | 419 SUSSEX Cobalt Goblet H |
| 36 | 201 AMBER 8 oz Tumbler H X | 81 | 135 Moongleam 1 Lt Candle, Pr H |
| 37 | 1201 FANDANGO Tumbler, Excellent Gold | 82 | 1469 RIDGELEIGH 1 Lt Candelabra, Pr, Wrong Bobeches |
| 38 | 369 HARTMAN 11 oz Soda, Flared H | 83 | 300 COLONIAL Sahara 2 Light Candelabra, Tall Base, Pr |
| 39 | 247 6oz Water Tumbler, 2 Ea H | 84 | 301 COLONIAL 3 Light Candelabra, Short Base w/341 Epergnion Bobeche, Pr H |
| 40 | 574 13oz Ice Tea, Straight, Narrow Optic | 85 | 300 COLONIAL 1 Lt Candelabra, Pr |
| 41 | 1637A TOWN & COUNTRY Dawn 12oz Tumbler, 2 Ea H | 86 | 1503 CRYSTOLITE 1 Lt Hurricane Lamp, Plain Globe, Pr |
| 42 | 369 HARTMAN 12 oz Soda, Straight, Narrow Optic, 3 Ea H | 87 | 142 3 Light Candle, Chateau Cut, Pr |
| 43 | 369 HARTMAN 13 oz Flared Soda, Narrow Optic (Signed B in Diamond) | 88 | 1495 FERN 2 Lt Candle, #508 Floral Etch, Pr |
| 44 | 574 13oz Iced Tea, Straight, Narrow Optic H | 89 | 134 2 Light Candle, Orchid Etch, Pr |
| 45 | 574 13oz Iced Tea, Straight, 2 Ea H | 90 | 1401 EMPRESS Alexandrite Dolphin Ftd, 1 Lt Candle, Pr H |
| | | 91 | 1428 WARWICK Sahara 2 Lt Candle, Pr H |
| | | 92 | 7000 SUNFLOWER 1 Lt Candle |
| | | 93 | 1504 REGENCY 2 Lt Candle |
| | | 94 | 129 TRIPLEX 3 Lt Candle |
| | | 95 | 1559 COLUMBIA 1 Lt Candle |
| | | 96 | 134 TRIDENT 2 Lt Candle |
| | | 97 | 1543 LODESTAR Dawn 1 Lt Candle Block |
| | | 98 | 150 BANDED FLUTE Handled Candlestick |
| | | 99 | 301 1 Lt Hurricane Light & 5080 12" Globe, Heisey Rose Etch |
| | | 100 | 200 9" Electric Light base w/Metal Spider H |

PAID ADVERTISEMENT

PAID ADVERTISEMENT

| | | | | | |
|-----|------|---|-----|------|--|
| 101 | 352 | FLAT PANEL 1 Qt Crushed Fruit, Dtd, H | 157 | 1E92 | OMEGA 5 oz Juice, Moonglo Cut, 10 Ea H |
| 102 | 352 | FLAT PANEL 24oz Lavendar Jar, Cut, 2 Ea H | 158 | 1E92 | OMEGA 4 oz Wine, Moonglo Cut, 10 Ea H |
| 103 | 352 | FLAT PANEL 24 oz Lavendar Jar, H | 159 | 1428 | WARWICK Cobalt 9" Horn of Plenty Vase, 2 Ea H |
| 104 | 465 | RECESSED PANEL 1Lb Candy Jar, Decor H | 160 | 1428 | WARWICK Sahara Horn of Plenty Floral Bowl H |
| 105 | 465 | RECESSED PANEL 1Lb Candy Jar H | 161 | 1401 | EMPRESS 11" Floral Bowl, Dolphin Ftd, Silver Overlay |
| 106 | 465 | RECESSED PANEL 1/2Lb Candy Jar, Cut H | 162 | 1401 | EMPRESS Moongleam 11" Dolphin Ftd, Floral Bowl |
| 107 | 1430 | ARISTOCRAT Cobalt 1/2Lb Candy Jar, Short Stem H | 163 | 1509 | QUEEN ANN 11" Dolphin Ftd, Floral Bowl, Chateau Cut |
| 108 | 1519 | WAVERLY Seahorse Candy Jar, Elks Crest H | 164 | 1469 | RIDGELEIGH Zircon Oval Floral Bowl H |
| 109 | 1503 | CRYSTOLITE Shell Covered Candy Box H | 165 | 1626 | SATELLITE 14" Party Plate, Moonglo Cut, Not Frosted H |
| 110 | 1183 | REVERE 7" Candy Box & Cover, Decor H-X | 166 | 1626 | SATELLITE 14" Party Plate, Moonglo Cut, Not Frosted H |
| 111 | 1183 | REVERE Moongleam 7" Candy Box & Cover H | 167 | 1626 | SATELLITE 7 1/2" Crimped Bowl, Not Frosted H |
| 112 | 1170 | PLEAT & PANEL Flamingo 7" Footed Candy H | 168 | 1495 | FERN Oval Floral Bowl H |
| 113 | 1170 | PLEAT & PANEL Flamingo Covered Lemon Dish H | 169 | 1404 | OLD SANDWICH Flamingo Oval Floral Bowl H |
| 114 | 17 | Puff Box & Cover H | 170 | 1533 | WAMPUM 12" Crimped Floral Bowl |
| 115 | 17 | Puff Box, Silver Lid H | 171 | 1519 | WAVERLY Ice Tub H |
| 116 | 1184 | YEOMAN Puff Box, No Cover | 172 | 350 | PINWHEEL & FAN 8" Nappy H |
| 117 | 1186 | YEOMAN Puff Box, Hawthorne Bottom, Flamingo Top H | 173 | 1252 | TWIST Marigold 8" Nappy H |
| 118 | 4044 | NEW ERA Claret & Wine H X | 174 | 477 | HEISEY HAIRPIN Basket, Frosted Panels H |
| 119 | 5040 | LARIAT Wine H | 175 | 351 | COLONIAL 10" High Foot Compote H |
| 120 | 5019 | WAVERLY Claret, Ivy Etch, 2 Ea H | 176 | 335 | PRINCE OF WALES 8" Footed Bowl H |
| 121 | 3389 | DUQUESNE Wine, Normandie Etch | 177 | 3366 | TROJAN 7" Compote, Trojan Etch H |
| 122 | 4044 | NEW ERA Cocktail, Chicken Chase Etch | 178 | 1519 | WAVERLY Ftd Oval Compote, Silver Overlay |
| 123 | 4054 | CORONATION 5 oz Soda, Tavern Etch | 179 | 1401 | EMPRESS Sahara Oval Compote H |
| 124 | 3495 | ALIBI 3oz Cocktail, Sweet Adeline Carving | 180 | 341 | PURITAN 7" High Footed Bowl, Crimped H |
| 125 | 6091 | CABOCHON Ftd Juice, Southwind Cut | 181 | 1229 | OCTAGON Hawthorne Handled Mayonnaise |
| 126 | 1E92 | OMEGA 12 oz Ftd Iced Tea, 8 Ea H | 182 | 1184 | YEOMAN Moongleam 6" Handled Bon Bon |
| 127 | 1E92 | OMEGA 5 oz Ftd Juice, 8 Ea H | 183 | 1184 | YEOMAN Flamingo Handled Bon Bon |
| 128 | 5083 | EL RANCHO Cocktail, 8 Ea H | 184 | 1255 | PINEAPPLE & FAN Cruet |
| 129 | 5083 | EL RANCHO Claret, 7 Ea H | 185 | 1181 | Syrup Jug, Cut H |
| 130 | 5057 | SUEZ Claret, Special Cut | 186 | 1489 | PURITAN Vinegar & Oil Bottle |
| 131 | 5057 | SUEZ Wine, Special Cut | 187 | 354 | COLONIAL 12oz Syrup H |
| 132 | 5057 | SUEZ Cocktail, Special Cut | 188 | 1503 | CRYSTOLITE Syrup, No Lid |
| 133 | 3411 | MONTE CRISTO Wine, Olympiad Etch | 189 | 1401 | EMPRESS Sahara Dolphin Ftd Ice Tub, Formal Chintz Etch H |
| 134 | 3333 | OLD GLORY Wine, Del Monte Cut | 190 | 1401 | EMPRESS Dolphin Ftd Ice Tub, Silver Overlay |
| 135 | 3336 | LADY LEG Saucer Champagne, Bead & Fan Etch H | 191 | 1252 | TWIST Marigold Ice Tub H X |
| 136 | | Imperial Plantation Champagne, Amber Stem, Made for Kahiki Restaruant | 192 | 500 | OCTAGON Sahara Ice Tub H |
| 137 | 5079 | PAN AMERICAN Cocktail, 12 Ea | 193 | 4045 | Alexandrite 12" Ball Vase, Wide Optic |
| 138 | 5078 | PARK AVENUE Claret, 8 Ea H | 194 | 1235 | BEADED PANEL & SUNBURST Punch Bowl & Base H |
| 139 | 5057 | SUEZ Cocktail, Comet Cut H | 195 | 335 | PRINCE OF WALES 4" Nappy, Gold Decor, 5 Ea H X |
| 140 | 4091 | KIMBERLY Cocktail, Special Cut | 196 | 10 | 10" Flamingo Floral Bowl, DO H |
| 141 | 393 | NARROW FLUTE Sherry, 2 Ea H | 197 | 10 | 10" Floral Bowl, Cut, Sterling Decor H |
| 142 | 4091 | KIMBERLY Wine, Laurel Cut | 198 | 485 | 13" Camelia Bowl, Sample |
| 143 | 3416 | BARBARA FRITCHIE 2 1/2oz Wine, Chateau Etch H | 199 | 1950 | CABOCHON Lighthouse Candy, No Lid H |
| 144 | 3333 | OLD GLORY Wine, #657 Cut H | 200 | | Pouter Pidgeon H |
| 145 | 3408 | JAMESTOWN Sherry | 201 | | Pouter Pidgeon H |
| 146 | 1183 | REVERE 5 oz Claret H | 202 | | Giraffe, Head Turned |
| 147 | 6060 | COUNTRY CLUB 4 oz Claret, 8 Ea | 203 | | Giraffe, Head Back |
| 148 | 6060 | COUNTRY CLUB 5 oz Juice, 8 Ea | 204 | | Fish Bookend |
| 149 | 5082 | MID CENTURY 5 oz Juice, 6 Ea H | 205 | | Rooster Vase |
| 150 | 5082 | MID CENTURY 5 oz Juice, 12 Ea H | 206 | | Large Elephant |
| 151 | 5082 | MID CENTURY 5 oz Juice, Maytime Cut H | 207 | | Middle Elephant |
| 152 | 4004 | IMPROMPTU 5 oz Ftd Juice | 208 | | Small Elephant |
| 153 | 4004 | IMPROMPTU 12 oz Ftd Iced Tea | | | |
| 154 | 4002 | AQUA CALIENTE, 8 Ea | | | |
| 155 | 1590 | ZODIAC 5 oz Juice, 12 Ea H | | | |
| 156 | 1E92 | OMEGA 12 oz Ftd Iced Tea, Moonglo Cut 7 Ea H | | | |

PAID ADVERTISEMENT

| | | | |
|-----------|--|--------------|---|
| 209 | Asiatic Pheasant H | 266 5025 | TYROLEAN 10oz Tall Goblet, Orchid Etch |
| 210 | Asiatic Pheasant H | 267 1519 | WAVERLY 8" Plate, Orchid Etch, 8 Ea |
| 211 | Ringneck Pheasant | 268 1509 | QUEEN ANN Cup & Saucer, Orchid Etch, 10 Ea H |
| 212 | Ringneck Pheasant H | 269 1447 | ROCOCO 5" Footed Cheese, Orchid Etch |
| 213 | Sealyham Terrier (Scotty) | 270 4225 | Cocktail Shaker, Orchid Etch, Silver Base & Stopper |
| 214 | Sealyham Terrier (Scotty) | 271 2052 | 2 1/2oz Bar, Orchid Etch |
| 215 | Donkey | 272 1540 | LARIAT 6 1/2" Round Vase, Orchid Etch H |
| 216 | Donkey | 273 1435 | Square 3" Indiv Ash Tray, Orchid Etch, 6 Ea |
| 217 | Goose, Wings Down | 274 1519 | WAVERLY Mayonnaise w/Ladle, Orchid Etch H |
| 218 | Goose, Wings Half | 275 1519 | WAVERLY Cream & Sugar, Orchid Etch H |
| 219 | Goose, Wings Up | 276 1509 | QUEEN ANN 9" Gardenia Bowl, Orchid Etch |
| 220 | Goose, Wings Up | 277 1509 | QUEEN ANN Triplex Relish, Orchid Etch H |
| 221 | Rabbit Paperweight (Repaired) | 278 1509 | QUEEN ANN 7 1/2" Sauce Bowl, Footed, Orchid Etch H |
| 222 | Rabbit Paperweight (Repaired) | 279 353 | COLONIAL 2 Qt Crushed Fruit H |
| 223 | Wood Duckling, Floating H | 280U8011 | MARSH ROSE 14" Party Plate |
| 224 | Show Horse | 281 1506 | PROVINCIAL 14" Party Plate H |
| 225 | Clydesdale Horse | 282 1183 | REVERE 12" Party Plate, Silver Overlay H |
| 226 | Cygnets H | 283 1252 | TWIST 10" Footed Utility Plate H |
| 227 | Sow H | 284 1229 | OCTAGON Moongleam 12" Sandwich Plate, Silver Overlay |
| 228 | Standing Piglet, 2 Ea H | 284A1469 | RIDGELEIGH 10" Serving Plate H |
| 229 | Standing Colt, Amber | 285 1229 | OCTAGON 12" Muffin Plate, Cut H |
| 230 | Standing Colt H | 286 1252 | TWIST Newark Sesquicentennial Platter |
| 231 | Standing Colt | 287 1183 | REVERE Flamingo 12" Oval Platter, Cut |
| 232 | Standing Colt | 288 1229 | OCTAGON Flamingo 10" Sandwich Plate |
| 233 | Sitting Colt | 289 1401 | EMPRESS Alexandrite 6" & 7" Round Plate H |
| 234 | Fighting Rooster | 290 1495 | FERN Zircon 6" Cheese Plate |
| 235 | Imperial Caramel Slag Airedale | 291 407 | COARSE RIB Hawthorne 6" & 8" Round Plates H |
| 236 | Imperial Caramel Slag Donkey | 292 1401 | EMPRESS Tangerine 8" Square Plate H |
| 237 | Imperial Caramel Slag Middle Elephant | 293 | 1971 Imperial Amgerglo Land of Legend Souvenir Plate |
| 238 | Imperial Caramel Slag Wood Duck | 294 1183 | REVERE 7 1/2" Amber Plate H |
| 239 | Imperial Caramel Slag Standing Colt | 295 1236 | EAGLE Plate X |
| 240 | Imperial Caramel Slag Mallard, Wings Up | 296 1238 | 5"-Flamingo Beehive Plate |
| 241 | Imperial Caramel Slag Pony Stallion (Sparky) | 297 1184 | YEOMAN 7" Marigold Plate, Empress Etch |
| 242 | Set of 3 Imperial-Ultra Blue Colts | 298 1184 | YEOMAN 6" Plate, Frontenac Etch, 12 Ea |
| 243 | Large Horsehead Stopper, 2 Ea | 299 407 | COARSE RIB 7" Plate, 6 Ea H |
| 244 | Ramshead Stopper | 300 1230 | 8" Flamingo Plate, 6 Ea H |
| 245 | Frosted Rooster Head Stopper | 301 1150 | 4 1/2" Tumbler Plate, 6 Ea H |
| 246 | Horsehead Stopper Made Into Paperweight | 302 1150 | 4 1/2" Tumbler Plate, 8 Ea H |
| 247 | Crystal Duck Stopper, 2 Ea | 303 1174 | 8" Colonial Nappy & 1150 7" Colonial Nappy H |
| 248 | Moongleam Duck Stopper, 2 Ea | 304 1183 | Revere 8" Plate, Cut & 1184 Yeoman 8" Amber Plate H X |
| 249 | Moongleam Duck Stopper made into pendant | 305 341 | PURITAN 3Pt Pitcher, Silver Overlay H |
| 250 1591 | Elephant Handle Childs Fairy Tale Mug H | 306 3355 | FAIRACRE Flamingo 54oz Jug H |
| 251 1489 | PURITAN Large Horsehead Cigarette Box H | 307 412 | RIB & PANEL 3Pt Ftd Tankard, Cut H |
| 252 1 | Madonna, Frosted | 308 4160 | 1/2Gal Jug, Tattng Needle Etch |
| 253 1 | Madonna, Frosted | 309 4036 1/2 | 1 Qt Decanter w/Stopper |
| 254 1560 | Victorian Belle | 310 300 | PEERLESS 1/2Gal Pitcher |
| 255 1560 | Victorian Belle, Frosted | 311 4225 | 1Qt Cocktail Shaker w/Dawn Strainer & Stopper |
| 256 15 | 5" Moongleam Duck Floral Bowl | 312 4225 | 1Qt Cocktail Shaker, Cobalt w/Cobalt Strainer & Stopper |
| 257 5091 | Waverly Bell, 2 Ea | 313 1469 | RIDGELEIGH 1 Qt cocktail shaker, No stopper or strainer |
| 258 4091 | KIMBERLY Bell H | | |
| 259 5025 | TYROLEAN 12oz Soda, Orchid Etch 4 Ea | | |
| 260 5025 | TYROLEAN 10oz Low Goblet, Orchid Etch, 12 Ea | | |
| 261 5025 | TYROLEAN 6oz Sherbet, Orchid Etch 11 Ea | | |
| 262 5022 | GRACEFUL 2 oz Sherry, Orchid Etch, 8 Ea H | | |
| 263 3484 | DONNA 12 oz Soda, Orchid Etch, 8 Ea | | |
| 264 5025 | TYROLEAN 6oz Saucer Champagne, Orchid Etch, 6 Ea H | | |
| 265 5025* | TYROLEAN 4oz Cocktail, Orchid Etch, 7 Ea H | | |

PAID ADVERTISEMENT

| | | | | | |
|------|-------|---|-----|-------|---|
| 314 | 4036 | 1 Pt Decanter | 371 | 1E92 | OMEGA 4oz Cocktail, 6 Ea H |
| 315 | 305 | PUNTY & DIAMOND POINT Decanter w/ Stopper | 372 | 341 | PURITAN 4½oz Low Ftd Sherbet, 4 Ea H |
| 316 | 4225 | 1 Pt Cocktail Shaker, Etched Us, Rooster Head Stopper | 373 | 300 | PEERLESS 6oz Ftd Egg Cup, Gold Dec, Lodge Souv |
| 317 | 4059 | Water Bottle | 374 | 1226 | 5½oz Sherbet, 3 Ea H |
| 318 | 1220 | PUNTY BAND Mug, Ruby Stain, Souv H | 375 | 300 | PEERLESS 4 oz Saucer Champagne, 6 Ea H |
| 319 | U8015 | STIPPLED THUMBPRINT Amber Punch Cup, Experimental | 376 | 3408 | JAMESTOWN 4oz Oyster Cocktail, Barcelona Cut, 11 Ea H |
| 320 | 310 | RING BAND Custard Punch Cup, Souv H | 377 | 3390 | CARCASSONNE Cobalt 4 oz Cocktail, 6 Ea |
| 321 | 1401 | EMPRESS Sahara Punch Cup H | 378 | 3390 | CARCASSONNE Sahara 4 oz Cocktail, Lafayette Etch, 3 Ea |
| 322 | 300½ | Punch Cup, 3 Ea H | 379 | 1E92 | OMEGA Wine, Waltz Cut, 4 Ea |
| 323 | 3390 | CARCASSONNE Cobalt 2oz Ftd Bar, 6 Ea | 380 | U8032 | CAPITAL Goblet |
| 324 | | 2oz Blown Bar Glass, 6 Ea | 381 | 5067 | PLANTATION Goblet, Pine Cut H |
| 325 | 1469 | RIDGELEIGH Roly Poly on 3½" CoasterHX | 382 | 1485 | SATURN Zircon Goblet H |
| 326 | 2052 | 1½oz Bar, Tally Ho Etch | 383 | 1401 | EMPRESS Moongleam Oyster Cocktail H |
| 327 | 341 | PURITAN Toothpick H | 384 | 337 | TOURAIN Amber Sherbet H |
| 328 | 1495 | Bead Swag Toothpick, Red Stain, Souv | 385 | 1632 | LODESTAR Dawn Old Fashion H |
| 329 | 335 | PRINCE OF WALES Toothpick, Gold Dec H | 386 | 3366 | TROJAN 3oz Oyster Cocktail, 8 Ea |
| 330 | 4228 | Cobalt Favor Vase | 387 | 4054 | CORONATION Old Fashion, 4 Ea |
| 331 | 473 | NARROW FLUTE W/RIM Indiv Nut H & #394 NARROW FLUTE Salted Nut H | 388 | 4004 | IMPROMPTU Double Old Fashion |
| 332 | | Footed Nut Cup, Silver Overlay | 389 | 4004 | IMPROMPTU Old Fashion, 6 Ea 2-X |
| 333 | 1183 | REVERE Flamingo Tub Salt, 6 Ea | 390 | | Blown Grapefruit Insert, 2 Ea |
| 334 | 1205 | FANCY LOOP Salt Dip, 6 Ea | 391 | | Blown Grapefruit Insert, 3 Ea |
| 335 | 1469 | RIDGELEIGH Salt Dip, 8 Ea in Orig BoxH | 392 | 4054 | CORONATION 2½oz Bar, 8 Ea 1-X |
| 336 | 393 | Flamingo Salt & Pepper w/#43 Tops | 393 | 42 | Flower Vase, 24" H |
| 337 | 48 | FLAMINGO Salt & Pepper | 394 | 11 | Flower Vase, 16" |
| 338 | 300 | PEERLESS Cordial H X | 395 | | Colonial 18" Vase |
| 339 | 3404 | SPANISH Cordial, Killarney Cut | 396 | 353 | Vase, 12" H |
| 340 | 3333 | OLD GLORY Cordial, Monogram PW | 397 | 353 | Vase, 12" H |
| 341 | 5091 | WAVERLY Cordial | 398 | 1420 | Cobalt 9" Tulip Vase H |
| 342 | 5072 | ROSE STEM Cordial H | 399 | 4004 | IMPROMPTU 10" Vase |
| 343 | 5078 | PARK AVENUE Cordial, 4 Ea H | 400 | 1401 | EMPRESS Flamingo Dolphin Ftd Vase, Old Colony Etch H |
| 344 | 4202 | 6" Bamboo Vase, 2 Ea | 401 | 353 | Vase, 10", 2 Ea H |
| 345 | 485 | 1 oz Cologne | 402 | 1428 | WARWICK 9" Horn of Plenty Vase, 2 Ea H |
| 346 | | Knife Rest made from Epergne Spacer, 12 Ea, Cut | 403 | 338 | 10" Carnation Vase H |
| 347 | | Salad Fork & Spoon H | 404 | 338 | 9" Carnation Vase H |
| 348 | | Magnifying Stand, 2 Ea | 405 | 4157 | Hawthorne 5½" Rose Bowl, DO |
| 349 | | Moongleam Metal Advertising Plaque | 406 | 4045 | 7" Ball Vase, Wide Optic |
| 350 | | Mirror Advertising Sign | 407 | 1503 | CRYSTOLITE 6" Vase, 2 Ea H |
| 351 | | Mirror Back Display Platform | 408 | 4220 | 5" Flamingo Spiral Optic Vase |
| 352 | | Framed Advertising Picture for Zodiac Pattern 2' x 2½' | 409 | | Verlys Mandarin Vase, Signed |
| 353 | | Advertising Sign for Heisey Orchid, 12" x 15", 2 Ea | 410 | | Verlys Thistles Vase, Signed |
| 354 | | Lot of Paper Sales Literature | 411 | 310 | RING BAND Custard Tumbler, Rose Decor H |
| 355 | 1489 | PURITAN Small Cigarette Box, Etched "God Bless America" w/Eagle | 412 | 310 | RING BAND Custard Tumbler, Gold Decor H |
| 356 | 1286 | Ash Tray, 2 Cut & 1 Plain | 413 | 1220 | PUNTY BAND Custard Tumbler, Rose Decor, Souv H |
| 357 | 359 | Match Stand Ash Tray, 2 Ea H | 414 | 1220 | PUNTY BAND Custard Mug, Rose Decor, Souv H |
| 358 | 1590 | ZODIAC Saucer Champagne, 18 Ea H | 415 | 1200 | CUT BLOCK CUSTARD Sugar, Souv |
| 359 | 413 | RIB & PANEL 6 oz Saucer Champagne, 5 Ea H | 416 | 1225 | PLAIN BAND Custard Handleless Sherb, Souv H |
| 359A | 1485 | SATURN Zircon Saucer Champagne | 417 | 1220 | PUNTY BAND Custard Indiv Creamer, SouvH |
| 360 | 3333 | OLD GLORY Saucer Champagne, 5 Ea H | 418 | 1220 | PUNTY BAND CUSTARD Indiv Creamer, SouvH |
| 361 | 6010 | FINESSE Saucer Champagne, 6 Ea | 419 | 1183 | REVERE French Dressing Boat & Underplate Silver Overlay H |
| 362 | 6010 | FINESSE Cocktail, Ultronic Cut | 420 | 12 | Single Row Slash Electric Shade X |
| 363 | 5040 | LARIAT Sherbet, 12 Ea H | 421 | 341 | PURITAN 6" High Ftd Jelly, 2 Ea H |
| 364 | 5003 | CRYSTOLITE Sherbet, 12 Ea | 422 | 341 | PURITAN 4½" High Ftd Jelly H |
| 365 | 5072 | ROSE STEM Sherbet, 8 Ea H | 423 | 1485 | SATURN 13" Bowl |
| 366 | 4004 | IMPROMPTU 4 oz Cocktail | 424 | 1637 | A TOWN & COUNTRY Salad Bowl |
| 367 | 3390 | CARCASSONNE Cobalt Sherbet, 3 Ea H | 425 | 1202 | 11" Floral Bowl |
| 368 | 1227 | MAHARG Sherbet, 8 Ea H | 426 | 1503 | CRYSTOLITE Bon Bon H |
| 369 | 150 | BANDED BLUTE 3oz Low Ft Sherbet, 6 Ea H | 427 | 1229 | OCTAGON Flamingo 5½" Jelly |
| 370 | 1567 | PLANTATION Flared Fruit Cup, 4 Ea H | 428 | 1429 | Oval Floral Bowl |
| | | | 429 | | Oval Boat Shaped Bowl |
| | | | 430 | 1201 | FANDANGO 10' Oblong Tray |

PAID ADVERTISEMENT

| | | | | |
|-----|------|--|-----|----------------------------|
| 431 | 1489 | PURITAN Camelia Bowl, Unfinished | 442 | Lot of Misc Cruet Stoppers |
| 432 | 352 | FLAT PANEL 8" Candy Tray H | 443 | Lot of 3 Door Knobs |
| 433 | | Sahara Frog for Swan Handled Bowl H | 444 | Lot of Cruet Stoppers |
| 434 | | Sahara Frog for Swan Handled Bowl H | 445 | Lot of Decanter Stoppers |
| 435 | | Epergne Vases, 2 Ea | 446 | Lot of Decanter Stoppers |
| 436 | 1184 | YEOMAN Boullion Cup, 4 Ea H | 447 | Lot of Misc Cream & Sugar |
| 437 | | Strainer & Stopper for Cocktail Shaker | 448 | Lot of Misc Trays |
| 438 | | 3 Stoppers for Small Lavendar Jars | 449 | Auto Headlight Lens |
| 439 | | Lot of 4 Misc Crystolite Lids | 450 | Auto Headlight LENS, 2 Ea |
| 440 | | Lot of Misc Lids & Syrup Tops | 451 | Auto Headlight Lesn, 3 Ea |
| 441 | | Lot of Cruet Stoppers | | |

MAIL BIDS ACCEPTED WITH CHECKS FOR MAXIMUM AMOUNT. MAIL BIDS WILL BE BID COMPETITIVELY AND ANY DIFFERENCE REFUNDED. ONLY ITEMS IN MINT CONDITION WILL BE SUBJECTED TO MAIL BIDS. PLEASE ADD \$5.00 FOR POSTAGE AND HANDLING. EXCESS WILL BE REFUNDED. CHECKS SHOULD BE MADE PAYABLE TO : SAM SCHNAIDT, AUCTIONEER, AND MAILED TO:

SAM SCHNAIDT, AUCTIONEER
 BOX 84
 GRANVILLE, OHIO 43023

SAM SCHNAIDT, AUCTIONEER
 614-587-0052

FRANK FRYE, MANAGER
 614-344-9847

PRICE LISTS AVAILABLE FOR \$1.00

GOOD FOOD AVAILABLE

PAID ADVERTISEMENT

PAID ADVERTISEMENT

Bob & Fran's
ANTIQUES
2007 Broadway
VANCOUVER, WASHINGTON 98663

We Specialize in
Glass — China
Silver Flatware
Collectibles — Furniture

HEISEY — Rib & Panel (Clear)
 — 115-Piece Unit Sale —
 For complete list, send us self-addressed stamped envelope.
We invite you to come in and browse

MONDAY—SATURDAY—10 a.m. to 5 p.m.
2007 Broadway—(206) 693-7972
 — *We Like to Buy Old Things* —

H & R DIAMOND H
Helen - Bob Rarey
1450 White Ash Drive
Columbus, OH 43204
(614)279-0390 after 5:30

* SIGNED - SASE - SHIPPING & INSURANCE
 EXTRA

| | | |
|------|--|----------|
| 350 | Pinwheel & Fan 8" Nappy* | \$ 52.50 |
| 353 | Med. Flat Panel Cheese & Cracker *1 pc... | 50.00 |
| 433 | Greek Key 6oz. Sherbet * (6 St, 6 Fl) Ea.. | 18.00 |
| 500 | Octagon Cream & Sugar * Mglm. Hndl. Pr... | 52.50 |
| 1184 | Yeoman Saucers *, Hawthorne (4) Ea.. | 6.00 |
| 1184 | Yeoman 9" Covered, Hld. Dish, DO Fla..... | 37.50 |
| 1401 | Empress Footed Cream & Sugar | 32.50 |
| 1469 | Ridgeleigh 8" Berry & 6 - 4" Dishes*..... | 65.00 |
| 1485 | Saturn Cream & Sugar * | 30.00 |
| 1486 | Coleport 7oz. Old Fashion *..... | 8.00 |
| 1495 | Fern 11" Floral Bowl, Hld, Footed..... | 30.00 |
| 1540 | Lariat 12" Relish..... | 17.50 |
| 1567 | Plantation Salt & Pepper * | 52.50 |
| | Goose, Wings Down..... | 375.00 |
| | Goose, Wings Half or Up..... | 95.00 |
| | Giraffe, Head to Side..... | 165.00 |
| | Small Elephant, Frosted..... | 155.00 |

For changes in ads during the year, please send \$1.00 per line.

MOSTLY HEISEY

RHODA CURLEY
16 Clayton Place
Albany, New York 12209
By Appointment (518)482-6272

LAST CHANCE ANTIQUES

42 N. Federal Hwy., Dania, Fl. 33004
(Between Miami & Ft. Lauderdale)
Large HEISEY Inventory & other Glass
Mail Orders (305)467-6356 (home)

GOLDSBERRY'S ANTIQUES

KALAMAZOO, Michigan
Shows Only -- Buy & Sell
HEISEY A Speciality
Phone: (616)381-3013

SCHWAN'S ANTIQUES

Route 1, Box 175B
John Tyler Highway
WILLIAMSBURG, VA. 23185
(804)229-7873 Shop and Shows

GREEN ACRES FARM

Antiques, Crystal Glass & Collectibles
2678 Hazelton Etna Road, S.W.
(S.R.310 N.) Pataskala, Oh. 43062
Sat. & Sun. P.M. or Call (614)927-1882

BERT'S BUDGET SHOP

General Line Antiques
403 W. Main St., Newark, Oh. 43055
Phone: (614)349-8045

THE WOODEN SHOE

Antiques & Collectibles-Buy & Sell
Glass, Furniture, Estates
Jim & Sheri Vanes, By Appointment
Hemdon, Va. 22070 Phone:435-9045

CURIOSITY NOOK

'Where Friends Meet To Antique'
3300 S. 8th. Ave. Westward Village
Yuma, Ar. 85364 (602)726-6730 or 726-8070
Barney & Jody Barnicle

CURIO CORNER

Accent Antiques of Kensington
3742 Howard Ave.
Kensington, Md. 20795
Phone: (301)933-3750

ANTIQUES BOUGHT

BOB SHULTZ SOLD
206-208 E. Main St., Route 419
Newmanstown, Pa. 17073
15 Mi. West of Reading, Pa.
Phone: (215)589-2819

T & S ANTIQUES

TOM MARTIN STEVE RODERICK
Specializing in Heisey
New Rochelle, N.Y.
(914) 235-9632

C&J ANTIQUES

COLE & JEAN MIESNER
BOX 45, 72WHIG ST.
NEWARK VALLEY, N.Y. 13811
(607) 642-9905

OLDE LOVED THINGS

ANTIQUES & COLLECTIBLES
Daris 'ed' Lacroix - Donald Mousseau
900 Ridgewood Avenue (Holly Hill)
Daytona Beach, Fl. 32017
HEISEY, CAMBRIDGE, Mail Order (904)252-7960

OFF-BROADWAY ANTIQUES

HEISEY GLASS & GENERAL ANTIQUES
121 S. Prospect St., Granville, Oh. 43023
Open 7 Days A Week 12-5 P.M.
Shop(614)587-2083 Sam 587-0052

LYNNE & ART'S GLASS HOUSE, INC.

'HEISEY OUR SPECIALTY'
Miami Beach, Fl. 33154
P.O. Box 54-6014
(305)861-7700 (305)895-5666

HEISEY HEAVEN & other collectables

Box 78 Rt. 1
Mansfield, Il. 61854
Ph: (217)489-4071
Hours by appointment or chance, Closed Fridays.

WICKFORD ANTIQUE ARCADE

RON & BEV WOOD Booths 6 & 7
650 Ten Rod Rd., N. Kingstown, R.I. 02852
Heisey, Primitives, Glass, Etc.
Home Phone: (401)295-0823

DIAMOND H PLUS

George & EILEEN SCHAMEL
Rt. 3 Box 419 Boonsboro, Md. 21713
Appointment or Mail Order
Phone: (301)432-6285

HEIDI-HO ANTIQUES, INC.

HEISEY and GENERAL ANTIQUES
838 S. High St., Columbus, Oh. 43206
Phone: (614)444-5774
Hours: Wed.-Sat. 11-5, Sun. 1-5

BOB & FRAN'S ANTIQUES

**CHINA - HEISEY - GLASSWARE
SILVER FLATWARE**
2007 Broadway Vancouver, Wa. 98663
Phone: (206)693-7972

ANN'S GIFTS & ANTIQUES

105 W. Main St., Hebron, Oh. 43025
Intersection Rt's 40 & 79
Next Door to Daisy Queen
Daily 11:30 A.M. to 5:30 P.M. Closed Thursday

SUM OF LIFE

ELAINE & FRANK HUSTED
P.O. Box 102
Phoenixville, Pa. 19460
Phone: (215)935-2962

RECOLLECTIONS

THERESA WERT
Lahaska Antique Center
Route 202 Lahaska, Pa.
Phone: (215)794-8667

THE "FINDERS" ANTIQUES

DAVID & SHIRLEY ROSE
513 E. Main Street
Newark, Oh. 43055
Phone: (614)349-7934

MOUNDBUILDERS ANTIQUES

IRENE RAUCK
1138 Moundview, Newark, Oh. 43055
Phone: (614)344-6043
Heisey & Animals General Antiques

HAPPY HAVEN ANTIQUES

MARY DUMKE
14319 Rattlesnake Road
Grass Valley, Ca. 95945
Phone: (916)273-9450

CHARLES A. SHAW

Glenwood Gardens - Rip Van Winkle
Yonkers, N.Y. 10701 Ph: (914)476-5175
American Glass
Shows and Mail Order

THE SLEEPING FOX

EVELYN & JAMES JORDAN
P.O. Box 583
Lansdale, Pa. 19446
Phone: (215)855-2480

GEORGE HOFFMAN ANTIQUES

G.W. HOFFMAN - J.H. DENNIS
129 South 4th. Street
Newark, Oh. 43055
Phone: (614)345-8021

CHARLES & MILDRED FISHER

Antiques & Collectibles, General Line
HEISEY, DEGENHART, IMPERIAL
991 Idlewild, Newark, Oh. 43055
Phone: (614)522-5398

HARRISON'S ANTIQUES

HEISEY, CAMBRIDGE, DUNCAN
26 Johnston's Lane
Mercersburg, Pa. 17236
Shows, Mail, By Appt. (717) 328-2451

THE CONNECTICUT YANKEE

'HEISEY OUR SPECIALTY'
707 S. Washington
Fredericksburg, Tx. 78624
(512) 997-4992

H and R DIAMOND H

HELEN & ROBERT RAREY
1450 WHITE ASH DRIVE
Columbus, Oh. 43204
(614) 479-0390 after 5:30

RAMBLING LANE ANTIQUES

KEITH & EVELYN HOOVER
Featuring HEISEY and Other Fine Glass
Rt. 4 Box 1005 Rineland, Wl. 54501
Phone: (715)282-5019

We assume no responsibility for errors in these ads after the first printing.....Editor

MAKE YOUR RESERVATIONS NOW...CONVENTION 1981--JUNE 18-19-20-21, 1981

The SHERATON INN will once again be our convention headquarters for 1981, and they have given a special room rate for all H.C.A. members. All activities will be held there with the exception of the SHOW AND DISPLAY. Please make your reservations early because last year they were all taken by the first of March.

The rate given us is ONE PERSON - \$32.00 - TWO PEOPLE - \$37.00 Queen size ONE PERSON - \$35.00 - TWO PEOPLE - \$38.00. The queen size rooms all have steam baths. NO ADDITIONAL CHARGE FOR CHILDREN UNDER 18 YEARS OF AGE AND NO ADVANCE DEPOSIT IS NEEDED. There is a \$5.00 charge per night for a rollaway bed.

SHERATON INN RESERVATION REQUEST

Name _____
 Address _____
 City _____ State _____ Zip _____
 Phone _____
 Arrive _____
 Depart _____

All rooms have two double beds.
 Single room requested (one person) \$32.00 _____
 Double room requested (two people) \$37.00 _____
 Queen size requested (one person) \$35.00 _____
 Queen size requested (two people) \$38.00 _____
 Rollaway bed _____ \$ 5.00 _____

Please make your reservation by clipping the attached form

Mail to: ROBERT McCLAIN
 156 W. SHIELDS ST.
 NEWARK, OHIO 43055
 Phone: (614) 345-8061

1981 SOUVENIR OSCAR FORM

PLEASE READ VERY CAREFULLY BEFORE FILLING OUT

Oscars are Light Blue, marked HCA '81' and IG. A limited edition of approximately 2600 to be offered to members at \$19.00 until May 31st. None will be sold between that date and the first day of the Convention, June 18, when they will be sold for \$22.00 if any are left. You may order ONE per member. This means ANY member who has a membership card regardless of class of membership. Please list all names as they WILL be checked. Everyone living in Ohio ordering for pick-up in Ohio, must pay 86¢ Sales Tax per Oscar. Shipping charges will be \$1.30 each. The Oscars will be shipped as soon as they are received.

DO NOT SEND DUES, BOOK ORDERS, ETC. WITH YOUR OSCAR ORDER. NO ORDERS WILL BE ACCEPTED WHICH ARE NOT ON YOUR ORIGINAL FORM FROM THE NEWSLETTER. See 'Desk of' in December newsletter for more information. Please keep this part for a reference and clip and mail the form below the line. Be sure your dues are currently paid. This is the fifth of a series of souvenir Oscars.



_____ Number of OSCARS AT \$19.00 _____ Only one per member
 Sales Tax .86¢ each _____ All Ohio Residents and Pick-Up in Newark
 Postage \$1.30 each _____
 TOTAL sent with order _____

Check one: _____ Please mail my Oscar(s)
 _____ I will pick up my Oscar(s)
 _____ at Convention or Museum after
 _____ the Convention

NAME(s) _____
 List all names _____
 ADDRESS _____
 CITY _____ STATE _____ ZIP _____

Make check payable to HCA, Inc.
 and mail to.....HCA OSCAR SALES
 P.O. BOX 27
 NEWARK, OHIO 43055

CHARGE MY

Mastercharge _____ Credit Card No. _____
 Expiration date required _____ Mo. _____ Yr. _____

LIMITED EDITION ART PRINTS
 OF THE
 A. H. HEISEY GLASS FACTORY
 HAND COLORED, ARTIST SIGNED
 SATISFACTION GUARANTEED
 \$15.00 POST PAID
 COLONIAL DISTRIBUTORS
 P.O. BOX 422
 NEWARK, OH 43055

Protect Your Reference
 Investment with . . . **PERMANENT
 LIBRARY QUALITY
 BUCKRAM BINDINGS!**



VOGEL—Books I, II, III, & IV \$16.35
 Bound in three volumes—Books I & II together
 HEISEY NEWS (1 or 2 years per volume) \$8.40
 ENCYCLOPEDIA OF HEISEY GLASSWARE—
 ETCHINGS AND CARVINGS \$5.80
 (Or any other 11" paperback)

Complete price list and detailed information upon request.
 Large SASE appreciated.

Please add for return shipment: \$1.60 for first volume and
 60¢ for each additional volume.

Send your material for binding to:

HEADRICK BUCHDRUCKEREI

315 E. 8th • Newberg, OR 97132 • Ph. 503/538-9352

MUSEUM HOURS ARE NOW

1 - 4 P.M. Wednesday, Saturday & Sunday until April 1st.

FIRST-CLASS MAIL

FIRST CLASS MAIL
 U.S. POSTAGE
 PAID
 PERMIT 34
 Reynoldsburg, Ohio 43068

return to:
 HEISEY NEWS
 Box 27
 Newark, OH 43055

