

# HEISEY

## news

OFFICIAL PUBLICATION HEISEY COLLECTORS OF AMERICA

©Heisey Collectors of America, Inc. 1980  
All Rights Reserved

VOL IX, NO. 5 MAY, 1980

ONE DOLLAR

*For the 80's*

**10th Annual**

*Elect HEISEY your collectible*

**ANTIQUE SHOW and SALE**  
**Heisey Glass Display**

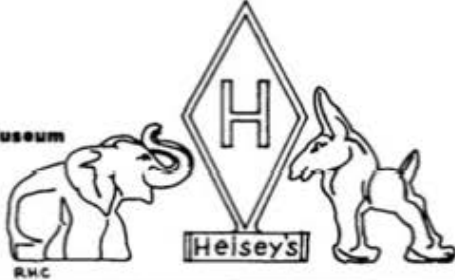
Newark Branch - O.S.U. Campus  
Country Club Drive, Newark, Ohio

Sponsored by  
*Heisey Collectors of America*

Thursday, June 19	12:00 noon to 8:00 p.m.
Friday, June 20	12:00 noon to 5:00 p.m.
Saturday, June 21	12:00 noon to 8:00 p.m.
Sunday, June 22	12:00 noon to 5:00 p.m.

Over Fifty Quality Dealers

Benefit National Heisey Museum  
Donation \$1.75



R.H.C.

## AN UNUSUAL CHANDELIER

...Sorry to be so late in sending you the pictures of our chandelier, which we called you about months ago.

It has been re-wired and cleaned, and is hanging over our dining room table. It looks lovely.

We had our Heisey Club meeting last night, and all members were quite impressed with it. We are from Connecticut, but belong to the Western Massachusetts Club.  
- Clare Nelson, Connecticut

Ed. Note: Note that this chandelier has an Ipswich candy jar as one of its parts. A most attractive fixture! Many manufacturers of lamps and lighting fixtures used Heisey glass in the assembly.




---

### HEISEY NEWS — — — P.O. BOX 27 — — — NEWARK, OHIO 43055

EDITOR — LOUISE REAM, 1115 W. Main St., Newark, OH 43055  
 ASS'T. EDITOR — NEILA BREDEHOFT, Box 27, Newark, OH 43055  
 PUBLISHED MONTHLY — \$10.00/year — \$1.00/copy  
 BACK ISSUES AVAILABLE AT \$8.00/year — \$1.00/copy

PRESIDENT	LOUISE REAM	(614) 344-2377
VICE PRESIDENT	JACK METCALF	(614) 892-2864
SECRETARY	MARY McWILLIAMS	(614) 345-4380
TREASURER	LOREN YEAKLEY	(614) 522-5820

Heisey Collectors of America, Inc. is a non-profit corporation with tax exempt status. Owners and operators of National Heisey Glass Museum, 6th and Church Streets, Newark, Ohio. Open Daily 1-4 p.m., April through October except Monday and Holidays, November through March, Wednesday, Saturday, Sunday 1-4 p.m. Members admitted free.

Phone: (614) 345-2932. Club membership includes 12 issues of Heisey News and participation in all club activities! \$10.00/Year plus \$1.00 each for additional family members in same household who wish a membership card. For voting membership add \$25.00, one time only fee, or write for information.

For Membership - HCA Membership, Box 27, Newark, OH 43055. Notify immediately of any change of address.

The opinions expressed in articles in Heisey News are those of the authors and not necessarily those of the organization. The Editorial Staff reserves the right to edit or refuse any material submitted for publication. When requesting information, please enclose a self addressed stamped envelope (SASE).

ADVERTISING — Send all ads to:  
 Neila Bredehoft, Advertising  
 Box 27  
 Newark, OH 43055

DEALER DIRECTOR ADVERTISING RATES — 5 line - \$6.00/6 issues

CLASSIFIED ADVERTISING — 5¢/word — \$1.00 Minimum. We cannot mix type sizes in Classified Ads. Abbreviations and initials count as words.

DISPLAY ADVERTISING	RATES	MEMBER	NON-MEMBER
	1/8 Page	\$ 8.00	\$15.00
	1/4 Page	\$15.00	\$25.00
	1/2 Page	\$25.00	\$40.00
	Full Page	\$45.00	\$60.00

#### PAYMENT IN FULL MUST ACCOMPANY ALL ADS.

Advertising copy reaching us by the 5th of the month will be in the next month's issue. Advertisements containing reproductions will not knowingly be accepted unless clearly stated (i.e. Heisey by Imperial, etc.) Heisey News assumes no responsibility for false advertising or misleading information. In the event of typographical error, the incorrect portion of the ad will be run in the following issue, but Heisey News assumes no further liability.

Send all letters and articles to be published to the Editor. Letters to columnists should be sent to the club address and will be forwarded.

## FROM THE DESK OF ...

*your President*

Well, Convention time is almost here and we hope that high prices of gasoline, in particular, and inflation in general, won't keep too many of you away. Fortunately we were able to keep the Convention rates nearly the same as last year. We are sure the dealers are saving their rare glass for you and you may find just that piece of glass or that lid or stopper you've been searching for. We are really looking forward to seeing many of you who make this your annual vacation, and those of you who are coming for the first time. Make yourselves known, talk to everybody. You'll have as good a time and meet as many people as you make the effort to do. We all want to be friendly - but you must remember it is a busy time for all of us here.

The proposed Heisey by Imperial book is coming along and hopefully we'll either have the book by June 19 or a mockup of it so that you can order it. It will have a full page color plate which should be very helpful to both the Heisey and the Heisey by Imperial collector.

Probably by the time you receive this the deadline for Oscars will be quite close - or may even have passed. At this writing sales have been very brisk. The Oscars are quite good this year - no sagging heads or bust-off marks so we hope you are pleased. Shipping will probably be done the week prior to Convention when the Robinsons arrive here from Illinois and the Johnsons from Wisconsin.

We still would like to have volunteers to work the club booths for periods of two hours at a time. We will have paid personnel acting as cashiers and assisting in other ways but we would like to have members helping with the actual selling. There will be a sales booth both at the show and the display. Some volunteer help would be helpful in the Museum as well, and we also need people for the display area.

Those of you who have not yet visited your Museum should do so. Members coming for the first time cannot believe that the Museum is so fine nor that it has such a wide variety of Heisey glass. Many people say that it boggles their minds and that they just can't take it all in at once. If you have seen the Yeakley book in color that is just a sample of the colored glass which you'll see in the Museum in its eight rooms and full lower level with all the glass displayed in beautifully lighted cabinets. New gifts, loans and acquisitions are added regularly which makes a return trip interesting.

We have again included the Convention schedule so that anyone who may have missed it in last month's issue will have an opportunity to register.

Ads on the front of newsletters are old and the items are not for sale. We should mark them better.

*Happy Heisey Collecting!*

*Louise Ream*

## THE CORNING MUSEUM OF GLASS

The new Corning Museum of Glass will open to the public on June 1, 1980.

- The building, looking like a silver ribbon of glass, appears to float above the flood plane. Designed by Gunnar Birkerts, it is a continuous linear periscope 725 feet long. (As you may remember, The Corning Museum of Glass was submerged under six feet of water during the Agnes Flood of 1972.)
- The most comprehensive collections in existence, now exceeding 20,000 pieces, will all be on public view for the first time.
- The installation is essentially a circular time tunnel stretching from 1500 BC to the present, calibrated with descriptive films of major technological break-throughs.

- The special exhibition, Tiffany's Tiffany, contains the glass, including windows, which America's preeminent artist-in-glass, Louis Comfort Tiffany, made for himself.
- The finest private collection of drinking vessels in the United States, The Strauss Collection recently bequeathed to the Museum, will go on public exhibition for the first time.
- The foremost Czechoslovakian artist-in-glass, Stanislav Libensky, (he did the Czech Pavilion at the Montreal World's Fair) is doing the entrance foyer - a cooperative venture between two of the world's major glassmakers without parallel or precedent.

For further information contact:  
Corning Museum of Glass  
Corning, N. Y. 14830

(607)937-5371

Ruby stained glass forms one of the prettiest of Heisey collections although most collectors do not realize the full extent possible in such a collection. Beginning collectors should be aware that the glass is not truly a red glass but a red stain which was applied over crystal glass. Often the term "red flashed" is used for this type of ware, but the term is erroneous.

Close examination of ruby stained glass reveals that it is indeed a stain which has been applied over crystal items. Often it is possible to see minute brush strokes if the article is examined closely. The stained item is usually fired (subjected to heat) which makes the color more or less permanent. Often items are found with scratches indicating hard use over the years. Ruby staining was developed as a cheap imitation of the more expensive Bohemian glass which was a cased glass in which red glass was formed over crystal glass during the manufacturing process. This resulted in an item which appeared completely red which was then often engraved or cut. This treatment removed the thin layer of red glass exposing the clear glass beneath it. The design was quite pleasing. Souvenir items are copies of this. The red stain was apparently easily removed and dates and place names or personal names easily added.

Many collectors and dealers dismiss Ruby Stained Heisey as souvenir ware and of limited variety. Neither of these observations is true. Many Heisey patterns are available with ruby stain and several of these patterns contain a variety of pieces available with the decoration. Several patterns were advertised by Heisey as available with "Ruby" decoration.

The assumption that "ruby stained" automatically means "souvenir" seems to arise because the most often seen ruby pieces are souvenir. Many of the common items are 1200 Cut Block pieces; 1220 Punt Band toothpick, shakers, tumbler, wine, individual cream and mug; 1255 Pineapple & Fan tumbler and small tankard and 1295 Bead Swag toothpick and shakers.

I feel the above items constitute 50% or more of the ruby decorated Heisey usually available. Ruby stained Heisey is not common - we just keep seeing the same kinds of pieces over and over. Many of these must have been very popular for considerable lengths of time. I think the most common items I have seen are the 1295 Bead Swag toothpick, the 1220 Punt Band toothpick and shakers and the Cut Block individual cream and Punt Band individual cream are also high on the list. The overall favorite item for souvenir seems to be the tumbler. Tumblers are found in many of the Heisey patterns.

The following patterns are available to some extent in ruby stain:

**1200 CUT BLOCK** - Found in a limited number of pieces, usually souvenir. Occasionally a non-souvenir piece will be found - usually the toothpick, although I also know of a plate. Items known - toothpick, individual cream, tumbler and plate.

**1205 FANCY LOOP** - A notation in an old price list reads "square dish - ruby edge and panel". This has me somewhat puzzled as I can't quite figure out where the "panel" is in Fancy Loop, although it probably refers to the largest plain portion of the figured area. I have also seen a lid to the table set size sugar which would indicate that the whole table set probably had been decorated.

**1220 PUNTY BAND** - Probably the most easily found pattern in both souvenir and non-souvenir items. Known items in non-souvenir are the 4 piece table set, water set, berry set and oblong relish. I suspect that the whole line might have been available with ruby stain. Of course, any item which is found non-souvenir might also be found with souvenir. Items often seen with souvenir are the shakers, toothpick, wines, individual cream, tumbler and mug.

**1225 PLAIN BAND** - This pattern was offered by Heisey with several decorations on the "Ball" referring to the plain band portion of the glass. Several different colors were offered among them #21 Ruby Ball on the full line of wares. I cannot recall having seen this particular pattern with the ruby decoration on the ball, but I have seen other colors, specifically a lavender and an amber (very light).

**1235 BEADED PANEL & SUNBURST** - This pattern was listed in old Heisey price lists with #28 Ruby decoration and #30 Ruby and Gold decoration. No further description of the decorations was given. The whole pattern line was offered with both types of decoration, but I have not seen much of it for sale.

**1255 PINEAPPLE & FAN** - This pattern may be found without souvenir, but the most often seen pieces are found with souvenir. These items are the mug, tumbler and the small tankard pitcher. Sometimes the toothpick is found. The decoration is found on the plain portion around the top of the item. I am uncertain if the whole line was available with the decoration.

**1295 BEAD SWAG** - The ruby decoration is applied above the beads covering the whole plain portion. Most items I have seen are souvenir pieces. I am not sure if the whole line was decorated

this way. Items I am familiar with are shakers, toothpick, punch cup, 2 styles of mugs, miniature rose bowl, wine and nappy. The punch cup is also found without souvenir. Another ruby type decoration appears to have been made on most of the line. This consists of ruby on the beads and a wide band of ruby about halfway up the plain portion of the piece. This band is engraved with a rather simple scroll motif embellished with dots. I have seen the table set, water set and toothpick. This decoration is harder to find than the other type and pieces I have seen were not souvenir. Whether either of these decorations was done or even sold by Heisey is something I do not know.

300, 300½ PEERLESS - The ruby decoration is on the plain portion about the top. I have very little information on this and am uncertain as to what pieces were available (although the table set was done) and have no idea if it was available from Heisey.

305 PUNTY & DIAMOND POINT - I have not seen this pattern with ruby stain, but a punch cup was reported to me. The decoration was on the plain portion around the top. Does anyone have any of this pattern decorated with ruby stain?

310 RING BAND - Only one item is known to me that is ruby stained - the crystal tumbler. All of these I have seen were souvenir. The decoration is on the large plain portion above the band.

315 paneled cane - The decoration is on the plain portion around the top. I have seen the table set, so I wouldn't be surprised at other pieces. It is unknown whether this was a decoration offered by Heisey.

325-PILLOWS - This pattern is occasionally found with red stain on the upper plain portion of the pieces. Enough examples have been seen that the whole line may have been decorated this way.

335 PRINCE OF WALES PLUMES - The line was decorated with the red stain on the plain portion above the figured portion and on the oval portion of the design. It is seen both with souvenir and without.

337 TOURAINE - In an old Heisey price list 337 Touraine stemware was offered with #65 Ruby Lustre on bowl. This was offered on 27 different stem pieces. No listing of tableware was included. I have, however, seen Touraine tableware decorated with a wide ruby band around the broadest part of the top, but leaving a clear band around the top of the item. The extreme top rim was also decorated with a fine band of ruby. I have seen items which were both souvenir and non-souvenir with this type of decoration.

343, 343½ SUNBURST - Old Heisey price lists tell us Heisey offered Sunburst with #75 Ruby decoration described as "Ruby lustre over the chrysanthemum". The full line of 343 Sunburst seems to have been available, at least 82 different items were listed in Price List 120. Where are they all now? 343½ Sunburst had 28 items listed, mostly nappies, 2 small plates, several jugs, a custard and a tumbler.

365 QUEEN ANN - No Heisey listing was found with this pattern listed with ruby decoration but it is not impossible that it may be a Heisey decoration. Several pieces of the line are known with the ruby on the large shield shaped portions of the pattern. These items were not souvenir. It is likely that most of the line was decorated since portions of the table set and the water jug have been seen.

1776 KALONYAL - Heisey offered this pattern with ruby decoration to their buyers. The description was #1 Ruby on Panels. Gold was also offered. Not many of the decorated pieces are found today. The 4 piece table set, 10 varieties of nappies, toothpick, salt & pepper, tumbler, jugs, and oil were available. The molasses can was listed but no pricing followed so it is unclear whether or not it was available.

160 LOCKET ON CHAIN - Several different items have been found with an all-over ruby decoration with the outlines of the locket and chain done in gold. Known are the water set, salt shakers, and wines. Certainly it is a possibility that all or most of the line was available with this unique decoration.

Other items are sometimes found with Ruby stain, for instance the 1100 punch cup, the 2 toy beer mugs and sometimes the 1280 Winged Scroll trinket box. It is certainly possible that many other items and patterns exist than those listed here. It would be interesting if you reported any others you might have.



PATTERN	SOUVENIR	NON-SOUVENIR	COMMENTS
1200 CUT BLOCK	yes	occasionally	most common items-toothpick, individual cream
1205 FANCY LOOP	?	yes	listed in a Heisey price list on square dish
1220 PUNTY BAND	yes	yes	most common Heisey pattern found with ruby stain usually souvenir, but many items non-souvenir.
1225 PLAIN BAND	probably	yes	#21 Ruby Ball listed in old Heisey Price Lists
1235 BEADED PANEL & SUNBURST	yes	yes	#28 Ruby & #30 Ruby & Gold listed in old Heisey Price Lists
1255 PINEAPPLE & FAN	yes	yes	most often souvenir items are tumbler, mug, & small tankard pitcher.
1295 BEAD SWAG	yes	occasionally	ruby decoration above beads on plain portion toothpick very common with souvenir
1295 BEAD SWAG	no	yes	decoration of ruby on beads with wide band around plain portion usually engraved with simple scroll motif
300, 300½ PEERLESS	no	yes	little information available
305 PUNTY & DIA. PT.	?	yes	punch cup reported with ruby above pattern
310 RING BAND	yes	no	only crystal tumbler known
315 PAN. CANE	?	yes	Little information available
325 PILLOWS	yes	yes	
335 PRINCE OF WALES	yes	yes	several different items known
337 TOURAINÉ	yes	yes	#65 Ruby Lustre on bowls of stemware listed in Heisey Price Lists. Some tableware also seen with wide ruby band about broad portion.
343, 343½ SUNBURST	?	yes	#75 Ruby Lustre over Chrysanthemum listed in old Heisey Price Lists.
365 QUEEN ANN	?	yes	Several items known
1776 KALONYAL	?	yes	#1 Ruby on panels listed in Heisey Price Lists
160 LOCKET ON CHAIN	?	yes	found with all-over ruby with chain & locket in gold

## OUR VISITORS FROM ENGLAND

BY LIZ KING

On April 12, the Heisey Museum entertained our city's British visitors, Mayor David Payne, Mayoress Frances Payne, and former Mayor Bill Drury of Newark-on-Trent. They were accompanied by Mr. & Mrs. Hoover, their hosts during their sojourn.

This all came about because Gloria Hoover, a staff member of Newark's local newspaper, The Advocate, went to England recently and visited Newark-on-Trent because Newark, Ohio in a round-a-bout way was named for the English city. While there, she became acquainted with the Mayor and Mayoress and invited them to visit Newark-on-Trent's namesake to unify relationships between the two cities. They arrived the week of April 6 and had a whirlwind tour of Newark and vicinity ending with their return to England on April 16.

They seemed immensely interested in the glass and were fascinated by the fact that, when the factory was operating, many orders were sent to England. They assured us that they would make every effort to locate some of it upon their return. Who knows? Perhaps we will have a new club from Newark-on-Trent!

Our visitors expressed special interest in the items which have an English registry mark and were astonished when we referred to a Prison Stripe "nappie", the word having a very different connotation in Great Britain. Glass diapers???

When we came to the case containing the glass Dinky Do, the Mayoress, seeing the original behind the Heisey figurine, said "Oh, someone must have painted it!" - a tactful way of saying "What is our Royal Doulton doing in a Heisey display case?"

We at the Museum wanted to do something to commemorate their visit, so we dedicated the Spanish-stemmed goblet engraved by Emil Krall for display at the Metropolitan Museum of Art and which had a special museum pattern, to Newark-on-Trent in honor of our guests.

A short social hour ended the tour, refreshments being served by the docents Phyllis McClain, tour director, Louise Ream, Iva Lou and Harold Crim, and Liz King.

\* \* \* \* \*

## HEISEY GLASS LECTURE AT SANDWICH GLASS MUSEUM

Orva Heissenbittel of Washington, D. C. gave two lectures on "Heisey Glass" at the Sandwich Glass Museum's Winter Lecture Series in Sandwich, Mass. on January 28-29. A capacity crowd of more than a hundred filled the lecture hall to learn about the glasswares made by the A. H. Heisey & Co. between 1896 and 1957, as well as the earlier glasswares produced during the years when A. H. Heisey was associated with the Duncan glass firm.

Mrs. Heissenbittel displayed (and passed around for closer examination) a variety of Heisey glasswares reflecting various eras of style, color and decoration from her collection, supplemented by examples from the collection of Sonya and Philip Phillips of nearby West Barnstable.

The museum's glass curator, Kauko Kahila, noted with interest a dolphin candlestick and the three "Beehive" plates which Mrs. Heissenbittel discussed and circulated for a closer look. The three "Beehive" plates included the original octagonal plate made at the Sandwich factory during their lacy period; a copy of it made by Heisey (based on an original wooden model used by Sandwich), and introduced by Heisey in 1927; and a less faithful copy made about the same time by Duncan-Miller.

National Heisey Museum brochures and membership applications were circulated as Orva concluded her talk on Heisey glass with information about HCA, its local clubs, and the National Museum and its thousands of beautiful examples of Heisey on display.

This was Orva's second invitation to speak in New England on the subject of Heisey; in November 1975 she addressed the prestigious National Early American Glass Club in Boston on "Heisey Glass," one of the first guest speakers to give a talk there on glass as "modern" as Heisey.

Orva's seminars on glass in the mid-West, the West Coast, and in the Washington, D. C. area always include the history, identification and appreciation of Heisey glass. This spring these included those at four colleges in the Greater Washington area and the Smithsonian Institution.

Orva founded the National Capital Heisey Collectors Club in 1972, which has been the nation's largest local Heisey club for many years - membership is usually close to 200. NCHCC meets at the Oxon Hill Library, Oxon Hill, Md. on the second Monday night at 7:30 pm, and welcomes all interested persons. Orva originated the "All-Heisey Glass Show & Sale", (the only show of its kind) which is sponsored by NCHCC, which she proposed as a fund-raising activity for the National Heisey Museum. More than \$10,000 has been donated to the Museum from the very successful eight annual shows to date.

Floral blocks 19, 20 and 21 are a family of three sizes of blocks of similar design. Pictures of the three blocks taken from Heisey catalog 211, page 84, are shown with this article. Vogel book III, page 94 is a copy of Heisey catalog 211, page 84. Blocks 19, 20 and 21 replaced floral blocks 9, 10, and 11 for about a 3 year period, 1931 to 1933. Blocks 9, 10 and 11 are described in my article that appeared in the October 1979 issue of Heisey News, page 11.

Let us look at the general design of this floral block family. The top of blocks 19, 20 and 21 are dome or mushroom shaped and are perforated with holes that go all the way through the blocks. The bottoms of the blocks are plain and relatively flat. In other words, there are no legs of any kind on the bottom. In comparison, blocks 9, 10 and 11 have six small legs on the bottom that are about an eighth of an inch long. Also, you can note in the pictures, for some reason, floral blocks 19 and 20 do not have a perforated hole in the center of the block while floral blocks 9 and 10 did. Per the catalog picture, block 21, like block 11, appears to have a hole in the center. The cross-section sketch I made of block 19 accompanying this article illustrates the holes all the way through, the absence of a hole in the center and the small ledge around the edge of the block at its maximum diameter. The dome shape, the holes all the way through, the absence of a hole in the center (19 and 20 only), the plain bottom with no legs, and the small ledge are all points of identification for Heisey floral blocks 19, 20 & 21.

The dimensions of the three blocks are as follows. The #19 block has a diameter (largest) of 3 inches, is 2 inches high and has 6 perforations. The #20 block has a diameter of 4½", is 2 ¾" high and has 18 perforations. The #21 block has a diameter of 5½", is 3" high and has 19 perforations. Heisey catalog and price list entries refer to the #19 block as 4", the #20 block as 5" and the #21 block as 6". The catalog/price list dimensions relate, on the high side, to the actual block dimensions.

Production of this family of 3 floral blocks started in about 1930 and ended in about 1936. All three block sizes were made in crystal, flamingo, moonbeam and sahara. I found no evidence that blocks 19, 20 and 21 were made in alexandrite. The price lists I looked at added support to the point that the blocks were not made in alexandrite. For example, price list #210 (circa 1933) lists prices for blocks 19, 20 and 21 in the color columns for crystal, flamingo, moonbeam and sahara. There are no prices indicated in the color columns alexandrite, tangerine or blue. Yet, we know that the blocks were used in the #1401 Empress floral bowl and that the Empress floral bowl was made in alexandrite. Therefore, why not alexandrite colored blocks? Since alexandrite colored pieces tend to cost about twice as much as the same pieces in crystal, it is my opinion that crystal blocks were furnished with or suggested for use with the alexandrite colored floral bowl.

There are many types of floral blocks made by other companies. So, now armed with the design information in this article and the article in the October 1979 Heisey News, you should be able to pick out the Heisey floral blocks 9, 10, 11, 19, 20 and 21 at flea markets or elsewhere.

The stock numbers 19, 20 and 21 were also used for salt & peppers and for candlesticks. Later, #20 was used for the Wood Duck and #21 for the Wood Duckling, resting.

The #17 flower block is a unique, one-of-a-kind block. It was especially designed to fit the #133 14" Swan handled floral bowl. The #133 floral bowl is sort of an elongated oval shape with swan handles at the long ends. Floral block #17 is long and narrow to match the bowl. The block itself is not oval shaped, but has its own special shape as you will note in the picture with this article.

This block is not the easiest to describe, so bear with me and refer to the picture as we go along. The center of the block is a bowl-like structure about 2½" tall. The bottom of the bowl is flat and the bowl walls are vertical with a contour that follows the general overall shape of the block. The block is signed with a small diamond H on the inside bottom of this bowl at the center. Horizontal flange-like structures come out from the top and bottom of the peculiar shaped bowl. The edge or perimeter of the flanges establish the final overall shape of the #17 floral block. The top flange has 14 evenly spaced holes through it for the flower stems. The bottom flange also has 14 holes through it in line with the holes in the top flange.

There are 16 evenly spaced small legs on the bottom flange that hold the block slightly above the bottom of the floral bowl. The overall dimensions of the #17 floral block are 5" wide by 9½" long by 2 ¾" tall.

Production of the #133 Swan handled floral bowl and matching swan candlesticks and the #17 floral block started in about 1931. First mention of the bowl, candlesticks and block occurred in a supplement to Heisey price list #209. Production of the #133 floral bowl and candlesticks stopped in about 1934. It must not have been a good seller. Production of the #17 floral block continued as the #1469 floral bowl in the new Ridgeleigh pattern line was especially designed to use that floral block. The #1469 floral bowl that used the #17 block was produced in two forms, with and without swan handles.

Production of the Ridgeleigh floral bowls associated with floral block #17 was only for about 3 years, about 1934 to about 1936. The production of the floral block also stopped. Thus, floral block #17 was produced for about 6 years, 1931 to 1936.

The #133 Swan handled floral bowl and candlesticks were made in crystal, flamingo, moon-  
gleam, and sahara, possibly alexandrite. The matching #17 floral block was made in crystal,  
flamingo, moon-  
gleam and sahara; no alexandrite. If the alexandrite bowl was made most likely  
a crystal floral block was used with it.

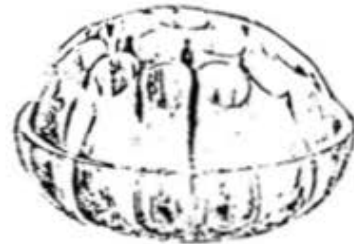
It appears that the two forms of Ridgeleigh floral bowls associated with block #17 were  
made in crystal only.

The shape and design of Heisey floral block #17 is so unique that I doubt if any other  
glass company made one like it.

Note: The 133 Swan handled console set appeared in an ad from February, 1930, China Glass &  
Lamps and was listed as "new" at that time. nb



No. 17 10 in. Block  
Holes Thru



No. 21 6 in. Block  
Mushroom Top Holes Thru

No.	SIZE	ITEM	PRICE PER DOZEN			
			CRY.	MO.	FLAM.	SAH.
9	4 in.	Block, Mushr'm Tp.Solid Bot.	4.20	4.20	4.20	.....
10	5 "	" " " " " "	8.50	8.50	8.50	.....
11	6 "	" " " " " "	14.00	14.00	14.00	.....
17	10 "	" (133 Bowl) Holes Thru.	14.00	14.00	14.00	17.50
18	9 "	" (134 Bowl) " "	22.00	22.00	22.00	27.50
19	4 "	" Mushroom Top "	5.50	5.50	5.50	6.80
20	5 "	" " " " " "	14.00	14.00	14.00	17.50
21	6 "	" " " " " "	18.00	18.00	18.00	22.50
22	6 "	" (1404 Oval Bl.) "	16.00	16.00	16.00	20.00

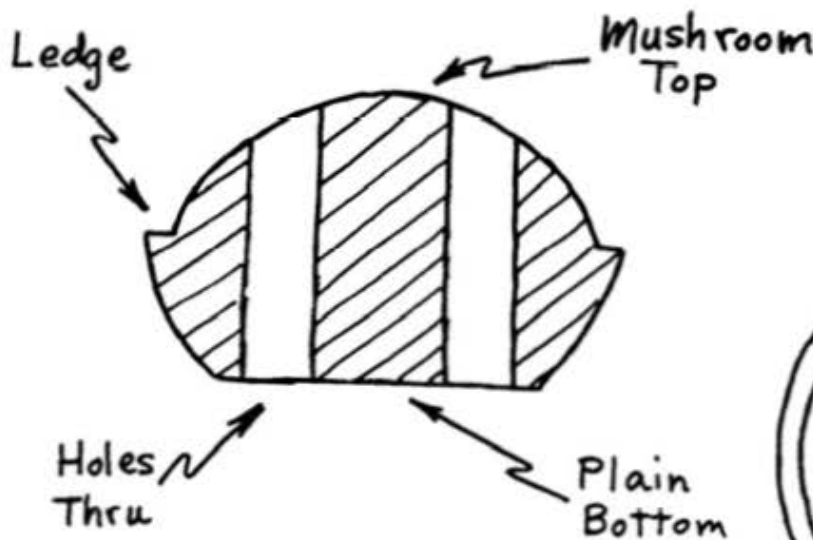
PRICE LIST #210 JUNE 1933



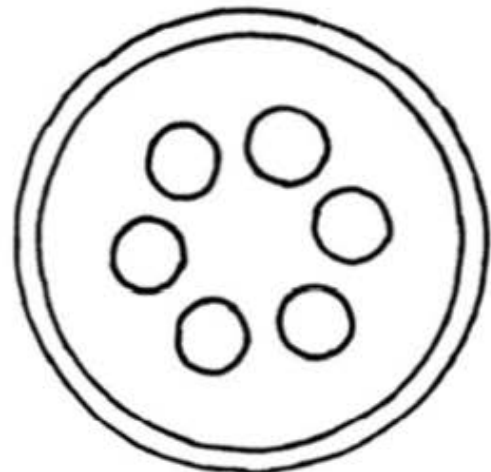
No. 20 5 in. Block  
Mushroom Top Holes Thru



No. 19 4 in. Block  
Mushroom Top Holes Thru



FLORAL BLOCK NO. 19

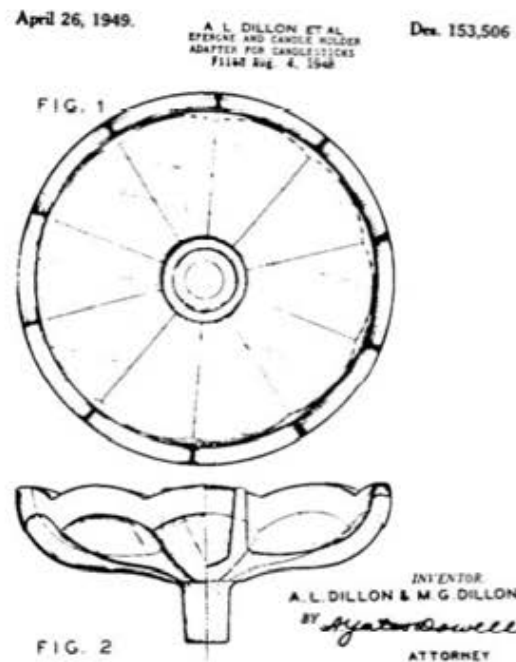
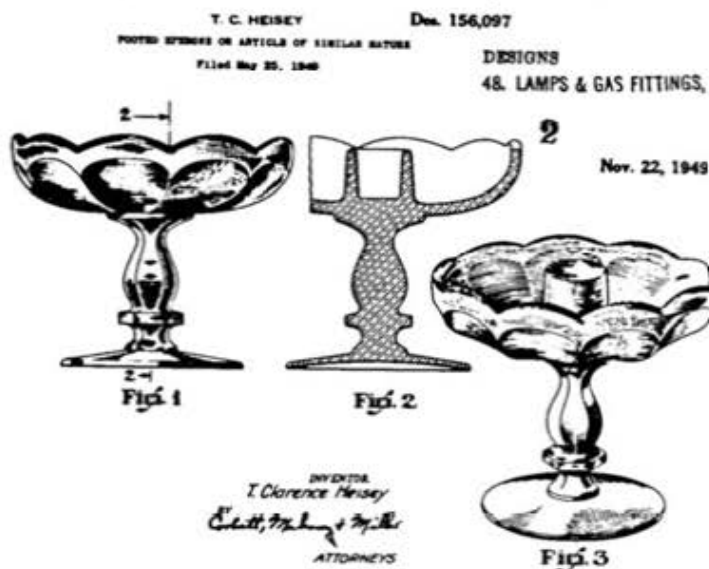


According to Webster the English word "epergne" comes from the French "epargne" which means a savings or an economy. However the relationship between the meaning of the word in French and the meaning of its English derivative eludes me. Normally the word in English is used to refer to a sizeable table centerpiece made of graduated tiers used to hold flowers, fruit or bonbons. While the early series of large epergnes produced by Heisey as pattern numbers 46 thru 54 are certainly in keeping with the Webster definition of the word, the term has also come to be used for smaller items designed to combine candle and flower arrangements. Heisey called them epergnions and epernettes and produced these items in Waverly (pattern #1519), Queen Ann (pattern #1509) and Plantation (pattern #1567) as well as Old Williamsburg (pattern #341). Other glass companies such as Cambridge and Duncan and Miller produced similar items which they also called epergnes. However this was not meant to be an exercise in semantics. The subjects of the article are the two design patents, numbers 153,506 and 156,097 shown here reproduced.

The #341 footed epergne candleholder produced as part of the Old Williamsburg pattern had its beginning with the design by Annie Lee Dillon of Raleigh, North Carolina of an epergne and candleholder adapter for candlesticks. Mrs. Dillon filed for a patent for her design in August of 1948 (pictured here as finalized in April of 1949) and assigned the patent to the Heisey Company. This is the same Mrs. Dillon referred to in the Louise Ream article in the May 1976 Heisey News. Heisey must have put the design into production immediately in several styles since it was already in a 1948 list. Production on items was often begun before a patent was filed for and issued. Interestingly there is no record in the assignment branch of the Patent Office that ownership of this design was transferred to the Heisey Company which means the transfer was negotiated by some other means. It would be interesting to know the legal implications, if any, which are involved here since this seems to be the case with other patents under Heisey ownership.

In the fall of 1943, several years before Mrs. Dillon applied for her patent, Horace King, Chairman of the art department at Denison University in Granville, Ohio began designing for the Heisey Company at the behest of T. Clarence Heisey who was then president of the Company. He worked for Heisey until 1956 and in 1973 wrote a series of articles for the Heisey News in which he explained that many of his designs were merely adaptations of already existing patterns. And this was the case in his "improvisation" as he called it, in which he inverted the stem of the #341 goblet and combined it with the Dillon epergne to produce the #341 footed epergne candleholder. As Mr. King explained in his Heisey News article of October 1973, Clarence Heisey liked it enough to have it patented and put into production. This patent, though indicating T. Clarence Heisey as the inventor, was, as we know, actually designed by Horace King. Interestingly this patent was applied for in May of 1949, only ten months after Mrs. Dillon applied for her patent.

Because this was a late production item there do not seem to be many of them on the glass collector's market yet. For more detail on the #341 footed epergne refer to the excellent article by Jack Metcalf in the January 1978 issue of the Heisey News.

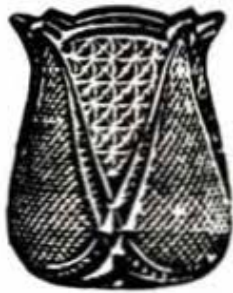




# A. H. Heisey & Co.

## NEWARK, O.,

MANUFACTURERS OF



1201 Pattern.

FIGURED.

A full line of 1201 Pattern.



## Fine Crystal Tableware, Bar Goods, ETC., ETC.

Full line of Samples on exhibition at Monongahela House, Room 167, during January and February.

SALESMEN.

Walter B. Lindsay, West.    A. A. Graesser, East.    Jos. Tomkinson, N. Y., Philadelphia and Baltimore.    Albert Meder, South and West.

# A. H. Heisey & Co.

NEWARK, OHIO.

MANUFACTURERS OF

NOTE: These ads came out before the factory opened. Molds & first samples were made at Robinson Glass Co. in Zanesville, Ohio.



**1200 Pattern.**

PLAIN, ENGRAVED AND DECORATED.

A full line of 1200 Pattern, Plain, Engraved and Decorated



**Fine Crystal Tableware, Bar Goods,  
ETC., ETC.**

Full line of Samples on exhibition at Monongahela House, Room 167 during January and February.

**SALESMEN.**

Walter B. Lindsay, West. A. A. Graesser, East. Joe. Tomkinson, N. Y., Philadelphia and Baltimore. Albert Meder, South and West.

Your name and address was listed in a recent issue of Fort Lauderdale News when a reader inquired where a book of Heisey glassware could be obtained.

Mrs. Eichelberger and I were fortunate in having known the Heisey family, including T. C. Heisey and his wife, Anne, back in the '40's and 50's.

Mr. Heisey presented me with an 8 inch square crystal ashtray engraved with my monogram, which we treasure highly. On another occasion, he made up a dozen square bottom tumblers engraved with my initial. We also own a square lead-glass liquor carafe which is unique.

For a Christmas present many years ago, I bought a pair of three-branch crystal candelabra for my wife, which she has used for a long time.

The Heisey production standards of that era surpassed those of its competitors and many slightly imperfect pieces were discarded as they came out of the annealing ovens.

- Robert A. Eichelberger, Florida

\* \* \* \* \*

Thank you for making the visit of our British guests such a memorable one.

I rather expect they got home and began looking through cupboards for pieces of Heisey. Once they get the "fever" there will soon be a chapter in Newark-on-Trent.

I can't think of a better way to unite our cities than through a piece of Heisey glass.

- Gloria Hoover, Newark

\* \* \* \* \*

I'm delighted to learn that I can replace the #300 candleholders with "Imperial" copies, as I've looked for perfect ones for my candelabra since the end of World War II.

Is it possible that the society will sometime offer replacements for missing metal parts i. e. metal lids for syrups, see Heisey News Feb. 80 p. 8. The glass bases are fairly easy to find and I have several but in more than 50 years of collecting pattern glass (we had a shop for nearly 25) I've seen only about two complete with lid. Of course the earlier lids to syrups, see for example Heisey News Oct. 1979 p. 12 are very desirable also and also hard to find unless one wants to buy a cracked syrup and use the top. (I see that Heisey called them molasses cans. We are more maple-syrup-happy hereabouts in Me. N. H. & Vt.) Please advise if you do know of sources for either type of top.

The other nearly impossible metal part to find is the metal lid for either powder jar or hair receiver preferably the former as it is needed desperately by about all dealers that I know within a range of say, 200 miles.

- Benedict Groder, Maine

Ed. Note: Does anyone out there know where these parts can be purchased? Or does anyone have any ideas about making some of these parts? It seems it would be a fertile field for someone.

\* \* \* \* \*

We're spreading the Heisey gospel around Westport. My Heisey evening was a great success, thanks mostly to the film. What a fine production that is! The Westport Historical group normally has about 20 regulars and for the Heisey program there were 73-- full house. Ted did the lighting for the exhibit and it was very effective - we showed about 100 representative pieces. I ran into only one problem-- when I brought all the glass home it wouldn't fit in the cupboards - it grew or something! I am most grateful to the Museum for making the film available.

Yesterday in my travels I purchased an interesting piece which I hope you can tell me for what it was designed. It is a Narrow Flute with Rim - 6" rather deep plate with attached individual almond. The plate is decorated with wide blue band and gold stripe while the small dish has a gold edge. I've searched all my literature and can't find a picture. It's not the oyster cocktail - could it be a shrimp cocktail dish? Was there a strawberry plate with powdered sugar container? Never heard of one. \*

Two weeks ago Ted and I had the pleasure of representing the Bay State Heisey Collectors Club at a meeting at the Sandwich Glass Museum, at which I made the formal presentation of a 14-inch Hawthorne Beehive plate to the permanent collection of the Sandwich Museum. It is a gift to the Museum from the Bay State Club. I also called attention to the exhibit of Heisey which the Bay State Club has arranged at the Sandwich Museum. The exhibit incorporates most of the original Sandwich patterns, as well as examples of all the colors and some other interesting examples of Heisey. It is a very attractive display of "our" glass, which will be on exhibition until the end of the season, October 31.

- Helen Mead, Mass.

\* The item is listed as a strawberry and sugar plate or an individual cheese and cracker plate.

\* \* \* \* \*

On the front cover of the March, 1980, News pertaining to the Heisey advertisement, at the bottom it listed Heisey offices in five major cities.

Just for the heck of it, I addressed envelopes to each of the five offices and mailed them on March 20, 1980, to see what would happen.

Here are the results:

Returned: 3/26/80 Philadelphia, Pa. Forwarding  
 3/27/80 New York Order Expired,  
 No Such Number  
 3/28/80 Chicago, Ill. Addressee Unknown  
 3/31/80 Baltimore, Md. No Such Number  
 4/5/80 Boston, Mass. Address Unknown

At least I averaged a 100% return from the post office.

Thought you might like to share this interesting little tid-bit with fellow readers.

- Keith P. Bradbury, Ohio

## CLUB NOTES

## WESTERN RESERVE HEISEY STUDY CLUB

The Western Reserve Heisey Study Group held its February meeting at the lovely home of Mary Little in Lorain. Following the business meeting, Lynn Sellers presented a program on Panelled Cane and Punt and Diamond Point. Luncheon was served on Old Queen Ann plates. Members enjoyed Mary's outstanding collection of punch cups and animals.

The March meeting was held at the home of Lynn Sellers. The club was saddened by the death of one of its most devoted members, Betty Eglet of Westlake. The group is exploring various kinds of suitable memorials for Betty. Mary Little presented a most informative program on Heisey stems. The group was enthralled with Mrs. Sellers collection of Heisey candleholders. Convention plans were discussed. The May meeting will be held at the home of Fred Hopkins. The group plans to show the Heisey toothpick holders slides.

- Thelma L. Morningstar

\* \* \* \* \*

## GATEWAY HEISEY CLUB OF PITTSBURGH, PA.

Meredith Hogner was the perfect hostess for the Gateway Heisey Club in the "pot hole" capital of the world on April 12.

After snacks and small talk, Carlene Masson conducted the business meeting with 12 other members present, and Rick and Mary Ellen Stoll as guests. A discussion on the perpetual calendar ensued. Plans were made for Darlene Sanders to draw the designs, and then to have the printing done on this project. Edie Van Dyke is the chairman of the ways and means committee. Thoughts and ideas about the convention were expressed.

Money for a piece of furniture will be sent to the Heisey Museum in memory of Charles N. Reed. Refinishing furniture was one of Chuck's great loves. We will forever miss his warm smile, his quiet friendly way, his sly sense of humor and his great wisdom.

Everyone brought Pineapple & Fan pieces to aid Bob Cook with his program. We all have renewed appreciation of this pattern.

As in the past few years at the April meeting, Jack Masson surprised his wife with a special gift of Heisey for her birthday. A zircon crystal round ash tray, and a large crushed fruit jar were the hits of the show and tell portion of the evening.

The evening came to a close with great expectations for the Heisey events to come: including our next meeting on June 7 at Lokays.

- Phyllis Freier

\* \* \* \* \*

310 RING BAND - Formerly known as 1245, (which is an incorrect number and actually belongs to STAR & ZIPPER). Colors for 310 are Ivory and Ivorina Verde. Rarely in crystal and opal.

My husband & I both enjoyed the Show and Sale in Alexandria. Though I am sure you do not remember meeting me, I enjoyed talking to you about the possibility of starting a club in this area. As you suggested I am sending my name and telephone number to be put in Heisey News. If enough people in the Norfolk and Peninsula area are interested it might be fun to form a group. I learned a lot at the show and have been able to identify some of my pieces as far as patterns are concerned.

It was truly a pleasure to meet so many really fine people. I had never been to a show or a meeting of Heisey people, so did not know just what to expect. Maybe someday I'll get to Newark. Would certainly like to see the Museum.

For those interested in forming a Heisey Club in this area my name, address and phone number is as follows:

Mrs. Jessie C. Hopkins  
350 La Salle Ave.  
Hampton, Va. 23661  
Phone: Area Code 804 722-5568

If I find enough people are interested I'll write for guidelines for such a club.

Jessie Hopkins, Va.

\* \* \* \* \*

## REFERENCE BOOK UPDATE BY LOUISE REAM

3390 CARCASSONE stemware made in sahara, flamingo, crystal bowl moonbeam foot, alexandrite, cobalt and crystal. Sometimes marked.

3311 stem line was named VELVEDERE by Heisey. Unmarked.

3312 stemware was named GAYOSO by Heisey. Augusta is an etching on Gayoso. Made flamingo, and marigold. Plain, diamond or wide optic.

4090 COVENTRY stemware was made in zircon for a short time.

3324 DELAWARE stemware - Made flamingo, diamond optic and checker optic. Hawthorne, checker optic.

300½ PEERLESS is an extension of the 300 line. The tumblers were made flamingo and moonbeam.

848 BOTTICELLI was cut on both 4069 Ridgeleigh blown goblets and 3389 Duquesne stem line.

1089 cutting in Burns book, page 108, is actually 1003 IVY cutting, page 108.

1085 FORGET-ME-NOT cutting (Burns page 104) is from 1955. We're sure this was a misprint.

1503 CRYSTOLITE - The pressed tumbler on page 76 of the white book and page 78 of the Burns blue book is shown on page 43 of the 1937 reprint 212-17. It is the pressed goblet with this type of bowl which is considered rare.

## TRIVIA FROM THE TURN LEDGERS

by Neila Bredehoft

All of the following items were listed in the old ledgers. Whether we will ever be able to find anything more about them is doubtful. We'd love to hear from anyone having any ideas or information about any of them.

- June, 1923 - Dorothy Dodd bracket - 141 made  
 In 1913 - #1, 2, 3, & 4 (oval) stove plates  
 December, 1912 - #114 lens (possibly the locomotive lens, or possibly a headlight lens for automobiles)  
 November, 1912 - #338 #2 salt - what is pattern #338?  
 September 1925 - 394 dental receptacle  
 September, 1923 - #1316 10 oz. goblet, optic  
 November, 1912 - #1408 Getting sardine  
 December, 1912 - #1506 custard - certainly NOT our old familiar 1506 Whirlpool in 1912!  
 October, 1924 - #3356 H. F. (handled, footed) soda - 81 made, 1/2 optic  
 October, 1923 - #3358 8 oz. goblet, optic  
 May, 1925 - #3439 11 oz. goblet, also 10 oz. goblet, special  
 October, 1925 - #3500 bell  
 June, 1924 - #4168 oval jug "all bad" - I wonder if they ever made any good ones?  
 In 1925 - #8433 mustard

NOTE - Some of the unusual numbers not appearing to place in any known Heisey sequence may be for special order items. We have found this to be true for some items especially in the 1300 series.

\* \* \* \* \*

Please identify the piece of Heisey drawn here. It is moongleam and signed with a small diamond H.



7 1/2" including handles.  
 1 1/2" high. Marked.

We have not yet been able to determine the correct Heisey number for this piece. Mr. Vogel has assigned it #7024 and called it Decagon. It should be noted that it has 8 sides not 10 as implied by the name. It is found in moongleam and flamingo.

\* \* \* \* \*

SOLD OUT-

The gift shop is now sold out of the Rearing Colts in light blue.

## REMEMBER WHEN

The cart used by the one who carried the mail bags from the depot of the railroad to the post office and to carry the outgoing mail from the post office to the depot?

How 'napkin rings' were used at the table? Each member of the family had his own ring. These held your own napkin and you always rolled it up and placed it in the ring at the close of the meal.

The "Blue Plate" special in restaurants, usually only 35¢ for practically a meal?

The operator on the telephone was called "Central"?

When some of the sayings were "Whoopee!" "Oh, Yeah?". "So's your old man!", "How Do You Get That Way?", "Lil Lam's Lettuce" and "Hot Dog!"?

That on the fancy covers on the spare tires, many witty sayings were used in advertising as these were usually given free to motorists?

The spring shipment the drugstore got in to promote the sale of certain brands of toothpaste, a free goldfish with every tube, how all the kids wanted to take better care of their teeth till they got the goldfish?

An artificial wreath, with black ribbon was hung on the door of a home when some one died and was left until the funeral?

When the quarantine signs were always put up in the window if you had the more serious contagious diseases and none of your friends could come in to see you during that period of thirty days?

How housewives put colored paper in the bowl of the kerosene lamp to dress it up, and the color showed in the oil?

The canvas bags carried by many motorists to hold water to replenish a boiling radiator?

The "board" sidewalks that made lots of noise when you ran on them? It was fun to see who could be the loudest.

IF YOU DO, YOU ARE NOT AS YOUNG AS YOU USED TO BE

Reprinted from American Flint Magazine- a periodical for the glass workers.

\* \* \* \* \*

## REFERENCE BOOK UPDATE BY LOUISE REAM

The item on page 79 (Burns) bottom of page is the 3355 FAIRACRE pattern. Vase known in flamingo and moongleam.

5044 CONSTELLATION - Crystal and amber. Amber tumbler in Museum.

4054 CORONATION - Items known in screen optic in dawn.

6060 COUNTRY CLUB - Crystal, and lime-light and dawn spiral (screen) optic.

1245 STAR & ZIPPER - Crystal and emerald. Unmarked.

1430 ARISTOCRAT jars - Known flamingo, moongleam, cobalt and crystal. One low one in tangerine. Many beautiful cuttings on this item.

CLASSIFIED:

WANTED: #5040 Lariat stemware with #980 Moon-glo cut. I will buy 1 to 12 goblets, 1 to 8 sherbets, and any other pieces of above stemware that have four or more alike. Write JOANNA NILES, 4932 Briarwood Place, Dallas, Texas 75209.

FOR SALE - HEISEY BY IMPERIAL: Set of 3 Ultra Blue colts \$125.00, 78 HCA Oscar (pink) \$32.50, and various caramel slag animals. Call (614) 888-5543. Write to THOMAS TUTTLE, 1444 Bolenhill Ave., Columbus, Ohio 43229.

FOR SALE: #3389 Duquesne goblets (6), \$12.50 each; 1978 pink Oscar, \$32.50 (1); 1979 yellow Oscar, \$30.00 (3); KATHY MILLER, 93 N. 40th St., Apt. 3, Newark, OH 43055; 366-3741. Post-age \$1.00 extra.

WANTED: Buying Depression Glass, Heisey, Cambridge, Fostoria, Akro Agate, glass figurals and unusual glass "cuties". NADINE PANKOW, 207 S. Oakwood, Willow Springs, Ill 60480 Phone 312-839-5231.

WANTED: 1401 Empress moongleam punch cups plus 9 inch footed vases. (All marked and undecorated.) Also most Minerva Pressed Pattern Glass items esp. covers (esp. seven inch) and bases. JERRY BAKER, P. O. Box 13081, St. Petersburg, Florida, 33733.

WILL trade three orchid short stem water goblets for three sherbets. J. RIDENOUR, 3329 Tecumseh, Lansing MI 48906.

WANTED: Yeoman plates in hawthorne (optic preferred). TRADE/SALE: In flamingo: 8-8" plates (Twist), 6 cups/saucers (diamond optic), center-handled sandwich plate (Empress); in Hawthorne: goblets and saucer champagnes (optic, condition varies). 1-401-783-8651, 3-6 p. m.

WANTED: Heisey Orchid and Rose etch for resale and private collection. Please send price list to H. DREYER, 3512 Hanks St., Sacramento, CA 95827.

\* \* \* \* \*

NANCY JONES  
926 DOUGLASS DRIVE  
McLEAN, VIRGINIA 22101  
(703) 356-0206

WANTED TO BUY  
(1) #160 LOCKET ON CHAIN toothpick holders  
(2) Individual pieces or collections of toothpick holders, tangerine, cordials, wines, bar tumblers, and Orchid etch.

I would also appreciate being contacted if you are considering the sale of your Heisey collection. I am a serious Heisey collector interested in purchasing entire collections.

Thank you and Happy Heisey Hunting this summer!

STAN DE GROOTE  
7425 DEMOCRACY BLVD.  
BETHESDA, MD 20034

WANTED: SPANISH STEM 3404 COBALT  
8 oz. footed soda sherbet  
3 1/2 oz. oyster cocktail cordial  
4 oz. claret  
Mint only - Will buy or trade

Also interested in corresponding with Spanish Stem collectors.

\* \* \* \* \*

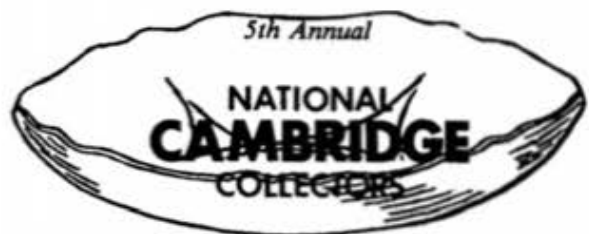
*The Degenhart Paperweight  
and Glass Museum, Inc.*



Opening May 31st  
Monday-Saturday 9-5  
Sunday 12-5

Located off I#77 at Cambridge Ohio St. Rd. #22  
(next to Tourist Info cabin)

Come visit us during the HCA Convention



**ANTIQUE SHOW & SALE**

(& 7th Annual HCA Convention)

**SHEKINDOAH INN**  
INTERSTATE 70 - EXIT 185 - 7 MILES EAST OF  
CAMBRIDGE, OHIO

**JUNE 27, 28, 29, 1980**

FRIDAY, JUNE 27th	8:00 - 9:00
(PREVIEW COMMISSION \$3.50)	
SATURDAY, JUNE 28th	11:00 - 8:00
SUNDAY, JUNE 29th	12:00 - 6:00
(ADMISSION \$1.75)	

OFFERING CAMBRIDGE AND OTHER FINE GLASSWARE  
ALONG WITH A DANIEL HANE OF ANTIQUES

**FOOD DOOR PRIZES PARKING**

**MAURICE & JEAN WALTER**  
 c/o Sir Speedy  
 431 MAIN ST.  
 WOBURN, MA 01801

Ph. 617-935-8238  
 After 6:30 245-2532 \*  
 P & I Extra  
 \* Marked

- 16 Puff jar with silver plate cover\*..\$ 22.50
- 300 5 oz. oyster cocktail with British Registry mark\*..... 10.00
- 353 5 compartment relish with tray \*... 18.00
- 353 12 oz. syrup with raised bottom.... 20.00
- 465 1/2 lb candy jar & cover \*..... 28.00
- 1184 13" Flamingo celery with Empress etch..... 20.00
- 1185 Handled sandwich plate with unknown cutting..... 20.00
- 1201 4" nappy..... 15.00
- 1255 punch bowl base..... 25.00
- 1425 8" plates (3).....ea... 8.00
- 1503 Console set, pr. of 3 lite sticks and 10" bowl..... 40.00
- 1540 Individual sugar and creamer..... 25.00
- 1540 3 coasters, the lot..... 11.00

FOR COMPLETE LIST

SEND S. A. S. E.

**GAYLE L. KAISER**  
 P. O. BOX 637  
 WHITEHALL, MT. 59759

Ph. (406) 287-3733  
 Signed Pieces

- \* 1. EMPRESS sahara 2" hi, ftd cocktail(9)..\$ 12.00
- \* 2. EMPRESS sahara, 8" plates (8)..... 10.00
- \* 3. IPSWICH, candelabra/vases/prisms....pr 175.00
- \* 4. SAWTOOTH BAND berry dishes (2) 4" dia 12.00
- \* 5. As above, small nicks on bottom (2)... 4.00
- \* 6. PURITAN sherbet, ftd., scalloped..... 12.50
- \* 7. ROCOCO nappy, 4 1/2" dia, small nicks on bottom..... 10.00
- \* 8. CRYSTOLITE tumblers 3 3/4" hi, 2 have tiny nicks on bottom..... 5 for..... 75.00
- \* 9. OLD SANDWICH sahara, water pitcher.... 175.00
- \* 10. OLD SANDWICH sahara, tumblers (3)..... 25.00
- \* 11. TWIST marigold ftd. wine..... 18.50
- \* 12. TWIST, marigold 6" plate, shows wear... 9.50
- \* 13. YEOMAN etched Frontenac flamingo grapefruit bowl 6 3/4"..... 17.50

Priced each unless indicated.

UPS Extra Money Order saves time.

PH (406) 287-3733

\* \* \* \* \*

**H & R DIAMOND H**

1450 WHITE ASH DR. COLUMBUS, OH 43204  
 (614) 279-0390 after 5:30

**ORCHID ETCH-ALL ITEMS**

- 2-134 2 lite candleholder .....pr.. \$ 55.00
- 2-142 3 lite candleholder.....pr.. 85.00
- 1-1401 EMPRESS 3 part rd. relish..... 45.00
- 1-1509 QUEEN ANN 7" oval div. dsg. bowl 32.50
- 9-1509 QUEEN ANN cup/saucer...per set.. 27.50
- 1-1519 WAVERLY violet vase..... 65.00
- 1-1519 WAVERLY 14" torte plate..... 55.00
- 1-1519 WAVERLY cream & sugar.....pr.. 45.00
- 1-1519 WAVERLY ind. cream & sugar...pr.. 55.00
- 8-1519 WAVERLY 7" salad plate.....ea.. 10.00
- 8-1519 WAVERLY 8" luncheon plate...ea.. 12.50
- 1-1540 LARIAT 7" vase..... 55.00
- 1-3484 10" pitcher..... 150.00
- 9-5025 TYROLEAN tall goblet.....ea.. 25.00
- 7-5025 TYROLEAN 4 oz. cocktail.....ea.. 30.00
- 12-5025 TYROLEAN short goblet.....ea.. 25.00
- 8-5025 TYROLEAN 12 oz. ice tea.....ea.. 25.00
- 1-5031 vinegar & oil bottle..... 70.00

Shipping & Insurance Extra

For list or wants -- SASE Please

\* \* \* \* \*

**SUM OF LIFE**

PO BOX 102  
 PHOENIXVILLE, PA 19460

Add 5% to all purchases for postage and insurance

- \* 1 #3416 BARBARA FRITCHIE cordial, alexandrite.....\$380.00
- \* 1 #352 FLAT PANEL lavender jar MOONGLEAM 1/2x1/2 clam chip on top, small chips on rim of top..... 200.00
- \* 1 #335 PRINCE OF WALES PLUMES tankard w/ gold flashing, 9"..... 80.00
- \* 1 #1235 BEADED PANEL/SUNBURST crackerjar. 110.00
- \* 1 #1205 FANCY LOOP cracker jar w/pewter top..... 120.00
- \* 6 #300 PEERLESS cordials.....ea.. 25.00
- \* Set #1280 WINGED SCROLL custard berry set 8" bowl, 6-4" nappies..... 340.00
- \* Set "Fortney" cobalt ponies - standing, sitting, kicking..... 150.00
- \* 4 PENN CHARTER parfais, hawthorne...ea.. 30.00
- \* 1 STANDING PONY crystal..... 140.00

MANY, MANY PATTERNS AND COLORS IN STOCK

Send SASE along with your statement of interest.

\* \* \*

**THE SLEEPING FOX**

P. O. BOX 583  
 LANSDALE, PA. 19446

PH. 1-215-855-2480  
 (After 7:30, Mon. & Wed.)  
 Postage & Insurance Extra

**CORDIALS:**

160	LOCKET ON CHAIN.....	\$115.00
300	PEERLESS.....	30.00
341	PURITAN.....	25.00
359	COLONIAL (narrow optic).....	35.00
363	COLONIAL.....	45.00
373	COLONIAL.....	25.00
3330	HANOVER, unk. cut.....	85.00
3333	OLD GLORY, unk. cut.....	40.00
3350	WABASH.....	20.00
3355	FAIRACRE, moongleam.....	130.00
5058	GOOSE.....	210.00

**GOBLETS:**

300	PEERLESS "Flamingo", luncheon...	75.00
433	GREEK KEY.....	75.00
1053	ZINZINNATI.....	40.00
3324	DELAWARE, hawthorne.....	50.00
3330	HANOVER.....	50.00
3331	STATUESQUE, gold filled etch....	40.00
3350	WABASH, "Flamingo".....	35.00
3360	PENN CHARTER, flamingo.....	45.00
3386	DIAMOND ROSE, "moongleam".....	60.00
3368	ALBEMARLE, marigold.....	70.00
7057	TRI KNOB, Trefoil etch.....	120.00

**WINES:**

150	WEDDING BAND.....	\$ 30.00
339	CONTINENTAL.....	35.00
351	PRISCILLA.....	30.00
393	NARROW FLUTE.....	30.00
1235	BEADED PANEL & SUNBURST.....	55.00
1485	SATURN, zircon.....	80.00
3308	BOB WHITE, Peacock etch.....	45.00
3309	PETITE.....	75.00
3312	GAYOSO, Monticello etch.....	20.00
3345	MARY N VIRG.....	110.00
3355	FAIRACRE, moongleam.....	25.00
3368	ALBEMARLE, Chateau cut.....	35.00
3370	AFRICAN, crystal.....	75.00
3380	OLD DOMINION, sahara, Empress et	40.00
3389	DUQUESNE, Old Colony etch.....	35.00
3389	DUQUESNE, sahara.....	40.00
3390	CARCASSONE, flamingo.....	65.00
3390	CARCASSONE, alexandrite.....	120.00
3397	GASCONY, cobalt.....	85.00
3418	SAVOY PLAZA.....	30.00
4002	AQUA CALIENTE, sahara.....	30.00
4083	STANHOPE, zircon.....	80.00
4091	KIMBERLY.....	35.00
5089	PRINCESS.....	30.00

\* \* \* \* \*

**JEAN & DON PARRETT**  
 4995 MAPLE DALE ROAD  
 JACKSON, MICH 49201

SHIPPING & INSURANCE EXTRA  
 517-784-7319 after 6:00 pm  
 R = Rare

**COBALT:**

1-3397	GASCONY 2½ oz. wine.....	\$ 90.00
1-3404	SPANISH stem 5½ oz champ.....	70.00
1-3404	SPANISH stem 10 oz goblet.....	85.00

**CUSTARD:**

1-1245	RING BAND toothpick.....	47.50
R-1-1280	WINGED SCROLL cup.....	100.00
R-1-1280	WINGED SCROLL 5½" saucer...	85.00

**TANGERINE:**

R-1-7"	dia. Coin optic Ball Vase	
	Dark Red side-Yeakley Color Book..	995.00

**MOONGLEAM:**

1-1252	TWIST hotel sugar.....	22.50
2-3357	KING ARTHUR champagne.....	15.00 ea
4-3355	FAIRACRE goblet.....	24.00 ea
2-1401	EMPRESS 8" sq. plate.....	12.50 ea
1-1401	EMPRESS 6" sq. plate.....	9.00
1-1401	EMPRESS 6" rd. plate.....	8.00

**SAHARA:**

1-1401	EMPRESS cruet.....	80.00
1-3389	DUQUESNE champagne.....	22.50
R-4-393	NARROW FLUTE nut cup.....	12.00 ea

**FLAMINGO:**

1-Pr.	OCTAGON ftd. salt & pepper....	24.00
1-500	OCTAGON frozen custard.....	5.00

**CRYSTAL:**

2-5038	ROOSTER TAIL cocktail.....	60.00 ea
1-1503	CRYSTOLITE cigaret lighter....	35.00
1-1467	RIDGELEIGH cruet.....	39.00.
R-4-355	QUATOR gr'd stem champagne...	17.50
1-4044	NEW ERA champagne.....	12.50
1-1951	CABOCHON goblet.....	15.00
R-2-818	FIFTH AVENUE goblet.....	20.00
1-3389	Orchid etch champagne.....	20.00
R-1-5089	PRINCESS 3 oz. wine.....	25.00
1-3411	MONTE CRISTO 3 oz. sherry.....	18.00
1-4044	NEW ERA goblet.....	15.00
2-4085	KOHINOOR 5 oz. parfait.....	8.00 ea
R-1 Pr-	ATHENA double candleholders	60.00 pr
R-1-	ATHENA 12½" floral bowl.....	50.00

ANTIQUES 'N' COLLECTABLES  
"HEISEY OUR SPECIALTY"

LYNNE



ART'S

GLASS-HOUSE  
INC.

P.O. BOX 54-6014  
MIAMI BEACH, FL 33154

*Dear Heisey Collector and Dealer,*

*We're heading your way! Heisey animals,  
lovely old patterns, and a rainbow of colors, will  
be coming along with us.*

*We'll be at the following shows.*

INDIANAPOLIS FAIRGROUNDS, JUNE 5-8

H.C.A. SHOW, NEWARK, OHIO JUNE 19-22

*While we are on the road, suggest a call to  
305-861-7700 or 305-895-5666.*

*See you soon,  
Lynne and Art*

Monthly Heisey column  
by Clarence Vogel!

*glass* REVIEW

80 PAGE ALL GLASS MAGAZINE  
since 1971

\$9.50 per year - 12 Issues  
Or, recent sample - \$1

The GLASS REVIEW is a handy 8½" x 5½" monthly magazine devoted to "Keeping Glass Collectors Informed" on both old & new glass. Printed on glossy stock and filled with large, clear photos, articles by nationally respected authors and writers, price reports, trends, research and reproduction information, previously unpublished catalog reprints, reviews of the latest glass books (and where to buy them), Questions & Answers, trademark info, large variety of glass ads on both old and new glass, up-to-date happenings in glass and MORE!

Enclose payment; send to: GLASS REVIEW,  
P.O. Box 2315, Costa Mesa, CA 92626.

HEISEY'S  
GLASSWARE of DISTINCTION

by Mary Louise Burns

COMPLETELY REVISED!

Now includes additional patterns, new illustrations, many new listings and is now perfect bound for sturdiness!

This comprehensive reference book is not a catalog reprint but a collection of all major patterns of tableware, stemware, cuttings, etchings, animals and Verlys produced through Heisey's 60 years of glassmaking.



Details of each pattern clearly shown by photo or illustrations for easy identification. Two indexes for easy reference: one by pattern name and one by pattern number.

All this for only \$11.95 pp.

ALSO NEW: Completely revised price guide supplement to the above, listing each item and UPDATED price trends. Patterns are listed alphabetically for easy reference. Only \$5.95 pp!


"ORDER NOW" Send check or money order to:  
MARY LOUISE BURNS

P.O. Box 1931  
Grants Pass, Or 97526

6 Books or more 40%

## Dealers Directory

5 Lines - \$6.00/6 issues

MOSTLY  HEISEY

RHODA CURLEY  
16 CLAYTON PLACE  
ALBANY, NEW YORK 12209  
By Appointment 518/482-8272

## Goldsberry's Antiques

KALAMAZOO, MICHIGAN  
SHOWS ONLY — BUY & SELL  
HEISEY A SPECIALTY  
PHONE: (616) 381-3013

## Schwan's Antiques

DICK & LEE SCHWAN  
208 OXFORD ROAD  
WILLIAMSBURG, VA 23185  
(804)229-7873 SHOWS & APPT.

## LAST CHANCE ANTIQUES

62 N. FEDERAL Hwy, DANIA, FL 33004  
(Between Miami & Ft. Lauderdale)  
Large Heisey Inventory & other Glass  
MAIL ORDERS (305)467-6356 (home)

## Antiques

BOB SHULTZ BOUGHT  
SOLD  
206-208 E. MAIN ST., ROUTE # 419  
NEWMANSTOWN, PA. 17073  
15 MI. WEST OF READING, PA.  
PHONE 215 589-2819

## GREEN ACRES FARM

ANTIQUES, CRYSTAL GLASS & COLLECTIBLES  
Saturday & Sunday P.M. or Call (614)827-1882  
2670 HAZELTON ETNA RD., S.W.  
S.R. 310 N. PATASKALA, OH 43082

## Bert's Budget Shop

403 W. MAIN ST., NEWARK, OHIO 43055  
PHONE: (614) 349-8045  
General line Antiques

## The Wooden Shoe

ANTIQUES & COLLECTIBLES — BUY & SELL  
GLASS, FURNITURE, ESTATES  
JIM & SHERI VANES BY APPT  
HERNDON, VA 22070-PH: 438-8048

## Curiosity Nook

"WHERE FRIENDS MEET TO ANTIQUE"  
3300 S. 8th Ave. Westward Village  
Yuma, Ar. 85364-(602)726-6730 or 726-8070  
BARNEY & JODY BARNICLE

## ACCENT ANTIQUES OF KENSINGTON

Curio Corner  
3742 HOWARD AVE.  
KENSINGTON, MD 20798  
PH: (301)833-3780

## ANTIQUES &amp; COLLECTIBLES



## Olde Loved Things

Deris "Ed" Lacroix - Donald Mousseau  
900 Ridgewood Avenue (Holly Hill)  
DAYTONA BEACH, FL 32017  
HEISEY, Cambridge, Mail order/(904)252-7960

## OFF-BROADWAY ANTIQUES

121 S Prospect St., Granville, oh 43023  
Open 7 days a week 12-5 PM  
Shop(614)587-2083-Sam 587-0052  
HEISEY GLASS & GENERAL ANTIQUES

## Lynne &amp; Art's Glass House, Inc.

"HEISEY OUR SPECIALTY"  
P.O. BOX 54-6014 - MIAMI BEACH, FL 33154  
(305)861-7700 - (305)895-5666

## Heisey Heaven &amp; other collectables

Box 78 Rt. #1  
MANSFIELD, IL 61854  
(217) 489-4071  
Hours: 1-5 Daily

## WICKFORD ANTIQUE ARCADE

RON & BEV. WOOD Booths 6 & 7  
650 TEN ROD RD., N. KINGSTOWN, R.I. 02852  
Heisey - Primitives - Glass - Etc.  
Home Phone: (401) 295-0823



## Diamond H Plus

GEORGE & EILEEN SCHAMEL  
Route 3, Box 419  
Boonsboro, Md. 21713  
Appointment or Mail Order  
Phone 301-432-6285

## Hooster Heritage Antiques

Marcel and Tom Zehr  
4005 SOUTH WAYNE AVENUE  
FORT WAYNE, INDIANA 46807  
(219) 745-4173

## HEIDI-HO ANTIQUES, INC.

838 S. HIGH ST., COLUMBUS, OH. 43206  
PHONE (614) 444-5774  
HEISEY and GENERAL ANTIQUES  
HOURS: WED. thru SAT. 11-5 SUN. 1-5

## The Connecticut Yankee



## "HEISEY OUR SPECIALTY"

707 S. Washington  
Route 2, Box 315  
Fredericksburg, TX 78624

## Charles &amp; Mildred Fisher

Antiques & Collectibles, General Line  
HEISEY, DEGENHART, IMPERIAL  
991 IDLEWILDE, NEWARK, OH 43055  
PHONE : (614) 522 - 8398

## Eagles Rest Antiques

CHINA HEISEY GLASSWARE  
BOUGHT and SOLD  
62 FIELD POINT RD., HEATH, OH 43055  
By Chance or Phone: (614)522-2035



## sum of life

elaine and frank hufted  
p.o. box 107,  
phoenixville, pa. 19460  
(715) 935-2962

## The "FINDERS" ANTIQUES

David & Shirley Rose  
513 E. Main Street  
Newark, Oh. 43055  
Phone (614) 349-7934

## Moundbuilders Antiques

IRENE RAUCK  
1138 MOUNDVIEW, NEWARK, OH 43055  
PHONE: (614) 344 - 8043  
HEISEY & ANIMALS/GEN. ANTIQUES


## Happy Haven Antiques

MARY DUMKE  
14319 Rattlesnake Road  
Grass Valley, CA 95945  
Phone: (916) 273-9450

## Charles A. Shaw

Glenwood Gardens-Rip Van Winkle  
Yonkers, NY 10701 - 914-476-5175



Shows & Mail Order  
American Glass 

## The Sleeping Fox

EVELYN & JAMES JORDAN  
P.O. BOX 883  
LANSDALE, PA 19446  
PHONE: (215) 855 - 2480

## George Hoffman Antiques

G.W. HOFFMAN - J.H. DENNIS  
129 SOUTH 4TH STREET  
NEWARK, OH 43055  
PH: (614) 345 8021



## NINTH ANNUAL CONVENTION

JUNE 19-20-21-22, 1980

OSU BRANCH CAMPUS  
COUNTRY CLUB DRIVE  
NEWARK, OHIO

DISPLAY: HOPEWELL HALL

SHOW: ADENA HALL

### CALENDAR OF EVENTS

#### THURSDAY, JUNE 19, 1980

1. REGISTRATION: EVERYONE MUST REGISTER. Packets can be picked up at 9:00 AM at OSU Branch, Hopewell Hall when the display will open with attendants present to answer your questions. Remember that registration badges are required for all events; they permit unlimited admission to Show and Display and to all free activities. Children under 12 will be admitted free except where food is served.  
ATTENTION: OSCARS will be available only at the show (Adena Hall) starting at 9:00 AM
2. REGISTRATION: OSU Branch from 9:00 AM to 8:00 PM.
3. ANTIQUE SHOW: Open from 12:00 Noon to 8:00 PM at Adena Hall, OSU Branch.
4. DISPLAY: Open from 9:00 AM to 8:00 PM at Hopewell Hall.
5. CAUCUS: Sheraton Inn for HCA members only, 8:30 PM to 11:30 PM. A trading post for Heisey Glass will be set up. Bring your duplicates or other Heisey to trade for Heisey of your choice. Each family will be permitted a maximum of 12 items on the table at any one time. These items will be FOR TRADE ONLY. Absolutely no money will be involved in the exchange. YOU WILL NOT BE ADMITTED WITHOUT YOUR BADGE.

#### FRIDAY, JUNE 20, 1980

1. REGISTRATION: Sheraton Inn 8:00 AM to 11:00 AM.
2. THE GREAT DEBATE: Sheraton Inn from 8:30 AM to 11:00 AM. Bring your "finds" and questionable Heisey to have identified. A panel of knowledgeable individuals will be on hand to assist. Continental breakfast will be served. Introduction of Candidates for Board of Directors.
3. REGISTRATION: HCA Booth at Adena Hall from 12:00 PM to 5:00 PM.
4. ANTIQUE SHOW: Open from 12:00 PM to 5:00 PM at OSU Branch.
5. DISPLAY: Open from 12:00 PM to 5:00 PM at OSU Branch.



# Granville, Ohio's Land of Legend 8th Annual SHOW & FLEA MARKET

GRANVILLE HIGH SCHOOL --RT. 661 N

THURS., JUNE 19, 9a.m.-8p.m.

FRI., JUNE 20, 10a.m.-8p.m.

SAT., JUNE 21, 10a.m.-4p.m.

OVER 35 DEALERS including Virgil Harp (repairing glassware)  
Clarence Vogel (author of Heisey books)  
Glassware, China, Brass, Furniture, Copper, Iron, Crafts, Primitives, Books,  
Pottery, lots of misc. (over 1,000 pieces of Heisey to be offered for sale).

HOME COOKED FOOD

FREE ADMISSION

PLENTY OF PARKING

Inside and outside dealers

For info:

MRS. BETTY MORRISON

127 E. Elm st., Granville, Ohio 43023

No reservations needed for outside space

ph: (614) 587-1062 or 349-7934

Sponsors: GRANVILLE ATHLETIC BOOSTERS



**FIRST-CLASS MAIL**

FIRST CLASS MAIL  
U.S. POSTAGE  
PAID  
PERMIT 34  
Reynoldsburg, Ohio 43068

MUSEUM HOURS ARE NOW open daily from 1-4 p.m. except Monday and holidays