

HEISEY

news

OFFICIAL PUBLICATION HEISEY COLLECTORS OF AMERICA

©Heisey Collectors of America, Inc. 1979
All Rights Reserved

Vol. VIII, No. 11 NOVEMBER, 1979

ONE DOLLAR



NO. 3-000-CANDELABRUM
3 LIGHTS, 3 ARMS
WITH CENTER BOWTIE
AND "H" FINISH
HEIGHT 20 1/2 IN. SPREAD 14 IN.

- NO. 000-3 LIGHT CANDELABRUM WITH
CENTER BOWTIE
CONSISTS OF
- 1 POLISHED BASE
 - 1 NO. 00 PEARL
 - 1 NO. 00 BOWTIE
 - 1 NO. 000 LIGHT ARM
 - 24 "A" OR "B" PRISMS
 - 2 NO. 00 PRISMS
 - 2 NO. 00 BOWTIES
 - 2 NO. 000 CRYSTAL BELLGARS

#300 — 3-Light CANDELABRUM
See: Dates to Remember on page 17

ADVERTISERS - PLEASE TAKE NOTE!!!

In the future DISPLAY ADS MUST BE LIMITED TO:

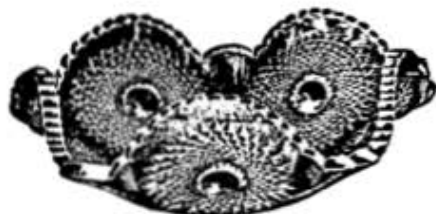
Full Page	50 lines, 102 spaces
Half Page	20 lines, 102 spaces
Fourth Page	20 lines, 45 spaces
Eighth Page	9 lines, 45 spaces

While preparing camera-ready copy we must ask our advertisers to read closely the above restrictions. Each character on a typewriter including periods, commas and spaces must be counted in the length of line. In eighth and quarter page ads if you require more than 45 spaces you must allow an additional line in your ad or consider taking a half page ad which allows up to 102 characters per line. If descriptions are kept to a minimum, unnecessary catalog references and other extra wordage eliminated most of you should be able to get approximately the same number of items in ads which you have been accustomed. The above lines permit 4 lines for name, address, and phone numbers, and one line for extra words, such as postage and insurance.

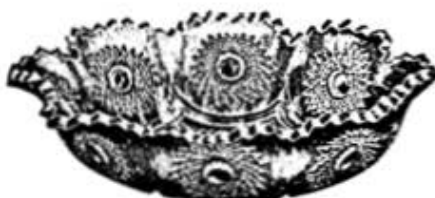
If your ad is too long we will list only the items which fit in, using the order listed--others will be dropped.

We are sorry this makes more work for you in preparing your ads, but typewriters are much less versatile than typesetting. Please bear with us. Your help is greatly appreciated.

Send future ads to: Neila Bredehoft, Ads
Box 27
Newark, OH 43055



4 1/4 IN. NAPPY SQUARE



4 1/4 IN. NAPPY, FLARED

343

HEISEY NEWS - - - P.O. BOX 27 - - - NEWARK, OHIO 43055

EDITOR - LOUISE REAM, 1115 W. Main St., Newark, OH 43055
ASS'T. EDITOR - NEILA BREDEHOFT, Box 27, Newark, OH 43055
PUBLISHED MONTHLY - \$10.00/year - \$1.00/copy
BACK ISSUES AVAILABLE AT \$8.00/year - \$1.00/copy

PRESIDENT	LOUISE REAM	(614) 344-2377
VICE PRESIDENT	JACK METCALF	(614) 892-2664
SECRETARY	MARY McWILLIAMS	(614) 345-4380
TREASURER	LOREN YEAKLEY	(614) 522-5820

Heisey Collectors of America, Inc. is a non-profit corporation with tax exempt status. Owners and operators of National Heisey Glass Museum, 6th and Church Streets, Newark, Ohio. Open Daily 1-4 p.m., April through October except Monday and Holidays, November through March, Wednesday, Saturday, Sunday 1-4 p.m. Members admitted free.

Phone: (614) 345-2832. Club membership (includes 12 issues of Heisey News and participation in all club activities) \$10.00/Year plus \$1.00 each for additional family members in same household who wish a membership card. For voting membership add \$25.00, one time only fee, or write for information.

For Membership - HCA Membership, Box 27, Newark, OH 43055. Notify immediately of any change of address.

The opinions expressed in articles in Heisey News are those of the authors and not necessarily those of the organization. The Editorial Staff reserves the right to edit or refuse any material submitted for publication. When requesting information, please enclose a self addressed stamped envelope (SASE).

ADVERTISING - Send all ads to:
Neila Bredehoft, Advertising
Box 27
Newark, OH 43055

DEALER DIRECTOR ADVERTISING RATES - 5 line \$6.00/6 issues

CLASSIFIED ADVERTISING - 5¢/word - \$1.00 Minimum. We cannot mix type sizes in Classified Ads. Abbreviations and initials count as words.

DISPLAY ADVERTISING	RATES	MEMBER	NON-MEMBER
	1/8 Page	\$ 8.00	\$15.00
	1/4 Page	\$15.00	\$25.00
	1/2 Page	\$25.00	\$40.00
	Full Page	\$45.00	\$60.00

PAYMENT IN FULL MUST ACCOMPANY ALL ADS.

Advertising copy reaching us by the 5th of the month will be in the next month's issue. Advertisements containing reproductions will not knowingly be accepted unless clearly stated (i.e. Heisey by Imperial, etc.) Heisey News assumes no responsibility for false advertising or misleading information. In the event of typographical error, the incorrect portion of the ad will be run in the following issue, but Heisey News assumes no further liability.

Send all letters and articles to be published to the Editor. Letters to columnists should be sent to the club address and will be forwarded.

Thanksgiving good wishes to all of you! We hope you have a wonderful family day.

As I write this on October 12 I don't know whether it will reach you before Thanksgiving or not. But it should.

Things have been quiet in Heiseyland. The committee for the questionnaire has been working by mail. It will take some time for them to get it ready as each committee member will be making suggestions. When the results of the survey are all in and analyzed, recommendations will go to the by-laws committee for further action. In fairness to all voting members, by-laws changes, (if any), should be voted on at the Convention when over half of the voting members are always present. When you get your questionnaires please return them quickly.

Starting on October 7 and lasting until October 21 the "Master Glass of Two Eras" display was in our Museum. The contemporary glass was presented by six members of the Ohio Designer Craftsmen and many of the pieces were very lovely. Not as many central Ohio HCA members responded to the Licking County Art Association's invitation as we had hoped. Their invitation to the preview and cocktail party which they held in our board room was mailed very late and many people probably already had plans for the evening.

Most people who came actually seemed more entranced by the beautiful Museum and the Heisey glass than they were with the contemporary glass. We probably will get new members as a result.

The slide lecture on October 7, by Christopher Ries was very good and you will be hearing more about him in the future. Dick Marsh talked about Heisey glass. Ries gave a slide history of glass from the beginning and Dick provided the tie-in between 1896 and the closing of the Heisey factory.

Neila Bredehoff has been a great help to me in typing copy and is now the advertising manager as well. Virginia Yeakley had handled this job since February of 1973 in a very capable way. She now works full time and felt she could no longer take care of this. Like several others of us, Loren and Virginia have given large parts of their lives to HCA and the Museum. The recent unwarranted criticism has disenchanted them as it has some others. If people away from here visualize hundreds, or even dozens, of local people helping out with the Museum and other work here they are dreaming - because it is not that way. We do well to have enough guides in the Museum and extra guides for tours. We mostly have to depend on retired persons.

Russ is improving greatly from his illness and we again thank you for your concern about us both. I am fine now.

We regret the recent problems we have had with our ads and we are still striving for a firm date for the newsletter to be mailed.

Don't forget the Christmas Party on December 8. See page 23 of the October issue for the reservation form. We plan to have an interesting program for you. The Museum will be open afterward for refreshments and for you to see the decorations.

As I write, Imperial Corporation is in its 7th week of a strike and we have not received the rest of our shipment of balking colts. We are already sold out of the first shipment. We are also out of pink, yellow, and plain blue bells, all of which are on order. We still have a few kicking colts and plenty of standing colts to fill your orders. We don't know whether the strike will end in time for us to get the first mallard for our December meeting but we will keep you informed.

Be sure to bring your glass for the auction if you come to the dinner. See Chauncey Delaney's article in the issue for the rules.

We've heard of the snow in other areas. We still have had none and the leaves are still green on the trees.

Bill Boland is not the president of Heisey Heritage Society but is the editor of Diamond Dust. Bob D'onofrio is president.

I forgot to mention last month the winners of the HHS raffle during Convention. Chris and Chris Maskaleris took the very rare tangerine Portsmouth goblet back to Maryland. The Empress alexandrite plate went to Mary Cunningham; four Gascony cobalt wines to Virginia Yeakley; Buxton Inn stem to Jack Swetnam; 2 New Era goblets, Ann Bumpus, four Imperial Old Williamsburg wines in different colors to and "An Encyclopedia of Duncan Glass" donated by author Gail Krause was won by Mrs. Dan Guillory, LA. The raffle netted \$1000.00 for the Museum.

We hope to see a lot of you at the Christmas dinner. We know cold and snow seem to always conspire to keep you away. Maybe not this time. Till then,

Happy Collecting,

Louise Ream

SEND IN YOUR DUES

It isn't too early to send in your Nov. & Dec. dues. You can help if you mail your money in early. Presently over 600 reminder cards need to be mailed out in December.

Help the Club save postage and help me to take the load off December! Thanks.

-Debbie Delaney, Membership

REFERENCE BOOK UPDATE

1511 TOUJOURS - Seldom marked. Seen most often with Minuet etch. Cream & sugar usually marked. Crystal only.

1447 ROCOCO was made in crystal, sahara, cobalt and zircon (limelight). Very rare in cobalt. The 1447 footed cheese compote was used as a center for many patterns of torse plates to make a snack set. L. R.

HEISEY DECORATIONS

- # 442 DIANA Double Plate Etching
- # 445 TROJAN Double Plate Etching
- #9008 SEA NYMPH* Double Plate Etching

442 DIANA
Double Plate Etching

by NEILA BREDEHOFT

This month we have three very pretty etchings all done in the Cameo double plate manner. The double plate etchings are some of the most elaborate and yet most delicate in appearance of any of the Heisey etchings. All are great favorites of mine. We have already discussed 413 Renaissance, 439 Pied Piper, and 503 Minuet so the three this time will complete the series.

Diana, 442, was introduced in 1925 with quite a lot of fanfare and an ad which showed its beauty to best advantage. It must have been a popular etching since it was listed in price lists until 1937. It was available in crystal and crystal with moongleam feet. Since writing our book it has also been found in all flamingo. Most items will be unmarked but the King Arthur stemware may be marked although the mark is often faint or obscured.

The ad featuring the Diana etched goblet stated, "The New Diana Goblet--Replete in the charm of the Jacobean period it is embellished in a beautiful two-tone etching featuring the exploits of the famous allegorical Heroine Diana." The medallions are joined by a very elaborate border and feature five different designs although not all pieces have all five designs. The goblet, for instance, has only three. The designs are two poses of Diana, both with her bow and rather scantily dressed in a flowing drape; one stag with head upraised; and two poses of dogs, one sniffing the ground and the other either lying down or leaping, it is difficult to tell which.

- Diana is found on:
- 3357 KING ARTHUR stemware
 - 2351, 2401 sodas
 - 2930 PLAIN & FANCY tumbler
 - 3350 WABASH pressed plate
 - 3480 KOORS soda & jug
 - 3481 GLENFORD tumbler & ice tea
 - 4164 jug
 - 4182 plate

Please add Flamingo to the colors listed in your books.

Trojan, 445, was introduced circa 1928 and discontinued by 1938. It was available in crystal, flamingo & crystal bowl moongleam stem. Also add that it was available in marigold bowl, crystal stem on 3368 Albemarle stemware! This array would make an attractive display for a



There are 5 different Cameos of Diana etching: 1 stag, 2 poses of dogs, and 2 poses of Diana.



Illustrations from "Encyclopedia of Heisey Glassware, Etchings and Carvings", by Ream & Bredehoft.

collector to have an example of each color.

Trojan has three basic cameos. First, a gladiator armed with sword and shield, apparently the "Trojan"; a person holding a goblet aloft;

and a person in long robes standing beside a brazier - possibly a fortune teller or simply a person warming his hands. The cameos are in squares with chamfered corners rather than the usual circles or ovals. The border is less ornate than that of Diana and most ornamentation appears beneath the cameos. This involved motif contains grapes in its design, appropriate since most Trojan appears only on drinking vessels.

Trojan is found on:

- 3366 TROJAN stemware
- 3368 ALBEMARLE stemware
- 3350 WABASH plate, pressed
- 3380 finger bowl
- 4182 plates

Please add to your etching lists:

3366 TROJAN - 4 oz. claret; 1½ oz. bar, footed; 7 in. comport; the size of the cordial is 1 oz. and the original number of the finger bowl is 3309.

3368 ALBEMARLE - stems available with marigold bowl, crystal stem.

3386 DIAMOND ROSE - 12 oz. Pilsner - what a super piece this would be!

Sea Nymph*, which we named and gave a reference number of 9008, has not been found in price lists or catalogs. It's documentation rests solely on the fact that several former Heisey employees remember it as being a Heisey product and that pieces of it have come from former employees. They referred to it as Neptune, quite an apt name and one which we used until we found that Heisey had used Neptune for etching #155. To avoid confusion we renamed it.

Sea Nymph also has three medallions - a sea god riding a seahorse (Neptune), a water nymph blowing pipes, and a mermaid seated on a wave. A collector is fortunate to have even one piece of this etching in his collection.

It was probably produced circa 1927. Since we can only document items we have seen the list is probably inaccurate, however here it is:

3365 RAMSHORN - 3 oz. cocktail, crystal. Please note that it comes on plain stemware with NO OPTIC - although usually this stem line has a broad swirl optic it was also made PLAIN.

4182 - 8 in. plate, crystal & moongleam. A flamingo plate can now be documented as some jewelry was seen in this color - an unfortunate fate for a rare piece unless it was badly damaged.



3365



3366



445 TROJAN
Double Plate Etching



3368



"Sea Nymph"

NOTE: Please add to your etching lists:
497 ROSALIE-1509 1 light Candelabra. (Queen Ann)
458 OLYMPIAD-134 Trident candlestick-recently reported by a fortunate collector.

➤ **HEISEY BASKETS #458, #461, and #462**

by **JOSEPH D. LOKAY**

The three Heisey baskets numbers 458, 461 and 462 are of the same design except for two special features. They are (1) a horizontal incised line around the outside surface of the basket body near the top edge and (2) the tent shaped series of vertical incised lines on the outside surfaces of the basket body at the bottom. Note the pictures of the three baskets with this article. Basket 458 has only the tent shaped vertical lines, basket 461 has both the single horizontal line and the tent shaped vertical lines and basket 462 has neither the horizontal line or vertical lines.

Baskets 458 and 462 came in only one size, 8 inches and basket 461 came in only one size, 7 inches. The basket bodies are six sided with 2 long sides opposite each other and 4 short sides in two pairs opposite each other. The handle is connected to the basket body at the centers of the 2 long sides. Two dimensions come to mind when looking at the six sided basket opening; the widest dimension and the shortest dimension, namely, the distance between the handles. The catalog size dimension for the baskets of 7 or 8 inches refers to the widest dimension across the basket opening.

Lets look at all the basket dimensions. For basket 461 (7" size), the widest dimension of the basket opening is 7", the distance between the handle is 5", the height

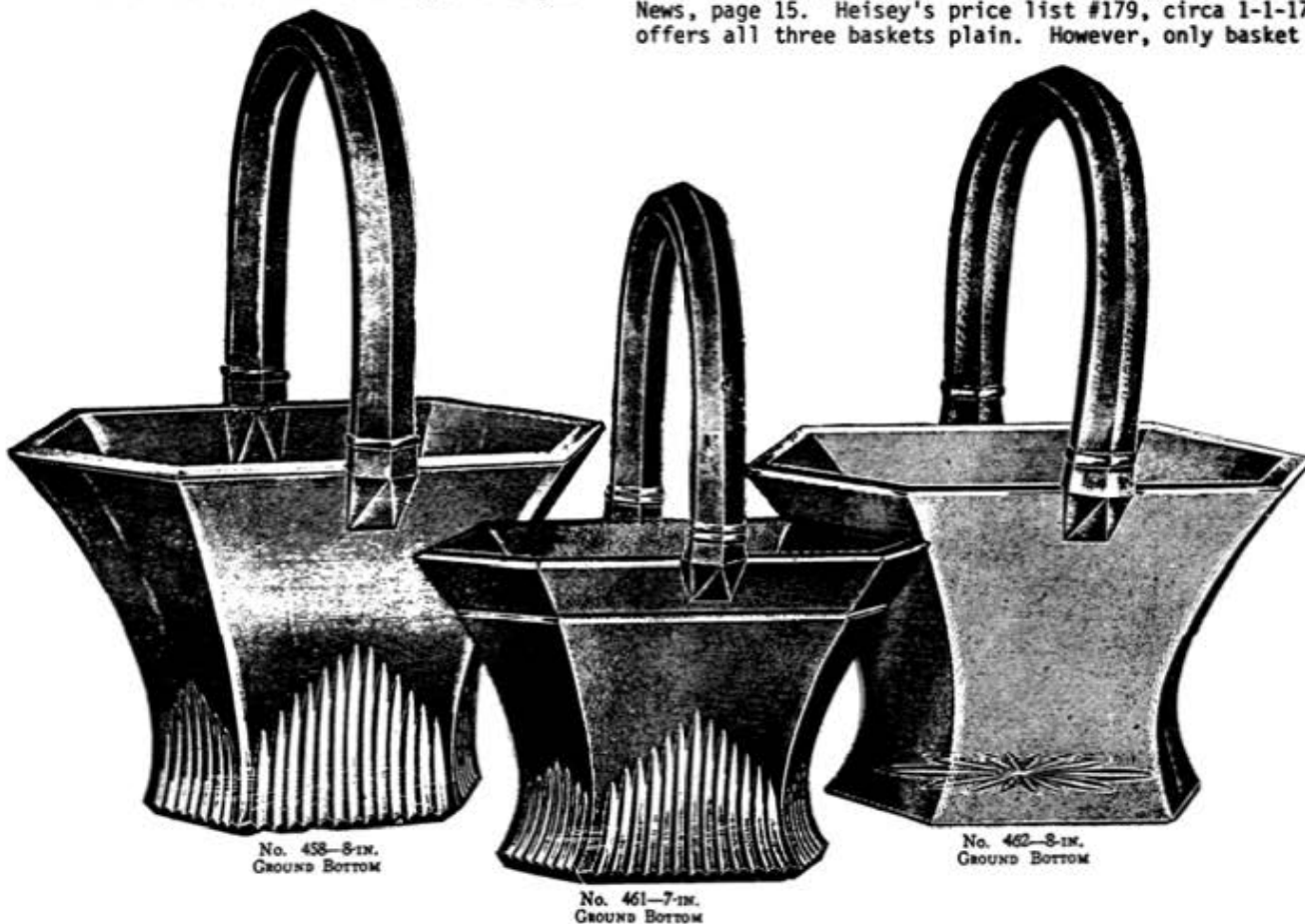
of the basket proper is 4½", and the overall height is 9". For baskets 458 and 462 (8" size), the widest dimension of the basket opening is 8", the distance between the handles is 6", the height of the basket proper is 5", and the overall height is 10½".

All three baskets have ground bottoms that contain the typical Heisey star. They are signed with a large Diamond H in the center of the bottom on the inside.

Production of basket 458 started in about 1914. Production of baskets 461 and 462 started about two years later in about 1916. Heisey price list #179, circa 1-1-17, is the first reference to contain all three baskets. The last reference I have to the baskets is price list #209, circa 9-1-29. Thus, I estimate that production of the three baskets ended in about 1932, giving a production period of about 18 years for the three baskets.

Baskets 458 and 462 were made in crystal only. Basket 461 was made in crystal, flamingo, moon- gleam and hawthorne. One in hawthorne is currently on display in the HCA museum. A Flamingo 461 basket is shown in Yeakley's color book II. The color supplement to price list #209, circa 1929, lists the 461 7" basket in flamingo and moon- gleam. The other two baskets are not listed in the color supplement.

The plain, flat surfaces of these three baskets were ideal for cuttings, etchings or other kind of decorations. The 1917-18 catalog of the Lewis & Neblett Company entitled "American Cut Glass" pictures baskets 458 and 462 with one of their cuttings on them. That catalog page is reproduced in the May 1976 Heisey News, page 15. Heisey's price list #179, circa 1-1-17, offers all three baskets plain. However, only basket



458 is offered with Heisey cuttings 602, 603, 604, 606 and 607 or Heisey etchings 343, 350 and 350/1. Heisey's booklet "Table Glass and How To Use It", circa 1916, pictures two 458 baskets, one with cutting #603 and one with etching 350/1. These two baskets are shown in the April 1974 Heisey News, page 11. The 693 Cloister cutting was later put on basket 458. The 698 Hyde Park* cutting was put on basket 461 and the 679 Windsor and 693 Cloister cuttings were put on basket 462.

Heisey's Arctic etch #9009 was placed on basket 461 in 1932. I found no other reference to Heisey etchings on baskets 461 and 462. I have seen baskets 461 and 462 with someone else's cuttings on them and I have seen basket 458 with enamel decorations on it.

Prior to production of the three baskets, stock number 461 was used for Heisey's Convex Circle pattern (Heisey News, June 1973) and stock number 462 was used for the Nail pattern (Heisey News, December 1975).



No. 462. 8-inch Basket.



No. 458. 8-inch Basket.

These cuttings were done by Lewis and Neblett, a cutting company in Cincinnati, Ohio.



HELP!

THEME NEEDED FOR 1980

It's time again to start thinking and planning for the 1980 National Heisey Convention. The task that we have facing us right now is deciding on a theme. Once that we have this, we will have a goal to work toward and be able to make more definite plans. We would like to get some ideas from our membership. Any suggestions that you have for a theme, please send them to "Convention Theme, Box 27, Newark, OH 43055". I hope that we will be able to come up with a nice prize for the theme selected and present it at the banquet. Please give this some thought and let's hear from you as soon as possible.

Bob McClain
Convention Chairman

WHAT CAN YOU DONATE TO THE MUSEUM???

Many times we have been asked what we need for the museum. If you have something which you would like to give just write and ask us if we need it. We have a very nice collection of cruets on display but we only own one or two and the same with toothpicks.

We would be glad to have stems, preferably goblets, in most cuttings and etchings. Since we do own some it is best to write to us before you send them.

The museum does not own many candlesticks, nut cups or salt dips. We do have all of the Fandango, clear Fancy Loop, Puritan and Orchid etch that we need unless the items are very unusual.

Direct your letters to Dick Marsh, Museum Committee Chairman, Box 27, Newark, OH 43055.

CORRECTIONS TO INDEX

This index is for sale in the museum and is item 23 on your list of publications, put out for HCA by the Dayton Area Club.

Under 1632 Satellite, add LODESTAR. Both have the same number with Satellite being crystal and Lodestar being in Dawn. The 1956 catalog lists them both under 1632. There are also four items of 1626 in Lodestar. Under the word Lodestar in the alphabetical listing add 1632.

Many people have been confused by the Heisey Thistle tumbler thinking it is the same as 435 Juniper which is pictured in Vogel 4 page 164 and is also shown in one of our catalogs. They are definitely not the same. The pattern 8003 Heisey Thistle was named and numbered by HCA and to date has not been shown in any publication nor appeared in any Heisey catalog we've seen, but has been pictured in Heisey News, Vol. II, No. 8, Pg. 8. It is a poor picture but you can see the difference in the two tumblers. The bands are entirely different and the one has a flower-like design while the other has definite thistles. HCA named it Heisey Thistle, adding "Heisey" to differentiate from other companies thistle patterns. Both tumblers may be seen in the museum. In your alphabetical listing in your index, under Thistle cross out 435 *. In the numerical index cross out the word thistle beside 435 and add the word Juniper. In the alphabetical index add Heisey Thistle. In the numerical index beside 8003 add Heisey to the word Thistle.

This seems like a lot of trouble for one small tumbler but it is a rare one and anyway we want to be as accurate as we can be. Making this index was a big job and was very well done. Few people would have the time or patience. L. R.

* See Heisey News, Vol. V, #11, p. 7 for Juniper pattern. Vol. II, #8, p. 8 for Heisey Thistle.

4 HEISEY HUNTER HAPPENINGS

by BOB RYAN

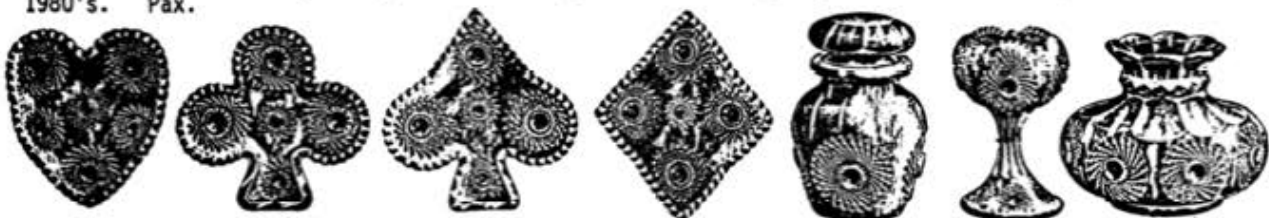
As you read this you have either consumed the "ole bird" or are about to as Thanksgiving will be coming next month about the time that this issue reaches you. It is an amazing thing that the "NEWS" gets out with all the illness and other work that seems to fall on single shoulders, but then, that's the way it is. Summer was very short indeed. We didn't get everywhere we wanted to go but we did spend a very lovely two weeks seeing Ontario. I mean, we saw Ontario. Toronto at the moment has to be my favorite large city. The cleanliness and friendly people. The food was great there also. We were able to visit some of the places that Hilda and her family frequented as young people. Georgian Bay is no longer the fishing hub it once was, in fact, there are no fishing vessels there at all now. The lamprey eels have done their dastardly deeds to the game fish especially the trout. So Hilda was a little sad to see the fishing village she knew as a youth denuded of the boats and fish people. The general stores there were still intriguing, though and the new found bakery along the road back to Tobermory made up for the loss of the fondly remembered bakery of Lions Head. We wandered around the Manitoulin Island stopping here and there to make some purchases from the Indians that inhabit the island. We were overjoyed with one particular stop where we had a great conversation with an Indian shop keeper. The longer we talked the better the merchandise became, somewhat like some of the Antique shops we have been in here in the states. We did no antiquing on this trip as we had promised our youngest that this would be a vacation not an antique trip. We had a delightful time, too. So you see some of our obsessions can be deprivations, if you know what I mean.

Enough about vacations, there is work to be done so here goes...a good many of you made up for my lack of time spent on the trail...from the Illini reports of Sahara Warwick vase, #1428... Flamingo perfume with Duck stopper...that's a very nice find...#335 Prince of Wales in a molasses jug and toothpick...very good...same pattern, a punch bowl with 12 cups...that's finding real good Heisey....They also found some animals...a small elephant, standing piglet...the real kind...and a goose with wings down...also reports on missing a bunch of Skier etched wines advertised in the TRADER...they suspect an Ohioian for beating them to the punch...A couple of collectors went visiting to Reno...just visiting and some Heisey Hunting and came up with a complete set of #3350 Wabash stems with the Renaissance etching...this was found in a yarn shop...I can see it now, all the knitters we'll be seeing next June...well, you will also have to venture south of the border down Mexico way...(sounds like a line from a song doesn't it?) to duplicate the next find this twosome came home with...would you believe a #1295 Beaded Swag in opal a tankard with 10, yes ten, tumblers...with gold trim...and green leaves...and red roses...and oh, my gosh...I have never found that much opal in all the years that I have been collecting...then, of course, I have never been to Mexico... Ole....I won't tell you how she smuggled the set out of Mexico....

Hey, you Long Islanders there is a Lonely Brooklyn lady who would like to share the joys of Heisey collecting...she is a member of H. C. A....

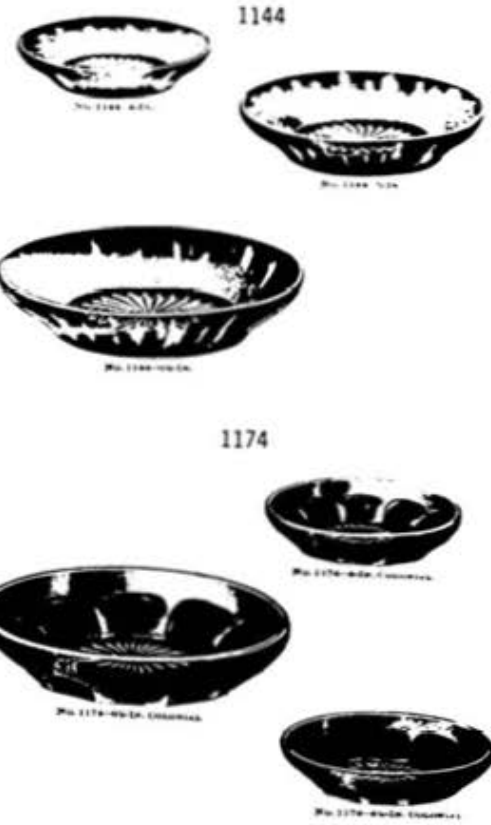
No issue of this article would be complete without the latest report from our retired Hunter, the Brookville Kid...Here is a list that sounds like someone's auction list...as the ads say, something for everyone...#135 candlesticks in alexandrite...a pair of fish bookends...#343 Sunburst toothpick...he's a toothpick collector folks, sorry about that...#1541 Athena cocktail, that's a new item in that pattern...#5077 Legionnaire cordial cut...sorry about that also Mrs. Kid is a cordial collector...#160 Locket on Chain wine...crystal...someday I'm gonna find a vaseline one...#1238 Beehive plate, 5" in limelight...he specializes in this item...usually finds them in stacks... #333 Waldorf Astoria toothpick...#1255 Pineapple & Fan salt dip...surprised that he kept this one, it was in crystal, usually he finds only green ones...#1295 Beaded Swag opal tumbler...Kid, did you read about the couple who found a tankard and ten tumblers? #1540 Lariat basket, unusual one... 1201 Fandango salt dip...#300 Peerless cordial with British registry...#1567 Pineapple candleblock better known as Plantation...like those...#356 ash tray...#1295 Beaded Swag emerald butter top only...lookout you owners of emerald bottoms, butter bottoms, that is...#1205 Fancy Loop emerald toothpick...what do I hear for this item?... and last but not least an all day vigil by Mrs. for a ROOSTER HEAD COCKTAIL SHAKER WITH SIX ROOSTER HEAD COCKTAILS advertised as a shaker and six cordials...they were the only people who went to claim these misnamed but very cheap pieces of Heisey... the last I heard the Keeds were headed for Mexico in their van...no ones gonna outdo the Kid even in a Foreign land....

Ya'll keep hunting and somewhere along the trail I'll run into you and to my good buddy who got the passel of Seaglade cut goblets remember you was in my turf area and I claims sum of em...had to do grand daughter duty that day...sure glad that someone who knew what they were got them....Our family wishes everyone a very Happy Holiday season and do hope that all of our problems can be resolved so that the time that we have can be spent enjoying each other. With effort and understanding all things are possible. Merry Christmas Everybody and here's much hope for the 1980's. Pax.

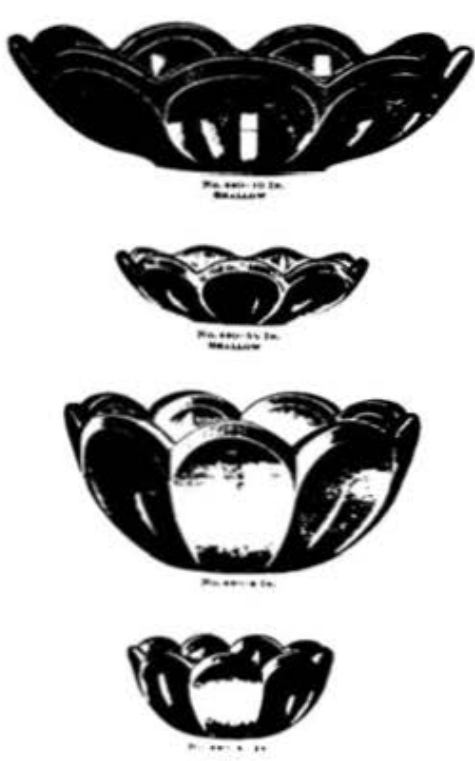


GOODIES IN THE 343 SUNBURST PATTERN

			List Price	Pcs. in turn.
#32	5"	Candlestick	\$4.80	500
201	9"	Candlelamp Base, 1 hole	30.00	150
300	12"	Hurricane Globe	24.00	160
355		Vase	9.00	360
1021		Sugar, 7/8 Cover	9.90	500
1021		Sugar and Cover	13.20	
1021		Cream	9.90	500
1404	6"	Candlestick	9.60	500
1435		Eye Bottle, No Stopper	27.00	150
1469	7"	Ball Vase	21.00	202
"	3"	Ash Tray, Rd. Hole in Cen.	5.40	600
"	8"	Vase, Regular	7.80	500
"	6" V	Vase, Notched for Cord	9.60	500
"	2"	Candlestick, Hole in Cent.	7.80	500
"	2"	Candlestick, Regular	7.20	500
"		4 oz. Cologne Bottle, Only	9.00	450
"		1 pt. Decanter, only; 2, 7/8" open	26.00	300
* "	10"	Vase, made into bottle	60.00	175
1469 1/2	4"	Ash Tray, hole in center	10.80	550
"	3"	Candlestick	15.00	500
"	8"	Vase, made into bottle	30.00	375
1433	4 1/2"	Ash Tray, Sq. F/P	7.20	500
1445		1 lt. Candlestick only	31.00	300
1503	3"	Short Stem Flower Vase	6.00	600
"	2"	Candleblock	6.00	600
"		1 lt. Candlelamp base	30.00	225
"		1 lt. Candlelamp Base and Ferrule	38.80	225
"	7 1/2"	Coupe Plate	6.00	550
"	3 1/2"	Ash Tray, Sq.	3.00	875
"		Ash Tray, Rd.	2.70	875
"	4"	Cigarette Box	7.80	500
"	4"	Cig. Box and Cover	12.00	
"		Cigarette Holder, Rd.	6.00	500
"		4 oz. Cologne bottle, only	12.00	500
1509		1 lt. Candelabra, no prisms	16.00	180
4028		Bitter bottle, only	7.60	300
4028		" " and tube	8.60	
4045	7"	Ball Vase w/o to fit cap	30.00	121
"	9"	" " " " " "	66.00	83



#440 NAPPIES



A PAGE INSERTED IN A HEISEY CATALOG

Rebel and Frank, a lamp manufacturing company in Cleveland, Ohio bought glass from many companies including Heisey for their lamps. The above is a copy of the original sheet. It is old and dirty and may not copy well but we like to use originals when possible. The Museum owns a 1469 1/2* vase which has been tooled about the top for a lamp base. Jay Barker has a lamp made from a ball vase, a flange was left at the top to attach the fixture. We have also seen lamps made from Whirlpool pieces, other Crystolite pieces, Fern items, and the 1518 Cut Miter vase.

The numbers above refer to these patterns. 1404 Old Sandwich, 1425 Victorian, 1469 Ridgeleigh, 1489 Puritan, 1445 Grape Cluster, 1503 Crystolite and 1509 Queen Ann. L. R.



DID YOU KNOW

Did you know that the finial which Vogel calls "Seaweed" on Waverly was called a "wave". It was also used for a bottle stopper and stem of blownware. See Heisey News Vol II, #7, p. 4 for an article by the designer, Horace King where he refers to this motif as a "wave". L. R.

SEVENTH ANNUAL ALL - HEISEY BENEFIT AUCTION
by CHAUNCEY DELANEY

It's that time again--the time to prepare for the 7th annual ALL-HEISEY BENEFIT AUCTION. The auction will be held at the Opera House, Main and Broadway, Granville, Ohio, on March 15, 1980 and as usual will be held in conjunction with the quarterly meeting.

The Annual Christmas Dinner and quarterly meeting on December 8, 1979, is a good time to drop off your consignments or donations and avoid the Christmas mail rush. We prefer that you drop off your consignments and donations at the Opera House between the hours of 12 noon and 5 p. m. as storage space in the Museum is limited and all glass will require movement to the Opera House eventually; however, if you can't get to Granville, you may bring your glass to the Museum. Those of you not able to attend the December meeting may either deliver your glass to the Opera House (open seven days a week between 12 noon and 5 p. m.) or mail it to HCA, P. O. Box 27, Newark, Ohio 43055. All consignments must be received by January 13, 1980.

The project committee agreed to maintain the same auction format as last year. Please limit your glass to ten lots per family (excluding donations). Items such as eight goblets or a dozen dinner plates that are to be sold together will be considered as one lot. Any consignments received in excess of the ten lot limit will be automatically considered as donations. The consignment fee remains at 20 percent with a \$5.00 minimum per lot. Please consign only Heisey, Heisey by Imperial or Verlys by Heisey glassware.

Be sure to include a list (including pattern number, name, color, etc., if possible) along with your name and address. Arrange the list in desired lots and identify which lots are consignments and which are donations. Don't forget to make a duplicate copy for your records.

The benefit auction is one of the major fund raising projects of the year and all proceeds go for support of your Museum. There is very little expense associated with the auction because facilities and auctioneer services are all donated. You can help by donating items for the auction. Remember, donations are full value tax deductible. The consignment fees are also tax deductible. So, get your glass in early and plan to be at the Opera House on March 15, 1980.

A SPECIAL THANKS TO VIRGINIA YEAKLEY

For many years both Loren and Virginia have been dedicated to the collection and preservation of Heisey glassware. They were among those founding members of HCA who first had the dream of a Museum for the glass. From 1969 to late 1971 when HCA was founded they had both worked very hard in the Newark HCC of which Loren was the first president. They are still active members of that club.

Virginia became the first treasurer of HCA and capably handled that office until July, 1975. She was advertising manager for Heisey News from February 1973 until September of 1979. In both of these capacities she did a competent job. I am sure our advertisers will attest to the latter. It takes a lot of time because of the many letters, phone calls, retyping ads, collecting the money, and constant changes in the Dealer Directory, etc. It has not been her fault that the ads sometimes were late. She always had them ready on time. She now is too busy with other duties to continue.

With much gratitude and great affection, we salute you, Virginia, for having contributed so greatly to both HCA and Heisey News for so many, many years.

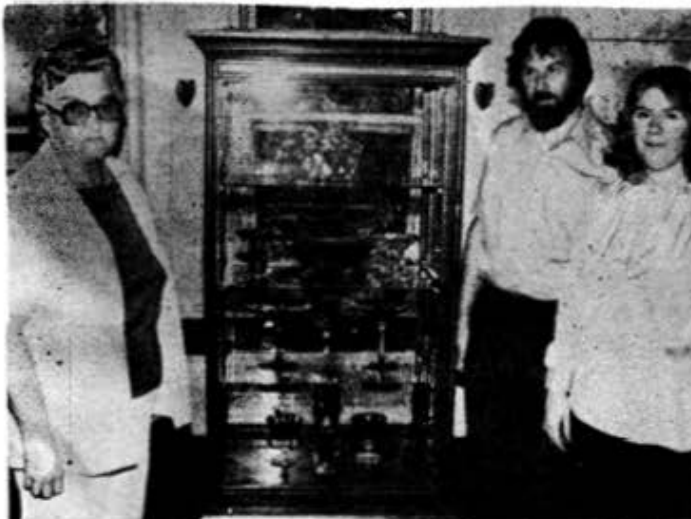
Louise

REFERENCE BOOK UPDATE

411 RIB & PANEL - The Heisey name for this pattern was Tudor. Made flamingo, moongleam, sahara, crystal and rarely in hawthorne. Some reference has been made to the pattern in alexandrite but that is actually the pretty shade of hawthorne. Only reissue by Imperial is a pitcher, probably the 1 quart. Pattern is usually marked.

1231 OCTAGON - Many pieces are not marked. Colors flamingo, moongleam, sahara, possibly marigold and hawthorne. Jug or rum pot also made in cobalt.

1469 RIDGELEIGH known in sahara and zircon in a few items. Pieces found in charcoal (smoke) or heather (purple) are Imperial even though marked with the Diamond H. A cigarette set in cobalt is probably also Imperial. Ridgeleigh is NOT known in flamingo or moongleam, though mentioned in those colors in some books. L. R.



JEAN MEHNERT, Mr. and Mrs. RALPH GEESEMAN, CENTRAL ILLINOIS HCC
Display. See page 5 OCTOBER Issue.

#1503 CRYSTOLITE

Pieces not shown in most reference books.
From an addenda to 1937 catalog 212-17. For
more on Crystolite see Vol. 1, #12, p. 4.



1503—11" Shell Comb, Salad
& Mayonnaise Bowl



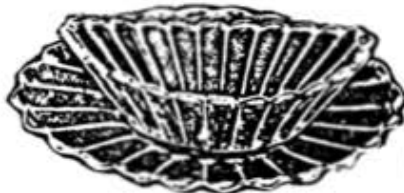
Cup & Saucer



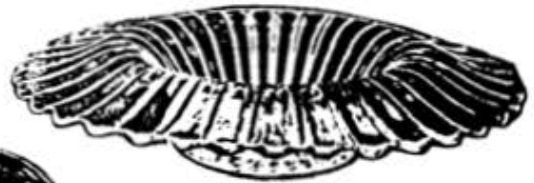
13" Shell Relish
5 Compt.



Conserve, 2 Compt., Hld.



7" Preserve Dish
7 1/2" Preserve Dish Plate



Garnish Bowl



Custard or Punch Cup



1503—6" Basket Hld.



Cloverleaf Relish
4 Compt.



6" Shell Mayonnaise



6" Shell Candy Box & Cover



1503—7" Shell Plate
also made
4", 7 1/2" and 13 1/2"



7" Shell Preline



5" Vase, Fld.; Regular



11" Shell Salad Bowl



11" Silver Fld.



11" Center Piece



5" Vase, Fld., Flared

Some time ago I wrote an article on rarity which received a great deal of favorable comment. The statements in that article remain true today. (See HEISEY NEWS, Vol. II, #11, P. 5.)

However many people seem to have trouble in determining why some things sell for so much more than others when both seem equally rare. It is quite true that some items, seldom seen, do not command a great price while others often seen often sell high. This is, of course, the desirability factor at work which really governs the price.

There is the Heisey "purist" who would buy nothing decorated with silver or enamel designs because they are sure they were not done at the Heisey factory. Others place a high value on these items, especially the silver overlay.

Each pattern line has its own rarities.

Former Heisey employees are disappointed that collectors place such a high value on colored glass when the company was actually best known for its fine quality clear crystal. But crystal was made for the entire 61 years and most colors were made for fairly short periods so are much harder to find. Some colors such as hawthorne, marigold, dawn, zircon-limelight, and vaseline were made for such short periods that they are in very limited supply and should always bring high prices. Amber is very hard to find and should command much higher prices than it does. In this case, though, except for the animals, figural stems etc., there are not a lot of desirable pieces.

Stemware in vaseline and dawn is almost non-existent. The 3345 Mary N Virg stem line in vaseline and a piece or two of 341 Old Williamsburg in dawn are known. Both should be marked.

In 1280 Winged Scroll, custard is the most oftenseen, followed by emerald, then opal and vaseline. Vaseline and opal are quite rare and command a good price. Crystal which may be the rarest of all is not too desirable.

In 1295 Bead Swag opal is most often seen followed by crystal which is usually decorated. Custard was made in only a few items, nappies, wines and goblets being seen most often. Although the full line was made in emerald it is the rarest color of all in 1295.

In #160 Locket on Chain crystal is fairly plentiful. This would be followed in order by emerald, ruby stain, vaseline and rarest of all, opal. We have seen opal listed only in the table set and this in a factory journal. The museum proudly displays a table set which is a museum acquisition (a table set is the cream, sugar, covered butter and spooner).

1255 Pineapple and Fan is most often found in crystal, fairly plentiful in emerald, and very rare in vaseline opalescent. Also known is a vase in black green (a green so deep as to appear black). There is a rare blue-green vase on loan in the museum that we call Ink Blue because we have a whimsy potty of the same color which the former owner (a Heisey employee) said was the name of the color. The small tankard, usually a souvenir piece, is sometimes seen in opal.

Plates and bowls in most patterns are the least desirable items unless you are trying to make a whole set. Certainly in the rare colors they are still very collectible. Also dinner plates, which are scarce, are very highly sought in Heisey Rose, Orchid, Minuet and for color table settings.

Toothpicks, cruets, molasses jugs, tumblers, rose bowls, punch cups, individual salts and nut cups, table sets, cream and sugars, pitchers and any stemware are some of the nicer items in the old patterns.

In 305 Punt and Diamond Point the paste bottle with silver top and brush and the colognes with silver tops are especially nice. Any item in this pattern is sought by the many who collect it.

The Winged Scroll dresser or smoking sets are good items and the ring tree, a real rarity and seldom seen in perfect condition, is probably the best item of all. If you see it - buy it. (In any color).

We are still looking for a piece of #150 Pointed Oval and Diamond Point in canary (vaseline). If you have a piece let us know. The museum would be especially interested in this for the permanent collection. It must be out there somewhere. The pattern is not plentiful in anything but crystal is most often seen and a fair amount of pieces are known in emerald. It is a short line pattern so your choices are few. Any piece in emerald would be a good find. In future issues we will discuss rarities in other patterns. Let us know what you have or what your favorite items are.



1295
Bead Swag



1255
Pineapple & Fan



1280
Winged Scroll



1201
Fandango



160
Locket on Chain

ADDITIONAL DONATIONS 1979

- 417 Double Rib & Panel basket, hawthorne. from Betty & Joe Adelstein.
- 473 Narrow Flute with Rim strawberry & sugar plate. from Mr. & Mrs. Ben Lewis.
- 1205 Fancy Loop footed, flared punch glass from Scott Heron.
- 8037 Fluted Diamond Foot comport. from Lloyd Caswell and Jan Macomber.
- 8038 1184 Yeoman oval bowl with 679 Windsor cutting. from Mrs. L. T. Moncrief.

Mahogany Settee

Donated by Diamond H Club

The following were all donated by Helen and Howard Smith:

- 1485 Saturn rose bowl, zircon
- 1485 Saturn rose bowl, crystal
- 4205 bud vase, moongleam
- 4205 bud vase, flamingo
- 4220 Swirl vase, moongleam
- 515 colognes, 2, flamingo
- 1186 Yeoman powder box, flamingo
- 3350 Wabash ice tea
- 1469 Ridgeleigh vase, 6"
- 485 Cologne with Cloister cut, 2
- 1183 Revere puff box with Cloister cut
- 1540 Lariat swing vase
- 353 Medium Flat Panel 8" vase
- 150 Banded Flute punch cup
- 300 Peerless cordial
- 300 Peerless individual cream
- 1158 Punch cup
- 393 Narrow Flute bar glass
- 341 Puritan 6" pickle
- Lemonade spoon, Augusta etch
- 354 Wide Flat Panel sugar, flamingo
- 1404 Old Sandwich 6" plate
- 1469 Ridgeleigh floral plateau
- Toothpick made from 116 candleholder, hawthorne
- 351 Priscilla mayonnaise plate
- 1150 5" plate
- 341 Puritan 12" plate
- 1519 Waverly covered candy, Orchid etch
- 1220 Punt Band indiv. cream, custard
- 1503 Crystolite basket
- 21 Lamp base with 6060 shade, cut 861 Neopolitan. Base also cut.
- 315 Paneled Cane toothpick, gold decor
- 343 Sunburst nappy, gold decor
- Colonial footed glass

HCA TALENT SEARCH

In the past we have often been lucky to stumble onto members with special talents, knowledge and abilities required to solve immediate problems when they arise.

Now we'd like to set up a talent "bank" to better utilize these abilities, so would you enclose a separate note with your next membership renewal, listing any talents that might conceivably be useful to the club, if you would want to volunteer them. It might eventually entail a few minutes advice or several weeks' work (to quote extremes). This type of volunteer effort is what makes HCA work so well.

Two specific immediate needs are:

1. Does anyone have any suggestions on how to preserve the many paper items in the Library (catalogs, price lists, etc.) that are already or likely to become brittle and/or disintegrate? We are using Microfiche and Xerox to preserve the information and make it usable for research, but we hope to preserve the original documents too.
2. Would anyone like to write a computer program in Fortran (a relatively simple sorting function) for use in indexing the remaining catalogs and price lists before they are put on Microfiche? Details are available upon request for interested parties.

These two items are good examples of the diversity of problems we encounter. Please address answers to:

Research & Archives Committee
HCA
Box 27
Newark, OH 43055



NO. 2 SALT OR PEPPER. SILVER PLATED TOP



TOOTHPICK



9 IN. FOOTED BOWL



6 IN. FOOTED JELLY



6 1/2 IN. FOOTED JELLY, FLARED

343

The purpose of this article is to look at the 343½ Sunburst pattern. First, let's discuss why the Heisey Company added a ½ to a pattern number. At times, some of the Heisey patterns contained two styles of the same item. As a means of differentiating between the two items, Heisey used the whole and half numbers. One style was given the pattern number and the other style was given the pattern number plus ½. For example, let's assume a pattern line XXX has two tumblers of slightly different design. One would be given number XXX and the second would be given number XXX ½. This way, when a salesman wrote an order, he could use the number XXX to order one style of tumbler or XXX ½ to order the other style of tumbler. Thus, there was no need for writing a description of the tumbler when writing the order.

In the case of the Sunburst pattern, there are two styles of nappy, tumbler, jug, hotel sugar & cream, punch cup and punch bowl. The following items were given the 343½ Sunburst pattern number.

343 ½ SUNBURST

1. Nappy: 5 sizes - 4", 4½", 7", 8" and 9" in 5 types - normal, cupped, flared, square, and shallow.
2. Tumbler: 8 oz.
3. Jug: 4 sizes - quart, 3 pint, 2 quart, and 3 quart.
4. Sugar & Cream: Hotel style
5. Punch cup (custard): 5 oz.
6. Punch bowl: 10 inch with or without stand.

Let us examine these six 343½ items with particular emphasis on how to recognize or identify the 343½ pieces from the 343 pieces. If the dual items in the Sunburst pattern were placed side by side, one would easily see the design difference, but which one is the 343 and which one is the 343½? So that you can easily tell which is which, a design description of each style follows.

NAPPY: The edge around the Sunburst nappies consists of several large scallops and each large scallop contains one large sunburst design. The 343½ nappies have a small plain scallop between the large scallops while the 343 nappies have only large scallops, no small ones. This design feature of the small plain scallop between the large ones is only useful for differentiating between 343 and 343½ nappies. An example of a 343 item with the small plain scallop is the footed jelly.

TUMBLER: The tumblers have one row of sunbursts horizontally around them. The 343½ tumbler has an incised circle around each sunburst while the 343 tumbler does not. Also, the 343½ tumbler does not have a horizontal row of thumb prints around it while the 343 tumbler does have one around it above the row of sunbursts.

JUG: The 343½ jugs are bulbous in shape and have only one row of large sunbursts around them. The 343 jugs are somewhat cylindrical in shape and have a row of thumbprints as well as a row of large sunbursts around them. Another design of 343 jugs have two rows of smaller sunbursts around them.

HOTEL SUGAR & CREAM: The 343½ hotel sugar & cream are circular in shape and contain one row of 4 sunbursts. The surfaces between the sunbursts are plain. The 343 hotel sugar & cream are oval in shape, have a tulip shaped top edge and have a line design between the sunbursts instead of a plain surface.

PUNCH CUP: The 343½ punch cup is cylindrical in shape and flares out at the top. The 343 punch cup is cup shaped and straight at the top. Both punch cups have one row of sunbursts around them.

PUNCH BOWL: Like the nappies, the 343½ punch bowls have a small plain scallop between the large scallops while the 343 punch bowls have only the large scallops. Each large scallop contains one sunburst. The 343½ punch bowls have one row of sunbursts while the 343 punch bowls have two rows of sunbursts. There is a small array of squares filled with fine cut placed diagonally between the sunbursts in the 343 punch bowl. The 343½ punch bowl base has one row of sunbursts. The 343 punch bowl base has two rows of sunbursts and the small arrays of squares filled with fine cut placed diagonally between the sunbursts.

The main production period for 343½ was about 1903 to 1909. The punch bowl and punch cups were offered after 1909 till about 1914. The Sunburst pattern pictures shown in Vogel book I are from Heisey catalog #50, circa 1905. The 343 and 343½ patterns were made in crystal only.

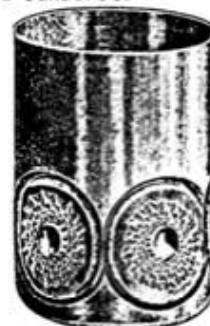
Heisey price list #120, circa 1906, offered 343½ nappies, jugs and tumbler with Heisey #6, #75 or #76 decoration. The #6 decoration was gold on the plain surfaces between the sunbursts, the #75 decoration was ruby lustre over the sunbursts and the #76 was amber lustre over the sunbursts. Price list #120 used the word "chrysanthemum" in place of the word "sunburst". This is most likely why some Heisey pattern names used the word chrysanthemum instead of the word sunburst.



343½



343



343½



343

343 and #343½
SUNBURST



HOTEL CREAM
343

¾ HOTEL CREAM
STUCK HANDLE

343½

¾ HOTEL SUGAR

HOTEL SUGAR

343½

343 Punch Bowl

343½ Punch Bowl

343

HALF-GALLON JUG, PIPERED HANDLE
343

QUART JUG, STUCK HANDLE, GROUNDED BOTTOM
343

QUART JUG, STUCK HANDLE
343½

CLUB NOTES

COLUMBIA HEISEY COLLECTORS GLASS DISPLAY

The Columbia Heisey Collectors have passed another milestone. With both anticipation and uncertainty we decided in lieu of a regular meeting to produce our first display at a glass show. With the decision made, the planning and logistics began - what patterns, colors, etc. ??

Candlesticks, colors, toothpick holders, toothpick holder slides - now, who has what. Phone calls...Emerald Winged Scroll table set will be brought to the show...a rendezvous at a flea market for cobalt and candlesticks...toothpicks dropped by...slides arrive by mail...arrangements made to pick up opal, custard, more toothpick holders and candlesticks. So it went as the list of display items began to fill out. Labels are typed, signs are made - everything is ready - we hope.

The day arrives and the 24-foot-long display is assembled - all production colors except vaseline; over 60 different candlesticks; the toothpick slides with a case-full of actual examples to compare. Featured at one end of the display was a Fandango pitcher - the official symbol of the Heisey Collectors of America Inc.

The results: many, many questions...surprise at the high percentage of unmarked items in the display...eleven new members for HCA (some of these were unaware of either the local or national club)...a lot of work...a lot of fun...anticipation of the next display.

Note: The set of title slides for the toothpick series is available for loan to those who wish to produce a slide show. Toothpick slides, titles, and an 80-slide Kodak Carousel projector make an unattended informative display. Contact Columbia Heisey Collectors, P. O. Box 266, Newberg, Oregon 97132 for more information.



LETTERS, WE GET LETTERS.....

...when I read about the trouble in Heiseyland, I decided to send a check for \$25 to become a voting member. I doubt I will ever be able to attend a meeting. However, it is my way of showing the confidence I have in your and our GREAT CLUB!

I will never forget the hard work of you, Loren, Virginia and others that STARTED the club.

I recall how frightened you were of addressing us all at the Conventions, yet you did it! You instilled in us all a love for the glass of "Heiseyland" and I still have fun collecting it.

-Mary Jane Miller, PA

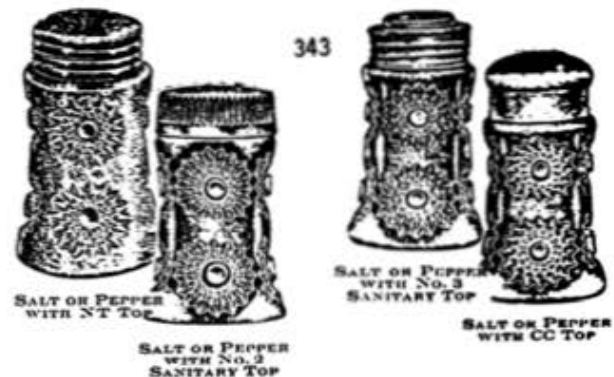
The Columbus Club's letter is extremely serious and important and deserved the space allotted to it in the August issue. Hopefully, we will be allowed to read about the Board's decisions concerning these matters. On the other hand, your comments on the Heisey Heritage Society and its newsletter "Diamond Dust" was a bit overextended, (as was their polemics on bullet voting). But that's a minor complaint about an otherwise informative and interesting issue.

I do have one serious complaint. It concerns your opening statement in "A Letter to the New Board". It reads, "You are now representing the nearly 5000 members of the HCA and more specifically the voting members of the HCA". Why, in heavens name, does the voting membership require "more specific" representation!?

I, as a non-voting member of the HCA, am well aware of the debt I owe the "working" membership. Maybe if the Board and voting members were equally aware of their debt and responsibility to the non-voting membership, there would never have been a need to nail the Columbus manifesto to the museum door.

-Vince Sparacio, N J

* Because the voting members elect the directors who govern the Club. All non-voting members receive all benefits of the Club except the privilege of voting, which is available to all adults for payment of a one-time fee of \$25.



CLUB NOTES

LAND OF HEISEY

The Land of Heisey study club met in the home of Donna Cunningham for the September meeting. Our summer finds were discussed and many oohs and ahhs were heard as members told what they have purchased. Our program was a word search devised by Donna. It contains Heisey pattern names (19). The game was fun and proved harder than expected. We want to share it with all of you so here it is.

- Vera Bagent, secretary

OPSEVAELDNAYSIA
 SIOCBYESIEHRAWEN
 CLRAOCNHORWAMPUM
 ALOUEENANNEONROO
 MOINATIRUPHKACER
 OWUSAROTROCPIOSE
 ESAIEQTMNHIOLSOT
 TYRDAFUAGIWTEDCS
 IAGINERNRCSRLOCU
 LTORBLOCKEPORGEL
 OPEERHICPMITENMC
 TFJECATLEKLALATE
 SZKODESRIAGUGDAP
 YEBOCBIWBCNQMNEA
 RALCNEWAEPPIOAGR
 COMRSATURNEACFOG

Saturn
 Hartman
 Fern
 Daisy and Leaves
 Grape Cluster
 Urn
 Pillows
 Puritan
 Crystolite
 Queen Ann
 Cabochon
 Wampum
 Empress
 Fandango
 Quator
 Twist
 Lariat
 Ipswich
 Nail



343 SUNBURST

A Knight With A Golden Gazelle

- Frank Husted

Some Heisey collectors were standing around
 In a manner solemn and grim
 When into the crowd, his face like a cloud
 Stepped Gentleman "Diamond Jim" !!

A "golden Gazelle" he wore in his lapel
 His manner designed to displease
 "My mission tonight is to set things a-right
 For our President, Madam Louise !!

"She charged me, today, to set straight away
 All rumors about the election
 To confront, to recall, to debate...or to stall...
 To use ANY mode of correction !!

The truth is obscure, but all motives were pure
 The sword cannot out do the pen
 In her service I search to applaud, not besmirch
 Her colleague, her ally named "STEM" !!

She said, "Go to the wilds, find the aberrant child
 Use tact, use all of your charm
 If you get off the track you'll find the old hack
 In the East, he's the "H. S." "right arm" !!

Say, "I wish you no ill" !! To non-President Bill
 Say, "You err, sir, you should have been smarter
 If you can't play the game and have all do the same
 Then simply surrender your charter !!"

Jim heaved a deep sigh, stared up at the sky
 And spoke in a manner that rang
 "H.H.S. wouldn't barter, we've surrendered our
 charter
 To the 'Golden Gazelle Award Gang' "

The Heisey collectors are smiling once more
 FOR HEISEY COLLECTING IS FUN !!!!
 H. H. S.'ers still work with that gang in Newark
 With rumors dispelled one-by-one.

Each member can aid and be amply repaid
 By giving each issue great care
 You'll each get a chance, this club to enhance
 By returning your mailed questionnaire!!!!!!

Here's a brief bit of verse with an eye
 to lightening "a compounding of errors of om-
 ission and commission vis-a-vis recent HCA
 events.

Frank

DATES TO REMEMBER

DEC. 8- Quarterly Meeting - 3 P.M.
 Lower level of museum

Christmas Dinner
 Moundbuilders Country Club
 (see last issue for form)

JAN. 15-Deadline for auction glass.

MARCH 15-Annual Museum benefit auction.

DESIGN.

A. J. SANFORD.
DISPLAY RACK FOR SHOES, &c.
APPLICATION FILED NOV. 3, 1915.

Patented Feb. 22, 1916.

48,611.

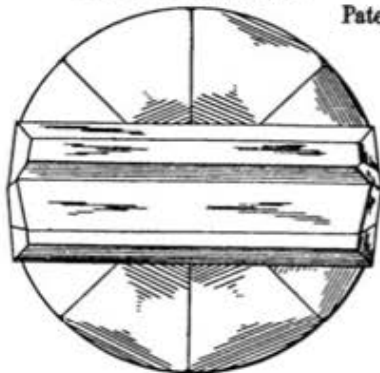


FIG. 1.
FR
PATTERN

COPY OF A PATENT
FOR A SHOE DISPLAY RACK

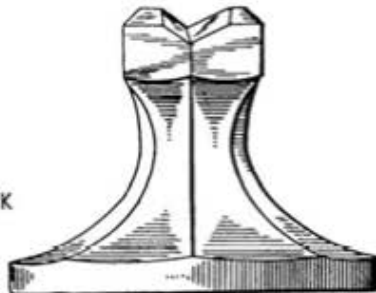


FIG. 2.

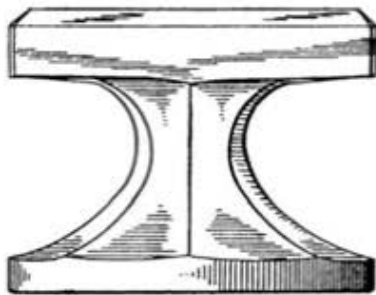


FIG. 3.

Inventor

A. J. Sanford

By
Berch, Beckwith & Little
Attorneys

1541 ATHENA



5041



INININI

DETAIL OF PATTERN

HEISEY REFERENCE BOOKS UPDATE

335 PRINCE OF WALES PLUMES is sometimes mentioned as being made in Emerald. We have seen NO such reference in original catalogs. Has anyone ever actually seen this? Pattern is marked.

351 PRISCILLA - The tall compote is known in vaseline. Reportedly 6 were made. One is owned by the Museum and it came from the daughter of a former employee who received it from Wilson Heisey. Marked.

421 PRISM BLOCK was made in several sizes of nappies. Marked. So far no other items known.

357 PRISON STRIPE which once seemed to be very scarce is seen often. The variant 358 vases are known with opalescent rims. Marked.

1220 PUNTY BAND may be found marked and unmarked. Known in crystal, plain or decorated. A few pieces in custard and opal, notably tumblers, mugs, individual cream, salt & peppers.

1541 ATHENA, though supposedly designed by Montgomery Ward, used part of the Lariat pattern with S's instead of loops of rope for the borders. Paul Fairall made us aware of this and it is obvious by observing many of the items. The ice bucket, however, is almost straight up and down with no feet and looks like no other ice bucket made by Heisey. Some other items in the pattern, which is much larger than originally supposed, seem to be completely new molds. For list of ATHENA items see Heisey News Vol IV #2, p. 5 and Vol VII #2, p. 6. Some pieces which are almost identical except for S's instead of loons are: footed cheese and cover, torte plate and 1447 footed comport, crimped bowl, plates, tall candy jar, bon bon, sugar and cream tray, mayonnaise set, sauce dish, and the three part relish. The stemware does not resemble Lariat at all. See pictures below, left.

The 1485 SATURN mustard jar can be found with a lid that has the paddle attached to it - zircon and crystal. There are other Saturn mustard jars as well.

Heisey advertised the 6" 1469 RIDGELEIGH ash tray as an advertising piece for businesses and banks. They would etch any design you wanted.

4043 - There is a cologne and a cruet in this pattern. Usually made with Danish Princess cutting.

110 DOLPHIN Candlesticks - Made amber, zircon, cobalt, flamingo, moongleam, sahara, crystal. We have cobalt, amber, flamingo and moongleam in the Museum.

In the Museum we have both the 4301 blown puff box (unmarked) and the 1183 REVERE puff box which is pressed and marked.

Did you know that the 3000, 4000, and 6000 numbers are all for blownware, not pressed, and do not fit into any pressed pattern? Exception being 4044 NEW ERA which has pressed items also in the line.

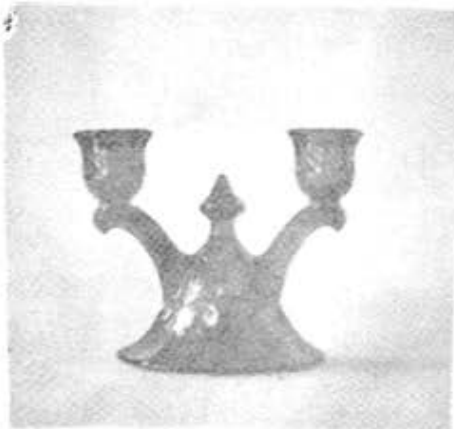
#1433 Thumbprint and Panel

by JACK METCALF

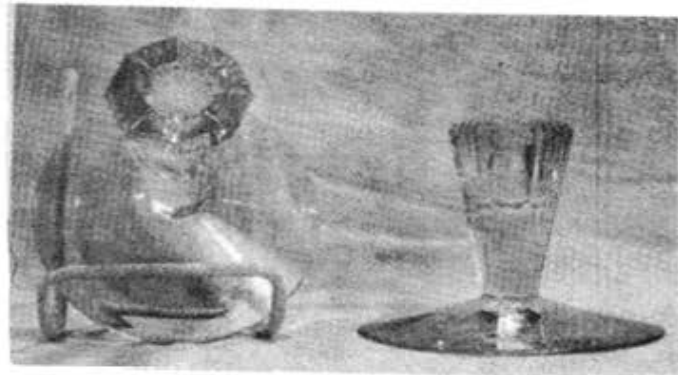
#1472 Parallel Quarter

The Parallel Quarter candleholders are about three inches in height and were produced in crystal only. They are listed in catalog and price lists 212 through 216, covering a span of more than five years from 1937 to beyond 1941. This presents a minor quandary when compared against the 1433 Thumbprint and Panel which was listed only in the 1935 catalog price list 211. The quandary being, of course, that the short timer Thumbprint and Panel is much more common than the Parallel Quarter. Thumbprint and Panel is listed or known to exist in crystal, crystal with mirror finish, flamingo, moongleam, and sahara. It was also produced in Heisey's "blue" or cobalt, which is very nice. Along with the matching floral bowls, the candlesticks were sold as console sets. No etchings are listed for No. 1433 and I've not come across any cuttings. The 1472 Parallel Quarter console set did have a single etching, the No. 492 King House etch. Apparently this etch was used only with this one item.

One further point wants mention on the Thumbprint and Panel, and that is that on more than one occasion, I've seen this 6" 2 light candleholder inverted and used as a small vase. One fine lady has done this for many years, and although it seems slightly unsteady and worries me to see it used as a vase, hers has never fallen over so far. You might try it just to get the idea, but don't write if it crashes over.



1433



1472



FINGER BOWL, FLARED. GROUND BOTTOM

343



FINGER BOWL. GROUND BOTTOM

TUMBLERS

by TOM BREDEHOFT

300½ PEERLESS 331 COLONIAL PANEL 341, 341½ PURITAN

Last month in discussing the problems with 136-300, I ignored the 300½ tumbler because it didn't look like the 300, as a matter of fact it doesn't look like anything else but it does come in moongleam and flamingo. I forgot the 331, which is similar. The major difference being that it had 8 panels instead of 6.

Another pair of tumblers which aren't confusing but maybe should be are 341 and 341½. Both have 6 panels, but other than that they don't look at all alike. On the other hand they are more similar than 300, 300½.

PERIOD: 300½-PEERLESS-1899-1932
331 COLONIAL PANEL- circa 1905, out by 1924
341 PURITAN- circa 1905, out by 1928
341½ PURITAN-circa 1905, used as part of Old Williamsburg and continued to the end. (1957)

COLOR: 300½ moongleam & flamingo, others possible
331- none known
341-none known
341½-none known

DECORATION: Gold on 300½, 341, and 341½
VARIATION: 300½ also had a soda line, as did 300, but we'll treat that at a later date. All of these should be signed and have ground bottoms.



300½



331



341



341½

333, 333½ WALDORF -ASTORIA

Two more tumblers which should be confused but aren't are 333 and 333½. Both were introduced about the same time, around the turn of the century, when Heisey developed the formula for the Very Best Crystal Glass on the Market then proceeded to make a multitude of colonial patterns to show off the pure crystal glass. Both were dropped from the line about 1917. At this time Heisey was well into the blown ware field and were cutting back on the low volume pressed lines.

PERIOD: 1901-1917
COLOR: none known
VARIATION: none known
DECORATION: none known. Look for silver overlay on 333.
Both are signed and have ground bottoms.

WALDORF-ASTORIA



333



333½

- 335 PRINCE OF WALES punch cups* 8 . . ea. . . \$ 18.00
 - 585 Narrow optic tumblers* 2 ea. . . . 12.00
 - 1223 Miscellaneous Baked Apple, Marigold flashed & metal holder* 22.50
 - 1235 BEADED PANEL & SUNBURST punch bowl & base* 125.00
 - 1235 BEADED PANEL & SUNBURST 4 pc. set, gold trim, sugar, spoon, cream, cov. butter 225.00
- FOR COMPLETE LIST, SEND SASE

MAURICE & JEAN WALTER
C/O Sir Speedy
431 Main Street
Woburn, MA 01901
Phone: (617) 935-8238
after 6:30 245-2532

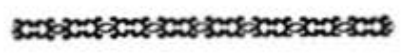
* Marked P & I Extra

J. CRAGG
 94 Elm Street
 Georgetown, Mass 01833
 (617) 352 - 2164

- CUSTARD
- 1280 WINGED SCROLL tumbler. \$ 60.00
- COBALT
- 3404 SPANISH goblets, crystal stem (4) ea. . 50.00
- SAHARA
- 1428 WARWICK cornucopia vase 5"* 60.00
- CRYSTAL
- 353 stack set, 3 piece* 35.00
- 451 CROSS LINED FLUTE tumblers*10 oz.(6) ea. 12.00
- 1404 OLD SANDWICH indiv. ash tray* 15.00
- 1519 WAVERLY cov. candy, ORCHID etch Sea Horse handles (9" high). 80.00
- 7019 DIAMOND CRYSTAL 14" torte plate* 30.00
- 1503 CRYSTOLITE covered cigarette box 12.00
- 300 PEERLESS bitters bottle. 20.00
- 1488 KOHINOOR 2 lite bobeches & prisms compl. 35.00
- 1488 same as above but very bad base but bobeches and prisms perfect. 18.00
- 1511 TOUJOURS apple marmalade/cover* 50.00
- RIBBON CANDY 4" nappy. 18.00

* Marked

POSTAGE & INSURANCE EXTRA



LYNN WELKER
 2 East Main
 New Concord, OH 43762
 (614) 826-4418

Postage Extra
 Excess Refunded
 Return Privilege
 * SIGNED

- GREEK KEY flamingo punch bowl base . . . \$ 100.00
- HAIRPIN wash bowl only * 100.00
- #352 16 oz. Moongleam humidor * 250.00
- HI-LO vase, sahara * 175.00
- 3397 GASCONY pint decanter HUNTER dp etch. 300.00
- CHARTER OAK flamingo d/o goblets (8) ea. . 12.00
- Flower block, flamingo for floral bowl . . 10.00
- QUEEN ANN sahara nutcup. 12.00
- CRYSTOLITE swan nutcups (6). ea. 12.00
- FANCY LOOP Emerald punch cup 30.00
- FANCY LOOP Emerald mustard base. 25.00
- ORCHID etch lg. cov. candy Bow finial* . . 55.00
- RENAISSANCE etch OLD GLORY* wine(1), clarets (2), cocktail (1) champagne(1) each 12.00
- 1974 Museum claret 50.00
- 1971 Amber First plate 50.00
- 1977 Green Spark Plug horse. 60.00
- 1978 Pink Spark Plug horse 25.00
- 1956 Heisey Original Catalog 40.00



THE SLEEPING FOX
 P.O. Box 583
 Lansdale, Pa 19446
 (215) 855-2480 - after 7:30 pm weekdays

- MAMA PIG \$ 350.00
- CYGNET 150.00
- RINGNECK PHEASANT. 110.00
- STANDING COLT. 75.00
- PLUG HORSE 95.00
- CLYDESDALE 300.00
- GOOSE, WINGS DOWN. 295.00
- GOOSE, WINGS HALF. 80.00
- GOOSE, WINGS UP. 95.00
- GIRAFFE, turned. 135.00
- FISH bowl. 480.00
- FISH candlestick 150.00
- FISH Matchholder 130.00
- FISH book end. 95.00
- ELEPHANT, medium, frosted. 160.00
- DONKEY 160.00
- DUCKLING, standing 150.00
- SCOTTY 100.00
- ROOSTER vase 90.00
- OWENS bust, frosted. 130.00
- MADONNA, limelight, frosted 9" 1500.00
- DOLPHIN candlestick lamp #110. 165.00
- PETTICOAT DOLPHIN compote, flamingo. . . 125.00
- PETTICOAT DOLPHIN compote, moongleam top 125.00
- SWAN handled bowl, sahara, w/ frog . . . 250.00

DONALD POPE
 1442 Palmetto Street
 Clearwater, FL 33515
 (813) 447-7427

- 1536 GENERAL'S CAP ash tray. \$ 25.00
- 1201 FANDANGO bowl 9" 50.00
- 1235 BEADED PANEL & SUNBURST water bottle glass is yellowed 35.00
- 494 Cologne/61 stopper gray cut V2P148. . 28.00
- 488 Cologne/61 stopper gray cut V2P148. . 30.00
- 1425 VICTORIAN double candlestick* (1) . . 25.00
- 1413 CATHEDRAL vase, flared w/lovely cut . 85.00
- 1193 Conserve dish gray cut * V3P125 . . . 28.00
- 10 MAPLE LEAF crystal coasters, 4 all for 40.00
- 411 RIB & PANEL tumbler some scratches* . 12.00
- 411 RIB & PANEL compote 5" gray cut* . . 30.00
- 112 Moongleam candlesticks, pair. 35.00
- 1404 OLD SANDWICH compote* 30.00
- 7021 PRISON STRIPE vase 4 1/2" *(358) . . . 28.00
- 1776 KALONYAL nappy * 22.00
- 433 GREEK KEY dinner plate-these are hard to find * 9" 25.00
- 1252 Flamingo TWIST tiny plates* 4 1/2" nice miniatures. ea 7.50
- 1425 VICTORIAN cruet, small * 23.00
- 335 PRINCE OF WALES tumbler ex. gold* . . 30.00
- 335 PRINCE OF WALES tumbler worn gold* . 25.00
- AIREDALE * 400.00
- HORSEHEAD bookends, pair pr 150.00

* MARKED
 POSTAGE & INSURANCE EXTRA

ANTIQUES 'N' COLLECTABLES
"HEISEY OUR SPECIALTY"

LYNNE



ART'S

GLASS-HOUSE
INC.

P. O. BOX 242
LAHASKA, PA. 18931
215-794-7800

*Dear Heisey Collector and Dealer,
We're heading your way! Heisey animals,
lovely old patterns, and a rainbow of colors, will
be coming along with us.*

We'll be at the following shows.

HARRISBURG, PA., Farm Show Building, NOVEMBER 15, 16, 17

PALM BEACH SHORES, FL., Collanades Beach Hotel, NOVEMBER 16, 17, 18

GAITHERSBURG, MD., Gaithersburg Fairgrounds, NOVEMBER 23, 24, 25

INDIANAPOLIS, IN., Indianapolis Fairgrounds, NOVEMBER 29, 30, DEC. 1, 2

*While we are on the road, suggest a call to
PA. 215-794-7800 or FL. 305-861-7700.*

*See you soon,
Lynne and Art*

Monthly Heisey column
by Clarence Vogel!

glass REVIEW

80 PAGE ALL GLASS MAGAZINE
since 1971

\$9.50 per year - 12 Issues
Or, recent sample - \$1

The GLASS REVIEW is a handy 8½" x 5½" monthly magazine devoted to "Keeping Glass Collectors Informed" on both old & new glass. Printed on glossy stock and filled with large, clear photos, articles by nationally respected authors and writers, price reports, trends, research and reproduction information, previously unpublished catalog reprints, reviews of the latest glass books (and where to buy them), Questions & Answers, trademark info, large variety of glass ads on both old and new glass, up-to-date happenings in glass and MORE!

Enclose payment; send to: GLASS REVIEW,
P.O. Box 2315- , Costa Mesa, CA 92626.



Goblet

343



EGG CUP

Dealers Directory

5 Lines - \$6.00/6 issues

MOSTLY HEISEY

RHODA CURLEY
16 CLAYTON PLACE
ALBANY, NEW YORK 12209
By Appointment 518/482-8272

Opera House Antiques

1414 & Broadway, Granville, Oh 43023
Open 7 days a week 12 - 5 P.M.
Shop (614)587-2083 - Sam 587-0052
HEISEY GLASS & GENERAL ANTIQUES

The Shultzes Antiques

BOUGHT SOLD
206-208 E. MAIN ST., ROUTE # 419
NEWMANSTOWN, PA. 17073
15 MI. WEST OF READING, PA.
PHONE 215-589-2819

The China Cupboard

185 A. SO. BROADWAY, ORCUTT, CA. 93454
Phone: (805) 937-6420
COLLECTIBLE & ANTIQUE GLASS & CHINA
HEISEY IN STOCK

Lynne & Art's Glass House, Inc.

"HEISEY OUR SPECIALTY"
Route 202 Lahaska, Pa. 18931 Box 242
Phone: (215) 794-7800

Evelyn's Antiques

3301 - 140 N.E. Marysville, Wash. 98270
I S Exit 202 Phone: (206)659-6114
MON-WED-SAT-SUN & by Appt.
Shop full of glass - Heisey, etc.

Schwan's Antiques

DICK & LEE SCHWAN
208 OXFORD ROAD
WILLIAMSBURG, VA 23185
(804)229-7873 SHOWS & APPT.

Bert's Budget Shop

403 W. MAIN ST., NEWARK, OHIO 43055
PHONE: (614) 349-8045
General line Antiques

Charles A. Shaw

Glenwood Gardens-RipVan Winkle
Yonkers, New York 10701
Shows & Mail Order
American Glass

Goldsberry's Antiques

KALAMAZOO, MICHIGAN
SHOWS ONLY -- BUY & SELL
HEISEY A SPECIALTY
PHONE: (616) 381 - 3013

ANTIQUES & COLLECTIBLES



Olde Loved Things

Deris "Ed" Lacroix - Donald Mousseau
900 Ridgewood Avenue (Holly Hill)
DAYTONA BEACH, FL. 32017
HEISEY, Cambridge, Mail order/(904)252-7980

Moundbuilders Antiques

IRENE RAUCK
1138 MOUNDVIEW, NEWARK, OH 43055
PHONE: (614) 344 - 6043
HEISEY & ANIMALS/GEN. ANTIQUES

Eagles Nest Antiques

CHINA HEISEY GLASSWARE
BOUGHT and SOLD
62 FIELD POINT RD., HEATH, OH 43055
By Chance or Phone: (614)522-2035

LAST CHANCE ANTIQUES

62 N. FEDERAL Hwy, DANIA, FL 33004
(Between Miami & Ft. Lauderdale)
Large Heisey Inventory & other Glass
MAIL ORDERS (305)467-6356 (home)

GREEN ACRES FARM

ANTIQUES, CRYSTAL GLASS & COLLECTIBLES
Saturday & Sunday P.M. or Call (614)827-1882
2878 HAZELTON ETNA RD., S.W.
S.R. 310 N PATASKALA, OH 43082

THE "FINDERS" ANTIQUES

Antiques - Heisey Glass - Buy-Sell
DAVID & SHIRLEY ROSE - Owners
66 S. HAZELWOOD AVE., NEWARK, OH 43065
Phone: (614) 349-7984

Hoosier Heritage Antiques

Marcell and Tom Zehr
4005 SOUTH WAYNE AVENUE
FORT WAYNE, INDIANA 46807
(219) 745-4173

Curiosity Nook

"WHERE FRIENDS MEET TO ANTIQUE"
3300 S. 8th Ave. Westward Village
Yuma, Ar. 85364-(602)726-6730 or 726-8070
BARNEY & JODY BARNICLE



Diamond H Plus

GEORGE & EILEEN SCHAMEL

Route 3, Box 419
Boonsboro, Md. 21713
Appointment or Mail Order
Phone 301-432-6285

WICKFORD ANTIQUE ARCADE

RON & BEV. WOOD Booths 6 & 7
660 TEN ROD RD., N. KINGSTOWN, R.I. 02852
Heisey - Primitives - Glass - Etc.
Home Phone: (401) 296-0823

Charles & Mildred Fisher

Antiques & Collectibles, General Line
HEISEY, DEGENHART, IMPERIAL
991 IDLEWILDE, NEWARK, OH 43055
PHONE: (614) 522 - 5398

The Wooden Shoe

ANTIQUES & COLLECTABLES - BUY & SELL
GLASS, FURNITURE, ESTATES
JIM & SHERI VANES BY APPT
HERNDON, VA 22070-PH: 438-9048

Heisey Heaven & other collectables

Box 78 Rt. #1
MANSFIELD, IL 61854
(217) 489-4071
Hours: 1-5 Daily



sum of life

elaine and frank husted
p.o. box 101,
phoenixville, pa. 19460
(215) 935-2962

Jim Kennon

Shows Only-PH:(216)934-4515
P.O. BOX 251 - AMHERST, OH 44001
Heisey - Cambridge - Pottery
Glass Animals - Duncan & Miller

Happy Haven Antiques

MARY DUMKE
14319 Rattlesnake Road
Grass Valley, CA 95945
Phone: (916) 273-9450

The Connecticut Yankee



"HEISEY OUR SPECIALTY"

707 S. Washington
Route 2, Box 315
Fredericksburg, TX 78624

ACCENT ANTIQUES OF KENSINGTON

Curio Corner

3742 HOWARD AVE.
KENSINGTON, MD 20789
PH: (301)833-3780

The Sleeping Fox

EVELYN & JAMES JORDAN
P.O. BOX 583
LANSDALE, PA 19446
PHONE: (215) 858 - 2480

George Hoffman Antiques

G.W. HOFFMAN - J.H. DENNIS
129 SOUTH 4TH STREET
NEWARK, OH 43088
PH: (614) 348-8880

Classified Ads

WANTED IN HEISEY ROSE ETCH- $\frac{1}{2}$ lb butter (without lid), 4 oz clarets, 4 oz cocktails 7" salad plates, 10 $\frac{1}{2}$ " dinner plates, 3 part round relish, indiv. cream, dinner bell & vases. ZELLA ASHER, 4343 S. Alton Way, Englewood, Colo. 80110 (203)771-1286

WANTED-Heisey No. 331 Colonial pattern 9 inch nappy flared, in crystal. Thank you--E. HAJICEK, 5515 W. 22nd PL., Cicero, IL 60650

Wanted-1250 Groove & Slash mint condition butter dish bottom. DICK SCHWAN, 208 Oxford Rd., Williamsburg, VA 23184 (804) 229-7873.

Wanted-Old Newark, OH postcards. DICK Smith 88 Maureen Dr., Heath, OH 43055 Phone (614) 522-3075.

WANTED-ANYTHING IN MARKED HEISEY 1401 EMPRESS MOONGLEAM especially punch cups, indiv. ftd. nut dishes, and 2 of the 9 inch ftd. vases. Also a pair of moon- gleam marked 129 Triplex candlesticks. Undecorated. Write: JERRY BAKER, P. O. Box 13081. St. Petersburg, FL 33733.

343



13 oz. MOLASSES CAN. U. K. OR NICKEL-PLATED TOP

8 Oz. OIL BOTTLE, CUT OR PRESSED STOPPER



FIRST-CLASS MAIL

FIRST CLASS MAIL
U.S. POSTAGE
PAID
PERMIT 34
Reynoldsburg, Ohio 43068

MUSEUM HOURS ARE NOW 1 - 4 P.M. Wednesday, Saturday & Sunday until April 1st.