

HEISEY *news*

OFFICIAL PUBLICATION HEISEY COLLECTORS OF AMERICA
© Heisey Collectors of America, Inc. 1979
All Rights Reserved

Vol. VIII, #9 — SEPTEMBER, 1979

ONE DOLLAR



HEISEY COLLECTORS OF AMERICA, INC.
8th Annual Convention
June 14-17, 1979

Cover of 1979 Convention Program
designed by Michelle Wilson.
The color of this cover was cobalt
with black print.

September 8th Annual Mini-Show and Souvenir Dinner
on the Museum Grounds in Newark, Ohio.

FROM THE DESK OF ...

your President

Convention Story

I am sorry that I was unable to write my usual column last month. I had an attack of kidney stones on July 7th and ended up in the hospital, finally undergoing surgery for their removal. I am feeling fairly well as I write this on July 26 but am not back to work in full force as yet.

I thank all of you who remembered me in so many kind ways - the flowers, the visits, the cards, the delicious food and the phone calls, etc.

As explained in the July Heisey News I had intended to write about the convention since with our hectic mailing schedule recently I was not able to get it in the June issue.

I thought you might like to see the cover of the beautiful convention program though you can't realize that the color was "cobalt" with black lettering. The montage of pattern names, the little paragraph from the program and the cover were all done by Michele Wilson who is the daughter of Stan and Kay Darling. Marcella, our newsletter printer, printed the program. I have also included the convention committees since I don't believe they have been printed before

and all of them deserve much credit for a job well done.

Those who came to convention said it was the best yet. But don't they say that every year? It was by this time become a "family reunion" for those of you who come every year. Firm friendships have been formed among the collectors everywhere. We only regret that all of you can't be here.

It is possible that the gasoline shortage had some effect but you would never have known it by observing the parking lots everyday with their out-of-state tags and the dozens of motor homes, trailers and vans.

If you came looking for glass you were not disappointed. This particular week in Heiseyland has the effect of making Heisey look very plentiful. 60 dealers at the high school offered the common, the rare and the very seldom seen. People picked up bargains at garage sales and flea markets that were unbelievable, though most said that Heisey at the Granville flea market was higher than at our own show. Several auctions added to the flood of glass. Everyone in the

DATES TO REMEMBER

- SEPT. 8. Mini-Show and Souvenir Dinner. Museum grounds.
 OCT. 27-28 All Glass Show - Sturbridge, Mass-Bay State H.C.C.
 OCT. 28 Antique Flea Market - Reynoldsburg, Oh - Reynoldsburg HCC
 DEC. 8 Christmas Dinner - Moundbuilders Country Club
1980 CONVENTION — JUNE 19 - 22

area has jumped on the coat tails of H.C.A. to take advantage of all of you being here. It must be fun for all of you but some wonder how good it is for our own show and other events.

The French Market Swap meet on Thursday evening was fun as usual with the brave making the best deals. It takes a lot of doing because you may have to make several trades to get the right item to make the final trade to get what you really wanted in the first place. The Heisey Heritage Society capably manned this event.

The identification session on Friday morning was well attended as it always is and the panel capably identified most of the glass. Members of the panel were: Tom Bredehoft; Elaine Husted; Gail Krause; Dick Marsh; Joe Lokay; Jack Metcalf; Louise Ream; Carl Sparaco and Lynn
 con't on next page

HEISEY NEWS --- P.O. BOX 27 --- NEWARK, OHIO 43055

EDITOR — LOUISE REAM, 1115 W. Main St., Newark, Ohio 43055
 PUBLISHED 25th DAY OF EACH MONTH, \$10.00/Year - \$1.00/Copy
 BACK ISSUES AVAILABLE AT \$8.00/Year(12)—\$1.00/per copy if available

PRESIDENT	LOUISE REAM	(614) 344-2377
VICE PRESIDENT	JACK METCALF	(614) 892-2664
SECRETARY	MARY McWILLIAMS	(614) 345-4380
TREASURER	LOREN YEAKLEY	(614) 366-5101

Heisey Collectors of America, Inc. is a non-profit corporation with tax exempt status. Owners and operators of National Heisey Glass Museum, 6th and Church Streets, Newark, Ohio. Open Daily 1-4 p.m., April through October except Mondays and Holidays, November through March, Wed., Sat., Sun. 1-4 p.m. Members admitted free.

Phone: (614) 345-2932. Club membership (includes 12 issues of Heisey News and participation in all club activities) \$10.00/Year plus \$1.00 each for additional family members in same household who wish a membership card. For voting membership add \$25.00, one time only fee, or write for information. For Membership - Debbie Delaney, Box 27, Newark, Ohio 43055. Notify immediately of any change of address.

The opinions expressed in articles in Heisey News are those of the authors and not necessarily those of the organization. The Editorial Staff reserves the right to edit or refuse any material submitted for publication. When requesting information, please enclose a self addressed stamped envelope (SASE).

ADVERTISING — Send all ads to:
 VIRGINIA YEAKLEY, Advertising Manager
 640 Melanie Court
 Newark, Ohio 43055

DEALER DIRECTORY ADVERTISING RATES — 5 line — \$5.00/6 issues

CLASSIFIED ADVERTISING - 5¢/word - \$1.00 Minimum. We cannot mix type sizes in Classified Ads. Abbreviations and initials count as words.

DISPLAY ADVERTISING RATES	MEMBER	NON-MEMBER
1/8 Page	\$ 8.00	\$15.00
1/4 Page	\$15.00	\$25.00
1/2 Page	\$25.00	\$40.00
Full Page	\$45.00	\$60.00

PAYMENT IN FULL MUST ACCOMPANY ALL ADS.

Advertising copy must be in our hands by the 5th of the month to be in the next month's issue. (Ads received by August 5th, for example, will be in the September issue.) Advertisements containing reproductions will not knowingly be accepted unless clearly stated (i.e. Heisey by Imperial, etc.) Heisey News assumes no responsibility for false advertising or misleading information. In the event of typographical error, the incorrect portion of the ad will be run in the following issue, but Heisey News assumes no further liability.

Send all letters and articles to be published to the Editor. Letters to columnists should be sent to the club address and will be forwarded.

con't from former page

Welker. Kay Darling acted as moderator.

A pleasant session for former employees and H.C.A. members on Friday afternoon was well attended. Tim Heisey spoke a few words of welcome. His mother, Anne, was also present.

On Friday evening the annual banquet was attended by about 300 persons who enjoyed a prime rib dinner, witty remarks by Stan Darling and Carl Sparacio and a wonderful speech by Robert P. Fischer, P.H.D. Director of Personnel Research at Fenton Art Glass. His speech was humorous, informative and very interesting. Jan Mooney again played the jazz harp during dinner.

All during the convention the museum stayed open all day and evening and the museum lounge was again in the board room of the new office building. Delicious cookies baked by members of the National Capital H.C.C. and the Northern Illinois H.C.C. were enjoyed by all the visitors. This is really a fine place to get acquainted.

The display at the Y.W.C.A. was again very beautiful thanks to Harley Bethel and his committee. The ideas were clever and the glass beautiful. Tables were again set in most colors with complementary floral arrangements. Various clubs had clever ideas and we hope to have slide sets on this.

Visitors arrived as early as Saturday ahead of the convention and stayed until as late as Tuesday the next week. It is always a busy week for those here who are most involved in planning but it is very rewarding.

The seminars were popular and the best attended that we have ever had. The Bredehoft's and myself presented the first one on "The Fabulous Kralls." We were pleased to have the daughter and grandson of Emil Krall with us. With material gleaned from them and from Anton Krall, the 81 year old nephew of Emil Krall who was also a lifelong engraver himself, we had voluminous information on the family and some of the processes. We also had many lovely pieces done by the Krall family on display.

Dick Marsh next presented the animal slides - always of interest, and Virginia Marsh and Virginia Yeakley

concluded the evening with the seminar on Fakes and misleading items. Among other things they showed the fake piglets, doe head bookends and the various stoppers. A new marked fake item on the market is a twin salt. There is also a fake of the large horsehead stopper.

The annual breakfast was well attended. Elsewhere you have seen the results of the election. In this issue are lists of donations during the show as well as some given since the last list was published. Lists of 1978 acquisitions are also printed in this issue.

According to many of you a week in Heiseyland is a thrilling experience and we are glad you enjoy it. A visit to our all-spruced up museum was nearly worth the trip by itself.

Next years convention will be from June 19 - 22 and will be held at the OSU Newark Campus in air-conditioned buildings. This should help those of you who have had school problems in the past.

Try to attend the souvenir dinner and mini-show (almost all Heisey) on September 8 on the museum grounds. This is a REAL FUN occasion. The antique cars will be on hand to pick you up at your various motels. You'll receive more information soon as a special mailing is prepared.

I am pleased to be your president for another year. I promise I am not going to fun forever even though it may seem like it.

Our printer is going to have open heart surgery very soon and we may have continued problems for a few months. Her doctor thinks she will be able to come back and continue with her printing soon. We all wish her the very best and we hope you put up with whatever problems this causes in getting Heisey News out on time for the next months or so.

Our attorney Stan Darling has decided to give up this "unpaid" job. He has done a fine job for us over the years and we regret his leaving us. Thank you Stan!

In response to questions about Russ, he is doing O.K. since his spell the morning of the annual meeting.

Till next month,

HAPPY COLLECTING
LOUISE REAM

P.S. We hope the black and white photos from the convention have arrived by the time this goes to press. ■

1979 CONVENTION COMMITTEES

KAY DARLING

.....GENERAL CHAIRMAN

SHOW

Jack Metcalf*
Chris Maskaleris
Jerry Robinson

Dick Spencer
Charles Wade

DISPLAY

Harley Bethel*
Marcella Bethel
Valli Feldman
Jean Johnson
Bill Johnson

Phyllis Hess
Maureen Kovacs
Mary McWilliams
Virginia Yeakley
Jerry Bagford

HOSPITALITY

Helen & Bob Rarey*
Helen & Carl Sparacio
Vivian & Percy Moore
Gateway H.C.C.
National Capital H.C.C.
Northern Illinois H.C.C.

SOUVENIR "Oscars"

Reynoldsburg H.C.C.

RESERVATIONS & REGISTRATIONS

Phyllis McClain
Robert G. McClain

PUBLICITY

Jack Caughenbaugh*
Louise Ream
Debbie Delaney

PROGRAM AND TICKETS

Marcella Bethel*
Harley Bethel
Stan Darling
Michele Wilson

"THE FRENCH MARKET"

Heisey Heritage Society
of Pennsylvania

"AULD LANG SYNE"

Frances Law*
Vi Armentrout

John Eshelman
Helen Pallagi

* Indicates Chairman

TELLERS for JUNE ELECTION

Board members Darrell Bratt and Dick Spencer were the overseers for the election.

Ron Dunham
Gertrude Swetnam
Charlie Baird
June Revelle
William Pearce

Martin Siglock
Virginia Johnson
Ernest Mehnert
Betty Wanser
Butch Jones



HARLEY'S ANGELS

Harley Bethel presented "Angel Necklaces" to these women who helped with the display. Seated- l to r: Louise Ream and Marcella Bethel. Standing- l to r: Virginia Yeakley, Mary McWilliams, Valli Feldman and Kay Darling.



l to r: Louise Ream, Loren Yeakley and Mary Little of the Western Reserve H.C.C. presenting a Sahara #135 bowl and a #7013 powder box to the museum.



Francis Law accepts a Certificate of Participation in the display for the Newark Club from Jerry Bagford.



Dr. Robert P. Fischer, Ph.D., our dynamic banquet speaker conversing at dinner with our very own Elizabeth King who is also our poetess laureate.



CONVENTION

1979

Carl Sparacio and Louise Ream admire the beautiful All-Heisey mosaic made and donated by Phyllis Goldstein, right, in memory of her husband, Milton. The glass was furnished by you club members. The mosaic is much more beautiful when you see it in color. Can you spot the outline of the Fandango pitcher?

HEISEY DECORATIONS

"HEISEY'S GRAPE PATTERNS"

by NEILA BREDEHOFT

Most glassware companies which produce or produced glassware for table use, especially drinking vessels made an etching or light cutting which had a grape motif. Many of these designs were called Vintage as a perfect name for the design. Heisey was no exception. The first Heisey design using the grape as central motif was #416 Vintage plate etching. We were very fortunate when writing the etching book to name this etching Vintage. It is the one etching name which we applied which has been found to be the original Heisey name also. Vintage was produced approximately from 1919 until possibly as late as 1924. It was produced solely on crystal ware. Price lists owned by HCA only list Vintage on blown ware (which will be unmarked), but it has also been found on a #353 Medium Flat Panel syrup so it may be found on other pieces of pressed ware also. Vintage resembles the grape etchings done by other companies so great care should be used when buying it for Heisey. Either make sure to memorize the etching or be sure you have a piece of Heisey glass when you make your purchase. Fostoria's #204 Vintage and #227 New Vintage etchings resemble Vintage but do not cover the major portion of the bowls of stemware as does the Heisey Vintage. Fostoria's etchings form a narrow band about the tops of glass items. Only a few years ago, I thought I had found a set of #3476



#416 VINTAGE*
Plate Etching
Goblet

Temple handled sodas with Vintage etch only to find out after comparing them with the Fostoria catalog reprint that I had purchased Fostoria, not Heisey.

Found on:

#3312 GAYOSO Stemware - please add to your lists: pousse cafe, finger bowl

353 MEDIUM FLAT PANEL syrup

Also please add to your etching book:

#2351 STRAIGHT 8, 10, 12 oz. sodas

#2930 PLAIN & FANCY 10 oz. tumbler

The second grape design produced by Heisey is #461 Concord plate etching. Even though this etching is not shown in any price lists or catalogs prior to 1935, it was shown in the patent application for the Silhouette etching process which was filed in 1933. Thus it must date as early as that. It is not a silhouette etching but was used as an example of the usual type of plate etchings produced at that time to show the difference between the plate etching and silhouette etching processes. Price lists state that it was available on crystal and sahara ware although I have never seen it in sahara. It is on a quite limited line and I do not believe it was very popular since not a lot of it has been seen up to this time. Using the 1933 date as its introduction, it was listed in catalogs up until 1937. The grape design of Concord is almost a secondary motif since the most unusual and easily remembered portion of the design consists of two seahorses back to back with a fan-like ornament between them. The grape pattern alternates with the sea-

- # 416 VINTAGE Plate etching
- # 461 CONCORD Plate etching
- #5000 BACCHUS carving

horses about the top portions of stemware.

Found on:

#3404 SPANISH stemware - in crystal & sahara

#1401 EMPRESS 6, 7, & 8 inch plates, round & square - in crystal & sahara

The final production decoration by Heisey using the grape design is #5000 Bacchus Carving. This is the first listed carving and is indeed aptly named. The only items directly involved as drinking vessels with Bacchus design are the Waldorf wine and the #4036 decanter. Other than these, the carving seems to appear mainly on accessory pieces and decorative items. Somehow, when we were researching this carving I expected to find a full line of drinking items to tie in with the name. Bacchus was designed by Carl Cobel and was introduced in 1934. It was discontinued by 1938, not 1939 as indicated in your etching books. I have not seen a great many pieces of Bacchus, but it is quite beautiful. There has been a large Yeoman plate on display in the Museum which is indeed eye-catching. Bacchus is found only on crystal items.

Found on:

134 FLORAL bowl

500 OCTAGON variety tray

#1184 YEOMAN plates

#1401 EMPRESS relish & plate

#3318 WALDORF wine

#4036 decanter

#1445 GRAPE CLUSTER & #1447 ROCOCO candlesticks

The only other known Heisey product using grapes as a decoration is #9043 which we called simply "Grapes". This is a specially done item and probably is unique. It was an experiment in etching and was done by Madelyn Land in 1918. The etching was done on a #4163 jug. Do not expect to find this etching. Also at this time there are no known Heisey production cuttings using grapes as the central motif.

●●●●●●●●

UPDATE:

I wrote last month's column without benefit of all my research materials (lost temporarily in our recent move) so I neglected to include the items which have been found in price lists since publication of the etching book. Please include the following in your lists:

For 15 SPIRAL BAND* add:

#3315 POLONAISE 5 1/2" comport, low and high footed; 7" comport, low footed finger bowl

#2351 STRAIGHT 8, 10, 12 oz. sodas



#4163 JUG — #9043 GRAPES

Etching on pitcher owned by the National Heisey Museum. Done by Madelyn Land, an employee of the decorating department. Signed by her and dated 1918.



#461 CONCORD Plate Etching

cop't from former page

#2515 3 oz. bar; 8, 12 oz. sodas

#2930 PLAIN & FANCY 10 oz. tumbler

#4268 4½ oz. custard

For #370 NILE add:

#3301 10 oz. goblet, 8 oz. goblet, 6 oz. champagne, 5½ oz. saucer champagne, 5 oz. hot whiskey, 5 oz. sherbet, ftd.

#500 Octagon
#500B BACCHUS Carving

4½ oz. oyster cocktail, 4 oz. claret, 3½ oz. cocktail, 2½ oz. cocktail, 2½ oz. Wine, 2 oz. sherry, 1 oz. cordial.

#3315 POLONAISE - 5½" comport, low and high footed, 7" comport, low footed; finger bowl.

#2351 STRAIGHT 8, 10, 12 oz. Sodas

#2930 PLAIN & FANCY 10 oz. tumbler

For #380 CASSANDRA add:

#3315 POLONAISE - 5½" comport, low & high footed; 7" comport, low footed; finger bowl.

#2351 STRAIGHT 8, 10, 12 oz. sodas

#2930 PLAIN & FANCY 10 oz. tumbler. ■

HEISEY CANDLESTICKS



- #118 "Plain and Fancy"
- #126 "Two Handled"
- #138 "Gascony"

by JACK METCALF

The name given above for all three of these are by the author, but for at least two of the three cases there is a relationship to Heisey nomenclature.

The first of the three, #118, (a squat 3" high) was introduced in the 1924 Price list 208 - It is shown in catalog 109 of 1929. There was no reference in the 1933 price list for Catalog 10. Production span was at least 5 years therefore, and this is not a particularly difficult candleholder to locate. The reason for the name is that every time #118 is mentioned, there is a note stating "also made diamond optic." Now, as far as I know, I've never seen one with the optic despite the more than 5 year production. I don't know if the optic was ugly and not many sold or so faint that I haven't noticed. "Plain and Fancy" was produced in crystal, flamingo and moongleam. The diamond H, when visible, is in the center of the bottom.

The second stick shown is the 6" tall #126. "Two-handled" candlestick. It is unusual in



the handles and Heisey referred to it thusly in their price list for catalog 209. #126 does not appear in either 208 or 210. The "Two Handled" was produced in crystal and the ever popular flamingo and moongleam. This is not an especially uncommon candlestick despite the relatively shorter production span. There did seem to be a problem with the handles, however, as about half of the examples which I have personally seen have a crack at the base of one of the handles. The handles are pressed as part of the mold.

For the third candlestick, #138, the production span is again not very long and interestingly #138 is not very common. Hopefully, no confusion will be generated by calling #138 "Gascony" which is the name associated with pattern #3397. #138 was introduced as a single item pattern, but it is shown in Catalog 210 with the Gascony pattern, but with #138 in parentheses. The name Gascony is therefore already in common usage for the candlestick.



The "No. 138" is 5 inches high, marked on the base, and is listed in colors crystal, flamingo, moongleam and sahara.

A couple of points which apply to all three, are, that I know of no etching or cutting on any, and they have not been reproduced by Imperial. Further, it is interesting that for all three, crystal is probably the least common color. ■

COLUMNISTS TAKE NOTE

by LOUISE REAM

Only one of you, Neila Bredehoff, submitted a column for this month. We can't print a newsletter without YOU. The deadline for your columns is the fifth of each month. We would even appreciate having them sooner and it wouldn't hurt if everyone would try to send two so we would always be sure of having one from you even if an emergency came up and you had to be late once.

Donations — Recent Acquisitions

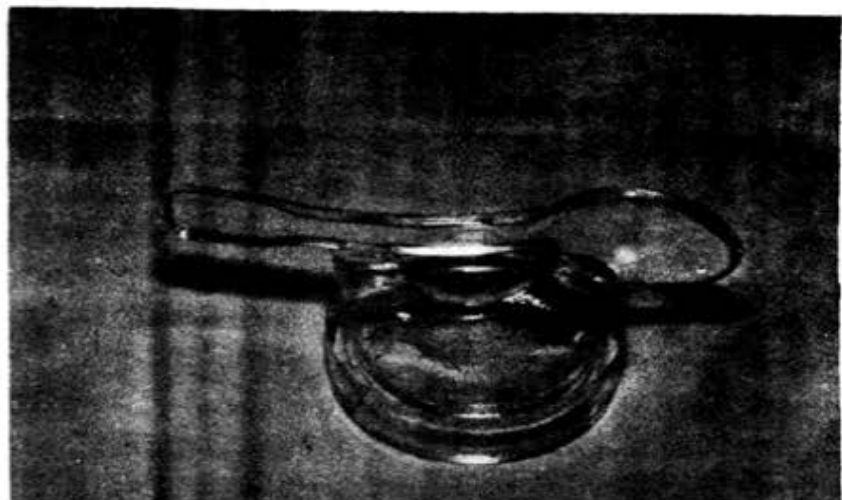
1. 22 x 28 Mosaic made w/broken Heisey glass - beautifully framed. Donated by Phyllis Goldstein in memory of her husband Milton. Made from broken glass donated by club members.
2. \$1,000.00 - Heisey Collectors of California for acquisitions
3. \$1,000.00 - Heisey Heritage Society - for acquisitions
4. 2-#1401 Empress tall ftd. Vases, engraved by Emil Krall, one signed by him - by Bay State H.C.C.
5. #135 Floral bowl, Sahara, and #7013 Thumbprint and Angle powder box - Western Reserve Study Club.
6. #353 Medium Flat Panel Tobacco Jar, Zircon, signed Benson and Hedges, plus \$360.00 cash for acquisitions - by National Capital H.C.C.
7. \$100.00 - for glass acquisitions - by Central Illinois H.C.C.
8. \$165.00 - South Florida H.C.C.
9. \$100.00 and #1183 Revere Japanese Garden Tray - Houston H.C.C.
10. #3304 Universal Pousse Cafe - Velma Norman, Texas
11. #3381 Creole Champagne, Sahara bowl - Heisey Collectors of Rochester Area
12. #1238 8" Sahara Beehive Plate - Heisey Collectors of Columbus
13. \$100.00 - Southern Ill. Diamond H Seekers
14. #1401 Empress Lion Head bowl, moon- gleam - Land of Legend HCC, Newark
15. #1201 Fandango Pitcher and a Hydrangea goblet was donated to Chrysler museum at the suggestion of the HCC board of directors by the National Capital HCC
16. Box of Glass was donated to the Auction - Long Island H.C.C.
17. Box of Glass was donated to the Auction - Heisey Collectors of Michigan
18. Cookies for the Lounge - Northern Illinois H.C.C.
19. Cookies for the Lounge - National Capital H.C.C.
20. Posters and place cards for display - Maureen Kovacs
21. Reynoldsburg HCC - Handled Oscar sales
22. Bay State Club is going to donate a piece of glass to the Sandwich Glass Museum.
23. The two clubs who furnished the cookies plus the Gateway HCC and the Heisey Collectors of Columbus each staffed the lounge for one day.
24. 3 sets color prints and 3 sets slides of convention - Darwin Bass
25. Gulf Oil Company - \$445.80
26. Joe D. Lokay - \$227.90 research expenses (Gulf Oil Co. matches on a 2 to 1 basis contributions by company employees)
27. 1 pair crystal bookends, monogram GRH. Donated by Gerald R. Haslop. These were a gift to him by his aunt, Louise Adkins.
28. #1472 Parallel Quarter Candleblocks with King House etching - Mr. and Mrs. Bernard Feldman.
29. #1200 Cut Block water bottle and #1170 Pleat & Panel moon- gleam goblet - Norman Alford
30. #21 Hat Rack for store display - Herbert and Dorothy Leviton
31. #1401 Empress floral bowl & #134 Trident candlesticks w/#497 Rosalie etch #3344 Carolina champagne w/unknown cutting - Mr. & Mrs. R.G. Albright
32. #2517 Teardrop 12" floral bowl, shaped like a hat - Hawthorne, by Odell and Virginia Johnson
33. #122 Candle holder - Hawthorne - Tom Martin
34. #3404 Spanish goblet - red side - Lynne-Art's Glass House
35. Liner - pattern unknown, moon- gleam - Roy Burns and Joe Perry
36. Early Tobacco Jar - David and Rhoda Curley
37. #341 Epergnette, 3 #3408 goblets w/#941 Barcelona cutting; #1540 Lariat cocktail w/#980 moon- gleam cutting; #1503 crystal- lite celery in silver plated tray; #150 relish; #365 Old Queen Ann nappy; #1503 crystalite oval floral bowl; #466 panel and double pleat nappy & a colonial marmalade - all given by Russ Thomas. To be used for museum or for auction, as the club desires.
38. 22x28 Mosaic made w/broken Heisey glass - beautifully framed - donated by Phyllis Goldstein in memory of her husband Milton. Made from broken glass
38. #3312 Gayoso goblets, flamingo - Donated by Phoebe Flory
39. The museum brochures handed out at the museum to all visitors - Diamond H Study Club
40. #4222 Horseshoe Vase w/#5009 Diana Carving donated by Earl & Mona Cupp
41. 1 Ovenware liner, #1549 apple ash tray, #2252 etched tumbler and #400 ale. Donated by Robert & Anne Johnson.
42. 300½ Bar Glass - flamingo, rare
43. Mustard Ladle on the "bust off" - very interesting!
44. Shards and Cullet from the Heisey dump.
45. #1417 Arch tumbler, amber, rare
46. #4057 7" Vase, amber, saturn optic, rare
47. #365 Old Queen Ann wine, rare
48. #1401½ Empress punch cup, cupped, unusual
49. #473 Narrow Flute w/rim sardine box - (This is an unusual piece. The lid is not ground, yet fits so tightly it is very hard to remove)
50. Blow mold for Vase from Heisey factory
51. Marker for scoring blown items to cut off the overflow from Heisey factory
52. #125 Leaf Candleblocks - seldom seen
53. 2 Experimental Cocktails w/twisted stems (2 styles) very rare
54. 15" plate, pattern unknown, #859 Cohasset cutting - beautiful & rare
55. #1238 8" Beehive plate, Hawthorne, rare
56. #1236 8" Eagle plate - Cobalt, rare
57. #6060 Country Club wine - #1040 Iris Stone engraving
58. Purchase of 12 rare items was not consummated. These were mostly in the "one known" category and a great loss to the museum.

Total 1979 Acquisitions to date:

\$2,783.50

All items have been listed in this and other newsletters for the year.

No. 1 thru 23 are Donations at Convention
24 thru 41 are other 1979 Donations,
42 thru 58 are Acquisitions since last listing.



Mustard Spoon still on the "bust off"

Barbara Fritchie



BARBARA FRITCHIE CORDIAL

FREDERICK, Md. — It was right and fitting that I should drop into Barbara Fritchie's house the first chance I got.

After all these years an apology was due for snickering at the feisty old dowager who alone in Frederick town waved her country's flag when Stonewall Jackson rode by with his rebel horde.

Looking back on that outrage now, from the vantage point of the very window where Dame Fritchie rescued the flag shot from its staff by the Confederate rifleman, the whole reaction of ridicule and irreverent laughter was probably Sister Miriam's fault.

Our eighth grade nun really identified with the Barbara Fritchie of the John Greenleaf Whittier poem. Her voice throbbled with emotion and the wattles in her throat over her wimple got red when she reached the line: "Shoot if you must this old gray head, but spare your country's flag."

We used to call her Barbara Fritchie behind her back.

The trouble began at the point in the poem when the nobler nature stirred within the general's soul and with a blush of shame he issued the order:

"Who touches a hair on yon gray head
Dies like a dog! March on!" he said.

Right there Charlie Schroder, the class

cutup, let out a blood curdling yelp, like a dog that had just been shot.

Stunned by his impudence and our volley of laughter, Sister Miriam ordered us to write out the entire poem three times for homework.

So, here in the old house, I make public amends to Whittier's hardy heroine.

Recent research shows that Gen. Jackson wasn't having a good week when he camped out on the Frederick fairgrounds. The day he crossed into Maryland, someone stole "Little Sorrel," his favorite steed. Admirers gave him a gigantic gray mare that reared up, tossed him in a ditch and rolled over on him as he tried to mount.

A staff officer named Sanders, who rode at Jackson's side, wrote years later that he never saw Barbara Fritchie or anyone else poke a head or a flag out any window. He recalled that the Confederate band played "Maryland, My Maryland" through the streets, hoping to rally some recruits to the Rebel cause but none came forward.

Oh well, history always has its debunkers.

Whittier, who never met Barbara Fritchie, heard the story in a letter from a neighbor. Emma Southworth, who wrote that "the city wore churchyard respect" when Jackson rode through, except for that one flag flying from that second-story window on Patrick Street.

Barbara's exact words when the shooting started, according to Emma, were: "Fire at this old head then, boys, for it is not more venerable than your flag." ■

HEISEY 1184 YEOMAN



CAMBRIDGE
#800 pattern



800-9 oz. Goblet

NOTE THE SIMILARITY BETWEEN THESE TWO. ANOTHER COMPANY IN INDIANA HAS ALSO MADE A SIMILAR PATTERN. THE

BALLS ON THE STEMS ARE DIFFERENT ON ALL THREE.

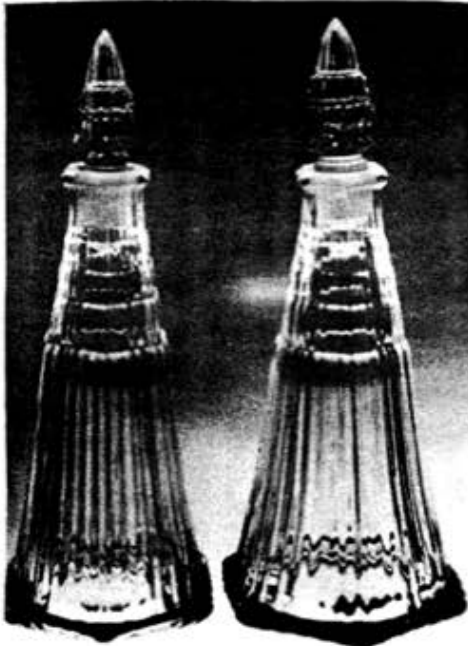
This word game was sent by the Southern Illinois Diamond H Seekers Club

- | | | |
|------------------|-----------------|-------------------|
| PUZZLE | ERMSWETA | ETARPTH |
| | 1. Sprgheprsao | 1. Lrwsio Diecgn |
| | 2. Afcti Meoe | 2. Etnsmojwa |
| | 3. Eollanringe | 3. Ewbdæ Gdas |
| | 4. Tintlaopna | 4. Letsictryo |
| | 5. Oacpf Olyn | 5. Nhs Diwodcia |
| | 6. Agdnonad | 6. Rivwyæa |
| | 7. Eryek Gke | 7. Rotnwi Reuae |
| | 8. Alocinio | 8. Rslæcb Ora |
| | 9. Ubrsrtsus | 9. Bgdern Tcaolbo |
| 10. Ntico Mersot | 10. Apnyb Tdun | |

answers on page 12



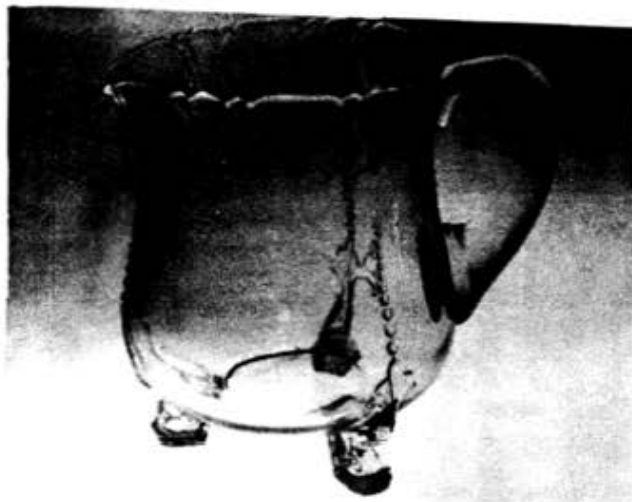
#1252 TWIST
Photo by David Curley



#1489 Ridgeleigh Decanters
Photo by Curley



#1255 Pineapple and Fan
Photo by David Curley



#1401 Empress Dolphin Footed Jub
Photo by Curley



Decorated #1183 Revere or #1511 Tourjours candle vase (centerpiece) This item was first issued as Revere and was made in color. The museum owns one in Moongleam.

* CLUB NEWS

BAY STATE H.C.C.

by **JARDA CRAGG, Reporter**

The gas shortage put a big crimp on the July 8th meeting attendance, but those who made it to the Box Lunch Auction at Dot and Wade Banck's in Hanover, had a good time. One important order of business was the Club's decision to donate a piece of Heisey, preferably of a similar pattern, to the Sandwich Museum. That should make for an interesting "match-up".

David Steer conducted the Show and Tell portion of the meeting. Among the "goodies" was an Ipswich console bowl in moongleam; a crystal Saturn shrimp bowl; a donkey; a goose (wings down); chrysanthemum water bottle; a Petticoat Dolphin compote with moongleam stem; and an Ipswich insert.

Hopefully, the gas crunch will have been put in its place by the time the August meeting rolls around, and more of us will be able to attend.

DAYTON AREA H.C.C.

by **MARY STICH, Secy**

The August meeting of the DAHCC was held at the Cincinnati home of Mary and Bill Stich. Finds of the last month were displayed and discussed as the members arrived.

After the business meeting the Heisey Toothpick slides were shown. Patterns, production years, color and rarity were discussed. Slides of the table settings and display from the June Convention were also shown.

Refreshments were served.



Joyce Dawson accepts Charter #30 for Columbia Heisey Collectors Club Oregon.

NEW CLUB RECEIVES CHARTER

We were very pleased to welcome The Columbia Heisey Collectors of the state of Oregon, with possibly a few from Washington, to our growing family of clubs. Joyce Dawson was on hand to receive the charter. Good Luck to the new club!!

WESTERN RESERVE H.C.C.

by **HELEN MARIMON, Publicity Chm.**

The Western Reserve Study Club met on June 21st at the home of Maddie Little in Lorain, Ohio, with 8 members and one guest present.

Following the brief business meeting, members who had attended convention gave reports on its various aspects. One member who had attended the convention for her first time was asked her initial reaction to the Heisey Museum. She said, "I thought I'd died and gone to Heaven."

"Finds" were shared and dessert was served in Old Queen Anne berry bowls.

MISCELLANEOUS



DOLPHIN FOOTED CANDLESTICKS

"THE BEAUTY of HEISEY GLASS"

by **E. GAIE ROBINSON**

I was born and raised in Ohio, not too far west of Newark, in the county seat of Logan County. Many trips were made between that small city and Columbus and Newark, Ohio.

Since learning of Heisey glass and its beauty and because I was courting a Newark girl in my young days it occurred to me that the subject of glass had never been an issue.

I have collected during the past years, Meissen, Dresden, Baccarat, Steuben, Waterford and Lalique, all prior to my introduction to Heisey. Now as an avid collector of the latter it affords me a great deal of pleasure to place certain pieces side by side and not only compare their beauty, their weight and brilliance

but revel in the fact that I am now a collector of a product made years ago that can still afford pleasure and satisfaction to those who have been caught in the "Heisey trap."

Why didn't we all start collecting in 1956?

After spending three days at the Heisey Show in Newark this past June and talking to so many wonderful people from all over the United States that share my enthusiasm, discovering that they had something to sell you and me that is to all the collectors the most beautiful glass in the world. One look around the auditorium in that High School would have convinced anyone that such a statement had to be true. ■

PUZZLE

Answers to word game
sent in by Southern Illinois
Diamond H Seekers Club

STEMWARE

1. Grasshopper
2. Comet Leaf
3. Legionnaire
4. Plantation
5. Fancy Loop
6. Fandango
7. Greek Key
8. Colonial
9. Sunburst
10. Monte Cristo

PATTERN

1. Winged Scroll
2. Jamestown
3. Beaded Swag
4. Crystallite
5. Old Sandwich
6. Waverly
7. Narrow Flute
8. Coarse Rib
9. Ribbed Octagon
10. Puntly Band

ALL HEISEY AUCTION

OPERA HOUSE
GRANVILLE, OHIO
FOOD AVAILABLE

SATURDAY, OCTOBER 20, 1979
DOORS OPEN --- 12:00 NOON
SALE STARTS 4:00 P.M.

Price List Available for \$1.00

This will be one of the finest HEISEY auctions ever held with over 60 animals and animals related items, including 2 AMBER elephants, large madonna, bull, tiger, show horse, AMBER seahorse and rooster cocktails, sahara lion bowl, complete set of imperial slag animals, this auction will feature some of the best pieces in color that have been offered for a long time. You won't be disappointed. Mark your calander and plan to attend. Many items in this sale come from a former Heisey Salesman.

- | | | | | | |
|----------|---|----------|--|----------|--|
| 1 #1469 | Ridgeleigh Indiv Cream, Sugar & Tray H | 23 # 393 | Narrow Flute 1/2 gal Jug H | 45 # 100 | VASELINE 1 Lt Candle, Pair H |
| 2 #1425 | Victorian Cream & Sugar H | 24 # 517 | Boudoir Jug w/#197 Tumbler H | 46 # 5 | 8" 1 Lt Candle, Pair |
| 3 #1230 | Ribbed Octagon FLAMINGO Cream & Sugar H | 25 #5032 | 1 Qt Martini Pitcher | 47 #1540 | Lariat 2 Lt Candle, Pair |
| 4 #1519 | Waverly Indiv Cream, Sugar & Tray H | 25 #6060 | Country Club 1 Qt Jug X | 48 #1540 | Lariat 2 Lt Candle, Pair |
| 5 # 352 | Flat Panel Indiv Cream & Covered Sugar H | 27 #1280 | Winged Scroll CUSTARD, 1/2 Gal Jug | 49 #1504 | Regency 2 Lt Candle, Pair |
| 6 #1184 | Yeoman MOONGLEAM Cream, and Covered Sugar H | 28 #1295 | Bead Swag EMERALD 1/2 Gal Jug, Decorated | 50 #1503 | Crystalite Electric Hurricane Lamps w/Globe, Pair |
| 7 # 355 | Quator Cream & Sugar, Cut H | 29 #1401 | Empress FLAMINGO Dolph Ft Jug H | 51 #7000 | Sunflower 1 Lt Candle, Pair |
| 8 # 393 | Narrow Flute Indiv Cream & Sugar H | 30 # 517 | 1 Qt Jug & 6 Ea #452 5 oz Soda, #499 Good Morning Etch | 52 #1428 | Warwick SAHARA 1 Lt Candle, Pair H |
| 9 # 500 | Octagon SAHARA Cream & Sugar H | 31 #1401 | Empress MOONGLEAM Dolph Ft Ice Bucket, Lafayette Etch H | 53 #1540 | Lariat 1 Lt Candle, Pair |
| 10 #1567 | Plantation Cream & Sugar | 32 # 461 | 7" HAWTHORNE Basket H | 54 #1567 | Plantation 1 Lt Candle Block, Pair |
| 11 #1503 | Crystalite Indiv Cream, Sugar & Tray H | 33 # 500 | Octagon FLAMINGO 5" Basket H | 55 #1503 | Crystalite 1 Lt Candle Block, Pair |
| 12 # 479 | Hotel FLAMINGO Cream & Sugar X | 34 #1405 | Ipswich Floral Bowl & Pr Candle vases w/Inserts H | 56 # 5 | Toy Candlestick, Pair H |
| 13 #1519 | Waverly Indiv Cream & Sugar, Orchid Etch & Tray H | 35 #1472 | Parallel Quarter 9" Floral Bowl & Pr 1 Lt Candle H | 57 # 5 | Toy Candlestick, Pair H |
| 14 # 473 | Narrow Flute w/Rim Indiv Cream & Sugar H | 36 #1472 | Parallel Quarter 9" Floral Bowl & Pr 1 Lt Candle H | 58 # 31 | Toy Candlestick, Pair H |
| 15 #4222 | Horseshoe FLAMINGO Cream & Sugar | 37 #1433 | Thumbprint & Panel MOONGLEAM Floral Bowl & Pr 2 Light Candles | 59 # 130 | Acorn FLAMINGO 1 Lt Candle, Pr |
| 16 #1503 | Crystalite Cream & Sugar H | 38 #1433 | Thumbprint & Panel SAHARA Floral Bowl & Pr 2 Light Candles | 60 #1488 | Kohinoor 2 Lt Candle, Pr |
| 17 #1469 | Ridgeleigh Indiv Cream & Sugar H | 39 #1401 | Empress 11" Floral Bowl & Pr #134 Two Light Candles, Antartic Etch | 61 #1543 | Lodestar DAWN 1 Lt Candle-block, Pair |
| 18 #1469 | Ridgeleigh Indiv Cream & Sugar H | 40 #1405 | Ipswich Candle Vases w/Inserts, Pr | 62 # 301 | 1 Lt Candle w/ALEXANDRITE Bobeche & Candle Cup |
| 19 #1567 | Plantation Cream & Sugar | 41 # 33 | 1 Lt Candle w/Bobeche & Prisms Pair | 63 #1511 | Toujours Candle Vase w/Insert, Krail Cut |
| 20 #1235 | Beaded Panel & Sunburst Cream & Sugar, No Lid, Gold | 42 # 135 | ALEXANDRITE 1 Lt Candle, Pair | 64 #1513 | 3 Lt Candelabra Epergne, Bobeche, Prisms & Flower Vase |
| 21 #1235 | Beaded Panel & Sunburst Spooner & Butter Top, Gold | 43 #4044 | New Era 2 Lt Candle, Pair | 65 #1506 | Provincial 3 Light Candle |
| 22 # 325 | Pillows FLAMINGO Water Bottle | 44 # 134 | Trident 2 Lt Candle, Rosalie Etch, Pair | 66 #1425 | Victorian 2 Light Candle H |
| | | | | 67 # 134 | Trident 2 Lt Candle, Cut |
| | | | | 68 # 134 | Trident 2 Lt Candle, Etched |
| | | | | 69 # 142 | 3 Lt Candle, Orchid Etch |
| | | | | 70 #1540 | Lariat Hurricane Light Base, Enamel Decor |
| | | | | 71 #1519 | Waverly 1 Lt Candle |
| | | | | 72 #1503 | Crystalite Mellon Shaped 1 Lt Candle Block |
| | | | | 73 #1509 | Queen Ann Dolph Ft Nappy Candle H |
| | | | | 74 #1425 | Victorian Cigarette Box H |
| | | | | 75 #1503 | Crystalite Cigarette Box & 4 Ea 3" Square Ash Trays H |
| | | | | 76 #1503 | Crystalite Cigarette Box & 3 Ea 3" Round Ash Trays H |
| | | | | 77 #1469 | Ridgeleigh Cigarette Box & 4 Ea Square Ash Trays H |
| | | | | 78 #1469 | Ridgeleigh Cigarette Holder & 4 Ea Square Ash Trays H |
| | | | | 79 # | Verlys Swallows Cigarette Box |
| | | | | 80 # | Verlys Swallows Ash Tray |

PAID ADVERTISEMENT



81 #1469 Ridgeleigh Ash Tray, 1 Ea.
 Spade, Club & Diamond H
 82 #1401 Empress Ash Tray, Monogram, H
 83 #1612 Botanical Ash Tray H
 84 #1503 Crystolite 3" Square Ash
 Tray, 2 Ea H
 85 #3390 Carcassonne Cigarette Holder,
 3 Ea
 86 #1486 Coleport Cigarette Set, Holder
 & 2 Ash Trays H
 87 #1186 Ashtray, Cut & Monogram FLG,
 12 Ea
 88 #1503 Crystolite ZIRCON 3" Round
 Ash Tray H
 89 #1488 Kohinoor ZIRCON Ash Tray H
 90 #1488 Kohinoor ZIRCON Ash Tray H
 91 #1404 Old Sandwich Indiv Ash Tray,
 8 Ea H
 92 #1469 Ridgeleigh Coaster, 7 Ea
 93 #1469 Ridgeleigh Coaster, 8 Ea in
 Original Box
 94 #1540 Lariat Coaster, 4 Ea
 95 #1540 Lariat Coaster, 2 Ea
 96 #1951 Cabochon Cake Stand H
 97 # Plain Compote H
 98 #1401 Empress SAHARA Round
 Compote H
 99 # 305 Punty & Diamond Point Jelly
 Compote
 100 # 310 Ring Band CUSTARD Jelly
 Compote, Gold Decor H
 101 # 300 Peerless 4" Jelly Compote H
 102 #1252 Twist MARIGOLD Ftd Mayonnaise
 103 #1469 Ridgeleigh Mayonnaise & Under-
 plate H
 104 #1503 Crystolite Mayonnaise &
 Underplate H
 105 #1506 Provincial Divided
 Mayonnaise H
 106 # 411 Rib & Panel Mayonnaise &
 Underplate H
 107 #1519 Waverly AMBER Footed Cheese
 108 #1401 Empress 3 Part Relish, Orchid
 Etch
 109 #1951 Cabochon DAWN 3 Part Divided
 Relish H
 110 #1503 Crystolite 13" Oval 3 Part
 Relish H
 111 #1503 Crystolite 13" Oval 3 Part
 Relish H
 112 #1495 Fern ZIRCON 3 Part Divided
 Relish
 113 #1503 Crystolite 10" Round 5 Part
 Relish.

114 #1503 Crystolite 3 Part 8" Relish
 Tray
 115 # 341 Colonial 3 Part Relish
 116 #1401 Empress SAHARA Olive Tray
 117 #1540 Lariat Tray for Artichoke
 Hearts H
 118 #1189 Yeoman FLAMINGO 13" Celery
 Tray H
 119 #2351 Double Old Fashion, Maryland
 Cut
 120 #5044 Constellation Old Fashion
 121 #4054 Coronation DAWN Old Fashion,
 Experimental Screen Optic
 122 #5060 Washington Square Old Fashion
 123 #5087 Comet Old Fashion
 124 #1425 Victorian Tumbler, 2 Ea H
 125 #1506 Provincial Tumbler, 3 Ea H
 126 #1401 Empress Tumbler H
 127 # 411 Rib & Panel Tumbler H
 128 #1637ATown & Country DAWN, 12 Oz
 Tumbler, 2 Ea H
 129 # 341 Puritan 7 oz Tumbler, 2 Ea H
 130 #5040 Hi Ball, Grey Cut
 131 #1951 Cabochon 8 oz Soda, AMBER Base
 132 #3359 Plateau MARIGOLD 5 oz Juice,
 6 Each
 133 #3397 Gascony TANGERINE 12 oz Soda,
 Red Side
 134 # 310 Ring Band CUSTARD Tumbler H
 135 # 310 Ring Band CUSTARD Tumbler H
 136 # 310 Ring Band CUSTARD Tumbler,
 Gold Decor H
 137 #1280 Winged Scroll CUSTARD Tumbler,
 Gold Decor
 138 #4051 Soda, Cut
 139 #1567 Plantation Cup & Saucer,
 Plantation Ivy Etch, H
 140 #1567 Plantation Cup & Saucer H
 141 #1950 Cabochon Cup & 2 Saucers H
 142 #1519 Waverly Cup H
 143 # 341 Old Williamsburg Cup & Saucer H
 144 #1519 Waverly Cup, Rose Etch H
 145 #1100 CUSTARD Punch Cup, Rose Decor H
 146 #1567 Plantation Punch Cup H
 147 # 433 Grecian Border Punch Cup,
 17 Ea H
 148 #1506 Provincial Punch Bowl, Under-
 plate & 20 Punch Cups H
 149 #
 Blown Crystal Punch Bowl &
 Plastic Ladle
 150 #
 16" Plate for #149
 151 # 341 Puritan 12" Footed Punch Bowl
 & Base H

152 # 341 Old Williamsburg 18" Torte
 Plate H
 153 #1632 Lodestar DAWN 14" Party Plate H
 154 #1567 Plantation 14" Torte Plate H
 155 #1401 Empress ALEXANDRITE 12" Handled
 Cake Plate H
 156 #1509 Queen Ann 15" Torte Plate,
 Minuet Etch
 157 #1280 Winged Scroll EMERALD 13" Tray
 158 #1506 Provincial 13" Torte Plate H
 159 #1184 Yeoman 8" Plate, Moonglo Cut
 12 Each
 160 # 407 Coarse Rib 6" Plate, 11 Ea H
 161 #1401 Empress COBALT 8" Square Plate
 4 Ea H X
 162 #1401 Empress TANGERINE 8" Square
 Plate H
 163 #3350 FLAMINGO DO Plate, Trojan Etch
 164 #1170 PLeat & Panel MOONGLEAM High
 Stem Covered Candy, Silver
 Overlay & Cut
 165 #1401 Empress SAHARA Dolph Ft Mar-
 malade & Cover w/Ladle H
 166 #1540 Lariat 5" Covered Candy,
 Krall Cut
 167 #1626 Lodestar DAWN Covered Jar H
 168 # 465 Recessed Panel 1/2 Pd Covered
 Candy, Cut H
 169 # 325 Pillows Stemmed Rose Bowl H
 170 #4085 Kohinoor ZIRCON 6" Ball Vase,
 Saturn Optic
 171 #4085 Kohinoor ZIRCON 4" Ball Vase,
 Saturn Optic
 172 #1255 Pineapple & Fan EMERALD 4"
 Rose Bowl
 173 #4220 ALEXANDRITE 7" Spiral Optic
 Vase
 174 #1252 Twist ALEXANDRITE 8" Round
 Nasturtium Bowl H
 175 #
 Bull H
 176 #
 Tiger Paperweight H
 177 #
 Airedale
 178 #
 Small Elephant
 179 #
 Middle Elephant
 180 #
 Large Elephant
 181 #
 Small Elephant, AMBER H
 182 #
 Middle Elephant, AMBER H
 183 #
 Donkey H
 184 #
 Standing Colt
 185 #
 Standing Colt X
 186 #
 Sealyham Terrier (Scotty)
 187 #
 Sparrow

PAID ADVERTISEMENT

189 # Sparrow
 190 # Chick, Head Down
 191 # Check, Head Up
 192 # Piglet, Standing, 2 Ea
 193 # Piglet, Sitting, 3 Ea
 194 # Wood Duckling, Floating X
 195 # Wood Duckling, Standing
 196 # Wood Duckling, Standing H
 197 # Bunny, Head Up
 198 # Cygnet
 199 # Horsehead Bookend, Pair
 200 # Goose, Wings 1/2 Up
 201 # Goose, Wings 1/2 Up
 202 # Goose, Wings Down
 203 # Goose, Wings Up
 204 # Ringneck Pheasant
 205 # Show Horse
 206 # Oscar (Sparky)
 207 # Show Horse X
 208 # Goose, Wings 1/2 Up X
 209 # Mallard, Wings Up X
 210 # Set of 3 Imperial Ultra
 Blue Colts
 211 # Imperial Caramel Slag
 Sealyham Terrier (Scotty)
 212 # Imperial Caramel Slag
 Mallard, Wings Down
 213 # Imperial Caramel Slag
 Mallard, Wings 1/2 Up
 214 # Imperial Caramel Slag
 Mallard, Wings Up
 215 # Imperial Caramel Slag
 Rearing Colt
 216 # Imperial Caramel Slag
 Kicking Colt
 217 # Imperial Caramel Slag
 Standing Colt
 218 # Imperial Caramel Slag
 Oscar (Sparky)
 219 # Imperial Caramel Slag
 Wood Duck
 220 # Imperial Caramel Slag
 Donkey
 221 # Imperial Caramel Slag
 Elephant
 222 # Imperial Caramel Slag
 Airedale
 223 # 2 Madonna, Frosted, RARE
 224 # 14 FLAMINGO Kingfisher Floral
 Block H
 225 #5074 Seahorse Cocktail, AMBER Stem
 226 #5048 Rooster Head Cocktail, AMBER
 227 #5048 Rooster Head Cocktail, 3 Ea
 228 #4225 1 Pt Cocktail Shaker, & 2 Ea
 #5038 Rooster Stem Cocktail,
 Etched Me, You & Us
 229 #4225 1 Qt Cocktail Shaker, Rooster
 Head Stopper, Moonglo Cut

230 #6060 1 Qt Cocktail Shaker, Small
 Horsehead Stopper
 231 #1503 Crystolite SWAN HANDLED
 Pitcher H
 232 #1469 Ridgeleigh SWAN HANDLED
 Floral Bowl H
 233 #1401 Empress SAHARA Ftd Lion Floral
 Bowl
 234 #7056 Elephant Handled Mug, AMBER H
 235 #1503 Crystolite Swan Master Nut
 Dish & 6 Indiv Swan Nut Dish
 236 #1210 FLAMINGO Frog Handled Cheese Plate
 237 #4225 SAHARA 1 Qt Cocktail Shaker &
 6 Ea #4002 SAHARA Aqua
 Calientes H
 238 #1405 Ipswich SAHARA 1 Qt Cock-
 tail Shaker
 239 #4225 1 Qt Cocktail Shaker, Sweet
 Adelide Carving
 240 #4225 1 Qt Cocktail Shaker, Tally
 Ho Etch
 241 #4224 Steeplechase MOONGLEAM 9"
 Cocktail Mixer
 242 #4224 Steeplechase MOONGLEAM 3"
 Cocktail, 2 Ea
 243 #4002 Aqua Caliente, Tally Ho Etch
 244 #4052 National 5 oz Soda, Tally Ho
 Etch
 245 #2401 8 oz Old Fashion, Polo Player
 Etch
 246 #5048 Rooster Head Cocktail, Tally
 Ho Etch
 247 #6060 13 oz Old Fashion, Winchester
 73 Etch
 248 #6060 10 oz Beverage, Winchester
 73 Etch
 249 #6060 3 oz Cocktail, Winchester
 73 Etch
 250 #1404 Old Sandwich AMBER 12 Oz
 Handled Mug H
 251 #5057 Suez 12 oz Ftd Ice Tea,
 AMBER Stem H
 252 #5040 Lariat 12 oz Ftd Ice Tea,
 Moonglo Cut, 5 Ea H
 253 # 341 Old Williamsgurg 9 oz Low
 Goblet, 11 Ea H
 254 # 341 Old Williamsburg 9.oz Tall
 Goblet, 2 Ea H
 255 #1540 Lariat 10 oz Goblet
 256 #3404 Spanish COBALT 10 Oz
 Goblet, 2 Ea
 257 #4085 Kohinoor 10 oz Goblet,
 EXPERIMENTAL BLUE Stem
 258 #1425 Victorian SAHARA 12 oz
 Footed Soda H
 259 #5019 Waverly 3 oz Wine
 260 #5019 Waverly 4 oz Claret

261 #5024 Oxford 3 oz Wine H
 262 #5040 Lariat 3 oz Wine, Grey Cut H
 263 #1567 Plantation Cigarette Holder
 264 # 363 Colonial 4 oz Claret
 265 # 363 Colonial 3 oz Wine
 266 #4004 Impromptu 4 oz Cocktail
 267 #5082 Mid Century 4 1/2 oz Cocktail H
 268 #5067 Plantation 4oz Claret,
 Plantation Ivy Etch H
 269 #5067 Plantation 4 oz Claret
 270 #3404 Spanish COBALT 3 1/2 oz Cocktail,
 Silver Overlay Floral Decor
 271 #5067 Plantation 3 oz Wine
 272 #5010 Symphone 3 oz Wine, Danish
 Princess Cut
 273 # 337 Tall Stem Sherry
 274 #5089 Princess 3 oz Cocktail,
 Orchid Etch X
 275 #3408 Jamestown 3 oz Cocktail,
 Cut, 6 Ea H
 276 #5019 Waverly 3 1/2 oz Cocktail
 277 #5067 Plantation 3 oz Cocktail
 278 # Plain Blown Champagne
 279 #5010 Symphone 3 oz Cocktail,
 Minuet Etch
 280 #5057 Suez 4 oz Claret, AMBER
 Stem H
 281 #5040 Lariat Juice, Moonglo Cut H
 282 #5040 Lariat Juice, Grey Cut H
 283 # Blown Saucer Champagne
 284 # Blown Saucer Champagne
 285 #3380 Old Dominion SAHARA Saucer
 Champagne
 286 # Blown Hollow Stem Champagne
 287 #3408 Jamestown Saucer Champagne,
 Krall Rose Cut
 288 #3408 Jamestown Saucer Champagne,
 Crinoline Etch
 289 #3404 Spanish COBALT 5 oz Saucer
 Champagne, 2 Each
 290 # Metal & Mirror Advertising
 Display Platform
 291 # 350 Pinwheel & Fan VASELINE 8"
 Nappy H
 292 # 350 Pinwheel & Fan MOONGLEAM 8"
 Nappy H
 293 # 350 Pinwheel & Fan MARGOLD 8"
 Nappy H
 294 # 350 Pinwheel & Fan FLAMINGO 8"
 Nappy H
 295 # 160 Locket on Chain EMERALD 8"
 Nappy
 296 #1440 SAHARA Floral Bowl, Ftd H
 297 #1567 Plantation 9" Salad Bowl
 298 #1567 Plantation 9" Low Crimped
 Bowl

299 #4206 Optic Tooth HAWTHORNE 10 1/2"
 Base, DO
 300 #4057 ZIRCON 10 1/2" Vase, Saturn
 Optic
 301 #4004 Impromptu 10 1/2" Vase
 302 #1469 Ridgely SAHARA 8" Vase H
 303 #3355 Fairacre FLAMINGO 12" Vase H
 304 #1626 Lodestar 8" Vase H
 305 #1428 Warwick SAHARA 9" Vase
 306 # 353 Colonial 10" Vase H
 307 #1428 Warwick 9" Vase, Cut H
 308 #1428 Warwick 9" Vase, Cut H
 309 #1951 Cabochon 7" Nappy, Moonglo
 Cut H
 310 #V8621 Verlys by Heisey LIMELIGHT
 Pinecone Bowl
 311 # 10 8" Floral Bowl, Cut H
 312 #1485 Saturn ZIRCON Tid Bit Bowl H
 313 #1506 Provincial 6" Vase H
 314 # 393 Narrow Flute Creamer
 315 #1567 Plantation Syrup Jug
 316 #1485 Saturn Sugar Shaker
 317 # 16oz Pitcher
 318 #4004 Impromptu 16 oz Pitcher X
 319 # 351 Priscilla 3 oz Oil H
 320 # 412 Double Rib & Panel 3 oz Oil H
 321 #1503 Crystolite Crute, No Stopper
 322 #5031 Vinegar & Oil Bottle
 323 #1401 Empress Ftd Nut Cups, 3 ea
 Flamingo, Sahara & Crystal
 324 #1469 Ridgely Divided Hd1 Nut,
 3 Ea
 325 #1252 Twist FLAMINGO Hd1 Nut, 4 Ea H
 326 #1469 Ridgely Ind Salt, 4 Ea H
 327 # 500 Octagon MOONGLEAM Frozen
 Dessert
 328 # 500 Octagon FLAMINGO Frozen
 Dessert, Cut 4 Ea
 329 #1225 Plain Band Toothpick H
 330 #1220 Punt Band Toothpick, Red
 tain
 331 # 300 Peerless Toothpick H
 332 # 150 Banded Flute Toothpick H
 333 # 310 Ring Band CUSTARD Toothpick
 Souvenir
 334 #1220 Punt Band CUSTARD Toothpick
 Souvenir H X
 335 #1280 Winged Scroll CUSTARD Tooth-
 pick
 336 #1200 Cut Block Toothpick, Red Stain
 337 #1200 Cut Block CUSTARD Hotel Sugar,
 Souvenir
 338 #1200 Cut Block CUSTARD Hotel Sugar,
 Souvenir
 339 #1255 Pineapple and Fan CUSTARD, 1/2
 Pt Tankard, Souvenir

340 #1295 Bead Swag CUSTARD Wine,
 Souvenir
 341 #1511 Toujours Candle Vase Insert
 342 #5040 Lariat Double Stem Cordial,
 Moonglo Cut H
 343 #5089 Princess Cordial, Orchid
 Etch H
 344 #5040 Lariat Cordial H
 345 #3304 Universal Cordial
 346 #3304 Universal Wine
 347 #4044 New Era Cordial, 8 Ea, Monog
 348 #1184 Yeoman Ctr 1 1/2 Floral Bowl H
 349 #1170 Pleat & Panel FLAMINGO Bouillon
 Cup & Underplate, Cut H
 350 #1184 Yeoman FLAMINGO 8" 3 Comp
 Hd1 Mint H
 351 #1503 Crystolite 7" Shell Bonbon
 352 #1401 Empress Small Condiment Tray
 353 # 473 Narrow Flute w/Rim FLAMINGO
 6" Pickle Tray H
 354 # 394 Narrow Flute 7" Pickle Tray H
 355 #1503 Crystolite Handled Jelly
 356 # 429 Plain Panel 4" Nappy, 2 Ea H
 357 #341 1/2 Puritan 4" Nappy, 2 Ea H
 358 # 341 Old Williamsburg Sherbet,
 2 Ea H
 359 #5040 Lariat Sherbet, Moonglo Cut
 5 Ea H 1-X
 360 #5067 Plantation Tall Sherbet, 3 Ea
 361 #5003 Crystolite Sherbet H
 362 #5057 Suez Sherbet, Cut
 363 #5072 Rose Stem Saucer Champagne,
 Rose Etch
 364 #5057 Suez Sherbet, Cut, 2 Ea
 365 #1227 Maharg 7 oz Sherbet, 4 Ea H
 366 # 429 Plain Panel Sherbet H
 367 # 300 Peerless 5 Oz Ftd Egg Cup H
 368 # 341 Puritan Champagne, 5 Ea H
 369 # 393 Narrow Flute Indiv Sugar
 Cube Holder
 370 # 433 Grecian Border Oval Sugar
 H X
 371 # 411 Rib & Panel Creamer H
 372 # 341 Old Williamsburg Cream
 & Sugar H
 373 #1509 Queen Ann Dolph Ft Cream,
 Cut H
 374 # Water Bottle, Waffle Design ?
 375 #1503 Crystolite Handled Bonbon H
 376 #1469 Ridgely Handled Bonbon H
 377 #1469 Ridgely Handled Bonbon H

378 #1540 Lariat Bonbon H
 379 #1252 Twist FLAMINGO Handled BonbonH
 380 #1253 Twist SAHARA Tri Corner Mint H
 381 #1503 Crystolite 5 1/2" Footed Cheese
 382 # 352 Flat Panel 5" Low Ftd Jelly,
 Gold Decor H
 383 #1401 Empress SAHARA 6" Dolph Ftd
 Mint H
 384 # 472 Narrow Flute w/Rim Round
 Divided Hd1 Rel H
 385 #1469 Ridgely Lemon Dish w/
 Cover H
 386 #1184 Yeoman 6" Handled Jelly,
 Cut H
 387 #1503 Crystolite Shell Candy &
 Cover
 388 #1567 Plantation 5" Nappy
 389 #1567 Plantation Syrup, No Lid
 390 #1567 Plantation Marmalade,
 No Lid H
 391 #1485 Saturn Sugar Shaker, No Lid
 392 #1485 Saturn Fruit Cocktail
 393 #1519 Waverly Salt Shaker, Rose
 Etch
 394 #1469 Ridgely 7" Square Plate H X
 395 #1503 Crystolite 7" Plate
 396 #1503 Crystolite 8" Plate
 397 #1567 Plantation 7" Round Plate.
 Plantation Ivy Etch
 398 # 4 Plates, 3 Ea #1184 Yeoman
 7" Salad Plate, Moonglo Cut &
 1 Ea #1425 Victorian 8" Rd
 399 #1509 Queen Ann 8" Round Plate,
 Crinoline Etch
 400 #1485 Saturn Footed Mayonnaise H
 401 #1489 Puritan 7" Square Ash Tray X
 402 # Bar Glass (Cambridge)
 403 #1425 Victorian Mustard Bottom
 Only H
 404 #1950 Cabochon Lid for Candy
 Jar, Ivy Etch
 405 #1519 Waverly Lid for Cigarette
 Holder, Orchid Etch
 406 # Mayonnaise Ladle
 407 # Mustard Ladle
 408 #1519 Waverly 5" Epergnette
 Candleholder
 409 # Epergnette Candleholder w/
 Prism pins
 410 # Square Bobeche

PAID ADVERTISEMENT

Mail bids accepted with checks for maximum amount. Mail bids will be bid competitively and any difference refunded.
 Only items in mint condition will be subjected to mail bids. Please add \$5.00 for postage and handling. Excess refunded.
 Checks should be made out to: Sam Schnaidt, Auctioneer, and mailed to: Heisey Auction
 Box 84
 Granville, Ohio 43023

SAM SCHNAIDT, Auctl
 (614) 987-0882

FRANK FRYE, Manager
 (614) 344-9847

Heisey Auction
 Box 84
 Granville, Ohio 43023

REYNOLDSBURG H.C. 5TH. ANNUAL ANTIQUE SHOW & FLEA MARKET

REYNOLDSBURG HIGH SCHOOL GYMNASIUM
 6699 E. Livingston Avenue, Reynoldsburg, Ohio
 Accomodations for 58 Top Quality Dealers

Sunday, October 28, 1979
 9:00 A.M. to 5:00 P.M.


Refreshments available all day
ADMISSION - PRICE: 50¢



Ca. 1933 # 1401
 Crystal, Cobalt, Flamingo and Moongleam Flamingo Empress Comport
 Courtesy of Mildred Bourdon



A. H. HEISEY & CO. 159
 No. 300 1/2 HALF-GALLON PITCHER, STUCK HANDLE
 No. 300 1/2 COLONIAL PATTERN

The glass article contained in this wrapper is of the celebrated  manufacture. Our trade mark is a guarantee that under like conditions it will last twice as long as the ordinary product. This  on each piece; look for it. Made in U.S.A.

Copyright by A. H. Heisey & Co.
 This is a copy of the logo on an original sheet of Heisey tissue paper wrapping

	PRICE PER DOZ.	No. DOZ. IN BBL.	WT. OF BBL.	Pos. IN CAY.
	L.P. O.P.			
Set, (2 Handled)	5 00 4 50	1 1/2	130	77
Spoon "	1 05 95	10	135	77
Cream	85 75	8	115	77
Sugar and Cover (2 Handled)	1 55 1 40	6 1/2	135	77
Butter and "	1 60 1 45	4	125	77
5 in. Nappy, Fruit	50 45	18	130	77
7 in. Berry	1 55 1 40	4	124	77
8 in. " Flared	1 75 1 55	4	124	77
9 in. " Shallow	2 00 1 75	3 1/2	115	77
8 in. "	2 00 1 75	3 1/2	140	77
9 in. " Flared	2 15 1 95	3 1/2	140	77
10 in. " Shallow	2 50 2 20	3	125	77

L. P. means Price Per Doz. in Less than Original Pkg.
 O. P. means Price Per Doz. in Original Pkg.

Ca. 1900 Not Marked.



HEISEY GLASS

Mrs. HAROLD E. WILLEY
Route #3, Box 180A
Frazeyburg, Ohio 43822

Phone: (614) 828-2557

Mail Orders Welcome

**HEISEY
SALE**

**HEISEY
SALE**

We have opened another 100 boxes

Call first if you are coming a great distance to be sure we are home. We are easy to find. Go East on State Rt. 16. When you leave the Expressway and enter Muskingum County, go 2 miles, turn left on Cannon Road. We are 1/4 mile on right up Cannon Rd. (Ask almost anyone at the HCA Museum).

Plates: Over 500 plates: 4 1/2" to 10 1/2" Vaseline, Tangerine, Moongleam, Flamingo, Marigold, Clear and Etched.

ETCHED: Titanic, Renaissance, Empress, Old Colony, Frontenac, Chintz, Pied Piper, Diana.

OTHER: Clear pleat and Panel, Waverly, Yeoman, #1223, Acorn, Beehive, Greek Key, #4182 cutting, Southwind cutting, Marigold Twist, Provincial, Moongleam old sandwich, Fern T.V. snack plates, Rib and Panel and more.

Stems: Over 500 stems: Cocktails, Goblets, Sherbets, Champagnes, and others. (no cordials). Sahara, Moongleam, Flamingo, Clear, Marigold and Etched.

ETCHED: Minuet, Bell-Le-Rose, Frontenac, Olympiad, Chintz, Renaissance, Old Colony on Clear and Sahara.

OTHER: King Arthur, Old Dominion, New Era, Whirlpool, Yeoman, Delaware, Kimberly, Victorian, #341 Puritan, Plantation, Creole, Penn Charter, Ipswich in Sahara only, Athena, Carcassonne, Twist in Marigold only, Rib and Panel, Egyptian in Flamingo, Rooster head, Southwind cutting, Midwest cutting and other.

Dinner Sets: 65 Pc. Dinner Set, Service for 8: Plates, Cups, Saucers and Stems, Flamingo D.O. Empress etched750.00

48 Pc. Dinner Set, Service for Six, Plates, Cups, Saucers and Stems. Flamingo D.O. Yeoman425.00

Electric Lamps: 2 - #1503 One light Electric lamp w/beautiful matched cut globeseach...200.00

Deep Plate Etching: Ref. to: Willey Deep plate etching book:

#4225 1 pint "Us" Cocktail shaker w/#118 Rooster head stopper - page 6	140.00
#2401 8 oz. Soda "Sailboat" Carving #5017 - page 24	75.00
#2401 8 oz. Old Fashion "Sailboat" Carving #5017 - page 24	75.00
#2401 12 oz. Soda "Lancaster" Deep Plate Etch #481 - page 9	40.00
#3405 3 oz. footed Cocktail "Tall Sail Boat" Etching #2 - page 11	100.00
#4161 5 oz. Soda or juice "Good Morning" Deep plate Etching #489 - page 25	50.00
#2052 1 1/2 oz. Bar "Circus" Camel #473 Deep Plate Etch - page 16	50.00
#2052 1 1/2 oz. Bar "Circus" Lion Tamer #472 Deep Plate Etch - page 17	250.00
#2052 1 1/2 oz. Bar "Tallyho" Deep Plate Etch #467 - page 35	35.00
#2052 1 1/2 oz. Bar "Fox Chase" Deep Plate Etch #459 - page 38	45.00
#2401 8 oz. Soda "Tallyho" Deep Plate Etch #467 - page 35	35.00
#4002 4 oz. Cocktail "Fisherman" Deep Plate Etch #459 - page 39	60.00
#4044 2-light Candlestick w/Bobeche & Prisms "Vanity Fair Carving" #5010 - V.IV.pg41	Pr...150.00

ADMINISTRATOR'S PUBLIC AUCTION

HEISEY COLLECTION - ANTIQUES

Saturday, September 15, 1979 - 10:30 A.M.

YELLOW SPRINGS, OHIO

(100 Dayton St., Bryan Community Center. 1 block off U.S. 68, 9 mile s-o Springfield and I-70)

Anthony Brecht, Sr., formerly of Newark, Ohio, was a glass blower at the Heisey plant from the 1930's through the 1940's, accounting for this outstanding collection:

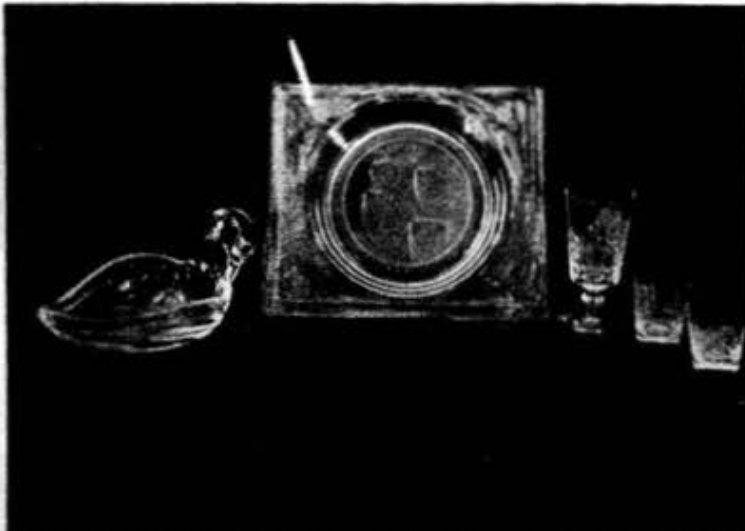
HEISEY

Pair cut & pair plain 2-light Candleholders w/prisms; large basket; footed decanter, rye bottle, cocktail shaker, all Tally Ho; Madonna; 8 Tally Ho stemmed cocktails & 6 Shot Glasses; 9 old Colony etched Queen Anne dinner plates, 13 coffee cup plates, 11 dessert plates, 5 luncheon plates, & handled dish; 8 New Era luncheon plates; etched sandwich tray; dolphin footed candy dish; 3 - 8 oz. Tally Ho tumblers; 6 crystalite pattern dinner plates; 6 formal goblets; 6 New Era wines; 10 short stem sherbets & 5 stemmed goblets, Old Colony etching; 8 Old Colony etched parfaits; 8 formal goblets, New Era cut; 7 saucer champagnes, New Era; 8 individual nuts, Lariat pattern; 3 small ladle spoons; 8 Tally Ho old fashion glasses; 6 Colony old fashion tumblers; 4 Flamingo individual salt & pepper; master Swan nut dish; Queen Anne covered dish w/etching; toujours apple, minuet etch; Colonial olive & pickle; cut ash trays, candy dishes.

OTHER GLASS: Cut & pressed glass fruit bowls; Flint glass compote; large covered compote; small carnival basket & footed candy dish; cranberry & silver pickle caster.

ANTIQUES

Beautiful Cherry corner cupboard w/glass; 8 matched ladder back chairs; outstanding Arrow back rocker; maple rope bed; 6 & 7 drawer Empire chests; maple blanket chest; walnut stand; Jenny Lind bed; ladder back rocker; 4 foot iron bench; tea cart; walnut chest; lift-top desk; needle point chair, foot stool & telephone stand; cedar chest; etc.



TERMS: Cash, Certified or Traveler's checks

ESTATE OF MARIE A. BRECHT
Sue M. Dillon and Anthony J. Brecht, Jr.
Co-Administrators with the will annexed.
Greene County Probate Court No. 18002



DON WELCH, CAI

*Certified Auctioneers Institute

Auctioneer

SPRINGFIELD, OHIO 45506-513/325-0750

WANTED:

1, 2 or 3

**# 37 SALT or PEPPER
SHAKERS
as pictured**



No. 37
SALT OR PEPPER, BLOWN
No. 57 TOP

**LOUISE REAM
1115 W. MAIN ST.
NEWARK, OHIO 43065
PH: (614)344-2377**

Classified Ads

- 1. FOR SALE: Heisey glass collection, 50 pieces held colored, plus Goose wings up. \$850.00 Firm. JOYCE DAWSON, 2418 W. CRESTVIEW, ROSEBURG, OR 97470, (503)872-4047, Prefer not to ship, but can.
- 2. FOR SALE: By private collector, odd pieces, send SASE for complete list with prices to: E.J. ELLEN, 12 CENTRAL AVE., PITTSBURGH, PA 15230.
- 3 FOR SALE: #6004 Classic 12 oz. goblets \$15.00 ea; for trade only; #5065 Colt Stem Cocktail, #1519 Lion Finial Trinket box, #1 Rooster, Med. Elephant, Sparrow for animals or Candelabra of equal value. CLAUDE HIGGINS, P.O. BOX 2723, MENLO PARK, CA 94025, PH: (415)322-8192.
- 4 WANTED: Old Newark, Ohio postcards. DICK SMITH, 88 MAUREEN DR. HEATH, OH 43065, Ph: (614)522-3075.
- 5 WANTED: One Trident candleholder in Sahara. SHELIA TOLLEFSON, 625 - 9th., SNOHOMISH, WA 98290.

LET US
FILL YOUR
WANTS
FOR
HEISEY GLASS

write

MOSTLY  HEISEY

**RHODA CURLEY
16 CLAYTON PLACE
ALBANY, N.Y.
12209
518-482-6272**

BLUE BINDERS

EACH ONE HOLDS
ALL 4
VOGEL BOOKS

**\$ 7.50 EACH
POSTPAID**

Pre - order price
until 11 / 15 / 79

Delivery First of Year

Includ^e street address for
UPS Delivery

**BOB JOHNSON
P.O. BOX 42
DAYTON, OH 45420
(513) 288-4384**

**VANCE KIMBALL
1567 EDWARD DR.,
STEVENSVILLE, MI 49127
PH: (616) 429-5579 after 5 PM**

SASE

POSTAGE & INSURANCE EXTRA

#1503 CRYSTOLITE 3-part Relish	10.00
#1503 CRYSTOLITE 6" Covered Preserve	15.00
#1503 CRYSTOLITE Cream & Sugar	Set...20.00
#1503 CRYSTOLITE 7" Snack Plate	10.00
#1503 CRYSTOLITE 5 1/2" Cheese footed	12.00
#1503 CRYSTOLITE Shell Mayonnaise & Ladle	18.00
#1503 CRYSTOLITE 11 1/2" Floral Bowl	22.00
#1503 CRYSTOLITE 7" Round Plate	7.00
#1503 CRYSTOLITE 11" Torte Plate	18.00
#1503 CRYSTOLITE Punch Cups - (7)	ea... 6.00
#1503 CRYSTOLITE Saucers - (9)	ea... 6.00
#1503 CRYSTOLITE Candy w/Flower Lid	22.00
#1504 Candlesticks	Pr...35.00
#5003 6 oz. Sherbert - (4)	ea...12.00
#5003 10 oz. Low footed Goblet - (8)	ea...20.00
#5003 5" Compote	20.00
#341 1/2 3 pint Jug (V1 pg 46)	30.00

FLAMINGO

#3390 CARCASSONNE 6 oz. Saucer Champagne - (2)	ea...20.00
#3390 CARCASSONNE 11 oz. Tall Stem Goblet - (4)	ea...20.00
#1404 OLD SANDWICH 6 oz. Sundae - (4)	ea...25.00
#1404 OLD SANDWICH 10 oz. Low Footed Goblet - (6)	ea...35.00

**ERIE'S FIRST ANNUAL
GLASS SHOW and SALE**
FEATURING
Cambridge, Duncan & Miller, Heisey
AND INCLUDING
GLASS OF ALL PERIODS

FOSTORIA



AUGUST 25 & 26, 1979
SAT. 1 p.m. to 9 p.m. - SUN. noon to 6 p.m.
HILTON HOTEL • ERIE, PA
10th & State Streets
(I-90 exit 6+8 miles north on Peach Street)
Admission - \$1.75 + 25¢ discount with this ad
CHILDREN UNDER 12 YEARS - FREE
Door Prize Each Day

PROMOTION BY
HANK PUGLIESE (814) 456 - 7131

ANTIQUES 'N' COLLECTABLES
"HEISEY OUR SPECIALTY"

LYNNE  ART'S
GLASS-HOUSE
INC.

P. O. BOX 242
LAHASKA, PA. 18931
215-794-7800

*Dear Heisey Collector and Dealer,
We're heading your way! Heisey animals,
lovely old patterns, and a rainbow of colors, will
be coming along with us.*

We'll be at the following shows.

ERIE, PENNA., HILTON HOTEL, AUGUST 25-26
COLUMBUS, OHIO, LAUSCHE BLDG. OHIO STATE FAIRGROUNDS, SEPT. 14-15-16
LYNCHBURG, VIRGINIA, LYNCHBURG COLLEGE FIELD HOUSE, SEPT. 20-21-22

*While we are on the road, suggest a call to
PA. 215-794-7800 or FL. 305-861-7700.*

*See you soon,
Lynne and Art*

Monthly Heisey column
by Clarence Vogel!

glass REVIEW

80 PAGE ALL GLASS MAGAZINE
since 1971
\$9.50 per year - 12 Issues
Or, recent sample - \$1

The GLASS REVIEW is a handy 8 1/2" x 5 1/2" monthly magazine devoted to "Keeping Glass Collectors Informed" on both old & new glass. Printed on glossy stock and filled with large, clear photos, articles by nationally respected authors and writers, price reports, trends, research and reproduction information, previously unpublished catalog reprints, reviews of the latest glass books (and where to buy them), Questions & Answers, trademark info, large variety of glass ads on both old and new glass, up-to-date happenings in glass and MORE!

Enclose payment; send to: GLASS REVIEW,
P.O. Box 2315- , Costa Mesa, CA. 92626.

**HEISEY'S
GLASSWARE of DISTINCTION**

by Mary Louise Burns



COMPLETELY REVISED!

Now includes additional patterns, new illustrations, many new listings and is now perfect bound for sturdiness!

This comprehensive reference book is not a catalog reprint but a collection of all major patterns of tableware, stemware, cuttings, etchings, animals and Verlys produced through Heisey's 60 years of glassmaking.

Details of each pattern clearly shown by photo or illustrations for easy identification. Two indexes for easy reference: one by pattern name and one by pattern number.

All this for only **\$11.95** pp.

.....
ALSO NEW: Completely revised price guide supplement to the above, listing each item and UPDATED price trends. Patterns are listed alphabetically for easy reference. Only \$5.95 pp!
.....

"ORDER NOW"

Send check or money order to:
MARY LOUISE BURNS
P.O. Box 1931

6 Books or more 40%

Grants Pass, Or 97526

H.C.A. Annual Mini - Show and Flea Market

Day of Souvenir Dinner and Quarterly Meeting

Saturday, September 8, 1979

Dawn to 2:30 p.m.

Advertised to public from 8:30 am to 2:30 pm

LOCATION: ● Museum Parking Lot

● In the Tent and Outside

● Outside dealers may stay set up later than 2:30.

● Easy access and parking

● Space \$10.00 for HCA members, other \$12.00

● Space 8 ft. x 13 ft. or near equivalent

● Tables available to rent at \$3.00 each

for further information contact:

Ray Ziegler
86 Hiawatha
Westerville, OH 43081

Free Admission

ROBERT H. DONOVAN
P.O. BOX 321
BOLTON, MA 01740

Phone: (617) 779-5008 after 5 P.M.

SASE Please

Postage & Insurance extra

#1205 Fancy Loop Hdl. Custard, crystal & gold	14.50
#1295 Beaded Swag Custard, handled ; (5)	ea... 9.00
#1255 Pineapple & Fan Tumbler Crystal & gold	22.50
#1228 Misc. *Floral bowl, nice cutting 8" rolled edge	28.50
#1469 Ridgely Ribbed Champagne Tall Stem*	12.00
#1540 Lariat Punch Cup*	4.00
#1509 Queen Ann 3-pt round, Relish* Orchid etch	18.00
# 352 Flat Panel 6 1/2" Cantaloup* -(3)	ea... 12.00
# 429 Colonial Panel Punch Bowl Base*	24.50
# 357 Prison Stripe Punch Bowl & Stand* w/6 Cups	380.00
#3408 Jamestown Rosalie etch, Tall Goblet - (5)	ea... 18.00
#3390 Carcasonne Short Goblets SAHARA - (6)	ea... 17.00
#1503 4" Covered Cigarette Box, Crystalite*	17.00
# 351 Priscilla 9" Celery*	12.00
#1428 Warwick 7" Vase - (2)	ea 22.00
# 354 Flat Panel wide Cream & Sugar* FLAMINGO	36.50
# 142 Optic Tumbler* 8 1/2 oz. Plain bottom	12.00
#1184 Yeoman Tumbler* FLAMINGO 8 oz.	14.00
#3404 Spanish Stem Goblets COBALT Bowls - (8)	500.00
# 335 Prince of Wales Covered Butter* Cr & gold	62.50
& complete 4 pc. Table Set, excellent condition	225.00

BAY STATE HEISEY COLLECTORS CLUB
SECOND ANNUAL

All Glass Show

Sheraton - Sturbridge Inn Rte. 20 - Sturbridge, Mass.

October 27, 1979

October 28, 1979

Saturday - 10:30 AM - 8 PM

Sunday - 9 AM - 4 PM

All Glass of All Periods

Benefit -
Heisey Glass Museum



Donation: \$1.75
- with card \$1.50

From New York City and South: I-95 to I-81 to I-84 and I-86 to Exit 3 in Sturbridge. left on Haynes Street to Rte 131. left to U.S. 20
From Boston and Northeast: Massachusetts Turnpike to Sturbridge Exit, right onto U.S. 20
From Upper New York State and West: Massachusetts Turnpike to Sturbridge Exit, right onto U.S. 20.

Dealers Directory

5 LINES - \$6.00/6 ISSUES

MOSTLY HEISEY

RHODA CURLEY
16 CLAYTON PLACE
ALBANY, NEW YORK 12209
By Appointment 518/482-6272

Opera House Antiques
Main & Broadway, Granville, OH 43023
Open 7 days a week 12 - 5 P.M.
Shop (614)587-2083 - Sam 587-0052
HEISEY GLASS & GENERAL ANTIQUES

The Shultzes Antiques BOUGHT
SOLD
206-208 E. MAIN ST., ROUTE # 419
NEWMANSTOWN, PA. 17073
15 MI. WEST OF READING, PA.
PHONE 215-599-2819

Elyne & Art's Glass House, Inc.
"HEISEY OUR SPECIALTY"
Route 202 Lehigh, Pa. 18931 Box 242
Phone: (215) 794-7800

Evelyn's Antiques
3301 - 140 N.E. Marysville, Wash. 98270
1 S Exit 202 Phone: (206)859-6114
MON-WED-SAT-SUN & by Appt.
Shop full of glass - Heisey, etc.


The China Cupboard
185 A. SO. BROADWAY, ORCUTT, CA. 93454
Phone: (805) 937-4420
COLLECTIBLE & ANTIQUE GLASS & CHINA
HEISEY IN STOCK

Bert's Budget Shop
403 W. MAIN ST., NEWARK, OHIO 43055
PHONE: (614) 349-8045
General line Antiques

Schwan's Antiques
DICK & LEE SCHWAN
208 OXFORD ROAD
WILLIAMSBURG, VA 23185
(804)229-7873 SHOWS & APPT.


RAMBLING LANE ANTIQUES
Featuring HEISEY & Other Fine Glass
KEITH & EVELYN HOOVER
RR #4 - BOX 1005 - (715)282-5019
RHINELANDER, WI 54501

Charles A. Shaw

Glenwood Gardens-Rip Van Winkle
Yonkers, New York 10701
Shows & Mail Order
American Glass 

Goldsberry's Antiques
KALAMAZOO, MICHIGAN
SHOWS ONLY -- BUY & SELL
HEISEY A SPECIALTY
PHONE: (616) 381 - 3013

ANTIQUE & COLLECTIBLES *Olde Loved Things*

 Daris "Ed" Lacroix - Donald Mousseau
900 Ridgewood Avenue (Holly Hill)
DAYTONA BEACH, FL. 32017
HEISEY, Cambridge, "Candlesticks q specialty"

Moundbuilders Antiques
IRENE RAUCK
1138 MOUNDVIEW, NEWARK, OH 43055
PHONE: (614) 344 - 6043
HEISEY & ANIMALS/GEN. ANTIQUES

Eagles Rest Antiques
CHINA HEISEY GLASSWARE
BOUGHT and SOLD
62 FIELD POINT RD., HEATH, OH 43055
By Chance or Phone: (614)522-2035

LAST CHANCE ANTIQUES
62 N. FEDERAL Hwy, DANIA, FL 33004
(Between Miami & Ft. Lauderdale)
Large Heisey Inventory & other Glass
MAIL ORDERS (306)467-6356 (home)

GREEN ACRES FARM
ANTIQUES, CRYSTAL GLASS & COLLECTIBLES
Saturday & Sunday P.M. or Call (614)827-1882
2670 HAZELTON ETNA RD., S.W.
S.R. 310 N) PATASKALA, OH 43082

THE "FINDERS" ANTIQUES
Antiques - Heisey Glass - Buy-Sell
DAVID & SHIRLEY ROSE - Owners
66 S. HAZELWOOD AVE., NEWARK, OH 43055
Phone: (614) 349-7934

Ann's Gifts & Antiques
106 W. MAIN ST., HEBRON, OH 43025
Intersection Rt. 40 & 79
Next door to Daisy Queen
MON-SAT 10-5:30 SUN 12-5:30

Hoosier Heritage Antiques
Marcell and Tom Zehr
4005 SOUTH WAYNE AVENUE
FORT WAYNE, INDIANA 46807
(219) 745-4173

Happy Haven Antiques
CHARLES & MARY DUMKE
RT. #3, BOX 2044A, GRASS VALLEY, CA. 95945
Phone: (916) 273-9450

 **Diamond H Plus**
GEORGE & EILEEN SCHAMEL
Route 3, Box 419
Boonsboro, Md. 21713
Appointment or Mail Order
Phone 301-432-6285

WICKFORD ANTIQUE ARCADE

RON & BEV. WOOD Booths 6 & 7
650 TEN ROD RD., N. KINGSTOWN, R.I. 02852
Heisey - Primitives - Glass - Etc.
Home Phone: (401) 295-0823

Charles & Mildred Fisher
Antiques & Collectibles, General Line
HEISEY, DEGENHART, IMPERIAL
991 IDLEWILDE, NEWARK, OH 43055
PHONE: (614) 522 - 5398

The Wooden Shop
ANTIQUES & COLLECTIBLES - BUY & SELL
GLASS, FURNITURE, ESTATES
JIM & SHERI VANES BY APPT
HERNDON, VA 22070-PH: 438-8048

Heisey Heaven & other collectables
NOW OPEN AT PEDDLER'S VILLAGE
SUNNY CREST MALL-URBANA, IL 61801
(CORNER FLORIDA AVE & PHILO RD.)
PHONE: (217) 384 - 9083



sum of life

elaine and frank husted
p.o. box 107,
phoenixville, pa. 19460
(215) 935-2967

Jim Kennan


Shows Only-PH:(216)834-4515
P.O. BOX 251 - AMHERST, OH 44001
Heisey - Cambridge - Pottery
Glass Animals - Duncan & Miller

Curiosity Nook

"WHERE FRIENDS MEET TO ANTIQUE"
3300 S. 8th Ave. Westward Village
Yuma, Ar. 85364-(602)726-6730 or 726-8070
BARNEY & JODY BARNICLE

The Connecticut Yankee

"HEISEY OUR SPECIALTY"

 707 S. Washington
Route 2, Box 315
Fredericksburg, TX 78624

ACCENT ANTIQUES OF KENSINGTON

Curio Corner
3742 HOWARD AVE.
KENSINGTON, MD 20795
PH: (301)833-3780

The Keeping Box
EVELYN & JAMES JORDAN
P.O. BOX 583
LANSDALE, PA 19446
PHONE: (215) 855 - 2480

George Hoffman Antiques

G.W. HOFFMAN - J.H. DENNIS
129 SOUTH 4TH STREET
NEWARK, OH 43085
PH: (614) 345-8980

BLACK HAND GORGE FESTIVAL

NO ADMISSION CHARGE **FIFTH ANNUAL** NO ADMISSION CHARGE
AT TOBOSO SCHOOL

SAT. SEPT. 22, 1979 10:00 TO 8:00
LARGE FLEA MARKET & CRAFT SHOW

OVER 100 DEALERS
FOR DEALERS INFORMATION CALL
763-3116

ALL TYPES OF GLASS: CAMBRIDGE, HEISEY, IMPERIAL & OTHERS

COLLECTIBLES: AVON, HUMMEL & OTHERS

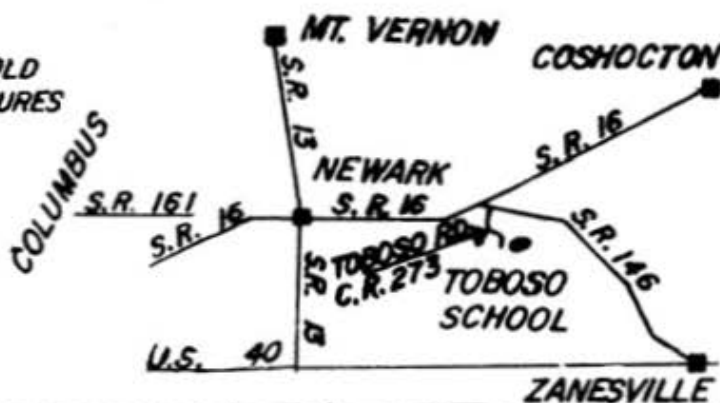
CRAFTS: DECOUPAGE, JEWELRY & OTHERS

POTTERY: HULL, ROSEVILLE, WELLER

COINS, GUNS, & MISC. ITEMS

TOURS OF
BLACK HAND GORGE
NATURE PRESERVE
PIONEER CONTESTS
LOTS OF GOOD FOOD

(FOLLOW SIGNS)



ANTIQUE EXHIBITS

FURNITURE, DISHES, QUILTS, COVERLETS OLD TOOLS, UNUSUAL ANTIQUE ITEMS, OLD PICTURES OF THE BLACK HAND GORGE & TOBOSO

PIONEER EXHIBITS

APPLEBUTTER MAKING



RETURN TO:
HEISEY NEWS
Box 27
Newark, OH 43065

FIRST-CLASS MAIL

FIRST CLASS MAIL
U.S. POSTAGE
PAID
PERMIT 34
Reynoldsburg, Ohio 43068

MUSEUM HOURS ARE NOW open: daily from 1-4 p.m. except Monday and holidays