

HEISEY *news*

OFFICIAL PUBLICATION HEISEY COLLECTORS OF AMERICA
©Heisey Collectors of America, Inc. 1978
All Rights Reserved

MAY, 1979 Vol. VIII, #5

ONE DOLLAR



#101 TROPICAL FISH PIECE 1948--1949
Photo Courtesy of Iola B. Parker

8th ANNUAL HEISEY CONVENTION-SHOW AND DISPLAY - JUNE 14-17, 1979 - NEWARK

FROM THE DESK OF ...

your president, **LOUISE REAM**

It is nearly that time again! Many of you will soon be heading toward Heiseyland some for the ninth* convention and others for the first. A recent letter from a yearly returnee says, "We feel like we are coming home." Indeed the Heisey Museum is every member's home in Newark. It belongs to all of us and we who live here are the caretakers. Without all of you it just could not have been. Those of you who have never visited the museum will be very much surprised at its scope. Nearly everyone is.

We invite you to visit our offices and the library which were not yet finished last year. The library is not yet completed but there are many interesting things there. We are pretty sure that we have at least every blown catalog and/or price list ever printed or xerox copies, as well as most of the pressed ware ones.

Please volunteer to help with the oscar booth, staffing the display, or hosting in the offices and library. Just jump in and help without waiting to be asked as it's a great way to get acquainted. We usually need some help in the museum a day or two ahead as well.

Anne Johnson of Dayton says she has found the fake button arches toothpick, usually found in crystal with red stain, in emerald with the "A.H. Heisey & Co. founded 1896." Don't buy it for "real".

We had six young business men from Australia as visitors a week or so ago. They were delightful and were impressed with the museum. They were in this area as guests of the Rotary International.

In answer to several questions, the prices printed in the 1953 and 1956 reprint catalogs, which we sell, are original and not current. There is a current price guide included with the 1953 reprint.

How would you like to find a #4163 pretzel jar in sahara? Or perhaps you'd like a #1183-5 part candleholder, #3411 Monte Cristo or #3408 Jamestown stemware or a Tom and Jerry mug in the same color? Maybe a pair of #134 Trident candleholders in tangerine (three of these are known), Sweet ad-o-line goblet in moongleam, flamingo, sahara, or cobalt or #11 3/4 Hoffman house goblet in moongleam, flamingo or sahara might be more to your liking. If you have, or find, any of these please let

DATES TO REMEMBER

JUNE 14 - Convention, Show, Display begin

MAY 15 - Was deadline for ordering Oscar

JUNE 14-17 Annual Convention, Show, Display
(See schedule in last issue)

SEPT. 8 - Annual Souvenir Dinner and Mini-Show

OSCAR PICKUP

OSCARS ARE TO BE PICKED UP DURING THE SHOW AT THE NEWARK HIGH SCHOOL ONLY. AFTER THE CONVENTION ANY LEFT MAY BE PICKED UP AT THE MUSEUM.

us know. We know they were all listed in catalogs but where are they?

We hope that any of you who attend the show and display will register this year so that you will get a badge. This will admit you to the show and display at any time and also to any of the free convention events. Be proud of your organization and let's show Newark how much impact we have on the town!!!

See you real soon,

Louise Ream

* There was one convention here before we started H.C.A. It was for the old California-based Heisey club which was very short lived.

HEISEY NEWS --- P.O. BOX 27 --- NEWARK, OHIO 43055

EDITOR — LOUISE REAM, 1115 W. Main St., Newark, Ohio 43055
PUBLISHED 25TH DAY OF EACH MONTH, \$10.00/Year-\$1.00/Copy
BACK ISSUES AVAILABLE AT \$8.00/YEAR - 80¢/COPY

PRESIDENT	LOUISE REAM	(614) 344 - 2377
VICE PRESIDENT	KAY DARLING	(614) 262 - 4360
SECRETARY	MARY McWILLIAMS	(614) 345 - 4380
TREASURER	LOREN YEAKLEY	(614) 366 - 5101

Heisey Collectors of America, Inc. is a non-profit corporation with tax exempt status. Owners and operators of National Heisey Glass Museum, 6th and Church Streets, Newark, Ohio. Open Daily 1-4 p.m., April through October except Mondays and Holidays, November through March, Wed., Sat., Sun. 1-4 p.m. Members admitted free.

Phone: (614) 345-2932. Club membership (includes 12 issues of Heisey News and participation in all club activities) \$10.00/Year plus \$1.00 each for additional family members in same household who wish a membership card. For voting membership add \$25.00, one time only fee, or write for information.

For Membership - Debbie Delaney, Box 27, Newark, Ohio 43055. Notify immediately of any change of address.

The opinions expressed in articles in Heisey News are those of the authors and not necessarily those of the organization. The Editorial Staff reserves the right to edit or refuse any material submitted for publication. When requesting information, please enclose a self addressed stamped envelope (SASE).

ADVERTISING - Send all ads to:
VIRGINIA YEAKLEY, Advertising Manager
640 Melanie Court
Newark, Ohio 43055

DEALER DIRECTORY ADVERTISING RATES-5 line-\$6.00/6 issues

CLASSIFIED ADVERTISING - 5¢/word - \$1.00 Minimum. We cannot mix type sizes in Classified Ads. Abbreviations and initials count as words.

DISPLAY ADVERTISING RATES	MEMBER	NON-MEMBER
1/8 Page	\$ 8.00	\$15.00
1/4 Page	\$15.00	\$25.00
1/2 Page	\$25.00	\$40.00
Full Page	\$45.00	\$60.00

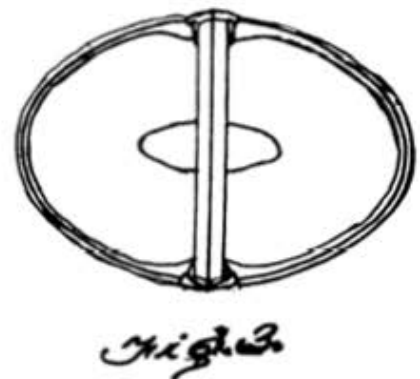
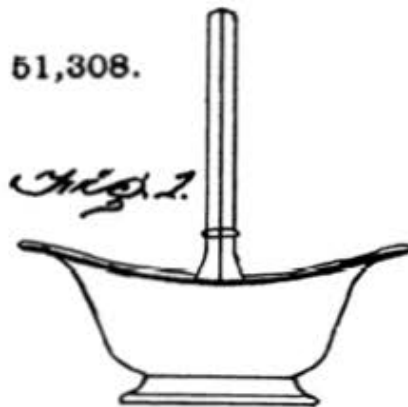
PAYMENT IN FULL MUST ACCOMPANY ALL ADS.

Advertising copy must be in our hands by the 5th of the month to be in the next issue. Advertisements containing reproductions will not knowingly be accepted unless clearly stated (i.e. Heisey by Imperial, etc) Heisey News assumes no responsibility for false advertising or misleading information. In the event of typographical error, the incorrect portion of the ad will be run in the following issue, but Heisey News assumes no further liability.

Send all letters and articles to be published to the Editor. Letters to columnists should be sent to the club address and will be forwarded.

FRUIT BASKET #467

51,308.



by JOSEPH D. LOKAY

The design for Heisey basket #467 was patented by A.J. Sanford. He filed a patent application on June 30, 1917 and was granted US design patent #51,308 on September 25, 1917.

Basket #467 is shown in only 2 of the Heisey catalogs at the HCA museum library. They are catalog #102 (circa 1923) and catalog #109 (circa 1928). Catalog #102, page 145 and catalog #109, page 122 which picture basket #467 are both included in Vogel's books as book II, page 155 and book III, page 122, respectively.

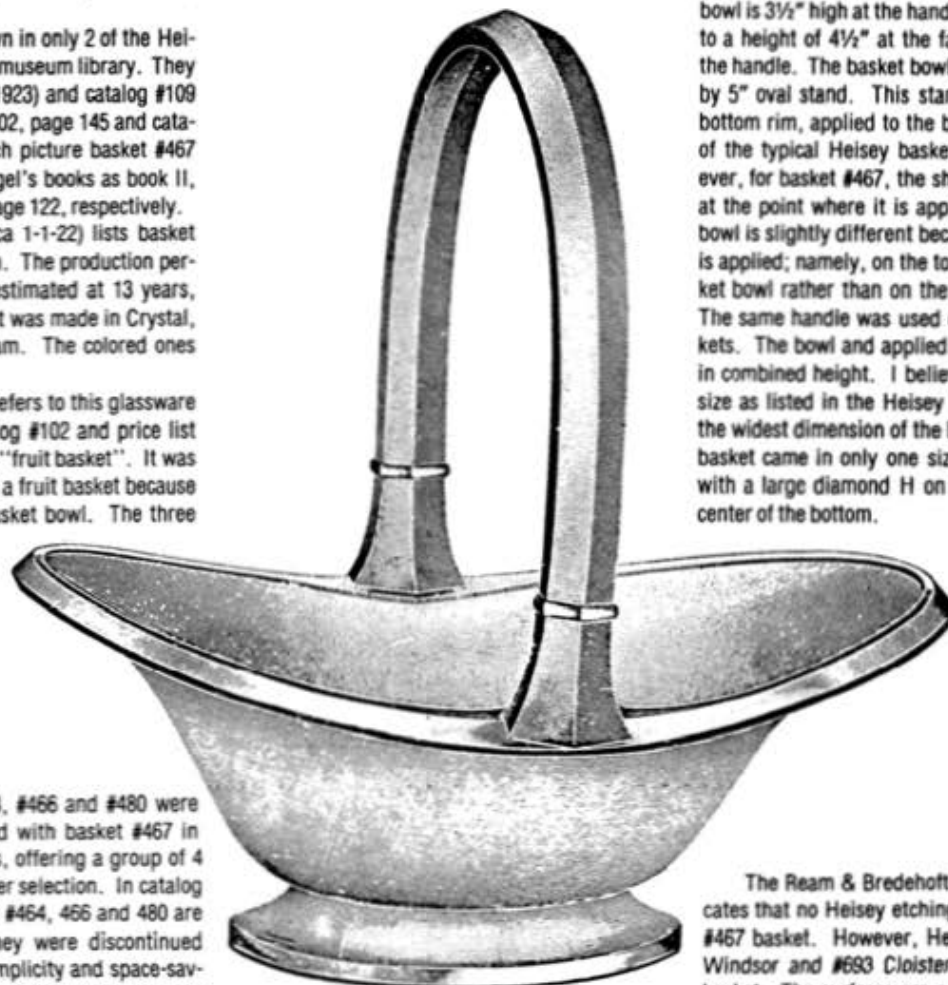
Price list #206 (circa 1-1-22) lists basket #467 at \$11.45 per dozen. The production period for basket #467 is estimated at 13 years, 1917 to 1929. The basket was made in Crystal, Flamingo and Moongleam. The colored ones are scarce.

The design patent refers to this glassware item as a basket. Catalog #102 and price list #206 both refer to it as a "fruit basket". It was most likely referred to as a fruit basket because of the lowness of the basket bowl. The three

HEISEY DESIGN PATENT #51,308
For Basket #467
Granted September 25, 1917

the last few production years for basket #467, the word fruit was dropped.

The bowl part of the basket has an oval opening at the top that measures 7" at the narrow point by 10½" at the wide point. The bowl is 3½" high at the handles, and tapers up to a height of 4½" at the farthest point from the handle. The basket bowl sits on a small 3" by 5" oval stand. This stand has a polished bottom rim, applied to the basket bowl is one of the typical Heisey basket handles. However, for basket #467, the shape of the handle at the point where it is applied to the basket bowl is slightly different because of the way it is applied; namely, on the top edge of the basket bowl rather than on the side of the bowl. The same handle was used on all 4 fruit baskets. The bowl and applied handle are 10½" in combined height. I believe the 10" basket size as listed in the Heisey catalogs refers to the widest dimension of the basket bowl. This basket came in only one size, and, is signed with a large diamond H on the inside in the center of the bottom.



#467-10" Fruit Basket
Patent #51308

other fruit baskets #464, #466 and #480 were pictured and price listed with basket #467 in these 2 references, thus, offering a group of 4 fruit baskets for customer selection. In catalog #109 the 3 fruit baskets #464, 466 and 480 are no longer shown as they were discontinued earlier. For perhaps simplicity and space-saving in catalog 109, fruit basket #467 was now shown with the other taller baskets with the title at the top of the catalog page reading "baskets". Therefore, one might say that in

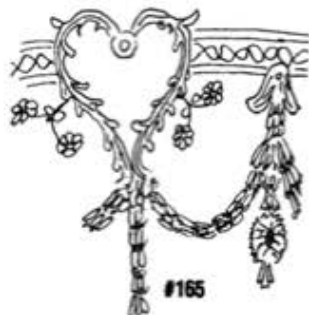
The Ream & Bredehoft etching book indicates that no Heisey etchings were put on the #467 basket. However, Heisey cuttings #679 Windsor and #693 Cloister were put on the basket. The surfaces are sufficiently plain so that decorating companies may have placed their own etchings, cuttings or other decorations on it.

HEISEY DECORATIONS



#160 etch

#160 OSAGE Pantograph Etching
#165 DUNDEE Pantograph Etching



#165



#4182
#160 etch



#4160
#160 etch

by NEILA BREDEHOFT

Osage, #160, is one of the most attractive of the pantograph etchings and is apparently more easily available than many others. It is probably quite possible to assemble a usable set of Osage with patience and perseverance.

Osage is very attractive consisting of several flowers and leafy swags and pendants combined with a geometric band about the top. The medium optic used for the ware adds even more beauty.

The production period of Osage was approximately from 1918 until 1928. It was etched only on crystal and on the #3344 Carolina stemware which was once thought to be much more scarce than it apparently is. The catalog lists Osage as being etched on medium optic ware and all I have seen was on medium optic. Sometimes other optics turn up which are not listed in price lists.

Found on:

- #3344 CAROLINA stemware
- #2351 STRAIGHT, #2401 CONFUSION, & #2451 sodas
- #2930 PLAIN & FANCY tumbler
- #3476 TEMPLE handled ice tea
- #3542 HAZELWOOD oyster cocktail
- #4160 ½ gal. jug
- #4182 6" plate

Dundee, #165, is the sister pantograph etching to Osage. The etchings are identical



#2930
#160 etch

except that the lacy flower which is central to the design of Osage is absent in Dundee. This makes it suddenly apparent that beneath the flower is a heart-shaped motif. This forms the most easily recognized feature of Dundee.

Dundee was produced from circa 1919 to 1928 to the best of our information. However, it is doubtful that it was made this many years since so little of it has been seen up to this time. It is found only on crystal and on approximately the same lines as Osage.

Found on:

- #3344 CAROLINA stemware
- #2351 STRAIGHT, #2401 CONFUSION sodas
- #2930 PLAIN & FANCY tumbler
- #3476 TEMPLE handled ice tea
- #4167 ½ gal. Jug
- #4182 6" Plate

The March Auction had several unusual or difficult-to-find etchings available for the collector. Some of the more scarce etchings included #9016 Poppy on a #1495 Fern candlestick, #517 Winchester '73 on 2 different items, #9013 You, Me, & Us was represented by a #4225 Cobel pint cocktail shaker and #450½ Formal Chintz on a #1401 Empress plate in Alexandrite. Several custom etchings not often seen were the #9040 Elks on the #1519 Waverly seahorse handled covered candy, #9041 Wigwam on a #1184 Yeoman soda and #9025 Chicken Chase on a #3405 Alibi cocktail. There must be quite a few happy collectors who are the new owners of these desirable items.

The Flea Market at Starlight School the next day provided the chance to purchase several other etchings. One dealer had several desirable items with silhouette etchings including a #4225 Cobel 1 qt. cocktail shaker with #463 Equestrian, unusual because of the cut flutes on the neck of the shaker. The same dealer also had a #4054 Coronation soda with #481 Lancaster. Also seen were items in #491 Frosty Dawn on Stanhope and #492 King House. Also two unusual frosted items were seen, a 4" moonbeam Beehive plate, and real rarity, the beautiful #2 Madonna.

STEMS #6004 Classic



Spring



Forget-Me-Not



American Beauty



Comet

by CARL SPARACIO

I've got a flash for Bob Ryan - if he had to depend on me for material to fill his "Heisey Hunter" column he'd have to rent out the space to fill it. I was mulling over this past winter and discovered that I came up with zilch. Not only did I not find any Heisey to brag about but everything else fell apart. We had a very cold winter but it seems everyone else's was colder. We had a lot of snow but, you guessed it, the whole world had more. I didn't even get a piece of Heisey for Christmas! Send your donations for this poor orphan in care of the museum.

Spring is in the air though. I know because I got my auction list. When you read this the auction will be history but right now it is the only glimmer of light on my bleak horizon. There doesn't seem to be as many stems in this auction as there have been in the past. The Princess Lily and Old Queen Ann goblets are two of the best pieces on the list. I'm speaking now of stem rarity which, in my own perverted sense of value, leaves no room for color or cuttings or anything else. The stem's the thing. I will be interested to see how they fare in the bidding. You already know how it all turned out.

Okay, on with our education.

If you don't give it any thought you could understandably come to the conclusion that the

last patterns introduced before Heisey closed its doors would be the easiest to find. This is not the case and the reasons are rather obvious. One, since they were introduced just a short time before the factory closed, they had a very short production run and, two, business had to be the pits or they wouldn't have closed. The result of this condition can be deduced by utilizing Sparacios' formula, namely: SPR + LS = TTF. Translated into English that means, "Short Production Run plus Lousy Sales equals Tough To Find". Einstein was never more brilliant.

A classic example of this is Classic (forgive me for that). #6004 Classic showed up in Heisey's last catalog (1956) so if we give it a two year run we're being generous. It has a blown bowl and a pressed stem. The stem is a re-hash of the earlier successful #5057 Suez. I feel it is better looking than Suez which had a more traditional look and, consequently, more commercial appeal.

The best piece offered in the Classic line was the 12 oz. goblet. It's unusual because most goblets were made 10 ounces or under. A 12 ounce bowl on a tall stem can be rather imposing.

Most bowls that size were put on short stems. The other pieces made were a champagne, 3½ oz. cocktail, 4 oz. claret, 5 oz. soda,

7 oz. sherbet and a footed ice tea. The ever popular cordial was not in this line. It would have been a cute little thing.

In the 50's etchings were pretty much passe. If you wanted something other than orchid or rose you'd have to look pretty hard and if you looked for Classic with an etching you'd strike out. Cuttings, on the other hand, were fashionable and with #6004 Classic you were given a choice of #1084 Spring, #1085 Forget-me-not, #1086 American Beauty and #1987 Comet. Besides these there must have been orders for other designs because Classic had a bowl which was ideal for cutting - large with no optic. Emil Krall could've put the Gettysburg Address on it.

Colors in Classic, like the etchings, were a victim of the times. Very little was offered in the last years. Amber, which had graduated to Sultana, was offered in some lines but not Classic. I find it interesting that Amber which ran for more years than any other Heisey color was still with it at the end. How come it's so hard to find? Well, I suppose we've got to admit to one color in Classic and that's Trial Aqua. I'm not calling it Trial Blue because it looks quite a bit different than the Trial Blue we've come to know and love.

Anyway, there is a cocktail in the museum
con't on page 11

SPEAKING OF EMPRESS

A. H. HEISEY & CO.

No. 1401 PATTERN—Continued

SIZE	ITEM	PRICE PER DOZEN						
		CRY.	MO.	FLAM.	SAH.	ALEX.	TANG.	BLUE
	Salt or Pepper No. 57 Top.....	4.00	4.00	4.00	5.00	6.00		
	“ “ “ No. 7 Glass Top.....	3.50	3.50	3.50	4.50			
	“ “ “ No. 657 Glass Top.....	5.00	5.00	5.00	6.00	7.00		
	Ice Tub.....	11.00	11.00	11.00	13.00			
	Silver Plated Handle.....	6.00						
	Ice Tub, and Silver, Pl. Hdl.	16.00	16.00	16.00	20.00			
	Nasturtium Bowl Footed.....	18.00	18.00	18.00	22.50			
9 in.	Floral Bowl Rolled Edge Grd. Bot.	7.00	7.00	7.00	8.80			
8½ "	“ “ Ftd. 2 Hdl.	9.00	9.00	9.00	11.30			
11 "	“ “ Ftd.	18.00	18.00	18.00	22.50	36.00	25.00	21.00
10 "	“ “ (Lion Head) Ftd.	24.00	24.00	24.00	30.00			
13 "	“ “ Ftd. (Lion Head) Ftd.	27.00	27.00	27.00	33.80			
9 "	“ “ 3 Hdl. Ftd.	12.00	12.00	12.00	15.00			
9 "	Vase Ftd.	13.90	13.90	13.90	17.40	30.00		
6 "	Candle Stick Toed.....	8.00	8.00	8.00	10.00	12.00		
	Ash Tray.....	4.50	4.50	4.50	5.60	6.50		5.00
	Cup Plain Edge (1401½).....	3.00	3.00	3.00	3.80	6.50		
	Saucer (1401½).....	3.00	3.00	3.00	3.80	6.50		
	Cup and Saucer (1401½).....	6.00	6.00	6.00	7.60	13.00		
8 "	Vase, 3 Handled.....	13.00	13.00	13.00	16.30			
	Candle Stick Ftd. 2 Hdl.	4.50	4.50	4.50	5.60			
	Frappe Bowl.....	7.00	7.00	7.00	8.80			
	“ Insert.....	3.30	3.30	3.30	4.10			
	“ Bowl and Insert.....	10.30	10.30	10.30	12.90			
6 in.	Compot Square.....	12.00	12.00	12.00	15.00			
8 "	Condiment Tray.....	6.00	6.00	6.00	7.50			
	Marmalade.....	5.50	5.50	5.50	7.00			
	“ Cover.....	3.50	3.50	3.50	4.50			
	“ and Cover.....	8.00	8.00	8.00	10.00			
6 in.	Candle Stick No. 135.....	10.80	10.80	10.80	13.50	15.00		12.00
16 "	Buffet Relish, 4 Comp.	21.00	21.00	21.00	26.50			
10 "	Celery Tray.....	5.00	5.00	5.00	6.30			
13 "	“ “.....	8.60	8.60	8.60	10.80	16.00		
13 "	Pickle and Olive, 2 Comp.	10.40	10.40	10.40	13.00			
10 "	Hors d'Oeuvre, 7 Comp.	18.00	18.00	18.00	22.50			
13 "	Hors d'Oeuvre, 2 Hdl.	18.00	18.00	18.00	22.50			
7 "	Triplex Relish..... Grd. Bot.	9.00	9.00	9.00	11.30	16.00		
10 "	“ “.....	13.50	13.50	13.50	16.90			
10 "	Combination Relish, 3 Comp.	12.00	12.00	12.00	15.00			
7 "	Triplex Relish Center Hdl.	14.50	14.50	14.50	18.10			

by LOUISE REAM

#1401 Empress was introduced in a supplement to catalog 109 which first came out in late 1928 or early 1929. This catalog has at least five supplement and though the one published by L.W. Promotions did not have pictures of Empress, we have one which shows several pages. Catalog 211-17, which has not been reprinted, has nine pages of it and the marking at the top of the page says "#1401 Empress". This is a 1935 catalog. By the time the 212-17 catalog came out in 1937 there was no mention of Empress but #1509 Queen Ann is shown. Price lists for this catalog show no color for Queen Ann as the color era was about over by then with the exception of Zircon and a few items in sahara. It was now that the ridges or undulations on the top of plates and the inside of other items appeared, which is the main difference between the two patterns. Even at that, some items were never changed at all.

We are printing here several pages of the Empress pattern listings. These came from the 1933 catalog and all the colors ever used for Empress are here. By this time hawthorne and marigold were long gone and, of course, were never used for Empress, though nothing is impossible and something might crop up.

Once in awhile you will find something which was not listed in a particular color such as the salt shaker and the 2-handled salad bowl in tangerine which are on display in the museum. As you can see, everything in the line was made in crystal, moongleam, flamingo and sahara. The first three were all the same price when made, with sahara running quite a bit higher. Note that alexandrite was always considerably higher which reflects the more expensive formula. Blue was cheaper than sahara and tangerine was only slightly higher in price than sahara. The large price difference of alexandrite, when new, should also make a difference today. To my knowledge the 11" floral bowl and 10½" dinner plates have not

been seen in tangerine. Who has these? Write if you do. In fact any items in the pattern not listed here in a particular color would, at the least, be unusual.

Empress is one of the easiest patterns to collect a set of in color and now you will know just what is available.

MISCELLANEOUS



No. 1000 - FLORAL

No. 1001 - FLORAL

No. 1002 - FLORAL

No. 1003 - FLORAL

HEISEY CANDLESTICKS

#112 & #123



by JACK METCALF

Certainly one of the most common of the Heisey candleholders is the 3" #112. Presumably it was very popular or at least very inexpensive. Also, the production period covered a long period of time, as #112 bears the patent #70558 issued to T. Clarence Heisey on March 23, 1926, and it was still listed in the last catalog in 1956. Further, Imperial issued this candleholder in crystal as late as 1976, although their glass quality at the time was not comparable.

Considering the production span, virtually any middle or late color is possible. I have personally seen crystal, flamingo, moongleam, sahara and hawthorne in more or less that order of most to least common. In addition, an "experimental" pair in a brilliant marigold

type color with a crystal edge around the foot is currently on display at the museum.

A number of etchings and cuttings were offered through the years with this candleholder. The well-known Orchid, Rose and Minuet etchings as well as Antarctic, Titania, Springtime and Olympiad should be available. Cuttings listed include Piccadilly, Larkspur, Continental, Festoon wreath, Harvester, Barcelona, Jungle Flower, Boquet and Evelyn and many more.

Not only did Heisey produce #112 in a three inch version. They also produced a 9" tall version with the same number and a special version which fitted into the same flower frog as the duck flower frog. For some reason, the flower frog center holder was given #123.

The latter two items are only listed in Catalog 109, hence a relatively short production span. The 9" #112 was produced in at least crystal, flamingo and moongleam. #123 is available in these three as well as hawthorne. The 9" is marked at the top of the stem and #123 is marked in the middle of the bottom.

One other item bears mention. Around Newark one frequently sees candleholder sockets (just the top part) flatted on the bottom and used as a toothpick holder. These were made by the workers and the #112 is one of the most frequently found items in this condition. While these could really be considered a whimsey, the value would not be great since they can be made still from any foot damaged candleholder. It's really sort of a neat idea.

'Around the Heisey World on a Holiday Caribbean Cruise'

After a long winter of shoveling snow, slippery roads and miserable cold weather, imagine yourself sailing to the sun kissed beauty of the Caribbean Islands. Elegant dining, lavish entertainment, incomparable service, fascinating ports of call, lots of companionship — sharing these pleasures with HCA friends aboard a sparkling white cruise ship will be a vacation you'll always treasure.

Jan Shurtz and Barbara Fischer of Welsh Hills Travel Service in Granville will present a movie about Caribbean Cruises during the convention. Check your program and be at the SHERATON INN at 4:00 P.M. on SATURDAY, JUNE 16th. After the movie they will be available to answer questions and distribute brochures.

Three, four or seven day cruises offering a selection of ports can be arranged especially for HCA members. Some members have indicated that early March or April would be desirable. Air/Sea packages are available from most major cities in the United States. Several months advance booking is required for groups so now is the time to start preparations for a memorable vacation. We look forward to seeing you at the cruise presentation.

For those of you who cannot make it to the convention this year and might be interested in a cruise write Loren Yeakley or Sam Schnaidt, c/o HCA and information will be forwarded. This is not restricted to HCA members so bring your friends and have a grand time.

ALL HEISEY SHOW

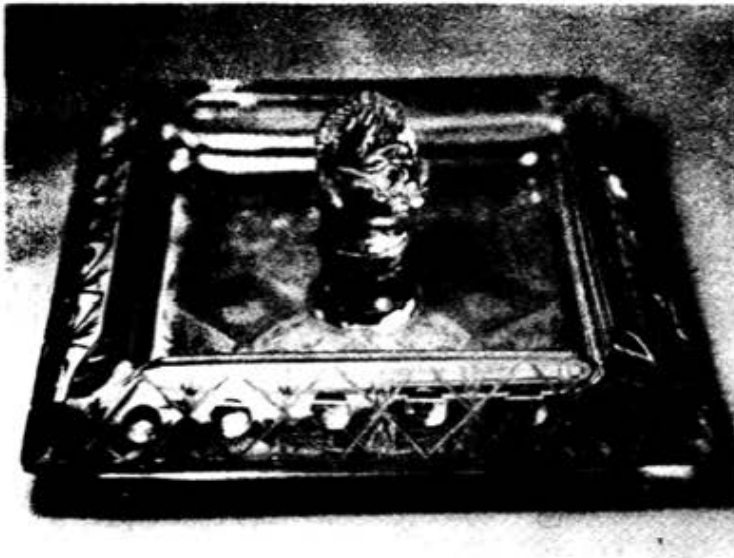
by L. REAM

The All-Heisey Show in Alexandria, Virginia, on March 24 and 25 was a great success as usual. Over 100 people were waiting in line when the door opened. It was a truly beautiful show and most of the visitors were buyers, not lookers. The dealers all seemed to be doing very well, which proves once more that there is no let-up in Heisey Collecting.

Kay and Stan Darling and Frances and Bob Law spent the weekend at the show and were of great help to me in the manning of H.C.A.'s booth. We took in over \$2500 from our books and other sales.

The members of the National Capital HCC were friendly and helpful as always and it was truly a weekend to remember!

Thanks again to all of the members of the club there. You did it again!!!

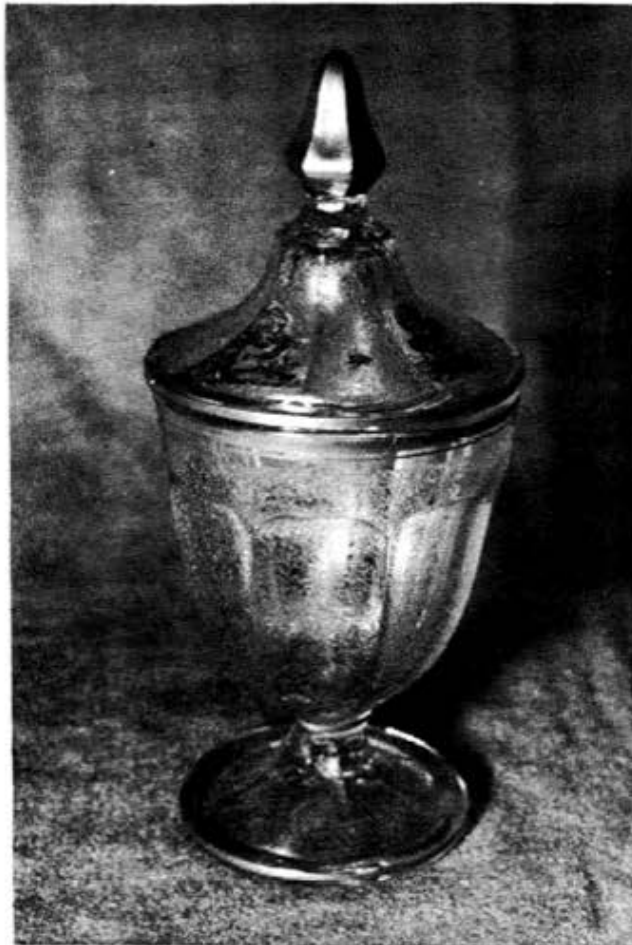


#1593 PRISM ASH TRAY WITH HORSEHEAD

In a 1949 catalog which had been used in the Heisey factory, and is now in our possession, I found a listing of seven #1593 Ash Trays of various sizes. At the end of the listing was the following: 8" square ash tray, horsehead. The picture from Lynne-Art's Glass house is of this ash tray which is in their collection, the only one known at this time. The usual horsehead ash tray is the #1489 Puritan with a small horsehead in it.

L.R.

HORSEHEAD ASH TRAY
8" Square



#353 MEDIUM FLAT PANEL CANDY JAR
Decorated by a company other than Heisey



"Charleton"

unveils

"Ebony Whirl"

Black and Lacquer Red

on a pleasing variety of crystal accessories

Abels, Wasserberg & Co., Inc.

23 EAST 26th ST., NEW YORK 10, N. Y.

Chicago:
Space 1548
Merchandise Mart

Los Angeles:
Marsh-Fairchild
503 Brack Shops
527 W. Seventh St.

Grand Rapids:
Grand Rapids Exhibition Bldg.
Fifth Floor

The two bowls at the lower left are Heisey and marked. They are painted Laquer Red and the threading is of heavy black enamel or lacquer. What a waste of good Heisey Glass. We have a small nappy kie in Room 5. From a November, 1952 publication.

Addition to listing

See page 7 of the March issue. Under #4163 please add - cobalt handle. This is the most common color for the handle and was inadvertently left out. The museum owns mugs with cobalt, flamingo and red handles. The red was only experimental and not listed in catalogs.

L.R.



LEFT TO RIGHT
 Sugar
 Cream
 Nappy (Finger Bowl) on 7" Plate
 9 oz. Low Goblet

Victorian is back again!

A recluse since the last war, popular demand has brought back this famous old Heisey pattern. VICTORIAN, the perfect crystal for outdoor and indoor entertaining alike, presents a complete line of hand-cast stemware, plates, and sodas. Order yours now for early delivery. A. H. Heisey & Co., Newark, Ohio.



LEFT TO RIGHT
 4 1/2 oz. Low Sherbet
 5 oz. Saucer Champagne
 3 1/2 oz. Cocktail
 12 oz. Footed Ice Tea
 9 oz. Tall Goblet
 4 oz. Oyster Cocktail
 4 oz. Claret
 2 1/2 oz. Wine
 7" Plate



LEFT TO RIGHT
 Old Fashion
 5 oz. Juice
 2 oz. Bar
 8 oz. Hiball
 12 oz. Ice Tea
 10 oz. Footed Tumbler

This pattern was first put on the market about 1934 and was discontinued during the war and for several years thereafter. When first made the colors were sahra, cobalt and crystal with a very few items made in flamingo and moonbeam. A butter dish lid is known in a strange shade of green. In the late years it was made only in crystal. It is usually marked. This pattern was made fairly extensively by Imperial in several colors and since it was made by them before they removed the marks in 1967 it may be confusing to collectors. Any colors other than the above are Imperial. L.R.

Ad from the February, 1951 Crockery & Glass Journal

#1425 VICTORIAN

Steps in the Production of a Goblet



1
The appearance of a gob of glass required to make a Goblet. The "gatherer" has picked up this amount of hot glass, performed and blown it into this shape.



2
The "blower" has blown the gob of glass (1), into this form by means of a mould and the pressure of air from his lungs. It is now ready for the stem.



3
The glass article (2), still red hot, is placed over a "second mould" and an additional quantity of glass enters the mould to form the stem and attach itself to the Goblet.



4
After fire-polishing the stem (3), a third gob of glass is attached to the base of the stem to be used for making the foot. All parts are still red hot excepting the last gob which is white hot and very plastic.



5
The "foot-setter" now forms a foot at the base of the stem shown in (3). The Goblet is now ready for annealing or heat-treating which takes place in a large continuous furnace called a lehr.



6
After annealing the Goblet is cut off to the proper height by means of a carborundum wheel and the application of a sharp flame.



7
The sharp rough edges in (6) have now been ground smooth and finally polished by another sharp flame which actually melts the edges until they are round. After a second annealing process which follows this, the Goblet is complete.

This was taken from an old glass union publication. The glassware is Imperial's Candlewick. Goblets at Heisey were also made in this manner when they had a pressed stem.

con't from page 5

in this color which is worth taking a look at. I won't go into the story of the discovery of this piece because I get violently ill whenever I think about it.

Classic is signed at the top of the stem so you should have little trouble identifying it unless, of course, it has a Trial Aqua bowl. Then you might snicker and put it down because "Heisey never made that!" A so called "stem expert" who shall remain nameless did just that. Oh, I could cry.

BOB RAREY Mailman II

The 1979 Museum Benefit Auction was the "Best Ever" any way you look at it. It was a beautiful day in Central Ohio, a high turn out and brisk demand for the glass offered. Mail Bidders again played a big part in the

Recent Donations — Acquisitions

We have purchased some good pieces lately for the museum and have had some nice donations. Acquisitions include:

- #1514 Oval floral bowl with beautiful Krall engraving.
- #4090 Coventry goblet - beautiful cutting
- #1541 Athena candy jar - most unusual
- #1184 Yeoman cigarette ash tray and holder in flamingo. See catalog 109, page 95.
- # 121 Fancy Square tumbler
- #3404 Spanish goblet - #865 florentine cut
- #2516 Circle Pair tumbler, marigold
- #1951 Cabochon "Handkerchief" vase made from cake stand

Recent donations are:

- #1485 Saturn limelight baked apple dish. Mr. & Mrs. Russell Swetnam
- #1183 Revere decorated and cut candy jar. Mr. & Mrs. Willard Bennett
- # 353 Medium Flat Panel mug. Joe Perry and Roy Burns
- #4052 National soda with #980 moonglo cut. Tom Martin
- #1445 Grape Cluster, 1 lite candelabrum, cobalt with crystal foot. In memory of Dora Rehbeck Smith



#1201 FANDANGO ROSE BOWL
Photo by David Curley

Note from Mailman II

success of the sale and hopefully at some future time all will be able to attend in person.

This year, 66 Bidders made 366 bids and purchased 71 lots for a total \$4350.50. Many thanks to all those who supported the sale, and to the unsuccessful, better luck next year. Next, the June Convention.

-12- **HEISEY PRISMS**

R. A. COBEL
GLASS PRISM
Filed Dec. 29, 1939

Aug. 3, 1943.
2,326,009



Fig. 1

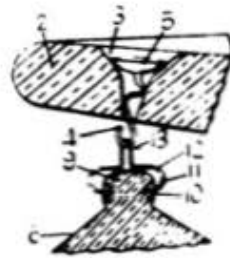


Fig. 2

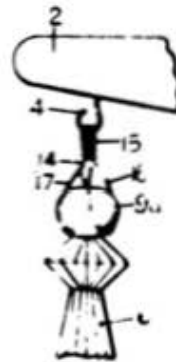


Fig. 3

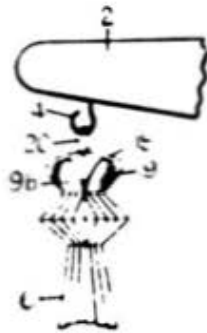


Fig. 4



Fig. 5

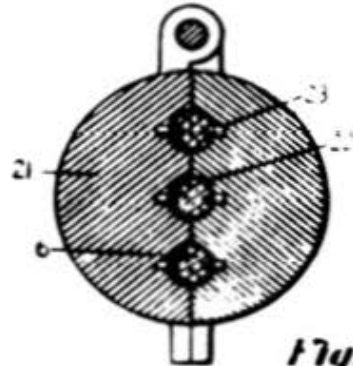


Fig. 6

by TOM FELT

During most of its history, the candelabra produced by Heisey were offered with prisms of European origin. (According to Mr. Vogel, in his Newscaster of June 1974, most prisms found after 1930 are probably Czechoslovakian; I have no concrete information that prisms were imported prior to this date, but the evidence would indicate that they almost certainly were, presumably from the very beginning of Heisey's production history.) In general, the time required and the expense involved in creating fine prisms would have been too great for Heisey to have competed economically with the specialty houses of Europe.

However, during World War II, it became impossible to rely upon this source of supply. And thus it was that in 1939 application was made to the U. S. Patent Office for a new kind of glass prism. The designer was Ray C. Cobel, assignor to A.H. Heisey & Company, and the application was approved on August 3, 1943 as patent #2,326,009.

As can be seen from the picture, what was unique about this prism is the fact that it is made in a single piece without a separate button. Furthermore, a new method of suspension is offered (or, actually, three proposed methods, as indicated in figures, 2, 3 and 4 of the accompanying diagram -- however, to the best of my knowledge, the method shown in figure 2 is the only one which was actually utilized by Heisey). The prism is hung using a spring clip which fits into a pair of minute depressions actually molded into the glass, thus making it unnecessary to drill all the way through the prism and thereby eliminating one of the most frequent causes of breakage in the production of prisms. And, finally, the prism is molded with a ribbed design which makes further cutting unnecessary. Upon removal from the mold, it is simply fire polished to add luster and the production process is complete.

Thus it was a prism which was both easy and economical to make. (And, in its way,

really quite attractive. It does not compare with the finer Czechoslovakian prisms, but placed in the right light, a Heisey prism has a gleam and a beauty all its own.) The same prism was produced in a stubby size (for use on the smaller candelabra, such as the Crystalite 2-light candelabrum) and I have seen another one-piece prism (faceted to resemble the popular "A" prism) which may also be of Heisey origin. (That Heisey offered two separate prisms during the war is borne out by their wartime order form, as reproduced in the Nov. 25, 1977 issue of the Heisey News, where candelabra are offered with a choice of either "P" or "R" prisms. And this is further confirmed by Paul Fairall, who recalled in the Apr. 25, 1974 issue of the Heisey News that Heisey made at least two different types of prism, and possibly three.)

As I write this, I'm working in the glow of a 4-light #301. The glass is lovely . . . but what makes this particular candelabrum so dear to my heart is the fact that it is ALL Heisey -- even the prisms!



Newark is at the junctions of Ohio Routes 16, 13, & 79. It is 33 miles east of Columbus, 26 miles west of Zanesville and 13 miles north of I-70.

North 21 St. joins State Route 13 approximately 1 mile north of Valley Lanes. The Public Square is one way traffic - counter clockwise. West Church St. is one way East between 4th and 2nd Streets, Mt. Vernon Road (State Route 13) between St. Clair and Locust is one way South. Hudson Avenue (State Route 13) between Locust and St. Clair is one way North.



New five-piece canasta set is available in milk glass, amber or green. Set includes covered cigarette box and four ashtrays in heart, diamond, spade and club shapes. \$2.95 a set. The Fenton Art Glass Company.

ALL THAT LOOKS LIKE RIDGELEIGH IS NOT!!!
THIS BOX HAS BEEN SEEN IN GREEN AND HAS BEEN OFFERED FOR SALE AS HEISEY. NOTE THAT IT IS FENTON GLASS.

No. 433 PATTERN



No. 433N-4 Oz. No. 8 STOPPER



6 Oz. No. 8 STOPPER

made 2, 4, 6 oz.

Additional items

in

#433 Grecian Border



5 Oz. TUMBLER



No. 433-OVAL MUG
HANDLING STOPPER



No. 433-OVAL MUG
GRIPPING BOTTOM



4 1/2 Oz. LOW FOOTED BERRY
CUPPED



6 Oz. LOW FOOTED BERRY
SHALLOW



6 Oz. LOW FOOTED BERRY
CUPPED



6 Oz. LOW FOOTED BERRY



6 Oz. LOW FOOTED BERRY
FLARED



4 1/2 Oz. LOW FOOTED BERRY



4 1/2 Oz. LOW FOOTED BERRY
FLARED



4 1/2 Oz. LOW FOOTED BERRY
SHALLOW



4 1/2 Oz. HIGH FOOTED BERRY
SHALLOW



4 1/2 Oz. BACCUS CHAMPAGNE



6 Oz. FOOTED TUMBLER
OR LOW FOOTED TUMBLER



11 Oz. GORLEY



7 Oz. GORLEY



4 1/2 Oz. CLARRY



5 1/2 Oz. BURCHETT



3 Oz. WIFE



5 Oz. CORDIAL



3 Oz. NIENY



3 Oz. COWTAIL

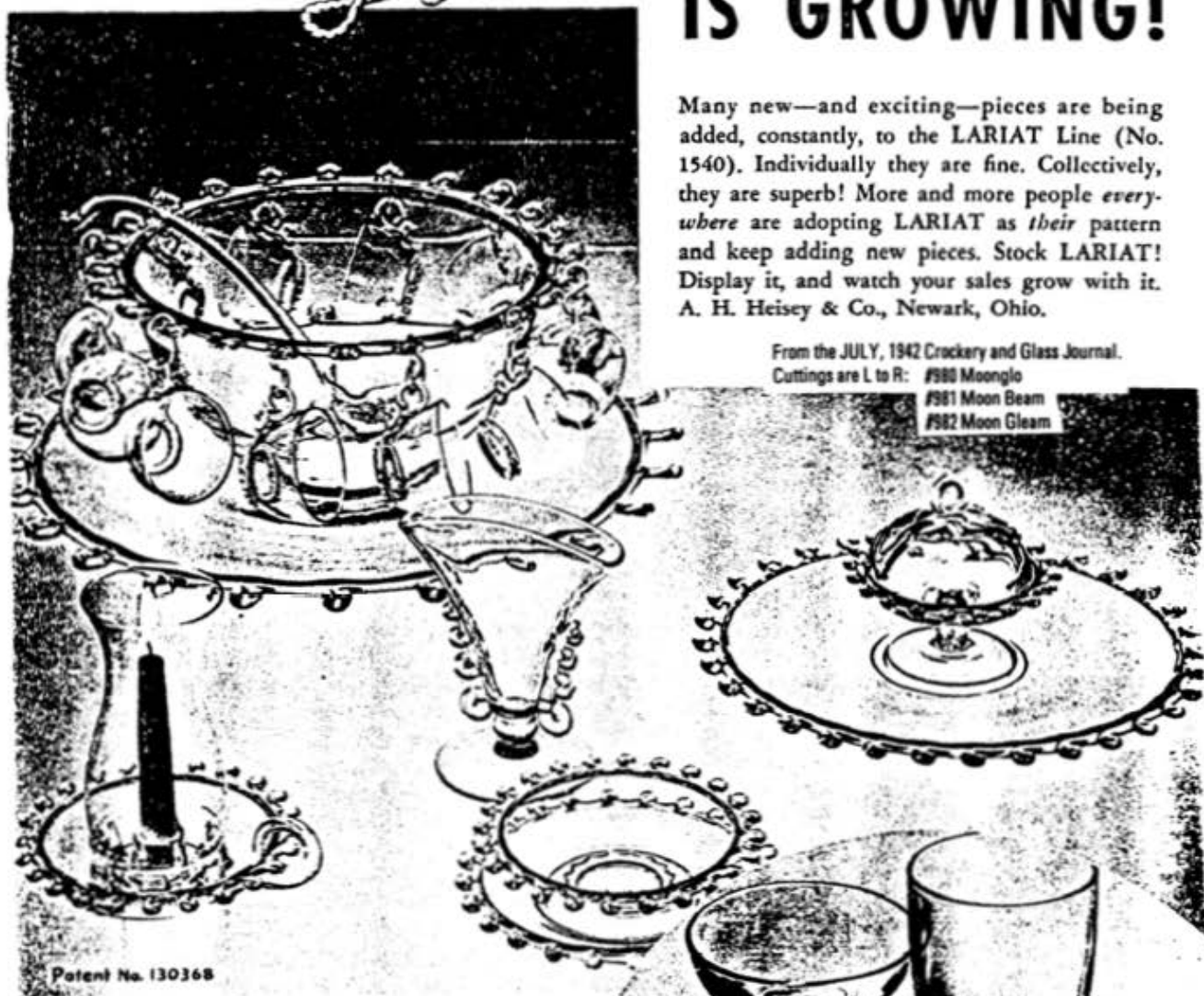
HEISEY'S *Lariat* LINE

IS GROWING!

Many new—and exciting—pieces are being added, constantly, to the LARIAT Line (No. 1540). Individually they are fine. Collectively, they are superb! More and more people *everywhere* are adopting LARIAT as *their* pattern and keep adding new pieces. Stock LARIAT! Display it, and watch your sales grow with it. A. H. Heisey & Co., Newark, Ohio.

From the JULY, 1942 Crockery and Glass Journal.

Cuttings are L to R:
 #980 Moonglo
 #981 Moon Beam
 #982 Moon Gleam



Patent No. 130368

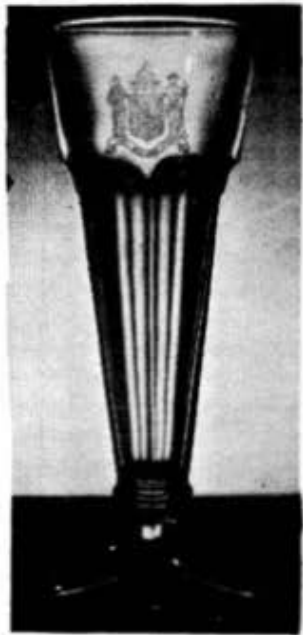
The Punch Bowl set is *complete* with plastic hooks for attaching cups—something different; Blackout Lamp is most timely; Cereal Dish and 8" Plate, most useful; Fan Vase and Footed Cheese and Cracker Plate attract discriminating hostesses. And now LARIAT Stemware! Saucer champagne and iced tea; cuttings shown on goblets are No. 980, 982 and 981.

HEISEY'S
 HAND · WROUGHT  CRYSTAL



New items

added to our Gift Shop



#351 PRISCILLA PILSNER
Fort William Henry Etch
Marked
Photo courtesy of Babs Kent



No. 300-Candle Holder



- SCOTTIES** — available in milk glass. Limited edition of 161712.50
made in original Heisey molds by Imperial Glass Corp. exclusively for
Heisey Collectors of America, Inc. 3 1/2" high
- PLATE HANGERS** for 8" plates to hang in a series from one nail.
Ideal for HCA souvenir plateseach... .50
- #300 CANDLE HOLDER**, by Imperial each...4.00
Fits #300 and #400 candelabra
- 9" CERAMIC PLATE** showing Heisey Museum, fall decor. Marked ... 2.50
Newark, Ohio 1978.
- KICKING COLT**, available in horizon blue. Limited edition of 156014.00
made in original Heisey molds by Imperial Glass Corp. exclusively for
Heisey Collectors of America, Inc. 4 3/4" high.
- STANDING COLT**, available in horizon blue in June. Limited edition ..14.00
made in original Heisey molds by Imperial Glass Corp. exclusively for
Heisey Collectors of America, Inc. 5" high.

ALSO AVAILABLE IN OTHER COLORS

- #1560 VICTORIAN GIRL BELLE** available in horizon blue7.00
horizon blue frosted7.00
- Made in original Heisey molds by Imperial Glass Corp. exclusively for
Heisey Collectors of America, Inc. 4 3/4" high.
- IMPERIAL ELEPHANT HANDLED FAIRY TALE MUG**,
available in horizon blue iridized8.50

DISCOUNT

10% on orders of \$50 to \$250
25% on orders of \$250 and over

Add 10% for postage and handling
Add 4 1/2 % sales tax - Ohio residents only



At Left—A magnificent decorative piece.
No. 1183 two-piece Vase Candelstick.
Fashioned in crystal with cutting No. 758.
Also comes without cutting. The prisms
can be had in blue, amber, amethyst or
crystal.

#1183 Revere Candle Vase

From a folder of the late twenties. Note that this is shown in
later catalogs with the #1511 Toujours pattern. The museum
owns one of these in moonbeam which was cut by Howard Black
an early Heisey cutter. We also have one in crystal with the #758
cutting. The prisms were imported.

CLUB NEWS



Bay State Heisey Collectors Club

by MAURICE WALTER

Twenty two members met at the Hancock United Church of Christ in Lexington, Mass. on March 13 for the annual meeting of the Bay State Heisey Collectors Club. What a difference in weather from the February meeting. The temperature was below zero at the time of the February meeting, and we couldn't meet in our regular room because of burst water pipes; the toilets couldn't be used either. This time the weather was springlike.

President Irene Walton started the meeting with annual reports of each officer and committee chairman. Arthur Anderson, reporting for the Show committee indicated that ten contracts for the October show were already completed. This is a good start towards our second show.

New officers were then elected for the following year as follows:

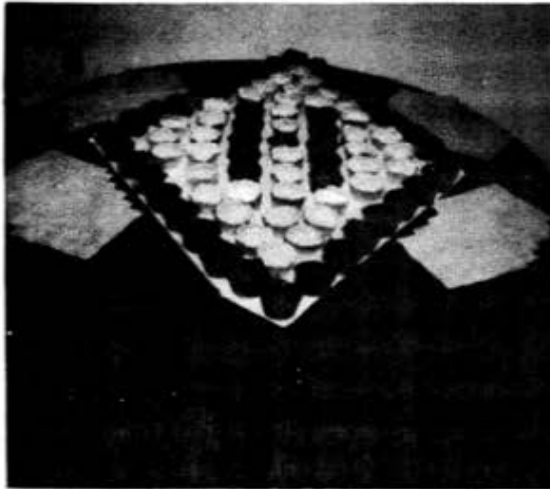
President - Irene Walton
V. President/Treasurer - Janet Macomber
Secretary - Betty Kennedy

Following the formal portion of the meeting, David Steer conducted Show and Tell. Some of the pieces shown were, a #300 Peerless catsup cruet; a #1519 Waverly covered bowl with bowtie handle on top, spiral optic, and orchid etch; an #1186 Yeoman two-handled, four compartment, 6" preserve dish, a #341 1/2 oz. cordial, a #1503 Crystolite tumbler, a #1205 Fancy Loop 4" 3-cornered nappy in emerald with gold trim, and a #305 Puntty and Diamond point pair of salt shakers.

At the conclusion of Show and Tell refreshments were served by Janet Macomber, Jean Martin, Edie Merit, Esther Young and Dottie Banck.

COLUMBIA HEISEY COLLECTORS

STUDY CONFUSING COLONIALS March, 1979



The March meeting, our third as a club, welcomed two new members and two guests. These new members as well as four others from our membership are also new members of HCA. Another couple, who had joined earlier by mail, was able to join us in person for the first time. Our members are quite scattered and distance and weather can be a problem.

The study subject of the evening was the oft confusing area of colonial, flute, and panel patterns. Members brought examples from their collections and Wille Carta, program chairman, pointed out pattern characteristics and differences using examples from the well-filled display table. It was especially educational in being able to see a wide variety of stems with their sometimes very small differences.

As usual there were the "what-is-it" items with some being identified quickly and others left us scratching our heads and vowing research.

The evening closed as we gathered at a table with dozens of cupcakes arranged in the familiar shape of the Heisey trademark.

The club was formed with the stated intention of meeting in the greater Portland, Oregon/Vancouver, Washington area. Most of the members live within a thirty-five mile radius of the center of this area but members also come from the Oregon coast to the west; as far north as mid-Washington; as far east as to be just forty miles from Idaho; and as far south as northern California. Several of these have joined with the full knowledge that they will not be able to attend every meeting but knowing that its better to be a part when possible than to miss out entirely.

If you are interested in joining with us, please write:

Columbia Heisey Collectors
P.O. Box 266
Newberg, Oregon 97132

NEWARK DIAMOND "H" CLUB

by PHYLLIS BRYAN, Secy

The March meeting was held in the meeting room of the office building. The June convention display theme was planned with stems, and cocktail shakers by Heisey. Betsy Leibrand & Iva Lou Crim served refreshments. The Imperial colors and Heisey look-alikes fakes were studied.

Linda Barnes hosted the April meeting in her home. Phyllis Frye was a guest. The "Happy Hour Around the World" theme was again discussed. The animals were studied after the business meeting.

THE HEISEY COLLECTORS OF THE ROCHESTER AREA

by MARVIN JACOB, SECY.

Auction Fever has hit the Heisey Club of the Rochester Area. Most of the talk at the March meeting held at the Arthur and Gertrude Costello home was the upcoming March auction. Three of our 12 families will be at the auction despite the many miles.

Finding a missing mate (and we don't mean spouse) was the main topic of discussion. Members brought Heisey pieces needing a mate. We went from single candlesticks to sugar and creamers to cups needing saucers. The club has started a list of items needing mates. Other members of the club will also be on the lookout for the missing mates. Several items found new homes. The club will continue to update the missing mates list.

Our club again extends our hospitality to any Heisey Club of America member that is in the Rochester, NY area and would like to talk Heisey.

Please phone (716) 586-7697 or (716) 381-6933.

Ed note - The picture which came with this article was too dark to print.

WESTERN RESERVE HEISEY CLUB

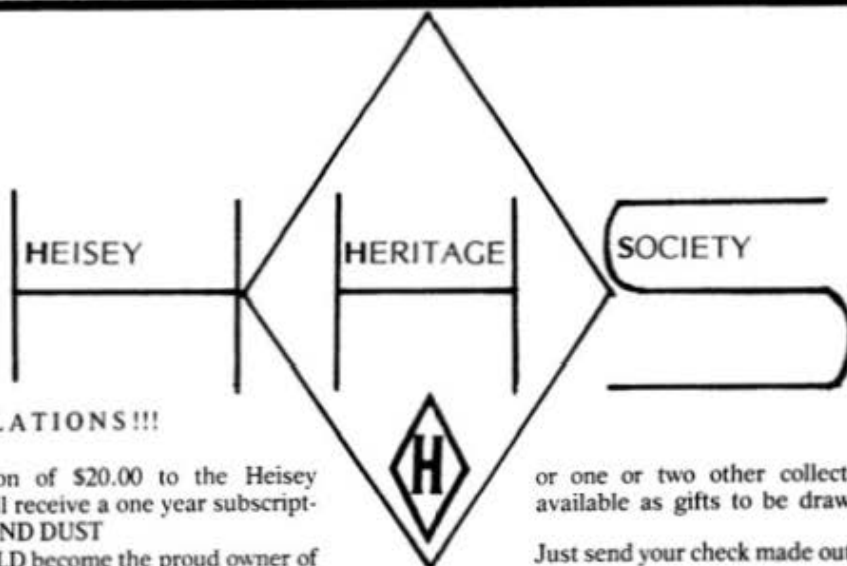
by HELEN MARIMON

The Western Reserve Heisey Glass Study Club met on March 22nd at the home of Helen Marimon. Following a business meeting conducted by President Lynn Sellers, Program Chairman Wendell Young showed the Heisey Animal slides which were greatly enjoyed by the twelve members present. The "Show and Tell" part of our Meeting -- the gleanings from shows and flea markets - is always a fun and learning time.

NEW CLUB?

Dorothy Ppe is looung for other C.A. members in Maine to start a work study group. She may be contacted at:

368-B Glenmere Rd.
Tenant's Corner, ME 04860



CONGRATULATIONS!!!

For your donation of \$20.00 to the Heisey Museum YOU will receive a one year subscription to the **DIAMOND DUST**

...and...you **COULD** become the proud owner of a Portsmouth **TANGERINE** Goblet, A #1401 8" **ALEXANDRITE** Plate, A rare #1225 **BUXTON INN** Sherbet (only four known)

or one or two other collectables of the five available as gifts to be drawn for the donors.

Just send your check made out to:

THE HEISEY HERITAGE SOCIETY to:
F. L. Husted, P.O. Box 102,
Phoenixville, PA 19460

We will send you FIFTY TICKETS for the drawing at the Heisey Collectors Sunday morning meeting in June, 1979. You will be notified by phone or mail if you are a lucky winner and yet unlucky enough to be absent!!! If you do not want to donate that much, tickets are 50¢ each or FIVE for \$2.00. Send the amount you wish to: F.Husted, or....you can pick up YOUR Lucky Number at the meeting....we ask for your support. All monies will be turned over to the Museum Fund!!!!

(This offer is invalid in states where raffles are prohibited)



HEISEY PUBLICATIONS

P.O. BOX 102 PLYMOUTH, OHIO 44865
Clarence W. Vogel



The four Heisey books compiled by Clarence W. Vogel are available now. These books are used as reference by most dealers in their advertisements. You cannot collect intelligently without them. The full page reproductions from old Heisey trade cataloges give you much more information than can be found in books not using this style of presentation....In addition much pertinent pattern information, history and other data is provided. Over 98% of the patterns are shown, some in color.....Also invest \$5.00 in a 1979 subscription to **THE HEISEY GLASS NEWSCASTER**, a quarterly publication, edited by Mr. Vogel. The 1977 and 1978 issues are available at \$4.00 for each year. Every issue is a new picture book. Order these now and keep up with new finds and discoveries. The **NEWSCASTER** is the oldest publication on the market. All issues back to 1971 are available. Write for prices. The quarterlies can be bound into a 5 x 9 inc book which will make a valuable addition to your Heisey library.....We will be set up at the **GRANVILLE SHOW**, sell Heisey glass and books during the **HCA CONVENTION WEEK IN JUNE, 1979**. Come in and see us.

BOOK I	HEISEY'S FIRST TEN YEARS, 1896 - 1905	\$11.00
BOOK II	HEISEY'S COLONIAL YEARS, 1906 - 1922	\$12.00
BOOK III	HEISEY'S ART AND COLORED GLASS, 1923 - 1942	\$13.00
BOOK IV	HEISEY'S EARLY AND LATE YEARS, 1896 - 1958	\$13.00

INCLUDE POSTAGE OF 40¢ PER BOOK OR 80¢ IF ORDERING ONE BOOK
OHIO RESIDENTS ADD 4% OHIO SALES TAX

ANTIQUES 'N' COLLECTABLES
"HEISEY OUR SPECIALTY"

LYNNE  ART'S
GLASS-HOUSE
INC.

ROUTE 202 — P. O. BOX 242
LAHASKA, PA. 18931
215-794-7800

*Dear Heisey Collector and Dealer,
We're Heading Your Way!! Heisey Animals,
Lovely Old Patterns, and a Rainbow of Colors, will
be coming along with us.*

We'll be at the following shows.

TIMONIUM, MARYLAND; FAIRGROUNDS, MAY 25 - 27
INDIANAPOLIS, INDIANA; FAIRGROUNDS; JUNE 7 - 10
NEWARK, OHIO; NEWARK HIGH SCHOOL; JUNE 14 - 17

*Our shop in Lahaska is usually open while we are
on the road, suggest a call 215-794-7800.*

*See you soon,
Lynne and Art*



— ESTABLISHED 1971 —
\$6.00 — 12 Issues

64 pages packed each month with articles by respected columnists, a variety of ads on both old and new glass, shows, new books on glass, trademarks, research information and more!

Printed magazine on glossy paper with large, clear photos. (recent sample \$1)

Enclose payment and send to:
GLASS REVIEW
P.O. Box 2315-H, Costa Mesa, CA 92626

—allow 30 days for first issue—

**HEISEY'S
GLASSWARE of DISTINCTION**
by Mary Louise Burns



COMPLETELY REVISED!

Now includes additional patterns, new illustrations, many new listings and is now perfect bound for sturdiness!

This comprehensive reference book is not a catalog reprint but a collection of all major patterns of tableware, stemware, cuttings, etchings, animals and Verlys produced through Heisey's 60 years of glassmaking.

Details of each pattern clearly shown by photo or illustrations for easy identification. Two indexes for easy reference: one by pattern name and one by pattern number.

All this for only **\$11.95** pp.

.....

ALSO NEW: Completely revised price guide supplement to the above, listing each item and UPDATED price trends. Patterns are listed alphabetically for easy reference. Only \$5.95 pp!

.....

"ORDER NOW" Send check or money order to:
MARY LOUISE BURNS
P.O. Box 1931
Grants Pass, Or 97526

6 Books or more 40%

LAND of LEGEND FESTIVAL'S
GIANT FLEA MARKET

TWO WEEKENDS

JUNE 9-10 & 16-17 8 A.M. to DARK

ON THE PUBLIC SQUARE
DOWNTOWN — NEWARK, OHIO

Limited Dealer Space Available
For Additional Information Contact:

robert miracle
145 FAIRVIEW AVE.
GRANVILLE, OHIO 43023

Phone: (614) 587-1532

Many Good HEISEY Dealers

"HEISEY STEMWARE"

by

Stephen Bradley, Constance Ryan
Robert Ryan

An outstanding book on Heisey Glassware devoted to Heisey's stemware. Well received by collectors and dealers. A limited edition, hardbound with beautiful full color cover, 240 pages, 337 photos, beautifully done sharp and clear, easy to use new format....rarities, signature, items, colors. Everything you wanted to know about Heisey's major product. Join the many Heisey collectors who write that the book has opened a new collecting area where you can still find some beautiful Heisey glass at great prices.

Mail your orders to:

HEISEY STEMWARE

88 Davis Rd.
Centerville, Oh 45459

HEISEY STEMWARE

or 9343 Alkire Rd.
Grove City, Oh 43123

BOOK PRICE: Plus \$1 for shipping & handling
Ohio Residents add \$.90 tax

\$ 2 0 . 0 0

This book is also available at
HCA Museum or Moundbuilder
Antiques, Newark, OH, Last
Chance Antiques, 60 N. Federal
Hywy., Dania, Florida 33004.

HEISEY GLASS

APRIL — MAY — JUNE — JULY
10 — 5 P.M.

Mrs. HAROLD E. WILLEY
Route #3, Box 180A
Frazeyburg, Ohio 43822

Phone: (614) 828-2557

HEISEY
SALE

By Appointment or by Chance

HEISEY
SALE

Over 2,000 Pieces

Pattern:

ATHENA	PINWHEEL and FAN
BEEHIVE	PRISON STRIPE
BEADED SWAG	PLEAT and PANEL
CREOLE	PEERLESS
CROSS LINED FLUTE	PINEAPPLE and FAN
CARCASSONE	PROVINCIAL
CRYSTOLITE	PLANTATION
EMPRESS	PLYMOUTH
FERN	QUEEN ANN
FAIRACRE	RIB and PANEL
FANCY LOOP	RECESSED PANEL
FLAT PANEL	REVERE
FANDANGO	RIDGELEIGH
GRECIAN BORDER	ROCOCO
IPSWICH	STANHOPE
KIMBERLY	SATURN
LARIAT	SUNBURST
NARROW FLUTE	STAR and ZIPPER
NEW ERA	TWIST
OLD SANDWICH	TULIP VASE
OLD DOMINION	PANELED CANE
OXFORD	VICTORIAN
PUNTY AND DIAMOND POINT	WARWICK
PILLOWS	WABASH
PRINCE OF WALES PLUMES	WAVERLY
PURITAN	YEOMAN

Colors:

SAHARA	MARIGOLD
HAWTHORNE	MOONGLEAM
COBALT	EMERALD GREEN
CRYSTAL	FLAMINGO

Etchings:

BELLE-le-ROSE	OLYMPIAD
CHINTZ	PIED PIPER
OLD COLONY	RENAISSANCE
DIANA	SHAWL DANCER
FISHERMAN	SAILBOAT
FRONTENAC	TALLY HO
HEISEY ROSE	CIRCUS
MINUET	GOOD MORNING

and much more

J. CRAGG
94 ELM ST.
GEORGETOWN, MASS. 01833
(617) 352-2164 after 5:00 p.m.

Postage & Insurance Extra ***Marked**

- Salad Fork & Spoon*40.00
- Condiment Set 2/S-2/P, Mustard*50.00
 (Derby Silver Co. Basket)
- #1205 FANCY LOOP Cracker Jar (no cover)35.00
- # 365 QUEEN ANN 10" Nappy30.00
- # 394 Footed SODA* (Ryan pg 22)20.00
- #1201 FANDANGO 9" Shallow Nappy30.00
- # 433 GREEK KEY Sherbets*(4)...ea...18.00
- # 433 GREEK KEY Cream and Sugar (Hotel)* 37.50
- # 433 GREEK KEY Low footed Jelly*20.00
- # 17 Handled Decanter Original Stopper22.50
- # 451 CROSS-LINED FLUTE Ind. Teas*(4) ea...18.00
- # 300 PEERLESS Water Bottle35.00
- # 01 EMPRESS Floral Bowl12.00
- # 300 F ÆERLESS Hdd Decanter Orig. stopper .22.50
- #1428 SAHARA Warwick 5" Cornicopia Vase* ..75.00
- #1509 QUEEN ANN Min.S/C* SAHARA40.00

Irene & Robert Donovan

Nov. to June	June thru Oct.
P.O. Box 303	P.O. Box 321
Palm Harbor	Bolton, Mass. 01740
Fla. 33563	

Collectors
Bells and Heisey Glass

S.A.S.E. Please
 P & S Xtra UPS
 *Marked

Phone: 617-779-5008
 after 5 P.M. and
 after May 1, 1979

- #3440 PORTSMOUTH D/O 9 oz. Goblet42.50
- #1538 GENERALS CAP Ash Tray32.00
- #1503 CRYSTOLITE Single Round CandlePr...14.00
- #1401 EMPRESS 8" Plates COBALT*(8)...250.00
- #3404 SPANISH 5 1/2 oz. Champagne COBALT(8)...300.00
- #3404 SPANISH 12 oz. Soda COBALT(8)...250.00
- #3404 SPANISH 10 oz. Goblet COBALT(8)...500.00
- #1401 EMPRESS 9" Vase MATTE ETCH GRAPES*85.00
- CLYDESDALE HORSE375.00
- FISH Book-ends285.00

THE MONTH OF MAY WILL BE INVENTORY SALE.
 We are collectors and therefore try to upgrade our collection. We buy a lot of Heisey and have a lot to sell as we turn our attention to other patterns and to the Heisey Animals. Send S.A.S.E. for four page list of GREA A A A A A T Heisey Glass buys. **SEND TODAY**

Classified Ads

FOR SALE: Set of Heisey Pleat & Panel, Flamingo, six cups & saucers, platter, six dessert plates, six luncheon plates, five luncheon plates, 1 extra plate (different shade of pink) \$150.00 **M.LANGERT, 10413 TRUXTON RD., ADELPHI, MD 20783**
 Phone: (301)434-4534

FOR SALE: HEISEY Pinwheel & Fan punch bowl, punch bowl base, (12) punch cups All 14 pcs are signed H and are perfect. \$450.00 P & I extra. (617)852-1900. alan saltz, 50 PLEASANT VALLEY DR., WORCESTER, MASS 01605.

WANTED: Heisey spooners, especially #300 Peerless, #1205 Fancy Loop, #1220 Punny Band, #1255 Pineapple & Fan; also want #354 Straw Jar, #341 Oval Hotel Cr. lid for #352 one qt. crushed fruit jar. **fred sherwood, box 1805, ESCONDIDO, Ca 92025.**

WANTED: #3350, 12 oz. Footed Handled ice teas, crystal, Pied Piper etch. **AMY JO JONES, N.8423 VALERIE, SPOKANE, WA 99208.**

WANTED: Dinner plates, 10 1/2" in crystal or colors in colonial patterns (Vogel III) **WILLIAM R. RODERICK, 1321 REDWOOD LANE, LIBERTYVILLE, IL 60048.**

4th Annual



**NATIONAL
CAMBRIDGE
COLLECTORS**

ANTIQUE SHOW & SALE

(& 5th Annual 20th Anniversary)

SHENANDOAH INN
 INTERSTATE 70 - EX. 166 - 7 MILES EAST OF
CAMBRIDGE, OHIO

JUNE 22, 23, 24, 1979

FRIDAY, JUNE 22nd 8:00 - 9:00
 (PREVIEW ADMISSION \$3.50)

SATURDAY, JUNE 23rd 11:00 - 6:00

SUNDAY, JUNE 24th 12:00 - 6:00
 (ADMISSION \$1.75)

**OFFERING CAMBRIDGE AND OTHER FINE GLASSWARE
 ALONG WITH A GENERAL LINE OF ANTIQUES**

FOOD DOOR PRIZES PARKING

- Signed* (314)471-4573 MARTHA McDOWELL**
P&I EXTRA 312 ADAMS
SIKESTON, MO. 63801
- #5041 Athena 4 oz. Cocktail(4)...ea...20.00
 - #1401 D F Ice Bucket, Silver Overlay
 1/2" mold mark in top50.00
 - #31473 Buttress corner flower arranger*(4)...28.00
 - #1540 LARIAT Platter 14", Decorated*16.00
 - #1469 RIDGELEIGH 6", 2-Compartment JELLY 7.00
 - FISH BOOK-END Chip on Fin30.00
 - FISH BOOK-END110.00
 - GOOSE, Wings Up, Damaged60.00
 - #1503 Punch Platter 19" *35.00
 - #1170 Pleat & Panel Flamingo LID for lemon dish*10.00
- SOME GLASS FROM MARCH AD IS AVAILABLE YET.**

Dealers Directory

5 LINES - \$6.00/6 ISSUES

MOSTLY HEISEY

RHODA CURLEY
16 CLAYTON PLACE
ALBANY, NEW YORK 12209
By Appointment 518/482-6272

Opera House Antiques
Main & Broadway, Granville, Oh 43023
Open 7 days a week 12 - 5 P.M.
Shop (614)587-2083 - Sam 587-0052
HEISEY GLASS & GENERAL ANTIQUES

The Shultzes Antiques BOUGHT
SOLD
206-208 E. MAIN ST., ROUTE # 419
NEWMANSTOWN, PA. 17073
15 MI. WEST OF READING, PA.
PHONE 215 589 2819

Lynne & Art's Glass House, Inc.
"HEISEY OUR SPECIALTY"
Route 202 Lahaska, Pa. 18931 Box 242
Phone: (215) 794-7800


Evelyn's Antiques
3301 - 140 N.E. Marysville, Wash. 98270
I S Exit 202 Phone: (206)659-6114
MON-WED-SAT-SUN & by Appt.
Shop full of glass - Heisey, etc.

The China Cupboard
105 A. SO. BROADWAY, ORCUTT, CA. 93454
Phone: (805) 937-6420
COLLECTIBLE & ANTIQUE GLASS & CHINA
HEISEY IN STOCK

Bert's Budget Shop
403 W. MAIN ST., NEWARK, OHIO 43055
PHONE: (614) 349-8045
General line Antiques

Schwan's Antiques
DICK & LEE SCHWAN
208 OXFORD ROAD
WILLIAMSBURG, VA 23185
(804)229-7873 SHOWS & APPT.

RAMBLING LANE ANTIQUES
Featuring HEISEY & Other Fine Glass
KEITH & EVELYN HOOVER
RR #4 - BOX 1005 - 1715/282-5019
RHINELANDER, WI 54501

Charles A. Shaw
Glenwood Gardens - Rip Van Winkle
Yonkers, New York 10701
Shows & Mail Order 
American Glass

Goldsberry's Antiques
KALAMAZOO, MICHIGAN
SHOWS ONLY -- BUY & SELL
HEISEY A SPECIALITY
PHONE: (616) 381 - 3013

ANTIQUES & COLLECTIBLES
Olde Loved Things

Daris "Ed" Lacroix - Donald Morisseau
900 Ridgewood Avenue (Holly Hill)
DAYTONA BEACH, FL. 32017
HEISEY, Cambridge, "Candlesticks a specialty"

Moundbuilders Antiques
IRENE RAUCK
1138 MOUNDVIEW, NEWARK, OH 43055
PHONE: (614) 344 - 6043
HEISEY & ANIMALS/GEN. ANTIQUES

Eagles Best Antiques
CHINA HEISEY GLASSWARE
BOUGHT and SOLD
62 FIELD POINT RD., HEATH, OH 43055
By Chance or Phone: (614)522-2035

LAST CHANCE ANTIQUES
62 N. FEDERAL Hwy, DANIA, FL 33004
(Between Miami & Ft. Lauderdale)
Large Heisey Inventory & other Glass
MAIL ORDERS (305)467-6356 (home)

Green Acres Farm
ANTIQUES, CRYSTAL, GLASS & COLLECTIBLES
SPECIALIZING IN HEISEY & CAMBRIDGE GLASS
BY CHANCE OR (614) 927-1882
2678 SR 310 N. - PATASKALA, OHIO 43062

THE "FINDERS" ANTIQUES
Antiques - Heisey Glass - Buy-Sell
DAVID & SHIRLEY ROSE - Owners
66 S. HAZELWOOD AVE., NEWARK, OH 43055
Phone: (614) 349-7934

Hoosier Heritage Antiques
Marceil and Tom Zehr
4005 SOUTH WAYNE AVENUE
FORT WAYNE, INDIANA 46807
(219) 745-4173

Happy Haven Antiques
CHARLES & MARY DUMKE
RT. #3, BOX 2044A, GRASS VALLEY, CA. 95945
Phone: (916) 273-9450



GEORGE & EILEEN SCHAMEL
Route 3, Box 419
Boonsboro, Md. 21713
Appointment or Mail Order
Phone 301-432-8285

WICKFORD ANTIQUE ARCADE
RON & BEV. WOOD Booths 6 & 7
650 TEN ROD RD., N. KINGSTOWN, R.I. 02852
Heisey - Primitives - Glass - Etc.
Home Phone: (401) 295-0823

Charles & Mildred Fisher
Antiques & Collectibles, General Line
HEISEY, DENGENHART, IMPERIAL
991 IDLEWILDE, NEWARK, OH 43055
PHONE : (614) 522 - 5398

The Wooden Shoe
ANTIQUES & COLLECTABLES - BUY & SELL
GLASS, FURNITURE, ESTATES
JIM & SHERI VAN ES BY APPT
HERNDON, VA 22070-PH: 435-9045

Heisey Heaven & other collectables
NOW OPEN AT PEDDLER'S VILLAGE
SUNNY CREST MALL - URBANA, IL 61801
(CORNER FLORIDA AVE & PHILO RD.)
PHONE: (217) 384 - 9083

 *sum of life*
elaine and frank husted
p.o. box 102,
phoenixville, pa. 19460
(215) 935-2962

Ann's Gifts & Antiques
105 W. MAIN ST., HEBRON, OH 43025
Intersection Rt. 40 & 79
Next door to Daisy Queen
MON-SAT 10-5:30 SUN 12-5:30

Curiosity Nook
"WHERE FRIENDS MEET TO ANTIQUE"
3300 S. 8th Ave. Westward Village
Yuma Ar. 85364-(602)726-6730 or 726-8070
BARNEY & JODY BARNICLE

Jim Kennon
Shows Only-PH:(216)934-4515
P.O. BOX 251 - AMHERST, OH 44001
Heisey - Cambridge - Pottery
Glass Animals - Duncan & Miller

ACCENT ANTIQUES OF KENSINGTON
Curio Corner
3742 HOWARD AVE.
KENSINGTON, MD 20795
PH: (301)933-3780

The Sleeping Fox
EVELYN & JAMES JORDAN
P.O. BOX 583
LANSDALE, PA 19446
PHONE: (215) 855 - 2480

George Hoffman Antiques
G.W. HOFFMAN - J.H. DENNIS
129 SOUTH 4TH STREET
NEWARK, OH 43085
PH: (614) 345-8590

Granville, Ohio's Land of Legend 7th Annual SHOW & FLEA MARKET

GRANVILLE HIGH SCHOOL — Rt. 661 N

WED., JUNE 13 - 5 pm-9 pm

THURS., JUNE 14 - 9 am-8 pm

FRI., JUNE 15 - 10 am-5 pm

OVER 35 DEALERS including Virgil Harp (repairing glassware)

Clarence Vogel (author of Heisey books)

Glassware, China, Brass, Furniture, Copper, Iron, Crafts, Primitives, Books,
Pottery, lots of misc. (over 1,000 pieces of Heisey to be offered for sale).

HOME COOKED FOOD

FREE ADMISSION

PLENTY OF PARKING

Inside and outside dealers:

For info:

MRS. BETTY MORRISON

127 E. Elm St., Granville, Ohio 43023

Ph: (614) 587-1062 or 349-7934

No reservations needed for outside space

Trailers may stay overnight

Sponsors: GRANVILLE ATHLETIC BOOSTERS

1979 SOUVENIR CERAMIC PLATES

(Second of Series)

Depicting the Heisey Glass Factory in Color
will be sold by

"The Land of Heisey Society"

an HCA affiliate, beginning in
May 1979 for the benefit of HCA.

The price is **\$2.50** each

plus **\$1.50** for shipping and handling.

Make checks payable to
"The Land of Heisey Society"

Mail orders to: **BERNARD KREIM**
119 Oakland Blvd., N.E.
Newark, Ohio 43055
Phone: (614)-763-3787

The plates will also be available during the June HCA Convention.

DAVE & DOT COX

Denotes signed items *

BOX 334

CEDARVILLE, IL 61013

Phone: (815) 563-4957

CRYSTAL

#1489 Ridgeleigh 4" covered CIGARETTE BOX *	13.00
#1425 VICTORIAN large covered CIGARETTE BOX in footed filigreed brass holder *	28.00
#1506 WHIRLPOOL Bon-Bon *	18.00
# 341 COLONIAL covered MUSTARD *	22.00
# 407 COARSE RIB large footed bowl w/flared rim *	25.00
# 442 8" high VASE* -- VII-126	40.00
# 341 COLONIAL PUNCH CUPS* (1 w/rim flake)	all 28.00
#1186 YEOMAN Ftd oval Hotel Sugar & Creamer* w/etched floral	24.00
#7022 ATHENA (Reverse Ess) Concole bowl w/1 double candlestick	60.00
#1503 CRYSTOLITE Candleblocks	Pr...15.00
#1567 PLANTATION Candleblocks	Pr...45.00
#1495 FERN 9 1/2" d Handled PLATE	12.00
#1405 Ipswich Candlevases* w/prisms & inserts(1 insert damaged) Pr	75.00
NARROW FLUTE w/Rim? (2) water tumblers *	ea... 7.00
# 352 2/ CRACKER JAR base* 6" high (Pat. 7/7/08)	45.00
#3333 Old Glory Hi-stem water goblets* w/Renaissance etch (5)	ea...15.00
# 343 SUNBURST Cruet -- wrong stopper & cloudiness ...so	14.00
# 393 Narrow Flute Ind. Sugar & Creamer* (creamer has gold rim) Pr	35.00
F L A M I N G O:	
#3362 CHARTER OAK (Egyptian) hi-stem water goblets(2)...	ea...18.00
M O O N G L E A M:	
#3355 FAIRACRE stem in Moongleam & Crystal bowl Champ* (11) ea	20.00
#1229 OCTAGON 7" handled PLATE	5.00
ORCHID ETCH w/TYROLEAN STEM	
(11) low footed water goblets	ea...18.50
(11) Sherbets	ea...13.00
(6) 8" d Plates -- Waverly	ea...10.50
M I S C E L L A N E O U S:	
#1506 Whirlpool by Imperial Lg. C & S - Green - signed Heisey	Pr...35.00
ROOSTER VASE (decorated) has crack on one side of tail	so...18.00
CAMBRIDGE: Martha pattern inverted saucer type approx 6" High Candlesticks	Pr...16.00

LETTERS, we get letters....

HAT'S OFF TO YOU MAILMAN !!

It is unbelievable that you auctioned Heisey on Saturday and by Friday of the following week I had received my purchase and refund check. Heisey folks are so efficient. Thank you for your time and effort on behalf of our organization. I sincerely regret that distance prohibits my assistance.

ED: We must add our compliments to all who worked on the auction as well as to the Buckeye HCC members who did such an efficient job of packing the glass for shipping on Monday evening after the auction. It was picked up by UPS and was on its way by Tuesday noon. Our new mail room with packing materials at hand was a big help, too. Many nice compliments have been received.

Betty Hyde, Florida

Around 1927 or 1928 I saw an advertisement in the National Geographic by the A.H. Heisey & Company offering a prize of Heisey glassware to all who could correctly bid a series of bridge hands. I sent in my bids and received a beautiful floral bowl in an unusual color, later identified as "Hawthorne". Anyway, it made me want everything to match it.

My father owned a hardware store in this small town of about 2,000 people in Northeast Missouri. He was over 75 years old at the time and I helped him every afternoon. He did sell dishes and glassware, even Haviland, but no glassware the quality of Heisey. After winning the bridge prize, I decided to see if he could

also sell Heisey glassware in a hardware store, even though it was of jewelry store quality. We became a Heisey dealer and sold many complete sets in three favorite colors - Hawthorne, Moongleam, and a red that I thought was the poorest of the colors, but I did sell two or three complete sets. Then later came the etched crystal and we sold it also.

One day I was at a luncheon where the hostess was using the crystal goblets with an etching which I think was called "Springtime". In the center of the etched design was a little bird. My goblet did not have the bird so I told my hostess that she should have told me the little bird was missing on one of her goblets so that I could have it replaced. I wrote the company and they promptly sent her a replacement, so she then had an extra goblet, even if one was missing a bird.

I am 87 years old now but I still enjoy having a dinner and entertaining. And though I have crystal in Heisey - goblets, sherbets, desert plates -- in a lovely etched pattern and Haviland dishes as an accompaniment, still my favorite table setting is everything in "Hawthorne" with linens to match and flowers in the floral bowl, the centerpiece I won in 1928. It is still lovely, particularly with the flowers arranged around the large bird in the center.

It is pleasing to know that after all these years there are others who share my love of Heisey.

Mrs. Virgil Bugard, LaPlata, Mo

Hi!

It's time to renew my subscription to the Heisey News. Enclosed find my check for \$10.00.

I sure enjoy the News and keep on the trail of Heisey all the time. It's hard to find in most places out here. Occassionally find something that's different from what I have and worth as good addition to my collection.

Thanks for a great paper.

Eloise Classen, Oregon

Just a note to thank you once more for all the help and kindness during my whirlwind trip to Heisey Land! My visit was really a dream come true. The auction was so excitingand it was especially fun to meet you and all the board members, and enjoy all the activity.

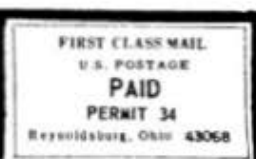
On Sunday the flea market was filled with goodies, too. I wished I had some money left!

The real highlight of the whole trip was the beautiful museum! I am still in awe remembering that fantastic place. The glass was so gorgeous....and displayed in such lovely ways! I wish I could come back each week, and be a more active member of the club!

I thought you would like to know that every piece of glass arrived home safely! I sure worried a little, on the trip, however.

I surely hope to come to the auction again next year....and to the convention that year as well. I hope it will be just a bit later in June so we can drive out. Thanks again for everything!

Lenora Shelley, Calif.



MUSEUM HOURS ARE NOW open daily from 1-4 p.m. except Monday and holidays