

# HEISEY NEWS

Vol. VI, No. 9  
September 25, 1977

OFFICIAL PUBLICATION HEISEY COLLECTORS OF AMERICA

© Heisey Collectors of America, Inc. 1977  
All Rights Reserved

One Dollar

*From the desk of...*

your President

*The last big fund raising event of 1977 is over and a very successful affair it was too. A great big "thank you" to anyone who had anything at all to do with the flea market and/or the dinner, and especially Sam Schnaidt and Jack Metcalf, chairmen for the two events. Sam and his wife, Heidi, also deserve all the praise they can get for letting 310 people come to a party on their lawn with all that is involved. Virginia Yeakley did a yeoman job with taking the orders and handing out decanters. It seems like it would be a simple job but take it from one who has done it -- it is murder to keep it all straight.*

*There is a notice about the new etching book in this issue so if you have not returned your bad copy for a good one or have waited to order, now is the time. Even though I am a co-author I must tell you that the book has been enthusiastically received and people are pleased with all the information which is not strictly about etchings. There are many, many shapes pictured, particularly from the early and late years and much other good information.*

*Mary McWilliams, who incidentally has been ill for a few weeks, is the chairman for the December Christmas dinner. She will be assisted by Susan Wade, Elizabeth King, Margaret Dzierwa and Debbie Delaney. The place will be announced next month.*

*At the business meeting an*

## A World Premiere

by LOUISE REAM

The highlight of the 5th Annual Souvenir Dinner was the presentation of the 28 minute sound movie, "The Heisey Glass Story", which was enthusiastically received by those present. The movie gives a brief history of the Heisey Company, the club and the museum.

Scenes from the 1977 auction, glass-making at Imperial Corp., and Mark Pickrel engraving a compote in his little home workshop highlighted the film. Shots of items from the museum, with many special effects, were almost breathtakingly beautiful with nearly all of the color turning out well which it so often does not. Jeff Briggs of Denison University produced the film working with Louise Ream, Loren Yeakley and Dick Marsh. The film will soon be available to study clubs or individuals who want to use it when lecturing.

Yes, the big day is over! Once again the weather cooperated and the evening was only pleasantly cool. To begain the day more than forty dealers at the Catholic High School offered an excellent choice of Heisey glassware and about 500 people visited the show from 8 to 5 p.m.

*amendment to the bylaws passed 54 to 14. This was the culmination of a year long study by a special committee on the feasibility of paid employees in the future. After much discussion by the committee and the board of directors the clause in the*

By 5:30 the eager members began to gather at the Schnaidt residence. They were taxied over from the parking lot in Klassy Collectible Kars belonging to other members of the club.

The big white tent proved to be too small for a crowd nearly 100 larger than in 1976 so two tents were put together to seat 250 and another one was placed on the front lawn for the remaining 60 plus. It looked very festive with green and white striped tents, two of which had clear plastic sides. Passersby must have thought it very enticing and slowed down to see what was going on. After dinner everyone moved over to the main tent for the program.

The cocktail hour began at about 6 and continued until 7:45 when the entire 310 people lined up in Sam's drive for an onslaught on the food. Standing inside the garage facing the crowd it looked like an army approaching.

Delicious hors d'oeuvres had been served earlier and the only difficulty was getting near enough to the tables to get some. The shrimp was served in a Heisey punch bowl as was a delicious mixture of fresh fruit. There was plenty of food but  
con't on page 5

*constitution which precludes the paying of officers was retained so that officers will not be paid.*

*The amendment was needed not necessarily today but when the work load is such that volunteers can no  
con't on page 11*

# TUMBLERS #1401 EMPRESS

BY TOM BREDEHOFT

In 1930, Heisey announced to the trade the development of a new pressed glass line which was their #1401 Empress. It was an early success probably due in part to the development at the same time of two new colors, alexandrite and sahara. The #1401 Empress line was quickly expanded into a wide variety of items including tumblers.

Most Empress tumblers have a ground base rim and are marked. The dolphin footed tumbler is difficult to find and desirable for a tumbler collector. The tumbler has four small dolphin feet as do so many items in Empress. It is known to come etched with Old Colony and Formal Chintz\* and I would not be surprised at other etchings of the same period. This tumbler may be marked on the back on one of the feet.

As most of you already know, at the end of the color period, Empress was re-designed into #1509 Queen Ann, which has noticeable optic in it. I have not been able to find a listing for a Queen Ann



8 oz. Footed Tumbler  
Ground Bottom

PERIOD: 1930 - 1936

COLOR: Crystal, Moongleam, Flamingo, Sahara, Cobalt, Alexandrite.

DECORATIONS: The dolphin footed tumbler known with #448 Old Colony etching and #450 1/2 Formal Chintz etching.\* Plain tumblers and ice teas unknown with any decorations at this time.

\*\*\*\*\*

tumbler in a catalog, so I believe the tumbler was discontinued before Queen Ann was developed. Therefore, any tum-



Dolphin Footed Tumbler

VARIATIONS: 5 oz. soda and 12 oz. ice tea and 8 oz. tumblers. All pieces cupped, straight or flared.

\* Those etchings are shown in "Etchings and Carvings" H.C.A.'s new book.

\*\*\*\*\*

blers in this design, regardless of whether they are in crystal or color should be Empress.

## HEISEY NEWS --- P.O. BOX 27 --- NEWARK, OHIO 43055

EDITOR - LOUISE REAM, 1115 W. Main St., Newark, Ohio 43055  
PUBLISHED 25TH DAY OF EACH MONTH, \$10.00/Year-\$1.00/Copy  
BACK ISSUES AVAILABLE AT \$8.00/YEAR - 80¢/COPY

PRESIDENT	LOUISE REAM	(614) 344 - 2377
VICE PRESIDENT	CHARLES WADE	(614) 366 - 6636
SECRETARY	ANN HOLMAN	(614) 323 - 0759
TREASURER	LOREN YEAKLEY	(614) 366 - 5101

ADVERTISING - Send all ads to:  
VIRGINIA YEAKLEY, Advertising Manager  
640 Melanie Court  
Newark, Ohio 43055

DEALER DIRECTORY ADVERTISING RATES-5 line-\$6.00/6 issues

CLASSIFIED ADVERTISING - 5¢/word - \$1.00 Minimum. We cannot mix type sizes in Classified Ads. Abbreviations and initials count as words.

DISPLAY ADVERTISING RATES	MEMBER	NON-MEMBER
1/8 Page	\$ 8.00	\$15.00
1/4 Page	\$15.00	\$25.00
1/2 Page	\$25.00	\$40.00
Full Page	\$45.00	\$60.00

**PAYMENT IN FULL MUST ACCOMPANY ALL ADS.**  
Advertising copy must be in our hands by the 10th of the month to assure publication in that month's issue. Advertisements containing reproductions will not knowingly be accepted unless clearly stated (i.e. Heisey by Imperial, etc) Heisey News assumes no responsibility for false advertising or misleading information. In the event of typographical error, the incorrect portion of the ad will be run in the following issue, but Heisey News assumes no further liability.

Heisey Collectors of America, Inc. is a non-profit corporation with tax exempt status. Owners and operators of National Heisey Glass Museum, 6th and Church Streets, Newark, Ohio. Open Daily 1-4 p.m., April through October except Mondays and Holidays, November through March, Wed., Sat., Sun. 1-4 P.M. Members admitted free. Phone: (614) 345-2932. Club membership (includes 12 issues of Heisey News and participation in all club activities) \$10.00/Year plus \$1.00 each for additional family members in same household who wish a membership card. For voting membership add \$25.00, one time only fee, or write for information.  
Membership Chairman - Ann Holman, Box 27, Newark, Ohio 43055. Notify immediately of any change of address.

The opinions expressed in articles in Heisey News are those of the authors and not necessarily those of the organization. The Editorial Staff reserves the right to edit or refuse any material submitted for publication. When requesting information, please enclose a self addressed stamped envelope (SASE).

Send all letters and articles to be published to the editor. Letters to columnists should be sent to the club address and will be forwarded.

# HEISEY DECORATIONS



#3350-5 oz. Parfait

by NEILA BREDEHOFT

One of Heisey's most popular etchings was introduced in 1922 and had a rather lengthy life of 20 years -- not being discontinued until 1942.

Pied Piper (#439) was one of the early etchings which was patented. The patent was applied for on December 16, 1922 and was granted February 10, 1925.



#3350-3 pint Squat Jug

Cut Neck

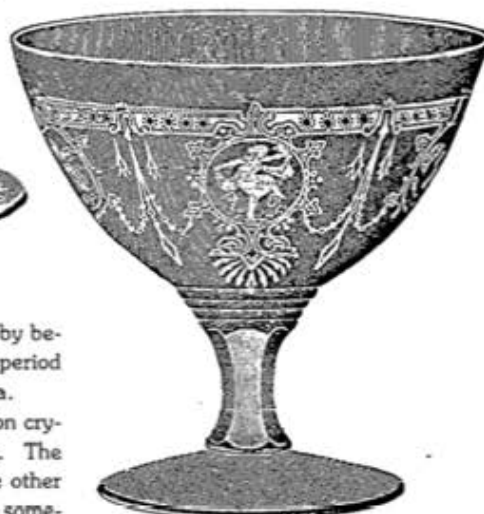
Pied Piper was also distinguished by being one of several etchings of this period which were designed by Josef Balda.

The etching is available only on crystal and is a double plate etching. The stemware may be marked, but the other items are unmarked. Pied Piper is sometimes referred to as Dancing Girl, obviously the name being derived from one of the other cameos rather than the one which Heisey used as the central theme. There are three different cameos -- the Pied Piper, one dancing girl facing right, and the other a dancing girl facing left. Both ladies are clothed and have a flowing scarf about them and hanging from their arms. The cameos are joined about the articles in a decorative band consisting of a border with swags and pointed pendants between the cameos. Especially noticeable on the larger and taller pieces is a large inverted fan-shaped ornament below each cameo.

Due to its length of production, Pied Piper can still be collected in sets. As



#2351-12 oz.  
Soda or Ice Tea



#3350 Grapefruit

with most of its contemporaries, Pied Piper is available in a full line of stemware, barware, and various jugs. Flat ware other than plates had not yet become fashionable in etched glassware.

Found on:

#3350 Wabash stemware and jugs, the jugs being available both with or without cut flutes about the neck.

#2052 Bar

#2351, #2401 Sodas

#2930 Plain & Fancy tumbler

#4026 Decanter

#4163, #4164 Jugs

#4182 3 sizes of plates



No. 3870, 8 oz.



No. 3440, 9 oz.

# STEMS #’s 3342, 3343, 3344

by CARL SPARACIO

Last month we began introducing you to some previously unknown Heisey Stems and will continue along that line until we have run out of discoveries. We have two new stems for you this time along with an "old" one which is so closely related that they must be considered together. This group may surprise some people as it did me. I never suspected that #3344 "Carolina" had relations closer than #3333 "Old Glory" which shares a family resemblance. If Old Glory is a kissin' cousin to Carolina then #3342 "Alabama" and #3343 "Georgia" are its siblings.

"Georgia" and "Alabama" are the twins of the family. Not quite identical, but close enough, like another set of twins who shall be nameless, to be troublesome. The names we have given them are not authentic Heisey, but will make it easier to keep them separated. Carolina, Georgia and Alabama are blown pieces with pressed stems.

First we'll tackle the twins, Georgia and Alabama. These two are identical in all respects except for their bowls. #3342 Alabama has a straight-sided cone-shaped bowl while #3343 Georgia has the more graceful lily-shaped bowl. I'm positive that both of these stems will be signed with the "Diamond H" at the top of the stem just under the bowl. The 1921 price list which brought these stems to light (dated 1/1/21) tells us that 7, 8, and 9 oz. goblets, a 5½ oz. saucer champagne and a 5½ oz. footed sherbet were offered in #3342 Alabama, while #3343 Georgia only had the 9 oz. goblet along with the other two pieces. The 5½ oz. footed sherbet was referred to as a 5½ oz. footed sundae in the #3343 Georgia line. Is there a difference? Both stems were offered both plain or optic, but no cuttings or etchings are listed. I have a goblet and a cocktail in what I thought was Carolina but which I am now convinced is Georgia which has the #160 Osage etching. You'll note that a cocktail was not listed for Georgia but I believe that earlier or later price lists surface we may find that both Georgia and Carolina were fairly complete lines.

As for #3344 Carolina your biggest problem will be telling it from #3343 Geo-



#3348, 9 oz. Goblet



#3343, 9 oz. Goblet



#3344, 9 oz. Goblet

rgia. The only difference appears to be in the knopf on the stem. On Georgia it is chunkier and at least twice as thick as it is on Carolina. Carolina's on the other hand, is more wafer-like and similar, but perhaps a trifle heavier, to what you will find on Old Glory. The same pieces are listed as available in "Carolina" as we gave for Georgia but Heisey Stemware adds a 1 oz. cordial, 2 oz. wine and a 3 oz. cocktail to this list. This same book advises us that it came with #745 cutting (which is Media, a Heisey name) and #160 etching (which is Osage). "Etchings and Carvings" also shows it with #165 Dundee etching. Carolina should also be marked at the top of the stem.

If you have any of these stems we've discussed this month please drop us a card. I would classify #3342 Alabama as unseen and, as far as I'm concerned, Carolina also belongs in that category because the stems I thought were Carolina I now believe to be Georgia. If we hear from enough people we might be able to guess the relative rarity of these pieces.

John (Jay) Barker a sharp-eyed young reader from Newark, Ohio, points out that #820 Beaumont, which is listed without a picture in Heisey Stemware, is shown in the #212 catalog (reprinted both by McClain and L.W. Promotions). Only after Jay wrote did I check further and found that it also is pictured in Vogel III. It appears that #820 Beaumont is similar to #818 Fifth Avenue, but with a slightly shorter stem.

Jay, it seems, also likes to rub it in. He enclosed a picture of his recently acquired Tangerine Spanish goblet along

with an interesting question, "How many of the unseens in Heisey Stemware have never been seen?" That's a difficult question to answer as my knowledge of the "seen" unseens would reflect only my personal experience and I report on this page as soon as I can verify them. I'm also sure that some have turned up of which I have not become aware. There is also the problem of some pieces of a stem line known to exist while others haven't surfaced. For instance, we know of Fandango wines but a goblet in the pattern has yet to turn up so far as we know. Add to this the question of newly discovered pieces which don't show up in any books and information gleaned from new price list discoveries such as we've covered in this column and you really have difficulty coming up with a definite answer. Perhaps we'll conduct a poll in the future and come up with a list. Better yet we'll wait for a supplement to "Heisey Stemware". Let them do the work. Fortunately Bob and Connie Ryan and Steve Bradley are not folks given to cursing. If they were I'm sure the air would be full of invectives.

**Ed. note—**In listing the unseens in their book "Heisey Stemware" the authors had to depend on what they, and people reporting to them, had seen. Naturally after people had access to their excellent book and could identify some of their stemware, many unseens then became "seen". Sometimes this results in many of one stem being found, as in a set. The Bradley—Ryan book really opened the door to stem collecting.

# DECANTER DINNER "77" by LIZ KING

In June, Stan said I must write a verse.  
 I'm out of ideas. Now what could be worse?  
 I've already praised the Claret Dinner,  
 Guaranteed not to make anyone thinner.

Today it's Decanter dinner, you see;  
 And just as glamorous as can be.  
 For the de canter more wine must flow  
 Than to fill our claret glasses, you know.

What of the decor? I haven't yet heard.  
 I'll buy it, whatever (unless it's a bird).  
 I join lots of clubs; the list is extensive,  
 But HCA is THE most expensive!

A fool and his money, the saying goes.  
 According to Sam, as everyone knows,  
 "It's only money!" HCAers don't care.  
 Come dinners or auctions, they're sure to be  
 there,

liz

con't from DINNER, page 1

it was difficult to keep the serving dishes filled up because of the crush of people. Those near the end of the line to make do with instant potatoes since the escaloped ones ran out as usually happens with a crowd this size.

crowd this size. There was no shortage of filet mignon with lots being left over after many people had gone back for seconds. The wine was flowing plentifully also during the dinner.

Mrs. Ed Schnaidt, Sam's mother, had again prepared the decorations. She used some of the #1 liners or snack bowls with the Heisey mark which we had purchased from Imperial several years ago when they were found in their warehouse. These were surrounded by rings

of pine cones and had floating candles in them.

Alwyn Miller of Shelbyville, Kentucky, surprised his wife Peggy, whose birthday it was, with a huge cake. The crowd all sang "Happy Birthday" to her and to Jean Parrott of Michigan who also had a birthday. Al had brought three more large cakes and everyone present helped Peg celebrate.

People were present from 15 states with five coming from California just for the occasion. Anne and Tim Heisey, honorary members, were welcome guests.

After the business meeting Frank Frye took over as Master of Ceremonies. He introduced Jerry Robinson of the Northern Illinois Club who had the sad duty of telling the crowd about the death

of Ben Reville. He presented the museum with a lovely #4225 Cobel decanter with an unusual cutting, in Ben's memory.

In what was to have been a happy recognition of the three gentlemen who had saved Ben's life in June, Jerry honored them with some very touching remarks and presented them with gifts both from HCA and from the Northern Illinois Club. They had, at least, given Ben another two or three months of precious life with his family. The three were Jim Jordan, a member of HCA, and John Spellman and Robert Kidd of Newark, both employees of the Ohio Power Co. who happened to be at the Sheraton when Ben had the attack.

After the movie, Sam had an auction. Clarets of each of the last four years were sold for a total of \$375.00. Craig Connelly and Larry Stickle helped with the auctioneering as they did in March. The Clarets sold had come from the ones held each year for the museum and which have been included in the total count for each year. They also sold some of the decorations from the tables.

All in all it was a very successful evening for HCA and those present seemed to enjoy themselves very much.

\*\*\*\*\*



Phyllis Goldstein presents album of all Heisey ads in National Geographic. Donated by Gateway HCC of Pittsburgh area.

## DID YOU KNOW?

by LOUISE REAM

1. That the #333 Waldorf Astoria toothpick can be found either marked or unmarked?
2. That the #400 Colonial toothpick and many other pieces of the pattern actually have eight panels instead of six?
3. That the glass figure always called "Dinky Do", because of its resemblance to the Royal Doulton girl, was referred to at Heisey (at least in printed information) as the "Minuet Girl"? This is a solid glass Colonial girl and was not made for production.
4. That Imperial DID make the #1405 Ipswich floral bowl, at least in heather (purple) but it was not made for production? They also tried to make the Droop flower bowl but had problems and it is listed "Discontinued, could not make".
5. That #1170 Pleat and Panel was made in hawthorne and sahara in at least some of the line? Both have been on display at the museum.
6. That items in cobalt include the #4075 2-3/4 oz. cocktail, blue foot; #4076 3 oz. cocktail, blue foot; #4077 9 oz. tumbler, footed with blue bowl? Some of these cocktails have been offered at auction; probably the first benefit auction.
7. That all but one or two items listed for

silhouette etchings (deep plate) done on colored glass and printed in "Etchings and Carvings" were copied directly from Heisey catalogs?

8. That the #3404 Spanish comport is listed as coming in sahara, as is the cobalt? Has anyone seen it in sahara?

9. That the 211-16 catalog from 1935 lists only sahara, alexandrite and blue (cobalt)? The supplement to 212-17 from 1937 lists Zircon.

10. That Heisey made Lead Amber for Fred Harvey restaurants? They also made many, many items in crystal for Harvey. The following is a listing for some of the amber items. Sometime we will print the crystal list.

#4059 Plain water bottle  
 #1217 Finger bowl, star bottom  
 #586 12 oz. ice tea, optic  
 #337 Touraine 5 oz. juice, optic  
 #337 1/2 4 1/2 oz. sherbet, optic  
 #353 Medium Flat Panel hall boy tray - 10"  
 #201 8 oz. tumbler  
 #1184 Yeoman plate 6 1/4"  
 #1125 7 1/2" plate  
 #4165 jug, no handle, 3 pint  
 #398 5" nappy, no star  
 #353 Medium Flat Panel hall boy jug.  
 1 quart  
 #12 Salt and Pepper  
 #353 Medium Flat Panel 4 1/2 oz. low

footed sherbet

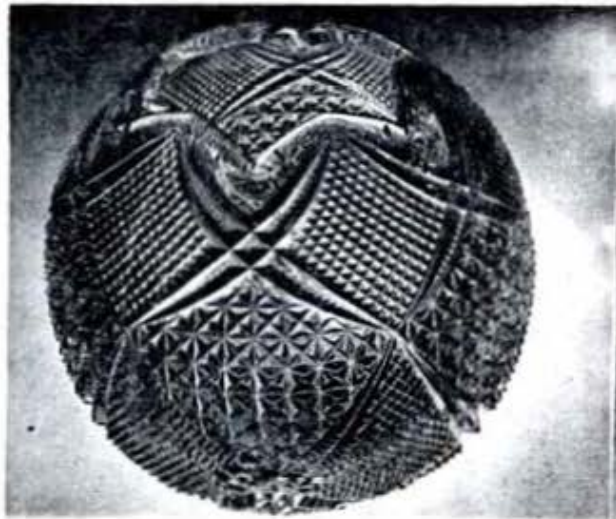
#352 Flat Panel oil bottle (cruet)  
 #353 Medium Flat Panel 10 oz., low-footed tumbler

Items with both the Fred Harvey Crest and Santa Fe Crest were ordered by Harvey.

11. That the bakelite knobs on the #1483 Stanhope pattern came in red, blue, yellow, ivory and black? Stanhope was a short-lived pattern, designed by Von Nessen of N.Y.C.

12. That #2323 Navy was made in several items besides the bar glasses? Navy barware was mostly adapted from the #2351 bar line with the addition of a thick cobalt base. Other items include 6, 7, and 8" plates; cup and saucer and cream and sugar from the #4044 New Era line with added cobalt foot; bouillon plates and a 2 oz. bar with 1/2 sham.

13. That the handled apple jelly dish which looks like a half apple is #1523? It comes with various cuttings and etchings including Minuet and Orchid etch and George IV cutting. Be careful in buying this item unless decorated because other companies made similar items. It is about 5 1/4" at the indent point, about 4 1/4" the other way and 1 1/2" high. The stems of the apples turns toward the right.

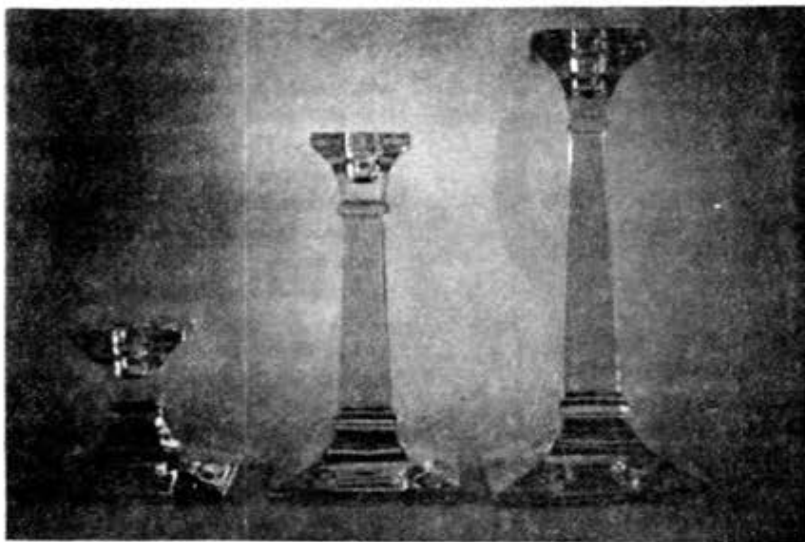


#1201 Fandango Rose Bowl, unmarked.



#1250 Groove and Slash pitcher, marked or unmarked

# HEISEY CANDLESTICKS #21



Desk

7" ?

9"

by JACK METCALF

Always being more or less on the lookout for candlesticks seems to cause me to be fussy about details that other folks don't bother much about. A case in point is the photograph above showing #21 candlesticks. It seems all wrong. Shown are the 7" and 9" heights along with the desk candleholder, and the difficulty is that the proportions of the tall ones are different. The 9" height has a more definite taper of the stem portion. Examination of the reprint catalog 75 is not a lot of help for two reasons. The first is that not all of the pictures have the same "aspect ratio" there either. Secondly, those shown in the Catalog 75 are indiscriminately shown with the top edge beveled or not. For quite some time, therefore, the difference in the 7" and 9" was uneasily attributed to different proportions naturally arising from the cutting of the mold. (Neither of the taller two shown in the picture are marked).

With the subsequent availability of additional examples, the mystery still remains to some extent. A marked 11" size has a nice proper taper and a marked 9" showed up identical to the one in the photograph. Then a marked 7" size showed up with a proper taper. The family grouping is OK now; they all look the "same". But what about the 7" size

shown above?! And unmarked, I never really questioned it before, but now I wouldn't bet even money on its being made by Heisey.

There is still a chance though, be-

cause #21 was made for more than 25 years and likely there was more than one mold. Of the several examples of the stocky one that I know about, none are marked. The mark should appear under the top curved candleholder portion, just above the band.

The #21 was introduced about 1908 in 5", 7", 9" and 11" sizes. Five years later the 5" size was replaced by a huge 15" size! In about 1923 the desk version was added and it continued on until the end of the second world war. By 1935 the 11" and 15" sizes had been phased out and then the 7" and 9" went out between 1935 and 1940. That's a complex schedule but it seems to have been a popular item and Heisey held on for a long time.

The bottoms are punted and the tops cut flat, with the amount of top cutting varied so that they may be found with or without the bevel indicated. There are no catalog listings (at present) of #21 in color, but similar electro-portable lamps turned up in Moongleam and Flamingo. Sharon keeps looking for a nice sahara one.



Vice President Charles Wade installs five directors at June Annual Meeting. l. to r.: Tom Bredehoff, Dick Spencer, Bob Johnson, Kay Darling & Mary McWilliams.

# #372 Heisey Syrup Pitcher

by JOSEPH D. LOKAY

In a previous article, I discussed the Heisey #353, #354 and #355 colonial style syrup pitchers (Heisey News, April 1977). The #372 syrup pitcher came after these pitchers, and is similar in colonial design to the straight-sided #353, #354 and #355 pitchers except for the shape of the handle. The two features which help identify the #372 syrup pitcher are (1) the straight sides that slightly taper inward to form a smaller diameter at the top, and (2) the flat top handle located near the top of the pitcher. Sketch one compares the #353, #354 and #355 style of handle to that of the #372 handle.

The #372 pitcher is shown in V. Mc Lean's reproduction of Heisey catalog #212 (1937), p. 17 and in Heisey pressed ware catalog #109 (circa 1928-29), p. 26. It is not shown in Heisey's 1913 catalog. The two catalogs make reference to three sizes for the #372 pitcher: 5, 7 and 12 oz. The catalog also shows the same patented metal lid on the #372 pitcher as was on the #353, #354 and #355 syrup pitchers



#372 - 7 oz.  
also make 5 & 12 oz.

except that the lever arm for opening the top is straight. The metal lids were available either chromium plated or nickel plated. Since #109 appears to be the first Heisey catalog to show the #372 pitcher, production of that pitcher most likely started around 1928.

The #372 pitcher can be found signed or unsigned, I believe the unsigned ones exist because the diamond H had essentially worn away in the mold. Study of the signed #372 pitchers showed the following interesting points. The pitchers are

only marked once with a diamond H that is on one side of the spout as compared to the #353, #354 and #355 syrup pitchers which are marked twice, one on each side of the spout. The diamond H on the #372 pitcher is small and is located close-in to where the spout meets the wall of the pitcher. Sketch 2 shows the location of the marks. The orientation for sketch 2 is looking down at the top from above the pitcher. For the 11 oz. pitcher, the single mark is on the right hand face of the spout. While, for the 5 oz. pitcher, the single mark is on the left hand face of the spout. I believe the mark on the 7 oz. pitcher will be in the same place as on the 5 oz. pitcher.

I have seen the small and large #372 pitcher in crystal, flamingo, moonbeam and sahara. It is possible that the pitcher was also made in marigold and hawthorne, however, I have not seen or heard of any. Based on the pattern lines generally found in marigold and hawthorne and on the concept that the accessory piece design should reasonably harmonize with the pattern line, I would be more of the opinion that the pitcher was **not** made in marigold or hawthorne. Does anyone have a #372 syrup pitcher in either of these two colors?

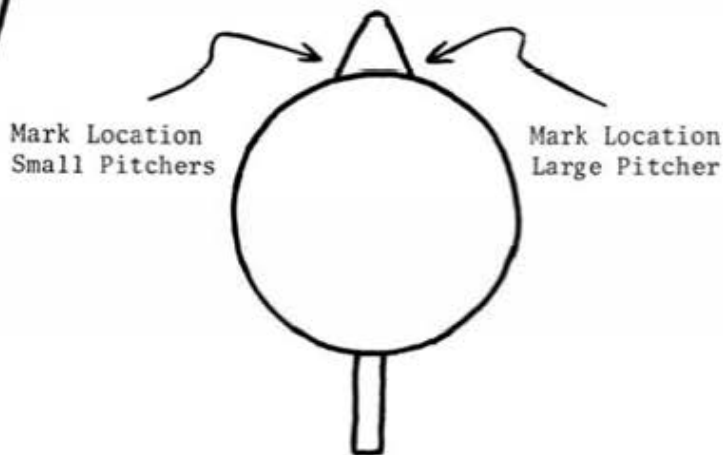


#353, 354 & 355  
Pitchers

#372  
Pitcher

COMPARISON OF HANDLES

SKETCH ONE



#372 SYRUP PITCHER

SKETCH TWO

# CLUB NEWS



## Bay State Heisey Collectors Club

by MAURICE WALTER

Eighteen members attended the August 9th meeting of the Bay State Heisey Collectors Club at the home of Bud and Vy Jones in Tewksbury, Mass. This meeting was probably the last time Bud and Vy would be able to participate in club activities since they are moving to Florida in the Fall. The club wishes them well in their new home.

The theme of the meeting was salt and pepper shakers. Over 20 patterns were brought in by members. Some of the patterns shown included Fandango, Fancy Loop, Beaded Swag, Plantation, and others. Colors included opal, custard, red flash, Sahara, and Limelight.

At the conclusion of the discussion of salt and pepper shakers "Show and Tell" was conducted. Two of the more unusual pieces shown were a Moongleam #4202 six inch bud vase and a crystal dolphin candlestick.

### Western Reserve Heisey Study Club

CHARTER #28

by LYNNE SELLERS

Eight "happy Heisey hunters" and one very interested guest were present for the August 18th meeting at the home of Bill and Mary Little.

President Mary Little and Secretary-Treasurer Fred Hopkins were unanimously re-elected to serve a second term of heading our study club here in the Cleveland—Lorain area.

Plans were finalized for a trip to the Mansfield Flea Market for a fun day of Heisey Hunting.

Linda Flock displayed a small ROCOCO nappy from her collection and presented an interesting and informative program on this elusive pattern.

Shirley Folts was unable to be with us due to foot surgery. Hope to see her at the September meeting at Mr./Mrs. Wendell Young's new home.

Refreshments were served by the hostess at the end of the meeting. Punch was served from a Greek Key punch bowl on stand and matching punch cups. All our host and hostesses use their Heisey pieces when serving refreshments, thus illustrating how the pieces were to be used when originally manufactured and sold.

On August 27, the fourth annual yard sale was held on the grounds of Dorothy and Wade Banck's home in Rockland, Mass. The weather was perfect for an outdoor sale. Fifteen dealers set up, most of them members of our club. A large variety of Heisey glass was put up for sale and attendance by visitors was very good. From what I've heard, sales were very brisk.

Our next event is the annual clam bake at Mary Williams' place in Marshfield, Mass. on September 13th.

### Heisey Collectors of Columbus

by KAY DARLING

At the August meeting of Heisey Collectors of Columbus, Ohio, Stephen Bradley was elected president. Robert Rarey was elected Vice-President and Joanne Williams will act as secretary for the second year of the club's existence.

### Reynoldsburg Heisey Collectors Club

by DOROTHY MARSHALL

Plans for our Third Annual Antique Show and Flea Market were finalized at our September Meeting. This will be held Sunday, October 30, in the Reynoldsburg High School gymnasium. There is ample room for 58 dealers. Hours will be from 9:00 to 5:00 and deal-

### LONG ISLAND HCC

by RUTH PERLOFF, Publicity Chr.

Long Islanders made their annual trip from the seashore to the mountains for the "fun" meeting of the year at the summer home of our punch bowl collectors, Marty and Charlotte Belfer. Most of the day was spent in the swimming pool or beside it eating the delicious snacks and lunch provided by our hostess. The punch bowl filled by Bill and Esther Loss and kept filled by our host added a warm glow to the festivities. As night fell, we sat down to a long table loaded with all kinds of dishes brought by our members and added to by the Belfers and enjoyed a feast in the crisp mountain air.

A Heisey club meeting has business to attend to, however, so we listened to reports from the members who had attended the June convention. All agreed that it was bigger and better than ever. Nominations were made for club officers who will be elected at the September meeting. The program committee proposed that we study the new etching book this year. We will also begin the study of the Heisey animals.

We all began our long trek home with the feeling that we had not only had a wonderful time but had gotten a lot of serious work done.

ers can set up Saturday evening if they wish as a security guard will be provided. Of course, all proceeds will be for the benefit of the Museum and we ask members to support our project by attending. Any dealers interested can contact Murphy Tarquinio, 866-4687 or Harley Bethel, 861-4831.

**Support**

**your**

**Advertisers**

# AMENDMENT TO BY-LAWS

Passed 9-10-77

\*Section 2 - The Executive Committee shall have authority to seek out, interview or examine and recommend to the Board of Directors persons to serve as paid employees in capacities as from time to time become necessary.

Such employees shall be hired and their intended compensation set by a 2/3 vote of the Board of Directors at a meeting wherein a quorum is present as provided in ARTICLE III, Section 3 of the By-Laws.

The compensation of such employees shall be reviewed by the Executive Committee from time to time and any changes recommended to the Board of Directors who shall pass upon such changes by a 2/3 vote of the Board of Directors at a meeting wherein a quorum is present.

Such employees shall serve at the will of the Board of Directors who can terminate such employment by a 2/3 vote of said Board of Directors at a meeting wherein a quorum is present.\*

## NOTICE NOTICE NOTICE

WE NOW HAVE THE NEW ETCHING BOOK WHICH IS MUCH MORE SATISFACTORY. WE HAVE PROMISED TO RETURN ALL WHICH WE CAN GET BACK TO THE PRINTER TO BE DESTROYED. YOU WILL BE MUCH HAPPIER WITH THE NEW BOOK AS IT IS POSTBOUND AND THE PAGES CANNOT CALL OUT. YOU MAY RETURN YOUR BOOK FOR 41 CENTS POSTAGE BUT BE SURE TO MARK "BOOK" IN LARGE LETTERS ON THE ENVELOPE. IF YOU WANT THEM AUTOGRAPHED LOUISE CAN DO IT BEFORE THEY ARE SENT AND TOM AND NEILA ARE AT ALL QUARTERLY MEETINGS. IF YOU HAVE NOT RECEIVED YOUR BOOK WHICH YOU ORDERED PRIOR TO THE CONVENTION PLEASE LET US KNOW AT ONCE.

## ANIMALS ANIMALS ANIMALS

BY THE TIME YOU RECEIVE THIS NEWSLETTER WE SHOULD HAVE ALL FOUR ANIMALS FROM IMPERIAL. THEY WILL BE SHIPPED TO YOU AS SOON AS POSSIBLE. PLEASE ALLOW AMPLE TIME AS WE HAVE HUNDREDS OF BACK ORDERS.

## Heisey Heritage Society

Heisey Heritage Society to Sponsor 2nd Glass Antique Show

Affiliate #8, still flushed with the success of last October's first glass show, is all primed for the second edition to be presented on October 22nd and 23rd in Mount Laurel, New Jersey, (see the ad in this issue for details).

The Heisey Heritage Society, which boasts an active participating membership from four states; New York, New Jersey, Pennsylvania and Delaware, (and a couple of "not so active" Ohio members), considers the Mount Laurel location perfectly situated for all comers. Last year's show drew guests from as far as Ohio, Virginia and Massachusetts.

More than thirty dealers will offer their finest in collectible glass, china and pottery. Quite naturally, Heisey and his

contemporaries will be more than adequately represented.

By carefully selecting its dealers, the club has quickly established a reputation for quality. Further, the Hilton's elegant grand ballroom provides a perfect setting. Many dealers and guests considered last year's show one of the most beautiful presentations on the antique circuit. All members are determined to repeat and, hopefully, surpass last year's effort.

If you are traveling anywhere near Philadelphia, New York City or Baltimore on that October weekend, Mount Laurel, N.J. is just a hop away. The Heisey Heritage Society will do its best to make you feel welcome. Stop by and introduce yourself. All proceeds benefit the Heisey Museum Fund.

-11-

con't from DESK OF, page 1

*longer handle it all. Some people who give not only all of their free time, but nearly all of their TIME, WILL NOT ALWAYS BE ABLE TO DO SO. The amendment is meant to take care of that when the time comes. Many people from away would like to work hard for the club and museum but, since distance makes it impossible it puts most of the burden on local people. Since it takes a recommendation from the executive committee and a two thirds majority of the 20 member board to hire someone it will not be easy to abuse this amendment, by hiring people who are not needed.*

*We were very sad to hear of the death of Ben Revelle whom we had hoped to see at the dinner. Our sympathy to his family.*

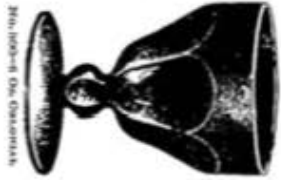
*Kay Darling is 1978 Convention Chairman; Charles Wade, Show Chairman, and Harley Bethel, Display Chairman. The 76's Heisey Club of the Columbus area will handle the souvenir sales for 1978.*

*The new salesroom at the museum is now finished and we've moved in. You can't imagine what a difference it makes in Room 8. The new room is very attractive and a delight to work in. Now that customers can handle the merchandise, and we have space to really see it, sales should improve.*

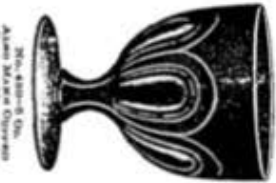
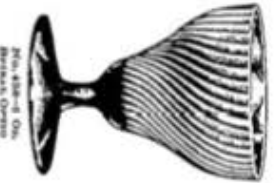
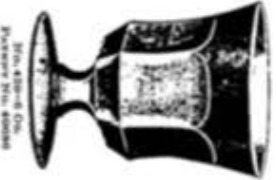
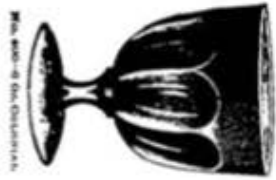
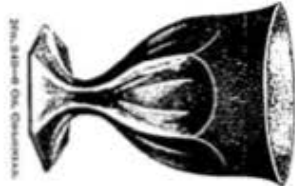
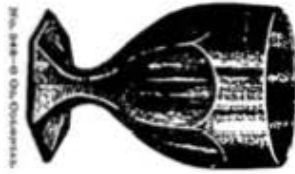
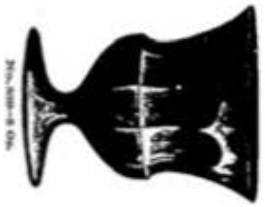
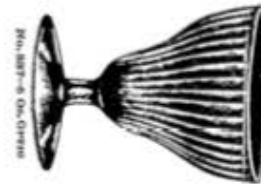
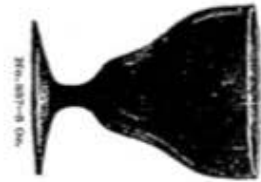
*We are gaining new members every day and more and more people from far away places come to visit us. Many visitors this summer have been from distant California, Washington, Oregon, Texas, Florida and nearly ANY state you could name as well as some from Japan, England, Sweden and other countries.*

*Happy Collecting!!*

*Louise Peam*



FOOTED  
EGG CUPS



FROM 1913 CATALOG

No. 433 1/2 PATTERN

GRECIAN BORDER



8 Oz. Oil  
No. 8 STOPPER

4 Oz. Oil  
No. 9 STOPPER

2 Oz. Oil  
No. 10 STOPPER

No. 433

GRECIAN BORDER



6 Oz. Oil  
No. 6 STOPPER

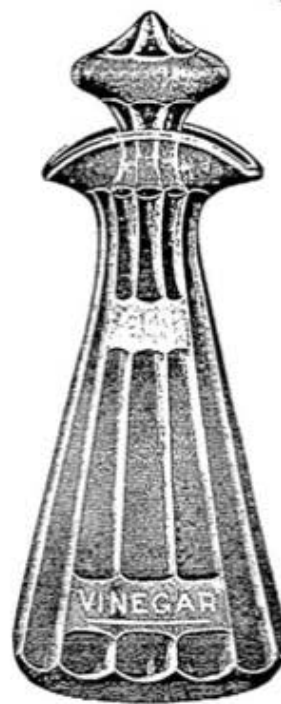
4 Oz. Oil  
No. 7 STOPPER

2 Oz. Oil  
No. 8 STOPPER



FRENCH DRESSING BOTTLE  
(SOLD UNDER LICENSE)

#352 Flat Panel



FRENCH DRESSING BOTTLE  
MANUFACTURED UNDER LICENSE  
GRANTED BY T. G. HAWKES & Co.

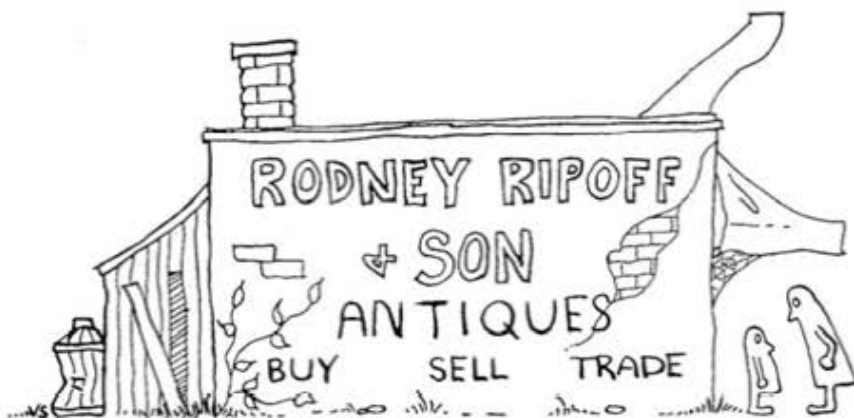
#394



INDIVIDUAL FOR THE STOPPER AND COVER  
WITH 5-IN. PLATE  
GROUPED STOPPER



FOOTSTAPLE  
GROUPED BOTTLE



"You see, Junior....the term "lightly frosted" lends a touch of elegance. If you say the decanter is "sick", you'll lose the sale."

## Classified Ads

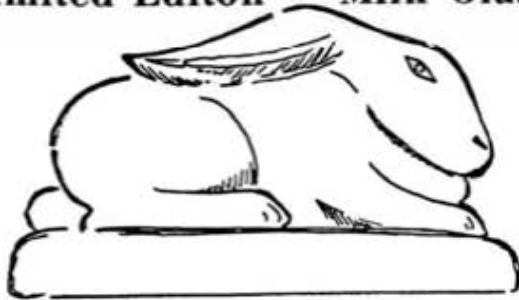
**BROKEN HEISEY:** Have Necklace, ear rings, ring or bell made from your pattern - inexpensively. Write for folder. RHODA CURLEY, MOSTLY HEISEY, 16 CLAYTON PLACE, ALBANY, NY 12209.

**WANTED:** #1231 Octagon in Flamingo any piece w/cut "wheat-like" pattern. Please write: JANET NEWCOMER, 27 BETHEL PLACE, WASHINGTON, W.V. 26181

**FOR SALE:** 11 Goblets 10 oz. Orchid 507 Tyrolean #5025 per #12.00 ea., also one Alexandrite, individual nut cup, please make offer. Postage & Insurance extra. MARY HORTON, 987 KENWICK RD., COLUMBUS, OH 43209 (614)231-4764



Limited Edition Milk Glass



RABBIT PAPERWEIGHT  
4" Long & 3" High

Made in original Heisey mold by Imperial Glass Corp. exclusively for Heisey Collectors of America, Inc., in a limited edition of 2500.

\$ 9.00 Postpaid

Ohio residents add 34¢ Sales Tax

Write for Quantity Rates

Order from: HCA Imperial Animals  
P.O. Box 27  
Newark, Ohio 43055

The ENCYCLOPEDIA of

HEISEY GLASSWARE - Volume I  
ETCHINGS and CARVINGS

H.C.A.'s.....  
first venture into the publishing field—the first of a 2 Volume series on the decorations applied to Heisey Glassware.

All known production Etchings and Carvings and how they were made. Many custom and special etchings.

- 228 pages
- hundreds of illustrations,
- many blown items never before pictured in reference books.

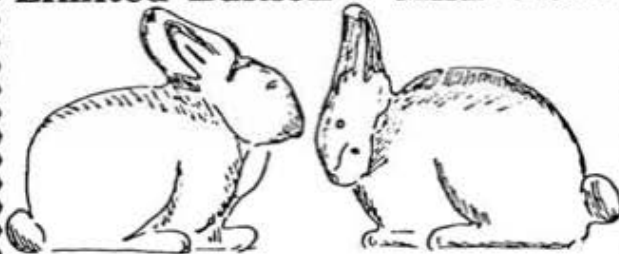
Send your check for: \$10.95

PLUS 10% FOR  
HANDLING AND MAILING  
OHIO RESIDENTS PLEASE ADD TAX

To: H.C.A. ETCHING BOOK  
BOX 27  
NEWARK, OH 43055

by Louise Ream  
Neila & Tom Bredehoff

Limited Edition Milk Glass



BUNNIES  
Each 2-3/8" High

Made in original Heisey mold by Imperial Glass Corp. exclusively for Heisey Collectors of America, Inc., in a limited edition of 2500 sets. Sold by the pair only

\$ 12.50 Pair Postpaid

Ohio residents add 50¢ Sales Tax  
—Write for Quantity Rates—

Order from: HCA IMPERIAL ANIMALS  
P.O. BOX 27  
NEWARK, OHIO 43055

DOROTHY KRAUSS  
55 FENNER AVE., ASHVILLE, NC 28804  
PHONE: (704) 252-2939

All prices plus Postage & insurance 3 day return if not satisfied.

- #5067 Plantation sherbets, etched Ivy .....5 for 50.00
- #1567 Plantation sherbets, Plain, .....7 for 55.00
- #1567 Comport 6 1/2" dia. 3 1/2" hi. #34 V.IV15.....20.00
- Candleblock #64 V.IV, pk2 .....50.00
- #1567 8 1/2" Plates, .....6 for 60.00
- #1540 Lariat 2-lite Candlesticks, etched .....Pr. 25.00
- #1540 Lariat sherbets, 6 oz. pressed .....3 for 20.00
- #5040 Lariat sherbets 5 1/2 oz. blown .....2 for 12.00
- #5040 Lariat, ftd. 5 oz. Juices blown .....6 for 45.00
- #1540 Bowl, 7" x 3" tall #29 in V.IVpg5 .....15.00
- #1540 Fan Vases, clear \$15.00,.....Silver Overlay .....28.00
- #1519 Orchid etched, Cream & Sugar Set .....32.00
- #5025 Orchid ftd. Ice Teas, .....6 for 90.00
- #1229 Hdd. Muffin Plate, Old Colony etch V.IIIpg12 .....32.00
- #1184 Yeoman center hdd. Sandwich Plate,  
Beautifully cut flowers, 2 sigs. V.IIpg112 .....32.00
- #1404 Old Sandwich oval sugar, Sahara V.IIIpg98 .....15.00
- #1469 Ridgeleigh 12 oz. ftd. soda, V.IIIpg109 .....(2).....14.00
- #1469 Ridgeleigh tray, 10 1/2" oblong, 3 sect. ....18.00
- #1469 Ridgeleigh Ind. Cream & Sugar, V.IIIpg104 .....20.00
- # 341 Jug, 1/2 gal., V.Ipg46 bottom row .....55.00
- #3366 Trojan 5 oz. sodas, V.IIIpg49 .....(2).....15.00
- # 355 Quator hotel Cream & Sugar Pat. date & signed  
Beautifully cut flowers, Heavy .....40.00

WANTED: Steware w/#449 Pompeii etch

**SUM OF LIFE**  
**P. O. BOX 102**  
**PHOENIXVILLE, PA. 19460**

Free Shipping and Handling  
 for all orders over \$200.00

Phone: (215)935-2962 anytime

# 150 BANDED FLUTE Egg Cup, 5½ oz. ....	(10)...	ea...	9.50
#1503 CRYSTOLITE Cream and Sugar, regular size .....		Set...	30.00
#1503 CRYSTOLITE Cream and Sugar, Individual size .....		Set...	40.00
#1503 CRYSTOLITE Nappy, 5", 2-Handled .....			15.00
#1503 CRYSTOLITE Ash Tray .....			5.00
#1503 CRYSTOLITE Candle Blocks .....		Pr.	15.00
#1503 CRYSTOLITE Lamps w/Hurricane Shades (electric with Heisey parts) .....		Pr.	50.00
#1504 CRYSTOLITE 2-lite Candelabra .....		Pr.	40.00
# 417 DOUBLE RIB AND PANEL Mustard w/Lid, FLAMINGO .....			30.00
# 417 DOUBLE RIB AND PANEL Tumbler .....			15.00
#3484 DONNA Tumblers w/Orchid Etch .....	(2)...	ea...	18.00
#1403 DOWAGER Grapefruit .....			35.00
#3389 DUQUESNE Champagnes, SAHARA .....	(5)...	ea...	17.00
#3389 DUQUESNE Iced Teas, Normandy Etch .....	(8)...	ea...	8.50
#3389 DUQUESNE Oyster Cocktails w/Normandy Etch .....	(2)...	ea...	8.00
#1509 EMPRESS Salt and Pepper Shaker, ALEXANDRITE .....			130.00
#1509 EMPRESS Vase, Arctic Etch .....			70.00
#1509 EMPRESS Bowls, CLEAR, Orchid Etch 6" .....	(2)...	ea...	30.00
#1509 EMPRESS Bowls, 7½", Dolphin Footed, Orchid Etch .....	(2)...	ea...	40.00
#1509 EMPRESS Compot, 6", Oval, Cut .....	(2)...	ea...	40.00
#1509 EMPRESS Floral Bowl, 9", Footed, 2-handles .....			25.00
#1509 EMPRESS Candlesticks, 6", Gild Trim Base .....		Pr...	40.00
#1509 EMPRESS Pitcher, Individual Size, Cut .....			15.00
#1509 EMPRESS Bowl, 11", Dolphin Footed .....			35.00
#1509 EMPRESS Bowl, 11", Dolphin Footed, Silver Overlay .....			35.00
#1509 EMPRESS Bowl, 11", Dolphin Footed, Rosalie Etch .....	(2)...	ea...	40.00
#1509 EMPRESS Individual Nut Cups, Dolphin Footed, Cut .....	(3)...	ea...	16.00
#1509 EMPRESS Candlesticks w/"A" Prisms .....		Pr...	65.00
#1509 EMPRESS Cruet, Cut, Original Stopper .....			40.00
#1509 EMPRESS Lemon Dish, Dolphin Finial Cover, Aluminum Holder .....			35.00
#1509 EMPRESS Condiment Tray, 6", Silver Trim .....			15.00
#1509 EMPRESS Relish, 3-Part .....			30.00
#1509 EMPRESS Plate, 8", COBALT .....			55.00
#1509 EMPRESS Plate, 8", TANGERINE .....			190.00
#1509 EMPRESS Plate, 7", FLAMINGO .....	(4)...	ea...	10.00
#1509 EMPRESS Creamer and Sugar, FLAMINGO .....		Set...	45.00
#1509 EMPRESS Relish, 2-Part, 13" .....			20.00
#1509 EMPRESS Individual Creamer, MOONGLEAM .....			14.00
#1509 EMPRESS Relish, 3-Part, 7", MOONGLEAM .....			20.00
#1509 EMPRESS Relish, 3-Part with Centerhandle, Silver Trim, MOONGLEAM .....			50.00
#1509 EMPRESS Platter, 14", SAHARA .....			45.00
#1509 EMPRESS Ice Bucket, Dolphin Footed, SAHARA .....			65.00
#1509 EMPRESS Bowl, 6", Dolphin Footed, SAHARA .....			35.00
#1509 EMPRESS Candlestick, Dolphin Footed, SAHARA .....		Pr...	180.00
#1509 EMPRESS Bowl, 11", Dolphin Footed, SAHARA .....			50.00
#1509 EMPRESS Candy, Covered, Dolphin Footed .....			80.00
#1509 EMPRESS Mayonnaise, SAHARA, 5" .....			35.00
#1509 EMPRESS Individual Nuts, Dolphin Footed, SAHARA .....	(4)...	ea...	28.00
#1509 EMPRESS Candlestick, Dolphin Footed, SAHARA .....			95.00
#4090 Coventry Sherries .....	(2)...	ea...	45.00

ANTIQUES 'N' COLLECTABLES  
"HEISEY OUR SPECIALTY"

LYNNE



ROUTE 202 — LAHASKA, PA. 18931  
ART'S P. O. BOX 242 215-794-7800

# GLASS-HOUSE INC.

*Dear Heisey Collector and Dealer,  
We're Heading Your Way!! Heisey Animals,  
Lovely Old Patterns, and a Rainbow of Colors, will  
be coming along with us.*

*We'll be at the following shows.*

1. WARRINGTON, PA. — Warrington Country Club -- Oct. 11, 12, & 13
2. MOORSTOWN, NEW JERSEY — Mount Laurel Hilton -- Oct. 22 & 23

*Our shop in Lahaska is usually open while we are  
on the road, suggest a call 215-794-7800.*

*See you soon,  
Lynne and Art*

## HEISEY'S GLASSWARE of DISTINCTION



by Mary Louise Burns

The FIRST Comprehensive reference book on Heisey Glassware! All major patterns of Heisey tableware, stemware, cuttings, etchings, Heisey animals and Verlys.

124 pages - over 240 patterns - more than 5600 items listed.

Several hundred photographs showing details of each pattern thus making identification easy.

Also, information on dates and colors of each pattern.

### EVERYTHING IN ONE BOOK!

only \$9.95 plus 75¢ postage

AT LAST! 50 Page Price Book on Heisey Glassware!  
Price Trends given on over 5600 items of Heisey Glassware listed alphabetically for easy reference.

only \$4.95 plus 75¢ postage  
(if ordered separately)

ORDER FROM: MARY LOUISE BURNS  
P.O. BOX 1931  
GRANTS PASS, ORE 97526

NAME \_\_\_\_\_  
STREET \_\_\_\_\_  
City/State/Zip \_\_\_\_\_  
6 books or more 40%

# Rainbow Review GLASS journal

"KEEPING GLASS COLLECTORS INFORMED"

## RAINBOW REVIEW GLASS JOURNAL — ESTABLISHED 1971 —

64 pages printed magazine style on glossy paper with large, clear photographs. Subscribers in every state, Canada, Australia, Greece and the West Indies!

Our writers are all respected in their field of glass with published books on their subjects: Clarence Vogel (Heisey); Vicki Gross (McKee); William Heacock (Victorian Colored Glass); Gene Florence (Depression and Akro Agate); Mary Van Pelt (Figurines and Animals in Glass); Glenita Stearns (Depression) and others.

Two of our writers are syndicated columnists: Jabe Tarter of Ohio and Orva Heissenbuttel of Washington, D.C.

Dedicated to "Keeping Glass Collectors Informed" on every facet of the glass field: news, books, shows, reviews, clubs, shops, questions & answers, interviews and a variety of ads: classified, display, wants, trades, bids and even a section for the "new" collectibles (such as Degenhart, Tiara, St. Clair, Fenton, etc.).

\$6 - one year \$11 - two years  
\$15 - three years

### IF YOU COLLECT "ANY" GLASS YOU'LL WANT THE RAINBOW REVIEW GLASS JOURNAL!

Send name, address, city, state and zip code, enclose payment, mail to RAINBOW REVIEW, P.O. Box 2315, Costa Mesa, CA 92626 (Allow 30 days) NOTE: Foreign subscribers add \$2 per year.

ROBERT H. DONOVAN  
P.O. BOX 321  
BOLTON, MA 01740

Phone: (617) 779-5008  
after 5:00 p.m.

SASE Postage & Insurance extra

- FERN 6" BonBon, Handled #1495 ..... 14.00
- Dolphin Footed Flamingo 6" Bowl #1401 ..... 35.00
- Rib & Panel Preserve Hawthorne # 411 ..... 32.50
- Wampum single Candlestick #1533 ..... Pr...38.50
- Inside Scallop Conserve #1193 Hawthorne ..... 37.50
- #31 Toy Candlestick ..... Pr...40.00
- # 5 Toy Candlestick ..... Pr...75.00
- Beaded Swag Covered Butter IVpg128, etched ..... 125.00
- Lodestar 10" Celery ..... 47.50
- Clear Verly's Duck Ash Tray ..... 18.00

Glass goes into storage for winter. Nov. 1st.

See you in May '78.

MARY MORRIS Postage &  
5090 BIXBY RD., GROVEPORT, OH 43125 Insurance extra  
Phone: (614) 836-9909 please enclose SASE.

- HONEY AMBER PLUG ..... 575.00
- POUTER PIGEON ..... 500.00
- FROSTED BULL ..... 1200.00
- FILLY, HEAD TURNED ..... 2000.00
- FILLY, HEAD FRONT ..... 2000.00
- SOW ..... 325.00
- FISH BOOKEND ..... 85.00
- DONKEY ..... 145.00
- SPARROW ..... 75.00
- SMALL ELEPHANT ..... 135.00
- LARGE ELEPHANT ..... 175.00
- #1632 DAWN LODESTAR JUICE PITCHER ..... 110.00
- HAIRPIN BASKET ..... 265.00
- #1205 FANCY LOOP CRACKER JAR ..... 125.00
- # 433 GREEK KEY GOBLET ..... 95.00
- #109 DOLPH COMFORT (clear base  
w/Flamingo plate top) ..... 95.00
- #305 PUNTY and DIAMOND POINT  
JELLY COMPORT ..... 58.00
- #7021 PRISON STRIPE VASE ..... 48.00
- #1205 EMERALD FANCY LOOP TUMBLER ..... 45.00
- #1253 EMERALD PINEAPPLE & FAN TUMBLER ..... 45.00
- #1428 Double Warwick Candlestick COBALT ..... 165.00

Have other Heisey and Animals, write or phone your wants.

THE HEISEY HERITAGE SOCIETY'S  
**2<sup>nd</sup> ANTIQUE  
GLASS SHOW**  
MOUNT LAUREL HILTON

LOCATED AT EXIT 4 N.J. TURNPIKE  
ON ROUTE 73, MOUNT LAUREL, NEW JERSEY

Our 1977 show will continue the reputation for beauty and quality establish-  
at our first show. We're heavy on Heisey. Plan a weekend trip to see the best more  
than 30 prominent dealers have to offer. You'll be glad you did.

**OCTOBER 22<sup>nd</sup>** Saturday 10 am to 9 pm  
**OCTOBER 23<sup>rd</sup>** Sunday Noon to 6 pm

GLASS, POTTERY and CHINA of ALL PERIODS  
benefit HEISEY COLLECTORS OF AMERICA Museum Fund  
\$1.50 Donation, with this ad \$1.25

**REYNOLDSBURG H.C.  
3RD. ANNUAL ANTIQUE**

**SHOW & FLEA  
MARKET**

Sunday, October 30, 1977  
9:00 a.m. to 5:00 p.m.

REYNOLDSBURG HIGH SCHOOL GYMNASIUM  
6699 E. Livingston Avenue, Reynoldsburg, Ohio

**Admission Price: 50¢**

**Accommodations for 58 Top Quality Dealers**

For Dealer Space Contact: MURPHY TARQUINIO, Chr.  
1744 Kaiser Drive  
Reynoldsburg, Oh 43068  
Phone: (614) 866-4687

REFRESHMENTS AVAILABLE ALL DAY

# Dealers Directory

5 LINES - \$6.00/6 ISSUES

## MOSTLY HEISEY

RHODA CURLEY  
18 CLAYTON PLACE - ALBANY, NEW YORK 12209  
By Appointment 518/482-6272

## Opera House Antiques

1811 & Broadway, Granville, Oh 43023  
Open 7 days a week 12 - 5 P. M.  
Frank (614)344-9847 - Sam 587-0052  
Shop (614)587-2083

LOTS OF HEISEY GLASS &amp; GENERAL ANTIQUES

## The Shultzes Antiques

BOUGHT SOLD  
206-208 E. MAIN ST., ROUTE # 419  
NEWMANSTOWN, PA. 17073  
15 MI. WEST OF READING, PA.  
PHONE 215-509-2819

## HAPPY HAVEN ANTIQUES

Charles & Mary Dumke  
RT. 3, BOX 2044A, GRASS VALLEY, CA. 95945  
Phone: (916) 273-9450

## THE CHINA CUPBOARD

185 A. SO. BROADWAY, ORCUTT, CA. 93454  
Phone: (805) 937-6420



COLLECTIBLE & ANTIQUE GLASS & CHINA  
HEISEY IN STOCK

## THE "FINDERS" ANTIQUES

Antiques -- Heisey Glass -- Buy-Sell

David and Shirley Rose -- owners  
66 S HAZELWOOD AVE. NEWARK, OH 43055  
PHONE: (614) 349-7934

## CHARLES A. SHAW

 P.O. Box 1063  
New York, N.Y. 10008   
Shows & Mail Order  
American Glass (914) 476-5175

## Goldsberry's Antiques

KALAMAZOO, MICHIGAN  
SHOWS ONLY -- BUY & SELL  
HEISEY A SPECIALITY  
PHONE: (616) 381-3013

## Rambling Lane Antiques

KEITH & EVELYN HOOVER-715-282-5019  
ROUTE 4, RHINELANDER, WI 54501

Featuring HEISEY Glass --  
Copper, brass, furniture

## Hoosier Heritage Antiques

Marcell and Tom Zehr  
4005 SOUTH WAYNE AVENUE  
FORT WAYNE, INDIANA 46807  
(219) 745-4173

## ARMENTROUT ANTIQUES

GENERAL LINE -- FURNITURE SPECIALTY  
PERIOD FURNITURE REPRODUCED TO ORDER  
40 N. 39TH STREET PHONE 344-6389  
NEWARK, OHIO 43055 ESTABLISHED 1932

## LYNNE & ART'S GLASS HOUSE, INC.

"HEISEY OUR SPECIALTY"  
Route 202 Lohaska, Pa. 18931 Box 242  
Phone: (215) 794-7800



## GEORGE & EILEEN SCHAMEL

Route 3, Box 419  
Boonsboro, Md. 21713

Appointment or Mail Order

DIAMOND H PLUS Phone 301-432-6285

## GREEN ACRES FARM

ANTIQUES, CRYSTAL, GLASS & COLLECTIBLES  
SPECIALIZING IN HEISEY & CAMBRIDGE GLASS  
BY CHANGE OR 1614) 927-1082  
2678 SR 310 N. - PATASKALA, OHIO 43062

## Jack & Sharon Metcalf

378 N. BUENA VISTA  
NEWARK, OHIO 43028  
HEISEY - POTTERY - GENERAL  
CHANGE OR APPOINTMENT (614) 349-7849

## Charles & Mildred Fisher

Antiques & Collectibles, General Line  
HEISEY, DENGENHART, IMPERIAL  
991 IDLEWILDE, NEWARK, OH 43055  
PHONE: (614) 522-5398

## WICKFORD ANTIQUE ARCADE

Ron & Bev. Wood Booths 6 & 7;  
650 Ten Rod Rd., N. Kingstown, R.I. 02852  
Heisey - Primitives - Glass - Etc.  
Home Phone: (401) 295-0823

## Humphreys Antiques

111E. MAIN ST. WEST BRANCH, IA 52358 BOX 433  
PHONE: 319-643-2879, 337-5096 EVE.  
Specializing in Glass, early and late  
SASE for wants, list Heisey, Duncan, Children's

## The Sleeping Fox

EVELYN & JAMES JORDAN  
P.O. BOX 583  
LANSDALE, PA 19446  
PHONE: (215) 855-2480

## MARG & RAY'S ANTIQUES

FURNITURE - OLD BANKS - TOYS  
GLASSWARE - LAMPS  
BOUGHT & SOLD  
521 LEXINGTON, NEWARK, OH 43085  
PHONE: (614) 345-1316

## Moundbuilders Antiques

"Specializing in old Heisey & Animals"  
IRENE RAUCK  
1138 MOUNDVIEW AVENUE NEWARK, OHIO 43055  
TELEPHONE  
AREA 614 344-6043



## sum of life

elaine and frank husted  
p.o. box 101,  
phoenixville, pa. 19460  
(215) 935-2962

## EAGLES REST ANTIQUES

CHINA HEISEY GLASSWARE  
BOUGHT and SOLD  
62 FIELD POINT RD., HEATH, OH 43055  
By Chance or Phone: (614)522-2035

## FLORIDA HEISEY HEADQUARTERS

LAST CHANCE ANTIQUES  
60 N. FEDERAL HIGHWAY, DANIA  
(Between Miami & Ft. Lauderdale)  
Appts: (305) 462-7306 Member HCA

## EVELYN'S ANTIQUES

3301 - 140 N.E. Marysville, Wash. 98270  
I S Exit 202 Phone: (206)859-6114  
MON-WED-SAT-SUN & by Appt.  
Shop full of glass - Heisey, etc.

## BERT'S BUDGET SHOP

403 W. MAIN ST., NEWARK, OHIO 43055  
PHONE: (614) 349-8045  
General line Antiques

## MOSTLY HEISEY

RHODA CURLEY  
18 CLAYTON PLACE - ALBANY, NEW YORK 12209  
By Appointment 518/482-6272

HEISEY HEAVEN & OTHER COLLECTABLES  
NOW OPEN AT PEDDLER'S VILLAGE  
SUNNY CREST MALL - URBANA, IL 61801  
(CORNER FLORIDA AVE & PHILO RD.)  
PHONE: (217) 384-8668

# LETTERS, we get letters....

by **PHYLLIS S. GOLDSTEIN**

Dear Heisey-ites,

No doubt you have all recovered from the wonderful convention and you all have stars in your eyes from the reflections of the magnificent Heisey Glass and our spectacular Museum. Let's now look to a bigger and better convention next year and the new sales room at the museum.

I enjoyed every minute of the weekend and came home to the hectic pleasure of a family reunion. I had an open house and was just preparing the last minute things in the kitchen. I placed the punch bowl (it wasn't a Heisey but a handsome McKee one on a stand that had been a gift to my girl friend's grandmother who died many years ago at the age of 92—so it was a treasured keepsake that had been given to me because they knew I would take good care of it—and I did all these many years)———anyway, I went to make the punch and put a can of frozen lemonade into it and turned around———and it cracked from side to side from the cold. I never knew anything could crack from cold——hot, yes—but cold——I learned fast——so I just want to pass the information on to you so you will never have the same experience. There was bedlam, to be sure, when you are expecting about 75 people——but I made a quick call to my girl friend who came to my rescue with hers——not as nice but an adequate one for the moment.

Of course, I can't use that glass for my projected Heisey mosaic, but I am

waiting for the glass that some of you promised when you saw me. Haven't started the mosaic yet because I am waiting for more color———like cobalt, alexandrite, tangerine and all the other goodies. I would really like to have at least a little-bitty piece of each in the mosaic. Please see what you can do for me——either send it to me or to the museum——or take it to the dinner when you go and I will get it eventually.

Happy Heisey Hunting

•••

As I complete my first year as an H.C.A. member I want you to know how much I appreciate your organization. I thoroughly enjoy the monthly newsletter "Heisey News". I read it from cover to cover and find myself constantly referring to back issues to answer questions and refresh my memory.

and refresh my memory about certain items.

Would love to someday visit the museum and see the beautiful collection of Heisey I've read so much about.

Mary Hidlebaugh, Iowa

Dear Louise,

The etching book arrived yesterday and I felt like I had hit the jackpot. I have so many examples of the things illustrated within, and have learned a lot from what I've seen in it already. Just brought home some good ole Minuet on Symphone from an all-glass show last week in Dallas.

When will you complete & publish the book on cuttings? I certainly look forward to having the complete set of volumes. The work you and the Bredehofts have put into this one is far superior to anything previously put in print about Heisey. In plainer language, you can understand it. Thank you for that!

P. Smith, Texas

•••

I got my autographed book of etchings. Can hardly wait for the one on cuttings....I had a complete stranger come into my shop inquiring about a Rhode Island club and the person who referred them to me was unknown to me. Maybe R.I. will get a club going if interest keeps picking up....

R. Wood, R.I

## DATES TO REMEMBER

**OCTOBER 22 - 23:** 2nd Annual Antique Show sponsored by Heisey Heritage Society, Mount Laurel Hilton, Mt. Laurel, N.J.

**OCTOBER 30:** 3rd Annual Antiques Flea Market sponsored by Reynoldsburg HCC, Reynoldsburg High School Gym

**DECEMBER 10:** Annual Meeting and Christmas Party. Location to be announced.



# ALL HEISEY AUCTION

AT THE OPERA HOUSE  
Granville, Ohio

SATURDAY, OCTOBER 15, 1977  
Sale starts at 5:30 p.m.

DOORS OPEN AT 12:00 NOON

- |   |       |   |        |
|---|-------|---|--------|
| 1. Crystal #1519 Waverly Cream & Sugar Orchid Etch H                  | _____ | 41. Crystal #1503 Crystolite 7" Covered Candy H                               | _____  |
| 2. Crystal #300½ Peerless Hotel Cream & Sugar H                       | _____ | 42. Crystal #1540 Lariat 8½" Nappy Cut H                                      | _____  |
| 3. Crystal #1401 Empress D.F. Cream & Sugar Chintz Etch H             | _____ | 43. Limelight #1506 Provincial 4-part Relish                                  | _____  |
| 4. Crystal #354 Colonial Stacked Cream & Sugar H                      | _____ | 44. Crystal #1510 Square on Round 12" Gardenia Dish H                         | _____  |
| 5. Crystal #1590 Zodiac Ashtray                                       | _____ | 45. Crystal #1201 Fandango Ice Cream Tray                                     | _____  |
| 6. Crystal #1590 Newark Sesquicentennial Ash Tray 1952                | _____ | 46. Dawn #1632 Lodestar 8" Bowl   | _____  |
| 7. Crystal #1590 Ohio Sequicentennial Ash Tray 1953                   | _____ | 47. Crystal #1252 Twist Newark Sesqui. Platter 1952                           | _____  |
| 8. Crystal #1536 Military Cap Ash Tray                                | _____ | 48. Sahara #1401 Empress 13" Hors D'oeuvres Tray H                            | _____  |
| 9. Crystal #600 Matchstand Ash Tray                                   | _____ | 49. Moongleam #1184 Yeoman D.O. 15" Platter Empress Etch                      | _____  |
| 10. Crystal Verlys by Heisey Swallows Ash Tray w/Etching              | _____ | 50. Crystal #1506 Provincial 13" Floral Bowl H                                | _____  |
| 11. Crystal #1489 Puritan Covered Cigarette Box, Small                | _____ | 51. Marigold #1252 Twist 8" Nappie H  | _____  |
| 12. Crystal #1447 Rococo Cov. Cigarette box w/cutting H               | _____ | 51A. 8" Coupe Plate for salad or snacks Exp.                                  | _____  |
| 13. Sahara #1503 Crystolite Covered Cigarette Box H                   | _____ | 52. Crystal #1489 Puritan Cologne Bottle                                      | _____  |
| 14. Crystal #1225 Plain Band 4 oz. Cruet                              | _____ | 53. Crystal #1511 Toujours Apple Marmalade w/spoon Cut H                      | _____  |
| 15. Crystal #1201 Fandango 4 oz. Cruet                                | _____ | 53A. #1184 Jam Jar w/Cutting H  | _____  |
| 16. Crystal #411 Rib & Panel 6 oz. Cruet H                            | _____ | 54. Dawn Bitters Bottle, no tube  | _____  |
| 17. Crystal #1184 Yeoman 4 oz. Cruet H                                | _____ | 55. Crystal #351 Colonial Mustard & Cover H                                   | _____  |
| 18. Crystal #1483 Stanhope 3 oz. Cruet Red Buttons                    | _____ | 56. Crystal #1506 Provincial Cigarette Lighter                                | _____  |
| 19. Crystal #1184 Yeoman 4 oz. Cruet Special Krall Cutting            | _____ | 57. Crystal #1401 Empress Mustard, Cover, & Spoon H                           | _____  |
| 20. Crystal #300 Peerless 9" Compote H                                | _____ | 58. Crystal #5012 Square Footed Urn Cigarette Holder Cut                      | _____  |
| 21. Crystal #1201 Fandango 8" Compote                                 | _____ | 59. Moongleam #1184 Yeoman 6" Handled Candy Basket                            | _____  |
| 22. Crystal #3333 Old Glory Comport 6" Chateau Cutting H              | _____ | 60. Flamingo #1184 Yeoman 6½" Handled Bon Bon                                 | _____  |
| 23. Crystal #1186 Yeoman 6" Comport Cut H                             | _____ | 61. Crystal #1489 Puritan Oil & Vinegar Bottle                                | _____  |
| 24. Crystal Blown Pulled Stem 6" Comport Cut                          | _____ | 62. Crystal Sugar Sifter, Sanitary Top  | _____  |
| 25. Flamingo #3355 Fairacre 12" Vase H                                | _____ | 63. Crystal #354 Colonial 12 oz. Sanitary Syrup H                             | _____  |
| 26. Flamingo #3355 Fairacre 12" Vase H                                | _____ | 64. Crystal #517 Quart Jug w/#197 Tumbler in top H                            | _____  |
| 27. Limelight #4057 Saturn 10½" Vase                                  | _____ | 65. Crystal #1519 Waverly Triplex Relish Rose Etch H                          | _____  |
| 28. Sahara #4216 Octagon 9" Vase                                      | _____ | 66. Crystal #5012 Square Footed Bud Vase Rose Etch                            | _____  |
| 29. Crystal #433 Greek Key Hotel Ice Tub H                            | _____ | 67. Crystal #1519 Waverly Salt & Pepper Shakers Rose Etch                     | _____  |
| 29A #352 24 oz. Humidor H   | _____ | 68. Crystal #1201 Fandango Celery   | _____  |
| 30. Crystal #3304 Universal Hollow Stem Champagne George IVth Cutting | _____ | 69. Crystal #1201 Fandango Covered Sugar                                      | X_____ |
| 31. Alexandrite #3381 Creole Saucer Champagne                         | _____ | 70. Crystal #1201 Fandango Covered Butter, shows wear                         | _____  |
| 32. Crystal #3304 Universal Hollow Stem Champagne Moonglo Cutting     | _____ | 71. Crystal #357 Prison Stripe Handled 5" Nappie (2) H                        | _____  |
| 33. Crystal #5010 Symphone Footed Ice Tea Danish Princess Cutting     | _____ | 72. Crystal #343 Sunburst 8" Nappie H   | _____  |
| 34. Crystal #5022 Graceful Footed Soda Harvester Cutting              | _____ | 73. Crystal #350 Pinwheel & Fan Berry Set 7 pcs. H                            | _____  |
| 35. Alexandrite #3381 Creole Footed Soda                              | _____ | 74. Crystal #439 Raised Loop 7" Nappie H                                      | _____  |
| 36. Crystal #4085 Kohinoor Fts. Soda Churchill Cutting                | _____ | 75. Crystal #393 Narrow Flute Biscuit Tray H                                  | _____  |
| 37. Zircon #4083 Stanhope Footed Soda                                 | _____ | 76. Crystal #1201 Fandango Cake Salver  | _____  |
| 38. Crystal #1540 Lariat 5" Candy Box & Cover Harvester Cutting H     | _____ | 77. Crystal #480 8" Fruit Basket H  | _____  |
| 39. Crystal #411 Rib & Panel Oval Candy Box & Cov. Cut H              | _____ | 78. Crystal #1511 Toujours Candle Vase no insert or prisms, Beautiful Cutting | _____  |
| 40. Crystal #1519 Waverly Covered Candy Bowknot Cut H                 | _____ | 79. Crystal #1503 Crystolite Pr. Single Candle Holders                        | _____  |
|   |       | 80. Flamingo #116 Oakleaf Etch 11" Floral Bowl & Candlesticks H               | _____  |

PAID ADVERTISEMENT

81. Cobalt #136 Triplex Candlesticks, Pair	_____	123. Crystal #1509 Queen Ann 10½" Dinner Plates (7)	_____
82. Crystal #301 Bases 1951 Hurricane Globes with Special Cutting H	_____	124. Crystal #1511 Toujours 8" Luncheon Plates (8)	_____
83. Crystal #301 Pair 2-lite Candelabra with Alexandrite Bobeches H	_____	125. Crystal #1511 Toujours Oblong Relish	_____
83A. #71 10" Oval Candlesticks Pr.	_____		
These were engraved by Emil Krall and used as shelf supports in the Heisey Display Case. H	_____		
84 Crystal #71 Pair 10" Candlesticks Cut H	_____	137 through 142 ALL FRONTENAC ETCHING	
85. Moongleam #129 Pair 5" Triplex Acorn Candlesticks H	_____	126. Crystal #1509 Queen Ann Divided Mayonnaise H	_____
86. Crystal #1513 Pair 3-light Candelabra bases	_____	127. Crystal #1511 Toujours Pr. 2-light Candelabra	_____
87. Flamingo #21 9" Electro-Portable Lamp Base H	_____	128. Crystal #3389 Duquesne Goblets, Cut (3)	_____
88. Crystal 0-300 Pr. 1 light Candelabrum 10"	_____	129. Crystal #3389 Duquesne Sherbets, Cut (8)	_____ (2X)
89. Crystal #301 Pr. 1 light Hurricane Electric Lamps Cut Globes H	_____	130. Crystal #3350 Wabash Goblets Pied Piper Etch (4) H	_____
90. Moongleam Stem, Crystal Bowl #3357 King Arthur Goblet	_____	131. Crystal #3350 Wabash Sherbets Pied Piper Etch (5) H	_____
91. Crystal #4091 Kimberly Goblet Dolly Madison Rose Cutting H	_____	132. Crystal #4044 New Era Goblets (3)	_____
92. Crystal #3411 Monte Cristo Goblet Wakiki Cutting	_____	133. Crystal #4044 New Era Saucer Champagne (3)	_____
93. Crystal #3389 Duquesne Goblet Unknown Cutting	_____	134. Crystal #5003 Crystolite Goblets (2)	_____
94. Crystal #3404 Spanish Goblet, Unknown Cutting	_____	135. Crystal #5003 Crystolite Sherbets (3)	_____
95. Crystal #1425 Victorian Rye Bottles (2)	_____	136. Crystal #4085 Kimberly Goblets Low Ft. (7) H	_____
96. Sahara Pinch Bottle	_____	136A. Crystal #3411 Monte Cristo Goblet Unknown Cutting	_____
97. Crystal #341 1 Qt. Decanter W/Cut Stopper	_____	137. Crystal #3350 Wabash Goblets (8) H	_____
98. Moongleam #3359 Decanter W/Cut Stopper	_____	138. Crystal #3350 Wabash Champagnes (8) H	_____
99. Crystal #4225 Qt. Cocktail Shaker Skier deep plate etch	_____	139. Crystal #3350 Wabash Cocktails (8) H	_____
99A. #1593 Cut Stopper Decanter Rye Bottle	_____	140. Crystal #3350 Wabash Oyster Cocktails (8) H	_____
100. Crystal #4054 Coronation 30 oz. Martini Mixer and 6 #6003 Tempo Cocktails Beautifully Cut H	_____	141. Crystal #2930 10 oz. Tumblers (8)	_____
101. Crystal Mallard Duck Wings Down H	_____	142. Crystal #4182 8" Plates (8)	_____
102. Crystal Duckling Standing H	_____	143. Crystal #3416 Barbara Fritchie Champagnes (4) H	_____
103. Crystal Cygnet	_____	144. Crystal #1227 Maharg Sherbets (6) H	_____
104. Crystal Colt Standing	_____	145. Cobalt #1428 Warwick 9" Vases Pair H	_____
105. Crystal Colt Standing	_____	146. Cobalt #1428 Warwick Center Bowl H	_____
106. Crystal Goose Wings Half	_____	147. Crystal #1401 Empress D.F. Floral Bowl Spec. Cutting	_____
107. Crystal Goose Wings Half	_____	148. Crystal #1519 Waverly 12" Crimped Floral Bowl Silver Decoration	_____
108. Crystal Elephant Large	_____	149. Flamingo #1401 Empress D.F. Candlesticks, Pair H	_____
109. Crystal Horsehead Bookend	_____	150. Flamingo #1401 Empress D.F. Floral Bowl H	_____
110. Crystal Horsehead Bookend	_____	151. Crystal #1533 Wampum Candlesticks Pair	_____
111. Crystal Fish Candleholder	_____	152. Crystal #1533 Wampum 12" Crimped Floral Bowl	_____
112. Crystal Rooster Vase	_____ X	153. Cobalt #1401 Empress D.F. Floral Bowl	_____
113. Limelight #1 Madonna, Frosted H	_____	154. Crystal #1183 Revere Gardenia Bowl Moonglo Cutting	_____
114. Sahara #109 6" Dolphin Candlestick	_____	155. Crystal #1503 Crystolite 12" Torte Plate Frosted H	_____
115. Amber #1519 Waverly Sea Horse Candy Jar H	_____	156. Crystal #1183 Revere 11" Center Handled Cake Plate Frosted H	_____
116. Crystal #5058 Penquin Decanter	_____	157. Crystal #355 Quator Crushed Fruit Jar H	_____
117. Crystal #5038 3½ oz. Rooster Stem Cocktail "Me" Etch	_____	158. Cobalt #1430 Aristocrat Candy Jar H	_____
118. Crystal #1519 Waverly Covered Cigarette Holder Orchid Etch H	_____	159. Crystal #1430 Aristocrat Candy Jar Cut H	_____
119. Crystal #1503 Individual Swan Nut Cup (2)	_____	160. Crystal #1183 Revere 1# Candy Jar Gold Stain H	_____
		161. Crystal #1519 Waverly Sea Horse candy jar rose etch H	_____
		161A. Crystal #465 Recessed Panels 1# candy jar gold decor	_____
		162. Tangerine #3397 Gascony Soda	_____
		163. Crystal #300 12 oz. Ice Tea H	_____
		164. Crystal & Cobalt #2323 Navy 10 oz. Soda Sailboat Deep Plate Etch	_____
		165. Crystal #179 Tumbler H	_____
		166. Moongleam #1252 Twist 12 oz. Ftd. Soda H	_____
		167. Alexandrite #3381 Creole 5 oz. Soda D.O.	_____
		168. Flamingo & Moongleam #3481 Footed Soda D.O.	_____
		169. Flamingo #299 Toddy Narrow Optic H	_____
		170. Flamingo #479 Cream & Sugar	_____
120 through 127 ALL MINUET ETCHING			
120. Crystal #5010 Symphone Goblets (8)	_____		
121. Crystal #5010 Symphone Cordials (6)	_____		
122. Crystal #1509 Queen Ann (8) Saucers (9) Cups H	_____		

PAID ADVERTISEMENT

171. Flamingo #479 Cream & Sugar	_____	215. Crystal #5010 Symphonic Cordial Wakiki Cutting	X_____
172. Marigold #1252 Twist Oval Footed Almond H	_____	216. Crystal #5010 Symphonic Cordial	_____
173. Crystal #1201 Fandango Individual Cream	_____	Danish Princess Cutting	_____
174. Moongleam #406 Coarse Rib Covered Hotel Sugar H	_____	217. Crystal #3408 Jamestown Cordial Barcelona Cutting H	H_____
175. Crystal #150 Pointed Oval & Diamond Point Creamer	_____	218. Crystal #5019 Waverly Cordial	_____
176. Sahara #355 Quator BonBon or Sugar H	_____	219. Crystal #3389 Duquesne Cordial (2)	_____
177. Crystal #1541 Athena Footed Sugar	_____	220. Crystal #5003 Crystolite Cordial	_____
178. Crystal #1540 Lariat Creamer Moonglo Cut H	_____	221. Crystal #5067 Plantation Cordial Pine Cutting H	_____
179. Crystal #1951 Cabachon Creamer H	_____	222. Crystal #300 Peerless Cordial H	_____
180. Crystal #1519 Waverly Creamer & Sugar	_____	223. Crystal #3408 Jamestown Bell, Daisy Cutting	_____
Orchid Etch H	_____	Original Gift Box	_____
181. Crystal #1509 Queen Ann 5" D.F. Mint Orchid Etch H	H_____	223A. Hawthorne #1001 Pr. Salt & Pepper Shakers	_____
182. Crystal #1519 Waverly 6½" Ftd. cheese orchid etch H	H_____	Cut by Krall	_____
182A. Crystal #1519 Waverly Sea Horse Ftd. Floral Bowl	_____	224. Silver & Blue Mirror Advertising Sign	_____
Orchid Etch H	_____	225. Crystal #352 Flat Panel 1½ oz. Lavender Jar H	H_____
183. Tangerine #1401 Empress 6" Square Plate H	H_____	226. Crystal #352 Flat Panel 3 oz. Lavender Jar H	H_____
184. Cobalt #1401 Empress 8" Square Plates (2) H	H_____	227. Cobalt #4231 Favor Vase D.O.	_____
185. Alexandrite #1401 Empress Square Plate,	_____	228. Cobalt #4227 Favor Vase D.O.	_____
Formal Chintz Etch H	_____	229. Crystal #1295 Bead Swag Toothpick	_____
186. Flamingo #1238 Beehive 8" Plate	_____	229A. Crystal #1205 Fancy Loop Toothpick	_____
187. Crystal #21 Electro-Portable Lamp Complete H	H_____	229B. Crystal #4054 Coronation 1 oz. Bar Glass	_____
188. Crystal #100 6" Candlesticks Pair H	H_____	230. Crystal #5087 Comet 2 oz. Bar Glass	_____
189. Crystal #103 Saucer Ft. Candlesticks Pr. Yellow Dec. H	H_____	231. Crystal #2351 1 oz. Bar Glass Tally Ho Deep Plate Etch	_____
190. Crystal #112 Candlesticks Pair Moonglo Cut	_____	232. Crystal #2351 1 oz. Bar Glass Barrel Shape	_____
191. Crystal #31 Toy Candlesticks, Pair	_____	Tally Ho Deep Plate Etch	_____
192. Sahara #1428 Warwick Single Candlesticks Pr. H	H_____	233. Alexandrite #1401 Empress D.F. Nut Dish	_____
193. Flamingo #1205 Raindrop Candlesticks Pr. H	H_____	234. Crystal #300½ Peerless Ftd. Almond Dishes (8)	_____
194. Flamingo #118 Candlesticks Pair H	H_____	234A. Crystal #1401 Empress D.F. Nut Cups (6)	_____
195. Crystal #1485 Saturn 2-light Candleblocks Pair	_____	234B. Moongleam #1252 Twist Nut Cup H	_____
196. Dawn #1415 Twentieth Century Juice Pitcher H	H_____	234C. Marigold #1252 Twist Nut Cup H	_____
197. Crystal & Moongleam #3355 Fairacre Pitcher D.O. H	H_____	234D. Moongleam #1229 Octagon Nut Cups (4) H	H_____
198. Crystal & Moongleam #4206 Optic Tooth	_____	234E. Crystal #433 Greek Key Footed Almond H	H_____
3-Pint Pitcher D.O.	_____	235. Dawn Pin Tray or Ash Receiver	_____
199. Moongleam #500 Ice Tub Silver Handle H	H_____	236. Crystal #433 Greek Key Butter Pat H	H_____
200. Crystal Asiatic Pheasant	_____	237. Cobalt #1404 Old Sandwich Individual Ash Tray H	H_____
201. Crystal Rooster Vase	_____	238. Crystal #1401 Old Sandwich ind. ash tray H (2) 1 X	1X_____
202. Crystal Fish Bowl Red Stain H	H_____	239. Sahara #10 Oak Leaf Coaster	_____
203. Crystal Fish Candleholders Pair	_____	240. Moongleam #1184 Yeoman ash tray cupid & psyche etch	_____
204. Crystal Fish Bookends Pair	_____	240A. Flamingo #1184 Yeoman ash tray cupid & psyche etch	_____
205. Crystal Standing Colt	_____	240B. Moongleam #1184 Yeoman ash tray cupid & psyche etch	_____
206. Crystal Sparrow	_____	241. Crystal #1489 Puritan Ash Tray Heart Shape	_____
206A. Crystal Giraffe Head Turned	_____	242. Flamingo #52 Ind. Salt & Pepper Sanitary Tops H	H_____
206B. Crystal Goose Wings Down	_____	243. Crystal #333 Waldorf-Astoria Bitters Bottle	_____
206C. Crystal Scotty	_____	244. Crystal #300 Peerless Violet Vase	_____
206D. Moongleam Muddler	_____	245. Crystal #341 Puritan Violet Vase	_____
207. Fern Green #1977 H.C.A. Souvenir Oscar IG	IG_____	246. Marigold #1229 Octagon 6" Cheese Dish D.O.	D.O._____
208 Crystal #5038 Rooster Stem Cocktail	_____	247. Marigold #1229 Octagon 6" Mint Dish D.O.	D.O._____
Special Beautiful Cutting	_____	248. Marigold #1252 Twist 6" 2-Hdd. Jelly H	H_____
209. Crystal #5038 Rooster Stem Cocktail	_____	249. Crystal #1229 Octagon 6" Mint Dish D.O.	D.O._____
Special Beautiful Cutting	_____	250. Moongleam #1229 Octagon 6" BonBon Sterling Decor.	Decor._____
210. Crystal #5058 Goose Stem Cordial Goose Frosted	_____	250A. Moongleam #1229 Octagon 6" Ftd. Mayonnaise	_____
211. Crystal #5048 Rooster Head Cocktail	_____	250B. Crystal #1229 Octagon 6" Mint Unknown Cutting	_____
Special Beautiful Cutting	_____	250C. Hawthorne #1229 Octagon 6" Mint	_____
212. Crystal #5048 Rooster Head Cocktail	_____	251. Moongleam #411 Rib & Panel 6" 2-Hdd. Mint H	H_____
Special Beautiful Cutting	_____	252. Moongleam #1252 Twist Mayonnaise Square Foot	_____
213. Crystal #4085 Kohinor 2½ oz. Wine Churchill Cutting	_____	253. Moongleam #1229 Octagon 5½" hdd. ftd. mayonnaise H	H_____
214. Crystal #5025 Tyrolean Sherry Orchid Etch	_____	254. Crystal #325 Pillows 6" Footed Jelly H	H_____

PAID ADVERTISEMENT

255. Crystal #1590 Zodiac 6" Comport H	_____	283. Marigold #1252 Twist 10½" Plate H	_____
256. Crystal #433 Greek Key 5" Low Ftd. Jelly H	_____	284. Crystal #1252 Twist 3 Plates (2) 5½" (1) 6½" H	_____
257. Crystal #433 Greek Key Banana Split	_____	285. Marigold #1252 Twist Sauce Dishes (2) H	_____
258. Moongleam #3880 Old Dominion Grapefruit D.O.	_____	286. Marigold #1252 Twist 3 Saucers, 1 cup	_____
259. Tangerine #3404 Spanish Cocktail Crystal Stem & Ft.	_____	(2) Cups Yeoman D.O. H	_____
260. Crystal #4055 Park Lane Cocktail Piccadilly Cutting	_____	286A. #1497 Cheese Plate Fern Patt. Special Cutting	_____
261. Crystal #3408 Jamestown Cocktail Special Cutting	_____	287. Crystal #1503 Crystallite Floral Bowl	_____
262. Sun Colored Crystal #341 Puritan 3 oz. Cocktail H	_____	288. Crystal #1503 Crystallite Cov. Candy 3-Compartment	_____
263. Crystal #5010 Symphone Wine Wakiki Cutting	_____	289. Crystal #1428 Warwick 5" Vases Pair H	_____
264. Crystal #300 Peerless Claret Reg. 350676 H	_____	290. Crystal #388 No. 2 6" Carnation Vase H	_____
265. Flamingo #3376 Adam Cocktail Adam Etch	_____	291. Crystal #46 Epergnes Custom Metal Base	_____
266. Alexandrite #3381 Creole Goblet	_____	6" Vase 11" Saucer H	_____
267. Crystal #4055 Park Lane Goblet Walter Gray Cutting	_____	292. Crystal 6½" Nappie w/Metal Rim & Handle H	_____
268. Crystal #1540 Lariat Goblet #981 Cutting	_____	293. Crystal #1540 Lariat Basket Moongleam Cut Variant	_____
269. Crystal #3340 Carolina Goblet dundee pantograph etch H	_____	294. Flamingo #1401 Empress Relish H	_____
270. Crystal w/Amber Ft. #5077 Legionaire Soda H	_____	295. Crystal #1511 Toujours Floral Bowl H	_____
271. Crystal #4091 Kimberly Ice Tea Courtship Cutting	_____	296. Crystal #1250 Groove & Slash Cov. Pickle Jar	_____
272. Crystal #1E92 Omega Ice Teas (2) H	_____	297. Crystal Candy Jar (no top) Cut H	_____
273. Flamingo #1184 Yeoman Parfait H	_____	298. Crystal #493 Perfume Bottle Cut	_____
274. Cobalt #3390 Carcassone Claret Crystal Foot	_____	299. Crystal #359 Colonial 1½ oz. Wine H	_____
275. Crystal #5090 Louisa Parfait H	_____	300. Crystal #3416 Barbara Fritchie Wine Chateau Etch H	_____
276. Crystal #1590 Zodiac Champagne H	_____	301. Sahara #1401 Empress Lion Head Bowl 2 Feet	X_____
277. Milk Glass #1295 Bead Swag Spooner	_____	302. Crystal #393 Narrow Flute Lg. Round Tray H	_____
278. Dawn #1632 Lodestar 5" Mayonnaise H	_____	303. Flamingo #1238 Beehive 4" Plate	_____
279. Crystal #305 Punty & Diamond Point Large Compote	_____	304. Flamingo #1238 Beehive 8" Plate	_____
280. Crystal #1205 Fancy Loop Square 9" Nappie	_____	305. Flamingo #1417 Tumbler	_____
281. Flamingo #1184 Yeoman 9" Cov. Veg. Dish D.O.	_____	306. Set of Imperial Heisey Souvenir Plates (6)	_____
282. Moongleam #350 Pinwheel & Fan Punch Cup H	_____	307. Imperial Amber Ipswich Candy Jar 1# H	_____
282A. Crystal #305 Punty & Diamond Point Punch Cup H	_____	308. Imperial Caramel Slag Standing Colt	_____
282B. Crystal #335 Prince of Wales Punch Cup H	_____		

MAIL BIDS ACCEPTED WITH CHECKS FOR MAXIMUM AMOUNT. MAIL BIDS WILL BE BID COMPETITELY AND ANY DIFFERENCE REFUNDED. CHECKS SHOULD BE MADE OUT TO: *F & S AUCTION SERVICE*

AND MAILED TO: *F & S AUCTION SERVICE*  
*BOX 84*  
*GRANVILLE, OHIO 43023*

PRICE LISTS AVAILABLE FOR \$ 1.00

**Food Available**

**SAM SCHNAIDT**  
**Auctioneer**  
(614) 587-0052

**FRANK FRYE**  
**Manager**  
(614) 344-9847

**PAID ADVERTISEMENT**