

Heisey



News

The Official Publication of Heisey Collectors of America, Inc.

SPRING AUCTION CATALOGS

HEISEY HERITAGE AUCTION

-Online Only-
www.HeiseyMuseum.HiBid.com
April 6, 2024
383 Lots
Details on page 2
Catalog on page 5

Roy Eggert, HCA Auction Firm Manager
Auction@HeiseyMuseum.org

Price \$3.00

SPRING BENEFIT AUCTIONS



DAY #1
April 7, 2024
-Online Only-
121 Lots
Details on page 2
Day #1 Catalog on page 12
DAY #2 & #3
April 12-13, 2024
-Online & In-Person-
870 Lots
Details on page 2
Day #2 Catalog on page 15
Day #3 Catalog on page 24

HEISEY HERITAGE Auction

Online Auctioneer: HiBid Online Auction
www.HeiseyMuseum.HiBid.com

383 Lots
-Online Only-

Auction Schedule

Preview: March 23
Pre-Bidding: March 30 @ 8 am ET
Live-Bidding: April 6 @ 12 noon ET
Glass Pick-Up: April 11 @ 10 am ET*

This is a timed auction where a "lot" is available for a set period of time. You may place bids any time before the closing of a particular lot.

To create your HiBid online account follow the instructions on page 4.

Online pre-bids may be placed during the pre-bidding period. Online live bids may be placed on the Live Auction day.

Minimum starting bid per lot is \$5.00.

No in-house shipping is available. All buyers are responsible to make their own pick-up & shipping arrangements, including shipping costs, directly with the shipper. See page 3 for details.

*Un-claimed Lots:

Items un-claimed as of **April 30, 2024**, may be assessed a storage fee of \$5.00 per day going forward. Items remaining un-claimed as of **May 31, 2024**, will be considered abandoned, become property of HCA, and any payment will be gratefully accepted as a charitable donation to HCA.

Review the General Auction Information on page 3 and Online Auction Terms & Conditions of Sale on page 4.

Need more info?

Contact us at auction@HeiseyMuseum.org

SPRING BENEFIT Auctions

Online Auctioneer: HiBid Online Auction
www.HeiseyMuseum.HiBid.com
In-Person Auctioneer: Craig Connelly

DAY #1 121 Lots
-Online Only-

Auction Schedule

Preview: March 23
Pre-Bidding: March 30 @ 8 am ET
Live Bidding: April 7 @ 2 pm ET
Glass Pick-Up: April 11 @ 10 am ET

DAY #2 & #3 870 Lots
-Online & In-Person-

Online Auction Schedule

Preview: March 30
Pre-Bidding: April 6 @ 8 am ET
Live Bidding: April 12-13 @ 9:30 am ET
Glass Pick-Up: April 16 @ 10 am ET

To create your HiBid online account follow the instructions on page 4.

In-Person Auction Schedule

Location: **GMP Local #244 Union Hall**
350 Hudson Ave, Newark, Ohio
Preview: BOTH DAYS @ 8:30 am ET
Auction: April 12 @ 9:30 am ET lots 1-475
April 13 @ 9:30 am ET lots 476-870

No in-house shipping is available. All buyers are responsible to make their own pick-up & shipping arrangements - including shipping costs - directly with the shipper. See page 3 for details.

Review the General Auction Information on page 3 and the Online & In-Person Auction Terms & Conditions of Sale on page 4.

Absentee bidding is available for this auction. See page 34 for details.

Need more info?

Contact us at auction@HeiseyMuseum.org

GENERAL AUCTION INFORMATION

AUCTIONEERS

In-Person: Craig Connelly
Online: HiBid Online Auction

CODES & ABBREVIATIONS

B = bruise	LB = pound
C'BLOCK = candleblock	LGE = large
CIG = cigarette	N.O.= narrow optic
C'STICK = candlestick	OZ = ounce
CTR = center	PC = pieces
D = item donated	PR = pair
D.F. = dolphin footed	PRT = part
D.O. = diamond optic	QT = quart
FTD = footed	RND = round
F or f = flake	S.O. = Saturn optic
GAL = gallon	SOUV = souvenir
H = marked w/ diamond H	SQ = square
HDL = handle	UNK = unknown
INCL = including	W.O. = wide optic
INDV = individual	X = major damage

ABSENTEE BIDDING AVAILABLE

Absentee bidding is available for the Spring Benefit Auction. HCA will bid competitively for you during the auction on April 12-13, 2024. The Absentee Bid Form is available on page 34 of this catalog, and on the website: www.HeiseyMuseum.org.

The minimum starting bid per lot is \$15.00. You set the maximum amount you are willing to pay on each lot. Include the lot number, pattern, and description of the items as listed in the catalog. If you mark "near mint only" we will use no discretion in your bid. If there is a variance on a lot not called in the catalog (i.e. damage or the number of items in a lot), we will not execute your bid. There may be minimum bid increment raises on certain items. In case of duplicate bids, the earliest postmark prevails.

If paying via check, please consider leaving the amount blank. Designate in the memo line of your check an amount not to exceed the total amount of your bids. The Auction Firm Manager or designee will fill in the exact amount of your purchase. Surplus bid money will be refunded. Send in a self-addressed stamped envelope (SASE) to return your check. HCA reserves the right to reject any bid.

Bids may be submitted via USPS to: "Absentee Bid" HCA, 169 W Church St, Newark, OH 43055 or via FAX to: (740) 345-9638. When complete, please contact the Museum (740) 345-2932 to confirm it has arrived.

Your Absentee bids must be signed and received at the Museum no later than 4:00 pm ET Tuesday, April 9, 2024.

SHIPPING & PICK-UP INFORMATION

Items may be claimed at:
The National Heisey Glass Museum
169 W Church St
Newark, OH

Glass Pick-Up Schedules:

HHA Glass: Thursday, April 11 @ 10 am ET
SBA Day #1: Thursday, April 11 @ 10 am ET
SBA Day #2 & #3: Tuesday, April 16 @ 10 am ET

No in-house shipping is available. All buyers are responsible to make their own PICK-UP & Shipping arrangements, including shipping costs, directly with the shipper.

HCA is aware of the following area shippers: Express Pack and Ship: (740) 366-1325, Pakmail: (740) 522-2564, and UPS Store 3910: (614) 939-5195.

HCA is not responsible for services provided by these vendors but will work with them to make sure your glass is available. The Museum will have copies of your receipt and will release your glass to your preferred shipper. Be sure to advise the Museum of your preferred shipper.

Un-claimed Lots:

Items un-claimed as of **April 30, 2024**, may be assessed a storage fee of \$5.00 per day going forward. Items remaining un-claimed as of **May 31, 2024**, will be considered abandoned, become property of HCA, and any payment will be gratefully accepted as a charitable donation to HCA.

ADDITIONAL GENERAL INFORMATION

- ◆ Auction proceeds benefit the National Heisey Glass Museum
- ◆ For your convenience this catalog and related forms are available on our website: www.HeiseyMuseum.org
- ◆ Photos of all auction lots are featured on the HCA auction page at www.HeiseyMuseum.HiBid.com
- ◆ HCA endeavors to describe all items to the best of our ability however, due to the age and unique nature of antiques, minor differences in descriptions and conditions may be found and are not the responsibility of HCA.
- ◆ Auction results will be published in a future issue of the Heisey News and posted on the Museum website.
- ◆ Questions? Contact us at auction@HeiseyMuseum.org

ONLINE HiBid AUCTION
TERMS & CONDITIONS of SALE

- 1) All lots sold in numerical cataloged order.
- 2) An 8% buyer's premium applies to all payments. All major credit cards accepted. A statement of winnings will be sent after payment is processed.
- 3) HCA endeavors to describe all items to the best of its ability; however, this is not a warranty.
- 4) All items are sold AS IS and WHERE IS. HCA has the right to make any corrections at the time of sale and to provide additional information.
- 5) HCA has the authority to set opening bids and reject any bid raise not in line with established bid increments. Items are sold without reserve, unless advertised otherwise. In the case of a disputed bid, HCA has the authority to settle disputes to the best of its ability and its decision is final.
- 6) Minimum starting bid per lot is \$5.00.
- 7) ALL SALES are FINAL and all items must be paid for before glass is picked up. Glass must be claimed by **April 30, 2024**. Items un-claimed by this date may be assessed a storage fee of \$5.00 per day going forward. Items remaining un-claimed as of **May 31, 2024**, will be considered abandoned, becomes property of HCA and any payment will be gratefully accepted as a charitable donation to HCA.
- 8) Buyer/Shipper must have receipt or bidder number in hand to pick up items.
- 9) **HCA (an auction firm) is licensed by the Ohio Department of Agriculture and bonded in favor of the state.**
- 10) Bidding on any item indicates acceptance of these ONLINE Terms and Conditions of Sale.

IN-PERSON LIVE AUCTION
TERMS & CONDITIONS of SALE

- 1) All lots sold in numerical cataloged order.
- 2) All major credit cards accepted. Cash, certified check, personal check, or money order accepted. An 8% buyer's premium applies. Buyer's premium is waived for cash or check payment. Cash only payment may be requested by HCA.
- 3) HCA endeavors to describe all items to the best of its ability; however, this is not a warranty.
- 4) All items are sold AS IS and WHERE IS. HCA has the right to make any corrections at the time of sale and to provide additional information. Inspection is welcomed.
- 5) The Auctioneer/HCA has the authority to set opening bids and reject any raise not in line with established bid increments. Items are sold without reserve, unless advertised otherwise. In the case of a disputed bid, the auctioneer has the authority to settle disputes to the best of his/her ability and his/her decision is final.
- 6) Minimum starting bid per lot is \$5.00.
- 7) ALL SALES are FINAL. Resales will be handled at Auctioneer's discretion. All items must be paid for and claimed the day of sale.
- 8) Buyer/Shipper must have paid receipt in hand to pick up items.
- 9) **HCA (an auction firm) and all auctioneers used by HCA are licensed by the Ohio Department of Agriculture and bonded in favor of the state.**
- 10) Bidding on any item indicates acceptance of these IN-PERSON Terms and Conditions of Sale.

CREATE YOUR HiBid ACCOUNT

- A) Go to the HCA auction page at:
www.HeiseyMuseum.HiBid.com
- B) Click on LOGIN / NEW BIDDER
Existing HiBid user? Enter Username & Password and log on
New to HiBid? Click on REGISTER HERE
 - a) Provide the requested information:
e-mail, name, address, phone, etc.
 - b) Create your user ID and PASSWORD

REGISTER for the AUCTION

- 1) Click on accept the TERMS & CONDITIONS
- 2) Submit your CREDIT CARD information
- 3) Click on SAVE ACCOUNT INFORMATION
- 4) Click on RETURN TO REGISTRATION



2024 HEISEY HERITAGE AUCTION LIST

383 lots Saturday, April 6 -Online Only-

- 1 5 PATRICIAN C'STICK 6" H (PR)
- 2 300 PEERLESS CHAMPAGNE TALL H (11)
- 3 300 ½ PEERLESS BAR FLARED H (8); BAR STRAIGHT H (1) (9-PC TOTAL)
- 4 2 GOOSE WINGS HALF H (1); 3 GOOSE WINGS UP H (2) (3-PC TOTAL)
- 5 341 PURITAN CORDIAL H (9); CLARET H (13); COCKTAIL H (5) (27-PC TOTAL)
- 6 341 PURITAN COMPORT 8" H (1); COMPORT 9" SHALLOW H (1)
- 7 393 NARROW FLUTE PLATE 9" H (2); PLATE 8" H (3); NAPPY 8 ½" SHALLOW H (1) (6-PC TOTAL)
- 8 393 NARROW FLUTE FINGER BOWL PLATE H (7)
- 9 393 NARROW FLUTE PLATE 6" H (26); PLATE 5 ½" H (22); PLATE 7" H (5); PLATE 6" CUPPED H (1) (54-PC TOTAL)
- 10 393 NARROW FLUTE PLATE 5" H (11); PLATE 4 ½" H (8); PLATE 4 ½" CUPPED H (6) (25-PC TOTAL)
- 11 341 PURITAN SUNDAE FTD FLUTED H (3); SHERBET 6-OZ FLUTED H (1); SHERBET 4-OZ FLUTED H (9) (13-PC TOTAL)
- 12 465 RECESSED PANEL CANDY W/ LID 1-LB H (1); 469 REVERSE HARTMAN CANDY W/ LID W/ UNK CUT SILVER OVERLAY H (1)
- 13 341 ½ PURITAN BUTTER W/ LID H (3); CHEESE PLATE W/ LID H (1) (4-PC TOTAL)
- 14 353 MEDIUM FLAT PANEL CHEESE & CRACKER 1-PC H
- 15 473 NARROW FLUTE W/ RIM ALMOND FTD H (6); 475 SALTED NUT H (6); STERLING SPOON (3) (15-PC TOTAL)
- 16 341 PURITAN PUNCH BOWL (1); BASE HI-FTD (1); PUNCH CUP (32) (34-PC TOTAL)
- 17 1183 REVERE OYSTER PLATE 9 ½" H (11)
- 18 1183 REVERE OYSTER PLATE 8 ½" H (11); PLATE 9" H (6); PLATE 8" (1) (18-PC TOTAL)
- 19 393 NARROW FLUTE MASTER ALMOND H (2); NUT FTD H (24) (26-PC TOTAL)
- 20 352 FLAT PANEL GRAPEFRUIT H (15); 1150 COLONIAL STAR PLATE 6" H (5); PLATE 5 ½" H (9) (29-PC TOTAL)
- 21 22 WINDSOR C'STICK 7" H (PR); 2 OLD WILLIAMSBURG C'STICK 7" H (PR) (4-PC TOTAL)
- 22 393 NARROW FLUTE TANKARD ½-GAL H (1); JUG 3-PINT H HDL C (1); JUG ½-GAL H HDL C (1) (3-PC TOTAL)
- 23 1503 CRYSTOLITE FLORAL BOWL 10" SQ H (1); FLORAL BOWL 11" CONE H (1); FLORAL BOWL 11" FLARED H (1); FLORAL BOWL 10" FLARED H (1) (4-PC TOTAL)
- 24 1503 CRYSTOLITE PUNCH BOWL H (1); CANDY BOX W/ LID RND H (1); CREAM & SUGAR H (1-SET); C'BLOCK (PR) (6-PC TOTAL)
- 25 373 OLD WILLIAMSBURG GOBLET H (9); COCKTAIL H (14) (23-PC TOTAL)
- 26 341 PURITAN SHERBET FLUTED H (12); SHERBET H (5); 349 COLONIAL FLARED SHERBET FLUTED H (2) (19-PC TOTAL)
- 27 5 PATRICIAN C'STICK 5" H (PR); 2 OLD WILLIAMSBURG C'STICK 7" H (PR); 1951 CABOCHON CANDELETTE H (PR); 1503 CRYSTOLITE C'BLOCK (PR) (8-PC TOTAL)
- 28 300 PEERLESS GOBLET H (12); SHERRY H (8); BURGUNDY H (10); COCKTAIL H (5) (35-PC TOTAL)
- 29 5 PATRICIAN C'STICK 9" (3); C'STICK 7 ½" H (4) (7-PC TOTAL)
- 30 393 NARROW FLUTE PUNCH BOWL (1); BASE (1); PUNCH CUP (12) (14-PC TOTAL)
- 31 341 PURITAN COMPORT 8" H (1); NAPPY 5" H (12) (13-PC TOTAL)
- 32 393 NARROW FLUTE CHAMPAGNE H (11); SHERBET DEEP H (5); SHERBET H (8) (24-PC TOTAL)
- 33 352 FLAT PANEL CHEESE & CRACKER 1-PC H (2)
- 34 352 FLAT PANEL TRAY 14" OVAL H (1); 341 PURITAN OVAL 9 ½" H (1); OVAL 8 ½" H (1) (3-PC TOTAL)
- 35 341 PURITAN NAPPY 10" SHALLOW H (1); NAPPY 8" H (2); NAPPY 7 ½" H (2); NAPPY 6 ½" H (3); NAPPY 4" H (3); NAPPY 5" SHALLOW H (9) (20-PC TOTAL)
- 36 341 PURITAN CHERRY JAR LGE H (1); HORSERADISH LGE H (1)
- 37 341 PURITAN PUNCH BOWL (1); BASE HI (1); PUNCH CUP (48) (50-PC TOTAL)
- 38 353 MEDIUM FLAT PANEL VASE 10" STAR BOTTOM H (1); VASE 10" H (1); VASE 8" H (1)
- 39 393 NARROW FLUTE ICE TUB HOTEL H
- 40 393 NARROW FLUTE CHEESE & CRACKER H (2-PC)
- 41 150 BANDED FLUTE PLATE 6 ½" H (4); SHERBET H (12) (16-PC TOTAL)
- 42 351 PRISCILLA BUTTER INDV H (11)
- 43 393 NARROW FLUTE PITCHER 1-PINT H (1); CELERY 9" H (1); PLATE 6 ½" (9); PLATE 4 ½" (10); 393 ½ NARROW FLUTE NAPPY 4 ½" (2) (23-PC TOTAL)
- 44 341 ½ PURITAN JUG 2-QT (1); JUG 1-QT (1); JUG 1-PINT (1) (3-PC TOTAL)
- 45 341 PURITAN GOBLET (1); BURGUNDY (10); CHAMPAGNE (14); EGG CUP (3); SHERBET (2) (30-PC TOTAL)
- 46 350 PINWHEEL & FAN PUNCH BOWL (1); BASE (1); PUNCH CUP (10); 341 PURITAN PUNCH CUP H (15) (27-PC TOTAL)
- 47 300 ½ PEERLESS SPOONER H
- 48 341 ½ PURITAN JUG 1-PINT H (2)
- 49 352 FLAT PANEL TRAY 10" H (1); 473 NARROW FLUTE W/ RIM SWEETMEAT 8" 2-HDL H (1); 393 NARROW FLUTE COTTAGE CHEESE GOLD DÉCOR H (1) (3-PC TOTAL)
- 50 341 ½ PURITAN NAPPY 11" H (1); 339 CONTINENTAL NAPPY 8 ½" H (1)

51 341 PURITAN NAPPY 7 ½" H (1); NAPPY 6 ½" H (2); NAPPY 7 ½" SHALLOW H (1); NAPPY 4 ½" H (6); PLATE 5" H (1); 354
 WIDE FLAT PANEL FINGER BOWL H (2) (13-PC TOTAL)
 52 300 PEERLESS CHAMPAGNE H (7); 351 PRISCILLA CLARET H (2) (9-PC TOTAL)
 53 351 PRISCILLA JELLY FTD 2-HDL H (1); 341 PURITAN JELLY TRICORN HDL H (1); CELERY 12" H (2); CELERY 9" H (1); CELERY
 9" W/ UNK CUT (1); 341 ½ PURITAN CREAM TABLE H (1); 1186 YEOMAN JELLY 2-HDL W/ UNK CUT H (1) (8-PC TOTAL)
 54 1224 HOT/COLD LINER H (4); 429 PLAIN PANEL RECESS CREAM & SUGAR NO LID H (1-SET); 16 SUSANNEH PUFF BOX NO LID
 H (1); 352 FLAT PANEL MUSTARD NO LID H (1); 357 SYRUP NO TOP H (1) (9-PC TOTAL)
 55 429 PLAIN PANEL RECESS PUNCH BOWL (1); BASE (1); 300 ½ PEERLESS PUNCH CUP (25) (27-PC TOTAL)
 56 1519 WAVERLY ICE BUCKET H
 57 5003 CRYSTOLITE GOBLET (8)
 58 5 PATRICIAN C'STICK 9" H (3)
 59 70 OCTAGON C'STICK 9" H (1-ONLY)
 60 1401 EMPRESS SANDWICH 2-HDL RND MOONGLEAM H B (1); SAUCER RND MOONGLEAM H (1)
 61 1170 PLEAT & PANEL CREAM & SUGAR W/ LID FLAMINGO H (1-SET); COMPORT W/ LID LO FTD FLAMINGO H (1) (3-PC TOTAL)
 62 1200 CUT BLOCK CREAM C (1); SUGAR W/ LID BASE F (1); SPOONER X (1); BUTTER TOP ONLY (1) FOR TABLE SET ALL SOUV
 "SARAH 1897" RUBY STAIN (4-PC TOTAL)
 63 1513 BAROQUE CANDELABRUM COMPLETE W/ VASE (1); CANDELABRUM BASE ONLY (1)
 64 1504 REGENCY C'BLOCK 2-LITE (5)
 65 1540 LARIAT C'STICK 2-LITE (PR); C'STICK 2-LITE W/ UNK CUT (1-ONLY); C'STICK 1-LITE (PR) (5-PC TOTAL)
 66 1533 WAMPUM TORTE PLATE 14"
 67 2 OLD WILLIAMSBURG C'STICK 9" (PR); C'STICK 7" H (PR) (4-PC TOTAL)
 68 1202 PANELED OCTAGON FLORAL BOWL 11 1/2" HAWTHORNE H
 69 1401 EMPRESS RELISH 7" TRIPLEX SAHARA H (2)
 70 1469 RIDGELEIGH CANDELABRA SKIRTED BASE H (PR)
 71 118 ROOSTER HEAD STOPPER
 72 1469 RIDGELEIGH MARMALADE W/ LID H (1); MUSTARD W/ LID H (1)
 73 1503 CRYSTOLITE PUFF BOX W/ LID H (1); CIG HOLDER RND FTD H (1); JAM JAR W/ LID H (1) OIL W/ STOPPER (2); RELISH 3-
 PRT OVAL H (1); CIG BOX LID ONLY 3 ½" (1) (7-PC TOTAL)
 74 1567 PLANTATION COASTER (5)
 75 1469 RIDGELEIGH RELISH 7" 2-PRT H (1); JELLY 2-PRT (2); CIG HOLDER SQ H (1); 1469 ½ RIDGELEIGH CIG HOLDER NO LID (1)
 (5-PC TOTAL)
 76 1469 RIDGELEIGH SALT INDV (8); NUT DISH H (4) (12-PC TOTAL)
 77 393 NARROW FLUTE CELERY 9" H (1); CREAM & SUGAR NO LID H (1-SET); 393 ½ NARROW FLUTE NAPPY 8 ½ " H (1)
 (4-PC TOTAL)
 78 1540 LARIAT CREAM & SUGAR ON TRAY H (3-PC SET); CELERY 12" (1); NAPPY 5" (1); LID ONLY FOR SMALL CANDY BOX (1)
 (6-PC TOTAL)
 79 1210 FROG CHEESE PLATE FLAMINGO
 80 1519 WAVERLY NUT OVAL LOTUS W/ GOLD DÉCOR H
 81 338 COLONIAL DRAPE VASE 6 ½" (1); VASE 8" (1)
 82 1540 LARIAT DRESSING 7" 2-PRT H (1); COLOGNE (1)
 83 393 NARROW FLUTE MUSTARD W/ LID H (1); #1 SPOON H (1); SUGAR INDV H (1) (3-PC TOTAL)
 84 52 SHORT SALT & PEPPER INDV W/ GLASS TOPS FLAMINGO H (1-SET)
 85 1540 LARIAT CARAMEL W/ LID
 86 1540 LARIAT VASE RND
 87 338 COLONIAL DRAPE VASE 10 ½" H
 88 373 OLD WILLIAMSBURG CLARET H (3); 300 PEERLESS SUNDAE FTD ENGLISH REGISTRY MARK H (1)
 89 1 RINGNECK PHEASANT (1); 2 GOOSE WINGS HALF (1); 3 GOOSE WINGS UP (1) (3-PC TOTAL)
 90 1540 PLUG HORSE CHARLETON DÉCOR F (1); 1522 COLT STANDING (2)
 91 338 COLONIAL DRAPE VASE 9 ½"
 92 1519 WAVERLY MAYO W/ 515 HEISEY ROSE ETCH H (1); COMPORT 6" SHALLOW (1); 1401 EMPRESS NUT (1) (3-PC TOTAL)
 93 433 GREEK KEY BANANA SPLIT H (1); 411 TUDOR JELLY FTD H (1); 474 NARROW FLUTE W/ RIM PRESERVE OVAL H (1); 1425
 VICTORIAN CELERY 12" H (1); 1170 PLEAT & PANEL COMPORT LO NO LID (1) (5-PC TOTAL)
 94 112 MERCURY C'STICK (1); 113 MARS C' STICK (1); 1469 RIDGELEIGH C'STICK 1-LITE 3 ½" (1); 1433 THUMBPRINT & PANEL
 C'STICK 2-LITE (1); 1503 CRYSTOLITE C'STICK 1-LITE (1); C'STICK 3-LITE (1) (6-PC TOTAL)
 95 MISC PARTS ASS'T SPEAR PRISMS ON NON-HEISEY BOBECHEs (32)
 96 1469 RIDGELEIGH PLATE 6" SQ H (11)
 97 1469 RIDGELEIGH PLATE 7" SQ H (12)
 98 1469 RIDGELEIGH CUP & SAUCER H (7-SETS)
 99 1222 FINE PLEAT PLATE 8" H WEAR (12)
 100 465 RECESSED PANEL BASKET 9" GOLD ENAMEL FLORAL DÉCOR H B
 101 1522 COLT STANDING MOUNTED IN METAL LAMP
 102 48 EPERGNE 2 PLATES ON 301 OLD WILLIAMSBURG CANDELABRA BASE (1)

103	1567	PLANTATION CAKE SALVER
104	1567	PLANTATION CREAM & SUGAR (1-SET); SUGAR H (1); OIL NO STOPPER H (1) (4-PC TOTAL)
105	1567	PLANTATION CELERY 13" H (1); CELERY-OLIVE 13" H (1)
106	1567	PLANTATION UNDERPLATE 11" W/ RAISED CTR RIM 3"
107	1567	PLANTATION TORTE PLATE 13 ½" WEAR (1); COMPORT HONEY H (1)
108	5067	PLANTATION CHAMPAGNE (5)
109	21	ARISTOCRAT ELECTROPORTABLE 9" METAL SPIDER (1); #2 GLOBE SATIN W/ FLORAL CUT H (1)
110	411	TUDOR GRAPEFRUIT H (6); 393 NARROW FLUTE ORANGE JUICE H (3); 394 NARROW FLUTE ORANGE JUICE H (1) (10-PC TOTAL)
111	391	ROSE'S VASE 8" H
112	1235	BEADED PANEL & SUNBURST TRAY 10" (1); WINE (5) (6-PC TOTAL)
113	17	STAR DECANTER RIM ROUGH (1); 1220 PUNTY BAND OIL NO STOPPER CLOUDY (1); 1401 EMPRESS OIL W/ STOPPER BASE X (1); 1404 OLD SANDWICH CATSUP NO STOPPER CLOUDY (1) (4-PC TOTAL)
114	3479	CONE SODA FTD IRIDIZED
115	354	WIDE FLAT PANEL CREAM & SUGAR FOR STACK SET NO BUTTER SOME f's (1-SET); 406 COARSE RIB CREAM FLAMINGO (1); 1252 TWIST NUT FLAMINGO H (1); 355 QUATOR SUGAR H RIM F (1) (5-PC TOTAL)
116	1252	TWIST NASTURTIUM BOWL OVAL MARIGOLD H SUGARING
117	3397	GASCONY SHERBET SAHARA (2)
118	3390	CARCASSONNE SHERBET W/ 448 OLD COLONY ETCH (4)
119	301-3	OLD WILLIAMSBURG CANDELBRUM 3-LITE TEAR DROP PRISMS HAWKES-LIKE CUT ON BASE 1-MISSING PRISM (1-ONLY)
120	1541	ATHENA RELISH 3-PRT OBLONG BASE F (1); 1170 PLEAT & PANEL SPICE TRAY H (1); 352 FLAT PANEL TRAY 10" RND H (1) (3-PC TOTAL)
121	352	FLAT PANEL MARMALADE W/ LID W/ UNK CUT H (1); 372 MCGRADY SYRUP 7-OZ NO LID (1); 1469 RIDGELEIGH CIG HOLDER SQ RIM F (1); MARMALADE NO LID H (1); 1183 REVERE MAYO 2-PRT W/ UNK CUT STERLING BASE H (1); 352 FLAT PANEL BUTTER NO LID W/ UNK CUT H (1) (6-PC TOTAL)
122	1250	GROOVE & SLASH CRACKER JAR NO LID
123	4085	KOHINOOR SHERBET W/ 493 CORONATION ETCH (1); SHERBET (2) (3-PC TOTAL)
124	3357	KING ARTHUR CHAMPAGNE MOONGLEAM STEM & FT 1-BASE F (7)
125	480	DAISY & LEAVES BASKET W/ OVERCUT H
126	1503	CRYSTOLITE NAPPY 8" H (1); OIL NO STOPPER (1); CANDY NO LID 3-PRT RND (1); 1540 LARIAT PICKLE-OLIVE RND (1) (4-PC TOTAL)
127	5042	CORINTHIAN CHAMPAGNE
128	310	RING BAND TUMBLER GREEN & GOLD DÉCOR CUSTARD
129	1	RINGNECK PHEASANT H (1); 1519 WAVERLY CORNUCOPIA VASE RIM F (2) (3-PC TOTAL)
130	1235	BEADED PANEL & SUNBURST JELLY FTD (1); NAPPY 8" SHALLOW (1); 350 PINWHEEL & FAN NAPPY 8" H (1) (3-PC TOTAL)
131	134	TRIDENT C'STICK GOLD DÉCOR (PR); 300-1 OLD WILLIAMSBURG CANDELBRUM 1-LITE BASE F (1-ONLY)
132	1205	FANCY LOOP TUMBLER GOOD GOLD (1); TUMBLER EMERALD BASE F (1); SALT INDV (2) (4-PC TOTAL)
133	2930	PLAIN & FANCY TUMBLER W/ 429 ZODIAC ETCH RIM f-1 (2); 3335 LADY LEG PARFAIT W/ 429 ZODIAC ETCH (2) (4-PC TOTAL)
134	6004	CLASSIC CHAMPAGNE W/ UNK CUT H (1); 351 PRISCILLA WINE H (1); 300 PEERLESS CORDIAL H (1); SHERRY H (1); 1220 PUNTY BAND MUG SOUV "FAIRMONT, MINN." GOLD DÉCOR OPAL (1) (5-PC TOTAL)
135	130	DIAMOND SUNBURST TUMBLER H
136	385	GRID & SQUARE TUMBLER H
137	4090	COVENTRY SODA 5-OZ FTD W/ 903 ZEUSE CUT (1); 5072 ROSE STEM GOBLET W/ 515 HEISEY ROSE ETCH (1); 3350 WABASH COCKTAIL H (2) (4-PC TOTAL)
138	300-5	OLD WILLIAMSBURG CANDELBRUM 5-LITE BOBECHE 1-F (1-ONLY)
139	1220	PUNTY BAND NAPPY 4" SCALLOPED (2) H W/ METAL STAND (1); 5 EPERGNE VASE IN METAL MOUNT (1) (2-PC TOTAL)
140	V-1066	VERLYS CUPIDON BOWL 6" (1) PAPER LABEL; V-8621 VERLYS PINECONE BOWL 6 ½" (1)
141	1405	IPSWICH CANDLEVASE NO INSERT (PR)
142	1488	KOHINOOR C'STICK (PR)
143	355	QUATOR CREAM & SUGAR GOLD DÉCOR H (1-SET)
144	1401	EMPRESS SANDWICH PLATE 2-HDL RND MOONGLEAM H
145	341	PURITAN HORSERADISH LGE W/ UNK CUT H RIM B
146	50	LOUISIANA SALT & PEPPER FLAMINGO (1-SET)
147	1483	STANHOPE CREAM & SUGAR BLACK KNOB H (1-SET); CUP & SAUCER BLACK KNOB (1-SET); PLATE 8" (1) (5-PC TOTAL)
148	393	NARROW FLUTE JUG 1-PINT H
149	1428	WARWICK VASE 9" H (2); VASE 5" H (2) (4-PC TOTAL)
150	1428	WARWICK VASE 7" (1); VASE 5" R H (1); CIG HOLDER BLUE FLASH H (1); CIG HOLDER H (1); VASE INDV SAHARA H (1); C'STICK 2-LITE H (PR) (7-PC TOTAL)
151	1428	WARWICK FLORAL BOWL (1); C'STICK 1-LITE H (PR)
152	343	SUNBURST COMPORT 8"

153 338 COLONIAL DRAPE VASE 15" CLOUDY H (1); VASE 8" H (1)
154 5038 ROOSTER STEM COCKTAIL RIM F-1 (9); COCKTAIL FROSTED (1) (10-PC TOTAL)
155 10 GIBSON GIRL FLORAL BOWL 10" D.O. H (1); FLORAL BOWL 10" BLACK & GOLD DÉCOR H (1); 9 GIBSON GIRL 8" BLACK & GOLD DÉCOR H (1) (3-PC TOTAL)
156 333 WALDORF ASTORIA DECANter
157 4225 COBEL COCKTAIL SHAKER 1-PINT W/ 9013 US ETCH PAPER LABEL
158 485 DUNHAM NAPPY 8" W/ UNK CUT H (1); 1183 REVERE PLATE 12" W/ UNK CUT H (1)
159 393 NARROW FLUTE ICE TUB H
160 1235 BEADED PANEL & SUNBURST DECANter NO STOPPER GOLD DÉCOR CLOUDY (1); DECANter NO STOPPER (1); WINE POOR GOLD DÉCOR (1); TUMBLER RIM F (1) (4-PC TOTAL)
161 1445 GRAPE CLUSTER C'STICK 2-LITE W/ UNK CUT H (PR)
162 341 PURITAN NAPPY 4" H (8); NAPPY 4" SHALLOW H (5); NAPPY 4 ½" SHALLOW H (3); ICE CREAM PLATE H (5); CELERY 9" H (1); PLATE 7" OVAL H (1); NAPPY 9" OVAL H (1) (24-PC TOTAL)
163 352 FLAT PANEL GRAPEFRUIT H (9)
164 1150 COLONIAL STAR PLATE 8 ½" H (8); PLATE 6 ½" H (8) (16-PC TOTAL)
165 341 PURITAN ICE TUB H (1); NAPPY 10" H (1); PLATE 6" H (2); 341 ½ NAPPY 4 ½" RIB f's H (1); 429 PLAIN PANEL RECESS NAPPY 5" H (1); 1150 COLONIAL STAR PLATE 5 ½" SILVER MOUNT H (1); PLATE 6" OPTIC H (2) (9-PC TOTAL)
166 1469 RIDGELEIGH GOBLET RIM F-1 (14)
167 465 RECESSED PANEL CANDY W/ LID 1-LB WORN GOLD DÉCOR H (2)
168 EPHEMERA GLASS AD "GLASS SECRETS" FADED FRAMED
169 1183 REVERE OYSTER PLATE 9" H (6); MARMALADE W/ LID GOLD DÉCOR H (1); LADLE NON-HEISEY (1); CANDY BOX 7" NO LID H (1) (9-PC TOTAL)
170 1205 FANCY LOOP VASE 8" WORN GOLD BASE F (1); OIL WRONG STOPPER (1); WATER BOTTLE (1) (3-PC TOTAL)
171 1469 RIDGELEIGH COASTER (8) SET IN ORIGINAL BOX
172 1504 REGENCY C'STICK 2-LITE (PR); 1428 WARWICK C'STICK 2-LITE SAHARA (1) (3-PC TOTAL)
173 1503 CRYSTOLITE CELERY 9" LEAF SILVER DÉCOR (1); LEAF MASTER NUT (1); LEAF NUT INDV PAPER LABEL (4); PLATE 8" SHELL PAPER LABEL (1) (7-PC TOTAL)
174 1506 PROVINCIAL FLORAL BOWL 12" FLARED H SUN PURPLE (1); MAYO H (1)
175 1469 RIDGELEIGH CARD SUIT ASHTRAY: CLUB, HEART, SPADE; ASHTRAY 2 ½" SQ H (6); CIG HOLDER SQ H (1); RELISH 9" RND 3-PRT SILVER DÉCOR H (1); TORTE PLATE 9" SILVER DÉCOR H (1); TRAY FOR INDV CREAM & SUGAR (1) (13-PC TOTAL)
176 331 COLONIAL PANEL WATER BOTTLE
177 4044 NEW ERA CANDELABRA 2-LITE (PR) EACH W/ DIFF PRISMS 3-MISSING
178 1951 CABOCHON CREAM & SUGAR NO LID H (1-SET); CUP & SAUCER H (4-SETS); JELLY 1-HDL H (1) (11-PC TOTAL)
179 1225 PLAIN BAND BUTTER W/ LID FINIAL ROUGH (1)
180 4091 KIMBERLY COCKTAIL BASE f-1 (2)
181 1575 LILY FLORAL BOWL FLARED H SUN PURPLE (2)
182 341 PURITAN NAPPY 6 ½" H (2); JELLY 1-HDL PAINTED DÉCOR H (1); 341 ½ PURITAN BUTTER LID ONLY H (1) (4-PC TOTAL)
183 4291 MARLENE CANDY NO LID W/ 426 MT. VERNON ETCH H RIM f
184 393 NARROW FLUTE PRESERVE W LID FTD GOLD DÉCOR H (1); SUGAR INDV H (1); SUGAR INDV ENAMEL & GOLD DECOR (1); 473 NARROW FLUTE W/ RIM PICKLE 6" H (1) (4-PC TOTAL)
185 394 NARROW FLUTE FRUIT BOWL 9 ½" H (1); 475 NARROW FLUTE W/ RIM NUT SALTED H (6) (7-PC TOTAL)
186 1184 YEOMAN PLATE 7" W/ 447 EMPRESS ETCH MARIGOLD (3)
187 300 PEERLESS OVAL 9" H RIM F (1); NAPPY 7" BASE F (1); TUMBLER H (1); 300 ½ BAR FLARED H (2); 351 PRISCILLA TUMBLER H (1) (6-PC TOTAL)
188 2 GOOSE WINGS HALF (1); 1557 ROOSTER VASE (1)
189 1495 FERN CREAM & SUGAR F W/ UNK CUT H (1-SET); 1186 YEOMAN CREAM & SUGAR OVAL FTD W/ UNK CUT H (1-SET); 479 PETAL CREAM & SUGAR FLAMINGO MISMATCH COLOR (1-SET) (6-PC TOTAL)
190 355 QUATOR CREAM & SUGAR HOTEL H (1-SET); 352 FLAT PANEL SUGAR INDV NO LID H (2) (4-PC TOTAL)
191 16 SUSANNEH PUFF BOX NO LID H (1); 350 PINWHEEL & FAN PUFF BOX METAL LID H (1); HAIR RECEIVER METAL LID LGE (1) (3-PC TOTAL)
192 1184 YEOMAN LEMON DISH W/ LID W/ UNK BUTTERFLY CUT H
193 5 MUSTARD SPOON
194 411 TUDOR CHAMPAGNE H (1); MINT H (1)
195 1519 WAVERLY CELERY 13" W/ 515 HEISEY ROSE ETCH H (1); UNDERPLATE FOR MAYO W/ 515 HEISEY ROSE ETCH (1)
196 1189 YEOMAN CELERY 13" GOLD DÉCOR H (1); 1186 YEOMAN LEMON DISH 5 ½" OVAL WORN GOLD & BLUE DÉCOR (1); LEMON DISH 5 ½" GOLD DÉCOR (1); 468 OCTAGON W/ RIM CELERY 13" GOLD DÉCOR H (1); CELERY 13" GOLD & BLUE DÉCOR H (1); CELERY 13" W/ UNK CUT H (1) (6-PC TOTAL)
197 1219 SIMPLICITY W/ STAR PLATE 7 ½" H (1); PLATE 5" H (1); PLATE 5" WORN GOLD RIM DÉCOR H (6); 337 TOURAINE NAPPY 5" SHALLOW W/ UNK ENGRAVING H (1) (9-PC TOTAL)
198 400 COLONIAL SCALLOP TOP SUGAR HOTEL H (1); 352 FLAT PANEL LAVENDER JAR 3-OZ NO LID GOLD DÉCOR H (1); SUGAR INDV NO LID WORN SILVER H (1); 1184 YEOMAN SUGAR INDV NO LID H (1); 1225 BUXTON INN SHERBET POOR SILVER H (1); 1170 PLEAT & PANEL CREAM WORN GOLD H (1) (6-PC TOTAL)

199	1243	FREIDA SHERBET N.O. H (1); 341 PURITAN SHERBET 4-OZ H (2); SHERBET 3-OZ H (2) (5-PC TOTAL)
200	4004	IMPROMPTU COCKTAIL (1); SHERBET (2)
201	451	CROSS LINED FLUTE VASE 6" H
202	1509	QUEEN ANN RELISH TRIPLEX W/ 507 ORCHID ETCH (1); CUP H (1)
203	5003	CRYSTOLITE SHERBET (4); TUMBLER (3) (7-PC TOTAL)
204	1503	CRYSTOLITE TUMBLER H (6)
205	373	OLD WILLIAMSBURG CLARET (7)
206	3390	CARCASSONNE SHERBET SAHARA (4); COCKTAIL SAHARA (1) (5-PC TOTAL)
207	1	GOOSE WINGS DOWN (1); 2 GOOSE WINGS HALF (1); 3 GOOSE WINGS UP (1) (3-PC SET)
208	350	PINWHEEL & FAN TUMBLER H (1); 325 PILLOWS TUMBLER H (1); 310 RING BAND TUMBLER FLORAL DÉCOR SOUV "CONNEAUT LAKE EXPOSITION PARK" CUSTARD RIM F (1); 1280 WINGED SCROLL TUMBLER WORN GOLD CUSTARD (1) (4-PC TOTAL)
209	1252	TWIST GOBLET LUNCHEON MARIGOLD H CRAZED (2)
210	5010	SYMPHONIE WINE W/ 502 CRINOLINE ETCH (2); 3357 KING ARTHUR CHAMPAGNE MOONGLEAM STEM & FT BASE F (1)
211	2401	OAKWOOD OLD FASHION W/ 9031 WEST POINT CREST ETCH
212	1495	FERN RELISH 3-PRT GOLD DÉCOR FT f (1); 1541 ATHENA CREAM & SUGAR (1-SET)
213	1486	COLEPORT TUMBLER DAWN H
214	5072	ROSE STEM CHAMPAGNE W/ 515 HEISEY ROSE ETCH (2); GOBLET W/ 515 HEISEY ROSE ETCH (2) (4-PC TOTAL)
215	1184	YEOMAN CREAM BASE F & SUGAR NO LID HDL C HAWTHORNE H (1-SET); 1229 OCTAGON MINT HAWTHORNE (1); MAYO MOONGLEAM (1); 1252 TWIST MINT FLAMINGO H (1) (5-PC TOTAL)
216	417	DOUBLE RIB & PANEL OYSTER COCKTAIL (1); 1225 PLAIN BAND HANDLELESS CUSTARD B (1); 1506 PROVINCIAL COCKTAIL (1); 407 COARSE RIB MUSTARD NO LID AMBER STAIN H (1); 433 GREEK KEY ICE TUB INDV H RIM F (1); 5019 WAVERLY CHAMPAGNE (1) (6-PC TOTAL)
217	1255	PINEAPPLE & FAN CREAM B & SUGAR HOTEL WORN GOLD EMERALD (1-SET)
218	355	QUATOR MINT FTD MOONGLEAM H (1); 1242 FINGER BOWL MOONGLEAM H (1)
219	305	PUNTY & DIAMOND POINT OVAL 11 ½"
220	406	COARSE RIB NAPPY 5" H (2); PLATE 11" H (1); PLATE 6" H (5); PLATE 9" H (1) (9-PC TOTAL)
221	9	GIBSON GIRL FLORAL BOWL 8" FLAMINGO H (1); 407 COARSE RIB PLATE 7" FLAMINGO H (1); 1225 RIDGE & STAR PLATE FLAMINGO H (1) (3-PC TOTAL)
222	1295	BEAD SWAG GOBLET SOUV "BRADENVILLE, PA" CUSTARD f's
223	3380	OLD DOMINION WINE SAHARA H (1); WINE W/ 447 EMPRESS ETCH H (1); PARFAIT W/ 447 EMPRESS ETCH H (1); 1E92 OMEGA JUICE FTD W/ 1098 STARFLOWER CUT PAPER LABEL H (2) (5-PC TOTAL)
224	1509	QUEEN ANN CUP H (5); 1540 LARIAT PUNCH CUP H (12); 1454 DIAMOND POINT ASHTRAY (1) INDV JELLY H (1) (19-PC TOTAL)
225	1224	HEXAGON SIX PLATE 13" FLAMINGO (1)
226	1486	COLEPORT BAR H (11)
227	1405	IPSWICH CANDLEVASE W/ INSERT H (PR)
228	3305	VIOLA CORDIAL W/ 163 MONTICELLO ETCH
229	1632	LODESTAR MAYO DAWN H
230	300	PEERLESS TOOTHPICK (2)
231	1401	EMPRESS COMPORT RND SAHARA H (1); 1506 PROVINCIAL VASE 4" FLARED (1)
232	3362	CHARTER OAK COMPORT LO MOONGLEAM H
233	45	FOOTED GIBSON GIRL COMPORT MOONGLEAM H (1); 1184 YEOMAN FLORAL BOWL 9 ½" HEXAGON MOONGLEAM H (1)
234	1225	PLAIN BAND JELLY W/ LID FTD
235		METAL EPERGNE SET W/ #6 VASE (1); 341 OLD WILLIAMSBURG NAPPY 4" H (4)
236	1184	YEOMAN SAUCER FOR DEMITASSE FLAMINGO H (8); UNDERPLATE FOR CREAM SOUP FLAMINGO (6) (14-PC TOTAL)
237		PARTS BOX OF MISC PRISMS; EPERGNETTE FITTERS; FERRULES
238		PARTS BOX OF MISC METAL & GLASS SHAKER LIDS
239		PARTS BOX OF MISC STOPPERS, SOME HEISEY
240		PARTS BOX OF MISC BOBECHES & PRISMS: 341 OLD WILLIAMSBURG (3); 4044 NEW ERA (3); 1513 BAROQUE (2); 1503 CRYSTOLITE (2) (10-PC TOTAL)
241	7	SALT SHAKER LID ONLY FLAMINGO (2); 4 SALT SHAKER LID ONLY FLAMINGO (2) (4-PC TOTAL)
242	1567	PLANTATION MARMALADE LID ONLY (1); CANDY LID ONLY W/ 516 PLANTATION IVY ETCH (1)
243	1183	REVERE LID FOR FTD PRESERVE W/ 679 WINDSOR CUT H (1); 305 PUNTY & DIAMOND POINT SCENT BOTTLE NO LID (1); 417 DOUBLE RIB & PANEL MUSTARD LID ONLY (1); HEISEY MARMALADE LID ONLY (1) (4-PC TOTAL)
244	433	GREEK KEY SHERBET 4-OZ H (11); SHERBET 4-OZ CUPPED H (6); PLATE 4 ½" H (2); PLATE 5" H (2); PLATE 5 ½" H (2) (23-PC TOTAL)
245	4225	COBEL COCKTAIL SHAKER 1-QT W/ 467 TALLY HO ETCH (1); 4002 AQUA CALIENTE COCKTAIL W/ 467 TALLY HO ETCH (6); COCKTAIL W/ 467 TALLY HO ETCH MONO "LLK" (1) (8-PC TOTAL)
246	473	NARROW FLUTE W/ RIM PICKLE-OLIVE W/ GOLD & ENAMEL DÉCOR H
247	49	YORKSHIRE SALT & PEPPER MOONGLEAM FT CLOUDY (1-SET)
248	433	GREEK KEY PUNCH BOWL CUPPED H (1); BASE (1)

249	4225	COBEL COCKTAIL SHAKER 1-QT W/ UNK CUT
250	365	OLD QUEEN ANNE NAPPY 9" H F
251	485	HEXAGON STEM COLOGNE NO STOPPER 1-3/4 OZ W/ 730 CORNFLOWER CUT H (1); COLOGNE BROKEN DAUBER 1-OZ GOLD DÉCOR H (1)
252	341	PURITAN ICE TUB H
253	1519	WAVERLY C'STICK 2-LITE W/ 947 ENCHANTRESS CUT (PR)
254	1415	TWENTIETH CENTURY SODA 9-OZ FTD DAWN PAPER LABEL
255	1486	COLEPORT TUMBLER DAWN H
256	1565	LEAF JELLY DAWN H (1); 1951 CABOCHON RELISH 9" 3-PRT DAWN H (1) (2-PC TOTAL)
257	1541	ATHENA C'STICK 2-LITE (PR); 1540 LARIAT C'STICK 2-LITE (PR)
258	4044	NEW ERA CANDELABRA 2-LITE SUN PURPLE (PR)
259	1506	PROVINCIAL C'STICK 2-LITE (PR)
260	354	WIDE FLAT PANEL COLOGNE PURPLE STAIN H
261	1280	WINGED SCROLL NAPPY 8" WORN GOLD DÉCOR EMERALD
262	1280	WINGED SCROLL OIL EMERALD (1); OIL WORN GOLD EMERALD (1)
263	1255	PINEAPPLE & FAN OIL GOLD DÉCOR EMERALD
264	1255	PINEAPPLE & FAN VASE 6" WORN GOLD EMERALD
265	353	MEDIUM FLAT PANEL COLOGNE W/ UNK CUT
266	485	HEXAGON STEM COLOGNE 3 1/2-OZ BROKEN DAUBER (1); COLOGNE 3 1/2-OZ W/ UNK CUT (1) DAUBER R
267	486	HEXAGON STEM COLOGNE 3 1/2-OZ W/ UNK CUT
268	6091	CABOCHON CORDIAL (2); CORDIAL W/ 1072 SOUTHWIND CUT (2) f-1 (4-PC TOTAL)
269	406	COARSE RIB CREAM & SUGAR W/ LID FLAMINGO H (2); 354 WIDE FLAT PANEL NUT FLAMINGO H (4); 1193 INSIDE SCALLOP CONSERVE FLAMINGO H (1) (7-PC TOTAL)
270	315	PANELED CANE JELLY FTD H (1); TOOTHPICK WORN GOLD (1); TOOTHPICK H (1) (3-PC TOTAL)
271	354	WIDE FLAT PANEL SOAP DISH H RIM f's
272	305	PUNTY & DIAMOND POINT SCENT BOTTLE
273	1951A	ELEPHANT MUG H
274	2401	OAKWOOD SODA 12-OZ W/ 467 TALLY HO ETCH (1); 3405 ALIBI COCKTAIL W/ 467 TALLY HO ETCH (1)
275	4085	KOHINOOR CORDIAL W/ 493 CORONATION ETCH
276	3316	BILTMORE NUT MOONGLEAM FT
277	465	RECESSED PANEL CANDY W/ LID 1/4-LB H
278	1280	WINGED SCROLL PIN TRAY EMERALD
279	3362	CHARTER OAK COMFORT LO MOONGLEAM H
280	461	BANDED PICKET BASKET FLAMINGO H
281	341	PURITAN BON BONNIERE CUPPED STEM R
282	1229	OCTAGON SANDWICH PLATE 12" HAWTHORNE
283	1186	YEOMAN PUFF BOX NO INSERT D.O. FLAMINGO H
284	10	MUDDLER (2)
285	1469	RIDGELEIGH COASTER ZIRCON (1); 1503 CRYSTOLITE COASTER (1)
286	365	OLD QUEEN ANNE TOOTHPICK H
287	1184	YEOMAN OIL W/ STOPPER 4-OZ MOONGLEAM (1); 473 NARROW FLUTE W/ RIM OIL W/ #6 STOPPER 6-OZ H (1)
288	1201	FANDANGO JELLY FTD SHALLOW (1); TOOTHPICK (1)
289	1447	ROCOCO BONBON H f (1); 356 WHITE OWL ASHTRAY H F (1)
290	1401	EMPRESS PLATE 10 1/2" SQ SAHARA H
291	1252	TWIST PLATE 9" MOONGLEAM H (1); SALT SHAKER FTD GLASS TOP H (1)
292	4225	COBEL COCKTAIL SHAKER 1-QT W/ 980 MOONGLO CUT
293	16	SUSANNEH PUFF BOX W/ LID W/ 9034 ST. LUKE'S COMMANDERY ETCH H RIM f
294	1184	YEOMAN CANDLEVASE NO INSERT W/ HAWKES-LIKE CUT H
295	1205	FANCY LOOP OIL W/ STOPPER (1); 1205 1/2 FANCY LOOP SALT SHAKER WORN GOLD (1)
296	1519	WAVERLY BUTTER W/ LID W/ 515 HEISEY ROSE ETCH
297	393	NARROW FLUTE WINE W/ HAWKES-LIKE CUT H (4)
298	1170	PLEAT & PANEL BOUILLON W/ UNDERPLATE H (8-SETS) (16-PC TOTAL)
299	393	NARROW FLUTE PUNCH BOWL CUPPED H (1); BASE (1); PUNCH CUP (13) (15-PC TOTAL)
300	1186	YEOMAN CREAM & SUGAR OVAL FTD W/ UNK CUT H (1-SET); CREAM & SUGAR OVAL FTD W/ UNK CUT H (1-SET) (4-PC TOTAL)
301	351	PRISCILLA VASE 4 1/2" STRAIGHT H (1); VASE 4" H (1)
302	1186	YEOMAN PRESERVE 6" EACH W/ DIFF UNK CUT H (2)
303	3368	ALBEMARLE CHAMPAGNE W/ HAWKES-LIKE CUT (3)
304	500	OCTAGON VARIETY TRAY W/ 855 FUCHSIA CUT H
305	352	FLAT PANEL CRUSHED FRUIT 2-QT H (2)
306	433	GREEK KEY JUG 3-PINT H
307	517	DANIEL TUMBLE UP JUG W/ 197 DANIEL TUMBLER W/ UNK CUT H

308 1225 RIDGE & STAR PLATE 7" W/ UNK CUT H (8)
309 3350 WABASH TUMBLER FTD W/ 439 PIED PIPER ETCH H (6)
310 1540 LARIAT CORDIAL 1-LOOP W/ 980 MOONGLO CUT H (6)
311 1540 LARIAT CREAM & SUGAR W/ 980 MOONGLO CUT H (1-SET); RELISH 8" RND 4-PRT W/ 980 MOONGLO CUT (1)
(3-PC TOTAL)
312 1540 LARIAT CELERY 12" W/ 980 MOONGLO CUT (1); CREAM & SUGAR W/ 980 MOONGLO CUT H (1-SET); RELISH OBLONG
3-PRT W/ 980 MOONGLO CUT H (1) (4-PC TOTAL)
313 1540 LARIAT CUP H (12); SAUCER (14) (26-PC TOTAL)
314 4044 NEW ERA CANDELABRUM 2-LITE MATTE FINISH (1-ONLY); CANDELABRUM 2-LITE W/ 5010 VANITY FAIR ETCH (1-ONLY)
315 463 BONNET BASKET W/ UNK CUT (1); BASKET W/ UNK CUT RIM R (1)
316 5 PATRICIAN CANDELABRUM BASE ONLY 11" (1); C'STICK 7" W/ UNK CUT H (1-ONLY)
317 122 ZIG ZAG C'STICK H (PR)
318 355 QUATOR CREAM & SUGAR W/ ART DECO ETCH H (1-SET)
319 407 COARSE RIB PRESERVE H
320 520 INNOVATION CANDLE LAMP H SUN PURPLE
321 1401 EMPRESS CREAM SOUP W/ UNDERPLATE (9-SETS) (18-PC TOTAL)
322 353 MEDIUM FLAT PANEL VASE 15" H (2)
323 1509 QUEEN ANN COMPORT OVAL W/ UNK CUT (2)
324 393 1/2 NARROW FLUTE NAPPY 4 1/2" (12); 393 NARROW FLUTE PLATE 4 1/2" (8); NAPPY 4 1/2" SHALLOW (15) (35-PC TOTAL)
325 335 PRINCE OF WALES PLUMES TOOTHPICK WORN GOLD (1); 343 SUNBURST TOOTHPICK H (1); 1235 BEADED PANEL &
SUNBURST TOOTHPICK WORN GOLD (1) (3-PC TOTAL)
326 1519 WAVERLY COMPORT OVAL NUT W/ 965 NARCISSUS CUT
327 1401 EMPRESS ICE BUCKET D.F. SILVER DÉCOR
328 325 PILLOWS JELLY FTD H
329 1401 EMPRESS COMPORT RND FLAMINGO H
330 1401 EMPRESS COMPORT SQ
331 1401 EMPRESS COMPOTIER D.F. H
332 1541 SCOTTY DOG (1); 1557 ROOSTER VASE (1); 1522 COLT STANDING (1) (3-PC TOTAL)
333 1170 PLEAT & PANEL COMPOTIER SILVER DÉCOR W/ UNK CUT FLAMINGO (1); PLATE 8" FLAMINGO W/ PINK FLAMINGO
LABEL (1)
334 1205 FANCY LOOP PICKLE OVAL WORN GOLD EMERALD
335 2355 CLOVERLEAF BAR (1); 3481 GLENFORD COCKTAIL HAWTHORNE RIM f (1); 4052 NATIONAL BAR W/ 980 MOONGLO CUT
RIM f (1) (3-PC TOTAL)
336 393 NARROW FLUTE CREAM & SUGAR INDV H (1-SET); 1220 PUNTY BAND SALT INDV RIM R (1); 1489 PURITAN BITTERS
BOTTLE NO TUBE W/ UNK CUT (1); 353 MEDIUM FLAT PANEL COMPORT 4 1/2" H (1) (5-PC TOTAL)
337 300 PEERLESS PUNCH BOWL (1); BASE (1); 300 1/2 PEERLESS PUNCH CUP (10) (12-PC TOTAL)
338 300 1/2 PEERLESS VASE 10" H
339 1295 BEAD SWAG TANKARD POPPY & GOLD DÉCOR OPAL (1); TUMBLER POPPY & GOLD DÉCOR OPAL BASE f-1 (6)
(7-PC TOTAL)
340 393 NARROW FLUTE ORANGE JUICE H (16)
341 188 DOUBLE HARTMAN TUMBLER H RIM f
342 1540 LARIAT MAYO W/ 980 MOONGLO CUT H (1); SANDWICH PLATE 14" W/ 980 MOONGLO CUT (1)
343 1540 LARIAT GARDENIA BOWL W/ UNK CUT (2); SANDWICH PLATE 14" W/ UNK CUT (1)
344 1540 LARIAT GOBLET W/ 980 MOONGLO CUT H (7)
345 5040 LARIAT GOBLET W/ 980 MOONGLO CUT H (5)
346 1540 LARIAT ICE TEA FTD W/ 980 MOONGLO CUT BASE f-1 (9)
347 355 QUATOR CREAM & SUGAR W/ UNK CUT H (1-SET)
348 355 QUATOR NAPPY 7" H (1); NAPPY 4" H (3); NAPPY 4 1/2" H (7) (11-PC TOTAL)
349 4044 NEW ERA RELISH 12" 3-PRT RIM f
350 361 IRWIN CIG HOLDER W/ ASHTRAY SILVER DÉCOR H
351 1519 WAVERLY TORTE PLATE 14" W/ 1003 IVY CUT
352 458 PICKET BASKET 8" W/ UNK CUT H
353 458 PICKET BASKET 8" W/ 350 MUMS ETCH H
354 465 RECESSED PANEL BASKET 7" W/ UNK CUT H
355 150 BANDED FLUTE PUNCH BOWL (1); BASE H (1); 393 NARROW FLUTE PUNCH CUP H (15) (17-PC TOTAL)
356 393 NARROW FLUTE TUMBLER H (8)
357 1472 PARALLEL QUARTER FLORAL BOWL W/ 492 KING HOUSE ETCH H
358 240 WATER BAR H
359 4182 THIN PLATE 7" W/ 445 TROJAN ETCH
360 465 RECESSED PANEL CANDY W/ SILVER LID 1/2-LB W/ UNK CUT H (1); CANDY W/ SILVER LID MONO "F" 1/2-LB W/ UNK CUT
H (1)

361	1483	STANHOPE RELISH 12" NO KNOBS 4-PRT W/ 494 SWINGTIME ETCH (1); 1231 RIBBED OCTAGON CELERY 12" W/ UNK CUT H (1); 1189 YEOMAN CELERY 12" GOLD DÉCOR FLAMINGO H (1) (3-PC TOTAL)
362	445	FINE TOOTH NAPPY 7 ½" SHALLOW W/ UNK CUT H (1); 1127 FINE TOOTH PLATE 7" W/ UNK CUT H (1); PLATE 5" H (2) (4-PC TOTAL)
363	4044	NEW ERA CANDELABRA MISSING 9 PRISMS (PR)
364	354	WIDE FLAT PANEL DOMINO SUGAR BASE f (1); 473 NARROW FLUTE W/ RIM DICE SUGAR H (1) W/ CREAM IRIDIZED H (1)
365	433	GREEK KEY PLATE 4 ½" H (10)
366	341	PURITAN NAPPY 4 ½" SHALLOW H (8); 1150 COLONIAL STAR PLATE 4 ½" H (3); 351 PRISCILLA GOBLET H (1); 300 PEERLESS SHERBET H (1); 1248 KELLY'S SHERBET H (1) (14-PC TOTAL)
367	300	PEERLESS SCHOEPEN 6-OZ H (8); 602 MARSA WATER BAR 4-OZ H (1); SODA 12-OZ H (1) (10-PC TOTAL)
368	310	RING BAND TUMBLER GOLD DÉCOR CUSTARD H
369	2	GOOSE WINGS HALF
370	1180	DEBRA CREAM & SUGAR NO LID W/ UNK CUT (1-SET)
371	150	BANDED FLUTE TRAY 13" H
372	6091	CABOCHON CHAMPAGNE (6)
373	4091	KIMBERLY CHAMPAGNE H (6)
374	465	RECESSED PANEL CANDY JAR W/ LID 1-LB W/ UNK CUT H (1); CANDY JAR W/ LID ½-LB W/ UNK CUT H (1); CANDY JAR NO LID ½-LB W/ UNK CUT H (1) (3-PC TOTAL)
375	300	PEERLESS CHAMPAGNE FLUTE FLARED H (1); 1506 PROVINCIAL JUICE FTD H (4); 3350 WABASH OYSTER COCKTAIL W/ 445 FRONTENAC ETCH (5-PC TOTAL)
376	343	SUNBURST PLATE 7" OVAL H (1); 150 BANDED FLUTE SUGAR TABLE NO LID H (1); 355 QUATOR SUGAR W/ UNK CUT H R (1); 363 LARKIN SYRUP 7-OZ W/ UNK CUT H HDL C (1); 1519 WAVERLY EPERGNETTE 6" SHALLOW H (1); 341 OLD WILLIAMSBURG EPERGNETTE H (5) (10-PC TOTAL)
377	451	CROSS LINED FLUTE CELERY 12" H (1); 393 NARROW FLUTE CELERY 9" H (1); 1183 REVERE CELERY 12" W/ UNK CUT H (1); 1252 TWIST CELERY 12" W/ UNK CUT H (1); 1567 PLANTATION CELERY 12" (1) (5-PC TOTAL)
378	475	NARROW FLUTE W/ RIM SALTED NUT MOONGLEAM H (2)
379	1170	PLEAT & PANEL BOUILLON W/ UNK CUT MONO "EMW" H (4)
380	1186	YEOMAN LEMON DISH OVAL W/ UNK CUT (4)
381	411	TUDOR CHEESE PLATE W/ UNK CUT H (2); BONBON W/ UNK CUT H (1); CHEESE PLATE W/ UNK CUT AMBER STAIN H (1) (4-PC TOTAL)
382	1229	OCTAGON JELLY W/ UNK ELABORATE CUT (1); 393 NARROW FLUTE PLATE 5" GOLD & ENAMEL DÉCOR H (1)
383	9	GIBSON GIRL FLORAL BOWL 8" W/ ENAMEL DÉCOR H (1); 484 EDITH FLORAL BOWL 10" W/ UNK CUT H (1)



2024 SPRING BENEFIT AUCTION LIST

DAY #1: Sunday, April 7 @ 2 pm ET -Online Only-

121 Lots featuring HEISEY REPRODUCTIONS

The HCA Board of Directors has embarked on a fundraising campaign to replace the HVAC systems at the Museum. Special items have been curated from the Museum hold-back and feasibility inventory to be included in this auction. You will find unusual items, "samples", and one-of-a-kind whimsies! Those items are Lots #62 through #85 and are indicated with an "H". All proceeds from the sale of these items are earmarked for the HVAC fund. Please give these items your special attention!

Abbreviations: ALIG = Arthur Lorch Imperial Glass; CG = Collector's Guild; D = Dalzell; EWR = E. Ward Russell; F = Fenton; HBI = Heisey by Imperial; I = Imperial; IG = Imperial Glass; LIG = Lenox Imperial Glass; M = Mosser; NI = New Imperial

1	1506	PROVINCIAL CANDY W/ LID VERDE GREEN HBI
2	1591	STORYBOOK MUG ORIGINAL LABEL HBI LIG (3)
3	1	MINUET GIRL CARAMEL SLAG HBI
4	1506	PROVINCIAL GOBLET 10-OZ HEATHER HBI (6)
5	1522	COLT STANDING HORIZON BLUE FOR HCA BY IMPERIAL 1979 IG (1); 1529 COLT BALKING HORIZON BLUE FOR HCA BY IMPERIAL 1979 IG (1) (2-PC TOTAL)
6	1454	DIAMOND POINT MATCH HOLDER AURORA JEWELS COBALT BLUE CARNIVAL HBI IG
7		CUP PLATE PURPLE IN BOX "KING HOUSE" MOTIF BY PAIRPOINT (1); CUP PLATE IN BOX "GOODNESS GRACIOUS" MOTIF BY PAIRPOINT (1); CUP PLATE TURQUOISE IN BOX "GOODNESS GRACIOUS" MOTIF BY PAIRPOINT (1) (3-PC TOTAL)
8	1	GOOSE WINGS DOWN LAVENDER ICE FOR HCA BY DALZELL 1993 HCA-93-D (1); 2 GOOSE WINGS HALF LAVENDER ICE FOR HCA BY DALZELL 1993 HCA-93-D (1)

9	1469	RIDGELEIGH ASHTRAY 2" HEATHER HB
10	1	ROOSTER MILK GLASS HBI IG
11	1522	COLT STANDING HORIZON BLUE FOR HCA BY IMPERIAL 1979 IG (1); 1529 COLT BALKING HORIZON BLUE FOR HCA BY IMPERIAL 1979 IG (1) (2-PC TOTAL)
12	3	ELEPHANT SMALL RUBY FOR HCA BY DALZELL 1996 HCA-96-D (1); 1 DONKEY COBALT FOR HCA BY DALZELL 1996 HCA-96-D (1) (2-PC TOTAL)
D	13	1 FLYING MARE COBALT FOR HCA BY DALZELL 1996 HCA-D
D	14	50 CABOCHON SIGN ON BUSTOFF LAVENDER ICE FOR HCA BY DALZELL 1998 HCA-98-D
D	15	20 WOOD DUCK CARAMEL SLAG HBI IG
D	16	2 CLYDESDALE COBALT FOR HCA BY MOSSER 1999 LONGABERGER EXCLUSIVE HCA-M
D	17	104 GAZELLE (1); 1 FILLY HEAD FORWARD (1); 1 GIRAFFE HEAD BACK (1); 2 HEN (1); 1522 COLT STANDING (1); 1529 COLT BALKING (1); 1 AIREDALE (1); 103 TIGER PAPERWEIGHT (1); 1 SOW (1); 1554 FISH BOOKEND (1); 1538 RABBIT PAPERWEIGHT (1); 5 CYGNET (1); 22 WOOD DUCKLING STANDING (1) ALL ROSALENE MADE FOR HCA BY FENTON #180 OF 450 (13-PC TOTAL)
D	18	121 LADY IN CURLS STOPPER AMBER
D	19	2 CLYDESDALE HUNTER GREEN FOR HCA BY MOSSER LONGABERGER EXCLUSIVE W/ LEAF 2000 HCA-M-00
D	20	SIGN CERAMIC "THE NATIONAL HEISEY COLLECTORS CLUB" SEPTEMBER 1969/1970 #294
D	21	1 FLYING MARE AMBER HBI NI (1)
	22	5024 OXFORD CORDIAL W/ 507 ORCHID ETCH FOR HCA BY IMPERIAL 1978 HCA-1978 (1); WOOD MODEL "KING HOUSE" FOR HCA BY CAT'S MEOW 1997 (1); WOOD MODEL "HEISEY FACTORY" FOR HCA BY CAT'S MEOW 1995 (1) (3-PC TOTAL)
	23	50 CABOCHON SIGN COBALT FOR HCA BY DALZELL HCA-95-D (1); 1 DIAMOND SIGN "HEISEY'S" COBALT FOR HCA BY DALZELL HCA (1) (2-PC TOTAL)
	24	50 CABOCHON SIGN LAVENDER ICE FOR HCA BY DALZELL 1995 HCA-95-D (1); 1 DIAMOND SIGN "HEISEY'S" ROSALENE FOR HCA BY FENTON 1992 HCA (1) (2-PC TOTAL)
	25	1 MINUET GIRL VASELINE FOR HCA BY MOSSER 1998 HCA
	26	1 DIAMOND SIGN "HEISEY'S" COBALT FOR HCA BY DALZELL 1985 HCA
	27	PAPERWEIGHT EGG-SHAPE CRYSTAL ENCASED COBALT DIAMOND H ETCH "NWH 2002 #1 OF 45"
	28	1601 SLEEPING FOX ASHTRAY COBALT W/ SILVER FOX "NATIONAL HEISEY GLASS MUSEUM CELEBRATING 25 YEARS" FOR HCA BY MOSSER 1999
	29	2 TRIANGLE SIGN FLAT CRYSTAL FOR HCA BY MOSSER 2003 HCA-2003-M
	30	PAPERWEIGHT HOCKEY PUCK SHAPE FOR HCA BY DALZELL 1996 "A.H. HEISEY AND COMPANY 100TH ANNIVERSARY"
	31	1591 STORYBOOK MUG ULTRA BLUE HBI 1976 IG EWR
	32	1 DIAMOND SIGN "HEISEY'S" COBALT FOR HCA BY DALZELL 1985 HCA
	33	1601 SLEEPING FOX ASHTRAY COBALT W/ SILVER FOX "NATIONAL HEISEY GLASS MUSEUM CELEBRATING 25 YEARS" FOR HCA BY MOSSER 1999
	34	103 TIGER PAPERWEIGHT BLACK HBI ALIG
	35	103 TIGER PAPERWEIGHT IMPERIAL JADE HBI LIG
	36	1519 WAVERLY TRINKET BOX W/ LID LION FINIAL AMBER HBI CG
	37	1 BULL COBALT FOR HCA BY DALZELL HCA-D
	38	2 BUNNY HEAD DOWN ULTRA BLUE HBI ALIG (1); 3 BUNNY HEAD UP ULTRA BLUE PAPER LABEL ALIG (1) (2-PC TOTAL)
	39	2 CLYDESDALE AMBER HBI ALIG
	40	2 CLYDESDALE COBALT MADE FOR HCA BY MOSSER HCA-1999-M LONGABERGER LEAF
	41	5 CYGNET RUBY FOR HCA BY DALZELL 1989 HCA-D (1); 5 CYGNET BLACK HBI PAPER LABEL (1) (2-PC TOTAL)
	42	1 DONKEY RUBY FOR HCA BY MOSSER HCA-M-00
	43	1 DONKEY COBALT FOR HCA BY DALZELL HCA-96-D
	44	1 ELEPHANT LARGE AMBER HBI H
	45	3 ELEPHANT SMALL COBALT FOR HCA BY MOSSER 2000 HCA-M-00
	46	1 SHOW HORSE AMBER HBI NI
	47	2 FILLY HEAD BACK AMBER HBI ALIG
	48	1 FLYING MARE COBALT FOR HCA BY DALZELL 1996 HCA-D
	49	50 CABOCHON SIGN COBALT FOR HCA BY DALZELL HCA-95-D
	50	10 MALLARD WINGS DOWN AMBER HBI IG (1); 11 MALLARD WINGS HALF AMBER PAPER LABEL HBI IG (1); 12 MALLARD WINGS UP PAPER LABEL AMBER HBI IG (1) (3-PC SET)
	51	1 RABBIT LAVENDER ICE FOR HCA BY DALZELL 1994 HCA-94-D
	52	1 REARING HORSE BOOKEND RUBY FOR HCA BY DALZELL HCA-D
	53	1 ROOSTER AMBER HBI IG
	54	1541 SCOTTY DOG MILK GLASS HBI IG
	55	1541 SCOTTY DOG BLACK HBI ALIG
	56	1 FILLY HEAD FORWARD SALMON HBI ALIG
	57	1 SOW AMBER PAPER LABEL HBI ALIG
	58	103 TIGER PAPERWEIGHT YELLOW MIST FOR HCA BY DALZELL 1997 HCA-97-D
	59	1 SOW LAVENDER ICE #267 OF 275 FOR HCA BY DALZELL HCA-95-D

60	1553	SPARROW COBALT FOR HCA BY DALZELL HCA-D-94
61	1553	SPARROW COBALT FOR HCA BY DALZELL HCA-D-94
H 62	1	DONKEY RUBY & WHITE SLAG FOR HCA BY MOSSER 2004 HCA-M-04
H 63	1	ELEPHANT LARGE HORIZON BLUE HBI PAPER LABEL
H 64	1	FLYING MARE ICE BLUE FOR HCA BY DALZELL 2000 MARKED "SAMPLE" LEANING
H 65	101	TROPICAL FISH YELLOW MIST FOR HCA BY DALZELL 1997 HCA-97-D
H 66	209	GOLDEN STATE ARCHES TUMBLER VASELINE FOR HCA BY DALZELL 1999 HCA-99-D
H 67	1447	ROCOCO BASKET BLUE IRIDIZED FOR HCA BY FENTON 1992-F
H 68	1506	PROVINCIAL CREAM & SUGAR INDV LAVENDER ICE FOR HCA BY DALZELL 1994 (1-SET)
H 69	1509	QUEEN ANN PITCHER EMERALD HBI CG
H 70	1519	WAVERLY FLORAL BOWL 11" 3-FTD SEAHORSE FT NUT BROWN HBI ALIG
H 71	1550	DOLPHIN C'STICK COBALT FOR HCA BY DALZELL 1995 HCA-95-D (PR)
H 72	1567	PLANTATION VASE 9" BELLED BASE LIGHT BLUE FROSTED LEANING
H 73	4045	HERON BALL VASE 9" GREEN HBI PAPER LABEL
H 74	1511	TOUJOURS APPLE MARMALADE W/ LID LAVENDER ICE FOR HCA BY DALZELL
H 75	1	REARING HORSE BOOKEND RUBY FOR HCA BY DALZELL HCA-D
H 76	1	RABBIT ULTRA BLUE HBI IG
H 77	2	HEN CHARCOAL SATIN FINISH HBI IG
H 78	5	SHOWHORSE HEAD DOWN ROSALENE FOR HCA BY FENTON MARKED "SAMPLE"
H 79	1540	PLUG HORSE HEAD TURNED FRENCH OPALESCENT FOR HCA BY FENTON 1987 HCA-87-F
H 80	1540	PLUG HORSE TEAL IRIDIZED FOR HCA BY FENTON 1989 HCA-89
H 81	1540	PLUG HORSE RUBY FOR HCA BY IMPERIAL HCA-83-IG
H 82	103	TIGER PAPERWEIGHT RUBY & WHITE SLAG FOR HCA BY MOSSER 2005 HCA-05-M
H 83	1503	CRYSTOLITE SWAN MASTER NUT VASELINE FOR HCA BY MOSSER 1999 HCA-98-M
H 84	1541	SCOTTY DOG ROSALENE FROSTED FOR HCA BY FENTON MARKED "SAMPLE"
H 85	1	GIRAFFE HEAD VARIANT AMBER HBI ALIG
86	1554	FISH BOOKEND PLUM-STONE FROSTED FOR HCA BY FENTON 1992
87	1	ELEPHANT LARGE FOR HCA BY FENTON 1988 HCA-88 (1); 2 ELEPHANT MEDIUM FOR HCA BY FENTON 1988 HCA-88 (1); 3 ELEPHANT SMALL FOR HCA BY FENTON 1987 HCA-87 (1) ALL FRENCH OPALESCENT (3-PC SET)
88	1	GOOSE WINGS DOWN LAVENDER ICE FOR HCA BY DALZELL 1993 HCA-93-D #126 OF 450 (1); 2 GOOSE WINGS HALF LAVENDER ICE FOR HCA BY DALZELL 1993 HCA-93-D #126 OF 450 (1); 3 GOOSE WINGS UP LAVENDER ICE FOR HCA BY DALZELL 1993 HCA-93-D (1) (3-PC TOTAL)
89	1	DONKEY SEA MIST FOR HCA BY FENTON 1992 HCA-92-F
90	1460	FLAME TUMBLER VASELINE OPALESCENT FOR HCA BY MOSSER 2008 HCA-M-08
91	1435	ASHTRAY INDV W/ 467 TALLY HO ETCH MONO "HCA" FOR HCA BY IMPERIAL 1981 (1); 3 PIGLET SITTING RUBY HBI (1); 2 PIGLET STANDING RUBY HBI (1); 3 PIGLET SITTING AMBER HBI (1); 2 PIGLET STANDING AMBER HBI (1); 2 PIGLET STANDING COBALT HBI (2) (7-PC TOTAL)
92	1	DONKEY FRENCH OPALESCENT FOR HCA BY FENTON 1988 HCA-88
93	341	OLD WILLIAMSBURG PITCHER 1-QT HBI
94	341	OLD WILLIAMSBURG RELISH 10" 3-PRT HBI
95	11	MALLARD WINGS HALF CARAMEL SLAG HBI PAPER LABEL
96	50	CABOCHON SIGN WILLOW BLUE FOR HCA BY MOSSER 2001 HCA-M-2001
97	1447	ROCOCO PLATES "LAND OF LEGEND" FOR HCA BY IMPERIAL: CRYSTAL (1); ULTRA BLUE (1); NUT BROWN (1); VERDE GREEN (1); AMBERGLO (1) (5-PC TOTAL)
98	1401	EMPRESS PLATE 4 1/2" W/ 9012 VICTORY ETCH FOR HCA BY DALZELL "HCA 1985 MOULDS"
99	1460	FLAME TUMBLER GREEN OPALESCENT FOR HCA BY MOSSER 2008 HCA-M-08 (1); TUMBLER BLUE OPALESCENT FOR HCA BY MOSSER 2008 HCA-M-08 (1) (2-PC TOTAL)
100	1405	IPSWICH CANDY W/ LID AMBER HBI
101	1447	ROCOCO PLATE "LAND OF LEGEND" FOR HCA BY IMPERIAL 1976 IG
102	50	CABOCHON SIGN LAVENDER ICE FOR HCA BY DALZELL 1995 HCA-95-D
103	1506	PROVINCIAL GARDENIA BOWL 11 1/2" VERDE GREEN HBI
104	1506	PROVINCIAL TORTE PLATE 13 1/2" HEATHER HBI
105	1591	STORYBOOK MUG HORIZON BLUE CARNIVAL FOR HCA BY IMPERIAL 1980 LIG (1); MUG MEADOW GREEN CARNIVAL FOR HCA BY IMPERIAL 1980 LIG (1) (2-PC TOTAL)
106	11	MALLARD WINGS HALF AMBER HBI IG
107	1541	SCOTTY DOG MILK GLASS HBI IG
108	341	OLD WILLIAMSBURG SHERBET HBI PAPER LABEL
109		WOOD MODEL "KING HOUSE" FOR HCA BY CAT'S MEOW (1); WOOD MODEL "HEISEY FACTORY" FOR HCA BY CAT'S MEOW (1) (2-PC TOTAL)
110	1413	CATHEDRAL VASE PINK HBI CG
111	20	WOOD DUCK CARAMEL SLAG HBI
112	2	HEN MILK GLASS HBI IG (1); 4 CHICK HEAD DOWN MILK GLASS HBI (3) (4-PC TOTAL)

113	2	ELEPHANT MEDIUM CARAMEL SLAG HBI IG PAPER LABEL
114	103	TIGER PAPERWEIGHT IMPERIAL JADE HBI LIG
115	1	DONKEY CARAMEL SLAG HBI IG PAPER LABEL
116	11	MALLARD WINGS HALF AMBER HBI IG (1); 12 MALLARD WINGS UP CARAMEL SLAG HBI IG (1)
117	1540	PLUG HORSE CARAMEL SLAG HBI IG
118	1522	COLT STANDING CARAMEL SLAG HBI
119	1	FILLY HEAD FORWARD HBI ALIG
120	1405	IPSWICH CANDY NO LID AMBER HBI H
121	1506	PROVINCIAL TUMBLER 8-OZ AMBER HBI

2024 SPRING BENEFIT AUCTION LIST

DAY #2 - Friday, April 12 – Lots 1-475

1	465	RECESSED PANEL CANDY JAR W/ LID 1-LB GOLD & PURPLE DÉCOR H
2	1495	FERN C'STICK 2-LITE (1-ONLY); 1503 CRYSTOLITE JELLY 2-HDL 2-PRT H (1); 1000 ISLAND DRESSING CRIMPED H (1); CREAM & SUGAR OVAL H (1-SET); BONBON 2-HDL H (1); MARMALADE W/ LID H (2) (8-PC TOTAL)
3	341	PURITAN JELLY 5" FTD H (1); CREAM & SUGAR FTD H (1-SET); 351 PRISCILLA NUT INDV (1)
4	1540	LARIAT C'STICK 1-LITE (PR); RELISH 2-PT H (1)
5	411	TUDOR JELLY 2-HDL HAWTHORNE H (1); 1229 OCTAGON MINT 2- HDL FLAMINGO (1); NUT INDV FLAMINGO H (2); 1231 RIBBED OCTAGON SAUCER FLAMINGO (1); 527 TAPER SODA 5-OZ FLAMINGO H (2); 479 PETAL CREAM FTD FLAMINGO (1); 4182 THIN PLATE 6" FLAMINGO WEAR (7) (15-PC TOTAL)
6	1201	FANDANGO SUGAR HOTEL WORN GOLD DÉCOR (1); 1205 FANCY LOOP CELERY DIP (2)
7	5012	URN CIG HOLDER W/ 507 ORCHID ETCH H (4); 1401 EMPRESS COFFEE CUP H (2); 1509 QUEEN ANN MINT D.F. W/ 507 ORCHID ETCH (1) (7-PC TOTAL)
8	373	OLD WILLIAMSBURG OYSTER COCKTAIL H (6); 355 QUATOR SUGAR HOTEL H (1); 1184 YEOMAN PRESERVE 6" W/ UNK CUT H (1) (8-PC TOTAL)
9	341	PURITAN CHEESE PLATE 9" H (1); NAPPY 6" H (1); NAPPY 10" OVAL H (1); CELERY 9" H (1); SPOON TRAY H (1) (5-PC TOTAL)
10	1519	WAVERLY MAYO W/ UNDERPLATE (1-SET); #7 LADLE (1) (3-PC TOTAL)
11		CATALOG REPRINT PRESSED WARE CATALOG #212, BLOWN WARE CATALOG NO 17 L-W PROMOTIONS
12	1569	FOOTED DROOP FLORAL BOWL H (1); 468 OCTAGON W/ RIM CELERY 12" WORN GOLD & BLACK PHEASANT & STUMP WHEELING DÉCOR H (1); 1184 YEOMAN PRESERVE 6" W UNK CUT (1); 411 TUDOR BONBON MOONGLEAM H (1) (4-PC TOTAL)
13	1150	COLONIAL STAR PLATE 8 ½" H (8); PLATE 7" H (1); 393 NARROW FLUTE PLATE 4 ½" H (1) (10-PC TOTAL)
14	407	COARSE RIB PLATE 8" H (7); 1223 FLUTED BORDER PLATE 7" H (1); BAKED APPLE H (1) (9-PC TOTAL)
15	465	RECESSED PANEL BASKET 7" H
16	1503	CRYSTOLITE GARDENIA BOWL SQ H CLOUDY (1); MAYO UNDERPLATE 2-HDL WEAR (1); ASHTRAY SQ INDV H (1); CIG BOX W/ LID H (1); 1485 SATURN MAYO H (1); 1469 RIDGELEIGH BRIDGE SUIT ASHTRAY: DIAMOND H (1); ASHTRAY 3" RND DEEP f (1) (7-PC TOTAL)
17	5031	OOH-LA-LA FRENCH DRESSING W/ STOPPER W/ 507 ORCHID ETCH (1); 1519 WAVERLY OIL W/ STOPPER W/ 507 ORCHID ETCH (1); CANDY BOX W/ LID W/ 507 ORCHID ETCH H (1); SANDWICH PLATE 14" WEAR (1); TORTE PLATE W/ 515 HEISEY ROSE ETCH (1); PLATE 10" W/ 515 HEISEY ROSE ETCH (1); CREAM & SUGAR W/ 515 HEISEY ROSE ETCH (1-SET) (8-PC TOTAL)
18	1280	WINGED SCROLL TOOTHPICK WORN GOLD CUSTARD (1); NAPPY 4 ½" CUSTARD (1); PUFF BOX NO LID CUSTARD (1); SPOON TRAY EXCELLENT GOLD DÉCOR CUSTARD (1) (4-PC TOTAL)
19	411	TUDOR GRAPEFRUIT H (1); JELLY 2-HDL MOONGLEAM H (1); LEMON DISH W/ LID H (1); PLATE 7" H (4); BONBON H (1); MAYO H (1); OIL W/ STOPPER (1); MINT 2-HDL H (2); CHEESE 2-HDL W/ UNK CUT H (1); CHEESE 2-HDL H (1); CHEESE 2-HDL HAWTHORNE (1); JELLY FTD GOLD DÉCOR H (1) (16-PC TOTAL)
20	411	TUDOR MUSTARD W/ UNK CUT W/ SILVER PLATE LID & SILVER PLATE SPOON H (1-SET); 417 DOUBLE RIB & PANEL MUSTARD W/ LID H (1); MUSTARD W/ LID FLAMINGO H (1) (3-PC TOTAL)
21	1495	FERN C'STICK 2-LITE (PR); 1509 QUEEN ANN COMFORT OVAL W/ UNK CUT (1)
22	1503	CRYSTOLITE FLORAL BOWL 12" OVAL FTD H (1); ICE BUCKET H (1); RELISH 3-PRT H (1) PUNCH BOWL H (1); PUNCH CUP H (1) (15-PC TOTAL) PLUS PLASTIC HOOKS
23	1185	YEOMAN CELERY 12" HAWTHORNE H (1); CELERY 12" FLAMINGO H (1); CELERY 12" W/ UNK CUT FLAMINGO H (1); CELERY 12" MOONGLEAM H (1) (4-PC TOTAL)
24	1506	PROVINCIAL SODA 12-OZ FTD H (8)
25	1506	PROVINCIAL SALAD BOWL 9" H (1); GOBLET (7) (8-PC TOTAL)
26	1506	PROVINCIAL PLATE 8" (8)

- 27 1506 PROVINCIAL VIOLET VASE H (1); SALT & PEPPER CLOUDY (1-SET); JELLY 2-HDL H (1); CREAM & SUGAR H (1-SET); JELLY 2-PRT H (2); BONBON H (1) (9-PC TOTAL)
- 28 1485 SATURN MARMALADE W/ LID (1); #4 SPOON H (1); OIL W/ STOPPER 3-OZ W/ SILVER OVERLAY (2); SUGAR W/ LID LOOP HDL H (1); CREAM W/ SATELLITE HDL H (1); MUSTARD W/ LID H (1) (7-PC TOTAL)
- 29 1225 PLAIN BAND TABLE SET: BUTTER W/ LID; CREAM & SUGAR; SPOONER (4-PC SET); OIL WRONG STOPPER 4-OZ (1); TOOTHPICK (1) (6-PC TOTAL)
- 30 150 BANDED FLUTE OIL W/ STOPPER 6-OZ (1); OIL W/ STOPPER 4-OZ (1); BAR 3-OZ H (1)
- 31 150 BANDED FLUTE WATER BOTTLE
- 32 1425 VICTORIAN BAR H (8); MARMALADE MADE FROM TUMBLER W/ METAL LID (1); METAL SPOON (1); METAL UNDERPLATE (1); VASE 4" H SUN PURPLE (1); OIL W/ STOPPER (1); CIG BOX 4" W/ LID H (1) (14-PC TOTAL)
- 33 1425 VICTORIAN GOBLET LOW FTD H (6); SODA 12-OZ FTD (1)
- 34 1295 BEAD SWAG GOBLET SOUV "OSWEGO, NY" CUSTARD (1); GOBLET SOUV "ASHLAND, WIS" ROSE DÉCOR CUSTARD (1); WINE SOUV "BASWELL, PA" CUSTARD (1)
- 35 1295 BEAD SWAG TUMBLER GOLD & WORN FLORAL DÉCOR OPAL (6); SUGAR NO LID WORN GOLD & FLORAL DÉCOR OPAL (1); SALT & PEPPER FLORAL DÉCOR OPAL (1-SET)
- 36 1295 BEAD SWAG NAPPY 8" GOLD DÉCOR (1); TUMBLER SOUV "OSKALOOSA" RUBY FLASH (1); TOOTHPICK SOUV "FRANKFORT" RUBY FLASH (1); TUMBLER (1); OIL W/ STOPPER WORN GOLD DÉCOR (1); PUNCH CUP SOUV "ELSIE 1902" RUBY FLASH (1) (6-PC TOTAL)
- 37 1401 EMPRESS GRAPEFRUIT SAHARA H (7); CUP & SAUCER RND SAHARA H (4-SETS) (15-PC TOTAL)
- 38 1401 EMPRESS MINT 2-HDL FLAMINGO H (1); TRIPLEX RELISH 7" FLAMINGO (1)
- 39 1428 WARWICK C'STICK 2-LITE (PR); CIG HOLDER H (4) (6-PC TOTAL)
- 40 1405 IPSWICH PLATE 8" H (5); PLATE 7" H (7); GOBLET H (1); CHAMPAGNE H (2); OIL W/ STOPPER H (1) (16-PC TOTAL)
- 41 1567 PLANTATION PUNCH BOWL (1); UNDERPLATE (1); LADLE (1); PUNCH CUP (6); (9-PC TOTAL) PLUS RED PLASTIC HOOKS
- 42 1567 PLANTATION MARMALADE W/ SPOON H (2)
- 43 1567 PLANTATION BUTTER W/ LID RND H (1); BUTTER 1/4-LB W/ LID H (1)
- 44 1567 PLANTATION PLATE 8 1/2" (3); OIL W/ STOPPER (1); DRESSING OVAL 2-PRT H (1)
- 45 1567 PLANTATION GARDENIA BOWL 9 1/2" (1); FLORAL BOWL 10" CRIMPED (1); CANDY NO LID FTD (1)
- 46 1567 PLANTATION HONEY FTD W/ 516 PLANTATION IVY ETCH H (1); RELISH 4-PRT (1); SUGAR FTD (1); C'STICK 2-LITE (1-ONLY)
- 47 1567 PLANTATION FLORAL BOWL 12" (1); GARDENIA BOWL 12" (1); FLORAL BOWL CRIMPED 10" (1)
- 48 1567 PLANTATION COCKTAIL H (6); 5067 JUICE FTD W/ 1038 PINE CUT (1); COCKTAIL (3); SHERBET (5) (15-PC TOTAL)
- 49 1235 BEADED PANEL & SUNBURST PUNCH BOWL BASE ONLY H (1); PUNCH CUP H (6); NAPPY 7" RIM f (1); OIL W/ STOPPER (1) (9-PC TOTAL)
- 50 1280 WINGED SCROLL NAPPY 8" WORN GOLD DÉCOR CUSTARD (1); NAPPY 4 1/2" CUSTARD (2); NAPPY 4" WORN GOLD CUSTARD (1); TUMBLER WORN GOLD CUSTARD (8) (12-PC TOTAL)
- 51 1401 EMPRESS FLORAL BOWL D.F. FLAMINGO (1); FLORAL BOWL D.F. W/ 448 OLD COLONY ETCH SAHARA (1); 1509 QUEEN ANN FLORAL BOWL D.F. (1)
- 52 1252 TWIST CREAM & SUGAR FTD LIGHTNING HDL FLAMINGO H (1-SET)
- 53 1252 TWIST ICE BUCKET MOONGLEAM H (1); ICE BUCKET H (1)
- 54 1252 TWIST FLORAL BOWL 12" RND FLAMINGO H (1); NAPPY 4 1/2" FLAMINGO H (5); NAPPY 4 1/2" MARIGOLD H (1)
- 55 4157 STEELE ROSE BOWL FLAMINGO
- 56 1183 REVERE CANDY 1/2-LB W/ LID W/ UNK CUT H (1)
- 57 1170 PLEAT & PANEL CREAM & SUGAR SILVER OVERLAY FLAMINGO H (1-SET); 1469 RIDGELEIGH OIL W/ STOPPER (1); 1184 YEOMAN OIL W/ #75 STOPPER 2-OZ MOONGLEAM (1) (4-PC TOTAL)
- 58 1229 OCTAGON NUT (2); NUT W/ UNK CUT H (2); NUT MOONGLEAM H (4); NUT FLAMINGO H (4) (12-PC TOTAL)
- 59 4225 COBEL COCKTAIL SHAKER 1-QT W/ #118 ROOSTER HEAD STOPPER (1); 5038 ROOSTER STEM COCKTAIL f (2); 2 FIGHTING ROOSTER BEAK f (1)
- 60 1243 STEPPED OCTAGON PLATE 8" FLAMINGO H (8)
- 61 1189 YEOMAN PICKLE & OLIVE 13" FLAMINGO (1); 1186 YEOMAN COMPORT 7" HI FTD SHALLOW FLAMINGO H (1); 1184 YEOMAN NAPPY 4 1/2" FLAMINGO H (2)
- 62 4225 COBEL COCKTAIL SHAKER 1-QT W/ 132 HORSEHEAD SMALL STOPPER W/ UNK CUT (1)
- 63 1184 YEOMAN CUP & SAUCER NO OPTIC MOONGLEAM H (4-SETS); 10 GIBSON GIRL FLORAL BOWL MOONGLEAM H (1) (9-PC TOTAL)
- 64 350 PINWHEEL & FAN PUNCH CUP MOONGLEAM H (12)
- 65 1170 PLEAT & PANEL COMPOTIER NO LID FLAMINGO (1); NAPPY 8 1/2" FLAMINGO H (1); NAPPY 4 1/2" FLAMINGO H (5) (7-PC TOTAL)
- 66 100 ASIATIC PHEASANT H (1); 1 RINGNECK PHEASANT H TAIL R (1); 2 GOOSE WINGS HALF H (1) (3-PC TOTAL)
- 67 4225 COBEL COCKTAIL SHAKER 1-QT W/ #86 STOPPER (1); COCKTAIL SHAKER 1-PINT W/ #86 STOPPER (1); 6060 COUNTRY CLUB SODA 10-OZ W/ 467 TALLY HO ETCH (3); 2401 OAKWOOD SODA 8-OZ W/ 467 TALLY HO ETCH (1); SODA 10-OZ W/ 467 TALLY HO ETCH (1); 2405 SODA 14-OZ W/ 467 TALLY HO ETCH (1) (8-PC TOTAL)
- 68 5072 ROSE STEM GOBLET W/ 515 HEISEY ROSE ETCH SOME PAPER LABEL H (10)
- 69 1401 EMPRESS NASTURTIUM BOWL D.F. W/ 458 OLYMPIAD ETCH
- 70 1401 EMPRESS ICE BUCKET D.F. W/ 458 OLYMPIAD ETCH H

71	3350	WABASH JUG SQUAT FTD W/ 458 OLYMPIAD ETCH H
72	500	OCTAGON RELISH 4-PRT W/ 458 OLYMPIAD ETCH H
73	4027	CHRISTOS DECANTER W/ 458 OLYMPIAD ETCH
74	1401	EMPRESS MAYO D.F. W/ 458 OLYMPIAD ETCH (1); JELLY W/ 458 OLYMPIAD ETCH (1); OIL W/ STOPPER W/ 458 OLYMPIAD ETCH (1); PICKLE & OLIVE W/ 458 OLYMPIAD ETCH (1) (4-PC TOTAL)
75	3411	MONTE CRISTO GOBLET W/ 458 OLYMPIAD ETCH (7)
76	3411	MONTE CRISTO CLARET W/ 458 OLYMPIAD ETCH (1); COCKTAIL W/ 458 OLYMPIAD ETCH (1); SHERRY W/ 458 OLYMPIAD ETCH (3)
77	3389	DUQUESNE TUMBLER FTD W/ 458 OLYMPIAD ETCH (4)
78	3355	FAIRACRE GOBLET W/ 458 OLYMPIAD ETCH (6)
79	1540	LARIAT HURRICANE BASE (1); C'STICK 3-LITE (1-ONLY)
80	1540	LARIAT RELISH OBLONG 3-PRT H (1); RELISH RND 3-PRT H (3); PICKLE & OLIVE (2) (6-PC TOTAL)
81	1540	LARIAT FLORAL BOWL OVAL (2)
82	1540	LARIAT COASTER (7); CREAM & SUGAR ON TRAY H (3-PC SET); SUGAR H (1); NUT (2) (13-PC TOTAL)
83	1540	LARIAT CANDY BOX LGE W/ LID H (1); CHEESE FTD W/ LID (1)
84	1540	LARIAT SANDWICH PLATE 13" (1); GARDENIA BOWL 12" (1); FLORAL BOWL 11" CRIMPED (1)
85	1540	LARIAT TORTE PLATE 13" (1); GARDENIA BOWL 12" (1); FLORAL BOWL 11" CRIMPED (1)
86	1540	LARIAT TORTE PLATE 13" (1); GARDENIA BOWL 12" (1); FLORAL BOWL 11" (1)
87	1540	LARIAT PUNCH BOWL (1); UNDERPLATE (1); PUNCH CUP H (12); NON-HEISEY LADLE (1) (15 PC-TOTAL) PLUS PLASTIC HOOKS
88	1540	LARIAT CAMELLIA 9" SHALLOW (2); NAPPY 8" H (2); BOWL 6" SILVER OVERLAY (1); BOWL 6" (1) (6-PC TOTAL)
89	1540	LARIAT MAYO (1); UNDERPLATE (3); UNDERPLATE W/ UNK CUT (1); SAUCER (1); PLATE 5 1/2" (2) (8-PC TOTAL)
90	5040	LARIAT GOBLET H (10)
91	1540	LARIAT CHAMPAGNE (5)
92	1404	OLD SANDWICH COMPORT SAHARA H
93	4220	JANICE VASE 4" SAHARA
94	1428	WARWICK VASE 9" W/ UNK CUT
95	1404	OLD SANDWICH COMPORT H
96	4209	OVAL VASE 9" W/ UNK CUT
97	3362	CHARTER OAK COMPORT HI FTD HAWTHORNE
98	3362	CHARTER OAK COMPORT HI FTD FLAMINGO H
99	1483	STANHOPE VASE 9" W/ RED KNOBS W/ 490 MAYTIME ETCH H
100	1485	SATURN VASE 9" FTD CRIMPED
101	4162/4	GENIE VASE D.O. MOONGLEAM
102	133	SWAN-HANDLED C'STICK 1-LITE FLAMINGO (PR)
103	1951	CABOCHON BUTTER W/ LID 1/4-LB DAWN H
104	121	PINWHEEL C'STICK HAWTHORNE H (PR)
105	1401	EMPRESS COMPORT OVAL W/ 448 OLD COLONY ETCH MOONGLEAM H
106	1184	YEOMAN OYSTER PLATE 9" VASELINE H
107	411	TUDOR JELLY FTD ENAMEL DÉCOR MOONGLEAM H (1); 1184 YEOMAN RELISH CTR HDL 3-PRT GOLD DÉCOR MOONGLEAM H (1)
108	1413	CATHEDRAL VASE FLARED SAHARA H
109	1184	YEOMAN TRAY 11" 3-PRT HDL MOONGLEAM H
110	1183	REVERE SANDWICH TRAY 11" CTR HDL MOONGLEAM H
111	1184	YEOMAN BOUILLON VASELINE H
112	1541	ATHENA CHEESE FTD W/ LID
113	1200	CUT BLOCK BOWL 8" FTD
114	1252	TWIST COMPORT W/ UNK CATTAIL CUT MOONGLEAM
115	516	FAIRACRE COLOGNE NO DAUBER FLAMINGO H
116	500	OCTAGON RELISH TRAY 4-PRT MOONGLEAM H
117	352	FLAT PANEL HUMIDOR MOONGLEAM H LID B
118	7026	HEART & DRAPE PLATE 8" MOONGLEAM (1); 1246 ACORN & LEAVES PLATE 8" MOONGLEAM (1); 1232 SPOKE PLATE 8" MOONGLEAM H (1) (3-PC TOTAL)
119	433	GREEK KEY CRUSHED FRUIT 2-QT H
120	3389	DUQUESNE CORDIAL W/ 449 POMPEII ETCH
121		MIRROR DISPLAY SIGN
122	50	DOORKNOB W/ CROSSHATCH
123	1	TEA DRIP STERLING SILVER RIM
124	5012	URN VASE 6" W/ UNK CUT
125	1447	ROCOCO COMPORT H
126	1255	PINEAPPLE & FAN VASE 10" EMERALD
127	1401	EMPRESS SHERBET BEADED SAHARA (4)

128	1184	YEOMAN SODA 12-OZ FLAMINGO H (12); 602 SODA 12-OZ FLAMINGO H (1) (13-PC TOTAL)
129	2351	NEWTON SODA 6-OZ FLAMINGO (5)
130	3312	GAYOSO GOBLET FLAMINGO (1); WINE FLAMINGO (2)
131	3312	GAYOSO COCKTAIL FLAMINGO (8)
132	3312	GAYOSO FINGER BOWL FLAMINGO (14)
133	1519	WAVERLY SALVER FTD W/ 507 ORCHID ETCH
134	105	PEMBROKE CANDELABRA 9" W/ "A" PRISMS MOONGLEAM (PR)
135	18	CLASSIC CANDELABRUM W/ #21 CANDLE 3-LITE ARM (1-ONLY)
136	1235	BEADED PANEL & SUNBURST DECANTER W/ STOPPER B (1); TRAY 10" (1); WINE (3) (5-PC TOTAL)
137	1540	LARIAT VASE 6" FTD RND CRIMPED (1); 1425 VICTORIAN VASE 4" H (1); 1558 DROOP FLORAL BOWL H (1)
138	2	OLD WILLIAMSBURG C'STICK 9" (PR)
139	1503	CRYSTOLITE OIL W/ STOPPER (2); CREAM & SUGAR H (1-SET); SALT & PEPPER METAL LIDS (1-SET) (6-PC TOTAL)
140	433	GREEK KEY ALMOND H (1); JELLY 5" FTD H (1); SHERBET 6-OZ H (1); PUNCH CUP H (1); SPOONER H (1) (5-PC TOTAL)
141	1469	RIDGELEIGH SODA FTD 12 OZ H (6)
142	2	2 OLD WILLIAMSBURG C'STICK 9" (PR); 341 OLD WILLIAMSBURG RELISH 5-PRT 13" H (1); RELISH 3-PRT 9" H (1); BOWL 7" OVAL H (1) (5-PC TOTAL)
143	1469	RIDGELEIGH VASE FLUTED 3 1/2" H (1); PLATE 6" (1); CHEESE HDL H (1); CREAM & SUGAR INDV ON TRAY (3-PC SET); CREAM SUN PURPLE (1); MUSTARD W/ LID H (1); CIG BOX NO LID H (1); ASHTRAY 2 1/2" SQ H (4); ASHTRAY CARD SUIT: HEART, SPADE, CLUB, DIAMOND H (4) (17-PC TOTAL)
144	1220	PUNTY BAND SALT & PEPPER H (1-SET)
145	1170	PLEAT & PANEL COMPOTIER W/ LID FLAMINGO
146	1295	BEAD SWAG PITCHER RUBY & GOLD DÉCOR (1); TUMBLER RUBY & GOLD DÉCOR (6)
147	1184	YEOMAN TUMBLER H (8)
148	1295	BEAD SWAG MUG SOUV "REBA ATLANTIC CITY" RUBY FLASH (1); PUNCH CUP SOUV "EL DORADO SPRINGS, MO" RUBY FLASH (1); PLATE 6" RUBY FLASH (1)
149	1295	BEAD SWAG TABLE CREAM SOUV "FROM MINERVA" RUBY & GOLD DÉCOR (1); TABLE SUGAR W/ LID RUBY & GOLD DÉCOR (1); SPOONER SOUV "JULY 26" (1)
150	1252	TWIST OIL W/ STOPPER 4-OZ (1); PLATE 4 1/2" H (1); CUP H (2); PICKLE 7" H (1) (5-PC TOTAL)
151	500	OCTAGON ICE BUCKET H
152	1567	PLANTATION BUTTER W/ LID 1/4-LB W/ 516 PLANTATION IVY ETCH H (1); MAYO W/ 516 PLANTATION IVY ETCH (1); CREAM & SUGAR W/ 516 PLANTATION IVY ETCH H (1-SET) (4-PC TOTAL)
153	1186	YEOMAN PUFF BOX NO INSERT NO OPTIC FLAMINGO H
154	411	TUDOR VASE 10" FTD H
155	1776	KALONYAL TOOTHPICK H
156	400	COLONIAL SCALLOP TOP JELLY FTD H (1); 351 PRISCILLA MAYO (1); UNDERPLATE H (1); CELERY 12" H (1); PICKLE H (1) (5-PC TOTAL)
157	395	COLONIAL BOWL 8" FTD H (1); 351 PRISCILLA NAPPY 5" H f-1 (11) (12-PC TOTAL)
158	1485	SATURN SALT & PEPPER H (1-SET)
159	1201	FANDANGO SUGAR SHAKER METAL LID WEAR
160	353	MEDIUM FLAT PANEL NUT FTD FLAMINGO (4); 1225 RIDGE & STAR PLATE 12" FLAMINGO H (1); PLATE 8" FLAMINGO H (7) (12-PC TOTAL)
161	1225	PLAIN BAND CAKE SALVER 10"
162	1434	TOM & JERRY MUG H
163	1205	FANCY LOOP CELERY VASE (1); SPOONER (1)
164	1506	PROVINCIAL SUGAR ZIRCON H
165	1255	PINEAPPLE & FAN SPOONER GOLD DÉCOR (1); 335 PRINCE OF WALES PLUMES SPOONER GOLD DÉCOR H (1)
166	1295	BEAD SWAG SPOONER RUBY DÉCOR (1); SPOONER FLORAL DÉCOR OPAL (1); 1280 WINGED SCROLL SPOONER GOLD DÉCOR EMERALD (1); 1225 PLAIN BAND SPOONER (1) (4-PC TOTAL)
167	1184	YEOMAN COLOGNE W/ STOPPER 4-OZ W/ UNK CUT
168	1184	YEOMAN COLOGNE W/ STOPPER 2-OZ GOLD DÉCOR
169	1503	CRYSTOLITE PITCHER ICE LIP
170	1503	CRYSTOLITE TUMBLER H f-1 (7)
171	1469	RIDGELEIGH CENTERPIECE 8" (1); STAR RELISH (1)
172	433	GREEK KEY CHERRY JAR SMALL RIM f CLOUDY
173	433	GREEK KEY OIL W/ STOPPER
174	353	MEDIUM FLAT PANEL CRUSHED FRUIT 2-QT H BOTTOM ROUGH
175	1503	CRYSTOLITE CIG BOX 4" W/ LID H (2); ASHTRAY 5" SQ H (2); ASHTRAY 3" SQ PAPER LABEL H (1) (5-PC TOTAL)
176	41	TALL CONE SALT & PEPPER ENAMEL DÉCOR H (1-SET); 23 SHORT PANEL SALT & PEPPER H (1-SET)
177	451	CROSS-LINED FLUTE VASE 6" H
178	358	PRISON STRIPE VASE VARIANT H
179	433	GREEK KEY BUTTER W/ LID GOLD DÉCOR H (1); SUGAR W/ LID GOLD DÉCOR H (1)
180	1567	PLANTATION MAYO 2-PRT H (1); UNDERPLATE (1); CUP & SAUCER H (2-SETS)

181 343 SUNBURST ICE CREAM TRAY H (1); NAPPY 5 ½" SHALLOW H (10); NAPPY 9" H (1) (12-PC TOTAL)
182 462 PLAIN HEXAGON BASKET 8" W/ 693 CLOISTER CUT H
183 1201 LAVERNE FLORAL BOWL MOONGLEAM H
184 1401 EMPRESS ICE BUCKET D.F. (1); ASHTRAY H (1)
185 1401 EMPRESS JUG SAHARA H (1); MINT SAHARA H (1)
186 339 CONTINENTAL CELERY VASE H (1); SPOONER H (1)
187 350 PINWHEEL & FAN PUFF BOX W/ METAL LID H (1); 23 PINEAPPLE & HEART PUFF BOX NO LID H (1)
188 1252 TWIST MAYO FTD FLAMINGO (1); BONBON FLAMINGO H (1); NUT INDV FLAMINGO H (8) (10-PC TOTAL)
189 1170 PLEAT & PANEL COMPOTIER MOONGLEAM H
190 1252 TWIST JUG MOONGLEAM H
191 393 NARROW FLUTE BISCUIT TRAY 9" H (1); SPOONER H (1)
192 1469 RIDGELEIGH LAMP ASSEMBLED FROM 6" VASE ROLY POLY COASTER & BRIDGE ASHTRAY W/ 2 FINIALS (1);
CANDELABRUM 9" H NO BOBECHEES OR PRISMS (1-ONLY)
193 341 ½ PURITAN PITCHER 1-QT H
194 341 PURITAN CELERY FTD H (1); 341 ½ SPOONER H RIB ROUGHNESS (1)
195 341 OLD WILLIAMSBURG NAPPY 6" H (5)
196 5067 PLANTATION GOBLET W/ 516 PLANTATION IVY ETCH (3); OYSTER COCKTAIL W/ 516 PLANTATION IVY ETCH (3)
(6-PC TOTAL)
197 5011 YORKTOWN CHAMPAGNE ROCK-SHARPE "RUGBY" CUT H RIM f-1 (7)
198 1235 BEADED PANEL & SUNBURST SPOONER (1); SPOONER GOLD DÉCOR (1)
199 1519 WAVERLY CIG HOLDER W/ 507 ORCHID ETCH H
200 1232 SPOKE PLATE 8" FLAMINGO H (4); 407 COARSE RIB PLATE 7" H (4) (8-PC TOTAL)
201 353 MEDIUM FLAT PANEL CRUSHED FRUIT 2-QT H BOTTOM WEAR
202 120 OVERLAPPING SWIRL C'STICK H (PR)
203 1183 REVERE MARMALADE W/ UNDERPLATE W/ UNK CUT H (2)
204 5012 URN VASE 7"
205 305 PUNTY & DIAMOND POINT WATER BOTTLE
206 1541 ATHENA C'STICK 2-LITE (PR)
207 1541 ATHENA CREAM & SUGAR (1-SET); 1951 CABOCHON CREAM & SUGAR H (1-SET)
208 300 PEERLESS SHERBET HANDLELESS H (1); JELLY 4" FTD H (1); 1183 REVERE UNDERPLATE FOR MARMALADE W/ UNK CUT H
(1); 339 CONTINENTAL NAPPY 4 ½" H (1); 351 PRISCILLA MUSTARD W/ LID H (1) (5-PC TOTAL)
209 33 SKIRTED PANEL C'STICK TOY H (2); 600 SQUARE-HANDLED C'STICK (1)
210 114 PLUTO C'STICK MOONGLEAM (PR)
211 1184 YEOMAN OYSTER PLATE 10" H (1); 417 DOUBLE RIB & PANEL PLATE 7" W/ UNK CUT H (1); 1243 STEPPED OCTAGON
PLATE 7" MOONGLEAM H (1); 1223 FLUTED BORDER PLATE 7" MOONGLEAM (2) (5-PC TOTAL)
212 1219 SIMPLICITY W/ STAR PLATE 7 ½" HARVEY AMBER H
213 1519 WAVERLY CIG HOLDER H (1); 1503 ¼ CRYSTOLITE C'BLOCK (PR)
214 1469 RIDGELEIGH OIL W/ STOPPER CLOUDY (1); 1503 CRYSTOLITE OIL W/ STOPPER (1); 475 NARROW FLUTE W/ RIM SALTED
NUT H (2); 1229 OCTAGON NUT INDV H (2) (6-PC TOTAL)
215 1483 STANHOPE RELISH 4-PRT W/ 494 SWINGTIME ETCH
216 1495 FERN C'STICK 2-LITE (PR)
217 1503 CRYSTOLITE PUNCH BOWL (1); UNDERPLATE (1); PUNCH CUP (17) H (19-PC TOTAL)
218 365 OLD QUEEN ANNE PUNCH BOWL H (1); BASE H (1)
219 1540 LARIAT PUNCH BOWL (1); UNDERPLATE (1); PUNCH CUP LARIAT + MISC (58) (60-PC TOTAL) PLUS PLASTIC HOOKS
220 1469 RIDGELEIGH PUNCH BOWL (1); UNDERPLATE (1); PUNCH CUP (11) (13-PC TOTAL)
221 429 PLAIN PANEL RECESS PUNCH BOWL (1); PUNCH CUP (10) H; 341 PURITAN UNDERPLATE H (1) (12-PC TOTAL)
222 300 PEERLESS PUNCH BOWL (1); BASE F (1); PUNCH CUP (6) H; PUNCH CUP MISC PATTERNS (13) H (21-PC TOTAL)
223 1401 EMPRESS PLATE 9" SQ COBALT H f
224 1509 QUEEN ANN CUP & SAUCER W/ 507 ORCHID ETCH (8-SETS)
225 1519 WAVERLY PLATE 8" W/ 507 ORCHID ETCH (10); CREAM & SUGAR INDV W/ 507 ORCHID ETCH (1-SET); SUGAR W/
507 ORCHID ETCH H (1) (13-PC TOTAL)
226 1401 EMPRESS PLATTER 14" W/ 448 OLD COLONY ETCH SAHARA (1); VEGETABLE 10" OVAL W/ 448 OLD COLONY ETCH
SAHARA H (1); BONBON OVAL W/ UNK CUT SAHARA H (1)
227 1401 EMPRESS FLORAL BOWL 11" D.F. SAHARA (1); MAYO D.F. SAHARA H (1); MINT D.F. SAHARA H (1); NUT D.F. SAHARA H (1)
(4-PC TOTAL)
228 1401 EMPRESS CREAM & SUGAR SAHARA H (1-SET); CUP & SAUCER SAHARA H (2-SETS); OYSTER COCKTAIL SAHARA H (1)
(7-PC TOTAL)
229 1401 EMPRESS BONBON OVAL SAHARA H (1); NAPPY 4" SAHARA (7) (8-PC TOTAL)
230 1401 EMPRESS MAYO SAHARA (1); MUSTARD W/ LID SAHARA H (1); OIL W/ STOPPER SAHARA (1)
231 1401 EMPRESS PLATTER 14" OVAL SAHARA (1); CELERY 13" SAHARA H (1); CELERY 8" SAHARA H RIM F (2) (4-PC TOTAL)
232 1401 EMPRESS RELISH 10" 3-PRT TRIPLEX SAHARA H (1); RELISH 7" 3-PRT TRIPLEX SAHARA H (1)
233 1401 EMPRESS ASHTRAY SAHARA H (1); MUSTARD W/ LID SAHARA H (1); SUGAR INDV SAHARA H (2) (4-PC TOTAL)

234	1401	EMPRESS PLATE 9" RND SAHARA H (16)
235	1401	EMPRESS PLATE 10 ½" RND SAHARA WEAR (2); RELISH 7" 3-PRT SAHARA (1)
236	1401	EMPRESS PLATE 6" RND SAHARA H (22); SAUCER RND SAHARA H (5); UNDERPLATE FOR CREAM SOUP SAHARA (3); DEMI TASSE SAUCER RND SAHARA H (3) (33-PC TOTAL)
237	1401	EMPRESS PLATE 8" RND SAHARA H (14); PLATE 7" RND SAHARA H (5) (19-PC TOTAL)
238	343	SUNBURST ICE CREAM TRAY 13" H (1); NAPPY 4 ½" SHALLOW H (9)
239	343	SUNBURST JELLY 1-HDL RND CRIMPED H f (1); CELERY 12" H (1); PUNCH CUP H (1); SUGAR INDV H (1); NAPPY 8" H (2); NAPPY 5" H f (1) (7-PC TOTAL)
240	310	RING BAND NAPPY 8" POOR GOLD SOUV "MILBANK S.D." CUSTARD (1); NAPPY 4" GOLD DÉCOR SOUV "MILBANK S.D." CUSTARD (3); TOOTHPICK GOLD DÉCOR SOUV "CHAUMONT, NY" CUSTARD (1); SALT SHAKER METAL LID ROSE DÉCOR CUSTARD H (1); TUMBLER ROSE DÉCOR CUSTARD H (1); BUTTER TOP ONLY ROSE DECOR CUSTARD (1); JUG CUSTARD H (1) (9-PC TOTAL)
241	1170	PLEAT & PANEL PLATE 7" FLAMINGO H (9); NAPPY 4" FLAMINGO H (4); CHAMPAGNE FLAMINGO (2) (15-PC TOTAL)
242	1170	PLEAT & PANEL CREAM & SUGAR W/ LID FLAMINGO H (1-SET); MARMALADE FLAMINGO H (1); LEMON DISH NO LID FLAMINGO H (1); OIL WRONG STOPPER FLAMINGO (1) (5-PC TOTAL)
243	1170	PLEAT & PANEL PLATTER 12" FLAMINGO (1); NAPPY 8" FLAMINGO H (1); VEGETABLE OVAL FLAMINGO H (2) (4-PC TOTAL)
244	1252	TWIST NASTURTIUM BOWL OVAL FLAMINGO H
245	1252	TWIST RELISH 2-PRT FLAMINGO H
246	1252	TWIST NAPPY 8" MOONGLEAM H (1); NAPPY 4" MOONGLEAM H (2)
247	406	COARSE RIB NAPPY 8" FLAMINGO H (1); NAPPY 5" FLAMINGO H (6); PLATE 7 ½" FLAMINGO H (7) (14-PC TOTAL)
248	10	MUDDLER (3)
249	406	COARSE RIB NAPPY 8" H (2); PLATE 11" H (1); PLATE 7" H (3); PLATE 6" H (1) (7-PC TOTAL)
250	1184	YEOMAN CUP NO OPTIC FLAMINGO H (4); SAUCER D.O. FLAMINGO H (4); GRAPEFRUIT D.O. FLAMINGO H (4); OIL WRONG STOPPER 2-OZ D.O. FLAMINGO (1); OIL WRONG STOPPER 4-OZ D.O. MOONGLEAM (1); 1229 OCTAGON MAYO 2-HDL D.O. FLAMINGO (1) (15-PC TOTAL)
251	1225	RIDGE & STAR PLATE 9" HAWTHORNE H (4)
252	1225	RIDGE & STAR PLATE 6" FLAMINGO H (3); PLATE 8" MOONGLEAM H (1); 407 COARSE RIB PLATE 6" FLAMINGO H (7) (11-PC TOTAL)
253	1252	TWIST CHEESE PLATE 2-HDL MARIGOLD H (2); 1223 FLUTED BORDER BAKED APPLE MARIGOLD STAIN H (2)
254	9	GIBSON GIRL FLORAL BOWL 9" W/ 730 CORNFLOWER CUT H (1); FLORAL BOWL 9" W/ 729 FAIRFIELD CUT H (1)
255	475	NARROW FLUTE W/ RIM SALTED NUT MOONGLEAM H (2); SALTED NUT FLAMINGO H (1); 1229 OCTAGON NUT FLAMINGO H (4); 353 MEDIUM FLAT PANEL NUT FLAMINGO (5); NUT SAHARA (1); 1404 OLD SANDWICH ASHTRAY SAHARA H (4) (17-PC TOTAL)
256	1540	LARIAT PLATE 8" (1); TORTE PLATE 15 ½" (1); CREAM & SUGAR ON TRAY (3-PC SET); SUGAR H (1); MAYO W/ UNDERBOWL (2-PC) W/ MATCHING SILVER OVERLAY H (8-PC TOTAL)
257	1540	LARIAT BASKET BOTTOM LOOP (1); FAN VASE H (1)
258	1540	LARIAT OIL W/ STOPPER H (2); COLOGNE W/ STOPPER (1) (3-PC TOTAL)
259	1184	YEOMAN GRAPEFRUIT H (11)
260	3802	MUSHROOM COVER
261	112	MERCURY C'STICK 1-LITE (PR); 1469 RIDGELEIGH TORTE PLATE 12" (1); 1519 WAVERLY EPERGNETTES H (PR); 465 RECESSED PANEL CANDY W/ LID 1-LB WORN GOLD H (1) (6-PC TOTAL)
262	1519	WAVERLY PLATE 8" W/ 515 HEISEY ROSE ETCH (7); 5072 ROSE STEM GOBLETS W/ 515 HEISEY ROSE ETCH H (5); JUICE FTD W/ 515 HEISEY ROSE ETCH H (6) (18-PC TOTAL)
263	1540	LARIAT PUNCH BOWL (1); UNDERPLATE (1); PUNCH CUP H (24) (26-PC TOTAL)
264	1252	TWIST COMPORT FLAMINGO (2)
265	3390	CARCASSONNE BAR FTD SAHARA (6)
266	1401	EMPRESS CREAM & SUGAR D/F W/ 448 OLD COLONY ETCH SAHARA H (1-SET); PLATE 8" RND W/ 448 OLD COLONY ETCH SAHARA H (12) (14-PC TOTAL)
267	1401	EMPRESS CUPS W/ 448 OLD COLONY ETCH SAHARA H (16); SAUCER SQ W/ 448 OLD COLONY ETCH SAHARA H (16); SAUCER RND W/ 448 OLD COLONY ETCH SAHARA H (8) (40-PC TOTAL)
268	1401	EMPRESS PLATE 8" SQ W/ 448 OLD COLONY ETCH SAHARA H (14); PLATE 7" SQ W/ 448 OLD COLONY ETCH SAHARA H (14) (28-PC TOTAL)
269	1401	EMPRESS CREAM SOUP W/ UNDERPLATE SQ W/ 448 OLD COLONY ETCH SAHARA (9-SETS) (18-PC TOTAL)
270	3380	OLD DOMINION GOBLET HI FTD W/ 448 OLD COLONY ETCH SAHARA f-1 (12)
271	3380	OLD DOMINION SODA 12-OZ FTD W/ 448 OLD COLONY ETCH SAHARA (10)
272	3380	OLD DOMINION WINE W/ 448 OLD COLONY ETCH SAHARA H (8)
273	3380	OLD DOMINION CHAMPAGNE HI FTD W/ 448 OLD COLONY ETCH SAHARA H (5); CHAMPAGNE LO FTD W/ 448 OLD COLONY ETCH SAHARA (5); SHERBET W/ 448 OLD COLONY ETCH SAHARA H (5) (15-PC TOTAL)
274	3380	OLD DOMINION FINGER BOWL W/ 448 OLD COLONY ETCH SAHARA (4)
275	1567	PLANTATION PLATE 9 ½" (11); CREAM & SUGAR (1-SET) (13-PC TOTAL)
276	1567	PLANTATION URN CANDY W/ LID (1); CANDY W/ LID (1)

277	1567	PLANTATION GARDENIA BOWL 11 ½" FTD (1)
278	1567	PLANTATION GARDENIA BOWL 12 ½" (1); C'STICK 3-LITE (PR)
279	1567	PLANTATION GOBLET (3); JUICE (5)
280	1567	PLANTATION ICE TEA FTD (9)
281	1567	PLANTATION CHAMPAGNE (8)
282	1567	PLANTATION COASTER (6); OIL W/ STOPPER (1)
283	1567	PLANTATION URN CANDY W/ LID (1); CANDY W/ LID (1)
284	1405	IPSWICH GOBLET H (4)
285	1191	LOBE SPICE DISH HDL 3-PRT MOONGLEAM W/ CRYSTAL WAFER
286	1184	YEOMAN FLORAL BOWL 9 ½" 6-SIDED FLAMINGO H (1); 1229 OCTAGON BONBON FLAMINGO (1)
287	339	CONTINENTAL WINE H (3); 1220 PUNTY BAND MUG CUSTARD H (1); 1469 RIDGELEIGH CIG HOLDER RND H (1); 1428 WARWICK VASE 7" H (1) (6-PC TOTAL)
288	1401	EMPRESS ICE BUCKET D.F. SAHARA H
289	1401	EMPRESS VASE 9 ½" D.F. SAHARA
290	1401	EMPRESS SALT & PEPPER METAL TOPS SAHARA (1-SET)
291	1401	EMPRESS CREAM & SUGAR D.F. SAHARA H (1-SET); NUT D.F. SAHARA (4) (6-PC TOTAL)
292	1401	EMPRESS JUG D.F. SAHARA
293	1401	EMPRESS PLATTER 13" OVAL SAHARA (1); VEGETABLE OVAL SAHARA (1)
294	1401	EMPRESS CREAM SOUP SAHARA H (6); UNDERPLATE RND SAHARA (2); SAUCER RND SAHARA H (4) (12-PC TOTAL)
295	1401	EMPRESS JELLY 2-HDL SAHARA (1); MINT D.F. SAHARA (1); RELISH 7" TRIPLEX SAHARA H (1); CELERY 12" SAHARA H (1) (4-PC TOTAL)
296	1401	EMPRESS PLATE 10 ½" SQ SAHARA H HEAVY WEAR (8)
297	1401	EMPRESS DESSERT 10" OVAL SAHARA H (1); SANDWICH PLATE 10" 2-HDL SQ SAHARA H (1)
298	3380	OLD DOMINION SHERBET SAHARA (6); 1401 EMPRESS PLATE 6" SQ SAHARA H (8) (14-PC TOTAL)
299	372	MCGRADY SYRUP 5-OZ METAL LID SAHARA H
300	1184	YEOMAN OIL W/ STOPPER 2-OZ SAHARA H (1); MUSTARD NO LID SAHARA H (1); 1229 OCTAGON MINT 2-HDL SAHARA (1) (3-PC TOTAL)
301	433	GREEK KEY FINGER BOWL H (1); PLATE 5" H (1); SHERBET H (1) (3-PC TOTAL)
302	393	NARROW FLUTE DOMINO SUGAR FTD H
303	339	CONTINENTAL NAPPY 7 ½" H (1); 400 COLONIAL SCALLOP TOP NAPPY 9" (1); 337 TOURAINE NAPPY 7" H (1); 341 ½ PURITAN NAPPY 8" H (1); NAPPY 4" H (1) (5-PC TOTAL)
304	1150	COLONIAL STAR PLATE 10 ½" H (1); PLATE 8" H (1); PLATE 7" H (4); PLATE 6" H (4); PLATE 5" H (2) (12-PC TOTAL)
305	1469	RIDGELEIGH PLATE 8" SQ H (2); RELISH 10" 3-PRT RECTANGLE H (1); TRAY 10" OBLONG H (1); JELLY 2-HDL H (1); PICKLE & OLIVE OVAL METAL HDL (1); CIG HOLDER RND (2); CIG HOLDER RECTANGLE (1); ASHTRAY SQ (4) (13-PC TOTAL)
306	1469	RIDGELEIGH CAKE PLATE 2-HDL H f
307	393	NARROW FLUTE JAPANESE GARDEN TRAY 10" H
308	1519	WAVERLY MAYO (1); UNDERPLATE (1); #6 SPOON PAPER LABEL (1) H (3-PC TOTAL)
309	341	PURITAN NAPPY 9 ½" H (2); NAPPY 5" H (1); 352 FLAT PANEL NAPPY 9 ½" H (1) (4-PC TOTAL)
310	1567	PLANTATION CELERY & OLIVE 13" H (1); 1425 VICTORIAN CELERY 13" H (1); 468 OCTAGON W/ RIM CELERY 13" H (1); 393 NARROW FLUTE CELERY 9" H (1); 341 PURITAN CELERY 12" H (2); CELERY 9" (1); PICKLE 6" H (2) (9-PC TOTAL)
311	433	GREEK KEY NUT H (10)
312	353	MEDIUM FLAT PANEL VASE 10" H
313	1401	EMPRESS RELISH 10" 3-PRT H (1); 1540 LARIAT RELISH 10 ½" RND 3-PRT H (1)
314	341 ½	PURITAN JUG 3-PINT H (1); BUTTER W/ LID (1); CREAM TABLE (3) (5-PC TOTAL)
315	1183	REVERE SANDWICH PLATE 12" H (1); 1218 SIMPLICITY PLATE 6 ½" H (5); 1219 SIMPLICITY W/ STAR PLATE 6 ½" H (1) (7-PC TOTAL)
316	300	PEERLESS WINE H (2); CHAMPAGNE H (4); 341 PURITAN SHERBET H (4); CHAMPAGNE H (1); 1250 HETRICK'S SHERBET H (9) (20-PC TOTAL)
317	1503	CRYSTOLITE TORTE PLATE 13" H (1); MAYO H (2); CREAM H (1); SUGAR H (2); ASHTRAY 3" RND H (1); CUP H (2); MUSTARD W/ LID (1); #5 SPOON H (1) (11-PC TOTAL)
318	351	PRISCILLA MUSTARD W/ LID (1); #10 PADDLE (1); BUTTER INDV (3); 1219 SIMPLICITY W/ STAR PLATE 4" (1); #9 LADLE (1); 1404 OLD SANDWICH ASHTRAY (1) (8-PC TOTAL)
319	354	WIDE FLAT PANEL SHAVING MUG H
320	341	PURITAN JELLY 1-HDL H (1); BOWL 9" OVAL H (1); PLATE 7" OVAL H (1); NAPPY 4 ½" H (2); NAPPY 4" H (2); NAPPY 4 ½" SHALLOW H (2); PLATE 6" H (6); PLATE 5 ½" H (1) (16-PC TOTAL)
321	300 ½	PEERLESS FINGER BOWL H (7); 352 FLAT PANEL NAPPY 4 ½" SHALLOW H (6); 341 ½ PURITAN FINGER BOWL FLARED H (6) (19-PC TOTAL)
322	393	NARROW FLUTE PLATE 5" H (1); NAPPY 4 ½" SHALLOW H (5); SHERBET (1); 352 FLAT PANEL GRAPEFRUIT (2); 1150 COLONIAL STAR PLATE 4" (2); 407 COARSE RIB PLATE 6" (1); 393 NARROW FLUTE FINGER BOWL PLATE (1); 1152 PUNCH CUP (2) (15-PC TOTAL)

323 411 TUDOR SUGAR W/ LID H (1); 351 PRISCILLA SUGAR H (1); 300 PEERLESS CREAM & SUGAR HOTEL H (1-SET); 393 NARROW FLUTE CREAM INDV H (1); 400 COLONIAL SCALLOP TOP SUGAR NO LID HOTEL H (1); 429 PLAIN PANEL RECESS SUGAR NO LID H (1); 352 FLAT PANEL CREAM HOTEL H (1); 354 WIDE FLAT PANEL SUGAR ONLY FOR STACK SET H (1); 300 ½ PEERLESS SUGAR HOTEL FTD H (1); 353 MEDIUM FLAT PANEL CREAM HOTEL H (1); 1185 YEOMAN SUGAR INDV NO OPTIC H (1); 407 COARSE RIB SUGAR INDV H (1); 1511 TOUJOURS MARMALADE NO LID H (1); 393 NARROW FLUTE MUSTARD W/ LID H (1); LID ONLY FOR HOTEL SUGAR PAPER LABEL (1) (16-PC TOTAL)

324 341 PURITAN PUNCH BOWL (1); LOW BASE (1); PUNCH CUP (51) (53-PC TOTAL)

325 310 RING BAND JUG ROSE DÉCOR CUSTARD H

326 1401 EMPRESS ICE BUCKET W/ SILVER PLATE HDL W/ 855 FUCHSIA CUT

327 353 MEDIUM FLAT PANEL TOBACCO JAR W/ LID H

328 1506 PROVINCIAL C'STICK 3-LITE ORIGINAL DESIGN (PR)

329 515 TAPER COLOGNE W/ #69 STOPPER NO DAUBER HAWTHORNE H

330 1280 WINGED SCROLL TOOTHPICK POOR GOLD CUSTARD (1); MATCH HOLDER POOR GOLD CUSTARD (2); CIG HOLDER POOR GOLD EMERALD BOTTOM C (1) (4-PC TOTAL)

331 357 DUCK ASHTRAY FLAMINGO H (1)

332 4085 KOHINOOR GOBLET (1); 1590 ZODIAC JUICE FTD (1); 367 PRISM BAND DECANTER W/ STOPPER (1) (3-PC TOTAL)

333 1637A TOWN & COUNTRY FLORAL BOWL 12" DAWN

334 811 ¾ HOFFMAN HOUSE GOBLET W/ 460 CLUB DRINKING SCENE ETCH H

335 1252 TWIST MUSTARD W/ LID FLAMINGO

336 4163 WHALEY MUG W/ 460 CLUB DRINKING SCENE ETCH H

337 353 MEDIUM FLAT PANEL MASTER ALMOND FLAMINGO

338 1184 YEOMAN NAPPY 4 ½" FLAMINGO H (6)

339 4 MARMALADE SPOON H (1); 341 PURITAN LID FOR TANKARD 3" H (1); 5038 ROOSTER STEM COCKTAIL (1)

340 1184 YEOMAN CUP D.O. FLAMINGO H (11); SAUCER D.O. FLAMINGO H (15); 1186 CUP & SAUCER D.O. (1-SET) (28-PC TOTAL)

341 1184 YEOMAN CREAM SOUP D.O. FLAMINGO (8); UNDERPLATE D.O. FLAMINGO (10) (18-PC TOTAL)

342 379 URN PUNCH CUP (5); 433 GREEK KEY PUNCH CUP (1); 350 PINWHEEL & FAN PUNCH CUP (1) (7-PC TOTAL)

343 515 TAPER COLOGNE W/ #69 STOPPER NO DAUBER H

344 3350 WABASH PLATE 6" D.O. SAHARA (8); 1184 YEOMAN BOUILLON SAHARA (1); UNDERPLATE SAHARA (1) (10-PC TOTAL)

345 1533 WAMPUM C'STICK 1-LITE (PR); 1951 CABOCHON CHEESE PLATE FTD H (1)

346 1503 CRYSTOLITE SWAN MASTER NUT H (1); SWAN INDV NUT (3); 1252 TWIST PLATTER "NEWARK SESQUICENTENNIAL"(1) (5-PC TOTAL)

347 305 PUNTY & DIAMOND POINT TANKARD

348 305 PUNTY & DIAMOND POINT CLARET JUG

349 1238 BEEHIVE PLATE 14" FLAMINGO RIM ROUGHNESS

350 3362 CHARTER OAK COMPORT HI FTD W/ SILVER OVERLAY FLAMINGO H

351 4027 CHRISTOS DECANTER MOONGLEAM FT & STOPPER

352 417 DOUBLE RIB & PANEL BASKET MOONGLEAM H

353 5013 SHASTA COMPORT HI FTD (1); 1184 YEOMAN COMPORT 5" LO FTD W/ 679 WINDSOR CUT H (1)

354 1519 WAVERLY VASE 6 ½" W/ 515 HEISEY ROSE ETCH H (1); 1433 THUMBPRINT & PANEL VASE FLARED H (1)

355 1255 PINEAPPLE & FAN JELLY COMPORT EMERALD

356 343 SUNBURST JELLY FTD H (1); 339 CONTINENTAL JELLY FTD H (1); 1540 LARIAT CHEESE W/ LID (1)

357 1567 PLANTATION GARDENIA BOWL FLARED FTD (1); DRESSING 9" 2-PRT H (1); RELISH 11" 3-PRT H (1) (3-PC TOTAL)

358 363 LARKIN SYRUP 7-OZ W/ UNK CUT H (1); 393 NARROW FLUTE FRENCH DRESSING (1); UNDERPLATE (1); 300 PEERLESS SUNDAE FTD H (5) (8-PC TOTAL)

359 1776 KALONYAL PLATE 11 ½" H WEAR

360 1401 EMPRESS SANDWICH PLATE CTR HDL SQ FLAMINGO

361 5067 PLANTATION GOBLET (1); SHERBET (8)

362 5025 TYROLEAN JUICE FTD W/ 507 ORCHID ETCH H (7)

363 5025 TYROLEAN COCKTAIL W/ 507 ORCHID ETCH (7)

364 EPHEMERA MISC HEISEY PAPER ITEMS (19-PC)

365 1200 CUT BLOCK CAKE SALVER 9"

366 1200 CUT BLOCK JELLY FTD

367 1200 CUT BLOCK CAKE BASKET

368 1200 CUT BLOCK NAPPY 5"

369 1200 CUT BLOCK SALT INDV (1); CREAM INDV (1)

370 1200 CUT BLOCK PITCHER ½-PINT SOUV "MRS. J.H. LAYER 1902" RUBY FLASH

371 433 GREEK KEY TRAY 15" OBLONG H

372 433 GREEK KEY WATER BOTTLE

373 433 GREEK KEY PLATE 10" DEEP (2)

374 433 GREEK KEY NAPPY 10" SHALLOW H

375 433 GREEK KEY GOBLET H

376 325 PILLOWS JUG 3-QT H

377	325	PILLOWS COMPORT 10" SHALLOW H
378	325	PILLOWS COMPORT 9"
379	325	PILLOWS COMPORT 9" CRIMPED
380	325	PILLOWS JELLY RND HDL H (1); JELLY TRICORN HDL H f (1)
381	325	PILLOWS ROSE BOWL 7" H
382	325	PILLOWS FRUIT 6" FTD H
383	325	PILLOWS JELLY 5" DEEP FTD H
384	325	PILLOWS ROSE BOWL 4" H
385	3350	WABASH TANKARD W/ 439 PIED PIPER ETCH H
386	1776	KALONYAL COMPORT 10" HI FTD H
387	385	GRID & SQUARE TANKARD H
388	343	SUNBURST JUG 1-QT H
389	4054	CORONATION TANKARD 30-OZ
390	1255	PINEAPPLE & FAN CAKE SALVER 10" EMERALD
391	300-1	OLD WILLIAMSBURG CANDELABRA 12" W/ BOBECHES & PRISMS SAHARA 1 CANDLE CUP R (PR)
392	102	BALL STEM C'STICK 9" H SUN PURPLE (PR)
393	108	THREE RING C'STICK 7" H (1-ONLY)
394	1404	OLD SANDWICH PLATE 8" SAHARA H (8)
395	1404	OLD SANDWICH FLORAL BOWL OVAL SAHARA H
396	1404	OLD SANDWICH TUMBLER FTD SAHARA H (2); SUNDAE SAHARA H (4); COCKTAIL SAHARA H (1) (7-PC TOTAL)
397	1404	OLD SANDWICH JUICE 6-OZ FLAT SAHARA H (6)
398	1404	OLD SANDWICH JUG ICE LIP SAHARA H
399	1404	OLD SANDWICH ICE TEA FTD SAHARA H (6)
400	1404	OLD SANDWICH PLATE 8" SAHARA H (6)
401	1567	PLANTATION BUTTER W/ LID RND H (1); JUICE FTD (4); ICE TEA FTD (1) (6-PC TOTAL)
402	5025	TYROLEAN OYSTER COCKTAIL W/ 507 ORCHID ETCH (4)
403	5010	SYMPHONIE CORDIAL (4)
404	2323	NAVY SODA 8-OZ COBALT FT (4)
405	5019	WAVERLY ICE TEA FTD (3); 3333 OLD GLORY GOBLET W/ 413 RENAISSANCE ETCH H (1); 5003 CRYSTOLITE COCKTAIL (6) (10-PC TOTAL)
406	300	PEERLESS SCHOEPPEN 12-OZ STRAIGHT H (8); 411 TUDOR BONBON H (1) (9-PC TOTAL)
407	1540	LARIAT GARDENIA BOWL 12" W/ 980 MOONGLO CUT (1); C'STICK 2-LITE W/ 980 MOONGLO CUT (PR)
408	3362	CHARTER OAK SHERBET MARIGOLD H
409	1541	ATHENA BOWL 12" FLARED CRIMPED (1); RELISH 11" 3-PRT (1)
410	1540	LARIAT DRESSING 2-PRT W/ 980 MOONGLO CUT H (1); MAYO W/ 980 MOONGLO CUT (1)
411	1233	PRESSED DIAMOND PLATE 7" FLAMINGO H (1); BAKED APPLE FLAMINGO H (1)
412	470	INTERCEPTED FLUTE PLATE 9" H
413	1559	COLUMBIA GARDENIA BOWL 13"
414	500	OCTAGON FROZEN DESSERT FLAMINGO (7)
415	500	OCTAGON FROZEN DESSERT MOONGLEAM (2); 419 SUSSEX CHAMPAGNE MOONGLEAM BOWL H (1)
416	1415	TWENTIETH CENTURY SODA 12-OZ MOONGLEAM H
417	353	MEDIUM FLAT PANEL SPICE TRAY AMBER STAIN CUT TO CLEAR H (1); 407 COARSE RIB MUSTARD W/ LID AMBER STAIN H (1)
418	1567	PLANTATION C'STICK 2-LITE (PR)
419	1404	OLD SANDWICH PARFAIT (4)
420	1519	WAVERLY JELLY W/ 507 ORCHID ETCH H (1); 1435 ASHTRAY W/ 507 ORCHID ETCH (2)
421	3362	CHARTER OAK CHAMPAGNE FLAMINGO H (4); 3357 KING ARTHUR COCKTAIL FLAMINGO (1)
422	1184	YEOMAN CANDY 8" HDL MOONGLEAM f
423	114	PLUTO C'STICK 1-LITE MOONGLEAM (PR)
424	113	MARS C'STICK 1-LITE FLAMINGO (PR)
425	114	PLUTO C'STICK 1-LITE FLAMINGO (1-ONLY); 1193 INSIDE SCALLOP CONSERVE FLAMINGO H (1)
426	5003	CRYSTOLITE ICE TEA FTD (2); SHERBET (11)
427	1503	CRYSTOLITE BOWL 12" OVAL H (1); CELERY LEAF 9" H (1); RELISH 9" LEAF 4-PRT (1); DRESSING 2-PRT (1); C'BLOCK ROSETTE (PR); 1502 C'BLOCK SWIRL (PR) (8-PC TOTAL)
428	5077	LEGIONNAIRE COCKTAIL W/ 1025 ARCADIA CUT (3); 6091 CABOCHON WINE 3-OZ ORIG LABEL (1); 5079 PAN AMERICAN COCKTAIL H (1); 5024 OXFORD JUICE W/ UNK CUT H (1) (6-PC TOTAL)
429	1540	LARIAT RELISH 9" 4-PRT RND (1); 1483 STANHOPE PLATE 7" (3); 1401 EMPRESS PUNCH CUP H (4); 1509 QUEEN ANN MINT (1); 1469 RIDGELEIGH BONBON (1); 393 NARROW FLUTE BANANA SPLIT H (1); 355 QUATOR ASHTRAY H (1); 1519 WAVERLY SALT & PEPPER SHORT NO TOP H (2) (14-PC TOTAL)
430	4231	FAVOR VASE COBALT
431	4228	FAVOR VASE COBALT
432	2323	NAVY BAR SHAM COBALT FT

433 411 TUDOR CELERY 12" H (1); 1425 VICTORIAN CELERY 12" H HDL f (1); 393 NARROW FLUTE CELERY 9" H (1) (3-PC TOTAL)
434 354 WIDE FLAT PANEL CREAM & SUGAR FOR STACK SET FLAMINGO H (1-SET); 1252 TWIST OIL W/ STOPPER 4-OZ FLAMINGO
(1); CHEESE PLATE 2-HDL MOONGLEAM H (1); PLATE 4 ½" FLAMINGO H (2); PLATE 6" FLAMINGO H (4) (10-PC TOTAL)
435 134 TRIDENT C'STICK 2-LITE W/ 504 TEA ROSE ETCH (1-ONLY); C'STICK 2-LITE W/ 507 ORCHID ETCH (1-ONLY)
436 134 TRIDENT C'STICK 2-LITE W/ 965 NARCISSUS CUT (1-ONLY); 4044 NEW ERA C'STICK 2-LITE (1-ONLY); 341 OLD
WILLIAMSBURG EPERGNETTES 6" H (2); 1252 TWIST PLATE "NEWARK SESQUICENTENNIAL" (1) (5-PC TOTAL)
437 411 TUDOR SUGAR W / LID FTD H
438 433 GREEK KEY ALMOND INDV H (4)
439 1205 RAINDROP FLORAL BOWL 12" MOONGLEAM H
440 6003 TEMPO CLARET W/ 1070 BEL-AIR CUT H (3)
441 1540 LARIAT GOBLET (4); CHAMPAGNE (1) (5-PC TOTAL)
442 1503 CRYSTOLITE PUNCH BOWL (1); UNDERPLATE (1); PUNCH CUP (12) H (14-PC TOTAL)
443 1503 CRYSTOLITE PUNCH BOWL (1); UNDERPLATE (1) H
444 353 MEDIUM FLAT PANEL JUG 3-PT H
445 411 TUDOR CHAMPAGNE MOONGLEAM H f (6)
446 3357 KING ARTHUR SHERBET MOONGLEAM STEM & FT f (7)
447 1184 YEOMAN CHAMPAGNE MOONGLEAM (2)
448 118 MISS MUFFET C'STICK MOONGLEAM MIS-MATCH COLOR H (2)
449 112 MERCURY C'STICK MOONGLEAM (PR)
450 1055 ASTOR GOBLET 10-OZ N.O. H (6)
451 1055 ASTOR GOBLET 8-OZ N.O. H (2)
452 357 PRISON STRIPE NAPPY 4 ½" H f (2); 393 NARROW FLUTE PLATE 5" H (2); PLATE 4 ½" H (1) (5-PC TOTAL)
453 16 SUSANNEH PUFF BOX W/ ORIG GLASS LID H (1); 17 PUFF BOX W/ ORIG GLASS LID H (1)
454 1503 CRYSTOLITE FLORAL BOWL 12" OVAL FTD H (1); CIG HOLDER RND H (1); CIG HOLDER FTD (1); ASHTRAY 3" RND H (2);
BONBON H (1) (6-PC TOTAL)
455 359 CHESTERFIELD ASHTRAY W/ MATCH HOLDER MOONGLEAM f (1); 1425 VICTORIAN ASHTRAY MONO "HFB" f (1); 1469
RIDGELEIGH ASHTRAY SQ 3" H f (1) (3-PC TOTAL)
456 1428 WARWICK CIG HOLDER (2); 33 SKIRTED PANEL C'STICK TOY H (1); 31 JACK-BE-NIMBLE C'STICK TOY (PR) (5-PC TOTAL)
457 112 MERCURY C'STICK SAHARA (1-ONLY)
458 112 MERCURY C'STICK FLAMINGO (PR)
459 1569 DROOP FLORAL BOWL OVAL H
460 1229 OCTAGON BOWL 8" 2-HDL FTD MOONGLEAM (1); NUT INDV MOONGLEAM H (3)
461 1229 OCTAGON MAYO FTD MOONGLEAM (1); MINT MOONGLEAM (1); NUT INDV MOONGLEAM H (3) (5-PC TOTAL)
462 1252 TWIST RELISH 3-PRT 13" MOONGLEAM H (1); BONBON MOONGLEAM H (1); PLATE 4 ½" MOONGLEAM H (7)
(9-PC TOTAL)
463 3480 KOORS SODA FTD D.O. MOONGLEAM FT (3)
464 3411 MONTE CRISTO GOBLET (1); COCKTAIL (2); 3416 BARBARA FRITCHIE CHAMPAGNE (2) (5-PC TOTAL)
465 120 OVERLAPPING SWIRL C'STICK FLAMINGO H (PR) 411 TUDOR CIG JAR NO LID HAWTHORNE H (1); 126 TROPHY C'STICK
MOONGLEAM H (1); 100 CENTENNIAL C'STICK H (1) (5-PC TOTAL)
466 1184 YEOMAN CELERY 12" MOONGLEAM (1); 1210 BONBON 2-HDL MOONGLEAM (1); 527 TAPER JUICE 5-OZ MOONGLEAM
(1); 500 OCTAGON FROZEN DESSERT MOONGLEAM (3) (6-PC TOTAL)
467 300 PEERLESS PUNCH CUP H (9)
468 5 PATRICIAN C'STICK TOY H (PR); 33 SKIRTED PANEL C'STICK TOY H (PR); 31 JACK-BE-NIMBLE C'STICK TOY H (PR); 30 TOM
THUMB C'STICK TOY H (PR) (8-PC TOTAL)
469 300-2 OLD WILLIAMSBURG CANDELABRA 2-LITE AMBER FLASH W/ UNK CUT A-2 PRISMS AMBER (PR)
470 EPHEMERA INCLUDING: HEISEY ADS; CHRISTMAS CARD; 2 NEEDLEPOINTS; COLOR SEALS; PUZZLE & GAME BOOK;
ASSORTED BROCHURES
471 1201 FANDANGO NAPPY 9" CRIMPED (1); CREAM INDV (1)
472 1591 STORYBOOK MUG H
473 3397 GASCONY WINE COBALT BOWL
474 3389 DUQUESNE CORDIAL W/ 832 CONTINENTAL CUT
475 3416 BARBARA FRITCHIE CORDIAL SAHARA BOWL

2024 SPRING BENEFIT AUCTION LIST

Day #3 - Saturday, April 13 – Lots 476-870

476 4090 COVENTRY COCKTAIL ZIRCON
477 3312 GAYOSO CORDIAL W/ 163 MONTICELLO ETCH
478 3366 TROJAN CORDIAL W/ PAIRPOINT CHELSEA CUT
479 3366 TROJAN CORDIAL W/ UNK CUT

480 3404 SPANISH CORDIAL W/ UNK CUT
 481 3380 OLD DOMINION CORDIAL W/ 448 OLD COLONY ETCH SAHARA
 482 3389 DUQUESNE CORDIAL W/ UNK CUT
 483 3389 DUQUESNE CORDIAL W/ UNK CUT
 484 3389 DUQUESNE CORDIAL W/ UNK CUT
 485 465 RECESSED PANEL CANDY W/ LID 1-LB W/ UNK CUT H (1); CANDY W/ LID 1-LB IRIDIZED H (1); CANDY W/ LID ½-LB PURPLE STAIN H (1) (3-PC TOTAL)
 486 465 RECESSED PANEL CANDY W/ LID 1-LB W/ ENAMEL DÉCOR H (1); CANDY W/ LID ½-LB W/ ENAMEL DÉCOR H (1)
 487 1503 CRYSTOLITE CANDY W/ LID H (1); MARMALADE H (1)
 488 23 PINEAPPLE & HEART PUFF BOX W/ METAL LID H (1)
 489 1519 WAVERLY CANDY W/ LID W/ 9040 ELKS BPOE ETCH H (1); CIG HOLDER W/ LID W/ 507 ORCHID ETCH H (1)
 490 1295 BEAD SWAG TOOTHPICK SOUV "ELKS CARNIVAL 1902 SHEBOYGAN WIS" WORN GOLD DÉCOR (1); TOOTHPICK SOUV "MADISON, MAINE" WORN GOLD DÉCOR (1)
 491 1225 PLAIN BAND TOOTHPICK H (3); 1201 FANDANGO TOOTHPICK (1); 1295 BEAD SWAG TOOTHPICK WORN GOLD DOT DÉCOR (1); 352 FLAT PANEL TOOTHPICK (1); 1205 FANCY LOOP TOOTHPICK WORN GOLD (1); TOOTHPICK WORN GOLD EMERALD (1) (8-PC TOTAL)
 492 352 FLAT PANEL CHEESE & CRACKER PLATE GOLD DÉCOR (2- PC); 393 NARROW FLUTE PRESERVE W/ LID GOLD DÉCOR H (1) (3-PC TOTAL)
 493 1 HORSEHEAD BOOKEND 1 GROUND BOTTOM (2)
 494 2 GOOSE WINGS HALF (1); 1554 FISH BOOKEND (1); 2 FIGHTING ROOSTER BEAK f (1) (3-PC TOTAL)
 495 1280 WINGED SCROLL SPOONER WORN GOLD EMERALD (1); 1025 SHARON CREAM & SUGAR NO LID W/ SILVER DÉCOR UNK CUT H (1-SET); 1020 PHYLLIS SUGAR W.O. H (1); 352 FLAT PANEL BUTTER BOTTOM ONLY H (1) (5-PC TOTAL)
 496 411 TUDOR CHEESE PLATE 2-HDL HAWTHORNE H (1); JELLY HAWTHORNE H (1); 1184 YEOMAN CREAM SOUP HAWTHORNE (1); BOUILLON MOONGLEAM H (1); SAUCER MOONGLEAM H (1); FLORAL BOWL D.O. MOONGLEAM (1); 475 NARROW FLUTE W/ RIM SALTED NUT FLAMINGO H (1); 479 PETAL CREAM & SUGAR FLAMINGO (1-SET); 407 COARSE RIB CELERY 12" MARIGOLD STAIN H (1); JELLY LO FTD MOONGLEAM H (1) (11-PC TOTAL)
 497 5003 CRYSTOLITE WHIMSEY: STEMS ONLY MADE FROM GOBLET (3); 501 LAVENDER JAR 5-OZ (1); 341 OLD WILLIAMSBURG CELERY 9" H (1) (5-PC TOTAL)
 498 335 PRINCE OF WALES PLUMES NAPPY 4 1/2" GOLD DÉCOR H (3); LID ONLY FOR SUGAR H (1)
 499 1183 REVERE CANDY BOX W/ LID 6" W/ UNK CUT H
 500 116 OAKLEAF C'STICK MOONGLEAM FT H (PR)
 501 1404 OLD SANDWICH BAR H (1); 3481 GLENFORD COCKTAIL MOONGLEAM FT (1); 10 GIBSON GIRL FLORAL PLATEAU H (1); 10 FLORAL BLOCK (1) (4-PC TOTAL)
 502 1951 CABOCHON CREAM & SUGAR W/ 980 MOONGLO CUT H (2)
 503 1184 YEOMAN PLATE 8" W/ 980 MOONGLO CUT (6)
 504 1184 YEOMAN PLATE 7" W/ 980 MOONGLO CUT (4)
 505 5024 OXFORD OYSTER COCKTAIL W/ 980 MOONGLO CUT H (5)
 506 1540 LARIAT CHAMPAGNE W/ 980 MOONGLO CUT (7)
 507 1286 CUPID & PSYCHE ASHTRAY MOONGLEAM (1); ASHTRAY FLAMINGO (1)
 508 1386 IRISH SETTER ASHTRAY FLAMINGO H
 509 1186 YEOMAN ASHTRAY W/ HAWKES BASKET CUT
 510 1186 YEOMAN ASHTRAY W/ UNK CUT (1); ASHTRAY W/ UNK CUT (1)
 511 1404 OLD SANDWICH ASHTRAY MOONGLEAM H (1); ASHTRAY FLAMINGO H (1); ASHTRAY COBALT H (1); ASHTRAY SAHARA H (1) (4-PC TOTAL)
 512 1404 OLD SANDWICH ASHTRAY FROSTED SILVER OVERLAY H (1); ASHTRAY W/ UNK CUT (1); ASHTRAY W/ UNK CUT (1); 1469 RIDGELEIGH NUT INDV H (1) (4-PC TOTAL)
 513 475 NARROW FLUTE W/ RIM SALTED NUT H (1) SALTED NUT MOONGLEAM H (1); SALTED NUT FLAMINGO H (2) (4-PC TOTAL)
 514 1252 TWIST NUT MARIGOLD H (1); NUT FLAMINGO H (1); BONBON INDV GOLD DÉCOR MOONGLEAM H (1) (3-PC TOTAL)
 515 1229 OCTAGON NUT INDV W/ UNK CUT MOONGLEAM H (1); NUT INDV W/ UNK CUT MOONGLEAM (1); NUT INDV W/447 EMPRESS ETCH H (1); NUT INDV W/ UNK PAIRPOINT CUT (1); NUT INDV W/ UNK CUT FLAMINGO (1) (5-PC TOTAL)
 516 1401 EMPRESS NUT INDV D.F. SAHARA f (8)
 517 1184 YEOMAN ASHTRAY HDL W/ UNK CUT (1); ASHTRAY HDL FLAMINGO H (1); ASHTRAY HDL MOONGLEAM (1) (3-PC TOTAL)
 518 441 GRAPE LEAF SQUARE ASHTRAY NOT FROSTED FLAMINGO
 519 1521 QUILT ASHTRAY INDV (1); 1533 WAMPUM ASHTRAY INDV (1)
 520 1428 WARWICK CIG HOLDER SAHARA H (2)
 521 10 OAKLEAF COASTER SAHARA (1); COASTER MOONGLEAM (1); COASTER FLAMINGO (1); COASTER FROSTED (1); COASTER (1) (5-PC TOTAL)
 522 1216 HORSERADISH WORN SILVER H (1); 485 HEXAGON COLOGNE NO STOPPER H (1)
 523 1229 OCTAGON NUT INDV NO OPTIC HAWTHORNE H (1); NUT INDV NO OPTIC GOLD DÉCOR MARIGOLD H (1); NUT INDV D.O. MARIGOLD H (1); NUT INDV D.O. FLAMINGO H (1) (4-PC TOTAL)
 524 1238 BEEHIVE PLATE 8" FLAMINGO (1); PLATE 8" MOONGLEAM (1); PLATE 4" FLAMINGO (1) (3-PC TOTAL)

525	1236	EAGLE PLATE 8" MOONGLEAM
526	305	PUNTY & DIAMOND POINT SALT SHAKER #2
527	2401	OAKWOOD BAR W/ 467 TALLY HO ETCH (1); 6060 COUNTRY CLUB BAR W/ 980 MOONGLO CUT (2)
528	4054	CORONATION ICE TUB
529	1184	YEOMAN COLOGNE 2-OZ W/ #65 STOPPER GOLD & ENAMEL DÉCOR
530	500	OCTAGON FROZEN DESSERT MOONGLEAM (2); FROZEN DESSERT FLAMINGO (1)
531	500	OCTAGON FROZEN DESSERT MARIGOLD
532	5025	TYROLEAN CORDIAL
533	3404	SPANISH CORDIAL W/ 941 BARCELONA CUT
534	3350	WABASH CORDIAL AMBER STAIN H
535	3350	WABASH CORDIAL GOLD WHEELING DÉCOR W/ PHEASANT & STUMP H
536	5023	CONTINENTAL CORDIAL PAPER LABEL
537	3389	DUQUESNE CORDIAL
538	1183	REVERE PUNCH BOWL FTD SMALL H BASE F
539	1567	PLANTATION CREAM & SUGAR W/ ELABORATE UNK CUT (1-SET)
540	5	PATRICIAN CANDELABRUM 12" 1-LITE (1-ONLY) W/ ASST PRISMS (11)
541	5	PATRICIAN C'STICK 9" (PR)
542	460	PINWHEEL BASKET 7" OVERCUT H
543	1295	BEAD SWAG PITCHER WORN GOLD W/ FLORAL DÉCOR OPAL (1); TUMBLER WORN GOLD W/ FLORAL DÉCOR OPAL (8) (9-PC TOTAL)
544	1590	ZODIAC CANDY W/ LID H
545	3397	GASCONY DECANTER
546	477	HEISEY HAIRPIN NAPPY 8" H
547	1280	WINGED SCROLL BUTTER W/ LID WORN GOLD ON BOTTOM EMERALD
548	393	NARROW FLUTE BUTTER W/ LID H
549	134	TRIDENT C'STICK 2-LITE FLAMINGO (PR)
550	479	PETAL CREAM & SUGAR FLAMINGO (1-SET); 1252 TWIST OIL NO STOPPER FLAMINGO (1); 1186 YEOMAN PUFF BOX W/ LID NO INSERT D.O. FLAMINGO H (1) (4-PC TOTAL)
551	2	ELEPHANT MEDIUM (1); 3 ELEPHANT SMALL (1)
552	1433	THUMBPRINT & PANEL VASE STRAIGHT H
553	21	ARISTOCRAT C'STICK 7" H (PR)
554	1184	YEOMAN SALT FLAMINGO (5)
555	1184	YEOMAN SALT MOONGLEAM (5)
556	1184	YEOMAN ASHTRAY INDV HDLD FLAMINGO (1); ASHTRAY INDV HDLD MOONGLEAM (1)
557	354	WIDE FLAT PANEL STACK SET: CREAM & SUGAR & BUTTER H (3-PC SET); BUTTER FOR STACK SET H (1) (4-PC SET)
558	393	NARROW FLUTE ALMOND SILVER DÉCOR H (4) SALT INDV (1) (5-PC TOTAL)
559	357	DUCK ASHTRAY H
560	1536	MILITARY CAP ASHTRAY FROM EMMA. DOCKERY (A.H.'S DAUGHTER) IN 1969 PAPER LABEL (1)
561	1469	RIDGELEIGH BAR H (4)
562	1425	VICTORIAN ASHTRAY H (1); 1404 OLD SANDWICH ASHTRAY COBALT H (1); ASHTRAY H (1); 1506 WHIRLPOOL NUT INDV H (2); 1186 YEOMAN ASHTRAY W/ UNK CUT (1); 1553 SPARROW (1) (7-PC TOTAL)
563	10	MUDDLER SMALL
564	1776	KALONYAL JELLY 5" FTD H (1); 433 GREEK KEY JELLY 1-HDL H (1); 451 CROSS-LINED FLUTE JELLY 1-HDL H (1); 393 NARROW FLUTE JELLY 1-HDL H (1) (4-PC TOTAL)
565	1519	WAVERLY TORTE PLATE W/ 965 NARCISSUS CUT
566	1540	LARIAT SANDWICH 12" CTR HDL
567	1280	WINGED SCROLL OIL W/ STOPPER WORN GOLD CUSTARD (2)
568	350	PINWHEEL & FAN PITCHER H
569	501	COLONIAL LAVENDER JAR 5-OZ
570	1401	EMPRESS CREAM & SUGAR SAHARA H (1-SET); 500 OCTAGON TRAY SAHARA (1)
571	1020	PHYLLIS CREAM & SUGAR W/ UNK CUT H (1-SET)
572	1540	LARIAT COLOGNE WORN CHARLETON ENAMEL DECOR
573	331	COLONIAL PANEL SALT (2); 341 PURITAN SALT INDV (3)
574	429	PLAIN PANEL RECESS SALT FTD (4)
575	32	SKIRTED PANEL HANDLED C'STICK 5" (1); 16 SUSANNEH PUFF BOX W/ ORIG GLASS LID W/ UNK CUT (1)
576	1280	WINGED SCROLL TUMBLER CUSTARD (1); TOOTHPICK WORN GOLD CUSTARD (1); MATCH HOLDER CUSTARD (1) (3-PC TOTAL)
577	2323	NAVY BAR N.O. COBALT FT
578	1519	WAVERLY VASE 6 ½" (2)
579	462	PLAIN HEXAGON BASKET H
580	458	PICKET BASKET H
581	135	EMPRESS C'STICK 1-LITE (2-PR)

582 5 PATRICIAN C'STICK 7" H (PR)
583 21 ARISTOCRAT C'STICK 7" H (PR)
584 3 MARLBORO C'STICK 8" (1-ONLY); 2 OLD WILLIAMSBURG C'STICK 7 1/2" (1-ONLY); 22 WINDSOR C'STICK 9" (1-ONLY)
(3-PC TOTAL)
585 338 COLONIAL DRAPE VASE 7 1/2" (2)
586 351 PRISCILLA VASE 3 1/2" STRAIGHT H (1); VASE 4" FLARED H (1); VASE 5 1/2" STRAIGHT H (1) (3-PC TOTAL)
587 1503 CRYSTOLITE VASE 5" (1); VASE VIOLET (1); 1469 RIDGELEIGH CANDLEVASE (1); 1540 LARIAT VASE 7" RND (1)
(4-PC TOTAL)
588 1552 FOUR LEAF C'STICK (PR)
589 4231 FAVOR VASE COBALT
590 112 MERCURY C'STICK 1-LITE (3)
591 118 MISS MUFFET C'STICK 1-LITE D.O. FLAMINGO H (PR)
592 106 INVERTED SAUCER C'STICK 1-LITE H (PR)
593 1401 EMPRESS CUP & SAUCER H (9-SETS); LID ONLY FOR MARMALADE H (1) (19-PC TOTAL)
594 1401 EMPRESS COMPOTIER D.F. H (2); FLORAL BOWL 9" ROLLED EDGE H (1)
595 1401 EMPRESS SANDWICH PLATE 12" RND H (1); SALAD BOWL 12" SQ H (1)
596 1519 WAVERLY CORNUCOPIA VASE H (1); 2 GOOSE WINGS HALF H (1); 341 PURITAN CELERY 12" H (1); CELERY 9" H (1); 398
HOPEWELL NAPPY 4" W/ 941 BARCELONA CUT H (2); 1503 CRYSTOLITE NAPPY 5" H (1); CREAM INDV H (1); ASHTRAY 3"
RND H (5) (13-PC TOTAL)
597 1252 TWIST FLORAL BOWL 9" FLARED MOONGLEAM H (1)
598 1575 FLORAL BOWL 12" H (1); 1509 QUEEN ANN LILY BOWL STRAIGHT UNFINISHED BOTTOM (1)
599 1184 YEOMAN GOBLET D.O. (6)
600 5044 CONSTELLATION SODA 12-OZ (4)
601 5044 CONSTELLATION BAR (3)
602 5057 SUEZ CLARET W/ 1017 PEACHTREE CUT H (5)
603 6091 CABOCHON GOBLET W/ 1072 SOUTHWIND CUT (3); COCKTAIL W/ 1072 SOUTHWIND CUT (1); WINE (1) (5-PC TOTAL)
604 3408 JAMESTOWN GOBLET W/ 965 NARCISSUS CUT H (2)
605 4055 PARK LANE GOBLET W/ 849 NOMAD CUT (1); 5019 WAVERLY ICE TEA FTD W/ 1021 MELROSE CUT (1); 3357 KING
ARTHUR LUNCHEON GOBLET W/ UNK CUT (1) (3-PC TOTAL)
606 4055 PARK LANE GOBLET W/ ELABORATE UNK CUT
607 3408 JAMESTOWN GOBLET W/ ELABORATE UNK CUT
608 4231 FAVOR VASE COBALT
609 1567 PLANTATION OIL W/ STOPPER H
610 1519 WAVERLY CREAM & SUGAR W/ 507 ORCHID ETCH H (1-SET); DRESSING 2-PRT W/ 507 ORCHID ETCH H (1) (3-PC TOTAL)
611 1509 QUEEN ANN SAUCER CANDLEBASE H (1); CANDLEHOLDER INDV (1)
612 1541 SCOTTY DOG (1); 1522 COLT STANDING (1); 1553 SPARROW (1) (3-PC TOTAL)
613 1401 EMPRESS NUT MOONGLEAM H (1); MAYO W/ UNK CUT SAHARA H (1); 5019 WAVERLY CHAMPAGNE (1) (3-PC TOTAL)
614 350 PINWHEEL & FAN JUG H (1); TUMBLER 8-OZ H (7) (8-PC TOTAL)
615 10 MALLARD WINGS DOWN (1); 11 MALLARD WINGS HALF (1); 12 MALLARD WINGS UP (1) (3-PC SET)
616 6060 COUNTRY CLUB OLD FASHION W/ 517 WINCHESTER '73 ETCH
617 393 NARROW FLUTE FRENCH DRESSING W/ UNDERPLATE ENAMEL DÉCOR H (1-SET)
618 4225 COBEL ROCK & RYE BOTTLE W/ STOPPER W/ 462 FOX CHASE ETCH H
619 3355 FAIRACRE JUG MOONGLEAM FT & HDL H SCRATCHED HDL
620 3368 ALBEMARLE CORDIAL W/ 445 TROJAN ETCH H
621 3366 TROJAN CORDIAL W/ 445 TROJAN ETCH H
622 5058 GOOSE CORDIAL
623 3365 RAMSHORN GOBLET W/ 9008 SEA NYMPH ETCH H
624 1519 WAVERLY TRINKET BOX W/ LID LION FINIAL H
625 1401 EMPRESS PLATE 15" RND W/ 5008 CASTLE HARBOR ETCH
626 135 EMPRESS FLORAL BOWL 12 1/2" SAHARA H
627 136 TRIPLEX C'STICK 3-LITE SAHARA H (PR)
628 1401 EMPRESS PLATE 10 1/2" RND W/ 448 OLD COLONY ETCH SAHARA H WEAR (4)
629 1401 EMPRESS FLORAL BOWL W/ 9009 ARCTIC ETCH (1); 135 EMPRESS C'STICK 1-LITE W/ 9009 ARCTIC ETCH (PR)
(3-PC TOTAL)
630 1205 FANCY LOOP COMPORT 9" FTD FAIR GOLD
631 341 PURITAN COMPORT 7 1/2" SHALLOW W/ UNK CUT H
632 483 FLUTED DIAMOND FOOT FRUIT 8" W/ UNK CUT H
633 300-1 OLD WILLIAMSBURG CANDELABRA W/ BOBECHES & PRISMS H (PR)
634 1183 REVERE SANDWICH PLATE 12" W/ UNK CUT H (1); 1519 WAVERLY GARDENIA BOWL W/ UNK CUT H (1); TORTE
PLATE 13 1/2" W/ UNK CUT H (1) (3-PC TOTAL)
635 436-3 VASE 16" H
636 343 SUNBURST BONBON SPADE H (1); BONBON CLUB H (1)

637	500	OCTAGON VARIETY TRAY W/ 849 NOMAD CUT
638	1951	CABOCHON CANDY W/ LID W/ 516 PLANTATION IVY ETCH H (1); C'STICK 3-LITE W/ 516 PLANTATION IVY ETCH (1-ONLY)
639	1567	PLANTATION URN CANDY W/ LID
640	1567	PLANTATION RELISH 13" 5-PRT
641	1567	PLANTATION VASE 5" H (1); OIL W/ WRONG STOPPER H (1)
642	5067	PLANTATION OYSTER COCKTAIL (6)
D 643	1295	BEAD SWAG BERRY SET: NAPPY 8" (1); NAPPY 4 ½" (6) ALL OPAL W/ FLORAL POPPY DÉCOR (7-PC TOTAL)
644	1567	PLANTATION CANDLEBLOCK (PR)
645	1433	THUMBPRINT & PANEL C'STICK 2-LITE SAHARA H (1-ONLY)
646	4045	HERON BALL VASE 4" ALEXANDRITE
647	7075	EGYPTIAN C'STICK 1-LITE H (PR)
D 648	126	TROPHY C'STICK 1-LITE (1); 22 WINDSOR C'STICK 1-LITE 10" H (1); 32 SKIRTED PANEL HANDLED C'STICK 5" (1); C'STICK 7" (1) (4-PC TOTAL)
D 649	1228	RINGLING EGG CUP H
D 650	1404	OLD SANDWICH OIL W/ STOPPER H (1); 1405 IPSWICH OIL W/ STOPPER (1)
D 651	1425	VICTORIAN SALT & PEPPER SANITARY TOPS H (1-SET)
D 652	7026	HEART & DRAPE PLATE 8 ½" H
D 653	1234	STIPPLED DIAMOND PLATE 8 ½" H
D 654	1776	KALONYAL PLATE 8 ½" H
D 655	1406	FLEUR DE LIS PLATE 8 ½" SQ H
D 656	1236	EAGLE PLATE 8 ½" (1); 1238 BEEHIVE PLATE 8 ½" (1)
D 657	1235	BEADED PANEL & SUNBURST PLATE 8 ½" (1); 343 SUNBURST PLATE 6" H (2); 1250 GROOVE & SLASH PLATE 6" (1); 1205 FANCY LOOP CHEESE PLATE (1) (5-PC TOTAL)
D 658	411	TUDOR PLATE 8" H (1); 1243 STEPPED OCTAGON PLATE 8" H (1); 1223 FLUTED BORDER PLATE 7" H (1) (3-PC TOTAL)
D 659	1489	PURITAN PLATE 8" f (1); 1469 RIDGELEIGH PLATE 6" SQ H (1); 1590 ZODIAC PLATE 8" H (1) (3-PC TOTAL)
D 660	400	COLONIAL SCALLOP TOP DRINK DECANTER INDV (1); 1255 PINEAPPLE & FAN CREAM TABLE (1); SALT & PEPPER #2 POOR TOP (1-SET) (4-PC TOTAL)
D 661	1540	LARIAT CREAM & SUGAR ON TRAY H (3-PC SET); 1486 COLEPORT ASHTRAY INDV H (1); 1425 VICTORIAN CIG BOX 4" IN ORMOLU METAL TRAY H (1) (5-PC TOTAL)
D 662	1195	PAUL REVERE BASE FOR FLORAL BOWL MOONGLEAM H (1); 1202 PANELED OCTAGON BASE FOR FLORAL BOWL 5 ½" MOONGLEAM H (1); BASE FOR FLORAL BOWL 5 ½" FLAMINGO H (1); BASE FOR FLORAL BOWL 4" FLAMINGO H (1); 353 MEDIUM FLAT PANEL LID FOR PUFF BOX OR SOAP DISH (1) (5-PC TOTAL)
D 663	1150	COLONIAL STAR PLATE 6" H (3); PLATE 7" H (3); PLATE 8" H (4) (10-PC TOTAL)
D 664	341	PURITAN CELERY 12" H (1); PICKLE 6" W/ UNK CUT H (1); PLATE 6" H (1); NAPPY 5 ½" SHALLOW H (1); NAPPY 4" H (1); 393 NARROW FLUTE CELERY 9" H (2) (7-PC TOTAL)
D 665	1575	CUPPED LILY VASE H
D 666	341 ½	PURITAN BUTTER W/ LID H
D 667	433	GREEK KEY PLATE 6" H (1); 343 SUNBURST NAPPY 4" H (1)
D 668	411	TUDOR NAPPY 9" H (1); 1223 FLUTED BORDER PLATE 7" H (1); 1401 EMPRESS PLATE 6" RND H (1) (3-PC TOTAL)
D 669	1503	CRYSTOLITE CANDY W/ METAL LID FLOWER FINIAL H (1); PLATE 7" (1); CIG HOLDER RND H (1) (3-PC TOTAL)
D 670	1469	RIDGELEIGH JELLY 3-HDL H (1); CHEESE PLATE H (1); 1567 PLANTATION JELLY 2-HDL SILVER OVERLAY H (1); 1183 REVERE SUGAR NO LID H (1) (4-PC TOTAL)
671	1170	PLEAT & PANEL CHEESE & CRACKER 14" FLAMINGO H (1-SET); CRACKER PLATE 10" FLAMINGO H (1) (3-PC TOTAL)
672	1170	PLEAT & PANEL PLATE 14" FLAMINGO H
673	1170	PLEAT & PANEL SPICE TRAY FLAMINGO H
674	1170	PLEAT & PANEL GOBLET FLAMINGO (10)
675	1170	PLEAT & PANEL GOBLET LUNCHEON FLAMINGO (8)
676	1170	PLEAT & PANEL SHERBET FLAMINGO (10)
677	1170	PLEAT & PANEL CREAM & SUGAR W/ LID FLAMINGO H (1-SET); SUGAR NO LID FLAMINGO H (1) (3-PC TOTAL)
678	1170	PLEAT & PANEL CUP & SAUCER FLAMINGO H (8-SETS)
679	1170	PLEAT & PANEL PLATE 7" FLAMINGO H (16); PLATE 6" FLAMINGO H (2) (18-PC TOTAL)
680	1170	PLEAT & PANEL PLATE 10 ½" FLAMINGO H (8)
681	1170	PLEAT & PANEL COMPORT W/ LID LO FTD FLAMINGO H
682	1170	PLEAT & PANEL COMPORTIER W/ LID HI FTD FLAMINGO
683	1170	PLEAT & PANEL JUG NO ICE LIP FLAMINGO H
684	1170	PLEAT & PANEL OIL W/ STOPPER FLAMINGO
685	1170	PLEAT & PANEL LEMON DISH FLAMINGO H
686	1170	PLEAT & PANEL JELLY 2-HDL FLAMINGO H (1); COMPORT NO LID LO FTD FLAMINGO (1)
687	1170	PLEAT & PANEL VASE 7 ½" FLAMINGO
688	1445	GRAPE CLUSTER C'STICK 1-LITE H (PR)
689	1252	TWIST NUT FLAMINGO H (1); 52 SHORT SALT & PEPPER INDV FLAMINGO (1-SET); 1454 DIAMOND POINT JELLY (8); ASHTRAY (8) (19-PC TOTAL)

690 1503 CRYSTOLITE RELISH 12" 3-PRT OVAL H (1); VIOLET VASE H (1); 1405 IPSWICH PLATE 7" H (1); 1219 SIMPLICITY W/ STAR PLATE 7" H (1) (4-PC TOTAL)

691 300 PEERLESS SUNDAE FTD H (2); NAPPY 4 ½" H (4); 341 PURITAN EGG CUP H (6); 351 PRISCILLA MUSTARD W/ LID H (1) (13-PC TOTAL)

692 1404 OLD SANDWICH ICE TEA 12-OZ FTD H (6)

693 21 ARISTOCRAT C'STICK 7 ½" H (2-PR) (4-PC TOTAL)

694 5 PATRICIAN C'STICK 7 ½" H (2-PR) (4-PC TOTAL)

695 25 FEDERAL C'STICK 7" H (PR)

696 4225 COBEL COCKTAIL SHAKER 1-QT

697 1401 EMPRESS CELERY 13" SAHARA H (1); 341 OLD WILLIAMSBURG EPERGNETTE H (2)

698 341 PURITAN PUNCH BOWL SHALLOW H (1); PICKLE 6" H (1); 393 NARROW FLUTE PLATE 5 ½" H (6) (8-PC TOTAL)

699 300-5 OLD WILLIAMSBURG CANDELABRUM 5-LITE (1-ONLY)

700 364 PEDESTAL ASHTRAY FLAMINGO f

701 1506 PROVINCIAL COASTER (1); 1540 LARIAT COASTER (1)

702 352 FLAT PANEL CANDY TRAY 8" H (1); 351 PRISCILLA SUGAR (1); 1503 CRYSTOLITE JELLY TRICORNER 1-HDL (1); 1401 EMPRESS LEMON DISH NO LID SAHARA H (1) (4-PC TOTAL)

703 EPIHEMERA ORIGINAL HEISEY SHIPPING BOX 19"x16"x15"

704 4035 BETHEL DECANTER W/ 467 TALLY HO ETCH

705 391 ROSE'S VASE 10" H

706 465 RECESSED PANEL VASE 9" H (2)

707 22 WINDSOR C'STICK 9" H (PR)

708 23 SHEFFIELD C'STICK 9" WORN GOLD H (PR)

709 1184 YEOMAN PLATE 8" W/ 980 MOONGLO CUT (12)

710 600 SQUARE-HANDLED C'STICK (1-ONLY)

711 367 PRISM BAND DECANTER

712 150 BANDED FLUTE FINGER BOWL H (5); NAPPY 4" H (4); PLATE 5" H (7); PLATE 7" H (4); SHERBET H (8) (28-PC TOTAL)

713 1 GIRAFFE HEAD BACK

714 1541 SCOTTY DOG (1); 1522 COLT STANDING (1); 1540 PLUG HORSE (1); 3 GOOSE WINGS UP (3) (6-PC TOTAL)

715 1554 FISH BOOKEND (1-ONLY)

716 1428 WARWICK VASE 9" UNK CUT F

717 1183 REVERE CANDY BOX W/ LID 7" W/ HAWKES-LIKE CUT f

718 1519 WAVERLY PLATE 8" W/ 507 ORCHID ETCH (10)

719 1170 PLEAT & PANEL PLATE 8" W/ HAWKES-LIKE CUT (6); PLATE 8" W/ UNK CUT H (12) (18-PC TOTAL)

720 1567 PLANTATION RELISH 8" RND W/ 516 PLANTATION IVY ETCH H

721 351 PRISCILLA ALE 8-OZ H

722 1413 CATHEDRAL VASE W/ 855 FUCHSIA CUT (1); VASE W/ 855 FUCHSIA GREY CUT (1)

723 433 GREEK KEY NAPPY 8 ½" H (1); NAPPY 5" SHALLOW H (6) (7-PC TOTAL)

724 1186 YEOMAN FRUIT BOWL 9" W/ UNK CUT H (1); 411 TUDOR NAPPY 8" H (1)

725 393 NARROW FLUTE PUNCH BOWL (1); BASE (1); PUNCH CUP (17) (19-PC TOTAL)

726 1413 CATHEDRAL VASE W/ UNK CUT

727 1170 PLEAT & PANEL CREAM SOUP H (7); UNDERPLATE (7) (14-PC TOTAL)

728 459 ROUND COLONIAL BASKET 7" W/ UNK CUT H (1); BASKET 7" W/ UNK CUT (1)

729 300 ½ PEERLESS BAR STRAIGHT H (3); BAR FLARED UNFINISHED H (1) (4-PC TOTAL)

730 353 MEDIUM FLAT PANEL VASE 10" W/ UNK CUT H BROWN STAIN (1); VASE 8" W/ SAME UNK CUT H (2); VASE 8" W/ DIFF UNK CUT H (1) (4-PC TOTAL)

731 5024 OXFORD GOBLET W/ 9062 PSI UPSILON CREST ETCH H (1); 5010 SYMPHONY ICE TEA FTD W/ 503 MINUET ETCH (1)

732 1184 YEOMAN JELLY H (2); BONBON H (1); MINT H (1); CHEESE PLATE (1) ALL W/ MATCHING UNK CUT (5-PC TOTAL)

733 393 NARROW FLUTE CHAMPAGNE HOLLOW STEM H (1); OYSTER COCKTAIL H (6) (7-PC TOTAL)

734 1401 EMPRESS FLORAL BOWL D.F. W/ 636 CLERMONT CUT (1); 134 TRIDENT C'STICK W/ 636 CLERMONT CUT (PR) (3-PC TOTAL)

735 112 MERCURY C'STICK W/ HAWKES-LIKE CUT (PR)

736 459 ROUND COLONIAL BASKET 7" W/ UNK BUTTERFLY CUT H

737 459 ROUND COLONIAL BASKET 7" GOLD & ENAMEL DÉCOR H

738 1170 PLEAT & PANEL CREAM SOUP W/ UNK CUT (9); UNDERPLATE W/ UNK CUT H (10); CREAM SOUP W/ HAWKES-LIKE CUT H (1); UNDERPLATE W/ HAWKES-LIKE CUT H (5) (25-PC TOTAL)

739 1 RINGNECK PHEASANT (2); 2 GOOSE WINGS HALF (2) (4-PC TOTAL)

740 473 NARROW FLUTE W/ RIM CUBE SUGAR W/ CREAM H (1-SET); CUBE SUGAR W/ CREAM IRIDIZED H (1 SET); CUBE SUGAR W/ CREAM LAVENDER STAIN H (1-SET)

741 473 NARROW FLUTE W/ RIM NAPPY 8" SQ H (1); NAPPY 4 ½" SQ H (6) (7-PC TOTAL)

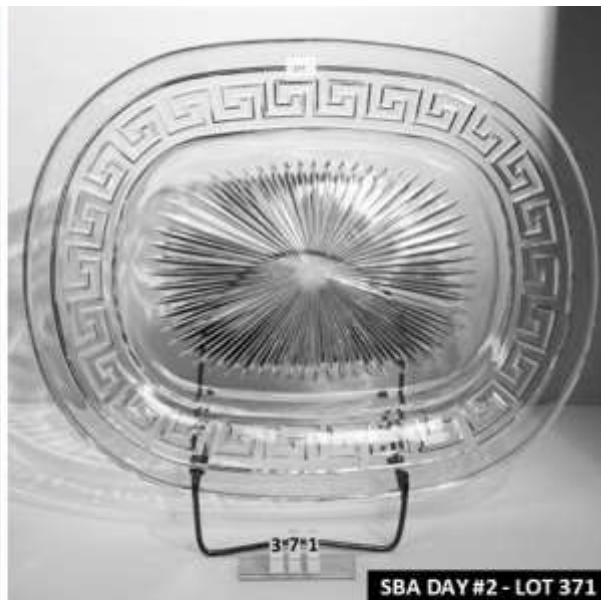
742 465 RECESSED PANEL CANDY W/ LID 1-LB ENAMEL DÉCOR H (1); CANDY W/ LID W/ UNK CUT STERLING OVERLAY H (1)

743 484 EDITH FLORAL BOWL 6 ½" W/ UNK CUT H (1); 11 GIBSON GIRL FLORAL BOWL 12" HAWKES-LIKE CUT SILVER OVERLAY H (1); 1472 PARALLEL QUARTER FLORAL BOWL W/ UNK CUT (1) (3-PC TOTAL)

744	1540	LARIAT SHERBET W/ 980 MOONGLO CUT (5); CHAMPAGNE W/ 980 MOONGLO CUT (12) (17-PC TOTAL)
745	4054	CORONATION COCKTAIL SHAKER W/ ART DECO STYLE MONOGRAM "APC"
746	338	COLONIAL DRAPE VASE 18" H
747	353	MEDIUM FLAT PANEL VASE 12" H (2)
748	1186	YEOMAN FRUIT BOWL 9" W/ UNK CUT H f-1 (4)
749	343	SUNBURST PUNCH BOWL (1); BASE (1); PUNCH CUP (9) H (11-PC TOTAL)
750	32	SKIRTED PANEL HANDLED C'STICK 5" (PR)
751	343	SUNBURST JELLY FTD H (1); 1503 CRYSTOLITE COMPORT CHOCOLATE RUBY STAIN H (1); 451 CROSS-LINED FLUTE JELLY FTD H (1) (3-PC TOTAL)
752	1540	LARIAT GARDENIA BOWL 12" W/ 980 MOONGLO CUT (2); GARDENIA BOWL 12 ½" W/ 980 MOONGLO CUT (1); FLORAL BOWL 12" FLARED W/ UNK CUT ROSES (1) (4-PC TOTAL)
753	1401	EMPRESS ICE BUCKET FLAMINGO H
754	1433	THUMBPRINT & PANEL VASE STRAIGHT H
755	5	PATRICIAN CANDELABRA 1-LITE 12" H (PR)
756	150	BANDED FLUTE NAPPY 4 ½" H (6); WINE H (10) (16-PC TOTAL)
757	354	WIDE FLAT PANEL CREAM & SUGAR W/ UNK CUT (1-SET); QUEEN ANN CREAM & SUGAR INDV H (1-SET); 341 OLD WILLIAMSBURG CREAM & SUGAR INDV H (1-SET); 393 NARROW FLUTE CREAM & SUGAR INDV H (1-SET) (8-PC TOTAL)
758	150	BANDED FLUTE COCKTAIL H (23)
759	459	ROUND COLONIAL BASKET 7" W/ UNK CUT H
760	459	ROUND COLONIAL BASKET 7" W/ 350 MUMS ETCH H
761	463	BONNET BASKET 7" W/ UNK BUTTERFLY CUT H
762	1235	BEADED PANEL & SUNBURST PUNCH BOWL (1); BASE (1); PUNCH CUP H (9) (11-PC TOTAL)
763	1445	GRAPE CLUSTER FLORAL BOWL H
764	341	PURITAN HORSERADISH SQUAT H (1); 352 FLAT PANEL HORSERADISH H (2) (3-PC TOTAL)
765	1469	RIDGELEIGH ASHTRAY CARD SUIT: CLUB, DIAMOND, HEART, SPADE H (4-PC)
766	1186	YEOMAN FRUIT BOWL 9" W/ UNK CUT H (3); PRESERVE 5" W/ UNK CUT H (2) (5-PC TOTAL)
767	1519	WAVERLY FLORAL BOWL SEAHORSE FT W/ 965 NARCISSUS CUT H
768	365	OLD QUEEN ANNE BONBON TRAY ENDS OUT H (3); JELLY RND 1-HDL H (1) (4-PC TOTAL)
769	473	NARROW FLUTE W/ RIM RELISH 8" 4-PRT H (1); JELLY 2-PRT 2-HDL H (1); 394 NARROW FLUTE CUBE SUGAR H (1) (3-PC TOTAL)
770	1509	QUEEN ANN FLORAL BOWL D.F. W/ 913 EVERGLADE CUT
771	1401	EMPRESS MINT D.F. W/ 501 BELLE LE ROSE ETCH (1); RELISH 7" TRIPLEX W/ UNK CUT (1); ASHTRAY DIFF MONOGRAMS (2); 1509 QUEEN ANN MAYO D.F. (1); CUP H (1) (6-PC TOTAL)
772	5010	SYMPHONIE GOBLET W/ 503 MINUET ETCH (9); CHAMPAGNE W/ 503 MINUET ETCH (8) (17-PC TOTAL)
773	393	NARROW FLUTE JUG 1-PINT HOTEL H
774	433 ½	GREEK KEY NAPPY 9" SHALLOW H (1); NAPPY 9 ½" H (1)
775	4182	THIN PLATE 8" W/ 781 ST. ANNE CUT (2)
776	22	WINDSOR C'STICK 9" W/ UNK CUT H (PR)
777	1186	YEOMAN JELLY 1-HDL W/ UNK CUT H (1); JELLY 3-HDL W/ UNK CUT H (1)
778	411	TUDOR JELLY W/ UNK CUT H (2); MINT W/ UNK CUT H (1); BAR H (1); PUNCH CUP H (8) (12-PC TOTAL)
779	1252	TWIST MINT W/ UNK CATTAIL CUT H (1); 1184 YEOMAN JELLY W/ UNK CUT H (1); 1170 PLEAT & PANEL JELLY W/ UNK CUT H (1) (3-PC TOTAL)
780	1229	OCTAGON BONBON W/ UNK CUT (1); JELLY W/ UNK CUT H (2); CHEESE W/ UNK CUT H (1); 1184 YEOMAN CHEESE W/ UNK CUT H (1); 1219 SIMPLICITY W/ STAR PLATE 4 ½" W/ UNK CUT H (3) (8-PC TOTAL)
781	1184	YEOMAN OYSTER PLATE 9" W/ HAWKES-LIKE CUT & MONO H (1); JELLY 1-HDL W/ HAWKES-LIKE CUT H (1); 411 TUDOR MINT W/ HAWKES-LIKE CUT H (1) (3-PC TOTAL)
782	1401	EMPRESS FLORAL BOWL D.F. W/ UNK CUT
783	1495	FERN MAYO W/ 893 CARLTON CUT (1); 1519 WAVERLY DRESSING 2-PRT H (1)
784	6091	CABOCHON GOBLET (6)
785	363	LARKIN SYRUP 7-OZ W/ UNK CUT H
786	1495	FERN CANDELABRUM 2-LITE W/ 1503 BOBECHE W/ 508 FLORAL ETCH (1); 112 MERCURY C'STICK (1); 1519 WAVERLY EPERGNETTE DEEP H (1); 302 OLD WILLIAMSBURG CANDELABRUM BASE ONLY (1) (4- PC TOTAL)
787	1483	STANHOPE PLATE 7" (4)
788	1184	YEOMAN FRENCH DRESSING W/ UNDERPLATE H (1-SET); 1485 SATURN MUSTARD W/ LID H (1)
789	4044	NEW ERA CLARET (1); OYSTER COCKTAIL (1)
790	5010	SYMPHONIE JUICE FTD W/ UNK CUT (3); 3404 SPANISH CHAMPAGNE W/ UNK CUT (1); 3368 ALBEMARLE COCKTAIL W/ 867 CHATEAU CUT (1); 5072 ROSE SHERBET W/ 515 HEISEY ROSE ETCH (1) (6-PC TOTAL)
791	3360	PENN CHARTER CHAMPAGNE W/ 781 ST. ANNE CUT (2)
792	3389	DUQUESNE GOBLET W/ UNK HEISEY CUT (6)
793	3350	WABASH GOBLET W/ 439 PIED PIPER ETCH H (3); ICE TEA W/ 439 PIED PIPER ETCH (2)
794	2355	CLOVER LEAF BAR (2)
795	5087	COMET BAR

796	6060	COUNTRY CLUB BAR W/ 980 MOONGLO CUT (1); 1486 COLEPORT BAR (1)
797	1205 ½	FANCY LOOP BAR WORN GOLD EMERALD
798	310	RING BAND TOOTHPICK SOUV WORN GOLD & FLORAL DÉCOR CUSTARD (1); TOOTHPICK WORN GOLD CUSTARD (2)
799	305	PUNTY & DIAMOND POINT TOOTHPICK
800	333	WALDORF ASTORIA TOOTHPICK (3)
801	1220	PUNTY BAND TOOTHPICK SCALLOP TOP RUBY FLASH (1); 1225 PLAIN BAND TOOTHPICK 1 MISSING BEAD (1); TOOTHPICK (1)
802	1295	BEAD SWAG TOOTHPICK SOUV "FLORA 1910" GOLD & FLORAL DÉCOR OPAL (1); TOOTHPICK GOLD & FLORAL DÉCOR OPAL (2)
803	32	SKIRTED PANEL HANDLED C'STICK 5" (PR); 5 PATRICIAN C'STICK TOY (PR); 33 SKIRTED PANEL C'STICK TOY H (PR); 31 JACK-BE-NIMBLE THUMB C'STICK TOY H (PR) (8-PC TOTAL)
804	1201	FANDANGO TOOTHPICK (1); 335 PRINCE OF WALES PLUMES TOOTHPICK SOUV "PHI HILL 1903" WORN RUBY FLASH (1); 1255 PINEAPPLE & FAN TOOTHPICK WORN GOLD (1); TOOTHPICK WORN GOLD ON RIM EMERALD (1); 1205 FANCY LOOP TOOTHPICK EMERALD (1); TOOTHPICK WORN GOLD RIM DECOR EMERALD (1) (6-PC TOTAL)
805	4044	NEW ERA CORDIAL H (1); 6091 CABOCHON CORDIAL (1); 6003 TEMPO CORDIAL (1) (3-PC TOTAL)
806	4002	AQUA CALIENTE COCKTAIL W/ 448 OLD COLONY ETCH SAHARA H (1); 1184 YEOMAN COCKTAIL D.O. MOONGLEAM H (2)
807	150	POINTED OVAL IN DIAMOND POINT SPOONER EMERALD (1); 1220 PUNTY BAND SUGAR NO LID RUBY FLASH (1); 1225 PLAIN BAND SHERBET RUBY FLASH H (1) (3-PC TOTAL)
808	150	BANDED FLUTE WINE 2-OZ H (1); 160 LOCKET ON CHAIN WINE (1); 1205 FANCY LOOP WINE EMERALD (1); 1295 BEAD SWAG WINE RUBY FLASH (1) (4-PC TOTAL)
809	341	PURITAN CREAM & SUGAR FTD H (1-SET)
810	113	MARS C'STICK SILVER DÉCOR H (PR)
811	50	DOORKNOB W/ CROSSHATCH f
812	1541	SCOTTY DOG (1); 1522 COLT STANDING (1); 1560 VICTORIAN BELLE BELL FROSTED (1) (3-PC TOTAL)
813	355	BORDEAU CHAMPAGNE SHALLOW W/ FULL GROUND & POLISHED STEM H BASE f (1)
814	1590	ZODIAC COMPORT H (1); 1951 CABOCHON HONEY FTD W/ 980 MOONGLO CUT (1)
815	1170	PLEAT & PANEL COMPORT W/ LID LO FTD MOONGLEAM H (1); CHOW CHOW W/ UNK CUT MOONGLEAM H (1)
816	1503	CRYSTOLITE RELISH 3-PRT (1); 1540 LARIAT MAYO FTD ROLLED RIM (1)
817	3368	ALBEMARLE COMPORT W/ 447 EMPRESS ETCH H (1); 1186 YEOMAN COMPORT 6" DEEP D.O. SAHARA H (1)
818	1229	OCTAGON MAYO W/ UNK ETCH MOONGLEAM (1); MAYO W/ GOLD SAME UNK ETCH MOONGLEAM (1); 1184 YEOMAN MINT COMPORT 5" W/ UNK CUT MOONGLEAM (1) (3-PC TOTAL)
819	335	PRINCE OF WALES PLUMES JELLY FTD 4 ½" WORN GOLD H (1); 411 TUDOR OIL W/ STOPPER H (1); 393 NARROW FLUTE DOMINO SUGAR FTD (2) (4-PC TOTAL)
820	1509	QUEEN ANN MAYO W/ 913 EVERGLADE CUT (1); #6 LADLE H (1)
821	1210	BONBON 2-HDL MOONGLEAM (1); 1229 OCTAGON BONBON W/ UNK CUT MOONGLEAM (1); 1405 IPSWICH PLATE 6" RD MOONGLEAM H (1) (3-PC TOTAL)
822	433	GREEK KEY PUNCH BOWL (1); BASE SUN PURPLE (1); PUNCH CUP W/ STAR BOTTOM (13); NON-HEISEY LADLE (1) (16-PC TOTAL)
823	1504	REGENCY C'STICK 2-LITE (PR)
824	142	CASCADE C'STICK 3-LITE W/ UNK CUT H (PR)
825	1186	YEOMAN ASHTRAY W/ UNK CUT (2); ASHTRAY W/ HAWKES BASKET CUT (1); ASHTRAY W/ UNK CUT (1) (4-PC TOTAL)
826	1405	IPSWICH CANDELVASE NO INSERTS (PR)
827	5	PATRICIAN C'STICK 9" H (PR)
828	142	CASCADE C'STICK 3-LITE W/ UNK CUT (PR)
829	105	PEMBROKE CANDELABRA 7" H (PR)
830	1405	IPSWICH CANDELVASE NO INSERT 1 W/MISSING PRISMS H (PR)
831	1425	VICTORIAN C'STICK 2-LITE H (1-ONLY)
832	1485	SATURN C'STICK 2-LITE (1-ONLY)
833	V-1180	AUTUMN-SPRING SEASONS VASE
834	2401	OAKWOOD DECANTER W/ 467 TALLY HO ETCH
835	465	RECESSED PANEL CANDY W/ LID ½-LB GOLD & FLORAL DÉCOR H (1); CANDY ½-LB W/ LID W/ UNK CUT STERLING KNOB (1); CANDY W/ LID 1/2-LB GOLD & FLASH DÉCOR W/ UNK CUT H (1) (3-PC TOTAL)
836	341	PURITAN CANDY W/ LID 1/2-LB W/ UNK CUT H
837	1186	YEOMAN FRUIT BOWL 9" W/ UNK CUT H (1); PRESERVE 6" W/ HUGHES CORNFLOWER CUT H (1); PRESERVE 6" W/ UNK CUT H f (1); PRESERVE 6" W/ UNK CUT H (1); LEMON DISH 5" W/ PAIRPOINT BUTTERFLY CUT H (2) (6-PC TOTAL)
838	1186	YEOMAN FRUIT BOWL 9" W/ UNK CUT H (1); LEMON DISH 5" W/ UNK CUT H (3) (4-PC TOTAL)
839	517	DANIEL TUMBLE-UP JUG 1-QT W/ 197 DANIEL TUMBLER H (1-SET)
840	4044	NEW ERA FLORAL BOWL W/ 601 SATIN FINISH
841	365	OLD QUEEN ANNE PUNCH BOWL (1); BASE H (1)
842	350	PINWHEEL & FAN PUNCH BOWL (1); BASE H (1)

- 843 1503 CRYSTOLITE ICE BUCKET NO HANDLE H (1); PICKLE & OLIVE H (1); MARMALADE W/ LID RUBY FLASH H (1); PUFF BOX BOTTOM ONLY H (1); CREAM & SUGAR INDV H (1-SET); CANDY BOTTOM ONLY (1); CIG HOLDER RND (1); SWAN MASTER NUT (1); SWAN NUT (1) (10-PC)
- 844 1469 RIDGELEIGH STAR RELISH H (1); 1495 FERN MAYO W/ 501 BELLE LE ROSE ETCH (1); 1506 WHIRLPOOL C'BLOCK (1); 1519 WAVERLY RELISH 2-PRT 3-FTD (1); 341 OLD WILLIAMSBURG EPERGNETTE 5 1/2" H (1); 1540 LARIAT C'STICK 1-LITE (1); 5010 SYMPHONIE BELL MADE FROM GOBLET W/ 502 CRINOLINE ETCH (1) (7-PC TOTAL)
- 845 1951 CABOCHON CANDELETTE H (2)
- 846 393 NARROW FLUTE JUG 1/2-GAL W/ PRESSED HDL H
- 847 465 RECESSED PANEL BOWL 8" FTD H
- 848 1951 CABOCHON HONEY FTD (1); MINT H (1); JELLY 1-HDL H (1); TIDBIT H (1); CEREAL BOWL 7" H (1) (5-PC TOTAL)
- 849 393 NARROW FLUTE MARMALADE W/ ENAMEL & GOLD DÉCOR H (1)
- 850 393 NARROW FLUTE CELERY W/ ENAMEL & GOLD DÉCOR H (1); 475 NARROW FLUTE W/ RIM PRESERVE W/ ENAMEL & GOLD DÉCOR H (1); LEMON DISH W/ LID W/ ENAMEL & GOLD DÉCOR H (1) (3-PC TOTAL)
- 851 355 QUATOR DOMINO SUGAR DOUBLE H (1); 351 PRISCILLA PICKLE H (1); MARMALADE W/ METAL LID PAPER LABEL (1); 343 SUNBURST PICKLE H (1); 393 NARROW FLUTE SALT INDV H (3); PLATE 5" H (1); 354 WIDE FLAT PANEL GRAPEFRUIT H (1); 300 PEERLESS BURGUNDY 3-OZ H (1); 341 PURITAN CREME DE MENTHE H (1) (11-PC TOTAL)
- 852 1201 PHILLIP MORRIS ASHTRAY W/ MATCH HOLDER
- 853 411 TUDOR FLORAL BOWL W/ UNK CUT H (1); 9 GIBSON GIRL FLORAL BOWL W/ UNK CUT H (1)
- 854 352 FLAT PANEL NAPPY 10" SHALLOW H (1); NAPPY 5 1/2" SHALLOW H f (6) (7-PC TOTAL)
- 855 1183 REVERE LEMON DISH W/ LID 5" W/ UNK CUT H (1); 1229 OCTAGON MINT W/ UNK CUT (1); BONBON W/ UNK CUT (1) (3-PC TOTAL)
- 856 433 GREEK KEY BUTTER W/ LID H
- 857 433 GREEK KEY PLATE 5" MADE INTO SUN-CATCHER IN WOOD FRAME H
- 858 433 GREEK KEY SHERBET 6-OZ H (4)
- 859 433 GREEK KEY COMPORT 5" SHALLOW H (2); NAPPY 5" STRAIGHT H (1); NAPPY 5" FLARED H (1) (4-PC TOTAL)
- 860 1404 OLD SANDWICH SUGAR OVAL H (1); 1024 EILEEN CREAM & SUGAR NO LID W/ UNK CUT H (1-SET) (3-PC TOTAL)
- 861 300 1/2 PEERLESS BAR FLARED H (2); 3390 CARCASSONNE COCKTAIL (2); 1435 ASHTRAY W/ 507 ORCHID ETCH (2); 1540 LARIAT CREAM & SUGAR H (1-SET); LID ONLY FOR LARGE CANDY BOX CHARLETON DECOR (1) (9-PC TOTAL)
- 862 19 ELECTROPORTABLE GLASS SPIDER 6 1/2" H (1); ELECTROPORTABLE SHADE NON-HEISEY W/ UNK CUT (1)
- 863 1540 LARIAT COCKTAIL W/ 980 MOONGLO CUT (11); CHAMPAGNE W/ 980 MOONGLO CUT (1); CAMELLIA BOWL 9 1/2" SHALLOW W/ 980 MOONGLO CUT (1) (13-PC TOTAL)
- 864 5040 LARIAT COCKTAIL H (9); JUICE FTD H (2); CLARET H (1); SHERBET H (11) (23-PC TOTAL)
- 865 3350 WABASH GOBLET W/ 439 PIED PIPER ETCH H (2); OYSTER COCKTAIL W/ 439 PIED PIPER ETCH (2)
- 866 3389 DUQUESNE GOBLET W/ 450 CHINTZ ETCH (1); ICE TEA W/ 450 CHINTZ ETCH (2)
- 867 150 BANDED FLUTE JUG 3-PINT H
- 868 150 BANDED FLUTE TUMBLER FTD H (1); SHERBET H (6)
- 869 150 BANDED FLUTE CHAMPAGNE H (15)
- D 870 1540 LARIAT UNDERPLATE FOR PUNCH BOWL





SBA DAY #2 - LOT 100



SBA DAY #2 - LOT 528



SBA DAY #3 - LOT 700



SBA DAY #2 - LOT 393



SBA DAY #2 - LOT 367



SBA DAY #3 - LOT 833



SBA DAY #3 - LOT 625



SBA DAY #2 - LOT 260



SBA DAY #3 - LOT 618



SBA DAY #3 - LOT 829



HHA - LOT 299



HHA - LOT 248

2024 SPRING BENEFIT AUCTION ABSENTEE BID FORM

- ◇ Mail to: Absentee Bids, HCA, 169 W. Church St., Newark, OH 43055.
- ◇ Fax to: (740) 345-9638 then call the Museum (740) 345-2932 to confirm it has arrived.
- ◇ Absentee Bids must be received **by 4:00 pm ET Tuesday, April 9, 2024.**
- ◇ Payments to be made via credit card (8% buyer's premium applies), check or money order.

Lot Number	Full Description	Near Mint Only	Minimum Bid \$15

Please Print: **TOTAL**

Name

Address

City/State/Zip

Daytime Phone (_____) _____ - _____

E-Mail Address:

Payment Information: (Check one) Visa; MasterCard; DiscoverCard; Check; Money Order

Card # _____ Exp: _____ 3-digit code: _____

Check # _____ Money Order # _____

Signature: _____ Date: _____

Your signature allows HCA to act as your agent and execute your Absentee Bids. We will make every effort to execute all absentee bids. Due to the large volume of bids that we receive, bids are occasionally misplaced or misfiled. Thank you for your understanding. We have endeavored to describe all items to the best of our ability however, this is not a warranty. Due to the age and unique nature of antiques, minor differences in descriptions and condition, i.e., size, minor imperfections, etc., are not the responsibility of HCA.

SUBMITTING THIS FORM CONVEYS ACCEPTANCE OF THE TERMS AND CONDITIONS OF SALE

(Rev 2024-01-24)

HEISEY COLLECTORS of AMERICA, Inc.

HCA Board of Directors

President: Suzanne Parker, Manassas, VA 703-742-1614
Vice-President:
Frachele Scott, Elizabeth City, NC 919-384-5159
Secretary: Mary Olson, St. Paul, MN 612-597-1284
Treasurer: Caleb-Michael Files, Rockville, MD 202-271-9501
Immediate Past President:
Charlie Wade, Sun City West, AZ 740-328-7027
Andy Baldus, Silver Spring, MD 301-213-9088
David-Eric Blair, Zanesville, OH 818-470-6900
Jim Cooke, Beaverton, OR 503-645-3385
Bari Fauss, Bethel Park, PA 703-282-2215
Jay Goletz, Newark, OH 740-345-9307
Martha McGill, Solana Beach, CA 619-993-1897
Eric Tankesley-Clarke, California, MO 573-796-3829
James Warren, St. Petersburg, FL 239-595-0084

HCA Membership Information

Strengthen your interest in Heisey's elegant glassware through membership in one of the largest collecting organizations in the United States - Heisey Collectors of America, Inc.

Associate dues are \$40.00 plus \$10.00 for each additional household member per year. Voting members pay an additional one-time fee of \$25.00.

To learn more about membership in Heisey Collectors of America or to renew your membership, contact the HCA Administrative Office 740-345-2932. You may also join by visiting our website: www.HeiseyMuseum.org

2024 HCA Calendar of Events

National Heisey Convention: June 13-15
Heisey Heritage Auction: October 12
Dave Spahr Fall Select Auction: October 19

The Heisey News

The official publication of HCA, the Heisey News is published monthly and mailed to all HCA members. It includes educational articles discussing Heisey patterns, colors, and various items made by the A.H. Heisey Company. Other special features provide current events information, Study Club news, a Dealer Directory, and Museum Shop offerings.



The NATIONAL HEISEY GLASS MUSEUM

169 W. Church Street
Newark, OH 43055
Phone: 740-345-2932
Fax: 740-345-9638
www.HeiseyMuseum.org

The Museum – Visit Us!

The National Heisey Glass Museum in Veterans Park, 6th & Church Streets, Newark, Ohio is owned and operated by Heisey Collectors of America, Inc., a 501(c)3 non-profit organization.

Come at your leisure to enjoy more than 6,000 pieces of elegant glassware produced by A.H. Heisey and Company from 1896-1957. Hundreds of patterns are featured in all production colors as well as rare and experimental items. Facilities are handicapped accessible and air-conditioned. Open year-round Tuesday through Saturday 10:00 am to 4:00 pm ET. In January and February, the Museum observes Winter hours and is closed on Tuesdays. Closed holidays. Other hours by appointment.

Museum Staff

- Interim Director: Jennifer Miller Phone Ext. 3
business@heiseymuseum.org
- Museum Shop & Interim Membership Manager:
Cheryl Varrasso Phone Ext. 5
membership@heiseymuseum.org
- Newsletter: Kirk Homrighouse Phone Ext. 2
KHomrighouse@heiseymuseum.org
- Member Guest Services: Tina Wells, Janet Brewer,
Elizabeth Bowman, Tracy Shively, Diana Ronan
clerk@heiseymuseum.org Phone Ext. 2

The Museum Shop

The Museum Shop features genuine Heisey glass for sale! In addition, there are glass beads, charms, and marbles made from re-purposed broken Heisey glass, along with reproduction items made for HCA from original Heisey molds. You will also find a large selection of Heisey reference books for purchase. Look for seasonal items too. The shop is open to the public during regular Museum hours.





Periodical Postage
 Paid at the Post Office
 In Newark, OH 43055
 Publication # 00986
 POSTMASTER SEND FORM 3579 TO:
HCA
 169 W. Church St.
 Newark, OH 43055



SBA DAY #1 - LOT 65

TO:



SBA DAY #2 - LOT 390



SBA DAY #2 - LOT 111



SBA DAY #2 - LOT 404



SBA DAY #1 - LOT 64



SBA DAY #1 - LOT 13



SBA DAY #2 - LOT 117



SBA DAY #2 - LOT 97



SBA DAY #1 - LOT 21



SBA DAY #2 - LOT 134