

HEISEY NEWS

VOL. II NO. 7 OFFICIAL PUBLICATION HEISEY COLLECTORS OF AMERICA JULY 25, 1973 SIXTY CENTS

From the desk of .

Your President, Louise Ream

It's all over for another year and we hope you all went home happy, though tired, from a busy four days in Newark. The convention, show and display were all a great success.

Nearly 350 people were pre-registered for at least part of the week's activities and almost 5000 people visited the show and display. Our most distant member was from the state of Washington and many came from all over the U.S.A. Many returned from former years and had pleasant reunions with friends made at the earlier meetings. Many have said that Heisey collectors are the friendliest people they know. At least there is no lack of a subject to talk about.

Heisey glass was there in abundance for those hunting the very rare, the not so rare and the plentiful items. Happy buyers went home with many new pieces for their collections and additions to sets.

When people walked into the display room and saw the spectacular array of glass, particularly the tables set in colors, their pleasure and delight were evident. The first place visited by most, however, was the show floor and the quick once-around for that item or items most desired.

Perhaps no one excels those who worked on it knows the hours of pre-planning and the actual work there is in setting up such a display. This year the work-load during the set-up and tear-down was lessened by those members from away who were with us from Monday through Sunday evening until all the glass was packed up and the tables, all 268
con't on page 7

EXECUTIVE BOARD 1973-74

At the dinner meeting of the Board of Directors on June 23, the former officers were all elected to a second term. Loren Yeakley who has served on the Executive Board in the stead of a junior past president, which obviously we do not have, will continue to act in that capacity.

ANTIQUE SHOW REPORT

DICK MARSH, SHOW MANAGER

This year's Antique Show was better than last year in attendance and amount of Heisey changing hands. One could call the show a roaring success and I do mean roaring. If one were to stop and just listen, there was a general din on the show floor the whole time it was open. The attendance was well over last years with the slowest day being as large as the second best last year.

All of the production colors were for sale plus a piece of black and one of trial blue. There were many interesting items offered for sale and naming all of them would take most of the News Letter, but a few do deserve mentioning. Bob Ryan was not disappointed, his locket-on-chain wines were there in Emerald Green, no less. The elusive pattern #12 turned up in the form of gas light shades,

con't on page 11

THANK YOU.....THANK YOU.....THANK YOU.....

by Loren Yeakley.

It is very difficult to find words to express our appreciation to all those who helped make the Heisey display the tremendous success it was this year. Many, many, loyal Heisey friends generously donated countless hours to present the best display ever. The kind expressions and generous comments from the nearly 5,000 HCA members, guests and visitors somehow make the tremendous effort all seem worthwhile. It is even more meaningful when one considers that all this effort is purely voluntary on the part of the members for the good of the organization.

On behalf of the HCA Board of Directors may I offer a great big "thank you" to those of you who so generously

con't on page 11

NOTICE!!!

A SLIDE SHOW OF THE DISPLAY IS BEING PREPARED. ANNOUNCEMENT WILL BE MADE IN AUGUST ISSUE AS TO NUMBER OF SLIDES AND COST.

"CONVENTION 1973" SEE PAGE by Louise Ream

PROFILES OF FORMER HEISEY EMPLOYEES # 14

" GRACE AND RONALD WOOLLES "

by Louise Ream



Grace Blanche White was born in Newark, Ohio on October 4, 1892. She attended the little "Texas school, and completed both the first and second grades in just one year. She later attended both East Main and Mill elementary schools and graduated from the old Newark High School in 1910. At least part, if, not all, of these schools no longer exist.

During her sophomore or junior year she began working part time, Saturdays, holidays and summer vacations, at the Heisey factory. At first she wiped glassware after it had been washed. She also did a variety of other things including working back of the lehrs in the packing room. There were tables here for putting up orders and packing glass in the barrels which were made on the premises. She helped to sort and wrap the glass which did not have to go to the cutting shop to be finished and also helped with the inventory. Jim Blaisdell was her foreman.

Another job was in the "salt room" where she "cracked off" the tops of salt and pepper shakers. The shaker tops were then put on and they were packed in boxes, salts and peppers packed separately.

After her graduation from high school, she worked full time in the cutting room office. August Welsh was her foreman at first and later Louise Adkins became forelady. She admired Miss Adkins very much for her great capability. Here she kept records of items made for the

Holophane Co. before Holophane started making it's own glass. This was lamp shades, globes and other lighting and illumination objects. She said that she was sure that Heisey was still making the glass for Holophane as late as 1913. She also kept records of the cost of finishing (grinding and polishing) Heisey glass items.

While working here she met Ronald Woolles who worked for Holophane in the Heisey plant sorting the glass. A romance blossomed and they were married in 1913. Mr. Woolles had graduated from high school in 1911 and had then attended Denison University and a business school for a short time before starting to work for Holophane. He later went to the etching room at Holophane, etching the various shades and globes. At this time Holophane had only offices, a shipping room and etching room according to Mrs. Woolles. Ironically, Holophane is still there making glass across the street from the former Heisey Factory, long after Heisey closed it's doors forever.

After the wedding the new Mrs. Woolles immediately quite her job. Her mother told her, "When you are married you don't work". (How times have changed!)

In 1916 Mr. Woolles left Holophane and "thought he could get rich at a tire factory in Akron" a booming business at the time. According to Mrs. Woolles he did not have the physique for a tire builder and took a job in the office. This did not pay like tire building and they soon came back to Newark.

When they returned Louise Adkins told Mr. Woolles that there was an "opportunity" for him in Heisey's etching room, which would have a chance for advancement. He later became foreman of the department. Here he worked until the day he died, July 9, 1941. When he first went to the etching room the plates were sent to Cleveland to be made. He later developed the acid to etch them at the Heisey factory for only a fraction of the cost to send them out.



He also perfected the acid resist which protected parts of the glass not to be etched. The basic ingredient in this was beeswax. He developed the acid which was used to polish the rock crystal, the name given to glass polished by this process. Instead of hand polishing the glass after it was cut, to restore it's original appearance (cut glass is always "gray" until it is polished) it was dipped in an acid bath which removed the gray look and also any rough edges of the cutting, making it very clear and bright. Killarney, Waterford, Sungate and many others are good examples of this. Mrs. Woolles said the men working with the acid had to wear wool pants as the fumes from it would eat any synthetic materials.

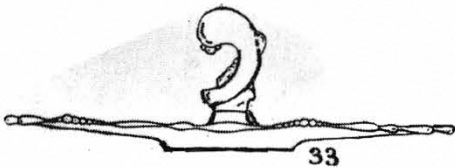
In the early thirties Mrs. Woolles worked again for the Heisey company, this time in her own home, where she checked orders and kept stock records for the etching department. In this way her husband would know immediately what was on hand and, when orders were received, what had to be made. When he brought the orders to her he could get them back the same day and get started on them at once. This apparently had been a bottleneck at the factory.

The Woolles had two sons. The older, Ronald Marcellus, was born in 1915 and Leonard in 1917. Marcellus, as she called him, achieved the rank of Lt. Col. and was a command pilot in the air force. He

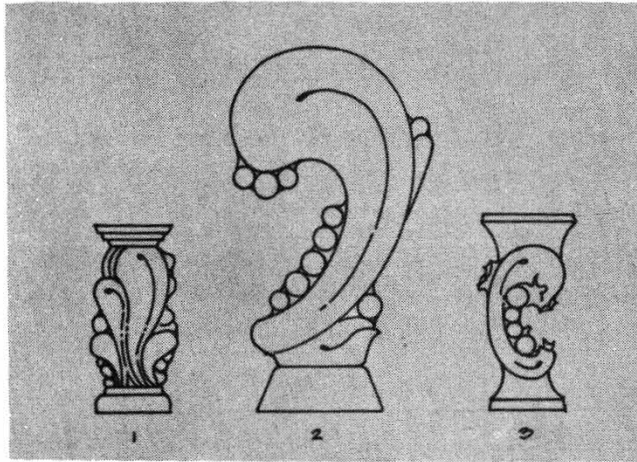
WAVERLY: NOW IT CAN BE TOLD..... by HORACE KING, Designer.

The reader will note that the by-line is the name only, not designer. It came as a surprise to discover that I did NOT originate the Waverly pattern as I claimed at the Granville Opera House in January, and as I had believed after an interval of 28 years. The Oceanic pattern was in production and was listed in the January 1944 catalog. I went to Heisey in late 1943 and there were 32 items at that time. The 1953 catalog shows 16 original Oceanic items. It also shows that I revised some pieces and designed 48 pieces in Waverly. I made more than 150 drawings for Waverly and it was so much a part of my work from 1944 until 1951 that I convinced myself that this was my design.

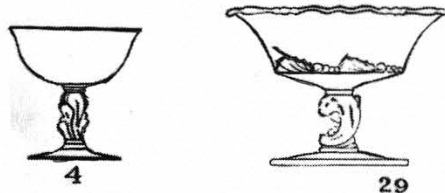
In the spring of 1944 Rod Irwin asked me if I could redesign some molds of lines that were to be discontinued. He gave a Queen Ann bowl, three Fern compartmented relish dishes and an Empress 11-inch party plate. I applied the Oceanic edge treatment to these items, worked in a deep spiral optic and changed the dolphin feet to sea horses in the Queen Ann bowl. The Fern handles were appropriate for the Oceanic pattern so they were unchanged. There was no stemware in Oceanic so I designed the line of goblets with the creating wave stem. This was to serve later as a bottle stopper and a handle for the candy jar cover. Clarence Heisey was very fond of this wave form which he called "The Plume of Navarre" and he used as the handle for the candy box cover in Lariat! No wonder at my confusion about Waverly!



The seahorse turned out well on the revised Queen Ann bowl so it was used as handles for the covered cigarette holder and the candy jar. Sea motifs were a challenge so the breaking wave came to life as a



handle for the 14-inch sandwich plate and the cover for the 5-inch candy box. It was modified for handles on the ice bucket and the 3-light candlestick. It also appears as the stem on the 7-inch footed oval comport. Rod was intrigued with the attractive variety of sea motifs so I added the spiral



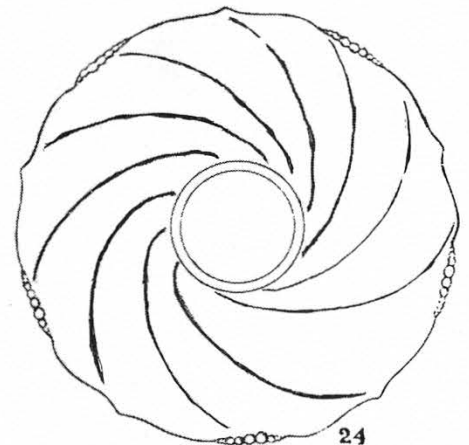
shell as a handle for the cover of the cigarette box. The original shell motifs of Oceanic were retained in several new low footed pieces. The bow as a handle for the six inch candy box is a mystery to me. The block foot is foreign to the Waverly line and it could be that the Waverly optic was added to the mold for an earlier novelty item.

During the year of 1947, I made more than twenty drawings for the two and three light candlesticks. This was always a difficult assignment because sticks were so different than the run of conventional tableware. The two drawings that were selected for production was fairly successful. They were greatly overshadowed, however, by the

floral stick designed by Carl Cobel in 1951. Carl is the son of Ray Cobel, and had had design experience with Norman Bel Geddes and Walter von Nessen in New York City. Louise Ream told me in the middle of May that she had seen the drawing of this stick when Carl visited with the Newark Club. I saw Carl later and he showed me the drawing, and at the time he said he did not know there was a line called Waverly and there is an almost incredible coincidence that his design carried motifs perfectly in keeping with those of Waverly. It is a beautiful stick that suggests the graceful floral forms in an aquatic setting. I am doubly embarrassed over the fact that I claimed credit for the design,

and accepted the token award earned by this and several Waverly pieces at the 1952 Gift Show at the Chicago Merchandising Mart. Such confusion can be explained by the fact that I had designed 48 items in Waverly, that I had made the 20-some drawings in 1947, and that I had made a measured drawing of Carl's stick for the 1953 catalog. I am happy for the opportunity here to acknowledge my error and give credit to Carl Cobel.

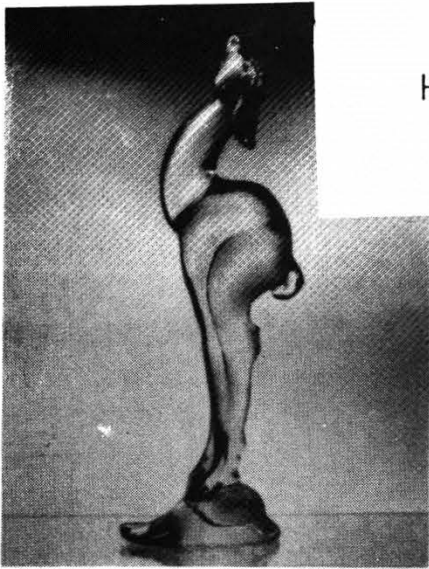
This line, like Plantation, went without a name for some time. Oceanic had been in production since 1941, but the drastic changes



in some designs and the addition of more than 40 new pieces invited a new name. We had many sessions trying to think of a name describing the line in terms that would at-
con't on page 12

HEISEY ANIMALS --- FIGURINES

" GAZELLE "
by Dick Marsh



GAZELLE
11" high

This month it's off to Asia and Africa for a look at the Gazelle. This animal is noted for his jimping ability and swift running. (I wish that I had had those talents during the convention while trying to run the Antique Show). Our friend is very graceful in appearance and movement. He was dubbed a nickname by a "Heisey", who will remain nameless, as a "constipated deer." The nickname came from the way he stands.

This item is known to come in

crystal and crystal frosted only. The quality of glass is very good to excellent and free of mold marks. He has not been reissued by Imperial Glass Co. and is one of the rarer animals. He is 10-3/4" tall and stands on a base that is 2-1/2" x 3-1/4". This base appears to represent a mound. The front of the hoofs rises from the base before the rear of the hoofs. From the top of the front of the hoofs the glass curves in the up the leg a short distance before it starts the outward sweep to the chest. The chest is a continuation of the lines of the legs. The right leg is slightly in front of the left. The neck protrudes out and upward from the chest but a short distance till it turns back up and over the body. The chin rises nearly straight upward then inclines to the nose. As we round the nose it is nearly straight down to his forehead. The forehead swells out and over the top of his head and then back in to his ears. The ears drop nearly straight down with a small

flip out at their tip. They are concave on either side and are in line with his legs. The ears turn up and into the neck and continue up the neck and head by protruding out from them. The eyes are located midway between the bottom of the ears and the top of the nose and are round dots of raised glass located in scooped out semi-circles. The back of the neck now returns to the body in a slight arc. His back humps up before rounding over his flanks to the tail. The tail curls out and back to his flanks becoming smaller the farther around it goes. The glass now curves in under the flanks and down to form the upper legs. The curve turns out, then drops at a sharp decline to form the knees. At the knees the glass turns in slightly then down to the ankle with a slight rise to show leg muscle. The ankles and hoofs are shown by a series of 3 triangular outcroppings.

All of the Gazelles that I have seen are marked with the Diamond H on the left hoof forward of center.

con't from PROFILES, page 3 died on Nov. 11, 1962 and is buried in Arlington National Cemetery. He had four children and his widow now lives in Kettering, Ohio. Leonard is a building and carpeting contractor living in Newark. He has three children. Both sons were in World War II. During the war Mrs. Wooles worked at the Goodyear Aircraft in Newark.

From 1954-57 she lived with her older son in Tripoli, Libya, North Africa where he was stationed at Wheeler Field. While there she worked at the Post Exchange, at first as a bonded cashier and later advanced to head the Military Dept. where they "had everything from a 5¢ brass star to a general's uniform". During her years in Africa she was able to visit the Holy Land and also several European countries.

Mrs. Wooles said she enjoyed her time working for Heisey and said that the glass was, at that time, considered to be the best

glass in America and at least one of the finest in the world. Her brother, John White; was a print-maker at Heisey.

She showed us her Heisey glass and some particularly beautiful Krall cuttings which she said had been obtained by her husband in "an exchange of favors between bosses." She also had two unusual plates which she said would go to the museum some day.

At 80, the petite Mrs. Wooles is remarkably active. She works in her yard and flowers and her attractive two story home is immaculate. She just got new aluminum siding and new carpeting. She is the teacher and treasurer of the Alathean senior adult Sunday School Class of the Christ Methodist Church. She is treasurer, past president and hospital chairman of the Blue Star Mothers, Newark Chapter #8, and Legislative Chairman of the Department of Ohio Blue Star Mothers. She just returned from an

eight day trip with the YWCA Travel Club of which she is a member. They went to Wisconsin Dells, Sault Ste. Marie and Mackinac Island. The photo accompanying this article was her passport picture two years ago when she made another trip to the Holy Land. Besides traveling, she loves to read and belongs to a card club.

A member of the HCA, she attended several convention events including Show and Tell and the former employees tea. If you were there I am sure you remember her. She was amused that she was able to buy a creamer which she needed from a dealer from Michigan and said that last year she matched up another set from a dealer from California.

I left Mrs. Wooles pleasant home hoping that I would have at least half her zest for life if I were fortunate enough to reach her age.

CONVENTION NEWS

The "Show and Tell" session on Thursday a.m. was well attended and many items were brought to be identified. On the panel were: Loren Yeakley, author "Heisey Glass in Color"; Lynn Welker, Co-author, "Cambridge Glass in Color"; Wayne McPeck, Verlys Decorative American Glass"; Robert Coyle, co-author "The Heisey Animals, Etc. Book 2"; Stephen Bradley and Bob Ryan currently gathering material for a book on Heisey stemware; Dick Marsh, HCA vice president and Heisey News columnist on Heisey animals and figurines, and Louise Ream. Horace King, designer was also present. Jim Korus, convention chairman, read letters from Ruth Herrick, M.D.* who published the 14B catalog reprint and Clarence Vogel, author of four books on Heisey glass, neither of whom were able to accept invitations to be present.

The two "Swap and Talk" meetings at the YWCA under the chairmanship of Jerry Robinson of Illinois, were enjoyed by the participants. The sessions gave members a chance to become better acquainted which was one of the reasons for having them. Those who traded reported "having a ball" and found some good items to add to collections. Perhaps more people will participate next year.

The "Guided Tour" of the display for members only was probably misnamed since there were no guides as such. However, knowledgeable people were in the various areas to answer questions and to give people a closer look at any item they wished to see. Most members seemed to enjoy this and have asked that it be included next year.

Emogene Shomaker, Newark, Helen Rea, Westerville, Ohio and Pat Spencer, Illinois, were hostesses for the former employees reception. "Gus" Heisey, Tim Heisey and Mrs. Clarence Heisey spoke to the former employees.

Each employee introduced himself (or herself) and told what they did at the factory. William H. Anderson, 97 years of age and no doubt the oldest employee living today, was present with his son William F. Anderson. The elder Mr. Anderson was in hot metal crafts and his son was a stopper fitter. (See Heisey News, June 1972 for a profile on Mr. Anderson.) Others present were: Mr. and Mrs. Ralph Hunter who both worked in the cutting shop and he had also worked in shipping; Miss Mildred Hunter and Zeller Pierce, Blow Shop; Charles Lovell, hot metal; Walter Gray, glass cutter; Grace Woolles, factory office; Dorothy Murphy and Ruth Fribley, etching room; Harold Swan, punch and stem; Carl Cobel and Horace King, designers; William Rehbeck, mold maker and Denise Spetseris, factory representative at B. Altman in New York City.

The dinner at Howard Johnson on Saturday night was attended by 187 people. Stanton Darling of Columbus, our attorney, acted as Master of Ceremonies. Gus Heisey again spoke briefly and introduced his



Pictured-Front row, L to R. Louise Ream, President; Ann Holman, Secretary; Virginia Yeakley, Treasurer. Second row, L to R, Loren Yeakley and Dick Marsh.



L to R, A.H. Heisey, grandson of the founder. Lucile Kennedy, Imperial Corp; Denise Spetseris, former Heisey Representative at B. Altman N.Y.C.; Paul Fairall, 42 yr. employee of Heisey Co. and Louise Ream, President, HCA.

wife. Lucile Kennedy, now sales manager of Imperial Corp. told us about the sale of Imperial to Lenox, makers of fine glass and china. She reassured us that Imperial and Lenox are both proud of their own marks and she could foresee no reason that they would ever use the Diamond H again.

Horace King, the principal speaker, was introduced by Tim Heisey. One gathered that the two had many memories of the association of Mr. King and T. Clarence, Tim's father. Mr. King talked about the patterns which he had designed and told some anecdotes about his association with Mr. Heisey.

On Sunday morning the breakfast and annual meeting were
con't on page 9



1973-74 BOARD OF DIRECTORS

L to R. Front row: Esther Culbertson, Louise Ream, Ann Holman, Frances Law, Donna Yeager, Virginia Yeakley, Hilda Ryan and Margaret Reed. Second row: Emogene Shomaker, Loren Yeakley, Virginia Marsh, George Abdalla, Dick Marsh, Tom Bredehoft, Russ Ream, Stephen Bradley and Wayne McPeck. Absent from picture: Evelyn and Harry Allen and Stephanie Moore.

OBSERVED

In a very well known Indiana shop dealing in art glass, a pair of #3-300 one lite candlesticks. Price: \$150.00 a pair
Question: Did the dealer know they were Heisey?

NOTICE

Send your questions to:
Louise Ream, Editorial Chrm.
Box 27
Newark, Ohio 43055

Your Ads to:
Virginia Yeakley
640 Melanie Court
Newark, Ohio 43055

Your Finds to:
Bob Ryan
Box 27
Newark, Ohio 43055

Membership information to:
Ann Holman
Box 27
Newark, Ohio 43055

con't from DESK OF, page 1 of them, were taken down. We have the promise of more help next year.

Many donations were made to the museum fund, also items for the museum, but since I do not have the complete list as yet, it will appear in next month's issue. We do not want to miss anyone who gave.

I must repeat this month that now since we have reached a membership of over 1100, I am more proud than ever of our progress in so short a time.

We included the copy of the program in last month's issue hoping that those of you who could not come might enjoy seeing what went on.

Donna Yeager will continue to be in charge of books. She also has the post cards which were shown last month. We think these cards will be good publicity for the club so we hope you will all order a supply.

Until next month

HAPPY COLLECTING!!!
Louise Ream

con't from HEISEY'S #1250, page 2 not find an over abundance on the market today.

In the May issue of Heisey News we stated that no collector in this area owned a piece of #12, Double Row Slash and Panel. Thanks to one of the dealers at the show in June several added this pattern to their collection in the form of an electric light shade. This same dealer is offering these shades in a 'for sale' ad in this issue of the newsletter. They are offered as the #9 Electric shade, 2-1/2" ring as shown on Page 136, Vogel Book IV, however, the pattern is #12. Collectors had better not pass this up. It is very scarce.

It is also noteworthy to report that the 8" vase in #1255 Pineapple and Fan has been found in Canary or vaseline with opalescent rim.

BACK ISSUES ARE NOW AVAILABLE.
\$6.00 for the complete Vol. I, or
60¢ each.

HEISEY HUNTER HAPPENINGS!!!

by Bob Ryan

Memories of a convention..... hot, humid, rain, wet, dismayed, amazed, bedazzled, befuddles, surprised, pleased, thankful.....all describe my week in Newark.....well, that's the column for the month folks....Ha, you all know that I am not a man of a few words.....thank God that I was working most of the show or you would've had to put a muzzle on me to shut me up....About that working....well, we were able, with the co-operation of two trusting friends, to accomplish an ambition; now that's over.....our hats are off to all those "regular" dealers. You really work hard at those shows; we know now, believe my achin' dogs...hosannah!!!!*

White waiting on Monday night for the tables to arrive we were able to view some of the drawings that were never accepted for production. Some of them it was easy to understand why they were never used and others it seemed to some of us would've been great items. One which especially appealed to me was a full nude holding a candle holder....several spots in my house for those.....

A noted Heisey designer was present but wouldn't claim them as his work.....could it have made a difference that his wife was present??...To all those brave souls.. who stayed so late to place and drape tables a tip of the Heisey Hunter's hats to ya...I thought for awhile foraging for the tables...he would've come up with some somehow. So many people come up to me with items for the column that it was necessary to ask one and all to write me...first man to make a list was the man who put an amber Flying Mare in his collection.....with his list of finds I can understand where he got the scratch for the mare.....

Probably the most satisfying find, make that "steal", was made by the young man who specializes in stems, from Columbus, when he found an unusual #6004 CLASSIC cocktail with an experimental blue color bowl.....this was found Thursday about three o'clock.....With all the mad action that took place on the show floor Wednesday you would've

thought that all the buys would've changed hands many times but in the mad rush the anxious left many gems for the plodders to uncover, and rightly so.....

Yours truly did not make it around until Friday afternoon and then found a SEAHORSE stemmed cocktail.....I was told that there had been four of the beasts on the floor....Whoever left the one for me, I owe you a big thanks....paid a handsome sum for it but consider it a bargain as I have never seen any for sale before.....

Remember when I wrote and told you to be sure to make your wants known to a dealer or dealers?, Well, a year after I had given this particular dealer some wants she approaches me at the show with two real winners for me #3332 SIXSIDE cocktail with a Heisey cutting and a #3389 DUQUESNE ice tea with the elusive POMPEII etching...Thanks a million, and remember what I asked you to bring me back next year.... gotta make a note to finagle a trip to California, will thank about that.....

Peering majestically from under a large glass dome a deep, deep Tangerine #3404 SPANISH STEM goblet entranced a young man and he succumbed to her charms and took her home with him.....super display job by the selling Newark dealer.....his booth was put together with much taste and forethought.....

Would you believe that someone that I know who collects condiments actually found 14 Heisey spoons and/or ladles at the show and swap shop.....one was a super sized spoon that matches her salad fork..

From out of the haze that hangs over Pittsburgh came this young couple who added many shot glasses to their collection.....also heard that they did well at the flea markets.....how wet did you get?.... One small nappy collector was so excited about doing so well with her collecting that she went back to the show and bought one more #365 QUEEN ANN nappy as she had found 11 new nappies and couldn't remember if she had bought a #365 or not.....Some of the others were the CRISS CROSS, DAISY AND LEAVES,

OVAL AND DIAMOND POINT, also found a #7022 REVERSE ESS coaster.....she also captured a RIBBON CANDY nappy at the swap shop.....

A Newark club member dealer appeared at the swap session and got in a couple of real good swaps it was reported.....This was a good idea and will improve the second time around.....Some of the "collectors did not care to swap for anything but cash.....This was not in keeping with the spirit of the session.....Some individuals had excellent items to trade and what was surplus for one person was another's prize.....Sometimes value was not completely considered...For those individuals who want only coin of the realm we suggest the flea market or show....Come on people, play by the rules.....collecting is fun.....selling is work. Can't remember all the magnificent items I saw for sale now, knew that I should've taken notes but then, they cramp my style.....(what style you say?) Be kind to an old weary man....yes, friends, my true identity is out....I can no longer pass for Paul Newman, Too many people saw me without my trusted disguisesoh, well, it was fun....There are some advantages of looking the way I do but can't think of one off hand.

One woman at the show nudged her husband and said, "That's the guy who writes The Hunter column." He grimaced and said, "Big deal, look at him, with those looks he has an advantage." Haven't figured that remark out yet but you know some of us aren't the swiftest.... I wished he would've said it in plain English, I might've wanted to thank him.....

Oh, almost forgot the brown paper bags....Newark Phenomena.... they really come in don't they?.... I believe that every piece of glass discovered on a back shelf in pantry or basement suddenly takes on green allure.....Some of the bags contained some really beautiful pieces of Heisey and others were of non-de-script backgrounds.....One of the best was a #1512 ROCOCO Stippled plate that found its way into
con't on page 10

con't from CONVENTION NEWS, page 6
also well attended with 42 voting members present,
as well as many associate members. Several patterns
were named and these will be pictured next month. If
and when original names and numbers for these are
learned naturally these given for the purpose of
identification will be relinquished.

Donna Yeager was re-elected to the board and new
members are Hilda Ryan (Mrs. Bob), Centerville, Ohio,
Tom Bredehoft, Oak Harbor, Ohio, Margaret Reed, Se-
wickley, Pa. and Stephen Bradley, Columbus, Ohio.
All had been very faithful in attendance at quarter-
ly meetings for the past 18 months.

Charters were presented to the clubs which had
complied with the guidelines and paid the charter
fee. The charter had been drawn up by Horace King
and they were made by engrossers at the Zaner Bloser
Co. in Columbus, Ohio. The first copy was hand done
in Old English script and then reproduced. The col-
ors are red and blue. All club names were then hand
lettered. They are very attractive. Which club will
be the next to receive one?

The eight active clubs which received charters
are: Newark, Reynoldsburg, Far East (Columbus area),
Long Island, Dayton Area, Central Illinois, and Bay
State (Mass.) Heisey Collectors Clubs and the Heisey
Heritage Society, N.J. and Pennsylvania.

* This is the same catalog which is now being re-
printed by another company, which apparently bought
the rights from Dr. Herrick.



A birdseye view of the show. Inside of booth front right,
Bob Ryan. (Wearing his bald head disguise).



A look at the Display. Tables set in all colors in which
such settings were made--including the rare tangerine. Old
patterns in foreground. Fandango pitcher under dome, symbol
of the HCA.

CARD OF THANKS !!!
I wish to thank everyone who was so kind both
to me and to my wife, Louise, during my recent
illness, surgery and recuperation.
The many cards, flowers and gifts were deeply
appreciated by both of us.
We agree that Heisey collectors are wonderful
people. RUSSELL W. REAM

— DEALER'S DIRECTORY —

TREASURE HOUSE ANTIQUES
7307 E. Main Street
Reynoldsburg, Ohio 43068
Phone: (614) 864-1795
RUSS AND LOUISE REAM

COLLECTOR'S HAVEN
187 S. Williams St.
Newark, Ohio
HARRY AND EVELYN ALLEN
(614) 344-5187 or 522-1635

LYNNE & ART'S GLASS HOUSE, INC
"HEISEY OUR SPECIALTY"
Route 202 Lahaska, Pa. 18931
(215) 794-7800 P.O. Box 242

THE GRIFFITHS
Heisey Glass & Antiques
Collectibles
106 Elm St. Hebron, Oh 43025
Res. Phone: 928-2761

BERT'S BUDGET SHOP
403 W. Main St
Newark, Ohio 43055
(614) 349-8045
General line Antiques

Moundbuilders Antiques
"Specializing in old Heisey
and Animals"
IRENE RAUCK
1138 MOUNDVIEW AVENUE NEWARK, OHIO 43055
TELEPHONE
AREA 614 344-6043

MARG & RAY'S ANTIQUES
FURNITURE - OLD BANKS - TOYS
GLASSWARE - LAMPS
BOUGHT & SOLD
487 MAPLE AVENUE NEWARK, OHIO 43055
PH. 345-1316

HEISEY MUSEUM
Write for appointment
C.W. VOGEL 126 W. High
PLYMOUTH, OHIO 44865
FREE ADMISSION

Hoosier Heritage Antiques
Marcell and Tom Zehr
4024 Fairfield Avenue
Fort Wayne, Indiana 46807
(219) 745-4173

CON'T HEISEY HUNTER HAPPENINGS!!!

con't from page 8
a Newark collection.....

Many people were kind enough to bring some of their very rare pieces by for me to see. Thank you... ..one was the floral bowl with the ORIENTAL deep plate etching....absolutely gorgeous.....Another very kind couple from the nation's capitol club went back to a shop and brought me a #3404 SPANISH STEM sherbet with the TITANIA etching which I did not have....Now that's what I call collectors helping collectors and that is what this club is all about.....Another Newark dealer brought a rare Krall bird cut goblet....trilling.....another a #1483 STANHOPE pressed goblet....

Dumb me, I was in a Newark shop several weeks ago and saw this green tray, well, when my family and I visited the same shop I showed them this tray. The dealer had told me it was a rare one but sometimes I don't get the point until the anvil falls on my head....anyway my wife told me to buy it, and that's another point...The tray was #150 BANDED FLUTE in MOONGLEAM.....

My wife reports viewing a #1401 Empress dolphin footed cobalt floral bowl.....now that the lady knows it is a piece of Heisey she will not sell it....next time.....

Want to thank all those doubting Thomases who let me steal that #1425 VICTORIAN nappy in experimental blue on Saturday morning.....I hadn't even examined the piece the night before because I knew I would never have a chance with all the big spenders present.....Surprise!!!!The piece that I really wanted and didn't have the competition on that I had expected was the #5013 SHASTA compote with the GEORGE IV cutting... ..I had written about this piece in January but you people must have forgotten it.....It has to be the very best example of cut pieces so far available of regular line pieces..... Many other good buys were made at the sale where the prices were generally in the proper stratosphere with a couple of exceptions where two avid collectors were determined to be the new owner of the item....

One item that was most desirable but out of my bracket was the "doulton type" solid glass doll. A love-

ly lady from New Jersey bought the #343 SUNBURST punch bowl and cups for my seven year old....she was thrilled.....she has polished each cup and the bowl personally.....She wants me to tell a special friend of hers that she also added the large pitcher, the molasses jug and a compote in this pattern to her collection.....a #1235 BEADED PANEL AND SUNBURST wine with perfect gold, along with a #343 SUNBURST EGG cup, went into our collection.....A collector added a child's mug to his collection.....How about that cut child's mug that was on display in a Newark lady's booth.....Sorry about that tenth commandment but I coveted it.....

I know of a couple lucky husbands whose wives purchased gifts for them during the course of the convention....One received an amber SPARKY for a wedding anniversary gift....What did he give you?..... The other received for Father's Day an alexandrite bowled cordial in the #4082 KENILWORTH pattern, She forgot her "father" completely, though he didn't even receive a pack of bum....The first couple had a great time at the swap session with only three items going in.... again its what you have that someone else wants.....

From Ohio's shores comes the report that two #357 PRISON STRIPE large compotes were found, a 11" tray, #423 DIAMOND BAND, a snow flake etched plate, 3 CANDY RIBBON tumblers (I'm gonna have to trade you my pitcher or you'll have to trade me your tumblers....it's not right to keep a family separated) and also 2 opal BEADED SWAG oil bottles with rose decor.....that's terrible....good hunting...Say, one of my real treats at the June show was meeting my Massachusetts correspondents.....They are most faithful and make me almost certain that I will bring my bloodhounds that way soon.....They report finding a marigold YEOMAN tray etched, a marigold flower box, and Sahara SWAN candlesticks....how about that.... and if he hadn't of bought the new animal book he wouldn't have even noticed them.....

A Pennsylvania lady found (found nothing, it was out and out

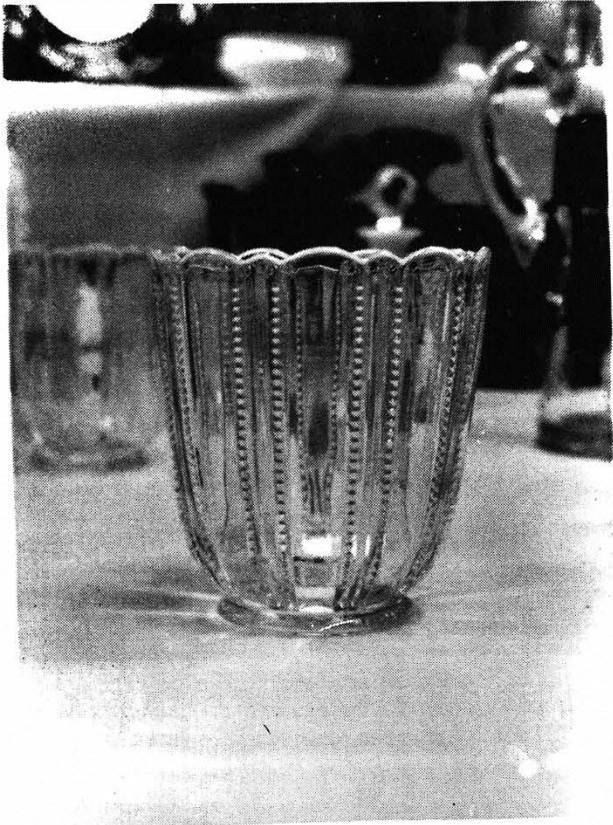
larceny), a #4045 BALL VASE in Alexandrite in local thrift shop windowone never knows....Then there was the story of the collector from Kentucky who passed up a pair of Ipswich candle vases at a show locally and then bought the floral bowl at an Ohio show, then proceeded to follow the dealer from show to show across Kentucky until he found her and bought the candle vases....When the best time to buy an antique; or collectible for that matter?.....

Are you all ready for this.... it is my sure shot method for finding Heisey for this month and if you think I've been drinking you're right. I've just taken it up after having this story related to me by two Fort Wayne collectors and vouched for by "Super Sleuth" and an author from New Concord....This is what you do but be sure to follow instructions implicitly as timing is of the utmost....First of all you don't stay at a banquet to hear the speaker. Instead you head for the nearest bar for some libation but be sure to choose your seats with great care....Don't be unfriendly with the guy seated next to you and be sure that he has had too much to drink... After a few more he will state that he has lots of that Heisey glass "that we use every day....You like, I'll bring you some over in the morning".....Well, if this guy isn't hung over 'til Monday it's the eighth wonder of the world...You be sure to show up at the swimming pool though, promptly at the appointed time....(The way this guy operates he must be with the CIA)....Johnny-on-the-spot he'll appear bearing not a piece of Heisey but eight cordials with the #1059 MIDWEST cutting...You knew that it would bear a cutting of grain the way this sport puts away the booze.....The price was right, gratis.....All together now take a couple long swigs and let's all turn green....those lucky....collectorsthat does it.....

HAPPY HUNTING!!!!

* Mr. Ryan assisted in the booth of Opera House Antiques during the show.

BACK ISSUES AVAILABLE!!!



A lamp globe in the #12 Double Row Slash and Panel. This pattern on display for the first time this year thanks to dealers Carmine Crea and Charles Shaw, Yonkers, N.Y. (A few of these shades stayed in Newark area collections.)

con't from ANTIQUE SHOW, page 1

several of them, and this caused a stir for awhile among a few advanced collectors. Most of the people must not have realized the rarity of this pattern as there was still one left at the end of the show. There were also 2 pieces of #361 Criss Cross which is a rare pattern, bringing the number of pieces that I know of to 6. There was a lot of Heisey custard including a winged scroll ring tree and cake stand. There were a pair of cherubs, a moonbeam tulip vase and an emerald green #150 pointed oval and diamond point pitcher. With all of the very good items left at the end of the show most of you either ran out of money (I know one couple had just enough to get home, but they had a carload of glass) exhausted like me, or didn't know what to buy.

con't from THANK YOU, page 1

offered your time and talents and to those of you who loaned glass for the display. The table settings in color, which must be considered the highlight of the display, were offered by popular request from your previous suggestions. Credit for the excellent display of stems goes to Steve Bradley and Bob Ryan. Would you believe they look equally "at home" wearing a carpenter's apron and operating a saw? Special thanks go to the Columbus area member clubs who exceeded the "call to duty". The next issue of the Newsletter will contain an article about the 1973 display.

And now our thoughts turn to 1974. Who knows, maybe our dream for a Heisey museum might even be in the realm of possibility this year?

MEMBERSHIP REPORT

by Ann Holman

A year ago on the first of June the HCA was 6 months old with a total of 526 members. To date we have 1114 which is over twice as many, and have 87 new members since last month's report. We're mailing nearly 800 newsletters.

July 31 renewals are due and August renewals just around the corner. Check your membership card for expiration date, to assure continuity of your newsletters.

Back issues are again available at \$6.00 for the entire Volume 1 and 60¢ per copy for any of Volume 2 copies.

A former Newark, Ohio member has moved to Cheyenne, Wyoming and is interested in becoming acquainted with other Heisey collectors in that area. We know we have another member in Wyoming but at the other corner of the state. If we do have any other members near Cheyenne, let us know and we will try to help you become acquainted.

OOPS, WE GOOFED!!!

We do goof but after looking over our evening paper, we don't feel so badly.

In last month's issue, Page 4 the title should have been, COLOR of THE MONTH, AMBER, by Frances Law.

On page 2 in the article about #461 Convex Circle it should read, "Pieces include 4-1/2" nappy, small and large spooners, 1 qt., 2 qt., and 48 oz. crushed fruits, 1 pt., 3 pt., 1 qt. and 1/2 gallon jugs.

In Heisey Hunter Happenings, in the third column about 1/3 down, no one found Pleat and Panel with cobalt bowl. It was a 3404 Spanish stem footed soda.

The article on HOW TO TELL QUALITY GLASSWARE on page 8 was taken from an old Heisey company advertising folder.

Everyone who received the Heisey News is an associate member of the club. We sell memberships, active or associate, and the newsletter is one of the benefits.

NOW YOU KNOW!

Sherbet is something you eat. A sherbet is a dish to put it in. According to Webster's New International Dictionary there is no such word as sherbert.

The proper spelling of Heisey's mystical lavender shade is ALEXANDRITE not Alexanderite.

THOUGHT FOR THE MONTH

IF JUST ONE THING GOES YOUR WAY, CONSIDER IT A LUCKY DAY.

THE OPINIONS EXPRESSED IN ARTICLES IN HEISEY NEWS ARE THOSE OF THE AUTHORS AND NOT NECESSARILY THOSE OF THE ORGANIZATION. THE EDITORIAL STAFF RESERVES THE RIGHT TO EDIT ALL MATERIAL SUBMITTED FOR PUBLICATION.



IN AUGUST....

DIAMOND DUST

WILL FEATURE.....



AN INTERVIEW WITH THE ONE, THE ONLY **CLARENCE VOGEL**

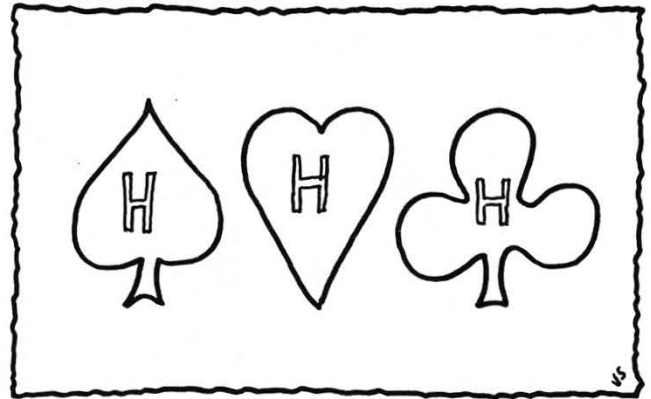


SOME UNCONVENTIONAL VIEWS OF THE **HCA JUNE CONVENTION**



SUBSCRIBE TODAY, SIX ISSUES, 1 YEAR, \$1.50, HEISEY HERITAGE SOCIETY, % V. SPARACIO, 21 FAIRMOUNT AVE., CLIFTON, N. J. 07011

SECOND HAND SUITS



"Sure this tattoo looks ridiculous, but look what it did for Harry."

HEISEY IN A NEW DIMENSION

Stereographs of the 1973 Heisey Show and Sale. 3-D photographs in full Kodacolor mounted on heavy 3-1/2" X 7" cards just like the old stereoscopic ones. All the table settings, plus hundreds of other pieces. As this is only a hobby with me, I will not sacrifice the quality of these Kodacolor prints for a cheaper method of reproduction. 30 Card Set \$30.00 plus \$1.35 tax for Ohio residents & \$1.00 postage & insurance.

KERMIT DILTS
RT. 8, BOX 291
NEWARK, OHIO 43055

con't from WAVERLY, page 4
tract the market. One day someone suggested the name, Seafoam. Lee Beardsheer, Heisey's top salesman, roared "Can you hear me ask a buyer if he would like to see Seafoam in Heisey?" So this name was dropped and we were back playing musical chairs on a name. By this time I was an experienced designer but I did not have the sharpness of the glass men whose lives were Heisey, and I just could not come up with a name. Rod pressed me for some idea I could work up from a designer's point of view, and I thought of the surf feature of the edge decoration. Surf was a word that did not appeal because it was a one syllable word that could be lost in conversation. I mentioned that the wave forms were a prominent feature of the design and it might be a clue to a name. Clarence had been quite out of the discussion until this moment, then at once, he came up with the name, Waverly. He said that it included the word wave and that Waverly is an honored word in English and American literature. So, Waverly was born, and that is how it all began.

Waverly was most distinctive in view of the thirteen patents that were assigned between August of 1948 and April of 1950. This is a much larger number than in any other line. In 1948 there were seven patents: August 4, the 7-inch oval comport (156,882); October 18, the 14-inch center handled sandwich plate (156,508); October 29, the 5-inch tall footed candy jar and cover (157,954); November 13, the 5-inch chocolate box and cover (156,884); the 6-1/2 inch two handled ice bowl (156,885); the Lariat covered candy with a Waverly handle (156,883); and December 9, the 14-inch sandwich plate (160,860).

There were three patents in 1949; October 18, the 10-ounce blown goblet (159,703); November 22, 6-1/2-inch two compartment oval dressing bowl (162,410); and the 7-inch footed fan vase (160,385). I developed the oval dressing bowl from the Fern mold. In 1950 there were also three patents: January 26, the 3-ounce oil bottle (160,486); March 14, the 7-inch footed vase (162,602); and April 12, the 14-inch oval plate (161,179) which I also adapted from the Fern mold.

This information can be found in Viola Cudd's Heisey Glassware, Chapter 4. She names Clarence Heisey as the designer because he signed the assignments to the company. Although these are my designs, Clarence's procedure was not unusual because I did not work at the factory. My teaching duties at Denison kept me in Granville much of the week. I did my work in my home studio, and quite often limited my visits to one call a week to deliver finished drawings and pick up new assignments.

Ed. Note: This pattern was made by Heisey in clear crystal and some pieces are found in light amber. It was often unsigned. Waverly was used extensively for Orchid and Heisey Rose etching, however not in the stemware. Imperial has made the low and the footed candy box and the compote with seahorse stem in caramel slag, both signed and unsigned (Diamond H). There has been a great deal of reissue of this pattern. A complete listing will be printed in a later issue of the News.



Mostly Heisey

MARKED *

- | | | |
|-----|--|----------|
| 1. | #1255 Crystal Pineapple and Fan, Lovely Gold Decoration - - - - - | \$ 42.00 |
| 2. | #1225 Custard Sawtooth Bands* - - - - - | 45.00 |
| 3. | #1469 Cups and Saucers* - - - - - 3 sets - - - - - ea - | 9.00 |
| 4. | #1469 Candleholder 2 Lites - - - - - pair - | 35.00 |
| 5. | #1469 Three Handled Triangle Pelish Dish* - - - - - | 12.50 |
| 6. | #1469 Round or Square Cigaret Holder - - - - - | 7.00 |
| 7. | #1469 Individual Cream and Sugar with Tray* - - - - - | 22.50 |
| 8. | # 429 Crystal Plain Panel Recess* Punch Cups (6) - - - - - ea - | 10.00 |
| | One of these cups would add sparkle to anyone's collection | |
| 9. | #1255 Emerald Pineapple and Fan Sugar - - - - - | 45.00 |
| 10. | # 394 Moonbeam Narrow Flute Domino Sugar Tray, B2. pg 85 - - - - - | 27.00 |
| 11. | # 394 Flamingo Narrow Flute Domino Sugar Tray, B2. pg 85 - - - - - | 20.00 |
| 12. | #1231 Ribbed Octagon Candleholders* B3. pg 15 - - - - - pair - | 11.00 |
| 13. | #1189 Celery Dish 13" * B3. pg 24 - - - - - | 12.00 |
| 14. | #1401 Masturium Floral Bowl, Pretty Rose Pink B3. pg 93 - - - - - | 24.50 |
| 15. | #1447 Crystal Pococo Cracker Plat* B3. pg 101, Beautiful - - - - - | 35.00 |
| 16. | # 397 Amber Footed Sodas* B4. pg 153 (4) - - - - - ea - | 13.00 |
| | An excellent example of Amber for your collection | |
| 17. | #4044 Crystal Horseshoe Candlelites B3. pg 126 - - - - - | 32.00 |
| 18. | #1401 Sahara Dolphin Footed Flower Bowl with Pretty Etching* - - - - - | 30.00 |

WE WANT TO THANK THE OFFICERS, THE CONVENTION, DISPLAY, AND BOOTH CHAIRMEN, THE DEDICATED WORKERS AND ALL THE WONDERFUL PEOPLE WHO STOPPED BY OUR BOOTH THAT MADE THE SECOND ANNUAL HEISEY COLLECTORS OF AMERICA CONVENTION SUCH A HUGE SUCCESS.

PP AND INS. EXTRA.

SATISFACTION GUARANTEED

RHODA CURLEY
 Mostly Heisey
 16 CLAYTON PLACE
 ALBANY, N.Y. 12209
 Phone: (518) 482-6272

CHUCKLE OF THE MONTH: *(An antique collector is at home when he is down in the dumps.*



CLYDESDALE

POSTAGE & INSURANCE EXTRA

SAHARA

| | | |
|--|--------------|---------|
| #1401 Lunch Plate 8" - - - - - | (3) - - - ea | \$ 7.00 |
| #1401 Salad Plate 7-1/2" - - - - - | (5) - - - ea | 6.00 |
| #1401 Cream & Sugar with Tray - - - - - | Set | 45.00 |
| #1401 Floral Bowl, Dolphin Footed - - - - - | | 30.00 |
| #142 3 Lite Candlesticks, B 3, pg 99 - - - - - | Pr | 50.00 |
| #1404 Old Sandwich 7" Compote - - - - - | | 65.00 |

FLAMINGO

| | | |
|--|-----|--------|
| # 110 Dolphin 10" Candlesticks, B 3, pg 32 - - - - - | Pr | 250.00 |
| #1401 6" Toed Candlesticks, B 3, pg 96 - - - - - | Pr | 65.00 |
| #1401 Cream & Sugar, Footed, B3, pg 129 - - - - - | Set | 27.00 |
| #1401 Vegetable Bowl - - - - - | | 20.00 |
| #1401 Footed Mayonnaise Bowl & Ladle, B3, pg 129 - - - - - | | 22.00 |
| #1401 Salt & Pepper, P3, pg 129 - - - - - | Set | 10.00 |

DECANTER SETS

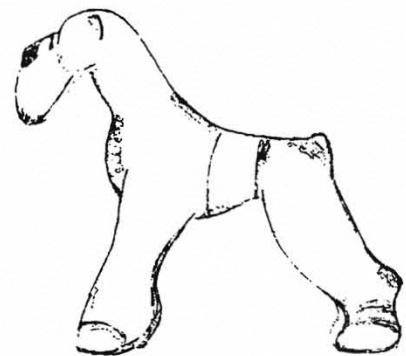
| | | |
|--|---------|--------|
| #4027 Flamingo, B3, pg 72, with 5 Oyster Cocktail Glasses - - - - - | All for | 65.00 |
| #4027 Cobalt, with 6 #3405 Glasses, Cobalt bowl - Crystal foot - - - - - | | 425.00 |
| #4027 Crystal Tallyho Deep Plate Etching with 6 Glasses #4002 - - - - - | | 240.00 |



GOOSE
(WINGS HALF WAY)



PLUG HORSE



AIREDALE

ANIMALS

| | |
|--------------------------------|----------|
| Rooster Vase - - - - - | \$ 48.00 |
| Scotty - - - - - | 40.00 |
| Fish Bookend - - - - - | 40.00 |
| Horse Head Bookend - - - - - | 50.00 |
| Ringneck Pheasant - - - - - | 50.00 |
| Rabbit Paperweight - - - - - | 40.00 |
| Plug Horse - - - - - | 40.00 |
| Goose, Wings halfway - - - - - | 45.00 |
| Clydesdale - - - - - | 110.00 |

SLAG ANIMALS BY IMPERIAL

| | |
|----------------------------------|---------|
| Wood Duck - - - - - | \$ 8.00 |
| Donkey - - - - - | 8.00 |
| Airedale - - - - - | 8.00 |
| Elephant - - - - - | 8.00 |
| Standing Pony - - - - - | 5.50 |
| Plug Horse - - - - - | 6.00 |
| Mallard, Wings up - - - - - | 6.00 |
| Mallard, Wings halfway - - - - - | 6.00 |

ARTHUR J. ANDERSON, JR.
BOX 941 FRAMINGHAM, MASS. 01701
Phone: (617) 653-5154

ALL HEISEY: Signed unless noted.
Postage and insurance extra.
Excess refunded.

* UNMARKED

- | | | | |
|---|------------------------------------|---|-----------------------------------|
| 1. # 16 9" Candlestick - - - - - Pr | \$ 32.00 | 36. #1425 Victorian Ash Tray Mon - - - | \$ 10.00 |
| 2. # 21 7" Candlestick - - - - - Pr | 30.00 | 37. #1425 Victorian 2 oz Bar (2) - - ea | 9.00 |
| 3. # 30 3" Min. Candlestick - - - Pr | 27.50 | 38. #1425 Victorian 12 oz soda*(2) - ea | 9.00 |
| 4. # 142 3 Lite " Orchid Etch - Pr | 40.00 | 39. #1425 " Low Ft. Gob.*(2) - ea | 9.00 |
| 5. # 150 Handled Chamberstick - - - | 12.00 | 40. # 433 Greek Key, 3 Pt. Jug - - - | 65.00 |
| 6. # 300 Peerless Cup Ft. Custard(8)ea | 5.00 | 41. # 433 Greek Key, 2 Qt. Jug - - - | 65.00 |
| 7. # 300 Punch Cups Press.Bot (6) - ea | 4.50 | 42. # 433 " " 5-1/2" Tall ft.Jelly | 27.50 |
| 8. # 300 Punch cups Cut Bot. (4) - ea | 4.50 | 43. #1506 Provincial Sherbet - - 6 for | 30.00 |
| 9. # 300 Sherbet & Plate, - - - - Set | 14.00 | 44. #1509 Queen Ann 6" 3 Ft. Mint - - | 10.00 |
| 10. # 300 Tumbler - - - - - - - - | 8.00 | 45. #1509 Queen Ann Cream & Sugar - Pr | 28.00 |
| 11. # 341 Puritan Tumbler (2) - - - ea | 7.50 | 46. #1509 " " Ind.Nut*Old Colony Et. | |
| 12. # 341 Finger Bowl - - - - - 6 for | 32.00 | | (4) ea 6.00 |
| 13. # 341 Shallow Hand. Sherbet (2) ea | 5.50 | 47. #1509 " " 11" Bowl Roselie - | 18.00 |
| 14. # 348 Cupped Wine (2) - - - - - ea | 9.00 | | Above four have Dolphin feet |
| 15. # 349 Flared Wine 12 (1 Dam) - - - | 85.00 | 48. #1509 3 Sec. Relish dish Orchid* - | 15.00 |
| 16. # 350 Pinwheel & Fan Punch cups | | 50. #1519 Waverly Stened candy* - - - | 9.00 |
| | (2) ea 7.00 | 51. #1519 Waverly Ind. sugar, Orchid - | 15.00 |
| 17. # 300 Puntly & Dia. Pt. Punch Cups | | 52. #1519 Waverly #55 Eperqne - - - Pr | 35.00 |
| | 5 ea.\$9.00 (1 chip) - 6 for 37.00 | 53. #1567 Plantation Cruet - - - (2) ea | 37.50 |
| 18. # 353 Med. Flat Panel 4-1/2" Ft. | | 54. #1567 " Syrup Jug Orig. Top - | 30.00 |
| | Sauce flared - 8.00 | 55. #1567 " 8-1/2" Plate, Ivy Etch. | 9.00 |
| 19. # 353 Grapefruit - - - - - 6 for | 35.00 | 56. #7012 Hair Rec. Top not orig. | |
| 20. # 352 Flat Panel Tall Celery - - - | 25.00 | | V. IV, pg 64 - - - - 27.50 |
| 21. # 351 5" Flared Vase - - - - - | 15.00 | 57. | Clear soup plates 9", 28 Star |
| 22. # 359 Sherbet St. Optic - - - - - | 5.00 | | cut bottom,lg. Dia H,Minor |
| 23. # 393 Nar. Flute 2 oz. Sherry - ea | 9.00 | | wear on bottoms - - - 8 for 45.00 |
| | 10 for 80.00 | | |
| 24. # 393 Nar. Flute 5 oz. Champ. - ea | 7.00 | | |
| | 9 for 55.00 | | |
| 25. # 394 Oblong Cube Sugar - - - - - | 12.00 | | |
| 26. # 394 5" Lemon dish, Dated - - - - | 18.00 | | |
| 27. # 379 Urn 10" Nappie, Sm chip one | | | |
| | corner bottom - - - 20.00 | | |
| 28. # 417 Coarse Rib Punch cups (10) ea | 4.50 | | |
| | all for 35.00 | | |
| 29. # 469 Hartman candy jar Gold - - - | 35.00 | | |
| 30. # 473 Nar. Fl. W/Rim | | | |
| | 5" Sugar Tray & Cream - - - 20.00 | | |
| 31. # 473 5-1/2" Shallow Nappies (3) ea | 5.00 | | |
| 32. # 473 6-1/2" Ind. Cheese & Cracker | | | |
| | dish similar to one in V.II, | | |
| | pg 36. Would make nice Shrimp | | |
| | & sauce dishes. Have 8, ea 24.00 | | |
| | 4 for 85.00 | | |
| | all for 160.00 | | |
| 33. # 429 Cruet V.II pg 154,#4 Stop. | 17.00 | | |
| 34. #1235 Crysanth. 6-1/2" Ft.Candy* - | 15.00 | | |
| 35. #1226 Sherbet (straight) - - 6 for | 35.00 | | |

FLAMINGO

- | | |
|---|---------------|
| 58. #1229 Octagon Bon Bon* cut - - - - | 8.00 |
| 59. #1252 Twist 2 Handled candy - - - | 15.00 |
| 60. #1252 Twist Wines* - - - - - 8 for | 110.00 |
| 61. #1252 Twist Tumblers - - - (6) - ea | 8.00 |
| | all for 45.00 |
| 62. #1193 7" Conserve dish - - - - - | 12.00 |
| 63. #1252 Twist 12" Platter* - - - - - | 12.00 |
| 64. # 355 Octagon Sq. Ft. Cr&Su. - - Pr | 37.50 |

MOONGLEAM

- | | |
|---|------------------------------|
| 65. #1252 Twist 9" bowl - - - - - | 22.50 |
| 66. # 473 Individual Nut - - - (2) - ea | 7.50 |
| 67. | Powder Box & Cov. Cl.Insert, |
| | only box marked - - - 30.00 |
| 68. # 354 12 oz. Syrup pitcher W/top - | 18.00 |
| 69. #1184 Yeoman Bon Bon - - - - - | 18.00 |
| 70. #1401 Empress 9" Dol. Ft. Vase - - | 48.00 |
| 71. #1184 Yeoman Finger Bowls D.O. | |
| | (10) - ea 4.00 |
| | all for 35.00 |
| 72. #1252 Twist Bon Bon - - - - - | 12.50 |
| 73. #1252 Twist Individual Nut - - - - | 9.00 |

VERLYS

- | | |
|--------------------------|----------------|
| Pine Cone Bowl, unsigned | CE - - - 20.00 |
| Butterfly Vase, signed | CE - - - 45.00 |

WANTED: Victorian (Waffle) Old Fashions, Tumblers, Oyster Cocktail, Vases,
Floral Bowl, All Imperial in Color also.

CARMINE CREA ANTIQUES
64 Locust Hill Ave.
Yonkers, New York 10701
Phone: (914) GR6-5175 Eves.

| | | |
|-----|---|------------|
| 1. | Fandango bowl, crimped edge 9-1/4" wide | \$ 22.00 |
| 2. | Fandango cruet, large | 55.00 |
| 3. | Fandango spooner, flake on edge | 20.00 |
| 4. | Greek Key, creamer and sugar, round, gold trim worn | 55.00 |
| 5. | Punty and Diamond Point, 6" comport | 45.00 |
| 6. | Goose, Wings Up | 45.00 |
| 7. | Wing Scroll, custard toothpick gold dec., flake on bottom of base | 65.00 |
| 8. | Orchid Etched, creamer and sugar (Waverly) | 25.00 |
| 9. | Ipswich, candleholders, Sahara (2) pair | 35.00 |
| 10. | Old Sandwich, fruit bowl crystal | 18.00 |
| 11. | Maryland cut, cocktail shaker | 45.00 |
| 12. | Dawn bowl, Lodestar 5" round | 17.00 |
| 13. | Dawn Juice pitcher 5" high, Town and Country | 45.00 |
| 14. | Ipswich, Moongleam (6) 5 oz. ftd. sodas | ea - 20.00 |
| 15. | Ipswich, Moongleam (8) 4 oz. saucer champagnes | ea - 22.00 |
| 16. | Ipswich, Crystal (8) 8" plates | ea - 10.00 |
| 17. | Ipswich, Crystal (3) 4 oz. saucer champagnes | ea - 7.50 |
| 18. | Ipswich, Crystal (5) dessert bowls | ea - 6.50 |
| 19. | Ipswich, Crystal (2) 4 oz. oyster cocktails | ea - 6.50 |
| 20. | Ipswich, Crystal (1) 10 oz. tumbler 4" high | 6.50 |
| 21. | Ipswich, Crystal (9) 10 oz. tumblers 5-1/2" high | ea - 15.00 |
| 22. | Ipswich, Crystal Bowl footed 11" | 30.00 |
| 23. | Old Sandwich, Sahara cream and sugar | 45.00 |
| 24. | Kalonyal comport, fluted edge 10" | 95.00 |
| 25. | Kalonyal celery | 55.00 |
| 26. | Colonial cake stand | 45.00 |
| 27. | Fancy Loop, comport 7-1/2" high | 75.00 |
| 28. | Rose Pattern Lariat bowl with fluted edge, crimped | 22.00 |
| 29. | Pillows covered sugar | 38.00 |
| 30. | Limelight saturn rose bowl 5" high - 18-1/2" round | 42.00 |
| 31. | Sahara Queen Ann dolphin footed candlestick, pair | 75.00 |
| 32. | Emerald green, Pineapple and fan tumbler, gold trim | 37.00 |
| 33. | Moongleam and Crystal candlestick #117, 8" pair | 85.00 |
| 34. | Sahara candlestick #131, 2" pair | 18.00 |
| 35. | Queen Ann nut dishes, dolphin footed (5) | ea - 5.00 |
| 36. | Fandango plate 8" scalloped edge | 18.00 |
| 37. | Old Sandwich, tumblers (3) Sahara | ea - 14.00 |
| 38. | Old Sandwich, water goblet moongleam | 14.00 |
| 39. | Wedding band, candleholder #150 | 18.00 |
| 40. | Fancy Loop, berry dish | 5.00 |
| 41. | Coarse rib, mustard | 13.00 |
| 42. | Queen Ann mustard, etched | 15.00 |
| 43. | Prince of Wales plate 7-3/4" round | 18.00 |
| 44. | Orchid etched champagnes (2), base unknown | 12.00 |
| 45. | Orchid etched goblet (1), base unknown | 14.00 |
| 46. | Plantation cruet | 27.50 |
| 47. | Dawn cruet - saturn | 35.00 |
| 48. | Lamp shades #9, Vogel Book, Page 136 | 35.00 |
| 49. | Pinwheel and Fan, creamer and sugar | 35.00 |
| 50. | Wedding Band #150, water bottle (tiny nick on lip, no harm) | 27.50 |

POSEY POT GIFTS
 56 E. COSHOCTON ST.,
 JOHNSTOWN, OHIO 43031

JIM LAMOREAUX
 4181 HARLEM ROAD
 NEW ALBANY, OHIO 43054
 Phone: (614) 855-7967

| | | |
|-------|--|----------|
| #1415 | Dawn 5 oz. Juice Glasses(M)(6) - - ea | \$ 15.00 |
| #1186 | Lemon Dish (Gold Edge)Bat.Datd.(M) - - | 12.50 |
| #5010 | 6 oz. Sherbet Danish Princess Etch(U) | 12.50 |
| # 341 | Puritan Covered Butter - - - - (M) - - | 35.00 |
| # 412 | 3 pt. Tankard - - - - - (M) - - | 35.00 |
| # 433 | 4-1/2 Grecian Border Plates(3) (M) ea | 4.00 |
| # 365 | Old Queen Ann Bon Bon - - - - (M) - - | 20.00 |
| #1415 | Dawn Sherbet - - - - - (M) - - | 18.50 |
| #1503 | Crystalite Cream & Sugar - - - (M) - - | 18.00 |
| #1404 | Old Sandwich Cream & Sugar - - (M) - - | 20.00 |
| #1485 | Saturn Tumbler - - - - - (M) - - | 3.50 |
| #1485 | Limelight Mayonnaise Saturn - (M) - - | 25.00 |
| #1485 | Saturn Rose Bowl - - - - - (M) - - | 10.00 |
| #1509 | Ind. Cream & Sugar QA - - - - (M) - - | 17.50 |
| # 325 | 8" Pillows Bowl - - - - - (M) - - | 40.00 |
| # 325 | 1/2 Gal. Pitcher Pillows - - - (M) - - | 55.00 |
| #1533 | 12" Wampum Bowl - - - - - (U) - - | 35.00 |
| #1509 | 8" Square Alexandrite plates(5)(M) ea | 45.00 |

| | |
|---|----------|
| Amber, (Sultana) tumbler Touraine | |
| fine rib (M) - - - - - | \$ 15.00 |
| Sahara double candleholder Thombrprint | |
| and Panel (M) - - - - - | 20.00 |
| Crystal dolphin ftd floral bowl 11" (M) - - | 15.00 |
| Fandango plate 8" - - - - - | 15.00 |
| Fandango tray 11"X6" | |
| (one small chip on top edge,so) - - | 20.00 |
| Wampum plate 12" diameter, 2" high edge - - | 25.00 |
| Punty Band Custard Souvenir pitcher (M) - - | 30.00 |
| 3 Hawthorne 7" D.O. plates, all - - - - - | 10.00 |
| Crystalite center bowl & pr.triple | |
| candleholders, 3 pieces - - - - | 35.00 |
| Peerless 300 table set, sugar, creamer, | |
| covered butter & spooner(gold decoration | |
| mostly worn off) - - - - - | 60.00 |
| Sahara Duquesne stemware(wide optic bowls) | |
| 6 goblets - \$12.00 ea, - - - all for | 60.00 |
| 5 champagnes \$10.00 ea, - - - all for | 40.00 |
| 4 sherbets - \$ 8.00 ea, - - - all for | 30.00 |

Sorry no list available but have a large selection of Heisey. Phone: (614) 967-7941 between 9 to 5 P.M. Open 6 days a week.

POSTAGE EXTRA. SASE please. Thank you.

LOREN & VIRGINIA YEAKLEY
 640 MELANIE COURT
 "JEFFERSON WOODS"
 NEWARK, OHIO 43055
 PHONE 366-5101



ALL ITEMS MINT AND SIGNED UNLESS NOTED. SATISFACTION GUARANTEED. PLEASE INCLUDE POSTAGE AND INSURANCE. EXCESS REFUNDED.

| | | | |
|-----|--|-------------|----------|
| 1. | #1485 Saturn 10 oz. Goblet, Zircon, signed, - - - - - | (6) - - ea | \$ 25.00 |
| 2. | #1404 Old Sandwich, 6 oz. Sundae, Sahara, signed, excellent color - set | (6) - - - - | 50.00 |
| 3. | #1184 Yeoman 8 oz. Goblet, Moongleam, signed, - - - - - | (6) - - ea | 12.00 |
| 4. | # 407 Coarse Rib 9" Plate, Moongleam, signed - - - - - | | 10.00 |
| 5. | # 407 Coarse Rib 8 oz. Goblet, Moongleam, Signed - - - - - | | 20.00 |
| 6. | # 52 Individual Salt & Pepper, Glass Tops, Flamingo, Signed - - - - - | pr | 10.00 |
| 7. | #1183 Revere, Individual Salt, Flamingo, not signed - - - - - | ea | 4.50 |
| 8. | # 479 Footed Hotel Cream and Sugar, Moongleam, not signed but good color - - - - - | pr | 25.00 |
| 9. | # 352 Flat Panel Knife Rest, Crystal, Vogel II, Pg 27, not signed - - - - - | | 9.00 |
| 10. | #3390 Carcassonne 4 oz. Claret, Cobalt, not signed - - - - - | | 40.00 |
| 11. | #1280 Winged Scroll, Covered Sugar and Creamer, Emerald, not signed - - - - - | pr | 120.00 |
| 12. | #1280 Winged Scroll, Covered Butter, Emerald, rim chip professionally repaired - - | | 50.00 |
| 13. | #1469-1/2 Ridgeleigh 8" Vase, Zircon, signed, Vogel III, Pg 106 - - - - - | | 85.00 |
| 14. | #1201 Fandango or Diamond Swag, Butter Pat, rare - - - - - | | 20.00 |
| 15. | #1201 Fandango or Diamond Swag, Hotel Cream & Sugar, Vogel IV, Pg 68 - - - - - | pr | 37.50 |
| 16. | #1201 Fandango or Diamond Swag, Celery Vase, Vogel IV, Pg 66 - - - - - | | 40.00 |
| 17. | #1205 Fancy Loop Salt Dip, not signed - - - - - | | 9.00 |
| 18. | # 379 Urn, Covered Sugar, mint, signed - - - - - | | 37.50 |
| 19. | # 379 Urn, 8-1/2 oz. Goblet, signed - - - - - | | 25.00 |
| 20. | # 335 Prince of Wales, Table Set, Cov.Butter, Cov.Sugar, Cr.& Su., some Gold - - - | | 200.00 |
| 21. | Elephant Handled Beer Mug, Crystal, Signed - - - - - | | 150.00 |
| 22. | #1401 Empress 11" Footed Floral Bowl, Lion Heads, Crystal, not signed - - - - - | | 150.00 |
| 23. | # 341 Old Williamsburg, Cordial, signed - - - - - | | 12.00 |
| 24. | #5024 Oxford, 1 oz. Cordial, signed - - - - - | | 12.00 |
| 25. | # 473 Narrow Flute w/Rim, Individual Nut Dish, signed - - - - - | | 10.00 |
| 26. | Sow, signed, and 2 Standing Piglets, 1 signed - - - - - | set | 300.00 |
| 27. | Fish Candlestick, not signed - - - - - | | 50.00 |
| 28. | 1971 Land of Legend Souvenir Heisey Plate, Amberglo - - - - - | | 37.50 |
| 29. | 1972 Land of Legend Souvenir Heisey Plate, Blue Haze - - - - - | | 15.00 |



LETTERS.....WE GET LETTERS....

Dear Madam:

Your June issue article about Depression Glass was of interest to us and since you invited comment, we are pleased to express our thoughts.

The phrase "Depression Glass" was coined for the convenience of collectors, but it is indeed misleading. However since it is so well established, we can only hope that it is better understood by all interested factions.

We have been asked often if Libbey Glass Company produced Depression Glass and to give description details. Libbey certainly operated throughout the depression years (during most of which I was Director of Advertising), but they did not make what is now called Depression Glass. Primarily a blown factory making fine quality table glass, in 1933 Libbey launched its famous Libbey-Nash Series, priced up to \$2,500 a dozen, which certain-

ly was not depression merchandise! The illfated line failed within less than two years.

Until 1939 all Libbey stemware was hand-blown. Tumbler production was machine-blown. Accordingly, the closest Libbey came to making Depression Glass was the hundreds of carloads of tumblers decorated with Disney Snow White and the Seven Dwarfs, Bambi, Dumbo and others. The nearest in stemware was a series of hand-made lines with blown bowls, most in colors of ruby, green, amber, etc. and some with platinum banding. All had the Saf-edge rim and such items are now collectible, commanding up to \$25 per piece. Depression Glass? No, we would say not. Depression Era Glass? Well, maybe and only maybe! Sincerely,

Carl U. Fauster, Director
Antique & Historic Glass Foundation
Toledo, Ohio

.....

I would like to tell you at this time, how much enjoyment I received doing the Heisey Show again this year. It was a real pleasure and much information was gained

from it.

I know that there is tremendous work to be done, when a show of that magnitude is produced. And I would like to congratulate each and everyone that had anything at all to do with producing it.

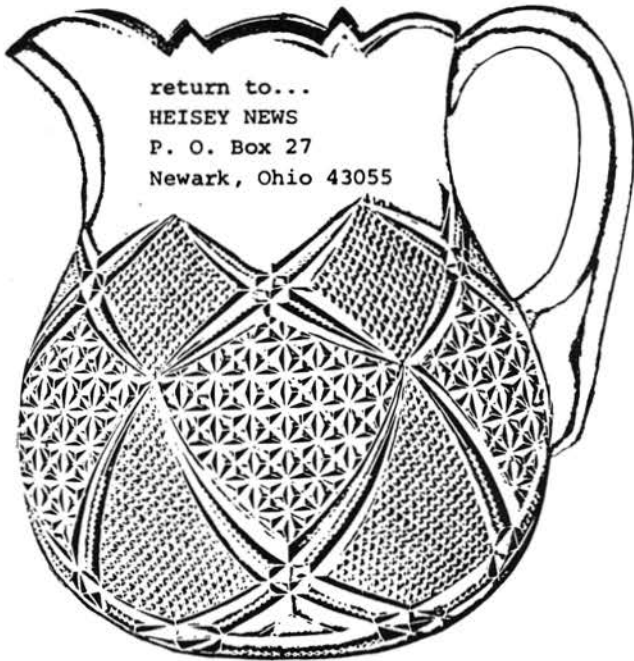
Mr. Yeakley, Dick Marsh and Wayne McPeck did a fine job producing, advertising and publicizing the show. The activities were fine and I feel everyone came back home with a little more added to his or her knowledge and pleasure of Heisey Glass, even tho the old purse probably took a beating---as mine did.

However, it gives us many pleasant memories to think about the rest of the year in preparation of maybe making the return trip next year.

Thanks again, for a wonderful time with wonderful people.

Sincerely,
Mildred Bourdon, The Bourdon House
Anaheim, Calif.

PS: Also want to comment on the brochure naming the dealers. It's great and I think it will be most helpful to everyone. Dealers and visitors alike.



FIRST CLASS MAIL