

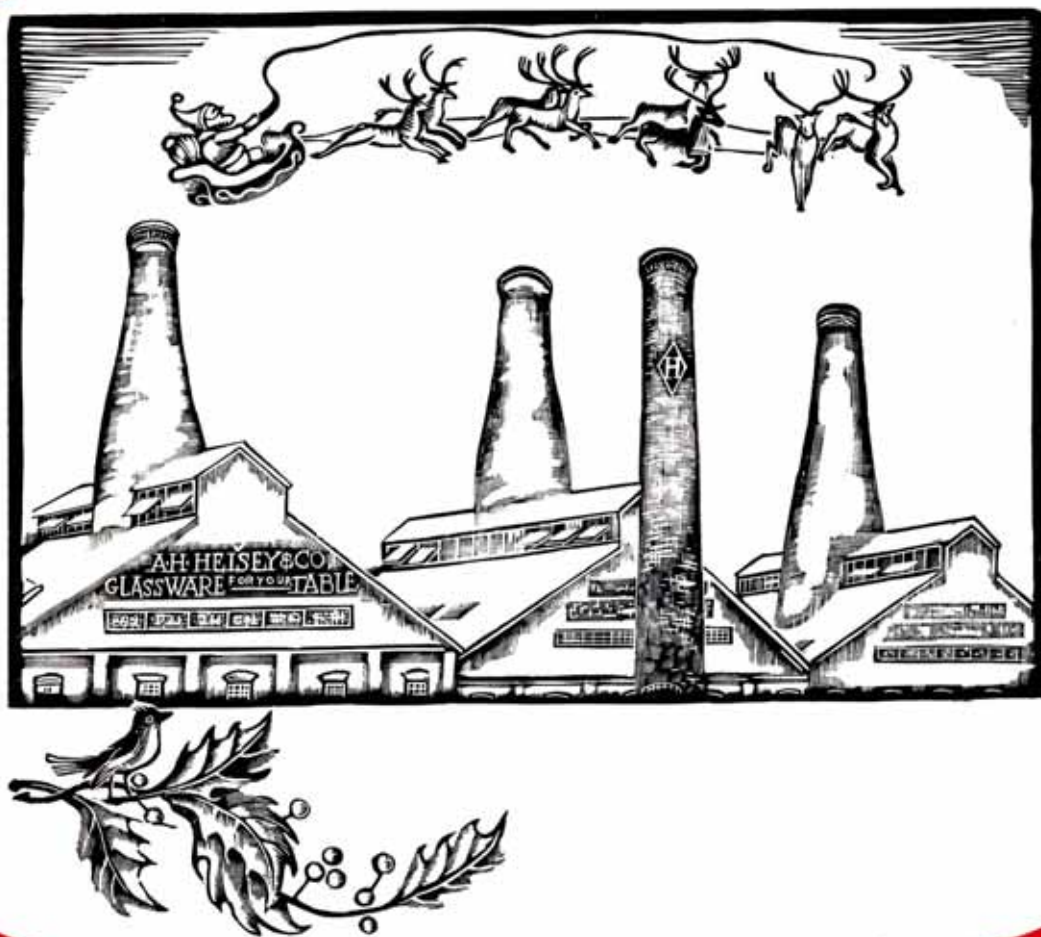
# HEISEY NEWS

The Official Publication of Heisey Collectors of America, Inc.

Volume XXVI No. 13

December 1997

ISSN 0731-8014



© Heisey Collectors of America, Inc.

All rights reserved 1997

## ***Happy Holidays HCA Members***

*Look inside for three special offers: the Lavender Ice Doe Head, 1998 Tiger paperweight, and the new HCA ornament—all three are perfect for gift giving!*

## HEISEY NEWS

Heisey Collectors of America, Inc.

169 West Church Street

Newark, Ohio 43055

Phone (614) 345-2932 Fax (614) 345-9638

E-mail: heisey@infinet.com

WEB SITE: www.ahheisey.com

All Rights Reserved 1997

ISSN 0731-8014

### Editor

Molly Kaspar

### Administrator

Mary Ourant

### HCA President

Tom Bischoff, (419) 533-7431

### HCA Vice President

Bob Rarey, (614) 279-0390

### HCA Secretary

Ginny Marsh, (614) 366-5608

### HCA Treasurer

Bob McElheney, (419) 537-6890

HEISEY NEWS is published and printed monthly (twice in March), by Heisey Collectors of America, Inc. Periodicals postage paid at Newark. Subscription is limited to HCA members. First class mailing is available for an extra \$13.00, due with payment of membership. If you are having difficulty receiving your newsletter, please contact the HCA Administrative office Monday through Friday 8:00 a.m. to 4:30 p.m.

The opinions expressed in articles in HEISEY NEWS are those of the authors and not necessarily those of the organization. The Editorial Staff reserves the right to edit, with or without the consent of the author, or to refuse any material submitted for publication.

### Back Issues

The following volumes are available as complete sets: V, VII, VIII, IX, X, XI, XII, XIII, XIV, XV, XVI, XVII, XVIII, XX, XXI, XXIII, XXIV, XXV for \$15.00 each volume (12 issues, plus auction list if available).

### Advertising

Send all ads to: HCA Advertising, 169 W. Church St., Newark, OH 43055 or fax ads to (614) 345-9638, include MasterCard or Visa information. Ads are to be typed or printed on white paper with dark ink. Camera ready ads accepted, but must follow line specifications. Ads containing reproductions will not knowingly be accepted unless clearly stated (e.g. Heisey by Imperial, etc.) HEISEY NEWS accepts no further liability. See Advertising section for rates and deadlines.

### Museum

Heisey/Collectors of America, Inc., a non profit corporation (tax exempt status), owns and operates The National Heisey Glass Museum in Veteran's Park, 6th and Church Streets, Newark, Ohio. Open Tuesday-Saturday 10-4, Sunday 1-4, closed holidays. Other hours by appointment. Members admitted free.

### Identification

HCA will attempt to identify unknown glass items. Please enclose a photograph with your drawings or descriptions. Other arrangements should be made in advance with the museum staff.

### Membership

To join Heisey Collectors of America or to renew your membership, contact HCA Administrative office Monday through Friday 8:00 a.m. to 4:30 p.m. Associate dues are \$22.00 plus \$5.00 for each additional household member. Voting members pay an additional one-time fee of \$25.00. Please consider supporting the Endowment Fund by joining at one of the levels listed on the back page.

### Museum Shop

There is always someone available in the shop to answer questions or take your order. When ordering by phone, please have a credit card ready. When ordering by mail, please be sure to include appropriate charges such as shipping and sales tax.

### Shipping and Receiving

Delivery is made much easier when we have a complete street address, not a PO Box. We prefer to use UPS. If you have not received a package, please call the administrative office to confirm it was sent. We will assist you in tracing it. If your package arrives damaged, please contact your local UPS representative. We insure everything.

### Donations and Loans to the Museum

If you have something you would like to share with the museum or have questions regarding items on loan, contact the assistant curator. HCA reserves the right to accept or refuse items based on current holdings.

## Calendar

December Quarterly Meeting & Dinner Dec. 6

All-Heisey Glass Show March 21-22

Sponsored by the NCHC, Silver Spring, MD

1998 HCA Benefit Auction April 3-4

1998 HCA Convention & Glass Sale June 16-20

## Features

### 1997 Limited Edition Ornament

*New Item!* 3

### 1998 Convention Update

*Dick Smith* 4

### Anybody Seen Vincent?

*Carl Sparacio* 5-6

### Special Limited Edition Lavender Ice Doe Head

*Hurry and order yours!* 9

### Holiday Dinner Reservation Form

*Hurry! Deadline is December 1st!* 9

### Heisey Plantation

*John Martinez* 10-12

### HCA Benefit Auction Consignor Contract

*Tom Felt* 13

*Tom Felt* 14-16

## Departments

*President's Discourse, Tom Bischoff* 3

*Museum Happenings, Molly Kaspar* 4

*From the Archives, Don Valdes* 7-8

*Club Notes* 17-18

*HCA News & Notes* 18

*Advertising* 19-27

# THE PRESIDENT'S DISCOURSE

TOM BISCHOFF

It is hard to believe Christmas is right around the corner. Your museum will once again be beautifully decorated thanks to the extra efforts of our staff. Volunteers are always appreciated; so if you like to decorate or have any other talents to offer, please call Mary, Molly or Kristy to see what job they can provide for you. (Kristy is getting married or may be by the time you read this; so maybe you should ask to speak to someone else for a month or so. Best wishes to you Kristy!)

Never being too early to talk about the Benefit Auction, the Committee advises of several nice pieces expected: Bamboo candlestick in Flamingo, a candy jar in Dawn and a Crystal swan handled pitcher! Bob Rarey will keep us all informed.

Molly Kaspar advises she has some space available for the December 7, 9:00 a.m. glassmaking class at the HCA Glass Studio. Give her a call; you'll be glad you did. Because HCA continues to grow, long term planning becomes more and more important. At the December Board meeting time will be taken to lay a foundation for a five year plan with respect to the museum and its facilities. The molds and warehouse, the Endowment Fund and long range goals will also be on the table. The goal of \$750,000.00 by the year 2000 in our Endowment Fund has already been surpassed. Dick Smith gave to the Executive Committee updates on proposals from the Special Projects Committee and on behalf of the Convention 1998 Committee. Work at HCA continues to be challenging, creative and rewarding. Take the opportunity to be more involved whenever possible. ♦

Front and back of the 1997 ornament.



## 1997 LIMITED EDITION ORNAMENT

There's something new in the Museum Shop—the 1997 Limited Edition ornament. This is the first in a series planned by HCA. Each year will feature a different scene—an image of the museum or a piece of elegant A.H. Heisey & Co. glassware. The two sided china ornaments are 3¼" round and the front is rimmed with gold. They hang from a gold ribbon.

This year the ornament features a color picture of the King House on one side and a brief description on the back. The best part is the ornaments can be displayed year round! Included with each is a brass stand which holds the item. Hurry and order yours while supplies last! Ornaments will be available in the Museum Shop. ♦

**Mail to:** HCA Ornament, 169 W. Church St., Newark, OH 43055 call (614)-345-2932 or fax (614) 345-9638

Name: \_\_\_\_\_

Address: \_\_\_\_\_

City/State/Zip: \_\_\_\_\_

Phone: \_\_\_\_\_ Tax ID: \_\_\_\_\_

Payment: Check or MasterCard/Visa: \_\_\_\_\_ Exp.: \_\_\_\_\_

Quantity: \_\_\_\_\_ X \$15.00 = \_\_\_\_\_

Tax (OH only) \_\_\_\_\_ X \$ .90 = \_\_\_\_\_

Shipping (EACH) \_\_\_\_\_ X \$2.00 = \_\_\_\_\_

TOTAL: \_\_\_\_\_ = \_\_\_\_\_

Limited Edition 1997

First in a Series

The King House

National Heisey Glass Museum  
Built in 1831 for Samuel Dennis King, a prominent Newark attorney this Greek Revival style house remained in the family until 1973 when it was moved to its present location by Heisey Collectors of America, Inc. to serve at the National Heisey Glass Museum.



HCA

# MUSEUM HAPPENINGS—ALL STAR HOLIDAY LINE-UP

## MOLLY KASPAR

This issue is packed with information! There are two new limited edition sales, the Lavender Ice Doe Head and a Pink Tiger Paperweight—see page 9 and the back cover for details. Don't forget to send your reservation for the Holiday Dinner; make note of the menu changes on page 9. Also included in this issue, an article from HCA member John Martinez of the National Capital Heisey Collectors Club. He shares his knowledge of pattern no. 1567 Plantation.

### HCA HOLIDAY EVENTS

#### November 24 to December 13

Third Annual HCA Coloring Contest. Contact the museum for an entry, children ages 3-12

#### December 6

- Quarterly Board Meeting, IIT 9:00 a.m.
- Craft workshops in the multi-purpose room
- Holiday Dinner & Quarterly Meeting, 6:30 pm

#### December 7

Glass Class, 9:00 am, HCA Glass Studio. Registration required

#### December 13

Kids Day and the coloring contest judging

#### December 15

Volunteer Luncheon

As 1997 comes to a close I've been looking back on events of the past year—I still can't believe this is the last *Heisey News* issue for '97! It seems like just yesterday we were bidding on our favorite glassware at the benefit auction and enjoying all that the Annual Convention has to offer. As the staff cleaned the glass collection last month I took notice of all the museum has—after two and a half years I still see something I've never noticed before. When you make out your gift-giving list this year, why not add HCA?

Maybe you own something that's missing in the museum, such as pieces in Marigold or Tangerine. Or you have a piece with a unique cutting or items in your favorite pattern. How about loaning several place settings to set our King House dining room table? We change the setting about every three months. Whatever you decide, please know your generosity is appreciated—you are part of our museum's continuing growth.

Don't forget to visit the museum this month to pick out those final gifts. There are new items in the shop including Green Mist Cygnets and Sparrows and more Lavender Ice Cabochon signs. The shop is expecting more new items soon, so we'll keep you posted.

**Happy Holidays! ♦**

## 1998 CONVENTION UPDATE

DICK SMITH

The theme for the 1998 Convention is "Fabulous 40's". Dates will be June 16-20, 1998. It is time to start making your plans for another great convention. Some of the activities already planned include:

Wednesday: Show Preview

Thursday: ID Session, Cherry Valley Lodge; Afternoon seminar at OSUN-COTC; Swap and Silent auction in the evening; OSU Show and Display

Friday: Annual Meeting, morning; Afternoon seminar; Annual Banquet, evening; OSU Show and Display

Saturday: Antique Flea Market in the Park; OSU Show and Display

We are still finalizing some events and details; more on these in future newsletters. If you have any questions, comments or suggestions about the convention, show or display give me a call at (614) 366-5163. ♦

### Museum Volunteers for October & November

Beth & Spencer Barker  
Leota Friel  
Mary Holmquist  
Frances Law  
Connie Makris  
Dick Marsh  
Bob & Phyllis McClain  
Mary McWilliams  
Dick & Marilyn Norris  
Mary Ourant  
Bob Rarey  
Bob Wilson



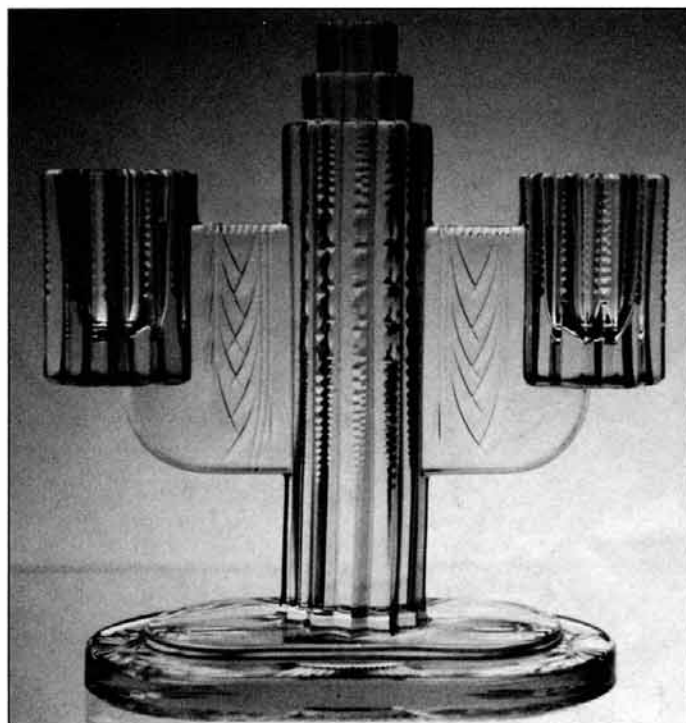
## ANYBODY SEEN VINCENT?

CARL SPARACIO

As well researched and documented the glass we love is, there's a lot about Heisey we don't know. You see a reference about something of interest but no amount of research turns up a clue as to what it actually is. Such is the case with Heisey's no. 884 "Vincent" cutting.

Aha! Just as I suspected, you don't know anything about "Vincent" either. And why would anyone care? you may ask. I'll tell you why—because I happen to be related to a nag. No not my wife, my brother Vince (though they both are running neck and neck for the title). I don't know if brother Vince is wound up about #884 Vincent because this cutting shares his name or because it's on Ridgeleigh, a Heisey pattern with which he's obsessed.

Ever since it was mentioned in Bob O'Grady's article on the Ridgeleigh two light candelabra in the November 1984 issue of the *Heisey News*, Vince has been sniffing like a Bloodhound who has lost the trail. Bob mentioned that this Ridgeleigh stick was offered in two cuttings: #883 Royal York and #884 Vincent. We know what #883 Royal York looks like but #884 Vincent is a mystery. Normal people could accept this but a Ridgeleigh nut needs more.



The two light candelabra, or two light candlestick, in question was sold both with and without a bobèche and prisms. With—it's a candelabra, without—it's a candlestick.

Harold Willey in his 1974 book, *Heisey's Cut Handmade Glassware*, skips from #883 Royal York to #885 Incognito with no mention of #884 Vincent. Further, Willey does not mention #883 Royal York on Ridgeleigh but does note its existence on the #1483 Stanhope two light candelabra.

To further confuse the issue, the 1987 Publication, *Heisey's Classic Ridgeleigh Glassware*, by Jones and Sparacio (not this Sparacio) acknowledges #884 Vincent on the Ridgeleigh two light candelabra but makes no mention of #883 Royal York on the same piece. When I asked one of the authors about this he said, "Very strange, somebody should have checked with O'Grady."

I didn't check with O'Grady but referred instead to *Heisey Candlesticks, Candelabra and Lamps* by Tom Felt and Bob O'Grady which was also published in 1984. This leads me to conclude that Bob used his book as a primary reference for his November 1984 issue of the *Heisey News* article. There's nothing wrong with that, it is comforting knowing he felt his reference source impeccable.

The Ridgeleigh book states that there are no illustrations available for #884 and the factory name is unknown (this from production records). The "Vincent" name was given by HCA causing somebody's brother to develop a swelled head.

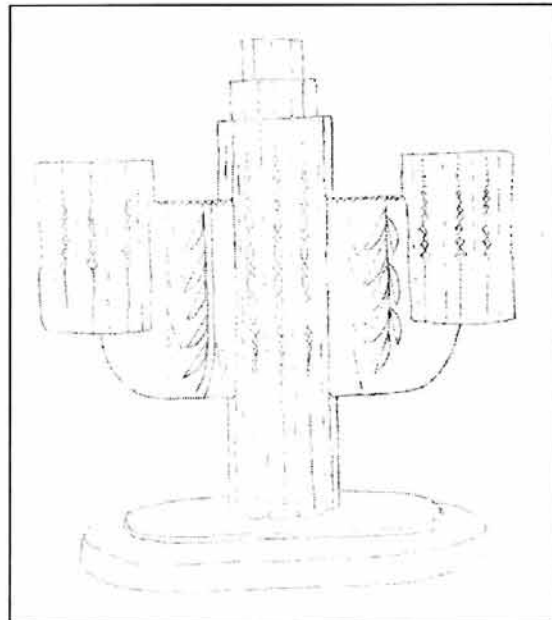
Now, the Bredehofts, in their 1991 *Handbook of Heisey Production Cuttings* ignore the #884 Vincent altogether (which now seems very wise on their part) and, like Willey, they do not place #883 Royal York on Ridgeleigh either. If this makes sense since Royal York does not seem to lend itself to that candelabra. Of course I would never say that to Felt or O'Grady because they have a reputation as meticulous researchers and are probably right. Besides, the last time I questioned something Tom wrote I was threatened with bodily harm.

To cover all bases, I checked with HCA archivist Don Valdes, and he told me the only reference he could find re: #884 Vincent was in Felt and O'Grady (I suspect they got to him before I did). Striking out there, I called the Bredehofts but no one answered their phone (is all this coincidence or am I right to suspect a conspiracy?). Since my deadline is now about three minutes away, I couldn't pursue it further.

Why all this fuss about a cutting that's never been seen on a candlestickelabra that's too tough to find anyway? You guessed it—the nag found one at the March All-Heisey Show in Silver Spring, Maryland which he suspects may have the elusive #884 Vincent cutting on it.

I've had little peace since.

It's a very attractive cutting in a sort of art deco style. It reminds me of the designs you might see around Rockefeller Center. The notching on the center post and candleholders are made more attractive by being graduated. What's interesting is that the piece is also cut on the *bottom* of the base which seems a waste because this location doesn't lend itself to easy viewing...



There you have it—all we're not sure we know about the #884 Vincent cutting. If no one can prove otherwise I declare this to be Heisey's official #884 Vincent cutting. Speak now or forever hold you peace—I need the rest.

Thanks to the other Sparacio for the photo and drawing and the use of his tear stained notes. ♦

**Editor's Note...** *The first half of this article printed earlier this year, however, the second half was missing due to modern technology. Carl faxed his article to me but only one page came through. He mentioned it would be short, but I was surprised at just how short! My apologies for not questioning this Carl!*

## ***FROM THE ARCHIVES—END OF THE LINE***

***DON VALDES***

The semi-annual glass cleaning chore is over. Even though it is not in my job description it is one of those chores where we all pitch in. I don't mind telling you that it is one helluva job with all sorts of dangers lurking in every corner. And it seems that each one of us has our own favorite error (accident, mishap, what-have-you). Some people mix up tags, some can't get the cabinet doors fastened without their favorite screw driver, I happen to be the "confuse the spray can" guy. It isn't really my fault. The glass cleaner and the furniture polish, except for the fine print on the label, come in identical containers. It wouldn't be too bad an error if it weren't for my glass cleaning technique—I spray the entire contents of a shelf then clean as I hand the pieces back. Furniture polish slows down the process! Of course nothing matches breaking glass, a mishap which, fortunately, very rarely occurs.

I'm sure we have all had our share of glass breaking of one sort or another. In working at Dad's hardware store I used to have the chore of breaking up the scrap window glass. The technique I developed then I was able to employ later when my wife, Johnnie, started the Granville Recycling Center way back in the early 70's. Of course we didn't recycle window glass. I'm not sure why. And then there was the time I poured hot wine punch into a Heisey bowl we had inherited from my mother. That was a while ago and I don't even know the pattern. (I hope Johnnie doesn't read this column, I think she has forgotten that episode).



All this leads to my most recent find, a hand written list of items, apparently those in the inventory, tucked into a June 1, 1956 catalog and price list (No. 33). On the cover is written: 12/31/1957. There are column headings: No. Pieces, To be Repaired, List Price each, Total. At first glance I thought the 8 1/2 double columned pages were all items to be repaired. Fortunately, that was not the case. The list included Cut Ware (1/2 column), Candelabras (1/2 column), Blown Ware to be glazed (1/4 column), Blown Ware (1 column), Etched Ware (1 1/2 columns) and Pressed Ware (4 1/2 columns). Is this what was on hand at the time of the factory's closing?

But first, the list of items "To be Repaired:" There are 2249 individual items ranging from 57 10" Chrysanthemum bowls @ \$14.50 (list) each to 124 #1404 sundaes @ \$1.05. In all, there was listed \$6918.60 worth of "To be Repaired" glassware. I'm

perplexed as to just what that means. How does one repair glassware? And just what was wrong with it?

Having come to realize the list was not only "To be Repaired" glassware but the entire inventory of the plant and, considering the date, I think we have the final inventory. Is this what was in those barrels of Heisey that went, rumor has it, for \$25 each? Here is a summary of the list with the list price totals:

Pressed Ware	\$71,706.10
Etched Ware	\$14,548.79
Blown Ware	\$8,072.18
Blown Ware to be Glazed	\$4,654.10
Candelabras and Parts	\$4,241.25
<u>Cut Ware</u>	<u>\$3,967.32</u>
Total	\$107,189.74

## ***FROM THE ARCHIVES—UPDATE***

Back in the August issue of this year I did a piece on the hostelry series. At that time I noted that the museum had no copy of the July 1926 *House Beautiful* ad hence I could not provide you, my good readers, with the recipe for Salad Granville Inn.

No sooner did the U.S. Postal Service make the delivery of *Heisey News* to the home of Bruce Logan in Miami Springs, FL than I had a thoughtful response, a very nice copy of the ad. Along with thanking Bruce I would like, at this time, to provide you with the recipe. It sounds good, but then I like ox tongue.

### **Salad Granville Inn**

*A tempting summer dish from the cuisine of the Granville (Ohio) Inn, the finest exclusive hostelry in America:*

Prepare julienne of chicken or ox tongue for number to be served. Mix with shredded truffles and celery. Add asparagus tips covered slightly with mayonnaise.

Decorate with tomatoes, cucumbers, endives and sliced hard boiled eggs. Cover with ravigot sauce. Garnish with water cress.

Once more, thanks, Bruce. ♦



## SPECIAL LIMITED EDITION LAVENDER ICE DOE HEAD

Sale dates: January 2 to January 31

HCA continues to bring you new animals for your Lavender Ice collection, this time we're reproducing the Doe Head bookend. **This is a limited edition, numbered series available to HCA members only.** The amount produced depends on the number ordered. The Doe Head must be purchased during the sale dates, **January 2 to January 31, 1998**. The cost is \$75.00 which includes shipping and handling. Ohio residents must pay sales tax. Orders received prior to the sale dates will be held until January 2. ♦

**Mail to:** DOE HEAD, 169 W. Church St., Newark, OH 43055 or call 614-345-2932

Name: \_\_\_\_\_

Address: \_\_\_\_\_

City/State/Zip: \_\_\_\_\_

Phone: \_\_\_\_\_ Tax ID: \_\_\_\_\_

Payment: Check or MasterCard/Visa: \_\_\_\_\_ Exp.: \_\_\_\_\_

Quantity \_\_\_\_\_ X \$75.00 = \_\_\_\_\_

Shipping (Each) \_\_\_\_\_ X \$5.00 = \_\_\_\_\_

Tax (OH only) \_\_\_\_\_ X \$4.50 = \_\_\_\_\_

TOTAL \_\_\_\_\_

**PLEASE CIRCLE**

SHIP

PICK UP



## HCA ANNUAL HOLIDAY DINNER

Saturday, December 6, 6:30 p.m. at the National Heisey Glass Museum

Enjoy the holiday season with HCA at our Annual Holiday Dinner. The museum will be decked out in Christmas attire awaiting your visit. Hors d'oeuvres and cocktails start the evening at 6:30 p.m., dinner follows at 7:30. The large buffet menu includes: individual ham loaf, scalloped potatoes, green beans almondine, salad, bread/rolls, pie and holiday cookies. Tea, coffee and wine included, cash bar available. To make the evening complete, special items will be auctioned that you won't want to miss. ♦

**PLEASE MAKE YOUR RESERVATIONS BY MONDAY, DECEMBER 1**

**Mail to:** HCA Dinner, 169 W. Church St., Newark, OH 43055 or call 614-345-2932

Name: \_\_\_\_\_

Address: \_\_\_\_\_

City/State/Zip: \_\_\_\_\_

Phone: \_\_\_\_\_

Payment: Check or MasterCard/Visa: \_\_\_\_\_ Exp.: \_\_\_\_\_

Number of Dinner Reservations: \_\_\_\_\_ X \$19.00 each = \_\_\_\_\_ Total

Name(s) of other attendees: \_\_\_\_\_



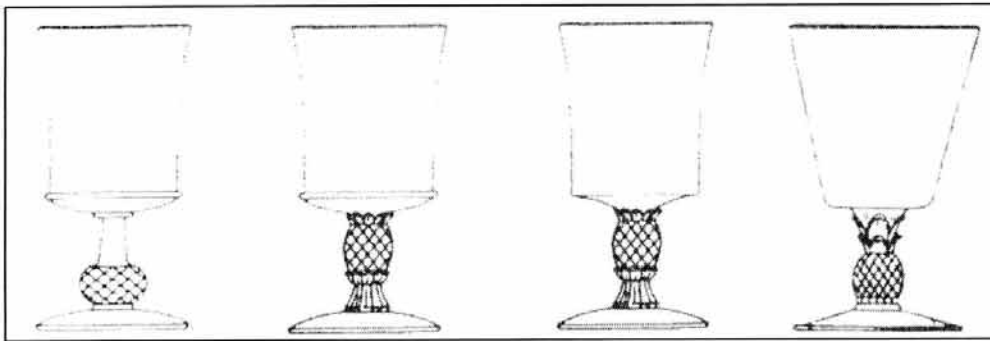
## HEISEY PLANTATION

JOHN MARTINEZ

*Reprinted from the Heisey Herald, September 1997*

"Charm, Goodwill, and Hospitality abound in this smart Heisey Pattern." That was how Heisey described the #1567 Plantation line. Its simple lines and pineapple motif made Plantation one of Heisey's most popular patterns.

Horace King, Chairman of the Art Department at Denison University in Granville, Ohio, and Heisey designer, was the creator of Plantation. In January 1944, T. Clarence Heisey handed Mr. King a German pressed glass goblet dating back to the 1850's, called Pavonia, and asked if he thought it could be worked into a decent modern design. Mr. King liked the shape of the bowl and felt all the goblet needed was a good stem. After



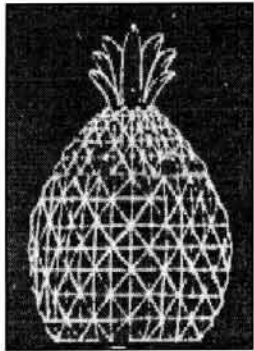
weeks of trying to adapt stems to the Pavonia bowl, he started to get discouraged. Then, one day while preparing for a lecture on Georgian furniture in American Art, Mr. King came across a slide of a Philadelphia Highboy with pineapples as finials and realized that such a finial might be the answer for the goblet stem.

*The evolution of  
Plantation: Pavonia,  
Pineapple, #1567  
Plantation, #5067  
Plantation.*

Late in the spring of 1944, Mr. Heisey approved the drawings for the new "Pineapple" goblet and a wood model and mold were made. Mr. King's original design had retained the basic shape of the original Pavonia bowl, including the bead at the bottom. After the first turn of the goblet, it was determined that the bead on the bottom of the bowl required an extra mold operation, which slowed down production. Ray Cobel, head of the mold shop, suggested a new mold without the bead, and T.C. asked Horace how he thought the change would affect his design. After grinding the bead off one of the goblets, Mr. King discovered that the goblet was more graceful. He then decided to redesign the mold and change the curve at the base of the bowl to make a nicer transition to the leaves at the top of the stem. Production resumed on the goblet, and Plantation was born.

After Mr. King expanded the goblet to a line of seven stems, he started work on blownware and plates. He found that the pineapple made an attractive ornamentation and was very versatile for details such as handles and finials on top of lids. The #5086 Oxford bowl was adapted to a slightly revised pineapple stem to produce the #5067 Plantation blown stems. The #5067 stems included a 1 oz. cordial and 3 oz. wine that were not available in the pressed stems. By 1946, Heisey was ready to introduce the pressed stems and a few pieces of the new line, but it didn't have a name. Around the factory, it was called "Pineapple", but Heisey wanted a name that would appeal to the buyers. After many suggestions, Rod Irwin, a Regional Sales Manager for Heisey, came up with Plantation. The full Plantation line was introduced in 1948 and was a great

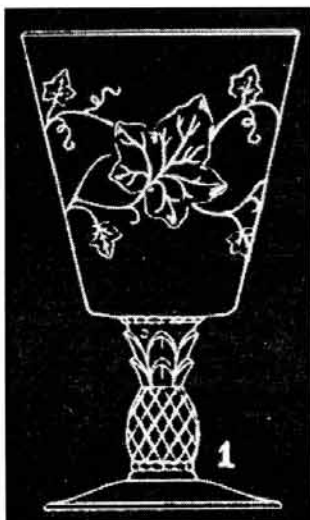
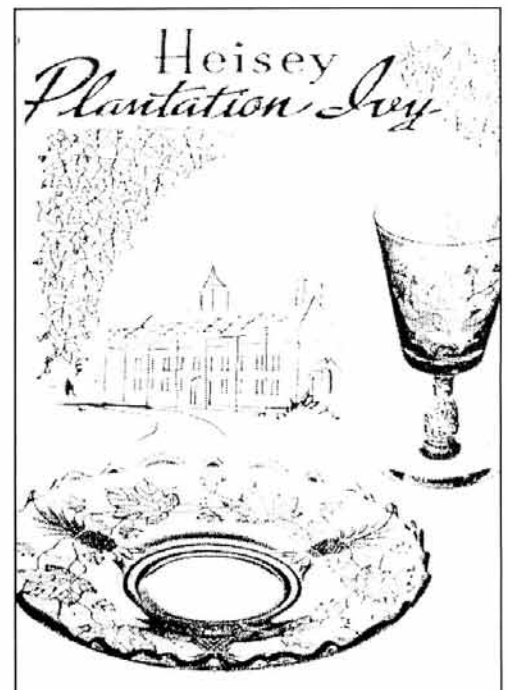
success. The 1949 catalog listed 99 items in Plantation and Bloomingdale's of New York City promoted it with two huge window displays.



When Clarence Heisey suggested that Mr. King hire an assistant, he brought in Jane Wilson Scott. She was an art major at Denison University and one of King's students. Her first job was to make scale drawings of every piece produced by Heisey for the 1950 catalog. Although Ms. Scott was only with Heisey for three years, she designed several new pieces to go into pattern lines originally designed by Horace King. Though few of Ms. Scott's designs were ever made, one that did make production was the Plantation marmalade jar and cover.

In early 1948 T.C. asked Horace to develop an Ivy etch for Plantation, to match a popular wallpaper pattern of the time. Mr. King was busy working on the Waverly line and suggested that the job be turned over to Jane Phillips, a specialist in etching design, who produced the Plantation Ivy etch.

In 1950, Heisey introduced Plantation Ivy. It appeared on the #5067 blown stems but not on the #1567 pressed stems. With the exception of the one light candleblock, marmalade and cover, Dr. Johnson's punch set, coupe and snack plates, and possibly a few other pieces, Heisey put Plantation Ivy on the rest of the Plantation line. By early 1952 it was clear that Plantation Ivy wasn't selling as well as expected. In a letter from a Heisey Sales Manager dated January 14, 1952, it was written, "We also put the Ivy etching on the #5086 (Oxford) shape. We believe that this will help the sale of Ivy etching as the #5067 has not been popular and did not retail too well." Heisey also offered Plantation Ivy on the #1957 Cabochon candy box and cover and the #300 Old Williamsburg 18" candle lamp with the #5080 globe (the etch appears on the globe which is the same used for the Plantation hurricane lamp). Even though Plantation Ivy was never a big seller, it was offered until the factory closed in December 1957.

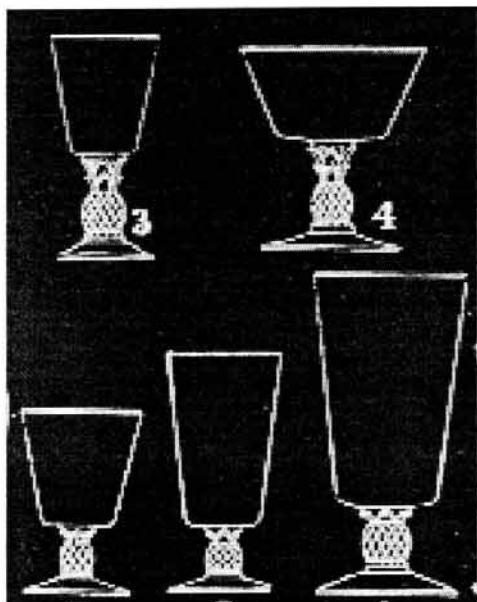


The #5019 Waverly stems can be found with the #9015 English Ivy etch, which is often mistaken for Plantation Ivy. The Plantation hurricane lamp and two light candlestick can also be found with the #515 Heisey Rose etch and the 4½ rolled foot mayonnaise can be found with the #9030 Rotary etch. Heisey also offered the #5067 Plantation stems with the #1038 Pine cutting.

The Imperial Glass Company only produced a few pieces of Plantation and it is usually easy to recognize from Heisey Plantation. Imperial produced the #5067 line with Amber stems for the Kahiki Restaurant in Columbus, Ohio. They also produced the Plantation Marmalade and cover in Milk Glass, marked with the Diamond H. The only piece of

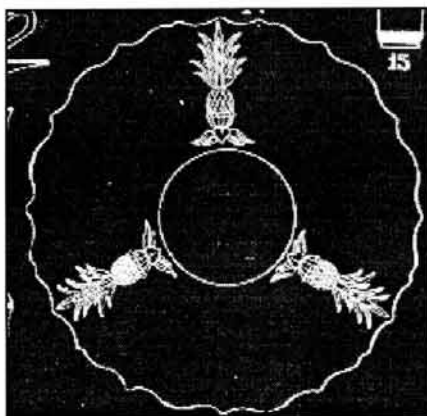
Plantation by Imperial that might fool today's Heisey collector is the #1567½ 13" five

compartment oval relish produced in Crystal. Heisey produced this relish with and without the pineapple on the bottom of the tray—the Imperial tray is without the pineapple. In 1982 Imperial received a special order for the Plantation ¼lb. and ½lb. butters and the marmalade and cover, all in Crystal. Imperial went into receivership before the job was completed and these pieces were sold out of Imperial's hay barn. None of the pieces were marked Heisey and the quality of the glass was not very good.



Today Plantation is one of the most collectible Heisey patterns and even though it is relatively easy to find it commands a higher price than a lot of the older Heisey patterns. Some of the more difficult to find pieces seem to be the 12" floral bowl, candy box and cover, cigarette box and cover, 5 oz juice, 10 oz. tumbler, 12 oz. ice tea (straight or flared), 9" footed case, snack plate and the coupe plate. The Plantation coaster and ashtray have been seen in Amber and were probably Heisey whimsey items. One of the stranger

Plantation pieces to show up is the rolled foot mayonnaise and cover. The mayonnaise does not seem to appear in the catalogs with a cover and the cover won't fit either of the candies, round butter or the covered cheese. Another interesting Plantation set is the Hostess Helper. It uses the same metal hooks and toothpick holders as the #1485 Saturn Hostess Helper. Also of interest is the #12 mayonnaise ladle with a handle that looks like a pineapple stem. Was this inspired by the Plantation line? I think so.



From an experiment on an old German pressed glass goblet came one of Heisey's most popular patterns. In the space of five years, Plantation grew to a line of 99 items. Today, almost forty years after the Heisey factory closed, Plantation is as popular as it has ever been. So, if you don't have any Plantation couldn't your Heisey collection use a little "Charm, Goodwill and Hospitality"? ♦

*Plantation*  
...hospitality in crystal



*Heisey has brilliantly adapted the pineapple, traditional symbol of warm hospitality, to PLANTATION hand-wrought crystal. Whether in the modern or traditional manner, your very special entertaining will take on new zest with sparkling PLANTATION stemware and table accessories.*

*Wonderful for gift-giving too, because it's so practical, so inexpensive. Write for the new illustrated folder.*

*A. H. Heisey & Co.,  
Dept. 49, Newark, Ohio.*





Name \_\_\_\_\_  
Address \_\_\_\_\_  
City \_\_\_\_\_ St. \_\_\_\_\_ Zip \_\_\_\_\_  
Daytime phone \_\_\_\_\_

**A signed contract must accompany your auction glass**

[illegible]

Owner/Consignor \_\_\_\_\_  
Address \_\_\_\_\_  
City \_\_\_\_\_ State \_\_\_\_\_ Zip \_\_\_\_\_

Glassware in this sale is catalogued in the order in which it is received.

HCA rep: Signature \_\_\_\_\_  
 Consignor: Signature \_\_\_\_\_ Date \_\_\_\_\_  
 Daytime phone ( ) \_\_\_\_\_

## HEISEY IN THE TRADE JOURNALS—No. 300 PART II

TOM FELT

Reprint from Heisey News Vol. XVIII No. 2, February 1989, pages 5-6

I stated in Part I (March 1997) of my article that Heisey's introduction of the no. 300 line was "innovative" and implied that Heisey was the first company to bring such a pattern out, a conclusion that I think is probably assumed by many collectors. However, as the accompanying advertisement (picture 1) makes clear, this distinction probably needs to be accorded to the Riverside Glass Company of Wellsburg, West Virginia, whose x-ray set is the earliest colonial design I have found illustrated in the trade journals, having been introduced in June, 1896, three years before Heisey's better known (and

presumably more popular) Peerless line came out. Although the flutes are wider, there is a certain basic resemblance between the patterns, typical of colonial styles, particularly in the scalloped rims and the bases of the pieces.

As mentioned in Part I, Heisey continued to feature the no. 300 pattern in advertisements in the trade journals throughout the early months of 1900. Three full pages appeared in the April issue of *The House Furnisher: China, Glass and Pottery Review*. Of special significance in picture 2 is the fact that the Diamond "H" appears for the first time and is identified as a trademark (although application for trademark status was not made until more than a year later, in June, 1901).

Also advertised at the same time was the footed punch bowl (picture 3) as part of: A complete line—Massive in appearance—Graceful in outline—Faultless glass—Superbly finished—Without a peer.

The punch bowl had earlier also appeared on the cover of *China, Glass & Lamps* on March 22, and a later issue (May 10) stated that it "is a beauty and is selling like hot cakes."



Picture 1

A final ad for 1900 appeared in December, with other new patterns emphasized in the intervening months. However, no. 300 was not forgotten and Heisey continued to add additional items to the line. On May 2, 1901, *China, Glass & Lamps* pictured a new candlestick now known as the no. 2 Old Williamsburg candlestick. It had the longest production of any candlestick in Heisey's history since it continued in the line until 1957, was then made by Imperial until 1982, and was even briefly reissued by Fostoria after the Old Williamsburg molds were sold to Lancaster Colony.

Then in September, 1901, there appeared a report in *The House Furnisher: China, Glass and Pottery Review* that "a very handsome three-branch candelabra has been placed on the market...The candelabra has the old-fashioned prismatic pendants which have such power of recalling the old days when our grandmothers held their occasional social

functions in the prim drawing room of the Colonial period." Actually, as the same journal described in their November issue:

It needs no prolonged search to discover the reason for the popularity of the Heisey line of fine table glassware. When the company starts to manufacture a special line they do not feel satisfied merely to bring out a couple of shapes, but make the line the most complete on the market. This is strikingly exemplified in the new offering they make in the way of a series of candelabra.

Four of them were introduced, in 2-, 3-, 4- and 5-light configurations. The 4-light was advertised in both *the House Furnisher: China, Glass and Pottery Review* and *Crockery and Glass Journal* and the massive 5-light was featured in the October 10 issue of the latter journal. The candelabrum was the only item from the no. 300 line to be patented. However, the application was not filed until July 11, 1903. It was approved August 18, 1903, ad no. 36,500.

Curiously, the pattern was registered in England in 1899 at the time it was first issued. Perhaps because of its plain design an attempt to patent it in the United States was not successful. At any rate, pieces are occasionally found with the British Rd. no. 350676 impressed on them. These include the 1 oz. cordial, 1½ oz. sherry, 2½ oz. wine, 4½ oz. high footed scalloped sherbet, 5 oz. low footed sherbet, 6 oz. oyster cocktail, 10 oz. goblet, 8" shallow footed bowl, 6" spoon tray, sugar and cover, and the butter and cover. On the stemmed pieces, the Rd. number appears in the form of a circle surrounding the Diamond H on the underside of the bottom. On the bowl, it's on the side and on the spoon tray it is located on the inside surface of the bottom on the longer side. The sugar and butter have the Rd. No. on the inside surface of their covers, near the finial.

The pattern continued to be made for many years, with 126 items still in production in 1913. By the end of the 1920's, 33 pieces remained in the catalogs and by 1939, there were only 9 left; the 7 oz. goblet and low footed goblet, 4½ oz. low footed sherbet, individual cream and sugar, and three sizes of schoeppens—5, 9 and 12 oz. These were offered on into the 1940's. However, by the late 1930's the old no. 341 Puritan pattern had been renamed and modified to become what would be the best selling pattern of Heisey's later years, no. 341 Old Williamsburg. Actually, this was an amalgam of pieces from several colonial patterns and included some of the same Peerless items still being offered under their original pattern number as listed above, including three schoeppens and the individual cream and sugar. Two of the schoeppens were still in the last catalog in 1956 (identified as a 5 oz. juice and 12 oz. ice tea), as well as the individual cream and sugar. At times, the regular Peerless cream and sugar were also sold as part of the Old Williamsburg pattern.

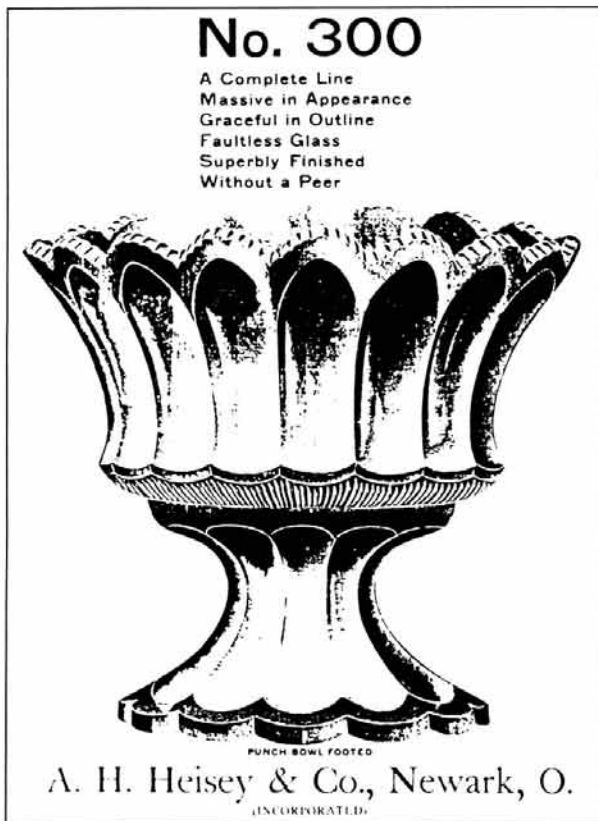
These same items continued to be offered as part of Old Williamsburg in the various colors made by Imperial from 1957 to 1984. The pictures in the Imperial catalogs do not look identical to those in the Heisey catalogs, however, so I'm not certain whether the 300 molds continued to be used, whether they were modified, or whether molds



Picture 2

from another pattern may have been substituted. In the Imperial catalogs, the proportions of the 12 oz. ice tea seem different and the individual cream and sugar seem to have lost the tiny scallops appearing on the rim of the Heisey originals.

This use of no. 300 pieces as part of Old Williamsburg is not too surprising, since the nucleus of that pattern (the original no. 341 Puritan consists of pieces very similar to Peerless but without the top rim of small scallops or the "petticoat" at the bases. Similarly, the somewhat later no. 400 Colonial Scalloped Top pattern is almost identical to Peerless, but without the "petticoat" and with slightly different panels and flutes.) Whenever I look at the bewildering variety of colonial patterns offered by Heisey—not to mention by all those other companies—I often wonder how the market could have supported them.



It might be interesting to note that the 7 oz. schoepfen in the Peerless pattern was also made in the 1950's, apparently in Crystal only, for the Harvey House restaurants and, shortly after Heisey closed but before their assets were sold to Imperial, they sent out this particular mold to Viking, along with several others, in order to fill an outstanding order.

Considering the long life of Peerless, it is not surprising that a few pieces were made in color in the mid 1920's, though apparently only in very small quantities. The low footed tumbler has been found in Moongleam and also, along with the 4½ oz. low footed sherbet and 8 oz. schoepfen, in Flamingo. The no. 300½ 2 oz. bar and 8 oz. tumbler were also made in both colors and the #2 water bottle has been seen in Sahara. Finally, the no. 300 low footed goblet was also made in Alexandrite. Several years ago, the *Heisey News* also mentioned that a few items had been found in Crystal with opalescent rims, but I have seen no further documentation for this.

Some decorations are also possible on Peerless. As early as January, 1900, *China, Glass & Lamps* mentioned that the pattern was available decorated in gold and colors, and a full

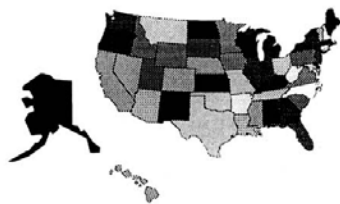
page advertisement on the cover of the March 22 issue of the same magazine pictured the punch bowl for no. 300, "a complete line of as handsome a design as ever produced. Crystal, crystal and gold, crystal and ruby." Actually, two gold decorations were offered: no. 1 gold on the edge of the plain portion of the top, with a band around the base of the flute, and no. 2 engraved and gold band, with an engraving on the flute, covered by a gold band running around the middle. The ruby decoration appears on the plain portion around the top. Kamm also mentions that this pattern was often decorated by firms specializing in souvenir ware "in gilt, ruby, green, etc.," so other colors were also possible.

Cuttings from other companies may also be found. An example is the 4½" violet vase cut by the Lewis & Neblett Company around 1917 to 1918, which was pictured in the May, 1976 issue of the *Heisey News*. ♦

Picture 3



## CLUB NOTES



### Tri-State Heisey Study Club

*Mike Maxwell*

Hello from everyone here at Tri-State Heisey Study Club. It has been a very long summer for Terry and myself. Anyone who has gone through a major renovation at their home knows what I'm talking about. The convention was a great success as usual. During the annual Saturday flea market, Tom Bischoff asked if I would co-chair the display for 1998. After some arm twisting in the subtle way that only Tom can do, I agreed.

For anyone who did not make it to convention this year, the display was set up showing new collectors of Heisey, that you didn't need to have a complete dinner set to dress your table up. Each table was set with various china patterns mixed in with stems or other serving pieces. A big thanks goes out to Replacements, Ltd. for supplying us with the china and much of the flatware. In keeping with that theme, we would like to do something similar this year.

If anyone has suggestions, or Heisey items they would like to display, I would appreciate hearing from you. A few ideas might be: several serving pieces from the same pattern, a collection of nappies in various patterns and colors, a setting of a pattern that did not include dinner plates (Ipswich, Old Sandwich, etc.). Any study clubs that would like to do a group display are certainly welcomed.

Please send your ideas and display lists to: Mike Maxwell, 301 S. Jonesville St., Montpelier, OH, 43543. Or call (419) 485-8701. If we aren't home leave a message on our machine.

Hoping to hear from you soon! ♦



### Heisey Club of California #13

*Carolyn Felger*

The Heisey Club of California met in September at the home of Carolyn and Dan Felger. Twenty members were present to hear a report from our National Board Members Gene Moenning and

Carolyn Felger on the Fall Quarterly Board Meeting hosted by the Washington Club. We also discussed our club elections coming up in October. We voted to again donate \$200 to the Historical Glass Museum in Redlands, CA.

Show and Tell was set up early, giving everyone time to look and study all the great finds. We had four tables full of beautiful glass. Among the eleven pieces brought by Martha McGill were a #1434 Tom and Jerry mug and a #3380 Old Dominion 1 oz. cordial in Flamingo. Carol Levin, co-hostess for the meeting, brought her #411 Tudor cut cigarette jar with lid and ashtray. Gordon Clark and Norvel Heisey brought a dozen wonderful items. Carolyn Felger showed off a #160 Locket on Chain footed cake salver; Betty Wanser was very proud of a #10 small muddler in Sahara; Bill Brakemeyer found a #1401 Empress three toed candlestick; Jay Byrne and Ed Steckley brought a #1469 Ridgeleigh cocktail shaker, perfume and covered marmalade and a very rare #1280 Winged Scroll pedestal cake salver in Custard; Lynn and Rich Borino were happy they found a #4216 Octagon 9" vase in Moongleam and Norm Sandusky showed us a #1183 Yeoman server with a beautiful cutting.

We look forward to our next monthly meeting in October. ♦



### Virginia Heisey Club #35

*Libby Marks*

The Virginia Heisey Club met at the home of Jean and Jerry Dougherty on November 2, 1997. In attendance were Dot and Bob Denton, Jessie and Charles Hopkins, Betty and Archie Johnson, Libby Marks and Frances and Harry Theide. President Jean Dougherty called the meeting to order. As this was the first meeting in some time we had a lot of minor business to take care of.

Under new business a motion was made by Jessie Hopkins and seconded by Betty Johnson to change the meeting time to the first Sunday of the month, 6 times a year. The motion carried and meetings will be held during the following months: February, April, June, August, October and December.

The next meeting will be December 14, 1997, 3:00 p.m., at the home of Jessie and Charles Hopkins. We would love to welcome any new members.

Jean Dougherty presented an informative program on Plantation. Afterward we shared our recent Heisey finds and refreshments were served. ♦



### **Dayton Area Heisey Collectors #7**

*Joyce Dickman*

Our October meeting was held October 21, 1997 at the Huber Heights Library. Twenty members were in attendance.

Business consisted of final arrangements for the club holiday party. Mac and Georgia Otten will host the party at their home. A new addition for this year will be actual food presented on or in Heisey glassware for all to share. All are encouraged to be creative as prizes will be presented for those judged "best presentation". We also hope to show the ID Breakfast video.

Programs for the remainder of the year were also finalized. We look forward to upcoming programs of: table place settings using china and Heisey glassware as accents; pottery; pilsners/ales and beer mugs; Benefit Auction price guessing game; hands on stemware and club silent auction.

The program for the evening was a complete and informative presentation of Heisey toothpicks by Jim Kennon who shared his collection for all to see. A beautiful collection—he has only two more to find.

Show and Tell was exciting as usual with #1404 Old Sandwich and Moongleam being the most represented. Examples of pieces shared were: #341 9" Moongleam compote; #1503 cologne with dauber; #1404 Amber mug; ring Band cream and sugar; #1404 high footed compote; #502 Innovation candlelamp with cutting; #1405 Ipswich ½ lb. Sahara covered candy; #1404 Moongleam candlesticks; #1404 Moongleam beer mug; #1404 Sahara low footed goblet; Moongleam syrup; Tudor cruet; Comet tumbler and #1503 Melon candleblocks. ♦



### **Northwest Heisey Club #22**

*Darlene Cochran*

Yes, it was raining Heisey in the northwest—three hundred and four pieces of Heisey glass. The Vivian and Percy Moore dinner and board meeting was held in Issaquah, Washington September of this year. There was a good turn out

for the board meeting, auction and banquet. We had board members from as far as North Carolina and Heisey members from as far as Florida.

First-time flyer Ginny Marsh was assured from husband Dick and co-flyers Virginia and Loren Yeakley that, yes, the plane would stay in the air.

Many thanks to our President Tom Bischoff and his wife Linda who braved the roads all the way to Washington to conduct the board meeting. He was also the auctioneer for our benefit auction.

My compliments to the Northwest and Oregon Heisey Clubs for sponsoring this benefit. I am so proud of our clubs. Yes, we worked hard and put a lot of hours into getting ready for the get together. California and North Carolina were very generous with their suggestions and helped to get us going. If you have ever considered sponsoring a board meeting do so, it's fun. ♦

## **HCA NEWS & NOTES**

### **HCA Welcomes new members for October:**

Mr. & Mrs. Jeff Baldwin, FL  
W.Scott Boyette, FL  
Kelly Covert, ND  
Barbara Dean, MI  
Stephen Fritchle, OH  
Cathy Fuller, MD  
Leonard Hayet, FL  
Richard G. Jenevein, CA  
Ed McAlister, VA  
Betty J. Martin, GA  
Michael & Kathy Martin, WA  
Brian Miller, FL  
Daniel Reichert, OH  
Mr. & Mrs. Harold Roberts Jr., NJ  
Martha T. Shackleton, NC  
Ellen H. Stewart, VA  
Billie Van Slyke, MO  
Evelyn Williams, MA  
Richard & Judy Young, IN

HCA member Frank Harper of the Dairyland Heisey Study Club recently underwent surgery October 29. All of his friends and fellow club members wish him a speedy recovery. ♦

**ATTENTION STUDY CLUBS!** Does your club have news or events to share with fellow members? Send updates BY THE FIRST OF THE MONTH to: Heisey News, 169 W. Church St., Newark, OH 43055, fax (614) 345-9638 or email: [heisey@infnet.com](mailto:heisey@infnet.com). ♦

►**Advertising:** Send all ads to HCA Advertising, 169 W. Church St., Newark, OH 43055. Ads may be faxed to (614) 345-9638; please include MasterCard or VISA number for billing purposes. All ads must be prepaid. Ads are to be typed or printed on white paper with dark ink. Please double space. Do not abbreviate Heisey pattern names or colors. Ads which are entered in a vertical column format may contain a maximum of 65 characters per line, including spaces and punctuation.

**Classified:** 20 cents per word (members), 30 cents per word (non-members), \$1.50 minimum, 1/8 page limit. Personal ads 1/8 page limit. Abbreviations and initials count as words.

Display Ads:	member	non
1/8 page (12 lines)	\$20.00	\$30.00
1/4 page (25 lines)	\$40.00	\$60.00
1/2 page (60 lines, <i>horizontal or vertical</i> )	\$80.00	\$120.00
Full page(120 lines)	\$160.00	\$240.00

**A charge of \$1.60 will be added for each additional line.**

Camera ready ads must follow specifications. Ads which do not correspond to the following measurements will be sized to fit.

**Camera Ready Ad Specifications:**

- 1/8 page: 2¼" high by 3½" wide
- 1/4 page: 4½" high by 3½" wide
- 1/2 page: 4½" high by 7½" wide OR 9" high by 3½" wide
- Full page: 9" high by 7½" wide

Ad copy must be received by the first of the month prior to publication (e.g. April 1 for May issue). Reproductions (i.e. Heisey by Imperial) must be clearly indicated. Heisey News accepts no further liability.

**Classified Ads**

**FOR SALE:** Heisey Aristocrat tall stem candy jars: Crystal, Cobalt, Sahara, cut Crystal. Call (614) 892-2142.

**WANTED:** Any glassware containing #463 Equestrian or #481 Lancaster silhouette etchings (show horse w/rider). Mike Smith, 2612 Manana, Dallas, TX 75220. (214) 352-3939.

**FOR SALE:** Approximately 50 pieces Heisey Crystolite, prices negotiable. Virginia Brunson (360) 577-6752 or 2350 38th Ave., Longview, WA 98632.

**WANTED:** Colonial candelabra base section only (part #300/3). Karen Hochman (908) 756-0010, PO Box 2516, Plainfield, NJ 07060.

**WANTED:** Three to five Twist 9 oz. luncheon stems (2 blocks in stems) in Moongleam green. William O'Laughlin, 190 O'Shaughnessy Blvd., San Francisco, CA 94127. (415) 661-3936.

**WANTED:** Heisey "Fox Chase" #1509 8" square plate, #5012 7" ftd. vase, #4163 16 oz. beer mug with Red, Moongleam, Amber handle. Fred Ludwig, 300 Rt. 10, Randolph, New Jersey 07869. (201) 366-1351

**WANTED:** Jamestown stems, Sheffield cutting, champagnes & ice teas. Lee Schwan (510) 687-0907.

**WANTED:** Heisey Baskets: etched, cut, colored, unusual decorations or whimsies. Send price and description to Kim Carlisle, 28220 Lamong Rd., Sheridan, IN 46069 (317) 758-5767.

**FOR SALE:** 1992 Gold Series (12 animals Fenton Rosalene) \$1,000.00. Rosalene Heisey Diamond H sign \$75.00. Lavender Ice Flying Mare. Oscar collection. (616) 377-4125 evenings.

**WANTED:** Heisey cocktail shakers: etched, colored or unusual patterns. Send price and description to Chris Janes, 13995 77th Pl. North, West Palm Beach, FL 33412.

**FRAN'S FANCY FINDS**  
**Fran & Jack Grenzebach**  
**10534 Valencia Rd.**  
**Seminole, FL 33772-7511**


**(813) 391-5184**  
**UPS & Ins. Extra**  
**H = Marked**

128	Liberty 3" candlesticks, Moongleam, pr.	\$60.00
369	Hartman 2 oz. bar, (2) ea.	\$40.00
406	Coarse Rib cream and sugar, Moongleam lid, H	\$85.00
472	Narrow Flute & Rim 1 pt. cream pitcher, H	\$110.00
472	Narrow Flute & Rim stack set with butter pat, H	\$160.00
1183	Revere covered cheese, cut, H	\$150.00
1401	Empress ashtray, Moongleam, H	\$325.00
1401	Empress 7" round 3 part relish, Moongleam	\$70.00
1401	Empress d/f nut cup, Moongleam, (6) ea.	\$35.00
1413	Cathedral vase, flared, Pairpoint Bothwell cut	\$165.00
1428	Warwick 9" vase, Cobalt, H	\$265.00
1469	Ridgeleigh candle vase, flared, Sahara	\$115.00
1486	Coleport 2 oz. bar, (3) ea.	\$22.00
1503	Crystolite Swan handle pitcher, H	\$850.00
1503	Crystolite cup and saucer, H, (8) ea.	\$20.00
1509	Queen Ann 1-lite candlestick with prisms, pr.	\$135.00
1566	Banded Crystolite 1-lite candlesticks, pr.	\$100.00
2401	Oakwood 12 oz. soda, tall sailboat etch	\$85.00
3397	Gascony tomato juice pitcher, Sahara	\$160.00
3390	Carcassone 1 pint ftd. decanter	\$175.00
4057	Saturn 2-lite candlesticks, pr.	\$160.00
	Standing Colt, Champagne	\$325.00
	Goose, wings down	\$450.00
	Hen	\$400.00
	Gazelle, Imperial Cobalt, pr.	\$450.00

# Heisey

**PUBLICATIONS**

**PO BOX 102**  
**Plymouth, Ohio 44865**  
**Ralph & Sandra McKelvey**  
**(419) 935-0338**



**Heisey**  
**Books & Glass**


**VOGEL BOOKS ON HEISEY**

**BOOK I "FIRST TEN YEARS".....\$14.00**

**BOOK II "COLONIAL YEARS".....\$14.00**

**BOOK III "ART & COLORED GLASS"...\$15.00**

**BOOK IV "EARLY AND LATE YEARS"..\$15.00**



**SPECIAL SET PRICE \$55.00**

**SHIPPING AND HANDLING**

**Add \$4.00 for all orders!!**

**H&R DIAMOND H** (614) 279-0390  
**Helen & Bob Rarey** After 5:30 pm  
**1450 White Ash Dr.** UPS & Ins. Extra  
**Columbus, OH 43204** H=Marked

134	Trident 2-lite candleholder, Rose etch, pr.	\$185.00
341	Puritan 1 lb. covered candy, unknown cut, H	\$325.00
1184	Yeoman 8" round plate, Normandie etch, (8) ea.	\$12.50
1401	Empress 8" sq. plate, Alexandrite, H, (4) ea.	\$90.00
1401	Empress 6" D/F 1-lite, Alexandrite, H, pr.	\$1,050.00
1401	Empress 7" round 3-part relish, Alexandrite, H	\$335.00
1401	Empress cup and sq. saucer, Alexandrite, (4) ea.	\$145.00
1401	Empress 11" D/F floral bowl, Cobalt	\$495.00
1405	Ipswich center vase, insert, "A" prisms, Cobalt, pr.	\$1,850.00
1415	Twentieth Century 9 oz. tumbler, Dawn, H, (6) ea.	\$42.50
1428	Warwick 9" cornucopia vase, Cobalt, pr.	\$535.00
1519	Waverly 3 oz. cruet with stopper, Rose etch	\$215.00
1519	Waverly 7" salad plate, Rose etch, (8) ea.	\$22.50
1519	Waverly 7" salad plate, Orchid etch, (10) ea.	\$17.50
1540	Lariat 8½" fld. basket	\$145.00
1615	Flame 2-lite candleholder, H, pr.	\$135.00
1951	Cabochon ¼ lb. stick butter, Rose etch, H	\$260.00
1951	Cabochon Heisey sign	\$345.00
4083	Stanhope 10 oz. goblet, Zircon bowl and foot, (5) ea.	\$155.00
4083	Stanhope 3½ oz. cocktail, Zircon bowl and foot, (6) ea.	\$175.00
4091	Kimberly 10 oz. goblet, Sungate cut, (3) ea.	\$55.00
4164	Gallagher ½ gal. ice lip pitcher, Rose etch	\$675.00
4164	Gallagher ½ gal. ice lip pitcher, Orchid etch	\$590.00
5025	Tyrolean 10 oz. short goblet, Orchid etch, (6) ea.	\$35.00
5072	Rose stem 12 oz. ice tea, Rose etch, (10) ea.	\$42.50

**JIM GARTNER** (301) 258-2904  
**455 Upshire Circle** UPS & Ins. Extra  
**Gaithersburg, MD 20878** H=Marked

2	9" candlesticks	\$155.00
305	Punty and Diamond Point punch cups, H, (4) ea.	\$14.00
350	Pinwheel and Fan punch cups, Moongleam, H, (2) ea.	\$38.00
433	Greek Key punch cup, Flamingo, H	\$40.00
1401	Empress D/F cream and sugar, Sahara, H	\$78.00
1401	Empress D/F 3 pt. water pitcher, Sahara, H	\$235.00
1404	Old Sandwich 6" compote, Sahara, H	\$135.00
1404	Old Sandwich water pitcher with ice catcher, H	\$185.00
1404	Old Sandwich water pitcher with ice catcher, H	\$365.00
1425	Victorian 5 pc. condiment set, H	\$148.00
	Goose, wings down	\$395.00

**BARI FAUSS** (703) 550-2218  
**8503 Shirley Woods Ct.** UPS & Ins. Extra  
**Lorton, VA 22079** H=Marked

2	Old Williamsburg 7" candlestick, pr.	\$80.00
2	Old Williamsburg 9" candlestick	\$100.00
350	Pinwheel and Fan large puff jar, (f), with lid, H	\$170.00
350	Pinwheel and Fan tumbler, H, (5) ea.	\$20.00
465	Recessed Panel 7" basket, patent date, H	\$150.00
485	1 oz. perfume, #64 stopper, gold dec., H	\$88.00
1252	Twist 2-hdl. cheese and 2-hdl. jelly	\$40.00
1252	Twist 10" celery, Moongleam, H	\$28.00
1401	Empress cup and saucer, Sahara, H, (4) ea.	\$40.00
1519	Waverly mayo liner with Orchid etch	\$20.00
1567	Plantation round cov. butter, (f) on finial, H	\$55.00
1567	Plantation candleblock	\$70.00

**FINDER'S ANTIQUE HOUSE** (804) 836-6782  
**Barbara Brock** UPS & Ins Extra  
**3769 Highway 29 North** Visa/MC/Discover  
**Danville, VA 24540** H=Marked

1433	Thumbprint and Panel bowl, Moongleam	\$95.00
1433	Thumbprint and Panel 2-lite candlestick, Mnglm, pr.	\$135.00
134	Trident 14" oval bowl, Sahara	\$110.00
134	Trident 2-lite candlestick, Sahara, H, pr.	\$135.00
18	Oval 9" flower frog block, Sahara	\$95.00
4224	Ivy vase, Tangerine	\$225.00
4045	5" ball vase, W/O, Cobalt	\$295.00
1225/109	Petticoat Dolphin comport, Ridge & Star top, all Flamingo, H	\$210.00
114	Oak Leaf candlesticks, Flamingo top/Crystal	\$65.00
4157	Steele Rose 5½" rose bowl, D/O, Flamingo	\$55.00
4209	Oval 9" vase, D/O Flamingo	\$70.00
1231	Octagon muffin plate, Marigold	\$85.00
1231	Octagon muffin plate, Moongleam	\$55.00
1252	Twist 12" round bowl, Flamingo, H	\$85.00
48	Koors salt and pepper, Flamingo, pr.	\$45.00
1184	Yeoman lemon dish with cover, 5" ground, Sahara, H	\$85.00
1401	Empress ind. cream and sugar, Sahara, H, set	\$60.00
99	Little Squatter candlesticks, Flamingo, H, pr.	\$40.00
1404	Thumbprint & Panel 1-lite cndstk, sterling overlay, H, pr.	\$135.00
1567	Plantation 2-lite candlesticks	\$145.00
1413	Cathedral flared vase	\$60.00
1255	Pineapple and Fan 10" vase	\$55.00
1255	Pineapple and Fan 8" vase	\$65.00
3390	Carcassone cigarette holder	\$35.00
1503	Crystalite covered lemon dish, H	\$75.00
1170	Pleat and Panel 8" lunch plates, H, (9) all	\$80.00
1469	Ridgeleigh 12" flared bowl, H	\$35.00
1519	Waverly 10" bowl, deep	\$40.00
1519	Waverly 14" platter	\$45.00
1541	Athena covered dish	\$45.00
1401	Empress cruet	\$80.00
1567	Plantation salt and pepper, H, pr.	\$75.00
1567	Plantation 13" gardenia bowl, ivy etch	\$75.00
1401	Empress 9" bowl, Orchid etch	\$50.00
1519	Waverly 12" crimped bowl, Orchid etch	\$57.50
1519	Waverly 11" platter, Orchid etch	\$55.00
1519	Waverly 14" platter, rose etch	\$67.50

**BABS KENT** (516) 374-4719  
**554 Amherst Dr.** 5-10 Evenings  
**Woodmere, NY 11598** UPS & Ins. Extra

	Giraffe, head back	\$225.00
	Giraffe, head side	\$250.00
	Dolphin candleholders	\$700.00
	Scotty Dog	\$150.00
	Clydesdale	\$600.00
	Elephant, large	\$425.00
	Elephant, medium	\$325.00
	Elephant, small	\$300.00
325	Pillows handled jelly, ruby flash on scalloped rim	\$275.00
1245	Ring Band toothpick, Custard, Rose decor.	\$95.00
	Goose, wings down	\$450.00
1255	Pineapple and Fan toothpick	\$125.00
335	Prince of Wales Plumes tankard, ruby flash	\$295.00



**WARREN & MARY WELSH**  
3635 Saddle Rock Rd.  
Colorado Springs, CO 80918

(719) 531-5866  
wels@earthlink.net  
Shipping & Ins. Extra  
H=Marked

299	Colonial 6 oz. toddy, Moongleam, H, (2) ea.	\$55.00
343	Sunburst 12" celery tray, H	\$35.00
350	Pinwheel and Fan 8" bowl, H	\$60.00
351	Priscilla 12 oz. ale, H, (3) ea.	\$75.00
352	Flat Panel orange bowl, H	\$250.00
353	Medium Flat Panel toothbrush holder, H	\$90.00
419	Sussex 8 oz. tumbler, Moongleam, H, (6) ea.	\$30.00
433	Greek Key cheese and cracker, H	\$175.00
1225	Plain Band childs table set, 4 pc., H	\$475.00
1238	Beehive 8" plate, Amber	\$155.00
1252	Twist ice bucket, Alexandrite, H	\$595.00
1252	Twist mustard with 4" plate, Flamingo, H	\$145.00
1252	Twist 4 oz. oil, Flamingo	\$145.00
1401	Empress champagne, Sahara, (6) ea.	\$55.00
1401	Empress goblet, Sahara, (4) ea.	\$75.00
1401	Empress tray for ind. cream and sugar, Moongleam	\$110.00
1404	Old Sandwich 1 pint pitcher, H	\$40.00
1405	Ipswich ftd. centerpiece with vase, "A" prisms, pr.	\$345.00
1425	Victorian pitcher, H	\$425.00
1425	Victorian 10 oz. barrel tumbler, H, (4) ea.	\$30.00
1469	Ridgeleigh cup and saucer, H, (3) ea.	\$25.00
1469	Ridgeleigh cigarette box, 4 ashtrays Zircon, (in box), H	\$220.00
1469½	Ridgeleigh 8" candle vase, Zircon	\$295.00
1485	Saturn 10 oz. goblet, Zircon bowl	\$135.00
1503	Crystolite round cream and sugar, 2 pc., H	\$80.00
1503	Crystolite oil with sticker	\$45.00
1503	Crystolite pitcher with sticker	\$125.00
1519	Waverly ice tub, Rose etch, H	\$495.00
1519	Waverly candy with lid, Rose etch, H	\$250.00
1519	Waverly tall candy with lid, Orchid etch, H	\$325.00
1567	Plantation 10 oz. tumblers, H, (8) ea.	\$155.00
1567	Plantation 5" vase, (2) ea.	\$110.00
1567	Plantation 9" salad bowl, H	\$225.00
1567	Plantation tall candy with lid	\$225.00
1567	Plantation ¼ lb. butter, H	\$170.00
3333	Old Glory 5 oz. champagne, Renaissance etch, H, (6) ea.	\$16.00
3333	Old Glory pousse cafe, H	\$135.00
3362	Charter Oak 6 oz. champagne, Flamingo, (4) ea.	\$20.00
3370	African 6 oz. champagne, Moongleam stem, (3) ea.	\$45.00
3370	African 3 oz. cocktail, Moongleam stem	\$45.00
3390	Carcassone low sherbet, Old Colony etch, Sahara, (7) ea.	\$22.00
3404	Spanish stem 3½ oz. cocktail, Cobalt bowl, (7) ea.	\$130.00
3404	Spanish stem 2½ oz. wine, Cobalt bowl, (7) ea.	\$175.00
3404	Spanish stem 1 oz. cordial, Cobalt bowl, (4) ea.	\$295.00
3404	Spanish stem 10 oz. goblet, Cobalt bowl, (4) ea.	\$125.00
3404	Spanish stem oyster cocktail, Cobalt bowl, (4) ea.	\$90.00
3404	Spanish stem 12 oz. ftd. soda, Cobalt bowl, (2) ea.	\$125.00
3404	Spanish stem 5½ oz. sherbet, Cobalt bowl, (2) ea.	\$85.00
3404	Spanish stem 5 oz. ftd. soda, Cobalt bowl, (4) ea.	\$85.00
3484	Donna 12 oz. soda, Orchid etch, H, (7) ea.	\$65.00
4083	Stanhope 5½ oz. chmpgne, Zircon bowl and foot, (2) ea.	\$85.00
5003	Crystolite 12 oz. ice tea, (8) ea.	\$36.00
5003	Crystolite 10 oz. water, (12) ea.	\$24.00
5010	Symphone tall goblet, Danish Princess etch, (12) ea.	\$28.00
5010	Symphone tall sherbet, Danish Princess etch, (10) ea.	\$20.00
5010	Symphone wine, Danish Princes etch, (10) ea.	\$30.00
5010	Symphone cocktail, Danish Princess etch, (4) ea.	\$25.00
5010	Symphone water, Danish Princess etch, (5) ea.	\$28.00
5025	Tyrolean 2 oz. wine, Orchid etch, (4) ea.	\$75.00
5031	French dressing bottle, Orchid etch	\$295.00

**J. & R. COLLECTIBLES**  
PO Box 1030  
Newark, OH 43058-1030

(614) 344-9719  
UPS & Ins. Extra  
H=Marked

32	Skirted Panel 5" chamberstick with hdl., (2) ea.	\$75.00
1401	Empress 1-lite candlestick, Alexandrite, H, pr.	\$1050.00
1404	Old Sandwich oil, Sahara, H	\$325.00
1567	Plantation salt and pepper, metal tops, H, pr.	\$95.00
1951	Cabochon ¼ lb. covered butter, Orchid etch, H	\$395.00
3390	Carcassone 12 oz. ftd. soda, Alexandrite bowl, (3) ea.	\$95.00
3390	Carcassone 6 oz. sherbet, Alexandrite bowl, (4) ea.	\$75.00
3481	Glenford 1½ oz. bar, D/O, Alexandrite	\$235.00
4231	Favor vase, Sahara, D/O	\$245.00
5010	Symphone 12 oz. ftd. soda, Minuet etch, (6) ea.	\$32.00
5012	urn 8" square ftd. bud vase, Orchid etch	\$325.00
7078	Diamond H sign, Cobalt, HCA Reproduction	\$75.00
	Asiatic Pheasant, Imperial Amber, H	\$375.00
	Tiger Paperweight, Imperial Amber, ALIG	\$275.00
	Tiger Paperweight, Imperial Caramel Slag, ALIG	\$95.00

HAPPY HOLIDAYS: Thanks to all our  
customers for a wonderful 22 years in business.

**SUM OF LIFE**  
**Elaine & Frank Husted**  
147 Barton Dr.  
Spring City, PA 19475-3415

(610) 469-1243  
(610) 469-1298 Fax  
We pay S&I-orders over \$500  
H=Marked

1404	Old sandwich old fashion glasses, H, (6) ea.	\$30.00
1183	Revere 11" platter with Windsor like cutting, H	\$35.00
1469	Ridgeleigh candle vase, Sahara	\$140.00
520	Innovation candle lamp, H	\$195.00
134	Trident candleholders, Tea Rose etch, pr.	\$75.00
1235	Beaded Panel and Sunburst wine, H	\$35.00
341	Water bottle	\$50.00
354	6 oz. Cologne	\$58.00
	Toujours apple marmalade, very small inner rim chip	\$70.00
1469	Ridgeleigh shot glass, H	\$29.00
33	Skirted Panel 6" handled candle, H	\$75.00

NOTE: Phone inquiries to our voice mail will be answered via fax or mail.  
Please leave fax number and/or name and address.

**THE COLLECTORS STOP**  
**Ralph & Eileene Wise**  
12018 Suellen Circle  
Wellington, FL 33414

(561) 793-0986  
UPS & Ins. Extra  
H=Marked

1413	Flamingo Cathedral straight vase	\$295.00
4057	Flamingo Schnaidt D/O water bottle	\$250.00
1405	Ipswich ftd. vase with candleholders, H, pr.	\$295.00
	Ringneck Pheasant	\$89.00
433	Greek Key 1 pint pitcher, H	\$250.00
136	Triplex Cobalt candlesticks, pr.	\$995.00
4044	New Era candlesticks, base cutting, complete, pr.	\$195.00
	10 Heisey baskets in stock, call in with your wants	
413	Rib and Panel Hawthorne cigarette box and cover, H	\$225.00
335	Prince of Wales Plume 11" cake salver	\$295.00
1469½	Ridgeleigh 8" vase, Zircon, H	\$395.00
1428	9" Warwick vases, Moongleam, Flamingo, H, CALL	

**"T&P" COLLECTIBLES**

Tom and Pat Gibbons  
1089 Wood St.  
Swansea, MA 02777

(508) 674-7361

Packing and UPS Extra  
H = Marked

21	Aristocrat 9" candlestick, tiny flake, pr.	\$75.00
341	Puritan 1 oz. cordial, H, (6)	\$120.00
394	Narrow Flute Dr. Johnson punch bowl, H	\$450.00
411	Rib and Panel 1 qt. jug, scratches on bottom, H	\$125.00
1020	Phyllis sugar, Vaseline	\$245.00
1225	Plain Band sherbet, no hdl., R/S	\$35.00
1252	Twist 3 pt. jug, Flamingo, H	\$255.00
1401	Empress nasturtium bowl, D/F, Moongleam, H	\$255.00
1404	Old Sandwich ½ gal. jug, Sahara, H	\$235.00
1425	Victorian 3 oz. cruet, H	\$45.00
1469	Ridgeleigh 7" ball vase	\$75.00
1469	Ridgeleigh ice tub and underplate, HH, set	\$125.00
1495	Fern 2-lite candlestick, pr.	\$78.00
1503	Crystolite 3-lite candlestick, pr.	\$75.00
1503	Crystolite cream and sugar, H, pr.	\$25.00
1540	Lariat rnd. 4 part 10" relish	\$35.00
1560	Victorian Girl Belle	\$70.00
1560	Victorian Girl Belle, Satin	\$70.00
1567	Plantation 8" salad plate, Ivy etch, (11)	\$16.00
3345	Mary 'n Virg goblet with Adam cutting	\$28.00
3370	African goblet, Moongleam stem and foot	\$45.00
3389	Duquesne goblet, Normandie etch, (4)	\$70.00
3411	Monte Cristo goblet, Olympiad etch, (9)	\$180.00

**WANTED: Pretzel Jar or Cover**

### WE CLEAN CLOUDY GLASS! SATISFACTION GUARANTEED

*Yes, it is true* that we really can restore the interior of your cruet, vase, decanter and other *internally* etched items back to near original condition.

*We do not* oil, wax or cover up the sickness in any way! We actually *remove* it.

*No items are too sick to clean!* If we cannot clean an item to meet your satisfaction, the cleaning is **FREE!**

*Send no money up front.* When we return your item a bill will be enclosed for the postage and cleaning. If you are not satisfied, only the return postage is requested.

*Most items* clean in 6-8 weeks. All glass is handled and cleaned at your risk. Some very cloudy items may take several additional weeks.

Cruet	\$20.00	Cocktail Shaker	\$30.00
Vinegar & Oil	\$25.00	Salt Shaker (one)	\$25.00
Cologne	\$20.00	Salt Shaker (pair)	\$35.00
Decanter	\$30.00	Water Bottle	\$30.00
Vases (under 12")	\$25.00	Lavender Jar	\$20-\$30.00

Ship to: **Kim Carlisle & Associates**  
28220 Lamong Road, Dept. H  
Sheridan, IN 46069  
(317) 758-5767

**HEISEY, ETC.**

Mike & Barb Rosenberger  
5115 W. 78th Ln.  
Schererville, IN 46375

(219) 864-1704

Shipping & Ins. Extra  
www.jorsm.com/elegantglass  
email: mer@jorsm.com

338	Colonial 20" swung vase	\$215.00
433	Greek Key 12" celery	\$77.50
515	Taper ¼ oz. cologne, D/O w/69 stopper, Hawthorne	\$235.00
515	Taper 1 oz. cologne with #69 dauber, good gold	\$245.00
1252	Twist 12 oz. ftd. soda, Moongleam	\$77.50
1401	Empress D/F ind. nut, Alexandrite	\$175.00
1404	Old Sandwich ind. ashtray, Moongleam	\$67.50
1404	Old Sandwich 12 oz. round creamer	\$75.00
1404	Old Sandwich 8 oz. soda, Moongleam	\$48.50
1404	Old Sandwich ½ gal. jug, Sahara	\$225.00
1483	Stanhope 6" covered candy, no knob	\$235.00
1489	Revere 4 oz. cologne with cut stopper	\$155.00
1503	Crystolite 14" coupe plate	\$145.00
1503	Crystolite 12" round gardenia bowl	\$175.00
1509	Queen Ann 15" D/F punch bowl	\$2500.00
1511	Toujours apple marmalade with spoon, Minuet etch	\$200.00
1519	Waverly 12" floral bowl, Seahorse ft., Rose etch	\$235.00
1540	Lariat 15" heavy loops plate	\$125.00
1951	Cabochon display sign	\$345.00
3390	Carcassone 4 oz. ftd. claret, Cobalt	\$160.00
4035	Seven Octagon cologne with duck stopper	\$245.00
4220	Janice 4" vase, S/O, Flamingo	\$120.00
5003	Crystolite bitters bottle with tube	\$165.00
7000	Sunflower 8 oz. tumbler	\$36.00
	Giraffe, head back	\$275.00

**PAUL SIMONS**  
130 Travellers Ln.  
Aiken, SC 29803

(803) 648-2524

Shipping & Ins. Extra  
H = Marked

407	Coarse Rib mustard, H	\$65.00
407	Coarse Rib covered butter, H	\$78.00
433	Greek Key 2 oz. wine, H, (6) ea.	\$140.00
433	Greek Key 3 oz. wine, H, (3) ea.	\$130.00
433	Greek Key 4½ oz. tall sherbet, H	\$110.00
433	Greek Key 3½ oz. wine, H	\$110.00
1184	Yeoman 2 oz. cruet, D/O, Sahara	\$98.00
1205	Fancy Loop wine, straight	\$58.00
1252	Twist mustard, Flamingo, H	\$95.00
1401	Empress 6" D/F candlesticks, H	\$225.00
1404	Old Sandwich 6" candlesticks, H	\$145.00
1404	Old Sandwich tall oil	\$95.00
1401	Empress ashtray, H	\$75.00
1401	Empress ashtray, Sahara, H	\$105.00
1428	Warwick cobalt candleholders (small)	\$225.00
1469	Candle vases, Sahara, (2) ea.	\$115.00
1483	Stanhope saucers, (4) ea.	\$15.00
1483	Stanhope luncheon plates, (4) ea.	\$20.00
1483	Stanhope cups, black knobs, (3) ea.	\$22.00
4044	New Era cordials, (2) ea.	\$55.00
5074	Seahorse wine	\$165.00
7003	Pinwheel and Fan basket, H	\$325.00
	Sweet Adeline pressed goblets, H, (7) ea.	\$200.00
	Standing Pony, (3) ea.	\$115.00
	Scotty Dog, (2) ea.	\$145.00
	Goose, wings up	\$145.00

**DON & JEAN PARRETT**  
**4995 Maple Dale Rd.**  
**Jackson, MI 49201**

**(517) 784-7319 Recorder**  
**Post & Ins. Extra**  
**H=Marked**

3416	Barbara Fritchie 3/4 oz. tall brandy, (6) ea.	\$95.00
5058	Goose stem 1 oz. cordial, frosted stem and foot	\$145.00
5058	Goose stem 2 oz. cherry, frosted stem and foot	\$150.00
359	Colonial 3/4 oz. pony brandy	\$65.00
359	Colonial 1 oz. cordial	\$60.00
347	Colonial 1 oz. cordial, (2) ea.	\$60.00
341	Puritan 1 oz. cordial	\$65.00
393	Narrow Flute 1 oz. tall brandy, frosted ft. and top	\$75.00
393	Narrow Flute 1 oz. cordial	\$75.00
433	Greek Key 1 oz. cordial	\$225.00
433	Greek key 1 oz. cordial, flared	\$250.00
1205	Fancy Loop 2 1/2 oz. wine, Emerald, good gold	\$110.00
1295	Beaded Swag 2 1/2 oz. wine, Custard, souvenir	\$65.00
3312	Gayoso 3 oz. cocktail, Peacock etch	\$35.00
3312	Gayoso 2 1/2 oz. wine, D/O, Flamingo	\$35.00
4083	Stanhope 3 oz. wine, saturn optic, Zircon bowl	\$150.00
3365	Trojan 3/4 oz. pony, D/O Flamingo, #445 Trojan etch	\$125.00
3318	Waldorf 2 oz. wine, etched	\$35.00
5077	Legionnaire 1 oz. cordial	\$75.00
4044	New Era 1 oz. cordial	\$50.00
1469	Ridgeleigh 8" round vase	\$125.00
352	Flat Panel 3 oz. lavender jar, cut, (2) ea.	\$75.00
1509	Queen Ann 3-comp. relish tray, silver overlay	\$45.00
464	Round fruit basket, cut	\$245.00
464	Round fruit basket, cut	\$245.00
462	Nail basket 6 side cut	\$225.00
1558	Droop 12" floral bowl	\$60.00
2323	Navy 13 oz. tall pilsner, Cobalt foot, (5) ea.	\$95.00
1252	Twist 5 oz. champagne, Moongleam, (2) ea.	\$35.00
462	Plain Hexagon floral basket	\$175.00
341	Puritan 12 oz. milk pitcher	\$95.00
393	Narrow Flute 12 oz. milk pitcher	\$110.00
351	Priscilla 12 oz. milk pitcher	\$150.00
1252	Twist 3 pt. pitcher, Flamingo	\$250.00
429	Plain Panel 1 qt. pitcher	\$175.00
354	Wide Flat Panel 3 pt. pitcher	\$175.00
1401	Empress 3 pt. D/F pitcher, Moongleam	\$295.00
1401	Empress 3 pt. D/F pitcher, Sahara	\$250.00
451	Cross Line Flute 3 1/2 pt. pitcher	\$195.00
351	Priscilla 3 pt. pitcher	\$175.00
300	Peerless 5 pt. pitcher	\$175.00
1404	Old Sandwich 3 pt. pitcher	\$145.00
4033	Bar bottle & stoppr., #467 Tally Ho etch, (4) 1 oz. bar, set	\$450.00
4033	Bar bottle and stopper, #462 Fox Chase etch	\$295.00
367	Prism Band 1 pt. decanter and stopper	\$175.00
367	Prism Band 1 pt. decanter and stopper, Flamingo	\$345.00
341	Puritan 30 oz. decanter, stopper (chip)	\$125.00
341	Puritan 36 oz. water bottle	\$95.00
351	Priscilla 32 oz. decanter and stopper	\$175.00
333	Waldorf 18 oz. decanter and stopper (flake)	\$165.00
4037	Oval 20 oz. decanter and stopper, #924 Maryland cut	\$195.00
4225	Cobel 1 pt. shaker, star cut	\$125.00
4054	Coronation 1 qt. shaker, stopper and strainer	\$75.00
6060	Country Club 1 qt. shaker, Rooster strpr., strainer	\$150.00
1170	Pleat and Panel sugar and creamer, Moongleam	\$95.00
353	Medium Flat Panel 2 qt. tobacco jar and lid	\$295.00
353	Medium Flat Panel 2 qt. tobacco jar and lid, Mnglm.	\$595.00
1413	Cathedral vase, #454 Antarctic etch	\$150.00
1401	Empress 16" 2 hdl.. rectangle tray, #454 Antarctic etch	\$125.00
1401	Empress 2 hdl.. 10" fruit bowl, Moongleam	\$165.00
1632	Satellite 12" fruit bowl, Dawn	\$175.00
343	Sunburst 8 1/2"x3" nappy	\$75.00
1401	Empress 8" nasturtium bowl, ftd., Sahara	\$195.00
1401	Empress 8" nasturtium bowl, ftd., silver overlay	\$155.00
134	Trident 14" oval floral bowl, Flamingo	\$225.00

**MAURICE & JEAN WALTER ANTIQUES (978) 975-3541, after 5pm**  
**6 Royal Crest Dr. #5**  
**N. Andover, MA 01845**  
**UPS & Ins. Extra**  
**H=Marked**

1	Georgian 9" candlestick, pr. (1 w/sm. inclusion in base	\$135.00
5	Patrician 8" candlestick, (1) H, pr.	\$120.00
113	Tumbler, old pattern, chips, but good for pattern ref.	\$5.00
105	Pembroke 7" 1-lite candelabra with prisms, pr.	\$190.00
118	Miss Muffit candlesticks, Moongleam, pr.	\$50.00
142	Cascade candlesticks, #921 Danish Princess cut, pr.	\$130.00
150	Banded Flute butter with lid, H	\$110.00
337	Touraine cvd. butter, red stain, gold, (some wear), cut	\$70.00
354	Wide Flat Panel syrup, 10 panels, (1) H, (2) ea.	\$38.00
372	McGrady syrup	\$42.00
393	Domino sugar, ftd. ind.	\$48.00
407	Coarse Rib 12" celery, Flamingo	\$55.00
451	Cross Lined Flute champagne, H	\$10.00
479	Petal cream and sugar, Flamingo, set	\$65.00
1184	Yeoman cream and sugar, Flamingo, no lid, set	\$50.00
1201	Fandango punch cup, (4) ea.	\$10.00
1205	Fancy Loop ind. cream, Emerald w/worn gold, nick	\$30.00
1225	Plain Band 8 1/2" comport, some missing beads on btm.	\$32.00
1229	Octagon 6" cheese plates, Marigold, (4) ea.	\$15.00
1229	Octagon nut cup, (2), 1 = Sahara D/O, 1 = Flamingo, ea.	\$16.00
1250	Star and Zipper 1/2 gal. tankard with metal top	\$75.00
1252	Twist 8" comport, Marigold, minute crazing	\$70.00
1252	Twist mustard w/lid, minor roughness/finial&inside, HH	\$68.00
1401	Empress 7" triplex relish, Sahara	\$30.00
1401	Empress 2 part relish, Moongleam	\$36.00
1401	Empress D/F nut cups, (2) ea.	\$12.00
1404	Old Sandwich 1-lite candlesticks, pr.	\$95.00
1428	Warwick 9" vase, Cobalt, straw marks	\$265.00
1433	Thumbprint and Panel 11" floral bowl, Sahara, H	\$85.00
1488	Kohinoor 2-lite cdlabra, Heisey prisms/some rough, pr.	\$250.00
1503	Crystolite cruets, minor clouding, O/S	\$18.00
1503	Crystolite 2 part round hdl.. candy with cover	\$45.00
1506	Whirlpool 5 1/2" ftd. candy with cover	\$70.00
1506	Whirlpool cigarette box with lid and 4 ashtrays, set	\$85.00
1509	Queen Ann oval comport with grey cut, (2) ea.	\$35.00
1519	Waverly salt/pepper with good silver overlay, pr.	\$35.00
1519	Waverly 2-lite cndlstk, Orchid etch, (1 rough bead) pr.	\$135.00
1519	Waverly covered butter, horsehead finial	\$65.00
1519	Waverly mayo and underplate, Rose etch	\$75.00
1519	Waverly 8" plate with Rose etch, (2) ea.	\$28.00
1519	Waverly cream and sugar, Rose etch, set	\$65.00
1519/1495	Console set, 3 pcs. all #508 etch, unique to set, set	\$140.00
1541	Athena 2-lite candlesticks, pr.	\$125.00
2323	Navy 7 oz. soda, Crystal with Cobalt base	\$50.00
3380	Old Dominion oyster cocktail, D/O, (8, 1w/sm nick), lot	\$85.00
3404	Spanish saucer chmpn., Cobalt & Cry. stem/foot, (2) ea.	\$80.00
4037	Clarence sherry, Maryland cut, silver stopper	\$138.00
4044	New Era 2-lite cndlstk, nick 1 base, cutting on base, pr.	\$130.00
4230	Favor vase	\$110.00
4163	Whaley mug, #455 Sportsman etch, (2) ea.	\$148.00
4163	Whaley mug, #460 Club Drinking Scene etch, (2) ea.	\$135.00
5038	Rooster Tail 3 1/2 oz. stem, (4) ea.	\$45.00
5048	Rooster head stem	\$55.00
	Goose, wings half, (2) ea.	\$90.00
	Ring Neck Pheasant	\$135.00
	Sparky (Plug Horse)	\$90.00
	Imperial Tiger paperweight, Jade, (2) ea.	\$75.00



**BRASWELL'S COLLECTIBLE GLASS (423) 538-5760**  
**380 Lowell Jones Rd. Shipping & Ins. Extra**  
**Piney Flats, TN 37686 H=Marked**

135	Empress single candlestick with silver overlay	\$40.00
394	Narrow Flute 12" 3 pt. relish, Flamingo, H	\$35.00
465	Recessed Panel 1 lb. covered candy with cutting, H	\$68.00
1404	Old Sandwich oval ftd. floral bowl with frog, H	\$49.00
1425	Victorian 5 oz. 2 ball champagne, (8) ea.	\$9.00
1425	Victorian 5½" vase, gold rim, H	\$30.00
1489½	Puritan horse head cigarette box	\$89.00
1504	Regency 2-lite candlestick, pr.	\$79.00
3397	Gascony 5 oz. glass, Sahara	\$20.00
5024	Oxford cocktail, juice or wine, H, (4) ea.	\$9.00
	HCA Oscar 1977 green	\$59.00
	HCA Oscars 1978 pink, 1979 yellow, ea.	\$48.00

**D&B ANTIQUES (404) 634-2799**  
**PO Box 83283 7 am-9 pm EST**  
**Decatur, GA 30033 Shipping & Ins. Extra**

1401	Empress ashtray, Alexandrite, H	\$250.00
1401	Empress ashtray, Moongleam, H	\$300.00
30	Tom Thumb candles, H, pr.	\$175.00
1469	Ridgeleigh roly poly base, H, cocktail glass, set	\$75.00
2323	Navy 2 oz. bar, Cobalt base	\$100.00
1504	Regency cologne with dauber	\$125.00
3350	Wabash cordial, H, or #3389 Duquesne, ea.	\$38.00
3350	Wabash cordial, Pied Piper etch, H	\$68.00
3389	Duquesne cordial, rock crystal cut	\$49.00
1404	Old Sandwich 18 oz. beer mug, Moongleam, H	\$300.00
1540	Lariat 8" rnd. candy box, horse head finial	\$1650.00

**WANTED: #48 Steeple Stopper**

**J.B.'S (281) 379-4519**  
**J.B. & Stephanie Shipping & Ins. Extra**  
**Tomball, TX 77375 H=Marked**

5	Patrician 8" candlestick, H	\$60.00
21	Aristocrat 9" candlestick	\$75.00
33	Skirted Panel 7" candlestick, pr.	\$45.00
300	Peerless 10" cake salver, H	\$100.00
300	Tall sherbet, H, ea.	\$12.00
335	Prince of Wales 8" nappy, (2) 4" nappies, H	\$125.00
350	Pinwheel and Fan 8" nappy, H	\$100.00
393	Colonial 3 oz. cocktail, H, (3) ea.	\$15.00
394	Narrow Flute domino sugar, Moongleam, pat. appld, H	\$85.00
472	Narrow Flute 7" pickle tray, Flamingo	\$40.00
493	Cologne with #65 stopper, etch, H	\$100.00
1201	Fandango 8" plate	\$65.00
1280	Winged Scroll 4 pc. smoke set, Emerald	\$300.00
1295	Beaded Swag cov. butter, Opal, rose decoration	\$150.00
1295	Beaded Swag tumbler, Opal, rose decoration	\$60.00
1295	Beaded Swag toothpick, Opal	\$60.00
1295	Beaded Swag toothpick, ruby flash, 1903	\$45.00
1295	Beaded Swag goblet, ruby, Mt. Vernon	\$50.00
1295	Beaded Swag hdl. mug, ruby	\$50.00
1503	Crystolite 10" 5-part relish, H	\$75.00
1503	Crystolite 2" candleblock, H, pr.	\$25.00
1503	Crystolite 4" 1-lite candlestick, pr.	\$35.00
1503	Crystolite 4" covered box, H	\$30.00
394	Narrow Flute 3 pt. pitcher	\$125.00
1519	Waverly covered lemon, dolphin finial, etch, H	\$45.00
	Gold Series with colts, 14 pc.	\$775.00
	Gem Series, 12 pc.	\$700.00

**WALRICK ANTIQUES (810) 229-5994**  
**Rick Vaughan & Walter Sherman UPS Extra**  
**1070 Hillcrest H=Marked**  
**Brighton, MI 48116**

99	Little Squatter candleblocks, Moongleam	\$46.00
142	Cascade 3-lite candlesticks, Orchid etch	\$148.00
350	Pinwheel and Fan 3 pt. jug, H	\$145.00
354	Wide Flat Panel cream and sugar, Moongleam, H	\$98.00
367	Prism Band 1 qt. decanter, Flmg., H, pres. steeple strpr.	\$240.00
372	McGrady 7 oz. syrup, Sahara, H	\$110.00
393	Narrow Flute pint pitcher, H	\$72.00
393	Narrow Flute 8" nappy, dated, H	\$35.00
393	Narrow Flute covered lemon, H	\$58.00
411	Tudor 5" high ftd. jelly, Hawthorne, H	\$68.00
433	Greek Key 4½ oz. sherbet, flared rim, H, (2) ea.	\$20.00
433	Greek Key small ice tub, H	\$121.00
433	Greek Key quart tankard, H	\$202.00
433	Greek Key 3 pt. jug, H	\$188.00
433	Greek Key punch cup, H, (16) ea.	\$17.00
1184	Yeoman 10" floral bowl, D/O, Hawthorne, H	\$94.00
1225	Ridge and Star 7" plate, Hawthorne, H, (6) ea.	\$23.00
1228	Swirl 7" plate, Marcel Wave, Moongleam, H, (8) ea.	\$12.00
1245/3970	Comport, Moongleam stem and base, H	\$90.00
1252	Twist 12" round floral bowl, Marigold, H	\$97.00
1252	Twist 1-lite candles, Marigold, H, pr.	\$152.00
1252	Twist 12" round floral bowl, Moongleam, H	\$77.00
1401	Empress D/F nasturtium bowl, Sahara	\$125.00
1401	Empress 10" salad bowl, Moongleam, H	\$97.00
1401	Empress 8" sq. plate, Alexandrite, H, (2) ea.	\$76.00
1401	Empress 7½" D/F nappy, Sahara, H	\$62.00
1401	Empress 8" sq. plate, Cobalt, H, (6) ea.	\$80.00
1401	Empress 6½" oval preserve, Moongleam, H	\$37.00
1404	Old Sandwich 7" sq. plate, Sahara, H, (6) ea.	\$23.00
1404	Old Sandwich saucer champagne, Sahara, H, (9) ea.	\$27.00
1404	Old Sandwich ind. ashtray, Cobalt, H, (2) ea.	\$42.00
1404	Old Sandwich 1-lite candles, pr.	\$88.00
1425	Victorian rose bowl, H	\$225.00
1425	Victorian 27 oz. rye bottle	\$138.00
1433	Thumbprint and Panel 11" floral bowl, #20 floral block, pr.	
	2-lite candles, Sahara	\$238.00
1503	Crystolite 8" 2 pt. hdl. conserve, HH	\$57.00
1506	Provincial 10" 4 comp. relish, Limelight	\$184.00
1509	Queen Ann 8" D/F sauce bowl, Orchid etch	\$58.00
1519	Waverly 13" floral bowl, Orchid etch	\$107.00
1540	Lariat cream and sugar, Moonglo etch, H	\$47.00
1540	Lariat goblet, Moonglo cutting, H, (5) ea.	\$24.00
1567	Plantation 8" plate, (8) ea.	\$31.00
1567	Plantation 5 oz. pressed ftd. juice, (5) ea.	\$47.00
1567	Plantation 4 oz. pressed claret, (4) ea.	\$62.00
1567	Plantation 10 oz. pressed goblet, (8) ea.	\$47.00
1567	Plantation covered marmalade, H	\$148.00
1567	Plantation 13" cake salver	\$162.00
1567	Plantation 12" crimped bowl	\$98.00
1567	Plantation cream and sugar, H	\$52.00
1567	Plantation 4" coaster/ashtray, (6) ea.	\$34.00
1626	Lodestar 8" vase, Dawn, H	\$137.00
3389	Duquesne 9 oz. goblet, Tangerine bowl, (2) ea.	\$285.00
3390	Carcassone 12 oz. flagon, Sahara	\$98.00
3390	Carcassone 11 oz. tall stem goblet, Cobalt bowl, (4) ea.	\$92.00
3404	Spanish cocktail, Cobalt bowl, (4) ea.	\$84.00
3480	Koors "29" jug, (6) 12 oz. sodas, Mnglm ft. & hdl., set	\$318.00
3480	Koors 10" flared floral bowl, Moongleam	\$83.00
4083	Stanhope 3½ oz. cocktail; Zircon bowl and foot, (2) ea.	\$107.00
5025	Tyrolean 3 oz. wine, Orchid etch, H, (8) ea.	\$72.00
5025	Tyrolean 12 oz. ftd. ice tea, Orchid etch, (8) ea.	\$57.00



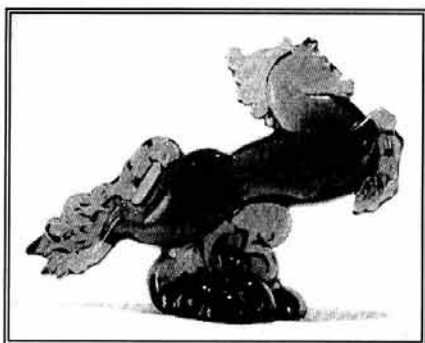
**MOSTLY HEISEY**  
Rhoda Curley  
16 Clayton Pl.  
Albany, NY 12209

**(800) 972-2775**  
**(518) 482-6272**  
UPS Extra  
All prices each

**Best Wishes For The Holidays**

5072	Rose stem cordial, Rose etch, (6)	\$165.00
5072	Rose stem goblet, Rose etch, (16)	\$45.00
5072	Rose stem wine, Rose etch, (5)	\$75.00
5072	Rose stem sherbet, Rose etch, (16)	\$35.00
1519	Waverly candy dish with lid, Rose etch, (2)	\$275.00
1519	Waverly 11" floral bowl, Sea Horse hdl., Rose etch	\$160.00
1519	Waverly D/F jelly scalloped, Rose etch	\$75.00
1519	Waverly 10" crimped bowl, Rose etch	\$95.00
1519	Waverly 3 part relish, Rose etch, (2)	\$115.00
1519	Waverly salt and pepper, Rose etch, pr.	\$85.00
1519	Waverly sandwich plate, center hdl., Rose etch	\$275.00
1519	Waverly mayo and underplate, Rose etch, (2)	\$110.00
1401	Empress compote, Rose etch	\$60.00
1401	Empress 4 ftd. 6" jelly, Rose etch	\$50.00
4037	Oval pt. sherry bottle, Maryland cutting, SS stopper with "N" initial on each stopper, (2)	\$125.00
1425	Victorian condiment set	\$215.00
1295	Beaded swag 9" bowl and 4 nappies, Milk Glass	\$160.00
1295	Beaded Swag covered butter with flower decoration	\$150.00
3397	Gascony 11 oz. goblet, Tangerine, \$275.00; soda	\$235.00
3397	Gascony 1 pt. decanter, Cobalt, with #88 stopper	\$595.00
1541	Athena mayo, plate and ladle	\$85.00
1541	Athena oval relish 11x7", 3 compartment	\$42.00
1252	Twist ftd. almond, Moongleam	\$55.00
1252	Twist nut dishes, (4)	\$29.00
433	Greek key fruit jar lid	\$150.00
433	Greek Key sherbets, flared, (7)	\$25.00
300	Peerless water (7) \$25.00, parfait (2) \$25.00, wine (2)	\$40.00
341	Puritan compote 8½x7½"	\$95.00
305	Punty and Diamond Point compote 8x8"	\$150.00
1540	Lariat master nut and (6) ind. nut	\$150.00
2351	Bob White (Peacock) 12 oz. soda, (4)	\$32.00
40	Epergne: 3 plate 29" spread 14"	\$1800.00
21	Aristocrat 1-lite candlestick, floral cutting, pr.	\$249.00
301	Old Williamsburg 2-lite candelabra, Sahara, (1)	\$495.00
300-3	Old Williamsburg 3-lite candelabra, tall base, pr.	\$950.00

**WANTED: Lower half of hemisphere for 5-lite candelabra**



**HEISEY AMBER FLYING MARE**  
**\$4995.00 PP**

TREAT YOURSELF TO ONE OF THE FEW  
HEISEY FLYING MARES IN EXISTENCE.  
IF YOU ALREADY HAVE ONE,  
GIVE THIS ONE OF OURS TO A LOVED ONE  
OR A FRIEND. IT IS IN GIVING YOU RECEIVE.  
RHODA CURLEY (800) 972-2775

**RON KOVACS**  
9310 E. Windrose Dr.  
Scottsdale, AZ 85260

**(602) 451-4995**  
UPS & Ins Extra  
H=Marked

Lion trinket box, Imperial Amber, (C.G.)	\$80.00
Tiger paperweight, Imperial Slag	\$89.00
Diamond H display sign, Viking Ultra Blue	\$80.00
Filly, head forward, Imperial Satin	\$85.00
Mallards, wings half, down, up, Imp. Horizon blue, set	\$69.00
Rooster vase	\$90.00
Tropical Fish #125 of 450, D-Viking Lavender Ice	\$360.00
Pouter Pigeon #268 of 450, D-Viking Lavender Ice	\$144.00
Show Horse #267 of 450, D-Viking Lavender Ice	\$202.00
Bull #267 of 450, D-Viking Lavender Ice	\$180.00

**CHRISTMAS SPECIAL**

10% discount on all remaining items from my October  
and November 1997 ads in the Heisey News.

**GLASS 'N' GLASS**  
**Virginia & Odell Johnson**  
6909 Tenth Ave. West  
Bradenton, FL 34209

**(941) 792-0604**  
UPS & Ins. Extra  
H=Marked

21	Aristocrat 7" candlesticks, H, pr.	\$110.00
341	Puritan 12" oval dish, star bottom, H	\$50.00
358	16 oz. Lavender jar, decorated	\$160.00
433	Greek key (no. 2) 2-hdl. jelly, star bottom, H	\$35.00
459	7" Rnd. colonial basket dec. w/gold & flower baskets, H	\$275.00
466	8" Fruit basket with cuttings, H	\$220.00
1219	9½" Plate, star bottom, H, (2) ea.	\$55.00
1225	Plain Band mustard/lid, H	\$40.00
1503	Crystolite mustard/lid, H	\$42.00
1503	Crystolite 5½" hdl. nappy, spider web, H	\$28.00
1503	Crystolite 7" shell praline	\$50.00
1503½	Crystolite handled creamer, H	\$40.00
5003	Crystolite cocktail, (5) ea.	\$15.00
1506	Provincial 3½ oz. cocktail, (4) ea.	\$12.00
1506	Provincial sugar/creamer/tray, H	\$60.00
1506	Provincial loop hdl. thousand island dressing bowl, H	\$35.00
1519	Waverly cruet	\$75.00
1519	Waverly 2-lite candleholders, Orchid etch, pr.	\$130.00
1525	Tyrolean wine, Orchid etch, H	\$65.00
393	Narrow Flute combination relish, lid, H	\$50.00

**LEE & DICK SCHWAN**  
3370J Northwood Dr.  
Concord, CA 94520

**(510) 687-0907**  
After 12/15/97 (561) 461-5940  
UPS & Ins. Extra

5063	Bantam Rooster cocktails, (2) ea.	\$1000.00
1404	Old Sandwich 6" compote	\$70.00
1255	Pineapple & Fan 7½" berry bowl, Emerald with gold	\$125.00
1255	Pineapple & Fan 4" nappies, Emerald w/gold, set of (4)	\$100.00
1184	Yeoman 8" 3-comp. hdl. relish, cutting	\$83.00
1503	Crystolite puff box and cover	\$55.00
1252	Twist 8" nasturtium bowl, Flamingo	\$150.00
1483	Stanhope 12" 5-comp. tray, Swingtime etch	\$150.00
3408	Jamestown 4 oz. cocktail, Barcelona cut, (3) ea.	\$10.00
1509	Queen Ann dolphin ftd. candleholder	\$35.00

**FOREVER HEISEY**  
**Norm & Jan Thran**  
**1663 Londondale Pkwy.**  
**Newark, OH 43055**

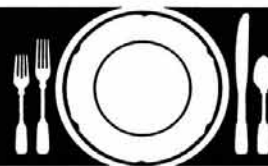
**(614) 344-5955**  
**UPS & Ins. Extra**  
**H = Marked**

	Mallard, wings up, H	\$160.00
	Sparrow or Standing Colt (choice)	\$75.00
21	Aristocrat 9 3/8" candlestick, H,	\$85.00
25	Federal 9 1/2" candlestick, H,	\$75.00
300	Peerless 9" vase, dark Moongleam/Emerald, faint H	\$175.00
333	Waldorf Astoria toothpick, faint H	\$95.00
343	Sunburst toothpick, H	\$140.00
354	Wide Flat Panel 1 oz. ftd. lavender jar, floral cutting, H	\$225.00
354	Wide Flat Panel 2 1/2 oz. ftd. lavender jar, floral cutting	\$195.00
417	Double Rib & Panel 6" hdl.. basket, H	\$195.00
458	Pickett 8" hdl.. basket, floral cutting, H	\$225.00
458	Pickett 8" hdl.. basket, H	\$160.00
462	8" hdl.. basket, floral cutting, H	\$225.00
463	Bonnet 7 1/2" hdl.. basket, faint H	\$145.00
480	8" hdl.. basket, floral overcut, H	\$245.00
1115	Bardbury bitters bottle with Tally Ho etch	\$225.00
1200	Cut block toothpick, red stain, souv. Pan Amer. 1901	\$70.00
1201	Fandango sugar sifter with original top	\$125.00
1205	Fancy Loop toothpick with fair to good gold	\$65.00
1234	Stippled Diamond 8" plate, Moongleam, H	\$35.00
1235	Beaded Panel & Sunburst toothpick	\$95.00
1238	Beehive 8" plate, Zircon	\$150.00
1238	Beehive 8" plate, Moongleam	\$35.00
1238	Beehive 5" plate, flamingo, (3) ea.	\$17.50
1255	Pineapple and Fan 8" vase, Emerald	\$75.00
1252	Twist 9" plate, Flamingo, H, (6) ea.	\$35.00
1252	Twist 8" plate, Flamingo, H, (6) ea.	\$15.00
1252	Twist twin hdl.. relish, Flamingo, H	\$50.00
1252	Twist 4 1/2" nappy, Flamingo, H, (2) for	\$32.00
1401	Empress 6" 3-toed candlestick, Moongleam, H	\$225.00
1401	Empress D/F mayo, Moongleam, H	\$60.00
1404	Old Sandwich oval cream and sugar, Sahara, H, pr.	\$85.00
1404	Old Sandwich ice lip 1/2 gal. pitcher, Flamingo, H	\$265.00
1404	Old Sandwich 4 1/2 oz. claret wine, Moongleam, H	\$75.00
1404	Old Sandwich ftd. water goblet, Moongleam	\$50.00
1425	Victorian 5 oz. oyster cocktail, H, (6) ea.	\$22.50
1469	Ridgeleigh 2-lite candelabra, complete, H	\$250.00
1469	Ridgeleigh 10" 1-lite candelabra, H, pr.	\$210.00
1469	Ridgeleigh water goblet, (5) ea.	\$40.00
1489	Late Puritan 4" Horsehead ashtray	\$65.00
1495	Fern 15" hdl.. sandwich tray, Dawn	\$275.00
1503	Crystolite 12" oval utility tray, H	\$40.00
1503 1/2	Crystolite 12" oval 3-part relish, H	\$40.00
1503 1/2	Crystolite 12" oval celery tray, H	\$40.00
1503	Crystolite 12" celery tray, H	\$40.00
1519	Waverly 6" ftd. jelly compote, Amber, orig. factory lbl.	\$250.00
1519	Waverly 8" plate, Orchid etch, (6) ea.	\$26.00
1519	Waverly 7" plate, Orchid etch, (6) ea.	\$19.00
1540	Lariat goblet, Moonglo cutting, (7) ea.	\$22.00
1540	Lariat tall champagne, Moonglo cutting, (8) ea.	\$15.00
5040	Lariat 12 oz. ftd. ice tea, Moonglo cutting, (4) ea.	\$25.00
5040	Lariat 5 oz. ftd. juice, Moonglo cutting, (5) ea.	\$22.50
5040	Lariat champagne, Moonglo cutting, (11) ea.	\$15.00
5040	Lariat goblet, #1003 Ivy cutting, H	\$27.00
1608	Jewel 7" plate	\$75.00
3308	Bob White goblet, #694 Balboa cutting	\$40.00
3390	Carcassone 3 pt. ftd. jug, Sahara	\$295.00
4004	Impromptu goblet, (5) ea.	\$15.00
4054	Coronation 12 oz. soda, floral cutting	\$25.00
4164	Gallagher 73 oz. water pitcher, Heisey Rose etch	\$595.00
7098	Cut Daisy 8" plate, H	\$50.00

**ERMA HULSLANDER**  
**1427 Ridgeview St.**  
**Mesquite, TX 75149**

**(972) 289-6159**  
**UPS & Ins. Extra**  
**All prices each**  
**H = Marked**

31	Toy, Jack-Be-Nimble candlesticks, pr.	\$65.00
134	Trident 2-lite candlesticks, Sahara, pr.	\$135.00
337	Touraine sherbet, Amberina, H	\$500.00
352	Flat Panel ice cream cone holder, H	\$60.00
500	Octagon frozen custard, Flamingo, (2)	\$15.00
1401	Empress ashtray, Alexandrite, H	\$225.00
1404	Old Sandwich Bar, Sahara	\$95.00
1404	Old Sandwich 1-lite candlesticks, pr.	\$75.00
3484	Donna ice lip pitcher, Orchid etch, H	\$435.00
4091	Kimberly 5 oz. juice, Dolly Madison Rose etch, (8)	\$40.00
4091	Kimberly 4 1/2 oz. claret wine, Dolly Madison etch, H, (8)	\$75.00
4091	Kimberly 5 1/2 oz. Sherbet, Dolly Madison etch, H, (8)	\$40.00
4091	Kimberly 10 oz. tall goblet, Dolly Madison etch, H, (5)	\$60.00
4091	Kimberly 12 oz. ice tea, Dolly Madison etch, (8)	\$50.00
4091	Kimberly 2 oz. wine, H, (6) ea.	\$90.00
4044	New Era cordials, (3)	\$55.00
	Clydesdale	\$350.00
	Giraffe, head back	\$190.00
	Goose, wings up or half	\$80.00
	Mallard, wings half (2)	\$150.00
	Plug Horse	\$90.00
	Rooster vase	\$60.00
	Sparrow tail up	\$70.00
	Filly, head forward, frosted, IG, (2)	\$70.00
	Scotty, Ultra Blue, IG	\$85.00



## The Best Of Heisey Glass...

... with popular patterns like Orchid, Heisey Rose, Minuet, and hundreds more. We also carry other fine crystal and depression glass from Cambridge, Fostoria, Imperial, Duncan & Miller, and more. The world's largest supplier of discontinued and active china, crystal, flatware and collectibles, Replacements, Ltd. carries over 4,000,000 pieces in inventory in over 85,000 patterns.

If you're looking to add to your collection, or if you're looking to sell - call us toll-free. Because even with over 4,000,000 pieces in our inventory, we're always looking for more.

## REPLACEMENTS, LTD.

China, Crystal & Flatware • Discontinued & Active

1089 Knox Road, Greensboro, NC 27420 Dept. HS

**1-800-REPLACE (1-800-737-5223)**

# DEALER DIRECTORY

Maximum 5 lines/12 months/\$35 MEMBERS ONLY

<b>MARJORIE GILLETTE</b> Rochester, New York Glassware Specialty Heisey Mail Orders & Shows (716) 225-4678	<b>SHIRLEY EUGENIA DUNBAR</b> Heisey a Specialty Mail Order, Shows, Appraisals PO Box 7085, Port St. Lucie, FL 34985 Oct-May (407) 337-1558 PO Box 222, Naples, ME 04055 May-Oct (207) 647-5652	<b>COMPARISON LIST</b> New Heisey Auction List for 1997 3 Year's Auction 94-95-96 Price: \$18.00 + \$3.00 Shipping Payable: B. Whaley 300 International Dr., Pataskala, OH 43062 (614) 927-1557
<b>ALL HEISEY AUCTION</b> Consignments Welcome Apple Tree Auction Center 1616 W. Church, Newark, OH 43055 (614) 344-9449	<b>GREEN ACRES FARM</b> Antiques, Crystal Glass & Collectibles 2678 Hazelton-Etna Rd., SW (S.R. 310-N) Pataskala, OH 43062 Sat. or Sun. PM or call (614) 927-1882	<b>MICHAEL KRUMME</b> Cambridge*Heisey*Fostoria*Duncan-Miller*Paden City I search-send detailed want list-all are kept on file PO Box 5542 Santa Monica, CA 90409
<b>D &amp; B ANTIQUES—ATLANTA</b> Bob Bartholomew Members Dixieland Heisey Club PO Box 33283, Decatur, GA 30033 Shows (404) 634-2799 Mail Order	<b>H &amp; R DIAMOND H</b> Helen & Bob Rarey 1450 White Ash Dr. Columbus, OH 43204 (614) 279-0390 after 5:30	<b>JEAN &amp; DON PARRETT</b> Beautiful Heisey Layaways Accepted 4995 Maple Dale Rd. Jackson, Michigan 49201 (517) 784-7319—Recorder
<b>ANTIQUES - THE SHULTZES</b> 206-208 East Main St. Newmanstown, PA 17073 15 Miles West of Reading, PA (610) 589-2819	<b>"HAPPINESS IS" - THE STULTZS</b> 3106 Warren Court, Glen Allen, VA 23060 Shows and Mail Order (804) 672-8102	<b>PATTON HOUSE ANTIQUES</b> Specializing in Glass*Heisey*Cambridge*Fostoria*Duncan* Factory Antique Mall, Verona, VA off I-81 Exit 227 The Antique Gallery, 3140 W. Cary St., Richmond, VA Antiquers Mall, Booth 81, Rt. 29 N., Charlottesville, VA The Daniels, Box 547, Louisa, VA 23093 (540) 967-1181
<b>C&amp;J ANTIQUES</b> Cole & Jean Miesner Box 45, 72 Whig St. Newark Valley, NY 13811 (607) 642-9905	<b>MOUNDBUILDERS ANTIQUES 2ND GENERATION</b> Heisey is our specialty! Mail Order, Searching, Shows (800) 366-4347 Sorry, Buckeye Lake shop temporarily closed	<b>SCHWAN'S ANTIQUES</b> SHOWS & MAILORDER 77 Lagos del Norte Ft. Pierce, FL 34951 (561) 461-5940
<b>DOXTOIS</b> Eva & Joe Hirsh Heisey & Pattern Glass 6 James St., Norwalk, CT 06850 (203) 847-3315	<b>HOOKED ON HEISEY</b> Jay C. Martin 97 Heritage Hill Rd., New Canaan, CT 06840 (203) 966-9359 24 hr. answering machine Mail Orders & Shows	<b>R &amp; L ANTIQUES-SAN FRANCISCO</b> Members of the Golden Gate Heisey Club 3690 Bodega Ave., Petaluma, CA 94952 Petaluma (707) 762-2494 San Francisco (415) 621-6693
<b>CHARLES &amp; MILDRED FISHER</b> Heisey animals and Heisey By Imperial animals 991 Idlewild, Newark, OH 43055 (614) 522-5398	<b>HEISEY IN NORTHEASTERN FLORIDA</b> Hundreds of pieces • You won't be sorry! Call for your personal showing. Located north of St. Augustine, via I-95, Exit 101 Very easy access (904) 280-0450	<b>THE SPARACIO'S</b> Carl & Helen Specializing in American Glass 28 Refy Ave., Ramsey, NJ 07446 (201) 327-2495
<b>CRYSTAL LADY</b> Joann Hagerty Specializing in elegant depression glassware 1817 Vinton St., Omaha, NE 68108 Shop (402) 341-0643 or Home (402) 391-6730	<b>GALAXY ANTIQUE MALL—JIM PAPPAS</b> galaxy-mall.com Email: ljip@galaxy-mall.com Glass and Pottery—Heisey & Blue Ridge a Specialty Phone: (609) 897-0345 Fax: (609) 936-0091 26 Kinglet Dr. N, Cranbury, NJ 08512	<b>MY DAUGHTER'S INHERITANCE</b> Heisey - Crystal - Porcelain Antique Village - 3750 Howard Ave. Kensington, MD 20895 (301) 933-4618 Maggi Smith
<b>FINDER'S ANTIQUE HOUSE</b> 3769 Hwy. 29 North Danville, VA 24540 Open Thursday—Saturday (804) 836-6782 Area's largest selection of Heisey and other Elegant Glassware.	<b>J. &amp; R. COLLECTIBLES</b> Shows, SASE, Mail Order list The Lukasko's PO Box 1030, Newark, OH 43058-1030 (614) 344-9719	<b>APPLE VALLEY COLLECTIBLES</b> Richard Garnett & Anne Borchert PO Box 552, Amenia, NY 12501 (914) 373-8791 Shows & Mail Order *Yesteryears Antique's—Monroe, CT (203) 459-9548*
<b>FRAN'S FANCY FINDS</b> Fran & Jack Grenzbech 10534 Valencia Rd., Seminole, FL 33772-7511 (813) 391-5184 SHOWS MAIL ORDERS	<b>MOSTLY HEISEY</b> Rhoda Curley 16 Clayton Pl., Albany, NY 12209 Shop and Mail Order (800) 972-2775	<b>THE WOODEN SHOE</b> 222 W. Washington St. Charles Town, WV 25414 Fri-Mon 11-5 (304) 725-1673 Glass—Pottery—Kerosene Lamps
<b>FOREVER HEISEY</b> Jan & Norm Thran Mail Order, Shows, Appraisal Service 1663 Londondale Pkwy., Newark, OH 43055 (614) 344-5955	<b>R &amp; S ANTIQUES AND GLASSWARE</b> Heisey-Specializing in Complete Heisey Tableservice Call or write for patterns and colors 2560 S. Maguire Rd. Ocoee, FL 34761 (407) 656-5700 or (407) 298-5980 PM	<b>WILLEY'S ANTIQUES &amp; MUSEUM</b> Specializing in Heisey 11110 Cannon Rd., Frazeyburg, OH 43822 16 miles east of Newark, OH (614) 828-2557
<b>WARREN &amp; MARY WELSH</b> Heisey & other elegant glassware 3635 Saddle Rock Rd., Colorado Springs, CO 80918 (719) 531-5866 Mail Order Shows	<b>GLORIOUS TREASURES ANTIQUE SHOPPE</b> Heisey Glass and other Fine Treasures 518 Main Street, Edmonds, WA 98020 10:00 to 6:00 Mon. thru Sat., Sun. Special events (425) 775-5753	<b>A TOUCH OF GLASS</b> Heisey—Depression—Elegant The Antique Station Case 03R 194 Thomas Johnson Dr., Frederick, MD 21709 David & Lisa Helm (410) 239-4234
<b>GLASS 'N' GLASS</b> Virginia & Odell Johnson 6909 10th Ave. W. Bradenton, FL 34209 (941) 792-0604	<b>G.W. ANTIQUES</b> http://www.sonic.net/~gwant Robert Gindhart (707) 575-8706 Gary Wimmershoff Santa Rosa, CA Heisey, Wedgwood and other fine antiques	<b>HEISEY, etc.</b> Mike & Barb Rosenberger Shows-Mail order (219) 864-1704 5115 W. 78th Ln., Schererville, IN 46375 Visit our web site: www.jorsm.com/elegantglass



## LIMITED EDITION TIGER PAPERWEIGHT

**Sale Dates: February 1 to March 2**



HCA offers the Tiger Paperweight, third in a limited edition series of four, during the 30-day sale dates of **February 1 to March 2, 1998**. The 1998 edition will be produced in **Pink** by Dalzell Viking. This piece will sit perfectly beside your Ice Blue and Yellow Mist Tiger Paperweights! **This sale is open to everyone**. The cost is \$50 each plus \$5 for shipping. Ohio residents must pay sales tax. Orders received prior to the sale date will be held for processing February 1, 1998.

**Mail to:** Tiger Paperweight, 169 W. Church St., Newark, OH 43055 or call (614) 345-2932

Name: \_\_\_\_\_

Address: \_\_\_\_\_

City/State/Zip: \_\_\_\_\_

Phone: \_\_\_\_\_ Tax ID: \_\_\_\_\_

Payment: Check or MasterCard/Visa: \_\_\_\_\_ Exp.: \_\_\_\_\_

Quantity: \_\_\_\_\_ X \$50.00 = \_\_\_\_\_

Tax (OH only) \_\_\_\_\_ X \$3.00 = \_\_\_\_\_

Shipping (EACH) \_\_\_\_\_ X \$5.00 = \_\_\_\_\_

TOTAL \_\_\_\_\_

**PLEASE CIRCLE**

SHIP

PICK UP



**Visit The  
National  
Heisey  
Glass  
Museum**

Come at your leisure to enjoy more than 4,800 pieces of glassware produced by A.H. Heisey and Company from 1896-1957. Hundreds of patterns are featured in all production colors. Rare and experimental items are included as well.

Facilities are air-conditioned and handicapped accessible. Hours are 10:00 a.m. to 4:00 p.m. Tuesday through Saturday, 1:00 to 4:00 p.m. Sunday. Members are admitted free, regular admission is \$2. Office hours are 8:00 a.m. to 4:30 p.m. weekdays.

**Membership Renewal Notice:** Check the date above your name and address on the mailing label. This is your expiration date. If it reads 11-10-97 make sure your dues are paid soon in order to receive next month's issue of Heisey News. Dues are \$22.00 per year, plus \$5.00 for each additional household member.

POSTMASTER SEND FORM 3579 TO:

**HCA**

**169 W. Church St.**

**Newark, OH 43055**



**PERIODICAL POSTAGE PAID**