

HEISEY NEWS

The Official Publication of Heisey Collectors of America, Inc.

Volume XXVI No. 10

September 1997

ISSN 0731-8014



© Heisey Collectors of America, Inc.

All rights reserved 1997

Inside this Issue: Last chance to order a lavender Ice Colt Set. Plus, the continuing interview with Fred Bosworth and an article on Crystolite stemware.

Kaufmann's Department Store in Pittsburgh, PA dressed this table for fall, complete with Crystolite, china and squirrel figurines!

HEISEY NEWS

Heisey Collectors of America, Inc.
169 West Church Street
Newark, Ohio 43055
Phone (614) 345-2932 Fax (614) 345-9638
E-mail: heisey@infinet.com
WEB SITE: www.ahheisey.com
All Rights Reserved 1997
ISSN 0731-8014

Editor

Molly Kaspar

Administrator

Mary Ourant

HCA President

Tom Bischoff, (419) 533-7431

HCA Vice President

Bob Rarey, (614) 279-0390

HCA Secretary

Ginny Marsh, (614) 366-5608

HCA Treasurer

Bob McElheney, (419) 537-6890

HEISEY NEWS is published and printed monthly (twice in March), by Heisey Collectors of America, Inc. Periodicals postage paid at Newark. Subscription is limited to HCA members. First class mailing is available for an extra \$13.00, due with payment of membership. If you are having difficulty receiving your newsletter, please contact the HCA Administrative office Monday through Friday 8:00 a.m. to 4:30 p.m.

The opinions expressed in articles in HEISEY NEWS are those of the authors and not necessarily those of the organization. The Editorial Staff reserves the right to edit, with or without the consent of the author, or to refuse any material submitted for publication.

Back Issues

The following volumes are available as complete sets: V, VII, VIII, IX, X, XI, XII, XIII, XIV, XV, XVI, XVII, XVIII, XX, XXI, XXIII, XXIV, XXV for \$15.00 each volume (12 issues, plus auction list if available).

Advertising

Send all ads to: HCA Advertising, 169 W. Church St., Newark, OH 43055 or fax ads to (614) 345-9638, include MasterCard or Visa information. Ads are to be typed or printed on white paper with dark ink. Camera ready ads accepted, but must follow line specifications. Ads containing reproductions will not knowingly be accepted unless clearly stated (e.g. Heisey by Imperial, etc.) HEISEY NEWS accepts no further liability. See Advertising section for rates and deadlines.

Museum

Heisey Collectors of America, Inc., a non profit corporation (tax exempt status), owns and operates The National Heisey Glass Museum in Veteran's Park, 6th and Church Streets, Newark, Ohio. Open Tuesday-Saturday 10-4, Sunday 1-4, closed holidays. Other hours by appointment. Members admitted free.

Identification

HCA will attempt to identify unknown glass items. Please enclose a photograph with your drawings or descriptions. Other arrangements should be made in advance with the museum staff.

Membership

To join Heisey Collectors of America or to renew your membership, contact HCA Administrative office Monday through Friday 8:00 a.m. to 4:30 p.m. Associate dues are \$22.00 plus \$5.00 for each additional household member. Voting members pay an additional one-time fee of \$25.00. Please consider supporting the Endowment Fund by joining at one of the levels listed on the back page.

Museum Shop

There is always someone available in the shop to answer questions or take your order. When ordering by phone, please have a credit card ready. When ordering by mail, please be sure to include appropriate charges such as shipping and sales tax.

Shipping and Receiving

Delivery is made much easier when we have a complete street address, not a PO Box. We prefer to use UPS. If you have not received a package, please call the administrative office, to confirm it was sent. He will assist you in tracing it. If your package arrives damaged, please contact your local UPS representative. We insure everything.

Donations and Loans to the Museum

If you have something you would like to share with the museum or have questions regarding items on loan, please contact the curatorial staff. HCA reserves the right to accept or refuse items based on current holdings.

Calendar

Fall Quarterly Meeting & Dinner September 12-13
17th Annual Glass Show and Sale Nov. 15-16
Sponsored by the Connecticut HCC

Features

Limited Edition Sale—Colt Set

Order Form 4

Anybody Seen Vincent?

Carl Sparacio 5

Interview with Fred Bosworth, Part II

8-12

Crystolite Blown Stemware—Pattern No. 5003

Jay Martin 13-15

Crossword Puzzle—A.H. Heisey & Co.

Tom Files 16-17

Heisey Advertisement

18

September Quarterly Dinner Reservation Form

19

Study Club Directory

20

News From the Shop

21

Departments

President's Discourse, Tom Bischoff

3

Museum Happenings, Molly Kaspar

4

From the Archives, Don Valdes

6-7

Club Notes

21

Advertising

22-27

THE PRESIDENT'S DISCOURSE

TOM BISCHOFF

I am sorry to report the death of Russell Ream in July. He was the husband of Louise Ream and also a long time supporter of HCA. Our condolences go to the family and friends. I also am sorry to report the resignation from the HCA Board of Jim Houghton whose input will be missed.

The July Planning Session (Board Meeting) had a lengthy agenda. A policy was established that the cost of a convention week preview show ticket will be at least the cost of registration plus preview ticket purchased with registration. We hope this will encourage more registrants who will then be encouraged to take advantage of the other activities offered by HCA.

At the meeting, Chuck Jones gave a presentation on the activities and direction the Endowment Committee would like to take. The Board will be reviewing the proposals and will take action at the December Meeting deciding the long term direction in which the Endowment Committee should be heading. At the September meeting, the Board will be deciding how funds from Miriam Pringle will be invested getting input from Park National Bank.

The September Membership Quarterly Meeting will be held immediately following the Percy and Vivian Moore dinner, held this year at the Holiday Inn, Issaquah, Washington.

A couple of weeks ago Bob McElheney and I along with the help of Molly Kaspar destroyed Imperial Asiatic Pheasants which were taking up storage space. To answer a question which comes up periodically, you should be advised glass put on display during convention week is covered by HCA insurance only while it is in the display building. It is not covered in transit and the form which you are requested to fill out must be complete for your own protection. Any damage or loss must be brought to our attention before your items leave the building. Bob Rarey will be writing an article soon concerning the Benefit Auction procedures to be followed this coming year.

Linda and I recently attended the Toothpick Collectors of America display in Toledo, Ohio. Heisey was well represented and we had the opportunity to view a Locket on Chain toothpick in Emerald!

Last month Carl Sparacio mentioned you would read elsewhere about the reduction of the number of Board members from twenty to sixteen. This proposal, adopted as a Constitutional Amendment at the Annual Meeting, will take effect over the course of the next four years.

The 1998 Operating Budget will be discussed at the September Board Meeting and will be approved at the December Meeting. My thanks to Bob McElheney for preparation of the draft for Board consideration. ♦

MUSEUM HAPPENINGS

MOLLY KASPAR

There is a lot of interesting information in this issue...per a member's request I've included an article on Crystolite stemware which appeared in a 1990 *Heisey News* issue. While we have nearly all back issues of the *News* available, it seems that we're out of 1990.

Correction: two endowment fund donors were listed incorrectly in the August *Heisey News*. The Oregon Trail Heisey Collectors Club donated \$107 in memory of Mildred Loudon. Mike and Barb Rosenberger donated \$25 in honor of Tim Rector's sister, Brenda. I apologize for the mistakes.

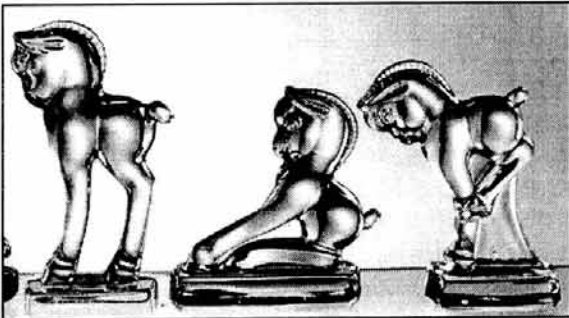
Also in this issue—the continuing interview with Fred Bosworth, former A.H. Heisey and Company salesman. This month he discusses cuttings and blown ware. I've been searching through Don's domain in the archives and found some fascinating information, such as pictures and correspondence I've never seen. I find it interesting to hear about Heisey from a salesman's point of view. I'll find more treasures for next month.

The registration deadline for the September dinner and souvenir is September 5. Hurry and make your reservations! The deadline for ordering the Lavender Ice Colt set is quickly approaching—September 13. Don't miss out on this special limited edition, numbered set.

The museum has remained busy during the summer months. Just this week we've had three tours totaling over 150 people. Many people stop by when they're traveling through Newark, usually not knowing exactly what A.H. Heisey and Company glass is all about. When they depart they leave with a newfound respect for Heisey and the glass industry.

The HCA Glass Studio has also been bustling with visitors. The heat doesn't seem to bother the glass blowers nor the people watching them create works of art. The next paperweight making class is Saturday, September 27 at 10 a.m. Call and reserve your spot. If you love glass I promise you will love the class! ♦

SPECIAL LIMITED EDITION SALE—COLT SETS



Have we got something special for all of our Lavender Ice collectors! The next offering in the Lavender Ice series is the three piece Colt Set—one kicking, one standing and one rearing. This popular set is offered to **members only**. The numbered sets may be ordered only during the special order dates: **August 15 through September 13**. Orders will not be processed until the beginning sale date. The cost is \$75.00 plus \$4.50 tax (**Ohio residents only**). Shipping is included in the cost. Orders accepted via mail, fax and phone. Call (614) 345-2932 to order or fax (614) 345-9638. ♦

Mail to: Colt Set, 169 W. Church St., Newark, OH 43055. Call (614) 345-2932.

Name: _____

Address: _____

City/State/Zip: _____

Phone: _____ OH Tax ID#: _____

Payment: Check or MasterCard/Visa: _____ exp.: _____

Quantity: _____ X \$75.00 = _____

Tax (OH ONLY): _____ X \$4.50 = _____

TOTAL: _____ = _____

Please Circle
SHIP
PICKUP

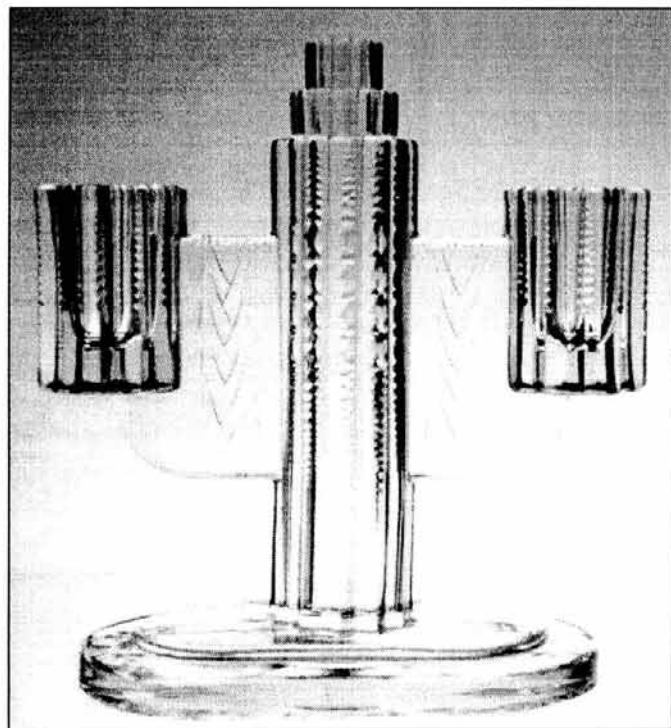
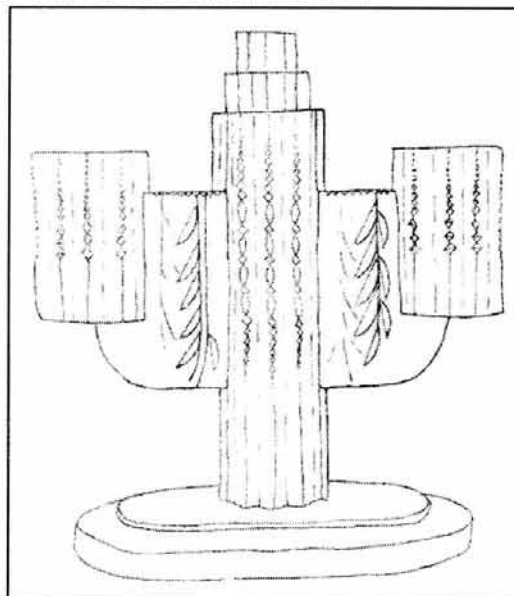
ANYBODY SEEN VINCENT?

CARL SPARACIO

As well researched and documented the glass we love is, there's a lot about Heisey we don't know. You see a reference about something of interest but no amount of research turns up a clue as to what it actually is. Such is the case with Heisey's no. 884 "Vincent" cutting.

Aha! just as I suspected, you don't know anything about "Vincent" either. And why would anyone care? you may ask. I'll tell you why—because I happen to be related to a nag. No, not my wife, my brother Vince (though they both are running neck and neck for the title.) I don't know if brother Vince is wound up about no. 884 "Vincent" because this cutting shares his name or because it's on Ridgeleigh, a Heisey pattern with which he's obsessed.

Ever since it was mentioned in Bob O'Grady's article on the Ridgeleigh two light candelabra in the November 1984 issue of the *Heisey News*, Vince has been sniffing like a Bloodhound who has lost the trail. Bob mentioned that this Ridgeleigh stick was offered in two cuttings: no. 883 Royal York and no. 884 Vincent. We know what no. 883 Royal York looks like but no. 884 Vincent is a mystery. Normal people could accept this but a Ridgeleigh nut needs more. ♦



FROM THE ARCHIVES—MYSTERIES ABOUND IN THE ARCHIVES

DON VALDES

This month I'd like to present you with two mysteries. I'll bet some old timer will be able to solve, or at least throw some light on the subject.

Mystery #1:

In sorting and cataloging I came across a photocopied, handwritten letter. I have not seen the original. The letter, faithfully copied with original spelling, punctuation, etc., is as follows:

Nov. 15th

To whom it may concern:-

This vase was molded off by and by Arthur Kessmeyer (*corrected to eier*), a fine Swedish gentleman, and one of the few exceptionally expert blow pipe artisans during his life span..

All his work was done in the factory room. Glass was gathered in a long hollow pipe from a pot of molten glass, then shaped by a wooden paddle. Then swung out to desired length. Tenderly caressed by the paddle to conform to the con cave or con vex lines desired. Thus the bowl has been formed.

Now a ball of glass is gathered and added to the bottom of the vase, rolled and chilled. This is to be the stem of the vase. Then another ball of glass is gathered and added to the stem. This is squeezed out by two wooden paddles to form a foot, then cooled and placed in the lehr to become annealed.

Tom Holman, the crack off foreman, handled the vase personally. Crack off is done by scoring the vase at the proper height, grinding and beveling after crack off completes his work.

Cracking off is done by scoring at the proper height with a black diamond. Heat is applied to the score mark & the vase turned or spun until it cracks evenly around, then ground & beveled..

From here the vase is placed in the hands of Emil Krall, expert engraver & cutter. He grinds and cuts the ball which is to be the stem into a Kohinoor button. Grinds the foot down to proper size, then polishes stem and foot with pumice, yellow lead then rouge to obtain beautiful luster and sheen.

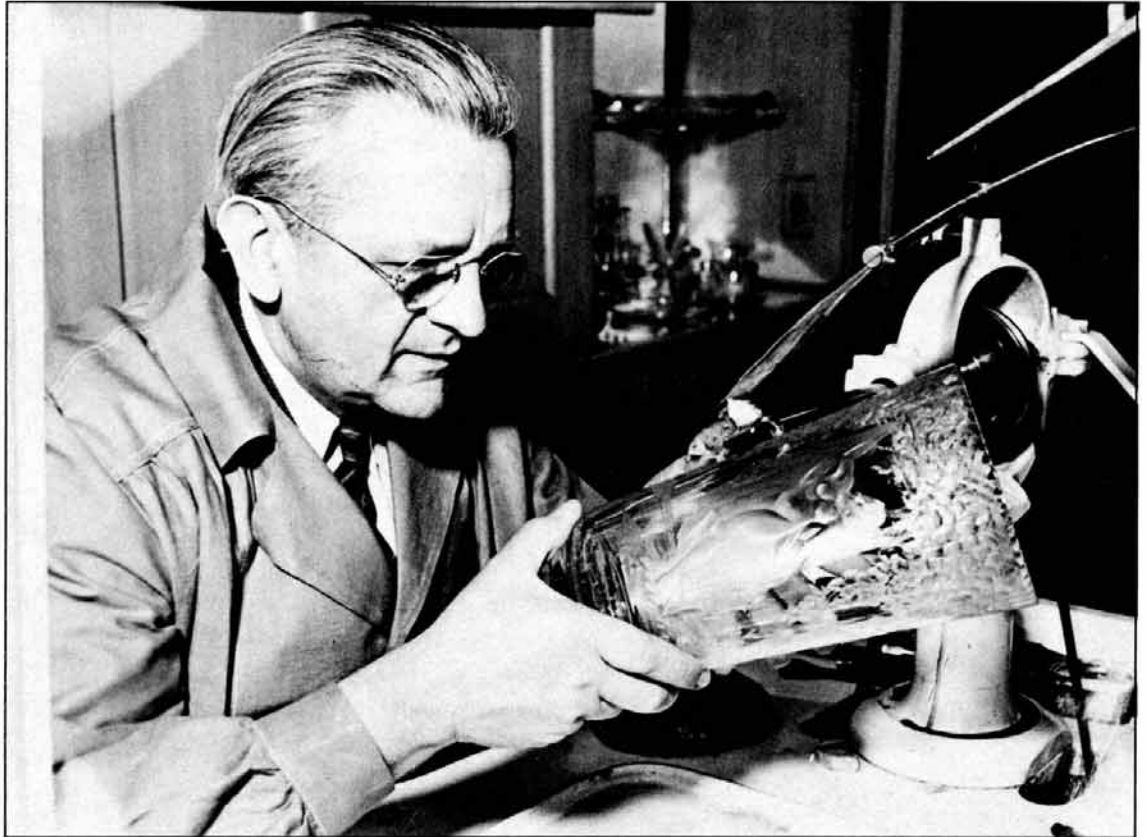
Now the great artistry of Mr. Krall is displayed by the wonderful scenes, engraved cut, and polished where desired to become this great and beautiful vase.

Mr. Emil Krall had no peers in the art of cutting, engraving and polishing. His ability to create scenes & complete them on glass is and has been well known the world over.

This is the history of the wonderful vase you are admiring, which was followed step by step by me.

(signed) Emmett E Olson

Accompanying the above was a photograph of Emil Krall engraving a vase. (We have several enlarged copies of the photo in the archives.) On the back of the photograph are notations indicating that the picture was used in one of the past *Heisey News*. That will take some searching and I am not at all sure that is the way you would like me to be spending my time.



Further, I wonder about the vase. Where is it? From the last sentence of

Emmett Olson's statement it is clear that the vase was on exhibit somewhere. Does anyone out there in collector land know where?

Mystery #2

Following convention Mary O. presented me with a number of items various members had brought for donations to the archives. We received some neat advertisements that I had not seen before, some early HCA news announcements, etc. Among the etc. was an *Alfred Hitchcock's Mystery Magazine*, dated April 1978 and given by Dorothy Leviton of Northbrook, IL. A bookmark on page 103 provided the explanation. The author is John Lutz, the scene is an auction. I quote:

The bald man held up a tiny jar in a metal holder. The jar caught the bright overhead light and glinted with diamond brilliance.

The colonel's grin was almost as bright. "Hey, she's a cut-glass pickle jar!"

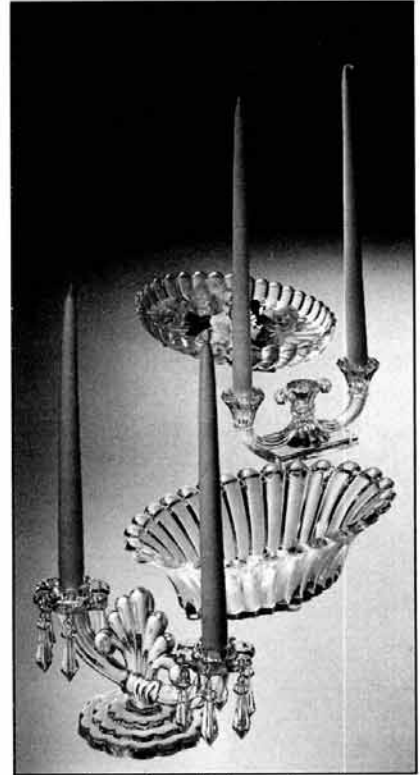
"Made by Heisey!" the bald man shouted, gazing at the jar with something like rapture.

The mystery? Is there or was there such a thing as a Heisey cut-glass pickle jar? Did John Lutz ever see one? Is he related to anyone from Olmsted Falls, Ohio?♦

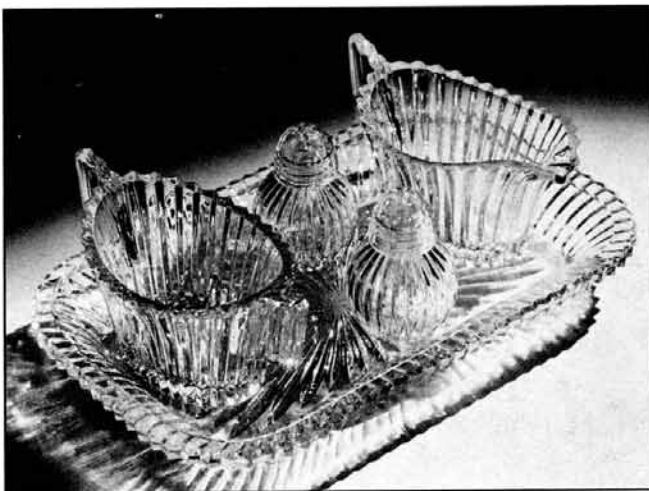
INTERVIEW, PART II—FRED BOSWORTH

The next way of treating glassware is to put a cutting upon it. You can have gray cutting, polished cutting and engraving or copper wheel engraving cut under the wheel (normal cutting is done over the wheel). Heisey could do both, copper wheel engraving and the "over the wheel" cutting. A very famous family worked for Heisey, and they were named Krall. I never knew them very well personally, except the older Mr. Krall appeared once at a demonstration we put on at Bloomingdale's in New York. He cut me a piece of glass with a rose that he did freehand right then and there on the floor of Bloomingdale's. He was a consummate artist—there was no question about it.

I recall at this same exhibition at Bloomingdale's where a customer came up and she said she wanted to have a gift for her daughter—she said she wanted her daughter's name written on it, and he said, "What's her name?" and she said, "Evangeline". Mr. Krall spoke slightly broken English, and the customer wrote down Evangeline on it, and he just picked up a rose bowl and he wrote "Evangeline" beautifully, using this copper wheel engraving process—just cut it right like that and handed it over to her. She paid her money for it and took it home.



Certainly these men were really artists. We had other people who did cutting in our shops. I imagine we averaged about—I'm guessing now—fifteen to eighteen cutters, and they varied from people who did just the most ordinary leaves and things to the Krall family. He had several sons or nephews, I'm not sure of the exact relationship, but many people in the factory could tell you that the Krall people themselves could do all types of intricate work.



There was a good volume for what I call plain pressed ware, and as I listen to my notes here, I hope you don't think I mean a plain piece of glass. I would call Crystolite or Ridgeleigh or Lariat a plain piece of pressed ware because it is made and there's nothing else done to it. It's made in the mold, and it's not plain glass, I hope you understand that. It could be figured and usually was, but when you took a plate, 1509 14" torte plate, which retailed, I'm guessing now, for \$3.00 to \$4.00 perhaps in the late 30's and put a cutting on it and polished it, and we polished by dipping in acid—the price suddenly changed to \$12.00 to \$16.00. Cutting is expensive.

In our shop it was particularly expensive. I never felt it was a really well run or economically managed shop. A cutting shop is, can be, the simplest thing and the cheapest thing or it can be frightfully expensive. There are gray cut pieces on the market where they just put a little petal flower and call it cut glass and it costs pennies to do



this. Or there is an elaborate cutting which Heisey always seemed to do which can literally cost a fortune, bringing the price up as I say three or four or five times what the plain blank would cost.

Another proposition that made it difficult and I claim was inefficiency was that about this time, the World War II era, cutting machines came into the market, and Heisey could never seem to clear it with the union and with our local that we should install machines. United States Glass and many other factories used machines a great deal. In other words, in even the most primitive machines you could put 8 or ten pieces on and they would be cut by machine, and eight or ten of them would be cut at the same time rather than one. They had all kinds of union trouble, and you can imagine

one man doing the work of eight. We were not in—I felt that we were never in—the market with the really sharp people in the cutting business. By sharp, I mean the Cataract-Sharp in Buffalo, New York who enjoyed I believe 75% of the cut business

If you find Heisey cuttings and you can identify them—they are hard to identify because generally we cut the Diamond-H out as being something that cheapened the glass rather than enhanced it. Today I know everything—the Diamond H is your battle flag, if you will. If you see the Diamond H you know it's Heisey, but many, many cut pieces don't show the Diamond H. And as a matter of fact, the salesmen, and notably myself, objected very strenuously. After all, Federal Glass and Fry Glass and Anchor Hocking all put their stamp on a little plate sorta like Tiffin's in New York that we tried to sell. They did not want to see a Diamond H in the center of a gorgeous cut plate, so I would say that if you find and can possibly identify any Heisey cut ware in the market, grab it because it's a scarcity. We didn't make that much of it, and I would almost bet that it was a loss to the factory, the entire cutting operation.



You can't talk about cutting flatware or pressed ware without getting into the whole subject of blown ware. I would guess 90% of the cutting process goes onto stemware, rather than onto flatware. Flatware and the cutting, I think I have tried to indicate, is a minor business but the blown ware business, that is blowing goblets, shams, sherbets, wines, bowls, vases—the entire blown ware business, is a separate thing that almost has

to be addressed by itself. You can be a perfectly wonderful press ware factory, and I believe that Heisey was that, and you can be a pretty terrible blown ware factory—and I wouldn't put Heisey in a terrible category—but I certainly have never felt that we were as good at making stemware and blown ware as we were at making pressed ware. So as I say, it naturally goes from pressed ware—when you talk about cuttings you stop talking about pressed ware, then you must go into blown ware because, again an educated



guess, 90% of the cut ware goes onto stemware blanks. When you think of your own collection of glassware, practically whatever you have that's cut is stemware.

Heisey's stemware can be categorized in three directions: Plain, like New Era #4044 and Crystolite were plain stemware patterns, and they essentially were plain patterns; they didn't need anything on them. They sold as a free form design. Then the next category were fancy items like all the rest of our line practically which were sometimes sold plain with a wide optic or swirl optic but mostly were either etched or cut. And

I'm going to address myself mostly to those two categories, etched and cut, because that again is where the volume is and you want to know—as well as I always wanted to know—where the business was done. And A.H. Heisey and Company in my time always had trouble with their stemware. It's a strange thing; I don't know why it was, what inefficiencies we had, I do know that many of my peers, people who worked for companies like Seneca and Bryce and others—West Virginia even—who made stemware didn't make pressed ware.

Tiffin's is a good example, up in Ohio. They made stemware in Tiffin, Ohio, but their pressed ware—they made a lot of it, semi-machine produced—was all made down in Glassport, Pennsylvania. In other words, they didn't like the feeling of mixing the two together. Now that's pure conjecture and I'm sure a real glass expert, not just one who just sold it, would quarrel with me on that basis. It seems like we made pressed ware by the long ton—always good quality never much trouble, and our stemware was just the opposite. I was always getting complaints. About the biggest complaint I used to receive was that the edges weren't properly annealed. If you've ever rubbed your finger or your hand around the edge of a goblet, it's got to feel smooth. It can't be feeling that you might cut yourself on it.



Our color ran quite good. We would occasionally get a little green or pink but mostly our color ran very well. Our craftsmanship was good, our stems and feet. They were done very well, but we would have trouble, it seems to me, on the edges and also on



the ring. Of course we only used a small percentage of lead. All the Americans used 6 to 10 percent of lead I'm told, as a maximum—half-crystal they call it on the European market. I know many people will deny what I'm saying but when you walk into a store and the dealer says, "Hey, I just got a bunch of your stuff back because—listen to this—and he'd hit a goblet and it would ring "bong" and the next goblet would go "tinkle" and the next goblet would go "unch". That's an overdrawn case, of course, but the glass did not consistently sound the same. Now there are many reasons why this would be, and I think you need a glass technician to get in here and talk about that rather than a salesman.

Continuing with the stemware picture as it was in the time I speak of (1937 to 1953) Heisey, as I indicated, was not a principal factor in stemware. Number one by all odds was the Cataract-Sharp in

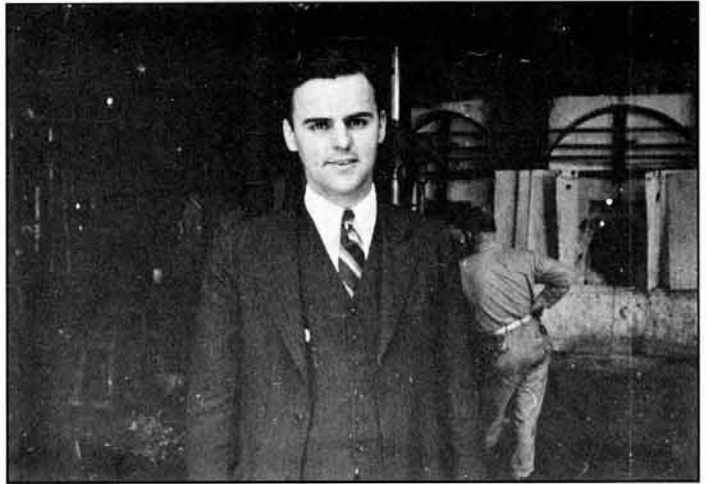
Buffalo. They were cutters and I'm told that at one time they had 500 frames going, more than the rest of the industry put together. As a buyer, I bought at least 75% of my department from Cataract-Sharp. They would have stems cut and polished with a certain amount of lead in them. The blanks were made by Bryce—to retail from \$1 to \$3. Heisey, Fostoria, and Duncan stemware retailed from \$2.75 to \$5 to \$6 a stem, so you see we were in a very different baseball league. However, Cataract-Sharp's main business was with department stores, especially the larger ones. Syndicates of department stores which had to go with us, like the small town jeweler who Cataract-Sharp was not interested in. They bought too small a quantity, and so there was a scramble between Heisey, Fostoria, Duncan, Seneca, so forth, for this class of business. So the way it worked out in my estimation is that where the jeweler was strong, particularly in the south and southwest and in many parts of the midwest, there was a pretty fair stemware business to be done. Where the jeweler was not the ruling potentate of glassware as in the northeast and the Pacific coast, we had a hard struggle to get stemware business.



Most of the stemware that I sold was etched stemware. We had a pattern like Orchid which sold very well, and people like it and might start off with a mayonnaise dish and wind up with stemware, which became a considerable order. I think probably all of you are familiar with the bridal registry, where a bride comes in, picks a pattern and all her

friends give her something in that pattern. With a pattern like Orchid or any big etched pattern, you can buy her \$25 worth of stemware or you can go as low as \$3 or \$4 and buy a mayonnaise bowl or some small item out of our pressed line of Orchid.

It was a nice business, but cut stemware business, you would have to ask someone else than me. I didn't sell a great deal of it, not for lack of trying, and I had lots of exclusive accounts who would get it bring it in, but it was hard work retailing it against such an outstanding company as Cataract-Sharp. The better class of stemware was sold by United States Glass Company in Tiffin, Ohio. Just to bring this section to a close, and answering the questionnaire that's been given to me, what small amounts of cut stemware I sold, the leading patterns would have been Arcadia, Barcelona and Danish Princess. ♦



CRYSTOLITE BLOWN STEMWARE—PATTERN No. 5003

JAY MARTIN

Reprinted from May 1990 Heisey News, vol. XIX no. 5

After over seven years of collecting and studying Heisey's Crystolite pattern I am finally able to say, with some confidence, that I can tell all eight of the regular production line stems apart. I honestly could not have made this statement in the first few years of my experience.

The difficulty for me was in distinguishing the difference between them when they were not lined up side-by-side as they are in the Heisey catalog pictures. This is particularly true of the 3½ oz. cocktail and the 3½ oz. oyster cocktail. I could never tell which one I had in my hand! In talking with other collectors I found I was not alone.

Experience taught me that the best way to deal with this problem was to study the different pieces, to be compared, by actually handling them. I believe this to hold true in dealing with other Heisey identification problems, as well.

In this article an attempt will be made to give descriptions of each of the Crystolite stems which will help in distinguishing their differences.

However, there is yet another pitfall in identifying Crystolite stems. Heisey used the same stem design in their no. 5077 Legionnaire line, designed in 1949 by Horace King. See Mr. King's article *Stemware...Bar Lines and Novelties* in the December issue of the *Heisey News*. In this article he mentions that he "...used modifications of the Crystolite stem and inverted in both cases" for his design of the no. 6003 Tempo and the no. 6004 Classic stem lines. Neither of which is easily confused with Crystolite.

Legionnaire, with its stems being exactly the same as Crystolite, is the really confusing look-a-like. The size and shape of the eight Legionnaire pieces are the same as the eight Crystolite pieces, however, the bowls tend to be thicker.

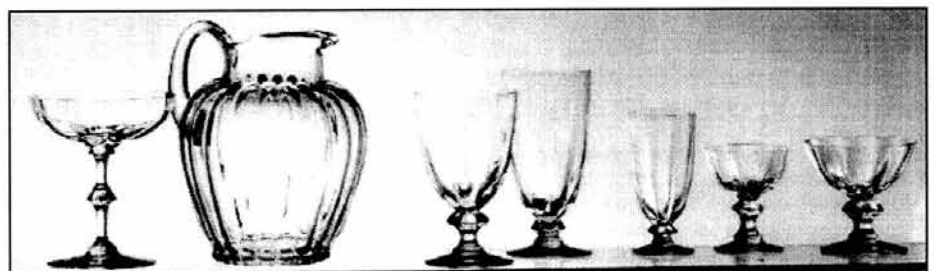
There is one major difference between the two patterns. Crystolite has a wide optic in its bowls and Legionnaire does not. This is a very simple but distinctive difference. However, at first glance you may be deceived.

As part of the descriptions which follow, you will find approximated dimensions to the nearest one-eighth of an inch. These are intended to be used in comparing the different Crystolite stems to one another and are not to be taken as a guide for the height of a no. 5003 cordial, etc. Please remember, we are dealing with handmade glassware, therefore each piece can be expected to be slightly different. For example, eight Crystolite goblets may range in height from 5¾" to 6".

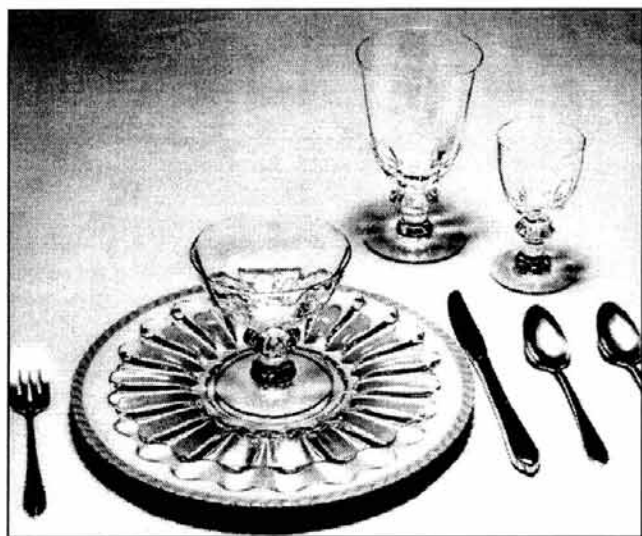
Crystolite blown stems have simple, graceful lines that make for a somewhat plain but elegant appearance. The wide optic in the bowls sets off this elegance in each



Illustration from a
salesman brochure



Archives picture



Archives picture

piece. These features, combined with Heisey's quality glass formulas, are surely responsible, if only in part, for the popularity that made this pattern a big seller for nineteen years.

All of these Crystolite stems, except the cordial, were produced by Heisey from 1938 to 1957, a total of nineteen years. The cordial was produced from 1944 to 1957. You'd think they would be easy to find!

I have examples of each of the eight pieces with the Diamond H trademark pressed into the stem. Mostly the marks are very small and hard to find, especially in dim or artificial light, or have melted away in the fire polishing. There is no reference in the book *Heisey by Imperial* to Imperial having ever made any of the Crystolite stems.

Item	Height	Diameter of bowl	Height of bowl	Stem length	Mark
10 oz goblet	3 7/8"	3 3/8"	4"	1 1/2"	bottom of stem
3 1/2 oz. claret	4 1/4"	2 3/8"	2 1/2"	1 1/2"	under knob
6 oz. sherbet	3 3/4"	3 7/8"	2"	1 1/4"	under knob
3 1/2 oz. cocktail	3 5/8"	2 3/4"	1 3/4"	1 1/4"	under knob
1 oz. cordial	3 5/8"	1 1/2"	1 3/4"	1 1/2"	under knob
3 1/2 oz. oyster cocktail	3 1/2"	2 3/8"	2 1/2"	3/4"	under knob
5 oz. footed juice	5 3/4"	2 1/4"	3 3/4"	3/4"	under knob
12 oz. footed ice tea	6 3/8"	3"	5"	3/4"	under knob

10 oz. Goblet

The goblet is of good medium proportion and weight. It feels good in use which makes drinking from it easy. It has a round full bowl which is not too high. If you do not plan on buying all eight different shapes in this line the goblet is versatile enough for many uses. It is the second tallest of the eight Crystolite stems.

3 1/2 oz. Claret

The claret fits comfortable in the hand and is an appropriate size and shape for its intended use. I don't know any claret drinkers so I use mine for sherry. The shape is very similar to that of the goblet but of course the size is scaled down. it is the fourth tallest of the eight Crystolite stems.

6 oz. Sherbet (Saucer Champagne)

The sherbet's bowl is wide and shallow. It makes up more than one half of the total height. It is ideal for serving sherbet, of course, as well as fruit cocktail, pudding, etc. It is the fifth tallest of the eight Crystolite stems.

3½ oz. Cocktail

The cocktail is the perfect serving piece for a Manhattan (who drinks Manhattans anymore?). I find it awkward to use but it was correct for its purpose. It has the same bowl height and overall height as the cordial. It is the sixth tallest of the eight Crystolite stems.

1 oz. Cordial

The cordial has, of course, the smallest bowl and is the only fragile (thin) stem of the entire line. It is the only Crystolite stem in which the stem itself makes up the majority of its height. It has, by far, the most graceful lines and it is true elegance itself. It is the same height as the 3½ oz. cocktail and so is also the sixth tallest of the eight Crystolite stems.

3½ oz. Oyster Cocktail

The oyster cocktail has a bowl which is much deeper and more narrow than the 3½ oz. cocktail. Its stem is much shorter too. It is hardly more than the knob which is at the top of the preceding five stems. It appears to have the same bowl as on the claret but note the difference in the stem length. It is the seventh tallest of the eight Crystolite stems.

5 oz. Footed Juice

The footed juice has very vertical lines which make it slim and graceful. Its height is more than two and one half its diameter. It is perfect for a V-8 juice appetizer or an elegant orange juice. It is the third tallest of the eight Crystolite stems.

12 oz. Footed Ice Tea

The footed ice tea also has very vertical lines but is much taller and not nearly as slim as the footed juice. The stem, once again, is just the knob as in the oyster cocktail and the footed juice. It is, naturally, perfectly suited for ice tea or as a water goblet if you used your 10 oz. goblets for wine. It is the tallest of the eight Crystolite stems.

There is yet another Crystolite blown stem, as well as one pressed stem which I have not mentioned in this article. They are the no. 5003 5" comport and the no. 1503 footed tumbler (pressed goblet).♦

Left to right: 10 oz. goblet, 3½ oz. claret, 6 oz. sherbet, 3½ oz. cocktail, 1 oz. cordial, 3½ oz. oyster cocktail, 5 oz. footed juice, 12 oz. ice tea.



CROSSWORD—A.H. HEISEY & CO.

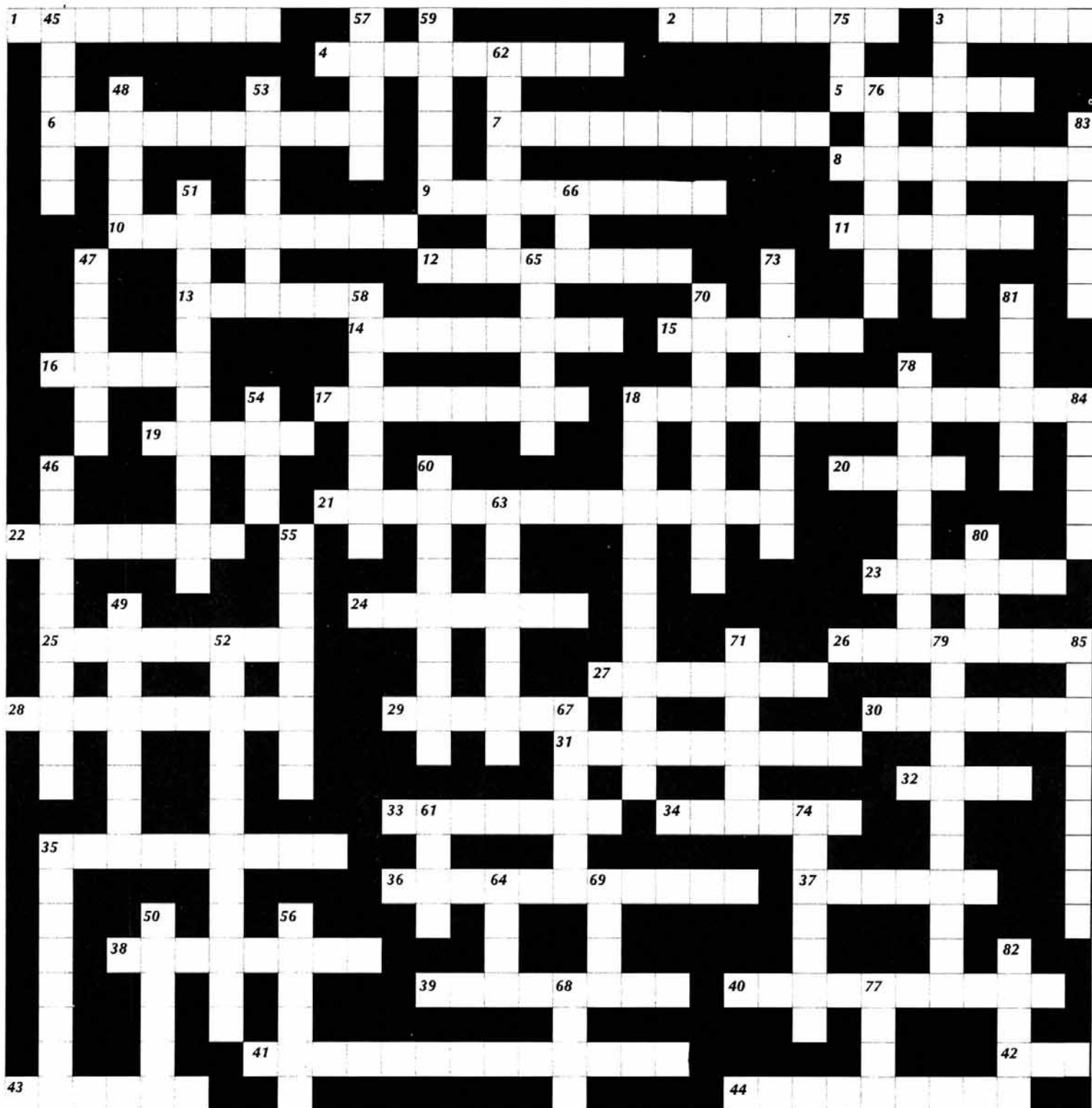
TOM FILES

Across:

1. Region of Northwest France
2. Literary work of ancient Greece
3. Catawba or Concord
4. Rough Adam bone
5. Seaman
6. Equal part of circumference
7. Uncultured local
8. Pursue by song
9. Pachyderms
10. Engraver from Austrian court
11. Honda or Riata
12. Florida Bay
13. Pattern No. 3312
14. Cynosure
15. Brimless Scottish cap
16. Globe
17. Japanese sovereign
18. Spinner and blower
19. Oak dropping
20. Part. to enemy: Adversary
21. Small perchers
22. Quiver-ly
23. Two Signs of this: Aries and Leo
24. Cry to the hounds
25. Panhandle city
26. Trademark of the club
27. Three pronged spear
28. Three lakes in county Kerry
29. Printed calico
30. English castle
31. Spur of the moment
32. Leaflike fronds
33. County borough of Southeast England
34. Medieval teutonic
35. Orbiting object
36. Aged bologna on bread
37. Monday night Frank's wife
38. Wild carrot lace
39. Spanish dance
40. Daffodil
41. This cape is most westernly point of N. America
42. Samovar
43. Worship
44. Argon blinds

Down:

3. Preceded the gold set
18. Jail line
35. _____ Laural, _____ Lange
45. Disa of Vanda
46. Old Southern estate
47. Baroque
48. Blaze
49. Sloop
50. Sect founder was George Fox
51. Swift parchment
52. Licking moniker
53. Homer's lock opener
54. Goddess of the Rainbow
55. Pattern no. 1776
56. His was was OPS
57. Halley's
58. Four year period
59. Cutting no. 614
60. Kansas city outdoor theater
61. Game played on horseback
62. Widow of an emperor
63. Antietam and Pimlico are here
64. Trumpeter
65. Old name for China
66. Acronym for Hospital Corp. of America
67. Limelight's cousin
68. Grandson was Enos
69. First light
70. Luna glint
71. Casque
73. Liz's place
74. Container for writing liquid
75. Rheus or sumac
76. _____ Isle, sland for Ireland
77. Turbot
78. Location of Kings of Argon palace
79. Author was Alexandre Dumas
80. City on isle of Hawaii
81. Arnold, Jack or Tiger
82. Goddess of love
83. Modern age
84. Arab Romaer
85. Farrier's filly footwear



NEW PATTERNS IN

Heisey Glass

SPARKLING TRADITIONAL
OR MODERN ACCESSORIES



Count Heisey glass among your blessings in planning interesting and distinctive room arrangements! You'll find exquisite shapes and designs in stemware; scintillating originality in the great variety of decorative pieces; cocktail and smoking accessories; and unbelievably moderate prices that slip easily into a slim budget. The two new designs illustrated are only a hint of the exciting possibilities for working out fresh decorative accents in Heisey Glass for any type of room.



A. H. HEISEY & COMPANY

Make your hotel reservations through Holiday Inn nationwide telephone number
(Nightly rate \$68 plus 11% tax good through August 22, 1997—\$80 per night thereafter.)

19



STUDY CLUB DIRECTORY

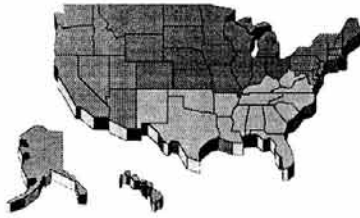
Interested in joining a study club? This updated list of the HCA Study Clubs reflects information obtained from a questionnaire mailed early this spring. Why not join a local study club? You will have the opportunity to meet fellow collectors and HCA members and learn more about your favorite glassware. If your club is not listed please forward the appropriate information—club name, contact name and phone number, when and where you meet—to Heisey News, 169 W. Church St., Newark, OH 43055.

STUDY CLUB	MEET WHEN?	WHERE?	CONTACT NAME
#1 Newark Heisey Collectors Club**			
#4 Central Illinois Heisey Collectors Club	4 meetings a year: Feb, May, Aug, Nov	Member's homes	Lester Riley (309) 346-1725
#5 Bay State Heisey Collectors Club	2nd. Tuesday of each month	Follen Church	Douglas Wynne*
#7 Dayton Area Heisey Collectors Club	3rd Tues. of the month Sept. to May, 6:30 pm	Huber Heights Library	Georgia Otten (937) 274-2662
#8 Heisey Heritage Society	6 meetings per year	Member's homes	Joyce M. Farnham (201) 327-7563
#13 Heisey Club of California	4th Sunday every month, 12:30	Member's homes	Jay Byrne (818) 353-2988
#14 Northern Illinois Heisey Club			Jerry Robinson (847) 356-7108
#15 Heisey Collectors Club of Michigan	Every 6 weeks, August through May	Member's homes	Jack Deppong (517) 323-7921
#16 Heisey Collectors of Texas	6 meetings per year, 2nd Sat. of month	Member's homes	Jan Hiser (972) 492-4827
#19 Heisey Collectors of the Rochester Area	10 meetings per year: Sunday, 2:30 pm	Member's homes	Bruce Schwendy (716) 247-5613
#22 Northwest Heisey Collectors	First Saturday of the month	Varies	Dixie Fuller (360) 263-4125
#25 Heisey 76'ers	Third Wednesday, Sept. through May	Member's homes	Hugo Wenzel (614) 258-2816
#26 Southern Illinois Diamond H Seekers	Monthly	Member's homes	Basil Hunt*
#31 Nassau Long Island Heisey Club	Generally every other month	Member's homes	Babs Kent*
# 33 Golden Gate Heisey Collectors Club	Quarterly	Member's homes	Russ Nicholas (415) 621-6693
#35 Virginia Heisey Club	First Saturday each month, 7:00 am	Member's homes	Jean Dougherty (757) 868-6664
#38 North Carolina Heisey Study Group	6 meetings per year: Jan, March, May, July, Sept, Nov.	Replacements Ltd Greensboro, NC	Frank Scott*
#39 Florida Heisey Collectors Club	Once a month, Oct. through May	Member's homes	Everett Dunbar (561) 337-1558
#41 Yankee Heisey Club	6 times a year	Member's homes	Jim Houghton (508) 764-1597
#42 Gulf Coast Heisey Club of Florida	3rd. Thursday in Nov, Jan, March	Member's homes	Bob Ellis (941) 379-3302
#43 Tri-State Heisey Study Club	1st Sat. every 3rd. month	Member's homes	Robert McElheney (419) 537-6892
#44 National Capital Heisey Study Club	Monthly: Sept, May	Potomac Comm. Library	Betty Heflin (301) 926-7052
#45 Hoosier Heisey Club	4 times per year: Saturday 2 pm	Warren Library, Indianapolis, IN	Donna Schellenberger (812) 738-3310
#47 Oregon Trail Heisey Collectors Club	Second Sunday of the month	Member's homes	Jim Cooke (503) 645-3385
#48 Dixieland Heisey Study Club	Odd number months, 2nd Saturday night	Member's homes	Sid Edwards (770) 928-3774

*Please contact HCA; we will pass your inquiry on to the appropriate study club.

**These clubs are not accepting new members.

CLUB NOTES



Yankee Heisey Club #41 *Dr. Ed Morin*

On Sunday July 13, 1997, Tom and Pat Gibbons hosted the annual summer cookout at their beautiful home in Swansea, Massachusetts. Invited guests were the Bay State Heisey Club and the South Eastern Massachusetts Heisey Club.

In attendance were: Ricky and Maria Martel, Irene Walton, Steve and Susan Pescatore, George Fogg, Frank Maloney, Bill and Sylvia Stickney, Jim Houghton, Tim Rector, Art and Carol Patton, Betty Bean, Dr. Ed Morin, Cyndee Freeman, Doug and Judy Wynne, Lew Lopolito, Maurice and Jean Walters.

All those in attendance enjoyed a fantastic meal cooked by Tom Gibbons and a tour of their home and their Heisey glass collection. It was great to see all the HCA members from Eastern Massachusetts at this annual cookout.



Dixieland Heisey Study Club #48 *Lamar Birckbichler*

The July dinner meeting was held at the home of Bob Bartholomew and David Fitkin. Attendance was 18 members. Recent finds were shared with the members. Sid Edwards and others shared June convention. Discussions regarding hosting a glass show in the Atlanta area to benefit HCA occurred. The membership agreed to form committees to begin the planning process. Our youngest member, Catherine Cogdill, was presented to the group by her proud parents. The next meeting will be hosted at Glenn Galls home by our Athens, Georgia members on September 13, 1997. Contact Sid Edwards at (770) 928-3744 for further information. ♦

ATTENTION STUDY CLUBS! Does your club have news or events to share with fellow members? Send updates BY THE FIRST OF THE MONTH to: Heisey News, 169 W. Church St., Newark, OH 43055, fax (614) 345-9638 or email: heisey@infinet.com. ♦

NEWS FROM THE SHOP

CALL THE SHOP AT (614) 345-2932 TO ORDER!

NEW!

New items to the shop:

The Sparrow and Cygnet are now available in Yellow Mist and Sea Mist Green.

Pocket edition field guides are back!

Now available: *Heisey Jugs, Pitchers, Tankards and Water Bottles* (#010) and *Heisey Candlesticks* (#123). The guides are \$4.95 each plus shipping and handling. The pocket size books contain pictures and useful information, and are especially nice when you're out searching for Heisey.

Available for rent:

The 1997 Convention ID Session. This would be a great topic to discuss at your next study club meeting! Watch a panel of Heisey experts identify glassware, including Heisey, other glass companies (mistaken for Heisey) and fakes. Call the museum today to reserve the VCR tape for your next meeting. Also available: the 1996 Convention ID Session tape.

Members, don't forget—the video's *A Legacy of American Craftsmanship* and *Making a Mark in Glass History: Heisey Collectors of America, Inc.* are available for rental.

➔**Advertising:** Send all ads to HCA Advertising, 169 W. Church St., Newark, OH 43055. Ads may be faxed to (614) 345-9638; please include MasterCard or VISA number for billing purposes. All ads must be prepaid. Ads are to be typed or printed on white paper with dark ink. Please double space. Do not abbreviate Heisey pattern names or colors. Ads which are entered in a vertical column format may contain a maximum of 65 characters per line, including spaces and punctuation.

Classified: 20 cents per word (members), 30 cents per word (non-members), \$1.50 minimum, 1/8 page limit. Personal ads 1/8 page limit. Abbreviations and initials count as words.

Display Ads:	member	non
1/8 page (12 lines)	\$20.00	\$30.00
1/4 page (25 lines)	\$40.00	\$60.00
1/2 page (60 lines, <i>horizontal or vertical</i>)	\$80.00	\$120.00
Full page(120 lines)	\$160.00	\$240.00

A charge of \$1.60 will be added for each additional line.

Camera ready ads must follow specifications. Ads which do not correspond to the following measurements will be sized to fit.

Camera Ready Ad Specifications:

- 1/8 page: 2 1/4" high by 3 1/2" wide
- 1/4 page: 4 1/2" high by 3 1/2" wide
- 1/2 page: 4 1/2" high by 7 1/2" wide OR 9" high by 3 1/2" wide
- Full page: 9" high by 7 1/2" wide

Ad copy must be received by the first of the month prior to publication (e.g. April 1 for May issue). Reproductions (i.e. Heisey by Imperial) must be clearly indicated. *Heisey News* accepts no further liability.

Classified Ads

WANTED: Heisey "Fox Chase" #1509 8" square plate, #5012 7" ftd. vase, #4163 16 oz. beer mug with Red, Moongleam, Amber handle. Fred Ludwig, 300 Rt. 10, Randolph, New Jersey 07869. (201) 366-1351

WANTED: (1) #300 candle holder, cupped top. Wire hangers to snap on "H" prisms. Need 40 wires. Cynthia Veilleux (508) 384-3894.

FOR SALE: Following all Heisey Rose etch. #1519 Waverly 1lb. covered butter \$175.00; footed cream & sugar; H \$75.00, 7 1/4" plates (5) ea. \$22.00; cup & saucer (4) sets ea. \$75.00; #5072 Rose stem goblets, Rose etch (4) ea. \$45.00; 12 oz. footed ice tea (2) ea. \$50.00; champagne (4) ea. \$40.00; cocktails (2) ea. \$50.00. Janice Thran, 1663 Londondale Pkwy., Newark, OH 43055. (614) 344-5955, S&H extra.

WANTED: One #1495 Fern Orchid etched two-lite candelabra with bobeches and prisms. Marge Laski, (810) 826-3877.

WANTED: Heisey Baskets: etched, cut, colored, unusual decorations or whimsies. Send price and description to Kim Carlisle, 28220 Lamong Rd., Sheridan, IN 46069 (317) 758-5767.

H&R DIAMOND H
Helen & Bob Rarey
1450 White Ash Dr.
Columbus, OH 43204

(614) 279-0390
After 5:30 pm
UPS & Ins. Extra
H=Marked

353	Medium Flat Panel 4" compote, H	\$15.00
407	Coarse Rib 9" celery, Flamingo, H	\$32.50
462	Plain Octagon 8" basket, Floral cut, H	\$210.00
473	Narrow Flute with Rim cube sugar and cream, irrid., H	\$42.50
1229	Octagon 2 handled mayo, D/O	\$18.50
1252	Twist 7" pickle, Flamingo, H	\$32.50
1404	Old Sandwich 8 oz. tumbler, Sahara, H, (6) ea.	\$30.00
1404	Old Sandwich 12" oval floral bowl	\$39.50
1415	Twentieth Century 5 oz. juice, Sahara, H, (6) ea.	\$27.50
1425	Victorian condiment set, complete, H	\$145.00
1428	Warwick 7" cornucopia vase, (2) ea.	\$32.50
1469	Ridgeleigh cigarette box & (4) 2" sq. ashtray, H	\$65.00
1469	Ridgeleigh 3 1/2" coaster, (6) ea. \$4.00 or all (6) for	\$22.50
1489	Puritan 4 1/2" covered cigarette box	\$21.50
1506	Provincial 1-lite candleblock, pr.	\$47.50
1512	Urn 8" bud vase, Rose etch	\$275.00
1540	Lariat 15" oval tray, Moonglo cut	\$47.50
1540	Lariat coaster (5) ea. \$6.00 or all (5) for	\$25.00
1565	Leaf jelly, Dawn, H	\$52.50
3397	Gascony 1 pint decanter, Sahara with Crystal st.	\$285.00
3397	Gascony 2 1/2 oz. wine, Sahara with Crystal foot, (6) ea.	\$55.00
3404	Spanish 10 oz. goblet, Cobalt bowl, (6) ea.	\$140.00
	Heisey Scottie Dog	\$110.00
	Heisey Sparrow	\$95.00
	Heisey Rooster Vase	\$95.00

HIS & HER ANTIQUES
Cynthia Veilleux
121 East St.
Wrentham, MA 02093

(508) 384-3894
UPS & Ins. Extra
H=Marked

300	Peerless 5 1/2" plate, H, (7) ea.	\$12.00
331	Colonial straw holder	\$125.00
341	Colonial mini custard cups (1 1/4x2 1/4"), (8) ea.	\$15.00
341	Colonial jelly compote, high ftd. (5 1/2x4 3/4"), H, (2) ea.	\$22.00
341 1/2	Colonial finger bowl, H, (9) ea.	\$22.00
380	Dessert nappies 5 1/4", H, (12) ea.	\$12.00
393	Narrow Flute covered sugar, H	\$28.00
394	Narrow Flute wines 5 1/2", H, (6) ea.	\$15.00
1405	Ipswich ftd centerpiece and vase, "A" prisms, H, pr.	\$725.00
1405	Ipswich 4 oz. saucer champagnes, H, (10) ea.	\$20.00
1	Georgian 9" candlesticks, pr.	\$175.00
1405	Ipswich (Imperial) covered candy, ftd., Amethyst	\$185.00
1425	Victorian (Imperial) 4 oz. claret, Verde	\$15.00
1425	Victorian (Imperial) 12 oz. ftd. soda, Amber, (4) ea.	\$15.00
1503	Crystolite punch cups, H, (12) ea.	\$12.00
1503	Crystolite 2 part long celery, H	\$30.00
1503	Crystolite covered box	\$35.00
3390	Carcassone low ftd. soda, 8 oz. Cobalt bowl, (10) ea.	\$55.00
3390	Carcassone low ftd. soda, 6 oz. Cobalt bowl, (12) ea.	\$45.00
1509	Provincial/Whirlpool tumblers, H, (3) ea.	\$15.00
350	Pinwheel & Fan hair receiver, silver plate top, H	\$75.00
351	Pinwheel & Fan dresser jar, silver plate top, H	\$75.00
1252	Twist nut cups, Marigold, H, (6) ea.	\$22.00
333	Colonial water bottle, 9 3/4" for Waldorf Astoria	\$125.00
1228	Marcel wave plates 7 1/4" Moongleam, H, (10) ea.	\$15.00

17th Annual All Glass Show & Sale
GLASS FROM THE DEPRESSION ERA
AND OTHER PERIODS

Sat. 10-5 Nov. 15-16, 1997 Sun. 11-4

Admission \$3.50. One or more with coupon \$3.00
 Southington High School

720 Pleasant Street, Southington, CT.

Featuring Cambridge, Heisey, Imperial,
 Fostoria, Duncan Miller, Morgantown,
 A to Z Depression Glass, Fenton, as
 well as glass from other periods.

Information 860-628-5389 or 203-426-6322

To Benefit The National Heisey Glass Museum

Food Available. Stay for lunch & visit with us
 I-84 Eastbound exit 32, Left to Rt. 10, left at 4th
 light to Flanders St. School 1/2 mi. on right. I-84
 Westbound exit 32m Right to Rt. 10, left at 5th
 light to Flanders St. School 1/2 mi. on right.

ANOTHER MAN'S TREASURE

(503) 645-3385

Jim Cooke

After 5:30 pm

17265 NW Meadowgrass Dr.

UPS & Ins. Extra

Portland, OR 97006

H=Marked

3345	Mary n Virg 4 1/2 oz. cocktails, Vaseline, H, (2) ea.	\$350.00
367	Prism Band decanter, Moongleam, H	\$265.00
1489	Puritan 4" candleblocks, pr.	\$70.00
1489	Puritan horsehead cigarette box (6")	\$80.00
1503	Crystolite 7" salad plates, (8) ea.	\$9.00
1503	Crystolite cream and sugar	\$30.00
5003	Crystolite 3 1/2 oz. oyster cocktails, (8) ea.	\$8.00
99	Little Squatter candleblock, Moongleam, pr.	\$60.00
479	Petals cream (H) and sugar, Moongleam	\$85.00
360	Winston ashtray/match stand, Flamingo, H	\$110.00
1401	Empress ice bucket with silver tongs, Sahara	\$115.00
2	Old Williamsburg candlesticks, 9" pr.	\$155.00

THE COLLECTORS STOP

(561) 793-0986

Ralph and Eileen Wise

UPS & Ins. Extra

12018 Suellen Circle

H=Marked

Wellington, FL 33414

	Swan, H	\$975.00
4224	Moongleam Steeple Chase cocktail shkr. & (4) ckts.	\$950.00
350	Pinwheel and Fan Flamingo 8 1/2" bowl (nappy), H	\$395.00
433	Greek Key 1 qt. crushed fruit, H	\$495.00
433	Greek Key 2 qt. crushed fruit, H	\$450.00
16	Pair Classic 11" candlesticks, H	\$395.00
1184	Yeoman Moongleam 4 oz. cruet (Heisey label)	\$125.00
433	Greek Key #2 puff box, H	\$325.00
465	Recess Panel 1 lb. candy, H	\$85.00
5	Pair toy candlesticks, H	\$95.00
1447	Rococo 2-lite candlestick, H	\$225.00
1776	Kalonyal 2 oz. wines, (3) ea.	\$110.00

"T&P" COLLECTIBLES

Tom and Pat Gibbons

1089 Wood St.

Swansea, MA 02777

(508) 674-7361

Packing and UPS Extra

H=Marked

1469	Ridgeleigh ind. sugar, cream, tray, H, set	\$63.00
1425	Victorian 9 oz. goblet, one ball	\$15.00
4163	Whaley 16 oz. mug, Fox Chase etch, c/h, H	\$65.00
1503	Crystolite cream and sugar, H, pr.	\$25.00
150	Banded Flute 6" shallow nappy, H, (6)	\$35.00
1401	Empress dolphin fld. 3 pt. jug, Flamingo, H	\$350.00
4225	Cobel 1 qt. shaker, unknown cutting	\$75.00
1483	Stanhope luncheon set w/cup & saucers, blk. knob, (4)	\$190.00
31	Jack Be Nimble candlestick, H	\$30.00
353	Medium Flat Panel 3 pint jug, bruise, H	\$55.00
520	Innovation lamp candlestick, cloudy, H	\$55.00

MOSTLY HEISEY

(800) 972-2775

Rhoda Curley

(518) 482-6272

16 Clayton Pl.

All Prices Each

Albany, NY 12209

Plus UPS

1533	Wampum 14" torte plate	\$49.00
1533	Wampum floral bowl and pr. candlesticks	\$99.00
7022	Athena 9" oval tray	\$22.00
7022	Athena 12" floral bowl	\$45.00
7022	Athena mayo with underplate	\$39.00
7022	Athena turned up 8" bon bon	\$25.00
1469	Ridgeleigh cocktail stems, (5)	\$29.00
1469	Ridgeleigh saucer champagne, (6)	\$25.00
1469	Ridgeleigh sherbets, (4)	\$19.00
3408	Jamestown goblet with Rosalie etch, (6)	\$23.00
1540	Lariat hurricane lamp, no globe	\$79.00
1540	Lariat hurricane lamp with hand painted floral	\$99.00

FOREVER HEISEY

(614) 344-5955

Norm & Jan Thran

UPS & Ins. Extra

1663 Londondale Pkwy.

H=Marked

Newark, OH 43055

351	Priscilla covered mustard, H	\$30.00
353	Medium Flat Panel straw jar (lays flat), H	\$350.00
355	Quator handled sugar, hotel, H	\$25.00
407	Coarse Rib table sugar (no lid), H	\$12.50
411	Tudor 8 oz. tumbler, straight, H, (2) ea.	\$15.00
1205	Fancy Loop covered cracker jar	\$275.00
1401	Empress individual D/F nut, Moongleam	\$37.00
1401	Empress individual D/F nut, Sahara	\$27.00
1401	Empress individual sugar, Moongleam, H	\$30.00
1401	Empress individual sugar, Sahara, H	\$27.00
1404	Old Sandwich 16 oz. footed tumbler, Sahara, H, (4) ea.	\$35.00
1404	Old Sandwich water goblet, Sahara, H, (4) ea.	\$37.00
1404	Old Sandwich champagne, Sahara, H, (3) ea.	\$27.00
1417	Arch tumbler, Sahara, H, (2) ea.	\$60.00
1469	Ridgeleigh 4 1/2" candle vase, flared, Zircon, pr.	\$395.00
1485	Saturn water goblet, Zircon, (4) ea.	\$85.00
1503	Crystolite individual leaf nut, (4) ea.	\$10.00
1503	Crystolite 1-lite candlesticks, pr.	\$30.00
1503	Crystolite 5 1/2" footed cheese	\$20.00
1503	Crystolite 12" oval 3 part relish, H	\$40.00
1503	Crystolite 8" plate with star base, H, (6) ea.	\$15.00
1503	Crystolite 7" plate, plain base, (4) for	\$40.00
1503	Crystolite 5" triangle hdd. jelly, spider web base	\$22.50
4044	New Era 8 oz. pilsner, (2) ea.	\$25.00
5048	Rooster Head cocktail, Amber Rooster stem	\$650.00

J.&R. Collectibles
PO Box 1030
Newark, OH 43058-1030

(614) 344-9719
UPS & Ins. Extra
H=Marked

25	Federal 8" candlestick, H, pr.	\$135.00
341	Old Williamsburg 13½" 5 compartment relish, H	\$65.00
353	Medium Flat Panel 8X12" ice cream tray, H	\$120.00
357	Prison Stripe covered butter, H	\$125.00
411	Rib and Panel 6½" preserve, #9034 St. Lukes etch	\$65.00
480	Fruit basket 8", cut (Vogel II pg. 155), H	\$265.00
1183	Revere 8" plate, West Point etch, H	\$45.00
1401	Empress 7" triplex relish, Alexandrite	\$325.00
1489	Puritan cologne, polished stopper, monogram M.L.M	\$100.00
1503	Crystolite electric lamps, 12" shades, all original, pr.	\$650.00
1506	Whirlpool covered candy, footed, H	\$75.00
3380	Old Dominion 10 oz. tall goblet, Alexandrite, D/O	\$160.00
3381	Creole 7 oz. short saucer champagne, Alexandrite	\$135.00
3381	Creole 7 oz. tall saucer champagne, Alexandrite, (3) ea.	\$135.00
3381	Creole grapefruit, Alexandrite bowl, Crystal ft., (2) ea.	\$225.00
7018	Oval in Diamond Point, marmalade & butter pat, H, set	\$22.50
1503	Crystolite, Imperial, 10" shallow nappy, red	\$40.00
	Bull, Imperial Black	\$625.00
	Clydesdale, Imperial Ultra Blue	\$130.00
	Dinky Do (Doulton Girl) Imperial Crystal	\$225.00
	Dinky Do, Imperial Ultra Blue on bustoff	\$150.00
	Donkey, Imperial Ultra Blue on bustoff	\$125.00
	Elephant, large, Imperial Horizon Blue on bustoff	\$600.00
	Elephant, small, Imperial Pink frosted	\$45.00
	Show Horse, Dalzell Viking Lavender Ice frosted	\$125.00

MAURICE & JEAN WALTER ANTIQUES (508) 975-3541
6 Royal Crest Dr. #5
N. Andover, MA 01845

After 5 pm
UPS & Ins Extra
H=Marked

300	Candlesticks, 9", H, pr.	\$105.00
310	Ring Band toothpick, Cstrd. w/good red&gold, Souv ME	\$48.00
381	Quilt ashtray	\$14.00
479	Petal cream and sugar, Flamingo	\$50.00
1200	Cut block ind. cream, Cstrd. w/good red&gold, souv. ME	\$20.00
1201	Fandango pickle tray with rough edge	\$15.00
1201	Fandango pickle tray with chip on edge	\$3.00
1229	Octagon 6" bon-bon, Marigold	\$30.00
1401	Empress celery, H	\$22.00
1401	Empress 2 part relish, Flamingo	\$28.00
1469	Ridgeleigh 2" candleblock	\$15.00
1472	Parallel Quarter candlestick, unknown etch	\$35.00
1486	Coleport shot glass	\$15.00
1503	Crystolite round candleblock, pr.	\$18.00
1503	Crystolite 1-lite candlestick, pr.	\$35.00
1503	Crystolite 1-lite candlestick	\$11.00
1503	Crystolite 3-lite candlestick, pr.	\$45.00
1503	Crystolite 3-lite candlestick, rough one arm	\$15.00
1503	Crystolite cigarette box and lid	\$30.00
1555	Cornucopia	\$20.00
3389	Duquesne champagne, Chintz etch	\$10.00
3390	Carcassone claret, set (4)	\$40.00
4036	Cocktail shaker, 3 pcs. with cutting of bird	\$45.00
4225	Cobel cocktail shaker, 1 pint, 3 pcs.	\$45.00
4225	Cobel cocktail shaker, 2 qt., 3 pcs.	\$38.00
7019	Sunflower cdlstk, (1)pr. good, (1)pr. sm. base flaw, ea. pr.	\$35.00

Dawn Minicozzi
4003 Carrollwood Vlg. Dr.
Tampa, FL 33624

(813) 961-0636
Shipping & Ins. Extra
H=Marked

Calls will be returned after September 1

3360	Penn Charter 10 oz. goblet, Hawthorne, H	\$55.00
3360	Penn Charter 3 oz. cocktail, Hawthorne, H, (2) ea.	\$35.00
3366	Trojan 2½ oz. wine, #445 Trojan etch	\$10.00
3366	Trojan 2½ oz. wine, Webb cut	\$10.00
5072	Rose cordial, H	\$140.00
3408	Jamestown 3 oz. cocktail, #816 Palmetto etch	\$10.00
3390	Carcassone 4 oz. claret, #451 Lafayette etch, Sahara	\$15.00
	Ringneck Pheasant	\$115.00
	Horsehead cigarette box, 6¼"	\$60.00
	Horsehead cigarette box, 4¼"	\$50.00
5038	Roostertail cocktail	\$70.00
5074	Seahorse cocktail, H	\$140.00
	Seahorse footed bowl, H	\$75.00
HEISEY BY IMPERIAL		
	Bull, Black	\$750.00
	Bull, Amber	\$900.00
	Tiger, Black with tag	\$80.00
	Tiger, Nut Brown	\$345.00
	Tiger, Caramel Slag with label	\$125.00
	Tiger, Sunshine yellow	\$325.00
	Tiger, Amber on bustoff	\$360.00
	Tiger, Jade	\$100.00
	Piglet, sitting, Pink	\$100.00
	Piglet, sitting, Amber	\$40.00
	Piglet, standing, Amber	\$40.00
	Bunny, head down, Caramel Slag	\$50.00
	Cygnat, Caramel Slag	\$50.00

HCA REPRODUCTIONS

Sleeping Fox ashtray, Lavender Ice frosted/clear combo	\$75.00
Elephants, set of 3, frosted Lavender Ice	\$225.00
Rearing Horse bookend, frosted Lavender Ice	\$140.00
Bull, frosted Lavender Ice	\$150.00
Pouter Pigeon, frosted Lavender Ice	\$150.00
Mallards, set of 3, frosted Lavender Ice	\$150.00
Tropical Fish, Lavender Ice	\$275.00
Tiger, Cobalt	\$150.00
Tiger, Ice Blue	\$65.00
Tiger, Yellow Mist	\$50.00
Flying Mare, Cobalt	\$900.00
Oscar, 1979 frosted Heather, misdated	\$45.00
Oscar, 1991 frosted Sapphire Blue Opalescent	\$35.00
Oscar, 1994 frosted Green Mist	\$30.00



Bucks County Antique Mall

Rt. 202 & Skyline Dr. • Chalfont, PA 18914 • 215-997-3227

An evening of Heisey

Wednesday September 17, 7:30 p.m.

Location: Bucks County Antique Mall

Film presentation and discussion.

Limited seating—please call for reservation

215-997-3227

MICHAEL KRUMME
PO Box 5542
Santa Monica, CA 90409-5542
mkrumme@pacbell.net

(213) 874-GLASS (-4527)
P&I included
Priced each
H = Marked

	Punch bowl ladle, dble spouted, late (for Lariat, etc.)	\$50.00
	Fish candleholders, pr., one as is	\$275.00
	Plug Horse (Oscar)	\$95.00
22	Windsor 7" candleholders, H, pr.	\$135.00
160	Locket on Chain 4" nappies, (5)	\$40.00
350	Pinwheel and Fan punch cups, Moongleam, H, (12)	\$25.00
350	Pinwheel and Fan punch cups, Moongleam, as is, H, (5)	\$10.00
	(Discount if you take all 17)	
351	Priscilla 4 oz. high ftd. sherbets, shallow, H, (6)	\$12.50
351	Priscilla extra-high footed shallow bowl, H	\$325.00
393	Narrow Flute almond, Moongleam	\$25.00
433	Greek Key 3 qt. tankard, H	\$275.00
473	Narrow Flute with Rim strawberry plate, H	\$200.00
1404	Old Sandwich cruet & stopper, H	\$50.00
1469	Ridgeleigh covered mustard with paddle, H	\$85.00
1519	Waverly 6 1/2" low footed comport, Rose etch	\$55.00
3440	Portsmouth saucer champagnes, Flamingo, set, (6)	\$80.00
1513	Baroque double candelabra with prisms, bobèches, pr.	\$100.00
3359	Plateau rose bowl, Flamingo	\$50.00

Send your Heisey and other elegant glass want list, I search—all are kept on file. Please note my new, easy-to-remember telephone number.

DOZIERS ANTIQUES
Marti Dozier
12100 Western View
Oklahoma City, OK 73162

(405) 728-3366
(405) 720-7315 fax
UPS & Ins Extra
H = Marked

128	Liberty 3" candlesticks, Moongleam, pr.	\$80.00
135	Empress 7" candlesticks, Lotus etch on base, Sahara, pr.	\$185.00
325	Pillows berry set, 9" crimped and (6) 5" nappies, all H	\$300.00
516/1	7" vase, diamond optic, Flamingo	\$54.00
1205	Fancy Loop 8" #2 vase (Vogel book IV, pg. 81)	\$80.00
1252	Twist 13" celery, Moongleam, H	\$40.00
1252	Twist bon bon (upturned sides), Moongleam, H	\$30.00
1280	Winged Scroll 9" nappy, Emerald (ex. gold)	\$85.00
1401	Empress 6" dolphin footed candy with cover, Sahara, H	\$200.00
1495	Fern twin mayo	\$28.00
1503	Crystolite 7" shell plates (H stickers), (6) ea.	\$22.00
1503	Crystolite oval cream and sugar, H, set	\$40.00
1511	Toujours 8" plates, Minuet etch, (4) ea.	\$15.00
1540	Lariat 5" ftd. compote with cover	\$52.00
1540	Lariat cream and sugar, H, set	\$32.00
1567	Plantation 5" footed compote with cover	\$120.00
1567	Plantation 3 oz. oil bottle with #125 stopper	\$125.00
4224	Ivy vase, Tangerine	\$210.00
	Lavender Ice Pouter Pigeon, Dalzell Viking #218 of 450	\$90.00
	Lavender Ice (1) large, (1) small elephant, Dalzell Viking #218 of 450, ea.	\$80.00

WANTED: #150 Banded Flute 10" round tray and tumbler for bedroom set, #343 Sunburst individual creamer, #1485 Saturn sugar ("ball" handles) Crystal.

WE CLEAN CLOUDY GLASS! **SATISFACTION GUARANTEED**

Yes, it is true that we really can restore the interior of your cruet, vase, decanter and other *internally* etched items back to near original condition.

We do not oil, wax or cover up the sickness in any way! We actually **remove** it.

No items are too sick to clean! If we cannot clean an item to meet your satisfaction, the cleaning is **FREE!**

Send no money up front. When we return your item a bill will be enclosed for the postage and cleaning. If you are not satisfied, only the return postage is requested.

Most items clean in 6-8 weeks. All glass is handled and cleaned at your risk. Some very cloudy items may take several additional weeks.

Cruet	\$20.00	Cocktail Shaker	\$30.00
Vinegar & Oil	\$25.00	Salt Shaker (one)	\$25.00
Cologne	\$20.00	Salt Shaker (pair)	\$35.00
Decanter	\$30.00	Water Bottle	\$30.00
Vases (under 12")	\$25.00	Lavender Jar	\$20-\$30.00

Ship to: **Kim Carlisle & Associates**
 28220 Lamong Road, Dept. H
 Sheridan, IN 46069
 (317) 758-5767

ERMA HULSLANDER
1427 Ridgeview St.
Mesquite, TX 75149

(972) 289-6159
UPS & Ins. Extra
H = Marked

	Clydesdale	\$375.00
31	Toy handled candlesticks, pr.	\$60.00
31	Toy handled candlestick, Sahara, (1) only	\$220.00
337	Touraine sherbet, Amberina, H, (25 made)	\$700.00
433	Greek Key high ftd. jelly with cover, H	\$85.00
433	Greek Key 3 pt. jug, H	\$190.00
433	Greek Key 6 oz. cruet, H	\$95.00
1225	Plain Band butter	\$50.00
1225	Plain Band spooner	\$30.00
1294	Queen Ann D/F floral bowl, Sahara	\$60.00
1401	Empress 6" D/F candlesticks, Sahara, H, pr.	\$200.00
1401	Empress ashtray, Alexandrite, H	\$225.00
1401	Empress ashtray, Flamingo, H	\$105.00
1404	Old Sandwich bar, Sahara	\$95.00
1428	Warwick 9" vase, Cobalt, H	\$275.00
1428	Warwick 12" floral bowl, Cobalt, H	\$395.00
1469	Ridgeleigh 6" candle vase, pr.	\$50.00
1469	Ridgeleigh 12" oval floral bowl, Zircon, H	\$350.00
1511	Apple marmalade with cover, H	\$45.00
3308	Bob White 2 oz. wine, #366 Peacock etch	\$25.00
4044	New Era 3 1/2 oz. cocktail, Cobalt bowl	\$145.00
4044	New Era 4 oz. claret wine, Cobalt bowl	\$165.00
4083	Stanhope 3 1/2 oz. cocktail, Zircon bowl and ft.	\$145.00
	Swan handled pitcher, Green, LIG	\$85.00
	Tiger paperweight, Black, IG	\$90.00

BARI FAUSS
8503 Shirley Woods Ct.
Lorton, VA 22079

(703) 550-2218
UPS & Ins. Extra
H = Marked

1469	Ridgeleigh 9" vase, H	\$85.00
1184	Yeoman 5 oz. parfait, Sahara	\$28.00
1513	Baroque candlestick, pr.	\$125.00
1404	Old Sandwich 12 oz. mug, H	\$50.00
465	Recessed Panel ½ lb. candy with gold decoration, H	\$40.00
1231	Ribbed Octagon creamer, Moongleam, H	\$25.00
479	Petal creamer and sugar, Moongleam, H	\$80.00
1567	Plantation 7" flat comport, H	\$90.00
1511	Toujours candlestick with Minuet etch	\$125.00
1401	Empress 8½" sq. plate with Pompeii etch, Sah., (8) ea.	\$16.00
3380	Old Dominion 12 oz. ftd. soda w/Old Colony etch, (ea.)	\$20.00
150	Banded Flute 4" candlestick	\$36.00

SANDUSKY's COLLECTIBLES
Norm and Matt
1754 Athens Ct.
Claremont, CA 91711

(909) 621-1704
UPS and Ins. Extra
H = Marked

300	Peerless 3 qt. jug, H	\$80.00
465	Recess Panel 1 lb. cov. candy w/sterling and cutting, H	\$125.00
1184	Yeoman 10½" plate, D/O, Moongleam, (10) set	\$600.00
1184	Yeoman 2 oz. oil, D/O, Sahara, H	\$80.00
1225	Plainband toothpick	\$30.00
1229	Octagon 12" sandwich plate, D/O, Sahara	\$40.00
1552	Colt standing, (2) ea.	\$75.00
1951	Cabochon 1-lite candle, H, pr.	\$35.00
3380	Old Dominion 6 oz. tall champ., D/O, Sahara, H, (5) ea.	\$25.00
3390	Carcassone, Morning After, 10½ oz., Sahara, (6) set	\$300.00

Send SASE for 137 piece Flamingo list (includes stems and dinner plates)

WALRICK ANTIQUES
Rick Vaughan and Walter Sherman
1070 Hillcrest
Brighton, MI 48116

(810) 229-5994
UPS Extra
H = Marked

	Asiatic Pheasant, H	\$345.00
	Imperial Clydesdale, Amber	\$255.00
2	Old Williamsburg 9" 1-lite candles, pr.	\$175.00
134	Trident 2-lite candles, (1) H, Flamingo, pr.	\$185.00
372	McGrady 7 oz. syrup, Sahara, H	\$110.00
411	Tudor 3 pt. jug, H	\$128.00
411	Tudor mayonnaise, H	\$33.00
433	Greek Key individual ftd. almond, H, (2) ea.	\$31.00
473	Narrow Flute with Rim 2 pt. hld. relish, HH	\$38.00
1252	Twist 6" plate, H, Marigold, (10) ea.	\$9.00
1401	Empress 16½" 4 compartment buffet relish, H, etched	\$72.00
1425	Victorian sugar, H	\$20.00
1425	Victorian 27 oz. rye bottle	\$140.00
1425	Victorian (2) 3 oz. cruets, H, in silver plate holder	\$125.00
1503	Crystolite covered puff box, H	\$65.00
1503	Crystolite cup and saucer, H, (8) set	\$26.00
1567	Plantation 8" plate, (8) ea.	\$32.00
1567	Plantation 10 oz. pressed goblet, (8) ea.	\$48.00
1567	Plantation 12 oz. pressed ftd. ice tea, (11) ea.	\$70.00
1567	Plantation 5 oz. pressed ftd. juice, (8) ea.	\$47.00
1567	Plantation 4 oz. pressed claret, (5) ea.	\$62.00
2930	9 oz. D/O tumbler, Flamingo, (5) ea.	\$10.00
3335	Lady Leg sherbet, H	\$10.00
3380	Old Dominion 10 oz D/O goblet, Sahara, (2) ea.	\$47.00
4225	Cobel 2 qt. cocktail shaker, paper label	\$80.00

Attention All HCA Members

If you are planning to move, please notify the HCA Administrative Office as soon as possible. Call (614) 345-2932 or write to: 169 W. Church St., Newark, Ohio 43055.

Even if you are one of our lucky members who travels between summer and winter homes, you must notify the office of your move. We do not keep records of your old address in our computer system.

Please assist HCA to better serve its members by notifying the office of any address or membership corrections.

THANK YOU!



Spectacular Parade of Heisey

As the world's largest supplier of discontinued or obsolete china, crystal and flatware, Replacements, Ltd. buys and sells over 54,000 patterns and has 2.1 million pieces.

We have many of your favorite Heisey patterns, including Heisey Rose and Heisey Orchid.

Contact us if you need to pick up a piece to add to your collection, or if you would like to sell some unneeded extras. We can provide a complete printout of available pieces in your pattern. Or we'll let you know our prices for the pieces you wish to sell. Let us help you complete your collection . . . or maybe you'll help add to ours.

REPLACEMENTS, LTD.

Call 1-800-562-4462

or visit our showroom:

Mon-Sat 8am-9pm; Sun 8am-6pm

Off I-85/40 at Mt. Hope Church Rd..

Exit 132 between Greensboro and Burlington • Dept HS

DEALER DIRECTORY

Maximum 5 lines/12 months/\$35 MEMBERS ONLY

MARJORIE GILLETTE Rochester, New York Glassware Specialty Heisey Mail Orders & Shows (716) 225-4678	SHIRLEY EUGENIA DUNBAR Heisey a Specialty Mail Order, Shows, Appraisals PO Box 7085, Port St. Lucie, FL 34985 Oct-May (407) 337-1558 PO Box 222, Naples, ME 04055 May-Oct (207) 647-5652	COMPARISON LIST New Heisey Auction List for 1997 3 Year's Auction 94-95-96 Price: \$18.00 + \$3.00 Shipping Payable: B. Whaley 300 International Dr., Pataskala, OH 43062 (614) 927-1557
ALL HEISEY AUCTION Consignments Welcome Apple Tree Auction Center 1616 W. Church, Newark, OH 43055 (614) 344-9449	GREEN ACRES FARM Antiques, Crystal Glass & Collectibles 2678 Hazelton-Etna Rd., SW (S.R. 310-N) Pataskala, OH 43062 Sat. or Sun. PM or call (614) 927-1882	MICHAEL KRUMME Cambridge*Heisey*Fostoria*Duncan-Miller*Paden City I search-send detailed want list-all are kept on file PO Box 5542 Santa Monica, CA 90409
D & B ANTIQUES—ATLANTA Bob Bartholomew Members Dixieland Heisey Club PO Box 33283, Decatur, GA 30033 Shows (404) 634-2799 Mail Order	H & R DIAMOND H Helen & Bob Rarey 1450 White Ash Dr. Columbus, OH 43204 (614) 279-0390 after 5:30	JEAN & DON PARRETT Beautiful Heisey Layaways Accepted 4995 Maple Dale Rd. Jackson, Michigan 49201 (517) 784-7319—Recorder
ANTIQUES - THE SHULTZES 206-208 East Main St. Newmanstown, PA 17073 15 Miles West of Reading, PA (610) 589-2819	"HAPPINESS IS" - THE STULTZS 3106 Warren Court, Glen Allen, VA 23060 Shows and Mail Order (804) 672-8102	PATTON HOUSE ANTIQUES Specializing in Glass*Heisey*Cambridge*Fostoria*Duncan* Factory Antique Mall, Verona, VA off I-81 Exit 227 The Antique Gallery, 3140 W. Cary St., Richmond, VA Antiquers Mall, Booth 81, Rt. 29 N., Charlottesville, VA The Daniels, Box 547, Louisa, VA 23093 (540) 967-1181
C&J ANTIQUES Cole & Jean Miesner Box 45, 72 Whig St. Newark Valley, NY 13811 (607) 642-9905	Your Ad Could Be Here!	
DOXTOIS Eva & Joe Hirsh Heisey & Pattern Glass 6 James St., Norwalk, CT 06850 (203) 847-3315	HOOKED ON HEISEY Jay C. Martin 97 Heritage Hill Rd., New Canaan, CT 06840 (203) 966-9359 24 hr. answering machine Mail Orders & Shows	R & L ANTIQUES-SAN FRANCISCO Members of the Golden Gate Heisey Club 3690 Bodega Ave., Petaluma, CA 94952 Petaluma (707) 762-2494 San Francisco (415) 621-6693
CHARLES & MILDRED FISHER Heisey animals and Heisey By Imperial animals 991 Idlewilde, Newark, OH 43055 (614) 522-5398	HEISEY IN NORTHEASTERN FLORIDA Hundreds of pieces • You won't be sorry! Call for your personal showing. Located north of St. Augustine, via I-95, Exit 101 Very easy access (904) 280-0450	THE SPARACIO'S Carl & Helen Specializing in American Glass 28 Refy Ave., Ramsey, NJ 07446 (201) 327-2495
CRYSTAL LADY Joann Hagerty Specializing in elegant depression glassware 1817 Vinton St., Omaha, NE 68108 Shop (402) 341-0643 or Home (402) 391-6730	Your Ad Could Be Here!	
ELEGANT GLASSWARE NOW LOCATED IN FINDER'S ANTIQUE HOUSE 1169 Piney Forest Rd. Danville, VA 24540 Open Thursday—Sunday (804) 836-6782 Area's Largest Selection of Heisey and Other Elegant Glass	J. & R. COLLECTIBLES Shows, SASE, Mail Order list The Lukasko's PO Box 1030, Newark, OH 43058-1030 (614) 344-9719	APPLE VALLEY COLLECTIBLES Richard Garnett & Anne Borchert PO Box 552, Amenia, NY 12501 (914) 373-8791 Shows & Mail Order *Yesteryears Antique's—Monroe, CT (203) 459-9548*
FRAN'S FANCY FINDS Fran & Jack Grenzebach 10534 Valencia Rd., Seminole, FL 33772-7511 (813) 391-5184 SHOWS MAIL ORDERS	MOSTLY HEISEY Rhoda Curley 16 Clayton Pl., Albany, NY 12209 Shop and Mail Order (800) 972-2775	THE WOODEN SHOE 222 W. Washington St. Charles Town, WV 25414 Fri-Mon 11-5 (304) 725-1673 Glass—Pottery—Kerosene Lamps
FOREVER HEISEY Jan & Norm Thran Mail Order, Shows, Appraisal Service 1663 Londondale Pkwy., Newark, OH 43055 (614) 344-5955	R & S ANTIQUES AND GLASSWARE Heisey-Specializing in Complete Heisey Tableservice Call or write for patterns and colors 2560 S. Maguire Rd. Ocoee, FL 34761 (407) 656-5700 or (407) 298-5980 PM	WILLEY'S ANTIQUES & MUSEUM Specializing in Heisey 11110 Cannon Rd., Frazeyburg, OH 43822 16 miles east of Newark, OH (614) 828-2557
WARREN & MARY WELSH Heisey & other elegant glassware 3635 Saddle Rock Rd., Colorado Springs, CO 80918 (719) 531-5866 Mail Order Shows	Your Ad Could Be Here!	
GLASS 'N' GLASS Virginia & Odell Johnson 6909 10th Ave. W. Bradenton, FL 34209 (941) 792-0604	G.W. ANTIQUES http://www.sonic.net/~gwant Robert Gindhart (707) 575-8706 Gary Wimmershoff Santa Rosa, CA Heisey, Wedgwood and other fine antiques	HEISEY, etc. Mike & Barb Rosenberger Shows-Mail order (219) 864-1704 5115 W. 78th Ln., Schererville, IN 46375 Visit our web site: www.jorsm.com/elegantglass

**Museum Volunteers
for
July & August**

Bill & Marcia Booth
Leota Friel
Frances Law
Connie Makris
Dick Marsh
Phyllis McClain
Mary McWilliams
Dick & Marilyn Norris
Bob Rarey
Bob Wilson

When Renewing Your Membership...

Help us to reach our new goal of \$750,000 by the year 2004. When you renew your membership at one of the levels below, any amount beyond the regular Associate dues—\$22.00 plus \$5.00 for each additional household member—goes into the Endowment Fund.

<i>Individual Contributing, one person in household</i>	\$30
<i>Joint Contributing, two people in one household</i>	\$40
<i>Family Contributing, parents and children under 18</i>	\$50
<i>Patron</i>	\$100
<i>Sponsor</i>	\$250
<i>Benefactor</i>	\$500

Contact HCA Administrative Office at (614) 345-2932 for more information. The Endowment Committee wishes to thank those who have become Endowment Members and all of the individuals and study clubs that have so generously supported the HCA Endowment Fund. Your support will make the museum self-sustaining in the years to come. Thank you all! ♦



**Visit The
National
Heisey
Glass
Museum**

Come at your leisure to enjoy more than 4,800 pieces of glassware produced by A.H. Heisey and Company from 1896-1957. Hundreds of patterns are featured in all production colors. Rare and experimental items are included as well.

Facilities are air-conditioned and handicapped accessible. Hours are 10:00 a.m. to 4:00 p.m. Tuesday through Saturday, 1:00 to 4:00 p.m. Sunday. Members are admitted free, regular admission is \$2. Office hours are 8:00 a.m. to 4:30 p.m. weekdays.

Membership Renewal Notice: Check the date above your name and address on the mailing label. This is your expiration date. If it reads 9-10-97 make sure your dues are paid soon in order to receive next month's issue of Heisey News. Dues are \$22.00 per year, plus \$5.00 for each additional household member.

POSTMASTER SEND FORM 3579 TO:

**HCA
169 W. Church St.
Newark, OH 43055**



PERIODICAL POSTAGE PAID