


HEISEY

NEWS  for your knowledge

OFFICIAL PUBLICATION of HEISEY COLLECTORS OF AMERICA

Volume XIX No.8

September 1990 ISSN 0731-8014



A crystal bubble amazed the world . . .

SOMEWHERE along the eastern Mediterranean . . . perhaps it was in glorious Sidon . . . two thousand years ago . . . a nobleman and his beautiful lady came to a famous glassworks.

Strange tidings had reached the aristocrat's ears, of a new way of making glass . . . Was it possible that something so radical had taken place in this already centuries-old industry? He wanted to see it with his own eyes . . . It might mean another triumph for his city! It might mean, too, new treasures to bestow on his beloved!

It was true! There, before their eyes, a humble artisan . . . nameless in history . . . wrought a miracle of wonder. He blew bubbles . . . bubbles of hot, glowing glass . . . by means of a long, hollow tube! Then transformed the fiery globules into shimmering vessels marvelous to behold.

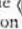
Just a crystal bubble! But it marked the invention of the blow-pipe, revolutionizing the industry . . . amazing the world! This secret, taken up and carried on by craftsmen of all times, has given to mankind one of its most priceless decorative and practical arts.

Inheriting the secrets of the ages . . . and perfecting their own developments . . . Heisey craftsmen fashion for your table enchanting glassware . . . creations of sparkling beauty.

Exquisite quality gleams forth from this glassware, Heisey's Glassware . . . the finest of it hand blown . . . as the finest has always been . . . magically wrought by highly-skilled, highly-paid artisans.

Jewel-like colors . . . the subtle rose of Flamingo, the royal amethyst of Hawthorne and the cool green of Moon Gleam . . . betoken Heisey's entrancing glassware, as well as brilliant crystal clearness.

These resplendent tints are at your command for complete table services . . . for every demand of the menu . . . different colors for different occasions . . . or to match your schemes of color.

You will find Heisey's Glassware at leading stores, where you can identify it by the  symbol of quality and distinction on every piece.

A beautiful bottle, "Gifts of Glassware," illustrated in color, replete with helpful suggestions, is yours for the asking.

A. H. HEISEY & CO.
321 Oakwood Ave. Newark, Ohio



HOW WONDERFULLY DELIGHTFUL A LUNCHEON CAN BE WHEN YOU HAVE ENCHANTING GLASSWARE BY HEISEY FOR YOUR TABLE. FASCINATING FINES SUCH AS THESE, IN RICH COLORS, MAKE Dainty DELICACIES EVEN MORE TEMPTING.

HEISEY'S
GLASSWARE  for your Table

GLASS PERFECTED THROUGH THE SECRETS OF FOUR THOUSAND YEARS

HEISEY NEWS

169 West Church Street, Newark, Ohio 43055

CLUB OFFICERS:

President, Richard P. (Dick) Smith (614) 366-5163
Vice-President, Sam Schnaidt (614) 587-0052
Secretary, Amy Jo Jones (513) 426-8668
Treasurer, Larry Stickle (614) 366-2000

Editor, Kathy Johnson Bowles
169 W. Church Street, Newark, Ohio 43055
(614) 345-2932
Published and Printed in Newark, Ohio
\$15.00 per year, \$1.25 per copy

Back Issues: Each Volume (12 issues a year): \$9.00 Volumes V, VIII, IX, X, XI, XII, XIII, XIV, XV, XVI, XVII, XVIII are available. Heisey Collectors of America, Inc., a not-for-profit corporation (tax exempt status), are owners and operators of The National Heisey Glass Museum, 6th and Church Streets, Newark, Ohio. Open daily 1-4pm except holidays. Other hours by appointment. Members admitted free.

HEISEY NEWS

Heisey Collectors of America, Inc.

All Rights Reserved 1990- ISSN 0731-8014

Published monthly, except twice in February, by Heisey Collectors of America, Inc., Newark, Ohio 43055. Second Class Postage Paid. Club Membership (includes 13 issues of Heisey News and participation in all club activities) \$15.00 per year, plus \$2.50 for each additional family member in same household who wishes a membership card. For voting Membership add \$25.00 as a one time only fee.

POSTMASTER: Send

address change to: HCA, 169 W. Church St., Newark, OH 43055

ADVERTISING

Send all ads to: HCA Advertising, 169 W. Church St., Newark, OH 43055.

DOUBLE SPACE ALL ADS

RATES:

CLASSIFIED: 15 cents per word. \$1.50 minimum.

ABBREVIATIONS AND INITIALS COUNT AS WORDS.

DEALER DIRECTORY: \$25.00 per year

DISPLAY	MEMBERS	NON-M
1/8 page (9 items)	\$20.00	\$30.00
1/4 page (20 items)	\$30.00	\$45.00
1/2 page (20 items- hor.)	\$45.00	\$67.00
1/2 page (50 items- vert.)	\$60.00	\$90.00
1 page (50 items)	\$75.00	\$112.00

Personal ads are limited to 1/8 space.

ALL ADS MUST BE PREPAID. Ad copy must be received by the 5th of the month preceding the publication date, e.g. April 5th for May issue. Ads containing reproductions will not knowingly be accepted unless clearly stated (e.g. Heisey by Imperial, etc.)

HEISEY NEWS assumes no responsibility for false advertising or misleading information.

In the event of a typographical error, the incorrect portion of the ad will run the following issue, but HEISEY NEWS assumes no further liability.

The opinions expressed in articles in HEISEY NEWS are those of the authors and not necessarily those of the organization. The Editor reserves the right to edit or refuse any material submitted for publication. When requesting information, please enclose a self-addressed stamped envelope.

About the Cover: The original masthead (first used in September 1972), designed by Vincent Sparacio, has served the Heisey News well for the past eighteen years. Now that the layout and type style has been revised, it seems natural to update the masthead so that all elements work together as a cohesive visual statement.

The new masthead design is derived from an original Heisey advertisement, "Heisey Glassware for your table," which included the diamond H trademark. An example of the original design is illustrated on the cover by one of the "Glass Secrets" ads. The "Glass Secrets" series was used in 1928 and 1929. The "historic" illustrations were from original oil paintings by Tanggren.

This particular "Glass Secret" (original Tanggren oil painting 23"x30", collection of The National Heisey Glass Museum) was third in the eight part series and appeared in Good Housekeeping and Women's Home Companion in 1928. The Heisey items featured are: #1224 plate, #1229 plate and 8" oval dessert (used as a salad here) and #3370 African 8oz. goblet. Also see Heisey on Parade by Sandra Stout for more information about the "Glass Secrets" series.

IN THIS ISSUE

Letters . . .	pgs. 4-5
Club Notes	pgs. 6-7
Augustus "Gus" H. Heisey, II diamonds are forever Janet Caswell	pg. 7 pgs. 8-9
Custard Glass: A Brief History George J. Reynolds	pgs. 10-12
Glossary of Glass Terms Kathy Johnson Bowles	pgs. 13-17
Dealer Directory	pg. 18
Advertisements	pgs. 19-22
Ruby Mother Rabbit	pg. 22
September Dinner/Mini Show	pg. 23
Calendar of Events	pg. 24

From the President, Dick Smith

I hope everyone is having a pleasant summer. As you probably already know, we have had quite a rainy summer in Newark. Consequently, we had flooding in the basement; three times to be exact. There was a defective back-flow valve in the sewer line and every time we had a very hard rain (e.g. Convention) the sewer line would back up. The problem was corrected, but the basement carpet was ruined.

The Museum Gift Shop has taken a new look and I think everyone will like it. The supply of original Heisey glassware is very low. Many visitors want a marked piece of Heisey to take home as souvenirs. If possible please donate any piece of original Heisey in good condition and valued under \$50.00 per piece. Your donation is tax deductible.

Sunday, July 29th was "Picnic in the Park", an annual event to raise money and increase community visibility for The Licking County Historical Society, The National Heisey Glass Museum and Old Town West. It was held in Veterans' Park in front of the Museum. There was a small flea market, the 4H Band, food and lots of visitors. Approximately 160 people signed the registration book in the Museum that day.

The September Dinner is fast approaching. The deadline for reservations is September 3. Reservations can be made by telephoning the Museum Monday through Friday 8-4:30pm. This an enjoyable time for all who attend. So, make your reservations now. Don't forget the Mini-Show the same day as the Dinner. For detailed information see page twenty- three.

Jim Clark of Dayton will be Chair of the March Benefit Auction. Start planning now and look for further information in the Newsletter.

I want to welcome Barb Furbee, new Gift Shop Clerk/ Curitorial Assistant and Ray Browning, Shipping Clerk. See you next month.



From the Editor, Kathy Johnson Bowles

In my haste to get last month's Heisey News to the printer, I left out some very important people-- those who volunteer to get the newsletter labelled, sorted and to the post office! However, HCA is sincerely grateful of their continued support and hard work. Thanks to: Stan Holmquist, Helen Kennon, Jim Kennon, Phyllis McClain, Mary McWilliams and Bob Rarey.

Correspondence: If you have any questions regarding the identification of glass, please be patient when waiting for a response. It usually takes me a bit longer than usual to answer your inquiries. If I cannot answer your question through research or with assistance from HCA members, Norm and Jan Thran, your letter will be forwarded to former Curator, Louise Ream.

Newsletter Deadline: Please remember that copy and advertisements must *arrive by the 5th* of the month prior to publication to be included in the newsletter. If the item is postmarked the 5th, it often doesn't arrive until as late as the 10th. This presents a problem since the newsletter must be at the printer at 8:30am on the 15th. So *please* mail your information by the **1st of the month**. If your submission is late, it cannot be included. Thank you.

Advertisers: Before sending in copy please review ad sizes and number of items. Check to insure the amount of information you want included fits into the ad space you have selected. Please realize that the more information squeezed into an ad space (beyond what we have indicated will fit), the smaller the type and the more difficult to read. Look over past ads for reference.

Corrections From August 1990 Heisey News: When there is transition in the work place, there is confusion. Please accept my apology for these corrections concerning donations in the August Heisey News.

Thanks again for your support.

29. Rochester HCC

"In Honor of Louise Ream"

#4091 Kimberly goblet, variation Churchill #890 1/2

#3416 Barbara Fritchic goblet, unknown cutting

38. North Carolina HCC

"In Memory of Bill Gibbs" \$250.00

39. Florida HCC

#1776 Kalonyal 3 1/4" salt and pepper

42. Gulf Coast HCC

"In Memory of Bruce Montgomery"

#3390 Carcassonne 1oz cordial Cobalt with Crystal stem

44. National Capital HCC, Washington, DC
Area \$2,600

Recent Articles About Heisey and Related Topics:

Antique Week, July 23, 1990, "Well-Run Auction Center Makes Attending Apple Tree Sales Fun" by Ed Duling.

The Daze, August 1990, "Heisey: Is it Tiffin's Classic or Heisey's Pied Piper?" by Neila Bredehoft.

Glass Collectors Digest, August 1990, "Something Old, Something New: A.H. Heisey & Co. in the 1930's" by Tom Felt.

New York-Pennsylvania Collector, May 1990, "Early Heisey Patterns" by Carl Sparacio; "A.H. Heisey" by George J. Reynolds; "Emil Krall: Glass Engraver For Royalty" by George J. Reynolds.

New York-Pennsylvania Collector, August 1990, "Heisey Sportsman Etchings" by George J. Reynolds.

Announcements:

Newark Study Club Forming: If interested Contact Jamie Van Winkle, Newark, Ohio at (614) 344-4924 for more information.

Benefit Auction: A reminder from Jim Clark. The Benefit Auction will again be held on March 8 & 9 at Apple Tree Auction Center. Be thinking of which wonderful and unusual items you plan to send. More information will follow.

Address for Louise Ream: (Please note the correct zip code) 7943 County Brook Lane, Club Worthington, Westerville, Ohio 43081



From the Business Manager, Bill Barrick

The water problem has been resolved as Dick Smith noted in his column. The ruined basement carpet has been removed and the area has been thoroughly cleaned.

Ray Browning, new Shipping Clerk, is doing a great job and fits in nicely with our organization. In addition, we are now having staff meetings every Monday to discuss matters of concern and policy.



Dear HCA,

Enclosed is our check to renew our membership in the greatest club in the world. It also has the greatest members. My wife and I attended our first Convention in June and had a fabulous five days. We never saw so much Heisey in our lives. Never have we met so many friendly and helpful people. We didn't decide to go until Tuesday of that week. By Thursday night we knew, good Lord willing, we'll be there next year. We attended everything but the meeting on Sunday morning (the only day we didn't get up before five am all week). We met such great people everywhere. We met novices (like us) and we met experts. All were equally friendly and enjoyable. These people put on no airs. Such great people. The staff at the Museum was more than helpful. We only met Louise Ream for the first time on vacation last July. We miss her already. Thanks.

Steve and Nettie Horath, Crest Hill, IL

Dear Friends,

Please renew my subscription to Heisey News. Since reading all your material, both current and fact issues, I have truly become an addict.

My late mother gave me about fifteen pieces she had accumulated from the early 1940's. Only by chance did I see a piece of Crystolite in an antique store, then I realized its true value. Out of storage it came and I haven't stopped collecting since. During last year's vacation, I hit the jack pot with forty new items. I thought I'd been to Reno. Fun, fun, fun.

Many thanks to all who are so dedicated and work so hard there in Newark. My dream is to one day visit the Museum.

Sincerely, Ava L. Davis, Ukiah, CA

Dear Ms. Johnson Bowles,

I would like to welcome you to the Heisey Family. In the past, Louise Ream has been very helpful in her responses to my inquiries. I know I will miss her, but knowing the high standards that are set by HCA, I know you will fit in.

I have been asked to identify a large collection of glassware for an estate sale that a good friend of mine is holding. There is one piece or should I say, a set that has us both intrigued. It is a Dawn #1637A 11" salad bowl and 14" sandwich plate. This in itself is not unusual. What does make this set unusual is a silver salad fork and spoon in a custom made "Pacific-Cloth" bag. On the flap of the bag is imprinted: "A.H. Heisey & Company" on the top line and "Manufacturer of Elegant Glass" on the second line. What we would like to know is: 1.) When was this done? 2.) Who made the silver pieces for Heisey (the only marking on them is three crowns in a triangle)? 3.) Were the original fork and spoon glass? If they were, what did they look like?

I hope you can answer these questions soon. Please answer by letter. We would like to put the letter with the piece when it is sold or be able to forward your answer to the person who purchases the set. I have enclosed a SASE for your reply. I hope to hear from you soon.

Sincerely, Ronald Woolley, Tampa, Florida

Dear Mr. Woolley,

Thank you for your kind words of welcome and confidence in your July 10th letter.

Concerning your question about the silver salad fork and spoon in the "Pacific-Cloth" bag, I called Louise on this one. She said this would have been done in the last two years of production since it was done with Dawn items. She also noted dozens of companies completed such sets of glass with extras such as the silver salad fork and spoon. For this reason, it would be difficult to determine who made the silver pieces.

However, I have found information in Heisey's last catalog, no. 33, June 1, 1956. On page 31 with the salad bowl and sandwich plate, there are silver plated and wooden servers listed for sale. I can only guess that the silver plated set is what

you mentioned. I have enclosed a copy of that catalog page.

I hope this has been helpful. If you have any further questions, feel free to call or write.

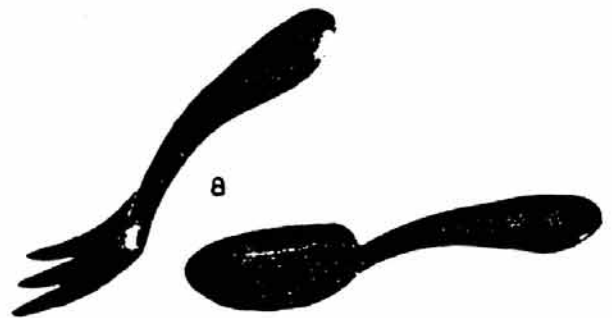
Sincerely, Kathy Johnson Bowles

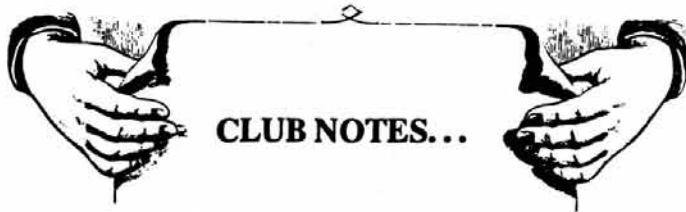
31



Salad Bowls

No.	Size	Item	Price	
			Dozen	Each
1-341	9 in.	Salad bowl (nappy).....	\$42.00	\$3.50
2-1485	10 in.	Salad bowl.....	39.00	3.25
3-1503	10 in.	Salad bowl.....	39.00	3.25
4-1519	9 in.	Salad bowl.....	39.00	3.25
5-1951	10 in.	Salad bowl.....	48.00	4.00
6-1637A	11 in.	Salad bowl.....	45.00	3.75
7-1637A	14 in.	Sandwich plate..	47.40	3.95
8-	99	2 pc. Wood fork & spoon.....	12.00	1.00
9-	15	2 pc. Silver-plated servers.....	60.00	5.00





CLUB NOTES...

Heisey Collectors of Texas

On Saturday, July 14th twenty-six members of HCT met for a very special and unique occasion at the home of Roger and Erma Hulslander in Mesquite, TX. This special occasion was the 15th Anniversary of the founding of Heisey Collectors of Texas. It was unique because all the charter members were present. In addition, meeting place and the hosts were the same that first meeting in 1975. To us, this is a record of achievement.

Our host, Roger, presented a program making puns on the Heisey patterns and the charter members. He recognized each of the couples who had begun this very active and enjoyable study club. After the program, we reminisced about the founding of our club and about members who had once belonged, but had dropped their membership for various reasons. Even though these people were gone, each had left their contributions to the club and Heisey collecting. Members also recalled the educational Heisey shows HCT had produced throughout the years in the Dallas Metroplex Area.

Our first secretary, Erma Hulslander, read the minutes of the first meeting. She reviewed exactly what was done to breathe life into HCT. Then Erma read correspondence from HCA regarding HCT receiving a charter. Charter #16 was granted to HCT in 1976 and received at the National Convention in June of that year (see photo at right). HCT has always been very proud of this affiliation working constantly to promote HCA and the beautiful Heisey Museum.

We had a huge birthday cake with the HCT logo (the outline of the state of Texas with a diamond H place where the Metroplex Area is located in the state) in the club colors of blue and white and surrounded with roses. The words on the cake read, "Happy 15th Birthday HCT". This beautiful and delicious cake was made in three flavors chocolate, vanilla and strawberry. Everyone tried a piece of each flavor. Other delightful finger foods were served on Heisey plates. All were made by Sheri Hulslander, daughter of the hosts.

Photographs were taken of the charter members gathered around the table. These members are Pat and Woody Hardin, Ed and Ella Buttry, John and Margie Allen, Madeline and A.C. Sullivan and Roger and Erma Hulslander.

The club scrapbook, made of velvet and a replica of the Heisey paper seal, was also on display. Many of the

members took a glimpse through the scrapbook of the many events spurring memories of long time members and whetting appetites of the new.

Show & Tell followed the festivities. Ella Buttry displayed a 1916 A.H. Heisey ad from Ladies Home Journal. The members who had visited Newark in June were loaded with all the prize pieces of Heisey glass found at "the most exciting Convention ever". Everyone felt they had been to the Convention when Show & Tell had ended.

We had two new members join HCT. They are Mary Ann and Fred Levine. The Levines have come to Texas from Washington state. They collect Alexandrite stems. It is a pleasure to welcome them into the Heisey Collectors of Texas.

Thank you HCA for making so many people happy and for bringing us together in a common bond for an enjoyable, caring and sharing fifteen years.

Respectfully submitted, Madeline Sullivan



Madeline Sullivan accepts Charter #16 for HCT from Louise Ream at 1976 National Convention, photo: 8/76 Heisey News.

The Rochester Area Heisey Collectors Club

On July 15th, our annual picnic was held at the beautiful 147 year old home of Norene and Don Walzer. The home rests next to the old Erie Canal and includes over two acres of land encompassing a tenant house, shop and kennel. This property was part of the famous Phelps Gorham Purchase in the late 18th century. Norene uses the shop to sell her antiques. However, the dogs never seem to use the kennel. They have five, beautiful Irish Setters which Norene shows. The Setters were kept in the garage most of the day. When they were released after dinner, it seemed like there were fifty instead of five, happy, gorgeous animals all over the place looking for handouts. The Walzer's love

of the place really shows and is evident in the beautifully kept buildings and grounds with flower and vegetable gardens in full bloom.

The meeting was called to order at 3:15pm by our President, Betty Evans. Since this was a picnic, the meeting was short. Nine members of our local club attended the Convention, quite a turn out for a small club. Marvin Jacob did most of the reporting about the Convention. He reported that there are problems with the sewage system at the Museum. It seems, maintaining a museum is much like owning a home, something always needs attention. Our club did quite well raising money this year. Betty Evans presented HCA with a check for \$600.00 for the Endowment Fund. The club also donated over \$200.00 for Louise Ream's selection of Krall cuttings to be placed in the Museum. With individual and club donations, we raised about the same for the Vogel memorial.

We were happy to see our former members, Mr. & Mrs. Jors, come as guests. Adele and John Pardee were home again from Florida. It was great to see them again. Adele reported that she had joined a club in Florida. Good to see her still collecting Heisey.

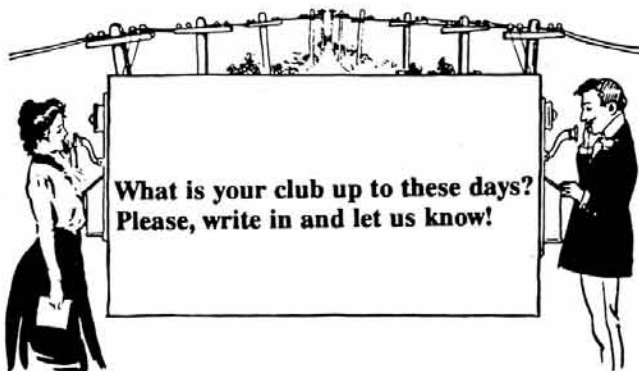
The Show & Tell brought a few items of interest. Marie and Jeff Frew picked up a nice Georgian 11" candle at Brimfield as well as a 8" Pinwheel and Fan nappy. Lois and Marv Jacob found an unusual 3" Regency candle. The hole for the candle was almost as deep as the piece. Perhaps it was used as a vase at one time as well. It was a beautiful piece of glass.

After the meeting Norene put on her usual display of food. We were stuffed by the time the dogs arrived. The party ended all too soon. With wonderful company, a great time was had by all.

Congratulations to all the new directors and officers. May all your decisions be made with wisdom. The new Curator, Kathy Johnson Bowles will need our support too. So lets get behind her with all the help that is necessary.

Our quote for the month: "Young men think of old men as fools, and old men know young men to be so." G.J.R.

George J. Reynolds



From the Newark Advocate, August 1, 1990 Grandson of Heisey Founder Dies



Susan and Gus Heisey at the 1977 HCA National Convention.
photo: unknown (Collection of HCA).

Granville-- The grandson of the founder of the world famous A.H. Heisey & Co. has died at the age of 76.

Augustus "Gus" H. Heisey II of Granville died Tuesday evening. His grandfather was Augustus H. Heisey, founder of the glass producing company that was located in Newark 1896 to 1957. Heisey's father, E. Wilson Heisey, was president of the company from 1922 until his death in 1942.

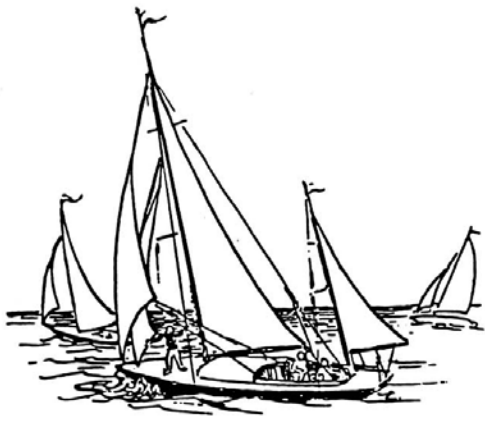
According to "Heisey News," a publication of the Heisey Collectors of America, Inc., Gus Heisey was born Dec. 7, 1913. He began to work at the plant at the age of 22 as a time-keeper in the payroll department. His uncle, T. Clarence Heisey, who assumed the presidency of the firm in 1942, promoted the young man to salesman in the southern states.

Sometime after the plant's closing, Heisey worked for the Lenox Co. and a china company, both located out of the state. He returned to Licking County and was an appraiser with the state highway department.

The Heisey Company, which was located at 301 Oakwood Ave., offered fine glassware, including pressed and colored glass and figurines. It continues to be one of the most sought after collectibles.

Memorial service will be at 1pm Saturday at the St. Luke's Episcopal Church in Granville. Burial will be at the Maple Grove Cemetery. Mr Heisey died Tuesday evening at home.

His wife, Susan (Montgomery) Heisey died in 1984. Surviving are his son Augustus H. Heisey of Granville; two daughters: Hope Heisey Jeffry of Tenfly, NJ and Justina Heisey Veszie of Drums, PA and 16 grandchildren. One daughter and one brother are deceased.



diamonds are forever . . .
 by Janet Caswell

The "J" Boats are here. What a thrill to see these magnificent sailing vessels under full sail. It is July 1st and two of the remaining three "J" class sailing vessels arrived here in the Yatching Center. This was the first time in fifty years that they sailed in our waters. There were originally ten "J" Boats built in the 1930's to compete in the America's Cup Regatta. Of the three remaining, the "Endeavour" recently underwent a five year, ten million dollar restoration. The "Endeavour" is privately owned. The wooden "Shamrock V", donated in 1986 to the Museum of Yatching by the Lipton Tea Co., has also had some work done but looks much as it did in the 1930's.

These are the biggest racing boats ever built. Many North Shore residents were involved in the

designing of these sailing classics of the 1930's. Most notable was Chandler Hovey, former Com-madore of the Eastern Yatch Club. Our Lighthouse Park is named after Hovey.

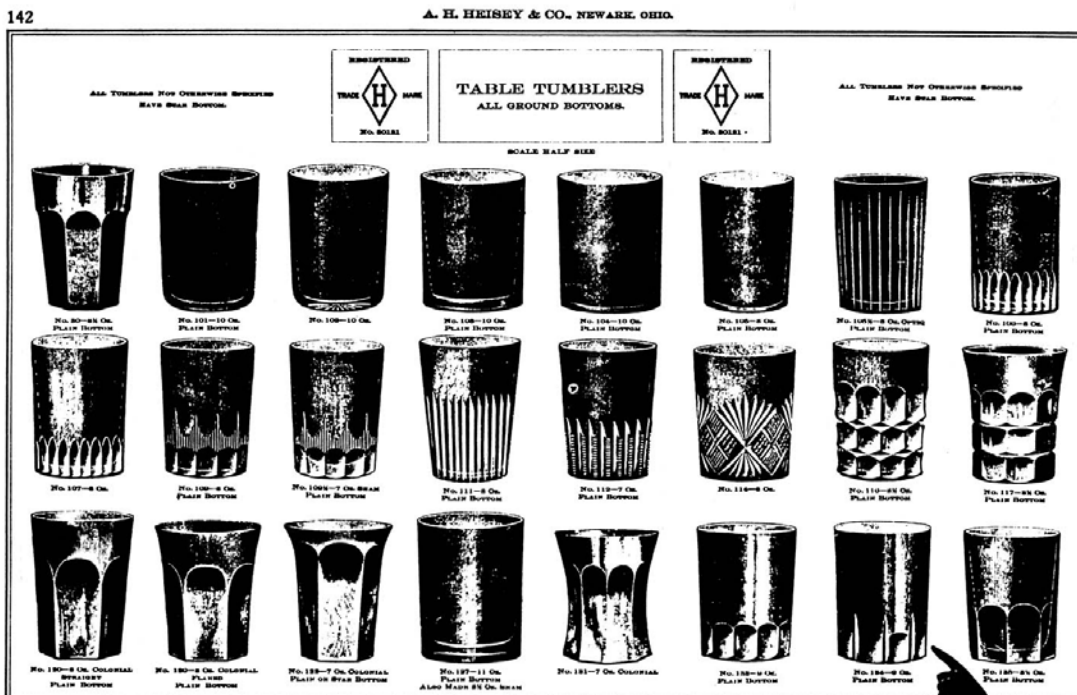
These boats, from the golden age of sailing, have a length of 130 feet and masts towering seven stories high. The two boats raced together last year in Newport. It marked the first time in fifty-two years that "J" Boats competed. The third remaining "J" Boat, the "Velsheda" is currently in England.

We almost needed a boat at convention this year. In spite of the weather everyone had a very enjoyable time. Everything was better than the year before.

"The Cardinal" acquired several things to "feather" his nest with: a 12oz Tumbler with Drinking Scene etch, also with the same Drinking Scene etch was a #4163 Whaley mug (one more for his collection). He also has two #4054 Coronation 14oz slim jim's (see page 245 of The Collector's Encyclopedia of Heisey Glass 1925-1938 by Neila Bredehoft), a #2323 Navy shot glass, a #1404 Old Sandwich shot glass and a three sham shot glass and the #134 Tumbler (seen on page 142 of Vogel book II) (see figure 1).

As for "Yours Truly" the little beaded Swag #1295 Wine in Crystal found its way back to the Yatching Center.

figure 1: page 142 Vogel, Book II.



"The Pottery Man" attended an auction. He waited five hours for the Heisey to be placed up for sale. Was it worth it? He thinks so: a #1220 Punt Band tumbler with Rose decoration, #1295 Beaded Swag 4" berry bowl with Rose decoration, a #1295 Beaded Swag wine also having Rose decoration. All are souvenir pieces from "Clayton Center, Iowa". Oh yes, the color was Custard. Purchased for a song. Also hauled in were three #4004 Impromptu (see figure 2) 12 oz. footed iced tea and one 4oz. footed cocktail. Talk about a steal. Can it be better than a steal?



figure 2: #4004 Impromptu.

"The Keystone Cop" is up to her old tricks. Will she ever leave those mundane pieces of glass where she finds them? Does she have to confiscate all of them? She found four 7 1/2" and one 8 1/2" #1469 Ridgeleigh plates. Good for dessert, they sparkle so! She put those under lock and key. Then to another show she went. Three fourths of the way through she spied a sugar bowl. Hmm, looks like Heisey. Hmm, it looks a 'funny' yellow. Sure, its Heisey. It's marked. It's #1020. What price? Big bucks? Let's say about the cost of two cartons of cigarettes. The color, oh yes, let's say Vaseline! Her only piece of Vaseline.

Hi there, "The Purple Passion". What's this I hear about three #4052 National 1 1/2oz. bar glasses with the Tally-Ho etch! What else is new? I haven't heard from you in awhile.

Oh my, "The Farmer" how do you get enough time from harvesting to find all these nice things? One #1253 Pineapple and Fan salt with sterling top, two #473 Narrow Flute with rim strawberry and sugar, seven #433 Greek Key low footed sherbets, a pair of #2 Windsor 7 1/2" candlesticks, a #352 Flat Panel horseradish and the #341 Puritan small cherry jar.

"Hooked on Heisey" talked about a couple of items: a #1253 Pineapple and Fan tumbler with Ruby stain and #184 Colonial 8oz. tumbler.

"The Tradin' Fools" did a little more hunting and a little more tradin'. They came up with: a #375 Prison Stripe toothpick, a #1205 Fancy Loop 1/2 gallon tankard, six #121 7 1/2oz. tumblers (see page 3 Vogel, Book I), #1295 Beaded swag creamer in Opal (no decoration) and the sugar and covered butter. Nice going!

"The Steadfast Colleague" has a large, plain Cobel shaker, three 4" square #1205 Fancy Loop nappies and the 11" celery tray.

At a flea market in Illinois, "The Inquisitive Neophyte" added another candy jar to his collection; the one pound recessed panel with an interesting etch.

"My Rebel Cousin" came up with the very lovely #367 Prism Band decanter in Flamingo (see example in Moongleam on page 34 of The Collector's Encyclopedia of Heisey Glass 1925-1938 by Neila Bredehoft).

"The Friendly Fox" purchased a beautiful #1464 Ridgeleigh 8" centerpiece in excellent condition.

Well now, this is the final day of the Yatching Center's "Festival of the Arts". This five day celebration of the Arts includes, painting, photography, wood carving, jewelry making, music and more. Wonderful music is played and staged overlooking the beautiful harbor. Today is "The Festival in the Street" for children of all ages which includes face painting, jugglers, clowns, street singers, balloons. So, I'm heading for the fun.

Please write all your finds, I sure can use your input. My mailbox has been empty lately.

Happy Hunting, Janet

Custard Glass: A Brief History

by George J. Reynolds

This article will cover only American made Custard glass, although a similar glass was made in England during the 1880's for the novelty and gift shop market.

"Custard" glass, as it is known today derives its name from the color of the great dessert our grandmothers were so fond of feeding us. This fairly heavy glass is distinguished by a fiery opalescence. The uranium salts used in its manufacture caused this opalescence. If the glass does not show this opalescence under a black light, it is probably not true Custard glass.

The Dithridge Company of Pittsburgh, Pennsylvania is reported to have produced the first American Custard in any quantity. Their production began in 1884. Dithridge did not make table sets in large turns. Consequently, examples of these sets are nearly impossible to find today. However, Dithridge Custard is still found at antique shows, usually in salts or syrups. The patterns normally seen are: Bulging Teardrop, Princess Swirl and Creased Swirl. The quality of the glass is excellent.

The Northwood Company of Indiana, Pennsylvania began production of their Custard glass in 1895. This firm dominated the field with many table sets, gilded and decorated with various hand painted designs. None of the firms that followed matched the success with Custard that Northwood enjoyed, although the Heisey firm was a close second.

Some of Northwood's more popular patterns include: Chrysanthemum Sprig, Beaded Circle, Louis XV, Intaglio and Inverted Fan and Feather, although they did not produce many other patterns. The Chrysanthemum Sprig pattern was also produced in a blue opaque glass. It was referred to as "Blue Custard", although it was never a true Custard glass. This blue glass is among the most expensive of all pattern glass produced in this country. Northwood's Custard still ranks at the top of most collector's lists, probably because of the large quantity produced and its superior decoration.

The great Heisey Glass Company commenced its Custard production in 1897. The quality of their glass is superior to that of many of the other producers. This was due to the large amount of uranium salts used and their refusal to produce an inferior product. Heisey produced two major pattern lines in Custard. The first was called Ivorina Verde now known as Winged Scroll, this popular line was never marked (see figure 1 and figure 5). It was offered in Emerald Green, Crystal and Vaseline. Ring Band was offered primarily in Custard and in most cases is marked. A large punch bowl was produced in the Sunburst and Beaded Panel pattern. The pattern was never used to make pieces other than an occasional odd item. If a collector should be tempted to buy this punch bowl, the item should first be checked under a black light. Due to the size of the bowl, a large amount of uranium salts were used in its production. This caused many stress cracks. In some cases, it caused crazing which is not obvious to the naked eye. A black light will show the flaws.

figure 1. pitcher photo: unknown.



A large number of souvenir items were made by Heisey in their minor Custard patterns. They were especially popular at fairs and carnivals. The names of towns and cities are usually painted on them (see figure 2). Many, though not all, Custard collectors disdain souvenir items. Therefore, they are fairly easy to find at glass shows today.

figure 2, souvenir items. photo: unknown.



Most of the Heisey glass produced after c.1900 was marked with its famous diamond "H". This includes their Custard glass. The lack of the mark does not mean that it is not Heisey glass. A collector must know the patterns, not just depend on the mark. The Heisey Collectors of America, Inc. now owns most of the molds that were used to identify their later glass. However, many of the molds used to make their older patterns were donated to the World War I & II scrap iron drives. Many of the patterns used to make their Custard glass were among those lost. This prevents any further reproduction of this great old Heisey glass.

Heisey's rare Custard pieces include: cake salvers (see figure 3), ring trees, punch bowls, colognes (see figure 4), and trays.

After 1900 a new group of companies entered the Custard market. The first was the Tarentum Glass Company that had limited success. Tarentum Glass produced a lovely Custard pattern with a fiery opalescence. Tarentum made two table settings, Victoria and Georgia

Gem. They also produced some beautiful kerosene lamps in the Heart and Thumbprint pattern. The Georgia Gem pattern was also produced in a Green Opaque glass which shows lots of fire under a black light.

In 1904 the Jefferson Glass Company of Steubenville, Ohio introduced their first Custard glass. Their table settings included Ribbed Drape, Diamond and Peg, and Jefferson Optic. Jefferson also produced thousands of souvenir items for the novelty trade. Ring and Beads, from their souvenir line, is often confused with Heisey's Ring Band pattern. Jefferson used a rose decoration which became very popular. This distinctive rose makes Jefferson Glass very easy to identify today. It was designed and applied by the Oriental Decorating Company. Very few of the glass firms of this period did their own decorating.

It is interesting to note that few candlesticks were produced in Custard glass. Perhaps this was due to the popularity of oil lamps and the new light source of the period, natural gas.

Several companies followed the lead of Northwood, Tarentum, and Heisey but never achieved their success. The secondary companies were Consolidated Lamp and Glass Company, U.S. Glass Company, Fenton Glass, Cloudersport Tile and Ornamental Glass Company and Imperial Glass Company. The Cambridge Glass Company produced a Ivory glass that was actually Custard, although the

figure 3, cake salver. photo: unknown.



firm did not market it as such. The McKee Glass Company produced a Custard as part of their kitchen ware line in the 1930's. This line was marketed as a French Ivory color. The McKee items will eventually become very scarce, particularly their Larel pattern. It is still possible to put together a complete set in this pattern for a modest investment. This is no longer possible with any of the early companies without a large expenditure.

Several "reproductions" have been offered by dealers as old glass. In particular the Chrysanthemum Sprig and Argonaut Shell patterns made by Northwood. They are obviously fakes to the experienced collector and lack any opalescence.

If interested in starting a Custard collection, first obtain a black light. Several reference books are available which will help identify this beautiful glass: Heacock's Victorian Glass in Color, Book 4; Yeakley's Heisey Glass in Color, and James Gaddis' six pamphlets "Keys to Custard Glass Identification." The Gaddis pamphlets and Yeakley's book are now out of print..



figure 4, cologne. photo: unknown.

The use of uranium salts in manufacture of Custard glass is only available with a special license. In addition, hand decoration is labor intensive. Both factors make production cost prohibitive. Unfortunately, this beautiful Victorian glass probably will never be reproduced in quantity again.

figure 5, five piece water set-- tankard, tumblers. photo: unknown.



Glossary of Glass Terms

Compiled by Kathy Johnson-Bowles

Annealing-- (1) to heat in order to fix laid on colors (2) a controlled reheating and cooling of glass article to remove any stress (forces) that may have been frozen in the glass by the rapid cooling that occurred as the article was shaped (e.g. crackled glass). To allow for this, the completely formed glass article, as it leaves the machine or the hands of the workman, is passed into a tunnel, partially reheated and slowly cooled (see lehr).

Batch-- the name given to the mixture of cullet and various raw materials which is fed into the furnace or tank and is melted into glass.

Bead-- (1) an enlarged, rounded edge of a tumbler or other glass article, or any raised section extending around the article (2) a small piece of glass tubing used around a lead wire.

Bent Glass--flat glass that has been shaped by sagging, while hot, into cylindrical or other curved shapes.

Bevelling-- grinding and polishing the surface at the edges to give a sloped border.

Blank-- any preliminary shape of glass which requires further operation of forming or finishing (cutting, etching, etc.).

Blister-- an imperfection; a relatively large bubble or gaseous inclusion of the glass.

Block Mold-- the simplest type of pressing mold, having no joints, they are the least expensive molds to make and the easiest to maintain. Produced ware without a vertical seam (see pressing mold).

Blow and Blow Process-- the process of forming hollow ware in which both the preliminary and final shapes are formed by air pressure.

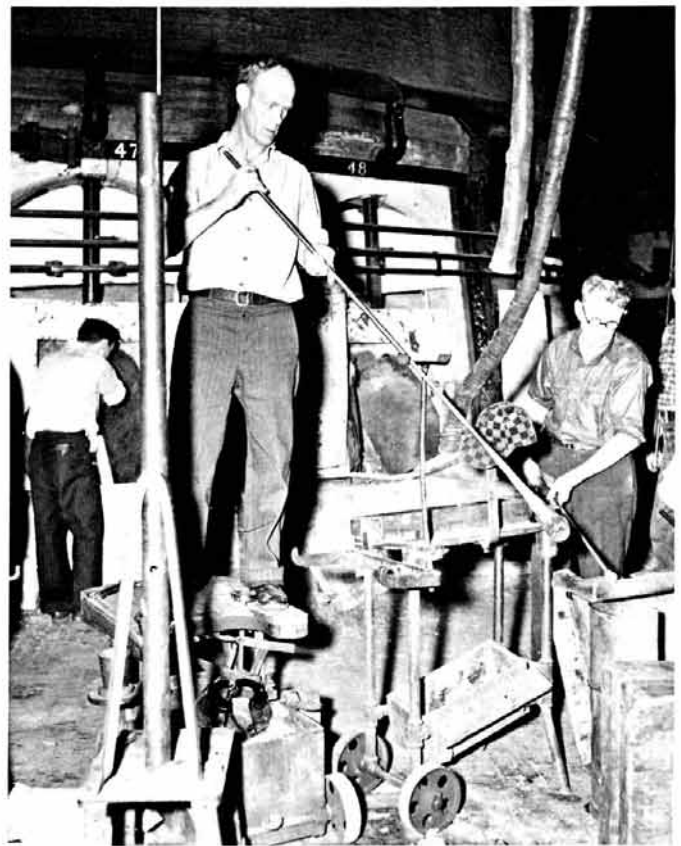
Blow Mold-- glass blown into this hinged mold for pattern or shape.

Blower-- any worker who forms glass by blowing either by mouth or with compressed air (also gaffer).

Blown Glass-- glassware shaped by air pressure, as by mouth blowing or by compressed air.

Blow Pipe-- a long metal tube, on the end of which the worker gathers a gob of glass and through which s/he blows to expand or shape the glass. This pipe or tube has a pear shaped knob at the gathering end and a mouth piece at the blowing end.

A blower holds a blow pipe in a glass shop. A gob of glass has been gathered at the end of the pipe. photo: unknown (Collection of HCA).



Cased Glass-- plain, or transparent glass, sometimes completely covered with a layer of colored glass, which can be cut through by the decorators to the level of the clear glass beneath, thus securing a two color effect. The glass is then known as "case-cut". One or more colored glasses can be thus overlaid upon primary glass of crystal clearness and decorated by cutting to yield multi-colored effects.

Casting-- a process of shaping molten glass by pouring it into or on molds, tables or rolls. Used in manufacture of plate glass and many other glass products.

Charge-- the glass forming mixture or "batch" which is placed in the furnace to be melted into glass.

Conchoidal-- shell-like in appearance, as when glass breaks with a conchoidal or shell-like fracture.

Continuous Tank-- a glass furnace in which the level of glass remains constant because the feeding in of raw material continuously replaces glass withdrawn.

Crackled-- glassware, the surface of which has been intentionally cracked by water immersion and partially healed by reheating before final shaping.

Crimping-- applying a fluting or wave-like effect to a blob or bubble of glass while it is still pliable.

Crucible-- a vessel or melting pot of some refractory (difficult to melt) material.

Emil Krall, Sr. engraves a vase. photo: unknown (Collection of HCA. Donated by Betty Cornell).



Crystal Glass-- a colorless glass containing a high percentage of lead oxide, highly transparent, frequently used for art or tableware. Often the term 'crystal' is used synonymous with 'fine glass'. It is relatively expensive to make and is considered by many to be the most beautiful of all types of glass.

Cullet-- broken or scrap glass which can be remelted and used again. The addition of a proportion of cullet (of the same composition as the glass to be melted) to the raw materials in the batch mixture is distinctly helpful since it facilitates melting.

The different stages of etching (Orchid etch goblets, Collection of HCA Donated by Alice F. Crouch). R to L: 1) stage 2--beeswax 2) stage 1-- application of design 3) final piece. photo: unknown.



Cut Glass-- glassware decorated by grinding figures or patterns on its surface by abrasive means, followed by polishing.

Enameled Glass-- glass coated or decorated with an opaque vitreous material. Probably first developed by the Saracens and Venetians, and later produced extensively in Bohemia, France, and the U.S.

Engraving-- the process of cutting figures, letters, etc. upon glass by abrasive means. Performed in much the same way as cutting but with more delicacy of treatment. Fine copper wheels are employed, and because abrasions of glass are much shallower great freedom of manipulation is possible.

Etch-- to attack the surface of glass with hydrofluoric acid or other agent, generally for marking or decoration.

Finishing-- process of cracking off, glazing, grinding and polishing glass after it has been blown, drawn or molded.

Fire Polishing-- making glass smooth, rounded or glossy by heating in a fire.

Flying mare former (Collection of HCA). The piece is placed in former while cooling to keep its shape. photo: unknown.



Flint Glass-- the term 'flint' as applied to glass should not be construed to mean that the glass is produced from flint; it is not. However, when this glass was introduced by the English, powdered flint was used instead of sand, and hence the name. Today the term is an arbitrary one-- a long-standing trade designation which indicates a plain, dense, transparent glass of high lead content.

Fluorescence-- that property which some bodies have of converting short, invisible radiant energy waves into the longer wave lengths of visible light.

Fluting-- ridge-like or rounded verticle lines impressed in blown glassware by means of a mold. When the lowered or concave section is wider than the raised or convex section, the glass is said to be fluted. When the reverse is true, the glass is ribbed.

Gaffer-- a master glass blower, an artist skilled in the making of glass, head workman of a glass hand shop.

Gather-- (n.) the mass of glass picked up by the hand shop worker on the punty or blowing iron. (v.) To get glass from a pot or tank on the pipe or punty.

Glass House-- the part of the glass factory in which the actual melting and forming of the glass occurs. Also used as synonym for glass factory or plant.

Glory Hole-- an opening giving access to the hot interior of a furnace used to reheat the ware in hand-working.

Gob-- (1) a portion of hot glass delivered by a feeder (2) a portion of hot glass gathered on punty or pipe.

Hand-made Glass-- a glass is spoken of as hand-made when it is shaped as the result of pure handicraft on the part of the glassworker (i.e. without recourse to molds). The chief hand process is that of blowing.

Hobnail Glass-- press glass characterized by an overall pattern resembling heads of hobnails, very popular in the 1850's and still being made today.

Intaglio-- a decorative process between cutting and engraving. In intaglio, the abrasions are made by means of a wetted stone, which yield a smooth, clean cut, going deeper than with a copper wheel.

Lead Glass-- glass containing a substantial proportion of lead oxide (PbO).

Lehr-- the tunnel shaped oven through which glass articles, after their formation by any of the numerous forming or shaping processes, are passed and subjected to a slow controlled cooling in order to eliminate internal stress or tensions (see annealing).

Marver-- polished metal, stone or wood on which the gather is rolled into a cylinder.

Melt-- a specific quantity of glass made at one time.

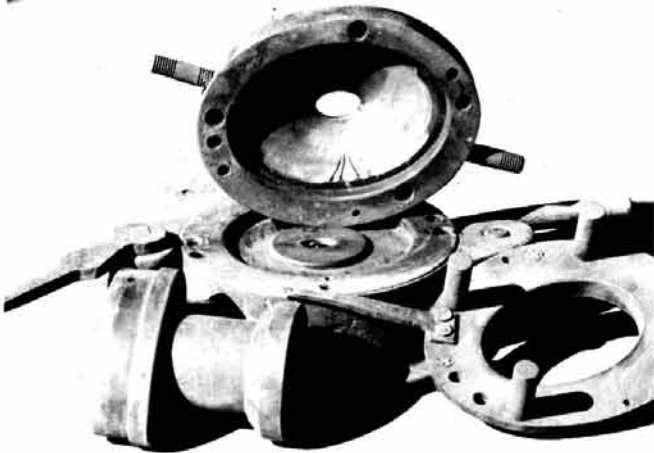
Melting-- the heating process by which the charge is completely converted into molten glass.

Metal--glass in its molten state.

Milk Glass-- white glass made by adding some special material such as fluorspar or tin to the batch.

Mold-- a form (usually metal) in which glass is shaped.

Mold (Collection HCA). photo: unknown.



Mold-blown Glass-- molten glass is blown into a bulb and dropped into a mold; it is then further blown to complete its formation.

Mold Mark-- mark or seam on glassware resulting from mold joint.

Paste Mold-- an iron mold lined with adherent carbon or with a paste usually made of beeswax, soap or resin which is placed in the hot mold and kept wet so that the revolving hot glass rides on a cushion of steam as it is blown and shaped.

Peephole-- a small opening in a furnace wall for observation purposes.

Mold (Collection HCA) photo: unknown.



Pot-- a one piece refractory container for melting glass. Open pot: a pot wherein the glass surface is not protected from the furnace atmosphere. Closed pot: a pot having a crown protecting the glass from the furnace atmosphere.

Pot Color-- the homogeneous color developed in glass melted in a pot; a solid color extending throughout the glass.

Pot Glass-- a high-grade brand of glass such as 'lead crystal'. Glass of this nature is necessarily made in small quantities, with all the care that can be devoted to it in order to maintain its purity and brilliance.

Pressed Glass-- glassware made by dropping molten glass into a mold in which shape is imparted to it by plunger action.

Pull-- the quantity of glass delivered by a furnace in a given time.

Pumice-- a hardened, spongy or cellular volcanic glass froth used for smoothing and polishing.

Punty-- an iron rod used for gathering and manipulating the hot glass, frequently used to remove partly formed glass from blow pipe.

Sand-- a hard granular rock material, finer than gravel, coarser than dust, and containing little or no organic matter. Glassmaking sands consists largely of silicon dioxide, or silica, and are found either as banks of loose sand or in the form of sandstone.

Sandwich Glass-- all types of glassware produced by the Boston and Sandwich Glass Co. at Sandwich, MA, on Cape Cod. The company founded by Deming Jarves, made glass that ranged from the finest hand-blown items to very expensive mass produced pressed glass.

Seam-- (n.) mark on glass surface resulting from joint of matching mold parts. (v.) to slightly grind the sharp edges of a piece of glass.

Servitor-- glassblower who is assistant to gaffer.

Shears-- scissors used to cut molten glass during shaping.

Shears (Collection HCA). R to L: 1) used to shear ice lip on blown pitcher, once owned and used by William Anderson 2) used to cut off bottom of cruets or oil bottles 3) pressers shears used by Pidge Fairall-- bolt added later. photo: K. Johnson Bowles.



Shop-- (1) a unit group of workmen producing glassware (2) location of a group and their tools and equipment at the furnace.

Stained Glass-- a colored glass, the substance of which has been body-colored in the process of manufacture.

Stress-- any condition of tension or compression existing within glass, particularly due to incomplete annealing, temperature gradient, or lack of homogeneity.

Tempered Glass-- glass that has been rapidly cooled from near the softening point, under rigorous control, to increase its mechanical and thermal endurance.

Tolerance-- allowed amount of variation from the standard or specified dimensions.

Wheelcut-- a cut in glass made by a revolving wheel. Steel wheels fed with a carborundum abrasive, are used to remove bulk of glass in making first cut (rough cut) of designs. Stone wheel and felt wheels are fed with finer abrasives such as linseed oil and emery powder or rouge, and used in polishing rough cuts to brilliant finish. Copper wheels are used in particularly intricate engraving.

Whimsey (Collection HCA). Glass chain made by a Heisey worker and probably worn during a Labor Day parade. photo: K. Johnson Bowles.



Whimsey-- novelty glassware made by glass blowers for their own amusement or to demonstrate skill.

Sources:

How Much Do You Know About Glass?

Harlan Logan, editor.

Webster's New Collegiate Dictionary

Victorian Times, Wheaton Village

	<p>GLASS WITH CLASS Lenore A. Shelley, GGHCC 216 DANVILLE DRIVE LOS GATOS, CA 95032 408-356-4036 "By Appointment Only"</p>	<p>COSHOCTON ANTIQUE CENTER A Community of Dealers 309 South 4th Street Coshocton, OH 43812 (614) 622-3223 Open Daily 10-6 (closed on Mondays, Jan-Mar)</p>
<p>ALL HEISEY AUCTION Consignments Welcome Apple Tree Auction Center 1616 W. Church, Newark, OH 43055 PH: (614) 344-9449</p>	<p>GREEN ACRES FARMS Antiques, Crystal Glass & Collectibles 2678 Hazelton-Etna Rd., SW (S.R. 310-N) Pataskala, OH 43062 Sat. or Sun. PM or call (614) 927-1882</p>	<p>THE CURIOSITY SHOPPE Heisey, Pottery, Coins, Crafts & More NEW SHOP in Holmes County Amish Country 13 W. Jackson, Millersburg, Oh 44654 (216) 674-2999</p>
<p>ALFA I CARRIAGE HOUSE ANTIQUES Featuring Depression & Elegant Glassware Al & Faye Maness Rt. 1 Box 552, Ashland, VA 23005 PH: (804) 798-1825</p>	<p>H & R DIAMOND H Helen & Robert Rarey 1450 White Ash Dr. Columbus, OH 43204 PH: (614) 279-0390 after 5:30</p>	<p>PARRETT'S ANTIQUES Heisey 4994 Mapledale Rd. OR 1215 Greenwood Ave. Jackson, Mich. 49201 PH: (517) 784-7319 OR (517) 783-3289</p>
<p>ANTIQUES - THE SHULTZES 206-208 East Main St. Newmanstown, PA 17073 15 Miles West of Reading, PA PH: (215) 589-2819</p>	<p>"HAPPINESS IS" - THE STULTZS 3106 Warren Court, Glen Allen, VA 23060 Shows and Mail Order PH: (804) 672-8102 GLASS CIRCA 1890-1960</p>	<p>PATTON HOUSE Rocky's Mall, I-81 & US 11 Weyer's Cave, VA 24486 PH: (703) 967-1181 The Antique Gallery, Richmond, VA</p>
<p>C & J ANTIQUES Cole & Jean Miesner Box 45, 72 Whig St. Newark Valley, NY 13811 PH: (607) 642-9905</p>	<p>HARRALSON'S HOBBIES Heisey - Rose O'Neill Items - Doll Repair 1426 W. Highland, Springfield, MO 65807 PH: (417) 883-2449 Cliff & Helen Harralson</p>	<p>EAGLES REST ANTIQUES Carl and Mary A. Evans Heisey - China - Pottery, etc. Shows or Appointment PH: (614) 522-2035</p>
	<p>HELEN & JIM KENNON Heisey, Cambridge, Fostoria, Duncan, Imperial, Fenton, Tiffin P.O. Box 114 Brookville, OH 45309 PH: (513) 833-5406 SHOWS ONLY</p>	<p>R & L ANTIQUES-SAN FRANCISCO Members of the Golden Gate Heisey Club 3690 Bodega Ave. Petaluma, CA 94952 PH: Petaluma (707) 762-2494 PH: San Francisco (415) 621-6693</p>
<p>CHARLES & MILDRED FISHER Heisey, Degenhart, Imperial, Antiques, Collectibles, General Line 991 Idlewilde, Newark, OH 43055 PH: (614) 522-5398</p>	<p>JJ MC KEE ANTIQUES Pottery - Glassware - Collectibles 222 B West 75th St. Kansas City, MO 64114 Wed.-Sun. 10-5 PH: (816) 361-8719</p>	<p>THE WOODEN SHOE Antiques & Collectibles Jim & Sheri VanEs by Appt. 810 Elden, Herndon, VA 22070 PH: (703) 435-9045</p>
<p>CRYSTAL LADY Joann Hagerty Specializing in elegant depression glassware 1819 Vinton Street, Omaha, NE 68108 Shop Ph. (402) 341-0643 or Home Ph. (402) 391-6730</p>	<p>RAILROAD DINING CAR CHINA Wanted By Collector - Harold W. Ames 4574 Driftwood La., Canandaigua, N Y 14424 1-716-394-1098 1-800-836-9619 Most Anything Railroad Related Wanted</p>	<p>SCHWAN'S ANTIQUES SHOWS & MAILORDER 77 Lagos del Norte Ft. Pierce, FL 34951 PH: (407) 461-5940</p>
<p>DIAMOND H PLUS Mail Orders & Shows George & Eileen Schamel 6625 Gilardi Rd., Boonsboro, MD 21713 PH: (301) 432-6285</p>	<p>J. & R. COLLECTIBLES Shows, SASE, Mail Order list June & Ray Lukasko P.O. Box 1030, Newark, OH 43055 PH: (614) 344-9719</p>	
<p>ETTELMAN'S DISCONTINUED CHINA & CRYSTAL HEISEY a SPECIALTY P.O. Box 6491-HN Corpus Christi, TX 78411 PH: (512) 888-8391 Include SASE</p>	<p>MOSTLY HEISEY Rhoda Curley 16 Clayton PL, Albany, NY 12209 Shop and Mail Order PH: (518) 482-6272</p>	<p>HEISEY PUBLICATIONS Box 102, Plymouth, Ohio 44865 All Vogel Heisey Books I, II, III, IV And Quarterly Newscasters available</p>
<p>FOREVER HEISEY Jan & Norm Thran Mail Order, Shows, Appraisal Service 1663 Londondale Pkwy., Newark, OH 43055 PH: (614) 344-5955</p>	<p>MOUND BUILDERS ANTIQUES Heisey & Animals, General Antiques Irene Rauck 1138 Moundview, Newark, OH 43055 PH: (614) 344-6043</p>	<p>WILLEY'S ANTIQUES & MUSEUM Specializing in Heisey 11110 Cannon Rd., Frazeytsburg, OH 43822 16 miles east of Newark, OH PH: (614) 828-2557</p>
	<p>THE MUTED SWAN ANTIQUES 5486 Peachtree Rd., Chamblee, GA 30341 Heart of Chamblee Antique Row Specializing in Heisey & Cambridge Bill & Pat Miller PH: (404) 451-7620</p>	<p>JAMES S. HARRIS ANTIQUES/APPRAISALS Box 672 Richmond, KY 40475-0672 PH:(606) 623-9100 Buying and Selling by Mail</p>
<p>GLASS 'N' GLASS Virginia & Odell Johnson Rt. 1, Box 1324 Hayward, WI 54843 PH: (715) 462-3753</p>		<p>TALL OAKS ANTIQUES 565 N. Nichols St., Lowell, IN 46356 Elegant & Dep Glass Specializing in Heisey. Shows - Mail Order - Shop - PH 219-696-0147 Mike & Barb Rosenberger</p>

H & R Diamond H
Helen and Bob Rarey
1450 White Ash Dr.
Columbus, Oh 43204

PH:614-279-0390
after 5:30PM
UPS &Ins.Extra
H-marked Heisey

#5 Patrician 5" 1 lite, pair	\$50.00
#150 Banded Flute 1 lite chamberstick, H	\$39.50
#300 Peerless 5" jelly compote, Gold dec.,H	\$47.50
#341 Puritan 11" nappy, H	\$45.00
#341 Puritan 13" party plate, H	\$47.50
#343 Sunburst 4" nappy, Gold dec., H	\$22.50
#355 Prince of Wales Plumes 5" hi-ftd jelly, H, warm gld	\$72.50
#365 Old Queen Ann 10" flared nappy, H	\$85.00
#411 Tudor 6 1/2" tall compot, H	\$35.00
#411 Tudor 5" ftd jelly, H	\$25.00
#433 Greek Key 5" hld. jelly, H	\$39.50
#1229 Octagon 10" hld. tray, cut	\$37.50
#1295 Beaded Swag 10 1/2" cake salver	\$65.00
#1469 Ridgeleigh 6" sq. plate, H (4) ea.	\$12.50
#1469 Ridgeleigh 8" sq. plate, H (4) ea.	\$25.00
#1511 Apple cov'd marmalade w/ ladle, cut, H	\$135.00
#1519 Waverly ctr. hld. sandwich tray	\$50.00
#1951 Cabachon 5" ftd. jelly, Bell-air cut	\$32.50
#5012 Urn individual cigarette holder	\$12.50
#5034 7 1/2" square footed vase	\$42.50

Schwans Antiques
77 Lagos del Norte
Ft. Pierce FL 34951

(407) 461-5940 (Postage & Insurance Extra)

#1235 Beaded Panel/ Sunburst sugar, ind.	\$35.00
#134 Trident candles Rose etch pr.	\$175.00
#1401 Empress 8" plates, Orchid etch (9) ea.	\$25.00
#1425 Victorian compote, 3 1/2" high	\$30.00
#1428 Warwick vase, 5" Cobalt	\$195.00
#3389 Duquesne 5oz. soda Tangerine (2) ea.	\$145.00
#4045 Ball vase Crystal, 6 1/2" optic	\$85.00
#416-109 dlphn cmpt, clr. ft. Mnglm Herringbone bwl	\$195.00
#461 Banded Picket basket, Flamingo	\$295.00

CLASSIQUE GLASS CO.
P.O. BOX 52572
TULSA, OK 74152

PH: 918-744-5409
UPS& INS. EXTRA
MOST MARKED

#1404 Old Sandwich Sahara 10oz low ftd goblet (8) ea	\$37.50
#1404 Old Sandwich Crystal square indiv ash tray (13)ea	\$9.00
#1404 Old Sandwich Sahara cruet stopper	\$27.50
#1506 Whirlpool Zircon 3 Hnld mayo bowl	\$125.00
Rooster stem cocktails (7) ea.	\$70.00
Verlys 14" water lily bowl	\$125.00
Verlys 14" poppy bowl	\$135.00
Circle pair Flamingo goblets (8)	\$32.00
#1413 Cathedral vase, flared Artic etch	\$225.00

PLEASE PHONE OR WRITE YOUR SPECIAL WANTS AND NEEDS

J & T Antiques
P.O. Box 933
Sturbridge, MA 01566

PH: 508-347-5424
Shipping & Ins. Extra
*** = MARKED**

#21 Aristocrat 7" candlestick * w/ floral etch	\$65.00
#22 Windsor 7" candlestick*	\$65.00
#150 Banded Flute candlestick	\$65.00
#305 Punty & Diamond Point decanter (no stopper)	\$75.00
#343 Sunburst punch bowl & base* w/ ladle	\$170.00
#400 Colonial footed punch bowl & base*	\$160.00
#433 Greek Key 2lb. candy jar*	\$175.00
#1184 Yeoman D/O dinner plates, Hawthorne (6) ea.	\$55.00
#1405 Ipswich candlevases w/ inserts*	\$190.00
#1469 Ridgeleigh Sahara coasters set of 8 orig bx	\$160.00
#1469 Ridgeleigh salts (8) ea.	\$8.00
#1509 Queen Ann 7 1/2" candlesticks pr.	\$175.00
#5040 Lariat goblets* w/Moonglo cut (12) ea	\$24.00
#5040 Lariat sherbets* w/Moonglo cut (8)ea.	\$20.00
#5040 Lariat wines* w/Moonglo cut (8) ea.	\$24.00
#5040 Lariat cordials* w/Moonglo cut (8) ea.	\$100.00
Elephant handled mug, Amber* (RARE)	\$600.00
Ringneck Pheasant* Heisey label (2) ea.	\$130.00
Heisey by Imperial Mallard wings up Carmel	\$30.00
Heisey by Imperial Standing Colt Carmel	\$35.00

J & R COLLECTIBLES
P.O. BOX 1030
NEWARK, OHIO 43055

PH. 614-344-9719
UPS &INS. EXTRA
*** = MARKED**

#4228 FAVOR VASE D/O Cobalt	\$225.00
#1401 EMPRESS Indiv. nut Sahara (3) ea.	\$27.50
#2401 soda 8oz. Sailboat carving	\$55.00
#4052 NATIONAL 1 1/2oz. bar Tally Ho etch (4) ea.	\$22.00
#4052 NATIONAL 12oz. soda Tally Ho etch	\$35.00
#1428 WARWICK 2lt. candlestick Sahara* Pr.	\$145.00
#1205 FANCY LOOP toothpick	\$60.00
#1401 EMPRESS cups w/beads & rd sauc Sah* (5)set	\$30.00
#5025 TRYLOLEAN 3oz wine Orchid Etch (4) ea.	\$72.50
#1519 WAVERLY 7" plates Orchid etch (8) ea.	\$17.50
#300 SHADE 9" Heisey Sticker	\$85.00
#1519 WAVERLY covd candy Seahorse hndls Orchid*	\$225.00
#142 CASCADE 3lt candlestick Orchid etch Pr.	\$165.00
#1519 WAVERLY 13" floral bowl Orchid etch	\$60.00
#341 PURITAN ice tub w/drainer*	\$85.00
#1229 OCTAGON 6" bon bon Mnglm Empress etch	\$32.00
#1509 QUEEN ANN 8" plates Minuet etch (6) ea.	\$22.00
#1509 QUEEN ANN 7" plates Minuet etch (6) ea.	\$20.00
#1509 QUEEN ANN Dol ftd cr & sug Minuet Pr.	\$75.00
#5010 SYMPHONE wine Crinoline etch	\$35.00

CORRECTION FROM AUGUST HEISEY NEWS:

#5067 PLANTATION 6 1/2oz sherbets* (4) ea.	\$18.00
#3947 4" covd Candy Winsor cut dbl*	\$72.50

Charles and Mildred Fisher**Antiques and Collectables****991 Idlewilde Avenue****Newark, Ohio 43055****PHONE: (614) 522-5398**

#1540 Lariat, cream & sugar w/ tray Moonglo cut H set	\$87.00
#1540 Lariat, wines w/Moonglo cut ea.	\$35.00
#4225 Cobel cocktail shaker w/ Moonglo cut	\$150.00
#6091 Cabachon ctr. hld sandwich tray w/Moonglo cut	\$130.00
#5072 Heisey Rose 2pt. divided dressing dish, 6 1/2", H	\$65.00
#1519 Waverly 1pt. sherry w/Orchid etch	\$250.00
#1519 Waverly honey dish w/Orchid etch	\$75.00
#1519 Waverly butter dish w/ horse finiel w/Orchid etch	\$250.00
#1519 Waverly luncheon plts, 8" w/Orchid etch H (8) ea.	\$30.00
#1519 Waverly cream & sugar mini w/Orchid etch H set	\$75.00
#1567 Plantation cream & sugar set	\$95.00
#1401 Empress cream & sugar mini Sahara H set	\$75.00
#4052 shot glass w/ National cut (2) ea.	\$30.00
#1489 Puritan oil & vinegar	\$85.00
#1632 Lodestar w/star bottom 8" vase Dawn H	\$350.00
#1170 Pleat & Panel cruet Flamingo	\$85.00
#1170 Pleat & Panel cream & sugar Flamingo all H	\$95.00
#1170 Pleat & Panel vase 8" Flamingo H	\$95.00
#1170 Pleat & Panel goblets, luncheon 7 1/2oz. H Flamingo (8) ea.	\$37.00
#1170 Pleat & Panel compote/candy w/cover Flamingo H	\$135.00

Robert H. Donovan**55 Vining Court, Apt 114****Ormond Beach, Fl 32074****(904) 677-1732****Better to Write****UPS & INS. EXTRA**

#7001 belle bell, Crystal, frosted ea.	\$65.00
goose 1/2 (2) ea.	\$45.00
#300 Peerless toothpick hldr.	\$22.00
#1425 Victorian 2oz bar (2) ea.	\$15.00
#433 Greek Key 7 1/2" ftd. bannana split	\$18.00
#1252 Twist 12" relish Moongleam	\$23.00
Sparky	\$70.00
#1489 Victoriam vinegar & oil btt'l	\$24.00
#1401 Empress 13" celery Moongleam	\$26.00
#1252 single sticks* Moongleam pr.	\$28.00
#1497 floral boat V. IV pg. 27	\$18.00
#1201 Fandango toothpick sl. bottom rough	\$30.00
#352 2qt. fruit jar no cover*	\$72.00
#1567 Plantation 2 hdl. dish*	\$15.00
#1533 Wampum single sticks pr.	\$28.00
#341 Puritan punch cups (5) all	\$25.00
#359 Colonial 4oz. saucer champagne	\$7.00
#393 Narrow Flute sham* (4) all	\$38.00
#5086 Yorktown 4 1/2oz cocktail ivy etch (6) all	\$72.00

200 MORE CHOICE ITEMS

WHAT ARE YOUR WANTS?

Mr. & Mrs. Donald N. Parrett**517-784-7319****4995 Mapledale Road****Jackson, Michigan 49201**

#1519 Waverly 6" oval dolphin compote Crystal	\$68.00
#1519 Waverly 7" oval cvd candy, Crystal	\$35.00
#1519 Waverly 6 1/2" oval lion cvr. candy Crystal	\$375.00
#1565 7" oval jelly bowl, Dawn	\$40.00
#1245 Star & Zipper 8" nappy Crystal	\$40.00
#1401 Empress suagr & creamer Sahara	\$48.00
#1540 Lariat 14" 2 hld. sandwich tray Crystal	\$80.00
#1540 Lariat 11 1/2" tall cvd compote Crystal	\$110.00
#1509 Queen Ann 14" gardenia bowl, Crystal	\$75.00
#1519 Waverly 8 1/2" lunch plts #965 Narcissas ct (8) ea.	\$16.00
#3480 Koors 3pt. D.O. pitcher Flamingo	\$90.00
#100 Asiatic pheasant, Crystal	\$295.00
#7097 Doulton girl, Crystal	\$375.00
#3 small elephant, Crystal	\$195.00
#1560 Victorian bell, clapper, Crystal	\$70.00
#1544 fish bookends, Crystal pr.	\$225.00
rooster vase, Crystal	\$75.00
#1225 Twist cvd mustard & plate, Crystal	\$45.00
#1225 Twist 9oz. tumbler, Moongleam (2) ea.	\$25.00
#393 Narrow Flute cvd. mustard Crystal	\$30.00
#1469 Ridgeleigh cvd. mustard Crystal	\$40.00
#353 Colonial cvd. lavender 3oz. frosted, Crystal	\$40.00
#353 Colonial 8oz. cologne frosted, Crystal	\$42.00
#352 Med. Panel 8oz. cologne Crystal	\$40.00
#5077 Legionaire 3oz. cocktail Amber stem (2) ea.	\$50.00
#5013 Shasta 3oz. cocktail Crystal	\$25.00
#6010 Finesse 3oz. cocktail, hollow stem, Crystal	\$25.00
#1231 Octagon 12" center hldd. sandwich Moongleam	\$40.00
#1252 Twist nastursiam 8" bowl Moongleam	\$70.00
#1252 Twist 3oz. cruet green stopper, Moongleam	\$110.00
#433 Greek Key 9" oval olive tray, Crystal	\$25.00
#1255 Pineapple & Fan 8oz. mug, Crystal	\$18.00
#1405 Ipswich 3oz. cruet, Crystal	\$50.00
#333 Waldor 3oz. cruet, Crystal	\$40.00
#352 Med. Panel 6oz. vin & oil, Crystal	\$30.00
#1506 Whirlpool 4 sq. ash trays & cvd. cig. box set, Cry	\$60.00
#341 Williamsburg ground & polished salt, Crystal (6) ea.	\$12.00
#352 Med. Panel butter pat 3", Crystal (3) ea.	\$12.00
#300 Peerless toothpick, Crystal	\$38.00
#393 Narrow Flute toothpick or bar, Crystal	\$35.00
#1201 Fandango toothpick, Crystal	\$60.00
#1235 Beaded Panel & Sunburst toothpick, Crystal	\$75.00
#1235 Beaded Panel & Sunburst toothpick good gold	\$85.00
#1469 Ridgeleigh salt & pepper cn sterling tops, Crystl pr.	\$50.00
#1469 Ridgeleigh salt & pepper rd. glass tops, Crystal pr.	\$50.00
#341 Williamsburg salt & peeper glasstops, Crystal, pr.	\$40.00
#29 Hexagon salt & pepper #60 tops, Crystal, pr.	\$35.00
#1503 Crystolite salt & pepper chrome tops, Crystal, pr.	\$45.00
#1506 Whirlpool salt & ppr fair chrome tops, Crystal, pr.	\$25.00
#48 salt & pepper gold decoration, Flamingo, pr.	\$50.00

L.A. MANESS
RT. 1 BOX 552
ASHLAND, VA 23005
VISA/ MASTERCARD WELCOME

PH: 804-798-1825
P & I RATE \$3/CTN
H = MARKED

#373 Colonial 3oz. cocktail (6) H ea.	\$25.00
#351 Colonial 8oz. goblet H (4) ea.	\$18.00
#300 Colonial low ftd sherbet H (8) ea.	\$12.00
#1503 Crystolite cream or sugar 2 1/2" high H ea.	\$15.00
#1503 Crystolite 3 part 8" relish	\$18.00
#433 Greek Key 5" low ftd jelly H	\$47.50
#433 Greek Key indiv ftd almond H (2)	\$25.00
#1540 Lariat duo candlesticks pr.	\$50.00
#1540 Lariat Fan vase H	\$37.50
#1229 Octagon Flamingo mayo w/#6 ladle H	\$45.00
#341 Puritan ice bucket H	\$49.00
#341 Puritan high ftd sherbet (5) ea.	\$12.50
#1469 Ridgeleigh mayo H w/ladle	\$37.50
#465 Recessed Panel 1# candy & cover w/floral & good gold decorated rim H	\$67.50
#1243 Stepped Octagon Flamingo 6" plate (4) H ea.	\$7.50
#1252 Twist Flamingo or Moongleam 12" celery H ea.	\$32.50
#1425 Victorian goblet H (2) ea.	\$27.00
#1425 Victorian saucer champagne H (8) ea.	\$16.00
#1425 Victorian 3oz. cruet H	\$50.00
#1184 Yeoman Moongleam 8oz. D.O. goblet H ea.	\$30.00

CLASSIFIED ADS . . .

FOR SALE: HEISEY following Crystal "Barcelona" on #3408 1 1/2oz. sherries \$20.00, "Crystolite" individual leaf nuts \$6.50, "Maryland" on #5024 sherbet \$20.00, "Moonglo" on Lariat footed juices \$20.00, "Narcissus" cocktails \$25.00, "Normandie" on #3389 cocktails \$20.00, "Pinwheel and Fan" hair receiver \$65.00, "Queen Ann" #365 4oz. sherbet \$20.00, "Ridgeleigh" round cigarette, square cigarettes \$15.00, small square ashtrays \$4.00, bridge ashtray set \$40.00; "Rose" unsigned sherbets \$25.00, "Sheffield" #3408 goblet \$22.50, "Southwind" #1951 sherbet \$20.00, "Washbash" #3350 wide optic champagnes \$10.00, rooster head cocktails Moonglo cut \$95.00, full rooster stem (frosted) cocktails \$60.00. Following Sahara "Albemarle" #3368 7" compote \$45.00, "Cathedral" vase (some scratches) \$85.00, "Ipswich" goblets \$42.50, champagnes \$35.00; Following Moongleam "Charter Oak" 7" compote \$75.00. All prices each plus shipping. Also have Duncan, Fostoria, Cambridge, etc. Write wants-- I search. Betty Anonby, CRYSTAL MATCHING SERVICE, RT.2 Box 58A, Kenyon, MN 55946 (507) 789-5837.

WANTED: Heisey baskets; etched, cut, colored or whimsey. Send price & description to Kim Carlisle R.R. 2, Box 321 Sheridan, IN 46069 (317) 758-5767.

WANTED: Items with Peacock etching. David Jordan, 1000 Lake Regency, Apt. 2409, College Park, GA 30349.

JAMES S. HARRIS
ANTIQUES/APPRAISALS
BOX 672
RICHMOND, KY 40475

606-623-9100
UPS & INS Extra
H = MARKED

#300 Peerless 3 1/2oz. tall champ. or parfait	\$17.50
#341 Puritan 2oz. oil H	\$32.50
#341 Puritan 12" oval hotel celery, H	\$30.00
#341 Puritan 5" lo ftd. jelly	\$21.00
#343 Sunbrust, 5" nappy, cupped, H	\$50.00
#350 Pinwheel & Fan, puff box w/ metal lid H	\$37.50
#351 Priscilla, 2oz. oil, H	\$75.00
#351 Priscilla 8oz. goblet, H 6 for	\$112.00
#353 Med. Flat Panel, 6oz. oil w/#9 strpr, H	\$55.00
#367 decanter, 1qt., w/#48 c/s, H	\$147.50
#393 Narrow Flute, hollow stem champ., straight H 6 for	\$150.00
#393 Narrow Flute 5 oz. ftd. sherbet, H 4 for	\$46.00
#393 Narrow Flute ind. cream & sugar, H	\$60.00
#397 Col. cupped scallop, 12" celery tray, H	\$62.50
#417 Double Rib & Panel cruet, H	\$52.50
#433 Greek Key punch bowl & base, both H	\$650.00
#433 Greek Key ftd. banana split, H	\$27.50
#436 No. 1 vase 11" H., H/H, m	\$47.50
#473 Narrow Flute w/rim, ind. almond, H 6 for	\$90.00
#485 2oz. cologne/#64 dauber w/poss. #924 Daisy cut, H	\$90.00
#1189 Yeoman, 13" celery, Flamingo, H	\$37.50
#1200 Cut Block, ind. cream, custard, "Newell, 1A + roses	\$70.00
#1200 same as above w/Stratford, Wis" + roses	\$70.00
#1201 Fandango salt dip	\$24.00
#1205 Fancy Loop, toothpick, Emer., fr. gold	\$165.00
#1225 Sawtooth Band, toothpick	\$50.00
Grove & Slash, tobacco humidior, H w/SP Art Nouveau lid	\$150.00
#1252 Twist 13" celery, Flamingo, H	\$35.00
#1255 Pineapple & Fan 5" pitcher, Custard, "Bruce, Wis." + roses	\$67.50
#1255 same as above w/ "Iron Ridge, Wis."	\$62.50
#1255 Pineapple & Fan, hld. mug, red st.	\$35.00
#1295 Beaded Swag, tumbler, ruby/clear	\$50.00
#1295 Beaded Swag, goblet, Custard, "Dow City, Iowa" + roses	\$85.00
#1295 Beaded Swag, same as above w/ "Woodland, Wis." + roses	\$85.00
#1295 Beaded Swag, toothpick, red st., sov. Panamerican Expo, 1901	\$55.00
#1295 Beaded Swag, toothpick, red st., Chicago, 1904	\$50.00
#1401 Empress cream/sugar, DF, Sahara	\$90.00
#1401 Empress 6 1/2" rnd. plate, Sahara, H 6 for	\$72.00
#1401 Empress 13" celery, Sahara, H	\$40.00
#1404 Old Sandwich, 1 1/2oz bar, H	\$35.00
#1483 Stanhope, ice tub, 2 hlnd, no knobs, H	\$75.00
#1519 Waverly, ind. cream/sugar, H	\$40.00
#2052 1 1/2oz. bar w/ #467 Tally Ho etch	\$50.00
#3355 Fairacre, goblet DO, H	\$17.50
#3368 Albemarle, 5oz. sauc. champ., DO	\$22.50
#4182 Thin 8" plate w/ #445 Trojan etch (16) ea.	\$13.00
#5031 8oz. dressing tl., etch "Vinegar & Oil"	\$60.00



DONALD P. BEAN
36 HARDING ST
MILFORD, MA 01757

PH 508 473-0561
*** = MARKED**
SHIPPING EXTRA

#300 Peerless ftd egg cup* (4) ea.	\$7.50
#150 Banded Flute 5" flared nappies* 4 for	\$45.00
#411 Rib & Panel 6oz. oil #7 stpr	\$37.50
#1469 Ridgeleigh 3oz. oil #103 stpr	\$35.00
#22 Windsor c-stick 7 1/2" tall (no mark)	\$25.00
#2 Old Williamsburg c-stick 9 1/8" tall (no mark)	\$35.00
#21 Aristocrat 3 1/2" desk c-sticks* pr.	\$125.00
#353 Med. Flat Panel 1 pc. cheese & cracker*	\$60.00
#353 Med Flat Panel ind. ftd. almond* (7) ea.	\$8.50

STILL NEED LG. 1205 COVER FOR POT POURRI JAR

RUBY MOTHER RABBIT PRE- ORDER SALE

Please Read Very Carefully Before Filling Out

Please complete this form and mail with check payable to HCA:

HCA Pre-Order Sale

169 N. Church St.

Newark, Ohio 43055

Deadline : October 1, 1990 (Postmarked)

Large Rabbit 4 5/8" high in Ruby by Dazell Viking Glass. They will be marked HCA and Dazell.

Nice for Holiday gifts. They will be offered for \$45.00 pre-order sale prior to October 1, 1990.

After this date they will be \$55.00 as long as they last.

Everyone living in Ohio ordering for pickup or shipment must pay \$2.70 sales tax per Rabbit

Shipping charges are \$6.00 each. No discounts.

Do Not Send Dues, Book Orders, Etc. With Your Rabbit Order

All checks and credit card orders will be held until the October 1, 1990 pre-sale cutoff date. If minimum quantities are not ordered the Ruby Rabbit will not be produced and checks will be returned.

Phone Orders Accepted With Visa or Mastercard.

_____ Number of Rabbits at \$45.00 each _____
 _____ Sales Tax (Ohio only) \$2.70 each _____
 _____ Postage \$6.00 each _____
 Total _____

Make checks payable to:
HCA, Inc.
All Ohio Residents +
Pick ups in Newark
Check one: _____ ship
 _____ hold for pick up
 prior to December 25, 1990

Name: _____

Address: _____

City: _____ State: _____ Zip: _____

MASTERCARD
 VISA

Mail to: **HCA Pre-Order Sale**
169 West Church Street
Newark, Ohio 43055

_____|_____|_____|_____|_____|_____|_____|_____|_____|_____|

EXPIRATION DATE REQUIRED-- MO. ____ YEAR ____

**SOUVENIR DINNER
APPLE TREE AUCTION CENTER
SEPTEMBER 8, 1990**



Please complete this form and mail with check payable to H.C.A. to: **HCA Souvenir Dinner
169 W. Church Street
Newark, Ohio 43055**

DEADLINE: SEPTEMBER 3, 1990
1426 CLOVER ROPE MUG, AMBER MADE BY DALZELL VIKING
(ONE TO A MEMBER)

	Amount Enclosed
_____ NUMBER OF MUGS WITHOUT DINNER, \$35.00 EACH	_____
_____ NUMBER OF MUGS WITH DINNER, \$40.00 EACH	_____
_____ EXTRA DINNER, NO MUG, \$20.00 EACH	_____
TOTAL	_____

NAME _____
STREET _____
CITY _____ STATE _____ ZIP _____

EXTRA NAMES _____
_____ I WILL PICK UP MY MUG(S) AT THE DINNER
_____ I WILL PICK UP MY MUG(S) AT THE MUSEUM AFTER SEPT. 9, 1990
_____ PLEASE MAIL MY MUG(S)-- POSTAGE INCLUDED

MASTERCARD

--	--	--	--	--	--	--	--	--	--	--	--	--	--	--	--	--	--	--	--

 VISA
 EXPIRATION DATE REQUIRED-- MO. _____ YEAR _____

IMPORTANT NOTICE!

IT'S MINI-SHOW TIME AGAIN!

The Tri-State Heisey Study Club will be in charge of the 20th Annual Mini-Show again this year. The Show will be held on September 8, 1990.

The location again this year will be at the Apple Tree Auction Center, 1616 West Church Street. Both the Show and the Dinner will be held there.

Contracts for space are being sent out this month to prospective dealers. The space is free but \$5.00 will be charged for each table with a limit of four, at least until it is known whether more space will be available.

For contracts write or call:

**Liz Hughs
12314 Harbor Point
Ft. Wayne, IN 46845
PH: (219) 833-3882**

This is a nice show with lots of Heisey. It will be followed by the Annual Souvenir Dinner which is always a lot of fun.



DUNCAN-MILLER

VITROLIER

MOLIERE

ARSTEN

CAMBRIDGE

TIFFIN GLASS COLLECTORS' CLUB
5TH ANNUAL ANTIQUE SHOW & SALE

NATIONAL GUARD ARMORY
 500 Riverside Drive
 Tiffin, Ohio

ADMISSION \$1.50 per person

Saturday, September 15, 1990 — 10:00 a.m. to 8:00 p.m.
 Sunday, September 16, 1990 — 11:00 a.m. to 5:00 p.m.

GUESTS: * Fred Bickenheuser; Author, Tiffin Books
 * Roserita Ziegler; Glass Historian

For more information call:

Shirley (419) 447-9875 Joyce (419) 485-1862

**DEPRESSION GLASS
 SHOW AND SALE**

October 20, 1990 10:00am to 4:00pm
Craftsmen Hall
3909 Centre Street
San Diego, CA
For more information call
(619) 588-1347

CALENDAR OF EVENTS

**September Dinner and Mini Show at
 Apple Tree Auction Center:
 Saturday, September 8**


**Annual Christmas Dinner at Best
 Western: Saturday, December 1**

**Annual Benefit Auction: Friday and
 Saturday, March 8 & 9, 1991**

**1991 Convention: Thursday through
 Sunday, June 20-23, 1991**

**National Heisey
 Glass Museum**

Corner of West Church
 North Sixth Streets
 Newark, Ohio 43055
 Phone (614) 345-2932
 Hours: Daily 1pm-4pm Closed Holidays



*Approximately 5,600 square feet of space for complete
 displaying of the beautiful hand made glass produced
 in Newark by the A.H. Heisey Co. from 1896 to 1957.*

POSTMASTER SEND FORM 3579 TO:



HEISEY NEWS
169 W. CHURCH ST.
NEWARK, OH 43055

SECOND CLASS

MEMBERSHIP RENEWAL NOTICE
 The date above your name and address is your
 renewal date. This is your last issue of the Heisey
 News if it reads: 9-10-90
**PLEASE DISREGARD THIS NOTICE IF YOU
 HAVE RECENTLY PAID YOUR DUES. THANKS!**

OHIO
the heart of it all! SM