

HEISEY *news*

OFFICIAL PUBLICATION HEISEY COLLECTORS OF AMERICA

© Heisey Collectors of America, Inc.
All Rights Reserved 1990

VOLUME XIX NO. 2

FEBRUARY, 1990 ISSN 0731-8014



DATES TO REMEMBER

HEISEY NEWS

P.O. Box 4367, Newark, OH 43055

CLUB OFFICERS:

President - Bob Rarey (614) 279-0390
Vice President - Dick Smith (614) 366-5163
Secretary - Amy Jo Jones (513) 426-8668
Treasurer - Betty Barnard (614) 366-7002
Curator - Louise Ream

Editor: Louise Ream

P.O. Box 4367, Newark, Ohio 43055

PH: (614) 345-2932

Published in Newark, Ohio, Printed in Newark, Ohio.

\$15.00 per year - \$1.25 per copy

Back Issues - Each Volume (12 issues) year - \$9.00

Volume V, VIII, IX, X, XI, XII, XIII, XIV, XV, XVI, XVII

Heisey Collectors of America, Inc. is a non-profit corporation with tax exempt status. Owners and operators of National Heisey Glass Museum, 6th and Church Streets, Newark, Ohio.

Open daily 1-4 p.m. except holidays. Other hours by appointment. Members admitted free.

HEISEY NEWS

Heisey Collectors of America, Inc.

All Rights Reserved 1990 - ISSN 0731-8014

Published monthly, except twice in February, by Heisey Collectors of America, Inc., Newark, OH 43055. Second Class postage paid. Newark, Ohio 43055. Club membership (includes 13 issues of Heisey News and participation in all club activities) \$15.00 per year plus \$2.50 for each additional family member in same household who wishes a membership card. For Voting Membership add \$25.00 one time only fee.

POSTMASTER: Send address change to:

HCA, P.O. Box 4367, Newark, OH 43055

When requesting information, please enclose a self-addressed, stamped envelope (SASE).

ADVERTISING - Send all ads to: HCA - Advertising
P.O. Box 4367
Newark, Ohio 43055

DOUBLE SPACE ALL ADS

Rates:

CLASSIFIED: 15¢ per word. \$1.50 minimum.

ABBREVIATIONS AND INITIALS COUNT AS WORDS

DEALER DIRECTORY: \$25 per year.

Display:	Members:	Non-Members:
1/8 page (9 items)	\$20.00	\$ 30.00
1/4 page (20 items)	30.00	45.00
1/2 page (20 items) Hor.	45.00	67.00
1/2 page (50 items) Vert.	60.00	90.00
1 page (50 items)	75.00	112.50

Personal ads limited to 1/8 space.

ALL ADS MUST BE PREPAID. Ad copy must be received by the 5th of the month preceding the publication date-i.e. April 5th for May issue. Ads containing reproductions will not knowingly be accepted unless clearly stated (i.e. Heisey by Imperial, etc.). HEISEY NEWS assumes no responsibility for false advertising or misleading information. In the event of typographical error, the incorrect portion of the ad will be run in the following issue, but HEISEY NEWS assumes no further liability.

The opinions expressed in articles in HEISEY NEWS are those of the authors and not necessarily those of the organization. The Editorial Staff reserves the right to edit or refuse any material submitted for publication. When requesting information, please enclose a self-addressed stamped envelope (SASE).

March 3, 4	Glass Show San Mateo, California	Golden Gate HCC
March 9, 10	Annual All-Heisey Auct Apple Tree Auct Center	HCA
March 11	Starlight Flea Market Starlight School	Land of Legend HCC
March 17, 18	All-Heisey Show, Silver Spring, MD	Natl Capt HCC
June 14, 15, 16 & 17	19th Annual Convention 20th Annual Glass Show & Display, Newark, Ohio	HCA
June 9, 10 16 & 17	Flea Market On the Square	Buckeye HCC

1989 GLASS DONATIONS FOR GIFT SHOP

1. \$234.00 donated by Al & Peggy Miller
2. \$164.00 donated by Harry L. Allen

1989 DONATION TO ENDOWMENT FUND

1. Frank E. Bateman - \$150.00

1989 MISCELLANEOUS DONATIONS

Bill & Marge Rossel - 3 books

WE HOPE THAT WE HAVE MENTIONED ALL THE DONATIONS WE RECEIVED THIS YEAR. IF WE HAVE MISSED ANYONE PLEASE LET US KNOW. WE APPRECIATE YOUR GENEROSITY.

ABOUT THE COVER

Right - Mrs. Clara Cochran, Secretary at A. H. Heisey & Company, explaining the making of handwrought Crystal.

NOTES FROM YOUR PRESIDENT

The Board of Directors, at the September Quarterly Meeting, felt that the Committee on Job Description Duties of paid employees should be reactivated for update. Serving on that committee were: Charlie Wade, Chairman, Stan Darling, Betty Barnard, Amy Jo Jones, Dick Smith and Sam Schnaidt. They made the following recommendation to the Board at the December meeting: "That there was a lack of day to day in-house supervision and management. That some person with managerial skills and experience be hired as "Business Manager" on a part time basis (20 to 30 hours per week) to assist and give direction to all paid employees. This person would be in charge and would answer directly to the Executive Committee and the Board of Directors." They also felt this person need not be Heisey oriented, nor should the individual be someone who was presently or had been directly involved in HCA activities. There was some concern expressed by some Board members as to whether such an individual would be willing to accept the challenge at a wage the club could afford. The Committee was of the opinion that someone who had the skills (possibly a recent early retiree) would welcome the opportunity to serve in this capacity.

The Board accepted the Committee Report and asked that it be implemented as soon as possible. Because of the uncertainty of the time frame, I did not speak of this item of business in my report to you last month.

The following "Search Committee" was appointed, with the approval of the Board: Betty Barnard, Sam Schnaidt and Charlie Wade. Local advertising, stating the required skills and advertising that the salary would be modest, brought in 21 resumes. Of these, the Committee selected three they felt were best qualified for in-depth interview. One was recommended to the Executive Committee on January 10.

Based on the Search Committee's recommendation, that person was hired by the Executive Committee. (At the December quarterly meeting the Board of Directors authorized the Executive Committee to act if a qualified person was found.)

Now, it can be announced - William "Bill" J. Barrick was the person recommended by the Search Committee. Bill, recently retired, has a Bachelors Degree from Ohio State University with a major in Personnel Management and minors in Accounting and Science. He worked for twenty-six years for AT & T, where he was a professional accountant involved in computer management and payroll accounting as a supervisor in both factory and office. He is a retired Major in the U.S. Army Reserve. We welcome him to the HCA Family!

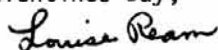
Until Next Month,



informed, read all of these articles.

(I spoke too soon. I looked out the window and the snow is coming down again.) My office is windowless so I don't look out often.

Happy Valentines Day,



FROM THE DESK OF THE EDITOR

The heavy snow, ice and sub-zero weather have left our area, at least for the time being. This was the worst weather ever in Central Ohio in December. We can now sympathize with those of you who have weather like this every year.

As you read in Bob's column, we now have a Business Manager who will start work on the 15th of this month. He has been here to meet and talk with the employees and we wish him well!

Once again there has been a problem with the Oscar. Most of you who were members earlier remember the misdates, double struck HCA's on them, etc. The last time we had a problem was 1985 when Imperial attempted to make an Antique Blue Oscar. They had so much trouble that they decided they could not finish the order. Then they made the Oscars in Black and sold the Blue ones to us also. These we sold on a first-come, first-served basis, and we very quickly sold the 446. Of course, this one is very desirable as mistakes usually are.

When they were making the 1990 Rosaline Oscar there was a power outage overnight which changed the color of the batch. They made 500 Oscars from this pot of glass and they look more like "peach" than "Rosaline". They offered them to HCA and, of course, we purchased them. HCA does not want Fenton or any other glass Company to be selling items made for us.

These are being offered to you at the top of page 23, with the Rosaline Oscar order form below. First-come, first served, as in 1985. You'd better order these first if you want to get them as "mistakes" usually go fast. We had to pay the same for these as the Rosaline, so they will sell for the same price. You may order ONE of EACH per member, but use the separate form to avoid confusion. Remember, you can order one for each member of either or both, of Peach and Rosaline. Frank Fenton says he may add the Peach color to their line. So, that is the way new colors are developed!

Jim Clark and Bob Ryan have given us news on the March auction which you will find in this issue. Just remember the dates, and times. You will be receiving the Auction List in a few weeks as an extra issue of the Heisey News. Form and bidding information will be included in the extra issue.

The Flea Market on the Square will be held as usual with the Buckeye Study Club in charge of it as their club project. See an ad in this issue for information. Send in early for your contract.

The 1990 "200" Dinner will be held this year on April 28 at the Newark Maennerchor. Betty Barnard and Dick Smith are the Co-Chairmen for this event with John Eshelman in charge of the dinner. The proceeds from this ordinarily are used as payment on the Warehouse Loan which should be paid off during 1990. For information write to Betty or Dick C/O HCA. (There will also be an auction the same day at Apple Tree Auction Center.)

The Starlight School Flea Market, sponsored by the Land of Legend HCC and the Starlight School, will be held the Sunday, March 11, after the auction, as usual. (See ad in this issue.) This is a good show with loads of Heisey, so plan to stay for it. Dick Smith is chairman for this show.

More motels are listed in this issue and Amy Jo Jones has an article on the Convention. To be fully

HEISEY IN THE TRADE JOURNALS
NO. 339 CONTINENTAL

By Tom Felt

There were two new patterns mentioned in the trade journals in January, 1903. Curiously the better known of the two, No. 341 Puritan, was not, to my knowledge, advertised. In fact, it seems initially to have been brought out solely as a stemware line and the pattern featured by Heisey, first in the January 15, 1903, issue of Crockery and Glass Journal and then in the February issue of The House Furnisher: China, Glass and Pottery Review was No. 339 Continental. This also carried through in the written announcements of the new patterns:

A. H. Heisey & Company's "Continental" line is fully maintaining their reputation for high grade ware. It is in the purest metal, highly polished, and has a rich cut glass effect. They are also showing a unique line of beautiful stemware, the "Puritan", that is attracting special attention for its beauty and originality of design (Crockery and Glass Journal, January 29, 1903).

Just one month later, full page advertisements also appeared in both trade journals for the No. 339½ Footed Continental line. (As far as I know, the "½" designation was only used for the table set pictured in the ad -- sugar, cream, spooner, and covered butter -- and not for any of the other footed pieces in the regular No. 339 line.)

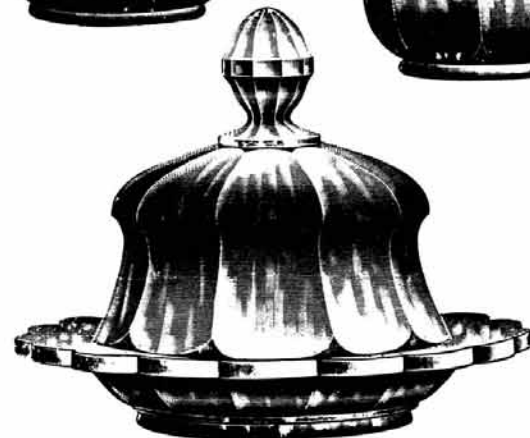
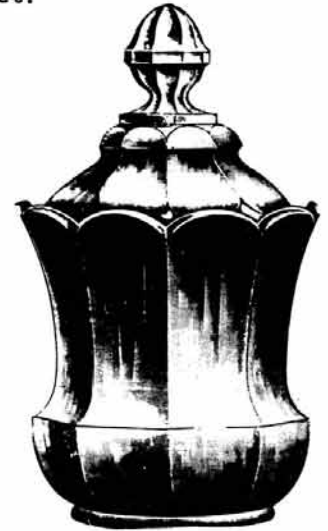
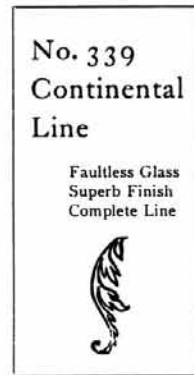
As advertised, the pattern was "a complete line made of faultless glass and superb in finish." There were 70 pieces, more than half of which were nappies or bowls (many footed and some with covers). Curiously, there were only two pieces of stemmed ware, the wine and the goblet, along with a footed egg cup and footed sherbet. There were also three sizes of pitchers, two cake salvers, a toothpick holder, and two styles of salt and pepper, along with a variety of other items. About a third of the pattern was discontinued sometime after 1905, with the remainder of the line going out of production by around 1908-1910.

Some of these pieces, however, including the No. 2 salt, the oil bottle, the molasses can, and the water bottle seem to have remained in production for a much longer period of time than the remainder of the pattern, since they appear to have been absorbed into the No. 400 pattern which came out in 1910. Indeed, the water bottle is known to have been made all the way until 1944 and is the one piece from the Continental pattern which was made in color, with some bottles known in Flamingo. (This is also the only mold from the line still in existence.)

As with many of Heisey's early patterns, Continental was available both plain or decorated, in this case with the company's No. 64 gold ornamentation on the edge and base of the pieces, with a gold band around the body just above the swell. In addition, it was also offered with the No. 65 engraving and is pictured in Heacock's Ruby-Stained Glass from A to Z as being quite rare with Ruby decoration. There is no evidence to indicate that Heisey ever applied Ruby stain to this particular pattern, so it is quite likely that this was done

by some other firm.

As one of many Colonial style lines to be brought out by Heisey in the early 1900's, this one was greeted as "a more graceful shape and much lighter than the old design" (The House Furnisher: China, Glass and Pottery Review, February, 1903). As a follow-up to the immensely popular No. 300 Peerless pattern, it helped to cement Heisey's reputation as manufacturer of some of the finest Colonial lines on the market.



A. H. Heisey & Co., Inc.

NEWARK, OHIO



No. 339 1/2
Continental
Line

Faultless Glass
Superb Finish
Complete Line



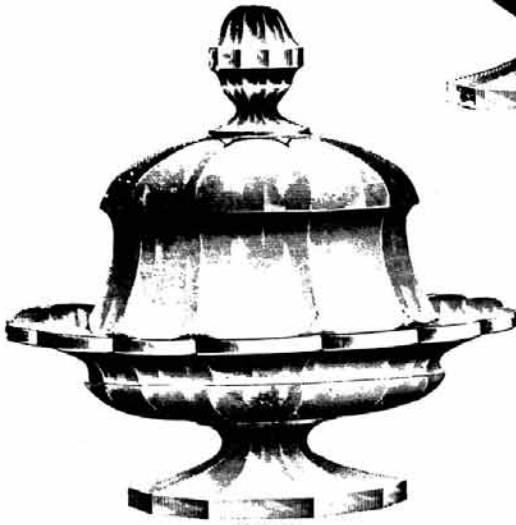
SUGAR.



CREAM.



SPOON.



BUTTER.



ftd sherbet

finger bowl

egg cup

wine

goblet



6 oz

8 oz



DISCONTINUED

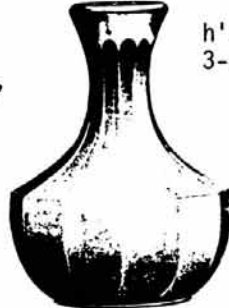
h'dled jelly



h'dled jelly
3-cornered



7" low ftd bowl



water bottle



6" nappy



7" nappy



DISCONTINUED

8" low ftd bowl &
cover



9" nappy, flared



4" nappy



5" nappy



1/2 gal pitcher
3 pt pitcher
3 qt pitcher



8" nappy



A. H. Heisey & Co., Inc.

NEWARK, OHIO





tall celery

Hotel Cream



oblong dish



Hotel Sugar

punch cup



spoon tray



celery tray

No. 1 bon bon



No. 2 bon bon



pickle dish

NO. 330 CONTINENTAL LINE

No. 3 bon bon



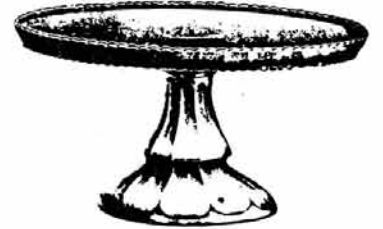
9" cake salver



cruet



syrup



10" cake salver



9" ftd bowl



DISCONTINUED

4½" ftd jelly



DISCONTINUED

5" ftd jelly



7" nappy & cov



DISCONTINUED

ftd jelly flared



8" hi ftd bowl



7" hi ftd bowl & cov



8" nappy & cover



8" hi ftd bowl & cov



7" hi ftd bowl



9" hi ftd bowl, flared



10" hi ftd bowl, fl



9" nappy



8" hi ftd bowl, fl



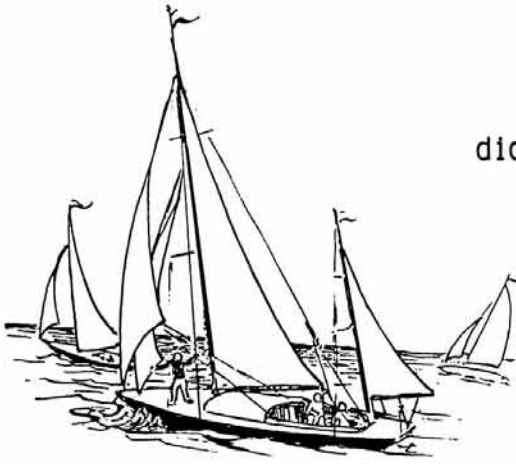
7" nappy, flared



8" nappy, flared



10" nappy, flared



diamonds
are
forever

By
Janet
Caswell

Do you use your Heisey for anything other than what it was meant to be used for? I do and it's a great deal of fun, plus the Heisey can be functional instead of just placed on a shelf. My little mustard #1469 Ridgeleigh, is sitting on my desk with stamps nestled inside plus a #960 Locket-on-Chain spooner gently holds pens and pencils. The bottom of the #354 Wide Flat Panel stack set (sugar) in Flamingo is used for paper clips; a coaster holds a few tags; the regal #356 ashtray sports a pretty 10 inch round candle, just in case the lights go out. In fact I have another just like it sitting on my piano, for the same reason. In my powder room is a #341 Puritan pickle jar with cover full of "puffs"; the #353 Medium Flat Panel mug (in fact two of them) is also utilized. A soap dish holds, of course, soap, while a Rib and Panel pickle dish houses perfumes, etc. My #353 Medium Flat Panel sanitary straw holder (the one laying down) has been known to hold mail until I realized how rare it was; now it is in a place of safety. Beside my phone, in the kitchen, there is a #411 Rib and Panel 7½" vase with the #9009 Arctic etch I use for pens and pencils. Perhaps you have ways that your Heisey is put to use also.

"The Amicable Stroller" did just that and in a very nonchalant way, up and down the isles of an antique co-op finding the #1401 Empress oil bottle in Sahara.

"Mr. Ridgeleigh" boasts a #1425 Victorian three ounce wine while the "Energetic Countess" scooped up a pair of #1951 Cabochon candellette and the #1401 Empress seven compartment relish in Crystal. That is a splendid piece of Heisey. I had one of these at one time and someone wanted to buy it so badly that we broke down and sold it; just one of those things that we were always sorry for.

"The Cardinal" collects tumblers as you all have probably surmised by now, but on occasion other things get entwined in his nest - namely: #1252 Twist creamer in Crystal, which is sort of cute; #300 Peerless syrup; #1489 Puritan bitters bottle with fishing lures painted on one side; #600 square handled saucer candlestick (in fact there are two of these); #353 Medium Flat Panel ashtray (one of a nest - note the word "nest") and #4044 New Era wine.

Also from the "Bay State" (ma) there was a report of the discovery of the beautiful #343 Sunburst Orchid vase. I had the privilege of seeing this one, it is lov-er-ly!!

"Mountain Gal" from the Golden State (ca) climb-

ed into her Heisey truck and traveled down the mountain to mail me a letter, short but very interesting. Listed were the following: #1252 Twist individual nuts, two (2) of these; #1506 Whirlpool (Provincial) 3" candleblocks, a pair; #1511 Tourjours individual cream and sugar, real "cute", she says. She is quite happy with that pair. I sure hope all is well up there in the hills, haven't heard from you in a long while.

"The Heavenly Honda" took "The Preacher and his Missus" out for a hunting excursion (Heisey hunting, that is) and came home with: #3368 Albemarle cordial/blue stain (Missus reported that Neila told her that the Sisters of St. Mary's of the Springs in Columbus did this work); one #3390 Carcassone - ready? - cordial 2 3/4" of beautiful blue iridescent and gold stained (or blue on a basic Sahara cordial, she wasn't sure which, but either way they went back to their motel to Party!!)

"The Farmer" (ma) just might have to build a loft in his barn to house all his extra Heisey - the past year was good to him. Here are a couple of new items told to me: #335 Prince of Wales Plumes punch bowl base; two #1533 Wampum one-lite candlesticks and a #1776 Kalonyal 7" flared nappie.

"The two Guys from Conn" report finding the one ounce #485 Crystal perfume along with a #1469 Crystal candle vase.

"The Steadfast Colleague" from the Wolverine State (mi) is crowing about a #1295 Beaded Swag one-half gallon tankard in Crystal with Ruby decoration; a pair of #116 Mercury 3" candlesticks in Flamingo and a Verlys by Heisey Zircon Pine Cone bowl with the original label.

"The Inquisitive Neophyte" braved the heat and the mud to go to a Kane County Flea Market. He said it was well worth the pound of mud that clung to each foot because he luckily found a #1425 Victorian goblet. It was hiding in a box of glasses under a table. He is having difficulty deciding if it is Heisey's Flamingo or Imperial's Azalea.* But for the price of less than two packs of cigarettes, it was quite a deal.

"My First Heisey Friend" reports the #343 Sunburst molasses can and also the #1201 Fandango molasses can. hmmmmmmmm.

"The Wiz" (ma) I hear that he has retired - all the more time to go out and use his magic wand - a #1421 Cobalt high-low vase appeared right out of the blue along with the #1469 Ridgeleigh bridge set.

"Mr. Pilgrim" reports a #379 Urn bowl (did you ever put the Urn bowl beside the Urn individual salt? Try it sometime, it is quite a contrast) also the Sea Horse Waverly bowl.

"My Sharp Eyed Friend" came up with the #1566 Banded Crystolite candlestick and the #195 stand for the 13" floral bowl in Moongleam.

"Busy Bee" buzzes around about her #1201 Fandango celery.

Until next month - "may you look back on the past with as much pleasure as you look forward to the future" - by Paul Dickson Happy Hunting!

P.S. Please write, I haven't heard from you folks in ever so long. Sit down and take a few minutes to make me happy. Really I need all of your input.

* Ed note: We've never seen the Victorian goblet in Flamingo but we do have a sherbet on display.

FROM THE ARCHIVES...

By Nella Bredehoft

The following is a list of customers in South Carolina and the patterns they carried. These are from handwritten lists in our archives.

ANDERSON:

Sullivan Hdwe Co.
5009 Queen Ann Etch 501 Belle-le-Rose
5022 Graceful Etch 507 Orchid
1506 Whirlpool
1540 Lariat
Cochran Jewelry
5010 Symphone Etch 503 Minuet
3408 Jamestown Cut 941 Barcelona

BEAUFORT:

Fox Jewelry
5025 Tyrolean Etch 507 Orchid

CHARLESTON:

Charleston Crockery
5010 Symphone Etch 503 Minuet
1404 Old Sandwich
4090 Coventry
341 Old Williamsburg
1503 Crystolite
Adams & Ortman
5022 Graceful Etch 507 Orchid
5024 Oxford Cut 976 St. George Waterford
1540 Lariat Cut 980 Moonglo
James F. Condon & Sons
5003 Crystolite
1503 Crystolite
1540 Lariat
3408 Jamestown cut 941 Barcelona
M. H. Lazarus Co.
5009 Queen Ann Etch 497 Rosalie
Ruff Hdwe Co.
5009 Queen Ann cut 913 Everglade
5010 Symphone etch 503 Minuet
5025 Tyrolean etch 507 Orchid
5009 Queen Ann etch 501 Belle-le-Rose
3408 Jamestown cut 941 Barcelona
5024 Oxford cut 976 St. George Waterford
1503 Crystolite
5003 Crystolite
1506 Whirlpool
1540 Lariat
Belk's Dept. Store
3408 Jamestown cut 984 Lancaster
5010 Symphone etch 502 Crinoline
5042 Corinthian cut 1002 Mediterranean
3350 Wabash
1509 Queen Ann
Watson China Store
3408 Jamestown etch 497 Rosalie
1404 Old Sandwich
Dora Gray
4090 Coventry, plain

AIKEN:

Powell Hdwe Co.
5025 Tyrolean etch 507 Orchid

CHESTER:

Chester Drug Co.
5010 Symphone etch 503 Minuet
3408 Jamestown cut 941 Barcelona
1540 Lariat
3368 Albemarle
1503 Crystolite
Ehrlich Flower Shop
1540 Lariat cut 980 Moonglo

CONWAY:

John Darden, Jeweler
1540 Lariat

FLORENCE:

Harry Gall, Jeweler
5025 Tyrolean etch 507 Orchid
5010 Symphone etch 503 Minuet
3408 Jamestown cut 941 Barcelona
1540 Lariat cut 980 Moonglo
1540 Lariat
1503 Crystolite
Frances McAdams
4004 Polkadot
341 Old Williamsburg
5003 Crystolite
1503 Crystolite
5024 Oxford cut 976 St. George Waterford

EASLEY:

N.E. Marcum, Jeweler
1503 Crystolite
1506 Whirlpool
5003 Crystolite
4004 Polkadot
341 Old Williamsburg
1540 Lariat
3408 Jamestown cut 985 Sheffield

ELLORRE:

The Gift Shop
5003 Crystolite
1540 Lariat
5025 Tyrolean etch 507 Orchid

FAIRFAX:

Winnette Hat Shop
5022 Graceful etch 507 Orchid

GREENVILLE:

Sullivan Hdwe
(Exclusive "H" a/c)
5010 Symphone etch 503 Minuet
3389 Duquesne cut 832 Continental
3389 Duquesne cut 913 Everglade
4091 Kimberly cut 903 Zeuse
5010 Symphone etch 502 Crinoline
4091 Kimberly etch 497 Rosalie
3368 Albemarle cut 867 Chateau
1506 Whirlpool
1540 Lariat
4004 Polkadot
5022 Graceful etch 507 Orchid
5022 Graceful cut 942 Harvester
3408 Jamestown cut 965 Narcissus

GREENWOOD:
 Gambrell Hdwe Co.
 5025 Tyrolean etch 507 Orchid
 1540 Lariat

GREER:
 J. M. McHugh
 5022 Graceful etch 507 Orchid

GEORGETOWN:
 Caroline Hdwe. Co.
 5010 Symphone etch 503 Minuet
 1503 Crystolite
 1506 Whirlpool
 Maloney's Jewelry
 5025 Tyrolean etch 507 Orchid

HARTSVILLE:
 Buyck's
 5025 Tyrolean etch 507 Orchid
 1503 Crystolite
 1540 Lariat
 J. L. Coker & Co. Dept. Store
 1540 Lariat stemware

LAKE CITY:
 Strickland's Jewelry
 5003 Crystolite
 1503 Crystolite
 1540 Lariat
 5009 Queen Ann cut 913 Everglade
 5010 Symphone etch 503 Minuet
 3408 Jamestown cut 985 Sheffield

LAURENS:
 Maxwell Bros. & Kinard
 5025 Tyrolean etch 507 Orchid
 1540 Lariat

LEXINGTON:
 Caughman's
 1540 Lariat

MANNING:
 Goldstein's Dept. Store
 5025 Tyrolean etch 507 Orchid
 5010 Symphone etch 503 Minuet

ORANGEBURG:
 Fersner's Variety Store
 5010 Symphone etch 503 Minuet
 3350 Wabash etch 440 Frontenac
 3389 Duquesne cut 913 Everglade
 1503 Crystolite
 1506 Whirlpool
 J.W. Smoak Hdwe.
 1540 Lariat

NEWBERRY:
 Carpenter's
 5025 Tyrolean etch 507 Orchid
 5003 Crystolite
 1503 Crystolite
 1540 Lariat

SPARTANSBURG:
 Aug. W. Smith Co.
 (Dept. Store)
 3350 Wabash etch 440 Frontenac
 3404 Spanish etch 458 Olympiad
 3368 Albemarle
 1506 Whirlpool

5025 Tyrolean etch 507 Orchid
 1540 Lariat

ROCK HILL:
 Tucker Jwly. Co.
 5010 Symphone etch 503 Minuet
 1540 Lariat

SUMTER:
 W. B. Burns & Sons
 5010 Symphone etch 503 Minuet
 5003 Crystolite
 Carolina Hdwe. Co.
 5009 Queen Ann etch 501 Belle-le-Rose
 4085 Kohinoor
 Galloway & Mosley, Jwlr.
 5025 Tyrolean etch 507 Orchid
 3408 Jamestown, plain
 5042 Corinthian cut 1002 Mediterranean
 1540 Lariat cut 980 Moonglo
 5024 Oxford cut 976 St. George Waterford
 1506 Whirlpool
 1503 Crystolite
 1540 Lariat

WALTERBORO:
 Morrall & Rainey Jwlr.
 1540 Lariat
 1503 Crystolite

WINNSBORO:
 L. C. Hardy Jwlr.
 5010 Symphone etch 503 Minuet

SENECA:
 Seneca Jwly. Co.
 5003 Crystolite
 1503 Crystolite
 3408 Jamestown
 5022 Graceful etch 507 Orchid
 5009 Queen Ann cut 913 Everglade
 1506 Whirlpool
 Ballenger Hdwe. Co.
 3350 Wabash etch 440 Frontenac
 1503 Crystolite
 1540 Lariat

IN MEMORIAM

We recently learned of the passing of one of Heisey's active members, William Johnson, husband of Jean Johnson of Columbus, Ohio.

Those who have helped with the Heisey Display each year will remember them. They have been members since 1973. They were always ready to help set up and tear down the Display for as long as I can remember.

"Wild Bill" passed away May 7, 1989, at Mt. Carmel Hospital. We shall miss his smiling face and helping hands.

We all wish to extend our heartfelt sympathy to Jean.

Mary McWilliams

FROM THE ARCHIVES. . .

By Neila Bredehoft

MOLD LIST

A wonderful list was found in a cheap, small notebook which looked very uninteresting and uninspiring at first glance. By this time, though, I have learned that even the most tiny scrap of paper may have significant information. I checked the book and found it to be a list of molds, apparently done in the mold room, possibly by Ray Cobel, head of the shop. The dates appear to be the date on which the mold was begun. Most entries contain the pattern number and a description of the item. This is followed by a four-digit number which corresponds to the numbers found on the mold drawings which were obtained from Imperial several years ago and the numbers stamped into the molds themselves.

By looking closely, you will note that the mold numbers are consecutive and the dates usually are also. This gives us an incredibly detailed account of the introduction of specific pieces of patterns. Another wonderful thing about this list is that it begins in 1940 for pressed ware (1939 for blown ware) and is complete until the end of the company. We have about 16 or 17 years of information about molds contained in this little book.

Until I began writing this article and typing the list for the Heisey News, I had not taken the time to compare the pattern numbers with known Heisey pattern numbers. Now I find that there are quite a few previously unknown numbers listed with descriptions of pieces. All of this helps complete, bit by bit, our list of Heisey numbers. Eventually, we may even know what some of these pieces look like.

The following are patterns mentioned in the list:

341 Old Williamsburg
352 Flat Panel
1184 Yeoman
1483 Stanhope
1489 Puritan
1503 Crystolite
1504 Regency
1519 Waverly
1521 Quilt
1533 Wampum
1534 Diamond
1537 Wreath

The 113 stopper is for the 1489 Puritan French dressing and the 114 stopper is for the 1504 Regency cologne.

New information includes the 1171 bowl for Hope Glass, 1524, 1525, 1526, 1532, and 1534. Prior to this, 1518 was known only as the Cut Mitre vase. 1539 is an unknown line for which we have a list, but no illustrations.

Pressed Ware

2-10-40	1503	Shell Candy Box	4149
2-15-40	1483	Bobash [sic]	4150
2-15-40	1503	1/2 4 3/4" Napy [sic] 7/16" with hole Paul Hanson Co.	4151
2-16-40	352	2 oz. Ind. cream	4152
2-20-40	1503	7" Shell Salad Plate	4153
2-27-40	1519	8" Plate	4154
2-28-40	1503	4" Cigarette Box	4155
2-29-40	1489	4" Candle Block	4156
3- -40	1503	4" Shell Sauce Dish	4157
3-13-40	1503	12" Shell Torque Plate	4158
3-13-40	1228	Hot & Cold Liner	4159
3-19-40	1503	10 1/2" Shell Plate	4160
3-22-40	1503	4 1/2" Square ash Tray	4161
3-25-40	1519	ftd. Mayonnaise	4162
4- 1-40	1519	Ftd. Sugar	4163
4- 1-40	1519	Ftd. Cream	4164
4- 3-40	1503	11" Flower Bowl	4165
4-10-40	1521	3" Ash Tray	4166
4-11-40	1521	4 1/2" Cigarette Box	4167
4-11-40	1521	4 1/2" Cigarette Box Cov.	4168
4-19-40	1521	7" Candy Box	4169
4-19-40	1521	7" Candy Box Cov.	4170
4-22-40	7	Ladle	4172
4-22-40	1519	Two light Candle Holder	4173

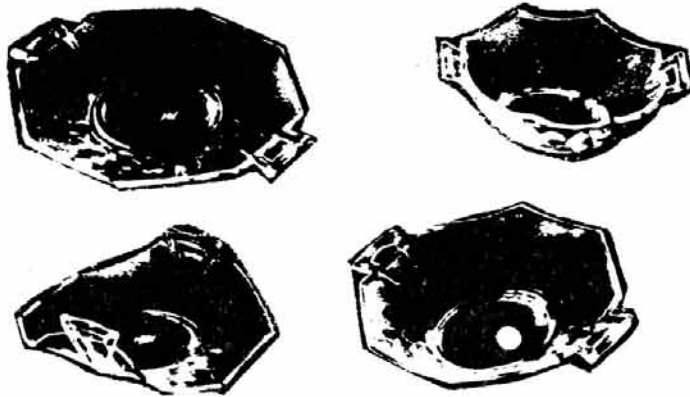
4-23-40	503	Shade 6"	4174
4-30-40	1184	4 1/2" Napy [sic] D.O.	4175
4-30-40	1184	5 1/2" Napy [sic] D.O.	4176
4-30-40	1184	8" Napy [sic] D.O.	4877
5- -40	1184	1 oz. Ind Cream	4178
5- 4-40	1519	11" three Comp Relish	4179
5- 7-40		7" Salad Plate	4180
5- 7-40	1519	7" Mayonnaise Plate	4181
5-1 -40	#1	Clock Face	4182
5-14-40	#505	4" Shade	4183
5-15-40	1171	6" Bowl Hope Glass Works	4184
5-22-40	1489	7" Square Candy Box	4185
5-22-40	1489	7" Square Candy Box Cov.	4186
6- 7-40	1503	4 1/2" Cigarette Box	4187
6- 7-40	1503	4 1/2" Cigarette Box Cov.	4188
6-14-40	1503	11" Center Piece	4189
6-14-40	1503	Punch Bowl	4190
6-25-40	1503	Custard	4191
7- 1-40	1503	10" Salad Bowl	4192
8- 6-40	1523	5 1/2" Half Apple Jelly	4193
8-12-40	1524	Small hld. Jelly Warren Kessler Co.	4194
8-29-40	1525	6" Ash Tray Warren Kessler	4195
9- 4-40	1489	4" Cigarette Box	4196
9- 9-40	1489	27 oz Rye Bottle	4197
9-17-40	1503	3/4 2 1/2" Candle Block	4198
9-17-40	1526	i" Plate	4199
9-20-40	1503	1/4 2 1/2" Candle Block	5000
9-20-40	1504	7" Candy Box	5001
9-20-40	1504	7" Candy Box Cov. Small Plunger	5002
9-24-40	1510	6" Comport	5003
9-25-40	1519	Ind Sugar	5004
9-25-40	1519	Ind Cream	5005
10- 1-40	1519	12" Cellery [sic]	5006
10- 2-40	1527	Kicking Colt	5007
10- 2-40	1489	8" x 10" Gardenia Bowl	5008
10- 4-40	1503	Ind Square Ash tray	5009
10- 7-40	1503	Five Comp Relish	5010
10- 9-40	341	2 1/2" Candle Block	5011
10-19-40	1528	8" Oak Leaf Relish	5012
10-21-40	1529	Balking Colt	5013
11-13-40	1489	4 3/4" Deep Cigar ash tray	5014
11-13-40	1489	1/2 2" Candle Block	5015
11-26-40	1503	1/2 12" Cellery [sic]	5016
11-26-40	1503	1/2" 12" three Comp Relish	5017
11-26-40	1503	7" Pickle	5018
11-26-40	1503	5" High foot Jelly	5019
11-26-40	1530	13" Torque Plate	5020
11-28-40	1489	11" Hexigan [sic] F. Bowl	5021
12- 2-40	1503	Cup	5022
12- 2-40	1503	6" Saucer	5023
12- 2-40	1489	Hart [sic] Ash Tray	5024
12- 2-40	1489	Club Ash Tray	5025
12- 2-40	1489	Spade Ash Tray	5026
12- 2-40	1489	Diamond Ash Tray	5027
12- 5-40	111	for 1489 Rye Bottle Stopper	5028
12- 5-40	112	for 1489 Cologne Stopper	5029
12- 9-40	1503	10" Combination Salad Bowl	5030
12- 9-40	1503	53/8" One Hld Jelly	5031
12-10-40	1503	63/8" Ftd. Napy [sic]	5032
12-12-40	1503	Two Comp Mayonnaise	5033
12-12-40	1532	3 1/2" Ash Tray	5034
12- -40		2" Candle Block	5035
12-14-40	1533	14" Torque Plate	5036
12-18-40	1518	10" Salad Bowl 14" Torque Plate	5037
		[Crossed Off and marked Canceled]	
12- 5-40	1489	4 oz. Cologne	5038

MAMMOTH SALE OF HEISEY

GLASS IS HELD BY MACY'S

12-19-40	1503	7" Shell Plate 1 hld.	5039
12-24-40	1489	Ind Salt	5040
1- 7-41	101	27 oz. Stopper	5041
1- 8-41	1489	2 1/2" Deep Ind ash tray	5042
1-11-41	101	Oil Stopper	5043
1-20-41	101	Cologne Drip Stopper	5044
1-21-41	1404	Round Hotel Sugar	5045
1-21-41	1404	Round Hotel Cream	5046
1-22-41	1534	Book End	5047
1-31-41	1489	7" Cigar ash Tray	5048
2- 3-41	1535	Table Salt	5049
2- 4-41	1503	7 oz Syrup Can	5050
2- 6-41	7	Salt Top	5051
2- 6-41	7	Pepper top	5052
2- 6-41	1489	1/2 6" Cigarette Box Cov.	5053
2-15-41	1503	3 1/2" Shell Candle Block	5054
3- 3-41	1171	Cigarette Liner	5055
3- 3-41	1536	Military Hat Ash Tray	5056
3-12-41	1503	7" Candy Box	5057
3-18-41	1537	6" Candy Box	5058
3-18-41	1537	6" Candy Box Cov.	5059
3-25-41	1538	Rabbit	5060
3-25-41	1503	Two light Candle Holder	5061
3-28-41	1489	4 1/2" Square Candy Box	5062
3-28-41	1489	4 1/2" Square Candy Box Cov.	5063
4- 8-41	1489	French Dressing Bottle	5064
4- 8-41	113	Stopper	5065
4-16-41	1539	10" Salad Bowl and 14" Torque Plate	5066
4-19-41	1541	Scoty [sic] Dog	5067
4-22-41	1489	2 3/4" Square Ash Tray	5068
4-22-41	1504	3" Candle Block	5069
4-22-41	1504	Puff Box	5070
4-2 -41	1503	Puff Box Cov.	5071
4-24-41	114	Cologne Stopper	5072
4-24-41	1504	3 oz Cologne	5073

NOTE: Original wording, punctuation and abbreviations have been retained as closely as possible.



On page 9 in last month's issue, these pieces were pictured. The description came from the original material from the Heisey factory. I forgot to change their description of the pattern. Actually these four pieces are 1229 Octagon as most of you probably knew already. Someone at Heisey goofed. L.R.

"We've never heard of anything like it! The biggest glassmakers in the business have never heard of anything like it! To everyone's best knowledge this is the largest, craziest, most breathtaking glass sale anywhere or anytime!"

That was the "leader" in the newspaper advertisement which introduced Macy's much-talked-about sale of the A. H. Heisey & Co.'s surplus stock, which began on Monday morning, October 15. And it drew in not just crowds but riotous crowds, believed by some to be the largest seen in one department in that store for 15 years. It is estimated that more than 25,000 persons had bought 210,000 pieces during the first three days of the sale, milling about with huge baskets or cartons offered by the store so that customers would serve themselves.

There were six carloads of glass on display, or to particularize, 301,578 pieces, including stemware, tumblers, plates, and fancy items of all sorts in crystal, rose, and green. Hand-blown, pressed, fire-polished, etched and optic ware was there, laid out in long unpainted wooden bins placed across the counters. The glass was displayed according to price ranges, which ran the gamut from 5 cents to \$1.99 per piece.

This glass represented stock valued at \$127,000 and it was sold at 25 cents on the dollar. Nothing was done to "dress up" the display, and it is probable that, under such circumstances, this had an appreciable effect on the number of sales, impressing the fact that only the bargain values were being stressed. The sale was not held in the regular china and glass department on the eighth floor but in an especially assigned section of 10,000 square feet on the fifth floor. It has been learned, however, that the regular glass department benefited to the extent of a 30 per cent increase over last year's sales.

CHINA, GLASS & LAMPS

November, 1935

MAHABAR AND CRYSTOLITE

Some people were confused to see the #1496 Mahabar pattern on page 12 of the January issue. This is a copy of a Heisey ad.

Actually the only items known with this name are the cigarette boxes and the ash trays, as shown on page 12.

Apparently these were popular so they added many items and changed the name to Crystolite. Crystolite was first shown in a 1939 catalog and 1496 was never in a catalog.

The cigarette boxes and ash trays are just the same in 1503 pattern as they were when it was 1496.

Some of the pieces on page 13 also come in Zircon. These include 1469 Ridgeleigh coasters, 1495 Fern relish tray and the 1485 Saturn candlesticks, all of which are beautiful and are popular collectibles. A few of the 1469 Ridgeleigh star relish dishes were made in Experimental Blue which are very valuable today. The museum owns one of these.

THE HEISEY CLUB OF SOUTHEASTERN MASS

As we gaze into the future of 1990, the incredible journey of the voyager beyond our solar system into unknown galaxies inspires us to look to the stars. We, the Heisey Club of Southeastern Massachusetts, have captured the light from several new stars to fulfill our officer's slate. President - Maria Martell; Vice President - Bill Thran; Secretary - Irene Walton; Treasurer - Dot Banck. Anyone who knows Maria Martell can attest to her enthusiasm for Heisey collecting. Her love spills over to those around her. Like a freshly uncorked champagne bottle, her dedication for glass collecting bubbles forth to drench our members. It is crystal clear that she is delighted to lead our club into a sparkling new year, 1990.

For her first duty as president, Maria presented our outgoing president, Mary Williams, with a gift from the members at our annual Christmas party which was held at the Capeway Restaurant in Brockton, Massachusetts. We know that Mary Williams's vast Heisey collection will welcome the addition of a hand painted Ruby-Amberina Pairpoint Christmas bell. The club thanked Mary for her leadership and inspiration to both novice and seasoned collectors. Pointsettias on the restaurant tables added to the festivity of the evening. Irene Walton created red and green Diamond H Christmas favors for all the attendees. The restaurant held a special place in the hearts of two Heisey members, Bill and Jackie Thran, who enjoyed a romantic evening dinner there on their wedding night just a few years ago. We wonder if they toasted their marriage that night with Heisey stems.

As we glance back to the past few months of 1989, the bright memories of our last few meetings still glow, with the "lazy hazy days of summer" free to Heisey hunt at flea markets, auctions, and yard sales, our members returned to the Banck's studio in September for an old fashioned yankee barbecue. In between the hamburgers and potato salad, the members managed to display their summer discoveries.

The program in October was a presentation by Richard Martell. Over the past few years, he has amassed a stunning Ridgeleigh collection. His glass filled two tables at the Banck's studio. Among the Ridgeleigh items, he displayed a 10" sq. dinner plate, an ice jug, a cocktail shaker, and a 2-lite candle holder with bobeches. Richard's program was professionally presented and peppered with spicy tales of his collecting escapades. Richard and Maria hunt for Heisey every weekend and always share their treasures with the club at "show and tell".

The November meeting was presented by another avid collector, Phil Phillips. He entertained the members with his theme, "The Romance of Collecting". He displayed an array of items, not all Heisey, from toothpicks to a tobacco jar, to dramatize how one collection can embrace anyone into the arms of another collection.

The Heisey Club of Southeastern Massachusetts extends best wishes for a happy and healthy 1990 to the Heisey Collectors of America. We also wish good Heisey hunting to Ted and Helen Mead who moved to Hawaii and to Shirley and Everett Dunbar who will

summer in Maine and winter in Florida.

Mary Neckes

Engraving, Please—Not Etching!

Engraved glass often is called "etched" by customers and sometimes also by sales personnel in retail stores. It is, of course, important that the distinctions between the two be clearly understood by retailers for proper merchandising.

One of the best-known lines of engraved glass comes from Orrefors in Sweden, and one of the prominent Orrefors craftsmen, Gustaf Abels, recently contributed the following comments to the Orrefors publication, *Review*.

Etching is a mechanical way of decorating glass. The piece of glass is covered with asphalt wax except on the parts where the design is to appear. These uncovered parts are treated with a corroding acid, which eats into the glass, producing a gray-textured design contrasting with the clear, transparent glass areas.

The engraver produces sculptural effects and modeled designs by use of hand tools. His equipment is very simple. He works at a small lathe into which are fitted, one at a time, interchangeable copper wheels. The lathe is driven by an electric motor, the speed of which can be regulated. The wheels are thin sheets of copper, varying diameter from 1/32nd of an inch to four inches.

When executing an engraved design, as many as 120 different wheels are used. The copper wheels are fed by hand with an abrasive of oil and emery powder.

This constitutes practically the entire equipment. Everything else is dependent upon dexterity and workmanship. The process is complicated by the fact that the glass piece—which often is very heavy—has to be pressed up against the wheel when being engraved.

Naturally, the results are entirely dependent on the engraver's ability in interpreting the artist's design and transforming it into the medium of glass. It is often said that the artist (designer) bears the same relation to the glass engraver that a composer bears to a pianist.

Note: This item is from a trade publication but there was no name or date on the page which this came from. Most of the engraving at Heisey was done with stone wheels. Copper was not available during the war years and was always expensive.

LETTERS, WE GET LETTERS . . . Janet Edmonson

I live in Sapulpa, Oklahoma, four blocks away from where the Bartlett Collins Glass Company started on June 25, 1915. I collect their glassware too. It has since been bought out by Indiana Glass Company which is operating now.

We also have a pop bottle factory called "Liberty Glass" which was called "Premium Glass Company" back in 1918. George F. Collins was president and his grandson is continuing the tradition.

We also had factories called "Schram" and "Sunflower". Schram Glass Company started in 1913. It made fruit jars. Schram closed after it was bought by Ball Brothers. Sunflower Glass Company made window plate glass. It closed in 1927.

Frankoma Pottery is located here. The Frisco Railway used to be located here and transferred to Tulsa in 1927.

Our town of Sapulpa is pretty rich in history too.

CLARENCE VOGEL MEMORIAL FUND TO BENEFIT OUR HEISEY MUSEUM

After Clarence Vogel's death this past August, many of his Heisey friends asked if a Memorial could be established for him. His family, when approached, suggested that such a Memorial Fund should benefit the Heisey Museum. The actual Memorial might be some significant Heisey Glass, a Krall cutting, or some such glass that Clarence loved so much.

A committee of the undersigned was formed for the purpose of administering this endeavor. Its purpose will be to formulate the fund, collect the funding and purchase the Memorial and present it to the Museum.

The undersigned ask that you send your personal contribution or your group's contribution to:

The Clarence Vogel Memorial Fund
c/o The Park National Bank
P. O. Box 850
Newark, Ohio 43055-9983
(Donna Holycross - 614-349-3777 -
reference only - not necessary on address)

We all have benefitted from Clarence's research - his reference books - his "Newscaster". Those of us who knew him personally will remember his personal interest to our inquires, his frank and direct answers, his humor - dry sometimes, yes, but given in such a way as to remember his sincere intent to help. Yes, he helped us to gain a deeper knowledge of Heisey. So let's remember him in a Memorial that will benefit all of us in the years to come.

Jim Earnshaw
133 Lind Avenue
Mansfield, Ohio 44903
(419) 524-4803

George Schamel
6625 Gilardi Road
Boonsboro, Maryland 21713
(301) 432-6285

Jim Kennon
P. O. Box 114
Brookville, Ohio 45309
(513) 833-5406

Manuel Klawans
2308 Ashboro Ddrive
Chevy Chase, Maryland 20815
(301) 588-2755

Ralph and Sandra (Vogel) McKelvey
3357 St. Rt. 103
Willard, Ohio 44890
(419) 935-0338

In addition, Bob Rarey and Sam Schnaidt have agreed to help with the selection and acquisition of the actual Memorial.

Send in your contribution soon, so we can be working on the selection, possibly as early as the Benefit Auction on March 9th and 10th. We will follow up this solicitation as necessary and also publish all contributions. We hope to have this completed in time to make the Memorial presentation before the Convention in June.

HEISEY SALUTES THE 90'S

As we begin the countdown to the year 2,000 the Convention Committee is going to kick off this last decade with a salute to the 90's. Looking back to the 1890's, the A. H. Heisey & Company was founded with production starting in 1896. As we look forward to the 1990's, HCA anticipates commemorating that legacy. Recently the Board established a committee to begin planning the event for 1996.

HCA has significant milestones of accomplishment of its own to commemorate. In 1970 the Newark Heisey Collectors Club provided a display for the Licking County Historical Society observing the occasion of the 75th anniversary of the founding of the A. H. Heisey & Company. Nineteen Ninety will mark the 20th anniversary of that display. Note that 1991 marks the 20th anniversary of the founding of HCA. In that year the 20th annual convention will be held. And, too, our beautiful museum will celebrate its 20th anniversary in 1994.

When you come to Newark in June to join with other conventioners in our Salute to the 90's! - plan on joining the festivities in new convention headquarters at the beautiful Denison University Campus in Granville. For a number of years, Denison has hosted many conferences and camps during the summer months. The Convention Committee felt the setting and facilities offered just the change of pace needed to add some sparkle to our proceedings. For those of you unfamiliar with the location, Denison is on the hill which overlooks the Granville High School where the Granville Flea Market is held.

When you do battle with that hectic, frenzied crowd at the high school, plan on stopping by Lamson Lodge on Pearl Street, (that's the street you must take to get to the Flea Market) at the back entrance to Denison. There you can attend a Wiener Roast to regain your strength and get acquainted. It is a new activity we've added to our calendar of events for those people who arrive early in the week in great anticipation of the convention. Come early, stay late!!

During convention week, dormitory accommodations will be available at Denison. Rooms are arranged in "suites" of two to four interconnecting bedrooms. Each suite of rooms has a bath. Beds are single with two beds per room. Linens are provided - 2 sheets, 2 towels, a pillowcase, and soap. Dorms have laundry facilities and recreational rooms. Please note: there are NO elevators between the four floors and NO air-conditioning in the dorms; Fans are permissible for use in the rooms by the occupants.

The dorms are on the green - directly adjacent to Huffman Hall where convention activities (except the show, display, and seminars) will be held. Within easy walking distance to the dorms is the Student Union where a snack bar is open 8:30 a.m. to 1:30 p.m. Monday through Friday.

Clearly these rooms are not suitable for everyone. However, it is an alternate choice for your consideration. (Rooms are still available at the Best Western and other motels in the area.) Cost for the dorm room is \$10 per person per night. When a single room is needed or required the cost will be \$15.

Availability of these dorms is contingent on a guarantee by HCA to Denison that 60 people have confirm-

ed reservations no later than March 15. If you would like to reserve a room(s) please send your request and an SASE to Sam Schnaidt, 1616 W. Church Street, Newark, Ohio 43055 - 614-344-4282. The SASE will be used to return confirmation of rooms. You are encouraged to get together with friends and family to make plans now to reserve rooms. When attending as a group, be sure to include in one letter of reservation ALL people who will be staying in one suite of rooms to make it easier to assign rooms. At the Benefit Auction in March, floor plans of the dorms will be available at Apple Tree Auction Center.

The Convention Committee is excited about the change of scene for our convention. Denison is such a beautiful campus, located in the lovely surroundings of historic Granville. Denison not only enjoys the reputation of having one of the most beautiful campus areas nationwide, but can also boast of having many well-known alumni, including Hal Holbrook, John Davidson, Michael Eisner (head of Disney Studios) and Four Star General John Chain, Commander-in-Chief of Strategic Air Command, among others. So, come and enjoy! Indulge in a little *deja vu* of college days gone but not forgotten! We look forward to sharing with you our Salute To The 90's!

Amy Jo Jones
Convention Co-Chairman

JIM CLARK, AN INTRODUCTION

Hello, fellow members of HCA, I am Jim Clark, Co-Chairman of the March Benefit Auction, and I would like to take this opportunity to introduce myself to you.

I am married to a wonderful Lady (Karen), and we have two daughters, Kelly (26) and Shelly (22). We are members of the Dayton Area Heisey Club; Karen is the secretary of this club and she writes our column for the newsletter. We also serve as docents at the museum on the 1st Saturday of the month.

We have been lucky to be members of a very active study club. This has brought us a long way in our knowledge of the glass that we love.

At this time I would like to take this opportunity to thank the people that have taught us along the way - first, Bob Ryan, who is my Co-Chairman, and without his encouragement and teaching I would not be at the point that I am; second, Jim Kennon, and the entire Dayton Club. Also, I would like to give a special thanks to Louise Ream, the 1st Lady of Heisey - she has done so much.

Last year was my 1st year to work at the auction, and I learned a lot but I wasn't ready for what I have discovered this year about all the details that go into a project like this. It is exciting and wonderful opening all the boxes just like at Christmas. Seeing all the beautiful glass that comes in you get anxious and can't wait for the auction. I am glad that Bob, and myself, have the help of people who really know their glass. Thanks for being so patient with the new help.

Now, I will let Bob, who has a delightful way of describing glass, report on what we have received,
continued on page

Jim Clark, An Introduction continued

but I have one suggestion don't be late for the Friday evening session as there are a couple of lots that shouldn't be missed - IF YOU LIKE HAWTHORNE.

Thank you for your support for the March auction, and I will be looking forward to meeting you there.

Jim Clark
Co-Chairman, Auction
Committee

1990 MARCH BENEFIT AUCTION

By Bob Ryan, Co-Chairman

The 1990 Heisey Benefit Auction will be held March 9 and 10 at the comfortable Apple Tree Auction Center, 1616 W. Church Street, Newark, Ohio. Your presence is requested, but if you cannot attend absentee bids will be accepted. Instructions for absentee bidding can be found on page 2 of the Auction List which will be mailed out shortly. Please make your list complete and follow the directions; if unsure, please clarify with someone on the committee or Louise Ream at the Museum. The committee co-chairmen are Jim Clark, 513-845-9132 and Bob Ryan, 513-433-6289. Study your list and if you need clarification, please call so there will be no disputes; if you are the successful bidder, the item is yours.

Our humble gratitude to all of you who responded to our request for Heisey glass for this benefit auction; you've done yourselves proud. Thank you all very much. Now, all we need is for you to spend that money on the auction. Come join us and have a great time. If it that is not possible, send us your absentee bids right away.

I will attempt to update you all on just what to look for in this year's auction. I had so many of you tell me last year that I got carried away with my descriptions of the glass that this year I decided to just report the facts - straight reporting with no embellishments; after all, what embellishment does Heisey glass need anyway. Just the facts, right?? Well, here goes . . .

The auction will start Friday, March 9, at 6:00 p.m., with the doors opening at 4:00 p.m. for previewing the auction. Saturday, March 10, the auction starts at 9:30 a.m. with the doors opening at 8:00 a.m. The quarterly meeting will begin at 9:00 a.m. The auction will be considerably longer this year as there is a little over 1100 lots; that translates to over two more hours of opportunity for all of you to purchase some of the glass you all admire, covet, or whatever.

All of the production colors except Vaseline are represented in this year's auction with many desirable items in color. The color distribution is evenly divided so those of you who collect a particular color will have many choices and a variety of patterns from which to choose. Some of them appeared to draw a lot of "oohs and ahs" from the people who were unwrapping the contents of the boxes and even the sophisticated people who were identifying the glass were heard to comment enthusiastically

about several pieces but I will not influence you by pointing out these particular lots because I know that you will recognize their exceptional qualities on your own. It has been some time since so many pieces of Tangerine and Zircon have appeared in a single auction. Some very desirable items too. Amber has an unusual swung vase whimsey (scratch that out editor as I am not to tempt these people; besides, I have already adjusted the shelves on my bookcase to accommodate this rather tall beauty and give it a warmer home than the breezes off Lake Michigan).

If your color choice runs to Sahara you can put together a set of stemware in 3390 Carcassone, offered in most sizes. There are several outstanding floral bowls in this hue also. Moongleam has several beautiful choices too. I particularly remember a couple of vases that I had not seen for many years. You'll recognize them by the unfamiliar number of their respective patterns. Hawthorne has some nice winners representing it; they appear early in the auction so don't tarry around the concession stand if you like Hawthorne. There are many choices in Flamingo with some unusual pieces and some very beautiful color. One piece is a really super piece and would be a decorator's delight but I am not to mention items separately but just report the facts - how boring!! Of course there are several pieces in the old colors, Emerald, Ivory, Custard and Opal - all in all over 200 lots of color, Alexandrite, too. Oh boy am I in for it! I haven't mentioned that deep blue color, Cobalt, have I? Well, there is an abundance including several stem pieces, candlesticks and floral bowls and Navy items too. Oh, how I wish I hadn't promised just the facts. There is one super Cobalt candlestick that should be mentioned - but then if I mentioned it and didn't mention the others, there would be discrimination charges, and I sure wouldn't want that to happen - would you friends? Enough about color.

There are many old patterns with some very good pieces. The auction abounds with items in Grecian Border, and the most Prince of Wales Plumes that I have ever seen in one auction (seems to me I've made that statement before). Most of all the old patterns are represented and some items that have not been seen recently at auction. There are abundant lots of the Colonial patterns with an opportunity to buy a good many Colonial stems in a couple of the more popular Colonial patterns, all sizes. Those of you who collect etchings will find much Orchid and Heisey Rose items along with a good selection of many of the earlier etchings especially Pied Piper. There are several lots of Deep Plate etchings from mugs to cocktail shakers, in a variety of patterns.

Those of you who collect the wee things start now to negotiate your bank loans. This is a good time because I saw in this morning's paper that small loans would be much easier to get in the next ninety days with favorable interest rates. Seems like the bankers are looking for the smaller user to get back some of the losses from their larger ventures. Anybody interested in some good shares of Campeau stock? Many consignors have put a variety of colors and patterns of nut cups, favor vases and cordials in the auction along with a record number of toothpick holders. You may want to consult
continued

1990 March Benefit Auction -

with one of the major lending institutions if you are considering starting a favor vase collection as there are more than 15 in the auction and something for you who already have what you thought to be all of them. Do you have the ones with silver underlay? Think about those three?

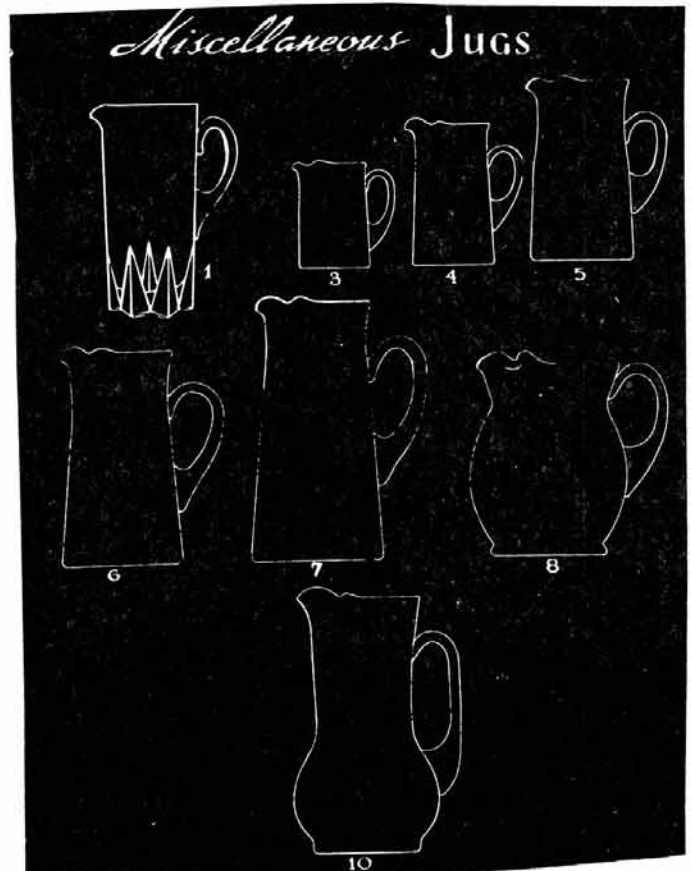
I guess with the winter we have had in most parts of the country, all of you dug into your cupboards and pulled out the Heisey candlesticks for some Colonial lighting fixtures during the weather-induced electrical outages. I know that our house was without electricity for over an hour or so - 22 hours - for the first time since Edison invented the light bulb. Even the Museum was victimized a couple of times. What I am getting at - there are many varieties of various candle lighting fixtures from single blocks to candelabrum complete with all the shimmering danglings (yeah, Louise, I know they are called bobeches and prisms but shimmerings and danglings sounded better to me). They come in dazzling colors, too. I wish that I could describe some of them to you, but you just want the facts, (right?) cut ones too, with cut hurricane globes, and some that have been electrified too, but, they wouldn't help you much if you didn't have any power, look nice though! How about a 301 two-lite in Alexandrite?

There are many jugs and tankards of all sizes and patterns, some really neat tumblers, lots of shot glasses and decanters, some with nice cuttings. In fact, there are many nice cuttings in the auction on just about everything in Heisey catalog categories, even some with Hawkes signature and the guy, "unknown". I wish that I could tell you about all the great stems that are in this auction, the superb cuttings on stems that are hard to find, great color, rarities, but I said that I would not embellish, and true to my promise, I'll just say if you want an honest view of what's really great just see me at the preview when I can talk "off the record".

Speaking about the preview, which opens at 4:00 p.m. on March 9, with the auction beginning at 6:00 p.m., please adhere to these hours so that we "amateurs" can properly have the glass displayed and checked prior to your viewing. This will permit a smooth running auction that everyone can enjoy. About a smooth running auction - all of you are encouraged to participate in the working part of the auction for the two day run. We will have posted boards for signing up for work detail; please lend a hand and learn more about what it takes to put on an auction. You may call Jim Clark or myself prior to the auction, or drop us a note, and then we can plan ahead. It is fun and we don't want to monopolize the enjoyment; you are all welcome to participate. Let us hear from you. Jim's number is mentioned earlier in this article as is mine.

Plan to come to Newark if you can; it is a fun affair and many new friendships are formed at this event. For all you newcomers, please let us know how we can help you have an even better time, short of noncompeting. Jim and I will be available for you, just approach us and let us know what we can do. If we don't know, we know someone who can answer your question. There are no ridiculous questions and it will not be the first time the ques-

tion has been proposed. Come enjoy and don't forget to bring money, lots of money!! If you have some left over there will be a super flea market at the Starlight School in Newark on Sunday. It is a fun weekend - don't miss it!



Bay State Heisey Collectors Present Their Twelfth Annual

ANTIQUE SHOW & SALE

Featuring collectible glass, pottery, china,
kitchenware and collectibles from all periods
Plus a Heisey Glass Display and Books on Heisey
and other glass from the National Heisey Museum

**Waltham High School
Lexington Street
Waltham, MA**

Exit 27A off Route 128/1-95
Totten Pond Road to Lexington Street
Follow Our Signs

**Saturday, April 28
10 a.m. - 5 p.m.
Sunday, April 29
10 a.m. - 4 p.m.**

Donation: - \$3.00 With this Ad - \$2.50
Dealer Space Available — Call (508) 921-0965

Sponsored by Bay State Heisey Collectors for the benefit of the National Heisey Museum.

We recently received the following letter from Tom and John Weishar. The "World of Glass" has lost another good friend. HCA extends its heartfelt sympathy to the family and friends of Joe Weishar. The Island Mould Company made the mould for the half size horsehead which was our September souvenir for four years. L.R.

Island Mould & *Machine Co., Inc.*

Telephone 233-3970

84 JOAN STREET at GLENWOOD
WHEELING, WEST VIRGINIA 26003

It is with deep sorrow that we announce the death of our father, JOSEPH J. WEISHAR November 21, 1989. He was one of the original founders in 1939 and until recently sole owner and president of the Island Mould & Machine Co., Inc..

We are very proud to say that Dad served the glass industry faithfully for over 50 years, served his country in World War II and was very appreciative to his customers and friends for allowing him to be a part of their business.

Celebrating our 50th Anniversary is now a sad occasion, but we can not forget how happy Dad was when he reached that goal earlier this year. We must cherish these memories and keep them dear.

On a less unpleasant note we find it fitting to inform you, that the torch has been passed on to the fourth generation of Weishar's working in the glass industry. We would like to take this opportunity to renew Dad's promise, and now our promise, to give you fast and courteous service in the future, and most important, the best workmanship possible.

Finally we would like to extend an invitation for you to stop and see a living memorial to Dad; the Island Mould & Machine Co., Inc. and his Glass Museum. These were Dad's Pride and Joy.

Very truly yours,

Tom Jh

MUSEUM BENEFIT DRAWING

SPONSORED BY THE BUCKEYE HEISEY COLLECTORS CLUB

1ST PRIZE: NO 1428 WARWICK COBALT HORN OF PLENTY
INDIVIDUAL CANDLESTICKS (PR)2ND PRIZE: NO 394 NARROW FLUTE DR. JOHNSON FOOTED
PUNCH BOWL w/FLANGE3RD PRIZE: 1295 BEADED SWAG OPAL COVERED BUTTER
w/PINK ROSE DECOR

4TH PRIZE: NO 1632 LODESTAR DAWN 5" MAYONNAISE

DONATION: 50¢ per ticket or 5 tickets for \$2

DRAWING: Quarterly Meeting, June 17, 1990

Tickets will be on sale all week of Convention,
June 14 - 17, 1990; pick up your lucky ticket on
one of these days. For those of you not able to
attend the Convention, send your check payable to:

THE BUCKEYE HEISEY COLLECTORS CLUB
659 CANTERBURY CT., NEWARK, OHIO 43055

We will enter your tickets for you and mail your
prize(s) if you are a winner. REMEMBER!! You need
not be present to win but your check must be received
before June 17, 1990.

ALL PROCEEDS BENEFIT THE HEISEY MUSEUM

(This offer invalid in states where prohibited
by law)

WANTED: YOUR BROKEN HEISEY GLASS FOR CLUB PROJECT.
CONTACT--BUCKEYE HEISEY COLLECTORS CLUB, C/O Walt
Stickle, 10180 Blue Jay Road, Newark, Ohio 43055.
Phone 1-614-323-2250.



Its Annual

Antique and Collectable

ALL GLASS, CHINA and POTTERY

SHOW AND SALE

◆ 1990 ◆

March 2, Sat. 10 a.m. to 6 p.m.

March 3, Sun. 10 a.m. to 4 p.m.

San Mateo County Fairgrounds

Oak Hall • ADMISSION 2.50
with this ad 2.00FOR THE BENEFIT OF THE HEISEY MUSEUM
NEWARK, OHIO

GGHCC: Box 488851, San Francisco, CA 94148

NEW HEISEY SHOWROOMS IN CHICAGO
FEATURED BY HANDSOME APPOINTMENTS

BUYERS who visit the new glassware display rooms of
A. H. Heisey & Co., Newark, O., on the fifteenth
floor of the Merchandise Mart, Chicago, are greeted by a
layout of equipment, furnishings and merchandise that in-
stantly captures the eye through its handsomeness and
elegance.

The new Heisey display rooms, which are under the di-
rection of W. S. Redfield, for many years a leader in glass
and pottery circles, occupy a space 80 feet long and 40 feet
wide, a total of 3,200 square feet. Upon entering the vis-
itor comes into a spacious reception room, with woodwork
done in two-tone ivory and with flooring of attractive rub-
ber tile. The show cabinets in this room have mirror
backgrounds and are inset in the side walls. The lighting
is enhanced through a system of reflectors.

A large dining room furnished in the Georgian period
comes next into view on the left. A table and chairs of
walnut accentuate the style of the period, while the plastic
work is finished in delightful Georgian green. An open
fireplace heightens the charm of the room and a carpet of
taupe forms a rich setting for the furniture. Illumination
is provided by an empire crystal chandelier. A gallery quite
unusual in design and arrangement, connecting with the
dining room, is an exceptionally attractive feature and adds
greatly to the effect as seen from the front corridor.

Archways opening from both the reception and the
dining room, usher one into the complete and strikingly
modern salesroom. Here everything is arranged with the
sole purpose of making the inspection and selection of the
merchandise delightfully convenient. Twenty-four dis-
play tables and 100 feet of side wall fixtures, finished in
walnut and equipped with mirror background and glass
shelving, allow comfortable space for one of the most com-
prehensive showings of the latest glassware designs.

Adjoining the salesroom are Mr. Redfield's executive of-
fices, so invitingly appointed that it is a real pleasure to
transact business in them. They are decorated in the
Early American style, with fitted knotty pine paneling
and beamed ceiling. The furniture is of curly maple and
a hook rug, reminiscent of colonial days, add a touch of
quaint beauty. Rather unusual, but entirely typical of
the period, is a reproduction of an old-fashioned "trick
cupboard" set in one of the side walls.

It is being announced that R. C. Irwin, who is the rep-
resentative for Heisey's glassware in the Middle West and
Rocky Mountain territory, is moving his headquarters
from Kansas City to these new Chicago offices to be lo-
cated there with Mr. Redfield, and from which he will
continue to serve his clientele as in the past.

SEE OSCAR FORM ON PAGE 23. POWER
FAILURE MAKES ANOTHER COLLECTIBLE.
ORDER NOW!

MOTELS IN THE NEWARK AREA

<u>FACILITY</u>	<u>LOCATION</u>	<u>UNITS</u>	<u>RATES</u>
ARBORGATE INN	1266 Hebron Road Heath, Ohio 43056 (614) 522-6112	59	Double - 1 person \$31.95 + tax Double - 2 people 37.95 + tax Extra person \$4.00 each Ten percent discount to senior citizens and members AARP & AAA
DUKE'S INN	I-70 at St. Rt. 79 (Buckeye Lake Exit) P.O. Box 1206 Buckeye Lake, Ohio 43008 (614) 929-1015	95	Double - 1 person \$31.31 tax inc Double - 2 people 36.92 tax inc Extra person \$3.00 each
HOLIDAY INN OF AMERICA	733 Hebron Road Rt. 79, Heath, Ohio 43056 (614) 522-1165	46	Double - 1 person \$45.00 + tax Double - 2 people \$51.00 + tax King - 1 person \$51.00 + tax King - 2 people \$59.00 + tax Discount - seniors, AAA, AARP
HOWARD JOHNSON'S MOTOR LODGE	755 Hebron Road Rt. 79, Heath, OH 43056 (614) 522-3191	67	Single - 1 person \$44.00 + tax Single - 2 people 52.00 + tax Double - 1 person 46.00 + tax Double - 2 people 54.00 + tax Extra Person \$8.00 each
KELLER MOTEL	I-70 Keller Road Hebron, Ohio 43025 (614) 927-8011	24	Single - 1 person \$20.64 + tax Single - 2 people 24.31 + tax Double - 1 person 25.23 + tax Double - 2 people 27.98 + tax Extra person \$3.00 each
STAR LITE MOTEL	Rt. 79, South 1342 Hebron Road Heath, Ohio 43056 (614) 522-3207	19	Single - 1 person \$22.00 + tax Single - 2 people 22.00 + tax Double - 1 person 22.00 + tax Double - 2 people 26.00 + tax

FLEA MARKET ON THE SQUARE

SATURDAY, JUNE 9 & SUNDAY, JUNE 10, 1990

SATURDAY, JUNE 16 & SUNDAY, JUNE 17, 1990

DEALER SPACE AVAILABLE

FOR INFORMATION

WRITE: FLEA MARKET
C/O BUCKEYÉ HEISEY
COLLECTORS CLUB
P.O. BOX 2383
HEATH, OHIO 43056

FOR THE BENEFIT OF HCA

RUBY ANIMALS

WE STILL HAVE RUBY BUNNIES, SPARROWS, AND CYGNETS BUT THEY ARE GOING FAST. SEE SALES LIST IN THE DECEMBER "HEISEY NEWS".



331 COLONIAL PANEL

WILL THE PERSON WHO SENT A WATER BOTTLE HERE TO BE IDENTIFIED PLEASE CONTACT US. WE DO NOT HAVE YOUR ADDRESS SO THAT WE CAN RETURN IT. THE 331 COLONIAL PANEL BOTTLE HE SENT IS BEAUTIFUL GLASS AND IS NEARLY PERFECT. L.R.

COMPARISON LIST

NEW HEISEY AUCTION LIST FOR 1990
3 YEAR'S AUCTION 87-88-89

PRICE: \$13.00

MAIL TO: B. WHALEY
300 INTERNATIONAL DR.
PATASKALA, OHIO 43062
1-614-927-1557

FOREVER HEISEY
 JAN & NORM THRAN
 1663 LONDONDALE PKWY.
 NEWARK, OHIO 43055

PH: 614-344-5955

SEE YOU AT THE FOLLOWING SHOWS:

Feb 2,3,4	Brazos Center	Bryan, TX
Feb 10,11	Fairgrounds, Arts & Crafts Bldg.	Columbus, Ohio
Feb 16,17,18	Rapides Parish Col.	Alexandria, LA
March 11	Starlight School	Newark, OH
March 17,18	Armory Place	Silver Spring, MD

Over 3,000 pieces of Heisey in stock. All SASE in-
 quiries answered. Send wants, we search.

ADAM'S & EVE'S ANTIQUES PH: 914-896-5818
 49 B ROSILIA LANE UPS & INS EXTRA
 FISHKILL, NY 12524 * SIGNED

1420 Tulip vase, 9" in Cobalt*	pr	\$600.00
1420 Tulip vase, 9" in Cobalt* (1 only)		325.00
1295 Beaded Swag t'pick, Opal w/flwrs & gld		75.00
1488 Kohinor 2-lite candlesticks . . . pr		80.00
1183 Revere oval cr & sug, Lewis & Neblett c		40.00
3408 Jamestown mug*, Sahara handle		95.00
1404 Old Sandwich 18 oz mug*		50.00
357 Prison Stripe tumbler*		100.00
335 Prince of Wales Plumes tumbler*, w/Ruby Stain, stain mint		100.00
1205 Fancy Loop tumb, Emer, gold trim fair		75.00

H & R DIAMOND H PH: 614-279-0390
 HELEN - BOB RAREY AFTER 5:30 P.M.
 1450 WHITE ASH DRIVE UPS & INS EXTRA
 COLUMBUS, OH 43204 * MARKED

300 Peerless 8" nappy*	\$	27.50
341 Puritan 4" low ftd jelly*		21.50
343 Sunburst 12" floral bowl*		62.50
473 Narrow Flute dressing boat*		20.00
1469 Ridgeleigh diamond ashtray*		10.00
1469 Ridgeleigh 4" rnd coaster (8) . . . ea		2.50
1489 Puritan 4 1/2" sq ashtray (2) ea		7.50
1489 Puritan 4 1/2" sq horsehead ashtray (2) ea		42.50
1503 Crystolite 3" sq ashtray*		5.00
1503 Crystolite shell cov'd candy		22.50
1503 Crystolite 13" oval ftd floral bowl*		27.50
1506 Provincial 9 oz tumbler* (2) ea		6.00
1519 Waverly 6 1/2" ftd honey, Rose Etch . . .		42.50
1519 Waverly 14" center h'dled sandwich plate		52.50
1540 Lariat 4 oz oil, #133 stopper (2) . ea		37.50
1590 Zodiac 1953 Ohio Sesqui ashtray . . .		12.50
5048 Rooster Head cocktail (2) ea		37.50
5072 Rose Stem 9 oz goblet (7) ea		15.00
5072 Rose Stem 6 oz champagne (8) ea		12.50
5072 Rose Stem 5 oz ftd juice or parfait, (7) ea		15.00

* L. A. MANESS PH: 804-798-1825
 * RT. 1, BOX 552 P & I RATE \$3/CTN
 * ASHLAND, VA 23005 H = MARKED

VISA/MASTERCARD WELCOME

* 351 Colonial champagne, H, (2) ea	\$	17.50
* 1503 Crystolite 10 oz goblet, H, (3) . . . ea		25.00
* 1503 Crystolite mayo w/ladle, H		52.50
* 1503 Crystolite 7" oval preserve, H . . .		25.00
* 433 Greek Key 9" celery tray, H		37.50
* 433 Greek Key 3 7/8" sherbet flared, H (5) ea		18.00
* 6 Ladle, Crystal, H (2) ea		22.50
* 1540 Lariat 9 oz goblet, H, (10) ea		22.50
* 1540 Lariat tray w/individual creamer & sugar, H set		52.50
* 112 Mercury 3" candlestick, Moongleam pr		45.00
* 393 Narrow Flute domino tray, H		50.00
* 479 Petal creamer, Flamingo, H		26.25
* 479 Petal sugar, Flamingo, H		26.25
* 1567 Plantation creamer		25.00
* 1567 Plantation sugar		25.00
* 341 Puritan 7" spoon rest, H		15.00
* 341 Puritan 6 oz cruets, H		50.00
* 1469 Ridgeleigh cov'd mustard, H		47.50
* 1225 Ridge & Star 7 1/2" plate, Flamingo, H, (6)ea		12.50
* 1252 Twist 8" plate, H (4) ea		15.00
* 1252 Twist 6" h'dled mint plate, Flam, H		18.00
* 1425 Victorian creamer or sugar, H . . . ea		23.75

 * NITA'S GLASS & LINEN SHOPPE PH: 206-978-4913
 * 591 LEONARD ROAD P & I EXTRA
 * ONALASKA, WA 98570

* 112 Mercury 3" candlestick, Orch Et pr	\$	85.00
* 300 Old Williamsburg 12" candelabra w/bobe- ches & prisms (1 only)		148.00
* 341 Puritan celery vase, H		53.00
* 352 Flat Panel cantaloupe plate, H		17.00
* 354 Wide Flat Panel cr & sug, Sahara pr		58.00
* 433 Greek Key cruets & stpr		48.00
* 433 Greek Key 2-h'dled jelly, H		46.00
* 433 Greek Key banana split, H		32.00
* 1201 Fandango toothpick		82.00
* 1205 Fancy Loop 3-cornered h'dled nappy, gold decor		36.00
* 1401 Empress DF, h'dled, ice bucket w/tongs, Chintz Etch, Sahara, H		175.00
* 1503 Crystolite covered shell		35.00
* 1519 Waverly 4" ftd violet vase, Orch Et, H		95.00
* 1519 Waverly fan vase, handles		48.00
* 1540 Lariat 2-lite candlesticks pr		68.00
* 1540 Lariat cologne & stpr, sticker		78.00
* 1540 Lariat 8 1/2" basket		135.00
* 5072 Rose Stem goblet, Rose Etch		50.00
* Sparrow (2) ea		95.00
* 3333 Old Glory goblet made into lovely bell, Trefoil Needle Etch, H		29.50

TALL OAKS ANTIQUES
MIKE & BARB ROSENBERGER
565 N. NICHOLS STREET
LOWELL, IN 46356

PH: 219-696-0147
UPS & INS EXTRA
H = MARKED

- 385 Grid & Square 1/2 gal tankard, H, crack at applied handle \$225.00
- 393 Narrow Flute 14" punch bowl, H, mold marks & scratches 115.00
- 1425 Victorian 9 oz hi-ftd goblets, H, (8)ea 19.00
- 1503 Crystalite 8 1/2" salad plates (5) . . ea 15.00
- 1486 Coleport 2 oz bar 13.75
- 1255 Pineapple & Fan 1/2 pint creamer, Custard w/decoration, H 110.00
- 1024 Cream & sugar w/lid, cut, H set 95.00
- 354 Wide Flat Panel cr & sug, Flam, H set 68.50
- 352 Flat Panel 5 oz lavender jar w/lid, H 95.00
- 1401 Empress 13" 2-part relish, Sahara, Etched, H 57.50
- 473 Narrow Flute w/Rim domino sug & cream, Flamingo set 52.50
- 1401 Empress ind cream & sugar set 37.50
- 114 Pluto candlesticks, Hawthorne . . . pr 175.00
- 1252 Twist 10" celery, Sahara, H 41.50
- 1519 Waverly 12" bowl, # 515 Etch 79.50
- 373 Old Williamsburg 1 oz cordial (2) . ea 40.00
- 1503 Crystalite 3 oz oil 42.50
- 1519 Waverly 6" 2-part relish 3-ftd (2) ea 18.75
- 150 Banded Flute 12" celery H 37.50
- 300 Puff box w/celluloid lid, 1/25/10, H . 57.50

LOOKING FOR #411 TUDOR 11" PLATES; #411 TUDOR CREAM; #411 TUDOR IND ALMOND AND #412 8 OZ H'DLED MUGS.

WILLEYS ANTIQUES
11110 CANNON ROAD
FRAZEYSBURG, OH 43822

PH: 614-828-2557

Over 2,000 pieces of Heisey for sale. Stemware and dinnerware matching service. Lots of colors, etchings and cuttings. Send want list and SASE. All letters answered if a SASE is enclosed.

SHOW DATES

Feb 2, 3, 4	Brazos Center	Bryan, TX
Feb 9, 10, 11	Palmer Auditorium	Austin, TX
Feb 16, 17, 18	Rapides Parish Col.	Alex, LA
Feb 23, 24, 25	Yamatorium	Opelousas, LA
March 3, 4	St. Bernard Cult Center	Chalmette, LA
March 17, 18	Armory Place	Silver Spring, MD

SEE YOU AT THE SHOWS!

Mildred and Harold Willey

* CLASSIFIED ADS

- * WANTED: Emerald Beaded Swag. E. J. Cox, Box 367, Spavinow, OK 74366.
- * WANTED: ANIMALS, ANIMALS, ANIMALS, ANIMALS, ANIMALS Heisey Amber Giraffe, Honey Amber Rooster and Flyt ing Mare, Cobalt Colts and Colored Limited Edti tion Heisey and Imperial Animals. Plaster/Wax AnimaT models. Collector, P.O. Box 1115, Newark, Ohio 43055; PH: 614-349-4714.
- * WANTED: Colonial Punch Bowl without cubs & ladle for same. Angie Maury, 41 Beaver Dam Ct., Colum- bia, SC 29223. PH: 803-788-0443.
- * WANTED: (1) Heisey Crystal Cherub Candlestick, 11 1/2". Dan Schwartz, 201 Bell St., Bay Minette, AL 36507. PH: 205-937-5167.
- * WANTED: (2) 4044 New Era rectangular bobeches. Michael Krumme, P.O. Box 5542, Santa Monica, CA 90405. PH: 213-936-4214.
- * WANTED: (1) 1401 Empress punch cup in Flamingo to complete collection. Roy Eggert 301-253-3583. Call anytime and leave message.
- * FOR SALE: Heisey 1425 Victorian, 22 pieces, SASF for price list. O'Leary, P.O. Box 242, Dedham, MA 01026.
- * FOR SALE: I have many books bearing the signature of George Duncan Heisey that were once part of his personal library. Please send \$3 per book (post- age paid) to Rodger Williams, P.O. Box 26322, Columbus, OH 43226. PH: 614-885-8955.
- * FOR SALE: 437 Ribbon Candy 1/2 gal jug*, \$600; \$079 Pan American parfait (10) ea, \$6; 3380 Old Domin- ion ftd soda, Old Colony Etch (4) ea, \$15; 1486 Coleport 12oz soda* (6) ea, \$8; 3389 Duduesne goblet, Chintz Etch (6) ea, \$20; 4054 Coronation 14oz Slim Jims (7) ea, \$25; 3362 Charter Oak 8oz goblet in Moongleam (6) ea, \$20; 4182 6" plate*, Sabrina Etch (9) ea, \$5; 1170 Pleat & Panel cream soup w/gold, (some worn) & Floral cut (9) ea, \$12.50; 1401 Empress 7" sq plate w/Old Colony Etch in Sahara (9) ea, \$12.50; 411 Tudor 12oz soda (5) ea, \$15. Ed & Arlene Crafts, 187 N. Pi- oneer Ave., Shavertown, PA 18708. PH: 717-675- 8553 after 6 P.M. Postage & Insurance Extra.
- * WANTED: For resale - (1) each, 7" and 9" #463 Bas- kets and one #467 Basket; 1205 Fancy Loop min- iature sugar; Epergne parts and Epergne plates. Mostly Heisey, 16 Clayton Place, Albany, NY 12209. PH: 518-482-6272.



18TH ANNUAL ALL-HEISEY GLASS SHOW & SALE
SPONSORED BY THE NATIONAL CAPITAL HEISEY STUDY CLUB
WITH THE NATIONAL CAPITAL HEISEY COLLECTORS BENEFITS THE NATIONAL HEISEY GLASS MUSEUM
SAT - MAR 17, 1990 11 AM to 7 PM
SUN - MAR 18, 1990 11 AM to 4 PM
ARMORY PLACE
WAYNE AVE & FENTON ST SILVER SPRING, MD
HEISEY GLASS IDENTIFICATION----1 to 2 PM EACH DAY
CERTIFICATE OF AUTHENTICITY FROM HCA
SMALL FEE EACH ITEM
DOOR PRIZE
Admission \$2.50 With Ad \$2.00



<p>A.W. PARKER Heisey & Pattern Glass Shows or Appointment Magalia, CA 95954 PH: (916) 873-2326</p>	<p>GLASS WITH CLASS Lenore A Shelley, GGHCC 1336 Lincoln Avenue San Jose, CA 95125 PH: (408) 286-8098</p>	<p>COSHOCTON ANTIQUE CENTER A Community of Dealers 309 South 4th Street Coshocton, OH 43812 (614) 622-3223 Open Daily 10-6 (closed on Mondays, Jan-Mar)</p>
<p>ALL HEISEY AUCTION Consignments Welcome Apple Tree Auction Center 1616 W. Church, Newark, OH 43055 PH: (614) 344-9449</p>	<p>GREEN ACRES FARMS Antiques, Crystal Glass & Collectibles 2678 Hazelton-Etna Rd., SW (S.R. 310-N) Pataskala, OH 43062 Sat. or Sun. PM or call (614) 927-1882</p>	<p>"HEISEY" PRICE COMPARISON GUIDE \$13.00 B. Whaley 614-927-1557 300 International Dr. Pataskala, Ohio 43062</p>
<p>ALFA I CARRIAGE HOUSE ANTIQUES Featuring Depression & Elegant Glassware Al & Faye Maness Rt. 1 Box 552, Ashland, VA 23005 PH: (804) 798-1825</p>	<p>H & R DIAMOND H Helen & Robert Rarey 1450 White Ash Dr. Columbus, OH 43204 PH: (614) 279-0390 after 5:30</p>	<p>PARRETT'S ANTIQUES Heisey 4994 Mapledale Rd. OR 1215 Greenwood Ave. Jackson, Mich. 49201 PH: (517) 784-7319 OR (517) 783-3289</p>
<p>ANTIQUES - THE SHULTZES 206-208 East Main St. Newmanstown, PA 17073 15 Miles West of Reading, PA PH: (215) 589-2819</p>	<p>"HAPPINESS IS" - THE STULTZS 3106 Warren Court, Glen Allen, VA 23060 Shows and Mail Order PH: (804) 672-8102 GLASS CIRCA 1890-1960</p>	<p>PATTON HOUSE Rocky's Mall, I-81 & US 11 Weyer's Cave, VA 24486 PH: (703) 967-1181 The Antique Gallery, Richmond, VA</p>
<p>C & J ANTIQUES Cole & Jean Miesner Box 45, 72 Whig St. Newark Valley, NY 13811 PH: (607) 642-9905</p>	<p>HARRALSON'S HOBBIES Heisey - Rose O'Neill Items - Doll Repair 1426 W. Highland, Springfield, MO 65807 PH: (417) 883-2449 Cliff & Helen Harralson</p>	<p>EAGLES REST ANTIQUES Carl and Mary A. Evans Heisey - China - Pottery, etc. Shows or Appointment PH: (614) 522-2035</p>
<p>GLASS RESTORATION LeRoy Carter, Jr. 125 Maple Ave. Utica, Ohio 43080 Phone 614-892-2775</p>	<p>HELEN & JIM KENNON Heisey, Cambridge, Fostoria, Duncan, Imperial, Fenton, Tiffin P.O. Box 114 Brookville, OH 45309 PH: (513) 833-5406 SHOWS ONLY</p>	<p>R & L ANTIQUES-SAN FRANCISCO Members of the Golden Gate Heisey Club 3690 Bodega Ave. Petaluma, CA 94952 PH: Petaluma (707) 762-2494 PH: San Francisco (415) 621-6693</p>
<p>CHARLES & MILDRED FISHER Heisey, Degenhart, Imperial, Antiques, Collectibles, General Line 991 Idlewilde, Newark, OH 43055 PH: (614) 522-5398</p>	<p>JJ MC KEE ANTIQUES Pottery - Glassware - Collectibles 222 B West 75th St. Kansas City, MO 64114 Wed.-Sun. 10-5 PH: (816) 361-8719</p>	<p>THE WOODEN SHOE Antiques & Collectibles Jim & Sheri VanEs by Appt. 810 Elden, Herndon, VA 22070 PH: (703) 435-9045</p>
<p>CRYSTAL LADY Joann Hagerty Specializing in elegant depression glassware 1819 Vinton Street, Omaha, NE 68108 Shop Ph. (402) 341-0643 or Home Ph. (402) 391-6730</p>	<p>RAILROAD DINING CAR CHINA Wanted By Collector - Harold W. Ames 4574 Driftwood La., Canandaigua, N Y 14424 1-716-394-1098 1-800-836-9619 Most Anything Railroad Related Wanted</p>	<p>SCHWAN'S ANTIQUES SHOWS & MAILORDER 77 Lagos del Norte Ft. Pierce, FL 34951 PH: (407) 461-5940</p>
<p>DIAMOND H PLUS Mail Orders & Shows George & Eileen Schamel 6625 Gilard Rd., Boonsboro, MD 21713 PH: (301) 432-6285</p>	<p>J. & R. COLLECTIBLES Shows, SASE, Mail Order list June & Ray Lukasko P.O. Box 1030, Newark, OH 43055 PH: (614) 344-9719</p>	<p>SHOW AND TELL ANTIQUES Art, Cut, Heisey and Pattern Glass 1525 Morrow Ave., Waco, TX 76707 Tues-Sat 10:30-4:30 PH: (817) 752-5372 Also: Mail Order and Shows Member NADA</p>
<p>ETTELMAN'S DISCONTINUED CHINA & CRYSTAL HEISEY a SPECIALTY P.O. Box 6491-HN Corpus Christi, TX 78411 PH: (512) 888-8391 Include SASE</p>	<p>MOSTLY HEISEY Rhoda Curley 16 Clayton PL, Albany, NY 12209 Shop and Mail Order PH: (518) 482-6272</p>	<p>HEISEY PUBLICATIONS Box 102, Plymouth, Ohio 44865 All Vogel Heisey Books I, II, III, IV And Quarterly Newscasters available</p>
<p>FOREVER HEISEY Jan & Norm Thran Mail Order, Shows, Appraisal Service 1663 Londondale Pkwy., Newark, OH 43055 PH: (614) 344-5955</p>	<p>MOUND BUILDERS ANTIQUES Heisey & Animals, General Antiques Irene Rauck 1138 Moundview, Newark, OH 43055 PH: (614) 344-6043</p>	<p>WILLEY'S ANTIQUES & MUSEUM Specializing in Heisey 11110 Cannon Rd., Frazeyburg, OH 43822 16 miles east of Newark, OH PH: (614) 828-2557</p>
<p>GERT'S GLASS Heisey & Duncan Gertrude & Russell Swetnam 1926 Saratoga Dr., Adelphi, MD 20783 PH: (301) 434-5113</p>	<p>THE MUTED SWAN ANTIQUES 5486 Peachtree Rd., Chamblee, GA 30341 Heart of Chamblee Antique Row Specializing in Heisey & Cambridge Bill & Pat Miller PH: (404) 451-7620</p>	<p>JAMES S. HARRIS ANTIQUES/APPRISALS Box 672 Richmond, KY 40475-0672 PH:(606) 623-9100 Buying and Selling by Mail</p>
<p>GLASS 'N' GLASS Virginia & Odell Johnson 6909 10th Ave. West Bradenton, FL 34209 PH: (813) 792-0604</p>	<p>NANCY'S ANTIQUES Heisey, Cambridge, Fostoria, Fenton Mail Order 906 44th St. NW, Canton, OH 44709 216-492-2595. Shop Union Station Antiques 12622 Cleveland Ave., Uniontown, OH Daily</p>	<p>TALL OAKS ANTIQUES 565 N. Nichols St., Lowell, IN 46356 Elegant & Dep Glass Specializing in Heisey. Shows - Mail Order - Shop - PH 219-696-0147 Mike & Barb Rosenberger</p>

SPECIAL OFFER - PEACH OSCAR

PLEASE READ VERY CAREFULLY BEFORE FILLING OUT
SEE PAGE 3 FOR EXPLANATION

THIS SPECIAL ISSUE OF OSCARS IS MARKED FENTON & HCA 90 BY FENTON IN OPAQUE PEACH. ONLY 500 ARE AVAILABLE. THEY ARE BEING OFFERED TO MEMBERS AT \$24 EACH UNTIL SOLD OUT. YOU MAY ORDER ONE PER MEMBER: THIS MEANS VOTING, ASSOCIATE, OR FAMILY MEMBER. PLEASE LIST ALL NAMES FOR CHECKING. EVERYONE LIVING IN OHIO OR ORDERING FOR PICK-UP IN OHIO, MUST PAY \$1.44 TAX. SHIPPING IS \$2.00. FIRST COME, FIRST SERVED!

PLEASE KEEP THIS PART OF THIS FORM FOR REFERENCE. CLIP AND MAIL THE BOTTOM PART. BE SURE YOUR DUES ARE CURRENTLY PAID.

DO NOT CONFUSE THIS SPECIAL OSCAR WITH THE ROSALINE OSCAR BEING OFFERED (SEE FORM BELOW).

THIS MAY BE THE ONLY TIME THIS FORM WILL BE IN THE NEWSLETTER, SO ACT TODAY!

PEACH

_____ NUMBER OF OSCARS AT \$24	EACH \$ _____	ONLY ONE PER MEMBER
SALES TAX \$1.44	EACH _____	ALL OHIO RESIDENTS & PICK-UPS IN NEWARK
POSTAGE \$2.00	EACH _____	CHECK ONE: <input type="checkbox"/> PLEASE SHIP MY OSCAR
TOTAL SENT WITH ORDER	\$ _____	<input type="checkbox"/> I WILL PICK UP MY OSCAR

NAME(S) _____
 LIST ALL NAMES _____
 ADDRESS _____ CITY _____ STATE _____ ZIP _____

MASTERCARD _____
 VISA _____
 EXPIRATION DATE REQUIRED: MO ___ YR ___

MAIL TO: HCA OSCAR SALES, P.O. BOX 4367,
 Newark, Ohio 43055

14TH ANNUAL SOUVENIR OSCAR FORM

PLEASE READ VERY CAREFULLY BEFORE FILLING OUT

THE OSCARS ARE FENTON'S ROSALENE AN UNUSUAL COMBINATION OF PINK AND NEAR-WHITE. THERE IS GOLD IN THE BATCH AND WHEN THE ANIMALS ARE REHEATED IN THE GLORY HOLE THEY TURN PINK IN A RANDOM MANNER AND WILL BE BEAUTIFUL. THEY WILL BE MARKED HCA "90 AND FENTON.


THEY WILL BE OFFERED TO MEMBERS ONLY FOR \$24 PRIOR TO CONVENTION. IF ANY ARE LEFT BY JUNE 14, THEY WILL BE OFFERED TO THE GENERAL PUBLIC FOR \$27 EACH.

YOU MAY ORDER ONE PER MEMBER. THIS MEANS ANY MEMBER WHO HAS A MEMBERSHIP CARD REGARDLESS OF THE CLASS OF MEMBERSHIP. PLEASE LIST ALL NAMES AS THEY WILL BE CHECKED. EVERYONE LIVING IN OHIO ORDERING FOR PICK-UP IN OHIO, MUST PAY \$1.44 SALES TAX PER OSCAR. SHIPPING CHARGES WILL BE \$2.00. THE OSCARS SHOULD REACH US BY EARLY FEBRUARY AND WILL BE SHIPPED AS SOON AS THEY ARE RECEIVED.

DO NOT SEND DUES, BOOK ORDERS, ETC. WITH YOUR OSCAR ORDER

PLEASE KEEP THIS PART FOR A REFERENCE AND CLIP AND MAIL THE FORM BELOW THE LINE. BE SURE YOUR DUES ARE CURRENTLY PAID. THIS IS THE 14TH OF A SERIES OF SOUVENIR OSCAR.

This is Oscar

ROSALENE	MAKE CHECK PAYABLE TO HCA, INC.	
_____ NUMBER OF OSCARS AT \$24	\$ _____	ONLY ONE PER MEMBER
SALES TAX \$1.44	_____	ALL OHIO RESIDENTS & PICK-UPS IN NEWARK
POSTAGE \$2.00	_____	CHECK ONE: _____ PLEASE MAIL MY OSCAR TO ME
TOTAL SENT WITH ORDER	\$ _____	_____ PLEASE HOLD MY OSCAR AT THE
NO PHONE ORDERS PLEASE		MUSEUM AND I WILL PICK IT UP DURING OR AFTER CONVENTION.

NAME(S) _____
 ADDRESS: _____ CITY _____ STATE _____ ZIP _____

MASTERCARD _____
 VISA _____
 EXPIRATION DATE REQUIRED: MO ___ YR ___

MAIL TO: HCA OSCAR SALES, P.O. BOX 4367,
 Newark, Ohio 43055

18 ANNUAL

STARLIGHT FLEA MARKET

ANTIQUES AND COLLECTORS SHOW

At
Starlight School
116 N. 22nd Street
Newark, Ohio

March 11 from 9 am - 4 pm

Antiques
Heisey Glass
Crafts
Pottery

Benefits-Starlight School & Heisey Museum
Sponsored by- Land of Legend Study Club

DONATION
\$1.00

(614) 366-5163

A PRODUCT OF DOUGLAS ENTERPRISES

Old Morgantown Glass Collectors' Guild



\$20.00 CHARTER MEMBERSHIP
includes

- One limited edition clear glass paperweight cast from an original 1936 Morgantown mold.
- One year's membership in the Old Morgantown Glass Collectors' Guild. Annual dues will be \$15.00 after first year.
- A quarterly Newsletter to member households. Each issue will contain previously unpublished material re The Economy Tumbler Company, The Old Morgantown Glass Works, and The Morgantown Glassware Guild.
- Other benefits to be listed in a letter of acknowledgement forwarded to each charter member upon receipt of the information listed below.

Please register me as a Charter Member of the OLD MORGANTOWN GLASS COLLECTORS' GUILD. My \$20.00 Membership Fee is enclosed.

Name (please print)

Street Address (U.S.)

P.O. Box (if applicable)

City

State

Zip

A.C. & Phone #


THE FOLLOWING MEMBERS OF MY HOUSEHOLD REQUEST ASSOCIATE MEMBERSHIP AND PRIVILEGES FOR AN ANNUAL FEE OF \$2.50 each:

TOTAL # Memberships: _____ AMOUNT ENCLOSED: _____
(Check or Money Order)

MAIL TO: OLD MORGANTOWN GLASS COLLECTORS' GUILD
P.O. Box 894 - Dept. HN Morgantown WV 26507-0894

National Heisey Glass Museum

Eight rooms and complete lower level displaying the beautiful hand made glass produced in Newark by the A.H. Heisey and Co. from 1896-1957.



Corner of West Church & North Sixth Streets
Newark, Ohio 43055

Phone: (614) 345-2932

Hours: Daily 1pm-4pm Closed Holidays

POSTMASTER SEND FORM 3579 TO:



SECOND CLASS

OHIO
the heart of it all! SM

Membership Renewal Notice
The date above your name and address is your renewal date. This is your last issue of the Heisey News if it reads
2-10-90

PLEASE DISREGARD THIS NOTICE IF YOU HAVE RECENTLY PAID YOUR DUES.