

# HEISEY NEWS

The Official Publication of Heisey Collectors of America, Inc.

Volume XXVIII No. 2

February 1999

ISSN 0731-8014



## HEISEY NEWS

Heisey Collectors of America, Inc.  
169 West Church Street  
Newark, Ohio 43055  
Phone (740) 345-2932 Fax (740) 345-9638  
E-mail: heisey@infinet.com  
WEB SITE: www.ahheisey.com  
All Rights Reserved 1999  
ISSN 0731-8014

**Curator/Editor**  
Molly Frye

**Administrator**  
Mary Ourant

**HCA President**  
Dick Smith (740) 366-5163

**HCA Vice President**  
Amy Jo Jones (937) 426-1567

**HCA Secretary**  
Ginny Marsh (740) 366-5608

**HCA Treasurer**  
Kenneth Rhoads (937) 275-5735

HEISEY NEWS is published and printed monthly (twice in March), by Heisey Collectors of America, Inc. Periodicals postage paid at Newark. Subscription is limited to HCA members. First class mailing is available for an extra \$13.00, due with payment of membership. If you are having difficulty receiving your newsletter, please contact the HCA Administrative office Monday through Friday 8:00 a.m. to 4:30 p.m.

The opinions expressed in articles in HEISEY NEWS are those of the authors and not necessarily those of the organization. The Editorial Staff reserves the right to edit, with or without the consent of the author, or to refuse any material submitted for publication.

### Back Issues

The following volumes are available as complete sets: V, VII, VIII, IX, X, XI, XII, XIII, XIV, XV, XVI, XVII, XVIII, XX, XXI, XXII, XXIV, XXV, XXVI, XXVII for \$15.00 each volume (12 issues, plus auction list if available).

### Advertising

Send all ads to: HCA Advertising, 169 W. Church St., Newark, OH 43055 or fax ads to (740) 345-9638, include MasterCard or Visa information. Ads are to be typed or printed on white paper with dark ink. Camera ready ads accepted, but must follow line specifications. Ads containing reproductions will not knowingly be accepted unless clearly stated (e.g. Heisey by Imperial, etc.) HEISEY NEWS accepts no further liability. See Advertising section for rates and deadlines.

### Museum

Heisey Collectors of America, Inc., a non profit corporation (tax exempt status), owns and operates The National Heisey Glass Museum in Veteran's Park, 6th and Church Streets, Newark, Ohio. Open Tuesday-Saturday 10-4, Sunday 1-4, closed holidays. Other hours by appointment. Members admitted free.

### Identification

HCA will attempt to identify unknown glass items. Please enclose a photograph with your drawings or descriptions. Other arrangements should be made in advance with the museum staff.

### Membership

To join Heisey Collectors of America or to renew your membership, contact HCA Administrative office Monday through Friday 8:00 a.m. to 4:30 p.m. Associate dues are \$22.00 plus \$5.00 for each additional household member. Voting members pay an additional one-time fee of \$25.00. Please consider supporting the Endowment Fund by joining at one of the levels listed on the back page.

### Museum Shop

There is always someone available in the shop to answer questions or take your order. When ordering by phone, please have a credit card ready. When ordering by mail, please be sure to include appropriate charges such as shipping and sales tax.

### Shipping and Receiving

Delivery is made much easier when we have a complete street address, not a PO Box. We prefer to use UPS. If you have not received a package, please call the administrative office to confirm it was sent. We will assist you in tracing it. If your package arrives damaged, please contact your local UPS representative. We insure everything.

### Donations and Loans to the Museum

If you have something you would like to share with the museum or have questions regarding items on loan, contact the assistant curator. HCA reserves the right to accept or refuse items based on current holdings.

## Calendar

Silver Spring Show	March 20-21, 1999
All Heisey Benefit Auction	April 9-10, 1999
Bay State Heisey Show	April 24-25
HCA Convention	June 14-20, 1999

## Features

### HCA Endowment Fund & HCA 1999 Budget

<i>Ken Rhoads</i>	3-4
<b>Limited Edition Pink Tiger Paperweight</b>	5
<b>Limited Time Offer—Ruby Red Geese</b>	5
<b>Valentines Day and a Mystery</b>	
<i>Carl Sparacio</i>	7-9
<b>What are They, Nuts?</b>	
<i>John Martinez</i>	10-13
<b>1999 Glass Display</b>	
<i>Amy Jo Jones</i>	14
<b>Make Your Reservations!</b>	14
<b>Twenty-Five Years Ago this Month</b>	
<i>Molly Frye</i>	15
<b>Recent Donations—July-December</b>	16-17
<b>Endowment Membership Report</b>	17-19
<b>Heisey Advertisement</b>	20
<b>Heisey News Index, 1998</b>	21

## Departments

<b>Message from the President, Dick Smith</b>	3
<b>Museum Happenings, Molly Frye</b>	6
<b>Club Notes</b>	22-23
<b>HCA News &amp; Notes</b>	23
<b>Advertising</b>	24-26

## **MESSAGE FROM THE PRESIDENT**

**DICK SMITH**

The New Year has arrived and I hope it brings nothing but good things for the HCA family. So far in Newark it has brought nothing but snow and ice, and has forced us to close the museum several days due to the weather.

The sale of the Ruby Geese and Pink Tiger are going on now. Place your order before the deadline, January 31. Your support on these projects helps support our museum.

The 1999 budget is approximately \$400,000. As you can tell, this will take a lot of support and fund raisers from within and outside the HCA membership. There is a brief financial report in this newsletter. A full report is available for your inspection at the museum.

The Benefit Auction is starting to take shape. There are several pieces of Zircon and a beautiful 12" Cobalt ball vase, with lots more to unpack and catalog. The committee has been hampered by severe snow and bad weather, forcing them to cancel a couple of their work weekends, but they should be done by the end of January.

The Board of Directors and Executive Committee are always looking for better ways to support the museum. We ask the membership for their thoughts and ideas on ways to achieve this. Send your suggestions to me in care of the National Heisey Glass Museum.

The Nominating Committee is looking for good candidates to run for the Board of Directors. If you know someone who is willing to invest their time and ideas to be a board member and help shape the future of HCA, contact Tom Bischoff or me.

Again I would like to thank our staff and volunteers for another month of dedicated serve.

See you next month! ♦

*Dick*

## **HCA ENDOWMENT FUND**

**KEN RHOADS, TREASURER**

Investment	12/4/97	4/2/98	6/12/98	9/17/98	12/3/98
Licking County Foundation at PNB	\$557,512.44	\$622,638.00	\$649,611.00	\$625,530.01	\$708,087.00
Bradbury Fund	235,613.86	232,174.47	219,765.00	211,302.00	271,908.00
Bob Evans Farms, Inc.	10,817.9 shares	10,900.21 shares	10920 shares	10920 shares	10920 shares
Klawns Fund	418.20	488.19	467.90	347.98	363.32
USF&G/St. Paul Co.*	19.6337 shares	19.7011 shares	19.7011 shares	10.434 shares	10.434 shares
Schoenfeldt Fund	17,955.00	15,625.00	16,950.00	15,440.00	18,000.00
Deluxe Corp.	500 shares	500 shares	500 shares	500 shares	500 shares
Rarey Fund	5,940.47	12,294.34	9,913.39	6,162.18	6,715.54
Deere Company	101.5465 shares	201.5465 shares	202.3141	203.0371	203.0371 shares
TOTAL VALUE	\$817,439.97	\$883,220.00	\$896,707.29	\$858,782.17	\$1,005,073.86
Change in value gain (loss)	\$55,576.98	\$65,780.03	\$13,487.29	(\$37,925.12)	\$146,291.69

\*USF&G was purchased by St. Paul Co. early in 1998 and the distribution of USF&G stock value appears as St. Paul Companies on and after 9/17/98.

# HCA 1999 OPERATING BUDGET

KEN RHOADS, TREASURER

## 1999 BUDGET

### BUDGETED ANNUAL INCOME

Contributions (not endowment)	\$20,000.00
Members Dues	55,000.00
Sales	94,000.00*
Special Projects	21,000.00
Convention	29,000.00*
Auction	112,600.00*
Dinners	4,000.00
Royalties	2,800.00
Investment Income	4,500.00
Ads—Heisey News	10,000.00
Museum Admission Fees	7,000.00
IIT Income	7,000.00
Endowment Donations	38,000.00
Sale of Fixed Assets	0.00
Returns and Allowances	0.00
<b>TOTAL</b>	<b>\$404,900.00</b>

### BUDGETED ANNUAL EXPENSES

Salaries	\$85,000.00
Payroll Taxes	6,800.00
Employee Benefits	5,000.00
Occupancy (Office & Museum)	36,000.00
Heisey News Print and Postage	35,000.00
Office Supplies & Rel.	10,000.00
Advertising—General	5,600.00
Warehouse	1,000.00
Banking Charges	2,000.00
Meetings/Dinners	3,200.00
Accounting Expenses	3,500.00
Museum & Related	1,900.00
IIT Expenses	13,200.00
Sales	47,400.00*
Convention	22,500.00*
Auctions	88,300.00*
Endowment Transfers	38,000.00*
Miscellaneous	500.00

**TOTAL \$404,900.00**

*\*The 1998 Budget carried these item expenses as part of item income.*

## Balance Sheet as of 12/31/98

### Assets

<b>Current Assets</b>		
Petty Cash	\$250.00	
Subtotal		250.00
Cash Operating	17,741.86	
Cash HCA Benefit Auction	445.71	
National City MM Acct.	76,169.18	
Total		94,356.75
PNB Endow. Trust	46,378.60	
Endow. Stock/Inves.	156,998.33	
Total		203,376.93
Accounts Receivable	0.00	
Inventory for resale	94,755.02	
Prepaid Insurance	1,497.05	
Certificate of Deposit	0.00	
Total current assets		96,252.07
<b>Fixed Assets</b>		
Building Improvements	623,080.70	
Accumulated Depreciation	124,507.47-	
Land Improvements	34,820.57	
Accumulated Depreciation	4,108.28-	
Building Administrative	93,062.30	
Accumulated Depreciation	47,552.24-	
Land-Office Building	5,352.50	
Warehouse Building	33,772.00	
Accumulated Depreciation	11,040.08-	
Land-Warehouse	12,600.00	
Furniture/Fixtures Museum	204,715.92	
Accumulated Depreciation	25,902.33-	
Furniture/Fixture Office	46,604.22	
Accumulated Depreciation	40,829.64-	
Computer	51,465.80	
Accumulated Depreciation	38,230.67-	
IIT Studio Equipment	35,097.33	
Accumulated Depreciation	4,809.75-	
Molds	243,397.00	
Total Fixed Assets		1,086,987.88
<b>Non Depreciable Assets</b>		
Heisey Glass Pcs. Donated	235,267.60	
Heisey Glass Pcs. Purchase	149,397.04	
Research and Archives Lib.	8,399.23	
Heisey Glass Archives	748.00	
Total Fixed Assets		393,811.87
<b>Other Assets</b>		
Workers Comp Deposits	450.45	
<b>Total Assets</b>		<b>\$1,875,485.95</b>

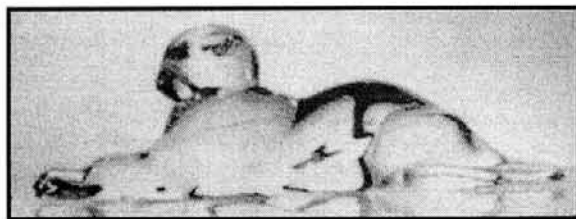
### Liabilities and Equity

<b>Current Liabilities</b>		
Accounts Payable Other	1,375.00	
S.W.T. Payable	340.45	
C.W.T. Payable	218.80	
Workers Comp	0.00	
Licking Valley School Tax	99.77	
Sales Tax	411.19	
Total Current Liabilities		2,445.21
<b>Equity</b>		
General Operation Fund	430,371.82	
Property Assets Fund	843,550.88	
Research and Archives Fund	9,147.23	
Heisey Glass Donated Fund	235,267.60	
Heisey Glass Purchase Fund	149,397.04	
Endowment Fund	156,998.33	
Current Earnings	48,307.84	
Total Equity		1,875,485.95
<b>TOTAL LIAB. &amp; EQUITY</b>		<b>\$1,875,485.95</b>



## LIMITED EDITION PINK TIGER PAPERWEIGHT

HCA offers it's **final Tiger Paperweight** in a series of four, produced by Mosser Glass in Pink. The Tiger will be on sale January 1-31, 1999. This piece will be the perfect finishing touch to your collection, including HCA Tiger's in Ice Blue, Yellow Mist and Evergreen. **This sale is open to everyone.** The cost is \$55 each plus \$6.00 shipping. Ohio residents must pay sales tax. ♦



Mail to: Pink Tiger, 169 W. Church St., Newark, OH 43055 Call: 740-345-2932

Name: \_\_\_\_\_ Tax Id.#: \_\_\_\_\_

Address: \_\_\_\_\_ Phone: \_\_\_\_\_

City: \_\_\_\_\_ State: \_\_\_\_\_ Zip: \_\_\_\_\_

Payment: Check or MasterCard/Visa: \_\_\_\_\_ Exp: \_\_\_\_\_

Quantity: \_\_\_\_\_ x \$55.00 each = \_\_\_\_\_

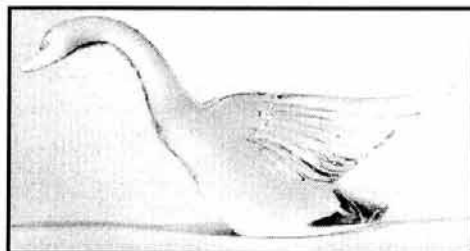
Tax (OH): \_\_\_\_\_ x \$3.30 each = \_\_\_\_\_

Shipping: \_\_\_\_\_ x \$6.00 each = \_\_\_\_\_

Total: \_\_\_\_\_ = \_\_\_\_\_

**Please Circle:**

SHIP  
PICKUP



## RUBY RED GEESE SALE—LIMITED ONE TIME OFFER!

Order your set of (3) Ruby Red Geese, produced by Mosser Glass, between January 1-31, 1999. Cost is \$150 plus shipping and applicable Ohio resident sales tax. This project will be produced in two runs, with no more than 250 sets made. The first will produce approximately 125 sets. **If no more than 100 sets are sold by January 31, then the second run of Geese will not be made.**

**Mail order: Ruby Red Geese, 169 W. Church St., Newark, OH 43055.**

**Fax: 740-345-9638 or Call 740-345-2932.**

Name: \_\_\_\_\_ Tax Id.# \_\_\_\_\_

Address: \_\_\_\_\_ Phone: \_\_\_\_\_

City: \_\_\_\_\_ State: \_\_\_\_\_ Zip: \_\_\_\_\_

Payment: Check or MasterCard/Visa: \_\_\_\_\_ Exp.: \_\_\_\_\_

Quantity: \_\_\_\_\_ x \$150.00 each set = \_\_\_\_\_

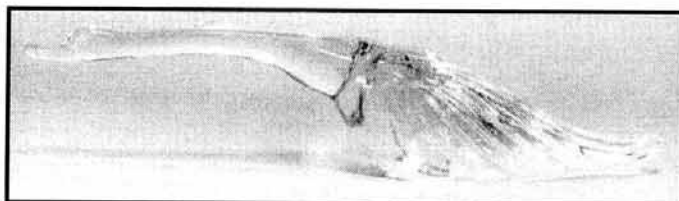
Tax (OH): \_\_\_\_\_ x \$9.00 each set = \_\_\_\_\_

Shipping: \_\_\_\_\_ x \$10.00 each set = \_\_\_\_\_

Total: \_\_\_\_\_ = \_\_\_\_\_

**Please Circle:**

SHIP  
PICKUP



## ***MUSEUM HAPPENINGS***

*MOLLY FRYE*

We can all pat ourselves on the back, HCA started the year off right by receiving it's first ever federal grant! This is a great step for the organization, as there is a fair amount of money available from state and government sources to provide extra funding for the museum and HCA Glass Studio.

HCA has been awarded a Museum Assessment Program grant by the Institute of Museum and Library Services. Through self-guided study and on-site consultation with a museum professional, the grant will enable the National Heisey Glass Museum to evaluate its current practices, establish priorities to achieve professional museum standards and plan how to best serve the community.

And speaking of the HCA Glass Studio, great things are happening there as well! The Institute of Industrial Technology is currently completing their Phase II construction. What this means is that the second floor is now full of exhibits (plus the first floor) and a new addition was added to the side of the building. The glass studio remains in the same place, providing glassmaking demonstrations and a Heisey mold exhibition.

IIT has planned a grand opening, scheduled for February 20, 10 am to 4 pm. They have special activities planned for the day, including science demonstrations. The glass studio will be up and running again, for another successful year. Don't forget we offer monthly paperweight classes, just call the museum at 740-345-2932 to find out more! ♦

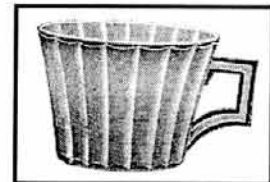
## ***NEWS FROM THE SHOP***

*MARY JO KOCHENDORFER*

Thank you to everyone who helped make our Christmas punch cup project a success! We asked the membership for punch cup donations to incorporate into one of our craft projects during our December open houses. Once again you made our event a great one. We received over 100 punch cups from members, and sold out of them by 2:00 pm! What a surprise for us!!



Again this year the Christmas open house craft projects were a successful fund-raiser for HCA. Plans are in the works for next year, so we'll keep you posted. We thought we might do something with small nappies....maybe you can start setting those aside for us just in case?



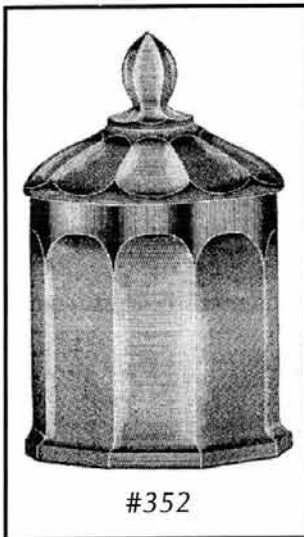
Thanks again HCA Members! ♦

## VALENTINE'S DAY AND A MYSTERY

CARL SPARACIO

I hope you all had a pleasant holiday season these past months. Since I was amongst the missing in the *Heisey News* in January, I feel a little discombobulated. Holiday preparations got the better of me and something had to give—it was either celebrate

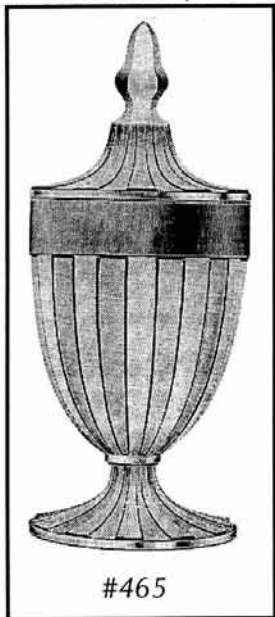
Christmas with a bare-naked Christmas tree or write an article for the *Heisey News*. The Christmas tree won because Mrs. S. gave her famous, "Or Else!" speech.



#352

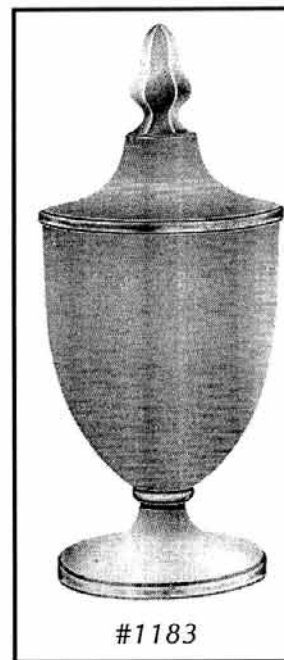
We've got wonderful things coming up on the Heisey calendar this month—for one thing (and likely the only thing,) there's Valentine's Day. That may seem far removed from Heisey but, believe me, it is not. Everybody loves a lover (unless he's in the Oval Office) and we remember that there used to be a bunch of gossip indicating that the Heisey boys were interested in more than glass. It would be tough to confirm at this late date though, I suppose, we could get Larry Flynt on it.

So, how can you make a Heisey Valentine for your Valentine's Day lover? It's easy, all it takes is a little imagination. You, too, can wow your Valentine. A Heisey candy jar (an 8 pponder would be nice) filled with delicious chocolates would say "I love you" better than anything from Hallmark. Or you could fill a colonial puff box with those little hard, red, heart shaped candies—the spicy ones that burn the tongue. However, it would be wise not to expect kisses immediately after your love has sampled them.



#465

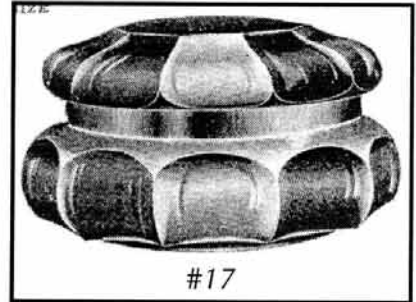
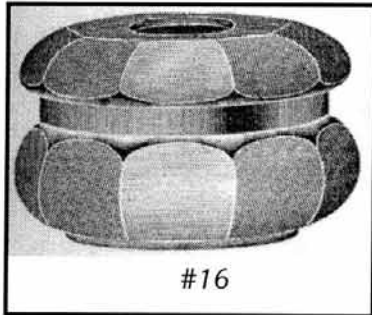
As for myself, I'm going to take the heart shaped ashtray from the Ridgeleigh bridge set and place my Valentine gift to my love in it. Then I'll wrap it with a ribbon. What could be more suitable than a genuine Heisey glass heart?



#1183

I haven't decided yet just what I will place in the ashtray. Jewelry would fit perfectly. A ring perhaps. But, then again, jewelry is not a practical gift. In fact, I'd go so far as to say it's a little gauche. Besides, gold is not a valentine color—red is. It would be better and in the spirit of the season to fill your little heart shaped ashtray with red M&M's. Some of you, on the face of it, might say that that seems cheap but it isn't. Frugal, maybe, but not cheap. First off, you would need to buy a whole package of multi-colored M&M's, pick out the red ones and throw the rest away. In my book, that's extravagant.

How about a Heisey trumpet vase? (squint your eyes while looking at one and you will actually see an elongated hear shape). A single red rose would be perfect in a small one and a dozen roses would be magnificent in a large one. See, it doesn't have to be an actually heart shaped piece of Heisey. Better yet, use a punch bowl—Old Queen Anne is a good choice. Fill it to overflowing with gifts that speak of your love. I won't make suggestions for those gifts because I know some of you and what you think speaks of your love may not be suitable for a family newspaper.

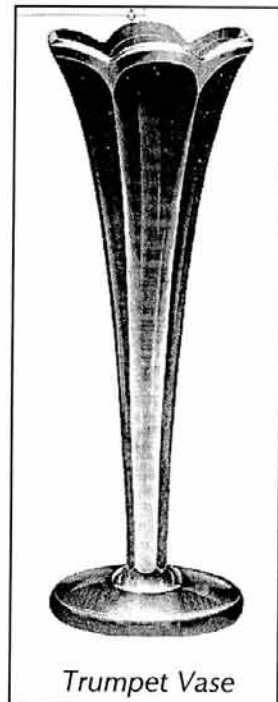


Actually February is more than Valentines Day. There's President's Day, too, which used to be a celebration of Washington's and Lincoln's birthdays but which has since been turned into a day for shopping orgies. No need to feel left out on Presidents Day, you can also celebrate Presidents Day with Heisey. Don't go to the mall—check the *Heisey News* for the sale

on many of the HCA reissues of Heisey animals and max out your credit card. Better yet, run out to Newark, Ohio and the Heisey Museum to shop till you drop .

To fulfill my duty to keep this column educational, I will enlighten you with the details of the Ridgeleigh Bridge Set. The Ridgeleigh Bridge Set consists of four pieces, each shaped like one of the suits in a deck of bridge cards. There's a diamond, a spade, a club and a heart. This set was produced regularly from 1935 to 1938 and then inconsistently until 1941. It is easy to confuse the unrelated little square Ridgeleigh ashtray with the diamond ashtray from the bridge set so, if you're missing the diamond in your bridge set, put in a square to fill in the empty spot. Hardly anyone but Walter Ludwig will notice the difference.

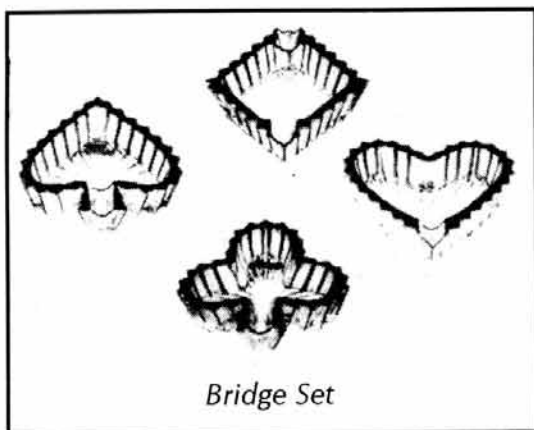
The Bridge Set was not made in color. Fortunately, color freaks can get their jollies and get around this by replacing the diamond in their bridge set with a square ashtray in either Sahara or Limelight. If you use both colors (hence, two diamonds) you'll probably have to call your bridge set a pinochle set.



Changing the subject now and, at the risk of sounding like Bill Clinton who said, "I never had sexual relations with that woman," I want to go on record as saying, "Me neither." Okay, so I'm so weak. I couldn't resist sticking that in.

What I actually want to say, using Bill Clinton's wounded President persona, is that I never drew a cartoon for the *Heisey News*. Furthermore, I'm getting upset at the fingers being pointed. Our HCA archivist, Don Valdes, opened the door to the cartoon mystery when he reprinted some of them and then wondered who contributed those cartoons to





Do I know who the cartoonist is? Of course I do. Will I share that information with you? Of course not (please note, I said I will not *share* it—that doesn't mean I won't *sell* it). Do we have any bidders out there? I can tell you this, I'm handsomer (prettier?) than the cartoonist but that's as far as I'll go. It'll cost you if you want to know.

Don't miss out, you can be the only kid on your block with this information.

Think you know? Send an email to [poppicarl@msn.com](mailto:poppicarl@msn.com) and I'll let you know if you're right. In the meantime, stay warm and well everyone—there's big Heisey doings coming up in March.

By the way, if anyone is in need of a Ridgeleigh bridge set with a missing heart, I know where you can get one. ♦

the *Heisey News*. There were subtle hints that I might have been involved. Well, I wasn't. I don't draw very well. Besides, I'm not afraid to put my name to anything of mine—no matter how embarrassing it might be (I offer my literary efforts in the *Heisey News* as proof).

*How would you bid these hands?*

(YOU ARE THE DEALER)

<b>Hand No. 7</b>	<b>Hand No. 10</b>
♠ 5-4-2	♠ A-K-Q-J-9-5-2
♥ A-K-9-8	♥ 6
♦ None	♦ J-3
♣ A-K-J-9-6-2	♣ A-Q-2
<b>Hand No. 8</b>	<b>Hand No. 11</b>
♠ A-K-Q-J	♠ 6
♥ A	♥ A-K-Q-J-9-5-2
♦ Q-J-10-8-7-5-3	♦ A-Q-2
♣ A	♣ J-3
<b>Hand No. 9</b>	<b>Hand No. 12</b>
♠ None	♠ A-K-Q-10-4-2
♥ A-K-9-8-6-3	♥ K-10-5-7
♦ A-K-Q-4-3-2	♦ A-K-10
♣ K	♣ None

These six hands, the second set in a series of bidding problems, were arranged by Milton C. Work. Send one bid for each hand before July 1st. Correct bids for all hands win valuable prizes. Other problems will follow in later issues. Grand prize to winner of series. Address "Heisey's Bridge Contest," Details and Mr. Work's answers on request.

*There's Matchless Charm in Glassware*

Enchanting pieces for every use—from bouillon to dessert and coffee—and for every occasion, from dinner or luncheon to bridge tea, are exquisitely wrought by Heisey. There are patterns and designs in infinite variety—and colors delightful to behold.

You may have the soft rose glow of Flamingo, or the delicate amethyst tint of Hawthorn, or the cool green of Moon Gleam, besides shimmering crystal—glinting like diamonds in the light.

Over the smartest tables this fine glassware casts its spell of charm. There are colors to gratify the most intimate whim of color arrangement. And always remember that glassware is in vogue today: *fashion demands fine glassware for the table.*

Ask your store to show you Heisey's Glassware. The trade mark is the sign of the genuine. And if you wish to choose ideal gifts for any occasion, write for our new booklet, "Gifts of Glassware."

A. H. HEISEY & COMPANY  
Newark, Ohio

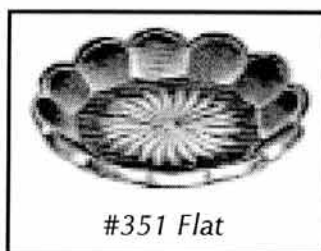
**HEISEY'S**  
GLASSWARE for your table

## WHAT ARE THEY, NUTS?

JOHN MARTINEZ

Does anybody remember ever using an individual nut dish? When I asked this question to our study group (National Capital Heisey Collectors Club), only two people of the twenty-six said they had. One person had seen them used at parties, and, most of the time, the nut cup was made of paper. The second person said he had seen individual nuts used at Bridge parties.

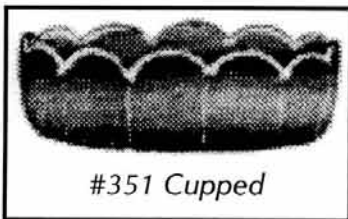
Heisey produced about thirty different individual nuts and almonds in a variety of colors from 1905 to 1957, when the factory closed. Tiffin, Cambridge, Fostoria, Duncan and Imperial Glass Companies also produced individual nuts, so there must have been a demand for them. Yet, when the average person encounters an individual nut for the first time, their initial guess would be an individual or master salt.



#351 Flat

The no. 351 Priscilla individual almonds, flat and cupped, were produced from 1905 to 1920, in crystal only, and are found in Vogel Book IV, page 157. The flat almond is

better known as a butter pat, and usually has a ground bottom. The flat and cupped almonds were most likely produced from the same mold, can be found with or without the star bottom, and are marked. In the 1986 spring issue of *The Heisey Glass Newscaster*, Mr.



#351 Cupped

Vogel shows a cupped almond and states it was the first he'd seen for sale in twenty years of collecting Heisey. The flat almond/butter pat is easy to find, while the cupped almond remains elusive.



#353/393

The no. 353 Medium Flat Panel individual footed almond was produced from 1908 to 1930 and found in Flamingo, Moongleam, Sahara, crystal, and Hawthorne. The Medium

Flat Panel almond has ten panels and is usually marked on the bottom of the foot. Duncan made a footed nut very similar in shape and size, the difference being it only has six panels and the glass is much thicker. The crystal almond is the easiest to find, while the Sahara and Hawthorne are the hardest.

The no. 393 Narrow Flute individual footed almond was produced from 1909-1935 in crystal. Heisey Price list no. 211 states that no. 353 and no. 393 individual footed almonds are the same. In the 1987-1989 Whaley Auction Price List, there was a Narrow Flute individual footed almond in Amber that sold for \$125.00. This was probably a whimsey item and quite scarce.



#394

The no. 394 Narrow Flute individual salted nut was produced from 1916 to 1933. It can be found in crystal

only, with or without the star bottom, always marked, and sometimes has the patent date 2/22/16 stamped on the bottom. The salted nut differs from the Narrow Flute pattern in that it has a pair of lines paralleling the rim and under the handles, where everything else in the pattern has a plain rim. The Narrow Flute nut is easy to find.



#411

The no. 411 Tudor individual almond was produced between 1923 and 1939 in crystal only. Because of its small size,

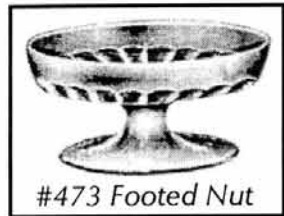
it could easily be confused as an individual salt. The Tudor almond is marked and one of the most difficult to find.



#433

The no. 433 Greek Key individual footed almond was produced from 1912 to 1938 in crystal only, and is usually marked on the bottom of the foot.

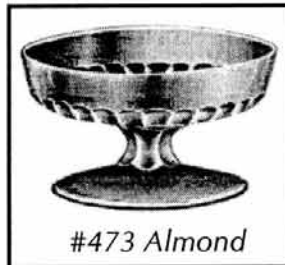
They are not hard to find, but due to the popularity of Greek Key, the footed almond may be expensive.



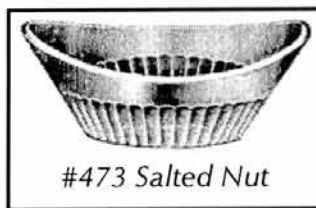
#473 Footed Nut

The no. 473 Narrow Flute with Rim individual footed almond, individual footed nut and individual salad nut were all produced from 1915 to 1927. The footed

almond and footed nut were made in crystal only, and are usually marked on the bottom of the foot. The individual salad nut came with or without the star bottom, in Moongleam, crystal, Flamingo, and Hawthorne. It is always marked and can sometimes be found with the patent date 2/22/16 stamped on the bottom (same date as the



#473 Almond

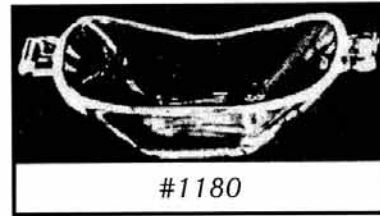


#473 Salted Nut

no. 394). The footed almond and footed nut may be hard to find, where the salad nut is much easier. The salad nut in color is more desirable and

commands a higher price, Hawthorne being the most expensive.

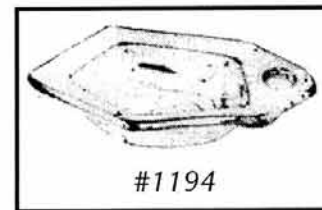
The no. 475 Narrow Flute with Rim individual salted nut was produced from 1915 to 1927 in crystal only. It appears to be the same as the no. 473 individual salad nut.



#1180

The no. 1180 Brazil individual nut was produced from 1922 to 1930, and is marked. It is the largest of the

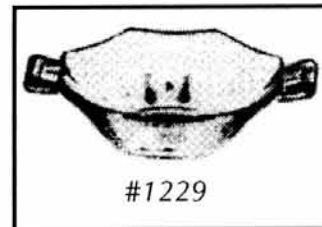
individual nuts and very similar in style to items in the Yeoman pattern. As the name suggests, it was used for Brazil nuts. The Brazil individual nut was made in crystal, Flamingo and Moongleam, and is hard to find.



#1194

The no. 1194 Pentagon individual nut was produced from 1922 to 1930. It is not marked and can be found in crystal, Moongleam, and

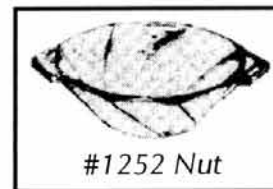
Flamingo and. It is also hard to find .



#1229

The no. 1229 Octagon individual nut was produced from 1928 to 1937. It was made plain and with diamond optic in crystal, Flamingo,

Moongleam, Hawthorne and Marigold. The Octagon nut can be found with the no. 447 Empress etch and may be found with Heisey cuttings. It can also be found with cuttings and gold trim from other decorating companies. This nut is easy to find in all colors except Hawthorne and Marigold.



#1252 Nut

The no. 1252 Twist individual nut and footed almond were produced from 1928 to 1937 in Flamingo, Moongleam, crystal, and Marigold, and are usually marked.

The individual nut is easy to find in all colors except Marigold. The individual almond doubles as the individual footed sugar, and is marked on the ball



#1252 Almond

between the foot and the bowl. The footed cream was also used as a dressing boat. The footed almond is easiest to find in Flamingo and Moongleam, and much harder to find in crystal and Marigold.



#1401/1509

The no. 1401 Empress individual nut was produced from 1929 to 1938 in crystal, Sahara, Flamingo, Moongleam and Alexandrite. It is sometimes marked behind one of the feet. The Empress nut can

be found with the no. 450 Chintz etch in crystal and Sahara and the no. 450½ Formal Chintz etch in all colors. It can also be found with Heisey cuttings and cuttings from outside decorating companies. The Empress nut is easy to find in all colors except Flamingo and Alexandrite. The latest Whaley Auction Price List shows the Alexandrite nut selling from \$130.00 to \$165.00.

The no. 1509 Queen Ann individual nut was produced from 1937 to 1948. It was made from the same mold as the Empress individual nut in crystal only, and can be found with the no. 448 Old Colony etch, no. 450 Chintz etch and no. 501 Belle-Le-Rose etch. It can also be found decorated with Heisey cuttings. Surprisingly, it is not found with the no. 507 Orchid etch, even though Queen Ann was a popular blank for Orchid. The Queen Ann individual candleholder was also made from the same mold as the nut.



#1469½ Nut



#1469½ 2-Compartment.

The no. 1469½ Ridgeleigh individual nuts were produced from 1936-1944 in crystal, and are usually marked. The two

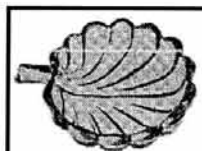
compartment individual nut only holds 4-5 nuts on each side and appears to be quite impractical. It must have been popular

with people who didn't want their nuts to mingle. Both Ridgeleigh nuts are easy to find.



#1483

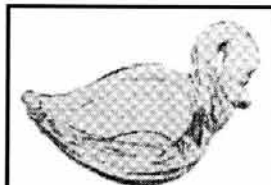
The no. 1483 Stanhope individual nut was produced from 1936 to 1941 in crystal only, and was not marked. It came with or without the colored knob, and can be found with the no. 490 Maytime etch and the no. 491 Frosty Dawn etch. The Stanhope nut is hard to find.



#1503 Leaf

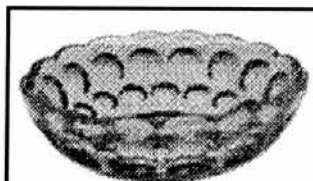
The no. 1503 Crystolite individual Leaf Nut and individual Swan Nut were produced between 1938 and 1957 in crystal, and were sometimes marked. In Charlene

Bowman's presentation on Heisey Nuts and Almonds to the Dayton Area Heisey Study Club, she mentions the Swan Nut in Amber. This was probably a whimsey item and would be quite rare. The Swan Nut was the only Heisey individual nut or almond to be reproduced. The Boyd Glass Company acquired the Heisey mold and reproduced the Swan Nut in a variety of colors.



#1503 Swan

HCA was able to retrieve the mold and has contracted Mosser to produce the individual and Master Swan in Vaseline, as gift shop items. Both nuts are easy to find.

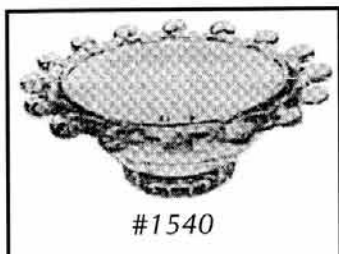


#1506

The no. 1506 Provincial individual nut was produced from 1938 to 1957, is often marked, and was also used as an individual jelly.

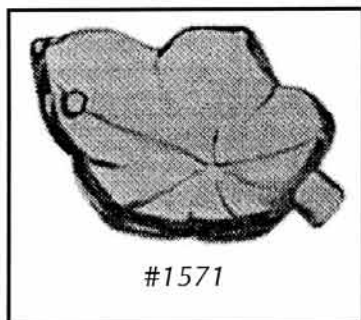
In Gene Florence's *Elegant Glass of the Depression Era* book, the individual nut is listed in crystal and Limelight. The Limelight nut was priced at \$35.00 Buy two, they're small! The crystal nut is fairly easy to find, where the limelight nut is difficult to impossible to find.





The no. 1540 Lariat individual nut was produced from 1948 to 1957 in crystal only, and is often marked. The mold was also used to produce the one

light candleblock. This nut can be found painted in enamel by the Charleton Decoration Co., and is easy to find.



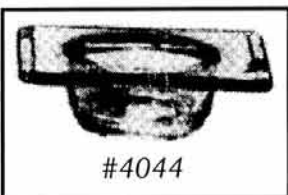
The no. 1571 Ivy Leaf individual nut was produced around 1950 in crystal, and was never marked. In the 1978 Autumn issue of the *Heisey Newscaster*, Mr. Vogel calls it a

Maple Leaf Nut. The nut is similar in design to the Plantation Ivy and English Ivy etches that Heisey was using during the same period. The Ivy Leaf nut is difficult to find, but because it is not marked, may be reasonably priced.



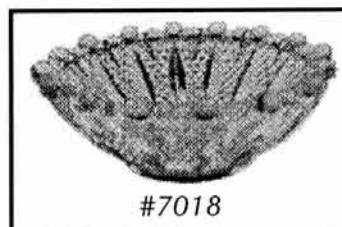
The no. 3316 Biltmore individual footed almond was produced from 1929 to 1935. It was made in crystal and crystal with Moongleam

foot. The Biltmore almond can be found plain, medium optic, wide optic and diamond optic. The Biltmore almond can also be found with some early Heisey etchings. Because it was blown glass, this almond will never be marked. Fostoria made a similar footed almond having a slightly taller stem and bigger bowl. Both almonds are hard to tell apart, and the Biltmore almond is hard to find.



The no. 4044 New Era individual nut was produced between 1934 and 1941 in crystal, and

was also used as an individual ashtray. It can be found with the nos. 600 and 601 satin finish, a and the no. 5010 Vanity Fair etch. The New Era nut may also be found with the no. 825 Sea Glade, no. 826 Venus, no. 843 Tahiti and no. 846 Neoclassic cuttings. The New Era nut is difficult to find.



The no. 7018 Oval Diamond Point individual nut was produced from 1935 to 1944 in crystal and is marked. It may have also been

used as an individual jelly because it is sometimes with a butter pat in the same pattern. The no. 7018 nut is easy to find.

The no. 8025 Banded Diamond individual footed nut was probably produced between 1908 and 1915, and probably marked. It is a colonial pattern with a shape similar to that of the no. 1252 Twist footed almond. The Banded Diamond nut is 2 3/4" high and quite rare. The Whaley Auction Price List for 1988-1990 showed one selling for \$170.00.

Don't ever say the Heisey salesmen didn't earn their money. How they were ever able to convince the American glass buying public they needed individual nuts and almonds is a miracle. Heisey individual nuts and almonds are nice to collect because most are easy to find, and they won't take a great deal of space to display.

Many individual nuts have found their way into individual salt collections. It has been my experience people become quite defensive when confronted with the reality that what they have is an individual nut, jelly or, Heaven forbid, ashtray. Their most frequent response is: "The Heisey catalog must be wrong!" So the next time you're in an antique shop and see a flock of "Swan Salts", tell the dealers they're NUTS! ♦

## **1999 GLASS DISPLAY**

AMY JO JONES

One of the most interesting features of the HCA convention has always been the Heisey Glass Display held in Hopewell Hall. It seems one of the more quiet and unassuming events of the week, but it is far from that. Many volunteer hours go into the planning of the individual displays by the exhibitors, plus the readying of the glass and the setting up of each scenario that makes the whole such a visual treat. Yes, there is the Heisey museum where you can see an array fabulous glassware, or the show where the glassware is tempting to your pocketbook, but it is not more lovingly presented than at the Display. It begs the questions—where did they find all that? Is there any left—is there any hope for my collection to evolve? About the time I find myself asking that, in dashes an exhibitor to add a piece to their display that they have just snagged. It happens every year.

Won't you share a part of your special collection with the rest of our members in June? The Display Committee has some spots left that need to be filled in order to enhance the Display theme, "It's a Celebration!" in honor of our museum which this year celebrates its 25th anniversary. It doesn't matter if your collection is 10 or 100 pieces, your exhibit can make a great contribution to what is one of the most anticipated features of the convention. For more details call the Display Chairman Mike Maxwell 419-485-8701 or Amy Jo Jones 937-426-1567 or email [ajjones@aol.com](mailto:ajjones@aol.com). This is a year of which we can all be proud. What an achievement, HCA!!♦

## **MAKE YOUR AUCTION & CONVENTION RESERVATIONS**

The following is a list of area lodging provided by the Licking County Convention and Visitors Bureau. Don't forget to make your reservations for the Benefit Auction and Annual Convention. To receive a copy of the bureau's brochure, *Licking County Travel Guide*, contact the convention bureau at (740) 345-8224. (\*Bed and Breakfast.)♦

*The Buxton Inn*, Granville (740) 587-0001  
*Buzz Inn*, Hebron (740) 467-2020  
*Cherry Valley Lodge*, Newark (800) 788-8008  
*Duke's Inn Motel*, Buckeye Lake 929-1015  
*Follet-Wright House\**, Granville 587-0941  
*George T. Jones House\**, Granville 587-1122  
*The Granville Inn*, Granville (740) 587-3333  
*Granville Manor\**, Granville (740) 587-4677  
*Holiday Inn*, Heath (740) 522-1165  
*Hometown Inn*, Heath (740) 522-6112  
*Howard Johnson's*, Heath (800) 446-4656  
*Motel 76*, Hebron (740) 467-2311  
*Muriel's Way\**, Newark (740) 763-4553

*Otter Fork Hills\**, Centerburg (614) 893-2467  
*Pitzer-Cooper House\**, Newark (800) 833-9436  
*Place Off the Square*, Newark (740) 322-6455  
*Porch House\**, Granville (740) 587-1995  
*Pudding House\**, Johnstown (740) 967-6060  
*Regal Inn*, Hebron (614) 927-8011  
*Super 8 Motel*, Heath (740) 788-9144  
*Star Lite Motel*, Heath (740) 522-3027  
*University Inn*, Newark (740) 344-2136  
*Wagram Motel*, Reynoldsburg (614) 927-2470  
*Welcome Inn Motel*, Hebron (740) 928-7861  
*Willow Brooke\**, Alexandria (800) 772-6372

## ***TWENTY FIVE YEARS AGO THIS MONTH***

**MOLLY FRYE**

*Do you remember the Heisey News headlines twenty five years ago this month?*

♦President Louise Ream reported on the effects of the energy crisis..." A recent article in the Tri-State Trader, an antique publication, concerning the energy crisis and ban on Sunday sales of gas and its effect on the antique business and collecting was quite interesting. They suggested that since this is the livelihood of many people and the recreation of many others that the Sunday ban on gasoline sales was discriminating against the antique business, because most buying is done on weekends.

They further stated that the antique business was the one which required no energy to supply merchandise, but in fact was a constant recycling of old items. People were



urged to contact their congressman and ask that gasoline be sold on Sunday." Louise went on to say that she hoped everyone would be able to find fuel to make it to the June convention!

♦The club was preparing for the Museum Fund Benefit Auction on March 16th.

♦Orva Heissenbuttel reported on the coming second Annual All-Heisey Glass Show and Sale sponsored by the National Capital Heisey Collectors Club in Alexandria, Virginia. Horace King, Heisey designer, was to be the guest of honor. Several of his original sketches were to be sold to benefit the Heisey Museum.

♦Ann Holman provided a membership report; there were over 1400 members with 1000 newsletters being mailed out. A total of 46 states plus the District of Columbia were included.

♦In club news, the Land of Heisey Society in Newark (once called the Heisey Heritage Society, not to be mistaken with the one in the New Jersey area) reported they were to receive their charter in June.

♦Imperial Glass Corporation introduced a new color, Sunshine (yellow). They were using it for the #341 Old Williamsburg pattern and the #1519 Waverly compote with cresting wave stem.

## RECENT DONATIONS

### JULY TO DECEMBER 1998

#### Donations to the collection

##### Thomas & Linda Bischoff

- ♦ Albemarle goblet with unknown cutting (2)
- ♦ Beaded Swag toothpick whimsy (Crystal)
- ♦ Jamestown champagne

##### Harry Allen

- ♦ Whimsy Zircon cane. Donated in memory of James Wonders

##### Sid & Mary Edwards

- ♦ Look-a-like Ridgeleigh bowl by Mikasa

##### Anonymous

- ♦ Crystolite champagne with Sabrina cut

#### Acquisitions to the collection

- ♦ Ruby Red Clydesdale on bust-off.
- ♦ Master Swan and Swan nut in Vaseline.
- ♦ Alexandrite candleblock
- ♦ 1469 Ridgeleigh 10" vase
- ♦ 1951 Cabochon 13½" plate with gold Jungle Flower decoration

#### Loans to the collection

#3389 Duquesne cocktail with Tangerine bowl.  
 #1590 Zodiac cream and sugar. #1590 Zodiac champagne. #1590 Zodiac 12 oz. tumbler.  
 #1590 Zodiac 5 oz. tumbler. #1590 Zodiac claret. #1590 Zodiac oyster cocktail. #1590 Zodiac ashtray. #1590 Zodiac 2-light candlestick.  
 #1533 Wampum bowl with fluted edges. Prison Stripe 9" nappy with rolled edge. Narrow Flute with Rim pancake set.

All Marigold with Empress etch: #1184 Yeoman 15" plate, #1184 Yeoman 13" 2-handled plate, #2401 5 oz. soda, #1229 Octagon 2-handled 6" cheese, #3380 Old Dominion 10 oz. tall stem goblet, #3380 Old Dominion grapefruit, #3380 Old Dominion champagne, #3380 Old Dominion 3 oz. cocktail, #3380 5 oz. parfait, #3380 Old Dominion 12 oz. footed tumbler, #3380 Old Dominion 8 oz. footed tumbler, #3380 Old Dominion 5 oz. footed tumbler, #1184 Yeoman cream soup and underplate,

#1184 Yeoman cream, #1184 Yeoman cup and saucer, #4075 finger bowl and underplate, #1184 Yeoman bouillon and underplate, #1184 6", 7", 9", 10½" plates.

#### Endowment Donations

Adele & John Pardee	\$25.00
Susan Moore, Benefactor Membership	\$500.00
Betty P. Hyde, Sponsor Membership	\$250.00
Robert & Jerilyn Clayton, Sponsor Mem.	\$250.00
Walter Ludwig, Sponsor Membership	\$250.00
Sally Abrams	\$100.00
<i>(Matching Gift Program)</i>	
Richard Smith	\$100.00
<i>(AEP Dollars for Doers Program)</i>	
Margaret Reed	\$100.00
<i>(In memory of Phylliss Freier)</i>	
Lynn & Janet Wilcox	\$25.00
<i>(In memory of Danny Glenn)</i>	
Mr. & Mrs. John MacDonald	\$25.00
<i>(In memory of Phylliss Freier)</i>	
National Capital HCC	\$25.00
<i>(In memory of Danny Glenn)</i>	
Dayton Area HCC	\$45.00
<i>(In memory of Judy Rhoads Father)</i>	
Jess & Linda Kinser	\$25.00
<i>(In memory of Frank Friel)</i>	
Ralph & Roberta Evans	\$25.00
<i>(In memory of Danny Glenn)</i>	

#### General Donations

Gulf Coast HCC	\$25.00
<i>(For use of videos)</i>	
Newark Diamond H Club	\$316.00
<i>(No longer active)</i>	
Heisey Heritage Society	\$1755.50
<i>(Auction in Corning, NY)</i>	

#### Acquisition Fund Donations

Connecticut HCC	\$650.00
-----------------	----------



## Other Donations

Thomas & Linda Bischoff  
(Computer system)

## Gift Shop Donations

David & Judy Ahart  
Elaine & Frank Husted  
Odell & Virginia Johnson  
Jasper & Jewell Castle  
Gene Moenning  
Jean Cushman  
Thomas & Linda Bischoff  
Jim Gartner  
Linda Mantarakis  
Mike & Marie Compton

Michael & Mary Ann Petrick  
Stephen Bradley  
Joe & Lavern Lokay  
Susan Moore  
William Heroon  
Scott Heron  
Dick & Virginia Marsh  
Heisey Heritage Society  
John & Jean Will  
Bob & Helen Rarey  
Sid & Mary Edwards  
Glen F. Crissman  
Dick & Marilyn Smith  
Mr. & Mrs. Anthony Lamonica

## ENDOWMENT MEMBERSHIP REPORT—JANUARY, 1999

### Benefactor—\$500

Jean Drexler  
J. Sidney & Mary Edwards  
and Catherine Callaway  
Carolyn & Dan Felger  
Dr. Helen & Olen Freeman  
Bruce & Marilou Logan  
Susan Moore

### Supporting—\$250

Jerilyn & Bob Clayton  
Edward & Vivki Hinshaw  
Elizabeth & Edward Hughes  
Betty Hyde  
Walter Ludwig  
Charles & Marquetta Mathena

### Patron—\$100

Warren Anderson  
Phil & Sally Abrams  
Janet & Mark Attix  
Thomas & Linda Bischoff  
Elio Bracco  
June Bramble  
Frances & Walter Brock  
Jasper & Jewell Castle  
Karen & James Clark  
Darlene, Gordon, Lee Ann,  
Teresa & Katherine Cochran  
Ella G. & C.F. Crandell  
Fred Currey  
W.T. & Joyce Dawson

Joyce Farnham  
Tom & Kathleen Files  
Isabelle Gibbs  
June A. Godden  
Virgil & Mary Hauser  
Robert & Betty Heflin  
George Heisey  
Don, Jan, Dennis, Rick &  
Ron Held  
David & Lisa Helm  
Odell & Virginia Johnson  
Amy Jo & Charles Jones  
Margaret Jones  
Harriet Kupferberg  
Mr. & Mrs. James Lucas &  
Adam Lucas  
Katharine Manchester  
Gene & Joyce Lentz-Moenning  
Peggy & Joseph Noll  
Mary Ourant  
John & Adele Pardee  
Betty Lee, Frederick, Anne M.  
& Amy Elizabeth Pease  
William & Adelaide Prior  
Sara Pritchard  
Robert & Helen Rarey  
William & Dorothy Roderick  
Lloyd & B. Marie Rohrer  
Pamela & Kenneth Rose  
Aaron & Rosamarie Rubay  
Robert & Hilda Ryan  
Frances Sanderson

George & Eileen Schamel  
Mary Frances, Philip &  
Stephen Shannon  
Jacquelyn Smith  
Terry Smith  
Richard Turkiewicz  
Sarah Tuttle  
Caron & Bruce Ulmer  
Betsy Walker  
Herbert, Betty &  
Katheryn Wanser  
Donald & Glenna Wehmeyer  
Jean & John Will Jr.

### Family—\$50

Marion & Lucile Barker  
Kendal & Maxine Bartlett  
Leo & Anne Odell Bevon  
Kay & Warren Chapman  
Donald, June & Joyce Clark  
Timothy, Connie, Nathan &  
Natalie Dall  
Rebecca & Randall Denny  
Edward, Barbara, Samantha &  
Jonathan Draley  
Gerald Easterla  
Pete & Jo Fitch  
Jack & Fran Grenzebach  
Don & Betsy Hanna  
Charles & Rhoda Hepner  
Mary Hibbard  
Elaine & Frank Husted

Barbara Huston & Laura Means  
Gordon & Laura Johnson  
Robert Jones  
Malcolm & Willa Kalman  
Elizabeth & Francis Patrick  
Kennedy  
Karl, Elizabeth, Michael &  
Sharon Kolter  
Jerry Laitinen  
Ned & Sibyl Lavengood  
Christos & Chris Maskaleris  
Tom & Marian McCollough  
Hugh & Nancy McCreery  
Mark, Cindy, Lauren &  
Roan Ourant  
Ginny Priest, Ric Lahmers &  
Larry Jones  
Agnes & Paul Pringle  
Betty & Howard Roxborough  
W. David & Vessie Saylor  
Michael, Toni, Melissa &  
Paul Schirmer  
Frank, Michele & Frachele  
Scott  
Joe & Penny Shreffler  
Yvonne & Blaine Sickles  
Phyllis Sneed & John Bryant  
Linda Sullivan  
William & Charlotte Sutman  
Charles & Susan Vystcil  
Maezene & Jack Walker  
Steve, Brenda & Brock Wilson

Wallace & Sharon Wilson  
D. Albert & Esther Young

**Joint—\$40**

David & Judy Ahart  
John & Margie Allen  
Marlene & Harlow Anderson  
Jerry & Clara (Betty) Ashcraft  
Norma & Robert Askeland  
Charlie & Jan Baird  
Linda Barnes  
James & Nadine Bartell  
John & Faye Beck  
Susan & John Been  
George Bennett Jr. &  
Lamar Birckbichler  
Deborah & Rachel Berman  
Mary & Leon Bernard  
Marjorie & Robert Berry  
James & Shirley Bliss  
Billy & Marcia Booth  
Rebecca & Raymond Boyd  
Lula & Sidney Brown  
Gerald & Mary Buchanan  
Mr. & Mrs. Tom Bumpus  
June & William Burke  
Jay Butler & Ed Steckley  
Stanley Carey & Rudy Haas  
David & Shirley Carlson  
Cathy Chapman  
Marion & Rayman Clark  
Harry & Joyce Clemings  
David & Lee Ann Close  
Robert Colliver &  
George Dexter  
Clyde & Elaine Cook Jr.  
Ed & Connie Cumberworth  
Stephanie Danaher &  
J.B. Gibson  
Joyce & Donald Deany  
Harriet & Russell Decatur  
Chauncey & Helen Delaney  
John & Marjorie Deppong  
Wilma & Kenneth Doane  
Frederick & Lucille Duhm  
Beverly & Shelby Duke  
Shirley & Everett Dunbar  
Charles & Opal Earhart  
James & Karen Edwards  
Anita & J.D. Elliott  
John & Gerry Eshelman Jr.  
Nick & Maggie Foster  
H.A. & Joyce Francis  
James & Mary Ann Frazier  
Frank & Phyllis Frye  
Rita & Joseph Germano  
Loren & Mary Jane Giblin  
Dewaine & Bonnie Glyda  
Alton & Donna Hale

Margaret & Milton Hall  
Marjorie & Francis Harper  
Robert & Patricia Harrison  
William Hasley  
Bill & Libby Hedinger  
Lloyd & Joyce Heisey  
Marty & Bonnie Heisey  
Michael & Mary Heisey  
Norval Heisey & Gordon Clark  
Kurt Herbst  
Gerald & Sharon Herdson  
Brad & Kimberly Hess  
Shoko & Seigo Hidaka  
Tim & Betty Hildebrand  
John & Susan Hill  
Bill & Colleen Hilleary  
Alice & Carl Hinger  
Eva & Joseph Hirsh  
Robert & Kathryn Huber  
Thomas & Barbara Hughes  
Roger & Erma Hulslander  
John & Karen Humeniuk  
Linda Hustad & Roberta Zink  
Mr. & Mrs. Robert Johnson  
Jim & Butch Jones  
Maris & Lawrence Kalmbach  
Robert & Janice Kastner  
Judy & Donald Kay  
Kathleen & B.A. Keiger  
Lillian & Thomas Kern  
Mary & Robert Kreimer  
LaVonne & H.C. Kriesel  
Maria & John Laughlin  
Charles & Deena Levy  
Dr. Blaine & Belle Lewis  
Vic & Shirley Lucarelli  
Patricia & Rex Lucke  
Mary & Richard Lundstrum  
Dick & Virginia Marsh  
Maria & Richard Martell  
Jay Martin & Richard Nicholson  
Bob & Phyllis McClain  
Linda Sue &  
Joeseeph McDermott  
F.J. & Robbie Jo McGinn  
Joyce & David Middleton  
Jean & Cole Miesner  
Claude & Marsha Moore  
Gregory & Gloria Moore  
Jeff & Paula Fabbri Morrow  
Violet & John Mueller  
Patricia & Charles Nesbit  
Leland & Bette Nichols  
Amy & Jeff North  
Park & Diane Noyes  
Carolyn & Arthur Patton  
Gloria & Carl Penwell  
Mary Ann & Michael Petrick  
Victoria Phillips & Eric Fahle  
Ronald & Virginia Pratt

David Protzman  
Roberta & Fred Pryor  
Shirley & Fred Reesbeck  
Marie & William Rehbeck  
Kenneth & Judith Rhoads  
Lester & Virginia Riley  
Mike & Mary Riley  
Martha & James Rivers  
Marvin & Eleanor Robbins  
Mr. & Mrs. Harold Roberts Jr.  
William & Margaret Rossel  
Roger & Margaret Rydin  
Richard & Sallie Sahr  
Sam & Heisey Schnaidt  
Herman Schornstein &  
Eric Love  
Robert & Wendy Seelandt  
Gerard & Roselyn Shondell  
Nancy & Dr. Edward Shore  
James & Janice Short  
Jean & Matthew Simi  
Deni Smith  
Blanche & Robert Smith  
Cynthia & Daniel Smith  
Richard & Marilyn Smith  
Carl & Helen Sparacio  
Vincent & Grace Sparacio  
Bill & Laura Stafford  
Frealyn & Pearl Stark Jr.  
Pauline & Yovan Stiko  
Jerry Stougard &  
Tara MacArthur  
John & Sue Suwalsky  
Robert & Diane Sweigard  
Sara & Peter Tascione  
Kathy & Frank Taylor  
Junior & Sherron Thiry  
Ronald & Vicki Travis Sr.  
Mr. & Mrs. Joseph Virostko  
Dan & Barbara Weakley  
Thomas & Debbie Wiggins  
Janet & Lynn Wilcox  
Mary Beth Will &  
Peggy Leonard  
Lawrence & Rebecca Williams  
W. Ruffin & Lib Woody Jr.  
Richard & Judy Young  
Russell & Barbara Young

**Individual—\$30**

Joe Adelstein  
Robert Albright  
Archie Anderson  
Mary Ellen Andrews  
Robert Annatone  
Barbara Anstine  
Carole April  
Yvonne Arbuckle  
Albert Bacon Jr.

Lynn Baillon  
Harvey Bair  
Carolyn Bardonner  
Verlyn Barker  
Nancy Brunner Barta  
Sylvia Baxter  
Sarah Bennett  
David Bergquist  
Carol Billington  
Julie Binkley  
Patricia Birney  
Ronald Blake  
James Blau  
Pollie Bland  
David Boling  
Martha Booth  
Helen Hudson Boyt  
Julie Carroll Branscom  
Mary Brodeur  
Ashlie Brookhart  
Douglas Brown  
Bette Burrell  
Mary Cameron  
Margaret Camicia  
Dorothy Caputo  
Martha Carvill  
Janet Caswell  
Sheila Chesney  
J.R. Chilton  
Constance Christie  
Ruth Cline  
Elaine Cobel  
Helen Cook  
Jill Cooper  
Frederica Cornett  
Jarda Cragg  
Dr. Vincent Crist  
Jane Crist  
Frank Cropper  
Jean Cushman  
Evelyn Daniel  
Nancy Daniel  
Ava Davis  
Barbara Davis  
Phyllis Deal  
Barbara DeBerry  
K.K. Deibel  
Barbara DeNiro  
Marcia Dion  
Patricia Dixon  
Dallas Dollase  
Hilda Douthitt  
Jo De Doyle  
Nancy Doyle  
Marcia Duncan  
Suzanne Duryee  
Sandra Dyer  
J.E. Eaves Jr.  
Beverly Eriksen  
Mary Evans

Bari Fauss  
 Libby Flashner  
 Brue Fleming  
 Shirley Foss  
 Kathleen Friedlander  
 Jeannie Fullen  
 Mary Funkhouser  
 Glen Gall  
 Bob Gersch  
 Kathryn Glick  
 Phyllis Goldstein  
 Richard Goodwin  
 Norma Gorsuch  
 Ann Gosnell  
 Arthur Gray  
 Doug Gray  
 Judy Green  
 Richard Green  
 Ginny Griffith  
 Dan Guckien  
 Helene Guski  
 Susan Guss  
 Doris Harraman  
 Arlene Hartman  
 Richard Hartman  
 Mary Heflich  
 Leroy Heisey  
 Jean Henson  
 Janice Hermann  
 Phyllis Hess  
 Patsy Holman  
 Sue Horn  
 Ruth Horwitz  
 James Howe  
 Joyce Ingram  
 Richard Jenevein  
 Kathryn Karjala  
 Dale Keith  
 Sally Keith  
 Anne Keller

Shelley Killen  
 Paul Kistler  
 Manuel Klawans  
 Rodney Knowles  
 Thomas Krenek  
 Shellie Kuziora  
 Stan Langley  
 Frances LeBlanc  
 Genny Lege  
 Kit Lieseke  
 William Line  
 Carol Lundstrom  
 Ralph Lusher  
 Nancy Mackey  
 Donald Macomber  
 Patricia Mahar  
 Virginia Malatin  
 Ellen Mandigo  
 Keith Mara  
 Terri Markland  
 Harriett Martin  
 Alan Matthews  
 Alice Jean Matuszak  
 Cliff McCaslin  
 Virginia McColm  
 Zelda McDonald  
 Martha McGill  
 Lori McGurer  
 Helen McKetta  
 Janet McKim  
 Douglas Meister  
 Marianne Melena  
 Dolores Shelfoon Mellette  
 Cathy Miller  
 Charlene Miller  
 Freda Miller  
 Kathy Miller  
 Patricia Miller  
 Kathryn Moffett  
 Cris Moore

John Moore  
 Betty Morrison  
 Paul Myers  
 Deidre Nelsen  
 Isa Nelson  
 Emily Nietering  
 Mrs. Don Norman  
 Karen O'Hare  
 Marcella O'Hare  
 Alice Orr  
 Mary Oursler  
 Jackie Payne  
 Mary Payne  
 Arvena Pearson  
 Janet Pepe  
 Ellen Peterson  
 E. Jill Pollock  
 Jeanne Rachal  
 Carol Jean Reed  
 Margaret Reed  
 Rita Richey  
 Marjorie Rogers  
 Susan Rouse  
 Paul Russell  
 Karyn Sanford  
 Marjorie Satryan  
 Fred Schaefer  
 Donna Schellenberger  
 Carolyn Schmick  
 Wendy Schuler  
 Wendy Schuler  
 Thomas Seibold  
 William Shaw  
 Lenore Shelley  
 Dale Simpson  
 Harriett Slear  
 Miriam Slemmons  
 Carla Smith  
 Derek Smith  
 Jimmy Smith

Louise Smith  
 Carroll Snider  
 Paul Soulier  
 Dennis Stark  
 Catharine Startzman  
 Bernice Stein  
 Deborah Stein  
 Donna Sterneberg  
 Barbara Stewart  
 Mary Stewart  
 Marcia Stoskopf  
 Norma Sturtevant  
 George Swan  
 Charles Swing  
 Mildred Talbot  
 Darcel Tanquary  
 Julia Taylor  
 John Thomas  
 Ethel Tilton  
 Anna Todd  
 Phoebe Tuttle  
 James VanWinkle Jr.  
 Rick Vaughan  
 Virginia Walcher  
 Janice Wallace  
 Patricia Wanner  
 Harold Watsky  
 Annette Waugh  
 Opal Weaver  
 Jean Whims  
 Priscilla Whitford  
 Kim Whitworth  
 Max Wiese  
 Jane Williams  
 Alicia Wilson  
 Olive Wilson  
 Tom Woodward  
 Fred Workman  
 Cameron Wright  
 Robert Zufall



**Don't miss the Benefit Auction**

**April 9 & 10**

**Look for more details in the March *Heisey News*!**

**There will be over 1,000 lots of A.H. Heisey and  
 Company glassware for you to bid on!!**



DECORATIVE  
GLASS

hand made in America by **Heisey**

V-1157A GEMS Vase, 6½"

V-960 Rose Candy & Cover, 5½"

V-1157  
VASE, 14½"



V-1099 Sacred Mountain Bowl, 8¼"



V-1099  
Party Plate, 11½"

1485 One-light  
Candlestick, 3"



V-1180

Autumn-Spring



V-1185

Summer-Winter

SEASONS VASES, 8¼"

A. H. HEISEY & CO.  
NEWARK, OHIO



The Finest in Glassware, Made in America by Hand for 60 years



# HEISEY NEWS INDEX—VOLUME XXVII 1998

JOE LOKAY

## Heisey Patterns

419	Sussex stemware	2, p7
423	Diamond Band	1, p6
1503	Crystalite, War Time Brochure	2, p18
1540	Lariat, War Time Brochure	2, p18
3390	Carcassone stemware	10, p5
4044	New Era advertisement	9, p20
6009A	Roundelay, list of Dawn color	13, p14

## Individual Heisey Items

1&2	Giraffes	5, p15
210	Barber Pole Tumbler	11, p7
341½	Colonial jugs	1, p14
421	Nappy	2, p6
465	Recessed Panel candy jars	11, p5
1540	Lariat vases	5, p15
2351	Newton barware	3, p6
3361	Charlotte stemware	9, p6
3368	Albemarle stemware	9, p6
3380	Old Dominion stemware	9, p6
	Candelabrum with 1469 Cobalt sockets	13, p5
	Doe Head, Lavender Ice	1, p13
	Favor vases, Heisey	9, p10
	Minuet Girl, 1998 souvenir	7, p2
	Tiger paperweight, pink	1, p15
	Wartime Salesman, gifts & decorations	8, p19

## Articles, General

	Archives, from the/Biting Off More Than	9, p8
	Archives, from the/Bogged Down Again	11, p7
	Archives, from the/Can't Hold a Candle	6, p7
	Archives, from the/Cataloging Catalogs	1, p7
	Archives, from the/Crazy Cartoons	12, p5
	Archives, from the/Crazy Cartoons, More	13, p7
	Archives, from the/G.E. Knobs & Heisey	3, p7
	Archives, from the/Odds and Ends	8, p11
	Archives, from the/Quality Control	7, p8
	Archives, from the/Show and Tell	5, p7
	Archives, from the/Things You Never Know	10, p7
	Archives, from the/Walter Von Nesson	2, p8
	Bay State Show	7, p16
	Board of Directors, 1998	9, p5
	Bosworth, Fred—Part IV	1, p10
	Bosworth, Fred, Part V	3, p16
	Bosworth, Fred—Part VI	5, p12
	Candidates, 1998 Board of Directors	6, p9
	Consignor Form, September Auction	6, p17
	Convention Display Report	8, p18
	Convention Program, HCA, 1998	7, p13
	Convention Registration Form, HCA, 1998	7, p14
	Convention Report for 1998	8, p5
	Corning, NY, Road to	8, p5
	Corning Glass Center	9, p13

	Display featuring #1425 Victorian	1, p13
	Donation List, July to December 1997	2, p14
	Donation List, January to June, 1998	9, p15
	Endowment Fund Report, 1997	2, p15
	Endowment Membership, 1998	9, p16
	Fake and Misleading Items	5, p16
	Financial Report 10/13/97-12/31/97	2, p4
	Founding Members Picture June 1996	3, p3
	HCA Benefit Auction List, 1998	4, p2
	HCA Benefit Auction, Really Big	6, p12
	HCA Benefit Auction Results	6, p12
	ID Breakfast, What to Bring	7, p15
	In Tribute, To Ann and Russ	7, p10
	Index for Heisey News, 1997	1, p19
	Lodging List, Newark Area	13, p10
	Longaberger and Heisey Museum	9, p14
	Membership Renewal Procedure	7, p7
	Modern Trends, Heisey	8, p1
	Motels in the Newark Area	5, p20
	Museum Happenings, Happy New Year	1, p4
	Museum Happenings	2, p5
	Museum Happenings	3, p4
	Museum Happenings	5, p4
	Museum Happenings	6, p4
	Museum Happenings	7, p5
	Museum Happenings	8, p4
	Museum Happenings	9, p5
	Museum Happenings	10, p4
	Museum Happenings	11, p4
	Museum Happenings	12, p4
	Museum Happenings	13, p4
	Nappy, Stem and a New Addict	2, p6
	New Things for the New Year	2, p6
	Online, Heisey	1, p6
	Online, Heisey, Getting Connected	7, p6
	Opera House Auction History	2, p11
	Parfait, It's a...	10, p5
	Sales Display Rooms, Chicago Office	8, p13
	Selling Table Glassware	10, p15
	September Quarterly Meeting & Dinner	12, p7
	Studio News, Paperweight Days	2, p13
	Study Club Directory	3, p20
	Studio News, Convention Classes	5, p4
	Study Club Directory	1, p20
	Table Talk, Heisey Ads	11, p14
	Thanksgiving Advertising, Heisey	12, p15
	Unmarked Heisey, Thoughts on	10, p112
	Vogel, Clarence, A Visit with	1, p16
	Zeisel, Eva, Heisey Ad	11, p9
	Zeisel, Eva—Part I	11, p10
	Zeisel, Eva—Part II	12, p10
	Zeisel, Eva—Part III	13, p11



## STUDY CLUB DIRECTORY

Interested in joining a study club? This updated list of the HCA Study Clubs reflects information obtained from a questionnaire mailed early this spring. Why not join a local study club? You will have the opportunity to meet fellow collectors and HCA members and learn more about your favorite glassware. If your club is not listed please forward the appropriate information—club name, contact name and phone number, when and where you meet—to Heisey News, 169 W. Church St., Newark, OH 43055. *Updated June 1998.*

STUDY CLUB	MEET WHEN?	WHERE?	CONTACT NAME
#1 Newark Heisey Collectors Club**			
#4 Central Illinois Heisey Collectors Club	Four times a year	Member's homes or restaurants	Jean Marsa (309) 444-4612
#5 Bay State Heisey Collectors Club	2nd. Tuesday of each month September to June, 7:00 pm	Follen Community Church	Doug Wynne (508) 660-2979
#7 Dayton Area Heisey Collectors Club	3rd Tues. of the month Sept. to May, 6:30 pm	Huber Heights Library	Charlene Bowman (937) 289-2114
#8 Heisey Heritage Society <i>New Jersey, E. Pennsylvania and Delaware areas</i>	Bi-monthly	Member's homes	Nettye Evans (302) 736-1368
#10 Gateway Heisey Collectors Club	Four times a year	Member's homes	Joe Lokay (412) 372-8563
#13 Heisey Club of California	4th Sunday every month, 12:30	Member's homes	Jay Byrne (818) 353-2988
#14 Northern Illinois Heisey Club	Four times a year	Member's homes	
#15 Heisey Collectors Club of Michigan	Every six weeks, August to May	Member's homes	Jack Deppong (517) 323-7921
#16 Heisey Collectors of Texas	6 meetings per year, 2nd Sat. of month	Member's homes	Jan Hiser (972) 492-4827
#19 Heisey Collectors of the Rochester Area	10 meetings per year: Sunday, 2:30 pm	Member's homes	Bruce Schwendy (716) 247-5613
#20 Buckeye Heisey Collectors Club	September to May, 4th Monday	Member's homes or the museum	John Eshelman (740) 366-4826
#22 Northwest Heisey Collectors	First Saturday of the month	Member's homes	Dixie Fuller (360) 263-4125
#25 Heisey 76'ers	September to May	Member's homes	Hugo Wenzel (614) 258-2816
#26 Southern Illinois Diamond H Seekers**			
#31 Nassau Long Island Heisey Club	Generally every other month	Member's homes	Babs Kent*
#32 Dairyland Heisey Club	Once a month	Member's homes	Don Friedemann (414) 673-2671
# 33 Golden Gate Heisey Collectors Club <i>Northern California</i>	Quarterly	Member's homes	Russ Nicholas (707) 762-2494
#35 Virginia Heisey Club	Six times a year, first Sunday of the month, 3 pm	Member's homes	Jean Dougherty (757) 868-6664
#38 North Carolina Heisey Study Group	6 meetings per year: Jan, March, May, July, Sept, Nov.	Replacements Ltd Greensboro, NC	Frank Scott*
#39 Florida Heisey Collectors Club	Once a month, Oct. to May	Member's homes	Al Colangelo (561) 499-3396
#41 Yankee Heisey Club	6 times a year	Member's homes	Jim Houghton (508) 764-1597
#42 Gulf Coast Heisey Club of Florida	November, January and March; 3rd Thursday 11:00 am	Member's homes	Bob Ellis (941) 379-3302
#43 Tri-State Heisey Study Club	1st Sat. every 3rd. month	Member's homes	Mike Maxwell (419) 485-8701
#44 National Capital Heisey Study Club	Monthly: September, May	Potomac Comm. Library	John Martinez (703) 979-6718
#45 Hoosier Heisey Club	Four times a year	Warren Library, Indianapolis, IN	Mike Rosenberger (219) 864-1704
#47 Oregon Trail Heisey Collectors Club	Second Sunday of the month	Member's homes	Jim Cooke (503) 645-3385
#48 Dixieland Heisey Study Club	Odd number months, 2nd Saturday night	Member's homes	Sid Edwards (770) 928-3774

\*Please contact HCA; we will pass your inquiry on to the appropriate study club.

\*\*These clubs are not accepting new members.

## CLUB NOTES



### Dayton Area Heisey Collectors

*Joyce Dickman*

Twenty members gathered at Jim and Karen Clarks home in New Carlisle on the evening of December 12 for our Christmas party.

We shared a buffet of carry-in goodies which were presented on beautiful Heisey glassware. After dinner we enjoyed a spirited game of "HeiZingo" receiving Heisey pieces brought for our gift exchange as prizes. "Heisey Charades" also provided evening fun and entertainment. A great time was had by all.

Thank you Jim and Karen for sharing your home and lovely Heisey collection for all to see.

Our monthly meetings are held at the Huber Heights Library at 6:30 pm on the 3rd Tuesdays of each month, September through May. Guests are always welcome. ♦



### National Capital Heisey CC

*John Martinez*

Happy New Year! We hope everyone had a happy and healthy holiday, filled with Heisey treasures. Once again, our Christmas dinner party was a wonderful event. Thanks to Mrs. Chris and Butch Jones for setting everything up at the Golden Flame.

Our November meeting was a roaring success with twenty six members in attendance. Thanks to Maezene Walker, Eileen Schamel, Ione O'Connor and Mr. Chris for supplying the glass that made such a beautiful display. Also, thanks to Charlene Bowman for letting me use her presentation on Heisey Nuts and Almonds, which I used for an article in the *Heisey Herald*.

Most of the dealers have already returned their contracts for the All Heisey Show and Sale, and everything is on schedule! We can hardly wait! ♦

## HCA NEWS & NOTES

### HCA Welcomes new members for December:

John & Karen Humeniuk, South Carolina

John Barta, Ohio  
George Becker, Indiana  
Susan & John Been, Georgia  
Tab Danker, Kentucky  
Zoretta Dickerson, Iowa  
Mary Farrance, Michigan  
Renette Gatny, Michigan  
Michelle Kennard, Ohio  
Jennifer Klett, Wisconsin  
Roselyn McKittrick, Indiana  
Pat Moore, North Carolina  
Leah Parmentier, Missouri  
Susan Reid, Ohio  
Don Russell, Michigan  
Pat Schirmer, Illinois  
Heather Schuett, North Carolina  
Nancy Schmidt, Minnesota  
Leslie Scott, Kentucky  
Liz Snyder, Indiana  
Kim Stolp, New York  
Norma Sturtevant, Pennsylvania  
Carol Sullivan, Texas  
Truetta Webb, Texas  
Jean Zajac, Ohio

### Coming Soon...

#### ♦ March 20-21, 1999

Annual All-Heisey Glass Show, Gaithersburg, MD. Sponsored by the National Capital Heisey Collectors Club (formerly held in Silver Spring). Contact George Schamel 301-432-6285 for info.

#### ♦ April 9-10, 1999

Annual HCA All-Heisey Benefit Auction, Newark, OH. Benefits the National Heisey Glass Museum. Contact the museum at (740) 345-2932.

#### ♦ April 24-25, 1999

The Bay State Heisey Collectors 21st Annual Show and Sale. Featuring antique glassware of all periods. Contact Louis at (617) 387-0017 for information.

#### ♦ June 15-20, 1999

Annual HCA Convention and Glass Show. Mark you calendar and plan to attend! Watch future newsletters for information.

◆**Advertising:** Send all ads to HCA. Advertising, 169 W. Church St., Newark, OH 43055. Ads may be faxed to (740) 345-9638; please include MasterCard or VISA number for billing purposes. **All ads must be prepaid.** Ads are to be typed or printed on white paper with dark ink. Please double space. Do not abbreviate Heisey pattern names or colors. Ads which are entered in a vertical column format may contain a maximum of 65 characters per line, including spaces & punctuation.

**Classified:** 20 cents per word (members), 30 cents per word (non-members), \$1.50 min., 1/8 page limit. Personal ads 1/8 page limit. Abbreviations & initials count as words.

Display Ads:	member	non
1/8 page (12 lines)	\$20.00	\$30.00
¼ page (25 lines)	\$40.00	\$60.00
½ page (60 lines, <i>horizontal or vertical</i> )	\$80.00	\$120.00
Full page(120 lines)	\$160.00	\$240.00

A charge of \$1.60 will be added for each additional line.

Camera ready ads must follow specifications. Ads which do not correspond to the following measurements will be sized.

#### Camera Ready Ad Specifications:

1/8 page: 2¼" high by 3½" wide

¼ page: 4½" high by 3½" wide

½ page: 4½" high by 7½" wide OR 9" high by 3½" wide

Full page: 9" high by 7½" wide

**Ad copy must be received by the first of the month prior to publication.** Reproductions (i.e. Heisey by Imperial) must be indicated. *Heisey News* accepts no further liability. ♦

## Classified Ads

**WANTED:** Heisey Baskets: etched, cut, colored, unusual decorations or whimsies. Send price and description to Kim Carlisle, 28220 Lamong Rd., Sheridan, IN 46069 (317) 758-5767.

**FOR SALE:** Remaining collection due to illness of collector. Cream, sugars, animals, etc. SASE. (504) 893-5752 after 6 pm.

**WANTED:** Heisey "Fox Chase" #1509 8" square plate, #5012 7" ftd. vase, #4163 16 oz. beer mug with Red, Moongleam, Amber handle. Fred Ludwig, 300 Rt. 10, Randolph, New Jersey 07869. (973) 366-1351.

**WANTED:** Any size lids for #465 Recessed Panel candy jars, clear. #1401 lid, Sahara lemon dish, cover for pretzel jar. Write: Box Holder, PO Box 584, Newark, OH 43058-0584.

**WANTED:** Heisey Stemware Book, by Bradley, Ryan & Ryan. Doug Sandeman, 5814-B Mission Center Rd, San Diego, CA 92123. (619) 571-2019, email: rssandeman@aol.com.

## IT'S HERE—THE NEW AUCTION COMPARISON LIST

NEW HEISEY AUCTION LIST FOR 1999  
3 YEAR AUCTIONS 96-97-98  
PRICE \$20.00 PLUS \$3.00 SHIPPING  
PAYABLE B. WHALEY  
300 INTERNATIONAL DRIVE  
PATASKALA, OHIO 43062  
(740) 927-1557

## WE CLEAN CLOUDY GLASS! SATISFACTION GUARANTEED

*Yes, it is true* that we really can restore the interior of your cruet, vase, decanter and other *internally* etched items back to near original condition.

*We do not* oil, wax or cover up the sickness in any way! We actually *remove* it.

*No items are too sick to clean!* If we cannot clean an item to meet your satisfaction, the cleaning is **FREE!**

*Send no money up front.* When we return your item a bill will be enclosed for the postage and cleaning. If you are not satisfied, only the return postage is requested.

*Most items* clean in 6-8 weeks. All glass is handled and cleaned at your risk. Some very cloudy items may take several additional weeks.

Cruet	\$27.50	Cocktail Shaker	\$30-35.00
Vinegar & Oil	\$30.00	Salt Shaker (one)	\$25.00
Cologne	\$27.50	Salt Shaker (pair)	\$42.50
Decanter	\$35-40.00	Water Bottle	\$30-40.00
Vases (under 10")	\$30-35.00	Lavender Jar	\$25-35.00

Ship to: **Kim Carlisle & Associates**  
28220 Lamong Road, Dept. H  
Sheridan, IN 46069  
(317) 758-5767  
kcarlisl@indy.net

**TRIPLE H**  
70 Mandy Ln.  
Rochester, NY 14625

**(716) 381-6933**  
**Shipping Extra**  
**H = Marked**

	Goose, wings half	\$90.00
9	Single Row Slash 4" ring gas lamp shade	\$25.00
350	Pinwheel and Fan punch cup, H	\$12.00
407	Coarse Rib hotel cream and sugar with lid, HH	\$50.00
1252	Twist 12" relish, Flamingo, H	\$25.00
1252	Twist 11" dinner plate, some scratches, Moongleam, H	\$80.00
1252	Twist 11" dinner plate, no scratches, Moongleam, H	\$180.00
1255	Pineapple and Fan 8½" vase	\$35.00
1295	Beaded Swag 3 oz. wine, partial red flash	\$30.00
1401	Empress nasturtium bowl, Sahara	\$125.00
1401	Empress dolphin ftd. mayo, Normandie etch	\$35.00
1469	Ridgeleigh 6" vase, flared	\$25.00
1469	Ridgeleigh old fashion glass, H	\$35.00
1506	Whirlpool 5" 2-hdl. divided relish, H	\$35.00
1506	Whirlpool ind. cream, sugar and tray, H	\$60.00
1540	Lariat punch bowl set: bowl, udrplt., 12 cups & #8 ladle	\$275.00
1540	Lariat 3-lite candlestick	\$30.00
3344	Carolina 1 oz. cordial, H	\$45.00
3360	Penn Charter 8 oz. goblet, checkerboard optic, Hawth.	\$60.00
3397	Gascony 2½ oz. wine, Sahara	\$100.00
<i>Heisey by others:</i>		
	Oscar, misdated 1979, Heather w/satin finish	\$60.00
	Oscar, 1980 Heather	\$25.00
	Oscar, 1981 light blue	\$35.00
	Oscar, Caramel Slag Imperial	\$40.00
	Standing Colt, Ultra Blue	\$35.00



The National Capital Heisey Study Club with  
The National Capital Heisey Collector's Club  
Present The Twenty-Seventh Annual  
**All-Heisey Glass Show**  
★★★★ New Location ★★★★★  
**Summit Hall Farm Park  
Activity Center**  
505 S. Frederick Ave.  
Gaithersburg, Md  
Admission \$4.50  
(With Ad \$4.00)  
All Proceeds to Benefit  
The Heisey Museum  
Sat., March 20, 1999  
10am to 6pm  
Sun., March 21, 1999  
11am to 4pm  
  
From I-270 use Exit 9A  
(I-370 Sam Elg Hwy)  
Take 355 North Exit  
(Town Center)  
Turn Left at 3rd Stop Light  
(Education Blvd)  
For More Information Call:  
(301) 432-6285

**FOREVER HEISEY**  
Norm & Jan Thran  
1663 Londondale Pkwy.  
Newark, OH 43055

(740) 344-5995  
jathra@communigate.net  
UPS & Ins. Extra  
H = Marked

16	Classic 7½" candlesticks, H, pr.	\$125.00
32	Skirted Panel hdl. 5" candlesticks, pr.	\$95.00
407	Coarse Rib custard/punch cup, H, (6) for	\$35.00
1225	Ridge and Star 7½" plate, Hawthorne, H, (2) ea.	\$22.00
1401½	Empress cup&rnd scr, Old Colony, Sah, H, (6) sets. ea.	\$35.00
1401½	Empress cup, Alexandrite, H, (4) ea.	\$110.00
1404	Old Sand. 8½" plate, Sah., H, very slight wear, (8) for	\$145.00
1417	Arch 9 oz. ftd. tumbler, Sahara, (3) ea.	\$55.00
1425	Victorian 27 oz. rye/whisky bottle, w/#99 stopper	\$125.00
1483	Stanhope cup w/black knob and (2) saucers, (3) pcs. for	\$25.00
1503	Crystolite 1-lite candlestick, pr.	\$32.00
1503	Crystolite 3" rnd. ashtray, Zircon, H	\$60.00
1519	Waverly cruet, plume stopper, Orchid etch	\$175.00
1540	Lariat 12 oz. ice tea, Moonglo cutting, (10) ea.	\$22.50
1540	Lariat water goblet, Moonglo cutting, (10) ea.	\$22.50
2401	Oakwood 6 oz. soda/juice, Orchid etch	\$135.00
3381	Creole 4 oz. cocktail, Sah. d/o bowl, crystal stem, (2) ea.	\$60.00
3381	Creole 5 oz. oyster cktl. Sah. d/o bowl, cry. stem, (4) ea.	\$45.00
3381	Creole 7 oz. short stem champagne, Sahara d/o bowl, crystal stem, (4) ea.	\$60.00
3390	Carcassone tall stem water goblet, Alex. bowl, H, (5) ea.	\$120.00
3390	Carcassone 12 oz. ftd. soda/ice tea, Alex. bowl, (2) ea.	\$115.00
3390	Carcassone 6 oz. sherbet, Alexandrite bowl	\$75.00
3390	Carcassone 12 oz. flagon, Cobalt w/o	\$275.00
3390	Carcassone 12 oz. flagon, Moongleam stem and base	\$195.00
4004	Impromptu water goblet, (5) for	\$75.00

Our 19th Year serving the Heisey family!! Always a large inventory, call, write or stop & visit while in Newark, open 7 days, we accept layaways

Naomi & Wally Bernstein  
36 Edgewood Ave.  
Mill Valley, CA 94941

(415) 381-3517  
UPS & Ins. Extra  
H = Marked

4	Puff box, glass cover, ground bottom Vbk.1 p95	\$95.00
5	8" candlesticks, H, pr.	\$99.00
170	Square in Diamond Point 8" bowl	\$52.00
300	Colonial 5" bobèche, H, pr.	\$40.00
300	Colonial 12 oz. schoppen ice tea, H, (2) ea.	\$25.00
350	Pinwheel and Fan 8" bowl, H	\$56.00
354	Wide Flat Panel oval hotel cream & sugar, Mnglm., H	\$59.00
361	Criss Cross 8" bowl	\$59.00
394	Narrow Flute domino sugar, Moongleam, H	\$45.00
433	Greek Key ice bucket & 7" star bottom underplate, H	\$95.00
473	Narrow Flute ind. cream and sugar, H	\$49.00
487	¾ oz. cologne, carved, #63 embossed sterling str., H	\$95.00
1189	Yeoman 13" celery tray, Moongleam, H	\$39.00
1201	Fandango 9" crimped fruit bowl	\$39.00
1205	Fancy Loop variant punch glass	\$59.00
1205	Fancy Loop punch glass	\$49.00
1205	Fancy Loop Emerald punch cup, souvenir	\$55.00
1205	Fancy Loop Emerald 8 oz. tumbler	\$42.00
1231	Ribbed Octagon 2-hdl. bon bon, Moongleam, H	\$35.00
1252	Twist 2-hdl. cheese, grd. bottom, Mnglm, H	\$25.00
1252	Twist variant 3-cornered mint, Moongleam, H	\$35.00
1252	Twist ind. nut dish, Moongleam, H, (2) ea.	\$25.00
1252	Twist 15" oval platter, Flamingo	\$45.00
1252	Twist oval hotel cream and sugar, Flamingo, H	\$45.00
1252	Twist 6" hdl. bon bon, Flamingo, H	\$32.00
1252	Twist (1252½) mayo Vbk3pg19, Flamingo, H	\$39.00
1252	Twist 10" celery Vbk3pg16, Moongleam, H	\$39.00
1255	Pineapple and Fan 8" fruit bowl	\$38.00
1401	Empress 11" dolphin ftd. floral bowl, Rosalie etch	\$95.00
1404	Old Sandwich sundae, Moongleam, H	\$35.00
1404	Old Sandwich 10 oz. ice tea, Moongleam	\$39.00
1469	Ridgeleigh 3 oz. oil w/#103 PS, H, (2) ea.	\$32.00
1469	Ridgeleigh French dressing bottle w/#100 PS, H	\$69.00
1469	Ridgeleigh 12" celery tray, H	\$35.00
1469	Ridgeleigh ind. cream and sugar, H	\$39.00
1469	Ridgeleigh 10" 5-compt. relish, H	\$38.00
1503	Crystolite 7" candy, brass cover glass flower hdl., H	\$45.00
1503	Crystolite 6" 2-hdl. jelly, H	\$23.00
1503	Crystolite 4" cigarette box with cover, H	\$35.00
1503	Crystolite set of (4) hi-ball coaster or ashtrays, H, all	\$30.00
1503	Crystolite ind. oval sugar, creamer, tray, H, all	\$48.00
1503	Crystolite 4¾" puff box, knobbed glass cover, H	\$68.00
1503	Crystolite 5½" footed cheese, H	\$28.00
1503	Crystolite 10" flared bowl, Dawn, H	\$75.00
1503	Crystolite 12" oval celery, H	\$35.00
1503	Crystolite 7" 2-hdl. bon bon, H	\$35.00
1503	Crystolite 8" nappy (bowl)	\$38.00
1503	Powder box w/glass lid resembling box bottom, H	\$110.00
1503	Crystolite punch cups, H, (11) ea.	\$10.00
1503	Crystolite punch bowl (no plate), H	\$75.00
1503	Crystolite 3" short stem flower vase, H	\$30.00
1503	Crystolite 14" electrified lamp, hurricane block base	\$98.00
1519	Waverly 11" seahorse ftd. floral bowl, H	\$95.00
1590	Zodiac cocktail, original H label	\$39.00
1590	Zodiac cocktail	\$29.00
3404	Spanish stem 6 oz. champagne, cutting, (2) ea.	\$35.00
3404	Spanish stem (as above) small rim chip	\$25.00
5072	Rose goblets, #515 Rose etch, (6) ea.	\$38.00
7018	Oval & Diamond Pt. 10" bowl, 14" plt., (3) orig. labels	\$195.00
	Heisey by Imperial Caramel Slag middle elephant	\$69.00

**GARY SHARDELL**  
537 69th St.  
Holmes Beach, FL 34217

(941) 778-2167  
UPS & Ins. Extra  
H = Marked

128	Liberty candlesticks, Marigold, pr.	\$175.00
1252	Twist mustard & lid, Moongleam, H	\$105.00
1184	Yeoman mustard & lid, Sahara	\$145.00
1280	Winged Scroll toothpick, Custard, excellent gold	\$145.00
310	Ring Band cruets, Custard, correct stopper	\$275.00
1280	Winged Scroll 7 oz. molasses can, Custard	\$275.00
520	Innovation 2-piece candleholders, H, pr.	\$225.00
52	Ind. salt and pepper, glass tops, all Hawthorne	\$215.00
1183	Revere 7" plate w/Alf Landon etch	\$85.00
1183	Revere cup and saucer, nominate Landon etch	\$105.00
2323	Navy 2 oz. bar, shot glass	\$105.00
52	Ind. salt and pepper, glass tops, all Flamingo	\$65.00

**RAPHAEL & EILEENE WISE**  
12018 Suellen Circle  
West Palm Beach, FL 33414

(561) 793-0986  
Shipping & Ins. Extra  
H = Marked

4204	Flamingo 9 1/4" vase	\$225.00
4035	Flamingo octagon cologne duck stopper	\$495.00
1495	Fern 6" mint dish, Zircon	\$115.00
1401	Empress d/f 8 oz. tumblers, H,	Call Please
6	Moongleam ladle, H	\$29.00
350	Pinwheel and Fan 8 1/2" bowl, Flamingo, H	\$395.00
1567	Plantation 2-hdl. 6" mint, H	\$95.00
1401	Empress 8" vase, H	\$135.00
1567	Plantation 4-part relish, H	\$135.00
1469	Sahara 2 1/2" square ashtrays, H, (3) ea.	\$29.95
46	Epergne 19" high x 11" tray flower vase base marked, H	\$695.00
3390	Carcassone cigarette holder, nice cutting	\$85.00



## The Best Of Heisey Glass...

... with popular patterns like Orchid, Heisey Rose, Minuet, and hundreds more. We also carry other fine crystal and depression glass from Cambridge, Fostoria, Imperial, Duncan & Miller, and more. The world's largest supplier of discontinued and active china, crystal, flatware and collectibles, Replacements, Ltd. carries over 4,000,000 pieces in inventory in over 85,000 patterns.

If you're looking to add to your collection, or if you're looking to sell - call us toll-free. Because even with over 4,000,000 pieces in our inventory, we're always looking for more.

## REPLACEMENTS, LTD.

China, Crystal & Flatware • Discontinued & Active

1089 Knox Road, Greensboro, NC 27420 Dept. HS

**1-800-REPLACE (1-800-737-5223)**

**DAVID W. DUGGER**  
3985 Alana Ave. S.E.  
Salem, OR 97302

(503) 371-1701  
dvdug@cyberis.net  
UPS & Ins. Extra

3304	Universal cocktail icer and liner, Orchid etch, (6) ea.	\$195.00
5025	Tyrolean 10 oz. goblet, tall stem, Orchid etch, (8) ea.	\$28.00
5025	Tyrolean 6 oz. saucer champagne, Orchid etch, (8) ea.	\$32.00
5025	Tyrolean 3 oz. wine, Orchid etch, (8) ea.	\$45.00
5025	Tyrolean 1 oz. cordial, orchid etch, (6) ea.	\$125.00
1519	Waverly 5 1/2" mayo, ftd., Orchid etch	\$70.00
1509	Queen Ann 6" 2 hdl. ftd. jelly, Orchid etch	\$50.00
5031	8 oz. French dressing bottle, Orchid etch	\$175.00
2351	Newton 12 oz. soda, Orchid etch	\$110.00
5012	Urn 9" ft. sham vase, Orchid etch	\$350.00
4057	10 1/2" flip vase, no optic, Orchid etch	\$425.00
485	14" gardenia bowl, Orchid etch	\$350.00

**GLASS 'N' GLASS**  
Virginia & Odell Johnson  
6909 10th Ave. W  
Bradenton, FL 34209

(941) 792-0604  
email:ovjohnson@aol.com  
UPS & Ins. Extra  
H = Marked

**10% Discount on this ad & any remaining items in Nov, Dec & Jan. ads**

339	Continental punch cup (custard cups), H, (8) ea.	\$15.00
354	Colonial sugar/cream/butter stack set, H	\$130.00
411	Rib & Panel hotel sugar/cream, H	\$50.00
433	Greek Key 5" plate, H, (6) ea.	\$18.00
1227	Maharg 3 oz. sherbets, n/o, H, (6) ea.	\$22.50
1428	Warwick 2-lite candleholders, pr.	\$50.00
1425	Victorian 10 oz. ftd. tumbler, H	\$30.00
1469	Ridgeleigh #1 vase, (2) ea.	\$40.00
1505	10" Cornucopia vase	\$40.00
1519	Waverly 14" torte plate	\$70.00
15	Kingfisher floral block, Moongleam, H	\$300.00
1506	Whirlpool 18" torte plate, Limelight, H	\$235.00

**H&R Diamond H**  
Helen & Bob Rarey  
1450 White Ash Drive  
Columbus, OH 43204

(614) 279-0390  
After 5:30 pm  
UPS & Ins. Extra  
H = Marked

10	Oak Leaf coaster, crystal \$20.00, Moongleam	\$40.00
393	Narrow Flute ind. almond, Hawthorne, H	\$65.00
433	Greek Key ind. almond, H	\$30.00
473	Narrow Flute with Rim ind. almond, Flamingo, H	\$22.50
473	Narrow Flute with Rim ind. almond, Moongleam, H	\$25.00
1186	Yeoman ashtray, Moongleam	\$25.00
1186	Yeoman ashtray, Hawthorne	\$55.00
1229	Octagon ind. nut., Marigold, H	\$45.00
1286	Yeoman ashtray, Cupid & Psyche	\$40.00
1286	Yeoman ashtray, Cupid & Psyche, Moongleam	\$55.00
1386	Yeoman ashtray, Irish Setter	\$35.00
1401	Empress d/f ind. nut, (6) ea.	\$17.50
1401	Empress d/f ind. nut, Flamingo	\$30.00
1401	Empress d/f ind. nut, Moongleam	\$35.00
1401	Empress d/f ind. nut, Sahara, Old Colony etch	\$35.00
1401	Empress d/f ind. nut, Alexandrite	\$250.00
1404	Old Sandwich ind. ashtray, floral cutting	\$15.00
1404	Old Sandwich ind. ashtray, Flamingo, H	\$40.00
1404	Old Sandwich ind. ashtray, Moongleam	\$50.00
1404	Old Sandwich ind. ashtray, Sahara, H	\$45.00
1404	Old Sandwich ind. ashtray, Cobalt, H	\$55.00
1469	Ridgeleigh ind. oval nut, H	\$17.50
1469	Ridgeleigh ind. square ashtray, Sahara, H	\$30.00
1469	Ridgeleigh coaster, Sahara	\$35.00
1469	Ridgeleigh coaster, Zircon	\$45.00

# DEALER DIRECTORY

Maximum 5 lines/12 months/\$35 MEMBERS ONLY

<b>HAROLD'S COLLECTABLES &amp; ANTIQUES</b> Heisey and other elegant glassware 6244 S. Cook Dr., Littleton, CO 80121 (303) 771-9432 email: harolds@uswest.net www.glassshow.com (see aisle 6)	<b>SHIRLEY EUGENIA DUNBAR</b> Heisey a Specialty—Mail Order, Shows, Appraisals email: shirley400@aol.com PO Box 7085, Port St. Lucie, FL 34985 Oct-May (407) 337-1558 PO Box 222, Naples, ME 04055 May-Oct (207) 647-5652	<b>COMPARISON LIST</b> NEW HEISEY AUCTION LIST FOR 1999 3 Year's Auction 97-98-99 Price: \$20.00 + \$3.00 Shipping Payable: B. Whaley 300 International Dr., Pataskala, OH 43062 (740) 927-1557
<b>ALL HEISEY AUCTION</b> Consignments Welcome Apple Tree Auction Center 1616 W. Church, Newark, OH 43055 (740) 344-4282	<b>GREEN ACRES FARM</b> Antiques, Crystal Glass & Collectibles 2678 Hazelton-Etna Rd., SW (S.R. 310-N) Pataskala, OH 43062 Sat. or Sun. PM or call (740) 927-1882	<b>MICHAEL KRUMME</b> Heisey and other elegant glassware PO Box 48225 http://www.glassshow.com Los Angeles, CA 90048 I search—send your want list (213) 874-GLASS (-4527) email: mkrumme@pacbell.net
<b>D &amp; B ANTIQUES—ATLANTA</b> Bob Bartholomew Members Dixieland Heisey Club PO Box 33283, Decatur, GA 30033 Shows (404) 634-2799 Mail Order	<b>H &amp; R DIAMOND H</b> Helen & Bob Rarey 1450 White Ash Dr. Columbus, OH 43204 (614) 279-0390 after 5:30	<b>JEAN &amp; DON PARRETT</b> Beautiful Heisey Layaways Accepted 4995 Maple Dale Rd. Jackson, Michigan 49201 (517) 784-7319—Recorder
<b>ANTIQUES - THE SHULTZES</b> 206-208 East Main St. Newmanstown, PA 17073 15 Miles West of Reading, PA (610) 589-2819	<b>"HAPPINESS IS" - THE STULTZS</b> 3106 Warren Court, Glen Allen, VA 23060 Shows and Mail Order (804) 672-8102	<b>PATTON HOUSE ANTIQUES</b> Specializing in Glass*Heisey*Cambridge*Fostoria*Duncan* Factory Antique Mall, Verona, VA off I-81 Exit 227 The Antique Gallery, 3140 W. Cary St., Richmond, VA Antiquers Mall, Booth 81, Rt. 29 N., Charlottesville, VA The Daniels, Box 547, Louisa, VA 23093 (540) 967-1181
<b>C&amp;J ANTIQUES</b> Cole & Jean Miesner Box 45, 72 Whig St. Newark Valley, NY 13811 (607) 642-9905	<b>GERI PINION</b> PO Box 110965 Campbell, CA 95011 (408) 370-1328 email: ibuyglass@aol.com	<b>SCHWAN'S ANTIQUES</b> SHOWS & MAIL ORDER 77 Lagos del Norte Ft. Pierce, FL 34951 (561) 461-5940
<b>DOXTOIS</b> Eva & Joe Hirsh Heisey & Pattern Glass 6 James St., Norwalk, CT 06850 (203) 847-3315	<b>HOOKED ON HEISEY</b> Jay C. Martin 97 Heritage Hill Rd., New Canaan, CT 06840 (203) 966-9359 24 hr. answering machine thefamilyfirm@worldnet.att.net	<b>R &amp; L ANTIQUES-SAN FRANCISCO</b> Members of the Golden Gate Heisey Club 3690 Bodega Ave., Petaluma, CA 94952 Petaluma (707) 762-2494 San Francisco (415) 621-6693
<b>CHARLES &amp; MILDRED FISHER</b> Heisey animals and Heisey By Imperial animals 991 Idlewild, Newark, OH 43055 (740) 522-5398	<b>MOUNDBUILDERS SECOND GENERATION</b> Shows, mail orders or appointment • Fifteen miles north of St. Augustine in Ponte Vedra Beach, FL. PO Box 1931, Ponte Vedra Beach, FL 32082 (888) HEISEYS (434-7397) (904) 280-0450	<b>THE SPARACIO'S</b> Carl & Helen Shows and Mail Order 28 Refy Ave., Ramsey, NJ 07446 (201) 327-2495 email: poppicarl@msn.com
<b>CRYSTAL LADY</b> Bill, Joann & Marcie Hagerty Specializing in elegant depression glassware 1817 Vinton St., Omaha, NE 68108 Shop (402) 341-0643 or Home (402) 391-6730	<b>GALAXY ANTIQUE MALL—JIM PAPPAS</b> galaxy-mall.com Email: ljip@galaxy-mall.com Glass and Pottery—Heisey & Blue Ridge a Specialty Phone: (609) 897-0345 Fax: (609) 936-0091 26 Kinglet Dr. N, Cranbury, NJ 08512	<b>MOONGLEAM ANTIQUES</b> Heisey Glassware & American Art Pottery John Woytowicz and Peter Rivard 230 Highland Ave., Gardiner, ME 04345 (207) 582-9048
<b>FINDER'S ANTIQUE HOUSE</b> 3769 Hwy. 29 North Danville, VA 24540 Open Thursday—Saturday (804) 836-6782 Area's largest selection of Heisey and other Elegant Glassware.	<b>J. &amp; R. COLLECTIBLES</b> Shows, SASE, Mail Order list The Lukasko's PO Box 1030, Newark, OH 43058-1030 (740) 344-9719	<b>APPLE VALLEY COLLECTIBLES</b> Richard Garnett & Anne Borchert PO Box 552, Amenia, NY 12501 (914) 373-8791 Shows & Mail Order *Yesteryears Antique's—Monroe, CT (203) 459-9548*
<b>FRAN'S FANCY FINDS</b> Fran & Jack Grenzbech 10534 Valencia Rd., Seminole, FL 33772-7511 (727) 391-5184 SHOWS MAIL ORDERS	<b>MOSTLY HEISEY</b> Rhoda Curley 16 Clayton Pl., Albany, NY 12209 Shop and Mail Order (800) 972-2775 Visit our web page: www.sony.inergy.com/mostlyheisey	<b>THE WOODEN SHOE</b> 222 W. Washington St., Charles Town, WV 25414 Fri-Mon 11-5 (304) 725-1673 Email: wdnshuct@aol.com Glass—Pottery—Kerosene Lamps
<b>FOREVER HEISEY</b> Jan & Norm Thran Mail Order, Shows, Appraisal Service 1663 Londondale Pkwy., Newark, OH 43055 (740) 344-5955	<b>R &amp; S ANTIQUES AND GLASSWARE</b> Heisey-Specializing in Complete Heisey Tableservice Call or write for patterns and colors 2560 S. Maguire Rd. Ocoee, FL 34761 (407) 656-5700 or (407) 876-9199 PM	<b>WILLEY'S ANTIQUES &amp; MUSEUM</b> Specializing in Heisey 11110 Cannon Rd., Frazeyburg, OH 43822 16 miles east of Newark, OH (740) 828-2557
<b>WARREN &amp; MARY WELSH</b> Heisey & other elegant glassware 3635 Saddle Rock Rd., Colorado Springs, CO 80918 (719) 531-5866 Mail Order Shows	<b>GLORIOUS TREASURES ANTIQUE SHOPPE</b> Heisey Glass and other Fine Treasures 518 Main Street, Edmonds, WA 98020 10:00 to 6:00 Mon. thru Sat., Sun. Special events (425) 775-5753	<b>PRATT'S ANTIQUES &amp; COLLECTIBLES</b> Heisey & other elegant glassware 220 N. Main, Kingfisher, OK 73750 (405) 375-3545 email: pratts@pdi.net Carol & Delbert Pratt
<b>GLASS 'N' GLASS</b> Virginia & Odell Johnson 6909 10th Ave. W. Bradenton, FL 34209 (941) 792-0604 email: ovjohnson@aol.com	<b>G.W. ANTIQUES</b> www.sonic.net/gwant Robert Gindhart (707) 575-8706 Gary Wimmershoff Santa Rosa, CA Heisey, Wedgwood and other fine antiques	<b>HEISEY, etc.</b> Mike & Barb Rosenberger heisey@logantele.com Shows-Mail order (502) 657-8344 974 Forgy Mill Rd., Dunmore, KY 42339 Visit our web site: www.logantele.com/~heisey



---

**Museum Volunteers for  
December & January**

Beth & Jay Barker  
Connie Makris  
Dick Marsh  
Phyllis McClain  
Mary McWilliams  
Mary Ourant

---

**When Renewing Your Membership...**

Help us to reach our new goal of \$2,000,000 by the year 2002. When you renew your membership at one of the levels below, any amount beyond the regular Associate dues—\$22.00 plus \$5.00 for each additional household member—goes into the Endowment Fund.

<b>Individual Contributing</b> , <i>one person in household</i>	<b>\$30</b>
<b>Joint Contributing</b> , <i>two people in one household</i>	<b>\$40</b>
<b>Family Contributing</b> , <i>parents and children under 18</i>	<b>\$50</b>
<b>Patron</b>	<b>\$100</b>
<b>Sponsor</b>	<b>\$250</b>
<b>Benefactor</b>	<b>\$500</b>

Contact HCA Administrative Office at (740) 345-2932 for more information. The Endowment Committee wishes to thank those who have become Endowment Members and all of the individuals and study clubs that have so generously supported the HCA Endowment Fund. Your support will make the museum self-sustaining in the years to come. Thank you all! ♦



**Visit The  
National  
Heisey  
Glass  
Museum**

Come at your leisure to enjoy more than 4,800 pieces of glassware produced by A.H. Heisey and Company from 1896-1957. Hundreds of patterns are featured in all production colors. Rare and experimental items are included as well.

Facilities are air-conditioned and handicapped accessible. Hours are 10:00 a.m. to 4:00 p.m. Tuesday through Saturday, 1:00 to 4:00 p.m. Sunday. Members are admitted free, regular admission is \$2. Office hours are 8:00 a.m. to 4:30 p.m. weekdays.

**Membership Renewal Notice:** Check the date above your name and address on the mailing label. This is your expiration date. If it reads 3-10-99 make sure your dues are paid soon in order to receive next month's issue of Heisey News. Dues are \$22.00 per year, plus \$5.00 for each additional household member.

POSTMASTER SEND FORM 3579 TO:

HCA  
169 W. Church St.  
Newark, OH 43055



**PERIODICAL POSTAGE PAID**