

HEISEY NEWS

The Official Publication of Heisey Collectors of America, Inc.

Volume XXV No. 13

December 1996

ISSN 0731-8014



*Seasons Greetings
from everyone
at HCA*

We wish you a joyous holiday season filled with special times. May the new year make you happy, healthy and wise—and may you discover even more Heisey treasures!

Merry Christmas
&
Happy New Year

HEISEY NEWS

Heisey Collectors of America, Inc.
169 West Church Street
Newark, Ohio 43055
Phone (614) 345-2932 Fax (614) 345-9638
E-mail: heisey@infinet.com
All Rights Reserved 1996
ISSN 0731-8014

Editor
Molly Kaspar

Administrator
Mary Ourant

HCA President
Tom Bischoff, (419) 533-7431

HCA Vice President
Bob Rarey, (614) 279-0390

HCA Secretary
Ginny Marsh, (614) 366-5608

HCA Treasurer
Charlie Wade, (614) 366-6636

HEISEY NEWS is published and printed monthly (twice in March), by Heisey Collectors of America, Inc. Periodicals postage paid at Newark. Subscription is limited to HCA members. First class mailing is available for an extra \$13.00, due with payment of membership. If you are having difficulty receiving your newsletter, please contact the HCA Administrative office Monday through Friday 8:00 a.m. to 5:00 p.m.

The opinions expressed in articles in HEISEY NEWS are those of the authors and not necessarily those of the organization. The Editorial Staff reserves the right to edit, with or without the consent of the author, or to refuse any material submitted for publication.

Back Issues

The following volumes are available as complete sets: V, VII, VIII, IX, X, XI, XII, XIII, XIV, XV, XVI, XVII, XVIII, XX, XXI, XXIII, for \$9.00 each volume (12 issues, plus auction list if available).

Advertising

Send all ads to: HCA Advertising, 169 W. Church St., Newark, OH 43055 or fax ads to (614) 345-9638, include MasterCard or Visa information. Ads are to be typed or printed on white paper with dark ink. Camera ready ads accepted, but must follow line specifications. Ads containing reproductions will not knowingly be accepted unless clearly stated (e.g. Heisey by Imperial, etc.) HEISEY NEWS accepts no further liability. See Advertising section for rates and deadlines.

Museum

Heisey Collectors of America, Inc. a non profit corporation (tax exempt status), owns and operates The National Heisey Glass Museum in Veteran's Park, 6th and Church Streets, Newark, Ohio. Open Tuesday-Saturday 10-4, Sunday 1-4, closed holidays. Other hours by appointment. Members admitted free.

Identification

HCA will attempt to identify unknown glass items. Please enclose a photograph with your drawings or descriptions. Other arrangements should be made in advance with the museum staff.

Membership

To join Heisey Collectors of America or to renew your membership, contact HCA Administrative office Monday through Friday 8:00 a.m. to 5:00 p.m. Associate dues are \$22.00 plus \$5.00 for each additional household member. Voting members pay an additional one-time fee of \$25.00. Please consider supporting the Endowment Fund by joining at one of the levels listed on the back page.

Museum Shop

There is always someone available in the shop to answer questions or take your order. When ordering by phone, please have a credit card ready. When ordering by mail, please be sure to include appropriate charges such as shipping and sales tax.

Shipping and Receiving

Delivery is made much easier when we have a complete street address, not a PO Box. We prefer to use UPS. If you have not received a package, please call Brad, shipping clerk, to confirm it was sent. He will assist you in tracing it. If your package arrives damaged, please contact your local UPS representative. We insure everything.

Donations and Loans to the Museum

If you have something you would like to share with the museum or have questions regarding items on loan, please contact the curatorial staff. HCA reserves the right to accept or refuse items based on current holdings.

Calendar

1996 Holiday Dinner	December 7, 1996
Make It Take It Glass Class	December 8, 1996
1997 HCA Benefit Auction	April 18-19, 1997
1997 HCA Convention	June 18-21, 1997

Features

Heisey Trademarks	4
Talk About Reproductions!	
<i>Carl Sparacio</i>	6-7
HCA Committees	10
How Sweet It Is—Heisey Look-a-Like	
<i>Jim Earnshaw</i>	11
All Heisey Benefit Auction	
<i>Auction Committee</i>	12
Questions and Answers	13
1997 HCA Benefit Auction Form	14
Holiday Dinner Form & News From The Shop	15

Departments

President's Discourse, Tom Bischoff	3-4
Museum Happenings, Molly Kaspar	5
From the Archives, Don Valdes	8-9
Club Notes	16
Advertising	17-27

The President's Discourse

Tom Bischoff

On the Saturday before my Monday deadline to have this Discourse to Molly I received an inquiry requesting an answer to the questions, is green always green(?). In reality I have been afforded an opportunity to review for you the mold policy of HCA.

The facts of life concerning use of the molds to control our own destiny (a Louise Ream phrase from her *Keeping in Touch* article in Volume XXI No. 13, page 7 of the 1992 *Heisey News*) has been adequately covered by Sam Schnaidt. (See the 1995 *Heisey News* Volume XXIV No. 1, page 3.) The article by Amy Jo Jones with the Board minutes on page 17 of the same issue sets forth Board policy. Also see Article II Sec 5(f) of the HCA By-Laws.

No items are made without Board approval though in the past feasibility items may have been authorized by the Executive Committee and presented to the Board for approval or disapproval as a production item. Having served HCA by my presence on the Special Projects Committee several years ago, I know color samples from various glass manufacturers were presented for consideration and recommendation to the board. Being color blind I tended to stay out of these discussions!

The HCA policy is most certainly no item will knowingly be made from a Heisey mold if Heisey or Imperial using a Heisey mold made the item in the particular color under consideration. See Amy Jo's referenced article above.

Glass ordering is done by the Chairperson of the Projects Committee, the Executive Committee, or through a designated staff person at the direction of one of the above. There are no "Mold Police" so the Board is monitored by itself and by you, the membership.

Kermit the Frog said, "It isn't easy being green." The green 1994 Ipswich candlestick is the item in question. It was made by Dalzell Viking and is so marked, as well as being marked HCA. But it is admittedly green! Is it Emerald? No. Is it Moongleam? No. Is it confusing? No. The recollection of Charlie Wade is the color was presented in the nature of a Dalzell Viking green Christmas tree and the color was determined by the Board to be appropriate.

The inquires concerning the mold issue also implied molds had been "loaned out". Not to my knowledge! The molds go from HCA to the manufacturer and back. No exceptions! All collectors should be able to enjoy the artistry and craftsmanship of the Heisey molds and some can only do this by purchasing the HCA reproductions. (See Louise Ream, Volume XXII No. 10, page 10 of the 1993 *Heisey News*.)

To answer another question recently raised about the quality of handmade glass items, I direct your attention to the fine article by Louise Ream in the 1993 *Heisey News*, Volume XXII No. 14, page 13. A few purchasers of the Lavender Ice Asiatic Pheasant have returned their piece for a refund. To the extent we can accommodate exchanges we will do so; but no additional pieces will be made. We are confident Ken Dalzell is sending us a fine product and our staff is using its best judgment in these matters.

Elsewhere in this issue is the article promised about the use of the trademark Diamond H. Similar articles appear in earlier issues of the *Heisey News*. I'll let you have the fun of reviewing these for yourself. Now that this most recent article has appeared, I will personally respond to the various inquiries received since June. I wanted my response to be consistent with the article prepared by legal counsel chosen for this purpose.

I highly recommend Christmas gifts be purchased through the Museum Shop. (Make Mary O. happy!) "The Auction" is coming sooner than you may realize, as is January 2, 1997, the last date for members to get their consignments and DONATIONS to the Museum for Bob, Chauncey and their crew to look over and catalog.

Merry Christmas!

Thomas L. Bischoff♦

Heisey Trademarks

Several years ago, our newsletter discussed the importance of properly using the Heisey trademarks. Heisey Collectors of America, Inc. owns federal trademark registrations giving it exclusive rights to use the Diamond "H" mark, the name HEISEY and the letters "HCA" on various glass products including drinking glasses and glass figurines. It also owns rights in the Diamond "H" mark for identifying membership in the association. It is important that the association's members properly use the marks. Members may use the Diamond "H" mark on business cards and letterheads to indicate their membership with the association.

If you use the mark on your cards or letterheads, it should be faithfully reproduced and the symbol ® should be placed next to it to show that it is a registered mark. The mark should appear as follows:



Please note that neither members nor others are authorized to use any of the association's marks on glass products without a written license from Heisey Collectors of America, Inc. We want to stop unauthorized reproductions and counterfeits of original Heisey glassware. This will reduce the risk of mistakenly purchasing counterfeit products, and should help to maintain the value of member's collections.

We ask that our members help in policing our marks. It will benefit all members and the association if we stop unauthorized use of the marks such as by non-members and by importers of counterfeit glassware. If you become aware of uses of the marks on glassware which appears to be unauthorized copies of Heisey glassware or the use of the marks by dealers who are not members of the association, we request that you notify the association so that we can take appropriate action. ♦

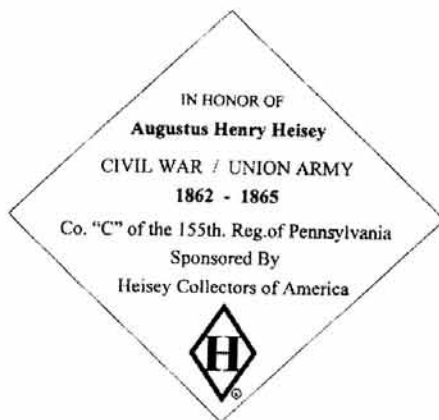
Museum Happenings

Molly Kaspar



November was a busy month at the National Heisey Glass Museum. We're back in cyberspace, on the internet to be exact. Board Member Walter Ludwig is creating HCA's home page. Now you may contact HCA and the museum via E-mail—our address is: heisey@infinet.com. I wonder what A.H. Heisey would think of our twentieth century technology!

Last month we received a visit from a National Geographic freelance photographer. A new book is in the works which features highlights and points of interest in the Great Lakes states. *(I was especially excited just to meet the photographer—when I was a kid I daydreamed about becoming a National Geographic photographer when I grew up! Don Valdes tells me I'm still a kid, so I guess I can keep dreaming!)* The National Heisey Glass Museum was one of just a few stops in the Central Ohio area for the photographer. Don't go out to the bookstore yet; the publisher doesn't expect the book to be in print until late December 1997.



The Veteran's Park walkway in front of the museum was completed and dedicated on November 10. Our commemorative stone, engraved with A.H. Heisey, sits amongst other noteworthy veterans. The park certainly looks different now, and I'm sure you will be surprised when you see it on your next visit to Newark.

By the time this issue of the *Heisey News* is mailed the HCA staff and volunteer crew will have completed the holiday decorating. Whew, what a

chore! We decked the galleries, inside and out, in celebration of the holidays! It looks beautiful and I hope that many of our HCA members have the opportunity to enjoy it.

The museum is enjoying it's annual holiday open houses. There are still two more open houses in December, one on December 7 and the other on December 14. The museum will be open extended hours on December 14, from 10 a.m. to 8 p.m. Stop by and make a Prism Angel or Festive Candleholder. Both are certain to become family traditions. Prism Angel kits are available through the Museum Shop—see page 15 for further details. The 1996 Holiday Coloring Contest entries are still available. Don't forget the entry deadline on December 6!

All of us at the museum look forward to seeing you at our open houses, volunteer luncheon and the Annual Holiday Dinner (Reservations are still being accepted. See page 15). Enjoy the holidays and bid farewell to 1996. Get ready for 1997—I'm confident it will be another great year for Heisey Collectors of America, Inc.

Happy Holidays! ♦

Attention all Heisey lovers...I know there are many of you who possess a wealth of information about A.H. Heisey and Company glassware. Why not share it with your fellow members? Ever thought of writing a short article? Or write up an outline for an article and we can work from there. Submit articles or ideas to the Heisey News, 169 W. Church St., Newark, OH 43055.



Attention Internet users!

E-mail HCA at:

heisey@infinet.com

Heisey Holiday 1996

Saturday, Dec. 7

- 10 a.m. to 4 p.m.
- Open House, Family Day and craft workshops
- Coloring contest judging

Saturday, Dec 14

- 10 a.m. to 8 p.m.
- Open House, Christmas in the Park (6 p.m. to 8 p.m.) and craft workshops

Send a SASE to the museum and request a coloring contest entry. Don't forget the December 6 deadline!

Talk About Reproductions!

Carl Sparacio

Our tree is here and the halls are ready to be decked. I'm preparing for Christmas. Christmas wouldn't be Christmas without last minute hysteria and, since I always run late, my Christmas will come complete with hysterics.

After choosing presents, the Christmas tree is the next toughest holiday job. We have an artificial tree now and that has reduced some of the trauma. I brag that our artificial tree is so realistic it drops needles—Helen says it sheds because I bought a cheap one. The idea behind an artificial tree was that we could set it up early and avoid last minute agita (an Italian word for an upset stomach, sort of) and then it could be left up longer.

No. 48 three tier epergne

So far I've only mastered the leave it up longer part—Valentine's Day is about right.

If you're not into tradition you probably don't gnash your teeth at "Heisey by Imperial" either. You, then, are ready for an artificial tree. These phony tress (unlike phony Heisey) have a lot going for them, you can even enjoy the lovely aroma of a fresh tree—it comes in a spray can. Before you rush out to buy a fake tree there are a few things you should know. Unlike you, I didn't have the benefit of my advice when I bought our first artificial tree. You are indeed blessed.

No. 47 one tier epergne

When shopping the stores that sell artificial Christmas trees (these are the stores that sell swimming pool supplies in season—not antiques shops where I searched vainly for one) you will have many kinds of "trees" to choose from: spruce, pine, balsam, pipecleaner and other assorted subspecies of nature. No matter what they're called, they all look alike—much as some of Heisey's colonial patterns do.



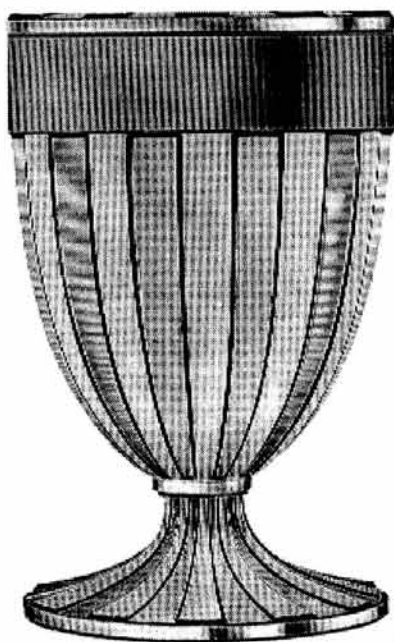
Artificial trees, just as live ones are sold by the foot and the higher the foot, the more outrageous the price (it's as if you were buying a Heisey epergne—one tier, two tier or three tier—your nose will bleed along with your wallet when you reach the top level). As I said, trees are sold by the foot, and if you want to buy a foot that stands atop seven other feet, you're talking major money. But don't let prices frighten you, artificial trees (unlike epergnes) are always on sale. There are pre-season sales and post-season sales and then, at the height of the season there are "we will

not be undersold!” sales. Fifty percent off appears to be the regular price in the artificial tree business (again, unlike epergnes).

You can’t help but pick up a lovely tree because those on display are beautiful. Walking into a Christmas store is like attending the HCA Convention—lots of things sparkle and dazzle. After you’ve chosen your tree and plunked down your credit card (the one that says Heisey Collectors of America and Park National Bank and has a picture of a Flying Mare,) you will be given a two foot square box. Believe it or not it will contain an eight foot Christmas tree. The carton weighs 900 pounds but there’s no extra charge for the hernia.

At home you unpack the tree to find that what was eight feet of fluffy evergreen tree in the store is naught but two cubic feet of compressed plastic and metal lying lifeless on your living room floor. Nowhere did it say that each branch had to be unfolded, shaped and then plugged into a brown pipe masquerading as a tree trunk.

It does work out eventually and, though an artificial tree has many advantages, there is one drawback. After the holidays when the tree is undecorated, you just don’t chuck it out with the garbage. No, you must pull out every branch, refold them, compress them and repack them all into their teeny tiny carton again. If you decide to go the artificial tree route, know now, before you go, that the tree will never fit back into that carton in your lifetime.



What has all this got to do with collecting Heisey? I’m not sure. If you’re a purist perhaps you can find some analogies hidden in this text somewhere. What I started out to do was tell you about a recent Heisey sighting. You know how I enjoy spotting Heisey in today’s ephemera. The latest was brought to my attention by my brother Vince, the imaginary one. It’s an ad in the November 14th edition of *The New York Times*. The ad is for Ralph Lauren *paint* of all things (and I thought that guy only put his name on underwear).

*No. 465 Recessed
Panel candy jar*

It’s a full page ad and it pictures a cut Recessed Panel candy or urn, since it lacks a top. It’s filled with roses. Most people would be more interested in buying the flower container than Ralph’s paint but, hey, Ralph knows underwear but nobody ever said he knows glass collecting.

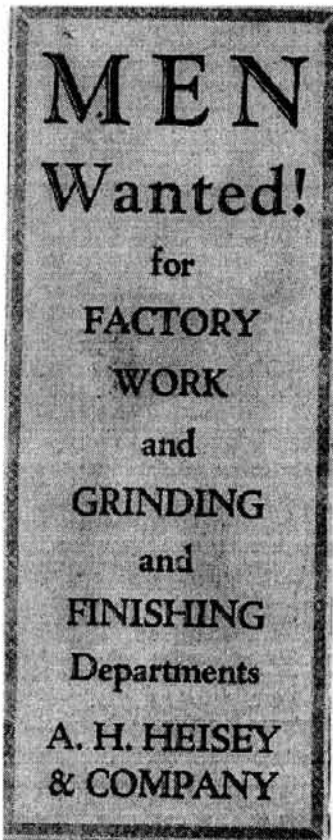
One last thought concerning Christmas tress—unlike real trees, artificial trees are easy to decorate. With an artificial tree every branch is in the right place and there’s no ugly side that needs to be turned to the wall. My wife says that’s more than she can say for me.

Merry Christmas and Happy Chanukah. ♦

From The Archives—Some Things Never Change

Don Valdes

It is great to be retired and free to travel at will. And it is always nice to get home again, even if it means having Molly breathing down my neck awaiting the next article *From the Archives*. A bit on our trip has some relevance—we flew to Nice, then on to Corsica, Sardinia and Italy proper (not to suggest anything improper re: Sardinia). One of our last ports of call was Venice with, what else, but a trip out to the island of Murano. You folks will get me interested in glass one of these days. The demonstration was great—a hand blown horse very similar to a flying mare. This was followed by a walk through their sales room (the only way out). At least I had the pleasure of being able to ask questions with a bit more intelligence than would have been the case prior to my HCA museum experience. The Murano folks, like Heisey, also attach a molded stem to blown glassware. At that point in my inquiry I wished I were better at identifying stemware patterns—I could swear I saw several designs that looked very familiar. What was most surprising to me was the etching. From what I was told they still use the pantograph which, according to Ream and Bredehoft, was no longer the method used by Heisey after 1930.



8/14/46 Classified

So much for the preliminaries. Back in the office I was immediately faced with an open folder of newspaper clippings in need of perusal and cataloging. This is part of the materials given the museum by Ann Harris (T.C. Heisey's granddaughter) about a year ago. Most of it consists of clippings—*Men (sic) wanted for factory work and grinding and finishing departments*—dated 8/13/46 and *Heisey employes (sic) share in \$150,000 annual pay boost*—dated 10/31/46, but some of the articles have never been clipped from the pages in which they appeared. These I love. In the July 3, 1947 issue of the *Newark Advocate*, front page, is a photograph of T.C. Heisey receiving the National Ad Award with the following story:

Magazine Campaign Rated Tops

The general magazine campaign of A.H. Heisey and Com. of Newark was awarded the highest honor among 252 entries submitted at the annual meeting of the National Advertising Agency Network, held June 25 to 28 at French Lick, Ind.

T. Clarence Heisey today received the award on behalf of his company.

The network, formed in 1932 to help improve the standards of advertising output, is composed of 27 advertising agencies located in strategic marketing areas from coast to coast. The Howard Swink Advertising Agency, Inc., of Marion, O., is the Heisey agency and was responsible for creation and production of the award-winning campaign.

Judges included such nationally-recognized advertising authorities as Robert F. Beard, Cameron Hawley, Henry Hoke, Harold Le-Duc and W.W. Ayer.¹

¹ How soon we forget!

But that isn't the part I love. Maybe one or two of you are old enough to remember these headline stories:

ANDY MAY IS CONVICTED OF BRIBERY. Andrew J. May, congressman from Kentucky, was convicted of selling his influence while wartime chairman of the House military committee.²

SEN. BRICKER DEFENDS JONES. ...Both (Rep. Robert F., R., Ohio) Jones and Sen. John W. Bricker (R., Ohio) acted to quash charges made by Columnist Drew Pearson that the Lima, O., congressman had been affiliated with the Ku Klux Klan and the Black Legion.³

TENSION MOUNTS OVER U.S.-SOVIET PLANS FOR EUROPE. Four nations - Poland, France, Italy and Czechoslovakia-appear destined today to get caught in the middle of the expected conflict between Russia and the western powers over the economic organization of Europe under the Marshall plan.

*T.C Heisey et al
receiving their award.*



² Some things never change

³ Ditto

HCA Committees 1995-1996

Acquisitions

Chauncey Delaney
Robert Rarey
Jan thran

After Auction Party

Amy Jo Jones

Benefit Auction

Robert Rarey
Mike Rosenberger
Norm Thran

Budget & Finance

Charlie Wade

Bylaws & Constitution

Sam Schnaidt
Hugo Wenzel
Loren Yeakley

Education

Sid Edwards
Walter Ludwig

Endowment

Gordon Cochran
Carl Sparacio
Norm Thran
Charlie Wade

Glass Evaluation

Chauncey Delaney
Robert Rarey
Norm Thran

IIT/HCA Glass Studio

Sam Schnaidt
Norm Thran
Molly Kaspar, Advisor

Membership

Fran Brock
Jim Houghton

Museum

Jay Barker
John Eshelman
Bob McElheney

Nominating

Fran Brock
Amy Jo Jones
Sam Schnaidt

Research & Archives

Joe Lokay

Special Projects

Sam Schnaidt
Dick Smith
Norm Thran
Charlie Wade

Technology/Internet

Walter Ludwig

Warehouse

John Eshelman
Dick Smith



C

A

Convention 1997 Committees

Convention Co-Chairmen

Gordon Cochran
Dick Smith

Annual Meeting

Tom Bischoff
Ginny Marsh

Banquet

Heidi Schnaidt

Display

Janet Caswell
Jim Cheadle
Donald Macomber
Marilyn Smith

Endowment Reception

Amy Jo Jones
Heidi Schnaidt
(Endowment Comm.)

Former Employess

Hugo Wenzel
Arlene Zipperlen

HCA Booth

Gene Moenning
Heisey Club of California

Hospitality

Beth Barker
Emogene Shomaker

ID Breakfast

Walter Ludwig
Norm Thran

IIT

Sam Schnaidt
Norm Thran

Program & Publicity

Carl Sparacio

Seminars

Jim Houghton
Joe Lokay
Walter Ludwig

Swap & Silent Auction

Dayton Area Study Club
Hoosier Heisey Club
Chrm.: Mike Rosenberger

How Sweet It Is—Heisey Look-a-Like

Jim Earnshaw

While collecting #372 Heisey syrups I noticed a difference in weight and in the sham or bottom. Some were a lot thicker than others. At first, I thought it may be in the way they were manufactured. It wasn't until the Duncan-Miller Show in Washington, Pennsylvania in 1991 that I learned different.



In looking at syrups in Gail Krause's sales booth, I picked up what I thought was a 7 oz. #372 Heisey piece. It had a heavy sham and was tagged a Duncan-Miller #54! She explained to me it was a Duncan-Miller #54 made during the years 1912-1915. Incidentally, Gail wrote several Duncan-Miller reference books with no mention or show of a Duncan-Miller #54 Syrup, so I totally relied on her word. No other Duncan-Miller #54 or Heisey #372 appeared at that show. But I had discovered a Heisey look-a-like and confirmed it to be

*Syrup with
automatous top*

Duncan-Miller by Gail Krause. What a new discovery! Now, how many #372's did I have at home with a heavy sham? I couldn't wait to get home and compare.

Two of my #372's had heavy shams, so could they be Duncan-Miller? Close examination and comparison shows some differences. First was the handle; it was slightly thicker and positioned about 1/8" higher. Thicker sham, more glass, heavier; I weighed them and yes, the Duncan-Miller weighed about 1 oz. more than the Heisey syrup. Enough difference to be significant and to reflect that two different syrups exist. However, they were alike enough to be thought of as look-a-like. No other single characteristic was significant enough to make them easier to identify in the field. Evidently Duncan-Miller copied the Heisey #372 syrup.

*Duncan-Miller
syrup with hinged
top.*

Now I have been writing about glass syrups. The big difference in the two are the tops! Duncan-Miller usually drilled two small holes just above the handles. They then riveted a top to the glass. Sometimes you will find a sterling silver top or it may be removable like Heisey's or automatous which opens as it is tilted to pour.

Very few #372 Heisey syrups were marked with the Diamond H on the spout or elsewhere. So the top difference is the significant one! ♦



All Heisey Benefit Auction—April 18 & 19, 1997

Auction Committee

The annual All Heisey Benefit Auction will again be held at Apple Tree Auction Center in Newark, Ohio, in conjunction with the Quarterly Meeting of Heisey Collectors of America, Inc.

The same policy that has been in effect for several years will again apply: twelve (12) lots per family may be consigned, with no limit on the number of donations. Any consignments over twelve will be considered a donation. Group your consignments as you want them sold. No limit on the number of pieces you may include in a lot. Consignments will be sold in the order they are received at the National Heisey Glass Museum. A consignment fee of twenty percent will be deducted from the selling price for the benefit of the Heisey Museum. PLEASE consign only Heisey or Heisey by Verlys. No Heisey by Imperial will be accepted. Clean glass sells better, so clean your glass prior to shipping.

For your convenience use the consignor packing list or similar list and enclose with your glass. The packing list form is included in the November and December issues of the *Heisey News*. If you are shipping your glassware, please send to: HCA April Auction, 169 W. Church Street, Newark, Ohio 43055. Be careful—adequate packing is important.

Remember: All glass will be inspected when received. Any glass found not to be Heisey will be returned. DEADLINE FOR CONSIGNING GLASS IS THURSDAY, JANUARY 2, 1997.

For answers to any questions you may have contact either: Bob Rarey (614) 279-0390 or Mike Rosenberger (219) 864-1704. ♦

1. Publication Title		2. Publication Number		3. Filing Date	
HEISEY NEWS		0000-9486		SEPT. 12, 1996	
4. Issue Frequency		5. Number of Issues Published Annually		6. Annual Subscription Price	
MONTHLY EXCEPT APRIL (2 ISSUES)		12		\$19.00	
7. Complete Mailing Address of Known Office of Publication (Not printer) (Street, city, county, state, and ZIP+4)					
Heisey Collectors of America, Inc. 169 West Church St. Newark, Ohio 43055					
8. Complete Mailing Address of Headquarters or General Business Office of Publisher (Not printer)					
Heisey Collectors of America, Inc. 169 West Church St. Newark, Ohio 43055					
9. Full Name and Complete Mailing Address of Publisher, Editor, and Managing Editor (Do not leave blank)					
Publisher (Name and complete mailing address) Heisey Collectors of America, Inc. 169 West Church St. Newark, Ohio 43055					
Editor (Name and complete mailing address) Kelly Thran 169 West Church St. Newark, Ohio 43055					
Managing Editor (Name and complete mailing address) same as above					
10. Owner (Do not leave blank. If the publication is owned by a corporation, give the name and address of the corporation immediately followed by the names and addresses of all stockholders owning or holding 1 percent or more of the total amount of stock. If not owned by a corporation, give the names and addresses of the individual owners. If owned by a partnership or other unincorporated firm, give its name and address as well as those of each individual owner. If the publication is published by a nonprofit organization, give its name and address.)					
Full Name Complete Mailing Address Heisey Collectors of America, Inc. 169 West Church St. Newark, OH 43055					
11. Known Bondholders, Mortgagees, and Other Security Holders Owring or Holding 1 Percent or More of Total Amount of Bonds, Mortgages, or Other Securities. If none, check box					
Full Name Complete Mailing Address None					
12. Tax Status (For completion by nonprofit organizations authorized to mail at special rates) (Check one) The purpose, function, and nonprofit status of this organization and the exempt status for federal income tax purposes: <input checked="" type="checkbox"/> Has Not Changed During Preceding 12 Months <input type="checkbox"/> Has Changed During Preceding 12 Months (Publisher must submit explanation of change with this statement)					
PS Form 3526, September 1995 (See Instructions on Reverse)					

13. Publication Title		14. Issue Date for Circulation Data Below	
HEISEY NEWS		SEPTEMBER 1996	
15. Extent and Nature of Circulation		Average No. Copies Each Issue During Preceding 12 Months	
a. Total Number of Copies (Net press run)		2750	
b. Paid and/or Requested Circulation		Actual No. Copies of Single Issue Published Nearest to Filing Date	
(1) Sales Through Dealers and Carriers, Street Vendors, and Counter Sales (Not mailed)		100	
(2) Paid or Requested Mail Subscriptions (Include advertiser's proof copies and exchange copies)		2569	
c. Total Paid and/or Requested Circulation (Sum of 15b(1) and 15b(2))		2669	
d. Free Distribution by Mail (Samples, complimentary, and other free)		25	
e. Free Distribution Outside the Mail (Carriers or other means)		25	
f. Total Free Distribution (Sum of 15d and 15e)		50	
g. Total Distribution (Sum of 15c and 15f)		2719	
h. Copies not Distributed		31	
(1) Office Use, Leftovers, Spoiled		N/A	
(2) Returns from News Agents		N/A	
i. Total (Sum of 15g, 15h(1), and 15h(2))		2750	
Percent Paid and/or Requested Circulation (15c / 15i x 100)		99%	
16. Publication of Statement of Ownership <input type="checkbox"/> Publication required. Will be printed in the December issue of the publication. <input checked="" type="checkbox"/> Publication not required.			
17. Signature and Title of Editor, Publisher, Business Manager, or Owner			
Mary K. Rosenberger, Administrator		Date Sept. 13, 1996	

Instructions to Publishers

- Complete and file one copy of this form with your postmaster annually on or before October 1. Keep a copy of the completed form for your records.
- In cases where the stockholder or security holder is a trustee, include in item 10 and 11 the name of the person or corporation for whom the trustee is acting. Also include the names and addresses of individuals who are stockholders who own or hold 1 percent or more of the total amount of bonds, mortgages, or other securities of the publishing corporation. In item 11, if none, check the box. Use blank sheets if more space is required.
- Be sure to furnish all circulation information called for in item 15. Free circulation must be shown in items 15d, e, and f.
- If the publication had second-class authorization as a general or requester publication, this Statement of Ownership, Management, and Circulation must be published; it must be printed in any issue in October or, if the publication is not published during October, the first issue printed after October.
- In item 16, indicate the date of the issue in which this Statement of Ownership will be published.
- Item 17 must be signed.

Failure to file or publish a statement of ownership may lead to suspension of second-class authorization.

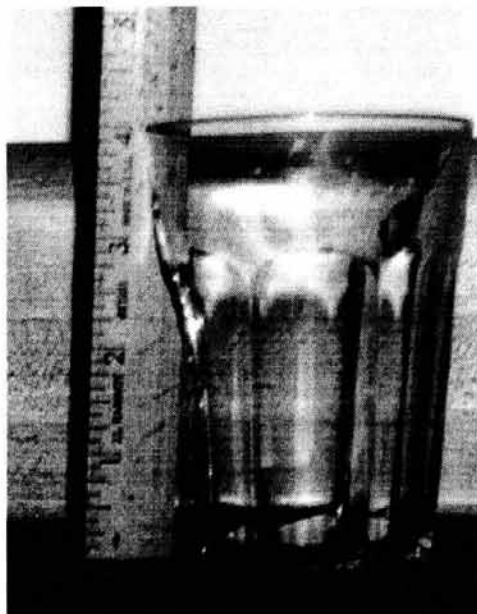
PS Form 3526, September 1995 (Reverse)

Questions And Answers

Molly Kaspar

Enthusiastic fifth grader in Newtown, PA asks:

Ques: Hello! I'm in the fifth grade. I attend Sol Feinstone Elementary School and I am in the humanities program. We just went on an archaeological dig at Tyler State Park to dig up trash hundreds of years old. I am aware that your company has been known for glassware, which is what I found on the dig.



The artifact that I found is half of a glass with a design that looks similar to a door with a rounded top. The designs go around the cup. The color of the glass is clear. On the bottom there is a small diamond with the letter H in it. The bottom of the glass is indented a little.

I hope you can determine when and by whom it was made. I would also appreciate any other information you can gather. I will be using it in a research project that is due soon.

Ans: What an interesting discovery you made at your archaeological dig. The piece you are questioning was indeed produced by A.H. Heisey and Company. From the photographs it appears that you found a No. 351 Priscilla 8 oz. tumbler with flared rim. This pattern line was produced circa 1905 through 1933.

Inquiry from Allion, Pennsylvania states:

Ques: Could you please help me? The piece in the picture belonged to my mother. I have looked through a zillion books on depression glass and can't find it anywhere. Perhaps that's because I don't know if this is considered a bowl? Ice bucket? Vase? I would appreciate any information you could give me.

Ans: You are the owner of Heisey's pattern No. 1252 Twist ice tub. Your piece is made in Moongleam and has a silver plated handle. The ice tub was also made in Flamingo, Marigold, Sahara and Alexandrite. The Twist pattern was produced between 1928 and 1937 and most pieces in this line were marked.



**1997 HCA BENEFIT AUCTION
CONSIGNOR PACKING LIST**

Name _____
Address _____
City _____ State _____ Zip _____
Daytime phone (_____) _____

Ship to: **HCA Auction, 169 W. Church St., Newark, OH 43055**

Deadline: **January 2, 1997**

A signed contract must accompany your auction glass

Lot#	Qty.	Pattern #/Name	Description	Cut/Etch	Color	H	Damage
1							
2							
3							
4							
5							
6							
7							
8							
9							
10							
11							
12							

Heisey Collectors of America, Inc. Benefit Auction

◆ April 18 and 19, 1997 ◆

AUCTION CONTRACT

This agreement is hereby entered into between *(Please Print)*

Owner/Consignor _____

Address _____

City _____ State _____ Zip _____

and Heisey Collectors of America, Inc. In consideration of 20% commission charged, HCA, in conjunction with auctioneers who are licensed by the Division of Licensing Dept. of Commerce and bonded in favor of the State of Ohio in the amount of \$10,000.00, hereby agrees to sell at absolute auction the above listed Heisey glass.

Commission percentage is subject to certain minimums or other extra expenses. Minimum commission is \$5.00 per lot. Usual expenses such as advertising, clerk and cashier fees, cataloging, labor and other expenses necessary to properly conduct an auction will be born by HCA.

HCA agrees to assume responsibility for goods to be sold at Benefit Auction. HCA responsibility begins when the goods are received and continues until the goods are sold. In the event of loss prior to sale, consignor will be compensated for item(s) lost or damaged based on the value determined by a qualified appraiser(s), less commission. HCA carries a blanket insurance policy to cover all items held for sale.

Owner/Consignor may not bid on his own goods at auction. Settlement for goods sold must be made in full within 72 hours after auction is completed. Collection of payment from buyers is the sole responsibility of HCA. All monies are held in HCA Trust Account. Consignors will be paid from Trust Account.

HCA rep: Signature Cherlie [Signature]

Consignor: Signature _____ Date _____

Daytime phone (_____) _____



HCA Annual Holiday Dinner

Saturday, December 7, 6:30 p.m. at the Institute of Industrial Technology

Please join your fellow members for a festive holiday dinner at the Institute of Industrial Technology and the HCA Glass Studio. Catch the excitement of special glassblowing demonstrations and browse through the exhibits on display in the Institute. The evening begins with a cocktail hour at 6:30 p.m. with your choice of many tempting appetizers and a donation bar. The dinner, catered by Heritage Catering, follows at 7:30 p.m. The menu includes shrimp scampi, beef tenderloin, new potatoes, California vegetable medley, tossed salad, dinner rolls, with turtle cheesecake and holiday cookies for dessert. Wine, coffee and ice tea are included. Pieces will be auctioned as they are made in the studio and we will also have an HCA feasibility auction. All this for only \$22.00 per person! ♦

***Deadline for Holiday
Dinner reservations is
5:00 p.m. Thursday,
December 5th!***

Reservation Form for 1996 Holiday Dinner

Mail to: HCA Holiday Dinner, 169 W. Church St., Newark, OH 43055, or call 614-345-2932

Name: _____

Address: _____

City/State/Zip: _____

Daytime Phone: _____

Payment: Check or MasterCard/Visa: _____ exp. _____

Number of Dinner Reservations: _____ X \$22.00 each = _____ Total

Name(s) of other attendees: _____

News From The Shop

Order your holiday gifts now to insure Christmas delivery!

♦ Back by popular demand, **Prism Angel Kits** (\$2.50 each).

♦ Ice Blue **Small Elephant**, clear (#125, \$36.50) or frosted (#125A, \$37.50) and **Donkey** (#128D, \$36.50) would be perfect compliments to your new Ruby and Cobalt set. Or, make it a blue trio with an Azure Blue **Scotty Dog** (#195, \$21.95).

***Call the Museum Shop
at (614) 345-2932 to
place your order. Shop
catalogs are available.***

♦ Why not get festive with green and red?

• **Tom and Jerry Mugs** available in Red (#107A, \$18.00) and Green (#107B, 15.00).

• Individual **Provincial Cream and Sugar sets** in Red (#192A, \$22.00 for the set).

• Green Mist **Tourjours Marmalade Jar** (#106A, \$25.00).

***Books abound in the
Museum Shop! Call for
a listing of titles.***

♦ Go for Gold with a **Gold Rope Mug**, some with frosted handles, (#157B, \$35.00).

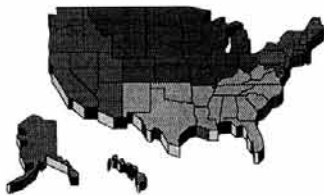
♦ Don't forget those animal lovers and figurine collectors on your list!

• Frosted Ruby Red **Double Horsehead Paperweight** on bust-off (#037E, \$35.00).

• **Victorian Bells** would look perfect next to your Christmas tree. These are available in Frosted Ruby Red (#049D, \$12.00) Clear Green (#048F, \$12.00) and Frosted Green (#019I, \$12.00).

♦ As always, **Madonna's** can be found in two colors in the Museum Shop, Lavender Ice (#040D, \$28.50, Frosted, #040E, \$28.50) and Ice Blue (#040F, \$28.50, Frosted, #040G, \$29.50). ♦

Club Notes



Dixieland Heisey Study Club #48 *Lamar Birckbichler*

The September meeting was finally held October 19, 1996 at the home of our President and his wife, Sid and Mary Edwards. Due to the 1996 Olympics and other events the club had not met for the summer. The club enjoyed a summer picnic indoors provided by the Athens Gang.

The meeting was called to order with twelve members and two guests present. The program was a report on the National Heisey Convention and the Quarterly meeting that occurred this summer. During Show and Tell members presented their best Heisey finds from the summer. The best find was the 10¢ Colonial punch cup.



The November meeting will be held at Glen Gall's home on Saturday, November 9th. Call Sid Edwards at (770) 928-3774 for information as to the directions to the November or January meeting. ♦

Heisey Collectors of the Rochester Area #19 *George Reynolds*

The Rochester Heisey Club is celebrating its 20th year as an HCA chartered club (#19). We have debated several times about how to make this a special year, with nothing definite decided to date. Our first President, Adele Pardee now resides in Florida and is still active with Heisey folks in that area. We still see her during most summers along with her fine husband John. The Jacob and Heron families were also among the original members and are still actively searching for Heisey. This has been an eventful year for our club. Marge Gillette, Bill Heron, Marie Frew and Arlene Reynolds have all been ill with one problem or another. Thankfully, they are all doing well now.

The club continues to have monthly meetings, all are held at members homes. This year we had the pleasure of welcoming two new members, Carol Stepinski and Ann Hancock, both will be real assets to our club.



The October meeting was held at the beautiful home of Marie and Jeff Frew. Marie gave a wonderful quiz on the Victorian pattern. This was very informative, especially for the new members. Many firms made a "Block" pattern that is similar to Victorian, so be careful. Donna Schewndy showed her recent find, a Domino sugar in Flamingo.

The members present at the meeting resolved that more work should be put in to make this more of a study club again. With younger members gradually taking over this is very important. ♦



Piccadilly Winter Antiques and Collectibles Extravaganza

The Piccadilly Winter Antiques and Collectibles extravaganza will be held at Cashman Field Center in Las Vegas on Saturday, January 4 and Sunday, January 5, 1997. Show hours are 9 a.m. to 5 p.m. Saturday, and 10 a.m. to 5 p.m. Sunday.

Over 200 dealers and collectors from around the nation will be on hand buying, selling, trading and offering appraisals on all types of antiques and collectibles.

General admission is \$3.50 per person. Children under 12 are admitted free and senior citizens pay only \$3.00. Cashman Field is located at 850 Las Vegas Blvd. in Las Vegas. For further information contact Piccadilly Promotions, Inc., PO Box 35681, Las Vegas, NV 89133-5681, (702) 655-7469. ♦

ATTENTION STUDY CLUBS! Does your club have news or events to share with fellow members? Send updates to: Heisey News, 169 W. Church St., Newark, OH 43055 or fax (614) 345-9638. ♦

► **Advertising:** Send all ads to HCA Advertising, 169 W. Church St., Newark, OH 43055 or fax ads to (614) 345-9638, include MasterCard or VISA information. Ads are to be typed or printed on white paper with dark ink. Please double space. All ads must be prepaid. Please do not abbreviate Heisey pattern names or colors. Ads which are entered in a vertical column format can contain a maximum of 67 characters per line, including spaces and punctuation.

Classified: 20 cents per word (members), 30 cents per word (non-members), \$1.50 minimum, 1/8 page limit. Personal ads 1/8 page limit. Abbreviations and initials count as words.

Display Ads:	member	non
1/8 page (12 lines)	\$20.00	\$30.00
1/4 page (25 lines)	\$40.00	\$60.00
1/2 page (horizontal or vertical) (60 lines)	\$80.00	\$120.00
Full page (120 lines)	\$160.00	\$240.00

A charge of \$1.60 will be added for each additional line in ad.

Ad copy must be received by the first of the month prior to publication (e.g. April 1 for May issue). Camera ready ads must follow specification. Reproductions (i.e. Heisey by Imperial) must be clearly indicated. *Heisey News* accepts no further liability.

Classified Ads

FOR SALE: *Heisey Animals:* Standing Colt, Sparrow or Goose wings half, choice \$75.00; Kicking Colt \$180.00; Goose wings up \$95.00; Giraffe head back \$210.00; Sparky \$95.00; Large Swan Nut \$30.00. *Imperial Animals:* Frosted Filly head forward \$35.00; Amber Show Horse \$550.00; Amber Rooster \$395.00; Amber covered Lion trinket box \$80.00; Amber Ringneck Pheasant \$325.00; Amber Filly head forward \$195.00. Fenton Rosalene, clear and numbered, choice: Sow, Giraffe, Gazelle, \$140.00. Heisey punch cups: #1469 cone shape (7) ea. \$15.00; regular #1469 (11) ea. \$10.00; #1503 Crystolite (10) ea. \$7.00; #1540 Lariat (11) ea. \$6.00; #407 Coarse Rib (12) ea. \$7.00; #300 Peerless (11) ea. \$8.00; #335 Prince of Wales (6) ea. \$18.00; #1225 Beaded Panel & Sunburst, H (2) ea. \$15.00. Janice Thran, 1663 Londondale Pkwy., Newark, OH 43055 (614) 344-5955. Shipping and handling extra.

XMAS SALE: Take 10% price reduction off remaining items listed in October and November display ads. Ron Kovacs, (602) 451-4995 (MST).

WANTED: A Heisey Bull, a piece of Vaseline preferably Pineapple and Fan, a 20" Greek Key punch bowl plate, a hemisphere for a 5 lighter, bobeches and candle cups. Dave Curley (800) 972-2775.

WANTED: #5089 Princess stems, Orchid etch, Bill Barker, 500 Nantucket Ave., Pickerington, Ohio 43147. (614) 927-0918.

WANTED: 6 up or down chicks, must be marked; 1 Plantation Ivy creamer; bottom for Empress lemon dish. Call (614) 366-6595.

FOR SALE: #433 Greek Key sherbet, 4 1/2 oz. cupped rim, \$17.50. #1425 Victorian: 5" comport \$35.00; 2 1/2 oz. wine \$25.00. #1454 Diamond Point individual jelly (4) ea. \$10.00. #1469 1/2 Ridgeleigh: individual cream and sugar, \$35.00 pair; 6" jelly \$20.00. #1506 Provincial: individual cream and sugar \$40.00 pair; 5" two handled, two compartment jelly \$25.00. Linda Berkey, 1705 Ptarmigan Ridge Circle, Grand Junction, CO 81506 (970) 242-2624.

WANTED: Heisey "Fox Chase" #1509 8" square plate, #5012 7" fld. vase, #4163 16 oz. beer mug with Red, Moongleam, Amber handle. Fred Ludwig, 300 Rt. 10, Randolph, New Jersey 07869. (201) 366-1351.

JEAN & DON PARRETT
4995 Maple Dale Rd.
Jackson, MI 49201

(517) 784-7319 Recorder
Shipping & Ins. Extra
H=Marked

	Horsehead booked ends, pr.	\$425.00
#1503	Crystolite 16" high 1-lite lamp, pr.	\$135.00
#1471	Empire 3-lite candle, #600 cut, pr.	\$395.00
#128	Liberty 1-lite candleholder, Moongleam, pr.	\$125.00
#1632	Lodestar 1-lite cup candleholder, Dawn, pr.	\$175.00
#1405	Ipswich 1-lite vase and insert candle, "A" prisms, pr.	\$295.00
#1503	Crystolite 2-lite candleholder, pr.	\$150.00
#25	Federal 7 1/2" high 1-lite candlestick, pr.	\$175.00
#1433	Thumbprint and Panel 2-lite candleholder, pr.	\$150.00
#1445	Grape 1-lite candelabra, No. 7 bobèche, "A" prisms, pr.	\$295.00
#402	Gothic 2-lite candelabra, #402 bobèche, "A" prisms, pr.	\$795.00
#1488	Kohinoor 2-lite cndlabra, #1488 bobèche, "D" prisms, pr.	\$295.00
#1506	Whirlpool 2-lite candleholder, pr.	\$295.00
#300-3	Williamsburg 3-lite candelabra, 6" spear prisms, cut	\$950.00
#300-3	Williamsburg 3-lite candelabra, "A" prisms, pr.	\$1195.00
#300-3	Williamsburg 3-lite candelabra, "A" prisms, Sahara, (1)	\$750.00
#300-2	Williamsburg 2-lite candelabra, "A" prisms, Sahara, pr.	\$1125.00
#48	Aristocrat 2 trays and up vase, 24" high	\$995.00
#1469	Ridgeleigh 14 pc. punch bowl, large tray and 12 cups, set	\$595.00
#1469	Ridgeleigh 14 pc. beverage bowl, tray and 12 cups, set	\$650.00
#335	Prince of Wales 14 pc. punch bowl, base, 12 cups, set	\$650.00
#400	Colonial 14 pc. punch bowl, base, 12 cups, set	\$495.00
#1503	Crystolite 14 pc. punch bowl, large tray, 12 cups, set	\$450.00
#447	Raised Loop 9" berry bowl	\$60.00
#1401	Empress Lion bowl, 12" footed	\$150.00
#1401	Empress 13" sq. 2 handled sandwich tray, Moongleam	\$155.00
#1401	Empress 12" round 2 handled 4" deep bowl, Moongleam	\$175.00
#1401	Empress 6" high covered candy, as is, Moongleam	\$85.00
#393	Narrow flute footed 5" candy	\$35.00
#441	Rib and Panel 3 leg 6" candy, cut	\$30.00
#3390	Carcassone 7 1/4" high optic, Morning After, Sahara, (4) ea.	\$80.00
#1401	Empress dolphin footed cream and sugar, Sahara, pr.	\$85.00
#1483	Stanhope cream and sugar, black knobs, pr.	\$75.00
#1483	Stanhope cup and saucer, black knobs, (4 sets) ea. set	\$20.00
#1483	Stanhope 8" plates, (4) ea.	\$12.00
#4209	Diamond optic 7" high vase, Flamingo	\$50.00
#433	Greek Key 7" ice bucket	\$135.00
#433	Greek Key 9" berry bowl	\$145.00
#500	Octagon 4 compartment 2 handled relish, cut	\$70.00
#1201	12" footed floral bowl, flash Sahara	\$75.00
#1413	Cathedral vase	\$75.00
#1545	Reversess 12" floral bowl	\$55.00
#1632	Lodestar 14" flat fruit bowl, Dawn	\$145.00
#1533	Wampum 14" Carnation bowl	\$50.00
#1205	Raindrop 13" floral bowl	\$45.00
#1519	Waverly 2 compartment 8" oval candy	\$45.00
#1519	Waverly 3 compartment relish tray	\$35.00
#1483	Stanhope 3 compartment candy, red handled	\$35.00
#500	Octagon sugar and creamer, Flamingo, pr.	\$75.00
#1184	Yeoman 7 1/2" bow tie candy, handled, Flamingo, gold dec.	\$70.00
#1184	Yeoman 11 1/4" D/O fruit boat, Flamingo	\$75.00
#1484	Yeoman 9 oz. fld. goblet, D/O, Flamingo, (6) ea.	\$22.00
#1484	Yeoman 6 oz. footed sherbet, Flamingo, (8) ea.	\$15.00
#1401	Empress 11 1/2" formal dinner plate, Flamingo	\$110.00
	Sparrow (2) ea.	\$105.00
	Small horsehead stopper	\$65.00
	Giraffe, head side	\$65.00
	Gazelle, satin	\$750.00
	Asiatic Pheasant	\$325.00
	Madonna	\$95.00
	Dinky Do	\$425.00
	Rooster vase	\$100.00
	Horsehead bookends, Crystal, pr.	\$425.00

**ADVERTISE
WITH THE
HEISEY NEWS!**



ONCE & FUTURE ANTIQUES

Susan & Steve Pescatore

9 Donna Rd.

Chelmsford, MA 01824

(508) 256-5418

UPS & Ins. Extra

Satisfaction Guaranteed

H=Marked

#10	Oak Leaf coaster, Crystal, (8) ea.	\$10.00
#32	Skirted Panel 7" handled candlestick	\$55.00
#150	Banded Flute 4" handled candlestick, (4) ea.	\$35.00
#150	Banded Flute 7" pickle dish, H	\$35.00
#150	Banded Flute finger bowl, H	\$30.00
#150	Banded Flute punch bowl, H, stand, H, 13 cups, H, set	\$350.00
#150	Banded Flute water bottle	\$170.00
#325	Pillows 5" footed jelly, H	\$50.00
#325	Pillows 9" oval bowl, H	\$40.00
#325	Pillows footed rose bowl, H	\$180.00
#325	Pillows 4" nappy, H, (3) ea.	\$18.00
#335	Prince of Wales 9" cake salver, H	\$175.00
#335	Prince of Wales toothpick, H	\$135.00
#341	Old Williamsburg 2 tier epergne with vase, H, low base, all pieces floral cut (2 flks, lg. plt.)	\$900.00
#343	Sunburst toothpick, H	\$125.00
#343	Sunburst oval mayo, H and plate, H, set	\$85.00
#343	Sunburst 6" pickle, H, minute flake	\$20.00
#350	Pinwheel and Fan 3-pint jug, H	\$200.00
#350	Pinwheel and Fan punch cup, Moongleam, (7) ea.	\$35.00
#355	Quator domino sugar, HH	\$55.00
#433	Greek Key 7½" lo-ftd. shallow bowl, H	\$115.00
#433	Greek Key 12½" French roll tray, H	\$135.00
#393	Narrow Flute punch cup, H, (6) ea.	\$18.00
#394	Narrow Flute 9 oz. variant goblet, H	\$30.00
#464	8" fruit baskets, H, 1 Floral cut, 1 Thistle cut, ea.	\$225.00
#1170	Pleat and Panel 5" hi-ftd. compotier and cover, Mnglm, H	\$120.00
#1183	Revere 12" Japanese garden tray, H	\$150.00
#1183	Revere 8" plate, West Point etch, (5) ea.	\$20.00
#1184	Yeoman 10½" plate, D/O, Hawthorne (mold mark)	\$40.00
#1201	Fandango ice cream tray	\$110.00
#1206	Swirl and Raindrop 12" floral bowl, Moongleam, H	\$75.00
#1229	Octagon 10" muffin plate, Hawthorne	\$75.00
#1229	Octagon 5½" 2 handled jelly, Hawthorne	\$35.00
#1231	Ribbed Octagon 12" salad bowl, Moongleam	\$65.00
#1231	Ribbed Octagon 8" plates, Moongleam, (6) set	\$70.00
#1415	Twentieth Century 1 pt. milk pitcher, Dawn, H	\$140.00
#1425	Victorian 10 oz. fld. tumbler, H, (5) ea.	\$35.00
#1469	Ridgeleigh 11" cone beverage bowl, H, 11 beverage cups, H, and 13" underplate, H, set	\$300.00
#1469	Ridgeleigh oval cigarette box and cover, H	\$75.00
#1488	Kohinoor ashtray, Zircon, (2) ea.	\$60.00
#1489	Late Puritan 6" horsehead cigarette box and cover	\$80.00
#1489	Late Puritan 4" horsehead ashtray	\$60.00
#1503	Crystolite 10" square gardenia bowl, H	\$110.00
#1503	Crystolite shell combination salad and mayo bowl	\$250.00
#1503	Crystolite 13" coupe torte plate	\$125.00
#1503	Crystolite powder jar and cover, H	\$75.00
#1506	Whirlpool footed candy and cover, Limelight	\$600.00
#1531	Quilt individual ashtray, (2) ea.	\$15.00
#1533	Wampum 14" torte plate	\$55.00
#1567	Plantation 5 oz. footed juice, (7) ea.	\$30.00
#1776	Kalonyal 9" cake salver, H (slight roughness bottom edge)	\$175.00
#1776	Kalonyal 3½ oz. punch cup, H, (5) ea.	\$30.00
#1776	Kalonyal butter bottom, H	\$35.00
#4083	Stanhope goblet, Zircon bowl and foot, (3) ea.	\$125.00
#4182	Thin 7" plate, D/O, Hawthorne, 1 small flake, (6) set	\$50.00
#4216	Plain Octagon 9" vase, Sahara	\$100.00
#5010	Symphone 12 oz. footed ice tea, Minuet etch, (2) ea.	\$55.00

FRANCES WOYTALEWICZ

11250 River Dr.

Warren, MI 48093-8108

(810) 939-9076

Call from 6-9 p.m. EST

UPS & Ins. Extra

H=Marked

#113	Mars candlesticks with Orchid etch, pr.	\$70.00
#134	Trident candlesticks with Orchid etch, pr	\$90.00
#305	Punty and Diamond Point punch cup, H, (3) ea.	\$12.00
#351	Priscilla 6 oz. ale with unknown cutting, H	\$40.00
#433	Greek Key 9" celery, slight wear on bottom	\$45.00
#1280	Winged Scroll, ½ gallon jug, Emerald, many mold marks	\$350.00
#1401	Queen Ann 6" dolphin footed candlesticks w/wires, pr.	\$125.00
#1425	Victorian 8" nappy, H	\$45.00
#1428	Warwick 1-lite candlesticks, pr.	\$45.00
#1428	Warwick 11" bowl, Horn of Plenty	\$90.00
#1428	Warwick 7" vase, Horn of Plenty, H, pr.	\$85.00
#1433	Thumbprint and Panel vase	\$90.00
#1447	Rococo 6" comport, H	\$90.00
#1503	Crystolite 4" 1-lite fld. candlesticks, two pairs, ea. pr.	\$45.00
#1503	Crystolite 7" round covered candy, metal lid	\$80.00
#1506	Provincial footed creamer and sugar, pr.	\$45.00
#1509	Queen Ann cheese plate with Orchid etch and	
#1447	5" cheese compote with Orchid etch, both for	\$140.00
#1509	Queen Ann lemon dish and cover with Orchid etch	\$300.00
#1509	Queen Ann 11" dolphin footed bowl and	
#134	Trident candlesticks all w/Rosalie etch, all 3 pcs.	\$150.00
#1519	Waverly 5" epergnette, H, pr.	\$30.00
#1540	Lariat 8" nougat, (6) ea.	\$20.00
#1540	Lariat candlestick, 2-lite, pr.	\$60.00
#1540	Lariat candlestick, 3-lite, pr.	\$85.00
#5072	Heisey Rose sherbet with Rose etch, (8) ea.	\$30.00
#5072	Heisey Rose 12 oz. fld. ice tea with Rose etch, (6) ea.	\$65.00

NAN ALDERSON

24846 13th Ave. South

Des Moines, WA 98198

(206) 824-7946

UPS & Ins. Extra

H=Marked

#121	Pinwheel candleholder, Hawthorne, H, one	\$40.00
#150	Banded Flute bar with heavy sham, ground bottom, H	\$35.00
#300	Peerless individual drink decanter	\$60.00
#305	Punty & Diamond Point perfume bottle w/silver top	\$40.00
#325	Pillows celery, 5" high, H	\$90.00
#341	Puritan punch cups, H, set of 12	\$60.00
#341	Williamsburg 5 compartment 13" pickle, cut star bottom, H	\$75.00
#343	Sunburst footed jelly 5" high, H	\$45.00
#350	Pinwheel and Fan basket (Pat 2/22/16), H	\$295.00
#429	Plain Panel open salt with base, 1 marked H, (2) ea.	\$25.00
#463	Bonnet 13" basket, Flamingo, mold flaw on rim	\$250.00
#463	Bonnet 13" basket, butterfly and flower cutting, H	\$250.00
#465	Recessed Panel 1 lb. candy with lid, gold trim, H	\$95.00
#487	Cologne, 1 oz. with #63 dauber stopper	\$70.00
#1184	Yeoman 8" candy w/center hdl, Flmgo, bubble on gr. btm	\$55.00
#1191	Pickle and spice 9" center hdl. section, etching, Hawthorne	\$85.00
#1205	Fancy Loop toothpick	\$60.00
#1205	Fancy Loop open salt dish	\$30.00
#1235	Beaded Panel and Sunburst salt bottle, silver plated top	\$25.00
#1255	Pineapple and Fan salt bottle, silver top (with small dint)	\$25.00
#1503	Crystolite double conserve, ctr. hdl. flowered silver overlay	\$45.00
#1503	Crystolite 4 part leaf relish, 9" (2) ea.	\$30.00
#4291	"Marlene" blown candy w/lid ½ lb., 3 different cuttings, H	\$125.00
	Goose wings half	\$75.00
	Asiatic Pheasant (chip on underside of base), H	\$200.00

BRASWELLS COLLECTIBLE GLASS (423) 538-5760
380 Lowell Jones Rd. Shipping & Ins. Extra
Piney Flats, TN 37686 H=Marked

#129	Tricorn 3-lite candlestick, pr.	\$80.00
#341	Puritan 4 oz. cruet with #2 stopper, H	\$32.00
#1170	Pleat and Panel high fld. compote with cover, Flamingo, H	\$65.00
#1401	Empress 7" triplex relish, Sahara	\$40.00
#1404	Old Sandwich oval fld. floral bowl, H	\$28.00
#1425	Victorian 5 oz. 2 ball champagne, (4) ea.	\$9.50
#1504	Regency 2-lite candlestick, pr.	\$75.00
#1540	Lariat cream and sugar, H	\$36.00
#5024	Oxford wine, (4) ea.	\$8.00

WARREN & MARY WELSH (719) 531-5866
3635 Saddle Rock Rd. Shipping & Ins. Extra
Colorado Springs, CO 80918 H=Marked

	Sparky, Honey Amber	\$850.00
#352	Flat Panel 1 qt. crushed fruit, H	\$275.00
#433	Greek Key cheese & cracker, H	\$150.00
#1225	Sawtooth Band 8" oblong nappy, H	\$75.00
#1252	Twist 3 pt. jug, Moongleam, H	\$175.00
#1401	Empress 9" dolphin footed vase, Moongleam, H	\$280.00
#1425	Victorian punch cups, H, (13) ea.	\$8.00
#1509	Queen Ann cup & saucer, Orchid etch, (6) ea. set	\$49.00
#1519	Waverly Orchid etch dinner plates, (10) ea.	\$165.00
#3362	Charter Oak 6 oz. saucer champagne, Flamingo, (8) ea.	\$20.00
#3484	Donna 12 oz. soda, Orchid etch, (7) ea.	\$65.00
#4231	Favor vase, Tangerine	\$800.00

WE CLEAN CLOUDY GLASS!
SATISFACTION GUARANTEED

Yes, it is true that we really can restore the interior of your cruet, vase, decanter and other *internally* etched items back to near original condition.

We do not oil, wax or cover up the sickness in any way! We actually *remove* it.

No items are too sick to clean! If we cannot clean an item to meet your satisfaction, the cleaning is **FREE!**

Send no money up front. When we return your item a bill will be enclosed for the postage and cleaning. If you are not satisfied, only the return postage is requested.

Most items clean in 6-8 weeks. All glass is handled and cleaned at your risk. Some very cloudy items may take several additional weeks.

Cruet	\$20.00	Cocktail Shaker	\$30.00
Vinegar & Oil	\$25.00	Salt Shaker (one)	\$15.00
Cologne	\$20.00	Salt Shaker (pair)	\$25.00
Decanter	\$30.00	Water Bottle	\$30.00
Vases (under 12")	\$25.00	Lavender Jar	\$20-\$30.00

Ship to: **Kim Carlisle & Associates**
28220 Lamong Road, Dept. H
Sheridan, IN 46069
(317) 758-5767

THE TREASURE PEDLAR (508) 443-0436
Helene Guski UPS & Ins. Extra
237 Peakham Rd. H=Marked
Sudbury, MA 01776

#12	Flat Rim floral bowl, Flamingo, H	\$35.00
#16	Hair receiver/sp lid, H	\$56.00
#123	Mars candle insert, Flamingo	\$125.00
#333	Waldorf Astoria 8 oz. cruet	\$50.00
#341	Old Williamsburg 8" high footed compote, H	\$85.00
#341	Old Williamsburg 1 qt. squat jug, H	\$125.00
#343	Sunburst punch bowl base, H	\$40.00
#350	Pinwheel and Fan 3 pt. jug, H	165.00
#350	Pinwheel and Fan punch bowl/stand, H	\$250.00
#353	Med. Flat Panel cheese/cracker plate, H	\$75.00
#357	2 oz. lavender jar	\$40.00
#393	Narrow Flute 3 oz. cocktail, H, (4) ea.	\$12.00
#393	Dr. Johnson punch bowl, shows wear, H	\$350.00
#393	Narrow Flute 2 oz. sherry, H, (6) ea.	\$15.00
#393	Narrow Flute 7" oval tray, H	\$35.00
#411	Tudor 5" fld. preserve with cover, floral cut, H	\$60.00
#417	Double Rib and Panel basket, Flamingo, H	\$175.00
#473	Narrow Flute with Rim 3 pc. stack set, H	\$85.00
#1020	Phyllis sugar, Moongleam, H	\$45.00
#1186	Yeoman cream and sugar, floral cutting, H	\$55.00
#1170	Pleat and Panel cream/sugar/lid, Flamingo	\$60.00
#1220	Punty Band wine, Ruby flashed, (3) ea.	\$20.00
#1229	Octagon individual nut, Moongleam, (4)	\$22.00
#1252	Twist 4" nappy, Moongleam, H, (11) ea.	\$20.00
#1255	Pineapple and Fan 10" oval bowl	\$60.00
#1295	Beaded Swag butter and lid	\$75.00
#1401	Empress ice bucket, handle, tongs	\$60.00
#1401	Empress individual nut, (4) ea.	\$10.00
#1401	Empress triplex dish, Sahara	\$30.00
#1469	Ridgeleigh square ashtray, Zircon, H, (2) ea.	\$55.00
#1488	Kohinoor ashtray, Zircon, H	\$60.00
#1485	Fern 2-lite candlestick, Poppy etch	\$40.00
#1503	Crystolite spider jelly, H	\$25.00
#1506	Whirlpool footed sherbet, (8) ea.	\$12.00
#1506	Whirlpool 5 oz. footed soda, H, (6) ea.	\$15.00
#1506	Whirlpool wine, H, (8) ea.	\$15.00
#1519	Waverly 12" crimped bowl, Orchid etch	\$70.00
#1540	Lariat ashtray, (4) ea.	\$8.00
#1540	Lariat 9 1/2" camelia bowl, Moonglo cut	\$40.00
#1540	Lariat 5" candy and cover	\$55.00
#1590	Zodiac footed comport, H	\$48.00
#1590	Zodiac cream and sugar, H	\$62.00
#4157	Steele rose bowl, Hawthorne	\$120.00
#4225	Cobel 1 qt. cocktail shaker	\$50.00

FRAN'S FANCY FINDS (813) 391-5184
10534 Valencia Rd. UPS & Ins. Extra
Seminole, FL 33772-7511 H=Marked

All pieces are #1519 Rose Etch (Waverly)

5" candy and cover, high footed, Sea Horse handles	\$195.00
9" salad bowl	\$195.00
covered chocolate	\$195.00
11" floral bowl, Sea Horse footed	\$170.00
covered butter with dolphin finial	\$175.00
4 part round relish	\$95.00
torte plate	\$85.00
oblong relish, 3 part	\$65.00
celery, oblong	\$60.00
honey cheese, footed	\$58.00
6 1/2" 2 handled jelly, footed	\$48.00
3 oz. cocktail, (1) ea.	\$45.00

Please check our November ad, there are a few choice items still available.

SUM OF LIFE
Elaine & Frank Husted
147 Barton Dr.
Spring City, PA 19475

(610) 469-1243
(610) 469-1298 fax
H=Marked

#1503	Crystolite melon candleblock, 2"	\$25.00
#1205	Fancy Loop footed punch cup	\$45.00
#1205	Fancy Loop 4" nappies, (4) ea.	\$35.00
#1201	Fandango rose bowl, 4"	\$85.00
#1540	Lariat 14" deviled egg plate	\$170.00
#1404	Old Sandwich butter pat, Cobalt, H	\$50.00
#1404	Old Sandwich butter pat, Sahara, H	\$30.00
#1404	Old Sandwich butter pat, Crystal, H	\$30.00
#3333	Old Glory cordial, unknown cutting	\$175.00
#3380	Old Dominion footed soda, Sahara, D/O, (5) ea.	\$25.00
#3380	Old Dominion wine, Sahara, D/O	\$60.00
#1E92	Omega cordial wreath cutting	\$70.00
#1E92	Omega wine, Moonglo cutting, (2) ea.	\$32.00
#5024	Oxford cordial, Huegenot cutting	\$75.00
#135	PanelledCane footed comport, 5" high, H	\$40.00
#369	Hartman wine	\$30.00
#3408	Jamestown goblet, Barcelona cutting, (4)	\$30.00
#393	Narrow Flute cream and sugar, Flamingo, H, set	\$100.00
#393	Narrow Flute sauce pitcher set with silver overlay	\$80.00
#367	Prism Band 1 qt. decanter, Moongleam with Crystal stopper	\$270.00
#341	Puritan cake salver, 9 1/4"	\$70.00
#341	Puritan 13 oz. molasses jug with Britannia top	\$90.00
#343	Sunburst sugar with lid, H	\$70.00
#5010	Symphone champagne with Minuet etch (7) ea.	\$50.00
#5010	Symphone cocktail with Minuet etch (8) ea.	\$30.00
#5010	Symphone goblet with Minuet etch (8) ea.	\$30.00
#5010	Symphone all 23 pieces (\$830 list) for the lot	\$700.00
#5010	Symphone cordial with Crinoline etch	\$75.00
#5025	Tyrolean cordial with Orchid etch, (12) ea.	\$190.00
#1184	Yeoman 7" plates, Sahara, D/O (5) ea.	\$8.00

We have over 400 items in many patterns and colors. Send SASE or inquire regarding your specific needs! We invite your calling (610) 469-1243, but please be sure to give your name, address and/or fax number for our response. Each piece carries a refund guarantee, upon our receipt of the piece, if you're not satisfied. Shipping extra.

MOSTLY HEISEY
Rhoda & Dave Curley
16 Clayton Place
Albany, NY 12209

(800) 972-2775
(518) 482-6272
UPS Extra
All Prices Each

Season's Greetings

	Diamond glass display emblem, Crystal, leans (2)	\$350.00
#3397	Gascony 1 pt. decanter, Cobalt 88 p/s	\$695.00
#1469	Ridgeleigh 1 pt. decanter 1469 p/s pr.	\$425.00
#4027	Christos 2 pt. decanter D/O, Moongleam stopper and foot	\$275.00
#1503	Crystolite 1 pt. cocktail shaker	\$435.00
#393	Narrow Flute miniature cream and sugar, Flamingo	\$120.00
#1225	Saw Tooth Band cream and sugar, exec. gold dec., set	\$95.00
#7015	Ribbed Quator cream and sugar set	\$95.00
#1252	Twist Moongleam cups and saucers, (6) set	\$35.00
#1252	Twist Moongleam 8" plate (6) \$22.00 or nut cups (4)	\$19.00
#1252	Twist Marigold 7 1/2" compote, flower/fern cut, minor bubble	\$115.00
#365	Old Queen Ann 9" compote	\$150.00
#1401	Empress oval compote with cutting	\$32.00
#1255	Pineapple and Fan vase 12" for \$65.00, 8" for \$39.00, 6" for	\$29.00
#1469	Ridgeleigh 8 1/2" vase	\$80.00
#411	Rib and Panel 10" vase with cutting	\$80.00
#40	Epergne 3 plate complete	\$1750.00
#4044	New Era 2-lite candelabra, pr.	\$225.00
#1469	Ridgeleigh 1-lite bobeches and prisms, pr.	\$210.00
#3397	Gascony 11 oz. low fld. goblet, Tangerine dark side	\$300.00
#8034	Albemarle variant saucer champagne, Hawthorne/Moongleam combination, (5)	\$425.00

CHARLES & MILDRED FISHER
991 Idlewilde Ave.
Newark, OH 43055

(614) 522-5398
H=Marked

Elephant, small	\$325.00
Elephant, medium	\$425.00
Elephant, large	\$475.00
Giraffe, head/back	\$295.00
Giraffe, head/side	\$295.00
Giraffe, head/side/back	\$325.00
Pouter Pigeon	\$1200.00
Pouter Pigeon, H	\$1300.00
Filly, head front	\$2500.00
Filly, head back	\$2500.00
Asiatic Pheasant	\$425.00
Asiatic Pheasant, H	\$450.00
Ringneck Pheasant	\$175.00
Swan	\$1200.00
Cygnets, standing	\$325.00
Goose, wings up	\$155.00
Goose, wings half	\$155.00
Goose, wings down	\$600.00
Mallard, wings up	\$240.00
Mallard, wings half	\$240.00
Mallard, wings down	\$425.00
Mallard, wings down, H	\$450.00
Colt, standing	\$125.00
Colt, standing, H	\$160.00
Colt, balking	\$295.00
Colt, kicking	\$295.00
Sow	\$1100.00
Donkey	\$450.00
Fish Bookend	\$175.00
Rooster Vase	\$175.00
Rabbit Paperweight	\$185.00
Gazelle	\$2800.00
Gazelle, H	\$3000.00
Airdale, faint H	\$1400.00
Scotty	\$160.00
Fighting Rooster	\$195.00
Fish Bowl	\$1200.00
Clydesdale	\$450.00
Plug Horse	\$145.00
Horsehead Bookend	\$180.00
Sparrow	\$125.00
Toy Horsehead	\$85.00
Wood Duck, H	\$1600.00
Piglets, sitting	\$105.00
Piglets, standing	\$105.00
Sparky, Amber	\$950.00

HEISEY BY IMPERIAL ON BUST-OFF

Bull, Nut Brown	\$1000.00
Tiger Paperweight, Amber	\$600.00
Hen, Yellow	\$600.00
Colt, Yellow, standing	\$350.00
Colt, Yellow, kicking	\$350.00
Donkey, Dark Blue	\$250.00
Donkey, Caramel Slag	\$250.00
Plug Horse (Sparky), Black HCA	\$250.00
Show Horse, Crystal	\$900.00
Show Horse, Amber	\$1000.00
Elephant, c/s medium	\$250.00
Filly, head forward, Satin	\$800.00

We also have a large selection of Imperial and Heisey by Imperial Animals.



**Buy and sell your
 favorite Heisey with
 the Heisey News!**

WALRICK ANTIQUES
Rick Vaughan & Walter Sherman
1070 Hillcrest
Brighton, MI 48116

(810) 229-5994
UPS Extra
H=Marked

#7	Mayonnaise ladle, H	\$21.00
#77	Duck cologne stopper, Moongleam	\$68.00
#341	Puritan 13" punch bowl, low foot, straight, H	\$170.00
#341	Puritan 4½ oz. punch cups, star bottom, H, (18) ea.	\$8.00
#341	Puritan 7" nappy, H	\$26.00
#351	Colonial 5" sweet pea vase, H	\$32.00
#353	Colonial 5 oz. sanitary syrup, H, dtd.	\$50.00
#393	Narrow Flute hotel cream and sugar, H	\$55.00
#1203	Flat Panel Octagon 12" floral bowl, Hawthorne, H	\$78.00
#1225	Plain Band 10" cake salver, H	\$65.00
#1401	Empress individual dolphin footed nut, Sahara, (4) ea.	\$25.00
#1401	Empress 5½" dolphin footed mayonnaise, H	\$40.00
#1401	Empress dolphin footed ice bucket, Tally Ho etch, H	\$230.00
#1401	Empress 7" oval comport, Flamingo, H	\$79.00
#1469	Ridgeleigh 10½" oblong tray, H	\$45.00
#1469½	Ridgeleigh 8" vase, Sahara, H	\$155.00
#1503	Crystalite 12" rolled edge torte plate, H	\$47.00
#1503	Crystalite 1-lite hurricane candlesticks, H, pr.	\$58.00
#1503	Crystalite covered mustard, paddle, H	\$60.00
#1567	Plantation cream and sugar	\$60.00
#1626	Lodestar 8" vase, Dawn, H	\$150.00
#3390	Carcassone 11 oz. tall stem goblet, Cobalt bowl, (4) ea.	\$105.00
#4036	Marshall pint sherry bottle, Maryland cut, silver on stopper	\$85.00
#4225	Cobel 1 qt. cocktail shaker, Nimrod etch	\$195.00
#5058	Penguin one pint decanter	\$310.00

HOOKED ON HEISEY
c/o Jay Martin
97 Heritage Hill Rd.
New Canaan, CT 06840

(203) 966-9359
24 hr. ans. mach.
CALL ANYTIME

100's OF PIECES OF HEISEY CRYSTOLITE FOR SALE INCLUDING:

Stemware, bowls, relish dishes, sandwich & torte plates, jug, tumblers, swan jug (with chip on foot), other serving pieces and many more special items.

ALSO 100's OF OTHER FINE HEISEY ITEMS SUCH AS:

Many pairs of candlesticks; Swan handle in Sahara, Dolphin in Moongleam, many more Crystal pairs and some singles.

Warwick Horn of Plenty vases; pair of large Cobalt, pair of large Crystal, one large Sahara, and one small Cobalt.

Hi-Lo vase in Flamingo; Penguin decanter; Heisey mirror & Cabochon signs, Christos decanter in Moongleam/Crystal; Irwin cigarette box/ashtray in Crystal.

MANY HEISEY ANIMALS

Amber Oscar, Filly (head forward), Swan, Cygnet, Show Horse, Small Horsehead, Rooster, Asiatic Pheasants, Ringneck Pheasants, Clydesdale, both Ducklings, all three Geese, all three Colts, all three Mallards, all three Elephants, and many more.

ALSO SEVERAL PIECES IN THE FOLLOWING PATTERNS:

Ipswich, Old Queen Ann, Sunburst, Pillows, Empress in Flamingo, Moongleam and Sahara, Lodestar Dawn, Pineapple and Fan, Fancy Loop, Beaded Panel and Sunburst, Kalonyal, Prince of Wales Plumes (both gold and red decoration), Punt and Diamond Point, and many others.

SOME OF THE OTHER GREAT ITEMS INCLUDE:

Candy dishes, vases and rose bowls, Beehive plates in Flamingo and Moongleam, Eagle plate in Moongleam, Sahara stemware, Puritan goblets, Coventry stemware with Zeuse cutting, Alexandrite stemware, many etched items and SPECIAL CUT ITEMS.

FAR TOO MUCH MORE TO LIST!

CALL ME WITH YOUR WISH LIST FOR CHRISTMAS!



Spectacular Parade of Heisey

As the world's largest supplier of discontinued or obsolete china, crystal and flatware, Replacements, Ltd. buys and sells over 54,000 patterns and has 2.1 million pieces.

We have many of your favorite Heisey patterns, including Heisey Rose and Heisey Orchid.

Contact us if you need to pick up a piece to add to your collection, or if you would like to sell some unneeded extras. We can provide a complete printout of available pieces in your pattern. Or we'll let you know our prices for the pieces you wish to sell. Let us help you complete your collection . . . or maybe you'll help add to ours.

REPLACEMENTS, LTD.

Call 1-800-562-4462

or visit our showroom:

Mon-Sat 8am-9pm; Sun 8am-6pm

Off I-85/40 at Mt. Hope Church Rd..

Exit 132 between Greensboro and Burlington • Dept HS

FOREVER HEISEY
Norm & Jan Thran
1663 Londondale Pkwy.
Newark, OH 43055

(614) 344-5955
UPS & Ins. Extra
H=Marked

#2	Plaid vase, 19" tall, crimped top, Crystal, H	\$195.00
#42	Elegance fld. salt & pepper, Flamingo D/O, Empress etch, plate tops, pr.	\$55.00
#77	Duck cologne stopper, Crystal	\$65.00
#134	Trident 2-lite candlestick, Moongleam, H, pr.	\$250.00
#150	Banded Flute toothpick, H	\$75.00
#150	Banded Flute water tumbler, H, (2) ea.	\$60.00
#150	Banded Flute 1 oz. cordial, H	\$80.00
#337	Touraine 4 1/2" fld. sherbet, Amber, narrow optic	\$30.00
#325	Pillows celery vase, H	\$95.00
#325	Pillows covered butter with good gold, HH	\$95.00
#393	Narrow Flute individual footed nut, Sahara	\$35.00
#393	Narrow Flute individual footed nut, Moongleam, H	\$20.00
#411	Tudor handled mayonnaise, Hawthorne, H	\$65.00
#433	Greek Key small covered cherry jar, H	\$125.00
#433	Greek Key 6" footed compote/jelly, H	\$95.00
#433	Greek Key tall champagne, flood rim, H, (6) ea.	\$55.00
#1184	Yeoman 5" footed compote, Moongleam, D/O	\$27.00
#1186	Yeoman covered puff box, Flamingo, D/O, H	\$125.00
#1201	Fandango toothpick	\$70.00
#1252	Twist 7" plate, Flamingo, H, (8) ea.	\$14.00
#1401	Empress 6 1/2" rmd. plate (underplate for cream soup), Alex., H	\$45.00
#1401	Empress 10 1/2" round dinner plate, Crystal, H, (4) ea.	\$40.00
#1401 1/2	Empress cup&saucer (rmd.), Sahara, Old Colony etch, H, 4ea.	\$35.00
#1404	Old Sandwich 1 pt. oval decanter, Flamingo w/Crystal stppr.	\$695.00
#1415	Twentieth Century 9 oz. footed tumbler, Flamingo, H	\$40.00
#1415	Twentieth Century 9 oz. footed tumbler, Dawn, H	\$45.00
#1417	Arch tumbler, Sahara, (2) ea.	\$55.00
#1425	Victorian 12 oz. footed soda/ice tea, H, (6) ea.	\$32.00
#1425	Victorian 2 ball champagne, (7) ea.	\$15.00
#1425	Victorian 1 ball sherbet, H, (4) for	\$45.00
#1469	Ridgeleigh 12" oval floral bowl, Zircon, H & pr. 4 1/2" candle vase, 3 pc. set	\$750.00
#1469	Ridgeleigh 12" celery and olive, H	\$35.00
#1469	Ridgeleigh 13 1/2" sandwich plate, H	\$40.00
#1469 1/2	Ridgeleigh 3" 1-lite candleblocks, pr.	\$45.00
#1496	Mahabar (Crystalite) 4 1/2" cigarette box base H	\$60.00
#1485	Saturn tid bit tray, Zircon, H	\$85.00
#1503	Crystalite round cream and sugar, H, pr.	\$55.00
#1503	Crystalite square candleblocks, pr.	\$35.00
#1503	Crystalite round cigarette holder, H	\$17.50
#1503	Crystalite 13" round tray (coupe tray), H	\$140.00
#1503	Crystalite 10" shell salad bowl	\$150.00
#1503	Crystalite 8" luncheon plate, plain center (7) ea.	\$11.00
#1503	Crystalite 8" luncheon plate, star center, H (8) ea.	\$14.00
#1509	Queen Ann 1-lite candelabra with Orchid etch (one only)	\$125.00
#1519	Waverly 11" 3-part relish with Orchid etch	\$55.00
#1519	Waverly fld. mayo (H) and 7" underplate w/Orchid etch, set	\$60.00
#2351	Newton 12 oz. soda, W/O, Orchid etch, (2) ea.	\$110.00
#3484	Donna 12 oz. soda, W/O, Orchid etch	\$75.00
#3484	Donna ice lip pitcher with Orchid etch	\$450.00
#5025	Tyrolean low goblet (luncheon) with Orchid etch, (2) ea.	\$30.00
#5025	Tyrolean 12 oz. footed ice tea with Orchid etch, (4) ea.	\$50.00
#1540	Lariat goblet with Moonglo cutting, (6) ea.	\$22.50
#1540	Lariat champagne with Moonglo cutting, (8) ea.	\$15.00
#1541	Athena 7" salad plates (one base rim flake) 8 for	\$55.00
#1632	Lodestar 4 1/2" 1-lite candleholders/nappy, Dawn, H, pr.	\$130.00
#1637A	Town and county 14" plate, Dawn	\$90.00
#2930	Plain & Fancy 8 oz. tumbler, Hwthne, checker optic, (4) ea.	\$45.00
#3350	Wabash 2 1/2 oz. wine with Pied Piper etch, (2) ea.	\$35.00
#3397	Gascony 1 pt. footed decanter with Fox Chase etch	\$250.00
#3397	Gascony 12 oz. footed soda, Tangerine (red side)	\$350.00
#3397	Gascony footed champagne, Tangerine W/O (2) ea.	\$295.00
#3397	Gascony footed water goblet, Tangerine, W/O (4) ea.	\$275.00
#4182	Thin 6 1/2" round plate, Alexandrite D/O	\$27.00
#4225	Cobel 1 pt. cocktail shaker, Rooster Head stppr, etched US	\$125.00
#5058	Goose Stem sherry	\$195.00

CALVIN & DOROTHY MEYER
8025 SW 47th Court
Gainesville, FL 32608

(352) 335-0664
UPS & Ins. Extra
H=Marked

#1513	Baroque 3-lite candelabra with prisms	\$95.00
#1235	Beaded Panel & Sunburst punch bowl, base, 24 cups, H (punch bowl has small chip on inside at top), set	\$425.00
#427	Daisy and Leaves 8" nappy, H	\$60.00
#1454	Diamond Point individual ashtray, H, (2) ea.	\$8.00
#1401	Empress 4 1/2" plate, 1985 souvenir, Victory etch, (4) ea.	\$7.00
#1205	Fancy Loop 7" high cracker jar, no lid	\$50.00
#3335	Lady Leg 8 oz. goblet, Adams cutting, (8) ea.	\$22.00
#3335	Lady Leg 6 oz. saucer champagne, Adams cutting, (9) ea.	\$18.00
#1540	Lariat 7" vase, crimped around top	\$50.00
#1183	Revere 6" plate, H, (5) ea.	\$6.00
#3350	Wabash 10 oz. goblet, Pied Piper etch, H, (7) ea.	\$16.00
#3350	Wabash 6 oz. saucer champagne, Pied Piper etch, H, (3) ea.	\$12.00
#1184	Yeoman 7" plate, Empress etch, D/O, (5) ea.	\$7.00
#1435	1981 Souvenir ashtray, Tally Ho etch, (2) ea.	\$7.00

If you don't like our prices, maybe we will like yours!
 "Gin a body meet a body", they may make a deal (apologies to Robert Burns).

Jean & Don Parrett
4995 Maple Dale Rd.
Jackson, MI 49201

(517) 784-7319
Recorder
Shipping & Ins. Extra
H=Marked

Heisey by Imperial:

Giraffe, Amber	\$425.00
Flying Mare, Amber	\$2495.00
Tiger trinket box, Amber	\$195.00
Show Horse, Amber (3) ea.	\$750.00
Filly head forward, Amber	\$300.00
Mallard, wings up, Amber on bust-off	\$250.00
Mallard, wings down, Amber on bust-off, (2) ea.	\$250.00
Mallard, wings half way, Amber (2) ea.	\$250.00
Red Sow	\$650.00
Amber Sow, (2) ea.	\$650.00
Pink Sow	\$750.00
Standing Pony, Amber on bust-off	\$250.00
Standing Pony, Amber, (2) ea.	\$250.00
Balking Pony, Amber, (3) ea.	\$300.00
Balking Pony, Amber on bust-off	\$300.00
Kicking Pony, Amber, (2) ea.	\$300.00
Airdale, Cobalt	\$100.00
Donkey, Cobalt	\$150.00
Cygnets, Black, (2) ea.	\$40.00
Tiger Paperweight, Black	\$295.00
1985 Oscar, Black	\$50.00
Filly head forward, frosted, (2) ea.	\$175.00
Pigs, head up or down, any color, each	\$90.00

J.B. Gibson
Tomball Texas

(713) 379-4519
UPS charges not included
H=Marked

#300	Peerless sherbet, H	\$15.00
#300	Peerless cake salver, H	\$75.00
#335	Prince of Wales 8" nappy with 2 4" nappies, H	\$125.00
#393	Narrow Flute fld. sherbets, H, (3) ea.	\$15.00
#472	Narrow Flute 7" pickle tray, Flamingo, (flat rim), H	\$65.00
#493	Cologne with #65 stopper, all cut, H	\$125.00
#493	Cologne with #65 stopper, all cut, H	\$125.00
#1280	Winged Scroll Emerald #1 smoke set, complete 4 pc. set	\$350.00
#1401	Empress covered lemon, H	\$55.00
#1503	Crystalite 5-part round relish	\$85.00
#5025	Tyrolean Orchid etch champagne, H	\$40.00
	Gold Series with added colts	\$850.00
	Gem Series	\$750.00

Call today! Much, much more in stock!! You need it, we find it!!

BARI FAUSS
8503 Shirley Woods Ct.
Lorton, VA 22079

(703) 550-2218
UPS & Ins. Extra
H=Marked

#134	Trident candlestick, Sahara, pr.	\$200.00
#135	Floral bowl, Sahara, H	\$160.00
#150	Banded Flute punch bowl base, H	\$30.00
#352	Flat Panel #4 vase with drop flange, H	\$200.00
#1184	Yeoman 12 oz. soda, D/O, Sahara, (6) ea.	\$20.00
#1401	Empress 4½" plate, Sahara, (4) ea.	\$15.00
#1469	Ridgeleigh ice tub	\$80.00
#1469	Ridgeleigh 11½" sandwich plate	\$40.00
#1469	Ridgeleigh 9" salad bowl	\$40.00
#1503	Crystolite covered shell candy dish	\$40.00
#1776	Kalonyal 11" tall footed comport, (f)	\$135.00
#1951	Cabochon comport with Moonglo cutting, H	\$35.00

H&R DIAMOND H
Helen & Bob Rarey
1450 White Ash Drive
Columbus, OH 43204

(614) 279-0390
After 5:30 p.m.
UPS & Ins. Extra
H=Marked

#1184	Yeoman cup & saucer, D/O, Flamingo, H, (6) ea.	\$17.50
#1229	Octagon 6" handled jelly, D/O, Sahara	\$22.50
#1401	Empress ashtray, Alexandrite, H	\$235.00
#1401	Empress D/F individual nut dish, Alexandrite, H	\$240.00
#1401	Empress cup and round saucer, Alexandrite, H, (4) ea.	\$125.00
#1401	Empress 7" round plate, Alexandrite, H, (6) ea.	\$65.00
#1401	Empress 6" round plate, Alexandrite, wear, H, (5) ea.	\$35.00
#1401	Empress round saucer, Flamingo, H, (3) ea.	\$7.50
#1401	Empress ashtray, Flamingo, H	\$95.00
#1401	Empress dolphin footed 5½" mint, Sahara	\$30.00
#1401	Empress dolphin footed 5½" mint, Sahara, Old Colony etch	\$35.00
#1469	Coleport 10 oz. tumbler, Dawn, H, (6) ea.	\$25.00
#1506	Provincial 3 handled mayo, Zircon, H	\$125.00
#3390	Carcassone 10 oz. short goblet, Alexandrite, (4) ea.	\$85.00
#3390	Carcassone 6 oz. sherbet, Alexandrite, (4) ea.	\$55.00
#3390	Carcassone 3 oz. oyster cocktail, Alexandrite, (4) ea.	\$67.50
#3390	Carcassone 6 oz. champagne, Cobalt bowl	\$55.00
#3357	King Arthur 2½ oz. wine, D/O, Flamingo stem, (8) ea.	\$25.00
#3480	Koors "29" 12 oz. fld. soda, D/O, Flamingo, (6) ea.	\$17.50
#341	Heisey by Imperial Puritan goblet, Amber, (4) ea.	\$12.50
#300	Heisey by Imperial Peerless indv. cream & sugar, Amber, H	\$42.50
#300	Heisey by Imperial Peerless indv. cream & sugar, Azalea, H	\$42.50
	Heisey by Fenton Rosalene satin Filly, head front	\$85.00
	Heisey by Fenton Rosalene satin Airdale	\$85.00
	Heisey by Fenton Rosalene satin Gazelle	\$85.00

J & R COLLECTIBLES
PO Box 1030
Newark, OH 43058-1030

(614) 344-9719
UPS & Ins. Extra
H=Marked

#300½	8 oz. tumbler, Flamingo, H, (6) ea.	\$85.00
#1205	Fancy Loop 2 oz. bar, Emerald Green, worn gold, etched	
	Mary Mt. Clemens 1898	\$115.00
#1255	Pineapple and Fan hotel cream and sugar, Emerald Green, pr	\$170.00
#1495	Fern 8" cheese plate, Orchid etch	\$95.00
#1503	Crystolite 4" coaster, Amber	\$125.00
#1506	Whirlpool 5½" 3 handled mayo, Limelight, H	\$145.00
#1511	Toujours apple marmalade, Minuet etch, H	\$285.00
#3304	Universal cocktail icer and liner, Minuet etch, (4) ea.	\$175.00
#3390	Carcassone 6 oz. saucer chmpgne, Alexandrite bowl, (4) ea.	\$135.00
#3390	Carcassone 6 oz. sherbet, Alexandrite bowl, 4 ea.	\$95.00
#3405	Alibi 3 oz. cocktail, Moongleam foot, Chicken Chase etch	\$175.00
#4230	Favor vase, D/O Sahara	\$225.00

HEISEY ETC.
Mike & Barb Rosenberger
5115 W. 78th Ln.
Schereville, IN 46375

(219) 864-1704
Shipping & Ins. Extra

Visit our Web site <http://www.jorsm.com/elegantglass>

#129	Tricorn 3-lite candlestick, Flamingo, pr.	\$250.00
#333	Waldorf Astoria toothpick holder	\$110.00
#341	Puritan pickle jar	\$110.00
#343	Sunburst half gallon jug	\$235.00
#343	Sunburst water bottle	\$145.00
#350	Pinwheel and Fan 3 pint jug	\$195.00
#352	Flat Panel oil and vinegar, Flamingo	\$175.00
#352	Flat Panel match stand ashtray	\$45.00
#393	Narrow Flute individual sugar and cream, Flamingo	\$135.00
#412	Tudor 12 oz. footed handled ice tea, Flamingo, (4) ea.	\$80.00
#804	Colonial 2 lb. covered cracker jar	\$325.00
#1252	Twist 8 oz. goblet, Moongleam, (6) ea.	\$145.00
#1252	Twist 8 oz. soda, Moongleam	\$45.00
#1252	Twist 8" plate, Moongleam, (6) ea.	\$18.00
#1252	Twist 11" plate, Flamingo	\$75.00
#1252	Twist 6" plate, Flamingo, (10) ea.	\$12.00
#1252	Twist cup and saucer, zigzag handle, Flamingo, (5 sets) ea.	\$55.00
#1401	Empress 3 part relish, Minuet etch	\$95.00
#1401	Empress dolphin footed tumbler, (3) ea.	\$145.00
#1401	Empress 8 oz. tumbler, Flamingo	\$67.50
#1404	Old Sandwich 8" plate, Moongleam, (6) ea.	\$45.00
#1417	Arch 8 oz. tumbler with toes, (2) ea.	\$95.00
#1428	Warwick individual candlestick, Cobalt	\$125.00
#1447	Rococo 8" nappy with handles	\$75.00
#1469	Ridgeleigh 11" centerpiece round bowl	\$225.00
#1469	Ridgeleigh cone beverage bowl and 10 cups	\$225.00
#1483	Stanhope vase, Frosty Dawn etch	\$150.00
#1506	Provincial individual sugar, cream and tray	\$125.00
#1567	Plantation 5 oz. footed juice, (6) ea.	\$38.50
#1567	Plantation syrup with drip cut lid	\$165.00
#1567	Plantation 10½" demi-torte plate	\$100.00
#1776	Kalonyal 9" nappy	\$85.00
#3380	Old Dominion cordial, Sahara	\$145.00
#3380	Old Dominion goblet, Sahara, (6) ea.	\$37.50
#3397	Gascony wine, Cobalt	\$145.00
#3480	Koors floral vase, Moongleam	\$85.00
#3480	Koors jug and 5 footed sodas, Moongleam foot, set	\$385.00
#3480	Koors jug, screen optic, Hawthorne	\$425.00
#4035	Bethel decanter, Kilarny cutting	\$175.00
#4044	New Era goblet, Cobalt bowl, (2) ea.	\$195.00
#4044	New Era 12 oz. footed soda, Cobalt bowl, (2) ea.	\$225.00
#4057	Schnaidt water bottle, wide optic, full cut neck	\$135.00
#5022	Graceful 4 oz. oyster cocktail, Orchid etch, (5) ea.	\$55.00
#5040	Lariat 5 oz. footed juice, Moonglo cut, (6) ea.	\$28.00
#5072	Rose cordial, Heisey Rose etch	\$175.00
	Kicking Pony	\$195.00

WANTED:

- #433 Greek Key cordial
- #1220 Puntty Band cordial
- #1225 Plain Band cordial

CAINS, DALLS & RYANS
88 Davis Rd.
Centerville, OH 45459
Send SASE for complete list

(513) 433-6289
Will return calls
Ins. & UPS Extra
H=Marked

#343	Sunburst small punch bowl and base, H	\$245.00
#379	Um salt shaker with sanitary top, H	\$27.00
#427	Daisy-n-leaves berry set, 8" and (4) 5" nappies, H	\$135.00
#1252	Twist Moongleam 13" celery, H	\$45.00
#1252	Twist Flamingo cruet with stopper, H	\$115.00
#1252	Twist Flamingo covered mustard, H	\$90.00
#1445	Grape oval floral bowl, H	\$65.00
#1469	Ridgeleigh bulbous salt and pepper	\$45.00
#1469	Ridgeleigh 2" square candlesticks, pr.	\$55.00
#1495	Fern 2-lite candlestick	\$39.00
#1503	Crystolite tray for individual cream and sugar, H	\$26.00
#1503	Crystolite 10" 5-part round relish	\$55.00
#1503	Crystolite 3-part oval relish	\$55.00
#1503	Crystolite 3-lite candlesticks, pr.	\$60.00
#1503½	Crystolite banded cup/saucers, 3 sets, ea.	\$40.00
#1519	Waverly 4-part relish with Heisey Rose etch	\$125.00
#1519	Waverly 5" compote with Heisey Rose etch	\$55.00
#1519	Waverly fld. mayo, underplate and spoon, Heisey Rose etch	\$125.00
#1519	Waverly salt and pepper shakers, Heisey Rose etch, pr.	\$70.00
#1540	Lariat fld. mayo with rolled edges, H	\$38.00
#1590	Zodiac fld. ice teas, H, (7) ea.	\$17.50
#1951	Cabochoon cups and saucers, H, 20 sets, ea.	\$11.00
#3333	Old Glory cordials wide optic, (4) ea.	\$22.00
#3389	Duquesne cordials with unusual Art Deco cut, (7) ea.	\$80.00
#5013	Shasta cordials wide optic, (5) ea.	\$90.00

"T & P" COLLECTIBLES
Tom & Pat Gibbons
1089 Wood Street
Swansea, MA 02777

(508) 674-7361
Packing & UPS Extra
H=Marked

Send SASE for latest list

#301	Old Williamsburg 4-lite candelabra	\$525.00
#305	Punty and Diamond Point punch set & base, H, (12 & 1 pcs.)	\$425.00
#335	Prince of Wales punch bowl base, chip, H	\$35.00
#411	Rib and Panel 6 oz. cruet	\$55.00
#411	Rib and Panel 3 pt. footed tankard, cut, H	\$115.00
#433	Greek Key cruet, no stopper, clear	\$65.00
#433	Greek Key punch cup, star bottom, H, (9)	\$110.00
#459	Round Colonial 7" basket, H	\$225.00
#1252	Twist ice bucket, no handle, H	\$55.00
#1255	Pineapple & Fan btr., sgr., crm., spn., Emerald, gold trim, set	\$495.00
#1255	Pineapple & Fan handled mug, Emerald, gold, Helen/1898	\$55.00
#1295	Beaded Swag covered sugar, Opal with roses	\$90.00
#1401	Empress 11" dolphin footed bowl	\$30.00
#1404	Old Sandwich cups, 1 with flake, Flamingo, H, (6)	\$180.00
#1404	Old Sandwich 6" square plate, Sahara, H, (7)	\$144.00
#1433	Thumbprint and Panel 2-lite candlestick, Sahara, pr.	\$155.00
#1469	Ridgeleigh 4 oz. cruet b/b stopper	\$45.00
#2401	Oakwood/bar Old fashioned, Tally Ho etch, 1 chipped (9)	\$225.00
#3355	Fairacre 3½ oz. cocktail, Moongleam, D/O	\$18.00
#3361	Charlotte goblet, Hawthorne with Moongleam stem, D/O, H	\$475.00
#3380	Old Dominion 10 oz. goblet, Sahara, H	\$35.00
#3380	Old Dominion 8 oz. soda, Alexandrite	\$95.00
#4206	Optic Tooth 12" vase, Moongleam foot	\$175.00

THE COLLECTOR'S STOP
12018 Suellen Circle
Wellington, FL 33414

(561) 793-0986
UPS Extra
H=Marked

#352	Flat Panel drop flange 9" vase, H	\$375.00
#2	Old Williamsburg 11" candlesticks, pr.	\$350.00
#1433	Thumbprint and Panel Moongleam candlesticks, pr.	\$250.00
#1404	Old Sandwich 6" Moongleam compote, H	\$150.00
#433	Greek Key 8" plate, H	\$95.00
#1567	Plantation 4-part relish, H	\$125.00
#1401	Empress Moongleam dolphin footed pitcher	\$495.00
#1469	Ridgeleigh 7" ice bucket and tongs, H	\$125.00
#21	Aristocrat 15" candlesticks, H	\$850.00
#461	Banded Picket Flamingo 7" basket	\$495.00
#325	Pillows cracker jar and cover, both H	\$395.00
#433	Greek Key 13" meat tray, H	\$375.00

ONCE & FUTURE ANTIQUES
Susan & Steve Pescatore
9 Donna Rd.
Chelmsford, MA 01824

(508) 256-5418
UPS & Ins. Extra
Satisfaction Guaranteed
H=Marked

ALL ORCHID ETCH

#485	Torte plate (slight wear)	\$125.00
#1435	3" square ashtray, (3) ea.	\$25.00
#1509	Queen Ann 12" 2 handled round sandwich plate	\$90.00
#1509	Queen Ann 16" snack plate (bottom roughness)	\$75.00
#1509	Queen Ann 7" triplex relish	\$30.00
#1519	Waverly footed salt and pepper, metal tops, pr.	\$60.00
#1540	Lariat 7" vase, crimped	\$110.00
#4035	Bethel cigarette holder	\$60.00
#4225	Cobel 1 qt. cocktail shaker, complete	\$195.00
#5025	Tyrolean 1 oz. cordial	\$110.00
#5025	Tyrolean 3 oz. wine, (4) ea.	\$75.00
#5031	French dressing bottle, #80 stopper	\$140.00

JIM PAPPAS
26 Kinglet Dr. N.
Cranbury, NJ 08512

(609) 897-0345
UPS & Ins. Extra
H=Marked

#1567	Plantation 4 part 8" round, Ivy etch, H	\$60.00
#4002	Aqua Caliente cocktail, Sportsman etch (2) ea.	\$42.00
#150	Banded Flute creamer and sugar, no top, H, pr.	\$40.00
#150	Banded Flute 12" celery tray, H	\$18.00
#4059	Allen 42 oz. water bottle	\$30.00
#1425	Victorian 2 oz. bar glass, H	\$20.00
#112	Mercury 3" candlesticks, Hawthorne, pr.	\$95.00
#1506	Provincial 3" round candleblocks, pr.	\$40.00
#1485	Saturn covered mustard, H	\$30.00
#1485	Saturn salt and pepper, metal tops, H, pr.	\$35.00
#473	Narrow Flute w/Rim strawberry & sugar plates, (3) ea.	\$115.00
#1567	Plantation footed 12 oz. ice tea, (7) ALL	\$425.00
#1567	Plantation cruet	\$125.00

**Remember to place
your ad by the first
of the month!**



D&B ANTIQUES
Bob Bartholomew
PO Box 33283
Decatur, GA 30033

(404) 634-2799
6 am-10 pm EST
UPS & Ins. Extra
H=Marked

#150	Banded Flute 13" tray, Moongleam, H	\$435.00
#325	Pillows toothpick, H	\$265.00
#330	Continental toothpick, H	\$110.00
#343	Sunburst toothpick, H	\$140.00
#300	Peerless toothpick	\$80.00
#1205	Fancy Loop toothpick	\$65.00
#150	Banded Flute toothpick, H	\$85.00
#352	Flat Panel toothpick	\$45.00
#310	Ring Band Ivory toothpick with Rosebud dec., trace of gold	\$75.00
#310	Ring Band Ivory toothpick "Tracy, Minn", fair gold	\$75.00
#4227	Favor vase, Sahara	\$175.00
#4229	Favor vase, Crystal, Floral decoration	\$115.00
#2052	1½ oz. bar, Sweetbriar cut	\$35.00
#150	Banded Flute 3 oz. bar, H	\$50.00
#300½	2½ oz. bar, Flamingo, H	\$85.00
#1404	Old Sandwich ash trays, Moongleam, Flamingo, Cobalt, Sahara in metal filligree stand, all H, set	\$245.00
#357	Duck ashtray, Moongleam, H	\$235.00
#1401	Empress ashtray, Moongleam, H	\$365.00
#1404	Old Sandwich 14 oz. beer mug, Moongleam, H	\$425.00
#1533	Wampum ashtray	\$20.00
#10	Muddler	\$28.00
#1401	Empress dolphin footed 6" candles, Sahara, H, pr.	\$250.00
#1405	Ipswich candle vase inserts, Sahara, H, (2) ea.	\$185.00
#30	Tom Thumb candles, H, pr.	\$175.00
#102	Ball stem candles, 9", H, pr.	\$275.00
#134	Trident candles, Alexandrite, (2) ea.	\$450.00
#112	Mercury candles, Sahara, pr.	\$85.00
#112	Mercury candles, Moongleam, pr.	\$75.00
#136	Triplex 3-lite, Cobalt, pr.	\$875.00
#110	Sandwich dolphin 10" stick, Flamingo, (1)	\$295.00
#110	Sandwich dolphin 10" lamp, Flamingo	\$295.00
#106	Inverted saucer candles, Moongleam, pr.	\$95.00
#99	Little Squatter, Moongleam, pr.	\$65.00
#120	Overlapping swirl candles, Hawthorne, pr.	\$135.00
#1252	Twist candles, Flamingo, H, pr.	\$85.00
#1205	Raindrop candles, Flamingo, pr.	\$80.00
#114	Pluto candles, Flamingo, silver decoration, pr.	\$90.00
#1485	Saturn 2-lite block, pr.	\$175.00
#1280	Winged Scroll cruet, Ivory	\$180.00
#1280	Winged Scroll molasses, Ivory, Pewter top	\$265.00
#372	McGrady 7 oz. syrup, Flamingo	\$140.00
#1184	Yeoman 12" floral bowl, Hawthorne, D/O	\$75.00
#1184	Yeoman 14" torte plate, Hawthorne	\$75.00
#1252	Twist 10½" plate, Marigold, H	\$75.00
#1252	Twist 2½ oz. wine, Marigold	\$75.00
#132	Sunburst candles, Marigold, pr.	\$175.00
#1183	Revere soup plates, Marigold, sl. sugary, (4) ea.	\$22.00
#1541	Athena 8" tall candy and cover (1948)	\$265.00
#1170	Pleat and Panel 6" L.F. covered comport, Moongleam, H	\$85.00
#1184	Yeoman 6" candy and cover, Sahara, D/O	\$125.00
#5072	Rose claret, Rose etch, (5) ea.	\$95.00
#5072	Rose wine, Rose etch, H, (2) ea.	\$85.00
#5072	Rose cordials, Rose etch, H, (8) ea.	\$165.00
#5072	Rose goblet, Rose etch	\$49.50
#3389	Duquesne 9 oz. goblet, Tangerine, (4) ea.	\$235.00
#3389	Duquesne 8 oz. fld. tumbler, Tangerine, (2) ea.	\$155.00
#3380	Old Dominion tall saucer chmpgne, Alexandrite, H, (4) ea.	\$126.00
#3380	Old Dominion cocktail, Alexandrite, (5) ea.	\$99.00
#4045	Ball vase, 9" Alexandrite, W/O	\$925.00
#129	Tricorn candle	\$75.00
#352	Flat Panel 14 oz. lavender jar and mush. stopper	\$220.00
#352	Flat Panel 24 oz. lavender jar and mush. stopper	\$350.00
#4045	Ball vase, W/O Cobalt, 4"	\$280.00

J&T ANTIQUES
Jim Houghton & Tim Rector
PO Box 933
Sturbridge, MA 01566

(508) 764-1597
(508) 764-1014 fax
UPS & Ins. Extra
H=Marked

#1567	Plantation high footed compote, tall, H	\$190.00
#1430	Aristocrat candy jar, high footed, brilliant cut, (pr.) each	\$1200.00
#1591A	Elephant handle mug, Amber, H	\$490.00
#71	Oval candlesticks, Windsor cutting, H, pr.	\$650.00
#1205	Fancy Loop cracker jar with lid	\$225.00
#1506	Provincial 10 oz. goblets, H, (7) ea.	\$15.00
#1235	Beaded Panel and Sunburst tumbler, good gold	\$20.00
#1235	Beaded Panel and Sunburst electric shade 2¼" ring, pr.	\$195.00
#417	Double Rib and Panel mustard, H	\$60.00
#2	Mustard spoon, H	\$35.00
#201	Windsor lamp w/bobeche, prisms, unk. shade, H, pr.	\$450.00
#1238	Sandwich beehive 8" plates, Flamingo, (6) ea.	\$25.00
#406	Coarse Rib cruet, no stopper, H	\$65.00
#1567	Plantation coasters, (5) ea.	\$40.00
#300	Individual drink decanter (2) ea.	\$30.00
	Small Elephant	\$200.00
	Small Elephant, bruise on toe	\$100.00
#1170	Pleat & Panel 5" high fld. compote, gold dec, H	\$85.00
#54	Daisy and Leaves swung vase, H	\$200.00
#352	1½ oz. lavender jar with heavy silver deposit, H	\$100.00

S. WILLIAMS
PO Box 1779
Brazoria, TX 77422-1779

(409) 964-4092 (lve. msg.)
UPS & Ins. Extra
H=Marked

#417	Double Rib and Panel 6" basket, H	\$150.00
#417	Double Rib and Panel 6" basket, Flamingo, H	\$200.00
#458	Picket 8" basket, Wheat cut, H	\$175.00
#461	Banded Picket 7" basket, Floral cut, H	\$225.00
#463	Bonnet 7" basket, Wheat/Band etch, small chip, H	\$150.00
#465	Recessed Panel 8" basket, H (V2PG100)	\$175.00
#341	Puritan 13" hg. candy jars, no lids, H, (like V1PG41) pr.	\$375.00
#352	Flat Panel vase with perforated cover, (V2PG28)	\$375.00
#427	12" Daisy and Leaves vase, H (like V2PG126)	\$350.00
#353	Colonial 2 qt. crusted fruit w/cover, H (V2PG631)	\$350.00
#451	Lined Flute ½ gal. pitcher, (4) 8 oz. tumblers, H, (V2PG 97)	\$260.00
#1192	8" scallop, shallow nappy, Vaseline, H, usage scratches	\$350.00
#1295	Beaded Swag 1/2 gal. tankard, Milk Glass with Rose dec.	\$210.00
#1401	11" footed floral etched bowl	\$90.00
#1433	Thumbprint & Panel 11" floral bowl, Moongleam	\$90.00
#1485	16" Saturn optic platter	\$50.00
#1488	Kohinoor ashtray, Zircon, H	\$90.00
#1519	Waverly 14" orchid etched (#507) platter	\$75.00
#1567	Plantation divided mayo. sterling silver base	\$90.00
#3381	7 oz. Creole saucer champagne, shrtstm, Alexandrite	\$140.00

Send SASE for complete inventory



***Your ad could
be here next
month!***

MOSTLY HEISEY
Rhoda Curley
16 Clayton Pl.
Albany, NY 12209

(800) 972-2775 toll free
(518) 482-6272
UPS Extra
All prices each

#40	Epergne 3 plates 30" high, complete	\$1775.00
#17	Classic I-lite 16" tall with prisms, pr.	\$650.00
#17	Classic I-lite 20" tall	\$450.00
#21	Aristocrat 7" candlesticks, Fort Wm. Henry etch, pr.	\$195.00
#3404	Spanish saucer champagne, Cobalt bowl, (7) ea.	\$125.00
#3404	Spanish soda, Cobalt bowl, (5) ea.	\$125.00
#3404	Spanish tall cocktail, Cobalt bowl, (4) ea.	\$125.00
#5010	Symphone cocktail, Danish Princess cutting, (6) ea.	\$35.00
#1496	Fern Zircon handled mayo or 6" handled cheese, choice	\$95.00
#1510	11 1/2" square flower bowl	\$125.00
#4224	Steeplechase 3 oz. cocktail, Sahara, (3) ea.	\$90.00
#1205	Fancy Loop wine, sherry, burgandy, champagne, choice	\$50.00
#4092	Kenilworth 1 1/2 oz. sherry, (6) ea.	\$17.00
#1469	Ridgeleigh sherbets (6) or champagne (6) choice	\$25.00
#1259	Groove and Slash spooner	\$50.00
#1428	Warwick 9" vase, Sahara	\$175.00
#1508	Whirlpool 9 oz. tumbler, Limelight	\$75.00
#361	Ashtray and cigarette container, Flamingo	\$175.00
	4 punch bowls and laddles, CALL, punch bowl bases only, Sunburst, Punt & Diamond Point, Greek Key, Old Queen Ann, choice	\$75.00
#393	Narrow Flute beautiful enamel ware set 42 pcs., 3 bowls, cruet, plates: 7" (8), 5 1/2" (8), 5" (4), 8 tumblers, (8) 4 1/2" nappies, pitcher, marmalade, set	\$995.00

NEW TO THE SHOP:

HCA Membership



Pins
&
Charms

**Show your pride for
Heisey Collectors of America, Inc!**

Made of sterling silver with a decorative blue overlay (*on the Diamond H and the HCA banner*), the pins and charms are \$20.00 each plus \$1.00 for shipping.

Call the Museum Shop today! (614) 345-2932

HEISEY COLLECTORS OF AMERICA, INC.

27 Annual

ELEGANT GLASS SHOW

Celebrate the legacy of A.H. Heisey & Company with
50 prominent dealers from across the US

—Preview—
Wednesday,
June 18, 1997
5 to 8 p.m.
—\$10—

—Regular Hours—
Thursday,
June 19, 1997
Friday,
June 20, 1997
12 noon
to 5 p.m.
—\$4*—

—Free—
Featuring Free
All-Heisey
Glass Display
—Free—

—Free—
Saturday,
June 21, 1997
12 noon to 5 p.m.
FREE Admission
—Free—
*Receive 50¢
discount with card
(except June 18)



OSUN-COTC Campus, Country Club Dr., Newark, Ohio

30 miles east of Columbus off Ohio St. Rt. 16

For more information call **(614) 345-2932**

Proceeds benefit The National Heisey Glass Museum

Large All Glass Auction

Sunday December 8, 1996 10 a.m.

Apple Tree Auction Center

1616 W. Church Street
Newark, OH 43055



This sale will feature a large selection of Heisey from several estates and private collections to include: (30) pcs Cobalt with unusual Gascony vase; Carcassonne stemware and favor vase; Custard incl (2) Winged Scroll smoking sets, Ring Band, Winged Scroll and other pcs. Animals include Show Horse, Medium Elephant, Pheasants, Colts; Duckling and others; large selection of candlesticks; sets in Rosalie and Titania etch; Tourjours Olympiad etch candle vases; Sahara, Limelight, Dawn and other colors. Most Amber Heisey by Imperial animals. Other glass incl large selection of Cambridge with large and hard to find pcs; Westmoreland with lots of Cabled Grape incl dinner plates, Fostoria, lots of older Fenton, Erickson with scarce pcs from a doctor's estate who was a personal friend of Carl Erickson; Imperial; Fostoria; Tiffin; Duncan and other Ohio and Ohio River Valley glass. This will be a full days sale with 800-1000 lots to sell in this fast moving catalogued auction. We have about 100 boxes to unpack. Much more than advertised. Absentee bids handled competitively.

DOORS OPEN AT 9 a.m.

Comfortable building and good food available.

Auctioneers: Sam Schnaidt, David Schnaidt, Paul Robison, Debbie Johnson.

Terms: We now accept Visa, MC and Discover. 5% buyers premium. **Buyers premium will be deleted for cash or approved check payment.**

Dealers Directory

Maximum 5 lines/12 months/\$35 MEMBERS ONLY

MARJORIE GILLETTE Rochester, New York Glassware Specialty Heisey Mail Orders & Shows 716-225-4678	SHIRLEY EUGENIA DUNBAR Heisey a Specialty Mail Order, Shows, Appraisals PO Box 7085, Port St. Lucie, FL 34985 Oct.-May 407-337-1558 PO Box 222, Naples, ME 04055 May-Oct. 207-647-5652	COMPARISON LIST New Heisey Auction List for 1996 3 Year's Auction 93-94-95 Price: \$15.00 + \$3.00 Shipping Payable: B. Whaley 300 International Dr., Pataskala, OH 43062 1-614-927-1557
ALL HEISEY AUCTION Consignments Welcome Apple Tree Auction Center 1616 W. Church, Newark, OH 43055 PH: (614) 344-9449	GREEN ACRES FARM Antiques, Crystal Glass & Collectibles 2678 Hazelton-Etna Rd., SW (S.R.310-N) Pataskala, OH 43062 Sat. or Sun. PM or call (614) 927-1882	MICHAEL KRUMME Cambridge • Heisey • Fostoria • Duncan-Miller • Paden City I search - send detailed want list - all are kept on file P.O. Box 5542 Santa Monica, CA 90409
D & B ANTIQUES — ATLANTA Bob Bartholomew Members Dixieland Heisey Club PO Box 33283, Decatur, GA 30033 Shows (404) 634-2799 Mail Order	H & R DIAMOND H Helen & Robert Rarey 1450 White Ash Dr. Columbus, OH 43204 PH: (614) 279-0390 after 5:30	JEAN & DON PARRETT Beautiful Heisey Layaways Accepted 4995 Maple Dale Rd. Jackson, Michigan 49201 (517) 784-7319 — Recorder
ANTIQUES - THE SHULTZES 206-208 East Main St. Newmanstown, PA 17073 15 Miles West of Reading, PA PH: (610) 589-2819	"HAPPINESS IS" - THE STULTZS 3106 Warren Court, Glen Allen, VA 23060 Shows and Mail Order PH: (804) 672-8102	PATTON HOUSE ANTIQUES THE DANIELS Box 547 Louisa, Virginia 23093 (540) 967-1181 Specializing in Glass Heisey • Fostoria • Duncan • Rocky's Antique Mall Weyers Cave, VA off I-81 The Antique Gallery 3140 W. Cary St., Richmond, VA
C & J ANTIQUES Cole & Jean Miesner Box 45, 72 Whig St. Newark Valley, NY 13811 PH: (607) 642-9905	MOUNDBUILDERS ANTIQUES 2ND GENERATION 3669 Route 360 Buckeye Lake, OH 43008-1905 (614) 928-1994 — (800) 366-4347 Open Thursdays 12-3 p.m. Also, by appointment.	SCHWAN'S ANTIQUES SHOWS & MAILORDER 77 Lagos del Norte Ft. Pierce, FL 34951 PH: (561) 461-5940
DOXTOIS Eva & Joe Hirsh Heisey & Pattern Glass 6 James St., Norwalk, CT 06850 PH: (203) 847-3315	HOOKED ON HEISEY Jay C. Martin 97 Heritage Hill Rd., New Canaan, CT 06840 (203) 966-9359 24 hr. ans. mach. Mail Orders & Shows	R & L ANTIQUES-SAN FRANCISCO Members of the Golden Gate Heisey Club 3690 Bodega Ave. Petaluma, CA 94952 PH: Petaluma (707) 762-2494 PH: San Francisco (415) 621-6693
CHARLES & MILDRED FISHER Heisey animals and Heisey By Imperial animals 991 Idlewilde, Newark, Ohio 43055 614-522-5398	JJ MC KEE ANTIQUITIES Pottery - Glassware - Collectibles 222 West 75th St. Kansas City, MO 64114 Wed.-Sun. 10-5 PH: (816) 361-8719	YOUR AD COULD BE HERE NEXT MONTH! Call today to reserve this space.
CRYSTAL LADY Joann Hagerty Specializing in elegant depression glassware 1817 Vinton Street, Omaha, NE 68108 Shop Ph. (402) 341-0643 or Home Ph. (402) 391-6730	DINNERWARE CLASSICS! 4125 Sperry St., Dallas, TX 75214-2743 (214) 821-6852 Selling Glassware & Dinnerware By Mail Heisey Glass	MY DAUGHTER'S INHERITANCE Heisey - Crystal - Porcelain Antique Village - 3750 Howard Avenue Kensington, MD 20895 (301) 933-4618 Maggi Smith
ELEGANT GLASSWARE NOW LOCATED IN FINDER'S ANTIQUE HOUSE 1169 Piney Forest Rd. Danville, VA 24540 Open Thursday—Sunday (804) 836-6782 Area's Largest Selection of Heisey & Other Elegant Glass	J. & R. COLLECTIBLES Shows, SASE, Mail Order list The Lukasko's PO Box 1030, Newark, Ohio 43058-1030 PH: (614) 344-9719	RON & MAUREEN KOVACS Downsizing Twenty Year Heisey Collection Please Send \$1.00 for extensive list 9310 East Wind Rose Dr. Scottsdale, AZ 85260 (602) 451-4995 (MST)
FRAN'S FANCY FINDS Fran & Jack Grenzebach 10534 Valencia Rd., Seminole, Florida 33772-7511 PH: (813) 391-5184 SHOWS MAIL ORDERS	MOSTLY HEISEY Rhoda Curley 16 Clayton PL, Albany, NY 12209 Shop and Mail Order PH: 1-800-972-2775	HEISEY HASBEENS Heisey glassware and estate books Toni and Parker Heisey 6678 Comstock Court, San Diego, CA 92111 PH: (619) 277-1210
FOREVER HEISEY Jan & Norm Thrane Mail Order, Shows, Appraisal Service 1663 Londondale Pkwy, Newark, OH 43055 PH: (614) 344-5955	R & S ANTIQUES AND GLASSWARE Heisey-Specializing in Complete Heisey Tableservice call or write for patterns and colors 2560 S. Maguire Rd. Ocoee, FL 34761 (407) 656-5700 or (407) 298-5980 PM	WILLEY'S ANTIQUES & MUSEUM Specializing in Heisey 11110 Cannon Rd., Frazeeburg, OH 43822 16 miles east of Newark, OH PH: (614) 828-2557
WARREN & MARY WELSH Heisey & other elegant glassware 3635 Saddle Rock Road, Colo. Springs, CO 80918 PH (719) 531-5866 Mail Order Shows	BOB & JOANNE MCELHENY'S HEISEY Booth 44-Pioneer Antique Mall Open 10-6, Sun. 1-5 Downtown Pioneer, Ohio-North of Exit 2 Ohio Turnpike Phones: Mall (419) 737-2341 Home (419) 537-6890	YOUR AD COULD BE HERE NEXT MONTH! Call today to reserve this space.
GLASS 'N' GLASS Virginia & Odell Johnson 6909 10th Ave. W. Bradenton, FL 34209 PH: (941) 792-0604	YOUR AD COULD BE HERE NEXT MONTH! Call today to reserve this space.	HEISEY, etc. Mike & Barb Rosenberger Shows-Mail order (219) 864-1704 5115 W. 78th Ln. Schererville, IN 46375 Visit our web site: www.jorsm.com/elegantglass

**Museum
Volunteers for
September &
October**

Beth & Jay Barker
Chauncey Delaney
Leota Friel
Mary Holmquist
Frances Law
Connie Makris
Phyllis McClain
Mary McWilliams
Dick & Marilyn
Norris
Bob Rarey
Bob Wilson

When Renewing Your Membership...

Help us to reach our new goal of \$750,000 by the year 2004. When you renew your membership at one of the levels below, any amount beyond the regular Associate dues—\$22.00 plus \$5.00 for each additional household member—goes into the Endowment Fund.

<i>Individual Contributing, one person in household</i>	\$30
<i>Joint Contributing, two people in one household</i>	\$40
<i>Family Contributing, parents and children under 18</i>	\$50
<i>Patron</i>	\$100
<i>Sponsor</i>	\$250
<i>Benefactor</i>	\$500

Contact HCA Administrative Office at (614) 345-2932 for more information. The Endowment Committee wishes to thank those who have become Endowment Members and all of the individuals and study clubs that have so generously supported the HCA Endowment Fund. Your support will make the museum self-sustaining in the years to come. Thank you all! ♦



**Visit The
National
Heisey
Glass
Museum**

Come at your leisure to enjoy more than 4,800 pieces of glassware produced by A.H. Heisey and Company from 1896-1957. Hundreds of patterns are featured in all production colors. Rare and experimental items are included as well.

Facilities are air-conditioned and handicapped accessible. Hours are 10:00 a.m. to 4:00 p.m. Tuesday through Saturday, 1:00 to 4:00 p.m. Sunday. Members are admitted free, regular admission is \$2. Office hours are 8:00 a.m. to 4:30 p.m. weekdays.

Membership Renewal Notice: Check the date above your name and address on the mailing label. This is your expiration date. If it reads 1-10-97 make sure your dues are paid soon in order to receive next month's issue of Heisey News. Dues are \$22.00 per year, plus \$5.00 for each additional household member.

POSTMASTER SEND FORM 3579 TO:

**HCA
169 W. Church St.
Newark, OH 43055**



PERIODICAL POSTAGE PAID