

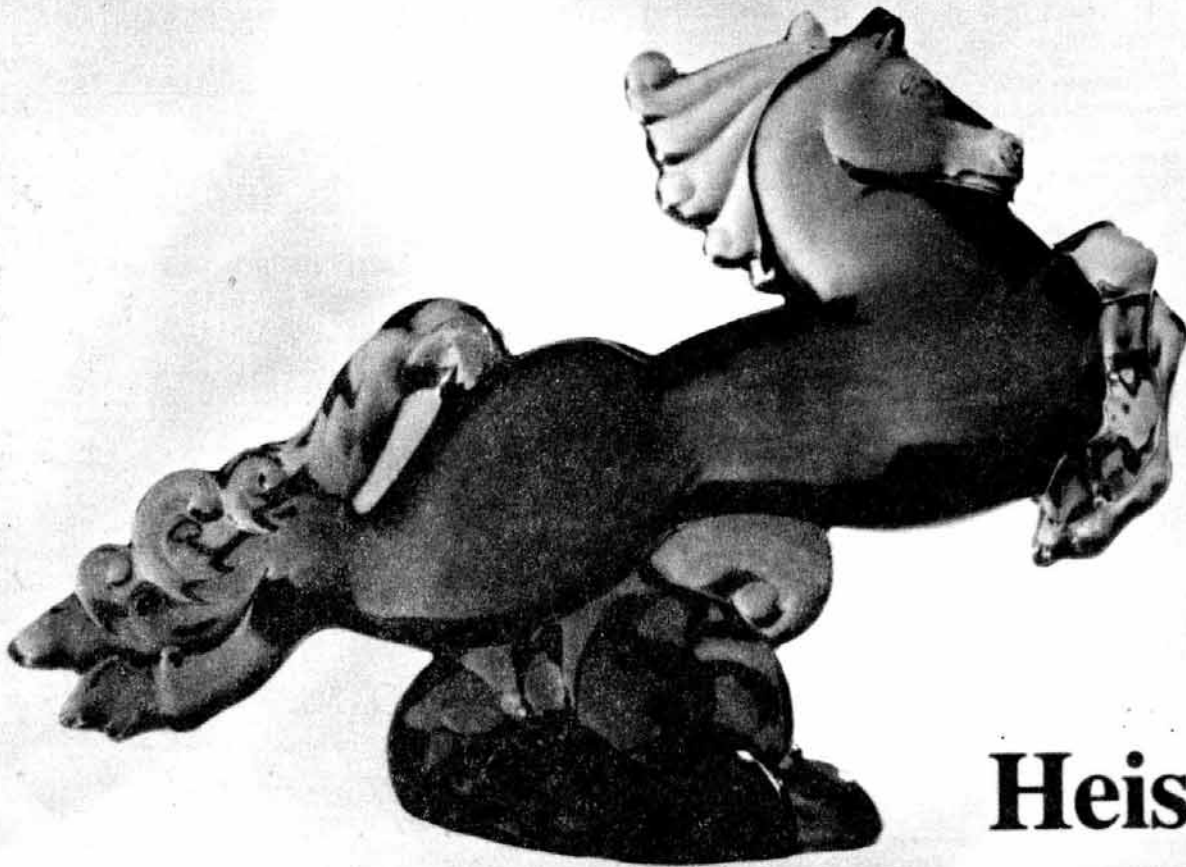
HEISEY *news*

OFFICIAL PUBLICATION HEISEY COLLECTORS OF AMERICA

© Heisey Collectors of America, Inc.
All Rights Reserved 1989

VOLUME XVIII NO. 10

NOVEMBER, 1989 ISSN 0731-8014



Heisey Collectors of America, Inc.
Newark, Ohio

Heisey



EXPIRATION DATE CHANGE

STARTING IN NOVEMBER YOUR MEMBERSHIPS WILL BE DATED AS OF THE 10TH OF THE MONTH. THIS EXPIRATION DATE WILL BE ON YOUR CARD AND ON YOUR LABEL ON THE COVER OF THE HEISEY NEWS. FOR EXAMPLE, 11/10/90.

IF YOUR DUES ARE NOT PAID BY THE 10TH YOU WILL NOT RECEIVE YOUR NEWSLETTER FOR THE FOLLOWING MONTH. AS IT IS, MANY PEOPLE PAY LATE AND WE HAVE TO SEND A NEWSLETTER OUT FIRST CLASS WHICH IS COSTLY.

EXPIRATION DATES ON REMINDER CARDS WILL STILL BE SENT AS USUAL AND BE SURE TO CHECK THE DATE IT MUST BE PAID BY TO ASSURE YOU OF RECEIVING ALL NEWSLETTERS FOR THE YEAR.

HEISEY NEWS

P.O. Box 4367, Newark, OH 43055

CLUB OFFICERS:

President - Bob Rarey (614) 279-0390
 Vice President - Dick Smith (614) 366-5163
 Secretary - Amy Jo Jones (513) 426-8668
 Treasurer - Betty Barnard (614) 366-7002
 Curator - Louise Ream

Editor: Louise Ream

P.O. Box 4367, Newark, Ohio 43055

PH: (614) 345-2932

Published in Newark, Ohio, Printed in Newark, Ohio.

\$15.00 per year - \$1.25 per copy

Back Issues - Each Volume (12 issues) year - \$9.00

Volume V, VIII, IX, X, XI, XII, XIII, XIV, XV, XVI, XVII

Heisey Collectors of America, Inc. is a non-profit corporation with tax exempt status. Owners and operators of National Heisey Glass Museum, 6th and Church Streets, Newark, Ohio.

Open daily 1-4 p.m. except holidays. Other hours by appointment. Members admitted free.

HEISEY NEWS

Heisey Collectors of America, Inc.

All Rights Reserved 1989 - ISSN 0731-8014

Published monthly, except twice in February, by Heisey Collectors of America, Inc., Newark, OH 43055. Second Class postage paid, Newark, Ohio 43055. Club membership (includes 13 issues of Heisey News and participation in all club activities) \$15.00 per year plus \$2.50 for each additional family member in same household who wishes a membership card. For Voting Membership add \$25.00 one time only fee.

POSTMASTER: Send address change to:

HCA, P.O. Box 4367, Newark, OH 43055

When requesting information, please enclose a self-addressed, stamped envelope (SASE).

ADVERTISING - Send all ads to: HCA - Advertising
 P.O. Box 4367
 Newark, Ohio 43055

DOUBLE SPACE ALL ADS

Rates:

CLASSIFIED: 15¢ per word. \$1.50 minimum.

ABBREVIATIONS AND INITIALS COUNT AS WORDS

DEALER DIRECTORY: \$25 per year.

Display:	Members:	Non-Members:
1/8 page (9 items)	\$20.00	\$ 30.00
1/4 page (20 items)	30.00	45.00
1/2 page (20 items) Hor.	45.00	67.00
1/2 page (50 items) Vert.	60.00	90.00
1 page (50 items)	75.00	112.50

Personal ads limited to 1/8 space.

ALL ADS MUST BE PREPAID. Ad copy must be received by the 5th of the month preceding the publication date-i.e. April 5th for May issue. Ads containing reproductions will not knowingly be accepted unless clearly stated (i.e. Heisey by Imperial, etc.). HEISEY NEWS assumes no responsibility for false advertising or misleading information. In the event of typographical error, the incorrect portion of the ad will be run in the following issue, but HEISEY NEWS assumes no further liability.

The opinions expressed in articles in HEISEY NEWS are those of the authors and not necessarily those of the organization. The Editorial Staff reserves the right to edit or refuse any material submitted for publication. When requesting information, please enclose a self-addressed stamped envelope (SASE).

NEW FROM THE MUSEUM GIFT GALLERY

WE HAVE RECENTLY ADDED GIFT CERTIFICATES TO THE ITEMS WHICH WE SELL IN THE GIFT SHOP. THESE CAN BE IN ANY AMOUNT YOU DESIRE. IF THE RECEIVER OF THE CERTIFICATE BUYS AN ITEM WHICH DOES NOT TAKE THE ENTIRE AMOUNT HE OR SHE CAN RECEIVE ANOTHER CERTIFICATE FOR THE BALANCE. IF THE BALANCE DUE IS LESS THAN \$5.00 A CASH RETURN WILL BE GIVEN IF DESIRED. (JUST SEND US A REQUEST AND A CHECK OR MONEY ORDER AND WE WILL SEND YOU THE CERTIFICATE, OR WE WILL SEND IT DIRECTLY TO THE PERSON FOR WHOM YOU BUY IT. IN THAT CASE, PLEASE GIVE US THE CORRECT NAME AND ADDRESS OF THE RECEIVER SO THAT WE WILL KNOW WHERE TO SEND IT.) THESE CERTIFICATES CAN BE USED AT HCA'S ALL-HEISEY AUCTION IN MARCH, TO PAY YOUR DUES OR ANY GIFT SHOP PURCHASES YOU MAY MAKE. ADDRESS YOUR ORDERS TO:

HCA GIFT GALLERY
 P.O. BOX 4367
 NEWARK, OHIO 43055

IF THE RECEIVER IS NOT FAMILIAR WITH OUR ITEMS WE HAVE FOR SALE, WE WILL BE HAPPY TO SEND A LISTING.

SEE NEW ITEMS IN THE CATALOG ON PAGES 21 AND 22 OF THIS ISSUE.

ABOUT THE COVER

Flying Mare Poster offered for sale on pages 2 and 22.

FROM YOUR PRESIDENT

The nip in the air and the falling leaves assure us that fall has arrived in Central Ohio. Where has the summer gone?

At the September Board of Directors Meeting, the Executive Committee was directed to receive quotes on roof repair at the Warehouse and authorized to have the work done as soon as possible. The Executive Committee voted to accept the low bid for this work, which will replace the existing flat roof with a sloping roof. The low bid of \$8,862.00 was nearly \$4,000 less than the second bid.

HCA is looking for an individual or individuals or a Study Club interested in taking over the management of the Flea Market on the Square. It is held each year on Saturday and Sunday of Convention Week and the weekend prior to Convention. The Buckeye Study Club has handled this project for the benefit of HCA for several years and has asked to be relieved. Any interested club or individuals should contact me or the HCA office for further details.

We expect to have some new items for sale in the gift shop for Christmas. Watch the Heisey News for the announcement. Gift Certificates are now available in any amount. Study Clubs may want to purchase one so that members can see the certificate. It is unique.

Dates to remember: December 9, HCA Annual Christmas Dinner, this year to be held at the Trout Club in Newark; March 9 & 10, Annual Museum Benefit Auction, Apple Tree Auction Center.

Get your donations and consignments in early. January 1, 1990, is the closing date.

Until next month, happy collecting

Bob Rarey

DATES TO REMEMBER

Nov 18, 19	All Glass Show, Armory, Southington, CT	Connecticut HCC
Dec 9	HCA Annual Christmas Dinner, Trout Club	HCA
March 3, 4	Glass Show San Mateo, California	Golden Gate HCC
March 9,10	Annual All-Heisey Auct Apple Tree Auct Center	HCA
March 16,17	All-Heisey Show, Silver Spring, Maryland	Natl. Capital HCC
June 14, 15, 16, 17	19th. Annual Convention 20th. Annual Glass Show & Display, Newark, Ohio	HCA

Dear Dealers:

Thank you so much for your kindness in remembering my husband, Bernie, by donating the Hi-Lo Vase to our favorite museum, and please forgive my delay in acknowledging your thoughtfulness.

Bernie was always so glad to be able to make the rounds at show-time, to chat with you all, to tell a story, and to listen to many stories from all of you. Thanks again! Sincerely,
Valli Feldman

FROM THE DESK OF THE EDITOR

Can you believe that it is getting close to Christmas, or will be when you receive this newsletter. Why don't you look at our list of items for sale in the gift gallery and order some of them for gifts?

Perhaps you were told that there would be no more Evergreen bells or baby cups. Since the few we had were made to finish out the pot of glass when the #1426 Clover Rope mugs were made, there were not too many of these items made.

It was decided to order 50 more mugs, and 50 each of plain and frosted bells. The quantities will still be quite limited but at least more of you can get them. The total of baby cups will be 93; plain bells 102 and frosted bells 73. There will be no more made.

At the same time we will be getting Ruby sparrows and cygnets from Viking Glass. These will be marked with HCA and a "D", and will be limited to approximately 300 each. We'll know the exact count when they arrive. A glass company doesn't know until something is made just what the exact count will be until it is finished. The cygnet will cost \$15.00 and the sparrow \$16.00

We are still offering the Flying Mare Poster which we advertised once before. At that time we did not have mailing tubes which would have made mail sales possible. Now we do have them so anyone can order the poster. The cost is \$8 plus shipping.

It is a beautiful full color photograph of an Amber flying mare. The size is 17 x 22 and it looks very well in a frame.

We also have three different Heisey posters from over 50 years ago. These are full color lithographs and came from the Heisey family. One shows Moon-bleam, Flamingo and Hawthorne and is 19" x 26".

The other two are from the Glass Secrets series, one with Flamingo glass, the other Moongleam. They depict scenes of early glassmaking. These are 19" x 28". You probably have seen this in old ads in magazines. All three of these posters are beautiful. Many people purchased them during the Convention. With the tubes, we will be able to send these to you through the mail for \$10 plus shipping.

Another nice gift for your collecting family or friends would be the gift certificates which we now sell in the gift gallery. These may be bought for any amount of money. If the receiver of the certificate buys an item which does not take the entire amount, he or she can receive another certificate for the balance. If the balance is less than \$5, a cash refund will be given. (See more information on this on page 2 of this issue.)

We are looking forward to the Christmas dinner and hope that you can attend. We'll list any animals that will be auctioned in next month's Heisey News. See the details on page 23.

We have had many visitors this fall and also a lot of bus tours. More people seem to be just getting into collecting Heisey and it is pleasant to see their enthusiasm. A lot of the new members are young which is also good for the club.

Happy Thanksgiving,

Louise Ream

By Tom Felt

Although it was not unusual for manufacturers of glassware in the 1890's and early 1900's to give names to their patterns, it wasn't until 1902, that Heisey adopted this practice for the first time. All of the patterns that we have considered so far in this series of articles were named by researchers. From here on, most major patterns will have names assigned by Heisey.

There were probably three such patterns which came out more or less simultaneously in 1902. One of these, no. 333 Waldorf Astoria, was never advertised. The other two, no. 335 Prince of Wales Plumes and no. 337 Touraine were featured extensively in the trade journals.

We'll take a closer look at Touraine next month, but it is worth noting now that there couldn't be a greater contrast imaginable between the two patterns: Touraine is completely plain whereas Prince of Wales is one of the most ornate designs brought out by Heisey in the early years.

It is also one of the first pattern names out of many in the years to come which to evince a definite anglophilia on the part of the Heiseys. (One has only to think of the two Queen Ann patterns, the Coronation etching, etc.) And it was definitely apropos: just days before the first advertisements appeared in The House Furnisher: China, Glass and Pottery Review, the Prince of Wales had ascended the throne of England becoming King Edward VII, succeeding Queen Victoria, the long-lived monarch who had probably given him (and everyone else) occasion to wonder whether he would ever have the opportunity to reign at all.

The initial two-page advertisement was in the February 5, 1902, issue and featured the table set (sugar, cream, spoon and butter), the 5-in. shallow footed jelly, 5-in. handled jelly, 4½-in. nappy, no. 3 salt, toothpick holder, 8-in. nappy, salted almond tray, finger bowl plate, custard, tumbler, ½-gallon pitcher, and no. 2 salt. These same pieces were also shown in two separate advertisements in the Crockery and Glass Journal in the February 27, and March 6, issues. Then, seven months later, a third ad appeared in the September 5, 1902, number of The House Furnisher: China, Glass and Pottery Review, depicting the bitters bottle, salted almond tray, 3-in. footed rose bowl, and 12-in. oval dish. The same issue stated that Heisey's "figured no. 335, which includes every article that goes to make up a complete line of table glassware, is one which the best dealers in the country are handling successfully, and which any merchant can take with full confidence that it will sell rapidly." Of even more interest, considering the pattern name, they go on to say that in its sales of both this pattern and Touraine, "the factory has not only been able to do a heavy business in the United States, but has won a firm place in the English markets."

According to price lists there were at least 65 items in this line, so it was a complete pattern, though curiously it lacked stemware (except for a footed egg cup). Most of the handled pieces have applied handles, instead of molded ones (again, with one exception, the handled jelly, as can be seen in the accompanying ad). Some of the footed pieces

come in two parts, base and bowl being separate, presumably because this is such a heavy, massive pattern. The line was made in Crystal only and can be found with Heisey's no. 1 gold decoration on the plain portion above the figure and in the plain elliptical ovals between the "plumes." Soon after it came out, it was mentioned in the Crockery and Glass Journal that the Oriental Glass company was offering the pattern with ruby and gold band decorations. Other companies may have also decorated this line, which is sometimes seen with souvenir inscriptions as well. The ruby stain may appear just on the plain edge above the figured portion of the design and sometimes in the elliptical ovals.

Most pieces, though not all, are marked with the Diamond H. This seems to have been a very popular line, possibly remaining in production as late as 1912, though more than half the line was discontinued sometime after 1905.

If you've paid any attention lately to the tabloids in the supermarket line, you'll know that the American love affair with British royalty is still going strong -- and I think it's safe to say that our love affair with Prince of Wales Plumes will continue for a long time to come as well.

- No. 1 -



No. 335 PATTERN
THE PRINCE OF WALES PLUMES

MANUFACTURED EXCLUSIVELY BY
A. H. HEISEY & Co.
INCORPORATED
NEWARK, OHIO



5-IN. FOOTED JELLY - SHALLOW



5-IN. HANDLED JELLY



5-IN. NAPPY



SUGAR AND COVER



SPOON



CREAM



No. 2 SALT OR PEPPER BOTTLE
NEURAL PLATED TOP



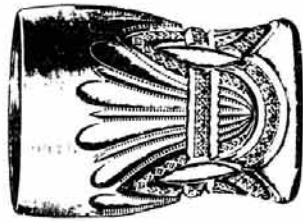
BUTTER AND COVER



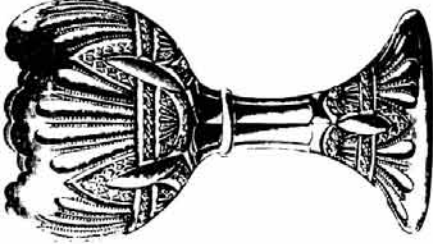
TOOTHPICK

NEW YORK REPRESENTATIVE
CLARENCE BAXTER MARTER
 12 WEST BROADWAY

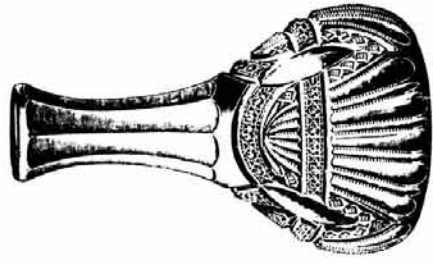
- No. 3 -



TUMBLER



3-INCH FOOTED ROSE BOWL



BITTER

MANUFACTURED EXCLUSIVELY BY
A. H. HEISEY & Co.
INCORPORATED
NEWARK
OHIO



SALTED ALMOND TRAY



12-INCH OVAL DISH



TRADE MARK

No. 335 PATTERN

- No. 2 -

TRADE MARK
No. 335 PATTERN
THE
PRINCE OF WALES PLUMES
 TRADE MARK

PHILADELPHIA REPRESENTATIVE
THOMAS DOWNS
 1111 MARKET STREET



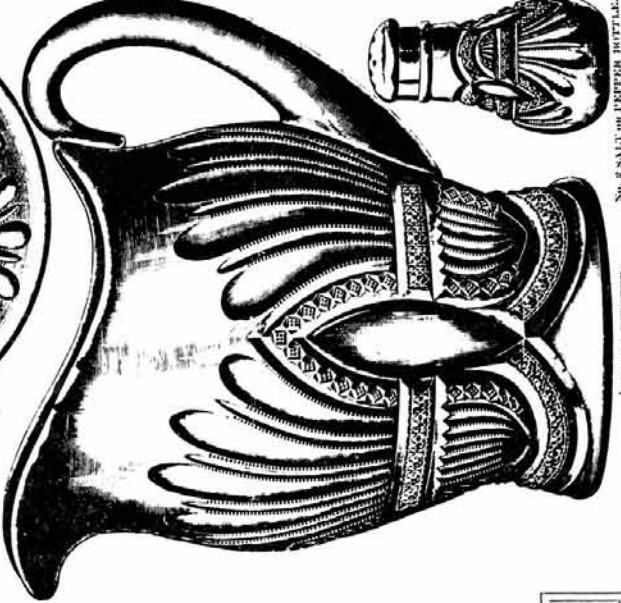
SALT. ORANGE BOWL



FINGER BOWL PLATE



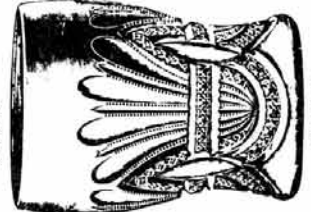
SALTED ALMOND TRAY



7-GALLON PITCHER



CUSTARD



TUMBLER

BALTIMORE REPRESENTATIVE
T. E. GODWIN
 5 WEST GERMAN STREET

No. 2 SALT ORANGE BOTTLE
 BALTIMORE PATTERN



11" or 12" salver



Molasses Can



7 oz syrup jug



Pickle Tray



Spoon Tray



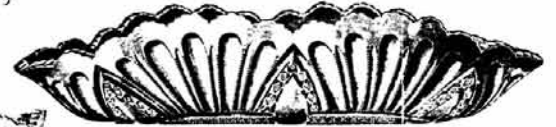
Footed Bowl, flared



6 oz Oil Bottle



Footed Jelly



10" Celery Tray



Oblong Berry Bowl



10 1/2" Oval Dish



10" ftd Bowl, shallow



7" Nappy



9" Oval Dish



10" Orange Bowl



Hotel Sugar



Hotel Cream
Stuck Handle



1/2 gallon Tankard
stuck handle



Water Bottle



Brandy Bottle



Finger Bowl



Finger Bowl, flared



Finger Bowl, cupped



Egg Cup



5" round Handled Jelly

ARCHIVES YIELD IMPORTANT NEW INFORMATION

A NEW COLOR DISCOVERED!

By Nella Bredehoft

Some of the more valuable items we received in the archives donated by the Heisey family include several old ledgers which are annual inventory books. While not exactly telling us what the company was making at the time, as the turn books do, these tell us what stock the company had on hand for sale. The books discussed here begin in July, 1901 and end with July, 1903. There are a few more in our collection, but these are the only ones concerning this article.

Many interesting tidbits are included in these pages, and after further study I am sure more will surface. We will get a better feeling for early Heisey production from study of these volumes. Some of the interesting items include lists of pieces and patterns in **emerald**, **ivory** and **opal**. A few scant notations are made for **opalescent** ware (more about that in another column).

For years we have known the existence of several pieces of old patterns such as *Pillows* in what we determined was Flamingo. Speculation to explain these pieces was that they were made when Flamingo was being tested and the old molds were used to show how the color would look when actually pressed into a piece of glass. In retrospect, this does seem rather complicated and unnecessary. Surely the company could have "tested" the color in molds currently being used and not bothered resurrecting an old mold which most certainly was stored in an inconvenient place, reconditioned, moved to the furnace area and warmed in. A lot of work for just a color test!

The mystery of these pieces is now solved. In the July, 1901 inventory I found the following lists:

- "300 [*Peerless*] #1 candle - rose 3 2/3 doz.
- "305 [*Punty and Diamond Point*] celery - rose 1"
- "325 [*Pillows*]
- Cream* - 7
- 4" *nappy* - 12
- 5" *nappy* - 6
- 7" *nappy* - 4
- 8" *nappy* - 4
- 9" *nappy* - 4
- 3 qt. *Jug* - 5
- egg cup* - 3
- water bottle* - 3
- tall celery* - 4"

All the *Pillows* items were listed in rose and valued at \$5.00. That's total, not per piece! Apparently the experiment with rose colored pieces began before July, 1901. By that time, they were considered almost completely valueless by the company.

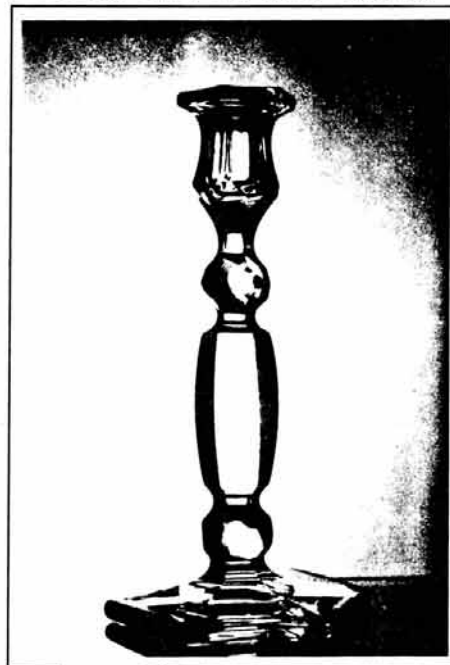
In July, 1902 the inventory had two interesting entries that may bear on this subject. The first listed 300 1/2 vases, #1, #2, #3, #00, #000 in red. Whether this is really meant to be red or actually an entry for rose is uncertain. I believe that it is meant to be rose since we have known about 300 1/2 vases in pink, although we formerly thought these were Flamingo. The other item mentioned in rose is a 381 Holophane shade, of which there were 2 dozen in the inventory.

By the July, 1903 inventory, no rose or red items were listed except for one entry which read: "325 [*Pillows*] assorted vases-rose".

We also have a 310 *Ring Band* spooner in the museum, but I found no listing for this pattern in rose, although it was listed in Ivory. The early listing of this color as rose may also help to explain later entries in turn books when workers listed the very first Flamingo items as rose. Some of them, at least, probably remembered the early rose color, even if it was only made in very small amounts.

It was a thrill for me to find even such scanty information as this about a new color! We will now have to add **ROSE** to our list of early era colors. It is not often that a discovery of such significance is found when researching glass such as Heisey which has been intensely studied for over 20 years. If you had a complete collection of the Heisey colors, you might not have now! Good luck in trying to find an example of Heisey's color Rose.

These are the items we have seen in "Rose". The museum owns the water bottle.



#1 Georgian - formerly called #1 Peerless



6" Pickle Dish



Molasses Can



Water Bottle



2 qt. Pitcher

diamonds are forever . . .

by Janet Caswell

Let me tell you about another historic street in the Yachting Center; "Looking Court" providing a grand view, one of the best in town. The "Lookout" itself is a three storied Georgian type home, adorned with especially fine fanlight and fluted pilasters in the colonial doorway. This door was used in the year 1922 for a scene in the film "Heart of a Hero". The rooms are low studded, and boasts a Beehive fireplace. The staircases rise at sharp angles, nearly vertical, such as in a ship. Here in a small but cozy room the pilot and customs officer, in the 1800's, watched for incoming ships. In 1920 the house was sold and the new owner, Waldo Ballard, started renovation. While removing many layers of yellowed old paper, the famous Washington Memorial wallpaper that had been struck off by orders of congress at the time of Washington's death was found. Sets were made for the thirteen states only, one being given to each of the Governors. The one for Massachusetts fell into the hands of Mr. Dixey, (the man who built the lookout) and he used it in his home. The design represents "Liberty" and "Justice" placing wreaths at the foot of the monument erected to Washington showing the coat of arms of the Washington family. Mr. Ballard, being skilled in copying and designing wallpapers, made fifty panels of this historic paper for the house.

"The Land of Lincoln" (ill) brought forth a new contributor to "diamonds are forever" and also new collectors of Heisey. In the past, Rookwood, Carnival and Fenton were his focal point; today, these are things of the past. He was given part of his mother's Heisey collection, a few years ago, and decided this year to come to Ohio to see the glass and pottery museums. It was suggested that while in Ohio some of their lesser items be sold. Instead, they traded rather than sell. When his "other half" visited the Heisey Museum, she was hooked. While in Newark a few things were acquired: #1205 Fancy Loop one piece footed punch bowl; nine (9) Fancy Loop custard cups; #1205 Fancy Loop claret jug; #1200 Cut Block ½ gallon tankard with Lily of the Valley cutting; #150 Pointed Oval in Diamond Point half gallon pitcher in --- ready? --- Emerald; Homey Amber standing pony; Slash & Panel (single row) 8" nappy. Needless to say, they were a very excited pair of "Heisey Cohorts".

Also heard from was the "Compassionate Beaver" from Oregon who said she found some "great" things: let's see--the Opal Beaded Swag syrup or molasses plus the individual creamer in #1235 Beaded Panel & Sunburst. Yes, I might say these belong in the "great" category or maybe ample, celebrated, or even momentous. From the "Sooner State" the "Okew Milkman" discovered (sitting on a back stoop?) the majestic #1295 Beaded Swag ½ gallon tankard in Emerald. He also saw the #379 Urn pitcher (he didn't state whether it was the jug or the tankard - oh well, it really doesn't much matter because when he went back to claim it as his - alas, it was gone.) Sound familiar?

"Cruet Man" from the Golden State (ca) enjoys talking to people, all people, and it very often pays off. In discussing his favorite subject - cruets, (Heisey cruets, that is) he was able to locate and add the #1485 Saturn 4 oz cruet to his collection. Absolutely mint condition. Excuse me, did

the color slip my mind? Does Limelight sound suitable? Yes! Then Limelight it will be.

Let me relate an exciting story; at least it was exciting to me. While I was browsing thru a current magazine, during lunch, there was an article called "Look What I Found!" (showing how 'flea' markets yield a cornucopia of treasures to brighten any home). On the third page of this article was a picture entitled "Glass Truly Brings a Room to Life". An insert of Ruby glass was shown at the bottom of the page, a beautiful hanging glass chandelier and pictured on the table were several pair of candlesticks. Among these sticks was a beautiful pair of Heisey #5 Patrician (probably 9" tall) plus in the center of the table was the #1201 Fandango punch bowl. This is one of the things I look for while going thru magazines, Heisey. Every now and again I am thrilled to discover a piece of two displayed in an ad or room layout. The magazine was September, 1989, Journal.

There is a person I know who is "Hooked on Heisey" and he tells me (and this is the first time he has written me with his finds and hopefully it won't be the last) he acquired the Crystolite #1503 9" vase plus the Crystolite Aster vase.

The "Steadfast Colleague" from (mi) said he had the #1205½ salt bottles and a #433 small spoon holder.

The "Canadian Goose" was very surprised to find a pair of #137 Concave Circle candlesticks in Sahara. This is a very nice addition to any collection. Not everyone has a pair of these little beauties. She also took possession of a #24 salt shaker which was, believe it or not, "thrown in" because she bought a book that she needed and the store keeper wanted to get rid of. Some people have all the luck!

The "La Pelican" found a Moongleam #4229 favor vase. It was in Mobile at a flea market, spotted on a high shelf from about thirty feet away. "There is a Heisey favor vase", he said! Yes, it was, but with a small chip - who cares, the price was right, very right! They carried it to Houston where another glass show was attended, there a glass repairman took the little favor vase and made it beautiful again.

"The Rebel" from the Bay State (ma) has the #1183 Revere divided mayo with sterling base and a cutting.

While "The Cardinal", also from the Bay State, acquired the lovely #353 Medium Flat Panel tumbler in Amber! He purchased that one at an auction and was just - a - chirruping all the way back to his nest.

My "Sharp Eyed Friend" came up with the #1541 Athena (reverse S) 13" torte plate (this pattern was sold by Montgomery Ward); also a #602 beer mug, 10 ounce.

Did I ever tell you about the time that we were invited to visit a lady we knew who wanted to see pictures of the Heisey Convention? We went over for the evening and after looking at pictures and slides for about an hour or more she served us cake and cold drinks from Crystolite. The Crystolite was given to her years before as wedding presents. Let me tell you that cake and cold drinks tasted so good. Before we left to come home the lady gave us each the glass we had our drink in to take with us. What a nice surprise, and what a lovely lady! Happy Hunting and Happy Thanksgiving.

MARCH HEISEY BENEFIT AUCTION

By Bob Ryan

The 1990 March Benefit Auction will be held on March 9 and 10 at the Appletree Auction Center in Newark, Ohio.

It is that time of the year to choose those great pieces of Heisey glass, pack them well and get them to H.C.A., 169 West Church Street, Newark, Ohio 43055. Mark your packages for the March Benefit Auction. Be sure to make two lists using the form found elsewhere in this newsletter; include a copy of the list with your glass and keep one for your records.

Each family may consign 12 lots and as many donated lots as they want. A lot may consist of one item or several items grouped together, eg., a #1404 creamer and a #1425 sugar or (4) #3350 Wabash goblets and (3) plates, etc. Remember, the auction fee is 20% on all consignments with a minimum fee of \$5.00, eg., if you consign a sherbet that brings \$6.00 you will realize \$1.00 on that sale. All consignments for this auction should be received by January 1, 1990. Clean undamaged glass brings better prices. Absentee bidding will be available again this year, but more about that later as we get closer to the auction date.

The Benefit Auction is the largest fund raiser for the club and has been well supported for which

we are very grateful. It would be great if we could have every Heisey member donate one item of Heisey glass; or, if you just can't part with any of your glass how about adding your cash donation to the auction receipts?

This year, Jim Clark of New Carlisle, Ohio, will be co-chairman. Jim brings a lot of energy and enthusiasm to the committee and along with all of the other members of last year's committee, we promise you some pleasant surprises. If you would like to join in the fun (there is a lot of work connected with the auction, also) let Jim or me know.

If at all possible, clear those dates on your calendar so that you will be able to enjoy the great time that was had by all those who attended last year's auction. It is a good opportunity to buy some great pieces of your favorite glass and renew or make new friendships. It all depends on you all; choose that glass and get it to Newark early, as there are a lot of decisions that have to be made and if we have the glass early, you help us make good decisions. Be prompt and please participate. We, H.C.A., need your glass consignments and donations.

I'm looking for some of you "olde timers" who have been missing out on this great happening; come on, get with it, have some fun and make some money too. If you don't need the money and can use a tax write off send a box or two as a donation.

We would like to have at least 1,000 lots for the auction. Overwhelm us, I dare you!!



AUCTION LIST FORM

Lot#	Item#	Patt- ern#	Pattern Name	Size	Item Description	Cutting/Etch	Color	# In Lot	◆	Dam- age

CLUB NOTES

BAY STATE HCC

By George Gleason

"We're Back" - The Bay State Heisey Collectors Club held its first meeting on September 12, 1989, after a long summer hiatus. Steve Pescatore called the meeting to order with secretary and treasurer reports accepted as read. Susan Pescatore gave a report on the convention in Ohio.

By her report and all accounts of the convention, it was a huge success. Our display, done by Susan Pescatore, Donald Macomber and Janet Caswell, was a Christmas package come true. They did an excellent job. Kudos to all who helped her here in the Bay State as well as in Ohio.

Gary Olson gave a final report on our 1989 Glass Show and by his report it was the best show ever. Thanks to Gary and all who helped make the show a great success.

Show and Tell was done jointly by Susan Pescatore and David Steer. A list of what was brought for show and tell follows: (2) #325 Pillows rose bowls; #1540 Lariat mayo; #1255 Pineapple & Fan cake salver; #4004 Impromptu stem; #1519 Waverly covered cheese; #4044 New Era candlesticks; #3397 Gascony tumbler with #459 Fisherman Etch; #325 Pillows punch cups with Ruby stain; #1567 Plantation candlestick; #1567 Plantation salt; #1201 Fandango cruet; #352 Flat Panel cruet; #325 Pillows egg cup; #393½ Narrow Flute biscuit tray; #4227 favor vase in Cobalt; #4229 favor vases in Sahara and Cobalt; #4230 favor vase in Crystal; #4230 favor vase in Sahara; #343 Sunburst rose bowl; #1401 Empress 3-part relish in Alexandrite; #3481 Glenford stem in Alexandrite; #1205 Fancy Loop cruet with Gold overlay; #1250 Groove & Slash spooner; #4091 Kimberly stem; #341 Puritan footed butter; #1221 Souffle stem.

This is just a sample of what was brought. We, in the Bay State, didn't waste any time this summer by what was found. Keep it up, you glass hounds.

Refreshments for the evening were provided by Judy and Andy Sanderson. They put on an epicurean delight to all palates. They really did a good job!

We will be back again next month so keep on finding those good finds!

YANKEE HEISEY CLUB

By Don Bean

The annual meeting of the Yankee Heisey Club was held on Sunday, September 17, 1989, at the home of Cynthia and Paul Vielleux in Wrentham, Massachusetts.

The new slate of officers for the coming year were installed as follows: Betty Bean, President; Ed Morin, Vice President; Phyllis Zona, Secretary; Charlie Horsfall, Treasurer.

Following the business meeting a fund raising auction was held with Jim Haughton serving as auctioneer.

A delicious buffet, served by the hostess, was enjoyed by all.

HEISEY CLUB OF CALIFORNIA

By Roy T. Boggs

Heisey Club of California met on September 24, at the home of Joyce and Gene Moenning, near Capistrano.

During the routine business, Chuck Fowler, chairing the nominating committee, announced they will soon be contacting prospective '90 officers; the proposed slate will be ready for the October election.

After the conclusion of business, our host gave the program on the "twins" Lodestar 1632-Satellite 1626. Most club members were surprised by the paucity of items available among those present, testifying in no uncertain terms to the lack of these items on the collectors market.

As an added fillip, Gene pleased the assemblage with a review of several of his more unusual - read that "striking" - items in his collection. His items of Pineapple & Fan vases (alone) are enough to make many collectors green, and I don't mean Emerald or Moongleam.

Several of our relatively newer members have really excelled, both in their knowledge and acquisitions, and are competing effectively with long-time members. Hurray! Hurray!

Show and tell, with many beautiful and desirable items gracing the display table, was followed by refreshments and a pleasant social hour.

A first time visitor drew her own ticket and carried away the door prize, (a beautiful Moongleam candlestick). In spite of this, sojourners are always welcome to visit and enjoy.

ROCHESTER AREA HEISEY COLLECTORS

By George J. Reynolds

Since our club has not had a formal meeting since May, we felt that the world should be informed that we are still here.

RAHCC was well represented at the HCA Souvenir dinner and show. Marge and Jerry Gillette, Marvin and Lois Jacob and Arlene and I were all there. However, Arlene and I did not attend the dinner. The show, held at the Appletree Auction House, was a marked improvement over the previous location in the tent. Sam deserves a lot of credit for all he does for HCA. The use of the auction house was donated by Sam for the show and dinner.

While we were in Ohio, the Mike Clum Auction House opened a new building in Rushville. There were sixteen pairs of candles advertised. Therefore, I decided to attend this premier event. The sixteen pair of candles turned out to be all Skirted Panel. After this disappointment we just stayed to watch another well run auction. Did get a nice mechanical elephant though. It seems that Ohio has the best run auctions in the country, at least compared with the events we have attended here in the Rochester area.

The shows continued fast and furious all summer long in this area. We drove to Clayton, New York, in August to a very nice show. Clayton is on the St. Lawrence river north of here. When we arrived the first thing we did was look for a restaurant, of course, the minute we saw one named O'Brien's we headed right for it. Marge and Jerry Gillette beat us though, they were waiting at a table as we

continued on next page

. . . Club Notes continued - Rochester Area

entered. The show was a productive one for us, we found a nice #459 basket with cutting and another #458, also with a nice cutting.

On the way home from Ohio, we stopped at a beautiful show in Greensburg, Pennsylvania. They had a great selection of glass and just about anything else you might collect. Their Art Glass display was the best we have ever seen. If you have the funds, be sure and catch the spring show. The boss found a nice Bonnet basket in a far corner.

This past weekend, the Rochester Depression Glass Club held its annual show in the Rochester Museum and Science Center. Several members of our Heisey Club belong to the Depression club as well. Although a small show, nineteen dealers, it is very well attended every year. This year was no exception. There were people from as far away as Canada, New Jersey, etc, in attendance. We had the good fortune to meet the founder of the Connecticut Heisey Club, her name is Clara Nelson, a lovely lady. She was set up helping another dealer next to Shirley Graff from Ohio. One of the attractions at this show is the display at the entrance. Sharon Orienter arranged this display with her usual wonderful flair. This year there was a competition among the various displays. You will be happy to know that Arlene Reynolds won, in a tie, the first prize with her Plantation display. Actually, I didn't think there was any comparison, but the customers did the voting and they were depression glass collectors. There was a great deal of Heisey in this show, although not considered depression glass in anyone's mind, a lot of it was made during this period.

That's it for this one, did you all know that Bill Heron was a grandfather? It doesn't seem possible.

Our quote for the month - "I find no sweeter fat than sticks to me own bones". (C.S.)

NORTHWEST HEISEY COLLECTORS CLUB

By Nancy Alderson

The August meeting was held at the home of Fred and Clara Olsen of Bellingham, Washington. President, Mary LaPosa, presided over the study meeting on stems and cuttings. Many new and interesting pieces were on display. Marilyn Pederson and Lu-vonne Nelson were co-hosts and the "show and tell" portion of the afternoon was followed by a terrific potluck. Tables were set on the Olsen's deck overlooking Bellingham Bay and the San Juan Islands. Eighty degrees and calm waters made this a meeting to remember.

September 9th meeting found this enthusiastic collector's group at the home of President, Mary LaPosa, in Tacoma, Washington. Vice President, Jamie Robinson, co-hosting, and each member contributing to the program on tortes, desserts, and luncheon plates. Many wonderful pieces had been found over the summer: including a Narrow Flute strawberry and powdered sugar dish; Stanhope individual nut with handle; Wabash stem with Frontenac etch; just to name a few.

The October meeting will be held at the home of Secretary, Glenna Wehmeyer, and husband, Don. Meetings are held the first Saturday of the month and

guests are welcome. For more information contact Don Wehmeyer of Seattle at (206) 546-2812.

GATEWAY HEISEY COLLECTORS CLUB OF PITTSBURGH, PENNSYLVANIA

By Phyllis Freier

All the members of the Gateway Heisey Collectors Club of Pittsburgh, Pennsylvania, were in a jovial mood, as they traveled over the hills of western Pennsylvania to the home of Margaret Reed for the October meeting.

Reports of the various committees were given in the business meeting conducted by our President, Harry Freier. We searched for ways to increase our treasury. It was decided we would have a blind and silent auction at our next meeting. Each object for the auction is to be wrapped and worth between \$2 and \$5. This should be a fun auction.

Robbie Stoll was accepted as our newest member.

Many facts were presented by Marge Satryan in her program on Ruby stain. Marge surprised us all when she told us most of the Ruby staining was done in the Pittsburgh area. The Oriental Glass Company did most of the Heisey glass. The thirteen patterns which were Ruby stained were:

- | | |
|---------------------|----------------------------|
| 1. Pineapple & Fan | *6. Wig Wam |
| 2. Plain Band | 7. Beaded Panel & Sunburst |
| 3. Punt Band | |
| 4. Prince of Wales | 8. Cut Block |
| 5. Old Queen Ann | 9. Fancy Loop |
| 10. Locket on Chain | |
| 11. Pillows | |
| 12. Peerless | |
| 13. Beaded Swag | |

We also learned that Ruby stain is the proper name for what we usually call Ruby flash.

Some of our members were very excited about their Heisey finds. The most unusual items in Show and Tell were a Heisey Goose, wings down; a small elephant; mallard; Heisey sparky; Waldorf Astoria toothpick.

We are all saddened by the departure of Ann and Bill Donaldson for Florida. Our loss will be the Florida clubs gain. We all wish Ann and Bill the best of everything and hope they will soon be back for a visit.

After Margaret served an elegant dinner, featuring a pumpkin ice cream pie, we bade our adieus.

We are always looking for new members. SO - if you live in the area, and if you are interested, please call 741-5368.

* We are unaware of this pattern. L.R.

GULF COAST HEISEY CLUB
MEETING - WEDS., NOVEMBER 15, 2:00 P.M.
AT THE HOME OF DOT AND CAL MEYER
GAINESVILLE, FLORIDA
VISITORS ARE WELCOME
IF YOU'D LIKE TO ATTEND
CALL 904-335-0664
OR
WRITE P.O. BOX 8092, 32605

J. R. COLLECTIBLES
 P.O. BOX 1030
 NEWARK, OHIO 43055

PH: 614-344-9719
 UPS & INS EXTRA
 * = MARKED

1506 Whirlpool 3-lite c'stk, 1st design pr	\$ 87.50
Mallard, wings down*	225.00
1591 Fairy tale mug*	295.00
1210 Frog h'lded 6" cheese plate	125.00
1434 Tom & Jerry mug*	110.00
5067 Plantation 10 oz gob, faint * (8) ea	35.00
5072 Rose 4 oz ck'tl, Rose Etch (8) . . ea	65.00
4225 Cobel 1 qt ck'tl shkr, Orchid Etch .	195.00
3416 Barbara Fritchie gob, Del Monte Cut*	55.00
3304 Universal 4½ oz claret, Fox Chase Etch	45.00
5010 Symphone 4½ oz oyst ck'tl, Minuet (8)ea	48.00
1519 Waverly 6" low ftd comport, Amber	275.00
1401 Empress 8" sq plates*, Tang (4) . ea	135.00
1632 Lodestar 7½" crimped bowl*	32.50
1567 Plantation cup* & sauc (5) set	60.00
1590 Zodiac 4½" cov'd ftd candy jar** . .	125.00
Asiatic pheasant*	325.00
343 Sunburst salt & pep w/#2 tops . . pr	95.00
3390 Carcassone cig hldr, W0, Cobalt bowl	65.00
357 Duck Ashtray*, Flamingo	155.00
5003 Crystolite 1 oz cordial, W0	95.00
3381 Creole 2½ oz ftd bar, D0, Alexandrite	195.00
3381 Creole tall sau champ, Alex bowl (2)ea	150.00
1567 Plantation cov'd marmalade*	120.00
1567 Plantation 5" cov'd compote*	110.00
2052 1½ oz bar, Club Drinking Scene . . .	65.00
5010 Symphone 1 oz cordial, Crinoline Etch	87.50
3416 Barbara Fritchie 1 oz cordial*, W0	87.50
3416 Barbara Fritchie ¾ oz brandy*, W0	87.50
3416 Barbara Fritchie ¾ oz brandy*, Cobalt Bowl	275.00
Giraffe, head back	165.00
1469 Ridgeleigh coasters, 8", Sahara, Original Jewelers Box set	165.00
461 Basket, 7", beautiful Butterfly Cut*	210.00
341 Puritan ice tub w/drainr*	125.00
1205 Fancy Loop wine (4) ea	27.50
1469 Ridgeleigh 6" candle vase, Zircon . .	150.00
2401 Soda, 12 oz, Polo Player Etch (2) ea	55.00
1519 Waverly 7" salad plates, Orchid Etch, (8) ea	20.00
1509 Queen Ann 12" cheese & cracker plate w/5½" ftd cheese, Orchid Etch . set	135.00
1519 Waverly 12" crimped bowl, Rose Etch	110.00
Horsehead stopper, small	72.50
4052 National 10 oz bever., Moonglo Cut (6) ea	15.00
1184 Yeoman 10½" dinner plates, Empress Etch (6) ea	55.00
1469 Ridgeleigh 5 oz sauc champ* (8) . ea	27.50
335 Prince of Wales cov'd butter* . . .	140.00
1428 Warwick 2-lite c'stk*, Sahara . . pr	140.00
4057 vase, 10½", Orchid Etch	375.00
1567 Plantation 8" plates (8) ea	25.00
SPECIAL - Goose, wings ½ up	80.00
SPECIAL - Goose, wings up	105.00
SPECIAL - 77 & 78 Oscars	50.00

Layaways welcome. Purchases made prior to Dec. 1st. shipped by Dec. 15th. - Merry Christmas!

Thank you for shopping J & R Collectibles.

* TALL OAKS ANTIQUES PH: 219-696-0147
 * MIKE & BARB ROSENBERGER UPS & INS EXTRA
 * 565 N. NICHOLS STREET H = MARKED
 * LOWELL, IN 46356

* 300 Colonial ind. cr & sug, Moongleam, H	\$ 57.50
* 300½ Colonial cream & sugar, H	35.00
* 242 Colonial bar tumbler, 2½ oz, H (2) ea	19.75
* 373 Colonial goblets, 9 oz, H (5) . . ea	19.00
. all	82.00
* 393 Narrow Flute banana split, H (4) ea	30.00
* 429 Colonial 5½ oz egg, H	21.50
* 1125 Starburst sand server w/ctr h'lde, Etched, H H	27.50
* 1186 Yeoman comport, Flamingo, H	34.50
* 1229 Octagon ind. nut, Flamingo, H (3) ea	23.00
* 1252 Twist 2" candlehldr, Moongleam, H pr	49.50
* 1401 Empress 6" sq comport, H	42.50
* 1404 Old Sandwich oval creamer, H . . .	16.50
* 1433 Thumbprint & Panel candlehldr . . pr	57.50
* 1489 Puritan cig box w/lid, 4½", paper label (small flake inside)	42.50
* 1489½ Puritan cig box w/Horse head lid, 6½"	125.00
* 1503 Crystolite cig box, 4", H	25.00
* 1503 Crystolite ftd oval nut, H	29.00
* 1567 Plantation butter or candy lid . . .	29.50
* 4044 New Era 3½ oz cocktail, H (2) . . ea	27.50
* 4044 New Era sauc champagne, H (2) 1-(small flake rim). ea	17.50

* Looking for #411 8" plates & 5" lemon dish w/cover
 * and 417 basket - "Crystal or Hawthorne".
 ** * * * * *

* JUNE WIRTANEN PH: 218-724-0238
 * 2128 EAST 4TH. ST. * = MARKED
 * DULUTH, MN 55812

HEISEY CRYSTAL ANIMALS

* Rooster Vase	\$125.00
* Scotty	145.00
* Duckling, standing* (2)	190.00
* Mallard, wings half - paper label	175.00
* Fish bookend	125.00
* Fish bowl	650.00
* Giraffe, head back	225.00
* Goose, wings down	375.00
* Goose, wings half	100.00
* Goose, wings up	115.00
* Plug Horse	115.00
* Pony, rearing	190.00
* Pony, kicking	250.00
* Pony, standing	125.00
* Horsehead bookend	150.00
* Ringneck pheasant	150.00
* Asiatic pheasant	350.00
* Pouter pigeon*	950.00
* Bunny, head up	175.00
* Sparrow	100.00

* Land of Legend Plates by Imperial - set of 6, 1971-1976 all 300.00
 * Carnival Mug by Imp mk'd EWR - Nixon--Agnew 75.00
 * Blue Dumbo Mug by Imperial mk'd 1969 EWR - Nixon--Agnew 90.00
 * ALSO HAVE CARMEL SLAG ANIMALS & MUGS BY IMPERIAL - WRITE OR CALL.

H & R DIAMOND H
HELEN - BOB RAREY
1450 WHITE ASH DR.
COLUMBUS, OHIO 43204

PH: 614-279-0390
AFTER 5:30 PM
UPS & INS EXTRA
* = MARKED

* L. A. MANESS
* RT. 1, BOX 552
* ASHLAND, VA 23005

PH: 804-798-1825
P & I RATE \$3.00
H = MARKED

VISA/MASTERCARD WELCOME

- 134 Trident 2-lite candlestick, Orchid Etch pr \$ 90.00
- 1519 Waverly 7" oval comport*, Orchid Etch 95.00
- 1519 Waverly 6½" jelly compote, Orchid Etch 40.00
- 1519 Waverly 7" round 3-comp relish, Orch Et 47.50
- 1519 Waverly bow-knot cov'd candy*, Orch Et 165.00
- 1509 Queen Ann T-handled server, Orch Etch 195.00
- 4037 Decanter 1 pint, sterling stopper, Orchid Etch 235.00
- 5022 Graceful 12 oz ice tea, Orch Et (4) ea 42.50
- 3404 Spanish 3½ oz oyster cocktail, Florentine Cut (3) ea 17.50
- 1519 Waverly Sea Horse ftd floral bowl, Rose Etch 155.00
- 1519 Waverly 7" vase, sterling base, signed Hawkes (2) ea 39.50
- 5040 Lariat 1 oz cordial 95.00
- 1401 Empress ashtray*, Cobalt 385.00
- 1401 Empress ashtray*, Moongleam 375.00
- 1401 Empress ashtray*, Flamingo 125.00
- 1401 Empress ashtray*, Sahara 95.00
- 1295 Beaded Swag Custard goblet, souvenir Oshkosh, Wisconsin 65.00
- Heisey by Imperial Green Carnival Donkey, #314 47.50
- Heisey by Imperial Amber Show Horse* 650.00
- Heisey by Imperial Amber Flying Mare* 1250.00

- * 433 Greek Key ind almond, ftd, H (2) ea \$ 25.00
- * 1540 Lariat 7" ftd fan vase 27.50
- * 393 Narrow Flute open lemon, H 17.50
- * 1229 Octagon ftd mayo w/#6 ladle, Flamingo, H 45.00
- * 300 Peerless plate, 5½", H (4) ea 8.00
- * 350 Pinwheel & Fan 4½" nappy, H (6) ea 15.00
- * 350 Pinwheel & Fan 8" nappy, H 45.00
- * 1567 Plantation saucer champagne, H (2) ea 22.50
- * 1567 Plantation 13" celery, H 48.00
- * 351 Priscilla 1 qt blown water jug 40.00
- * 341 Puritan 4½" nappy, H (7) ea 10.00
- * 341 Puritan oyster cocktail, 6oz, H (4) ea 15.00
- * 341½ Puritan squat jug, ½ gal, H 112.50
- * 341 Puritan sherbet, high ftd, H (8) ea 12.50
- * 1252 Twist 10" celery, Moongleam, H 35.00
- * 1252 Twist 6" handled jelly, Flamingo, H 18.00
- * 1252 Twist ind nut dish, Flamingo, H (2)ea 18.00
- * 1425 Victorian cruet, 3 oz, H 50.00
- * 1185 Yeoman center handled sandwich plate, 10½", HH 25.00
- * 1184 Yeoman 8 oz goblet, Moongleam, D0, H (5) ea 27.50

BOB KNEASS
P.O. BOX 3528
SALINAS, CA 93912

PH: 408-484-9971
UPS & INS EXTRA

* NITA'S GLASS & LINEN SHOPPE
* 591 LEONARD ROAD
* ONALASKA, WA 98570

PH: 206-978-4913
POSTAGE & INSUR-
ANCE EXTRA

- 1567 Plantation ftd cov'd compote, Ivy Etch \$ 85.00
- 1483 Stanhope cup & saucer 23.00
- 3366 Trojan goblet, Moongleam stem (2) ea 38.00
- 3355 Fairacre goblet, Flamingo stem (4) ea 31.00
- 1403 Dowager grapefruit (3) ea 22.00
- 1205 Fancy Loop cruet 50.00
- 3404 Spanish Soda, Barcelona Cut 40.00
- 3390 Carcassone footed bar 26.00
- 1401 Empress Sahara nuts (13) 18.00
- 350 Pinwheel & Fan punch cups, Moongleam (12) ea 27.00
- 1386 Irish Setter ashtray, Flamingo 36.00
- 367 Prism Band Decanter, Moongleam 235.00
- 1469 Ridgeleigh cruet 25.00
- 1567 Plantation Pineapple block candle (1) 34.00
- 393 Narrow Flute ½ gal tankard & 6 tumblers 145.00
- 1485 Saturn sugar shaker 38.00
- 1425 Victorian 3-comp 11" relish 40.00
- 1184 Yeoman 5 oz soda, Sahara (6) 18.00
- 465 Recessed Panel 1 lb. candy 40.00
- 1295 Bead Swag wine, Custard 85.00

- * 150 Banded Flute chamberstick, H (1) only \$ 45.00
- * 355 Quator cream & sugar, rectangular, Flamingo, H pr 95.00
- * 357 Prison Stripe 4½" vase, H 60.00
- * 433 Greek Key 7" footed compote, H 115.00
- * 465 Recessed Panel cov'd candy, 10½", H 90.00
- * 467 Tally Ho shot glasses (6) ea 30.00
- * 1401 Empress 10½" sq plate, Sahara, H 90.00
- * 1401 Empress 8½" sq plate, Sahara, H 35.00
- * 1401 Empress cup & sq saucer, Sahara, H 33.00
- * 1401 Empress sq grapefruit, Sahara, H 24.00
- * 1467 Ridgeleigh cup & saucer, H 26.00
- * 1469 Ridgeleigh cologne & stopper 85.00
- * 1469 Ridgeleigh cracker tray, brass handle, glass leaves & berries attached to handle 72.00
- * 1485 Saturn castor set, wooden tray, 2 cruets, salt & pep, cov'd mustard, sterling spoon, H set 250.00
- * 1540 Lariat cream & sugar, H pr 25.00
- * 1540 Lariat 3-part relish, H 34.00
- * 1776 Kalonyal jelly compote, H 49.00
- * 3390 Carcassone 3 oz cockt'l, Sah (5) ea 28.00
- * 3390 Carcassone 6 oz sherbets, Sah (3) ea 28.00
- * 3390 Carcassone 2½ oz wines, Sahara (3) ea 28.00

ALSO, ANYTHING LEFT FROM MY SEPTEMBER AD TAKE 10% OFF.

MOSTLY HEISEY
RHODA CURLEY
16 CLAYTON PLACE
ALBANY, NY 12209-1304

PH: 518-482-6272
UPS EXTRA

Verlys Love Bird Vase, Opalescent \$265.00

BOWLS

350 Pinwheel & Fan 8" 80.00
1445 Grape Cluster 13" round floral . . . 65.00
1229 Octagon rect. 11" floral in Sahara . 49.00
1428 Warwick 11" floral 69.00
1206 Misc. optic 12" floral in Hawthorne,
Vogel 3, p.30 120.00
1205 Misc. optic 12" floral in Hawthorne,
Vogel 3, p.30 125.00

MAYONNAISES

411 Rib & Panel in Moongleam 40.00
1252 Twist in Sahara - \$70.00, in Moongleam 75.00
1401 Empress in Crystal - \$43, in Sah (2) ea 62.00
1467 Ridgeleigh, \$29 or 1503 Crystolite . 33.00
1495 Fern twin 42.00

NAPPIES

427 Daisy & Leaf 4 1/2", (8) ea 21.00
1776 Kalonyal 4 1/2", (4) ea 23.00
1295 Beaded Swag milk glass 4 1/2", (2) . . ea 55.00
1129 Fine Tooth 4 1/2", (10) ea 20.00
352 Flat Panel 6 1/2" grapefruit enameled floral
decoration, (4) ea 24.00

CREAM & SUGARS

1170 Pleat & Panel in Flamingo 75.00
1401 Empress DF in Flamingo set 78.00
1401 Empress DF in Sahara set 78.00
393 Narrow Flute w/tray, miniature. . . set 65.00
354 Wide Flat Panel, stack set w/but pat 60.00
1541 Athena - \$50 or Lariat w/tray . . . 55.00

TOBACCO ITEMS

381 Quilt or 1533 Wampum Cig Box . . . ea 85.00
1489 1/2 lge cig box w/horsehead handle . . ea 95.00
1489 1/2 sm cig box w/horsehead handle . . . 85.00
1503 Crystolite cig box or Lariat . . . ea 50.00
0000 Four Horse Head Sq ashtray, Sah, Maker?100.00

VASES

4204 9 1/2" D0 in Flamingo, dainty (2) . . ea 55.00
1401 Empress 9 1/2" DF excel silver, flor dec 105.00
1205 Fancy Loop ball, one 6" - \$105, one 4" 95.00
1255 Pineapple & Fan vase 9" - \$40; 9" w/gold
dec - \$48; 10" - \$65; 12" - 95.00
1413 Cathedral flared w/Artic Etch 135.00

RELISHES

1170 Pleat & Panel 5-comp spice tray, Flmngo 75.00
1469 Ridgeleigh star, 5-comp (3) ea 50.00
1503 Crystolite cloverleaf 4-comp (2) . . ea 45.00
1495 Fern 2-h'lde, 3-comp beautiful flor et 48.00
1506 Whirlpool 10" 4-comp 45.00

COVERED BUTTERS

1225 Sawtooth Band, toy 185.00
1401 Empress w/cut in Farbr ware hldr w/knf 75.00
1519 Waverly w/Rose Etch 180.00
1205 Fancy Loop 125.00

1632 Lodestar 7 1/2" bwl, Dawn (4) ea 90.00
1632 Lodestar 5 1/2" sahtray, Dawn 80.00
1637 1/2 Town & Country 14" plate, Dawn (2) ea 90.00
1401 Empress luncheon set, Lafayette Etch - (8) 8"
(8) cups & sauc, DF cr & sug set 495.00

* JIM GARTNER PH: 904-677-7415
* 4-FISHERMAN'S CIRCLE UPS & INS INCLUDED
* APT. 1 * = MARKED
* ORMOND BEACH, FL 32174

* 300 Peerless 7 oz goblets* (6) ea \$ 16.00
* 335 Prince of Wales Plumes water bottle,
* no gold 130.00
* 341 1/2 Old Williamsburg cov'd sugar* 60.00
* 354 Wide Flat Panel oval hotel cream &
* sugar*, Moongleam 68.00
* 1235 Beaded Panel & Sunburst 14" punch bowl*
* only 155.00
* 1252 Twist 12" muffin plate, curved up h'lides*
* in Marigold 95.00
* 1252 Twist 7" ftd compote*, Flamingo . . . 68.00
* 1252 Twist ftd mayo*, Moongleam 55.00
* 1401 Empress 9" DF vase*, Moongleam . . . 130.00
* 1503 Crystolite ice bucket w/h'lde* 110.00
* 1503 Crystolite cup & saucrs* (4 sets) set 24.00
* 1503 Crystolite puff box* 55.00
* 1519 Waverly cov'd candy, seahorse h'lides*,
* Rose Etch 175.00
* 1519 Waverly cov'd candy, seahorse h'lides*,
* Orchid Etch 175.00
* 1540 Lariat 1/2 lb candy & cov, rnd, stkr . 155.00
* 1541 (7002) Athena cream & sug w/floral cutting,
* Vogel 4, p. 65 60.00
* Plug Horse 85.00
* Colt, kicking 185.00
* Mallard, wings up* (2) ea 150.00
* Mallard, wings half up 175.00

* * * * *

GLASS 'N' GLASS PH: 813-792-0604
VIRGINIA & ODELL JOHNSON * = MARKED
6909 TENTH AVE., WEST POSTAGE & HANDLING
BRADENTON, FL 34209 EXTRA

ORCHID ETCH

* 1519 Waverly 7" salad plates (8) ea \$ 18.00
* 5025 Tyrolean stem 10 oz goblet*(tall)
* (7) ea 28.00
* 5025 Tyrolean stem 6 oz sherbets *(6) ea 24.00
* 5025 Tyrolean stem 3 oz wines* (7) . . ea 55.00
* 1509 Queen Ann cup & sauc* (12 sets) per set 38.50
* 1519 Waverly cream & sugar * set 50.00
* 142 Cascade candlesticks (one has minute
* chip under base) pr 85.00
* 1509 Queen Ann cup* (1) 15.00
* ROSE ETCH 5072 Rose stem 3 oz wine . . . 70.00
* 5072 Rose stem, 1 oz cordial (5) ea 130.00
* 1519 Waverly ind cream & sug & tray . . . 120.00
* 1519 Waverly 14" sandw plate, center h'lided 135.00
* 325 Pillows ftd rosebowl, scalloped top . 100.00
* 1184 Yeoman D0 2 1/2 oz bar*, Sahara (8) all 75.00
* 1428 Warwick Horn of Plenty Bowl*, Cobalt 285.00
* 1252 Twist mustard w/lid*, Moongleam . . . 100.00
* 411 Tudor ftd preserve w/cover*, Moongleam 75.00
* 2401 Circus Etch soda, Camel 90.00
* 1533 Wampum 14" torte plate 30.00
* 1469 Ridgeleigh 13" torte plate* 35.00

MR. & MRS. DONALD N. PARRETT PH: 517-784-7319
 4995 MAPLEDALE ROAD & RECORDER
 JACKSON, MI 49201 P & I EXTRA

341 Old Williamsburg ind salt (6) . . ea \$ 12.00
 352 Flat Panel 3 oz lavender jar . . . 48.00
 1540 Lariat 4 oz cologne & strp (2) . . 65.00
 1245 Ring Band toothpick, Custard, souvenir 50.00
 1220 Puntly Band salt & pep, Custard, souve-
 nir, mint 100.00
 1506 Whirlpool salt & pep, Crys, original
 tops pr 30.00
 1506 Whirlpool salt & pep, Amb, original
 tops, Imperial pr 30.00
 1401 Empress salt only, Sahara, orig top 35.00
 341 Old Williamsburg salt & pep, Crys, orig
 tops pr 40.00
 27 Colonial tall salt & pep, #57 tops pr 38.00
 305 Puntly & Diam Point tall salt & pep, ster-
 ling tops, rare pr 85.00
 1404 Old Sandwich 2" sq ashtray, Cobalt
 (2) ea 30.00
 29 Colonial short salt & pep, Crys w/gold
 & blue stripe pr 32.00
 359 Colonial 1 oz cordial (6) ea 30.00
 3380 Old Dominion 1 oz cordial, Sah (6) ea 95.00
 5077 Legionnaire 1 oz cordial, Crys . . . 80.00
 1519 Waverly 1 oz cordial, Crys 95.00
 299 Old Fashion, 5 oz, NQ (2) ea 30.00
 3304 Universal cocktail icer & liner, W0,
 (6) ea 35.00
 3304 Universal cocktail icer & liner, No
 Optic (8) ea 30.00
 1485 Saturn 5" center dip bwl hostess help 20.00
 1469 Ridgeleigh 9 oz gob, ball shape (6)ea 30.00
 1469 Ridgeleigh 6 oz champagne (6) . . ea 27.50
 1469 Ridgeleigh sm cr & sug & tray . . set 48.00
 1469 Ridgeleigh lg cr & sug pr 45.00
 1469 Ridgeleigh ind sq salt (6) ea 12.00
 1469 Ridgeleigh cov'd marmalade (2) . . ea 75.00
 1469 Ridgeleigh sm oval jelly (6) . . . ea 12.00
 1469 Ridgeleigh salt & pep pr 35.00
 1469 Ridgeleigh 6" sq plates (8) ea 22.50
 1469 Ridgeleigh 7" sq plates (8) ea 25.00
 1469 Ridgeleigh 8" sq plates (6) ea 32.50
 1469 Ridgeleigh 8" sq plates, frosted simplex
 (8) ea 35.00
 1469 Ridgeleigh 4 1/2" nappy (6) ea 12.00
 1469 Ridgeleigh 8 1/2" berry bowl 40.00
 1469 Ridgeleigh 2 1/2" sq ashtray (6) . . ea 5.00
 1469 Ridgeleigh 4" cigarette box 18.00
 1469 Ridgeleigh 6" sq ashtray 38.00
 1469 Ridgeleigh 5" sq nappy (6) ea 12.00
 1469 Ridgeleigh 8" sq nappy 38.00
 1469 Ridgeleigh bridge ashtray (6) . . . ea 10.00
 1469 Ridgeleigh 4" diam coaster (6) . . ea 9.00
 1469 Ridgeleigh cup & sauc (4 sets) . . set 38.00
 1469 Ridgeleigh cov'd mustard 50.00
 1469 Ridgeleigh #52-#1 ind vase 50.00
 1469 Ridgeleigh low 8" ftd compote . . . 52.50
 1469 Ridgeleigh 11" 3-comp relish 40.00
 1469 Ridgeleigh 2-h'lded ice bucket . . . 75.00
 1469 Ridgeleigh 1/2 gal ice jug 225.00
 1425 Victorian 1 qt rye bottle & stopr . . 145.00
 1425 Victorian 3 1/2 oz cocktail (6) . . . ea 22.00
 3389 Duquesne 3 oz cocktail (11) ea 10.00
 1951 Cabachon 1-lite candleholder . . . pr 30.00
 1503 Crystolite 1-lite candlehldr 4 pr. ea pr 25.00
 1252 Twist 1-lite candlehldr, Flamingo pr 42.00
 1425 Victorian 6 oz sherbet (4) ea 15.00

1540 Lariat 12" urn cov'd jar, #102 \$145.00
 1540 Lariat #77 - 5" sm cut cov'd candy 65.00
 1540 Lariat #70 - 7" caramel box & cov 60.00
 1540 Lariat #79 - 7" candy box & cov . . 75.00
 1540 Lariat #136 4" cig box & cover . . . 45.00
 1540 Lariat #90 - 1 - cup & saucer (6) set 35.00
 5040 Lariat #1 - 9 oz goblet, Moonglo (4)ea 30.00
 1540 Lariat #57 - 10 1/2" salad bowl 65.00
 1540 Lariat #121 - 13" gardenia bowl, Moon-
 glo cut 75.00
 1540 Lariat #112 - 8 1/2" ftd basket 125.00
 1540 Lariat #129 - 3-lite cndlblk, rare pr 345.00

*
 * CLASSIFIED ADS
 *

* WANTED: Emerald Beaded Swag. E.J. Cox, Box 367,
 Spavinow, OK 74366. PH: 918-589-2859.
 * WANTED: Epergne plates and parts; candelabra
 parts and Marigold Twist. Highest prices paid.
 Mostly Heisey, 16 Clayton Place, Albany, NY 12209.
 * PH: 518-482-6272.
 * FOR SALE: Crystolite, Victorian, Ridgeleigh stems
 and various pieces. Old Dominion champagnes,
 Marigold bowls with Crystal stems, marked.
 * D. Stokes, 809 S. McDuffie, Anderson, SC 29624.
 * PH: 803-226-0118.
 * FOR SALE: Punch bowl base, Greek Key. \$35 + UPS.
 * Goldblatt, P.O. Box 302, Hopewell, NJ 08525. PH:
 * 609-466-1864.
 * FOR SALE: CANDLESTICKS, 1 pr #5, Toy, Crystal, \$75;
 * 1 #30, Tom Thumb, Toy, Crystal, \$75; 1 #31, Jack-
 * Be-Nimble, Sahara, \$150; 1 pr #31, Jack-Be-Nim-
 * ble, Crystal, \$70; 1 pr, #31, Jack-Be-Nimble,
 * Moongleam, \$275; 1 pr (Skirted Panel) #33, Toy,
 * Crystal, \$85; 1 pr #5 Candelabra, Moongleam,
 * with bobèche and A prisms, \$1,100. Jane F. Mos-
 * tier, 279 N. E. 116th St., Miami, FL 33161. PH:
 * 305-895-4910.
 * WANTED: Heisey, Minuet Etch - Ice tea pitcher
 * #4164. J. W. Beck, 1927 O'Hara Drive, Charlotte,
 * NC 28217.
 * WANTED: Collector desires Flamingo #1401 Empress
 * punch cups to go with #1401 Empress 15" punch
 * bowl. Also needs glass ladle for same. Must be
 * mint. Jim Maguire(516) 326-2447, anytime - leave
 * message.
 * FOR SALE: Baskets: #480 8" fruit, \$165; #458 Daisy
 * C, \$115; #459 7" Daisy C, \$190; Plantation 3-li.c'
 * hldr, pr \$165; #4225 1 qt Rooster head shaker, \$60;
 * #1 strainer & 86 stopper, \$20; Imperial Crystal
 * Filly, head forward, \$225; Imperial Crystal Filly,
 * head turned, \$225. UPS Extra. Edna Weisser, 538W
 * Surf Road, Ocean City, NJ 08226. PH: 609-399-6289.
 * MAIL BID - Each: No. 21 9" lamp base; Old Sand-
 * wich candle vase w/Sahara insert; lion-covered
 * Waverly trinket box; 1401 Empress dolphin footed
 * Sahara candlesticks; Greek Key cordial; Circus
 * Round (Steeplechase), Sahara cocktail; Spanish/
 * Cobalt wine; Fox Chase wine; goose stem sherry;
 * Fancy Loop wine, sherry. Reasonable bids accept-
 * ed, don't miss out on bargains. Jean Bybee, 426
 * El Toro, Webster, TX 77598.
 * FOR SALE: #1951 Cabochon cream & sugar in Dawn*,
 * \$95; #1252 Twist 11" celery in Marigold*, \$50;
 * #1245 Ring Band 7 pc berry set* in Custard, w/
 * gold flowers, mint, \$275; 6 pc bedroom set -
 * #341-10 1/2" rd tray*; #341 1/2 gal tank w/lid*; #341 1/2
 * continued on page 16

FOREVER HEISEY
 NORM & JAN THRAN
 1663 LONDDALE PKWY.
 NEWARK, OHIO 43055

PH: 614-344-5955

Over 3,000 pieces of Heisey for sale. Stemware and dinnerware matching service. Lots of colors, etchings and cuttings. Send want list - we search. All letters answered if SASE is enclosed.

SHOW DATES

Oct. 27, 28, 29 Will Rogers Col. Ft. Worth, TX
 Nov. 4, 5 Adam's Mark Hotel Houston, TX
 Nov. 10, 11, 12 Market Hall Dallas, TX
 SEE YOU AT THE SHOWS, Norm & Jan Thran

ADAM'S & EVE'S ANTIQUES PH: 914-896-5818
 49B ROSILIA LANE P & I EXTRA
 FISHKILL, NY 12524 * = MARKED

- 379 Urn master salt, 3" diam. \$ 40.00
- 1776 Kalonyal toothpick holder* 200.00
- 379 Urn toothpick holder* 100.00
- 1255 Pineapple & Fan toothpick hldr, Crystal w/gold 70.00
- 1255 Pineapple & Fan toothpk hldr, Eme w/gld 140.00
- 1295 Beaded Swag toothpick hldr, Opal w/flowers, (painting worn) 75.00
- 1295 Beaded Swag toothpick hldr, Crys w/Ruby Stain, Souvenir Pan American, 1901 40.00
- 352 Flat Panel toothpick holder 30.00
- 351 Priscilla toothpick holder* 35.00



ALL HEISEY & IMPERIAL AUCTION
 SAT DEC 9, 1989

APPLE TREE AUCTION CENTER
 1616 W. CHURCH STREET
 NEWARK, OHIO 43055
 (614) 344-4282

PLAN TO COME TO NEWARK FOR OUR AUCTION AND ATTEND THE HCA CHRISTMAS DINNER SATURDAY EVENING.

MANY NICE ITEMS WILL BE OFFERED - CHECK YOUR NEXT HEISEY NEWS FOR A MORE DETAILED LISTING.

CONSIGNMENTS FOR THIS AUCTION WILL BE ACCEPTED THROUGH NOVEMBER 4TH.

CATALOGS WILL BE AVAILABLE FOR \$2.00.

SAM SCHNAIDT & TIM HUGHES - AUCTIONEERS

FRANK FRYE - MANAGER

* Classified ads continued from page 15

* tumbler*; 353 ashtray*; 33 candlestick*, 5",
 * mint, \$225.00. Mildred Lee, 115 Phillips Drive,
 * Decatur, IL 62521. PH: 217-428-3106.

* FOR SALE: Goose, Wings up, \$65; #1183 Revere
 * combination pickle/olive, marked twice, \$47.50;
 * #1519 Waverly Rose Etch 12" crimped bowl, \$62.50;
 * Oscars 1977 - 1983, \$25 ea; #1519 Waverly Orchid
 * 12" celery, \$48.50; #1404 Old Sandwich catsup
 * bottle, \$48.50; #32 Skirted Panel stick w/handle,
 * 5", \$39.50; #1401 Empress lemon dish w/dolphin
 * finial, etched, \$49.50; #433 Greek Key french
 * bread tray, \$97.50; #1519 Waverly Rose cream &
 * sugar, \$67.50; #1401 Empress cream & sugar in
 * Flamingo, \$75; #393 Narrow Flute domino sugar,
 * \$39.50; #4036½ decanter, 1 pint, Krall cutting,
 * \$295; #352 Flat Panel mustard w/cover, \$45;
 * #433 Greek Key 12" celery, \$48.50; #1540 Lariat
 * 12" bowl & 14" underplate w/cutting, \$88; #1540
 * Lariat candy w/cover, \$47.50; #1469 Ridgeleigh 6"
 * candle vase in Sahara, \$68.50; #101 Simplicity 9"
 * candlestick (one) \$89.50; #5 Patrician 11" can-
 * dlestick (one) \$99.50; #136 Triplex 3-lite
 * candlesticks (pr) \$119.50; #1509 Queen Ann 7½"
 * 1-lite w/prisms candlesticks (pr) \$ 99.50; #1425
 * Victorian candlesticks, 2-lite (pr) \$119.95;
 * #1280 Emerald Wing Scroll cream & sugar, good
 * gold, \$165; #114 Hawthorne 3½" pluto candlesticks
 * (pr) \$99.50; #353 2 qt Colonial crushed fruit,
 * \$275; 15" Epergne, metal base w/2 cherubs, one
 * shelf & vase marked, \$250; will swap #31 toy
 * candlestick in Sahara for #31 in Moongleam or
 * Flamingo. The Collector's Stop, 407-793-0986,
 * shipping extra.

* FOR SALE: Orchid Etch: #1519 Waverly cream & sug-
 * ar, \$52/set; #1519 Waverly 6½" honey, \$38; #134
 * Trident candlesticks, \$80/pr; (8) #5025 Tyrolean
 * 10 oz tall goblets, \$30/ea; (8) #5025 Tyrolean
 * 6 oz sherbets, \$22/ea; (8) #5025 Tyrolean 4 oz cock-
 * tails, \$34/ea. CRYSTOLITE - #1503: 7" snack
 * plate, 2-handled, \$20; 3-comp candy dish without
 * cover, \$15; 14" sandwich plate (scratches) and
 * 5½" ftd cheese, \$32/set; 12" 7 qt punch bowl,
 * \$85. MISCELLANEOUS: (6) #407 Coarse Rib punch
 * cups, \$6/ea; (5) #150 Banded Flute punch cups,
 * \$7/ea; #1509 Queen Ann 5½" mayo, DF, \$22; #1519
 * Waverly 6½" oval dressing bowl, Rose Etch, \$40;
 * #1519 Waverly 11" 3-comp relish, oblong, plain,
 * \$22. Skip Munn, 36818 Samoa Drive, Sterling
 * Heights, MI 48077. PH: 313-977-3281.

* WILLEY'S ANTIQUES PH: 614-828-2557
 * 11110 CANNON ROAD
 * FRAZEYSBURG, OHIO 43822

* Over 2,000 pieces of Heisey for sale. Stemware
 * and dinnerware matching service. Lots of colors,
 * etchings and cuttings. Send want list and SASE.
 * All letters answered if a SASE is enclosed.

SHOW DATES

* Oct 27, 28 & 29 Will Rogers Col. Ft. Worth, TX
 * Nov 4, 5 Adams Mark Hotel Houston, TX
 * SEE YOU AT THE SHOWS, Mildred and Harold Willey

CRYSTAL LADY
1819 VINTON STREET
OMAHA, NE 68108

PH: 402-341-0643
402-391-6730
UPS & INS EXTRA
* = MARKED

135	Empress 12½" floral bowl*, Sahara . .	\$100.00
136	Triplex candleholders*, Sahara . . pr	200.00
1401	Empress 11" floral bowl*, Sahara . .	70.00
1401	Empress ind sugar*, Sahara	30.00
1401	Empress 13" 2-part pickle & olive*, Sahara	30.00
1401	Empress 13" celery tray*, Sahara . .	29.50
1401	Empress ind nut cup*, Moongleam (3) ea	35.00
1483	Stanhope cream & sugar* pr	45.00
1483	Stanhope cup & saucer* (3)	30.00
1483	Stanhope 7" plates (4) ea	15.00
3380	Old Dominion 6 oz sherbet*,Sahara(3)ea	47.50
3380	Old Dominion 3 oz c'tail*,Sahara (6)ea	47.50
3333	Old Glory 3/4 oz Pousse cafe, optic * (3) ea	55.00
3333	Old Glory 3/4 oz Pousse cafe, plain* (2) ea	55.00
4083	Stanhope 10 oz gob, saturn optic, Zircon bowl & foot & Crystal stem (10) . . ea	80.00
4083	Stanhope 5 oz champ,same as above(10)ea	70.00
4083	Stanhope 3 oz c'tail,same as above(10)ea	80.00
1485	Saturn 7" plate, Zircon (10). . . . ea	45.00
3390	Carcassonne 12 oz flagon, Sahara, Old Colony Etched (2) ea	60.00
3390	Carcassonne 11 oz low H20, Sahara, Old Colony Etched (O.C.) (2) ea	28.00
3390	Carcassonne 3 oz c'tail, Sahara, Old Colony Etched (O.C.)	30.00
1401	Empress 7" sq plate*,Sahara, Old Colony Etch (O.C.) (7) ea	20.00
5040	Lariat sherbet*,Moonglo cut ea	20.00
5040	Lariat goblet*, Moonglo cut ea	30.00
5040	Lariat ftd ice tea*, Moonglo cut . . ea	35.00
5040	Lariat 5 oz ftd juice*, Moonglo cut ea	30.00
1540	Lariat ftd fan vase*, Moonglo cut . ea	55.00
1540	Lariat 8½" flat nougat*, Moonglo cut ea	37.50
1540	Lariat 9½" camillia bowl*, Moonglo cut	35.00
1540	Lariat 10" ftd h'lded basket	175.00
1540	Lariat cr & sug*, Moonglo cut . . . pr	45.00
1404	Old Sandwich 1½ oz bar glass* . . . ea	20.00
1404	Old Sandwich ind ashtray* ea	8.00
354	Wide Flat Panel hotel cr & sug*, with unknown cut pr	75.00
1401	Empress 8" plate*, Alexandrite . . ea	50.00
1483	Stanhope 2-lite candles, unknown et pr	250.00
5025	Dinner Bell*, Orchid Etch	135.00
1509	Queen Ann ice bucket, Orchid Etch . .	200.00
1519	Waverly 11" relish*3-comp, Orch Etch	70.00
	64 oz ice tea pitcher, Orchid Etch .	500.00
1519	Waverly 9" salad bowl, Orchid Etch .	75.00
1519	Waverly 3 oz ftd oil, Orchid Etch . .	180.00
	Individual ashtray, Orchid Etch . . ea	35.00
1503	Crystolite ind swan salts ea	17.00
1503	Crystolite sauc champagnes* ea	25.00
1503	Crystolite 13" oval floral bowl* . .	47.50
	Ridgeleigh French Dressing Btl & Strp	70.00

HEISEY BY IMPERIAL

Ipswich covered candy, Antique Blue . . .	100.00
Ipswich covered candy, Verde Green . . .	80.00

SEND WANT LIST

8TH ANNUAL ALL GLASS SHOW & SALE

Sponsored by the
Connecticut Heisey Collectors Club

BENEFIT OF THE NATIONAL
HEISEY MUSEUM

SATURDAY
NOV. 18, 1989
10:00 a.m. to 5:00 p.m.

SUNDAY
NOV. 19, 1989
11:00 a.m. to 4:00 p.m.

National Guard Armory
590 Woodruff Street
Southington, CT

ADMISSION — \$2.50
with this Ad — \$2.00
I-84 to Exit 32 South (Rt. 10)
To Hobart Street — Right on to Pleasant St.
Left to Armory

Dorothy Thorpe
1901 - 1989

One of our members from California sent us the following information.

Dorothy C. Thorpe, 88, died on September 4, 1989, in Carlsbad, California.

Mrs. Thorpe started a line of glassware at the height of the Great Depression to help ease the family's income burden. Her original creations were seen by such film stars as Clark Gable, who helped to popularize the sandblasted tumblers, drinking glasses and vases. By the time she sold control of the Glendale-based firm shortly after the death of her husband in 1953, Dorothy C. Thorpe originals were being sold in most of the finer department stores across the nation.

Most of you are aware of Dorothy Thorpe's work since she used lots of Heisey glass in her work. In Room 5 upstairs in the museum we have several pieces with her sandblasted designs. These are signed with her **DTC** mark. She also had the Hydrangea items made at Heisey, probably using her moulds. These were sandblasted and decorated with a lavender stain. They are very popular with Heisey collectors today.

LETTERS, WE GET LETTERS

Dear Louise:

You should have been with us on Sunday, at our Yankee Heisey Club meeting. We had a combined cook-out, meeting and auction! The food was delicious and the home of our hostess was a real treasure -- built in 1720, full of antiques and, according to the hostess, has a ghost who fortunately didn't participate!

Sincerely,
Betty Bean

FABULOUS 3-DAY PUBLIC AUCTION
FRIDAY - NOV. 24 AT 5:00 PM
SATURDAY - NOV. 25 AT 10:00 AM
SUNDAY - NOV. 26 AT 1:00 PM

AT

AMERICAN EAGLE AUCTION CO.
20060 U.S. ROUTE 23, CIRCLEVILLE, OHIO
(LOCATED 3 MILES N. OF CIRCLEVILLE ON U.S.
RT. 23 & 17 MILES SOUTH OF INTS. 270 & 23)

FRIDAY AT 5:00 - ALL BARBIE DOLL AUCTION FROM THE ESTATE OF VICTOR SEAS

SATURDAY AT 10:00 - SUPER HEISEY COLLECTION & OTHER GLASSWARE FROM ESTATE OF VICTOR SEAS. HEISEY -- COBOLT BLUE PLUG HORSE, (2) AMBER PLUG HORSES, CRYSTAL PLUG HORSE, (2) AMBER STANDING PONIES, (2) FROSTED OWENS BUST, FROSTED SIGNED BULL, FROSTED TIGER PAPERWEIGHT, CRYSTAL LG. HANDLED ELEPHANT MUG SIGNED, SIGNED FROSTED SHOW HORSE, (2) CRYSTAL CLYDESDALES, SIGNED CRYSTAL AIREDALE, (2) ROOSTER VASES, CRYSTAL FISH MATCH HOLDER, (2) RABBIT PAPERWEIGHTS, ROOSTER COCKTAIL SHAKER, HORSE HEAD COCKTAIL SHAKER, SIGNED RUBY FISH BOWL, CRYSTAL SCOTTY, FIGHTING ROOSTER, (2) SPARROWS, STANDING PONY, HEN, FROSTED HORSE HEAD BOOKEND, (10) PIGLETS, (2) PIGS - 1 SIGNED, FROSTED FISH BOOKEND, CRYSTAL FISH BOOKEND, (2) CRYSTAL FISH CANDLESTICKS, ROOSTER & HORSEHEAD STOPPERS, PONY REARING & PONY KICKING, FLOATING DUCKLING, SIGNED COCKTAIL GLASS WITH HUNTING DOG, (2) ROOSTER COCKTAIL GLASSES, SKIER COCKTAIL GLASS, SIGNED SEA HORSE FOOTED BOWL, SIGNED HORSE HEAD LARIET CANDY DISH, (2) DUCK STOPPERS FOR COLOGNE BOTTLES, (10) GLASSES W/ETCHING OF FOX CHASE, SODA GLASS & WHISKEY GLASS OF TALLY HO, CHEVY CHASE VASE #4057 OF GIRL WALKING DOG 10 3/4" H., RARE #4209 9" VASE WITH #1 SPORT ETCHING, VARIOUS CANDY DISHES, CELERY DISHES, CRYSTAL CANDLE HOLDERS, MANY OTHER PCS. OF HEISEY IN PINK, ALEXANDRITE, FLAMINGO TWIST, CRYSTAL, (6) GLASSES W/ETCHING OF PIED PIPER (3) CHICKS ETC.

IMPERIAL - (3) SIGNED FILLY HORSES, CHILDS ELEPHANT HANDLED MUG, (6) COLBOLT BLUE LAND OF LEGEND PLATES DATED 1975, (2) GREEN DOLPHIN CANDLESTICK HOLDERS, CRYSTAL SESQUICENTENNIAL PLATTER DATED 1952, VERDE GREEN COMM. PLATE - 1973, (2) AMBER COMM. PLATES - 1971, SMOKE COMM. PLATE - 1974, AQUA COMM. PLATE - 1972, (5) CLEAR COMM. PLATES - 1976, CARAMEL SLAG PCS. TO INCLUDE CHAMP TERRIER, (5) ELEPHANTS, PLUG HORSE, SITTING DUCK, (2) STANDING PONIES; MALLARD (WINGS HALF WAY), MALLARD (WINGS UP), DONKEY, (3) GREEN 1977 PLUG HORSES, (2) AMBER 1979 PLUG HORSES, (4) PINK 1978 PLUG HORSES, (3) BLUE REARING PONIES, (2) MILK GLASS STANDING PONIES,,

COLLECTORS PLATES - 1971 IMPERIAL TWO TURTLE DOVES, 1971 STERLING AMERICA MOTHERS DAY, 1971 ELLARD THE LIONESS, 1972 FENTON VALENTINE'S DAY, 1977 MGM SETS OF THE WIZARD OF OZ CHARACTERS, 1971 KAISER MOTHER'S DAY, 1971 KAISER MUTTERTAG, 1971 SEBRING HERITAGE MOTHER'S DAY, (2) 1972 MASON FAMILY HORSESHOE CLUB RENO, 1971 ROYALE BLUE WINTER CHINA FATHER'S DAY, 1967 ROYAL COPENHAGEN KAI LANGE THE ROYAL OAK, 1971 MARMOT CHINA FATHER'S DAY, 1974 IMPERIAL FIVE GOLD RINGS, (2) FAIENCE DE STAMAND DEERS, 1971 BERLIN DESIGN MUTTERTAG, 1971 ELLARD COLL. PAPA, 1972 VENETO FLAIR PUMA, 1971 CHARLES RUSSEL THE WAGON BOSS, (2) 1983 FINSBURY PRINCE WILLIAM OF WALES, 1974 RIDGEWOOD NORMAN ROCKWELL SCOTTY GETS HIS TREE, 1970 IMPERIAL PARTRIDGE IN A PEAR TREE, 1975 IMPERIAL SIX GEESE A LAYING, 1973 IMPERIAL FOUR COLLY BIRDS, 1970 FRANKLIN MINT BRINGING HOME THE TREE, (3) REED & BARTON 1972 KENTUCKY DERBY, 1971 FR. MINT NORMAN ROCKWELL UNDER THE MISTLETOE, 1972 LINCOLN MINT ALFRED BRUNETTIN MOTHER'S DAY, 1972 FR. MINT NORMAN ROCKWELL THE CAROLERS, 1973 FR. MINT NORMAN ROCKWELL TRIMMING THE TREE, 1970 FR. MINT NORMAN ROCKWELL BRINGING HOME THE TREE, 1972 FR. MINT IRENE SPENCER MOTHER & CHILD.

SUNDAY AT 1:00 - FURNITURE, GUNS, COUNTRY, ETC.

FOR INFORMATION CALL LOU DANIELS AT 614-927-2368 OR BOB BOLING AT 614-654-4993

<p>A.W. PARKER Heisey & Pattern Glass Shows or Appointment Magalia, CA 95954 PH: (916) 873-2326</p>	<p>GLASS WITH CLASS Lenore A Shelley, GGHC 1336 Lincoln Avenue San Jose, CA 95125 PH: (408) 286-8098</p>	<p>OLDE LOVED THINGS 900 Ridgewood Ave. (Holly Hill) Daytona Beach, FL 32017 (904) 252-7960 Hours: Sat., Sun., & Mon., 10-4</p>
<p>ALL HEISEY AUCTION Consignments Welcome Apple Tree Auction Center 1616 W. Church, Newark, OH 43055 PH: (614) 344-9449</p>	<p>GREEN ACRES FARMS Antiques, Crystal Glass & Collectibles 2678 Hazelton-Etna Rd., SW (S.R. 310-N) Pataskala, OH 43062 Sat. or Sun. PM or call (614) 927-1882</p>	<p>"HEISEY" PRICE COMPARISON GUIDE \$13.00 B. Whaley 614-927-1557 300 International Dr. Pataskala, Ohio 43062</p>
<p>ALFA I CARRIAGE HOUSE ANTIQUES Featuring Depression & Elegant Glassware Al & Faye Maness Rt. 1 Box 552, Ashland, VA 23005 PH: (804) 798-1825</p>	<p>H & R DIAMOND H Helen & Robert Rarey 1450 White Ash Dr. Columbus, OH 43204 PH: (614) 279-0390 after 5:30</p>	<p>PARRETT'S ANTIQUES Heisey 4994 Mapledale Rd. OR 1215 Greenwood Ave. Jackson, Mich. 49201 PH: (517) 784-7319 OR (517) 783-3289</p>
<p>ANTIQUES - THE SHULTZES 206-208 East Main St. Newmanstown, PA 17073 15 Miles West of Reading, PA PH: (215) 589-2819</p>	<p>"HAPPINESS IS" - THE STULTZS 3108 Warren Court, Glen Allen, VA 23060 Shows and Mail Order PH: (804) 672-8102 GLASS CIRCA 1890-1960</p>	<p>PATTON HOUSE Heisey & Duncan Miller Rocky's Mall, 1-81 & US 11 Weyer's Cave, VA 24486 PH: (703) 967-1181</p>
<p>C & J ANTIQUES Cole & Jean Miesner Box 45, 72 Whig St. Newark Valley, NY 13811 PH: (607) 642-9905</p>	<p>HARRALSON'S HEISEY HUNTERS Sponsor: S.W. MO's Antique Shows 78 Quality Dealers From 14 States 1989 Dates: Apr. 29-30 & Oct. 28-29 Info: 1426 W. Highland, Springfield, MO 65807 PH: (417) 883-2449</p>	<p>EAGLES REST ANTIQUES Carl and Mary A. Evans Heisey - China - Pottery, etc. Shows or Appointment PH: (614) 522-2035</p>
<p>GLASS RESTORATION LeRoy Carter, Jr. 125 Maple Ave. Utica, Ohio 43080 Phone 614-892-2775</p>	<p>HELEN & JIM KENNON Heisey, Cambridge, Fostoria, Duncan, Imperial, Fenton, Tiffin P.O. Box 114 Brookville, OH 45309 PH: (513) 833-5406 SHOWS ONLY</p>	<p>R & L ANTIQUES-SAN FRANCISCO Members of the Golden Gate Heisey Club 3690 Bodega Ave. Petaluma, CA 94952 PH: Petaluma (707) 762-2494 PH: San Francisco (415) 621-6693</p>
<p>CHARLES & MILDRED FISHER Heisey, Degenhart, Imperial, Antiques, Collectibles, General Line 991 Idlewilde, Newark, OH 43055 PH: (614) 522-5398</p>	<p>JJ MC KEE ANTIQUES Pottery - Glassware - Collectibles 222 B West 75th St. Kansas City, MO 64114 Wed.-Sun. 10-5 PH: (816) 361-8719</p>	<p>THE WOODEN SHOE Antiques & Collectibles Jim & Sheri VanEs by Appt. 810 Elden, Herndon, VA 22070 PH: (703) 435-9045</p>
<p>CRYSTAL LADY Joann Hagerty Specializing in elegant depression glassware 1819 Vinton Street, Omaha, NE 68108 Shop Ph. (402) 341-0643 or Home Ph. (402) 391-6730</p>	<p>THE PURPLE PLACE Featuring Heisey & Other Fine Glass Martha & Harold Earp 1940 Suwanee, Ft. Myers, FL 33901 PH: (813) 936-1572 Anytime</p>	<p>SCHWAN'S ANTIQUES SHOWS & MAILORDER 77 Lagos del Norte Ft. Pierce, FL 34951 PH: (407) 461-5940</p>
<p>DIAMOND H PLUS Mail Orders & Shows George & Eileen Schamel 6625 Gillard Rd., Boonsboro, MD 21713 PH: (301) 432-6285</p>	<p>J. & R. COLLECTIBLES Shows, SASE, Mail Order list June & Ray Lukasko P.O. Box 1030, Newark, OH 43055 PH: (614) 344-9719</p>	<p>SHOW AND TELL ANTIQUES Art, Cut, Heisey and Pattern Glass 1525 Morrow Ave., Waco, TX 76707 Tues-Sat 10:30-4:30 PH: (817) 752-5372 Also: Mail Order and Shows Member NADA</p>
<p>ETTELMAN'S DISCONTINUED CHINA & CRYSTAL HEISEY a SPECIALTY P.O. Box 6491-HN Corpus Christi, TX 78411 PH: (512) 888-8391 Include SASE</p>	<p>MOSTLY HEISEY Rhoda Curley 16 Clayton PL, Albany, NY 12209 Shop and Mail Order PH: (518) 482-6272</p>	<p>HEISEY PUBLICATIONS Box 102, Plymouth, Ohio 44865 All Vogel Heisey Books I, II, III, IV And Quarterly Newscasters available</p>
<p>FOREVER HEISEY Jan & Norm Thran Mail Order, Shows, Appraisal Service 1663 Londondale Pkwy., Newark, OH 43055 PH: (614) 344-5955</p>	<p>MOUND BUILDERS ANTIQUES Heisey & Animals, General Antiques Irene Rauck 1138 Moundview, Newark, OH 43055 PH: (614) 344-6043</p>	<p>WILLEY'S ANTIQUES & MUSEUM Specializing in Heisey 11110 Cannon Rd., Frazeysburg, OH 43822 16 miles east of Newark, OH PH: (614) 828-2557</p>
<p>GERT'S GLASS Heisey & Duncan Gertrude & Russell Swetnam 1926 Saratoga Dr., Adelphi, MD 20783 PH: (301) 434-5113</p>	<p>THE MUTED SWAN ANTIQUES 5486 Peachtree Rd., Chamblee, GA 30341 Heart of Chamblee Antique Row Specializing in Heisey & Cambridge Bill & Pat Miller PH: (404) 451-7620</p>	<p>JAMES S. HARRIS ANTIQUES/APPRISALS Box 672 Richmond, KY 40475-0672 PH:(606) 623-9100 Buying and Selling by Mail</p>
<p>GLASS 'N' GLASS Virginia & Odell Johnson 6909 10th Ave. West Bradenton, FL 34209 PH: (813) 792-0604</p>	<p>NANCY'S ANTIQUES Heisey, Cambridge, Fostoria, Fenton Mail Order 906 44th St. NW, Canton, OH 44709 216-492-2595. Shop Union Station Antiques 12622 Cleveland Ave., Uniontown, OH Daily</p>	<p>TALL OAKS ANTIQUES 565 N. Nichols St., Lowell, IN 46356 Elegant & Dep Glass Specializing in Heisey. Shows - Mail Order - Shop - PH 219-696-0147 Mike & Barb Rosenberger</p>

HEISEY REFERENCE PUBLICATIONS

1. THE HEISEY ANIMALS: By James McDermott. Pictures all 56 animals produced by Heisey, states size of each animal and includes price guide \$ 4.95
4. HEISEY'S GLASSWARE OF DISTINCTION: By Mary Louise Burns. Includes price guide - contains all major tableware patterns with pictures for easy identification \$11.95
7. HEISEY GLASS IN COLOR, BOOK 2: By Loren and Virginia Yeakley. More than 750 items pictured in color. Comprehensive discussion of each. With price guide \$12.50
8. ENCYCLOPEDIA OF HEISEY GLASSWARE, ETCHINGS AND CARVINGS, SECOND PRINTING: Comes with Addendum. By Ream and Bredehoft - 268 pages in all. Both books \$19.95
15. HEISEY CATALOG AND FACTORY PRICE LIST: By Antiques Research Publications. Catalog reprint #33, dated June 1, 1956. Last catalog published by the company. Complete listings of patterns offered by Heisey when they discontinued operations in 1957. . \$ 8.50
55. HEISEY'S CUT HANDMADE GLASSWARE: By Harold E. Willey. Reprint of old catalogs, showing some of the many cuttings by Heisey, mostly on stemware, 147 pages \$ 5.95
68. HEISEY BY IMPERIAL: By Newark Heisey Collectors Club - 2nd. Ed. - includes price trends & color plate. Every piece of every pattern made by Imperial, until they went into bankruptcy, is listed and priced in all colors used for the pattern . . . \$ 6.95
79. HEISEY GLASSWARE: By Heisey Collectors of America, Inc. - reprint of Catalog 76, the 1915 supplement to Catalog 75 - 58 pages - many items never shown in books or catalogs. Includes all the kerosene lamps and many electric lamps, with price guide . \$ 6.95
88. HEISEY TOOTHPICK HOLDERS: By Nancy and David Jones, published by HCA - complete information on all Heisey toothpick holders. Contains photographs of each. Section on confusing items and fakes, with price guide. \$ 4.95
92. HEISEY ORCHID ETCH: By Neila Bredehoft, published by HCA. Twenty-four page booklet of Heisey's most popular etching - 230 pieces listed and dated individually. Includes a history of the etching and many early ads. With updated price guide . . . \$ 4.95
- 93A. ELEGANT GLASSWARE OF THE DEPRESSION ERA - BOOK III: By Gene Florence. Fostoria, Cambridge, Heisey and others. Illustrated in full color with price guide \$19.95
99. HEISEY ROSE: By Neila Bredehoft, published by HCA - 24 page booklet - all known pieces listed and dated. It includes history and many copies of ads. Comes with price guide \$ 4.95
101. HEISEY CANDLESTICKS, CANDELABRA AND LAMPS: By Tom Felt and Bob O'Grady assisted by Jack Metcalf. A definite survey of the history and manufacture of candlesticks and other lighting devices made by A. H. Heisey & Co., 1896-1957 with over 350 illustrations of all known candlesticks, including 25 in full color - 436 pages \$24.95
- 101A. COMPLETE PRICE GUIDE FOR HEISEY CANDLESTICKS: \$ 2.50
106. COLLECTORS GUIDE TO HEISEY'S GLASSWARE: By L. W. Promotions - excerpts from Heisey Catalogs 75, 109, 212-17. Comes with a price guide \$17.95
111. WESTMORELAND SPECIALTY COMPANY: Reprint of 1912 Catalog. Several patterns shown. Items easily confused with Heisey illustrated - includes c'sticks, toy sets, etc. . \$ 6.95
112. COLLECTORS ENCYCLOPEDIA OF HEISEY GLASS, 1925 - 1938: (The Color Years) By Neila Bredehoft for HCA. 408 pages - 32 pages of color. Over 1,000 pieces are illustrated and priced in every color in which the item was made. New pr guide bound in bk \$24.95
115. HEISEY ON PARADE: By Sandra Stout. This book has ads found in magazines from 1896 to 1957 and all of the Heisey patents. 284 pages \$17.95
116. HEISEY'S LARIAT AND ATHENA PATTERNS: By Tom Felt with a price guide. 52 pages . . . \$ 5.95
122. HEISEY'S CLASSIC RIDGELEIGH GLASSWARE: By Jim Jones & Vince Sparacio. Includes dates of production for each piece, complete item listing, decorations, ads & several illustrations. Shows confusing items made by other companies & proposed production items \$5.95

123. FIELD GUIDE FOR HEISEY CANDLESTICKS: By HCA compiled by Marv Jacob. Information from "Heisey Candlesticks, Candelabra & Lamps" by Tom Felt and Bob O'Grady. This pocket guide is perfect for identifying Heisey candlesticks. Includes pictures, heights, sizes, colors, number and name for each candlestick. For price guide see 101A \$ 1.95
124. EARLY DUNCAN GLASSWARE: By Neila Bredehoft, George Fogg & Frank Maloney. A complete and well illustrated history of the George Duncan & Sons Co. of Pittsburg from 1874 to 1892. Includes color plate and photo section. An excellent history of the company A.H. Heisey was associated with before establishing his own company. Includes a price guide \$19.59
125. GEORGE DUNCAN & SONS: Reprint of their 1890 catalog - their last \$ 6.95
129. HEISEY'S DEEP PLATE ETCHING & CARVING: By Harold Willey. 39 pages with price guide \$ 6.95
- 129A. HEISEY'S DEEP PLATE ETCHING & CARVING - PRICE GUIDE ONLY: \$ 2.50
131. VICTORIAN NOVELTIES & FIGURALS - GEORGE DUNCAN & SONS: By Tom & Neila Bredehoft. 52 pages, with price guide \$ 5.95

H E I S E Y ' S G I F T G A L L E R Y

34. LEADED GLASS DIAMOND H WINDOW ORNAMENT: With hanger \$ 7.50
36. HALF SIZE HORSEHEAD PAPERWEIGHT: Souvenir item, all frosted. Crystal (1984), Cobalt (1985), Ruby (1986), Light Blue (1987). Marked HCA & dated each \$35.00
39. BACK ISSUES OF HEISEY NEWS: By the Volume. Volumes VIII,IX,X,XI,XII,XIII,XIV, XV, XVI and XVII (12 issues each year) \$ 9.00
40. MADONNA: By Fenton marked HCA '87 - French Opalescent \$21.50
By Fenton marked HCA '89 - Teal Blue, clear \$25.00
By Fenton marked HCA '89 - Teal Blue, frosted \$26.50
41. ELEPHANT HANDLED FAIRY TALE MUG: Imperial, marked ALIG, Crystal \$13.00
Fenton, marked HCA '87 Copper Blue \$16.00
Fenton, marked HCA '88 Ruby \$16.00
Fenton, marked HCA '89 Teal Blue \$16.00
Viking, marked HCA '89 Ruby \$16.00
Viking, marked HCA '89 Evergreen \$16.00
45. HEN: Made by Imperial - Marked IG - Milk Glass \$ 7.50
46. CHICKS: Made by Imperial - Marked IG - Milk Glass - Head Up & Head Down each \$ 1.50
48. VICTORIAN GIRL BELL: Tangelo (orange) clear, made by Viking \$11.00
Ruby (red) clear, made by Viking \$11.00
Azure Blue, clear, made by Viking \$11.00
Clematis (Alexandrite) clear, made by Viking \$11.00
Lilac, clear, made by Viking \$11.00
Evergreen, clear, made by Viking \$11.00
- 48A. VICTORIAN GIRL BELL: Tangelo (orange) frosted, made by Viking \$12.00
Yellow, frosted, made by Imperial \$12.00
Light Green, frosted, made by Imperial \$12.00
Ruby (red) frosted, made by Viking \$12.00
Azure Blue, frosted, made by Viking \$12.00
Clematis (Alexandrite) frosted, made by Viking \$12.00
Lilac, frosted, made by Viking \$12.00
Light Blue, frosted, made by Imperial \$12.00
Evergreen, frosted, made by Viking \$12.00
65. WINGS-UP MALLARD: By Imperial Glass, Light Blue - clear \$13.00
frosted \$14.00
66. WINGS-HALF MALLARD: By Imperial Glass, Light Blue - clear \$13.00
frosted \$14.00
71. CYGNET: By Imperial Glass, Light Blue - clear \$10.00
frosted \$11.00

72.	<u>STANDING DUCKLING:</u>	By Imperial Glass, Sunshine Yellow - clear & frosted . . .	each \$11.00
73.	<u>FLOATING DUCKLING:</u>	By Imperial Glass, Sunshine Yellow - clear & frosted . . .	each \$11.00
74.	<u>MOTHER WOOD DUCK:</u>	By Imperial Glass, Sunshine Yellow - frosted	\$20.00
78.	<u>FISH MATCH HOLDER:</u>	By Imperial Glass, Sunshine Yellow, clear	\$ 9.50
		frosted	\$11.00
89.	<u>FISH CANDLESTICK:</u>	By Imperial Glass, Sunshine Yellow, clear & frosted	each \$11.00
94.	<u>YEOMAN TRIANGLE ASH TRAY:</u>	The only item ever made for HCA with the original Diamond H mark, also marked HCA. <u>Price reduced</u> - clear	\$ 6.50
97.	<u>BLACK TIGER PAPERWEIGHT:</u>	Made by Imperial Glass, marked ALIG	\$25.00
102.	<u>#33 TOY CANDLESTICK:</u>	By Imperial, marked ALIG, Crystal	each \$10.00
		Rose Pink	each \$13.50
	(All the colored candlesticks were made by Imperial for HCA in limited numbers).	Sunshine Yellow	each \$13.50
		Light Blue	each \$13.50
105.	<u>PRISMS:</u>	With gold or silver wire	each \$ 1.25
107.	<u>SHORT FERRULE:</u>	To hold bobèche	each \$ 4.00
108.	<u>PRISM PINS:</u>	Gold or Silver, 1 dozen postpaid	\$ 1.00
113.	<u>#1401 EMPRESS 4½" PLATE:</u>	By Imperial, marked HCA - Victory Etch & "Moulds 1985"	\$ 2.50
114.	<u>DIAMOND H ADVERTISING SIGN:</u>	By Viking - Cobalt plain	\$22.50
		frosted	\$23.50
117.	<u>CABOCHON ADVERTISING SIGN:</u>	By Viking - Light Amber, marked HCA '86	\$20.00
121.	<u>BABY ELEPHANT:</u>	By Fenton, French Opalescent dated '88	\$20.00
126.	<u>MEDIUM ELEPHANT:</u>	By Fenton, French Opalescent dated '88	\$22.50
128.	<u>DONKEY:</u>	By Fenton, French Opalescent dated '88	\$20.00
130.	<u>BUNNY - SET OF HEAD-UP AND HEAD-DOWN:</u>	Made by Dalzell-Viking in Ruby marked HCA set	\$37.50
131.	<u>BUNNY - (1) HEAD-UP:</u>	Made by Dalzell-Viking in Ruby, marked HCA	\$20.00
132.	<u>BUNNY - (1) HEAD-DOWN:</u>	Made by Dalzell-Viking in Ruby, marked HCA	\$20.00
133.	<u>SPARROW:</u>	Made by Dalzell-Viking in Ruby, marked HCA and (D)- (300 made, limited ed)	\$16.00
134.	<u>CYGNET:</u>	Made by Dalzell-Viking in Ruby, marked HCA and (D) -(300 made, limited ed)	\$15.00
135.	<u>KICKING COLT:</u>	Made by Dalzell-Viking in Ruby, frosted, marked HCA '89 (limited ed)	\$20.00
136.	<u>AMBER FLYING MARE POSTER:</u>	17 x 22	\$ 8.00
137.	<u>FULL COLOR LITHOGRAPH:</u>	Featuring Moongleam, Flamingo and Hawthorne and is 19"x26"	\$10.00
138.	<u>FULL COLOR LITHOGRAPH:</u>	From Glass Secrets Series featuring Flamingo glass-19"x28"	\$10.00
139.	<u>FULL COLOR LITHOGRAPH:</u>	From Glass Secrets Series featuring Moongleam glass-19"x28"	\$10.00

SEE ORDER FORM ON PAGE 24. IF YOU NEED MORE SPACE THAN THE ORDER FORM ALLOWS PLEASE USE A SHEET OF PAPER TO CONTINUE YOUR ORDER. THANK YOU.



No Discounts on limited editions.

Florence King 'mother' of drama at NHS

"Lights, camera, action!" When these words were first spoken at Newark High School in the late 1800s and early 1900s, they probably were spoken by Florence M. King.

Daughter of prominent Newark attorney William Alexander King, Miss King started her play writing and directing career at the age of 10 while entertaining at family get-togethers. To Florence M. King, theater was the love of her life.

As the first play director at Newark High School, Miss King taught piano privately and was organist at Second Presbyterian Church for more than 40 years. Records do not show whether she was paid by the district for her work at Newark High, or whether she did it out of sheer love of directing.

For many years, this Newark High School graduate produced three plays a year for the benefit of Newark Hospital and later for the benefit of the Newark Public Library.

It is reported that the evenings always consisted of three one-act plays and that Miss King never charged admission, but merely gathered a free-will offering in which buttons often were found.

Miss King also received a membership to the old Country Club, for which she provided entertainment one evening a year. Either three one-act plays or an operetta were produced outdoors at the first tee while the audience sat on the porch to watch.

Florence King's niece, Elizabeth King, a former teacher in the Newark City Schools, continues to have a strong devotion to her aunt, who died in 1938. A former actress with the Denison Summer Theatre and Licking County Players, Elizabeth King continues to keep the name of her aunt before the Newark community.

Since 1941, with the exception of the classes of 1965 through 1969, the

Florence M. King Drama Award has been presented to the most worthy senior thespian at Newark High School. An engraved silver bowl has been given to the recipient each year.

Recipients have been Elizabeth Mercer (1941), Shirley Spencer (1942), Melva Vanderhoven (1943), Edward Ewald (1944), Jack Bertsch (1945), William Shell (1946), Richard Mercer (1947), Letha Dyers (1948), and Shirley Lamson (1949).

Recipients during the 1950s were Joyce Drake (1950), Augusta Lucas (1951), Carma Acklin (1952), John Fields (1953), Lawrence Green (1954), Margaret McGlone (1955), William Offenbaker (1956), Susai Coelho (1957), Barbara McKin (1958) and Harold Clawson Jr (1959).

1960 recipients of the award were John Ankele (1960), Richard Young (1961), Karen Hoover (1962), George Machlan (1963) and Erin McAllister (1964).

Recipients in the '70s were Molly Kelley (1970), Marguerite Browning (1971), Robin Coelho (1972), Mary Wolverton (1973), Scott Austin (1974), Charles Connor (1975), Carolyn Hudgins (1976), Richard Laverghetta (1977), Frances Owens (1978) and Todd Sullivan (1979).

The '80s recipients are Glenn Pettit (1980), Suzanne Pettit (1981), William Burckel (1982), Carmen Coventry (1983), Holly Pitts (1984), Beth Mayhew (1985), Jonathan Lynch (1986), Kathleen Arlen (1987), Susan Dickerson (1988) and Christa Wycoff (1989).

Sincere thanks go to Elizabeth King for keeping this recognition of a special lady alive. A plaque listing the names of recipients hangs in the lobby of the Lawrence E. Griffin Performing Arts Center on the high school campus.

Robert Hite is superintendent of Newark City Schools. He writes this column, *School Bell*, weekly for *The Advocate*.



ANNUAL CHRISTMAS DINNER

DECEMBER 9, 1989

COCKTAIL HOUR 6:30

DINNER 7:00

OPEN CASH BAR

Licking Springs

TROUT AND GOLF CLUB

2250 HORNS HILL ROAD ROUTE 2

NEWARK, OHIO 43055

SEND RESERVATIONS TO:
HCA CHRISTMAS DINNER
PO BOX 4367
NEWARK, OH 43055

\$15.00 INCLUDES TAX AND TIP

ENTERTAINMENT

DEADLINE FOR RESERVATIONS DEC. 5, 1989
(if you order late, please call
614-345-2932)

NAMES:

ADDRESS:

AMOUNT PER PERSON

Please list all names so that name tags may be made out properly.

Total

\$

QUANTITY	STOCK NO	ITEM	COLOR	UNIT PRICE	TOTAL

ORDER BY NUMBER AND NAME

MAIL ORDER TO: HCA SALES
P.O. BOX 4367
NEWARK, OH 43055

TOTAL

DISCOUNT

SUB TOTAL

SALES TAX (Ohio only)

\$3.00 HANDLING
(Except Book Orders)

10% SHIPPING

GRAND TOTAL

NAME:	
ADDRESS:	
CITY:	STATE: ZIP:
PHONE: ()	
SIGNATURE:	

EXPIRATION DATE:

MO:		YR:	
-----	--	-----	--

MASTER CARD VISA

CREDIT CARD NUMBER:

--	--	--	--	--	--	--	--	--	--	--	--	--	--	--	--	--	--

SHIPPING RATES

BOOKS - 10% SHIPPING ONLY - \$1.00 minimum.
OTHER ITEMS \$3.00 HANDLING PLUS 10% SHIPPING.
OHIO RESIDENTS PLEASE ADD 6% SALES TAX.
10% DISCOUNT TO MEMBERS ONLY ON ORDERS OF \$50.00
OR MORE. (EXCEPT OSCARS OR SPECIAL ITEMS)

MAKE CHECKS PAYABLE TO HCA, INC.
PAYABLE IN US FUNDS ONLY

**National Heisey
Glass Museum**

Eight rooms and
complete lower level
displaying the beautiful
hand made glass
produced in Newark by the A.H. Heisey and Co. from
1896-1957.



Corner of West Church & North Sixth Streets
Newark, Ohio 43055

Phone: (614) 345-2932

Hours: Daily 1pm-4pm Closed Holidays



Membership Renewal Notice

The date above your name and address
is your renewal date. This is your last
issue of the Heisey News if it reads
11-10-89

**PLEASE DISREGARD THIS NOTICE IF YOU HAVE
RECENTLY PAID YOUR DUES.**

POSTMASTER SEND FORM 3579 TO:



SECOND CLASS