

# HEISEY news

OFFICIAL PUBLICATION HEISEY COLLECTORS OF AMERICA

© Heisey Collectors of America, Inc.

All Rights Reserved 1989

VOLUME XVIII NO. 8

AUGUST, 1989 ISSN 0731-8014



## HEISEY NEWS

P.O. Box 4367, Newark, OH 43055

### CLUB OFFICERS:

President - Bob Rarey (614) 279-0390  
Vice President - Dick Smith (614) 366-5163  
Secretary - Amy Jo Jones (513) 426-8668  
Treasurer - Betty Barnard (614) 366-7002  
Curator - Louise Ream

Editor: Louise Ream

P.O. Box 4367, Newark, Ohio 43055

PH: (614) 345-2932

Published in Newark, Ohio, Printed in Newark, Ohio.

\$15.00 per year - \$1.25 per copy

Back Issues - Each Volume (12 issues) year - \$9.00

Volume V, VIII, IX, X, XI, XII, XIII, XIV, XV, XVI, XVII

Heisey Collectors of America, Inc. is a non-profit corporation with tax exempt status. Owners and operators of National Heisey Glass Museum, 6th and Church Streets, Newark, Ohio.

Open daily 1-4 p.m. except holidays. Other hours by appointment. Members admitted free.

### HEISEY NEWS

Heisey Collectors of America, Inc.

All Rights Reserved 1989 - ISSN 0731-8014

Published monthly, except twice in February, by Heisey Collectors of America, Inc., Newark, OH 43055. Second Class postage paid, Newark, Ohio 43055. Club membership (includes 13 issues of Heisey News and participation in all club activities) \$15.00 per year plus \$2.50 for each additional family member in same household who wishes a membership card. For Voting Membership add \$25.00 one time only fee.

POSTMASTER: Send address change to:

HCA, P.O. Box 4367, Newark, OH 43055

When requesting information, please enclose a self-addressed, stamped envelope (SASE).

ADVERTISING - Send all ads to: HCA - Advertising  
P.O. Box 4367  
Newark, Ohio 43055

DOUBLE SPACE ALL ADS

### Rates:

CLASSIFIED: 15¢ per word. \$1.50 minimum.

ABBREVIATIONS AND INITIALS COUNT AS WORDS

DEALER DIRECTORY: \$25 per year.

Display:	Members:	Non-Members:
1/8 page ( 9 items)	\$20.00	\$ 30.00
1/4 page (20 items)	30.00	45.00
1/2 page (20 items) Hor.	45.00	67.00
1/2 page (50 items) Vert.	60.00	90.00
1 page (50 items)	75.00	112.50

Personal ads limited to 1/8 space.

ALL ADS MUST BE PREPAID. Ad copy must be received by the 5th of the month preceding the publication date-i.e. April 5th for May issue. Ads containing reproductions will not knowingly be accepted unless clearly stated (i.e. Heisey by Imperial, etc.). HEISEY NEWS assumes no responsibility for false advertising or misleading information. In the event of typographical error, the incorrect portion of the ad will be run in the following issue, but HEISEY NEWS assumes no further liability.

The opinions expressed in articles in HEISEY NEWS are those of the authors and not necessarily those of the organization. The Editorial Staff reserves the right to edit or refuse any material submitted for publication. When requesting information, please enclose a self-addressed stamped envelope (SASE).

## IMPORTANT NOTICE!

### IT'S MINI-SHOW TIME AGAIN !

The Tri-State Heisey Study Club will be in charge of the 19th. Annual Mini-Show again this year. The show will be held on September 9, 1989.

The location has been changed to Apple Tree Auction Center, 1616 West Church St. and both the show and dinner will be held there.

Contracts for space are being sent out this month to prospective dealers. The space is free but \$5.00 will be charged for each table with a limit of four, at least until it is known whether more space will be available.

For contracts write or call:

Liz Hughes PH: 219-833-3882  
R.3, Box 480  
Angola, IN 46703

This is a nice show with lots of Heisey. It will be followed by the Annual Souvenir Dinner which is always a lot of fun.

See page 23 for information on ordering the dinner and this year's souvenir.

Last year the 1426 Clover Rope mug in Ruby by Fenton was a sellout. This year's mug will be made in "Evergreen" by Dalzell-Viking and should be equally beautiful.

The price is the same as last year. Please order as soon as possible.

More information will appear in the September newsletter.



### ABOUT THE COVER

FOUR EXAMPLES OF THE USE  
OF THE HEISEY EPERGNETTES  
DESIGNED BY MRS. DILLON.  
SEE ARTICLE ON PAGE 6.



## NOTES FROM YOUR PRESIDENT . . .

The beautiful and highly successful 18th. Annual Convention came to conclusion at the 5:00 p.m. close of the 19th. Annual Antique Show and Heisey Glass Display. Both are held at the Ohio State University Branch Campus in Newark, Ohio. (If this 18th. Convention and 19th. Antique Show - Display is confusing, it is because the first Antique Show - Heisey Glass Display was held a year prior to the first Convention.)

The year's theme "Christmas In June" provided the opportunity for some very unusual and beautiful display themes and dealer decorations. The Museum was presented in its beautiful Christmas splendor and the Decorating Committee had also brought the Christmas Spirit to the Best Western Hotel for the Annual Banquet and Sunday morning Annual Meeting. Santa (Mr. W. L. Hitchcock of Georgia) was present at the Preview and the Banquet. I wish all of you could have been there to enjoy the season with us.

The "Gala Preview" opened the festivities with dinner at 5:00 P.M. on Thursday, June 15. Attendance was an all-time record with more than 700 registrations.

The panel identification of Heisey and other glass on Friday morning was well attended and an abundance of glass was on hand to test the experts. Friday afternoon was the reception for former "Heisey employees and friends". It was followed by the Annual Banquet on Friday evening. This year, it was decided to have the Roll Call of the Clubs and individuals at the banquet rather than having a speaker. It is with great pride and humility that I can report the response to my suggestion "that donations be made to the Endowment Fund", was generously received. The donations from clubs and individuals totaled more than \$10,500 for the Endowment Fund. This is a great start toward the goal of doubling the Endowment Fund in 1989.

Saturday afternoon Seminars - The Color "Moon-gleam" by Walter Ludwig, Heisey "Favor Vases" by Joyce Rohde, and "Insurance on Glassware and other Antiques" by Mike Thompson were very informative and well attended. A growing highlight of the Convention is the Heisey Swap and Silent Auction on Saturday night, sponsored by the Dayton Heisey Club. I have been informed that the event has outgrown the capacity of the Best Western Ballroom.

Saturday night was the Annual Meeting of the Board of Directors. After the routine reports of the Secretary and Treasurer were accepted, Curator, Louise Ream, reported that gift shop sales for 1989, through May 31, were \$13,291.47. Museum admissions totaled \$1,065.45 for the same period. A number of tours have greatly increased the Museum admissions. New items in the gift shop have been well received by visitors. The Project Committee suggested that gift certificates be made available for sale in the gift shop. This was passed by the Board. Archivist, Neila Bredehoft, asked the Board for permission to allow the Columbus Heisey Collectors Club to take six to ten etching plates for cleaning. Permission was granted.

The Long Range Planning Committee asked that consideration be given to the appointment of a Silver Anniversary Committee for the observation in 1996.

Last month I reported that a second computer was

on order. As was announced at the Annual Meeting, it is now in place, operating, and it is paid for. The March Benefit Auction net to the Club exceeded budget figures by enough to pay for the computer. Neila, Amy Jo Jones and Pat Hildebrand are receiving instruction in its proper use and function.

Betty Barnard was elected to fill the one year unexpired term of Neila Bredehoft, who had resigned to become Museum Archivist.

A motion was made to distribute the ballots for the election of directors during the breakfast at the Annual Meeting and, that ballots be counted, starting at 9:30 a.m. The motion was passed. The Board Meeting adjourned.

The Annual Meeting of HCA was called to order at 8:00 a.m. on Sunday morning. Routine reports followed; candidates for the Board of Directors were introduced, and certificates given to Clubs and individuals who participated in the Heisey Glass Display. Two new Study Clubs were presented charters: Hoosier Heisey Club of the Indianapolis area and National Capital Study Club of the Washington D.C. area.

The following were elected to a four year term on the Board: Kay Darling, Marvin Jacob, Amy Jo Jones, Sam Schnaidt and Betty Wanser.

At the Board of Directors Reorganization Meeting immediately following the Annual Meeting, the following officers were elected: President, Robert Rarey; Vice President, Richard Smith; Secretary, Amy Jo Jones; Treasurer, Betty Barnard. Charlie Wade, immediate Past President, is the fifth member of the Executive Committee.

I would like to take this opportunity to express my "Thanks" and appreciation to all those faithful, hardworking members whose work and devotion made this Convention a success. A very special "Thank You" to the five retiring Board Members; Charlie Baird, Neila Bredehoft, Mary McWilliams, Liz Stickle and Charlie Wade.

Without your assistance, it would not have been possible.

Dates to Remember: September 9, 1989, Souvenir Dinner and quarterly meeting; June 14 through 17, 1990, 19th. HCA Annual Convention and 20th. Annual Antique Show and Heisey Glass Display.

Happy Collecting,

*Bob Rarey*

---

### HEISEY MUSEUM AND HCA FEATURED IN *THE COUNTRY LETTER* by Neila Bredehoft

Recently we received a complimentary copy of *The Country Letter*, for July-August, 1989. This publication is produced by Time-Life Books so hopefully has a wide circulation.

Included in this issue were two references to HCA and the Heisey Museum as follows:

"National Heisey Glass Museum P.O. Box 4367, Sixth and W. Church Sts., Newark, OH 43055; 614-345-2932. Heisey glass, produced from 1896 through 1957, was considered the finest handmade table glass in America." The other reference was a listing (the first listed!) under *GLASS GROUPS*, which simply listed HCA and its address.

While the listings were in an expanded article about Depression Glass, all HCA members should be happy to have this excellent publicity about our organization and our Museum included in such a national publication.

## HEISEY PEOPLE LIKE TO HAVE "FUN" AND THEY ARE "GENEROUS" PEOPLE

Unknown to us, one of our great dealers, Jerry Gallagher, was taking up his own collection in his booth for the Endowment Fund. After the show closed on Sunday, he came over with the (below sample) box he had prepared, and the money. I personally want to say "thank you Jerry for the enthusiasm".

CONTRIBUTE TO  
HEISEY SALVATION  
ARMY-  
(ENDOWMENT FUND)  
Merry Christmas!



We also want our Heisey members who were not able to be at the Sunday morning breakfast to know of our merriment after the breakfast. This is just one of several things. Each year this beautiful blue smock gets raffled off to the highest bidder. This year our Sam Schnaidt auctioned it off. Last year our charming Betty Wanser was the lucky gal.



Since last year she has sold people's signatures on this stylish Heisey (by Imperial) smock. Sam Schnaidt introduced us to a new game which was exciting and fun. Betty did a great job modeling this lovely garment and it fit her so nicely that her husband (Herb) bought it back for Betty. Since Betty is a blonde, the smock was very becoming. He paid \$400 + for it. To the left of this article is Betty in the smock. Betty informed us that she knew someone who volunteered to embroider all the names on the smock. This will be a "one of a kind", in fact "an original", so if any of our members would like to bid on this, please do so. Betty was elected on our board this year and she is from California. "Congratulations Betty for a job well done".

*Helen Roney*

### IN MEMORIAM

Everett Lybarger, husband of our bookkeeper, Wanda Lybarger, died on July 13, after a short illness. He is survived by his mother, his wife, Wanda, two daughters, Sharon Sandbrink and Karen Lybarger; son, Jay; four grandchildren; and a host of friends.

Everett will be missed by all of the employees of HCA. He brought Wanda to work every morning and came after her each evening. He nearly always came in when he picked her up. His pleasant personality, his friendliness, and helpfulness made him a friend to all of us and to all who knew him.

## FROM THE DESK OF THE EDITOR . . .

Another wonderful Convention has come and gone! Most people seemed to be pleased with the theme and now you know how we decorate your museum at Christmas time.

Study Clubs and some individual members had thought up very clever ideas for their booths, making it one of our best-ever displays. The theme was also carried out in the show and at the Best Western headquarters. All in all the whole thing was a huge success.

The gift shop in the museum was very busy in June, beginning with the days of the first weekend of the Flea Market on the Square and continuing through two or three days after the Convention while some visitors were still here. Seventeen thousand, seven hundred and eighty-two dollars was taken in during June with the largest part of it during that period. This figure does not include sales at the show nor mail orders.

The Teal bell in clear glass was sold out that week so now we have only the frosted one which is very beautiful. Baby cups and madonnas are still available in the shop.

There must have been many beginning collectors as books were, and still are, among our top selling items. Acquiring books is your first best move in collecting anything. Just one good purchase would easily pay for one book.

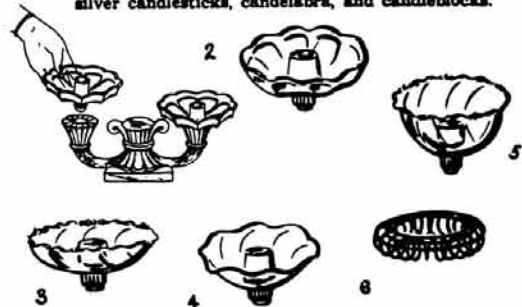
I enjoyed visiting with so many of you and wish I had had more time. It is a great pleasure to see so many of you return year after year, and to meet new members.

Be sure to take note of the article on page Two concerning the September Dinner and its location. The form for ordering your mug is on page 23. One mug to a member, please. These will be beautiful and hopefully it will be another sellout.

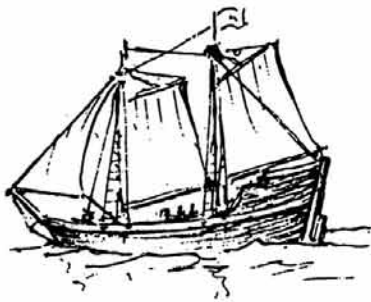
Also, contact Liz Hughes if you want to have space at the Mini-Show. This year there will be no chance that rain can spoil the show since it will be inside. The only cost is for renting the tables and you must use ours.

### Decorative Ideas As Limitless As The Stars

Like magic, this Heisey accessory brings versatile, colorful beauty, mingled with your own ingenuity, to your candlesticks! It's the Epergnette, a crystal "saucer," designed to hold a candle and flowers. Deep enough to hold water for your favorite floral arrangements, the Epergnette fits into your own crystal or silver candlesticks, candelabra, and candleblocks.







diamonds are forever . . . .

The day was forecasted as sunny and warm; I was invited to motor to Manchester in a twenty-two foot motor boat, why not! Pull away from the dock at about 8:45 a.m., the harbor was calm, the weekend sailors were waiting on the pier for the launch to take them to their respective boats for a day in the sun. The boat headed for Manchester Harbor using the audible buoys as route markers. (Such as the Bell Buoys, these gong as they sway with the swell of the ocean). As I look toward the horizon it seems like a million miles away (in reality the eye can see only a distance of about five miles) the sail boat only a tiny dot where sky meets sea. It's peaceful and gives me time to think and sort things out. But you must remember this calm beautiful day could, in just moments, turn into a rough sea with waves breaking over the bow and crashing down on your head. Upon entering Manchester the boat tied up at the pier and breakfast was the order for the day. Leaving Manchester and heading back to the Yachting Center, the shore line was followed motoring in and out of each and every harbor along our course. The day was lazy, the air clean, the smell of the salt air a treat to my senses. The sun shone down making the ripples on the water reflect like millions of diamonds dancing in glee. As the boat rounded the point, bringing the mouth of Marblehead harbor back into view, a myriad of sails greeted me, bright colored spinnakers wafting in the breeze, the sailors vying for position; it would be a race to the finish.

Thinking about races reminds me of the time quite a few years ago. It was summer and there was a great deal more glass here in the yachting center than there is at this time. Also, you must remember, the dealers here were not near as knowledgeable as they are today. A dealer called and said she was going to run a house sale; she told us just what room that we would find a lot of glass. She mentioned something about Cobalt. The sale was to begin at 8:00 a.m. - no sooner, no later. Race to the house to be first in line so we could rush right in when the door opened; race to the dining room and there in the cabinet was all sorts of glass. I just put my arms across the front of the cabinet and said, "I'm taking it all". What was there? All sorts of things; Cambridge, Fostoria, Depression, and yes, Heisey! A standing colt; six Marigold #1252 Twist plates, 8"; (The price on the top plate was \$2.50. I asked if they were \$2.50 each. The dealer said, "no that is the price for the whole stack".) three Greek Key banana boats and a Cobalt Thumbprint and Panel 11" bowl. I haven't found Cobalt for such a good price in many a year! We came in first in that race.

"The Cardinal" (ma) spread his wings and flew to parts unknown to see what he could feather his nest with. He was able to bring home a few choice scraps: a perfect #343 Sunburst tumbler; a shot glass with #980 Moonglo cut; #197 Tumbler-up.

"The Rebel" showed up with the #352 violet vase and the #1255 Pineapple and Fan 8" vase in Emerald.

"That High Steppin Couple" came up with a few delightful pieces of Heisey that they would like to inform you about: #18 Crystal flower block; Mari-gold Narrow Flute individual creamer; #300 12oz schoeppen.

"The Wiz" carefully placed his white gloves and tall black top hat on the table; with a flourish he waved his magic wand over the hat - repeating some sort of 'mumbo-jumbo' and Voila! there appeared a myriad of #3368 Albermarle goblets, oyster cock-tails and ice teas. Oh, I'm so sorry, did I forget to mention that they all had the #867 Chateau Cut? A very impressive demonstration, and well worth the price of admission.

Now, "The Midnight Riders" are not going to be outdone so they donned their riding capes and set off in the wee hours to see just what could be captured: two (2) #1295 Beaded Swag goblets were roped in, did I say Custard; #1205 Fancy Loop cracker jar with cover; and, the thing that pleased them the most, two wooden models - one for the #5024 Oxford tumbler bowl and the other for the #6004 Classic. Two most exciting discoveries.

Also found in the Bay State (ma) area was a #150 Banded Flute 7" plate surrounded with a 1½" silver plate - fancy, band. Very attractive.

"Mr. 1469" claims that Ridgeleigh is his first love, but even so there are some things that he finds very hard to pass by. One of those things was a Heisey spoon, marked. What a catch that was!

"The Amicable Stroller" is always up-beat and quite enthusiastic in everything she does. Heisey hunting gives her much pleasure and it seems that she can hardly wait for the weekend to roll around so she can hit the Heisey Trail. That trail led to a beautiful Sahara #1428 Warwick individual candlestick, (Sahara being her favorite color) and a #417 Double Rib and Panel basket in Hawthorne.

"The Hilltoppers" report a Narrow Flute soda along with the Winged Scroll creamer and covered sugar in Emerald with very good gold.

"The Busy Bee" wanted all to know about her Lariat Fan vase and the #1503 Crystolite two-compartment relish.

"Judge Roy Bean", the Hanging Judge, decided to bring his latest victim to "Gallows Hill" (point of interest - Gallows Hill is where the Salem witches were hung); here he hung for all to see a #1205 Fancy Loop orange bowl and the #500 Octagon 5" basket in Moongleam.

This past weekend was the first annual Marblehead Days and "Sandy Claws" arrived at State Street wharf in a Lobster Boat. Yes, perhaps you have guessed, Sandy Claws was a man-sized lobster who greeted all the residents from a large lobster trap. The children were all in awe of him and could hardly believe their eyes. Good times are the menu for summer in the Yachting Center.

Please let me hear from you all, my files are getting depleted. Your input is certainly very much needed. Keep my mailbox overflowing. I would enjoy that, believe me!!

Happy Hunting, Janet Caswell

# Mrs. C. A. Dillon Invents New Gadget, The "Epergnette"

By Sophia Sue Macon

Mrs. C. A. (Annie Lee) Dillon, the "Lady Edison" of Raleigh, has delved once more into her grab-bag of clever ideas and has come up with another invention that's the talk of the leading glass companies of America.

Mrs. Dillon, who only about a year ago patented her popular "Fence-Me-In" bed guard, (designed to prevent babies and small children from falling out of bed) has recently given the A. H. Heisey Company of Newark, Ohio, the go-ahead sign on the manufacture of a gadget which she calls the "epergnette." The "Heisey Epergnette," the trade name of Mrs. Dillon's invention, is "a round fluted crystal flower container which fits any candelabrum or candlestick, transforming it into an epergne." The approximately five inch saucer-shape container, designed with a rubber gasket at the base, will fit any size candlestick. It can also be used effectively in a silver or crystal goblet, sherbet glass or even in an ordinary water glass, with or without candles. In fact, says Mrs. Dillon, there are almost a thousand different arrangements that can be made. "The epergnette is inexpensive and practical and will appeal to every home lover."

The "Heisey Epergnette" began to take shape in Mrs. Dillon's mind one night last year when she was bemoaning the fact that she didn't have an epergne to use at her next day's party. A French epergne, of course, would cost hundreds of dollars. Why, figured Mrs. Dillon, couldn't a candelabrum be made into an epergne. So, while the rest of the family was sleeping, Mrs. Dillon made her way downstairs and with some candlesticks, candelabra, different size saucers, and paste she went to work! The saucers stubbornly refused to stick but somehow or other Mrs. Dillon managed to balance them until the next day when she called her good friend, Mrs. R. L. McMillan, over to pass on her idea. Mrs. McMillan was enthusiastic and urged Mrs. Dillon "by all means to do something about it." Upon request, Mrs. Dillon gave a demonstration of her "gadgets" at a meeting of the Raleigh Garden Club. The local women, including close friends, Mesdames Earl Johnson, Vic Bell, and N. E. Edgerton, Jr., were equally as enthusiastic and under the sponsorship of the Garden Club president, Mrs. Walter Willard, a petition was signed and sent to the Heisey company urging that these "gadgets" be made. The company replied that "this was certainly proof of wide acceptance of the epergnette."

Mrs. Dillon, of course, wrote to several glass companies telling them of her invention. They all wrote back that it was a "splendid idea" and "advised her to proceed." The Fostoria Glass Company even sent a salesman here to see it. The Heisey Company was especially interested, though, and asked for pictures and some of her crude samples. Park White made the photographs; then the Raleigh "inventress" sat back and waited. Designing molds is a very slow and complicated process, and not until this past July did Mrs. Dillon receive the first samples of her epergnettes while at her summer home in Montreat.

In the meantime, negotiations with the patent office in Washington were under way. Mrs. Dillon's sister-in-law, Mrs. Grover Dillon, made the trip to Washington to help untangle the governmental red tape with the assistance of the same lawyer who patented the "fence-me-in-bed." Because of Mrs. Grover Dillon's help and advice (she held out for the candle holder in the center of the epergnette -- which, incidentally has proved to be a good thing), she and Mrs. "C. A." took out the patent together on a royalty basis.

During the polio quarantine in Montreat this summer, when the gates were closed, Mrs. Dillon, in order to entertain the vacationists, decided to put on a "full-fledged" flower show. For four days, the Raleigh "Lady Edison" displayed flower arrangements and, of course, her new invention, the epergnette. Hundreds of people from all parts of the country came, each of whom planned, when they returned home, to be the first in their vicinity to make "epergnette" arrangements. Mrs. Dillon was later asked to present her idea before the Garden Club of Asheville. She also gave a demonstration before the woman's Club of Montreat and was requested by many of the Montreat vacationists to come to towns throughout the United States to show her new invention.

In her demonstrations, Mrs. Dillon explained that in the winter when flowers are scarce, a few blooms and foliage can be combined in an epergnette to make a unique arrangement. Nandina berries, for instance, can be used. A good suggestion for a Thanksgiving she said, includes fruit, nuts, fall leaves, and a berried shrub; for a bridal table, white clematis vines; for Valentine's, red carnations; and poinsettias for Christmas. Gladioli, hydrangea blossoms, combined with hydrangea leaves, large chrysanthemums, pine needles and pine cones, and in the spring, fragile camellias will all make beautiful epergnette arrangements, declared the Raleigh woman.

The "Heisey epergnette" (it was originally to be called the "Dillon epergnette" but was changed because the Heisey name is more nationally known) will be advertised nationally beginning in November.

The Heisey Company has written that "without question", all leading magazines, "House Beautiful," "Bride's Magazine," etc. will feature epergnettes between now and the first of the year. They will also be a main feature of many of the Christmas catalogues.

The idea, they write, "has been sold to many of the biggest stores and quite a few of the leading florists. Epergnettes are now on the market and are being shipped all over the country." "In Chicago," stated one of the officials of the company, "they were the talk of the flower show. They were also a main part of the National Rose Growers Convention in Denver and were shown in a special display at the Dallas Texas show."

Mrs. Dillon has also received a letter of congratulations from one of the editors of "House Beautiful" who stated she was keeping the "Heisey Epergnette" in mind for an editorial. A story will be released soon from the Heisey Company on the personal background of Mrs. Dillon.

Epergnettes will be on display in Raleigh within the next few weeks. They will be moderately priced and can be bought with or without candle holders.

continued on page 7



continued from page 6  
ders. The Heisey Company plans also to make a more expensive epergnette of a finer crystal, suitable for wedding gifts. Mrs. Dillon has also designed a flower holder and several other size epergnettes, all of which the company plans soon to manufacture.

Up until now, the trend in flower arrangements has been a bowl of flowers in the center, flanked with candlesticks, candelabra, or candle holders.

Through the efforts of one Raleigh woman who constantly seeks to make her home a more attractive place in which to live, all home lovers will be able to design an entirely different, practical, and unusual flower arrangement.

Reprinted from News Observer, Raleigh, NC, September 26, 1945.

## REPORT FROM CONVENTION HOSPITALITY COMMITTEE

By Dairyland Heisey Club

We wish to thank all of those who generously furnished cookies, breads, candy, pecans, peanuts, pepper jelly and other goodies which added so much to our cheese and crackers for the Museum Hospitality Room during the 1989 Convention. It looked just like Christmas! Thanks also, to all the Conventioneers who stopped in for a snack and visit. We always enjoy serving you and comparing notes from the past year.

A special thanks goes to Jay Martin, Museum and Show Hospitality Chairman, who so efficiently and attentively saw to it that our supplies were ready, labeled and replenished as necessary. Never have we had this accomplished so well and so pleasantly. As the song goes "It Ain't What You Do It's The Way You Do It." Jay turned this into a fun job and the best year we have ever experienced in the Hospitality Room. Jay also appeared to be a one person Hospitality Committee.

We also wish to thank Sonny and Ray Larson, and Dick Spencer for the great support and assistance to our club at the Antique Show. We needed all the help we could get so Sonny, Ray and Dick were especially helpful and appreciated. Bob McClain and Amy Jo Jones, as Convention Co-Chairmen, were also very supportive of our efforts. Electricians, Russel Kain, his wife "Jingles", and daughter, as well as the entire OSU Staff, are to be commended for their great cooperation all during the show. Our every need was as important to them as it was to us! Our appreciation also goes to those dealers who so willingly filled in for canceled booths giving us a full house. We especially hope they had a profitable show!

All of the above are largely responsible for what we thought was a successful show despite much adversity and interference.

Note: Thanks to the Dairyland Club for their year after year continued effort in this capacity. They, along with the Northern Illinois Club, began this tradition of cookies etc. many years ago. Later the Dairyland Club began to bring the cheese and crackers and many other HCA members also bring cookies and other delicious snacks.

## LETTERS, WE GET LETTERS . . . .

We would like to congratulate you for the marvelous organization and all the work you put into the Heisey Show this year. This was the first time we have attended the dinner before the preview. We joined the end of a long line, but were very surprised at how quickly we were served and how delicious the food was. The show was beautiful with many fine pieces of glass and many friendly dealers. We also enjoyed the museum and the snack we had there the next day. Altogether it was an unforgettable experience which we hope to repeat again next year.

Dale and Doris Shepherd

Another great Convention is over. Just thanks is hardly adequate to all of you that donate so much time and work to making all the conventions such a success. Each one is better. This was our 16th. and we're looking forward to the 17th. We appreciate it.

Don and Betsy Hanna

Congratulations on another successful Convention. We really enjoyed it. Please extend our thanks to all who worked to make it such a success.

Enclosed you will find a check for \$100. If not needed to pay for the new computer, please put it in the Endowment Fund.

John and Pauline Stiks

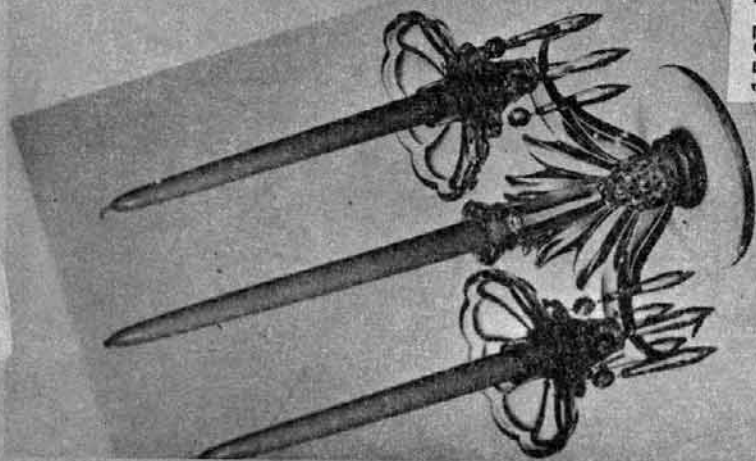
## WANTED-DOCENTS

WE OFFER YOU A BEAUTIFUL PLACE TO WORK, TO MEET PEOPLE FROM ALL OVER THE UNITED STATES AND ABROAD, AND HAVE THE OPPORTUNITY TO LEARN MORE ABOUT OUR BEAUTIFUL HEISEY GLASS MUSEUM AND THE GLASS ITSELF.

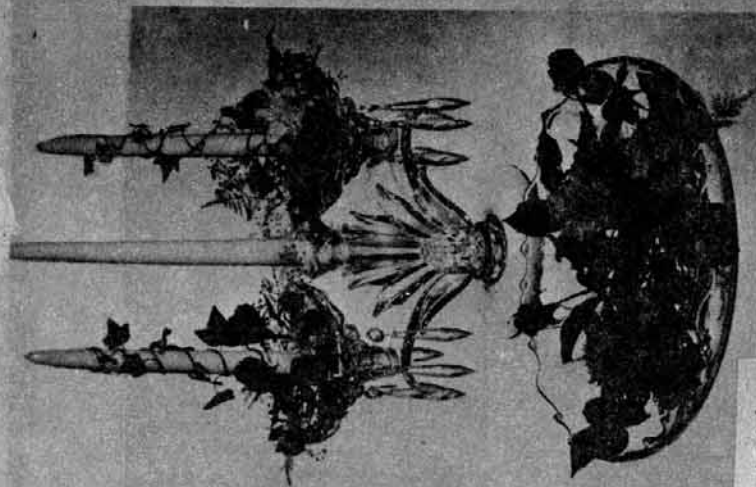
ALL THIS FOR ONLY 3 HOURS OF YOUR TIME - 1:00 p.m. - 4:00 p.m. ON THE DAY OF YOUR CHOICE. THE MUSEUM IS OPEN 7 DAYS A WEEK. DOCENT CLASSES WILL BE HELD SOON FOR THOSE INTERESTED. PROCEDURES WILL BE EXPLAINED SO YOU WILL FEEL AT EASE WITH THE PUBLIC AND THE GLASS.

THE MUSEUM NEEDS YOUR HELP. PLEASE CONSIDER THIS AND GIVE LOUISE A CALL AT 614-345-2932.

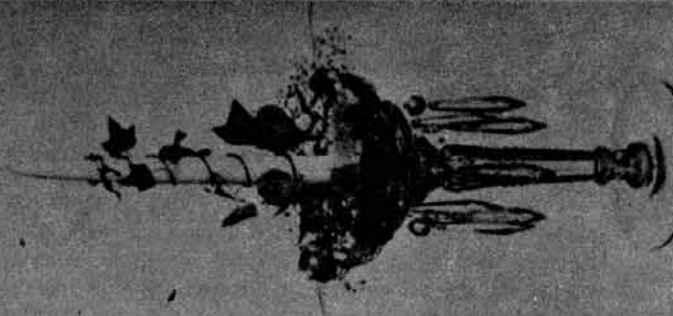
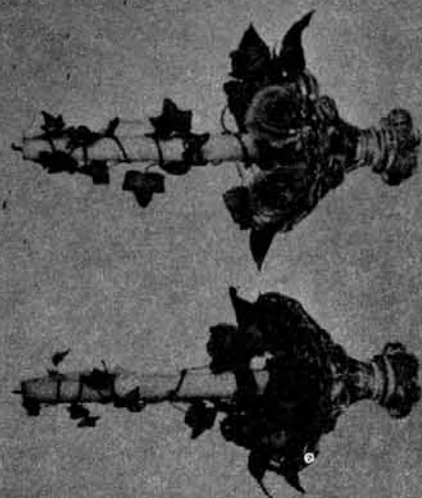
Mary McWilliams



1567 Plantation

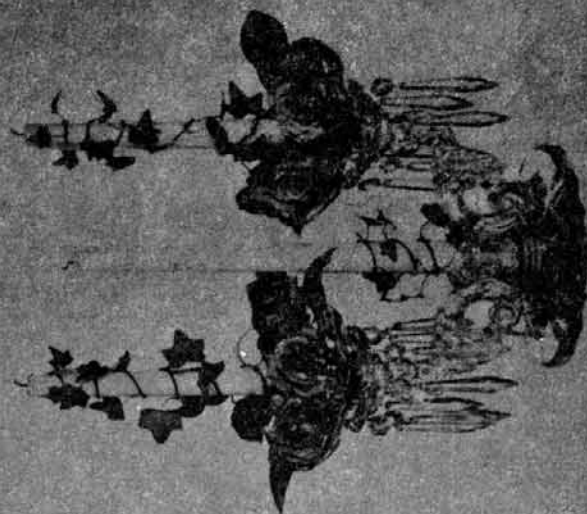


1566 Banded Flute

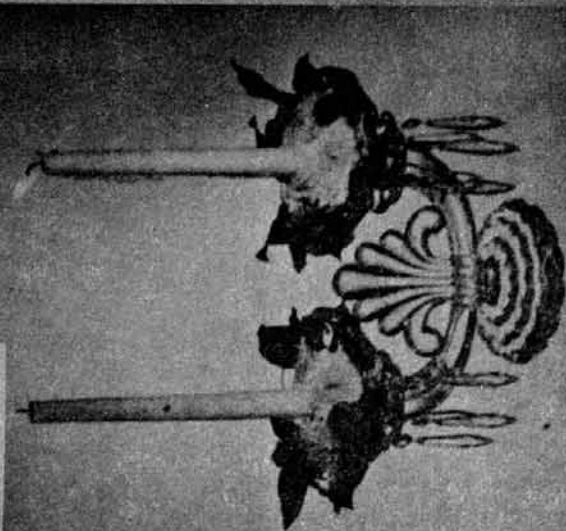


1509 Queen Ann

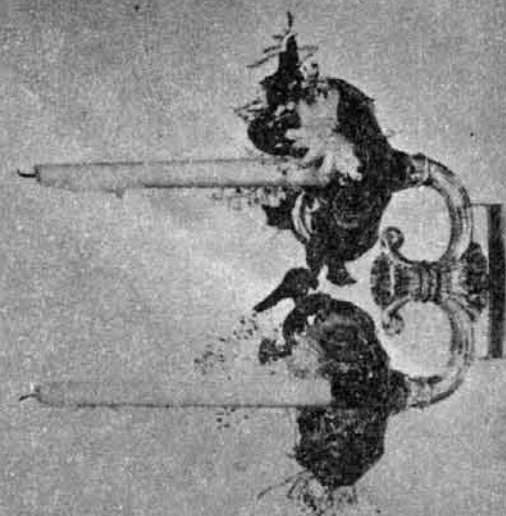
1513 Baroque



1503 Crystolite

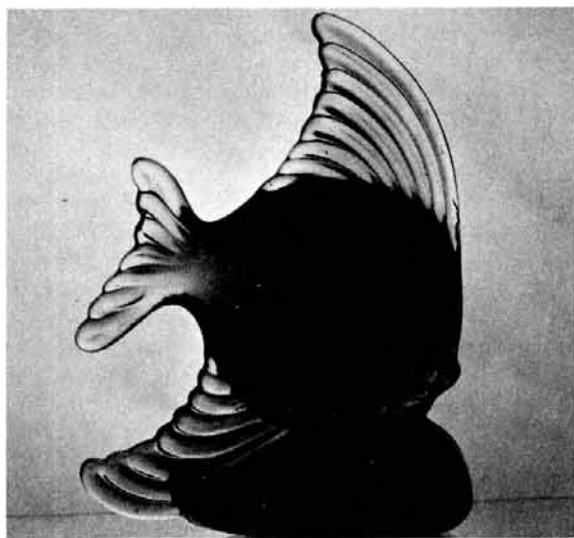


1504 Regency





By Tom Felt



If you attended the Imperial Convention or sat through the last hour of so of the auction at this year's Heisey Convention, chances are this won't be news to you: Heisey by Imperial animals, especially those made in very limited quantities during the last couple of years that Imperial was in business, have taken off phenomenally, in some cases selling for as much as or more than the Heisey originals. Out of 149 animals in the auction, 38 brought prices above \$100 (ranging all the way up to \$1200!) with the average being somewhere around \$250 - 300 each. That's pretty fast appreciation for pieces that are no more than 5 - 6 years old!

Although Amber seems to be the color most sought after by collectors, there was one pair of animals in light blue that also attracted considerable attention: the Fish bookends. So, although I can't show you a picture of the bookends in that particular color, I thought it might be interesting to look at them in another color made by Imperial in 1984.

The Fish pictured is in a deep ruby, although as you can probably tell from the photograph, the fins and tail shade from orange to yellow, making the color almost an Amberina. (I doubt, however, that this effect was achieved deliberately. Red has to be reheated in order for the color to come out and is often difficult to control.) We purchased a pair of these bookends at the factory in 1985, along with another pair in Verde (green) -- unlike the Verde ones, which have a very nice finish, the ruby pair is mottled and one of them has striations inside. Both pairs are ground on the bottom.

According to the information given by Paul Kikeli in his recent article on the animals (reprinted from *The Imperial Collectors Glasszette*), there were only 60 first quality Verde Fish bookends made; my guess would be that there were even fewer produced in Ruby or Light Blue. As was the case with the Heisey originals, none of these Imperial reissues of the Fish seem to have been marked. There are no records of Imperial having made this particular animal in Crystal or in any other colors.

The Fish bookend was originally made by Heisey from 1942 - 1952 as pattern No. 1554. I don't know

if this is a Royal Hickman design, but suspect it might be, since he did create some fish for Royal Haeger which bear a slight resemblance.

FROM THE ARCHIVES . . .

By Neila Bredehoft

Several more interesting things are surfacing from the archives of the Heisey family. One of the items we purchased from the estate was a basket catalog. We did not have this catalog in our archives before, so it is a valuable addition in making our catalogs and price lists more complete. While there was not very much new information contained in this catalog, it is very helpful and the illustrations are great. It has been copied and is now on the library shelves for the use of members.

In addition to this catalog, several other xeroxed files have been placed on the shelves including original correspondence between Royal Hickman and Rod Irwin when most of the animals were being designed. This also includes mention of some proposed pieces which were apparently never made. Some letters to salesmen have been copied in addition to files from particular salesmen, such as Conrad Woeffel, sales representative in the California area.

As we slowly go through our voluminous files, more and more of these notebooks will be available in the library on specialized subjects.

Some interesting items which have been given to Louise for use in *Heisey News* (in addition to the many items which have been printed in newsletters for the past several months) include lists of stores and the patterns which they ordered. These stores are mainly in the south and are from the era of Crystalite, Lariat, Minuet, Orchid and other popular patterns.

BOOK REVIEW

By Neila Bredehoft

*Emyl Jenkins' Appraisal Book* by Emyl Jenkins.  
HB 325 pp. published by Crown Publishers, Inc.,  
New York. \$24.95.

This well-written book by a professional appraiser is what everyone needs to evaluate his antiques and valuable possessions. Identification, insurance, inventory lists, condition and many other important topics are discussed in a manner easily understood and followed.

Inventories are recommended for heirlooms and antiques and items such as china, stemware, and silverware which may have been fairly recent purchases but have appreciated greatly in value over the years.

Chapter 18 deals with crystal and glassware and defines different types of collectible glass. Included is a short list of glass trademarks. The Glass Glossary defines many commonly used terms, colors and companies, which is quite helpful to anyone who is not acquainted with glass.

All in all, I was pleasantly surprised and impressed by the organization and readability of this book. I feel it would be a great help to anyone who owns antiques and needs to inventory and identify exactly what he owns.

## CLUB NOTES . . . .

### YANKEE HEISEY CLUB

By Donald Bean

The regular meeting was held on May 8, at the Bean home in Milford, Massachusetts. A prospective new member and a guest were introduced by President Betty Bean.

Membership and publicity committee announced that our annual club auction will be held at our September meeting. Members are asked to donate Heisey glass as well as other items. This is a fund raiser for HCA so let's all be generous!

The club is planning a cookout in July at the home of Cynthia and Paul Veilleu in Wrentham, Massachusetts.

A committee has been formed to investigate the possibility of having our first annual Yankee Heisey Club All Glass Show. This will be an HCA benefit show. Since we are all novices in this endeavor a tentative target date could be the fall of 1990.

Ed Morin will be our club delegate to the June, 1989, Convention. Ed is a "Catalogue #433" collector.

Progress has been reported by a special committee on plate donations of Heisey glass to be sold at the HCA Museum. The program for this meeting was the showing of slides of the Heisey Museum collection of glass. Over 30 items were brought in for show and tell. Some of the items included: 1503 Crystolite large oval footed bowl; 433 Greek Key cherry jar; 1401 Empress individual cream and sugar in Sahara; 1404 Old Sandwich ice lip pitcher; 1255 Pineapple & Fan Emerald toothpick holder; 1401 Empress Tangerine 8" plate; 1205 Fancy Loop fruit basket.

### VIRGINIA HEISEY CLUB

By Becky Eshbach

The June, 1989, meeting of the Virginia Heisey Club consisted of a tour of the Chrysler Museum in Norfolk. The Museum reopened its doors this past winter after four years and \$13.5 million were spent on remodeling, refurbishing and expanding of the museum. Of interest to the club was the Institute of Glass Exhibition which consisted of ten galleries containing works by Tiffany, Emile Galle, and The Boston and Sandwich Glass Company, that make up only part of an ever growing 8,000 piece collection. Included in the display were 12 pieces of Heisey (e.g. Pineapple & Fan pitcher in Emerald with gold overlay; 1433 Thumbprint & Panel bowl in Cobalt; Hydrangea champagne with amethyst hued etching on base).

After the tour of the Chrysler the members met for dinner at a nearby restaurant. The main point of business was the voting of a \$340 donation to be made to HCA for the Endowment Fund. After the meeting a long leisurely dinner was enjoyed.

### HOOSIER HEISEY CLUB

By Edward P. Kult

The Hoosier Heisey Club met on June 3, 1989, with 28 members present. Kim Carlisle, President, presided at the business meeting. Rachel Wolfe,

Secretary, read the minutes and presented the treasurer's report. A film presentation and display on toothpick holders was given by Fred and Lucille Duham followed by a show and tell table. Refreshments of cider and doughnuts were provided by the hospitality committee. The next meeting will be held at the Warren Branch Library, 9701 East 21st. Street, Indianapolis, on Saturday, August 26, 1989, from 2 to 4 p.m. New members are welcome.

### GATEWAY HEISEY COLLECTORS CLUB

by Phyllis Freier

Members of the Gateway Heisey Collectors Club of Pittsburgh, Pennsylvania, have many pleasant memories associated with Heisey and June. First was the club meeting and delicious dinner at the home of Bill and Ann Donaldson.

Plans were made at the business meeting for the convention. Everyone brought their favorite piece of Heisey with an explanation of why it is their favorite piece. A video tape of Joe Lokay's seminar on Heisey's first patterns was shown. Plans and great expectations were in our heads.

Then came the day to leave for Newark and the HCA convention. Twelve of our 18 members attended the convention. We made our presence known by: having a display "Little bits of Christmas"; helping to prepare and serve the preview dinner; making decorations for the banquet; presenting money for the library and endowment funds; attending the seminars that Joe Lokay organized; selling and buying on the square; buying at the show and sale; swapping at the swap session; visiting with our many Heisey friends; sampling the goodies in the hospitality room; voting in the election for directors; thoroughly enjoying "Christmas in June".

The HCA convention too is now a memory. We had spent wonderful days in Heisey Land. It is now like a dream. We were like Alice in Wonderland - only this was real, and we really were there.

IF THERE ARE ANY PEOPLE IN THE GREATER DETROIT AREA INTERESTED IN JOINING A HEISEY STUDY CLUB PLEASE CONTACT:

MARLENE WHITE  
23433 RIVERVIEW  
SOUTHFIELD, MI 48034  
(313) 352-4342

#### NOTE

We were unable to get the lists of donated items in this month but they will be listed in the next issue. Also, we will be using some convention photos next month. There was not enough time after Convention and Pat's and my vacations to get them ready for this month's issue. Sorry!





# Table Talk

HEISEY'S GLASSWARE

For Your Table



No. 12

A. H. HEISEY & COMPANY, NEWARK, OHIO

May, 1927

## Announcing Hawthorne

New colors - elusive, irresistible in their fascination.  
New designs - anticipating the trend of the times. Old fashioned quality - strict fidelity to the time honored ideals.  
These are the three cardinal principles of Heisey's pre-eminence in the field of glassware manufacture.

A. H. Heisey Co.





## Hawthorne — Heisey's New Color

**T**HIS announces a new color in glassware by Heisey, a delicate amethyst tint, to which the distinctive name, "Hawthorne," has been given.

Side by side with the soft rose glow of Flamingo and the charming green of Moon Gleam, the new Hawthorne color will take its place in popular demand.

Heisey's Hawthorne Glassware appeals to people. This was ascertained before putting it into extensive production and before releasing it to the trade.

People are delighted with Hawthorne because it looks so exquisite on the table—the rare, elusive tint adds a new charm that is wonderfully delightful. And it is such beautiful glassware! The finest quality of blown and pressed items made by Heisey craftsmen.

You will want to add this new color to your stock, because people are going to buy it, and it will give you a splendid additional sales feature to bring them into your store.



**I**N the charming Hawthorne tint are perfume bottles and puff and powders for milady's dressing table. The bottles shown here are No. 515. The three piece puff and powder with cover is No. 1186. These items are in the beautiful diamond optic effect.

### Annual Factory Shut-Down in July

As is our custom with our factory employees, the Heisey plant will close from July 1st to July 15th or thereabouts. In this period orders cannot immediately be handled and after re-opening, normal production cannot be reached for a time, due to natural conditions in the glassware business. We are asking our friends of the trade to bear this in mind and to anticipate summer requirements as nearly as possible by ordering in May. Orders received in June will get our best attention, but to avoid delays it is safer to order in May.



### Everything for the Table

**C**OMPLETE table services in several designs are offered in the Hawthorne color. From the illustration above a good idea can be obtained of the beauty this glassware gives the table, which is an attractive suggestion for a summer luncheon arrangement.

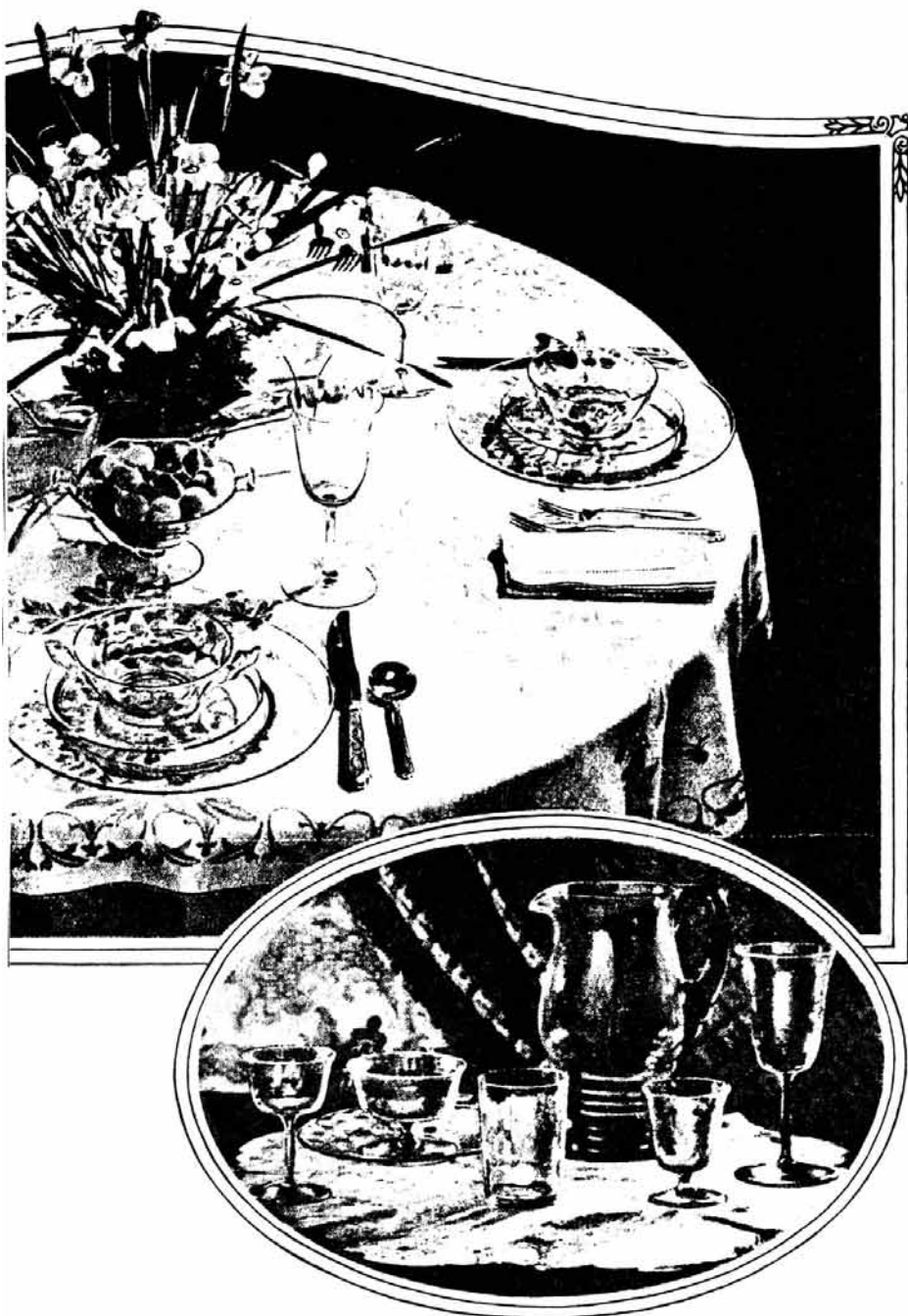
The Hawthorne glassware items on this table are as follows:

- No. 49 Salt and Pepper
- No. 3324 Goblets
- No. 1229 Two-handled Comportier
- No. 1182 Cream Soup and Saucers
- No. 1182 10½-in. Service Plates
- No. 1203 Floral Bowl with foot

A table set in a similar manner in your store will go a long way to make sales for you. It is certain to excite the admiration of your customers.







## Wide Selection of Pieces in Hawthorne Tint

A wide variety of Heisey's fine glassware comes in the new Hawthorne color—the beautiful amethyst tint that is proving its popularity. Selections can be made for a complete table service in a number of patterns.

### Meeting Popular Demand

Heisey's creative staff are quick to sense the trend of popular taste even in advance of a clearly defined movement. Their productions in crystal have met with a decided buying response. Then the dainty Moon Gleam and Flamingo table services have had a great deal to do with shaping the present large vogue of colored glassware. And now comes Heisey's new color—Hawthorne.

### A New Line to Sell

The new Hawthorne color offers the trade an effective new line of beautiful glassware which they can sell with satisfaction to themselves and their customers. Hawthorne glassware appeals to discriminating people, because of its wonderful tint. By carrying it in stock and displaying it in your windows and store, you will be in a position to take advantage of the demand for Hawthorne.

Pieces for every occasion and purpose can be had in the Hawthorne tint. A few of them are bouillon cups and plates, service plates, salad plates, coffee cups and saucers, sandwich plates and dessert plates.

### Variety of Items and Designs

A complete selection of glasses is offered, such as goblets, sherbets, saucer champagnes, fruit and oyster cocktails, parfaits, tumblers and soda and iced tea glasses. Jugs or pitchers of different designs are included. Then there are a variety of accessories, as, for instance, comports, flower bowls, candlesticks, salts and peppers, mayonnaise dishes, nut and bon bons, condiment dishes, and many more. The smoker may have cigarette jars and ash trays and for the dressing table there are perfume bottles and powder containers.

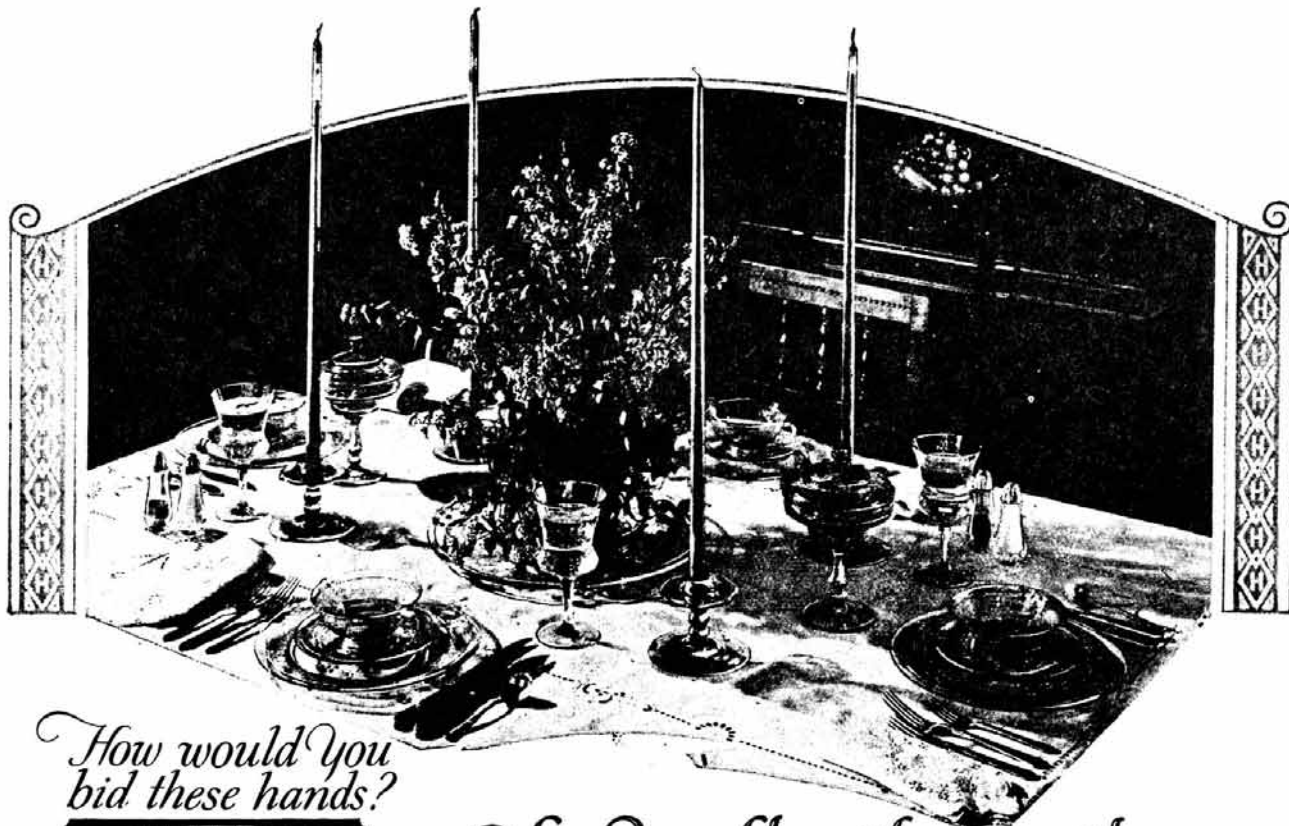
The superb attractiveness of the Hawthorne line will be an incentive to purchasers, especially during the spring and summer months, when colors are so seasonable. We suggest you place your order without delay for a representative stock in this new color.

HERE we have several enchanting pieces of Hawthorne blown ware. Following are the numbers: 3324 Cocktail, Oyster Cocktail, Goblet, Sherbet; 2930 Tumbler; 4182 7-in. Plate and 3480 Jug. The plate is diamond optic while the bowls of the other pieces reveal a unique and striking semi-corrugated effect.

Only a few pieces of the broad range of patterns and designs that come in the beautiful Hawthorne tint are illustrated in these pages. And the color is so elusive that it is difficult to catch it in a picture. But we believe that what is shown here will give you a reasonably close idea of what this fine new color is like.

From the comments already heard about this color, we feel that we have struck another happy interpretation of people's desires in glassware and we believe that it will be welcomed in general by the trade.





*How would you  
bid these hands?*



[YOU ARE THE DEALER]

Hand No. 7  
♠ 5-6-3 ♥ A-K-9-8 ♦ None ♣ A-K-J-9-6-2

Hand No. 8  
♠ A-K-Q-J ♥ A ♦ Q-J-10-8-7-5-3 ♣ A

Hand No. 9  
♠ None ♥ A-K-9-8-6-3 ♦ A-K-Q-4-3-2 ♣ K

Hand No. 10  
♠ A-K-Q-J-9-5-2 ♥ 6 ♦ J-3 ♣ A-Q-2

Hand No. 11  
♠ 6 ♥ A-K-Q-J-9-5-2 ♦ A-Q-2 ♣ J-3

Hand No. 12  
♠ A-K-Q-10-4-2 ♥ K-10-9-7 ♦ A-K-10 ♣ None

This is the second set of six hands in a series of bidding problems arranged exclusively for us by the pre-eminent Bridge Authority, Milton C. Work.

Send in one bid for each hand before July 1st. Correct bids for all hands receive valuable prizes. Other problems will appear in later issues of this magazine. Winner of the entire series will be awarded grand prize.

Send bids to Bridge Contest Dept., A. H. Heisey & Company, Newark, Ohio. Further details and Mr. Work's answers and explanatory comment mailed to anyone on request.




## *There's Matchless Charm in Glassware*

Enchanting pieces for every use—from bouillon to dessert and coffee—and for every occasion, from dinner or luncheon to bridge tea, are exquisitely wrought by Heisey. There are patterns and designs in infinite variety—and colors delightful to behold.

You may have the soft rose glow of Flamingo, or the delicate amethyst tint of Hawthorn, or the cool green of Moon Gleam, besides shimmering crystal.

Over the smartest tables this fine glassware casts its spell of charm. There are colors to gratify the most intimate whim of color arrangement. And always remember that glassware is in vogue today; *fashion demands fine glassware for the table.*

Ask your store to show you Heisey's Glassware. The  trade mark is the sign of the genuine. And if you wish to choose ideal gifts for any occasion, write for our new booklet, "Gifts of Glassware."

A. H. HEISEY & COMPANY  
Newark, Ohio

HEISEY'S  
GLASSWARE  for your Table

THE second advertisement in Heisey's 1927 campaign is reproduced above. It is to appear in the following magazines: House Beautiful for April; National Geographic, Vogue, House & Garden and Junior League Bulletin for May; and in the June Number of Good Housekeeping. Another series of bridge bidding problems is given. The Bridge Contest is attracting wide attention. Are you and your salespeople participating and are you playing it up in your sales program? The table was set and photographed under the direction of New York authorities in table decoration.



## HARRY M. BORTZ



218 E. SEDGWICK ST.  
PHILADELPHIA, PA.

September 25, 1937

A. H. Heisey & Co.  
Newark, Ohio

Gentlemen:

In reply to your letter of September 16th, regarding the sale of jugs and the larger items, I have been studying this ever since and hope that whatever information I can give you will be construed only as an effort on my part to help unravel a few snarls.

It is not only my opinion but I believe general knowledge that jugs, bowls, vases and the like are selling today in larger quantities than they have ever sold before, but we are not getting any of this business because we do not go after it. Two years ago, coasters were just as dead in our line as jugs are now, and look at the world of coasters we have sold in the last couple of years with still no sign of a let-up.

But getting back to jugs. Our competitor's have just slipped one over on us. Lots of them went to making them in iron moulds in order to eliminate excessive weight. The tank factories put them out for a fraction of what ours cost. Furthermore, probably 75% of the jugs which are sold today have an ice lip and where we have one we should have a dozen. And now another side of the story. In 1910 we got 50¢ a dozen for tumblers, and \$3.60 for the 34½ half gallon jug. Today those same articles are 100% higher on the tumblers, and 200% higher for the jugs. Granted there are conditions today that demand a higher cost on the jugs, but I feel safe in stating that these jug prices could be pared down somewhat and still show a profit.

As for the larger items, we once sold a ship load of punch bowls. Up until a few years ago when I think you got careless in annealing these articles with the result that for every barrel we sold we had to replace with another barrel, and while very unprofitable, this may appear in your estimation to have solved the trouble but the trade today have plenty of unforeseen and unavoidable troubles and when they run into a situation of this type they just do not buy any more punch bowls from us but try the other fellow's.

Our berry bowl business could be greatly stimulated with a little adjustment in price. In 1910 our best bowls (341 - 8") sold for \$2.25 per dozen. Today the 1469 bowl which costs far less to produce than the 341 costs around \$6.50 or up 200%.

I realize that it is easier today to extract \$1.00 from Mrs. Housewife's pocket than it was 40 or 50¢ twenty-five years ago but still there must be a limit, and we usually find that limit when things cease to sell.

The same applies to our 12" Ridgeleigh torte tray which I realize is selling because it fits into the pattern but according to our competitors it is just a dollar retailer. Perhaps you have never studied this situation from this particular angle and I hope this information will be of value.

Yours very truly, Harry M. Bortz

## A. H. HEISEY & CO.



NEWARK, OHIO

March 29, 1945

Mr. T. C. Heisey  
Newark, Ohio

Dear Clarence:

Your letter of the 26th received. I think like you do that the factory should receive primary consideration, and I put it chronologically that way in my letter to you. The reason I dwelt a lot on rearranging the Chicago office was because I sent you a drawing and it had to be explained. Also arranging offices is something that I know about.

The first job I had when I left school was with the Western Cabinet & Fixture Co., K. C. Missouri. It was a big outfit and we built P.O. fixtures, bank fixtures, drug stores, and etc. We built the P.O. at Indianapolis, remodeled the one at Detroit and etc. I was to be a salesman and was first put into the drafting department under Rev. Grey, a real artist and man of God. I was taught that God gives all space and area, but man boxes it in and deals with it, renting it out, buying and selling and etc., but eventually gives it all back to God. While it really is God's man is privileged to make the best of it while he holds it trust, and if he does not it is a sin. I learned enough about T squares and drawing boards to make sketches and finally to go out on the road to sell a druggist a whole new store. Maybe he already had a running business in this space boxed in by four walls, or as Rev. Grey said, "Six Sides." If it was empty I had to visualize a running store, and sketch in the fixtures to make the store successful, it had to be successful because we usually sold with 10% down and the balance along as the business paid out, if the business failed we lost. Good training maybe.

Rev. Grey said no man should waste anything of God's, and to do so was a sin. Since then I have seen a lot of high priced space wasted and I look at offices and show rooms, with a critical eye, and may I say experienced eye. I have built hundreds new and more hundreds remodeled, some before I left W. C. F. Company, and many more since then just for the fun of it. Some of these I can look to with pride. One recently they hired a high priced architect to come out from New York to build them a fine jewelry store. This man knew his fixtures but he did not know jewelry, so he built a mess. These folks called me into the picture and I made some suggestions especially with regard to lighting and it changed the whole aspect of the place. This is the last kind of a fellow I would hire to do a job of rebuilding an office or showroom for me, an architect. He does not know the problems.

The dining room in the Chicago office is merely atmosphere, but we do not have enough space to properly represent our line and we cannot afford atmosphere in that crowded office. We certainly do not need to put in a waiting room for dealers, that would be just a mess, and there is always one salesman who would hog most of the desks and space if it were arranged so he could do it; this salesman is in every  
continued on next page

outfit. Space for dealers should be around thru the room, arranged so that each salesman can have his dealers separately. I hope you keep that drawing I sent you and show it to whoever you have do the job of remodeling, which is a minor cost job, and not a big one. Certainly a post war affair of small magnitude and cost. You see I have given this matter a little thought.

It might be a matter of sales meeting discussion, but I would say not. Some of your salesmen know about suave entertainment of dealers, some know how to write up orders in a beautiful handwriting, some know one thing and some know another, and usually the ones that know the least about the subject under discussion have the most to say. Me too.

If things get better I would like to see a salesmeeting this year, late, but if not then it should be postponed. The salesmeeting should be without liquor or entertainment, in my opinion, and strictly for business. Past salesmeetings have been 99% entertainment and 1% business, this should be reversed; but that is just one man's idea.

Joe's (Lower) room in New York, while looking like a Fruit Market, is actually a better salesroom than the Chicago office, and if this be treason and etc.

Whatever suggestions I have to offer are my best, and does not depend at all on whether they agree with what the boss thinks, and even if the ideas are feeble, they are the best I have regardless, limited only by lack of ability.

Glad we have some nice things to sell. I am damn tired of selling and buying plain pressed ware.

Sincerely, Baum (Fred Baumgartner)  
Chicago Office

April 16, 1945

Dear Baum:

I hadn't answered your letter of the 29th for the reason we have not had adequate stenographic help around here to take care of our correspondence, but from now on we may be a little more prompt.

The history of your early career was very interesting to me. I can well understand, that with your natural genius for orderliness and display and your education in the practical handling of presentation, you have stored up a most valuable inventory of public eye appeal and that you actually get the itch to do something every time you see a store that is not presenting its wares according to your practiced eye.

I can, therefore, understand that you are driven wild by our New York setup. I do not wholly agree with you, so far as our Chicago show rooms are concerned. Comparisons are always odious, but although the Cambridge setup may sell goods, I think they would sell even more if they had a little more taste and atmosphere in their display. Along that line, I feel that our beautiful dining room in the Merchandise Mart, while it presents a lot of space without much display, still it has the value of charm that is not to be sneezed at. Therefore, I would hate to give up the dining room without more study than I have put on it at present. I do think that when it comes to changing displays, our New York office ought to be the first step in that direction.

All this probably sounds like heresy to a realist like yourself, but a little classic atmosphere doesn't come amiss now and then. Do not get the idea that we do not appreciate your suggestions. We welcome them - and heartily - because they are usually well thought out and they leave us with quite a little food for thought. One thing we like is that you do not coddle us, and, frankly, we do not want to be coddled. We all need a kick in the pants now and then so that we can let go of the sea weed and come to the surface with something new, fresh and appealing. I am sure that between the bunch of us we can get lined up on our production, display, presentation and sales propaganda that will spell success. We are doing our darndest to get things in order. As you know, everyone who is not in a manufacture of war material has been handicapped by mechanics. That is quite a blow to us because we have suffered the loss of a good many mold makers. However, to offset this, we have worked our mold makers overtime every minute we can get them to work but with the number of items with which we have curtailed use, molds wear out faster than under normal conditions. A good bit of the time our mold makers occupy in reproducing old molds. This means we are going to have to farm out our molds. In other words, we mean to be at the Union Station when the train pulls in.

Thanks a million for your suggestions; come again any time you think we need a haymaker.  
Sincerely, Clarence Heisey

### HEISEY GLASS BEAUTIFIES MALL

Thanks to the efforts of Robert Coyle, Newark Collector, Dealer, and Interior Decorator, a beautiful window display is being seen daily by hundreds of people at Indian Mound Mall, Newark, Ohio.

A quilt of largely shades of rose and blue serves as a backdrop for Zircon, Flamingo and Crystal Heisey Glass. In this small space a three branch candelabra and other pieces show Heisey to its best advantage.

A small round table with a rose drop skirt and an overlay of an exquisite white Battenberg tablecloth, is set for two with a Flamingo luncheon service and candlesticks. A desk bears a lovely Flamingo lamp and on a lower shelf, a Zircon humider. Zircon and Crystal pieces are featured on low shelves just inside the window.

The total effect is that of a cozy, comfortable room. There is a picture of the Heisey Museum and a sign saying "Heisey Collectors of America". Two framed Heisey posters on the wall add a nice touch completing this beautiful ad for our collectible.

Ruth Perloff

FOREVER HEISEY  
NORM & JAN THRAN  
1663 LONDONDALE PKWY.  
NEWARK, OH 43055

PH: 614-344-5955  
SHIPPING & INS.  
EXTRA  
H = MARKED

IG Amber Show Horse . . . . . \$625.00  
IG Amber Piglets, standing & sitting pr 70.00  
3397 Gascony oval ftd floral bowl, Sahara, H 115.00  
372 O'Grady 5 oz syrup, Flamingo, H . . 55.00  
372 O'Grady 7 oz syrup, Sahara . . . . 115.00  
1184 Yeoman 2 oz cruet, Sahara, DO, H . . 85.00  
1469 Ridgeleigh cov'd mustard w/paddle, H 52.50  
353 Medium Flat Panel 10oz ftd soda, Amber,  
H . . . . . 65.00  
500 Octagon hld'd ice tub w/tongs, Nimrod  
Carving, H . . . . . 185.00  
1184 Yeoman ctr hld'd 3-part relish, Moongleam,  
Floral cut . . . . . 45.00  
433 Greek Key 1 pc cheese & crackr, H . 110.00  
1425 Victorian 2 Rye/Whiskey decanters in  
signed Farberware holder . . . . . 175.00  
1519 Waverly Bow Tie cov'd candy w/orchid  
Etch, H . . . . . 160.00  
1509 Queen Ann 8" nappy w/orchid etch . . 45.00  
1506 Provincial tumbler, H (4) . . . . ea 12.50  
355 Quator ind cream & sugar, H . . . pr 75.00  
1469 Ridgeleigh old fashion, H (3) . . ea 35.00  
5010 Symphone wine, Danish Princess Cut,  
(6) . . . . . ea 55.00  
5010 Symphone cordial, Danish Princess Cut,  
(4) . . . . . ea 125.00  
5010 Symphone oyster cocktail, Danish Prin-  
cess Cut, (4) . . . . . ea 22.50

SEE YOU AT THE SOUTHERN ILLINOIS CLUB SHOW IN BELLE-  
VILLE, IL AUGUST 12 & 13. OVER 3,000 PIECES OF  
HEISEY IN STOCK, SEND WANTS, WE ALSO SEARCH. ALL  
SASE INQUIRIES ANSWERED.

SALEM ANTIQUES  
NEILA BREDEHOFT  
10217 STICKLE RD.  
ST. LOUISVILLE, OH 43071

PH: 614-745-1014  
POSTAGE & INS  
EXTRA

3333 Old Glory cordial, Renaissance etch \$ 65.00  
3380 Old Dominion bar, Empress Et, Marigold  
bowl . . . . . 85.00  
5078 Park Avenue cordial . . . . . 110.00  
1951 Cabochon ftd jelly, Wheat cutting . . 18.00  
1205 Fancy Loop 8" plate . . . . . 30.00  
1555 Cornucopia floral bowl, wear on base . 25.00  
134 Floral bowl, Sahara . . . . . 85.00  
1590 Zodiac 12" plate . . . . . 90.00

L. A. MANESS  
RT. 1, BOX 552  
ASHLAND, VA 23005

PH: 804-798-1825  
P & I RATE \$3.00  
H = MARKED

351 Colonial (Priscilla) 8oz gob, H (4) ea \$18.00  
351 Colonial (Priscilla) cov mustard, H . . 49.00  
373 Colonial 1½ oz wine, H (4) . . . . ea 16.00  
407 Coarse Rib 7" plate, Flmngo, H (5) . . ea 12.00  
433 Greek Key 6 oz sherbet low ftd, H (6)ea 15.00  
1243 Stepped Octagon 6" plate, Flmngo, H (8)ea 12.00  
1425 Victorian goblet, H (2) . . . . . ea 27.00  
1425 Victorian sauc champagne, H (3) . . ea 18.00  
Standing Colt, H . . . . . 99.00

DONALD P. BEAN  
36 HARDING STREET  
MILFORD, MA 01757

PH: 508-473-0561  
SHIPPING EXTRA  
\* = MARKED

494 Cologne\*, 2 oz, w/#61 stopper, iridized,  
lavender V2-P148 . . . . . \$ 70.00  
1503 Crystolite 3-lite candles . . . . pr 45.00  
160 Locket on Chain 8½" pickle tray . . 100.00  
160 Locket on Chain creamer . . . . . 75.00  
353 Medium Flat Panel flared mayo dish  
w/attached plate\*, V2-P35 . . . . . 45.00  
16 Classic candle sticks\*, 5 5/8" tall pr 80.00  
393 Narrow Flute 12 oz soda\* (4) . . . ea 9.00  
1255 Pineapple & Fan toothpick holder, Emer-  
ald, gold on top - fair gold fans, ex-  
cellent . . . . . 125.00  
1506 Provincial by Imperial 5½" footed candy  
box & cover, Azalea . . . . . 65.00

STILL NEED COVER FOR LARGE 1205 POTPOURRI JAR!!

SHELDON W. MUM  
36818 SAMOA DRIVE  
STERLING HEIGHTS, MI 48077

PH: 313- 977-3281  
UPS & INS EXTRA  
\* = MARKED

134 Trident 2-lite candlestks, Orch Et pr \$80.00  
1503 Crystolite 3-lite candlesticks . . pr 30.00  
1509 Queen Ann 5½" mayonnaise, DF . . . 22.00  
1519 Waverly 6½" honey or cheese, ftd, Or-  
chid Etch . . . . . 42.00  
5025 Tyrolean 10 oz goblets, tall stem, Or-  
chid Etch (8) . . . . . ea 32.00  
5025 Tyrolean 4 oz cocktails, Orchid Etch,  
(6) . . . . . ea 34.00  
5025 Tyrolean 6 oz sherbets, Orchid Etch,  
(8) . . . . . ea 22.00  
1519 Waverly ftd salt & pep, Rose Etch pr 55.00  
1519 Waverly 11" 3-comp relish, oblong\* . 22.00

WILLEY'S ANTIQUES  
11110 CANNON ROAD  
FRAZEYSBURG, OH 43822

PH: 614-828-2557

Over 2,000 pieces of Heisey for sale. Stem-  
ware and dinnerware matching service. Lots of  
colors, etchings and cuttings. Send want list and  
SASE. All letters answered if a SASE is enclosed.

#### SHOW DATES

We are coming your way with lots of beautiful  
Heisey.

August 13, 14	Fairgrounds	Belleville, IL
Aug 31 & Sept 1, 2 & 3	Memorial Audi- torium	Spartanburg, SC
Sept. 9 & 10	Lakeland Civic Center	Lakeland, FL

See you at the shows,

Mildred and Harold Willey



JAMES S. HARRIS  
ANTIQUES/APPRISALS  
BOX 672  
RICHMOND, KY 40475

PH: 606-623-9100  
UPS & INS EXTRA  
H = MARKED

17	Puff box bottom w/metal lid, H . . .	\$ 30.00
112	Mercury 1-lite candle, Flamingo . .	35.00
118	Miss Muffet 1-lite candle, Moongleam, H . . . . . pr	47.50
300	Peerless individual drink decanter .	25.00
300	Peerless 2 oz wines, H (4) . . . . all	50.00
341	Puritan 12" hotel celery, grnd btm, H	30.00
343	Sunburst 5" ftd jelly, H . . . . .	62.50
350	Pinwheel & Fan 8" nappy, H . . . . .	47.50
351	Priscilla cov'd mustard, H . . . . .	40.00
351	Priscilla 2 oz bar tumbler, H (5) ea	15.00
353	Medium Flat Panel sanitary straw tray, ground bottom, H . . . . .	237.50
393	Narrow Flute french dressing boat .	35.00
393	Narrow Flute ind. cream & sugar, H .	25.00
411	Tudor 10" vase w/gold trim, H . . . .	90.00
413	Tudor 6 oz oil w/stopper, H . . . . .	42.50
433	Greek Key powder box w/metal mirrored lid, H . . . . .	185.00
433	Greek Key 5" plate, H . . . . .	15.00
468	Octagon w/Rim 12" celery, Moongleam, H	40.00
1159	Custard, 5 oz, red stain, clear handle, "Edna, 1902", star bottom, H . . . . .	57.50
1170	Pleat & Panel 7½" luncheon goblets, Fla- mingo, (7) . . . . . all	210.00
1184	Yeoman cup & saucer, Moongleam, H (4)ea	27.50
1184	Yeoman cup & saucer, Flamingo, H (10)ea	22.50
1186	Yeoman cup & saucer, Flamingo, DO, H (4) . . . . . ea	30.00
1225	Sawtooth (Plain Band) toy spoon (tooth- pick), etched . . . . .	75.00
1225	Sawtooth (Plain Band) toy spoon (tooth- pick), gold band & etch . . . . .	80.00
1229	Octagon 8" oval dessert dish, Flamingo	37.50
1252	Twist mayo, Crys w/Moongleam ft . .	70.00
1280	Winged Scroll tumbler, custard/gold	100.00
1404	Old Sandwich 6" comport, H/paper label	40.00
1469	Ridgeleigh 3 oz oil bottle w/#103 PS	65.00
1483	Stanhope cream & sugar, H . . . . .	60.00
1503	Crystolite ind cream & sug on tray, H	45.00
1503	Crystolite 1-lite candle . . . . . pr	57.50
1540	Lariat coasters, (5) . . . . . all	35.00
3316	Biltmore goblet w/Raleigh et (8) . all	64.00
3333	Old Glory 2 oz wine w/#32 needle, cut, (3) . . . . . ea	50.00
3408	Jamestown goblet w/Barcelona Ct, (5)ea	30.00
4044	New Era 2-lite candlestk/bobeche, w/"A" prisms & 11" floral bowl . . . . .	200.00
4055	Park Lane 13oz ftd soda w/#840 Briar- cliff cut (4) . . . . . all	140.00
4207	Classic 8" vase, DO, Moongleam . .	125.00
4225	Cobel 1 qt cocktl shkr, complete .	47.50
5044	Constellation old fash, cut, mono(4)all	30.00
6004	Classic goblet w/Comet cut, H . .	15.00
7000	Sunflower 14" sandwich plate, H .	50.00
7000	Sunflower 13" floral bowl, H . . .	50.00

BUYING INDIVIDUAL PIECES, COLLECTIONS, LIDS, TOPS  
AND ADVERTISING ITEMS. WRITE AND DESCRIBE FOR  
PROMPT REPLY.

THE COLLECTOR'S STOP  
12018 SUELLEN CIRCLE  
WEST PALM BEACH, FL 33414

PH: 407-793-0986  
\* = MARKED  
UPS EXTRA

18	Classic 19" 1-lite candelabra w/"C" prisms . . . . .	\$300.00
300	Old Williamsburg 2-lite candle (Hawkes sterling base) . . . . .	285.00
301	Old Williamsburg 10½" 2-lite candle w/cutting, nice . . . . . pr	295.00
1445	Grape Cluster sticks w/prisms* . pr	180.00
1509	Queen Ann 7½" 1-lite sticks w/ prisms . . . . . pr	135.00
1511	Toujours 2-lite sticks w/prisms pr	135.00
1513	Baroque 3-lite candelabra epergne w/prisms . . . . . pr	170.00
4044	New Era 2-lite candle w/prisms pr	135.00
135	Empress sticks, Alexandrite . . pr	600.00
110	Sandwich Dolphin sticks, Crys . pr	285.00
16	Classic 7" sticks . . . . . pr	85.00
30	Tom Thumb sticks* . . . . . pr	185.00
1567	Plantation 5" 1-lite ftd sticks pr	190.00
140	Crocus 7" 2-lite sticks . . . . pr	225.00
301	Old Williamsburg 10½" 3-lite sticks* w/prisms, Sahara . . . . . pr	695.00
600	Square Handle stick 2½" saucer .	60.00
1405	Ipswich inserts for candle vase*, Sahara . . . . . pr	175.00
1445	Grape Cluster 2-lite frosted/Crystal sticks* . . . . . pr	275.00
1425	Victorian 2-lite sticks* . . . . pr	195.00
1404	Old Sandwich 6" sticks*, Sahara pr	235.00
1550	Dolphin (Fish) 5" sticks . . . . pr	295.00
1550	Dolphin (Fish) match holder . .	195.00
109	Petticoat Dolphin sticks, Flamngo pr	395.00
1225/109	Dolphin ftd Comportier 6½" .	265.00
31	Jack Be Nimble stick* . . . . .	35.00
335	Prince of Wales Plumes punch cups* (8) . . . . . ea	17.50
1428	Warwick 9" Horn of Plenty vase*, Coblt	235.00
1428	Warwick 9" Horn of Plenty vase*, Flam	395.00
1420	Tulip vase*, Flamingo, rare . .	450.00
4045	Ball vase, 6", W0, Sahara (mint)	135.00
300	Peerless toothpick* (mint) . . .	20.00
16	Hair Receiver* . . . . .	75.00
341½	Pitcher*, 1 pint, hard size to find	150.00
804	Candy or cracker, 2 lb. . . . .	235.00
	Ring Neck Pheasant . . . . .	125.00
1401	Empress sticks*, Moongleam . . . pr	550.00
1401	Empress 8oz tumbler*, DF, Sahara (2)ea	145.00
1413	Cathedral vase, 7½" with cutting	95.00
1776	Kalonyal butter & cov*, marked twice	295.00
1	Madonna*, Limelight . . . . .	1575.00
352	Knife Rest . . . . .	40.00
1255	Pineapple & Fan salt & pepper .	45.00
352	Colonial 1 qt crushed fruit* . .	275.00
	Heisey frosted Doulton girl . .	495.00
3404	Ruby Red bowl goblet, 10 oz, Spanish Stem* . . . . .	575.00
7056	Elephant handle large mug* . . .	425.00
	Goose, wings half way* . . . . .	110.00
	Goose, wings up* . . . . .	110.00
352	Flat Panel vase, Vogel Bk II, Pg 28, #4, hard to find . . . . .	450.00
352	Flat Panel vase, Vogel Bk II, Pg 29, #2, hard to find . . . . .	500.00

OTHER NICE HEISEY PIECES IN STOCK - SEND SASE  
FOR WANT LIST.

SHIRLEY REESBECK  
238 ROCKLAND AVENUE  
RIVER VALE, NJ 07675

PH: 201-666-9320  
UPS & INS EXTRA  
\* = MARKED

451	Cross Lined Flute tumb* 3 3/4" (3) ea	\$ 40.00
1205	Fancy Loop cracker jar, metal lid . .	80.00
3408	Jamestown cocktail, 3 oz (2) . . ea	4.00
1445	Grape Cluster floral bowl* & pr 1-lite candlesticks . . . . . all	295.00
341	Puritan cake salver*, 10" . . . . .	37.00
1201	Laverne fruit bowl*, Flamingo . . . .	55.00
1225	Sawtooth (Plain Band) molasses can, top replaced . . . . .	32.00
1404	Old Sandwich ice lip jug*, 1/2 gal, Sah	140.00
337	Touraine oil, 6 oz, gold decoration .	30.00
300	Peerless ind drink decanter (2) . . ea	10.00
3350	Wabash ftd grapefruit*, Moongleam, DO	35.00
4044	New Era 2-lite candelabra . . . . . pr	110.00
142	Cascade 3-lite single candlestick .	30.00
1495	Fern 2-lite single c'stick, Poppy Etch	30.00
1	Georgian 9" candlesticks . . . . . pr	140.00
1	Georgian 9" single candlestick . . . .	70.00
47	Regal 7" candlestick*, unk cutting pr	105.00
21	Aristocrat 7" candlestick* . . . . .	35.00
22	Windsor 7" candlestick (1-*) . . . . pr	100.00
1405	Ipswich candlestick w/candlevases* pr	185.00
341	Puritan pickle jar* . . . . .	40.00
5	Patrician 9" candlestick (1-*) . . pr	100.00
1485	Saturn mustard w/lid* . . . . .	20.00
1519	Waverly deep epergnette c'holder* . .	10.00
134	Trident candleholders . . . . . pr	40.00
1567	Plantation 2-lite candlestick, single	60.00
1513	Baroque candlestick w/vases . . . . pr	190.00
31	Jack-Be-Nimble single candlestick, Moon- gleam - or will trade for #31 Sahara	160.00
31	Jack-Be-Nimble single, Crystal . . . .	35.00
1001	Caswell sugar sifter, Flamingo . . . .	60.00
300-2	Candelabra 2-lite, 16", Crys, single	175.00
300-1	candelabra 1-lite, 12", Sahara, single	175.00
1201	Fandango 8 oz oil, no stopper . . . .	25.00
1205	Fancy Loop 6 oz oil, no stopper . . . .	30.00
417	Double Rib & Panel 3 oz oil*, no stpr	15.00
411	Tudor/Rib & Panel 6 oz oil*, no stpr	15.00
	Standing Pony . . . . .	65.00
465	Recessed Panel 7" basket . . . . .	95.00

\*\*\*\*\*

## LARIAT PRICE GUIDE UPDATE NOW AVAILABLE

By Neila Bredehoft

Prices to the book about Lariat and Athena have recently been updated and are currently available for \$1.00 plus 25¢ postage (or an SASE).

Several increases have been made on items and everyone should have the updated version to go with their original book.

Order From: HCA SALES  
P.O. BOX 4367  
NEWARK, OH 43055

JIM GARTNER  
4-FISHERMAN'S CIRCLE  
APT. 1  
ORMOND BEACH, FL 32174

PH: 904-677-7415  
UPS & INS INCLUDED  
\* = MARKED

112	Mercury candlestick, single, Orchid Etch . . . . . pr	\$ 45.00
134	Trident 5" candlesticks, Flmngo pr	95.00
150	Banded Flute 4 oz cruet* . . . . .	45.00
150	Banded Flute punch cups* (6) . . ea	9.00
341	Puritan ftd spooner* . . . . .	55.00
341 1/2	Colonial round butter & cover* . .	82.00
341 1/2	Colonial squat jug*, 2 quart . . . .	95.00
355	Quator twin domino sugar* . . . . .	40.00
372	McGrady 8 oz syrup*, Sahara . . . .	90.00
411	Rib & Panel 5" ftd preserve & cov* w/cut, Hawthorne . . . . .	95.00
433	Greek Key pickle jar*, no cover . .	60.00
433	Greek Key hotel ice tub* . . . . .	235.00
433	Greek Key 5" ice tub* . . . . .	110.00
433	Greek Key 3 pt tankard* . . . . .	155.00
465	Recessed Panel 1 lb cov'd candy*, good gold (2) . . . . . ea	55.00
465	Recessed Panel 8" basket*, sm mould mk	75.00
473	Narrow Flute 5" diced sugar & cr, 2 h'lded w/rim* . . . . .	55.00
500	Octagon 12" oblong 4-sect tray*, Moon- glo cutting . . . . .	68.00
1170	Pleat & Panel low ftd compote & cov*, Moongleam . . . . .	65.00
1183	Revere 1/2 lb candy jar & cov w/cloister cut* . . . . .	60.00
1235	Beaded Panel & Sunburst 7" high ftd compote . . . . .	95.00
1252	Twist twin relish*, Sahara . . . . .	48.00
1401	Empress DF cream & sug*, Moongleam set	75.00
1404	Old Sandwich 6 1/2 oz toddy & 4 oz oyster cocktail*, Moongleam (1 each) . . ea	20.00
1404	Old Sandwich 3 oz cocktles*, Sah (3)ea	25.00
1404	Old Sandwich 10oz ftd gob*, Sah (5)ea	30.00
1404	Old Sandwich 10oz ftd tumb*, Sah (2)ea	25.00
1404	Old Sandwich 12 oz ice teas*, straight grnd btm (2) . . . . . ea	25.00
1404	Old Sandwich ind ash trays*, Sahara, (3) . . . . . ea	30.00
1404	Old Sandwich 5 oz ice teas or sodas*, straight, grnd btm, Sahara, (6) . ea	16.00
1404	Old Sandwich oval cr & sug*, Flmngo set	70.00
1404	Old Sandwich 12" oval floral bwl* .	45.00
1404	Old Sandwich 4oz oyst'r c'tl*, Sah(7)ea	15.00
1404	Old Sandwich 12 oz creamer*, Moongleam	85.00
1425	Victorian punch cups*, (5) . . . . . ea	7.00
1489	Puritan 4 1/2" sq ash tray - (paper stkr)	22.00
1489	Puritan 6" sq ash tray - (paper stkr)	33.00
1503	Crystolite triple candlesticks . . pr	38.00
1509	Queen Ann marmalade w/cover . . . .	55.00
1509	Queen Ann 8 1/2" 2-h'lded ftd bwl, Orch ET	42.00
1519	Waverly cov'd candy, Seahrse h'ldes, Orchid Etch . . . . .	175.00
1519	Waverly 3-sect relish*, Orch Et (2) ea	35.00
1519	Waverly salt & Pep ftd (tops show wear)	35.00
1540	Lariat rnd 12" bowl w/cutting . . . .	45.00
1626	Lodestar 1 qt pitcher, Dawn . . . . .	85.00
3350	Wabash 6" low ftd compote w/cov*, Flmngo	90.00
5022	Graceful stem 12oz ftd ice tea, Orch Et	37.00
5040	Lariat 10 oz gob*, Mglo Cut (10) . . ea	23.00
5040	Lariat 5 1/2oz sh stem champ*, Mglo C (9)ea	18.00
5040	Lariat 3 1/2oz c'tls*, Mglo Cut (7) . . ea	18.00

H & R DIAMOND H  
HELEN - BOB RAREY  
1450 WHITE ASH DRIVE  
COLUMBUS, OH 43204

PH: 614-279-0390  
AFTER 5:30 P.M.  
UPS & INS EXTRA  
\* = MARKED

3350 Wabash 5" cov'd lemon dish\*, Flamingo \$ 39.50  
5012 Urn ind. cigarette holder . . . . . 22.50  
1401 Empress h'lded ftd. 6" jelly\*, Flamingo 29.50  
112 Mercury 1-lite, Minuet Etch, 1 only . . . 29.50  
1184 Yeoman cup & sauc\*, DO, Flamingo, (7) ea 12.50  
150 Banded Flute 4 oz cruet\* . . . . . 45.00  
4182 round plate, 7", DO, Flamingo (8) . all 35.00

1540 Lariat cream, sugar & tray\* . . . . . 65.00  
1225 plate, 6", Hawthorne (6) . . . . . all 60.00  
354 Wide Flat Panel hotel cream & sugar,  
Flamingo . . . . . 52.50  
1184 Yeoman 7" comport\*, DO, Flamingo . . . 32.50  
1469 Ridgeleigh 8" sq. plate\* (4) . . . . . ea 29.50

1229 Octagon 5½" ftd h'lded mayo, Hawthorne 42.50  
1509 Queen Ann cup & saucer\*, Orchid Etch  
(3) . . . . . ea 39.50  
1509 Queen Ann 6" DF mint, Orchid Etch . . . 39.50  
1519 Waverly 7" plate, Orchid Etch (6) . . . ea 12.50  
5025 Tyrolean 10 oz tall goblet, Orchid Etch  
(4) . . . . . ea 25.00

112 Mercury 1-lite, Orchid Etch . . . . . pr 57.50  
1401 Empress DF ind nut cup (2) . . . . . ea 10.00

1776 Kalonyal 9" bowl\*, shows wear . . . . . 19.50

\*\*\*\*\*

CLASSIQUE GLASS CO.  
P.O. BOX 52572  
TULSA, OK 74152

PH: 918-744-5409  
MINT MOST MKD  
UPS EXTRA

160 LOCKET ON CHAIN 4" bowl (2) . . . . . \$ 48.00  
433 Greek Key compote . . . . . 80.00  
433 Greek Key ftd banana split (2) . . . . . 33.00  
433 Greek Key 3 pt jug . . . . . 160.00

1184 Yeoman 12 oz tumbler, Moongleam, DO  
(3) . . . . . 30.00  
1401 Empress 11" floral bowl, Sahara . . . . . 85.00  
1401 Empress 8" sq plate, Cobalt (6) . . . . . 66.00  
1401 Empress cup & sauc, Sahara (3) . . . . . 35.00  
1401½ Empress var. cup & sauc, Sahara (3) . . . 33.00  
1401 Empress 8" vase, Antarctic Etch . . . . . 125.00  
1404 Old Sandwich 8" sq plate, Moongleam (3) 27.00  
1405 Ipswich candle vases, complete . . pr 170.00

1417 Arch tumbler, Cobalt (6) . . . . . 85.00  
1425 Victorian 5 oz sherbet, Sahara (3) . . . 45.00  
1433 Thumbprint & Panel 2-lite c'stks . pr 425.00  
3360 Penn Charter goblet, Flamingo (2) . . . 33.00  
3360 Penn Charter champagne, Flamingo (2) . . 26.00  
3360 Penn Charter champagne, Hawthorne (2) . 45.00  
3355 King Arthur champagne, Flamingo (4) . . 20.00

3362 Charter Oak goblet, Moongleam (4) . . . 28.00

GIRAFFE - Head Turned To Right . . . . . 170.00

\* TALL OAKS ANTIQUES  
\* MIKE & BARB ROSENBERGER  
\* 565 N. NICHOLS STREET  
\* LOWELL, IN 46356  
\*  
\* PH: 219-696-0147  
\* UPS & INS EXTRA  
\* H = MARKED

300 Colonial decanter w/stopper, 1 pint . \$ 85.00  
357 Sanitary syrup w/lid, H & dated . . . 42.50  
393 ind. domino sugar cube holder, H, w/gold  
trim (mint) . . . . . 45.00  
419 Sussex tumblers, 8oz & 12oz, H, Moon-  
gleam, (1) each . . . . . ea 35.00  
465 Recessed Panel 1 lb candy w/lid, etch  
silver overlay, H . . . . . 78.50  
1025 Hotel sugar w/lid & creamer, H . . . set 62.50  
1184 Yeoman floral bowl, Flamingo, H . . . 29.50

1186 Yeoman DO compote, Moongleam stem, crys-  
tal bowl, HH . . . . . 48.50  
1252 Twist utility plate 4-ftd 10", H,  
(scratches) . . . . . 34.00  
1401 Empress bowl 11" DF, Sahara . . . . . 78.50  
1401 Empress mint dish, DF, Sahara . . . . . 29.50  
1401 Empress nappy 7½" DF, Flamingo, H . . . 57.50  
1401 Empress plate 7" rd. Alexandrite, H . . . 47.50

1503 Crystolite torte plate, 13", H . . . . . 32.50  
1519 Waverly ind. sugar & creamer, H . . . set 35.00  
1519 Waverly oil & vinegar, etched . . . . . 75.00  
1540 Lariat punch bowl (small flake on btm) 105.00  
1541 Athena 2-lite candle holder . . . . . pr 110.00  
3333 Old Glory sauc champ, H, unk cut (4) ea 39.50

1405 Imperial Ipswich candy w/lid, Heather, H 115.00

WANTED - 'TUDOR' & 'BASKETS'

\*\*\*\*\*

\* ONCE & FUTURE ANTIQUES  
\* STEVE & SUSAN PESCATORE  
\* 9 DONNA ROAD  
\* CHELMSFORD, MA 01824  
\*  
\* PH: 508-256-5418  
\* UPS & INS EXTRA  
\* \* = MARKED

33 Skirted Panel 7" candlesticks . . pr \$ 70.00  
133 Swan-handled floral bowl, Moongleam 165.00  
325 Pillows water bottle (sl. cloudy) 90.00  
341 Puritan 9" high-footed bowl\* . . . . . 60.00  
433 Greek Key ½-gallon tankard\* . . . . . 200.00  
433 Greek Key 10" cheese & cracker plate\* 90.00

473 Narrow Flute w/Rim (variant) dice sugar  
tray (Vogel, Bk. 4, pg. 163) . . . . . 25.00  
1170 Pleat & Panel 6" low-ftd comport, Moon-  
gleam (no cover) . . . . . 35.00

1184 Yeoman 8" plates, Flamingo, DO, Trojan  
Etch (5) . . . . . ea 12.00

1200 Sq. In Diam Pt cruet w/stpr (sm chip on  
stpr) . . . . . 90.00

1201 Fandango 4" rose bowl . . . . . 70.00

1225 Plain Band (Sawtooth) 10" cake salver  
(mint) . . . . . 85.00

1245/3970 comport, Flamingo . . . . . 40.00

1415 Twentieth Century 4 oz ftd sherbet\*,  
Sahara (4) . . . . . ea 30.00

1469 Ridgeleigh 13" torte plate\* . . . . . 30.00

1469 Ridgeleigh ind oval jelly\* . . . . . 10.00

1469 Ridgeleigh cig. holder & (4) sq ash-  
trays . . . . . all 30.00

3404 Spanish 10 oz goblets, Olympiad Et (6)  
(sold in sets of two or more) . . . . . ea 45.00

4004 Impromptu 10 oz sodas (6) . . . . . ea 12.00

5025 Tyrolean 6 oz tall sherbets or sauc champs,  
(7 - sold sep. or as a set) . . . . . ea 12.00



# ALL HEISEY & IMPERIAL AUCTION

FRI SEPT 8

6:30 P.M.

APPLE TREE AUCTION CENTER  
1616 W. CHURCH STREET  
NEWARK, OHIO 43055



This auction will offer over 50 pieces of Orchid Etch - includes: cruets; bud vases; Donna sodas; individual ash trays; stemware. Also, Rose etch cruets; large pitcher and stemware; about 100 pieces of Crystolite which includes cake stand; ice lip pitchers; blown sodas; cups & saucers, etc; Cobalt and Tangerine cocktails; Saturn Zircon cup and saucer; Fancy Loop punch bowl; rare Saxony Sahara cordial; other cordials; Fisherman cocktail shaker; Tally Ho ice bucket; animals including horsehead bookends; bunny; scotty; colts; fish bookend. Also, animal related items feature swan handled pitcher; goose decanter; sherries; seahorse stem cocktails; "You, Me and Us" cocktail set with rooster stem cocktails.

Over 100 Heisey by Imperial animals including: Amber flying mare; show horse; filly; clydesdale; tiger; giraffe; sow; piglets; girl head stopper; salmon pink filly; pink sow; hen; elephant; unusual Antique Blue clydesdale; Ultra Blue filly; clydesdale; donkeys; elephant; airedale; scotties; sow; ducks and others; Caramel Slag includes mother rabbit; tiger; colts; mallards, etc. Also offered are animals in Yellow, Green, Jade, Light Blue, Crystal and Milk Glass; other Heisey by Imperial items and several nice pieces of Verlys.

Plan to spend the weekend in Newark; the HCA Flea Market and the September dinner will follow on Saturday.

Catalogs for this auction are available from Apple Tree Auction Center for \$2.00.

SAM SCHNAIDT & TIM HUGHES - AUCTIONEERS

(614) 344-4282

FRANK FRYE - MANAGER

## DATES TO REMEMBER

AUGUST 12 & 13	Glass & Pottery Show, Belleville, IL Fairgrounds.	Southern Illinois Diamond H Seekers
SEPTEMBER 9	Mini-Show and Souvenir Dinner, Apple Tree Auction Center, Newark, Ohio. Managed by Tri-State Heisey Club	HCA
November 4 & 5	All Glass Show, Armory, Southington, Connecticut	Connecticut HCC
DECEMBER 2	HCA Annual Christmas Dinner, Newark, Ohio. Location to be announced later.	HCA
JUNE 14, 15, 16 & 17	19th. Annual Convention - 20th. Annual Glass Show and Display, Newark, Ohio.	HCA

☆☆☆☆☆


*Raffle*

**TIFFIN GLASS COLLECTORS' CLUB**

☆☆☆☆☆

*Door Prizes*

**4th Annual Antique Show and Sale**



NATIONAL GUARD ARMORY  
500 RIVERSIDE DRIVE ★ TIFFIN, OHIO  
Admission \$1.00

**Saturday, September 16, 1989 - 10:00 A.M. to 8:00 P.M.**  
**Sunday, September 17, 1989 - 11:00 A.M. to 5:00 P.M.**

*25 Dealers*

Guests: Fred Bickenheuser, Author Tiffin Books  
Jim Measell, Findlay and Greentown Author

*Food Area*

INFORMATION:

Ginny (419) 447-5832 ★ Shirley (419) 447-9875 ★ Joyce (419) 435-1262

**SUPPORT  
OUR  
ADVERTISERS !!!**

<b>A.W. PARKER</b> Heisey & Pattern Glass Shows or Appointment Magalia, CA 95954 PH: (916) 873-2326	<b>GLASS WITH CLASS</b> Lenore A Shelley, GGHCC 1336 Lincoln Avenue San Jose, CA 95125 PH: (408) 286-8098	<b>OLDE LOVED THINGS</b> 900 Ridgewood Ave. (Holly Hill) Daytona Beach, FL 32017 (904) 252-7960 Hours: Sat., Sun., & Mon., 10-4
<b>ALL HEISEY AUCTION</b> Consignments Welcome Apple Tree Auction Center 1616 W. Church, Newark, OH 43055 PH: (614) 344-9449	<b>GREEN ACRES FARMS</b> Antiques, Crystal Glass & Collectibles 2678 Hazelton-Etna Rd., SW (S.R. 310-N) Pataskala, OH 43062 Sat. or Sun. PM or call (614) 927-1882	<b>"HEISEY"</b> PRICE COMPARISON GUIDE \$13.00 B. Whaley 614-927-1557 300 International Dr. Pataskala, Ohio 43062
<b>ALFA I CARRIAGE HOUSE ANTIQUES</b> Featuring Depression & Elegant Glassware Al & Faye Maness Rt. 1 Box 552, Ashland, VA 23005 PH: (804) 798-1825	<b>H &amp; R DIAMOND H</b> Helen & Robert Rarey 1450 White Ash Dr. Columbus, OH 43204 PH: (614) 279-0390 after 5:30	<b>PARRETT'S ANTIQUES</b> Heisey 4994 Mapledale Rd. OR 1215 Greenwood Ave. Jackson, Mich. 49201 PH: (517) 784-7319 OR (517) 783-3289
<b>ANTIQUES - THE SHULTZES</b> 206-208 East Main St. Newmanstown, PA 17073 15 Miles West of Reading, PA PH: (215) 589-2819	<b>"HAPPINESS IS" - THE STULTZS</b> 3106 Warren Court, Glen Allen, VA 23060 Shows and Mail Order PH: (804) 672-8102 GLASS CIRCA 1890-1960	<b>PATTON HOUSE</b> Heisey & Duncan Miller Rocky's Mall, 1-81 & US 11 Weyer's Cave, VA 24486 PH: (703) 967-1181
<b>C &amp; J ANTIQUES</b> Cole & Jean Miesner Box 45, 72 Whig St. Newark Valley, NY 13811 PH: (607) 642-9905	<b>HARRALSON'S HEISEY HUNTERS</b> Sponsor: S.W. MO's Antique Shows 78 Quality Dealers From 14 States 1989 Dates: Apr. 29-30 & Oct. 28-29 Info: 1426 W. Highland, Springfield, MO 65807 PH: (417) 883-2449	<b>EAGLES REST ANTIQUES</b> Carl and Mary A. Evans Heisey - China - Pottery, etc. Shows or Appointment PH: (614) 522-2035
<b>GLASS RESTORATION</b> LeRoy Carter, Jr. 125 Maple Ave. Utica, Ohio 43080 Phone 614-892-2775	<b>HELEN &amp; JIM KENNON</b> Heisey, Cambridge, Fostoria, Duncan, Imperial, Fenton, Tiffin P.O. Box 114 Brookville, OH 45309 PH: (513) 833-5406 SHOWS ONLY	<b>R &amp; L ANTIQUES-SAN FRANCISCO</b> Members of the Golden Gate Heisey Club 3690 Bodega Ave. Petaluma, CA 94952 PH: Petaluma (707) 762-2494 PH: San Francisco (415) 621-6693
<b>CHARLES &amp; MILDRED FISHER</b> Heisey, Degenhart, Imperial, Antiques, Collectibles, General Line 991 Idlewild, Newark, OH 43055 PH: (614) 522-5398	<b>JJ MC KEE ANTIQUES</b> Pottery - Glassware - Collectibles 222 B West 75th St. Kansas City, MO 64114 Wed.-Sun. 10-5 PH: (816) 361-8719	<b>THE WOODEN SHOE</b> Antiques & Collectibles Jim & Sheri VanEs by Appt. 810 Elden, Herndon, VA 22070 PH: (703) 435-9045
<b>DAVE'S ANTIQUES</b> Specializing in Heisey Shows & Mail Order 1403 E. Knollwood St. Tampa, FL 33604 (813) 237-5550	<b>THE PURPLE PLACE</b> Featuring Heisey & Other Fine Glass Martha & Harold Earp 1940 Suwanee, Ft. Myers, FL 33901 PH: (813) 936-1572 Anytime	<b>SCHWAN'S ANTIQUES</b> SHOWS & MAILORDER 77 Lagos del Norte Ft. Pierce, FL 34951 PH: (407) 461-5940
<b>DIAMOND H PLUS</b> Mail Orders & Shows George & Eileen Schamel 6625 Gilardi Rd., Boonsboro, MD 21713 PH: (301) 432-6285	<b>J. &amp; R. COLLECTIBLES</b> Shows, SASE, Mail Order list June & Ray Lukasko P.O. Box 1030, Newark, OH 43055 PH: (614) 344-9719	<b>SHOW AND TELL ANTIQUES</b> Art, Cut, Heisey and Pattern Glass 1525 Morrow Ave., Waco, TX 76707 Tues-Sat 10:30-4:30 PH: (817) 752-5372 Also: Mail Order and Shows Member NADA
<b>ETTELMAN'S DISCONTINUED</b> <b>CHINA &amp; CRYSTAL</b> HEISEY a SPECIALTY P.O. Box 6491-HN Corpus Christi, TX 78411 PH: (512) 888-8391 Include SASE	<b>MOSTLY HEISEY</b> Rhoda Curley 16 Clayton PL, Albany, NY 12209 Shop and Mail Order PH: (518) 482-6272	<b>HEISEY PUBLICATIONS</b> Box 102, Plymouth, Ohio 44865 All Vogel Heisey Books I, II, III, IV And Quarterly Newscasters available
<b>FOREVER HEISEY</b> Jan & Norm Thran Mail Order, Shows, Appraisal Service 1663 Londondale Pkwy., Newark, OH 43055 PH: (614) 344-5955	<b>MOUND BUILDERS ANTIQUES</b> Heisey & Animals, General Antiques Irene Rauck 1138 Moundview, Newark, OH 43055 PH: (614) 344-6043	<b>WILLEY'S ANTIQUES &amp; MUSEUM</b> Specializing in Heisey 11110 Cannon Rd., Frazeyburg, OH 43822 16 miles east of Newark, OH PH: (614) 828-2557
<b>GERT'S GLASS</b> Heisey & Duncan Gertrude & Russell Swetnam 1926 Saratoga Dr., Adelphi, MD 20783 PH: (301) 434-5113	<b>THE MUTED SWAN ANTIQUES</b> 5486 Peachtree Rd., Chamblee, GA 30341 Heart of Chamblee Antique Row Specializing in Heisey & Cambridge Bill & Pat Miller PH: (404) 451-7620	<b>JAMES S. HARRIS ANTIQUES/APPRAISALS</b> Box 672 Richmond, KY 40475-0672 PH: (606) 623-9100 Buying and Selling by Mail
<b>GLASS 'N' GLASS</b> Virginia & Odell Johnson Rt. 1, Box 1324 Hayward, WI 54843 PH: (715) 462-3753	<b>NANCY'S ANTIQUES</b> Heisey, Cambridge, Fostoria, Fenton Mail Order 906 44th St. NW, Canton, OH 44709 216-492-2595. Shop Union Station Antiques 12622 Cleveland Ave., Uniontown, OH Daily	<b>TALL OAKS ANTIQUES</b> 565 N. Nichols St., Lowell, IN 46356 Elegant & Dep Glass Specializing in Heisey. Shows - Mail Order - Shop - PH 219-696-0147 Mike & Barb Rosenberger





# Classified Ads

**WANTED:** Imperial Animal & Figurines. Collector, P.O. Box 115, Newark, Ohio 43055.

**WANTED:** 1503 Crystolite Rosette candle holders in Ruby (by Imperial). Terry Cranstons, 7789 Pontiac Lake Road, Pontiac, MI 48054.

**WANTED:** 423 Diamond Band, 1200 Cut Block punch cups. W. B. Gibbs, 1303 N. Sellars Mill Road, Burlington, NC 27217. Phone 919-226-7669.

**FOR SALE:** Bantam Rooster cocktails (4) each \$275; 1506 Whirlpool 3-lite candleholder, pr. \$70. Glenda Wright, 3240 Aldrich S. Apt. 101, Minneapolis, MN 55408. Post. Ext.

**WANTED FOR RESALE:** Heisey chicks, head up & head down; horsehead sherry; two horsehead cocktails; roosterhead cocktails. Mint only. Lynne Sellers, 4312 Kolbe Road, Lorain, Ohio 44053.

**WANTED:** One sherbet, Crystolite pattern. Will consider trade. Have six cups & saucers available. Contact Lundy, 10496 TR 90, Kenton, Ohio 43316.

**WANTED:** Emerald Beaded Swag. E. J. Cox, Box 367, Spavinow, OK 74366. Phone 918-589-2859.

**WANTED:** 1401 Empress 6" toed candlestick, Sahara (only need one). Joseph Mitchell, RD#4, Box 330, Reading, PA 19606.

**WANTED:** Epergne plates and parts; candelabra parts and Marigold Twist. Highest prices paid. Mostly Heisey, 16 Clayton Place, Albany, NY 12209. Phone 518-482-6272.

**WANTED:** 1425 Victorian punch bowl and plate. Will purchase or trade for 1235 Beaded Panel & Sunburst punch bowl or 343 Sunburst 15" punch bowl. Mindy London, 1620 S. Main, Blackwell, OK 74631. PH: 405-363-0715.

**NEEDED:** Broken Heisey Glass - colors & Diamond H's for Tiffany style lamp shade to be donated to the museum. Leave at museum or send to Linda Megaw, Rt. 1, Box 124, Spring Hills, KS 66083. Thank you.

## GLASS AND POTTERY - SHOW AND SALE Over 40 Dealers

7th Annual Depression Era Glass and Pottery Show  
St. Clair Fairgrounds (Air Conditioned Building)  
Belleville, Illinois

Saturday, August 12 - 10 a.m. to 5 p.m.  
Sunday, August 13 - 10 a.m. to 4 p.m.

### SPECIAL GUESTS:

Gene Florence, Noted Author  
Lee Garmon & Doris Frizzell, Co-Authors "Collecting Royal Haeger"

Special Displays: Heisey, Cambridge, Fostoria, Imperial, Fenton  
Glass Repair (grinding) Available

Admission: \$1.25 (Good for both days) • Door Prizes  
Sponsored by: Southern Illinois Diamond H Seekers

## National Heisey Glass Museum

Eight rooms and complete lower level displaying the beautiful hand made glass produced in Newark by the A.H. Heisey and Co. from 1896-1957.



Corner of West Church & North Sixth Streets  
Newark, Ohio 43055

Phone: (614) 345-2932

Hours: Daily 1pm-4pm Closed Holidays

**OHIO**  
*the heart of it all!* SM

### Membership Renewal Notice

The date above your name and address is your renewal date. This is your last issue of the Heisey News if it reads 8-31-89

PLEASE DISREGARD THIS NOTICE IF YOU HAVE  
RECENTLY PAID YOUR DUES.

POSTMASTER SEND FORM 3579 TO:



**SECOND CLASS**