

HEISEY®

news

OFFICIAL PUBLICATION HEISEY COLLECTORS OF AMERICA
 © Heisey Collectors of America, Inc.
 All Rights Reserved 1989

VOLUME XVIII NO. 4

APRIL, 1989 ISSN 0731-8014

Comes the "Dawn"
 in Heisey's new

Town & Country



NEW
 HORIZONS
 AT
 HEISEY

Town and Country, in the new "Dawn" shade, includes Ice Teas, Tumblers, Juices, Nappies (4, 6, and 8 inch), and Plates (6, 8, and 10 inch) plus Ice Lip Pitcher, Salad Bowl and 14 inch Sandwich Plate.

The parade of "new horizons at Heisey" continues with TOWN AND COUNTRY . . . glamour glass of varying densities in the new "Dawn" shade to blend with any luncheon setting. Eva Zeisel has fashioned this versatile line for round-the-calendar entertaining . . . "on its own" or with fine dinnerware. Order from your Heisey representative now for prompt delivery. A. H. Heisey & Co., Newark, Ohio.



Heisey
 CRYSTAL

the finest in glassware, made in America by hand

HEISEY NEWS

P.O. Box 4367, Newark, OH 43055

CLUB OFFICERS:

President - Bob Rarey (614) 279-0390
Vice President - Dick Smith (614) 366-5163
Secretary - Liz Stickle (614) 323-2250
Treasurer - Mary McWilliams (614) 345-4380
Curator - Louise Ream

Editor: Louise Ream

P.O. Box 4367, Newark, Ohio 43055

PH: (614) 345-2932

Published in Newark, Ohio, Printed in Newark, Ohio.

\$15.00 per year - \$1.25 per copy

Back Issues - Each Volume (12 issues) year - \$9.00

Volume V, VIII, IX, X, XI, XII, XIII, XIV, XV, XVI

Heisey Collectors of America, Inc. is a non-profit corporation with tax exempt status. Owners and operators of National Heisey Glass Museum, 6th and Church Streets, Newark, Ohio.

Open daily 1-4 p.m. except holidays. Other hours by appointment. Members admitted free.

HEISEY NEWS

Heisey Collectors of America, Inc.

All Rights Reserved 1989 - ISSN 0731-8014

Published monthly, except twice in February, by Heisey Collectors of America, Inc., Newark, OH 43055. Second Class postage paid, Newark, Ohio 43055. Club membership (includes 13 issues of Heisey News and participation in all club activities) \$15.00 per year plus \$2.50 for each additional family member in same household who wishes a membership card. For Voting Membership add \$25.00 one time only fee.

POSTMASTER: Send address change to:
HCA, P.O. Box 4367, Newark, OH 43055

When requesting information, please enclose a self-addressed, stamped envelope (SASE).

ADVERTISING - Send all ads to: HCA - Advertising
P.O. Box 4367
Newark, Ohio 43055

DOUBLE SPACE ALL ADS

Rates:

CLASSIFIED: 15¢ per word. \$1.50 minimum.

ABBREVIATIONS AND INITIALS COUNT AS WORDS

DEALER DIRECTORY: \$25 per year.

Display:	Members:	Non-Members:
1/8 page (9 items)	\$20.00	\$ 30.00
1/4 page (20 items)	30.00	45.00
1/2 page (20 items) Hor.	45.00	67.00
1/2 page (50 items) Vert.	60.00	90.00
1 page (50 items)	75.00	112.50

Personal ads limited to 1/8 space.

ALL ADS MUST BE PREPAID. Ad copy must be received by the 5th of the month preceding the publication date-i.e. April 5th for May issue. Ads containing reproductions will not knowingly be accepted unless clearly stated (i.e. Heisey by Imperial, etc.). HEISEY NEWS assumes no responsibility for false advertising or misleading information. In the event of typographical error, the incorrect portion of the ad will be run in the following issue, but HEISEY NEWS assumes no further liability.

The opinions expressed in articles in HEISEY NEWS are those of the authors and not necessarily those of the organization. The Editorial Staff reserves the right to edit or refuse any material submitted for publication. When requesting information, please enclose a self-addressed stamped envelope (SASE).

THANK YOU

ALL CONSIGNORS, ALL BIDDERS, ALL WORKERS, APPLE TREE AUCTION CENTER AND EVERYONE INVOLVED IN ANY WAY WITH THE AUCTION. IT WAS A HUGE SUCCESS.

BOB RYAN, CHAIRMAN
& HIS COMMITTEE

BOARD CANDIDATES

1. KAY DARLING, COLUMBUS, OHIO
2. MARVIN JACOB, ROCHESTER, NEW YORK
3. AMY JO JONES, XENIA, OHIO
4. MAX PUDERBAUGH, COLUMBUS, OHIO
5. SAM SCHNAIDT, GRANVILLE, OHIO
6. KAREN TEMPLE, CHULA VISTA, CA
7. BETTY WANSER, ANAHEIM, CALIFORNIA

PROFILES WILL BE PRINTED IN MAY.

DATES TO REMEMBER

APRIL 21, 22	BAY STATE HCC SHOW	WALTHAM, MA
JUNE 11, 12, 13, 14	FLEA MARKET ON THE SQUARE	NEWARK, OH
JUNE 9, 10, 11		IMPERIAL CONVENTION
JUNE 9, 10, 11		FOSTORIA CONVENTION
JUNE 15, 16, 17, 18		HEISEY CONVENTION
JUNE 22, 23, 24, 25		CAMBRIDGE CONVENTION
AUGUST 1, 2, 3, 4		FENTON CONVENTION

NOTICE

RED COLTS ARE SOLD OUT!

FROM YOUR PRESIDENT

Dear HCA Members:

It is with pride and gratitude that I am reporting that the 1989 Museum Benefit Auction was a record-setting event. The total dollar figure for sales far exceeded any in the past. The same applies to the share received by the museum. I'll leave the details for Louise to report.

On behalf of all HCA members I offer our sincere "thanks" to Bob Ryan (Auction Chairman) and his committee and to all the volunteers who helped make this record setting event a huge success. Our "thanks" also to Loren Yeakley (Mailman); Virginia Yeakley who put the list in the computer; and to Sam Schnaidt, Tim Hughes, Larry Stickle and Craig Connelly, who all donated their services as auctioneers and did a tremendous job. Also, to the Apple Tree Auction Center for the use of their lovely facility. Finally, and also very important, is our "thanks" and appreciation to the bidders, buyers and consignors. Without you, there would be no auction. This will undoubtedly be our largest fundraiser for the year 1989.

All of this has certainly taken place at a very appropriate time, as I report on the actions taken by the Board at their quarterly meeting. The 1989 proposed budget was adopted as amended.

The annual audit report from auditor Floyd Mason was presented, but since board members had not had an opportunity to study it the discussion was delayed until the June Board meeting. In Floyd Mason's written comments he stated that the system of internal control has provided excellent results in safe guarding the assets of the club. A summary of the audit will appear in the Heisey News, as will the quarterly treasurer's report.

I hope everyone has read and reread the article by Stan Darling in the March issue of the Heisey News regarding the need of an archivist and the tools to do this work. If you haven't read the article, I sincerely hope you will. The Board adopted the proposed job description for an Archivist - Librarian. This position was offered to Neila Bredehofft who accepted the challenge and agreed to become the Archivist - Librarian. She will be working as Archivist part-time. As Louise stated when she suggested Neila, "she is the one most knowledgeable and very capable within the organization for this position".

The Board has authorized the purchase of a second computer. This was all taken into consideration when the proposed budget was prepared and may necessitate the borrowing of funds. I am now appealing to clubs and individuals to meet the challenge as we did with the Mould Fund Drive. As Stan Darling stated in his article, "Heisey projects are our only justification for existence".

In addition to the above, the usual day to day expenses must be met. Last year, because of the exterior restoration, the lawn was neglected and must be given attention this year. We also hope to have the wrought iron fence installed on the bank along the Church Street side of the lawn. It has been cleaned and painted and is now stored in the warehouse. Some other projects are being planned to coincide with the Ameri-Flora Show to be held in Columbus and Central Ohio in 1992. This is to commemorate the 500th. anniversary of Columbus' dis-

covery of America.

Our next event is the 200 Dinner and tickets are available and being sold. The date is April 22. If you would like tickets, contact the HCA office. Only 200 tickets will be sold.

I know I can count on your support.

Bob Rarey

FROM THE DESK OF THE EDITOR . . .

The big auction is over and what an auction it was! There was more variety in this auction than in any in recent years with something which would fit into anyone's collection. Members came from far and wide. Mail bids were received on more than 1200 items. Prices certainly hit a new high on many pieces. As you can tell from the Treasurer's Report (listed in this newsletter) HCA made a lot of money.

Leonard is sending out the mail bidder's glass and it will take some time. We hope you have yours by the time you get this newsletter. He works alone and has a mountain of glass to ship.

We are getting ready to go to Silver Spring, Maryland, on Friday to participate in the All-Heisey Show. I suppose many of you in the east will be present at that show. We always take books and some of our glass to sell there. HCA has done very well in selling there each year.

Wilford Adams of Fishkill, New York, has been quite ill recently. We hope that some improvement has been made by this time.

Peg La Rosa of Waltham, Massachusetts, formerly of Newark, Ohio, and a member of HCA, died this week. She was a member of the Bay State HCC. Our sympathy goes out to her family, many of whom live in Newark.

This issue has few pictures but we have been so busy with the red colts, auction and endless questions about both; visitors and getting ready for the show in Silver Spring, Maryland, that we just didn't have enough time to get everything in that we wanted to.

We have the new cabinet donated by the Connecticut HCC filled with glass now. On Friday, before the auction, Virgil Hauser, former board member, brought a new cherry cabinet for room 1. It is beautiful and will be more so when we have time to fill it with glass.

Don't forget to go to the great Bay State Show in Waltham, Massachusetts on April 22 and 23.

Louise Ream

TREASURER'S REPORT
FEBRUARY 28, 1989

CASH BALANCE NOVEMBER 30, 1988	\$6,661.45
CASH RECEIVED	\$54,368.81
CASH PAID OUT	\$54,646.67
CASH BALANCE FEBRUARY 28, 1989	\$6,383.59
BALANCE ON LOAN AT BANCOHIO	\$33,000
BALANCE IN ENDOWMENT FUND	\$39,398.22
TOTAL NUMBER OF BOB EVANS STOCK SHARES	6,421
INCOME FROM MARCH BENEFIT AUCTION	\$83,555
H C A'S SHARE	\$19,653

HEISEY IN THE TRADE JOURNALS - NO. 315 PANELED CANE

by Tom Felt

As noted in last month's article, the year 1900 began for Heisey with the introduction of No. 305 Puntty and Diamond Point. This was followed in the summer by another new pattern, No. 310 Ring Band. Curiously this one was neither mentioned nor advertised in the trade journals. It is also unusual in that most patterns were first released in the spring or fall seasons, and Heisey's decision to bring it out "off-season" may explain why they also decided not to advertise it.

Then at the end of the year, two more patterns were introduced: No. 315 Paneled Cane and No. 325 Pillows. One of the first advertisements for No. 315, in the December 1900 issue of The House Furnisher: China, Glass and Pottery Review is especially interesting, illustrating an electric shade and a 7 inch stalactite globe. This is intriguing not only for the items shown, which needless to say are considered both rare and highly desirable by collectors today, but because the two shades apparently are not even really part of the No. 315 pattern. This is clearly suggested by the text accompanying the advertisement itself: "No. 315 pattern, one of our new complete lines for the coming spring, in an imitation cut pattern of the plain order, similar in design to our No. 14 shades herewith illustrated . . ." A notice elsewhere in the same issue also stated that The House Furnisher "is the first journal to show these new lines, the illustration(s) for which were only prepared during the last days of November . . . Heisey & Company in the regular advertisement of their new No. 315 pattern state that a complete set of illustrations of the new design will appear in the next number . . ." Although the two shades in question may indeed have been incorporated into the new pattern, I rather suspect they were substituted last minute because of the similarity in design mentioned and due to the late preparation of the correct illustrations. A comparison of the two shades with other pieces in the pattern reveal that the design motif on the shades is an imitation of the strawberry-diamond motif used in cut glass (which is also found on Duncan & Miller's No. 48 Diamond Ridge, introduced at the same time as Paneled Cane in early 1901) whereas the real No. 315 pieces have double rows of slashes filled with cross hatching or "cane".

Equally intriguing in this first ad was a statement which was repeated and elaborated on in a two page advertisement showing several pieces from the pattern in the January, 1901, issue of The House Furnisher: China, Glass and Pottery Review:

HAVE YOU SEEN IT?
HEISEY'S HAPPY MEDIUM
Number Three-Fifteen

No. 315 PATTERN is a modification of our famous No. 300 Colonial -- the pattern without a peer -- in which we have retained much of the richness and graceful dignity of that popular pattern -- the 300 -- and added the sparkling brilliancy of the imitation cut, securing an effect

TRADE MARK

THE H TRADE-MARK—AN ASSURANCE OF SUPERIOR DESIGN, WORKMANSHIP AND FINISH

MANUFACTURED ONLY BY

A. H. HEISEY & CO., INC.
NEWARK, OHIO, U. S. A.

No. 315 PATTERN.

TRADE MARK

No. 315 PATTERN, ONE OF OUR NEW COMPLETE LINES FOR THE COMING SPRING, IS AN IMITATION CUT PATTERN OF THE PLAIN ORDER, SIMILAR IN DESIGN TO OUR NO. 14 SHADES HEREWITH ILLUSTRATED, AND IN GENERAL SHAPE AND FORM A MODIFICATION OF OUR FAMOUS NO. 300 COLONIAL, "THE PATTERN WITHOUT A PEER."

THE COMPLETE SET OF HEISEY'S PATTERNS SEE LIST INSIDE OF "THE GREEN BOOK."

that is truly "a happy medium."

And, in fact, a comparison of items in the No. 300 pattern will reveal that their basic shapes are essentially identical, but with narrower panels interspersed with double rows of cane. It can be suspected that Heisey's "happy medium," being somewhat "betwixt and between" (neither epitomizing the "new" colonial style made popular by Peerless, nor quite fitting the style of imitation cut glass which had hitherto been so popular) did not successfully capture the public's fancy. The two page ad in the January issue of The House Furnisher: China, Glass and Pottery Review and a similar one page advertisement in the December 27, 1900, number of Crockery and Glass Journal seem to have been the only ones to appear, although cuts of individual items continued to be featured in February and March, 1901. The pattern itself probably did not stay in production more than a few years, perhaps being discontinued as early as 1903. Minnie Watson Kamm mentions a catalog showing 29 pieces in this pattern, but to my knowledge none of these pages have ever been reprinted, making Paneled Cane one of the least documented of the early patterns.

No. 315, "a figured design of much elegance," is mentioned in the January 10, 1901, issue of China, Glass & Lamps as being available both in plain Crystal and in Crystal and Gold. This refers to Heisey's No. 1 gold decoration on the plain portion above the flutes. Although an early mention is made in the Heisey News of Ruby*decorated pieces in this pattern, I have been unable to find any confirmation of this

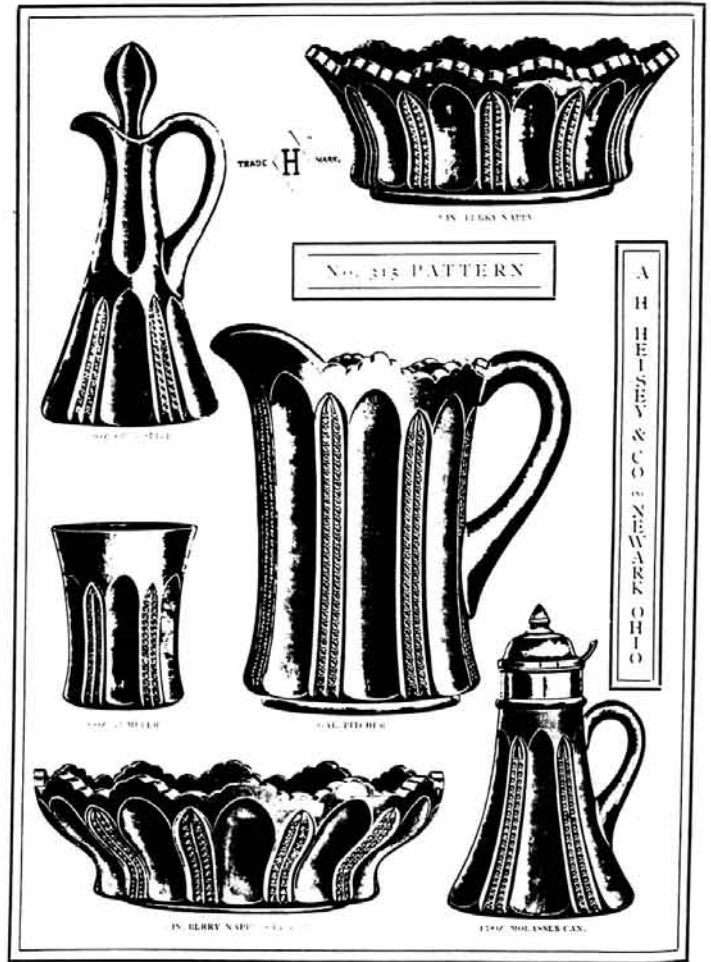
(although certainly the pattern dates from a period when this kind of decoration was extremely popular).*

There are also early mentions of a ½ pint tankard in Custard, apparently derived from Kamm's A Seventh Pattern Glass Book. The same piece also appears in William Heacock's Custard Glass from A to Z. To my knowledge, however, this piece has been erroneously attributed to the No. 315 pattern, again because of a similarity of design. I don't know if a different pattern number has in fact been discovered for this tankard but instead of being slashed with double rows of cane it has double rows of a motif more closely resembling daisy and button, which leads me to assume that it was from a single-item pattern, probably made only in Custard and intended for the souvenir market.

Paneled Cane, on the other hand, was made only in Crystal and its pieces are probably always marked with the Diamond H since the pattern's introduction was less than a year after the mark went into use and just shortly before an application for trademark status was filed for. (You will note, however, that the advertisements already identify it as a trademark.)

* A few pieces of Paneled Cane in Ruby stain have been seen and are very beautiful. L.R.

House Furnisher; China, Glass & Pottery Review, Jan. 1901



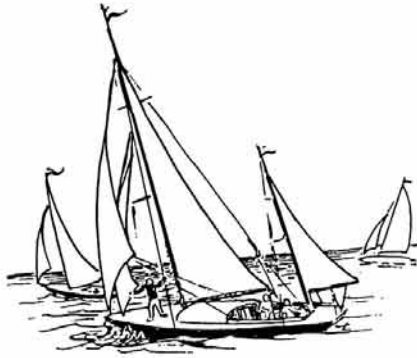
LETTERS, WE GET LETTERS . . .

Dear Heisey Collectors:

I'm in love with Heisey Glass!! My mother has been a flow-blue collector for years and I have . . . "watched". Only recently has the mania of "collecting" struck me and did I ever get hit hard! Heisey glass is so beautiful!

I am married and temporarily stationed (military) at Anchorage, Alaska. I would love to hear more about your group and any information you can pass along to me. I don't think there's a Heisey group here but let me know if there may be another "fan" up here. We'll have Heisey parties even with two.
Shelley Brugger, Alaska

- Q, I have a fair-sized collection of Heisey pieces and this month just purchased a #473 Narrow Flute with Rim which I am not sure I am identifying correctly. From the Heisey Newsletter I think it is a strawberry with powdered sugar but am not sure. The plate size is too small for the shrimp and cocktail dish. This particular piece has the rim trimmed in gold only some of it has worn off on the top layer. Can you tell me more about it and is it a worthwhile piece to have? I have the cheese and cracker double dish and this makes an interesting companion piece. (A. Roloff, Virginia)
- A, From your description I feel sure that you have the individual strawberry and sugar, which is sometimes referred to as an individual cheese and continued on page 12



diamonds are forever

by Janet Caswell

It all began with a trip to Hungary, "the Inquisitive Neophyte" purchased an interesting little Crystal pitcher in Budapest. Upon returning to the U. S. he realized how foolish he was not to have searched for the sugar while in Hungary. A few weeks later he was at a Kane County Flea Market and came across a little sugar bowl that he thought he could use. The sugar was a little high in price and while dickering with the dealer for a price more to his liking the dealer replied, "oh, no! It's a Heisey!" He just shrugged and wandered off. Curiosity got the best of him and he returned to the booth and purchased the little sugar. A trip to the local library was in order to find out what a "Heisey" was. A friend joined him in reading and asking questions of dealers. Three china cabinets full and many cartons later, it was obvious he was hooked.

He collects Empress #1401 in Sahara and Flamingo. His Sahara table service for six is fairly complete and he is working on the Flamingo. Many additional pieces (150 or so) have been picked up at garage sales, flea markets and local auctions, some at real good prices. A Twist #1252 goblet was discovered once for less than a loaf of bread.

Speaking of a person discovering lots of Heisey in one place, how about "Mr. 1469" and his Missus: #3380 Old Dominion ice teas all in Sahara, (6) six; Old Dominion wines, also in Sahara, (6) six; 10 oz goblets, Sahara, (5) five. Now in #3350 Wabash with the Pied Piper etch they are reporting (4) four each of - 10 oz goblets, champagnes and footed sodas. All in one day!!

"The Farmer" locked the barn door and took off for parts unknown. Only unknown to us, not to him, for he'll never tell. Can't say as I blame him. A couple of things were unearthed along the way: a #1220 Punt Band 7" crimped comport; a #411 Tudor 2-handled mint and a #343 Sunburst butter cover. This will give him something to look for.

"The Magnanimous Chieftain" (ma) delights in telling about a #1205 Fancy Loop potpourri jar and a #393 Narrow Flute Moongleam champagne*. The "Energetic Countess" couldn't pass up a #394 Flat Panel oil in Flamingo and the #150 Banded Flute Tray, also in Flamingo. I was lucky enough to see the tray and it is handsome. She also picked up a #1404 Old Sandwich candlestick in Moongleam and the #419 Sussex finger bowl.

Now we come to the "Stalwart Stem Collector" - this next item, of course, is not a stem but, never-the-less, I'm sure we will forgive him for this slight oversight. Here goes, one item only

but a real gem, #4224 Ivy vase, oh yes, let me tell you that Tangerine is the color, wide optic and perfect. Ummmmmm good!!

The #1252 Twist Marigold salt plus a Twist Experimental Gold 9 oz goblet is in the proud hands of "Yours Truly". By the way, if you place an experimental gold piece under a "black light", it will turn a bright Salmon Red while a true Marigold piece will have a fiery yellow-green glow to it. The black light is a lot of fun to play with but, remember, it is not a true test of Heisey.

Perhaps the "Eager Beaver" is happier now that he decided to take that trip to "Disney". He had put it off for a couple of years and finally agreed that if he could go Heisey Hunting along the way it would be just the incentive he needed to travel that far from home.

Now they drove straight to Florida with nary a stop for hunting Heisey, enjoyed four fun filled but exhausting days on and off the rides - in and out of the shops - in other words, eating, drinking and and being merry. Now a day's rest and the journey home, at last Heisey hunting. Hunting, yes that was the word for it; shop after shop was explored, prices were high and anything they did see they already had at least two of already, oh well. Just before reaching home, on a corner lot just one block from their own home, was a fairly large yard sale; might as well take a look. Before they finished looking several things were purchased; two #1469½ Ridgeleigh 4" ash trays and a 7" 2-compartment relish, in Crystal. To their delight there was a lady there that was selling her collection of water pitchers or jugs and amid the dozen or so were three that were Heisey and these they scooped up in a hurry. A #1170 Pleat & Panel 3 pint ice jug in Crystal; a #433 Greek Key medium size; a #1401 Empress 3 pint footed jug. All the rest were depression glass. Can you imagine traveling almost 1200 miles and coming home to find the Heisey right in your own back yard?

"The Cardinal" (ma) is very happy with a present he received a couple of months ago. The #1469 Ridgeleigh coaster - in Zircon (his first piece of Zircon and he uses it almost every night). He told me that he would like to collect Zircon. Well, perhaps he will; I hope that dream comes true for him.

"The South Jersey Troops" report finding in Maine a pair of #1401 Empress 6" toed candlesticks in Sahara. (Hey, troops, just what have you all been up to lately, I haven't heard - miss you).

"The Buckeye Belles" found one small elephant (at a very good price) in a shop in Tucson. As they were leaving the shop, or rather trying too, the Belles spied another small elephant and a large elephant peering out of a china cabinet. As you can guess, these two animals were also grabbed up plus the double cube sugar. What a nice days work, or should I say - play? Yes, play is the word!

Perhaps now that Spring is just around the corner, and before all those outdoor fleas start, you could sit down for just a few minutes and Make my Day by writing me about all those good things found this past winter. Your input is greatly needed. Perhaps you would enjoy sharing how you got interested in hunting for Heisey. Please write and tell Me!!

Until next month, I send you all Love and
Happy Hunting.

*We are not aware of #393 Narrow Flute champagnes in Moongleam. This would be a rarity. Can we get a photo of it? L.R.

CONVENTION NOTES

In justifying the long trip to the first Heisey convention I attended, I told my husband it would be "a learning experience." (In actuality, I wanted an opportunity to be able to purchase items never available in my faraway state.) Being the nice guy he is (and very intuitive) he agreed and we were off. However, in looking back at that first convention, recalling purchases is not nearly as easy as remembering the first awesome impressions of the museum, the display at Hopewell Hall, the seminars at the Best Western, and the show at Adena Hall.

If you are planning a first trip to the convention, upon arrival make your first stop the Heisey Museum and plan double the time you may think you need. The brochure describing your self-guided tour will take you from Heisey's first production days to it's last. Following the tour, be sure to visit the library which includes not only reference books, catalog reprints, etc. pertaining to Heisey, but books, manuals and papers on other glassware companies and other collectables as well. HCA is very proud of the collection and seeks to make it one of the most comprehensive of its kind anywhere. Therefore, a donation by any individual or group to this library would always be greatly appreciated.

During your tour introduce yourself to Louise Ream, curator, who can answer any question you can think of and all you can't. If it is not your first trip, make your first stop in the museum Room 7 to view the new cabinet handcrafted by Bob Shomaker and made possible by the Connecticut Heisey Collectors Club. It is filled with glass donated or purchased during 1988. Many rare or unusual items fill this cabinet.

And remember, too, the museum is always in need of volunteers during convention time. Even if you have no experience as a docent, greeting people at the door of the grand showplace is delightful duty. There is no better way to meet fellow collectors from all over the country. (Contact Louise or convention chairman if you can.) Museum hours begin at 9:00 AM daily except Sunday when it will open at 12 PM following the annual meeting. It will close at the same time as the Show and Display except Thursday when it will close at 4 PM. Closing at that time will give everyone a chance to get out to Adena Hall before 5 PM when the Preview dinner begins.

Thursday evening when the display (Window Shopping) opens at Hopewell Hall should be the second "learning opportunity" for first time attendees and old timers alike. In the center of the room will be individual tables set with different patterns and colors of Heisey's finest tableware. On the perimeter of the room will be the study club displays taking their themes from the convention's theme of "HCA Presents - CHRISTMAS IN JUNE!" This theme is proving to be very inspiring for our study clubs - this year will have a full house. Any questions you may have can be very expertly answered by Janet Caswell, Display Chairman, or any of the committee members present. Also on display will be the Ginny Marsh collection of Santas in the display cabinet in the lobby. Don't miss it! Display hours will be the same as the show except on Preview Night when it will open at 7 PM - one hour later than the show which opens at 6 PM. On Sunday the display will close at four.

Seminars always provide interesting information for the never ending Heisey glass pursuit. This year's seminars held at the Best Western, Convention Headquarters, on Saturday afternoon, will feature favor vases and the color of Moongleam. Plans for a third seminar will be announced later. A mixed bag of learning opportunities will present itself during the Show (Santas Workshop.) Stepping into the room for the first time is totally awesome. All that Heisey in one place turned me instantly into a frenzied, yet weak kneed, mass of indecision. All the rustle of wrapping paper for the purchases of more decisive buyers did not help. What was truly incredible was that it all started less than two minutes into the door. One learns the fine art of random scanning at racing speed. One learns to make decisions quickly. One learns to bring more money next time. One vows to never come again (upon checking the wallet) and the most important of all, one learns that some vows were made to be broken. For those of you who have learned all there is to know about this whole frustrating process, do be alert to new show hours listed on the schedule. Particularly noteworthy is that the show will close at 6 PM on Saturday this year. That will allow everyone a chance to get a "bean" before going to the Swap and Silent Auction which this year will start at 7:30 instead of 9:00. (Look for new Swap details next month.)

The jolly gent himself will put in an appearance during convention by special request, promising to add charm and gayety to HCA's gala festivities. Resting up down South in preparation for this double duty this year, let us all hope that Santa acclimates well to warm, humid weather. Newark in June does not remind one of the North Pole, only long for it. For Santa's sake, let's all hope for a "COOL YULE!"

So make those final plans for the convention. June will be here before you know it! Find your own justification for coming - any one will do it. Take it from one who knows, the whole world of Heisey collecting will never be the same for you.

Amy Jo Jones, Co-Chairman

AN UNUSUAL SHOWER

by Miriam Balo

On Sunday, February 12, Mary Frances Shannon and Mary Lou Heatwole of Newark, Ohio, held an unusual shower in the Shannon home honoring Debra Fulton, a bride-to-be.

The unique thing about the shower was that all of the gifts were Heisey glass and all in the Flamingo color. A list was sent out with the invitations and almost everything on the list was purchased, either for a shower or a wedding gift.

Several different patterns were represented. Included were Gayoso stemware, #134 candlesticks, #1252 Twist, #1229 Octagon, #1401 Empress and several others.

The delicious refreshments were also served on Heisey glass. Mrs. Fulton, mother of the bride, presided at the tea table.

Ed Note: The bride is the step granddaughter of Miriam Balo of Frazeyburg, Ohio, a long-time member of HCA. Does anyone else have an interesting story to submit? We always welcome your input.

This story was broadcast by the "Acme Man" over Stations WADC, WAKR and WHKK.

HEISEY GLASS WARE - PART I

(While this article may have some discrepancies, we feel that you will enjoy reading it.)

It's all so sparkling and rich looking that you can hardly hesitate to order a complete set of table glassware for your home. There is something about beautiful glass that makes food and drink taste better -- it adds a richness to your home, and there is just a lot of self satisfaction in being able to own beautiful table glassware.

Some two or three years ago, I had the pleasure of meeting a gentleman by the name of Howard -- they called him "Butter" Howard because when he was a youngster he delivered butter from home to home from his father's farm. Well, the name "Butter" Howard still is with him. Mrs. Howard and he -- mostly Mrs. Howard -- operate an Inn on Route 40 near Zanesville, Ohio, known as Headley Inn.* I talked with Mr. Howard relative to our radio program and he suggested that the Heisey Glass Company would make a good subject.

I am going to give you just a brief history of the A. H. Heisey & Company of Newark, Ohio. The Diamond H trademark of this company has identified ultimate quality in fine crystal for more than fifty years. That such a reputation stems from no accident is shown by the history of this typically American firm, founded and guided by youthful ambition and a pioneering spirit.

The founder, Major A. H. Heisey, served in the Union Army for four years in the Civil War. He began his career in the glass industry immediately after his discharge from the Army. It was about 1880 that Major Heisey decided to satisfy a pioneer yearning to enter the mining and ceramic industry in Arizona and Colorado. After building an adequate financial reserve in this field, ambitious Major Heisey determined to establish his own glass house back east. He chose Newark, Ohio because of its proximity to natural resources of fuel and fine sand -- its transportation facilities and industrious workers.

Production actually began in 1895,** and the Diamond H trademark was conceived for the firm by George Duncan Heisey, son of the founder. This was the first recognized trademark in the glassware industry.

Heisey experienced very little competition from the very start because of the high quality of their crystal and the way it was finished by cutting or grinding. The grinding was something new again in fine handwrought glassware. Heisey made everything in a pattern from goblets to plates in all sizes. Heisey was the first glassware to advertise nationally -- this occurred in about 1910.

In 1914, the Heisey Company began to make blown stemware in the trend of that day. Not being satisfied with the status quo position, they started making fancy pressed stems. The idea met with the universal approval, and today it is safe to say that practically all the best handwrought stemware is made with pressed items. The popularity of the sparkling colored glassware from 1923 to 1930 was the direct result of pioneering by A. H. Heisey Company.

And so the business grew. Sure they had their ups and downs -- they had their problems during the wartime when they lost many of their expert men, but Heisey survived, and is a credit to the industry.

The story of glass is about six-thousand years old. According to the Roman historian, Pliny, who lived 23 A.D. to 79 A.D., some Phoenician merchants with a cargo of natron, which was carbonate of soda, landed on the Coast of Palestine near the mouth of the Belus -- they built their fire, and finding no stones on which to place their cooking pot, took some of the pieces of natron for this purpose. When the natron was fused by the heat it mixed with the sand and produced streams of a transparent, unknown fluid, later called glass.

Some experts doubt the probability of the manufacturing of glass after this manner. Some records show that Egyptians anti-dated the other nations in the use of glass. The oldest specimens of glass that we know are Egyptian, and it is quite probable that the land of Pharos was the original home of glass.

Transparent glass is about 2,500 years old, the oldest example that we find being bottles. Just when the art of blowing glass originated, we do not know, but blown glass objects found by Doctor Petrie, when the City of Tel-el-Amarna in Upper Egypt was excavated gives us one authentic date. The industry probably goes back several thousand years before the Christian era.

The peculiar consistency of the glass adopts it to a wider use than almost any other material. Glass, when cold, is a hard, crystal-like substance. When it is heated is is a liquid, and it may be either poured into moulds, blown or pressed into forms, or spun into threads and woven.

Woven glass has the pliability and soft sheen of satin. It is a remarkable fact that, while the chief quality of glass is transparency, all the materials that compose it are opaque. The mysterious agent that produces the change is fire. Glass is really the offspring of fire.

There are many different types of glass, which include the potash group of glasses, the soda group of glasses, the barium crown flint glasses for optical purposes, and the borosilicate group of glasses which were originated by Messrs, Shott and Abbe.

Glassmaking in this country began when glassmakers were brought to Jamestown with the illfated settlers in 1607. There are just so many different kinds and types of glass that time prevents me from going into much detail.

Now let's take time out to visit this factory. As you well can imagine, it is a noisy place and exceedingly hot. After my drive to Newark, which is about 105 miles, and rain all the way, I was very agreeable to getting inside the glass house.

We were conducted on a tour through the glass house by Mr. Clark Greenwood, who is one of the up-and-coming young men of this organization. I started to ask him a lot of questions and -- he answered just about everying that I asked him -- and, not only did he answer them, but it was in a quick, positive way so I knew that he knew what he was talking about.

Well, there are a good many secrets in the glass industry, and I had to be very careful in asking the proper questions so that I would not reveal any trade secrets.

So, the first thing I said was - "What is glass

made of?" He told me it's a mixture of sand, red lead -- which comes in powder form, lime and calcium, and then a few other ingredients.

Well, this entire batch, as it is called, is in powder form. It is mixed by experts, otherwise the glass will not turn out in the fine quality that Heisey makes. (Broken glass called cullet is added to the batch and sand is a big part of the batch also. L.R.)

Well, the mixture is put into carts and then shoveled into pots. These pots, naturally, generate a very terrific heat, and they are put into the so-called furnaces -- they look like the old-fashioned kilns, and, frankly, that's what they are. There are sixteen of these pots to a furnace or a kiln, as we might term it. They are made of clay, and each one of the pots hold a little over a ton of the mixture.

The pots are preheated -- they gradually creep up to 1700 degrees, and then in their final melting period they reach 2,700 degrees. And, if you don't think that's hot, you should be near them. The heat is terrific, and these pots usually last about six months before they must be discarded. It's very, very important that all sorts of iron be eliminated from these mixtures because iron disturbs the color color of the finished product -- so the chemists are actively engaged in making every effort to eliminate the iron.

You know, I can ask some dumb questions, and one was - "Is Heisey considered one of the best quality glass makers in the country?" The answer was positive -- they were, and I could tell from the conversation that the people of Heisey are very, very proud of the fine quality glassware they turn out. This firm employs about four-hundred to four-hundred fifty people to turn out this work. Glass is blown manually, and it is pressed manually. Well, I notice my time is getting short, and rather than hurry you through the factory, I am going to continue my talk on Heisey Glassware next week. I am sure that you will want to hear the balance of the story, which really takes you through this plant where this fine glassware is made.

Be sure to listen next week at this same time, same station, for the continuation of this story. *Several years ago this landmark closed. Later there was an auction which included lots of Heisey glass. Particularly memorable to me are three #10 Dolphin Candlesticks in Moongleam which were purchased by Harold Willey. At that time not many of those had been seen. L.R.

**The first glass was made for Heisey at the Robinson Glass Company in Zanesville in 1895. The Heisey factory was built in 1895 and started producing in 1896. L.R.

These stations are in the Northeastern Ohio area.

HEISEY GLASSWARE - PART 2

Last week, the "Acme Man" told you about his visit to Newark, Ohio, at which time he gave you a little history of glass, as well as the history of the A.H. Heisey & Company, manufacturers of fine table glassware. As time ran short last week, I postponed the actual trip through the factory until today. We were conducted on this tour by Mr. Clark Greenwood. Mr. Greenwood told us much about the factory even before going into the plant, because it is rather noisy and extremely hot in the plant--and, he thought by first telling us of it, we could see the actual operation, and then, if we had more

questions he would be glad to answer them. So here is the story of the visit through the "glass house" as they call it, of the Heisey Glass Company at Newark, Ohio.

Well, we enter the pressed glass department now, and we see a lot of activity--a lot of hand work, a lot of expert handling of the hot molten glass.

There is a man called the "gatherer"--he gathers hot glass on the end of a long rod--he knows just exactly how much to take--it's just like you and I taking a spoonful of food. That glass is red - not only red, but white-hot, and he drops a glob of it in a waiting mold. He drops just enough of this hot molten glass to make one piece of ware.

Now the presser takes over. He knows when to cut off the glass with his shears and just how hard to press that hot glass--he knows how long to hold that pressure and how long it can stay in the mold before taken out, and if he makes an error it's a broken or discarded piece of ware.

And now the carry-over boy takes over. With tongs and wooden paddles, he transports the still red-hot glass to another worker, who shapes the glass perfectly by the use of old fashioned tools--mostly wood blocks. I said there is a lot of expert hand-work, and that's true, but remember, this is only the pressed glass department--the blown glass and the cut glass takes still more experts.

Now the glassware goes into the annealing ovens, where it is finally tempered to resist breakage.

There is oil in the molds in order to keep the molds cool. The finisher must produce a round and perfect piece of ware.

We look at another furnace. This is called the Glory Hole, and, as Mr. Greenwood said, the only reason that it is called the Glory Hole is because it is not as hot as the other furnace, which has reached 2700 degrees, whereas the Glory Hole is only 900 degrees. They have three of these large furnaces--2700 degrees each.

It is interesting to see them make a plate. When this first comes out of the mold it looks like a bowl. Gradually it is shaped like a plate--very carefully, and very exacting.

The mixture of the ingredients, I am told, is the main feature of quality glassware.

And now we go into the blown glass department. This is another interesting department--more so, I think, because there is more actual hand-work required. Here the gatherer reaches into the hot molten glass with a pipe known as a Blow Pipe, and immediately as he withdraws the glob of glass on the end of the blow pipe, he gives it one big puff. He does this manually, and you can imagine that takes a lot of wind power. By doing this they get a so-called "hard scum" on the inside as well as on the outside of this individual piece of ware. He then takes it to the glass blower who blows this glass, then into a mold to shape it. And again the process of cooling. The glass blower gets the highest pay in the factory.

Now, if they are making stem-ware, the stem is pressed onto the article. Remember, this is all by hand - some molds are used for accuracy, but it is surprising to see these men and a few women handling this hot glass on the end of these long iron rods - each one doing a little job on the ware, and then passing it on to someone else.

Now, there is a fellow who puts the foot on the stem of a goblet, we will say. A gatherer drops just the right proportion of hot glass on the stem. Through expert handling, this hot glass is literally cut to the proper size before it is finally shaped to make the foot of a piece of glassware.

The operation of these things was so fascinating that it just took me by surprise--I couldn't be in all parts of the factory at the same time, neither could I watch all operations at the same time--and, frankly, I do not feel capable of fully describing the techniques used in the production of this fine Heisey tableware. When goblets are first made, they look like a vase, but are gradually reduced and shaped to the goblets as we know them. This is really craftsmanship at its best--it takes about four years to learn a job--the art is being handed down from father to son - to son, and so on.

And now the glassware is finally brought up for a final inspection before any more work is done, and if it shows signs of defects - like blisters or stones or a bad bottom, or a crooked stem, or a bad edge, it is all discarded, broken up and thrown back into the furnace. There is grinding of edges and bevels, and there are continuous inspections.

I was interested to see them make some Hurricane Lamps, and when they went to cut these lamps to the correct size, they used a diamond to make a score or a mark on the lamp, and then they pass it through a hot flame or series of flames and the lamp breaks off at the scored spot with uncanny accuracy.

And now we enter the cutting department where William R. Groves has charge. To me this was a very interesting department because it requires so much handwork and brainwork. It takes four to five years, and sometimes a lifetime, to become an expert glass cutter. They follow a line, or rather guide lines, and then put the design within those lines. It's hand work, eye work and brain work. Some of these men have been in this same factory, or have had forty to fifty years experience in grinding these designs on glassware.

I did forget to tell you something, and it's quite important, and that is - you can tell real glass--real, good glass, by the ring it has when you tap it with your finger.

We watched a man by the name of Max Seidel; he has been in the operation for forty-eight years. He learned his trade in Germany and Bohemia. His son is now his understudy. He was working on some glassware, making a design of some kind. He turned around and talked to me, and then he'd continue with his grinding, and then he'd talk again and continue with his grinding. By that time I am sure I would have been all mixed up and would have had all kinds of designs on that one glass--but not so with Max.

I asked him where his pattern was that he was following, and he proudly said - "When once I see the pattern, it is in my mind and I don't have to follow any pattern after that because I have been doing this for the past forty-eight years."

Well, Max, my hat is off to you and your son for the fine work you are doing--the craftsmanship and the work you turn out is wonderful.

We went into another department where they were making stoppers for bottles like perfume bottles or cruets, cocktail shakers and acid bottles. Each one of these stoppers is formed perfectly to fit the individual bottle.

Well, my time is getting short, and the people in the factory were just about ready to go to lunch. We didn't see the so-called "etching" of the glassware, which is a new process--it doesn't require the handwork that the other does--that department wasn't running. However, we had a very fine visit with Mr. Clarence Heisey, the President of the organization, and we visited the display room where there were, I would say, thousands of pieces on display--and, if I ever considered myself a "bull in the china shop", this was the "Acme Man" in the glassware display--glass everywhere--beautiful glass--Heisey Glass--the glassware that has made a national reputation for itself, and I appreciated the opportunity of visiting this factory, and I hope you enjoyed the story; and if you will listen in next week at this same time, I'll have another story for you. In the meantime, if you would like a copy of this talk, I will be glad to mail you one--just address the "Acme Man" at Box 191, Akron, Ohio, and it will be sent to you, free of charge.

Ed. Note: Etching was not a new process at that time. Silhouette etchings, sometimes referred to as Deep Plate, were new in these later years, a patented process. These etchings include Tallyho, Circus, Sportsman and many others. L.R.

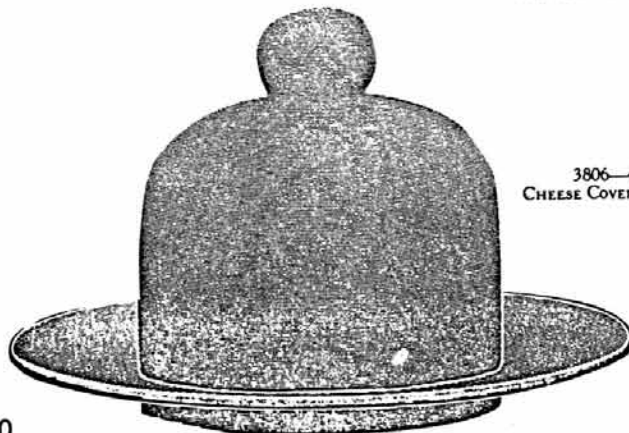
NOTE OF THANKS . . .

As members of the Dayton area Heisey Club we were privileged to take an active role in the recent HCA benefit auction. Bob Ryan, chairman of the auction is also president of our study club. Words cannot fully express the fun, the excitement and the beauty of this auction. It was our first benefit auction, but definitely won't be our last. Just being able to see, touch, "ooh and ah" at such spectacular pieces of glass - I doubt that we ever forget the experience! To those of you who were unable to attend I hope you can come next year; it is an experience you will not regret! We've only been in the study group for about 9 months but everyone has been so friendly and helpful and the fellowship has been truly remarkable.

Thanks Bob, Hilda, Molly, Connie, Amy Jo, Jane, Ira, "Chip", Barbara, Liz and Walt for the privilege of being a part of this fantastically beautiful event. Thanks also to the entire staff of the Apple Tree for your help in making this event so successful.

Although Jim took well over 100 pictures, they will in no way capture the true brilliance of the glass or the sun streaming in on the Alexandrite rose bowl. Absolutely breathtaking!

Karen Clark



3806-41-IN.
CHEESE COVER AND PLATE

RELEASE

For and in consideration of the sum of Two Hundred Twenty-five Dollars and Forty-three Cents (\$225.43), receipt of which is hereby acknowledged, the same being the balance due the undersigned from Imperial Glass Corporation, of Bellaire, Ohio, under and by virtue of a certain agreement between the undersigned and said Imperial Glass Corporation, made and entered into as of May 1, 1958, and relating to the purchase of certain moulds and/or other equipment by said Imperial Glass Corporation from the undersigned, the undersigned does hereby acknowledge that said Imperial Glass Corporation has paid in full all obligations due from it under the terms of said contract and has fully complied with all of the agreements to be performed by it, as set forth in said contract, and does, therefore, release said Imperial Glass Corporation, an Ohio corporation, of Bellaire, Ohio, its successors and assigns, from any and all liabilities, obligations, claims, demands, damages, actions and causes of action of any nature whatsoever, growing out of or resulting from the contract hereinbefore described, dated as of May 1, 1958. It is understood, however, that said Imperial Glass Corporation shall have the right to continue to use the name "Heisey" and all trade marks relating to patterns, shapes and names of lines, as provided in said contract, and that this release is made and given subject to any liability which said Imperial Glass Corporation may have by reason of having assumed any or all of Heisey's liabilities pursuant to licensing or royalty agreements relating to any of the merchandise sold by the undersigned to Imperial Glass Corporation under and by virtue of the terms of said agreement.

The undersigned further represents that it has not assigned to any other person, persons, business organisation or corporation any of its rights under said agreement made as of May 1, 1958, and that this release is a full and complete release of the liability of said Imperial Glass Corporation under said agreement.

The undersigned, as a part of this release, further agrees to execute any other document or documents or assurances necessary for the complete release of the chattel mortgage given by said Imperial Glass Corporation to the undersigned as security under the terms of said agreement.

WITNESS our signature and seal signed and affixed hereto by authority duly given, this _____ day of _____, 1961.

This is a release written in May, 1961, to the Imperial Glass Corporation when they made the last payment on their purchase of all the Heisey Company assets as of May 1, 1958.

Note that Imperial had the right to use the name "Heisey" and all other trademarks. Many people have been very confused about this.

HCA owns the Diamond H trademark, also the word "Heisey" on glass as well as the Diamond H trademark on paper.



2502—12-oz.
HANDLED



3477



3478



2514—12-oz.
HANDLED



3476—8-oz.
HANDLED AND FOOTED

BAY STATE HEISEY COLLECTORS CLUB

The Bay State Heisey Collectors Club held its regular monthly meeting at the office of Maurice and Jean Walter with Gary Olson presiding. The writer is saddened to learn that the son of Ralph and Eileen Wise had passed on. The club is also saddened and our prayers and sympathy go out to Ralph and Eileen. (They are former members of our club.)

The program for the evening was an auction in memory of our member, Olga Heath. Stephen Pescatore was the auctioneer. A good time was had by all.

Show and tell was done by David Steer who did an excellent job. A list of items brought for show & tell included the following:

1. 1541 Athena 13" plate
2. #602 Mug
3. 1401 Empress nappy with Rosalie etch.
4. 1255 Pineapple & Fan molasses
5. 1566 Banded Crystolite Candlesticks
6. 305 Punt & Diamond Point water bottle
7. #1201 Fandango celery

A good job to everyone for their good finds.

Refreshments for the evening were done by Bobby Kline & Barbara Mc Tighe. They really put on a great spread.

Don't forget our glass show on April 22 & 23 at Waltham High School, Waltham, Mass.

George Gleason, Scribe

THE HEISEY COLLECTORS OF THE ROCHESTER AREA

Our February meeting was held on a beautiful winter day at the home of Bruce and Donna Schwendy. Their wonderful Cocker Spaniel "Pixie" greeted us at the door; she seems to like glass too.

Bruce, our Prez, called the mob to order at 3:15PM and welcomed our guests for the day. They included the Schwendy's beautiful daughter Nancy, her friend Mark Niggli and his parents Sue and John. The Niggli's were properly impressed by the Schwendy's great collection, as they should be. Nancy is developing into a first class Heisey collector herself and can spot a good piece a mile away; chips too.

The first topic for discussion was the display for the convention and whether we would participate. After some give and take, George Reynolds made the motion that we set up a club display, Bobbie Zimmer seconded the motion and it was passed. George and Marvin Jacob were appointed to coordinate the work required. The topic is a secret; come to the convention if you want to know what it is.

Our Marvin Jacob has been nominated for the board of directors; we are all very proud of him and hope he does well.

Our subject for the day was then held. George went over the history of the #354 pattern with a brief description of the differences between Cans, Syrups, etc. Jerry Gillette presented the #1540 Candle and it's history and showed the two different three light candle blocks. He then showed the #463 Bonnet basket and it's variations; very informative. Betty Evans then described the Short Panel plate, which is indeed in short supply.*

After a brief raffle we all ate our hearts out, Jerry was seen eating "no no" cake while Marge was out of the room. Donna and Bruce put out a great variety of food for our consumption. That Bruce is

a pretty good cook and baker too.

The meeting ended all too soon and was one of the more informative ones held lately. The Schwendys have a beautiful friendly home and invite you all to visit them if you are in this area. However, you must like dogs. There has been a rumor the past few years that some Heisey Dealers from the West are anti-dog, we hope this isn't true.

Show and Tell was sparse at this meeting. The Gillettes brought a beautiful two-handled Greek Key covered jelly, a wonderful piece of glass.

The shows are going full force in this area now. This past weekend a large show was held at the Monroe County Dome arena with 170 dealers set up. Marge Gillette, Sharon Orienter and Betty Evans were all showing and seemed to be doing well. We saw a semi-rare Lion Head bowl in Sahara but it was not in the best condition. Most of the Heisey seen at the show, other than at the member's booths was the common item. A lot of cut glass is starting to be shown with Hawkes leading the way in this area. Of course the Hawkes plant was located in Corning, New York which is only a two hour drive from Rochester.

Our quote for the month. "One of the things we have to be thankful for is that we don't get as much government as we pay for."

George Reynolds

Ed Note: We are not familiar with the short panel plate. What is it? There is a #23 Short Panel salt & pepper.

NORTH CAROLINA HCC Patsy Nesbit

The North Carolina Heisey Study Club met in Beaufort, N.C. at the Inlet Inn for a luncheon meeting on Saturday, January 8 with 15 members present. Ed and Virginia Purva brought subs and Frances and Jim Sutton and Patsy and Charles Nesbit furnished chips, spreads, drinks and dessert. Patsy Nesbit gave the program using the black light with a variety of glass. Interesting comparisons were made. Several of the members stayed overnight at the Inn and enjoyed eastern N.C. hospitality. There are several antiques businesses in the area. Plans were discussed for the display at the convention. Hopefully, we will be able to participate in this manner at the June Convention. A report was given on Tee Shirt sales and discussion was held concerning the payment of annual dues and compiling a current membership list. Ned Lavengood, president, presided over the meeting.

The November meeting was hosted by the Abrams and Howells in Charlotte. Since members wanted to spend as much of the day as possible shopping at the huge Metro Liner Flea Market an evening dinner meeting was planned. In September our group met in Kernersville at the Archer's Museum and were presented a tour of Kerner's Folly. Several members went to the Flea Market weekend at Hillsville following the meeting.

Letters, We Get Letters - continued from page 5

and cracker. Yes, it is desirable to have in a collection.

Many of these have gold trim, not applied at the Heisey factory, however, but probably at a company which purchased Heisey to decorate. L.R.

CLUB NOTES

GATEWAY HCC

Greetings to all our friends across the country from the Gateway Heisey Collectors Club of Pittsburgh, Pennsylvania. Do you know that Pittsburgh is located at the confluence of the Allegheny and Monongahela Rivers where they form the mighty Ohio? The Indians who lived here named the rivers. Early in the history of our country the Ohio River opened up trade from the East to the West and so Pittsburgh has been called the Gateway to the West; hence, the name of our club.

On a cold Sunday afternoon in February we met at the home of Eleanor and Clem Larkin for our meeting. Our newly elected president, Harry Freier, was in charge of the meeting. One of the first orders was the appointments of the following chairladies: Marge Satryan, social; Mary Alice Stoll, program; Joanne Autenreith, ways and means; Margaret Reed, publicity.

Receipts from the 1988 project "Make Your Dollars Grow" was gleefully accepted by the treasurer, Joe Lokay. There was a discussion of how we can increase our treasury this year.

An exciting discussion about the convention theme was held after we had decided to have a display again this year. We are all excited about what we have chosen as our "secret" theme. The following display committee was appointed by Prez Harry! Anne Donaldson, Mary Alice Stoll and Phyllis Freier.

Joe Lokay, who is chairman for the seminars at the convention announced that a very interesting program of seminars is being planned.

Joe was in charge of the program in the absence of LaVerne, who was visiting their son and his family in Atlanta, Georgia. (Bill is showing improvement in his siege with leukemia). Joe read LaVerne's list of very interesting bits of information that she had gathered under the subject "Do You Know?" Following this we had a Heisey quiz.

Show and Tell, always envy time, produced some interesting pieces of Heisey. An unscheduled show was the appearance of five deer on the snowy hillside near the Larkin's home.

Following Show and Tell we were treated to a delicious dinner that Eleanor surely spent hours preparing. It was appealing to the eye as well as the appetite.

We would be happy to welcome any prospective new members to our club. Our members currently come from Allegheny, Beaver and Westmoreland Counties. If you live in this tri-county area, come join us. You can contact us by writing to HCA in Newark.

Margaret Reed

NATIONAL CAPITAL HEISEY STUDY CLUB

The National Capital Heisey Study Club and the National Capital Heisey Collectors Club met jointly on February 13 at the Oxon Hill Maryland Library meeting room. As usual it was raining on our meeting night. However, it was not cold enough for snow, so we weren't forced to cancel as in January. Gert and Jack Swetnam greeted us with a gaily decorated Valentine table of delicious refreshments. While enjoying the goodies, the twenty-two members in attendance checked out the latest Heisey "finds" and

"whatzits" on display.

The main subject of the business meeting, presided over by President Bob O'Grady, was the coming 17th. Annual All-Heisey Glass Show and Sale at Armory Place in Silver Spring, Maryland, on Saturday and Sunday, March 18 and 19, 1989. Members were requested to sign up to work at the show.

The evening ended with a very informative and interesting program on "Heisey by Imperial Candlesticks" presented by Bob O'Grady. He started with Imperial's purchase of all Heisey's molds, tools, customer lists, patents, copyrights, trademarks and glass formulas in April, 1958, and worked through Imperial's subsequent twenty-four years of Heisey mold ownership until bankruptcy in October, 1982. He described the different trademarks by the different company owners, some of which were used on Heisey reproductions. Bob explained that Imperial made twenty-three different patterns of Heisey candlesticks in Crystal and colors, but that Amber was the only Heisey color formula that Imperial used. All the other colors are different and should not be confused with Heisey. However, the Crystal that Imperial made in the early years was very good and carried the Diamond H trademark so is indistinguishable, with a few exceptions, from the real Heisey but all Heisey by Imperial, regardless of the mark, is now collectible. Bob brought a colorful display of candlesticks from his collection which he discussed. This was a truly great program!

We were glad to see you at the All-Heisey Show and Sale in Silver Spring, Maryland, on March 18 and 19.

Doris Wall

YANKEE HEISEY CLUB, WORCESTER, MA AREA

On December 11, 1988, the club held a potluck Christmas party at the Bean's home in Milford. We all enjoyed a delightful meal, and there was plenty of Heisey talk as well.

We started our new year on January 2, 1989, with our regular January meeting at the Bean home in Milford, and it has been decided that this will be our permanent meeting place.

The club has been successful in obtaining the use of a large glassed in table display case in the Milford Public Library. For the entire month of March we will promote an attractive display of Heisey glass for public viewing. The display will be in the center of the main lobby of the library. Announcement of the event will be made in the local newspaper.

Many items were brought to "show and tell". Honorable mention is given to the following:

433 Grecian Border Hotel Ice Tub; 433 Grecian Border Butter Pat; 433 Grecian Border 2 oz Sherry; 433 Grecian Border 2 oz sherry, flared.

The program for the evening was "Sugar and Creamers". Over 30 different sets were shown and discussed.

The next meeting will be held in Milford on March 6, 1989.

Don Bean

HOW YOU CAN SUPPORT HCA AND THE NATIONAL HEISEY GLASS MUSEUM

YOU SHOULD CONTACT YOUR ATTORNEY CONCERNING THIS BUT THE FOLLOWING LANGUAGE IS SUGGESTED FOR USE:

You can support Heisey Collectors of America, Inc., owner of The National Heisey Glass Museum in Newark, Ohio, through any of the following means:

GIFTS IN YOUR LIFETIME

Gifts in cash, securities, or real or personal property (such as Heisey Glass) provide immediate support for general purposes. In addition, such gifts can be given for acquisition of Heisey Glass for the museum, Endowment Fund or any special project.

- Special event gift: To recognize a special occasion.
- Gift of thanks: To honor a volunteer or other person.
- Memorial Gift: To commemorate a special relative or friend.

WHEN THERE IS A WILL

By means of a simple codicil, a bequest to The Heisey Collectors of America, Inc., owners of The National Heisey Glass Museum may be added to an executed will. It is recommended that when making bequests or planned gifts that you consult an attorney who can advise you on the tax advantages of the gift. HCA is a Non-Profit Tax Exempt organization with a 501 (c 3) Educational Status.

The following basic clause is suggested in making your bequest:

Form of Bequest

I give (devise) and bequeath to Heisey Collectors of America, Inc., a Non-Profit Corporation, chartered by The State of Ohio with an IRS 501 (c 3) Educational Status, having its office at 169 West Church Street, Newark, Ohio 43055 the sum of \$ _____ (amount) or all of my Heisey Glassware, or, the following items of my Heisey Glassware, or _____ % (_____ percent) of my residual estate to be used or disposed of at the discretion of The National Board of Directors of Heisey Collectors of America, Inc.

THE ABOVE IS IN RESPONSE TO REQUESTS FOR THIS TYPE OF INFORMATION.

HAVE MORE FUN COLLECTING GLASS - JOIN A NATIONAL GLASS CLUB BECOME MORE KNOWLEDGEABLE ABOUT YOUR COLLECTIBLE GLASS

The National glass collecting clubs listed below have each been organized to serve you, the collector. Each club is dedicated to the education of the collector, and the preservation of their particular type or manufacture of glassware. Each would appreciate the opportunity to help you achieve more satisfaction from your collection.

If you are interested in membership in any of these organizations, check the list below. The appropriate club(s) will acknowledge your application with either a membership card (if remittance is enclosed) or additional information as required. MAIL TO:

NATIONAL GLASS CLUBS
P.O. Box 416
Cambridge, OH 43725

My Name is _____

Address _____

City _____ State _____ Zip Code _____

I am interested in the following club(s)

<input type="checkbox"/> Fenton Art Glass Collectors of America, Inc.	\$15.00
<input type="checkbox"/> Fostoria Glass Society of America, Inc.	\$12.50
<input type="checkbox"/> Heisey Collectors of America, Inc.	\$15.00
<input type="checkbox"/> National Cambridge Collectors, Inc.	\$13.00
<input type="checkbox"/> National Depression Glass Association, Inc.	\$10.00
<input type="checkbox"/> National Duncan Glass Society	\$10.00
<input type="checkbox"/> National Imperial Glass Collectors Society	\$10.00
<input type="checkbox"/> Tiffin Glass Collectors Club	\$10.00

Please make check
payable to the name of
the organization you
wish to join

478 .	60.00	546 .	75.00	618 .	37.50	689 .	55.00	760 .	140.00	830 .	80.00
479 .	55.00	547 .	60.00	619 .	30.00	690 .	22.50	761 .	20.00	831 .	170.00
480 .	35.00	548 .	50.00\	620 .	67.50	691 .	20.00	762 .	45.00	832 .	57.50
481 .	30.00	549 .	55.00	621 .	60.00	692 .	60.00	763 .	55.00	833 .	20.00
482 .	17.50	550 .	5.00	622 .	37.50	693 .	30.00	764 .	50.00	834 .	165.00
483 .	30.00	551 .	15.00	623 .	25.00	694 .	25.00	765 .	25.00	835 .	47.50
484 .	40.00	552 .	20.00	624 .	20.00	695 .	25.00	766 .	27.50	836 .	130.00
485 .	30.00	553 .	10.00	625 .	25.00	696 .	70.00x	767 .	35.00	837 .	27.50
486 .	55.00	554 .	25.00	626 .	12.50	697 .	60.00	768 .	25.00	838 .	100.00
487 .	27.50	555 .	17.50	627 .	40.00	698 .	125.00	769 .	825.00	839 .	30.00
488 .	30.00	556 .	47.50	628 .	120.00	699 .	115.00	770 .	160.00	840 .	10.00
489 .	30.00	557 .	125.00	629 .	110.00	700 .	70.00	771 .	1700.00x	841 .	210.00
490 .	30.00	558 .	90.00	630 .	65.00	701 .	125.00	772 .	60.00	842 .	50.00
491 .	52.50	559 .	45.00	631 .	62.50	702 .	65.00	773 .	20.00	843 .	30.00
492 .	90.00	560 .	85.00	632 .	110.00	703 .	30.00	774 .	140.00	844 .	25.00
493 .	170.00	561 .	170.00	633 .	70.00	704 .	22.50	775 .	40.00	845 .	50.00
494 .	85.00	562 .	110.00	634 .	70.00	705 .	70.00	776 .	80.00	846 .	12.50
495 .	45.00	563 .	120.00	635 .	80.00	706 .	310.00	777 .	25.00	847 .	25.00
496 .	75.00	564 .	260.00	636 .	135.00	707 .	325.00	778 .	35.00	848 .	30.00
497 .	75.00	565 .	210.00	637 .	230.00	708 .	50.00x	779 .	35.00	849 .	40.00
498 .	100.00	566 .	140.00	638 .	25.00	709 .	100.00	780 .	32.50	850 .	60.00
499 .	270.00	567 .	25.00	639 .	25.00	710 .	150.00	781 .	35.00	851 .	20.00
500 .	35.00	568 .	45.00	640 .	180.00	711 .	210.00	782 .	140.00	852 .	230.00
501 .	60.00	569 .	50.00	641 .	80.00	712 .	105.00	783 .	140.00	853 .	40.00x
502 .	110.00	570 .	200.00	642 .	15.00	713 .	60.00	784 .	37.50	854 .	35.00
503 .	325.00	571 .	35.00	643 .	100.00	714 .	115.00	785 .	120.00	855 .	30.00
503A.	535.00	572 .	25.00	644 .	55.00	715 .	35.00	786 .	85.00	856 .	42.50
503B.	140.00	573 .	50.00	645 .	5.00	716 .	65.00	787 .	55.00	857 .	65.00
503C.	60.00	574 .	85.00	646 .	85.00	717 .	30.00	788 .	25.00	858 .	260.00
503E.	45.00	575 .	25.00	647 .	65.00	718 .	55.00	789 .	55.00	859 .	50.00
504 .	230.00	576 .	30.00	648 .	70.00	719 .	55.00	790 .	45.00	860 .	170.00
505 .	35.00	577 .	45.00	649 .	35.00	720 .	17.50	791 .	80.00x	861 .	95.00
506 .	290.00	578 .	55.00	650 .	160.00	721 .	45.00	792 .	120.00	862 .	360.00
507 .	170.00	579 .	30.00	651 .	120.00	722 .	25.00	793 .	35.00	863 .	32.50
508 .	30.00	580 .	22.50	652 .	65.00	723 .	27.50	794 .	50.00	864 .	55.00
509 .	55.00	581 .	45.00	653 .	50.00	724 .	50.00	794A.	215.00	865 .	175.00
510 .	100.00	582 .	45.00	654 .	45.00	725 .	42.50	795 .	1100.00	866 .	25.00
511 .	25.00	583 .	45.00	655 .	50.00	726 .	110.00	796 .	140.00	867 .	80.00
512 .	7.50	584 .	40.00	656 .	32.50	727 .	27.50	797 .	180.00	868 .	40.00
513 .	62.50	585 .	35.00	657 .	20.00	728 .	100.00	798 .	180.00	869 .	115.00
514 .	110.00	586 .	20.00	658 .	5.00	729 .	22.50x	799 .	150.00	870 .	170.00
515 .	30.00	587 .	30.00	659 .	10.00	730 .	60.00	800 .	1000.00	871 .	150.00
516 .	175.00	588 .	100.00	660 .	22.50	731 .	50.00	801 .	135.00	872 .	12.50
517 .	70.00	589 .	90.00	661 .	30.00	732 .	1500.00	802 .	110.00	873 .	7.50
518 .	110.00	590 .	155.00	662 .	110.00	733 .	2800.00	803 .	50.00	874 .	7.50
519 .	75.00	591 .	65.00	663 .	25.00	734 .	130.00	804 .	80.00	875 .	32.50
520 .	25.00x	592 .	65.00	664 .	75.00	735 .	105.00	805 .	125.00	876 .	10.00
521 .	175.00	593 .	30.00	665 .	60.00	736 .	850.00	806 .	20.00	877 .	10.00
522 .	25.00	594 .	75.00	666 .	130.00	737 .	230.00	807 .	100.00	878 .	25.00
523 .	40.00x	595 .	80.00	667 .	70.00	738 .	80.00	808 .	12.50	879 .	45.00
524 .	35.00	596 .	25.00	668 .	17.50	739 .	90.00	809 .	45.00	880 .	20.00
525 .	90.00	597 .	45.00	669 .	130.00	740 .	200.00	810 .	32.50	881 .	12.50
526 .	60.00	598 .	45.00	670 .	80.00	741 .	80.00	811 .	22.50	882 .	50.00
527 .	90.00	599 .	115.00	671 .	120.00	742 .	105.00	812 .	25.00	883 .	80.00
528 .	65.00	600 .	250.00	672 .	45.00	743 .	55.00	813 .	30.00	884 .	35.00
529 .	1.00	601 .	150.00	673 .	35.00	744 .	1750.00	814 .	42.50	885 .	35.00
530 .	25.00	602 .	170.00	674 .	55.00	745 .	105.00	815 .	7.50	886 .	40.00
531 .	45.00	603 .	60.00	675 .	140.00	746 .	30.00	816 .	70.00	887 .	25.00
532 .	75.00	604 .	17.50	676 .	45.00	747 .	60.00	817 .	20.00	888 .	85.00
533 .	25.00	605 .	35.00	677 .	70.00	748 .	17.50	818 .	70.00	889 .	530.00
534 .	100.00	606 .	10.00	678 .	70.00	749 .	45.00	819 .	22.50	890 .	45.00
535 .	65.00	607 .	10.00	679 .	45.00	750 .	70.00	820 .	20.00	891 .	17.50
536 .	70.00	608 .	5.00	680 .	40.00	751 .	70.00	821 .	37.50	892 .	20.00
537 .	125.00	609 .	55.00	681 .	22.50	752 .	45.00	822 .	25.00	893 .	105.00
538 .	55.00	610 .	35.00	682 .	15.00	753 .	140.00	823 .	30.00	894 .	90.00
539 .	45.00	611 .	20.00	683 .	70.00	754 .	75.00	824 .	20.00	895 .	120.00
540 .	210.00	612 .	80.00	684 .	57.50	755 .	55.00x	825 .	45.00	896 .	90.00
541 .	140.00	613 .	100.00	685 .	57.50	756 .	95.00	826 .	30.00x	897 .	37.50
542 .	65.00	614 .	60.00	686 .	25.00	757 .	130.00	827 .	12.50	898 .	55.00
543 .	75.00	615 .	15.00	687 .	140.00	758 .	260.00	828 .	45.00	899 .	22.50
544 .	90.00	616 .	40.00	688 .	55.00	759 .	45.00	829 .	65.00	900 .	20.00
545 .	125.00x	617 .	12.50							901 .	25.00x

CAMPING FACILITIES

ALEXANDRIA

HIVALLEY 614/924-4115
 Open April 1 to October 31 (90 campsites)
 4817 Northridge Rd. N.W., Alexandria, OH 43001

Trailer & RV sites, tent sites, group camping, water & electric hookups, dumping station, flush toilets, hot showers, tables, fire rings, public phone, drinking water. Fishing, nature trails.

BUCKEYE LAKE

BUCKEYE LAKE KOA 614/928-0706
 Open April 1 to December 1
 (2 miles south of I-70 on SR 79)
 P.O. Box 972, Buckeye Lake, OH 43008
 (205 campsites)

Trailer & RV sites, tent sites, group camping, electric hookups, water hookups, sewer hookups, dumping station, store, flush toilets, hot showers, laundry, tables, fire rings, firewood, public phone, drinking water. Swimming pool, playground, nature trails. Nearby: Boating, fishing, hunting, swimming (lake), golf course, cross-country skiing, ice skating.

GRANVILLE

LAZY R CAMPGROUND 614/366-4385
 Open April 1 to November 1 (200 campsites)
 2340 Dry Creek Rd. N.E., Granville, OH 43023

Trailer & RV sites, tent sites, group camping, electric hookups, sewer hookups, water hookups, dumping station, store, flush toilets, pit-type latrines, hot showers, tables, fire rings, firewood, public phone. Fishing, playground, nature trails, bike trails, sledding, snowmobiling, badminton, basketball, volleyball, general store & gift shop. Western square dancing year around.



THE LAND OF LICKING

The Licking County Convention and Visitors Bureau

OFFICE 50 West Locust Street, Box 201, Newark, Ohio 43055 (614) 348-8224

GRATIOT

NATIONAL TRAIL CAMPGROUND 614/787-2860
 Open year-round (30 campsites)
 10998 W. Pike, Gratiot, OH 43740

Trailer & RV sites, tent sites, electric hookups, sewer hookups, water hookups, dump station, LP gas, hot showers, picnic tables, fire rings, firewood, heated pool, public phone, meeting room, game room. Fishing, playground, badminton, volleyball, horseshoes.

JOHNSTOWN

BADLANDS STABLES 614/927-6634
 Primitive camping (100 campsites)
 2632 Beech Rd. N.W., Johnstown, OH 43031

Horseback riding, fishing, and hayrides available for fee.

NEWARK

HIDDEN HILL CAMPGROUND 614/763-2750
 Open April 1 to November 2 (62 campsites)
 3246 Loper Rd N.E., Newark, OH 43055

Trailer & RV sites, tent sites, group camping, water & electric hookups, dumping station, flush toilets, tables, fire rings, firewood, drinking water. Playground and shelter house.

MASONS HOUSE OF FLINT 614/787-2503
 Open year-round (50 campsites)
 15886 Flint Ridge Rd S.E., Newark, OH 43055

Trailer & RV sites, tent sites, group camping, electric hookups, flush toilets, hot showers, drinking water, tables, fire rings. Fishing, flint digging.

THORNVILLE

CAMP & MOTEL FAIRVIEW 614/323-3983
 (on US Hwy. 40 off I-70 Exit No. 132 or 142, 5 miles from either)

Open May 7 to October 31 (42 campsites)
 11833 National Rd. S.E., Thornville, OH 43076

Trailer & RV sites, tent sites, group camping, electric hookups, dumping station, pit-type latrines, hot showers, picnic tables, fire rings, firewood, drinking water. Fishing, swimming pool, playground, nature trails. Pond stocked with fish.

In response to several requests for camping facilities we are printing this for the convenience of many of you.

NASHPORT (Muskingum Co.)

Dillon State Park 614/453-0442
 (On SR 146, 10 mi. SE of Newark)
 5265 Dillon Hills Dr., PO Box 126, Nashport, 43830
 Open Year-round (195 campsites)

Trailer & RV sites, tent sites, cabins, electric hookups, dumping station, store, flush toilets, laundry, tables, fire rings, public phone, drinking water. Boating, fishing, hunting, swimming (lake), playground, nature trails, sledding.



THE LAND OF LICKING

The Licking County Convention and Visitors Bureau

OFFICE 170 S. State Route 79 South, Buckeye Lake, Ohio 43008 (614) 928-0338

Classified Ads . .

WANTED: Stopper for #1401 Empress cruet, Moongleam. Michael Krumme, Box 5542, Santa Monica, CA 90405.

FOR SALE: Punch cups, Grecian Border, 12 @ \$15; punch cups, Lariat, 12 @ \$5; 3 oz wines, Tyrolean, Orchid etch, 6 @ \$30; 4½ oz cocktails, Tyrolean, Orchid etch, 6 @ \$30; No 16 candlesticks, pr, \$65; 2-lite candlesticks, Plantation, Ivy etch, pr, \$125; 2-lite candlesticks, Lariat, pr, \$45; wines, Narrow Flute, 3 @ \$7.50. B & J Collectibles, P.O. Box 23, Clinton, MD 20735, PH: 301-423-4228. Shipping Extra.

FOR SALE: COLLECTOR LIQUIDATING -- approximately 60 pieces of Heisey for sale. Please send SASE for list. LINDA'S TREASURES, P.O. BOX 6635, Hollywood, Florida 33081 or call (305) 966-2521.

FOR SALE: Large Amber elephant marked with a Diamond "H". Robert Garey, 92 Campbell St., Delaware, Ohio 43015. PH: 614-369-7558.

FOR SALE: Plantation punch cups (12) ea \$20; Suez goblet, Belvedere cut* (8) ea \$20; Suez ftd ice tea, Belvedere cut* (8) ea \$20; Duquesne goblet, Chintz etch (7) ea \$20; Wabash h'lded ice tea, Pied Piper etch* (4) ea \$35; Symphone low goblet, Minuet etch (17) ea \$22; Stanhope low goblet (7) ea \$15; Banded Flute sugar w/lid \$50; Banded Flute Hotel sugar n/lid \$30; Jamestown sherbet, Barcelona cut (5) ea \$15; Jamestown goblet, Barcelona cut (10) ea \$20; Pillows punch bowl & base* \$220; Pillows punch cups* (6) ea \$30; Beaded Swag tankard & 4 tumblers, Opal w/floral decor \$250; Banded Flute 5" plate* (3) ea \$15; Old Dominion ftd soda, Old Colony etch (4) ea \$15; Wabash sherbet, Pied Piper etch (8) ea \$15; Banded Flute champagne (4) ea \$20; Waverly 10½" dinner plate (12) ea \$45; Waverly cup & saucer (10) set \$35. Arlene & Ed Crafts, 187 N. Pioneer Ave, Shavertown, PA 18708. PH: 675-8553 after 6 p.m.

* Marked, P & I extra.

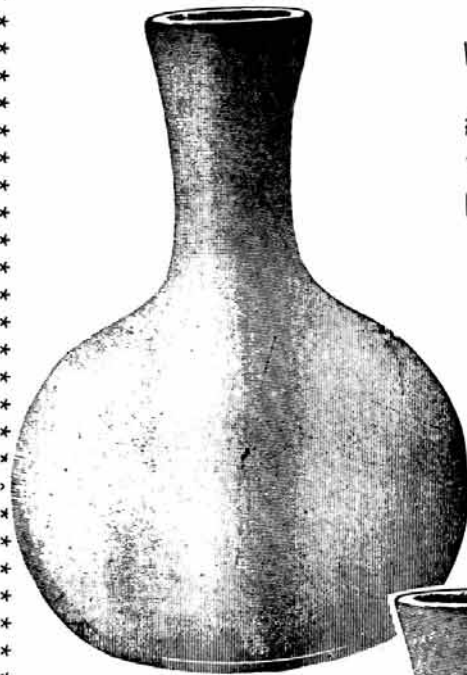
FOR SALE: #3366 Trojan 5 oz champagne, Flamingo, H, (6) ea \$25; #3366 Trojan 2½ oz wine, Flamingo, H, (6) ea \$37.50; #5022 Graceful wine, Harvester Cut, (4) ea \$32.50; #3335 Lady Leg wine, Zodiac etch, H, (3) ea \$25; #1540 Lariat underplate for punch bowl \$77.50; #372 O'Grady 7 oz syrup, Sahara \$115; pr. Ringneck pheasants \$250; small elephant \$210. Norm & Jan Thran, 1663 Londondale Pkwy., Newark, OH 43055 - PH: 614-344-5955. SEE YOU AT THE BAY STATE HEISEY SHOW APRIL 22 & 23 AT WALTHAM HIGH SCHOOL, MASSACHUSETTS.



3947 4 IN. WITH COVER



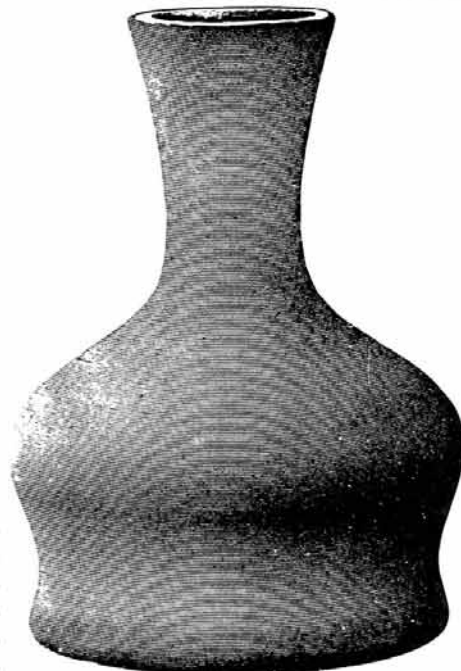
3947-4-IN.



4059



4056



4057

WATER BOTTLES

#4059 is the one that the Fred Harvey Museum needs.

H & R DIAMOND H
HELEN - BOB RAREY
1450 WHITE ASH DRIVE
COLUMBUS, OHIO 43204

PH: 614-279-0390
AFTER 5:30 P.M.
UPS & INS. EXTRA
* MARKED

150 Pointed Oval in Diamond Point cov'd
sugar \$ 25.00
350 Pinwheel & Fan cream* & sugar* . . . 65.00
300 Peerless 7 pc berry set*, gold decor 135.00
429 Plain Panel Recess hotel creamer* . . 17.50
429 Plain Panel Recess 8" nappy* 45.00
433 Grecian Border 5½" ftd h'lded jelly* 55.00
433 Grecian Border 3½" plate* (4) . . . ea 12.50

451 Cross Lined Flute 8½" nappy* 37.50
500 Octagon cream* & sugar*, Mnglm h'ldes 55.00
1205 Fancy Loop 10" vase 57.50
1401 Empress 8" sq plate*, Alexandrite (4)ea 65.00
1401 Empress 8" rd plate*, Sahara (3) . . ea 12.50
1401 Empress 7" sq plate, Flamingo, #450½
Etch (3) ea 15.00

1401 Empress 6" sq plate, Flamingo, #450½
Etch (3) ea 15.00
1401 Empress 7½" DF nappy*, Sahara, Old Col-
only Etch 42.50
1428 Warwick 1-lite candleholder* 13.50
1485 Saturn cream* & sugar* 32.50
1495 Fern 6" cheese, handled 7.50
1506 Whirlpool oil bottle 39.50
1951 Cabochon 1 pint pitcher 27.50

JIM GARTNER
4-FISHERMAN'S CIRCLE
ORMOND BEACH, FL 32074

PH: 904-677-7415
UPS & INS EXTRA
SIGNED *

372 McGrady 8 oz sanitary syrup, Mnglm \$ 88.00
372 McGrady 8 oz sanitary syrup*,Sahara 110.00
500 Octagon 12" oblong 4-sect tray*, Moon-
glo cut 80.00
1184 Yeoman 4" shallow, DO, compote*, Hawth 48.00
1252 Twist 2" candlesticks w/cut*, Mnglm pr 48.00
1252 Twist 2½ oz cruet, Moongleam 78.00
5040 Lariat stem 5½ oz champ*,Mnglo c (9) ea 22.00
1401 Empress DF cream & sug*, Moongleam set 85.00
1401 Empress DF marmalade w/cov 65.00
1404 Old Sandwich 10 oz ftd tumbler*, Sahara
(2) ea 27.50
1404 Old Sandwich 3 oz ck'tls*, Sahara (3)ea 27.50
1404 Old Sandwich 12 oz ice teas, strt grd btm,
Sahara (2) ea 27.50
5040 Lariat stem 10 oz gob*, Mnglo c (10) ea 32.00
1509 Queen Ann 8½" ftd bwl* w/handles, Orchid
Etch 48.00
1509 Queen Ann 7" comb. dressing bwl*, Or-
chid Etch 42.00
1509 Queen Ann 6" ftd jelly w/handles, Or-
chid Etch 36.00
1509 Queen Ann 14" sandwich plate, Orchid Et 62.00
1519 Waverly 6½" honey dish, Orchid Etch 46.00
5025 Tyrolean 10 oz goblet, short stem, Or-
chid Etch (8) ea 26.00
5040 Lariat stem, 3½ oz ck'tls*, Moonglo
Cut (7) ea 22.00

* ONCE & FUTURE ANTIQUES
* 9 DONNA ROAD
* CHELMSFORD, MA 01824
* STEVE & SUSAN PESCATORE

PH: 508-256-5418
UPS & INS EXTRA
* MARKED

* 133 Swan handled floral bowl, Moongleam . \$225.00
* 352 Flat Panel oval tray*, 13½" 60.00
* 352 Flat Panel horseradish 30.00
* 1201 Fandango 4" rose bowl 70.00
* 1229 Octagon 2-h'lded 6" mint dish w/2-h'lded
plate, DO, Marigold, (mint) set 50.00
* 1243 Stepped Octagon 7" plates*, Flamingo
(14) 10.00
* 1245 Spiral 10 3/4" dinner plates*, Flamingo
(4) ea 35.00
* 1295 Beaded Swag lemonade set, pitcher and 6 tumb-
lers, opal w/rose dec, good gold, mint 300.00
* 1401 Empress DF 11" floral bowl, Rosalie Et 30.00
* 134 Trident candlesticks, Rosalie Etch pr 65.00
* 1428 Warwick 9" horn of plenty vase*, Cobalt,
(MINT) 350.00
* 1519 Waverly 13" bowl, Orchid Etch . . . 50.00
* 3404 Spanish champagne, Cobalt bowl (4) ea 80.00
* 3480 Koors pitcher, DO, Moongleam handle and
foot 100.00
* 4182 Plate, 8", Pied Piper Etch (4) . . ea 12.00
* 4182 Plate, 6", Pied Piper Etch (6) . . ea 8.00

* DONALD P. BEAN
* 36 HARDING STREET
* MILFORD, MA 01757

PH: 508-473-0561
SHIPPING EXTRA
* = MARKED

* 341½ Puritan ½ gal squat jug* \$ 60.00
* 1231 Ribbed Octagon cream* & sug*, Fla-
mingo set 35.00
* 1252 Twist 6" 2-h'lded cheese plate*, Mnglm 17.00
* 1540 Lariat cream* & sug* & tray* . . . 35.00
* 1405 Ipswich insert only for C-Vase (1) 35.00
* 1469½ Ridgeleigh 3" cyl type candleblock pr 40.00
* 1205 Fancy Loop toothpick holder . . . 45.00
* 1506 Provincial floral bowl* 35.00
* 1469 Ridgeleigh star shape relish* . . 35.00

* WANTED: COVER FOR LARGE POTPOURRI JAR!

* LEISURE CITY ANTIQUES AND COLLECTABLE FLEA
* MARKET MALL AT VANATTA, OHIO, ON ROUTE 13,
* FOUR MILES NORTH OF DOWNTOWN NEWARK, PHONE
* 745-5466

* OPEN YEAR ROUND ON FRIDAY, SATURDAY AND SUNDAY 10
* TO 5. ALSO OPEN EVERY DAY JUNE 9 THRU JUNE 19.
* YOU ARE WELCOME TO BUY AND BROWSE AS LONG AS YOU
* LIKE - PLENTY OF FREE PARKING.
* HEISEY, HEISEY BY IMPERIAL, DUNCAN MILLER, CAM-
* BRIDGE, FENTON (new and old) AND OTHER FINE GLASS
* WARE.
* MANY DEALERS SELLING SUCH ITEMS AS CLOCKS AND
* WATCHES, TOOLS, TOYS AND GAMES, MARBLES, FURNITURE,
* MODELS AND JEWELRY.
* OUTSIDE DEALER SET-UP AVAILABLE AT \$3.00 A DAY.

JEAN & DON PARRETT
4995 MAPLE DALE RD.
JACKSON, MI 49201

PH: 517-784-7319
P & I EXTRA
H = MARKED

1503 Crystolite 8" luncheon plate (12) ea \$ 24.00
1503 Crystolite 7" salad plate (12) . . ea 18.00
1503 Crystolite 4" coaster (6) ea 10.00
1503 Crystolite Cruet & Stopper 35.00
1503 Crystolite 14" cheese compote w/tray 75.00
1503 Crystolite 8 oz tumbler 27.50
1503 Crystolite 6" tall dbl lip compote . 42.50
1503 Crystolite 4 oz cologne, dauber stop-
per (2) ea 110.00
1503 Crystolite puff box w/cover 75.00
1503 Crystolite oval mayo & plate, 2 h'lded 60.00
1503 Crystolite 3" hg. cig lighter & cap 32.50
1404 Old Sandwich 1½ oz bar (6) ea 38.00
4054 Coronation 1½ oz bar (3) ea 35.00
1485 Saturn toothpick (3) ea 28.00
29 Hexagon short salt & pep, gold dec pr 30.00
49 Yorkshire DO ftd salt & pepper . . pr 50.00
53 Tall Individual salt & pepper w/glass
tops, Moongleam pr 35.00
1401 Empress ftd salt shkr, Sahara . . . 22.00
1235 Beaded Panel & Sunburst salt shkr . 20.00
1511 Toujours cr & sug, #503 Minuet Et pr 75.00
1401 Empress DF cr & sug, Sahara . . . pr 50.00
1401 Empress 8" center h'lde 3-compartment
triplex relish, Sahara 40.00
1401 Empress DF individual nut, Sahara . 27.00
1509 Queen Ann cov'd marmalade, DF, #397
Rosalie Et, rare 75.00
1229 Octagon ftd mayo & ladle, beautiful cut 45.00
411 Rib & Panel ftd mayo & ladle, Flamingo 45.00
1231 Octagon 6" plate, nut bowl & ladle,
Hawthorne 50.00
436 Round ash tray, 6", polished 40.00
341 Old Williamsburg 1 qt milk pitcher, H 80.00
341 Old Williamsburg ice tub 2-h'lded . 45.00
341 Old Williamsburg cracker & ftd cheese,
gold decor set 90.00
341 Old Williamsburg 1½ qt decanter w/steep
stopper 95.00
341 Old Williamsburg master salt 40.00
341 Old Williamsburg ind. salt, scalloped
top (6) ea 10.00
352 Flat Panel 1½ oz lavender jar . . . 47.50
393 Narrow Flute cov'd mustard 35.00
352 Flat Panel 2 qt crushed fruit . . . 165.00
300 Peerless 3½" violet vase, flared . . 60.00
300 Peerless 8 oz tea caddy, #353 top . 38.00
1425 Victorian 3 oz cruet & stopper . . . 60.00
1425 Victorian rye bottle & stopper . . . 120.00
407 Coarse Rib cov'd pickle jar 35.00
356 Ash tray & match holder 35.00
1404 Old Sandwich 2" sq ind.ash tray, Cobalt 30.00
1184 Yeoman cov'd puff box, Moongleam . . 75.00
1184 Yeoman 6" hg compote 38.00
1590 Zodiac Imperial 2-lite candle holder,
Amber 45.00
341 Old Williamsburg 12" ice cream tray 85.00
1951 Cabochon center h'lded server, Moonglo
Cut 110.00
433 Greek Key tall champagne, rare (3) ea 35.00
433 Greek Key 3" hg - 10" shallow nappy 120.00
1405 Ipswich 8" sq. luncheon plate, Sahara,
(6) ea 32.50
1509 Queen Ann 8" rd luncheon plate, Danish
Princess Cut (6) ea 25.00
1225 Twist 7" salad plate, Moongleam (4)ea 20.00

1245 Spiral 6" dessert plate, Moonglm (4) ea\$ 15.00
1184 Yeoman 10½" dinner plate, DO, Haw-
thorne (6) ea 50.00
1184 Yeoman 10½" dinner plate, DO, Fla-
mingo (6) ea 40.00
1184 Yeoman 6" salad plate, DO, Flamngo(4)ea 13.00
1184 Yeoman 8" luncheon plate, DO, Sah (3)ea 20.00
1205 Fancy Loop cov'd lge Potpourri jar . . 145.00
1519 Waverly cov'd ftd 8" candy "BPOE" . . 95.00
1205 Fancy Loop 4 pc table set, cov'd butter,
cov'd sugar, spooner,cream, gd gld set 295.00
1540 Lariat 12" hg cov'd, ftd candy, loops on
side 170.00
1540 Lariat 4 oz cologne or oil 60.00
1540 Lariat 14" ct'r h'lded sandwich plate 110.00
1540 Lariat 14" 2-h'lded sandwich plate . . 100.00
1540 Lariat 10½" salad bowl 75.00
1540 Lariat 5" sm candy box, nice cutting . 60.00
1540 Lariat 7" cov'd caramel box 75.00
1540 Lariat 7" cov'd candy box, lge 90.00
1540 Lariat 8" loops up,marshmallow plate . 50.00
1540 Lariat 10" loops up demi torte plate . 60.00
1540 Lariat 8" luncheon plate (3) ea 22.50
5040 Lariat 9 oz Moonglo goblets (4) . . ea 30.00
1184 Yeoman DO cup & saucer, Flamingo (7)set 22.50
3312 Augusta DO 8 oz goblet, Flamingo (6) ea 25.00
3312 Augusta DO 6 oz champagne, Flamngo(4)ea 15.00
5025 Tyrolean tall ck'tl, Orchid Et, (6) ea 40.00
1567 Plantation cov'd butter, round 85.00
1567 Plantation 3 pc mayo, plate & spoon . 75.00
1567 Plantation 9 oz goblet (4) 27.50
5067 Plantation 6 oz champagne (2) ea 25.00
5067 Plantation 4 oz ck'tl (8) ea 25.00
1567 Plantation 4" rd coaster (12) ea 12.00
1567 Plantation 8½" luncheon plate (8) . . ea 40.00
5072 Rose 9 oz goblet, Heisey Rose Et (4) ea 38.00
5072 Rose 6 oz champ, Heisey Rose Et (5) ea 28.00
5072 Rose 6 oz sherbet, Heisey Rose Et (4)ea 28.00
5072 Rose 3 oz wine, Heisey Rose Et (6) . ea 75.00
5072 Rose 5 oz parfait, Heisey Rose Et(8) ea 45.00
1519 Waverly tall salt & pep, Heisey Rose
Etch pr 72.50
1540 Lariat fan vase, Orchid Etch 80.00
1469 Ridgeleigh 10"hg 1-lite candelabra, "A
prisms", mold notch on c. cup btm pr 185.00
1469 Ridgeleigh 16" lg swan floral bowl . . 310.00
1469 Ridgeleigh 8" rd berry bowl 75.00
1469 Ridgeleigh 4" rd berry bowl (6). . . ea 15.00
1469 Ridgeleigh 8" low ftd compote 50.00
1469 Ridgeleigh 5" spittoon shape vase . . 40.00
1469 Ridgeleigh 8" sq plate, Simplex Et(8)ea 38.00
1469 Ridgeleigh 7" sq salad plate 28.00
1469 Ridgeleigh 6" sq dessert plate (8) . . ea 28.00
1469 Ridgeleigh 4" rd coasters (5) ea 10.00
1469 Ridgeleigh cov'd marmalade 70.00
1469 Ridgeleigh 3" rd coaster (4) ea 10.00
1469 Ridgeleigh sugar & cream, lge . . . pr 45.00
1469 Ridgeleigh individual salt, sq (12) ea 10.00
1469 Ridgeleigh individual oval jelly (6) ea 12.00
1469 Ridgeleigh cone salt & pepper (2pr) pr 37.50
1469 Ridgeleigh 4" covered cigarette box 32.00
1469 Ridgeleigh 1½ oz bar glass (2) . . . ea 32.50
4045 Ball Vase 6", W0, (dark side) Tangerine 595.00
343 Sunburst 6" compote, H 48.00

G R A N V I L L E , O H I O ' S
 17TH. ANNUAL ANTIQUE SHOW & FLEA MARKET
 GRANVILLE HIGH SCHOOL - RT. 661 N.

<u>INSIDE</u>	<u>OUTSIDE</u>
JUNE 14 4 - 9	JUNE 15 DAWN - DUSK
JUNE 15 9 - 8	JUNE 16 DAWN - DUSK
JUNE 16 9 - 8	JUNE 17 DAWN - DUSK
JUNE 17 10 - 4	

KENNETH FISCHER will be repairing glassware. Over 100 dealers with furniture, glassware, pottery, books, crafts, primitives and lots of miscellaneous. (Thousands of pieces of Heisey) Vogel's books on Heisey will be for sale.

FREE ADMISSION

FOOD

PLENTY OF PARKING

No reservations needed for outside space

FOR INFORMATION: MRS. BETTY MORRISON
 127 E. ELM STREET
 GRANVILLE, OHIO 43023

TELEPHONE: 614-587-1062 or
 366-3298

Sponsors: Granville Athletic Boosters

IMPORTANT 2 DAY AUCTION - ALL HEISEY & IMPERIAL GLASS

APPLE TREE AUCTION CENTER, 1616 W. CHURCH STREET, NEWARK, OHIO 43055

FRIDAY APRIL 21 - 7:00 P.M.

SATURDAY APRIL 22 - 9:00 A.M.

OVER 1,000 LOTS OF FINE GLASS

FRI: This session will include 25 creams and sugars without partners; single candlesticks; plates; punch cups; nice selection of almond dishes; about 40 pcs of Crystolite; many nice Colonial pcs; about 40 pcs of Ridgely; good stemware and other miscellaneous.

SAT: We will offer about 70 animal and animal related items to include fish bowl; horseheads; donkey; giraffes; asiatic pheasant; elephant; geese; colts; bunnies; ducklings; Flamingo dolphin candlesticks; kingfisher and duck flower frogs. Sixty pieces of Plantation and Plantation Ivy; 25 pr. of cream & sugars; nice selections in candlesticks, cruets, relishes; 50 pcs of Flamingo Pleat & Panel; 80 pcs of Orchid etch including unusual tall pitcher, blown vases, cruet, oil bottle, sodas, covered butter and much more. Deep plate etchings including Circus, Modern Polo, Circus Round, Fisherman, Hunter, Sailboat carving and 50 pcs of Tallyho. Good smoking items and covered jars; Limelight Provincial tall covered candy; many good "little" items to include six Alexandrite footed bars; Sahara, Victorian footed bars; several toothpicks; cordials; saltdips; colognes; match box; early mirror sign and lots more.

IMPERIAL - About 80 animals to include Amber flying mare; fillys; colts; mallards; show horse; tiger "black", bulls - one on bustoff & one with white highlights; sow on bustoff; scotty; charcoal hen; Red sow with Amber tail; Pink clydesdale, hen and individual fighting rooster; Crystal doe head, filly, rooster & elephant handled mugs; Amberina fish; Ultra Blue gazelle, airdales, elephants, donkeys, wood ducks, colts, scottys, piglets, carmel slag scotty, balking & kicking colts, mallards wings up & down, airedale, tiger and others.

There is lots more in this sale. Don't miss it.

DOORS OPEN FOR INSPECTION 1 HOUR BEFORE EACH SESSION. TERMS: CASH OR GOOD CHECK W/AUCTIONEERS APPROVAL. GOOD FOOD & COMFORTABLE SEATS.

SAM SCHNAIDT & TIM HUGHES - AUCTIONEERS - (614) 344-4282.
 FRANK FRYE MANAGER

<p>A. W. PARKER Heisey & Pattern Glass Shows or Appointment Magalia, CA 95954 PH: (916) 873-2326</p>	<p>GLASS WITH CLASS Lenore A Shelley, GGHC 1336 Lincoln Avenue San Jose, CA 95125 PH: (408) 286-8098</p>	<p>OLDE LOVED THINGS 900 Ridgewood Ave. (Holly Hill) Daytona Beach, FL 32017 (904) 252-7960 Hours: Sat., Sun., & Mon., 10-4</p>
<p>ALL HEISEY AUCTION Consignments Welcome Apple Tree Auction Center 1616 W. Church, Newark, OH 43055 PH: (614) 344-9449</p>	<p>GREEN ACRES FARMS Antiques, Crystal Glass & Collectibles 2678 Hazelton-Etna Rd., SW (S.R. 310-N) Pataskala, OH 43062 Sat. or Sun. PM or call (614) 927-1882</p>	<p>OUR PLACE AND MEMORY LANE ANTIQUES 1234 Newark Rd., Granville, Ohio 43023 (614) 587-4601, Open every day 12-5 Heisey, general line of antiques and collectibles</p>
<p>ALFA I CARRIAGE HOUSE ANTIQUES Featuring Depression & Elegant Glassware Al & Faye Maness 508 E. Cary Street Richmond, VA 23219 PH: (804) 788-1630</p>	<p>H & R DIAMOND H Helen & Robert Rarey 1450 White Ash Dr. Columbus, OH 43204 PH: (614) 279-0390 after 5:30</p>	<p>PARRETT'S ANTIQUES Heisey 4994 Mapledale Rd. OR 1215 Greenwood Ave. Jackson, Mich. 49201 PH: (517) 784-7319 OR (517) 783-3289</p>
<p>ANTIQUES - THE SHULTZES 206-208 East Main St. Newmanstown, PA 17073 15 Miles West of Reading, PA PH: (215) 589-2819</p>	<p>"HAPPINESS IS" - THE STULTZS 3106 Warren Court, Glen Allen, VA 23060 Shows and Mail Order PH: (804) 262-1273 GLASS CIRCA 1890-1960</p>	<p>PATTON HOUSE Heisey & Duncan Miller Rocky's Mall, 1-81 & US 11 Weyer's Cave, VA 24486 PH: (703) 967-1181</p>
<p>C & J ANTIQUES Cole & Jean Miesner Box 45, 72 Whig St. Newark Valley, NY 13811 PH: (607) 642-9905</p>	<p>HARRALSON'S HEISEY HUNTERS Sponsor: S.W. MO's Antique Shows 78 Quality Dealers From 14 States 1989 Dates: Apr. 29-30 & Oct. 28-29 Info: 1426 W. Highland, Springfield, MO 65807 PH: (417) 883-2449</p>	<p>EAGLES REST ANTIQUES Carl and Mary A. Evans Heisey - China - Pottery, etc. Shows or Appointment PH: (614) 522-2035</p>
<p>GLASS RESTORATION LeRoy Carter, Jr. 125 Maple Ave. Utica, Ohio 43080 Phone 614-892-2775</p>	<p>HELEN & JIM KENNON Heisey, Cambridge, Fostoria, Duncan, Imperial, Fenton, Tiffin P.O. Box 114 Brookville, OH 45309 PH: (513) 833-5406 SHOWS ONLY</p>	<p>R & L ANTIQUES-SAN FRANCISCO Members of the Golden Gate Heisey Club 3690 Bodega Ave. Petaluma, CA 94952 PH: Petaluma (707) 762-2494 PH: San Francisco (415) 621-6693</p>
<p>CHARLES & MILDRED FISHER Heisey, Degenhart, Imperial, Antiques, Collectibles, General Line 991 Idlewilde, Newark, OH 43055 PH: (614) 522-5398</p>	<p>JJ MC KEE ANTIQUES Pottery - Glassware - Collectibles 222 B West 75th St. Kansas City, MO 64114 Wed.-Sun. 10-5 PH: (816) 361-8719</p>	
<p>DAVE'S ANTIQUES Specializing in Heisey Shows & Mail Order 1403 E. Knollwood St. Tampa, Fl. 33604 (813) 237-5550</p>	<p>THE PURPLE PLACE Featuring Heisey & Other Fine Glass Martha & Harold Earp 1940 Suwanee, Ft. Myers, FL 33901 PH: (813) 936-1572 Anytime</p>	<p>SCHWAN'S ANTIQUES SHOWS & MAILORDER 77 Lagos del Norte Ft. Pierce, FL 34951 PH: (407) 461-5940</p>
<p>DIAMOND H PLUS Mail Orders & Shows George & Eileen Schamel Rt. 3, Box 171, Boonsboro, MD 21713 PH: (301) 432-6285</p>	<p>J. & R. COLLECTIBLES Shows, SASE, Mail Order list June & Ray Lukasko P.O. Box 1030, Newark, OH 43055 PH: (614) 344-9719</p>	<p>SHOW AND TELL ANTIQUES Art, Cut, Heisey and Pattern Glass 1525 Morrow Ave., Waco, TX 76707 Tues-Sat 10:30-4:30 PH: (817) 752-5372 Also: Mail Order and Shows Member NADA</p>
<p>ETTELMAN'S DISCONTINUED CHINA & CRYSTAL HEISEY a SPECIALTY P.O. Box 6491-HN Corpus Christi, TX 78411 PH: (512) 888-8391 Include SASE</p>	<p>MOSTLY HEISEY Rhoda Curley 16 Clayton PL, Albany, NY 12209 Shop and Mail Order PH: (518) 482-6272</p>	<p>SINGLETREE ANTIQUES Cut, Pattern & Heisey Glass 10717 Staples Mill Rd. Glenn Allen, VA 23060 Chance or appointment PH: (804) 266-3795</p>
<p>FOREVER HEISEY Jan & Norm Thran Mail Order, Shows, Appraisal Service 1663 Londondale Pkwy., Newark, OH 43055 PH: (614) 344-5955</p>	<p>MOUND BUILDERS ANTIQUES Heisey & Animals, General Antiques Irene Rauck 1138 Moundview, Newark, OH 43055 PH: (614) 344-6043</p>	<p>WILLEY'S ANTIQUES & MUSEUM Specializing in Heisey 11110 Cannon Rd., Frazeyburg, OH 43822 16 miles east of Newark, OH PH: (614) 828-2557</p>
<p>GERT'S GLASS Heisey & Duncan Gertrude & Russell Swetnam 1926 Saratoga Dr., Adelphi, MD 20783 PH: (301) 434-5113</p>	<p>THE MUTED SWAN ANTIQUES 5486 Peachtree Rd., Chamblee, GA 30341 Heart of Chamblee Antique Row Specializing in Heisey & Cambridge Bill & Pat Miller PH: (404) 451-7620</p>	
<p>GLASS 'N' GLASS Virginia & Odell Johnson 6909 10th Ave. West Bradenton, FL 34209 PH: (813) 792-0604</p>	<p>NANCY'S ANTIQUES Heisey, Cambridge, Fostoria, Fenton Mail Order 906 44th St. NW, Canton, OH 44709 216-492-2595. Shop Union Station Antiques 12622 Cleveland Ave., Uniontown, OH Daily</p>	<p>JAMES S. HARRIS ANTIQUES/APPRISALS Box 672 Richmond, KY 40475-0672 PH: (606) 623-9100 Buying and Selling by Mail</p>

HEISEY COLLECTORS OF AMERICA, INC.

PRESENTS

FLEA MARKET ON THE SQUARE

NEWARK, OHIO

Saturday, June 10 & Sunday, June 11
Saturday, June 17 & Sunday, June 18

Dealer Space Available

For Information

Write: HCA Flea Market
P.O. Box 4367
Newark, Ohio 43055
Phone: 614-345-2932

1989

19th Annual Antique Show & Sale Heisey Glass Display



"CHRISTMAS IN JUNE"

18th ANNUAL CONVENTION
OSU - COTC Newark Campus
Country Club Drive, Newark, Ohio

Friday, June 16 12:00 p.m. to 5:00 p.m.
Saturday, June 17 11:00 a.m. to 6:00 p.m.
Sunday, June 18 12:00 p.m. to 5:00 p.m.

(DISPLAY CLOSES AT 4:00 P.M. ON SUNDAY)

Donation \$2.50
Plenty of Free Parking
GALA PREVIEW



® Thursday, June 15, 1989



®

Dinner 5:00 p.m. to 7:00 p.m.
Show 6:00 to 9:00 p.m. Display 7:00 p.m. to 9:00 p.m.

Donation \$10.00 Includes Meal



FLEA MARKET ON THE SQUARE

Two Weekends

Saturday, June 10 Sunday, June 11
Saturday, June 17 Sunday, June 18

Dawn to ??

FOR INFORMATION CALL 614-345-2932

Sponsored by

Heisey Collectors of America, Inc.

Benefit National Heisey Glass Museum

National Heisey Glass Museum

Eight rooms and
complete lower level
displaying the beautiful
hand made glass
produced in Newark by the A.H. Heisey and Co. from
1896-1957.



Corner of West Church & North Sixth Streets
Newark, Ohio 43055

Phone: (614) 345-2932

Hours: Daily 1pm-4pm Closed Holidays

OHIO
the heart of it all! SM

Membership Renewal Notice

The date above your name and address
is your renewal date. This is your last
issue of the Heisey News if it reads
4-30-89

PLEASE DISREGARD THIS NOTICE IF YOU HAVE
RECENTLY PAID YOUR DUES.

POSTMASTER SEND FORM 3579 TO:



SECOND CLASS