

HEISEY *news*

OFFICIAL PUBLICATION HEISEY COLLECTORS OF AMERICA
© Heisey Collectors of America, Inc.
All Rights Reserved 1989

VOLUME XVIII NO. 2

FEBRUARY, 1989 ISSN 0731-8014



HEISEY NEWS

P.O. Box 4367, Newark, OH 43055

CLUB OFFICERS:

President - Bob Rarey (614) 279-0390
Vice President - Dick Smith (614) 366-5163
Secretary - Liz Stickle (614) 323-2250
Treasurer - Mary McWilliams (614) 345-4380
Curator - Louise Ream

Editor: Louise Ream

P.O. Box 4367, Newark, Ohio 43055

PH: (614) 345-2932

Assistant Editor: Neila Bredehoff

P.O. Box 4367, Newark, Ohio 43055

PH: (614) 345-2932

Published in Newark, Ohio, Printed in Newark, Ohio.

\$15.00 per year - \$1.25 per copy

Back Issues - Each Volume (12 issues) year - \$9.00

Volume V, VIII, IX, X, XI, XII, XIII, XIV, XV, XVI

Heisey Collectors of America, Inc. is a non-profit corporation with tax exempt status. Owners and operators of National Heisey Glass Museum, 6th and Church Streets, Newark, Ohio.

Open daily 1-4 p.m. except holidays. Other hours by appointment. Members admitted free.

HEISEY NEWS

Heisey Collectors of America, Inc.

All Rights Reserved 1989 - ISSN 0731-8014

Published monthly, except twice in February, by Heisey Collectors of America, Inc., Newark, OH 43055. Second Class postage paid, Newark, Ohio 43055. Club membership (includes 13 issues of Heisey News and participation in all club activities) \$15.00 per year plus \$2.50 for each additional family member in same household who wishes a membership card. For Voting Membership add \$25.00 one time only fee.

POSTMASTER: Send address change to:

HCA, P.O. Box 4367, Newark, OH 43055

When requesting information, please enclose a self-addressed, stamped envelope (SASE).

ADVERTISING - Send all ads to: HCA - Advertising
P.O. Box 4367
Newark, Ohio 43055

DOUBLE SPACE ALL ADS

Rates:

CLASSIFIED: 15¢ per word. \$1.50 minimum.

ABBREVIATIONS AND INITIALS COUNT AS WORDS

DEALER DIRECTORY: \$25 per year.

Display:	Members:	Non-Members:
1/8 page (9 items)	\$20.00	\$ 30.00
1/4 page (20 items)	30.00	45.00
1/2 page (20 items) Hor.	45.00	67.00
1/2 page (50 items) Vert.	60.00	90.00
1 page (50 items)	75.00	112.50

Personal ads limited to 1/8 space.

ALL ADS MUST BE PREPAID. Ad copy must be received by the 5th of the month preceding the publication date-i.e. April 5th for May issue. Ads containing reproductions will not knowingly be accepted unless clearly stated (i.e. Heisey by Imperial, etc.). HEISEY NEWS assumes no responsibility for false advertising or misleading information. In the event of typographical error, the incorrect portion of the ad will be run in the following issue, but HEISEY NEWS assumes no further liability.

The opinions expressed in articles in HEISEY NEWS are those of the authors and not necessarily those of the organization. The Editorial Staff reserves the right to edit or refuse any material submitted for publication. When requesting information, please enclose a self-addressed stamped envelope (SASE).

A GIFT

A lovely 13 x 17" framed photograph of Elizabeth King was presented to the museum on December 21. The picture was taken on January 1, 1989, when she was 80 years old.

Clarine M. Rogers, a good friend of Elizabeth, gave it to us in her honor. It is presently hanging in Room 8 and we are very pleased to have it.

L.R.



ERROR CORRECTION

We apologize for an error in the last newsletter in the Column on donations. On page 15, item 3 under Club Donations, it should have read as follows: #1255 Pineapple & Fan Toothpick in Emerald. Donated by the Virginia Heisey Club in memory of Dr. Ted Bunch.



ABOUT THE COVER

Picture from our recently acquired original material. #6060 Country Club Sodas, Cocktail Party Etch.

There are several different versions of this etching, designed by Eva Zeisel. In Room 7 of the museum we display two pieces but neither have designs exactly like these. This is very difficult to find and it is doubtful that much was produced.

Our focus this month is on upcoming events. The first, and one of the most exciting each year, is the Annual Museum Benefit Auction, to be held on March 10 and 11. I'm sure after reading Bob Ryan's account in the January Heisey News, you are as excited as I about the glass being offered this year. Both Bob and Louise have stated the glass is outstanding, something for everyone. We wish all of you could attend, but knowing that is not possible, don't hesitate to mail bid. As you will note, the separate mailing of the Auction List enables a better description of the items being offered. Loren Yeakley will again be the mailman and he will bid competitively for you.

Don't forget the 17th. Annual Starlight Antique Show - Flea Market to be held on March 12, the day after the Benefit Auction. Both of these functions benefit your Heisey Museum.

The Annual "200" Dinner will be held again this year in April. This one night event is for the retirement of the Mould Warehouse debt. I encourage your participation, you need not be present to win, the cash prizes range from \$50 to \$1,000. Chances are one in ten you win.

Plans are progressing for the Annual Convention, June 15 thru 18. As we stated before, early registration is desirable and necessary. Frank Harper will act as Co-Chairman with Jim Reynolds of the Antique Show.

It was the feeling of the Board of Directors that the Research and Archives Committee will now need someone to digest and record the information contained in the large volume of paper received from the Ann and Tim Heisey Estates. A committee is at work on this matter and will report further at the March Board of Directors Meeting.

Hope to see you at the March Benefit Auction. Happy Collecting,

Bob Ryan

CONVENTION '89 NEWS

HCA PRESENTS - "CHRISTMAS IN JUNE!"

Can it be true? Only 134 anxious days left until shopping? Say it is so! For the Heisey collector and glass lover in general, "Christmas in June!" can't get here soon enough.

What a wonderland of delights Convention '89 will be from "Window Shopping" (the display) at Hopewell Hall to "Santa's Workshop" (The Antique Show) at Adena Hall. These festivities will be launched by "Twas the Night Before Christmas" Preview Gala. The goodies list will be highlighted by roast turkey and ham as well as other traditional holiday fare. Come - eat till it ouches you - you will need the strength to get through the frenzied grand opening rush of the Antique Show!

Plan on another "Holiday Feast" when we convene Friday evening at the Newark Inn for the annual banquet. This evening's headliner will be the Club Reports. Our holiday spirits will be heightened as we see and hear how well our study clubs have done throughout the past year and how popular our favorite collectible continues to be. The HCA Board feels having the club reports on Friday will make for a shorter, more efficient annual meeting

Michael Lanners of North Riverside, Illinois, died suddenly on November 9. He was a longtime member of HCA and has attended most Conventions and September dinners as well as many of the 200 dinners. He is survived by his wife, Evelyn, also an HCA member. HCA extends heartfelt sympathy to his family.

Evelyn M. Allen died on December 24th. She was a founding member of the Newark Heisey Club and also of Heisey Collectors of America, Inc. (which was organized by the Newark Club). She was a member of the first Board of Directors and assisted with Heisey News for the first few years.

She also was a founding member of the Cambridge Collectors Club.

Surviving are her husband Harry (Tony) Allen; Patti Smith, daughter; J. Michael Allen, son; two sisters; one brother; four grandchildren; two great grandchildren; and, a host of friends.

Evelyn was an Antique Dealer specializing in Heisey and Cambridge glass. She had done every HCA show from the beginning and was well known for her sense of humor and hearty laugh.

We will all miss her, and the family has our sympathy.

Arlin Schmidt died on January 4. He is the father of Neila Bredehofft. He and his wife moved to this area in 1983 after the Bredehoffs had moved here. He spent the last few years in a nursing home where Neila's mother also resides. Neila is the only child. Funeral services were held in St. Marys, Ohio, near his former home in Moulton, Ohio.

HCA extends sympathy to Neila and her family.

and election on Sunday morning. Hurray! No more near misses at the airport, more time for last minute purchases and more time for fond farewells as we're "Headin" Home from the Holidays!!

Amy Jo Jones
Convention Co-Chairman

TREASURER'S QUARTERLY REPORT

NOVEMBER 30, 1988

CASH BALANCE AUGUST 31, 1988	\$ 8,973.19
CASH RECEIVED	48,371.44
CASH PAID OUT	50,683.18
CASH BALANCE NOVEMBER 30, 1988	\$ 6,661.45
BALANCE ON LOAN AT BANCOHIO	\$36,000.00
PAID ON LOAN THIS QUARTER	\$ 6,000.00

MARY MCWILLIAMS, TREASURER

FROM THE DESK OF THE CURATOR

Christmas and New Years are over and we have entered into a brand new year. I was on vacation for ten whole days which was great, since I hadn't had that long of a period away from here at one time for four or five years. The worst part of going on vacation, as most of you know, is coming back to find your desk loaded and so many things to do at once.

The first day I was back we took down the Christmas decorations first. Then, Bob Ryan came to work on auction glass. He and I spent the whole day on it. He came back the next day and Gerald (Denny) Rehn of Cincinnati, and Bill and Betty Barnard joined us. All the glass which was here has been listed and moved to the Appletree Auction House. You'll receive your list around the first of February. Bob will tell you more about the auction in this issue. We have great glass this time so we hope that many of you will come, or at least send mail bids.

Miriam Pringle called this week and said that she is recovering from surgery performed in November and will soon be going back to teaching. For Miriam 1988 was not a good year. We hope 1989 is much better.

We had an error in the listing of her donation last month. She actually donated an unusual #1184 Salad Bowl, Sahara - Diamond Optic, with a scalloped rim, instead of an #1184 Yeoman Candlestick in Sahara. There is no such thing as a Yeoman Candlestick. Sorry for the error!

Please note that we will be having an extra issue of Heisey News to be sent out each February which will make 13 issues per year. This is being done so that we can send the Auction List out by itself from now on - the way we used to do.

Since we have the second class mailing this had to be added on page 2.

There are several items in this issue which we printed from our wonderful acquisition of Heisey paper materials.

We have always known that Heisey was not the forerunner of Colonial type glassware. Their only claim was that they had revived this type of glass which had been made back in the 1850's or before. I don't remember having known that the Riverside Glass Company had made a Colonial pattern in 1896. That is an interesting fact included in Tom Felt's article on 300 Peerless, page 5.

Visitors just now are scarce and will be until March, probably. We still gets lots of mail. Oscar orders are coming in well. These are limited to approximately 1200 this year.

Orders are also coming in for the Etching Book. It is being printed now and should be here before long, depending on how long it takes to bind it.

It sounds as though the Study Clubs have been busy. We would really appreciate it if more of you sent us some news.

As for the auction, Bob has given you a good run-down. It is a good auction and everyone should find something which they want.

We found the "Visible Cooking Ware" Catalog in the new material. While we have long been aware of it and have seen a good many pieces, we had never before seen a catalog for it. Some of the pieces which we have seen are not among those in the Catalog. Unfortunately, Heisey was not able to continue making this glass because of patent infringements. It is not extremely valuable but it is interesting.

Note on page 18 that the Ruby Colts will be made soon; exclusively for HCA in our molds and marked HCA '89. See page 18, top right.

Rooms are going fast at the Newark Inn so get your reservations in soon. Next month we'll be printing the rates for the other motels in the area.

The Bredehoft book is being reprinted and there will be an updated price guide to go with it. We'll notify you when it arrives. We will have extra copies to sell in the gift shop.

Louise Ream



3801--5" Comport
Unmarked



3947 Cov'd Comport--4½"
Pressed stem, marked

PLEASE NOTE

We have ordered 500 copies of the Encyclopedia of Heisey Glass, Etchings and Carvings by Louise Ream, and Tom and Neila Bredehoft, which has been out of print for several years. (Remember, our former printer threw the printing plates away.) This book will be printed from an original book.

We have about 500 of the Addendums to this book and we plan to offer both of these together for \$19.95. You may pre-order at any time so that you will be assured of receiving a copy.

Advance orders will also help to pay for the book when it is finished.

Address your orders to:
HCA Etchings and Carvings
P.O. Box 4367
Newark, Ohio 43055

Be sure to add \$2.00 for shipping and handling and \$1.20 tax in Ohio. Visa and MasterCard accepted.

HEISEY IN THE TRADE JOURNALS - NO. 300
PEERLESS (part II) by Tom Felt

I stated in last month's article that Heisey's introduction of the no. 300 line was "innovative" and implied that Heisey was the first company to bring such a pattern out, a conclusion that I think is probably assumed by many collectors. However, as the accompanying advertisement (picture #1) makes clear, this distinction probably needs to be accorded to the Riverside Glass Company of Wellsville, W. Virginia, whose x-ray set is the earliest colonial design I have found illustrated in the trade journals, having been introduced in June, 1896, three years before Heisey's better known (and presumably more popular) Peerless line came out. Although the flutes are wider, there is a certain basic resemblance between the patterns, typical of colonial styles, particularly in the scalloped rims and the bases of the pieces.

As mentioned in last month's article, Heisey continued to feature the no. 300 pattern in advertisements in the trade journals throughout the early months of 1900. Three full pages appeared in the April issue of The House Furnisher: China, Glass and Pottery Review. Of special significance in picture #2 is the fact that Diamond H appears for the first time and is identified as a trademark (although application for trademark status was not made until more than a year later, in June, 1901).

Also advertised at the same time was the footed punch bowl (picture #3) as part of:

a complete line
Massive in appearance
Graceful in outline
Faultless glass
Superbly finished
Without a peer

The punch bowl had earlier also appeared on the cover of China, Glass & Lamps on March 22nd. and a later issue (May 10th.) stated that it "is a beauty and is selling like hot cakes."

A final ad for 1900 appeared in December, with other new patterns emphasized in the intervening months. However, no. 300 was not forgotten and Heisey continued to add additional items to the line. On May 2nd., 1901, China, Glass & Lamps pictured a new candlestick. (Now known as the no. 2 Old Williamsburg candlestick, it had the longest production of any candlestick in Heisey's history, since it continued in the line until 1957, was then made by Imperial until 1982, and was even briefly reissued by Fostoria after the Old Williamsburg molds were sold to Lancaster Colony).

Then, in September, 1901, there appeared a report in The House Furnisher: China, Glass and Pottery Review that "a very handsome three-branch candelabra has been placed on the market . . . The candelabra has the old-fashioned prismatic pendants which have such a power of recalling the old days when our grandmothers held their occasional social function in the prim drawing room of the Colonial period." Actually, as the same journal described in their November issue:

It needs no prolonged search to discover the reason for the popularity of the Heisey line of fine table glassware. When the company starts to manufacture a spec-

ial line they do not feel satisfied merely to bring out a couple of shapes, but make the line the most complete on the market. This is strikingly exemplified in the new offering they make in the way of a series of candelabra.

Four of them were introduced, in 2-, 3-, 4- and 5-light configurations. The 4-light was advertised in both The House Furnisher: China, Glass and Pottery Review and Crockery and Glass Journal and the massive 5-light was featured in the October 10th. issue of the latter journal. The candelabrum was the only item from the no. 300 line to be patented. The application was not filed until July 11, 1903, however. It was approved August 18, 1903, as no. 36,500.

Curiously, the pattern was registered in England in 1899 at the time it was first issued. Perhaps because of its plain design an attempt to patent it in the United States was not successful. At any rate, pieces are occasionally found with the British Rd. no. 350676 impressed on them. These include the 1 oz. cordial, the 1½ oz. sherry, the 2½ oz. wine, the 4½ oz. high footed scalloped sherbet, the 5 oz. low footed sherbet, the 6 oz. oyster cocktail, the 10 oz. goblet, the 8" shallow footed bowl, the 6" spoon tray, the sugar and cover, and the butter and cover. On the stemmed pieces, the Rd. number appears in the form of a circle surrounding the Diamond H on the underside of the bottom. On the bowl, it's on the side and on the spoon tray it is located on the inside surface of the bottom on the longer side. The sugar and butter have the Rd. no. on the inside surface of their covers, near the finial.

The pattern continued to be made for many years, with 126 items still in production in 1913. By the end of the 1920's, 33 pieces remained in the catalogs and by 1939, there were only 9 left; the 7 oz. goblet, 4½ oz. low footed sherbet, 7 oz. low footed goblet, individual cream and sugar, and three sizes of schoepkens (5, 9, and 12 oz.) These were offered on into the 1940's. Curiously, however, by the late 1930's the old no. 341 Puritan pattern had been renamed and modified to become what would be the best selling pattern of Heisey's later years, no. 341 Old Williamsburg. Actually, this was an amalgam of pieces from several colonial patterns and included some of the same Peerless items still being offered under their original pattern number as listed above, including the three schoepkens and the individual cream and sugar. Two of the schoepkens were still in the last catalog in 1956 (identified as a 5 oz. juice and a 12 oz. ice tea), as well as the individual cream and sugar. At times, the regular Peerless cream and sugar were also sold as part of the Old Williamsburg pattern.

These same items continued to be offered as part of Old Williamsburg in the various colors made by Imperial from 1957 to 1984. The pictures in the Imperial catalogs do not look identical to those in the Heisey catalogs, however, so I'm not certain whether the 300 molds continued to be used, whether they were modified, or whether molds from another pattern may have been substituted. In the Imperial catalogs, the proportions of the 12 oz. Ice Tea seem different and the individual cream and sugar seem to have lost the tiny scallops appearing on the

rim of the Heisey originals.

This use of no. 300 pieces as part of Old Williamsburg is not too surprising, since the nucleus of that pattern (the original no. 341 Puritan) consists of pieces very similar to Peerless, but without the top rim of small scallops or the "petticoat" at the bases. Similarly, the somewhat later no. 400 Colonial Scalloped Top* pattern is almost identical to Peerless, but without the "petticoat" and with slightly different panels and flutes. Whenever I look at the bewildering variety of colonial patterns offered by Heisey (not to mention by all those other companies), I often wonder how the market could have supported them.

It might be interesting to note that the 7 oz. schoepfen in the Peerless pattern was also made in the 1950's (apparently in crystal only) for the Harvey House restaurants and, shortly after Heisey closed but before their assets were sold to Imperial, they sent this particular mold to Viking, along with several others, in order to fill an outstanding order.

Considering the long life of Peerless, it is not surprising that a few pieces were made in color in the mid 1920's, though apparently only in very small quantities. The low footed tumbler has been found in moonbeam and also, along with the 4½ oz. low footed sherbet and the 8 oz. schoepfen, in flamingo. The no. 300½ 2 oz. bar and 8 oz. tumbler were also made in both colors and the #2 water bottle has been seen in sahara. Finally, the no. 300 low footed goblet was also made in alexandrite. (A number of these pieces can be seen in The Collector's Encyclopedia of Heisey Glass, 1925-1938, p. 35, 36 & 41.) Several years ago, the Heisey News also mentioned that a few items had been found in crystal with opalescent rims, but I have seen no further documentation for this.**

Some decorations are also possible on Peerless. As early as January, 1900, China, Glass & Lamps mentioned that the pattern was available decorated in gold "and colors," and a full page advertisement on the cover of the March 22nd. issue of the same magazine pictured the punch bowl for no. 300, "a complete line of as handsome a design as ever produced. Crystal, crystal and gold, crystal and ruby." Actually, two gold decorations were offered: no. 1 gold on the edge of the plain portion of the top, with a band around the base of the flute, and no. 2 engraved and gold band, with an engraving on the flute, covered by a gold band running around the middle. The ruby decoration appears on the plain portion around the top. (The sugar, spoon, and cream with ruby decoration are pictured in Heacock's Ruby-Stained Glass from A to Z, p. 45.) Kamm also mentions that this pattern was often decorated by firms specializing in souvenir ware "in gilt, ruby, green, etc.," so other colors are also possible.

Cuttings from other companies may also be found. An example is the 4½" violet vase cut by Lewis & Neblett Company around 1917-1918, which was pictured in the May, 1976, issue of the Heisey News.

* Ed. Note: Most pieces of #400 pattern have eight flutes rather than the six of Peerless.

** Ed. Note: Items seen were 4" nappies with opalescent rims. Nappies have also been seen in a strange blue-green shade. L.R.


RIVERSIDE GLASS WORKS,


WELLSBURG, W. VA.



X RAY SET.
YOUR JOBBER HANDLES THESE GOODS


No. 300
"The Pattern Without a Peer"



HOTEL SALT



A. H. HEISEY BERRY


A. H. HEISEY & Co.
Inc.



No. 300 JUG


INDIVIDUAL CREAM


INDIVIDUAL SUGAR


HOTEL SUGAR


HOTEL SYRUP


HOTEL CREAM

Newark, O.

The Punch Bowl is pictured on page 7

CHRYSLER MUSEUM CELEBRATES NEW GLASS GALLERIES WITH GLASS FORUM II

NORFOLK, VA--Celebrating the opening of the newly installed Chrysler Institute of Glass, The Chrysler Museum will host Glass Forum II from April 13-15, 1989. Distinguished scholars and artists will fill out the three-day program of lectures, tours and socials. A \$125 fee covers all events.

The Glass Forum II is a sequel to The Chrysler Museum's successful 1981 Glass Forum which brought scholars and collectors from around the country in a major exchange on glass and collecting.

Speakers for Glass Forum II will include:

- *Dwight P. Lanmon, director of the Corning Museum of glass, who will discuss "European Glass After the Renaissance: The Triumph of Technique."
- *Kenneth M. Wilson, retired senior curator of decorative arts at the Henry Ford Museum and former assistant director of the Corning Museum of Glass, will lecture on "American Glass From the Time of the 1853 New York Crystal Palace to the Turn of the Century."
- *Dr. Robert Koch, retired professor of art at Southern Connecticut State College and author of three definitive books on Tiffany glass, will speak about "Tiffany Glass of the Chrysler."
- *Paul Hollister, adjunct associate professor at the Cooper-Hewitt Museum, the Smithsonian Institution's National Museum of Design, will discuss "French Pate de Verre of the Art Nouveau and Art Deco Periods."
- *Dale Chihuly, a contemporary glass artist who is retired from the Rhode Island School of Design, will lecture on "Studio Glass and Pilchuck," the glassblowing school he founded near Seattle, Washington. His work, among the most widely collected in the country, is included in the Chrysler's collection.
- *Penelope Hunter-Stiebel, retired from the Metropolitan Museum of Art where she was associate curator in the department of 20th century art, is presently curatorial consultant associated with the New York art gallery, Rosenberg & Stiebel, Inc. She will speak about "French Art Nouveau and Glass."
- *James Garrison Stradling, a former television journalist who has become a well known and respected antiques dealer, will discuss "Collecting American Glass--Can You See Your Way Clear?"
- *Gary E. Baker, associate curator of glass at The Chrysler Museum, will lecture "Early American Glass in The Chrysler Collections."

In a class by itself, The Chrysler Institute of Glass consists of approximately 8,000 pieces ranging from antiquity to the late 20th century. The new installation is part of the Chrysler Museum's three-year, \$13.5 million expansion and renovation program that will be reopened to the public on February 26, 1989. The Chrysler Institute of Glass has remained in storage for two years while major renovations were being completed.

At the opening, the glass collection will be installed in a series of ten new galleries on the first floor of the newly renovated and expanded Chrysler Museum. The display, to be installed chronologically, will provide one of the most comprehensive surveys of the history of glass to be found anywhere

in the world. In these new galleries, supplemented by extensive study galleries, The Chrysler Institute of Glass will now be able to exhibit nearly 75 percent of its holdings, including the outstanding collections of Sandwich glass, Tiffany glass and lamps and 19th century art glass.

Registration for the Glass Forum II may be made by sending the \$125 fee along with name, address and phone number to Glass Forum II, The Chrysler Museum, Olney Road and Mowbray Arch, Norfolk, VA 23510. Reservations should be made by March 30, 1989.

Accommodations for Glass Forum II participants are reserved at the Days Hotel Waterside, 345 Granby Street, Norfolk, VA 23510. After March 20, the Days Hotel will accept reservations only on a space-available basis. Their toll free number is 1-800-522-0976.

The Chrysler Museum is located on Olney Road and Mowbray Arch in Norfolk. After February 26, 1989, the Museum will be open Tuesday through Saturday from 10 a.m. to 4 p.m. and on Sundays from 1 to 5 p.m. Admission and parking are free. For a recorded message on weekly events at the Chrysler, call 804-622-ARTS.

For further information, please contact:
Robin Maurice, The Chrysler Museum, Olney Road and Mowbray Arch, Norfolk, VA 23510. PH: 804-622-1211.

No. 300

A Complete Line
Massive in Appearance
Graceful in Outline
Faultless Glass
Superbly Finished
Without a Peer



PUNCH BOWL FOOTED

A. H. Heisey & Co., Newark, O.

INCORPORATED

HISTORY OF THE A. H. HEISEY & COMPANY

(A sample of our newly acquired Paper Material)

THE DIAMOND H trade-mark of the A. H. Heisey & Company, Newark, Ohio, has identified ultimate quality in fine crystal for more than 50 years.* Such a reputation is no accident; this is shown by the history of this typically American firm, founded and guided by youthful ambition and a pioneering spirit.

After serving in the Union Army for four years in the Civil War, Major A. H. Heisey,** founder of the company which today bears his name, began his career in the glass industry with the King Glass Company, of Pittsburgh, Pennsylvania. Subsequently, Major Heisey gained additional know-how in the industry as a partner with his brother-in-law, James E. Duncan, I, in the George Duncan & Sons Company, (founded in Pittsburgh by his father-in-law), and with the U. S. Glass Company, which purchased the Duncan firm toward the latter part of the 1880's.

It was along about this time when the Major decided to satisfy a pioneer yearning to enter the mining and ceramic business in Arizona and Colorado.

After success in this field, ambitious Major Heisey determined to establish his own glass house back East. Looking around for a suitable site, he chose Newark, Ohio, because of its proximity to natural resources of fuel and fine sand, its transportation facilities and industrious workers.

Production at the A. H. Heisey & Company began in 1895 and the famous Diamond H trade-mark was conceived for the firm by George Duncan Heisey, son of the founder. This was the first recognized trade-mark in the glassware industry.

At the turn of the century, just about every American "glass house" was producing fancy, lavish patterns resembling "geometric pinwheels." Not content with this monotonous theme, the Heisey Company thought it was time to revive the simpler Colonial Glassware and did so. This trend proved tremendously popular and it wasn't long before other glass-makers were following Heisey's lead.

Despite the swing to Colonial lines, Heisey maintained leadership at this point, because of the high quality of their crystal and the way it was finished by cutting or grinding --- something new again in fine handwrought glassware. What is more, Heisey made everything in a pattern from goblets to plates.

It cannot be said that the Heisey Company hid their "highlights" under a bushel either.

In 1914, the Heisey Company began to make blown stemware in the trend of that day, but here again, Major Heisey and his sons, now in business with him, were not satisfied with the status quo. Instead of the traditional pulled stems for stemware, they started making fancy pressed stems. The idea met with universal approval, and today, it is safe to say that practically all of the best handwrought stemware is made with pressed stems.

The popularity of sparkling colored glassware from 1923 to 1930 was a direct result of pioneering by the A. H. Heisey & Company. New appealing colors introduced by Heisey included Moongleam, an unusual green; Alexandrite, a true orchid color; Flamingo, a gorgeous pink; Tangerine, the only orange color produced; and Zircon, the true natural color. A-

mong other colors made under the Diamond H trade-mark was Sahara, a golden yellow.

At the outset of World War II, the Newark industry foresaw a demand for figurines and cut glassware to replace the supply that would be cut off if the fighting spread. When the worst did come, Heisey filled the assignment with distinction.

World War II was more than just a change in the market for the Heisey Company. Sons, husbands and brothers marched off to war. Employees, too, joined the colors or entered war industries. More power to them! It just meant that for the duration fewer demands for Heisey crystal could be satisfied.

In a world at peace, Heisey leadership continues to hinge not on an assembly line, but on the individual skill and personality of Heisey Craftsmen -- men and women who have grown up in the business. Modernization of methods and equipment is the best in the industry.

It is not unusual for a Heisey "old-timer" to have over 40 years' service with the Company, and a few to have 50 years service. Twenty-five year veterans are comparatively common. As for families employed at the firm, it is often a tradition that a son follow in his father's footsteps. Today, for example, the president of the company is T. Clarence Heisey, son of founder A. H. Heisey, who succeeded his brother, the late E. Wilson Heisey, as president.

Skilled manpower, heritage, tradition, experience! These are reasons why the A. H. Heisey & Company can look forward to maintaining aggressive leadership in the glassware industry.

* Sources differ as to the first date of production. Samples were made in Zanesville in 1895 by the Robinson Glass Company.

** Research has been done on Mr. Heisey's military status and comes up with his being a captain, not a major.



#9052 Emma in our Etching book has turned out to be a pattern named Cereus. We have an original picture of it.



"Marblehead Forever"

diamonds are forever

In 1882 Abbott Hall became the scene for a spontaneous reception for the twenty-first president of the United States. Chester A. Arthur had no plans to visit the Yachting Center, however he was anchored in Marblehead Harbor on a government despatch (sic) boat; the President had landed at Dixey's Wharf (sic), boarded a carriage and headed for Salem, the adjacent town. When he arrived in Salem he was approached by a "sad-faced" man who asked the President if he would speak to the people of Marblehead. Because of a very pressing schedule the request was denied. On the trip back to the President's ship the request was again denied; finally the "sad-faced" man jumped into the driver's box and brought the carriage to Abbott Hall. The fire alarm clanged, the bells rang, and the President was borne into the auditorium at Abbott Hall where he was greeted by the citizens of Marblehead who seemed to have expected the coup. President Arthur was greeted with cheers and applause; with good nature the President delivered a short speech and was then permitted to leave and was brought back to the wharf (sic) by a delighted crowd. Chester Arthur later wrote, "But I can never forget the fact that I was once kidnapped in Marblehead!"

EXTRA - EXTRA READ ALL ABOUT IT - "R. M. J. and Cover Crossed the Equator Twice!"

Vell let me explain it vas "Ole and Minnie", back in November they took a little sojourn to far 'avay' places - namely Hawaii, New Zealand and Australia (lucky, lucky); before leaving, a R. M. J. and cover, or perhaps I should say Ridgeleigh Mustard Jar with cover, was purchased in LA - tucked away in luggage and transported hundreds of miles only to come back home to the good ole U. S. of A. If only that piece of glass could talk, what tales it could tell.

If I'm not mistaken I have never been fortunate enough to report any finds from Canada, but this month "The Canadian Goose" wrote me a very interesting letter in which she informed me a bit about her collection. She has about one-hundred-forty pieces mainly in Crystolite, Ridgeleigh, Empress and Lariat, with more than half of the colors represented. She started out with a #7000 Sunflower 14" plate which she couldn't identify until she came across "Burns" book. Her Sunflower collection has grown to seven pieces. A pair of Fish Candlesticks are listed as a prize possession along with eight (8) #3364 Charter Oak Goblets and Cocktails in Mari-

gold with Crystal stems and foot. She has already learned the lesson we all did regarding "the one that got away". The beautiful Empress footed 9" Vase (in Sahara) was spotted, the price was rather dear - so she hesitated, it would wait - she would think about it for a while, besides it was also quite obscure on the shelf and no one would see it there. Less than one-half hour later she decided to go back and take that lovely Vase home - gone! Haven't we all learned that lesson - "he who hesitates is lost"!

"The Farmer" (ma) took the sleigh out of the barn and with the aid of two trusty horses and his sleigh bells headed thru the snow to town. Now, on the return trip, one could have easily mistaken him for Jolly Ole St. Nick! In his bag there was one #433 Greek Key 4 oz. Oil with the #6 Stopper; one #201 Colonial 8 oz. Tumbler in the very rare Harvey Amber; the #1590 Zodiac 5 oz. footed Juice or Parfait; six (6) #1252 Twist individual Nuts in Moon-bleam; and, last but not least, were a pair of #1469½ Ridgeleigh one-lite Candelabra, complete and perfect! Very nice trip into town; I wonder if the horses were tired pulling all that Heisey home? Oh, I mustn't forget, I'm going to report more things next month.

"From the Point" comes news of the #468 Octagon Celery Tray in Moongleam while "The Rebel" brags about two (2) #1205 Fancy Loop Butter Pats.

"The Energetic Countess" boasts about (and well she might) a few #299 Toddy Glasses; one in Crystal, one in Sahara, one in Moongleam, and another in Flamingo, along with a #1951 Cabachon handled Nappy and the infrequently discovered Orchid Etch ½lb. Butter Dish, also in #1951 Cabachon. Perfectly lovely!!

"The Teacher" from the Bay State (ma) crows about a #343 6 oz. Sunburst Oil along with a little #1295 Beaded Swag Toothpick adorned with Ruby Stain. Lovely little piece, the stain was in great shape.

"Mr. 1469" has an enchanting pair of #1504 Regency two-lite Candlesticks while his other half, "The Amicable Stroller", is quite excited about the #1295 Beaded Swag Opal Tankard and the #394 Narrow Flute Salted Nuts - one in Moongleam, and the other in Flamingo.

"The Cardinal" decided that he should spread his wings and be good to himself - so, added to his growing collection, were several Tumblers: a #1404 Old Sandwich 8 oz. Tumbler in Crystal; the 6 oz. Navy glass with Cobalt Base; a #1506 Whirlpool 12 oz. Clear Soda; and in #300 Peerless an 8 oz. Tumbler and the beautiful 12 oz. straight Schoeppen. Some phenomenal pieces of Heisey there; he talked about them all the way home to his nest!

Yours Truly also came across an ostentatious piece of Heisey for less than a theatre ticket. It was a perfect #1567 Plantation one-half gallon Water Pitcher with the ice lip, and most grandly adorned with the #516 Plantation Ivy Etch. What an excellent addition to a collection of Water Jugs and Pitchers! One of the things that make this piece special other than the rarity of same - is that it is light in weight so that when summer arrives it can be used for my Iced Tea, and believe me, I shall surely do just that. The dealer I purchased the Jug from knew that it was Heisey but didn't know the worth. She told me that she was making a profit so that made me feel better.

When I reported the "Teachers" finds a few paragraphs back I left out a couple of very important items - a #1205 Fancy Loop Syrup, no top, and the bottom to the Saturn #1485 Marmalade in Zircon. I'm sorry I missed those, but better late than never.

"The Wiz" reports finding a #135 Sahara Candlestick; the #3350 Wabash Stem with Trefoil Needle Etch; the #3308 Bob White Stem with Peacock Etch; a #3312 Gayoso Stem with a Pantograph Etch; the #164 Salem; and last the #3320 Ritz Stem with #155 Neptune Pantograph Etch.

Happy Hunting and Happy
Valentines Day, may you all
receive Heisey for Valentines!

Peace and Happiness

Janet Caswell

ROCHESTER AREA HCC

by George Reynolds .

Our annual Christmas party was held at the home of Arlene and Geroge Reynolds. We had our usual good attendance with two guests as well. Rhoda and Dave Curley came in from Taxville, New York. It was really great to see them. This did create a problem though, since Dave is still looking for candle parts we had to keep an eye on him all afternoon long. Rhoda and Dave brought the only show and tell of the day. It turned out to be a beautiful Moongleam and Hawthorne Vase in the #4206 Optic Tooth pattern, hard to find to say the least. There were a lot of oohs and ahs over this, but Dave wouldn't donate it to the Herons. Dave said they were going to donate it to the museum; we all agreed this was nice of them.

Since we have a tradition of all exchanging small gifts at this event, this was done with everyone having a great time after sampling the hard punch. Since I do not drink, apparently a full bottle of VO makes the punch slightly strong; no one complained though. Of course, the Walzers left driving the wrong car, but they swapped at the restaurant when we arrived there safely.

We were happy to see Marion Heron; she looks great after the traumatic period she has had since recently losing her mother. The Heron's future daughter-in-law attended as well and Jon came along with her. Her name is Keetha Murphy; she is a lovely, friendly girl. We wish them both all the best; they plan on a spring wedding.

The party ended all too soon and we retired to the Maplewood Inn for dinner. This restaurant is located on the most prestigious street in Rochester. Many of the great men from this area built their home on East Avenue. They include George Eastman, Hiram Sibley (the founder of Western Union) and many other familiar names from the 19th century. The George Eastman House is maintained as a Photographic Museum with a new wing in the process of being added to enlarge it. If any of you Heisey people are in the area, make sure you see it. You will find the stop will be very worthwhile.

Back at the restaurant I was lucky enough to sit across from Dave Curley. The meal was great and went off without a hitch, due to the efficiency of my wife, Arlene, as usual. Dave and I spent two hours reminiscing about his former career as a Drug Salesman. He says he only sold to doctors; it sounded like an interesting life. Dave's birthday was on the 10th of December; we thought he looked

a lot younger than 65. But, with all these face lifts and makeup, it's tough to tell these days.

We all hated to see the party end but had a wonderful time with a great bunch of people. Sharon and Frank Orienter were not able to attend; they had to suffer through a trip to Hawaii. However, we missed them, great people.

Our quote for the month - "Censure is the tax a man pays to the public for being eminent".

GATEWAY HEISEY COLLECTORS CLUB OF PITTSBURGH, PENNSYLVANIA

By Phyllis Freier

Christmas was in the air when the Gateway Heisey Collectors Club met at the home of Phyllis and Harry Freier for a chili dinner in December. Thanks to all the members who helped to make the dinner and the evening very enjoyable and very special.

Earl Autenreith conducted the Business meeting in which Harry Freier was elected president for 1989. Ann Donaldson and Joe Lokay were chosen to continue as secretary and treasurer, respectively. Marge Satryan was selected as Vice President.

Bob and Mary Hallborg presented a program on Pennsylvania's State Historical Sites and State Parks. Pennsylvania also has many National Historical Sites. We are all proud of the part our Keystone State played in the history of our nation. We all should explore the history and beauty of our home state more thoroughly.

We had a short show and tell session. If anyone in the Pittsburgh area wishes to join in our study of Heisey glass, please start the New Year right by contacting us via the National Heisey organization in Newark, Ohio.

Everyone in the Gateway Heisey Collectors Club wishes all Heisey Hoarders and their families a very Healthy, Happy, and Exciting New Year!

HEISEY CLUB OF SOUTHEASTERN MASSACHUSETTS

By Mary Neckes

We, the members of the Heisey Club of Southeastern Massachusetts, hope that all members of the National Heisey Collectors had a wonderful holiday season. Entering 1989 with renewed spirit, our devotion to the club brings new resolutions for the new year.

First, we resolve to support the Heisey Collectors of America and the Heisey Glass Museum. Our Third Annual Antique Glass Show and Sale which supports the museum was a tremendous success. Club members worked very hard to nurture this event. The show chairperson, Shirley Dunbar, and her husband, Everett, have planned this event for the past three years. Shirley, our resident college professor, always has everything well organized. We also thank Jackie and Bill Thran, Russ and Harriet Decatur, and Anna Bartlett for the sumptuous food in the hospitality room. Many other members generously donated food for the luncheon. Michael Moss acted as security guard all night (no one would dare mess with Michael!) and many members shared the door duty. Our club experiences great joy in helping to make the Heisey Glass Museum the "jewel" of American glass museums.

Second, we resolve to continue the fine education process through our study programs. Irene Walton,

the program chairperson, has done a wonderful job in presenting information seminars to our study group. Janet Caswell dazzled her audience in October with her presentation, "1401 Empress and 1509 Queen Ann". After capturing our interest with glass examples, Janet gave the members handouts and references for future enjoyment. In November, Phyllis Zona presented a program on open salts. She offered examples of many different mediums which included china, glass, silver, wood, pottery, color, intaglio, European, American, and Japanese types. Last year's programs serve as an example of the club's commitment to education.

At our December meeting, the club held the Christmas party at the Banck's barn. Once again, Dot and Wade Banck's home sparkled with holiday lights. Good cheer and levity filled the rooms with the new year just around the corner, all the guests made these "Heisey" New Year's Resolutions for 1989:

- Helen Mead - "I resolve to buy only what appeals to me."
- Ted Mead - "To slow down at every yard sale." (so I don't have to turn around a few miles up the road.)
- Donald Macomber - "To find any cobalt tumbler."
- Shirley Dunbar - "Not going to buy anything over \$5.00."
- Janey Caswell - "To finish my set of Old Sandwich in Flamingo and start on Plantation."
- Russ & Harriet Decatur - "To locate Ridgeleigh ½ gallon ice jug."
- Irene Walton - "Look for Emerald green Pineapple and Fan, especially the open salt."
- Maria Martell - "To complete my existing collections and not start any new ones!!"
- Mary Williams - "To find all the pieces that have eluded me for twenty-five years."
- Dot Banck - "To be lucky and find a Pineapple & Fan Heisey salt."
- Rita Rozinha - "To find a salt and sugar in Moongleam."
- Richard Martell - "To finish Spanish Cobalt stem collection."
- Wade Banck - "I'm going to go Heisey hunting this year more than I have in the last couple of years."
- Bill Walton - "Behave myself at the Heisey meetings."
- Paul Neckes - "Use my Heisey Victorian small sodas for orange juice in the morning."
- Mary Neckes - "Find a perfect place in my house for the Prince of Wales Punch Bowl which I bought from Bill Walton. He warned me not to put it in the sun."

THE FLORIDA HEISEY COLLECTORS CLUB

By Ruth Perloff

Our first meeting of the year was held at the home of Ruth and Jack Perloff in Port St. Lucie, on December 14th. at noon.

After a delicious lunch consisting of every-

one's brown-bag sandwich accompanied by the hostess's vegetable tray and dip, fruit salad, cookies and coffee (don't we sound health conscious), well we want to stay around to Heisey Hunt as long as possible), the meeting began.

Show and Tell included a #4027 Christos Decanter in Alexandrite with cut stopper; Benson and Hedges Humidor in Moongleam; #305 Punt and Diamond Point Molasses, Perfume and Paste Bottle; #1200 Cut Block and #325 Pillows Cruets; #379 Urn Table Salt, flared, and more.

A bottle brought in, what first appeared to be a Diamond H signed, was identified as Illinois Glass with actually a Diamond I signature.

Education was on salt dips with examples passed around to study and feel. These were #1225 Plain Band; #429 Plain Panel, Recess; #1200 Revere; #1183 (3 colors); #331 Colonial Panel; #341 Puritan individual; and, also, the larger Table Salt, #325 Pillows; #379 Urn; #1255.Pineapple & Fan; #1235 Beaded Panel & Sunburst; #1205 Fancy Loop; #1201 Fandango; and, a signed #3121 individual Salt. This was a good introduction to a number of patterns for new members and a great refresher course to us oldsters.

We were all saddened by the news that Ralph and Eileen Wise recently lost their son, who had been ill for some time.

The next meeting will be Tuesday, January 31, at the Morrill's home on Hutchinson Island. The subject will be Heisey Candlesticks with discussion to be led by Jean Zeller.

If there are Heisey collectors living in the Treasure Coast area of Florida (Palm Beach to Melbourne and inland section of this area) who would like to be in a club, please contact us. Write in Care Of HCA, Box 4367, Newark, Ohio 43055.

MOUNDBUILDERS HCC

by Louise Ream

The Moundbuilders Club met on Tuesday evening, January 10, in the lower level of the Heisey Museum, with Mary McWilliams as hostess. In keeping with the June Convention theme, "Heisey Presents Christmas in June", we chose an appropriate badge for our Club's Annual Convention badge sale. Santa is wearing sunglasses on the badge so we thought it was just right for June.

We also picked the theme for our Convention Display Booth, "Our Christmas Wish List", and discussed the way we will carry it out.

Mary served delicious refreshments and, afterward, presented a game for us to play. Each person wrote the letters of his or her full name vertically on a piece of paper. The idea was to think of something glass connected, including colors, etchings, cuttings, processes, patterns, etc., which began with each letter of the person's name. Everyone was able to think of these and nearly everyone had different answers. It was a lot of fun and many of you may want to do this at one of your meetings.

The February meeting will be held at the home of Margaret Weber on the 1st.

Incidentally, the logo of the Convention badge will be "Have a Cool Yule".

LETTERS, WE GET LETTERS

Please enroll me and my husband in your club. We've only started collecting about five months ago, but we love it. It is the most beautiful glass we've ever seen. Thanks.

Kurt & Gay Roberts

Hello folks, (that is if anyone is there.) I sure am seeing a lot of Ohio, New York, and Michigan plates now - auto plates. New Year's weekend brought us 80 plus degrees every day until Wednesday, (today) and upper 40 degrees tomorrow morning but back nearly to 80 again this weekend. I went to a flea market this morning for a little while and did not come up with much but you will be getting a nice Sherbet (or is it a Champagne) with the older Large Diamond H. The lady would not discount her price of \$.50 so I just had to pay it, but I am sure that the gift shop can sell it for a little more. I sure would like to hit the next auction but I do not see how, so I will forget it for now.

Sincerely,
Jerry R. Baker, Florida

DATES TO REMEMBER

March 10, 11	All-Heisey Museum Benefit Auction	Apple Tree Auction Center
March 12	Starlight Flea Mkt.	Starlight Sch.
March 18, 19	All Heisey Show	Armory Place Silver Spring, MD
April 21, 22	Bay State HCC Show	Waltham, MA
June 9, 10, 11	Imperial Convention	
June 9, 10, 11	Fostoria Convention	
June 15, 16, 17, 18	Heisey Convention	
June 22, 23, 24, 25	Cambridge Convention	
August 1, 2, 3, 4	Fenton Convention	



3403--3oz.
Cocktail



4267--4½oz.
Custard



3351--5½oz.
Hollow Stem
Champagne

NOTE

Please send in reports of your clubs. We have 39 active clubs. If all of you wrote once a year we could schedule three clubs a month. As it is we can depend on only a few to write.

INTERESTED IN A STUDY CLUB?

Members interested in a Study Club in their state can send letters to HCA which will be forwarded to club presidents. At this time we have clubs in only the states on the following list.

If you wish to help start a club in your area, send your name, address and phone number and we will print them in Heisey News. Belonging to a study group is a real plus for a collector. It is such fun to share your finds and knowledge with others. The missing numbers are for clubs no longer active and we now have 38 in all.

Between the Mississippi River and California there is pretty much a vast wasteland as far as clubs go, though we do have members in every state.

CURRENT LIST OF HEISEY STUDY CLUBS

1. Newark HCC, Ohio
2. Reynoldsburg HCC, Ohio
3. Far East HCC, Columbus, Newark, Ohio
4. Central Illinois HCC
5. Bay State HCC, Massachusetts
6. Long Island HCC, New York
7. Dayton Area HCC, Dayton
8. Heisey Heritage Society, PA and NJ
10. Gateway HCC, Pennsylvania
11. Heisey Hunters, Newark, Ohio
13. California HCC
14. Northern Illinois HCC
15. Heisey CC of Michigan
16. Heisey Collectors of Texas
19. Rochester Area HCC, New York
20. Buckeye HCC, Newark, Ohio area
21. Newark Diamond H Club, Newark, Ohio
22. Northwest Heisey Study Club, WA and OR
23. Heisey Collectors of Columbus, Columbus, Ohio
24. Heisey Club of Western Massachusetts
25. Heisey 76'ers, Columbus, Ohio area
26. Southern Illinois Diamond H Seekers
27. Land of Legend Heisey Study Club, Newark, Ohio
28. Western Reserve Heisey Glass Study Club, Northern Ohio
31. Nassau-Long Island Heisey Club, New York
32. Dairyland Heisey Club, Wisconsin
33. Golden Gate HCC, California
34. Connecticut HCC
35. Virginia Heisey Club
36. Southeastern Massachusetts HCC
37. Moundbuilders HCC, Newark, Ohio
38. North Carolina HCC
39. Florida HCC, West Coast
40. Heisey Hustlers of San Diego County, California
41. Yankee Heisey Club, Massachusetts
42. Gulf Coast Heisey Club, Florida
43. Tri State HCC, Ohio, Indiana and Michigan
44. National Capital Heisey Study Club, Washington, D. C. area

IF YOU WISH TO CONTACT ANY OF THE ABOVE CLUBS, PLEASE SEND US A LETTER ADDRESSED TO THEM AND WE'LL FORWARD IT TO THEM. WE CANNOT GIVE OUT ADDRESSES OF INDIVIDUALS WITHOUT THEIR PERMISSION.

THANK YOU.

HCA BENEFIT AUCTION

Auction Chairman,
Bob Ryan

Thank you, thank you, thank you!!! You all really responded to my plea with beautiful glass for the benefit auction. The final day of unpacking and cataloging, we kept towels busy taking care of the drooling as our unpacker unwrapped all these beauties. I hope the bank balances are in good order by March because there's some real fine "stuff" in this auction. I'll try to tell you about some of the highlights but what appeals to me may not appeal to you, but I know some of it will appeal to all HCA collectors. Be sure to read over the listing that you receive separate from your Heisey News.

All of these items are in addition to what I wrote about in the last issue of the Heisey News.

A beautiful Flamingo water set, #2516 Circle Pair with 6 footed ice teas, same pattern . . . 2 pieces of #3397 Gascony; a goblet in Tangerine and a 14 oz soda in Tangerine, very definitely to the red side . . . also, a #3389 Duquesne champagne in Tangerine and while we are on this color, a pair of #4224 Ivy vases. There are 267 lots of color in the auction, featuring not only the above mentioned pieces but many pieces not seen before, or rarely seen in the colors that we have in this auction. For example, an #116 Oak Leaf single candlestick in Hawthorne, really fantastic; #393 Narrow Flute individual creamer and sugar in a beautiful shade of Moongleam; #1255 Pineapple & Fan 4" rose bowl in Emerald; #4002 Aqua Caliente cocktail in Sahara; #160 Locket on Chain 4" Nappy in Emerald; #461 Banded Picket basket in Flamingo; #1180 Brazil individual nut in Flamingo; #3380 Old Dominion 1 oz bar in Marigold with the Empress Etching, also a pair of cordials in this pattern in Sahara; an Amber #1624 Patio footed soda; #337 Touraine Amber sherbet, narrow optic; a difficult item in the #3404 Spanish stem line is the claret w/cobalt bowl; a very beautiful deep Moongleam #1401 Empress handled sandwich tray; #4045 ball vase, 7" in Cobalt; the very rare and beautiful all Hawthorne comport made of a #1245 plate on a #3970 stem. This piece is truly a wonder, it would look great in anyone's collection, (especially mine).

Not all the great pieces are in color. Everyone will have an opportunity to own our national symbol, the #1201 Fandango water pitcher - go for it! Also in Fandango there is a cruet and a very unusual 8" comport with a cupped bowl, excellent glass. #433 Greek Key (Grecian Border) has some very interesting stem pieces being offered. A sherry, cordial, and a cocktail. The cocktail is a really unusual piece but it sure was not a popular item in stemware when this pattern was produced. It is a flared cocktail, that's for sure.

Another real rarity is a #442 Colonial vase, outstanding glass; #325 4" rose bowl, a true beauty; #201 candlelamp with a #4060 6" shade with the neapolitan cutting, bobeches, prisms and a frosted base. This now makes three lamps for your bidding pleasure. (Remember the #21 Flamingo lamp in last month's Heisey News? The base is Flamingo and the shade is Crystal with a floral cutting).

There are several toothpicks for your perusal and a bidding war should develop over these rare

"lil" fellows. A pair of #343 Sunburst; #365 Old Queen Ann; #315 Paneled Cane, that's the real toughie; #379 Urn. All of these are prime and not easy to find, so be prepared to spend a little and enjoy a lot.

Staying with small things, I am happy to announce that there will be 30 or so cordials, including these latest unwrapped goodies: #5003 Crystolite, 2; #3380 Old Dominion, Sahara; #4085 Kohinoor with the Coronation etching; #5022 Graceful with Orchid etching; #5078 Park Avenue; #5010 Symphone with Danish Princess cutting. This leads me to the cuttings.

There are many great cut items this year, including #4225 Cobel cocktail shaker with a Skier cutting (not an etching); #1183 Yeoman #1 candy with an elaborate cutting; #3408 Jamestown goblet with the super Palmetto cutting. No need to spend airfare for sunny Florida, just be the successful bidder on this beauty and fill it with Chablis. As you sip away the palms in the cutting will waft you away to the sandy shores; aspirin not included. Also, #5022 Graceful wine with the Harvester cutting. There are also several candlesticks that are cut.

#7000 Sunflower is seen a lot in large torte plates or sandwich plates but I cannot recall ever seeing an 8" plate in this pattern until they were unwrapped for the auction - eight of them. Now someone will have a nice luncheon set. There are several covered butters available in the listing but the one that catches the eye for simple elegance is the #337 Touraine, par excellence . . .

There is an outstanding selection of candlesticks, candelabrum and candleblocks in this auction. Some of them are as follows: a pair of #1447 Rococo 2-lite frosted, which are very attractive; (By candlelight they would be very romantic, too) A 2-lite #1632 Lodestar in dawn; a pair of New Era, #4044 2-lite candelabrum with bobeches and prisms and elaborately cut. By elaborately cut I mean to a fare-the-well.

One of the largest selections of animals offered is in this auction with some very rare specimens. For all you animal lovers we will have a veteran on board to make certain these pure-breds and thoroughbreds are properly coddled. Added to last months "sale bill", a superb Gazelle, splendid glass and mark free; a Crystal flying mare, majestic; a Harvey Amber large elephant, the only one known at this time. He has bubbles in his trunk that simulates drinking water. If you are an animal collector this is a must buy. This next fellow would also carry that designation. It is probably a fore-runner of the production BULL. His hide is prepared for "show" with marceling or waving and from the middle of his formidable head he is "dressed" with "show beading". He is slightly shorter with a broader chest, neat! Then, there is the experimental CLYDESDALE in Harvey Amber*, another great item and quite rare . . . several Ring Neck Pheasants, including two pair decorated . . . Scotty or Sealyham Terriers.. Rooster Vase, Fighting Roosters...Standing Pony and Balking Pony...Master Swan Nut and several individual swan nuts...a Lion Trinket Box...and a Sahara Lions-head bowl... a pair of Asiatic Pheasants...Donkies.. Sparkies...Mallards, wings down and wings up...a Rabbit Paperweight...Fish Bookends...Horsehead Bookends, one pair frosted...three Chicks and several animal related items. Also, a magnificent Harvey Amber flying mare - who cares if it leans backwards?

continued from page
 Wow, and these critters will be distributed throughout the auction to give everyone time to plan ahead.

That's not all folks, there are many pieces of Orchid etched items including a very rare bowl in #1509 Queen Ann. It is kind of square and different, very nice, and should belong to an Orchid collector. A large #4225 Cobel cocktail shaker with a sterling base and sterling on the top is also available in Orchid etching. There is a "lot" of nothing but clarets in #5025 Tyrolean. These are not easy to find, especially in quantity. How many of you have seen the #5026 blown candlestick with Orchid etch? What an item for either the candlestick or Orchid etch collector!

You Heisey Rose fans have several goblets to contend for, nine of them, and they are flared more than usual.

Ridgeleigh collectors have a bonanza. Many pieces including a rare 8" square bowl with six 5" nappies; a Farber-ware 5 candelabra with Ridgeleigh candle sockets...kind of neat.

It is impossible to remember all the great items and I'm sorry if I forgot your favorite, but trust me, those of us who have seen the glass for the auctions over the years can tell you that this auction will be one that others are compared to in the future. Thanks to those of you who consigned and donated glass, and I am thanking in advance all of you who are coming to the APPLE TREE AUCTION CENTER March 10th. and 11th., or are sending bids. You will not be disappointed. Don't risk missing out on bidding; if you're not sure if you can make the trip, send your bids, and then come anyway. There will be some extra curricular activities, I'm sure, a laugh or two and fun.

Our gratitude to those who have helped prepare the listing: Louise, Betty and Bill Barnard, Tim Dall, Amy Jo Jones, Chauncey Delaney, Betty and Burl Whaley, Mark Groesser, Denny Rehn, Bob Rarey, Walt Stickle and my wife, Hilda. For technical advice, the Thrans, Jan and Norm. You were all great.

See ya all there! March 10th doors open at 6 p.m. and March 11 at 8:30 a.m. ... Bring money...

*Harvey Amber is sometimes referred to as "honey amber" and was the shade used for Harvey House Restaurant Glass. Sultana is the deep Amber and was used for Heisey animals and other late glass. It is the shade for which Imperial had the formula and was the only Heisey color they ever used. They used it for many Heisey animals during their bankruptcy. Animals made by Heisey in the Harvey Amber were experimental only and are quite rare. LR



This version of a Bucking Bronco was also among our recent acquisitions of Heisey paper material. This is similar to, but not exactly like, a Bucking Bronco etching which we have on a #4225 Cobel Cocktail Shaker. See picture below.

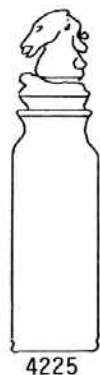


FROM - HEISEY GLASSWARE --
 VOL. I -- ETCHINGS AND CARVINGS



#9014 Rose of Peace

Does anyone have a piece of this pattern?
 It is easily confused with #511 Gardenia.



4225

9018 BUCKIN' BRONCO
 Silhouette Etching

4225 COBEL
 1 qt. Cocktail shaker

A. H. HEISEY & CO.

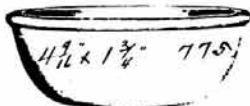
NEWARK, OHIO



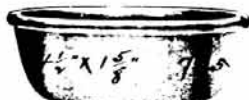
No metal, no rust, no tarnish; will not stain or discolor. Sanitary, and as easily cleaned as china. Its high polish makes it appropriate for serving on the dining table. Bakes food quickly and uniformly throughout. Should be removed from the oven with a dry cloth. Guaranteed against breakage in the oven. All covers have small hole in top of knob, to permit steam to escape. (Patent applied for)

These pictures are from a small catalog on Visible Cooking Ware which was made for a short time in Heisey's earlier years. Heisey was sued by the makers of Pyrex (Corning) and discontinued this glass. It is usually vase-line, sometimes a greenish color and sometimes Crystal. It is marked.

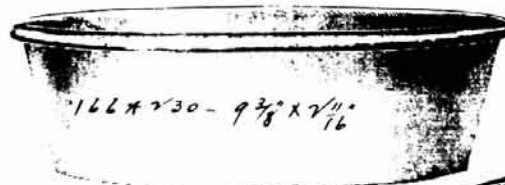
FOR OVEN USE ONLY



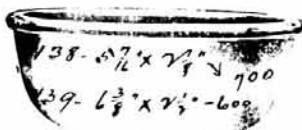
No. 136--4 1/2" Individual Baker, Round
Capacity 8 ounces



No. 137--4 1/2" Individual Baker, Round
Capacity 7 ounces



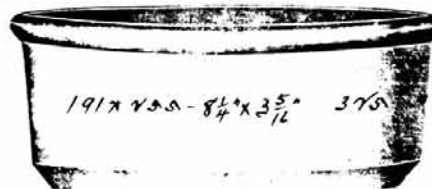
No. 166--9" Baking or Pudding Dish, Round
Capacity 2 quarts.



No. 138--5" Individual Baker, Round
Capacity 14 ounces
Also make No. 139--6" Individual Baker, Round



No. 312--5" Shirred Egg, Round



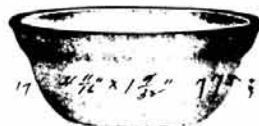
No. 191--8" Baking Dish, Deep Round
Capacity 2 quart



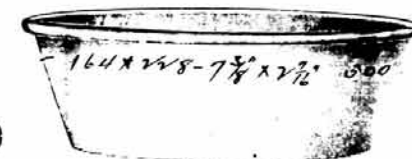
No. 279--6 x 4 3/4" Casserole, Oval
Capacity 21 ounces



No. 313--6" Shirred Egg, Round



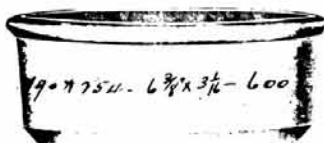
No. 124--4 1/2" Baked Apple, Round
Capacity 8 ounces



No. 164--7" Baking or Pudding Dish, Round
Capacity 1 quart



No. 254--6" Casserole, Round
Capacity 36 ounces



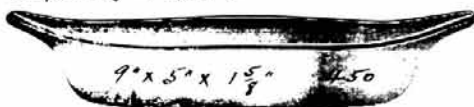
No. 190--6" Baking Dish, Deep, Round
Capacity 1 quart



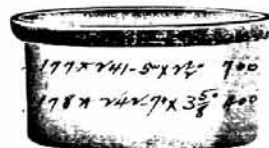
No. 324--6" Au Gratin, Round



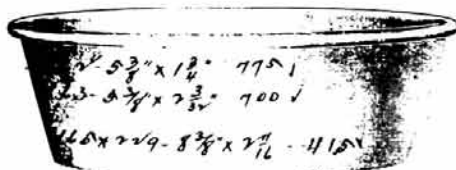
No. 280--8x6 1/2" Casserole, Oval
Capacity 1 1/2 quarts



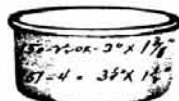
No. 335--9" Au Gratin, Oval



No. 177--5" Baking Dish, Round
Capacity 1 pint
Also make No. 178--7" size
Capacity 1 quart



No. 165--8" Baking or Pudding Dish, Round
Capacity 1 1/2 quart.
Also makes 5" size-No. 162
6" size-No. 163



No. 150--2 1/2" Ramekin
Capacity 3 ounces
No. 151--3" Ramekin
Capacity 4 ounces



No. 398 Percolator Top
2 1/2"



No. 381--9" Layer Cake Dish, Round



No. 243--9" Casserole, Deep, Round
Capacity 2½ quarts
Also make No. 242--7" Casserole, Deep



No. 300--Bean Pot
Capacity 20 ounces
Also make No. 301--Bean Pot
Capacity 1 quart



No. 179--9" Baking Dish, Deep, Round
Capacity 2½ quarts



No. 255--8" Casserole, Capacity 2 quarts



No. 217--8x6½" Baking Dish, Deep, Oval
Capacity 1½ quarts



No. 216--6x4 ¾" Baking Dish, Deep, Oval
Capacity 21 ounces



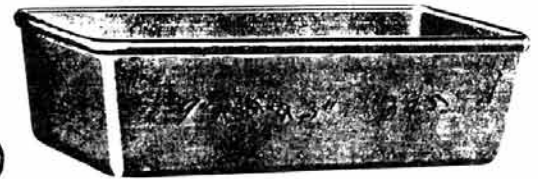
No. 357--12x7½x2" Roaster



No. 230--9" Casserole, Shallow, Round
Capacity 2 quarts



No. 267--9½x6 ¾" Beefsteak Casserole, Shallow, Oval
Capacity 1½ quarts



No. 346--9x5x3" Bread Baker



No. 228--7" Casserole, Shallow, Round
Capacity 1 quart
Also make No. 229--8" Casserole Shallow, Round
Capacity 1½ quarts



No. 392--6" Individual Pie Plate, Round



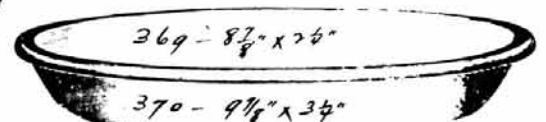
No. 268--10½x7 ¾" Beefsteak Casserole, Shallow, Oval
Capacity 2 quarts



No. 368--8" Pie Plate, Round



No. 241--5" Casserole, Deep, Round



No. 370--10" Pie Plate, Round
Also make No. 369--9" size

HCA OSCARS

YEAR	COLOR	MADE BY	NUMBER
1977	Fern Green	Imperial	2115
1978	Rose Pink	Imperial	2838
1979	Sunshine Yellow	Imperial	2663
*1979	Heather (misdated)	Imperial	1099
1980	Heather	Imperial	2930
1980	Heather (strike over)	Imperial	441
1981	Light Blue	Imperial	2642
1982	Emerald Green	Imperial	2274
1983	Tangelo (Orange)	Viking	2262
***1983	Tangelo (frosted)	Viking	310
*1983	Ruby (misdated)	Viking	251
1984	Ruby	Viking	2164
1984	Ruby (frosted)	Viking	208
**1985	Antique Blue	Imperial	446
1985	Black Opaque	Imperial	1500
1986	Clematis (Alexandrite)	Viking	1548
1987	Crystal Opalescent	Fenton	1500
1988	opal	Fenton	1461

No. 300 COLONIAL PATTERN



Mustard



Toothpick



5 & 7 oz Bar Syrups



13 oz Syrups

* When the company made the first turn of these they had forgotten to change the date. Rather than let them be sold in their seconds shop we bought them and sold them by a special drawing.

** Imperial was having troubles in making antique blue so we took the 446 and sold them by a special drawing, and had the regular Oscar made in black opaque.

*** Over runs were frosted. Sold by drawing.



THE PARK NATIONAL BANK

50 North Third Street • Newark, Ohio 43055

UPDATE OF THE ENDOWMENT FUND. DONATIONS FOR THIS ARE ALWAYS WELCOME.

TRUST DEPARTMENT

REVIEW OF ASSETS AS OF OCT 31, 1988 23 21 0058 01 4

LCFPG NATIONAL HEISEY GLASS MUSEUM ENDOWMENT FD

PAGE 1

SHARES OR PAR VALUE	DESCRIPTION	UNIT MARKET PRICE	TOTAL MARKET VALUE	INVESTMENT COST BASIS	EST. ANNUAL INCOME	CURRENT YIELD
	C A S H					
	INCOME CASH		679.76	679.76		
	PRINCIPAL CASH		0.00	0.00		
	TOTAL CASH		679.76	679.76		
	M I S C C A S H E Q U I V - T X B L					
4,182.50	TRUST FOR US TREAS OBLIG - INCOME		4,182.50	4,182.50	0	0.00
5,629.63	TRUST FOR US TREAS OBLIG PRINCIPAL		5,629.63	5,629.63	428	7.61
	TOTAL MISC CASH EQUIV-TXBL		9,812.13	9,812.13	428	4.37
	S A V I N G S & L O A N S E C S					
9,000	COUNTY SAVINGS BANK CD 7.6% DUE 11/06/88		9,000.00	9,000.00	684	7.60
10,000	COUNTY SAVINGS BANK 7.45% DUE 05/06/89		10,000.00	10,000.00	745	7.45
	TOTAL SAVINGS & LOAN SECS		19,000.00	19,000.00	1,429	7.52
	GRAND TOTAL		29,491.89	29,491.89	1,857	6.30

WILLEY'S ANTIQUES
11110 CANNON ROAD
FRAZEYSBURG, OHIO 43822

PH: 614-828-2557

Over 2,000 pieces of Heisey for sale. Stenware and dinnerware matching service. Lots of colors, etchings and cuttings. Send want list and SASE. All letters answered if a SASE is enclosed.

SHOW DATES

Feb. 3, 4, 5	Brazos Center	Bryan, Texas
Feb. 11, 12, 13	Palmer Auditorium	Austin, Texas
Feb. 17, 18, 19	Rapides Parish Coll.	Alexandria, Louisiana

Mar. 3, 4, 5	St. Bernard Cult. Center	Chalmette, Louisiana
Mar. 18, 19	Armory Place	Silver Sprngs, Maryland

HOPE TO SEE YOU AT THE SHOWS,

MILDRED AND HAROLD WILLEY

COMING SOON

RUBY COLTS FROM DALZELL-VIKING
(formerly Viking Glass Co.)
TO BE MADE IN OUR ORIGINAL MOULDS
LIMITED TO 200 SETS AND DATED 1989
SOLD ONLY IN SETS OF THREE
STANDING, BALKING AND REARING
\$60 PER SET

With your 10% member discount, only \$54.00.
\$3.00 handling fee and 10% for shipping
You may order now
Marked HCA '89
Orders will be filled as soon as the Colts arrive from the factory. Visa and MasterCard accepted.
You will love Viking's Ruby!

HCA Sales
P.O. Box 4367-Dept.F
Newark, OH 43055

1989
19th Annual
Antique Show & Sale
Heisey Glass Display



"CHRISTMAS IN JUNE"
18th ANNUAL CONVENTION
OSU - COTC Newark Campus
Country Club Drive, Newark, Ohio

Friday, June 16 12:00 p.m. to 5:00 p.m.
Saturday, June 17 11:00 a.m. to 6:00 p.m.
Sunday, June 18 12:00 p.m. to 5:00 p.m.

(DISPLAY CLOSES AT 4:00 P.M. ON SUNDAY)

Donation \$2.50
Plenty of Free Parking
GALA PREVIEW
® Thursday, June 15, 1989

Dinner 5:00 p.m. to 7:00 p.m.
Show 6:00 to 9:00 p.m. Display 7:00 p.m. to 9:00 p.m.

Donation \$10.00 Includes Meal



FLEA MARKET ON THE SQUARE

Two Weekends

Saturday, June 10 Sunday, June 11
Saturday, June 17 Sunday, June 18

Dawn to ??
FOR INFORMATION CALL 614-345-2932

Sponsored by

Heisey Collectors of America, Inc.
Benefit National Heisey Glass Museum

Bay State Heisey Collectors
Present Their Eleventh Annual

ANTIQU
SHOW & SALE

Featuring collectible glass, pottery, china, kitchenware and collectibles from all periods

Plus a Heisey Glass Display and Books on Heisey and other glass from the National Heisey Museum

Waltham High School
Lexington Street
Waltham, MA

Exit 27A off Route 128/I-95
Totten Pond Road to Lexington Street
Follow Our Signs

Saturday, April 22
10 a.m. - 5 p.m.

Sunday, April 23
10 a.m. - 4 p.m.

Donation: - \$3.00 With Card - \$2.50

Sponsored by Bay State Heisey Collectors for the benefit of the National Heisey Museum

BOB JOHNSON
P. O. BOX 42
DAYTON, OHIO 45420

PH: 513-299-4364
P & I EXTRA
* = MARKED

* TODD PEASE
* 552 CARRIAGE DRIVE
* BATAVIA, IL 60510

PH: 312-879-8569
AFTER 6 P.M. CST
SHIPPING EXTRA
* = MARKED

31 Jack-Be-Nimble Toy Candlestick* pr \$ 55.00
112 Mercury 3" Candlestick, Moonglmm pr 32.00
114 Pluto Candlestick, Moonglmm . . . pr 40.00
142 Cascade 3-lite Candlestick . . . pr 60.00
300 Peerless Bitters Bottle 15.00
300 Peerless Egg Cup, rd. #350676 (2)* ea 8.00
300 Peerless Sherry (4, w/1 rd#)* . . ea 15.00

333 Waldorf Astoria 2 oz Cruet 40.00
350 Pinwheel & Fan Sugar* 28.00
362 Sanitary Syrup w/Grey Cutting* . . . 45.00
393 Narrow Flute 5" covered Lemon* . . . 25.00
394 Narrow Flute 12" Relish, cut*, Moonglmm 40.00
411 Tudor 5" 2-handle Jelly, Moonglmm 18.00
421 Prism Block 8½" Nappy* 35.00
433 Greek Key 6½" diam. Ice Tub* 90.00
433 Greek Key 4½ oz cup'd Sherbet*,(2) ea 14.00

1184 Yeoman Cover*, on #170 8 oz Tumblr* 25.00
1205 Fancy Loop Tumbler w/gold, Emerald,
(2) ea 40.00
1225 Plain Band #4 Shakers pr 37.00
1250 Groove & Slash 4½" diam Rose Bowl 40.00
1255 Pineapple & Fan flared oval Bowl, 12½" 35.00
1425 Victorian 6" crimped Compote* . . . 28.00
1425 Victorian 9 oz high ftd Goblet, (9)ea 15.00
1469 Ridgeleigh Mayonnaise* 10.00
1469½ Ridgeleigh 7" Relish, 2-compartment** 15.00
1469½ Ridgeleigh 8" Vase* 30.00

1472 Parallel Quarter Candlestick . . . pr 35.00
1486 Coleport Cigarette hldr & 3-Ash Tray*
set 65.00
1489 Puritan Cologne 45.00
1489 Puritan French Dressing Oil & Vinegar
Etch, Sterling Top 25.00
1495 Fern Relish 3-comp w/#893 Carlton Cut 35.00

1502 Crystolite Cigarette Lighter, Swirl 25.00
1503 Crystolite 13" Floral Bowl, round 30.00
1503 Crystolite 8" Relish 3-compartment** 23.00
1503 Crystolite Lid for Marmalade Jar . . 7.00

1506 Whirlpool 5 oz Fruit Juice*, Limelight 42.00
1519 Waverly Cornucopia Vase pr 30.00
1519 Waverly Lid for Cigarette Jar . . . 10.00
1540 Lariat Goblet w/#964 Maryland, (9) ea 20.00
1540 Lariat ftd. Ice Tea w/#964 Maryland,
(6) ea 15.00
1540 Lariat Champagne w/#964 Maryland,
(7) ea 12.00
1559 Columbia Candlestick, crimped . . pr 45.00
2401 Soda, 12 oz, w/Nimrod 28.00

3389 Duquesne Goblet w/#450 Chintz . . . 25.00
3411 Monte Cristo Goblet w/#458 Olympiad,
(2) ea 28.00
4052 National Goblet w/"ULC" Etch 15.00
4057 Cecilia 10½" Vase w/#5022 Lily Carving 65.00
7000 Sunflower Candlestick pr 40.00
7000 Sunflower Cream & Sugar* pr 35.00

1 Donkey, Carmel Slag 30.00

* 1425 Victorian 12" Celery Tray* \$ 12.50
* 7000 Sunflower Creamer & Sugar* pr 35.00
* 1483 Stanhope Creamer, open h'lides* . . 15.00
* 1401 Empress Creamer & Sugar, Sahara,DF pr 50.00
* 1295 Beaded Swag ½ gal Tankard, Opal, w/Rose
Decor, some gold 215.00

* 1469 Ridgeleigh Candle Vases, Sahara, 1 w/
small chip pr 85.00
* 1445 Grape Cluster 2-lite Candlestks* pr 220.00
* 1506 Whirlpool Juice Glasses* (12) . . . ea 10.00
* 1506 Whirlpool 6" Vase* 17.50
* 1506 Whirlpool Sherbet* (7) ea 6.00
* 1506 Whirlpool Goblet* 8 oz (14) . . . ea 12.50
* 1506 Whirlpool 8" Plate (13) ea 10.00
* 1506 Whirlpool 3½" Vase* 12.50

* 1503 Crystolite 10 oz Goblets* (8) . . . ea 18.00
* 1540 Lariat Wine* 22.50
* 1184 Yeoman 5" high ftd. shallow Compote*,
D0, Moonglmm 35.00

* 1503 Crystolite 5-part Relish, round* . . 30.00
* 1503 Crystolite Individual Sugar, Creamer,
& Tray* set 42.50

* 5025 Orchid Sherbets (12) ea 25.00
* 1469 Ridgeleigh Coasters, Zircon (8) . set 350.00

* * * * *
* J & T ANTIQUES PH: 508-347-5424
* P. O. BOX 933 UPS & INSURANCE EXTRA
* STURBRIDGE, MA 01566 * = MARKED

* 21 Flower Bock, 6" w/Mushroom Top, Fla-
mingo \$ 45.00
* 150 Banded Flute 9½" Nappy*, flared . . 30.00
* 301 Old Williamsburg 2-lite Candelabra pr 350.00
* 353 Medium Flat Panel Cheese & Cracker*,
Silver Overlay 60.00

* 407 Coarse Rib 9" Celery Tray*, stained
Yellow 35.00
* 500 Octagon Ice Tub & Tongs* n/h'lde, Moon-
gleam 45.00
* 1205 Fancy Loop small Cracker Jar, n/top 65.00
* 1401 Empress 7" sq. Plates*, Sahara, Old
Colony Etch (8) 130.00
* 1401 Empress 13" 2-compartment Olive* . 22.00

* 1404 Old Sandwich 10 oz low ftd Gob (2) ea 35.00
* 1425 Victorian Punch Cups* (40) . . . ea 8.00
* 1540 Lariat 11" 3-compartment Oblong Relish* 36.00

* 1540 Lariat 5" Mayonnaise* 35.00
* 1540 Lariat 13" Torte Plate, rolled edge 45.00
* 1540 Lariat 7" Caramel w/cover 55.00
* 1540 Lariat Sugar & Cream* 28.00

* 10% DISCOUNT ON ITEMS REMAINING FROM LAST MONTHS
ADD.
*
*

CHARLES O. HORSFALL
17 WHITNEY STREET
JEFFERSON, MA 01522

PH: 508-829-9928
6 - 9 P.M. E.S.T.
* = MARKED

SHIPPING & POSTAGE INCLUDED IN PRICE

- 52 Ind. Salt & Pepper, Sahara pr \$ 50.00
- 150 Banded Flute Butter & Cover*, no-show Chip 85.00
- 315 Paneled Cane Butter & Cov.*,excellent Ruby Stain 125.00
- 417 Double Rib & Panel 3 oz Oil w/stpr* 90.00
- 1205 Fancy Loop Water Bottle 90.00
- 1235 Beaded Panel & Sunburst 8 oz Oil w/stpr 75.00
- 1567 Plantation 3 oz Oil & stopper* . . 100.00
- 1252 Twist 4 oz Oil w/stpr*, Flamingo . 85.00
- 1255 Pineapple & Fan #2 Salt & Pepper, Sterling Tops pr 60.00
- 1255 Pineapple & Fan 12" Vase 70.00
- 1280 Winged Scroll Tankard, Ivorina Verde, & (6) 8 oz Tumblers all 600.00
- 1295 Beaded Swag Tankard, Opal, gold good-fair 150.00
- 1295 Beaded Swag Toothpick, Opal, gold fair 115.00
- 1295 Beaded Swag Toothpick, Ruby, souv. 1000 Islands 85.00
- 1404 Old Sandwich 8" square Plate* . . 25.00
- 1485 Saturn 4 oz Oil w/stopper 65.00
- 1489 Puritan (late) 4" Cigarette Box & Cover, 2 bubbles 65.00
- 1509 Queen Ann 2-comp. Salad Dressing*, Orchid Etch 75.00
- 1509 Queen Ann 6" Mint*,2-h'lded, Orch Et 50.00
- 4036 Sherry, oval, Orch Etch, Sterling Overlay Stopper 375.00

THE COLLECTOR'S STOP
12018 Suellen Circle
West Palm Beach, FL 33414
VISA - MASTERCARD

PH: 407-793-0986
SHIPPING & INS.
EXTRA
* = MARKED

- 1567 Plantation Cruet* \$125.00
- 160 Locket on Chain Molasses Syrup Can, Rare, Mint Condition CALL
- 1401 Empress 10½" Plates*, rnd., Flam (5)ea 87.50
- 4057 Cecelia Vase, 10½", Orchid Et,(sticker)299.50
- 1401 Empress Cr & Sug*, DF, Sahara . . . 55.00
- 333 Waldorf Astoria Toothpick* 135.00
- 433 Greek Key 12" Celery Tray* 60.00
- 433 Greek Key 13" Oblong Tray* 225.00
- 433 Greek Key 2-h'lded Jelly* 85.00
- 6 Ladle* 20.00
- 343 Sunburst ½ gal Jug* 199.50
- 353 Medium Flat Panel 2qt. Crushed Fruit 295.00
- 1405 Ipswich candle vases and inserts. All cobalt, With prisms. All perfect. CALL

- 1428 Warwick 9" Horn of Plenty Vase, Sahara 195.00
- 1401 Empress DF Cream & Sug, Flamingo . 85.00

PLEASE VISIT US AT ORANGE COUNTY CONVENTION CENTER
9800 INTERNATIONAL DRIVE, ORLANDO, FLORIDA

FEBRUARY 24-25-26th., 1989

HAPPY NEW YEAR TO ALL MY CUSTOMERS!

17TH. ANNUAL ALL-HEISEY GLASS SHOW
AND SALE SPONSORED BY THE NATIONAL CAPITAL
HEISEY STUDY CLUB WITH THE NATIONAL CAPITAL

HEISEY COLLECTORS

BENEFITS THE NATIONAL HEISEY GLASS

MUSEUM

SAT, MAR, 18, 1989
11 AM to 7 PM

SUN, MAR 19, 1989
11 AM to 4 PM

ARMORY PLACE

Wayne Ave & Fenton St. Silver Spring, MD

HEISEY GLASS IDENTIFICATION ---- 1 to 2 PM EACH DAY

CERTIFICATE OF AUTHENTICITY FROM HCA

SMALL FEE FOR EACH ITEM

DOOR PRIZE

ADMISSION \$2.50

With Ad \$2.00



FOREVER HEISEY
NORM & JAN THRAN
1663 LONDONDALE PKWY.
NEWARK, OHIO 43055

PH: 614-344-5955

SHOW DATES

- Feb. 11, 12 Fairgrounds, Arts & Columbus, Ohio
- Feb. 17,18,19 Rapides Parish Coll. Alexandria,LA
- Feb. 24,25,26 Palmer Auditorium Austin, TX
- Mar. 3, 4, 5 International Shows Joplin, MO
- Mar. 12 Starlight School Newark, Ohio
- Mar. 18, 19 Armory Place Silver Springs, Maryland

HOPE TO SEE ALL OUR HEISEY FRIENDS AT THE UPCOMING SHOWS. ALWAYS 2,000 PC'S OF HEISEY IN STOCK. ALL SASE INQUIRIES ANSWERED. WRITE YOUR WANTS, WE SEARCH.

PLEASE DOUBLE SPACE ALL WRITTEN OR TYPED MATERIAL WHICH YOU SEND US FOR PUBLICATION. IT WILL MAKE OUR WORK TWICE AS EASY. THIS INCLUDES ALL ARTICLES, CLUB NEWS, AND ADS.

THANK YOU,
LOUISE REAM

JIM GARTNER
4 - FISHERMAN'S CIRCLE
APT. 1
ORMOND BEACH, FL 32074

PH: 904-677-7415
UPS & INS EXTRA
SIGNED *

- 112 Mercury 3" 1-lite Candlestk,Orch E.pr \$ 65.00
- 300 Peerless 6" round Plates* (9) . . . ea 9.50
- 341 Puritan ftd. tall Celery* 55.00
- 341 Puritan 2-lite Candelabra yoke, Sahara 45.00
- 341½ Puritan 3 pint squat Juq* 85.00
- 353 Medium Flat Panel 9" Compote* 48.00
- 379 Urn Water Bottle 115.00
- 372 McGrady 8 oz. Sanitary Syrup* 110.00
- 1170 Pleat & Panel low ftd Compote & cover*,
Moongleam 75.00
- 1404 Old Sandwich oval Cr&Sug*, Flmngo, set 85.00
- 5025 Tyrolean short stem 10 oz Goblets, Or-
chid Etch (4) ea 33.00
- 1503 Crystolite oval 13" ftd Floral Bwl* 68.00
- 1509 Queen Ann 14" rnd Sandwich Plate, Orch-
id Etch* 78.00
- 1235 Beaded Panel & Sun Brst 9" ftd Compote 135.00
- 1519 Waverly ftd 7" Honey Dish, Orchid Et 45.00
- 1519 Waverly 7" ftd. Jelly*,Orchid Etch 45.00
- 1540 Lariat 10 oz Goblets, Moonglo Cut,
(10) ea 32.00
- 1540 Lariat 5½ oz short Champagnes, Moon-
glo Cut, (9) ea 23.00
- 1540 Lariat 3½ oz Cockt'ls, Moonglo Cut,
(7) ea 23.00
- 5022 Graceful Stem 12 oz ftd Ice Tea, Orchid
Etch 55.00

DONALD P. BEAN
36 HARDING STREET
MILFORD, MA 01757

PH: 508-473-0561
SHIPPING EXTRA
* = MARKED

- 354 Wide Flat Panel 3 pc Stack Set* . . \$ 47.00
- 1469½ Ridgeleigh 2-comp, 2 h'dled Nut Cups*
8 for 88.00
- 142 Cascade 3-lite Candle, light wear on
base (1 only) 20.00
- 1472 Parallel Quarter 1-lite Candle (1 only) 15.00
- 1425 Victorian 2 oz Bar* (2) ea 20.00
- 71 Oval 10½" Candle* (1 only) 85.00
- 433 Grecian Border Ind. ftd. Almond* (2)ea 15.00
- 1509 Queen Ann 9" Gardenia Bwl, Orch Et 35.00
- 22 Windsor 1-lite Candle 9 5/8" Tall
(1 only) 42.00

STILL NEED COVER FOR LG 1205 POTPOURRI JAR.

Classified Ads

BUYING: Caprice blue or Rosepoint by Cambridge;
Rose or Orchid by Heisey; American, June Fair-
fax, Versailles, Trojan, etc., by Fostoria;
and Depression Glass in Crystal or colors.
NADINE PANKOW, 206 S. Oakwood, Willow Springs,
Illinois 60480. PH: 312-839-5231.
WANTED: Yeakley Glass In Color, Book I. Bob
Acre, 322 N. Second Street, Osborne, Kansas
67473 or call 913-346-2536.
WANTED: Imperial Animals & Figurines. Col-
lector, P.O. Box 1115, Newark, Ohio 43055.

H & R DIAMOND H
HELEN - BOB RAREY
1450 WHITE ASH DRIVE
COLUMBUS, OH 43204

PH: 614-279-0390
AFTER 5:30 P.M.
UPS & INS. EXTRA
* = MARKED

- 341 Puritan 3½" Sauce Dish*, (6) . . . ea \$ 7.50
- 353 Medium Flat Panel 12" Vase* 65.00
- 394 Narrow Flute 5 oz Juice*,(5) . . . ea 12.50
- 394 Narrow Flute 8 oz Tumbler*,(8) . . ea 15.00
- 1401 Empress h'dled Cream Soup*, (4). . . ea 7.50
- 1425 Victorian Cream & Sugar* 35.00
- 1469 Ridgeleigh Cigarette Box* - 4" sq. Ash
Tray*. 35.00
- 1485 Saturn 4" Ball Vase 39.50
- 1503 Crystolite low oval Bowl* 37.50
- 1503 Crystolite Ice Bucket* w/h'lde 95.00
- 1503 Crystolite cov'd Marmalade* 52.50
- 1590 Zodiac Ohio Sesqui Ash Tray (1953) . 15.00
- 1590 Zodiac Newark Sesqui Ash Tray (1952) 15.00
- 1540 Lariat 2-lite Candle, Moonglo Cut pr 42.50
- 1626 Satellite 13" Bowl*, cut 55.00
- 3390 Carcassonne Tall Goblet*, Old Colony
Etch, (7). ea 15.00
- 3390 Carcassonne Sherbet, Old Colony Etch,
(6) ea 10.00
- 1401 Empress 6" sq. Plate, Old Colony
Etch, (8) ea 9.00
- 6060 Country Club 3 pint Cocktail Shaker 45.00
- Heisey by Imperial Whirlpool 12oz Soda*, Red 21.50

NANCY'S ANTIQUES
906 44th. Street, N.W.
Canton, OH 44709

PH: 216-492-2595
SHIPPING EXTRA
* MARKED

- Straw Holder, Crystal \$115.00
- Ash Tray McArthur Hat 45.00
- Kingfisher Flower Frog, Flamingo . . . 225.00
- Scotty Dog 145.00
- 46 Cheshire Salt & Pep*, Flamingo . . . pr 50.00
- 118 Miss Muffet 3" Candle, DO, Flamingo (1) 25.00
- 500 Octagon Cream & Sug*,Cry/Moong . . 70.00
- 1200 Cut Block Souv. Sugar, Custard . . 60.00
- 1252 Twist 10" Celery*, Flamingo 30.00
- 1425 Victorian Punch Cups*, (6) ea 12.00
- 1469 Ridgeleigh 3" Coasters, (8) ea 10.00
- 1503 Crystolite Ind. Cream & Sug* . . . pr 30.00
- 1503 Crystolite 1-lite Candle pr 30.00
- 1506 Provincial Sherbet* 5 oz (12) . . . ea 18.00
- 1540 Lariat 5½ oz Sherbets, (8) ea 10.00
- 1540 Lariat 10" shallow Nappy, (2) . . . ea 25.00
- 1951 Cabochon Candlette 1-lite pr 50.00
- 3390 Carcassonne Sherbet, Alex/bowl . . . 90.00
- 3408 Koors Pitcher, Moongleam ft & h'lde 175.00
- 5072 Rose stem & etch Champagnes* (5) . ea 42.00

DEALERS DIRECTORY MAX. 5 LINES/12 MONTHS/\$25.00

We assume no responsibility for error in these ads after the first printing - Editor
For Changes in ads during the year, please send \$2.00 per line.

<p>A. W. PARKER Heisey & Pattern Glass Shows or Appointment Magalia, CA 95954 PH: (916) 873-2326</p>	<p>GLASS WITH CLASS Lenore A Shelley, GGHCC 1336 Lincoln Avenue San Jose, CA 95125 PH: (408) 286-8098</p>	<p>OLDE LOVED THINGS 900 Ridgewood Ave. (Holly Hill) Daytona Beach, FL 32017 (904) 252-7960 Hours: Sat., Sun., & Mon., 10-4</p>
<p>ALL HEISEY AUCTION Consignments Welcome Apple Tree Auction Center 1616 W. Church, Newark, OH 43055 PH: (614) 344-9449</p>	<p>GREEN ACRES FARMS Antiques, Crystal Glass & Collectibles 2678 Hazelton-Etna Rd., SW (S.R. 310-N) Pataskala, OH 43062 Sat. or Sun. PM or call (614) 927-1882</p>	<p>OUR PLACE AND MEMORY LANE ANTIQUES 1234 Newark Rd., Granville, Ohio 43023 (614) 587-4601, Open every day 12-5 Heisey, general line of antiques and collectibles</p>
<p>ALFA I CARRIAGE HOUSE ANTIQUES Featuring Depression & Elegant Glassware Al & Faye Maness 508 E. Cary Street Richmond, VA 23219 PH: (804) 788-1630</p>	<p>H & R DIAMOND H Helen & Robert Rarey 1450 White Ash Dr. Columbus, OH 43204 PH: (614) 279-0390 after 5:30</p>	<p>PARRETT'S ANTIQUES Heisey 4994 Mapledale Rd. OR 1215 Greenwood Ave. Jackson, Mich. 49201 PH: (517) 784-7319 OR (517) 783-3289</p>
<p>ANTIQUES - THE SHULTZES 206-208 East Main St. Newmanstown, PA 17073 15 Miles West of Reading, PA PH: (215) 589-2819</p>	<p>"HAPPINESS IS" - THE STULTZS 3106 Warren Court, Glen Allen, VA 23060 Shows and Mail Order PH: (804) 262-1273 GLASS CIRCA 1890-1960</p>	<p>PATTON HOUSE Heisey & Duncan Miller Rocky's Mall, 1-81 & US 11 Weyer's Cave, VA 24486 PH: (703) 967-1181</p>
<p>C & J ANTIQUES Cole & Jean Miesner Box 45, 72 Whig St. Newark Valley, NY 13811 PH: (607) 642-9905</p>	<p>HARRALSON'S HEISEY HUNTERS Sponsor: S.W. MO's Antique Shows 78 Quality Dealers From 14 States 1989 Dates: Apr. 29-30 & Oct. 28-29 Info: 1426 W. Highland, Springfield, MO 65807 PH: (417) 883-2449</p>	<p>EAGLES REST ANTIQUES Carl and Mary A. Evans Heisey - China - Pottery, etc. Shows or Appointment PH: (614) 522-2035</p>
<p>C.E. HIGGINS (S.F. Bay Area) Shows and Mail Order P.O. Box 2723 Menlo Park, CA 94025 PH: (415) 322-0192 Evenings</p>	<p>HELEN & JIM KENNON Heisey, Cambridge, Fostoria, Duncan, Imperial, Fenton, Tiffin P.O. Box 114 Brookville, OH 45309 PH: (513) 833-5406 SHOWS ONLY</p>	<p>R & L ANTIQUES-SAN FRANCISCO Members of the Golden Gate Heisey Club 3690 Bodega Ave. Petaluma, CA 94952 PH: Petaluma (707) 762-2494 PH: San Francisco (415) 621-6693</p>
<p>CHARLES & MILDRED FISHER Heisey, Degenhart, Imperial, Antiques, Collectibles, General Line 991 Idlewilde, Newark, OH 43055 PH: (614) 522-5398</p>	<p>JJ MC KEE ANTIQUES Pottery - Glassware - Collectibles 222 B West 75th St. Kansas City, MO 64114 Wed.-Sun. 10-5 PH: (816) 361-8719</p>	<p>RAY ZIEGLER Glass Repair 185 County Line Westerville, OH 43081 PH: (614) 891-9796</p>
<p>DAVE'S ANTIQUES Specializing in Heisey Shows & Mail Order 1403 E. Knollwood St. Tampa, Fl. 33604 (813) 237-5550</p>	<p>THE PURPLE PLACE Featuring Heisey & Other Fine Glass Martha & Harold Earp 1940 Suwanee, Ft. Myers, FL 33901 PH: (813) 936-1572 Anytime</p>	<p>SCHWAN'S ANTIQUES SHOWS & MAILORDER 77 Lagos del Norte Fl. Pierce, FL 34951 PH: (407) 461-5940</p>
<p>DIAMOND H PLUS Mail Orders & Shows George & Eileen Schamel Rt. 3, Box 171, Boonsboro, MD 21713 PH: (301) 432-6285</p>	<p>J. & R. COLLECTIBLES Shows, SASE, Mail Order list June & Ray Lukasko P.O. Box 1030, Newark, OH 43055 PH: (614) 344-9719</p>	<p>SHOW AND TELL ANTIQUES Art, Cut, Heisey and Pattern Glass 1525 Morrow Ave., Waco, TX 76707 Tues-Sat 10:30-4:30 PH: (817) 752-5372 Also: Mail Order and Shows Member NADA</p>
<p>ETTELMAN'S DISCONTINUED CHINA & CRYSTAL HEISEY a SPECIALTY P.O. Box 6491-HN Corpus Christi, TX 78411 PH: (512) 888-8391 Include SASE</p>	<p>MOSTLY HEISEY Rhoda Curley 16 Clayton PL, Albany, NY 12209 Shop and Mail Order PH: (518) 482-6272</p>	<p>SINGLETREE ANTIQUES Cut, Pattern & Heisey Glass 10717 Staples Mill Rd. Glenn Allen, VA 23060 Chance or appointment PH: (804) 266-3795</p>
<p>FOREVER HEISEY Jan & Norm Thrän Mail Order, Shows, Appraisal Service 1663 Londondale Pkwy., Newark, OH 43055 PH: (614) 344-5955</p>	<p>MOUND BUILDERS ANTIQUES Heisey & Animals, General Antiques Irene Rauck 1138 Moundview, Newark, OH 43055 PH: (614) 344-6043</p>	<p>WILLEY'S ANTIQUES & MUSEUM Specializing in Heisey 11110 Cannon Rd., Frazeeysburg, OH 43822 16 miles east of Newark, OH PH: (614) 828-2557</p>
<p>GERT'S GLASS Heisey & Duncan Gertrude & Russell Swetnam 1926 Saratoga Dr., Adelphi, MD 20783 PH: (301) 434-5113</p>	<p>THE MUTED SWAN ANTIQUES 5486 Peachtree Rd., Chamblee, GA 30341 Heart of Chamblee Antique Row Specializing in Heisey & Cambridge Bill & Pat Miller PH: (404) 451-7620</p>	<p>THE WOODEN SHOE Antiques & Collectibles Jim & Sheri VanEs by Appt. 810 Elden, Herndon, VA 22070 PH: (703) 435-9045</p>
<p>GLASS 'N' GLASS Virginia & Odell Johnson 6909 10th Ave. West Bradenton, FL 34209 PH: (813) 792-0604</p>	<p>NANCY'S ANTIQUES Heisey, Cambridge, Fostoria, Fenton Mail Order 906 44th St. NW, Canton, OH 44709 216-492-2595. Shop Union Station Antiques 12622 Cleveland Ave., Uniontown, OH Daily</p>	<p>JAMES S. HARRIS ANTIQUES/APPRAISALS Box 672 Richmond, KY 40475-0672 PH: (606) 623-9100 Buying and Selling by Mail</p>

CONVENTION DATES FOR 1989 ARE JUNE 15, 16, 17, 18

Best Western Newark Inn (formerly the Sheraton) will be our Convention headquarters this year. They've given us the same special rates as last year. All Convention activities are held there, except the show, display and flea market. The Museum is nearby. Make your reservations as there are only 100 rooms and they go fast and most are gone by March 1st.

BEST WESTERN NEWARK INN RESERVATION REQUEST

NAME _____

ADDRESS _____

CITY _____ STATE _____ ZIP _____

PHONE _____

All rooms have two double beds.

ARRIVE _____

Single room requested (1 person) \$ 37.00

DEPART _____

Double room requested (2 people) 42.00

Please make your reservation by clipping the attached form and mail to:

King or Queen size requested (1) 40.00

King or Queen size requested (2) 45.00

Rollaway bed 5.00

ROBERT MCCLAIN
336 MEADOWBROOK DR.
NEWARK, OHIO
PH: 614-366-7087

13TH ANNUAL SOUVENIR OSCAR FORM

PLEASE READ VERY CAREFULLY BEFORE FILLING OUT

THIS IS OSCAR

THE OSCARS ARE TEAL (BLUE-GREEN) AND ARE MADE BY FENTON, MARKED HCA '89.

They will be offered to members only for \$22.00 prior to Convention. If any are left by June 15, they will be offered to members and the general public alike for \$25.00 each. Approximately 1200 will be made.



PLUG HORSE

You may order ONE per member. This means ANY member who has a membership card, regardless of the class of membership. PLEASE LIST ALL NAMES AS THEY WILL BE CHECKED. Everyone living in Ohio, ordering for pick-up in Ohio, must pay \$1.32 sales tax per Oscar. Shipping charges will be \$2.00. The Oscars will be shipped to you as soon as they arrive here from Fenton Art Glass Company.

DO NOT SEND DUES, BOOK ORDERS, ETC. WITH YOUR OSCAR ORDER

Please keep this part for a reference and clip and mail the form below the line. Be sure your dues are currently paid. This is the 13th. of a series of souvenir Oscars.

_____ Number of OSCARS at \$22.00 each \$ _____	Only one per member
Sales Tax \$1.32 each _____	All Ohio Residents and Pick-ups in Newark
Postage \$2.00 each _____	Check One: _____ Please mail my Oscar
Total Sent with Order \$ _____	_____ I will pick up my Oscar

PHONE ORDERS - CREDIT CARD ONLY

NAME(S) _____

LIST EXTRA NAMES _____

ADDRESS _____

CITY _____ STATE _____ ZIP _____

Make check payable to HCA, Inc. and mail to:
HCA OSCAR SALES, P.O. BOX 4367, NEWARK, OH 43055

MASTERCARD
VISA
EXPIRATION DATE REQUIRED MO _____ YEAR _____

17 ANNUAL



STARLIGHT FLEA MARKET

ANTIQUES AND COLLECTORS SHOW

At
Starlight School
116 N. 22nd Street
Newark, Ohio

March 12 from 9 am - 4 pm

Antiques
Heisey Glass
Crafts
Pottery

Benefits—Starlight School & Heisey Museum
Sponsored by— Land of Legend Study Club

FOOD AVAILABLE

DONATION

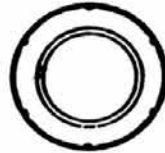
\$1.00

Ad compliments of

Basic Distribution

(614) 366-5163

A PRODUCT OF BOUGLAS ENTERPRISES



REPLACEMENTS, LTD.

302 Gallimore Dairy Road, #HN
Greensboro, NC 27409-9723
(919) 668-2064
Fax # (919) 668-9844

Discontinued China & Crystal

WORLD'S LARGEST INVENTORY!

Over a million pieces of bone china, earthenware, and crystal.
Call or write today . . . (SASE please).
BUY AND SELL

Pattern Name _____

Company Name _____

Pattern Number _____ Pattern Color _____

Pieces Desired _____

Name _____

Street Address _____

City _____ State _____ Zip _____

Home Phone () _____

National Heisey Glass Museum

Eight rooms and complete lower level displaying the beautiful hand made



glass produced in Newark by the A.H. Heisey and Co. from 1896-1957
Corner of West Church & North Sixth Streets
Newark, Ohio 43055

Phone: (614) 345-2932

Hours: Daily 1pm-4pm Closed Holidays

OHIO
the heart of it all! SM

Membership Renewal Notice

The date above your name and address is your renewal date. This is your last issue of the Heisey News if it reads 2-28-89

PLEASE DISREGARD THIS NOTICE IF YOU HAVE RECENTLY PAID YOUR DUES.

POSTMASTER SEND FORM 3579 TO:



SECOND CLASS