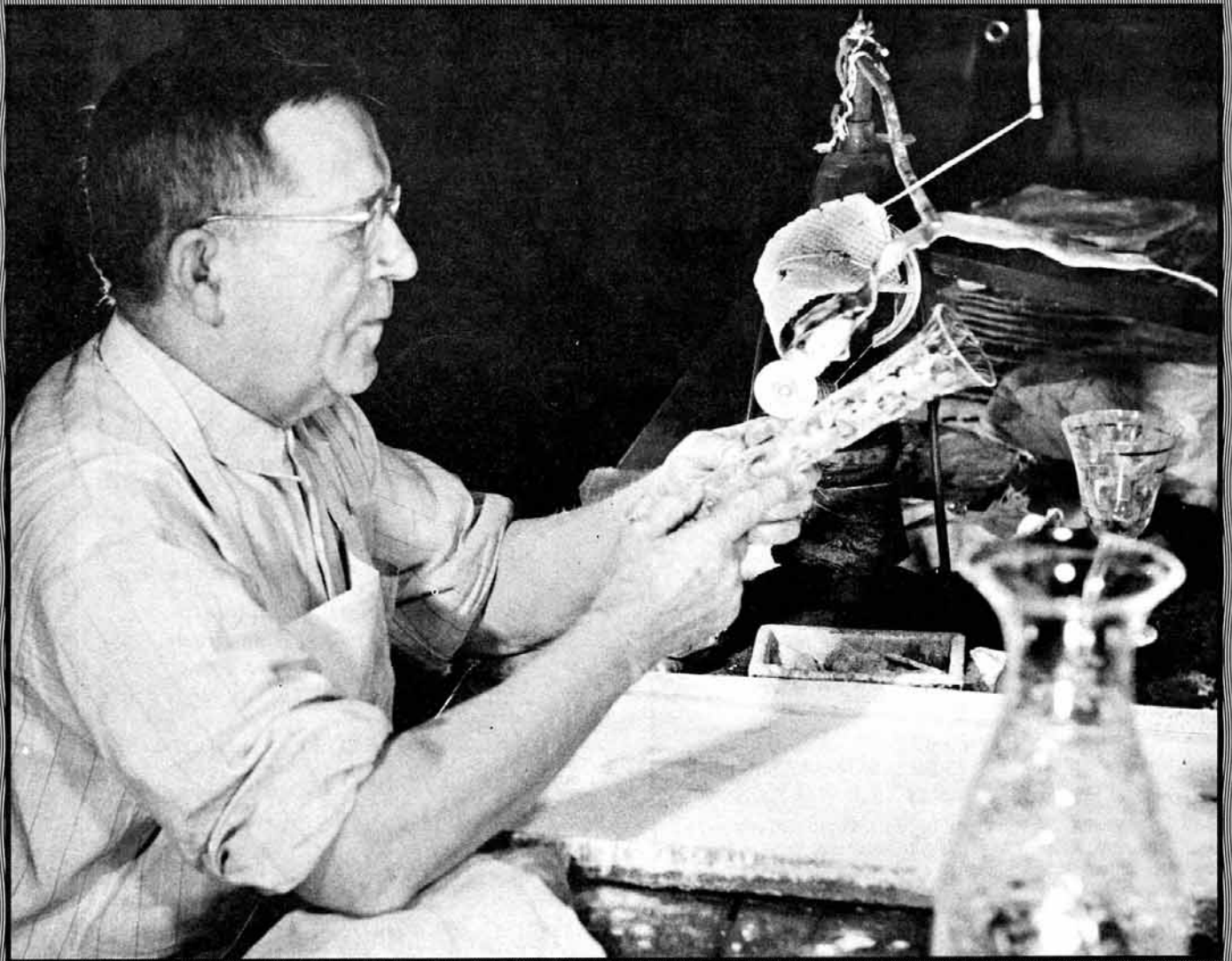


# HEISEY *news*

OFFICIAL PUBLICATION HEISEY COLLECTORS OF AMERICA  
© Heisey Collectors of America, Inc.  
All Rights Reserved 1989

VOLUME XVIII NO. 1

JANUARY, 1989 ISSN 0731-8014



## HEISEY NEWS

P.O. Box 4367, Newark, OH 43055

### CLUB OFFICERS:

President - Bob Rarey (614) 279-0390  
Vice President - Dick Smith (614) 366-5163  
Secretary - Liz Stickle (614) 323-2250  
Treasurer - Mary McWilliams (614) 345-4380  
Curator - Louise Ream

Editor: Louise Ream

P.O. Box 4367, Newark, Ohio 43055

PH: (614) 345-2932

Assistant Editor: Neila Bredehoft

P.O. Box 4367, Newark, Ohio 43055

PH: (614) 345-2932

Published in Newark, Ohio, Printed in Newark, Ohio.

\$15.00 per year - \$1.25 per copy

Back Issues - Each Volume (12 issues) year - \$9.00

Volume V, VIII, IX, X, XI, XII, XIII, XIV, XV, XVI

Heisey Collectors of America, Inc. is a non-profit corporation with tax exempt status. Owners and operators of National Heisey Glass Museum, 6th and Church Streets, Newark, Ohio.

Open daily 1-4 p.m. except holidays. Other hours by appointment. Members admitted free.

### HEISEY NEWS

Heisey Collectors of America, Inc.

All Rights Reserved 1989 - ISSN 0731-8014

Published monthly by Heisey Collectors of America, Inc., Newark, OH 43055. Second Class postage paid, Newark, Ohio 43055. Club membership (includes 12 issues of Heisey News and participation in all club activities) \$15.00 per year plus \$2.50 for each additional family member in same household who wishes a membership card. For Voting Membership add \$25.00 one time only fee.

POSTMASTER: Send address change to:

HCA, P.O. Box 4367, Newark, OH 43055

When requesting information, please enclose a self-addressed, stamped envelope (SASE).

ADVERTISING - Send all ads to: HCA - Advertising  
P.O. Box 4367  
Newark, Ohio 43055

DOUBLE SPACE ALL ADS

### Rates:

CLASSIFIED: 15¢ per word. \$1.50 minimum.

ABBREVIATIONS AND INITIALS COUNT AS WORDS

DEALER DIRECTORY: \$25 per year.

Display:	Members:	Non-Members:
1/8 page ( 9 items)	\$20.00	\$ 30.00
1/4 page (20 items)	30.00	45.00
1/2 page (20 items) Hor.	45.00	67.00
1/2 page (50 items) Vert.	60.00	90.00
1 page (50 items)	75.00	112.50

Personal ads limited to 1/8 space.

ALL ADS MUST BE PREPAID. Ad copy must be received by the 5th of the month preceding the publication date-i.e. April 5th for May issue. Ads containing reproductions will not knowingly be accepted unless clearly stated (i.e. Heisey by Imperial, etc.). HEISEY NEWS assumes no responsibility for false advertising or misleading information. In the event of typographical error, the incorrect portion of the ad will be run in the following issue, but HEISEY NEWS assumes no further liability.

The opinions expressed in articles in HEISEY NEWS are those of the authors and not necessarily those of the organization. The Editorial Staff reserves the right to edit or refuse any material submitted for publication. When requesting information, please enclose a self-addressed stamped envelope (SASE).

## WAMPUM



No. 1533  
Cigarette Box & Cover

## OCEANIC



No. 1519—14 in. Torte Plate  
and 1509—2 Lt. Candlestick

OCEANIC WAS THE NAME GIVEN TO  
THE 1519 PATTERN. LATER CHANGED  
TO "WAVERLY".

### ABOUT THE COVER

MAX SEIDEL

ONE OF HEISEY'S FINEST ENGRA-  
VERS. ENGRAVING IS DONE UNDER  
THE WHEEL.

FROM YOUR PRESIDENT . . .

Dear HCA Members,

A New Year and a new beginning. It is with great pleasure that I report the Museum Restoration Project is complete! Even though some members had doubts of it ever being finished, we can be justly proud of our beautiful Museum and the quality of the work that was done. Larry Stickle, as Museum Committee Chairman, deserves our wholehearted "thanks" as he was the overseer of the restoration from start to finish. The work took much longer than anticipated, but we had no way of knowing the condition of the siding until work was begun. What started as a painting project soon developed into a restoration project. As a result, the total project greatly exceeded the budget figure, but we can be proud of the quality of work done. The total project cost was \$15,767.98 and is paid.

The Executive Committee rescinded their earlier action regarding reservations by Bob McClain at the Best Western. As a matter of clarification, the club's only involvement was obtaining a block of 100 rooms. In the early days, the Convention Committee had permitted Bob, on his own, to handle reservations for those who requested him to do so. He will do the same again this year, strictly on his own, as a service to members. Elsewhere in this issue you will find hotel reservation information.

Now a report of the actions of the Board of Directors at the quarterly Meeting on December 3, 1988. The Treasurer's Report and the Curator's Report are detailed elsewhere in this issue. On the recommendation of the Project Committee the three Colts will be made in Ruby and will be for sale in the gift shop. As part of their report, the Board gave its approval to their recommendation to again hold the 200 Dinner in April, the exact date to be determined later.

The Research and Archives Committee recommended that the Club reprint the Etching & Carving Book which has not been available for some time. The Board voted to have 500 copies reprinted and to sell them as a package with the 500 addendums on hand. The Committee also reported that the club was receiving a large volume of paper goods of the A. H. Heisey Company from the estate of Ann and Tim Heisey. A further report on this will follow as soon as the Committee is able to evaluate the contents of this gift.

A report from the Convention Committee stated that a theme has been chosen for the 1989 Convention. Amy Jo Jones and Bob McClain are Co-Chairman this year. Jim Reynolds has agreed to act as Show Chairman. My only comment at this time regarding the Convention is that there will be some minor changes in some events and times this year; hopefully to shorten the Sunday morning Annual Meeting. The exact specifics I leave to the Chairman in charge to report.

The Museum Benefit Auction at this writing consists of numerous outstanding items for your approval and purchase. Bob Ryan, Chairman, is promising a few surprises again this year. The Auction List will be a separate mailing and will be sent shortly after the first of the year.

Under Old Business, the Board discussed the possible need to purchase the house on W. Church

Street, immediately west of the Office Building. It was decided to forego any attempt to purchase at this time. The purchase of a second computer was placed on hold until the Board was presented a more detailed report on the need and use of this proposed equipment.

New Business: For members requiring accommodations during the Convention, some limited space will be available in the Sharon Valley Apartments behind the Adena Hall parking lot. Summer guest rates (June thru August, 1988) were as follows: 2 bedroom apartment from one to ten day occupancy, \$26.50 per night. Three bedroom, same basis, \$33.00 per night. Limited availability. Contact Evan J. Jansen, General Manager, at 929 Sharon Valley Road, Newark, Ohio 43055. Phone 614-366-4645 for reservations and details.

I would be remiss if I fail to remind you from time to time, the need to continue to support the Endowment Fund. It is hoped that someday in the future, it will be the vehicle that will ensure the continued existence and operation of the Museum. Except for rare and unusual glass items, we now have more glass than can be displayed. I am asking that clubs and individuals consider this when making your gifts to HCA. The suggestion was made at the Board Meeting that we try to double the Endowment Fund in 1989. This would mean raising about \$30,000 during 1989. Think about it!

If we pause to look back, HCA can certainly be proud of all that has been accomplished in the relative short time it has been in existence. It could not have happened without your cooperation and support. We have struggled at times, but have always been able to work out the problems. Since the consolidation of our loans, less than three years ago, we have not borrowed any money and we have repaid better than half the loan. Together we can do anything!

From Club Headquarters, our wish to you for a Happy and Prosperous 1989

*Robert P. Rarey*

#### IN MEMORIAM

Lyle Lane Welker of New Concord, Ohio, died in November. He had lived in New Concord for 42 years. He, along with his wife, Mary, and his son, Lynn, was an Antiques dealer for 25 years. He was a member of HCA and his family has done our June Show from the beginning years. He is survived by his wife, Mary, his son, Lynn and daughter, Kay Mears. Lyle will be missed by all of us. We offer our sympathy to the Welker family.

#### ON THE SICK LIST

Dick Marsh recently has been having heart problems. He has had heart catherization and the balloon treatment for a clogged artery. He is recovering nicely though he has a very swollen and very sore arm. Hopefully he can go back to work sometime in January. Dick is a member of the Newark HCC which founded HCA in 1971. He served on the board for 12 years, and has been Vice President, and Treasurer. He also was the chairman of the Museum Committee for a long time.

We hope he has a rapid recovery.



## FROM THE DESK OF THE EDITOR AND CURATOR . .

1988 has been a bad year, healthwise, for many of our members. We just had word from Mary Jane Miller, of Pittsburgh, a longtime member, that her husband, Albert J. Miller, passed away on November 1. Our sympathy goes out to Mary Jane and her family.

As I write this we are having our first really cold winter day but the sun is shining brightly on our beautifully "restored" museum. At night floodlights light up the glistening white exterior with candles in all of the windows and a glorious wreath with a huge red bow on the front door. It is really awe-inspiring. You should all be so proud of your lovely museum.

Many of you have never had the opportunity to visit here. If you have not, you are missing one of the finest small museums in the country and the largest collection of glass from one factory. You would all be so happy that you collect this beautiful glassware.

After our Christmas Dinner at the Best Western on December 3, many of the guests came to the museum for our usual gathering here to see the Christmas decorations. Everything looks so different at night with the soft lighting and especially, with the tree and all the candles. Refreshments were available in the lower level and many people played euchre. If you wonder what that is, it is basically a midwestern card game - lots of fun!

Getting the most attention were two gorgeous pieces of glass which came from the estate of Mary Jeanette Heisey who has recently died. One is a #3397 Gascony Decanter in TANGERINE. I know of only two of these. Perhaps some of you have one but they are very scarce.

The second is the most beautiful piece of Heisey glass that I have ever seen. It is a #4225 Cobel Cocktail Shaker (which is really not rare at all). However, this one has been cased with Cobalt and then "cut back" to clear. In the manner of Webb Cameo glass, there are flowers raised from the surface. These are blue. The cut-back areas also have a different floral cutting. There are cut flutes all around the base which are also cut through to the clear. For those of you who are not familiar with "cased" glass, it means that a layer of another color has been applied to the outside. We have another piece cased in Cobalt, a very beautiful Ball Vase with an Emil Krall engraving, and the #3390 Carcassonne Pitcher cased with experimental Gold Ruby. The Ball Vase came from the A. H. Heisey II family and the Ruby Gold Pitcher came from the estate of Paul Fairall - a 42 year Heisey employee.

The Cocktail Shaker can rightfully be called Art Glass

In an article in the Newark Advocate some time ago, which was dated January 2, 1913, there was an announcement that Wilson Heisey "is the new President of the Heisey Company in 1913". This is entirely new information to us and changes the history somewhat. We will have to do some study on this.

Speaking of study, we have received a mountain of paper material from the estate of Tim and Anne Heisey which will keep researchers busy for years to come. This is the third large group of material which we have acquired and, no doubt, the most

informative. We are lucky to have Neila Bredehoff here to work with this material.

By the way, in regard to the "Crystal Care" article on page 4 of the December newsletter - please, don't use an emery board on your glass to repair nicks. Find a glass repairman. Consult antique dealers in your area who might know where to have it done. To wash glass try Tri-Sodium-Phosphate which can be purchased at hardware stores and, perhaps, drug stores. Use very sparingly. Don't put stemware in a dishwasher.

The Auction glass this year is very good quality and there are lots of very desirable items. See Bob Ryan's article for more details.

Be on the lookout for your auction list and send your mail bids early.

*Louise Ream*

## MARCH BENEFIT AUCTION

The glass is coming in and, so far, we have logged in many pieces of color: items in Ivory, Opal, Custard, Flamingo, Moongleam, Emerald, Cobalt, Sahara, Amber, Dawn, Limelight, experimental Gold, Alexandrite, Hawthorne and Tangerine. Some of the items include: an Empress 8" Plate in Tangerine; a pair of 1205 Raindrop Candleholders in experimental Gold; a 3350 Wabash Goblet with Gold foot and Stem. These pieces are really rare and should be very competitive. Also, two 1405 Ipswich Goblets in Sahara; a 3380 Old Dominion 1 oz. Bar in Sahara; a 1421 Hilo Vase in Sahara; a pair of 1401 D.F. 6" Candles in Sahara; a pair of 301 Old Williamsburg 1-lite Candelabra in Sahara.

Since I tempted you Cobalt collectors, here are a few pieces of your favorite shade of blue: a 1433 2-lite Candleholder; a nice 1415 Twentieth Century Sherbet; a beautiful 419 Sussex Finger Bowl; the very rare 3407 Cobalt Beer Mug with Crystal handle.

Many pieces of Custard include Toothpicks in 1280 Winged Scroll, 310 Ring Band, and 315 Paneled Cane. Also a 1295 Beaded Swag Opal table set.

Some outstanding pieces in Dawn: a 1637A Salad Bowl; a 14" 1637A Town & Country Torte Plate; a superb 14" Lodestar Torte Plate, quite unusual; there are 1404 Old Sandwich Moongleam 8" Plates, (8 of them) a 12 oz. Soda same color, same pattern; #23 Salt and Pepper in Moongleam; #15 Duck Floral Block in Moongleam; 1205 Pineapple & Fan 10" Vase in Emerald; 1205 Fancy Loop straight side Wine, also in Emerald; 3380 Old Dominion tall and regal Goblet in Alexandrite completely; 3381 Creole 1 oz. Bar in Alexandrite; 1401 Dolphin footed individual Nut, also in Alexandrite; #14 King Fisher Floral Block in Hawthorne; 3381 Creole Champagne in Alexandrite; 2323 Navy Old Fashion double sham; 2323 Navy 5 oz. Soda; 4231 Favor Vases in Sahara and Flamingo; #15 Duck Floral Block in Flamingo; 1252 Twist Mustard w/cover and spoon in Flamingo.

In Provincial a 1506 covered tall Candy; a 4-part Relish Tray, Zircon of course; 1252 Twist 8" Bowl in Marigold, a great piece.

Every ten years or so an item comes along that absolutely blows your eyeballs out of their sockets!

Continued on Page 18.



diamonds are forever . . . . .

It's four pm on a Sunday here in the Yachting Center; there is a soft gentle snow falling and in the distance there is the sound of sleigh bells. I'm standing by the 'Star of the Sea Church' looking with great delight at a Sloop all outlined in Christmas Lights. My grandchildren and I are waiting here, along with other children and their parents, all are excited; you see it is only three days before Christmas and the sleigh, drawn by two horses, is coming to pick us up and transport us all to the center of 'old town' so we can greet Santa. As the sleigh winds its way through our quaint streets many shops are passed, their windows decorated with scenes of Christmas past, Christmas present, and Christmas yet to come. Each shop trying to capture the true meaning of Christmas as well as being the recipient of the first prize in our annual window decorating contest. As the snow falls quietly the children's voices, as they sing carols, seem to project from one end of the town to the other. It is a happy time! Here we are now, in old town, a beautiful tree all decorated with hundreds of tiny sparkling lights that remind me of 'fairy dust'. In the distance, again we hear sleigh bells, this time they are on Santas sleigh as he makes his way to greet the children. As I stand and watch the faces of my grandchildren I can't help but feel some of the excitement that I felt when I was a child. Merry Christmas, Happy New Year = 1989 bring us all "peace on earth and good will toward men!"

To start off the new year, "Mountain Grandma" (from Cal, the golden state) wrote to let me know that she was still in there pitching; #1540 Lariat covered Candy Dish; #1184 Yeoman Creamer in Moongleam, plus another Creamer - the #479 Petal, also in Moongleam. Adding to her small, but growing, collection of #343 Sunburst is the 10" footed Salver (or cake stand). This last piece she really had to put up quite a struggle for but it was well worth the effort.

Last month I reported on how "the Scribe" (from the garden state) began her quest for Heisey and I said I would relate the rest of the story. Over the years, since these first pieces became family treasures, the Scribe has found another Hotel Cream and Sugar in #1231 Ribbed Octagon - another pair of Ribbed Octagon Candleholders plus six (6) more 7" plates. Also found have been many other assorted serving plates, candy dishes, bonbons, etc. in various other patterns, all Moongleam to meet her needs and complete her Christmas Eve table setting. She claims, and rightly so, "it just wouldn't be Christmas without my Heisey"! (perhaps some of you have stories to tell regarding how you started collecting Heisey, let me know.)

From the Beaver State (or) the "Compassionate Beaver" brags finding, in the "Centennial State" (Col), a #1485 Saturn Tidbit tray, in Limelight - and in the "Equality State" (wy) a #1403 Flamingo Half Circle Sugar was tucked securely in her "ditty" bag to be proudly carried home. Something else to hunt for, that's half the fun!!

It's often a puzzle to me where "The Farmer" (Bay State, ma) finds the time, with his busy schedule, to go out and hunt up all those delightful pieces. Well, at least there are still things out there to find; he proves it all the time. Let's start with the #1405 Ipswich footed Sodas, 8 oz. and eight (8) of them; a regal #433 Greek Key 21" buffet Plate; two (2) #2323 12 oz. Navy Sodas, one half sham, wide optic; a #1509 Queen Ann 6½" oval Lemon Dish and Cover with Dolphin Finial - this piece was cut, plus in a Chrome-Kraft holder by Farber Bros.

"The Pottery Man" (mo) the 'show me state' reports finding a #1200 Cut Block individual Sugar, in Custard, with souvenir floral decoration of 'Excelsior Springs, Mo.

"The Keystone Cops" from (pa.) went to a "Depression Glass" show and discovered some Glass that the dealers were not aware was Heisey, which they had out for sale; #300½ Peerless 2½ oz Bar Glass in Flamingo - would you believe it was in excellent condition and marked! Plus, the #1503 Crystalite 4½ oz Cologne with the drip stopper (or dauber).

"One Preacher and his Missus" from the Buckeye State (oh) stopped at one of those "too good to be true" places. This was a very nice shop advertising Cambridge Glass; they decided to go in anyway and just look, and look they did! They tiptoed out with many things. I just am going to report a few this month and will save a few for next month. Ready? The 32 oz Cristos footed Decanter and six (6) Old Fashions plus one (1) shot glass with Tally Ho Etch! Two (2) Mustard Spoons that are scarce as hen's teeth, and two (2) Old Sandwich 12 oz Beer Mugs, also in Crystal. Really now that sure was a "too good to be true place".

"The Cardinal" became the animated owner of the #1252 Twist 8 oz Tumbler in Flamingo. One by one his tumbler collection is expanding. He has not taken a count of late; perhaps he should.

"The energetic Countess" reports the #353 Medium Flat Panel individual dual Almond in Moongleam and a lovely #325 Pillows spooner.

"Yours Truly" added another Candlestick, the #1205 Teardrop (1) in Flamingo; #305 Puntty and Diamond Point Sugar Sifter plus the Paste Jar. I really love that little Paste Jar it is so cute!

"The Teacher" reports a #1201 Fandango three cornered Bowl plus another Bowl, the #1495 Fern and this one is etched.

"The Wiz" bragged about the #4069 Ridgeleigh Cocktail; 8" Crystal Beehive Plate and a #1567 Plantation Marmalade.

"Moonglintered, sunwashed -- our town, place apart, Marblehead, where lagging pulses start --

Again, I must ask for your input, my mailbox is crying to be filled with all your finds, great or small, everything is welcome. Write to me in care of HCA or to me personally.

Happy New Year and Happy Hunting,  
Janet Caswell



HEISEY IN THE TRADE JOURNALS - NO. 300  
 PEERLESS (part 1) By Tom Felt

In September, 1899, Heisey's newest pattern was advertised both in The House Furnisher: China, Glass and Pottery Review, which featured the butter, tall celery, cream, and 9" berry nappy, and on the cover of the September 21st. issue of China, Glass & Lamps (picture #1): "Our new 300 line made in fine crystal. Made in very complete line of tableware. Comprises some 150 pieces." With hindsight of today's collector, it probably doesn't seem exceptional that this famous pattern should have been introduced in such a major way; it is only when we turn to a report in that same journal that we begin to realize what a departure it really was:

A. H. Heisey & Co., of Newark, Ohio, known among the makers of fine pressed crystal and opal glassware in the United States, have departed boldly and radically from the beaten path in designing their new line of crystal tableware, which they call No. 300. The line is severely plain being a reproduction of the old pure lead flint cut glassware of our fathers, with its limpid honest crystal, its broad cut flute, and regularly scalloped edge . . . After so many attempts to do something out of the ordinary rut in glassware designing . . . it is pleasant to turn to an honest and unpretentious reproduction of the old and simple forms of antiquity, since one feels at once that only a metal maker capable of producing pure, fine crystal, would be bold enough to adopt a heavy cut ware pattern with broad flute. We predict a large sale for Heisey's new No. 300 line.

Innovative and successful it was. Although pressed glass reproductions of cut patterns were to remain popular and Heisey would produce several more in the years to come, their plain colonial line caught on to such an extent that within a very short time virtually every other glass company followed suit. If any single pattern can be said to have solidified Heisey's reputation and ensured the new company's survival, it was the no. 300 line. And it is not insignificant to note that from this point on, until the factory closed, there was always at least one colonial pattern (and often several) in production.

No. 300 eventually grew to at least 166 pieces, and possibly as many as 180, plus another 57 items in the no. 300½ line. It is often bewildering trying to differentiate between the various colonial patterns made by Heisey. For instance, many (but not all) pieces in no. 300 are scalloped, whereas the comparable items in no. 300½ have a plain rim. However, as you will note in picture #2, which was the next advertisement to appear in The House Furnisher: China, Glass and Pottery Review in October, 1899, the extensive selection of stemware (at least two dozen stemmed items altogether) are not scalloped and do not even have the serrated band, often referred to as a "petticoat" by collectors today, which appears around the base of so many of the other pieces.

On October 19th., China, Glass & Lamps reported further that Heisey's new pattern "is one of the richest and prettiest things offered the trade for some time . . . They are receiving the endorsement of the public for good taste and sound judg-

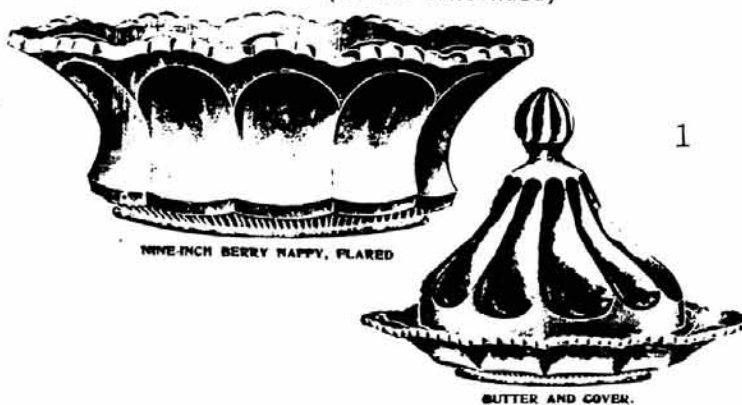
ment in the way of fine orders and it is certain that this line will be one of the most popular things brought out this season."

Over the next year, a total of 16 full-page advertisements appeared in the trade journals, as well as another half a dozen smaller ads and illustrations of individual pieces. Picture #3, from the December 14, 1899, issue of Crockery and Glass Journal is of some interest. In addition to the 13 oz. molasses can and the 6 oz oil bottle, it also pictures the 6" honey dish and cover. But, wait a minute: look at the table set which also appears in the same ad and compare the butter with the one in picture #1. You're right. The butter and honey dish have been reversed in the later advertisement.

In the China, Glass & Lamps issue of March 15, 1900, it is stated that Heisey's "No. 300 pattern has proven a genuine surprise and is having a phenomenal demand." That same month a three page advertisement appeared in The House Furnisher: China, Glass and Pottery Review, including picture #4, showing "a selection from the 30 new pieces recently added to our 300 pattern." Among the new items is a candlestick -- the very first one ever made by Heisey. Later, after three more candlesticks were added to the line, this one was known as the 1-300, with the "-300" suffix eventually dropped. Collectors today know it as the No. 1 candlestick.

Of equal note in this ad is the fact that for the first time No. 300 is called "The Pattern Without a Peer." It was from this designation that Minnie Watson Kamm derived the name Peerless by which the pattern is known today. (It should be noted that some of the catalogs refer to this as the "No. 300 Colonial pattern," and as a result "Colonial" is sometimes also encountered in books on glassware as a name for this pattern; however, this was actually a generic description used for various similar lines in the early catalogs.)

(To be continued)



**OUR NEW 300 LINE**

Is complete in every particular comprising 150 pieces

**A. H. Heisey & Co.**  
 INCORPORATED  
 NEWARK, O.

TALL CELERY.

CREAM.

Oct. 1899

Mar. 1900

2

Claret. Sherry. Burgundy. Wine. Eff Glass. Champagne. Footed Tumbler.

**OUR NEW 300 LINE**  
MADE IN VERY COMPLETE LINE OF TABLE WARE,  
COMPRISING SOME 150 PIECES.

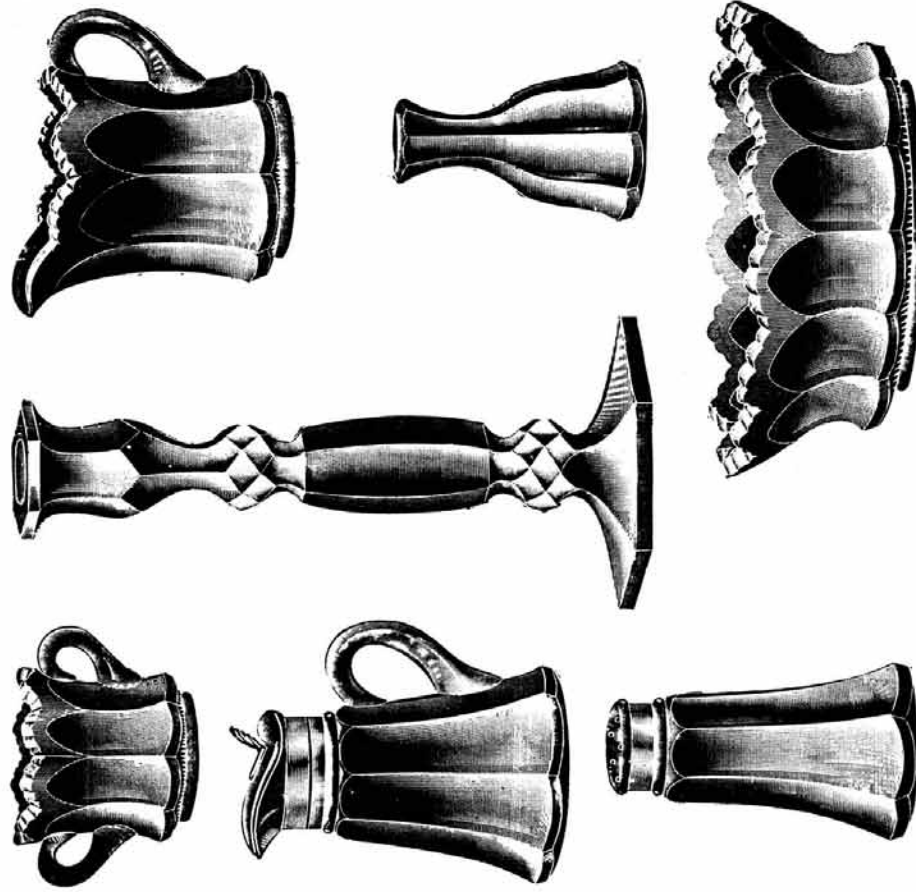
**A. H. HEISEY & CO.**  
INCORPORATED  
NEWARK, OHIO.

**A. H. Heisey & Co., Newark, O.**  
(INCORPORATED)

4

# No. 300

"THE PATTERN WITHOUT A PEER."



A Selection from the 30 new pieces recently added to our

## 300 Pattern

A. H. HEISEY & CO.,

NEWARK, OHIO.

Incorporated.

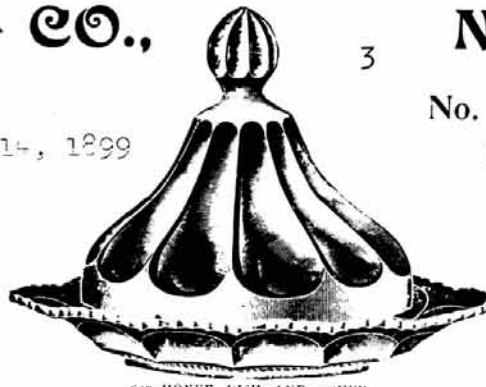
3

Dec. 14, 1899

No. 300  
PATTERN.



FOR MOLASSAS CAN



6 in. HONEY DISH AND COVER



6 oz. OIL BOTTLE AND STOPPER



9 in. BERRY SHALLOW



SUGAR AND COVER



CREAM



SPOON



BUTTER AND COVER



PROVINCIAL ETCHING  
NOT PRODUCED FOR SALE

*J. S. ...*  
12/4/51



## CONVENTION '89 NEWS

### CHRISTMAS IN JUNE!

Amy Jo Jones  
Convention Co-Chairman

For those so fortunate as to live near enough to the HCA Museum to visit frequently, there is never a lovelier time at the grand old home than at Christmas. From candles glowing softly in every window to gaily decorated trees and Heisey Candy Jars filled with brightly colored hard candies, the festive museum is a seasonal treat not to be missed. But how, for example, can Heisey friends like the Warners in far off Montana, the McSweens in southern Texas or my mom in high Colorado enjoy this holiday spectacular? No problem! The convention committee is planning to recreate this very special time during Convention '89 when HCA presents - "Christmas in June!" Although the season will be recreated to be the same as enjoyed by all in December, hopefully typical winter weather won't prevail!

Some things will change, however. For a sampling, the Swap on Saturday evening will start at 7:30 P.M. which is earlier than in previous years. Also, the Antique Show on Preview night will close one hour earlier. No leisurely shopping on that night, anyway - everyone is always in a buying frenzy lest anyone beat them to a good deal and then is outta there!

The Reservation Form for the Best Western Inn is in this issue on page 23. Refer to Bob Rarey's column for more information on this. Send your request to Bob McClain as soon as possible. These rooms go fast.

So this is CALL TO CONVENTION '89! Come, enjoy. Relive Christmas in June. Come home Warners, McSweens, Mom, and everyone. Come home for the Heisey Holidays!

Amy Jo Jones  
Convention Co-Chairman

### QUESTIONS AND ANSWERS . . . .

Q. Clarence W. Vogel in his book (number 3) makes this statement on page 32 regarding Ipswich: "There is no proof that Heisey produced this pattern in any color but Crystal except for the center piece in Cobalt Blue." In another part of his book he states that Ipswich was made in several of the colors. Reference is to pattern no. 1405. Was Ipswich made by Heisey in colors, and if so, which colors? If not, then are all Ipswich pattern no. 1405 items in color made by Imperial? Your assistance will be appreciated.

Janice E. Whitley,  
Wyoming

A. When Mr. Vogel was writing his book he might not have been aware at first that 1405 Ipswich was made in several colors. Actually, if one only had a late catalog it would have been listed only in Crystal. He probably later had access to an earlier price list. No. 1405 Ipswich was actually made in the following colors: Crystal, Moongleam, Flamingo,

Sahara and Cobalt. There are also a few goblets around in Alexandrite, a real rarity. There is one in the museum.

- Q. In what colors did Imperial make this pattern?
- A. Imperial made only four items in Ipswich. These include the large Candy Jar and Cover in Amber, 1960 - 69; Heather, 1961 - 65; Verde 1961 - 67; Antique Blue, 1966. A small Candy Jar made from the footed Tumbler, had a Cambridge lid. (Imperial also owned the Cambridge moulds). These were made in two Cambridge colors, Mandarin Gold and Moonlight Blue from January 1962-65. The gold looks like Heisey's Sahara and the blue is sometimes mistaken for Heisey's experimental blue, especially, when found without the lid. These two are usually marked with the Diamond H. They also made the 11" footed bowl from January, 1960, to January, 1962, in Amber, Heather and Verde. Usually they are marked with the Diamond H. They also made what they called a Pecan bowl which was made by flaring out the Candy Jar and crimping the edges; made in Heather and Amber. Heather is a purplish color and Verde is a mossy shade of green. Imperial also made a few of these in a white color similar to Fenton's Opel, the color of last year's Oscar. These are also marked and only a few have been seen.

### HOW ABOUT A STUDY CLUB

IN SOUTH CAROLINA

CONTACT: Debra J. Stokes  
809 S. McDuffie  
Anderson, SC 29624

### PLEASE NOTE

We have ordered 500 copies of the Encyclopedia of Heisey Glass, Etchings and Carvings by Louise Ream, and Tom and Neila Bredehoft, which has been out of print for several years. (Remember, our former printer threw the printing plates away.) This book will be printed from an original book.

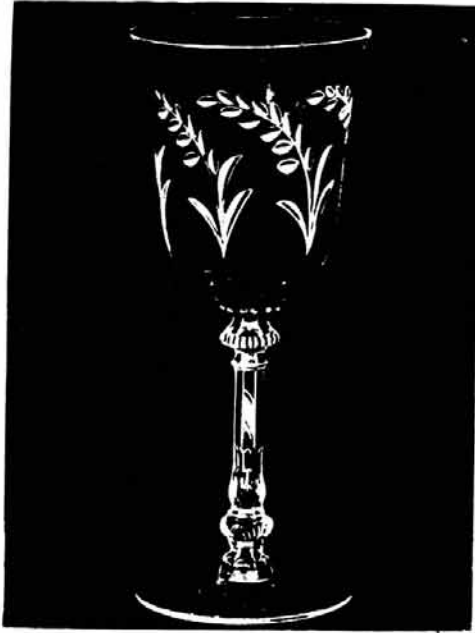
We have about 500 of the Addendums to this book and we plan to offer both of these together for \$19.95. You may pre-order at any time so that you will be assured of receiving a copy.

Advance orders will also help to pay for the book when it is finished.

Address your orders to:  
HCA Etchings and Carvings  
P.O. Box 4367  
Newark, Ohio 43055

Be sure to add \$2.00 for shipping and handling and 67¢ tax in Ohio. Visa and Mastercard accepted.

**HARVESTER**  
Cutting No. 942  
5025 TYROLEAN STEM



No.	Size	Item	Price Doz. P
5025	10 oz.	Goblet, Tall Stem	\$16.20
5025	10 oz.	Goblet, Short Stem	16.20
5025	6 oz.	Saucer Champagne	16.20
5025	6 oz.	Sherbet	16.20
*5025	4½ oz.	Claret	16.20
*5025	4 oz.	Oyster Cocktail	16.20
5025	4 oz.	Cocktail	16.20
5025	3 oz.	Wine	16.20
*5025	2 oz.	Sherry	16.20
*5025	1 oz.	Cordial	16.20
5025	5 oz.	Footed Soda	16.20
5025	12 oz.	Footed Soda	16.20
5025		Finger Bowl (3309)	16.20
5025		Dinner Bell	21.00
2930		Tumbler, Plain	12.00
*3304		Cocktail Icer and Liner	30.00
4192½	9 in.	Vase, Ftd.	57.00
57		Salt or Pepper and No. 657 Top	13.20
112		Candlestick	21.00
500	12 in.	Variety Tray	72.00
142	3 lt.	Candlestick	45.00
1184	16 in.	Buffet Plate	102.00
1184	8 in.	Plate	21.00
1184	7 in.	Plate	19.80
1184	6 in.	Plate	16.20
1519	2 lt.	Candlestick	36.00
1519	11 in.	Footed Floral Bowl	57.00
1519	8 in.	Plate	21.00
1519	7 in.	Salad Plate	18.00
1519	14 in.	Torte Plate	54.00
1519	14 in.	Sandwich Plate	54.00
1519	11 in.	Floral Bowl, Grd. Bot.	54.00
1519		Salad Bowl	54.00
1519		Gardenia Bowl	54.00
1519	11 in.	Relish, 3 Comp.	48.00
1519	5½ in.	Mayonnaise, Ftd.	30.00
1519	7 in.	Mayonnaise Plate	18.00
1519		Cream, Ftd.	24.00
1519		Sugar, Ftd.	24.00
1519	6½ in.	Low Ft. Compot	24.00
1519		Oval Nut Compot	24.00
1519		Ind. Sugar	21.00
1519		Ind. Cream	21.00
1519	4 in.	Violet Vase, Ftd.	24.00
1519	7 in.	Jelly, Ftd.	21.00

**MOONGLO**  
Cutting No. 980  
1540 LARIAT (PRESSED)

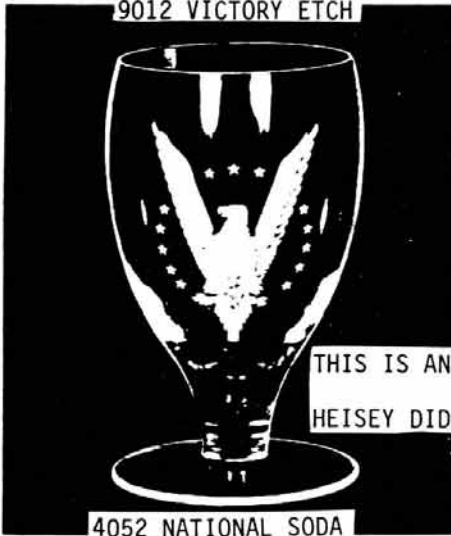


No.	Size	Item	Price Doz. P
1540		Goblet	\$13.35
1540		Saucer Champagne	13.35
1540		Cocktail	13.35
1510		Wine	\$13.35
1540	5 oz.	Soda	13.35
1540	12 oz.	Ice Tea	13.35
1540	14 in.	Sandwich Plate	48.00
1540	13 in.	Gardenia Bowl	48.00
1540	9½ in.	Camelia Bowl	36.00
1540	2 lt.	Candlestick	30.00
1540	3 lt.	Candlestick	36.00
1540	13 in.	Celery	36.00
1540	11 in.	Oblong Relish, 3 Comp.	45.00
*1540	7 in.	Jelly, Hld.	27.00
*1540		Sweet Meat, Hld.	36.00
1540	5 in.	Small Candy Box and Cover	36.00
1540		Twin Dressing Bowl	42.00
1540		Sugar	18.00
1540		Cream	18.00
1540		Sugar and Cream Tray	18.00
1540		Carmel and Cover	48.00
1540	10 in.	Round Relish	48.00
1540		Mayonnaise	27.00
1540	13 in.	Oval Bowl	48.00
1540	7 in.	Candy	24.00
1540	8 in.	Marshmallow	24.00
1540		Footed Fan Vase No. 2	24.00
1540		Footed Cheese and Cover	27.00
1540	1 lt.	Candlestick	13.20
1184	7 in.	Plate	18.00
1184	6 in.	Plate	15.00
1184	8 in.	Plate	21.00
4052	1½ oz.	Bar	7.20
4052	5 oz.	Soda	8.40
4052	8 oz.	Old Fashion	9.00
4052	10 oz.	Sodas	9.60
4052	12 oz.	Sodas	10.20
4052	14 oz.	Sodas	10.80
*3318	3½ oz.	Cocktail	13.35
4036	1 qt.	Cocktail Shaker	72.00
4036½	1 pt.	Decanter, No. 101 P.S	60.00
4225	1 qt.	Cocktail Shaker	72.00
4080		Finger Bowl	15.00

The prices on these two pages are original, from a 1944 catalog.

**VICTORY**

Deep Plate Etching  
9012 VICTORY ETCH



THIS IS AN ASSIGNED NUMBER.  
HEISEY DID NOT GIVE IT A NUMBER.

**SHEFFIELD**

Cutting No. 985  
3408 JAMESTOWN



No.	Size	Item	Price Doz. P
4052		Goblet	\$ 9.60
4052	8 oz.	Old Fashion	6.60
4052	1 1/2 oz.	Bar	5.60
4052	3 oz.	Soda	5.60
4052	5 oz.	Soda	6.00
4052	10 oz.	Soda	6.30
4052	12 oz.	Soda	6.60
4052	14 oz.	Soda	7.50
4052	10 oz.	Tumbler	6.30
*3316	1 oz.	Cordial	10.20
*3316	3 oz.	Burgundy	10.20
*3318	3 1/2 oz.	Cocktail	10.20
5038	3 1/2 oz.	Cocktail	13.20
4054		Martini Mixer	30.00
5012	9 in.	Footed Vase	69.00
4036	1 pt.	Decanter and No. 101 P S	45.00
4036	1 qt.	Decanter and No. 101 P S	60.00
4036	1 qt.	Cocktail Shaker, Complete	60.00
4037	1 qt.	Cocktail Shaker, Complete	60.00
1184	8 in.	Plate	15.00
1184	9 in.	Plate	18.00
1489		Hurricane Block and No. 4061 Shade	54.00

No.	Size	Item	Price Doz. P
3408	9 oz.	Goblet	\$14.40
3408	6 oz.	Saucer Champagne	14.40
3408	6 oz.	Sherbet	14.40
*3408	5 oz.	Parfait	14.40
*3408	4 1/2 oz.	Claret	14.40
*3408	4 oz.	Oyster Cocktail	14.40
3408	3 oz.	Cocktail	14.40
*3408	2 oz.	Wine	14.40
*3408	1 1/2 oz.	Sherry	14.40
*3408	1 oz.	Cordial	14.40
*3408	9 oz.	Tumbler, C.F.	14.40
*3408	5 oz.	Soda or Juice Glass, C.F.	14.40
*3408	12 oz.	Soda or Ice Tea, C.F.	14.40
3408		Finger Bowl (3309)	14.40
3408 1/2	5 oz.	Ftd. Soda or Juice Glass	14.40
3408 1/2	12 oz.	Footed Soda or Ice Tea	14.40
3408		Dinner Bell	21.00
1184	7 in.	Plate	15.00
1184	6 in.	Plate	13.20
1184	8 in.	Plate	18.00
134	2 lt.	Candlestick	30.00
1509		Sugar, Ftd.	21.00
1509		Cream, Ftd.	21.00
1509	12 in.	Sandwich Plate, Rd., 2 Hld.	60.00
1509	11 in.	5 O'Clock Relish, 3 Comp.	39.00
1509	11 in.	Floral Bowl, Ftd.	48.00
1509	5 1/2 in.	Mayonnaise, Ftd.	24.00

**ST. GEORGE WATERFORD**

Pattern No. 976



5024	11 oz.	Goblet	\$15.00
5024	6 1/2 oz.	Saucer Champagne	15.00
5024	4 oz.	Cocktail	15.00
*5024	4 oz.	Oyster Cocktail	15.00
*5024	3 oz.	Wine	15.00
*5024	1 oz.	Cordial	15.00
5024	5 oz.	Soda, Ftd. or Juice Glass	15.00
5024	12 oz.	Soda, Ftd. or Ice Tea	15.00
5024		Finger Bowl (3335)	15.00
5024	1 oz.	Cordial, Tall Stem	15.00
5024	1 oz.	Liquor, Ftd.	15.00
1184	6 in.	Plate	15.00
1184	7 in.	Plate	18.00
1184	8 in.	Plate	21.00



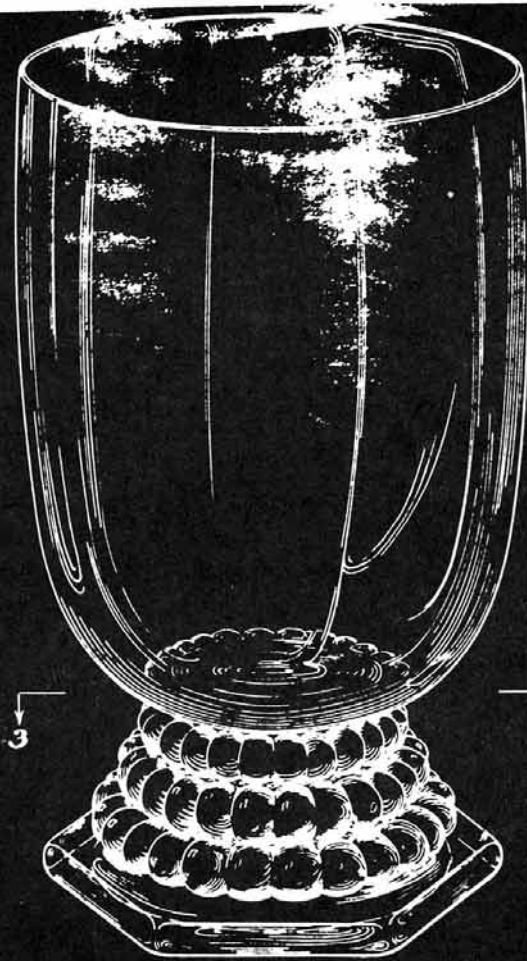


Fig 1

Fig 2



Fig 4

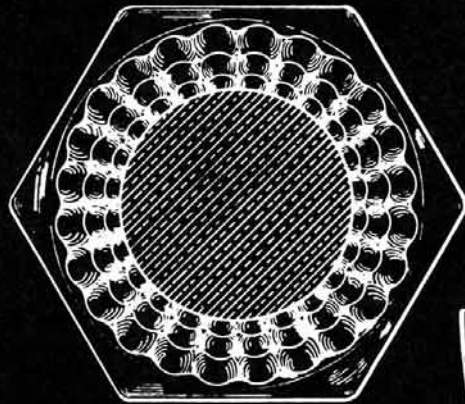


Fig 3



Fig 5

INVENTOR.  
T. Clarence Heisey

BY

ATTORNEYS.

**'UNIVERSAL**



No. 3304—10 oz. Goblet

**WABASH**



No. 3350—10 oz. Goblet

**ALBEMARLE**



No. 3368—8 oz. Goblet

**SPANISH**



No. 3404—10 oz. Goblet

**JAMESTOWN**



No. 3408—9 oz. Goblet

**POLKADOT**



No. 4004—10 oz. Goblet

**NEW ERA**



No. 4044—10 oz. Goblet

**KIMBERLY  
CLASSIC**



No. 4091—10 oz. Goblet

**CRYSTOLITE**



No. 5003—10 oz. Goblet  
Low Foot

**QUEEN ANN**



No. 5009—10 oz. Goblet

**SYMPHONY**



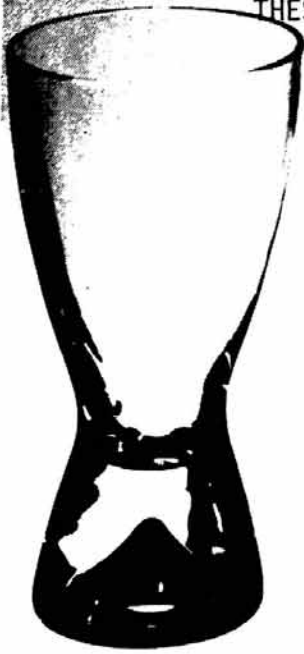
No. 5010—9 oz. Goblet  
Low Foot

**SYMPHONY**



No. 5010—9 oz. Goblet

AD FROM CROCKERY AND GLASS JOURNAL, 2/54  
THESE ARE NOT MARKED AND ARE DIFFICULT TO IDENTIFY.



NEW  
HORIZONS  
AT  
HEISEY



It's  
the New  
Hourglass!

This latest of "new horizons at Heisey" is bound to intrigue those with a flair for things modern. Eva Zeisel has lent her fresh, deft touch to a thrilling new line of hollow bottom glasses we've christened Hourglass. Shown above are the ice tea, goblet, claret and cocktail in this exciting line.

And this is just one of *several* new patterns designed for Heisey by Eva Zeisel. You'll want to cash in on the proven appeal of these designs.



**P. S.** We haven't forgotten those with "traditional taste." Wonderful, well-established patterns like Oxford will continue to delight the hearts of countless women . . . and remember, only Heisey offers such a complete line of gifts in hand-made American glass.

**Heisey**   
**CRYSTAL**

*the finest in glassware,  
made in America by hand*



## DONATIONS SINCE LAST LISTING

1. #355 Prince of Wales Plumes Toothpick, donated by Jim and Butch Jones.
2. Imperial - #1506 Provincial Candy Jar with Cambridge Lid, Verde; #1506 Provincial Vase marked with a Diamond H, Heather; #1506 Provincial Comport, Heather; Fake Strawberry Toothpick, light Green, marked with a Diamond H; #341 #2 Candlestick, Blue Haze, rough; #1506 Provincial Candy Jar with Cambridge Lid, Heather; #1506 Provincial Salt and Pepper, Heather; #341 Old Williamsburg Tumbler, Experimental Orange Iridescent. All donated by William T. Clifford.
3. #1488 Kohinoor 2 lite Candelabrum complete with Bobeches and Prisms in Zircon. Donated by Lynda and David Dickerson.
4. #3333 Old Glory Sherry, 2 oz. with Renaissance Etch. Donated by J. J. McKee Antiquities.
5. #5022 Graceful low Goblet with #507 Orchid Etch. Donated by Diane Pratt Griffith.
6. Royal Haeger Ceramic Clydesdale Planter, (aqua ), designed by Royal Hickman. Donated by Orva Heissenbuttel.
7. #305 Punt & Diamond Point Punch Cup, Marked, which is unusual for this pattern. Donated by Dick and Virginia Marsh.
8. #3318 Waldorf Goblet with Moulin Rouge Cutting. Donated by Mary McWilliams in memory of her mother, Ethel Hogue.
9. #1252 Twist Mustard w/cover in Flamingo. Donated by Betty and Frederick Pease in memory of Olga Heath.
10. #6060 Country Club Old Fashion with #73 Winchester Etch. Donated by Letha Dyer Reynolds in honor of Florence Dyer, longtime employee of Heisey.
11. Two #353 Medium Flat Panel 17" Cemetery Vases (no foot). Donated by Evelyn Ritter in memory of her husband, William E. Ritter, and his mother, Bess Ritter.
12. #1401 Empress Dolphin ftd. Bowl, Imperial, in Sunshine Yellow. Donated by Rick and Mary Alice Stoll. Also, \$158.50 in glass to be sold in the gift shop.
13. #1469 Ridgeleigh Goblet, rare. HCA has the Mould Drawing for this. Donated by Bill Lanche and Jeff Najjoun - Table Toppers.
14. #3408 Jamestown Cordial with Barcelona cutting. donated by Frances and Carl Law in memory of their son, Carl Law, III. #1609 - (6) 8" Plates; #1609 (2) 7" Plates; #3408 Jamestown Goblets (5); #3408 Jamestown ftd. Sodas (6); #1509 Queen Ann(2) two-handled jellies; #1509 Queen Ann Mayo; #1509 Queen Ann Mayo Plate, 7", all with Barcelona Cutting and donated in memory of Frances Law's mother, Loma Lee Ingram. Also, \$40 in glass to be sold in the gift shop.
15. #1234 Mushroom Sherbets (2), donated by Carl Weinbrenner.
16. Glass to be sold in the gift shop in the amount of \$50 donated by Butch and Jim Jones.
17. A Watchman's Time Clock; Desk Pen Holder with Scottie Dog and \$89 in glass to be sold in the gift shop. Donated by Bob and Helen Rarey.
18. Glass to be sold in the gift shop in the amount of \$265. Donated by Barbara & Curt Guilmette.
19. Desk Calendar and Clock from the estate of Tim & Ann Heisey donated by Janet & Lynn Wilcox.
20. Antique Chair donated by Mrs. Richard Jacobs.
21. #1503 Crystalite Candlesticks, pr.; 1503 Crystalite ftd. Candlestick; 112 Mercury Candlestick; 150 Banded Flute Chamberstick; 113 Mars Candlestick, Flamingo; 113 Mars Candlestick, Moongleam; 1471 Buttress, 2 Candlesticks; 120 Overlapping Candlestick, Moongleam; 1509 Queen Ann Saucer Candlebase; 121 Pinwheel Candlestick, Flamingo; 1231 Ribbed Octagon Candlestick, Flamingo; 118 Miss Muffet Candlestick, Moongleam; 1252 Twist Candlestick, Moongleam; 600 Square Handled Candlestick; 112 Mercury Candlestick; 1503 Crystalite Melon Candleblock, pr.; 16 Classic Candlestick; 1533 Wampum Candlestick, pr; 1184 Yeoman Candlestick, Sahara; 1252 Twist Nappy, Moongleam; 1170 Pleat & Panel Nappy, Flamingo; Also, glass to be sold in the gift shop in the amount of \$150. Donated by Miriam Pringle.
22. #5013 Shasta Goblet with #10 Special Cutting. Donated by Helen Rea in memory of her husband, Robert L. Rea.

## CLUB DONATIONS SINCE LAST LISTING . . .

1. #3397 Gascony Cream & Sugar in memory of Lena Gentry. Donated by the Southern Illinois Diamond H Seekers.
2. #1485 Saturn Cruet in Dawn and #1280 Winged Scroll Miniature Lamp, made from Molasses Can. Donated by the Dayton Area HCC.
3. #1255 Pinwheel & Fan Toothpick in Emerald. Donated by the Virginia Heisey Club in memory of Dr. John Bunch.
4. Connecticut HCC donated \$125.00 for Acquisitions.

## ACQUISITION SINCE LAST LISTING . . .

1. #305 Punt & Diamond Point Toothpick.

## CLUB NOTES . . . .

### GATEWAY HEISEY COLLECTORS CLUB OF PITTSBURGH, PA.

Time really flies when you are having fun. Time also flies by when you aren't having fun. Time doesn't wait on you either. So - - - the time came for the Gateway Heisey Collectors Club's November Meeting at the home of Rick and Mary Alice Stoll. A delicious spaghetti dinner served on hand painted china was savored by the twelve members present.

Bill and Ann Donaldson, and JoAnne Autereith were appointed to the nominating committee by our president Earl Autenreith. It doesn't seem possible this year has flown by so fast, and that it is time to have a nominating committee again.

Robbie Stoll, assisted by his father, Rick Stoll, displayed and explained his cruet collection. They compared many features especially, handles and stoppers. We all decided to look more vigorously for cruets.

Our Heisey finds were displayed at our Show and Tell period. To hold, to feel, and to see close up such items as a 5" Plantation Epergne Candlestick, a child's Elephant Handled Mug, a #1508 Card Box, a #4233 5" Candlestick Vase, and a #3380 Sahara 2 oz. footed Bar Glass with the Empress Etch is really the best way to learn. Margaret Eubank and Robbie Stoll were our guests for the evening. If you would like to join us at our Pittsburgh Fun Meetings, please, contact us via The Heisey Collectors of America, Inc., in Newark, Ohio, before any more time flies by.

Phyllis Freier

### HEISEY CLUB OF CALIFORNIA . . . .

On 23 October, Heisey Club of California (L.A.) met in the home of June and Don Godden. Members and guests came from as far as one hundred miles. Major item of business (as per national scene) was election. A fine slate had been compiled in September and was elected by unanimous acclamation:

Pres: Leo Bevon V.P. Karen Temple  
Sec'y: Ann Paulson Trea: Homer Paulson

Following were promptly appointed by new President for 1989:

Pony Exp Editor: Penny Thorup  
Hospital Chairm: Chuck Fowler  
Program Chairman: Betty Wanser  
Corresp. Sec: Roy Boggs

A big vote of thanks is in order for departing officers, for HCC has had a good year; all members can be justly proud. Penny T. has undertaken a big (and important) job, replacing Betty W. as Pony Express Editor. Betty has given us many years of faithful service. Her reliability and steadfast dedication to our Club, and Heisey collecting, is without peer in HCC! All who know her, far and wide, will agree.

Our Hostess, June, flowered us with a full spread of "Orchids" (which she first received as wedding presents, "Oh, so many years ago"), (for shame Don, taking such a young child down that aisle)! She has, in fact, a beautiful collection, with only the very rarest of items missing. After a discourse of Orchid (507) and its' decoration on

such a wide variety of glass patterns including 1435, 1509, 1519, 3304, 3484, 5025, and others, then additional members showed selected pieces of their Orchids.

Recent finds were shown and discussed; followed by refreshments which were too numerous to list and too filling to honestly classify as "refreshments".

Next meeting to be held in Capistrano Beach. Any "snowbirds" flying thru our area, and desiring to visit, may call the undersigned (in Riverside, 714-688-8364) for information on meeting time and place.

Roy T. Boggs

### BAY STATE HCC . . . .

This is your reporter from the Bay State HCC reporting on its October meeting. We go from the "Minute Man" City to the "Tannery" City in Massachusetts. We held our meeting at the office of Maurice and Jean Walter, due to the fact that our regular meeting place is being remodeled.

Gary Olson was the Man of the Hour. He conducted the meeting in the absence of our president, D. Young. Gary did a good job. "D" would have been proud of him.

We held our first raffle and it proved to be quite successful. It was conducted by Frank Maloney. Donald Macomber was the first winner and was quite happy.

The program was a continuation of "Bring and Brag" from last summer and we really out did ourselves this time.

Things brought included the following:  
#1225 Plate; #1519 Waverly Bowl with Orchid Etch; #343 Sunburst Tumbler; #1469 Ridgeleigh Lemon Dish; #300 Peerless Bowl; #433 Greek Key Bowl; #355 Quator Cream and Sugar; #1425 Victorian Shot Glass.

David Steer conducted Show and Tell as usual.

Beverly Berberian provided the food and did a great job.

Keep April 22 and 23 open for the Annual Glass Show in Waltham, Massachusetts. This benefits the National Heisey Glass Museum.

George Gleason

### HEISEY COLLECTORS OF THE ROCHESTER AREA . . .

The October meeting was held at the home of Jerry and Marge Gillette. It was a lovely fall day with a very good turnout. Lois and Walter Winger were the guests of the Jacob's, lovely people who were welcomed by all.

It was suggested that we, as a group, send some glass as a donation to the HCA March Auction; this was approved. My wife volunteered my services to pack and mail the glass; but I'll get even though.

The subject for the day was cream and sugars. Bruce made up a great quiz about the subject. With Sharon helping (actually doing most of the work) the quiz proceeded. I'll tell you, good memory retention is a definite plus during a quiz like this. Jerry Gillette was the winner; I noticed a Vogel book near him during the test. Fortunately there wasn't a prize awarded for the winner. There was a long table set up that was completely covered with sugars and creamers. Among the unusual pieces shown were: rare Cameo pink Depression Glass pieces; Parrot: green Cream and Sugar with a Salt and Pepper set. These pieces were presented by Jerry and Lynn

Mention who are Depression Glass Collectors with many rare lovely items.

The Show and Tell was a good one as well; the following items were shown: Fern individual Cream and Sugar with Bevedere Etch; Lodestar Dawn Cream and Sugar; Half Circle Sahara Cream and Sugar; #1401 Candy box with Antarctic Etch; Daisy and Leaves 1/2 gallon Pitcher; Lariat 3 light Candle Block in the form of heavy rectangle. There were others too numerous to mention.

Some members of our club attended the Auburn, Massachusetts show the first part of the month. The show seemed to be poorly attended, although there were many great pieces displayed for sale. We found a great Gridand Square Tankard from a Rochester Dealer; too bad we had to drive a thousand miles to buy it. Janet and Norman Thran, from Newark, were set up there and had a great selection for sale. Lovely show; too bad our members did not support it more fully.

The shows in this area are continuing at a feverish pace. There were two good ones yesterday just east of here. We noticed a pair of Sahara Swan handled candles scooped up for not much more than a good haircut. So, you see, there are still buys out there if you do your homework and get up early to be first in line at the shows.

Marion Heron's mother died just before Thanksgiving.

Happy Heisey Hunting and a Happy New Year to all.

Our quote for the month is: The adage that greatness is the accumulation of attention to detail. To know what to do but in not doing it is the same as not knowing.

George J. Reynolds

### BAY STATE CLUB . . . . .

by George Gleason

Here I am reporting again from the Tannery City, Woburn, Massachusetts. Our November meeting was held at the office of Jean and Maurice Walter due to the continued remodeling of our regular meeting place.

President D. Young presided. Two new members, Andy and Judy Sanderson, attended. We wish them good hunting!

The program was our annual auction for the benefit of the museum, with George Fogg acting as Auctioneer and, as always, the "great Swami" did fine.

Some sad notes - Susan Proctor's mother and Gary Olson's father died recently.

Excellent food was provided by Frank Maloney, George Fogg and Gary Olson.

Our December Christmas party was held at Steve and Susan Pescatore's home. Everyone brought a dish to be shared by all.

Both Jean Siek and Esther Young are out of the hospital and doing well at this writing.

Since this will be seen after Christmas, we hope that everyone had a beautiful Christmas, a Happy Hanukkah, and a Joyous New Year to come.

Remember our glass show in Watham, Massachusetts in April. (See next issue for exact dates.) Come

and see a beautiful show and, of course, Buy! Buy! Buy!

### LETTERS, WE GET LETTERS . . . . .

Dear Mrs. Ream:

In the September, 1988, issue of the "Heisey News" you reprinted an article on Dorothy Thorpe. At the time I received the copy, I glanced thru it and then, as most busy antique dealers, laid it aside to read later. Well, today was later. I want to say that I found the article very interesting, as I have had a number of her pieces pass thru my shop and, in fact, have one piece in my collection. It is beautifully done glass. The information I have to give you is, while visiting the "John Ringling Home" in Sarasota, Florida, I noticed in the gift shop, a beautiful etched plate; upon looking at it closer, it is signed DTS. I asked the person in charge who that was and she gave me a card which went with the plate. It was from Dorothy Thorpe Studio. I wrote a friend of mine in California and asked him about it. He said that she died some time in the late 1960's or early 1970's, but that her company is still in business.\* The address I have is:

Dorothy C. Thorpe, Inc.  
7990 San Fernando Road  
Sun Valley, California 91352

Also, at the end of the article, you have an Ed. Note: "In 211-16 Price List there is a reference to the #1184 16" Buffet Plate being used by Dorothy Thorpe." It is indeed a fact. In August I sold that piece with a Dorothy Thorpe etch on it. It was a design of Hibiscus Flowers etched into it and was signed DTC on the very edge.

Ron Woolley  
Florida

\* Note: I wrote to this address some time ago and never received a reply. I believe that she died in the 70's. Most of her designs were carvings not etchings. L.R.

\*\*\*\*\*

### DATES TO REMEMBER

March 10, 11	All-Heisey Museum Benefit Auction	Apple Tree Auction Center
March 12	Starlight Flea Mkt.	Starlight Sch.
March 18, 19	All Heisey Show	Armory Place Silver Spring, MD
April 21, 22	Bay State HCC Show	Waltham, MA
June 9, 10, 11	Imperial Convention	
June 9, 10, 11	Fostoria Convention	
June 15, 16, 17, 18	Heisey Convention	
June 22, 23, 24, 25	Cambridge Convention	
August 1, 2, 3, 4	Fenton Convention	



Heisey Auction continued

Would you believe a #21 Electro Portable Lamp with cut shade, spider, complete? What's so great about that??? It's Flamingo, darlin, yes sireee Flamingo; this is extremely rare, extremely beautiful and only one to sell.

Wow!!! How about a 393 Narrow Flute 1/2 gallon Tankard with a beautiful floral cutting with five 9 oz. Tumblers in 400 pattern with the same cutting; one of the finest water sets I have seen in Heisey, truly beautiful. There is also a beautiful 353 Medium Flat Panel 10" Spice Tray with a floral cutting and cut star bottom - gorgeous. Two 398 Bowls, 8", elaborately cut; 3404 Spanish Cordial with a Pairpoint cutting; 1191 Lobe 9" Spice Tray with a Hawkes cutting; a complete set of Kimberly stems - Goblets, Champagnes, Cocktails, 8" Luncheon Plates all beautifully cut with the Dolly Madison Rose cutting; 3404 Spanish Goblet with Florentine cutting; 3365 Ramshorn Goblet with a splendid cutting, stem, bowl and foot.

There are also several deep plate etchings; Circus, Sportsman, Club Drinking Scene and Tally Ho. Also, a Nimrod carved Old Fashion not seen too often anymore. Lots of old patterns - - 160 Locket on Chain Punch Cup; 1295 Beaded Swag Toothpick, Ruby Stain; 1205 Fancy Loop Cracker Jar; 433 Greek Key Cherry Jar; 325 Pillows footed Rose Bowl; 300 Peerless Table Set; 1201 Fandango beautiful 10" Oblong Dish, superb example of Fandango, one of the best I've seen; a Toothpick, 9" Nappy and a gorgeous 8 1/2" footed Comport all in Fandango; 352 covered Crushed Fruit Jar - 2 quart; 1250 Groove and Slash Cruet with stopper; 1776 Kalonyal Toothpick and Punch Bowl; 1220 Punt Band with beaded top Toothpick, Ruby Stain - this is the hard one to find.

A lot of animals - two sets of Giraffes; a pair of Ringed Necked Pheasants; Asiatic Pheasant; Donkey; Clydesdale; beautiful Show Horse; Medium Elephant; Rearing Pony; Sealyham Terrier; Rooster Vase.

Animal related items - 4058 Goose stem Cocktail, Sherry and Wine; 3405 Alibi Cocktail with the Chicken Chase Etching, Moongleam foot.

There are some super stems - 160 Locket on Chain Wine, Ruby Stain with Gold decor; 4044 New Era Cordial; 3416 Barbara Fritchie 3/4 oz. Brandy in Cobalt; 6003 Tempo Cordial; 5010 Symphone Cordial with Crinoline Etching; 4083 Stanhope Claret with Limelight Bowl; Two 5040 Lariat Cordials with Moonglo cutting; 369 Hartman Wine.

How about a 433 Greek Key Tankard; 1425 Victorian Rye Bottle; #5 Patrician Toy Candlesticks, a pair; #30 Tom Thumb Candlestick; 1567 Plantation 10 1/2" round Serving Tray - unusual piece in Plantation with unusual marking in the leaf; 13" Victorian Torte Plate and many others.

The selection is great!! These are some of the ones that appealed to those of us unpacking and cataloging the glass. Get your bids in early, or better yet, come to the auction. It truly is a fun event and the glass is spectacular. A couple of the pieces are worth the trip.

Happy New Year,  
Bob Ryan

Many more lots have been processed since this was written and the glass continues to be very interesting and in good condition. This will be a good auction. L.R.



ALL HEISEY & IMPERIAL GLASS AUCTION

SAT JAN. 21, 1989

9:30 A.M.

APPLE TREE AUCTION CENTER  
1616 W. CHURCH STREET  
NEWARK, OHIO 43055

THIS SALE WILL OFFER ALMOST 800 LOTS OF HEISEY AND HEISEY BY IMPERIAL GLASS. AS WELL AS A LARGE COLLECTION OF ADVERTISEMENTS, ORIGINAL CATALOGS, TABLE TALKS ETC. & OTHER PAPER GOODS FROM THE HEISEY FACTORY. GOOD COLORED PIECES INCL - ALEXANDRITE D F FLORAL BOWL; LRG LIMELIGHT SATURN VASE; FLAM & MNGLM DOUBLE RIB & PANEL BASKETS; & IN EMPRESS COBALT PLATES; DAWN COV BUTTER DISH ETC.. ANIMALS INCL ASIATIC PHEASANT; PR HORSEHEAD BOOKENDS; PHEASANTS; GOOSE; HEAD DOWN BUNNY & SCOTTY DOGS. ALSO OFFERED IS TALLY HO FOOTED DECANTER W/NATIONAL COCKTAILS; TALL PIED PIPER ETCH PITCHER & WINES; UNUSUAL B & O R. R. ETCH COCKTAILS; NICE SELECTION OF CRUETS; GOOD COLLECTION OF IPSWICH, PROVINCIAL & VICTORIAN PIECES. GOOD PIECES IN ROSE AND ORCHID ETCH, SEVERAL MIRROR ADVERTISING SIGNS & APPROX 100 PIECES OF COLONIAL WARE INCLS STEMS & SERVING PIECES.

IMPERIAL: THE LARGEST COLLECTION OF HEISEY BY IMPERIAL WE HAVE OFFERED. AMBER ANIMALS INCL RARE TROPICAL FISH; SHOW HORSE; LRG ELEPHANT; DOE HEAD; PIGLETS; FROSTED SOW; COLTS; MALLARDS; FILLY; CLYDESDALE & UNUSUAL LADYHEAD STOPPER. SLAG ANIMALS INCL SCOTTY; KICKING & SITTING COLTS; AIREDALE & OTHERS. ULTRA BLUE ITEMS ARE GAZELLE; AIREDALE; CLYDESDALES; ELEPHANT; DONKEY; SCOTTY; WOODDUCK; & COLTS; OTHER ANIMALS ARE JADE & BLACK TIGERS; PINK & GREEN ELEPHANTS; YELLOW COLT, FISH MATCHHOLDER & CANDLESTICK; FROSTED AMBERINA FISH BOOKEND; CRYSTAL ELEPHANT, DOE HEAD & FOX ASH TRAY; MILK GLASS & HORIZON BLUE ANIMALS; OSCARS; NURSERY RHYME MDL MUGS; LOTS OF COLONIAL COLORED STEMWARE & OTHER GOOD PIECES.

CATALOGS WILL BE IN THE MAIL SOON. IF YOU HAVE NOT RENEWED YOUR SUBSCRIPTION, SEND RIGHT AWAY. SUBSCRIPTION IS \$12.00 FOR THE YEAR & INCLS PRICE LIST AFTER EACH AUCTION.

WE HOPE YOU CAN ATTEND THIS SALE BUT IF YOU ARE UNABLE TO COME - WE WILL BE HAPPY TO EXECUTE MAIL BIDS FOR YOU.

DOORS OPEN 1 HOUR BEFORE SALE

SAM SCHNAIDT & TIM HUGHES - AUCTIONEERS  
(614) 344 - 4282  
FRANK FRYE - MANAGER

CLASSIQUE GLASS CO. PH: 918-744-5409  
 BOX 52572 UPS EXTRA  
 Tulsa, OK 74152 EACH UNLESS NOTED

- 160 "Locket on Chain" 4" Nappy . . . . \$ 47.00
- 160 "Locket on Chain" Spooner . . . . . 85.00
- 160 "Locket on Chain" Creamer . . . . . 80.00
- 325 "Pillows" Cov'd Sug., gold on lid . . 70.00
- 433 "Greek Key" 6 oz Oil, #8 Stopper . . 90.00
- 433 "Greek Key" Compote . . . . . 80.00
- 1401 "Empress" 11" D.F. Bowl, Moongleam . 75.00
- 1401 "Empress" 8½" Vase, Antarctic Etch . 125.00
- 1401 "Empress" #135 Candlesticks, Sahara pr 165.00
- 1404 "Old Sandwich" 8 oz Tumbler, Str. (6) 16.00
- 1405 "Ipswich" Candl Vase, inserts, prisms pr 185.00
- 1425 "Victorian" Sherbets, Sahara (3) . . 47.00
- 1495 "Fern" 6" Hdld Mint Dish, Zircon . . 55.00
- 1506 "Whirlpool" 2 lt. Candlestick . . pr 120.00
- 1567 "Plantation" Cream & Sugar . . . . set 48.00
- 1567 "Plantation" Ivy Etch Goblets (6) . 35.00
- 1567 "Plantation" Ivy Etch Champagnes (4) 35.00
- 5010 "Symphone" Cockt'ls, Minuet Etch (2). 42.00
- 5072 "Rose" Goblets, Rose Etch (7) . . . 44.00
- 5072 "Rose" Sherbets, Rose Etch (8) . . . 37.00
- 1252 "Twist" Flamingo, Many Serv. Pcs. Call/Write

\*\*\*\*\*

J & T ANTIQUES PH: 508-347-5424  
 P. O. BOX 933 UPS & INS EXTRA  
 STURBRIDGE, MA 01566 \* MARKED

- 355 "Quator" 4" square Nappies\* (12) . ea \$ 10.00
- 391 Vase\*, 8" . . . . . 95.00
- 393 "Narrow Flute" ind. Sugar\*, Flamingo 35.00
- 411 "Tudor" 8" Vases (2) . . . . . ea 35.00
- 433 "Greek Key" 8½" Bowl\* . . . . . 75.00
- 433 "Greek Key" 7½" ftd. Banana Split\* 48.00
- 436 Vase\* 16½" . . . . . 75.00
- 436 Vase\* 14" . . . . . 62.00
- 1184 "Yeoman" 5 pcs. Berry Set\* . . . . 55.00
- 1184 "Yeoman" 6" low ftd. Compote\*, Moon-  
gleam, D/O . . . . . 50.00
- 1401 "Empress" Old Colony Etch, Service for Six  
Six 8" Plates\*, Six Cups & Saucers\*,  
Six 3380 Oyster Cocktails, & Six 3380  
10 oz. Tumblers. . . . . 390.00
- 1405 "Ipswich" Sug & Cr, Moongleam, Rare\* 125.00
- 1567 "Plantation" 7" Salad Plates (8) . ea 12.00
- 3380 "Old Dominion" 10 oz Goblet, Sahara 40.00
- 3380 "Old Dominion" 10 oz Tumblers, Sahara  
(2) . . . . . ea 20.00

WANTED: HANDLE FOR #500 ICE TUB  
 #350 "PINWHEEL & FAN" PUNCH CUPS  
 #1425 VICTORIAN PUNCH BOWL & BUFFET  
 PLATE

\* OAK GROVE ANTIQUES PH: 508-772-2538  
 \* 49 GROVE STREET AFTER 5 P.M.  
 \* AYER, MA 01432 P & I EXTRA  
 \* \* MARKED

- \* 350 "Pinwheel & Fan" 8" Bowl\* . . . . . \$ 55.00
- \* 411 "Rib & Panel" 4 oz. Oil\*, #7 Strp. . 45.00
- \* 1503 "Crystalite" 6 oz. Sherbets\* (2) . ea 11.00
- \* 1503 "Crystalite" Punch Cups\* (10). . . ea 7.00
- \* 1519 "Waverly" 13" Gardenia Bwl, Orchid Et 65.00
- \* 1519 "Waverly" 12" Crimped Floral Bowl,  
Rose Etch . . . . . 55.00
- \* 1540 "Lariat" 14" Sandwich Plate . . . 45.00
- \* 1472 "Parallel Quarter" 12" Floral Bowl  
King House Etch . . . . . 50.00
- \* 3312 "Augusta" Saucer Champagne D/O, Flamingo  
(8) all 110.00

LIQUIDATING THE GLASS COLLECTIONS

SELLING (PLUS OR MINUS) 700 PIECES OF HEISEY. IN-  
 CLUDES 35 DIFFERENT PUNCH CUPS, 30 ASSORTED CRUETS,  
 ONE OF A KIND ITEMS AND 60 ASSORTED STEMS. ALSO  
 800 PIECES OF DUNCAN MILLER OF ALL DIFFERENT PAT-  
 TERNS. (PLUS/MINUS). SEND YOUR WANTS WITH AN  
 SASE AND ALL WILL BE ANSWERED.

CERTIFIED CHECK OR MONEY ORDER - MANNY KLAWANS,  
 2308 ASHBORO DRIVE, CHEVY CHASE, MARYLAND 20815.  
 PHONE: 301-588-2755.  
 (LEAVE MESSAGE, WILL RETURN IT.)

\*\*\*\*\*

FOREVER HEISEY PH: 614-344-5955  
 NORM & JAN THRAN SHIPPING & INS. EXTRA  
 1663 LONDONDALE PKWY. H = MARKED  
 NEWARK, OHIO 43055

- \* 3407 "Overdorf" 16 oz Mug, Cobalt with Cry-  
stal Handle, Rare . . . . . \$395.00
- \* 343 "Sunburst" Tumbler, H (4) . . . . ea 45.00
- \* 305 "Punty & Diamond Point" cov'd Cracker  
Jar . . . . . 295.00
- \* 3390 "Carcassonne" Tall Gob, Alex, H (5) ea 110.00
- \* 3390 "Carcassonne" Tall Champ, Alex, H (5)ea 90.00
- \* 1506 "Provincial" 4-pt hldl Relish, Lime-  
light . . . . . 210.00
- \* 433 "Greek Key" 9 oz Goblet, H (4) . ea 145.00
- \* 433 "Greek Key" 8½ oz Bowl, H . . . . 55.00
- \* 433 "Greek Key" 4½" Nappy, H (7) . . ea 17.50
- \* 1541 "Athena" Goblet . . . . . 47.50
- \* 1541 "Athena" 7½" Plate & 7½" Nappy (2) ea 25.00
- \* 1541 "Athena" 9" Tray for Cr/Sug . . . . 25.00
- \* 1541 "Athena" 8" Bon Bon . . . . . 32.50
- \* 1401 "Empress" 8" rnd Plate, Alex, H (5) 50.00
- \* 1401 "Empress" 7" sq. Plate, Alex, H (3) 45.00
- \* 351 "Priscilla" 6½" ftd Sw Meat, Crimped, H 45.00
- \* 351 "Priscilla" cov'd Mustard, H . . . 30.00

IG - Standing & Sitting Piglets, Amb (8)ea 35.00  
 IG - Show Horse, Amber . . . . . 295.00  
 IG - Head Forward Filly, Amber . . . . . 275.00  
 INQUIRIES WELCOME - ALWAYS 2,000 PC'S OF HEISEY IN  
 STOCK. ALL SASE ANSWERED. WRITE WANTS - WE SEARCH.

H & R DIAMOND H  
HELEN - BOB RAREY  
1450 White Ash Drive  
Columbus, Ohio 43204

PH: 614-279-0390  
AFTER 5:30 P.M.  
UPS & INS EXTRA  
\* MARKED

PUNCH CUPS

150	"Banded Flute"* (Wedding Band) (8)	ea	\$17.50
300½	"Peerless"* (Colonial)		12.50
305	"Punty & Diamond Point"*		19.50
325	"Pillows"*		42.50
337	"Touraine"* (8)	ea	9.50
339	"Continental"* (2)	ea	10.00
343	"Sunburst"*		19.50
357	"Prison Stripe"*		22.50
400	"Colonial"*		10.00
407	"Coarse Rib"* (6)	ea	12.50
411	"Tudor"* (Rib & Panel) (10)	ea	12.50
429	"Plain Panel Recess"*		17.50
1105	"Flared"*		7.50
1205	"Fancy Loop" (1 with gold decor) (4)	ea	12.50
1401	"Empress"* (8)	ea	17.50
1425	"Victorian"* (8)	ea	9.50
1469	"Ridgeleigh"* Round (6)	ea	12.50
1506	"Whirlpool"* (Provincial) (4)	ea	12.50
1567	"Plantation"* (2)	ea	12.50
1776	"Kalonyal"*		30.00

\*\*\*\*\*

DONALD P. BEAN  
36 HARDING STREET  
MILFORD, MA 01757

PH: 508-473-0561  
SHIPPING EXTRA  
\* = MARKED

5025	"Tyrolean 3 oz Wine*, Orch Et (2)	ea	\$ 45.00
1205	"Fancy Loop" #3 Bon Bon		22.00
300	"Peerless" 7 oz Goblets (7)	ea	11.00
150	"Banded Flute" Saucer ft Chamberstick		45.00
353	"Medium Flat Panel" 1 pc Cheese * Crkr*		55.00
47	"Regal" Candle* 9 3/4" tall - 1 only		65.00
1506	"Provincial" Sweet Pea Vase*		45.00
1405	"Ipswich" 8 oz ftd. Soda (8)	all	100.00
1405	"Ipswich" Finger Bowls* with under Plates, (5) sets for		75.00

STILL NEED COVER FOR LG 1205 POTPOURRI JAR!

**ART GLASS AUCTION**

Saturday Evening, February 18, 1989 - 6:00 p.m.

Travel Lodge - Marietta, Ohio

Interstate 77 (Exit 1) and Route 7 North

**275 Lots of FENTON, NORTHWOOD,  
IMPERIAL & ETC.**

Auctioneer: Ross Thomas (614)374-8629

MAIL BIDS ACCEPTED. CATALOG \$1.00 + SASE. FOR INFORMATION SEND SASE TO:

Mildred Coty  
121 West 12th Street  
Parkersburg, WV 26101

Terms of Sale: Cash, Traveler's Check, Cashier's Check or Personal Check with positive identification known by auctioneer. Not responsible for loss or accidents. Licensed and bonded in favor of the State of Ohio.

*	JEAN & DON PARRETT	PH: 517-784-7319
*	4995 MAPLE DALE ROAD	RECORDER
*	JACKSON, MI 49201	POST & INS EXTRA
*	4044 "New Era" 2-lt."A" Prsms Candelabra pr	\$145.00
*	300-2 "Colonial" 2-lt. "C" Prsms Candela-	
*	bra, 16" high (1)	325.00
*	1-2-3 Large, Medium, & Small Elephants set	725.00
*	300-2 "Colonial" 2-lt. "A" Prsms Candelabra,	
*	16" high	ea 270.00
*	1503 "Crysolite" 14" diam.; edge up Sandwich	
*	Tray & Cheese, footed	2 pcs set 65.00
*	1503 "Crysolite" 6" diam. cov'd shell footed	
*	Candy	45.00
*	1503 "Crysolite" 6" high ftd. Compote	28.00
*	1503 "Crysolite" cov'd Jam Jar	48.00
*	1503 "Crysolite" cov'd Mustard, Marked	45.00
*	1503 "Crysolite" 3" short Fl'd Vase	55.00
*	1503 "Crysolite" 8" lg. oval Mayo Plate	28.00
*	1469 "Ridgeleigh" 4" cov'd Cigarette Box	35.00
*	1489 "Puritan" 4½" sq. Horse Hd. Ash Tray	60.00
*	49 Salt & Pep D/O ft'd, #809 Top, Flmngo pr	65.00
*	1401 Salt Shkr ftd., #809 Top, Sahara (1)	30.00
*	1951 "Cabochon Sug & Creamer	set 35.00
*	3357 "King Arthur" 2½ oz Sherry, D/O,	
*	Moongleam (6)	ea 30.00
*	488 Cologne 2 oz & #61 Stopper	48.00
*	393 "Narrow Flute" cov'd Mustard	38.00
*	353 "Medium Flat Panel" 6 oz Syrup, no lid	20.00
*	1231 "Octagon" 6" Plate, Nut Bwl & Ladle,	
*	Hawthorne	3 pc set 55.00
*	1632 "Lodestar" 10" Celery Tray, Dawn	65.00
*	4222 "Horseshoe" 2 hldd Sugar Bwl	50.00
*	1506 "Whirlpool" 2 hldd Sugar Bwl	18.00
*	1404 "Old Sandwich" 10 oz Low ftd Goblet, Sah	18.00
*	1184 "Yeoman" 6" high Compote, Moongleam	35.00
*	352 "Flat Panel" 2 qt. Crushed Fruit & Cov.	165.00
*	341 "Williamsburg" 12 oz Milk Pitchr N/Mark	75.00
*	1509 "Queen Ann" Ice Bucket & Hd'l, Plume Ct	145.00
*	1485 "Saturn" Ftd. Cheese (for Hostess Helper)	38.00
*	1567 "Plantation" cov'd Marmalade & Spn (2)	ea 75.00
*	1567 "Plantation" cov'd Butter, round	85.00
*	4044 "New Era" 2 hldd Bouillon Cup, Matte	
*	Etch Handles (2)	ea 18.00
*	4044 "New Era" 2-lt "A" Prsms Candle Hldr pr	145.00
*	341 "Puritan" 10½" Crckr & Low Cheese,	
*	Great Gold	2 pc set 95.00
*	1425 "Victorian" 12" Cracker Plate	65.00
*	1184 "Yeoman" 8½" D/O Luncheon Pl, Sah (3)	ea 12.00
*	1252 "Twist" 7" Salad Plate, Mnglm (4)	ea 20.00
*	1252 "Twist" 6" Plate (4)	ea 15.00
*	1519 "Waverly" 14" Torte Plate, #965 Narc Ct	60.00
*	1519 "Waverly" 9½" Salad Bwl, Orchid Etch	135.00
*	1519 "Waverly" cov'd sq. Butter	75.00
*	1519 "Waverly" 2 hldd Dolphin Ice Bucket	100.00
*	4054 "Coronation" Ice Bucket	50.00
*	1540 "Lariat" 12½" Gardenia Bwl, Moonglo Cut	75.00
*	1540 "Lariat" 7" Mayo Plate	12.00
*	1231 "Octagon" c'tr hldl Sandwich Tray,	
*	Moongleam	50.00
*	1229 "Octagon" ftd Mayo & Ladle, beautiful ct	48.00
*	1513 "Baroque" 2-lt C Vase Candelabra	75.00
*	1405 "Ipswich" 3½ oz Cruet & Stopper	60.00

NOTE - 10% OFF ON ALL ITEMS LEFT IN SEPTEMBER, OCTOBER, NOVEMBER AND DECEMBER, 1988 HEISEY NEWS AD'S OF JEAN & DON PARRETT. THANK YOU.



CHARLES O. HORSFALL  
17 WHITNEY STREET  
JEFFERSON, MA 01522

PH: 508-829-9928  
6 P.M. - 9 P.M.  
E.S.T.  
\* MARKED

SHIPPING & INSURANCE INCLUDED IN PRICE

- 11 "Muddler" (2) . . . . . ea \$ 30.00
- 150 "Pointed Oval in Diamond Point" 4" Nappy (2) . . . . . pr 40.00
- 305 "Punty Band" 4 oz Oil, #4 Stopper 90.00
- 335 "Prince of Wales Plumes" ½ gallon Pitcher, worn gold\* . . . . . 115.00
- 335 "Prince of Wales Plumes" Butter w/cov, one chip, worn gold\* . . . . . 70.00
- 350 "Pinwheel & Fan" 4½" Nappy\* . . . . . 20.00
- 350 "Pinwheel & Fan" Hotel Sugar\* . . . . . 20.00
- 351 "Priscilla" 10 oz Catsup, #3 Stopper 70.00
- 393 "Narrow Flute" Ind. Almond, Sil Overlay\* 15.00
- 393 "Narrow Flute" Ind. Almond\* . . . . . 12.00
- 393 "Narrow Flute" Mustard & Cover\* . . . . . 35.00
- 394 "Narrow Flute" 5" Lemon, Ptd 2/22/16\*, good gold . . . . . 30.00
  
- 433 "Grecian Border" Ind. Almond\* . . . . . 28.00
- 433 "Grecian Border" Cream/Sugar\* . . set 100.00
- 1184 "Yeoman" 5" Rd. Lemon Dish\*,no/cov, Sahara, D/O . . . . . 35.00
- 1184 "Yeoman" 2 oz Oil\*, #2 Clear Strpr, Sah 75.00
- 1201 "Fandango" 6" Oval Relish . . . . . 22.00
- 1201 "Fandango" Hotel Sugar . . . . . 25.00
- 1205 "Fancy Loop" No. 1 Salt, Replated Top 35.00
- 1205 "Fancy Loop" Toothpick . . . . . 65.00
- 1205½ "Fancy Loop" Salt, Top good condition 33.00
- 1229 "Octagon" 6" Cheese, Marigold, mild crazing . . . . . 20.00
- 1250 "Groove & Slash" 8½" Nappy . . . . . 60.00
- 1252 "Twist" Ind. Nut\*, Moongleam (2) ea 26.00
- 1252 "Twist" 5" Mint\*,Marigold, mild crazing 26.00
  
- 1252 "Twist" 4 oz Oil\*,Flamingo . . . . . 85.00
- 1252 "Twist" 7" 2-handled Bon Bon\* . . . . . 30.00
- 1252 "Twist" 4" 2-handled Bon Bon\*, Flamingo 25.00
- 1255 "Pineapple & Fan" 8" Nappy . . . . . 85.00
- 1280 "Winged Scroll" 4" ftd Sauce, Ivorina Verde . . . . . 40.00
- 1295 "Bead Swag" Spooner, Ruby Stain, Souvenir 1903 . . . . . 75.00
- 1404 "Old Sandwich" 6" Candlestick . . . . . 32.00
- 1404 "Old Sandwich" Oyster Cockt'l\*(5) all 60.00
  
- 1413 Cathedral Vase\*, Sahara . . . . . 195.00
- 1428 "Warwick" 8 3/4" Vase . . . . . 55.00
- 1428 "Warwick" 2½" 1-lt. Candlestks\* (2) 36.00
- 1428 "Warwick" 5" Vase\* . . . . . 35.00
- 1469 "Ridgeleigh" Ind. Nut . . . . . 12.00
- 1469 "Ridgeleigh" 2-comp, 2-hdld Jelly . . 22.00
- 1469 "Ridgeleigh" Ind. Cream & Sugar\* . . 45.00
- 1469 "Ridgeleigh" 3 cornered Mint\* . . . . 20.00
  
- 1425 "Victorian" 5 oz Sherbets (3) . . . ea 15.00
- 1425 "Victorian" 2½ oz Wine\* (8) . . . all 180.00
- 1503 "Crystalite" Leaf Hdld Jelly, Sticker 60.00
- 1503 "Crystalite" 2 Hdld Jelly\* . . . . . 20.00
- 1509 "Queen Ann" Dolphn ftd Mayo\*, Normandie Etch . . . . . 50.00
- 1519 Waverly Cream & Sugar\* . . . . . 45.00
- 1540 "Lariat" Sugar . . . . . 18.00
- Mallards I.G., Lt. Bl, up-½-down . . .set 100.00
- Rooster, Hen, 2 Chicks, I.G., Milk Gls set 125.00

\* WILLEY'S ANTIQUES PH: 614-828-2557  
\* 11110 CANNON ROAD  
\* FRAZEYSBURG, OHIO 43822

\* Over 2,000 pieces of Heisey for sale. Stenware  
\* and dinnerware matching service. Lots of colors,  
\* etchings and cuttings. Send want list and SASE.  
\* All letters answered if a SASE is enclosed.

SHOW DATES

- \* Jan 6, 7, 8 Will Rogers Coll. Ft. Worth, TX
- \* Jan 13, 14, 15 Fairgrounds Tulsa, OK
- \* Jan 20, 21, 22 Civic Center McAllen, TX
- \* Jan 27, 28, 29 Y.O. Hilton Motel Kerrville, TX
- \* Feb 3, 4, 5 Brazos Center Bryan, TX
- \* Feb 11, 12, 13 Palmer Auditorium Austin, TX
- \* Feb 17, 18, 19 Rapides Parish Coll. Alex., LA
- \* Feb 24, 25, 26 To be announced
- \* Mar 3, 4, 5 St. Bernard Cult. Chalmette, LA  
Center
- \* Mar 18, 19 Armory Place Silver Springs,  
Maryland

HOPE TO SEE YOU AT THE SHOWS.

Mildred and Harold  
Willey

\* \* \* \* \*

## Classified Ads

\* BUYING: Caprice blue or Rosepoint by Cambridge;  
\* Rose or Orchid by Heisey; American, June Fair-  
\* fax, Versailles, Trojan, etc., by Fostoria; and  
\* Depression Glass in Crystal or colors. NADINE  
\* PANKOW, 206 S. Oakwood, Willow Springs, IL 60480.  
\* PH: 312-839-5231.

\* WANTED: 1519 Waverly Stenware, plain, Crystal. Up  
\* to 6 of any size. Call after 6. PH: 203-379-3667.

\* FOR SALE: 1503 Crystalite 11" Dinner Plates, like  
\* new. Nine at \$100. Diana Davis, 10616 N.E. 194,  
\* Bothell, WA 98011. PH: 206-485-6464.

\* FOR SALE: 1401 Empress 7" Plates, square, tanger-  
\* ine. 3389 Duquesne Finger Bowls, 5 oz. Sherbets,  
\* 9 oz. Goblets, 5 oz. Saucer Champagne, Tangerine  
\* Bowl, W/O. Alice Cooper, 1018 Lowell Road, Las  
\* Cruces, NM 88001. PH: 505-525-0247.

\* WANTED: 2 Insert Candle Cups for #1405 Ipswich  
\* Centerpiece Vases. Ruth H. Beyer, 833 N. 15th.  
\* Street, Manitowoc, WI 54220. PH: 414-684-9746.

\* \* \* \* \*

\* PLEASE, WE ARE ALMOST OUT OF HEISEY GLASS FOR  
\* THE GIFT SHOP. WE DO NOT NEED EXPENSIVE ITEMS -  
\* MARKED PLATES, NAPPIES, ETC. SELL WELL TO CASUAL  
\* VISITORS.

\* WE WILL PRICE THE ITEMS AND SEND YOU A DONATION  
\* SLIP FOR THAT AMOUNT.

LOUISE REAM, CURATOR

<p><b>A.W. PARKER</b> Heisey &amp; Pattern Glass Shows or Appointment Magalia, CA 95954 PH: (916) 873-2326</p>	<p><b>GLASS WITH CLASS</b> Lenore A Shelley, GGHC 1336 Lincoln Avenue San Jose, CA 95125 PH: (408) 286-8098</p>	<p><b>OLDE LOVED THINGS</b> 900 Ridgewood Ave. (Holly Hill) Daytona Beach, FL 32017 (904) 252-7960 Hours: Sat., Sun., &amp; Mon., 10-4</p>
<p><b>ALL HEISEY AUCTION</b> Consignments Welcome Apple Tree Auction Center 1616 W. Church, Newark, OH 43055 PH: (614) 344-9449</p>	<p><b>GREEN ACRES FARMS</b> Antiques, Crystal Glass &amp; Collectibles 2678 Hazelton-Etna Rd., SW (S.R. 310-N) Pataskala, OH 43062 Sat. or Sun. PM or call (614) 927-1882</p>	<p><b>OUR PLACE AND MEMORY LANE ANTIQUES</b> 1234 Newark Rd., Granville, Ohio 43023 (614) 587-4601, Open every day 12-5 Heisey, general line of antiques and collectibles</p>
<p><b>ALFA I CARRIAGE HOUSE ANTIQUES</b> Featuring Depression &amp; Elegant Glassware Al &amp; Faye Maness 508 E. Cary Street Richmond, VA 23219 PH: (804) 788-1630</p>	<p><b>H &amp; R DIAMOND H</b> Helen &amp; Robert Rarey 1450 White Ash Dr. Columbus, OH 43204 PH: (614) 279-0390 after 5:30</p>	<p><b>PARRETT'S ANTIQUES</b> Heisey 4994 Mapledale Rd. OR 1215 Greenwood Ave. Jackson, Mich. 49201 PH: (517) 784-7319 OR (517) 783-3289</p>
<p><b>ANTIQUES - THE SHULTZES</b> 206-208 East Main St. Newmanstown, PA 17073 15 Miles West of Reading, PA PH: (215) 589-2819</p>	<p><b>"HAPPINESS IS" - THE STULTZS</b> 3106 Warren Court, Glen Allen, VA 23060 Shows and Mail Order PH: (804) 262-1273 GLASS CIRCA 1890-1960</p>	<p><b>PATTON HOUSE</b> Heisey &amp; Duncan Miller Rocky's Mall, 1-81 &amp; US 11 Weyer's Cave, VA 24486 PH: (703) 967-1181</p>
<p><b>C &amp; J ANTIQUES</b> Cole &amp; Jean Miesner Box 45, 72 Whig St. Newark Valley, NY 13811 PH: (607) 642-9905</p>	<p><b>HARRALSON'S HEISEY HUNTERS</b> Sponsor: S.W. MO's Antique Shows 78 Quality Dealers From 14 States 1989 Dates: Apr. 29-30 &amp; Oct. 28-29 Info: 1426 W. Highland, Springfield, MO 65807 PH: (417) 883-2449</p>	<p><b>EAGLES REST ANTIQUES</b> Carl and Mary A. Evans Heisey - China - Pottery, etc. Shows or Appointment PH: (614) 522-2035</p>
<p><b>C.E. HIGGINS (S.F. Bay Area)</b> Shows and Mail Order P.O. Box 2723 Menlo Park, CA 94025 PH: (415) 322-0192 Evenings</p>	<p><b>HELEN &amp; JIM KENNON</b> Heisey, Cambridge, Fostoria, Duncan, Imperial, Fenton, Tiffin P.O. Box 114 Brookville, OH 45309 PH: (513) 833-5406 SHOWS ONLY</p>	<p><b>R &amp; L ANTIQUES-SAN FRANCISCO</b> Members of the Golden Gate Heisey Club 3690 Bodega Ave. Petaluma, CA 94952 PH: Petaluma (707) 762-2494 PH: San Francisco (415) 621-6693</p>
<p><b>CHARLES &amp; MILDRED FISHER</b> Heisey, Degenhart, Imperial, Antiques, Collectibles, General Line 991 Idlewilde, Newark, OH 43055 PH: (614) 522-5398</p>	<p><b>J.J. &amp; BOB MC KEE</b> Pottery Glassware Collectibles 334 W. 75th St. Kansas City, MO 64114 Wed.-Sun. 10-5 PH: (816) 361-8719</p>	<p><b>RAY ZIEGLER</b> Glass Repair 185 County Line Westerville, OH 43081 PH: (614) 891-9796</p>
<p><b>DAVE'S ANTIQUES</b> Specializing in Heisey Shows &amp; Mail Order 1403 E. Knollwood St. Tampa, Fl. 33604 (813) 237-5550</p>	<p><b>THE PURPLE PLACE</b> Featuring Heisey &amp; Other Fine Glass Martha &amp; Harold Earp 1940 Suwanee, Ft. Myers, FL 33901 PH: (813) 936-1572 Anytime</p>	<p><b>SCHWAN'S ANTIQUES SHOWS &amp; MAILORDER</b> 77 Lagos del Norte Ft. Pierce, FL 34951 PH: (407) 461-5940</p>
<p><b>DIAMOND H PLUS</b> Mail Orders &amp; Shows George &amp; Eileen Schamel Rt. 3, Box 171, Boonsboro, MD 21713 PH: (301) 432-6285</p>	<p><b>J. &amp; R. COLLECTIBLES</b> Shows, SASE, Mail Order list June &amp; Ray Lukasko P.O. Box 1030, Newark, OH 43055 PH: (614) 344-9719</p>	<p><b>SHOW AND TELL ANTIQUES</b> Art, Cut, Heisey and Pattern Glass 1525 Morrow Ave., Waco, TX 76707 Tues-Sat 10:30-4:30 PH: (817) 752-5372 Also: Mail Order and Shows Member NADA</p>
<p><b>ETTELMAN'S DISCONTINUED CHINA &amp; CRYSTAL HEISEY a SPECIALTY</b> P.O. Box 6491-HN Corpus Christi, TX 78411 PH: (512) 888-8391 Include SASE</p>	<p><b>MOSTLY HEISEY</b> Rhoda Curley 16 Clayton PL, Albany, NY 12209 Shop and Mail Order PH: (518) 482-6272</p>	<p><b>SINGLETREE ANTIQUES</b> Cut, Pattern &amp; Heisey Glass 10717 Staples Mill Rd. Glenn Allen, VA 23060 Chance or appointment PH: (804) 266-3795</p>
<p><b>FOREVER HEISEY</b> Jan &amp; Norm Thran Mail Order, Shows, Appraisal Service 1663 Londondale Pkwy., Newark, OH 43055 PH: (614) 344-5955</p>	<p><b>MOUND BUILDERS ANTIQUES</b> Heisey &amp; Animals, General Antiques Irene Rauck 1138 Moundview, Newark, OH 43055 PH: (614) 344-6043</p>	<p><b>WILLEY'S ANTIQUES &amp; MUSEUM</b> Specializing in Heisey 11110 Cannon Rd., Frazeyburg, OH 43822 16 miles east of Newark, OH PH: (614) 828-2557</p>
<p><b>GERT'S GLASS</b> Heisey &amp; Duncan Gertrude &amp; Russell Swetnam 1926 Saratoga Dr., Adelphi, MD 20783 PH: (301) 434-5113</p>	<p><b>THE MUTED SWAN ANTIQUES</b> 5486 Peachtree Rd., Chamblee, GA 30341 Heart of Chamblee Antique Row Specializing in Heisey &amp; Cambridge Bill &amp; Pat Miller PH: (404) 451-7620</p>	<p><b>THE WOODEN SHOE</b> Antiques &amp; Collectibles Jim &amp; Sheri VanEs by Appt. 810 Elden, Herndon, VA 22070 PH: (703) 435-9045</p>
<p><b>GLASS 'N' GLASS</b> Virginia &amp; Odell Johnson 6909 10th Ave. West Bradenton, FL 34209 PH: (813) 792-0604</p>	<p><b>NANCY'S ANTIQUES</b> Heisey, Cambridge, Fostoria, Fenton Mail Order 906 44th St. NW, Canton, OH 44709 216-492-2595. Shop Union Station Antiques 12622 Cleveland Ave., Uniontown, OH Daily</p>	<p><b>JAMES S. HARRIS ANTIQUES/APPRISALS</b> Box 672 Richmond, KY 40475-0672 PH: (606) 623-9100 Buying and Selling by Mail</p>

CONVENTION DATES FOR 1989 ARE JUNE 15, 16, 17, 18

Best Western Newark Inn (formerly the Sheraton) will be our Convention headquarters this year. They've given us the same special rates as last year. All Convention activities are held there, except the show, display and flea market. The Museum is nearby. Make your reservations as there are only 100 rooms and they go fast and most are gone by March 1st.

BEST WESTERN NEWARK INN RESERVATION REQUEST

NAME \_\_\_\_\_  
 ADDRESS \_\_\_\_\_  
 CITY \_\_\_\_\_ STATE \_\_\_\_\_ ZIP \_\_\_\_\_  
 PHONE \_\_\_\_\_  
 ARRIVE \_\_\_\_\_  
 DEPART \_\_\_\_\_

All rooms have two double beds.  
 Single room requested (1 person) \$ 37.00  
 Double room requested (2 people) 42.00  
 King or Queen size requested (1) 40.00  
 King or Queen size requested (2) 45.00  
 Rollaway bed . . . . . 5.00

Please make your reservation by clipping the attached form and mail to:

ROBERT MCCLAIN  
 336 MEADOWBROOK DR.  
 NEWARK, OHIO  
 PH: 614-366-7087

13TH ANNUAL SOUVENIR OSCAR FORM

PLEASE READ VERY CAREFULLY BEFORE FILLING OUT

THE OSCARS ARE TEAL (BLUE - GREEN) AND ARE MADE BY FENTON, MARKED HCA '89

They will be offered to members only for \$22.00 prior to Convention.

If any are left by June 15, they will be offered to members and the general public alike for \$25.00 each.

You may order ONE per member. This means ANY member who has a membership card, regardless of the class of membership. Please list all names as they will be checked. Everyone living in Ohio, ordering for pick-up in Ohio, must pay \$1.32 sales tax per Oscar. Shipping charges will be \$2.00. The Oscars will be shipped to you as soon as they arrive here from Fenton Art Glass Co.

DO NOT SEND DUES, BOOK ORDERS, ETC. WITH YOUR OSCAR ORDER

Please keep this part for a reference and clip and mail the form below the line. Be sure your dues are currently paid. This is the 13th. of a series of souvenir Oscars.

\_\_\_\_\_ Number of OSCARS at \$22.00 each \$ \_\_\_\_\_ Only one per member.  
 Sales Tax \$1.32 each . . . . . \_\_\_\_\_ All Ohio Residents and Pick-ups in Newark  
 Postage \$2.00 each . . . . . \_\_\_\_\_ Check One: \_\_\_\_\_ Please mail my Oscar  
 Total Sent with Order . . . . . \$ \_\_\_\_\_ I will pick up my Oscar  
 PHONE ORDERS CREDIT CARD ONLY

NAMES \_\_\_\_\_

ADDRESS: \_\_\_\_\_

Make check payable to HCA, Inc. and mail to: HCA OSCAR SALES  
 P.O. Box 4367  
 Newark, Ohio 43055

CITY: \_\_\_\_\_ STATE \_\_\_\_\_ ZIP \_\_\_\_\_

MASTERCARD   
 VISA  \_\_\_\_\_

EXPIRATION DATE REQUIRED MO \_\_\_\_\_ YEAR \_\_\_\_\_



17 ANNUAL



# STARLIGHT FLEA MARKET

ANTIQUES AND COLLECTORS SHOW

At  
Starlight School  
116 N. 22nd Street  
Newark, Ohio

March 12 from 9 am - 4 pm

Antiques  
Heisey Glass  
Crafts  
Pottery

Benefits-Starlight School & Heisey Museum  
Sponsored by- Land of Legend Study Club

FOOD AVAILABLE

DONATION

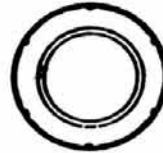
\$1.00

Ad compliments of

**Basic Distribution**

(614) 366-5163

A PRODUCT OF BOUGLAS ENTERPRISES



## REPLACEMENTS, LTD.

302 Gallimore Dairy Road, #HN  
Greensboro, NC 27409-9723  
(919) 668-2064  
Fax # (919) 668-9844

*Discontinued China & Crystal*

### WORLD'S LARGEST INVENTORY!

Over a million pieces of bone china, earthenware, and crystal.  
Call or write today . . . (SASE please).  
BUY AND SELL

Pattern Name \_\_\_\_\_

Company Name \_\_\_\_\_

Pattern Number \_\_\_\_\_ Pattern Color \_\_\_\_\_

Pieces Desired \_\_\_\_\_

Name \_\_\_\_\_

Street Address \_\_\_\_\_

City \_\_\_\_\_ State \_\_\_\_\_ Zip \_\_\_\_\_

Home Phone (\_\_\_\_) \_\_\_\_\_

POSTMASTER SEND FORM 3579 TO:



### National Heisey Glass Museum

Eight rooms and complete lower level displaying the beautiful hand made glass produced in Newark by the A.H. Heisey and Co. from 1896-1957  
Corner of West Church & North Sixth Streets  
Newark, Ohio 43055



Phone: (614) 345-2932

Hours: Daily 1pm-4pm Closed Holidays

**OHIO**  
*the heart of it all!* SM

#### Membership Renewal Notice

The date above your name and address is your renewal date. This is your last issue of the Heisey News if it reads 2-28-89

PLEASE DISREGARD THIS NOTICE IF YOU HAVE RECENTLY PAID YOUR DUES.

**SECOND CLASS**